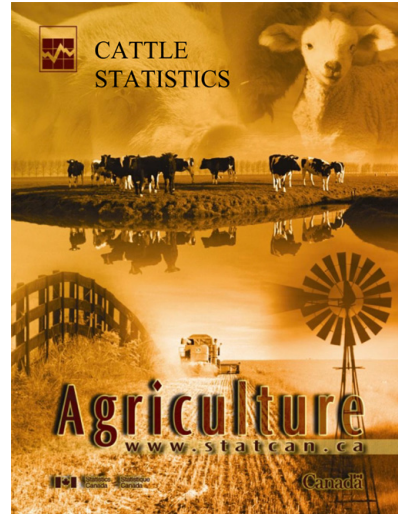




Catalogue no. 23-012-XIE

# Cattle Statistics

2002, vol. 1, no. 1



## **How to obtain more information**

Specific inquiries about this product and related statistics or services should be directed to Client Services, Agriculture Division, Statistics Canada at 1-800-465-1991 or by e-mail; [agriculture@statcan.ca](mailto:agriculture@statcan.ca).

For information on the wide range of data available from Statistics Canada, you can contact us by calling one of our toll-free numbers. You can also contact us by e-mail or by visiting our Web site.

<b>National inquiries line</b>	<b>1 800 263-1136</b>
<b>National telecommunications device for the hearing impaired</b>	<b>1 800 363-7629</b>
<b>Depository Services Program inquiries</b>	<b>1 800 700-1033</b>
<b>Fax line for Depository Services Program</b>	<b>1 800 889-9734</b>
<b>E-mail inquiries</b>	<b><a href="mailto:infostats@statcan.ca">infostats@statcan.ca</a></b>
<b>Web site</b>	<b><a href="http://www.statcan.ca">www.statcan.ca</a></b>

## **Ordering and subscription information**

This product, Catalogue no. 23-012-XIE, is available on Internet free. Users can obtain single issues at <http://www.statcan.ca/cgi-bin/downpub/freepub.cgi>.

## **Standards of service to the public**

Statistics Canada is committed to serving its clients in a prompt, reliable and courteous manner and in the official language of their choice. To this end, the Agency has developed standards of service which its employees observe in serving its clients. To obtain a copy of these service standards, please contact Statistics Canada toll free at 1 800 263-1136.



Statistics Canada  
Agriculture Division

# Cattle Statistics

2002, vol. 1, no. 1

Published by authority of the Minister responsible for Statistics Canada

© Minister of Industry, 2002

All rights reserved. No part of this publication may be reproduced, stored in a retrieval system or transmitted in any form or by any means, electronic, mechanical, photocopying, recording or otherwise without prior written permission from Licence Services, Marketing Division, Statistics Canada, Ottawa, Ontario, Canada K1A 0T6.

December 2002

Catalogue no. 23-012-XIE, vol. 1, no. 1

Frequency: Semi-annual

ISSN 1705-1320

Ottawa

La version française de cette publication est disponible sur demande (n° 23-012-XIF au catalogue).

---

## Note of appreciation

*Canada owes the success of its statistical system to a long-standing partnership between Statistics Canada, the citizens of Canada, its businesses, governments and other institutions. Accurate and timely statistical information could not be produced without their continued cooperation and goodwill.*

**SYMBOLS**

The following standard symbols are used in Statistics Canada publications:

- . not available for any reference period
- .. not available for a specific reference period
- ... not applicable
- p preliminary
- r revised
- x suppressed to meet the confidentiality requirements of the Statistics Act
- E use with caution
- F too unreliable to be published

This publication was prepared under the direction of:

- **Mark Elward, Chief,**  
Livestock and Animal Products Section
- **Robert Plourde, Unit Head,**  
Livestock Estimating Unit
- **Donald Cutts, Statistical Officer,**  
Livestock and Animal Products Section

---

## TABLE OF CONTENTS

	<b>Page</b>
<b>HIGHLIGHTS</b>	1
<b>CONCEPTS AND METHODS</b>	5
<b>Table</b>	
1. Inventory on Farms, by Province	7
2. Supply-Disposition by Province	9
3. Cattle, Farm Production, Canada	11
4. Calves, Farm Production, Canada	12
5. Inventory per Farm Type, by Province	13
6. Prices, at Toronto, by Month	23
7. Prices, at Alberta, by Month	24

---

## Livestock estimates

July 1, 2002

The national herd of cattle and calves declined up to the end of June 2002 amid a favourable export market, according to an annual survey of 22,400 farmers. Meanwhile, despite tumbling prices, hog inventories reached record levels.

---

### **As of July 1<sup>st</sup>, 2002**

The national herd of cattle and calves declined 1.0% from July 1<sup>st</sup> 2001 amid a favourable export market, according to an annual survey of 22,400 farmers. The vast majority of exports went to the United States.

As of July 1, 2002, livestock producers had an estimated 15,277,200 head of cattle on their farms. This was down slightly from the record 15,424,500 head on farms as of July 1, 2001.

Led by a 16% plunge in drought-affected Alberta, cattle inventories on Canadian feeding operations tumbled 6.6%. Increases in Manitoba and the East partially offset declines in Alberta and Saskatchewan. The majority of cattle on feeding operation can be found in Alberta where dry conditions, lower cattle prices and rising feed costs pushed inventories down.

This decline occurred in the wake of a 22% increase in exports of live animals during 2002, and a 12% increase in exports of beef, as opposed to live animals. At the same time, domestic slaughter fell 1.0%.

Dry conditions in portions of the Prairies may have had an impact on farmers' decisions to ship more cattle south of the border for feeding, finishing and slaughter. Other factors behind the exports were favourable exchange rates, general growth in the American demand for beef and strong prices in 2001. Prices for livestock, particularly hogs, softened in 2002.

Average prices for hogs during the second quarter of 2002 were about 29% lower than the same period last year. Despite concerns over prices, farmers reported a record 14.6 million hogs as of July 1, 2002, up 3.9% from the same time a year earlier.

Sheep and lamb exports also surged in the wake of increased demand and a lower Canadian dollar. Farmers had an estimated 1,252,500 animals on their farms as of July 1, 2002, up 0.4%, a modest gain compared with the last four years.

The July Livestock Survey was conducted in June. Farmers were asked to report the number of livestock on their farms as of July 1, 2002. Consequently, activity that occurred after July 1, principally due to drought conditions in the Prairies, will be reflected in future reports. Historical data have been adjusted to align with the 2001 Census of Agriculture.

*Livestock inventories at July 1<sup>st</sup>, 2002*

Livestock inventories at July 1						
000's of head	Cattle		Hogs		Sheep and Lambs	
	2001	2002	2001	2002	2001	2002
<b>Canada</b>	<b>15,425</b>	<b>15,277</b>	<b>14,050</b>	<b>14,594</b>	<b>1,248</b>	<b>1,253</b>
Atlantic	295	292	397	389	47	48
Quebec	1,360	1,370	4,294	4,330	256	279
Ontario	2,130	2,140	3,476	3,590	340	335
Manitoba	1,425	1,470	2,556	2,785	84	78
Saskatchewan	2,900	2,840	1,129	1,230	149	155
Alberta	6,500	6,325	2,029	2,100	287	288
British Columbia	815	840	168	170	85	70

Note: Due to rounding, totals may not add.

**Livestock sector expands with fewer producers**

Census of Agriculture data show that the livestock sector, dominated by cattle and hogs, continues to grow. Livestock producers have benefited over time from favourable exchange rates and increasing demand for both animals and meat from south of the border. The growth coincides with freer trade.

Western Canada's livestock sector has grown more rapidly than that in the East, partly due to the advantage of feeding animals close to key feed-producing areas. The demise of the Crow Rate that subsidized transportation of western grain gave a competitive advantage to producers closer to feed supplies.

Census data showed that the cattle sector grew a modest 4.4% between 1996 and 2001, and by 15% between 1981 and 2001. As of May 15, 2001, Census Day, there were a record 15.6 million cattle in Canada.

Even though the beef sector is behind the increase in the cattle sector, there were fewer producers. In 2001, 122,000 farms reported cattle, down 14% from 1996 and 34% from 1981.

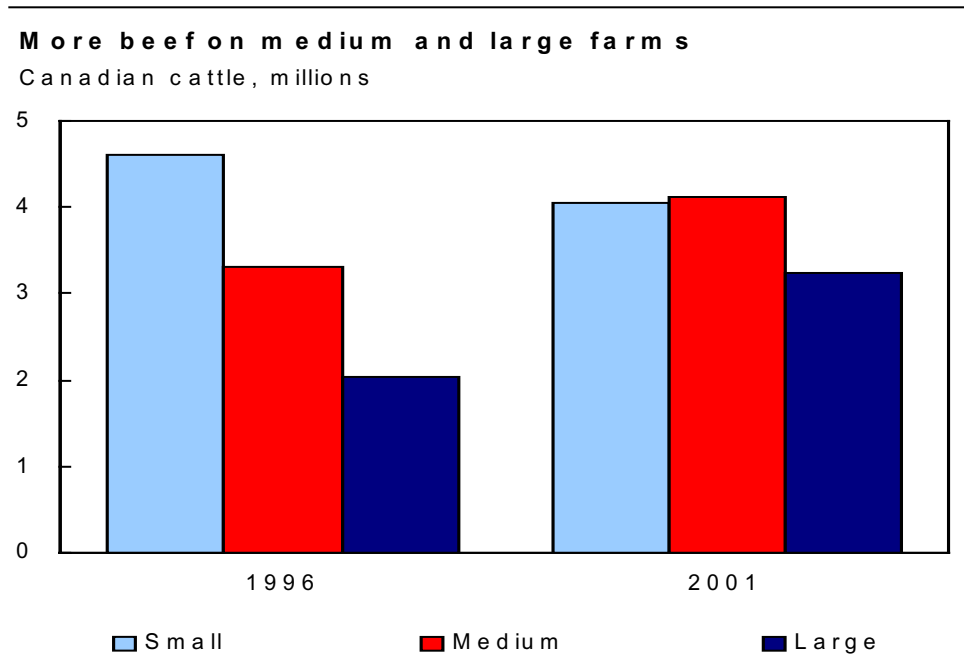
The average beef operation had 244 cattle, excluding farms with agricultural sales less than \$25,000. Cattle can be found on all sizes of farms, with no one size dominating. Beef producers with sales of more than \$500,000 held 28% of the cattle at the time of the census.

Cattle, particularly beef, are more prevalent in the West. Three-quarters of the national herd is in the West, with Alberta alone accounting for 43% of Canadian cattle, or about 6.6 million animals.

At the same time, 21,900 producers reported dairy cows. Dairy farms are more common in the East with 38% of the herd in Quebec and 34% in Ontario.

The trend to fewer dairy cows continued in 2001. The number of farms reporting dairy cows declined 29%, while the number of dairy cows fell 14% when compared to 1996. Efficiency gains continued to be made in the dairy industry, as production remained stable due to increased production per animal.

### *Canada, Cattle by size, 1996 and 2001*



### **Hog numbers at record levels**

One of the most significant increases shown by the 2001 Census of Agriculture was a 26% jump in hogs since 1996. At the same time, the number of farms reporting hogs fell 27%.

The 2001 Census of Agriculture enumerated 14.0 million hogs, up 41% since 1981. Expansion has been more rapid in the West. However, the two largest hog producing provinces were still Quebec, with 4.3 million head, and Ontario with 3.5 million.

About 15,500 farms reported hogs on the census. The average operation, excluding those with sales of less than \$25,000, had 1,195 hogs, up 70% from 1996.



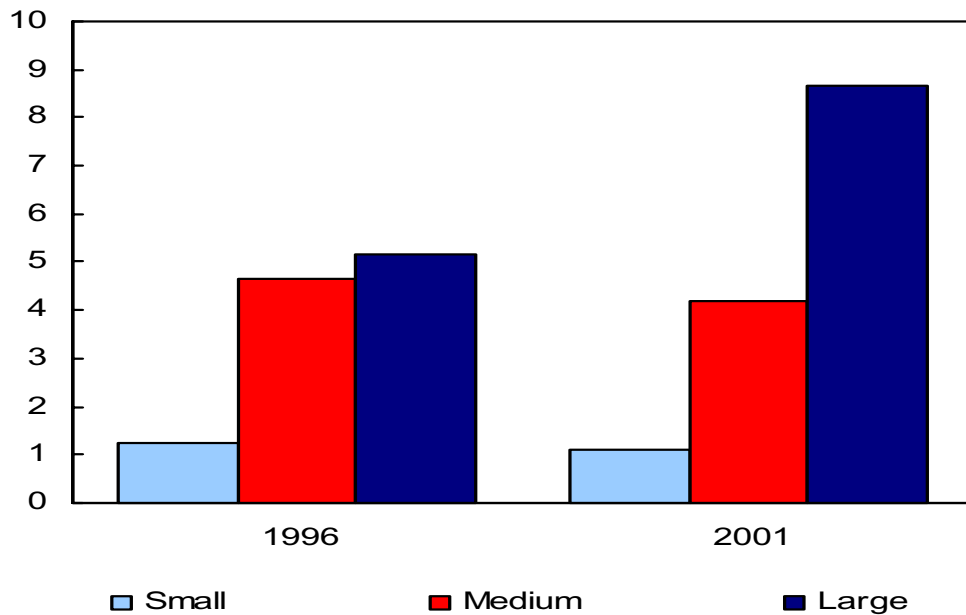
Most hogs are now produced on large operations, especially in Western Canada, where 75% of hogs were on operations with sales of over \$500,000. In the East, 52% of hogs were on such large operations.

***Canada, Hogs by size, 1996 and 2001***

---

**Large hog operations are expanding**

Canadian hogs, millions



## **Livestock Statistics – Concepts and Methods**

### **Concepts**

Inventory levels of the various types of livestock intended for sale in Canada are measured at specific times throughout the year. Surveyed operations are requested to include all animals located on the farming operation, regardless of ownership. They are also asked to include animals owned but pastured on a community pasture, grazing co-op or public land. Producers are asked to exclude animals owned but kept on a farm, ranch or feedlot operated by someone else. Inventory levels are estimated for cattle, calves, pigs, sheep and lambs. Estimates are also produced for certain categories of animals on the basis of age, sex, weight and/or purpose i.e. breeding or slaughter.

Current information on livestock inventories and related statistics such as supply and disposition enable those active in the agricultural sector to observe and assess changes in the industry, measure performance and keep the agricultural community and general public informed of developments. The primary data users are federal and provincial governments, producer boards, farmers and farm organisations, private business, academic research institutions and students. Livestock data assists governments in formulating agricultural policies and developing programs. Farming organisations use statistics in developing recommendations for producers and government. Farmers make increasing use of prices, production, and marketing statistics in planning their operations. In addition, these livestock statistics are used in the calculation of farm incomes and in the Canadian System of National Accounts for indicators such as gross domestic product.

### **Methods**

To produce livestock estimates, there are actually 6 different survey occasions. All of the survey occasions collect data primarily using Computer Assisted Telephone Interviews (CATI) although there are special procedures in place for the very large or complex operations.

Two of the occasions are the January Livestock Survey and the July Livestock Survey. These are large-scale general livestock surveys collecting data on cattle, hogs, sheep and other livestock, referring to inventories at the 1<sup>st</sup> of the month. The probability samples include about 10,000 operations at January 1, and about 28,000 operations at July 1. These surveys collect data during a three-week period in the western provinces, Ontario and Quebec. Regardless of when operators respond, they are asked to report inventories as of January 1 or July 1. The livestock survey results are released, following processing and analysis, approximately seven weeks after the reference date.

Hog inventories are the focus of two other survey occasions collecting estimates of pig numbers at April 1 and October 1. This survey was initiated in 1998 as estimates from 1978 to 1997 were based solely on analytical tools. For the hog surveys, a sub-sample of the prior livestock survey is used. The probability samples are 1,500 at April 1 and 2,500 at October 1 and, similar to the livestock surveys, these CATI surveys cover the western provinces, Ontario and Quebec. Producers are requested to report their inventories as of the reference date, although the data are collected during a 7-day period near or before that date. The hog survey results are normally released three to four weeks after the reference date.

The June and November Atlantic Surveys are used to produce estimates for that region. These surveys are multi-purpose collecting data, primarily inventories, on livestock including cattle, hogs and sheep in addition to collecting data related to the area, yield and production of the principal field

crops. The probability samples are 1,300 in June and 2,200 in November with the data collected by telephone. The results are released at the same time as the livestock results. For reference points where surveys do not exist for the Atlantic region, analytical tools are used to produce the estimates.

Recently a new piece of information has been added to the cattle statistics allowing users a better understanding of the cattle industry. In essence, the total inventories are distributed, on the basis of survey results and sector level balance sheets, to a specific farm type. The two major categories are dairy and beef. The beef sector is then broken down to beef cattle on cow/calf and mixed beef and dairy operations; beef cattle on feeder, stocker/finish operations; and, beef cattle on feeding operations, which includes feedlots.

To summarise, the livestock statistics are survey-based estimates. The survey relies on a list frame that is established every five years by the Census of Agriculture and updated to include new entrants, particularly large hog operations. The probability sample surveys are conducted by telephone. The survey results are analysed and corrected before the data are used to analyse the industry and fine-tune the estimates. The survey data are reviewed in a board environment before the commodity analyst works with the data primarily using supply-disposition analysis. The results of the industry analysis are reviewed by the board before being sent to the individual provinces. Once the data are finalised they are released to the public and published. The principal data released include inventories and summarised supply-disposition tables. The data also flow, via farm income estimates, to the Canadian System of National Accounts. In addition the data are used in the calculation of net farm income projections, produced by Agriculture and Agri-Food Canada in co-operation with Statistics Canada and the provinces.



TABLE 1. Cattle and Calves on Farms, Semi-Annually, by Province, East, West and Canada, 2002

	Nfld/Lab	PEI	NS	NB	Que	Ont	EAST	Man	Sask	Alta	BC	WEST	CANADA	
-----'000 head -----														
<b>JANUARY 1, 2002</b>													<b>'02/01</b>	
													<b>%</b>	
<b>Bulls, 1 year plus</b>	0.1	0.8	1.5	1.3	14.8	23.5	42.0	25.0	57.0	98.0	15.0	195.0	237.0	99.0
<b>Beef cows</b>	0.7	13.4	25.9	20.5	207.5	376.0	644.0	528.0	1220.0	1959.0	285.0	3992.0	4636.0	100.7
<b>Milk cows</b>	4.7	14.5	24.0	19.2	418.0	367.0	847.4	42.0	28.0	92.0	74.5	236.5	1083.9	99.3
<b>Heifers:dairy replacement</b>	1.4	6.9	11.3	9.4	176.0	200.0	405.0	18.5	14.0	36.0	34.0	102.5	507.5	102.0
<b>Heifers:beef replacement</b>	0.3	3.1	5.0	4.3	32.0	75.0	119.7	73.0	165.0	250.0	46.0	534.0	653.7	97.0
<b>Heifers:slaughter</b>	0.1	9.0	3.4	4.1	20.0	135.0	171.6	47.0	23.0	610.0	11.0	691.0	862.6	107.7
<b>Steers, 1 year plus</b>	0.2	16.4	5.4	6.4	71.7	184.0	284.1	54.0	33.0	800.0	30.0	917.0	1201.1	98.3
<b>Calves, under 1 year</b>	2.0	20.9	30.0	25.8	346.0	653.5	1078.2	457.5	877.5	1930.0	174.5	3439.5	4517.7	100.8
<b>TOTAL</b>	9.5	85.0	106.5	91.0	1286.0	2014.0	3592.0	1245.0	2417.5	5775.0	670.0	10107.5	13699.5	100.7
-----'000 head -----														
<b>JULY 1, 2002</b>													<b>'02/01</b>	
													<b>%</b>	
<b>Bulls, 1 year plus</b>	0.1	0.8	1.4	1.2	15.0	25.0	43.5	27.0	61.0	110.0	18.0	216.0	259.5	97.9
<b>Beef cows</b>	0.7	13.2	26.2	20.2	213.5	373.0	646.8	574.0	1200.0	2040.0	291.0	4105.0	4751.8	99.0
<b>Milk cows</b>	4.6	14.5	23.9	18.9	408.0	367.0	836.9	41.5	29.0	90.0	75.0	235.5	1072.4	100.0
<b>Heifers:dairy replacement</b>	1.4	6.8	11.3	9.4	181.5	199.5	409.9	20.0	13.5	38.0	36.5	108.0	517.9	100.1
<b>Heifers:beef replacement</b>	0.2	3.0	5.0	4.8	33.0	74.5	120.5	92.0	213.0	343.0	57.5	705.5	826.0	96.2
<b>Heifers:slaughter</b>	0.1	9.3	3.2	4.2	22.0	167.0	205.8	74.0	64.0	746.0	23.0	907.0	1112.8	105.0
<b>Steers, 1 year plus</b>	0.2	17.0	5.5	6.4	85.0	339.0	453.1	112.0	122.5	862.0	49.0	1145.5	1598.6	96.4
<b>Calves, under 1 year</b>	1.9	20.4	30.5	25.9	412.0	595.0	1085.7	529.5	1137.0	2096.0	290.0	4052.5	5138.2	98.9
<b>TOTAL</b>	9.2	85.0	107.0	91.0	1370.0	2140.0	3802.2	1470.0	2840.0	6325.0	840.0	11475.0	15277.2	99.0



TABLE 2. Cattle and Calves, Supply-Disposition Balance Sheet, Semi-Annually, by Province, East, West and Canada, 2002

	Nfld/Lab	PEI	NS	NB	Que	Ont	EAST	Man	Sask	Alta	BC	WEST	CANADA
	----- '000 head -----												
JANUARY - JUNE 2002													
1. Inventory at January 1	9.5	85.0	106.5	91.0	1286.0	2014.0	3592.0	1245.0	2417.5	5775.0	670.0	10107.5	13699.5
2. Calves born	1.3	15.0	22.3	22.9	409.1	410.4	881.0	533.2	1014.7	1832.9	333.5	3714.3	4595.3
3. Interprovincial imports	0.0	0.1	0.0	0.2	11.0	183.6	194.9	36.1	54.6	373.7	33.0	497.4	692.3
4. International imports	0.0	0.0	0.0	0.0	16.0	22.0	38.0	0.0	0.5	8.6	2.4	11.5	49.5
5. Total Supply (1+2+3+4)	10.8	100.1	128.8	114.1	1722.1	2630.0	4705.9	1814.3	3487.3	7990.2	1038.9	14330.7	19036.6
6. Slaughter	1.2	12.7	11.2	9.5	231.9	290.2	556.7	21.0	120.3	1130.8	23.6	1295.7	1852.4
7. Interprovincial exports	0.0	0.0	7.0	9.7	52.8	0.1	69.6	143.9	271.6	116.6	90.6	622.7	692.3
8. International exports	0.0	0.2	0.4	1.4	23.0	145.9	170.9	119.8	169.1	249.4	51.7	590.0	760.9
9. Deaths and condemnations	0.4	2.2	3.2	2.5	44.4	53.8	106.5	59.6	86.3	168.4	33.0	347.3	453.8
10. Output (6+7+8+9)	1.6	15.1	21.8	23.1	352.1	490.0	903.7	344.3	647.3	1665.2	198.9	2855.7	3759.4
11. Inventory at July 1	9.2	85.0	107.0	91.0	1370.0	2140.0	3802.2	1470.0	2840.0	6325.0	840.0	11475.0	15277.2
12. Residual (5-10-11)	0.0	0.0	0.0	0.0	0.0	0.0	0.0	0.0	0.0	0.0	0.0	0.0	0.0

**TABLE 3. Cattle , Total Slaughter and Farm Production, Canada, 1976 - 2001**

Year	Total Slaughter	Exported Alive	Imported Alive	Farm Production	MEAT PRODUCTION				
					Total Slaughter	Average Cold Dressed Weight <sup>(1)</sup>	Total Cold Dressed Weight <sup>(1)</sup>	Edible Offal	
(A)	(B)	(C)	(A)+(B)-(C)	000 head		kg	tonnes		
1976	4476.3	326.0	133.2	4669.1	4476.3	248.4	1111896	41822	
1977	4374.7	288.0	33.4	4629.3	4374.7	249.7	1092120	41045	
1978	3992.5	286.3	47.6	4231.2	3992.5	256.5	1023965	37456	
1979	3433.8	199.8	19.9	3613.7	3433.8	267.3	917848	32219	
1980	3525.7	209.8	22.8	3712.7	3525.7	266.3	938780	33108	
1981	3691.3	184.6	80.3	3795.6	3691.3	265.0	978149	34657	
1982	3788.1	317.3	71.5	4033.9	3788.1	260.4	986493	35579	
1983	3708.8	265.9	77.5	3897.2	3708.8	267.7	992745	34851	
1984	3565.9	294.2	29.9	3830.2	3565.9	266.0	948414	33508	
1985	3603.0	334.8	51.5	3886.3	3603.0	273.5	985250	33867	
1986	3511.4	221.0	60.9	3671.5	3511.4	280.5	985152	33046	
1987	3194.5	234.0	66.0	3362.5	3194.5	285.8	912966	30108	
1988	3086.3	461.1	31.8	3515.6	3086.3	293.8	906869	29079	
1989	3121.0	444.9	39.6	3526.3	3121.0	291.1	908400	29420	
1990	2892.0	822.5	13.4	3701.1	2892.0	296.6	857931	27236	
1991	2726.1	840.9	43.2	3523.8	2726.1	301.8	822776	25657	
1992	2834.8	1240.4	33.2	4042.0	2834.8	302.2	856655	26717	
1993	2685.0	1188.1	48.0	3825.1	2685.0	306.3	822309	25310	
1994	2727.4	982.6	95.1	3614.9	2727.4	316.0	861862	26860	
1995	2791.3	1108.8	78.6	3821.5	2791.3	318.1	887912	28741	
1996	3143.2	1481.1	46.8	4577.5	3143.2	310.5	976111	33102	
1997	3257.7	1331.8	34.7	4554.8	3257.7	321.5	1047337	35103	
1998	3405.8	1288.7	62.4	4632.1	3405.8	334.9	1140595	36713	
1999	3588.7	957.5	182.0	4364.2	3588.7	340.7	1222691	38728	
2000	3498.7	938.1	260.3	4176.5	3498.7	349.6	1223291	39233	
2001	3433.9	1280.3	196.3	4517.9	3433.9	352.8	1211375	38535	

(1) Not including edible offal.



**TABLE 4. Calves, Total Slaughter and Farm Production, Canada, 1976 - 2001**

Year	Total Slaughter	Exported Alive	Imported Alive	Farm Production	MEAT PRODUCTION				
					Total Slaughter	Average Cold Dressed Weight <sup>(1)</sup>	Total Cold Dressed Weight <sup>(1)</sup>	Edible Offal	
(A)	(B)	(C)	(A)+(B)-(C)						
000 head				kg		tonnes			
1976	1003.7	151.8	52.7	1102.8	1003.7	53.5	53664	2049	
1977	976.8	147.6	17.4	1107.0	976.8	51.2	49971	1994	
1978	771.5	182.3	8.2	945.6	771.5	50.7	39134	1575	
1979	533.3	169.3	5.6	697.0	533.3	55.5	29613	1089	
1980	531.3	148.8	4.3	675.8	531.3	60.1	31926	1085	
1981	561.7	166.7	20.2	708.2	561.7	63.2	35514	1147	
1982	597.7	187.6	14.9	770.4	597.7	64.7	38662	1220	
1983	618.8	117.2	12.4	723.6	618.8	64.2	39711	1263	
1984	651.9	112.7	17.7	746.9	651.9	64.9	42308	1331	
1985	631.8	46.4	6.1	672.1	531.8	68.9	43539	1290	
1986	591.6	26.9	10.4	608.1	591.6	72.8	43091	1207	
1987	509.8	33.4	9.3	533.9	509.8	79.3	40417	1041	
1988	491.4	46.5	4.9	533.0	491.4	82.4	40507	1003	
1989	502.9	53.9	1.1	555.7	502.9	86.5	43529	1026	
1990	462.3	61.1	0.6	522.8	462.3	91.2	42173	943	
1991	426.5	88.3	0.3	514.5	426.5	101.2	43176	870	
1992	397.1	67.0	3.4	460.7	397.1	106.1	42144	811	
1993	347.5	47.3	12.6	382.2	347.5	107.4	37322	709	
1994	336.9	34.5	22.1	349.3	336.9	111.6	37596	726	
1995	354.8	26.8	7.9	373.7	354.8	113.6	40295	764	
1996	363.0	31.9	13.3	381.6	363.0	111.3	40386	823	
1997	373.1	49.0	9.2	412.9	373.1	112.9	42141	846	
1998	349.7	26.7	26.7	349.7	349.7	118.5	41428	793	
1999	347.5	28.6	52.8	323.3	347.5	118.3	41125	788	
2000	339.6	26.7	61.6	304.7	339.6	120.3	40847	770	
2001	326.3	39.8	38.1	328.0	326.3	118.3	38581	740	

(1) Not including edible offal.

**TABLE 5. Total Inventory per Farm Type, by Province, East, West and Canada, 2000 to 2002**

<b>- Atlantic -</b>	Jan 1/00	July 1/00	Jan 1/01	July 1/01	Jan 1/02	July 1/02
<b>On ALL CATTLE Operations:</b>						
	----- '000 head -----					
Bulls	4.4	4.2	4.1	3.7	3.7	3.5
Milk cows	65.9	64.7	63.5	62.2	62.4	61.9
Beef cows	63.6	62.6	61.5	60.8	60.5	60.3
Milk heifers	26.0	27.6	28.5	29.7	29.0	28.9
Beef heifers - breeding	12.3	12.6	12.9	13.5	12.7	13.0
Beef heifers - slaughter	15.5	17.6	16.0	16.7	16.6	16.8
Steers	31.7	31.4	29.1	29.0	28.4	29.1
Calves	80.4	81.7	78.6	78.9	78.7	78.7
TOTAL Inventory	299.8	302.4	294.2	294.5	292.0	292.2
<b>On DAIRY Operations:</b>						
Bulls	0.9	0.9	0.8	0.8	0.7	0.8
Milk cows	65.9	64.7	63.5	62.2	62.4	61.9
Beef cows						
Milk heifers	26.0	27.6	28.5	29.7	29.0	28.9
Beef heifers - breeding						
Beef heifers - slaughter	2.1	0.9	2.3	0.9	2.4	0.9
Steers	5.1	2.1	4.2	1.9	4.0	1.9
Calves	26.7	26.5	26.3	25.5	26.5	25.5
TOTAL Inventory	126.7	122.7	125.6	121.0	125.0	119.9
<b>On BEEF Operations(1):</b>						
Bulls	3.5	3.3	3.3	2.9	3.0	2.7
Milk cows	0.0	0.0	0.0	0.0	0.0	0.0
Beef cows	63.6	62.6	61.5	60.8	60.5	60.3
Milk heifers	0.0	0.0	0.0	0.0	0.0	0.0
Beef heifers - breeding	12.3	12.6	12.9	13.5	12.7	13.0
Beef heifers - slaughter	13.3	16.7	13.8	15.8	14.2	15.8
Steers	26.7	29.3	24.9	27.1	24.4	27.2
Calves	53.8	55.2	52.3	53.5	52.2	53.2
TOTAL Inventory	173.2	179.7	168.7	173.5	167.0	172.2
<b>On cow / calf operations:</b>						
Bulls	2.7	2.2	2.6	1.9	2.3	1.7
Milk cows	0.0	0.0	0.0	0.0	0.0	0.0
Beef cows	49.0	42.6	47.4	41.3	46.6	41.0
Milk heifers	0.0	0.0	0.0	0.0	0.0	0.0
Beef heifers - breeding	9.7	7.9	10.4	8.9	10.3	8.5
Beef heifers - slaughter	1.8	2.0	2.0	1.9	2.1	1.8
Steers	2.8	3.4	2.2	2.9	2.1	3.1
Calves	29.8	40.1	29.2	38.2	29.4	38.2
TOTAL Inventory	95.8	98.2	93.8	95.1	92.8	94.3
<b>On feeder, stocker / finish operations:</b>						
Bulls	0.8	1.1	0.7	1.0	0.7	1.0
Milk cows	0.0	0.0	0.0	0.0	0.0	0.0
Beef cows	14.6	20.0	14.1	19.5	13.9	19.3
Milk heifers	0.0	0.0	0.0	0.0	0.0	0.0
Beef heifers - breeding	2.6	4.7	2.5	4.6	2.4	4.5
Beef heifers - slaughter	4.9	6.3	5.2	6.2	5.5	6.1
Steers	7.3	11.3	6.1	10.1	5.7	10.5
Calves	20.9	14.1	20.5	13.5	20.7	13.5
TOTAL Inventory	51.1	57.5	49.1	54.9	48.9	54.9
<b>On feeding operations:</b>						
Bulls	0.0	0.0	0.0	0.0	0.0	0.0
Milk cows	0.0	0.0	0.0	0.0	0.0	0.0
Beef cows	0.0	0.0	0.0	0.0	0.0	0.0
Milk heifers	0.0	0.0	0.0	0.0	0.0	0.0
Beef heifers - breeding	0.0	0.0	0.0	0.0	0.0	0.0
Beef heifers - slaughter	6.6	8.4	6.6	7.7	6.6	7.9
Steers	16.6	14.6	16.6	14.1	16.6	13.6
Calves	3.1	1.0	2.6	1.8	2.1	1.5
TOTAL Inventory	26.3	24.0	25.8	23.5	25.3	23.0

(1) Excluding small amounts of heifers for slaughter and steers on dairy farms.

**TABLE 5. Total Inventory per Farm Type, by Province, East, West and Canada, 2000 to 2002**

<b>- Quebec -</b>	Jan 1/00	July 1/00	Jan 1/01	July 1/01	Jan 1/02	July 1/02
<b>On ALL CATTLE Operations:</b>	-----'000 head-----					
Bulls	15.4	15.2	14.8	15.0	14.8	15.0
Milk cows	427.0	416.0	420.0	409.0	418.0	408.0
Beef cows	212.5	212.0	202.7	211.5	207.5	213.5
Milk heifers	178.0	176.0	174.0	182.0	176.0	181.5
Beef heifers - breeding	32.5	36.0	33.0	34.0	32.0	33.0
Beef heifers - slaughter	9.0	15.0	16.0	19.0	20.0	22.0
Steers	58.1	59.8	64.5	79.5	71.7	85.0
Calves	324.0	405.0	355.0	410.0	346.0	412.0
<b>TOTAL Inventory</b>	<b>1,256.5</b>	<b>1,335.0</b>	<b>1,280.0</b>	<b>1,360.0</b>	<b>1,286.0</b>	<b>1,370.0</b>
<b>On DAIRY Operations:</b>						
Bulls	5.6	5.0	5.0	4.9	4.6	4.3
Milk cows	427.0	416.0	420.0	409.0	418.0	408.0
Beef cows						
Milk heifers	178.0	176.0	174.0	182.0	176.0	181.5
Beef heifers - breeding						
Beef heifers - slaughter	1.1	1.8	2.1	2.8	1.3	2.7
Steers	4.2	2.7	6.8	4.1	6.3	3.8
Calves	189.6	204.8	204.6	204.0	203.6	207.0
<b>TOTAL Inventory</b>	<b>805.5</b>	<b>806.3</b>	<b>812.5</b>	<b>806.8</b>	<b>809.8</b>	<b>807.3</b>
<b>On BEEF Operations(1):</b>						
Bulls	9.8	10.2	9.8	10.1	10.2	10.7
Milk cows	0.0	0.0	0.0	0.0	0.0	0.0
Beef cows	212.5	212.0	202.7	211.5	207.5	213.5
Milk heifers	0.0	0.0	0.0	0.0	0.0	0.0
Beef heifers - breeding	32.5	36.0	33.0	34.0	32.0	33.0
Beef heifers - slaughter	7.9	13.2	14.0	16.2	18.7	19.3
Steers	54.0	57.2	57.8	75.4	65.4	81.4
Calves	134.3	200.3	150.5	205.9	142.4	205.0
<b>TOTAL Inventory</b>	<b>451.0</b>	<b>528.9</b>	<b>467.8</b>	<b>553.1</b>	<b>476.2</b>	<b>562.9</b>
<b>On cow / calf operations:</b>						
Bulls	9.3	9.2	9.3	9.3	9.4	9.5
Milk cows	0.0	0.0	0.0	0.0	0.0	0.0
Beef cows	202.9	192.9	193.2	194.6	191.7	189.6
Milk heifers	0.0	0.0	0.0	0.0	0.0	0.0
Beef heifers - breeding	30.7	32.0	31.5	30.5	29.0	28.0
Beef heifers - slaughter	2.3	1.9	2.2	2.9	2.3	3.1
Steers	2.9	3.6	4.3	4.3	3.8	3.1
Calves	122.1	179.1	129.7	187.0	122.1	181.7
<b>TOTAL Inventory</b>	<b>370.2</b>	<b>418.7</b>	<b>370.2</b>	<b>428.6</b>	<b>358.3</b>	<b>415.0</b>
<b>On feeder, stocker / finish operations:</b>						
Bulls	0.5	1.0	0.5	0.8	0.8	1.2
Milk cows	0.0	0.0	0.0	0.0	0.0	0.0
Beef cows	9.6	19.1	9.5	16.9	15.8	23.9
Milk heifers	0.0	0.0	0.0	0.0	0.0	0.0
Beef heifers - breeding	1.8	4.0	1.5	3.5	3.0	5.0
Beef heifers - slaughter	3.1	6.8	4.8	8.3	4.9	9.2
Steers	16.1	11.6	11.5	19.1	13.1	18.3
Calves	4.7	15.2	6.8	12.9	15.3	18.3
<b>TOTAL Inventory</b>	<b>35.8</b>	<b>57.7</b>	<b>34.6</b>	<b>61.5</b>	<b>52.9</b>	<b>75.9</b>
<b>On feeding operations:</b>						
Bulls	0.0	0.0	0.0	0.0	0.0	0.0
Milk cows	0.0	0.0	0.0	0.0	0.0	0.0
Beef cows	0.0	0.0	0.0	0.0	0.0	0.0
Milk heifers	0.0	0.0	0.0	0.0	0.0	0.0
Beef heifers - breeding	0.0	0.0	0.0	0.0	0.0	0.0
Beef heifers - slaughter	2.5	4.5	7.0	5.0	11.5	7.0
Steers	35.0	42.0	42.0	52.0	48.5	60.0
Calves	7.5	6.0	14.0	6.0	5.0	5.0
<b>TOTAL Inventory</b>	<b>45.0</b>	<b>52.5</b>	<b>63.0</b>	<b>63.0</b>	<b>65.0</b>	<b>72.0</b>

(1) Excluding small amounts of heifers for slaughter and steers on dairy farms.

**TABLE 5. Total Inventory per Farm Type, by Province, East, West and Canada, 2000 to 2002**

<b>- Ontario -</b>	Jan 1/00	July 1/00	Jan 1/01	July 1/01	Jan 1/02	July 1/02
<b>On ALL CATTLE Operations:</b>						
	-----'000 head-----					
Bulls	25.0	26.0	24.0	25.0	23.5	25.0
Milk cows	380.0	377.0	372.0	365.0	367.0	367.0
Beef cows	396.0	387.0	380.0	378.0	376.0	373.0
Milk heifers	180.0	184.0	191.0	197.0	200.0	199.5
Beef heifers - breeding	70.0	71.0	63.0	82.0	75.0	74.5
Beef heifers - slaughter	110.0	180.0	140.0	162.0	135.0	167.0
Steers	212.0	306.0	219.0	315.0	184.0	339.0
Calves	622.0	566.0	656.0	606.0	653.5	595.0
<b>TOTAL Inventory</b>	<b>1,995.0</b>	<b>2,097.0</b>	<b>2,045.0</b>	<b>2,130.0</b>	<b>2,014.0</b>	<b>2,140.0</b>
<b>On DAIRY Operations:</b>						
Bulls	4.4	4.4	4.0	4.0	3.8	4.3
Milk cows	380.0	377.0	372.0	365.0	367.0	367.0
Beef cows						
Milk heifers	180.0	184.0	191.0	197.0	200.0	199.5
Beef heifers - breeding						
Beef heifers - slaughter	9.4	9.6	8.0	7.0	4.7	5.7
Steers	22.8	27.1	21.8	41.3	22.9	36.0
Calves	223.3	188.9	238.8	204.0	241.0	201.5
<b>TOTAL Inventory</b>	<b>819.9</b>	<b>791.0</b>	<b>835.6</b>	<b>818.3</b>	<b>839.4</b>	<b>814.0</b>
<b>On BEEF Operations(1):</b>						
Bulls	20.6	21.6	20.0	21.0	19.7	20.7
Milk cows	0.0	0.0	0.0	0.0	0.0	0.0
Beef cows	396.0	387.0	380.0	378.0	376.0	373.0
Milk heifers	0.0	0.0	0.0	0.0	0.0	0.0
Beef heifers - breeding	70.0	71.0	63.0	82.0	75.0	74.5
Beef heifers - slaughter	100.7	170.4	132.0	155.0	130.3	161.2
Steers	189.2	278.9	197.2	273.8	161.1	303.6
Calves	398.8	377.3	417.2	401.9	412.6	393.5
<b>TOTAL Inventory</b>	<b>1,175.3</b>	<b>1,306.2</b>	<b>1,209.4</b>	<b>1,311.7</b>	<b>1,174.7</b>	<b>1,326.5</b>
<b>On cow / calf operations:</b>						
Bulls	16.9	16.6	16.8	16.0	16.0	15.9
Milk cows	0.0	0.0	0.0	0.0	0.0	0.0
Beef cows	318.8	291.0	313.1	283.1	298.9	280.5
Milk heifers	0.0	0.0	0.0	0.0	0.0	0.0
Beef heifers - breeding	54.2	52.3	51.0	63.5	57.7	56.5
Beef heifers - slaughter	8.2	6.6	4.8	6.3	4.1	6.8
Steers	6.3	13.6	6.9	11.5	7.8	13.8
Calves	285.4	283.0	290.9	305.0	294.4	298.7
<b>TOTAL Inventory</b>	<b>689.8</b>	<b>663.1</b>	<b>683.5</b>	<b>685.4</b>	<b>678.9</b>	<b>672.2</b>
<b>On feeder, stocker / finish operations:</b>						
Bulls	3.7	5.0	3.2	5.0	3.7	4.8
Milk cows	0.0	0.0	0.0	0.0	0.0	0.0
Beef cows	77.2	96.0	66.9	94.9	77.1	92.5
Milk heifers	0.0	0.0	0.0	0.0	0.0	0.0
Beef heifers - breeding	15.8	18.7	12.0	18.5	17.3	18.0
Beef heifers - slaughter	21.5	38.8	27.2	40.7	30.2	39.4
Steers	37.9	72.3	50.3	72.3	43.3	70.8
Calves	79.4	83.3	81.3	84.9	87.2	84.8
<b>TOTAL Inventory</b>	<b>235.5</b>	<b>314.1</b>	<b>240.9</b>	<b>316.3</b>	<b>258.8</b>	<b>310.3</b>
<b>On feeding operations:</b>						
Bulls	0.0	0.0	0.0	0.0	0.0	0.0
Milk cows	0.0	0.0	0.0	0.0	0.0	0.0
Beef cows	0.0	0.0	0.0	0.0	0.0	0.0
Milk heifers	0.0	0.0	0.0	0.0	0.0	0.0
Beef heifers - breeding	0.0	0.0	0.0	0.0	0.0	0.0
Beef heifers - slaughter	71.0	125.0	100.0	108.0	96.0	115.0
Steers	145.0	193.0	140.0	190.0	110.0	219.0
Calves	34.0	11.0	45.0	12.0	31.0	10.0
<b>TOTAL Inventory</b>	<b>250.0</b>	<b>329.0</b>	<b>285.0</b>	<b>310.0</b>	<b>237.0</b>	<b>344.0</b>

(1) Excluding small amounts of heifers for slaughter and steers on dairy farms.

**TABLE 5. Total Inventory per Farm Type, by Province, East, West and Canada, 2000 to 2002**

<b>- EAST -</b>	Jan 1/00	July 1/00	Jan 1/01	July 1/01	Jan 1/02	July 1/02
<b>On ALL CATTLE Operations:</b>						
	-----'000 head-----					
Bulls	44.8	45.4	42.9	43.7	42.0	43.5
Milk cows	872.9	857.7	855.5	836.2	847.4	836.9
Beef cows	672.1	661.6	644.2	650.3	644.0	646.8
Milk heifers	384.0	387.6	393.5	408.7	405.0	409.9
Beef heifers - breeding	114.8	119.6	108.9	129.5	119.7	120.5
Beef heifers - slaughter	134.5	212.6	172.0	197.7	171.6	205.8
Steers	301.8	397.2	312.6	423.5	284.1	453.1
Calves	1,026.4	1,052.7	1,089.6	1,094.9	1,078.2	1,085.7
<b>TOTAL Inventory</b>	<b>3,551.3</b>	<b>3,734.4</b>	<b>3,619.2</b>	<b>3,784.5</b>	<b>3,592.0</b>	<b>3,802.2</b>
<b>On DAIRY Operations:</b>						
Bulls	10.9	10.3	9.8	9.7	9.1	9.4
Milk cows	872.9	857.7	855.5	836.2	847.4	836.9
Beef cows						
Milk heifers	384.0	387.6	393.5	408.7	405.0	409.9
Beef heifers - breeding						
Beef heifers - slaughter	12.6	12.3	12.4	10.7	8.4	9.3
Steers	32.1	31.9	32.8	47.3	33.2	41.7
Calves	439.6	420.2	469.7	433.5	471.1	434.0
<b>TOTAL Inventory</b>	<b>1,752.1</b>	<b>1,720.0</b>	<b>1,773.7</b>	<b>1,746.1</b>	<b>1,774.2</b>	<b>1,741.2</b>
<b>On BEEF Operations(1):</b>						
Bulls	33.9	35.1	33.1	34.0	32.9	34.1
Milk cows	0.0	0.0	0.0	0.0	0.0	0.0
Beef cows	672.1	661.6	644.2	650.3	644.0	646.8
Milk heifers	0.0	0.0	0.0	0.0	0.0	0.0
Beef heifers - breeding	114.8	119.6	108.9	129.5	119.7	120.5
Beef heifers - slaughter	121.9	200.3	159.8	187.0	163.2	196.3
Steers	269.9	365.4	279.9	376.3	250.9	412.2
Calves	586.9	632.8	620.0	661.3	607.2	651.7
<b>TOTAL Inventory</b>	<b>1,799.5</b>	<b>2,014.8</b>	<b>1,845.9</b>	<b>2,038.3</b>	<b>1,817.9</b>	<b>2,061.6</b>
<b>On cow / calf operations:</b>						
Bulls	28.9	28.0	28.7	27.2	27.7	27.1
Milk cows	0.0	0.0	0.0	0.0	0.0	0.0
Beef cows	570.7	526.5	553.7	519.0	537.2	511.1
Milk heifers	0.0	0.0	0.0	0.0	0.0	0.0
Beef heifers - breeding	94.6	92.2	92.9	102.9	97.0	93.0
Beef heifers - slaughter	12.3	10.5	9.0	11.1	8.5	11.7
Steers	12.0	20.6	13.4	18.7	13.7	20.0
Calves	437.3	502.2	449.8	530.2	445.9	518.6
<b>TOTAL Inventory</b>	<b>1,155.8</b>	<b>1,180.0</b>	<b>1,147.5</b>	<b>1,209.1</b>	<b>1,130.0</b>	<b>1,181.5</b>
<b>On feeder, stocker / finish operations:</b>						
Bulls	5.0	7.1	4.4	6.8	5.2	7.0
Milk cows	0.0	0.0	0.0	0.0	0.0	0.0
Beef cows	101.4	135.1	90.5	131.3	106.8	135.7
Milk heifers	0.0	0.0	0.0	0.0	0.0	0.0
Beef heifers - breeding	20.2	27.4	16.0	26.6	22.7	27.5
Beef heifers - slaughter	29.5	51.9	37.2	55.2	40.6	54.7
Steers	61.3	95.2	67.9	101.5	62.1	99.6
Calves	105.0	112.6	108.6	111.3	123.2	116.6
<b>TOTAL Inventory</b>	<b>322.4</b>	<b>429.3</b>	<b>324.6</b>	<b>432.7</b>	<b>360.6</b>	<b>441.1</b>
<b>On feeding operations:</b>						
Bulls	0.0	0.0	0.0	0.0	0.0	0.0
Milk cows	0.0	0.0	0.0	0.0	0.0	0.0
Beef cows	0.0	0.0	0.0	0.0	0.0	0.0
Milk heifers	0.0	0.0	0.0	0.0	0.0	0.0
Beef heifers - breeding	0.0	0.0	0.0	0.0	0.0	0.0
Beef heifers - slaughter	80.1	137.9	113.6	120.7	114.1	129.9
Steers	196.6	249.6	198.6	256.1	175.1	292.6
Calves	44.6	18.0	61.6	19.8	38.1	16.5
<b>TOTAL Inventory</b>	<b>321.3</b>	<b>405.5</b>	<b>373.8</b>	<b>396.5</b>	<b>327.3</b>	<b>439.0</b>

(1) Excluding small amounts of heifers for slaughter and steers on dairy farms.

**TABLE 5. Total Inventory per Farm Type, by Province, East, West and Canada, 2000 to 2002**

<b>- Manitoba -</b>	Jan 1/00	July 1/00	Jan 1/01	July 1/01	Jan 1/02	July 1/02
<b>On ALL CATTLE Operations:</b>						
	-----'000 head-----					
Bulls	24.5	26.5	25.0	27.0	25.0	27.0
Milk cows	41.5	41.0	42.0	42.5	42.0	41.5
Beef cows	515.0	554.0	524.0	566.0	528.0	574.0
Milk heifers	17.0	18.5	17.0	20.0	18.5	20.0
Beef heifers - breeding	67.0	82.0	68.0	84.0	73.0	92.0
Beef heifers - slaughter	38.0	61.0	37.0	62.0	47.0	74.0
Steers	41.0	85.0	49.0	105.0	54.0	112.0
Calves	416.0	532.0	443.0	518.5	457.5	529.5
<b>TOTAL Inventory</b>	<b>1,160.0</b>	<b>1,400.0</b>	<b>1,205.0</b>	<b>1,425.0</b>	<b>1,245.0</b>	<b>1,470.0</b>
<b>On DAIRY Operations:</b>						
Bulls	0.7	0.7	0.5	0.8	0.7	0.7
Milk cows	41.5	41.0	42.0	42.5	42.0	41.5
Beef cows						
Milk heifers	17.0	18.5	17.0	20.0	18.5	20.0
Beef heifers - breeding						
Beef heifers - slaughter	0.1	0.2	0.1	0.3	0.1	0.2
Steers	0.4	0.9	0.7	1.4	0.9	1.4
Calves	19.0	22.3	20.2	21.0	21.4	21.0
<b>TOTAL Inventory</b>	<b>78.7</b>	<b>83.6</b>	<b>80.5</b>	<b>86.0</b>	<b>83.6</b>	<b>84.8</b>
<b>On BEEF Operations(1):</b>						
Bulls	23.8	25.8	24.5	26.2	24.3	26.3
Milk cows	0.0	0.0	0.0	0.0	0.0	0.0
Beef cows	515.0	554.0	524.0	566.0	528.0	574.0
Milk heifers	0.0	0.0	0.0	0.0	0.0	0.0
Beef heifers - breeding	67.0	82.0	68.0	84.0	73.0	92.0
Beef heifers - slaughter	37.9	60.8	37.0	61.8	46.9	73.7
Steers	40.7	84.1	48.3	103.6	53.1	110.7
Calves	397.0	509.7	422.8	497.6	436.1	508.5
<b>TOTAL Inventory</b>	<b>1,081.4</b>	<b>1,316.4</b>	<b>1,124.6</b>	<b>1,339.2</b>	<b>1,161.4</b>	<b>1,385.2</b>
<b>On cow / calf operations:</b>						
Bulls	22.1	23.1	23.0	23.2	22.8	23.2
Milk cows	0.0	0.0	0.0	0.0	0.0	0.0
Beef cows	477.4	491.9	489.9	500.9	494.7	505.7
Milk heifers	0.0	0.0	0.0	0.0	0.0	0.0
Beef heifers - breeding	60.3	68.2	62.8	72.6	68.2	78.2
Beef heifers - slaughter	3.3	4.6	2.7	9.2	7.6	6.8
Steers	2.1	7.0	2.9	9.6	5.4	10.4
Calves	323.6	439.5	326.3	430.2	369.3	435.8
<b>TOTAL Inventory</b>	<b>888.8</b>	<b>1,034.3</b>	<b>907.6</b>	<b>1,045.7</b>	<b>968.0</b>	<b>1,060.1</b>
<b>On feeder, stocker / finish operations:</b>						
Bulls	1.7	2.7	1.5	3.0	1.5	3.1
Milk cows	0.0	0.0	0.0	0.0	0.0	0.0
Beef cows	37.6	62.1	34.1	65.1	33.3	68.3
Milk heifers	0.0	0.0	0.0	0.0	0.0	0.0
Beef heifers - breeding	6.7	13.8	5.2	11.4	4.8	13.8
Beef heifers - slaughter	11.6	20.2	9.3	31.1	15.3	28.4
Steers	6.1	23.1	9.4	37.0	11.7	33.3
Calves	55.4	58.2	69.5	63.9	53.8	68.2
<b>TOTAL Inventory</b>	<b>119.1</b>	<b>180.1</b>	<b>129.0</b>	<b>211.5</b>	<b>120.4</b>	<b>215.1</b>
<b>On feeding operations:</b>						
Bulls	0.0	0.0	0.0	0.0	0.0	0.0
Milk cows	0.0	0.0	0.0	0.0	0.0	0.0
Beef cows	0.0	0.0	0.0	0.0	0.0	0.0
Milk heifers	0.0	0.0	0.0	0.0	0.0	0.0
Beef heifers - breeding	0.0	0.0	0.0	0.0	0.0	0.0
Beef heifers - slaughter	23.0	36.0	25.0	21.5	24.0	38.5
Steers	32.5	54.0	36.0	57.0	36.0	67.0
Calves	18.0	12.0	27.0	3.5	13.0	4.5
<b>TOTAL Inventory</b>	<b>73.5</b>	<b>102.0</b>	<b>88.0</b>	<b>82.0</b>	<b>73.0</b>	<b>110.0</b>

(1) Excluding small amounts of heifers for slaughter and steers on dairy farms.

**TABLE 5. Total Inventory per Farm Type, by Province, East, West and Canada, 2000 to 2002**

<b>- Saskatchewan -</b>	Jan 1/00	July 1/00	Jan 1/01	July 1/01	Jan 1/02	July 1/02
<b>On ALL CATTLE Operations:</b>	-----'000 head-----					
Bulls	53.0	60.0	58.0	63.0	57.0	61.0
Milk cows	31.0	31.0	33.0	30.0	28.0	29.0
Beef cows	1,100.0	1,180.0	1,160.0	1,240.0	1,220.0	1,200.0
Milk heifers	14.0	13.0	14.0	13.5	14.0	13.5
Beef heifers - breeding	155.0	230.0	175.0	220.0	165.0	213.0
Beef heifers - slaughter	31.0	80.0	24.0	60.0	23.0	64.0
Steers	44.0	128.0	40.0	125.0	33.0	122.5
Calves	822.0	1,028.0	796.0	1,148.5	877.5	1,137.0
<b>TOTAL Inventory</b>	<b>2,250.0</b>	<b>2,750.0</b>	<b>2,300.0</b>	<b>2,900.0</b>	<b>2,417.5</b>	<b>2,840.0</b>
<b>On DAIRY Operations:</b>						
Bulls	0.7	0.6	0.5	0.5	0.5	0.5
Milk cows	31.0	31.0	33.0	30.0	28.0	29.0
Beef cows						
Milk heifers	14.0	13.0	14.0	13.5	14.0	13.5
Beef heifers - breeding						
Beef heifers - slaughter	0.2	0.3	0.1	0.3	0.1	0.4
Steers	1.4	4.7	1.6	0.8	0.3	1.0
Calves	9.6	10.6	8.7	10.0	10.4	11.6
<b>TOTAL Inventory</b>	<b>56.9</b>	<b>60.2</b>	<b>57.9</b>	<b>55.1</b>	<b>53.3</b>	<b>56.0</b>
<b>On BEEF Operations(1):</b>						
Bulls	52.3	59.4	57.5	62.5	56.5	60.5
Milk cows	0.0	0.0	0.0	0.0	0.0	0.0
Beef cows	1,100.0	1,180.0	1,160.0	1,240.0	1,220.0	1,200.0
Milk heifers	0.0	0.0	0.0	0.0	0.0	0.0
Beef heifers - breeding	155.0	230.0	175.0	220.0	165.0	213.0
Beef heifers - slaughter	30.9	79.6	23.8	59.7	22.9	63.6
Steers	42.5	123.2	38.4	124.3	32.7	121.4
Calves	812.4	1,017.4	787.4	1,138.4	867.1	1,125.5
<b>TOTAL Inventory</b>	<b>2,193.1</b>	<b>2,689.6</b>	<b>2,242.1</b>	<b>2,844.9</b>	<b>2,364.2</b>	<b>2,784.0</b>
<b>On cow / calf operations:</b>						
Bulls	50.6	55.3	55.9	59.2	54.9	57.0
Milk cows	0.0	0.0	0.0	0.0	0.0	0.0
Beef cows	1,064.8	1,092.6	1,124.0	1,165.6	1,184.6	1,125.6
Milk heifers	0.0	0.0	0.0	0.0	0.0	0.0
Beef heifers - breeding	148.5	208.7	170.7	204.5	160.4	196.6
Beef heifers - slaughter	5.1	9.6	3.2	9.2	4.0	10.8
Steers	4.7	11.8	3.6	14.0	5.0	17.8
Calves	704.4	925.7	691.0	1,038.2	766.8	1,038.2
<b>TOTAL Inventory</b>	<b>1,978.1</b>	<b>2,303.7</b>	<b>2,048.4</b>	<b>2,490.7</b>	<b>2,175.7</b>	<b>2,446.0</b>
<b>On feeder, stocker / finish operations:</b>						
Bulls	1.7	4.1	1.6	3.3	1.6	3.5
Milk cows	0.0	0.0	0.0	0.0	0.0	0.0
Beef cows	35.2	87.4	36.0	74.4	35.4	74.4
Milk heifers	0.0	0.0	0.0	0.0	0.0	0.0
Beef heifers - breeding	6.5	21.3	4.3	15.5	4.6	16.4
Beef heifers - slaughter	16.8	32.0	9.6	30.5	12.9	37.8
Steers	9.8	56.4	13.8	60.3	10.7	48.6
Calves	90.0	84.7	58.4	86.2	87.3	80.3
<b>TOTAL Inventory</b>	<b>160.0</b>	<b>285.9</b>	<b>123.7</b>	<b>270.2</b>	<b>152.5</b>	<b>261.0</b>
<b>On feeding operations:</b>						
Bulls	0.0	0.0	0.0	0.0	0.0	0.0
Milk cows	0.0	0.0	0.0	0.0	0.0	0.0
Beef cows	0.0	0.0	0.0	0.0	0.0	0.0
Milk heifers	0.0	0.0	0.0	0.0	0.0	0.0
Beef heifers - breeding	0.0	0.0	0.0	0.0	0.0	0.0
Beef heifers - slaughter	9.0	38.0	11.0	20.0	6.0	15.0
Steers	28.0	55.0	21.0	50.0	17.0	55.0
Calves	18.0	7.0	38.0	14.0	13.0	7.0
<b>TOTAL Inventory</b>	<b>55.0</b>	<b>100.0</b>	<b>70.0</b>	<b>84.0</b>	<b>36.0</b>	<b>77.0</b>

(1) Excluding small amounts of heifers for slaughter and steers on dairy farms.

**TABLE 5. Total Inventory per Farm Type, by Province, East, West and Canada, 2000 to 2002**

<b>- Alberta -</b>	Jan 1/00	July 1/00	Jan 1/01	July 1/01	Jan 1/02	July 1/02
<b>On ALL CATTLE Operations:</b>						
	-----'000 head-----					
Bulls	93.0	109.0	98.0	114.0	98.0	110.0
Milk cows	87.0	89.0	90.0	91.0	92.0	90.0
Beef cows	1,890.0	2,030.0	1,995.0	2,060.0	1,959.0	2,040.0
Milk heifers	34.0	38.0	35.0	39.0	36.0	38.0
Beef heifers - breeding	260.0	350.0	275.0	370.0	250.0	343.0
Beef heifers - slaughter	490.0	690.0	560.0	720.0	610.0	746.0
Steers	855.0	930.0	800.0	960.0	800.0	862.0
Calves	1,881.0	2,043.0	1,976.0	2,146.0	1,930.0	2,096.0
<b>TOTAL Inventory</b>	<b>5,590.0</b>	<b>6,279.0</b>	<b>5,829.0</b>	<b>6,500.0</b>	<b>5,775.0</b>	<b>6,325.0</b>
<b>On DAIRY Operations:</b>						
Bulls	1.9	2.2	1.8	1.9	1.5	1.7
Milk cows	87.0	89.0	90.0	91.0	92.0	90.0
Beef cows						
Milk heifers	34.0	38.0	35.0	39.0	36.0	38.0
Beef heifers - breeding						
Beef heifers - slaughter	5.0	5.9	7.8	6.4	9.2	7.6
Steers	7.7	7.6	7.0	5.2	6.3	4.5
Calves	51.5	42.6	60.5	45.6	46.2	35.8
<b>TOTAL Inventory</b>	<b>187.1</b>	<b>185.3</b>	<b>202.1</b>	<b>189.1</b>	<b>191.2</b>	<b>177.6</b>
<b>On BEEF Operations(1):</b>						
Bulls	91.1	106.8	96.2	112.1	96.5	108.3
Milk cows	0.0	0.0	0.0	0.0	0.0	0.0
Beef cows	1,890.0	2,030.0	1,995.0	2,060.0	1,959.0	2,040.0
Milk heifers	0.0	0.0	0.0	0.0	0.0	0.0
Beef heifers - breeding	260.0	350.0	275.0	370.0	250.0	343.0
Beef heifers - slaughter	485.1	684.1	552.2	713.5	600.9	738.4
Steers	847.4	922.4	793.0	954.8	793.8	857.6
Calves	1,829.5	2,000.3	1,915.6	2,100.5	1,883.8	2,060.1
<b>TOTAL Inventory</b>	<b>5,403.1</b>	<b>6,093.6</b>	<b>5,627.0</b>	<b>6,310.9</b>	<b>5,584.0</b>	<b>6,147.4</b>
<b>On cow / calf operations:</b>						
Bulls	86.2	96.6	91.5	101.5	92.2	95.7
Milk cows	0.0	0.0	0.0	0.0	0.0	0.0
Beef cows	1,789.8	1,824.9	1,897.2	1,860.2	1,868.8	1,801.3
Milk heifers	0.0	0.0	0.0	0.0	0.0	0.0
Beef heifers - breeding	234.8	284.0	254.5	294.5	223.9	284.1
Beef heifers - slaughter	15.0	23.3	23.4	29.4	28.8	28.5
Steers	39.5	30.4	52.2	26.8	30.5	28.0
Calves	910.3	1,649.9	1,133.2	1,750.9	1,247.2	1,723.0
<b>TOTAL Inventory</b>	<b>3,075.6</b>	<b>3,909.1</b>	<b>3,452.0</b>	<b>4,063.3</b>	<b>3,491.4</b>	<b>3,960.6</b>
<b>On feeder, stocker / finish operations:</b>						
Bulls	4.9	10.2	4.7	10.6	4.3	12.6
Milk cows	0.0	0.0	0.0	0.0	0.0	0.0
Beef cows	100.2	205.1	97.8	199.8	90.2	238.7
Milk heifers	0.0	0.0	0.0	0.0	0.0	0.0
Beef heifers - breeding	25.2	66.0	20.5	75.5	26.1	58.9
Beef heifers - slaughter	105.1	265.8	163.8	284.1	192.1	343.9
Steers	207.9	342.0	172.8	368.0	173.3	372.6
Calves	329.2	310.4	385.4	309.6	426.6	325.1
<b>TOTAL Inventory</b>	<b>772.5</b>	<b>1,199.5</b>	<b>845.0</b>	<b>1,247.6</b>	<b>912.6</b>	<b>1,351.8</b>
<b>On feeding operations:</b>						
Bulls	0.0	0.0	0.0	0.0	0.0	0.0
Milk cows	0.0	0.0	0.0	0.0	0.0	0.0
Beef cows	0.0	0.0	0.0	0.0	0.0	0.0
Milk heifers	0.0	0.0	0.0	0.0	0.0	0.0
Beef heifers - breeding	0.0	0.0	0.0	0.0	0.0	0.0
Beef heifers - slaughter	365.0	395.0	365.0	400.0	380.0	366.0
Steers	600.0	550.0	568.0	560.0	590.0	457.0
Calves	590.0	40.0	397.0	40.0	210.0	12.0
<b>TOTAL Inventory</b>	<b>1,555.0</b>	<b>985.0</b>	<b>1,330.0</b>	<b>1,000.0</b>	<b>1,180.0</b>	<b>835.0</b>

(1) Excluding small amounts of heifers for slaughter and steers on dairy farms.



**TABLE 5. Total Inventory per Farm Type, by Province, East, West and Canada, 2000 to 2002**

<b>- British Columbia -</b>	Jan 1/00	July 1/00	Jan 1/01	July 1/01	Jan 1/02	July 1/02
<b>On ALL CATTLE Operations:</b>	-----'000 head-----					
Bulls	14.5	18.0	15.5	17.5	15.0	18.0
Milk cows	71.0	69.0	70.5	73.0	74.5	75.0
Beef cows	275.0	285.0	279.0	283.0	285.0	291.0
Milk heifers	37.5	37.0	38.0	36.0	34.0	36.5
Beef heifers - breeding	48.0	55.0	47.0	55.0	46.0	57.5
Beef heifers - slaughter	9.0	22.0	8.0	20.0	11.0	23.0
Steers	25.0	40.0	20.0	45.0	30.0	49.0
Calves	170.0	279.0	177.0	285.5	174.5	290.0
TOTAL Inventory	650.0	805.0	655.0	815.0	670.0	840.0
<b>On DAIRY Operations:</b>						
Bulls	1.2	1.4	1.2	1.4	1.2	1.4
Milk cows	71.0	69.0	70.5	73.0	74.5	75.0
Beef cows						
Milk heifers	37.5	37.0	38.0	36.0	34.0	36.5
Beef heifers - breeding						
Beef heifers - slaughter	0.1	0.1	0.2	0.4	0.2	0.8
Steers	0.9	0.6	0.2	0.6	1.0	0.7
Calves	27.9	28.6	28.6	29.2	28.6	29.6
TOTAL Inventory	138.6	136.7	138.7	140.6	139.5	144.0
<b>On BEEF Operations(1):</b>						
Bulls	13.3	16.6	14.3	16.1	13.8	16.6
Milk cows	0.0	0.0	0.0	0.0	0.0	0.0
Beef cows	275.0	285.0	279.0	283.0	285.0	291.0
Milk heifers	0.0	0.0	0.0	0.0	0.0	0.0
Beef heifers - breeding	48.0	55.0	47.0	55.0	46.0	57.5
Beef heifers - slaughter	9.0	22.0	7.9	19.8	10.9	22.3
Steers	24.2	39.5	19.8	44.6	29.0	48.2
Calves	142.1	250.4	148.4	256.3	145.9	260.4
TOTAL Inventory	511.6	668.5	516.4	674.8	530.6	696.0
<b>On cow / calf operations:</b>						
Bulls	12.0	14.1	13.2	14.2	12.6	14.6
Milk cows	0.0	0.0	0.0	0.0	0.0	0.0
Beef cows	251.6	243.6	259.7	250.4	262.2	257.5
Milk heifers	0.0	0.0	0.0	0.0	0.0	0.0
Beef heifers - breeding	43.3	45.7	41.8	45.8	42.1	48.1
Beef heifers - slaughter	0.4	2.1	1.0	3.6	1.6	3.2
Steers	1.8	5.1	3.0	9.5	5.3	7.5
Calves	114.5	205.4	116.7	218.8	116.7	220.6
TOTAL Inventory	423.6	516.0	435.4	542.3	440.5	551.5
<b>On feeder, stocker / finish operations:</b>						
Bulls	1.3	2.5	1.1	1.9	1.2	2.0
Milk cows	0.0	0.0	0.0	0.0	0.0	0.0
Beef cows	23.4	41.4	19.3	32.6	22.8	33.5
Milk heifers	0.0	0.0	0.0	0.0	0.0	0.0
Beef heifers - breeding	4.7	9.3	5.2	9.2	3.9	9.4
Beef heifers - slaughter	3.1	17.4	4.4	13.7	5.8	16.6
Steers	10.9	22.4	7.8	18.6	13.7	28.7
Calves	27.1	44.5	27.7	37.0	27.7	37.3
TOTAL Inventory	70.5	137.5	65.5	113.0	75.1	127.5
<b>On feeding operations:</b>						
Bulls	0.0	0.0	0.0	0.0	0.0	0.0
Milk cows	0.0	0.0	0.0	0.0	0.0	0.0
Beef cows	0.0	0.0	0.0	0.0	0.0	0.0
Milk heifers	0.0	0.0	0.0	0.0	0.0	0.0
Beef heifers - breeding	0.0	0.0	0.0	0.0	0.0	0.0
Beef heifers - slaughter	5.5	2.5	2.5	2.5	3.5	2.5
Steers	11.5	12.0	9.0	16.5	10.0	12.0
Calves	0.5	0.5	4.0	0.5	1.5	2.5
TOTAL Inventory	17.5	15.0	15.5	19.5	15.0	17.0

(1) Excluding small amounts of heifers for slaughter and steers on dairy farms.

**TABLE 5. Total Inventory per Farm Type, by Province, East, West and Canada, 2000 to 2002**

<b>- WEST -</b>	Jan 1/00	July 1/00	Jan 1/01	July 1/01	Jan 1/02	July 1/02
<b>On ALL CATTLE Operations:</b>						
	-----'000 head-----					
Bulls	185.0	213.5	196.5	221.5	195.0	216.0
Milk cows	230.5	230.0	235.5	236.5	236.5	235.5
Beef cows	3,780.0	4,049.0	3,958.0	4,149.0	3,992.0	4,105.0
Milk heifers	102.5	106.5	104.0	108.5	102.5	108.0
Beef heifers - breeding	530.0	717.0	565.0	729.0	534.0	705.5
Beef heifers - slaughter	568.0	853.0	629.0	862.0	691.0	907.0
Steers	965.0	1,183.0	909.0	1,235.0	917.0	1,145.5
Calves	3,289.0	3,882.0	3,392.0	4,098.5	3,439.5	4,052.5
<b>TOTAL Inventory</b>	<b>9,650.0</b>	<b>11,234.0</b>	<b>9,989.0</b>	<b>11,640.0</b>	<b>10,107.5</b>	<b>11,475.0</b>
<b>On DAIRY Operations:</b>						
Bulls	4.5	4.9	4.0	4.6	3.9	4.3
Milk cows	230.5	230.0	235.5	236.5	236.5	235.5
Beef cows						
Milk heifers	102.5	106.5	104.0	108.5	102.5	108.0
Beef heifers - breeding						
Beef heifers - slaughter	5.4	6.5	8.2	7.4	9.6	9.0
Steers	10.4	13.8	9.5	8.0	8.5	7.6
Calves	108.0	104.1	118.0	105.8	106.6	98.0
<b>TOTAL Inventory</b>	<b>461.3</b>	<b>465.8</b>	<b>479.2</b>	<b>470.8</b>	<b>467.6</b>	<b>462.4</b>
<b>On BEEF Operations(1):</b>						
Bulls	180.5	208.6	192.5	216.9	191.1	211.7
Milk cows	0.0	0.0	0.0	0.0	0.0	0.0
Beef cows	3,780.0	4,049.0	3,958.0	4,149.0	3,992.0	4,105.0
Milk heifers	0.0	0.0	0.0	0.0	0.0	0.0
Beef heifers - breeding	530.0	717.0	565.0	729.0	534.0	705.5
Beef heifers - slaughter	562.9	846.5	620.9	854.8	681.6	898.0
Steers	954.8	1,169.2	899.5	1,227.3	908.6	1,137.9
Calves	3,181.0	3,777.8	3,274.2	3,992.8	3,332.9	3,954.5
<b>TOTAL Inventory</b>	<b>9,189.2</b>	<b>10,768.1</b>	<b>9,510.1</b>	<b>11,169.8</b>	<b>9,640.2</b>	<b>11,012.6</b>
<b>On cow / calf operations:</b>						
Bulls	170.9	189.1	183.6	198.1	182.5	190.5
Milk cows	0.0	0.0	0.0	0.0	0.0	0.0
Beef cows	3,583.6	3,653.0	3,770.8	3,777.1	3,810.3	3,690.1
Milk heifers	0.0	0.0	0.0	0.0	0.0	0.0
Beef heifers - breeding	486.9	606.6	529.8	617.4	494.6	607.0
Beef heifers - slaughter	23.8	39.6	30.3	51.4	42.0	49.3
Steers	48.1	54.3	61.7	59.9	46.2	63.7
Calves	2,052.8	3,220.5	2,267.2	3,438.1	2,500.0	3,417.6
<b>TOTAL Inventory</b>	<b>6,366.1</b>	<b>7,763.1</b>	<b>6,843.4</b>	<b>8,142.0</b>	<b>7,075.6</b>	<b>8,018.2</b>
<b>On feeder, stocker / finish operations:</b>						
Bulls	9.6	19.5	8.9	18.8	8.6	21.2
Milk cows	0.0	0.0	0.0	0.0	0.0	0.0
Beef cows	196.4	396.0	187.2	371.9	181.7	414.9
Milk heifers	0.0	0.0	0.0	0.0	0.0	0.0
Beef heifers - breeding	43.1	110.4	35.2	111.6	39.4	98.5
Beef heifers - slaughter	136.6	335.4	187.1	359.4	226.1	426.7
Steers	234.7	443.9	203.8	483.9	209.4	483.2
Calves	501.7	497.8	541.0	496.7	595.4	510.9
<b>TOTAL Inventory</b>	<b>1,122.1</b>	<b>1,803.0</b>	<b>1,163.2</b>	<b>1,842.3</b>	<b>1,260.6</b>	<b>1,955.4</b>
<b>On feeding operations:</b>						
Bulls	0.0	0.0	0.0	0.0	0.0	0.0
Milk cows	0.0	0.0	0.0	0.0	0.0	0.0
Beef cows	0.0	0.0	0.0	0.0	0.0	0.0
Milk heifers	0.0	0.0	0.0	0.0	0.0	0.0
Beef heifers - breeding	0.0	0.0	0.0	0.0	0.0	0.0
Beef heifers - slaughter	402.5	471.5	403.5	444.0	413.5	422.0
Steers	672.0	671.0	634.0	683.5	653.0	591.0
Calves	626.5	59.5	466.0	58.0	237.5	26.0
<b>TOTAL Inventory</b>	<b>1,701.0</b>	<b>1,202.0</b>	<b>1,503.5</b>	<b>1,185.5</b>	<b>1,304.0</b>	<b>1,039.0</b>

(1) Excluding small amounts of heifers for slaughter and steers on dairy farms.

**TABLE 5. Total Inventory per Farm Type, by Province, East, West and Canada, 2000 to 2002**

<b>- CANADA -</b>	Jan 1/00	July 1/00	Jan 1/01	July 1/01	Jan 1/02	July 1/02
<b>On ALL CATTLE Operations:</b>						
	-----'000 head-----					
Bulls	229.8	258.9	239.4	265.2	237.0	259.5
Milk cows	1,103.4	1,087.7	1,091.0	1,072.7	1,083.9	1,072.4
Beef cows	4,452.1	4,710.6	4,602.2	4,799.3	4,636.0	4,751.8
Milk heifers	486.5	494.1	497.5	517.2	507.5	517.9
Beef heifers - breeding	644.8	836.6	673.9	858.5	653.7	826.0
Beef heifers - slaughter	702.5	1,065.6	801.0	1,059.7	862.6	1,112.8
Steers	1,266.8	1,580.2	1,221.6	1,658.5	1,201.1	1,598.6
Calves	4,315.4	4,934.7	4,481.6	5,193.4	4,517.7	5,138.2
<b>TOTAL Inventory</b>	<b>13,201.3</b>	<b>14,968.4</b>	<b>13,608.2</b>	<b>15,424.5</b>	<b>13,699.5</b>	<b>15,277.2</b>
<b>On DAIRY Operations:</b>						
Bulls	15.4	15.2	13.8	14.3	13.0	13.7
Milk cows	1,103.4	1,087.7	1,091.0	1,072.7	1,083.9	1,072.4
Beef cows						
Milk heifers	486.5	494.1	497.5	517.2	507.5	517.9
Beef heifers - breeding						
Beef heifers - slaughter	18.0	18.8	20.6	18.1	18.0	18.3
Steers	42.5	45.7	42.3	55.3	41.7	49.3
Calves	547.6	524.3	587.7	539.3	577.7	532.0
<b>TOTAL Inventory</b>	<b>2,213.4</b>	<b>2,185.8</b>	<b>2,252.9</b>	<b>2,216.9</b>	<b>2,241.8</b>	<b>2,203.6</b>
<b>On BEEF Operations(1):</b>						
Bulls	214.4	243.7	225.6	250.9	224.0	245.8
Milk cows	0.0	0.0	0.0	0.0	0.0	0.0
Beef cows	4,452.1	4,710.6	4,602.2	4,799.3	4,636.0	4,751.8
Milk heifers	0.0	0.0	0.0	0.0	0.0	0.0
Beef heifers - breeding	644.8	836.6	673.9	858.5	653.7	826.0
Beef heifers - slaughter	684.8	1,046.8	780.7	1,041.8	844.8	1,094.3
Steers	1,224.7	1,534.6	1,179.4	1,603.6	1,159.5	1,550.1
Calves	3,767.9	4,410.6	3,894.1	4,654.1	3,940.1	4,606.2
<b>TOTAL Inventory</b>	<b>10,988.7</b>	<b>12,782.9</b>	<b>11,355.9</b>	<b>13,208.1</b>	<b>11,458.1</b>	<b>13,074.2</b>
<b>On cow / calf operations:</b>						
Bulls	199.8	217.1	212.3	225.3	210.2	217.6
Milk cows	0.0	0.0	0.0	0.0	0.0	0.0
Beef cows	4,154.3	4,179.5	4,324.5	4,296.1	4,347.5	4,201.2
Milk heifers	0.0	0.0	0.0	0.0	0.0	0.0
Beef heifers - breeding	581.5	698.8	622.7	720.3	591.6	700.0
Beef heifers - slaughter	36.1	50.1	39.3	62.5	50.5	61.0
Steers	60.1	74.9	75.1	78.6	59.9	83.7
Calves	2,490.1	3,722.7	2,717.0	3,968.3	2,945.9	3,936.2
<b>TOTAL Inventory</b>	<b>7,521.9</b>	<b>8,943.1</b>	<b>7,990.9</b>	<b>9,351.1</b>	<b>8,205.6</b>	<b>9,199.7</b>
<b>On feeder, stocker / finish operations:</b>						
Bulls	14.6	26.6	13.3	25.6	13.8	28.2
Milk cows	0.0	0.0	0.0	0.0	0.0	0.0
Beef cows	297.8	531.1	277.7	503.2	288.5	550.6
Milk heifers	0.0	0.0	0.0	0.0	0.0	0.0
Beef heifers - breeding	63.3	137.8	51.2	138.2	62.1	126.0
Beef heifers - slaughter	166.1	387.3	224.3	414.6	266.7	481.4
Steers	296.0	539.1	271.7	585.4	271.5	582.8
Calves	606.7	610.4	649.6	608.0	718.6	627.5
<b>TOTAL Inventory</b>	<b>1,444.5</b>	<b>2,232.3</b>	<b>1,487.8</b>	<b>2,275.0</b>	<b>1,621.2</b>	<b>2,396.5</b>
<b>On feeding operations:</b>						
Bulls	0.0	0.0	0.0	0.0	0.0	0.0
Milk cows	0.0	0.0	0.0	0.0	0.0	0.0
Beef cows	0.0	0.0	0.0	0.0	0.0	0.0
Milk heifers	0.0	0.0	0.0	0.0	0.0	0.0
Beef heifers - breeding	0.0	0.0	0.0	0.0	0.0	0.0
Beef heifers - slaughter	482.6	609.4	517.1	564.7	527.6	551.9
Steers	868.6	920.6	832.6	939.6	828.1	883.6
Calves	671.1	77.5	527.6	77.8	275.6	42.5
<b>TOTAL Inventory</b>	<b>2,022.3</b>	<b>1,607.5</b>	<b>1,877.3</b>	<b>1,582.0</b>	<b>1,631.3</b>	<b>1,478.0</b>

(1) Excluding small amounts of heifers for slaughter and steers on dairy farms.

**TABLE 6. Prices, A1, A2 Steers <sup>(1), (2), (3)</sup>, Weighted Average at Toronto, by Month, 1976 - 2002**

Year	Jan	Feb	Mar	Apr	May	Jun	Jul	Aug	Sep	Oct	Nov	Dec	Annual
	----- \$ / cwt -----												
1976	44.76	42.39	41.57	45.00	46.05	43.04	39.86	38.85	40.87	40.29	41.35	41.93	41.89
1977	40.87	40.83	41.49	43.23	43.79	43.22	44.14	44.95	46.23	48.35	49.32	49.26	44.50
1978	49.32	49.76	52.88	59.67	66.16	67.18	64.52	64.77	65.11	67.54	66.93	67.86	62.07
1979	74.50	80.79	83.97	84.14	83.62	83.05	78.14	75.04	78.28	78.38	78.51	81.92	81.92
1980	82.99	82.36	78.83	75.45	76.57	76.08	81.20	84.14	83.88	83.91	83.85	83.42	80.74
1981	82.79	79.36	78.93	78.73	81.34	83.03	83.32	81.69	80.14	78.99	76.43	74.90	80.00
1982	74.12	75.75	77.21	82.07	90.58	90.30	84.34	81.75	79.51	74.55	75.70	74.91	80.54
1983	76.59	78.12	79.19	84.55	83.31	82.59	78.22	76.15	73.91	74.12	76.62	82.25	78.98
1984	85.14	82.74	84.99	86.79	86.63	84.23	86.89	85.87	83.21	82.47	85.90	88.47	85.30
1985	89.04	86.99	86.01	83.24	82.77	81.07	76.31	72.30	73.16	78.89	82.04	86.27	81.63
1986	84.85	82.76	81.09	79.53	79.73	77.92	81.49	83.22	84.08	84.30	88.22	89.45	82.66
1987	85.31	84.38	84.07	87.87	94.98	92.89	89.73	89.48	91.18	88.99	88.57	87.04	88.89
1988	86.84	87.95	89.77	93.54	93.74	90.18	84.18	82.42	83.16	84.16	85.34	85.55	87.35
1989	87.37	89.26	91.37	90.81	91.58	88.09	88.34	87.40	86.27	86.06	88.31	89.92	88.82
1990	88.92	88.42	86.85	87.72	88.88	88.62	88.31	88.36	87.91	88.53	92.65	93.58	88.89
1991	92.23	90.07	89.37	90.71	90.22	88.77	86.03	83.28	79.68	77.18	72.18	74.48	84.56
1992	80.19	83.12	84.82	87.02	88.53	87.32	87.52	86.98	86.79	87.94	91.36	98.25	87.38
1993	98.92	96.98	97.89	99.34	103.48	99.07	95.41	95.83	95.22	90.24	93.08	95.32	97.23
1994	95.70	95.48	96.73	99.19	94.95	91.33	92.07	92.99	87.54	83.45	89.47	90.89	92.58
1995	96.39	96.10	92.56	88.25	85.40	88.34	86.90	85.89	83.66	82.86	83.88	86.85	88.12
1996	82.10	78.64	78.04	75.27	76.62	79.99	83.05	88.23	88.47	87.28	90.42	86.53	82.89
1997	85.42	84.63	87.75	89.35	90.52	88.80	83.00	83.55	80.19	84.00	87.20	85.81	85.85
1998	87.90	87.61	88.96	89.56	91.31	91.29	88.29	87.77	85.81	86.27	86.70	87.67	88.26
1999	89.49	90.96	92.53	93.83	91.78	92.29	89.40	90.38	89.92	91.94	96.91	102.21	92.64
2000	101.66	100.82	104.42	111.04	108.25	104.67	103.38	101.04	98.02	96.83	99.32	104.82	102.86
2001	111.37	114.74	119.56	122.00	119.09	116.34	115.13	108.72	104.33	96.72	100.62	102.23	110.90
2002	106.48	112.93	112.60	106.77	104.42	100.31	98.63	99.32	95.87	..	..	..	..

(1) 1976 to 1989 - 1000 lb. and over; 1990 to 1993, 1051 lbs and over.

(2) 1994 onward - 1251 lb. and over. Prices in Ontario - includes 13 markets and Ontario Public Stockyards.

(3) 1996 onward - all slaughter steers. Prepared by Canfax Research Services.

**TABLE 7. Prices, Alberta Direct Sales Steer Prices <sup>(1)</sup>, Monthly Weighted Average, 1976 - 2002**

Year	Jan	Feb	Mar	Apr	May	Jun	Jul	Aug	Sep	Oct	Nov	Dec	Annual
	----- \$ / cwt -----												
1976	39.81	39.25	38.07	42.24	41.84	40.21	37.44	36.74	38.80	37.78	38.03	37.46	39.05
1977	35.74	34.86	36.85	38.79	39.67	40.92	41.93	41.46	43.31	46.13	46.08	43.99	40.48
1978	44.36	44.89	50.14	57.55	64.74	66.75	62.53	61.86	63.32	65.20	62.37	63.68	58.80
1979	69.78	76.97	80.01	80.71	79.84	80.17	75.36	72.75	76.42	72.99	75.53	79.56	76.86
1980	80.00	77.76	74.19	71.12	73.12	71.75	75.71	77.54	78.35	78.82	81.09	82.24	76.81
1981	79.86	74.79	74.23	78.33	79.98	79.22	77.18	75.46	73.40	72.59	70.80	67.99	75.14
1982	65.68	68.34	71.42	78.90	86.98	82.98	78.13	74.89	73.89	71.98	71.92	67.63	73.98
1983	68.26	70.28	73.52	79.65	77.77	75.20	70.87	70.18	69.47	71.92	72.12	74.32	72.69
1984	77.32	77.25	79.70	80.89	78.96	75.83	77.44	75.04	73.88	76.28	79.45	80.65	77.74
1985	81.02	76.98	78.65	78.10	79.01	75.66	69.06	66.91	70.42	76.70	79.82	79.65	75.58
1986	74.51	72.60	73.02	72.24	72.55	70.57	74.89	76.08	79.07	81.26	82.13	79.42	75.60
1987	77.95	78.34	80.62	86.57	89.21	85.32	80.41	84.25	85.84	83.80	83.16	78.88	83.38
1988	78.37	82.17	84.62	86.25	84.53	78.68	76.14	77.05	78.58	82.29	81.04	78.00	80.63
1989	83.54	86.12	87.36	83.45	81.31	77.98	78.59	80.11	79.06	81.92	83.38	83.85	81.54
1990	85.13	86.43	85.66	85.00	82.88	81.80	81.76	82.42	82.55	86.65	88.10	87.02	84.30
1991	86.19	86.08	87.67	87.11	82.14	79.99	77.94	73.79	73.26	73.12	70.16	70.74	78.31
1992	74.53	80.47	82.84	82.66	82.02	79.18	81.03	81.03	81.45	83.96	85.06	89.18	82.22
1993	95.00	96.74	97.53	96.21	94.70	87.98	87.64	91.07	89.85	89.95	91.29	88.96	91.90
1994	91.25	91.01	95.50	93.82	85.95	81.07	83.80	84.73	80.84	81.02	87.83	88.06	86.17
1995	94.53	94.00	89.60	84.29	80.59	81.25	80.00	78.78	77.06	79.24	83.45	81.64	82.91
1996	78.64	75.31	75.94	71.97	72.28	73.60	77.90	83.59	86.61	87.61	86.11	78.16	78.42
1997	79.71	84.12	87.15	86.30	84.69	82.31	83.00	83.55	80.19	84.00	87.20	85.81	84.00
1998	84.69	82.56	83.45	86.74	86.33	83.44	79.81	80.95	78.35	84.06	88.67	86.81	83.56
1999	90.08	88.36	90.85	88.58	88.03	86.37	84.94	87.42	87.26	89.93	95.09	99.11	89.30
2000	94.90	92.46	98.55	100.25	96.59	92.73	89.52	91.71	88.54	91.98	98.99	107.09	95.00
2001	107.66	113.81	118.07	111.75	105.24	99.81	98.41	97.95	94.25	94.82	96.88	99.07	102.82
2002	105.08	107.10	109.62	98.19	94.77	90.73	90.11	92.43	94.57	..	..	..	..

(1) From 1996 onward - all slaughter steers, Prepared by Canfax Research Services.