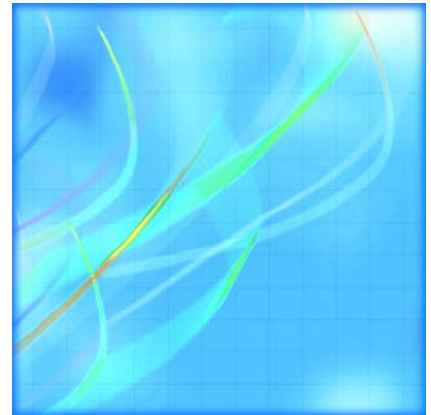




Catalogue no. 23-015-XIE

# Poultry and egg statistics

2005



Statistics  
Canada

Statistique  
Canada

Canada

## How to obtain more information

Specific inquiries about this product and related statistics or services should be directed to: Livestock Section, Agriculture Division, Statistics Canada, Ottawa, Ontario, K1A 0T6 (telephone: 1 800 263-1136).

For information on the wide range of data available from Statistics Canada, you can contact us by calling one of our toll free numbers. You can also contact us by e-mail or by visiting our website.

National inquiries line **1 800 263-1136**

National telecommunications device for the hearing impaired **1 800 363-7629**

Depository Services Program inquiries **1 800 700-1033**

Fax line for Depository Services Program **1 800 889-9734**

E-mail inquiries ***infostats@statcan.ca***

Website ***www.statcan.ca***

## Ordering and subscription information

This product, Catalogue no. 23-015-XIE, is available on the Statistics Canada Internet site free of charge. To obtain single issues visit our website at *www.statcan.ca*, and select Products and Services.

## Standards of service to the public

Statistics Canada is committed to serving its clients in a prompt, reliable and courteous manner and in the official language of their choice. To this end, the Agency has developed *standards of service* which its employees observe in serving its clients. To obtain a copy of these service standards, please contact Statistics Canada toll free at 1 800 263-1136. The service standards are also published on *www.statcan.ca* under About Statistics Canada > Providing services to Canadians.



Statistics Canada  
Agriculture Division  
Livestock Section

# Poultry and egg statistics

2005

Published by authority of the Minister responsible for Statistics Canada

© Minister of Industry, 2005

All rights reserved. The content of this publication may be reproduced, in whole or in part, and by any means, without further permission from Statistics Canada, subject to the following conditions: that it is done solely for the purposes of private study, research, criticism, review, newspaper summary, and/or for non-commercial purposes; and that Statistics Canada be fully acknowledged as follows: Source (or "Adapted from", if appropriate): Statistics Canada, name of product, catalogue, volume and issue numbers, reference period and page(s). Otherwise, no part of this publication may be reproduced, stored in a retrieval system or transmitted in any form or by any means, electronic, mechanical, photocopy, for any purposes, without the prior written permission of Licensing Services, Marketing Division, Statistics Canada, Ottawa, Ontario, Canada K1A 0T6.

November 2005

Catalogue no. 23-015-XIE, Vol. 2, No. 3

ISSN 1710-3525

Frequency: Quarterly

Ottawa

La version française de cette publication est disponible sur demande (n° 23-015-XIF au catalogue).

---

#### **Note of appreciation**

*Canada owes the success of its statistical system to a long standing partnership between Statistics Canada, the citizens of Canada, its businesses, governments and other institutions. Accurate and timely statistical information could not be produced without their continued cooperation and goodwill.*

# User information

---

## Symbols

The following standard symbols are used in Statistics Canada publications:

- . not available for any reference period
- .. not available for a specific reference period
- ... not applicable
- 0 true zero or a value rounded to zero
- 0<sup>s</sup> value rounded to 0 (zero) where there is a meaningful distinction between true zero and the value that was rounded
- p preliminary
- r revised
- x suppressed to meet the confidentiality requirements of the *Statistics Act*
- E use with caution
- F too unreliable to be published

# Table of contents

---

<b>Highlights</b>	<b>5</b>
<b>Introduction</b>	<b>9</b>
<b>Related products</b>	<b>10</b>
<b>Statistical tables</b>	
<b>1</b> Production of poultry meat	12
<b>2 Disposition of poultry meat</b>	13
2-1 Chicken	13
2-2 Turkey	14
2-3 Total poultry	15
<b>3</b> Supply and disposition of poultry meat	16
<b>4 Production of eggs by province</b>	18
4-1 Average number of layers	18
4-2 Eggs per 100 layers	19
4-3 in thousands of dozens	20
<b>5 Disposition of eggs, quantity and value by province</b>	21
5-1 Canada	21
5-2 Newfoundland and Labrador	22
5-3 Prince Edward Island	23
5-4 Nova Scotia	24
5-5 New Brunswick	25
5-6 Quebec	26
5-7 Ontario	27
5-8 Manitoba	28
5-9 Saskatchewan	29
5-10 Alberta	30
5-11 British Columbia	31
<b>6</b> Stocks of frozen eggs and edible dried eggs, Canada	32
<b>7</b> Supply and disposition of eggs	32
<b>8</b> Average prices of eggs sold for consumption in Canada, by month	33
<b>9</b> Report of processed eggs production, Canada	33

## **Table of contents – continued**

### **Data quality, concepts and methodology**

Poultry meat production and value	34
Egg production and value	36
Consumption of poultry and eggs	38

### **Appendix**

I. Glossary of terms	39
----------------------	----

### **Charts**

1. Value of poultry products, Canada, 1995 to 2004	6
2. Poultry meat production, Canada 1995 to 2004	6
3. Per capita disappearance of meats, Canada, 1995 to 2004	7
4. Production of eggs, Canada, 1995 to 2004	7
5. Per capita consumption of eggs, Canada, 1995 to 2004	8

## Highlights

---

### Value of poultry products increases

The value of poultry products totalled \$2.6 billion in 2004, showing a moderate increase of 2.0% from 2003. Sales of poultry meat, including turkey, were up 3.3% with a total value over \$1.8 billion. The value of egg sales, however, decreased 1.1% from 2003 to stand at \$748.3 million.

Canadian farmers produced 1.1 million tonnes of poultry meat in 2004, up 1.1% from 2003. Chicken accounts for over 85% of all poultry meat produced. It increased 1.7% from year-ago levels. Turkey production stood at 145 thousand tonnes in 2004, a decrease of 2.5% from 2003.

The consumption of poultry has stabilized over recent years, reaching 13.5 kilograms per person in 2004, a slight increase of 1.5% from last year and well above the 11.8 kilograms consumed per person ten years ago. The introduction of varied and readily available easy-to-prepare and ready-to-eat poultry products appeals to the time-conscious consumer and has contributed to poultry's on-going popularity.

### Egg production declines in 2004

Egg production in 2004, at 554.2 million dozen, decreased 4.1% from 2003 possibly led by the necessary destruction of birds following an outbreak of Avian Influenza (AI) in British Columbia. Some of the shortfall was made up by other provinces but British Columbia still registered a decline of close to 40% in egg production.

Annual egg consumption has rebounded in recent years and was pegged at 12.8 dozen per person in 2004, a level similar to 2002 following a slight increase in 2003. Generally, the recent growth can be attributed to publicity outlining the nutritional benefits of eggs, increased use of eggs by the food service sector, the growing popularity of value added products and the expanded use and availability of processed egg products.

Egg production, which totalled 436.1 million dozen during the first 9 months of 2005, is staging a recovery. Following the incidence of Avian Influenza (AI), production is back to levels experienced in 2003. British Columbia is quickly regaining its share of production while Ontario and Manitoba continue to make up for the shortfall.

Chart 1

Value of poultry products, Canada, 1995 to 2004

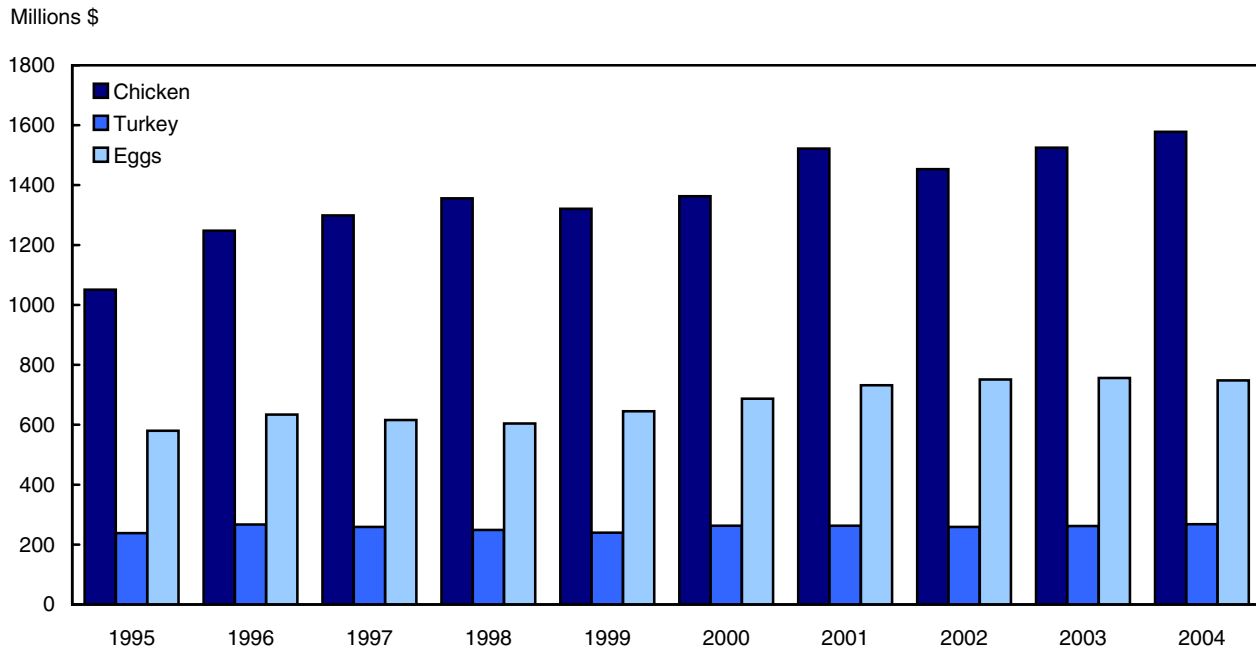
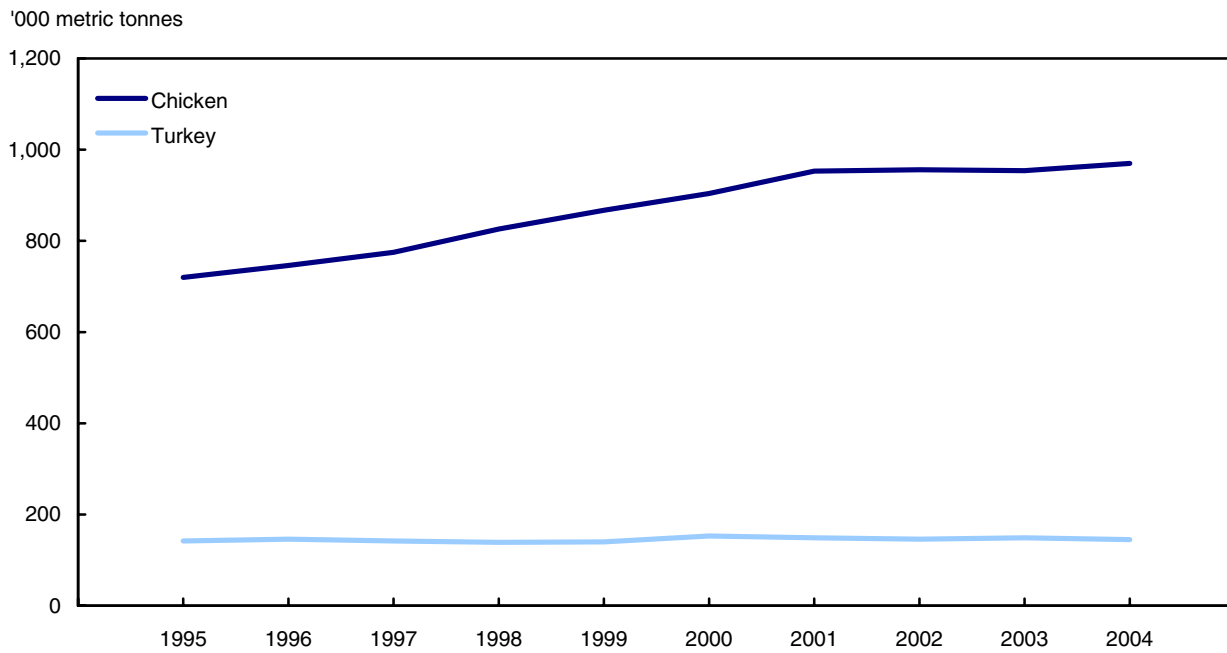


Chart 2

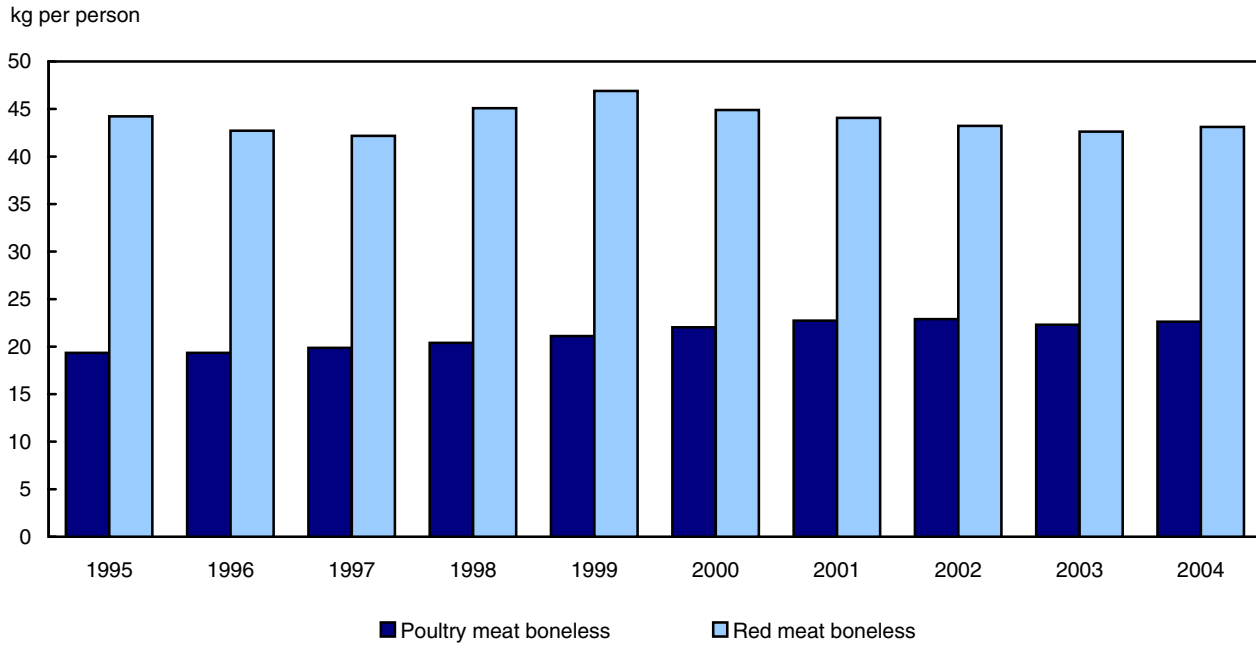
Poultry meat production, Canada 1995 to 2004





**Chart 3**

**Per capita disappearance of meats, Canada, 1995 to 2004**



**Chart 4**

**Production of eggs, Canada, 1995 to 2004**

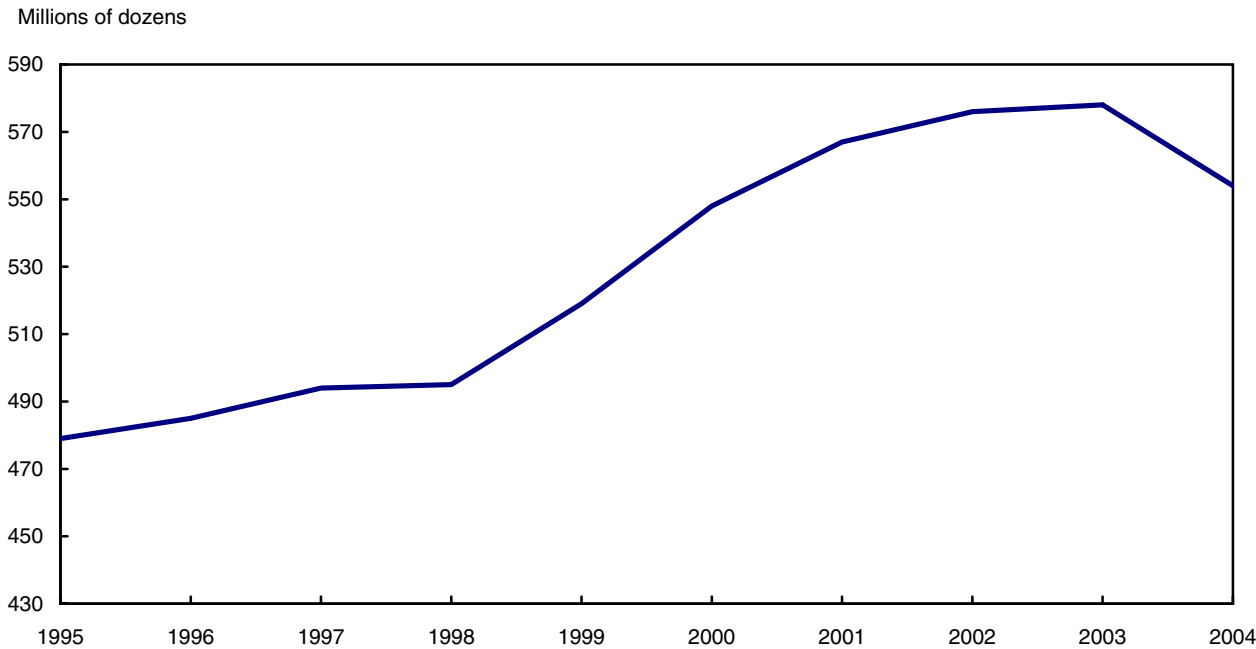
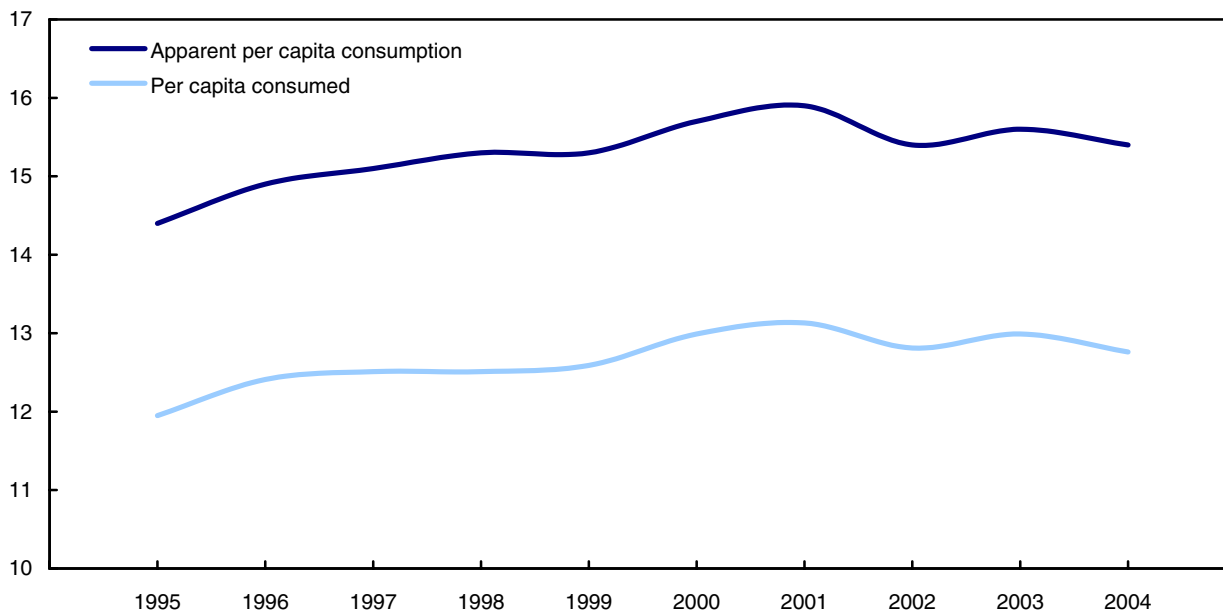


Chart 5

Per capita consumption of eggs, Canada, 1995 to 2004

Dozens per person



## Introduction

---

This publication provides data on the production, supply and disposition and value of poultry meat and eggs. Also included are data on the average price of eggs sold for table consumption, the per capita disappearance and consumption of poultry meats and eggs, and the production and stocks of processed eggs.

The data presented are obtained from a variety of sources such as administrative sources and censuses. Administrative data are provided by the Canadian Egg Marketing Agency (CEMA), Agriculture and Agri-Food Canada (AAFC) and Statistics Canada. Information from Statistics Canada's Census of Agriculture and Census of Population is also used in preparing the estimates.

The data, published on a provincial basis, are used in decision making by government agencies, processors, retailers, universities, producer organizations and health institutions.

Statistics Canada has been estimating poultry meat production and value since 1951. Concepts and methods vary over time due to changes in the sector and/or the availability of data sources. Users should note the following:

- i. Production data supplied in table 7 (Supply and disposition of eggs) are compiled in May of each year and revised annually. Production and disposition data supplied in tables 4 and 5 (Production and disposition of eggs) are subject to revision throughout the year and may not compare exactly to the data in table 7;
- ii. beginning in 1986, egg consumption is adjusted to take into consideration a loss of 1.95% of total egg production due to leakers and rejects;
- iii. also beginning in 1986, a new method is used to calculate consumption on the farm;
- iv. a negligible number of hatchery-supply eggs are sold on the table market. Since data on the amount sold are not available, it is deemed to be zero.

The data series are available on CANSIM at the same time as the information appears in The Daily, Statistics Canada's official release vehicle. CANSIM, Statistics Canada's computerized database, is an information management system designed to facilitate both historical research and current analysis.

## Related products

---

### Selected publications from Statistics Canada

---

21-206-X	Statistics on income of farm operators
21-207-X	Statistics on income of farm families
23-003-X	Production of eggs

---

### Selected CANSIM tables from Statistics Canada

---

003-0017	Supply and disposition of poultry meat and eggs in Canada
003-0018	Production, disposition and farm value of poultry meat
003-0019	Fowl and chicken meat production, weight and farm value
003-0020	Production and disposition of eggs
003-0021	Placement of chicks and turkey poults for production
003-0022	Production and disposition of eggs

---

### Selected surveys from Statistics Canada

---

3421	Egg Producers Survey
5039	Production of Poultry and Eggs

---

### Selected tables of Canadian statistics from Statistics Canada

---

- *Production of eggs, by provinces*
- *Production of poultry, by provinces*

# Statistical tables

---

---

Table 1

Production of poultry meat

	Birds			Weight			Value		
	2002	2003	2004	2002	2003	2004	2002	2003	2004
	in thousands			in thousands of kilograms			in thousands of dollars		
<b>Chicken</b>									
Canada	609,077	599,317	597,486	931,617	928,899	946,125	1,447,562	1,519,666	1,572,924
Newfoundland and Labrador	x	x	x	x	x	x	x	x	x
Prince Edward Island	x	x	x	x	x	x	x	x	x
Nova Scotia	21,637	21,124	21,842	31,798	31,551	33,276	51,303	53,224	58,103
New Brunswick	15,365	16,674	17,825	22,634	25,175	26,865	36,856	43,316	46,938
Quebec	162,746	159,140	164,502	258,181	255,673	268,563	402,093	419,368	445,759
Ontario	193,201	188,685	195,364	303,927	302,942	318,701	471,127	494,911	529,834
Manitoba	27,539	27,202	28,303	39,608	39,235	40,499	61,127	63,577	67,144
Saskatchewan	21,469	23,070	24,991	30,137	30,782	32,937	47,075	50,364	55,367
Alberta	55,073	51,628	54,376	83,518	80,678	88,093	122,192	124,357	138,471
British Columbia	101,031	100,614	78,537	146,319	147,118	120,458	229,940	244,546	204,372
<b>Stewing hen</b>									
Canada	16,615	16,306	15,765	24,348	24,604	23,591	5,554	5,424	4,817
Newfoundland and Labrador	x	x	x	x	x	x	x	x	x
Prince Edward Island	x	x	x	x	x	x	x	x	x
Nova Scotia	619	340	82	782	497	231	174	234	126
New Brunswick	315	469	328	370	620	407	156	202	131
Quebec	4,363	4,408	4,280	6,528	6,686	6,422	2,464	2,268	2,021
Ontario	8,764	8,404	8,613	11,970	11,240	11,696	1,328	1,098	1,277
Manitoba	1,102	365	226	1,424	860	640	23	2	1
Saskatchewan	62	66	169	131	174	427	16	18	46
Alberta	285	514	470	788	1,419	1,164	78	136	127
British Columbia	1,105	1,740	1,596	2,356	3,107	2,602	1,316	1,466	1,088
<b>Total Chicken <sup>1</sup></b>									
Canada	625,692	615,623	613,251	955,965	953,503	969,716	1,453,116	1,525,090	1,577,741
Newfoundland and Labrador	x	x	x	x	x	x	x	x	x
Prince Edward Island	x	x	x	x	x	x	x	x	x
Nova Scotia	22,255	21,464	21,924	32,580	32,047	33,508	51,477	53,457	58,229
New Brunswick	15,680	17,144	18,153	23,004	25,795	27,272	37,012	43,518	47,069
Quebec	167,109	163,548	168,782	264,710	262,359	274,985	404,556	421,636	447,779
Ontario	201,965	197,089	203,977	315,897	314,182	330,398	472,455	496,009	531,112
Manitoba	28,641	27,567	28,530	41,032	40,095	41,140	61,149	63,579	67,145
Saskatchewan	21,531	23,136	25,160	30,268	30,956	33,364	47,091	50,382	55,413
Alberta	55,358	52,142	54,846	84,306	82,097	89,257	122,270	124,493	138,597
British Columbia	102,135	102,354	80,133	148,674	150,225	123,059	231,255	246,012	205,459
<b>Turkey</b>									
Canada	19,672	19,798	19,515	146,410	148,661	145,004	259,017	262,402	267,830
Newfoundland and Labrador	x	x	x	x	x	x	x	x	x
Prince Edward Island	x	x	x	x	x	x	x	x	x
Nova Scotia	762	722	730	3,703	3,495	3,522	6,458	6,151	6,458
New Brunswick	347	330	309	2,544	2,463	2,289	4,360	4,229	4,069
Quebec	4,313	4,295	4,466	31,178	30,791	31,552	55,900	54,911	58,133
Ontario	8,389	8,374	8,364	67,108	67,340	68,019	118,413	118,143	126,220
Manitoba	1,363	1,481	1,368	9,771	10,433	9,539	17,045	18,210	17,276
Saskatchewan	757	797	719	4,876	5,210	4,674	8,780	9,498	8,892
Alberta	1,576	1,677	1,709	11,764	13,141	12,399	21,450	24,150	23,705
British Columbia	2,160	2,118	1,845	15,426	15,747	12,971	26,542	27,037	23,003
<b>Total poultry</b>									
Canada	645,364	635,421	632,767	1,102,375	1,102,165	1,114,720	1,712,132	1,787,492	1,845,571
Newfoundland and Labrador	x	x	x	x	x	x	x	x	x
Prince Edward Island	x	x	x	x	x	x	x	x	x
Nova Scotia	23,017	22,185	22,655	36,282	35,542	37,030	57,935	59,608	64,687
New Brunswick	16,027	17,473	18,462	25,548	28,258	29,561	41,372	47,747	51,138
Quebec	171,423	167,843	173,248	295,887	293,151	306,536	460,456	476,547	505,913
Ontario	210,353	205,463	212,341	383,005	381,522	398,417	590,868	614,151	657,332
Manitoba	30,004	29,047	29,897	50,803	50,528	50,678	78,194	81,790	84,421
Saskatchewan	22,288	23,932	25,879	35,144	36,166	38,038	55,871	59,880	64,304
Alberta	56,934	53,819	56,555	96,069	95,238	101,656	143,719	148,643	162,302
British Columbia	104,295	104,472	81,978	164,100	165,971	136,030	257,797	273,050	228,462

1. Includes stewing hen.

Table 2-1

Disposition of poultry meat — Chicken<sup>1</sup>

	Birds			Weight			Value		
	2002	2003	2004	2002	2003	2004	2002	2003	2004
	in thousands			in thousands of kilograms			in thousands of dollars		
<b>Sold</b>									
Canada	625,272	615,212	612,859	955,017	952,574	968,790	1,451,824	1,523,761	1,576,398
Newfoundland and Labrador	x	x	x	x	x	x	x	x	x
Prince Edward Island	x	x	x	x	x	x	x	x	x
Nova Scotia	22,248	21,457	21,918	32,562	32,031	33,491	51,451	53,430	58,201
New Brunswick	15,678	17,141	18,151	22,999	25,791	27,268	37,007	43,513	47,064
Quebec	167,081	163,522	168,756	264,644	262,296	274,923	404,464	421,541	447,685
Ontario	201,860	196,987	203,878	315,676	313,968	330,185	472,176	495,720	530,821
Manitoba	28,592	27,522	28,486	40,910	39,975	41,019	60,986	63,410	66,973
Saskatchewan	21,476	23,086	25,113	30,143	30,837	33,248	46,931	50,218	55,247
Alberta	55,235	52,016	54,735	84,033	81,829	88,990	121,874	124,085	138,184
British Columbia	102,091	102,306	80,079	148,564	150,112	122,942	231,101	245,857	205,303
<b>Home consumption</b>									
Canada	420	411	392	948	929	926	1,291	1,329	1,343
Newfoundland and Labrador	x	x	x	x	x	x	x	x	x
Prince Edward Island	x	x	x	x	x	x	x	x	x
Nova Scotia	8	7	6	17	17	16	26	27	28
New Brunswick	3	2	3	5	5	4	5	5	5
Quebec	28	26	26	66	63	62	92	95	95
Ontario	105	102	99	221	214	212	279	289	291
Manitoba	50	45	44	122	121	121	163	169	172
Saskatchewan	55	49	46	125	119	116	160	164	165
Alberta	124	126	111	273	268	267	395	408	413
British Columbia	44	48	54	110	112	117	154	155	156
<b>Disposition <sup>2</sup></b>									
Canada	625,692	615,623	613,251	955,965	953,503	969,716	1,453,116	1,525,090	1,577,741
Newfoundland and Labrador	x	x	x	x	x	x	x	x	x
Prince Edward Island	x	x	x	x	x	x	x	x	x
Nova Scotia	22,255	21,464	21,924	32,580	32,047	33,508	51,477	53,457	58,229
New Brunswick	15,680	17,144	18,153	23,004	25,795	27,272	37,012	43,518	47,069
Quebec	167,109	163,548	168,782	264,710	262,359	274,985	404,556	421,636	447,779
Ontario	201,965	197,089	203,977	315,897	314,182	330,398	472,455	496,009	531,112
Manitoba	28,641	27,567	28,530	41,032	40,095	41,140	61,149	63,579	67,145
Saskatchewan	21,531	23,136	25,160	30,268	30,956	33,364	47,091	50,382	55,413
Alberta	55,358	52,142	54,846	84,306	82,097	89,257	122,270	124,493	138,597
British Columbia	102,135	102,354	80,133	148,674	150,225	123,059	231,255	246,012	205,459

1. Includes stewing hen.

2. Includes sold and home consumption.

Table 2-2

Disposition of poultry meat — Turkey

	Birds			Weight			Value		
	2002	2003	2004	2002	2003	2004	2002	2003	2004
	in thousands			in thousands of kilograms			in thousands of dollars		
<b>Sold</b>									
Canada	19,653	19,782	19,501	146,279	148,546	144,901	258,782	262,195	267,638
Newfoundland and Labrador	x	x	x	x	x	x	x	x	x
Prince Edward Island	x	x	x	x	x	x	x	x	x
Nova Scotia	762	721	730	3,701	3,493	3,521	6,455	6,148	6,455
New Brunswick	346	329	309	2,543	2,462	2,289	4,357	4,227	4,068
Quebec	4,312	4,294	4,466	31,169	30,784	31,546	55,884	54,899	58,123
Ontario	8,385	8,372	8,361	67,083	67,318	67,999	118,369	118,103	126,182
Manitoba	1,361	1,479	1,366	9,759	10,420	9,526	17,022	18,188	17,253
Saskatchewan	752	793	716	4,844	5,185	4,655	8,722	9,452	8,855
Alberta	1,571	1,673	1,704	11,726	13,107	12,366	21,381	24,087	23,643
British Columbia	2,158	2,116	1,844	15,416	15,737	12,961	26,524	27,021	22,987
<b>Home consumption</b>									
Canada	19	16	15	131	116	103	234	207	192
Newfoundland and Labrador	x	x	x	x	x	x	x	x	x
Prince Edward Island	x	x	x	x	x	x	x	x	x
Nova Scotia	0	0	0	2	2	2	3	3	3
New Brunswick	0	0	0	1	1	1	2	2	2
Quebec	1	1	1	9	7	6	16	13	10
Ontario	3	3	3	25	23	21	45	40	38
Manitoba	2	2	2	13	13	13	22	22	23
Saskatchewan	5	4	3	32	26	20	58	47	37
Alberta	5	5	5	38	35	33	69	64	62
British Columbia	2	1	1	10	10	9	18	17	16
<b>Disposition <sup>1</sup></b>									
Canada	19,672	19,798	19,515	146,410	148,661	145,004	259,017	262,402	267,830
Newfoundland and Labrador	x	x	x	x	x	x	x	x	x
Prince Edward Island	x	x	x	x	x	x	x	x	x
Nova Scotia	762	722	730	3,703	3,495	3,522	6,458	6,151	6,458
New Brunswick	347	330	309	2,544	2,463	2,289	4,360	4,229	4,069
Quebec	4,313	4,295	4,466	31,178	30,791	31,552	55,900	54,911	58,133
Ontario	8,389	8,374	8,364	67,108	67,340	68,019	118,413	118,143	126,220
Manitoba	1,363	1,481	1,368	9,771	10,433	9,539	17,045	18,210	17,276
Saskatchewan	757	797	719	4,876	5,210	4,674	8,780	9,498	8,892
Alberta	1,576	1,677	1,709	11,764	13,141	12,399	21,450	24,150	23,705
British Columbia	2,160	2,118	1,845	15,426	15,747	12,971	26,542	27,037	23,003

1. Includes sold and home consumption.



Table 2-3

## Disposition of poultry meat — Total poultry

	Birds			Weight			Value		
	2002	2003	2004	2002	2003	2004	2002	2003	2004
	in thousands			in thousands of kilograms			in thousands of dollars		
<b>Sold</b>									
Canada	644,925	634,994	632,360	1,101,296	1,101,120	1,113,690	1,710,607	1,785,956	1,844,036
Newfoundland and Labrador	x	x	x	x	x	x	x	x	x
Prince Edward Island	x	x	x	x	x	x	x	x	x
Nova Scotia	23,010	22,178	22,648	36,263	35,524	37,012	57,906	59,578	64,657
New Brunswick	16,024	17,471	18,460	25,542	28,253	29,556	41,364	47,740	51,131
Quebec	171,394	167,816	173,222	295,813	293,080	306,469	460,348	476,440	505,808
Ontario	210,246	205,358	212,239	382,759	381,285	398,184	590,544	613,823	657,003
Manitoba	29,953	29,001	29,852	50,669	50,395	50,545	78,009	81,599	84,226
Saskatchewan	22,228	23,879	25,830	34,986	36,022	37,903	55,653	59,669	64,102
Alberta	56,805	53,688	56,439	95,759	94,936	101,356	143,256	148,172	161,827
British Columbia	104,249	104,422	81,923	163,980	165,849	135,904	257,624	272,878	228,290
<b>Home consumption</b>									
Canada	439	427	407	1,079	1,045	1,029	1,526	1,536	1,535
Newfoundland and Labrador	x	x	x	x	x	x	x	x	x
Prince Edward Island	x	x	x	x	x	x	x	x	x
Nova Scotia	8	7	6	19	18	18	29	30	30
New Brunswick	3	3	3	6	6	5	8	7	7
Quebec	29	27	26	74	70	68	108	107	105
Ontario	108	105	102	246	237	233	324	329	329
Manitoba	51	47	46	135	133	134	185	191	195
Saskatchewan	60	53	50	157	145	136	218	211	202
Alberta	129	131	115	310	303	300	464	471	475
British Columbia	46	50	55	121	122	126	172	172	173
<b>Disposition <sup>1</sup></b>									
Canada	645,364	635,421	632,767	1,102,375	1,102,165	1,114,720	1,712,132	1,787,492	1,845,571
Newfoundland and Labrador	x	x	x	x	x	x	x	x	x
Prince Edward Island	x	x	x	x	x	x	x	x	x
Nova Scotia	23,017	22,185	22,655	36,282	35,542	37,030	57,935	59,608	64,687
New Brunswick	16,027	17,473	18,462	25,548	28,258	29,561	41,372	47,747	51,138
Quebec	171,423	167,843	173,248	295,887	293,151	306,536	460,456	476,547	505,913
Ontario	210,353	205,463	212,341	383,005	381,522	398,417	590,868	614,151	657,332
Manitoba	30,004	29,047	29,897	50,803	50,528	50,678	78,194	81,790	84,421
Saskatchewan	22,288	23,932	25,879	35,144	36,166	38,038	55,871	59,880	64,304
Alberta	56,934	53,819	56,555	96,069	95,238	101,656	143,719	148,643	162,302
British Columbia	104,295	104,472	81,978	164,100	165,971	136,030	257,797	273,050	228,462

1. Includes sold and home consumption.

Table 3

## Supply and disposition of poultry meat

	2000	2001	2002	2003	2004
tonnes					
<b>Chicken</b>					
Production	877,134	929,827	931,617	928,899	946,125
Beginning stocks	22,228	21,852	29,281	28,947	23,719
Imports	97,971	104,324	107,315	110,579	..
Total supply	997,333	1,056,003	1,068,213	1,068,425	..
Exports	82,049	80,819	76,413	93,185	..
Ending stocks	21,852	29,281	28,947	23,719	33,069
Domestic disappearance, total	893,432	945,903	962,853	951,521	..
kilograms					
Per capita disappearance, eviscerated basis	29.1	30.5	30.7	30.1	30.4
Per capita disappearance, boneless weight	17.5	18.4	18.5	18.1	18.3
Per capita consumed <sup>2</sup>	10.3	10.8	10.8	10.6	10.7
tonnes					
<b>Stewing hen</b>					
Production	26,744	23,121	24,348	24,604	23,591
Beginning stocks	951	1,087	732	1,942	780
Imports	50,782	47,592	46,725	37,538	..
Total supply	78,477	71,800	71,805	64,084	..
Exports	19,126	17,009	14,947	10,035	..
Ending stocks	1,087	732	1,942	780	837
Domestic disappearance, total	58,264	54,059	54,916	53,269	..
kilograms					
Per capita disappearance, eviscerated basis	1.8	1.7	1.8	1.7	1.7
Per capita disappearance, boneless weight	1.1	1.0	1.0	1.0	1.0
Per capita consumed <sup>2</sup>	0.7	0.6	0.6	0.6	0.6
tonnes					
<b>Total Chicken<sup>1</sup></b>					
Production	903,878	952,948	955,965	953,503	969,716
Beginning stocks	23,179	22,939	30,013	30,889	24,499
Imports	148,753	151,916	154,040	148,117	..
Total supply	1,075,810	1,127,803	1,140,018	1,132,509	..
Exports	101,175	97,828	91,360	103,220	..
Ending stocks	22,939	30,013	30,889	24,499	33,906
Domestic disappearance, total	951,696	999,962	1,017,769	1,004,790	..
kilograms					
Per capita disappearance, eviscerated basis	31.0	32.2	32.4	31.7	32.1
Per capita disappearance, boneless weight	18.7	19.4	19.5	19.1	19.3
Per capita consumed <sup>2</sup>	10.9	11.4	11.4	11.2	11.3

See footnotes at the end of the table.

Table 3 – continued

## Supply and disposition of poultry meat

	2000	2001	2002	2003	2004
	tonnes				
<b>Turkey</b>					
Production	152,633	149,493	146,410	148,661	145,004
Beginning stocks	9,199	14,410	19,218	13,956	15,852
Imports	6,426	7,049	7,951	7,871	10,185
Total supply	168,258	170,952	173,579	170,488	171,041
Exports	23,105	20,882	25,675	26,355	26,673
Ending stocks	14,410	19,218	13,956	15,852	11,731
Domestic disappearance, total	130,743	130,853	133,948	128,281	132,637
	kilograms				
Per capita disappearance, eviscerated basis	4.3	4.2	4.3	4.1	4.2
Per capita disappearance, boneless weight	3.4	3.3	3.4	3.2	3.3
Per capita consumed <sup>2</sup>	2.2	2.2	2.2	2.1	2.2
	tonnes				
<b>Total poultry meat</b>					
Production	1,056,511	1,102,441	1,102,375	1,102,164	1,114,720
Beginning stocks	32,378	37,349	49,231	44,845	40,351
Imports	155,178	158,965	161,991	155,988	..
Total supply	1,244,067	1,298,755	1,313,597	1,302,997	..
Exports	124,280	118,710	117,035	129,575	..
Ending stocks	37,349	49,231	44,845	40,351	45,637
Domestic disappearance, total	1,082,438	1,130,814	1,151,716	1,133,071	..
	kilograms				
Per capita disappearance, eviscerated basis	35.3	36.5	36.7	35.8	36.3
Per capita disappearance, boneless weight	22.0	22.7	22.9	22.3	22.6
Per capita consumed <sup>2</sup>	13.2	13.6	13.7	13.3	13.5

1. Includes stewing hen.

2. Experimental, use with caution. Disappearance adjusted for retail, household, cooking and plate loss.

Table 4-1

Production of eggs by province — Average number of layers

	Jan.	Feb.	Mar.	Apr.	May	June	July	Aug.	Sept.	Oct.	Nov.	Dec.	Annual average
	in thousands												
<b>Newfoundland and Labrador</b>													
2003	350	345	350	357	347	346	351	350	347	335	339	351	347
2004	349	348	348	346	336	339	341	315	325	338	329	344	338
2005	351	349	350	348	336	338	340	319	330	..	..	..	340
<b>Prince Edward Island</b>													
2003	130	130	130	131	131	131	131	130	130	130	129	128	130
2004	127	127	128	128	128	127	127	124	125	126	122	125	126
2005	128	128	129	129	128	128	127	126	126	..	..	..	128
<b>Nova Scotia</b>													
2003	731	716	714	714	724	731	722	730	734	733	732	729	726
2004	736	739	735	728	738	733	725	714	698	725	749	759	732
2005	768	771	768	726	712	732	740	733	722	..	..	..	741
<b>New Brunswick</b>													
2003	772	799	778	788	743	760	755	758	768	742	786	765	768
2004	780	753	782	791	793	773	764	767	771	766	766	804	776
2005	742	693	738	693	794	808	743	731	729	..	..	..	741
<b>Quebec</b>													
2003	4,667	4,636	4,714	4,742	4,664	4,624	4,622	4,697	4,722	4,562	4,499	4,592	4,645
2004	4,619	4,615	4,648	4,640	4,626	4,625	4,614	4,641	4,606	4,565	4,637	4,777	4,634
2005	4,715	4,669	4,800	4,870	4,978	4,945	4,756	4,825	4,898	..	..	..	4,828
<b>Ontario</b>													
2003	9,569	9,520	9,504	9,528	9,487	9,454	9,367	9,344	9,436	9,416	9,481	9,599	9,475
2004	9,593	9,562	9,521	9,526	9,516	9,594	9,670	9,636	9,593	9,593	9,720	9,905	9,619
2005	9,894	9,742	9,720	9,813	9,835	9,845	9,786	9,760	9,778	..	..	..	9,797
<b>Manitoba</b>													
2003	3,132	3,120	3,115	3,114	3,104	3,055	3,094	3,119	3,099	3,074	3,032	3,046	3,092
2004	3,041	3,029	3,081	3,105	3,101	3,104	3,051	3,034	3,025	2,968	2,995	3,092	3,052
2005	3,118	3,108	3,124	3,088	3,080	3,114	3,109	3,099	3,079	..	..	..	3,102
<b>Saskatchewan</b>													
2003	1,035	1,044	1,070	1,075	1,082	1,133	1,112	1,121	1,140	1,117	1,096	1,095	1,093
2004	1,061	1,010	1,071	1,107	1,085	1,065	1,077	1,121	1,106	1,096	1,114	1,118	1,086
2005	1,126	1,135	1,106	1,078	1,120	1,176	1,189	1,179	1,142	..	..	..	1,139
<b>Alberta</b>													
2003	2,200	2,183	2,215	2,249	2,257	2,246	2,255	2,276	2,272	2,218	2,215	2,237	2,235
2004	2,242	2,228	2,199	2,252	2,278	2,251	2,286	2,367	2,362	2,337	2,385	2,403	2,299
2005	2,348	2,313	2,306	2,308	2,342	2,357	2,358	2,388	2,359	..	..	..	2,342
<b>British Columbia</b>													
2003	3,271	3,258	3,273	3,312	3,343	3,326	3,293	3,295	3,302	3,281	3,285	3,299	3,295
2004	2,821	3,340	3,282	2,394	1,327	1,301	1,549	1,674	1,576	1,544	1,640	1,699	2,012
2005	2,102	1,895	2,132	2,332	2,509	2,660	2,789	3,016	3,012	..	..	..	2,494
<b>Canada</b>													
2003	25,856	25,751	25,864	26,010	25,882	25,805	25,701	25,821	25,950	25,608	25,593	25,840	25,806
2004	25,369	25,751	25,795	25,017	23,928	23,912	24,205	24,392	24,187	24,057	24,456	25,025	24,673
2005	25,292	24,803	25,172	25,385	25,835	26,102	25,937	26,176	26,176	..	..	..	25,652

Table 4-2

## Production of eggs by province — Eggs per 100 layers

	Jan.	Feb.	Mar.	Apr.	May	June	July	Aug.	Sept.	Oct.	Nov.	Dec.	Annual total
<b>Newfoundland and Labrador</b>													
2003	2,444	2,269	2,341	2,268	2,394	2,345	2,417	2,436	2,392	2,366	2,350	2,411	28,436
2004	2,424	2,335	2,477	2,428	2,480	2,427	2,472	2,519	2,435	2,511	2,466	2,560	29,528
2005	2,434	2,344	2,452	2,426	2,406	2,385	2,323	2,497	2,402	..	..	..	21,668
<b>Prince Edward Island</b>													
2003	2,390	2,235	2,362	2,323	2,448	2,367	2,454	2,422	2,301	2,348	2,327	2,426	28,399
2004	2,467	2,319	2,445	2,400	2,432	2,417	2,473	2,547	2,453	2,436	2,462	2,477	29,329
2005	2,450	2,308	2,429	2,405	2,397	2,432	2,440	2,505	2,402	..	..	..	21,771
<b>Nova Scotia</b>													
2003	2,537	2,297	2,384	2,375	2,383	2,386	2,518	2,462	2,397	2,451	2,402	2,535	29,131
2004	2,492	2,324	2,411	2,405	2,416	2,400	2,488	2,483	2,469	2,457	2,456	2,497	29,295
2005	2,439	2,330	2,397	2,372	2,379	2,350	2,440	2,214	2,352	..	..	..	21,276
<b>New Brunswick</b>													
2003	1,984	1,888	2,002	1,945	1,994	1,961	2,028	2,020	1,967	2,014	1,973	2,051	23,819
2004	2,036	1,946	2,014	1,971	2,007	1,978	2,043	2,042	1,975	2,024	1,986	2,025	24,048
2005	2,054	1,981	2,048	2,033	2,000	1,964	2,041	2,071	2,005	..	..	..	18,192
<b>Quebec</b>													
2003	2,316	2,105	2,308	2,169	2,255	2,166	2,268	2,279	2,203	2,244	2,212	2,260	26,787
2004	2,232	2,058	2,227	2,125	2,210	2,137	2,228	2,212	2,175	2,239	2,194	2,240	26,282
2005	2,218	2,053	2,210	2,099	2,191	2,129	2,196	2,212	2,119	..	..	..	19,430
<b>Ontario</b>													
2003	2,357	2,133	2,340	2,235	2,318	2,259	2,327	2,319	2,257	2,325	2,272	2,335	27,477
2004	2,331	2,107	2,299	2,211	2,307	2,239	2,301	2,279	2,219	2,298	2,291	2,382	27,268
2005	2,378	2,178	2,368	2,288	2,368	2,318	2,382	2,380	2,310	..	..	..	20,970
<b>Manitoba</b>													
2003	2,661	2,412	2,634	2,532	2,618	2,545	2,631	2,618	2,536	2,601	2,524	2,690	31,002
2004	2,775	2,509	2,751	2,627	2,721	2,635	2,712	2,719	2,617	2,690	2,613	2,771	32,146
2005	2,850	2,593	2,834	2,716	2,811	2,713	2,798	2,802	2,700	..	..	..	24,819
<b>Saskatchewan</b>													
2003	2,264	1,967	2,136	2,064	2,103	2,063	2,114	2,128	2,048	2,133	2,067	2,135	25,225
2004	2,103	1,942	2,110	2,014	2,138	2,058	2,128	2,074	2,020	2,103	2,053	2,112	24,859
2005	2,118	1,901	2,060	1,982	2,081	2,011	2,071	2,052	1,998	..	..	..	18,277
<b>Alberta</b>													
2003	2,002	1,822	1,987	1,898	1,966	1,897	1,980	1,935	1,892	1,923	1,936	1,941	23,183
2004	2,005	1,784	1,993	1,894	1,977	1,899	1,972	1,916	1,865	1,950	1,933	1,958	23,146
2005	2,010	1,822	2,001	1,916	2,009	1,911	1,983	1,941	1,898	..	..	..	17,493
<b>British Columbia</b>													
2003	2,094	1,910	2,079	1,980	2,042	1,986	2,046	2,033	1,996	2,042	2,018	2,091	24,315
2004	2,169	1,916	2,101	1,875	2,213	2,246	2,139	1,951	1,892	2,018	1,930	1,937	24,387
2005	2,051	2,006	2,143	1,998	2,140	1,990	2,078	2,040	1,953	..	..	..	18,399
<b>Canada</b>													
2003	2,314	2,100	2,289	2,186	2,262	2,198	2,276	2,267	2,204	2,259	2,217	2,289	26,858
2004	2,308	2,092	2,279	2,179	2,294	2,231	2,290	2,257	2,199	2,274	2,241	2,315	26,954
2005	2,327	2,150	2,322	2,228	2,309	2,237	2,306	2,294	2,222	..	..	..	20,398

Table 4-3

## Production of eggs by province in thousands of dozens

	Jan.	Feb.	Mar.	Apr.	May	June	July	Aug.	Sept.	Oct.	Nov.	Dec.	Annual total
	in thousands of dozens												
<b>Newfoundland and Labrador</b>													
2003	712	652	683	675	693	675	706	711	692	661	665	705	8,230
2004	704	676	718	701	694	685	702	660	660	706	675	733	8,315
2005	711	682	715	704	674	671	658	663	661	..	..	..	6,139
<b>Prince Edward Island</b>													
2003	258	243	257	254	268	258	267	263	249	253	249	258	3,077
2004	261	246	261	256	259	256	261	264	255	255	251	257	3,082
2005	262	247	261	258	257	259	259	262	253	..	..	..	2,317
<b>Nova Scotia</b>													
2003	1,546	1,371	1,419	1,414	1,437	1,454	1,516	1,498	1,466	1,498	1,464	1,539	17,620
2004	1,528	1,431	1,477	1,459	1,486	1,465	1,504	1,477	1,437	1,485	1,532	1,579	17,860
2005	1,561	1,497	1,533	1,435	1,412	1,433	1,505	1,352	1,416	..	..	..	13,143
<b>New Brunswick</b>													
2003	1,276	1,257	1,299	1,277	1,234	1,242	1,275	1,276	1,260	1,246	1,292	1,307	15,240
2004	1,324	1,221	1,312	1,299	1,327	1,275	1,301	1,305	1,268	1,292	1,267	1,357	15,547
2005	1,270	1,143	1,259	1,174	1,323	1,322	1,264	1,262	1,218	..	..	..	11,235
<b>Quebec</b>													
2003	9,009	8,132	9,065	8,572	8,765	8,348	8,737	8,918	8,668	8,530	8,294	8,649	103,686
2004	8,592	7,916	8,627	8,218	8,519	8,236	8,567	8,556	8,348	8,518	8,477	8,917	101,492
2005	8,715	7,987	8,841	8,518	9,091	8,774	8,703	8,895	8,648	..	..	..	78,172
<b>Ontario</b>													
2003	18,792	16,925	18,529	17,745	18,329	17,798	18,165	18,057	17,748	18,244	17,947	18,677	216,957
2004	18,637	16,789	18,245	17,553	18,293	17,902	18,539	18,302	17,736	18,368	18,556	19,659	218,577
2005	19,604	17,679	19,179	18,713	19,407	19,019	19,424	19,358	18,821	..	..	..	171,203
<b>Manitoba</b>													
2003	6,944	6,271	6,838	6,570	6,773	6,480	6,785	6,804	6,549	6,662	6,378	6,829	79,882
2004	7,034	6,333	7,064	6,798	7,031	6,816	6,895	6,874	6,598	6,652	6,523	7,141	81,758
2005	7,406	6,716	7,377	6,989	7,215	7,041	7,249	7,237	6,928	..	..	..	64,158
<b>Saskatchewan</b>													
2003	1,952	1,712	1,905	1,849	1,896	1,948	1,959	1,988	1,946	1,985	1,888	1,948	22,976
2004	1,860	1,634	1,884	1,858	1,933	1,826	1,910	1,937	1,862	1,921	1,906	1,968	22,498
2005	1,988	1,798	1,899	1,781	1,942	1,971	2,052	2,017	1,901	..	..	..	17,348
<b>Alberta</b>													
2003	3,671	3,315	3,668	3,556	3,698	3,551	3,721	3,671	3,582	3,553	3,573	3,618	43,178
2004	3,745	3,313	3,652	3,554	3,754	3,562	3,756	3,779	3,670	3,797	3,842	3,920	44,343
2005	3,933	3,512	3,846	3,685	3,920	3,755	3,896	3,863	3,730	..	..	..	34,141
<b>British Columbia</b>													
2003	5,707	5,184	5,670	5,465	5,687	5,506	5,615	5,584	5,494	5,582	5,525	5,748	66,766
2004	5,099	5,334	5,747	3,740	2,448	2,435	2,761	2,722	2,485	2,596	2,637	2,743	40,747
2005	3,592	3,168	3,807	3,883	4,475	4,410	4,830	5,127	4,901	..	..	..	38,194
<b>Canada</b>													
2003	49,867	45,062	49,331	47,376	48,780	47,259	48,746	48,769	47,653	48,214	47,275	49,280	577,612
2004	48,783	44,893	48,986	45,435	45,743	44,458	46,196	45,877	44,318	45,590	45,667	48,274	554,218
2005	49,042	44,429	48,717	47,139	49,716	48,654	49,840	50,036	48,478	..	..	..	436,050

Table 5-1

## Disposition of eggs, quantity and value by province — Canada

	Jan.	Feb.	Mar.	Apr.	May	June	July	Aug.	Sept.	Oct.	Nov.	Dec.	Annual total
	quantity, in thousands of dozens												
<b>Sold for consumption</b>													
2003	43,693	39,285	42,789	41,019	42,352	41,165	42,569	42,651	41,414	42,382	41,153	42,979	503,449
2004	42,396	39,006	42,462	40,016	40,214	38,905	40,038	39,902	38,597	39,931	39,480	42,106	483,052
2005	43,330	38,813	42,442	41,215	43,302	42,444	43,591	43,645	42,694	..	..	..	381,476
<b>Sold for hatching</b>													
2003	5,097	4,791	5,473	5,325	5,369	5,067	5,121	5,059	5,203	4,786	5,092	5,233	61,614
2004	5,336	4,908	5,466	4,430	4,534	4,584	5,155	4,977	4,754	4,667	5,196	5,127	59,134
2005	4,654	4,647	5,224	4,901	5,341	5,159	5,175	5,312	4,735	..	..	..	45,147
<b>Home consumption</b>													
2003	125	125	125	125	125	125	125	125	125	125	125	125	1,501
2004	125	125	125	125	125	125	125	125	125	125	125	125	1,501
2005	125	125	125	125	125	125	125	125	125	..	..	..	1,126
<b>Leakers and rejects</b>													
2003	953	862	945	906	933	903	931	934	912	922	905	942	11,047
2004	927	854	933	863	870	845	878	873	843	866	866	916	10,534
2005	933	844	926	898	947	926	949	953	925	..	..	..	8,301
<b>Total disposition of eggs</b>													
2003	49,867	45,062	49,331	47,375	48,779	47,259	48,746	48,769	47,653	48,215	47,275	49,280	577,611
2004	48,783	44,893	48,986	45,434	45,743	44,459	46,196	45,877	44,319	45,589	45,667	48,274	554,221
2005	49,042	44,429	48,717	47,139	49,715	48,654	49,840	50,036	48,478	..	..	..	436,049
	value, in thousands of dollars												
<b>Sold for consumption</b>													
2003	45,926	41,716	45,274	43,503	44,927	43,680	45,481	45,764	44,348	45,321	44,027	45,911	535,879
2004	45,471	42,095	45,720	43,508	44,487	44,008	45,439	45,904	44,253	44,773	44,327	46,617	536,602
2005	43,873	38,698	42,316	41,132	43,265	42,487	43,732	44,416	43,272	..	..	..	383,191
<b>Sold for hatching</b>													
2003	17,916	16,837	19,374	18,878	19,073	17,993	18,208	17,971	18,494	17,002	18,083	18,592	218,421
2004	18,965	17,534	19,543	15,765	16,206	16,485	18,575	17,949	16,970	16,524	17,774	17,389	209,680
2005	15,401	15,403	17,406	16,363	17,976	17,262	17,209	17,642	15,693	..	..	..	150,354
<b>Home consumption</b>													
2003	156	160	164	166	166	165	165	166	156	164	164	163	1,949
2004	164	164	165	167	170	173	175	175	160	171	171	166	2,016
2005	156	154	162	162	162	162	163	164	154	..	..	..	1,435
<b>Total value of disposition of eggs</b>													
2003	63,998	58,713	64,812	62,547	64,166	61,837	63,854	63,900	62,998	62,487	62,273	64,666	756,250
2004	64,600	59,792	65,428	59,440	60,863	60,666	64,189	64,028	61,383	61,468	62,271	64,172	748,298
2005	59,430	54,255	59,884	57,657	61,402	59,911	61,103	62,221	59,119	..	..	..	534,980

Table 5-2

Disposition of eggs, quantity and value by province — Newfoundland and Labrador

	Jan.	Feb.	Mar.	Apr.	May	June	July	Aug.	Sept.	Oct.	Nov.	Dec.	Annual total
quantity, in thousands of dozens													
<b>Sold for consumption</b>													
2003	698	639	669	661	679	662	692	697	679	648	652	691	8,067
2004	690	663	704	687	680	672	688	647	647	692	662	718	8,151
2005	697	669	700	690	661	658	645	650	648	..	..	..	6,018
<b>Sold for hatching</b>													
2003	0	0	0	0	0	0	0	0	0	0	0	0	0
2004	0	0	0	0	0	0	0	0	0	0	0	0	0
2005	0	0	0	0	0	0	0	0	0	..	..	..	0
<b>Home consumption</b>													
2003	0	0	0	0	0	0	0	0	0	0	0	0	2
2004	0	0	0	0	0	0	0	0	0	0	0	0	2
2005	0	0	0	0	0	0	0	0	0	..	..	..	2
<b>Leakers and rejects</b>													
2003	14	13	13	13	14	13	14	14	14	13	13	14	161
2004	14	13	14	14	14	13	14	13	13	14	13	14	162
2005	14	13	14	14	13	13	13	13	13	..	..	..	120
<b>Total disposition of eggs</b>													
2003	712	652	683	675	693	675	706	711	692	661	665	705	8,231
2004	704	676	718	701	694	685	702	660	660	706	675	733	8,316
2005	711	682	715	703	674	672	658	663	661	..	..	..	6,140
value, in thousands of dollars													
<b>Sold for consumption</b>													
2003	1,088	997	1,017	1,005	1,031	1,005	1,071	1,078	1,029	970	975	1,062	12,329
2004	1,061	1,019	1,082	1,056	1,046	1,032	1,058	995	1,001	1,071	1,024	1,111	12,555
2005	1,078	1,035	1,084	1,067	1,022	1,018	998	1,006	1,003	..	..	..	9,310
<b>Sold for hatching</b>													
2003	0	0	0	0	0	0	0	0	0	0	0	0	0
2004	0	0	0	0	0	0	0	0	0	0	0	0	0
2005	0	0	0	0	0	0	0	0	0	..	..	..	0
<b>Home consumption</b>													
2003	0	0	0	0	0	0	0	0	0	0	0	0	4
2004	0	0	0	0	0	0	0	0	0	0	0	0	4
2005	0	0	0	0	0	0	0	0	0	..	..	..	3
<b>Total value of disposition of eggs</b>													
2003	1,089	997	1,017	1,005	1,032	1,006	1,071	1,078	1,030	971	976	1,063	12,333
2004	1,061	1,019	1,083	1,056	1,046	1,033	1,058	995	1,001	1,071	1,024	1,112	12,559
2005	1,078	1,035	1,084	1,067	1,022	1,019	998	1,006	1,003	..	..	..	9,313



Table 5-3

## Disposition of eggs, quantity and value by province — Prince Edward Island

	Jan.	Feb.	Mar.	Apr.	May	June	July	Aug.	Sept.	Oct.	Nov.	Dec.	Annual total
	quantity, in thousands of dozens												
<b>Sold for consumption</b>													
2003	253	238	251	248	262	252	261	257	244	248	244	253	3,011
2004	255	241	256	251	253	251	256	259	249	249	246	252	3,017
2005	256	242	255	253	251	254	254	257	247	..	..	..	2,267
<b>Sold for hatching</b>													
2003	0	0	0	0	0	0	0	0	0	0	0	0	0
2004	0	0	0	0	0	0	0	0	0	0	0	0	0
2005	0	0	0	0	0	0	0	0	0	..	..	..	0
<b>Home consumption</b>													
2003	1	1	1	1	1	1	1	1	1	1	1	1	6
2004	1	1	1	1	1	1	1	1	1	1	1	1	6
2005	1	1	1	1	1	1	1	1	1	..	..	..	5
<b>Leakers and rejects</b>													
2003	5	5	5	5	5	5	5	5	5	5	5	5	60
2004	5	5	5	5	5	5	5	5	5	5	5	5	60
2005	5	5	5	5	5	5	5	5	5	..	..	..	45
<b>Total disposition of eggs</b>													
2003	258	243	257	254	268	258	267	263	249	253	249	258	3,077
2004	261	246	261	256	259	256	261	264	255	255	251	257	3,083
2005	262	247	261	258	256	259	259	262	253	..	..	..	2,317
	value, in thousands of dollars												
<b>Sold for consumption</b>													
2003	340	317	328	326	345	331	348	340	320	323	318	331	3,966
2004	335	316	336	329	333	329	336	339	330	330	325	333	3,969
2005	338	319	337	334	332	335	335	339	327	..	..	..	2,997
<b>Sold for hatching</b>													
2003	0	0	0	0	0	0	0	0	0	0	0	0	0
2004	0	0	0	0	0	0	0	0	0	0	0	0	0
2005	0	0	0	0	0	0	0	0	0	..	..	..	0
<b>Home consumption</b>													
2003	1	1	1	1	1	1	1	1	1	1	1	1	9
2004	1	1	1	1	1	1	1	1	1	1	1	1	10
2005	1	1	1	1	1	1	1	1	1	..	..	..	7
<b>Total value of disposition of eggs</b>													
2003	340	318	329	327	345	332	349	341	320	324	318	332	3,975
2004	336	317	336	330	333	330	337	340	331	331	326	333	3,978
2005	339	320	338	335	332	336	336	340	328	..	..	..	3,004

Table 5-4

## Disposition of eggs, quantity and value by province — Nova Scotia

	Jan.	Feb.	Mar.	Apr.	May	June	July	Aug.	Sept.	Oct.	Nov.	Dec.	Annual total
quantity, in thousands of dozens													
<b>Sold for consumption</b>													
2003	1,533	1,359	1,407	1,402	1,425	1,442	1,504	1,486	1,454	1,485	1,452	1,526	17,474
2004	1,520	1,423	1,469	1,452	1,478	1,458	1,496	1,469	1,429	1,477	1,524	1,571	17,765
2005	1,553	1,489	1,525	1,428	1,404	1,425	1,497	1,345	1,408	..	..	..	13,072
<b>Sold for hatching</b>													
2003	0	0	0	0	0	0	0	0	0	0	0	0	0
2004	0	0	0	0	0	0	0	0	0	0	0	0	0
2005	0	0	0	0	0	0	0	0	0	..	..	..	0
<b>Home consumption</b>													
2003	2	2	2	2	2	2	2	2	2	2	2	2	18
2004	2	2	2	2	2	2	2	2	2	2	2	2	18
2005	2	2	2	2	2	2	2	2	2	..	..	..	14
<b>Leakers and rejects</b>													
2003	11	10	10	10	10	11	11	11	11	11	11	11	127
2004	7	6	6	6	6	6	7	6	6	6	7	7	77
2005	7	7	7	6	6	6	7	6	6	..	..	..	57
<b>Total disposition of eggs</b>													
2003	1,546	1,371	1,419	1,414	1,437	1,454	1,516	1,498	1,466	1,498	1,464	1,539	17,620
2004	1,528	1,431	1,477	1,459	1,486	1,465	1,504	1,477	1,437	1,485	1,532	1,579	17,860
2005	1,561	1,497	1,533	1,435	1,412	1,433	1,505	1,352	1,416	..	..	..	13,142
value, in thousands of dollars													
<b>Sold for consumption</b>													
2003	2,054	1,822	1,886	1,879	1,909	1,932	2,015	1,991	1,948	1,990	1,946	2,045	23,416
2004	2,037	1,906	1,967	1,944	1,979	1,952	2,005	1,969	1,929	1,994	2,056	2,119	23,855
2005	2,095	2,009	2,057	1,926	1,894	1,922	2,019	1,816	1,901	..	..	..	17,637
<b>Sold for hatching</b>													
2003	0	0	0	0	0	0	0	0	0	0	0	0	0
2004	0	0	0	0	0	0	0	0	0	0	0	0	0
2005	0	0	0	0	0	0	0	0	0	..	..	..	0
<b>Home consumption</b>													
2003	3	3	3	3	3	3	3	3	3	3	3	3	37
2004	3	3	3	3	3	3	3	3	3	3	3	3	37
2005	3	3	3	3	3	3	3	3	3	..	..	..	28
<b>Total value of disposition of eggs</b>													
2003	2,057	1,825	1,889	1,882	1,912	1,935	2,018	1,994	1,951	1,993	1,949	2,048	23,453
2004	2,040	1,909	1,971	1,947	1,982	1,955	2,008	1,972	1,932	1,997	2,059	2,122	23,892
2005	2,098	2,012	2,060	1,929	1,897	1,925	2,022	1,819	1,904	..	..	..	17,665

Table 5-5

## Disposition of eggs, quantity and value by province — New Brunswick

	Jan.	Feb.	Mar.	Apr.	May	June	July	Aug.	Sept.	Oct.	Nov.	Dec.	Annual total
	quantity, in thousands of dozens												
<b>Sold for consumption</b>													
2003	819	811	828	804	790	797	839	837	822	820	827	856	9,850
2004	857	814	843	829	834	832	857	853	827	841	829	854	10,071
2005	842	798	843	817	822	832	840	856	828	..	..	..	7,477
<b>Sold for hatching</b>													
2003	431	420	445	447	419	420	411	413	412	401	439	424	5,082
2004	440	382	442	443	466	417	418	426	416	424	412	476	5,162
2005	403	322	391	333	475	463	398	381	365	..	..	..	3,530
<b>Home consumption</b>													
2003	1	1	1	1	1	1	1	1	1	1	1	1	11
2004	1	1	1	1	1	1	1	1	1	1	1	1	11
2005	1	1	1	1	1	1	1	1	1	..	..	..	8
<b>Leakers and rejects</b>													
2003	25	25	25	25	24	24	25	25	25	24	25	26	297
2004	26	24	26	25	26	25	25	25	25	25	25	27	303
2005	25	22	25	23	26	26	25	25	24	..	..	..	219
<b>Total disposition of eggs</b>													
2003	1,276	1,257	1,299	1,277	1,234	1,242	1,275	1,276	1,260	1,246	1,292	1,307	15,239
2004	1,324	1,221	1,312	1,298	1,327	1,275	1,301	1,305	1,269	1,291	1,267	1,357	15,548
2005	1,271	1,143	1,259	1,173	1,323	1,322	1,264	1,262	1,218	..	..	..	11,235
	value, in thousands of dollars												
<b>Sold for consumption</b>													
2003	1,103	1,093	1,115	1,083	1,064	1,073	1,145	1,143	1,123	1,121	1,129	1,170	13,363
2004	1,154	1,096	1,136	1,116	1,124	1,121	1,155	1,149	1,123	1,142	1,125	1,159	13,599
2005	1,142	1,083	1,144	1,108	1,115	1,129	1,140	1,162	1,124	..	..	..	10,147
<b>Sold for hatching</b>													
2003	1,347	1,313	1,390	1,398	1,308	1,313	1,285	1,292	1,288	1,252	1,373	1,326	15,885
2004	1,376	1,195	1,383	1,386	1,456	1,302	1,306	1,330	1,300	1,325	1,289	1,489	16,138
2005	1,260	1,007	1,221	1,041	1,484	1,448	1,244	1,190	1,142	..	..	..	11,036
<b>Home consumption</b>													
2003	1	1	1	1	1	1	1	1	1	1	1	1	17
2004	1	1	1	1	1	1	1	1	1	1	1	1	17
2005	1	1	1	1	1	1	1	1	1	..	..	..	13
<b>Total value of disposition of eggs</b>													
2003	2,452	2,407	2,507	2,483	2,374	2,388	2,432	2,436	2,413	2,374	2,503	2,497	29,264
2004	2,532	2,292	2,520	2,504	2,582	2,425	2,462	2,481	2,424	2,468	2,416	2,649	29,754
2005	2,404	2,091	2,367	2,150	2,600	2,578	2,386	2,353	2,267	..	..	..	21,195

Table 5-6

## Disposition of eggs, quantity and value by province — Quebec

	Jan.	Feb.	Mar.	Apr.	May	June	July	Aug.	Sept.	Oct.	Nov.	Dec.	Annual total
quantity, in thousands of dozens													
<b>Sold for consumption</b>													
2003	7,478	6,737	7,422	7,050	7,132	6,864	7,270	7,392	7,120	7,141	6,846	7,080	85,532
2004	7,074	6,427	7,014	6,702	6,930	6,774	7,037	7,088	6,869	7,084	6,957	7,320	83,276
2005	7,215	6,458	7,127	6,892	7,438	7,209	7,196	7,224	7,133	..	..	..	63,892
<b>Sold for hatching</b>													
2003	1,349	1,230	1,460	1,349	1,456	1,315	1,291	1,346	1,373	1,217	1,280	1,394	16,059
2004	1,344	1,329	1,439	1,350	1,417	1,295	1,357	1,295	1,310	1,262	1,349	1,417	16,165
2005	1,324	1,367	1,536	1,454	1,470	1,388	1,331	1,492	1,340	..	..	..	12,702
<b>Home consumption</b>													
2003	6	6	6	6	6	6	6	6	6	6	6	6	72
2004	6	6	6	6	6	6	6	6	6	6	6	6	72
2005	6	6	6	6	6	6	6	6	6	..	..	..	54
<b>Leakers and rejects</b>													
2003	176	159	177	167	171	163	170	174	169	166	162	169	2,023
2004	168	154	168	160	166	161	167	167	163	166	165	174	1,979
2005	170	156	172	166	177	171	170	173	169	..	..	..	1,524
<b>Total disposition of eggs</b>													
2003	9,009	8,132	9,065	8,572	8,765	8,348	8,737	8,918	8,668	8,530	8,294	8,649	103,686
2004	8,592	7,916	8,627	8,218	8,519	8,236	8,567	8,556	8,348	8,518	8,477	8,917	101,492
2005	8,715	7,987	8,841	8,518	9,091	8,774	8,703	8,895	8,648	..	..	..	78,172
value, in thousands of dollars													
<b>Sold for consumption</b>													
2003	8,642	7,759	8,550	8,123	8,217	7,909	8,509	8,652	8,329	8,356	8,010	8,282	99,338
2004	8,155	7,434	8,115	7,874	8,399	8,407	8,734	8,812	8,479	8,551	8,397	8,834	100,191
2005	7,963	6,869	7,585	7,336	7,917	7,674	7,661	7,714	7,612	..	..	..	68,331
<b>Sold for hatching</b>													
2003	4,721	4,306	5,110	4,721	5,095	4,601	4,517	4,713	4,807	4,258	4,478	4,880	56,207
2004	4,705	4,719	5,108	4,791	5,031	4,648	4,873	4,651	4,701	4,392	4,439	4,663	56,721
2005	4,198	4,333	4,869	4,610	4,660	4,400	4,272	4,789	4,301	..	..	..	40,432
<b>Home consumption</b>													
2003	8	8	8	8	8	8	8	8	8	8	8	8	96
2004	8	8	8	8	8	8	8	8	8	8	8	8	96
2005	8	7	8	8	8	8	8	8	8	..	..	..	71
<b>Total value of disposition of eggs</b>													
2003	13,371	12,073	13,668	12,852	13,320	12,518	13,034	13,373	13,144	12,622	12,496	13,170	155,641
2004	12,868	12,161	13,231	12,673	13,438	13,063	13,615	13,471	13,188	12,951	12,844	13,505	157,008
2005	12,169	11,209	12,462	11,954	12,585	12,082	11,941	12,511	11,921	..	..	..	108,834

Table 5-7

## Disposition of eggs, quantity and value by province — Ontario

	Jan.	Feb.	Mar.	Apr.	May	June	July	Aug.	Sept.	Oct.	Nov.	Dec.	Annual total
	quantity, in thousands of dozens												
<b>Sold for consumption</b>													
2003	16,773	15,080	16,444	15,745	16,333	15,841	16,202	16,128	15,792	16,364	16,000	16,674	193,376
2004	16,563	14,845	16,161	15,629	16,275	15,860	16,387	16,210	15,702	16,422	16,393	17,411	193,858
2005	17,528	15,644	17,081	16,627	17,404	16,995	17,443	17,379	16,932	..	..	..	153,033
<b>Sold for hatching</b>													
2003	1,620	1,482	1,691	1,621	1,606	1,577	1,576	1,544	1,577	1,491	1,564	1,606	18,956
2004	1,678	1,584	1,695	1,549	1,628	1,660	1,757	1,702	1,655	1,555	1,768	1,832	20,061
2005	1,661	1,657	1,691	1,688	1,592	1,620	1,569	1,569	1,489	..	..	..	14,535
<b>Home consumption</b>													
2003	33	33	33	33	33	33	33	33	33	33	33	33	396
2004	33	33	33	33	33	33	33	33	33	33	33	33	396
2005	33	33	33	33	33	33	33	33	33	..	..	..	297
<b>Leakers and rejects</b>													
2003	366	330	361	346	357	347	354	352	346	356	350	364	4,229
2004	363	327	356	342	357	349	362	357	346	358	362	383	4,262
2005	382	345	374	365	378	371	379	377	367	..	..	..	3,338
<b>Total disposition of eggs</b>													
2003	18,792	16,925	18,529	17,745	18,329	17,798	18,165	18,057	17,748	18,244	17,947	18,677	216,957
2004	18,637	16,789	18,245	17,553	18,293	17,902	18,539	18,302	17,736	18,368	18,556	19,659	218,577
2005	19,604	17,679	19,179	18,713	19,407	19,019	19,424	19,358	18,821	..	..	..	171,203
	value, in thousands of dollars												
<b>Sold for consumption</b>													
2003	17,288	15,542	16,969	16,255	16,862	16,354	16,731	16,658	16,290	16,891	16,512	17,205	199,557
2004	17,406	15,732	17,123	16,841	17,993	18,136	18,741	18,931	18,294	18,416	18,380	19,518	215,511
2005	17,317	15,095	16,508	16,073	16,821	16,426	16,863	17,188	16,453	..	..	..	148,744
<b>Sold for hatching</b>													
2003	5,799	5,307	6,054	5,802	5,751	5,646	5,642	5,528	5,647	5,337	5,599	5,751	67,863
2004	6,005	5,701	6,100	5,622	5,973	6,094	6,446	6,245	5,892	5,535	5,765	5,972	71,350
2005	5,216	5,202	5,310	5,385	5,077	5,216	5,052	5,051	4,795	..	..	..	46,304
<b>Home consumption</b>													
2003	42	42	44	44	44	44	44	44	42	43	43	43	519
2004	44	44	44	44	45	47	47	48	43	45	45	45	541
2005	42	41	44	44	44	44	44	44	42	..	..	..	389
<b>Total value of disposition of eggs</b>													
2003	23,129	20,891	23,067	22,101	22,657	22,044	22,417	22,230	21,979	22,271	22,154	22,999	267,939
2004	23,455	21,477	23,267	22,507	24,011	24,277	25,234	25,224	24,229	23,996	24,190	25,535	287,402
2005	22,575	20,338	21,862	21,502	21,942	21,686	21,959	22,283	21,290	..	..	..	195,437

Table 5-8

## Disposition of eggs, quantity and value by province — Manitoba

	Jan.	Feb.	Mar.	Apr.	May	June	July	Aug.	Sept.	Oct.	Nov.	Dec.	Annual total
quantity, in thousands of dozens													
<b>Sold for consumption</b>													
2003	6,563	5,880	6,410	6,155	6,373	6,106	6,375	6,423	6,160	6,269	5,990	6,443	75,147
2004	6,643	5,964	6,620	6,375	6,596	6,380	6,482	6,462	6,197	6,257	6,115	6,716	76,807
2005	7,014	6,322	6,931	6,574	6,762	6,593	6,815	6,800	6,521	..	..	..	60,332
<b>Sold for hatching</b>													
2003	231	254	280	272	253	233	263	233	246	248	249	238	2,999
2004	239	230	291	275	283	288	264	263	257	250	266	271	3,176
2005	233	248	287	264	297	296	278	281	257	..	..	..	2,441
<b>Home consumption</b>													
2003	15	15	15	15	15	15	15	15	15	15	15	15	180
2004	15	15	15	15	15	15	15	15	15	15	15	15	180
2005	15	15	15	15	15	15	15	15	15	..	..	..	135
<b>Leakers and rejects</b>													
2003	135	122	133	128	132	126	132	133	128	130	124	133	1,556
2004	137	124	138	133	137	133	134	134	129	130	127	139	1,595
2005	144	131	144	136	141	137	141	141	135	..	..	..	1,250
<b>Total disposition of eggs</b>													
2003	6,944	6,271	6,838	6,570	6,773	6,480	6,785	6,804	6,549	6,662	6,378	6,829	79,882
2004	7,034	6,333	7,064	6,798	7,031	6,816	6,895	6,874	6,598	6,652	6,523	7,141	81,758
2005	7,406	6,716	7,377	6,989	7,215	7,041	7,249	7,237	6,928	..	..	..	64,158
value, in thousands of dollars													
<b>Sold for consumption</b>													
2003	4,457	3,972	4,320	4,167	4,350	4,123	4,428	4,648	4,485	4,642	4,415	4,736	52,743
2004	4,730	4,208	4,648	4,470	4,691	4,527	4,699	4,868	4,648	4,686	4,633	5,087	55,895
2005	4,773	4,316	4,710	4,441	4,636	4,547	4,802	5,009	4,845	..	..	..	42,079
<b>Sold for hatching</b>													
2003	831	912	1,005	976	908	838	942	835	881	889	895	856	10,768
2004	856	827	1,043	986	1,029	1,049	960	959	936	911	967	986	11,509
2005	846	903	1,046	960	1,083	1,076	1,013	1,022	937	..	..	..	8,886
<b>Home consumption</b>													
2003	13	13	13	13	13	13	13	14	15	15	15	15	165
2004	13	13	13	13	13	13	15	15	15	15	15	15	168
2005	13	13	13	13	13	13	14	15	15	..	..	..	122
<b>Total value of disposition of eggs</b>													
2003	5,301	4,897	5,338	5,156	5,271	4,974	5,383	5,497	5,381	5,546	5,325	5,607	63,676
2004	5,599	5,048	5,704	5,469	5,733	5,589	5,674	5,842	5,599	5,612	5,615	6,088	67,572
2005	5,632	5,232	5,769	5,414	5,732	5,636	5,829	6,046	5,797	..	..	..	51,087

Table 5-9

## Disposition of eggs, quantity and value by province — Saskatchewan

	Jan.	Feb.	Mar.	Apr.	May	June	July	Aug.	Sept.	Oct.	Nov.	Dec.	Annual total
quantity, in thousands of dozens													
<b>Sold for consumption</b>													
2003	1,723	1,492	1,676	1,590	1,647	1,696	1,727	1,734	1,708	1,742	1,648	1,682	20,065
2004	1,641	1,420	1,632	1,658	1,723	1,626	1,658	1,695	1,633	1,694	1,670	1,735	19,785
2005	1,735	1,560	1,657	1,559	1,698	1,728	1,800	1,781	1,712	..	..	..	15,230
<b>Sold for hatching</b>													
2003	176	172	177	208	197	199	179	200	185	189	188	213	2,283
2004	168	167	200	149	157	149	200	189	178	175	184	180	2,095
2005	199	188	190	172	191	190	197	182	137	..	..	..	1,645
<b>Home consumption</b>													
2003	15	15	15	15	15	15	15	15	15	15	15	15	180
2004	15	15	15	15	15	15	15	15	15	15	15	15	180
2005	15	15	15	15	15	15	15	15	15	..	..	..	135
<b>Leakers and rejects</b>													
2003	38	33	37	36	37	38	38	39	38	39	37	38	448
2004	36	32	37	36	38	36	37	38	36	37	37	38	438
2005	39	35	37	35	38	38	40	39	37	..	..	..	338
<b>Total disposition of eggs</b>													
2003	1,952	1,712	1,905	1,849	1,896	1,948	1,959	1,988	1,946	1,985	1,888	1,948	22,976
2004	1,860	1,634	1,884	1,858	1,933	1,826	1,910	1,937	1,862	1,921	1,906	1,968	22,498
2005	1,988	1,798	1,899	1,781	1,942	1,971	2,052	2,017	1,901	..	..	..	17,348
value, in thousands of dollars													
<b>Sold for consumption</b>													
2003	1,590	1,747	1,949	1,855	1,921	1,977	2,018	2,030	1,978	1,993	1,886	1,924	22,868
2004	1,859	1,614	1,862	1,924	2,050	1,981	2,024	2,123	2,046	2,082	2,051	1,995	23,611
2005	1,892	1,698	1,813	1,712	1,863	1,896	1,977	1,937	1,856	..	..	..	16,644
<b>Sold for hatching</b>													
2003	633	616	634	745	706	715	642	718	663	680	675	766	8,193
2004	602	600	716	534	571	544	727	689	647	638	670	653	7,591
2005	724	684	691	626	695	690	717	661	500	..	..	..	5,988
<b>Home consumption</b>													
2003	17	21	20	20	20	20	20	20	19	20	20	20	237
2004	20	20	20	21	21	21	21	21	20	21	21	20	247
2005	19	19	19	19	19	19	19	19	18	..	..	..	170
<b>Total value of disposition of eggs</b>													
2003	2,240	2,384	2,603	2,620	2,647	2,712	2,680	2,768	2,660	2,693	2,581	2,710	31,298
2004	2,481	2,234	2,598	2,479	2,642	2,546	2,772	2,833	2,713	2,741	2,742	2,668	31,449
2005	2,635	2,401	2,523	2,357	2,577	2,605	2,713	2,617	2,374	..	..	..	22,802

Table 5-10

Disposition of eggs, quantity and value by province — Alberta

	Jan.	Feb.	Mar.	Apr.	May	June	July	Aug.	Sept.	Oct.	Nov.	Dec.	Annual total
quantity, in thousands of dozens													
<b>Sold for consumption</b>													
2003	3,053	2,725	2,989	2,890	3,017	2,945	3,046	3,030	2,910	2,983	2,863	2,994	35,445
2004	3,043	2,754	2,988	2,926	3,096	2,950	3,032	3,070	3,021	3,179	3,100	3,254	36,413
2005	3,256	2,906	3,170	3,059	3,211	3,103	3,176	3,185	3,079	..	..	..	28,145
<b>Sold for hatching</b>													
2003	513	492	574	564	576	504	569	536	569	468	607	520	6,493
2004	596	461	560	526	552	510	618	602	544	511	634	557	6,670
2005	567	505	568	521	600	546	611	570	545	..	..	..	5,034
<b>Home consumption</b>													
2003	33	33	33	33	33	33	33	33	33	33	33	33	396
2004	33	33	33	33	33	33	33	33	33	33	33	33	396
2005	33	33	33	33	33	33	33	33	33	..	..	..	297
<b>Leakers and rejects</b>													
2003	72	65	72	69	72	69	73	72	70	69	70	71	844
2004	73	65	71	69	73	69	73	74	72	74	75	76	864
2005	77	68	75	72	76	73	76	75	73	..	..	..	665
<b>Total disposition of eggs</b>													
2003	3,671	3,315	3,668	3,556	3,698	3,551	3,721	3,671	3,582	3,553	3,573	3,618	43,178
2004	3,745	3,313	3,652	3,554	3,754	3,562	3,756	3,779	3,670	3,797	3,842	3,920	44,343
2005	3,933	3,512	3,846	3,685	3,920	3,755	3,896	3,863	3,730	..	..	..	34,141
value, in thousands of dollars													
<b>Sold for consumption</b>													
2003	3,546	3,184	3,429	3,367	3,515	3,426	3,546	3,533	3,365	3,408	3,270	3,417	41,006
2004	3,592	3,267	3,549	3,531	3,825	3,729	3,836	3,863	3,765	3,875	3,776	3,714	44,322
2005	3,555	3,170	3,471	3,344	3,511	3,393	3,478	3,479	3,370	..	..	..	30,771
<b>Sold for hatching</b>													
2003	1,831	1,755	2,066	2,055	2,097	1,834	2,073	1,951	2,072	1,705	2,211	1,894	23,544
2004	2,171	1,677	2,059	1,937	2,030	1,875	2,275	2,244	2,029	1,905	2,396	2,105	24,703
2005	2,145	1,909	2,147	1,970	2,270	1,947	2,181	2,036	1,947	..	..	..	18,552
<b>Home consumption</b>													
2003	43	43	42	44	44	43	43	43	40	41	41	41	508
2004	43	43	43	44	45	46	46	45	42	44	44	42	527
2005	40	40	41	41	41	41	41	41	39	..	..	..	365
<b>Total value of disposition of eggs</b>													
2003	5,420	4,982	5,537	5,466	5,656	5,303	5,662	5,527	5,477	5,154	5,522	5,352	65,058
2004	5,806	4,987	5,651	5,512	5,900	5,650	6,157	6,152	5,836	5,824	6,216	5,861	69,552
2005	5,740	5,119	5,659	5,355	5,822	5,381	5,700	5,556	5,356	..	..	..	49,688



Table 5-11

## Disposition of eggs, quantity and value by province — British Columbia

	Jan.	Feb.	Mar.	Apr.	May	June	July	Aug.	Sept.	Oct.	Nov.	Dec.	Annual total
quantity, in thousands of dozens													
<b>Sold for consumption</b>													
2003	4,800	4,323	4,692	4,473	4,694	4,560	4,653	4,668	4,526	4,681	4,632	4,780	55,482
2004	4,109	4,455	4,775	3,508	2,348	2,103	2,145	2,149	2,022	2,035	1,984	2,276	33,909
2005	3,235	2,726	3,152	3,318	3,652	3,647	3,925	4,169	4,185	..	..	..	32,009
<b>Sold for hatching</b>													
2003	776	740	847	865	862	819	833	787	841	772	765	836	9,742
2004	871	755	840	139	32	265	542	500	395	490	582	394	5,805
2005	267	360	561	469	716	657	791	838	600	..	..	..	5,260
<b>Home consumption</b>													
2003	20	20	20	20	20	20	20	20	20	20	20	20	240
2004	20	20	20	20	20	20	20	20	20	20	20	20	240
2005	20	20	20	20	20	20	20	20	20	..	..	..	180
<b>Leakers and rejects</b>													
2003	111	101	111	107	111	107	109	109	107	109	108	112	1,302
2004	99	104	112	73	48	47	54	53	48	51	51	53	793
2005	70	62	74	76	87	86	94	100	96	..	..	..	745
<b>Total disposition of eggs</b>													
2003	5,707	5,184	5,670	5,465	5,687	5,506	5,615	5,584	5,494	5,582	5,525	5,748	66,766
2004	5,099	5,334	5,747	3,740	2,448	2,435	2,761	2,722	2,485	2,596	2,637	2,743	40,747
2005	3,592	3,168	3,807	3,883	4,475	4,410	4,830	5,127	4,901	..	..	..	38,194
value, in thousands of dollars													
<b>Sold for consumption</b>													
2003	5,818	5,284	5,712	5,444	5,713	5,549	5,670	5,691	5,481	5,627	5,566	5,739	67,294
2004	5,142	5,503	5,902	4,424	3,048	2,794	2,852	2,855	2,639	2,627	2,560	2,748	43,094
2005	3,720	3,105	3,607	3,792	4,154	4,146	4,458	4,767	4,782	..	..	..	36,531
<b>Sold for hatching</b>													
2003	2,754	2,628	3,115	3,181	3,208	3,046	3,107	2,934	3,136	2,881	2,852	3,119	35,961
2004	3,250	2,815	3,134	509	116	973	1,988	1,831	1,465	1,818	2,248	1,521	21,668
2005	1,012	1,365	2,122	1,771	2,707	2,485	2,730	2,893	2,071	..	..	..	19,156
<b>Home consumption</b>													
2003	27	27	31	31	31	31	31	31	26	31	31	30	358
2004	30	30	31	31	32	32	32	32	26	32	32	30	370
2005	28	28	31	31	31	31	31	31	26	..	..	..	268
<b>Total value of disposition of eggs</b>													
2003	8,599	7,939	8,858	8,656	8,952	8,626	8,808	8,656	8,643	8,539	8,449	8,888	103,613
2004	8,422	8,348	9,067	4,964	3,196	3,799	4,872	4,718	4,130	4,477	4,840	4,299	65,132
2005	4,760	4,498	5,760	5,594	6,892	6,662	7,219	7,691	6,879	..	..	..	55,955

Table 6

Stocks of frozen eggs and edible dried eggs, Canada

	Jan.	Feb.	Mar.	Apr.	May	June	July	Aug.	Sept.	Oct.	Nov.	Dec.
	tonnes											
<b>Whole eggs, total</b>												
2003	697	831	944	960	779	673	543	528	547	499	481	467
2004	381	615	702	627	799	894	1,044	1,090	814	764	844	951
2005	817	1,132	1,187	1,017	923	837	734	859	755	679	..	..
<b>Yolk, total</b>												
2003	526	706	739	622	473	517	344	335	261	346	309	382
2004	310	70	406	443	408	376	392	335	351	433	563	475
2005	497	552	566	553	548	605	776	687	639	599	..	..
<b>Whites, total</b>												
2003	85	131	134	115	139	153	124	134	149	165	117	113
2004	103	90	110	118	122	117	134	101	126	107	127	110
2005	163	148	147	128	122	100	119	91	124	99	..	..
<b>Edible dried eggs</b>												
2003	931	1,199	1,412	1,475	924	680	823	769	678	610	678	555
2004	761	698	772	776	591	590	506	762	781	850	725	926
2005	1,097	1,096	1,064	1,088	1,056	1,064	1,016	835	907	941	..	..
<b>Dried, whole and mixes</b>												
2003	242	348	378	397	172	126	257	258	228	196	287	289
2004	248	244	275	260	229	193	98	215	189	214	232	281
2005	358	291	340	376	396	303	333	293	284	287	..	..
<b>Dried, yolk and mixes</b>												
2003	322	498	670	749	498	341	335	344	242	187	173	80
2004	189	181	180	224	116	120	119	247	266	266	287	298
2005	359	419	338	339	313	427	273	146	170	180	..	..
<b>Dried albumen</b>												
2003	366	353	364	329	253	213	231	167	209	228	217	186
2004	324	273	317	293	246	278	289	300	327	369	205	347
2005	380	386	386	373	347	334	411	396	452	474	..	..

Table 7

Supply and disposition of eggs

	2000	2001	2002	2003	2004
	in thousands of dozens				
Production	547,630	566,659	575,789	577,612	553,761
Beginning stocks	8,097	7,962	9,026	10,737	8,697
Imports	39,830	41,959	42,879	44,304	68,021
Total supply	595,557	616,580	627,694	632,653	630,479
Exports	36,837	43,860	59,632	55,997	57,938
Used for hatching	58,463	60,821	61,985	61,614	58,677
Leakers and rejects	10,436	10,759	11,051	11,047	10,525
Ending stocks	7,962	9,026	10,737	8,697	12,230
Domestic disappearance, total	481,859	492,114	484,289	495,298	491,109
	dozens				
Domestic disappearance per capita	15.7	15.9	15.4	15.6	15.4
Per capita consumed <sup>1</sup>	13.0	13.1	12.8	13.0	12.8

1. Experimental, use with caution. Disappearance adjusted for retail, household, cooking and plate loss.

Table 8

## Average prices of eggs sold for consumption in Canada, by month

	Jan.	Feb.	Mar.	Apr.	May	June	July	Aug.	Sept.	Oct.	Nov.	Dec.
	dollars per dozen											
1997	1.06	1.06	1.07	1.07	1.07	1.07	1.07	1.05	1.05	1.05	1.06	1.06
1998	1.06	1.05	1.05	1.05	1.04	1.04	1.02	1.02	1.02	1.00	1.00	1.00
1999	0.98	0.98	0.98	0.99	1.00	1.00	1.02	1.01	1.01	1.01	1.00	0.99
2000	0.99	0.99	0.99	0.99	1.00	1.00	0.98	1.02	1.03	1.03	1.04	1.04
2001	1.02	1.02	1.04	1.04	1.05	1.05	1.05	1.05	1.04	1.05	1.07	1.06
2002	1.05	1.05	1.05	1.05	1.05	1.05	1.05	1.09	1.07	1.07	1.07	1.10
2003	1.05	1.06	1.06	1.06	1.06	1.06	1.07	1.07	1.07	1.07	1.07	1.07
2004	1.07	1.08	1.08	1.09	1.11	1.13	1.14	1.15	1.15	1.12	1.12	1.11
2005	1.01	1.00	1.00	1.00	1.00	1.00	1.00	1.02	1.01	..	..	..

Table 9

## Report of processed eggs production, Canada

	Whole egg	Yolk	Albumen	Total processed egg
	kilograms			
<b>Total break</b>				
2002	29,379,028	13,036,186	23,744,970	66,160,184
2003	30,032,825	10,749,516	19,461,976	60,244,317
2004	24,776,368	7,620,863	13,728,322	46,125,553
<b>Frozen eggs</b>				
2002	3,559,199	3,826,549	1,349,262	8,735,010
2003	3,390,821	3,730,944	1,483,631	8,605,396
2004	3,120,313	2,476,640	759,878	6,356,831
<b>Liquid eggs</b>				
2002	20,722,089	3,006,624	4,922,307	28,651,020
2003	23,104,299	2,531,102	5,378,880	31,014,281
2004	19,384,914	2,419,455	4,790,931	26,595,300
<b>Dried eggs</b>				
2002	2,398,516	2,009,642	2,768,554	7,176,712
2003	1,915,670	1,852,538	2,129,767	5,897,975
2004	895,982	1,306,663	1,301,471	3,504,116

# Poultry meat production and value

---

## Concepts

Poultry meat production and value are estimated for chicken meat (including stewing hens) and turkey meat sold by producers as well as that consumed by these producers. Production is measured in both the number of birds slaughtered and the eviscerated weight of the slaughtered birds. Estimates of quantities sold consist of commercial and non-commercial slaughter and are made at the provincial level. Commercial slaughter is adjusted for inter-provincial and international movement. Commercial slaughter includes all birds that have been slaughtered in registered slaughter houses while non-commercial slaughter consists of any birds that may be slaughtered on farms. Poultry meat production is valued at the average price per kilogram (eviscerated weight basis) received by producers. Prices include any bonuses and premiums which can be attributed to specific commodities and exclude fees deducted before the producer is paid (e.g. storage, transport, and administration costs).

Home consumption is the amount of poultry meat consumed by producers and their immediate families. The amount consumed is valued at market prices as it represents the income producers would have received had the product been sold.

## Methods

The major administrative source of data for poultry meat production and value is Agriculture and Agri-Food Canada. Inspectors from the Canadian Food Inspection Agency (CFIA) collect quantity data while inspecting meat at processing plants as legislated under the Meat Inspection Act. Unless specified, these data are used as published, without further adjustment. Commercial slaughter represents all birds slaughtered in registered processing plants. The quantity and weight of all birds slaughtered in these facilities are reported to and published by AAFC.

Non-commercial slaughter is estimated based on data provided weekly to AAFC by registered hatcheries on the placement of chicks in small lots, intended to produce meat. The placement data are adjusted for death loss and birds kept for laying to arrive at an estimate of chickens that reach maturity. Estimates of both death loss and the time required for chicks to reach maturity are obtained from industry specialists. Non-commercial slaughter is further divided into home consumption and birds sold. Home consumption is calculated by multiplying per capita consumption of the given poultry meat by the human population of farms producing that kind of poultry.

The human population on farms is derived from the linkage of the Agriculture and the Population Censuses.

Two prices obtained from registered processing plants, and published by AAFC, are used to calculate the value of chicken meat production: one for chickens weighing less than 2.3 kilograms and another for those weighing 2.3 kilograms and over. Prices for the corresponding categories are weighted by the quantity produced to obtain the total value. The price for chickens weighing 2.3 kilograms and over is used in calculating the value of production for chickens slaughtered on farms (including home consumption).

Data on stewing hen production and prices are obtained from registered processing plant reports provided to AAFC. No calculation is made for stewing hens slaughtered on farms since the amount is considered negligible. Home consumption is calculated in the same manner as the chicken meat production.

Turkey meat production is based on birds slaughtered in registered slaughter houses, as reported by AAFC, and non-commercial slaughter. Non-commercial slaughter, turkeys slaughtered on farms, is estimated using data on turkey inventories from the most recent Census of Agriculture. Home consumption is calculated in the same manner as the chicken meat production.

Two prices are used to determine the value of turkey meat production: one for turkeys weighing less than 5.0 kgs and another for those weighing 5.0 kgs and over. Prices for the corresponding categories are multiplied by the quantity produced to obtain their value.

### **Data quality**

Data on number of birds sold, eviscerated weight and value are obtained through administrative sources. Producers are paid for the birds which they sell through registered slaughter houses on the basis of these administrative records. Because of this process, the quality of the administrative data is deemed to be high. Registered slaughter houses account for approximately 99% of total poultry production. This implies that total production values are also good. Administrative sources are subject to non-sampling errors such as omissions, duplications and mistakes in reporting, recording and processing the data. The effects of these errors cannot be measured directly.

Although no systematic revisions are undertaken for poultry meat data, revisions that do occur reflect updates resulting from late entries and corrections due to misclassification and data entry errors. Overall, the changes between the original and revised numbers are very small (e.g. less than 1% for chicken and turkey).

# Egg production and value

---

## Concepts

Total egg production in Canada and the provinces includes all eggs sold for consumption, consumed by producers, sold for hatching, leakers and rejects. Production from registered, non-registered as well as hatchery supply flocks are included in the estimates.

The value of egg production is calculated at the provincial level using different prices for eggs produced by the three different types of flocks listed above. These prices include any bonuses and premiums which can be attributed to specific commodities and exclude fees deducted before the producer is paid (e.g. storage, transport and administration costs).

Egg production is derived using average layer numbers and their derived rates of lay. Laying hens include all layers 19 weeks and older except for layers in hatchery supply flocks where layers are 26 weeks and older. Layer numbers and average rates of lay are obtained for the three types of operations (registered flocks, non-registered flocks and hatchery supply flocks).

## Methods

Registered flocks have to be registered with and provide information to provincial egg marketing boards. Layer numbers in registered flocks are supplied by the CEMA, the regulatory board for the egg producing industry. The agency, in turn, receives data from the provincial egg marketing boards. These data are used directly in the estimates without adjustments.

Non-registered flocks are those with fewer birds than the limits set by the provincial egg marketing boards. These limits vary by province and can range from 100 to 500 birds. Layer numbers for the non-registered flocks are estimated using Census data.

Hatchery supply flocks produce hatching eggs for both egg and meat type birds. Layers in hatchery supply flocks are estimated by Statistics Canada based on the number of birds (broilers) provided by Canadian Broiler Hatching Egg Marketing Agency, information on egg sets from CEMA and an average rate of lay for each type of bird.

Rates of lay, at the provincial level, for registered and non-registered flocks and hatchery supply flocks are estimated by industry specialists.

Estimates of all layers, rates of lay and egg production are prepared monthly using administrative data. Layers in registered flocks account for the bulk of the layer population and these data are available weekly from the CEMA.

Monthly estimates for non-registered flocks are made using historical seasonal patterns. Rates of lay do not fluctuate dramatically.

Shifts on rates of lay are made on the basis of monthly egg gradings collected by CEMA from registered grading stations.

The value of egg production for registered flocks is calculated using prices provided by CEMA, which regulates all prices paid to producers. Prices for the non-registered flocks are calculated based on industry information. In the case of eggs produced by the hatchery supply flock, all eggs are valued at prices paid to broiler egg producers as provided by the Canadian Broiler Egg Marketing Agency. Production estimates are simply multiplied by the prices to obtain the total value of production.

The quality of layer numbers in registered flocks is deemed to be high since the number of laying hens in these flocks is set by quota allocation and the flocks are subject to regular audits. The vast majority of layers are found in the registered flocks and thus, total layer estimates can also be considered to be of high quality. Based on the 2001 Census of Agriculture, more than 90% of all layers in each province were in registered flocks except for Saskatchewan and Alberta, where the totals were 79% and 86% respectively.

## Revisions

Layer numbers in registered flocks are collected through the CEMA and are subject to minor revisions. Monthly layer estimates in non-registered flocks are revised, if necessary, after the results of the Census of Agriculture are available.

Rates of lay for both registered and non-registered flocks are assessed monthly based on administrative data published by CEMA on eggs graded at registered stations.

# Consumption of poultry and eggs

---

## Concepts

Statistics Canada's Agriculture Division has produced data indicating the amount of food available for consumption (apparent per capita disappearance) along with estimated quantities of food consumed in Canada.

The apparent per capita disappearance data represent what is available for consumption on average for the total Canadian population. The estimates do not indicate total poultry and egg supplies actually consumed by an individual or specific group of individuals, since estimates are not calculated for waste or spoilage during transportation at the retail level, in households, private institutions or restaurants.

The estimated quantities of food consumed represent apparent per capita disappearance data that have been adjusted to account for retail, household, cooking and plate loss. These data are considered experimental in nature and should be used with caution.

## Methods

A residual approach is used in calculating quantities of poultry meat and eggs available for human consumption. Annual balance sheets are prepared to determine the consumption levels. Total supply is estimated by adding beginning stocks, annual production and imports. Exports and ending stocks are subtracted from total supply to estimate the domestic disappearance. Poultry meat export and import numbers are obtained from AAFC. Apparent per capita consumption is determined by dividing domestic disappearance by the total Canadian population at July 1 each year. Population numbers are obtained from the Demography Division of Statistics Canada. To estimate the amount consumed, factors are applied to the apparent per capita consumption data to account for retail, household, cooking and plate loss.

Domestic disappearance for eggs is obtained by subtracting exports, eggs used for hatching, leakers and rejects from the total supply to arrive at the domestic disappearance of eggs. A revised methodology was introduced in 1986 to calculate the consumption of eggs where 1.95% of total egg production was subtracted to account for leakers and rejects. Import and export data are supplied by the International Trade Division of Statistics Canada. Domestic disappearance is then divided by the July 1 population of Canada to obtain the apparent per capita consumption data. To estimate the amount consumed, factors are applied to the apparent per capita consumption data to account for retail, household, cooking and plate loss.



# Appendix I

---

## Glossary of terms

**Administrative Data:** data that are collected by public or private agencies or organizations in the administration of programs or legislation.

**Broilers:** chickens that are being raised for meat production.

**Egg Sets:** fertilized eggs in hatcheries that are to hatch into chicks, either to replace laying hens or to be raised for meat production.

**Eviscerated Weight:** the weight of a bird that has not been de-boned but has had its head, feathers, feet and innards removed.

**Hatchery Supply Flock:** consists of laying hens which produce eggs that will be hatched into chicks. These chicks will either become laying hens or be raised for meat production.

**Apparent per capita disappearance:** represents what is available for consumption on average for the total Canadian population. The disappearance data are divided by the July 1 Canadian population to arrive at the apparent per capita disappearance estimate. The estimates do not indicate quantities actually consumed by an individual or specific group of individuals, since estimates are not calculated for waste or spoilage during transportation at the retail level, in households, private institutions or restaurants.

**Quantities of food consumed:** the estimated quantities of food consumed represent apparent per capita disappearance data that have been adjusted to account for retail, household, cooking and plate loss. These data are considered experimental in nature and should be used with caution.

**Leakers and rejects:** eggs that do not meet the lowest standard grading requirements.

**Stewing hens:** laying hens which have completed their laying cycle and are slaughtered for meat.