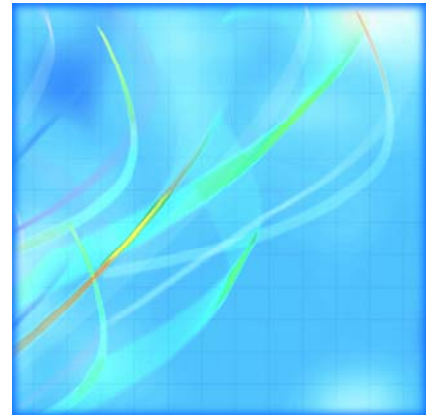




Catalogue no. 23-015-XIE

# Poultry and Egg Statistics

October to December 2006



Statistics  
Canada

Statistique  
Canada

Canada

## **How to obtain more information**

Specific inquiries about this product and related statistics or services should be directed to: Livestock Section, Agriculture Division, Statistics Canada, Ottawa, Ontario, K1A 0T6 (telephone: 1-800-263-1136).

For information on the wide range of data available from Statistics Canada, you can contact us by calling one of our toll free numbers. You can also contact us by e-mail or by visiting our website at [www.statcan.ca](http://www.statcan.ca).

National inquiries line **1-800-263-1136**

National telecommunications device for the hearing impaired **1-800-363-7629**

Depository Services Program inquiries **1-800-700-1033**

Fax line for Depository Services Program **1-800-889-9734**

E-mail inquiries [infostats@statcan.ca](mailto:infostats@statcan.ca)

Website [www.statcan.ca](http://www.statcan.ca)

## **Information to access the product**

This product, catalogue no. 23-015-XIE, is available for free in electronic format. To obtain a single issue, visit our website at [www.statcan.ca](http://www.statcan.ca) and select Publications.

## **Standards of service to the public**

Statistics Canada is committed to serving its clients in a prompt, reliable, courteous, and fair manner. To this end, the Agency has developed standards of service that its employees observe in serving its clients. To obtain a copy of these service standards, please contact Statistics Canada toll free at 1-800-263-1136. The service standards are also published on [www.statcan.ca](http://www.statcan.ca) under About us > Providing services to Canadians.



Statistics Canada  
Agriculture Division  
Livestock Section

# Poultry and Egg Statistics

October to December 2006

Published by authority of the Minister responsible for Statistics Canada

© Minister of Industry, 2007

All rights reserved. The content of this electronic publication may be reproduced, in whole or in part, and by any means, without further permission from Statistics Canada, subject to the following conditions: that it be done solely for the purposes of private study, research, criticism, review or newspaper summary, and/or for non-commercial purposes; and that Statistics Canada be fully acknowledged as follows: Source (or "Adapted from", if appropriate): Statistics Canada, year of publication, name of product, catalogue number, volume and issue numbers, reference period and page(s). Otherwise, no part of this publication may be reproduced, stored in a retrieval system or transmitted in any form, by any means—electronic, mechanical or photocopy—or for any purposes without prior written permission of Licensing Services, Client Services Division, Statistics Canada, Ottawa, Ontario, Canada K1A 0T6.

March 2007

Catalogue no. 23-015-XIE, Vol. 3, No. 4

ISSN 1710-3525

Frequency: Quarterly

Ottawa

La version française de cette publication est disponible sur demande (n° 23-015-XIF au catalogue).

---

#### **Note of appreciation**

*Canada owes the success of its statistical system to a long standing partnership between Statistics Canada, the citizens of Canada, its businesses, governments and other institutions. Accurate and timely statistical information could not be produced without their continued cooperation and goodwill.*

# User information

---

## Symbols

The following standard symbols are used in Statistics Canada publications:

- . not available for any reference period
- .. not available for a specific reference period
- ... not applicable
- 0 true zero or a value rounded to zero
- 0<sup>s</sup> value rounded to 0 (zero) where there is a meaningful distinction between true zero and the value that was rounded
- p preliminary
- r revised
- x suppressed to meet the confidentiality requirements of the *Statistics Act*
- E use with caution
- F too unreliable to be published

# Table of contents

---

<b>Highlights</b>	<b>5</b>
<b>Introduction</b>	<b>9</b>
<b>Related products</b>	<b>10</b>
<b>Statistical tables</b>	
1 Production of poultry meat	12
2 Disposition of poultry meat	13
2-1 Chicken	13
2-2 Turkey	14
2-3 Total poultry	15
3 Supply and disposition of poultry meat	16
4 Production of eggs by province	18
4-1 Average number of layers	18
4-2 Eggs per 100 layers	19
4-3 in thousands of dozens	20
5 Disposition of eggs by province, quantity and value by province	21
5-1 Canada	21
5-2 Newfoundland and Labrador	22
5-3 Prince Edward Island	23
5-4 Nova Scotia	24
5-5 New Brunswick	25
5-6 Quebec	26
5-7 Ontario	27
5-8 Manitoba	28
5-9 Saskatchewan	29
5-10 Alberta	30
5-11 British Columbia	31

## Table of contents – continued

6	Stocks of frozen eggs and edible dried eggs, Canada	32
7	Supply and disposition of eggs	32
8	Average prices of eggs sold for consumption in Canada, by month	33
9	Report of processed eggs production, Canada	33

## Data quality, concepts and methodology

	Poultry meat production and value	34
	Egg production and value	36
	Consumption of poultry and eggs	38

## Appendix

I	Glossary of terms	39
---	-------------------	----

## Charts

1.	Value of poultry products, Canada, 1996 to 2005	6
2.	Poultry meat production, Canada 1996 to 2005	6
3.	Per capita disappearance of meats, Canada, 1996 to 2005	7
4.	Production of eggs, Canada, 1997 to 2006	7
5.	Per capita consumption of eggs, Canada, 1996 to 2005	8

# Highlights

---

## Value of poultry products unchanged

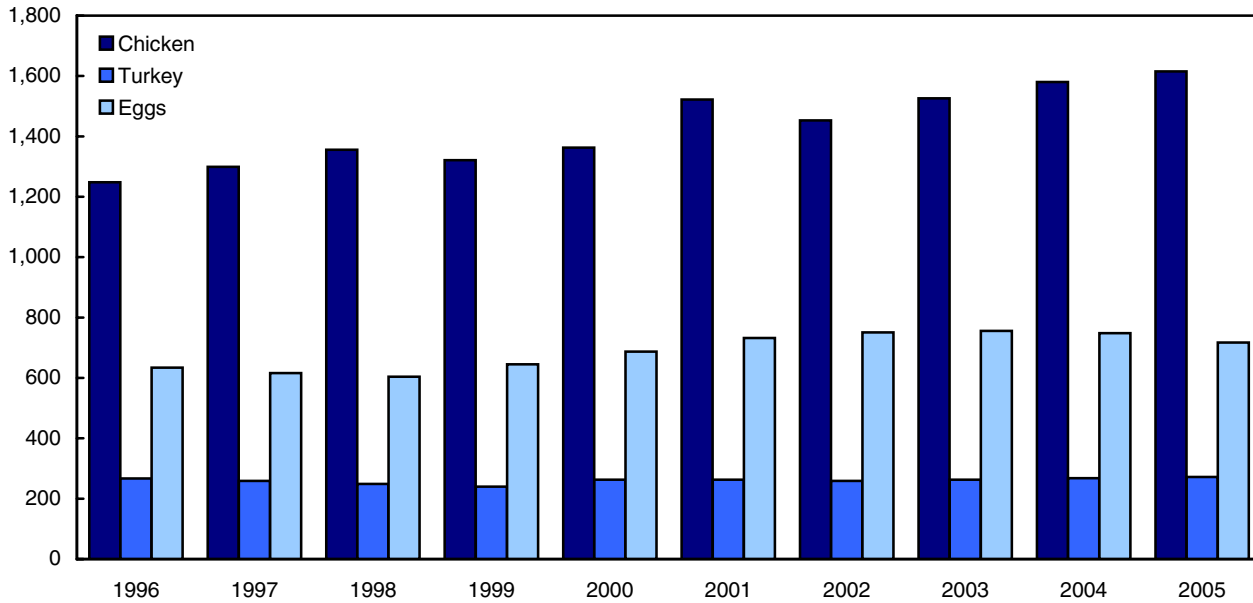
- The value of poultry products totalled \$2.6 billion in 2005, virtually unchanged from 2004. Sales of poultry meat, including turkey, were up 2.1% with a total value close to \$1.9 billion. The value of egg sales, however, decreased 4.2% from 2004 to stand at \$717.2 million.
- Canadian farmers produced 1.2 million tonnes of poultry meat in 2005, up 3.6% from 2004. Chicken accounts for close to 87% of all poultry meat produced. It increased 3.1% from year-ago levels. Turkey production stood at 155 thousand tonnes in 2005, an increase of 7.1% from 2004.
- The consumption of poultry has stabilized over recent years, reaching 13.7 kilograms per person in 2005, a slight increase of 1.5% from last year and well above the 11.6 kilograms consumed per person ten years ago. The introduction of varied and readily available easy-to-prepare and ready-to-eat poultry products appeals to the time conscious consumer and has contributed to poultry's on-going popularity.

## Egg production increases in 2006

- Egg production in 2006, at 588.4 million dozen, showed a slight increase of 0.3% from 2005.
- The value of those eggs was \$733.3 million, an increase of 2.2% from 2005.
- In December 2006, production was down 1.0%, compared to December of last year.
- Annual egg consumption has stabilized in recent years and was pegged at 12.9 dozen per person in 2005, following a slight decrease in 2004. Generally, the recent sustained growth in egg consumption can be attributed to the publicity surrounding the nutritional benefits of eggs, the increased use of eggs by the food service sector, the growing popularity of value added products and the expanded use and availability of processed egg products.

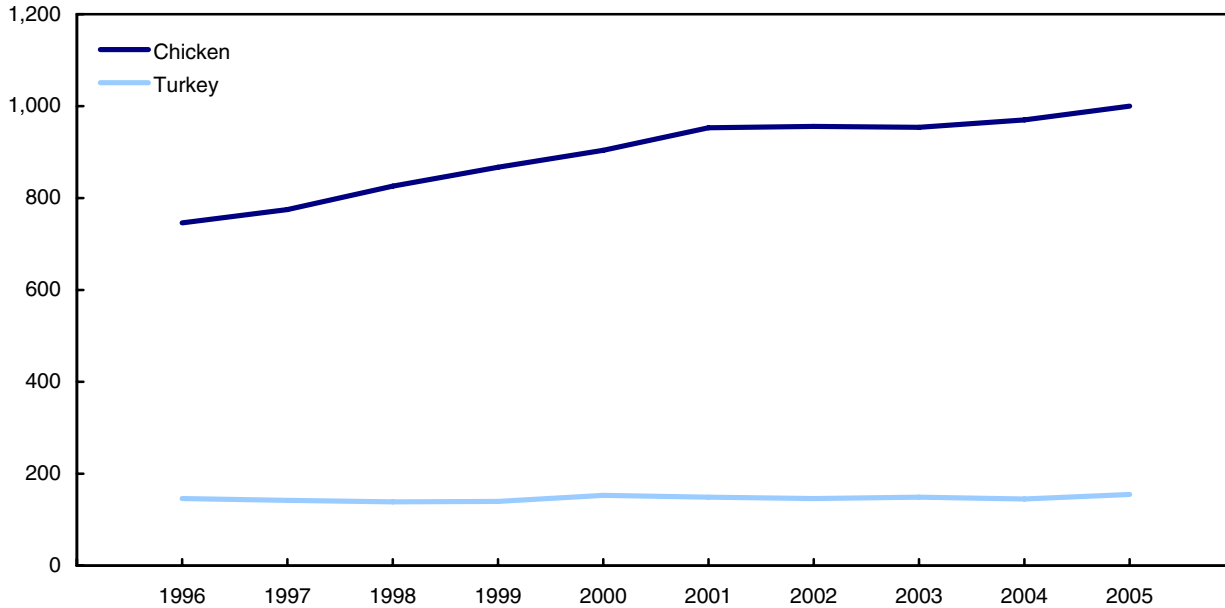
**Chart 1**  
**Value of poultry products, Canada, 1996 to 2005**

millions of dollars



**Chart 2**  
**Poultry meat production, Canada 1996 to 2005**

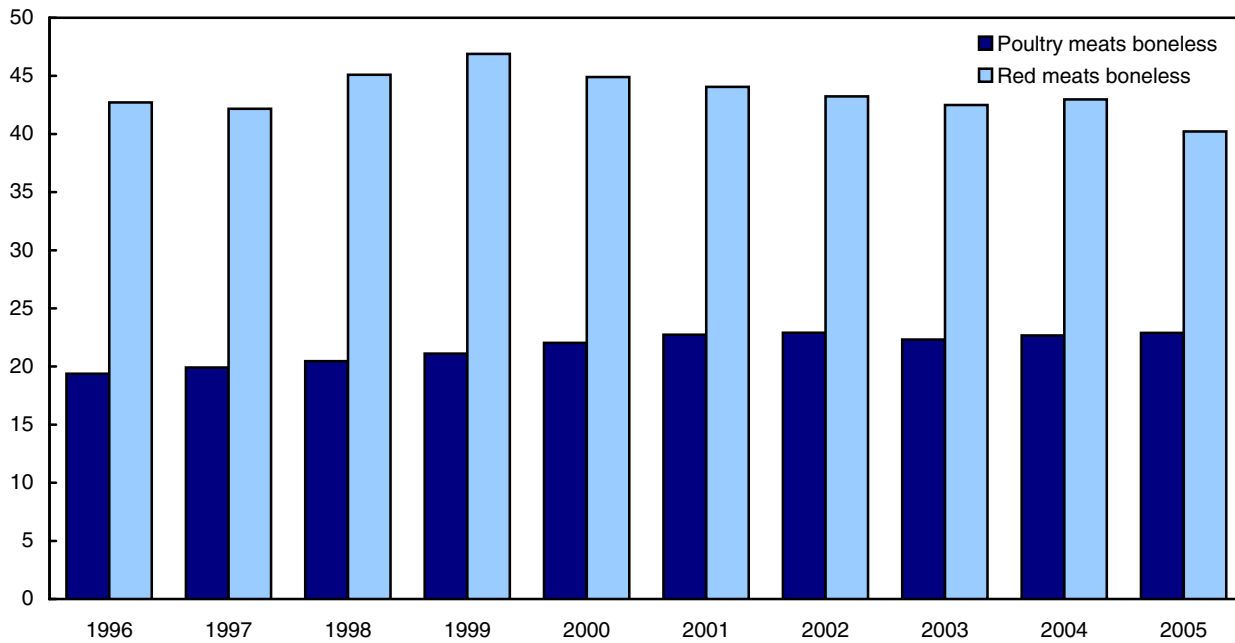
thousand metric tonnes





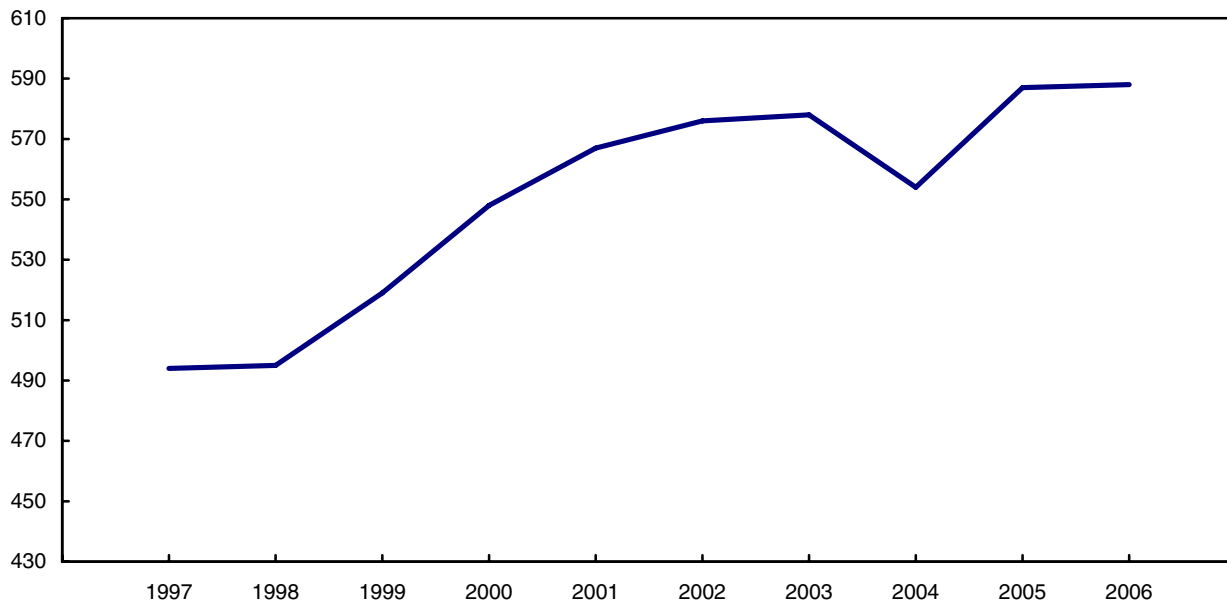
**Chart 3**  
Per capita disappearance of meats, Canada, 1996 to 2005

kilograms per person



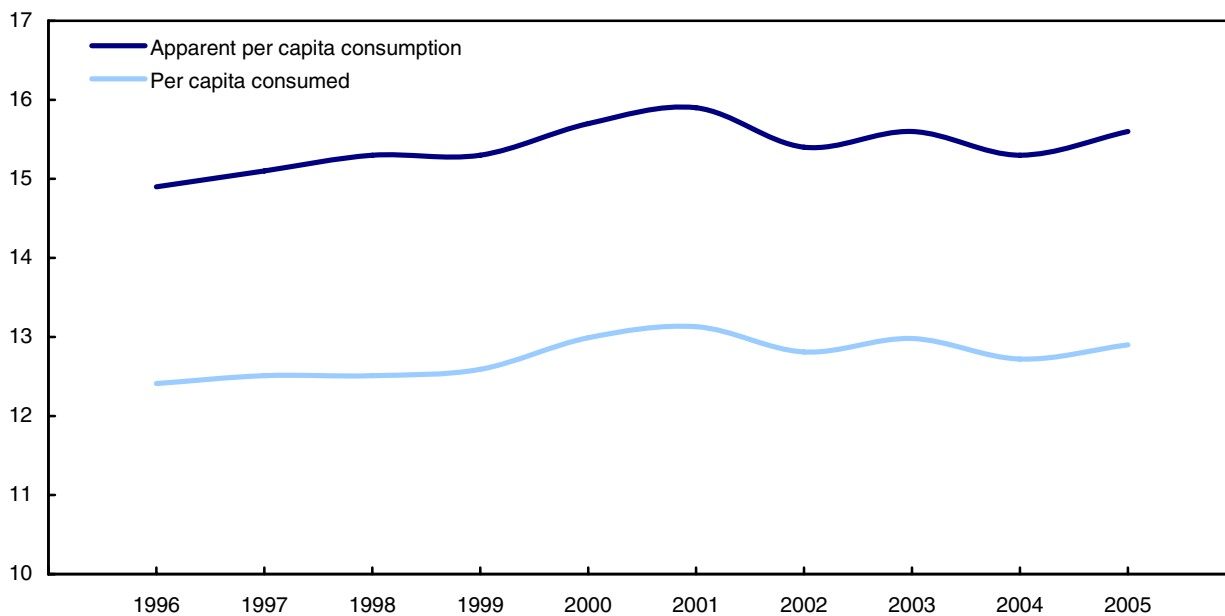
**Chart 4**  
Production of eggs, Canada, 1997 to 2006

millions of dozens



**Chart 5**  
**Per capita consumption of eggs, Canada, 1996 to 2005**

dozens per person



## Introduction

---

This publication provides data on the production, supply and disposition and value of poultry meat and eggs. Also included are data on the average price of eggs sold for table consumption, the per capita disappearance and consumption of poultry meats and eggs, and the production and stocks of processed eggs.

The data presented are obtained from a variety of sources such as administrative sources and censuses. Administrative data are provided by the Canadian Egg Marketing Agency (CEMA), Agriculture and Agri-Food Canada (AAFC) and Statistics Canada. Information from Statistics Canada's Census of Agriculture and Census of Population is also used in preparing the estimates.

The data, published on a provincial basis, are used in decision making by government agencies, processors, retailers, universities, producer organizations and health institutions.

Statistics Canada has been estimating poultry meat production and value since 1951. Concepts and methods vary over time due to changes in the sector and/or the availability of data sources. Users should note the following:

- i. production data supplied in table 7 (Supply and disposition of eggs) are compiled in May of each year and revised annually. Production and disposition data supplied in tables 4 and 5 (Production and disposition of eggs) are subject to revision throughout the year and may not compare exactly to the data in table 7;
- ii. beginning in 1986, egg consumption is adjusted to take into consideration a loss of 1.95% of total egg production due to leakers and rejects;
- iii. also beginning in 1986, a new method is used to calculate consumption on the farm;
- iv. a negligible number of hatchery-supply eggs are sold on the table market. Since data on the amount sold are not available, it is deemed to be zero;
- v. please note that the quantity and value of eggs sold for hatching in New Brunswick also include the quantity and value for the other Atlantic provinces.

The data series are available on CANSIM at the same time as the information appears in The Daily, Statistics Canada's official release vehicle. CANSIM, Statistics Canada's computerized database, is an information management system designed to facilitate both historical research and current analysis.

## Related products

---

### Selected publications from Statistics Canada

---

21-206-X	Statistics on income of farm operators
21-207-X	Statistics on income of farm families
21-208-X	Statistics on revenues and expenses of farms
23-003-X	Production of eggs

---

### Selected CANSIM tables from Statistics Canada

---

003-0017	Supply and disposition of poultry meat and eggs in Canada
003-0018	Production, disposition and farm value of poultry meat
003-0019	Fowl and chicken meat production, weight and farm value
003-0020	Production and disposition of eggs
003-0021	Placement of chicks and turkey poults for production
003-0022	Production and disposition of eggs

---

### Selected surveys from Statistics Canada

---

3421	Egg Producers Survey
5039	Production of Poultry and Eggs

---

### Selected summary tables from Statistics Canada

---

- *Production of eggs, by province*
- *Production of poultry, by province*

# Statistical tables

---

---

**Table 1**  
**Production of poultry meat**

	Birds			Weight			Value		
	2003	2004	2005	2003	2004	2005	2003	2004	2005
	in thousands			in thousands of kilograms			in thousands of dollars		
<b>Chicken</b>									
Canada	599,633	597,759	611,164	929,749	946,186	977,355	1,521,066	1,574,911	1,610,452
Newfoundland and Labrador	x	x	x	x	x	x	x	x	x
Prince Edward Island	x	x	x	x	x	x	x	x	x
Nova Scotia	21,129	21,831	21,969	31,559	33,257	33,392	53,237	58,070	55,821
New Brunswick	16,674	17,825	17,321	25,175	26,865	26,726	43,316	46,938	45,669
Quebec	159,456	164,144	158,376	256,523	267,494	262,618	420,769	443,882	424,907
Ontario	188,685	195,723	196,461	302,942	319,473	323,906	494,911	531,682	525,359
Manitoba	27,202	28,303	28,931	39,235	40,500	41,204	63,577	67,145	66,705
Saskatchewan	23,070	25,342	21,850	30,782	33,404	31,326	50,364	55,524	49,213
Alberta	51,628	54,297	53,013	80,678	87,983	86,882	124,357	138,320	141,896
British Columbia	100,614	78,537	101,453	147,118	120,458	154,440	244,546	204,372	272,180
<b>Stewing hen</b>									
Canada	16,306	15,762	15,089	24,617	23,592	22,722	5,418	4,855	4,764
Newfoundland and Labrador	x	x	x	x	x	x	x	x	x
Prince Edward Island	x	x	x	x	x	x	x	x	x
Nova Scotia	340	82	79	497	231	224	240	126	128
New Brunswick	469	328	155	620	407	280	202	131	89
Quebec	4,382	4,312	4,266	6,614	6,500	6,527	2,242	2,058	2,162
Ontario	8,430	8,579	8,742	11,312	11,620	12,030	1,105	1,268	1,317
Manitoba	365	196	194	860	554	528	2	1	4
Saskatchewan	66	182	147	174	466	351	18	51	38
Alberta	514	487	272	1,419	1,212	614	136	132	63
British Columbia	1,740	1,596	1,233	3,119	2,602	2,167	1,472	1,088	962
<b>Total Chicken 1</b>									
Canada	615,939	613,522	626,253	954,366	969,778	1,000,077	1,526,484	1,579,766	1,615,216
Newfoundland and Labrador	x	x	x	x	x	x	x	x	x
Prince Edward Island	x	x	x	x	x	x	x	x	x
Nova Scotia	21,469	21,913	22,048	32,056	33,488	33,615	53,478	58,195	55,949
New Brunswick	17,144	18,153	17,476	25,795	27,272	27,006	43,518	47,069	45,758
Quebec	163,838	168,456	162,642	263,137	273,994	269,144	423,011	445,940	427,070
Ontario	197,115	204,302	205,203	314,254	331,093	335,936	496,016	532,949	526,677
Manitoba	27,567	28,500	29,125	40,095	41,053	41,732	63,579	67,145	66,708
Saskatchewan	23,136	25,524	21,997	30,956	33,870	31,678	50,382	55,575	49,251
Alberta	52,142	54,784	53,286	82,097	89,195	87,496	124,493	138,452	141,959
British Columbia	102,354	80,133	102,687	150,237	123,059	156,608	246,018	205,460	273,141
<b>Turkey</b>									
Canada	19,834	19,526	20,492	148,911	145,107	155,419	262,844	268,015	271,691
Newfoundland and Labrador	x	x	x	x	x	x	x	x	x
Prince Edward Island	x	x	x	x	x	x	x	x	x
Nova Scotia	722	730	731	3,495	3,522	3,543	6,151	6,458	6,069
New Brunswick	327	330	362	2,446	2,463	2,700	4,200	4,373	4,504
Quebec	4,298	4,449	4,343	30,825	31,423	31,554	54,972	57,895	55,004
Ontario	8,406	8,371	8,499	67,552	68,078	69,675	118,512	126,331	121,748
Manitoba	1,480	1,368	1,432	10,431	9,538	10,575	18,208	17,274	18,088
Saskatchewan	791	795	674	5,184	5,107	4,631	9,449	9,683	8,448
Alberta	1,687	1,662	1,757	13,191	12,129	13,117	24,242	23,209	24,033
British Columbia	2,118	1,816	2,688	15,747	12,809	19,583	27,037	22,717	33,726
<b>Total poultry</b>									
Canada	635,772	633,048	646,745	1,103,277	1,114,885	1,155,496	1,789,327	1,847,781	1,886,906
Newfoundland and Labrador	x	x	x	x	x	x	x	x	x
Prince Edward Island	x	x	x	x	x	x	x	x	x
Nova Scotia	22,191	22,643	22,779	35,551	37,010	37,159	59,628	64,653	62,018
New Brunswick	17,470	18,484	17,838	28,241	29,735	29,706	47,718	51,442	50,263
Quebec	168,136	172,904	166,985	293,963	305,416	300,697	477,983	503,835	482,074
Ontario	205,521	212,672	213,702	381,805	399,171	405,611	614,529	659,280	648,424
Manitoba	29,047	29,867	30,557	50,526	50,591	52,307	81,787	84,420	84,796
Saskatchewan	23,927	26,318	22,671	36,140	38,977	36,309	59,831	65,257	57,699
Alberta	53,829	56,446	55,042	95,288	101,323	100,613	148,735	161,661	165,992
British Columbia	104,472	81,949	105,375	165,984	135,868	176,190	273,055	228,177	306,867

1. Includes stewing hen.

**Table 2-1**  
**Disposition of poultry meat — Chicken<sup>1</sup>**

	Birds			Weight			Value		
	2003	2004	2005	2003	2004	2005	2003	2004	2005
	in thousands			in thousands of kilograms			in thousands of dollars		
<b>Sold</b>									
Canada	615,532	613,130	625,856	953,447	968,855	999,158	1,525,172	1,578,495	1,614,038
Newfoundland and Labrador	x	x	x	x	x	x	x	x	x
Prince Edward Island	x	x	x	x	x	x	x	x	x
Nova Scotia	21,463	21,907	22,042	32,039	33,472	33,599	53,451	58,168	55,923
New Brunswick	17,141	18,151	17,474	25,791	27,268	27,001	43,513	47,064	45,753
Quebec	163,812	168,430	162,617	263,075	273,932	269,083	422,918	445,846	426,981
Ontario	197,014	204,203	205,104	314,042	330,881	335,725	495,731	532,659	526,393
Manitoba	27,522	28,456	29,083	39,976	40,933	41,612	63,413	66,974	66,538
Saskatchewan	23,087	25,478	21,949	30,838	33,755	31,563	50,220	55,477	49,248
Alberta	52,017	54,673	53,169	81,832	88,928	87,231	124,090	138,041	141,537
British Columbia	102,307	80,079	102,633	150,126	122,943	156,492	245,864	205,304	272,980
<b>Home consumption</b>									
Canada	407	391	397	919	923	919	1,312	1,271	1,177
Newfoundland and Labrador	x	x	x	x	x	x	x	x	x
Prince Edward Island	x	x	x	x	x	x	x	x	x
Nova Scotia	7	6	6	16	16	16	27	27	26
New Brunswick	2	3	2	4	4	4	5	5	5
Quebec	26	25	25	63	62	61	94	94	89
Ontario	101	99	99	212	212	211	285	290	283
Manitoba	45	44	43	119	121	120	167	172	171
Saskatchewan	49	46	47	118	116	115	162	97	3
Alberta	125	111	117	265	267	265	402	411	422
British Columbia	48	54	54	111	116	116	153	156	162
<b>Disposition<sup>2</sup></b>									
Canada	615,939	613,522	626,253	954,366	969,778	1,000,077	1,526,484	1,579,766	1,615,216
Newfoundland and Labrador	x	x	x	x	x	x	x	x	x
Prince Edward Island	x	x	x	x	x	x	x	x	x
Nova Scotia	21,469	21,913	22,048	32,056	33,488	33,615	53,478	58,195	55,949
New Brunswick	17,144	18,153	17,476	25,795	27,272	27,006	43,518	47,069	45,758
Quebec	163,838	168,456	162,642	263,137	273,994	269,144	423,011	445,940	427,070
Ontario	197,115	204,302	205,203	314,254	331,093	335,936	496,016	532,949	526,677
Manitoba	27,567	28,500	29,125	40,095	41,053	41,732	63,579	67,145	66,708
Saskatchewan	23,136	25,524	21,997	30,956	33,870	31,678	50,382	55,575	49,251
Alberta	52,142	54,784	53,286	82,097	89,195	87,496	124,493	138,452	141,959
British Columbia	102,354	80,133	102,687	150,237	123,059	156,608	246,018	205,460	273,141

1. Includes stewing hen.

2. Includes sold and home consumption.

**Table 2-2**  
**Disposition of poultry meat — Turkey**

	Birds			Weight			Value		
	2003	2004	2005	2003	2004	2005	2003	2004	2005
	in thousands			in thousands of kilograms			in thousands of dollars		
<b>Sold</b>									
Canada	19,818	19,511	20,478	148,798	145,004	155,315	262,642	267,823	271,506
Newfoundland and Labrador	x	x	x	x	x	x	x	x	x
Prince Edward Island	x	x	x	x	x	x	x	x	x
Nova Scotia	721	730	731	3,493	3,521	3,542	6,148	6,455	6,066
New Brunswick	326	330	362	2,445	2,462	2,699	4,198	4,372	4,503
Quebec	4,297	4,448	4,342	30,818	31,417	31,548	54,960	57,885	54,994
Ontario	8,403	8,368	8,497	67,529	68,057	69,654	118,474	126,293	121,712
Manitoba	1,479	1,366	1,431	10,419	9,525	10,562	18,186	17,252	18,066
Saskatchewan	787	792	671	5,159	5,087	4,612	9,404	9,646	8,412
Alberta	1,683	1,658	1,752	13,157	12,096	13,085	24,180	23,147	23,973
British Columbia	2,116	1,815	2,687	15,737	12,800	19,574	27,021	22,701	33,710
<b>Home consumption</b>									
Canada	16	15	14	113	103	103	202	192	184
Newfoundland and Labrador	x	x	x	x	x	x	x	x	x
Prince Edward Island	x	x	x	x	x	x	x	x	x
Nova Scotia	0	0	0	2	2	2	3	3	3
New Brunswick	0	0	0	1	1	1	2	2	2
Quebec	1	1	1	7	6	6	12	10	10
Ontario	3	3	3	22	21	21	39	38	36
Manitoba	2	2	2	12	13	13	21	23	22
Saskatchewan	4	3	3	25	20	20	46	37	36
Alberta	5	5	4	34	33	33	62	62	60
British Columbia	1	1	1	9	9	9	16	16	16
<b>Disposition <sup>1</sup></b>									
Canada	19,834	19,526	20,492	148,911	145,107	155,419	262,844	268,015	271,691
Newfoundland and Labrador	x	x	x	x	x	x	x	x	x
Prince Edward Island	x	x	x	x	x	x	x	x	x
Nova Scotia	722	730	731	3,495	3,522	3,543	6,151	6,458	6,069
New Brunswick	327	330	362	2,446	2,463	2,700	4,200	4,373	4,504
Quebec	4,298	4,449	4,343	30,825	31,423	31,554	54,972	57,895	55,004
Ontario	8,406	8,371	8,499	67,552	68,078	69,675	118,512	126,331	121,748
Manitoba	1,480	1,368	1,432	10,431	9,538	10,575	18,208	17,274	18,088
Saskatchewan	791	795	674	5,184	5,107	4,631	9,449	9,683	8,448
Alberta	1,687	1,662	1,757	13,191	12,129	13,117	24,242	23,209	24,033
British Columbia	2,118	1,816	2,688	15,747	12,809	19,583	27,037	22,717	33,726

1. Includes sold and home consumption.



**Table 2-3**  
**Disposition of poultry meat — Total poultry**

	Birds			Weight			Value		
	2003	2004	2005	2003	2004	2005	2003	2004	2005
	in thousands			in thousands of kilograms			in thousands of dollars		
<b>Sold</b>									
Canada	635,350	632,642	646,334	1,102,244	1,113,858	1,154,474	1,787,813	1,846,318	1,885,544
Newfoundland and Labrador	x	x	x	x	x	x	x	x	x
Prince Edward Island	x	x	x	x	x	x	x	x	x
Nova Scotia	22,184	22,637	22,773	35,533	36,993	37,141	59,599	64,623	61,989
New Brunswick	17,468	18,481	17,836	28,236	29,729	29,701	47,711	51,435	50,256
Quebec	168,109	172,878	166,959	293,893	305,349	300,630	477,877	503,730	481,975
Ontario	205,417	212,571	213,601	381,571	398,939	405,380	614,204	658,952	648,105
Manitoba	29,001	29,822	30,513	50,395	50,458	52,174	81,599	84,226	84,604
Saskatchewan	23,874	26,269	22,620	35,997	38,842	36,174	59,624	65,123	57,660
Alberta	53,700	56,331	54,921	94,989	101,024	100,315	148,270	161,188	165,510
British Columbia	104,423	81,894	105,319	165,863	135,743	176,065	272,885	228,005	306,690
<b>Home consumption</b>									
Canada	422	406	411	1,032	1,027	1,023	1,514	1,463	1,362
Newfoundland and Labrador	x	x	x	x	x	x	x	x	x
Prince Edward Island	x	x	x	x	x	x	x	x	x
Nova Scotia	7	6	6	18	18	18	29	30	29
New Brunswick	3	3	2	6	5	5	7	7	7
Quebec	27	26	26	69	67	67	106	105	99
Ontario	104	102	102	234	232	231	324	328	319
Manitoba	46	46	44	132	133	133	188	194	192
Saskatchewan	53	49	50	143	135	135	207	134	39
Alberta	129	115	121	299	299	298	464	473	482
British Columbia	49	55	55	121	126	125	170	172	177
<b>Disposition <sup>1</sup></b>									
Canada	635,772	633,048	646,745	1,103,277	1,114,885	1,155,496	1,789,327	1,847,781	1,886,906
Newfoundland and Labrador	x	x	x	x	x	x	x	x	x
Prince Edward Island	x	x	x	x	x	x	x	x	x
Nova Scotia	22,191	22,643	22,779	35,551	37,010	37,159	59,628	64,653	62,018
New Brunswick	17,470	18,484	17,838	28,241	29,735	29,706	47,718	51,442	50,263
Quebec	168,136	172,904	166,985	293,963	305,416	300,697	477,983	503,835	482,074
Ontario	205,521	212,672	213,702	381,805	399,171	405,611	614,529	659,280	648,424
Manitoba	29,047	29,867	30,557	50,526	50,591	52,307	81,787	84,420	84,796
Saskatchewan	23,927	26,318	22,671	36,140	38,977	36,309	59,831	65,257	57,699
Alberta	53,829	56,446	55,042	95,288	101,323	100,613	148,735	161,661	165,992
British Columbia	104,472	81,949	105,375	165,984	135,868	176,190	273,055	228,177	306,867

1. Includes sold and home consumption.

**Table 3**  
**Supply and disposition of poultry meat**

	2001	2002	2003	2004	2005
tonnes					
<b>Chicken</b>					
Production	929,827	931,617	929,749	946,186	977,355
Beginning stocks	21,852	29,281	28,947	23,719	33,069
Imports	104,324	107,315	110,579	99,324	102,448
Total supply	1,056,003	1,068,213	1,069,275	1,069,229	1,112,872
Exports	80,819	76,413	93,185	64,710	84,873
Ending stocks	29,281	28,947	23,719	33,069	38,201
Domestic disappearance, total	945,903	962,853	952,371	971,450	989,798
kilograms					
Per capita disappearance, eviscerated basis	30.5	30.7	30.1	30.4	30.7
Per capita disappearance, boneless weight	18.4	18.5	18.1	18.3	18.5
Per capita consumed <sup>2</sup>	10.8	10.8	10.6	10.7	10.8
tonnes					
<b>Stewing hen</b>					
Production	23,121	24,348	24,617	23,592	22,722
Beginning stocks	1,087	732	1,942	780	837
Imports	47,592	46,725	37,538	51,167	52,777
Total supply	71,800	71,805	64,097	75,539	76,336
Exports	17,009	14,947	10,035	16,178	21,218
Ending stocks	732	1,942	780	837	1,257
Domestic disappearance, total	54,059	54,916	53,282	58,524	53,861
kilograms					
Per capita disappearance, eviscerated basis	1.7	1.8	1.7	1.8	1.7
Per capita disappearance, boneless weight	1.0	1.0	1.0	1.1	1.0
Per capita consumed <sup>2</sup>	0.6	0.6	0.6	0.6	0.6
tonnes					
<b>Total Chicken <sup>1</sup></b>					
Production	952,948	955,965	954,366	969,778	1,000,077
Beginning stocks	22,939	30,013	30,889	24,499	33,906
Imports	151,916	154,040	148,117	150,491	155,225
Total supply	1,127,803	1,140,018	1,133,372	1,144,768	1,189,208
Exports	97,828	91,360	103,220	80,888	106,091
Ending stocks	30,013	30,889	24,499	33,906	39,458
Domestic disappearance, total	999,962	1,017,769	1,005,653	1,029,974	1,043,659
kilograms					
Per capita disappearance, eviscerated basis	32.2	32.4	31.8	32.2	32.3
Per capita disappearance, boneless weight	19.4	19.5	19.1	19.4	19.5
Per capita consumed <sup>2</sup>	11.4	11.4	11.2	11.4	11.4
tonnes					
<b>Turkey</b>					
Production	149,493	146,413	148,911	145,107	155,419
Beginning stocks	14,410	19,218	13,956	15,852	11,731
Imports	7,049	7,951	7,871	10,185	9,260
Total supply	170,952	173,582	170,738	171,144	176,410
Exports	20,882	25,675	26,355	26,673	24,471
Ending stocks	19,218	13,956	15,852	11,731	12,393
Domestic disappearance, total	130,853	133,951	128,531	132,740	139,546
kilograms					
Per capita disappearance, eviscerated basis	4.2	4.3	4.1	4.2	4.3
Per capita disappearance, boneless weight	3.3	3.4	3.2	3.3	3.4
Per capita consumed <sup>2</sup>	2.2	2.2	2.1	2.2	2.3

See footnotes at the end of the table.

Table 3 – continued

## Supply and disposition of poultry meat

	2001	2002	2003	2004	2005
	tonnes				
<b>Total poultry meat</b>					
Production	1,102,441	1,102,378	1,103,277	1,114,885	1,155,496
Beginning stocks	37,349	49,231	44,845	40,351	45,637
Imports	158,965	161,991	155,988	160,676	164,485
Total supply	1,298,755	1,313,600	1,304,110	1,315,912	1,365,618
Exports	118,710	117,035	129,575	107,561	130,562
Ending stocks	49,231	44,845	40,351	45,637	51,851
Domestic disappearance, total	1,130,814	1,151,719	1,134,184	1,162,714	1,183,205
	kilograms				
Per capita disappearance, eviscerated basis	36.5	36.7	35.8	36.4	36.7
Per capita disappearance, boneless weight	22.7	22.9	22.3	22.7	22.9
Per capita consumed <sup>2</sup>	13.6	13.7	13.3	13.5	13.7

1. Includes stewing hen.

2. Experimental, use with caution. Disappearance adjusted for retail, household, cooking and plate loss.

**Table 4-1  
Production of eggs by province — Average number of layers**

	Jan.	Feb.	Mar.	Apr.	May	June	July	Aug.	Sept.	Oct.	Nov.	Dec.	Annual average
	in thousands												
<b>Newfoundland and Labrador</b>													
2004	349	348	348	346	336	339	341	315	325	338	329	344	338
2005	348	342	344	341	329	337	346	336	334	342	333	334	339
2006	347	342	344	339	328	338	348	338	339	350	340	342	341
<b>Prince Edward Island</b>													
2004	127	127	128	128	128	127	127	124	125	126	122	125	126
2005	129	129	129	130	129	129	129	128	134	135	132	131	130
2006	128	128	131	131	131	131	130	130	136	137	133	132	132
<b>Nova Scotia</b>													
2004	736	739	735	728	738	733	725	714	698	725	749	759	732
2005	751	728	742	736	732	747	745	750	736	709	727	753	738
2006	753	749	754	739	737	752	750	755	740	714	731	758	744
<b>New Brunswick</b>													
2004	780	753	782	791	793	773	764	767	771	766	766	804	776
2005	729	734	757	777	767	761	726	718	723	732	778	764	747
2006	714	741	767	787	733	750	746	733	735	739	777	740	747
<b>Quebec</b>													
2004	4,619	4,615	4,648	4,640	4,626	4,625	4,614	4,641	4,606	4,565	4,637	4,777	4,634
2005	4,715	4,669	4,800	4,870	4,978	4,942	4,757	4,775	4,828	4,742	4,661	4,794	4,794
2006	4,834	4,764	4,857	4,874	4,930	4,859	4,731	4,732	4,741	4,749	4,708	4,717	4,791
<b>Ontario</b>													
2004	9,593	9,562	9,521	9,526	9,516	9,594	9,670	9,636	9,593	9,593	9,720	9,905	9,619
2005	9,894	9,734	9,712	9,813	9,835	9,844	9,786	9,760	9,778	9,699	9,671	9,519	9,754
2006	9,376	9,413	9,564	9,667	9,732	9,683	9,618	9,545	9,435	9,387	9,463	9,556	9,537
<b>Manitoba</b>													
2004	3,041	3,029	3,081	3,105	3,101	3,104	3,051	3,034	3,025	2,968	2,995	3,092	3,052
2005	3,107	3,094	3,120	3,087	3,078	3,111	3,102	3,091	3,077	3,030	3,045	3,090	3,086
2006	3,039	3,026	2,959	2,963	3,046	3,049	3,051	3,040	3,000	3,005	3,039	3,049	3,022
<b>Saskatchewan</b>													
2004	1,061	1,010	1,071	1,107	1,085	1,065	1,077	1,121	1,106	1,096	1,114	1,118	1,086
2005	1,126	1,135	1,106	1,078	1,120	1,176	1,189	1,179	1,147	1,176	1,215	1,197	1,154
2006	1,202	1,195	1,173	1,178	1,160	1,147	1,148	1,152	1,088	1,087	1,177	1,141	1,154
<b>Alberta</b>													
2004	2,242	2,228	2,199	2,252	2,278	2,251	2,286	2,367	2,362	2,337	2,385	2,403	2,299
2005	2,348	2,313	2,306	2,308	2,342	2,357	2,358	2,388	2,359	2,341	2,364	2,371	2,346
2006	2,365	2,318	2,286	2,312	2,264	2,248	2,317	2,375	2,381	2,374	2,385	2,344	2,331
<b>British Columbia</b>													
2004	2,821	3,340	3,282	2,394	1,327	1,301	1,549	1,674	1,576	1,544	1,640	1,699	2,012
2005	2,102	1,895	2,132	2,332	2,509	2,660	2,789	3,016	3,137	3,228	3,237	3,194	2,686
2006	2,801	3,155	3,131	3,219	3,257	3,207	3,141	3,164	3,155	3,126	3,132	3,143	3,136
<b>Canada</b>													
2004	25,369	25,751	25,795	25,017	23,928	23,912	24,205	24,392	24,187	24,057	24,456	25,025	24,673
2005	25,249	24,772	25,148	25,471	25,819	26,063	25,927	26,142	26,252	26,135	26,161	26,147	25,774
2006	25,559	25,831	25,966	26,210	26,318	26,164	25,979	25,964	25,749	25,668	25,886	25,923	25,935

**Table 4-2**  
**Production of eggs by province — Eggs per 100 layers**

	Jan.	Feb.	Mar.	Apr.	May	June	July	Aug.	Sept.	Oct.	Nov.	Dec.	Annual total
<b>Newfoundland and Labrador</b>													
2004	2,424	2,335	2,477	2,428	2,480	2,427	2,472	2,519	2,435	2,511	2,466	2,560	29,528
2005	2,465	2,192	2,234	2,462	2,491	2,471	2,521	2,505	2,356	2,342	2,473	2,531	29,038
2006	2,432	2,222	2,273	2,466	2,475	2,497	2,437	2,528	2,495	2,323	2,467	2,534	29,143
<b>Prince Edward Island</b>													
2004	2,467	2,319	2,445	2,400	2,432	2,417	2,473	2,547	2,453	2,436	2,462	2,477	29,329
2005	2,320	2,194	2,251	2,302	2,369	2,398	2,395	2,336	2,231	2,315	2,289	2,335	27,722
2006	2,334	2,213	2,323	2,315	2,348	2,392	2,429	2,363	2,254	2,357	2,327	2,348	27,999
<b>Nova Scotia</b>													
2004	2,492	2,324	2,411	2,405	2,416	2,400	2,488	2,483	2,469	2,457	2,456	2,497	29,295
2005	2,466	2,236	2,374	2,430	2,514	2,448	2,552	2,551	2,454	2,464	2,516	2,524	29,533
2006	2,496	2,262	2,405	2,429	2,464	2,446	2,441	2,535	2,500	2,459	2,402	2,424	29,262
<b>New Brunswick</b>													
2004	2,036	1,946	2,014	1,971	2,007	1,978	2,043	2,042	1,975	2,024	1,986	2,025	24,048
2005	2,098	1,939	2,041	1,998	2,012	1,994	2,103	2,028	2,043	2,040	2,015	2,155	24,463
2006	2,065	1,936	2,040	1,982	2,057	2,017	2,052	2,077	2,019	2,039	2,016	2,108	24,402
<b>Quebec</b>													
2004	2,232	2,058	2,227	2,125	2,210	2,137	2,228	2,212	2,175	2,239	2,194	2,240	26,282
2005	2,218	2,053	2,210	2,099	2,191	2,129	2,197	2,208	2,142	2,213	2,165	2,234	26,060
2006	2,203	2,025	2,197	2,078	2,172	2,079	2,166	2,169	2,120	2,185	2,135	2,196	25,726
<b>Ontario</b>													
2004	2,331	2,107	2,299	2,211	2,307	2,239	2,301	2,279	2,219	2,298	2,291	2,382	27,268
2005	2,378	2,177	2,370	2,288	2,368	2,318	2,382	2,380	2,310	2,396	2,351	2,445	28,159
2006	2,444	2,225	2,419	2,323	2,416	2,328	2,429	2,397	2,345	2,422	2,381	2,485	28,614
<b>Manitoba</b>													
2004	2,775	2,509	2,751	2,627	2,721	2,635	2,712	2,719	2,617	2,690	2,613	2,771	32,146
2005	2,852	2,602	2,837	2,716	2,813	2,714	2,801	2,807	2,703	2,784	2,700	2,775	33,105
2006	2,808	2,536	2,790	2,679	2,767	2,678	2,764	2,762	2,668	2,738	2,654	2,785	32,632
<b>Saskatchewan</b>													
2004	2,103	1,942	2,110	2,014	2,138	2,058	2,128	2,074	2,020	2,103	2,053	2,112	24,859
2005	2,118	1,901	2,060	1,982	2,081	2,011	2,071	2,052	1,998	2,115	2,000	2,065	24,451
2006	2,043	1,868	1,929	1,804	1,832	1,779	1,854	1,851	1,786	1,894	1,812	1,836	22,298
<b>Alberta</b>													
2004	2,005	1,784	1,993	1,894	1,977	1,899	1,972	1,916	1,865	1,950	1,933	1,957	23,146
2005	2,010	1,822	2,001	1,916	2,009	1,911	1,983	1,941	1,898	1,969	1,936	2,011	23,411
2006	2,035	1,837	2,024	1,956	2,023	1,941	2,004	1,983	1,913	1,988	1,940	2,017	23,657
<b>British Columbia</b>													
2004	2,169	1,916	2,101	1,875	2,213	2,246	2,139	1,951	1,892	2,018	1,930	1,937	24,387
2005	2,051	2,006	2,143	1,998	2,140	1,990	2,078	2,040	1,971	2,029	2,006	2,077	24,529
2006	2,152	1,897	2,087	1,998	2,076	2,016	2,069	2,060	1,988	2,058	2,021	2,071	24,479
<b>Canada</b>													
2004	2,308	2,092	2,279	2,179	2,294	2,231	2,290	2,257	2,199	2,274	2,241	2,315	26,954
2005	2,329	2,143	2,318	2,228	2,315	2,242	2,314	2,302	2,231	2,302	2,258	2,338	27,323
2006	2,343	2,126	2,309	2,217	2,301	2,224	2,303	2,292	2,230	2,297	2,249	2,334	27,223

**Table 4-3  
Production of eggs by province in thousands of dozens**

	Jan.	Feb.	Mar.	Apr.	May	June	July	Aug.	Sept.	Oct.	Nov.	Dec.	Annual total
	in thousands												
<b>Newfoundland and Labrador</b>													
2004	704	676	718	701	694	685	702	660	660	706	675	733	8,315
2005	716	625	640	699	682	693	727	702	656	668	685	705	8,199
2006	703	633	651	697	677	704	706	712	704	678	699	722	8,286
<b>Prince Edward Island</b>													
2004	261	246	261	256	259	256	261	264	255	255	251	257	3,082
2005	249	235	242	248	255	257	257	250	249	261	251	255	3,008
2006	248	236	253	253	256	260	264	256	255	269	258	259	3,068
<b>Nova Scotia</b>													
2004	1,528	1,431	1,477	1,459	1,486	1,465	1,504	1,477	1,437	1,485	1,532	1,579	17,860
2005	1,544	1,355	1,468	1,490	1,534	1,523	1,584	1,594	1,504	1,457	1,523	1,585	18,160
2006	1,566	1,413	1,512	1,497	1,513	1,532	1,524	1,594	1,542	1,463	1,464	1,532	18,150
<b>New Brunswick</b>													
2004	1,324	1,221	1,312	1,299	1,327	1,275	1,301	1,305	1,268	1,292	1,267	1,357	15,547
2005	1,275	1,186	1,288	1,294	1,286	1,265	1,273	1,214	1,231	1,244	1,306	1,371	15,232
2006	1,229	1,196	1,304	1,300	1,257	1,261	1,275	1,269	1,236	1,255	1,306	1,300	15,186
<b>Quebec</b>													
2004	8,592	7,916	8,627	8,218	8,519	8,236	8,567	8,556	8,348	8,518	8,477	8,917	101,492
2005	8,715	7,987	8,841	8,518	9,091	8,768	8,710	8,787	8,616	8,746	8,408	8,924	104,110
2006	8,876	8,039	8,892	8,440	8,922	8,419	8,540	8,555	8,375	8,645	8,377	8,634	102,713
<b>Ontario</b>													
2004	18,637	16,789	18,245	17,553	18,293	17,902	18,539	18,302	17,736	18,368	18,556	19,659	218,577
2005	19,604	17,662	19,179	18,713	19,407	19,018	19,424	19,358	18,821	19,364	18,946	19,394	228,889
2006	19,093	17,457	19,279	18,711	19,593	18,782	19,471	19,069	18,436	18,949	18,778	19,790	227,407
<b>Manitoba</b>													
2004	7,034	6,333	7,064	6,798	7,031	6,816	6,895	6,874	6,598	6,652	6,523	7,141	81,758
2005	7,385	6,708	7,377	6,986	7,215	7,035	7,240	7,230	6,931	7,029	6,850	7,147	85,135
2006	7,112	6,396	6,879	6,615	7,023	6,804	7,028	6,998	6,671	6,856	6,722	7,076	82,179
<b>Saskatchewan</b>													
2004	1,860	1,634	1,884	1,858	1,933	1,826	1,910	1,937	1,862	1,921	1,906	1,968	22,498
2005	1,988	1,798	1,899	1,781	1,942	1,971	2,052	2,017	1,910	2,073	2,025	2,060	23,514
2006	2,047	1,860	1,886	1,771	1,771	1,700	1,774	1,777	1,620	1,716	1,777	1,746	21,443
<b>Alberta</b>													
2004	3,745	3,313	3,652	3,554	3,754	3,562	3,756	3,779	3,670	3,797	3,842	3,920	44,343
2005	3,933	3,512	3,846	3,685	3,920	3,755	3,896	3,863	3,730	3,840	3,814	3,974	45,769
2006	4,010	3,548	3,855	3,769	3,817	3,636	3,870	3,925	3,795	3,932	3,856	3,940	45,953
<b>British Columbia</b>													
2004	5,099	5,334	5,747	3,740	2,448	2,435	2,761	2,722	2,485	2,596	2,637	2,743	40,747
2005	3,592	3,168	3,807	3,883	4,475	4,410	4,830	5,127	5,151	5,458	5,411	5,528	54,840
2006	5,023	4,987	5,445	5,361	5,636	5,388	5,415	5,432	5,226	5,361	5,275	5,425	63,972
<b>Canada</b>													
2004	48,783	44,893	48,986	45,435	45,743	44,458	46,196	45,877	44,318	45,590	45,667	48,274	554,218
2005	49,000	44,236	48,587	47,297	49,808	48,695	49,993	50,142	48,800	50,140	49,219	50,941	586,856
2006	49,907	45,762	49,956	48,412	50,464	48,485	49,867	49,587	47,859	49,125	48,511	50,421	588,357

**Table 5-1**  
**Disposition of eggs by province, quantity and value by province — Canada**

	Jan.	Feb.	Mar.	Apr.	May	June	July	Aug.	Sept.	Oct.	Nov.	Dec.	Annual total
quantity, in thousands of dozens													
<b>Sold for consumption</b>													
2004	42,397	39,007	42,463	40,017	40,215	38,906	40,039	39,903	38,598	39,932	39,481	42,107	483,064
2005	43,302	38,572	42,279	41,276	43,421	42,518	43,706	43,830	42,737	44,177	43,224	44,745	513,787
2006	43,890	40,060	43,670	42,337	44,008	42,551	43,711	43,624	42,059	43,285	42,532	44,608	516,332
<b>Sold for hatching</b>													
2004	5,336	4,908	5,466	4,430	4,534	4,584	5,155	4,977	4,754	4,667	5,196	5,127	59,134
2005	4,636	4,694	5,254	4,990	5,317	5,127	5,194	5,221	4,992	4,876	4,932	5,098	60,329
2006	4,936	4,702	5,205	5,026	5,366	4,883	5,078	4,891	4,762	4,775	4,928	4,725	59,276
<b>Home consumption</b>													
2004	124	124	124	124	124	124	124	124	124	124	124	124	1,489
2005	125	125	125	125	125	125	125	125	125	125	125	125	1,501
2006	125	125	125	125	125	125	125	125	125	125	125	125	1,501
<b>Leakers and rejects</b>													
2004	927	854	933	863	870	845	878	873	843	866	866	916	10,534
2005	937	846	929	906	945	925	967	966	946	962	938	974	11,240
2006	956	875	956	925	965	926	954	947	914	941	927	964	11,249
<b>Total disposition of eggs</b>													
2004	48,783	44,893	48,986	45,434	45,743	44,459	46,196	45,877	44,319	45,589	45,667	48,274	554,220
2005	49,000	44,236	48,587	47,297	49,808	48,695	49,992	50,142	48,800	50,140	49,219	50,941	586,857
2006	49,907	45,762	49,955	48,413	50,464	48,485	49,867	49,587	47,859	49,125	48,512	50,422	588,358
value, in thousands of dollars													
<b>Sold for consumption</b>													
2004	45,472	42,096	45,722	43,509	44,488	44,009	45,440	45,906	44,254	44,775	44,329	46,618	536,618
2005	43,533	38,061	41,757	40,884	43,095	42,260	43,567	44,340	43,027	44,611	43,942	45,427	514,505
2006	44,472	40,944	44,799	43,584	45,294	43,813	45,075	45,222	43,654	44,561	43,830	45,795	531,043
<b>Sold for hatching</b>													
2004	18,965	17,534	19,543	15,765	16,206	16,485	18,575	17,949	16,970	16,524	17,774	17,389	209,680
2005	15,335	15,545	17,501	16,641	17,899	17,158	17,264	17,344	16,583	16,176	16,378	16,934	200,758
2006	16,513	15,859	17,517	16,959	18,095	16,509	17,064	16,459	16,077	16,130	16,883	16,181	200,245
<b>Home consumption</b>													
2004	163	163	163	166	169	172	174	173	159	170	170	165	2,002
2005	156	154	162	162	162	162	163	164	154	167	167	165	1,932
2006	164	167	165	165	165	165	165	168	171	167	167	165	1,989
<b>Total value of disposition of eggs</b>													
2004	64,600	59,792	65,428	59,440	60,863	60,666	64,189	64,028	61,383	61,469	62,272	64,172	748,300
2005	59,023	53,760	59,419	57,687	61,156	59,579	60,993	61,848	59,764	60,954	60,487	62,525	717,194
2006	61,149	56,970	62,480	60,707	63,553	60,486	62,304	61,849	59,901	60,858	60,879	62,142	733,277

**Table 5-2**  
**Disposition of eggs by province, quantity and value by province — Newfoundland and Labrador**

	Jan.	Feb.	Mar.	Apr.	May	June	July	Aug.	Sept.	Oct.	Nov.	Dec.	Annual total
quantity, in thousands of dozens													
<b>Sold for consumption</b>													
2004	690	663	704	687	680	672	688	647	647	692	662	718	8,151
2005	702	613	628	685	669	679	713	688	643	655	672	691	8,037
2006	689	620	638	683	664	690	693	698	690	665	686	708	8,123
<b>Sold for hatching</b>													
2004	0	0	0	0	0	0	0	0	0	0	0	0	0
2005	0	0	0	0	0	0	0	0	0	0	0	0	0
2006	0	0	0	0	0	0	0	0	0	0	0	0	0
<b>Home consumption</b>													
2004	0	0	0	0	0	0	0	0	0	0	0	0	2
2005	0	0	0	0	0	0	0	0	0	0	0	0	2
2006	0	0	0	0	0	0	0	0	0	0	0	0	2
<b>Leakers and rejects</b>													
2004	14	13	14	14	14	13	14	13	13	14	13	14	162
2005	14	12	13	14	13	14	14	14	13	13	13	14	160
2006	14	12	13	14	13	14	14	14	14	13	14	14	162
<b>Total disposition of eggs</b>													
2004	704	676	718	701	694	685	702	660	660	706	675	733	8,316
2005	716	625	641	699	682	693	727	702	656	668	685	705	8,199
2006	703	633	651	697	677	704	707	712	704	678	699	723	8,287
value, in thousands of dollars													
<b>Sold for consumption</b>													
2004	1,061	1,019	1,082	1,056	1,046	1,032	1,058	995	1,001	1,071	1,024	1,111	12,555
2005	1,022	868	884	971	948	962	1,017	979	927	944	975	997	11,494
2006	935	862	887	950	923	952	949	956	937	896	924	933	11,103
<b>Sold for hatching</b>													
2004	0	0	0	0	0	0	0	0	0	0	0	0	0
2005	0	0	0	0	0	0	0	0	0	0	0	0	0
2006	0	0	0	0	0	0	0	0	0	0	0	0	0
<b>Home consumption</b>													
2004	0	0	0	0	0	0	0	0	0	0	0	0	4
2005	0	0	0	0	0	0	0	0	0	0	0	0	4
2006	0	0	0	0	0	0	0	0	0	0	0	0	4
<b>Total value of disposition of eggs</b>													
2004	1,061	1,019	1,083	1,056	1,046	1,033	1,058	995	1,001	1,071	1,024	1,112	12,559
2005	1,023	868	884	971	948	963	1,018	979	927	945	976	997	11,498
2006	936	862	887	950	923	952	949	957	937	896	924	933	11,106



**Table 5-3**  
**Disposition of eggs by province, quantity and value by province — Prince Edward Island**

	Jan.	Feb.	Mar.	Apr.	May	June	July	Aug.	Sept.	Oct.	Nov.	Dec.	Annual total
quantity, in thousands of dozens													
<b>Sold for consumption</b>													
2004	255	241	256	251	253	251	256	259	249	249	246	252	3,017
2005	243	230	237	243	249	252	251	245	243	256	245	249	2,943
2006	243	230	248	248	251	255	258	251	249	264	253	254	3,003
<b>Sold for hatching</b>													
2004	0	0	0	0	0	0	0	0	0	0	0	0	0
2005	0	0	0	0	0	0	0	0	0	0	0	0	0
2006	0	0	0	0	0	0	0	0	0	0	0	0	0
<b>Home consumption</b>													
2004	1	1	1	1	1	1	1	1	1	1	1	1	6
2005	1	1	1	1	1	1	1	1	1	1	1	1	6
2006	1	1	1	1	1	1	1	1	1	1	1	1	6
<b>Leakers and rejects</b>													
2004	5	5	5	5	5	5	5	5	5	5	5	5	60
2005	5	5	5	5	5	5	5	5	5	5	5	5	59
2006	5	5	5	5	5	5	5	5	5	5	5	5	60
<b>Total disposition of eggs</b>													
2004	261	246	261	256	259	256	261	264	255	255	251	257	3,083
2005	249	235	242	248	255	257	257	250	249	261	251	255	3,008
2006	248	236	253	253	256	260	264	257	255	269	258	259	3,069
value, in thousands of dollars													
<b>Sold for consumption</b>													
2004	335	316	336	329	333	329	336	339	330	330	325	333	3,969
2005	303	280	288	296	304	306	306	299	302	317	304	309	3,613
2006	280	269	290	290	296	300	302	294	289	303	291	282	3,486
<b>Sold for hatching</b>													
2004	0	0	0	0	0	0	0	0	0	0	0	0	0
2005	0	0	0	0	0	0	0	0	0	0	0	0	0
2006	0	0	0	0	0	0	0	0	0	0	0	0	0
<b>Home consumption</b>													
2004	1	1	1	1	1	1	1	1	1	1	1	1	10
2005	1	1	1	1	1	1	1	1	1	1	1	1	8
2006	1	1	1	1	1	1	1	1	1	1	1	1	8
<b>Total value of disposition of eggs</b>													
2004	336	317	336	330	333	330	337	340	331	331	326	333	3,978
2005	304	281	289	297	304	307	306	300	302	317	305	309	3,621
2006	280	270	291	291	296	301	303	294	290	304	291	283	3,494

**Table 5-4**  
**Disposition of eggs by province, quantity and value by province — Nova Scotia**

	Jan.	Feb.	Mar.	Apr.	May	June	July	Aug.	Sept.	Oct.	Nov.	Dec.	Annual total
quantity, in thousands of dozens													
<b>Sold for consumption</b>													
2004	1,520	1,423	1,469	1,452	1,478	1,458	1,496	1,469	1,429	1,477	1,524	1,571	17,765
2005	1,531	1,344	1,456	1,476	1,528	1,516	1,559	1,572	1,478	1,442	1,513	1,571	17,987
2006	1,551	1,400	1,498	1,486	1,501	1,520	1,513	1,582	1,530	1,452	1,452	1,520	18,006
<b>Sold for hatching</b>													
2004	0	0	0	0	0	0	0	0	0	0	0	0	0
2005	0	0	0	0	0	0	0	0	0	0	0	0	0
2006	0	0	0	0	0	0	0	0	0	0	0	0	0
<b>Home consumption</b>													
2004	2	2	2	2	2	2	2	2	2	2	2	2	18
2005	2	2	2	2	2	2	2	2	2	2	2	2	18
2006	2	2	2	2	2	2	2	2	2	2	2	2	18
<b>Leakers and rejects</b>													
2004	7	6	6	6	6	6	7	6	6	6	7	7	77
2005	11	10	11	12	5	6	23	21	24	13	8	12	155
2006	14	11	12	10	10	10	10	11	10	10	10	10	126
<b>Total disposition of eggs</b>													
2004	1,528	1,431	1,477	1,459	1,486	1,465	1,504	1,477	1,437	1,485	1,532	1,579	17,860
2005	1,544	1,355	1,468	1,490	1,534	1,523	1,584	1,594	1,504	1,457	1,523	1,585	18,160
2006	1,566	1,413	1,512	1,497	1,513	1,532	1,524	1,594	1,542	1,463	1,463	1,532	18,150
value, in thousands of dollars													
<b>Sold for consumption</b>													
2004	2,037	1,906	1,967	1,944	1,979	1,952	2,005	1,969	1,929	1,994	2,056	2,119	23,855
2005	1,931	1,695	1,836	1,862	1,925	1,910	1,966	1,983	1,864	1,819	1,908	1,981	22,679
2006	1,847	1,687	1,806	1,790	1,817	1,839	1,831	1,914	1,847	1,752	1,753	1,806	21,689
<b>Sold for hatching</b>													
2004	0	0	0	0	0	0	0	0	0	0	0	0	0
2005	0	0	0	0	0	0	0	0	0	0	0	0	0
2006	0	0	0	0	0	0	0	0	0	0	0	0	0
<b>Home consumption</b>													
2004	3	3	3	3	3	3	3	3	3	3	3	3	37
2005	3	3	3	3	3	3	3	3	3	3	3	3	37
2006	3	3	3	3	3	3	3	3	3	3	3	3	37
<b>Total value of disposition of eggs</b>													
2004	2,040	1,909	1,971	1,947	1,982	1,955	2,008	1,972	1,932	1,997	2,059	2,122	23,892
2005	1,934	1,698	1,839	1,865	1,928	1,913	1,969	1,986	1,867	1,822	1,911	1,984	22,716
2006	1,850	1,690	1,809	1,793	1,820	1,842	1,834	1,917	1,850	1,755	1,756	1,809	21,726

**Table 5-5**  
**Disposition of eggs by province, quantity and value by province — New Brunswick**

	Jan.	Feb.	Mar.	Apr.	May	June	July	Aug.	Sept.	Oct.	Nov.	Dec.	Annual total
quantity, in thousands of dozens													
<b>Sold for consumption</b>													
2004	857	814	843	829	834	832	857	853	827	841	829	854	10,071
2005	843	768	841	843	810	796	828	785	814	827	866	931	9,952
2006	847	808	872	852	841	818	819	834	817	846	886	909	10,147
<b>Sold for hatching</b>													
2004	440	382	442	443	466	417	418	426	416	424	412	476	5,162
2005	406	393	421	425	450	443	419	404	393	392	414	413	4,972
2006	357	364	406	422	391	417	430	409	394	384	394	364	4,732
<b>Home consumption</b>													
2004	1	1	1	1	1	1	1	1	1	1	1	1	11
2005	1	1	1	1	1	1	1	1	1	1	1	1	11
2006	1	1	1	1	1	1	1	1	1	1	1	1	11
<b>Leakers and rejects</b>													
2004	26	24	26	25	26	25	25	25	25	25	25	27	303
2005	25	23	25	25	25	25	25	24	24	24	26	27	297
2006	24	23	25	25	25	25	25	25	24	25	26	25	296
<b>Total disposition of eggs</b>													
2004	1,324	1,221	1,312	1,298	1,327	1,275	1,301	1,305	1,269	1,291	1,267	1,357	15,548
2005	1,275	1,186	1,287	1,294	1,287	1,265	1,273	1,214	1,232	1,244	1,306	1,371	15,232
2006	1,229	1,196	1,303	1,299	1,257	1,261	1,275	1,269	1,236	1,255	1,306	1,299	15,186
value, in thousands of dollars													
<b>Sold for consumption</b>													
2004	1,154	1,096	1,136	1,116	1,124	1,121	1,155	1,149	1,123	1,142	1,125	1,159	13,599
2005	1,057	964	1,055	1,058	1,017	999	1,039	984	1,020	1,037	1,085	1,167	12,483
2006	980	952	1,027	1,003	996	970	970	988	968	1,002	1,050	1,060	11,965
<b>Sold for hatching</b>													
2004	1,376	1,195	1,383	1,386	1,456	1,302	1,306	1,330	1,300	1,325	1,289	1,489	16,138
2005	1,269	1,229	1,316	1,327	1,407	1,385	1,310	1,264	1,228	1,225	1,294	1,290	15,544
2006	1,115	1,137	1,268	1,318	1,224	1,304	1,345	1,280	1,232	1,200	1,231	1,139	14,792
<b>Home consumption</b>													
2004	1	1	1	1	1	1	1	1	1	1	1	1	17
2005	1	1	1	1	1	1	1	1	1	1	1	1	17
2006	1	1	1	1	1	1	1	1	1	1	1	1	17
<b>Total value of disposition of eggs</b>													
2004	2,532	2,292	2,520	2,504	2,582	2,425	2,462	2,481	2,424	2,468	2,416	2,649	29,754
2005	2,327	2,195	2,372	2,387	2,426	2,385	2,350	2,250	2,250	2,264	2,380	2,458	28,043
2006	2,096	2,090	2,296	2,322	2,221	2,275	2,317	2,269	2,201	2,204	2,282	2,200	26,773

**Table 5-6  
Disposition of eggs by province, quantity and value by province — Quebec**

	Jan.	Feb.	Mar.	Apr.	May	June	July	Aug.	Sept.	Oct.	Nov.	Dec.	Annual total
quantity, in thousands of dozens													
<b>Sold for consumption</b>													
2004	7,074	6,427	7,014	6,702	6,930	6,774	7,037	7,088	6,869	7,084	6,957	7,320	83,276
2005	7,215	6,458	7,127	6,892	7,438	7,209	7,196	7,226	7,134	7,358	7,031	7,408	85,692
2006	7,411	6,612	7,265	6,932	7,277	6,934	7,069	7,099	6,921	7,261	6,999	7,255	85,035
<b>Sold for hatching</b>													
2004	1,344	1,329	1,439	1,350	1,417	1,295	1,357	1,295	1,310	1,262	1,349	1,417	16,165
2005	1,324	1,367	1,536	1,454	1,470	1,382	1,338	1,384	1,308	1,211	1,207	1,336	16,316
2006	1,286	1,264	1,448	1,337	1,465	1,315	1,298	1,283	1,285	1,209	1,209	1,205	15,603
<b>Home consumption</b>													
2004	6	6	6	6	6	6	6	6	6	6	6	6	72
2005	6	6	6	6	6	6	6	6	6	6	6	6	72
2006	6	6	6	6	6	6	6	6	6	6	6	6	72
<b>Leakers and rejects</b>													
2004	168	154	168	160	166	161	167	167	163	166	165	174	1,979
2005	170	156	172	166	177	171	170	171	168	171	164	174	2,030
2006	173	157	173	165	174	164	167	167	163	169	163	168	2,003
<b>Total disposition of eggs</b>													
2004	8,592	7,916	8,627	8,218	8,519	8,236	8,567	8,556	8,348	8,518	8,477	8,917	101,492
2005	8,715	7,987	8,841	8,518	9,091	8,768	8,710	8,787	8,616	8,746	8,408	8,924	104,110
2006	8,876	8,039	8,892	8,440	8,922	8,419	8,540	8,555	8,375	8,645	8,377	8,634	102,713
value, in thousands of dollars													
<b>Sold for consumption</b>													
2004	8,155	7,434	8,115	7,874	8,399	8,407	8,734	8,812	8,479	8,551	8,397	8,834	100,191
2005	7,963	6,869	7,585	7,336	7,917	7,674	7,661	7,716	7,613	7,855	7,633	8,041	91,863
2006	8,339	7,361	8,086	7,786	8,174	7,789	7,941	7,962	7,758	8,142	7,848	8,135	95,321
<b>Sold for hatching</b>													
2004	4,705	4,719	5,108	4,791	5,031	4,648	4,873	4,651	4,701	4,392	4,439	4,663	56,721
2005	4,198	4,333	4,869	4,610	4,660	4,381	4,294	4,441	4,200	3,864	3,849	4,287	51,986
2006	4,129	4,145	4,749	4,384	4,863	4,366	4,283	4,233	4,278	4,027	4,110	4,096	51,663
<b>Home consumption</b>													
2004	8	8	8	8	8	8	8	8	8	8	8	8	96
2005	8	7	8	8	8	8	8	8	8	8	8	8	95
2006	8	8	8	8	8	8	8	8	8	8	8	8	96
<b>Total value of disposition of eggs</b>													
2004	12,868	12,161	13,231	12,673	13,438	13,063	13,615	13,471	13,188	12,951	12,844	13,505	157,008
2005	12,169	11,209	12,462	11,954	12,585	12,063	11,963	12,165	11,821	11,727	11,490	12,336	143,944
2006	12,476	11,514	12,843	12,178	13,045	12,163	12,232	12,203	12,044	12,177	11,966	12,239	147,080

**Table 5-7**  
**Disposition of eggs by province, quantity and value by province — Ontario**

	Jan.	Feb.	Mar.	Apr.	May	June	July	Aug.	Sept.	Oct.	Nov.	Dec.	Annual total
quantity, in thousands of dozens													
<b>Sold for consumption</b>													
2004	16,564	14,846	16,162	15,630	16,276	15,861	16,388	16,211	15,703	16,423	16,394	17,412	193,870
2005	17,528	15,645	17,081	16,627	17,404	16,995	17,443	17,379	16,932	17,470	17,071	17,507	205,082
2006	17,279	15,641	17,273	16,813	17,484	16,956	17,462	17,227	16,619	17,067	16,838	17,905	204,564
<b>Sold for hatching</b>													
2004	1,678	1,584	1,695	1,549	1,628	1,660	1,757	1,702	1,655	1,555	1,768	1,832	20,061
2005	1,661	1,640	1,691	1,688	1,592	1,619	1,569	1,569	1,489	1,483	1,473	1,476	18,949
2006	1,409	1,443	1,597	1,500	1,694	1,427	1,596	1,437	1,424	1,479	1,541	1,466	18,012
<b>Home consumption</b>													
2004	32	32	32	32	32	32	32	32	32	32	32	32	384
2005	33	33	33	33	33	33	33	33	33	33	33	33	396
2006	33	33	33	33	33	33	33	33	33	33	33	33	396
<b>Leakers and rejects</b>													
2004	363	327	356	342	357	349	362	357	346	358	362	383	4,262
2005	382	344	374	365	378	371	379	377	367	378	369	378	4,462
2006	372	340	376	365	382	366	380	372	360	370	366	386	4,435
<b>Total disposition of eggs</b>													
2004	18,637	16,789	18,245	17,553	18,293	17,902	18,539	18,302	17,736	18,368	18,556	19,659	218,577
2005	19,604	17,662	19,179	18,713	19,407	19,018	19,424	19,358	18,821	19,364	18,946	19,394	228,889
2006	19,093	17,457	19,279	18,711	19,593	18,782	19,471	19,069	18,436	18,949	18,778	19,790	227,407
value, in thousands of dollars													
<b>Sold for consumption</b>													
2004	17,407	15,733	17,125	16,842	17,994	18,137	18,742	18,933	18,295	18,418	18,382	19,519	215,527
2005	17,317	15,096	16,508	16,073	16,821	16,426	16,863	17,188	16,453	17,000	16,609	17,032	199,386
2006	17,156	15,651	17,269	16,962	17,638	17,105	17,617	17,419	16,819	17,268	17,031	18,107	206,042
<b>Sold for hatching</b>													
2004	6,005	5,701	6,100	5,622	5,973	6,094	6,446	6,245	5,892	5,535	5,765	5,972	71,350
2005	5,216	5,150	5,310	5,385	5,077	5,214	5,052	5,051	4,795	4,760	4,729	4,766	60,505
2006	4,651	4,761	5,255	4,934	5,538	4,667	5,187	4,669	4,657	4,837	5,161	4,909	59,226
<b>Home consumption</b>													
2004	43	43	42	43	44	46	46	46	42	44	44	44	527
2005	42	41	44	44	44	44	44	44	42	45	45	45	524
2006	46	46	44	44	44	44	44	44	46	46	46	46	540
<b>Total value of disposition of eggs</b>													
2004	23,455	21,477	23,267	22,507	24,011	24,277	25,234	25,224	24,229	23,997	24,191	25,535	287,404
2005	22,575	20,287	21,862	21,502	21,942	21,684	21,959	22,283	21,290	21,805	21,383	21,843	260,415
2006	21,853	20,458	22,568	21,940	23,220	21,816	22,848	22,132	21,522	22,151	22,238	23,062	265,808

**Table 5-8**  
**Disposition of eggs by province, quantity and value by province — Manitoba**

	Jan.	Feb.	Mar.	Apr.	May	June	July	Aug.	Sept.	Oct.	Nov.	Dec.	Annual total
quantity, in thousands of dozens													
<b>Sold for consumption</b>													
2004	6,643	5,964	6,620	6,375	6,596	6,380	6,482	6,462	6,197	6,257	6,115	6,716	76,807
2005	7,014	6,322	6,931	6,574	6,762	6,593	6,815	6,800	6,521	6,618	6,383	6,705	80,038
2006	6,678	6,009	6,458	6,195	6,577	6,373	6,595	6,588	6,258	6,428	6,295	6,658	77,112
<b>Sold for hatching</b>													
2004	239	230	291	275	283	288	264	263	257	250	266	271	3,176
2005	212	240	287	261	297	290	269	274	260	259	318	288	3,257
2006	280	247	272	276	294	283	281	259	268	279	281	265	3,284
<b>Home consumption</b>													
2004	15	15	15	15	15	15	15	15	15	15	15	15	180
2005	15	15	15	15	15	15	15	15	15	15	15	15	180
2006	15	15	15	15	15	15	15	15	15	15	15	15	180
<b>Leakers and rejects</b>													
2004	137	124	138	133	137	133	134	134	129	130	127	139	1,595
2005	144	131	144	136	141	137	141	141	135	137	134	139	1,660
2006	139	125	134	129	137	133	137	136	130	134	131	138	1,603
<b>Total disposition of eggs</b>													
2004	7,034	6,333	7,064	6,798	7,031	6,816	6,895	6,874	6,598	6,652	6,523	7,141	81,758
2005	7,385	6,708	7,377	6,986	7,215	7,035	7,240	7,230	6,931	7,029	6,850	7,147	85,135
2006	7,112	6,396	6,879	6,615	7,023	6,804	7,028	6,998	6,671	6,856	6,722	7,076	82,179
value, in thousands of dollars													
<b>Sold for consumption</b>													
2004	4,730	4,208	4,648	4,470	4,691	4,527	4,699	4,868	4,648	4,686	4,633	5,087	55,895
2005	4,773	4,316	4,710	4,441	4,636	4,547	4,802	5,009	4,845	4,900	4,816	5,043	56,838
2006	4,638	4,205	4,693	4,300	4,610	4,485	4,748	4,916	4,673	4,822	4,765	5,017	55,872
<b>Sold for hatching</b>													
2004	856	827	1,043	986	1,029	1,049	960	959	936	911	967	986	11,509
2005	771	875	1,046	952	1,083	1,056	980	998	947	942	1,159	1,047	11,856
2006	1,018	900	991	1,004	1,068	1,029	1,021	944	976	1,016	1,023	964	11,954
<b>Home consumption</b>													
2004	13	13	13	13	13	13	15	15	15	15	15	15	168
2005	13	13	13	13	13	13	14	15	15	15	15	15	167
2006	13	13	14	13	13	13	13	15	15	15	15	15	167
<b>Total value of disposition of eggs</b>													
2004	5,599	5,048	5,704	5,469	5,733	5,589	5,674	5,842	5,599	5,612	5,615	6,088	67,572
2005	5,557	5,204	5,769	5,406	5,732	5,616	5,796	6,022	5,807	5,857	5,990	6,105	68,861
2006	5,669	5,118	5,698	5,317	5,691	5,527	5,782	5,875	5,664	5,853	5,803	5,996	67,993

**Table 5-9**  
**Disposition of eggs by province, quantity and value by province — Saskatchewan**

	Jan.	Feb.	Mar.	Apr.	May	June	July	Aug.	Sept.	Oct.	Nov.	Dec.	Annual total
quantity, in thousands of dozens													
<b>Sold for consumption</b>													
2004	1,641	1,420	1,632	1,658	1,723	1,626	1,658	1,695	1,633	1,694	1,670	1,735	19,785
2005	1,735	1,560	1,657	1,559	1,698	1,728	1,800	1,781	1,712	1,801	1,761	1,766	20,558
2006	1,776	1,607	1,650	1,501	1,511	1,474	1,549	1,561	1,446	1,488	1,521	1,522	18,606
<b>Sold for hatching</b>													
2004	168	167	200	149	157	149	200	189	178	175	184	180	2,095
2005	199	188	190	172	191	190	197	182	146	217	210	239	2,319
2006	216	202	184	220	210	178	175	166	127	180	206	175	2,237
<b>Home consumption</b>													
2004	15	15	15	15	15	15	15	15	15	15	15	15	180
2005	15	15	15	15	15	15	15	15	15	15	15	15	180
2006	15	15	15	15	15	15	15	15	15	15	15	15	180
<b>Leakers and rejects</b>													
2004	36	32	37	36	38	36	37	38	36	37	37	38	438
2005	39	35	37	35	38	38	40	39	37	40	39	40	457
2006	40	36	37	35	35	33	35	35	32	33	35	34	420
<b>Total disposition of eggs</b>													
2004	1,860	1,634	1,884	1,858	1,933	1,826	1,910	1,937	1,862	1,921	1,906	1,968	22,498
2005	1,988	1,798	1,899	1,781	1,942	1,971	2,052	2,017	1,910	2,073	2,025	2,060	23,514
2006	2,047	1,860	1,886	1,771	1,771	1,700	1,774	1,777	1,620	1,716	1,777	1,746	21,443
value, in thousands of dollars													
<b>Sold for consumption</b>													
2004	1,859	1,614	1,862	1,924	2,050	1,981	2,024	2,123	2,046	2,082	2,051	1,995	23,611
2005	1,892	1,698	1,813	1,712	1,863	1,896	1,977	1,937	1,856	1,968	1,922	1,928	22,462
2006	1,935	1,779	1,829	1,685	1,697	1,657	1,744	1,779	1,651	1,636	1,669	1,669	20,730
<b>Sold for hatching</b>													
2004	602	600	716	534	571	544	727	689	647	638	670	653	7,591
2005	724	684	691	626	695	690	717	661	532	788	764	871	8,443
2006	785	735	669	802	764	649	636	604	461	654	750	636	8,145
<b>Home consumption</b>													
2004	20	20	20	21	21	21	21	21	20	21	21	20	247
2005	19	19	19	19	19	19	19	19	18	20	20	20	230
2006	20	21	20	20	20	20	20	21	21	20	20	20	243
<b>Total value of disposition of eggs</b>													
2004	2,481	2,234	2,598	2,479	2,642	2,546	2,772	2,833	2,713	2,741	2,742	2,668	31,449
2005	2,635	2,401	2,523	2,357	2,577	2,605	2,713	2,617	2,406	2,776	2,706	2,819	31,135
2006	2,740	2,535	2,518	2,507	2,481	2,326	2,400	2,404	2,133	2,310	2,439	2,325	29,118

**Table 5-10**  
**Disposition of eggs by province, quantity and value by province — Alberta**

	Jan.	Feb.	Mar.	Apr.	May	June	July	Aug.	Sept.	Oct.	Nov.	Dec.	Annual total
quantity, in thousands of dozens													
<b>Sold for consumption</b>													
2004	3,043	2,754	2,988	2,926	3,096	2,950	3,032	3,070	3,021	3,179	3,100	3,254	36,413
2005	3,256	2,906	3,170	3,059	3,211	3,103	3,176	3,185	3,079	3,202	3,163	3,326	37,836
2006	3,346	2,979	3,250	3,177	3,186	3,025	3,225	3,252	3,150	3,277	3,201	3,321	38,389
<b>Sold for hatching</b>													
2004	596	461	560	526	552	510	618	602	544	511	634	557	6,670
2005	567	505	568	521	600	546	611	570	545	530	544	538	6,646
2006	553	467	497	486	524	507	537	563	538	545	547	509	6,273
<b>Home consumption</b>													
2004	33	33	33	33	33	33	33	33	33	33	33	33	396
2005	33	33	33	33	33	33	33	33	33	33	33	33	396
2006	33	33	33	33	33	33	33	33	33	33	33	33	396
<b>Leakers and rejects</b>													
2004	73	65	71	69	73	69	73	74	72	74	75	76	864
2005	77	68	75	72	76	73	76	75	73	75	74	77	891
2006	78	69	75	73	74	71	75	77	74	77	75	77	895
<b>Total disposition of eggs</b>													
2004	3,745	3,313	3,652	3,554	3,754	3,562	3,756	3,779	3,670	3,797	3,842	3,920	44,343
2005	3,933	3,512	3,846	3,685	3,920	3,755	3,896	3,863	3,730	3,840	3,814	3,974	45,769
2006	4,010	3,548	3,855	3,769	3,817	3,636	3,870	3,925	3,795	3,932	3,856	3,940	45,953
value, in thousands of dollars													
<b>Sold for consumption</b>													
2004	3,592	3,267	3,549	3,531	3,825	3,729	3,836	3,863	3,765	3,875	3,776	3,714	44,322
2005	3,555	3,170	3,471	3,344	3,511	3,393	3,478	3,479	3,370	3,527	3,482	3,658	41,438
2006	3,676	3,327	3,627	3,575	3,587	3,407	3,634	3,698	3,583	3,601	3,516	3,645	42,876
<b>Sold for hatching</b>													
2004	2,171	1,677	2,059	1,937	2,030	1,875	2,275	2,244	2,029	1,905	2,396	2,105	24,703
2005	2,145	1,909	2,147	1,970	2,270	1,947	2,181	2,036	1,947	1,894	1,942	1,920	24,308
2006	1,975	1,666	1,775	1,735	1,869	1,839	1,951	2,042	1,955	1,980	1,987	1,846	22,620
<b>Home consumption</b>													
2004	43	43	43	44	45	46	46	45	42	44	44	42	527
2005	40	40	41	41	41	41	41	41	39	41	41	41	488
2006	41	43	42	43	43	43	43	43	43	41	41	41	507
<b>Total value of disposition of eggs</b>													
2004	5,806	4,987	5,651	5,512	5,900	5,650	6,157	6,152	5,836	5,824	6,216	5,861	69,552
2005	5,740	5,119	5,659	5,355	5,822	5,381	5,700	5,556	5,356	5,462	5,465	5,619	66,234
2006	5,692	5,036	5,444	5,353	5,499	5,289	5,628	5,783	5,581	5,622	5,544	5,532	66,003



**Table 5-11**  
**Disposition of eggs by province, quantity and value by province — British Columbia**

	Jan.	Feb.	Mar.	Apr.	May	June	July	Aug.	Sept.	Oct.	Nov.	Dec.	Annual total
quantity, in thousands of dozens													
<b>Sold for consumption</b>													
2004	4,109	4,455	4,775	3,508	2,348	2,103	2,145	2,149	2,022	2,035	1,984	2,276	33,909
2005	3,235	2,726	3,152	3,318	3,652	3,647	3,925	4,169	4,181	4,548	4,519	4,590	45,662
2006	4,070	4,153	4,518	4,450	4,717	4,506	4,528	4,532	4,378	4,538	4,401	4,556	53,347
<b>Sold for hatching</b>													
2004	871	755	840	139	32	265	542	500	395	490	582	394	5,805
2005	267	360	561	469	716	657	791	838	850	784	766	810	7,869
2006	835	717	801	786	789	757	761	774	726	698	751	743	9,136
<b>Home consumption</b>													
2004	20	20	20	20	20	20	20	20	20	20	20	20	240
2005	20	20	20	20	20	20	20	20	20	20	20	20	240
2006	20	20	20	20	20	20	20	20	20	20	20	20	240
<b>Leakers and rejects</b>													
2004	99	104	112	73	48	47	54	53	48	51	51	53	793
2005	70	62	74	76	87	86	94	100	100	106	106	108	1,069
2006	98	97	106	105	110	105	106	106	102	105	103	106	1,249
<b>Total disposition of eggs</b>													
2004	5,099	5,334	5,747	3,740	2,448	2,435	2,761	2,722	2,485	2,596	2,637	2,743	40,747
2005	3,592	3,168	3,807	3,883	4,475	4,410	4,830	5,127	5,151	5,458	5,411	5,528	54,840
2006	5,023	4,987	5,445	5,361	5,636	5,388	5,415	5,432	5,226	5,361	5,275	5,425	63,972
value, in thousands of dollars													
<b>Sold for consumption</b>													
2004	5,142	5,503	5,902	4,424	3,048	2,794	2,852	2,855	2,639	2,627	2,560	2,748	43,094
2005	3,720	3,105	3,607	3,792	4,154	4,146	4,458	4,767	4,777	5,244	5,208	5,272	52,250
2006	4,687	4,851	5,286	5,243	5,557	5,309	5,339	5,296	5,128	5,139	4,983	5,142	61,960
<b>Sold for hatching</b>													
2004	3,250	2,815	3,134	509	116	973	1,988	1,831	1,465	1,818	2,248	1,521	21,668
2005	1,012	1,365	2,122	1,771	2,707	2,485	2,730	2,893	2,934	2,703	2,641	2,753	28,116
2006	2,840	2,515	2,810	2,782	2,769	2,655	2,641	2,687	2,518	2,416	2,621	2,591	31,845
<b>Home consumption</b>													
2004	30	30	31	31	32	32	32	32	26	32	32	30	370
2005	28	28	31	31	31	31	31	31	26	32	32	30	362
2006	30	30	31	31	31	31	31	31	32	31	31	30	370
<b>Total value of disposition of eggs</b>													
2004	8,422	8,348	9,067	4,964	3,196	3,799	4,872	4,718	4,130	4,477	4,840	4,299	65,132
2005	4,760	4,498	5,760	5,594	6,892	6,662	7,219	7,691	7,737	7,979	7,881	8,055	80,728
2006	7,557	7,396	8,127	8,056	8,357	7,995	8,011	8,014	7,678	7,586	7,635	7,763	94,175

**Table 6**  
**Stocks of frozen eggs and edible dried eggs, Canada**

	Jan.	Feb.	Mar.	Apr.	May	June	July	Aug.	Sept.	Oct.	Nov.	Dec.
	tonnes											
<b>Whole eggs, total</b>												
2005	817	1,132	1,187	1,017	923	837	734	859	755	671	757	727
2006	549	948	1,250	1,151	1,178	1,302	1,088	1,176	1,165	1,008	832	661
2007	567	1,049	..	..	..	..	..	..	..	..	..	..
<b>Yolk, total</b>												
2005	497	552	566	553	548	605	776	687	639	609	663	765
2006	710	717	956	1,121	924	813	860	797	877	896	781	738
2007	639	849	..	..	..	..	..	..	..	..	..	..
<b>Whites, total</b>												
2005	163	148	147	128	122	100	119	91	124	83	87	137
2006	75	97	97	126	128	141	101	134	126	98	108	125
2007	79	120	..	..	..	..	..	..	..	..	..	..
<b>Edible dried eggs</b>												
2005	1,097	1,096	1,064	1,088	1,056	1,064	1,016	835	907	998	744	1,074
2006	862	986	1,042	1,009	804	913	994	1,131	1,090	1,214	1,164	1,029
2007	789	795	..	..	..	..	..	..	..	..	..	..
<b>Dried, whole and mixes</b>												
2005	358	291	340	376	396	303	333	293	284	229	232	286
2006	262	227	223	206	194	195	227	231	173	169	231	199
2007	172	188	..	..	..	..	..	..	..	..	..	..
<b>Dried, yolk and mixes</b>												
2005	359	419	338	339	313	427	273	146	170	210	211	262
2006	207	311	301	261	217	234	243	238	139	152	145	143
2007	137	161	..	..	..	..	..	..	..	..	..	..
<b>Dried albumen</b>												
2005	380	386	386	373	347	334	411	396	452	559	301	525
2006	392	448	518	541	393	485	524	662	778	893	788	686
2007	480	446	..	..	..	..	..	..	..	..	..	..

**Table 7**  
**Supply and disposition of eggs**

	2001	2002	2003	2004	2005
	in thousands of dozens				
Production	566,659	575,789	577,612	554,218	586,782
Beginning stocks	7,962	9,026	10,737	8,697	9,578
Imports	41,959	42,880	44,304	68,025	46,532
Total supply	616,580	627,695	632,653	630,940	642,892
Exports	43,860	59,632	55,997	61,697	60,442
Used for hatching	60,821	61,985	61,614	59,134	60,326
Leakers and rejects	10,759	11,051	11,047	10,534	11,240
Ending stocks	9,026	10,737	8,697	9,578	9,113
Domestic disappearance, total	492,114	484,290	495,298	489,997	501,771
	dozens				
Domestic disappearance per capita	15.9	15.4	15.6	15.3	15.6
Per capita consumed <sup>1</sup>	13.1	12.8	13.0	12.7	12.9

1. Experimental, use with caution. Disappearance adjusted for retail, household, cooking and plate loss.

**Table 8**  
Average prices of eggs sold for consumption in Canada, by month

	Jan.	Feb.	Mar.	Apr.	May	June	July	Aug.	Sept.	Oct.	Nov.	Dec.
	dollars per dozen											
1998	1.06	1.05	1.05	1.05	1.04	1.04	1.02	1.02	1.02	1.00	1.00	1.00
1999	0.98	0.98	0.98	0.99	1.00	1.00	1.02	1.01	1.01	1.01	1.00	0.99
2000	0.99	0.99	0.99	0.99	1.00	1.00	0.98	1.02	1.03	1.03	1.04	1.04
2001	1.02	1.02	1.04	1.04	1.05	1.05	1.05	1.05	1.04	1.05	1.07	1.06
2002	1.05	1.05	1.05	1.05	1.05	1.05	1.05	1.09	1.07	1.07	1.07	1.10
2003	1.05	1.06	1.06	1.06	1.06	1.06	1.07	1.07	1.07	1.07	1.07	1.07
2004	1.07	1.08	1.08	1.09	1.11	1.13	1.14	1.15	1.15	1.12	1.12	1.11
2005	1.00	0.99	0.99	0.99	0.99	0.99	1.00	1.01	1.01	1.01	1.02	1.02
2006	1.01	1.02	1.03	1.03	1.03	1.03	1.03	1.04	1.04	1.03	1.03	1.03

**Table 9**  
Report of processed eggs production, Canada

	Whole egg	Yolk	Albumen	Total processed egg
	kilograms			
<b>Total break</b>				
2004	24,776,368	7,620,863	13,728,322	46,125,553
2005	26,991,320	8,745,305	16,149,294	51,885,919
2006	29,032,174	8,603,393	16,785,691	54,421,258
<b>Frozen eggs</b>				
2004	3,120,313	2,476,640	759,878	6,356,831
2005	2,680,171	2,860,990	912,089	6,453,250
2006	2,458,411	3,084,370	700,203	6,242,984
<b>Liquid eggs</b>				
2004	19,384,914	2,419,455	4,790,931	26,595,300
2005	22,333,496	3,109,602	4,879,711	30,322,809
2006	21,120,932	2,450,719	5,894,230	29,465,881
<b>Dried eggs</b>				
2004	895,982	1,306,663	1,301,471	3,504,116
2005	964,512	1,201,930	1,673,582	3,840,024
2006	1,066,072	1,018,012	1,899,680	3,983,764

# Poultry meat production and value

---

## Concepts

Poultry meat production and value are estimated for chicken meat (including stewing hens) and turkey meat sold by producers as well as that consumed by these producers. Production is measured in both the number of birds slaughtered and the eviscerated weight of the slaughtered birds. Estimates of quantities sold consist of commercial and non-commercial slaughter and are made at the provincial level. Commercial slaughter is adjusted for inter-provincial and international movement. Commercial slaughter includes all birds that have been slaughtered in registered slaughter houses while non-commercial slaughter consists of any birds that may be slaughtered on farms. Poultry meat production is valued at the average price per kilogram (eviscerated weight basis) received by producers. Prices include any bonuses and premiums which can be attributed to specific commodities and exclude fees deducted before the producer is paid (e.g. storage, transport, and administration costs).

Home consumption is the amount of poultry meat consumed by producers and their immediate families. The amount consumed is valued at market prices as it represents the income producers would have received had the product been sold.

## Methods

The major administrative source of data for poultry meat production and value is Agriculture and Agri-Food Canada. Inspectors from the Canadian Food Inspection Agency (CFIA) collect quantity data while inspecting meat at processing plants as legislated under the Meat Inspection Act. Unless specified, these data are used as published, without further adjustment. Commercial slaughter represents all birds slaughtered in registered processing plants. The quantity and weight of all birds slaughtered in these facilities are reported to and published by AAFC.

Non-commercial slaughter is estimated based on data provided weekly to AAFC by registered hatcheries on the placement of chicks in small lots, intended to produce meat. The placement data are adjusted for death loss and birds kept for laying to arrive at an estimate of chickens that reach maturity. Estimates of both death loss and the time required for chicks to reach maturity are obtained from industry specialists. Non-commercial slaughter is further divided into home consumption and birds sold. Home consumption is calculated by multiplying per capita consumption of the given poultry meat by the human population of farms producing that kind of poultry.

The human population on farms is derived from the linkage of the Agriculture and the Population Censuses.

Two prices obtained from registered processing plants, and published by AAFC, are used to calculate the value of chicken meat production: one for chickens weighing less than 2.3 kilograms and another for those weighing 2.3 kilograms and over. Prices for the corresponding categories are weighted by the quantity produced to obtain the total value. The price for chickens weighing 2.3 kilograms and over is used in calculating the value of production for chickens slaughtered on farms (including home consumption).

Data on stewing hen production and prices are obtained from registered processing plant reports provided to AAFC. No calculation is made for stewing hens slaughtered on farms since the amount is considered negligible. Home consumption is calculated in the same manner as the chicken meat production.

Turkey meat production is based on birds slaughtered in registered slaughter houses, as reported by AAFC, and non-commercial slaughter. Non-commercial slaughter, turkeys slaughtered on farms, is estimated using data on turkey inventories from the most recent Census of Agriculture. Home consumption is calculated in the same manner as the chicken meat production.

Two prices are used to determine the value of turkey meat production: one for turkeys weighing less than 5.0 kgs and another for those weighing 5.0 kgs and over. Prices for the corresponding categories are multiplied by the quantity produced to obtain their value.

### **Data quality**

Data on number of birds sold, eviscerated weight and value are obtained through administrative sources. Producers are paid for the birds which they sell through registered slaughter houses on the basis of these administrative records. Because of this process, the quality of the administrative data is deemed to be high. Registered slaughter houses account for approximately 99% of total poultry production. This implies that total production values are also good. Administrative sources are subject to non-sampling errors such as omissions, duplications and mistakes in reporting, recording and processing the data. The effects of these errors cannot be measured directly.

Although no systematic revisions are undertaken for poultry meat data, revisions that do occur reflect updates resulting from late entries and corrections due to misclassification and data entry errors. Overall, the changes between the original and revised numbers are very small (e.g. less than 1% for chicken and turkey).

# Egg production and value

---

## Concepts

Total egg production in Canada and the provinces includes all eggs sold for consumption, consumed by producers, sold for hatching, leakers and rejects. Production from registered, non-registered as well as hatchery supply flocks are included in the estimates.

The value of egg production is calculated at the provincial level using different prices for eggs produced by the three different types of flocks listed above. These prices include any bonuses and premiums which can be attributed to specific commodities and exclude fees deducted before the producer is paid (e.g. storage, transport and administration costs).

Egg production is derived using average layer numbers and their derived rates of lay. Laying hens include all layers 19 weeks and older except for layers in hatchery supply flocks where layers are 26 weeks and older. Layer numbers and average rates of lay are obtained for the three types of operations (registered flocks, non-registered flocks and hatchery supply flocks).

## Methods

Registered flocks have to be registered with and provide information to provincial egg marketing boards. Layer numbers in registered flocks are supplied by the CEMA, the regulatory board for the egg producing industry. The agency, in turn, receives data from the provincial egg marketing boards. These data are used directly in the estimates without adjustments.

Non-registered flocks are those with fewer birds than the limits set by the provincial egg marketing boards. These limits vary by province and can range from 100 to 500 birds. Layer numbers for the non-registered flocks are estimated using Census data.

Hatchery supply flocks produce hatching eggs for both egg and meat type birds. Layers in hatchery supply flocks are estimated by Statistics Canada based on the number of birds (broilers) provided by Canadian Broiler Hatching Egg Marketing Agency, information on egg sets from CEMA and an average rate of lay for each type of bird.

Rates of lay, at the provincial level, for registered and non-registered flocks and hatchery supply flocks are estimated by industry specialists.

Estimates of all layers, rates of lay and egg production are prepared monthly using administrative data. Layers in registered flocks account for the bulk of the layer population and these data are available weekly from the CEMA.

Monthly estimates for non-registered flocks are made using historical seasonal patterns. Rates of lay do not fluctuate dramatically.

Shifts on rates of lay are made on the basis of monthly egg gradings collected by CEMA from registered grading stations.

The value of egg production for registered flocks is calculated using prices provided by CEMA, which regulates all prices paid to producers. Prices for the non-registered flocks are calculated based on industry information. In the case of eggs produced by the hatchery supply flock, all eggs are valued at prices paid to broiler egg producers as provided by the Canadian Broiler Egg Marketing Agency. Production estimates are simply multiplied by the prices to obtain the total value of production.

The quality of layer numbers in registered flocks is deemed to be high since the number of laying hens in these flocks is set by quota allocation and the flocks are subject to regular audits. The vast majority of layers are found in the registered flocks and thus, total layer estimates can also be considered to be of high quality. Based on the 2001 Census of Agriculture, more than 90% of all layers in each province were in registered flocks except for Saskatchewan and Alberta, where the totals were 79% and 86% respectively.

## Revisions

Layer numbers in registered flocks are collected through the CEMA and are subject to minor revisions. Monthly layer estimates in non-registered flocks are revised, if necessary, after the results of the Census of Agriculture are available.

Rates of lay for both registered and non-registered flocks are assessed monthly based on administrative data published by CEMA on eggs graded at registered stations.

# Consumption of poultry and eggs

---

## Concepts

Statistics Canada's Agriculture Division has produced data indicating the amount of food available for consumption (apparent per capita disappearance) along with estimated quantities of food consumed in Canada.

The apparent per capita disappearance data represent what is available for consumption on average for the total Canadian population. The estimates do not indicate total poultry and egg supplies actually consumed by an individual or specific group of individuals, since estimates are not calculated for waste or spoilage during transportation at the retail level, in households, private institutions or restaurants.

The estimated quantities of food consumed represent apparent per capita disappearance data that have been adjusted to account for retail, household, cooking and plate loss. These data are considered experimental in nature and should be used with caution.

## Methods

A residual approach is used in calculating quantities of poultry meat and eggs available for human consumption. Annual balance sheets are prepared to determine the consumption levels. Total supply is estimated by adding beginning stocks, annual production and imports. Exports and ending stocks are subtracted from total supply to estimate the domestic disappearance. Poultry meat export and import numbers are obtained from AAFC. Apparent per capita consumption is determined by dividing domestic disappearance by the total Canadian population at July 1 each year. Population numbers are obtained from the Demography Division of Statistics Canada. To estimate the amount consumed, factors are applied to the apparent per capita consumption data to account for retail, household, cooking and plate loss.

Domestic disappearance for eggs is obtained by subtracting exports, eggs used for hatching, leakers and rejects from the total supply to arrive at the domestic disappearance of eggs. A revised methodology was introduced in 1986 to calculate the consumption of eggs where 1.95% of total egg production was subtracted to account for leakers and rejects. Import and export data are supplied by the International Trade Division of Statistics Canada. Domestic disappearance is then divided by the July 1 population of Canada to obtain the apparent per capita consumption data. To estimate the amount consumed, factors are applied to the apparent per capita consumption data to account for retail, household, cooking and plate loss.



# Appendix I

---

## Glossary of terms

**Administrative Data:** data that are collected by public or private agencies or organizations in the administration of programs or legislation.

**Broilers:** chickens that are being raised for meat production.

**Egg Sets:** fertilized eggs in hatcheries that are to hatch into chicks, either to replace laying hens or to be raised for meat production.

**Eviscerated Weight:** the weight of a bird that has not been de-boned but has had its head, feathers, feet and innards removed.

**Hatchery Supply Flock:** consists of laying hens which produce eggs that will be hatched into chicks. These chicks will either become laying hens or be raised for meat production.

**Apparent per capita disappearance:** represents what is available for consumption on average for the total Canadian population. The disappearance data are divided by the July 1 Canadian population to arrive at the apparent per capita disappearance estimate. The estimates do not indicate quantities actually consumed by an individual or specific group of individuals, since estimates are not calculated for waste or spoilage during transportation at the retail level, in households, private institutions or restaurants.

**Quantities of food consumed:** the estimated quantities of food consumed represent apparent per capita disappearance data that have been adjusted to account for retail, household, cooking and plate loss. These data are considered experimental in nature and should be used with caution.

**Leakers and rejects:** eggs that do not meet the lowest standard grading requirements.

**Stewing hens:** laying hens which have completed their laying cycle and are slaughtered for meat.