

TABLE OF CONTENTS

INTRODUCTION	1
APPENDIX A NISGA'A LANDS	3
Appendix A-1 Map of Index of Map Sheets of Nisga'a Lands	5
Appendix A-2 32 Map Sheets of Nisga'a Lands	9
Appendix A-3 Metes and bounds description of Nisga'a Lands	43
Appendix A-4 List of Former Nisga'a Indian reserves on Nisga'a Lands	50
APPENDIX B EXCEPTIONS TO NISGA'A LANDS	53
Appendix B-1 Land in the vicinity of Red Bluff that has been set apart as Indian Reserve No.88.	55
Appendix B-2 Fee Simple parcels within the boundaries of Nisga'a Lands	57
Schedule 1 Fee simple parcels with a right to access within the boundaries of Nisga'a Lands as set out in paragraphs 25 and 27 of the Access Chapter	61
Appendix B-3 Woodlot Licence and Agriculture Leases within the boundaries of Nisga'a Lands	63
Sketch 1 Woodlot Licence 141	64
Sketch 2 Agriculture lease 631313 over Block C of District Lot 453, Cassiar District ..	65
Sketch 3 Agriculture lease 633080 over Block A and the Northwest 1/4 of District Lot 3063, Cassiar District.	66
Appendix B-4 Roads associated with the fee simple parcels referred to in Appendix B-2	67
APPENDIX C INTERESTS ON NISGA'A LANDS	69
Appendix C-1 Interests on Nisga'a	71
Part 1 Existing Interests	73
Part 2 Public utility transmission and distribution facilities	76
Part 3 Roads.....	79
Appendix C-2 Applicable forms of document for existing interests listed in Part 1 of Appendix C - 1	85
Document 1 Licence of Occupation for Communication Site	87
Document 2 Licence of Occupation for Provincial Communication Site	97
Document 3 Licence of Occupation for Communication Site with Utility Access	107
Document 4 Licence of Occupation for Communication Site with Road Access	119
Document 5 Licence of Occupation for Communication Site with Road Access and Utility Access	131
Document 6 Licence of Occupation for Hydro Communication Site	143
Document 7 Licence of Occupation for Forestry Experimental Plots	153
Document 8 Licence of Occupation for a Hydrometric Station	163
Document 9 Licence of Occupation for a Navigational Light	173
Document 10 Licence of Occupation for Telephone Exchange	183
Document 11 Permit of Occupation for Waterworks	193

Document 12	Special Use Permit for Forestry Operations	203
Document 13	Leases (not published)	211
Appendix C-3	Applicable forms of document for Public Utility Transmission and Distribution Facilities listed in Part 2 of Appendix C - 1	213
Document 1	Grant of Right of Way and Licence for Public Utility Works to British Columbia Hydro and Power Authority (Hydro)	215
Document 2	Grant of Right of Way and Licence for Telecommunications to BC TEL	227
Appendix C-4	Applicable forms of document for Roads listed in Part 3 of Appendix C - 1	239
Document 1	Grant of Right of Way for Secondary Provincial Roads;	241
Document 2	Grant of Private Road Easement; and	245
Document 3	Grant of Right of Way for Access Roads to British Columbia Hydro and Power Authority (Hydro)	255
Appendix C-5	Certificates of Possession issued by Canada on former Nisga'a Indian reserves on Nisga'a Lands	263
Appendix C-6	Persons with an interest authorized by Band Council Resolution on former Nisga'a Indian reserves on Nisga'a Lands	269
Appendix C-7	Angling guide licences, trapline licences and guide outfitter licence wholly or partially on Nisga'a Lands	287
APPENDIX D	NISGA'A FEE SIMPLE LANDS OUTSIDE NISGA'A LANDS	289
Appendix D-1	Map of Category A and B Lands	291
Appendix D-2	Category A Lands	295
Appendix D-3	Sketches of Category A Lands	301
Sketch 1	Former Indian Reserve No. 15 "Kinnamax" (X'anmas) and extension	303
Sketch 2	Former Indian Reserve No. 16 "Talahaat" (Txaalaxhatkw) and extension	304
Sketch 3	Former Indian Reserve No. 17 "Georgie" (X'uji)	305
Sketch 4	Former Indian Reserve No. 19 "Scamakounst" (Sgamagunt)	306
Sketch 5	Former Indian Reserve No. 20 "Kinmelit" (Gwinmilit)	307
Sketch 6	Former Indian Reserve No. 21 "Slooks" (Xlukwskw)	308
Sketch 7	Former Indian Reserve No. 22 "Staqoo" (Ksi Xts'at'kw)	309
Sketch 8	Former Indian Reserve No. 23 "Ktsinet" (Xts'init) and extensions	310
Sketch 9	Former Indian Reserve No. 24 "Gitzaalt" (Gits'oohl)	311
Sketch 10	Former Indian Reserves No. 26 and 26A "Tackuan" (T'ak'uwaan) and extensions	312
Sketch 11	Former Indian Reserves No. 27 and 27A "Kshwan" (Ks wan) and extensions	313
Sketch 12	Former Indian Reserve No. 38 "Lakbelak" (Lax Bilak)	314
Sketch 13	Former Indian Reserve No. 39 "Lakbelak Creek" (Lax Bilak)	315
Sketch 14	Former Indian Reserve No. 40 "Lakbelak Lake" (Lax Bilak)	316
Sketch 15	Former Indian Reserve No. 42 "Dogfish Bay" (Xmaat'in) and extension	317
Sketch 16	Former Indian Reserve No. 43 "Pearse Island" (Wil Milit) and extension	318
Appendix D-4	List of estates, interests, charges, mineral claims, encumbrances, licences, and permits located on Category A Lands	319
Appendix D-5	Sketches showing the location of active mineral claims on Category A Lands	321
Sketch 1	Mineral Claims in vicinity of former Indian Reserve No.s 26 and 26A "Tackuan"	323
Sketch 2	Mineral Claims in vicinity of former Indian Reserve No.s 27 and 27A "Kshwan"	324

Appendix D-6	Category B Lands	325
Appendix D-7	Sketches of Category B Lands	331
Sketch 1	Hattie Island	333
Sketch 2	Fords Cove	334
Sketch 3	Winter Inlet	335
Sketch 4	Nasoga Gulf	336
Sketch 5	Echo Cove	337
Sketch 6	Kinskuch Lake	338
Sketch 7	Jade Lake	339
Sketch 8	Kitsault Lake	340
Sketch 9	Kwinageese Lake	341
Sketch 10	Ohl Creek	342
Sketch 11	Meziadin Junction	343
Sketch 12	Meziadin Lake	344
Sketch 13	Amoth Lake	345
Sketch 14	Amoth Headwaters Lake	346
Sketch 15	Grizzly Bear Lake	347
Appendix D-8	List of estates, interests, charges, mineral claims, encumbrances, licences and permits located on Category B Lands	349
 APPENDIX E	 MAP OF NISGA'A COMMERCIAL RECREATION TENURE	 351
 APPENDIX F	 HERITAGE SITES AND KEY GEOGRAPHIC FEATURES	 355
Appendix F-1	Sites of cultural and historic significance to the Nisga'a Nation to be designated as provincial heritage sites	357
Appendix F-2	Names to be recorded in the British Columbia Geographic Names Information System	358
Appendix F-3	Place names to be changed by British Columbia	360
 APPENDIX G	 PARKS AND ECOLOGICAL RESERVE	 363
Appendix G-1	Map and metes and bounds description of Anhlut'ukwsim Laxmihl Angwinga'asanskwhl Nisga'a (a.k.a. Nisga'a Memorial Lava Bed Park)	366
Appendix G-2	Map and metes and bounds description of Gingietl Creek Ecological Reserve No. 115	371
Appendix G-3	Map and metes and bounds description of Bear Glacier Park	375
 APPENDIX H	 TRANSITIONAL PROVISIONS FOR FOREST RESOURCES	 379
Schedule 1	Map of Forestry Transition period planning criteria for forest development plans	
 APPENDIX I	 MAPS OF NASS AREA AND AREAS FOR BIVALVE HARVESTING. .	 395
Appendix I-1	Map of Nass Area with general location of Intertidal Zones for Bivalve Harvesting	397
Appendix I-2	Map of Observatory Inlet Bivalve Harvesting Area	399

Appendix I-3	Map of Nasoga'a Gulf Bivalve Harvesting Area	400
Appendix I-4	Map of Winter Inlet Bivalve Harvesting Area	401
 APPENDIX J	 NASS WILDLIFE AREA.	 403
	Map and metes and bounds description of the Nass Wildlife Area	
 APPENDIX K	 MAP OF GUIDE OUTFITTER AREA	 409
 APPENIX L	 CULTURAL ARTIFACTS AND HERITAGE.	 413
Appendix L-1	Nisga'a Artifacts to be transferred from the Canadian Museum of Civilization to the Nisga'a Nation	415
Appendix L-2	Nisga'a Artifacts to be shared by the Canadian Museum of Civilization and the Nisga'a Nation.	417
Appendix L-3	Nisga'a Artifacts to be transferred from the Royal British Columbia Museum to the Nisga'a Nation	421
Appendix L-4	Nisga'a Artifacts to be held by the Royal British Columbia Museum	424
 APPENDIX M	 DISPUTE RESOLUTION	 427
Appendix M-1	Collaborative Negotiations	429
Appendix M-2	Mediation	432
Appendix M-3	Technical Advisory Panel	436
Appendix M-4	Neutral Evaluation	441
Appendix M-5	Elders Advisory Council	445
Appendix M-6	Arbitration.	448

INTRODUCTION

These appendices form part of the Nisga'a Final Agreement entered into between:

the Nisga'a Nation;

Her Majesty the Queen
in Right of Canada;

and

Her Majesty the Queen
in Right of
British Columbia

APPENDIX A

NISGA'A LANDS

APPENDIX A - 1 MAP INDEX OF MAP SHEETS OF NISGA'A LANDS

APPENDIX A - 2 32 MAP SHEETS OF NISGA'A LANDS

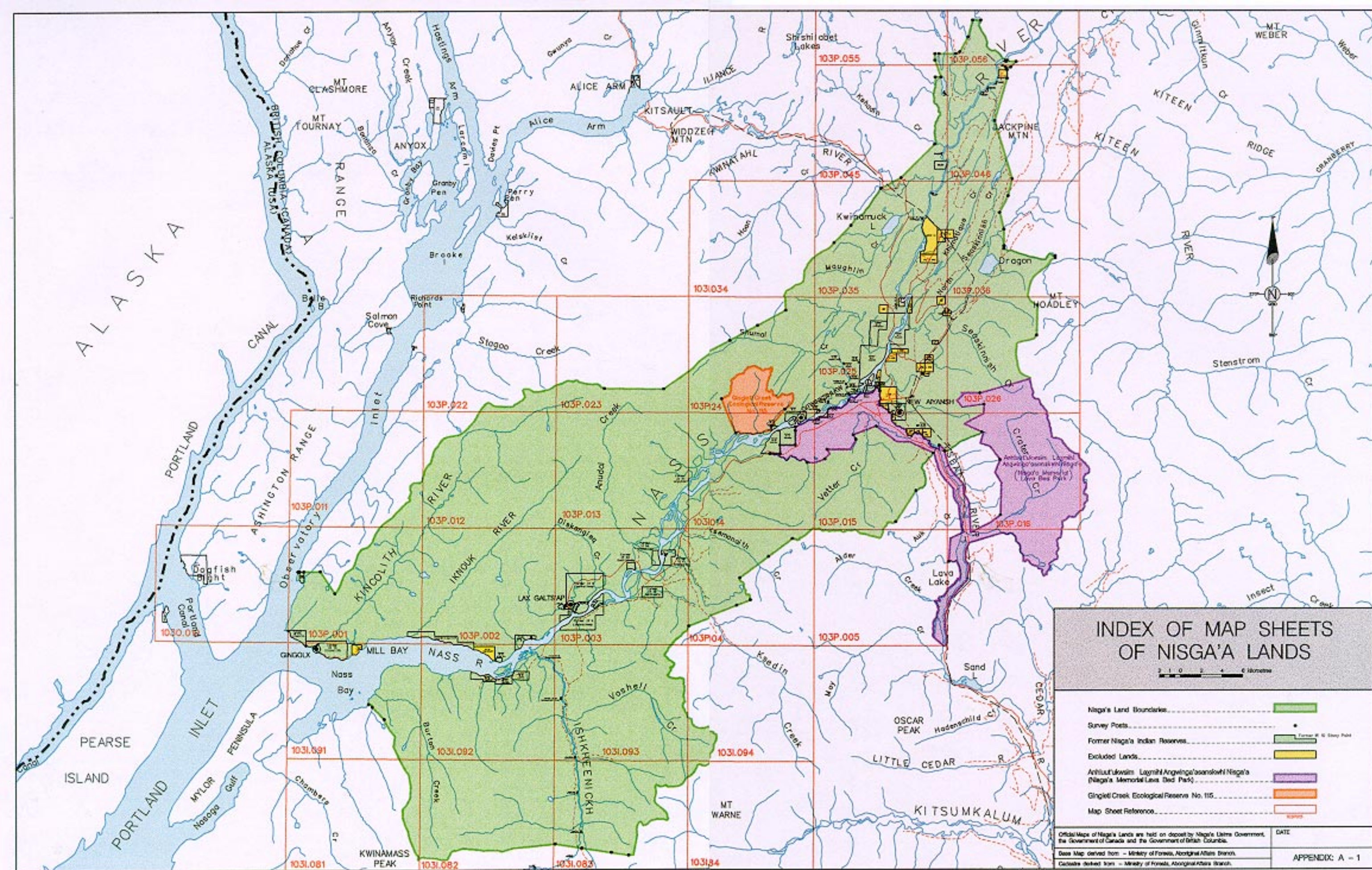
Map Sheet 1	103I. 081	Map Sheet 17	103P. 013
Map Sheet 2	103I. 082	Map Sheet 18	103P. 014
Map Sheet 3	103I. 083	Map Sheet 19	103P. 015
Map Sheet 4	103I. 084	Map Sheet 20	103P. 016
Map Sheet 5	103I. 091	Map Sheet 21	103P. 022
Map Sheet 6	103I. 092	Map Sheet 22	103P. 023
Map Sheet 7	103I. 093	Map Sheet 23	103P. 024
Map Sheet 8	103I. 094	Map Sheet 24	103P. 025
Map Sheet 9	103O. 010	Map Sheet 25	103P. 026
Map Sheet 10	103P. 001	Map Sheet 26	103P. 034
Map Sheet 11	103P. 002	Map Sheet 27	103P. 035
Map Sheet 12	103P. 003	Map Sheet 28	103P. 036
Map Sheet 13	103P. 004	Map Sheet 29	103P. 045
Map Sheet 14	103P. 005	Map Sheet 30	103P. 046
Map Sheet 15	103P. 011	Map Sheet 31	103P. 055
Map Sheet 16	103P. 012	Map Sheet 32	103P. 056

APPENDIX A - 3 METES AND BOUNDS DESCRIPTION OF NISGA'A LANDS

APPENDIX A - 4 LIST OF FORMER NISGA'A INDIAN RESERVES ON NISGA'A LANDS

APPENDIX A - 1

MAP INDEX OF MAP SHEETS OF NISGA'A LANDS



APPENDIX A - 2

32 MAP SHEETS OF NISGA'A LANDS

Map Sheet 1	103I. 081	Map Sheet 17	103P. 013
Map Sheet 2	103I. 082	Map Sheet 18	103P. 014
Map Sheet 3	103I. 083	Map Sheet 19	103P. 015
Map Sheet 4	103I. 084	Map Sheet 20	103P. 016
Map Sheet 5	103I. 091	Map Sheet 21	103P. 022
Map Sheet 6	103I. 092	Map Sheet 22	103P. 023
Map Sheet 7	103I. 093	Map Sheet 23	103P. 024
Map Sheet 8	103I. 094	Map Sheet 24	103P. 025
Map Sheet 9	103O. 010	Map Sheet 25	103P. 026
Map Sheet 10	103P. 001	Map Sheet 26	103P. 034
Map Sheet 11	103P. 002	Map Sheet 27	103P. 035
Map Sheet 12	103P. 003	Map Sheet 28	103P. 036
Map Sheet 13	103P. 004	Map Sheet 29	103P. 045
Map Sheet 14	103P. 005	Map Sheet 30	103P. 046
Map Sheet 15	103P. 011	Map Sheet 31	103P. 055
Map Sheet 16	103P. 012	Map Sheet 32	103P. 056



FLUORESCENT LEGEND

<p>Transpiration</p> <p>Rate of transpiration is affected by the following factors:</p> <ul style="list-style-type: none"> Temperature Humidity Wind speed Light intensity Soil moisture Plant factors (e.g. leaf area, stomatal density) <p>Experiment: Potometer</p> <p>Diagram of a potometer setup showing a plant shoot connected to a glass tube with a bubble. The distance moved by the bubble is measured over time to determine the rate of transpiration.</p>	<p>Photosynthesis</p> <p>Rate of photosynthesis is affected by the following factors:</p> <ul style="list-style-type: none"> Light intensity CO₂ concentration Temperature Plant factors (e.g. leaf area, chlorophyll content) <p>Experiment: Leaf Disc</p> <p>Diagram of a leaf disc floating in a solution of sodium bicarbonate. The disc is inverted, and the volume of gas produced is measured by the displacement of water.</p>	<p>Enzymes</p> <p>Enzymes are biological catalysts that speed up chemical reactions in living organisms. They are specific to their substrates and are affected by temperature and pH.</p> <p>Experiment: Amylase</p> <p>Diagram of an experiment to investigate the effect of temperature on the activity of the enzyme amylase. The reaction is monitored by the disappearance of a colored substrate.</p>	<p>Cell Structure</p> <p>Diagram of a plant cell showing the cell wall, nucleus, chloroplasts, and vacuole. The cell is shown in a state of turgor.</p> <p>Experiment: Microscopy</p> <p>Diagram of a microscope showing the eyepiece, objective lenses, stage, and base. The diagram illustrates the path of light through the specimen and lenses.</p>	<p>Plant Tissues</p> <p>Diagram of a plant stem showing the different tissues: epidermis, cortex, phloem, cambium, xylem, and pith.</p> <p>Experiment: Staining</p> <p>Diagram of a plant tissue being stained with iodine solution to visualize starch grains.</p>	<p>Human Physiology</p> <p>Diagram of the human digestive system showing the mouth, esophagus, stomach, small intestine, and large intestine.</p> <p>Experiment: Digestion</p> <p>Diagram of an experiment to investigate the digestion of starch by the enzyme amylase. The reaction is monitored by the disappearance of a colored substrate.</p>
--	---	--	--	---	---



NISGA'A LANDS

Aug Sheet 123.082































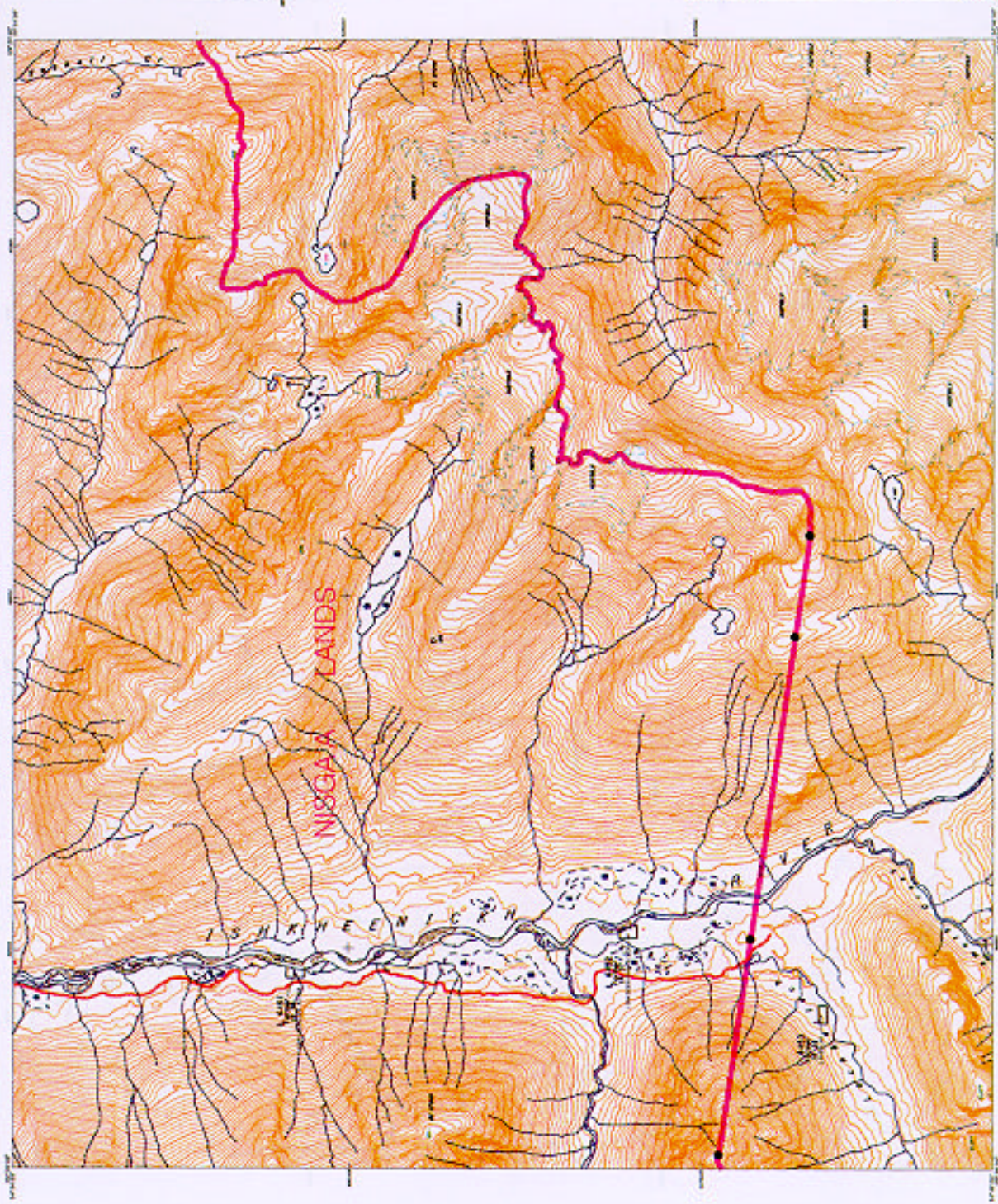



Boardman approved as dictated on this _____ day of _____

Colleen Lange of Maple's Lovers are held in demand with Maple's Lovers Entertainment, the Queen of Canada and the Government of the Province of British Columbia.

APPENDIX A - 2

APPENDIX A - 2



PLANIMETRIC LEGEND

	Boundary
	Road
	River
	Lake
	Contour
	Settlement
	Forest
	Water
	Power Line
	Fence
	Trail
	Boundary
	Road
	River
	Lake
	Contour
	Settlement
	Forest
	Water
	Power Line
	Fence
	Trail
	Boundary
	Road
	River
	Lake
	Contour
	Settlement
	Forest
	Water
	Power Line
	Fence
	Trail



NISGAYA LANDS

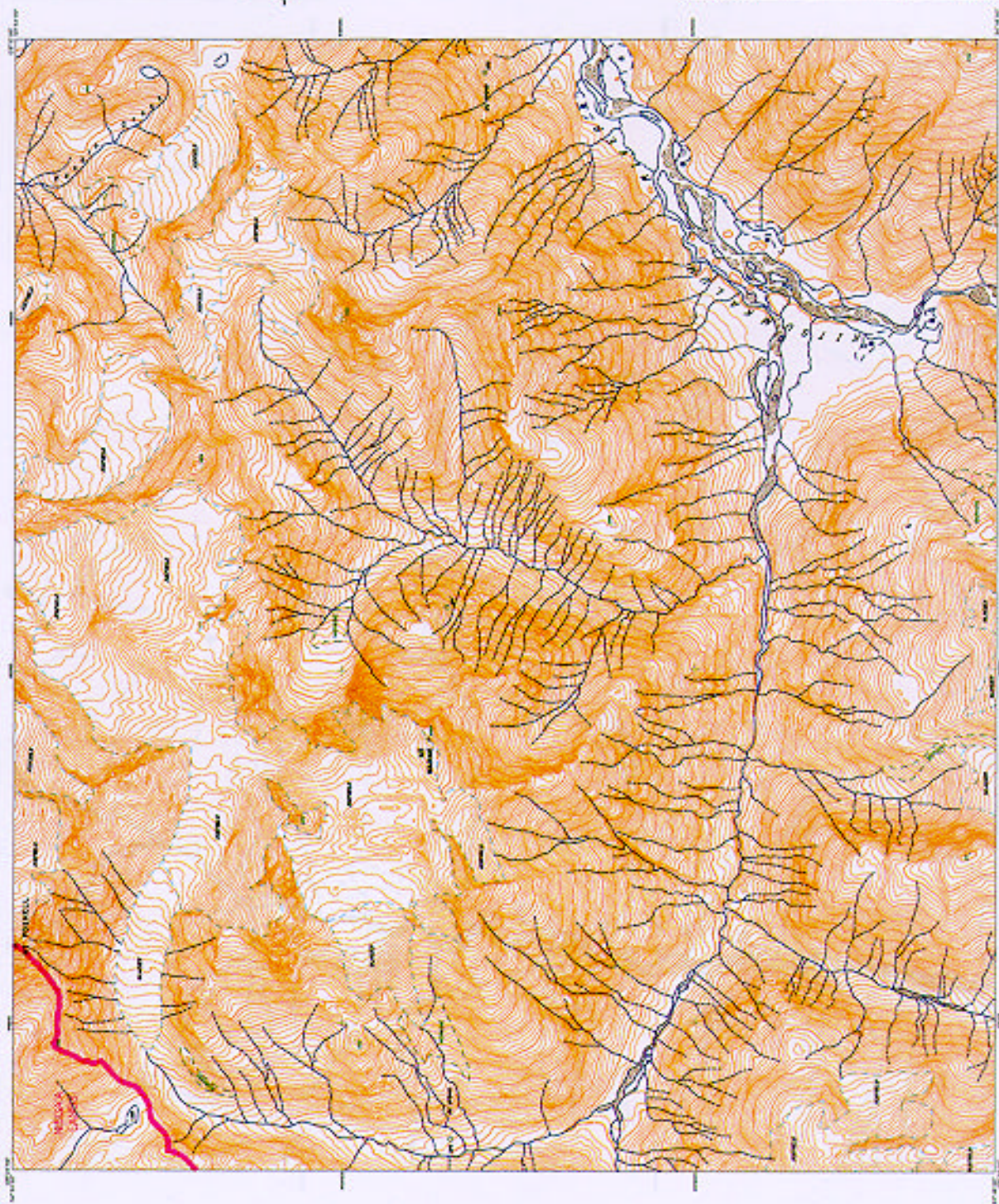
Map Sheet 803.003



	Boundary
	Road
	River
	Lake
	Contour
	Settlement
	Forest
	Water
	Power Line
	Fence
	Trail

Map Sheet 803.003
 NISGAYA LANDS
 Map Sheet 803.003

Map Sheet 803.003
 NISGAYA LANDS
 Map Sheet 803.003



PLANIMETRIC LEGEND

Transportation

Highway	1-2
Trunk Road	3-4
Local Road	5-6
Trail	7-8
Waterway	9-10
Canal	11-12
Lock	13-14
Bridge	15-16
Swamp	17-18
Marsh	19-20
Shrubland	21-22
Forest	23-24
Open	25-26
Water	27-28
Ice	29-30
Permafrost	31-32
Perennial Snow	33-34
Glacier	35-36
Iceberg	37-38
Ice Field	39-40
Ice Shelf	41-42
Ice Cap	43-44
Ice Sheet	45-46
Ice Mass	47-48
Ice Bank	49-50
Ice Drift	51-52
Ice Deposit	53-54
Ice Accumulation	55-56
Ice Buildup	57-58
Ice Growth	59-60
Ice Expansion	61-62
Ice Increase	63-64
Ice Enlargement	65-66
Ice Growth	67-68
Ice Expansion	69-70
Ice Increase	71-72
Ice Enlargement	73-74
Ice Growth	75-76
Ice Expansion	77-78
Ice Increase	79-80
Ice Enlargement	81-82
Ice Growth	83-84
Ice Expansion	85-86
Ice Increase	87-88
Ice Enlargement	89-90
Ice Growth	91-92
Ice Expansion	93-94
Ice Increase	95-96
Ice Enlargement	97-98
Ice Growth	99-100

Landmark features

Rocky outcrop	101-102
Cliff	103-104
Scree	105-106
Gravel	107-108
Sand	109-110
Silt	111-112
Clay	113-114
Shale	115-116
Slate	117-118
Schist	119-120
Gneiss	121-122
Granite	123-124
Diorite	125-126
Basalt	127-128
Andesite	129-130
Rhyolite	131-132
Trachyte	133-134
Obsidian	135-136
Quartzite	137-138
Serpentine	139-140
Amphibolite	141-142
Metasiltstone	143-144
Metasandstone	145-146
Metasiltstone	147-148
Metasandstone	149-150
Metasiltstone	151-152
Metasandstone	153-154
Metasiltstone	155-156
Metasandstone	157-158
Metasiltstone	159-160
Metasandstone	161-162
Metasiltstone	163-164
Metasandstone	165-166
Metasiltstone	167-168
Metasandstone	169-170
Metasiltstone	171-172
Metasandstone	173-174
Metasiltstone	175-176
Metasandstone	177-178
Metasiltstone	179-180
Metasandstone	181-182
Metasiltstone	183-184
Metasandstone	185-186
Metasiltstone	187-188
Metasandstone	189-190
Metasiltstone	191-192
Metasandstone	193-194
Metasiltstone	195-196
Metasandstone	197-198
Metasiltstone	199-200

Drainage and related features

Drainage	201-202
Stream	203-204
Channel	205-206
Bedrock	207-208
Gravel	209-210
Sand	211-212
Silt	213-214
Clay	215-216
Shale	217-218
Slate	219-220
Schist	221-222
Gneiss	223-224
Granite	225-226
Diorite	227-228
Basalt	229-230
Andesite	231-232
Rhyolite	233-234
Trachyte	235-236
Obsidian	237-238
Quartzite	239-240
Serpentine	241-242
Amphibolite	243-244
Metasiltstone	245-246
Metasandstone	247-248
Metasiltstone	249-250
Metasandstone	251-252
Metasiltstone	253-254
Metasandstone	255-256
Metasiltstone	257-258
Metasandstone	259-260
Metasiltstone	261-262
Metasandstone	263-264
Metasiltstone	265-266
Metasandstone	267-268
Metasiltstone	269-270
Metasandstone	271-272
Metasiltstone	273-274
Metasandstone	275-276
Metasiltstone	277-278
Metasandstone	279-280
Metasiltstone	281-282
Metasandstone	283-284
Metasiltstone	285-286
Metasandstone	287-288
Metasiltstone	289-290
Metasandstone	291-292
Metasiltstone	293-294
Metasandstone	295-296
Metasiltstone	297-298
Metasandstone	299-300

Other features

Other features	301-302
Other features	303-304
Other features	305-306
Other features	307-308
Other features	309-310
Other features	311-312
Other features	313-314
Other features	315-316
Other features	317-318
Other features	319-320
Other features	321-322
Other features	323-324
Other features	325-326
Other features	327-328
Other features	329-330
Other features	331-332
Other features	333-334
Other features	335-336
Other features	337-338
Other features	339-340
Other features	341-342
Other features	343-344
Other features	345-346
Other features	347-348
Other features	349-350
Other features	351-352
Other features	353-354
Other features	355-356
Other features	357-358
Other features	359-360
Other features	361-362
Other features	363-364
Other features	365-366
Other features	367-368
Other features	369-370
Other features	371-372
Other features	373-374
Other features	375-376
Other features	377-378
Other features	379-380
Other features	381-382
Other features	383-384
Other features	385-386
Other features	387-388
Other features	389-390
Other features	391-392
Other features	393-394
Other features	395-396
Other features	397-398
Other features	399-400

Other features

Other features	401-402
Other features	403-404
Other features	405-406
Other features	407-408
Other features	409-410
Other features	411-412
Other features	413-414
Other features	415-416
Other features	417-418
Other features	419-420
Other features	421-422
Other features	423-424
Other features	425-426
Other features	427-428
Other features	429-430
Other features	431-432
Other features	433-434
Other features	435-436
Other features	437-438
Other features	439-440
Other features	441-442
Other features	443-444
Other features	445-446
Other features	447-448
Other features	449-450
Other features	451-452
Other features	453-454
Other features	455-456
Other features	457-458
Other features	459-460
Other features	461-462
Other features	463-464
Other features	465-466
Other features	467-468
Other features	469-470
Other features	471-472
Other features	473-474
Other features	475-476
Other features	477-478
Other features	479-480
Other features	481-482
Other features	483-484
Other features	485-486
Other features	487-488
Other features	489-490
Other features	491-492
Other features	493-494
Other features	495-496
Other features	497-498
Other features	499-500

Other features

Other features	501-502
Other features	503-504
Other features	505-506
Other features	507-508
Other features	509-510
Other features	511-512
Other features	513-514
Other features	515-516
Other features	517-518
Other features	519-520
Other features	521-522
Other features	523-524
Other features	525-526
Other features	527-528
Other features	529-530
Other features	531-532
Other features	533-534
Other features	535-536
Other features	537-538
Other features	539-540
Other features	541-542
Other features	543-544
Other features	545-546
Other features	547-548
Other features	549-550
Other features	551-552
Other features	553-554
Other features	555-556
Other features	557-558
Other features	559-560
Other features	561-562
Other features	563-564
Other features	565-566
Other features	567-568
Other features	569-570
Other features	571-572
Other features	573-574
Other features	575-576
Other features	577-578
Other features	579-580
Other features	581-582
Other features	583-584
Other features	585-586
Other features	587-588
Other features	589-590
Other features	591-592
Other features	593-594
Other features	595-596
Other features	597-598
Other features	599-600

Other features

Other features	601-602
Other features	603-604
Other features	605-606
Other features	607-608
Other features	609-610
Other features	611-612
Other features	613-614
Other features	615-616
Other features	617-618
Other features	619-620
Other features	621-622
Other features	623-624
Other features	625-626
Other features	627-628
Other features	629-630
Other features	631-632
Other features	633-634
Other features	635-636
Other features	637-638
Other features	639-640
Other features	641-642
Other features	643-644
Other features	645-646
Other features	647-648
Other features	649-650
Other features	651-652
Other features	653-654
Other features	655-656
Other features	657-658
Other features	659-660
Other features	661-662
Other features	663-664
Other features	665-666
Other features	667-668
Other features	669-670
Other features	671-672
Other features	673-674
Other features	675-676
Other features	677-678
Other features	679-680
Other features	681-682
Other features	683-684
Other features	685-686
Other features	687-688
Other features	689-690
Other features	691-692
Other features	693-694
Other features	695-696
Other features	697-698
Other features	699-700

Other features

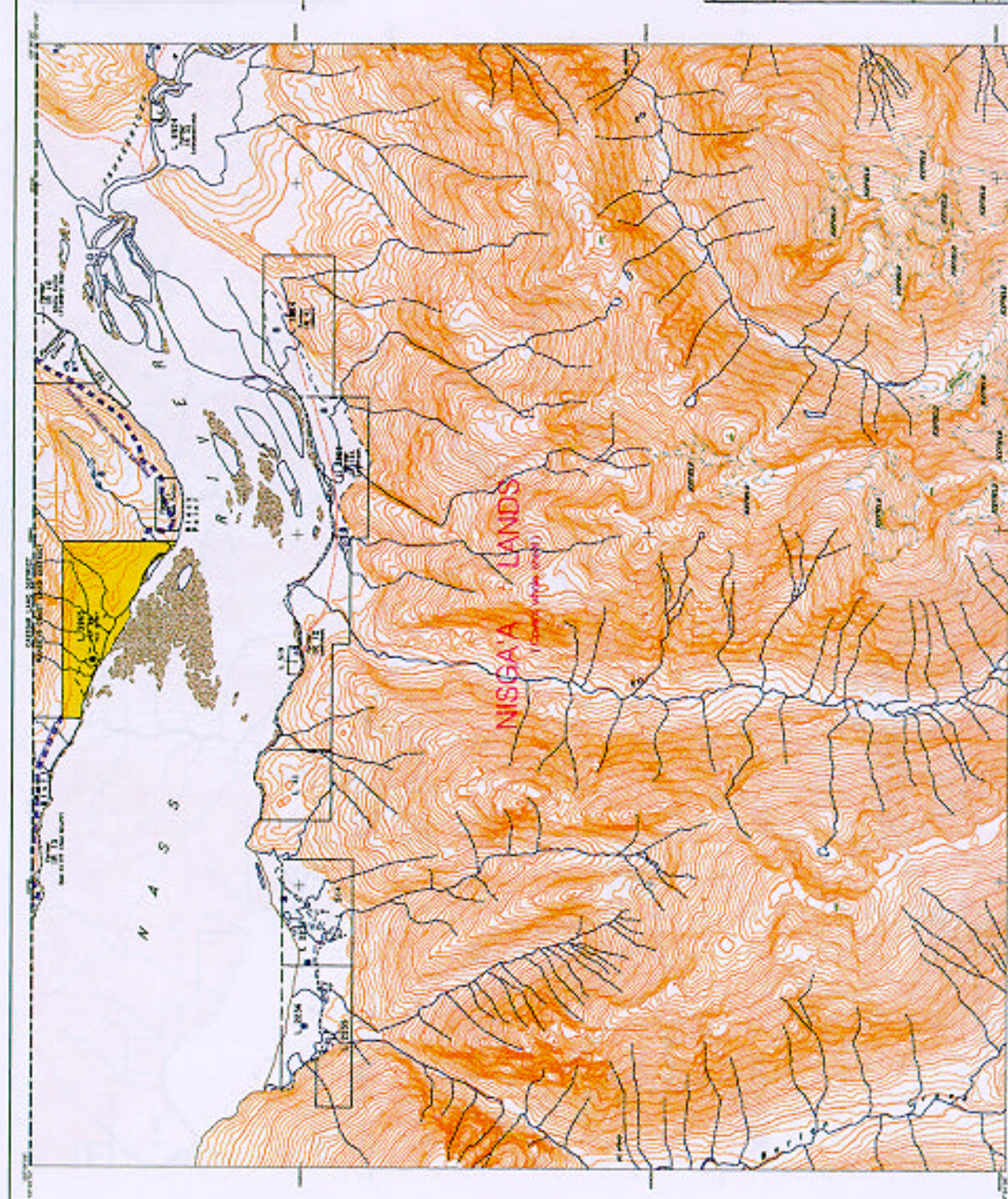
Other features	701-702
Other features	703-704
Other features	705-706
Other features	707-708
Other features	709-710
Other features	711-712
Other features	713-714
Other features	715-716
Other features	717-718
Other features	719-720
Other features	721-722
Other features	723-724
Other features	725-726
Other features	727-728
Other features	729-730
Other features	731-732
Other features	733-734
Other features	735-736
Other features	737-738
Other features	739-740
Other features	741-742
Other features	743-744
Other features	745-746
Other features	747-748
Other features	749-750
Other features	751-752
Other features	753-754
Other features	755-756
Other features	757-758
Other features	759-760
Other features	761-762
Other features	763-764
Other features	765-766
Other features	767-768
Other features	769-770
Other features	771-772
Other features	773-774
Other features	775-776
Other features	777-778
Other features	779-780
Other features	781-782
Other features	783-784
Other features	785-786
Other features	787-788
Other features	789-790
Other features	791-792
Other features	793-794
Other features	795-796
Other features	797-798
Other features	799-800

Other features

Other features	801-802
Other features	803-804
Other features	805-806
Other features	807-808
Other features	809-810
Other features	811-812
Other features	813-814
Other features	815-816
Other features	817-818
Other features	819-820
Other features	821-822
Other features	823-824
Other features	825-826
Other features	827-828
Other features	829-830
Other features	831-832
Other features	833-834
Other features	835-836
Other features	837-838
Other features	839-840
Other features	841-842
Other features	843-844
Other features	845-846
Other features	847-848
Other features	849-850
Other features	851-852
Other features	853-854
Other features	855-856
Other features	857-858
Other features	859-860
Other features	861-862
Other features	863-864
Other features	865-866
Other features	867-868
Other features	869-870
Other features	871-872
Other features	873-874
Other features	875-876
Other features	877-878
Other features	879-880
Other features	881-882
Other features	883-884
Other features	885-886
Other features	887-888
Other features	889-890
Other features	891-892
Other features	893-894
Other features	895-896
Other features	897-898
Other features	899-900

Other features

Other features	901-902
Other features	903-904
Other features	905-906
Other features	907



FLUORESCENT LEGEND

[illegible]

NISGA'A LANDS

4490 Sheet 1739.062

[illegible]

For further information, please contact: info@hugoboss.com

Consent Maps of Hinger's Lands are held on deposit with Neger's Library, Government, the Government of Canada, and the Government of the Province of British Columbia.

Long-term Survival		Short-term Survival		Quality of Life		Health Economics	
Study	Survival (%)	Study	Survival (%)	Study	Quality of Life	Study	Health Economics
1	85	1	85	1	85	1	85
2	80	2	80	2	80	2	80
3	75	3	75	3	75	3	75
4	70	4	70	4	70	4	70
5	65	5	65	5	65	5	65
6	60	6	60	6	60	6	60
7	55	7	55	7	55	7	55
8	50	8	50	8	50	8	50
9	45	9	45	9	45	9	45
10	40	10	40	10	40	10	40
11	35	11	35	11	35	11	35
12	30	12	30	12	30	12	30
13	25	13	25	13	25	13	25
14	20	14	20	14	20	14	20
15	15	15	15	15	15	15	15
16	10	16	10	16	10	16	10
17	5	17	5	17	5	17	5
18	0	18	0	18	0	18	0
19	0	19	0	19	0	19	0
20	0	20	0	20	0	20	0
21	0	21	0	21	0	21	0
22	0	22	0	22	0	22	0
23	0	23	0	23	0	23	0
24	0	24	0	24	0	24	0
25	0	25	0	25	0	25	0
26	0	26	0	26	0	26	0
27	0	27	0	27	0	27	0
28	0	28	0	28	0	28	0
29	0	29	0	29	0	29	0
30	0	30	0	30	0	30	0
31	0	31	0	31	0	31	0
32	0	32	0	32	0	32	0
33	0	33	0	33	0	33	0
34	0	34	0	34	0	34	0
35	0	35	0	35	0	35	0
36	0	36	0	36	0	36	0
37	0	37	0	37	0	37	0
38	0	38	0	38	0	38	0
39	0	39	0	39	0	39	0
40	0	40	0	40	0	40	0
41	0	41	0	41	0	41	0
42	0	42	0	42	0	42	0
43	0	43	0	43	0	43	0
44	0	44	0	44	0	44	0
45	0	45	0	45	0	45	0
46	0	46	0	46	0	46	0
47	0	47	0	47	0	47	0
48	0	48	0	48	0	48	0
49	0	49	0	49	0	49	0
50	0	50	0	50	0	50	0
51	0	51	0	51	0	51	0
52	0	52	0	52	0	52	0
53	0	53	0	53	0	53	0
54	0	54	0	54	0	54	0
55	0	55	0	55	0	55	0
56	0	56	0	56	0	56	0
57	0	57	0	57	0	57	0
58	0	58	0	58	0	58	0
59	0	59	0	59			



PLANNING LEGEND

Transcription	<p>1. What is the template strand? The strand that is used to synthesize the complementary RNA strand.</p> <p>2. What is the coding strand? The strand that has the same sequence as the RNA (except for T instead of U).</p> <p>3. What is the start codon? AUG (codes for Methionine).</p> <p>4. What is the stop codon? UAA, UAG, UGA (do not code for any amino acid).</p> <p>5. What is the function of the 5' cap? Protects the RNA from degradation and helps in ribosome binding.</p> <p>6. What is the function of the poly-A tail? Protects the RNA from degradation and helps in export from the nucleus.</p>
Translation	<p>1. What is the ribosome? A large complex of RNA and protein that synthesizes proteins.</p> <p>2. What is the function of the ribosome? To synthesize a protein from an mRNA template.</p> <p>3. What is the function of the tRNA? To bring amino acids to the ribosome and match them with the mRNA codons.</p> <p>4. What is the function of the rRNA? To form the structural core of the ribosome and catalyze the formation of peptide bonds.</p> <p>5. What is the function of the mRNA? To carry the genetic information from the DNA to the ribosome.</p>
Genetics	<p>1. What is a gene? A segment of DNA that codes for a specific protein.</p> <p>2. What is a chromosome? A long molecule of DNA packaged with proteins.</p> <p>3. What is a mutation? A change in the DNA sequence.</p> <p>4. What is a point mutation? A change in a single nucleotide.</p> <p>5. What is a frameshift mutation? A deletion or insertion of nucleotides that shifts the reading frame.</p> <p>6. What is a silent mutation? A mutation that does not change the amino acid sequence.</p> <p>7. What is a missense mutation? A mutation that changes one amino acid.</p> <p>8. What is a nonsense mutation? A mutation that creates a premature stop codon.</p>
Cell Biology	<p>1. What is a cell? The basic unit of life.</p> <p>2. What is a prokaryotic cell? A cell without a nucleus.</p> <p>3. What is a eukaryotic cell? A cell with a nucleus.</p> <p>4. What is the nucleus? The control center of the cell, containing DNA.</p> <p>5. What is the cytoplasm? The fluid-filled space inside the cell.</p> <p>6. What is the cell membrane? The boundary of the cell.</p> <p>7. What is the cell wall? A rigid structure that provides support and protection.</p> <p>8. What is a vacuole? A fluid-filled sac used for storage.</p> <p>9. What is a lysosome? An organelle that breaks down waste materials.</p> <p>10. What is a mitochondrion? An organelle that produces energy for the cell.</p>



NISGA'A LANDS

Use Sheet 1001003



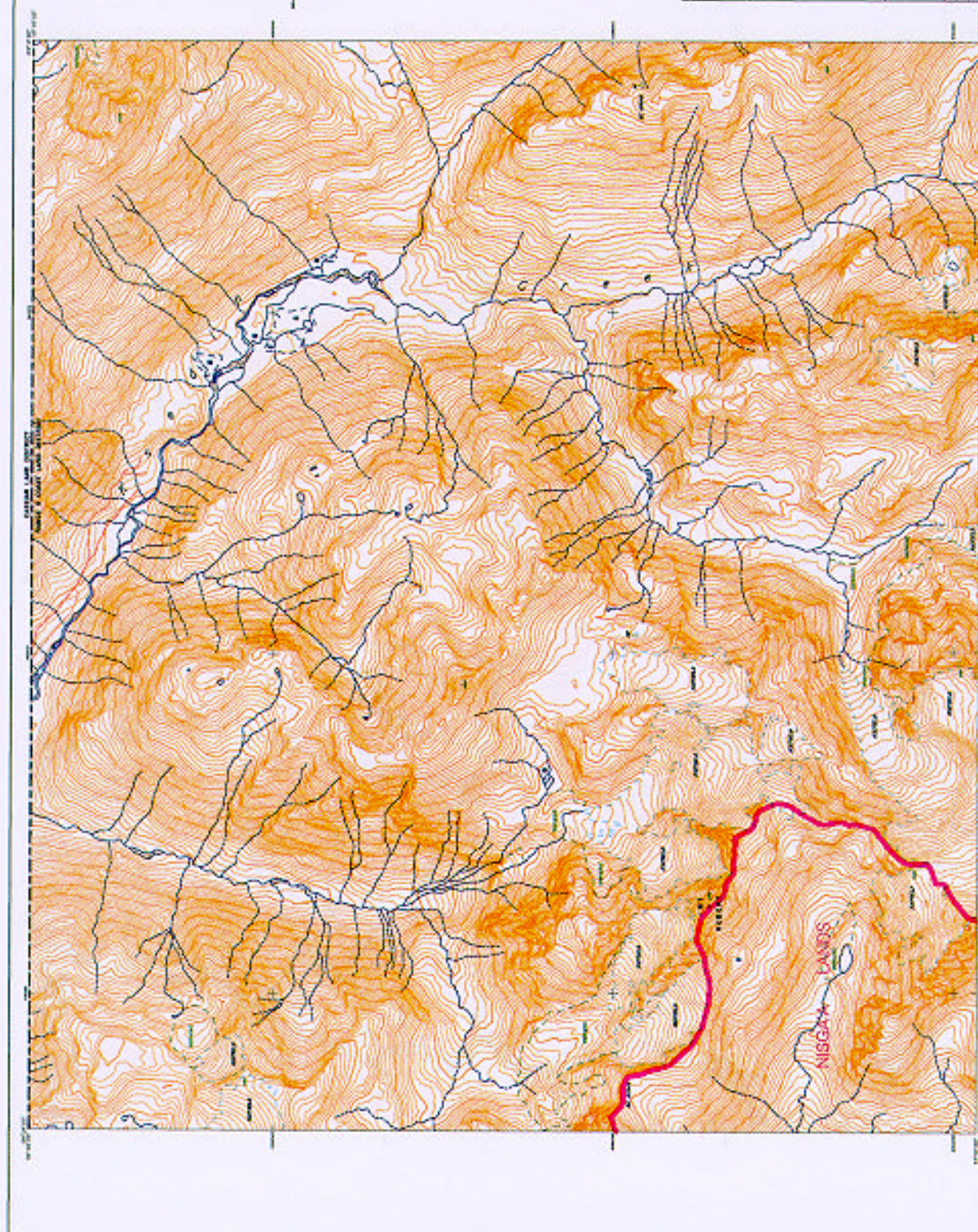
1990's Last Minutes
 1990's News
 1990's Sports
 1990's Travel
 1990's Weather
 1990's Entertainment
 1990's Health
 1990's Education
 1990's Technology
 1990's Business
 1990's Politics
 1990's Culture
 1990's Science
 1990's Environment
 1990's Law
 1990's Religion
 1990's History
 1990's Geography
 1990's Social Issues
 1990's Arts
 1990's Music
 1990's Film
 1990's Literature
 1990's Theater
 1990's Television
 1990's Radio
 1990's Internet
 1990's Mobile
 1990's Gaming
 1990's Sports
 1990's Entertainment
 1990's Health
 1990's Education
 1990's Technology
 1990's Business
 1990's Politics
 1990's Culture
 1990's Science
 1990's Environment
 1990's Law
 1990's Religion
 1990's History
 1990's Geography
 1990's Social Issues
 1990's Arts
 1990's Music
 1990's Film
 1990's Literature
 1990's Theater
 1990's Television
 1990's Radio
 1990's Internet
 1990's Mobile
 1990's Gaming

Boundary Account is located in the city of

Official Maps of Nigeria's Lands are held on deposit with Nigeria's Lands Government, the Government of Canada, and the Government of the Province of British Columbia.

7. THEORY OF THE CASE

[illegible]



PLANIMETRIC LEGEND

	Road
	Railway
	Water
	Forest
	Mountain
	Lake
	Stream
	Swamp
	Bog
	Marsh
	Tundra
	Meadow
	Field
	Pasture
	Cropland
	Forest land
	Water land
	Mountain land
	Lake land
	Stream land
	Swamp land
	Bog land
	Marsh land
	Tundra land
	Meadow land
	Field land
	Pasture land
	Cropland land



NISGA'A LANDS Map Sheet 938 (94)

	Road
	Railway
	Water
	Forest
	Mountain
	Lake
	Stream
	Swamp
	Bog
	Marsh
	Tundra
	Meadow
	Field
	Pasture
	Cropland

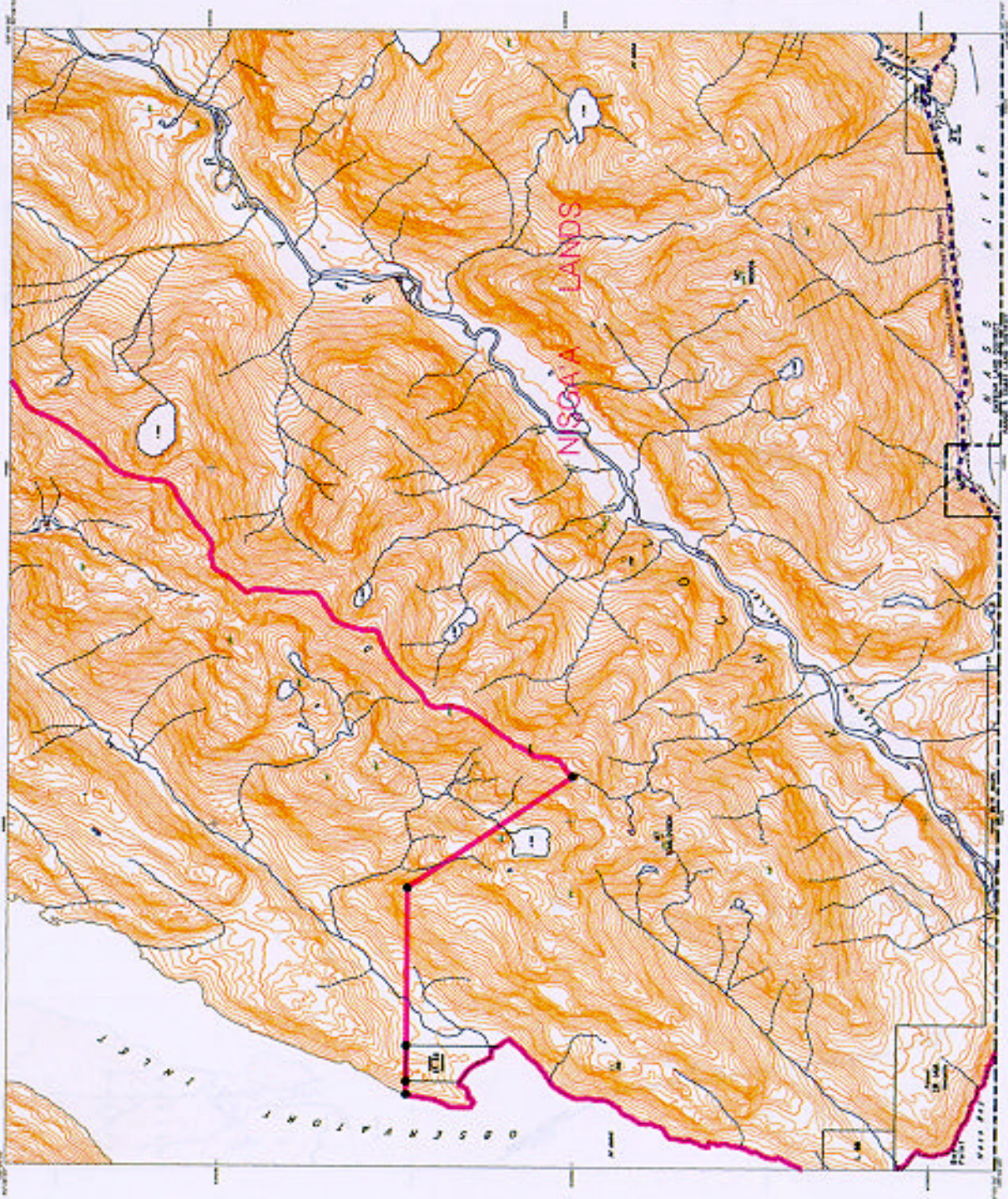
Revisions approved in October of 1994, July 95.

© Crown Map of Nisga'a Lands are held on behalf of Nisga'a Lands Commission, the Government of Canada and the Government of the Province of British Columbia.

Scale: 1:50,000

APPENDIX A - 2

Map Sheet 9



PLANTING LEGEND

1. **Genetic**
 2. **Environmental**
 3. **Developmental**
 4. **Neurochemical**
 5. **Neuroanatomical**
 6. **Neurophysiological**
 7. **Neuropsychological**
 8. **Neuroimaging**
 9. **Neuropharmacological**
 10. **Neuroendocrinological**
 11. **Neuroimmunological**
 12. **Neuroinfectious**
 13. **Neurodegenerative**
 14. **Neuroregenerative**
 15. **Neuroprotective**
 16. **Neurorehabilitative**
 17. **Neurotherapeutic**
 18. **Neurodiagnostic**
 19. **Neuroprognostic**
 20. **Neuropreventive**
 21. **Neuroeducational**
 22. **Neurocognitive**
 23. **Neurobehavioral**
 24. **Neurobiological**
 25. **Neurological**
 26. **Neuropsychiatric**
 27. **Neurogeriatric**
 28. **Neurogerontological**
 29. **Neurogeriatric**
 30. **Neurogerontological**
 31. **Neurogeriatric**
 32. **Neurogerontological**
 33. **Neurogeriatric**
 34. **Neurogerontological**
 35. **Neurogeriatric**
 36. **Neurogerontological**
 37. **Neurogeriatric**
 38. **Neurogerontological**
 39. **Neurogeriatric**
 40. **Neurogerontological**
 41. **Neurogeriatric**
 42. **Neurogerontological**
 43. **Neurogeriatric**
 44. **Neurogerontological**
 45. **Neurogeriatric**
 46. **Neurogerontological**
 47. **Neurogeriatric**
 48. **Neurogerontological**
 49. **Neurogeriatric**
 50. **Neurogerontological**
 51. **Neurogeriatric**
 52. **Neurogerontological**
 53. **Neurogeriatric**
 54. **Neurogerontological**
 55. **Neurogeriatric**
 56. **Neurogerontological**
 57. **Neurogeriatric**
 58. **Neurogerontological**
 59. **Neurogeriatric**
 60. **Neurogerontological**
 61. **Neurogeriatric**
 62. **Neurogerontological**
 63. **Neurogeriatric**
 64. **Neurogerontological**
 65. **Neurogeriatric**
 66. **Neurogerontological**
 67. **Neurogeriatric**
 68. **Neurogerontological**
 69. **Neurogeriatric**
 70. **Neurogerontological**
 71. **Neurogeriatric**
 72. **Neurogerontological**
 73. **Neurogeriatric**
 74. **Neurogerontological**
 75. **Neurogeriatric**
 76. **Neurogerontological**
 77. **Neurogeriatric**
 78. **Neurogerontological**
 79. **Neurogeriatric**
 80. **Neurogerontological**
 81. **Neurogeriatric**
 82. **Neurogerontological**
 83. **Neurogeriatric**
 84. **Neurogerontological**
 85. **Neurogeriatric**
 86. **Neurogerontological**
 87. **Neurogeriatric**
 88. **Neurogerontological**
 89. **Neurogeriatric**
 90. **Neurogerontological**
 91. **Neurogeriatric**
 92. **Neurogerontological**
 93. **Neurogeriatric**
 94. **Neurogerontological**
 95. **Neurogeriatric**
 96. **Neurogerontological**
 97. **Neurogeriatric**
 98. **Neurogerontological**
 99. **Neurogeriatric**
 100. **Neurogerontological**

NISGA'A LANDS

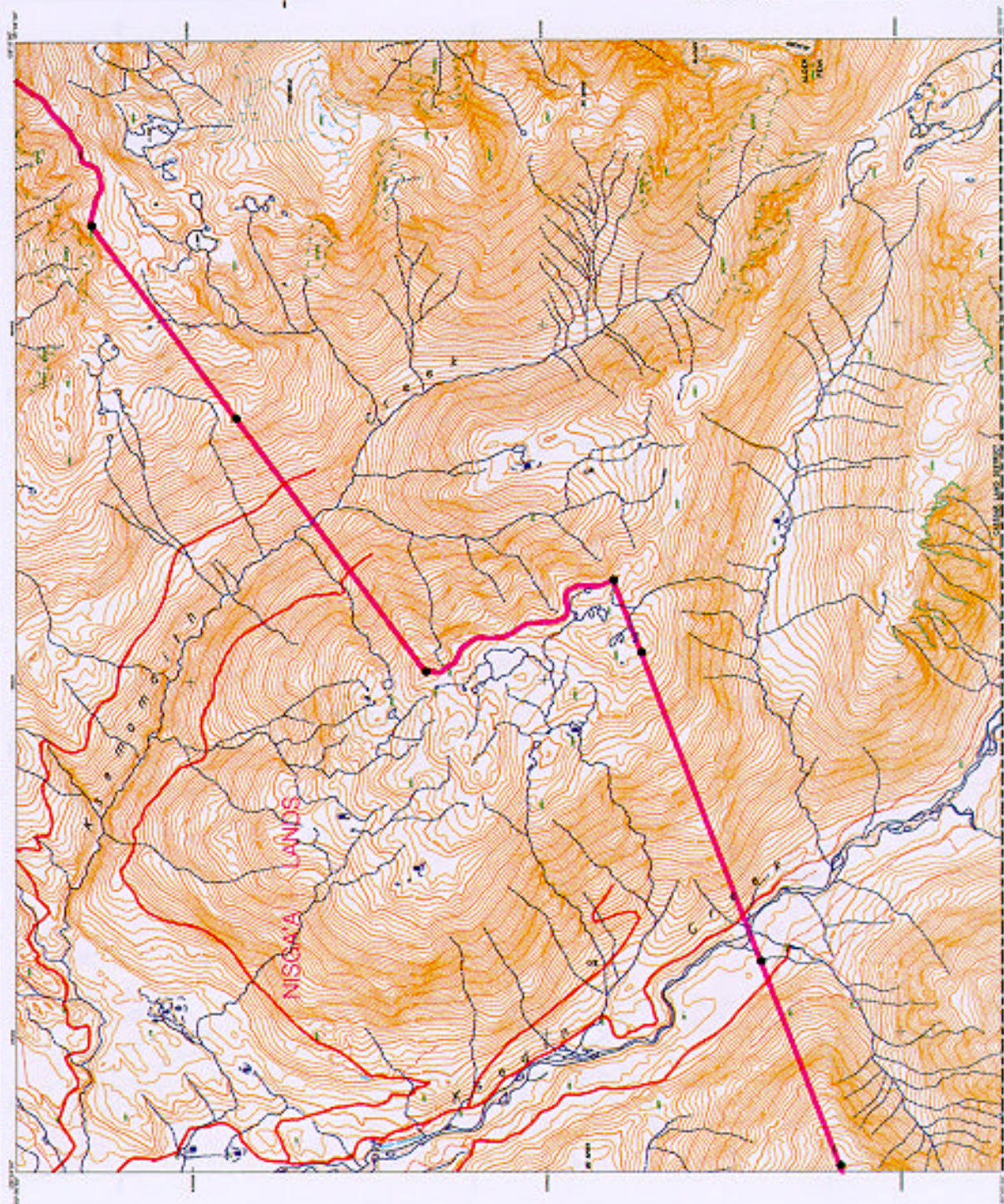
150 Street View, CT

[illegible]

Boundaries approved as decided on the _____ day of _____.

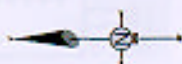
Official Maps of Haiti's Lands are held on deposit with Hago's (Lands) Government, the Government of Canada, and the Government of the Province of British Columbia.

APPENDIX 4 - 2
Map Sheet 90



FLUORIMETRIC LEGEND

Transportation		Landmark features		Climate and related features		Vegetation		Soil		Water		Human	
1. Road	2. Air	1. Climate	2. Soil	1. Vegetation	2. Soil	1. Water	2. Human	1. Road	2. Air	1. Climate	2. Soil	1. Vegetation	2. Soil
3. Water	4. Rail	3. Climate	4. Soil	3. Vegetation	4. Soil	3. Water	4. Human	3. Road	4. Air	3. Climate	4. Soil	3. Vegetation	4. Soil
5. Road	6. Air	5. Climate	6. Soil	5. Vegetation	6. Soil	5. Water	6. Human	5. Road	6. Air	5. Climate	6. Soil	5. Vegetation	6. Soil
7. Road	8. Air	7. Climate	8. Soil	7. Vegetation	8. Soil	7. Water	8. Human	7. Road	8. Air	7. Climate	8. Soil	7. Vegetation	8. Soil
9. Road	10. Air	9. Climate	10. Soil	9. Vegetation	10. Soil	9. Water	10. Human	9. Road	10. Air	9. Climate	10. Soil	9. Vegetation	10. Soil
11. Road	12. Air	11. Climate	12. Soil	11. Vegetation	12. Soil	11. Water	12. Human	11. Road	12. Air	11. Climate	12. Soil	11. Vegetation	12. Soil
13. Road	14. Air	13. Climate	14. Soil	13. Vegetation	14. Soil	13. Water	14. Human	13. Road	14. Air	13. Climate	14. Soil	13. Vegetation	14. Soil
15. Road	16. Air	15. Climate	16. Soil	15. Vegetation	16. Soil	15. Water	16. Human	15. Road	16. Air	15. Climate	16. Soil	15. Vegetation	16. Soil
17. Road	18. Air	17. Climate	18. Soil	17. Vegetation	18. Soil	17. Water	18. Human	17. Road	18. Air	17. Climate	18. Soil	17. Vegetation	18. Soil
19. Road	20. Air	19. Climate	20. Soil	19. Vegetation	20. Soil	19. Water	20. Human	19. Road	20. Air	19. Climate	20. Soil	19. Vegetation	20. Soil
21. Road	22. Air	21. Climate	22. Soil	21. Vegetation	22. Soil	21. Water	22. Human	21. Road	22. Air	21. Climate	22. Soil	21. Vegetation	22. Soil
23. Road	24. Air	23. Climate	24. Soil	23. Vegetation	24. Soil	23. Water	24. Human	23. Road	24. Air	23. Climate	24. Soil	23. Vegetation	24. Soil
25. Road	26. Air	25. Climate	26. Soil	25. Vegetation	26. Soil	25. Water	26. Human	25. Road	26. Air	25. Climate	26. Soil	25. Vegetation	26. Soil
27. Road	28. Air	27. Climate	28. Soil	27. Vegetation	28. Soil	27. Water	28. Human	27. Road	28. Air	27. Climate	28. Soil	27. Vegetation	28. Soil
29. Road	30. Air	29. Climate	30. Soil	29. Vegetation	30. Soil	29. Water	30. Human	29. Road	30. Air	29. Climate	30. Soil	29. Vegetation	30. Soil
31. Road	32. Air	31. Climate	32. Soil	31. Vegetation	32. Soil	31. Water	32. Human	31. Road	32. Air	31. Climate	32. Soil	31. Vegetation	32. Soil
33. Road	34. Air	33. Climate	34. Soil	33. Vegetation	34. Soil	33. Water	34. Human	33. Road	34. Air	33. Climate	34. Soil	33. Vegetation	34. Soil
35. Road	36. Air	35. Climate	36. Soil	35. Vegetation	36. Soil	35. Water	36. Human	35. Road	36. Air	35. Climate	36. Soil	35. Vegetation	36. Soil
37. Road	38. Air	37. Climate	38. Soil	37. Vegetation	38. Soil	37. Water	38. Human	37. Road	38. Air	37. Climate	38. Soil	37. Vegetation	38. Soil
39. Road	40. Air	39. Climate	40. Soil	39. Vegetation	40. Soil	39. Water	40. Human	39. Road	40. Air	39. Climate	40. Soil	39. Vegetation	40. Soil
41. Road	42. Air	41. Climate	42. Soil	41. Vegetation	42. Soil	41. Water	42. Human	41. Road	42. Air	41. Climate	42. Soil	41. Vegetation	42. Soil
43. Road	44. Air	43. Climate	44. Soil	43. Vegetation	44. Soil	43. Water	44. Human	43. Road	44. Air	43. Climate	44. Soil	43. Vegetation	44. Soil
45. Road	46. Air	45. Climate	46. Soil	45. Vegetation	46. Soil	45. Water	46. Human	45. Road	46. Air	45. Climate	46. Soil	45. Vegetation	46. Soil
47. Road	48. Air	47. Climate	48. Soil	47. Vegetation	48. Soil	47. Water	48. Human	47. Road	48. Air	47. Climate	48. Soil	47. Vegetation	48. Soil
49. Road	50. Air	49. Climate	50. Soil	49. Vegetation	50. Soil	49. Water	50. Human	49. Road	50. Air	49. Climate	50. Soil	49. Vegetation	50. Soil
51. Road	52. Air	51. Climate	52. Soil	51. Vegetation	52. Soil	51. Water	52. Human	51. Road	52. Air	51. Climate	52. Soil	51. Vegetation	52. Soil
53. Road	54. Air	53. Climate	54. Soil	53. Vegetation	54. Soil	53. Water	54. Human	53. Road	54. Air	53. Climate	54. Soil	53. Vegetation	54. Soil
55. Road	56. Air	55. Climate	56. Soil	55. Vegetation	56. Soil	55. Water	56. Human	55. Road	56. Air	55. Climate	56. Soil	55. Vegetation	56. Soil
57. Road	58. Air	57. Climate	58. Soil	57. Vegetation	58. Soil	57. Water	58. Human	57. Road	58. Air	57. Climate	58. Soil	57. Vegetation	58. Soil
59. Road	60. Air	59. Climate	60. Soil	59. Vegetation	60. Soil	59. Water	60. Human	59. Road	60. Air	59. Climate	60. Soil	59. Vegetation	60. Soil
61. Road	62. Air	61. Climate	62. Soil	61. Vegetation	62. Soil	61. Water	62. Human	61. Road	62. Air	61. Climate	62. Soil	61. Vegetation	62. Soil
63. Road	64. Air	63. Climate	64. Soil	63. Vegetation	64. Soil	63. Water	64. Human	63. Road	64. Air	63. Climate	64. Soil	63. Vegetation	64. Soil
65. Road	66. Air	65. Climate	66. Soil	65. Vegetation	66. Soil	65. Water	66. Human	65. Road	66. Air	65. Climate	66. Soil	65. Vegetation	66. Soil
67. Road	68. Air	67. Climate	68. Soil	67. Vegetation	68. Soil	67. Water	68. Human	67. Road	68. Air	67. Climate	68. Soil	67. Vegetation	68. Soil
69. Road	70. Air	69. Climate	70. Soil	69. Vegetation	70. Soil	69. Water	70. Human	69. Road	70. Air	69. Climate	70. Soil	69. Vegetation	70. Soil
71. Road	72. Air	71. Climate	72. Soil	71. Vegetation	72. Soil	71. Water	72. Human	71. Road	72. Air	71. Climate	72. Soil	71. Vegetation	72. Soil
73. Road	74. Air	73. Climate	74. Soil	73. Vegetation	74. Soil	73. Water	74. Human	73. Road	74. Air	73. Climate	74. Soil	73. Vegetation	74. Soil
75. Road	76. Air	75. Climate	76. Soil	75. Vegetation	76. Soil	75. Water	76. Human	75. Road	76. Air	75. Climate	76. Soil	75. Vegetation	76. Soil
77. Road	78. Air	77. Climate	78. Soil	77. Vegetation	78. Soil	77. Water	78. Human	77. Road	78. Air	77. Climate	78. Soil	77. Vegetation	78. Soil
79. Road	80. Air	79. Climate	80. Soil	79. Vegetation	80. Soil	79. Water	80. Human	79. Road	80. Air	79. Climate	80. Soil	79. Vegetation	80. Soil
81. Road	82. Air	81. Climate	82. Soil	81. Vegetation	82. Soil	81. Water	82. Human	81. Road	82. Air	81. Climate	82. Soil	81. Vegetation	82. Soil
83. Road	84. Air	83. Climate	84. Soil	83. Vegetation	84. Soil	83. Water	84. Human	83. Road	84. Air	83. Climate	84. Soil	83. Vegetation	84. Soil
85. Road	86. Air	85. Climate	86. Soil	85. Vegetation	86. Soil	85. Water	86. Human	85. Road	86. Air	85. Climate	86. Soil	85. Vegetation	86. Soil
87. Road	88. Air	87. Climate	88. Soil	87. Vegetation	88. Soil	87. Water	88. Human	87. Road	88. Air	87. Climate	88. Soil	87. Vegetation	88. Soil
89. Road	90. Air	89. Climate	90. Soil	89. Vegetation	90. Soil	89. Water	90. Human	89. Road	90. Air	89. Climate	90. Soil	89. Vegetation	90. Soil
91. Road	92. Air	91. Climate	92. Soil	91. Vegetation	92. Soil	91. Water	92. Human	91. Road	92. Air	91. Climate	92. Soil	91. Vegetation	92. Soil
93. Road	94. Air	93. Climate	94. Soil	93. Vegetation	94. Soil	93. Water	94. Human	93. Road	94. Air	93. Climate	94. Soil	93. Vegetation	94. Soil
95. Road	96. Air	95. Climate	96. Soil	95. Vegetation	96. Soil	95. Water	96. Human	95. Road	96. Air	95. Climate	96. Soil	95. Vegetation	96. Soil
97. Road	98. Air	97. Climate	98. Soil	97. Vegetation	98. Soil	97. Water	98. Human	97. Road	98. Air	97. Climate	98. Soil	97. Vegetation	98. Soil
99. Road	100. Air	99. Climate	100. Soil	99. Vegetation	100. Soil	99. Water	100. Human	99. Road	100. Air	99. Climate	100. Soil	99. Vegetation	100. Soil



NISGA'A LANDS

Step Sheet 1234567890



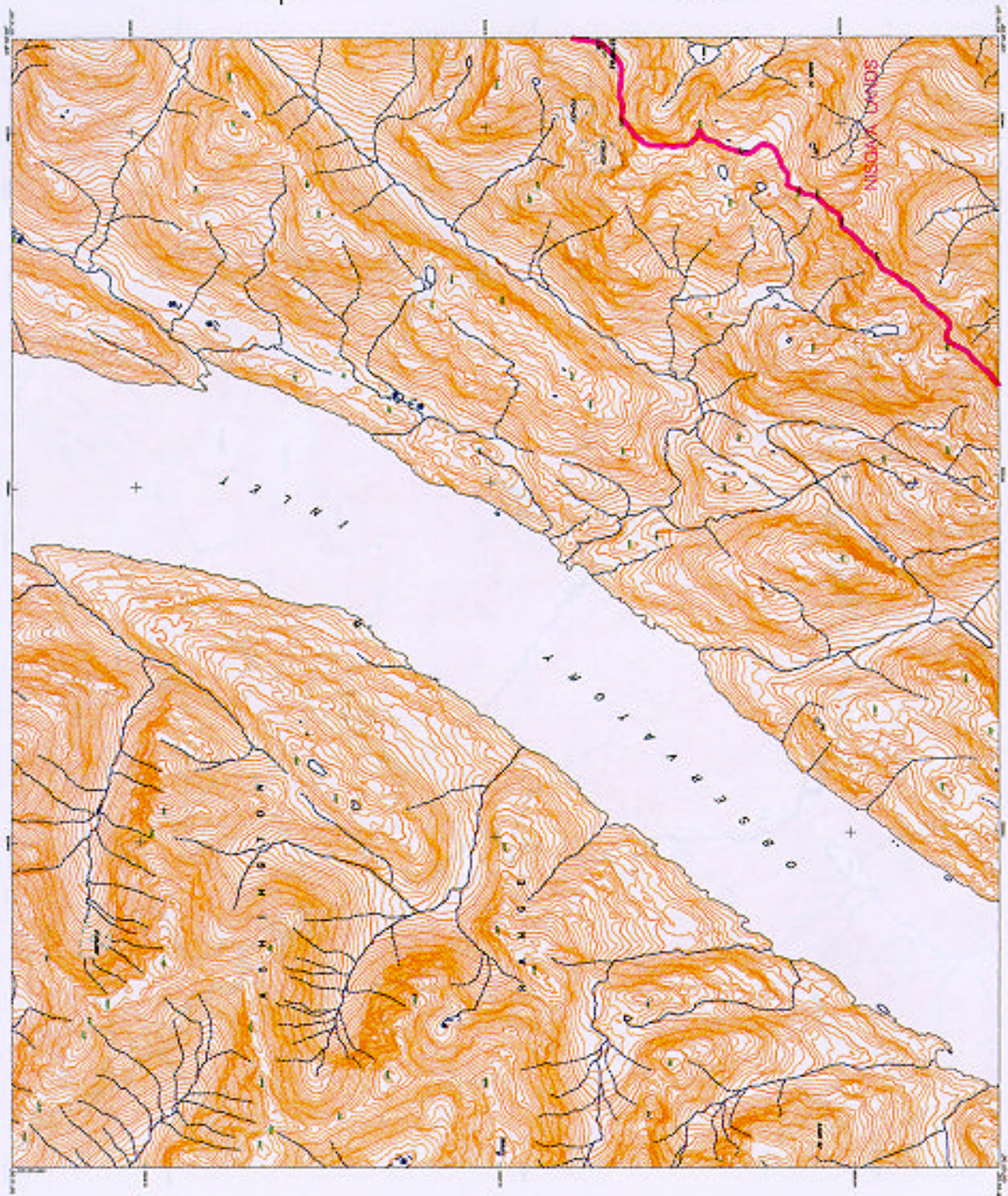
1. **Top Level** (100%)
 2. **Second Level** (20%)
 3. **Third Level** (10%)
 4. **Fourth Level** (5%)
 5. **Fifth Level** (2%)
 6. **Sixth Level** (1%)
 7. **Seventh Level** (0.5%)
 8. **Eighth Level** (0.2%)
 9. **Ninth Level** (0.1%)
 10. **Tenth Level** (0.05%)

Inventory returned is credited on this _____ day of _____

Official Maps of MapInfo's clients are held on deposit with MapInfo's clients. Government of Canada and the Government of the Province of British Columbia.

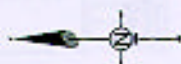
Figure 1

100



FLUORESCENT LEGEND

<p>Characteristics</p> <ul style="list-style-type: none"> • They are the most common type of mutation. • They are usually caused by errors during DNA replication. • They can be caused by environmental factors such as radiation and chemicals. • They can be inherited from one or both parents. • They can be repaired by the cell's DNA repair mechanisms. 	<p>Consequences</p> <ul style="list-style-type: none"> • They can lead to the production of faulty proteins. • They can lead to the development of cancer. • They can lead to the development of genetic disorders. • They can lead to the development of aging. 	<p>Examples</p> <ul style="list-style-type: none"> • Sickle cell anemia (caused by a single amino acid change in hemoglobin). • Cystic fibrosis (caused by a deletion of three amino acids in the CFTR protein). • Phenylketonuria (caused by a mutation in the PAH gene). 	<p>Diagram</p>	<p>Point Mutation</p> <p>A point mutation is a change in a single nucleotide base pair in the DNA sequence. This can result in a change in the amino acid sequence of the protein encoded by that gene, which can lead to various consequences, including disease.</p>
<p>Characteristics</p> <ul style="list-style-type: none"> • They are usually caused by errors during DNA replication. • They can be caused by environmental factors such as radiation and chemicals. • They can be inherited from one or both parents. • They can be repaired by the cell's DNA repair mechanisms. 	<p>Consequences</p> <ul style="list-style-type: none"> • They can lead to the production of faulty proteins. • They can lead to the development of cancer. • They can lead to the development of genetic disorders. • They can lead to the development of aging. 	<p>Examples</p> <ul style="list-style-type: none"> • Sickle cell anemia (caused by a single amino acid change in hemoglobin). • Cystic fibrosis (caused by a deletion of three amino acids in the CFTR protein). • Phenylketonuria (caused by a mutation in the PAH gene). 	<p>Diagram</p>	<p>Point Mutation</p> <p>A point mutation is a change in a single nucleotide base pair in the DNA sequence. This can result in a change in the amino acid sequence of the protein encoded by that gene, which can lead to various consequences, including disease.</p>



NISGA'A LANDS

115 South Main St.

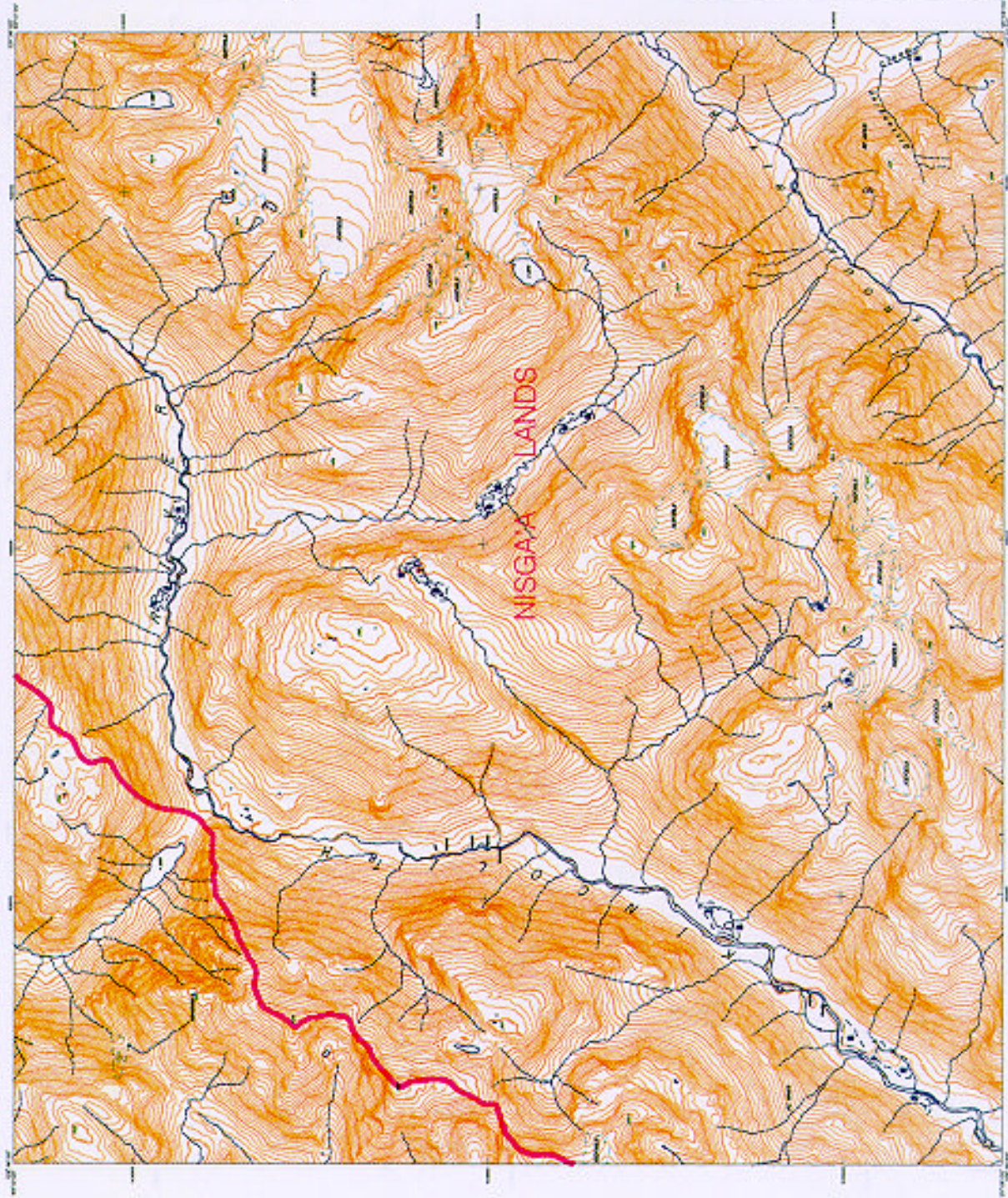
[illegible]

... of the ...

Official Maps of Niagara's Lands are held on deposit with Niagara's Local Government, the Government of Canada and the Government of the Province of Ontario.

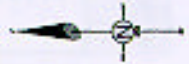
APPENDIX A - 2

1	2	3	4	5	6	7	8	9	10	11	12	13	14	15	16	17	18	19	20	21	22	23	24	25	26	27	28	29	30	31	32	33	34	35	36	37	38	39	40	41	42	43	44	45	46	47	48	49	50	51	52	53	54	55	56	57	58	59	60	61	62	63	64	65	66	67	68	69	70	71	72	73	74	75	76	77	78	79	80	81	82	83	84	85	86	87	88	89	90	91	92	93	94	95	96	97	98	99	100	101	102	103	104	105	106	107	108	109	110	111	112	113	114	115	116	117	118	119	120	121	122	123	124	125	126	127	128	129	130	131	132	133	134	135	136	137	138	139	140	141	142	143	144	145	146	147	148	149	150	151	152	153	154	155	156	157	158	159	160	161	162	163	164	165	166	167	168	169	170	171	172	173	174	175	176	177	178	179	180	181	182	183	184	185	186	187	188	189	190	191	192	193	194	195	196	197	198	199	200	201	202	203	204	205	206	207	208	209	210	211	212	213	214	215	216	217	218	219	220	221	222	223	224	225	226	227	228	229	230	231	232	233	234	235	236	237	238	239	240	241	242	243	244	245	246	247	248	249	250	251	252	253	254	255	256	257	258	259	260	261	262	263	264	265	266	267	268	269	270	271	272	273	274	275	276	277	278	279	280	281	282	283	284	285	286	287	288	289	290	291	292	293	294	295	296	297	298	299	300	301	302	303	304	305	306	307	308	309	310	311	312	313	314	315	316	317	318	319	320	321	322	323	324	325	326	327	328	329	330	331	332	333	334	335	336	337	338	339	340	341	342	343	344	345	346	347	348	349	350	351	352	353	354	355	356	357	358	359	360	361	362	363	364	365	366	367	368	369	370	371	372	373	374	375	376	377	378	379	380	381	382	383	384	385	386	387	388	389	390	391	392	393	394	395	396	397	398	399	400	401	402	403	404	405	406	407	408	409	410	411	412	413	414	415	416	417	418	419	420	421	422	423	424	425	426	427	428	429	430	431	432	433	434	435	436	437	438	439	440	441	442	443	444	445	446	447	448	449	450	451	452	453	454	455	456	457	458	459	460	461	462	463	464	465	466
---	---	---	---	---	---	---	---	---	----	----	----	----	----	----	----	----	----	----	----	----	----	----	----	----	----	----	----	----	----	----	----	----	----	----	----	----	----	----	----	----	----	----	----	----	----	----	----	----	----	----	----	----	----	----	----	----	----	----	----	----	----	----	----	----	----	----	----	----	----	----	----	----	----	----	----	----	----	----	----	----	----	----	----	----	----	----	----	----	----	----	----	----	----	----	----	----	----	----	-----	-----	-----	-----	-----	-----	-----	-----	-----	-----	-----	-----	-----	-----	-----	-----	-----	-----	-----	-----	-----	-----	-----	-----	-----	-----	-----	-----	-----	-----	-----	-----	-----	-----	-----	-----	-----	-----	-----	-----	-----	-----	-----	-----	-----	-----	-----	-----	-----	-----	-----	-----	-----	-----	-----	-----	-----	-----	-----	-----	-----	-----	-----	-----	-----	-----	-----	-----	-----	-----	-----	-----	-----	-----	-----	-----	-----	-----	-----	-----	-----	-----	-----	-----	-----	-----	-----	-----	-----	-----	-----	-----	-----	-----	-----	-----	-----	-----	-----	-----	-----	-----	-----	-----	-----	-----	-----	-----	-----	-----	-----	-----	-----	-----	-----	-----	-----	-----	-----	-----	-----	-----	-----	-----	-----	-----	-----	-----	-----	-----	-----	-----	-----	-----	-----	-----	-----	-----	-----	-----	-----	-----	-----	-----	-----	-----	-----	-----	-----	-----	-----	-----	-----	-----	-----	-----	-----	-----	-----	-----	-----	-----	-----	-----	-----	-----	-----	-----	-----	-----	-----	-----	-----	-----	-----	-----	-----	-----	-----	-----	-----	-----	-----	-----	-----	-----	-----	-----	-----	-----	-----	-----	-----	-----	-----	-----	-----	-----	-----	-----	-----	-----	-----	-----	-----	-----	-----	-----	-----	-----	-----	-----	-----	-----	-----	-----	-----	-----	-----	-----	-----	-----	-----	-----	-----	-----	-----	-----	-----	-----	-----	-----	-----	-----	-----	-----	-----	-----	-----	-----	-----	-----	-----	-----	-----	-----	-----	-----	-----	-----	-----	-----	-----	-----	-----	-----	-----	-----	-----	-----	-----	-----	-----	-----	-----	-----	-----	-----	-----	-----	-----	-----	-----	-----	-----	-----	-----	-----	-----	-----	-----	-----	-----	-----	-----	-----	-----	-----	-----	-----	-----	-----	-----	-----	-----	-----	-----	-----	-----	-----	-----	-----	-----	-----	-----	-----	-----	-----	-----	-----	-----	-----	-----	-----	-----	-----	-----	-----	-----	-----	-----	-----	-----	-----	-----	-----	-----	-----	-----	-----	-----	-----	-----	-----	-----	-----	-----	-----	-----	-----	-----	-----	-----	-----	-----	-----	-----	-----	-----	-----	-----	-----	-----	-----	-----	-----	-----	-----	-----	-----	-----	-----	-----	-----	-----	-----	-----



PLANIMETRIC LEGEND

	International Boundary
	Provincial Boundary
	Township Boundary
	Section Boundary
	Water Feature
	Road
	Rail Line
	Pipeline
	Power Line
	Boundary Line
	Landmark Feature
	Cultural Feature
	Geological Feature
	Biological Feature
	Historical Feature
	Modern Feature
	Unlabeled Feature



NISGA'A LANDS

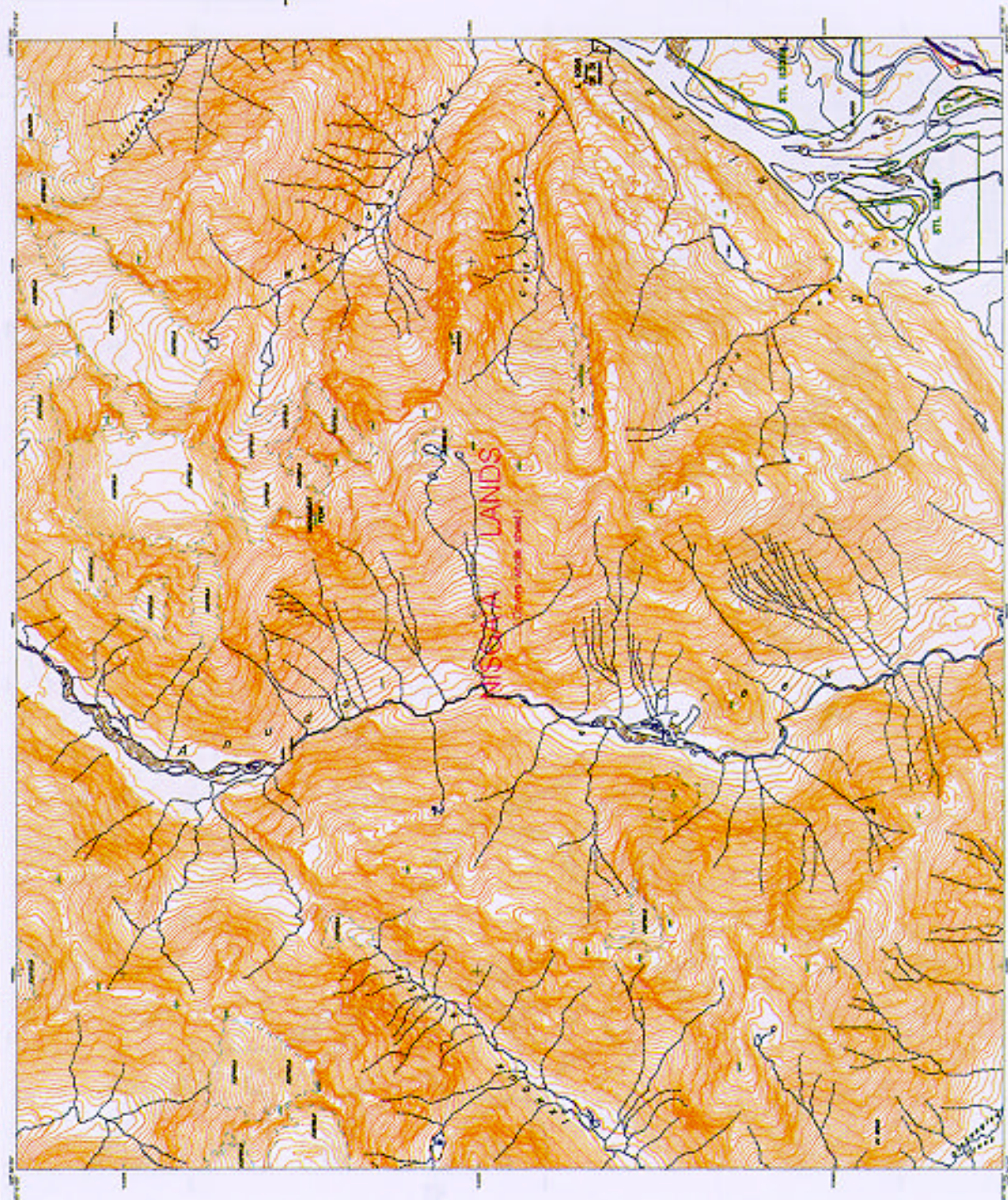
Map Sheet 103P/02



	Nisga'a Land Boundary
	Nisga'a Village Boundary
	Nisga'a Village
	Nisga'a Village Area
	Nisga'a Village Water
	Nisga'a Village Road
	Nisga'a Village Rail
	Nisga'a Village Pipeline
	Nisga'a Village Power
	Nisga'a Village Boundary Line
	Nisga'a Village Landmark
	Nisga'a Village Cultural
	Nisga'a Village Geological
	Nisga'a Village Biological
	Nisga'a Village Historical
	Nisga'a Village Modern
	Nisga'a Village Unlabeled

Approved as required on the 10th day of _____ 2002
 The Minister of Natural Resources Canada
 The Government of Canada and the Government of the Province of British Columbia

Map Sheet 103P/02	Map Sheet 103P/02
Map Sheet 103P/02	Map Sheet 103P/02
Map Sheet 103P/02	Map Sheet 103P/02
Map Sheet 103P/02	Map Sheet 103P/02



PHARMACOMETRIC LEGEND

[illegible]

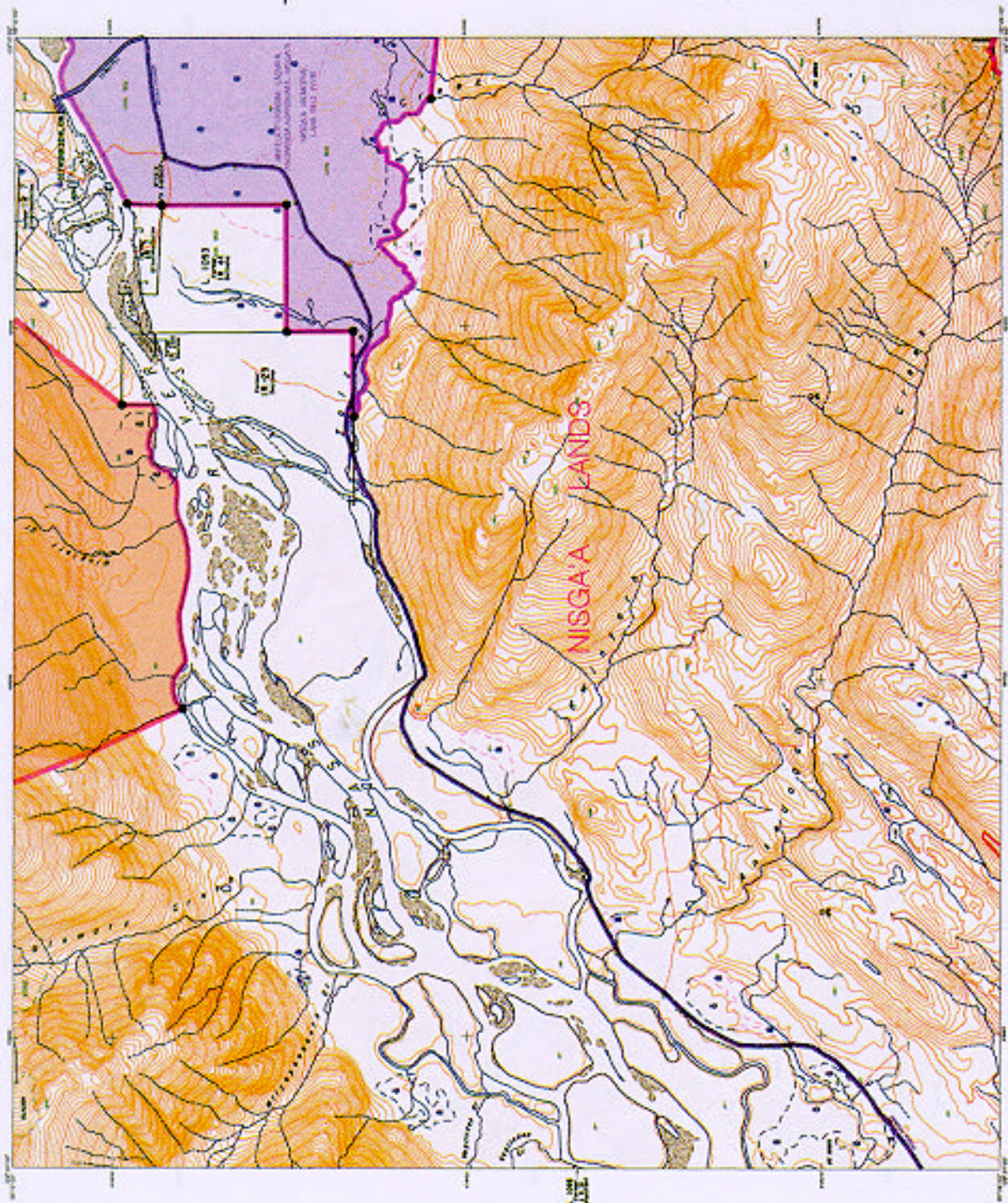
NISGA'A LANDS

END OF PAGE 207

Japan's Last Samurai
July 1991
January Picture Book
Japan's History
Samurai Lady: Age of Feud
Samurai: Learning from the Masters
Japan's International Aid Policy
Japan-Care: Globalization No. 10
Japan's Last Samurai

Sovereignty assumed as depicted on this _____ day of _____.

Figure 4.10



FLUORESCENT LEGEND

[illegible]

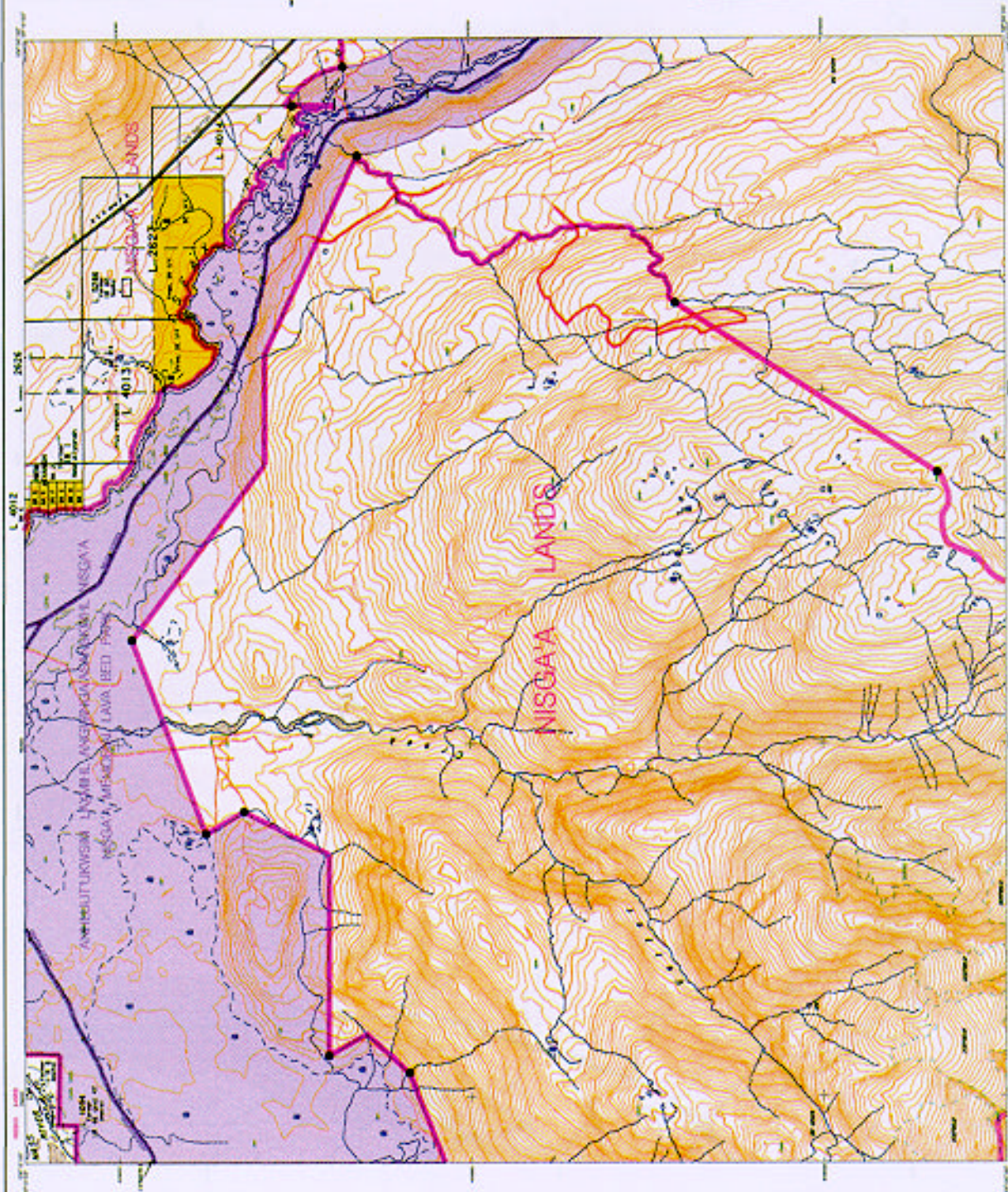
NISGA'A LANDS

710 6754 19023 Day

Magna Land Services
 Latic Paint
 International PaperProducts
 Interiors Housing
 Intersect 2000 Sign & City
 Interiors Design and Construction Supply
 Interiors Interiors Ltd. Inc.
 Intersect 2000 Supply Supply Inc.
 Intersect 2000

Boundaries approved as required on this _____ day of _____.

Figure 4 - 1



NISGA'A LANDS

Map Sheet 103P.016

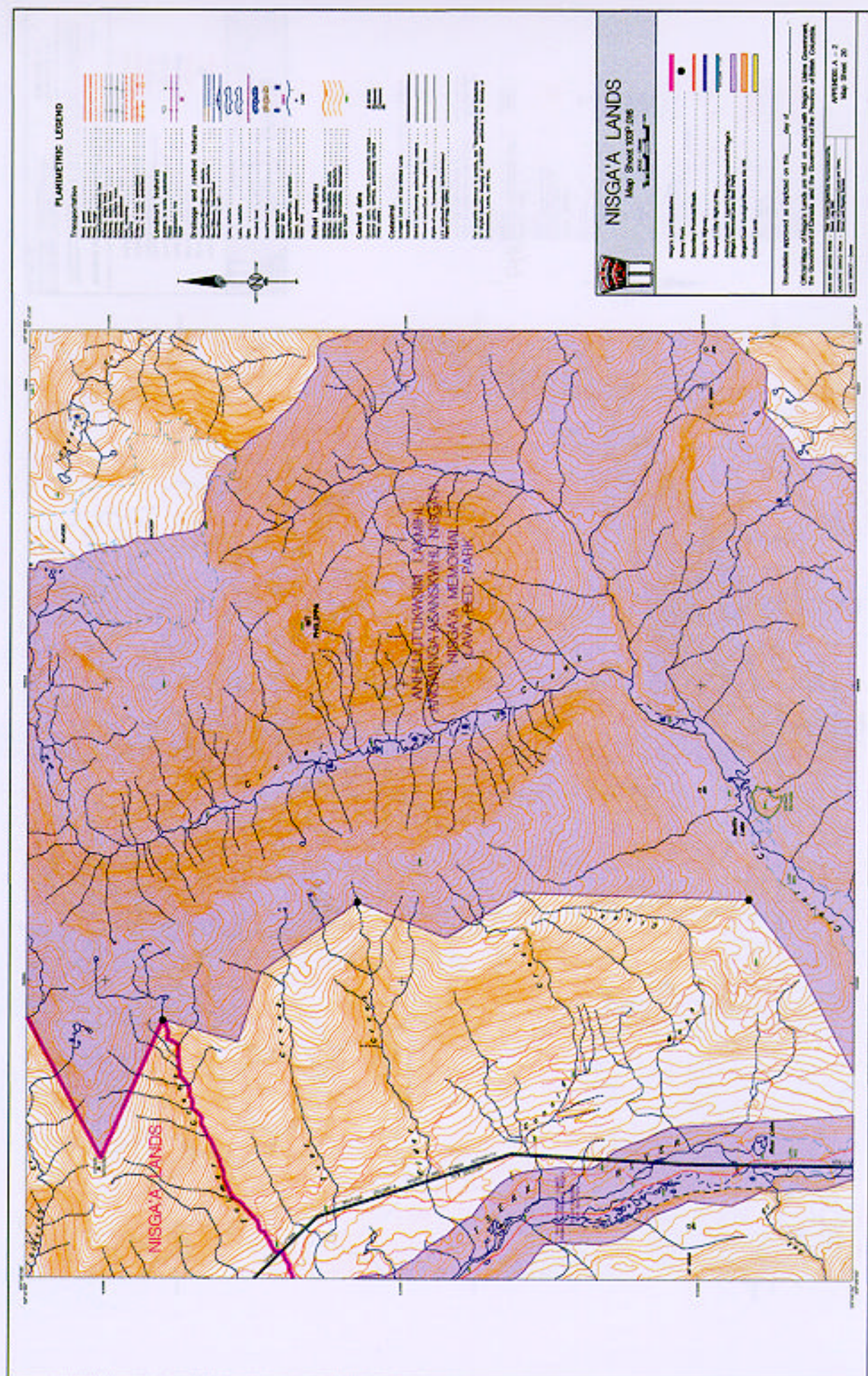
[illegible]

Notarization approved as depicted on this _____ day of _____

*Allotment of Maple's Lands are held in deposit with Maple's Home Government, the Government of Canada, and the Government of the Province of British Columbia.

PROJECT A - 2

THE



PLANIMETRIC LEGEND

Transportation	Landmark Features	Setbacks and related features	Other features
Highway	Water	Setback	Other
Major Road	Water	Setback	Other
Minor Road	Water	Setback	Other
Trail	Water	Setback	Other
...

NISGA'A LANDS Map Sheet 3029/016

Map Sheet Legend	Map Sheet Legend
...	...
...	...
...	...
...	...
...	...

Scale: 1:50,000
 Date: 1998
 Author: Nisga'a Nation
 Project: Nisga'a Lands
 Map Sheet: 3029/016



PLANIMETRIC LEGEND

[illegible]

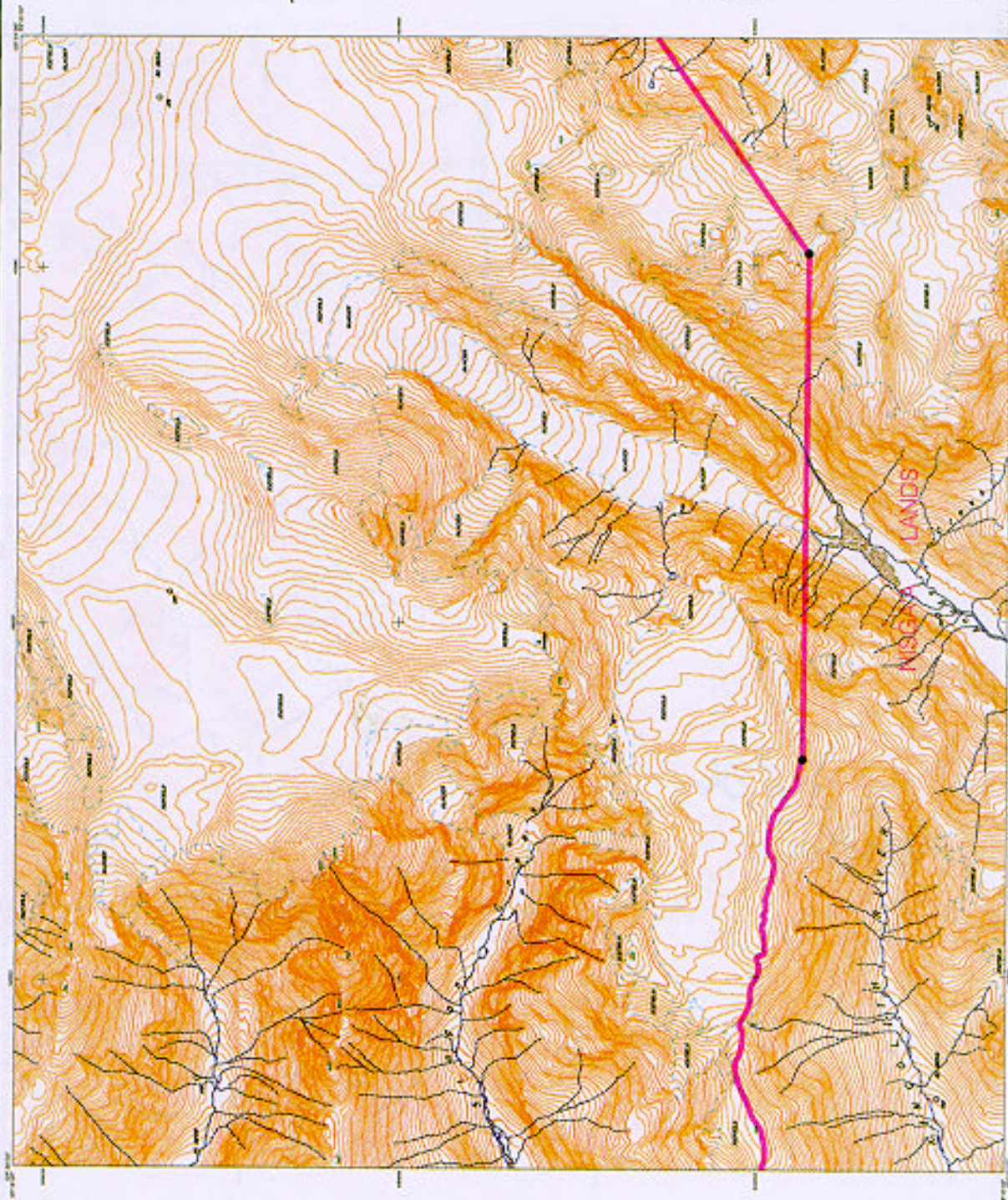
NISGA'A LANDS

[illegible]

Business account is opened in the City of

Official Maps of Haida's Lands are held on deposit with Haida's Home Government, the Government of Canada and the Government of the Province of British Columbia.

APPENDIX A - 1	
Long Street St	
1	1000
2	1000
3	1000
4	1000
5	1000
6	1000
7	1000
8	1000
9	1000
10	1000
11	1000
12	1000
13	1000
14	1000
15	1000
16	1000
17	1000
18	1000
19	1000
20	1000
21	1000
22	1000
23	1000
24	1000
25	1000
26	1000
27	1000
28	1000
29	1000
30	1000
31	1000
32	1000
33	1000
34	1000
35	1000
36	1000
37	1000
38	1000
39	1000
40	1000
41	1000
42	1000
43	1000
44	1000
45	1000
46	1000
47	1000
48	1000
49	1000
50	1000
51	1000
52	1000
53	1000
54	1000
55	1000
56	1000
57	1000
58	1000
59	1000
60	1000
61	1000
62	1000
63	1000
64	1000
65	1000
66	1000
67	1000
68	1000
69	1000
70	1000
71	1000
72	1000
73	1000
74	1000
75	1000
76	1000
77	1000
78	1000
79	1000
80	1000
81	1000
82	1000
83	1000
84	1000
85	1000
86	1000
87	1000
88	1000
89	1000
90	1000
91	1000
92	1000
93	1000
94	1000
95	1000
96	1000
97	1000
98	1000
99	1000
100	1000



PLANNING LEGEND

	Transportation
	Landmark Features
	Drainage and related features
	Cultural Sites
	Other Features



NISGAYA LANDS

Map Sheet 100/100



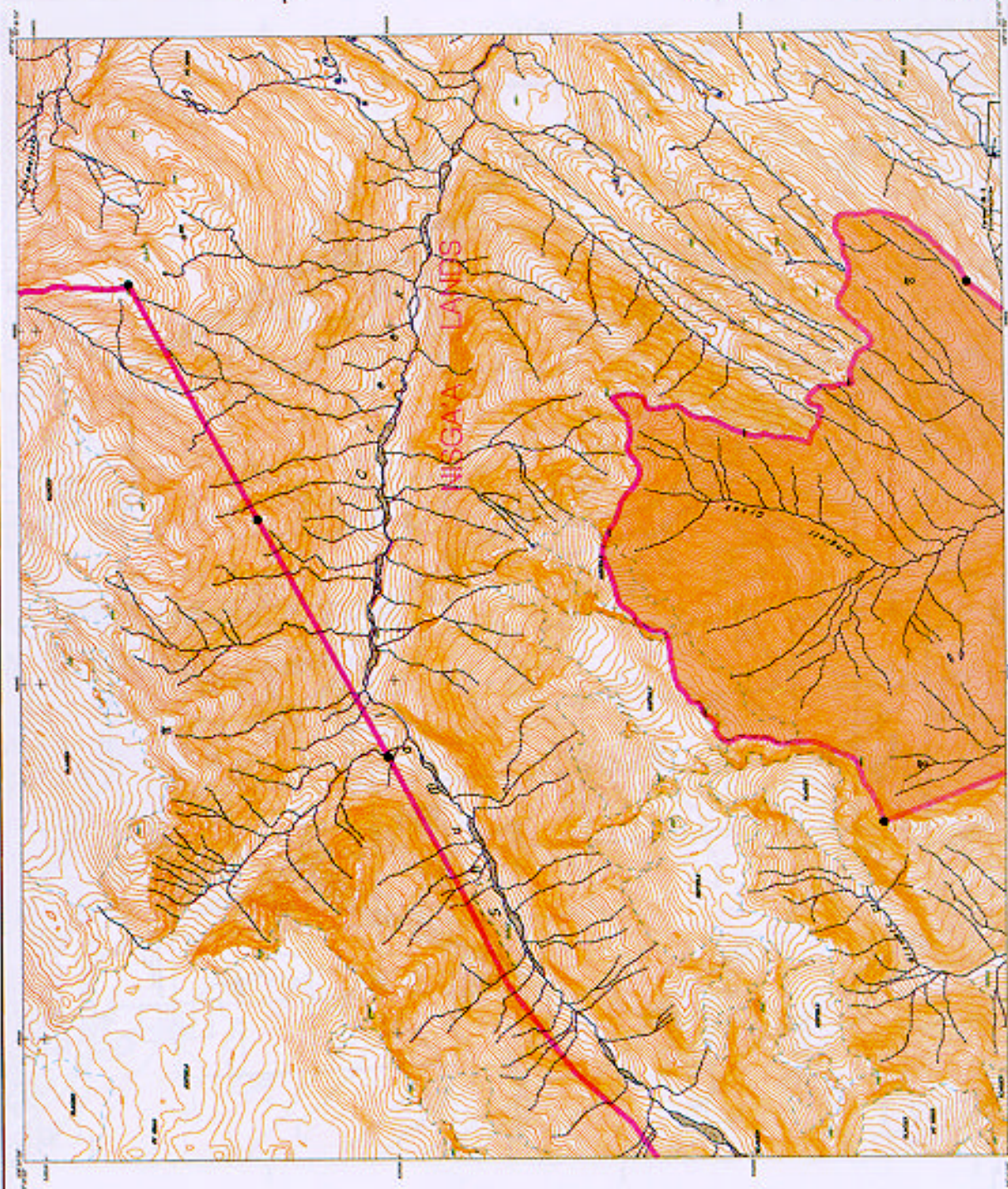
	Nisgaya Land Boundary
	Nisgaya River
	Nisgaya Lake
	Nisgaya Mountain
	Nisgaya Valley
	Nisgaya Forest
	Nisgaya Wildlife
	Nisgaya Heritage
	Nisgaya Culture
	Nisgaya Language
	Nisgaya History
	Nisgaya Future

Boundaries approved as depicted on the map of the Nisgaya Lands are used in accordance with the Nisgaya Lands Agreement, the Government of Canada and the Government of British Columbia.

Map Sheet 100/100

APPENDIX A - 2

Map Sheet 100/100



FLATINOMETRIC LEGEND

<p>Transportation</p> <p>1. Trucks - 1000 units</p> <p>2. Trains - 1000 units</p> <p>3. Ships - 1000 units</p> <p>4. Airplanes - 1000 units</p> <p>5. Helicopters - 1000 units</p> <p>6. Submarines - 1000 units</p> <p>7. Spacecraft - 1000 units</p> <p>8. Boats - 1000 units</p> <p>9. Jeeps - 1000 units</p> <p>10. Motorcycles - 1000 units</p> <p>11. Bicycles - 1000 units</p> <p>12. Rolling stock - 1000 units</p> <p>13. Maritime vessels - 1000 units</p> <p>14. Aircraft carriers - 1000 units</p> <p>15. Naval ships - 1000 units</p> <p>16. Merchant ships - 1000 units</p> <p>17. Passenger ships - 1000 units</p> <p>18. Freight ships - 1000 units</p> <p>19. Warships - 1000 units</p> <p>20. Submersibles - 1000 units</p> <p>21. Space shuttles - 1000 units</p> <p>22. Orbiters - 1000 units</p> <p>23. Probes - 1000 units</p> <p>24. Rovers - 1000 units</p> <p>25. Landers - 1000 units</p> <p>26. Antennas - 1000 units</p> <p>27. Telescopes - 1000 units</p> <p>28. Detectors - 1000 units</p> <p>29. Transmitters - 1000 units</p> <p>30. Receivers - 1000 units</p> <p>31. Processors - 1000 units</p> <p>32. Storage devices - 1000 units</p> <p>33. Power supplies - 1000 units</p> <p>34. Thermal shields - 1000 units</p> <p>35. Heat exchangers - 1000 units</p> <p>36. Radiators - 1000 units</p> <p>37. Solar panels - 1000 units</p> <p>38. Batteries - 1000 units</p> <p>39. Fuel cells - 1000 units</p> <p>40. Engines - 1000 units</p> <p>41. Propellers - 1000 units</p> <p>42. Wings - 1000 units</p> <p>43. Fuselages - 1000 units</p> <p>44. Engines - 1000 units</p> <p>45. Propellers - 1000 units</p> <p>46. Wings - 1000 units</p> <p>47. Fuselages - 1000 units</p> <p>48. Engines - 1000 units</p> <p>49. Propellers - 1000 units</p> <p>50. Wings - 1000 units</p> <p>51. Fuselages - 1000 units</p> <p>52. Engines - 1000 units</p> <p>53. Propellers - 1000 units</p> <p>54. Wings - 1000 units</p> <p>55. Fuselages - 1000 units</p> <p>56. Engines - 1000 units</p> <p>57. Propellers - 1000 units</p> <p>58. Wings - 1000 units</p> <p>59. Fuselages - 1000 units</p> <p>60. Engines - 1000 units</p> <p>61. Propellers - 1000 units</p> <p>62. Wings - 1000 units</p> <p>63. Fuselages - 1000 units</p> <p>64. Engines - 1000 units</p> <p>65. Propellers - 1000 units</p> <p>66. Wings - 1000 units</p> <p>67. Fuselages - 1000 units</p> <p>68. Engines - 1000 units</p> <p>69. Propellers - 1000 units</p> <p>70. Wings - 1000 units</p> <p>71. Fuselages - 1000 units</p> <p>72. Engines - 1000 units</p> <p>73. Propellers - 1000 units</p> <p>74. Wings - 1000 units</p> <p>75. Fuselages - 1000 units</p> <p>76. Engines - 1000 units</p> <p>77. Propellers - 1000 units</p> <p>78. Wings - 1000 units</p> <p>79. Fuselages - 1000 units</p> <p>80. Engines - 1000 units</p> <p>81. Propellers - 1000 units</p> <p>82. Wings - 1000 units</p> <p>83. Fuselages - 1000 units</p> <p>84. Engines - 1000 units</p> <p>85. Propellers - 1000 units</p> <p>86. Wings - 1000 units</p> <p>87. Fuselages - 1000 units</p> <p>88. Engines - 1000 units</p> <p>89. Propellers - 1000 units</p> <p>90. Wings - 1000 units</p> <p>91. Fuselages - 1000 units</p> <p>92. Engines - 1000 units</p> <p>93. Propellers - 1000 units</p> <p>94. Wings - 1000 units</p> <p>95. Fuselages - 1000 units</p> <p>96. Engines - 1000 units</p> <p>97. Propellers - 1000 units</p> <p>98. Wings - 1000 units</p> <p>99. Fuselages - 1000 units</p> <p>100. Engines - 1000 units</p>	<p>Landmark 1: Republic</p> <p>1. Trucks - 1000 units</p> <p>2. Trains - 1000 units</p> <p>3. Ships - 1000 units</p> <p>4. Airplanes - 1000 units</p> <p>5. Helicopters - 1000 units</p> <p>6. Submarines - 1000 units</p> <p>7. Spacecraft - 1000 units</p> <p>8. Boats - 1000 units</p> <p>9. Jeeps - 1000 units</p> <p>10. Motorcycles - 1000 units</p> <p>11. Bicycles - 1000 units</p> <p>12. Rolling stock - 1000 units</p> <p>13. Maritime vessels - 1000 units</p> <p>14. Aircraft carriers - 1000 units</p> <p>15. Naval ships - 1000 units</p> <p>16. Merchant ships - 1000 units</p> <p>17. Passenger ships - 1000 units</p> <p>18. Freight ships - 1000 units</p> <p>19. Warships - 1000 units</p> <p>20. Submersibles - 1000 units</p> <p>21. Space shuttles - 1000 units</p> <p>22. Orbiters - 1000 units</p> <p>23. Probes - 1000 units</p> <p>24. Rovers - 1000 units</p> <p>25. Landers - 1000 units</p> <p>26. Antennas - 1000 units</p> <p>27. Telescopes - 1000 units</p> <p>28. Detectors - 1000 units</p> <p>29. Transmitters - 1000 units</p> <p>30. Receivers - 1000 units</p> <p>31. Processors - 1000 units</p> <p>32. Storage devices - 1000 units</p> <p>33. Power supplies - 1000 units</p> <p>34. Thermal shields - 1000 units</p> <p>35. Heat exchangers - 1000 units</p> <p>36. Radiators - 1000 units</p> <p>37. Solar panels - 1000 units</p> <p>38. Batteries - 1000 units</p> <p>39. Fuel cells - 1000 units</p> <p>40. Engines - 1000 units</p> <p>41. Propellers - 1000 units</p> <p>42. Wings - 1000 units</p> <p>43. Fuselages - 1000 units</p> <p>44. Engines - 1000 units</p> <p>45. Propellers - 1000 units</p> <p>46. Wings - 1000 units</p> <p>47. Fuselages - 1000 units</p> <p>48. Engines - 1000 units</p> <p>49. Propellers - 1000 units</p> <p>50. Wings - 1000 units</p> <p>51. Fuselages - 1000 units</p> <p>52. Engines - 1000 units</p> <p>53. Propellers - 1000 units</p> <p>54. Wings - 1000 units</p> <p>55. Fuselages - 1000 units</p> <p>56. Engines - 1000 units</p> <p>57. Propellers - 1000 units</p> <p>58. Wings - 1000 units</p> <p>59. Fuselages - 1000 units</p> <p>60. Engines - 1000 units</p> <p>61. Propellers - 1000 units</p> <p>62. Wings - 1000 units</p> <p>63. Fuselages - 1000 units</p> <p>64. Engines - 1000 units</p> <p>65. Propellers - 1000 units</p> <p>66. Wings - 1000 units</p> <p>67. Fuselages - 1000 units</p> <p>68</p>
---	---



NISGA'A LANDS

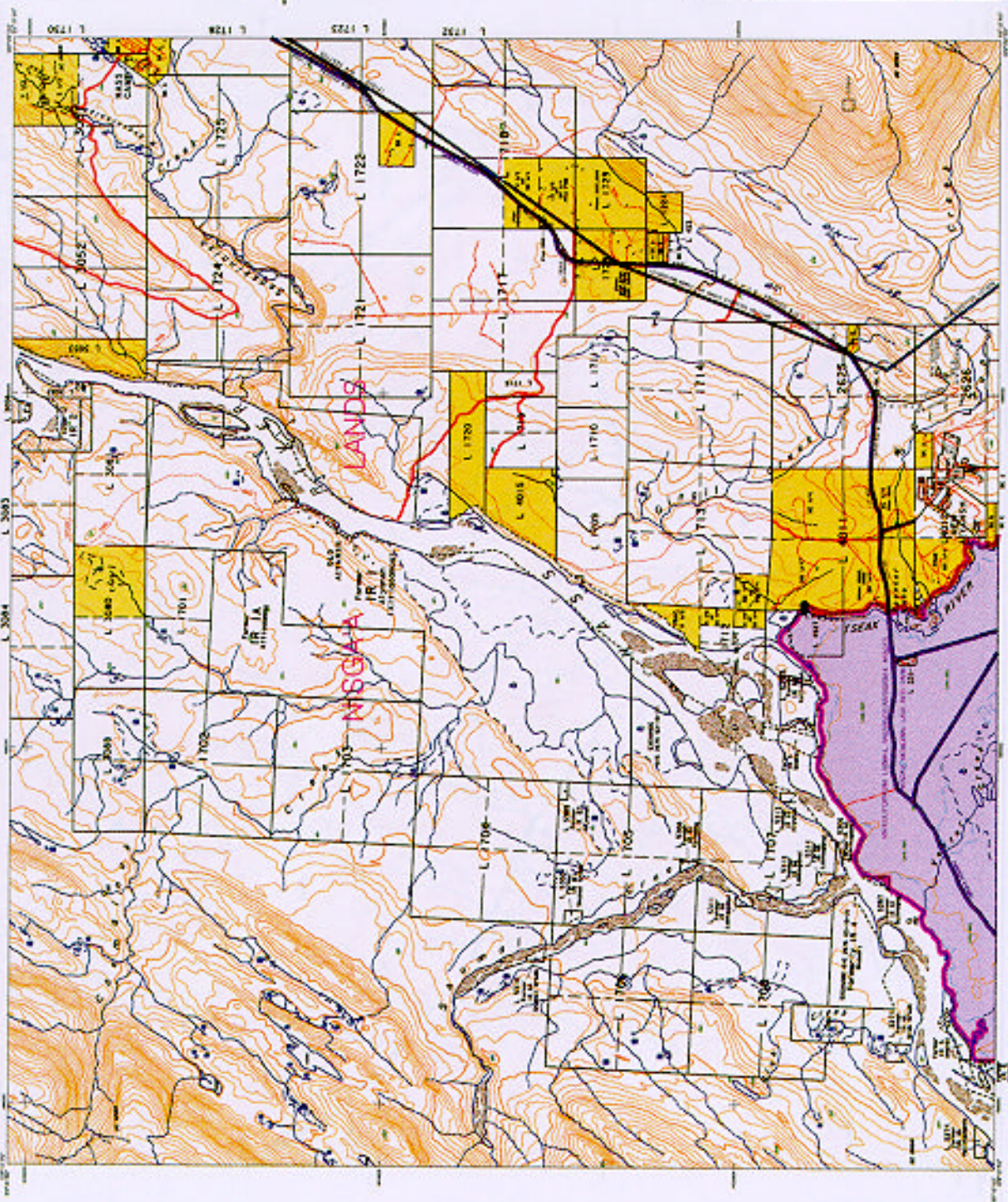
Sheet 100P.024

[illegible]

Boundaries approved as depicted on this _____ day of _____.

APPENDIX 4 - 2

Unit 2000 20



PLANIMETRIC LEGEND

Language/Action

Language	Action
1. Language	1. Action
2. Language	2. Action
3. Language	3. Action
4. Language	4. Action
5. Language	5. Action
6. Language	6. Action
7. Language	7. Action
8. Language	8. Action
9. Language	9. Action
10. Language	10. Action

Cognitive/Action

Cognitive	Action
1. Cognitive	1. Action
2. Cognitive	2. Action
3. Cognitive	3. Action
4. Cognitive	4. Action
5. Cognitive	5. Action
6. Cognitive	6. Action
7. Cognitive	7. Action
8. Cognitive	8. Action
9. Cognitive	9. Action
10. Cognitive	10. Action

1. The first step is to identify the problem or question that needs to be answered. This involves understanding the context and the specific requirements of the task.



NISGA'A LANDS

http://www.pearson.com

1

Page: 1 of 1
 Page: 2 of 2
 Page: 3 of 3
 Page: 4 of 4
 Page: 5 of 5
 Page: 6 of 6
 Page: 7 of 7
 Page: 8 of 8
 Page: 9 of 9
 Page: 10 of 10
 Page: 11 of 11
 Page: 12 of 12
 Page: 13 of 13
 Page: 14 of 14
 Page: 15 of 15
 Page: 16 of 16
 Page: 17 of 17
 Page: 18 of 18
 Page: 19 of 19
 Page: 20 of 20
 Page: 21 of 21
 Page: 22 of 22
 Page: 23 of 23
 Page: 24 of 24
 Page: 25 of 25
 Page: 26 of 26
 Page: 27 of 27
 Page: 28 of 28
 Page: 29 of 29
 Page: 30 of 30
 Page: 31 of 31
 Page: 32 of 32
 Page: 33 of 33
 Page: 34 of 34
 Page: 35 of 35
 Page: 36 of 36
 Page: 37 of 37
 Page: 38 of 38
 Page: 39 of 39
 Page: 40 of 40
 Page: 41 of 41
 Page: 42 of 42
 Page: 43 of 43
 Page: 44 of 44
 Page: 45 of 45
 Page: 46 of 46
 Page: 47 of 47
 Page: 48 of 48
 Page: 49 of 49
 Page: 50 of 50
 Page: 51 of 51
 Page: 52 of 52
 Page: 53 of 53
 Page: 54 of 54
 Page: 55 of 55
 Page: 56 of 56
 Page: 57 of 57
 Page: 58 of 58
 Page: 59 of 59
 Page: 60 of 60
 Page: 61 of 61
 Page: 62 of 62
 Page: 63 of 63
 Page: 64 of 64
 Page: 65 of 65
 Page: 66 of 66
 Page: 67 of 67
 Page: 68 of 68
 Page: 69 of 69
 Page: 70 of 70
 Page: 71 of 71
 Page: 72 of 72
 Page: 73 of 73
 Page: 74 of 74
 Page: 75 of 75
 Page: 76 of 76
 Page: 77 of 77
 Page: 78 of 78
 Page: 79 of 79
 Page: 80 of 80
 Page: 81 of 81
 Page: 82 of 82
 Page: 83 of 83
 Page: 84 of 84
 Page: 85 of 85
 Page: 86 of 86
 Page: 87 of 87
 Page: 88 of 88
 Page: 89 of 89
 Page: 90 of 90
 Page: 91 of 91
 Page: 92 of 92
 Page: 93 of 93
 Page: 94 of 94
 Page: 95 of 95
 Page: 96 of 96
 Page: 97 of 97
 Page: 98 of 98
 Page: 99 of 99
 Page: 100 of 100
 Page: 101 of 101
 Page: 102 of 102
 Page: 103 of 103
 Page: 104 of 104
 Page: 105 of 105
 Page: 106 of 106
 Page: 107 of 107
 Page: 108 of 108
 Page: 109 of 109
 Page: 110 of 110
 Page: 111 of 111
 Page: 112 of 112
 Page: 113 of 113
 Page: 114 of 114
 Page: 115 of 115
 Page: 116 of 116
 Page: 117 of 117
 Page: 118 of 118
 Page: 119 of 119
 Page: 120 of 120
 Page: 121 of 121
 Page: 122 of 122
 Page: 123 of 123
 Page: 124 of 124
 Page: 125 of 125
 Page: 126 of 126
 Page: 127 of 127
 Page: 128 of 128
 Page: 129 of 129
 Page: 130 of 130
 Page: 131 of 131
 Page: 132 of 132
 Page: 133 of 133
 Page: 134 of 134
 Page: 135 of 135
 Page: 136 of 136
 Page: 137 of 137
 Page: 138 of 138
 Page: 139 of 139
 Page: 140 of 140
 Page: 141 of 141
 Page: 142 of 142
 Page: 143 of 143
 Page: 144 of 144
 Page: 145 of 145
 Page: 146 of 146
 Page: 147 of 147
 Page: 148 of 148
 Page: 149 of 149
 Page: 150 of 150
 Page: 151 of 151
 Page: 152 of 152
 Page: 153 of 153
 Page: 154 of 154
 Page: 155 of 155
 Page: 156 of 156
 Page: 157 of 157
 Page: 158 of 158
 Page: 159 of 159
 Page: 160 of 160
 Page: 161 of 161
 Page: 162 of 162
 Page: 163 of 163
 Page: 164 of 164
 Page: 165 of 165
 Page: 166 of 166
 Page: 167 of 167
 Page: 168 of 168
 Page: 169 of 169
 Page: 170 of 170
 Page: 171 of 171
 Page: 172 of 172
 Page: 173 of 173
 Page: 174 of 174
 Page: 175 of 175
 Page: 176 of 176
 Page: 177 of 177
 Page: 178 of 178
 Page: 179 of 179
 Page: 180 of 180
 Page: 181 of 181
 Page: 182 of 182
 Page: 183 of 183
 Page: 184 of 184
 Page: 185 of 185
 Page: 186 of 186
 Page: 187 of 187
 Page: 188 of 188
 Page: 189 of 189
 Page: 190 of 190
 Page: 191 of 191
 Page: 192 of 192
 Page: 193 of 193
 Page: 194 of 194
 Page: 195 of 195
 Page: 196 of 196
 Page: 197 of 197
 Page: 198 of 198
 Page: 199 of 199
 Page: 200 of 200
 Page: 201 of 201
 Page: 202 of 202
 Page: 203 of 203
 Page: 204 of 204
 Page: 205 of 205
 Page: 206 of 206
 Page: 207 of 207
 Page: 208 of 208
 Page: 209 of 209
 Page: 210 of 210
 Page: 211 of 211
 Page: 212 of 212
 Page: 213 of 213
 Page: 214 of 214
 Page: 215 of 215
 Page: 216 of 216
 Page: 217 of 217
 Page: 218 of 218
 Page: 219 of 219
 Page: 220 of 220
 Page: 221 of 221
 Page: 222 of 222
 Page: 223 of 223
 Page: 224 of 224
 Page: 225 of 225
 Page: 226 of 226
 Page: 227 of 227
 Page: 228 of 228
 Page: 229 of 229
 Page: 230 of 230
 Page: 231 of 231
 Page: 232 of 232
 Page: 233 of 233
 Page: 234 of 234
 Page: 235 of 235
 Page: 236 of 236
 Page: 237 of 237
 Page: 238 of 238
 Page: 239 of 239
 Page: 240 of 240
 Page: 241 of 241
 Page: 242 of 242
 Page: 243 of 243
 Page: 244 of 244
 Page: 245 of 245
 Page: 246 of 246
 Page: 247 of 247
 Page: 248 of 248
 Page: 249 of 249
 Page: 250 of 250
 Page: 251 of 251
 Page: 252 of 252
 Page: 253 of 253
 Page: 254 of 254
 Page: 255 of 255
 Page: 256 of 256
 Page: 257 of 257
 Page: 258 of 258
 Page: 259 of 259
 Page: 260 of 260
 Page: 261 of 261
 Page: 262 of 262
 Page: 263 of 263
 Page: 264 of 264
 Page: 265 of 265
 Page: 266 of 266
 Page: 267 of 267
 Page: 268 of 268
 Page: 269 of 269
 Page: 270 of 270
 Page: 271 of 271
 Page: 272 of 272
 Page: 273 of 273
 Page: 274 of 274
 Page: 275 of 275
 Page: 276 of 276
 Page: 277 of 277
 Page: 278 of 278
 Page: 279 of 279
 Page: 280 of 280
 Page: 281 of 281
 Page: 282 of 282
 Page: 283 of 283
 Page: 284 of 284
 Page: 285 of 285
 Page: 286 of 286
 Page: 287 of 287
 Page:

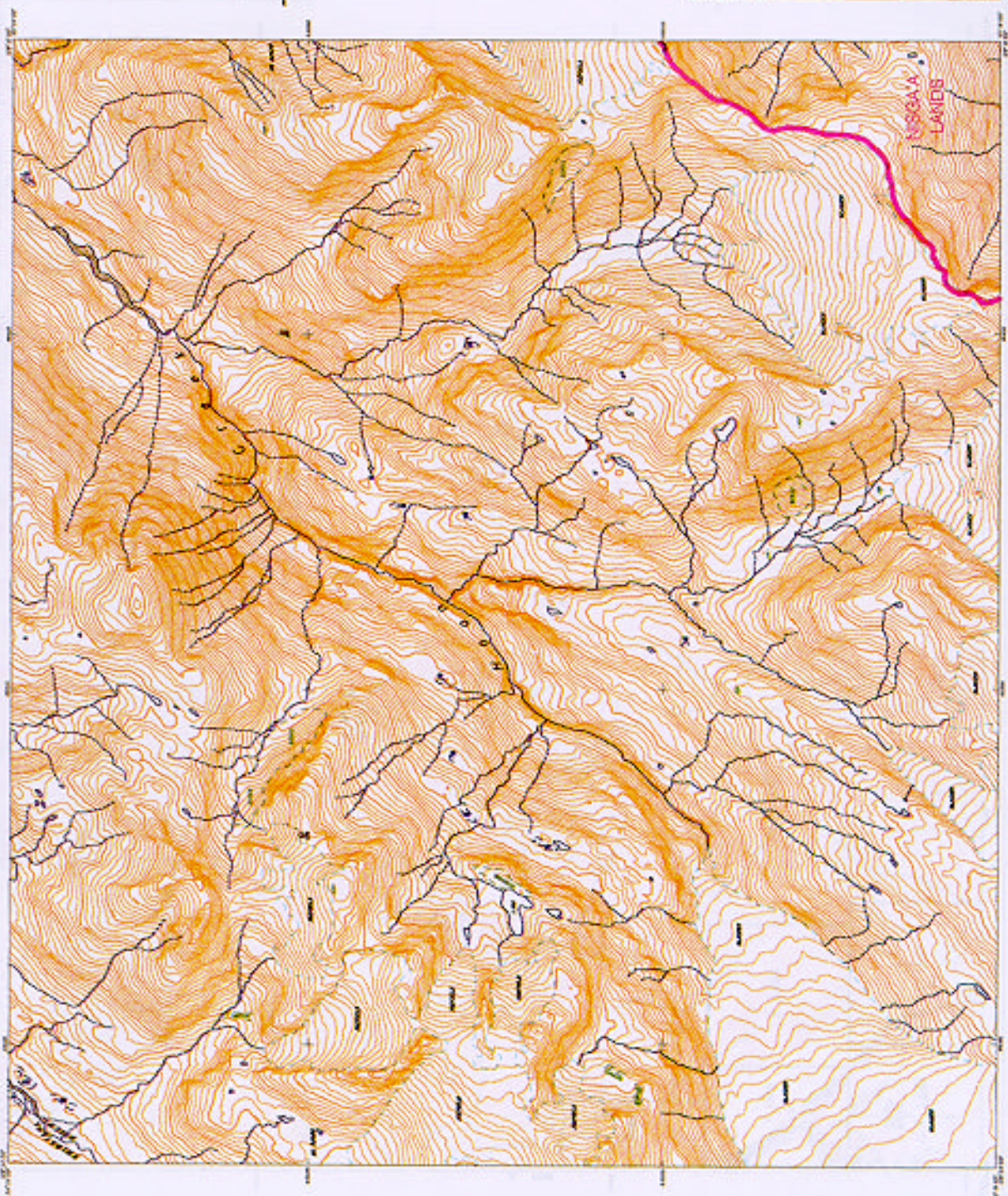
Buyer's name as displayed on file _____ day of _____

Official Maps of Hager's Lands are held on deposit with Hager's Living Organization, the Government of Canada, and the Government of the Province of British Columbia.

100

APPENDIX A - 9

Up, Great Sir



60607 COLUMBIA



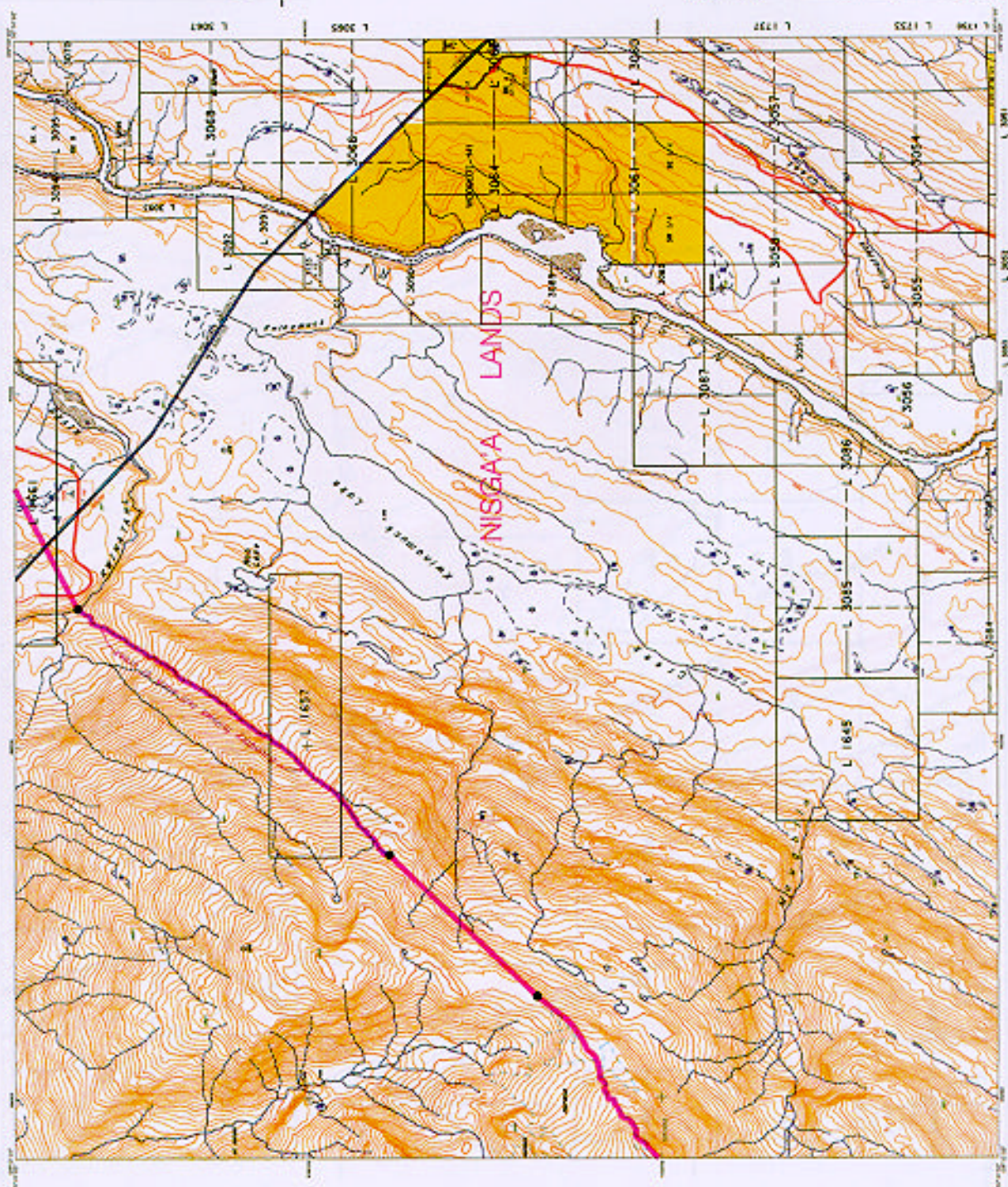
NISGA'A LANDS

460 Street 1234 1024

[illegible]

Boundaries approved as indicated on the _____ day of _____

[illegible]



FLUORIMETRIC LEGEND

[illegible]

NISGA'A LANDS

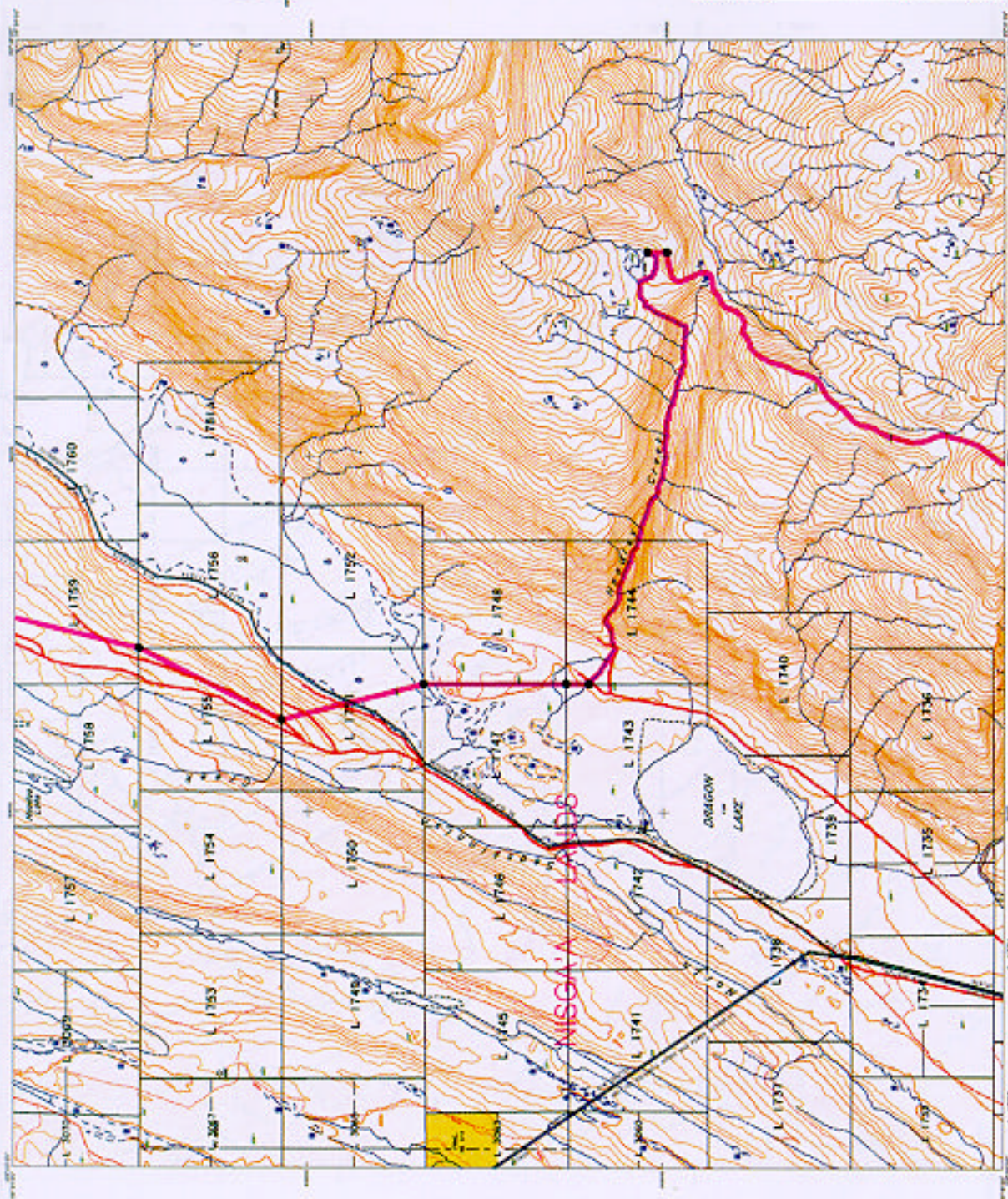
Map Sheet 100P.005

[illegible]

Boundaries approved as depicted on this _____ day of _____.

APPENDIX A - 2

APPENDIX A 2



PLANTMETRIC LEGEND

<p>Transportation</p> <p>1. Trucks</p> <p>2. Trains</p> <p>3. Ships</p> <p>4. Airplanes</p> <p>5. Helicopters</p> <p>6. Submarines</p> <p>7. Spacecraft</p> <p>8. Autonomous Vehicles</p> <p>9. Drone Delivery</p> <p>10. Hyperloop</p> <p>11. Maglev Trains</p> <p>12. Electric Buses</p> <p>13. Self-Driving Cars</p> <p>14. High-Speed Rail</p> <p>15. Space Elevator</p> <p>16. Undersea Cables</p> <p>17. Autonomous Ships</p> <p>18. Space Stations</p> <p>19. Interplanetary Travel</p> <p>20. Space Colonization</p>	<p>Language Features</p> <p>1. Adjectives</p> <p>2. Adverbs</p> <p>3. Conjunctions</p> <p>4. Prepositions</p> <p>5. Interjections</p> <p>6. Exclamations</p> <p>7. Imperatives</p> <p>8. Questions</p> <p>9. Statements</p> <p>10. Commands</p> <p>11. Requests</p> <p>12. Offers</p> <p>13. Agreements</p> <p>14. Disagreements</p> <p>15. Apologies</p> <p>16. Compliments</p> <p>17. Criticisms</p> <p>18. Suggestions</p> <p>19. Instructions</p> <p>20. Explanations</p>	<p>Storage and related features</p> <p>1. Cloud Storage</p> <p>2. Local Storage</p> <p>3. External Storage</p> <p>4. Network Storage</p> <p>5. Hybrid Storage</p> <p>6. Virtual Storage</p> <p>7. Immutable Storage</p> <p>8. Secure Storage</p> <p>9. Compliance Storage</p> <p>10. Disaster Recovery Storage</p> <p>11. Backup Storage</p> <p>12. Archive Storage</p> <p>13. Retention Storage</p> <p>14. Encryption Storage</p> <p>15. Access Control Storage</p> <p>16. Logging Storage</p> <p>17. Audit Storage</p> <p>18. Monitoring Storage</p> <p>19. Alerting Storage</p> <p>20. Reporting Storage</p>	<p>Medical Systems</p> <p>1. Diagnostic Systems</p> <p>2. Therapeutic Systems</p> <p>3. Monitoring Systems</p> <p>4. Imaging Systems</p> <p>5. Lab Systems</p> <p>6. Pharmacy Systems</p> <p>7. Emergency Systems</p> <p>8. Telemedicine Systems</p> <p>9. Wearable Systems</p> <p>10. Robotic Systems</p> <p>11. AI Systems</p> <p>12. Blockchain Systems</p> <p>13. IoT Systems</p> <p>14. Cloud Systems</p> <p>15. Mobile Systems</p> <p>16. Security Systems</p> <p>17. Compliance Systems</p> <p>18. Integration Systems</p> <p>19. Interoperability Systems</p> <p>20. Standardization Systems</p>	<p>Engineering Skills</p> <p>1. Mathematics</p> <p>2. Physics</p> <p>3. Chemistry</p> <p>4. Electronics</p> <p>5. Mechanics</p> <p>6. Thermodynamics</p> <p>7. Fluid Dynamics</p> <p>8. Structural Analysis</p> <p>9. Material Science</p> <p>10. Manufacturing Processes</p> <p>11. Quality Control</p> <p>12. Project Management</p> <p>13. Teamwork</p> <p>14. Communication</p> <p>15. Problem Solving</p> <p>16. Attention to Detail</p> <p>17. Time Management</p> <p>18. Stress Management</p> <p>19. Adaptability</p> <p>20. Continuous Learning</p>	<p>Geography</p> <p>1. Physical Geography</p> <p>2. Human Geography</p> <p>3. Regional Geography</p> <p>4. Local Geography</p> <p>5. Global Geography</p> <p>6. Environmental Geography</p> <p>7. Urban Geography</p> <p>8. Rural Geography</p> <p>9. Coastal Geography</p> <p>10. Mountain Geography</p> <p>11. Desert Geography</p> <p>12. Forest Geography</p> <p>13. Water Geography</p> <p>14. Climate Geography</p> <p>15. Soil Geography</p> <p>16. Vegetation Geography</p> <p>17. Population Geography</p> <p>18. Migration Geography</p> <p>19. Development Geography</p> <p>20. Policy Geography</p>
---	--	--	---	---	--



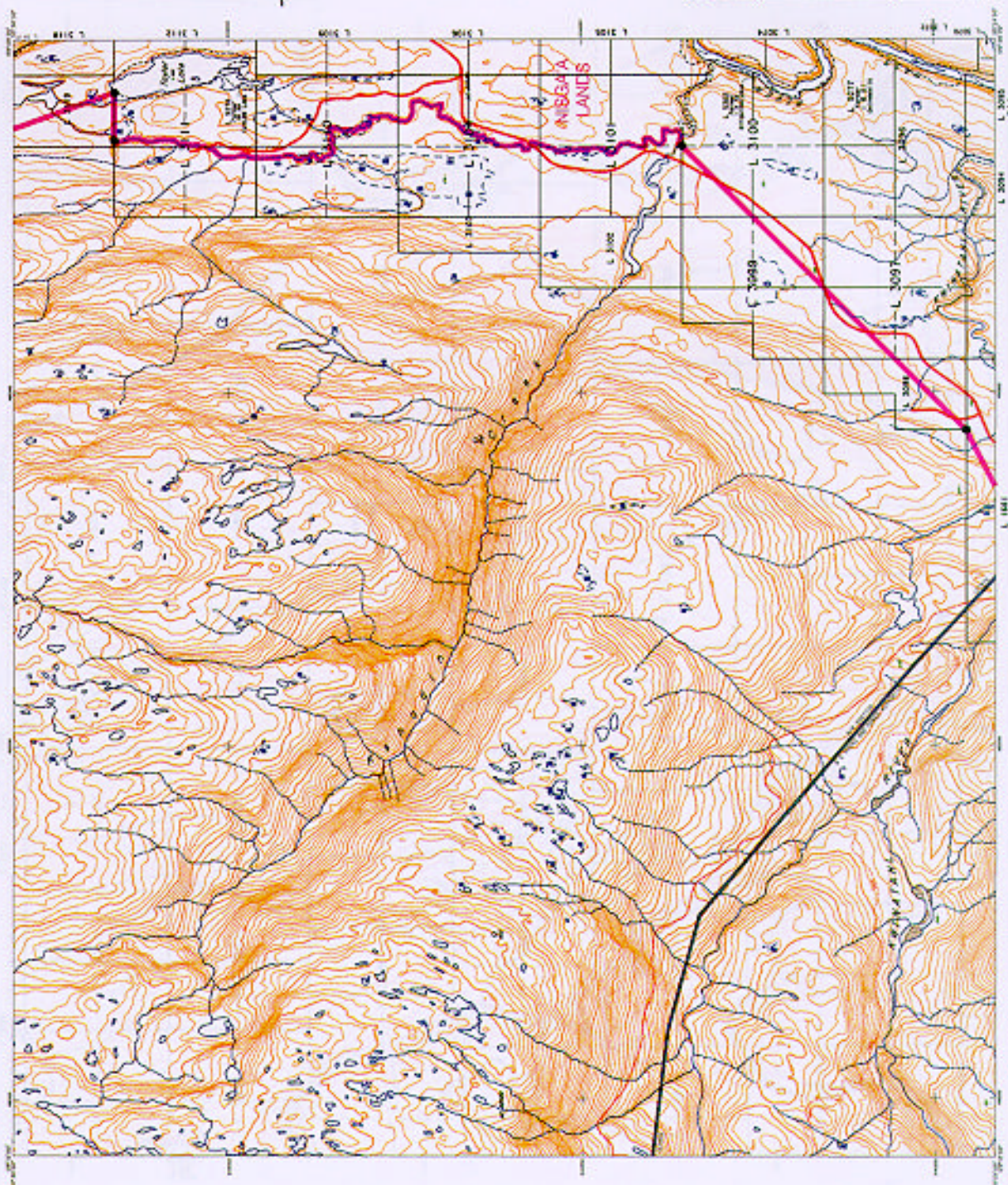
NISGA'A LANDS

[illegible][illegible]

Resolutions approved are deposited on this _____ day of _____.

ANSWER: A - 2

100% **Guaranteed**



PLANTIMETRIC LEGEND

[illegible]

the authors of the book, and the book is a very good read.



NISGA'A LANDS

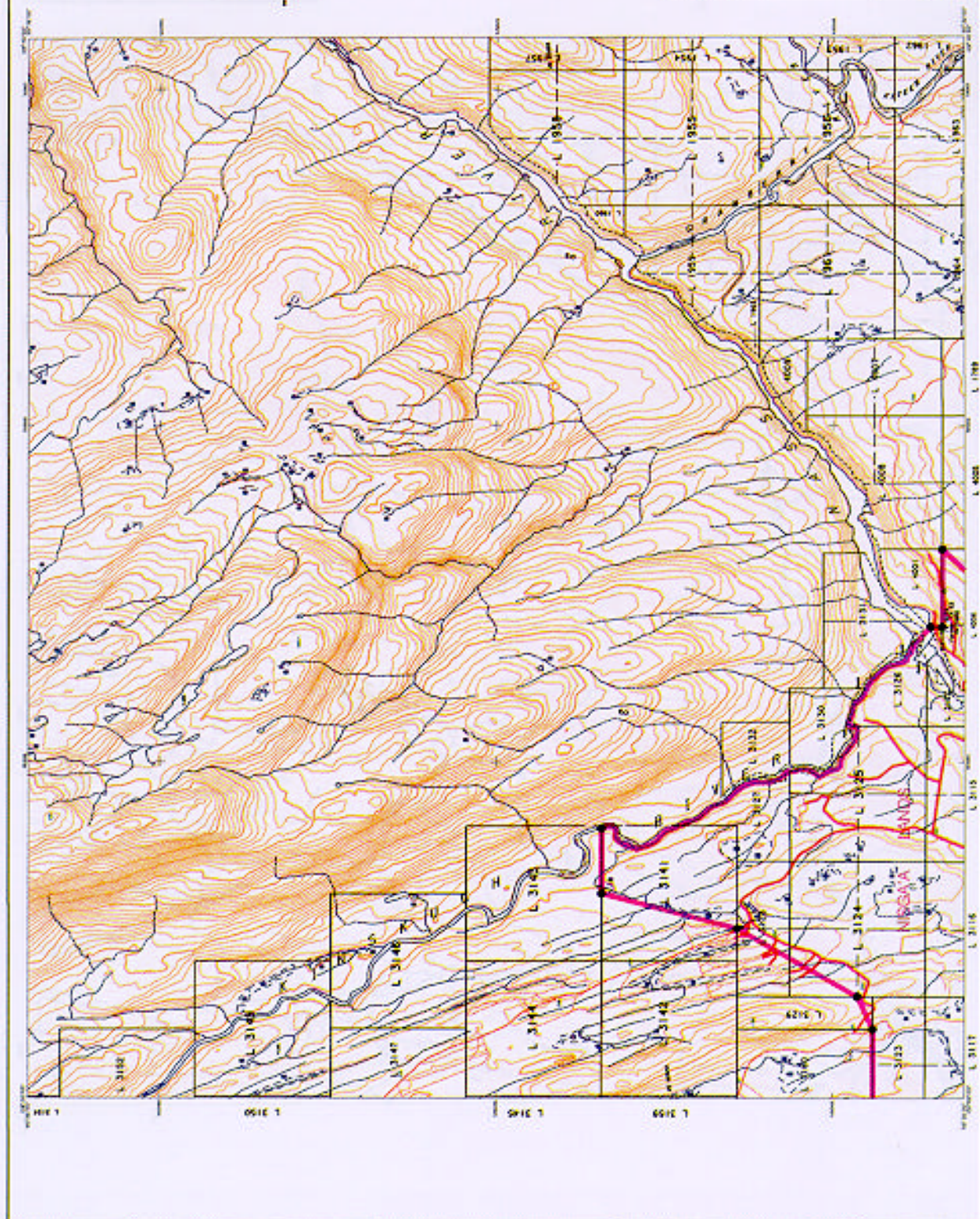
Sheet 1025-045

[illegible]

Sourcebook approved as deposited in this _____ city of _____.

APPENDIX A - 2

Map Sheet 39



ANIMATING LEGEND

[illegible]

NISGA'A LANDS

Top Sheet Top Use

[illegible]

Boundaries Approved: M. Decided on the _____ day of _____

Critical Masses of Mingo's Lands are held in deposit with Mingo's Lands Government, the Government of Canada and the Government of the Province of British Columbia.

1. The first step is to identify the problem or question that needs to be answered.

APPENDIX A - 3

RESEARCH

APPENDIX A - 3

METES AND BOUNDS DESCRIPTION OF NISGA'A LANDS

All those parcels or tracts of Crown land situated within the Province of British Columbia and lying within the following described area:

Commencing at the post set at the southwest corner of former Kincolith Indian Reserve No. 14, Range 5 Coast District, with said post being a point on the northerly natural boundary of Nass Bay and to be marked number #1;

thence in a general westerly direction along the northerly natural boundary of Nass Bay to the easterly natural boundary of Observatory Inlet;

thence in a general northerly direction along the easterly natural boundary of Observatory Inlet, to post number #2 which is to be set at the intersection of the westerly prolongation of the northerly boundary of former Scowban Indian Reserve No. 28, Cassiar District, with said natural boundary;

thence easterly to and along the northerly boundary of former Scowban Indian Reserve No. 28, with the posts set at the northwest and northeast corners thereof to be marked numbers #3 and #4, respectively, and continuing easterly along the easterly prolongation of said northerly boundary for a distance of 1773 metres, more or less, to post number #5 which is to be set on the ridge lying to the west of the unnamed creek that flows in a general northwesterly direction into the unnamed creek that passes through the southeast portion of former Scowban Indian Reserve No. 28 flowing southwesterly into Observatory Inlet;

thence on a bearing of 146° 32' 36", a distance of 2.24 kilometres, more or less, to post number #6, which is to be set on the northwesterly boundary of the watershed of Kincolith River;

thence northeasterly and easterly along the northwesterly and northerly boundaries of the watershed of Kincolith River to post number #7, which is to be set on said northerly boundary of the watershed of Kincolith River;

thence on a bearing of 90° 51' 00", a distance of 5.68 kilometres, more or less, to post number #8, which is to be set on the easterly boundary of the watershed of Anudol Creek;

thence on a bearing of 55° 00' 00", a distance of 3.459 kilometres;

thence on a bearing of 41° 52' 00", a distance of 858 metres;

thence on a bearing of 53° 11' 00", a distance of 1.255 kilometres;

thence on a bearing of 64° 30' 00", a distance of 1.124 kilometres;

thence on a bearing of 62° 05' 00", a distance of 1.777 kilometres to a post which is to be set and numbered #9;

thence on a bearing of 61° 52' 00", a distance of 3.064 kilometres to a post which is to be set and numbered #10;

thence on a bearing of 61° 52' 00", a distance of 3.04 kilometres, more or less, to post number #11 which is to be set on the westerly boundary of the watershed of Chemainuk Creek;

METES AND BOUNDS DESCRIPTION OF NISGA'A LANDS continued...

thence in a general northerly direction along the westerly boundaries of the watersheds of Chemainuk and Maughlin Creeks to post number #12 which is to be set on the westerly boundary of the watershed of Maughlin Creek;

thence on a bearing of 43° 53' 00", a distance of 2.32 kilometres, more or less, to post number #13 which is to be set on the most westerly point of the westerly natural boundary of the small unnamed lake situated at the headwaters of the unnamed creek that flows northeasterly through District Lot 1657 into Kwinatahl River;

thence northerly and northeasterly along the westerly and northwesterly natural boundary of said unnamed lake and continuing northeasterly along the left natural boundary of said unnamed creek to post number #14 which is to be set at the junction of the natural boundary of said unnamed creek with the right natural boundary of Kwinatahl River;

thence northeasterly in a straight line to the post set at the southwest corner of District Lot 3098 and to be marked number #15;

thence northeasterly in a straight line to the post set at the southeast corner of the west half of District Lot 3101 and to be marked number #16;

thence northerly along the easterly boundary of the west half of District Lot 3101 to the left natural boundary of Kshadin Creek;

thence easterly along the left natural boundary of Kshadin Creek to the right natural boundary of the unnamed creek that flows southerly into Kshadin Creek and that includes Taylor Lake within its drainage;

thence in a general northerly direction along the right natural boundary of said unnamed creek, passing through District Lots 3101, 3104, 3110, and 3111, to post number #17 which is to be set at the intersection of said natural boundary with the northerly boundary of District Lot 3111;

thence easterly along the northerly boundary of District Lot 3111 to the northeast meander post thereof, with said meander post to be marked number #18;

thence northwesterly in a straight line to the post set at the northwest corner of District Lot 3119 and to be marked number #19;

thence on a bearing of 0° 00' 00" to post number #20 which is to be set at a point lying on a bearing of 270° 00' 00" from the post set at the southwest corner of District Lot 3160 and to be marked number #21;

thence on a bearing of 90° 00' 00" to post number #21 set at the southwest corner of District Lot 3160;

thence easterly along the southerly boundary of District Lot 3160 to the post set at the southeast corner thereof, and to be marked number #22;

thence northeasterly in a straight line to the quarter post set on the westerly boundary of District Lot 3124, and to be marked number #23;

thence northeasterly in a straight line to the quarter post set on the northerly boundary of District Lot 3128, and to be marked number #24;

thence northeasterly in a straight line to the quarter post set on the northerly boundary of District Lot 3141, and to be marked number #25;

thence easterly along the northerly boundary of District Lot 3141 to post number #26 which is to be set at the intersection of said northerly boundary with the right natural boundary of Kinskuch River;

thence southeasterly along the right natural boundary of Kinskuch River to the right natural boundary of Nass River;

thence southeasterly in a straight line to the post set at the northwest corner of District Lot 4001, and to be marked number #27;

thence southerly along the westerly boundary of District Lot 4001 to the post set at the southwest corner thereof, and to be marked number #28, with said post being a point on the northerly boundary of District Lot 4006;

thence easterly along the northerly boundary of District Lot 4006 to the post set at northeast corner thereof, and to be marked number #29;

thence southwesterly in a straight line to post number #30, which is to be set at a point lying on a bearing of 90° 00' 00", a distance of 325 metres, from the post set at the southeast corner of District Lot 5278, being former Kinyug Indian Reserve No. 57, and to be marked number #31;

thence on a bearing of 270° 00' 00" to post number #31 set at the southeast corner of District Lot 5278;

thence southwesterly in a straight line to the post set at the northeast corner of the fractional southwest quarter of District Lot 4006, and to be marked number #32;

thence southerly along the easterly boundary of the fractional southwest quarter of District Lot 4006 to the post set at the southeast corner thereof, and to be marked number #33;

thence southwesterly in a straight line to the quarter post set on the easterly boundary of District Lot 3077, and to be marked number #34;

thence southeasterly in a straight line to the post set at the southeast corner of District Lot 1763, and to be marked number #35;

thence southwesterly in a straight line to the post set at the northeast corner of District Lot 1755, and to be marked number #36 ;

thence southwesterly in a straight line to the quarter post set on the northerly boundary of District Lot 1751, and to be marked number #37;

thence southeasterly in a straight line to the post set at the northeast corner of District Lot 1747, and to be marked number #38;

thence southerly along the easterly boundary of District Lot 1747 to the post set at the northeast corner of District Lot 1743, and to be marked number #39;

thence southerly along the easterly boundary of District Lot 1743 to post number #40 which is to be set at the intersection of said easterly boundary with the left natural boundary of Hoadley Creek;

thence in a general easterly direction along the left natural boundary of Hoadley Creek to the westerly natural boundary of the unnamed lake at the headwaters of Hoadley Creek ;

thence southerly, easterly and northerly along the westerly, southerly and easterly natural boundaries of said unnamed lake to post number #41 which is to be set at the most easterly point thereon;

thence on a bearing of 180° 00' 00", a distance of 218 metres, more or less, to post number #42 which is to be set on the southeasterly boundary of the watershed of Hoadley Creek;

METES AND BOUNDS DESCRIPTION OF NISGA'A LANDS continued...

thence in a general southwesterly direction along the southeasterly boundary of the watershed of Hoadley Creek and continuing in a general southerly direction along the ridge that separates those creeks that flow westerly into Dragon Lake and Seaskinnish Creek from those that flow easterly into Kiteen River to post number #43 which is to be set on said ridge;

thence on a bearing of 181° 32' 00", a distance of 2.90 kilometres, more or less, to post number #44 which is to be set on the easterly boundary of the watershed of Seaskinnish Creek;

thence in a general southerly direction along the easterly boundary of the watershed of Seaskinnish Creek to the summit of Mount Priestly, being a point thereon;

thence southwesterly in a straight line to post number #45 which is to be set at the summit of Mount Hoeft;

thence on a bearing of 270° 00' 00", a distance of 1.797 kilometres;

thence on a bearing of 123° 02' 00", a distance of 247 metres;

thence on a bearing of 225° 46' 00", a distance of 857 metres;

thence on a bearing of 141° 00' 00", a distance of 805 metres;

thence on a bearing of 82° 14' 00", a distance of 2.106 kilometres to a post which is to be set and numbered #46;

thence on a bearing of 181° 48' 00", a distance of 889 metres;

thence on a bearing of 242° 01' 00", a distance of 2.139 kilometres;

thence on a bearing of 114° 00' 00", a distance of 2.03 kilometres, more or less, to post number # 47 which is to be set on the right natural boundary of Fulmar Creek;

thence southwesterly along the right natural boundary of Fulmar Creek to post #48 which is to be set at the intersection of said natural boundary with a line drawn parallel to and 600 metres perpendicularly distant easterly from the centre line of Nisga'a Highway (formerly Nass Valley Road);

thence northwesterly along said line drawn parallel to and 600 metres perpendicularly distant easterly from the centre line of Nisga'a Highway to the easterly boundary of District Lot 4014;

thence southerly along the easterly boundary of District Lot 4014 to the post set at the southeast corner thereof, and to be marked post number #49, and continuing southerly along the southerly prolongation of the easterly boundary of District Lot 4014 produced to a point on a line drawn parallel to and 60 metres perpendicularly distant easterly from the right natural boundary of Tseax River;

thence in a general northwesterly direction along said line drawn parallel to and 60 metres perpendicularly distant easterly from the right natural boundary of Tseax River to the southerly boundary of Lot A of District Lot 4012, Plan 9176;

thence westerly along the southerly boundary of said Lot A to the southwest corner thereof, with said southwest corner being a point on the right natural boundary of Tseax River;

thence in a general northerly direction along the westerly boundary of said Lot A to the northwest corner thereof, with a portion of the westerly boundary of said Lot A being also the right natural boundary of Tseax River;

thence easterly along the northerly boundary of said Lot A to the most westerly boundary of former New Aiyansh Indian Reserve No. 1, as shown on Plan 65110 recorded in the Canada Lands Surveys Records at Ottawa;

thence northerly along the westerly boundary of former New Aiyansh Indian Reserve No. 1 to its intersection with a line drawn parallel to and 60 metres perpendicularly distant easterly from the right natural boundary of Tseax River;

thence in a general northwesterly direction along said line drawn parallel to and 60 metres perpendicularly distant easterly from the right natural boundary of Tseax River to post number #50 which is to be set at a point on said line which lies on a bearing of 90° 00' 00" from the post set at the southeast corner of District Lot 5275, being former Ksilamisk Indian Reserve No. 89, and to be marked #51;

thence on a bearing of 270° 00' 00" to the left natural boundary of Tseax River;

thence northwesterly along the left natural boundary of Tseax River to the left natural boundary of Nass River;

thence in a general southwesterly direction along the left natural boundary of Nass River to the northeast corner of District Lot 5287, being former Quinogag Indian Reserve No. 61;

thence southerly and westerly along the easterly and southerly boundaries of District Lot 5287 to the southwest corner thereof, with said corner being a point on the left natural boundary of Nass River;

thence in a general southwesterly direction along the left natural boundary of Nass River and following the left natural boundary of the river channel lying to the south and east of former Amatal Indian Reserve No. 5 to the easterly boundary of former Amatal Indian Reserve No. 6;

thence southerly and westerly along the easterly and southerly boundaries of former Amatal Indian Reserve No. 6 to the easterly boundary of District Lot 1094, being former Amaral Indian Reserve No.s 46 and 47 (undivided);

thence southerly and westerly along the easterly and southerly boundaries of District Lot 1094 to the southwest corner thereof, with said corner being a point on the left natural boundary of Nass River;

thence in a general southwesterly direction along the left natural boundary of Nass River, to the post set at the intersection of said natural boundary with the easterly boundary of that portion of former Gitwinksihlkw Indian Reserve No. 7 lying to the south of Nass River, and with said post to be marked number #52;

thence southerly along said easterly boundary of former Gitwinksihlkw Indian Reserve No. 7, passing through the post set at the southeast corner thereof and to be marked number #53, and continuing southerly along the easterly boundary of District Lot 1093, being former Gwinaha Indian Reserve No. 44, to the post set at the southeast corner thereof, and to be marked number #54;

thence westerly along the southerly boundary of District Lot 1093 to the post set at the southwest corner thereof, and to be marked number #55, with said post being a point on the easterly boundary of former Zaulzap Indian Reserve No. 29;

thence southerly and westerly along the easterly and southerly boundaries of former Zaulzap Indian Reserve No. 29, passing through the post set at the southeast corner thereof and to be marked number #56, to post number #57 which is to be set at the intersection of said southerly boundary with the left natural boundary of Zolzap Creek;

thence in a general easterly direction along the left natural boundary of Zolzap Creek to post number #58 which is to be set at a point on said natural boundary lying on a bearing of 143° 58' 00", a distance of 2.02 kilometres, more or less from the southeast corner of District Lot 1093, being the former Gwinaha Indian Reserve No. 44;

METES AND BOUNDS DESCRIPTION OF NISGA'A LANDS continued...

thence on a bearing of 96° 14' 00", a distance of 695 metres;

thence on a bearing of 68° 32' 00", a distance of 1.096 kilometres to a post which is to be set and numbered #59 ;

thence on a bearing of 42° 39' 00", a distance of 654 metres;

thence on a bearing of 330° 37' 00", a distance of 497 metres to a post which is to be set and numbered #60;

thence on a bearing of 90° 15' 00", a distance of 2.277 kilometres;

thence on a bearing of 26° 45' 00", a distance of 1.083 kilometres to a post which is to be set and numbered #61;

thence on a bearing of 330° 15' 00", a distance of 500 metres to a post which is to be set and numbered #62;

thence on a bearing of 69° 15' 00", a distance of 2.35 kilometres, more or less, to post number #63 which is to be set on a bearing of 270° 00' 00", a distance of 2.05 kilometres, from the southwest corner of District Lot 4013, Cassiar District;

thence on a bearing of 127° 15' 00", a distance of 2.500 kilometres;

thence on a bearing of 90° 15' 00", a distance of 1.25 kilometres;

thence on a bearing of 115° 08' 00", a distance of 2.48 kilometres, more or less to post number #64 which is to be set at the intersection of the right natural boundary of an unnamed creek that flows northeasterly into Tseax River with a line drawn parallel to and 400 metres perpendicularly distant southwesterly from the centre line of Nisga'a Highway (formerly the Nass Valley Road);

thence in a general southwesterly direction along the right natural boundary of said unnamed creek to a post to be set thereon and numbered #65;

thence on a bearing of 213° 04' 00", a distance of 3.54 kilometres, more or less, to post number #66 which is to be set on the southerly boundary of the watershed of Vetter Creek;

thence in a general westerly direction along the southerly boundaries of the watersheds of Vetter and Ansedagan Creeks to post number #67 which is to be set on the southerly boundary of the watershed of Ansedagan Creek at a point lying on a bearing of 171° 37' 00", a distance of 8.26 kilometres, more or less, from the southeast corner of former Zaulzap Indian Reserve No. 29;

thence on a bearing of 233° 27' 00", a distance of 2.719 kilometres, to a post to be set and numbered #68;

thence on a bearing of 233° 27' 00", a distance of 3.58 kilometres, more or less, crossing Ksemamaith Creek, to post number #69 which is to be set on the northeasterly boundary of the watershed of Ksedin Creek;

thence southeasterly along the northeasterly boundary of the watershed of Ksedin Creek, a distance of 2.50 kilometres to a post which is to be set thereon and numbered #70;

thence on a bearing of 249° 08' 00", a distance of 877 metres to a post which is to be set and numbered #71;

thence on a bearing of 249° 08' 00", a distance of 3.739 kilometres, crossing Ksedin Creek, to a post which is to be set and numbered #72;

thence on a bearing of 249° 08' 00", a distance of 2.47 kilometres, more or less to post number #73 which is to be set on the easterly boundary of the watershed of Ginlulak Creek;

thence in a general southerly direction along the easterly boundaries of the watersheds of Ginlulak and Voshell Creeks to the southerly boundary of the watershed of Voshell Creek;

thence westerly along the southerly boundary of the watershed of Voshell Creek to the easterly boundary of the watershed of Ishkheenickh River;

thence in a general southwesterly direction along the easterly boundary of the watershed of Ishkheenickh River to a post which is to be set thereon, and numbered #74;

thence on a bearing of 278° 44' 00", a distance of 1.164 kilometres to a post to be set and numbered #75;

thence on a bearing of 278° 44' 00", a distance of 3.471 kilometres, crossing Ishkheenickh River, to post number #76 which is to be set on a bearing of 44° 52' 00" a distance of 1.084 kilometres, from the northeast corner of District Lot 6435, Range 5, Coast District, being former Lakbelak Indian Reserve No. 38;

thence on a bearing of 278° 44' 00", a distance of 2.48 kilometres, more or less, to post number #77 which is to be set on the northerly boundary of the watershed of Lachballach Creek;

thence in a general westerly direction along the northerly boundaries of the watersheds of Lachballach Creek and Kwinamass River to the westerly boundary of the watershed of Burton Creek;

thence northerly along the westerly boundary of the watershed of Burton Creek to a post which is to be set thereon, and numbered #78;

thence on a bearing of 316° 14' 00", a distance of 1.63 kilometres, more or less, to post number #79 which is to be set on the right natural boundary of the northwesterly flowing unnamed tributary of Welda Creek;

thence northerly and westerly along said right natural boundary and continuing northerly and westerly along the right natural boundary of Welda Creek to the southerly natural boundary of Nass Bay;

thence westerly and northerly along the southerly natural boundary of Nass Bay to post number #80 which is to be set at a point on said natural boundary lying on a bearing of 198° 33' 00", a distance of 214 metres, more or less, from the northwest corner of District Lot 6822 ;

thence on a bearing of 310° 38' 00", a distance of 7.911 kilometres;

thence northerly in a straight line to the post set at the southwest corner of former Kincolith Indian Reserve No. 14, Range 5 Coast District, and which is to be marked number #1, with said post being a point on the northerly natural boundary of Nass Bay, and being also the point of commencement, and with the official copies of plans for all referenced posts to be filed on deposit with the Office of the Surveyor General in Victoria, British Columbia, on completion of survey.

Excepting there out:

Firstly: submerged lands;

Secondly: Gingietl Ecological Reserve No. 115;

Thirdly: the Nisga'a Highway corridor; and

Fourthly: the lands within the boundaries set out in Appendix B.

APPENDIX A - 4

**LIST OF FORMER NISGA'A INDIAN RESERVES
ON NISGA'A LANDS.**

MAP NO.	I.R. NAME	NO.	LEGAL DESCRIPTION	PLAN*
103I. 083	Ishkseenickh River	36	D.L. 6451, Range 5 Coast	BC735
103I. 083	Ishkseenickh River	37	D.L. 6452, Range 5 Coast	BC734
103I. 091	Kincolith	14		BC137
103I. 092	Black Point	11		BC128
103I. 092	Ishkseenickh	33	D.L. 6924, Range 5 Coast	BC737
103I. 092	Lachtesk	12A	D.L. 3963, Range 5 Coast	BC674
103I. 092	Lachtesk	12		BC128
103I. 092	Lakata	41	D.L. 3964, Range 5 Coast	BC675
103I. 092	Red Cliff (Red Bluff)	13		BC137
103I. 093	Ishkseenickh River	34	D.L. 6925, Range 5 Coast	BC742
103I. 093	Ishkseenickh River	35	D.L. 6450, Range 5 Coast	BC736
103P. 001	Kincolith	14A		BC137
103P. 001	Scowban	28		BC138
103P. 002	Stoney Point (Fishery Bay)	10	includes Section 3 Block 1, Range 5 Coast	BC128
103P. 003	Andegulay	8		BC132
103P. 003	Andegulay	8A		BC132
103P. 003	Dachlabah	30		BC131
103P. 003	Ightkeany	32	District Lot 5435, Cassiar	BC730
103P. 003	Lachkaltsap	9	includes Lachkaltsap 9A Block A of D.L. 7051, Cassiar Section 2 Block 1 Range 5 Coast	BC128 BC165
103P. 013	Anyutawl	31	D.L. 1095, Cassiar	BC738
103P. 014	Gitwinksihlkw	7		BC136
103P. 014	Gwinaha	44	D.L. 1093, Cassiar	BC740
103P. 014	Zaulzap	29A		BC165
103P. 014	Zaulzap	29		BC132
103P. 015	Amaral	46 & 47	D.L. 1094, Cassiar	BC739

MAP NO.	I.R. NAME	No.	LEGAL DESCRIPTION	PLAN*
103P. 015	New Aiyansh	1	Block J of D.L. 4012, S.W. 1/4 of D.L. 2626, N.E. 1/4 of D.L. 4012, Lot A of D.L. 4012, Plan 9176, N.W. 1/4 of D.L. 2626, except Block A, N.E. 1/4 of D.L. 4013 and Lot A of D.L. 4013, Plan PRP 14915, all in Cassiar	59981, 59982, and 59983
103P. 015	Seaks	60	D.L. 5286, Cassiar	BC636
103P. 025	Aiyansh	87	D.L. 5313, Cassiar	BC618
103P. 025	Aiyansh	83	D.L. 5309, Cassiar	BC622
103P. 025	Aiyansh (Kitladamas)	1		BC136
103P. 025	Amatal	5		BC136
103P. 025	Amatal	6		BC136
103P. 025	Gish Creek	45	D.L. 5271, Cassiar	BC640
103P. 025	Kitladamax	1A		BC136
103P. 025	Ksilamisk	89	D.L. 5275, Cassiar	BC626
103P. 025	Kzimeng	82	D.L. 5308, Cassiar	BC623
103P. 025	Lakks gamal	86	D.L. 5312, Cassiar	BC619
103P. 025	Lakks gamal	88	D.L. 5314, Cassiar	BC617
103P. 025	Lakks gamal	85	D.L. 5311, Cassiar	BC620
103P. 025	Quinogag	61	D.L. 5287, Cassiar	BC634
103P. 025	Sanklksgamal	80	D.L. 5306, Cassiar	BC625
103P. 025	Seaks	3		BC136
103P. 025	Shumal Creek	81	D.L. 5307, Cassiar	BC624
103P. 025	Shumal Creek	84	D.L. 5310, Cassiar	BC621
103P. 025	Tsimmanweenclis	2		BC136
103P. 025	Voilnadamtk	48	D.L. 5274, Cassiar	BC627
103P. 035	Anokswok	59	D.L. 5285, Cassiar	BC637
103P. 035	Kwinamuck	49	D.L. 3133, Cassiar	BC628
103P. 045	Gwindebilk	51	D.L. 5277, Cassiar	BC629
103P. 045	Gitquinmiyaue	76	D.L. 5302, Cassiar	BC635
103P. 045	Taylor Lake	50	D.L. 5276, Cassiar	BC639
103P. 046	Gitsheoaksit	68	D.L. 5282, Cassiar	BC638

LIST OF FORMER NISGA'A INDIAN RESERVES ON NISGA'A LANDS continued...

MAP NO.	I.R. NAME	NO.	LEGAL DESCRIPTION	PLAN*
103P. 046	Gwimmauz	52	D.L. 5280, Cassiar	BC632
103P. 046	Gwinkbawueast	54	D.L. 5281, Cassiar	BC630
103P. 046	Kinyug	57	D.L. 5278, Cassiar	BC631
103P. 056	Gwingag	53	D.L. 5279, Cassiar	BC633

* These are Canada Lands Survey Records on deposit in Ottawa.