

Occupational Analyses Series

Floorcovering Installer

2005

Trades and Apprenticeship Division

Division des métiers et de l'apprentissage

Human Resources
Partnerships Directorate

Direction des partenariats
en ressources humaines

Disponible en français sous le titre :

Poseur/poseuse de revêtements souples

The Canadian Council of Directors of Apprenticeship (CCDA) recognizes this Occupational Analysis as the national standard for the occupation of Floorcovering Installer.

ACKNOWLEDGEMENTS

Human Resources and Skills Development Canada (HRSDC) wishes to express sincere appreciation for the contribution of the many industrial establishments, professional associations, labour organizations, tradespersons, provincial and territorial government departments and agencies, and all others who contributed to this publication.

Special acknowledgement is extended to the following representatives from the trade:

Harold Boychuck	Manitoba
Paul Felicio	Ontario
Cory Horne	Nova Scotia
John Okopien	Quebec
Fred Richardson	Alberta
Hamish Roper	British Columbia

This analysis was prepared by the Human Resources Partnerships Directorate of HRSDC. The planning, coordinating, facilitating and processing of this analysis were undertaken by the National Occupational Analyses (NOA) Team of the Trades and Apprenticeship Division. Brendon Farrell for the host jurisdiction of British Columbia also participated in the development of this NOA.

OTHER RELATED OCCUPATIONAL TITLE

This analysis covers tasks performed by floorcovering installers whose occupational title has been identified by some provinces and territories of Canada by the name of Floor Covering Installer.

LIST OF RED SEAL NATIONAL OCCUPATIONAL ANALYSES

TITLE	NOC* Code
Appliance Service Technician (1997)	7332
Automotive Painter (2005)	7322
Automotive Service Technician (2005)	7321
Baker (1997)	6252
Boilermaker (2003)	7262
Bricklayer (2000)	7281
Cabinetmaker (2000)	7272
Carpenter (1998)	7271
Cement Finisher (1995)	7282
Construction Electrician (2003)	7241
Cook (2003)	6242
Electrical Rewind Mechanic (1999)	7333
Electronics Technician – Consumer Products (1997)	2242
Farm Equipment Mechanic (2000)	7312
Floorcovering Installer (2005)	7295
Glazier (2004)	7292
Hairstylist (2005)	6271
Heavy Duty Equipment Technician (2004)	7312
Industrial Electrician (2003)	7242
Industrial Instrument Mechanic (2000)	2243
Industrial Mechanic (Millwright) (1999)	7311
Insulator (Heat and Frost) (2000)	7293
Ironworker (Generalist) (1993)	7264
Lather (Interior Systems Mechanic) (2002)	7284
Machinist (2005)	7231
Metal Fabricator (Fitter) (2003)	7263

Mobile Crane Operator (1997)	7371
Motorcycle Mechanic (1995)	7334
Motor Vehicle Body Repairer (Metal and Paint) (2005)	7322
Oil Burner Mechanic (1997)	7331
Painter and Decorator (2000)	7294
Partsperson (2005)	1472
Plumber (2003)	7251
Powerline Technician (2004)	7244
Recreation Vehicle Mechanic (2000)	7383
Refrigeration and Air Conditioning Mechanic (2004)	7313
Roofer (1997)	7291
Sheet Metal Worker (1997)	7261
Sprinkler System Installer (2003)	7252
Steamfitter – Pipefitter (1996)	7252
Tilesetter (2004)	7283
Tool and Die Maker (1997)	7232
Transport Trailer Technician (2003)	7321
Truck and Transport Mechanic (2000)	7321
Welder (2004)	7265

* National Occupational Classification

Requests for these publications should be forwarded to:

**Trades and Apprenticeship Division
Human Resources Partnerships
Human Resources and Skills Development Canada
140 Promenade du Portage, Phase IV, 5th Floor
Gatineau, Quebec K1A 0J9**

These publications are also available to order or download online at: www.red-seal.ca.

FOREWORD

The first National Conference on Apprenticeship in Trades and Industries, held in Ottawa in 1952, recommended that the federal government be requested to co-operate with provincial apprenticeship committees and officials in preparing analyses of a number of skilled occupations. To this end, Human Resources and Skills Development Canada (HRSDC) sponsors a program, under the guidance of the Canadian Council of Directors of Apprenticeship (CCDA), to develop a series of occupational analyses.

The Occupational Analysis Program has the following objectives:

- to identify and group the tasks performed by skilled workers in particular occupations;
- to identify those tasks that are performed by skilled workers in every province and territory;
- to develop instruments for use in the preparation of Interprovincial Standards “Red Seal” Examinations and curricula for training leading to the certification of skilled workers;
- to facilitate the mobility, in Canada, of apprentices and skilled workers;
- to supply employers and employees, and their associations, industries, training institutions and governments with analyses of the tasks performed in particular occupations.

TABLE OF CONTENTS

ACKNOWLEDGEMENTS	I
OTHER RELATED OCCUPATIONAL TITLE	II
LIST OF RED SEAL NATIONAL OCCUPATIONAL ANALYSES	III
FOREWORD	V

GUIDE TO ANALYSIS

DEVELOPMENT OF ANALYSIS	XI
STRUCTURE OF ANALYSIS	XI
VALIDATION METHOD	XII
SCOPE OF THE FLOORCOVERING INSTALLER TRADE	XIV
OCCUPATIONAL OBSERVATIONS	XV
SAFETY	XVI

ANALYSIS

BLOCK A OCCUPATIONAL SKILLS

Task 1	Uses tools and equipment.	3
Task 2	Organizes work.	5
Task 3	Identifies materials.	10
Task 4	Assesses floor.	13

BLOCK B FLOOR PREPARATION

Task 5	Removes existing floorcovering and accessories.	16
Task 6	Prepares substrate.	19
Task 7	Installs underlayment.	21

BLOCK C CARPET

Task 8	Installs carpets.	23
Task 9	Performs specialized carpet procedures.	28
Task 10	Installs carpet on stairs.	32
Task 11	Services carpet installations.	34

BLOCK D RESILIENT FLOORING

Task 12	Installs resilient tiles.	36
Task 13	Installs resilient sheet goods.	39
Task 14	Performs specialized resilient flooring procedures.	41
Task 15	Installs specialty flooring products and accessories.	45
Task 16	Services resilient flooring installations.	48

BLOCK E WOOD AND LAMINATE FLOORING

Task 17	Installs pre-finished hardwood, engineered wood and laminate flooring.	50
Task 18	Services pre-finished hardwood, engineered wood and laminate flooring.	55

APPENDICES

APPENDIX A	TOOLS AND EQUIPMENT	59
APPENDIX B	GLOSSARY	63
APPENDIX C	BLOCKS AND TASKS WEIGHTING	67
APPENDIX D	PIE CHART	71
APPENDIX E	TASK PROFILE CHART	73

GUIDE TO ANALYSIS

DEVELOPMENT OF ANALYSIS

A draft analysis is developed by a committee of industry experts in the field led by a team of facilitators. This draft analysis identifies all the tasks performed in the occupation.

The draft is translated and reviewed by the NOA Team of HRSDC. A copy of this analysis is then forwarded to provincial/territorial authorities for review by specialists in the field. Their recommendations are assessed and incorporated into the final draft.

The occupational analysis is published in both official languages.

STRUCTURE OF ANALYSIS

To facilitate understanding of the nature of the occupation, the work performed is divided into the following divisions:

- BLOCK** – is the largest division within the analysis and reflects a distinct operation relevant to the occupation.
- TASK** – is the distinct activity that, combined with others, makes up the logical and necessary steps the worker is required to perform to complete a specific assignment within a “BLOCK”.
- SUB-TASK** – is the smallest division into which it is practical to subdivide any work activity and, combined with others, fully describes all duties constituting a “TASK”.

Supporting Knowledge & Abilities

The elements of skill and knowledge that an individual must acquire to adequately perform the sub-task.

Trends

Any shifts or changes in technology that affect the block.

Related Components

All components related to a specified block being undertaken by the floorcovering installer.

Tools and Equipment

All tools and equipment necessary for the floorcovering installer to perform the work on all given tasks identified within the block.

VALIDATION METHOD

At the request of the Canadian Council of Directors of Apprenticeship (CCDA), the Standardization Subcommittee developed a method for validating the Red Seal National Occupational Analyses.

A draft of the analysis is sent to all jurisdictions for validation. Each jurisdiction rates the sub-tasks and applies percentage ratings to blocks and tasks. This method for the validation of the National Occupational Analysis identifies common core tasks across Canada for a specific occupation. This feature facilitates the weighting of the Interprovincial Standards “Red Seal” Examinations.

DEFINITIONS

YES: the sub-task is performed by workers in the occupation in a specific jurisdiction.

NO: the sub-task is not performed by workers in the occupation in a specific jurisdiction.

BLOCK %: the average number of questions (items), derived from the collective decision made by workers within the occupation from all areas of Canada, that will be placed on an interprovincial examination to assess each block of the analysis.

TASK %: the average number of questions (items), derived from the collective decision made by workers within the occupation from all areas of Canada, that will be placed on an interprovincial examination to assess each task of the analysis.

NV: Not Validated by a province/territory.

ND: Not Designated in a province/territory.

PROVINCIAL/TERRITORIAL ABBREVIATIONS

NL: Newfoundland and Labrador

NS: Nova Scotia

PE: Prince Edward Island

NB: New Brunswick

QC: Quebec

ON: Ontario

MB: Manitoba

SK: Saskatchewan

AB: Alberta

BC: British Columbia

NT: Northwest Territories

YT: Yukon

NU: Nunavut

COMMON CORE

The criteria for determining common core depend on the performance of sub-tasks. If at least 70% of the responding jurisdictions (excluding NVs and NDs) perform a sub-task, it shall be considered common core.

Interprovincial Standards “Red Seal” Examinations are based on the common core identified through this validation process. Validation identifies what will be assessed through the interprovincial examination.

BLOCKS AND TASKS WEIGHTING (APPENDIX C)

This appendix represents the block and task percentages as submitted by each jurisdiction.

Each jurisdiction, with the use of a provincial/territorial occupational advisory committee, validates the content, places percentages on blocks and tasks, and indicates whether or not the sub-tasks are performed by the skilled workers within the occupation. The results of this exercise are submitted to the NOA Team who then analyzes the data and develops this appendix which provides the individual jurisdictional validation results as well as the national averages of all responses.

PIE CHART (APPENDIX D)

The graph depicts the national percentages assigned to blocks in the analysis.

SCOPE OF THE FLOORCOVERING INSTALLER TRADE

Floorcovering installers install, replace and repair a variety of floorcoverings. They work with cushion, carpeting, vinyl, resilient tile, sheet flooring, pre-finished wood, unfinished wood, engineered wood, laminate, seasonal carpets and artificial turf. Floorcovering installers install and service floorcoverings in residential and industrial/commercial/institutional (ICI) settings.

In new building construction, floorcovering is one of the final procedures to be carried out. Floorcovering installers ideally begin their work after services (water, electricity, light, heat) are installed and walls are painted.

When replacing or repairing pre-existing floorcoverings, the work area must be cleared of furniture and appliances. Existing flooring, cushion and trim must often be removed. Floorcovering installers are required to match patterns and insert pieces when repairing damaged areas.

The preparation for floorcovering installation involves inspecting, measuring and cleaning surfaces onto which the floorcovering is to be installed. Preparation normally includes correcting surface imperfections such as cracks, chips and small holes, and sanding and filling wood substrates and/or underlayment panels.

Floorcovering installers may be responsible for site visits, planning, scheduling and estimating of jobs. They use blueprints, freehand drawings, scaled drawings, layout plans, shop drawings, work orders and finish schedules.

Self-employment is common in this trade. Some floorcovering installers are employed by flooring businesses (retail or wholesale), construction companies and contractors.

A growing number of installers work primarily in one area of specialization within the trade such as carpet or resilient flooring installation. Floorcovering installers may work closely with other tradespeople such as carpenters, painters, electricians, interior systems mechanics, drywallers and cabinet makers.

Key attributes for people entering this trade are: good colour vision, hand-eye coordination, problem solving skills, mathematical skills, communication skills and organizational skills. Good physical condition is important because the work often requires considerable kneeling, stretching, twisting and lifting heavy, awkward loads.

Health and safety are important for these tradespeople as they are frequently in contact with chemical (e.g. paints, adhesives and other toxic materials) and physical (e.g. cutting tools, fastening tools and dust) hazards. Ongoing safety awareness and a good knowledge of safety standards and regulations are important.

With experience, journeypersons may move into supervisory, management and sales positions.

This trade offers year round, indoor and physically rewarding work. Skilled floorcovering tradespersons install products that enhance existing and new structures. A career in this trade can be financially and personally rewarding.

OCCUPATIONAL OBSERVATIONS

There has been an observation of a need to attract new entrants to this trade due to an ageing workforce. Because of the physical nature of the trade, there is a negative general public perception of the trade, making attracting new entrants a challenge.

Task-specific, unsupervised, subcontract work is prevalent in this trade; therefore, there is an increased emphasis on worker business skills. A growing concern with subcontracting is the undefined responsibility for on-the-job training. Many floorcovering professionals voluntarily engage in upgrading courses, manufacturers' seminars and professional education courses to stay current with new trends and product innovations. Some workers may seek product specific technical training through manufacturers, resulting in their scope of training and experience being limited to specific products and methods.

In larger markets with larger employers, there are indications of specialization in the trade with floorcovering installers working with specific types of floorcovering materials such as synthetic turf, vinyl decking and specialty concrete finishes.

There has been an increase of awareness of physical impacts of the trade on floorcovering professionals. There have been new tools developed to address this concern and they are increasingly being used. Mini-stretchers and power stretchers are the recommended methods to stretch carpet; this reduces the use of knee kickers, one of the most common causes of long term injury to floorcovering installers.

The trade has seen the need for new specialty skills such as plastic welding to completely enclose rooms and make them germ free in locations such as hospital operating rooms and laboratories.

Environmental concerns have increased the use of environmentally friendly products such as natural products, low Volatile Organic Compounds (VOC) in adhesives and recycled materials.

SAFETY

Safe working procedures and conditions, accident prevention and the preservation of health are of primary importance to industry in Canada. These responsibilities are shared and require the joint efforts of government, employers and employees. It is imperative that all parties are aware of circumstances and conditions that may lead to injury or harm. Safe learning experiences and environments can be created by controlling the variables and behaviours that may contribute to accidents or injury.

It is generally recognized that a safety-conscious attitude and work practices contribute to a healthy, safe and accident-free working environment.

It is imperative to apply and be familiar with the Occupational Health and Safety Acts and Workplace Hazardous Material Information System (WHMIS) Regulations. As well, it is essential to determine workplace hazards and take measures to protect oneself, co-workers, the public and the environment.

As safety education is an integral part of training in all jurisdictions, personal safety practices are not recorded in this document. However, the technical safety aspect relating to each task and sub-task are included throughout this analysis.

ANALYSIS

BLOCK A

OCCUPATIONAL SKILLS

Trends: Tool innovation to reduce physical impact of trade. New tools to remove carpets. More ergonomic design of tools. Use of cell phones has increased communication in the trade. A greater emphasis on safety. Manufacturers are placing more technical information on their websites. This may make it necessary for installers to become computer literate.

Related Components: Not applicable.

Tools and Equipment: See Appendix A.

Task 1 Uses tools and equipment.

Sub-task

1.01 Uses hand tools.

Supporting Knowledge & Abilities

<u>NL</u>	<u>NS</u>	<u>PE</u>	<u>NB</u>	<u>QC</u>	<u>ON</u>	<u>MB</u>	<u>SK</u>	<u>AB</u>	<u>BC</u>	<u>NT</u>	<u>YT</u>	<u>NU</u>
NV	yes	NV	NV	NV	yes	yes	NV	yes	yes	NV	NV	NV

1.01.01	knowledge of types of hand tools
1.01.02	knowledge of hand cutting tools
1.01.03	knowledge of abrading tools
1.01.04	knowledge of fastening and prying tools
1.01.05	knowledge of stretching tools
1.01.06	knowledge of layout and marking tools
1.01.07	knowledge of trowelling tools
1.01.08	knowledge of floor preparation tools
1.01.09	ability to select tools
1.01.10	ability to maintain tools

Sub-task**1.02 Uses power tools.****Supporting Knowledge & Abilities**

<u>NL</u> NV	<u>NS</u> yes	<u>PE</u> NV	<u>NB</u> NV	<u>QC</u> NV	<u>ON</u> yes	<u>MB</u> yes	<u>SK</u> NV	<u>AB</u> yes	<u>BC</u> yes	<u>NT</u> NV	<u>YT</u> NV	<u>NU</u> NV	
					1.02.01								knowledge of types of portable power tools such as battery powered and gas powered
					1.02.02								knowledge of manufacturers' specifications
					1.02.03								ability to select portable power tools
					1.02.04								ability to maintain portable power tools
					1.02.05								ability to recognize hazards such as worn parts, worn power cords and dull blades
					1.02.06								ability to store portable power tools

Sub-task**1.03 Uses measuring tools.****Supporting Knowledge & Abilities**

<u>NL</u> NV	<u>NS</u> yes	<u>PE</u> NV	<u>NB</u> NV	<u>QC</u> NV	<u>ON</u> yes	<u>MB</u> yes	<u>SK</u> NV	<u>AB</u> yes	<u>BC</u> yes	<u>NT</u> NV	<u>YT</u> NV	<u>NU</u> NV	
					1.03.01								knowledge of types of measuring tools
					1.03.02								knowledge of basic geometry
					1.03.03								knowledge of imperial and metric systems
					1.03.04								ability to organize measuring tools
					1.03.05								ability to maintain measuring tools
					1.03.06								ability to store measuring tools
					1.03.07								ability to interpret readings

Sub-task**1.04 Uses personal protective equipment (PPE).****Supporting Knowledge & Abilities**

<u>NL</u>	<u>NS</u>	<u>PE</u>	<u>NB</u>	<u>QC</u>	<u>ON</u>	<u>MB</u>	<u>SK</u>	<u>AB</u>	<u>BC</u>	<u>NT</u>	<u>YT</u>	<u>NU</u>
NV	yes	NV	NV	NV	yes	yes	NV	yes	yes	NV	NV	NV
					1.04.01		knowledge of types of PPE					
					1.04.02		knowledge of PPE operations					
					1.04.03		knowledge of workplace safety and health regulations					
					1.04.04		ability to select PPE					
					1.04.05		ability to recognize worksite hazards					
					1.04.06		ability to inspect and maintain PPE					

Task 2 Organizes work.**Sub-task****2.01 Communicates with others.****Supporting Knowledge & Abilities**

<u>NL</u>	<u>NS</u>	<u>PE</u>	<u>NB</u>	<u>QC</u>	<u>ON</u>	<u>MB</u>	<u>SK</u>	<u>AB</u>	<u>BC</u>	<u>NT</u>	<u>YT</u>	<u>NU</u>
NV	yes	NV	NV	NV	yes	yes	NV	yes	yes	NV	NV	NV
					2.01.01		knowledge of methods of communication					
					2.01.02		ability to translate technical terms into layperson language					
					2.01.03		ability to communicate trade standards and practices to customers					
					2.01.04		ability to establish customer expectations for service and repairs					
					2.01.05		ability to communicate with supervisors					
					2.01.06		ability to communicate with other tradespersons					

- 2.01.07 ability to coach apprentices
- 2.01.08 ability to operate communication equipment such as cell phones, two-way radios and computers
- 2.01.09 ability to use hand signals

Sub-task

2.02 Assesses jobsite conditions and requirements.

Supporting Knowledge & Abilities

<u>NL</u>	<u>NS</u>	<u>PE</u>	<u>NB</u>	<u>QC</u>	<u>ON</u>	<u>MB</u>	<u>SK</u>	<u>AB</u>	<u>BC</u>	<u>NT</u>	<u>YT</u>	<u>NU</u>
NV	yes	NV	NV	NV	yes	yes	NV	yes	yes	NV	NV	NV

- 2.02.01 knowledge of product requirements
- 2.02.02 knowledge of jobsite readiness
- 2.02.03 knowledge of accessibility requirements
- 2.02.04 knowledge of jobsite safety and security
- 2.02.05 ability to identify potential problems such as obstruction and scheduling conflicts with other trades
- 2.02.06 ability to assess environmental conditions such as temperature, humidity, ventilation, dust and light
- 2.02.07 ability to establish work schedule according to jobsite conditions
- 2.02.08 ability to recognize preparation required beyond the scope of floorcovering installer trade

Sub-task**2.03 Plans sequence of installation. Supporting Knowledge & Abilities**

<u>NL</u>	<u>NS</u>	<u>PE</u>	<u>NB</u>	<u>QC</u>	<u>ON</u>	<u>MB</u>	<u>SK</u>	<u>AB</u>	<u>BC</u>	<u>NT</u>	<u>YT</u>	<u>NU</u>
NV	yes	NV	NV	NV	yes	yes	NV	yes	yes	NV	NV	NV

- 2.03.01 knowledge of floorcovering operations
- 2.03.02 knowledge of time required to complete each operation
- 2.03.03 ability to plan work procedures
- 2.03.04 ability to prioritize sequence of operations with regard to jobsite conditions

Sub-task**2.04 Measures dimensions. Supporting Knowledge & Abilities**

<u>NL</u>	<u>NS</u>	<u>PE</u>	<u>NB</u>	<u>QC</u>	<u>ON</u>	<u>MB</u>	<u>SK</u>	<u>AB</u>	<u>BC</u>	<u>NT</u>	<u>YT</u>	<u>NU</u>
NV	yes	NV	NV	NV	yes	yes	NV	yes	yes	NV	NV	NV

- 2.04.01 knowledge of basic mathematical formulas
- 2.04.02 ability to perform basic calculations
- 2.04.03 ability to determine pattern repeats
- 2.04.04 ability to interpret blueprints and drawings

Sub-task**2.05 Performs layout. Supporting Knowledge & Abilities**

<u>NL</u>	<u>NS</u>	<u>PE</u>	<u>NB</u>	<u>QC</u>	<u>ON</u>	<u>MB</u>	<u>SK</u>	<u>AB</u>	<u>BC</u>	<u>NT</u>	<u>YT</u>	<u>NU</u>
NV	yes	NV	NV	NV	yes	yes	NV	yes	yes	NV	NV	NV

- 2.05.01 knowledge of standard widths of materials in both metric and imperial measures
- 2.05.02 knowledge of pattern matching principles

2.05.03	knowledge of manufacturers' recommendations and specifications for flooring materials such as dye lot sequence and pile direction
2.05.04	ability to determine pattern run off
2.05.05	ability to determine seam location
2.05.06	ability to determine fill sizes according to product
2.05.07	ability to inspect materials prior to installation for defects such as factory flaws or damage

Sub-task

2.06 Uses documentation.

Supporting Knowledge & Abilities

<u>NL</u>	<u>NS</u>	<u>PE</u>	<u>NB</u>	<u>QC</u>	<u>ON</u>	<u>MB</u>	<u>SK</u>	<u>AB</u>	<u>BC</u>	<u>NT</u>	<u>YT</u>	<u>NU</u>
NV	yes	NV	NV	NV	yes	yes	NV	yes	yes	NV	NV	NV

2.06.01	ability to interpret and scale blueprints
2.06.02	ability to read job specifications
2.06.03	ability to interpret finish schedule
2.06.04	ability to interpret work orders
2.06.05	ability to interpret flooring manufacturers' product specifications and recommendations
2.06.06	ability to draw a sketch
2.06.07	ability to document job readiness and environmental conditions
2.06.08	ability to check material received against work orders and specifications
2.06.09	ability to document extra work required
2.06.10	ability to document jobsite problems

Sub-task**2.07 Maintains safe work environment.****Supporting Knowledge & Abilities**

<u>NL</u>	<u>NS</u>	<u>PE</u>	<u>NB</u>	<u>QC</u>	<u>ON</u>	<u>MB</u>	<u>SK</u>	<u>AB</u>	<u>BC</u>	<u>NT</u>	<u>YT</u>	<u>NU</u>
NV	yes	NV	NV	NV	yes	yes	NV	yes	yes	NV	NV	NV

- 2.07.01 knowledge of components of a safe work environment
- 2.07.02 knowledge of jurisdictional safety regulations
- 2.07.03 knowledge of location of first aid supplies
- 2.07.04 ability to use safety equipment and structures
- 2.07.05 ability to identify hazards
- 2.07.06 ability to use Workplace Hazardous Materials Information System (WHMIS)
- 2.07.07 ability to maintain clean and obstruction-free work environment
- 2.07.08 ability to identify positive ventilation

Sub-task**2.08 Performs final inspection.****Supporting Knowledge & Abilities**

<u>NL</u>	<u>NS</u>	<u>PE</u>	<u>NB</u>	<u>QC</u>	<u>ON</u>	<u>MB</u>	<u>SK</u>	<u>AB</u>	<u>BC</u>	<u>NT</u>	<u>YT</u>	<u>NU</u>
NV	yes	NV	NV	NV	yes	yes	NV	yes	yes	NV	NV	NV

- 2.08.01 knowledge of industry standards
- 2.08.02 knowledge of customer expectations
- 2.08.03 ability to inspect all work and perform remedial tasks
- 2.08.04 ability to review job with customer
- 2.08.05 ability to resolve discrepancies between industry standards and customer expectations

Task 3 Identifies materials.

Sub-task

3.01 Identifies types of carpets.

Supporting Knowledge & Abilities

<u>NL</u>	<u>NS</u>	<u>PE</u>	<u>NB</u>	<u>QC</u>	<u>ON</u>	<u>MB</u>	<u>SK</u>	<u>AB</u>	<u>BC</u>	<u>NT</u>	<u>YT</u>	<u>NU</u>
NV	yes	NV	NV	NV	yes	yes	NV	yes	yes	NV	NV	NV
					3.01.01							
					3.01.02							
					3.01.03							
					3.01.04							
					3.01.05							
					3.01.06							

Sub-task

3.02 Identifies types of resilient flooring.

Supporting Knowledge & Abilities

<u>NL</u>	<u>NS</u>	<u>PE</u>	<u>NB</u>	<u>QC</u>	<u>ON</u>	<u>MB</u>	<u>SK</u>	<u>AB</u>	<u>BC</u>	<u>NT</u>	<u>YT</u>	<u>NU</u>
NV	yes	NV	NV	NV	yes	yes	NV	yes	yes	NV	NV	NV
					3.02.01							
					3.02.02							
					3.02.03							
					3.02.04							
					3.02.05							

Sub-task

3.03 Identifies types of pre-finished wood and laminate flooring.

Supporting Knowledge & Abilities

<u>NL</u>	<u>NS</u>	<u>PE</u>	<u>NB</u>	<u>QC</u>	<u>ON</u>	<u>MB</u>	<u>SK</u>	<u>AB</u>	<u>BC</u>	<u>NT</u>	<u>YT</u>	<u>NU</u>
NV	yes	NV	NV	NV	yes	yes	NV	yes	yes	NV	NV	NV
					3.03.01							
					3.03.02							
					3.03.03							
					3.03.04							
					3.03.05							

Sub-task

3.04 Identifies types of cushion.

Supporting Knowledge & Abilities

<u>NL</u>	<u>NS</u>	<u>PE</u>	<u>NB</u>	<u>QC</u>	<u>ON</u>	<u>MB</u>	<u>SK</u>	<u>AB</u>	<u>BC</u>	<u>NT</u>	<u>YT</u>	<u>NU</u>
NV	yes	NV	NV	NV	yes	yes	NV	yes	yes	NV	NV	NV
					3.04.01							
					3.04.02							
					3.04.03							
					3.04.04							

Sub-task**3.05 Selects adhesives.****Supporting Knowledge & Abilities**

<u>NL</u>	<u>NS</u>	<u>PE</u>	<u>NB</u>	<u>QC</u>	<u>ON</u>	<u>MB</u>	<u>SK</u>	<u>AB</u>	<u>BC</u>	<u>NT</u>	<u>YT</u>	<u>NU</u>
NV	yes	NV	NV	NV	yes	yes	NV	yes	yes	NV	NV	NV
					3.05.01							
					3.05.02							
					3.05.03							
					3.05.04							
					3.05.05							

Sub-task**3.06 Selects trim and accessories.****Supporting Knowledge & Abilities**

<u>NL</u>	<u>NS</u>	<u>PE</u>	<u>NB</u>	<u>QC</u>	<u>ON</u>	<u>MB</u>	<u>SK</u>	<u>AB</u>	<u>BC</u>	<u>NT</u>	<u>YT</u>	<u>NU</u>
NV	yes	NV	NV	NV	yes	yes	NV	yes	yes	NV	NV	NV
					3.06.01							
					3.06.02							
					3.06.03							
					3.06.04							
					3.06.05							

Task 4 Assesses floor.

Sub-task

4.01 Identifies grade level.

Supporting Knowledge & Abilities

<u>NL</u> NV	<u>NS</u> yes	<u>PE</u> NV	<u>NB</u> NV	<u>QC</u> NV	<u>ON</u> yes	<u>MB</u> yes	<u>SK</u> NV	<u>AB</u> yes	<u>BC</u> yes	<u>NT</u> NV	<u>YT</u> NV	<u>NU</u> NV
-----------------	------------------	-----------------	-----------------	-----------------	------------------	------------------	-----------------	------------------	------------------	-----------------	-----------------	-----------------

- 4.01.01 knowledge of effects of grade level on various floorcoverings
- 4.01.02 knowledge of manufacturers' recommendations regarding grade level
- 4.01.03 ability to identify and define above-grade, on-grade and below-grade subfloors

Sub-task

4.02 Identifies subfloor type.

Supporting Knowledge & Abilities

<u>NL</u> NV	<u>NS</u> yes	<u>PE</u> NV	<u>NB</u> NV	<u>QC</u> NV	<u>ON</u> yes	<u>MB</u> yes	<u>SK</u> NV	<u>AB</u> yes	<u>BC</u> yes	<u>NT</u> NV	<u>YT</u> NV	<u>NU</u> NV
-----------------	------------------	-----------------	-----------------	-----------------	------------------	------------------	-----------------	------------------	------------------	-----------------	-----------------	-----------------

- 4.02.01 knowledge of types of subfloor such as concrete, wood, metal and ceramic
- 4.02.02 knowledge of basic construction principles
- 4.02.03 ability to determine substructure

Sub-task

4.03 Determines possibility of asbestos containing products.

Supporting Knowledge & Abilities

<u>NL</u> NV	<u>NS</u> yes	<u>PE</u> NV	<u>NB</u> NV	<u>QC</u> NV	<u>ON</u> yes	<u>MB</u> yes	<u>SK</u> NV	<u>AB</u> yes	<u>BC</u> yes	<u>NT</u> NV	<u>YT</u> NV	<u>NU</u> NV
-----------------	------------------	-----------------	-----------------	-----------------	------------------	------------------	-----------------	------------------	------------------	-----------------	-----------------	-----------------

- 4.03.01 knowledge of asbestos containing products
- 4.03.02 knowledge of available asbestos tests

- 4.03.03 ability to recognize warning signs for asbestos such as age of material, size of material and colour of adhesives
- 4.03.04 ability to obtain and interpret test results

Sub-task

4.04 Conducts field tests.

Supporting Knowledge & Abilities

<u>NL</u>	<u>NS</u>	<u>PE</u>	<u>NB</u>	<u>QC</u>	<u>ON</u>	<u>MB</u>	<u>SK</u>	<u>AB</u>	<u>BC</u>	<u>NT</u>	<u>YT</u>	<u>NU</u>
NV	yes	NV	NV	NV	yes	yes	NV	yes	yes	NV	NV	NV

- 4.04.01 knowledge of types of moisture tests such as calcium chloride, mat test and meters
- 4.04.02 knowledge of alkalinity test (pH)
- 4.04.03 knowledge of bond tests
- 4.04.04 ability to visually identify types of contaminants such as oil, ink, paint, dust, varnish, parting compound and adhesives
- 4.04.05 ability to perform temperature readings
- 4.04.06 ability to interpret field results

Sub-task

4.05 Determines floor preparation required.

Supporting Knowledge & Abilities

<u>NL</u>	<u>NS</u>	<u>PE</u>	<u>NB</u>	<u>QC</u>	<u>ON</u>	<u>MB</u>	<u>SK</u>	<u>AB</u>	<u>BC</u>	<u>NT</u>	<u>YT</u>	<u>NU</u>
NV	yes	NV	NV	NV	yes	yes	NV	yes	yes	NV	NV	NV

- 4.05.01 knowledge of floorcovering to be installed
- 4.05.02 knowledge of manufacturers' recommendations
- 4.05.03 knowledge of floor preparation materials available

4.05.04 ability to identify subfloor composition

4.05.05 ability to identify subfloor deficiencies

BLOCK B

FLOOR PREPARATION

Trends: Asbestos contamination is becoming less common as these types of hazardous floors are being gradually replaced in older buildings. Installers should be aware of potential asbestos hazards in buildings where old flooring has only been covered or encapsulated. In general, subfloor conditions in the construction process have deteriorated resulting in much more extensive subfloor preparation for floorcovering installers.

Related Components: Resilient sheet goods, carpet, cushion, vinyl composite tile, trims, adhesives, contaminants, tackless strips, fasteners, base, patching compounds (portland cement and gypsum based), self-levelling products, primers, product additives, bonding agents, sealers, trowelled underlayment, underlayment panels.

Tools and Equipment: Basic hand tools, power tools and equipment, PPE.

Task 5 Removes existing floorcovering and accessories.

Sub-task

5.01 Removes wall base and trims. Supporting Knowledge & Abilities

<u>NL</u>	<u>NS</u>	<u>PE</u>	<u>NB</u>	<u>QC</u>	<u>ON</u>	<u>MB</u>	<u>SK</u>	<u>AB</u>	<u>BC</u>	<u>NT</u>	<u>YT</u>	<u>NU</u>
NV	yes	NV	NV	NV	yes	yes	NV	yes	yes	NV	NV	NV

5.01.01	knowledge of types of wall base
5.01.02	knowledge of types of trims
5.01.03	knowledge of fasteners such as glue, staples and nails
5.01.04	ability to prevent damage to wall finishes
5.01.05	ability to prevent damage to existing wall base and trims for reinstallation
5.01.06	ability to salvage materials

Sub-task**5.02 Removes carpet.****Supporting Knowledge & Abilities**

<u>NL</u>	<u>NS</u>	<u>PE</u>	<u>NB</u>	<u>QC</u>	<u>ON</u>	<u>MB</u>	<u>SK</u>	<u>AB</u>	<u>BC</u>	<u>NT</u>	<u>YT</u>	<u>NU</u>
NV	yes	NV	NV	NV	yes	yes	NV	yes	yes	NV	NV	NV

5.02.01 knowledge of existing carpet installation

5.02.02 knowledge of floorcovering removal techniques

5.02.03 knowledge of disposal methods and regulations

5.02.04 ability to prevent damage to existing finished surfaces

5.02.05 ability to salvage materials

Sub-task**5.03 Removes resilient flooring.****Supporting Knowledge & Abilities**

<u>NL</u>	<u>NS</u>	<u>PE</u>	<u>NB</u>	<u>QC</u>	<u>ON</u>	<u>MB</u>	<u>SK</u>	<u>AB</u>	<u>BC</u>	<u>NT</u>	<u>YT</u>	<u>NU</u>
NV	yes	NV	NV	NV	yes	yes	NV	yes	yes	NV	NV	NV

5.03.01 knowledge of existing floorcovering installation

5.03.02 knowledge of asbestos containing products

5.03.03 knowledge of provincial and territorial regulations regarding removal and disposal of asbestos containing products

5.03.04 knowledge of floorcovering removal techniques such as chipping, heating, stripping manually and by machine

5.03.05 knowledge of disposal methods and regulations

5.03.06 ability to prevent damage to existing finished surfaces

5.03.07 ability to remove adhesives

Sub-task**5.04 Removes wood and laminate flooring.****Supporting Knowledge & Abilities**

<u>NL</u>	<u>NS</u>	<u>PE</u>	<u>NB</u>	<u>QC</u>	<u>ON</u>	<u>MB</u>	<u>SK</u>	<u>AB</u>	<u>BC</u>	<u>NT</u>	<u>YT</u>	<u>NU</u>
NV	yes	NV	NV	NV	yes	yes	NV	yes	yes	NV	NV	NV

5.04.01	knowledge of wood and laminate installation techniques
5.04.02	knowledge of wood and laminate removal techniques
5.04.03	knowledge of disposal methods and regulations
5.04.04	ability to prevent damage to existing finished surfaces
5.04.05	ability to salvage materials

Sub-task**5.05 Removes underlayments.****Supporting Knowledge & Abilities**

<u>NL</u>	<u>NS</u>	<u>PE</u>	<u>NB</u>	<u>QC</u>	<u>ON</u>	<u>MB</u>	<u>SK</u>	<u>AB</u>	<u>BC</u>	<u>NT</u>	<u>YT</u>	<u>NU</u>
NV	yes	NV	NV	NV	yes	yes	NV	yes	yes	NV	NV	NV

5.05.01	knowledge of removal techniques
5.05.02	knowledge of disposal methods and regulations
5.05.03	ability to determine composition of subfloor layers such as asbestos containing products and gypsum panels
5.05.04	ability to prevent damage to existing finished surfaces
5.05.05	ability to remove fasteners

Task 6 Prepares substrate.

Sub-task

6.01 Removes contaminants.

Supporting Knowledge & Abilities

<u>NL</u>	<u>NS</u>	<u>PE</u>	<u>NB</u>	<u>QC</u>	<u>ON</u>	<u>MB</u>	<u>SK</u>	<u>AB</u>	<u>BC</u>	<u>NT</u>	<u>YT</u>	<u>NU</u>
NV	yes	NV	NV	NV	yes	yes	NV	yes	yes	NV	NV	NV

- 6.01.01 knowledge of removal techniques such as scraping, sanding, and by chemical and mechanical means
- 6.01.02 knowledge of disposal methods and regulations
- 6.01.03 ability to identify types of contaminants such as oil, ink, paint, dust, varnish, parting compound and adhesives
- 6.01.04 ability to prevent damage to finished surfaces

Sub-task

6.02 Prepares concrete floors.

Supporting Knowledge & Abilities

<u>NL</u>	<u>NS</u>	<u>PE</u>	<u>NB</u>	<u>QC</u>	<u>ON</u>	<u>MB</u>	<u>SK</u>	<u>AB</u>	<u>BC</u>	<u>NT</u>	<u>YT</u>	<u>NU</u>
NV	yes	NV	NV	NV	yes	yes	NV	yes	yes	NV	NV	NV

- 6.02.01 knowledge of concrete floor composition such as lightweight concrete and radiant heated slab
- 6.02.02 knowledge of manufacturers' recommendations on the use of remedial products such as patching compounds, self-levelling products, bonding agents and sealers
- 6.02.03 ability to apply patching and levelling compounds

Sub-task**6.03 Prepares wood floors.****Supporting Knowledge & Abilities**

<u>NL</u>	<u>NS</u>	<u>PE</u>	<u>NB</u>	<u>QC</u>	<u>ON</u>	<u>MB</u>	<u>SK</u>	<u>AB</u>	<u>BC</u>	<u>NT</u>	<u>YT</u>	<u>NU</u>
NV	yes	NV	NV	NV	yes	yes	NV	yes	yes	NV	NV	NV
					6.03.01							
					6.03.02							
					6.03.03							
					6.03.04							
					6.03.05							
					6.03.06							
					6.03.07							

Sub-task**6.04 Prepares specialty floors.****Supporting Knowledge & Abilities**

<u>NL</u>	<u>NS</u>	<u>PE</u>	<u>NB</u>	<u>QC</u>	<u>ON</u>	<u>MB</u>	<u>SK</u>	<u>AB</u>	<u>BC</u>	<u>NT</u>	<u>YT</u>	<u>NU</u>
NV	yes	NV	NV	NV	yes	yes	NV	yes	yes	NV	NV	NV
					6.04.01							
					6.04.02							
					6.04.03							
					6.04.04							

Sub-task

6.05 Prepares existing flooring to accept new floorcovering.

Supporting Knowledge & Abilities

<u>NL</u>	<u>NS</u>	<u>PE</u>	<u>NB</u>	<u>QC</u>	<u>ON</u>	<u>MB</u>	<u>SK</u>	<u>AB</u>	<u>BC</u>	<u>NT</u>	<u>YT</u>	<u>NU</u>
NV	yes	NV	NV	NV	yes	yes	NV	yes	yes	NV	NV	NV

- 6.05.01 knowledge of number of layers of existing floorcovering
- 6.05.02 knowledge of manufacturers' recommendations for installation
- 6.05.03 knowledge of surface deficiencies such as delamination, wax build up and damage
- 6.05.04 ability to correct surface deficiencies
- 6.05.05 ability to apply patching and levelling compounds
- 6.05.06 ability to undercut jambs and trims

Task 7 Installs underlayment.

Sub-task

7.01 Installs trowelled underlayment.

Supporting Knowledge & Abilities

<u>NL</u>	<u>NS</u>	<u>PE</u>	<u>NB</u>	<u>QC</u>	<u>ON</u>	<u>MB</u>	<u>SK</u>	<u>AB</u>	<u>BC</u>	<u>NT</u>	<u>YT</u>	<u>NU</u>
NV	yes	NV	NV	NV	yes	yes	NV	yes	yes	NV	NV	NV

- 7.01.01 knowledge of manufacturers' recommendations regarding the use of trowelled underlayment
- 7.01.02 knowledge of types of trowelled underlayment products and additives
- 7.01.03 ability to follow recommended mixing and application procedures
- 7.01.04 ability to apply primers and bonding agents

Sub-task**7.02 Installs rigid underlayment panels.****Supporting Knowledge & Abilities**

<u>NL</u>	<u>NS</u>	<u>PE</u>	<u>NB</u>	<u>QC</u>	<u>ON</u>	<u>MB</u>	<u>SK</u>	<u>AB</u>	<u>BC</u>	<u>NT</u>	<u>YT</u>	<u>NU</u>
NV	yes	NV	NV	NV	yes	yes	NV	yes	yes	NV	NV	NV

7.02.01 knowledge of flooring manufacturers' recommendations regarding types of underlayment panels

7.02.02 knowledge of fastening techniques

7.02.03 ability to measure, cut and fit underlayment panels

7.02.04 ability to prevent damage to existing finished surfaces

BLOCK C

CARPET

Trends: Overall, there is a decreased use of carpet in residential installations being replaced by hard surface flooring. Within carpet installations, there is an increase in patterned carpets and more complex designs. In commercial carpeting, there is an increase in the use of pad-attached carpet and modular carpet tile. There is an increase in environmental concerns resulting in more recycled and recyclable materials.

Related Components: Carpet (rolls and tiles), tackless strip, accessories (transition trims, mouldings), fasteners, cushion, adhesives, seaming tapes, sealers.

Tools and Equipment: Basic hand tools, power tools and equipment, specialized carpet tools and equipment, PPE.

Task 8 Installs carpets.

Sub-task

8.01 Installs carpets by conventional method.

Supporting Knowledge & Abilities

<u>NL</u>	<u>NS</u>	<u>PE</u>	<u>NB</u>	<u>QC</u>	<u>ON</u>	<u>MB</u>	<u>SK</u>	<u>AB</u>	<u>BC</u>	<u>NT</u>	<u>YT</u>	<u>NU</u>
NV	yes	NV	NV	NV	yes	yes	NV	yes	yes	NV	NV	NV
					8.01.01							knowledge of types and forms of tackless strip and their applications
					8.01.02							knowledge of acclimation requirements
					8.01.03							knowledge of fastening methods for cushion and accessories
					8.01.04							knowledge of carpet layout considerations such as dye lot sequence, direction of pile lay and location of seams, fills and cross seams
					8.01.05							knowledge of manufacturers' specifications
					8.01.06							knowledge of stretching procedures for materials such as woven, tufted and proprietary backings
					8.01.07							ability to install tackless strip

8.01.08	ability to install carpet cushion
8.01.09	ability to recognize worn and damaged components such as tackless strip, trims and cushion
8.01.10	ability to position carpet widths with respect to pile direction and pattern
8.01.11	ability to determine seaming methods
8.01.12	ability to stretch carpet
8.01.13	ability to manipulate pattern alignment
8.01.14	ability to trim and fit carpet

Sub-task

8.02 Installs carpets by direct glue-down method.

Supporting Knowledge & Abilities

<u>NL</u>	<u>NS</u>	<u>PE</u>	<u>NB</u>	<u>QC</u>	<u>ON</u>	<u>MB</u>	<u>SK</u>	<u>AB</u>	<u>BC</u>	<u>NT</u>	<u>YT</u>	<u>NU</u>
NV	yes	NV	NV	NV	yes	yes	NV	yes	yes	NV	NV	NV

8.02.01	knowledge of types of seam sealers
8.02.02	knowledge of manufacturers' recommendations such as adhesive spread rate and trowel notch size
8.02.03	knowledge of acclimation requirements
8.02.04	knowledge of carpet layout considerations such as dye lot sequence, direction of pile lay and location of seams, fills and cross seams
8.02.05	ability to apply adhesive by methods such as spraying, rolling and trowelling
8.02.06	ability to maintain consistent spread rate throughout application of adhesive
8.02.07	ability to manipulate pattern alignment
8.02.08	ability to trim and fit carpet

Sub-task**8.03 Installs carpets by double-bond method.****Supporting Knowledge & Abilities**

<u>NL</u>	<u>NS</u>	<u>PE</u>	<u>NB</u>	<u>QC</u>	<u>ON</u>	<u>MB</u>	<u>SK</u>	<u>AB</u>	<u>BC</u>	<u>NT</u>	<u>YT</u>	<u>NU</u>
NV	yes	NV	NV	NV	yes	yes	NV	yes	yes	NV	NV	NV
					8.03.01							
					8.03.02							
					8.03.03							
					8.03.04							
					8.03.05							
					8.03.06							
					8.03.07							
					8.03.08							
					8.03.09							
					8.03.10							

Sub-task**8.04 Installs modular carpet tiles.****Supporting Knowledge & Abilities**

<u>NL</u>	<u>NS</u>	<u>PE</u>	<u>NB</u>	<u>QC</u>	<u>ON</u>	<u>MB</u>	<u>SK</u>	<u>AB</u>	<u>BC</u>	<u>NT</u>	<u>YT</u>	<u>NU</u>
NV	yes	NV	NV	NV	yes	yes	NV	yes	yes	NV	NV	NV
					8.04.01							

8.04.02	knowledge of manufacturers' recommendations such as adhesive spread rate, method of adhesive application and open time
8.04.03	knowledge of acclimation requirements
8.04.04	knowledge of carpet layout considerations such as pile direction, dye lot sequence, border sizes and manufacturers' recommended layout
8.04.05	ability to lay out grid line
8.04.06	ability to establish and maintain working line consistency
8.04.07	ability to apply adhesives
8.04.08	ability to trim and fit modular carpet tiles

Sub-task

8.05 Cuts carpet.

Supporting Knowledge & Abilities

<u>NL</u>	<u>NS</u>	<u>PE</u>	<u>NB</u>	<u>QC</u>	<u>ON</u>	<u>MB</u>	<u>SK</u>	<u>AB</u>	<u>BC</u>	<u>NT</u>	<u>YT</u>	<u>NU</u>
NV	yes	NV	NV	NV	yes	yes	NV	yes	yes	NV	NV	NV

8.05.01	knowledge of carpet pattern repeats
8.05.02	knowledge of types of carpet construction such as woven and tufted
8.05.03	ability to square end cuts using various squaring techniques such as T-square, 3-4-5 and lapping back
8.05.04	ability to make multiple square cuts from roll

Sub-task**8.06 Seams carpet.****Supporting Knowledge & Abilities**

<u>NL</u>	<u>NS</u>	<u>PE</u>	<u>NB</u>	<u>QC</u>	<u>ON</u>	<u>MB</u>	<u>SK</u>	<u>AB</u>	<u>BC</u>	<u>NT</u>	<u>YT</u>	<u>NU</u>
NV	yes	NV	NV	NV	yes	yes	NV	yes	yes	NV	NV	NV
					8.06.01							
					8.06.02							
					8.06.03							
					8.06.04							
					8.06.05							
					8.06.06							
					8.06.07							
					8.06.08							

Sub-task**8.07 Completes carpet installation.****Supporting Knowledge & Abilities**

<u>NL</u>	<u>NS</u>	<u>PE</u>	<u>NB</u>	<u>QC</u>	<u>ON</u>	<u>MB</u>	<u>SK</u>	<u>AB</u>	<u>BC</u>	<u>NT</u>	<u>YT</u>	<u>NU</u>
NV	yes	NV	NV	NV	yes	yes	NV	yes	yes	NV	NV	NV
					8.07.01							
					8.07.02							

- 8.07.03 ability to tuck and finish carpet at doorways and trims
- 8.07.04 ability to roll glue-down materials according to manufacturers' recommendations

Task 9 Performs specialized carpet procedures.

Sub-task

9.01 Installs borders and insets.

Supporting Knowledge & Abilities

<u>NL</u>	<u>NS</u>	<u>PE</u>	<u>NB</u>	<u>QC</u>	<u>ON</u>	<u>MB</u>	<u>SK</u>	<u>AB</u>	<u>BC</u>	<u>NT</u>	<u>YT</u>	<u>NU</u>
NV	yes	NV	NV	NV	yes	yes	NV	yes	yes	NV	NV	NV

- 9.01.01 knowledge of basic procedures and recommendations for border and inset installations
- 9.01.02 knowledge of inner wall construction
- 9.01.03 ability to establish layout
- 9.01.04 ability to construct narrow multi-coloured borders and insets
- 9.01.05 ability to establish pile lay direction and pattern
- 9.01.06 ability to cut mitres where borders and insets meet and intersect
- 9.01.07 ability to establish and maintain parallel lines
- 9.01.08 ability to cut border and inset carpet to size
- 9.01.09 ability to stretch and stay-tack field and border
- 9.01.10 ability to attach borders and insets to field carpet
- 9.01.11 ability to stretch trim and fit entire installation

Sub-task**9.02 Installs wall base.****Supporting Knowledge & Abilities**

<u>NL</u>	<u>NS</u>	<u>PE</u>	<u>NB</u>	<u>QC</u>	<u>ON</u>	<u>MB</u>	<u>SK</u>	<u>AB</u>	<u>BC</u>	<u>NT</u>	<u>YT</u>	<u>NU</u>
NV	yes	NV	NV	NV	yes	yes	NV	yes	yes	NV	NV	NV

9.02.01 knowledge of wall base application methods

9.02.02 knowledge of existing wall condition

9.02.03 knowledge of wall base composition such as vinyl, carpet and rubber

9.02.04 knowledge of pre-formed corners

9.02.05 ability to apply adhesive

9.02.06 ability to cut and wrap inside and outside corners

9.02.07 ability to maintain consistent floor to wall transition

9.02.08 ability to maintain consistent finish on carpet base

Sub-task**9.03 Binds carpet.****Supporting Knowledge & Abilities**

<u>NL</u>	<u>NS</u>	<u>PE</u>	<u>NB</u>	<u>QC</u>	<u>ON</u>	<u>MB</u>	<u>SK</u>	<u>AB</u>	<u>BC</u>	<u>NT</u>	<u>YT</u>	<u>NU</u>
NV	yes	NV	NV	NV	yes	yes	NV	yes	yes	NV	NV	NV

9.03.01 knowledge of binding products such as binding tapes, serging and fringes

9.03.02 knowledge of carpet construction

9.03.03 ability to verify shape and dimensions

9.03.04 ability to trim and prepare carpets prior to binding

9.03.05 ability to attach binding tape to carpet edge using the binding stapler method and hand sewing

9.03.06 ability to attach binding tape using carpet binding sewing machine

Sub-task

9.04 Upholsters carpet.

Supporting Knowledge & Abilities

<u>NL</u>	<u>NS</u>	<u>PE</u>	<u>NB</u>	<u>QC</u>	<u>ON</u>	<u>MB</u>	<u>SK</u>	<u>AB</u>	<u>BC</u>	<u>NT</u>	<u>YT</u>	<u>NU</u>
NV	yes	NV	NV	NV	yes	yes	NV	yes	yes	NV	NV	NV

9.04.01 knowledge of carpet upholstery concepts and techniques

9.04.02 ability to finish inside and outside corners on stringers, stairs, walls and other three dimensional objects

9.04.03 ability to wrap under lips and nosings

Sub-task

9.05 Installs area rugs and runners.

Supporting Knowledge & Abilities

<u>NL</u>	<u>NS</u>	<u>PE</u>	<u>NB</u>	<u>QC</u>	<u>ON</u>	<u>MB</u>	<u>SK</u>	<u>AB</u>	<u>BC</u>	<u>NT</u>	<u>YT</u>	<u>NU</u>
NV	yes	NV	NV	NV	yes	yes	NV	yes	yes	NV	NV	NV

9.05.01 knowledge of cushions for area rugs and runners

9.05.02 ability to construct area rugs and runners to specified shape using borders, insets and bindings

9.05.03 ability to position area rugs, runners and cushions

9.05.04 ability to finish edges of rugs and runners

Sub-task**9.06 Installs release carpets.****Supporting Knowledge & Abilities**

<u>NL</u>	<u>NS</u>	<u>PE</u>	<u>NB</u>	<u>QC</u>	<u>ON</u>	<u>MB</u>	<u>SK</u>	<u>AB</u>	<u>BC</u>	<u>NT</u>	<u>YT</u>	<u>NU</u>
NV	yes	NV	NV	NV	yes	yes	NV	yes	yes	NV	NV	NV
					9.06.01							
					9.06.02							
					9.06.03							

Sub-task**9.07 Installs trims and accessories.****Supporting Knowledge & Abilities**

<u>NL</u>	<u>NS</u>	<u>PE</u>	<u>NB</u>	<u>QC</u>	<u>ON</u>	<u>MB</u>	<u>SK</u>	<u>AB</u>	<u>BC</u>	<u>NT</u>	<u>YT</u>	<u>NU</u>
NV	yes	NV	NV	NV	yes	yes	NV	yes	yes	NV	NV	NV
					9.07.01							
					9.07.02							
					9.07.03							
					9.07.04							

Task 10 Installs carpet on stairs.

Sub-task

10.01 Installs carpet on stairs by conventional method.

Supporting Knowledge & Abilities

<u>NL</u>	<u>NS</u>	<u>PE</u>	<u>NB</u>	<u>QC</u>	<u>ON</u>	<u>MB</u>	<u>SK</u>	<u>AB</u>	<u>BC</u>	<u>NT</u>	<u>YT</u>	<u>NU</u>
NV	yes	NV	NV	NV	yes	yes	NV	yes	yes	NV	NV	NV

- 10.01.01 knowledge of installation recommendations for tackless strip installation
- 10.01.02 knowledge of recommendations for cushion installation
- 10.01.03 knowledge of all types of stair construction such as boxed, open-ended, double-ended, pie, bullnose and full wrap (Hollywood)
- 10.01.04 knowledge of types of finishes such as waterfall, cap and band, full wrap and upholstered
- 10.01.05 ability to measure and cut carpet to fit stair dimensions
- 10.01.06 ability to maintain pattern integrity

Sub-task

10.02 Installs carpet on stairs by glue-down method.

Supporting Knowledge & Abilities

<u>NL</u>	<u>NS</u>	<u>PE</u>	<u>NB</u>	<u>QC</u>	<u>ON</u>	<u>MB</u>	<u>SK</u>	<u>AB</u>	<u>BC</u>	<u>NT</u>	<u>YT</u>	<u>NU</u>
NV	yes	NV	NV	NV	yes	yes	NV	yes	yes	NV	NV	NV

- 10.02.01 knowledge of all types of stair construction such as boxed, open-ended, double-ended, pie, bullnose and full wrap (Hollywood)
- 10.02.02 knowledge of types of finishes such as waterfall, cap and band, full wrap and upholstered

10.02.03	knowledge of stair installation procedures such as sequencing and maintaining pattern integrity
10.02.04	ability to fit carpet to contour of stairs
10.02.05	ability to measure and cut carpet to fit stair dimensions

Sub-task

10.03 Installs modular carpet tiles on stairs.

Supporting Knowledge & Abilities

<u>NL</u>	<u>NS</u>	<u>PE</u>	<u>NB</u>	<u>QC</u>	<u>ON</u>	<u>MB</u>	<u>SK</u>	<u>AB</u>	<u>BC</u>	<u>NT</u>	<u>YT</u>	<u>NU</u>
NV	yes	NV	NV	NV	yes	yes	NV	yes	yes	NV	NV	NV

10.03.01	ability to recognize product limitations for stair applications
10.03.02	ability to install nosing
10.03.03	ability to maintain joint alignment and pattern alignment on staircase

Sub-task

10.04 Installs stair runners.

Supporting Knowledge & Abilities

<u>NL</u>	<u>NS</u>	<u>PE</u>	<u>NB</u>	<u>QC</u>	<u>ON</u>	<u>MB</u>	<u>SK</u>	<u>AB</u>	<u>BC</u>	<u>NT</u>	<u>YT</u>	<u>NU</u>
NV	yes	NV	NV	NV	yes	yes	NV	yes	yes	NV	NV	NV

10.04.01	knowledge of fastening methods
10.04.02	knowledge of alignment techniques for regular and irregular stairs
10.04.03	knowledge of carpet edge finishing techniques
10.04.04	ability to maintain pattern integrity

Task 11 Services carpet installations.

Sub-task

11.01 Repairs carpet installed by conventional method.

Supporting Knowledge & Abilities

<u>NL</u>	<u>NS</u>	<u>PE</u>	<u>NB</u>	<u>QC</u>	<u>ON</u>	<u>MB</u>	<u>SK</u>	<u>AB</u>	<u>BC</u>	<u>NT</u>	<u>YT</u>	<u>NU</u>
NV	yes	NV	NV	NV	yes	yes	NV	yes	yes	NV	NV	NV

- 11.01.01 knowledge of carpet construction
- 11.01.02 knowledge of carpet repair techniques
- 11.01.03 ability to verify service requirements
- 11.01.04 ability to determine cause of damage such as water leaks, animal damage and general wear
- 11.01.05 ability to repair holes
- 11.01.06 ability to restretch and refit carpet
- 11.01.07 ability to retuft carpet
- 11.01.08 ability to repair and refit damaged seams
- 11.01.09 ability to reapply delaminated secondary backing of carpets
- 11.01.10 ability to repair or replace damaged accessories

Sub-task

11.02 Repairs glued down carpet.

Supporting Knowledge & Abilities

<u>NL</u>	<u>NS</u>	<u>PE</u>	<u>NB</u>	<u>QC</u>	<u>ON</u>	<u>MB</u>	<u>SK</u>	<u>AB</u>	<u>BC</u>	<u>NT</u>	<u>YT</u>	<u>NU</u>
NV	yes	NV	NV	NV	yes	yes	NV	yes	yes	NV	NV	NV

- 11.02.01 knowledge of carpet construction
- 11.02.02 knowledge of carpet repair techniques
- 11.02.03 ability to verify service requirements

- 11.02.04 ability to determine cause of damage such as water leaks, animal damage and general wear
- 11.02.05 ability to repair holes
- 11.02.06 ability to retuft carpet
- 11.02.07 ability to repair and refit damaged seams
- 11.02.08 ability to re-glue carpets
- 11.02.09 ability to reapply delaminated secondary backing of carpets
- 11.02.10 ability to repair or replace damaged accessories

BLOCK D

RESILIENT FLOORING

Trends: More natural products such as linoleum and cork being used. Increase in heat welding of seams. More innovative designs and colours. Decrease in the use of perimeter glue. Decrease in popularity of glossy finishes.

Related Components: Adhesives, resilient flooring material, trims, base, coving, levelling compounds, underlayment, weld rod, fasteners, seam sealers, solvents, mineral spirits, cleaners.

Tools and Equipment: Basic hand tools, power tools and equipment, specialized resilient flooring tools and equipment, PPE.

Task 12 Installs resilient tiles.

Sub-task

12.01 Establishes layout grid lines. Supporting Knowledge & Abilities

<u>NL</u> NV	<u>NS</u> yes	<u>PE</u> NV	<u>NB</u> NV	<u>QC</u> NV	<u>ON</u> yes	<u>MB</u> yes	<u>SK</u> NV	<u>AB</u> yes	<u>BC</u> yes	<u>NT</u> NV	<u>YT</u> NV	<u>NU</u> NV
-----------------	------------------	-----------------	-----------------	-----------------	------------------	------------------	-----------------	------------------	------------------	-----------------	-----------------	-----------------

12.01.01 knowledge of basic geometry, Pythagorean theorem (3-4-5) and surface area

12.01.02 knowledge of use of material with regard to appearance and design

12.01.03 ability to establish room centre line

12.01.04 ability to adjust layout lines to minimize use of small pieces along prominent walls and transitions

Sub-task**12.02 Applies adhesives.****Supporting Knowledge & Abilities**

<u>NL</u> NV	<u>NS</u> yes	<u>PE</u> NV	<u>NB</u> NV	<u>QC</u> NV	<u>ON</u> yes	<u>MB</u> yes	<u>SK</u> NV	<u>AB</u> yes	<u>BC</u> yes	<u>NT</u> NV	<u>YT</u> NV	<u>NU</u> NV	
					12.02.01								knowledge of types of flooring materials
					12.02.02								knowledge of types of adhesives such as asphalt emulsion, clear set, conductive and two-part epoxy
					12.02.03								knowledge of manufacturers' recommendations such as adhesive spread rate, method of adhesive application and open time
					12.02.04								ability to determine recommended trowel notch size
					12.02.05								ability to maintain consistent spread rate and notch size throughout application of adhesive

Sub-task**12.03 Positions field material.****Supporting Knowledge & Abilities**

<u>NL</u> NV	<u>NS</u> yes	<u>PE</u> NV	<u>NB</u> NV	<u>QC</u> NV	<u>ON</u> yes	<u>MB</u> yes	<u>SK</u> NV	<u>AB</u> yes	<u>BC</u> yes	<u>NT</u> NV	<u>YT</u> NV	<u>NU</u> NV	
					12.03.01								knowledge of types of resilient tiles such as pure vinyl, vinyl composite tile (VCT), rubber, cork and static dissipative tile (SDT)
					12.03.02								knowledge of installation patterns such as ashlar, basket weave and herringbone
					12.03.03								knowledge of material characteristics such as grain and directional arrows
					12.03.04								knowledge of acclimation requirements
					12.03.05								ability to apply equal and even pressure during installation

12.03.06	ability to establish and maintain working line consistency
12.03.07	ability to establish and maintain pattern and design integrity
12.03.08	ability to identify defective tiles
12.03.09	ability to establish and work to correction lines

Sub-task

12.04 Fits material.

Supporting Knowledge & Abilities

<u>NL</u>	<u>NS</u>	<u>PE</u>	<u>NB</u>	<u>QC</u>	<u>ON</u>	<u>MB</u>	<u>SK</u>	<u>AB</u>	<u>BC</u>	<u>NT</u>	<u>YT</u>	<u>NU</u>
NV	yes	NV	NV	NV	yes	yes	NV	yes	yes	NV	NV	NV

12.04.01	knowledge of types of resilient tiles such as pure vinyl, vinyl composite tile (VCT), rubber, cork and static dissipative tile (SDT)
12.04.02	knowledge of types of cuts such as mechanical and hand scribing
12.04.03	ability to tight cut tiles to walls
12.04.04	ability to cut tiles to irregular objects such as door frames, toilet flanges and drains

Sub-task

12.05 Rolls material.

Supporting Knowledge & Abilities

<u>NL</u>	<u>NS</u>	<u>PE</u>	<u>NB</u>	<u>QC</u>	<u>ON</u>	<u>MB</u>	<u>SK</u>	<u>AB</u>	<u>BC</u>	<u>NT</u>	<u>YT</u>	<u>NU</u>
NV	yes	NV	NV	NV	yes	yes	NV	yes	yes	NV	NV	NV

12.05.01	knowledge of types of resilient tiles such as pure vinyl, vinyl composite tile (VCT), rubber, cork and static dissipative tile (SDT)
----------	--

12.05.02	knowledge of types of adhesives such as asphalt emulsion, clear set, conductive and two-part epoxy
12.05.03	knowledge of manufacturers' recommended procedures

Task 13 Installs resilient sheet goods.

Sub-task

13.01 Cuts material.

Supporting Knowledge & Abilities

<u>NL</u>	<u>NS</u>	<u>PE</u>	<u>NB</u>	<u>QC</u>	<u>ON</u>	<u>MB</u>	<u>SK</u>	<u>AB</u>	<u>BC</u>	<u>NT</u>	<u>YT</u>	<u>NU</u>
NV	yes	NV	NV	NV	yes	yes	NV	yes	yes	NV	NV	NV

13.01.01	knowledge of types of material such as polyvinyl chloride (PVC), linoleum and felt back
13.01.02	knowledge of strategic placement of material cuts
13.01.03	knowledge of efficient use of material
13.01.04	knowledge of acclimation requirements
13.01.05	ability to transport and handle full rolls or pieces of material
13.01.06	ability to cut material square

Sub-task

13.02 Fits material.

Supporting Knowledge & Abilities

<u>NL</u>	<u>NS</u>	<u>PE</u>	<u>NB</u>	<u>QC</u>	<u>ON</u>	<u>MB</u>	<u>SK</u>	<u>AB</u>	<u>BC</u>	<u>NT</u>	<u>YT</u>	<u>NU</u>
NV	yes	NV	NV	NV	yes	yes	NV	yes	yes	NV	NV	NV

13.02.01	knowledge of pattern scribing and direct scribing methods
13.02.02	knowledge of underscribing

- 13.02.03 knowledge of seam preparation such as edge trimming, pattern matching and overlapping
- 13.02.04 ability to cut around straight and irregular objects such as door frames, toilet flanges and drains

Sub-task

13.03 Applies adhesives.

Supporting Knowledge & Abilities

<u>NL</u>	<u>NS</u>	<u>PE</u>	<u>NB</u>	<u>QC</u>	<u>ON</u>	<u>MB</u>	<u>SK</u>	<u>AB</u>	<u>BC</u>	<u>NT</u>	<u>YT</u>	<u>NU</u>
NV	yes	NV	NV	NV	yes	yes	NV	yes	yes	NV	NV	NV

- 13.03.01 knowledge of types of flooring materials
- 13.03.02 knowledge of types of adhesives such as pressure sensitive, linoleum and two-part epoxy
- 13.03.03 knowledge of manufacturers' recommended trowel notch sizes
- 13.03.04 knowledge of adhesive set-up and curing time
- 13.03.05 ability to maintain consistent spread rate and trowel notch size throughout adhesive application
- 13.03.06 ability to roll adhesive according to manufacturers' recommendations

Sub-task

13.04 Rolls material.

Supporting Knowledge & Abilities

<u>NL</u>	<u>NS</u>	<u>PE</u>	<u>NB</u>	<u>QC</u>	<u>ON</u>	<u>MB</u>	<u>SK</u>	<u>AB</u>	<u>BC</u>	<u>NT</u>	<u>YT</u>	<u>NU</u>
NV	yes	NV	NV	NV	yes	yes	NV	yes	yes	NV	NV	NV

- 13.04.01 knowledge of types of material such as polyvinyl chloride (PVC), linoleum and felt back
- 13.04.02 knowledge of types of adhesives such as pressure sensitive, linoleum and two-part epoxy

- 13.04.03 knowledge of manufacturers' recommended procedures
- 13.04.04 ability to remove trapped air bubbles prior to rolling

Sub-task

13.05 Cuts seams to fit.

Supporting Knowledge & Abilities

<u>NL</u>	<u>NS</u>	<u>PE</u>	<u>NB</u>	<u>QC</u>	<u>ON</u>	<u>MB</u>	<u>SK</u>	<u>AB</u>	<u>BC</u>	<u>NT</u>	<u>YT</u>	<u>NU</u>
NV	yes	NV	NV	NV	yes	yes	NV	yes	yes	NV	NV	NV

- 13.05.01 knowledge of types of seaming methods such as scribing, double cutting and pre-cutting
- 13.05.02 knowledge of manufacturers' recommended location to cut seam on product
- 13.05.03 ability to use different cutting techniques such as top cut and double cut
- 13.05.04 ability to hand roll seams to transfer adhesive

Task 14 Performs specialized resilient flooring procedures.

Sub-task

14.01 Performs coving operations.

Supporting Knowledge & Abilities

<u>NL</u>	<u>NS</u>	<u>PE</u>	<u>NB</u>	<u>QC</u>	<u>ON</u>	<u>MB</u>	<u>SK</u>	<u>AB</u>	<u>BC</u>	<u>NT</u>	<u>YT</u>	<u>NU</u>
NV	yes	NV	NV	NV	yes	yes	NV	yes	yes	NV	NV	NV

- 14.01.01 knowledge of types of coving operations such as border coving, flash coving and toe kicks
- 14.01.02 knowledge of uses and types of adhesives such as contact tape, contact cement and base adhesives
- 14.01.03 knowledge of types of coved corners such as butterfly and boot plug
- 14.01.04 ability to cut and fit fillet/cove strips

14.01.05	ability to cut and fit cove caps
14.01.06	ability to pattern scribe and direct scribe
14.01.07	ability to cut and fit inside and outside corners
14.01.08	ability to cut and fit to cap

Sub-task

14.02 Installs resilient flooring on stairs.

Supporting Knowledge & Abilities

<u>NL</u>	<u>NS</u>	<u>PE</u>	<u>NB</u>	<u>QC</u>	<u>ON</u>	<u>MB</u>	<u>SK</u>	<u>AB</u>	<u>BC</u>	<u>NT</u>	<u>YT</u>	<u>NU</u>
NV	yes	NV	NV	NV	yes	yes	NV	yes	yes	NV	NV	NV

14.02.01	knowledge of types of stair substrates such as wood, concrete and steel pan
14.02.02	knowledge of all types of stair construction such as boxed, open-ended, double-ended, pie, bullnose and full wrap (Hollywood)
14.02.03	knowledge of types of stair nosings such as under-slung and overlap
14.02.04	ability to install fillet/cove strips
14.02.05	ability to pattern match field, stairs and landings
14.02.06	ability to install stair nosings

Sub-task

14.03 Seals seams chemically.

Supporting Knowledge & Abilities

<u>NL</u>	<u>NS</u>	<u>PE</u>	<u>NB</u>	<u>QC</u>	<u>ON</u>	<u>MB</u>	<u>SK</u>	<u>AB</u>	<u>BC</u>	<u>NT</u>	<u>YT</u>	<u>NU</u>
NV	yes	NV	NV	NV	yes	yes	NV	yes	yes	NV	NV	NV

14.03.01	knowledge of manufacturers' recommended seam sealer
14.03.02	knowledge of drying time for sealer
14.03.03	knowledge of two-part sealer working time

14.03.04	ability to clean and prepare seam for seam sealer
14.03.05	ability to apply seam sealer according to manufacturers' specifications
14.03.06	ability to mix two-part seam sealer according to manufacturers' specifications
14.03.07	ability to protect seams during drying time

Sub-task

14.04 Heat welds seams.

Supporting Knowledge & Abilities

<u>NL</u>	<u>NS</u>	<u>PE</u>	<u>NB</u>	<u>QC</u>	<u>ON</u>	<u>MB</u>	<u>SK</u>	<u>AB</u>	<u>BC</u>	<u>NT</u>	<u>YT</u>	<u>NU</u>
NV	yes	NV	NV	NV	yes	yes	NV	yes	yes	NV	NV	NV

14.04.01	knowledge of types of flooring materials that can be heat welded
14.04.02	knowledge of types of weld rods
14.04.03	knowledge of grooving techniques such as hand, machine and heat grooving
14.04.04	knowledge of groove dimensions
14.04.05	knowledge of welding temperatures and speed
14.04.06	knowledge of types of welding tips
14.04.07	ability to groove seams to required dimensions
14.04.08	ability to apply and trim weld rod according to manufacturers' specifications
14.04.09	ability to trim weld rod with spatula knife and trim plate
14.04.10	ability to heat weld coving

Sub-task**14.05 Applies two-part adhesives.****Supporting Knowledge & Abilities**

<u>NL</u>	<u>NS</u>	<u>PE</u>	<u>NB</u>	<u>QC</u>	<u>ON</u>	<u>MB</u>	<u>SK</u>	<u>AB</u>	<u>BC</u>	<u>NT</u>	<u>YT</u>	<u>NU</u>
NV	yes	NV	NV	NV	yes	yes	NV	yes	yes	NV	NV	NV

14.05.01 knowledge of site requirements for adhesives and materials

14.05.02 knowledge of epoxy adhesive volatility

14.05.03 knowledge of working time

14.05.04 knowledge of shelf life of adhesives

14.05.05 knowledge of curing time

14.05.06 ability to mix adhesives uniformly

14.05.07 ability to maintain consistent spread rate throughout adhesive application

Sub-task**14.06 Installs insets, borders and feature strips.****Supporting Knowledge & Abilities**

<u>NL</u>	<u>NS</u>	<u>PE</u>	<u>NB</u>	<u>QC</u>	<u>ON</u>	<u>MB</u>	<u>SK</u>	<u>AB</u>	<u>BC</u>	<u>NT</u>	<u>YT</u>	<u>NU</u>
NV	yes	NV	NV	NV	yes	yes	NV	yes	yes	NV	NV	NV

14.06.01 knowledge of specified pattern design

14.06.02 knowledge of seaming methods

14.06.03 knowledge of product compatibility

14.06.04 ability to incorporate pattern into field

Sub-task**14.07 Installs wall base.****Supporting Knowledge & Abilities**

<u>NL</u>	<u>NS</u>	<u>PE</u>	<u>NB</u>	<u>QC</u>	<u>ON</u>	<u>MB</u>	<u>SK</u>	<u>AB</u>	<u>BC</u>	<u>NT</u>	<u>YT</u>	<u>NU</u>
NV	yes	NV	NV	NV	yes	yes	NV	yes	yes	NV	NV	NV
					14.07.01							knowledge of existing wall conditions
					14.07.02							knowledge of pre-formed corners
					14.07.03							ability to cut and fit inside and outside corners
					14.07.04							ability to apply adhesive
					14.07.05							ability to maintain consistent floor to wall transition

Task 15 Installs specialty flooring products and accessories.**Sub-task****15.01 Installs safety floors.****Supporting Knowledge & Abilities**

<u>NL</u>	<u>NS</u>	<u>PE</u>	<u>NB</u>	<u>QC</u>	<u>ON</u>	<u>MB</u>	<u>SK</u>	<u>AB</u>	<u>BC</u>	<u>NT</u>	<u>YT</u>	<u>NU</u>
NV	yes	NV	NV	NV	yes	yes	NV	yes	yes	NV	NV	NV
					15.01.01							knowledge of types of safety floors
					15.01.02							knowledge of installation systems
					15.01.03							knowledge of specialized grooving equipment
					15.01.04							knowledge of manufacturers' recommended adhesives

Sub-task

15.02 Installs tread, riser and stringer materials.

Supporting Knowledge & Abilities

<u>NL</u>	<u>NS</u>	<u>PE</u>	<u>NB</u>	<u>QC</u>	<u>ON</u>	<u>MB</u>	<u>SK</u>	<u>AB</u>	<u>BC</u>	<u>NT</u>	<u>YT</u>	<u>NU</u>
NV	yes	NV	NV	NV	yes	yes	NV	yes	yes	NV	NV	NV

- 15.02.01 knowledge of manufacturers' recommended adhesives
- 15.02.02 ability to measure and pre-cut material
- 15.02.03 ability to scribe and net fit
- 15.02.04 ability to use specific adhesives under nosing

Sub-task

15.03 Installs conductive flooring components.

Supporting Knowledge & Abilities

<u>NL</u>	<u>NS</u>	<u>PE</u>	<u>NB</u>	<u>QC</u>	<u>ON</u>	<u>MB</u>	<u>SK</u>	<u>AB</u>	<u>BC</u>	<u>NT</u>	<u>YT</u>	<u>NU</u>
NV	yes	NV	NV	NV	yes	yes	NV	yes	yes	NV	NV	NV

- 15.03.01 knowledge of conductive adhesive properties
- 15.03.02 knowledge of conductive tile properties
- 15.03.03 knowledge of grounding strips
- 15.03.04 ability to install grounding strips according to manufacturers' specifications
- 15.03.05 ability to confirm location of grounding strips

Sub-task**15.04 Installs specialty wall covering products.****Supporting Knowledge & Abilities**

<u>NL</u>	<u>NS</u>	<u>PE</u>	<u>NB</u>	<u>QC</u>	<u>ON</u>	<u>MB</u>	<u>SK</u>	<u>AB</u>	<u>BC</u>	<u>NT</u>	<u>YT</u>	<u>NU</u>
NV	yes	NV	NV	NV	yes	yes	NV	yes	yes	NV	NV	NV

15.04.01	knowledge of techniques to install resilient wall covering materials to walls and other designated areas
15.04.02	knowledge of types of specialty wall covering products
15.04.03	ability to establish layout lines
15.04.04	ability to apply adhesive to wall
15.04.05	ability to match patterns
15.04.06	ability to hand roll material
15.04.07	ability to heat weld seams

Sub-task**15.05 Installs trims and accessories.****Supporting Knowledge & Abilities**

<u>NL</u>	<u>NS</u>	<u>PE</u>	<u>NB</u>	<u>QC</u>	<u>ON</u>	<u>MB</u>	<u>SK</u>	<u>AB</u>	<u>BC</u>	<u>NT</u>	<u>YT</u>	<u>NU</u>
NV	yes	NV	NV	NV	yes	yes	NV	yes	yes	NV	NV	NV

15.05.01	knowledge of fasteners such as glue, nails and screws
15.05.02	ability to measure and cut trims
15.05.03	ability to fasten trims

Task 16 Services resilient flooring installations.

Sub-task

16.01 Performs resilient flooring repairs.

Supporting Knowledge & Abilities

<u>NL</u>	<u>NS</u>	<u>PE</u>	<u>NB</u>	<u>QC</u>	<u>ON</u>	<u>MB</u>	<u>SK</u>	<u>AB</u>	<u>BC</u>	<u>NT</u>	<u>YT</u>	<u>NU</u>
NV	yes	NV	NV	NV	yes	yes	NV	yes	yes	NV	NV	NV

- 16.01.01 knowledge of resilient flooring construction types
- 16.01.02 knowledge of resilient repair techniques
- 16.01.03 ability to determine cause of damage such as water leaks, animal damage and general wear
- 16.01.04 ability to determine most effective method of repair
- 16.01.05 ability to repair small and large holes
- 16.01.06 ability to blend new material with old material

Sub-task

16.02 Repairs accessories.

Supporting Knowledge & Abilities

<u>NL</u>	<u>NS</u>	<u>PE</u>	<u>NB</u>	<u>QC</u>	<u>ON</u>	<u>MB</u>	<u>SK</u>	<u>AB</u>	<u>BC</u>	<u>NT</u>	<u>YT</u>	<u>NU</u>
NV	yes	NV	NV	NV	yes	yes	NV	yes	yes	NV	NV	NV

- 16.02.01 knowledge of repair and replacement techniques
- 16.02.02 knowledge of repair possibilities such as repair, replace and upgrade
- 16.02.03 ability to determine cause of accessory failure
- 16.02.04 ability to establish the conditions to perform the repair such as fixing crumbled subfloor or repairing drywall

Sub-task**16.03 Repairs seams.****Supporting Knowledge & Abilities**

<u>NL</u> NV	<u>NS</u> yes	<u>PE</u> NV	<u>NB</u> NV	<u>QC</u> NV	<u>ON</u> yes	<u>MB</u> yes	<u>SK</u> NV	<u>AB</u> yes	<u>BC</u> yes	<u>NT</u> NV	<u>YT</u> NV	<u>NU</u> NV	
					16.03.01								knowledge of resilient seaming techniques such as heat welding and chemical welding
					16.03.02								knowledge of seam repair limitations
					16.03.03								ability to repair miscut or open seams and peaked and loose seams
					16.03.04								ability to protect seams during drying time

BLOCK E

WOOD AND LAMINATE FLOORING

Trends: Laminate flooring has become much more popular. There is a trend towards do-it-yourself designed laminate flooring. Click-together laminate has overtaken glue-together in popularity. Machining quality and finish of pre-finished hardwood have improved. Engineered hardwood has gained popularity because of unstable raw material costs in solid hardwood flooring. Parquet flooring has decreased in popularity, with site finished parquet almost disappearing from the market.

Related Components: Underlayments, wood and laminate flooring materials, adhesives, finishes, fasteners, solvents, mineral spirits, cleaners, steel wool, sandpaper, wood glue, laminate glue.

Tools and Equipment: Basic hand tools, power tools and equipment, specialized wood and laminate flooring and underlayment tools and equipment, PPE.

Task 17 Installs pre-finished hardwood, engineered wood and laminate flooring.

Sub-task

17.01 Undercuts jambs and trims.

Supporting Knowledge & Abilities

<u>NL</u>	<u>NS</u>	<u>PE</u>	<u>NB</u>	<u>QC</u>	<u>ON</u>	<u>MB</u>	<u>SK</u>	<u>AB</u>	<u>BC</u>	<u>NT</u>	<u>YT</u>	<u>NU</u>
NV	yes	NV	NV	NV	yes	yes	NV	yes	yes	NV	NV	NV

17.01.01 knowledge of jamb material characteristics

17.01.02 knowledge of finished height of material

17.01.03 knowledge of building code requirements

17.01.04 knowledge of types of jambs such as steel, wood and medium density fibreboard (MDF)

17.01.05 knowledge of types of trims

17.01.06 ability to protect surrounding finished surfaces during cutting process

Sub-task**17.02 Installs barriers.****Supporting Knowledge & Abilities**

<u>NL</u>	<u>NS</u>	<u>PE</u>	<u>NB</u>	<u>QC</u>	<u>ON</u>	<u>MB</u>	<u>SK</u>	<u>AB</u>	<u>BC</u>	<u>NT</u>	<u>YT</u>	<u>NU</u>
NV	yes	NV	NV	NV	yes	yes	NV	yes	yes	NV	NV	NV
					17.02.01							
												knowledge of types of barriers such as sound and vapour
					17.02.02							knowledge of flooring material being installed
					17.02.03							knowledge of site barrier requirements
					17.02.04							knowledge of fastening techniques
					17.02.05							ability to establish and maintain seal integrity

Sub-task**17.03 Establishes layout lines.****Supporting Knowledge & Abilities**

<u>NL</u>	<u>NS</u>	<u>PE</u>	<u>NB</u>	<u>QC</u>	<u>ON</u>	<u>MB</u>	<u>SK</u>	<u>AB</u>	<u>BC</u>	<u>NT</u>	<u>YT</u>	<u>NU</u>
NV	yes	NV	NV	NV	yes	yes	NV	yes	yes	NV	NV	NV
					17.03.01							
												knowledge of basic geometry, Pythagorean theorem (3-4-5), surface area and triangulation
					17.03.02							knowledge of efficient use of material with regard to appearance and design
					17.03.03							ability to establish centre line of room
					17.03.04							ability to determine orientation of material
					17.03.05							ability to avoid the use of small pieces along prominent walls and transitions

Sub-task**17.04 Cuts material.****Supporting Knowledge & Abilities**

<u>NL</u> NV	<u>NS</u> yes	<u>PE</u> NV	<u>NB</u> NV	<u>QC</u> NV	<u>ON</u> yes	<u>MB</u> yes	<u>SK</u> NV	<u>AB</u> yes	<u>BC</u> yes	<u>NT</u> NV	<u>YT</u> NV	<u>NU</u> NV	
					17.04.01								knowledge of types of materials such as laminate, parquet and solid wood
					17.04.02								knowledge of scribing techniques
					17.04.03								knowledge of types of cuts such as mitre and relief cuts
					17.04.04								knowledge of cutting blade properties such as tooth count, kerf and tooth material
					17.04.05								ability to select optimal cutting tool for specific cut
					17.04.06								ability to protect surrounding finished surfaces during cutting process

Sub-task**17.05 Applies adhesives.****Supporting Knowledge & Abilities**

<u>NL</u> NV	<u>NS</u> yes	<u>PE</u> NV	<u>NB</u> NV	<u>QC</u> NV	<u>ON</u> yes	<u>MB</u> yes	<u>SK</u> NV	<u>AB</u> yes	<u>BC</u> yes	<u>NT</u> NV	<u>YT</u> NV	<u>NU</u> NV	
					17.05.01								knowledge of types of adhesives such as epoxy, wood glue and laminate glue
					17.05.02								knowledge of types of flooring material
					17.05.03								knowledge of substrate construction
					17.05.04								knowledge of environmental concerns
					17.05.05								knowledge of adhesive requirements for laminate flooring
					17.05.06								ability to maintain consistent spread rate throughout adhesive application

- 17.05.07 ability to apply adhesive according to manufacturers' specifications
- 17.05.08 ability to remove excess adhesive squeeze-out

Sub-task

17.06 Installs laminate flooring.

Supporting Knowledge & Abilities

<u>NL</u>	<u>NS</u>	<u>PE</u>	<u>NB</u>	<u>QC</u>	<u>ON</u>	<u>MB</u>	<u>SK</u>	<u>AB</u>	<u>BC</u>	<u>NT</u>	<u>YT</u>	<u>NU</u>
NV	yes	NV	NV	NV	yes	yes	NV	yes	yes	NV	NV	NV

- 17.06.01 knowledge of acclimation requirements
- 17.06.02 knowledge of fastening systems
- 17.06.03 knowledge of expansion and contraction tolerances
- 17.06.04 knowledge of offsetting requirements for adjacent end joints
- 17.06.05 knowledge of areas requiring adhesive
- 17.06.06 ability to acclimate material according to manufacturers' specifications
- 17.06.07 ability to integrate expansion joints into the overall design
- 17.06.08 ability to avoid the use of small pieces along prominent walls and transitions

Sub-task

17.07 Installs pre-finished and engineered wood.

Supporting Knowledge & Abilities

<u>NL</u>	<u>NS</u>	<u>PE</u>	<u>NB</u>	<u>QC</u>	<u>ON</u>	<u>MB</u>	<u>SK</u>	<u>AB</u>	<u>BC</u>	<u>NT</u>	<u>YT</u>	<u>NU</u>
NV	yes	NV	NV	NV	yes	yes	NV	yes	yes	NV	NV	NV

- 17.07.01 knowledge of acclimation requirements
- 17.07.02 knowledge of fastening systems such as glue down, nailing and mechanical joint

17.07.03	knowledge of types of pre-finished woods such as solid and engineered wood
17.07.04	knowledge of expansion and contraction characteristics of wood types
17.07.05	knowledge of substrate structures
17.07.06	knowledge of wood fillers and finishes
17.07.07	knowledge of nailing techniques and spacing
17.07.08	knowledge of types of fasteners
17.07.09	ability to test for humidity and moisture content
17.07.10	ability to acclimate materials according to manufacturers' specifications
17.07.11	ability to determine material orientation
17.07.12	ability to lay out material with regard to adjacent joint spacing, grain pattern and colour
17.07.13	ability to make and use splines

Sub-task

17.08 Installs specialty wood and laminate flooring trims and accessories.

Supporting Knowledge & Abilities

<u>NL</u>	<u>NS</u>	<u>PE</u>	<u>NB</u>	<u>QC</u>	<u>ON</u>	<u>MB</u>	<u>SK</u>	<u>AB</u>	<u>BC</u>	<u>NT</u>	<u>YT</u>	<u>NU</u>
NV	yes	NV	NV	NV	yes	yes	NV	yes	yes	NV	NV	NV
					17.08.01		knowledge of types of trims and accessories such as T-caps, nosings and reducers					
					17.08.02		knowledge of expansion and contraction considerations					
					17.08.03		knowledge of fastening systems and methods					
					17.08.04		ability to cut, fit and secure trims, nosings and accessories					

17.08.05	ability to cut, fit and secure wood and laminate flooring on stringers, risers and treads
17.08.06	ability to cut and fit inlays and borders
17.08.07	ability to cut, fit and secure wall base and quarter-rounds
17.08.08	ability to fabricate custom accessories from field materials

Task 18 Services pre-finished hardwood, engineered wood and laminate flooring.

Sub-task

18.01 Repairs boards.

Supporting Knowledge & Abilities

<u>NL</u>	<u>NS</u>	<u>PE</u>	<u>NB</u>	<u>QC</u>	<u>ON</u>	<u>MB</u>	<u>SK</u>	<u>AB</u>	<u>BC</u>	<u>NT</u>	<u>YT</u>	<u>NU</u>
NV	yes	NV	NV	NV	yes	yes	NV	yes	yes	NV	NV	NV

18.01.01	knowledge of repair techniques such as steaming, filling and sanding
18.01.02	knowledge of flooring and repair materials
18.01.03	knowledge of repair limitations
18.01.04	ability to determine extent of damage
18.01.05	ability to fill holes and abrasions
18.01.06	ability to finish material to match existing surfaces
18.01.07	ability to glue loose material
18.01.08	ability to prevent damage to existing finished surfaces

Sub-task**18.02 Replaces boards and accessories.****Supporting Knowledge & Abilities**

<u>NL</u>	<u>NS</u>	<u>PE</u>	<u>NB</u>	<u>QC</u>	<u>ON</u>	<u>MB</u>	<u>SK</u>	<u>AB</u>	<u>BC</u>	<u>NT</u>	<u>YT</u>	<u>NU</u>
NV	yes	NV	NV	NV	yes	yes	NV	yes	yes	NV	NV	NV
					18.02.01		knowledge of flooring materials					
					18.02.02		knowledge of existing fastening system					
					18.02.03		knowledge of existing flooring finish					
					18.02.04		knowledge of replacement techniques					
					18.02.05		ability to determine cause of product failure					
					18.02.06		ability to prevent damage to existing finished surfaces					
					18.02.07		ability to make and use splines					
					18.02.08		ability to use specialized cutting tools to fabricate repair pieces					
					18.02.09		ability to finish material to match existing surfaces					

APPENDICES

TOOLS AND EQUIPMENT

Personal Protective Equipment (PPE)

approved respirator	hard hat
back support belt	hearing protection
CSA approved work boots	knee pads
dust mask	safety glasses
fall arrest equipment	work gloves

Basic Hand Tools

adjustable wrench	patching trowel
awl	pencils/markers
broom	pliers
caulking gun	plumb bob
chalk line	putty knife
chisels	rubber mallet
claw hammer	scale rulers
dryline	screwdrivers
dust brush	sharpening stone
files	square
hacksaw	straightedge
hand scraper	tee square
hand stapler	tin snips
measuring tape	tool box
mitre box	tool pouch and belt
moulding lifter	utility knife
nail set	

Power Tools and Equipment

air compressors	hammer drill
air sled	heat gun
angle grinder	heat seam welding system
binding machine and stapler	hot melt glue gun
circular saw	jamb saw
cove base adhesive gun	jigsaw
dollies and hand trucks	laser line
drum sander	lights
edger	mitre saw
electric tacker	pneumatic nailer
extension cords	pneumatic tacker
floor fan	portable electric circular saw
floor maintainer	portable table saw

Power Tools and Equipment (continued)

powder actuated tools	soldering guns
power drill and mixing paddle	spray machine
router and specialized router bits	stripper machine
sanders	vacuum cleaner
seaming iron	welding gun

Specialized Carpet Tools and Equipment

adhesive trowels	loop pile cutter
anchorite tool	moisture test kit
brad set	needles
carpet base cutter	parallel cutter
carpet cart	porcupine roller
carpet comb	power stretcher
carpet crane	row separator
carpet restretcher (crab)	seam seal kit
carpet seam roller	seam squeezer
carpet shears	sewing palm and thimble
carpet spreader	stair stretcher
carpet tractor	stair tool
carpet tucker	stand up roller
cookie cutter	stand up scraper
cushion-back cutter	staple lifter
door pin tool	tack hammer
double cutter	tack strip cutter
double headed crabs	thread
driving bar	trowel notcher
hammer stapler	tufting kit
hot melt edge sealer tip	various knives
knee kicker	wall trimmer – conventional
latex squeeze bottle	

Specialized Resilient Flooring Tools and Equipment

bar scribe	linoleum dolly
bricks	mixing paddle
corner scribe	moisture test kit
cove base gouging tool	paint brushes
cove base groover	paint roller and tray
divider	power drill
edge trimmer	propane torch
extension hand roller	sand bags
grooving machine	seam roller
hand groover	spatula knife (quarter-moon knife)
hand roller	specialized knives
heat welding gun	spreader or notched steel trowel
hobby knives (Exacto or excel)	stand-up roller

Specialized Resilient Flooring Tools and Equipment (continued)

tile cutter	universal scribe
trim plate	wall roller
two metre straightedge	wall trimmer
under or recess scribe	

Specialized Wood and Laminate Flooring and Underlayment Tools and Equipment

angle clamp	moisture test kit
fastening detector	pneumatic hardwood nailer
glue scrapers	pull bar
glue trowels	shear
hardwood mallet	spacers
laminate clamps	tapping block
laminate straps	toe-kick saw
manual hardwood nailer	underlayment stapler

GLOSSARY

acclimation	allowing the flooring products to pre-adjust to the environmental conditions in which they are being installed
adhesive	material used as a bonding agent
area rug	a carpet not fastened to the floor and usually not covering the entire floor
ashlar	a term used to describe the layout of floor tiles or plywood panels in relation to every other row such as half-staggered or brick pattern design
asphalt emulsion	a fast setting water-based adhesive, containing solutions of asphalt and latex (rubber)
Axminster carpet	a type of woven carpet construction
backing	material that forms the back of the carpet, regardless of type of construction: <ul style="list-style-type: none"> a) primary back - in tufted carpets, the material to which surface yarns are attached; made of jute, Kraft cord, cotton, woven or non-woven synthetics b) secondary back - also called double backing; any material (jute, polypropylene, woven or non-woven synthetic scrim, foam or cushion) laminated to the primary back.
base	a flat or shaped, extruded or moulded, vinyl, rubber or combination material attached to the bottom of vertical surfaces such as walls, counter bases, etc.
below-grade subfloor	a subfloor that is partially or completely below the surrounding ground level in direct contact either with the ground or with fill that is in direct contact with the ground
berber carpet	manufactured carpet with a pebbly, homespun appearance made from natural-coloured (but sometimes dyed) wools
binding	a strip (usually cloth) sewn over the edge of a piece of carpet for protection from wear and unravelling
cap	material used when flash coving tile and/or sheet goods are used as an edge finish
carpet	the general term for a fabric or soft floorcovering fastened to the entire floor from wall to wall
carpet lining	see cushion
conductive floorcovering	electrical conductive resilient floorcovering materials specially formulated to prevent the build-up of static charges

construction	the term applies to the method by which a floorcovering is manufactured
contaminant	a substance that inhibits the bond between the substrate and the floorcovering material and/or discolours the floorcovering material
conventional method	the stretch in installation of carpet over cushion and tackless strip
cork tile	cork granules of different sizes and densities thoroughly and uniformly bonded with resin binders; made in sheet and tile form
count	a number identifying yarn size, or weight per unit of length (or length per unit of weight) depending on the spinning systems used (such as denier, woollen, worsted, cotton or jute system)
coving	also referred to as flash or self-coving; floorcovering materials installed over a cove backing-up the wall to a specific height
cross seams	the joining together of the ends of two pieces of floorcovering into a continuous length of floorcovering
cushion	a separate material placed under a carpet to provide resiliency support and noise absorption (also carpet lining, padding and underlay)
cut pile	carpet pile that has cut ends as the face
density	the amount of pile in a given area of carpet reflective of the closeness of the pile yarns and expressed as kilotex per cm ² which reflects the percent of the surface covered with fibres
double cut	also called full-lapped. A method making a seam in floorcovering
dye lot	amount of floorcovering material that is produced from a single batch of dye; each batch of dye has a control number attached to it to assist in sequencing
edge trim	metal or resilient moulded or extruded shapes designed for installation at exposed edges of the carpet or resilient floorcovering to protect edges from damage
edging	a finished protective edge material used as a stop for resilient floorcovering
feature strips	contrasting strips or shapes of flooring material used as borders or to delineate pattern for decorative or functional purpose (as in gymnasium or multi-purpose game situations)
field	the area of floorcovering that is contained within the limits of the borders or walls
fillet/cove strips	structural backing for flash coving
flocked	a method of manufacturing carpet using electrostatic charge and adhesive
foam	used as a secondary backing on some tufted carpets

fusion-backed carpet (PVC)	a method of manufacturing carpet backing
gauge	the specified thickness and density of a floorcovering product
grade	relationship of a subfloor to exterior ground levels
hot melt seaming	a carpet seaming method
inset (also insert)	custom or standard shape in contrasting colour or pattern, set into the field of resilient floorcovering for special purposes or effects
linoleum	a thoroughly blended composition of linseed oil, natural and synthetic resins, granulated cork, wood flour, mineral and chemical pigments calendered to a backing of jute canvas (hessian) or saturated rag felt
mitre	a method where two pieces of floorcovering are joined together at an angle (usually 45 degrees)
needle-punched carpet	a method of constructing a carpet without backing
nosing	a finished protective metal, vinyl or rubber, formed edge material used for stair tread covering
on-grade subfloor	a subfloor which is in direct contact with the ground or with less than 450 mm (18 in.) of air space under it or a suspended subfloor in contact at some point with fill
padding	see cushion
pattern matching	a procedure for insuring correct alignment of patterned materials
pattern repeat	the distance from a point in a pattern figure to the same point where it occurs again
pile	the upright ends of yarn, whether cut or looped, that form the wearing surface of carpets or rugs
pile direction (pile lay)	see shading
proprietary backings	a type of backing which is unique to a particular manufacturer such as Kara-Loc
reducers	materials used to transition floorcovering to a different level
runners	a continuous material used as a surface covering in traffic lanes and stairs leaving a margin on each side
seam sealing	a procedure for sealing seams using a special applicator and sealants
seam welding	a process of fusing or filling seams in certain types of flooring

secondary backing	a woven or non-woven fabric attached to the back of carpets
serging	also known as over sewing, this is a method of finishing the cut edges of some carpet. It is customary to serge the side and bind the end
shading	<ul style="list-style-type: none"> a) an apparent change of colour in carpet pile caused as light is reflected in different ways when pile fibres are bent; not a defect, but a characteristic especially of cut-pile fabrics, including upholstery and clothing b) variance in colours between two or more panels of resilient flooring cut from the roll
static dissipative tile (SDT)	flooring installation system that allows for controlled dissipation of static electric charges; used for computer and data rooms
stringer material	a strip material used on the sides of stairs
subfloor	for structural purposes and is the substrate or supporting layer for the underlayment
substrate	the smooth surface prepared to accept the floorcovering such as concrete, underlayment and existing floorcovering
tackless strip (smooth edge)	used under carpet along walls with pins angled towards the wall; carpet is stretched onto the pins to provide a smooth tight finish
trace cutting	a procedure for cutting seams where a trimmed side overlaps an untrimmed side and the trace of the trimmed side is followed
tread material	floorcovering materials used for finishing stair treads
trim	material used to finish and protect edge and to provide transition between different floorcovering materials
tufted carpet	a type of carpet construction
tufts	the cut or uncut loops forming the face of tufted or woven carpet
underlay	see cushion
underlayment	<ul style="list-style-type: none"> a) approved composition board or plywood of at least 6 mm (1/4 in.) thick, properly secured over wood-based subfloors to create a substrate b) approved trowel-applied material used to level, smooth, skim-coat or fill subfloor irregularities to create a substrate
vinyl composite tile (VCT)	a thoroughly blended composition of vinyl resins, plasticizer, inert fillers and pigments formed under pressure and heat into sheet form, then cut into tile size
wear layer	the top portion of a floorcovering
Wilton carpet	a type of woven carpet construction
yarn	any fibre used to manufacture carpet, natural or synthetic

BLOCKS AND TASKS WEIGHTING**BLOCK A OCCUPATIONAL SKILLS**

	<u>NL</u>	<u>NS</u>	<u>PE</u>	<u>NB</u>	<u>QC</u>	<u>ON</u>	<u>MB</u>	<u>SK</u>	<u>AB</u>	<u>BC</u>	<u>NT</u>	<u>YT</u>	<u>NU</u>	National Average
%	NV	10	NV	NV	NV	15	15	NV	8	10	NV	NV	NV	11%

Task 1 Uses tools and equipment.

	<u>NL</u>	<u>NS</u>	<u>PE</u>	<u>NB</u>	<u>QC</u>	<u>ON</u>	<u>MB</u>	<u>SK</u>	<u>AB</u>	<u>BC</u>	<u>NT</u>	<u>YT</u>	<u>NU</u>	
%	NV	25	NV	NV	NV	25	27	NV	25	35	NV	NV	NV	27%

Task 2 Organizes work.

	<u>NL</u>	<u>NS</u>	<u>PE</u>	<u>NB</u>	<u>QC</u>	<u>ON</u>	<u>MB</u>	<u>SK</u>	<u>AB</u>	<u>BC</u>	<u>NT</u>	<u>YT</u>	<u>NU</u>	
%	NV	25	NV	NV	NV	25	25	NV	25	15	NV	NV	NV	23%

Task 3 Identifies materials.

	<u>NL</u>	<u>NS</u>	<u>PE</u>	<u>NB</u>	<u>QC</u>	<u>ON</u>	<u>MB</u>	<u>SK</u>	<u>AB</u>	<u>BC</u>	<u>NT</u>	<u>YT</u>	<u>NU</u>	
%	NV	25	NV	NV	NV	25	15	NV	25	20	NV	NV	NV	22%

Task 4 Assesses floor.

	<u>NL</u>	<u>NS</u>	<u>PE</u>	<u>NB</u>	<u>QC</u>	<u>ON</u>	<u>MB</u>	<u>SK</u>	<u>AB</u>	<u>BC</u>	<u>NT</u>	<u>YT</u>	<u>NU</u>	
%	NV	25	NV	NV	NV	25	33	NV	25	30	NV	NV	NV	28%

BLOCK B FLOOR PREPARATION

	<u>NL</u>	<u>NS</u>	<u>PE</u>	<u>NB</u>	<u>QC</u>	<u>ON</u>	<u>MB</u>	<u>SK</u>	<u>AB</u>	<u>BC</u>	<u>NT</u>	<u>YT</u>	<u>NU</u>	National Average
%	NV	20	NV	NV	NV	25	30	NV	30	20	NV	NV	NV	25%

Task 5 Removes existing floorcovering and accessories.

	<u>NL</u>	<u>NS</u>	<u>PE</u>	<u>NB</u>	<u>QC</u>	<u>ON</u>	<u>MB</u>	<u>SK</u>	<u>AB</u>	<u>BC</u>	<u>NT</u>	<u>YT</u>	<u>NU</u>	
%	NV	20	NV	NV	NV	30	33	NV	15	30	NV	NV	NV	26%

Task 6 Prepares substrate.

	<u>NL</u>	<u>NS</u>	<u>PE</u>	<u>NB</u>	<u>QC</u>	<u>ON</u>	<u>MB</u>	<u>SK</u>	<u>AB</u>	<u>BC</u>	<u>NT</u>	<u>YT</u>	<u>NU</u>	
%	NV	40	NV	NV	NV	40	33	NV	50	40	NV	NV	NV	40%

Task 7 Installs underlayment.

	<u>NL</u>	<u>NS</u>	<u>PE</u>	<u>NB</u>	<u>QC</u>	<u>ON</u>	<u>MB</u>	<u>SK</u>	<u>AB</u>	<u>BC</u>	<u>NT</u>	<u>YT</u>	<u>NU</u>	
%	NV	40	NV	NV	NV	30	34	NV	35	30	NV	NV	NV	34%

BLOCK C CARPET

	<u>NL</u>	<u>NS</u>	<u>PE</u>	<u>NB</u>	<u>QC</u>	<u>ON</u>	<u>MB</u>	<u>SK</u>	<u>AB</u>	<u>BC</u>	<u>NT</u>	<u>YT</u>	<u>NU</u>	National Average
%	NV	25	NV	NV	NV	20	20	NV	24	30	NV	NV	NV	24%

Task 8 Installs carpets.

	<u>NL</u>	<u>NS</u>	<u>PE</u>	<u>NB</u>	<u>QC</u>	<u>ON</u>	<u>MB</u>	<u>SK</u>	<u>AB</u>	<u>BC</u>	<u>NT</u>	<u>YT</u>	<u>NU</u>	
%	NV	40	NV	NV	NV	40	40	NV	55	40	NV	NV	NV	43%

Task 9 Performs specialized carpet procedures.

	<u>NL</u>	<u>NS</u>	<u>PE</u>	<u>NB</u>	<u>QC</u>	<u>ON</u>	<u>MB</u>	<u>SK</u>	<u>AB</u>	<u>BC</u>	<u>NT</u>	<u>YT</u>	<u>NU</u>	
%	NV	25	NV	NV	NV	10	25	NV	10	20	NV	NV	NV	18%

Task 10 Installs carpet on stairs.

	<u>NL</u>	<u>NS</u>	<u>PE</u>	<u>NB</u>	<u>QC</u>	<u>ON</u>	<u>MB</u>	<u>SK</u>	<u>AB</u>	<u>BC</u>	<u>NT</u>	<u>YT</u>	<u>NU</u>	
%	NV	25	NV	NV	NV	25	20	NV	25	20	NV	NV	NV	23%

Task 11 Services carpet installations.

	<u>NL</u>	<u>NS</u>	<u>PE</u>	<u>NB</u>	<u>QC</u>	<u>ON</u>	<u>MB</u>	<u>SK</u>	<u>AB</u>	<u>BC</u>	<u>NT</u>	<u>YT</u>	<u>NU</u>	
%	NV	10	NV	NV	NV	25	15	NV	10	20	NV	NV	NV	16%

BLOCK D RESILIENT FLOORING

	<u>NL</u>	<u>NS</u>	<u>PE</u>	<u>NB</u>	<u>QC</u>	<u>ON</u>	<u>MB</u>	<u>SK</u>	<u>AB</u>	<u>BC</u>	<u>NT</u>	<u>YT</u>	<u>NU</u>	National Average
%	NV	30	NV	NV	NV	20	25	NV	24	35	NV	NV	NV	27%

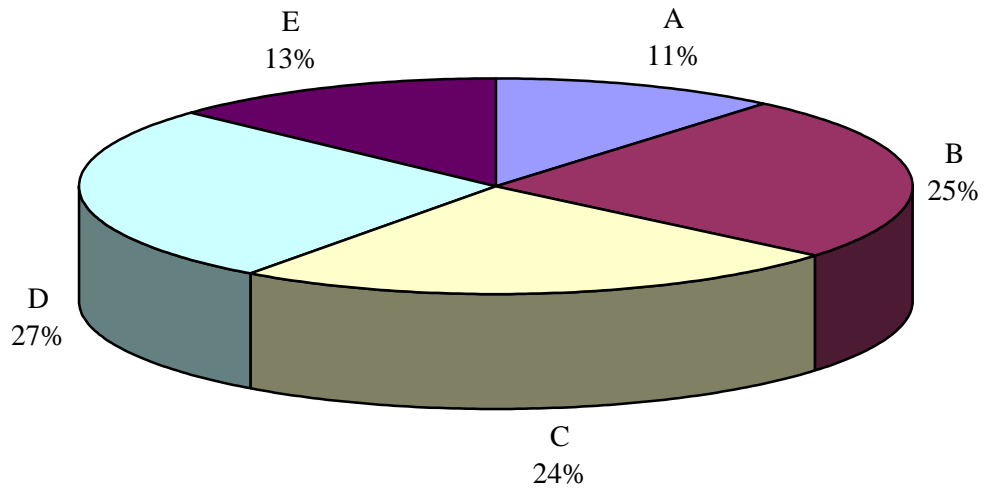
Task 12	Installs resilient tiles.													
%	<u>NL</u>	<u>NS</u>	<u>PE</u>	<u>NB</u>	<u>QC</u>	<u>ON</u>	<u>MB</u>	<u>SK</u>	<u>AB</u>	<u>BC</u>	<u>NT</u>	<u>YT</u>	<u>NU</u>	20%
	NV	15	NV	NV	NV	35	10	NV	15	25	NV	NV	NV	
Task 13	Installs resilient sheet goods.													
%	<u>NL</u>	<u>NS</u>	<u>PE</u>	<u>NB</u>	<u>QC</u>	<u>ON</u>	<u>MB</u>	<u>SK</u>	<u>AB</u>	<u>BC</u>	<u>NT</u>	<u>YT</u>	<u>NU</u>	35%
	NV	30	NV	NV	NV	35	30	NV	40	40	NV	NV	NV	
Task 14	Performs specialized resilient flooring procedures.													
%	<u>NL</u>	<u>NS</u>	<u>PE</u>	<u>NB</u>	<u>QC</u>	<u>ON</u>	<u>MB</u>	<u>SK</u>	<u>AB</u>	<u>BC</u>	<u>NT</u>	<u>YT</u>	<u>NU</u>	20%
	NV	30	NV	NV	NV	10	25	NV	20	15	NV	NV	NV	
Task 15	Installs specialty flooring products and accessories.													
%	<u>NL</u>	<u>NS</u>	<u>PE</u>	<u>NB</u>	<u>QC</u>	<u>ON</u>	<u>MB</u>	<u>SK</u>	<u>AB</u>	<u>BC</u>	<u>NT</u>	<u>YT</u>	<u>NU</u>	15%
	NV	15	NV	NV	NV	10	25	NV	15	10	NV	NV	NV	
Task 16	Services resilient flooring installations.													
%	<u>NL</u>	<u>NS</u>	<u>PE</u>	<u>NB</u>	<u>QC</u>	<u>ON</u>	<u>MB</u>	<u>SK</u>	<u>AB</u>	<u>BC</u>	<u>NT</u>	<u>YT</u>	<u>NU</u>	10%
	NV	10	NV	NV	NV	10	10	NV	10	10	NV	NV	NV	

BLOCK E WOOD AND LAMINATE FLOORING

	<u>NL</u>	<u>NS</u>	<u>PE</u>	<u>NB</u>	<u>QC</u>	<u>ON</u>	<u>MB</u>	<u>SK</u>	<u>AB</u>	<u>BC</u>	<u>NT</u>	<u>YT</u>	<u>NU</u>	National Average
%	NV	15	NV	NV	NV	20	10	NV	14	5	NV	NV	NV	13%

Task 17	Installs pre-finished hardwood, engineered wood and laminate flooring.													
%	<u>NL</u>	<u>NS</u>	<u>PE</u>	<u>NB</u>	<u>QC</u>	<u>ON</u>	<u>MB</u>	<u>SK</u>	<u>AB</u>	<u>BC</u>	<u>NT</u>	<u>YT</u>	<u>NU</u>	67%
	NV	80	NV	NV	NV	60	50	NV	75	70	NV	NV	NV	
Task 18	Services pre-finished hardwood, engineered wood and laminate flooring.													
%	<u>NL</u>	<u>NS</u>	<u>PE</u>	<u>NB</u>	<u>QC</u>	<u>ON</u>	<u>MB</u>	<u>SK</u>	<u>AB</u>	<u>BC</u>	<u>NT</u>	<u>YT</u>	<u>NU</u>	33%
	NV	20	NV	NV	NV	40	50	NV	25	30	NV	NV	NV	

PIE CHART*



TITLES OF BLOCKS

Block A Occupational Skills
 Block B Floor Preparation
 Block C Carpet

Block D Resilient Flooring
 Block E Wood and Laminate Flooring

* Average percentage of the total number of questions on an interprovincial examination, assigned to assess each block of the analysis, as derived from the collective input from workers within the occupation from all areas of Canada. Interprovincial examinations typically have from 100 to 150 multiple-choice questions.

TASK PROFILE CHART – FLOORCOVERING INSTALLER (2005)

BLOCKS		TASKS	← SUB-TASKS →					
A	OCCUPATIONAL SKILLS	1. Uses tools and equipment.	1.01 Uses hand tools.	1.02 Uses power tools.	1.03 Uses measuring tools.	1.04 Uses personal protective equipment (PPE).		
		2. Organizes work.	2.01 Communicates with others.	2.02 Assesses jobsite conditions and requirements.	2.03 Plans sequence of installation.	2.04 Measures dimensions.	2.05 Performs layout.	2.06 Uses documentation.
			2.07 Maintains safe work environment.	2.08 Performs final inspection.				
		3. Identifies materials.	3.01 Identifies types of carpets.	3.02 Identifies types of resilient flooring.	3.03 Identifies types of pre-finished wood and laminate flooring.	3.04 Identifies types of cushion.	3.05 Selects adhesives.	3.06 Selects trim and accessories.
			4. Assesses floor.	4.01 Identifies grade level.	4.02 Identifies subfloor type.	4.03 Determines possibility of asbestos containing products.	4.04 Conducts field tests.	4.05 Determines floor preparation required.
B	FLOOR PREPARATION	5. Removes existing floorcovering and accessories.	5.01 Removes wall base and trims.	5.02 Removes carpet.	5.03 Removes resilient flooring.	5.04 Removes wood and laminate flooring.	5.05 Removes underlayments.	
		6. Prepares substrate.	6.01 Removes contaminants.	6.02 Prepares concrete floors.	6.03 Prepares wood floors.	6.04 Prepares specialty floors.	6.05 Prepares existing flooring to accept new floorcovering.	
			7. Installs underlayment.	7.01 Installs trowelled underlayment.	7.02 Installs rigid underlayment panels.			

FLOORCOVERING INSTALLER (2005)

BLOCKS	TASKS	← SUB-TASKS →					
C CARPET	8. Installs carpets.	8.01 Installs carpets by conventional method.	8.02 Installs carpets by direct glue-down method.	8.03 Installs carpets by double-bond method.	8.04 Installs modular carpet tiles.	8.05 Cuts carpet.	8.06 Seams carpet.
		8.07 Completes carpet installation.					
	9. Performs specialized carpet procedures.	9.01 Installs borders and insets.	9.02 Installs wall base.	9.03 Binds carpet.	9.04 Upholsters carpet.	9.05 Installs area rugs and runners.	9.06 Installs release carpets.
		9.07 Installs trims and accessories.					
	10. Installs carpet on stairs.	10.01 Installs carpet on stairs by conventional method.	10.02 Installs carpet on stairs by glue-down method.	10.03 Installs modular carpet tiles on stairs.	10.04 Installs stair runners.		
11. Services carpet installations.	11.01 Repairs carpet installed by conventional method.	11.02 Repairs glued down carpet.					
D RESILIENT FLOORING	12. Installs resilient tiles.	12.01 Establishes layout grid lines.	12.02 Applies adhesives.	12.03 Positions field material.	12.04 Fits material.	12.05 Rolls material.	
	13. Installs resilient sheet goods.	13.01 Cuts material.	13.02 Fits material.	13.03 Applies adhesives.	13.04 Rolls material.	13.05 Cuts seams to fit.	

FLOORCOVERING INSTALLER (2005)

BLOCKS

TASKS

← SUB-TASKS →

14. Performs specialized resilient flooring procedures.	14.01 Performs coving operations.	14.02 Installs resilient flooring on stairs.	14.03 Seals seams chemically.	14.04 Heat welds seams.	14.05 Applies two-part adhesives.	14.06 Installs insets, borders and feature strips.
	14.07 Installs wall base.					

15. Installs specialty flooring products and accessories.	15.01 Installs safety floors.	15.02 Installs tread, riser and stringer materials.	15.03 Installs conductive flooring components.	15.04 Installs specialty wall covering products.	15.05 Installs trims and accessories.

16. Services resilient flooring installations.	16.01 Performs resilient flooring repairs.	16.02 Repairs accessories.	16.03 Repairs seams.

E WOOD AND LAMINATE FLOORING

17. Installs pre-finished hardwood, engineered wood and laminate flooring.	17.01 Undercuts jambs and trims.	17.02 Installs barriers.	17.03 Establishes layout lines.	17.04 Cuts material.	17.05 Applies adhesives.	17.06 Installs laminate flooring.
	17.07 Installs pre-finished and engineered wood.					

17.07 Installs pre-finished and engineered wood.	17.08 Installs specialty wood and laminate flooring trims and accessories.
--	--

18. Services pre-finished hardwood, engineered wood and laminate flooring.	18.01 Repairs boards.	18.02 Replaces boards and accessories.