

Catalogue no. 65-001-X

# Canadian International Merchandise Trade

October 2008



Statistics  
Canada

Statistique  
Canada

Canada

## How to obtain more information

For information about this product or the wide range of services and data available from Statistics Canada, visit our website at [www.statcan.gc.ca](http://www.statcan.gc.ca), e-mail us at [infostats@statcan.gc.ca](mailto:infostats@statcan.gc.ca), or telephone us, Monday to Friday from 8:30 a.m. to 4:30 p.m., at the following numbers:

### Statistics Canada's National Contact Centre

Toll-free telephone (Canada and the United States):

Inquiries line	1-800-263-1136
National telecommunications device for the hearing impaired	1-800-363-7629
Fax line	1-877-287-4369

Local or international calls:

Inquiries line	1-613-951-8116
Fax line	1-613-951-0581

### Depository Services Program

Inquiries line	1-800-635-7943
Fax line	1-800-565-7757

## To access this product

This product, Catalogue no. 65-001-X, is available free in electronic format. To obtain a single issue, visit our website at [www.statcan.gc.ca](http://www.statcan.gc.ca) and select "Publications" > "Free Internet publications."

## Standards of service to the public

Statistics Canada is committed to serving its clients in a prompt, reliable and courteous manner. To this end, Statistics Canada has developed *standards of service* that its employees observe. To obtain a copy of these service standards, please contact Statistics Canada toll-free at 1-800-263-1136. The service standards are also published on [www.statcan.gc.ca](http://www.statcan.gc.ca) under "About us" > "Providing services to Canadians."

Statistics Canada  
International Trade Division

# Canadian International Merchandise Trade

October 2008

Published by authority of the Minister responsible for Statistics Canada

© Minister of Industry, 2008

All rights reserved. The content of this electronic publication may be reproduced, in whole or in part, and by any means, without further permission from Statistics Canada, subject to the following conditions: that it be done solely for the purposes of private study, research, criticism, review or newspaper summary, and/or for non-commercial purposes; and that Statistics Canada be fully acknowledged as follows: Source (or "Adapted from", if appropriate): Statistics Canada, year of publication, name of product, catalogue number, volume and issue numbers, reference period and page(s). Otherwise, no part of this publication may be reproduced, stored in a retrieval system or transmitted in any form, by any means—electronic, mechanical or photocopy—or for any purposes without prior written permission of Licensing Services, Client Services Division, Statistics Canada, Ottawa, Ontario, Canada K1A 0T6.

December 2008

Catalogue no. 65-001-X, vol. 62, no. 10

ISSN 1480-8781

Frequency: Monthly

Ottawa

La version française de cette publication est disponible sur demande (n° 65-001-X au catalogue).

---

#### **Note of appreciation**

*Canada owes the success of its statistical system to a long standing partnership between Statistics Canada, the citizens of Canada, its businesses, governments and other institutions. Accurate and timely statistical information could not be produced without their continued cooperation and goodwill.*

# User information

---

## Symbols

The following standard symbols are used in Statistics Canada publications:

- . not available for any reference period
- .. not available for a specific reference period
- ... not applicable
- 0 true zero or a value rounded to zero
- 0<sup>s</sup> value rounded to 0 (zero) where there is a meaningful distinction between true zero and the value that was rounded
- p preliminary
- r revised
- x suppressed to meet the confidentiality requirements of the *Statistics Act*
- E use with caution
- F too unreliable to be published

## Note to Users

All totals are calculated from full figures and rounded independently; consequently, totals may not equal the sum of their components.

# Table of contents

---

<b>Highlights</b>	<b>5</b>
<b>Analysis</b>	<b>8</b>
The month in trade	8
<b>Statistical tables</b>	
1 Merchandise trade of Canada, balance of payments basis, seasonally adjusted	13
1-1 Current dollars	13
1-2 Constant dollars, 2002	14
1-3 Price indices (Laspeyres)	15
2 Exports by commodity groupings, balance of payments basis, seasonally adjusted	16
2-1 Current dollars	16
2-2 Constant dollars, 2002	18
3 Domestic exports to selected countries, customs basis, not seasonally adjusted	20
3-1 October	20
3-2 Year to date, January to October	21
4 Domestic exports by country, customs basis, not seasonally adjusted	22
5 Exports by province of origin, customs basis, not seasonally adjusted	26
5-1 October	26
5-2 Year to date, January to October	27
6 Imports by commodity groupings, balance of payments basis, seasonally adjusted	28
6-1 Current dollars	28
6-2 Constant dollars, 2002	30
7 Imports from selected countries, customs basis, not seasonally adjusted	32
7-1 October	32
7-2 Year to date, January to October	33
8 Imports by country, customs basis, not seasonally adjusted	34
9 Imports by province of clearance, customs basis, not seasonally adjusted	38
9-1 October	38
9-2 Year to date, January to October	39

**Table of contents – continued**

**Data quality, concepts and methodology**

Technical notes

40

# Highlights

---

## October 2008

Canada's international merchandise imports and exports both increased in current dollars in October. When measured in constant dollars, both declined. The constant dollar measurement isolates the volume movement by removing the price effect.

Canada's international merchandise trade in October 2008 was greatly influenced by a 10.7% fall (based on the noon spot rate monthly average) in the value of the Canadian dollar vis à vis the U.S. dollar during the month and by a sharp fall in energy, food and industrial material commodity prices on world markets (a drop of 16.5% according to the Bank of Canada's U.S. dollar index of commodity prices). The exchange rate decline was the largest such decrease in a single month in recorded history. The immediate effect of the currency depreciation on imports was to increase substantially the price of imported goods from the U.S. The effect was slightly moderated by the fall in commodity prices. For exports, given the dominant role of commodities such as petroleum and gas, metals and minerals and grains, which tend to be priced in U.S. dollars, the price increase was much less. Overall, import and export prices rose 8.0% and 4.2% respectively, during the month.

In current dollars, imports increased 4.1% to \$39.7 billion, as they rose in all sectors except automotive products. It was the sixth increase in seven months. In constant dollar terms, imports fell 3.6%.

The value of exports in current dollars rose 2.5% to \$43.5 billion following two months of decline. All sectors except automotive products contributed to the gain. In constant dollar terms, exports fell 1.6%.

As a result, Canada's international merchandise trade balance with the world narrowed to \$3.8 billion from \$4.3 billion in September. This marked the second consecutive monthly contraction as imports grew more than exports.

The growth in imports from the United States surpassed the growth in exports by over \$900 million in October. Consequently, Canada's trade surplus with the United States continued to narrow for the fourth month in a row, totalling \$7.3 billion.

Meanwhile, Canada's trade deficit with countries other than the United States narrowed to \$3.5 billion as exports to these countries grew more rapidly than imports, largely due to a rise in petroleum and coal products as well as precious metals to the European Union.

### Note to readers

Merchandise trade is one component of the current account of Canada's balance of payments, which also includes trade in services, investment income and transfers.

International merchandise trade data by country are available on both a balance of payments and a customs basis for the United States, Japan and the United Kingdom. Trade data for all other individual countries are available on a customs basis only. Balance of payments data are derived from customs data by making adjustments for characteristics such as valuation, coverage, timing and residency. These adjustments are made to conform to the concepts and definitions of the Canadian System of National Accounts.

Constant dollars referred to in the text are calculated using the Laspeyres volume formula which is current dollars divided by Paasche indexes.

The *Chain Fisher real export and import monthly values* are now available on CANSIM database under table numbers 228-0056 (monthly) and 228-0057 (quarterly).

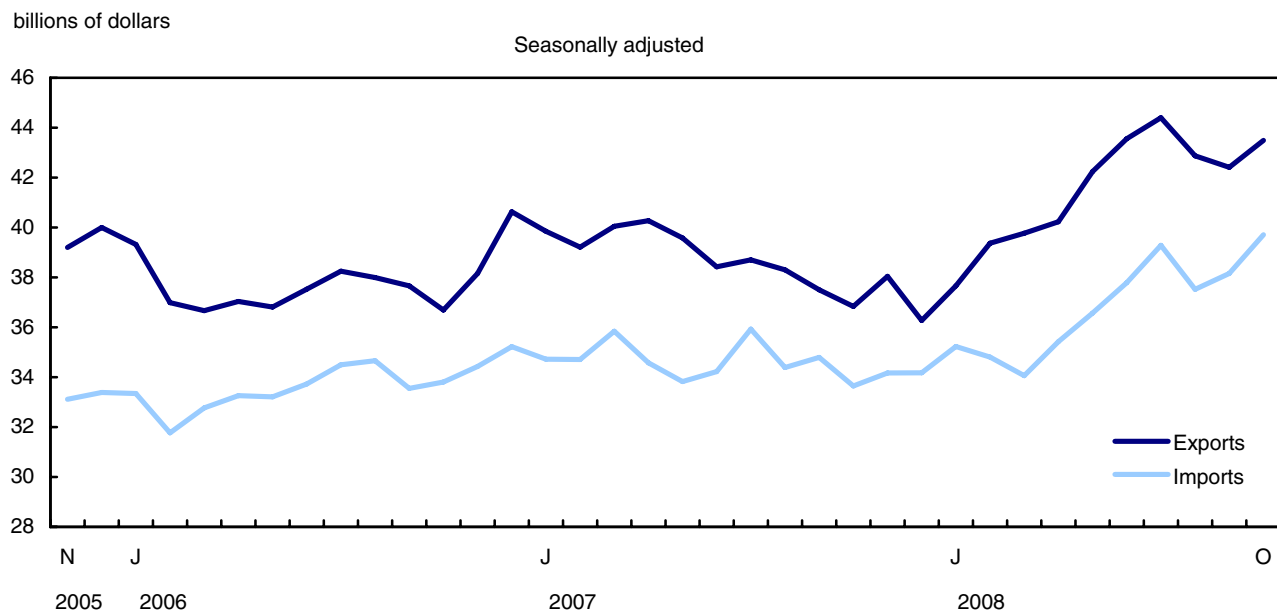
**Revisions**

In general, merchandise trade data are revised on an ongoing basis for each month of the current year. Current year revisions are reflected in both the customs and balance of payments based data. Revisions to customs based data for the previous year are released on a quarterly basis. Revisions to balance of payments based data for the three previous years are released annually in June.

Factors influencing revisions include late receipt of import and export documentation, incorrect information on customs forms, replacement of estimates with actual figures, changes in classification of merchandise based on more current information, and changes to seasonal adjustment factors.

Revised data are available in the appropriate CANSIM tables.

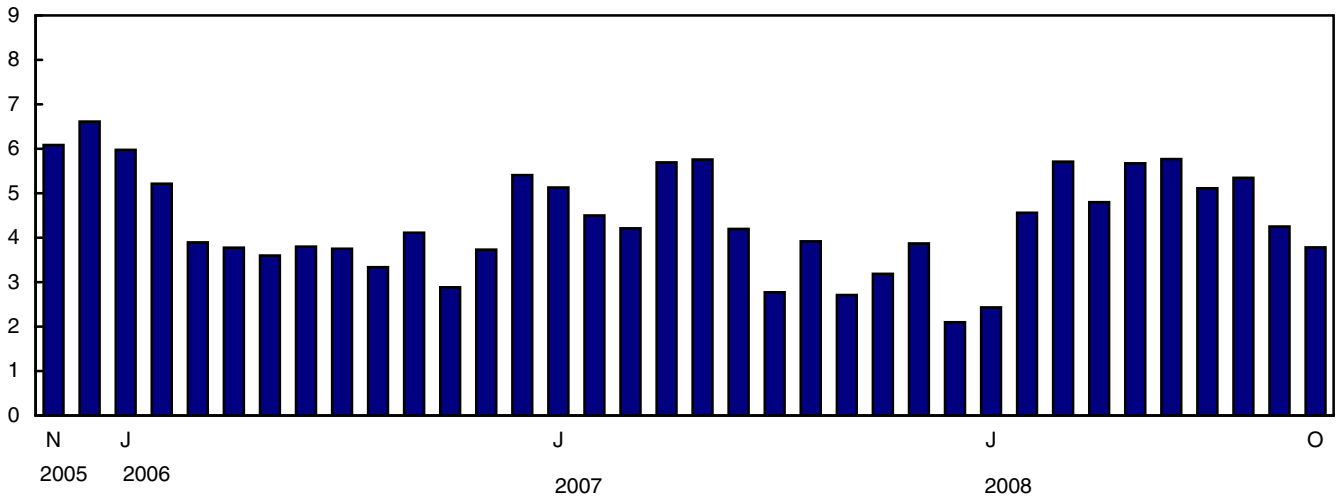
**Chart 1**  
**Exports and imports**



**Chart 2**  
**Trade balance**

billions of dollars

Seasonally adjusted



# Analysis

---

## The month in trade

### Import prices rise in all sectors except energy

Strong imports of crude petroleum led the gain in imports of energy products, which increased 22.3% to \$5.7 billion. Predominately originating from Saudi Arabia, the United Kingdom and Norway, crude petroleum imports rose 25.7% in October as large gains in volumes offset price declines.

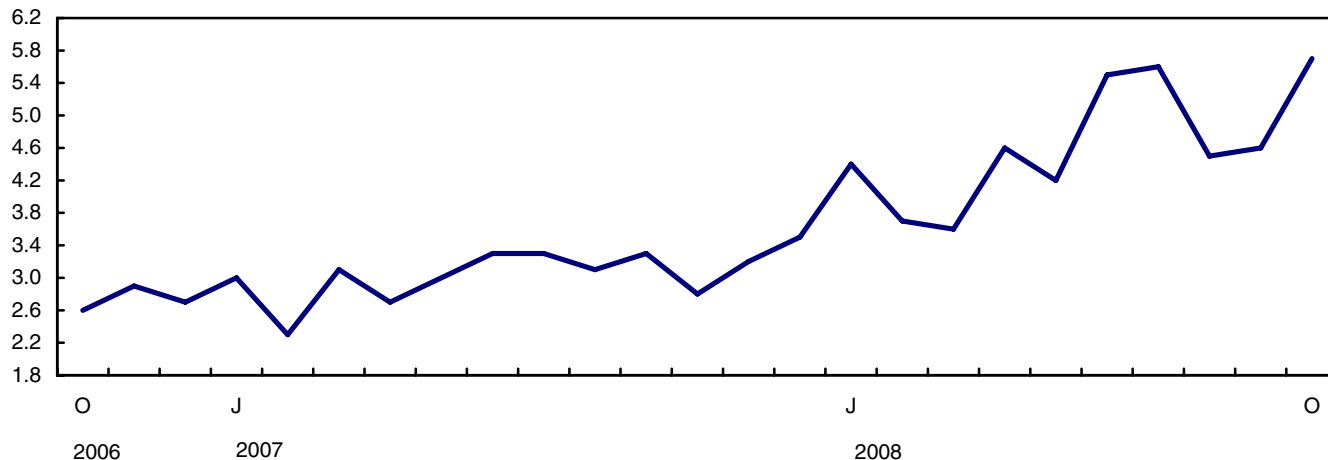
Machinery and equipment imports were up 3.2%, the eighth increase in 11 months. The gain was the result of rising prices as volumes fell. Contributing to the expansion were laptop and desktop computers from China, excavating machinery, and transformers for use at hydro plants.

Imports of automotive products dropped 1.7% to \$6.1 billion due to declining volumes as prices rose. The loss was attributed to a 7.4% drop in imports of passenger autos, registering the third monthly decline since January. Softening the decline in imports of automotive products, trucks and other motor vehicles gained 4.4%, the fourth increase in the past five months. Part of the increase in trucks can be attributed to the delayed production of new 2009 models following periods of shutdown at some U.S. truck production plants.

**Chart 1**  
**Imports of energy products**

billions of dollars

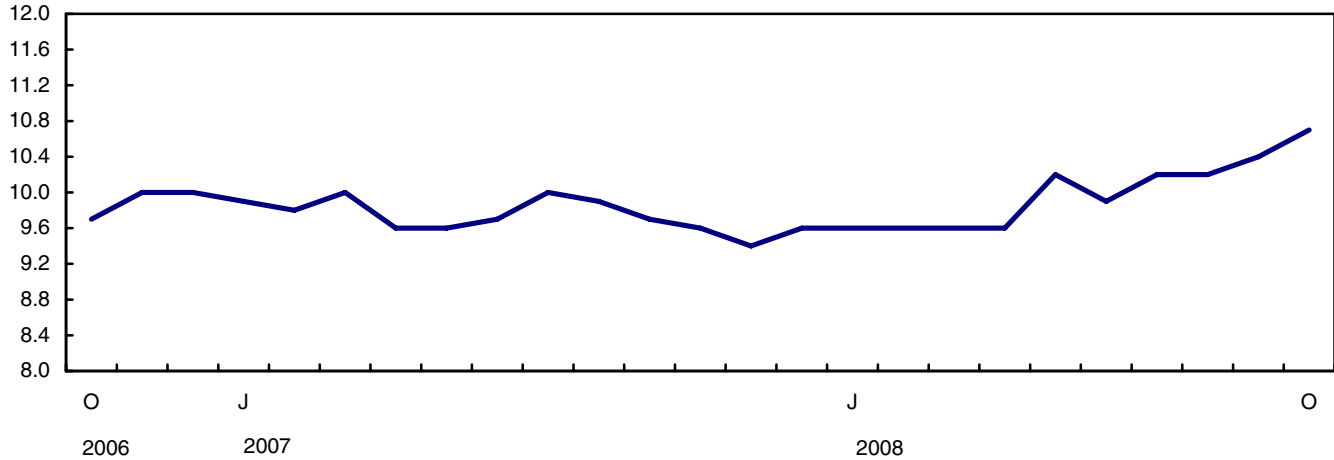
Seasonally adjusted



**Chart 2**  
**Imports of machinery and equipment**

billions of dollars

Seasonally adjusted



### Widespread increases lead to gain in exports

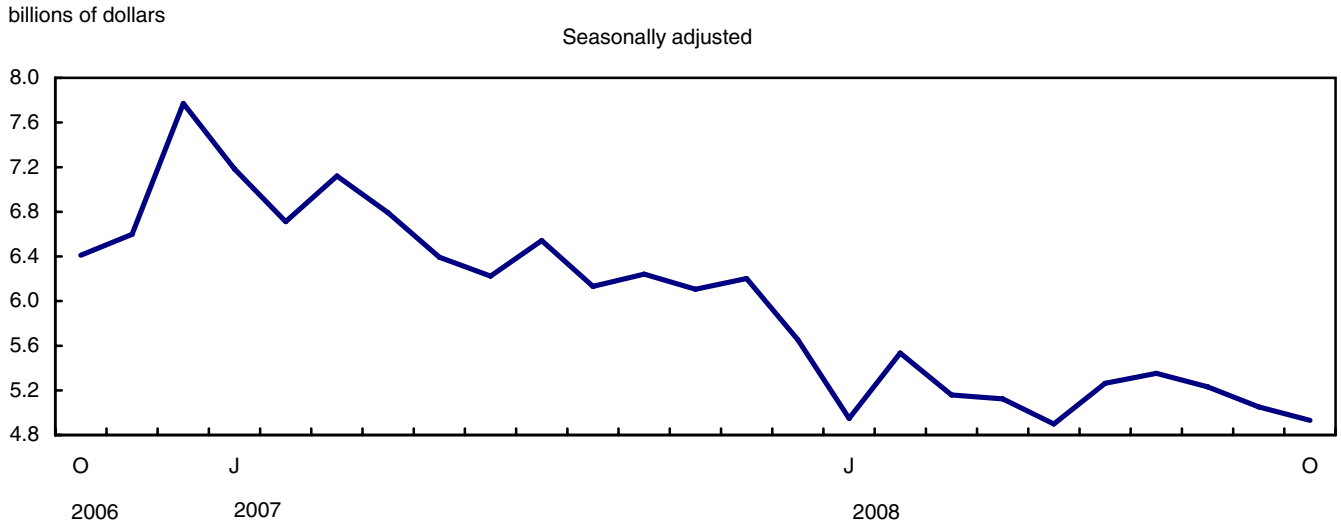
Exports of machinery and equipment increased 5.7% to \$8.3 billion as prices rose for the fifth straight month. Industrial machinery exports, on the rise since July, led the gain.

Contributing to the increase were exports of gold coins, which have been in high demand in the U.S. The U.S. mint temporarily suspended sales of one of its gold coins in late September as demand had depleted inventories.

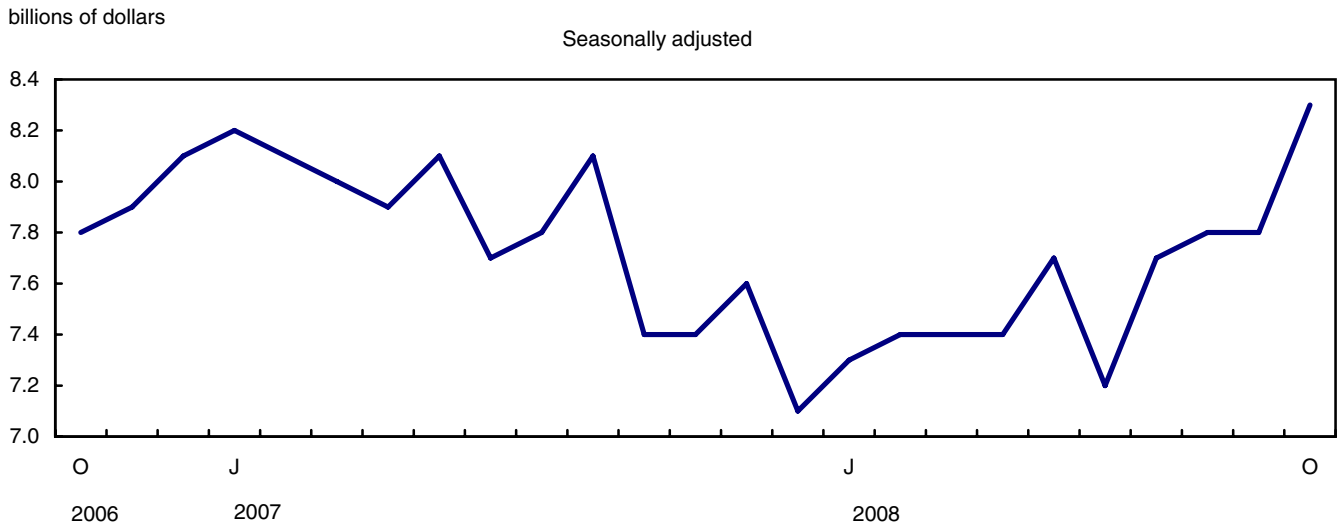
Exports of agricultural and fishing products rose 6.1% to \$3.6 billion as both prices and volumes increased. Export prices for these products have been on an upward trend since July 2007. Increased exports of wheat to Algeria, Morocco, Italy and the United States contributed to the rise, reflecting a strong harvest.

Canada's exports of automotive products fell 2.4% to \$4.9 billion, due to a large decline in volume as prices rose, prolonging the downward trend that began in January 2007. During this period of decline, the monthly value of automotive exports has fallen nearly 37%. Passenger autos continued their contribution to the decline, falling 3.7%. Much of the loss in passenger autos can be attributed to a weak sales market in the United States, which, in October, fell to its lowest level since 1983.

**Chart 3**  
**Exports of automotive products**



**Chart 4**  
**Exports of machinery and equipment**



**Text table 1**  
**Merchandise trade by principal trading area, balance of payments basis, seasonally adjusted**

	September	October	Change	Year to date		Year to date change	October		
	2008	2008		2007	2008		2008/2007	2008/2007	
	millions of dollars			percent			millions of dollars		percent
<b>Export to:</b>									
United States	31,970	32,522	552	1.7	299,218	316,376	17,158	5.7	15.6
Japan	1,054	1,115	61	5.7	8,371	9,666	1,295	15.5	47.2
European Union <sup>1</sup>	3,322	3,741	418	12.6	32,125	32,713	589	1.8	21.4
Other Organization for Economic Co-operation and Development <sup>2</sup>	2,010	1,877	-133	-6.6	16,616	17,698	1,082	6.5	16.8
Other countries	4,055	4,236	181	4.5	32,407	39,545	7,138	22.0	30.0
<b>Total</b>	<b>42,412</b>	<b>43,490</b>	<b>1,078</b>	<b>2.5</b>	<b>388,735</b>	<b>415,997</b>	<b>27,261</b>	<b>7.0</b>	<b>18.1</b>
<b>Imports from:</b>									
United States	23,740	25,192	1,452	6.1	225,835	234,038	8,203	3.6	15.1
Japan	1,012	982	-30	-3	9,950	9,678	-272	-2.7	-5.3
European Union <sup>1</sup>	4,373	4,152	-221	-5.1	35,393	38,904	3,510	9.9	24.6
Other Organization for Economic Co-operation and Development <sup>2</sup>	2,392	2,504	112	4.7	20,772	22,571	1,799	8.7	16.8
Other countries	6,643	6,879	236	3.6	54,708	63,363	8,655	15.8	31.0
<b>Total</b>	<b>38,159</b>	<b>39,708</b>	<b>1,549</b>	<b>4.1</b>	<b>346,658</b>	<b>368,553</b>	<b>21,895</b>	<b>6.3</b>	<b>18.0</b>
<b>Balance:</b>									
United States	8,231	7,330	-901	...	73,382	82,338	8,955	...	...
Japan	42	132	91	...	-1,579	-12	1,567	...	...
European Union <sup>1</sup>	-1,050	-411	639	...	-3,269	-6,191	-2,922	...	...
Other Organization for Economic Co-operation and Development <sup>2</sup>	-382	-626	-245	...	-4,156	-4,873	-717	...	...
Other countries	-2,588	-2,643	-55	...	-22,301	-23,819	-1,517	...	...
<b>Total</b>	<b>4,253</b>	<b>3,782</b>	<b>-471</b>	...	<b>42,077</b>	<b>47,443</b>	<b>5,366</b>	...	...

1. European Union includes: Austria, Belgium, Bulgaria, Cyprus, Czech Republic, Denmark, Estonia, Finland, France, Germany, Greece, Hungary, Ireland, Italy, Latvia, Lithuania, Luxembourg, Malta, Netherlands, Poland, Portugal, Romania, Slovakia, Slovenia, Spain, Sweden and United Kingdom.
2. Other Organization for Economic Co-operation and Development includes: Australia, Canada, Iceland, Mexico, New Zealand, Norway, South Korea, Switzerland and Turkey.

**Text table 2**  
**Reconciliation of customs and balance of payments trade data, not seasonally adjusted**

	2008						2007
	October	September	August	July	June	May	Annual
	millions of dollars						
<b>Exports</b>							
<b>Customs basis</b>	<b>44,587</b>	<b>41,605</b>	<b>42,253</b>	<b>43,511</b>	<b>42,535</b>	<b>41,862</b>	<b>450,369</b>
<b>Balance of payments adjustments</b>	<b>62</b>	<b>658</b>	<b>733</b>	<b>-46</b>	<b>1,582</b>	<b>2,032</b>	<b>12,683</b>
Valuation and residency							
Inland freight	653	632	597	605	617	634	6,846
Other valuation and residency	-2,507	-1,951	-1,546	-1,187	-840	-739	-10,608
Timing	185	38	20	-25	-5	41	-72
Coverage	1,731	1,939	1,662	561	1,810	2,096	16,517
<b>Balance of payments basis</b>	<b>44,649</b>	<b>42,263</b>	<b>42,986</b>	<b>43,465</b>	<b>44,117</b>	<b>43,894</b>	<b>463,051</b>
<b>Imports</b>							
<b>Customs basis</b>	<b>41,123</b>	<b>38,108</b>	<b>35,920</b>	<b>37,291</b>	<b>38,046</b>	<b>37,366</b>	<b>406,886</b>
<b>Balance of payments adjustments</b>							
Valuation and residency	876	737	1,005	682	970	545	8,120
Inland freight	846	795	768	775	772	768	8,147
Other valuation and residency	-75	-37	-83	-74	-53	-34	-872
Timing	0	0	0	0	0	0	0
Coverage	105	-21	320	-19	251	-189	845
<b>Balance of payments basis</b>	<b>41,999</b>	<b>38,845</b>	<b>36,925</b>	<b>37,973</b>	<b>39,016</b>	<b>37,911</b>	<b>415,006</b>

# Statistical tables

---

---

**Table 1-1**  
**Merchandise trade of Canada, balance of payments basis, seasonally adjusted — Current dollars**

	Exports	Imports	Balance	Period to period change		
				Exports	Imports	Balance
				percent	percent	percent
	millions of dollars			percent		millions of dollars
2004	429,006	363,158	65,848	0.0	0.0	0
2005	450,150	387,804	62,346	4.9	6.8	-3,502
2006	453,732	404,253	49,480	0.8	4.2	-12,866
2007	463,051	415,006	48,046	2.1	2.7	-1,434
<b>2006</b>						
First quarter	112,971	97,885	15,086	-5.6	-1.5	-5,220
Second quarter	111,376	100,203	11,172	-1.4	2.4	-3,913
Third quarter	113,905	102,705	11,200	2.3	2.5	28
Fourth quarter	115,481	103,459	12,021	1.4	0.7	821
<b>2007</b>						
First quarter	119,112	105,273	13,839	3.1	1.8	1,818
Second quarter	118,279	102,629	15,650	-0.7	-2.5	1,811
Third quarter	114,509	105,108	9,401	-3.2	2.4	-6,249
Fourth quarter	111,151	101,996	9,155	-2.9	-3.0	-246
<b>2008</b>						
First quarter	116,798	104,095	12,704	5.1	2.1	3,548
Second quarter	126,025	109,782	16,243	7.9	5.5	3,539
Third quarter	129,683	114,968	14,715	2.9	4.7	-1,528
<b>2007</b>						
January	39,850	34,720	5,131	-1.9	-1.4	-277
February	39,211	34,712	4,499	-1.6	0.0	-632
March	40,051	35,841	4,210	2.1	3.3	-289
April	40,270	34,576	5,694	0.5	-3.5	1,484
May	39,584	33,826	5,757	-1.7	-2.2	63
June	38,425	34,226	4,199	-2.9	1.2	-1,558
July	38,703	35,930	2,773	0.7	5.0	-1,426
August	38,304	34,385	3,918	-1.0	-4.3	1,145
September	37,502	34,793	2,710	-2.1	1.2	-1,208
October	36,835	33,649	3,187	-1.8	-3.3	477
November	38,044	34,172	3,872	3.3	1.6	685
December	36,272	34,175	2,097	-4.7	0.0	-1,775
<b>2008</b>						
January	37,659	35,228	2,430	3.8	3.1	333
February	39,369	34,806	4,563	4.5	-1.2	2,132
March	39,771	34,060	5,710	1.0	-2.1	1,148
April	40,228	35,427	4,801	1.1	4.0	-910
May	42,240	36,567	5,673	5.0	3.2	872
June	43,557	37,788	5,769	3.1	3.3	96
July	44,398	39,285	5,113	1.9	4.0	-656
August	42,872	37,524	5,348	-3.4	-4.5	235
September	42,412	38,159	4,253	-1.1	1.7	-1,095
October	43,490	39,708	3,782	2.5	4.1	-471

**Note(s):** Due to rounding, monthly data may not add up to quarterly data and quarterly data may not add up to annual data.

**Table 1-2**  
**Merchandise trade of Canada, balance of payments basis, seasonally adjusted — Constant dollars, 2002**

	Exports	Imports	Balance	Period to period change	
				Exports	Imports
	millions of dollars			percent	
2004	429,497	400,558	28,940	0.0	0.0
2005	439,300	431,787	7,513	2.3	7.8
2006	443,301	456,702	-13,401	0.9	5.8
2007	449,825	483,340	-33,516	1.5	5.8
<b>2006</b>					
First quarter	111,623	111,033	590	-1.7	-0.3
Second quarter	109,737	113,858	-4,121	-1.7	2.5
Third quarter	110,143	115,604	-5,461	0.4	1.5
Fourth quarter	111,798	116,206	-4,408	1.5	0.5
<b>2007</b>					
First quarter	112,963	116,645	-3,682	1.0	0.4
Second quarter	113,281	117,536	-4,255	0.3	0.8
Third quarter	112,887	123,814	-10,927	-0.3	5.3
Fourth quarter	110,694	125,345	-14,651	-1.9	1.2
<b>2008</b>					
First quarter	106,971	122,148	-15,177	-3.4	-2.6
Second quarter	105,718	123,397	-17,680	-1.2	1.0
Third quarter	104,565	123,799	-19,234	-1.1	0.3
<b>2007</b>					
January	38,206	38,445	-239	-2.0	-2.3
February	36,908	38,633	-1,725	-3.4	0.5
March	37,849	39,568	-1,719	2.6	2.4
April	38,233	38,962	-728	1.0	-1.5
May	37,995	38,709	-714	-0.6	-0.6
June	37,053	39,866	-2,813	-2.5	3.0
July	37,948	41,999	-4,051	2.4	5.3
August	37,672	40,412	-2,739	-0.7	-3.8
September	37,267	41,403	-4,136	-1.1	2.5
October	37,238	41,996	-4,757	-0.1	1.4
November	38,059	42,406	-4,346	2.2	1.0
December	35,396	40,944	-5,548	-7.0	-3.4
<b>2008</b>					
January	34,998	41,192	-6,194	-1.1	0.6
February	36,560	41,076	-4,516	4.5	-0.3
March	35,413	39,881	4,468	-3.1	-2.9
April	34,902	40,240	-5,337	-1.4	0.9
May	35,657	41,741	-6,084	2.2	3.7
June	35,158	41,417	-6,259	-1.4	-0.8
July	35,506	42,743	-7,237	1.0	3.2
August	34,673	40,337	-5,663	-2.3	-5.6
September	34,385	40,718	-6,333	-0.8	0.9
October	33,838	39,239	-5,402	-1.6	-3.6

**Note(s):** Due to rounding, monthly data may not add up to quarterly data and quarterly data may not add up to annual data.

**Table 1-3**  
**Merchandise trade of Canada, balance of payments basis, seasonally adjusted — Price indices (Laspeyres)**

	2002=100			Period to period change		
	Exports	Imports	Terms of trade	Exports	Imports	Terms of trade
	millions of dollars			percent		
2004	101.9	92.2	110.6	0.0	0.0	0.0
2005	104.6	92.2	113.5	2.6	0.0	2.6
2006	104.6	92.8	112.8	0.0	0.7	-0.6
2007	106.9	91.5	116.8	2.2	-1.3	3.5
<b>2006</b>						
First quarter	102.2	91.9	111.1	-6.0	-0.2	-5.8
Second quarter	104.4	92.1	113.4	2.1	0.1	2.0
Third quarter	105.7	93.5	113.1	1.3	1.5	-0.3
Fourth quarter	106.3	93.5	113.7	0.6	0.0	0.6
<b>2007</b>						
First quarter	108.5	95.2	114.0	2.0	1.8	0.2
Second quarter	109.0	92.9	117.3	0.5	-2.4	2.9
Third quarter	105.4	90.3	116.6	-3.3	-2.7	-0.6
Fourth quarter	104.9	87.8	119.5	-0.4	-2.8	2.4
<b>2008</b>						
First quarter	110.6	90.6	122.1	5.4	3.2	2.3
Second quarter	118.8	95.3	124.7	7.5	5.2	2.3
Third quarter	122.6	101.0	121.3	3.1	6.1	-2.9
<b>2007</b>						
January	107.2	95.1	112.8	-1.1	1.0	-2.1
February	109.3	95.1	115.0	1.9	0.0	1.9
March	109.9	95.3	115.4	0.5	0.2	0.3
April	109.5	94.6	115.8	-0.3	-0.7	0.4
May	108.5	92.6	117.3	-0.9	-2.1	1.2
June	107.6	91.6	117.5	-0.9	-1.0	0.2
July	106.5	90.7	117.4	-1.0	-0.9	-0.1
August	105.8	90.6	116.8	-0.7	-0.2	-0.5
September	104.2	89.7	116.2	-1.5	-1.0	-0.5
October	103.4	88.5	116.9	-0.7	-1.3	0.5
November	104.7	86.5	120.9	1.2	-2.2	3.4
December	106.3	88.4	120.2	1.6	2.2	-0.6
<b>2008</b>						
January	109.0	89.9	121.3	2.5	1.6	0.9
February	108.6	90.2	120.3	-0.4	0.4	-0.8
March	113.0	91.4	123.6	4.1	1.3	2.8
April	115.6	93.3	123.9	2.3	2.1	0.2
May	118.2	94.6	125.0	2.3	1.4	0.9
June	121.3	98.0	123.7	2.6	3.7	-1.1
July	124.2	99.3	125.1	2.4	1.3	1.1
August	122.1	102.3	119.4	-1.7	3.0	-4.7
September	120.7	101.6	118.8	-1.1	-0.7	-0.5
October	123.7	105.6	117.2	2.5	3.9	-1.3

**Note(s):** Due to rounding, monthly data may not add up to quarterly data and quarterly data may not add up to annual data.

**Table 2-1**  
**Exports by commodity groupings, balance of payments basis, seasonally adjusted — Current dollars**

	September 2008	October 2008	Change	Year to date		Year to date change	October 2008/2007		
	millions of dollars			percent			percent		
<b>Total</b>	<b>42,412</b>	<b>43,490</b>	<b>1,078</b>	<b>2.5</b>	<b>388,735</b>	<b>415,997</b>	<b>27,261</b>	<b>7.0</b>	<b>18.1</b>
<b>Agricultural and fishing products</b>	<b>3,404</b>	<b>3,610</b>	<b>206</b>	<b>6.1</b>	<b>28,628</b>	<b>33,729</b>	<b>5,101</b>	<b>17.8</b>	<b>30.5</b>
Wheat	440	536	97	22.0	3,785	5,687	1,902	50.2	34.6
Other agricultural and fishing products	2,965	3,074	109	3.7	24,843	28,042	3,199	12.9	29.8
Live animals	202	175	-27	-13.5	2,002	1,992	-10	-0.5	-13.2
Fish and fish preparations	362	371	9	2.5	3,628	3,509	-119	-3.3	11.7
Barley	37	42	4	12.0	300	600	300	100.0	-50.4
Wheat flour	8	8	0	2.9	63	88	25	38.9	30.2
Other cereals unmilled	56	79	23	41.5	486	818	332	68.2	42.8
Other cereal preparations	255	274	19	7.5	2,113	2,354	241	11.4	33.2
Meat and meat preparations	430	452	22	5.2	3,510	3,783	273	7.8	41.5
Alcoholic beverages	71	83	12	16.4	730	694	-37	-5.0	17.4
Other food, feed, beverages and tobacco	1,013	1,023	10	1.0	8,467	9,094	628	7.4	30.1
Rapeseed	379	328	-51	-13.4	1,915	3,289	1,374	71.7	203.2
Other crude vegetable products	151	239	88	58.1	1,629	1,822	193	11.9	19.9
<b>Energy products</b>	<b>11,380</b>	<b>11,580</b>	<b>200</b>	<b>1.8</b>	<b>75,560</b>	<b>112,165</b>	<b>36,606</b>	<b>48.4</b>	<b>55.1</b>
Crude petroleum	5,769	5,609	-161	-2.8	33,140	54,879	21,739	65.6	56.5
Natural gas	2,765	2,671	-94	-3.4	24,010	29,588	5,578	23.2	21.6
Other energy products	2,846	3,301	455	16.0	18,410	27,698	9,289	50.5	96.1
Coal and other bituminous substances	654	781	127	19.4	2,309	4,664	2,355	102.0	237.4
Petroleum and coal products	1,905	2,007	102	5.4	13,500	19,490	5,990	44.4	63.3
Electricity	287	513	225	78.5	2,600	3,544	944	36.3	130.4
<b>Forestry products</b>	<b>2,276</b>	<b>2,353</b>	<b>76</b>	<b>3.4</b>	<b>24,934</b>	<b>21,589</b>	<b>-3,345</b>	<b>-13.4</b>	<b>5.7</b>
Lumber and sawmill products	787	828	41	5.2	10,882	7,742	-3,139	-28.8	-7.9
Other crude wood products	41	66	25	60.1	668	530	-139	-20.7	11.8
Lumber	474	487	14	2.9	6,395	4,534	-1,861	-29.1	-3.5
Other wood fabricated materials	272	275	3	1.0	3,819	2,679	-1,140	-29.8	-18.0
Wood pulp and other wood products	577	549	-28	-4.8	5,575	5,593	18	0.3	-3.4
Newsprint and other paper and paperboard	913	976	63	6.9	8,477	8,254	-224	-2.6	28.8
Newsprint paper	504	550	46	9.1	4,467	4,407	-60	-1.3	38.3
Other paper and paperboard	409	426	17	4.3	4,010	3,846	-164	-4.1	18.3
<b>Industrial goods and materials</b>	<b>9,803</b>	<b>9,864</b>	<b>60</b>	<b>0.6</b>	<b>87,848</b>	<b>94,522</b>	<b>6,674</b>	<b>7.6</b>	<b>19.9</b>
Metal ores	1,313	1,270	-44	-3.3	12,179	13,161	983	8.1	17.1
Iron ores, concentrates and scrap	511	378	-133	-26.0	2,779	4,112	1,332	47.9	37.0
Copper ores, concentrates and scrap	137	263	126	92.1	1,802	2,028	226	12.5	21.1
Nickel ores, concentrates and scrap	310	229	-82	-26.3	4,373	3,587	-786	-18.0	-27.1
Zinc ores, concentrates and scrap	15	32	17	113.1	314	313	-1	-0.4	98.8
Other ores, concentrates and scrap	340	368	28	8.2	2,910	3,122	212	7.3	40.8
Chemicals, plastics and fertilizers	3,239	3,372	133	4.1	27,827	29,938	2,110	7.6	35.1
Inorganic chemicals	509	494	-14	-2.8	5,626	4,624	-1,002	-17.8	12.2
Organic chemicals	585	637	51	8.8	5,781	6,018	237	4.1	23.6
Fertilizers and fertilizer materials	719	823	104	14.5	3,311	5,862	2,551	77.1	157.8
Synthetic rubber and plastics	1,124	1,100	-24	-2.1	10,388	10,599	211	2.0	14.1
Other chemical products	302	318	16	5.4	2,721	2,834	113	4.2	23.5
Metals and alloys	3,486	3,436	-50	-1.4	32,198	34,428	2,231	6.9	8.9
Primary iron and steel	145	114	-31	-21.4	548	1,189	641	117.1	83.2
Steel bars, rods, plates, sheets	464	474	10	2.1	3,207	4,342	1,135	35.4	43.4
Other iron and steel and alloys	354	366	12	3.3	2,870	3,309	439	15.3	44.6
Aluminum including alloys	817	860	43	5.3	8,540	7,771	-769	-9.0	18.6
Copper and alloys	335	301	-34	-10.0	3,541	3,853	313	8.8	-28.6
Nickel and alloys	295	266	-29	-9.7	4,917	3,058	-1,859	-37.8	-28.7
Precious metals and alloys	842	830	-12	-1.5	5,682	8,379	2,697	47.5	23.7
Zinc and alloys	118	103	-15	-12.6	1,856	1,257	-599	-32.3	-47.1
Other non-ferrous metals and alloys	117	123	6	5.0	1,037	1,270	233	22.5	-1.4

Table 2-1 – continued

## Exports by commodity groupings, balance of payments basis, seasonally adjusted — Current dollars

	September 2008	October 2008	Change	Year to date		Year to date change		October 2008/2007	
	millions of dollars			percent		millions of dollars		percent	
				2007	2008				
Other industrial goods and materials	1,765	1,786	20	1.2	15,645	16,994	1,350	8.6	19.8
Asbestos unmanufactured	7	6	-1	-17.5	46	57	11	23.8	37.1
Other crude animal products	74	66	-9	-11.6	699	717	18	2.6	3.8
Other crude non-metallic minerals	422	399	-23	-5.5	2,357	3,886	1,529	64.9	52.8
Other crude materials, inedible	54	54	0	0.4	476	497	21	4.3	7.8
Metal fabricated basic products	469	481	12	2.6	4,893	4,549	-344	-7.0	7.6
Textile fabricated materials	207	206	-1	-0.4	2,390	2,033	-357	-14.9	-5.3
Non-metallic mineral basic products	213	207	-5	-2.4	2,081	1,986	-95	-4.6	12.3
Other fabricated materials	320	366	47	14.6	2,703	3,270	567	21.0	39.7
<b>Machinery and equipment</b>	<b>7,808</b>	<b>8,255</b>	<b>447</b>	<b>5.7</b>	<b>78,689</b>	<b>75,999</b>	<b>-2,690</b>	<b>-3.4</b>	<b>11.1</b>
Industrial and agricultural machinery	2,068	2,235	166	8.0	18,686	19,352	667	3.6	21.8
Industrial machinery	1,838	2,020	182	9.9	17,183	17,535	352	2.0	20.3
Agricultural machinery includ. tractors	231	215	-16	-6.8	1,502	1,818	315	21.0	38.0
Aircraft and other transportation equipment	1,595	1,602	7	0.4	17,515	16,309	-1,206	-6.9	-2.9
Aircraft, engines, parts	1,185	1,190	5	0.5	13,061	12,151	-910	-7.0	-3.2
Other transportation equipment	410	411	2	0.4	4,454	4,159	-295	-6.6	-2.0
Other machinery and equipment	4,145	4,418	274	6.6	42,489	40,338	-2,151	-5.1	11.9
Television, telecommunication equipment	759	825	65	8.6	8,925	7,843	-1,082	-12.1	2.4
Office machines and equipment	511	550	39	7.6	6,151	5,041	-1,110	-18.0	0.8
Other equipment and tools	1,990	2,058	68	3.4	18,873	19,081	209	1.1	14.3
Other end products, inedible	885	986	101	11.4	8,539	8,372	-168	-2.0	23.8
<b>Automotive products</b>	<b>5,053</b>	<b>4,931</b>	<b>-121</b>	<b>-2.4</b>	<b>65,449</b>	<b>51,496</b>	<b>-13,954</b>	<b>-21.3</b>	<b>-19.2</b>
Passenger autos and chassis	2,874	2,768	-106	-3.7	33,765	28,744	-5,021	-14.9	-17.8
Trucks and other motor vehicles	574	535	-39	-6.7	11,195	6,148	-5,047	-45.1	-40.1
Motor vehicle parts	1,604	1,628	24	1.5	20,490	16,603	-3,886	-19.0	-11.8
<b>Other consumer goods</b>	<b>1,443</b>	<b>1,630</b>	<b>187</b>	<b>12.9</b>	<b>15,868</b>	<b>14,983</b>	<b>-885</b>	<b>-5.6</b>	<b>6.6</b>
<b>Special transactions trade</b>	<b>735</b>	<b>790</b>	<b>55</b>	<b>7.5</b>	<b>6,925</b>	<b>6,771</b>	<b>-154</b>	<b>-2.2</b>	<b>30.4</b>
<b>Unallocated balance of payments   adjustments</b>	<b>510</b>	<b>478</b>	<b>-32</b>	<b>-6.2</b>	<b>4,834</b>	<b>4,742</b>	<b>-92</b>	<b>-1.9</b>	<b>0.1</b>

**Table 2-2**  
**Exports by commodity groupings, balance of payments basis, seasonally adjusted — Constant dollars, 2002**

	September 2008	October 2008	Change	Year to date		Year to date change	October 2008/2007		
	millions of dollars			percent					
				2007	2008				
<b>Total</b>	<b>34,385</b>	<b>33,838</b>	<b>-547</b>	<b>-1.6</b>	<b>376,369</b>	<b>351,091</b>	<b>-25,279</b>	<b>-6.7</b>	<b>-9.1</b>
<b>Agricultural and fishing products</b>	<b>2,930</b>	<b>3,056</b>	<b>127</b>	<b>4.3</b>	<b>30,558</b>	<b>30,569</b>	<b>11</b>	<b>0.0</b>	<b>3.6</b>
Wheat	268	358	90	33.8	3,768	3,389	-379	-10.1	14.8
Other agricultural and fishing products	2,662	2,698	36	1.4	26,790	27,180	390	1.5	2.3
Live animals	217	190	-27	-12.4	2,231	2,278	47	2.1	-28.3
Fish and fish preparations	410	393	-17	-4.1	4,077	4,017	-60	-1.5	-3.3
Barley	21	25	3	15.9	276	406	130	47.2	-67.7
Wheat flour	7	7	0	3.8	60	71	11	18.2	29.3
Other cereals unmilled	41	55	14	34.9	535	695	160	29.9	-10.6
Other cereal preparations	212	211	-1	-0.4	2,152	2,133	-18	-0.8	-1.0
Meat and meat preparations	428	442	14	3.3	4,055	4,244	189	4.7	10.4
Alcoholic beverages	106	115	10	9.2	1,091	1,101	10	0.9	-10.5
Other food, feed, beverages and tobacco	849	869	21	2.4	8,874	8,632	-242	-2.7	8.2
Rapeseed	257	211	-46	-17.8	1,811	2,181	370	20.4	126.9
Other crude vegetable products	116	180	64	55.3	1,627	1,420	-207	-12.7	-2.3
<b>Energy products</b>	<b>4,575</b>	<b>4,956</b>	<b>381</b>	<b>8.3</b>	<b>45,438</b>	<b>46,616</b>	<b>1,178</b>	<b>2.6</b>	<b>9.8</b>
Crude petroleum	2,084	2,211	126	6.1	19,086	19,605	519	2.7	15.9
Natural gas	1,389	1,346	-42	-3.1	15,395	14,822	-572	-3.7	-14.9
Other energy products	1,102	1,399	297	27.0	10,958	12,189	1,231	11.2	36.6
Coal and other bituminous substances	149	166	17	11.5	1,315	1,587	272	20.7	15.5
Petroleum and coal products	755	862	107	14.2	7,543	7,997	454	6.0	29.2
Electricity	198	371	173	87.2	2,099	2,605	505	24.1	74.2
<b>Forestry products</b>	<b>2,535</b>	<b>2,497</b>	<b>-37</b>	<b>-1.5</b>	<b>29,360</b>	<b>25,540</b>	<b>-3,820</b>	<b>-13.0</b>	<b>-12.5</b>
Lumber and sawmill products	914	954	39	4.3	12,988	9,865	-3,123	-24.0	-18.2
Other crude wood products	49	72	23	47.2	801	695	-106	-13.3	4.8
Lumber	586	613	27	4.7	7,915	6,223	-1,692	-21.4	-14.9
Other wood fabricated materials	279	268	-11	-4.0	4,272	2,947	-1,324	-31.0	-28.7
Wood pulp and other wood products	674	617	-57	-8.5	6,827	6,579	-248	-3.6	-16.3
Newsprint and other paper and paperboard	946	927	-19	-2.0	9,545	9,096	-449	-4.7	-2.7
Newsprint paper	503	498	-5	-1.0	4,996	4,761	-235	-4.7	-2.2
Other paper and paperboard	443	429	-14	-3.2	4,549	4,335	-214	-4.7	-3.3
<b>Industrial goods and materials</b>	<b>6,272</b>	<b>6,182</b>	<b>-89</b>	<b>-1.4</b>	<b>63,035</b>	<b>62,970</b>	<b>-66</b>	<b>-0.1</b>	<b>-1.4</b>
Metal ores	613	664	51	8.3	5,356	6,241	885	16.5	20.0
Iron ores, concentrates and scrap	187	131	-56	-29.8	1,731	1,928	198	11.4	-29.6
Copper ores, concentrates and scrap	47	112	65	138.7	589	672	83	14.2	55.5
Nickel ores, concentrates and scrap	173	149	-24	-13.7	1,212	1,655	443	36.5	51.4
Zinc ores, concentrates and scrap	10	24	14	146.1	100	182	82	81.9	251.8
Other ores, concentrates and scrap	197	249	52	26.3	1,724	1,803	79	4.6	30.9
Chemicals, plastics and fertilizers	2,101	2,037	-64	-3.1	21,007	20,843	-164	-0.8	2.6
Inorganic chemicals	250	223	-27	-10.7	1,730	2,238	508	29.4	36.5
Organic chemicals	287	303	16	5.6	3,560	3,140	-420	-11.8	-3.2
Fertilizers and fertilizer materials	248	267	20	8.0	2,468	2,704	236	9.6	10.7
Synthetic rubber and plastics	957	879	-79	-8.2	9,912	9,362	-550	-5.6	-6.5
Other chemical products	360	365	5	1.4	3,336	3,398	62	1.9	11.3
Metals and alloys	2,112	2,050	-63	-3.0	20,251	21,029	779	3.8	-3.4
Primary iron and steel	70	50	-20	-28.4	399	650	251	63.0	6.5
Steel bars, rods, plates, sheets	292	297	5	1.8	2,826	3,194	367	13.0	-6.0
Other iron and steel and alloys	219	213	-6	-2.7	2,473	2,402	-71	-2.9	-12.3
Aluminum including alloys	685	719	34	4.9	7,325	6,717	-607	-8.3	5.5
Copper and alloys	113	110	-4	-3.1	1,248	1,260	12	1.0	-23.8
Nickel and alloys	145	133	-12	-8.0	1,252	1,299	47	3.8	7.1
Precious metals and alloys	458	415	-43	-9.4	3,617	4,329	712	19.7	-4.3
Zinc and alloys	80	65	-15	-18.9	629	737	108	17.2	-18.2
Other non-ferrous metals and alloys	50	48	-3	-5.4	482	442	-41	-8.4	-9.6

Table 2-2 – continued

## Exports by commodity groupings, balance of payments basis, seasonally adjusted — Constant dollars, 2002

	September 2008	October 2008	Change	Year to date		Year to date change	October 2008/2007		
	millions of dollars			percent					
				2007	2008				
Other industrial goods and materials	1,445	1,431	-14	-0.9	16,422	14,856	-1,566	-9.5	-11.1
Asbestos unmanufactured	8	6	-1	-18.1	53	65	12	22.4	28.9
Other crude animal products	76	68	-8	-10.3	744	765	20	2.7	-5.3
Other crude non-metallic minerals	326	313	-14	-4.2	4,076	3,601	-475	-11.6	-28.7
Other crude materials, inedible	54	49	-4	-7.8	489	489	0	-0.1	-3.5
Metal fabricated basic products	369	377	8	2.2	4,207	3,694	-514	-12.2	-2.0
Textile fabricated materials	210	192	-18	-8.5	2,462	2,142	-319	-13	-22.7
Non-metallic mineral basic products	175	170	-6	-3.2	1,857	1,697	-159	-8.6	3.4
Other fabricated materials	227	256	29	12.8	2,534	2,403	-131	-5.2	4.0
<b>Machinery and equipment</b>	<b>8,729</b>	<b>8,765</b>	<b>36</b>	<b>0.4</b>	<b>89,431</b>	<b>86,775</b>	<b>-2,655</b>	<b>-3.0</b>	<b>0.3</b>
Industrial and agricultural machinery	1,946	2,051	105	5.4	18,316	18,605	289	1.6	12.0
Industrial machinery	1,729	1,856	127	7.3	16,826	16,823	-4	0.0	10.9
Agricultural machinery includ. tractors	217	195	-22	-10.1	1,489	1,782	292	19.6	23.8
Aircraft and other transportation equipment	1,995	1,866	-129	-6.5	21,736	20,812	-924	-4.3	-11.4
Aircraft, engines, parts	1,581	1,473	-108	-6.8	17,169	16,531	-638	-3.7	-13.7
Other transportation equipment	413	393	-21	-5.0	4,567	4,281	-286	-6.3	-1.7
Other machinery and equipment	4,789	4,849	60	1.3	49,379	47,359	-2,020	-4.1	0.9
Television, telecommunication equipment	950	963	13	1.4	10,999	9,986	-1,014	-9.2	-8.1
Office machines and equipment	1,169	1,146	-22	-1.9	12,208	11,494	-714	-5.8	-7.0
Other equipment and tools	1,896	1,929	33	1.7	18,289	18,372	83	0.5	9.0
Other end products, inedible	774	810	37	4.8	7,883	7,507	-376	-4.8	7.3
<b>Automotive products</b>	<b>6,494</b>	<b>5,726</b>	<b>-767</b>	<b>-11.8</b>	<b>86,698</b>	<b>69,171</b>	<b>-17,527</b>	<b>-20.2</b>	<b>-33.8</b>
Passenger autos and chassis	4,087	3,465	-623	-15.2	48,775	42,967	-5,808	-11.9	-33.8
Trucks and other motor vehicles	649	568	-81	-12.4	15,177	7,844	-7,333	-48.3	-56.6
Motor vehicle parts	1,757	1,694	-64	-3.6	22,745	18,360	-4,385	-19.3	-19.8
<b>Other consumer goods</b>	<b>1,422</b>	<b>1,586</b>	<b>164</b>	<b>11.5</b>	<b>15,566</b>	<b>14,701</b>	<b>-865</b>	<b>-5.6</b>	<b>5.2</b>
<b>Special transactions trade</b>	<b>581</b>	<b>599</b>	<b>18</b>	<b>3.0</b>	<b>6,552</b>	<b>5,531</b>	<b>-1,021</b>	<b>-15.6</b>	<b>-1.9</b>
<b>Unallocated balance of payments adjustments</b>	<b>848</b>	<b>469</b>	<b>-379</b>	<b>-44.7</b>	<b>9,730</b>	<b>9,217</b>	<b>-513</b>	<b>-5.3</b>	<b>-58.8</b>

**Table 3-1**  
**Domestic exports to selected countries, customs basis, not seasonally adjusted — October**

	Agricultural and fishing products	Energy products	Forestry products	Industrial goods	Machinery and equipment	Automotive products	Consumer goods	Special transactions	Total
millions of dollars									
<b>United States</b>									
2007	1,607.6	7,077.1	1,540.9	4,980.9	4,562.9	6,224.8	1,071.4	513.3	27,578.9
2008	1,997.9	11,364.0	1,672.5	6,025.8	4,966.5	4,872.4	1,137.9	736.2	32,773.3
<b>Mexico</b>									
2007	131.9	0.1	17.2	86.9	72.8	84.5	5.2	0.7	399.4
2008	169.7	35.5	18.0	99.9	82.9	111.5	5.1	0.4	523.1
<b>Japan</b>									
2007	220.9	62.3	112.8	229.8	46.6	4.0	7.4	0.6	684.3
2008	355.3	209.5	145.0	213.8	61.8	3.1	12.6	0.2	1,001.0
<b>European Union</b>									
<b>Germany</b>									
2007	28.2	14.1	18.8	113.7	125.6	3.7	11.8	1.0	317.0
2008	27.4	38.9	18.1	216.2	143.2	3.5	10.9	1.1	459.2
<b>France</b>									
2007	27.8	0.1	24.2	10.8	98.3	4.0	21.8	1.9	188.9
2008	31.3	34.1	14.1	48.9	102.0	3.5	29.4	2.2	265.5
<b>United Kingdom</b>									
2007	60.9	4.7	41.5	577.7	117.1	7.0	34.5	5.8	849.1
2008	67.2	135.5	29.7	566.6	179.1	5.1	14.9	4.9	1,003.0
<b>Italy</b>									
2007	31.6	14.0	45.6	127.7	33.4	0.9	5.4	0.3	259.0
2008	44.8	35.5	41.0	17.3	40.6	1.0	5.8	0.4	186.3
<b>Other European Union</b>									
2007	136.4	41.7	36.2	379.7	216.5	17.1	53.0	4.0	884.7
2008	178.2	180.4	41.8	340.0	206.9	36.4	91.7	2.7	1,078.2
<b>Total</b>									
2007	284.9	74.6	166.3	1,209.6	590.9	32.8	126.4	13.0	2,498.6
2008	348.9	424.4	144.6	1,189.0	671.8	49.6	152.6	11.3	2,992.2
<b>Newly industrialized countries</b>									
<b>South Korea</b>									
2007	28.6	48.2	49.7	60.3	22.3	1.2	7.1	1.8	219.3
2008	25.1	164.5	21.7	66.8	52.3	1.1	6.7	0.4	338.7
<b>Hong Kong</b>									
2007	15.0	0.0	2.3	58.1	20.7	0.5	3.5	1.5	101.5
2008	31.2	0.0	12.8	40.3	18.9	0.5	6.2	0.9	110.9
<b>Taiwan</b>									
2007	10.1	7.8	26.8	47.7	10.5	0.1	3.6	0.5	107.2
2008	13.1	70.2	22.2	46.1	14.2	0.1	1.4	0.1	167.4
<b>Singapore</b>									
2007	3.6	34.5	0.2	15.4	28.0	0.2	2.3	0.5	84.8
2008	3.6	0.4	0.6	12.7	28.8	2.3	4.2	0.2	52.8
<b>Total</b>									
2007	57.4	90.5	79.0	181.5	81.5	2.0	16.5	4.3	512.8
2008	73.0	235.2	57.3	165.9	114.2	4.1	18.4	1.6	669.7
<b>Other countries</b>									
2007	740.7	61.4	310.8	1,028.2	738.6	73.7	114.1	24.7	3,092.3
2008	1,029.5	183.0	360.6	1,235.4	956.7	80.3	139.4	16.7	4,001.6
<b>Total</b>									
2007	<b>3,043.4</b>	<b>7,366.1</b>	<b>2,227.0</b>	<b>7,717.0</b>	<b>6,093.3</b>	<b>6,422.0</b>	<b>1,341.0</b>	<b>556.6</b>	<b>34,766.5</b>
2008	<b>3,974.3</b>	<b>12,451.6</b>	<b>2,398.0</b>	<b>8,929.8</b>	<b>6,854.1</b>	<b>5,120.9</b>	<b>1,466.0</b>	<b>766.4</b>	<b>41,961.0</b>

Table 3-2

## Domestic exports to selected countries, customs basis, not seasonally adjusted — Year to date, January to October

	Agricultural and fishing products	Energy products	Forestry products	Industrial goods	Machinery and equipment	Automotive products	Consumer goods	Special transactions	Total
millions of dollars									
<b>United States</b>									
2007	15,635.8	72,676.3	18,284.8	52,565.9	46,215.1	59,938.6	10,140.7	5,937.8	281,395.0
2008	17,077.6	107,422.1	15,039.5	57,336.5	44,121.7	46,575.8	9,202.8	6,134.6	302,910.6
<b>Mexico</b>									
2007	1,040.5	19.9	153.3	828.8	627.1	859.0	62.8	16.8	3,608.2
2008	1,238.5	136.5	159.5	1,109.6	828.7	773.9	57.1	5.3	4,309.2
<b>Japan</b>									
2007	2,472.9	821.3	1,275.1	2,173.5	619.8	47.4	93.3	18.4	7,521.7
2008	3,297.9	1,723.6	1,209.8	2,173.9	494.2	32.0	99.0	4.0	9,034.5
<b>European Union</b>									
<b>Germany</b>									
2007	159.5	160.4	213.4	1,054.3	1,115.2	58.3	128.9	24.0	2,914.1
2008	171.6	258.0	146.2	1,349.2	1,054.6	40.9	130.8	10.8	3,162.1
<b>France</b>									
2007	151.8	60.8	224.7	621.7	1,008.7	47.9	207.6	21.0	2,344.2
2008	164.0	325.9	220.0	384.3	1,019.4	42.2	262.3	16.6	2,434.7
<b>United Kingdom</b>									
2007	368.2	129.0	456.7	6,446.2	1,738.5	67.8	224.1	72.1	9,502.6
2008	409.5	361.5	321.1	7,278.6	1,722.6	63.0	172.0	40.8	10,369.3
<b>Italy</b>									
2007	243.8	86.6	329.5	701.2	618.3	17.7	50.9	6.9	2,054.9
2008	260.9	258.9	325.2	577.1	404.5	9.6	54.9	4.2	1,895.4
<b>Other European Union</b>									
2007	824.7	296.6	489.3	4,770.5	2,353.3	260.4	420.5	64.4	9,479.8
2008	977.3	1,665.7	390.2	3,868.5	2,344.1	234.6	557.6	42.7	10,080.7
<b>Total</b>									
2007	1,747.9	733.5	1,713.6	13,593.9	6,834.1	452.2	1,032.1	188.4	26,295.6
2008	1,983.3	2,870.0	1,402.6	13,457.6	6,545.3	390.4	1,177.8	115.1	27,942.2
<b>Newly industrialized countries</b>									
<b>South Korea</b>									
2007	253.3	492.5	450.9	803.4	275.3	13.4	67.8	15.0	2,371.4
2008	291.1	995.4	438.3	917.9	344.1	9.8	47.1	8.1	3,051.7
<b>Hong Kong</b>									
2007	200.4	0.2	44.3	557.2	225.6	3.5	38.2	11.8	1,081.3
2008	279.8	0.3	88.2	623.5	218.2	5.4	38.1	9.8	1,263.2
<b>Taiwan</b>									
2007	91.5	88.9	295.7	590.4	109.0	1.1	30.7	6.1	1,213.4
2008	132.8	208.3	285.7	537.8	118.9	1.3	27.7	2.1	1,314.7
<b>Singapore</b>									
2007	47.8	69.1	7.6	152.0	263.9	7.6	29.9	7.5	585.7
2008	37.1	34.3	12.3	167.3	299.1	12.7	29.2	3.2	595.3
<b>Total</b>									
2007	593.0	650.7	798.5	2,103.0	873.9	25.5	166.6	40.4	5,251.7
2008	740.8	1,238.3	824.5	2,246.6	980.3	29.2	142.1	23.2	6,224.9
<b>Other countries</b>									
2007	5,897.0	852.4	3,205.9	11,122.4	6,462.7	850.7	1,029.1	234.1	29,654.3
2008	8,362.3	1,788.3	3,539.2	13,701.1	7,763.7	669.8	1,052.1	161.0	37,037.6
<b>Total</b>									
2007	27,387.1	75,754.1	25,431.3	82,387.6	61,633.3	62,173.5	12,525.4	6,436.0	353,728.3
2008	32,700.6	115,178.9	22,175.4	90,025.3	60,734.8	48,471.2	11,731.3	6,443.3	387,460.7

**Table 4**  
**Domestic exports by country, customs basis, not seasonally adjusted**

	October		January to October		Variation
	2007	2008	2007	2008	January to October 2008/2007
millions of dollars					
<b>North America</b>					
Greenland	1.1	0.5	12.3	13.6	10.6
High Seas	0.0	0.0	0.0	0.0	0.0
Mexico	399.4	523.1	3,608.2	4,309.2	19.4
Saint Pierre and Miquelon	1.4	1.3	11.0	12.2	10.9
United States	27,578.9	32,773.3	281,395.0	302,910.6	7.6
<b>Total</b>	<b>27,980.7</b>	<b>33,298.2</b>	<b>285,026.5</b>	<b>307,245.5</b>	<b>7.8</b>
<b>Western Europe</b>					
Andorra	0.1	0.0	0.2	0.1	-50.0
Austria	23.1	22.8	278.0	339.4	22.1
Belgium	248.2	276.4	2,405.4	2,511.5	4.4
Denmark	35.2	44.8	287.5	322.6	12.2
Faeroe Islands	0.1	0.1	1.6	1.6	0.0
Finland	31.9	119.1	527.8	856.5	62.3
France	188.9	265.5	2,344.2	2,434.7	3.9
Germany	317.0	459.2	2,914.1	3,162.1	8.5
Gibraltar	0.0	0.1	43.1	596.6	...
Greece	18.5	19.0	113.8	109.9	-3.4
Iceland	4.6	1.9	76.4	43.9	-42.5
Italy	259.0	186.3	2,054.9	1,895.4	-7.8
Luxembourg	4.1	9.4	201.2	77.5	-61.5
Malta	2.2	1.0	8.1	15.4	90.1
Netherlands	280.7	280.0	3,031.2	2,936.6	-3.1
Norway	302.9	130.9	3,126.1	2,563.1	-18.0
Portugal	13.0	11.8	110.1	140.6	27.7
Republic of Ireland (Eire)	30.9	79.5	265.8	371.9	39.9
Spain	61.8	88.0	976.8	959.4	-1.8
Sweden	52.9	33.5	432.8	455.7	5.3
Switzerland	86.6	123.5	1,157.0	942.4	-18.5
United Kingdom	849.1	1,003.0	9,502.6	10,369.3	9.1
<b>Total</b>	<b>2,811.0</b>	<b>3,155.9</b>	<b>29,858.8</b>	<b>31,106.3</b>	<b>4.2</b>
<b>Other Europe</b>					
Albania	0.7	10.2	11.2	31.2	178.6
Armenia	0.5	1.9	7.2	19.2	166.7
Azerbaijan	0.5	1.2	12.8	14.1	10.2
Belarus	1.1	0.1	4.3	3.6	-16.3
Bosnia and Herzegovina	0.9	0.3	3.8	5.3	39.5
Bulgaria	4.1	2.7	22.4	24.5	9.4
Croatia	1.9	2.8	19.1	60.7	217.8
Czech Republic	24.7	11.9	194.3	193.3	-0.5
Estonia	2.5	2.6	25.7	20.0	-22.2
Georgia	1.2	3.9	11.5	16.9	47.0
Hungary	10.9	9.0	66.4	111.0	67.2
Kazakhstan	8.2	15.3	107.2	194.3	81.3
Kyrgyzstan	0.5	0.9	5.1	5.8	13.7
Latvia	2.3	6.2	30.3	39.1	29.0
Lithuania	3.7	4.9	29.6	38.1	28.7
Macedonia (Former Yugoslav Republic of Macedonia)	1.1	1.3	13.9	10.6	-23.7
Montenegro	0.1	1.0	1.2	5.9	391.7
Poland	15.7	36.3	199.0	280.2	40.8
Republic of Moldova	0.1	1.2	0.7	9.1	...
Romania	7.1	5.6	101.6	182.8	79.9
Russian Federation	84.4	116.5	881.7	1,195.9	35.6
Serbia	0.9	2.2	9.2	12.1	31.5
Slovakia	9.2	1.7	69.8	41.9	-40.0
Slovenia	1.1	10.9	88.0	38.6	-56.1
Tajikistan	0.4	0.5	1.5	4.0	166.7
Turkmenistan	2.2	0.4	5.6	2.4	-57.1
Ukraine	11.4	25.4	94.7	206.8	118.4
Uzbekistan	0.1	3.1	7.5	11.7	56.0
<b>Total</b>	<b>197.5</b>	<b>280.1</b>	<b>2,025.5</b>	<b>2,779.1</b>	<b>37.2</b>

Table 4 – continued

## Domestic exports by country, customs basis, not seasonally adjusted

	October		January to October		Variation
	2007	2008	2007	2008	January to October 2008/2007
millions of dollars					
<b>Middle East</b>					
Bahrain	2.2	2.4	35.1	46.2	31.6
Cyprus	0.8	0.9	14.2	14.3	0.7
Egypt	30.2	130.4	258.0	495.8	92.2
Eritrea	0.0	0.0	0.6	0.8	33.3
Ethiopia	0.4	1.6	13.1	65.0	396.2
Iran	46.6	98.8	192.6	351.7	82.6
Iraq	18.8	32.3	240.8	173.6	-27.9
Israel	24.9	44.8	301.5	435.3	44.4
Jordan	3.7	5.6	46.9	61.7	31.6
Kuwait	6.1	18.2	88.9	117.1	31.7
Lebanon	4.9	7.3	46.7	58.9	26.1
Libya	31.1	8.6	94.6	97.3	2.9
Oman	4.3	12.9	100.8	75.7	-24.9
Qatar	5.0	7.7	72.1	65.4	-9.3
Saudi Arabia	82.4	68.2	489.1	818.3	67.3
Somalia	0.0	0.5	1.8	1.7	-5.6
Sudan	12.6	9.9	157.6	178.2	13.1
Syria	3.9	3.5	55.8	52.0	-6.8
Turkey	62.7	133.8	503.4	1,081.6	114.9
United Arab Emirates	116.5	195.0	819.7	1,128.4	37.7
Yemen	3.0	28.4	19.3	47.6	146.6
<b>Total</b>	<b>460.0</b>	<b>810.6</b>	<b>3,552.5</b>	<b>5,366.7</b>	<b>51.1</b>
<b>Other Africa</b>					
Algeria	26.4	58.4	387.6	723.9	86.8
Angola	5.1	6.7	46.0	107.3	133.3
Antarctica	0.0	0.5	0.5	3.3	560.0
Benin	0.3	0.6	5.9	10.1	71.2
Botswana	1.1	0.5	9.9	8.1	-18.2
Bouvet Island	0.0	0.0	0.0	0.0	...
Burkina Faso	1.3	0.3	5.9	5.0	-15.3
Burundi	0.2	0.1	1.5	1.2	-20.0
Cameroon	0.3	5.4	16.2	15.4	-4.9
Cape Verde	0.0	0.0	0.1	0.8	700.0
Central African Republic	0.0	0.0	0.4	0.1	-75.0
Chad	0.6	1.8	12.4	4.8	-61.3
Comoros	0.1	0.0	0.3	0.5	66.7
Congo	0.8	4.2	15.9	23.8	49.7
Democratic Republic of the Congo	1.2	1.1	32.3	16.0	-50.5
Djibouti	0.0	0.1	0.9	1.6	77.8
Equatorial Guinea	0.4	1.2	1.6	5.1	218.8
French Southern Territories	0.0	0.0	0.2	0.1	-50.0
Gabon	2.6	2.0	12.0	22.4	86.7
Gambia	0.0	0.3	0.4	0.7	75.0
Ghana	17.5	26.4	121.4	158.5	30.6
Guinea	0.8	1.2	6.2	13.4	116.1
Guinea-Bissau	0.0	0.0	0.1	0.7	600.0
Ivory Coast	0.6	1.2	10.3	22.4	117.5
Kenya	4.0	8.9	59.5	57.5	-3.4
Lesotho	0.0	0.0	0.3	0.0	0.0
Liberia	1.2	0.5	6.6	8.1	22.7
Madagascar	0.6	1.6	6.8	9.4	38.2
Malawi	0.4	0.4	4.1	4.4	7.3
Mali	0.3	0.2	5.0	5.3	6.0
Mauritania	0.4	0.0	7.7	3.5	-54.5
Mauritius	0.3	0.4	4.0	4.2	5.0
Morocco	33.1	40.1	171.9	252.0	46.6
Mozambique	1.3	0.2	16.2	9.7	-40.1
Namibia	2.1	0.2	4.7	7.9	68.1
Niger	0.3	0.2	3.3	2.8	-15.2
Nigeria	6.1	20.1	142.9	66.4	-53.5
Rwanda	0.1	0.1	1.5	3.6	140.0
Saint Helena	0.0	0.0	0.5	0.4	-20.0
Sao Tome and Principe	0.0	0.0	0.1	0.0	0.0
Senegal	0.9	2.4	25.0	24.1	-3.6
Seychelles	0.1	0.1	0.6	1.3	116.7

Table 4 – continued

## Domestic exports by country, customs basis, not seasonally adjusted

	October		January to October		Variation
	2007	2008	2007	2008	January to October 2008/2007
millions of dollars					
Sierra Leone	1.0	1.6	5.7	8.4	47.4
South Africa	48.5	59.7	552.2	711.3	28.8
Swaziland	0.1	0.3	3.9	5.2	33.3
Togo	0.3	2.2	9.0	14.8	64.4
Tunisia	2.3	2.6	97.6	26.1	-73.3
Uganda	0.9	1.1	10.0	8.9	-11.0
United Republic of Tanzania	2.8	10.1	36.0	46.2	28.3
Western Sahara	0.0	0.0	0.0	0.0	...
Zambia	4.8	2.2	55.1	20.4	-63.0
Zimbabwe	1.0	0.1	4.1	3.9	-4.9
<b>Total</b>	<b>172.6</b>	<b>267.3</b>	<b>1,922.1</b>	<b>2,450.8</b>	<b>27.5</b>
<b>Other Asia</b>					
Afghanistan	0.3	1.0	7.1	11.3	59.2
Bangladesh	58.5	4.3	307.9	239.5	-22.2
Bhutan	0.0	0.0	0.2	0.0	0.0
British Indian Ocean Territory	0.0	0.1	0.9	0.7	-22.2
Brunei Darussalam	1.3	0.1	2.6	1.9	-26.9
Cambodia	0.4	0.3	2.9	2.2	-24.1
China	691.5	800.2	7,335.3	8,391.5	14.4
Hong Kong	101.5	110.9	1,081.3	1,263.2	16.8
India	177.1	390.8	1,361.1	1,860.8	36.7
Indonesia	70.5	67.7	734.9	1,203.4	63.8
Japan	684.3	1,001.0	7,521.7	9,034.5	20.1
Laos	0.0	0.2	0.6	17.5	...
Macau	3.7	5.8	34.0	37.5	10.3
Malaysia	74.9	82.4	446.3	598.8	34.2
Maldives	0.3	0.3	5.6	4.3	-23.2
Mongolia	0.5	0.4	8.2	7.3	-11.0
Myanmar	0.0	0.0	0.0	0.1	0.0
Nepal	3.3	1.0	10.0	2.7	-73.0
North Korea	0.3	1.5	17.7	16.0	-9.6
Pakistan	11.9	36.8	361.6	498.7	37.9
Philippines	36.5	83.3	355.7	442.9	24.5
Singapore	84.8	52.8	585.7	595.3	1.6
South Korea	219.3	338.7	2,371.4	3,051.7	28.7
Sri Lanka	5.8	39.5	188.0	353.5	88.0
Taiwan	107.2	167.4	1,213.4	1,314.7	8.3
Thailand	50.4	59.0	475.8	561.9	18.1
Timor-Leste	0.0	0.0	0.3	0.3	0.0
Viet Nam	13.8	11.0	237.2	251.3	5.9
<b>Total</b>	<b>2,398.1</b>	<b>3,256.6</b>	<b>24,667.2</b>	<b>29,763.6</b>	<b>20.7</b>
<b>Oceania</b>					
American Samoa	0.1	0.0	1.2	0.7	-41.7
Australia	144.0	175.5	1,311.4	1,625.7	24.0
Christmas Island	0.0	0.0	0.1	0.2	100.0
Cocos (Keeling) Islands	0.0	0.6	0.1	6.2	...
Cook Islands	0.0	0.1	0.5	0.9	80.0
Fiji	0.1	0.1	1.6	1.8	12.5
French Polynesia	1.1	0.5	11.8	13.6	15.3
Guam	0.1	0.2	2.3	2.4	4.3
Heard Island and McDonald Islands	0.0	0.0	0.0	0.0	0.0
Kiribati	0.0	0.0	0.2	0.0	0.0
Nauru	0.0	0.0	0.0	0.2	...
New Caledonia	0.7	1.4	20.6	16.0	-22.3
New Zealand	41.6	28.9	321.1	352.1	9.7
Niue	0.0	0.0	0.0	0.0	0.0
Norfolk Island	0.0	0.0	0.1	0.1	0.0
Papua New Guinea	0.3	1.6	2.5	9.5	280.0
Pitcairn	0.0	0.0	0.1	0.3	200.0
Samoa	0.0	0.0	0.1	0.4	300.0
Solomon Islands	0.1	0.0	0.2	0.0	0.0
Tonga	0.0	0.0	0.5	0.4	-20.0

Table 4 – continued

## Domestic exports by country, customs basis, not seasonally adjusted

	October		January to October		Variation
	2007	2008	2007	2008	January to October 2008/2007
millions of dollars					
United States Minor Outlying Islands	0.2	2.1	11.3	14.1	24.8
Vanuatu	0.0	0.1	0.2	0.3	50.0
Wallis and Futuna	0.0	0.0	0.0	0.0	...
<b>Total</b>	<b>188.4</b>	<b>211.1</b>	<b>1,685.9</b>	<b>2,044.9</b>	<b>21.3</b>
<b>South America</b>					
Argentina	27.4	18.7	192.0	176.8	-7.9
Bolivia	2.9	7.1	10.4	21.3	104.8
Brazil	131.5	217.5	1,211.9	2,139.3	76.5
Chile	46.7	61.7	584.0	559.9	-4.1
Colombia	47.9	52.5	468.3	562.1	20.0
Ecuador	28.1	21.4	189.1	196.7	4.0
Falkland Islands (Malvinas)	0.0	0.0	0.0	0.1	0.0
Guyana	3.2	1.5	23.9	16.0	-33.1
Paraguay	0.8	0.8	5.4	12.3	127.8
Peru	19.4	26.6	243.2	305.1	25.5
Suriname	0.5	1.3	7.5	8.5	13.3
Uruguay	1.4	2.7	16.6	140.7	747.6
Venezuela	68.3	67.1	562.9	650.9	15.6
<b>Total</b>	<b>378.2</b>	<b>478.8</b>	<b>3,515.1</b>	<b>4,789.6</b>	<b>36.3</b>
<b>Central America Antilles</b>					
Anguilla	0.2	0.2	1.2	2.1	75.0
Antigua and Barbuda	1.4	1.8	11.5	17.6	53.0
Aruba	1.0	0.5	10.3	4.7	-54.4
Bahamas	20.6	39.4	83.0	142.9	72.2
Barbados	4.5	4.7	45.6	37.9	-16.9
Belize	0.5	1.4	5.4	5.4	0.0
Bermuda	4.6	5.2	49.8	51.7	3.8
British Virgin Islands	0.1	0.3	1.7	6.8	300.0
Cayman Islands	0.9	0.7	31.6	12.0	-62.0
Costa Rica	7.3	8.6	62.9	89.2	41.8
Cuba	33.6	61.3	326.2	530.9	62.8
Dominica	0.4	0.3	3.8	5.2	36.8
Dominican Republic	9.9	6.7	145.3	167.7	15.4
El Salvador	5.0	4.4	38.8	42.0	8.2
Grenada	0.4	0.4	5.2	4.8	-7.7
Guatemala	13.1	7.5	106.8	126.9	18.8
Haiti	2.1	2.7	21.6	36.9	70.8
Honduras	2.8	2.6	38.0	70.8	86.3
Jamaica	14.3	10.9	156.5	170.6	9.0
Montserrat	0.0	0.1	0.2	0.3	50.0
Netherlands Antilles	25.1	14.3	39.0	27.1	-30.5
Nicaragua	3.6	1.8	17.7	19.4	9.6
Panama	4.4	12.2	63.5	92.1	45.0
Saint Kitts and Nevis	1.1	1.0	7.6	6.9	-9.2
Saint Lucia	1.5	0.8	12.2	9.0	-26.2
Saint Vincent and the Grenadines	0.9	0.6	6.4	5.8	-9.4
Trinidad and Tobago	20.0	11.5	174.6	221.3	26.7
Turks and Caicos Islands	0.8	0.4	8.8	6.0	-31.8
<b>Total</b>	<b>180.0</b>	<b>202.5</b>	<b>1,475.0</b>	<b>1,914.2</b>	<b>29.8</b>
<b>All countries</b>	<b>34,766.5</b>	<b>41,961.0</b>	<b>353,728.3</b>	<b>387,460.7</b>	<b>9.5</b>

**Table 5-1**  
**Exports by province of origin, customs basis, not seasonally adjusted — October**

	Agricultural and fishing products	Energy products	Forestry products	Industrial goods	Machinery and equipment	Automotive products	Consumer goods	Special transactions	Total
millions of dollars									
<b>Domestic exports</b>									
Newfoundland Labrador									
2007	53.0	555.2	26.0	157.7	4.5	0.3	0.2	4.1	801.0
2008	58.8	1,127.5	34.8	279.6	5.6	0.1	0.0	5.5	1,511.9
Prince Edward Island									
2007	43.0	0.0	0.7	0.7	10.1	0.3	1.6	6.1	62.5
2008	49.3	0.0	0.0	1.5	21.9	0.1	2.0	8.0	82.9
Nova Scotia									
2007	89.3	76.6	62.9	50.9	94.8	11.0	7.2	6.9	399.5
2008	89.0	99.1	96.5	62.4	125.1	9.8	7.5	9.1	498.7
New Brunswick									
2007	91.9	483.0	124.1	85.4	31.9	2.5	8.2	9.3	836.4
2008	114.3	735.9	140.8	102.9	30.2	2.0	11.8	13.1	1,150.9
Quebec									
2007	397.2	186.1	623.3	1,829.8	1,989.6	197.6	394.2	100.0	5,717.8
2008	501.6	376.0	711.5	1,991.2	2,061.3	227.2	321.5	153.9	6,344.4
Ontario									
2007	694.5	236.8	307.1	3,305.3	3,026.0	6,075.4	819.9	308.2	14,773.1
2008	840.8	461.1	352.2	3,489.0	3,455.0	4,737.0	996.3	409.2	14,740.7
Manitoba									
2007	337.1	74.7	38.3	317.6	148.7	59.7	32.7	21.5	1,030.3
2008	441.9	153.1	31.1	293.1	180.7	65.1	38.8	32.1	1,235.8
Saskatchewan									
2007	620.1	605.0	24.8	366.8	53.5	5.8	2.7	9.7	1,688.3
2008	940.7	1,220.6	16.5	973.4	78.2	4.0	1.6	13.5	3,248.5
Alberta									
2007	524.4	4,657.4	168.1	937.1	404.1	42.3	16.9	47.0	6,797.4
2008	689.4	7,251.8	183.2	1,180.0	531.0	52.7	22.7	67.0	9,977.8
British Columbia									
2007	192.9	491.3	851.6	469.4	329.1	26.9	57.1	43.9	2,462.2
2008	248.4	1,026.4	831.5	546.6	363.0	22.8	63.6	55.0	3,157.2
Yukon, Northwest Territories and Nunavut <sup>1</sup>									
2007	0.0	0.0	0.0	196.5	1.0	0.1	0.4	0.0	198.0
2008	0.0	0.0	0.0	10.0	2.1	0.1	0.1	0.0	12.2
<b>Total</b>									
2007	3,043.4	7,366.1	2,227.0	7,717.0	6,093.3	6,422.0	1,341.0	556.6	34,766.5
2008	3,974.3	12,451.6	2,398.0	8,929.8	6,854.1	5,120.9	1,466.0	766.4	41,961.0
<b>Re-exports</b>									
2007	36.0	65.3	9.2	305.6	959.5	131.3	218.0	731.3	2,456.1
2008	52.5	42.7	6.4	220.7	1,041.1	112.2	211.9	938.3	2,625.9
<b>Total exports</b>									
2007	3,079.5	7,431.3	2,236.2	8,022.6	7,052.8	6,553.2	1,559.1	1,287.9	37,222.5
2008	4,026.8	12,494.3	2,404.4	9,150.5	7,895.1	5,233.2	1,677.9	1,704.7	44,587.0

1. Data for the most current month do not include some exports of Chapter 71 "Natural/cultured pearls, precious stones and metals, coins etc" for reasons relating to timing.

**Table 5-2**  
**Exports by province of origin, customs basis, not seasonally adjusted — Year to date, January to October**

	Agricultural and fishing products	Energy products	Forestry products	Industrial goods	Machinery and equipment	Automotive products	Consumer goods	Special transactions	Total
millions of dollars									
<b>Domestic exports</b>									
Newfoundland Labrador									
2007	712.7	7,195.4	302.4	1,386.4	94.7	2.6	0.7	61.6	9,756.5
2008	724.4	10,015.2	254.3	1,803.7	47.6	1.1	1.5	66.1	12,914.0
Prince Edward Island									
2007	430.3	0.0	5.1	12.5	96.5	2.0	23.1	76.3	645.7
2008	417.9	0.0	1.6	14.5	166.1	1.2	23.6	71.4	696.1
Nova Scotia									
2007	995.3	1,025.0	738.3	450.1	994.3	109.2	70.5	77.5	4,460.3
2008	873.0	1,429.8	751.2	493.1	1,033.2	98.8	65.3	82.2	4,826.6
New Brunswick									
2007	924.9	5,375.1	1,397.6	900.6	406.5	35.8	67.4	97.5	9,205.2
2008	1,037.1	7,650.8	1,062.1	1,136.3	282.0	18.0	92.1	103.7	11,382.2
Quebec									
2007	3,379.1	2,105.3	6,856.3	19,099.4	18,821.1	1,887.2	3,220.6	1,377.9	56,746.8
2008	3,866.8	3,695.2	6,428.1	19,525.5	18,616.2	1,790.9	2,951.6	1,294.8	58,169.1
Ontario									
2007	6,577.7	2,484.9	3,602.8	37,098.9	31,591.3	58,630.4	7,840.6	3,374.9	151,201.6
2008	6,625.8	3,880.9	3,247.2	38,387.1	30,351.1	45,278.6	7,554.0	3,397.3	138,721.8
Manitoba									
2007	2,892.3	796.9	383.4	3,104.8	1,683.1	590.8	524.2	225.0	10,200.4
2008	3,568.0	1,213.9	319.0	2,717.7	1,821.7	492.4	302.0	250.6	10,685.2
Saskatchewan									
2007	4,767.8	6,013.0	290.2	4,048.4	585.8	50.1	22.5	99.9	15,877.8
2008	7,498.4	11,794.4	219.0	6,693.4	720.1	35.1	19.4	107.5	27,087.3
Alberta									
2007	4,768.2	45,625.8	1,819.3	9,652.3	3,984.8	547.8	171.7	538.0	67,108.1
2008	6,112.6	67,596.2	1,723.1	11,959.6	4,530.3	492.5	186.9	579.6	93,180.9
British Columbia									
2007	1,937.8	5,132.5	10,035.3	4,964.8	3,369.6	317.4	583.5	506.2	26,847.0
2008	1,975.2	7,902.5	8,169.4	5,521.8	3,159.5	262.4	533.6	488.4	28,012.7
Yukon, Northwest Territories and Nunavut <sup>1</sup>									
2007	1.1	0.0	0.6	1,669.4	5.7	0.3	0.7	1.2	1,679.0
2008	1.4	0.0	0.4	1,772.7	7.1	0.2	1.3	1.7	1,784.8
<b>Total</b>									
2007	27,387.1	75,754.1	25,431.3	82,387.6	61,633.3	62,173.5	12,525.4	6,436.0	353,728.3
2008	32,700.6	115,178.9	22,175.4	90,025.3	60,734.8	48,471.2	11,731.3	6,443.3	387,460.7
<b>Re-exports</b>									
2007	370.0	646.3	107.9	3,193.3	10,533.3	1,376.7	1,853.3	7,885.7	25,966.5
2008	402.0	785.0	71.0	2,347.5	9,221.5	1,223.9	1,869.9	7,464.8	23,385.6
<b>Total exports</b>									
2007	27,757.0	76,400.3	25,539.2	85,581.0	72,166.7	63,550.2	14,378.7	14,321.7	379,694.8
2008	33,102.5	115,963.9	22,246.4	92,372.8	69,956.3	49,695.0	13,601.2	13,908.1	410,846.3

1. Data for the most current month do not include some exports of Chapter 71 "Natural/cultured pearls, precious stones and metals, coins etc" for reasons relating to timing.

**Table 6-1**  
**Imports by commodity groupings, balance of payments basis, seasonally adjusted — Current dollars**

	September 2008	October 2008	Change	Year to date		Year to date change		October 2008/2007	
	millions of dollars			percent		millions of dollars			percent
				2007	2008				
<b>Total</b>	<b>38,159</b>	<b>39,708</b>	<b>1,549</b>	<b>4.1</b>	<b>346,658</b>	<b>368,553</b>	<b>21,895</b>	<b>6.3</b>	<b>18.0</b>
<b>Agricultural and fishing products</b>	<b>2,467</b>	<b>2,517</b>	<b>50</b>	<b>2.0</b>	<b>21,188</b>	<b>23,289</b>	<b>2,101</b>	<b>9.9</b>	<b>18.8</b>
Fruits and vegetables	673	727	54	8.0	6,024	6,440	416	6.9	21.8
Fresh fruits and berries	233	260	27	11.5	2,074	2,269	196	9.4	24.1
Dried fruits, fruits and fruit preparations	121	132	11	9.5	1,129	1,209	80	7.1	18.4
Fresh vegetables	181	188	7	3.9	1,599	1,655	57	3.5	20.1
Other vegetables and vegetable preparations	139	147	9	6.1	1,223	1,307	84	6.8	23.0
Other agricultural and fishing products	1,794	1,790	-4	-0.2	15,163	16,848	1,685	11.1	17.6
Live animals	17	17	-1	-3.9	151	158	7	4.9	20.4
Meat and meat preparations	180	177	-3	-1.6	1,614	1,681	67	4.1	10.3
Fish and marine animals	157	151	-6	-3.9	1,581	1,554	-26	-1.7	2.7
Cocoa, coffee, tea and other food preparations	400	409	9	2.2	3,399	3,714	315	9.3	20.9
Dairy produce, eggs and honey	51	49	-2	-3.8	526	522	-4	-0.7	-7.5
Corn (maize) shelled	63	61	-1	-2.2	426	604	178	41.8	20.9
Other cereals and cereal preparations	180	185	5	2.8	1,436	1,698	262	18.2	28.0
Sugar and sugar preparations	148	133	-15	-10.0	1,087	1,195	109	10.0	28.1
Fodder, feed, excluding unmilled cereal	135	130	-5	-3.6	919	1,210	291	31.7	29.4
Beverages	302	310	8	2.8	2,666	2,942	276	10.4	13.0
Tobacco	32	33	1	3.0	330	315	-14	-4.3	1.4
Crude vegetable products	128	133	5	4.2	993	1,243	250	25.2	35.4
Cotton	2	2	0	0.2	37	11	-26	-70.4	-57.1
<b>Energy products</b>	<b>4,646</b>	<b>5,684</b>	<b>1,039</b>	<b>22.4</b>	<b>29,842</b>	<b>46,556</b>	<b>16,714</b>	<b>56.0</b>	<b>103.4</b>
Crude petroleum	2,958	3,718	761	25.7	19,552	30,465	10,913	55.8	97.9
Other energy products	1,688	1,966	278	16.5	10,290	16,091	5,801	56.4	114.5
Coal and other related products	514	553	39	7.7	3,621	5,093	1,472	40.6	85.6
Petroleum and coal products	1,174	1,413	239	20.3	6,669	10,998	4,329	64.9	128.5
<b>Forestry products</b>	<b>238</b>	<b>247</b>	<b>9</b>	<b>3.8</b>	<b>2,506</b>	<b>2,408</b>	<b>-98</b>	<b>-3.9</b>	<b>0.5</b>
Forestry products	238	247	9	3.8	2,506	2,408	-98	-3.9	0.5
Crude wood products	38	47	8	22.3	440	392	-47	-10.8	7.0
Wood fabricated materials	200	201	1	0.3	2,066	2,015	-51	-2.5	-0.9
<b>Industrial goods and materials</b>	<b>7,990</b>	<b>8,079</b>	<b>89</b>	<b>1.1</b>	<b>71,157</b>	<b>76,046</b>	<b>4,889</b>	<b>6.9</b>	<b>18.2</b>
Metals and metal ores	2,918	2,752	-166	-5.7	23,798	27,484	3,686	15.5	13.7
Metals in ores, concentrates and scrap	739	656	-83	-11.2	6,271	7,281	1,009	16.1	-16.4
Steel bars, rods, plates, sheets	719	720	1	0.2	6,006	6,362	356	5.9	26.2
Other iron and steel products	500	527	27	5.5	3,305	4,221	915	27.7	74.7
Precious metals including alloys	486	390	-96	-19.7	3,311	4,669	1,359	41.0	20.1
Other non-ferrous metals and alloys	475	459	-16	-3.4	4,905	4,951	46	0.9	4.4
Chemicals and plastics	2,715	2,895	180	6.6	25,321	25,963	642	2.5	24.0
Organic chemicals	702	694	-8	-1.1	7,210	6,577	-633	-8.8	16.8
Plastic materials	892	989	97	10.9	8,688	8,901	213	2.4	21.1
Other chemicals and related products	1,121	1,212	91	8.1	9,422	10,485	1,062	11.3	31.3
Other industrial goods and materials	2,357	2,433	76	3.2	22,038	22,600	562	2.5	16.9
Crude animal products	29	28	-1	-5.1	268	286	18	6.7	16.5
Wool and man-made fibres	22	23	0	1.6	238	211	-27	-11.2	5.1
Crude non-metallic minerals	93	93	0	0.2	832	834	2	0.2	21.6
Textile fabricated materials	222	226	4	1.6	2,358	2,166	-191	-8.1	4.5
Metal fabricated basic products	913	957	44	4.8	8,706	8,834	128	1.5	15.4
Rubber fabricated materials	91	96	5	5.7	965	863	-102	-10.5	8.5
Oils, fats, animal and vegetable	129	122	-7	-5.4	859	1,020	161	18.8	62.5
Non-metallic minerals	344	359	15	4.4	2,864	3,123	259	9.0	22.9
Other fabricated materials	514	530	16	3.1	4,950	5,263	314	6.3	15.5

Table 6-1 – continued

## Imports by commodity groupings, balance of payments basis, seasonally adjusted — Current dollars

	September 2008	October 2008	Change	Year to date		Year to date change	October 2008/2007		
	millions of dollars			percent			percent		
<b>Machinery and equipment</b>	<b>10,408</b>	<b>10,738</b>	<b>330</b>	<b>3.2</b>	<b>97,628</b>	<b>100,146</b>	<b>2,518</b>	<b>2.6</b>	<b>11.8</b>
Industrial and agricultural machinery	2,954	3,032	78	2.6	26,313	28,000	1,687	6.4	13.0
Engines, turbines and electric motors	308	326	18	5.9	2,859	3,266	407	14.3	21.6
Drilling mining machinery	175	185	10	5.5	1,396	1,491	95	6.8	54.5
Excavating machinery	300	326	26	8.6	2,660	2,966	306	11.5	-3.2
Metal working machinery	209	212	2	1.1	2,043	2,041	-1	-0.1	1.4
Other industrial machinery	1,594	1,621	27	1.7	14,434	14,896	463	3.2	13.7
Agricultural machinery including tractors	367	362	-5	-1.3	2,922	3,339	418	14.3	11.7
Aircraft and other transportation equipment	1,396	1,421	25	1.8	13,806	14,418	612	4.4	-0.9
Aircraft, engines, parts	838	844	6	0.7	9,064	9,230	166	1.8	-14.7
Other transportation equipment and parts	558	577	19	3.4	4,742	5,188	446	9.4	30.1
Office machines and equipment	1,205	1,278	73	6.0	12,733	11,838	-895	-7.0	9.6
Other machinery and equipment	4,853	5,008	155	3.2	44,776	45,890	1,114	2.5	15.8
Other communication and related equipment	1,704	1,733	29	1.7	15,110	15,797	687	4.5	17.1
Other equipment and tools	3,150	3,275	125	4.0	29,667	30,094	427	1.4	15.1
<b>Automotive products</b>	<b>6,187</b>	<b>6,081</b>	<b>-107</b>	<b>-1.7</b>	<b>67,445</b>	<b>61,354</b>	<b>-6,091</b>	<b>-9.0</b>	<b>-6.2</b>
Passenger autos and chassis	2,411	2,233	-178	-7.4	21,863	22,428	566	2.6	3.5
Trucks and other motor vehicles	1,203	1,256	53	4.4	14,573	12,950	-1,623	-11.1	-12.1
Motor vehicle parts	2,573	2,591	18	0.7	31,010	25,976	-5,034	-16.2	-10.5
<b>Other consumer goods</b>	<b>4,921</b>	<b>5,040</b>	<b>120</b>	<b>2.4</b>	<b>45,797</b>	<b>46,823</b>	<b>1,026</b>	<b>2.2</b>	<b>12.1</b>
Apparel and footwear	995	1,011	16	1.6	8,892	9,169	277	3.1	18.5
Apparel and apparel accessories	824	829	5	0.6	7,377	7,640	262	3.6	16.5
Footwear	171	182	10	6.1	1,515	1,530	15	1.0	28.3
Miscellaneous consumer goods	3,925	4,029	104	2.6	36,905	37,654	749	2.0	10.7
Television, radios, phonographs	139	147	8	5.7	1,474	1,383	-91	-6.2	13.2
Printed matter	297	332	35	11.8	3,056	3,037	-20	-0.6	13.6
Watches, sporting goods and toys	532	554	22	4.2	5,008	5,240	232	4.6	0.9
House furnishings	749	766	16	2.2	6,876	7,046	170	2.5	14.1
Photographic goods	251	269	18	7.3	2,309	2,348	39	1.7	16.4
Miscellaneous end products	1,958	1,962	4	0.2	18,181	18,600	419	2.3	11.0
<b>Special transactions trade</b>	<b>565</b>	<b>563</b>	<b>-3</b>	<b>-0.5</b>	<b>4,319</b>	<b>5,017</b>	<b>699</b>	<b>16.2</b>	<b>37.4</b>
<b>Unallocated balance of payments adjustments</b>	<b>736</b>	<b>757</b>	<b>22</b>	<b>2.9</b>	<b>6,776</b>	<b>6,913</b>	<b>137</b>	<b>2.0</b>	<b>14.8</b>

**Table 6-2**  
**Imports by commodity groupings, balance of payments basis, seasonally adjusted — Constant dollars, 2002**

	September 2008	October 2008	Change		Year to date		Year to date change		October 2008/2007
					2007	2008			
	millions of dollars		percent		millions of dollars		percent		
<b>Total</b>	<b>40,718</b>	<b>39,239</b>	<b>-1,479</b>	<b>-3.6</b>	<b>399,991</b>	<b>408,583</b>	<b>8,593</b>	<b>2.1</b>	<b>-6.6</b>
<b>Agricultural and fishing products</b>	<b>2,338</b>	<b>2,332</b>	<b>-6</b>	<b>-0.2</b>	<b>22,704</b>	<b>23,446</b>	<b>743</b>	<b>3.3</b>	<b>-1.6</b>
Fruits and vegetables	627	656	29	4.6	5,954	6,265	311	5.2	9.4
Fresh fruits and berries	219	248	29	13.2	2,149	2,235	87	4.0	2.9
Dried fruits, fruits and fruit preparations	117	129	12	10.1	987	1,170	183	18.5	18.8
Fresh vegetables	166	154	-12	-7.1	1,619	1,625	5	0.3	23.9
Other vegetables and vegetable preparations	125	126	0	0.1	1,199	1,236	37	3.1	-0.6
Other agricultural and fishing products	1,711	1,676	-35	-2.0	16,750	17,181	432	2.6	-5.4
Live animals	17	16	-1	-6.4	157	163	7	4.4	-2.8
Meat and meat preparations	184	179	-5	-2.8	1,577	1,750	173	11.0	-5.9
Fish and marine animals	206	198	-8	-3.7	2,178	2,054	-124	-5.7	-7.4
Cocoa, coffee, tea and other food preparations	340	369	29	8.5	3,780	3,509	-271	-7.2	-3.5
Dairy produce, eggs and honey	46	40	-6	-13.6	556	452	-104	-18.7	-25.6
Corn (maize) shelled	38	39	1	1.6	392	424	32	8.3	-18.4
Other cereals and cereal preparations	163	165	2	1.0	1,495	1,723	227	15.2	-1.9
Sugar and sugar preparations	161	127	-34	-21.2	1,164	1,352	189	16.2	0.2
Fodder, feed, excluding unmilled cereal	95	98	3	3.2	1,017	1,001	-16	-1.6	-9.4
Beverages	289	281	-8	-2.8	2,775	2,961	187	6.7	-4.5
Tobacco	41	38	-3	-7.8	444	428	-16	-3.6	-18.3
Crude vegetable products	128	125	-3	-2.5	1,154	1,347	193	16.7	6.4
Cotton	2	2	0	-2.6	62	16	-46	-74.1	-65.9
<b>Energy products</b>	<b>1,776</b>	<b>2,286</b>	<b>511</b>	<b>28.7</b>	<b>16,656</b>	<b>18,872</b>	<b>2,216</b>	<b>13.3</b>	<b>48.3</b>
Crude petroleum	936	1,258	321	34.3	10,064	10,173	108	1.1	38.8
Other energy products	839	1,029	189	22.5	6,592	8,699	2,107	32.0	61.9
Coal and other related products	264	302	38	14.3	2,475	3,063	588	23.8	32.5
Petroleum and coal products	575	727	152	26.3	4,117	5,636	1,520	36.9	78.4
<b>Forestry products</b>	<b>305</b>	<b>293</b>	<b>-12</b>	<b>-3.8</b>	<b>3,035</b>	<b>3,128</b>	<b>93</b>	<b>3.1</b>	<b>-10.5</b>
Forestry products	305	293	-12	-3.8	3,035	3,128	93	3.1	-10.5
Crude wood products	47	59	12	26.0	505	505	0	-0.1	4.2
Wood fabricated materials	258	234	-24	-9.2	2,529	2,623	93	3.7	-13.5
<b>Industrial goods and materials</b>	<b>6,497</b>	<b>6,253</b>	<b>-243</b>	<b>-3.7</b>	<b>67,851</b>	<b>67,628</b>	<b>-223</b>	<b>-0.3</b>	<b>-12.1</b>
Metals and metal ores	1,771	1,637	-134	-7.6	17,368	18,284	917	5.3	-14.6
Metals in ores, concentrates and scrap	410	367	-43	-10.4	3,340	3,969	630	18.9	-8.1
Steel bars, rods, plates, sheets	397	382	-15	-3.9	4,750	4,215	-535	-11.3	-24.7
Other iron and steel products	282	280	-2	-0.9	2,610	2,796	186	7.1	-1.9
Precious metals including alloys	254	226	-28	-11.1	2,239	2,756	517	23.1	-8.8
Other non-ferrous metals and alloys	427	382	-45	-10.6	4,429	4,548	119	2.7	-19.8
Chemicals and plastics	2,204	2,225	21	1.0	25,215	23,603	-1,611	-6.4	-12.8
Organic chemicals	439	436	-3	-0.6	6,112	4,635	-1,477	-24.2	-25.9
Plastic materials	842	858	16	1.9	9,245	9,003	-243	-2.6	-9.5
Other chemicals and related products	923	931	8	0.9	9,857	9,966	109	1.1	-8.3
Other industrial goods and materials	2,522	2,391	-130	-5.2	25,269	25,740	471	1.9	-9.5
Crude animal products	24	23	-1	-5.1	267	270	3	1.0	2.1
Wool and man-made fibres	26	24	-2	-8.4	306	267	-39	-12.7	-20.1
Crude non-metallic minerals	73	71	-2	-3.0	819	708	-111	-13.5	-5.7
Textile fabricated materials	283	261	-22	-7.8	3,144	2,912	-233	-7.4	-16.9
Metal fabricated basic products	926	874	-52	-5.7	9,596	9,520	-76	-0.8	-12.4
Rubber fabricated materials	110	102	-8	-7.6	1,247	1,110	-136	-10.9	-19.4
Oils, fats, animal and vegetable	97	92	-6	-5.7	870	809	-61	-7.1	14.1
Non-metallic minerals	403	383	-20	-4.9	3,486	3,821	334	9.6	-0.8
Other fabricated materials	578	561	-17	-2.9	5,533	6,323	791	14.3	-8.0

Table 6-2 – continued

## Imports by commodity groupings, balance of payments basis, seasonally adjusted — Constant dollars, 2002

	September 2008	October 2008	Change	Year to date		Year to date change	October 2008/2007		
	millions of dollars			percent					
				2007	2008				
<b>Machinery and equipment</b>	<b>14,659</b>	<b>13,773</b>	<b>-886</b>	<b>-6.0</b>	<b>137,580</b>	<b>145,274</b>	<b>7,694</b>	<b>5.6</b>	<b>-6.8</b>
Industrial and agricultural machinery	3,629	3,307	-321	-8.9	33,065	35,770	2,706	8.2	-11.3
Engines, turbines and electric motors	401	366	-35	-8.8	3,645	4,277	631	17.3	-3.4
Drilling mining machinery	193	182	-11	-5.7	1,613	1,720	107	6.6	18.9
Excavating machinery	368	356	-12	-3.2	3,325	3,771	446	13.4	-23.2
Metal working machinery	264	236	-28	-10.6	2,628	2,671	42	1.6	-20.1
Other industrial machinery	1,925	1,748	-178	-9.2	18,078	18,839	761	4.2	-11.7
Agricultural machinery including tractors	479	421	-58	-12.0	3,775	4,493	718	19.0	-9.1
Aircraft and other transportation equipment	1,656	1,502	-154	-9.3	16,829	17,752	923	5.5	-21.6
Aircraft, engines, parts	1,026	934	-92	-8.9	11,146	11,560	414	3.7	-30.4
Other transportation equipment and parts	630	568	-62	-9.9	5,683	6,192	509	9.0	-0.8
Office machines and equipment	2,471	2,669	197	8.0	24,469	24,633	163	0.7	12.9
Other machinery and equipment	6,903	6,295	-608	-8.8	63,217	67,120	3,902	6.2	-7.0
Other communication and related equipment	2,769	2,473	-296	-10.7	23,829	26,305	2,476	10.4	-4.7
Other equipment and tools	4,134	3,822	-312	-7.5	39,388	40,815	1,427	3.6	-8.3
<b>Automotive products</b>	<b>7,620</b>	<b>7,053</b>	<b>-567</b>	<b>-7.4</b>	<b>82,354</b>	<b>76,600</b>	<b>-5,754</b>	<b>-7.0</b>	<b>-17.0</b>
Passenger autos and chassis	2,752	2,612	-140	-5.1	24,557	25,557	1,000	4.1	5.8
Trucks and other motor vehicles	1,443	1,387	-56	-3.9	17,167	15,559	-1,608	-9.4	-22.8
Motor vehicle parts	3,425	3,054	-371	-10.8	40,630	35,484	-5,146	-12.7	-27.8
<b>Other consumer goods</b>	<b>6,415</b>	<b>5,939</b>	<b>-476</b>	<b>-7.4</b>	<b>60,830</b>	<b>63,475</b>	<b>2,645</b>	<b>4.3</b>	<b>-10.3</b>
Apparel and footwear	1,379	1,255	-123	-8.9	12,455	13,210	755	6.1	-4.6
Apparel and apparel accessories	1,142	1,031	-111	-9.7	10,326	11,025	699	6.8	-6.0
Footwear	236	224	-12	-5.2	2,129	2,185	57	2.7	2.3
Miscellaneous consumer goods	5,037	4,684	-353	-7.0	48,375	50,265	1,890	3.9	-11.7
Television, radios, phonographs	227	213	-14	-6.3	2,377	2,289	-88	-3.7	-10
Printed matter	394	394	0	0.1	4,044	4,149	105	2.6	-8.2
Watches, sporting goods and toys	736	697	-38	-5.2	7,157	7,598	441	6.2	-18.8
House furnishings	944	867	-76	-8.1	8,815	9,269	453	5.1	-9.6
Photographic goods	460	445	-15	-3.3	3,865	4,236	371	9.6	1.0
Miscellaneous end products	2,277	2,068	-209	-9.2	22,116	22,724	608	2.7	-13.0
<b>Special transactions trade</b>	<b>614</b>	<b>568</b>	<b>-46</b>	<b>-7.5</b>	<b>5,039</b>	<b>5,632</b>	<b>593</b>	<b>11.8</b>	<b>8.3</b>
<b>Unallocated balance of payments adjustments</b>	<b>494</b>	<b>740</b>	<b>246</b>	<b>49.8</b>	<b>3,943</b>	<b>4,529</b>	<b>586</b>	<b>14.9</b>	<b>216.9</b>

**Table 7-1**  
**Imports from selected countries, customs basis, not seasonally adjusted — October**

	Agricultural and fishing products	Energy products	Forestry products	Industrial goods	Machinery and equipment	Automotive products	Consumer goods	Special transactions	Total
millions of dollars									
<b>United States</b>									
2007	1,304.8	584.3	184.3	4,435.2	4,688.1	5,039.6	1,957.2	363.7	18,557.2
2008	1,593.3	1,644.7	190.1	5,342.3	5,199.3	4,524.7	2,204.5	532.0	21,230.8
<b>Mexico</b>									
2007	69.1	58.7	0.5	98.0	655.6	531.6	101.9	2.9	1,518.2
2008	76.5	75.4	0.3	132.8	843.8	529.2	131.5	1.8	1,791.3
<b>Japan</b>									
2007	5.0	4.3	0.1	110.8	574.9	635.0	116.3	0.3	1,446.7
2008	6.8	0.5	0.2	102.0	568.8	628.6	106.9	0.8	1,414.7
<b>European Union</b>									
<b>Germany</b>									
2007		1.0	1.9	190.0	377.3	304.8	165.8	0.5	1,065.4
2008	24.1	1.1	1.4	230.8	452.2	256.9	165.5	0.3	1,142.4
<b>France</b>									
2007	85.0	4.6	0.4	67.0	143.4	3.0	120.4	1.2	425.0
2008	91.4	41.7	0.3	84.5	148.0	4.2	157.1	0.2	527.4
<b>United Kingdom</b>									
2007	45.3	317.2	0.3	109.0	247.7	60.9	137.4	1.8	919.6
2008	48.8	601.8	0.0	118.5	358.8	42.9	153.9	1.0	1,325.8
<b>Italy</b>									
2007	59.4	0.0	1.4	83.3	115.5	13.8	86.5	0.9	360.8
2008	80.4	0.1	1.3	93.9	144.5	20.8	100.6	0.5	442.2
<b>Other European Union</b>									
2007	134.5	230.8	4.1	279.1	398.8	130.8	300.1	0.5	1,478.7
2008	133.1	135.2	4.5	240.0	429.7	126.5	374.1	0.7	1,443.7
<b>Total</b>									
2007	348.4	553.6	8.2	728.4	1,282.7	513.3	810.1	4.8	4,249.4
2008	387.9	780.0	7.5	767.8	1,533.1	451.2	951.4	2.7	4,881.5
<b>Newly industrialized countries</b>									
<b>South Korea</b>									
2007	4.2	2.7	0.0	88.3	243.8	98.3	19.7	0.1	457.2
2008	3.6	25.8	0.0	85.2	307.5	151.5	25.3	0.1	599.0
<b>Hong Kong</b>									
2007	2.5	0.0	0.1	2.7	17.8	0.1	22.6	0.1	45.8
2008	1.9		0.1	4.7	16.0	0.1	20.0	0.0	42.8
<b>Taiwan</b>									
2007	4.5	0.1	1.1	75.4	227.4	14.3	38.4	0.1	361.3
2008	4.3	0.0	0.2	82.9	210.3	15.2	41.0	0.1	354.0
<b>Singapore</b>									
2007	1.3	0.0	0.1	72.9	60.0	0.3	19.7	0.0	154.3
2008	4.2	0.0	0.0	21.2	50.4	0.3	16.3	0.0	92.5
<b>Total</b>									
2007	12.5	2.8	1.3	239.3	548.9	113.0	100.4	0.3	1,018.6
2008	14.0	25.8	0.3	194.1	584.2	167.1	102.5	0.2	1,088.3
<b>Other countries</b>									
2007	583.8	1,641.3	65.3	1,452.9	2,466.6	192.5	1,981.1	59.4	8,443.0
2008	693.9	2,963.0	63.7	1,759.5	2,797.1	197.6	2,188.5	53.1	10,716.4
<b>Total</b>									
2007	2,323.6	2,845.0	259.7	7,064.5	10,216.8	7,024.9	5,067.2	431.5	35,233.1
2008	2,772.5	5,489.3	262.1	8,298.5	11,526.4	6,498.5	5,685.3	590.5	41,123.1

**Table 7-2**  
**Imports from selected countries, customs basis, not seasonally adjusted — Year to date, January to October**

	Agricultural and fishing products	Energy products	Forestry products	Industrial goods	Machinery and equipment	Automotive products	Consumer goods	Special transactions	Total
millions of dollars									
<b>United States</b>									
2007	12,038.1	8,054.8	1,834.6	45,151.8	47,309.1	49,765.9	18,655.1	3,694.9	186,504.4
2008	13,655.7	13,472.5	1,785.3	48,835.4	47,889.8	43,223.1	18,682.7	3,743.6	191,288.1
<b>Mexico</b>									
2007	983.8	665.9	5.7	976.5	5,615.0	5,097.1	967.6	27.3	14,338.8
2008	978.5	795.0	4.0	1,189.4	5,878.6	4,589.3	881.3	35.4	14,351.5
<b>Japan</b>									
2007	51.7	157.3	1.6	1,031.5	5,117.7	5,633.4	991.4	3.3	12,987.9
2008	51.0	50.3	1.7	1,092.3	5,234.7	5,650.2	856.3	4.1	12,940.4
<b>European Union</b>									
<b>Germany</b>									
2007	196.1	52.1	19.5	2,016.0	3,654.6	2,288.6	1,410.1	8.1	9,645.2
2008	226.4	23.0	14.2	2,103.6	4,048.8	2,478.3	1,659.9	57.6	10,611.8
<b>France</b>									
2007	583.1	83.1	4.2	835.2	1,377.0	46.1	1,240.8	16.7	4,186.2
2008	658.4	185.1	2.8	728.9	1,599.4	63.7	1,333.0	250.2	4,821.5
<b>United Kingdom</b>									
2007	333.0	3,651.3	3.6	1,165.7	2,609.4	468.5	1,288.1	29.3	9,548.8
2008	347.9	4,884.3	1.8	1,039.3	2,670.3	469.0	1,172.9	34.3	10,619.9
<b>Italy</b>									
2007	473.0	189.2	16.9	980.8	1,499.9	188.3	941.4	7.0	4,296.5
2008	547.8	117.2	15.1	975.6	1,402.8	210.7	926.2	44.8	4,240.3
<b>Other European Union</b>									
2007	989.4	1,994.2	51.2	3,019.5	3,723.4	911.3	3,017.5	8.1	13,714.7
2008	1,025.6	2,295.8	43.4	2,628.8	4,402.0	1,090.0	3,377.1	116.7	14,979.4
<b>Total</b>									
2007	2,574.5	5,969.9	95.4	8,017.2	12,864.4	3,902.9	7,898.0	69.2	41,391.4
2008	2,806.1	7,505.5	77.3	7,476.1	14,123.4	4,311.7	8,469.1	503.7	45,272.9
<b>Newly industrialized countries</b>									
<b>South Korea</b>									
2007	32.9	40.5	0.3	784.0	1,939.4	1,372.4	217.4	1.0	4,387.8
2008	39.9	190.3	0.4	782.7	2,341.2	1,469.5	206.2	1.1	5,031.4
<b>Hong Kong</b>									
2007	24.4	0.1	1.9	74.5	172.8	1.9	178.2	0.5	454.3
2008	26.9	0.1	0.9	32.1	163.5	1.6	163.1	0.6	388.7
<b>Taiwan</b>									
2007	45.8	0.5	9.7	744.6	1,961.4	140.9	372.9	1.5	3,277.4
2008	47.2	74.1	9.1	725.6	1,880.1	153.2	369.4	1.1	3,259.9
<b>Singapore</b>									
2007	16.3	0.0	0.8	537.3	566.0	4.5	143.9	2.2	1,271.1
2008	27.7	83.3	1.0	205.6	494.0	2.6	177.9	3.6	995.6
<b>Total</b>									
2007	119.4	41.1	12.7	2,140.5	4,639.6	1,519.7	912.4	5.2	9,390.6
2008	141.8	347.8	11.4	1,746.1	4,878.8	1,626.9	916.6	6.3	9,675.6
<b>Other countries</b>									
2007	5,426.6	15,502.0	601.5	14,258.3	22,578.0	1,882.3	16,918.9	329.5	77,497.2
2008	5,745.8	24,136.6	573.2	16,151.6	22,937.3	1,937.7	17,876.4	665.1	90,023.8
<b>Total</b>									
2007	21,196.3	30,391.0	2,551.6	71,575.9	98,124.3	67,801.3	46,343.5	4,129.3	342,113.2
2008	23,379.8	46,307.6	2,452.9	76,491.2	100,942.7	61,338.9	47,682.5	4,958.1	363,553.7

**Table 8**  
**Imports by country, customs basis, not seasonally adjusted**

	October		January to October		Variation
	2007	2008	2007	2008	January to October 2008/2007
millions of dollars					
<b>North America</b>					
Canada	349.4	301.7	3,122.5	3,091.4	-1.0
Greenland	3.6	0.1	39.3	25.7	-34.6
Mexico	1,518.2	1,791.3	14,338.8	14,351.5	0.1
Saint Pierre and Miquelon	0.1	0.0	0.7	0.5	-28.6
United States	18,557.2	21,230.8	186,504.4	191,288.1	2.6
<b>Total</b>	<b>20,428.4</b>	<b>23,323.8</b>	<b>204,005.7</b>	<b>208,757.2</b>	<b>2.3</b>
<b>Western Europe</b>					
Andorra	0.0	0.0	0.1	0.1	0.0
Austria	138.6	143.0	1,214.9	1,288.6	6.1
Belgium	164.7	205.4	1,965.4	1,866.5	-5.0
Denmark	194.9	128.8	1,084.2	1,409.8	30.0
Faeroe Islands	0.0	0.2	2.7	1.2	-55.6
Finland	91.1	73.2	722.8	703.3	-2.7
France	425.0	527.4	4,186.2	4,821.5	15.2
Germany	1,065.4	1,142.4	9,645.2	10,611.8	10.0
Gibraltar	0.0	0.0	0.0	0.0	0.0
Greece	12.9	10.5	113.2	111.6	-1.4
Iceland	4.1	2.0	24.4	29.3	20.1
Italy	360.8	442.2	4,296.5	4,240.3	-1.3
Luxembourg	8.4	5.3	83.4	89.3	7.1
Malta	1.2	1.7	21.4	18.8	-12.1
Netherlands	145.5	181.0	1,500.7	1,866.4	24.4
Norway	521.0	622.7	4,566.1	5,501.4	20.5
Portugal	27.4	33.3	304.6	380.1	24.8
Republic of Ireland (Eire)	189.0	185.3	2,198.3	1,726.1	-21.5
Spain	135.2	116.9	1,052.9	1,407.0	33.6
Sweden	203.5	169.1	1,766.6	1,950.4	10.4
Switzerland	170.3	223.2	1,882.5	2,146.7	14.0
United Kingdom	919.6	1,325.8	9,548.8	10,619.9	11.2
<b>Total</b>	<b>4,778.5</b>	<b>5,539.3</b>	<b>46,181.0</b>	<b>50,790.2</b>	<b>10.0</b>
<b>Other Europe</b>					
Albania	0.3	0.4	1.8	2.5	38.9
Armenia	0.2	1.9	1.8	5.3	194.4
Azerbaijan	0.2	111.7	62.5	1,168.2	...
Belarus	0.5	0.9	17.7	32.9	85.9
Bosnia and Herzegovina	0.4	0.4	4.7	4.9	4.3
Bulgaria	13.2	6.6	103.5	99.0	-4.3
Croatia	2.7	6.1	32.3	45.9	42.1
Czech Republic	22.2	35.3	273.4	292.1	6.8
Estonia	3.1	3.2	27.7	36.0	30.0
Georgia	8.3	9.3	55.3	107.3	94.0
Hungary	26.7	36.8	267.6	326.2	21.9
Kazakhstan	0.1	13.0	30.4	66.5	118.8
Kyrgyzstan	0.0	0.0	0.0	1.0	0.0
Latvia	1.0	1.1	12.2	30.1	146.7
Lithuania	10.3	4.2	145.4	335.6	130.8
Macedonia (Former Yugoslav Republic of Macedonia)	0.6	0.3	7.8	6.9	-11.5
Montenegro	0.1	0.0	0.7	0.6	-14.3
Poland	52.5	70.6	501.4	697.7	39.2
Republic of Moldova	0.2	0.4	2.1	2.1	0.0
Romania	14.0	11.6	142.3	121.8	-14.4
Russian Federation	65.9	128.8	1,212.8	1,784.5	47.1
Serbia	1.0	1.0	11.7	10.3	-12.0
Slovakia	13.4	14.9	144.3	155.0	7.4
Slovenia	9.8	6.0	65.7	65.5	-0.3
Tajikistan	0.0	0.0	0.1	0.0	0.0
Turkmenistan	0.1	0.0	1.0	0.8	-20.0
Ukraine	7.5	24.1	108.8	160.9	47.9
Uzbekistan	0.0	0.0	0.4	0.9	125.0
<b>Total</b>	<b>254.2</b>	<b>488.5</b>	<b>3,235.4</b>	<b>5,560.6</b>	<b>71.9</b>
<b>Middle East</b>					
Bahrain	0.1	0.2	8.0	3.4	-57.5

Table 8 – continued

## Imports by country, customs basis, not seasonally adjusted

	October		January to October		Variation
	2007	2008	2007	2008	January to October 2008/2007
millions of dollars					
Cyprus	0.1	0.0	2.8	2.4	-14.3
Egypt	21.8	6.4	137.1	82.7	-39.7
Eritrea	0.0	0.0	0.0	0.0	0.0
Ethiopia	0.8	1.1	7.2	10.2	41.7
Iran	3.3	7.8	39.4	36.3	-7.9
Iraq	0.0	187.1	1,351.0	1,840.2	36.2
Israel	77.4	102.2	797.1	1,037.3	30.1
Jordan	1.3	1.0	14.0	12.2	-12.9
Kuwait	0.0	0.0	1.7	7.6	347.1
Lebanon	1.6	1.6	13.1	13.2	0.8
Libya	0.0	0.0	0.0	0.0	0.0
Oman	0.2	0.8	3.0	3.4	13.3
Qatar	0.0	0.0	0.3	0.5	66.7
Saudi Arabia	187.6	448.1	1,542.5	2,195.8	42.4
Somalia	0.0	0.0	0.0	0.1	0.0
Sudan	5.3	5.2	51.7	57.4	11.0
Syria	1.1	0.6	52.8	54.9	4.0
Turkey	54.1	71.8	550.4	577.2	4.9
United Arab Emirates	2.7	3.6	25.3	323.4	...
Yemen	0.0	0.0	0.1	0.2	100.0
<b>Total</b>	<b>357.5</b>	<b>837.5</b>	<b>4,597.6</b>	<b>6,258.4</b>	<b>36.1</b>
<b>Other Africa</b>					
Algeria	450.0	794.7	4,071.6	7,041.9	73.0
Angola	152.4	465.5	810.3	2,236.2	176.0
Antarctica	0.0	0.0	0.0	0.0	0.0
Benin	0.0	0.0	0.2	0.0	0.0
Botswana	0.0	0.1	81.0	12.2	-84.9
Bouvet Island	0.0	0.0	0.0	0.0	0.0
Burkina Faso	0.0	0.0	0.3	0.1	-66.7
Burundi	0.0	0.0	0.1	0.5	400.0
Cameroon	0.5	0.4	6.4	4.0	-37.5
Cape Verde	0.0	0.0	0.0	0.0	0.0
Central African Republic	0.0	0.0	0.1	0.1	0.0
Chad	0.0	0.0	0.0	0.2	0.0
Comoros	0.0	0.0	0.0	0.0	0.0
Congo	0.1	0.1	2.8	2.1	-25.0
Democratic Republic of the Congo	0.0	0.1	0.4	0.6	50.0
Djibouti	0.0	0.0	0.0	0.0	0.0
Equatorial Guinea	0.0	0.0	150.6	81.1	-46.1
French Southern Territories	0.0	0.0	0.0	0.0	0.0
Gabon	0.0	0.1	1.4	1.0	-28.6
Gambia	0.0	0.0	0.1	0.1	0.0
Ghana	2.1	6.1	18.1	27.9	54.1
Guinea	5.4	5.9	29.6	55.0	85.8
Guinea-Bissau	0.0	0.0	0.0	0.0	0.0
Ivory Coast	7.3	18.8	269.6	90.6	-66.4
Kenya	1.3	1.8	14.9	12.5	-16.1
Lesotho	0.6	0.7	6.4	5.9	-7.8
Liberia	1.4	0.7	16.7	20.3	21.6
Madagascar	1.6	3.8	16.5	16.6	0.6
Malawi	0.1	0.2	1.5	2.2	46.7
Mali	0.0	0.0	0.3	0.3	0.0
Mauritania	0.6	0.0	0.7	0.2	-71.4
Mauritius	6.2	1.2	10.6	6.1	-42.5
Morocco	29.5	23.7	149.6	90.2	-39.7
Mozambique	0.0	0.2	0.2	1.1	450.0
Namibia	0.0	21.0	102.8	242.8	136.2
Niger	0.3	0.0	0.9	0.6	-33.3
Nigeria	5.9	67.9	270.1	722.3	167.4
Rwanda	0.0	0.1	0.2	0.4	100.0
Saint Helena	0.0	0.0	0.0	0.1	0.0
Sao Tome and Principe	0.0	0.0	0.0	0.0	0.0
Senegal	0.1	0.3	1.1	1.0	-9.1
Seychelles	0.2	0.1	3.6	1.4	-61.1
Sierra Leone	2.0	0.0	11.6	1.0	-91.4
South Africa	97.2	116.8	878.5	737.8	-16.0

Table 8 – continued

## Imports by country, customs basis, not seasonally adjusted

	October		January to October		Variation
	2007	2008	2007	2008	January to October 2008/2007
millions of dollars					
Swaziland	0.2	0.3	2.2	2.1	-4.5
Togo	0.1	0.1	2.2	6.0	172.7
Tunisia	2.7	3.7	44.7	35.6	-20.4
Uganda	0.1	0.0	2.4	2.1	-12.5
United Republic of Tanzania	0.3	0.3	1.9	1.7	-10.5
Western Sahara	0.0	0.0	0.0	0.0	0.0
Zambia	0.0	0.0	0.3	0.6	100.0
Zimbabwe	0.1	0.0	2.6	3.7	42.3
<b>Total</b>	<b>768.6</b>	<b>1,534.9</b>	<b>6,985.3</b>	<b>11,468.2</b>	<b>64.2</b>
<b>Other Asia</b>					
Afghanistan	0.1	0.1	0.6	1.1	83.3
Bangladesh	49.2	64.2	480.6	548.0	14.0
Bhutan	0.0	0.0	0.0	0.0	0.0
British Indian Ocean Territory	0.0	0.0	0.0	0.0	0.0
Brunei Darussalam	0.2	0.1	1.8	2.0	11.1
Cambodia	19.5	24.2	177.8	223.4	25.6
China	3,674.7	4,366.7	32,307.3	34,741.5	7.5
Hong Kong	45.8	42.8	454.3	388.7	-14.4
India	185.2	232.1	1,670.1	1,825.9	9.3
Indonesia	92.6	109.7	846.0	891.2	5.3
Japan	1,446.7	1,414.7	12,987.9	12,940.4	-0.4
Laos	0.6	0.4	6.3	4.6	-27.0
Macao	2.4	2.5	28.6	25.4	-11.2
Malaysia	259.9	262.4	2,444.1	2,412.4	-1.3
Maldives	0.1	0.0	0.5	0.2	-60.0
Mongolia	17.2	16.1	161.9	152.4	-5.9
Myanmar	1.0	0.0	6.7	0.7	-89.6
Nepal	1.9	1.9	11.9	13.1	10.1
North Korea	0.0	0.0	0.1	0.1	0.0
Pakistan	23.8	24.3	207.6	200.3	-3.5
Philippines	67.0	75.7	649.4	687.1	5.8
Singapore	154.3	92.5	1,271.1	995.6	-21.7
South Korea	457.2	599.0	4,387.8	5,031.4	14.7
Sri Lanka	9.9	10.3	92.5	99.4	7.5
Taiwan	361.3	354.0	3,277.4	3,259.9	-0.5
Thailand	209.2	239.2	1,914.6	2,039.2	6.5
Timor-Leste	0.1	1.0	0.8	5.5	587.5
Viet Nam	68.0	94.6	645.5	787.3	22.0
<b>Total</b>	<b>7,147.8</b>	<b>8,028.4</b>	<b>64,033.3</b>	<b>67,276.9</b>	<b>5.1</b>
<b>Oceania</b>					
American Samoa	0.0	0.0	1.9	0.2	-89.5
Australia	207.8	153.0	1,482.4	1,399.0	-5.6
Christmas Island	0.0	0.0	0.0	0.0	0.0
Cocos (Keeling) Islands	0.0	0.0	0.0	0.0	0.0
Cook Islands	0.0	0.0	0.0	0.1	0.0
Fiji	0.6	0.5	6.6	7.4	12.1
French Polynesia	0.5	0.2	1.9	1.1	-42.1
Guam	0.0	0.5	0.1	0.7	600.0
Heard Island and McDonald Islands	0.0	0.0	0.0	0.0	0.0
Kiribati	0.0	0.0	0.1	0.0	0.0
Nauru	0.0	0.1	0.1	0.1	0.0
New Caledonia	0.0	0.0	0.1	0.3	200.0
New Zealand	46.0	34.1	426.9	411.7	-3.6
Niue	0.0	0.0	0.0	0.0	0.0
Norfolk Island	0.0	0.0	0.0	0.0	0.0
Papua New Guinea	0.4	0.2	2.7	1.5	-44.4
Pitcairn	0.0	0.0	0.0	0.0	0.0
Samoa	0.0	0.0	0.3	0.0	0.0
Solomon Islands	0.0	0.0	0.1	0.1	0.0
Tonga	0.0	0.0	0.1	0.1	0.0
United States Minor Outlying Islands	0.5	0.3	8.1	4.7	-42.0
Vanuatu	0.0	0.0	0.1	0.0	0.0
Wallis and Futuna	0.0	0.0	0.1	0.0	0.0
<b>Total</b>	<b>255.9</b>	<b>188.8</b>	<b>1,931.6</b>	<b>1,827.3</b>	<b>-5.4</b>

Table 8 – continued

## Imports by country, customs basis, not seasonally adjusted

	October		January to October		Variation
	2007	2008	2007	2008	January to October 2008/2007
millions of dollars					
<b>South America</b>					
Argentina	42.7	59.3	359.7	452.7	25.9
Bolivia	29.9	4.1	95.6	60.1	-37.1
Brazil	286.3	271.8	2,721.3	2,188.0	-19.6
Chile	140.9	130.9	1,302.0	1,619.8	24.4
Colombia	39.5	44.2	403.1	525.4	30.3
Ecuador	19.3	13.6	195.9	145.1	-25.9
Falkland Islands (Malvinas)	0.0	0.0	0.0	0.1	0.0
Guyana	14.3	25.1	129.4	187.1	44.6
Paraguay	2.2	2.0	13.3	14.2	6.8
Peru	224.8	248.5	1,670.3	2,076.3	24.3
Suriname	8.7	65.0	336.0	507.0	50.9
Uruguay	7.2	1.6	86.3	28.6	-66.9
Venezuela	197.1	98.8	1,197.0	1,264.0	5.6
<b>Total</b>	<b>1,012.8</b>	<b>964.9</b>	<b>8,509.9</b>	<b>9,068.5</b>	<b>6.6</b>
<b>Central America Antilles</b>					
Anguilla	0.0	0.1	0.1	0.2	100.0
Antigua and Barbuda	0.1	0.1	0.5	5.3	960.0
Aruba	0.0	0.2	123.3	120.4	-2.4
Bahamas	7.0	0.7	59.2	63.5	7.3
Barbados	0.6	0.9	7.0	7.2	2.9
Belize	0.3	1.0	10.0	9.0	-10.0
Bermuda	0.1	0.2	3.0	1.7	-43.3
British Virgin Islands	0.0	0.3	1.4	11.5	721.4
Cayman Islands	0.0	0.0	0.3	0.2	-33.3
Costa Rica	26.2	35.0	315.2	316.3	0.3
Cuba	51.8	64.4	928.7	813.3	-12.4
Dominica	0.0	0.0	0.2	0.2	0.0
Dominican Republic	10.9	13.2	96.3	104.4	8.4
El Salvador	4.2	5.0	37.6	62.0	64.9
Grenada	0.0	0.0	0.6	0.6	0.0
Guatemala	13.4	17.0	205.2	215.0	4.8
Haiti	2.2	1.5	17.1	16.7	-2.3
Honduras	8.6	12.3	105.5	130.0	23.2
Jamaica	36.9	26.8	309.4	250.6	-19.0
Montserrat	0.0	0.1	0.2	0.1	-50.0
Netherlands Antilles	0.0	0.0	18.7	2.6	-86.1
Nicaragua	2.7	6.9	71.8	88.1	22.7
Panama	0.6	1.2	9.1	19.6	115.4
Saint Kitts and Nevis	0.4	0.5	3.5	4.3	22.9
Saint Lucia	0.0	0.0	0.2	0.1	-50.0
Saint Vincent and the Grenadines	0.0	0.0	0.5	0.1	-80.0
Trinidad and Tobago	63.0	29.4	303.8	301.3	-0.8
Turks and Caicos Islands	0.3	0.0	4.8	1.9	-60.4
<b>Total</b>	<b>229.4</b>	<b>216.8</b>	<b>2,633.3</b>	<b>2,546.3</b>	<b>-3.3</b>
<b>All countries</b>	<b>35,233.1</b>	<b>41,123.1</b>	<b>342,113.2</b>	<b>363,553.7</b>	<b>6.3</b>

**Table 9-1  
Imports by province of clearance, customs basis, not seasonally adjusted — October**

	Agricultural and fishing products	Energy products	Forestry products	Industrial goods	Machinery and equipment	Automotive products	Consumer goods	Special transactions	Total
millions of dollars									
Newfoundland Labrador									
2007	2.7	79.6	0.0	8.1	5.2	2.7	0.7	0.1	99.1
2008	3.8	281.6	0.0	4.0	3.8	0.1	0.7	0.1	294.0
Prince Edward Island									
2007	0.3	0.0	0.0	6.6	0.3	0.0	0.0	0.0	7.3
2008	0.3	0.0	0.0	0.0	0.2	0.0	0.1	0.0	0.6
Nova Scotia									
2007	32.2	242.3	1.2	88.2	69.4	325.2	14.4	2.7	775.5
2008	40.4	205.8	1.9	99.9	90.0	282.9	16.6	1.2	738.8
New Brunswick									
2007	63.5	494.4	13.6	67.8	46.6	31.4	13.1	2.1	732.6
2008	49.8	1,236.6	14.2	85.7	63.2	26.4	18.0	1.6	1,495.5
Quebec									
2007	372.7	1,367.3	65.9	1,232.0	1,588.5	209.8	856.1	66.1	5,758.4
2008	452.3	1,907.9	66.4	1,500.2	1,712.7	217.9	990.5	51.3	6,899.3
Ontario									
2007	1,242.1	441.9	100.1	3,977.1	6,151.8	5,650.9	3,231.9	324.5	21,120.4
2008	1,506.8	973.1	103.5	4,603.2	6,684.3	5,113.3	3,581.6	484.9	23,050.8
Manitoba									
2007	70.8	6.6	6.6	234.0	475.3	151.6	136.3	9.0	1,090.2
2008	83.9	41.6	8.6	348.4	606.1	191.6	163.8	6.4	1,450.4
Saskatchewan									
2007	22.6	19.6	1.4	148.0	290.1	103.2	22.3	2.9	610.1
2008	29.1	82.8	2.3	271.0	368.9	92.8	32.9	0.5	880.4
Alberta									
2007	152.4	83.5	11.6	379.2	565.5	103.1	97.5	11.0	1,403.9
2008	180.5	280.6	7.8	583.5	779.0	100.8	112.7	10.8	2,055.6
British Columbia									
2007	360.8	107.9	59.2	923.4	1,023.2	447.0	694.8	13.1	3,629.4
2008	420.5	478.0	57.3	802.2	1,215.7	472.1	768.4	33.5	4,247.6
Yukon, Northwest Territories and Nunavut									
2007	3.3	1.8	0.0	0.1	0.8	0.0	0.0	0.1	6.2
2008	5.0	1.3	0.0	0.5	2.7	0.4	0.0	0.1	10.1
<b>Total</b>									
<b>2007</b>	<b>2,323.6</b>	<b>2,845.0</b>	<b>259.7</b>	<b>7,064.5</b>	<b>10,216.8</b>	<b>7,024.9</b>	<b>5,067.2</b>	<b>431.5</b>	<b>35,233.1</b>
<b>2008</b>	<b>2,772.5</b>	<b>5,489.3</b>	<b>262.1</b>	<b>8,298.5</b>	<b>11,526.4</b>	<b>6,498.5</b>	<b>5,685.3</b>	<b>590.5</b>	<b>41,123.1</b>

**Table 9-2**  
**Imports by province of clearance, customs basis, not seasonally adjusted — Year to date, January to October**

	Agricultural and fishing products	Energy products	Forestry products	Industrial goods	Machinery and equipment	Automotive products	Consumer goods	Special transactions	Total
millions of dollars									
Newfoundland Labrador									
2007	25.0	2,271.6	0.0	100.8	104.5	3.6	6.3	0.8	2,512.6
2008	36.3	3,471.0	0.1	82.4	136.9	1.2	14.1	7.7	3,749.7
Prince Edward Island									
2007	3.0	0.0	0.0	13.9	26.9	0.1	3.2	0.2	47.3
2008	2.8	0.0	0.1	13.1	83.1	0.1	18.0	0.3	117.6
Nova Scotia									
2007	317.4	1,467.5	15.0	1,241.2	679.3	2,371.5	131.0	21.7	6,244.4
2008	305.2	1,768.2	17.5	1,220.3	992.7	2,662.1	128.2	16.9	7,111.0
New Brunswick									
2007	377.7	4,132.3	117.7	674.5	510.1	220.1	161.6	15.0	6,209.2
2008	394.0	7,202.5	108.7	837.5	727.8	320.9	151.0	19.4	9,761.9
Quebec									
2007	3,146.8	14,653.6	680.9	13,455.0	16,500.2	1,863.2	8,527.0	540.9	59,367.7
2008	3,501.6	19,577.0	613.3	14,371.7	16,738.0	2,080.0	8,471.3	849.5	66,202.5
Ontario									
2007	11,702.6	4,785.6	982.0	41,271.6	56,211.8	55,294.8	29,432.9	3,163.3	202,844.8
2008	12,757.7	7,423.5	934.8	42,768.1	56,692.7	47,838.6	30,113.9	3,592.4	202,121.6
Manitoba									
2007	645.8	99.6	71.8	2,693.7	4,887.9	1,336.7	1,279.9	81.1	11,096.5
2008	824.1	309.3	81.3	3,194.1	5,255.4	1,553.3	1,433.0	79.6	12,730.1
Saskatchewan									
2007	201.0	180.4	20.1	1,571.9	2,662.2	963.1	225.5	21.4	5,845.6
2008	292.7	429.9	25.0	2,250.2	3,280.3	1,097.3	251.5	17.5	7,644.3
Alberta									
2007	1,359.6	1,313.9	108.2	3,734.1	6,589.8	1,112.5	901.6	139.7	15,259.6
2008	1,585.8	3,037.4	95.2	4,554.9	6,604.6	1,139.8	1,005.0	131.7	18,154.3
British Columbia									
2007	3,365.1	1,466.5	555.7	6,818.2	9,918.0	4,634.7	5,673.1	145.2	32,576.6
2008	3,626.9	3,055.9	576.8	7,197.2	10,410.4	4,644.6	6,096.3	242.3	35,850.5
Yukon, Northwest Territories and Nunavut									
2007	52.2	19.7	0.0	1.0	33.6	0.9	1.3	0.1	108.8
2008	52.7	32.8	0.0	1.7	20.8	1.1	0.3	0.7	110.1
<b>Total</b>									
<b>2007</b>	<b>21,196.3</b>	<b>30,391.0</b>	<b>2,551.6</b>	<b>71,575.9</b>	<b>98,124.3</b>	<b>67,801.3</b>	<b>46,343.5</b>	<b>4,129.3</b>	<b>342,113.2</b>
<b>2008</b>	<b>23,379.8</b>	<b>46,307.6</b>	<b>2,452.9</b>	<b>76,491.2</b>	<b>100,942.7</b>	<b>61,338.9</b>	<b>47,682.5</b>	<b>4,958.1</b>	<b>363,553.7</b>

# Technical notes

---

## The Canadian international merchandise trade statistical program

### I Introduction

The objective of this text is to provide a general overview of the Canadian International Merchandise Trade Statistical Program with special reference to concepts and definitions. The text is intended for the general user and simplicity is emphasized. More technical details can be obtained from the International Trade Division upon request.

### II Conceptual framework

**1. Objectives and coverage:** The primary objective of the Canadian International Merchandise Trade Statistical Program is to measure the change in the stock of material resources of the country resulting from the movement of merchandise into or out of Canada. Information on imports and exports are inputs into the System of National Accounts particularly in the Balance of Payments and Gross Domestic Product, and are used in the formulation of trade and budgetary policies. Governments, importers, exporters, manufacturers and shipping companies use trade statistics to:

- monitor import penetration and export performance;
- monitor commodity price and volume changes;
- examine transport implications.

**2. Trade statistics - Customs basis/Balance of Payments basis:** Merchandise trade statistics are reported and presented on two different bases: Customs basis and Balance of Payment basis. (B.O.P.)

When goods are imported into or exported from Canada, declarations must be filed with Customs giving such information as description and value of the goods, origin and port of clearance of commodities and the mode of transport. Most of this information is required for the purposes of Customs Administration. Statistics developed from administrative records of Customs are commonly referred to as Customs based trade statistics.

Customs based trade statistics are more accurate at measuring imports than they are at measuring exports. This is the case because Customs are typically more vigilant with respect to goods entering the country than they are with goods leaving the country.

Customs based export statistics may understate and/or incorrectly portray the destination of exports. Export statistics are understated when the proper documentation is not filed with Customs. Exports are incorrectly portrayed when the country of final destination is inaccurately reported on the customs documentation - this occurs most frequently when goods are routed through an intermediary country before continuing on to their final destination.

Statistics Canada does not have a measure of undercoverage but periodically conducts reconciliation exercises with its major trading partners, excluding the United States.

On January 1st, 1990, Canada entered into a Memorandum of Understanding (MOU) with the United States concerning the exchange of import data. As a consequence, each administration is using the other's import data to replace its own export data. Canada's international merchandise trade statistics are, therefore, no longer derived exclusively from the administrative records of Canada Border Services Agency, but from United States Customs records as well.

Customs based information is adjusted to conform with the National Accounts concepts and definitions. The adjustments to derive Balance of Payments based trade data include trade definition, valuation and timing related adjustments. The principal difference between the two trade concepts is that Customs based merchandise trade statistics cover the physical movement of goods as they are reflected on customs documents, while Balance of Payments adjusted data are intended to cover all economic transactions between residents and non-residents which involve merchandise trade. This section describes the concepts and processes pertaining to the Customs based trade statistics only. (For further information on Balance of Payments adjusted data see the publication *"Canada's Balance of International Payments" Catalogue no. 67-001-XPB*).

**3. System of trade:** Canadian trade statistics are compiled according to the "General" system of trade as defined by the United Nations Statistical Office. Under this system, imports include all goods which have crossed Canada's territorial boundary, whether for immediate consumption in Canada or stored in bonded Customs warehouses. Domestic exports include goods grown, extracted or manufactured in Canada, including goods of foreign origin which have been materially transformed in Canada. Re-exports are exports of goods of foreign origin which have not been materially transformed in Canada, including foreign goods withdrawn for export from bonded customs warehouses. Total exports are the sum of Domestic exports and Re-exports. Thus the general trade system, in principal, presents all goods entering the country (imports) and all goods leaving the country (exports). It differs from the "Special" system of trade in the treatment of imported goods into Customs bonded warehouses. Under the "Special" system, these goods are counted only if and when they are withdrawn from Customs warehouses for home consumption. They are not counted in export statistics unless they have first cleared Customs.

Conceptually, under the "General" system, the statistical frontier coincides with the geographical boundary, while under the "Special" system, it coincides with the Customs boundary.

**4. Valuation:** For Customs purposes, imports are recorded at values established according to the provisions of the Customs Act, which, since January 1st, 1985, reflects valuation methods based on the General Agreement on Tariffs and Trade (GATT) Valuation Code System. It generally requires the value for duty of imported goods be equivalent to the transaction value or the price actually paid.

To determine the transaction value of imported goods, all transportation and associated costs arising in respect of the goods being appraised prior to and at the place of direct shipment to Canada, are to be added to the price of the goods. Therefore, Canadian imports are valued F.O.B. (Free on Board), place of direct shipment to Canada. It excludes freight and insurance costs in bringing the goods to Canada from the point of direct shipment.

To countries other than the United States, exports are, in principal, valued or recorded at the values declared on export documents which usually reflect the transaction value, i.e. actual selling price, or in the case of a non-arm's length transaction, the transfer price used for company accounting purposes. Canadian exports to overseas countries are valued at F.O.B. port of exit, including domestic freight charges to that point but net of discounts and allowances. As of January, 1990, Canadian exports to the U.S. are valued F.O.B. point of exit from Canada. Prior to 1990, they were valued F.O.B. place of lading net of freight charges, discounts and allowances.

**5. Statistical period:** The reference period is the calendar month and the calendar year. The closing of the statistical month for imports and Canadian exports to the United States is defined as the last calendar day of the month, based as closely as practicable on the date of clearance from Customs.

The closing of the statistical month for exports, to countries other than the United States, is also defined as the last calendar day of the month. Those export documents which are received too late for incorporation in the current month are assigned to the month the transaction took place. If a monthly summary report from a high volume exporter is not received on time, the data are imputed for the current month and revised with the trade value in the following statistical month.

**6. Trading partner attribution (Country of origin/destination):** Exports are attributed to the country, which is the last known destination of the goods at the time of export. Exports to the United States are attributed to the state of destination.

Imports are attributed to their country of origin, that is, the country in which the goods were grown, extracted or manufactured in accordance to the rules of origin administered by Canada Border Services Agency. Imports from

the United States are attributed to the state of origin. Prior to 1988, most imports were attributed to the country of export/consignment with the exception of imports from Central and South America.

**7. Principal trading areas:** The “principal trading areas” are country groupings defined as follows:

**United States:** (includes trade with Puerto Rico and the U.S. Virgin Islands).

**Japan:**

**E.U. (European Union):** Austria, Belgium, Bulgaria, Cyprus, Czech Republic, Denmark, Estonia, Finland, France, Germany, Greece, Hungary, Ireland, Italy, Latvia, Lithuania, Luxembourg, Malta, Netherlands, Poland, Portugal, Romania, Slovakia, Slovenia, Spain, Sweden and United Kingdom.

**Other O.E.C.D.:** Australia, Canada, Iceland, Mexico, New Zealand, Norway, South Korea, Switzerland, and Turkey. (The E.U. countries, United States, and Japan are also members of O.E.C.D. - the Organization for Economic Co-operation and Development).

**Other countries:** This group includes all countries and territories other than the United States, Japan, E.U. and other O.E.C.D.

**8. Legal framework:** Import and export statistics with countries other than the United States are derived from information contained on administrative records collected by the Canada Border Services Agency under the Customs Act. Copies of these documents (or information therefrom) are sent to Statistics Canada in accordance with Section 25 of the Statistics Act. It follows that the disclosure of trade statistics is governed by both the Customs Act and the Statistics Act and is subject to the provisions of Section 17.(2)(a) of the latter. Disclosure of export statistics to the United States is now governed by a Memorandum of Understanding which provides for an exchange of detailed import statistics between Canada and the United States.

Questions concerning details of methods not covered by these notes should be addressed to the Marketing and Client Services Section, International Trade Division, Statistics Canada, Ottawa, Ontario, K1A 0T6.

**Telephone:** 1-800-294-5583 or within the area code 613-951-9647

**Facsimile:** 1-800-664-0055 or within the area code 613-951-0117

**Internet:** *trade@statcan.gc.ca*