

SENIORS' HOUSING REPORT

Québec



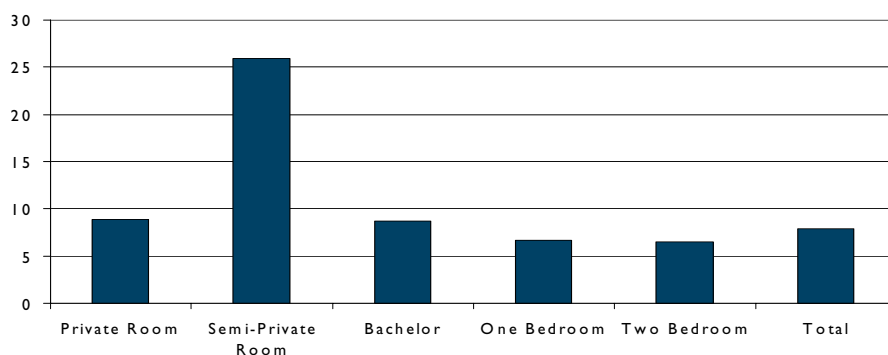
Canada Mortgage and Housing Corporation

Date Released: 2009

Highlights

- The vacancy rate for standard retirement home spaces stood at 7.9 per cent in Quebec
- Results and market conditions are variable across regions
- Room and board type units made up 40 per cent of standard places
- The average rent (for either room and board or apartments) surpassed \$ 1,100
- Quebec stands out with the highest capture rate in Canada

Figure 1

Vacancy Rates (%) of Standard Spaces by Unit Type
(province of Quebec)

Source: CMHC

Table of Contents

4 Vacancy Rates

5 Universe

6 Rents

8 Spotlight on...

12 Data Tables

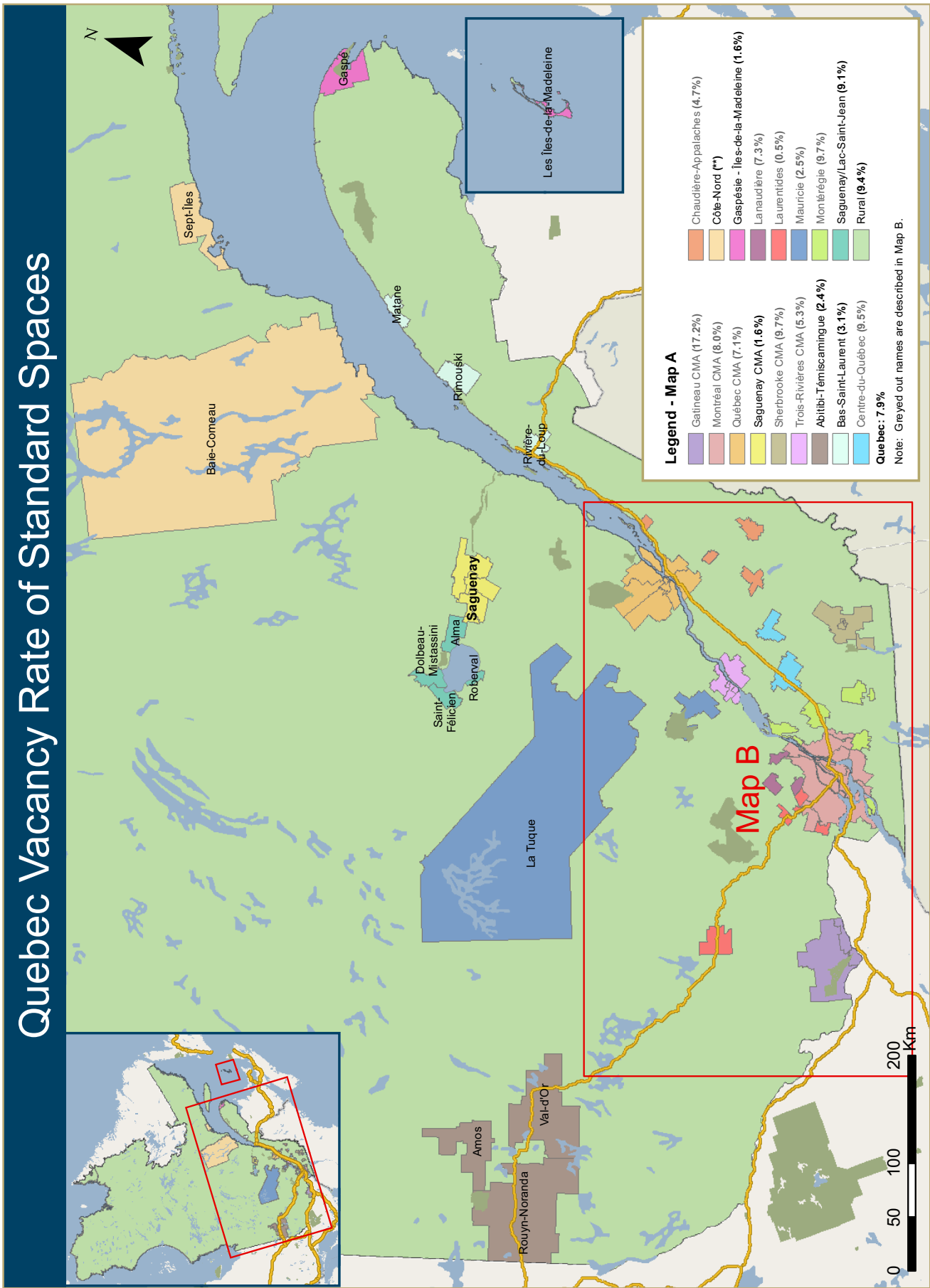
54 Methodology

54 Definitions

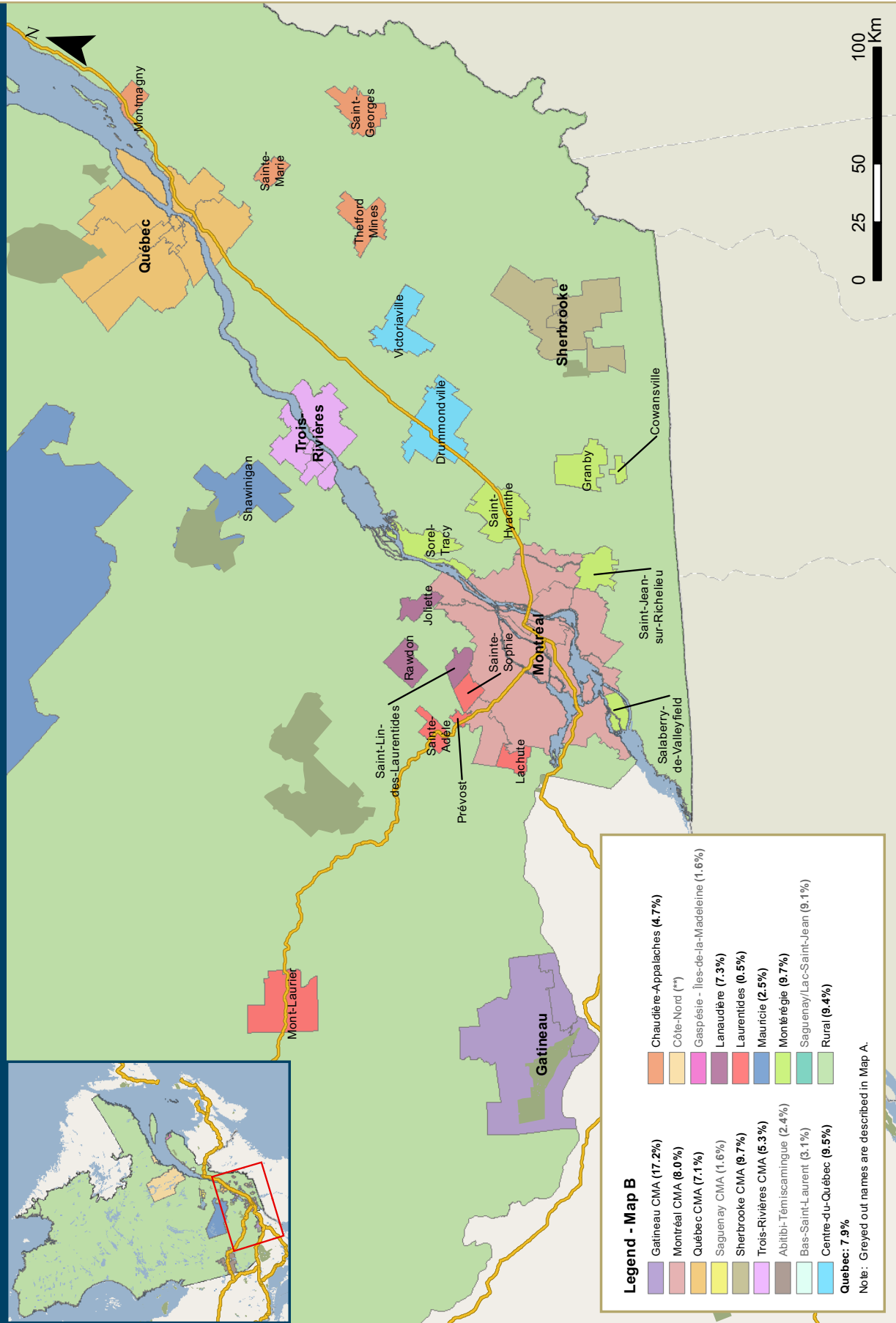
SUBSCRIBE NOW!

Access CMHC's Market Analysis Centre publications quickly and conveniently on the Order Desk at www.cmhc.ca/housingmarketinformation. View, print, download or subscribe to get market information e-mailed to you on the day it is released. CMHC's electronic suite of national standardized products is available for free.

Quebec Vacancy Rate of Standard Spaces



Quebec Vacancy Rate of Standard Spaces



VACANCY RATES

Vacancy rate at 7.9 per cent in Quebec

According to the results of the National Seniors' Housing Survey conducted by Canada Mortgage and Housing Corporation (CMHC) in February 2009, the vacancy rate for standard retirement home spaces stood at 7.9 per cent in Quebec. Standard spaces include all types of units where residents receive less than one and a half hours of medical care per day. However, this vacancy rate conceals rental performance disparities among the different unit types; in fact, while less than 7 per cent of apartments with one or two bedrooms were unoccupied, nearly 9 per cent of bachelor apartments and room-and-board units were vacant.

For the first time as part of a seniors' housing survey, CMHC also collected data on heavy care spaces, where, contrary to standard spaces, residents receive more than one and a half hours of medical care per day.

The survey results revealed that market conditions were softer for heavy care units than for standard spaces, with a vacancy rate that was 3.8 percentage points higher (11.7 per cent).

Market conditions tight in Saguenay but soft in Gatineau

In urban centres with 100,000 or more inhabitants (namely, census metropolitan areas, or CMAs), the results were mixed. In the Saguenay area, the vacancy rate for standard spaces stood at 1.6 per cent, the lowest of Québec's major urban centres. Conditions were especially tight for bachelor units and one-bedroom apartments, which both had vacancy rates below 1 per cent. The increase in the number of people aged 75 years or older in this area—the strongest hike among Québec's CMAs according to the data from the last two censuses—may therefore have contributed to stimulating demand for rental units in

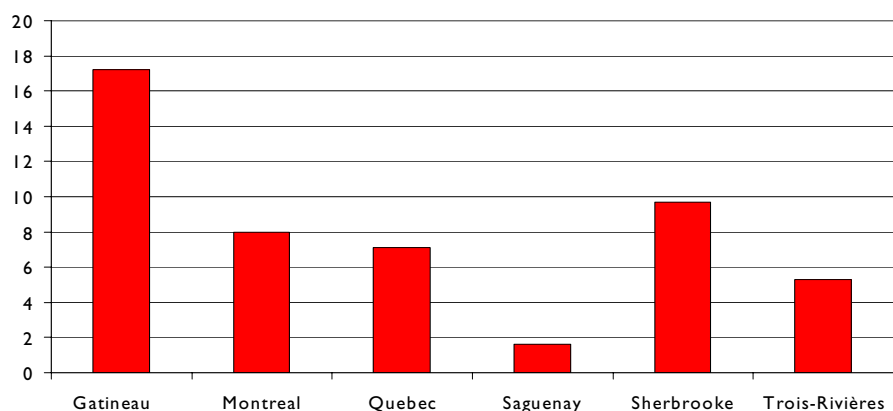
retirement homes.

With a vacancy rate of 8 per cent, the Montréal CMA posted conditions that were the most similar to those prevailing at the provincial level. Also, just like for Quebec overall, the proportions of vacant units were lower for units with one or two bedrooms than for bachelor apartments or room-and-board units. Within the CMA, market conditions were the softest on the Island of Montréal (where the vacancy rate was 9.2 per cent). This probably resulted from the significant number of upper-range spaces in the survey universe there and also from the addition of several new retirement homes in this sector. The tightest market conditions in the CMA were observed on the South Shore, with a vacancy rate of 6 per cent.

In the Québec CMA, the survey results revealed that the vacancy rate for standard spaces reached 7.1 per cent in February 2009. With the exception of semi-private rooms,

Figure 2

Vacancy Rates (%) of Standard Spaces by Unit Type (Quebec CMAs)



Source: CMHC

2009 Vacancy Rates (%)

	Standard spaces	Total
British Columbia	7.5	5.4
Alberta	5.9	5.4
Saskatchewan	3.4	2.8
Manitoba	7.8	6.4
Ontario	13.3	13.2
Quebec	7.9	7.9
Nova Scotia	7.3	8.3
New Brunswick	6.4	6.6
Prince Edward Island	9.3	8.8
Newfoundland & Labrador	18.9	14.2
Canada	9.2	8.7

for which more than one in four units were unoccupied, all other unit types had vacancy rates varying between plus or minus two percentage points from the average for the CMA (thus, between 5.1 per cent and 9.1 per cent). The Québec area market was also characterized by a geographic polarization. In fact, three of the nine zones had relatively low vacancy rates (Lévis, Val-Bélair and Charny), while conditions were much softer in the other zones.

Contrary to the previously mentioned CMAs, Gatineau stood out as the area where apartments were the most difficult to rent out. The vacancy rate for one-bedroom apartments attained 24.2 per cent, and the rate for two-bedroom units was 25.8 per cent. For all unit types combined, the percentage of vacant units in retirement homes reached 17.2 per cent in February 2009, making Gatineau the metropolitan area with the softest market.

With a vacancy rate of just under 10 per cent, the Sherbrooke CMA had the second highest proportion of unoccupied spaces. This rate was mainly attributed to the significant percentages (between 15 per cent and 20 per cent) of vacant bachelor units and one-bedroom apartments in the city of Sherbrooke (pre-merger). By comparison, the vacancy rate in Magog, for all unit types combined, was just 2.8 per cent.

Lastly, in the Trois-Rivières CMA, the vacancy rate for standard spaces reached 5.3 per cent in 2009. Rooms and two-bedroom apartments registered the highest proportions of unoccupied units (between 6 per cent and 7 per cent), while market conditions were tighter for bachelor

units and one-bedroom apartments (with rates between 4 per cent and 5 per cent). All zones, except for Cap-de-la-Madeleine, posted vacancy rates above 4 per cent.

Lower vacancy rates in Shawinigan and Granby

In the large census agglomerations (CAs), that is, those with 50,000 to 99,999 inhabitants, the tightest market conditions were noted in Shawinigan and Granby (with vacancy rates of 2.6 per cent and 3.3 per cent, respectively) while, in Drummondville and Saint-Jean-sur-Richelieu, more than one in ten units had not yet found takers. With a vacancy rate of 8 per cent, the Saint-Hyacinthe CA stood in the middle of the pack. As for retirement homes in rural areas (with fewer than 10,000 inhabitants), they recorded a vacancy rate of 9.4 per cent, or just above the average for Québec overall.

UNIVERSE

Rooms make up nearly four in ten retirement home spaces in Québec

According to the latest survey, there were 32,603 room-and-board units among all standard spaces in Québec. This figure represents nearly 40 per cent of the 83,025 retirement home units across Québec. One-bedroom apartments were the second most common unit type (32 per cent of standard spaces), followed by bachelor units (17 per cent of standard spaces) and two-bedroom apartments (12 per cent of standard spaces).

With all spaces considered, the universe rose to 88,201 units, representing an addition of about 5,000 units to the existing standard spaces. Out of this number, more than 4,000 were rooms, which is not surprising since many of them likely have as residents seniors who need relatively significant medical care.

Two thirds of standard spaces located in CMAs

Québec's urban centres with 100,000 or more inhabitants had two thirds of all standard spaces in the province. As well, the proportion of people aged 75 years or older¹ who live in CMAs across Québec was also about 66 per cent.

Contrary to the results mentioned in the previous section, one-bedroom apartments accounted for the largest share of the universe of standard spaces in the Montréal and Québec CMAs (around 40 per cent of the 34,982 spaces in the Montréal area and the 9,096 spaces in the Québec area). Rooms ranked second, with about one in four of all units, both in Montréal and Québec. The remainder was divided between bachelor units and two-bedroom apartments. In Gatineau, room-and-board units represented one third of the universe, while most of the apartments there were one-bedroom units.

In Saguenay and Sherbrooke, the situation was also different, as room-and-board units made up nearly half of all rental units for seniors (universe of 1,966 spaces in Saguenay and 3,664 in Sherbrooke). In the Trois-Rivières area, more than half of the 3,137 standard spaces enumerated were apartments.

¹ People aged 75 years or older represent a significant client group in retirement homes.

Census agglomerations (with 10,000 to 100,000 inhabitants), for their part, had 21 per cent of the universe of standard rental retirement home spaces, while this proportion was 13 per cent for rural areas. And, in these last areas, room-and-board units largely dominated, as they represented 8,321 of the 10,996 spaces.

Finally, it should be mentioned that the Gatineau area had the largest proportion of spaces other than standard, with 15 per cent of the universe there. By comparison, this percentage was only 2 per cent in the capital of the Eastern Townships and varied between 3 per cent and 8 per cent in the other CMAs².

AVERAGE RENTS

Average rents above \$1,100 for both rooms and apartments in Quebec

The survey results revealed that the average rent for standard spaces in Quebec was \$1,333 in February 2009. Average monthly costs stood at \$1,266 for room-and-board units and at \$1,338 in the case of semi-private rooms. As for apartments, the monthly rents were \$1,179 for bachelor units, \$1,372 for one-bedroom apartments and \$1,670 for two-bedroom units. Also, as a sign of the more significant medical care provided there, heavy care spaces had an average rent of \$2,563 at the time of our latest survey, for a difference of about \$1,300 with the average for standard rooms.

Figure 3

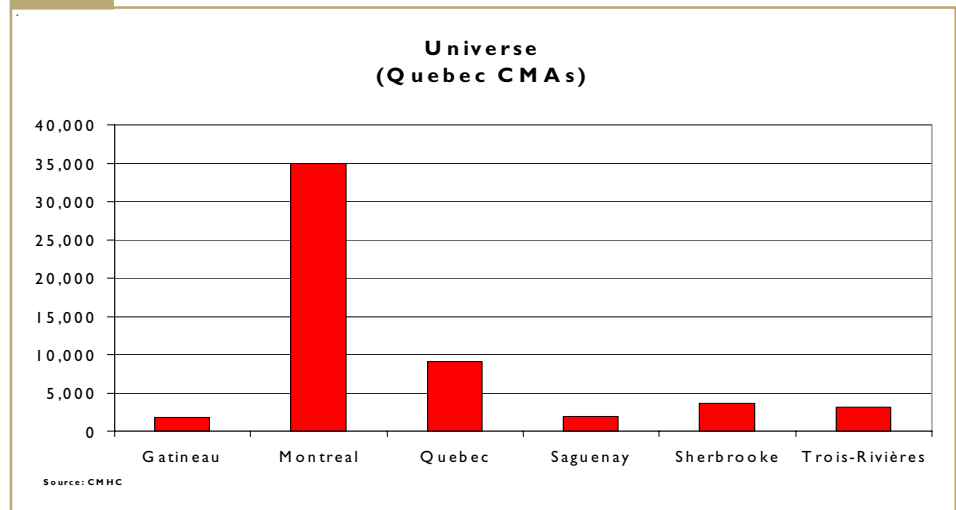
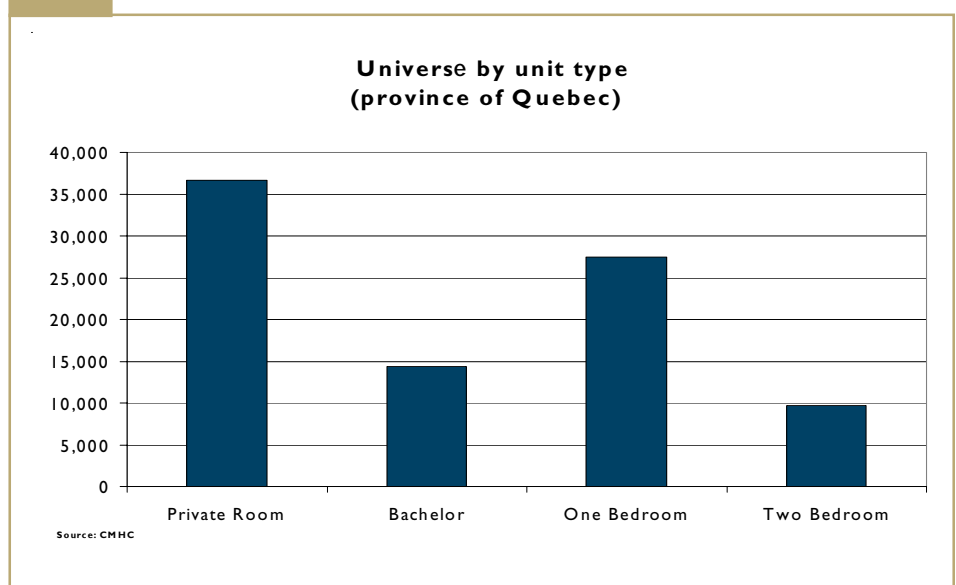


Figure 4



Analysis of the results shows that units with rents in the upper range have a higher vacancy rate. In fact, while the vacancy rate for standard spaces with rents between \$900 and \$1,600 was just below 7 per cent, the proportion of unoccupied units with monthly costs above \$1,600 was 10.3 per cent. It should be noted, however, that units renting for more than \$1,600 account for just

18 per cent of the total supply, while units with rents between \$900 and \$1,600 represent seven out of ten units.

Surprisingly at first glance, standard spaces with rents of \$900 or less also had a relatively high vacancy rate of 10.3 per cent. This may result from the fact that these units are contained in retirement homes that

² This calculation cannot be done for the Trois-Rivières CMA, as spaces other than standard are not published for reasons of confidentiality or statistical reliability.

are less recent or that offer fewer services, which may, in turn, attract fewer potential clients.

Average rents mixed across Quebec CMAs

Among all the CMAs, Gatineau had the highest average rent, at \$1,695. The arrival of many new units (with more care services) on the market there in recent years may have contributed to such a result. In the Montréal area, the average rent was \$1,417 in February 2009. The Island of Montréal, where 29 per cent of the spaces were in the upper rent range (more than \$1,600), was the most expensive sector (with an average rent of \$1,476) in the CMA. This rent was about the same as the average cost to live in a retirement home in the Québec area (\$1,480) at the time of our latest survey. As for the Saguenay and Trois-Rivières areas, their average rents were very similar, both at around \$1,280. The Sherbrooke area stood out with the most affordable average rent, at \$1,178.

Just like in the province overall, units renting for \$900 or less had the highest vacancy rates in most Quebec CMAs. For units with rents in the upper range (above \$1,600), however, the results were much more mixed across the CMAs.

Contrary to the situation observed in the CMAs, the average rents varied much less significantly from one large CA to another. In fact, the most affordable average rent was \$1,158 in Shawinigan, while the highest was observed in Granby (\$1,254).

Figure 5

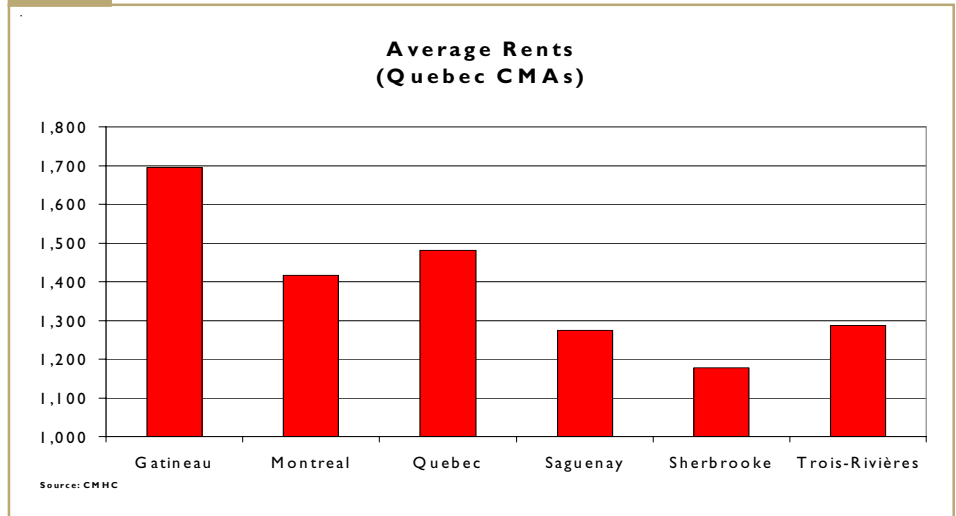
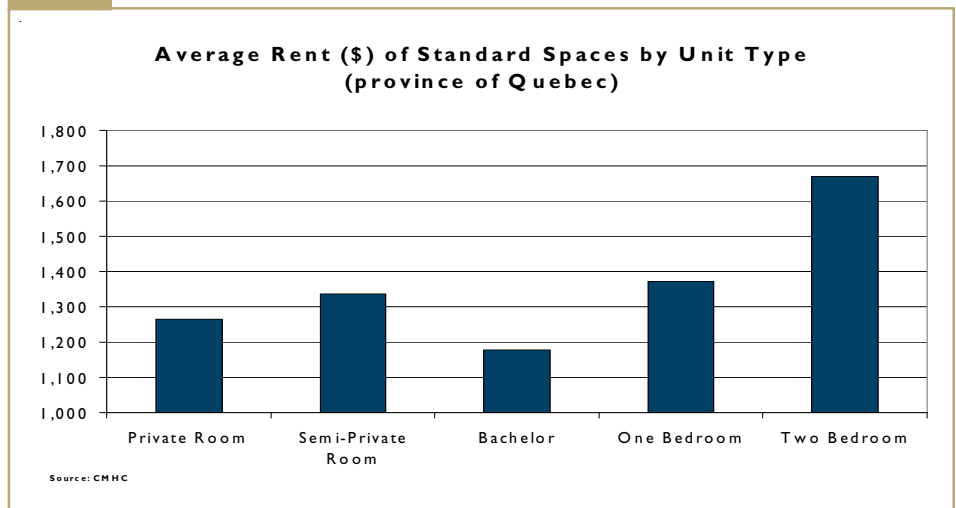


Figure 6



Spotlight on...

Capture rates

The capture rate, as defined by the survey, is the proportion of the population aged 75 years or older living in the retirement homes included in the survey universe.

Quebec stands out from the rest of Canada

In Quebec, the capture rate stood at 17.3 per cent at the time our survey in February 2009. This was the highest rate in Canada and the only one that was above the 10-per-cent mark. The closest Canadian province was Prince Edward Island, with a capture rate of 9.8 per cent. In the Western provinces, the Prairies, Ontario, and Newfoundland and Labrador, the capture rates varied between 4.9 per cent and 7.3 per cent.

In other words, while about one in five people aged 75 years or older lived in a retirement home in Quebec, only around one in twenty did so in the provinces listed above. In Nova Scotia, this rate was even below 1 per cent.

This does not necessarily mean that people aged 75 years or older in the rest of Canada do not change housing tenures. It may be that a non-negligible number of them go from ownership to condominium or to rental tenure but not to a specialized "retirement" residence.

In Quebec CMAs

Among the Quebec CMAs, the Sherbrooke area had the highest capture rate, at 31 per cent. In fact, nearly one in three people aged 75 years or older lived in a retirement

home in the capital of the Eastern Townships. The Trois-Rivières CMA had the second highest capture rate (26 per cent), followed by the Saguenay and Québec CMAs, with rates of 20 per cent.

The areas with the lowest capture rates were Montréal and Gatineau, which had rates of 17 per cent and 15 per cent, respectively. The low capture rate in Gatineau does not necessarily explain the high vacancy rate there at the time. In the case of Sherbrooke, the high capture rate could mean that the number of potential new clients may be limited, at least in the short term.

QUÉBEC SENIORS' HOUSING REPORT - ZONE DESCRIPTIONS		
Zone		Municipalities, boroughs or sectors
Gatineau CMA		
City of Gatineau (601-602)		
601	Gatineau East	Buckingham, Masson-Angers, Gatineau
602	Gatineau West	Hull, Aylmer
Outlying Sector (603)		
603	Outlying Sector	Pontiac, Chelsea, La Pêche, Cantley, Denholm, Val-des-Monts, L'Ange-Gardien
Montréal CMA		
Island of Montréal (101-105)		
101	Island Centre	Downtown, Notre-Dame-de-Grâce, Côte-Saint-Luc, Côte-des-Neiges, Montréal-Ouest, Hampstead, Westmount, Mont-Royal, Plateau Mont-Royal, Outremont, Rosemont, Villieray, Verdun, Le Sud-Ouest
102	Island West	Beaconsfield, Senneville, Roxboro, Sainte-Anne-de-Bellevue, Pierrefonds, L'Île-Bizard, L'Île-Dorval, Sainte-Geneviève, Baie-d'Urfé, Kirkland, LaSalle, Lachine, Dorval, Dollard-des-Ormeaux, Pointe-Claire, Saint-Laurent
103	Island North	Cartierville, Montréal-Nord, Rivière-des-Prairies, Ahuntsic
104	Island East	Montréal-Est, Pointe-aux-Trembles, Mercier, Anjou, Saint-Léonard, Hochelaga-Maisonneuve, Saint-Michel
105	Vaudreuil-Soulanges	Pincourt, Hudson, Saint-Lazare, Les Cèdres, Pointe-des-Cascades, Vaudreuil-Dorion, Terrasse Vaudreuil, Vaudreuil-sur-le-Lac, Notre-Dame-de-l'Île-Perrot, L'Île-Cadieux, Coteau-du-Lac, Les Coteaux, L'Île-Perrot
Laval and North Shore (106-108)		
106	Laval	Laval
107	North Shore	La Plaine, Lachenaie, Terrebonne, Mascouche, L'Assomption, Repentigny, Le Gardeur, Charlemagne, L'Épiphanie, Saint-Gérard-Majella, Saint-Sulpice, Blainville, Sainte-Thérèse, Boisbriand, Bois-des-Filion, Rosemère, Lorraine, Sainte-Anne-des-Plaines, Mirabel, Saint-Placide, Deux-Montagnes, Oka, Saint-Eustache, Sainte-Marthe-sur-le-Lac, Pointe-Calumet, Saint-Joseph-du-Lac, Saint-Antoine-de-Lavaltrie, Lavaltrie
108	Saint-Jérôme	Saint-Jérôme, Saint-Antoine, Lafontaine, Bellefeuille, Gore, Saint-Colomban
South Shore (109-111)		
109	South Shore Centre	Longueuil, Brossard, Saint-Hubert, Saint-Lambert, Lemoyne, Greenfield Park
110	South Shore East	Boucherville, Varennes, Sainte-Julie, Saint-Bruno, Saint-Basile-le-Grand, Saint-Amable, Mont-Saint-Hilaire, Otterburn Park, Saint-Mathieu-de-Beloeil, McMasterville, Carignan, Chambly, Richelieu, Saint-Mathias-sur-Richelieu, Notre-Dame-de-Bon-Secours, Beloeil, Saint-Bruno-de-Montarville, Verchères
111	South Shore West	La Prairie, Candiac, Saint-Constant, Sainte-Catherine, Delson, Saint-Philippe, Saint-Isidore, Mercier, Châteauguay, Léry, Beauharnois, Melocheville, Maple Grove, Saint-Mathieu
Québec CMA		
North Centre (1-4)		
1	Basse-Ville, Vanier	Basse-Ville (including Limoilou, Saint-Roch, Saint-Sauveur), Vanier
2	Haute-Ville	Haute-Ville (including Saint-Jean-Baptiste, Champlain, Montcalm)
3	Québec des Rivières, L'Ancienne-Lorette	Québec des Rivières (including Neufchâtel, Duberger, Les Saules, Lebourgneuf), L'Ancienne-Lorette
4	Sainte-Foy, Sillery, Cap-Rouge, Saint-Augustin	Sainte-Foy, Sillery, Cap-Rouge, Saint-Augustin-de-Desmaures
Northern Suburbs (5-7)		
5	Val-Bélair, Saint-Émile, Loretteville and others	Val-Bélair, Saint-Émile, Loretteville, Lac-Saint-Charles, Lac-Delage, Valcartier, Shannon, Lac-Saint-Joseph, Sainte-Catherine-de-la-Jacques-Cartier, Fossambault
6	Charlesbourg, Stoneham and others	Charlesbourg, Lac Beauport, Stoneham-et-Tewkesbury
7	Beauport, Boischatel, Î.O. and others	Beauport, Sainte-Brigitte-de-Laval, Boischatel, L'Ange-Gardien, Château-Richer, Île d'Orléans

QUÉBEC SENIORS' HOUSING REPORT - ZONE DESCRIPTIONS		
Zone		Municipalities, boroughs or sectors
Québec CMA (continued)		
South Shore (8-9)		
8	Charny, Saint-Romauld, Saint-Jean Chr. and others	Charny, Saint-Rédempteur, Breakeyville, Saint-Romuald, Saint-Jean-Chrysostome, Saint-Nicolas, Saint-Lambert, Saint-Étienne
9	Lévis, Pintendre and others	Lévis, Pintendre, Saint-Joseph-de-Lévis, Beaumont
Saguenay CMA		
City of Saguenay (301-303)		
301	Chicoutimi	Chicoutimi
302	Jonquière	Jonquière
303	La Baie	La Baie
Outlying Sector (304)		
304	Outlying Sector	Larouche, Saint-Honoré, Saint-Fulgence
Sherbrooke CMA		
City of Sherbrooke (401-404 and 406)		
401	East District	North: city limits, South: city limits, East: city limits, West: Saint-François River
402	North District	North: city limits, South: Magog River, East: Saint-François River and Queen North
403	West District	North: Magog River and Galt West, South: city limits, East: Wellington South, West: Magog River
404	Central District	North: Saint-François River, South: Galt West and Wellington, East: Saint-François River, West: Belvédère and Queen North
406	Magog	Magog
Suburbs (405)		
405	Suburbs	Ascot Corner, Ascot, Bromptonville, Brompton Township, Deauville, Hatley Township, Ascot Township, Fleurimont, Compton Station, Lennoxville, North Hatley, Rock Forest, Saint-Denis-de-Brompton, Saint-Élie-d'Orford, Stoke, Waterville
Trois-Rivières CMA		
Trois-Rivières Centre (501-503)		
501	Trois-Rivières	Trois-Rivières
502	Trois-Rivières-Ouest	Trois-Rivières-Ouest
503	Cap-de-la-Madeleine	Cap-de-la-Madeleine
Outlying Sector (504)		
504	Outlying Sector	Bécancour, Champlain, Pointe-du-Lac, Saint-Louis-de-France, Saint-Maurice

TABLES INCLUDED IN THE QUÉBEC SENIORS' HOUSING REPORT

- 1.1 Vacancy Rate (%) of Standard Spaces by Zone and Unit Type
- 1.2 Vacancy Rate of Standard Spaces (%) by Zone and Rent Range (\$)
- 1.3 Vacancy Rates (%) and Average Rents (\$) of Heavy Care Spaces by Zone

- 2.1 Universe of Standard Spaces by Zone and Unit Type
- 2.2 Total Universe by Zone and Unit Type
- 2.3 Universe of Standard Spaces by Zone and Rent Range (\$)
- 2.4 Proportion (%) of Structures where Select Services are Available By Structure Size and Zone
- 2.5 Proportion (%) of Structures with Access to Selected Amenities
- 2.6 Universe, Number of Residents Living in Universe and Capture Rate (%) by Zone

- 3.1 Average Rent (\$) of Standard Spaces by Zone and Unit Type

[To access Supplementary Tables click here](#)

1.1 – Vacancy Rates (%) of Standard Spaces by Zone and Unit Type

Québec

Centre	Private Room	Semi-Private Room	Bachelor	One Bedroom	Two Bedroom	Total
Gatineau CMA	8.6 ^a	n/u	9.6 ^a	24.2 ^a	25.8 ^a	17.2 ^a
Gatineau East	6.3 ^a	n/u	**	28.0 ^a	**	20.2 ^a
Gatineau West	12.4 ^a	n/u	10.5 ^a	19.2 ^a	**	14.2 ^a
Surrounding Area	**	n/u	n/u	n/u	n/u	**
Montréal CMA	10.6 ^a	15.1 ^a	9.4 ^a	6.7 ^a	5.7 ^a	8.0 ^a
Island of Montréal	12.9 ^a	15.1 ^a	9.6 ^a	8.5 ^a	5.5 ^a	9.2 ^a
Island Centre	11.8 ^a	13.3 ^a	9.3 ^a	6.7 ^a	7.5 ^a	9.1 ^a
Island West	20.3 ^a	**	18.8 ^a	13.9 ^a	5.4 ^a	14.1 ^a
Island North	8.8 ^a	n/u	6.4 ^a	6.4 ^a	3.2 ^a	6.2 ^a
Island East	10.1 ^a	**	7.4 ^a	7.1 ^a	7.8 ^a	7.9 ^a
Vaudreuil-Soulanges	22.6 ^a	**	**	**	**	8.5 ^a
Laval/North Shore	9.0 ^a	17.6 ^a	11.7 ^a	5.1 ^a	4.9 ^a	6.9 ^a
Laval	9.1 ^a	**	12.9 ^a	5.1 ^a	4.5 ^a	6.8 ^a
North Shore	6.9 ^a	18.2 ^a	7.7 ^a	4.6 ^a	4.3 ^a	5.8 ^a
Saint-Jérôme	14.9 ^a	n/u	n/u	**	**	12.8 ^a
Montréal/South Shore	8.3 ^a	**	6.0 ^a	2.9 ^a	8.9 ^a	6.0 ^a
South Shore Centre	10.9 ^a	**	5.6 ^a	2.2 ^a	12.9 ^a	7.1 ^a
South Shore East	6.3 ^a	n/u	6.0 ^a	3.8 ^a	2.1 ^a	5.1 ^a
South Shore West	**	n/u	6.5 ^a	3.4 ^a	**	4.8 ^a
Québec CMA	8.0 ^a	27.3 ^a	9.5 ^a	5.4 ^a	6.5 ^a	7.1 ^a
Centre North	10.8 ^a	25.0 ^a	12.8 ^a	6.4 ^a	5.7 ^a	8.4 ^a
Basse-Ville	10.9 ^a	**	7.6 ^a	4.0 ^a	4.6 ^a	7.7 ^a
Haute-Ville	18.7 ^a	n/u	13.9 ^a	1.8 ^a	2.5 ^a	7.5 ^a
Québec des Rivières	2.8 ^a	n/u	10.1 ^a	10.8 ^a	9.9 ^a	9.1 ^a
Sainte-Foy	9.2 ^a	**	19.6 ^a	7.8 ^a	6.3 ^a	9.1 ^a
Northern Suburbs	9.7 ^a	**	7.7 ^a	4.5 ^a	8.3 ^a	7.1 ^a
Val-Bélair	2.6 ^a	**	1.8 ^a	**	**	1.6 ^a
Charlesbourg	**	n/u	8.0 ^a	7.9 ^a	8.9 ^a	8.1 ^a
Beauport	12.1 ^a	n/u	8.3 ^a	1.4 ^a	**	7.7 ^a
Québec/South Shore	2.2 ^a	**	1.3 ^a	1.5 ^a	**	1.9 ^a
Charny	4.0 ^a	**	**	**	**	3.6 ^a
Lévis	1.5 ^a	n/u	1.9 ^b	0.8 ^a	**	1.3 ^a
Saguenay CMA	2.5 ^a	**	0.3 ^a	0.7 ^a	2.0 ^a	1.6 ^a
Chicoutimi	1.0 ^a	**	**	**	**	0.6 ^a
Jonquière	3.3 ^a	n/u	0.6 ^a	1.3 ^a	4.5 ^a	2.2 ^a
La Baie	4.6 ^a	n/u	**	n/u	n/u	3.6 ^a
Sherbrooke CMA	6.7 ^a	**	18.6 ^a	13.6 ^a	2.9 ^b	9.7 ^a
Old City of Sherbrooke	7.1 ^a	n/u	18.2 ^d	15.8 ^a	3.2 ^c	11.1 ^a
East	14.3 ^a	n/u	3.8 ^a	3.7 ^a	0.5 ^a	5.7 ^a
North	2.3 ^c	n/u	**	25.5 ^a	**	17.8 ^a
West	**	n/u	**	**	**	**
Centre	5.5 ^a	n/u	**	**	**	3.9 ^a

(continued)

1.1 – Vacancy Rates (%) of Standard Spaces by Zone and Unit Type

Québec

Centre	Private Room	Semi-Private Room	Bachelor	One Bedroom	Two Bedroom	Total
Magog	2.4 ^a	n/u	**	**	**	2.8 ^a
Suburb	9.6 ^a	**	**	1.1 ^a	**	8.2 ^a
Trois-Rivières CMA	6.2 ^a	**	4.1 ^a	4.8 ^a	6.9 ^a	5.3 ^a
Trois-Rivières Centre	3.7 ^a	n/u	4.2 ^a	5.2 ^a	7.0 ^a	4.8 ^a
Trois-Rivières	1.0 ^a	n/u	6.5 ^a	5.2 ^a	13.9 ^a	5.8 ^a
Trois-Rivières-Ouest	2.2 ^a	n/u	3.5 ^a	9.9 ^a	**	4.9 ^a
Cap-de-la-Madeleine	8.8 ^a	n/u	1.3 ^a	1.5 ^a	**	3.0 ^a
Surrounding Area	11.0 ^a	**	**	2.2 ^a	**	7.6 ^a
Abitibi-Témiscamingue	2.5 ^a	n/u	n/u	**	n/u	2.4 ^a
Amos CA	**	n/u	n/u	**	n/u	**
Rouyn-Noranda CA	**	n/u	n/u	n/u	n/u	**
Val-d'Or CA	2.0 ^a	n/u	n/u	n/u	n/u	2.0 ^a
Bas-Saint-Laurent	4.6 ^a	n/u	1.5 ^a	0.8 ^a	**	3.1 ^a
Matane CA	**	n/u	n/u	n/u	n/u	**
Rimouski CA	0.8 ^a	n/u	0.7 ^a	**	**	0.6 ^a
Rivière-du-Loup CA	9.8 ^a	n/u	4.2 ^a	1.1 ^a	**	5.7 ^a
Centre-du-Québec	10.7 ^a	n/u	3.2 ^c	6.4 ^a	26.0 ^a	9.5 ^a
Drummondville CA	8.0 ^a	n/u	2.4 ^a	10.3 ^a	32.8 ^a	11.6 ^a
Victoriaville CA	13.1 ^c	n/u	3.7 ^d	0.5 ^b	**	7.2 ^b
Chaudière-Appalaches	7.1 ^a	n/u	1.8 ^a	5.1 ^a	1.4 ^a	4.7 ^a
Montmagny	19.6 ^a	n/u	**	**	**	10.6 ^a
Sainte-Marie	**	n/u	**	**	**	11.4 ^c
Saint-Georges CA	**	n/u	2.4 ^a	1.2 ^a	**	1.6 ^a
Thetford Mines CA	3.4 ^a	n/u	**	2.8 ^a	**	2.7 ^a
Côte-Nord	**	n/u	**	**	**	**
Baie-Comeau CA	**	n/u	n/u	**	**	**
Sept-Îles CA	n/u	n/u	**	**	**	**
Gaspésie/Îles-de-la-Madeleine	1.7 ^a	n/u	**	n/u	n/u	1.6 ^a
Gaspé	**	n/u	n/u	n/u	n/u	**
Îles de la Madeleine	**	n/u	**	n/u	n/u	**
Lanaudière	8.6 ^b	n/u	26.7 ^d	2.6 ^b	4.0 ^c	7.3 ^a
Joliette CA	6.7 ^c	n/u	21.9 ^d	2.4 ^c	2.4 ^c	5.9 ^b
Rawdon	**	n/u	**	**	**	**
Saint-Lin-des-Laurentides	**	n/u	n/u	**	**	**
Laurentides	0.8 ^a	n/u	**	**	**	0.5 ^a
Lachute CA	n/u	n/u	**	**	**	**
Mont-Laurier	**	n/u	**	**	n/u	**
Prévost	n/u	n/u	n/u	n/u	n/u	n/u
Sainte-Adèle	**	n/u	n/u	n/u	n/u	**
Sainte-Sophie	**	n/u	n/u	n/u	n/u	**

(continued)

I.1 – Vacancy Rates (%) of Standard Spaces by Zone and Unit Type

Québec

Centre	Private Room	Semi-Private Room	Bachelor	One Bedroom	Two Bedroom	Total
Mauricie	2.4 a	n/u	**	2.3 a	**	2.5 a
La Tuque CA	n/u	n/u	**	**	**	**
Shawinigan CA	2.4 a	n/u	**	2.6 a	**	2.6 a
Montréal	11.7 a	**	9.3 a	5.3 a	3.8 a	9.7 a
Cowansville CA	18.3 a	n/u	**	**	**	16.7 a
Granby CA	3.2 b	n/u	4.8 c	**	**	3.3 b
Saint-Hyacinthe CA	6.1 a	**	20.0 a	5.2 a	6.2 a	8.0 a
Saint-Jean-sur-Richelieu CA	23.3 a	n/u	**	0.6 a	**	12.3 a
Salaberry-de-Valleyfield CA	15.2 d	n/u	n/u	n/u	**	14.9 c
Sorel-Tracy CA	3.7 a	n/u	**	**	**	8.3 a
Saguenay/Lac-Saint-Jean	7.3 a	**	6.7 a	18.3 a	2.8 a	9.1 a
Alma CA	7.7 a	n/u	7.7 a	**	**	12.0 a
Dolbeau-Mistassini CA	5.1 a	**	8.9 a	7.9 a	**	7.2 a
Roberval	**	n/u	**	**	**	**
Saint-Félicien	**	n/u	**	n/u	n/u	**
Rural	10.0 a	**	9.4 b	5.1 c	4.9 c	9.4 a
Province of Québec	8.9 a	25.9 d	8.7 a	6.7 a	6.5 a	7.9 a

The following letter codes are used to indicate the reliability of the estimates:

a – Excellent, b – Very good, c – Good, d – Fair (Use with Caution)

** Data suppressed to protect confidentiality or data is not statistically reliable

n/u: No units exist in universe for this category n/s: No units exist in the sample for this category n/a: Not applicable

I.2 – Vacancy Rates (%) of Standard Spaces by Zone and Rent Range (\$)

Québec

Centre	\$900 or less	\$901 - \$1,200	\$1,201 - \$1,600	\$1,601+	Total where rents are known
Gatineau CMA	**	8.3 ^a	12.3 ^a	22.3 ^a	17.2 ^a
Gatineau East	**	7.5 ^a	17.7 ^a	27.0 ^a	20.2 ^a
Gatineau West	**	11.5 ^a	7.4 ^a	17.6 ^a	14.2 ^a
Surrounding Area	n/u	**	**	n/u	**
Montréal CMA	10.8 ^a	7.4 ^a	6.7 ^a	9.6 ^a	8.0 ^a
Island of Montréal	9.9 ^a	8.9 ^a	7.6 ^a	11.1 ^a	9.3 ^a
Island Centre	5.3 ^a	8.7 ^a	8.8 ^a	10.8 ^a	9.1 ^a
Island West	**	21.7 ^a	12.8 ^a	10.5 ^a	14.1 ^a
Island North	8.6 ^a	5.0 ^a	2.6 ^a	12.3 ^a	6.2 ^a
Island East	12.2 ^c	7.2 ^a	6.3 ^a	12.9 ^a	8.0 ^a
Vaudreuil-Soulanges	n/u	**	9.1 ^a	11.6 ^a	8.5 ^a
Laval/North Shore	12.9 ^a	6.0 ^a	6.9 ^a	3.6 ^a	6.9 ^a
Laval	14.8 ^a	5.2 ^a	5.9 ^a	4.3 ^a	6.8 ^a
North Shore	7.1 ^a	6.8 ^a	6.1 ^a	2.0 ^a	5.8 ^a
Saint-Jérôme	**	7.1 ^b	18.9 ^a	n/u	12.8 ^a
Montréal/South Shore	9.7 ^b	6.0 ^a	4.0 ^a	10.2 ^a	6.2 ^a
South Shore Centre	**	6.8 ^a	2.7 ^a	14.1 ^a	7.3 ^a
South Shore East	**	5.3 ^b	4.8 ^b	4.1 ^c	5.1 ^a
South Shore West	**	4.9 ^a	6.2 ^a	**	4.8 ^a
Québec CMA	10.9 ^a	6.1 ^a	7.7 ^a	7.4 ^a	7.3 ^a
Centre North	8.5 ^a	7.5 ^a	8.6 ^a	9.5 ^a	8.7 ^a
Basse-Ville	5.8 ^a	6.9 ^a	9.9 ^a	1.2 ^a	7.7 ^a
Haute-Ville	**	**	9.1 ^a	7.4 ^a	7.5 ^a
Québec des Rivières	**	9.1 ^a	9.7 ^a	2.1 ^a	9.1 ^a
Sainte-Foy	**	9.4 ^b	5.7 ^b	12.5 ^a	9.8 ^a
Northern Suburbs	33.9 ^a	6.2 ^a	8.2 ^a	3.3 ^a	7.1 ^a
Val-Bélair	n/u	**	1.1 ^a	2.6 ^a	1.6 ^a
Charlesbourg	**	3.0 ^a	11.2 ^a	2.3 ^a	8.1 ^a
Beauport	50.0 ^a	9.3 ^a	5.5 ^a	4.3 ^a	7.7 ^a
Québec/South Shore	5.2 ^c	2.1 ^a	0.8 ^a	2.3 ^b	2.1 ^a
Charny	**	3.0 ^a	2.0 ^a	**	3.6 ^a
Lévis	3.0 ^d	1.7 ^c	**	1.8 ^c	1.5 ^a
Saguenay CMA	9.1 ^a	1.5 ^a	0.8 ^a	1.7 ^a	1.6 ^a
Chicoutimi	**	0.6 ^a	0.2 ^a	**	0.6 ^a
Jonquière	**	1.3 ^a	1.6 ^a	2.4 ^a	2.2 ^a
La Baie	**	4.1 ^a	n/u	n/u	3.6 ^a

(continued)

1.2 – Vacancy Rates (%) of Standard Spaces by Zone and Rent Range (\$)

Québec

Centre	\$900 or less	\$901 - \$1,200	\$1,201 - \$1,600	\$1,601+	Total where rents are known
Sherbrooke CMA	7.3 ^c	5.3 ^a	4.0 ^a	1.7 ^a	4.9 ^a
Old City of Sherbrooke	7.3 ^c	4.3 ^b	4.2 ^a	**	4.6 ^a
East	**	3.4 ^a	4.7 ^a	n/u	5.7 ^a
North	**	2.8 ^c	**	**	3.2 ^c
West	n/u	**	**	**	**
Centre	**	5.3 ^a	**	**	3.9 ^a
Magog	n/u	1.5 ^a	4.8 ^a	**	2.8 ^a
Suburb	n/u	**	3.1 ^a	**	8.2 ^a
Trois-Rivières CMA	3.9 ^a	4.5 ^a	6.8 ^a	2.9 ^a	5.0 ^a
Trois-Rivières Centre	3.6 ^a	4.2 ^a	6.7 ^a	2.5 ^a	4.8 ^a
Trois-Rivières	6.2 ^a	6.2 ^a	7.2 ^a	2.5 ^a	5.8 ^a
Trois-Rivières-Ouest	n/u	2.5 ^a	8.9 ^a	4.5 ^a	4.9 ^a
Cap-de-la-Madeleine	1.0 ^a	4.7 ^a	2.2 ^a	**	3.0 ^a
Surrounding Area	4.3 ^b	5.9 ^b	7.1 ^b	5.9 ^c	5.8 ^a
Abitibi-Témiscamingue	**	4.3 ^a	0.8 ^a	**	2.4 ^a
Amos CA	**	**	**	n/u	**
Rouyn-Noranda CA	**	**	**	**	**
Val-d'Or CA	**	3.8 ^a	**	**	2.0 ^a
Bas-Saint-Laurent	**	3.4 ^a	4.1 ^a	**	3.1 ^a
Matane CA	n/u	**	n/u	n/u	**
Rimouski CA	**	1.0 ^a	**	**	0.6 ^a
Rivière-du-Loup CA	**	9.5 ^a	5.2 ^a	**	5.7 ^a
Centre-du-Québec	7.4 ^b	8.0 ^b	7.6 ^a	21.5 ^a	9.5 ^a
Drummondville CA	9.4 ^a	3.7 ^a	9.9 ^a	**	11.6 ^a
Victoriaville CA	**	11.4 ^c	3.2 ^d	0.7 ^b	7.2 ^b
Chaudière-Appalaches	2.9 ^a	6.8 ^a	2.5 ^a	7.8 ^b	4.7 ^a
Montmagny	**	**	**	**	10.6 ^a
Sainte-Marie	**	2.7 ^a	0.8 ^a	**	1.6 ^a
Saint-Georges CA	n/u	6.3 ^c	**	**	11.4 ^c
Thetford Mines CA	**	3.7 ^a	0.7 ^a	**	2.7 ^a
Côte-Nord	**	**	**	**	**
Baie-Comeau CA	**	**	**	n/u	**
Sept-Îles CA	n/u	**	**	**	**
Gaspésie/Îles-de-la-Madeleine	1.6 ^a	**	**	n/u	1.6 ^a
Gaspé	**	**	**	n/u	**
Îles de la Madeleine	**	**	**	n/u	**

(continued)

I.2 – Vacancy Rates (%) of Standard Spaces by Zone and Rent Range (\$)**Québec**

Centre	\$900 or less	\$901 - \$1,200	\$1,201 - \$1,600	\$1,601+	Total where rents are known
Lanaudière	**	12.8 c	1.9 a	**	7.3 a
Joliette CA	**	10.8 c	0.3 b	**	5.9 b
Rawdon	n/u	**	**	n/u	**
Saint-Lin-des-Laurentides	**	**	n/u	n/u	**
Laurentides	**	**	0.7 a	**	0.5 a
Lachute CA	n/u	**	**	n/u	**
Mont-Laurier	**	**	**	**	**
Prévost	n/u	n/u	n/u	n/u	n/u
Sainte-Adèle	n/u	n/u	**	n/u	**
Sainte-Sophie	n/u	n/u	**	n/u	**
Mauricie	2.6 a	2.9 a	2.1 a	1.5 b	2.5 a
La Tuque CA	**	**	**	n/u	**
Shawinigan CA	2.9 a	3.0 a	2.1 a	1.5 b	2.6 a
Montréal	10.4 a	7.3 a	7.2 a	23.9 a	9.8 a
Cowansville CA	n/u	**	19.8 a	**	16.7 a
Granby CA	**	2.9 b	4.0 b	**	3.3 b
Saint-Hyacinthe CA	7.4 a	8.3 a	3.3 a	19.1 a	8.0 a
Saint-Jean-sur-Richelieu CA	14.9 a	14.0 a	3.5 b	**	12.3 a
Salaberry-de-Valleyfield CA	n/u	**	**	**	16.1 d
Sorel-Tracy CA	**	1.0 a	7.2 a	**	8.3 a
Saguenay/Lac-Saint-Jean	12.3 c	6.1 a	14.7 a	**	9.2 a
Alma CA	**	6.0 a	25.3 a	**	12.0 a
Dolbeau-Mistassini CA	12.4 c	5.9 b	7.1 b	**	7.5 a
Roberval	n/u	**	**	n/u	**
Saint-Félicien	n/u	**	**	n/u	**
Rural	14.0 c	8.2 a	8.3 b	6.9 c	9.4 a
Province of Québec	10.3 a	6.8 a	6.6 a	10.3 a	7.8 a

The following letter codes are used to indicate the reliability of the estimates:

a – Excellent, b – Very good, c – Good, d – Fair (Use with Caution)

** Data suppressed to protect confidentiality or data is not statistically reliable

n/u: No units exist in universe for this category n/s: No units exist in the sample for this category n/a: Not applicable

1.3 – Vacancy Rates (%) and Average Rents (\$) of Heavy Care Spaces by Zone

Québec

Centre	Vacancy Rate	Average Rent
Gatineau CMA	**	**
Montréal CMA	9.7 a	2,982 a
Island of Montréal	5.5 a	2,962 a
Island Centre	5.7 a	3,415 a
Island West	1.3 a	2,728 a
Island North	**	**
Island East	**	**
Vaudreuil-Soulanges	**	**
Laval/North Shore	55.6 a	2,836 a
Laval	59.3 a	3,027 a
North Shore	**	**
Saint-Jérôme	**	**
Montréal/South Shore	7.8 a	3,087 a
South Shore Centre	8.3 a	3,266 a
South Shore East	7.3 a	2,440 a
South Shore West	**	**
Québec CMA	8.5 a	2,440 a
Centre North	9.7 a	2,512 a
Northern Suburbs	3.1 a	2,107 a
South Shore	**	**
Saguenay CMA	**	**
Sherbrooke CMA	**	**
Trois-Rivières CMA	**	**
Abitibi-Témiscamingue	n/u	n/u
Bas-Saint-Laurent	**	1,616 a
Centre-du-Québec	**	**
Chaudière-Appalaches	**	**
Côte-Nord	**	**
Gaspésie/Îles-de-la-Madeleine	**	**
Lanaudière	n/u	n/u
Laurentides	n/u	n/u
Mauricie	n/u	n/u
Montréal	36.6 a	2,048 a
Saguenay/Lac-Saint-Jean	n/u	n/u
Rural	**	1,394
Province of Québec	11.7 a	2,563 a

The following letter codes are used to indicate the reliability of the estimates:

a – Excellent, b – Very good, c – Good, d – Fair (Use with Caution)

** Data suppressed to protect confidentiality or data is not statistically reliable

n/u: No units exist in universe for this category n/s: No units exist in the sample for this category n/a: Not applicable

2.1 – Universe of Standard Spaces by Zone and Unit Type

Québec

Centre	Private Room	Bachelor	One Bedroom	Two Bedroom	Total
Gatineau CMA	579 ^a	270 ^a	677 ^a	256 ^a	1,782 ^a
Montréal CMA	8,365 ^a	6,662 ^a	14,348 ^a	5,608 ^a	34,982 ^a
Island of Montréal	3,779 ^a	3,891 ^a	8,018 ^a	2,342 ^a	18,030 ^a
Island Centre	1,669 ^a	660 ^a	1,658 ^a	350 ^a	4,338 ^a
Island West	613 ^a	851 ^a	2,099 ^a	853 ^a	4,416 ^a
Island North	458 ^a	1,338 ^a	2,724 ^a	657 ^a	5,176 ^a
Island East	873 ^a	**	**	**	3,606 ^a
Vaudreuil-Soulanges	165 ^a	**	**	**	493 ^a
Laval/North Shore	2,765 ^a	1,507 ^a	4,289 ^a	2,485 ^a	11,046 ^a
Laval	605 ^a	1,144 ^a	2,726 ^a	1,631 ^a	6,106 ^a
North Shore	1,622 ^a	363 ^a	**	**	4,051 ^a
Saint-Jérôme	538 ^a	n/u	**	**	889 ^a
Montréal/South Shore	1,821 ^a	1,264 ^a	2,041 ^a	780 ^a	5,906 ^a
South Shore Centre	828 ^a	487 ^a	1,059 ^a	495 ^a	2,869 ^a
South Shore East	**	468 ^a	634 ^a	**	2,195 ^a
South Shore West	**	309 ^a	348 ^a	**	842 ^a
Québec CMA	2,491 ^a	1,882 ^a	3,588 ^a	1,136 ^a	9,096 ^a
Centre North	1,217 ^a	879 ^a	2,385 ^a	687 ^a	5,169 ^a
Basse-Ville	526 ^a	185 ^a	399 ^a	87 ^a	1,197 ^a
Haute-Ville	225 ^a	230 ^a	553 ^a	158 ^a	1,166 ^a
Québec des Rivières	178 ^a	258 ^a	461 ^a	91 ^a	988 ^a
Sainte-Foy	288 ^a	206 ^a	972 ^a	351 ^a	1,818 ^a
Northern Suburbs	529 ^a	838 ^a	859 ^a	419 ^a	2,645 ^a
Val-Bélair	**	55 ^a	131 ^a	**	322 ^a
Charlesbourg	**	459 ^a	438 ^a	**	1,279 ^a
Beauport	**	324 ^a	290 ^a	**	1,044 ^a
Québec/South Shore	744 ^a	165 ^a	343 ^a	30 ^b	1,282 ^a
Charny	200 ^a	55 ^a	**	**	331 ^a
Lévis	544 ^a	110 ^a	**	**	951 ^a
Saguenay CMA	943 ^a	**	563 ^a	**	1,966 ^a
Chicoutimi	**	**	**	**	857 ^a
Jonquière	392 ^a	176 ^a	**	**	944 ^a
La Baie	**	**	n/u	n/u	165 ^a
Sherbrooke CMA	1,757 ^a	**	1,003 ^a	**	3,664 ^a
Old City of Sherbrooke	988 ^a	448 ^a	850 ^a	402 ^a	2,687 ^a
East	210 ^a	185 ^a	190 ^a	202 ^a	787 ^a
North	**	196 ^b	497 ^a	**	1,227 ^a
West	**	**	**	**	**
Centre	235 ^a	**	**	**	408 ^a
Magog	371 ^a	**	**	**	465 ^a
Suburb	398 ^a	**	89 ^a	**	512 ^a

(continued)

2.1 – Universe of Standard Spaces by Zone and Unit Type

Québec

Centre	Private Room	Bachelor	One Bedroom	Two Bedroom	Total
Trois-Rivières CMA	**	824 ^a	975 ^a	**	3,137 ^a
Trois-Rivières Centre	621 ^a	810 ^a	839 ^a	342 ^a	2,612 ^a
Trois-Rivières	209 ^a	309 ^a	461 ^a	137 ^a	1,116 ^a
Trois-Rivières-Ouest	230 ^a	**	172 ^a	**	789 ^a
Cap-de-la-Madeleine	**	160 ^a	206 ^a	**	707 ^a
Surrounding Area	356 ^a	**	136 ^a	**	525 ^a
Abitibi-Témiscamingue	**	n/u	**	n/u	**
Amos CA	**	n/u	**	n/u	**
Rouyn-Noranda CA	**	n/u	n/u	n/u	**
Val-d'Or CA	351 ^a	n/u	n/u	n/u	351 ^a
Bas-Saint-Laurent	732 ^a	201 ^a	255 ^a	71 ^a	1,259 ^a
Matane CA	**	n/u	n/u	n/u	**
Rimouski CA	387 ^a	153 ^a	**	**	637 ^a
Rivière-du-Loup CA	**	48 ^a	**	**	**
Centre-du-Québec	1,221 ^a	646 ^a	741 ^a	300 ^a	2,908 ^a
Drummondville CA	576 ^a	254 ^a	**	**	1,513 ^a
Victoriaville CA	645 ^a	392 ^b	**	**	1,395 ^a
Chaudière-Appalaches	666 ^a	448 ^a	707 ^a	147 ^a	1,967 ^a
Montmagny	153 ^a	**	**	**	284 ^a
Sainte-Marie	**	**	**	**	293 ^a
Saint-Georges CA	**	255 ^a	343 ^a	**	699 ^a
Thetford Mines CA	447 ^a	**	144 ^a	**	691 ^a
Côte-Nord	**	**	**	**	**
Baie-Comeau CA	**	n/u	**	**	**
Sept-Îles CA	n/u	**	**	**	**
Gaspésie/Îles-de-la-Madeleine	**	**	n/u	n/u	188 ^a
Lanaudière	482 ^a	203 ^a	786 ^a	271 ^a	1,741 ^a
Joliette CA	352 ^b	**	685 ^a	**	1,466 ^a
Rawdon	**	**	**	**	**
Saint-Lin-des-Laurentides	**	n/u	**	**	**
Laurentides	250 ^a	**	90 ^a	**	375 ^a
Lachute CA	n/u	**	**	**	**
Mont-Laurier	72 ^a	**	**	n/u	108 ^a
Prévost	n/u	n/u	n/u	n/u	n/u
Sainte-Adèle	**	n/u	n/u	n/u	**
Sainte-Sophie	**	n/u	n/u	n/u	**
Mauricie	973 ^a	**	269 ^a	**	1,358 ^a
La Tuque CA	n/u	**	**	**	**
Shawinigan CA	973 ^a	**	**	**	**

(continued)

2.1 – Universe of Standard Spaces by Zone and Unit Type

Québec

Centre	Private Room	Bachelor	One Bedroom	Two Bedroom	Total
Montréal	3,350 ^a	607 ^a	1,025 ^a	405 ^a	5,388 ^a
Cowansville CA	** ^a	**	**	**	299 ^a
Granby CA	715 ^a	201 ^b	**	**	1,128 ^a
Saint-Hyacinthe CA	580 ^a	165 ^a	326 ^a	226 ^a	1,297 ^a
Saint-Jean-sur-Richelieu CA	651 ^a	**	386 ^a	115 ^a	1,245 ^a
Salaberry-de-Valleyfield CA	** ^a	n/u	n/u	**	903 ^a
Sorel-Tracy CA	326 ^a	**	**	**	515 ^a
Saguenay/Lac-Saint-Jean	642 ^a	464 ^a	268 ^a	36 ^a	1,410 ^a
Alma CA	325 ^a	222 ^a	**	**	691 ^a
Dolbeau-Mistassini CA	138 ^a	146 ^a	101 ^a	**	405 ^a
Roberval	**	**	**	**	**
Saint-Félicien	**	**	n/u	n/u	**
Rural	8,321 ^a	745 ^b	**	**	10,996 ^a
Province of Québec	32,603^a	13,843^a	26,965^a	9,615^a	83,025^a

The following letter codes are used to indicate the reliability of the estimates:

a – Excellent, b – Very good, c – Good, d – Fair (Use with Caution)

** Data suppressed to protect confidentiality or data is not statistically reliable

n/u: No units exist in universe for this category n/s: No units exist in the sample for this category n/a: Not applicable

2.2 – Total Universe* by Zone and Unit Type

Québec

Centre	Private Room	Bachelor	One Bedroom	Two Bedroom	Total
Gatineau CMA	762 ^a	**	677 ^a	**	2,102 ^a
Standard Spaces	579 ^a	270 ^a	677 ^a	256 ^a	1,782 ^a
Heavy Care	**	n/u	n/u	n/u	**
Respite	**	n/u	n/u	n/u	**
Non-Market or Subsidized Spaces	**	**	n/u	**	**
All other and Unknown	**	**	n/u	n/u	**
Montréal CMA	10,626 ^a	6,866 ^a	14,620 ^a	5,644 ^a	37,757 ^a
Standard Spaces	8,365 ^a	6,662 ^a	14,348 ^a	5,608 ^a	34,982 ^a
Heavy Care	1,280 ^a	**	73 ^a	**	1,476 ^a
Respite	165 ^a	**	**	n/u	175 ^a
Non-Market or Subsidized Spaces	657 ^a	**	80 ^a	**	774 ^a
All other and Unknown	159 ^a	**	**	n/u	351 ^a
Québec CMA	2,890 ^a	1,989 ^a	3,726 ^a	1,140 ^a	9,744 ^a
Standard Spaces	2,491 ^a	1,882 ^a	3,588 ^a	1,136 ^a	9,096 ^a
Heavy Care	304 ^a	80 ^a	**	**	461 ^a
Respite	**	**	**	n/u	**
Non-Market or Subsidized Spaces	55 ^a	**	50 ^a	**	127 ^a
All other and Unknown	**	n/u	n/u	n/u	**
Saguenay CMA	1,005 ^a	**	563 ^a	**	2,032 ^a
Standard Spaces	943 ^a	**	563 ^a	**	1,966 ^a
Heavy Care	**	n/u	n/u	**	**
Respite	14 ^a	n/u	n/u	n/u	14 ^a
Non-Market or Subsidized Spaces	**	n/u	n/u	n/u	**
All other and Unknown	**	n/u	n/u	n/u	**
Sherbrooke CMA	1,807 ^a	**	1,010 ^a	**	3,723 ^a
Standard Spaces	1,757 ^a	**	1,003 ^a	**	3,664 ^a
Heavy Care	**	n/u	n/u	n/u	**
Respite	n/u	**	n/u	n/u	**
Non-Market or Subsidized Spaces	n/u	n/u	**	n/u	**
All other and Unknown	**	n/u	**	n/u	**
Trois-Rivières CMA	**	824 ^a	975 ^a	**	**
Standard Spaces	**	824 ^a	975 ^a	**	3,137 ^a
Heavy Care	**	n/u	n/u	n/u	**
Respite	n/u	n/u	n/u	n/u	n/u
Non-Market or Subsidized Spaces	n/u	n/u	n/u	n/u	n/u
All other and Unknown	n/u	n/u	n/u	n/u	n/u
Abitibi-Témiscamingue	**	n/u	**	**	615 ^a
Standard Spaces	**	n/u	**	n/u	**
Heavy Care	n/u	n/u	n/u	n/u	n/u
Respite	n/u	n/u	n/u	n/u	n/u
Non-Market or Subsidized Spaces	n/u	n/u	**	**	**
All other and Unknown	n/u	n/u	n/u	n/u	n/u

(continued)

2.2 – Total Universe* by Zone and Unit Type

Québec

Centre	Private Room	Bachelor	One Bedroom	Two Bedroom	Total
Bas-Saint-Laurent	797 ^a	**	**	71 ^a	1,353 ^a
Standard Spaces	732 ^a	201 ^a	255 ^a	71 ^a	1,259 ^a
Heavy Care	59 ^a	n/u	n/u	n/u	59 ^a
Respite	**	**	n/u	n/u	**
Non-Market or Subsidized Spaces	**	**	**	n/u	**
All other and Unknown	n/u	n/u	n/u	n/u	n/u
Centre-du-Québec	1,285 ^a	713 ^a	741 ^a	300 ^a	3,039 ^a
Standard Spaces	1,221 ^a	646 ^a	741 ^a	300 ^a	2,908 ^a
Heavy Care	**	**	n/u	n/u	**
Respite	**	**	n/u	n/u	14 ^a
Non-Market or Subsidized Spaces	**	n/u	n/u	n/u	**
All other and Unknown	n/u	n/u	n/u	n/u	n/u
Chaudière-Appalaches	677 ^a	448 ^a	707 ^a	154 ^a	1,985 ^a
Standard Spaces	666 ^a	448 ^a	707 ^a	147 ^a	1,967 ^a
Heavy Care	**	n/u	n/u	**	**
Respite	**	n/u	n/u	n/u	**
Non-Market or Subsidized Spaces	n/u	n/u	n/u	n/u	n/u
All other and Unknown	n/u	n/u	n/u	**	**
Côte-Nord	**	**	**	**	**
Standard Spaces	**	**	**	**	**
Heavy Care	**	n/u	n/u	n/u	**
Respite	n/u	n/u	n/u	n/u	n/u
Non-Market or Subsidized Spaces	n/u	n/u	**	n/u	**
All other and Unknown	n/u	n/u	n/u	n/u	n/u
Gaspésie/Îles-de-la-Madeleine	**	**	n/u	n/u	222 ^a
Standard Spaces	**	**	n/u	n/u	188 ^a
Heavy Care	**	n/u	n/u	n/u	**
Respite	**	n/u	n/u	n/u	**
Non-Market or Subsidized Spaces	n/u	n/u	n/u	n/u	n/u
All other and Unknown	n/u	n/u	n/u	n/u	n/u
Lanaudière	482 ^a	203 ^a	**	271 ^a	**
Standard Spaces	482 ^a	203 ^a	786 ^a	271 ^a	1,741 ^a
Heavy Care	n/u	n/u	n/u	n/u	n/u
Respite	n/u	n/u	n/u	n/u	n/u
Non-Market or Subsidized Spaces	n/u	n/u	n/u	n/u	n/u
All other and Unknown	n/u	n/u	**	n/u	**
Laurentides	**	**	90 ^a	**	514 ^a
Standard Spaces	250 ^a	**	90 ^a	**	375 ^a
Heavy Care	n/u	n/u	n/u	n/u	n/u
Respite	**	n/u	n/u	n/u	**
Non-Market or Subsidized Spaces	n/u	n/u	n/u	n/u	n/u
All other and Unknown	n/u	**	n/u	n/u	**

(continued)

2.2 – Total Universe* by Zone and Unit Type

Québec

Centre	Private Room	Bachelor	One Bedroom	Two Bedroom	Total
Mauricie	986 ^a	**	269 ^a	**	1,372 ^a
Standard Spaces	973 ^a	**	269 ^a	**	1,358 ^a
Heavy Care	n/u	n/u	n/u	n/u	n/u
Respite	**	n/u	n/u	n/u	**
Non-Market or Subsidized Spaces	**	n/u	n/u	n/u	**
All other and Unknown	n/u	n/u	n/u	n/u	n/u
Montréal	3,738 ^a	607 ^a	1,025 ^a	405 ^a	5,775 ^a
Standard Spaces	3,350 ^a	607 ^a	1,025 ^a	405 ^a	5,388 ^a
Heavy Care	225 ^a	n/u	n/u	n/u	225 ^a
Respite	74 ^b	n/u	n/u	n/u	74 ^b
Non-Market or Subsidized Spaces	**	n/u	n/u	n/u	**
All other and Unknown	**	n/u	n/u	n/u	**
Saguenay/Lac-Saint-Jean	**	464 ^a	**	**	1,505 ^a
Standard Spaces	642 ^a	464 ^a	268 ^a	36 ^a	1,410 ^a
Heavy Care	n/u	n/u	n/u	n/u	n/u
Respite	30 ^a	n/u	n/u	n/u	30 ^a
Non-Market or Subsidized Spaces	**	n/u	**	**	65 ^a
All other and Unknown	n/u	n/u	n/u	n/u	n/u
Rural	8,629 ^a	**	1,590 ^a	**	11,316 ^a
Standard Spaces	8,321 ^a	745 ^a	**	**	10,996 ^a
Heavy Care	52 ^a	**	**	n/u	60 ^a
Respite	**	**	n/u	n/u	**
Non-Market or Subsidized Spaces	102 ^a	n/u	n/u	n/u	102 ^a
All other and Unknown	**	n/u	n/u	n/u	**
Province of Québec	36,694 ^a	14,347 ^a	27,455 ^a	9,705 ^a	88,201 ^a
Standard Spaces	32,603 ^a	13,843 ^a	26,965 ^a	9,615 ^a	83,025 ^a
Heavy Care	2,166 ^a	270 ^a	**	**	2,599 ^a
Respite	579 ^a	29 ^a	**	n/u	621 ^a
Non-Market or Subsidized Spaces	988 ^a	64 ^a	176 ^a	76 ^a	1,303 ^a
All other and Unknown	358 ^a	141 ^a	**	**	651 ^a

* Total universe is the number of all spaces including both occupied and unoccupied spaces.

The following letter codes are used to indicate the reliability of the estimates:

a – Excellent, b – Very good, c – Good, d – Fair (Use with Caution)

** Data suppressed to protect confidentiality or data is not statistically reliable

n/u: No units exist in universe for this category n/s: No units exist in the sample for this category n/a: Not applicable

2.3 – Universe of Standard Spaces By Zone and Rent Range (\$)

Québec

	Less than \$901		\$901 - \$1,200		\$1,201 - \$1,600		\$1,601 +		Total where rents are known
Centre	Number of Spaces	% of Total*	Number of Spaces	% of Total*	Number of Spaces	% of Total*	Number of Spaces	% of Total*	Number of Spaces
Gatineau CMA	**		**		530 ^a	29.7	997 ^a	55.9	1,782
Gatineau East	**		**		277 ^a	28.6	497 ^a	51.3	968
Gatineau West	**		**		217 ^a	**	500 ^a	**	**
Surrounding Area	n/u		**		**		n/u		**
Montréal CMA	4,132 ^a	12.0	8,040 ^a	23.4	14,294 ^a	41.6	7,921 ^a	23.0	34,388
Island of Montréal	2,712 ^a	15.1	3,816 ^a	21.2	6,231 ^a	34.7	5,200 ^a	29.0	17,959
Island Centre	717 ^a	16.5	904 ^a	20.8	768 ^a	17.7	1,950 ^a	45.0	4,338
Island West	**		**		1,672 ^a	37.9	1,961 ^a	44.4	4,416
Island North	1,743 ^a	34.1	1,480 ^a	28.9	1,464 ^a	28.6	429 ^a	8.4	5,115
Island East	**		**		2,071 ^a	57.6	697 ^a	19.4	3,597
Vaudreuil-Soulanges	n/u		**		256 ^a	51.9	**		493
Laval/North Shore	1,265 ^a	11.5	2,739 ^a	24.8	5,585 ^a	50.6	1,458 ^a	13.2	11,046
Laval	915 ^a	15.0	1,451 ^a	23.8	2,745 ^a	45.0	995 ^a	16.3	6,106
North Shore	326 ^a	8.0	828 ^a	20.4	2,434 ^a	60.1	463 ^a	11.4	4,051
Saint-Jérôme	24 ^a	2.7	459 ^a	51.6	406 ^a	45.7	n/u		889
Montréal/South Shore	155 ^a	2.9	1,486 ^a	27.6	2,479 ^a	46.1	1,263 ^a	23.5	5,383
South Shore Centre	**		805 ^a	28.7	1,149 ^a	41.0	**		2,804
South Shore East	**		374 ^a	21.5	1,024 ^a	59.0	**		1,737
South Shore West	**		307 ^a	36.5	306 ^a	36.3	**		842
Québec CMA	314 ^a	3.5	2,240 ^a	25.3	3,807 ^a	42.9	2,504 ^a	28.2	8,866
Centre North	152 ^a	3.0	1,208 ^a	24.0	1,988 ^a	39.5	1,684 ^a	33.5	5,032
Basse-Ville	52 ^a	4.3	577 ^a	48.2	483 ^a	40.4	85 ^a	7.1	1,197
Haute-Ville	**		**		384 ^a	32.9	619 ^a	53.1	1,166
Québec des Rivières	**		**		608 ^a	61.5	95 ^a	9.6	988
Sainte-Foy	**		**		513 ^a	30.5	885 ^a	52.6	1,681
Northern Suburbs	44 ^a	1.7	596 ^a	22.5	1,447 ^a	54.7	557 ^a	21.1	2,645
Val-Bélair	n/u		**		182 ^a	56.5	**		322
Charlesbourg	**		**		827 ^a	64.7	**		1,279
Beauport	30 ^a	2.9	322 ^a	30.8	438 ^a	42.0	254 ^a	24.3	1,044
Québec/South Shore	118 ^a	9.9	435 ^a	36.6	372 ^a	31.3	264 ^a	22.2	1,189
Charny	**		134 ^a	40.5	148 ^a	44.7	**		331
Lévis	**		301 ^a	35.1	224 ^a	26.1	**		858
Saguenay CMA	88 ^a	4.5	917 ^a	46.6	720 ^a	36.6	241 ^a	12.3	1,966
Chicoutimi	**		**		414 ^a	48.3	**		857
Jonquière	**		458 ^a	48.5	306 ^a	32.4	**		944
La Baie	**		**		n/u		n/u		165

(continued)

2.3 – Universe of Standard Spaces By Zone and Rent Range (\$)

Québec

	Less than \$901		\$901 - \$1,200		\$1,201 - \$1,600		\$1,601 +		Total where rents are known
Centre	Number of Spaces	% of Total*	Number of Spaces	% of Total*	Number of Spaces	% of Total*	Number of Spaces	% of Total*	Number of Spaces
Sherbrooke CMA	309 ^a	9.4	1,675 ^a	51.0	1,240 ^a	37.7	60 ^a	1.8	3,285
Old City of Sherbrooke	309 ^a	13.4	**		764 ^a	33.1	**		2,308
East	**		**		493 ^a	62.6	n/u		787
North	**		533 ^a	62.9	**		**		848
West	n/u		**		**		**		**
Centre	**		169 ^a	41.4	**		**		408
Magog	n/u		**		189 ^a	40.6	**		465
Suburb	n/u		**		287 ^a	56.1	**		512
Trois-Rivières CMA	337 ^a	10.8	1,190 ^a	38.3	1,093 ^a	35.1	491 ^a	15.8	3,111
Trois-Rivières Centre	197 ^a	7.5	1,038 ^a	39.7	937 ^a	35.9	440 ^a	16.8	2,612
Trois-Rivières	**		291 ^a	26.1	485 ^a	43.5	**		1,116
Trois-Rivières-Ouest	n/u		408 ^a	51.7	270 ^a	34.2	111 ^a	14.1	789
Cap-de-la-Madeleine	**		339 ^a	47.9	182 ^a	25.7	**		707
Surrounding Area	140 ^a	28.1	152 ^a	30.5	156 ^a	31.3	51 ^a	10.2	499
Abitibi-Témiscamingue	**		303 ^a	49.4	127 ^a	20.7	**		613
Amos CA	**		**		**		n/u		**
Rouyn-Noranda CA	**		**		**		**		**
Val-d'Or CA	**		157 ^a	44.7	**		**		351
Bas-Saint-Laurent	**		586 ^a	46.5	460 ^a	36.5	**		1,259
Matane CA	n/u		**		n/u		n/u		**
Rimouski CA	**		390 ^a	61.2	97 ^a	15.2	**		637
Rivière-du-Loup CA	**		**		363 ^a	63.2	**		574
Centre-du-Québec	532 ^a	18.3	1,234 ^a	42.4	772 ^a	26.5	370 ^a	12.7	2,908
Drummondville CA	**		539 ^a	35.6	506 ^a	33.4	**		1,513
Victoriaville CA	**		695 ^a	49.8	266 ^a	19.1	**		1,395
Chaudière-Appalaches	173 ^a	8.8	730 ^a	37.1	837 ^a	42.6	228 ^a	11.6	1,967
Montmagny	**		**		**		**		284
Sainte-Marie	**		219 ^a	31.3	391 ^a	55.9	**		699
Saint-Georges CA	n/u		**		**		**		293
Thetford Mines CA	**		355 ^a	51.4	294 ^a	42.5	**		691
Côte-Nord	**		**		**		**		**
Baie-Comeau CA	**		**		**		n/u		**
Sept-Îles CA	n/u		**		**		**		**
Gaspésie/Îles-de-la-Madeleine	62 ^a	33.0	**		**		n/u		188
Gaspé	**		**		**		n/u		**
Îles de la Madeleine	**		**		**		n/u		80

(continued)

2.3 – Universe of Standard Spaces By Zone and Rent Range (\$)

Québec

	Less than \$901		\$901 - \$1,200		\$1,201 - \$1,600		\$1,601 +		Total where rents are known
Centre	Number of Spaces	% of Total*	Number of Spaces	% of Total*	Number of Spaces	% of Total*	Number of Spaces	% of Total*	Number of Spaces
Lanaudière	**		770 a	44.2	559 a	32.1	**		1,741
Joliette CA	**		625 a	42.6	468 a	31.9	**		1,466
Rawdon	n/u		**		**		n/u		**
Saint-Lin-des-Laurentides	**		**		n/u		n/u		**
Laurentides	**		41 a	10.9	285 a	76.0	**		375
Lachute CA	n/u		**		**		n/u		**
Mont-Laurier	**		**		**		**		108
Prévost	n/u		n/u		n/u		n/u		n/u
Sainte-Adèle	n/u		n/u		**		n/u		**
Sainte-Sophie	n/u		n/u		**		n/u		**
Mauricie	203 a	14.9	717 a	52.8	301 a	22.2	137 a	10.1	1,358
La Tuque CA	**		**		**		n/u		**
Shawinigan CA	**		**		**		137 a		1,307
Montréal	739 a	13.9	1,469 a	27.6	2,428 a	45.6	685 a	12.9	5,321
Cowansville CA	n/u		**		248 a	82.9	**		299
Granby CA	**		338 a	30.0	696 a	61.7	**		1,128
Saint-Hyacinthe CA	215 a	16.6	386 a	29.8	487 a	37.5	209 a	16.1	1,297
Saint-Jean-sur-Richelieu CA	408 a	32.8	329 a	26.4	**		**		1,245
Salaberry-de-Valleyfield CA	n/u		275 a	32.9	**		**		837
Sorel-Tracy CA	**		**		279 a	54.2	**		515
Saguenay/Lac-Saint-Jean	**		748 a	53.8	468 a	33.6	**		1,391
Alma CA	**		402 a	58.2	225 a	32.6	**		691
Dolbeau-Mistassini CA	**		119 a	30.8	156 a	40.4	**		386
Roberval	n/u		**		**		n/u		**
Saint-Félicien	n/u		**		**		n/u		**
Rural	2,339 a	21.3	5,289 a	48.1	2,838 a	25.8	530 a	4.8	10,996
Province of Québec	9,678 a	11.8	26,304 a	32.2	30,884 a	37.8	14,845 a	18.2	81,710

* % is based on those units where the rent is known.

The following letter codes are used to indicate the reliability of the estimates:

a – Excellent, b – Very good, c – Good, d – Fair (Use with Caution)

** Data suppressed to protect confidentiality or data is not statistically reliable

n/u: No units exist in universe for this category n/s: No units exist in the sample for this category n/a: Not applicable

2.4 – Proportion (%) of Structures where Select Services are Available*

By Structure Size and Zone

Québec

Centre	Meals						On-Site Medical Services
	Not offered	Optional	# included in rent				
			1	2	3		
Gatineau CMA	0.0 ^b	14.3 ^a	0.0 ^b	4.8 ^a	81.0 ^a	90.5 ^a	
10 - 49	0.0 ^c	9.1 ^a	0.0 ^c	9.1 ^a	81.8 ^a	90.9 ^a	
50 - 99	**	**	**	**	**	**	
100 and more	**	25.0 ^a	**	**	75.0 ^a	87.5 ^a	
Gatineau East	0.0 ^c	25.0 ^a	0.0 ^c	8.3 ^a	66.7 ^a	83.3 ^a	
10 - 49	**	14.3 ^a	**	14.3 ^a	71.4 ^a	85.7 ^a	
50 - 99	n/u	n/u	n/u	n/u	n/u	n/u	
100 and more	**	40.0 ^a	**	**	60.0 ^a	80.0 ^a	
Gatineau West	**	**	**	**	100.0 ^a	100.0 ^a	
10 - 49	**	**	**	**	**	**	
50 - 99	**	**	**	**	**	**	
100 and more	**	**	**	**	**	**	
Surrounding Areas	**	**	**	**	**	**	
10 - 49	**	**	**	**	**	**	
50 - 99	n/u	n/u	n/u	n/u	n/u	n/u	
100 and more	n/u	n/u	n/u	n/u	n/u	n/u	
Montréal CMA	0.7 ^a	26.5 ^a	2.9 ^a	5.2 ^a	64.7 ^a	81.8 ^a	
10 - 49	0.0 ^b	3.1 ^b	0.8 ^a	0.8 ^a	95.3 ^a	66.1 ^a	
50 - 99	0.0 ^b	14.7 ^c	0.0 ^b	6.2 ^b	79.1 ^a	89.4 ^a	
100 and more	1.6 ^c	53.6 ^a	6.0 ^a	9.0 ^a	29.7 ^a	94.6 ^a	
Island of Montréal	1.5 ^a	28.1 ^a	2.0 ^a	8.2 ^a	60.2 ^a	84.0 ^a	
10 - 49	0.0 ^b	0.0 ^b	0.0 ^b	2.1 ^c	97.9 ^a	68.5 ^a	
50 - 99	0.0 ^c	**	0.0 ^c	5.6 ^a	82.1 ^a	88.6 ^a	
100 and more	2.8 ^c	50.4 ^a	3.8 ^a	12.9 ^a	30.1 ^a	93.4 ^a	
Island Centre	0.0 ^b	18.4 ^a	2.0 ^b	4.1 ^b	75.5 ^a	73.5 ^a	
10 - 49	0.0 ^c	0.0 ^c	0.0 ^c	0.0 ^c	100.0 ^a	57.9 ^a	
50 - 99	**	**	**	**	100.0 ^a	83.3 ^a	
100 and more	0.0 ^b	37.5 ^a	4.2 ^c	8.3 ^b	50.0 ^a	83.3 ^a	
Island West	0.0	32.3 ^a	6.5 ^a	22.6 ^a	38.7 ^a	86.7 ^a	
10 - 49	**	**	**	**	100.0 ^a	40.0 ^a	
50 - 99	0.0 ^a	0.0 ^a	0.0 ^a	25.0 ^a	75.0 ^a	75.0 ^a	
100 and more	0.0	45.5 ^a	9.1 ^a	27.3 ^a	18.2 ^a	100.0 ^a	
Island North	**	**	0.0 ^b	0.0 ^b	53.1 ^a	84.4 ^a	
10 - 49	0.0 ^c	0.0 ^c	0.0 ^c	0.0 ^c	100.0 ^a	**	
50 - 99	**	**	**	**	**	**	
100 and more	**	75.0 ^a	0.0 ^c	0.0 ^c	**	93.8 ^a	
Island East	0.0 ^b	**	0.0 ^b	13.6 ^d	**	100.0 ^a	
10 - 49	**	**	**	**	**	100.0 ^a	
50 - 99	**	**	**	**	**	100.0 ^a	
100 and more	0.0 ^c	**	0.0 ^c	**	**	100.0 ^a	

(continued)

2.4 – Proportion (%) of Structures where Select Services are Available*

By Structure Size and Zone

Québec

Centre	Meals					On-Site Medical Services
	Not offered	Optional	# included in rent			
			1	2	3	
Vaudreuil-Soulanges	**	**	**	**	88.9 ^a	88.9 ^a
10 - 49	**	**	**	**	100.0 ^a	**
50 - 99	**	**	**	**	**	**
100 and more	**	**	**	**	**	**
Laval/North Shore	0.0 ^b	28.8 ^a	2.9 ^a	3.0 ^a	65.3 ^a	72.4 ^a
10 - 49	0.0 ^b	8.1 ^b	2.0 ^a	0.0 ^b	89.9 ^a	50.6 ^a
50 - 99	0.0 ^c	22.2 ^d	0.0 ^c	11.1 ^c	66.7 ^a	88.9 ^a
100 and more	0.0 ^b	63.5 ^a	6.0 ^a	3.0 ^a	27.5 ^a	96.9 ^a
Laval	0.0	39.4 ^a	9.1 ^a	3.0 ^a	48.5 ^a	84.4 ^a
10 - 49	0.0	0.0	8.3 ^a	0.0	91.7 ^a	66.7 ^a
50 - 99	**	**	**	**	**	**
100 and more	0.0	63.2 ^a	10.5 ^a	5.3 ^a	21.1 ^a	94.4 ^a
North Shore	0.0 ^b	28.3 ^a	0.0 ^b	3.8 ^b	67.9 ^a	75.5 ^a
10 - 49	0.0 ^b	15.4 ^d	0.0 ^b	0.0 ^b	84.6 ^a	57.7 ^a
50 - 99	0.0 ^c	18.8 ^d	0.0 ^c	12.5 ^c	68.8 ^a	87.5 ^a
100 and more	0.0 ^c	72.7 ^a	0.0 ^c	0.0 ^c	27.3 ^d	100.0 ^a
Saint-Jérôme	0.0 ^c	**	0.0 ^c	0.0 ^c	92.9 ^a	**
10 - 49	0.0 ^c	0.0 ^c	0.0 ^c	0.0 ^c	100.0 ^a	**
50 - 99	n/u	n/u	n/u	n/u	n/u	n/u
100 and more	**	**	**	**	**	**
Montréal/South Shore	0.0 ^b	19.2 ^a	4.9 ^c	1.6 ^a	74.4 ^a	91.9 ^a
10 - 49	0.0 ^b	0.0 ^b	0.0 ^b	0.0 ^b	100.0 ^a	89.2 ^a
50 - 99	0.0 ^c	7.6 ^a	0.0 ^c	0.0 ^c	92.4 ^a	91.4 ^a
100 and more	0.0 ^b	50.3 ^a	13.9 ^d	4.5 ^a	31.4 ^a	95.5 ^a
South Shore Centre	0.0 ^b	28.0 ^d	12.0 ^d	0.0 ^b	60.0 ^a	88.0 ^a
10 - 49	0.0 ^c	0.0 ^c	0.0 ^c	0.0 ^c	100.0 ^a	81.8 ^a
50 - 99	**	**	**	**	**	**
100 and more	0.0 ^c	63.6 ^a	27.3 ^d	0.0 ^c	**	100.0 ^a
South Shore East	0.0 ^b	16.7 ^a	0.0 ^b	4.2 ^a	79.2 ^a	95.7 ^a
10 - 49	**	**	**	**	100.0 ^a	88.9 ^a
50 - 99	**	12.5 ^a	**	**	87.5 ^a	100.0 ^a
100 and more	**	42.9 ^a	**	14.3 ^a	42.9 ^a	100.0 ^a
South Shore West	0.0 ^c	7.1 ^a	0.0 ^c	0.0 ^c	92.9 ^a	92.9 ^a
10 - 49	**	**	**	**	100.0 ^a	100.0 ^a
50 - 99	**	**	**	**	**	**
100 and more	**	25.0 ^a	**	**	75.0 ^a	75.0 ^a
Québec CMA	0.0 ^b	17.8 ^a	3.0 ^a	22.1 ^a	57.1 ^a	78.8 ^a
10 - 49	0.0 ^b	1.6 ^a	1.6 ^a	6.5 ^b	90.4 ^a	74.6 ^a
50 - 99	0.0 ^b	27.3 ^a	0.0 ^b	33.8 ^a	38.9 ^a	85.6 ^a
100 and more	0.0 ^b	37.1 ^a	9.6 ^c	37.6 ^a	15.7 ^d	78.1 ^a

(continued)

2.4 – Proportion (%) of Structures where Select Services are Available* By Structure Size and Zone Québec

Centre	Meals					On-Site Medical Services
	Not offered	Optional	# included in rent			
			1	2	3	
Centre North	0.0 ^b	28.2 ^a	4.8 ^c	17.1 ^a	49.8 ^a	68.8 ^a
10 - 49	0.0 ^b	3.7 ^a	0.0 ^b	3.7 ^a	92.7 ^a	63.3 ^a
50 - 99	0.0 ^c	**	0.0 ^c	35.6 ^a	28.2 ^a	78.9 ^a
100 and more	0.0 ^b	52.0 ^a	13.4 ^d	21.5 ^a	13.0 ^c	69.3 ^a
Basse-Ville	0.0 ^c	25.0 ^a	0.0 ^c	10.0 ^a	65.0 ^a	70.0
10 - 49	**	11.1 ^a	**	**	88.9 ^a	66.7 ^a
50 - 99	**	20.0 ^a	**	20.0 ^a	60.0 ^a	80.0 ^a
100 and more	**	50.0 ^a	**	16.7 ^a	33.3 ^a	66.7 ^a
Haute-Ville	0.0 ^c	23.1 ^a	0.0 ^c	15.4 ^a	61.5 ^a	76.9 ^a
10 - 49	**	**	**	**	100.0 ^a	57.1 ^a
50 - 99	**	**	**	**	**	**
100 and more	**	75.0 ^a	**	25.0 ^a	**	100.0 ^a
Québec des Rivières	0.0 ^c	27.3 ^a	0.0 ^c	45.5 ^a	27.3 ^a	45.5 ^a
10 - 49	**	**	**	25.0 ^a	75.0 ^a	25.0 ^a
50 - 99	**	**	**	**	**	**
100 and more	**	50.0 ^a	**	50.0 ^a	**	75.0 ^a
Sainte-Foy	0.0 ^c	**	**	10.0 ^d	**	75.0 ^a
10 - 49	**	**	**	**	100.0 ^a	85.7 ^a
50 - 99	**	**	**	**	**	100.0 ^a
100 and more	**	**	**	**	**	**
Northern Suburbs	0.0 ^b	13.0 ^c	2.0 ^a	29.3 ^a	55.6 ^a	89.8 ^a
10 - 49	0.0 ^b	0.0 ^b	4.0 ^a	12.4 ^d	83.6 ^a	88.1 ^a
50 - 99	0.0 ^c	**	0.0 ^c	40.6 ^a	23.1 ^d	88.6 ^a
100 and more	**	**	**	**	**	100.0 ^a
Val-Bélair	**	**	**	33.3 ^a	66.7 ^a	44.4 ^a
10 - 49	**	**	**	**	100.0 ^a	50.0 ^a
50 - 99	**	**	**	**	**	**
100 and more	n/u	n/u	n/u	n/u	n/u	n/u
Charlesbourg	0.0 ^c	**	0.0 ^c	**	**	100.0 ^a
10 - 49	**	**	**	**	**	**
50 - 99	**	**	**	**	**	100.0 ^a
100 and more	**	**	**	**	**	100.0 ^a
Beauport	0.0 ^b	0.0 ^b	4.3 ^a	21.7 ^a	73.9 ^a	100.0 ^a
10 - 49	0.0 ^c	0.0 ^c	6.3 ^a	6.3 ^a	87.5 ^a	100.0 ^a
50 - 99	**	**	**	40.0 ^a	60.0 ^a	100.0 ^a
100 and more	**	**	**	**	**	**
Québec/South Shore	0.0 ^b	0.0 ^b	0.0 ^b	21.1 ^d	78.9 ^a	82.9 ^a
10 - 49	0.0 ^c	0.0 ^c	0.0 ^c	0.0 ^c	100.0 ^a	71.9 ^a
50 - 99	**	**	**	**	80.1 ^a	89.7 ^a
100 and more	**	**	**	**	**	**

(continued)

2.4 – Proportion (%) of Structures where Select Services are Available*

By Structure Size and Zone

Québec

Centre	Meals					On-Site Medical Services
	Not offered	Optional	# included in rent			
			1	2	3	
Charny	**	**	**	11.1 ^a	88.9 ^a	100.0 ^a
10 - 49	**	**	**	**	100.0 ^a	100.0 ^a
50 - 99	**	**	**	25.0 ^a	75.0 ^a	100.0 ^a
100 and more	n/u	n/u	n/u	n/u	n/u	n/u
Lévis	0.0 ^c	0.0 ^c	0.0 ^c	**	73.3 ^a	73.3 ^a
10 - 49	**	**	**	**	100.0 ^a	**
50 - 99	**	**	**	**	83.3 ^a	83.3 ^a
100 and more	**	**	**	**	**	**
Saguenay CMA	0.0 ^b	6.7 ^a	3.3 ^a	3.3 ^a	86.7 ^a	76.7 ^a
10 - 49	0.0 ^c	0.0 ^c	0.0 ^c	0.0 ^c	100.0 ^a	75.0 ^a
50 - 99	**	**	12.5 ^a	**	87.5 ^a	62.5 ^a
100 and more	**	33.3 ^a	**	16.7 ^a	50.0 ^a	100.0 ^a
Chicoutimi	0.0 ^c	9.1 ^a	0.0 ^c	9.1 ^a	81.8 ^a	81.8 ^a
10 - 49	**	**	**	**	100.0 ^a	80.0 ^a
50 - 99	**	**	**	**	**	**
100 and more	**	**	**	**	**	**
Jonquière	0.0 ^c	7.1 ^a	7.1 ^a	0.0 ^c	85.7 ^a	64.3 ^a
10 - 49	**	**	**	**	100.0 ^a	62.5 ^a
50 - 99	**	**	**	**	**	**
100 and more	**	**	**	**	**	**
La Baie	**	**	**	**	100.0 ^a	100.0 ^a
10 - 49	**	**	**	**	**	**
50 - 99	**	**	**	**	**	**
100 and more	n/u	n/u	n/u	n/u	n/u	n/u
Sherbrooke CMA	**	8.1 ^c	0.0 ^b	10.3 ^a	78.6 ^a	47.9 ^a
10 - 49	0.0 ^c	0.0 ^c	0.0 ^c	0.0 ^c	100.0 ^a	**
50 - 99	0.0 ^c	0.0 ^c	0.0 ^c	30.0 ^a	70.0 ^a	**
100 and more	**	**	**	**	**	**
Old city of Sherbrooke	**	12.7 ^d	0.0 ^b	12.0 ^a	70.7 ^a	46.7 ^a
10 - 49	**	**	**	**	100.0 ^a	**
50 - 99	**	**	**	**	67.9 ^a	**
100 and more	**	**	**	**	**	**
East	**	11.1 ^a	**	22.2 ^a	66.7 ^a	11.1 ^a
10 - 49	**	**	**	**	100.0 ^a	**
50 - 99	**	**	**	**	**	**
100 and more	**	**	**	**	**	**
North	**	**	**	**	**	**
10 - 49	**	**	**	**	**	**
50 - 99	**	**	**	**	**	**
100 and more	**	**	**	**	**	**

(continued)

2.4 – Proportion (%) of Structures where Select Services are Available*

By Structure Size and Zone

Québec

Centre	Meals					On-Site Medical Services
	Not offered	Optional	# included in rent			
			1	2	3	
West	**	**	**	**	**	**
10 - 49	n/u	n/u	n/u	n/u	n/u	n/u
50 - 99	**	**	**	**	**	**
100 and more	**	**	**	**	**	**
Centre	**	16.7 ^a	**	**	83.3 ^a	66.7
10 - 49	**	**	**	**	**	**
50 - 99	**	**	**	**	**	**
100 and more	**	**	**	**	**	**
Magog	**	**	**	14.3 ^a	85.7 ^a	57.1 ^a
10 - 49	**	**	**	**	**	**
50 - 99	**	**	**	**	**	**
100 and more	**	**	**	**	**	**
Suburbs	**	**	**	**	100.0 ^a	42.9 ^a
10 - 49	**	**	**	**	**	**
50 - 99	**	**	**	**	**	**
100 and more	**	**	**	**	**	**
Trois-Rivières CMA	0.0 ^b	12.5 ^a	0.0 ^b	6.3 ^a	81.3 ^a	41.7 ^a
10 - 49	0.0 ^b	0.0 ^b	0.0 ^b	0.0 ^b	100.0 ^a	31.0 ^a
50 - 99	**	22.2 ^a	**	11.1 ^a	66.7 ^a	44.4 ^a
100 and more	**	40.0 ^a	**	20.0 ^a	40.0 ^a	70.0 ^a
Trois-Rivières Centre	0.0 ^b	13.9 ^a	0.0 ^b	8.3 ^a	77.8 ^a	41.7 ^a
10 - 49	0.0 ^c	0.0 ^c	0.0 ^c	0.0 ^c	100.0 ^a	26.3 ^a
50 - 99	**	25.0 ^a	**	12.5 ^a	62.5 ^a	50.0 ^a
100 and more	**	33.3 ^a	**	22.2 ^a	44.4 ^a	66.7 ^a
Trois-Rivières	0.0 ^c	18.8 ^a	0.0 ^c	12.5 ^a	68.8 ^a	50.0 ^a
10 - 49	**	**	**	**	100.0 ^a	25.0 ^a
50 - 99	**	50.0 ^a	**	**	50.0 ^a	75.0 ^a
100 and more	**	25.0 ^a	**	50.0 ^a	25.0 ^a	75.0 ^a
Trois-Rivières-Ouest	**	**	**	**	100.0 ^a	22.2 ^a
10 - 49	**	**	**	**	100.0 ^a	25.0 ^a
50 - 99	**	**	**	**	**	**
100 and more	**	**	**	**	**	**
Cap-de-la-Madeleine	0.0 ^c	18.2 ^a	0.0 ^c	9.1 ^a	72.7 ^a	45.5 ^a
10 - 49	**	**	**	**	100.0 ^a	28.6 ^a
50 - 99	**	**	**	**	**	**
100 and more	**	**	**	**	**	**
Surrounding Areas	0.0 ^c	8.3 ^a	0.0 ^c	0.0 ^c	91.7 ^a	41.7 ^a
10 - 49	**	**	**	**	100.0 ^a	40.0 ^a
50 - 99	**	**	**	**	**	**
100 and more	**	**	**	**	**	**

(continued)

2.4 – Proportion (%) of Structures where Select Services are Available* By Structure Size and Zone Québec

Centre	Meals					On-Site Medical Services
	Not offered	Optional	# included in rent			
			1	2	3	
Abitibi-Témiscamingue	0.0 c	9.1 a	0.0 c	0.0 c	90.9 a	27.3 a
10 - 49	**	16.7 a	**	**	83.3 a	16.7 a
50 - 99	**	**	**	**	**	**
100 and more	**	**	**	**	**	**
Amos CA	**	**	**	**	**	**
10 - 49	**	**	**	**	**	**
50 - 99	n/u	n/u	n/u	n/u	n/u	n/u
100 and more	n/u	n/u	n/u	n/u	n/u	n/u
Rouyn-Noranda CA	**	**	**	**	**	**
10 - 49	**	**	**	**	**	**
50 - 99	**	**	**	**	**	**
100 and more	**	**	**	**	**	**
Val-d'Or CA	**	**	**	**	100.0 a	20.0 a
10 - 49	**	**	**	**	**	**
50 - 99	**	**	**	**	**	**
100 and more	**	**	**	**	**	**
Bas-Saint-Laurent	0.0 c	0.0 c	15.0 a	5.0 a	80.0 a	65.0 a
10 - 49	**	**	**	12.5 a	87.5 a	62.5 a
50 - 99	**	**	16.7 a	**	83.3 a	50.0 a
100 and more	**	**	33.3 a	**	66.7 a	83.3 a
Matane CA	**	**	**	**	**	**
10 - 49	**	**	**	**	**	**
50 - 99	n/u	n/u	n/u	n/u	n/u	n/u
100 and more	n/u	n/u	n/u	n/u	n/u	n/u
Rimouski CA	**	**	**	**	100.0 a	80.0 a
10 - 49	**	**	**	**	**	**
50 - 99	**	**	**	**	100.0 a	75.0 a
100 and more	**	**	**	**	**	**
Rivière-du-Loup CA	**	**	33.3 a	11.1 a	55.6 a	44.4 a
10 - 49	**	**	**	25.0 a	75.0 a	50.0 a
50 - 99	**	**	**	**	**	**
100 and more	**	**	**	**	**	**
Centre-du-Québec	0.0 b	15.7 d	0.0 b	11.5 a	72.7 a	47.9 a
10 - 49	**	**	**	**	100.0 a	**
50 - 99	**	**	**	13.6 c	**	**
100 and more	0.0 c	26.4 a	0.0 c	17.6 a	56.0 a	81.6 a
Drummondville CA	0.0 c	21.4 a	0.0 c	21.4 a	57.1 a	50.0 a
10 - 49	**	**	**	**	100.0 a	**
50 - 99	**	**	**	**	**	**
100 and more	**	42.9 a	**	28.6 a	28.6 a	85.7 a

(continued)

2.4 – Proportion (%) of Structures where Select Services are Available*

By Structure Size and Zone

Québec

Centre	Meals					On-Site Medical Services
	Not offered	Optional	# included in rent			
			1	2	3	
Victoriaville CA	0.0 c	**	0.0 c	0.0 c	90.9 a	**
10 - 49	**	**	**	**	**	**
50 - 99	**	**	**	**	**	**
100 and more	**	**	**	**	100.0 a	**
Chaudière-Appalaches	0.0 b	6.9 a	0.0 b	**	81.9 a	62.1 a
10 - 49	0.0 c	6.0 a	0.0 c	0.0 c	94.0 a	64.2 a
50 - 99	**	**	**	**	100.0 a	33.3 a
100 and more	**	16.0 d	**	**	**	84.0 a
Montmagny	**	**	**	16.7 a	83.3 a	50.0 a
10 - 49	**	**	**	**	**	**
50 - 99	**	**	**	**	**	**
100 and more	**	**	**	**	**	**
Sainte-Marie	**	**	**	**	**	100.0 a
10 - 49	**	**	**	**	**	**
50 - 99	n/u	n/u	n/u	n/u	n/u	n/u
100 and more	**	**	**	**	**	**
Saint-Georges CA	**	14.3 a	**	14.3 a	71.4 a	100.0 a
10 - 49	**	**	**	**	100.0 a	100.0 a
50 - 99	n/u	n/u	n/u	n/u	n/u	n/u
100 and more	**	**	**	**	**	**
Thetford Mines CA	0.0 c	9.1 a	0.0 c	0.0 c	90.9 a	27.3 a
10 - 49	**	16.7 a	**	**	83.3 a	16.7 a
50 - 99	**	**	**	**	100.0 a	25.0 a
100 and more	**	**	**	**	**	**
Côte-Nord	**	**	**	**	**	**
10 - 49	**	**	**	**	**	**
50 - 99	**	**	**	**	**	**
100 and more	**	**	**	**	**	**
Baie-Comeau CA	**	**	**	**	**	**
10 - 49	n/u	n/u	n/u	n/u	n/u	n/u
50 - 99	**	**	**	**	**	**
100 and more	n/u	n/u	n/u	n/u	n/u	n/u
Sept-Îles CA	**	**	**	**	**	**
10 - 49	**	**	**	**	**	**
50 - 99	n/u	n/u	n/u	n/u	n/u	n/u
100 and more	**	**	**	**	**	**
Gaspésie-Îles-de-la-Madeleine	**	**	**	**	100.0 a	50.0 a
10 - 49	**	**	**	**	100.0 a	25.0 a
50 - 99	**	**	**	**	**	**
100 and more	n/u	n/u	n/u	n/u	n/u	n/u

(continued)

2.4 – Proportion (%) of Structures where Select Services are Available*

By Structure Size and Zone

Québec

Centre	Meals					On-Site Medical Services
	Not offered	Optional	# included in rent			
			1	2	3	
Gaspé	**	**	**	**	**	**
10 - 49	n/u	n/u	n/u	n/u	n/u	n/u
50 - 99	**	**	**	**	**	**
100 and more	n/u	n/u	n/u	n/u	n/u	n/u
Îles-de-la-Madeleine	**	**	**	**	100.0 ^a	25.0 ^a
10 - 49	**	**	**	**	100.0 ^a	25.0 ^a
50 - 99	n/u	n/u	n/u	n/u	n/u	n/u
100 and more	n/u	n/u	n/u	n/u	n/u	n/u
Lanaudière	0.0 ^c	**	0.0 ^c	**	**	**
10 - 49	**	10.7 ^d	**	**	89.3 ^a	**
50 - 99	**	**	**	**	**	**
100 and more	**	**	**	**	**	**
Joliette CA	0.0 ^d	**	0.0 ^d	**	**	**
10 - 49	**	**	**	**	100.0 ^a	**
50 - 99	**	**	**	**	**	**
100 and more	**	**	**	**	**	**
Rawdon	**	**	**	**	**	**
10 - 49	**	**	**	**	**	**
50 - 99	n/u	n/u	n/u	n/u	n/u	n/u
100 and more	**	**	**	**	**	**
Saint-Lin-des-Laurentides	**	**	**	**	**	**
10 - 49	**	**	**	**	**	**
50 - 99	n/u	n/u	n/u	n/u	n/u	n/u
100 and more	n/u	n/u	n/u	n/u	n/u	n/u
Laurentides	**	**	**	**	89.1 ^a	**
10 - 49	**	**	**	**	**	**
50 - 99	**	**	**	**	**	**
100 and more	**	**	**	**	**	**
Lachute CA	**	**	**	**	**	**
10 - 49	n/u	n/u	n/u	n/u	n/u	n/u
50 - 99	n/u	n/u	n/u	n/u	n/u	n/u
100 and more	**	**	**	**	**	**
Mont-Laurier	**	**	**	**	**	**
10 - 49	**	**	**	**	**	**
50 - 99	n/u	n/u	n/u	n/u	n/u	n/u
100 and more	n/u	n/u	n/u	n/u	n/u	n/u
Prévost	n/u	n/u	n/u	n/u	n/u	n/u
10 - 49	n/u	n/u	n/u	n/u	n/u	n/u
50 - 99	n/u	n/u	n/u	n/u	n/u	n/u
100 and more	n/u	n/u	n/u	n/u	n/u	n/u

(continued)

2.4 – Proportion (%) of Structures where Select Services are Available* By Structure Size and Zone Québec

Centre	Meals					On-Site Medical Services
	Not offered	Optional	# included in rent			
			1	2	3	
Sainte-Adèle	**	**	**	**	**	**
10 - 49	**	**	**	**	**	**
50 - 99	**	**	**	**	**	**
100 and more	n/u	n/u	n/u	n/u	n/u	n/u
Sainte-Sophie	**	**	**	**	**	**
10 - 49	n/u	n/u	n/u	n/u	n/u	n/u
50 - 99	**	**	**	**	**	**
100 and more	n/u	n/u	n/u	n/u	n/u	n/u
Mauricie	0.0 ^b	4.0 ^d	0.0 ^b	7.9 ^c	88.1 ^a	24.0 ^d
10 - 49	0.0 ^c	0.0 ^c	0.0 ^c	0.0 ^c	100.0 ^a	11.1 ^d
50 - 99	**	**	**	**	**	**
100 and more	**	**	**	**	**	80.0 ^a
La Tuque CA	**	**	**	**	**	**
10 - 49	n/u	n/u	n/u	n/u	n/u	n/u
50 - 99	**	**	**	**	**	**
100 and more	n/u	n/u	n/u	n/u	n/u	n/u
Shawinigan CA	0.0 ^b	4.2 ^d	0.0 ^b	4.2 ^d	91.7 ^a	25.0 ^d
10 - 49	0.0 ^c	0.0 ^c	0.0 ^c	0.0 ^c	100.0 ^a	11.1 ^d
50 - 99	**	**	**	**	**	**
100 and more	**	**	**	**	**	80.0 ^a
Montréal	0.0 ^b	8.4 ^b	0.0 ^b	2.8 ^b	88.8 ^a	82.2 ^a
10 - 49	0.0 ^b	0.0 ^b	0.0 ^b	0.0 ^b	100.0 ^a	79.8 ^a
50 - 99	0.0 ^c	0.0 ^c	0.0 ^c	0.0 ^c	100.0 ^a	83.2 ^a
100 and more	0.0 ^c	**	0.0 ^c	11.6 ^d	**	86.1 ^a
Cowansville CA	**	20.0 ^a	**	**	80.0 ^a	80.0 ^a
10 - 49	**	**	**	**	**	**
50 - 99	**	**	**	**	**	**
100 and more	**	**	**	**	**	**
Granby CA	0.0 ^c	0.0 ^c	0.0 ^c	**	91.7 ^a	**
10 - 49	**	**	**	**	**	**
50 - 99	**	**	**	**	100.0 ^a	**
100 and more	**	**	**	**	**	**
Saint-Hyacinthe CA	0.0 ^c	5.9 ^a	0.0 ^c	0.0 ^c	94.1 ^a	94.1 ^a
10 - 49	**	**	**	**	100.0 ^a	88.9 ^a
50 - 99	**	**	**	**	100.0 ^a	100.0 ^a
100 and more	**	25.0 ^a	**	**	75.0 ^a	100.0 ^a
Saint-Jean-sur-Richelieu CA	0.0 ^c	**	0.0 ^c	0.0 ^c	81.3 ^a	100.0 ^a
10 - 49	**	**	**	**	100.0 ^a	100.0 ^a
50 - 99	**	**	**	**	**	**
100 and more	**	**	**	**	**	100.0 ^a

(continued)

2.4 – Proportion (%) of Structures where Select Services are Available* By Structure Size and Zone Québec

Centre	Meals					On-Site Medical Services
	Not offered	Optional	# included in rent			
			1	2	3	
Salaberry-de-Valleyfield CA	**	**	**	**	100.0 ^a	**
10 - 49	**	**	**	**	100.0 ^a	**
50 - 99	**	**	**	**	**	**
100 and more	**	**	**	**	**	**
Sorel-Tracy CA	0.0 ^c	8.3 ^a	0.0 ^c	8.3 ^a	83.3 ^a	83.3 ^a
10 - 49	**	**	**	**	100.0 ^a	77.8 ^a
50 - 99	n/u	n/u	n/u	n/u	n/u	n/u
100 and more	**	**	**	**	**	**
Saguenay/Lac-Saint-Jean	0.0 ^b	3.7 ^a	7.4 ^a	7.4 ^a	81.5 ^a	66.7 ^a
10 - 49	0.0 ^c	0.0 ^c	0.0 ^c	14.3 ^a	85.7 ^a	50.0 ^a
50 - 99	**	**	20.0 ^a	**	80.0 ^a	90.0 ^a
100 and more	**	**	**	**	**	**
Alma CA	0.0 ^c	9.1 ^a	9.1 ^a	0.0 ^c	81.8 ^a	63.6 ^a
10 - 49	**	**	**	**	100.0 ^a	25.0 ^a
50 - 99	**	**	20.0 ^a	**	80.0 ^a	80.0 ^a
100 and more	**	**	**	**	**	**
Dolbeau-Mistassini CA	**	**	**	11.1 ^a	88.9 ^a	77.8 ^a
10 - 49	**	**	**	16.7 ^a	83.3 ^a	83.3 ^a
50 - 99	**	**	**	**	**	**
100 and more	**	**	**	**	**	**
Roberval	**	**	25.0 ^a	25.0 ^a	50.0 ^a	50.0 ^a
10 - 49	**	**	**	**	**	**
50 - 99	**	**	**	**	**	**
100 and more	n/u	n/u	n/u	n/u	n/u	n/u
Saint-Félicien	**	**	**	**	**	**
10 - 49	**	**	**	**	**	**
50 - 99	**	**	**	**	**	**
100 and more	n/u	n/u	n/u	n/u	n/u	n/u
Rural	0.0 ^c	**	0.6 ^b	**	90.0 ^a	**
10 - 49	0.0 ^c	**	0.0 ^c	**	90.0 ^a	**
50 - 99	0.0 ^b	0.0 ^b	**	**	91.1 ^a	**
100 and more	**	**	**	**	**	**
Province of Québec	0.3 ^a	12.2 ^a	1.8 ^a	8.4 ^b	77.3 ^a	63.8 ^a
10 - 49	0.0 ^b	2.2 ^c	0.3 ^a	5.1 ^d	92.4 ^a	53.2 ^a
50 - 99	0.0 ^b	9.8 ^a	2.6 ^c	11.7 ^c	75.9 ^a	69.2 ^a
100 and more	1.2 ^a	40.5 ^a	5.3 ^a	14.2 ^a	38.7 ^a	87.1 ^a

* Services are considered to be included in rent for a structure if the majority of all units have the service included in the rent.

The following letter codes are used to indicate the reliability of the estimates:

a – Excellent, b – Very good, c – Good, d – Fair (Use with Caution)

** Data suppressed to protect confidentiality or data is not statistically reliable

n/u: No units exist in universe for this category n/s: No units exist in the sample for this category n/a: Not applicable

2.5 – Proportion (%) of Structures with Access to Selected Amenities by Structure Size and Zone Québec

Centre	Registered Nurse onsite	24-hour call bell	Pharmacy	Transportation Services	Swimming Pool	Movie Theatre	Exercise Facilities
Gatineau CMA	47.6 ^a	85.7 ^a	23.8 ^a	52.4 ^a	19.0 ^a	28.6 ^a	33.3 ^a
10 - 49	18.2 ^a	72.7 ^a	9.1 ^a	27.3 ^a	9.1 ^a	9.1 ^a	27.3 ^a
50 - 99	**	**	**	**	**	**	**
100 and more	75.0 ^a	100.0 ^a	50.0 ^a	100.0 ^a	37.5 ^a	62.5 ^a	37.5 ^a
Gatineau East	25.0 ^a	83.3 ^a	33.3 ^a	66.7 ^a	25.0 ^a	25.0 ^a	33.3 ^a
10 - 49	**	71.4 ^a	**	42.9 ^a	14.3 ^a	14.3 ^a	28.6 ^a
50 - 99	n/u	n/u	n/u	n/u	n/u	n/u	n/u
100 and more	60.0 ^a	100.0 ^a	80.0 ^a	100.0 ^a	40.0 ^a	40.0 ^a	40.0 ^a
Gatineau West	85.7 ^a	85.7 ^a	14.3 ^a	42.9 ^a	14.3 ^a	42.9 ^a	28.6 ^a
10 - 49	**	**	**	**	**	**	**
50 - 99	**	**	**	**	**	**	**
100 and more	**	**	**	**	**	**	**
Surrounding Areas	**	**	**	**	**	**	**
10 - 49	**	**	**	**	**	**	**
50 - 99	n/u	n/u	n/u	n/u	n/u	n/u	n/u
100 and more	n/u	n/u	n/u	n/u	n/u	n/u	n/u
Montréal CMA	61.7 ^a	95.4 ^a	34.3 ^a	34.0 ^a	25.9 ^a	43.7 ^a	43.0 ^a
10 - 49	34.7 ^a	92.8 ^a	12.4 ^a	25.2 ^a	4.8 ^b	22.7 ^a	20.5 ^a
50 - 99	70.7 ^a	97.8 ^a	29.0 ^a	22.9 ^a	4.1 ^b	47.7 ^a	41.3 ^a
100 and more	84.6 ^a	96.9 ^a	57.4 ^a	46.6 ^a	54.2 ^a	62.5 ^a	65.3 ^a
Island of Montréal	72.8 ^a	94.4 ^a	33.7 ^a	39.7 ^a	29.2 ^a	38.5 ^a	37.6 ^a
10 - 49	45.3 ^a	92.0 ^a	2.1 ^c	25.8 ^d	4.2 ^d	12.3 ^d	12.3 ^c
50 - 99	75.8 ^a	93.9 ^a	**	29.2 ^d	5.6 ^a	**	29.2 ^d
100 and more	90.4 ^a	96.0 ^a	54.4 ^a	51.4 ^a	51.3 ^a	55.5 ^a	56.3 ^a
Island Centre	85.7 ^a	91.8 ^a	24.5 ^a	24.5 ^a	16.3 ^a	18.4 ^a	18.4 ^a
10 - 49	73.7 ^a	89.5 ^a	0.0 ^c	15.8 ^d	0.0 ^c	0.0 ^c	5.3 ^c
50 - 99	83.3 ^a	100.0 ^a	**	**	**	**	**
100 and more	95.8 ^a	91.7 ^a	37.5 ^a	37.5 ^a	33.3 ^a	29.2 ^a	33.3 ^a
Island West	90.3 ^a	100.0 ^a	38.7 ^a	64.5 ^a	51.6 ^a	58.1 ^a	71.0 ^a
10 - 49	40.0 ^a	100.0 ^a	**	80.0 ^a	**	20.0 ^a	**
50 - 99	100.0 ^a	100.0 ^a	25.0 ^a	75.0 ^a	25.0 ^a	50.0 ^a	75.0 ^a
100 and more	100.0 ^a	100.0 ^a	50.0 ^a	59.1 ^a	68.2 ^a	68.2 ^a	86.4 ^a
Island North	62.5 ^a	90.6 ^a	**	53.1 ^a	25.0 ^d	53.1 ^a	**
10 - 49	**	92.9 ^a	**	**	**	**	**
50 - 99	**	**	**	**	**	**	**
100 and more	87.5 ^a	93.8 ^a	**	81.3 ^a	**	**	**
Island East	**	95.5 ^a	**	**	**	**	**
10 - 49	**	**	**	**	**	**	**
50 - 99	**	100.0 ^a	**	**	**	**	**
100 and more	75.0 ^a	100.0 ^a	75.0 ^a	**	**	75.0 ^a	**

(continued)

2.5 – Proportion (%) of Structures with Access to Selected Amenities by Structure Size and Zone Québec

Centre	Registered Nurse onsite	24-hour call bell	Pharmacy	Transportation Services	Swimming Pool	Movie Theatre	Exercise Facilities
Vaudreuil-Soulanges	**	100.0 ^a	**	**	**	**	**
10 - 49	**	100.0 ^a	**	**	**	**	**
50 - 99	**	**	**	**	**	**	**
100 and more	**	**	**	**	**	**	**
Laval/North Shore	40.1 ^a	96.9 ^a	22.0 ^a	27.0 ^a	24.1 ^a	38.1 ^a	35.1 ^a
10 - 49	16.4 ^a	93.7 ^a	4.2 ^c	22.7 ^a	6.2 ^b	14.4 ^a	12.4 ^a
50 - 99	55.6 ^a	100.0 ^a	11.1 ^c	16.6 ^d	5.6 ^c	44.5 ^a	27.7 ^a
100 and more	66.7 ^a	100.0 ^a	54.3 ^a	39.1 ^a	60.6 ^a	69.4 ^a	72.6 ^a
Laval	51.5 ^a	97.0 ^a	42.4 ^a	48.5 ^a	36.4 ^a	51.5 ^a	51.5 ^a
10 - 49	33.3 ^a	91.7 ^a	8.3 ^a	41.7 ^a	0.0	16.7 ^a	8.3 ^a
50 - 99	**	**	**	**	**	**	**
100 and more	63.2 ^a	100.0 ^a	68.4 ^a	52.6 ^a	63.2 ^a	78.9 ^a	78.9 ^a
North Shore	40.4 ^a	98.1 ^a	11.5 ^c	19.2 ^a	19.2 ^a	38.5 ^a	30.8 ^a
10 - 49	16.0 ^d	96.0 ^a	0.0 ^b	20.0 ^d	12.0 ^c	20.0 ^d	20.0 ^d
50 - 99	56.3 ^a	100.0 ^a	12.5 ^c	12.5 ^c	6.3 ^c	50.0 ^a	25.0 ^d
100 and more	72.7 ^a	100.0 ^a	**	27.3 ^d	54.5 ^a	63.6 ^a	63.6 ^a
Saint-Jérôme	**	92.9 ^a	**	**	**	**	**
10 - 49	0.0 ^c	90.9 ^a	**	**	0.0 ^c	0.0 ^c	0.0 ^c
50 - 99	n/u	n/u	n/u	n/u	n/u	n/u	n/u
100 and more	**	**	**	**	**	**	**
Montréal/South Shore	70.0 ^a	95.2 ^a	55.2 ^a	31.8 ^a	20.8 ^a	64.8 ^a	68.1 ^a
10 - 49	46.7 ^a	92.7 ^a	45.9 ^a	28.6 ^a	3.7 ^d	56.7 ^a	49.8 ^a
50 - 99	84.8 ^a	100.0 ^a	45.7 ^a	23.2 ^d	0.0 ^c	61.0 ^a	76.5 ^a
100 and more	90.9 ^a	95.5 ^a	72.5 ^a	40.8 ^a	54.7 ^a	77.2 ^a	86.3 ^a
South Shore Centre	80.0 ^a	92.0 ^a	**	**	**	44.0 ^a	56.0 ^a
10 - 49	63.6 ^a	81.8 ^a	**	27.3 ^d	**	27.3 ^d	**
50 - 99	**	**	**	**	**	**	**
100 and more	90.9 ^a	100.0 ^a	63.6 ^a	**	63.6 ^a	72.7 ^a	81.8 ^a
South Shore East	66.7 ^a	95.8 ^a	75.0 ^a	37.5 ^a	16.7 ^a	87.5 ^a	91.7 ^a
10 - 49	33.3 ^a	100.0 ^a	66.7 ^a	22.2 ^a	**	88.9 ^a	88.9 ^a
50 - 99	75.0 ^a	100.0 ^a	75.0 ^a	25.0 ^a	**	87.5 ^a	87.5 ^a
100 and more	100.0 ^a	85.7 ^a	85.7 ^a	71.4 ^a	57.1 ^a	85.7 ^a	100.0 ^a
South Shore West	57.1 ^a	100.0 ^a	64.3 ^a	21.4 ^a	7.1 ^a	64.3 ^a	50.0 ^a
10 - 49	37.5 ^a	100.0 ^a	75.0 ^a	37.5 ^a	**	62.5 ^a	25.0 ^a
50 - 99	**	**	**	**	**	**	**
100 and more	75.0 ^a	100.0 ^a	75.0 ^a	**	25.0 ^a	75.0 ^a	75.0 ^a
Québec CMA	46.5 ^a	93.5 ^a	14.9 ^a	45.2 ^a	12.0 ^a	41.5 ^a	34.3 ^a
10 - 49	34.9 ^a	90.6 ^a	3.2 ^c	31.9 ^a	1.6 ^a	20.6 ^a	9.5 ^a
50 - 99	44.2 ^a	95.3 ^a	22.4 ^d	44.3 ^a	19.9 ^d	56.8 ^a	47.2 ^a
100 and more	71.8 ^a	97.0 ^a	28.1 ^a	72.0 ^a	22.1 ^d	62.6 ^a	66.1 ^a

(continued)

2.5 – Proportion (%) of Structures with Access to Selected Amenities by Structure Size and Zone Québec

Centre	Registered Nurse onsite	24-hour call bell	Pharmacy	Transportation Services	Swimming Pool	Movie Theatre	Exercise Facilities
Centre North	50.1 a	95.4 a	15.5 a	37.6 a	11.0 c	39.0 a	26.8 a
10 - 49	41.0 a	92.7 a	3.7 a	29.8 a	3.7 a	18.5 a	3.7 a
50 - 99	35.6 a	100.0 a	14.1 a	14.4 d	14.1 a	50.0 a	21.5 d
100 and more	69.5 a	95.7 a	30.3 a	60.8 a	17.7 d	56.3 a	56.9 a
Basse-Ville	45.0 a	100.0 a	5.0 a	40.0 a	0.0 c	35.0 a	10.0 a
10 - 49	11.1 a	100.0 a	**	33.3 a	**	11.1 a	**
50 - 99	60.0 a	100.0 a	**	20.0 a	**	40.0 a	**
100 and more	83.3 a	100.0 a	16.7 a	66.7 a	**	66.7 a	33.3 a
Haute-Ville	69.2 a	92.3 a	30.8 a	38.5 a	15.4 a	46.2 a	15.4 a
10 - 49	85.7 a	85.7 a	14.3 a	28.6 a	14.3 a	28.6 a	**
50 - 99	**	**	**	**	**	**	**
100 and more	50.0 a	100.0 a	75.0 a	75.0 a	25.0 a	75.0 a	50.0 a
Québec des Rivières	27.3 a	81.8 a	27.3 a	18.2 a	18.2 a	45.5 a	45.5 a
10 - 49	**	75.0 a	**	**	**	25.0 a	25.0 a
50 - 99	**	**	**	**	**	**	**
100 and more	75.0 a	75.0 a	25.0 a	50.0 a	**	50.0 a	50.0 a
Sainte-Foy	55.0 a	100.0 a	10.0 d	**	**	**	**
10 - 49	**	100.0 a	**	**	**	**	**
50 - 99	**	100.0 a	**	**	**	**	**
100 and more	**	100.0 a	**	**	**	**	77.8 a
Northern Suburbs	35.7 a	87.8 a	17.3 d	54.7 a	19.4 d	46.6 a	44.5 a
10 - 49	19.9 a	84.1 a	4.2 d	28.0 a	0.0 b	28.0 a	20.1 a
50 - 99	47.7 a	88.6 a	**	76.9 a	**	59.8 a	59.8 a
100 and more	**	100.0 a	**	100.0 a	**	84.0 a	100.0 a
Val-Bélair	33.3 a	88.9 a	**	22.2 a	**	11.1 a	22.2 a
10 - 49	33.3 a	100.0 a	**	**	**	**	16.7 a
50 - 99	**	**	**	**	**	**	**
100 and more	n/u	n/u	n/u	n/u	n/u	n/u	n/u
Charlesbourg	**	100.0 a	**	81.3 a	**	81.3 a	81.3 a
10 - 49	**	**	**	**	**	**	**
50 - 99	**	100.0 a	**	88.9 a	**	88.9 a	88.9 a
100 and more	**	100.0 a	**	100.0 a	**	100.0 a	100.0 a
Beauport	26.1 a	78.3 a	0.0 b	47.8 a	4.3 a	34.8 a	26.1 a
10 - 49	18.8 a	75.0 a	0.0 c	37.5 a	0.0 c	37.5 a	18.8 a
50 - 99	20.0 a	80.0 a	**	60.0 a	**	20.0 a	20.0 a
100 and more	**	**	**	**	**	**	**
Québec/South Shore	58.1 a	100.0 a	**	46.1 a	0.0 b	**	**
10 - 49	**	100.0 a	0.0 c	**	0.0 c	**	0.0 c
50 - 99	**	100.0 a	**	**	**	60.9 a	60.9 a
100 and more	**	**	**	**	**	**	**

(continued)

2.5 – Proportion (%) of Structures with Access to Selected Amenities by Structure Size and Zone Québec

Centre	Registered Nurse onsite	24-hour call bell	Pharmacy	Transportation Services	Swimming Pool	Movie Theatre	Exercise Facilities
Charny	66.7 ^a	100.0 ^a	**	33.3 ^a	**	11.1 ^a	11.1 ^a
10 - 49	80.0 ^a	100.0 ^a	**	40.0 ^a	**	**	**
50 - 99	50.0 ^a	100.0 ^a	**	25.0 ^a	**	25.0 ^a	25.0 ^a
100 and more	n/u	n/u	n/u	n/u	n/u	n/u	n/u
Lévis	**	100.0 ^a	**	**	0.0 ^c	**	**
10 - 49	**	100.0 ^a	**	**	**	**	**
50 - 99	**	100.0 ^a	**	**	**	83.3 ^a	83.3 ^a
100 and more	**	**	**	**	**	**	**
Saguenay CMA	43.3 ^a	96.7 ^a	0.0 ^b	26.7 ^a	10.0 ^a	20.0 ^a	30.0 ^a
10 - 49	37.5 ^a	100.0 ^a	0.0 ^c	12.5 ^a	0.0 ^c	6.3 ^a	18.8 ^a
50 - 99	25.0 ^a	100.0 ^a	**	25.0 ^a	**	**	12.5 ^a
100 and more	83.3 ^a	83.3 ^a	**	66.7 ^a	50.0 ^a	83.3 ^a	83.3 ^a
Chicoutimi	45.5 ^a	90.9 ^a	0.0 ^c	45.5 ^a	18.2 ^a	27.3 ^a	36.4 ^a
10 - 49	20.0 ^a	100.0 ^a	**	20.0 ^a	**	**	20.0 ^a
50 - 99	**	**	**	**	**	**	**
100 and more	**	**	**	**	**	**	**
Jonquière	50.0 ^a	100.0 ^a	0.0 ^c	14.3 ^a	7.1 ^a	21.4 ^a	35.7 ^a
10 - 49	62.5 ^a	100.0 ^a	**	**	**	12.5 ^a	25.0 ^a
50 - 99	**	**	**	**	**	**	**
100 and more	**	**	**	**	**	**	**
La Baie	20.0 ^a	100.0 ^a	**	20.0 ^a	**	**	**
10 - 49	**	**	**	**	**	**	**
50 - 99	**	**	**	**	**	**	**
100 and more	n/u	n/u	n/u	n/u	n/u	n/u	n/u
Sherbrooke CMA	34.2 ^a	97.4 ^a	10.3 ^a	28.2 ^a	18.8 ^d	16.2 ^d	34.6 ^a
10 - 49	13.2 ^a	93.4 ^a	0.0 ^c	6.6 ^a	0.0 ^c	0.0 ^c	6.6 ^a
50 - 99	37.5 ^a	100.0 ^a	7.5 ^a	52.5 ^a	22.5 ^a	15.0 ^a	**
100 and more	**	100.0 ^a	28.6 ^d	28.6 ^d	**	**	79.4 ^a
Old city of Sherbrooke	**	100.0 ^a	12.0 ^a	32.0 ^a	25.3 ^d	**	**
10 - 49	10.9 ^a	100.0 ^a	**	10.9 ^a	**	**	10.9 ^a
50 - 99	21.4 ^d	100.0 ^a	10.7 ^c	**	21.4 ^d	**	**
100 and more	**	100.0 ^a	**	**	**	**	**
East	11.1 ^a	100.0 ^a	22.2 ^a	33.3 ^a	33.3 ^a	11.1 ^a	11.1 ^a
10 - 49	**	100.0 ^a	**	**	**	**	**
50 - 99	**	**	**	**	**	**	**
100 and more	**	**	**	**	**	**	**
North	**	100.0 ^a	**	**	**	**	**
10 - 49	**	**	**	**	**	**	**
50 - 99	**	**	**	**	**	**	**
100 and more	**	**	**	**	**	**	**

(continued)

2.5 – Proportion (%) of Structures with Access to Selected Amenities by Structure Size and Zone Québec

Centre	Registered Nurse onsite	24-hour call bell	Pharmacy	Transportation Services	Swimming Pool	Movie Theatre	Exercise Facilities
West	**	**	**	**	**	**	**
10 - 49	n/u	n/u	n/u	n/u	n/u	n/u	n/u
50 - 99	**	**	**	**	**	**	**
100 and more	**	**	**	**	**	**	**
Centre	50.0 ^a	100.0 ^a	16.7 ^a	50.0 ^a	16.7 ^a	16.7 ^a	33.3 ^a
10 - 49	**	**	**	**	**	**	**
50 - 99	**	**	**	**	**	**	**
100 and more	**	**	**	**	**	**	**
Magog	57.1 ^a	100.0 ^a	**	28.6 ^a	14.3 ^a	28.6 ^a	42.9 ^a
10 - 49	**	**	**	**	**	**	**
50 - 99	**	**	**	**	**	**	**
100 and more	**	**	**	**	**	**	**
Suburbs	14.3 ^a	85.7 ^a	14.3 ^a	14.3 ^a	**	**	42.9 ^a
10 - 49	**	**	**	**	**	**	**
50 - 99	**	**	**	**	**	**	**
100 and more	**	**	**	**	**	**	**
Trois-Rivières CMA	41.7 ^a	93.8 ^a	8.3 ^a	50.0 ^a	14.6 ^a	25.0 ^a	31.3 ^a
10 - 49	31.0 ^a	93.1 ^a	0.0 ^b	44.8 ^a	0.0 ^b	3.4 ^a	6.9 ^a
50 - 99	55.6 ^a	88.9 ^a	**	44.4 ^a	11.1 ^a	22.2 ^a	44.4 ^a
100 and more	60.0 ^a	100.0 ^a	40.0 ^a	70.0 ^a	60.0 ^a	90.0 ^a	90.0 ^a
Trois-Rivières Centre	44.4 ^a	91.7 ^a	11.1 ^a	52.8 ^a	19.4 ^a	33.3 ^a	36.1 ^a
10 - 49	26.3 ^a	89.5 ^a	0.0 ^c	42.1 ^a	0.0 ^c	5.3 ^a	10.5 ^a
50 - 99	62.5 ^a	87.5 ^a	**	50.0 ^a	12.5 ^a	25.0 ^a	37.5 ^a
100 and more	66.7 ^a	100.0 ^a	44.4 ^a	77.8 ^a	66.7 ^a	100.0 ^a	88.9 ^a
Trois-Rivières	56.3 ^a	87.5 ^a	12.5 ^a	50.0 ^a	18.8 ^a	31.3 ^a	37.5 ^a
10 - 49	25.0 ^a	87.5 ^a	**	37.5 ^a	**	**	12.5 ^a
50 - 99	100.0 ^a	75.0 ^a	**	50.0 ^a	25.0 ^a	25.0 ^a	50.0 ^a
100 and more	75.0 ^a	100.0 ^a	50.0 ^a	75.0 ^a	50.0 ^a	100.0 ^a	75.0 ^a
Trois-Rivières-Ouest	11.1 ^a	100.0 ^a	11.1 ^a	55.6 ^a	22.2 ^a	44.4 ^a	33.3 ^a
10 - 49	**	100.0 ^a	**	75.0 ^a	**	25.0 ^a	**
50 - 99	**	**	**	**	**	**	**
100 and more	**	**	**	**	**	**	**
Cap-de-la-Madeleine	54.5 ^a	90.9 ^a	9.1 ^a	54.5 ^a	18.2 ^a	27.3 ^a	36.4 ^a
10 - 49	42.9 ^a	85.7 ^a	**	28.6 ^a	**	**	14.3 ^a
50 - 99	**	**	**	**	**	**	**
100 and more	**	**	**	**	**	**	**
Surrounding Areas	33.3 ^a	100.0 ^a	0.0 ^c	41.7 ^a	0.0 ^c	0.0 ^c	16.7 ^a
10 - 49	40.0 ^a	100.0 ^a	**	50.0 ^a	**	**	**
50 - 99	**	**	**	**	**	**	**
100 and more	**	**	**	**	**	**	**

(continued)

2.5 – Proportion (%) of Structures with Access to Selected Amenities by Structure Size and Zone Québec

Centre	Registered Nurse onsite	24-hour call bell	Pharmacy	Transportation Services	Swimming Pool	Movie Theatre	Exercise Facilities
Abitibi-Témiscamingue	9.1 a	81.8 a	9.1 a	54.5 a	0.0 c	0.0 c	18.2 a
10 - 49	**	83.3 a	**	66.7 a	**	**	**
50 - 99	**	**	**	**	**	**	**
100 and more	**	**	**	**	**	**	**
Amos CA	**	**	**	**	**	**	**
10 - 49	**	**	**	**	**	**	**
50 - 99	n/u	n/u	n/u	n/u	n/u	n/u	n/u
100 and more	n/u	n/u	n/u	n/u	n/u	n/u	n/u
Rouyn-Noranda CA	**	**	**	**	**	**	**
10 - 49	**	**	**	**	**	**	**
50 - 99	**	**	**	**	**	**	**
100 and more	**	**	**	**	**	**	**
Val-d'Or CA	**	80.0 a	**	60.0 a	**	**	40.0 a
10 - 49	**	**	**	**	**	**	**
50 - 99	**	**	**	**	**	**	**
100 and more	**	**	**	**	**	**	**
Bas-Saint-Laurent	55.0 a	95.0 a	20.0 a	40.0 a	5.0 a	0.0 c	20.0 a
10 - 49	37.5 a	100.0 a	12.5 a	12.5 a	**	**	**
50 - 99	66.7 a	100.0 a	**	50.0 a	**	**	33.3 a
100 and more	66.7 a	83.3 a	50.0 a	66.7 a	16.7 a	**	33.3 a
Matane CA	**	**	**	**	**	**	**
10 - 49	**	**	**	**	**	**	**
50 - 99	n/u	n/u	n/u	n/u	n/u	n/u	n/u
100 and more	n/u	n/u	n/u	n/u	n/u	n/u	n/u
Rimouski CA	60.0 a	100.0 a	30.0 a	60.0 a	**	**	20.0 a
10 - 49	**	**	**	**	**	**	**
50 - 99	75.0 a	100.0 a	**	75.0 a	**	**	25.0 a
100 and more	**	**	**	**	**	**	**
Rivière-du-Loup CA	44.4 a	88.9 a	11.1 a	22.2 a	11.1 a	**	22.2 a
10 - 49	25.0 a	100.0 a	**	**	**	**	**
50 - 99	**	**	**	**	**	**	**
100 and more	**	**	**	**	**	**	**
Centre-du-Québec	64.3 a	100.0 a	23.8 d	**	28.0 d	28.3 d	28.0 d
10 - 49	**	100.0 a	**	**	**	**	**
50 - 99	**	100.0 a	**	**	**	**	**
100 and more	100.0 a	100.0 a	**	**	**	55.2 a	**
Drummondville CA	57.1 a	100.0 a	28.6 a	21.4 a	28.6 a	21.4 a	28.6 a
10 - 49	**	100.0 a	**	25.0 a	**	**	**
50 - 99	**	**	**	**	**	**	**
100 and more	100.0 a	100.0 a	42.9 a	28.6 a	57.1 a	42.9 a	57.1 a

(continued)

2.5 – Proportion (%) of Structures with Access to Selected Amenities by Structure Size and Zone Québec

Centre	Registered Nurse onsite	24-hour call bell	Pharmacy	Transportation Services	Swimming Pool	Movie Theatre	Exercise Facilities
Victoriaville CA	**	100.0 ^a	**	**	**	**	**
10 - 49	**	**	**	**	**	**	**
50 - 99	**	100.0 ^a	**	**	**	**	**
100 and more	100.0 ^a	100.0 ^a	**	**	**	**	**
Chaudière-Appalaches	34.5 ^a	100.0 ^a	13.8 ^a	50.0 ^a	10.3 ^a	**	42.2 ^a
10 - 49	23.9 ^a	100.0 ^a	6.0 ^a	**	6.0 ^a	17.9 ^a	29.9 ^a
50 - 99	50.0 ^a	100.0 ^a	16.7 ^a	50.0 ^a	**	**	33.3 ^a
100 and more	**	100.0 ^a	**	68.0 ^a	**	100.0 ^a	84.0 ^a
Montmagny	50.0 ^a	100.0 ^a	16.7 ^a	83.3 ^a	**	16.7 ^a	16.7 ^a
10 - 49	**	**	**	**	**	**	**
50 - 99	**	**	**	**	**	**	**
100 and more	**	**	**	**	**	**	**
Sainte-Marie	**	100.0 ^a	**	**	**	**	**
10 - 49	**	**	**	**	**	**	**
50 - 99	n/u	n/u	n/u	n/u	n/u	n/u	n/u
100 and more	**	**	**	**	**	**	**
Saint-Georges CA	14.3 ^a	100.0 ^a	42.9 ^a	71.4 ^a	14.3 ^a	57.1 ^a	71.4 ^a
10 - 49	**	100.0 ^a	25.0 ^a	75.0 ^a	**	25.0 ^a	50.0 ^a
50 - 99	n/u	n/u	n/u	n/u	n/u	n/u	n/u
100 and more	**	**	**	**	**	**	**
Thetford Mines CA	54.5 ^a	100.0 ^a	0.0 ^c	18.2 ^a	18.2 ^a	27.3 ^a	45.5 ^a
10 - 49	50.0 ^a	100.0 ^a	**	**	16.7 ^a	33.3 ^a	50.0 ^a
50 - 99	50.0 ^a	100.0 ^a	**	25.0 ^a	**	**	50.0 ^a
100 and more	**	**	**	**	**	**	**
Côte-Nord	**	**	**	**	**	**	**
10 - 49	**	**	**	**	**	**	**
50 - 99	**	**	**	**	**	**	**
100 and more	**	**	**	**	**	**	**
Baie-Comeau CA	**	**	**	**	**	**	**
10 - 49	n/u	n/u	n/u	n/u	n/u	n/u	n/u
50 - 99	**	**	**	**	**	**	**
100 and more	n/u	n/u	n/u	n/u	n/u	n/u	n/u
Sept-Îles CA	**	**	**	**	**	**	**
10 - 49	**	**	**	**	**	**	**
50 - 99	n/u	n/u	n/u	n/u	n/u	n/u	n/u
100 and more	**	**	**	**	**	**	**
Gaspésie-Îles-de-la-Madeleine	33.3 ^a	100.0 ^a	16.7 ^a	33.3 ^a	**	**	16.7 ^a
10 - 49	**	100.0 ^a	**	50.0 ^a	**	**	25.0 ^a
50 - 99	**	**	**	**	**	**	**
100 and more	n/u	n/u	n/u	n/u	n/u	n/u	n/u

(continued)

2.5 – Proportion (%) of Structures with Access to Selected Amenities by Structure Size and Zone Québec

Centre	Registered Nurse onsite	24-hour call bell	Pharmacy	Transportation Services	Swimming Pool	Movie Theatre	Exercise Facilities
Gaspé	**	**	**	**	**	**	**
10 - 49	n/u	n/u	n/u	n/u	n/u	n/u	n/u
50 - 99	**	**	**	**	**	**	**
100 and more	n/u	n/u	n/u	n/u	n/u	n/u	n/u
Îles-de-la-Madeleine	**	100.0 ^a	**	50.0 ^a	**	**	25.0 ^a
10 - 49	**	100.0 ^a	**	50.0 ^a	**	**	25.0 ^a
50 - 99	n/u	n/u	n/u	n/u	n/u	n/u	n/u
100 and more	n/u	n/u	n/u	n/u	n/u	n/u	n/u
Lanaudière	**	93.7 ^a	**	**	**	**	**
10 - 49	**	**	**	**	10.7 ^d	**	**
50 - 99	**	100.0 ^a	**	**	**	**	**
100 and more	**	**	**	**	**	**	**
Joliette CA	**	91.7 ^a	**	**	**	**	**
10 - 49	**	**	**	**	**	**	**
50 - 99	**	100.0 ^a	**	**	**	**	**
100 and more	**	**	**	**	**	**	**
Rawdon	**	**	**	**	**	**	**
10 - 49	**	**	**	**	**	**	**
50 - 99	n/u	n/u	n/u	n/u	n/u	n/u	n/u
100 and more	**	**	**	**	**	**	**
Saint-Lin-des-Laurentides	**	**	**	**	**	**	**
10 - 49	**	**	**	**	**	**	**
50 - 99	n/u	n/u	n/u	n/u	n/u	n/u	n/u
100 and more	n/u	n/u	n/u	n/u	n/u	n/u	n/u
Laurentides	18.2 ^a	100.0 ^a	18.2 ^a	**	**	**	**
10 - 49	**	100.0 ^a	12.5 ^a	**	**	**	**
50 - 99	**	**	**	**	**	**	**
100 and more	**	**	**	**	**	**	**
Lachute CA	**	**	**	**	**	**	**
10 - 49	n/u	n/u	n/u	n/u	n/u	n/u	n/u
50 - 99	n/u	n/u	n/u	n/u	n/u	n/u	n/u
100 and more	**	**	**	**	**	**	**
Mont-Laurier	**	100.0 ^a	**	**	**	**	**
10 - 49	**	100.0 ^a	**	**	**	**	**
50 - 99	n/u	n/u	n/u	n/u	n/u	n/u	n/u
100 and more	n/u	n/u	n/u	n/u	n/u	n/u	n/u
Prévost	n/u	n/u	n/u	n/u	n/u	n/u	n/u
10 - 49	n/u	n/u	n/u	n/u	n/u	n/u	n/u
50 - 99	n/u	n/u	n/u	n/u	n/u	n/u	n/u
100 and more	n/u	n/u	n/u	n/u	n/u	n/u	n/u

(continued)

2.5 – Proportion (%) of Structures with Access to Selected Amenities by Structure Size and Zone Québec

Centre	Registered Nurse onsite	24-hour call bell	Pharmacy	Transportation Services	Swimming Pool	Movie Theatre	Exercise Facilities
Sainte-Adèle	**	**	**	**	**	**	**
10 - 49	**	**	**	**	**	**	**
50 - 99	**	**	**	**	**	**	**
100 and more	n/u	n/u	n/u	n/u	n/u	n/u	n/u
Sainte-Sophie	**	**	**	**	**	**	**
10 - 49	n/u	n/u	n/u	n/u	n/u	n/u	n/u
50 - 99	**	**	**	**	**	**	**
100 and more	n/u	n/u	n/u	n/u	n/u	n/u	n/u
Mauricie	4.0 d	96.0 a	8.0 c	**	12.0 d	11.9 c	15.9 d
10 - 49	0.0 c	94.4 a	5.6 d	**	0.0 c	0.0 c	0.0 c
50 - 99	**	**	**	**	**	**	**
100 and more	**	100.0 a	**	**	**	**	**
La Tuque CA	**	**	**	**	**	**	**
10 - 49	n/u	n/u	n/u	n/u	n/u	n/u	n/u
50 - 99	**	**	**	**	**	**	**
100 and more	n/u	n/u	n/u	n/u	n/u	n/u	n/u
Shawinigan CA	4.2 d	95.8 a	8.3 c	**	12.5 d	8.3 c	12.5 d
10 - 49	0.0 c	94.4 a	5.6 d	**	0.0 c	0.0 c	0.0 c
50 - 99	**	**	**	**	**	**	**
100 and more	**	100.0 a	**	**	**	**	**
Montréal	47.4 a	98.3 a	14.4 c	22.4 a	11.1 c	25.4 a	30.0 a
10 - 49	23.2 d	96.6 a	**	22.2 a	5.5 a	14.3 c	14.8 d
50 - 99	**	100.0 a	5.5 d	**	**	**	**
100 and more	82.5 a	100.0 a	17.0 d	29.0 d	22.7 d	**	**
Cowansville CA	40.0 a	100.0 a	**	20.0 a	**	20.0 a	**
10 - 49	**	**	**	**	**	**	**
50 - 99	**	**	**	**	**	**	**
100 and more	**	**	**	**	**	**	**
Granby CA	**	100.0 a	0.0 c	**	**	**	**
10 - 49	**	**	**	**	**	**	**
50 - 99	**	100.0 a	**	**	**	**	**
100 and more	**	**	**	**	**	**	**
Saint-Hyacinthe CA	64.7 a	100.0 a	11.8 a	23.5 a	23.5 a	23.5 a	23.5 a
10 - 49	33.3 a	100.0 a	11.1 a	44.4 a	22.2 a	11.1 a	11.1 a
50 - 99	100.0 a	100.0 a	**	**	**	**	**
100 and more	100.0 a	100.0 a	25.0 a	**	50.0 a	75.0 a	75.0 a
Saint-Jean-sur-Richelieu CA	**	100.0 a	**	**	0.0 c	**	**
10 - 49	**	100.0 a	**	**	**	**	**
50 - 99	**	**	**	**	**	**	**
100 and more	**	100.0 a	**	**	**	**	**

(continued)

2.5 – Proportion (%) of Structures with Access to Selected Amenities by Structure Size and Zone Québec

Centre	Registered Nurse onsite	24-hour call bell	Pharmacy	Transportation Services	Swimming Pool	Movie Theatre	Exercise Facilities
Salaberry-de-Valleyfield CA	**	**	**	**	**	**	**
10 - 49	**	**	**	**	**	**	**
50 - 99	**	**	**	**	**	**	**
100 and more	**	**	**	**	**	**	**
Sorel-Tracy CA	33.3 a	100.0 a	8.3 a	25.0 a	8.3 a	8.3 a	16.7 a
10 - 49	11.1 a	100.0 a	**	22.2 a	**	**	**
50 - 99	n/u	n/u	n/u	n/u	n/u	n/u	n/u
100 and more	**	**	**	**	**	**	**
Saguenay/Lac-Saint-Jean	25.9 a	100.0 a	0.0 b	51.9 a	0.0 b	18.5 a	29.6 a
10 - 49	7.1 a	100.0 a	0.0 c	42.9 a	0.0 c	14.3 a	21.4 a
50 - 99	40.0 a	100.0 a	**	60.0 a	**	10.0 a	30.0 a
100 and more	**	**	**	**	**	**	**
Alma CA	18.2 a	100.0 a	0.0 c	72.7 a	0.0 c	36.4 a	18.2 a
10 - 49	**	100.0 a	**	50.0 a	**	25.0 a	**
50 - 99	20.0 a	100.0 a	**	80.0 a	**	20.0 a	20.0 a
100 and more	**	**	**	**	**	**	**
Dolbeau-Mistassini CA	33.3 a	100.0 a	**	55.6 a	**	11.1 a	44.4 a
10 - 49	16.7 a	100.0 a	**	66.7 a	**	16.7 a	33.3 a
50 - 99	**	**	**	**	**	**	**
100 and more	**	**	**	**	**	**	**
Roberval	25.0 a	100.0 a	**	25.0 a	**	**	25.0 a
10 - 49	**	**	**	**	**	**	**
50 - 99	**	**	**	**	**	**	**
100 and more	n/u	n/u	n/u	n/u	n/u	n/u	n/u
Saint-Félicien	**	**	**	**	**	**	**
10 - 49	**	**	**	**	**	**	**
50 - 99	**	**	**	**	**	**	**
100 and more	n/u	n/u	n/u	n/u	n/u	n/u	n/u
Rural	**	95.2 a	4.9 d	**	**	**	13.7 d
10 - 49	**	94.3 a	4.1 d	**	**	5.5 d	**
50 - 99	**	100.0 a	**	**	**	**	**
100 and more	**	100.0 a	**	**	**	**	**
Province of Québec	41.4 a	95.4 a	16.0 a	35.7 a	13.2 a	25.3 a	28.6 a
10 - 49	25.3 d	93.8 a	6.0 b	**	3.5 d	10.5 c	12.6 c
50 - 99	50.4 a	97.9 a	14.4 c	34.1 a	7.9 b	30.6 a	35.2 a
100 and more	75.8 a	97.4 a	43.7 a	52.1 a	43.3 a	59.3 a	64.5 a

The following letter codes are used to indicate the reliability of the estimates:

a – Excellent, b – Very good, c – Good, d – Fair (Use with Caution)

** Data suppressed to protect confidentiality or data is not statistically reliable

n/u: No units exist in universe for this category n/s: No units exist in the sample for this category n/a: Not applicable

2.6 – Universe, Number of Residents Living in Universe and Capture Rate by Zone Québec

Centre	Total Number of Spaces	Overall Vacancy Rate	Number of Residences	Number of Residents	Estimated Population Aged 75+*	Capture Rate** (%)
Gatineau CMA	2,102	15.0 a	21	1,970 a	13,154	15.0
Gatineau East	1,102	18.7 a	12	1,031 a		
Gatineau West	**	11.7 a	**	**		
Surrounding Area	**	**	**	**		
Montréal CMA	37,757	7.8 a	316	41,626 a	245,071	17.0
Island of Montréal	19,937	8.7 a	150	21,924 b		
Island Centre	5,118	8.3 a	50	5,161 a		
Island West	4,933	12.8 a	31	4,944 a		
Island North	5,400	6.0 a	35	6,601 c		
Island East	3,979	7.7 a	24	4,684 c		
Vaudreuil-Soulanges	507	8.3 a	10	**		
Laval/North Shore	11,449	7.3 a	102	12,774 a		
Laval	6,333	7.5 a	33	7,305 a		
North Shore	4,201	5.6 a	54	4,669 b		
Saint-Jérôme	915	13.3 a	15	**		
Montréal/South Shore	6,371	6.0 a	64	6,928 a		
South Shore Centre	3,215	7.1 a	26	3,412 b		
South Shore East	2,250	5.1 a	24	2,469 a		
South Shore West	906	4.4 a	14	1,047 a		
Québec CMA	9,744	7.2 a	139	10,130 a	51,118	19.8
Centre North	5,702	8.5 a	65	5,837 a		
Basse-Ville	1,335	6.9 a	20	1,329 a		
Haute-Ville	1,220	7.2 a	13	1,205 a		
Québec des Rivières	1,159	11.3 a	11	1,141 a		
Sainte-Foy	1,988	8.9 a	21	2,162 b		
Northern Suburbs	2,714	7.0 a	49	2,876 a		
Val-Bélair	334	1.5 a	9	354 a		
Charlesbourg	1,289	8.1 a	17	1,461 b		
Beauport	1,091	7.5 a	23	1,061 a		
Québec/South Shore	1,328	1.9 a	25	1,417 b		
Charny	341	3.5 a	9	346 a		
Lévis	987	1.3 a	16	1,071 b		
Saguenay CMA	2,032	1.8 a	30	2,155 a	10,661	20.2
Chicoutimi	891	0.6 a	11	947 a		
Jonquière	973	2.7 a	14	1,043 a		
La Baie	168	3.6 a	5	165 a		

(continued)

2.6 – Universe, Number of Residents Living in Universe and Capture Rate by Zone Québec

Centre	Total Number of Spaces	Overall Vacancy Rate	Number of Residences	Number of Residents	Estimated Population Aged 75+*	Capture Rate** (%)
Sherbrooke CMA	3,723	10.1 a	39	3,749 b	12,207	30.7
Old City of Sherbrooke	2,738	11.7 a	25	2,755 b		
East	833	7.8 a	9	1,020 a		
North	1,230	17.8 a	7	**		
West	**	**	**	**		
Centre	**	3.9 a	**	488 a		
Magog	470	3.0 a	7	496 a		
Suburb	515	8.2 a	7	498 a		
Trois-Rivières CMA	**	5.2 a	48	3,199 a	12,298	26.0
Trois-Rivières Centre	2,612	4.8 a	36	2,653 a		
Trois-Rivières	1,116	5.8 a	16	1,078 a		
Trois-Rivières-Ouest	789	4.9 a	9	804 a		
Cap-de-la-Madeleine	707	3.0 a	11	771 a		
Surrounding Area	**	7.3 a	12	546 a		
Abitibi-Témiscamingue	615	2.4 a	11	648 a		
Amos CA	**	**	**	**		
Rouyn-Noranda CA	**	**	**	**		
Val-d'Or CA	351	2.0 a	5	373 a		
Bas-Saint-Laurent	1,353	2.9 a	20	1,406 a		
Matane CA	**	**	**	**		
Rimouski CA	678	0.6 a	10	718 a		
Rivière-du-Loup CA	**	5.3 a	**	**		
Centre-du-Québec	3,039	9.2 a	26	2,685 a		
Drummondville CA	1,578	11.2 a	14	1,592 a		
Victoriaville CA	1,461	7.0 b	12	1,093 c		
Chaudière-Appalaches	1,985	4.9 a	29	2,161 c		
Montmagny	284	10.6 a	6	281 a		
Sainte-Marie	300	12.6 c	5	**		
Saint-Georges CA	710	1.5 a	7	748 a		
Thetford Mines CA	691	2.7 a	11	731 a		
Côte-Nord	**	**	**	**		
Baie-Comeau CA	**	**	**	**		
Sept-Îles CA	**	**	**	**		
Gaspésie/Îles-de-la-Madeleine	222	1.4 a	6	234 a		
Gaspé	**	**	**	**		
Îles de la Madeleine	**	**	**	**		

(continued)

2.6 – Universe, Number of Residents Living in Universe and Capture Rate by Zone Québec

Centre	Total Number of Spaces	Overall Vacancy Rate	Number of Residences	Number of Residents	Estimated Population Aged 75+*	Capture Rate** (%)
Lanaudière	**	7.2 a	21	**		
Joliette CA	1,491	5.8 b	16	**		
Rawdon	**	**	**	**		
Saint-Lin-des-Laurentides	**	**	**	**		
Laurentides	514	7.0 a	11	509 b		
Lachute CA	**	**	**	**		
Mont-Laurier	134	**	6	**		
Prévost	n/u	n/u	n/u	n/u		
Sainte-Adèle	**	**	**	**		
Sainte-Sophie	**	**	**	**		
Mauricie	1,372	2.9 a	26	1,461 b		
La Tuque CA	**	**	**	**		
Shawinigan CA	**	3.0	**	**		
Montréal	5,775	10.5 a	74	5,331 b		
Cowansville CA	353	14.7 a	5	**		
Granby CA	1,213	3.1 b	13	1,251 d		
Saint-Hyacinthe CA	1,445	11.4 a	17	1,371 a		
Saint-Jean-sur-Richelieu CA	1,312	13.2 a	17	1,230 c		
Salaberry-de-Valleyfield CA	910	14.8 c	10	**		
Sorel-Tracy CA	542	7.9 a	12	567 a		
Saguenay/Lac-Saint-Jean	1,505	8.6 a	27	1,522 a		
Alma CA	718	11.7 a	11	687 a		
Dolbeau-Mistassini CA	435	6.7 a	9	462 a		
Roberval	**	2.9 a	**	**		
Saint-Félicien	**	**	**	**		
Rural	11,316	9.4 a	368	10,863 a		
Province of Québec	88,201	7.9 a	1,215	91,433 a	528,734	17.3

* Source: Institut de la statistique du Québec, Perspectives démographiques, Québec et régions, 2001-2051, édition 2003.

** The capture rate is the proportion of the population aged 75 and over living in the survey universe.

The following letter codes are used to indicate the reliability of the estimates:

a – Excellent, b – Very good, c – Good, d – Fair (Use with Caution)

** Data suppressed to protect confidentiality or data is not statistically reliable

n/u: No units exist in universe for this category n/s: No units exist in the sample for this category n/a: Not applicable

3.1 – Average Rent (\$) of Standard Spaces by Zone and Unit Type

Québec

Centre	Private Room	Semi-Private Room	Bachelor	One Bedroom	Two Bedroom	Total
Gatineau CMA	1,617 ^a	n/u	1,510 ^a	1,734 ^a	1,961 ^a	1,695 ^a
Gatineau East	1,707 ^a	n/u	**	1,514 ^a	**	1,623 ^a
Gatineau West	1,556 ^a	n/u	1,758 ^a	2,027 ^a	**	1,799 ^a
Surrounding Area	**	n/u	n/u	n/u	n/u	**
Montréal CMA	1,500 ^a	1,709 ^a	1,148 ^a	1,370 ^a	1,720 ^a	1,417 ^a
Island of Montréal	1,653 ^a	1,852 ^a	1,145 ^a	1,423 ^a	1,921 ^a	1,476 ^a
Island Centre	1,846 ^a	2,047 ^a	1,313 ^a	1,796 ^a	2,458 ^a	1,797 ^a
Island West	1,907 ^a	**	1,302 ^a	1,528 ^a	2,114 ^a	1,652 ^a
Island North	1,157 ^a	n/u	847 ^a	1,136 ^a	1,437 ^a	1,101 ^a
Island East	1,364 ^a	**	1,260 ^a	1,366 ^a	1,862 ^a	1,397 ^a
Vaudreuil-Soulanges	1,678 ^a	**	**	**	**	1,563 ^a
Laval/North Shore	1,294 ^a	1,596 ^a	1,084 ^a	1,274 ^a	1,509 ^a	1,307 ^a
Laval	1,442 ^a	**	1,085 ^a	1,262 ^a	1,501 ^a	1,311 ^a
North Shore	1,287 ^a	1,489 ^a	1,081 ^a	1,293 ^a	1,621 ^a	1,321 ^a
Saint-Jérôme	1,153 ^a	n/u	n/u	**	**	1,213 ^a
Montréal/South Shore	1,497 ^a	**	1,252 ^a	1,359 ^a	1,801 ^a	1,441 ^a
South Shore Centre	1,612 ^a	**	1,221 ^a	1,385 ^a	1,909 ^a	1,517 ^a
South Shore East	1,405 ^a	n/u	1,183 ^a	1,341 ^a	1,603 ^a	1,368 ^a
South Shore West	**	n/u	1,356 ^a	1,307 ^a	**	1,337 ^a
Québec CMA	1,435 ^a	1,617 ^a	1,303 ^a	1,494 ^a	1,829 ^a	1,480 ^a
Centre North	1,527 ^a	1,630 ^b	1,242 ^a	1,509 ^a	1,985 ^a	1,532 ^a
Basse-Ville	1,180 ^a	**	1,216 ^a	1,277 ^a	1,443 ^a	1,238 ^a
Haute-Ville	2,093 ^a	n/u	1,472 ^a	1,634 ^a	1,948 ^a	1,733 ^a
Québec des Rivières	1,293 ^a	n/u	1,012 ^a	1,449 ^a	1,610 ^a	1,321 ^a
Sainte-Foy	1,864 ^a	**	1,309 ^a	1,566 ^a	2,249 ^a	1,724 ^a
Northern Suburbs	1,444 ^a	**	1,387 ^a	1,435 ^a	1,585 ^a	1,446 ^a
Val-Bélair	1,413 ^a	**	1,135 ^a	1,316 ^a	**	1,354 ^a
Charlesbourg	**	n/u	1,423 ^a	1,444 ^a	1,591 ^a	1,475 ^a
Beauport	1,465 ^a	n/u	1,379 ^a	1,476 ^a	**	1,437 ^a
Québec/South Shore	1,277 ^a	**	1,193 ^a	1,563 ^a	1,772 ^a	1,339 ^a
Charny	1,248 ^a	**	1,296 ^a	**	**	1,293 ^a
Lévis	1,287 ^a	n/u	1,142 ^a	1,648 ^a	**	1,356 ^a
Saguenay CMA	1,101 ^a	**	1,166 ^a	1,514 ^a	1,680 ^a	1,274 ^a
Chicoutimi	1,137 ^a	**	1,202 ^a	**	**	1,310 ^a
Jonquière	1,057 ^a	n/u	1,169 ^a	1,530 ^a	1,614 ^a	1,272 ^a
La Baie	1,119 ^a	n/u	**	n/u	n/u	1,104 ^a

(continued)

3.1 – Average Rent (\$) of Standard Spaces by Zone and Unit Type

Québec

Centre	Private Room	Semi-Private Room	Bachelor	One Bedroom	Two Bedroom	Total
Sherbrooke CMA	1,155 a	**	1,067 a	1,155 a	1,437 a	1,178 a
Old City of Sherbrooke	1,142 a	n/u	1,055 a	1,098 a	1,410 a	1,157 a
East	1,166 a	n/u	1,105 a	1,282 a	1,486 a	1,262 a
North	1,108 a	n/u	738 a	928 a	**	1,029 a
West	**	n/u	**	**	**	**
Centre	1,149 a	n/u	**	**	**	1,215 a
Magog	1,161 a	n/u	**	**	**	1,220 a
Suburb	1,182 a	**	**	1,378 a	**	1,238 a
Trois-Rivières CMA	1,182 a	**	1,173 a	1,401 a	1,505 a	1,286 a
Trois-Rivières Centre	1,173 a	n/u	1,168 a	1,464 a	1,531 a	1,312 a
Trois-Rivières	1,108 a	n/u	1,197 a	1,489 a	1,722 a	1,365 a
Trois-Rivières-Ouest	1,411 a	n/u	1,148 a	1,495 a	**	1,324 a
Cap-de-la-Madeleine	949 a	n/u	1,156 a	1,383 a	1,362 a	1,215 a
Surrounding Area	1,200 a	**	**	986 a	**	1,151 a
Abitibi-Témiscamingue	1,344 a	n/u	n/u	**	n/u	1,327 a
Amos CA	**	n/u	n/u	**	n/u	**
Rouyn-Noranda CA	**	n/u	n/u	n/u	n/u	**
Val-d'Or CA	1,386 a	n/u	n/u	n/u	n/u	1,386 a
Bas-Saint-Laurent	1,217 a	n/u	1,188 a	1,247 a	1,376 a	1,227 a
Matane CA	**	n/u	n/u	n/u	n/u	**
Rimouski CA	1,211 a	n/u	1,140 a	**	**	1,157 a
Rivière-du-Loup CA	1,227 a	n/u	1,339 a	1,370 a	**	1,308 a
Centre-du-Québec	974 a	n/u	1,178 a	1,319 a	1,705 a	1,183 a
Drummondville CA	922 a	n/u	1,148 a	1,267 a	1,771 a	1,195 a
Victoriaville CA	1,021 a	n/u	1,199 a	1,397 a	**	1,170 a
Chaudière-Appalaches	1,245 a	n/u	1,085 a	1,377 a	1,493 a	1,275 a
Montmagny	1,312 a	n/u	**	**	**	1,185 a
Sainte-Marie	**	n/u	**	**	**	1,659 a
Saint-Georges CA	**	n/u	1,145 a	1,221 a	**	1,230 a
Thetford Mines CA	1,220 a	n/u	**	1,154 a	**	1,193 a
Côte-Nord	**	n/u	**	**	**	**
Baie-Comeau CA	**	n/u	n/u	**	**	**
Sept-Îles CA	n/u	n/u	**	**	**	**
Gaspésie/Îles-de-la-Madeleine	1,080 a	n/u	**	n/u	n/u	1,085 a
Gaspé	**	n/u	n/u	n/u	n/u	**
Îles de la Madeleine	922 a	n/u	**	n/u	n/u	955 a
Lanaudière	1,103 a	n/u	970 a	1,324 a	1,543 a	1,256 a
Joliette CA	1,087 a	n/u	968 a	1,365 a	1,555 a	1,279 a
Rawdon	**	n/u	**	**	**	**
Saint-Lin-des-Laurentides	**	n/u	n/u	**	**	**

(continued)

3.1 – Average Rent (\$) of Standard Spaces by Zone and Unit Type

Québec

Centre	Private Room	Semi-Private Room	Bachelor	One Bedroom	Two Bedroom	Total
Laurentides	1,330 ^a	n/u	**	1,338 ^a	**	1,329 ^a
Lachute CA	n/u	n/u	**	**	**	**
Mont-Laurier	1,192 ^a	n/u	**	**	n/u	1,174 ^a
Prévost	n/u	n/u	n/u	n/u	n/u	n/u
Sainte-Adèle	**	n/u	n/u	n/u	n/u	**
Sainte-Sophie	**	n/u	n/u	n/u	n/u	**
Mauricie	1,159	n/u	**	1,115 ^a	**	1,154 ^a
La Tuque CA	n/u	n/u	**	**	**	**
Shawinigan CA	1,159 ^a	n/u	**	1,112 ^a	**	1,158 ^a
Montréal	1,260 ^a	**	1,298 ^a	1,292 ^a	1,145 ^a	1,261 ^a
Cowansville CA	1,316 ^a	n/u	**	**	**	1,382 ^a
Granby CA	1,189 ^a	n/u	1,281 ^a	**	**	1,254 ^a
Saint-Hyacinthe CA	1,249 ^a	**	1,426 ^a	1,316 ^a	934 ^a	1,230 ^a
Saint-Jean-sur-Richelieu CA	1,188 ^a	n/u	**	1,114 ^a	1,350 ^a	1,170 ^a
Salaberry-de-Valleyfield CA	1,363 ^a	n/u	n/u	n/u	**	1,363 ^a
Sorel-Tracy CA	1,284 ^a	n/u	**	**	**	1,342 ^a
Saguenay/Lac-Saint-Jean	1,014 ^a	**	1,193 ^a	1,496 ^a	1,608 ^a	1,182 ^a
Alma CA	1,021 ^a	n/u	1,279 ^a	**	**	1,215 ^a
Dolbeau-Mistassini CA	1,015 ^a	**	1,020 ^a	1,504 ^a	**	1,174 ^a
Roberval	**	n/u	**	**	**	**
Saint-Félicien	**	n/u	**	n/u	n/u	**
Rural	1,096 ^a	**	1,117 ^a	1,171 ^a	1,370 ^a	1,116 ^a
Province of Québec	1,266 ^a	1,338 ^a	1,179 ^a	1,372 ^a	1,670 ^a	1,333 ^a

The following letter codes are used to indicate the reliability of the estimates (cv = coefficient of variation):

a – Excellent ($0 \leq cv \leq 2.5$), b – Very good ($2.5 < cv \leq 5$), c – Good ($5 < cv \leq 7.5$)

d – Fair (Use with Caution) ($7.5 < cv \leq 10$)

** Data suppressed to protect confidentiality or data is not statistically reliable

n/u: No units exist in universe for this category n/s: No units exist in the sample for this category n/a: Not applicable

Methodology

Canada Mortgage and Housing Corporation conducted the first National Seniors' Housing Survey in February and March. The survey was conducted in all centres in all ten provinces.

The survey targeted private or non-profit residences where the majority of residents are 65 years of age or older and have access to additional services not offered in traditional rental structures. Examples of such services include meal service, housekeeping and laundry. To be eligible for the survey, a residence must provide an on-site meal plan or on-site medical services. However, the survey excluded seniors' residences which provide high levels of healthcare (defined as 1.5 hours or more of care per day) to all of their residents. Nursing homes and long-term care facilities are examples of facilities that were not included in the survey. Only residences with at least 10 units were included in the survey.

Survey data was obtained through a combination of telephone interviews and fax and email responses. Information was obtained from the owner, manager, or residence administrator. Survey results reflect market conditions at the time of the survey. Survey results have been weighted to ensure that they are reflective of the universe. The level of statistical reliability is noted in the data tables. For more information on the reliability of the data please click [here](#).

All statistics published, excluding information on new market supply, include only those facilities that have been in operation for at least one year.

Definitions

Space: A space is a residential area that is rented out. Examples of spaces include: one-half of a semi-private unit, a private or bachelor unit, a one-bedroom unit and a two-bedroom unit. In most cases a space is the same as a unit. The exception is the case where a unit has been divided to rent to multiple residents. Semi-private and ward units are an example of this.

Standard Space: A space occupied by a resident who does not receive high levels of care (i.e. the resident receives less than 1.5 hours of care per day.) Regional terms for this type of space vary across the country.

Heavy Care Space: A space where the residence provides 1.5 hours or more of healthcare per day to the resident. Examples include Alzheimer, Dementia and mobility support residents.

Respite Space: A space used to provide temporary accommodation for a senior who normally lives in another place and not at the residence.

Non-market or Subsidy Space: A space where the rent received for the unit is less than market rent or where the resident occupying the unit is subsidized.

Rent: The rent refers to the actual amount residents pay for their space and all mandatory services. Charges for additional non-mandatory services are excluded from the rent. For vacant spaces, the rent is the amount the owner is asking for the space.

Vacancy: A space is considered vacant if, at the time of the survey, it is physically unoccupied and available for immediate rental.

Acknowledgement

The Seniors' Housing Survey could not have been conducted without the cooperation of the property owners, managers, and facility administrators. CMHC acknowledges their hard work and assistance in providing timely and accurate information. As a result of their contribution, CMHC is able to provide information that benefits the entire housing industry.

CMHC—HOME TO CANADIANS

Canada Mortgage and Housing Corporation (CMHC) has been Canada's national housing agency for more than 60 years.

Together with other housing stakeholders, we help ensure that the Canadian housing system remains one of the best in the world. We are committed to helping Canadians access a wide choice of quality, environmentally sustainable and affordable homes – homes that will continue to create vibrant and healthy communities and cities across the country.

For more information, visit our website at www.cmhc.ca

You can also reach us by phone at 1-800-668-2642 or by fax at 1-800-245-9274.
Outside Canada call 613-748-2003 or fax to 613-748-2016.

Canada Mortgage and Housing Corporation supports the Government of Canada policy on access to information for people with disabilities. If you wish to obtain this publication in alternative formats, call 1-800-668-2642.

The Market Analysis Centre's (MAC) electronic suite of national standardized products is available for free on CMHC's website. You can view, print, download or subscribe to future editions and get market information e-mailed automatically to you the same day it is released. It's quick and convenient! Go to www.cmhc.ca/housingmarketinformation

For more information on MAC and the wealth of housing market information available to you, visit us today at www.cmhc.ca/housingmarketinformation

To subscribe to priced, printed editions of MAC publications, call 1-800-668-2642.

©2009 Canada Mortgage and Housing Corporation. All rights reserved. CMHC grants reasonable rights of use of this publication's content solely for personal, corporate or public policy research, and educational purposes. This permission consists of the right to use the content for general reference purposes in written analyses and in the reporting of results, conclusions, and forecasts including the citation of limited amounts of supporting data extracted from this publication. Reasonable and limited rights of use are also permitted in commercial publications subject to the above criteria, and CMHC's right to request that such use be discontinued for any reason.

Any use of the publication's content must include the source of the information, including statistical data, acknowledged as follows:

Source: CMHC (or "Adapted from CMHC," if appropriate), name of product, year and date of publication issue.

Other than as outlined above, the content of the publication cannot be reproduced or transmitted to any person or, if acquired by an organization, to users outside the organization. Placing the publication, in whole or part, on a website accessible to the public or on any website accessible to persons not directly employed by the organization is not permitted. To use the content of any CMHC Market Analysis publication for any purpose other than the general reference purposes set out above or to request permission to reproduce large portions of, or entire CMHC Market Analysis publications, please contact: the Canadian Housing Information Centre (CHIC) at <mailto:chic@cmhc.gc.ca>; 613-748-2367 or 1-800-668-2642.

For permission, please provide CHIC with the following information:

Publication's name, year and date of issue.

Without limiting the generality of the foregoing, no portion of the content may be translated from English or French into any other language without the prior written permission of Canada Mortgage and Housing Corporation.

The information, analyses and opinions contained in this publication are based on various sources believed to be reliable, but their accuracy cannot be guaranteed. The information, analyses and opinions shall not be taken as representations for which Canada Mortgage and Housing Corporation or any of its employees shall incur responsibility.



STAY ON TOP OF THE HOUSING MARKET

Enhance your decision-making with the latest information on Canadian housing trends and opportunities.

CMHC's Market Analysis Centre e-reports provide a wealth of detailed local, provincial, regional and national market information.

- **Forecasts and Analysis** – Future-oriented information about local, regional and national housing trends.
- **Statistics and Data** – Information on current housing market activities — starts, rents, vacancy rates and much more.

Free reports available on-line:

- Canadian Housing Statistics
- Housing Information Monthly
- Housing Market Outlook, Canada
- Housing Market Outlook, Highlight Reports – *Canada and Regional*
- Housing Market Outlook, Major Centres
- Housing Market Tables: Selected South Central Ontario Centres
- Housing Now, Canada
- Housing Now, Major Centres
- Housing Now, Regional
- Monthly Housing Statistics
- Northern Housing Outlook Report
- Preliminary Housing Start Data
- Renovation and Home Purchase Report
- Rental Market Provincial Highlight Reports *Now semi-annual!*
- Rental Market Reports, Major Centres
- Rental Market Statistics *Now semi-annual!*
- Residential Construction Digest, Prairie Centres
- Seniors' Housing Reports
- Seniors' Housing Reports - Supplementary Tables, Regional

Get the market intelligence you need today!

Click www.cmhc.ca/housingmarketinformation to view, download or subscribe.

Client e-Update

A monthly [e-newsletter](#) that features the latest market insight, housing research and information to help housing finance professionals enhance client relationships and grow their business.