

Catalogue no. 65-001-X

# Canadian International Merchandise Trade

April 2009



Statistics  
Canada

Statistique  
Canada

Canada

## How to obtain more information

For information about this product or the wide range of services and data available from Statistics Canada, visit our website at [www.statcan.gc.ca](http://www.statcan.gc.ca), e-mail us at [infostats@statcan.gc.ca](mailto:infostats@statcan.gc.ca), or telephone us, Monday to Friday from 8:30 a.m. to 4:30 p.m., at the following numbers:

### Statistics Canada's National Contact Centre

Toll-free telephone (Canada and the United States):

Inquiries line	1-800-263-1136
National telecommunications device for the hearing impaired	1-800-363-7629
Fax line	1-877-287-4369

Local or international calls:

Inquiries line	1-613-951-8116
Fax line	1-613-951-0581

### Depository Services Program

Inquiries line	1-800-635-7943
Fax line	1-800-565-7757

## To access this product

This product, Catalogue no. 65-001-X, is available free in electronic format. To obtain a single issue, visit our website at [www.statcan.gc.ca](http://www.statcan.gc.ca) and select "Publications."

## Standards of service to the public

Statistics Canada is committed to serving its clients in a prompt, reliable and courteous manner. To this end, Statistics Canada has developed *standards of service* that its employees observe. To obtain a copy of these service standards, please contact Statistics Canada toll-free at 1-800-263-1136. The service standards are also published on [www.statcan.gc.ca](http://www.statcan.gc.ca) under "About us" > "Providing services to Canadians."

Statistics Canada  
International Trade Division

# Canadian International Merchandise Trade

April 2009

Published by authority of the Minister responsible for Statistics Canada

© Minister of Industry, 2009

All rights reserved. The content of this electronic publication may be reproduced, in whole or in part, and by any means, without further permission from Statistics Canada, subject to the following conditions: that it be done solely for the purposes of private study, research, criticism, review or newspaper summary, and/or for non-commercial purposes; and that Statistics Canada be fully acknowledged as follows: Source (or "Adapted from", if appropriate): Statistics Canada, year of publication, name of product, catalogue number, volume and issue numbers, reference period and page(s). Otherwise, no part of this publication may be reproduced, stored in a retrieval system or transmitted in any form, by any means—electronic, mechanical or photocopy—or for any purposes without prior written permission of Licensing Services, Client Services Division, Statistics Canada, Ottawa, Ontario, Canada K1A 0T6.

June 2009

Catalogue no. 65-001-X, vol. 63, no. 4

ISSN 1480-8781

Frequency: Monthly

Ottawa

La version française de cette publication est disponible sur demande (n° 65-001-X au catalogue).

---

#### **Note of appreciation**

*Canada owes the success of its statistical system to a long standing partnership between Statistics Canada, the citizens of Canada, its businesses, governments and other institutions. Accurate and timely statistical information could not be produced without their continued cooperation and goodwill.*

# User information

---

## Symbols

The following standard symbols are used in Statistics Canada publications:

- . not available for any reference period
- .. not available for a specific reference period
- ... not applicable
- 0 true zero or a value rounded to zero
- 0<sup>s</sup> value rounded to 0 (zero) where there is a meaningful distinction between true zero and the value that was rounded
- p preliminary
- r revised
- x suppressed to meet the confidentiality requirements of the *Statistics Act*
- E use with caution
- F too unreliable to be published

## Note to Users

All totals are calculated from full figures and rounded independently; consequently, totals may not equal the sum of their components.

# Table of contents

---

<b>Highlights</b>	<b>5</b>
<b>Analysis</b>	<b>7</b>
<b>Statistical tables</b>	
1 Merchandise trade of Canada, balance of payments basis, seasonally adjusted	12
1-1 Current dollars	12
1-2 Constant dollars, 2002	13
1-3 Price indices (Laspeyres)	14
2 Exports by commodity groupings, balance of payments basis, seasonally adjusted	15
2-1 Current dollars	15
2-2 Constant dollars, 2002	17
3 Domestic exports to selected countries, customs basis, not seasonally adjusted	19
3-1 April	19
3-2 Year to date, January to April	20
4 Domestic exports by country, customs basis, not seasonally adjusted	21
5 Exports by province of origin, customs basis, not seasonally adjusted	25
5-1 April	25
5-2 Year to date, January to April	26
6 Imports by commodity groupings, balance of payments basis, seasonally adjusted	27
6-1 Current dollars	27
6-2 Constant dollars, 2002	29
7 Imports from selected countries, customs basis, not seasonally adjusted	31
7-1 April	31
7-2 Year to date, January to April	32
8 Imports by country, customs basis, not seasonally adjusted	33
9 Imports by province of clearance, customs basis, not seasonally adjusted	37
9-1 April	37
9-2 Year to date, January to April	38

**Table of contents – continued**

**Data quality, concepts and methodology**

Technical notes

39

# Highlights

---

## April 2009

- Canada's merchandise exports fell 5.1% to \$30.8 billion in April mostly due to 3.2% reduction in prices while volumes decreased 1.9%.
- Lower exports of industrial goods and materials, energy products, and machinery and equipment largely accounted for the decrease in overall exports. Gains in agricultural and fishing products, and automotive products partially offset the decline.
- Imports decreased 1.5% to \$31.0 billion mainly due to declines in industrial goods and materials as well as machinery and equipment. Import prices were down 1.8% while volumes edged up 0.3%.
- Exports and imports have generally been trending downwards since the peak of July 2008. Exports have fallen \$13.6 billion or 30.6% since July 2008 with more than 80% of the decline occurring from November 2008 to January 2009. In comparison, imports have declined \$8.5 billion or 21.6% since July 2008 with almost 70% of the decrease occurring in December 2008 and January 2009.
- In April, Canada posted a small trade deficit with the world of \$179 million following a surplus of \$1.0 billion in March.
- Canada's trade surplus with the United States shrank to \$2.8 billion from \$3.5 billion in March as exports and imports declined 4.4% and 1.7% respectively. Since July 2008, exports to the United States accounted for 88% of the decrease in Canada's exports to the world. Accordingly, the United States share of Canada's exports was 72.3% in April 2009, down from 77.0% in July 2008.
- The trade deficit with countries other than the United States widened to \$3.0 billion from \$2.4 billion in March as exports fell 6.9% and imports edged down 1.0%. After a solid gain in March, exports to the European Union fell 16.6% and led the decrease in exports to countries other than the United States.

### Note to readers

Merchandise trade is one component of the current account of Canada's balance of payments, which also includes trade in services, investment income, transfers, capital and financial flows.

International merchandise trade data by country are available on both a balance of payments and a customs basis for the United States, Japan and the United Kingdom. Trade data for all other individual countries are available on a customs basis only. Balance of payments data are derived from customs data by making adjustments for characteristics such as valuation, coverage, timing and residency. These adjustments are made to conform to the concepts and definitions of the Canadian System of National Accounts.

Constant dollars referred to in the text are calculated using the Laspeyres volume formula which is current dollars divided by Paasche indexes.

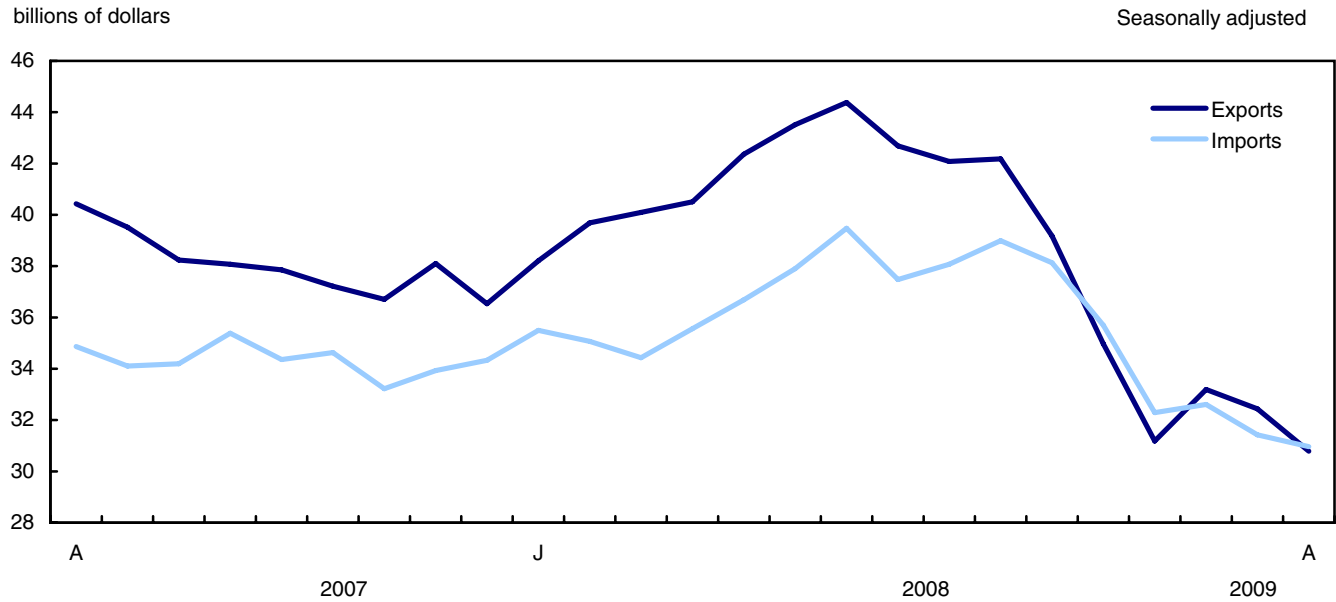
### Revisions

In general, merchandise trade data are revised on an ongoing basis for each month of the current year. Current and previous year revisions are reflected in both the customs and balance of payments based data. Revisions to customs based data for the previous year are also released on a quarterly basis. Revisions to balance of payments based data for the four previous years are included with today's release.

Factors influencing revisions include late receipt of import and export documentation, incorrect information on customs forms, replacement of estimates with actual figures, changes in classification of merchandise based on more current information and changes to seasonal adjustment factors.

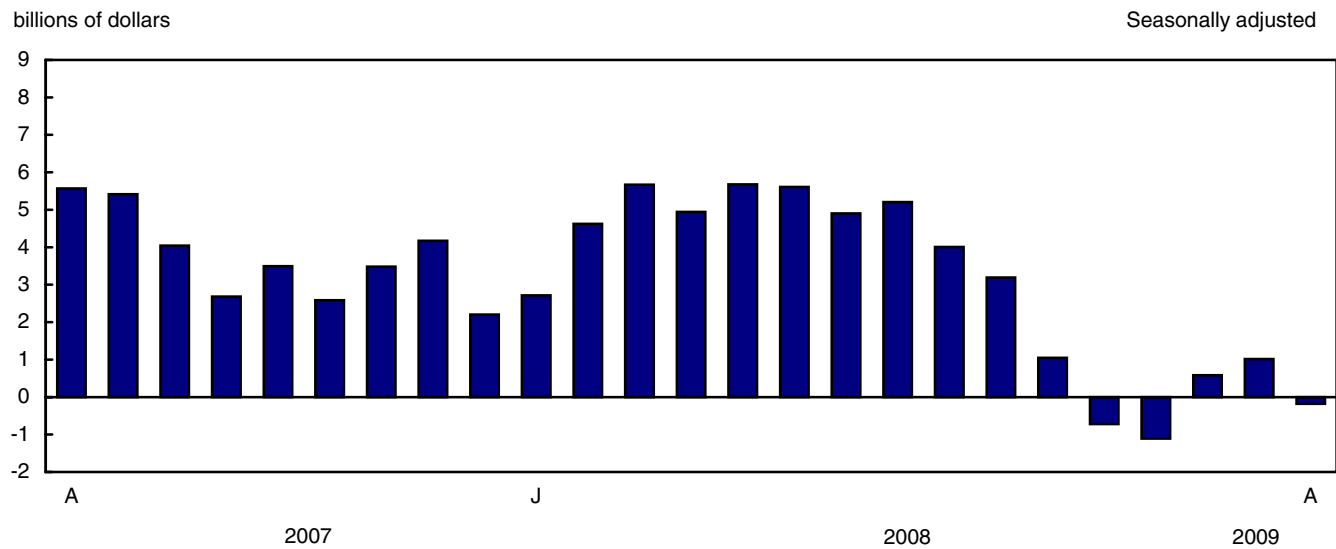
Revised data are available in the appropriate CANSIM tables.

**Chart 1**  
**Exports and imports**



**Note(s):** Note(s): On a balance of payments basis.

**Chart 2**  
**Trade balance**



**Note(s):** On a balance of payments basis.

# Analysis

---

## Most export sectors decline

Exports of industrial goods and materials fell 9.7% to \$6.3 billion, the lowest level since March 2004, mainly the result of volume reductions. Lower exports of precious metals, notably gold, and fertilizers were the main contributors to the decline in this sector. Exports of steel and aluminum products also declined in April as a result of weak global demand for these products.

Exports of energy products contracted 8.7% to \$6.1 billion as prices and volumes declined. Exports of natural gas decreased 14.9% due to lower industrial demand and high inventory levels in North America. Natural gas exports have been on a downward trend since July 2008. Crude petroleum exports declined 4.8% to \$3.1 billion while petroleum and coal products decreased 12.0% to \$1.0 billion.

Machinery and equipment exports were down 7.0% to \$7.1 billion as volume reductions dominated the decrease in exports across most categories in this sector.

Exports of agricultural and fishing products rose 5.1%, moderating the overall decline in exports. Higher exports of canola and wheat largely accounted for the gains.

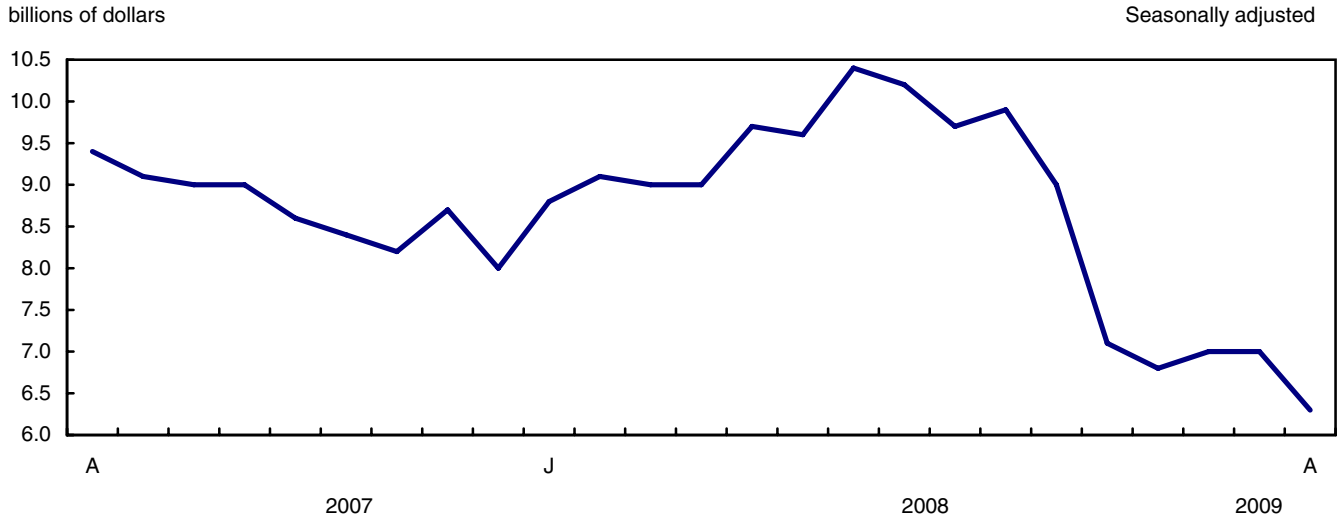
## Industrial goods and materials drag imports down

Imports of industrial goods and materials declined 8.4% to \$6.1 billion, the lowest level since April 2004. Metals and metal ores, which led the decline, registered the fourth consecutive decrease. The slowdown in the automotive industry and in drilling activities has reduced the demand for iron and steel products. Lower imports of chemicals and plastics also contributed to the decline. A combination of lower prices and volumes accounted for the decline in imports of industrial goods and materials.

Machinery and equipment imports decreased 3.3% to \$9.3 billion due to widespread declines reflecting lower prices. This sector has been trending downward since November 2008 with the sharpest declines observed in December 2008 and January 2009.

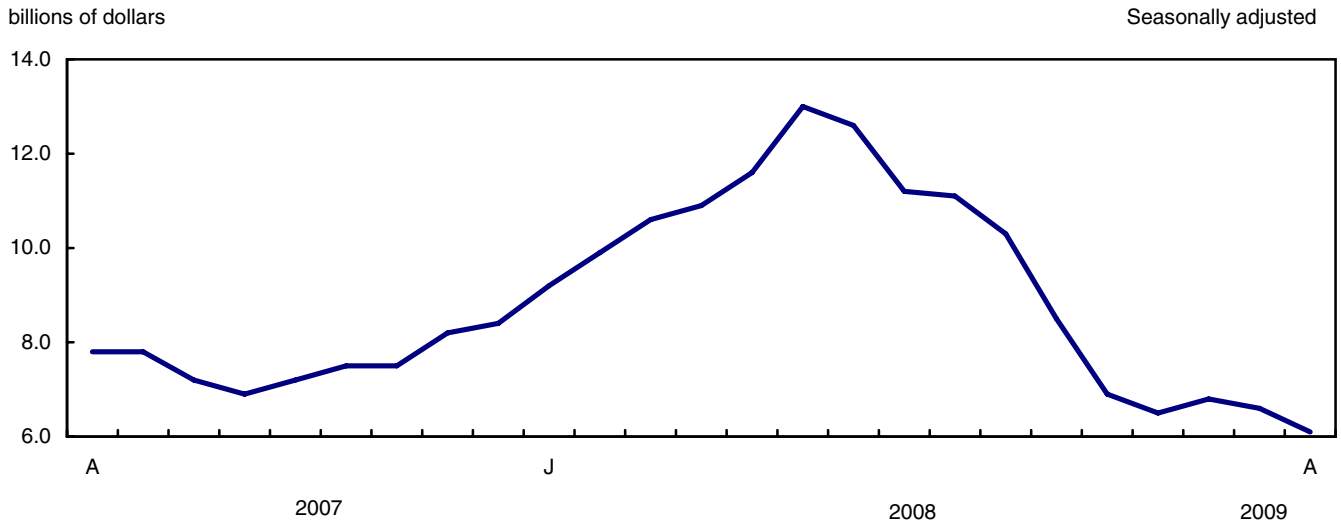
Imports of energy products rose 11.9% partially offsetting the decline in overall imports as prices and volumes increased in April. Crude petroleum imports, which have been trending downwards since July 2008, increased 24.0% to \$1.7 billion in April.

**Chart 1**  
**Exports of industrial goods and materials**



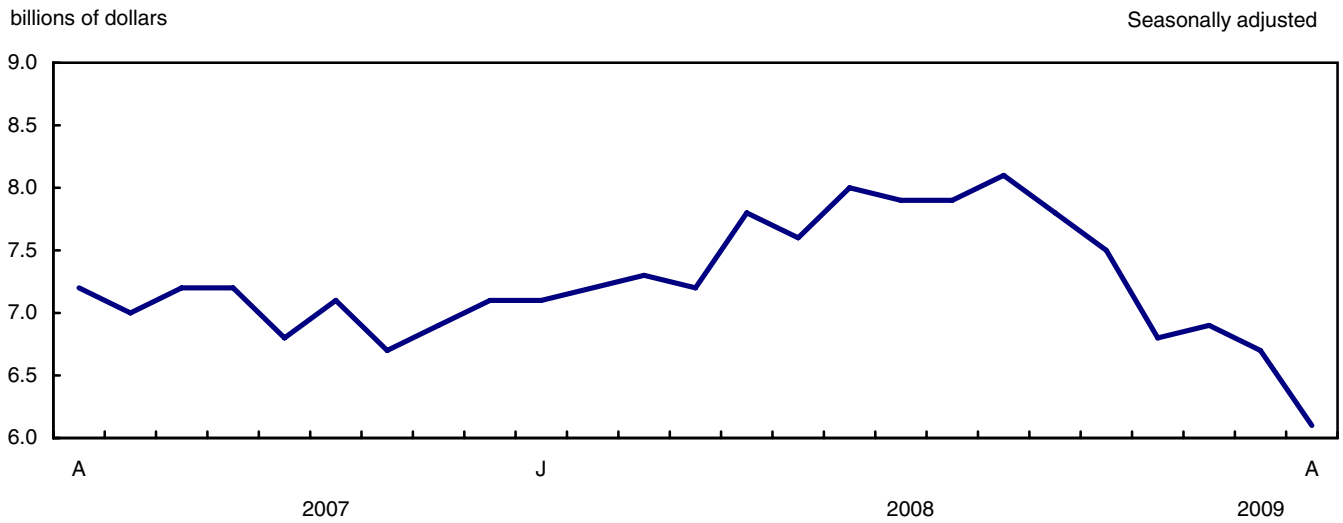
**Note(s):** On a balance of payments basis.

**Chart 2**  
**Exports of energy products**



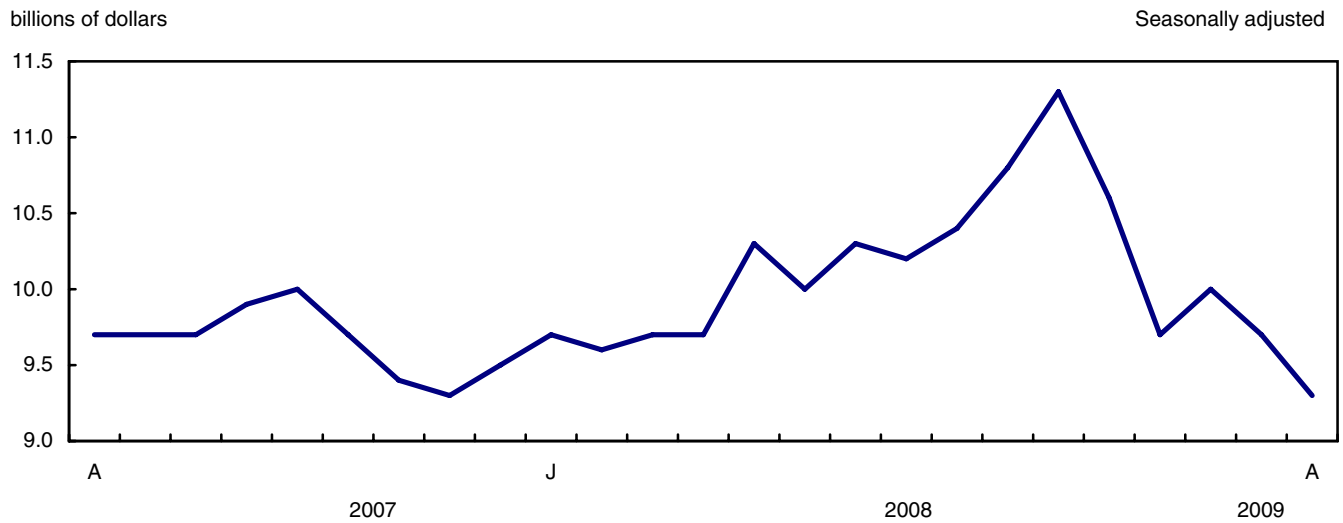
**Note(s):** On a balance of payments basis.

**Chart 3**  
**Imports of industrial goods and materials**



**Note(s):** On a balance of payments basis.

**Chart 4**  
**Imports of machinery and equipment**



**Note(s):** On a balance of payments basis.

**Text table 1**  
**Merchandise trade by principal trading area, balance of payments basis, seasonally adjusted**

	March 2009	April 2009	Change	Year to date		Year to date change	April 2009/2008		
				2008	2009				
	millions of dollars		percent		millions of dollars		percent		
<b>Export to:</b>									
United States	23,270	22,252	-1,017	-4.4	121,417	92,931	-28,486	-23.5	-28.4
Japan	865	823	-42	-4.8	3,480	3,464	-17	-0.5	-12.1
European Union <sup>1</sup>	3,275	2,731	-544	-16.6	12,413	11,671	-742	-6.0	-10.1
Other Organization for Economic Co-operation and Development <sup>2</sup>	1,303	1,394	91	7.0	6,066	5,229	-837	-13.8	-8.2
Other countries	3,725	3,585	-141	-3.8	15,126	14,305	-821	-5.4	-8.9
<b>Total</b>	<b>32,438</b>	<b>30,785</b>	<b>-1,652</b>	<b>-5.1</b>	<b>158,502</b>	<b>127,600</b>	<b>-30,903</b>	<b>-19.5</b>	<b>-24.0</b>
<b>Imports from:</b>									
United States	19,808	19,469	-339	-1.7	89,573	79,810	-9,763	-10.9	-14.7
Japan	689	743	54	7.8	3,955	3,265	-690	-17.4	-24.8
European Union <sup>1</sup>	3,288	3,327	39	1.2	14,424	13,355	-1,069	-7.4	-17.5
Other Organization for Economic Co-operation and Development <sup>2</sup>	2,079	2,046	-33	-1.6	8,346	8,336	-11	-0.1	3.3
Other countries	5,560	5,380	-180	-3.2	24,257	22,523	-1,734	-7.1	-6.2
<b>Total</b>	<b>31,424</b>	<b>30,964</b>	<b>-460</b>	<b>-1.5</b>	<b>140,554</b>	<b>127,289</b>	<b>-13,266</b>	<b>-9.4</b>	<b>-12.9</b>
<b>Balance:</b>									
United States	3,462	2,783	-679	...	31,844	13,120	-18,723	...	...
Japan	175	80	-95	...	-475	199	673	...	...
European Union <sup>1</sup>	-13	-595	-582	...	-2,011	-1,684	327	...	...
Other Organization for Economic Co-operation and Development <sup>2</sup>	-776	-652	124	...	-2,280	-3,106	-826	...	...
Other countries	-1,834	-1,795	40	...	-9,131	-8,218	913	...	...
<b>Total</b>	<b>1,014</b>	<b>-178</b>	<b>-1,193</b>	<b>...</b>	<b>17,948</b>	<b>311</b>	<b>-17,637</b>	<b>...</b>	<b>...</b>

1. European Union includes: Austria, Belgium, Bulgaria, Cyprus, Czech Republic, Denmark, Estonia, Finland, France, Germany, Greece, Hungary, Ireland, Italy, Latvia, Lithuania, Luxembourg, Malta, Netherlands, Poland, Portugal, Romania, Slovakia, Slovenia, Spain, Sweden and United Kingdom.
2. Other Organization for Economic Co-operation and Development includes: Australia, Canada, Iceland, Mexico, New Zealand, Norway, South Korea, Switzerland and Turkey.

**Text table 2**  
**Reconciliation of customs and balance of payments trade data, not seasonally adjusted**

	2009				2008		2008 Actual
	April	March	February	January	December	November	
	millions of dollars						
<b>Exports</b>							
<b>Customs basis</b>	<b>29,899</b>	<b>32,286</b>	<b>29,750</b>	<b>29,491</b>	<b>34,410</b>	<b>38,683</b>	<b>483,568</b>
<b>Balance of payments adjustments</b>	<b>1,045</b>	<b>1,687</b>	<b>608</b>	<b>83</b>	<b>-689</b>	<b>-267</b>	<b>6,289</b>
Valuation and residency							
Inland freight	476	523	491	439	531	628	6,997
Other valuation and residency	-654	-339	-855	-1,197	-2,365	-2,618	-16,502
Timing	96	40	-3	-77	8	-40	-79
Coverage	1,127	1,463	975	918	1,137	1,763	15,873
<b>Balance of payments basis</b>	<b>30,944</b>	<b>33,973</b>	<b>30,358</b>	<b>29,574</b>	<b>33,721</b>	<b>38,416</b>	<b>489,857</b>
<b>Imports</b>							
<b>Customs basis</b>	<b>30,652</b>	<b>31,993</b>	<b>29,617</b>	<b>29,209</b>	<b>33,646</b>	<b>36,037</b>	<b>433,431</b>
<b>Balance of payments adjustments</b>	<b>800</b>	<b>846</b>	<b>549</b>	<b>642</b>	<b>553</b>	<b>1,063</b>	<b>9,557</b>
Valuation and residency							
Inland freight	638	658	602	619	650	712	8,908
Other valuation and residency	25	-16	-38	-38	-52	-70	-565
Timing	0	0	0	0	0	0	0
Coverage	137	204	-15	61	-45	421	1,214
<b>Balance of payments basis</b>	<b>31,452</b>	<b>32,839</b>	<b>30,166</b>	<b>29,851</b>	<b>34,199</b>	<b>37,100</b>	<b>442,988</b>

# Statistical tables

---

---

**Table 1-1**  
**Merchandise trade of Canada, balance of payments basis, seasonally adjusted — Current dollars**

	Exports	Imports	Balance	Period to period change		
				Exports	Imports	Balance
				percent	percent	percent
	millions of dollars			percent		millions of dollars
2005	450,210	387,838	62,372	0.0	0.0	0
2006	453,951	404,345	49,606	0.8	4.3	-12,767
2007	463,127	415,229	47,898	2.0	2.7	-1,708
2008	489,857	442,988	46,869	5.8	6.7	-1,029
<b>2007</b>						
First quarter	120,454	106,198	14,256	4.4	3.1	1,887
Second quarter	118,191	103,166	15,025	-1.9	-2.9	769
Third quarter	113,144	104,379	8,765	-4.3	1.2	-6,260
Fourth quarter	111,338	101,486	9,852	-1.6	-2.8	1,088
<b>2008</b>						
First quarter	117,996	104,991	13,005	6.0	3.5	3,152
Second quarter	126,385	110,154	16,230	7.1	4.9	3,226
Third quarter	129,144	115,028	14,116	2.2	4.4	-2,114
Fourth quarter	116,332	112,815	3,517	-9.9	-1.9	-10,599
<b>2009</b>						
First quarter	96,814	96,325	489	-16.8	-14.6	-3,028
<b>2008</b>						
January	38,209	35,496	2,713	4.6	3.4	512
February	39,689	35,067	4,623	3.9	-1.2	1,909
March	40,097	34,428	5,669	1.0	-1.8	1,046
April	40,507	35,564	4,943	1.0	3.3	-726
May	42,365	36,688	5,677	4.6	3.2	733
June	43,513	37,902	5,611	2.7	3.3	-66
July	44,379	39,476	4,903	2.0	4.2	-708
August	42,685	37,479	5,206	-3.8	-5.1	302
September	42,080	38,073	4,008	-1.4	1.6	-1,198
October	42,181	38,991	3,190	0.2	2.4	-818
November	39,177	38,129	1,049	-7.1	-2.2	-2,141
December	34,974	35,695	-721	-10.7	-6.4	-1,770
<b>2009</b>						
January	31,185	32,293	-1,108	-10.8	-9.5	-387
February	33,192	32,609	583	6.4	1.0	1,691
March	32,438	31,424	1,014	-2.3	-3.6	431
April	30,785	30,964	-178	-5.1	-1.5	-1,193

**Note(s):** Due to rounding, monthly data may not add up to quarterly data and quarterly data may not add up to annual data.

**Table 1-2**  
**Merchandise trade of Canada, balance of payments basis, seasonally adjusted — Constant dollars, 2002**

	Exports	Imports	Balance	Period to period change	
				Exports	Imports
	millions of dollars			percent	
2005	439,306	431,680	7,626	0.0	0.0
2006	443,398	456,881	-13,483	0.9	5.8
2007	449,581	483,522	-33,941	1.4	5.8
2008	415,123	485,171	-70,048	-7.7	0.3
<b>2007</b>					
First quarter	113,771	117,511	-3,740	2.0	1.6
Second quarter	113,538	118,154	-4,615	-0.2	0.5
Third quarter	112,008	123,373	-11,366	-1.3	4.4
Fourth quarter	110,264	124,484	-14,220	-1.6	0.9
<b>2008</b>					
First quarter	107,366	123,120	-15,754	-2.6	-1.1
Second quarter	105,949	123,992	-18,043	-1.3	0.7
Third quarter	104,458	124,141	-19,683	-1.4	0.1
Fourth quarter	97,350	113,917	-16,567	-6.8	-8.2
<b>2009</b>					
First quarter	87,426	98,270	-10,844	-10.2	-13.7
<b>2008</b>					
January	35,336	41,546	-6,210	0.0	1.2
February	36,473	41,373	-4,900	3.2	-0.4
March	35,557	40,201	-4,644	-2.5	-2.8
April	35,078	40,481	-5,404	-1.3	0.7
May	35,639	41,927	-6,288	1.6	3.6
June	35,233	41,584	-6,351	-1.1	-0.8
July	35,530	43,031	-7,502	0.8	3.5
August	34,592	40,426	-5,834	-2.6	-6.1
September	34,337	40,684	-6,347	-0.7	0.6
October	33,470	39,215	-5,745	-2.5	-3.6
November	32,772	38,542	-5,770	-2.1	-1.7
December	31,108	36,160	-5,052	-5.1	-6.2
<b>2009</b>					
January	28,161	33,120	-4,960	-9.5	-8.4
February	30,036	33,165	-3,129	6.7	0.1
March	29,229	31,985	-2,756	-2.7	-3.6
April	28,666	32,092	-3,427	-1.9	0.3

**Note(s):** Due to rounding, monthly data may not add up to quarterly data and quarterly data may not add up to annual data.

**Table 1-3**  
**Merchandise trade of Canada, balance of payments basis, seasonally adjusted — Price indices (Laspeyres)**

	2002=100			Period to period change		
	Exports	Imports	Terms of trade	Exports	Imports	Terms of trade
	millions of dollars			percent		
2005	104.6	92.2	113.4	0.0	0.0	0.0
2006	105.1	92.7	113.3	0.4	0.5	-0.1
2007	107.2	91.6	117.0	2.0	-1.2	3.2
2008	116.3	97.6	119.1	8.5	6.6	1.9
<b>2007</b>						
First quarter	109.5	95.2	115.0	3.1	1.9	1.2
Second quarter	112.0	92.9	120.5	2.3	-2.4	4.7
Third quarter	105.0	90.1	116.5	-6.2	-3.0	-3.2
Fourth quarter	105.6	88.0	119.9	0.5	-2.3	2.9
<b>2008</b>						
First quarter	111.3	90.4	123.1	5.4	2.7	2.7
Second quarter	118.5	95.2	124.5	6.4	5.2	1.2
Third quarter	121.8	101.1	120.6	2.8	6.2	-3.4
Fourth quarter	114.0	103.9	109.7	-6.4	2.8	-9.2
<b>2009</b>						
First quarter	110.0	101.5	108.3	-3.6	-2.3	-1.3
<b>2008</b>						
January	109.7	89.9	122.0	2.3	1.9	0.4
February	110.0	90.0	122.2	0.3	0.2	0.2
March	113.2	91.3	124.0	2.9	1.4	1.5
April	116.3	93.4	124.6	2.7	2.2	0.5
May	118.5	94.5	125.4	1.9	1.2	0.7
June	120.9	97.7	123.7	2.0	3.4	-1.3
July	123.8	99.5	124.4	2.4	1.8	0.6
August	121.6	101.8	119.4	-1.8	2.3	-4.1
September	120.0	101.9	117.8	-1.3	0.1	-1.4
October	121.6	104.8	116.1	1.3	2.8	-1.5
November	116.6	104.2	111.9	-4.1	-0.5	-3.6
December	111.5	102.7	108.5	-4.4	-1.4	-3.0
<b>2009</b>						
January	109.9	100.7	109.1	-1.4	-1.9	0.5
February	110.0	101.3	108.5	0.0	0.6	-0.5
March	109.7	102.5	107.0	-0.3	1.1	-1.4
April	107.0	100.7	106.3	-2.4	-1.7	-0.7

**Note(s):** Due to rounding, monthly data may not add up to quarterly data and quarterly data may not add up to annual data.

**Table 2-1**  
**Exports by commodity groupings, balance of payments basis, seasonally adjusted — Current dollars**

	March 2009	April 2009	Change	Year to date		Year to date change		April	
				2008	2,009			2009/2008	
	millions of dollars		percent		millions of dollars		percent		
<b>Total</b>	<b>32,438</b>	<b>30,785</b>	<b>-1,652</b>	<b>-5.1</b>	<b>158,502</b>	<b>127,600</b>	<b>-30,903</b>	<b>-19.5</b>	<b>-24.0</b>
<b>Agricultural and fishing products</b>	<b>3,404</b>	<b>3,577</b>	<b>173</b>	<b>5.1</b>	<b>13,068</b>	<b>13,862</b>	<b>794</b>	<b>6.1</b>	<b>7.5</b>
Wheat	514	637	123	24.0	2,307	2,320	13	0.5	6.0
Other agricultural and fishing products	2,890	2,939	50	1.7	10,761	11,542	782	7.3	7.8
Live animals	185	187	2	1.1	811	715	-96	-11.8	-2.3
Fish and fish preparations	359	362	3	0.9	1,352	1,425	73	5.4	5.5
Barley	49	45	-4	-8.4	337	207	-131	-38.8	-43.8
Wheat flour	7	7	-1	-8.6	32	27	-5	-15.4	-24.1
Other cereals unmilled	45	43	-2	-4.6	261	214	-47	-17.9	-47.2
Other cereal preparations	253	258	5	1.9	892	1,020	128	14.3	9.3
Meat and meat preparations	398	388	-9	-2.4	1,333	1,592	259	19.4	11.7
Alcoholic beverages	63	66	2	3.7	270	256	-14	-5.0	-4.3
Other food, feed, beverages and tobacco	1,052	978	-74	-7.0	3,446	3,982	536	15.5	12.3
Rapeseed	281	405	124	44.1	1,319	1,271	-48	-3.6	22.3
Other crude vegetable products	197	201	4	1.9	708	833	126	17.8	20.9
<b>Energy products</b>	<b>6,646</b>	<b>6,066</b>	<b>-580</b>	<b>-8.7</b>	<b>40,585</b>	<b>25,974</b>	<b>-14,611</b>	<b>-36.0</b>	<b>-44.3</b>
Crude petroleum	3,240	3,084	-156	-4.8	20,079	11,628	-8,451	-42.1	-42.9
Natural gas	1,556	1,324	-232	-14.9	11,113	6,735	-4,378	-39.4	-56.4
Other energy products	1,850	1,658	-193	-10.4	9,393	7,611	-1,782	-19.0	-32.7
Coal and other bituminous substances	484	443	-41	-8.4	922	1,764	842	91.3	49.6
Petroleum and coal products	1,151	1,013	-139	-12.0	7,204	4,882	-2,322	-32.2	-44.3
Electricity	215	202	-13	-6.2	1,267	965	-301	-23.8	-41.9
<b>Forestry products</b>	<b>1,705</b>	<b>1,651</b>	<b>-53</b>	<b>-3.1</b>	<b>8,383</b>	<b>6,890</b>	<b>-1,492</b>	<b>-17.8</b>	<b>-21.8</b>
Lumber and sawmill products	575	539	-35	-6.2	3,011	2,260	-751	-25.0	-27.8
Other crude wood products	44	50	6	13.2	194	182	-11	-5.9	13.7
Lumber	327	294	-33	-10.1	1,758	1,266	-492	-28.0	-34.1
Other wood fabricated materials	204	195	-8	-4.2	1,059	812	-248	-23.4	-23.8
Wood pulp and other wood products	375	379	4	1.1	2,247	1,588	-659	-29.3	-33.9
Newsprint and other paper and paperboard	754	733	-22	-2.9	3,125	3,043	-82	-2.6	-7.5
Newsprint paper	397	383	-14	-3.5	1,629	1,622	-7	-0.4	-9.6
Other paper and paperboard	357	349	-8	-2.2	1,496	1,421	-75	-5.0	-5.2
<b>Industrial goods and materials</b>	<b>7,010</b>	<b>6,328</b>	<b>-682</b>	<b>-9.7</b>	<b>35,925</b>	<b>27,121</b>	<b>-8,804</b>	<b>-24.5</b>	<b>-29.4</b>
Metal ores	893	852	-41	-4.6	4,565	3,302	-1,263	-27.7	-18.4
Iron ores, concentrates and scrap	382	393	11	2.9	1,331	1,512	180	13.6	50.1
Copper ores, concentrates and scrap	162	107	-55	-33.7	534	400	-134	-25.0	-25.0
Nickel ores, concentrates and scrap	75	123	48	64.0	1,430	456	-974	-68.1	-59.8
Zinc ores, concentrates and scrap	42	19	-24	-56.2	122	87	-36	-29.1	-47.8
Other ores, concentrates and scrap	232	210	-22	-9.3	1,147	847	-300	-26.2	-29.4
Chemicals, plastics and fertilizers	2,219	2,018	-200	-9.0	10,882	9,040	-1,842	-16.9	-25.6
Inorganic chemicals	410	386	-23	-5.7	1,649	1,664	15	0.9	-10.2
Organic chemicals	372	368	-4	-1.0	2,315	1,499	-817	-35.3	-32.4
Fertilizers and fertilizer materials	385	244	-141	-36.5	1,774	1,643	-131	-7.4	-45.0
Synthetic rubber and plastics	807	789	-19	-2.3	4,076	3,273	-803	-19.7	-22.9
Other chemical products	245	231	-14	-5.9	1,068	963	-105	-9.8	-14.8
Metals and alloys	2,452	2,092	-360	-14.7	13,725	9,074	-4,651	-33.9	-40.2
Primary iron and steel	28	48	20	68.7	385	111	-274	-71.2	-58.0
Steel bars, rods, plates, sheets	299	198	-101	-33.8	1,505	1,062	-444	-29.5	-49.7
Other iron and steel and alloys	202	200	-2	-1.0	1,243	857	-386	-31.1	-36.0
Aluminum including alloys	490	424	-66	-13.5	2,934	2,031	-903	-30.8	-45.4
Copper and alloys	201	176	-25	-12.5	1,641	765	-876	-53.4	-62.1
Nickel and alloys	198	174	-23	-11.8	1,490	754	-736	-49.4	-55.6
Precious metals and alloys	886	715	-171	-19.3	3,420	2,907	-513	-15.0	-8.2
Zinc and alloys	78	74	-4	-5.0	572	314	-258	-45.1	-42.9
Other non-ferrous metals and alloys	70	82	12	17.7	534	273	-261	-48.8	-38.9

Table 2-1 – continued

## Exports by commodity groupings, balance of payments basis, seasonally adjusted — Current dollars

	March 2009	April 2009	Change		Year to date		Year to date change		April
					2008	2,009			2009/2008
	millions of dollars		percent		millions of dollars		percent		
Other industrial goods and materials	1,446	1,366	-80	-5.5	6,753	5,704	-1,049	-15.5	-20.3
Asbestos unmanufactured	5	5	0	9.3	19	19	1	2.9	-2.5
Other crude animal products	55	67	12	21.1	311	251	-60	-19.2	-40.5
Other crude non-metallic minerals	306	244	-63	-20.4	1,503	1,130	-373	-24.8	-32.8
Other crude materials, inedible	44	55	11	25.6	185	190	4	2.2	21.1
Metal fabricated basic products	367	354	-13	-3.4	1,795	1,497	-298	-16.6	-21.3
Textile fabricated materials	185	179	-6	-3.3	806	726	-80	-9.9	-7.8
Non-metallic mineral basic products	171	163	-7	-4.3	786	693	-93	-11.8	-14.3
Other fabricated materials	312	297	-14	-4.6	1,349	1,198	-150	-11.1	-15.2
<b>Machinery and equipment</b>	<b>7,640</b>	<b>7,107</b>	<b>-533</b>	<b>-7.0</b>	<b>29,650</b>	<b>30,135</b>	<b>485</b>	<b>1.6</b>	<b>-4.6</b>
Industrial and agricultural machinery	1,815	1,704	-111	-6.1	7,320	7,316	-4	-0.1	-6.5
Industrial machinery	1,619	1,527	-92	-5.7	6,682	6,580	-102	-1.5	-7.6
Agricultural machinery includ. tractors	196	178	-18	-9.4	638	736	98	15.4	4.9
Aircraft and other transportation equipment	1,809	1,606	-202	-11.2	6,727	6,947	220	3.3	-4.3
Aircraft, engines, parts	1,380	1,282	-99	-7.1	5,029	5,567	538	10.7	0.8
Other transportation equipment	428	324	-104	-24.3	1,699	1,380	-318	-18.7	-20.3
Other machinery and equipment	4,016	3,797	-220	-5.5	15,602	15,871	270	1.7	-3.9
Television, telecommunication equipment	760	791	32	4.1	3,047	3,356	309	10.2	-1.1
Office machines and equipment	453	445	-9	-1.9	1,957	1,818	-139	-7.1	-9.0
Other equipment and tools	1,827	1,661	-166	-9.1	7,381	7,042	-339	-4.6	-8.6
Other end products, inedible	976	900	-76	-7.8	3,217	3,655	438	13.6	6.3
<b>Automotive products</b>	<b>3,392</b>	<b>3,483</b>	<b>91</b>	<b>2.7</b>	<b>21,012</b>	<b>13,110</b>	<b>-7,903</b>	<b>-37.6</b>	<b>-33.1</b>
Passenger autos and chassis	1,738	1,811	73	4.2	11,415	6,363	-5,052	-44.3	-40.4
Trucks and other motor vehicles	464	523	60	12.9	2,481	2,103	-378	-15.2	7.7
Motor vehicle parts	1,190	1,148	-42	-3.5	7,117	4,644	-2,473	-34.7	-31.7
<b>Other consumer goods</b>	<b>1,683</b>	<b>1,596</b>	<b>-87</b>	<b>-5.2</b>	<b>5,616</b>	<b>6,502</b>	<b>886</b>	<b>15.8</b>	<b>10.9</b>
<b>Special transactions trade</b>	<b>578</b>	<b>548</b>	<b>-30</b>	<b>-5.2</b>	<b>2,495</b>	<b>2,340</b>	<b>-154</b>	<b>-6.2</b>	<b>-14.2</b>
<b>Unallocated balance of payments adjustments</b>	<b>381</b>	<b>430</b>	<b>49</b>	<b>12.9</b>	<b>1,770</b>	<b>1,666</b>	<b>-104</b>	<b>-5.9</b>	<b>-8.6</b>

**Table 2-2**  
**Exports by commodity groupings, balance of payments basis, seasonally adjusted — Constant dollars, 2002**

	March 2009	April 2009	Change	Year to date		Year to date change		April	
				2008	2009			2009/2008	
	millions of dollars		percent		millions of dollars		percent		
<b>Total</b>	<b>29,229</b>	<b>28,666</b>	<b>-563</b>	<b>-1.9</b>	<b>142,444</b>	<b>116,092</b>	<b>-26,352</b>	<b>-18.5</b>	<b>-18.3</b>
<b>Agricultural and fishing products</b>	<b>3,149</b>	<b>3,317</b>	<b>169</b>	<b>5.4</b>	<b>12,393</b>	<b>12,758</b>	<b>365</b>	<b>2.9</b>	<b>7.6</b>
Wheat	443	538	96	21.6	1,366	1,905	538	39.4	60.7
Other agricultural and fishing products	2,706	2,779	73	2.7	11,026	10,853	-173	-1.6	1.1
Live animals	198	193	-6	-2.8	1,001	780	-221	-22.1	-15.1
Fish and fish preparations	382	402	20	5.1	1,590	1,555	-36	-2.2	-1.9
Barley	34	32	-2	-5.9	232	148	-84	-36.1	-38.5
Wheat flour	6	6	-1	-8.4	25	24	-1	-3.9	-18.0
Other cereals unmilled	42	41	-2	-3.8	247	181	-67	-26.9	-43.8
Other cereal preparations	195	202	7	3.6	864	800	-64	-7.4	-9.4
Meat and meat preparations	403	408	5	1.2	1,677	1,640	-38	-2.2	-4.9
Alcoholic beverages	110	112	3	2.7	446	432	-14	-3.2	1.4
Other food, feed, beverages and tobacco	924	833	-90	-9.8	3,438	3,453	14	0.4	-3.4
Rapeseed	253	384	131	52.0	914	1,156	242	26.4	77.0
Other crude vegetable products	159	166	7	4.5	590	685	95	16.1	19.9
<b>Energy products</b>	<b>4,530</b>	<b>4,366</b>	<b>-164</b>	<b>-3.6</b>	<b>18,688</b>	<b>18,058</b>	<b>-630</b>	<b>-3.4</b>	<b>-5.5</b>
Crude petroleum	1,958	1,919	-38	-2.0	7,546	7,721	175	2.3	2.1
Natural gas	1,467	1,404	-63	-4.3	6,330	5,761	-569	-9.0	-9.6
Other energy products	1,106	1,043	-62	-5.6	4,812	4,577	-236	-4.9	-12.4
Coal and other bituminous substances	92	103	11	12.4	539	384	-155	-28.7	-30.3
Petroleum and coal products	810	722	-88	-10.8	3,299	3,322	24	0.7	-6.5
Electricity	205	218	14	6.7	975	870	-105	-10.7	-19.3
<b>Forestry products</b>	<b>1,967</b>	<b>2,004</b>	<b>37</b>	<b>1.9</b>	<b>10,455</b>	<b>8,041</b>	<b>-2,414</b>	<b>-23.1</b>	<b>-23.1</b>
Lumber and sawmill products	766	734	-33	-4.2	4,085	3,018	-1,067	-26.1	-28.4
Other crude wood products	51	60	9	16.8	269	223	-47	-17.3	-14.1
Lumber	489	451	-37	-7.6	2,591	1,897	-694	-26.8	-31.5
Other wood fabricated materials	227	223	-4	-1.7	1,224	898	-326	-26.7	-24.9
Wood pulp and other wood products	507	562	55	10.9	2,696	2,177	-519	-19.2	-17.4
Newsprint and other paper and paperboard	694	708	14	2.0	3,673	2,846	-827	-22.5	-21.2
Newsprint paper	346	354	8	2.3	1,909	1,446	-463	-24.3	-25.7
Other paper and paperboard	348	353	6	1.6	1,764	1,400	-364	-20.6	-16.2
<b>Industrial goods and materials</b>	<b>5,317</b>	<b>4,928</b>	<b>-389</b>	<b>-7.3</b>	<b>25,426</b>	<b>20,727</b>	<b>-4,699</b>	<b>-18.5</b>	<b>-19.2</b>
Metal ores	504	484	-20	-3.9	2,249	1,888	-360	-16.0	2.5
Iron ores, concentrates and scrap	129	141	12	9.5	805	537	-268	-33.3	-1.1
Copper ores, concentrates and scrap	85	50	-35	-40.8	171	214	43	25.1	18.8
Nickel ores, concentrates and scrap	60	101	42	69.5	561	353	-208	-37.2	-8.4
Zinc ores, concentrates and scrap	31	12	-19	-61.7	60	64	5	8.0	-31.6
Other ores, concentrates and scrap	198	179	-19	-9.6	652	721	69	10.6	12.8
Chemicals, plastics and fertilizers	1,673	1,606	-67	-4.0	8,167	6,674	-1,493	-18.3	-19.7
Inorganic chemicals	210	188	-23	-10.8	821	793	-29	-3.5	-11.6
Organic chemicals	324	333	9	2.6	1,273	1,294	21	1.7	8.7
Fertilizers and fertilizer materials	119	82	-37	-31.3	1,031	534	-497	-48.2	-64.8
Synthetic rubber and plastics	742	746	4	0.6	3,750	2,972	-778	-20.7	-19.1
Other chemical products	278	258	-20	-7.2	1,293	1,082	-210	-16.3	-21.1
Metals and alloys	1,758	1,516	-241	-13.7	8,554	6,645	-1,910	-22.3	-27.4
Primary iron and steel	23	31	8	36.2	255	73	-182	-71.3	-55.5
Steel bars, rods, plates, sheets	209	147	-62	-29.7	1,317	762	-555	-42.2	-53.6
Other iron and steel and alloys	163	176	13	7.7	1,062	676	-386	-36.3	-29.9
Aluminum including alloys	611	501	-111	-18.1	2,614	2,423	-191	-7.3	-24.3
Copper and alloys	114	87	-27	-23.8	546	449	-97	-17.7	-37.4
Nickel and alloys	162	146	-16	-9.9	559	582	23	4.2	-1.6
Precious metals and alloys	363	313	-49	-13.6	1,737	1,235	-502	-28.9	-20.2
Zinc and alloys	69	66	-4	-5.2	301	278	-23	-7.7	-7.3
Other non-ferrous metals and alloys	43	50	7	15.9	164	166	3	1.6	30.7

Table 2-2 – continued

## Exports by commodity groupings, balance of payments basis, seasonally adjusted — Constant dollars, 2002

	March 2009	April 2009	Change		Year to date		Year to date change		April
					2008	2009			2009/2008
	millions of dollars		percent		millions of dollars		percent		
Other industrial goods and materials	1,383	1,322	-61	-4.4	6,456	5,520	-936	-14.5	-14.3
Asbestos unmanufactured	5	6	1	9.8	22	20	-1	-6.6	-11.3
Other crude animal products	80	89	8	10.3	328	319	-9	-2.8	-19.8
Other crude non-metallic minerals	400	339	-62	-15.5	1,790	1,614	-176	-9.8	-10.6
Other crude materials, inedible	41	55	14	33.0	183	185	2	1.3	18.7
Metal fabricated basic products	286	279	-7	-2.3	1,512	1,163	-349	-23.1	-24.5
Textile fabricated materials	167	164	-2	-1.3	877	659	-218	-24.9	-21.0
Non-metallic mineral basic products	135	132	-3	-2.2	694	550	-144	-20.8	-20.6
Other fabricated materials	269	259	-10	-3.6	1,051	1,010	-41	-3.9	0.8
<b>Machinery and equipment</b>	<b>7,880</b>	<b>7,451</b>	<b>-429</b>	<b>-5.4</b>	<b>34,506</b>	<b>31,437</b>	<b>-3,069</b>	<b>-8.9</b>	<b>-13.4</b>
Industrial and agricultural machinery	1,645	1,542	-103	-6.3	7,188	6,685	-503	-7.0	-13.3
Industrial machinery	1,466	1,381	-85	-5.8	6,531	6,015	-516	-7.9	-13.9
Agricultural machinery includ. tractors	179	161	-18	-10.0	657	670	13	2.0	-8.3
Aircraft and other transportation equipment	2,039	1,837	-202	-9.9	8,758	7,900	-858	-9.8	-15.0
Aircraft, engines, parts	1,607	1,522	-85	-5.3	6,918	6,552	-366	-5.3	-11.8
Other transportation equipment	433	316	-117	-27.0	1,840	1,348	-492	-26.7	-27.6
Other machinery and equipment	4,196	4,072	-124	-3.0	18,560	16,851	-1,709	-9.2	-12.6
Television, telecommunication equipment	854	902	47	5.5	3,930	3,818	-112	-2.8	-12.9
Office machines and equipment	919	937	18	2.0	4,494	3,707	-788	-17.5	-16.3
Other equipment and tools	1,670	1,520	-150	-9.0	7,181	6,443	-738	-10.3	-12.6
Other end products, inedible	753	713	-39	-5.2	2,955	2,883	-71	-2.4	-7.1
<b>Automotive products</b>	<b>3,843</b>	<b>4,028</b>	<b>185</b>	<b>4.8</b>	<b>29,127</b>	<b>14,932</b>	<b>-14,195</b>	<b>-48.7</b>	<b>-43.5</b>
Passenger autos and chassis	2,123	2,249	126	5.9	17,836	7,824	-10,012	-56.1	-51.7
Trucks and other motor vehicles	504	583	79	15.7	3,307	2,325	-982	-29.7	-2.4
Motor vehicle parts	1,216	1,196	-20	-1.7	7,985	4,784	-3,201	-40.1	-36.1
<b>Other consumer goods</b>	<b>1,612</b>	<b>1,524</b>	<b>-88</b>	<b>-5.4</b>	<b>5,530</b>	<b>6,243</b>	<b>713</b>	<b>12.9</b>	<b>7.8</b>
<b>Special transactions trade</b>	<b>525</b>	<b>502</b>	<b>-23</b>	<b>-4.4</b>	<b>2,194</b>	<b>2,111</b>	<b>-84</b>	<b>-3.8</b>	<b>-6.9</b>
<b>Unallocated balance of payments adjustments</b>	<b>405</b>	<b>544</b>	<b>139</b>	<b>34.3</b>	<b>4,125</b>	<b>1,785</b>	<b>-2,340</b>	<b>-56.7</b>	<b>-44.6</b>

**Table 3-1**  
**Domestic exports to selected countries, customs basis, not seasonally adjusted — April**

	Agricultural and fishing products	Energy products	Forestry products	Industrial goods	Machinery and equipment	Automotive products	Consumer goods	Special transactions	Total
millions of dollars									
<b>United States</b>									
2008	1,673.1	10,715.3	1,542.2	5,850.8	4,685.6	5,048.9	946.4	599.9	31,062.2
2009	1,692.1	5,406.6	1,152.4	3,690.6	4,034.3	3,285.5	1,061.7	485.0	20,808.3
<b>Mexico</b>									
2008	105.9	7.3	10.3	79.4	76.0	65.2	4.6	0.3	348.9
2009	109.2	0.2	5.4	62.6	58.8	53.5	3.0	1.4	294.1
<b>Japan</b>									
2008	357.7	135.8	122.2	188.2	55.1	3.8	7.5	0.4	870.6
2009	249.9	218.6	84.0	110.8	51.4	3.6	15.5	0.6	734.2
<b>European Union</b>									
Germany									
2008	11.4	16.7	14.8	73.0	102.2	3.8	16.6	1.0	239.6
2009	13.0	18.9	10.1	80.6	150.0	5.5	12.5	0.6	291.2
France									
2008	9.8	48.7	16.7	29.4	107.9	5.7	34.7	1.3	254.3
2009	10.6	0.2	14.6	24.6	96.3	3.3	21.5	1.6	172.8
United Kingdom									
2008	60.3	19.9	36.9	644.5	179.9	5.1	18.4	2.9	967.9
2009	38.1	3.9	27.4	358.4	250.2	2.7	16.3	3.5	700.5
Italy									
2008	69.0	10.0	29.6	88.8	38.1	1.0	5.0	0.4	241.9
2009	98.3	5.6	26.9	20.7	37.1	0.4	6.5	0.4	196.0
Other European Union									
2008	84.4	78.6	41.2	346.8	264.2	21.1	45.5	3.6	885.3
2009	84.0	146.3	27.8	137.9	261.1	13.6	46.5	2.9	720.1
<b>Total</b>									
2008	235.0	173.9	139.3	1,182.4	692.3	36.7	120.3	9.2	2,589.0
2009	244.0	174.9	106.9	622.1	794.8	25.5	103.4	9.0	2,080.6
<b>Newly industrialized countries</b>									
South Korea									
2008	34.5	30.2	47.2	55.5	25.3	0.8	4.3	0.5	198.4
2009	24.4	133.0	39.0	86.1	76.3	3.7	4.6	0.9	368.0
Hong Kong									
2008	35.9	0.0	10.0	72.0	24.3	0.5	3.5	1.1	147.4
2009	26.7	0.1	9.8	37.8	17.5	0.7	4.9	0.8	98.3
Taiwan									
2008	13.0	18.8	38.7	73.6	12.5	0.3	2.3	0.2	159.3
2009	11.5	26.8	15.4	24.8	18.5	0.2	2.5	0.1	99.8
Singapore									
2008	3.6	0.7	0.8	17.2	37.9	1.1	3.4	0.4	65.0
2009	3.6	0.3	3.9	59.1	28.5	5.6	1.9	0.2	103.1
<b>Total</b>									
2008	87.0	49.7	96.7	218.2	100.0	2.8	13.5	2.1	570.1
2009	66.2	160.2	68.0	207.8	140.8	10.2	14.0	2.0	669.1
<b>Other countries</b>									
2008	739.8	152.8	351.5	1,400.0	723.9	70.0	92.6	13.3	3,543.9
2009	1,100.8	51.7	285.2	1,012.3	568.3	39.9	99.9	13.6	3,171.7
<b>Total</b>									
2008	3,198.5	11,234.8	2,262.1	8,919.1	6,332.8	5,227.3	1,184.8	625.2	38,984.5
2009	3,462.1	6,012.2	1,701.9	5,706.3	5,648.3	3,418.2	1,297.4	511.6	27,758.0

**Table 3-2**  
**Domestic exports to selected countries, customs basis, not seasonally adjusted — Year to date, January to April**

	Agricultural and fishing products	Energy products	Forestry products	Industrial goods	Machinery and equipment	Automotive products	Consumer goods	Special transactions	Total
millions of dollars									
<b>United States</b>									
2008	6,170.3	38,406.6	5,835.9	21,838.6	17,249.7	19,622.8	3,306.2	2,225.7	114,655.8
2009	6,673.6	23,139.2	4,854.9	15,621.2	16,735.7	11,694.3	3,840.5	1,979.7	84,539.0
<b>Mexico</b>									
2008	401.8	16.2	64.6	343.4	275.0	284.4	16.8	1.5	1,403.7
2009	368.7	9.9	31.4	250.1	278.0	210.2	13.9	5.6	1,167.8
<b>Japan</b>									
2008	1,249.6	382.7	446.1	664.4	188.3	13.3	37.1	1.4	2,982.8
2009	1,032.5	768.7	351.5	382.0	245.7	11.8	62.0	3.0	2,857.2
<b>European Union</b>									
<b>Germany</b>									
2008	65.3	44.1	56.4	319.9	420.0	13.6	57.1	4.5	981.0
2009	51.4	88.7	41.5	183.8	681.4	17.2	49.2	4.9	1,118.2
<b>France</b>									
2008	46.2	176.5	95.4	115.6	409.7	21.3	117.1	3.4	985.2
2009	46.2	74.7	48.4	235.1	453.7	10.8	109.1	6.6	984.5
<b>United Kingdom</b>									
2008	172.1	59.6	123.0	2,937.8	788.8	23.5	67.8	13.3	4,186.0
2009	123.6	23.2	98.6	2,505.7	752.0	10.8	124.7	13.6	3,652.2
<b>Italy</b>									
2008	135.9	77.7	140.5	341.5	163.7	3.6	20.2	1.6	884.6
2009	169.7	42.0	98.0	97.9	190.7	3.1	22.9	1.1	625.3
<b>Other European Union</b>									
2008	301.4	212.6	159.1	1,521.5	913.3	89.5	176.7	11.1	3,385.3
2009	266.9	337.4	113.7	818.1	1,033.1	54.4	271.0	12.1	2,906.7
<b>Total</b>									
2008	720.9	570.4	574.4	5,236.3	2,695.5	151.5	439.0	34.0	10,422.1
2009	657.8	566.0	400.2	3,840.6	3,110.9	96.3	576.8	38.4	9,286.9
<b>Newly industrialized countries</b>									
<b>South Korea</b>									
2008	120.1	192.3	177.0	318.8	115.0	3.5	19.1	2.9	948.6
2009	100.5	396.9	112.5	328.9	172.3	8.6	16.3	2.1	1,138.1
<b>Hong Kong</b>									
2008	112.7	0.1	30.8	226.2	87.7	1.8	14.5	4.0	477.7
2009	133.3	0.1	32.8	156.8	116.2	3.2	22.8	2.4	467.5
<b>Taiwan</b>									
2008	45.9	38.2	106.5	261.0	39.9	0.7	10.1	0.8	503.0
2009	53.7	78.0	61.0	86.8	43.5	0.5	10.8	0.3	334.6
<b>Singapore</b>									
2008	13.7	23.7	4.8	73.3	126.4	4.8	9.5	1.3	257.4
2009	13.1	1.7	5.4	83.4	105.6	14.8	9.1	0.6	233.7
<b>Total</b>									
2008	292.4	254.2	319.0	879.3	368.9	10.8	53.1	9.0	2,186.8
2009	300.6	476.8	211.7	655.9	437.6	27.2	58.9	5.3	2,173.9
<b>Other countries</b>									
2008	3,108.1	460.2	1,288.2	4,907.5	3,085.8	261.6	417.6	46.4	13,575.4
2009	3,518.6	315.3	1,124.7	3,485.0	3,023.3	252.9	406.5	90.8	12,217.0
<b>Total</b>									
2008	11,943.1	40,090.3	8,528.2	33,869.5	23,863.5	20,344.5	4,270.2	2,318.1	145,227.4
2009	12,551.8	25,275.9	6,974.4	24,234.8	23,831.4	12,292.5	4,959.0	2,122.7	112,242.5

**Table 4**  
**Domestic exports by country, customs basis, not seasonally adjusted**

	April		January to April		Variation
	2008	2009	2008	2009	January to April 2009/2008
millions of dollars					
<b>North America</b>					
Greenland	3.4	4.5	8.2	7.1	-13.4
Mexico	348.9	294.1	1,403.7	1,167.8	-16.8
Saint Pierre and Miquelon	1.4	0.9	4.3	3.8	-11.6
United States	31,062.2	20,808.3	114,655.8	84,539.0	-26.3
<b>Total</b>	<b>31,415.8</b>	<b>21,107.7</b>	<b>116,072.0</b>	<b>85,717.7</b>	<b>-26.2</b>
<b>Western Europe</b>					
Andorra	0.0	0.0	0.0	0.0	0.0
Austria	53.2	63.1	183.6	202.8	10.5
Belgium	256.3	108.9	950.3	575.9	-39.4
Denmark	20.0	47.7	90.1	191.3	112.3
Faeroe Islands	0.0	0.0	0.8	0.6	-25.0
Finland	43.9	16.6	215.3	115.5	-46.4
France	254.3	172.8	985.2	984.5	-0.1
Germany	239.6	291.2	981.0	1,118.2	14.0
Gibraltar	46.1	0.0	193.7	16.8	-91.3
Greece	11.4	8.9	34.4	33.3	-3.2
Iceland	4.7	2.9	20.3	8.4	-58.6
Italy	241.9	196.0	884.6	625.3	-29.3
Luxembourg	9.2	3.5	28.2	13.5	-52.1
Malta	3.1	0.8	6.1	37.8	519.7
Netherlands	250.9	224.9	1,008.1	765.6	-24.1
Norway	308.7	147.5	1,110.5	426.9	-61.6
Portugal	14.0	43.6	43.3	68.7	58.7
Republic of Ireland (Eire)	27.4	21.2	97.1	186.0	91.6
Spain	85.0	117.3	269.3	381.8	41.8
Sweden	28.0	22.0	111.6	83.7	-25.0
Switzerland	101.5	101.4	335.3	375.5	12.0
United Kingdom	967.9	700.5	4,186.0	3,652.2	-12.8
<b>Total</b>	<b>2,967.1</b>	<b>2,290.7</b>	<b>11,734.7</b>	<b>9,864.2</b>	<b>-15.9</b>
<b>Other Europe</b>					
Albania	1.9	0.3	6.1	2.3	-62.3
Armenia	2.3	0.5	5.6	1.8	-67.9
Azerbaijan	1.2	1.4	7.5	4.8	-36.0
Belarus	0.1	0.0	2.3	0.6	-73.9
Bosnia and Herzegovina	0.3	0.3	0.8	1.4	75.0
Bulgaria	1.7	0.8	8.3	10.8	30.1
Croatia	1.6	1.8	6.7	8.9	32.8
Czech Republic	17.6	10.8	92.7	43.9	-52.6
Estonia	1.8	1.0	6.9	5.2	-24.6
Georgia	1.3	0.4	5.4	1.9	-64.8
Hungary	9.5	6.7	55.0	28.1	-48.9
Kazakhstan	14.4	11.1	122.7	83.1	-32.3
Kyrgyzstan	1.4	0.0	3.3	1.1	-66.7
Latvia	3.4	2.0	12.2	8.0	-34.4
Lithuania	2.8	1.5	14.1	16.6	17.7
Macedonia (Former Yugoslav Republic of Macedonia)	0.9	1.0	4.6	4.8	4.3
Montenegro	0.6	0.3	1.1	0.6	-45.5
Poland	27.8	12.8	99.1	63.5	-35.9
Republic of Moldova	1.1	0.1	1.7	1.0	-41.2
Romania	5.6	2.8	20.5	17.5	-14.6
Russian Federation	111.0	72.6	452.5	313.9	-30.6
Serbia	0.7	0.6	3.3	4.4	33.3
Slovakia	10.0	1.7	21.2	5.5	-74.1
Slovenia	1.3	0.9	13.5	47.3	250.4
Tajikistan	0.3	0.3	1.6	0.8	-50.0
Turkmenistan	0.0	0.0	0.6	1.7	183.3
Ukraine	19.2	6.0	53.9	21.5	-60.1
Uzbekistan	0.2	1.8	0.8	6.3	687.5
<b>Total</b>	<b>240.1</b>	<b>139.6</b>	<b>1,024.0</b>	<b>707.7</b>	<b>-30.9</b>

Table 4 – continued

## Domestic exports by country, customs basis, not seasonally adjusted

	April		January to April		Variation
	2008	2009	2008	2009	January to April 2009/2008
millions of dollars					
<b>Middle East</b>					
Bahrain	2.8	1.2	10.5	5.6	-46.7
Cyprus	1.3	0.7	4.4	4.2	-4.5
Egypt	45.9	28.5	122.5	167.8	37.0
Eritrea	0.0	0.0	0.2	0.0	0.0
Ethiopia	13.6	0.0	23.0	3.0	-87.0
Iran	11.4	32.4	70.5	100.1	42.0
Iraq	2.1	66.3	26.5	201.1	658.9
Israel	33.7	16.4	130.5	99.5	-23.8
Jordan	6.7	5.1	21.6	20.4	-5.6
Kuwait	8.5	5.8	33.9	23.0	-32.2
Lebanon	6.7	6.1	22.2	23.7	6.8
Libya	7.1	13.9	60.0	131.0	118.3
Oman	5.7	8.6	22.1	52.8	138.9
Qatar	4.7	6.4	28.7	39.2	36.6
Saudi Arabia	61.0	65.9	309.9	361.8	16.7
Somalia	0.0	0.0	0.0	0.0	...
Sudan	22.5	23.8	65.3	53.1	-18.7
Syria	4.0	5.6	21.4	14.8	-30.8
Turkey	62.2	42.1	280.9	227.9	-18.9
United Arab Emirates	80.9	166.7	402.6	453.7	12.7
Yemen	3.5	1.8	14.1	6.1	-56.7
<b>Total</b>	<b>384.4</b>	<b>497.4</b>	<b>1,670.7</b>	<b>1,988.9</b>	<b>19.0</b>
<b>Other Africa</b>					
Algeria	52.8	47.6	245.4	154.2	-37.2
Angola	5.9	6.7	71.5	29.5	-58.7
Antarctica	0.0	0.0	0.8	0.0	0.0
Benin	0.7	0.2	3.1	2.6	-16.1
Botswana	0.5	0.2	2.1	2.0	-4.8
Bouvet Island	0.0	0.0	0.0	0.0	0.0
Burkina Faso	0.4	0.8	2.3	2.0	-13.0
Burundi	0.1	0.1	0.5	0.4	-20.0
Cameroon	0.4	0.8	6.4	7.1	10.9
Cape Verde	0.0	0.1	0.5	0.4	-20.0
Central African Republic	0.0	0.0	0.0	0.4	0.0
Chad	0.9	0.9	1.2	5.0	316.7
Comoros	0.3	0.0	0.3	0.0	0.0
Congo	4.9	1.3	8.9	9.2	3.4
Democratic Republic of the Congo	1.6	1.0	6.8	5.2	-23.5
Djibouti	0.1	0.1	0.6	1.3	116.7
Equatorial Guinea	0.3	1.2	1.3	2.0	53.8
French Southern Territories	0.0	0.0	0.1	0.0	0.0
Gabon	0.9	2.2	10.9	13.4	22.9
Gambia	0.0	0.2	0.1	0.3	200.0
Ghana	29.2	6.8	61.6	47.7	-22.6
Guinea	2.9	3.7	6.5	8.2	26.2
Guinea-Bissau	0.5	0.0	0.5	0.0	...
Ivory Coast	2.1	1.0	8.0	10.6	32.5
Kenya	5.5	5.2	12.0	26.5	120.8
Lesotho	0.0	0.0	0.0	0.0	0.0
Liberia	1.0	0.6	2.5	1.4	-44.0
Madagascar	0.6	3.9	3.6	11.9	230.6
Malawi	0.5	0.4	1.8	1.3	-27.8
Mali	0.4	0.2	3.2	1.8	-43.8
Mauritania	0.4	0.3	0.9	1.2	33.3
Mauritius	0.3	0.8	1.5	2.3	53.3
Morocco	34.3	83.7	122.9	153.1	24.6
Mozambique	1.2	0.3	3.1	1.5	-51.6
Namibia	1.1	0.1	3.5	0.8	-77.1
Niger	0.3	0.1	1.0	0.9	-10.0
Nigeria	5.5	13.5	18.6	44.6	139.8
Rwanda	0.2	0.1	1.1	0.7	-36.4
Saint Helena	0.0	0.0	0.2	0.1	-50.0
Sao Tome and Principe	0.0	0.0	0.0	0.0	...
Senegal	4.8	0.9	13.1	5.8	-55.7
Seychelles	0.1	0.0	0.4	0.3	-25.0

Table 4 – continued

## Domestic exports by country, customs basis, not seasonally adjusted

	April		January to April		Variation
	2008	2009	2008	2009	January to April 2009/2008
millions of dollars					
Sierra Leone	0.8	0.7	2.9	1.8	-37.9
South Africa	42.1	50.0	177.4	160.7	-9.4
Swaziland	3.1	0.2	3.6	0.3	-91.7
Togo	3.9	0.2	7.3	4.5	-38.4
Tunisia	2.0	45.3	9.3	50.5	443.0
Uganda	0.8	0.5	4.2	5.0	19.0
United Republic of Tanzania	3.6	1.9	13.5	11.9	-11.9
Western Sahara	0.0	0.0	0.0	0.1	...
Zambia	2.0	0.4	5.6	2.3	-58.9
Zimbabwe	0.8	0.0	1.7	6.9	305.9
<b>Total</b>	<b>219.8</b>	<b>284.3</b>	<b>854.4</b>	<b>800.1</b>	<b>-6.4</b>
<b>Other Asia</b>					
Afghanistan	1.7	2.2	3.4	20.8	511.8
Bangladesh	18.0	65.4	129.1	332.7	157.7
Bhutan	0.0	0.0	0.0	0.1	0.0
British Indian Ocean Territory	0.0	0.0	0.2	0.0	0.0
Brunei Darussalam	0.1	0.6	0.3	0.9	200.0
Cambodia	0.2	1.4	0.7	2.0	185.7
China	903.5	959.8	3,353.8	3,783.4	12.8
Hong Kong	147.4	98.3	477.7	467.5	-2.1
India	148.2	103.4	554.6	537.8	-3.0
Indonesia	128.0	89.9	481.2	306.6	-36.3
Japan	870.6	734.2	2,982.8	2,857.2	-4.2
Laos	10.1	0.2	12.1	0.9	-92.6
Macau	3.2	1.1	13.1	10.0	-23.7
Malaysia	49.8	48.4	251.0	143.1	-43.0
Maldives	0.3	0.4	1.5	1.3	-13.3
Mongolia	0.8	0.6	3.1	1.8	-41.9
Myanmar	0.0	0.0	0.0	0.0	...
Nepal	0.3	0.2	0.8	1.2	50.0
North Korea	4.1	1.3	7.5	10.2	36.0
Pakistan	28.6	62.6	274.4	188.6	-31.3
Philippines	38.3	21.0	191.8	133.5	-30.4
Singapore	65.0	103.1	257.4	233.7	-9.2
South Korea	198.4	368.0	948.6	1,138.1	20.0
Sri Lanka	77.9	26.9	181.5	116.1	-36.0
Taiwan	159.3	99.8	503.0	334.6	-33.5
Thailand	48.9	37.4	201.4	136.1	-32.4
Timor-Leste	0.0	0.0	0.0	0.0	...
Viet Nam	56.0	21.6	125.2	49.1	-60.8
<b>Total</b>	<b>2,958.6</b>	<b>2,847.9</b>	<b>10,956.1</b>	<b>10,807.4</b>	<b>-1.4</b>
<b>Oceania</b>					
American Samoa	0.0	0.0	0.1	0.2	100.0
Australia	140.7	82.7	563.6	487.1	-13.6
Christmas Island	0.0	0.2	0.0	0.2	0.0
Cocos (Keeling) Islands	0.0	0.0	0.0	0.1	...
Cook Islands	0.0	0.0	0.8	0.0	...
Fiji	0.1	0.3	0.8	3.0	275.0
French Polynesia	1.3	1.1	5.6	3.3	-41.1
Guam	0.1	0.1	0.7	0.6	-14.3
Heard Island and McDonald Islands	0.0	0.0	0.0	0.0	...
Kiribati	0.0	0.0	0.0	0.0	0.0
Nauru	0.0	0.0	0.2	0.0	0.0
New Caledonia	0.6	0.3	4.9	1.1	-77.6
New Zealand	31.2	18.9	141.2	99.5	-29.5
Norfolk Island	0.0	0.0	0.0	0.3	0.0
Papua New Guinea	0.5	1.9	3.0	5.2	73.3
Pitcairn	0.0	0.0	0.1	0.0	0.0
Samoa	0.3	0.0	0.3	0.1	-66.7
Solomon Islands	0.0	0.0	0.0	0.1	...
Tonga	0.0	0.0	0.0	0.0	0.0
United States Minor Outlying Islands	2.6	1.0	4.3	3.6	-16.3
Vanuatu	0.0	0.0	0.1	1.0	900.0
<b>Total</b>	<b>177.5</b>	<b>106.5</b>	<b>725.8</b>	<b>605.5</b>	<b>-16.6</b>

Table 4 – continued

## Domestic exports by country, customs basis, not seasonally adjusted

	April		January to April		Variation
	2008	2009	2008	2009	January to April 2009/2008
millions of dollars					
<b>South America</b>					
Argentina	25.8	24.3	76.1	64.0	-15.9
Bolivia	0.4	0.2	4.1	2.4	-41.5
Brazil	180.5	94.7	579.9	318.0	-45.2
Chile	70.7	58.2	222.1	204.7	-7.8
Colombia	58.5	49.0	200.6	196.0	-2.3
Ecuador	19.4	29.8	89.5	94.5	5.6
Falkland Islands (Malvinas)	0.0	0.0	0.1	0.0	
Guyana	1.0	4.0	4.2	9.8	133.3
Paraguay	2.6	0.3	3.8	2.6	-31.6
Peru	17.1	41.7	107.6	149.2	38.7
Suriname	0.6	0.8	2.7	2.7	0.0
Uruguay	1.6	1.4	53.3	7.4	-86.1
Venezuela	35.6	34.6	189.4	239.5	26.5
<b>Total</b>	<b>413.6</b>	<b>339.1</b>	<b>1,533.5</b>	<b>1,290.7</b>	<b>-15.8</b>
<b>Central America Antilles</b>					
Anguilla	0.5	0.1	1.1	0.7	-36.4
Antigua and Barbuda	1.4	1.3	4.9	3.1	-36.7
Aruba	0.6	0.4	2.0	1.7	-15.0
Bahamas	2.0	3.2	8.7	9.8	12.6
Barbados	2.9	3.8	13.1	12.0	-8.4
Belize	0.3	0.4	1.3	2.1	61.5
Bermuda	5.4	5.9	20.1	20.6	2.5
British Virgin Islands	0.2	0.1	1.2	1.8	50.0
Cayman Islands	1.0	0.6	3.7	2.2	-40.5
Costa Rica	7.6	6.5	31.9	19.9	-37.6
Cuba	59.1	42.2	165.3	108.6	-34.3
Dominica	0.2	0.4	3.1	1.7	-45.2
Dominican Republic	31.2	10.1	74.6	42.0	-43.7
El Salvador	2.5	5.5	16.2	12.1	-25.3
Grenada	0.5	0.6	2.1	2.3	9.5
Guatemala	21.4	4.1	60.5	31.6	-47.8
Haiti	2.0	10.3	9.4	18.1	92.6
Honduras	8.8	4.6	16.3	11.2	-31.3
Jamaica	18.5	11.0	78.4	35.1	-55.2
Montserrat	0.0	0.0	0.1	0.1	0.0
Netherlands Antilles	1.6	2.3	6.0	7.8	30.0
Nicaragua	1.1	2.0	7.0	5.8	-17.1
Panama	9.0	6.8	36.3	34.0	-6.3
Saint Kitts and Nevis	0.8	0.5	2.2	2.1	-4.5
Saint Lucia	0.6	0.6	3.0	2.9	-3.3
Saint Vincent and the Grenadines	0.7	0.7	2.2	2.5	13.6
Trinidad and Tobago	27.4	20.5	83.0	66.4	-20.0
Turks and Caicos Islands	0.3	0.5	2.5	2.1	-16.0
<b>Total</b>	<b>207.7</b>	<b>144.9</b>	<b>656.1</b>	<b>460.3</b>	<b>-29.8</b>
<b>All countries</b>	<b>38,984.5</b>	<b>27,758.0</b>	<b>145,227.4</b>	<b>112,242.5</b>	<b>-22.7</b>

**Table 5-1**  
**Exports by province of origin, customs basis, not seasonally adjusted — April**

	Agricultural and fishing products	Energy products	Forestry products	Industrial goods	Machinery and equipment	Automotive products	Consumer goods	Special transactions	Total
millions of dollars									
<b>Domestic exports</b>									
Newfoundland and Labrador									
2008	37.2	1,027.9	25.8	73.7	4.9	0.4	0.1	6.6	1,176.7
2009	50.7	330.1	20.2	205.0	5.8	0.1	0.1	4.7	616.7
Prince Edward Island									
2008	30.7	0.0	0.2	0.8	19.3	0.2	2.3	6.3	59.9
2009	35.4	0.0	0.2	3.5	13.5	0.1	3.4	9.4	65.4
Nova Scotia									
2008	67.6	172.0	67.6	44.7	102.7	12.3	6.5	8.2	481.5
2009	63.7	44.6	41.0	49.8	91.0	7.3	6.3	5.7	309.4
New Brunswick									
2008	71.2	871.0	102.6	110.9	27.1	1.7	10.1	9.2	1,204.0
2009	77.8	509.5	94.0	64.3	26.9	2.4	11.9	6.7	793.5
Quebec									
2008	342.1	298.2	644.5	2,007.0	2,203.2	182.4	286.9	127.6	6,091.8
2009	368.9	271.9	516.2	1,272.9	1,855.4	163.4	281.3	117.1	4,847.1
Ontario									
2008	660.4	326.7	339.1	3,824.9	2,998.4	4,886.9	783.5	335.4	14,155.2
2009	684.4	242.0	218.1	2,478.1	2,748.7	3,112.1	884.1	260.2	10,627.8
Manitoba									
2008	364.3	127.3	36.2	301.2	188.9	50.5	22.0	17.9	1,108.3
2009	373.4	43.8	29.5	191.3	181.1	61.6	51.3	24.0	956.0
Saskatchewan									
2008	792.2	1,052.2	24.1	670.9	63.6	3.0	1.4	12.3	2,619.7
2009	926.4	512.7	28.2	373.0	68.4	4.9	1.7	9.0	1,924.2
Alberta									
2008	644.8	6,629.5	178.8	1,181.7	404.1	56.6	20.1	53.5	9,169.1
2009	689.0	3,500.6	126.4	708.9	395.4	50.6	15.4	35.3	5,521.5
British Columbia									
2008	187.7	730.1	843.2	519.8	320.0	33.3	51.8	47.9	2,733.7
2009	192.5	557.0	628.2	358.8	260.3	15.7	41.7	39.5	2,093.8
Yukon, Northwest Territories and Nunavut <sup>1</sup>									
2008	0.3	0.0	0.0	183.5	0.4	0.0	0.1	0.4	184.7
2009	0.0	0.0	0.0	0.6	1.8	0.0	0.2	0.1	2.8
<b>Total</b>									
2008	3,198.5	11,234.8	2,262.1	8,919.1	6,332.8	5,227.3	1,184.8	625.2	38,984.5
2009	3,462.1	6,012.2	1,701.9	5,706.3	5,648.3	3,418.2	1,297.4	511.6	27,758.0
<b>Re-exports</b>									
2008	33.0	43.3	9.0	238.2	952.1	142.8	185.9	758.8	2,363.1
2009	33.9	18.9	6.3	209.2	920.6	80.2	171.9	700.5	2,141.5
<b>Total exports</b>									
2008	3,231.5	11,278.1	2,271.1	9,157.2	7,284.9	5,370.1	1,370.7	1,384.0	41,347.6
2009	3,496.0	6,031.1	1,708.2	5,915.5	6,568.9	3,498.5	1,469.2	1,212.1	29,899.5

1. Data for the most current month do not include some exports of Chapter 71 "Natural/cultured pearls, precious stones and metals, coins etc" for reasons relating to timing.

**Table 5-2**  
**Exports by province of origin, customs basis, not seasonally adjusted — Year to date, January to April**

	Agricultural and fishing products	Energy products	Forestry products	Industrial goods	Machinery and equipment	Automotive products	Consumer goods	Special transactions	Total
millions of dollars									
<b>Domestic exports</b>									
Newfoundland and Labrador									
2008	108.6	3,124.8	95.1	308.7	18.3	0.6	0.5	21.9	3,678.6
2009	119.0	1,672.7	92.9	541.7	24.8	0.3	0.2	17.9	2,469.5
Prince Edward Island									
2008	135.8	0.0	0.9	4.4	64.1	0.6	11.0	24.1	240.8
2009	154.3	0.0	0.4	8.3	62.3	0.2	10.3	31.0	266.8
Nova Scotia									
2008	289.2	516.2	272.9	181.6	393.6	45.8	26.1	31.0	1,756.4
2009	274.0	270.0	221.5	184.2	376.2	35.6	24.8	26.3	1,412.6
New Brunswick									
2008	283.2	2,843.4	394.0	387.1	109.8	7.1	36.5	34.6	4,095.6
2009	317.2	1,921.4	422.1	211.3	116.4	9.9	40.1	28.7	3,067.1
Quebec									
2008	1,363.1	1,184.8	2,451.5	7,295.1	7,747.9	701.3	1,112.3	465.6	22,321.6
2009	1,432.5	1,020.1	2,092.3	5,348.9	7,551.7	561.8	1,217.5	473.6	19,698.5
Ontario									
2008	2,416.8	1,236.0	1,245.8	15,204.7	11,711.7	19,045.6	2,701.9	1,246.8	54,809.4
2009	2,647.0	1,033.3	1,017.2	10,467.8	11,894.6	11,157.5	3,248.8	1,047.7	42,513.9
Manitoba									
2008	1,396.0	404.2	132.9	1,157.6	716.6	209.9	96.8	79.1	4,193.1
2009	1,404.2	176.1	104.7	781.1	743.2	245.8	164.6	119.4	3,739.0
Saskatchewan									
2008	2,883.3	3,307.0	84.1	2,217.5	269.3	15.1	11.3	43.7	8,831.4
2009	2,983.3	1,807.1	98.5	1,935.9	345.9	13.0	6.5	35.9	7,226.1
Alberta									
2008	2,424.5	25,171.0	649.5	4,394.8	1,626.3	193.7	67.3	196.7	34,724.0
2009	2,516.7	15,010.9	545.0	2,883.7	1,672.3	191.5	65.4	186.7	23,072.1
British Columbia									
2008	641.7	2,302.8	3,201.2	1,907.4	1,204.2	124.9	205.5	174.2	9,761.8
2009	702.9	2,364.4	2,379.7	1,490.7	1,040.9	76.7	180.1	155.4	8,390.7
Yukon, Northwest Territories and Nunavut <sup>1</sup>									
2008	0.8	0.0	0.3	810.6	1.6	0.0	1.0	0.5	814.7
2009	0.5	0.0	0.0	381.3	2.9	0.1	0.9	0.2	386.0
<b>Total</b>									
2008	11,943.1	40,090.3	8,528.2	33,869.5	23,863.5	20,344.5	4,270.2	2,318.1	145,227.4
2009	12,551.8	25,275.9	6,974.4	24,234.8	23,831.4	12,292.5	4,959.0	2,122.7	112,242.5
<b>Re-exports</b>									
2008	159.0	137.3	33.7	889.4	3,620.0	519.5	711.4	2,860.0	8,930.2
2009	172.4	162.2	25.9	777.1	4,012.9	341.1	797.0	2,895.9	9,184.4
<b>Total exports</b>									
2008	12,102.1	40,227.5	8,561.9	34,758.9	27,483.5	20,864.0	4,981.6	5,178.1	154,157.6
2009	12,724.1	25,438.2	7,000.2	25,011.8	27,844.2	12,633.6	5,756.0	5,018.6	121,426.9

1. Data for the most current month do not include some exports of Chapter 71 "Natural/cultured pearls, precious stones and metals, coins etc" for reasons relating to timing.

**Table 6-1**  
**Imports by commodity groupings, balance of payments basis, seasonally adjusted — Current dollars**

	March 2009	April 2009	Change	Year to date		Year to date change		April	
				2008	2009			2009/2008	
	millions of dollars		percent		millions of dollars		percent		
<b>Total</b>	<b>31,424</b>	<b>30,964</b>	<b>-460</b>	<b>-1.5</b>	<b>140,554</b>	<b>127,289</b>	<b>-13,266</b>	<b>-9.4</b>	<b>-12.9</b>
<b>Agricultural and fishing products</b>	<b>2,531</b>	<b>2,507</b>	<b>-24</b>	<b>-0.9</b>	<b>8,877</b>	<b>10,142</b>	<b>1,264</b>	<b>14.2</b>	<b>11.9</b>
Fruits and vegetables	718	697	-20	-2.8	2,432	2,826	394	16.2	14.2
Fresh fruits and berries	253	244	-9	-3.5	861	988	128	14.8	11.3
Dried fruits, fruits and fruit preparations	140	131	-10	-6.8	463	546	83	17.9	10.7
Fresh vegetables	179	184	5	3.0	608	713	105	17.4	24.4
Other vegetables and vegetable preparations	146	139	-7	-5.0	501	579	78	15.6	10.5
Other agricultural and fishing products	1,813	1,810	-4	-0.2	6,445	7,315	870	13.5	11.0
Live animals	17	17	0	-2.2	62	68	6	9.8	12.7
Meat and meat preparations	197	187	-10	-4.9	633	752	118	18.7	18.1
Fish and marine animals	182	189	7	3.9	608	734	126	20.7	22.2
Cocoa, coffee, tea and other food preparations	427	420	-7	-1.6	1,421	1,698	276	19.4	16.0
Dairy produce, eggs and honey	44	44	-1	-1.7	221	175	-46	-20.8	-16.0
Corn (maize) shelled	34	38	3	9.2	252	173	-80	-31.5	-33.0
Other cereals and cereal preparations	206	196	-10	-4.7	630	814	184	29.3	19.7
Sugar and sugar preparations	140	139	-2	-1.1	460	569	109	23.6	22.3
Fodder, feed, excluding unmilled cereal	111	116	5	4.4	448	485	36	8.1	1.0
Beverages	306	301	-5	-1.7	1,112	1,253	141	12.6	5.8
Tobacco	30	29	-1	-2.0	120	116	-4	-3.2	-7.2
Crude vegetable products	118	134	16	13.7	474	477	3	0.6	8.6
Cotton	1	1	0	-17.8	3	3	0	-0.3	-8.9
<b>Energy products</b>	<b>2,352</b>	<b>2,633</b>	<b>280</b>	<b>11.9</b>	<b>16,289</b>	<b>10,645</b>	<b>-5,644</b>	<b>-34.7</b>	<b>-40.9</b>
Crude petroleum	1,375	1,706	330	24.0	10,141	5,820	-4,321	-42.6	-40.9
Other energy products	977	927	-50	-5.1	6,148	4,825	-1,323	-21.5	-40.8
Coal and other related products	448	253	-195	-43.5	1,995	1,906	-88	-4.4	-37.4
Petroleum and coal products	529	674	145	27.3	4,153	2,919	-1,235	-29.7	-42.0
<b>Forestry products</b>	<b>213</b>	<b>206</b>	<b>-7</b>	<b>-3.2</b>	<b>955</b>	<b>853</b>	<b>-102</b>	<b>-10.7</b>	<b>-12.4</b>
Forestry products	213	206	-7	-3.2	955	853	-102	-10.7	-12.4
Crude wood products	46	42	-4	-8.7	150	182	32	21.0	10.9
Wood fabricated materials	166	164	-3	-1.6	805	671	-134	-16.6	-17.0
<b>Industrial goods and materials</b>	<b>6,664</b>	<b>6,103</b>	<b>-562</b>	<b>-8.4</b>	<b>28,857</b>	<b>26,474</b>	<b>-2,383</b>	<b>-8.3</b>	<b>-15.7</b>
Metals and metal ores	2,111	1,798	-313	-14.8	10,677	8,350	-2,327	-21.8	-30.1
Metals in ores, concentrates and scrap	525	367	-158	-30.1	3,113	1,917	-1,196	-38.4	-51.6
Steel bars, rods, plates, sheets	419	415	-4	-1.0	2,349	1,721	-628	-26.7	-32.0
Other iron and steel products	332	258	-74	-22.2	1,379	1,564	185	13.4	-21.1
Precious metals including alloys	528	474	-54	-10.2	1,853	1,913	60	3.2	13.4
Other non-ferrous metals and alloys	308	284	-24	-7.7	1,982	1,234	-748	-37.7	-38.2
Chemicals and plastics	2,526	2,291	-235	-9.3	9,631	9,710	79	0.8	-7.1
Organic chemicals	592	525	-67	-11.3	2,533	2,400	-133	-5.3	-15.7
Plastic materials	738	720	-17	-2.3	3,366	2,979	-386	-11.5	-17.1
Other chemicals and related products	1,196	1,046	-150	-12.6	3,732	4,330	598	16.0	7.3
Other industrial goods and materials	2,027	2,013	-14	-0.7	8,549	8,415	-134	-1.6	-8.3
Crude animal products	19	26	7	37.4	104	82	-22	-21.1	-9.3
Wool and man-made fibres	19	18	-1	-7.2	80	75	-5	-6.4	-13.2
Crude non-metallic minerals	63	72	9	14.7	319	280	-39	-12.4	-15.6
Textile fabricated materials	202	198	-4	-2.1	851	814	-36	-4.3	-5.7
Metal fabricated basic products	802	789	-13	-1.7	3,325	3,289	-36	-1.1	-7.0
Rubber fabricated materials	82	80	-2	-2.4	331	322	-8	-2.5	-5.7
Oils, fats, animal and vegetable	106	92	-13	-12.7	363	423	60	16.7	-4.0
Non-metallic minerals	280	267	-13	-4.8	1,161	1,158	-3	-0.2	-10.0
Other fabricated materials	455	473	18	3.9	2,015	1,970	-45	-2.2	-10.3

Table 6-1 – continued

## Imports by commodity groupings, balance of payments basis, seasonally adjusted — Current dollars

	March 2009	April 2009	Change		Year to date		Year to date change		April
					2008	2009			2009/2008
	millions of dollars		percent		millions of dollars		percent		
<b>Machinery and equipment</b>	<b>9,668</b>	<b>9,348</b>	<b>-320</b>	<b>-3.3</b>	<b>38,787</b>	<b>38,748</b>	<b>-39</b>	<b>-0.1</b>	<b>-3.7</b>
Industrial and agricultural machinery	2,525	2,316	-209	-8.3	10,706	10,192	-514	-4.8	-14.2
Engines, turbines and electric motors	375	287	-89	-23.7	1,150	1,435	285	24.7	-12.8
Drilling mining machinery	130	136	6	4.5	536	561	26	4.8	-3.8
Excavating machinery	196	157	-39	-19.7	1,176	781	-395	-33.6	-44.3
Metal working machinery	143	133	-9	-6.6	803	591	-212	-26.4	-26.9
Other industrial machinery	1,338	1,249	-89	-6.6	5,762	5,425	-337	-5.8	-13.7
Agricultural machinery including tractors	343	354	11	3.2	1,279	1,398	119	9.3	11.5
Aircraft and other transportation equipment	1,521	1,508	-13	-0.9	5,854	6,002	148	2.5	4.3
Aircraft, engines, parts	1,089	1,039	-50	-4.6	3,836	3,966	131	3.4	11.2
Other transportation equipment and parts	432	469	37	8.5	2,018	2,035	17	0.9	-8.3
Office machines and equipment	1,057	1,074	18	1.7	4,711	4,281	-430	-9.1	-6.5
Other machinery and equipment	4,566	4,450	-116	-2.5	17,517	18,274	757	4.3	0.9
Other communication and related equipment	1,585	1,595	10	0.6	5,984	6,338	355	5.9	6.3
Other equipment and tools	2,981	2,855	-126	-4.2	11,533	11,935	402	3.5	-1.9
<b>Automotive products</b>	<b>4,059</b>	<b>4,118</b>	<b>59</b>	<b>1.5</b>	<b>23,999</b>	<b>16,057</b>	<b>-7,943</b>	<b>-33.1</b>	<b>-30.6</b>
Passenger autos and chassis	1,260	1,360	100	8.0	8,560	5,113	-3,447	-40.3	-36.1
Trucks and other motor vehicles	933	835	-98	-10.5	5,127	3,722	-1,404	-27.4	-30.3
Motor vehicle parts	1,866	1,923	57	3.0	10,313	7,222	-3,091	-30.0	-26.1
<b>Other consumer goods</b>	<b>4,886</b>	<b>4,953</b>	<b>67</b>	<b>1.4</b>	<b>18,032</b>	<b>19,918</b>	<b>1,886</b>	<b>10.5</b>	<b>9.6</b>
Apparel and footwear	968	998	29	3.0	3,439	4,077	638	18.5	16.3
Apparel and apparel accessories	808	845	37	4.6	2,882	3,423	541	18.8	17.5
Footwear	161	153	-8	-5.0	557	654	97	17.4	10.2
Miscellaneous consumer goods	3,917	3,955	37	1.0	14,593	15,841	1,248	8.6	8.0
Television, radios, phonographs	116	114	-2	-1.8	558	440	-117	-21.0	-18.2
Printed matter	313	313	0	0.0	1,192	1,246	54	4.5	3.5
Watches, sporting goods and toys	532	519	-13	-2.5	2,023	2,116	93	4.6	2.5
House furnishings	754	709	-44	-5.9	2,693	3,010	317	11.8	3.5
Photographic goods	223	214	-9	-4.2	919	905	-14	-1.5	-4.6
Miscellaneous end products	1,980	2,086	107	5.4	7,209	8,124	915	12.7	15.6
<b>Special transactions trade</b>	<b>390</b>	<b>423</b>	<b>33</b>	<b>8.5</b>	<b>1,888</b>	<b>1,758</b>	<b>-129</b>	<b>-6.9</b>	<b>-22.7</b>
<b>Unallocated balance of payments adjustments</b>	<b>661</b>	<b>673</b>	<b>13</b>	<b>1.9</b>	<b>2,869</b>	<b>2,694</b>	<b>-175</b>	<b>-6.1</b>	<b>-3.4</b>

**Table 6-2**  
**Imports by commodity groupings, balance of payments basis, seasonally adjusted — Constant dollars, 2002**

	March 2009	April 2009	Change		Year to date		Year to date change	April 2009/2008	
					2008	2009			
	millions of dollars		percent		millions of dollars		percent		
<b>Total</b>	<b>31,985</b>	<b>32,092</b>	<b>108</b>	<b>0.3</b>	<b>163,602</b>	<b>130,362</b>	<b>-33,239</b>	<b>-20.3</b>	<b>-20.7</b>
<b>Agricultural and fishing products</b>	<b>2,258</b>	<b>2,223</b>	<b>-35</b>	<b>-1.6</b>	<b>9,427</b>	<b>9,023</b>	<b>-403</b>	<b>-4.3</b>	<b>-3.9</b>
Fruits and vegetables	678	648	-31	-4.5	2,498	2,645	147	5.9	4.0
Fresh fruits and berries	245	231	-14	-5.8	886	957	71	8.0	2.4
Dried fruits, fruits and fruit preparations	125	117	-8	-6.4	443	489	46	10.5	5.8
Fresh vegetables	182	182	0	0.2	673	702	29	4.3	9.9
Other vegetables and vegetable preparations	126	117	-9	-6.9	496	497	1	0.3	-2.8
Other agricultural and fishing products	1,580	1,576	-4	-0.3	6,929	6,379	-550	-7.9	-6.9
Live animals	16	16	-1	-3.4	68	63	-5	-7.5	-4.2
Meat and meat preparations	181	171	-9	-5.1	700	714	13	1.9	-0.6
Fish and marine animals	214	214	0	-0.1	836	869	33	4.0	13.0
Cocoa, coffee, tea and other food preparations	324	309	-15	-4.8	1,411	1,262	-149	-10.5	-9.0
Dairy produce, eggs and honey	44	38	-6	-13.9	185	159	-26	-14.0	-1.2
Corn (maize) shelled	26	29	3	12.7	201	130	-71	-35.2	-30.4
Other cereals and cereal preparations	160	155	-5	-3.3	677	636	-41	-6.0	-11.1
Sugar and sugar preparations	131	128	-4	-2.7	547	524	-23	-4.3	-5.3
Fodder, feed, excluding unmilled cereal	73	83	9	12.4	415	339	-76	-18.3	-19.1
Beverages	264	263	-1	-0.5	1,173	1,084	-89	-7.6	-11.8
Tobacco	30	31	1	4.2	170	124	-45	-26.7	-28.8
Crude vegetable products	115	139	24	20.5	540	470	-71	-13.0	-1.2
Cotton	1	1	0	-22.8	5	4	-1	-12.0	-20.6
<b>Energy products</b>	<b>1,584</b>	<b>1,648</b>	<b>65</b>	<b>4.1</b>	<b>7,203</b>	<b>6,902</b>	<b>-301</b>	<b>-4.2</b>	<b>-11.8</b>
Crude petroleum	838	993	155	18.4	3,664	3,548	-116	-3.2	-2.5
Other energy products	745	655	-90	-12.1	3,539	3,354	-185	-5.2	-23.0
Coal and other related products	348	198	-150	-43.1	1,369	1,325	-44	-3.2	-24.3
Petroleum and coal products	397	457	60	15.2	2,170	2,029	-141	-6.5	-22.4
<b>Forestry products</b>	<b>250</b>	<b>253</b>	<b>2</b>	<b>1.0</b>	<b>1,271</b>	<b>1,002</b>	<b>-269</b>	<b>-21.1</b>	<b>-19.0</b>
Forestry products	250	253	2	1.0	1,271	1,002	-269	-21.1	-19.0
Crude wood products	55	51	-4	-7.1	198	219	20	10.1	3.7
Wood fabricated materials	195	201	6	3.3	1,073	784	-289	-26.9	-23.3
<b>Industrial goods and materials</b>	<b>5,553</b>	<b>5,328</b>	<b>-225</b>	<b>-4.1</b>	<b>27,671</b>	<b>22,271</b>	<b>-5,401</b>	<b>-19.5</b>	<b>-20.6</b>
Metals and metal ores	1,468	1,286	-182	-12.4	7,754	5,790	-1,963	-25.3	-24.5
Metals in ores, concentrates and scrap	415	297	-118	-28.4	1,650	1,479	-171	-10.3	-23.6
Steel bars, rods, plates, sheets	305	307	1	0.4	1,860	1,234	-625	-33.6	-30.9
Other iron and steel products	213	183	-30	-14.2	1,086	990	-96	-8.8	-23.0
Precious metals including alloys	232	213	-18	-7.9	1,261	887	-374	-29.7	-16.4
Other non-ferrous metals and alloys	303	287	-16	-5.4	1,898	1,200	-698	-36.8	-24.5
Chemicals and plastics	2,155	2,048	-107	-5.0	9,623	8,370	-1,253	-13.0	-15.3
Organic chemicals	461	431	-30	-6.4	1,981	1,908	-74	-3.7	-5.3
Plastic materials	686	720	34	4.9	3,619	2,801	-818	-22.6	-22.0
Other chemicals and related products	1,008	897	-111	-11.0	4,022	3,661	-361	-9.0	-13.7
Other industrial goods and materials	1,931	1,994	64	3.3	10,295	8,111	-2,185	-21.2	-23.0
Crude animal products	26	45	19	73.5	110	124	13	12.2	46.0
Wool and man-made fibres	22	20	-2	-7.9	108	90	-17	-16.0	-23.9
Crude non-metallic minerals	58	60	2	3.3	287	252	-35	-12.0	-19.7
Textile fabricated materials	224	227	3	1.4	1,194	920	-274	-22.9	-22.1
Metal fabricated basic products	720	726	6	0.8	3,813	2,996	-817	-21.4	-23.2
Rubber fabricated materials	84	85	0	0.5	450	335	-115	-25.6	-25.5
Oils, fats, animal and vegetable	85	78	-7	-8.5	309	339	31	10.0	-0.4
Non-metallic minerals	283	284	1	0.4	1,487	1,194	-294	-19.7	-24.8
Other fabricated materials	428	469	41	9.6	2,538	1,860	-678	-26.7	-28.1

Table 6-2 – continued

## Imports by commodity groupings, balance of payments basis, seasonally adjusted — Constant dollars, 2002

	March 2009	April 2009	Change		Year to date		Year to date change	April 2009/2008		
					2008	2009				
	millions of dollars		percent		millions of dollars		percent			
<b>Machinery and equipment</b>	<b>11,483</b>	<b>11,449</b>	<b>-34</b>	<b>-0.3</b>	<b>57,985</b>	<b>46,773</b>	<b>-11,212</b>	<b>-19.3</b>	<b>-20.3</b>	
Industrial and agricultural machinery	2,556	2,417	-139	-5.4	14,268	10,511	-3,757	-26.3	-32.3	
Engines, turbines and electric motors	390	310	-81	-20.6	1,559	1,526	-33	-2.1	-30.4	
Drilling mining machinery	117	125	8	7.1	653	516	-137	-21.0	-25.9	
Excavating machinery	195	165	-30	-15.3	1,552	792	-760	-49.0	-55.3	
Metal working machinery	152	147	-5	-3.4	1,093	636	-456	-41.8	-40.6	
Other industrial machinery	1,338	1,282	-56	-4.2	7,629	5,521	-2,107	-27.6	-32.4	
Agricultural machinery including tractors	364	388	24	6.7	1,784	1,520	-264	-14.8	-12.1	
Aircraft and other transportation equipment	1,500	1,528	28	1.8	7,490	6,013	-1,477	-19.7	-16.4	
Aircraft, engines, parts	1,086	1,064	-22	-2.0	4,928	4,030	-899	-18.2	-10.8	
Other transportation equipment and parts	414	464	50	12.0	2,561	1,983	-579	-22.6	-26.9	
Office machines and equipment	1,988	2,066	78	3.9	9,754	8,129	-1,625	-16.7	-13.6	
Other machinery and equipment	5,439	5,439	-1	0.0	26,474	22,121	-4,353	-16.4	-17.3	
Other communication and related equipment	2,196	2,249	53	2.4	10,282	8,958	-1,324	-12.9	-11.7	
Other equipment and tools	3,244	3,189	-54	-1.7	16,192	13,163	-3,029	-18.7	-20.8	
<b>Automotive products</b>	<b>4,492</b>	<b>4,640</b>	<b>148</b>	<b>3.3</b>	<b>30,694</b>	<b>17,963</b>	<b>-12,731</b>	<b>-41.5</b>	<b>-38.4</b>	
Passenger autos and chassis	1,473	1,592	118	8.0	9,841	5,981	-3,860	-39.2	-34.8	
Trucks and other motor vehicles	967	870	-98	-10.1	6,332	3,893	-2,439	-38.5	-40.4	
Motor vehicle parts	2,052	2,179	128	6.2	14,521	8,089	-6,432	-44.3	-40.1	
<b>Other consumer goods</b>	<b>5,310</b>	<b>5,529</b>	<b>219</b>	<b>4.1</b>	<b>25,302</b>	<b>22,013</b>	<b>-3,289</b>	<b>-13.0</b>	<b>-11.8</b>	
Apparel and footwear	1,117	1,194	76	6.8	5,168	4,816	-353	-6.8	-6.2	
Apparel and apparel accessories	934	1,013	79	8.5	4,334	4,050	-284	-6.6	-5.0	
Footwear	183	181	-3	-1.5	834	765	-69	-8.2	-12.5	
Miscellaneous consumer goods	4,192	4,335	143	3.4	20,134	17,197	-2,937	-14.6	-13.2	
Television, radios, phonographs	156	159	3	1.9	944	605	-339	-35.9	-31.2	
Printed matter	343	353	10	2.9	1,670	1,398	-273	-16.3	-16.2	
Watches, sporting goods and toys	634	648	14	2.2	3,012	2,554	-458	-15.2	-12.3	
House furnishings	793	771	-21	-2.7	3,668	3,220	-448	-12.2	-16.5	
Photographic goods	328	315	-13	-3.9	1,678	1,333	-345	-20.5	-22.9	
Miscellaneous end products	1,939	2,089	150	7.7	9,162	8,088	-1,074	-11.7	-8.1	
<b>Special transactions trade</b>	<b>403</b>	<b>440</b>	<b>37</b>	<b>9.1</b>	<b>2,217</b>	<b>1,809</b>	<b>-408</b>	<b>-18.4</b>	<b>-30.3</b>	
<b>Unallocated balance of payments adjustments</b>	<b>652</b>	<b>582</b>	<b>-70</b>	<b>-10.8</b>	<b>1,832</b>	<b>2,606</b>	<b>774</b>	<b>42.3</b>	<b>22.7</b>	

**Table 7-1**  
**Imports from selected countries, customs basis, not seasonally adjusted — April**

	Agricultural and fishing products	Energy products	Forestry products	Industrial goods	Machinery and equipment	Automotive products	Consumer goods	Special transactions	Total
millions of dollars									
<b>United States</b>									
2008	1,331.4	1,362.7	181.8	5,038.5	4,901.8	4,592.8	1,855.4	380.8	19,645.2
2009	1,458.5	831.3	154.1	3,737.2	4,379.2	3,106.3	2,038.0	414.7	16,119.3
<b>Mexico</b>									
2008	105.0	50.8	0.4	117.9	548.9	433.7	73.7	4.0	1,334.3
2009	120.5	36.8	0.5	87.6	570.5	428.6	73.8	2.4	1,320.7
<b>Japan</b>									
2008	4.2	30.6	0.2	115.5	571.9	647.2	89.7	1.1	1,460.4
2009	4.8	0.4	0.1	120.3	417.2	427.7	82.6	0.3	1,053.3
<b>European Union</b>									
<b>Germany</b>									
2008	21.4	1.1	1.9	232.3	386.9	368.5	199.9	26.5	1,238.6
2009	21.2	1.3	1.6	180.7	324.9	228.3	176.9	0.6	935.5
<b>France</b>									
2008	59.6	5.1	0.3	65.7	156.1	9.2	115.6	67.3	479.0
2009	55.4	5.5	0.3	81.7	195.8	11.2	132.6	0.2	482.7
<b>United Kingdom</b>									
2008	29.9	396.2	0.4	105.1	261.6	63.2	106.1	11.3	973.8
2009	25.8	129.9	0.1	125.3	309.4	24.5	117.9	1.3	734.2
<b>Italy</b>									
2008	49.3	0.1	1.6	102.0	173.0	25.0	80.0	12.8	443.6
2009	43.3	0.0	1.4	79.4	132.7	18.6	87.9	0.3	363.7
<b>Other European Union</b>									
2008	98.1	264.9	4.8	333.4	466.2	140.5	301.1	35.9	1,644.9
2009	90.8	130.4	4.3	272.3	350.4	49.1	350.5	0.7	1,248.4
<b>Total</b>									
2008	258.3	667.5	9.0	838.5	1,443.7	606.5	802.6	153.8	4,780.0
2009	236.4	267.1	7.6	739.4	1,313.3	331.7	865.8	3.1	3,764.5
<b>Newly industrialized countries</b>									
<b>South Korea</b>									
2008	5.0	7.6	0.1	62.0	218.1	144.4	16.1	0.1	453.3
2009	4.0	11.5	0.0	71.7	211.7	190.3	18.4	0.1	507.7
<b>Hong Kong</b>									
2008	3.1	0.0	0.1	2.5	16.7	0.1	13.3	0.0	35.8
2009	2.5	0.0	0.0	3.0	10.6	0.3	11.0	0.0	27.4
<b>Taiwan</b>									
2008	4.7	0.0	1.0	69.8	188.4	16.6	31.5	0.2	312.1
2009	5.4	0.0	0.5	63.3	175.2	14.3	35.0	0.1	294.0
<b>Singapore</b>									
2008	2.1	0.0	0.2	6.7	53.6	0.3	23.4	2.7	89.1
2009	3.1	0.0	0.0	8.8	42.7	0.4	17.3	0.0	72.3
<b>Total</b>									
2008	14.9	7.6	1.3	141.0	476.9	161.4	84.3	3.0	890.4
2009	15.1	11.5	0.5	146.8	440.2	205.3	81.8	0.2	901.4
<b>Other countries</b>									
2008	548.0	1,775.3	51.7	1,509.7	2,114.0	214.4	1,471.3	63.8	7,748.2
2009	624.4	1,552.6	43.5	1,360.0	2,205.8	136.8	1,551.4	18.0	7,492.5
<b>Total</b>									
2008	2,261.9	3,894.5	244.3	7,761.0	10,057.1	6,656.1	4,377.1	606.6	35,858.6
2009	2,459.8	2,699.7	206.3	6,191.2	9,326.2	4,636.3	4,693.4	438.7	30,651.6

**Table 7-2**  
**Imports from selected countries, customs basis, not seasonally adjusted — Year to date, January to April**

	Agricultural and fishing products	Energy products	Forestry products	Industrial goods	Machinery and equipment	Automotive products	Consumer goods	Special transactions	Total
millions of dollars									
<b>United States</b>									
2008	4,902.0	4,870.5	713.7	18,339.9	18,612.3	17,176.7	6,998.8	1,287.3	72,901.2
2009	5,608.1	3,770.1	651.1	15,355.9	17,824.7	10,950.3	7,746.9	1,372.0	63,279.1
<b>Mexico</b>									
2008	474.4	158.1	1.6	437.3	2,065.0	1,675.8	312.0	12.7	5,137.0
2009	534.1	74.3	2.1	422.0	2,074.6	1,415.5	319.7	11.1	4,853.3
<b>Japan</b>									
2008	20.5	31.5	0.5	397.8	2,186.4	2,417.7	352.1	2.0	5,408.5
2009	22.5	1.3	0.5	432.7	1,764.1	1,733.1	339.7	1.1	4,295.1
<b>European Union</b>									
<b>Germany</b>									
2008	69.5	16.2	5.8	851.5	1,529.2	1,061.5	691.8	47.8	4,273.2
2009	79.0	4.4	3.7	708.2	1,558.1	718.7	635.9	3.0	3,711.0
<b>France</b>									
2008	204.9	14.1	1.0	275.1	611.5	22.5	478.9	125.2	1,733.3
2009	200.0	58.6	0.9	313.3	706.6	39.0	559.0	1.7	1,879.1
<b>United Kingdom</b>									
2008	107.8	1,240.9	0.7	407.4	954.7	206.6	437.1	17.8	3,372.9
2009	107.2	678.4	0.5	489.3	1,202.3	119.2	455.0	6.0	3,057.8
<b>Italy</b>									
2008	189.8	0.2	6.8	359.3	549.2	77.5	343.6	23.7	1,550.1
2009	194.0	10.7	5.6	328.0	501.1	60.6	359.0	2.3	1,461.3
<b>Other European Union</b>									
2008	346.6	655.8	18.2	1,112.3	1,484.7	495.9	1,315.2	62.5	5,491.2
2009	351.8	366.4	15.6	1,036.0	1,465.2	194.4	1,404.6	16.7	4,850.6
<b>Total</b>									
2008	918.6	1,927.2	32.4	3,005.6	5,129.3	1,864.0	3,266.4	277.1	16,420.8
2009	932.0	1,118.4	26.3	2,874.8	5,433.4	1,131.8	3,413.4	29.6	14,959.8
<b>Newly industrialized countries</b>									
<b>South Korea</b>									
2008	16.5	20.5	0.2	256.5	786.3	555.4	70.1	0.4	1,705.8
2009	15.7	25.3	0.0	292.9	816.0	565.7	77.1	0.2	1,792.9
<b>Hong Kong</b>									
2008	10.7	0.0	0.3	10.0	62.5	0.6	55.9	0.1	140.0
2009	8.9	0.0	0.0	12.7	58.4	0.7	44.7	0.2	125.7
<b>Taiwan</b>									
2008	17.2	31.9	3.8	268.3	729.4	66.4	131.5	0.5	1,249.0
2009	19.8	0.1	2.7	271.1	712.7	59.8	134.0	0.4	1,200.5
<b>Singapore</b>									
2008	6.7	2.3	0.7	112.2	197.9	1.0	68.7	2.8	392.4
2009	10.5	51.5	0.6	185.9	190.2	1.4	87.0	0.4	527.5
<b>Total</b>									
2008	51.1	54.7	5.0	646.9	1,776.1	623.5	326.1	3.8	3,487.2
2009	54.9	77.0	3.4	762.5	1,777.3	627.7	342.8	1.2	3,646.7
<b>Other countries</b>									
2008	2,184.3	8,457.1	213.6	5,837.7	8,554.1	738.9	6,110.7	260.8	32,357.2
2009	2,460.7	5,322.2	178.0	6,053.9	8,876.7	515.9	6,873.2	156.1	30,436.8
<b>Total</b>									
<b>2008</b>	<b>8,551.1</b>	<b>15,499.2</b>	<b>966.8</b>	<b>28,665.2</b>	<b>38,323.3</b>	<b>24,496.6</b>	<b>17,366.1</b>	<b>1,843.8</b>	<b>135,712.1</b>
<b>2009</b>	<b>9,612.5</b>	<b>10,363.3</b>	<b>861.3</b>	<b>25,901.9</b>	<b>37,750.9</b>	<b>16,374.4</b>	<b>19,035.7</b>	<b>1,571.1</b>	<b>121,471.1</b>

**Table 8**  
**Imports by country, customs basis, not seasonally adjusted**

	April		January to April		Variation
	2008	2009	2008	2009	January to April to April 2009/2008
millions of dollars					
<b>North America</b>					
Canada	260.9	266.1	1,253.1	1,065.7	-15.0
Greenland	0.1	0.0	9.0	16.6	84.4
Mexico	1,334.3	1,320.7	5,137.0	4,853.3	-5.5
Saint Pierre and Miquelon	0.0	0.0	0.0	0.1	0.0
United States	19,645.2	16,119.3	72,901.2	63,279.1	-13.2
<b>Total</b>	<b>21,240.5</b>	<b>17,706.1</b>	<b>79,300.2</b>	<b>69,214.9</b>	<b>-12.7</b>
<b>Western Europe</b>					
Andorra	0.0	0.0	0.0	0.0	0.0
Austria	147.5	92.1	545.5	379.0	-30.5
Belgium	211.5	97.6	785.6	428.4	-45.5
Denmark	168.5	69.0	364.3	307.7	-15.5
Faeroe Islands	0.1	0.0	0.2	0.3	50.0
Finland	106.3	89.1	280.4	308.3	10.0
France	479.0	482.7	1,733.3	1,879.1	8.4
Germany	1,238.6	935.5	4,273.2	3,711.0	-13.2
Gibraltar	0.0	0.0	0.0	0.0	0.0
Greece	13.7	12.7	40.4	47.5	17.6
Iceland	2.7	2.9	9.9	9.3	-6.1
Italy	443.6	363.7	1,550.1	1,461.3	-5.7
Luxembourg	18.9	6.5	38.9	23.1	-40.6
Malta	2.4	1.1	6.1	8.0	31.1
Netherlands	190.0	224.2	585.5	634.5	8.4
Norway	535.7	428.9	2,229.8	1,211.7	-45.7
Portugal	27.9	20.2	107.5	90.2	-16.1
Republic of Ireland (Eire)	139.1	200.4	691.7	811.9	17.4
Spain	218.7	114.1	597.6	448.7	-24.9
Sweden	189.6	144.9	740.9	622.1	-16.0
Switzerland	252.5	198.4	861.9	1,194.1	38.5
United Kingdom	973.8	734.2	3,372.9	3,057.8	-9.3
<b>Total</b>	<b>5,360.1</b>	<b>4,218.3</b>	<b>18,815.6</b>	<b>16,634.1</b>	<b>-11.6</b>
<b>Other Europe</b>					
Albania	0.1	0.5	0.6	0.9	50.0
Armenia	0.2	3.4	0.5	12.8	...
Azerbaijan	0.0	200.6	0.1	420.8	...
Belarus	0.6	1.3	24.7	15.3	-38.1
Bosnia and Herzegovina	0.4	0.5	1.7	2.3	35.3
Bulgaria	5.1	8.8	35.1	38.4	9.4
Croatia	4.7	1.4	13.0	7.4	-43.1
Czech Republic	26.6	24.6	105.8	102.2	-3.4
Estonia	5.1	2.1	13.5	7.8	-42.2
Georgia	10.1	12.4	27.7	41.2	48.7
Hungary	32.3	25.7	117.1	128.4	9.6
Kazakhstan	0.2	3.6	0.5	16.2	...
Kyrgyzstan	0.0	0.0	0.7	0.4	-42.9
Latvia	0.6	0.9	24.0	3.7	-84.6
Lithuania	3.2	11.6	14.2	58.1	309.2
Macedonia (Former Yugoslav Republic of Macedonia)	0.5	0.4	3.0	4.3	43.3
Montenegro	0.1	0.1	0.3	0.2	-33.3
Poland	106.0	71.3	258.3	285.9	10.7
Republic of Moldova	0.2	0.1	0.6	0.7	16.7
Romania	9.9	9.2	43.0	42.8	-0.5
Russian Federation	180.9	144.9	609.9	626.3	2.7
Serbia	0.8	0.9	3.6	4.1	13.9
Slovakia	17.7	17.0	68.4	52.1	-23.8
Slovenia	3.7	4.9	25.6	20.2	-21.1
Tajikistan	0.0	0.0	0.0	0.0	0.0
Turkmenistan	0.0	0.0	0.2	0.1	-50.0
Ukraine	19.4	6.0	31.8	37.8	18.9
Uzbekistan	0.0	11.5	0.1	11.6	...
<b>Total</b>	<b>428.3</b>	<b>563.4</b>	<b>1,424.0</b>	<b>1,941.9</b>	<b>36.4</b>

Table 8 – continued

## Imports by country, customs basis, not seasonally adjusted

	April		January to April		Variation
	2008	2009	2008	2009	January to April 2009/2008
millions of dollars					
<b>Middle East</b>					
Bahrain	0.3	0.3	0.8	3.1	287.5
Cyprus	0.7	0.4	1.9	1.5	-21.1
Egypt	16.8	13.3	30.0	40.0	33.3
Eritrea	0.0	0.0	0.0	0.0	0.0
Ethiopia	1.3	1.4	3.1	4.1	32.3
Iran	2.8	1.4	14.9	9.1	-38.9
Iraq	188.7	68.3	821.0	417.5	-49.1
Israel	113.9	67.1	372.9	332.7	-10.8
Jordan	0.9	1.4	4.7	6.0	27.7
Kuwait	1.8	0.0	6.3	37.2	490.5
Lebanon	1.6	1.0	4.8	4.3	-10.4
Libya	0.0	0.0	0.0	0.1	0.0
Oman	0.6	0.3	1.4	1.9	35.7
Qatar	0.0	3.5	0.1	7.9	...
Saudi Arabia	197.8	108.6	729.9	444.0	-39.2
Somalia	0.0	0.0	0.0	0.0	0.0
Sudan	5.2	5.4	26.6	24.7	-7.1
Syria	0.7	0.4	2.3	1.5	-34.8
Turkey	39.9	40.6	163.0	251.0	54.0
United Arab Emirates	1.8	62.0	301.8	173.8	-42.4
Yemen	0.0	0.0	0.1	0.0	0.0
<b>Total</b>	<b>574.7</b>	<b>375.2</b>	<b>2,485.6</b>	<b>1,760.4</b>	<b>-29.2</b>
<b>Other Africa</b>					
Algeria	371.9	362.5	2,325.1	1,057.0	-54.5
Angola	183.4	52.5	607.3	355.3	-41.5
Antarctica	0.0	0.0	0.0	0.0	0.0
Benin	0.0	0.0	0.0	0.0	0.0
Botswana	0.0	0.3	0.1	5.4	...
Bouvet Island	0.0	0.0	0.0	0.0	0.0
Burkina Faso	0.0	0.0	0.1	0.0	0.0
Burundi	0.0	0.0	0.2	0.1	-50.0
Cameroon	0.5	0.4	2.2	1.6	-27.3
Cape Verde	0.0	0.0	0.0	0.0	0.0
Central African Republic	0.0	0.0	0.0	0.0	0.0
Chad	0.0	0.0	0.1	0.0	0.0
Comoros	0.0	0.0	0.0	0.0	0.0
Congo	0.2	0.1	1.3	0.6	-53.8
Democratic Republic of the Congo	0.1	0.0	0.2	0.3	50.0
Djibouti	0.0	0.0	0.0	0.0	0.0
Equatorial Guinea	0.0	0.0	81.1	141.2	74.1
French Southern Territories	0.0	0.0	0.0	0.0	0.0
Gabon	0.1	0.2	0.4	0.8	100.0
Gambia	0.0	0.0	0.0	0.0	0.0
Ghana	4.2	1.3	12.2	9.1	-25.4
Guinea	6.2	5.8	17.3	21.9	26.6
Guinea-Bissau	0.0	0.0	0.0	0.0	0.0
Ivory Coast	4.7	26.4	27.1	57.7	112.9
Kenya	1.2	1.9	4.3	5.9	37.2
Lesotho	0.4	0.7	1.9	2.9	52.6
Liberia	1.8	2.3	6.8	7.7	13.2
Madagascar	1.2	1.3	5.2	11.6	123.1
Malawi	0.1	0.1	0.7	0.5	-28.6
Mali	0.0	0.1	0.1	0.2	100.0
Mauritania	0.0	0.0	0.0	0.4	0.0
Mauritius	0.7	0.8	2.1	3.9	85.7
Morocco	4.4	4.1	44.3	51.6	16.5
Mozambique	0.2	0.0	0.7	0.2	-71.4
Namibia	0.2	115.5	67.6	162.6	140.5
Niger	0.1	0.0	0.3	0.1	-66.7
Nigeria	68.0	52.6	351.2	144.7	-58.8
Rwanda	0.1	0.0	0.2	0.2	0.0
Saint Helena	0.0	0.0	0.1	0.0	0.0
Sao Tome and Principe	0.0	0.0	0.0	0.0	0.0
Senegal	0.1	0.2	0.2	0.3	50.0
Seychelles	0.1	0.0	0.6	0.4	-33.3

Table 8 – continued

## Imports by country, customs basis, not seasonally adjusted

	April		January to April		Variation
	2008	2009	2008	2009	January to April 2009/2008
millions of dollars					
Sierra Leone	0.0	0.2	0.5	0.6	20.0
South Africa	58.9	53.6	258.4	198.1	-23.3
Swaziland	0.3	0.1	0.8	0.6	-25.0
Togo	1.2	0.2	4.8	0.4	-91.7
Tunisia	2.3	4.8	11.2	15.5	38.4
Uganda	0.3	0.2	0.8	0.7	-12.5
United Republic of Tanzania	0.2	0.2	0.7	1.7	142.9
Western Sahara	0.0	0.0	0.0	0.0	0.0
Zambia	0.0	0.0	0.2	0.2	0.0
Zimbabwe	0.2	0.1	0.4	0.8	100.0
<b>Total</b>	<b>713.4</b>	<b>688.7</b>	<b>3,838.8</b>	<b>2,262.7</b>	<b>-41.1</b>
<b>Other Asia</b>					
Afghanistan	0.1	0.0	0.5	0.5	0.0
Bangladesh	51.5	69.6	192.4	296.7	54.2
Bhutan	0.0	0.0	0.0	0.0	0.0
British Indian Ocean Territory	0.0	0.0	0.0	0.0	0.0
Brunei Darussalam	0.2	0.1	0.8	0.9	12.5
Cambodia	16.5	19.6	80.4	103.8	29.1
China	3,039.8	3,103.6	11,948.6	13,068.2	9.4
Hong Kong	35.8	27.4	140.0	125.7	-10.2
India	186.0	181.0	691.1	744.0	7.7
Indonesia	76.3	85.0	316.3	353.6	11.8
Japan	1,460.4	1,053.3	5,408.5	4,295.1	-20.6
Laos	0.4	0.5	2.2	2.8	27.3
Macao	1.9	1.1	11.0	6.8	-38.2
Malaysia	232.7	175.4	930.4	758.7	-18.5
Maldives	0.0	0.1	0.1	0.1	0.0
Mongolia	15.0	13.4	58.5	51.3	-12.3
Myanmar	0.0	0.0	0.7	0.0	0.0
Nepal	0.8	1.1	4.0	3.7	-7.5
North Korea	0.0	0.0	0.0	0.0	0.0
Pakistan	19.2	18.9	73.5	78.6	6.9
Philippines	67.0	57.6	255.5	234.3	-8.3
Singapore	89.1	72.3	392.4	527.5	34.4
South Korea	453.3	507.7	1,705.8	1,792.9	5.1
Sri Lanka	9.8	8.6	39.6	40.7	2.8
Taiwan	312.1	294.0	1,249.0	1,200.5	-3.9
Thailand	166.7	171.1	719.7	745.2	3.5
Timor-Leste	0.0	0.3	0.1	1.2	...
Viet Nam	62.0	70.2	255.2	326.1	27.8
<b>Total</b>	<b>6,296.8</b>	<b>5,931.8</b>	<b>24,476.4</b>	<b>24,759.1</b>	<b>1.2</b>
<b>Oceania</b>					
American Samoa	0.0	0.0	0.1	0.1	0.0
Australia	126.8	95.7	559.2	501.7	-10.3
Christmas Island	0.0	0.0	0.0	0.0	0.0
Cocos (Keeling) Islands	0.0	0.0	0.0	0.0	0.0
Cook Islands	0.0	0.0	0.0	0.0	0.0
Fiji	0.7	0.5	2.0	1.9	-5.0
French Polynesia	0.1	0.0	0.4	0.2	-50.0
Guam	0.0	0.1	0.2	0.2	0.0
Heard Island and McDonald Islands	0.0	0.0	0.0	0.0	...
Kiribati	0.0	0.0	0.0	0.1	0.0
Nauru	0.0	0.0	0.0	0.0	0.0
New Caledonia	0.0	0.0	0.1	0.1	0.0
New Zealand	53.1	38.2	175.4	140.6	-19.8
Niue	0.0	0.0	0.0	0.0	0.0
Norfolk Island	0.0	0.0	0.0	0.0	0.0
Papua New Guinea	0.2	0.1	0.8	0.4	-50.0
Pitcairn	0.0	0.0	0.0	0.0	0.0
Samoa	0.0	0.0	0.0	0.0	0.0
Solomon Islands	0.0	0.0	0.0	0.0	0.0
Tonga	0.0	0.0	0.0	0.0	0.0
United States Minor Outlying Islands	0.6	0.4	2.5	1.7	-32.0
Vanuatu	0.0	0.0	0.0	0.0	0.0

Table 8 – continued

## Imports by country, customs basis, not seasonally adjusted

	April		January to April		Variation
	2008	2009	2008	2009	January to April 2009/2008
	millions of dollars				
Wallis and Futuna	0.0	0.0	0.0	0.0	0.0
<b>Total</b>	<b>181.6</b>	<b>135.0</b>	<b>740.9</b>	<b>647.0</b>	<b>-12.7</b>
<b>South America</b>					
Argentina	27.9	60.8	140.4	228.2	62.5
Bolivia	4.3	4.3	21.9	23.0	5.0
Brazil	209.6	172.9	837.9	802.2	-4.3
Chile	147.3	176.8	715.0	623.4	-12.8
Colombia	53.1	56.2	221.2	227.8	3.0
Ecuador	15.7	23.1	65.3	89.7	37.4
Falkland Islands (Malvinas)	0.0	0.0	0.0	0.0	0.0
Guyana	16.2	24.1	70.2	95.1	35.5
Paraguay	1.3	0.6	4.7	2.8	-40.4
Peru	194.2	217.5	816.9	871.8	6.7
Suriname	39.8	24.4	172.4	162.4	-5.8
Uruguay	1.3	1.5	17.8	37.4	110.1
Venezuela	86.2	97.5	436.9	346.5	-20.7
<b>Total</b>	<b>796.9</b>	<b>859.7</b>	<b>3,520.6</b>	<b>3,510.3</b>	<b>-0.3</b>
<b>Central America Antilles</b>					
Anguilla	0.0	0.0	0.0	0.2	0.0
Antigua and Barbuda	0.0	0.0	4.9	0.1	-98.0
Aruba	0.0	23.9	120.1	52.6	-56.2
Bahamas	25.0	5.2	27.6	18.1	-34.4
Barbados	0.4	0.4	2.4	3.0	25.0
Belize	0.8	0.5	2.5	3.4	36.0
Bermuda	0.1	0.1	0.3	0.3	0.0
British Virgin Islands	0.9	0.1	8.4	0.1	-98.8
Cayman Islands	0.0	0.0	0.1	0.1	0.0
Costa Rica	29.5	32.3	130.2	128.3	-1.5
Cuba	89.9	23.5	363.5	139.8	-61.5
Dominica	0.1	0.0	0.1	0.1	0.0
Dominican Republic	12.0	11.4	37.5	47.5	26.7
El Salvador	3.5	5.1	13.6	31.3	130.1
Grenada	0.0	0.0	0.3	0.1	-66.7
Guatemala	16.2	28.8	76.6	87.7	14.5
Haiti	1.6	2.5	6.4	7.3	14.1
Honduras	13.2	13.7	49.2	53.5	8.7
Jamaica	29.7	2.8	71.6	46.9	-34.5
Montserrat	0.0	0.0	0.0	0.0	0.0
Netherlands Antilles	0.0	5.0	2.4	9.9	312.5
Nicaragua	21.6	6.9	37.2	28.5	-23.4
Panama	0.7	0.4	14.8	3.1	-79.1
Saint Kitts and Nevis	0.4	0.5	1.4	1.5	7.1
Saint Lucia	0.0	0.0	0.1	0.1	0.0
Saint Vincent and the Grenadines	0.0	0.0	0.0	0.0	0.0
Trinidad and Tobago	20.3	10.3	138.1	77.0	-44.2
Turks and Caicos Islands	0.2	0.0	0.7	0.2	-71.4
<b>Total</b>	<b>266.3</b>	<b>173.4</b>	<b>1,110.1</b>	<b>740.6</b>	<b>-33.3</b>
<b>All countries</b>	<b>35,858.6</b>	<b>30,651.6</b>	<b>135,712.1</b>	<b>121,471.1</b>	<b>-10.5</b>

**Table 9-1**  
**Imports by province of clearance, customs basis, not seasonally adjusted — April**

	Agricultural and fishing products	Energy products	Forestry products	Industrial goods	Machinery and equipment	Automotive products	Consumer goods	Special transactions	Total
millions of dollars									
Newfoundland and Labrador									
2008	6.5	363.5	0.0	3.4	38.3	0.2	0.6	0.0	412.5
2009	6.0	120.9	0.3	1.9	12.5	0.1	0.1	0.0	141.9
Prince Edward Island									
2008	0.7	0.0	0.0	0.1	0.3	0.0	0.0	0.2	1.3
2009	0.7	0.0	0.0	1.6	0.0	0.0	0.1	0.0	2.4
Nova Scotia									
2008	20.7	204.5	1.6	126.3	90.6	405.2	12.6	1.4	862.8
2009	23.6	141.6	1.1	46.7	95.3	233.7	18.3	0.7	560.9
New Brunswick									
2008	25.5	425.8	10.4	68.7	61.8	40.1	14.3	2.2	648.9
2009	29.9	602.8	9.6	65.7	75.4	24.6	14.0	2.3	824.2
Quebec									
2008	317.2	1,633.2	60.7	1,412.9	1,732.0	231.8	701.1	67.8	6,156.6
2009	352.8	923.3	63.4	1,158.4	1,730.2	178.6	895.2	50.0	5,351.8
Ontario									
2008	1,259.3	453.4	92.0	4,406.7	5,518.0	5,082.9	2,859.9	494.9	20,167.0
2009	1,371.6	592.4	74.3	3,455.1	5,050.5	3,736.7	2,977.5	359.4	17,617.3
Manitoba									
2008	88.8	10.2	8.3	349.9	557.8	138.6	136.7	7.4	1,297.6
2009	81.6	14.4	6.3	312.6	490.8	93.0	144.8	6.6	1,150.0
Saskatchewan									
2008	29.4	27.2	2.1	233.2	330.6	115.6	23.9	0.5	762.5
2009	32.1	34.6	4.3	227.0	315.3	56.6	21.4	0.8	692.2
Alberta									
2008	157.5	390.7	9.5	417.7	700.7	137.4	116.7	13.2	1,943.4
2009	162.6	128.8	8.5	338.9	600.5	55.7	91.7	9.0	1,395.6
British Columbia									
2008	351.5	384.5	59.6	741.6	1,026.7	504.4	511.4	19.1	3,598.8
2009	394.3	140.8	38.5	583.3	955.4	257.4	530.4	9.9	2,910.1
Yukon, Northwest Territories and Nunavut									
2008	4.9	1.6	0.0	0.4	0.2	0.1	0.0	0.0	7.2
2009	4.5	0.2	0.0	0.2	0.3	0.0	0.0	0.0	5.3
<b>Total</b>									
<b>2008</b>	<b>2,261.9</b>	<b>3,894.5</b>	<b>244.3</b>	<b>7,761.0</b>	<b>10,057.1</b>	<b>6,656.1</b>	<b>4,377.1</b>	<b>606.6</b>	<b>35,858.6</b>
<b>2009</b>	<b>2,459.8</b>	<b>2,699.7</b>	<b>206.3</b>	<b>6,191.2</b>	<b>9,326.2</b>	<b>4,636.3</b>	<b>4,693.4</b>	<b>438.7</b>	<b>30,651.6</b>

**Table 9-2**  
**Imports by province of clearance, customs basis, not seasonally adjusted — Year to date, January to April**

	Agricultural and fishing products	Energy products	Forestry products	Industrial goods	Machinery and equipment	Automotive products	Consumer goods	Special transactions	Total
millions of dollars									
Newfoundland and Labrador									
2008	15.1	1,350.0	0.0	19.3	47.2	0.6	2.2	4.0	1,438.4
2009	15.6	698.0	0.3	37.4	36.6	0.2	1.3	0.1	789.5
Prince Edward Island									
2008	1.0	0.0	0.1	0.2	1.2	0.0	5.9	0.2	8.6
2009	1.1	0.0	0.0	17.5	0.4	0.1	0.1	0.1	19.2
Nova Scotia									
2008	108.4	776.2	5.9	498.9	326.7	1,155.2	48.1	5.2	2,924.5
2009	106.7	478.9	4.2	273.9	397.9	764.1	63.3	7.8	2,096.8
New Brunswick									
2008	104.6	2,010.5	40.3	315.9	239.5	125.2	55.8	6.8	2,898.5
2009	108.2	1,626.4	37.8	273.2	270.8	85.9	56.8	8.3	2,467.4
Quebec									
2008	1,205.5	6,852.0	257.4	5,466.4	6,796.8	855.2	3,039.6	351.1	24,823.9
2009	1,453.1	3,666.7	284.8	4,557.0	6,893.7	646.8	3,821.5	171.5	21,495.1
Ontario									
2008	4,719.3	2,114.1	356.0	16,195.4	21,210.6	18,933.0	11,156.2	1,341.4	76,026.1
2009	5,403.1	1,903.6	303.6	14,276.8	20,333.6	12,672.8	11,786.7	1,252.7	67,932.8
Manitoba									
2008	328.7	72.3	28.9	1,180.4	1,994.3	567.4	525.4	31.1	4,728.5
2009	322.0	62.8	26.7	1,283.1	2,041.1	485.1	558.0	30.7	4,809.5
Saskatchewan									
2008	114.4	106.1	9.6	814.7	1,152.5	456.2	79.7	8.8	2,741.9
2009	117.5	133.2	10.3	927.5	1,188.8	284.2	85.4	8.9	2,755.7
Alberta									
2008	612.0	1,151.1	39.9	1,630.6	2,649.5	492.8	382.4	40.4	6,998.8
2009	613.3	1,048.5	36.2	1,819.8	2,686.5	260.8	386.6	41.1	6,892.7
British Columbia									
2008	1,334.1	1,059.4	228.8	2,542.7	3,896.2	1,910.5	2,070.8	54.5	13,097.0
2009	1,466.7	743.4	157.5	2,435.1	3,885.6	1,174.4	2,276.0	49.0	12,187.6
Yukon, Northwest Territories and Nunavut									
2008	8.0	7.5	0.0	0.6	8.8	0.6	0.1	0.3	25.9
2009	5.3	1.9	0.0	0.8	16.0	0.0	0.1	0.9	24.9
<b>Total</b>									
<b>2008</b>	<b>8,551.1</b>	<b>15,499.2</b>	<b>966.8</b>	<b>28,665.2</b>	<b>38,323.3</b>	<b>24,496.6</b>	<b>17,366.1</b>	<b>1,843.8</b>	<b>135,712.1</b>
<b>2009</b>	<b>9,612.5</b>	<b>10,363.3</b>	<b>861.3</b>	<b>25,901.9</b>	<b>37,750.9</b>	<b>16,374.4</b>	<b>19,035.7</b>	<b>1,571.1</b>	<b>121,471.1</b>

# Technical notes

---

## The Canadian international merchandise trade statistical program

### I Introduction

The objective of this text is to provide a general overview of the Canadian International Merchandise Trade Statistical Program with special reference to concepts and definitions. The text is intended for the general user and simplicity is emphasized. More technical details can be obtained from the International Trade Division upon request.

### II Conceptual framework

**1. Objectives and coverage:** The primary objective of the Canadian International Merchandise Trade Statistical Program is to measure the change in the stock of material resources of the country resulting from the movement of merchandise into or out of Canada. Information on imports and exports are inputs into the System of National Accounts particularly in the Balance of Payments and Gross Domestic Product, and are used in the formulation of trade and budgetary policies. Governments, importers, exporters, manufacturers and shipping companies use trade statistics to:

- monitor import penetration and export performance;
- monitor commodity price and volume changes;
- examine transport implications.

**2. Trade statistics - Customs basis/Balance of Payments basis:** Merchandise trade statistics are reported and presented on two different bases: Customs basis and Balance of Payment basis. (B.O.P.)

When goods are imported into or exported from Canada, declarations must be filed with Customs giving such information as description and value of the goods, origin and port of clearance of commodities and the mode of transport. Most of this information is required for the purposes of Customs Administration. Statistics developed from administrative records of Customs are commonly referred to as Customs based trade statistics.

Customs based trade statistics are more accurate at measuring imports than they are at measuring exports. This is the case because Customs are typically more vigilant with respect to goods entering the country than they are with goods leaving the country.

Customs based export statistics may understate and/or incorrectly portray the destination of exports. Export statistics are understated when the proper documentation is not filed with Customs. Exports are incorrectly portrayed when the country of final destination is inaccurately reported on the customs documentation - this occurs most frequently when goods are routed through an intermediary country before continuing on to their final destination.

Statistics Canada does not have a measure of undercoverage but periodically conducts reconciliation exercises with its major trading partners, excluding the United States.

On January 1st, 1990, Canada entered into a Memorandum of Understanding (MOU) with the United States concerning the exchange of import data. As a consequence, each administration is using the other's import data to replace its own export data. Canada's international merchandise trade statistics are, therefore, no longer derived exclusively from the administrative records of Canada Border Services Agency, but from United States Customs records as well.

Customs based information is adjusted to conform with the National Accounts concepts and definitions. The adjustments to derive Balance of Payments based trade data include trade definition, valuation and timing related adjustments. The principal difference between the two trade concepts is that Customs based merchandise trade statistics cover the physical movement of goods as they are reflected on customs documents, while Balance of Payments adjusted data are intended to cover all economic transactions between residents and non-residents which involve merchandise trade. This section describes the concepts and processes pertaining to the Customs based trade statistics only. (For further information on Balance of Payments adjusted data see the publication *“Canada’s Balance of International Payments” Catalogue no. 67-001-XPB*).

**3. System of trade:** Canadian trade statistics are compiled according to the “General” system of trade as defined by the United Nations Statistical Office. Under this system, imports include all goods which have crossed Canada’s territorial boundary, whether for immediate consumption in Canada or stored in bonded Customs warehouses. Domestic exports include goods grown, extracted or manufactured in Canada, including goods of foreign origin which have been materially transformed in Canada. Re-exports are exports of goods of foreign origin which have not been materially transformed in Canada, including foreign goods withdrawn for export from bonded customs warehouses. Total exports are the sum of Domestic exports and Re-exports. Thus the general trade system, in principal, presents all goods entering the country (imports) and all goods leaving the country (exports). It differs from the “Special” system of trade in the treatment of imported goods into Customs bonded warehouses. Under the “Special” system, these goods are counted only if and when they are withdrawn from Customs warehouses for home consumption. They are not counted in export statistics unless they have first cleared Customs.

Conceptually, under the “General” system, the statistical frontier coincides with the geographical boundary, while under the “Special” system, it coincides with the Customs boundary.

**4. Valuation:** For Customs purposes, imports are recorded at values established according to the provisions of the Customs Act, which, since January 1st, 1985, reflects valuation methods based on the General Agreement on Tariffs and Trade (GATT) Valuation Code System. It generally requires the value for duty of imported goods be equivalent to the transaction value or the price actually paid.

To determine the transaction value of imported goods, all transportation and associated costs arising in respect of the goods being appraised prior to and at the place of direct shipment to Canada, are to be added to the price of the goods. Therefore, Canadian imports are valued F.O.B. (Free on Board), place of direct shipment to Canada. It excludes freight and insurance costs in bringing the goods to Canada from the point of direct shipment.

To countries other than the United States, exports are, in principal, valued or recorded at the values declared on export documents which usually reflect the transaction value, i.e. actual selling price, or in the case of a non-arm’s length transaction, the transfer price used for company accounting purposes. Canadian exports to overseas countries are valued at F.O.B. port of exit, including domestic freight charges to that point but net of discounts and allowances. As of January, 1990, Canadian exports to the U.S. are valued F.O.B. point of exit from Canada. Prior to 1990, they were valued F.O.B. place of lading net of freight charges, discounts and allowances.

**5. Statistical period:** The reference period is the calendar month and the calendar year. The closing of the statistical month for imports and Canadian exports to the United States is defined as the last calendar day of the month, based as closely as practicable on the date of clearance from Customs.

The closing of the statistical month for exports, to countries other than the United States, is also defined as the last calendar day of the month. Those export documents which are received too late for incorporation in the current month are assigned to the month the transaction took place. If a monthly summary report from a high volume exporter is not received on time, the data are imputed for the current month and revised with the trade value in the following statistical month.

**6. Trading partner attribution (Country of origin/destination):** Exports are attributed to the country, which is the last known destination of the goods at the time of export. Exports to the United States are attributed to the state of destination.

Imports are attributed to their country of origin, that is, the country in which the goods were grown, extracted or manufactured in accordance to the rules of origin administered by Canada Border Services Agency. Imports from

the United States are attributed to the state of origin. Prior to 1988, most imports were attributed to the country of export/consignment with the exception of imports from Central and South America.

**7. Principal trading areas:** The “principal trading areas” are country groupings defined as follows:

**United States:** (includes trade with Puerto Rico and the U.S. Virgin Islands).

**Japan:**

**E.U. (European Union):** Austria, Belgium, Bulgaria, Cyprus, Czech Republic, Denmark, Estonia, Finland, France, Germany, Greece, Hungary, Ireland, Italy, Latvia, Lithuania, Luxembourg, Malta, Netherlands, Poland, Portugal, Romania, Slovakia, Slovenia, Spain, Sweden and United Kingdom.

**Other O.E.C.D.:** Australia, Canada, Iceland, Mexico, New Zealand, Norway, South Korea, Switzerland, and Turkey. (The E.U. countries, United States, and Japan are also members of O.E.C.D. - the Organization for Economic Co-operation and Development).

**Other countries:** This group includes all countries and territories other than the United States, Japan, E.U. and other O.E.C.D.

**8. Legal framework:** Import and export statistics with countries other than the United States are derived from information contained on administrative records collected by the Canada Border Services Agency under the Customs Act. Copies of these documents (or information therefrom) are sent to Statistics Canada in accordance with Section 25 of the Statistics Act. It follows that the disclosure of trade statistics is governed by both the Customs Act and the Statistics Act and is subject to the provisions of Section 17.(2)(a) of the latter. Disclosure of export statistics to the United States is now governed by a Memorandum of Understanding which provides for an exchange of detailed import statistics between Canada and the United States.

Questions concerning details of methods not covered by these notes should be addressed to the Marketing and Client Services Section, International Trade Division, Statistics Canada, Ottawa, Ontario, K1A 0T6.

**Telephone:** 1-800-294-5583 or within the area code 613-951-9647

**Facsimile:** 1-800-664-0055 or within the area code 613-951-0117

**Internet:** *trade@statcan.gc.ca*