

Catalogue no. 65-001-X

# Canadian International Merchandise Trade

February 2010



Statistics  
Canada

Statistique  
Canada

Canada

## How to obtain more information

For information about this product or the wide range of services and data available from Statistics Canada, visit our website at [www.statcan.gc.ca](http://www.statcan.gc.ca), e-mail us at [infostats@statcan.gc.ca](mailto:infostats@statcan.gc.ca), or telephone us, Monday to Friday from 8:30 a.m. to 4:30 p.m., at the following numbers:

### Statistics Canada's National Contact Centre

Toll-free telephone (Canada and the United States):

Inquiries line	1-800-263-1136
National telecommunications device for the hearing impaired	1-800-363-7629
Fax line	1-877-287-4369

Local or international calls:

Inquiries line	1-613-951-8116
Fax line	1-613-951-0581

### Depository Services Program

Inquiries line	1-800-635-7943
Fax line	1-800-565-7757

## To access this product

This product, Catalogue no. 65-001-X, is available free in electronic format. To obtain a single issue, visit our website at [www.statcan.gc.ca](http://www.statcan.gc.ca) and select "Publications."

## Standards of service to the public

Statistics Canada is committed to serving its clients in a prompt, reliable and courteous manner. To this end, Statistics Canada has developed *standards of service* that its employees observe. To obtain a copy of these service standards, please contact Statistics Canada toll-free at 1-800-263-1136. The service standards are also published on [www.statcan.gc.ca](http://www.statcan.gc.ca) under "About us" > "Providing services to Canadians."

Statistics Canada  
International Trade Division

# Canadian International Merchandise Trade

February 2010

Published by authority of the Minister responsible for Statistics Canada

© Minister of Industry, 2010

All rights reserved. The content of this electronic publication may be reproduced, in whole or in part, and by any means, without further permission from Statistics Canada, subject to the following conditions: that it be done solely for the purposes of private study, research, criticism, review or newspaper summary, and/or for non-commercial purposes; and that Statistics Canada be fully acknowledged as follows: Source (or "Adapted from", if appropriate): Statistics Canada, year of publication, name of product, catalogue number, volume and issue numbers, reference period and page(s). Otherwise, no part of this publication may be reproduced, stored in a retrieval system or transmitted in any form, by any means—electronic, mechanical or photocopy—or for any purposes without prior written permission of Licensing Services, Client Services Division, Statistics Canada, Ottawa, Ontario, Canada K1A 0T6.

April 2010

Catalogue no. 65-001-X, vol. 64, no. 2

ISSN 1480-8781

Frequency: Monthly

Ottawa

Cette publication est également disponible en français.

---

#### **Note of appreciation**

*Canada owes the success of its statistical system to a long-standing partnership between Statistics Canada, the citizens of Canada, its businesses, governments and other institutions. Accurate and timely statistical information could not be produced without their continued cooperation and goodwill.*

# User information

---

## Symbols

The following standard symbols are used in Statistics Canada publications:

- . not available for any reference period
- .. not available for a specific reference period
- ... not applicable
- 0 true zero or a value rounded to zero
- 0<sup>s</sup> value rounded to 0 (zero) where there is a meaningful distinction between true zero and the value that was rounded
- p preliminary
- r revised
- x suppressed to meet the confidentiality requirements of the *Statistics Act*
- E use with caution
- F too unreliable to be published

## Note to users

All totals are calculated from full figures and rounded independently; consequently, totals may not equal the sum of their components.

The data is based on commodity groups (sector, subsector and major group).

# Table of contents

---

<b>Highlights</b>	<b>5</b>
<b>Analysis</b>	<b>7</b>
<b>Related products</b>	<b>11</b>
<b>Statistical tables</b>	
1 Merchandise trade of Canada, balance of payments basis, seasonally adjusted	15
1-1 Current dollars	15
1-2 Constant dollars, 2002	16
1-3 Price indices (Laspeyres)	17
2 Exports by commodity groupings, balance of payments basis, seasonally adjusted	18
2-1 Current dollars	18
2-2 Constant dollars, 2002	20
3 Domestic exports to selected countries, customs basis, not seasonally adjusted	22
3-1 February	22
3-2 Year to date, January to February	23
4 Domestic exports by country, customs basis, not seasonally adjusted	24
5 Exports by province of origin, customs basis, not seasonally adjusted	28
5-1 February	28
5-2 Year to date, January to February	29
6 Imports by commodity groupings, balance of payments basis, seasonally adjusted	30
6-1 Current dollars	30
6-2 Constant dollars, 2002	32
7 Imports from selected countries, customs basis, not seasonally adjusted	34
7-1 February	34
7-2 Year to date, January to February	35
8 Imports by country, customs basis, not seasonally adjusted	36

**Table of contents – continued**

9	Imports by province of clearance, customs basis, not seasonally adjusted	40
9-1	February	40
9-2	Year to date, January to February	41

**Data quality, concepts and methodology**

	Technical notes	42
--	-----------------	----

## Highlights

---

- Canada's merchandise exports grew 2.8% in February, on the strength of industrial goods and materials, outpacing a 0.9% increase in imports. As a result, Canada's trade surplus with the world widened to \$1.4 billion in February from \$754 million in January.
- Exports increased to \$34.0 billion from \$33.1 billion in January, as prices and volumes each grew 1.4%. This represented the fifth increase in export volumes and prices during the past six months. While most export sectors experienced gains in February, industrial goods and materials accounted for over half the growth in exports.
- Imports rose to \$32.6 billion from \$32.3 billion as volumes increased 1.0% while prices declined 0.2%. Import volumes have been trending upward since April 2009 whereas prices have generally been declining during the same period. Notable increases in imports of machinery and equipment, and automotive products were nearly offset by pronounced declines in imports of energy products. Excluding the energy products sector, imports would have increased 2.6% in February.
- On the strength of automotive products, exports to the United States increased 2.0% and imports grew 1.2%. As a result, Canada's trade surplus with the United States widened to \$4.4 billion in February from \$4.2 billion in January.
- Exports to countries other than the United States rose 5.2% as exports to all principal trading areas except Japan increased in February. Imports from countries other than the United States grew 0.2% due to higher imports from Japan. Consequently, Canada's trade deficit with these countries narrowed to \$3.0 billion in February from \$3.4 billion in January.

### Note to readers

Merchandise trade is one component of Canada's international balance of payments, which also includes trade in services, investment income, current transfers as well as capital and financial flows.

International merchandise trade data by country are available on both a balance of payments and a customs basis for the United States, Japan and the United Kingdom. Trade data for all other individual countries are available on a customs basis only. Balance of payments data are derived from customs data by making adjustments for characteristics such as valuation, coverage, timing and residency. These adjustments are made to conform to the concepts and definitions of the Canadian System of National Accounts.

Data in this release are on a balance of payments basis, seasonally adjusted in current dollars. Constant dollars are calculated using the Laspeyres volume formula.

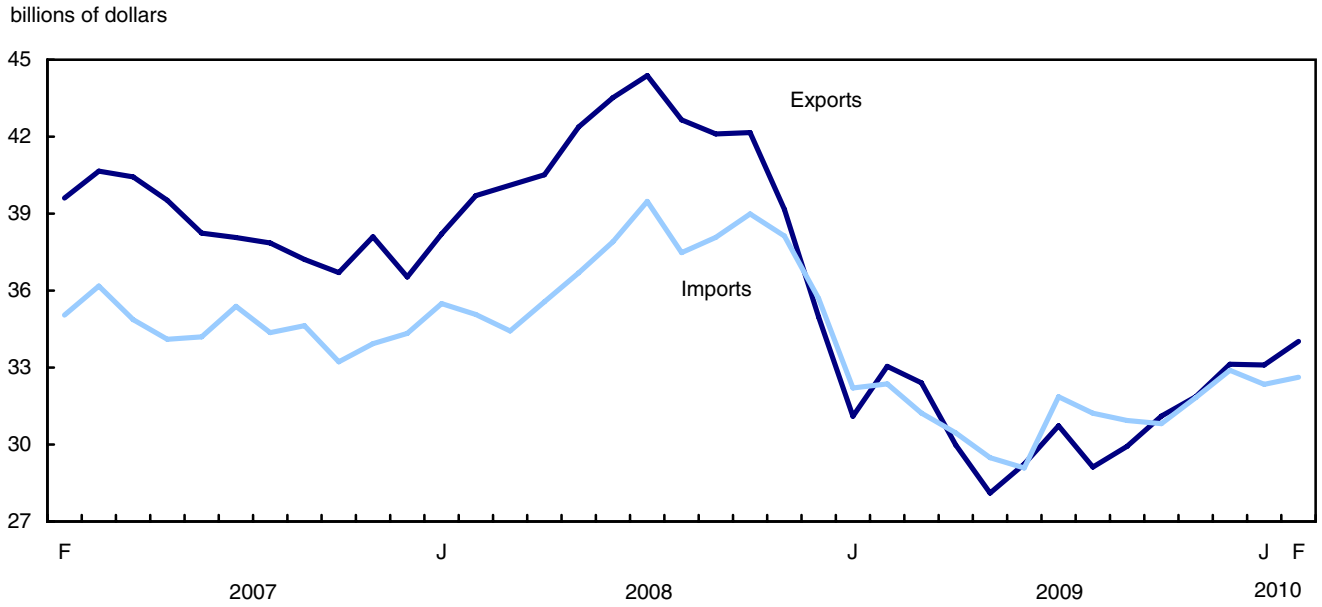
### Revisions

In general, merchandise trade data are revised on an ongoing basis for each month of the current year. Current year revisions are reflected in both the customs and balance of payments based data. Revisions to customs based data for the previous year are released on a quarterly basis. Revisions to balance of payments based data for the three previous years are released annually in June.

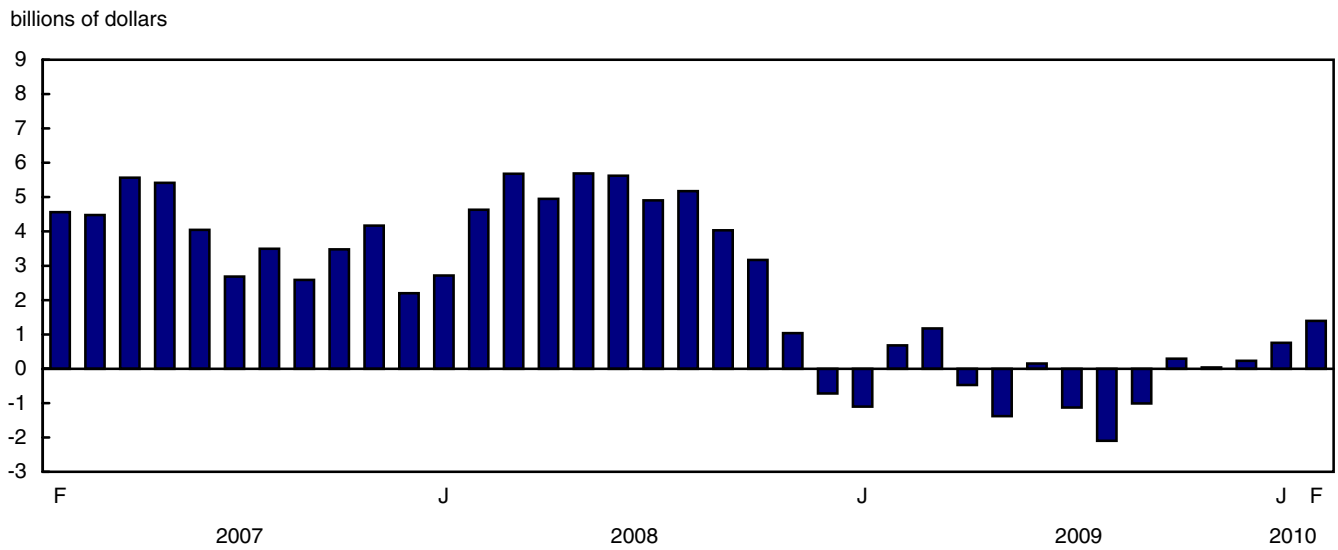
Factors influencing revisions include late receipt of import and export documentation, incorrect information on customs forms, replacement of estimates with actual figures, changes in classification of merchandise based on more current information, and changes to seasonal adjustment factors.

Revised data are available in the appropriate CANSIM tables.

**Chart 1**  
Exports and imports, seasonally adjusted, on a balance of payments basis



**Chart 2**  
Trade balance, seasonally adjusted, on a balance of payments basis



## Analysis

---

### **Six of the seven export sectors post gains**

Following a 6.2% gain in January, exports of industrial goods and materials grew 7.2% to \$7.9 billion in February. Although the gains were broad-based, increased volumes of metals ores and higher prices of chemical, plastics and fertilizers accounted for almost three-quarters of the growth.

Metals ores grew 36.5% on the strength of nickel ores and copper ores while fertilizers and fertilizer materials, such as potash, led the 4.5% gain in exports of chemicals, plastics and fertilizers. Exports of fertilizers and fertilizer materials increased for a fifth consecutive month in February.

Exports of automotive products rose 5.0% to \$4.5 billion, largely due to a 4.6% volume increase. Exports of passenger autos grew 9.4% as some manufacturers resumed production after extended plant shutdowns in January. In contrast, exports of motor vehicle parts declined 2.9%, after three consecutive months of increases.

Exports of energy products grew 0.8% to \$8.7 billion, as prices rose 1.8%. Higher exports of crude petroleum were nearly offset by decreases in exports of natural gas as well as petroleum and coal products. Exports of crude petroleum increased 6.1% largely due to price increases. Natural gas exports decreased for the first time since May 2009, falling 7.6% as a result of reductions in volumes.

### **Energy products dampen the growth in imports**

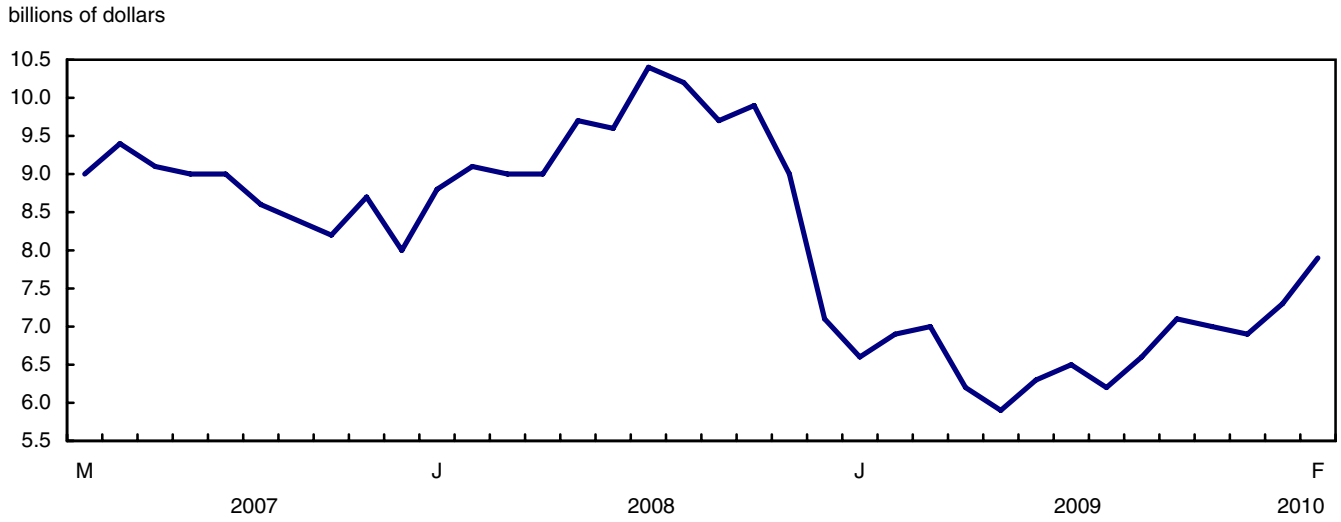
Imports of energy products, declining for the second consecutive month, fell 14.2% to \$2.9 billion in February. Imports of crude petroleum decreased 18.1% as volumes fell 22.2%, largely reflecting production disruptions and maintenance at some refineries. Imports of coal and other related products declined 16.5% mainly due to lower imports of natural gas.

After two months of decreases, imports of machinery and equipment grew 3.3% to \$8.7 billion. This represented the fourth increase in imports of machinery and equipment since the peak of November 2008. Widespread growth throughout the sector was led by industrial and agricultural machinery as well as other machinery and equipment.

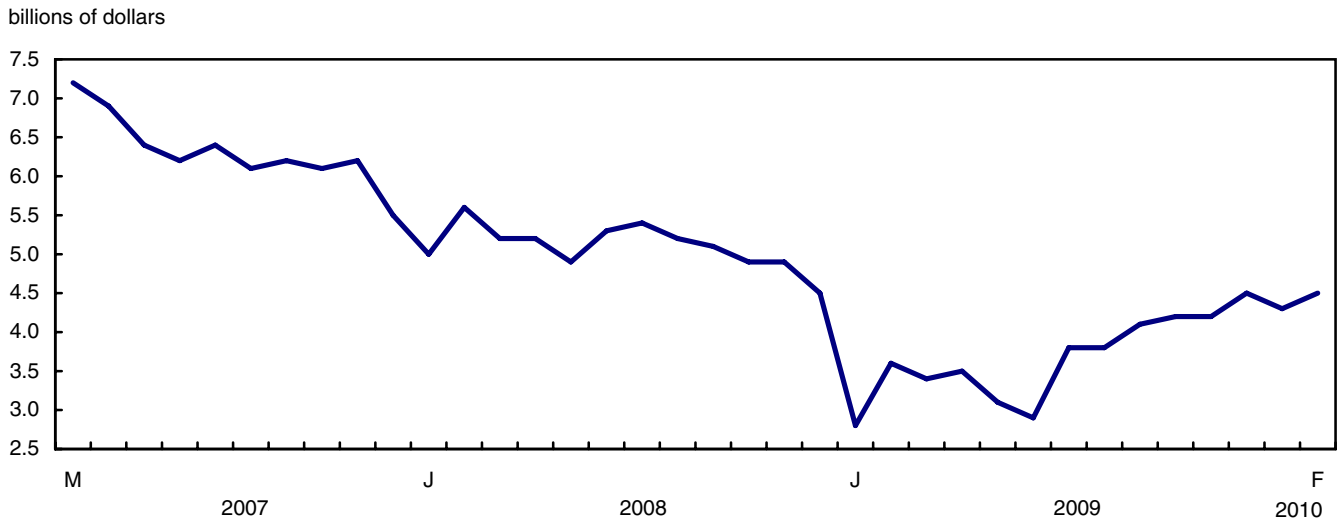
Industrial and agricultural machinery increased 7.0% on the strength of excavating machinery, up 50.4%. Other machinery and equipment grew largely due to higher imports of communication equipment.

Imports of automotive products rose 3.5% to \$6.0 billion, the highest value since October 2008. The gain was mainly due to a 3.1% increase in volumes. Imports of passenger autos grew 9.8% and were the main factor behind the growth in the sector. Imports of trucks and other motor vehicles advanced 3.7%, the fifth consecutive month of increases, reflecting the demand for large pick-up trucks.

**Chart 1**  
**Exports of industrial goods and equipment, seasonally adjusted, on a balance of payments basis**

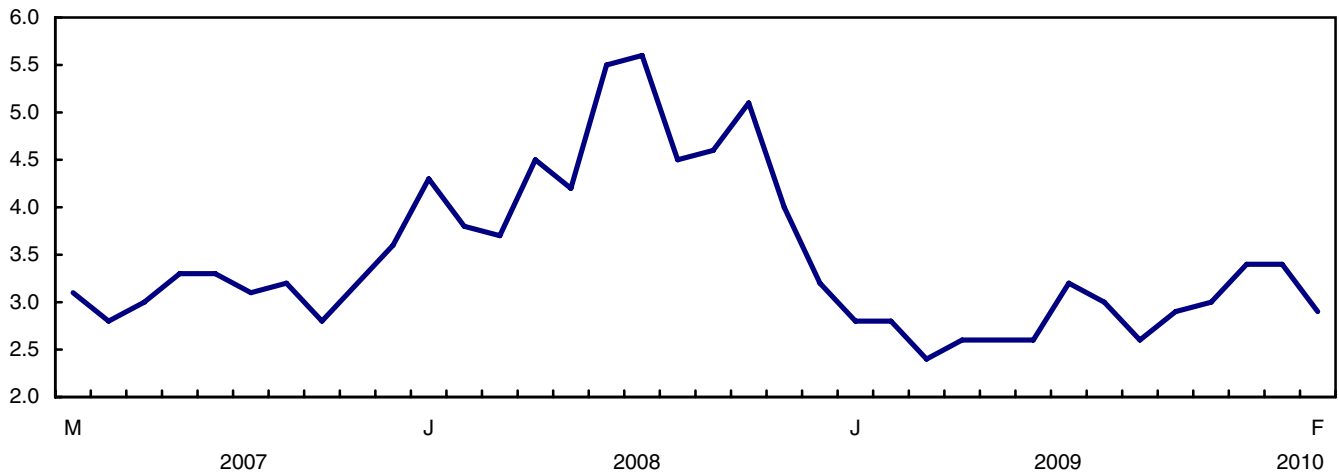


**Chart 2**  
**Exports of automotive products, seasonally adjusted, on a balance of payments basis**



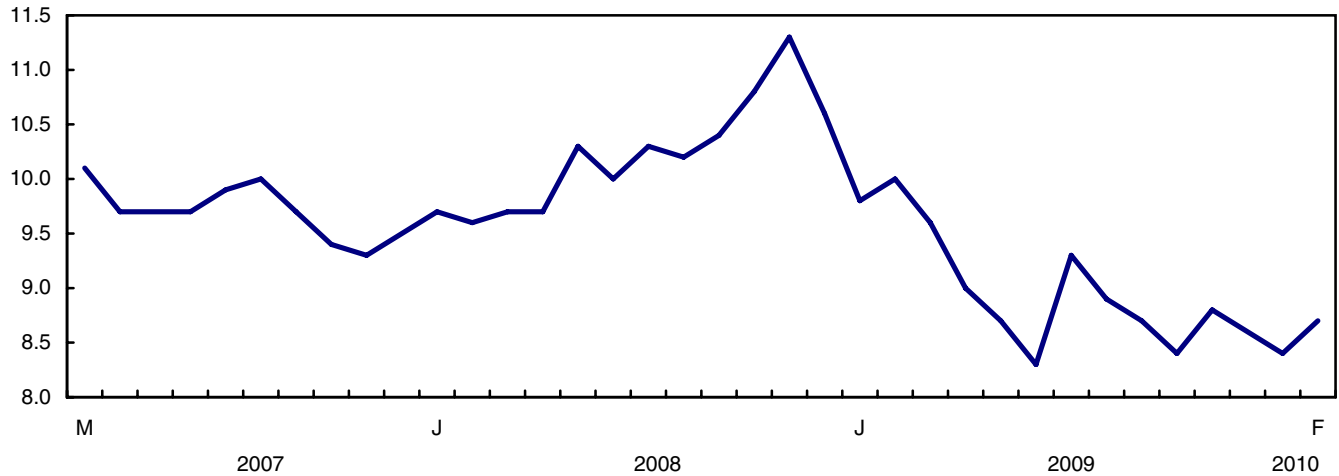
**Chart 3**  
Imports of energy products, seasonally adjusted, on a balance of payments basis

billions of dollars



**Chart 4**  
Imports of machinery and equipment, seasonally adjusted, on a balance of payments basis

billions of dollars



**Text table 1**  
**Merchandise trade by principal trading area, balance of payments basis, seasonally adjusted**

	January 2010	February 2010	Change	Year to date			February 2010/ February 2009		
				2009		Change			
				2009	2010				
	millions of dollars		percent	millions of dollars		percent			
<b>Export to</b>									
United States	24,769	25,252	483	1.9	47,166	50,021	2,855	6.1	3.8
Japan	793	792	-1	-0.1	1,707	1,585	-122	-7.1	-6.4
European Union <sup>1</sup>	2,718	2,853	135	5.0	5,631	5,571	-60	-1.1	2.3
Other Organisation for Economic Co-operation and Development <sup>2</sup>	1,481	1,604	123	8.3	2,576	3,085	510	19.8	20.8
Other countries	3,340	3,516	176	5.3	7,068	6,857	-211	-3.0	-6.1
<b>Total</b>	<b>33,102</b>	<b>34,018</b>	<b>915</b>	<b>2.8</b>	<b>64,148</b>	<b>67,120</b>	<b>2,972</b>	<b>4.6</b>	<b>2.9</b>
<b>Imports from</b>									
United States	20,607	20,857	250	1.2	40,401	41,464	1,063	2.6	1.6
Japan	744	892	149	20.0	1,842	1,636	-207	-11.2	18.7
European Union <sup>1</sup>	3,044	3,026	-18	-0.6	6,773	6,070	-703	-10.4	-10.1
Other Organisation for Economic Co-operation and Development <sup>2</sup>	2,436	2,422	-14	-0.6	4,157	4,858	700	16.8	20.8
Other countries	5,517	5,426	-91	-1.7	11,391	10,944	-448	-3.9	-5.1
<b>Total</b>	<b>32,348</b>	<b>32,623</b>	<b>275</b>	<b>0.9</b>	<b>64,565</b>	<b>64,971</b>	<b>406</b>	<b>0.6</b>	<b>0.8</b>
<b>Balance</b>									
United States	4,162	4,395	233	...	6,765	8,558	1,793	...	...
Japan	49	-100	-150	...	-135	-51	85	...	...
European Union <sup>1</sup>	-326	-173	153	...	-1,142	-499	643	...	...
Other Organisation for Economic Co-operation and Development <sup>2</sup>	-954	-818	137	...	-1,582	-1,772	-191	...	...
Other countries	-2,177	-1,910	267	...	-4,323	-4,087	237	...	...
<b>Total</b>	<b>755</b>	<b>1,394</b>	<b>640</b>	<b>...</b>	<b>-417</b>	<b>2,149</b>	<b>2,566</b>	<b>...</b>	<b>...</b>

1. European Union includes: Austria, Belgium, Bulgaria, Cyprus, Czech Republic, Denmark, Estonia, Finland, France, Germany, Greece, Hungary, Ireland, Italy, Latvia, Lithuania, Luxembourg, Malta, Netherlands, Poland, Portugal, Romania, Slovakia, Slovenia, Spain, Sweden and United Kingdom.
2. Other Organisation for Economic Co-operation and Development includes: Australia, Canada, Iceland, Mexico, New Zealand, Norway, South Korea, Switzerland and Turkey.

**Text table 2**  
**Reconciliation of customs and balance of payments trade data, not seasonally adjusted**

	2010		2009				2009
	February	January	December	November	October	September	Annual
	millions of dollars						
<b>Exports</b>							
<b>Customs basis</b>	<b>30,606</b>	<b>29,893</b>	<b>30,948</b>	<b>30,534</b>	<b>31,195</b>	<b>29,908</b>	<b>359,700</b>
<b>Balance of payments adjustments</b>	<b>724</b>	<b>1,214</b>	<b>920</b>	<b>1,142</b>	<b>947</b>	<b>684</b>	<b>10,062</b>
Valuation and residency							
Inland freight	518	482	477	480	515	507	6,207
Other valuation and residency	-981	-550	-722	-652	-505	-720	-7,638
Timing	113	-13	16	-17	-3	23	-164
Coverage	1,074	1,295	1,149	1,331	940	874	11,657
<b>Balance of payments basis</b>	<b>31,330</b>	<b>31,107</b>	<b>31,868</b>	<b>31,676</b>	<b>32,142</b>	<b>30,592</b>	<b>369,762</b>
<b>Imports</b>							
<b>Customs basis</b>	<b>29,779</b>	<b>28,175</b>	<b>30,855</b>	<b>31,302</b>	<b>31,565</b>	<b>31,171</b>	<b>365,151</b>
<b>Balance of payments adjustments</b>	<b>823</b>	<b>783</b>	<b>988</b>	<b>686</b>	<b>953</b>	<b>554</b>	<b>9,219</b>
Valuation and residency							
Inland freight	647	623	647	660	685	668	7,728
Other valuation and residency	33	21	44	41	54	69	203
Timing	0	0	0	0	0	0	0
Coverage	143	139	297	-15	214	-183	1,288
<b>Balance of payments basis</b>	<b>30,602</b>	<b>28,958</b>	<b>31,843</b>	<b>31,988</b>	<b>32,518</b>	<b>31,725</b>	<b>374,370</b>

## Related products

---

### Selected publications from Statistics Canada

---

65-208-X	International Merchandise Trade Annual Review
65-506-X	A Profile of Canadian Exporters
65F0013X	Canadian International Merchandise Trade Database
65F0019X	A Database for Analysis of International Markets
65F0020X	Data Integration - International Trade Data and Manufacturing Shipments Data

---

### Selected CANSIM tables from Statistics Canada

---

228-0001	Merchandise imports and exports, by major groups and principal trading areas for all countries, monthly
228-0002	Merchandise imports and exports, by major groups and principal trading areas for all countries, quarterly
228-0003	Merchandise imports and exports, by major groups and principal trading areas for all countries, annual
228-0033	Imports, customs-based, by province of clearance, monthly
228-0034	Domestic exports, customs-based, by province of origin, monthly
228-0041	Merchandise imports and exports by sector and sub-sector, customs and balance of payments basis, for all countries, monthly
228-0042	Merchandise imports and exports by sector and sub-sector, customs and balance of payments basis, for all countries, quarterly
228-0043	Merchandise imports and exports by sector and sub-sector, customs and balance of payments basis, for all countries, annual
228-0047	Merchandise imports and exports balance of payments and customs-based price and volume indexes for all countries, monthly
228-0048	Merchandise imports and exports balance of payments and customs-based price and volume indexes for all countries, quarterly
228-0049	Merchandise imports and exports balance of payments and customs-based price and volume indexes for all countries, annual

228-0050	Merchandise imports and exports customs-based price indexes, Canada and United States trade, and Standard International Trade Classification (SITC revision 3) price indexes for all countries and United States, monthly
228-0051	Merchandise imports and exports customs-based price indexes, Canada and United States trade, and Standard International Trade Classification (SITC revision 3) price indexes for all countries and United States, quarterly
228-0052	Merchandise imports and exports customs-based price indexes, Canada and United States trade, and Standard International Trade Classification (SITC revision 3) price indexes for all countries and United States, annual
228-0053	Merchandise import and export price and volume indexes by sector and sub-sector, customs and balance of payments basis, for all countries, monthly
228-0054	Merchandise import and export price and volume indexes by sector and sub-sector, customs and balance of payments basis, for all countries, quarterly
228-0055	Merchandise import and export price and volume indexes by sector and sub-sector, customs and balance of payments basis, for all countries, annual
228-0056	Merchandise imports and exports by sector, balance of payments basis, for all countries, seasonally adjusted, Fisher formula, monthly
228-0057	Merchandise imports and exports by sector, balance of payments basis, for all countries, seasonally adjusted, Fisher formula, quarterly

---

### **Selected surveys from Statistics Canada**

---

2201	Canadian International Merchandise Trade (Customs Basis)
2202	Canadian International Merchandise Trade (Balance of Payments Basis)
2203	International Trade Price Indexes

---

### **Selected summary tables from Statistics Canada**

---

- *Canada: Economic and financial data*
- *Imports, exports and trade balance of goods on a balance-of-payments basis, by country or country grouping*
- *Exports of goods on a balance-of-payments basis*

- *Imports of goods on a balance-of-payments basis*
- *Merchandise trade of Canada (monthly)*
- *Economic indicators, by province and territory (monthly and quarterly)*
- *Latest statistics (monthly)*

# Statistical tables

---

---

**Table 1-1**  
**Merchandise trade of Canada, balance of payments basis, seasonally adjusted — Current dollars**

	Exports	Imports	Trade balance	Period to period change		
				Exports	Imports	Balance
	millions of dollars			percent		millions of dollars
2006	453,951	404,345	49,606	0.0	0.0	0
2007	463,127	415,229	47,898	2.0	2.7	-1,708
2008	489,857	442,988	46,869	5.8	6.7	-1,029
2009	369,762	374,370	-4,608	-24.5	-15.5	-51,477
<b>2007</b>						
First quarter	120,454	106,198	14,256	4.4	3.1	1,887
Second quarter	118,191	103,166	15,025	-1.9	-2.9	769
Third quarter	113,144	104,379	8,765	-4.3	1.2	-6,260
Fourth quarter	111,338	101,486	9,852	-1.6	-2.8	1,088
<b>2008</b>						
First quarter	117,996	104,991	13,005	6.0	3.5	3,152
Second quarter	126,385	110,154	16,230	7.1	4.9	3,226
Third quarter	129,144	115,028	14,116	2.2	4.4	-2,114
Fourth quarter	116,332	112,815	3,517	-9.9	-1.9	-10,599
<b>2009</b>						
First quarter	96,550	95,791	759	-17.0	-15.1	-2,758
Second quarter	87,330	89,026	-1,697	-9.6	-7.1	-2,456
Third quarter	89,781	94,017	-4,237	2.8	5.6	-2,540
Fourth quarter	96,102	95,535	567	7.0	1.6	4,803
<b>2009</b>						
January	31,101	32,201	-1,100	-11.1	-9.8	-379
February	33,046	32,363	683	6.3	0.5	1,783
March	32,403	31,226	1,176	-1.9	-3.5	493
April	29,982	30,453	-471	-7.5	-2.5	-1,647
May	28,108	29,485	-1,378	-6.3	-3.2	-907
June	29,239	29,087	152	4.0	-1.3	1,530
July	30,731	31,860	-1,129	5.1	9.5	-1,281
August	29,121	31,219	-2,098	-5.2	-2.0	-969
September	29,928	30,938	-1,010	2.8	-0.9	1,088
October	31,110	30,815	295	3.9	-0.4	1,305
November	31,863	31,825	38	2.4	3.3	-257
December	33,129	32,895	234	4.0	3.4	196
<b>2010</b>						
January	33,102	32,348	755	-0.1	-1.7	521
February	34,018	32,623	1,394	2.8	0.9	640

**Note(s):** Because of rounding, monthly data may not add up to quarterly data and quarterly data may not add up to annual data.

**Table 1-2**  
**Merchandise trade of Canada, balance of payments basis, seasonally adjusted — Constant dollars, 2002**

	Exports	Imports	Trade balance	Period to period change	
				Exports	Imports
	millions of dollars			percent	
2006	443,398	456,881	-13,483	0.0	0.0
2007	449,581	483,522	-33,941	1.4	5.8
2008	415,123	485,171	-70,048	-7.7	0.3
2009	346,061	407,517	-61,456	-16.6	-16.0
<b>2007</b>					
First quarter	113,771	117,511	-3,740	2.0	1.6
Second quarter	113,538	118,154	-4,615	-0.2	0.5
Third quarter	112,008	123,373	-11,366	-1.3	4.4
Fourth quarter	110,264	124,484	-14,220	-1.6	0.9
<b>2008</b>					
First quarter	107,366	123,120	-15,754	-2.6	-1.1
Second quarter	105,949	123,992	-18,043	-1.3	0.7
Third quarter	104,458	124,141	-19,683	-1.4	0.1
Fourth quarter	97,350	113,917	-16,567	-6.8	-8.2
<b>2009</b>					
First quarter	87,873	98,051	-10,178	-9.7	-13.9
Second quarter	82,470	95,835	-13,365	-6.1	-2.3
Third quarter	86,134	105,544	-19,410	4.4	10.1
Fourth quarter	89,585	108,087	-18,502	4.0	2.4
<b>2009</b>					
January	28,328	33,154	-4,826	-8.9	-8.3
February	30,083	33,023	-2,939	6.2	-0.4
March	29,461	31,874	-2,413	-2.1	-3.5
April	28,134	31,673	-3,539	-4.5	-0.6
May	26,926	32,067	-5,140	-4.3	1.2
June	27,410	32,096	-4,686	1.8	0.1
July	29,445	35,263	-5,818	7.4	9.9
August	27,909	35,342	-7,433	-5.2	0.2
September	28,780	34,939	-6,159	3.1	-1.1
October	29,525	35,118	-5,593	2.6	0.5
November	29,541	36,114	-6,572	0.1	2.8
December	30,518	36,855	-6,337	3.3	2.1
<b>2010</b>					
January	30,251	36,465	-6,214	-0.9	-1.1
February	30,660	36,832	-6,172	1.4	1.0

**Note(s):** Because of rounding, monthly data may not add up to quarterly data and quarterly data may not add up to annual data.

**Table 1-3**  
**Merchandise trade of Canada, balance of payments basis, seasonally adjusted — Price indices (Laspeyres)**

	2002=100			Period to period change		
	Exports	Imports	Terms of trade	Exports	Imports	Terms of trade
	price indices (Laspeyres)			percent		
2006	105.1	92.7	113.3	0.0	0.0	0.0
2007	107.2	91.6	117.0	2.0	-1.2	3.2
2008	116.3	97.6	119.1	8.5	6.6	1.9
2009	105.4	96.5	109.3	-9.3	-1.2	-8.2
<b>2007</b>						
First quarter	109.5	95.2	115.0	3.1	1.9	1.2
Second quarter	112.0	92.9	120.5	2.3	-2.4	4.7
Third quarter	105.0	90.1	116.5	-6.2	-3.0	-3.2
Fourth quarter	105.6	88.0	119.9	0.5	-2.3	2.9
<b>2008</b>						
First quarter	111.3	90.4	123.1	5.4	2.7	2.7
Second quarter	118.5	95.2	124.5	6.4	5.2	1.2
Third quarter	121.8	101.1	120.6	2.8	6.2	-3.4
Fourth quarter	114.0	103.9	109.7	-6.4	2.8	-9.2
<b>2009</b>						
First quarter	109.4	100.9	108.4	-4.0	-2.9	-1.2
Second quarter	105.2	97.4	108.0	-3.8	-3.5	-0.3
Third quarter	102.9	94.5	108.9	-2.2	-3.0	0.8
Fourth quarter	105.1	93.2	112.8	2.1	-1.4	3.5
<b>2009</b>						
January	109.2	100.0	109.3	-2.0	-2.7	0.7
February	109.3	100.8	108.5	0.1	0.8	-0.7
March	109.1	102.0	107.0	-0.2	1.3	-1.4
April	106.7	100.3	106.3	-2.3	-1.7	-0.6
May	104.4	96.6	108.1	-2.1	-3.7	1.6
June	104.1	95.4	109.1	-0.3	-1.3	0.9
July	103.6	95.6	108.4	-0.4	0.2	-0.6
August	103.0	94.0	109.6	-0.6	-1.7	1.1
September	103.1	93.9	109.8	0.0	-0.1	0.1
October	104.0	92.6	112.3	0.9	-1.4	2.3
November	105.4	93.4	112.8	1.3	0.9	0.4
December	106.2	93.6	113.5	0.8	0.2	0.6
<b>2010</b>						
January	107.9	93.4	115.5	1.6	-0.2	1.8
February	108.7	94.9	114.6	0.8	1.6	-0.8

**Note(s):** Because of rounding, monthly data may not add up to quarterly data and quarterly data may not add up to annual data.

**Table 2-1**  
**Exports by commodity groupings, balance of payments basis, seasonally adjusted — Current dollars**

	January	February	Change		Year to date			February 2010/ February 2009	
	2010	2010			2009		2010		
	millions of dollars		percent		millions of dollars		percent		
<b>Total</b>	<b>33,102</b>	<b>34,018</b>	<b>915</b>	<b>2.8</b>	<b>64,148</b>	<b>67,120</b>	<b>2,972</b>	<b>4.6</b>	<b>2.9</b>
<b>Agricultural and fishing products</b>	<b>2,944</b>	<b>3,002</b>	<b>58</b>	<b>2.0</b>	<b>6,733</b>	<b>5,945</b>	<b>-787</b>	<b>-11.7</b>	<b>-11.7</b>
Wheat	358	386	29	8.0	1,153	744	-409	-35.5	-33.6
Other agricultural and fishing products	2,586	2,615	29	1.1	5,580	5,201	-378	-6.8	-7.2
Live animals	114	148	34	29.6	336	262	-73	-21.8	-13.7
Fish and fish preparations	333	339	6	1.7	680	672	-8	-1.2	0.1
Barley	14	16	2	14.2	113	29	-84	-74.2	-75.5
Wheat flour	6	7	0	6.0	13	13	0	-0.5	5.3
Other cereals unmilled	40	38	-1	-3.8	116	78	-38	-33.0	-36.3
Other cereal preparations	229	223	-6	-2.7	513	451	-62	-12.0	-17.5
Meat and meat preparations	367	358	-9	-2.4	796	725	-71	-8.9	-8.1
Alcoholic beverages	62	61	-1	-2.0	126	123	-2	-1.7	-7.3
Other food, feed, beverages and tobacco	931	960	29	3.2	1,907	1,891	-16	-0.9	0.3
Rapeseed	268	246	-21	-7.9	561	514	-46	-8.3	-15.0
Other crude vegetable products	222	219	-3	-1.5	418	441	22	5.4	6.2
<b>Energy products</b>	<b>8,608</b>	<b>8,681</b>	<b>73</b>	<b>0.8</b>	<b>13,130</b>	<b>17,290</b>	<b>4,160</b>	<b>31.7</b>	<b>29.4</b>
Crude petroleum	4,577	4,855	278	6.1	5,327	9,432	4,105	77.1	74.1
Natural gas	1,802	1,665	-137	-7.6	3,813	3,467	-346	-9.1	-6.8
Other energy products	2,230	2,161	-69	-3.1	3,990	4,391	401	10.0	1.2
Coal and other bituminous substances	289	310	21	7.4	751	600	-152	-20.2	-25.3
Petroleum and coal products	1,686	1,587	-99	-5.9	2,725	3,273	548	20.1	6.4
Electricity	255	264	9	3.7	514	519	4	0.9	15.4
<b>Forestry products</b>	<b>1,648</b>	<b>1,682</b>	<b>34</b>	<b>2.1</b>	<b>3,557</b>	<b>3,331</b>	<b>-226</b>	<b>-6.4</b>	<b>-6.4</b>
Lumber and sawmill products	622	637	15	2.5	1,145	1,258	113	9.9	10.6
Other crude wood products	61	36	-25	-41.3	87	97	10	11.5	-21.0
Lumber	370	398	27	7.3	643	768	125	19.5	23.3
Other wood fabricated materials	190	203	13	7.1	415	393	-22	-5.4	-2.3
Wood pulp and other wood products	429	443	14	3.2	818	872	53	6.5	10.9
Newsprint and other paper and paperboard	598	603	5	0.8	1,593	1,200	-393	-24.6	-26.6
Newsprint paper	290	286	-4	-1.3	883	577	-307	-34.7	-35.3
Other paper and paperboard	308	316	9	2.9	710	624	-86	-12.1	-16.4
<b>Industrial goods and materials</b>	<b>7,349</b>	<b>7,878</b>	<b>528</b>	<b>7.2</b>	<b>13,515</b>	<b>15,227</b>	<b>1,712</b>	<b>12.7</b>	<b>14.6</b>
Metal ores	751	1,025	274	36.5	1,583	1,776	193	12.2	18.7
Iron ores, concentrates and scrap	352	347	-5	-1.5	755	699	-56	-7.4	-12.4
Copper ores, concentrates and scrap	122	224	102	83.1	131	346	216	165.3	137.1
Nickel ores, concentrates and scrap	69	254	184	265.3	274	323	49	18.0	91.3
Zinc ores, concentrates and scrap	27	7	-20	-73.3	26	35	8	32.7	-59.2
Other ores, concentrates and scrap	180	194	13	7.5	398	374	-24	-6.1	-13.2
Chemicals, plastics and fertilizers	2,405	2,513	108	4.5	4,670	4,918	247	5.3	9.9
Inorganic chemicals	381	352	-28	-7.5	835	733	-102	-12.2	-16.2
Organic chemicals	474	509	35	7.5	745	983	237	31.9	43.8
Fertilizers and fertilizer materials	503	618	115	22.8	954	1,120	167	17.5	40.1
Synthetic rubber and plastics	794	801	7	0.8	1,656	1,595	-60	-3.6	-2.8
Other chemical products	254	233	-20	-8.0	481	487	5	1.1	-5.7

Table 2-1 – continued

## Exports by commodity groupings, balance of payments basis, seasonally adjusted — Current dollars

	January 2010	February 2010	Change	Year to date			February 2010/ February 2009		
				2009		Change			
				millions of dollars	percent			millions of dollars	percent
<b>Metals and alloys</b>	<b>2,856</b>	<b>2,943</b>	<b>87</b>	<b>3.1</b>	<b>4,452</b>	<b>5,799</b>	<b>1,347</b>	<b>30.3</b>	<b>28.1</b>
Primary iron and steel	92	103	11	12.1	37	196	159	433.8	388.7
Steel bars, rods, plates, sheets	268	277	9	3.4	559	545	-14	-2.4	-9.0
Other iron and steel and alloys	227	240	13	5.7	447	467	20	4.5	9.9
Aluminum including alloys	636	638	2	0.4	1,082	1,274	192	17.7	27.7
Copper and alloys	253	322	69	27.3	378	576	197	52.2	70.6
Nickel and alloys	136	113	-23	-16.7	385	249	-136	-35.3	-43.0
Precious metals and alloys	1,014	1,013	-2	-0.2	1,286	2,027	741	57.6	38.4
Zinc and alloys	141	138	-3	-2.3	160	278	118	73.6	70.3
Other non-ferrous metals and alloys	88	98	10	11.7	116	186	70	59.8	82.9
<b>Other industrial goods and materials</b>	<b>1,337</b>	<b>1,397</b>	<b>59</b>	<b>4.4</b>	<b>2,809</b>	<b>2,734</b>	<b>-76</b>	<b>-2.7</b>	<b>-2.0</b>
Asbestos unmanufactured	6	5	-2	-23.8	10	11	1	7.0	-15.4
Other crude animal products	69	49	-20	-28.7	123	119	-4	-3.6	-23.6
Other crude non-metallic minerals	274	322	48	17.3	546	596	50	9.1	18.2
Other crude materials, inedible	50	52	2	4.3	91	102	11	11.9	14.7
Metal fabricated basic products	337	343	6	1.9	761	680	-82	-10.8	-10.1
Textile fabricated materials	175	177	2	1.0	357	352	-5	-1.3	-2.7
Non-metallic mineral basic products	151	160	9	6.1	356	311	-45	-12.6	-10.3
Other fabricated materials	275	289	14	5.0	564	563	-1	-0.2	-2.5
<b>Machinery and equipment</b>	<b>6,008</b>	<b>6,034</b>	<b>27</b>	<b>0.4</b>	<b>15,514</b>	<b>12,042</b>	<b>-3,472</b>	<b>-22.4</b>	<b>-24.7</b>
Industrial and agricultural machinery	1,469	1,384	-85	-5.8	3,811	2,853	-958	-25.1	-24.8
Industrial machinery	1,314	1,237	-77	-5.8	3,441	2,551	-890	-25.9	-25.2
Agricultural machinery includ. tractors	155	147	-8	-5.3	370	302	-68	-18.5	-21.7
Aircraft and other transportation equipment	1,353	1,438	84	6.2	3,670	2,791	-879	-23.9	-28.8
Aircraft, engines, parts	1,061	1,148	87	8.2	3,030	2,209	-821	-27.1	-31.1
Other transportation equipment	292	289	-3	-1.0	640	582	-58	-9.1	-18.0
Other machinery and equipment	3,186	3,213	27	0.8	8,033	6,399	-1,635	-20.4	-22.6
Television, telecommunication equipment	646	649	3	0.5	1,770	1,295	-474	-26.8	-29.2
Office machines and equipment	344	344	0	0.0	914	689	-225	-24.6	-24.6
Other equipment and tools	1,466	1,476	9	0.6	3,565	2,942	-623	-17.5	-19.8
Other end products, inedible	729	743	14	2.0	1,785	1,472	-313	-17.5	-20.5
<b>Automotive products</b>	<b>4,310</b>	<b>4,524</b>	<b>213</b>	<b>4.9</b>	<b>6,326</b>	<b>8,834</b>	<b>2,508</b>	<b>39.7</b>	<b>27.2</b>
Passenger autos and chassis	2,777	3,038	262	9.4	2,907	5,815	2,908	100.0	86.4
Trucks and other motor vehicles	186	177	-9	-4.9	1,182	364	-818	-69.2	-74.8
Motor vehicle parts	1,347	1,308	-39	-2.9	2,237	2,655	418	18.7	6.8
<b>Other consumer goods</b>	<b>1,453</b>	<b>1,432</b>	<b>-22</b>	<b>-1.5</b>	<b>3,181</b>	<b>2,885</b>	<b>-296</b>	<b>-9.3</b>	<b>-11.4</b>
<b>Special transactions trade</b>	<b>319</b>	<b>327</b>	<b>8</b>	<b>2.6</b>	<b>1,235</b>	<b>645</b>	<b>-590</b>	<b>-47.7</b>	<b>-46.3</b>
<b>Unallocated balance of payments adjustments</b>	<b>462</b>	<b>458</b>	<b>-4</b>	<b>-0.9</b>	<b>958</b>	<b>921</b>	<b>-37</b>	<b>-3.9</b>	<b>-3.6</b>

**Table 2-2**  
**Exports by commodity groupings, balance of payments basis, seasonally adjusted — Constant dollars, 2002**

	January	February	Change		Year to date			February 2010/ February 2009	
	2010	2010			2009	2010	Change		
	millions of dollars		percent		millions of dollars			percent	
<b>Total</b>	<b>30,251</b>	<b>30,660</b>	<b>409</b>	<b>1.4</b>	<b>58,412</b>	<b>60,911</b>	<b>2,499</b>	<b>4.3</b>	<b>1.9</b>
<b>Agricultural and fishing products</b>	<b>3,088</b>	<b>3,151</b>	<b>63</b>	<b>2.0</b>	<b>6,105</b>	<b>6,238</b>	<b>134</b>	<b>2.2</b>	<b>2.0</b>
Wheat	373	413	39	10.6	896	786	-110	-12.3	-11.1
Other agricultural and fishing products	2,714	2,738	24	0.9	5,209	5,452	244	4.7	4.3
Live animals	142	183	41	28.6	381	324	-56	-14.7	-6.5
Fish and fish preparations	435	452	17	3.9	745	888	143	19.2	22.9
Barley	15	16	1	7.5	82	30	-52	-63.0	-64.8
Wheat flour	6	7	0	5.5	12	13	1	9.7	15.7
Other cereals unmilled	44	48	4	9.0	91	93	1	1.5	2.1
Other cereal preparations	205	196	-9	-4.3	405	400	-5	-1.1	-7.1
Meat and meat preparations	440	414	-26	-5.8	818	855	37	4.5	3.4
Alcoholic beverages	118	114	-3	-2.8	206	232	26	12.8	6.3
Other food, feed, beverages and tobacco	873	890	16	1.9	1,632	1,763	131	8.0	8.3
Rapeseed	236	220	-16	-6.8	494	455	-39	-7.9	-12.9
Other crude vegetable products	200	199	-2	-1.0	343	399	56	16.4	16.2
<b>Energy products</b>	<b>4,778</b>	<b>4,733</b>	<b>-46</b>	<b>-1.0</b>	<b>9,363</b>	<b>9,511</b>	<b>148</b>	<b>1.6</b>	<b>-1.1</b>
Crude petroleum	1,929	1,965	36	1.9	4,150	3,894	-256	-6.2	-4.2
Natural gas	1,537	1,406	-132	-8.6	2,837	2,943	106	3.8	-0.4
Other energy products	1,312	1,362	50	3.8	2,377	2,674	297	12.5	2.8
Coal and other bituminous substances	140	148	8	6.0	170	288	118	69.6	63.4
Petroleum and coal products	917	915	-2	-0.2	1,793	1,832	39	2.2	-11.4
Electricity	255	299	44	17.2	414	554	140	33.7	48.4
<b>Forestry products</b>	<b>2,141</b>	<b>2,084</b>	<b>-56</b>	<b>-2.6</b>	<b>4,083</b>	<b>4,225</b>	<b>142</b>	<b>3.5</b>	<b>0.0</b>
Lumber and sawmill products	866	820	-46	-5.3	1,518	1,686	169	11.1	4.9
Other crude wood products	91	47	-44	-48.8	111	138	27	24.1	-11.8
Lumber	558	550	-8	-1.4	954	1,108	153	16.1	9.7
Other wood fabricated materials	217	224	6	3.0	452	441	-11	-2.5	-1.9
Wood pulp and other wood products	558	545	-13	-2.3	1,090	1,103	12	1.1	1.0
Newsprint and other paper and paperboard	717	719	3	0.4	1,475	1,436	-40	-2.7	-5.6
Newsprint paper	354	351	-3	-0.8	782	705	-77	-9.8	-9.9
Other paper and paperboard	363	368	5	1.5	694	731	37	5.3	-1.1
<b>Industrial goods and materials</b>	<b>5,236</b>	<b>5,479</b>	<b>243</b>	<b>4.6</b>	<b>10,253</b>	<b>10,715</b>	<b>462</b>	<b>4.5</b>	<b>7.0</b>
Metal ores	400	551	152	37.9	887	951	64	7.2	15.9
Iron ores, concentrates and scrap	170	183	13	7.6	272	354	82	30.2	32.5
Copper ores, concentrates and scrap	42	76	35	83.0	78	118	40	52.0	35.1
Nickel ores, concentrates and scrap	39	143	104	265.8	204	183	-22	-10.7	51.5
Zinc ores, concentrates and scrap	13	4	-9	-70.1	21	16	-5	-21.7	-74.4
Other ores, concentrates and scrap	136	145	9	6.4	313	281	-32	-10.3	-15.7
Chemicals, plastics and fertilizers	1,777	1,736	-41	-2.3	3,327	3,512	185	5.6	5.0
Inorganic chemicals	193	163	-30	-15.5	379	357	-22	-5.9	-13.4
Organic chemicals	307	296	-11	-3.6	626	602	-24	-3.8	0.0
Fertilizers and fertilizer materials	191	248	58	30.3	315	439	124	39.5	68.7
Synthetic rubber and plastics	774	745	-28	-3.7	1,466	1,519	52	3.6	-0.2
Other chemical products	312	283	-29	-9.2	541	596	55	10.1	3.0

Table 2-2 – continued

## Exports by commodity groupings, balance of payments basis, seasonally adjusted — Constant dollars, 2002

	January 2010	February 2010	Change	Year to date			February 2010/ February 2009		
				2009		Change			
				millions of dollars	percent	millions of dollars		percent	
<b>Metals and alloys</b>	<b>1,794</b>	<b>1,837</b>	<b>43</b>	<b>2.4</b>	<b>3,318</b>	<b>3,631</b>	<b>313</b>	<b>9.4</b>	<b>10.3</b>
Primary iron and steel	69	73	4	5.9	21	143	122	592.0	540.8
Steel bars, rods, plates, sheets	232	234	2	0.8	402	465	64	15.9	9.2
Other iron and steel and alloys	200	202	2	1.2	333	403	70	21.0	17.6
Aluminum including alloys	620	637	17	2.7	1,284	1,257	-27	-2.1	5.0
Copper and alloys	84	103	19	22.6	241	187	-54	-22.4	-12.5
Nickel and alloys	72	60	-11	-16.0	278	132	-146	-52.5	-58.2
Precious metals and alloys	411	418	7	1.7	550	830	280	50.9	40.9
Zinc and alloys	69	67	-2	-2.7	139	137	-3	-1.9	-3.7
Other non-ferrous metals and alloys	37	41	4	12.1	70	78	8	11.5	28.9
<b>Other industrial goods and materials</b>	<b>1,265</b>	<b>1,355</b>	<b>90</b>	<b>7.1</b>	<b>2,720</b>	<b>2,620</b>	<b>-100</b>	<b>-3.7</b>	<b>2.2</b>
Asbestos unmanufactured	7	5	-2	-25.4	11	12	1	5.5	-18.2
Other crude animal products	77	58	-19	-24.7	147	135	-12	-8.2	-27.4
Other crude non-metallic minerals	304	389	85	27.9	819	693	-126	-15.3	12.0
Other crude materials, inedible	46	45	-1	-1.6	90	91	1	1.1	0.0
Metal fabricated basic products	272	279	7	2.7	587	551	-36	-6.0	-5.9
Textile fabricated materials	191	189	-2	-0.9	323	380	57	17.7	14.4
Non-metallic mineral basic products	129	132	3	2.6	282	260	-21	-7.5	-4.8
Other fabricated materials	239	257	18	7.3	462	496	35	7.6	4.5
<b>Machinery and equipment</b>	<b>6,721</b>	<b>6,719</b>	<b>-1</b>	<b>0.0</b>	<b>16,223</b>	<b>13,440</b>	<b>-2,783</b>	<b>-17.2</b>	<b>-19.4</b>
Industrial and agricultural machinery	1,358	1,283	-75	-5.5	3,501	2,641	-860	-24.6	-23.4
Industrial machinery	1,214	1,149	-65	-5.3	3,166	2,364	-803	-25.4	-23.7
Agricultural machinery includ. tractors	144	133	-11	-7.3	335	277	-58	-17.2	-20.9
Aircraft and other transportation equipment	1,662	1,752	90	5.4	4,189	3,414	-775	-18.5	-23.6
Aircraft, engines, parts	1,368	1,473	105	7.7	3,570	2,842	-729	-20.4	-24.6
Other transportation equipment	294	279	-15	-5.1	619	573	-46	-7.4	-17.6
Other machinery and equipment	3,701	3,684	-17	-0.4	8,533	7,385	-1,148	-13.5	-15.7
Television, telecommunication equipment	824	819	-4	-0.5	2,015	1,643	-372	-18.5	-21.2
Office machines and equipment	847	835	-12	-1.4	1,836	1,682	-155	-8.4	-8.1
Other equipment and tools	1,397	1,392	-5	-0.3	3,260	2,789	-471	-14.4	-17.9
Other end products, inedible	634	638	4	0.6	1,422	1,271	-150	-10.6	-12.4
<b>Automotive products</b>	<b>5,763</b>	<b>6,025</b>	<b>262</b>	<b>4.5</b>	<b>7,203</b>	<b>11,789</b>	<b>4,586</b>	<b>63.7</b>	<b>48.8</b>
Passenger autos and chassis	4,054	4,387	333	8.2	3,590	8,440	4,850	135.1	118.7
Trucks and other motor vehicles	226	209	-16	-7.2	1,318	435	-883	-67.0	-73.6
Motor vehicle parts	1,484	1,430	-54	-3.7	2,295	2,913	619	27.0	14.3
<b>Other consumer goods</b>	<b>1,391</b>	<b>1,370</b>	<b>-22</b>	<b>-1.6</b>	<b>3,066</b>	<b>2,761</b>	<b>-305</b>	<b>-9.9</b>	<b>-11.8</b>
<b>Special transactions trade</b>	<b>284</b>	<b>296</b>	<b>12</b>	<b>4.1</b>	<b>1,101</b>	<b>580</b>	<b>-521</b>	<b>-47.3</b>	<b>-46.0</b>
<b>Unallocated balance of payments adjustments</b>	<b>850</b>	<b>803</b>	<b>-47</b>	<b>-5.5</b>	<b>1,015</b>	<b>1,653</b>	<b>638</b>	<b>62.9</b>	<b>56.3</b>

**Table 3-1**  
**Domestic exports to selected countries, customs basis, not seasonally adjusted — February**

	Agricultural and fishing products	Energy products	Forestry products	Industrial goods	Machinery and equipment	Automotive products	Consumer goods	Special transactions trade	Total
millions of dollars									
<b>United States</b>									
2009	1,607.9	5,707.1	1,224.4	3,797.6	4,176.8	3,034.2	882.8	475.7	<b>20,906.5</b>
2010	1,340.9	7,516.8	1,057.8	4,125.5	3,018.5	4,152.0	774.3	237.2	<b>22,223.1</b>
<b>Mexico</b>									
2009	77.5	0.6	7.0	65.2	68.9	57.8	2.9	0.8	<b>280.8</b>
2010	138.3	12.7	12.1	73.1	48.9	68.7	21.7	0.0	<b>375.6</b>
<b>Japan</b>									
2009	204.9	183.0	87.5	73.1	86.2	2.9	22.0	1.1	<b>660.7</b>
2010	231.6	67.6	100.6	127.3	77.2	5.7	19.3	0.5	<b>629.7</b>
<b>European Union</b>									
<b>Germany</b>									
2009	11.9	0.1	12.4	36.1	119.2	3.1	10.0	3.5	<b>196.2</b>
2010	11.1	8.1	5.8	107.5	109.6	3.1	13.4	0.8	<b>259.3</b>
<b>France</b>									
2009	12.2	0.1	13.0	91.4	110.6	2.4	27.3	2.7	<b>259.7</b>
2010	9.4	0.1	8.5	47.1	68.1	2.9	14.9	0.9	<b>151.9</b>
<b>United Kingdom</b>									
2009	24.3	0.9	27.9	635.1	95.2	2.9	71.0	4.9	<b>862.4</b>
2010	25.7	16.3	13.9	768.7	84.7	3.8	17.7	3.6	<b>934.3</b>
<b>Italy</b>									
2009	19.2	19.7	20.3	53.9	68.8	0.8	5.1	0.1	<b>187.7</b>
2010	23.8	15.1	25.2	30.9	24.5	0.4	13.3	0.1	<b>133.3</b>
<b>Other European Union</b>									
2009	56.0	79.6	26.9	258.6	242.3	13.3	72.9	3.3	<b>752.9</b>
2010	66.3	54.1	20.5	205.0	247.1	9.6	35.8	4.3	<b>642.7</b>
<b>Total</b>									
2009	123.6	100.4	100.6	1,075.1	636.2	22.4	186.3	14.4	<b>2,258.9</b>
2010	136.3	93.6	73.9	1,159.2	533.9	19.8	95.0	9.7	<b>2,121.4</b>
<b>Newly industrialized countries</b>									
<b>South Korea</b>									
2009	25.7	92.7	30.4	48.2	27.2	0.5	4.4	0.5	<b>229.7</b>
2010	43.1	66.5	32.0	87.5	42.0	7.7	2.9	1.4	<b>283.1</b>
<b>Hong Kong</b>									
2009	37.3	0.0	8.0	29.6	21.3	0.4	5.9	0.4	<b>102.9</b>
2010	37.3	0.1	4.8	48.7	17.8	0.7	4.2	1.1	<b>114.7</b>
<b>Taiwan</b>									
2009	12.1	23.3	11.4	18.5	7.9	0.0	1.2	0.0	<b>74.4</b>
2010	15.1	0.0	18.7	22.6	10.3	0.2	1.6	0.1	<b>68.6</b>
<b>Singapore</b>									
2009	2.6	0.3	0.1	8.4	23.9	1.4	2.3	0.1	<b>38.9</b>
2010	5.9	0.8	0.5	12.8	21.9	0.7	2.7	0.3	<b>45.5</b>
<b>Total</b>									
2009	77.7	116.4	49.9	104.6	80.2	2.3	13.7	1.1	<b>445.9</b>
2010	101.3	67.3	56.0	171.5	92.1	9.3	11.5	2.9	<b>512.0</b>
<b>Other countries</b>									
2009	849.2	147.9	282.3	768.7	839.1	65.2	96.7	41.8	<b>3,090.9</b>
2010	623.8	132.0	346.5	1,051.7	610.9	54.6	171.7	22.3	<b>3,013.4</b>
<b>Total</b>									
2009	<b>2,940.9</b>	<b>6,255.3</b>	<b>1,751.6</b>	<b>5,884.3</b>	<b>5,887.4</b>	<b>3,184.9</b>	<b>1,204.4</b>	<b>535.0</b>	<b>27,643.7</b>
2010	<b>2,572.2</b>	<b>7,890.1</b>	<b>1,646.9</b>	<b>6,708.4</b>	<b>4,381.6</b>	<b>4,310.1</b>	<b>1,093.4</b>	<b>272.6</b>	<b>28,875.2</b>

**Table 3-2**  
**Domestic exports to selected countries, customs basis, not seasonally adjusted — Year to date, January to February**

	Agricultural and fishing products	Energy products	Forestry products	Industrial goods	Machinery and equipment	Automotive products	Consumer goods	Special transactions trade	Total
millions of dollars									
<b>United States</b>									
2009	3,195.1	12,381.7	2,445.3	7,818.2	8,208.0	5,111.0	1,730.1	1,001.2	<b>41,890.6</b>
2010	2,636.3	15,177.7	2,076.1	8,471.6	6,144.9	7,483.8	1,542.5	480.3	<b>44,013.3</b>
<b>Mexico</b>									
2009	165.8	1.6	20.0	120.2	124.6	105.3	6.7	1.0	<b>545.1</b>
2010	217.7	13.7	22.8	158.1	102.7	141.5	27.8	0.4	<b>684.7</b>
<b>Japan</b>									
2009	502.4	300.5	173.8	164.5	151.5	5.8	28.8	1.7	<b>1,329.0</b>
2010	438.7	234.1	194.8	225.4	129.8	11.8	25.6	0.8	<b>1,260.9</b>
<b>European Union</b>									
<b>Germany</b>									
2009	26.6	32.6	22.1	79.7	292.0	6.9	23.6	3.9	<b>487.3</b>
2010	19.7	8.1	14.7	207.2	263.6	5.1	28.4	1.0	<b>547.8</b>
<b>France</b>									
2009	23.1	61.1	20.6	117.0	205.2	4.4	55.5	4.5	<b>491.4</b>
2010	18.0	0.2	21.5	81.6	132.0	5.3	32.9	2.0	<b>293.5</b>
<b>United Kingdom</b>									
2009	49.7	1.4	45.4	1,291.0	290.2	5.5	89.9	7.1	<b>1,780.2</b>
2010	44.4	17.0	32.1	1,519.7	266.8	7.7	32.8	5.7	<b>1,926.2</b>
<b>Italy</b>									
2009	64.0	19.7	48.1	67.9	102.9	1.4	9.7	0.5	<b>314.2</b>
2010	31.0	36.8	50.7	49.7	87.9	0.8	23.7	2.1	<b>282.6</b>
<b>Other European Union</b>									
2009	121.6	158.1	54.2	504.4	544.9	27.9	128.9	6.6	<b>1,546.5</b>
2010	136.7	64.0	48.6	401.5	426.9	18.7	81.5	8.1	<b>1,186.0</b>
<b>Total</b>									
2009	285.0	272.9	190.4	2,060.0	1,435.3	46.0	307.5	22.6	<b>4,619.6</b>
2010	249.7	126.1	167.7	2,259.7	1,177.2	37.6	199.3	18.9	<b>4,236.2</b>
<b>Newly industrialized countries</b>									
<b>South Korea</b>									
2009	43.9	189.4	55.7	118.1	46.1	1.1	6.3	0.8	<b>461.5</b>
2010	73.8	147.2	65.0	153.8	81.4	13.4	7.3	2.0	<b>543.8</b>
<b>Hong Kong</b>									
2009	74.9	0.0	16.5	54.6	79.3	1.0	9.1	1.0	<b>236.4</b>
2010	73.6	0.1	12.8	114.6	36.2	1.3	8.4	1.7	<b>248.8</b>
<b>Taiwan</b>									
2009	27.6	23.5	25.8	38.0	14.4	0.1	3.8	0.1	<b>133.3</b>
2010	26.1	23.4	35.7	42.6	20.1	0.6	6.8	0.2	<b>155.5</b>
<b>Singapore</b>									
2009	5.2	1.2	0.5	14.8	45.3	2.7	4.8	0.3	<b>74.7</b>
2010	11.0	1.3	2.7	23.1	45.6	2.5	6.0	0.4	<b>92.6</b>
<b>Total</b>									
2009	151.7	214.1	98.5	225.4	185.1	4.9	24.0	2.1	<b>905.8</b>
2010	184.6	172.0	116.2	334.1	183.2	17.8	28.6	4.3	<b>1,040.7</b>
<b>Other countries</b>									
2009	1,566.8	200.4	538.9	1,472.6	1,576.8	108.9	191.0	58.7	<b>5,714.0</b>
2010	1,364.4	201.3	651.3	1,903.3	1,184.8	104.0	255.4	34.7	<b>5,699.2</b>
<b>Total</b>									
2009	<b>5,866.8</b>	<b>13,371.1</b>	<b>3,466.8</b>	<b>11,860.9</b>	<b>11,681.3</b>	<b>5,381.9</b>	<b>2,288.5</b>	<b>1,087.3</b>	<b>55,004.6</b>
2010	<b>5,091.5</b>	<b>15,924.8</b>	<b>3,228.8</b>	<b>13,352.3</b>	<b>8,922.7</b>	<b>7,796.5</b>	<b>2,079.1</b>	<b>539.4</b>	<b>56,935.0</b>

**Table 4**  
**Domestic exports by country, customs basis, not seasonally adjusted**

	February		January to February		Change January to February 2010/ January to February 2009
	2009	2010	2009	2010	
millions of dollars					
<b>North America</b>					
Greenland	1.1	0.5	2.2	1.8	-19.4
Mexico	280.8	375.6	545.1	684.7	25.6
Saint Pierre and Miquelon	1.0	1.2	1.9	2.2	20.5
United States	20,906.5	22,223.1	41,890.6	44,013.3	5.1
<b>Total</b>	<b>21,189.4</b>	<b>22,600.4</b>	<b>42,439.8</b>	<b>44,702.0</b>	<b>5.3</b>
<b>Western Europe</b>					
Andorra	0.0	0.0	0.0	0.0	485.6
Austria	78.3	15.2	126.4	49.1	-61.2
Belgium	178.8	97.3	350.7	178.9	-49.0
Denmark	45.0	14.5	95.0	32.8	-65.5
Faeroe Islands	0.0	0.0	0.5	0.0	-91.3
Finland	15.1	13.0	85.2	28.7	-66.3
France	259.7	151.9	491.4	293.5	-40.3
Germany	196.2	259.3	487.3	547.8	12.4
Gibraltar	0.0	0.0	0.0	0.0	-100.0
Greece	9.1	4.9	16.5	10.6	-35.7
Iceland	2.5	5.4	3.5	10.3	192.8
Italy	187.7	133.3	314.2	282.6	-10.0
Luxembourg	6.2	6.8	9.4	10.1	7.3
Malta	1.5	48.7	2.2	49.3	...
Netherlands	197.2	222.1	400.1	408.6	2.1
Norway	78.4	254.0	219.8	377.1	71.6
Portugal	10.1	51.9	15.7	57.9	268.6
Republic of Ireland (Eire)	51.5	15.7	94.2	56.5	-40.0
Spain	95.2	73.2	180.5	141.7	-21.5
Sweden	18.9	28.4	38.2	48.6	27.2
Switzerland	111.1	26.7	184.4	244.9	32.8
United Kingdom	862.4	934.3	1,780.2	1,926.2	8.2
<b>Total</b>	<b>2,404.7</b>	<b>2,356.5</b>	<b>4,895.4</b>	<b>4,755.2</b>	<b>-2.9</b>
<b>Other Europe</b>					
Albania	0.6	2.1	0.7	2.6	257.4
Armenia	0.3	0.7	0.7	1.2	74.4
Azerbaijan	0.8	1.2	2.5	1.8	-29.0
Belarus	0.4	0.1	0.4	0.1	-71.4
Bosnia and Herzegovina	0.0	0.3	0.4	0.5	22.1
Bulgaria	1.4	1.4	2.1	22.3	947.5
Croatia	1.9	28.8	3.4	30.3	791.3
Czech Republic	8.9	11.5	19.8	19.9	0.3
Estonia	1.4	1.8	2.2	2.8	27.6
Georgia	0.7	1.8	1.1	3.0	167.8
Hungary	6.8	6.1	15.3	10.7	-29.7
Kazakhstan	25.1	49.1	39.8	57.8	45.5
Kyrgyzstan	0.7	0.0	1.0	0.1	-92.1
Latvia	2.1	0.8	3.9	2.0	-49.2
Lithuania	4.3	1.5	5.8	2.7	-54.5
Macedonia (Former Yugoslav Republic of Macedonia)	1.5	1.1	2.3	1.9	-19.7
Montenegro	0.1	0.1	0.2	0.1	-50.5
Poland	12.2	9.9	36.3	25.4	-30.2
Republic of Moldova	0.3	0.1	0.3	0.1	-59.9
Romania	5.3	5.9	8.9	13.2	49.4
Russian Federation	74.4	56.1	142.1	100.8	-29.1
Serbia	0.7	0.4	2.2	0.7	-66.2
Slovakia	1.2	10.0	2.4	11.5	387.8
Slovenia	1.6	1.2	33.6	1.5	-95.5
Tajikistan	0.2	0.3	0.3	1.1	236.2
Turkmenistan	1.0	0.1	1.2	0.4	-67.6
Ukraine	4.0	7.0	8.8	14.6	66.1
Uzbekistan	0.3	0.1	4.4	0.9	-80.5
<b>Total</b>	<b>158.2</b>	<b>199.5</b>	<b>342.1</b>	<b>329.9</b>	<b>-3.6</b>
<b>Middle East</b>					
Bahrain	1.2	1.1	3.0	2.5	-16.3

Table 4 – continued

## Domestic exports by country, customs basis, not seasonally adjusted

	February		January to February		Change
	2009	2010	2009	2010	January to February 2010/ January to February 2009
	millions of dollars				
Cyprus	0.9	0.8	2.1	1.4	-35.4
Egypt	30.9	35.7	58.1	55.5	-4.4
Eritrea	0.0	0.9	0.0	1.2	...
Ethiopia	0.1	0.5	0.6	0.8	32.6
Iran	15.4	8.3	59.0	14.6	-75.2
Iraq	19.5	4.2	72.6	6.1	-91.6
Israel	29.9	30.8	54.7	52.0	-4.9
Jordan	8.6	5.1	10.8	11.6	8.0
Kuwait	3.7	5.1	11.6	13.6	17.8
Lebanon	4.6	5.4	10.2	10.6	4.0
Libya	65.5	22.9	108.1	42.6	-60.6
Oman	9.2	9.7	21.2	19.1	-9.9
Qatar	6.8	13.9	13.0	17.6	35.6
Saudi Arabia	130.4	32.7	226.1	149.9	-33.7
Somalia	0.0	0.0	0.0	0.0	139.6
Sudan	2.2	1.0	8.6	7.6	-11.6
Syria	1.7	2.3	4.3	4.3	0.8
Turkey	88.8	126.1	122.1	168.2	37.7
United Arab Emirates	86.3	66.3	164.2	167.9	2.2
Yemen	0.9	3.2	2.4	4.5	86.4
<b>Total</b>	<b>506.5</b>	<b>375.9</b>	<b>952.7</b>	<b>751.8</b>	<b>-21.1</b>
<b>Other Africa</b>					
Algeria	65.1	24.7	92.3	48.0	-48.0
Angola	4.9	7.0	12.0	9.5	-20.7
Antarctica	0.0	0.0	0.0	0.0	-37.3
Benin	0.7	0.7	1.4	1.1	-16.7
Botswana	0.4	0.1	0.9	0.2	-81.5
Burkina Faso	0.5	1.5	0.7	3.3	363.9
Burundi	0.1	0.1	0.2	0.1	-33.3
Cameroon	1.3	2.5	1.9	2.6	42.7
Cape Verde	0.0	0.0	0.1	0.2	65.9
Chad	1.2	0.6	3.2	1.0	-68.9
Comoros	0.0	0.0	0.0	0.0	-100.0
Congo	4.2	1.7	5.4	2.2	-59.1
Democratic Republic of the Congo	2.1	0.9	3.3	1.9	-41.3
Djibouti	0.2	0.1	1.2	0.1	-90.8
Equatorial Guinea	0.3	0.1	0.6	0.3	-48.2
French Southern Territories	0.0	0.0	0.0	0.0	-64.9
Gabon	1.1	1.4	9.6	3.2	-66.8
Gambia	0.1	0.1	0.1	0.1	-4.2
Ghana	13.2	15.7	23.7	27.1	14.4
Guinea	2.9	0.5	3.8	0.8	-80.2
Ivory Coast	0.9	0.6	5.2	1.0	-80.7
Kenya	6.3	3.8	13.1	6.1	-53.1
Lesotho	0.0	0.0	0.0	0.0	0.0
Liberia	0.2	0.5	0.5	2.2	371.7
Madagascar	2.5	2.9	7.2	8.2	15.1
Malawi	0.2	0.3	0.4	0.6	27.6
Mali	1.1	0.3	1.2	0.7	-42.3
Mauritania	0.5	0.0	0.7	0.1	-86.6
Mauritius	0.5	0.1	0.9	0.3	-69.6
Morocco	18.5	3.9	20.7	7.8	-62.5
Mozambique	0.4	0.6	0.6	1.5	164.0
Namibia	0.0	0.0	0.7	0.1	-91.8
Niger	0.2	0.3	0.4	0.3	-22.1
Nigeria	4.7	17.4	27.1	21.4	-20.8
Rwanda	0.1	0.1	0.1	0.2	73.2
Saint Helena	0.0	0.0	0.0	0.0	-100.0
Sao Tome and Principe	0.0	0.0	0.0	0.0	...
Senegal	0.6	1.2	2.8	3.1	10.7
Seychelles	0.1	0.0	0.2	0.0	-79.2
Sierra Leone	0.5	0.5	0.7	1.7	126.5
South Africa	33.5	32.9	67.2	58.6	-12.8
Swaziland	0.0	0.0	0.1	0.1	-32.7
Togo	0.9	2.1	1.7	2.4	35.6

Table 4 – continued

## Domestic exports by country, customs basis, not seasonally adjusted

	February		January to February		Change
	2009	2010	2009	2010	January to February 2010/ January to February 2009
millions of dollars					
Tunisia	1.5	5.5	3.1	20.2	551.5
Uganda	0.4	0.9	4.1	2.0	-50.9
United Republic of Tanzania	4.9	2.9	6.9	4.5	-35.6
Zambia	0.7	13.2	1.4	13.3	837.9
Zimbabwe	2.3	0.0	6.9	0.5	-92.8
<b>Total</b>	<b>179.9</b>	<b>147.8</b>	<b>334.2</b>	<b>258.6</b>	<b>-22.6</b>
<b>Other Asia</b>					
Afghanistan	13.3	16.9	14.5	19.1	32.3
Bangladesh	115.2	47.4	206.1	131.9	-36.0
Bhutan	0.0	0.0	0.0	0.0	-100.0
British Indian Ocean Territory	0.0	0.6	0.0	0.6	...
Brunei Darussalam	0.1	0.4	0.2	5.9	...
Cambodia	0.2	0.2	0.4	0.3	-23.4
China	912.7	874.7	1,706.5	1,513.9	-11.3
Hong Kong	102.9	114.7	236.4	248.8	5.2
India	126.3	89.6	221.9	221.1	-0.4
Indonesia	95.1	82.1	143.9	127.8	-11.2
Japan	660.7	629.7	1,329.0	1,260.9	-5.1
Laos	0.4	0.3	0.5	0.4	-21.3
Macau	3.2	0.2	5.7	0.6	-89.1
Malaysia	25.5	42.6	66.8	101.2	51.5
Maldives	0.5	0.2	0.8	0.6	-23.0
Mongolia	0.3	0.9	0.4	2.1	407.4
Nepal	0.2	0.0	0.3	0.1	-74.1
North Korea	3.4	0.3	6.1	1.3	-78.0
Pakistan	42.7	9.3	53.2	38.0	-28.5
Philippines	54.4	47.1	88.3	69.6	-21.2
Singapore	38.9	45.5	74.7	92.6	24.0
South Korea	229.7	283.1	461.5	543.8	17.9
Sri Lanka	31.1	30.0	59.4	77.9	31.2
Taiwan	74.4	68.6	133.3	155.5	16.7
Thailand	31.5	86.4	64.2	128.6	100.3
Viet Nam	8.8	9.9	15.8	34.0	114.9
<b>Total</b>	<b>2,571.2</b>	<b>2,480.9</b>	<b>4,889.7</b>	<b>4,776.7</b>	<b>-2.3</b>
<b>Oceania</b>					
American Samoa	0.0	0.1	0.1	0.1	9.5
Australia	185.3	158.2	300.3	324.2	8.0
Christmas Island	0.0	0.0	0.1	0.0	-17.4
Cocos (Keeling) Islands	0.0	0.0	0.0	0.0	169.3
Fiji	2.1	0.1	2.3	0.3	-87.9
French Polynesia	0.6	0.5	1.2	1.3	15.3
Guam	0.2	0.1	0.3	0.2	-48.1
Kiribati	0.0	0.0	0.0	0.0	...
Nauru	0.0	0.0	0.0	0.0	-100.0
New Caledonia	0.2	2.1	0.6	3.3	500.0
New Zealand	42.9	22.6	65.4	46.2	-29.3
Norfolk Island	0.0	0.0	0.3	0.0	-100.0
Papua New Guinea	0.3	0.6	1.1	1.2	1.9
Pitcairn	0.0	0.0	0.0	0.0	-24.6
Samoa	0.1	0.1	0.1	0.1	4.0
Solomon Islands	0.1	0.0	0.1	0.0	-100.0
United States Minor Outlying Islands	0.7	1.0	1.4	2.6	91.7
Vanuatu	0.6	0.1	0.7	0.2	-68.0
<b>Total</b>	<b>232.9</b>	<b>185.5</b>	<b>373.8</b>	<b>379.9</b>	<b>1.6</b>
<b>South America</b>					
Argentina	11.9	11.4	22.0	28.2	28.4
Bolivia	0.4	0.9	1.9	1.2	-37.7
Brazil	70.0	236.2	126.1	341.6	171.0
Chile	61.7	32.8	95.4	72.6	-23.9
Colombia	42.0	48.4	91.2	84.1	-7.9
Ecuador	11.2	15.1	41.8	37.6	-9.9
Falkland Islands (Malvinas)	0.0	0.0	0.0	0.0	...
Guyana	0.6	3.0	3.2	4.9	52.9

Table 4 – continued

## Domestic exports by country, customs basis, not seasonally adjusted

	February		January to February		Change
	2009	2010	2009	2010	January to February 2010/ January to February 2009
millions of dollars					
Paraguay	1.6	0.8	2.0	1.4	-29.2
Peru	25.5	30.5	61.7	70.5	14.2
Suriname	0.7	0.8	0.9	1.5	74.0
Uruguay	1.7	2.0	3.7	4.0	5.5
Venezuela	67.1	17.6	133.3	55.3	-58.5
<b>Total</b>	<b>294.4</b>	<b>399.7</b>	<b>583.1</b>	<b>702.9</b>	<b>20.5</b>
<b>Central America Antilles</b>					
Anguilla	0.4	0.1	0.5	0.1	-72.0
Antigua and Barbuda	0.8	1.3	1.4	3.7	165.8
Aruba	0.6	0.3	0.8	0.6	-31.0
Bahamas	2.5	1.7	4.8	27.6	468.7
Barbados	2.6	3.6	4.6	6.1	32.8
Belize	0.6	0.3	1.0	0.6	-34.2
Bermuda	4.8	2.6	8.6	5.2	-39.4
British Virgin Islands	0.1	19.7	1.4	19.9	...
Cayman Islands	0.7	0.5	0.8	0.9	4.2
Costa Rica	5.0	9.0	8.2	14.6	77.4
Cuba	27.9	17.2	40.1	44.3	10.4
Dominica	0.4	0.5	0.8	1.1	48.3
Dominican Republic	8.1	15.0	19.3	27.2	41.2
El Salvador	2.7	2.9	4.5	8.9	97.2
Grenada	0.5	0.8	1.0	1.2	29.8
Guatemala	5.7	4.4	20.3	10.6	-47.8
Haiti	2.1	0.5	6.0	7.2	18.8
Honduras	1.9	1.6	4.0	3.2	-18.2
Jamaica	7.8	15.5	14.5	27.2	87.6
Montserrat	0.0	0.0	0.1	0.0	-20.4
Netherlands Antilles	2.4	3.3	3.8	4.5	18.8
Nicaragua	1.8	0.7	2.9	1.0	-65.8
Panama	10.5	6.2	16.5	15.2	-7.9
Saint Kitts and Nevis	0.4	1.0	1.2	1.3	8.3
Saint Lucia	0.7	0.7	1.4	1.2	-9.9
Saint Vincent and the Grenadines	0.5	0.3	1.2	0.7	-38.2
Trinidad and Tobago	14.7	18.8	23.4	43.1	84.6
Turks and Caicos Islands	0.4	0.3	0.6	0.7	16.1
<b>Total</b>	<b>106.6</b>	<b>129.0</b>	<b>193.7</b>	<b>278.1</b>	<b>43.6</b>
<b>All countries</b>	<b>27,643.7</b>	<b>28,875.2</b>	<b>55,004.6</b>	<b>56,935.0</b>	<b>3.5</b>

**Table 5-1**  
**Exports by province of origin, customs basis, not seasonally adjusted — February**

	Agricultural and fishing products	Energy products	Forestry products	Industrial goods	Machinery and equipment	Automotive products	Consumer goods	Special transactions trade	Total
millions of dollars									
<b>Domestic exports</b>									
Newfoundland and Labrador									
2009	25.4	529.1	35.5	118.9	6.5	0.1	0.1	3.6	<b>719.2</b>
2010	33.9	410.0	8.1	77.2	3.5	0.0	0.0	1.7	<b>534.4</b>
Prince Edward Island									
2009	36.9	0.0	0.0	2.2	14.8	0.0	2.3	7.6	<b>63.9</b>
2010	29.2	0.1	0.0	1.3	7.2	0.1	1.9	4.9	<b>44.5</b>
Nova Scotia									
2009	67.0	82.1	61.9	41.0	97.3	7.3	6.8	6.6	<b>370.1</b>
2010	59.8	49.1	53.6	38.6	102.1	3.7	3.5	3.1	<b>313.4</b>
New Brunswick									
2009	75.6	439.9	102.8	30.2	27.0	2.3	7.9	6.5	<b>692.2</b>
2010	71.4	699.3	86.0	97.8	20.7	2.1	17.8	3.0	<b>998.1</b>
Quebec									
2009	349.8	250.7	508.8	1,318.3	1,877.1	136.1	343.4	123.4	<b>4,907.4</b>
2010	325.7	230.0	453.4	1,530.4	1,369.8	111.2	396.9	76.9	<b>4,494.3</b>
Ontario									
2009	625.4	258.5	266.0	2,468.1	2,963.9	2,917.1	743.9	254.4	<b>10,497.4</b>
2010	560.5	247.1	220.0	2,927.5	2,248.1	4,098.1	598.6	124.8	<b>11,024.7</b>
Manitoba									
2009	344.4	37.0	23.9	183.9	179.9	57.6	38.0	30.8	<b>895.5</b>
2010	294.4	48.6	15.1	167.9	129.6	37.5	23.3	18.5	<b>734.8</b>
Saskatchewan									
2009	640.4	411.7	22.5	438.8	91.5	3.4	1.3	7.4	<b>1,617.0</b>
2010	556.6	712.1	10.2	635.6	60.6	2.5	1.7	3.6	<b>1,982.9</b>
Alberta									
2009	609.6	3,563.3	148.5	709.7	375.9	44.6	16.3	53.7	<b>5,521.6</b>
2010	486.8	4,871.2	165.5	788.3	232.2	32.3	9.7	19.3	<b>6,605.3</b>
British Columbia									
2009	166.1	683.1	581.7	362.1	252.9	16.2	44.6	40.8	<b>2,147.5</b>
2010	153.5	622.7	634.9	423.4	206.5	22.6	39.9	17.1	<b>2,120.6</b>
Yukon, Northwest Territories and Nunavut <sup>1</sup>									
2009	0.3	0.0	0.0	211.1	0.3	0.1	0.0	0.1	<b>212.0</b>
2010	0.3	0.0	0.0	20.4	1.4	0.0	0.1	0.0	<b>22.2</b>
<b>Total</b>									
2009	<b>2,940.9</b>	<b>6,255.3</b>	<b>1,751.6</b>	<b>5,884.3</b>	<b>5,887.4</b>	<b>3,184.9</b>	<b>1,204.4</b>	<b>535.0</b>	<b>27,643.7</b>
2010	<b>2,572.2</b>	<b>7,890.1</b>	<b>1,646.9</b>	<b>6,708.4</b>	<b>4,381.6</b>	<b>4,310.1</b>	<b>1,093.4</b>	<b>272.6</b>	<b>28,875.2</b>
<b>Re-exports</b>									
2009	<b>38.9</b>	<b>34.5</b>	<b>5.1</b>	<b>171.8</b>	<b>985.9</b>	<b>85.0</b>	<b>169.5</b>	<b>690.6</b>	<b>2,181.4</b>
2010	<b>44.1</b>	<b>14.8</b>	<b>5.4</b>	<b>165.0</b>	<b>736.0</b>	<b>81.7</b>	<b>134.6</b>	<b>548.7</b>	<b>1,730.3</b>
<b>Total exports</b>									
2009	<b>2,979.8</b>	<b>6,289.8</b>	<b>1,756.8</b>	<b>6,056.1</b>	<b>6,873.3</b>	<b>3,269.8</b>	<b>1,374.0</b>	<b>1,225.6</b>	<b>29,825.1</b>
2010	<b>2,616.4</b>	<b>7,904.9</b>	<b>1,652.3</b>	<b>6,873.4</b>	<b>5,117.5</b>	<b>4,391.8</b>	<b>1,228.0</b>	<b>821.3</b>	<b>30,605.5</b>

1. Data for the current month do not include some exports from the Harmonized System, Chapter 71, "Natural/cultured pearls, precious stones and metals, coins, etc." for reasons relating to timing.

**Table 5-2**  
**Exports by province of origin, customs basis, not seasonally adjusted — Year to date, January to February**

	Agricultural and fishing products	Energy products	Forestry products	Industrial goods	Machinery and equipment	Automotive products	Consumer goods	Special transactions trade	Total
millions of dollars									
<b>Domestic exports</b>									
Newfoundland and Labrador									
2009	44.4	889.9	52.4	217.6	13.3	0.1	0.1	8.9	<b>1,226.7</b>
2010	62.4	901.5	16.2	165.2	6.3	0.1	0.1	3.8	<b>1,155.6</b>
Prince Edward Island									
2009	77.6	0.0	0.0	3.1	31.1	0.1	5.1	18.2	<b>135.1</b>
2010	58.4	0.3	0.3	4.1	20.3	0.2	3.6	7.7	<b>94.8</b>
Nova Scotia									
2009	133.3	189.4	113.4	90.1	183.1	17.4	12.0	13.7	<b>752.3</b>
2010	107.9	79.6	113.9	81.3	194.3	6.9	9.7	6.3	<b>599.9</b>
New Brunswick									
2009	154.6	938.9	216.1	75.8	51.1	4.6	17.4	14.7	<b>1,473.3</b>
2010	153.5	1,541.1	186.9	185.8	42.6	4.2	35.1	6.5	<b>2,155.7</b>
Quebec									
2009	686.4	527.2	1,015.9	2,633.7	3,693.4	243.1	615.5	242.3	<b>9,657.7</b>
2010	663.0	541.5	896.2	3,037.1	2,846.6	218.0	726.9	140.8	<b>9,070.0</b>
Ontario									
2009	1,243.5	578.3	555.5	4,971.5	5,884.3	4,875.2	1,456.0	526.5	<b>20,090.9</b>
2010	1,112.4	491.6	445.1	5,922.2	4,497.3	7,380.5	1,144.3	246.4	<b>21,239.7</b>
Manitoba									
2009	697.9	82.9	46.7	383.3	357.2	108.6	55.7	61.5	<b>1,793.7</b>
2010	586.0	96.3	30.4	346.0	262.1	67.8	54.5	42.7	<b>1,485.8</b>
Saskatchewan									
2009	1,267.2	884.7	51.1	1,034.1	164.2	5.4	2.7	17.5	<b>3,426.8</b>
2010	1,101.1	1,402.4	25.8	1,214.9	130.3	8.2	2.8	7.7	<b>3,893.1</b>
Alberta									
2009	1,231.8	7,978.3	280.9	1,407.8	792.5	88.5	32.4	105.3	<b>11,917.5</b>
2010	958.1	9,629.9	323.0	1,576.6	497.1	67.0	17.9	42.5	<b>13,112.0</b>
British Columbia									
2009	329.7	1,301.4	1,134.8	678.7	510.3	38.7	91.0	78.8	<b>4,163.3</b>
2010	288.3	1,240.8	1,190.9	782.8	424.0	43.4	84.0	35.1	<b>4,089.4</b>
Yukon, Northwest Territories and Nunavut <sup>1</sup>									
2009	0.3	0.0	0.0	365.3	0.8	0.1	0.6	0.1	<b>367.2</b>
2010	0.5	0.0	0.0	36.3	1.9	0.1	0.1	0.1	<b>39.0</b>
<b>Total</b>									
2009	<b>5,866.8</b>	<b>13,371.1</b>	<b>3,466.8</b>	<b>11,860.9</b>	<b>11,681.3</b>	<b>5,381.9</b>	<b>2,288.5</b>	<b>1,087.3</b>	<b>55,004.6</b>
2010	<b>5,091.5</b>	<b>15,924.8</b>	<b>3,228.8</b>	<b>13,352.3</b>	<b>8,922.7</b>	<b>7,796.5</b>	<b>2,079.1</b>	<b>539.4</b>	<b>56,935.0</b>
<b>Re-exports</b>									
2009	<b>96.9</b>	<b>73.3</b>	<b>12.7</b>	<b>369.2</b>	<b>1,956.9</b>	<b>165.3</b>	<b>332.2</b>	<b>1,376.2</b>	<b>4,382.8</b>
2010	<b>102.3</b>	<b>91.1</b>	<b>10.4</b>	<b>361.8</b>	<b>1,465.7</b>	<b>154.2</b>	<b>290.6</b>	<b>1,087.7</b>	<b>3,563.8</b>
<b>Total exports</b>									
2009	<b>5,963.7</b>	<b>13,444.4</b>	<b>3,479.6</b>	<b>12,230.1</b>	<b>13,638.2</b>	<b>5,547.2</b>	<b>2,620.7</b>	<b>2,463.4</b>	<b>59,387.3</b>
2010	<b>5,193.8</b>	<b>16,015.9</b>	<b>3,239.2</b>	<b>13,714.1</b>	<b>10,388.4</b>	<b>7,950.7</b>	<b>2,369.7</b>	<b>1,627.1</b>	<b>60,498.8</b>

1. Data for the current month do not include some exports from the Harmonized System Chapter 71, "Natural/cultured pearls, precious stones and metals, coins, etc." for reasons relating to timing.

**Table 6-1**  
**Imports by commodity groupings, balance of payments basis, seasonally adjusted — Current dollars**

	January	February	Change		Year to date			February 2010/ February 2009	
	2010	2010			2009	2010	Change		
	millions of dollars		percent		millions of dollars		percent		
<b>Total</b>	<b>32,348</b>	<b>32,623</b>	<b>275</b>	<b>0.9</b>	<b>64,565</b>	<b>64,971</b>	<b>406</b>	<b>0.6</b>	<b>0.8</b>
<b>Agricultural and fishing products</b>	<b>2,361</b>	<b>2,380</b>	<b>19</b>	<b>0.8</b>	<b>5,093</b>	<b>4,742</b>	<b>-351</b>	<b>-6.9</b>	<b>-5.9</b>
Fruits and vegetables	657	677	20	3.0	1,418	1,334	-85	-6.0	-4.5
Fresh fruits and berries	238	245	7	3.1	493	484	-9	-1.9	0.0
Dried fruits, fruits and fruit preparations	107	107	0	-0.3	275	214	-61	-22.1	-23.1
Fresh vegetables	171	179	8	5.0	360	350	-10	-2.7	-0.7
Other vegetables and vegetable preparations	140	145	5	3.2	290	285	-5	-1.7	1.0
Other agricultural and fishing products	1,704	1,703	-1	-0.1	3,674	3,408	-266	-7.2	-6.5
Live animals	13	16	3	22.2	33	29	-4	-12.4	6.3
Meat and meat preparations	165	174	9	5.5	366	340	-26	-7.2	-4.9
Fish and marine animals	154	155	1	0.5	360	310	-50	-13.9	-14.7
Cocoa, coffee, tea and other food preparations	403	385	-18	-4.4	848	788	-60	-7.1	-8.7
Dairy produce, eggs and honey	42	45	3	6.9	90	87	-3	-3.8	-2.7
Corn (maize) shelled	43	49	7	15.4	98	92	-7	-6.7	4.4
Other cereals and cereal preparations	178	173	-5	-2.8	410	350	-59	-14.5	-18.5
Sugar and sugar preparations	148	143	-6	-3.7	283	291	8	2.8	-1.2
Fodder, feed, excluding unmilled cereal	112	117	6	5.1	263	229	-34	-12.8	-9.6
Beverages	298	292	-6	-2.1	645	590	-55	-8.5	-2.8
Tobacco	30	32	1	4.0	58	62	5	7.9	17.4
Crude vegetable products	117	121	4	3.8	219	238	18	8.4	8.6
Cotton	1	1	0	10.0	2	2	1	31.3	20.7
<b>Energy products</b>	<b>3,371</b>	<b>2,894</b>	<b>-477</b>	<b>-14.2</b>	<b>5,621</b>	<b>6,265</b>	<b>644</b>	<b>11.5</b>	<b>4.0</b>
Crude petroleum	1,984	1,625	-359	-18.1	2,738	3,608	870	31.8	36.4
Other energy products	1,388	1,269	-119	-8.6	2,883	2,656	-226	-7.9	-20.3
Coal and other related products	582	486	-96	-16.5	1,169	1,067	-102	-8.7	-31.7
Petroleum and coal products	806	783	-23	-2.8	1,713	1,589	-124	-7.3	-11.1
<b>Forestry products</b>	<b>206</b>	<b>221</b>	<b>15</b>	<b>7.3</b>	<b>431</b>	<b>428</b>	<b>-3</b>	<b>-0.6</b>	<b>5.0</b>
Forestry products	206	221	15	7.3	431	428	-3	-0.6	5.0
Crude wood products	34	34	0	0.8	93	68	-25	-27.1	-25.8
Wood fabricated materials	173	188	15	8.6	338	360	23	6.7	13.5
<b>Industrial goods and materials</b>	<b>6,462</b>	<b>6,477</b>	<b>15</b>	<b>0.2</b>	<b>13,494</b>	<b>12,938</b>	<b>-555</b>	<b>-4.1</b>	<b>-4.5</b>
Metals and metal ores	2,334	2,315	-19	-0.8	4,314	4,649	335	7.8	7.0
Metals in ores, concentrates and scrap	591	575	-16	-2.7	1,017	1,166	149	14.7	5.5
Steel bars, rods, plates, sheets	489	522	33	6.7	860	1,011	151	17.6	21.2
Other iron and steel products	292	283	-8	-2.9	912	575	-337	-36.9	-34.2
Precious metals including alloys	584	593	9	1.5	911	1,177	266	29.2	28.2
Other non-ferrous metals and alloys	378	342	-37	-9.7	614	720	106	17.2	15.5
Chemicals and plastics	2,224	2,236	13	0.6	4,856	4,460	-396	-8.1	-10.6
Organic chemicals	528	486	-42	-8.0	1,269	1,013	-256	-20.1	-25.1
Plastic materials	756	778	21	2.8	1,511	1,534	23	1.5	2.5
Other chemicals and related products	940	973	34	3.6	2,076	1,913	-163	-7.9	-11.1
Other industrial goods and materials	1,904	1,925	21	1.1	4,324	3,829	-495	-11.4	-9.1
Crude animal products	15	18	3	17.2	39	34	-6	-14.3	-2.8
Wool and man-made fibres	18	19	0	1.7	38	37	-1	-3.1	-2.1
Crude non-metallic minerals	71	71	0	-0.1	136	142	5	4.0	8.2
Textile fabricated materials	181	184	3	1.6	408	366	-43	-10.5	-10.5
Metal fabricated basic products	738	741	4	0.5	1,680	1,479	-201	-12.0	-10.7
Rubber fabricated materials	79	82	3	3.9	161	160	-1	-0.7	3.3
Oils, fats, animal and vegetable	98	93	-5	-5.4	226	191	-35	-15.4	-19.0
Non-metallic minerals	273	270	-4	-1.3	602	543	-58	-9.7	-9.7
Other fabricated materials	430	447	17	4.0	1,033	877	-156	-15.1	-7.9

Table 6-1 – continued

## Imports by commodity groupings, balance of payments basis, seasonally adjusted — Current dollars

	January 2010	February 2010	Change		Year to date			February 2010/ February 2009	
					2009	2010	Change		
	millions of dollars		percent		millions of dollars			percent	
<b>Machinery and equipment</b>	<b>8,413</b>	<b>8,688</b>	<b>275</b>	<b>3.3</b>	<b>19,714</b>	<b>17,101</b>	<b>-2,613</b>	<b>-13.3</b>	<b>-12.8</b>
Industrial and agricultural machinery	2,038	2,180	143	7.0	5,318	4,218	-1,100	-20.7	-16.2
Engines, turbines and electric motors	250	244	-6	-2.3	764	494	-270	-35.3	-43.2
Drilling mining machinery	112	124	12	10.6	293	236	-56	-19.3	-5.5
Excavating machinery	135	204	68	50.4	411	339	-72	-17.5	6.8
Metal working machinery	122	118	-5	-3.7	308	240	-68	-22.1	-20.7
Other industrial machinery	1,112	1,162	50	4.5	2,836	2,274	-563	-19.8	-14.0
Agricultural machinery including tractors	306	329	23	7.5	706	635	-71	-10.1	-6.6
Aircraft and other transportation equipment	1,032	1,065	33	3.2	3,025	2,098	-927	-30.6	-35.5
Aircraft, engines, parts	645	652	6	1.0	1,891	1,297	-594	-31.4	-37.8
Other transportation equipment and parts	387	414	27	6.9	1,134	801	-334	-29.4	-31.6
Office machines and equipment	1,006	1,027	21	2.1	2,136	2,033	-103	-4.8	-4.0
Other machinery and equipment	4,338	4,415	77	1.8	9,236	8,753	-483	-5.2	-4.8
Other communication and related equipment	1,522	1,585	64	4.2	3,115	3,107	-8	-0.3	0.0
Other equipment and tools	2,816	2,830	14	0.5	6,121	5,646	-475	-7.8	-7.3
<b>Automotive products</b>	<b>5,817</b>	<b>6,023</b>	<b>206</b>	<b>3.5</b>	<b>7,831</b>	<b>11,839</b>	<b>4,009</b>	<b>51.2</b>	<b>52.8</b>
Passenger autos and chassis	1,870	2,053	183	9.8	2,503	3,923	1,421	56.8	65.3
Trucks and other motor vehicles	1,521	1,577	56	3.7	1,941	3,097	1,156	59.5	62.5
Motor vehicle parts	2,426	2,393	-33	-1.4	3,387	4,819	1,432	42.3	38.4
<b>Other consumer goods</b>	<b>4,660</b>	<b>4,729</b>	<b>69</b>	<b>1.5</b>	<b>10,056</b>	<b>9,389</b>	<b>-667</b>	<b>-6.6</b>	<b>-6.4</b>
Apparel and footwear	845	825	-19	-2.3	2,106	1,670	-436	-20.7	-20.6
Apparel and apparel accessories	709	690	-19	-2.7	1,760	1,398	-361	-20.5	-21.3
Footwear	136	136	0	-0.2	347	272	-75	-21.7	-17.0
Miscellaneous consumer goods	3,816	3,904	88	2.3	7,950	7,719	-230	-2.9	-2.7
Television, radios, phonographs	131	134	3	2.4	205	264	60	29.3	23.6
Printed matter	273	270	-3	-1.2	620	543	-78	-12.5	-14.3
Watches, sporting goods and toys	484	477	-7	-1.4	1,060	962	-98	-9.3	-9.6
House furnishings	720	710	-10	-1.4	1,530	1,430	-100	-6.5	-8.8
Photographic goods	199	200	1	0.4	462	400	-62	-13.4	-10.0
Miscellaneous end products	2,008	2,112	105	5.2	4,073	4,120	47	1.2	2.7
<b>Special transactions trade</b>	<b>313</b>	<b>460</b>	<b>147</b>	<b>47.1</b>	<b>948</b>	<b>772</b>	<b>-175</b>	<b>-18.5</b>	<b>11.4</b>
<b>Unallocated balance of payments adjustments</b>	<b>744</b>	<b>752</b>	<b>7</b>	<b>1.0</b>	<b>1,379</b>	<b>1,496</b>	<b>117</b>	<b>8.5</b>	<b>8.8</b>

**Table 6-2**  
**Imports by commodity groupings, balance of payments basis, seasonally adjusted — Constant dollars, 2002**

	January	February	Change		Year to date			February 2010/ February 2009	
	2010	2010			2009	2010	Change		
	millions of dollars		percent		millions of dollars		percent		
<b>Total</b>	<b>36,465</b>	<b>36,832</b>	<b>366</b>	<b>1.0</b>	<b>66,176</b>	<b>73,297</b>	<b>7,121</b>	<b>10.8</b>	<b>11.5</b>
<b>Agricultural and fishing products</b>	<b>2,375</b>	<b>2,363</b>	<b>-12</b>	<b>-0.5</b>	<b>4,542</b>	<b>4,738</b>	<b>196</b>	<b>4.3</b>	<b>4.6</b>
Fruits and vegetables	665	666	1	0.1	1,326	1,330	4	0.3	1.0
Fresh fruits and berries	234	244	10	4.4	489	477	-11	-2.3	0.6
Dried fruits, fruits and fruit preparations	105	103	-3	-2.4	246	208	-38	-15.6	-17.9
Fresh vegetables	189	185	-5	-2.5	341	374	34	9.8	10.9
Other vegetables and vegetable preparations	136	134	-2	-1.5	250	271	21	8.2	7.5
Other agricultural and fishing products	1,710	1,697	-13	-0.8	3,216	3,408	191	6.0	6.1
Live animals	14	16	2	17.7	31	30	-2	-4.9	14.9
Meat and meat preparations	179	184	5	2.9	361	363	2	0.6	2.2
Fish and marine animals	240	253	12	5.1	441	493	52	11.9	12.1
Cocoa, coffee, tea and other food preparations	359	340	-19	-5.2	626	699	72	11.6	8.7
Dairy produce, eggs and honey	49	45	-5	-9.5	81	94	13	15.5	9.2
Corn (maize) shelled	38	46	7	19.7	75	84	9	12.0	26.8
Other cereals and cereal preparations	156	150	-5	-3.3	319	306	-13	-4.1	-7.8
Sugar and sugar preparations	147	127	-21	-14.0	262	274	11	4.3	-6.1
Fodder, feed, excluding unmilled cereal	94	98	4	3.8	188	192	4	2.2	8.0
Beverages	276	267	-9	-3.2	552	543	-10	-1.7	3.4
Tobacco	38	39	1	2.5	63	76	13	20.7	36.3
Crude vegetable products	119	132	13	10.6	214	252	38	17.5	15.7
Cotton	2	2	0	11.9	3	4	1	42.8	32.0
<b>Energy products</b>	<b>1,797</b>	<b>1,523</b>	<b>-274</b>	<b>-15.2</b>	<b>3,738</b>	<b>3,320</b>	<b>-417</b>	<b>-11.2</b>	<b>-18.8</b>
Crude petroleum	804	626	-179	-22.2	1,782	1,430	-352	-19.8	-18.8
Other energy products	993	898	-95	-9.6	1,956	1,891	-65	-3.3	-18.8
Coal and other related products	530	421	-109	-20.5	767	952	184	24.0	-11.5
Petroleum and coal products	463	476	13	2.9	1,188	939	-249	-21.0	-24.4
<b>Forestry products</b>	<b>286</b>	<b>299</b>	<b>13</b>	<b>4.4</b>	<b>495</b>	<b>586</b>	<b>91</b>	<b>18.4</b>	<b>23.1</b>
Forestry products	286	299	13	4.4	495	586	91	18.4	23.1
Crude wood products	52	49	-2	-4.6	111	101	-10	-8.6	-12.2
Wood fabricated materials	235	250	15	6.4	384	484	101	26.2	33.8
<b>Industrial goods and materials</b>	<b>5,959</b>	<b>6,022</b>	<b>63</b>	<b>1.1</b>	<b>11,236</b>	<b>11,980</b>	<b>745</b>	<b>6.6</b>	<b>6.9</b>
Metals and metal ores	1,690	1,671	-19	-1.1	2,965	3,360	395	13.3	13.2
Metals in ores, concentrates and scrap	308	324	16	5.3	784	631	-152	-19.4	-23.8
Steel bars, rods, plates, sheets	435	453	19	4.4	599	888	289	48.4	49.2
Other iron and steel products	238	221	-17	-7.1	560	460	-100	-17.9	-17.3
Precious metals including alloys	319	328	9	2.8	441	647	207	47.0	69.3
Other non-ferrous metals and alloys	390	344	-46	-11.8	583	734	151	25.9	20.5
Chemicals and plastics	2,136	2,209	73	3.4	4,127	4,346	218	5.3	3.6
Organic chemicals	385	363	-23	-5.9	992	748	-244	-24.6	-26.6
Plastic materials	837	827	-10	-1.2	1,398	1,664	266	19.0	18.5
Other chemicals and related products	914	1,020	105	11.5	1,738	1,934	197	11.3	8.3
Other industrial goods and materials	2,133	2,142	9	0.4	4,144	4,275	131	3.2	5.9
Crude animal products	19	20	1	7.6	61	39	-22	-35.5	-31.5
Wool and man-made fibres	24	24	0	0.6	47	48	2	3.7	1.2
Crude non-metallic minerals	58	58	0	0.6	126	116	-11	-8.5	-2.8
Textile fabricated materials	245	243	-2	-0.7	461	488	27	5.9	5.9
Metal fabricated basic products	788	785	-3	-0.4	1,532	1,574	41	2.7	4.1
Rubber fabricated materials	96	99	3	2.8	166	195	30	17.9	21.0
Oils, fats, animal and vegetable	94	92	-2	-2.5	177	186	9	5.2	4.5
Non-metallic minerals	335	323	-12	-3.6	618	658	40	6.5	6.3
Other fabricated materials	474	497	23	4.9	956	971	14	1.5	10.1

Table 6-2 – continued

## Imports by commodity groupings, balance of payments basis, seasonally adjusted — Constant dollars, 2002

	January 2010	February 2010	Change		Year to date			February 2010/ February 2009	
					2009	2010	Change		
	millions of dollars		percent		millions of dollars			percent	
<b>Machinery and equipment</b>	<b>11,988</b>	<b>12,200</b>	<b>211</b>	<b>1.8</b>	<b>23,802</b>	<b>24,188</b>	<b>386</b>	<b>1.6</b>	<b>2.8</b>
Industrial and agricultural machinery	2,488	2,635	147	5.9	5,500	5,123	-376	-6.8	-1.1
Engines, turbines and electric motors	310	299	-12	-3.8	802	609	-193	-24.1	-33.3
Drilling mining machinery	126	137	11	8.4	272	263	-9	-3.4	13.3
Excavating machinery	167	249	83	49.5	416	416	0	0.0	30.1
Metal working machinery	156	148	-8	-4.9	332	305	-28	-8.4	-6.2
Other industrial machinery	1,341	1,390	50	3.7	2,912	2,731	-182	-6.2	1.5
Agricultural machinery including tractors	389	412	24	6.1	765	801	36	4.7	8.9
Aircraft and other transportation equipment	1,232	1,227	-4	-0.4	3,044	2,459	-585	-19.2	-24.8
Aircraft, engines, parts	795	772	-23	-2.9	1,938	1,566	-371	-19.2	-26.2
Other transportation equipment and parts	437	456	19	4.3	1,107	892	-214	-19.4	-22.5
Office machines and equipment	2,076	2,087	11	0.5	4,051	4,163	111	2.7	5.0
Other machinery and equipment	6,193	6,251	58	0.9	11,206	12,443	1,237	11.0	12.0
Other communication and related equipment	2,535	2,610	75	2.9	4,456	5,145	689	15.5	16.4
Other equipment and tools	3,658	3,641	-17	-0.5	6,750	7,298	548	8.1	9.1
<b>Automotive products</b>	<b>7,193</b>	<b>7,418</b>	<b>225</b>	<b>3.1</b>	<b>8,864</b>	<b>14,612</b>	<b>5,748</b>	<b>64.8</b>	<b>66.6</b>
Passenger autos and chassis	2,249	2,481	232	10.3	2,993	4,729	1,736	58.0	66.8
Trucks and other motor vehicles	1,757	1,826	70	4.0	2,056	3,583	1,527	74.2	77.4
Motor vehicle parts	3,188	3,111	-77	-2.4	3,814	6,299	2,485	65.2	60.7
<b>Other consumer goods</b>	<b>5,971</b>	<b>5,940</b>	<b>-32</b>	<b>-0.5</b>	<b>11,141</b>	<b>11,911</b>	<b>770</b>	<b>6.9</b>	<b>6.9</b>
Apparel and footwear	1,185	1,147	-37	-3.1	2,514	2,332	-182	-7.2	-6.8
Apparel and apparel accessories	996	963	-33	-3.3	2,102	1,959	-143	-6.8	-7.4
Footwear	189	184	-5	-2.5	412	373	-38	-9.3	-3.8
Miscellaneous consumer goods	4,786	4,792	6	0.1	8,627	9,579	951	11.0	10.8
Television, radios, phonographs	220	221	1	0.6	280	442	162	57.9	50.1
Printed matter	337	327	-10	-2.9	700	664	-36	-5.2	-7.1
Watches, sporting goods and toys	666	647	-19	-2.9	1,258	1,313	56	4.4	3.1
House furnishings	930	893	-38	-4.0	1,639	1,823	184	11.2	7.7
Photographic goods	354	353	-1	-0.2	672	707	35	5.2	9.2
Miscellaneous end products	2,279	2,350	72	3.1	4,078	4,629	551	13.5	14.8
<b>Special transactions trade</b>	<b>353</b>	<b>523</b>	<b>170</b>	<b>48.0</b>	<b>970</b>	<b>876</b>	<b>-94</b>	<b>-9.7</b>	<b>24.5</b>
<b>Unallocated balance of payments adjustments</b>	<b>542</b>	<b>545</b>	<b>3</b>	<b>0.6</b>	<b>1,390</b>	<b>1,086</b>	<b>-304</b>	<b>-21.9</b>	<b>-24.3</b>

**Table 7-1  
Imports from selected countries, customs basis, not seasonally adjusted — February**

	Agricultural and fishing products	Energy products	Forestry products	Industrial goods	Machinery and equipment	Automotive products	Consumer goods	Special transactions trade	Total
millions of dollars									
<b>United States</b>									
2009	1,300.5	1,150.5	161.1	3,733.6	4,459.9	2,661.1	1,825.5	334.5	<b>15,626.6</b>
2010	1,167.6	916.6	161.6	3,676.7	3,684.1	3,982.8	1,734.6	406.6	<b>15,730.7</b>
<b>Mexico</b>									
2009	126.8	4.4	0.7	101.8	487.1	360.4	79.9	2.8	<b>1,163.8</b>
2010	145.9	53.5	0.4	126.4	550.8	709.4	75.8	2.5	<b>1,664.7</b>
<b>Japan</b>									
2009	5.6	0.3	0.1	92.1	418.1	423.0	74.7	0.3	<b>1,014.2</b>
2010	5.0	0.5	0.1	110.1	352.7	621.6	78.8	0.3	<b>1,169.0</b>
<b>European Union</b>									
<b>Germany</b>									
2009	18.5	0.7	0.5	183.4	467.9	171.7	152.3	1.1	<b>996.1</b>
2010	19.6	1.0	1.2	164.6	281.0	251.3	131.3	0.4	<b>850.5</b>
<b>France</b>									
2009	47.7	24.7	0.1	74.1	143.6	10.6	163.9	0.8	<b>465.4</b>
2010	41.1	0.5	0.1	133.5	104.8	6.9	134.7	1.4	<b>423.1</b>
<b>United Kingdom</b>									
2009	30.5	224.5	0.1	124.1	286.1	27.3	105.4	1.5	<b>799.5</b>
2010	26.1	89.5	0.1	165.2	258.5	30.5	88.9	7.7	<b>666.5</b>
<b>Italy</b>									
2009	41.4	0.0	1.2	73.7	107.1	11.5	93.7	0.4	<b>329.0</b>
2010	38.2	0.0	1.2	69.9	103.9	14.1	92.4	0.2	<b>320.0</b>
<b>Other European Union</b>									
2009	87.3	88.7	3.3	249.5	363.7	52.9	335.9	2.6	<b>1,183.8</b>
2010	83.0	224.9	2.7	208.2	292.2	60.3	327.8	1.0	<b>1,200.0</b>
<b>Total</b>									
2009	225.5	338.7	5.1	704.8	1,368.4	273.9	851.2	6.4	<b>3,773.9</b>
2010	208.0	315.9	5.4	741.4	1,040.5	363.0	775.2	10.6	<b>3,460.1</b>
<b>Newly industrialized countries</b>									
<b>South Korea</b>									
2009	2.9	1.1	0.0	77.6	176.9	99.5	18.8	0.1	<b>376.7</b>
2010	4.3	1.2	0.0	50.7	167.0	219.2	14.7	0.1	<b>457.2</b>
<b>Hong Kong</b>									
2009	1.6	0.0	0.0	2.4	18.1	0.1	10.1	0.0	<b>32.3</b>
2010	1.7	0.0	0.1	1.4	8.3	0.2	7.8	0.0	<b>19.7</b>
<b>Taiwan</b>									
2009	3.8	0.0	0.4	57.1	159.7	15.7	31.5	0.1	<b>268.3</b>
2010	4.1	0.0	0.5	57.2	129.6	12.8	28.4	0.1	<b>232.8</b>
<b>Singapore</b>									
2009	1.9	51.5	0.2	28.0	46.1	0.5	14.7	0.3	<b>143.2</b>
2010	1.2	0.0	0.0	4.0	31.7	0.3	18.0	0.4	<b>55.6</b>
<b>Total</b>									
2009	10.2	52.7	0.6	165.0	400.7	115.7	75.1	0.4	<b>820.5</b>
2010	11.3	1.2	0.6	113.3	336.7	232.5	68.9	0.6	<b>765.2</b>
<b>Other countries</b>									
2009	555.6	1,146.2	40.4	1,527.1	1,976.2	118.1	1,785.7	57.7	<b>7,207.1</b>
2010	565.1	1,431.8	45.3	1,214.4	1,903.6	142.3	1,653.8	33.1	<b>6,989.3</b>
<b>Total</b>									
2009	<b>2,224.2</b>	<b>2,692.7</b>	<b>208.0</b>	<b>6,324.4</b>	<b>9,110.4</b>	<b>3,952.2</b>	<b>4,692.1</b>	<b>402.2</b>	<b>29,606.1</b>
2010	<b>2,103.1</b>	<b>2,719.5</b>	<b>213.4</b>	<b>5,982.4</b>	<b>7,868.4</b>	<b>6,051.7</b>	<b>4,387.1</b>	<b>453.6</b>	<b>29,779.2</b>

**Table 7-2**  
**Imports from selected countries, customs basis, not seasonally adjusted — Year to date, January to February**

	Agricultural and fishing products	Energy products	Forestry products	Industrial goods	Machinery and equipment	Automotive products	Consumer goods	Special transactions trade	Total
millions of dollars									
<b>United States</b>									
2009	2,684.9	2,180.0	314.7	7,608.2	8,504.3	4,628.7	3,570.0	622.8	<b>30,113.6</b>
2010	2,397.5	1,966.7	302.4	7,321.9	6,988.9	6,974.5	3,390.1	570.2	<b>29,912.2</b>
<b>Mexico</b>									
2009	274.9	4.4	1.0	222.3	943.5	591.8	160.0	5.5	<b>2,203.4</b>
2010	295.5	101.8	0.7	246.3	1,039.8	1,281.4	151.7	4.4	<b>3,121.6</b>
<b>Japan</b>									
2009	11.3	0.6	0.3	202.0	889.9	888.3	163.4	0.6	<b>2,156.4</b>
2010	11.0	0.8	0.2	200.4	649.0	997.1	157.6	0.5	<b>2,016.5</b>
<b>European Union</b>									
<b>Germany</b>									
2009	38.7	1.7	1.0	334.0	842.3	269.8	300.5	2.7	<b>1,790.8</b>
2010	36.2	2.0	2.0	308.2	521.7	419.5	262.4	0.9	<b>1,552.8</b>
<b>France</b>									
2009	101.1	51.6	0.4	139.5	298.7	16.5	291.2	1.1	<b>900.0</b>
2010	92.8	6.6	0.3	190.1	206.8	20.2	267.8	1.8	<b>786.4</b>
<b>United Kingdom</b>									
2009	53.4	373.5	0.3	234.3	549.3	47.4	198.6	3.6	<b>1,460.3</b>
2010	52.2	459.4	0.1	291.9	466.9	50.4	170.9	10.5	<b>1,502.2</b>
<b>Italy</b>									
2009	97.4	10.6	3.3	161.7	235.5	24.4	172.0	0.8	<b>705.7</b>
2010	83.5	0.1	2.3	139.5	229.2	23.6	165.8	0.3	<b>644.2</b>
<b>Other European Union</b>									
2009	183.0	138.3	8.1	508.1	695.7	90.2	734.0	3.2	<b>2,360.6</b>
2010	158.8	295.4	5.5	390.0	545.3	97.8	619.9	1.4	<b>2,114.0</b>
<b>Total</b>									
2009	473.7	575.6	13.1	1,377.5	2,621.4	448.3	1,696.4	11.5	<b>7,217.4</b>
2010	423.5	763.4	10.1	1,319.7	1,969.9	611.4	1,486.8	14.8	<b>6,599.6</b>
<b>Newly industrialized countries</b>									
<b>South Korea</b>									
2009	6.6	7.8	0.0	152.8	418.6	221.8	38.1	0.1	<b>845.9</b>
2010	9.2	4.9	0.0	105.9	323.9	394.4	28.7	0.1	<b>867.2</b>
<b>Hong Kong</b>									
2009	3.6	0.0	0.0	7.6	28.2	0.2	22.3	0.2	<b>62.2</b>
2010	3.7	0.0	0.2	3.0	18.8	0.4	16.6	0.0	<b>42.7</b>
<b>Taiwan</b>									
2009	8.5	0.1	1.2	143.8	348.9	29.1	64.6	0.2	<b>596.3</b>
2010	9.7	0.0	1.2	117.2	278.1	25.2	60.1	0.2	<b>491.7</b>
<b>Singapore</b>									
2009	5.5	51.5	0.6	171.0	93.6	0.7	36.3	0.3	<b>359.6</b>
2010	4.9	0.0	0.0	28.1	64.5	0.6	27.9	0.6	<b>126.6</b>
<b>Total</b>									
2009	24.3	59.4	1.8	475.2	889.4	251.8	161.3	0.7	<b>1,864.0</b>
2010	27.5	5.0	1.5	254.3	685.2	420.4	133.3	0.9	<b>1,528.1</b>
<b>Other countries</b>									
2009	1,225.0	2,645.5	95.8	3,067.5	4,179.4	240.0	3,708.0	102.7	<b>15,263.9</b>
2010	1,191.1	3,103.9	97.3	2,751.7	3,953.3	291.9	3,327.3	59.2	<b>14,775.7</b>
<b>Total</b>									
2009	<b>4,694.1</b>	<b>5,465.6</b>	<b>426.8</b>	<b>12,952.6</b>	<b>18,027.9</b>	<b>7,048.9</b>	<b>9,459.1</b>	<b>743.8</b>	<b>58,818.8</b>
2010	<b>4,346.3</b>	<b>5,941.6</b>	<b>412.1</b>	<b>12,094.3</b>	<b>15,286.1</b>	<b>10,576.8</b>	<b>8,646.7</b>	<b>650.1</b>	<b>57,954.1</b>

**Table 8**  
**Imports by country, customs basis, not seasonally adjusted**

	February		January to February		Change January to February 2010/ January to February 2009
	2009	2010	2009	2010	
millions of dollars					
<b>North America</b>					
Canada	242.5	368.1	486.0	755.6	55.5
Greenland	7.7	0.0	10.6	0.1	-99.1
Mexico	1,163.8	1,664.7	2,203.4	3,121.6	41.7
Saint Pierre and Miquelon	0.0	0.0	0.1	0.1	35.3
United States	15,626.6	15,730.7	30,113.6	29,912.2	-0.7
<b>Total</b>	<b>17,040.6</b>	<b>17,763.5</b>	<b>32,813.6</b>	<b>33,789.6</b>	<b>3.0</b>
<b>Western Europe</b>					
Andorra	0.0	0.0	0.0	0.0	213.5
Austria	94.9	80.6	199.3	145.0	-27.2
Belgium	111.7	137.6	199.2	220.1	10.5
Denmark	60.8	160.1	132.4	275.8	108.2
Faeroe Islands	0.0	0.2	0.1	0.3	135.3
Finland	53.9	72.3	134.0	119.1	-11.1
France	465.4	423.1	900.0	786.4	-12.6
Germany	996.1	850.5	1,790.8	1,552.8	-13.3
Gibraltar	0.0	0.0	0.0	0.0	7.4
Greece	13.8	8.9	25.5	16.3	-36.2
Iceland	2.0	3.2	3.7	5.8	55.9
Italy	329.0	320.0	705.7	644.2	-8.7
Luxembourg	3.8	5.2	13.1	13.8	5.3
Malta	1.7	1.4	4.0	2.4	-39.5
Netherlands	136.3	133.1	257.9	223.0	-13.5
Norway	285.9	345.2	525.2	599.6	14.2
Portugal	26.0	20.9	46.2	39.6	-14.3
Republic of Ireland (Eire)	214.4	157.8	449.5	287.0	-36.2
Spain	115.7	86.8	210.2	152.7	-27.4
Sweden	162.3	155.1	303.6	292.1	-3.8
Switzerland	369.5	153.1	582.1	389.9	-33.0
United Kingdom	799.5	666.5	1,460.3	1,502.2	2.9
<b>Total</b>	<b>4,242.8</b>	<b>3,781.5</b>	<b>7,943.0</b>	<b>7,268.1</b>	<b>-8.5</b>
<b>Other Europe</b>					
Albania	0.2	0.2	0.3	0.4	72.3
Armenia	3.6	2.0	6.2	4.7	-23.6
Azerbaijan	55.2	0.0	161.5	0.0	-100.0
Belarus	9.6	0.4	13.9	0.9	-93.2
Bosnia and Herzegovina	0.6	0.6	1.3	1.1	-20.3
Bulgaria	6.6	4.5	23.7	9.5	-59.8
Croatia	2.0	1.7	3.9	3.2	-16.0
Czech Republic	27.1	16.8	59.9	46.9	-21.8
Estonia	1.9	1.3	4.0	3.0	-23.5
Georgia	9.2	7.4	18.7	15.7	-15.9
Hungary	23.9	25.4	61.2	47.5	-22.4
Kazakhstan	0.3	0.1	11.0	11.5	4.0
Kyrgyzstan	0.0	0.0	0.4	0.0	-98.5
Latvia	1.0	0.5	1.9	0.8	-57.3
Lithuania	24.7	35.5	43.5	41.7	-3.9
Macedonia (Former Yugoslav Republic of Macedonia)	0.7	0.5	1.9	1.1	-44.8
Montenegro	0.1	0.0	0.1	0.0	-90.8
Poland	74.5	65.0	139.1	118.4	-14.9
Republic of Moldova	0.2	0.2	0.5	0.3	-36.0
Romania	10.9	9.6	22.7	20.2	-11.1
Russian Federation	174.6	270.3	252.6	589.8	133.5
Serbia	0.8	0.8	2.3	1.9	-17.5
Slovakia	13.1	15.6	19.8	27.8	40.5
Slovenia	4.6	5.8	9.2	10.9	18.0
Tajikistan	0.0	0.0	0.0	0.0	-52.9
Turkmenistan	0.0	0.0	0.0	0.0	-37.7
Ukraine	7.3	2.4	25.2	6.5	-74.3
Uzbekistan	0.0	0.4	0.1	0.7	...
<b>Total</b>	<b>452.8</b>	<b>467.1</b>	<b>885.1</b>	<b>964.8</b>	<b>9.0</b>

Table 8 – continued

## Imports by country, customs basis, not seasonally adjusted

	February		January to February		Change
	2009	2010	2009	2010	January to February 2010/ January to February 2009
millions of dollars					
<b>Middle East</b>					
Bahrain	1.2	0.2	2.7	0.4	-84.5
Cyprus	0.3	0.3	0.5	0.4	-22.1
Egypt	8.2	23.3	19.9	30.9	54.8
Eritrea	0.0	0.0	0.0	0.0	100.0
Ethiopia	0.8	0.8	2.0	1.7	-14.4
Iran	1.8	3.6	4.2	6.7	59.6
Iraq	46.3	0.2	245.4	211.9	-13.7
Israel	97.3	76.6	178.9	150.0	-16.2
Jordan	1.4	1.3	3.5	3.2	-9.1
Kuwait	36.5	0.0	36.5	0.0	-100.0
Lebanon	0.6	1.3	2.1	2.2	5.9
Libya	0.0	0.0	0.0	0.1	111.4
Oman	1.4	0.2	1.5	0.4	-70.0
Qatar	0.0	29.2	0.1	60.6	...
Saudi Arabia	79.8	172.4	242.3	320.4	32.2
Somalia	0.0	0.0	0.0	0.0	832.0
Sudan	7.0	2.7	11.8	9.5	-19.3
Syria	0.3	0.5	0.5	1.3	135.7
Turkey	58.4	41.1	159.0	84.6	-46.8
United Arab Emirates	2.6	47.6	6.0	50.4	747.1
Yemen	0.0	0.0	0.0	0.0	-64.8
<b>Total</b>	<b>343.6</b>	<b>401.3</b>	<b>916.9</b>	<b>934.8</b>	<b>1.9</b>
<b>Other Africa</b>					
Algeria	207.9	148.2	522.0	626.1	19.9
Angola	82.6	148.9	203.3	227.8	12.0
Antarctica	0.0	0.0	0.0	0.0	-100.0
Benin	0.0	0.0	0.0	0.0	-4.2
Botswana	0.0	0.0	0.1	6.9	...
Bouvet Island	0.0	0.0	0.0	0.0	-100.0
Burkina Faso	0.0	8.1	0.0	8.1	...
Burundi	0.0	0.0	0.1	0.0	-82.4
Cameroon	0.6	0.4	1.0	0.7	-27.3
Cape Verde	0.0	0.0	0.0	0.0	-95.9
Central African Republic	0.0	0.0	0.0	0.0	-80.6
Chad	0.0	0.0	0.0	0.1	...
Comoros	0.0	0.0	0.0	0.0	-2.4
Congo	0.1	0.1	0.3	0.3	-3.1
Democratic Republic of the Congo	0.0	0.2	0.1	0.2	58.8
Djibouti	0.0	0.0	0.0	0.0	...
Equatorial Guinea	86.1	142.8	141.2	142.8	1.1
French Southern Territories	0.0	0.0	0.0	0.0	-100.0
Gabon	0.2	0.0	0.6	0.0	-97.5
Gambia	0.0	0.0	0.0	0.0	89.0
Ghana	1.7	3.4	6.4	5.2	-18.3
Guinea	6.4	5.5	12.8	5.6	-56.6
Guinea-Bissau	0.0	0.0	0.0	0.0	361.6
Ivory Coast	7.7	10.5	18.5	25.9	39.9
Kenya	1.6	0.8	3.0	2.5	-14.3
Lesotho	0.3	0.3	0.5	1.1	106.1
Liberia	3.8	2.4	5.2	7.9	52.2
Madagascar	4.0	2.0	8.8	2.5	-71.5
Malawi	0.1	0.1	0.3	4.2	...
Mali	0.0	0.0	0.0	0.0	-74.3
Mauritania	0.2	0.2	0.3	0.2	-44.8
Mauritius	0.9	0.8	2.3	1.8	-21.3
Morocco	12.0	16.4	36.0	29.3	-18.8
Mozambique	0.2	0.2	0.2	0.2	-6.1
Namibia	0.0	0.0	47.0	6.2	-86.9
Niger	0.0	0.0	0.1	0.1	-9.9
Nigeria	0.5	80.3	90.6	128.9	42.4
Rwanda	0.1	0.0	0.1	0.1	-28.0
Saint Helena	0.0	0.0	0.0	0.0	276.5
Sao Tome and Principe	0.0	0.0	0.0	0.0	-99.0
Senegal	0.1	0.0	0.1	0.1	30.3

Table 8 – continued

## Imports by country, customs basis, not seasonally adjusted

	February		January to February		Change
	2009	2010	2009	2010	January to February 2010/ January to February 2009
millions of dollars					
Seychelles	0.0	0.0	0.4	0.0	-94.6
Sierra Leone	0.3	0.2	0.3	0.2	-26.5
South Africa	46.6	27.6	87.3	81.0	-7.2
Swaziland	0.2	0.1	0.3	0.2	-34.1
Togo	0.0	0.0	0.2	0.1	-53.7
Tunisia	4.3	4.6	7.2	8.8	23.5
Uganda	0.1	0.3	0.2	0.5	109.6
United Republic of Tanzania	0.4	0.3	1.0	0.5	-47.4
Western Sahara	0.0	0.0	0.0	0.0	-9.1
Zambia	0.1	0.1	0.1	0.2	47.5
Zimbabwe	0.1	0.5	0.7	0.7	2.4
<b>Total</b>	<b>469.0</b>	<b>605.2</b>	<b>1,198.3</b>	<b>1,326.9</b>	<b>10.7</b>
<b>Other Asia</b>					
Afghanistan	0.2	0.2	0.4	0.4	4.6
Bangladesh	75.9	58.8	140.2	115.3	-17.7
Bhutan	0.0	0.0	0.0	0.0	-95.7
British Indian Ocean Territory	0.0	0.0	0.0	0.0	1.6
Brunei Darussalam	0.4	0.0	0.5	0.0	-98.3
Cambodia	29.5	23.8	59.1	54.2	-8.4
China	3,148.5	2,842.3	6,794.8	5,925.2	-12.8
Hong Kong	32.3	19.7	62.2	42.7	-31.4
India	184.7	143.8	366.0	291.5	-20.3
Indonesia	82.5	73.3	176.6	146.6	-17.0
Japan	1,014.2	1,169.0	2,156.4	2,016.5	-6.5
Laos	0.5	0.7	1.1	1.4	27.4
Macao	1.5	0.6	3.7	1.2	-67.3
Malaysia	178.2	158.2	359.2	318.2	-11.4
Maldives	0.0	0.0	0.0	0.0	378.1
Mongolia	11.4	8.2	24.5	20.1	-18.0
Myanmar	0.0	0.0	0.0	0.0	-60.2
Nepal	0.9	0.8	1.8	1.7	-6.2
North Korea	0.0	0.0	0.0	0.0	189.8
Pakistan	19.5	17.4	37.1	36.3	-2.3
Philippines	52.7	66.4	102.3	128.7	25.8
Singapore	143.2	55.6	359.6	126.6	-64.8
South Korea	376.7	457.2	845.9	867.2	2.5
Sri Lanka	9.3	9.6	20.8	19.1	-8.3
Taiwan	268.3	232.8	596.3	491.7	-17.5
Thailand	183.9	167.3	365.5	350.7	-4.0
Timor-Leste	0.3	0.1	0.7	0.2	-73.2
Viet Nam	77.1	78.5	177.1	164.8	-6.9
<b>Total</b>	<b>5,891.7</b>	<b>5,584.1</b>	<b>12,651.9</b>	<b>11,120.4</b>	<b>-12.1</b>
<b>Oceania</b>					
American Samoa	0.0	0.0	0.0	0.0	0.5
Australia	95.6	111.2	232.0	218.6	-5.8
Christmas Island	0.0	0.1	0.0	0.1	...
Cocos (Keeling) Islands	0.0	0.0	0.0	0.0	-3.9
Cook Islands	0.0	0.0	0.0	0.0	-87.5
Fiji	0.3	0.6	0.8	1.1	36.6
French Polynesia	0.0	0.1	0.1	0.1	-39.2
Guam	0.0	0.0	0.0	0.0	-82.3
Heard Island and McDonald Islands	0.0	0.0	0.0	0.0	230.8
Kiribati	0.0	0.0	0.1	0.0	-94.3
Nauru	0.0	0.0	0.0	0.0	-23.9
New Caledonia	0.0	0.0	0.1	0.0	-98.4
New Zealand	28.9	28.2	62.3	53.7	-13.8
Niue	0.0	0.0	0.0	0.0	...
Norfolk Island	0.0	0.0	0.0	0.0	-100.0
Papua New Guinea	0.1	0.2	0.2	0.3	40.3
Pitcairn	0.0	0.0	0.0	0.0	-25.6
Samoa	0.0	0.0	0.0	0.0	800.2
Solomon Islands	0.0	0.0	0.0	0.0	173.6
Tonga	0.0	0.0	0.0	0.0	-96.2

Table 8 – continued

## Imports by country, customs basis, not seasonally adjusted

	February		January to February		Change
	2009	2010	2009	2010	January to February 2010/ January to February 2009
millions of dollars					
United States Minor Outlying Islands	0.4	0.4	0.9	0.8	-3.1
Vanuatu	0.0	0.0	0.0	0.0	606.9
Wallis and Futuna	0.0	0.0	0.0	0.0	...
<b>Total</b>	<b>125.4</b>	<b>140.9</b>	<b>296.5</b>	<b>274.8</b>	<b>-7.3</b>
<b>South America</b>					
Argentina	40.7	42.9	100.1	82.4	-17.7
Bolivia	4.8	10.1	9.6	14.3	48.2
Brazil	201.0	203.4	432.7	479.7	10.9
Chile	122.5	137.8	268.5	418.3	55.8
Colombia	44.9	59.2	96.2	93.2	-3.1
Ecuador	23.7	17.4	44.9	32.8	-26.8
Falkland Islands (Malvinas)	0.0	0.0	0.0	0.0	...
Guyana	22.9	0.3	43.1	18.2	-57.7
Paraguay	0.6	0.3	1.3	1.3	4.4
Peru	234.6	300.5	441.1	572.2	29.7
Suriname	52.8	38.1	90.4	67.9	-24.9
Uruguay	14.6	7.1	32.0	16.3	-49.1
Venezuela	87.0	2.2	178.7	11.9	-93.4
<b>Total</b>	<b>850.0</b>	<b>819.4</b>	<b>1,738.6</b>	<b>1,808.6</b>	<b>4.0</b>
<b>Central America Antilles</b>					
Anguilla	0.1	0.0	0.1	0.1	-58.0
Antigua and Barbuda	0.0	0.0	0.1	0.0	-87.6
Aruba	6.1	0.0	27.5	0.1	-99.7
Bahamas	8.7	0.2	9.4	0.5	-94.9
Barbados	0.4	0.6	1.9	2.1	11.8
Belize	1.0	0.9	1.8	1.3	-29.2
Bermuda	0.1	0.1	0.1	0.2	47.8
British Virgin Islands	0.0	0.0	0.0	0.1	80.7
Cayman Islands	0.0	0.0	0.1	0.1	85.9
Costa Rica	31.3	34.9	58.1	66.2	14.0
Cuba	46.4	59.5	75.8	97.9	29.2
Dominica	0.0	0.0	0.0	0.0	-27.0
Dominican Republic	10.8	9.9	22.2	19.1	-13.8
El Salvador	5.3	3.6	18.1	6.1	-66.6
Grenada	0.0	0.0	0.0	0.1	758.9
Guatemala	16.7	20.4	36.8	57.2	55.5
Haiti	1.2	1.8	2.5	3.9	54.5
Honduras	12.7	13.1	23.1	25.0	8.2
Jamaica	11.2	18.8	19.3	25.9	34.5
Montserrat	0.0	0.1	0.0	0.1	...
Netherlands Antilles	4.8	0.0	4.8	0.1	-98.2
Nicaragua	7.0	12.0	14.2	19.3	35.7
Panama	0.4	6.8	2.0	14.7	644.9
Saint Kitts and Nevis	0.4	0.7	0.8	1.2	51.0
Saint Lucia	0.0	0.0	0.0	0.0	-38.0
Saint Vincent and the Grenadines	0.0	0.0	0.0	0.0	-55.0
Trinidad and Tobago	25.3	32.6	55.9	125.0	123.7
Turks and Caicos Islands	0.0	0.0	0.1	0.0	-42.3
<b>Total</b>	<b>190.2</b>	<b>216.1</b>	<b>374.8</b>	<b>466.1</b>	<b>24.4</b>
<b>All countries</b>	<b>29,606.1</b>	<b>29,779.2</b>	<b>58,818.8</b>	<b>57,954.1</b>	<b>-1.5</b>

**Table 9-1  
Imports by province of clearance, customs basis, not seasonally adjusted — February**

	Agricultural and fishing products	Energy products	Forestry products	Industrial goods	Machinery and equipment	Automotive products	Consumer goods	Special transactions trade	Total
millions of dollars									
<b>Newfoundland and Labrador</b>									
2009	4.5	90.0	0.0	14.6	3.5	0.0	0.3	0.0	<b>113.0</b>
2010	2.5	120.3	0.0	1.3	8.8	0.0	0.7	0.1	<b>133.9</b>
<b>Prince Edward Island</b>									
2009	0.0	0.0	0.0	0.0	0.1	0.0	0.0	0.0	<b>0.2</b>
2010	0.1	0.0	0.0	0.0	0.0	0.0	0.0	0.0	<b>0.2</b>
<b>Nova Scotia</b>									
2009	29.5	80.4	1.0	100.5	119.2	193.0	11.8	2.4	<b>537.7</b>
2010	27.4	142.3	1.5	80.3	68.9	256.6	12.1	0.8	<b>590.0</b>
<b>New Brunswick</b>									
2009	22.2	266.3	9.2	72.9	60.3	22.1	11.8	2.5	<b>467.5</b>
2010	28.5	685.7	11.0	73.4	55.2	34.8	12.8	1.6	<b>902.9</b>
<b>Quebec</b>									
2009	333.6	1,085.6	70.5	1,032.0	1,767.9	161.9	992.1	52.9	<b>5,496.5</b>
2010	317.6	876.2	58.5	960.7	1,230.0	165.1	983.3	45.5	<b>4,636.9</b>
<b>Ontario</b>									
2009	1,270.5	516.9	71.5	3,499.7	4,812.9	2,971.3	2,880.2	298.4	<b>16,321.5</b>
2010	1,180.1	474.6	76.2	3,526.5	4,442.8	5,126.8	2,664.1	373.6	<b>17,864.7</b>
<b>Manitoba</b>									
2009	74.0	15.9	5.9	306.3	497.2	116.0	134.2	8.7	<b>1,158.1</b>
2010	68.5	45.7	6.8	270.7	408.2	92.5	119.4	6.1	<b>1,018.0</b>
<b>Saskatchewan</b>									
2009	27.2	32.0	2.3	240.4	271.8	87.6	20.4	6.2	<b>687.9</b>
2010	21.3	25.2	1.8	188.2	273.7	58.4	26.2	0.8	<b>595.6</b>
<b>Alberta</b>									
2009	132.2	359.0	8.9	510.1	642.9	69.5	94.3	15.1	<b>1,832.0</b>
2010	137.8	199.0	7.8	341.5	556.8	74.4	85.9	14.7	<b>1,417.9</b>
<b>British Columbia</b>									
2009	330.4	246.2	38.8	547.5	928.3	330.8	546.9	15.5	<b>2,984.3</b>
2010	319.2	150.2	49.8	539.8	822.6	243.1	482.5	10.4	<b>2,617.6</b>
<b>Yukon, Northwest Territories and Nunavut</b>									
2009	0.0	0.5	0.0	0.4	6.3	0.0	0.0	0.3	<b>7.5</b>
2010	0.0	0.3	0.0	0.0	1.3	0.0	0.0	0.0	<b>1.7</b>
<b>Total</b>									
<b>2009</b>	<b>2,224.2</b>	<b>2,692.7</b>	<b>208.0</b>	<b>6,324.4</b>	<b>9,110.4</b>	<b>3,952.2</b>	<b>4,692.1</b>	<b>402.2</b>	<b>29,606.1</b>
<b>2010</b>	<b>2,103.1</b>	<b>2,719.5</b>	<b>213.4</b>	<b>5,982.4</b>	<b>7,868.4</b>	<b>6,051.7</b>	<b>4,387.1</b>	<b>453.6</b>	<b>29,779.2</b>

**Table 9-2**  
**Imports by province of clearance, customs basis, not seasonally adjusted — Year to date, January to February**

	Agricultural and fishing products	Energy products	Forestry products	Industrial goods	Machinery and equipment	Automotive products	Consumer goods	Special transactions trade	Total
millions of dollars									
Newfoundland and Labrador									
2009	7.2	360.4	0.0	18.9	10.6	0.1	1.0	0.1	<b>398.2</b>
2010	4.6	423.3	0.1	6.3	19.8	0.1	1.1	0.2	<b>455.3</b>
Prince Edward Island									
2009	0.2	0.0	0.0	15.9	0.2	0.0	0.0	0.0	<b>16.4</b>
2010	0.3	0.0	0.0	5.2	0.1	0.0	0.0	0.0	<b>5.6</b>
Nova Scotia									
2009	61.5	242.7	2.2	161.3	199.5	279.8	22.6	3.8	<b>973.5</b>
2010	57.2	287.0	2.6	146.9	120.1	417.9	23.8	2.1	<b>1,057.5</b>
New Brunswick									
2009	52.7	640.9	18.8	138.8	116.5	34.5	24.0	2.7	<b>1,028.9</b>
2010	53.1	1,236.2	19.9	178.5	107.7	63.7	26.7	2.1	<b>1,688.0</b>
Quebec									
2009	743.1	1,970.5	142.2	2,277.5	3,306.3	290.3	2,006.2	73.9	<b>10,810.0</b>
2010	656.7	1,944.9	114.5	2,096.8	2,410.3	308.8	1,871.3	60.5	<b>9,463.8</b>
Ontario									
2009	2,628.2	1,010.5	151.0	6,989.9	9,629.5	5,314.6	5,763.8	590.9	<b>32,078.4</b>
2010	2,413.1	1,062.8	150.0	7,059.6	8,713.6	8,903.4	5,320.0	538.4	<b>34,160.9</b>
Manitoba									
2009	157.0	29.9	13.0	610.2	1,004.5	241.2	265.6	15.7	<b>2,337.2</b>
2010	140.0	79.0	12.1	512.4	801.5	171.5	228.8	8.7	<b>1,954.0</b>
Saskatchewan									
2009	54.5	65.1	3.8	447.8	550.6	166.2	37.7	9.5	<b>1,335.3</b>
2010	48.4	59.3	2.9	354.6	491.2	117.9	43.2	2.5	<b>1,120.0</b>
Alberta									
2009	294.9	672.7	17.4	1,058.7	1,314.1	131.7	189.1	21.2	<b>3,699.8</b>
2010	298.5	476.5	14.5	721.9	1,016.5	133.2	166.4	19.8	<b>2,847.3</b>
British Columbia									
2009	694.8	471.5	78.4	1,233.0	1,887.1	590.5	1,149.1	25.5	<b>6,129.9</b>
2010	674.5	371.8	95.6	1,012.1	1,597.6	460.3	965.4	15.8	<b>5,193.1</b>
Yukon, Northwest Territories and Nunavut									
2009	0.0	1.4	0.0	0.5	9.0	0.0	0.0	0.3	<b>11.2</b>
2010	0.0	0.8	0.0	0.1	7.7	0.0	0.0	0.0	<b>8.5</b>
<b>Total</b>									
<b>2009</b>	<b>4,694.1</b>	<b>5,465.6</b>	<b>426.8</b>	<b>12,952.6</b>	<b>18,027.9</b>	<b>7,048.9</b>	<b>9,459.1</b>	<b>743.8</b>	<b>58,818.8</b>
<b>2010</b>	<b>4,346.3</b>	<b>5,941.6</b>	<b>412.1</b>	<b>12,094.3</b>	<b>15,286.1</b>	<b>10,576.8</b>	<b>8,646.7</b>	<b>650.1</b>	<b>57,954.1</b>

# Technical notes

---

## The Canadian international merchandise trade statistical program

### I Introduction

The objective of this text is to provide a general overview of the Canadian International Merchandise Trade Statistical Program with special reference to concepts and definitions. The text is intended for the general user and simplicity is emphasized. More technical details can be obtained from the International Trade Division upon request.

### II Conceptual framework

**1. Objectives and coverage:** The primary objective of the Canadian International Merchandise Trade Statistical Program is to measure the change in the stock of material resources of the country resulting from the movement of merchandise into or out of Canada. Information on imports and exports are inputs into the System of National Accounts particularly in the Balance of Payments and Gross Domestic Product, and are used in the formulation of trade and budgetary policies. Governments, importers, exporters, manufacturers and shipping companies use trade statistics to:

- monitor import penetration and export performance;
- monitor commodity price and volume changes;
- examine transport implications.

**2. Trade statistics - Customs basis/Balance of Payments basis:** Merchandise trade statistics are reported and presented on two different bases: Customs basis and Balance of Payment basis. (B.O.P.)

When goods are imported into or exported from Canada, declarations must be filed with Customs giving such information as description and value of the goods, origin and port of clearance of commodities and the mode of transport. Most of this information is required for the purposes of Customs Administration. Statistics developed from administrative records of Customs are commonly referred to as Customs based trade statistics.

Customs based trade statistics are more accurate at measuring imports than they are at measuring exports. This is the case because Customs are typically more vigilant with respect to goods entering the country than they are with goods leaving the country.

Customs based export statistics may understate and/or incorrectly portray the destination of exports. Export statistics are understated when the proper documentation is not filed with Customs. Exports are incorrectly portrayed when the country of final destination is inaccurately reported on the customs documentation - this occurs most frequently when goods are routed through an intermediary country before continuing on to their final destination.

Statistics Canada does not have a measure of undercoverage but periodically conducts reconciliation exercises with its major trading partners, excluding the United States.

On January 1st, 1990, Canada entered into a Memorandum of Understanding (MOU) with the United States concerning the exchange of import data. As a consequence, each administration is using the other's import data to replace its own export data. Canada's international merchandise trade statistics are, therefore, no longer derived exclusively from the administrative records of Canada Border Services Agency, but from United States Customs records as well.

Customs based information is adjusted to conform with the National Accounts concepts and definitions. The adjustments to derive Balance of Payments based trade data include trade definition, valuation and timing related adjustments. The principal difference between the two trade concepts is that Customs based merchandise trade statistics cover the physical movement of goods as they are reflected on customs documents, while Balance of Payments adjusted data are intended to cover all economic transactions between residents and non-residents which involve merchandise trade. This section describes the concepts and processes pertaining to the Customs based trade statistics only. (For further information on Balance of Payments adjusted data see the publication *"Canada's Balance of International Payments" Catalogue no. 67-001-XPB*).

**3. System of trade:** Canadian trade statistics are compiled according to the "General" system of trade as defined by the United Nations Statistical Office. Under this system, imports include all goods which have crossed Canada's territorial boundary, whether for immediate consumption in Canada or stored in bonded Customs warehouses. Domestic exports include goods grown, extracted or manufactured in Canada, including goods of foreign origin which have been materially transformed in Canada. Re-exports are exports of goods of foreign origin which have not been materially transformed in Canada, including foreign goods withdrawn for export from bonded customs warehouses. Total exports are the sum of Domestic exports and Re-exports. Thus the general trade system, in principal, presents all goods entering the country (imports) and all goods leaving the country (exports). It differs from the "Special" system of trade in the treatment of imported goods into Customs bonded warehouses. Under the "Special" system, these goods are counted only if and when they are withdrawn from Customs warehouses for home consumption. They are not counted in export statistics unless they have first cleared Customs.

Conceptually, under the "General" system, the statistical frontier coincides with the geographical boundary, while under the "Special" system, it coincides with the Customs boundary.

**4. Valuation:** For Customs purposes, imports are recorded at values established according to the provisions of the Customs Act, which, since January 1st, 1985, reflects valuation methods based on the General Agreement on Tariffs and Trade (GATT) Valuation Code System. It generally requires the value for duty of imported goods be equivalent to the transaction value or the price actually paid.

To determine the transaction value of imported goods, all transportation and associated costs arising in respect of the goods being appraised prior to and at the place of direct shipment to Canada, are to be added to the price of the goods. Therefore, Canadian imports are valued F.O.B. (Free on Board), place of direct shipment to Canada. It excludes freight and insurance costs in bringing the goods to Canada from the point of direct shipment.

To countries other than the United States, exports are, in principal, valued or recorded at the values declared on export documents which usually reflect the transaction value, i.e. actual selling price, or in the case of a non-arm's length transaction, the transfer price used for company accounting purposes. Canadian exports to overseas countries are valued at F.O.B. port of exit, including domestic freight charges to that point but net of discounts and allowances. As of January, 1990, Canadian exports to the U.S. are valued F.O.B. point of exit from Canada. Prior to 1990, they were valued F.O.B. place of lading net of freight charges, discounts and allowances.

**5. Statistical period:** The reference period is the calendar month and the calendar year. The closing of the statistical month for imports and Canadian exports to the United States is defined as the last calendar day of the month, based as closely as practicable on the date of clearance from Customs.

The closing of the statistical month for exports, to countries other than the United States, is also defined as the last calendar day of the month. Those export documents which are received too late for incorporation in the current month are assigned to the month the transaction took place. If a monthly summary report from a high volume exporter is not received on time, the data are imputed for the current month and revised with the trade value in the following statistical month.

**6. Trading partner attribution (Country of origin/destination):** Exports are attributed to the country, which is the last known destination of the goods at the time of export. Exports to the United States are attributed to the state of destination.

Imports are attributed to their country of origin, that is, the country in which the goods were grown, extracted or manufactured in accordance to the rules of origin administered by Canada Border Services Agency. Imports from the United States are attributed to the state of origin. Prior to 1988, most imports were attributed to the country of export/consignment with the exception of imports from Central and South America.

**7. Principal trading areas:** The “principal trading areas” are country groupings defined as follows:

**United States:** (includes trade with Puerto Rico and the U.S. Virgin Islands).

**Japan:**

**E.U. (European Union):** Austria, Belgium, Bulgaria, Cyprus, Czech Republic, Denmark, Estonia, Finland, France, Germany, Greece, Hungary, Ireland, Italy, Latvia, Lithuania, Luxembourg, Malta, Netherlands, Poland, Portugal, Romania, Slovakia, Slovenia, Spain, Sweden and United Kingdom.

**Other O.E.C.D.:** Australia, Canada, Iceland, Mexico, New Zealand, Norway, South Korea, Switzerland, and Turkey. (The E.U. countries, United States, and Japan are also members of O.E.C.D. - the Organization for Economic Co-operation and Development).

**Other countries:** This group includes all countries and territories other than the United States, Japan, E.U. and other O.E.C.D.

**8. Legal framework:** Import and export statistics with countries other than the United States are derived from information contained on administrative records collected by the Canada Border Services Agency under the Customs Act. Copies of these documents (or information therefrom) are sent to Statistics Canada in accordance with Section 25 of the Statistics Act. It follows that the disclosure of trade statistics is governed by both the Customs Act and the Statistics Act and is subject to the provisions of Section 17.(2)(a) of the latter. Disclosure of export statistics to the United States is now governed by a Memorandum of Understanding which provides for an exchange of detailed import statistics between Canada and the United States.

Questions concerning details of methods not covered by these notes should be addressed to the Marketing and Client Services Section, International Trade Division, Statistics Canada, Ottawa, Ontario, K1A 0T6.

**Telephone:** 1-800-294-5583 or within the area code 613-951-9647

**Facsimile:** 1-800-664-0055 or within the area code 613-951-0117

**Internet:** [trade@statcan.gc.ca](mailto:trade@statcan.gc.ca)