

Skills Research Initiative Initiative de recherche sur les compétences

Ageing Population and Immigration in Canada: Economic, Labour Market and Regional Implications

Maxime Fougère (Human Resources and Skills Development Canada)
Simon Harvey (Human Resources and Skills Development Canada)
Marcel Mérette (University of Ottawa) François Poitras (Industry Canada)

Working Paper 2005 A-05

Human Resources and Skills Development Canada/Ressources humaines et développement des compétences Canada
Industry Canada/Industrie Canada
Social Sciences and Humanities Research Council/Conseil de recherches en sciences humaines du Canada

Working Paper Series / Collection Documents de travail



Government
of Canada

Gouvernement
du Canada

Canada

In the context of the federal government's innovation strategy, Human Resources and Skills Development Canada (HRSDC), Industry Canada (IC) and the Social Sciences and Humanities Research Council Initiative on the New Economy (SSHRC-INE) are partnering to design and fund a multi-year skill-related research program—the HRSDC-IC-SSHRC Skills Research Initiative (HISSRI). The research is grouped into four themes:

- A. Labour Market and Skills Implications of Population Aging;
- B. Employer-Supported Training;
- C. Adjustments in Markets for Skilled Workers;
- D. International Mobility of Skilled Workers.

The HISSRI Working Paper Series provides a forum for the discussion of analytical issues related to the themes covered under the research partnership. Working Papers are circulated in the language in which they were written. The papers reflect the views of the authors and no responsibility for them should be attributed to HRSDC, IC or the SSHRC. Comments on the papers are invited and may be sent directly to the authors.

Dans le cadre de la stratégie d'innovation du gouvernement fédéral, Ressources humaines et développement des compétences Canada (RHDCC), Industrie Canada (IC) et l'Initiative de la nouvelle économie du Conseil de recherches en sciences humaines (INE-CRSH) se sont associés pour concevoir et financer un programme pluriannuel de recherches sur les compétences, appelé Initiative de recherche sur les compétences de RHDCC-IC-CRSH. Ce programme comprend quatre grands thèmes :

- A. les incidences du vieillissement de la population sur le marché du travail et la main-d'œuvre spécialisée;
- B. la formation en entreprise;
- C. l'adaptation du marché du travail aux travailleurs spécialisés;
- D. la mobilité des travailleurs spécialisés dans le monde.

La collection Documents de travail de l'Initiative de recherche servira de tribune où seront abordées plusieurs questions analytiques liées aux thèmes susmentionnés. Les documents de travail sont diffusés dans la langue dans laquelle ils ont été écrits. Les opinions qui y sont exprimées sont celles des auteurs et n'engagent pas RHDCC, IC ou le CRSH. Le lecteur est prié de faire part de ses commentaires aux auteurs.

Skills Research Initiative Initiative de recherche sur les compétences

Ageing Population and Immigration in Canada: Economic, Labour Market and Regional Implications

Maxime Fougère (Human Resources and Skills Development Canada)
Simon Harvey (Human Resources and Skills Development Canada)
Marcel Mérette (University of Ottawa) François Poitras (Industry Canada)

Working Paper 2005 A-05

Human Resources and Skills Development Canada/Ressources humaines et développement des compétences Canada
Industry Canada/Industrie Canada
Social Sciences and Humanities Research Council/Conseil de recherches en sciences humaines du Canada

To obtain copies of the documents published under the
HRSDC-IC-SSHRC Skills Research Initiative, please
visit http://strategis.ic.gc.ca/epic/internet/ineas-aes.nsf/en/h_ra01877e.html or contact:

Publications Officer
Micro-Economic Policy and Analysis
Industry Canada
10th Floor, East Tower
235 Queen St.
Ottawa, Ontario K1A 0H5

Tel.: (613) 952-6411; Fax.: (613) 991-1261
E-mail: mepa.apme@ic.gc.ca

Pour obtenir des exemplaires des documents publiés
dans le cadre du Programme de recherches sur les
compétences de RHDCC-IC-CRSH, cliquer sur
http://strategis.ic.gc.ca/epic/internet/ineas-aes.nsf/fr/h_ra01877f.html ou s'adresser à :

Agent des publications
Analyse de la politique micro-économique
Industrie Canada
10^e étage, tour Est
235, rue Queen
Ottawa (Ontario) K1A 0H5

Tél. : (613) 952-6411; Fax : (613) 991-1261
Courriel : mepa.apme@ic.gc.ca

Acknowledgements

This paper was presented at the International Social Security Association (ISSA) Conference in Antwerp, May 2003 and the Canadian Economic Association Meeting in Ottawa, June 2003. The authors wish to thank Gilles Bérubé, Michael Cichon, Lee Cohen, Christian Dea, Bernard Fortin and Denis Latulippe for useful comments and Jean Mercenier for technical advises.

Abstract

This paper examines the long term economic, labour market and intergenerational equity implications of increasing the number of immigrants in Canada. The analysis is done using a regional overlapping generations model. The simulations are performed according to alternative scenarios of regional residential location decisions of immigrants across Canada. Among the key findings, the simulations indicate that increasing the number of immigrants to achievable targets would reduce labour market pressures associated with population ageing to some extent and ease somewhat the anticipated decline in national savings and real per-capita GDP. However, these benefits take several decades to materialise. The results also suggest that if recent trends in immigrant's regional location continue, regional income disparity will increase in the future.

Résumé

Cette étude examine les implications à long terme sur l'économie, le marché du travail et l'équité intergénérationnelle d'accroître le nombre d'immigrants au Canada. L'analyse est effectuée à l'aide d'un modèle régional à générations imbriquées. Les simulations sont effectuées selon des scénarios alternatifs de décisions sur la localisation régionale des immigrants au Canada. Parmi les principaux résultats, l'augmentation du nombre d'immigrants selon des cibles réalistes réduirait dans une certaine mesure les pressions sur le marché du travail dues au vieillissement et atténuerait quelque peu la baisse anticipée de l'épargne nationale et du PIB réel par habitant. Toutefois, les gains économiques ne se matérialiseront pas avant plusieurs décennies. Les résultats suggèrent également que le maintien des tendances récentes observées de localisation régionale des immigrants va accroître les disparités régionales de revenus dans le futur.

1. Introduction

The population in Canada and other industrialised countries is ageing and consequently the ratio of elderly to the working-age population (ratio of 65+ to the 15-64 population) is expected to increase dramatically over the next several decades.¹ The trend in retirement decision also indicates that older Canadian workers retire earlier than in previous decades. A direct consequence of ageing population is that the transition of the baby-boom generation from work to retirement is expected to lead to job opportunities in all major occupational groups. In particular, some occupations/sectors where workers are generally older or tend to retire earlier may be more affected (e.g. Social Science, Health and Primary Industries).² This in turn could result in a relative scarcity of workers and the trend towards early retirement could intensify the situation.

According to the conventional view, the transition of baby-boomers from work-to-retirement could also potentially have important perverse socio-economic effects in the future, such as a decline in national savings and in real per-capita income.³ It could also put increased pressures on the cost of public pensions and health care, and have negative intergenerational equity implications. However, the relative scarcity of workers is likely to result in increases in real wages, which would provide some compensating effects to workers.

A wide range of policies can be considered to help accommodate some of the consequences of ageing. In this respect, the Canadian government has already taken steps forward by reforming the Canada and Quebec Pension Plans (CPP/QPP) and by adopting a strategy of gradual reduction in the ratio of public debt-to-GDP. Another key policy instrument is Canada's immigration, which reflects a range of socio-economic objectives including economic growth, family reunification and humanitarian objectives. In this respect, in comparison to other industrialised countries, Canada has one of the highest inflows of immigrants relative to its population. In fact, without the contribution of immigration, the growth in the population and in the labour force would be expected to eventually decline in the future.

¹ This is well documented in *Reforms for an ageing society*, OECD 2000, Paris.

² See Government of Canada (2002).

³ See, for example, Auerbach and Kotlikoff (1987), Auerbach *et al.* (1989), Group of Ten (1998) and Hviding and Mérette (1998). It must be noted however, that the conventional view has been challenged by a number of authors including Emery and Rongve (1999), Denton and Spencer (2000), Fougère and Mérette (2000) and Mérette (2002).

Since the annual flow and the skill composition of new immigrants to Canada is an important factor of labour force growth, there is no doubt that current immigration trends contribute to enhance the balance between the working-age population and the retired people. It is, however more difficult to quantify the economic-welfare gains associated to immigration and to evaluate the additional gain that would be associated with an increase in the number of new immigrants.

Another important factor to consider when we look at migration flows is the residential location decision of new immigrants, given the potential implications on regional disparity. In fact, according to the stylised facts, recent trends in new immigrant's residential location indicate that a large proportion of them choose to live in central Canada (province of Ontario) in much greater proportion than the province's share of the Canadian population. If the vast majority of immigrants choose the richest province as residence location, this may potentially have consequences on regional labour markets and regional income disparity. On the one hand, the inflows of immigrants may increase regional income disparity through changes in regional labour supply, although this effect can also be partly offset by reductions in wage pressures in the richest province and increases in the other regions. The net effects on income and regional disparity can only be disentangled through general equilibrium analysis.

Given these important migration policy issues, this paper evaluates the potential socio-economic and labour market implications of increasing the number of immigrants in Canada in the context of an ageing workforce. It also evaluates the potential implications on national and regional labour markets, wages, real per-capita income and intergenerational equity. Finally, it looks at the regional demographic and socio-economic implications of residential location decision of immigrants and the consequences on regional income disparity.

The methodological approach used for this analysis is based on two models. The first is a demographic projection model (MEDS)⁴ for Canada and its ten provinces. This model is used to simulate the impact of migration policy shocks on the demographic structure of the population and the elderly dependency ratio. The second model is a regional overlapping generations (OLG) model calibrated to Canadian data. This model is used to evaluate the national and regional real

per-capita income and wage effects of a change in migration policy as well as the intergenerational equity and regional disparity implications.

The paper is divided as follows. Section 2 provides some overview of the literature on ageing and immigration. Section 3 discusses Canada's demographic changes and presents some stylised facts on Canada's immigration. Section 4 presents a brief non-technical description of the regional OLG model and the main calibration parameters (the detailed model structure is available in Appendix). Section 5 discusses the regional demographic scenarios and the contribution of alternative migration policies on the elderly dependency ratio. Section 6 presents the main simulation results using the regional OLG model. Finally, Section 7 draws some policy conclusions.

2. Ageing and Immigration

It has long been recognised that international migration can play an important demographic and economic role in industrialised countries, particularly in the context of population ageing. Immigration is seen as a way to partially compensate for the phenomenon experienced in several countries of fertility rates being below natural replacement levels. This section provides a quick review of the literature on the demographic and economic impacts of immigration.

The demographic impacts of immigration include not only the direct increase in population size, but also the selectivity of immigrants, such as the age composition, which can induce demographic changes. For example, selecting an immigrant population with a younger mean age than the native-born population would influence the age structure of the population.

There are also indirect effects of immigration on population growth through immigrant fertility. Immigrant fertility may induce population effects by selecting a disproportional number of younger immigrant women in their reproductive years and by selecting immigrants with higher fertility rates than native-born women. In this case, immigration can contribute to slowing down the extent of aging population if the fertility of immigrant women is greater than the fertility of non-immigrants. It is not clear, however, that immigrant women will keep the same fertility behaviour as expected in their country of origin.

⁴ See Models of economic-demographic system (MEDS), Research Institute for Quantitative Studies in Economics

In this respect, the literature puts forward three alternative hypotheses on immigration fertility, namely the disruption hypothesis, the selectivity hypothesis and the adaptation hypothesis. According to the disruption hypothesis, international migration would disrupt a woman's fertility history and she will have fewer children than expected during the time interval preceding and following the move. The selectivity hypothesis states that immigration tends to select women with socio-economic characteristics that pre-dispose them toward lower fertility compared to women who do not migrate. Finally, the adaptation hypothesis states that immigrant's fertility behaviours change in response to new economic and social conditions in the host country. These new conditions would be explained by the rising cost of having children, the lack of a supporting family network and the increase in women's labour force participation rate.⁵

Bean and Stephen (1986) and Stephen and Bean (1992) provide evidence of the disruption hypothesis for women of Mexican origin living in the United States. Friedlander *et al.* (1980) examine Asian and African Jewish immigrant women in Israel and find support for the adaptation hypothesis. The adaptation hypothesis is also supported by Bean and Swicegood (1982).

Several papers have examined the economic impact of immigration using the neoclassical framework and have come up with mixed results. Berry and Soligo (1969) argue that if natives own the economy's fixed factors, immigration would increase the natives' factor incomes through increased fixed factor's returns. Simon (1989) separates the production capital used by immigrants in the job from the demographic capital and finds positive economic effects. Clark and Ng (1991) also find positive economic effects from immigration. Hellwig *et al.* (1992) and the Centre for International Economics (1998) use macroeconomic models to evaluate the economic impact of immigration and find that immigration raises real per-capita GDP. By contrast, Usher (1977) and Peter and Verikios (1994) using respectively UK and Australian data conclude that immigration reduces native's incomes.⁶

There is also an abundant literature that examines the labour market implications of immigration. Among these, Tu (1991) argues that the native labour force whose skills are complementary to those of immigrants experience an improvement in their relative position with

and Population, McMaster University, Hamilton.

⁵ For more detailed information on the impact of immigrant fertility, see for example, Waldorf (1999).

⁶ For a more exhaustive review of the literature, see for example, Alvarado and Creedy (1998).

respect to workers whose skills is substitutable to those of immigrants. In the same vein, Borjas (1994, 1995) and Borjas et al. (1996) find that lower-skilled immigrant workers reduce the wages and employment of lower-skilled native workers in the United States. Finally, Green (1995) finds that targeted skilled immigrants to Canada are more occupationally mobile than native workers and contribute to improve economic efficiency through a more flexible labour market.

Storesletten (2000) uses a computable general equilibrium model with overlapping generations to investigate whether a reform of immigration policy can resolve the fiscal problem associated to population ageing. His results indicate that selective immigration policies that involve increasing the inflow of high and medium-skilled immigrant workers would remove the need for fiscal reform in the United States.

3. Some Stylised Facts on Demographic Changes and Immigration

The decline in the fertility rate and the rise in life expectancy are the two principal causes of ageing population. In Canada, after reaching unprecedented level of 3.9 children per woman on average in 1960, the fertility rate has declined dramatically since. As shown in Chart 1, the fertility rate has come down very significantly since the mid 1960s, reaching 1.5 on average between 1996 and 2000. Also, with the increasing quality of life, Canadians are living longer and healthier lives. As a result, the life expectancy has increased very significantly during the past 40 years from 68 years for males and 74 years for females in 1960 to 76 years and 82 years for males and females respectively in 2000 (See Table 1).

As the baby-boom generation moves through the age structure, the growth of Canadian born individuals decreases and immigration becomes an important source of population growth. As shown in Chart 2, after falling back to 100,000 per year range in the mid-1980s, immigration levels have risen sharply since, averaging near 220,000 per year during the 1990s or 0.75% of the population and reaching 250,000 in 2000 or 0.82 % of the population. In addition, during the 1991-96 period, net migration has provided 71% of Canada's labour force growth with foreign born individuals accounting for 19% of its labour force in 1996.⁷

⁷ For more information on the Canadian demographic situation, see for example, Statistics Canada (2001a).

Chart 1
Fertility Rate

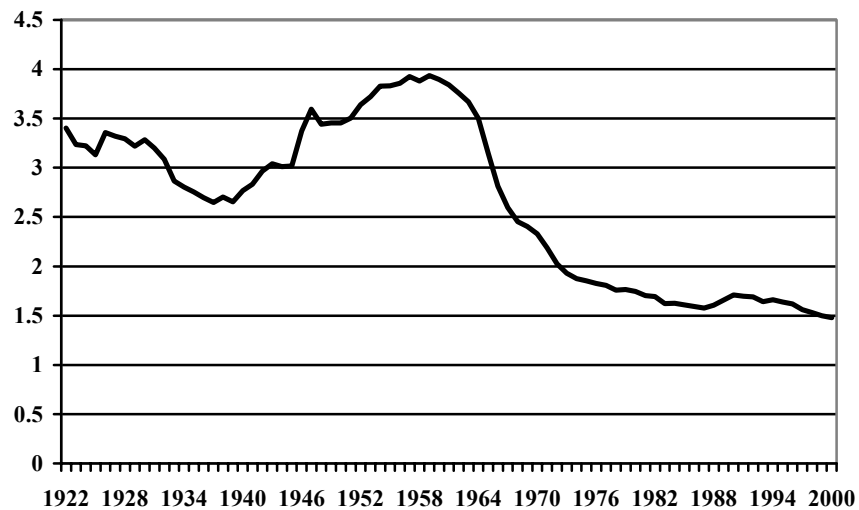


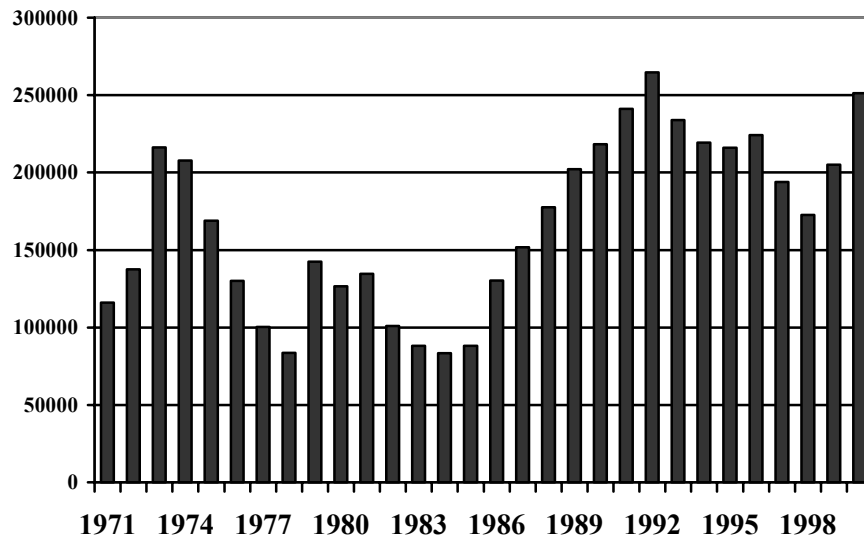
Table 1
Life expectancy

Years	Women	Men
1960	74	68
1970	76	69
1980	79	72
1985	80	73
1990	80	74
1995	81	75
2000	82	76

Source: Census

Despite the increasing share of immigrants in the labour force, Canada's elderly dependency ratio has increased steadily during the 1980s and 1990s. Also, according to the demographic model MEDS and based on reasonable assumptions on net migration and the fertility rate, the elderly dependency ratio is projected to increase more rapidly after 2010 and reach unprecedented levels by 2046 as it could more than double (see Chart 3).⁸ These projections are consistent with those of Statistics Canada (2001b), Beaujot and Matthews (2001) and Beaujot (2002).

Chart 2
Number of New Immigrants



However, despite the anticipated rise in the elderly dependency ratio, maintaining the recent trend in migration flows in the future would significantly contribute to limit the rise in the elderly dependency ratio, assuming that the age distribution of new immigrants remains unchanged. As indicated in Table 2, new immigrants are generally younger given the higher proportion representing age groups 0-14 and 25-39 relative to the Canadian population. In order to evaluate the potential demographic implications of immigration on the elderly dependency ratio, we present a demographic scenario, which assumes that net immigration is zero after 2001. As shown in Chart 3, without immigration, the elderly dependency ratio would be 23% higher by 2046, reaching 49% instead of 40% in the scenario with immigration.

The regional distribution of immigrants is also an important problematic in the context of ageing given that the regional location decision of immigrants will have longer term implications on the growth of the population by province and potentially also on regional disparity. As shown in Table 3, in recent years, more than half of new immigrants have settled in Ontario, averaging 55% between 1997 and 2001 and 59% in 2001. In comparison, Ontario's population represents 38% of Canada's population. British Columbia is the other province who benefited from a proportion of immigrants greater than its share of the Canadian population. All the other provinces

⁸ The simulation is based on the assumption that the fertility rate is 1.5 during the projection period, the number of new immigrants corresponds to 0.75% of the population and the age distribution of immigrants remains constant to its

have hosted a proportion of immigrants that is significantly smaller than their share of the Canadian population. If this situation persists in the future, it will likely have implications on regional labour markets and on the regional distribution of income.

Chart 3
Elderly Dependency Ratio

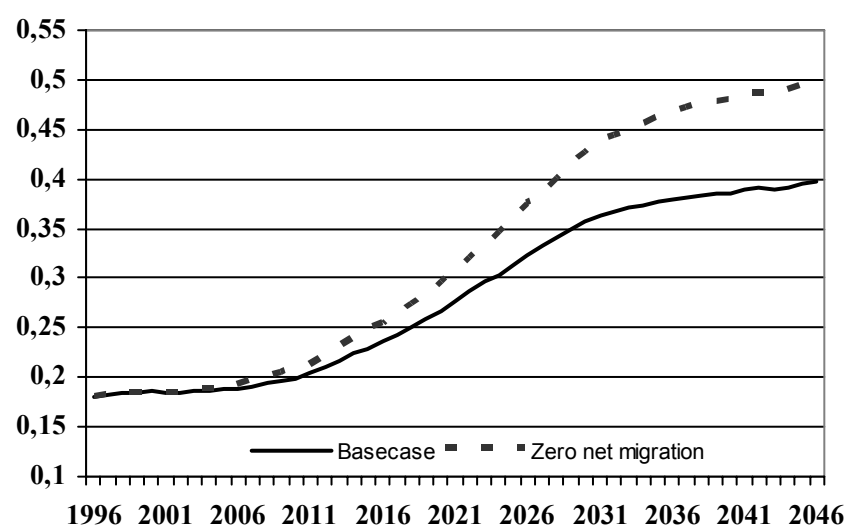


Table 2
Percent Age Distribution of Canadians and Recent Immigrants, 1999

Age group	Males		Females	
	Population	Immigrant	Population	Immigrant
0-14	18.3	24.0	17.1	22.5
15-24	13.8	12.6	13.0	16.5
25-39	22.8	43.6	22.4	42.1
40-64	33.3	17.8	33.0	16.4
65+	11.8	2.0	14.5	2.5

Finally, according to Canada's current immigration target, Elinor Caplan, Minister of Citizenship and Immigration indicated in her November 1999 statement that the federal government long-run immigration target is to achieve 1% of the population annually.

Table 3
Residence of Immigrants, 1997-2001 Average

Province	Share of Canadian Population	Share of Total Recent Immigrants
Newfoundland	1.7	0.21
P.E.I.	0.45	0.07
Nova Scotia	3.03	1.04
New Brunswick	2.44	0.35
Quebec	23.8	14.3
Ontario	38.2	55.4
Manitoba	3.7	1.85
Saskatchewan	3.27	0.8
Alberta	9.86	6.26
British Columbia	13.18	19.6

4. The Regional OLG Model

In this section, we present a brief non-technical description of the regional OLG model and discuss the calibration. A description of the model's equations is available upon request. A full description of the model is also available in Mercenier and Mérette (2002).

Model Description

The model is dynamic and represents the economy of Canada. It is composed of six regions: the region of the Atlantic (Newfoundland, Prince-Edward Island, Nova Scotia and New Brunswick), Quebec, Ontario, the Prairies (Manitoba and Saskatchewan), Alberta and British Columbia. In the model, each region produces one differentiated good, that is a good imperfectly substitutable with other regions' production good and is very open to trade with the other regions. In response to the demographic shock, the Canadian economy responds like a closed economy. This assumption is tolerable since the projection of demographic changes in Canada over the next 50 years is similar to that in other OECD countries.⁹

There are four types of economic agents in each region: a representative firm, one household per age group, six regional and one national governments. The model has six final

⁹ Fougère and Mérette (1998) have examined the macroeconomic impact of ageing in Canada and six other OECD countries under the closed versus small-open economy assumptions. Given that the anticipated US demographic shock is roughly similar than in Canada, their analysis shows that the simulated economic impact is roughly the same under both assumptions.

goods, two factors of production (physical capital and labour), and two financial assets (bonds and capital ownership titles).

The representative firm produces the unique regional good. Its production technology is represented by a Cobb-Douglas function. The regional firm hires labour and rents physical capital. Labour and physical capital are assumed to be immobile across regions, which implies that there is one market for labour and capital in each of these two factors of production in each region. The model's production and investment technologies also differ across regions. Physical capital is a composite good of the six regional final goods. The investment technology is represented by a constant elasticity of substitution (CES) function.

Each region has 15 representative native households, one per age group corresponding to 4 years and 15 corresponding immigrant households. An overlapping generation framework also characterises the household's dynamic, with 15 generations living side by side in each period. At any new period, a new generation is born and the eldest one dies. Each native individual enters the labour market at the age of 17 and dies at the age of 77. The population growth rate is treated as exogenous. Each native generation optimises a CES type inter-temporal utility function of consumption and bequest subject to lifetime income. The household's optimisation problem consists of choosing the consumption and savings pattern. Savings can be allocated between domestic physical capital ownership titles or regional bonds issued by regional governments. Similarly, consumption expenditures are allocated toward the six available final goods accordingly to households' preferences represented by a CES function.

Since immigrant households are not born in Canada, they enter the country at one point during their life and choose a regional location. The age of arrival and regional location decisions are exogenous. Once immigrant households enter the country, they adopt a similar behaviour than their Canadian native counterpart in terms of consumption, savings and labour-leisure decision. We also assume that they initially own the same value of wealth when they enter the country as their native counterpart of the same generation.

Governments issue bonds to finance their public debt and to satisfy their budget constraint. They tax labour income, capital income and consumption expenditures and spend on public expenditures, health care, education and interest payments on the public debt. The national

government also manages the public pension system, which is represented by a simple pay-as-you go pension scheme and financed by contribution rates on labour income. Since the pension program is national, the contribution rate is the same in each region.

The financial market is considered perfectly integrated across regions. This means that financial capital is perfectly mobile across regions and the interest parity condition applies. Rates of returns on savings are thus perfectly identical across regions. The model assumes perfectly competitive markets and perfect foresight agents. Moreover, output prices are flexible, so combined with the assumption of regional differentiated good, relative output prices act as if there were flexible exchange rate across regions.

Calibration

The computable general equilibrium model compares two states of the six regional economies in the context of an ageing population, according to alternative assumptions of immigration targets and immigrant regional location decisions. To accomplish the comparison we first need to generate an initial steady state equilibrium with constant demographics by calibrating the parameters of the model to replicate what is observed in the data. Since the model is dynamic, the initial equilibrium is in fact a steady state that repeats every period and where the population structure of 2000 remains forever. A demographic shift is then introduced in the simulation experiments according to the assumptions made in the demographic model and with alternative migration policies and regional location of immigrants. The state of the regional economies will thus change in comparison to the initial steady state. The impact of alternative migration policies and regional location decision of immigrants are compared with a base case scenario of population ageing.

Table 4 reports variable and parameter values that are imposed in the calibration procedure. The inter-temporal elasticity of substitution is assumed to be the same across regions and consistent with values found in the literature. The intra-temporal elasticity of substitution is also assumed identical across the different types of consumption and investment demands and across regions. The value of this parameter is relatively high with respect to the literature to compensate for the fact that Canada is considered in the model as a closed economy.

Table 4
Calibration Parameters

Region	Atlantic	Quebec	Ontario	Prairies	Alberta	BC
Regional Share of GDP	.062	.217	.387	.070	.137	.128
Share of capital in production	.278	.280	.280	.324	.324	.270
Wage income tax rate	.318	.374	.313	.295	.304	.318
Capital income tax rate	.382	.478	.562	.407	.384	.446
Consumption tax rate	.234	.219	.200	.193	.137	.199
Public Health Care/GDP	.077	.066	.053	.066	.045	.070
Public Education/GDP	.060	.052	.032	.039	.041	.045
Government debt	.421	.431	.288	.226	.018	.110
Intertemporal elast. of substitution	1.0	1.0	1.0	1.0	1.0	1.0
Elast. of substitution for consumption	9.0	9.0	9.0	9.0	9.0	9.0
Elast. of substitution for investment	9.0	9.0	9.0	9.0	9.0	9.0

A matrix of interregional flows is calculated between the six regions and serves to estimate the ownership distribution of wealth (physical capital plus government bonds) across individuals and regions. It is assumed that regional physical capital is owned by regional residents first. This means that residents have a stock of wealth composed of local physical capital ownership titles plus bonds issued by local and outside regional governments. Given this interregional data and the above parameter values, regional rate of time preference was calibrated as to ensure equilibrium in the Canadian financial asset market. For simulation purposes, the general equilibrium of the economy is replicated over the 100 period horizons. The length of horizon is determined to ensure that after the demographic projected shift the economy converges to a long-run steady state. Although the model contains only 15 overlapping-generations and 6 regions, the model has more than 54,000 equations. It can thus be solved only through computations.

5. Regional Demographic Scenarios and the Effect of Immigration

We examine the impact of immigration through four scenarios of demographic projections. The assumptions concerning the fertility rate, the life expectancy, the proportion of emigrants and the age distribution of immigrants are the same in each scenario and are summarized in Tables 2 and 5. The assumptions on the fertility rate and life expectancy are based on the most recent numbers available by province. In the demographic projections, it is assumed that immigrants and non-immigrants have similar life-expectancy. Also for simplicity, the assumption on the fertility rate is based on the adaptation hypothesis, where immigrant women in Canada are assumed to

have the same fertility rate as non-immigrants. It must be noted, however, that the demographic model captures the difference in family size between immigrants when they enter Canada and non-immigrants. The assumption of similar fertility rate between immigrant and non-immigrant women has some potential implications for the results. They are likely to result in a more conservative impact of demographic changes associated to immigration than assuming a higher fertility rate for immigrant women.

The difference in each scenario can be summarized as follows. Scenario 1 (Baseline scenario) assumes that the proportion of new immigrants in Canada represents 0.75% of the population each year, corresponding to the 1997-2001 historical average. It also supposes that Canada does not achieve its current immigration target of 1% and that the regional location of immigrants remains the same as that observed during the 1997-2001 period (see Table 3). Scenario 2 assumes a more optimistic scenario where Canada achieves its national target of immigration, which corresponds to 1% of the population each year. Scenario 2 supposes that the regional distribution of new immigrants is the same as in Scenario 1. As a result, the assumption on the regional location of recent immigrants in Scenarios 1 and 2 is more favourable to the provinces of Ontario and British Columbia who receive more than their share of the Canadian population.

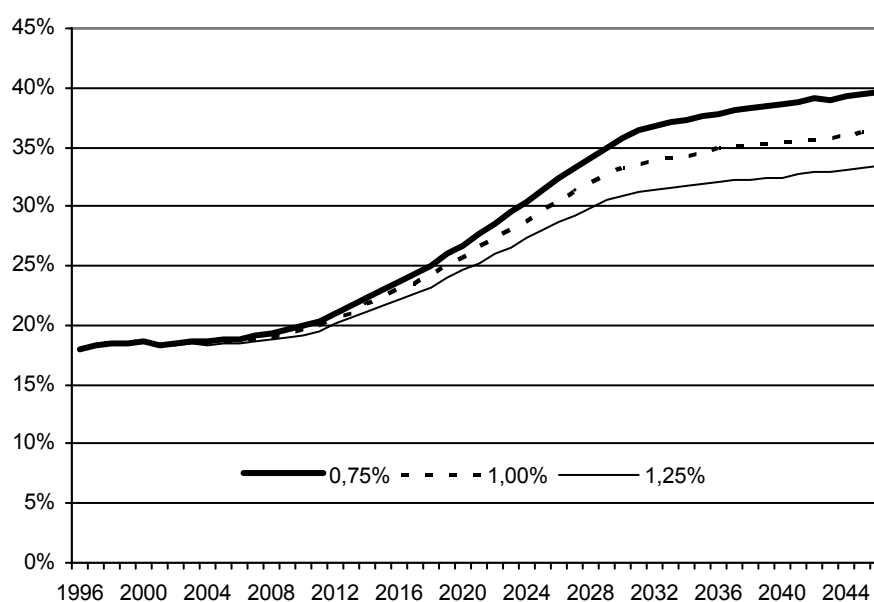
Scenarios 3 and 4 have the same national immigration targets of 0.75% and 1%, respectively, but in contrast to the first two scenarios, they assume that the regional distribution of immigrants will be equal in the future to the provincial share of the Canadian population. Under this alternative assumption, immigration contributes to maintain the provincial distribution of the population equal to its 2000 level as opposed to the first two scenarios where immigration contributes to increase the population weight of Ontario and British Columbia.

Chart 4 presents the impact of alternative migration target scenarios on Canada's elderly dependency ratios. As can be seen, in comparison to the baseline scenario with 0.75% of new immigrants each year, achieving a target of 1% would reduce the elderly dependency ratio by 9% by 2046, which is not negligible at the national level. For illustrative purposes, we also added a more optimistic scenario of an immigration objective of 1.25% of the population. In this case, the elderly dependency ratio would be reduced by 16% by 2046 compared to a scenario of 0.75%.

Table 5
Main Demographic Assumptions

Province	NF	PEI	NS	NB	Qc	Ont	Man	Sask	Alb	BC
Fertility rate	1.21	1.56	1.42	1.45	1.47	1.53	1.81	1.81	1.70	1.45
Life expectancy (2044)										
Men	78	79	79	81	80	82	80	80	81	81
Women	82	85	85	85	85	86	84	86	84	85
Annual share of emigrants (% of Pop)	0.05	0.03	0.07	0.04	0.16	0.28	0.16	0.11	0.26	0.22
Annual share of new immigrants										
Scen1 and Scen2	0.21	0.07	1.04	0.35	14.3	55.4	1.85	0.80	6.26	19.6
Scen3 and Scen4	1.70	0.45	3.03	2.44	23.8	38.2	3.70	3.27	9.86	13.2

Chart 4
Canada's Elderly Dependency ratio
Under Alternative Scenarios of Migration Targets



When we look at the impact by region, the results indicate that regional differences in fertility rates and the assumption concerning the regional location of immigrants lead to substantial regional differences in elderly dependency ratios. Chart 5 presents the demographic projection by region according to the 4 scenarios. As can be seen in the chart, the baseline scenario indicates that the Prairies will experience the smallest increase in the elderly dependency ratio compared to the other regions, mainly because of the relatively higher assumed fertility rate. This region is

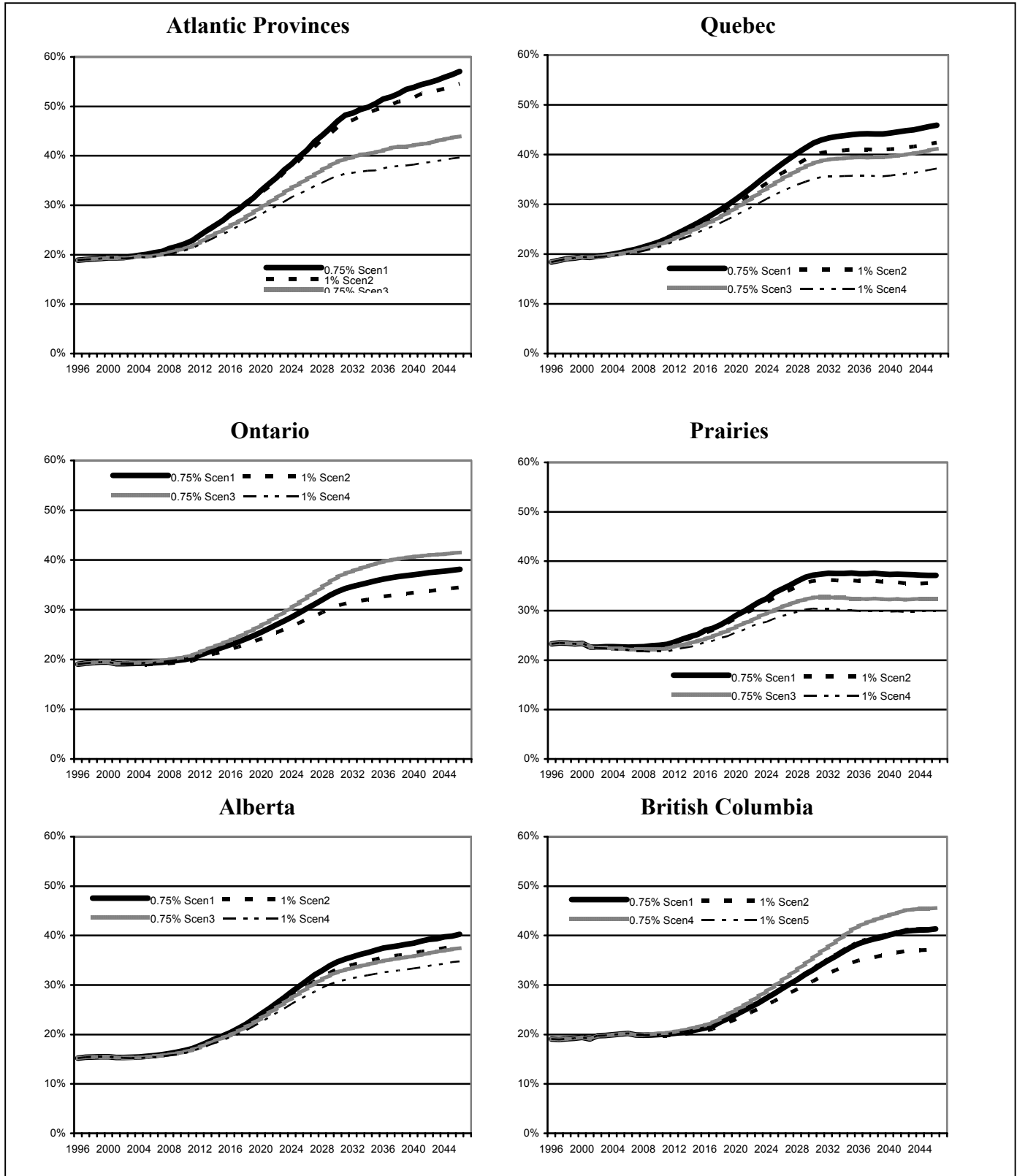
followed by Ontario and British Columbia. In this scenario, these two provinces benefit in good part from the high proportion of new immigrants who choose these provinces as residential location. By contrast, the Atlantic region experiences the most significant increase in the elderly dependency ratio, followed by Quebec and Alberta.

When we achieve new immigration targets as in Scen2, all the regions benefit through a relatively smaller increase in the elderly dependency ratio. However, not surprisingly, Ontario and British Columbia have the greatest reduction in the elderly dependency ratio since they receive the highest proportion of immigrants relative to their population. Shock minus control, the elderly dependency ratio is 9.7% lower in Scen2, respectively for Ontario by 2044 and 9.9% lower for British Columbia. When we look at the remaining regions, Quebec has the third largest reduction in the elderly dependency ratio compared to the baseline with 7.7%, while the impact is relatively smaller in the remaining regions, ranging from 7.7% to 4.2% in Scen2. Assuming that recent immigrants have the same degree of labour force attachment in every province, this suggests that Ontario and BC would benefit the most in terms of labour supply growth.

Table 6
Impact of Changes in Immigration Target on Elderly Dependency Ratio by 2044
Relative to the Baseline Scenario (Scen1)

Region	Atlantic	Quebec	Ontario	Prairies	Alberta	BC
Scen1						
Level	0.56	0.45	0.38	0.37	0.40	0.41
Scen2						
Level	0.54	0.42	0.34	0.35	0.37	0.37
% difference from Scen1	-4.2%	-7.7%	-9.7%	-4.6%	-5.7%	-9.9%
Scen3						
Level	0.43	0.40	0.41	0.32	0.37	0.45
% difference from Scen1	-22.5%	-10.6%	9.1%	-12.8%	-6.9%	10.5%
Scen4						
Level	0.39	0.37	0.38	0.30	0.34	0.42
% difference from Scen1	-30.0%	-19.2%	-0.2%	-19.6%	-13.6%	0.9%

Chart 5
Regional Elderly Dependency Ratio
Based on Alternative Demographic Scenarios



When we assume that the regional location of immigrants is the same as the provincial share of the population in Scen3 and Scen4, the results are strikingly different. The regional difference in the elderly dependency ratio is significantly reduced. For example, in these alternative scenarios, the province of Quebec and the Atlantic region have a similar demographic profile than Ontario by 2044 in terms of the elderly dependency ratio. The Atlantic and Quebec also do better than British Columbia. Finally, the Prairies regions and Alberta have the lowest elderly dependency ratio in Scen3 and Scen4 compared to the rest of Canada.

6. Simulation Results with the Regional CGE Overlapping Generations Model

We first present the simulation results at both national and regional levels for the baseline demographic scenario. This is followed by an examination of alternative scenarios with increased immigration and according to an alternative assumption on the residential location of recent immigrants.

The baseline results first indicate that the declining share of the working-age population and the rising proportion of older people have negative economic implications on national savings (see Table 7). The life-cycle theory of savings is a key assumption in the model and explains this result. The negative labour supply effect and the decline in savings also explain the fall in real GDP per capita relative to a scenario with no ageing. Initially, however, the demographic shock positively contributes to growth as the baby-boomers are still in the labour force, accumulating large amounts of savings and being highly productive at work. However, as they move through retirement, their savings decline as well as real per-capita GDP. Shock minus control, between 2002 and 2050, real per-capita GDP falls by 7.4% in comparison to a situation with no demographic changes.

Also in the demographic shock, the proportion of workers becomes relatively scarce as opposed to physical capital which is more abundant (rising capital-labour ratio). This is the result of excess demand pressures on labour, which leads to higher real wages, while the real return to capital declines. Moreover, according to the baseline scenario, current older generations benefit from the demographic shock through economic-welfare gains via increased lifetime real after-tax income and consumption, while younger future generations suffer economic-welfare losses as a result of ageing.

Table 7
% Shock minus Control Baseline Results
(National Level)

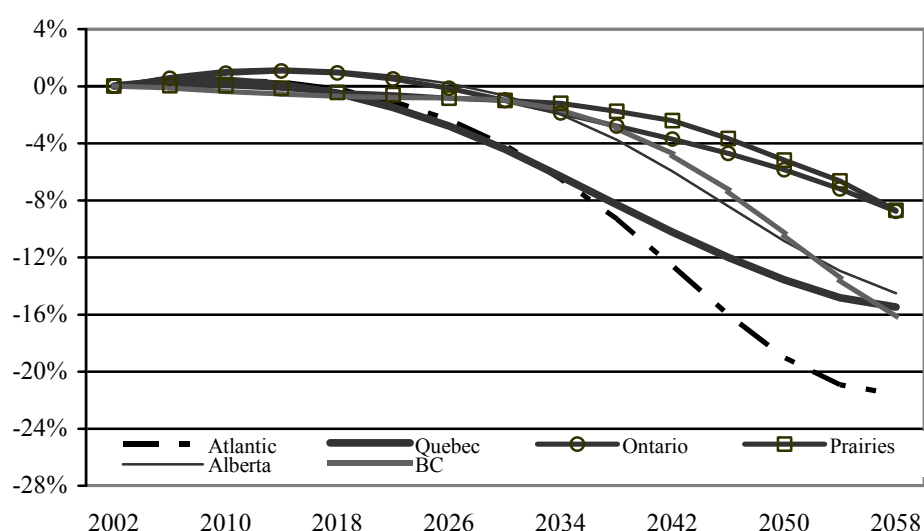
	Real GDP per Capita	National Savings	Real Wage Rate		Real Return to Capital
			Before Tax	After Tax	
2002	0.0%	0.0%	0.0%	0.0%	0,0%
2006	0.5%	-0.6%	0.7%	1.2%	-0,1%
2010	0.7%	-1.3%	1.4%	2.2%	-0,2%
2014	0.8%	-2.0%	2.0%	3.1%	-0,4%
2018	0.7%	-2.7%	2.7%	3.8%	-0,5%
2022	0.3%	-3.5%	3.3%	4.3%	-0,6%
2026	-0.2%	-4.3%	3.8%	4.7%	-0,7%
2030	-0.9%	-5.0%	4.3%	4.8%	-0,7%
2034	-1.9%	-5.8%	4.7%	4.7%	-0,8%
2038	-3.0%	-6.6%	5.0%	4.3%	-0,8%
2042	-4.3%	-7.2%	5.1%	3.5%	-0,7%
2046	-5.8%	-7.9%	5.0%	2.3%	-0,7%
2050	-7.4%	-8.4%	4.6%	0.9%	-0,6%

When we look at the results by region, the numbers vary quite markedly. As shown in Chart 6, the Atlantic region and the province of Quebec suffer the largest real income decline compared to the rest of Canada. As illustrated with the elderly dependency ratio, these regions experience the greatest increase in the proportion of older people as a share of their population. In comparison, Alberta and British Columbia are closest to the national average and the Prairies and Ontario benefit from the smallest decline in real per-capita income. The Prairies benefit from a higher-than-average fertility rate, which partially offsets the rising number of older people, while Ontario receives the largest share of recent immigrants.

Moreover, since the province of Ontario attracts a larger proportion of immigrants, this contributes to reduce labour market pressures and potential labour shortages in the province. Conversely, the other provinces, particularly the East, do not benefit as much from immigration and regional labour market pressures are relatively greater compared to Ontario. This is reflected by smaller increases in real wage rates in Ontario relative to the rest of Canada (see Chart 7). The results also indicate that the more rapid pace of ageing in the Eastern provinces provides some compensation in terms of a more rapid increase in real wages. This implies that regional differences in demographic changes could provide some incentives for regional labour mobility from Ontario to the rest of Canada, especially in favour of the Atlantic provinces.

In addition, since each region produces one unique good, and these are imperfect substitutes, the faster ageing regions benefit from an improvement in their terms of trade because of a more limited supply of their goods, as illustrated by the relative increase in regional output prices. However, these favourable terms of trade effects are insufficient to compensate for the negative effects on the provinces' real per-capita income. These results, both national and regional are consistent with other studies presented for Canada.¹⁰

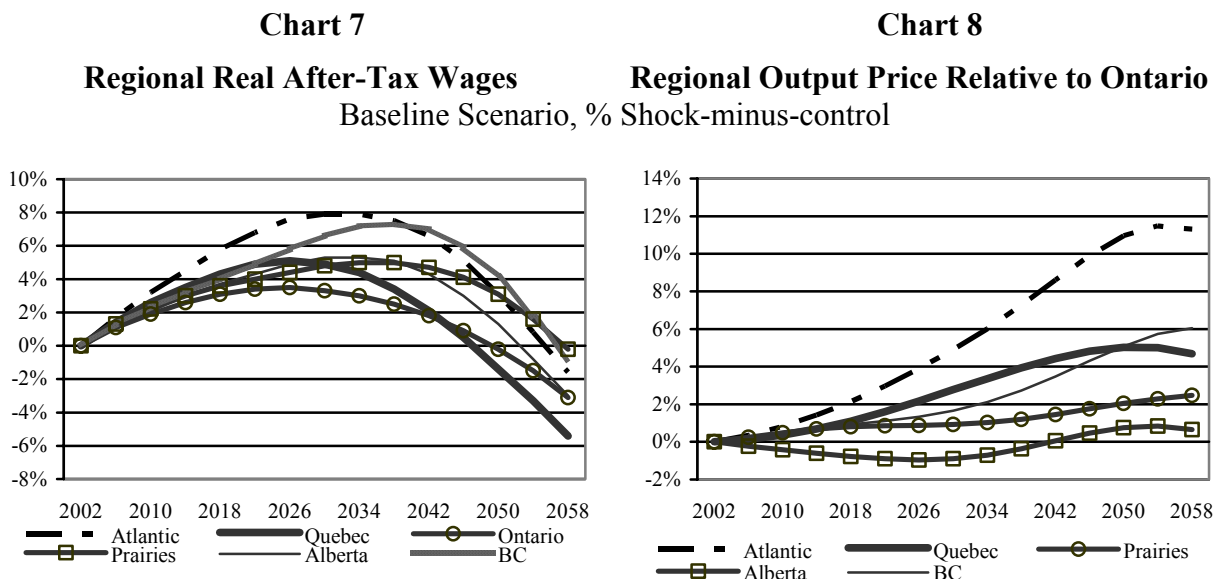
Chart 6
Regional Real per-Capita Income, Baseline Scenario
 % Shock-minus-control impact



When we look at the regional fiscal implications of ageing, there are opposing forces at play. On the one hand, the rising proportion of baby-boomers going through retirement contributes to reduce the wage income tax base and to raise public health expenditures. On the other hand, the relative scarcity of workers and abundance in the stock of physical capital lead to an increase in wages and a decline in interest rates. The wage increase partially offsets the impact of the decline in the number of workers on the wage income tax base and the fall in interest rates contributes to reduce the interest payments on the public debt. Finally, the declining proportion of younger people provides downward pressures on public education spending. In the simulations, we assume that both national and regional governments maintain a constant debt-to-GDP ratio and adjust the wage income tax rate accordingly. Initially, the wage income tax rate declines in all regions as the net effect on the fiscal balance is favourable. Eventually, the effects of the demographic pressures

¹⁰ See, for example, Hviding and Mérette (1998), Fougère and Mérette (2000) and Mercenier and Mérette (2002).

on the fiscal balance are reversed and the wage income tax base has to increase to maintain the debt-to-GDP constant.



In Scenario 2, the immigration target of 1% of the total population is achieved, which contributes to reduce the negative consequences of ageing on real per-capita GDP. However, the differential impacts are more noticeable over the longer term. At the national level, the decline in real per-capita GDP is reduced by near 10% by 2050, corresponding to about 1 percentage point gain in real per-capita GDP. The impact of increased immigration also reduces labour market pressures to some extent, as reflected by the smaller increase in real wages. This also provides an indication that increasing the immigration target further to 1.25% of the population, for example, and achieving it would roughly double the benefits on real per-capita GDP to 20% or 2 percentage points. The improvement in real per-capita income has also positive intergenerational consequences by improving economic-welfare benefits to future young generations compared to existing older generations. Finally, the rise in the number of immigrants has some implications on the financing of public pensions. However, there are two factors at play. On the one hand, the rise in the number of immigrants raises labour supply, which in turn increases total wage compensation and reduces the pressure on public pension contribution rates. On the other hand, the increase in labour supply reduces real wage growth, thus reducing total wage compensation.

At the regional level, it can be noted that the increase in the number of immigrants has virtually no effect on real per-capita income for the Atlantic region, Alberta and the Prairies, since these provinces receive a very small fraction of immigrants (see Chart 9). It also only has a small effect in Quebec. However, the impact is more significant in Ontario and British Columbia. The increase in the number of immigrants to these two provinces also reduces labour market pressures, which is reflected by smaller real wage growth compared to the other regions and relative to the baseline scenario. This suggests that increasing the number of immigrants in a scenario where Ontario and British Columbia continue to receive a proportion of immigrants greater than their share of the population would provide more incentives to labour mobility due to rising real wage differences in favour of the other provinces.

In Scenario 3, the proportion of immigrants is the same as in the baseline scenario. However, the regional location of immigrants, rather than being dominated by Ontario and BC, is equally distributed, according to the provincial share of the population in the total population. Accordingly, the negative impact on real per-capita income for the Atlantic, Quebec, the Prairies and Alberta are relatively smaller over the long run since these provinces now benefit more from immigration. Also not surprisingly, Ontario and BC have a larger decline in real per-capita income compared to the baseline scenario, since they benefit less from immigration. This scenario also reduces regional real wage growth differences, which implies a more balanced reduction in regional labour market pressures due to immigration. This implies that immigration in this scenario has no influence on incentives to regional labour mobility.

Finally, in Scenario 4, we have maintained the same assumption as in Scenario 3 concerning the regional location of immigrants, but the number of immigrants achieves 1% of the population per year. As can be seen in Chart 9, this is the most favourable scenario for the Atlantic, the Prairies, Quebec and Alberta in terms of improvement in real per-capita income, and since they can benefit from the larger proportion of immigrants in their region. Ontario and BC are almost identical as in the baseline scenario. Moreover, as shown in chart 10, this scenario reduces the impact on regional income disparity. This scenario also reduces regional labour market pressures in a more balanced way.

Chart 9
Regional Real per Capita Income, Baseline and Alternative Scenarios
% Shock-minus-control

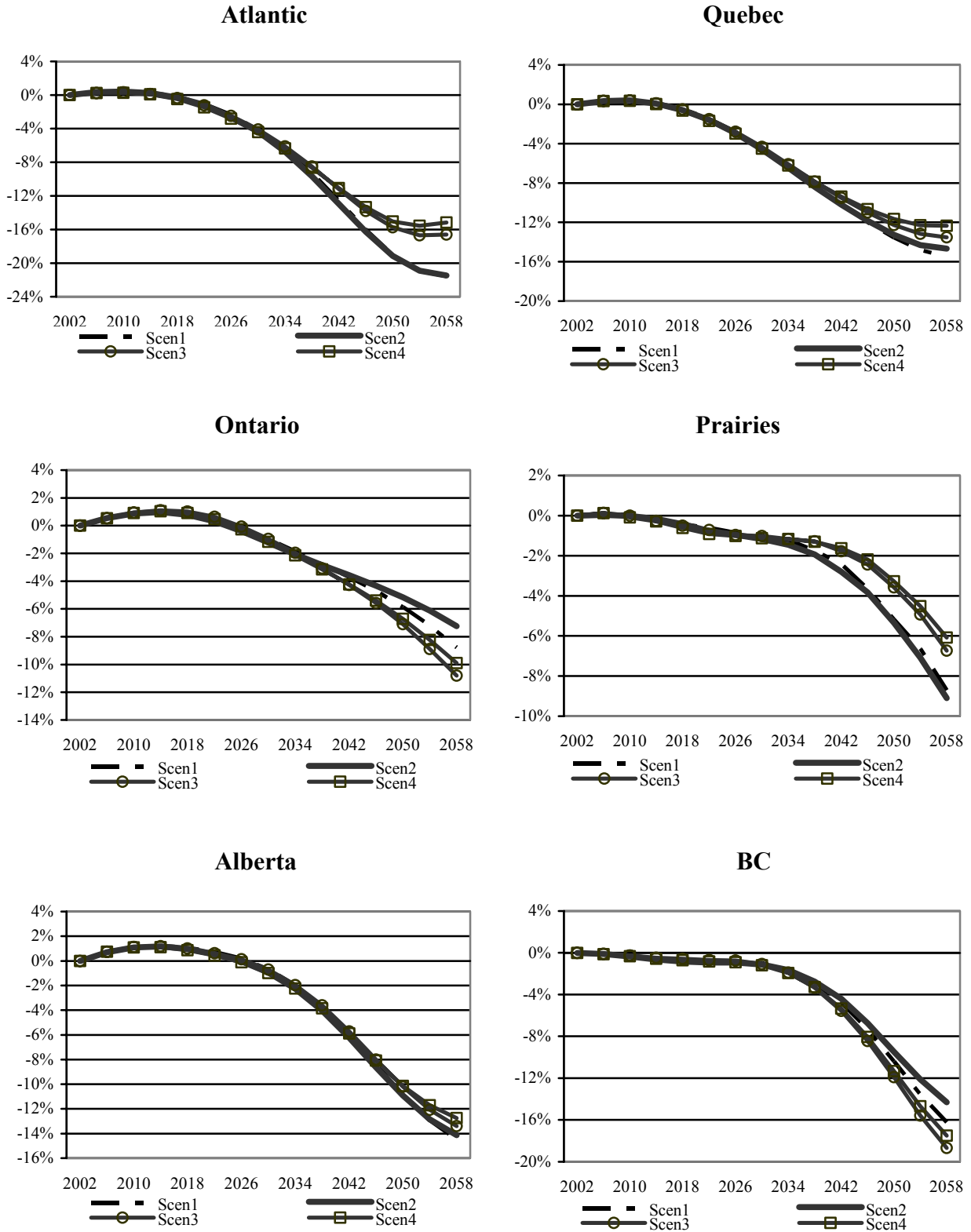
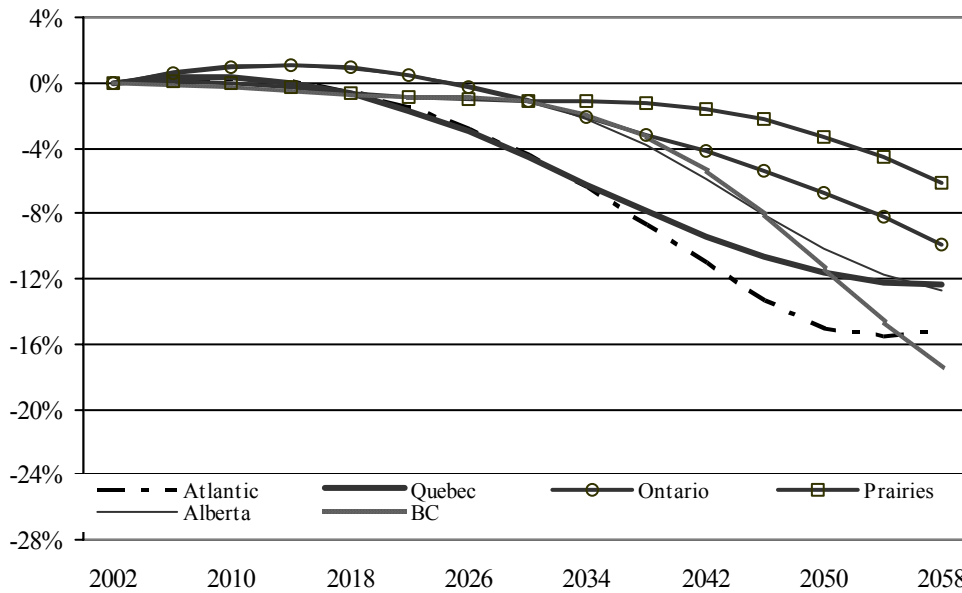


Chart 10
Regional Real per Capita Income, Scen4 Scenario
 % Shock-minus-control impact



Finally, Table 8 provides a summary on the impact of alternative immigration scenarios on labour market pressures at the national and regional levels, as indicated by the change in real wages relative to Scenario 1. As shown in the table, raising the proportion of immigrants from 0.75% to 1% (Scenario 2) of the total population reduces real wage pressures slightly over the long term at the national level. Real wages are 0.8% lower in Scenario 2 by 2050 compared to Scenario 1. A scenario of increased immigration with a more equitable regional distribution of new immigrants (Scenario 4) provides some additional reduction in real wage pressures to 1.1% by 2050.

Across the regions, the reduction in real wage pressures is roughly similar in Scenario 2, ranging from -0.6% for the Prairies to -1.1% for British Columbia by 2050. The Atlantic region obtains more substantial reduction in real wage pressures in Scenarios 3 and 4 with -1.7% and -3% respectively by 2050, as well as Quebec in Scenario 4 with -1.6% by 2050. Finally, in Scenario 3, real wage pressures increase by 1% and 1.6% respectively for Ontario and British Columbia by 2050, since they receive a smaller proportion of immigrants compared to Scenario 1.

Table 8
Impact of Alternative Immigration Trends on Real Wage Pressures
(% change relative to Scenario 1)

	2014	2026	2038	2050
Canada				
Scen2	0.0%	-0.2%	-0.5%	-0.8%
Scen3	0.0%	0.0%	0.0%	-0.2%
Scen4	0.0%	-0.2%	-0.5%	-1.1%
Atlantic				
Scen2	0.0%	-0.2%	-0.3%	-0.6%
Scen3	0.0%	-0.2%	-0.6%	-1.7%
Scen4	-0.1%	-0.4%	-1.1%	-3.0%
Quebec				
Scen2	0.0%	-0.2%	-0.4%	-0.7%
Scen3	0.0%	-0.1%	-0.3%	-0.7%
Scen4	-0.1%	-0.3%	-0.8%	-1.6%
Ontario				
Scen2	0.0%	-0.2%	-0.5%	-0.8%
Scen3	0.0%	0.3%	0.7%	1.0%
Scen4	0.0%	-0.1%	-0.3%	-0.5%
Prairies				
Scen2	0.0%	-0.2%	-0.4%	-0.6%
Scen3	0.0%	-0.1%	-0.3%	-0.8%
Scen4	-0.1%	-0.4%	-0.9%	-1.7%
Alberta				
Scen2	0.0%	-0.2%	-0.4%	-0.7%
Scen3	0.0%	0.0%	-0.1%	-0.4%
Scen4	0.0%	-0.2%	-0.5%	-1.2%
British Columbia				
Scen2	0.0%	-0.3%	-0.6%	-1.1%
Scen3	0.1%	0.4%	0.9%	1.6%
Scen4	0.0%	-0.2%	-0.5%	-0.9%

7. Interpretation of Results, Policy Implications and Conclusion

The results first indicate that since the proportion of immigrants entering Canada is substantial and the age distribution of recent immigrants is normally younger than the age distribution of Canadian born individuals, the projected impact of immigration on the Canadian labour force is quite significant in the long run as illustrated by the elderly dependency ratio projections. According to simulation results with the regional OLG model, a simple rule-of-thumb calculation would suggest that under standard demographic assumptions, expected future immigration flows would contribute to reduce the negative impact of ageing on real per capita GDP by roughly 30% compared with a situation with no immigration.

The results also reveal that raising the number of immigrants would provide some additional benefits in terms of real GDP gains, but these effects would come in the very long run. For example, achieving an immigration target of 1% of the population rather than 0.75% could prevent an additional 10% decline in real GDP per-capita, but it would take near half a century to achieve. The contribution of increased immigration to the reduction in labour market pressures is also small. This clearly indicates that raising immigration can accommodate only very partially the labour market consequences of ageing.

Moreover, the simulations suggest that the regional location decision of immigrants may substantially raise regional income disparity. If current immigration trends persist in the long run, Ontario and British Columbia could obtain most of the socio-economic benefits of immigration, which would in turn contribute to raise regional disparity. On the other hand, regional wage growth differentials would also arise at the advantage of the other provinces. This would in turn provide incentives to regional labour mobility from Ontario to the rest of Canada.

Moreover, according to the simulations, an equitable regional distribution of recent immigrants would generate more benefits to regions like the Atlantic, the Prairies and Quebec in the long run than simply raising immigration targets. It would also significantly contribute to reduce regional disparity. Finally, a combination of both increased immigration and a more equitable regional distribution of immigration would be the most preferred scenario since it would generate both positive and more equitable benefits to all the regions of Canada.

Since the results found in this study are model-based simulations, a number of caveats need to be raised. For model simplification, we assumed that recent immigrants have similar labour force characteristics and owned the same value of assets than Canadian-born individuals. Relaxing these two assumptions would likely change the magnitude of the results but not their direction.

Correspondingly, the next step in our work will consist of presenting simulation scenarios where recent immigrant workers have a different level of education/skill level and a different stock of assets than Canadian-born workers to evaluate the socio-economic implications of raising the proportion of skilled immigrants. Finally, we also plan to use a regional CGE overlapping generations model disaggregated at both the sectoral and occupational level to evaluate more

specifically the potential implication of attracting skilled immigrants by occupational group on the labour market in the context of an ageing population.

References

Alvarado, José and Creedy, John, *Population Ageing, Migration and Social Expenditure*, Cheltenham: Edward Elgar Publishing Limited, 1998.

Auerbach, Alan J. and Kotlikoff Laurence J., *Dynamic Fiscal Policy*, Cambridge University Press, Cambridge, U.K., 1987.

Auerbach, Alan J., Kotlikoff Laurence J., Hagemann Robert P. and Nicoletti Giuseppe, “The Economic Dynamics of an Ageing Population: The Case of Four OECD Countries, *OECD Economic Review*, 1989, 12, pp. 97-130.

Bean, Frank D. and Stephen, Elizabeth H., *The Effect of Disruption on the Fertility of Immigrant Mexican Women in the United States*, mimeo presented at the 1986 Meeting of the American Sociological Association, New York, 1986.

Bean Frank D. and Swicegood, C. Gray, “Generation, Female Education and Mexican American Fertility”, *Social Science Quarterly*, 1982, 63, pp. 131-144.

Beaujot, Roderic and Deborah Matthews, *Immigration and the Future of Canada's Population*, Discussion Paper no. 00-1, University of London Ontario, 2000.

Beaujot, Roderic, *Projecting the Future of Canada's Population: Assumptions, Implications and Policy*, Discussion Paper no. 02-06, Population Studies Centre, University of Western Ontario, 2002.

Berry, A. and Soligo R., “Some Welfare Aspects of International Migration”, *Journal of Political economy*, 1969, 77, pp. 778-794.

Blinder, Alan, *Toward an Economic Theory and Income Distribution*, Cambridge: MIT Press, 1974.

Borjas, G., “The Economics of Immigration”, *Journal of Economic Literature*, 1994, 32, pp. 1667-1717.

Borjas, G., “The Economic Benefits from Immigration”, *Journal of Economic Perspectives*, 1995, 9, pp. 3-22.

Borjas, G. and Trejo, S., *Searching for the Effects of Immigration on the Labour Market*, Working Paper no. 5454, NBER, 1996.

Centre for International Economics, “The Relationship Between Immigration and Economic Performance”, In *Immigration: A Commitment to Australia (CAAIP)*, Canberra: AGPS, 1988.

Clarke, H. and Ng, Y-K, "Are there Valid Economic Grounds for Restructuring Immigration?", *Economic Papers*, 1991, 10 (1) pp. 71-76.

Denton, F. and B. Spencer, "Population Aging and Its Economic Costs: A Survey of the Issues and Evidence", *Canadian Journal of Aging*, 2000, 19, pp. 509-536.

Emery, J.C.H. and I. Rongve (1999), "Much Ado About Nothing? Demographic Bulges, The Productivity Puzzle and CPP Reform", *Contemporary Economic Policy*, 1999, 17, pp. 68-78.

Fougère, Maxime and Marcel Mérette, *Population Ageing and the Current Account in Selected OECD Countries*, Working Paper no. 98-04, Department of Finance, 1998.

Fougère, Maxime and Marcel Mérette, "Population Aging, Intergenerational Equity and Growth: An Analysis with an Endogenous Growth Overlapping Generations Model", In *Using Dynamic General Equilibrium Models for Policy Analysis*, eds. G. Harrison, Svend E. Hougaard Jensen, Lars Haagen Pedersen and Thomas Rutherford, Amsterdam: North Holland, 2000a.

Fougère, Maxime, and Mérette, Marcel, "Economic Dynamics of Population Ageing in Canada: An Analysis with a Computable Overlapping Generations Model," *Manuscript* presented at the annual meeting of the Sixth International Conference on Computing Economics and Finance, Barcelona, Spain, 2000b.

Frieland, Dov, Zvi Eisenbach and Calvin Goldscheider, "Family Size Limitation and Birth Spacing: The Fertility Transition of African and Asian Immigrants in Israel", *Population and Development Review*, 1980, 6, pp. 581-593.

Government of Canada, *Job Futures: World of Work*, Human Resources Development Canada, Gatineau, 2002.

Green, D., *Immigrant Occupational Attainment: Assimilation and Mobility Over Time*, Discussion Paper no. 95-15, University of British Columbia, Vancouver, 1995.

Group of Ten, *The Macroeconomic and Fiscal Implications of Ageing Populations*, Basle: Bank of International Settlements, 1998.

Hviding, Ketil and Marcel Mérette (1998), *Macroeconomic Effects of Pension Reform in the Context of Ageing : OLG Simulations for Seven OECD Countries*, Working Paper no. 201, OECD, 1998.

Hellwig, O, King, A, Manning, I and Perkins J. *Immigrant Incomes and Expenditures*, Canberra: AGPS, 1992.

Mercenier, Jean and Marcel Mérette, *Will Population Ageing Increase Inequality Across Canada?*, Human Resources Development Canada Working Paper forthcoming, Gatineau, Canada, 2002.

Mérette, Marcel (2002), "The Bright Side: A Positive View on the Economics of Aging", *Choices IRPP*, 2002, 8, (1), pp. 1-24.

OECD, *Reforms for an Ageing Society*, Paris, 2000.

Peter, M. and G. Verikios, *Quantifying the Effect of Immigration on Economic Welfare in Australia*, Monash University Department of Economics Seminar Paper no. 13, 1994.

Simon, J., *The Economic Consequences of Immigration*, Oxford: Basil Blackwell, 1989.

Statistics Canada, *Report on the Demographic Situation in Canada*, Ottawa, 2001a.

Statistics Canada *Population Projections for Canada, Provinces and Territories, 2002-2026*, catalogue no. 91-520, Ottawa, 2001b.

Stephen, Elizabeth H. and Frank D. Bean, "Assimilation, Disruption and the Fertility of Mexican-Origin Women in the United States", *International Migration Review*, 1992, 26, pp. 67-88

Storesletten, Kjetil, "Sustaining Fiscal Policy Through Immigration", *Journal of Political Economy*, 2000, 108 (2), pp. 300-323

Tu, P., "Migration: Gains or Losses", *Economic Record*, 1991, 67, pp. 153-157

Usher, D. "Public Property and the Effects of Migration upon Other Residents of the Migrants' Countries of Origin and Destination", *Journal of Political Economy*, 1977, 85, pp. 1001-1020.

Waldorf, Brigitte, "Impacts of Immigrant Fertility on Population Size and Composition", In *Migration and Restructuring in the United States: A Geographic Perspective*, eds K. Pandit and S. D. Withers, Rowman & Littlefield Publishers Inc., 1999.

Appendix: Model Structure

The Production Sector

The regional economy's production is represented by a Cobb-Douglas function where $Y_{j,t}$ represents the output of region j at time t , K is the capital stock, L the effective labour force and A the scaling variable.

$$(1) \quad Y_{j,t} = A_j K_{j,t}^{\alpha_j} L_{j,t}^{1-\alpha_j}$$

Firms in each region hire labour and rent physical capital to produce output and operate in a perfect competition market. Factor demand and output are determined by the following conditions for profit maximisation:

$$(2) \quad \frac{re_{j,t}}{P_{j,t}} = \alpha_j A_j \left(\frac{K_{j,t}}{L_{j,t}} \right)^{\alpha_j-1},$$

$$(3) \quad \frac{w_{j,t}}{P_{j,t}} = (1 - \alpha_j) A_j \left(\frac{K_{j,t}}{L_{j,t}} \right)^{\alpha_j},$$

where re is the rental rate of capital, w the wage rate per unit of effective labour and P the output price. The regional capital stock (K) is determined as follows:

$$(4) \quad K_{j,t+1} = Inv_{j,t} + (1 - \delta_j) K_{j,t},$$

with Inv representing investment and δ the depreciation rate of capital.

Household Behaviour

Each native generation optimises a CES type inter-temporal utility function of consumption and bequest subject to lifetime income. The household's optimisation problem consists of choosing the consumption and savings pattern. Savings can be allocated between domestic physical capital ownership titles or regional bonds issued by regional governments. Similarly, consumption

expenditures are allocated toward the six available final goods accordingly to households' preferences represented by a CES function.

$$(5) \quad U = \frac{1}{1-\theta} \sum_{g=1}^{15} \left(\frac{1}{1+\rho} \right)^g (C_{j,g,t+g-1}^{1-\theta} + \beta_g^\theta Beq_{j,g,t+g-1}^{1-\theta}) \quad , \quad 0 < \theta < 1, \beta_{g \neq 15} = 0, \beta_{g=15} > 0 \quad ,$$

where $C_{j,g,t}$ is consumption of an individual in region j of age group g at time t . Beq is bequest, ρ the pure rate of time preference and θ the inverse of the inter-temporal elasticity of substitution. β is a constant parameter. Following Blinder (1974), the level of bequest enters in the utility function giving rise to intergenerational transfers. It should be noted that this presentation of the utility function yields very different results from the alternative of introducing the utility of future generations directly into the utility function of current generations. In this form presented here, the utility of bequest is independent of the present value of cash receipts extending beyond the death of the current generation.

The present value of household wealth W is the discounted sum of lifetime labour income after deduction of taxes, deduction of public old-age pensions $pens$ and inheritance inh .

$$(6) \quad W = \sum_{g=1}^{15} \left(\frac{1}{1+ri_{t+g-1}(1-\tau_k)} \right) \left[Y_{L,g,t+g-1} (1-\tau_{w,j,t+g-1} - c_{P,t+g-1}) + inh_{g,t+g-1} + pens_{g,t+g-1} \right] \quad ,$$

where Y_L is labour income, ri is the rate of interest, τ_K the tax rate on capital income τ_w the tax rate on labour income and c_P the public pension plan contribution rate. Labour income depends on the individual's productivity or earnings profile E which is defined as a quadratic function of age. It is also assumed to be identical across region.

$$(7) \quad E_g = \gamma + \lambda g - \psi g^2 \quad , \quad \gamma, \lambda, \psi \geq 0 \quad .$$

Labour income of an individual age group is defined as :

$$(8) \quad Y_{L,j,g,t} = w_{j,t} E_g \quad , \quad g = 1, 2, \dots, 12.$$

Pension benefits of the retirees are a fraction of their average labour earnings. The fraction is determined by the public pension replacement rate $repl$ that applies identically across Canada. Pension benefits are thus equal to:

$$(9) \quad Pens_{j,gm,t} = repl \frac{1}{12} \sum_{gj} w_{j,t-14+gj} E_{gj} \quad , \quad gm = 13, 14, 15 \quad , \quad gj = 1, 2, \dots, 12$$

The first-order condition for consumption and bequest can be defined as follows:

$$(10) \quad C_{j,g+1,t+g} = \left[\frac{(1 + r_{t+g}(1 - \tau_K)) P_{C,j,t+g-1}}{(1 + \rho) P_{C,j,t+g}} \right]^{(1/\theta)} C_{j,g,t+g-1} \quad ,$$

$$(11) \quad Beq_{j,g,t} = \beta_g C_{j,g,t} \quad .$$

Bequest is distributed at the end of each generation's lifetime. Inheritances arising from the oldest age group's ($g=15$) bequests are assumed to be equally distributed to all working generations.

$$(12) \quad Inh_{j,gj,t} Pop_{j,gj,t} = \frac{1}{12} Beq_{j,gn,t} Pop_{j,gn,t} \quad , \quad gn = 15 \quad ,$$

where $Pop_{j,g,t}$ is the number of people living in region j of age group g at time t . The population growth rate is treated as exogenous.

The next step in the optimisation problem for household is to allocate their consumption expenditures across the six different final goods. A CES function is used to represent the inter-regional household preference. In the first-order conditions, a final goods produced in region i and consumed by an individual in region j ($ConI_{i,j,g}$) is determined by:

$$(13) \quad ConI_{i,j,g} = \mu_{C,i,j} \left(\frac{P_{C,j}}{P_i} \right)^{\sigma_{C,j}} C_{j,g} \quad ,$$

where P_c is the price of consumption, μ_c is a preference parameter for resident of region j for goods produced in region i and determines the regional distribution of total consumption, and σ_c is the inter-regional consumption elasticity of substitution when all prices are equal.

The price of consumption is determined by a non-linear weighted average of local prices and also depends on the preferences parameters.

$$(14) \quad P_{C,j}^{(1-\sigma_{C,j})} = \sum_j \mu_C P_i^{(1-\sigma_{C,j})} .$$

A CES function describes the investment technology. The composition of regional investment is then defined as:

$$(15) \quad Einv_{i,j} = \mu_{Inv,i,j} \left(\frac{P_{Inv,j}}{P_i} \right)^{\sigma_{Inv,j}} Inv_j ,$$

where μ_{Inv} is a parameter in the CES investment technology and σ_{Inv} is the corresponding elasticity of substitution.

The price of investment is determined similarly as for the price of consumption, that is:

$$(16) \quad P_{Inv,j,t}^{(1-\sigma_{Inv,j})} = \sum \mu_{Inv,i,j} P_{i,t}^{(1-\sigma_{Inv,j})} .$$

As bonds and capital shares are assumed to be perfect substitutes, expected returns on bonds equal expected returns on capital shares. Moreover, financial capital is perfectly mobile across the Canadian regions and an interest parity condition ensures that the interest rate is unique across regions. In equation 17, the unique rate of interest ri is expressed as being equal to the rental return on capital re minus the depreciation rate plus the capital gains, and this, for all regions j :

$$(17) \quad ri_{j,t} = \frac{re_{j,t} + (1 - \delta_j) P_{Inv,j,t}}{P_{Inv,j,t-1}}, \forall j .$$

The Government Sector

The government budget constraint is defined as :

$$(18) \quad \begin{aligned} & P_{j,t} Bond_{j,t+1} + \sum_g Pop_{j,g,t} (\tau_{w,t} (w_{j,t} E_g + Pens_{j,g}) + \tau_{C,t} P_{C,j,t} C_{j,g} + \tau_{K,t} \sum_i ri_t Lend_{i,g,t}) \\ & = P_{j,t} (Gov_{j,t} + GovH_{j,t} + GovE_{j,t}) + ri_t P_{j,t-1} Bond_{j,t} \end{aligned}$$

Where, τ_c is the effective tax rate on consumption, $Lend$ is the stock of wealth accumulated by households, Gov is public expenditures, $GovH$ health care spending and $GovE$ education spending. Pay-as-you-go pension benefits are financed by contribution rates on labour income. The pension program is represented by the following equation:

$$(19) \quad \sum_{gm} Pop_{j,gm,t} Pens_{j,gm,t} = c_{P,t} \sum_{gj} Pop_{j,gj,t} E_{j,gj} w_{j,t} \quad , gj = 1,2,\dots,12 \quad , gm = 13,14,15$$

where c_P is the national contribution rate for the pay-as-you-go program.

Market and Aggregation Conditions

The model assumes that all markets are perfectly competitive. There are 6 goods markets in the model. The equilibrium condition for the goods market states that each regional output must be equal to total demand:

$$(20) \quad Y_{j,t} = \sum_i (EC_{j,i,t} + EInv_{j,i,t}) + Gov_{j,t} + GovH_{j,t} + GovE_{j,t} \quad .$$

Labour and physical capital are immobile across regions, so a market exists for these two production factors in each region. The stock of effective labour is the number of individuals times their corresponding productivity level:

$$(21) \quad L_{j,t} = \sum_{gj} Pop_{j,gj,t} E_{gj} \quad .$$

Finally, the capital market must be in equilibrium for Canada that is, the sum of the stock of wealth ($Lend$) accumulated by all Canadians must be equal to the sum of bonds issued by regional governments and the stocks of capital used in each region:

$$(22) \quad \sum_{j,g} Pop_{j,g,t} Lend_{j,g+1,t+1} = \sum_j P_{j,t} Bond_{j,t+1} + P_{Inv,j,t} K_{j,t+1} \quad .$$