



Natural Resources
Canada

Ressources naturelles
Canada



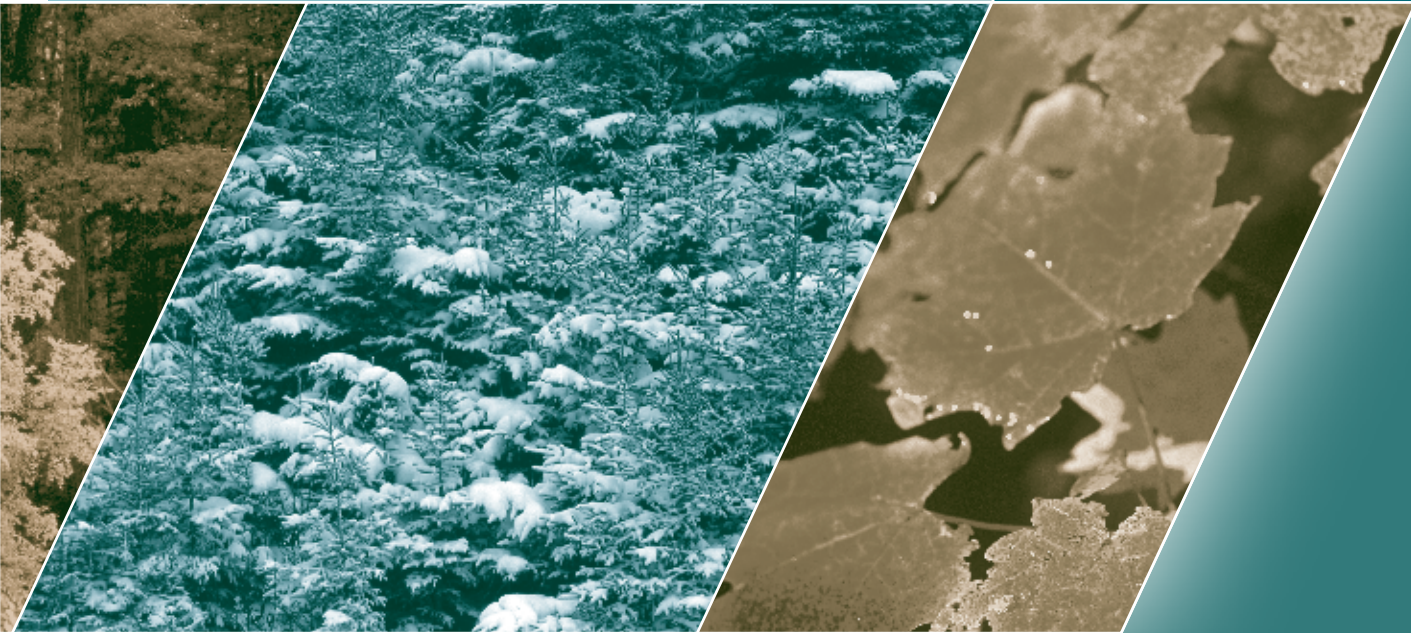
CANADIAN FOREST SERVICE

Publications Digest

SERVICE CANADIEN DES FORÊTS

Abrégé des publications

VOLUME 20, 2010



Canada

The State of Canada's Forests annual report for 2010 features an insightful review of Canada's forests and forest sector during the past year; statistical profiles for Canada and the provinces and territories; and a sample of the indicators for sustainable forest management (SFM), along with how Canada's forests are doing in key areas of SFM.

The publication is available in the Bookstore, bookstore.cfs.nrcan.gc.ca; in a PDF format file; and on the Canada's Forests Web site, canadaforests.nrcan.gc.ca/rpt.

Le rapport annuel 2010 de **L'État des forêts au Canada** présente un examen perspicace des forêts et du secteur forestier au Canada au cours de la dernière année; des profils statistiques sur le Canada, les provinces et les territoires; et un échantillon des indicateurs d'aménagement forestier durable (AFD), assorti de l'information la plus récente sur la situation des forêts canadiennes dans chaque domaine de l'AFD.

La publication est disponible en format PDF dans notre librairie, librairie.scf.nrcan.gc.ca, et sur le site Web Les forêts du Canada, foretscanada.nrcan.gc.ca/rpt?lang=fr.



CELEBRATING FORESTS FOR PEOPLE / DES FORÊTS POUR LES POPULATIONS

The United Nations General Assembly has declared 2011 the International Year of Forests (IYF).

The theme selected for the year, Celebrating Forests for People, is intended to raise awareness regarding the sustainable management, conservation, and sustainable development of all types of forests.

For information on Canada's celebration of IYF and its global leadership in sustainable forest management, please visit www.internationalyearforests.ca.

L'Assemblée générale des Nations Unies a déclaré l'année 2011 Année internationale des forêts (AIF).

Le thème choisi pour l'année, Des forêts pour les populations, est destiné à sensibiliser le public aux notions de gestion durable, de conservation et de développement durable pour tous les types de forêts.

Pour de l'information concernant les célébrations de l'AIF au Canada et notre leadership mondial en matière d'aménagement forestier durable, veuillez visiter le www.anneeinternationaleforets.ca



The Publications Digest lists publications from the research establishments and headquarters of the Canadian Forest Service (CFS), Natural Resources Canada (NRCan).

Most of these publications are distributed free and may be obtained by contacting the relevant CFS research establishment. The source of each publication is usually indicated by a circled number referring to an address listed on the last page. Publications may be ordered from the CFS Online Bookstore (bookstore.cfs.nrcan.ca) or by mail, fax, phone, or e-mail (see the last page for detailed information). Online only publications are available from the CFS Online Bookstore. Priced publications are listed on pages 28–34.

In some cases, an abstract or short description and/or a PDF format file of the publication is available from the CFS Online Bookstore.

The language of each report is indicated by the language of the title. Reference to the availability of the report in the other official language may be found at the end of the bibliographic entry.

This issue includes all publications issued in 2010 and those not previously mentioned in *The Publications Digest*.

L'Abrégé des publications cite les publications des établissements de recherche et de l'administration centrale du Service canadien des forêts (SCF) de Ressources naturelles Canada (RNCAN).

La plupart des publications sont gratuites et peuvent être obtenues auprès de l'établissement du SCF qui les a publiées. Un numéro encerclé indique habituellement cette source et renvoie le lecteur à la liste d'adresses qui se trouve à la dernière page de l'*Abrégé*. On peut commander les publications à partir de la librairie en ligne du SCF (librairie.scf.nrcan.gc.ca), ou par la poste, par fax, par téléphone ou par courriel (voir les précisions à la dernière page). Les publications disponibles en ligne seulement se trouvent dans la librairie en ligne du SCF. Les publications tarifées sont énumérées aux pages 28 à 34.

Un résumé ou une courte description et/ou un fichier en format PDF de la publication est parfois offert dans la librairie en ligne du SCF.

La langue du titre indique dans quelle langue la publication est disponible. Si elle l'est dans l'autre langue officielle, un renvoi au titre approprié est donné à la fin de la notice bibliographique.

Ce numéro comprend toutes les publications distribuées en 2010 et les précédentes qui n'ont pas été mentionnées dans l'*Abrégé*.

CFS ONLINE BOOKSTORE
bookstore.cfs.nrcan.gc.ca

LIBRAIRIE EN LIGNE DU SCF
librairie.scf.nrcan.gc.ca

Table of Contents

Table des matières

General Information	4	Information générale
Climate Change and Atmospheric Influences	6	Changements climatiques et influences atmosphériques
Forest Diseases	8	Maladies forestières
Forest Ecology and Site Classification	9	Écologie forestière et classification des sites
Forest Fires	11	Incendies de forêt
Forest Insects	12	Insectes forestiers
Genetics, Tree Improvement, and Biodiversity	16	Génétique, amélioration des arbres et biodiversité
Growth and Yield, Inventory, and Monitoring	19	Accroissement, inventaire et biosurveillance
Impacts of Forestry Practices	22	Incidences des pratiques forestières
International Trade and Policy	24	Commerce international et politiques
Silviculture	24	Sylviculture
Socioeconomics and Statistics	24	Socioéconomie et statistique
Sustainable Forest Management	25	Aménagement durable des forêts
Miscellaneous	27	Divers
Priced Publications	28	Publications tarifées
Establishment Addresses	36	Adresses des établissements

Aboriginal Communities and Forestry. 2010. NRCan, CFS, HQ, Ottawa. 3 p. [Français : voir *Les Collectivités autochtones...*]

⑥

Bassin des Lacs Turkey. 2009. RNCAN, SCF, Centre de foresterie des Grands Lacs, Sault Ste. Marie (Ontario). Brochure. [English: see *Turkey Lakes...*] ③

Les Brèves du Service canadien des forêts, Centre de foresterie des Laurentides. 2010. RNCAN, SCF, Centre de foresterie des Laurentides, Québec (Québec). N° 20. 2 p. [English: see *In Brief...No. 20.*] ②

Les Brèves du Service canadien des forêts, Centre de foresterie des Laurentides. 2010. RNCAN, SCF, Centre de foresterie des Laurentides, Québec (Québec). N° 21. 2 p. [English: see *In Brief...No. 21.*] ②

Les Brèves du Service canadien des forêts, Centre de foresterie des Laurentides. 2010. RNCAN, SCF, Centre de foresterie des Laurentides, Québec (Québec). N° 22. 2 p. [English: see *In Brief...No. 22.*] ②

Les Brèves du Service canadien des forêts, Centre de foresterie des Laurentides. 2010. RNCAN, SCF, Centre de foresterie des Laurentides, Québec (Québec). N° 23. 2 p. [English: see *In Brief...No. 23.*] ②

The Bridge. Newsletter of Natural Resources Canada's First Nations Element of the Mountain Pine Beetle Initiative, and of the British Columbia First Nations Forestry Program. (Last edition). 2010. NRCan, CFS, Pacific Forestry Centre, Victoria, B.C., and Indian and Northern Affairs Canada. 12 p. [Français : voir *Le Pont.*] ⑤

In Brief from the Canadian Forest Service, Laurentian Forestry Centre. 2010. NRCan, CFS, Laurentian Forestry Centre, Québec, Que. No. 20. 2 p. [Français : voir *Les Brèves (...)* N° 20.] ②

In Brief from the Canadian Forest Service, Laurentian Forestry Centre. 2010. NRCan, CFS, Laurentian Forestry Centre, Québec, Que. No. 21. 2 p. [Français : voir *Les Brèves (...)* N° 21.] ②

In Brief from the Canadian Forest Service, Laurentian Forestry Centre. 2010. NRCan, CFS, Laurentian Forestry Centre, Québec, Que. No. 22. 2 p. [Français : voir *Les Brèves (...)* N° 22.] ②

In Brief from the Canadian Forest Service, Laurentian Forestry Centre. 2010. NRCan, CFS, Laurentian Forestry Centre, Québec, Que. No. 23. 2 p. [Français : voir *Les Brèves (...)* N° 23.] ②

Bulletin du Programme des collectivités forestières, numéro 5, été 2010. [En ligne seulement]. 2010. RNCAN,

SCF, Administration centrale, Ottawa. 6 p. [English: see *Forest Communities...Summer 2010.*]

Canada's National Research Forests. Unique research opportunities. 2010. NRCan, CFS, HQ, Ottawa. 3 p. [Français : voir *Forêts expérimentales...*] ⑥

Canadian Wood Fibre Centre. Implementation Plan 2009–2011. 2010. NRCan, CFS, Canadian Wood Fibre Centre, Ottawa. 16 p. [Français : voir *Centre canadien (...)* Plan...] ⑥

Canadian Wood Fibre Centre. Who we are and what we do 2010–2011. [Online only]. 2010. NRCan, CFS, Canadian Wood Fibre Centre, Ottawa. 16 p. [Français : voir *Centre canadien (...)* *Qui nous sommes...*]

Centre canadien sur la fibre de bois. Plan de mise en œuvre 2009-2011. 2010. RNCAN, SCF, Centre canadien sur la fibre de bois, Ottawa. 16 p. [English: see *Canadian...Implementation...*] ⑥

Centre canadien sur la fibre de bois. Qui nous sommes et ce que nous faisons 2010-2011. [En ligne seulement]. 2010. RNCAN, SCF, Centre canadien sur la fibre de bois, Ottawa. 16 p. [English: see *Canadian...Who we are...*]

Centre de foresterie des Grands Lacs, Bulletin-é, numéro 8, hiver 2010. [En ligne seulement]. 2010. RNCAN, SCF, Centre de foresterie des Grands Lacs, Sault Ste. Marie (Ontario). <http://scf.rncan.gc.ca/nouvelles/source/11/329> [English: see *Great Lakes...Winter 2010.*]

Centre de foresterie des Grands Lacs, Bulletin-é, numéro 9, printemps 2010. [En ligne seulement]. 2010. RNCAN, SCF, Centre de foresterie des Grands Lacs, Sault Ste. Marie (Ontario). <http://scf.rncan.gc.ca/nouvelles/source/11/337> [English: see *Great Lakes...Spring 2010.*]

Centre de foresterie des Grands Lacs, Bulletin-é, numéro 10, été 2010. [En ligne seulement]. 2010. RNCAN, SCF, Centre de foresterie des Grands Lacs, Sault Ste. Marie (Ontario). <http://scf.rncan.gc.ca/nouvelles/source/11/341> [English: see *Great Lakes...Summer 2010.*]

Centre de foresterie des Grands Lacs, Bulletin-é, numéro 11, automne 2010. [En ligne seulement]. 2010. RNCAN, SCF, Centre de foresterie des Grands Lacs, Sault Ste. Marie (Ontario). <http://scf.rncan.gc.ca/nouvelles/source/11/345> [English: see *Great Lakes...Fall 2010.*]

Les Collectivités autochtones et la foresterie. 2010. RNCAN, SCF, Administration centrale, Ottawa. 3 p. [English: see *Aboriginal Communities...*] ⑥

e-Nouvelles du Programme forestier des Premières nations, janvier-février 2010. [En ligne seulement]. 2010. RNCAN, SCF, Direction des sciences et des programmes, et Affaires indiennes et du Nord Canada, Ottawa. 4 p. [English: see *First Nations... e-news. January-February 2010.*]

e-Nouvelles du Programme forestier des Premières nations, juillet-août 2010. [En ligne seulement]. 2010. RNCAN, SCF, Direction des sciences et des programmes, et Affaires indiennes et du Nord Canada, Ottawa. 4 p. [English: see *First Nations... e-news. July-August 2010.*]

L'État des forêts au Canada. Rapport annuel 2010. 2010. RNCAN, SCF, Administration centrale, Ottawa. 45 p. [English: see *The State of Canada's Forests...*] ⑥

First Nations Forestry Program. Annual report 2007-2008. 2010. NRCAN, CFS, Science and Programs Branch, and Indian and Northern Affairs Canada, Ottawa. 34 p. [Français : voir *Programme (...) Rapport annuel...*] ⑥

First Nations Forestry Program e-news. January-February 2010. 2010. [Online only]. NRCAN, CFS, HQ, Science and Programs Branch, and Indian and Northern Affairs Canada, Ottawa. 4 p. [Français : voir *e-Nouvelles (...) janvier-février 2010.*]

First Nations Forestry Program e-news. July-August 2010. 2010. [Online only]. NRCAN, CFS, Science and Programs Branch, Ottawa, and Indian and Northern Affairs Canada. 4 p. [Français : voir *e-Nouvelles (...) juillet-août 2010.*]

Forest Communities Program. Helping communities meet the transition challenges of a changing forest sector. 2010. NRCAN, CFS, Science and Programs Branch, Ottawa. Pamphlet. 5 p. [Français : voir *Programme des collectivités (...) Aider...*] [Also available in Russian, Portuguese, and Spanish.] ⑥

Forest Communities Program Newsletter, Issue 5, Summer 2010. [Online only]. 2010. NRCAN, CFS, HQ, Ottawa. 6 p. [Français : voir *Bulletin du Programme...*]

Forêts expérimentales nationales du Canada. Des possibilités de recherche exceptionnelles. 2010. RNCAN, SCF, Administration centrale, Ottawa. 3 p. [English: see *Canada's National...*] ⑥

Great Lakes Forestry Centre e-Bulletin, Issue 8, Winter 2010. [Online only]. 2010. NRCAN, CFS, Great Lakes Forestry Centre, Sault Ste. Marie, Ont. <http://cfs.nrcan.gc.ca/news/source/11/329> [Français : voir *Centre de foresterie (...) hiver 2010.*]

Great Lakes Forestry Centre e-Bulletin, Issue 9, Spring 2010. [Online only]. 2010. NRCAN, CFS, Great Lakes Forestry Centre, Sault Ste. Marie, Ont. <http://cfs.nrcan.gc.ca/news/source/11/337> [Français : voir *Centre de foresterie (...) printemps 2010.*]

Great Lakes Forestry Centre e-Bulletin, Issue 10, Summer 2010. [Online only]. 2010. NRCAN, CFS, Great Lakes Forestry

Centre, Sault Ste. Marie, Ont. <http://cfs.nrcan.gc.ca/news/source/11/341> [Français : voir *Centre de foresterie (...) été 2010.*]

Great Lakes Forestry Centre e-Bulletin, Issue 11, Fall 2010. [Online only]. 2010. NRCAN, CFS, Great Lakes Forestry Centre, Sault Ste. Marie, Ont. <http://cfs.nrcan.gc.ca/news/source/11/345> [Français : voir *Centre de foresterie (...) automne 2010.*]

Info-Forêts. Décembre 2009. Keiran, M., éditeur. RNCAN, SCF, Centre de foresterie du Pacifique, Victoria (Colombie-Britannique). 12 p. [English: see *Information Forestry...*December 2009.] ⑤

Info-Forêts. Avril 2010. Keiran, M., éditeur. RNCAN, SCF, Centre de foresterie du Pacifique, Victoria (Colombie-Britannique). 12 p. [English: see *Information Forestry...*April 2010.] ⑤

Information Forestry Newsletter. December 2009. Keiran, M., ed. NRCAN, CFS, Pacific Forestry Centre, Victoria, B.C. 12 p. [Français : voir *Info-Forêts.* Décembre 2009.] ⑤

Information Forestry Newsletter. Avril 2010. Keiran, M., ed. NRCAN, CFS, Pacific Forestry Centre, Victoria, B.C. 12 p. [Français : voir *Info-Forêts.* Avril 2010.] ⑤

National Forest Week, September 19-25, 2010. Canada's natural resources: branching out. 2010. NRCAN, CFS, HQ, Ottawa. Poster. [Français : voir *La Semaine nationale...*] ⑥

Le Pont. Bulletin de l'élément Premières nations du Programme sur le dendroctone du pin de Ressources naturelles Canada et du Programme forestier des Premières nations de la Colombie-Britannique. (Dernière édition). 2010. RNCAN, SCF, Centre de foresterie du Pacifique, Victoria (Colombie-Britannique) et Affaires indiennes et du Nord Canada. 12 p. [English: see *The Bridge.*] ⑤

Programa Comunidades Florestais. Ajudamos comunidades a enfrentarem os desafios de um setor florestal em evolução. (Portuguese) 2010. NRCAN, CFS, HQ Ottawa. Pamphlet. 5 p. ⑥

Programa de Comunidades Forestales. Ayudando a las comunidades a enfrentar los desafíos de la transición en un sector forestal en proceso de cambio. (Spanish) 2010. NRCAN, CFS, HQ, Ottawa. Pamphlet. 5 p. ⑥

Programme d'écologisation des pâtes et papiers. Guide de l'évaluation environnementale. [En ligne seulement]. 2010. RNCAN, SCF, Administration centrale, Ottawa. 56 p. [English: see *Pulp and paper...Environmental assessment...*]

Programme d'écologisation des pâtes et papiers. Guide de mesure de la performance. [En ligne seulement]. 2010. RNCAN, SCF, Administration centrale, Ottawa. 19 p. [English: see *Pulp and paper...Performance measurement...*]

Programme d'écologisation des pâtes et papiers. Guide de rédaction du rapport final. [En ligne seulement]. 2010. RNCAN, SCF, Administration centrale, Ottawa. 14 p. [English: see *Pulp and paper...Final report guide.*]

Programme des collectivités forestières. Aider les collectivités à relever les défis inhérents à un secteur forestier en constante évolution. 2010. RNCAN, SCF, Direction des sciences et des programmes, Ottawa. Brochure. 5 p. [English: see *Forest Communities...Helping communities...*] [Aussi disponible en russe, portugais et espagnol.] ⑥

Programme forestier des Premières Nations. Rapport annuel 2007-2008. 2010. RNCAN, SCF, Direction des sciences et des programmes, et Affaires indiennes et du Nord Canada, Ottawa. 37 p. [English: see *First Nations...Annual report...*] ⑥

Pulp and paper green transformation program. Environmental assessment guide. [Online only]. 2010. NRCAN, CFS, HQ, Ottawa. 52 p. [Français : voir *Programme d'écologisation (...) Guide de l'évaluation...*]

Pulp and paper green transformation program. Final report guide. [Online only]. 2010. NRCAN, CFS, HQ, Ottawa. 14 p. [Français : voir *Programme d'écologisation (...) Guide de rédaction...*]

Pulp and paper green transformation program. Performance measurement guide. [Online only]. 2010. NRCAN, CFS, HQ, Ottawa. 18 p. [Français : voir *Programme d'écologisation (...) Guide de mesure...*]

La Semaine nationale de l'arbre et des forêts, du 19 au 25 septembre 2010. Les ressources naturelles du Canada : à branches déployées. 2010. RNCAN, SCF, Administration centrale, Ottawa. Affiche. [English: see *National Forest Week...*] ⑥

The State of Canada's Forests. Annual report 2010. 2010. NRCAN, CFS, HQ, Ottawa. 45 p. [Français : voir *L'État des forêts...*] ⑥

Turkey Lakes Watershed. 2009. Great Lakes Forestry Centre. NRCAN, CFS, Great Lakes Forestry Centre, Sault Ste. Marie, Ont. Brochure. [Français : voir *Bassin des Lacs Turkey.*] ③

Climate Change and Atmospheric Influences

Changements climatiques et influences atmosphériques

Climate change and forest management in Canada: impacts, adaptive capacity and adaptation options. A state of knowledge report. [Online only]. 2010. Johnston, M.H.; Williamson, T.B.; Munson, A.D.; Ogden, A.E.; Moroni, M.T.; Parsons, R.; Price, D.T.; Stadt, J.J. Sustainable Forest Management Network, University of Alberta, Edmonton, Alta. 54 p.

Decreasing uncertainty in CBM-CFS3 estimates of forest soil C sources and sinks through use of long-term data from the Canadian Intersite Decomposition Experiment. 2009. Smyth, C.; Trofymow, J.A.; Kurz, W.A.; CIDET Working Group. NRCAN, CFS, Pacific Forestry Centre, Victoria, B.C. Inf. Rep. BC-X-422. 46 p. ⑤

Forests and society – responding to global drivers of change. IUFRO World Series Volume 25. 2010. Mery, G.; Katila, P.; Galloway, G.; Alfaro, R.I.; Kanninen, M.; Lobovikov, M.; Varjo, J., eds. International Union of Forest Research Organizations (IUFRO), Vienna. 509 p. <http://www.iufro.org/wfse> ⑤

Historical frequency, intensity and extent of mountain pine beetle disturbance in British Columbia. 2010. Alfaro, R.I.; Campbell, E.; Hawkes, B.C. NRCAN, CFS, Pacific Forestry Centre, Victoria, B.C. Mountain Pine Beetle Working Paper 2009-30. 52 p. ⑤

Le Modèle du bilan du carbone du secteur forestier canadien à l'échelle des opérations (MBC-SFC3). Édition révisée. 2010.

Kull, S. NRCAN, SCF, Centre de foresterie du Nord, Edmonton (Alberta). Brochure. [English: see *The operational-scale carbon...*] ④

The operational-scale carbon budget model of the Canadian forest sector (CBM-CFS3). Revised version. 2010. Kull, S. NRCAN, CFS, Northern Forestry Centre, Edmonton, Alta. Pamphlet. [Français : voir *Le Modèle du bilan...*] ④

Journal Articles and Other Contributions / Articles de revues scientifiques et autres collaborations

Allen, C.D.; Macalady, A.K.; Chenchouni, H.; Bachelet, D.; McDowell, N.; Vennetier, M.; Kitzberger, T.; Rigling, A.; Breshears, D.D.; Hogg, E.H.; Gonzalez, P.; Fensham, R.; Zhang, Z.; Castro, J.; Demidova, N.; Lim, J.H.; Allard, G.; Running, S.W.; Semerci, A.; Cobb, N. 2010. A global overview of drought and heat-induced tree mortality reveals emerging climate change risks for forests. *For. Ecol. Manag.* 259(4):660–684. ④

Arevalo, C.B.M.; Bhatti, J.S.; Chang, S.X.; Sidders, D.M. 2010. Distribution of recent photosynthates in saplings of two hybrid poplar clones. *Commun. Soil Sci. Plant Anal.* 41(8):1004–1015. ④

Bernier, P.Y.; Guindon, L.; Kurz, W.A.; Stinson, G. 2010. Reconstructing and modelling 71 years of forest growth in a Canadian boreal landscape: a test of the CBM-CFS3 carbon accounting model. *Can. J. For. Res.* 40:109–118. ②

Boisvenue, C.; Running, S.W. 2010. Simulations show decreasing carbon stocks and potential for carbon emissions in Rocky Mountain forests over the next century. *Ecol. Appl.* 20:1302–1319. ②

Burton, P.J.; Bergeron, Y.; Bogdanski, B.E.C.; Juday, G.P.; Kuuluvainen, T.; McAfee, B.J.; Ogden, A.E.; Alfaro, R.I.; Francis, D.A.; Gauthier, S.; Hantula, J. 2010. Sustainability of boreal forests and forestry in a changing environment. Pages 247–282, Chapter 14 in G. Mery, P. Katila, G. Galloway, R.I. Alfaro, M. Kanninen, M. Lobovikov, and J. Varjo, eds. *Forests and society – responding to global drivers of change*. IUFRO World Series Volume 25. International Union of Forest Research Organizations (IUFRO), Vienna. 509 p. <http://www.iufro.org/wfse> ⑤

Cavard, X.; Bergeron, Y.; Chen, H.Y.H.; Paré, D. 2010. Mixed-species effect on tree aboveground carbon pools in the east-central boreal forests. *Can. J. For. Res.* 40:37–47. ②

Chhin, S.; Hogg, E.H.; Lieffers, V.J.; Huang, S. 2010. Growth-climate relationships vary with height along the stem in lodgepole pine. *Tree Physiol.* 30:335–345. ④

Dymond, C.C.; Neilson, E.T.; Stinson, G.; Porter, K.B.; MacLean, D.A.; Gray, D.R.; Campagna, M.; Kurz, W.A. 2010. Future spruce budworm outbreak may create a carbon source in eastern Canadian forests. *Ecosystems* 13(6):917–931. ⑤

Hagemann, U.; Moroni, M.T.; Shaw, C.H.; Kurz, W.A.; Makeschin, F. 2010. Comparing measured and modelled forest carbon stocks in high-boreal forests of harvest and natural-disturbance origin in Labrador, Canada. *Ecol. Model.* 221(5):825–839. ④

Hermle, S.; Lavigne, M.B.; Bernier, P.Y.; Bergeron, O.; Paré, D. 2010. Component respiration, ecosystem respiration and net primary production of a mature black spruce forest in northern Quebec. *Tree Physiol.* 30:527–540. ②

Huang, J.; Tardif, J.C.; Bergeron, Y.; Denneker, B.; Berninger, F.; Girardin, M.P. 2010. Radial growth response of four dominant boreal tree species to climate along a latitudinal gradient in the eastern Canadian boreal forest. *Global Change Biol.* 16:711–731. ②

Kurz, W.A. 2010. Commentary: an ecosystem context for global gross forest cover loss estimates. Pages 9025–9026 (Vol. 107(20)) in *Proceedings of the National Academy of Sciences (PNAS) of the United States of America*. PNAS, Washington, DC. ⑤

Kurz, W.A. 2010. Large inter-annual variations in carbon emissions and removals. Pages 41–48 Invited Background Paper in H.S. Eggleston, N. Srivastava, K. Tanabe, and J. Baasansuren, eds. *IPCC 2010, Revisiting the use of managed land as a proxy for estimating national anthropogenic emissions and removals*, 5–7 May 2009, National Institute for Space Research (INPE), São José dos Campos, Brazil. Institute for Global Environmental Strategies (IGES), Hayama, Japan. ⑤

Lafleur, B.; Paré, D.; Munson, A.D.; Bergeron, Y. 2010. Response of northeastern North American forests to climate change: will

soil conditions constrain tree species migration? *Environ. Rev.* 18:279–289. ②

Laganière, J.; Angers, D.A.; Paré, D. 2010. Carbon accumulation in agricultural soils after afforestation: a meta-analysis. *Global Change Biol.* 16:439–453. ②

Manzoni, S.; Trofymow, J.A.; Jackson, R.B.; Porporato, A. 2010. Stoichiometric controls on carbon, nitrogen, and phosphorus dynamics in decomposing litter. *Ecol. Monogr.* 80(1):89–106. ⑤

McAfee, B.J.; de Camino, R.; Burton, P.J.; Eddy, B.; Fähser, L.; Messier, C.; Reed, M.G.; Spies, T.; Vides, R.; Baker, C.; Barriga, M.; Campos, J.; Corrales, O.; Espinoza, L.; Gibson, S.; Glatthorn, J.; Martineau-Delisle, C.; Prins, C.; Rose, N.A. 2010. Managing forested landscapes for socio-ecological resilience. Pages 399–440, Chapter 22 in G. Mery, P. Katila, G. Galloway, R.I. Alfaro, M. Kanninen, M. Lobovikov, and J. Varjo, eds. *Forests and society – responding to global drivers of change*. IUFRO World Series Volume 25. International Union of Forest Research Organizations (IUFRO), Vienna. 509 p. <http://www.iufro.org/wfse> ⑤

Metsaranta, J.M.; Kurz, W.A.; Neilson, E.T.; Stinson, G. 2010. Implications of future disturbance regimes on the carbon balance of Canada's managed forest (2010–2100). *Tellus B* 62B(5):719–728. ④

Meyn, A.; Taylor, S.W.; Flannigan, M.D.; Thonicke, K.; Cramer, W. 2010. Relationship between fire, climate oscillations, and drought in British Columbia, Canada, 1920–2000. *Global Change Biol.* 16:977–989. ③

Michaelian, M.; Hogg, E.H.; Hall, R.J.; Arsenault, E. 2010. Massive mortality of aspen following severe drought along the southern edge of the Canadian boreal forest. *Global Change Biol.* (In Press) ④

Moroni, M.T.; Shaw, C.H.; Kurz, W.A.; Rampley, G.J. 2010. Forest carbon stocks in Newfoundland boreal forests of harvest and natural disturbance origin II: model evaluation. *Can. J. For. Res.* 40(11):2146–2163. ④

Moroni, M.T.; Shaw, C.H.; Otahal, P. 2010. Forest carbon stocks in Newfoundland boreal forests of harvest and natural disturbance origin I: field study. *Can. J. For. Res.* 40(11):2135–2145. ④

Parks, C.G.; Bernier, P.Y. 2010. Adaptation of forests and forest management to changing climate with emphasis on forest health: a review of science, policies and practices. *For. Ecol. Manag.* 259:657–659. ②

Podur, J.; Wotton, M. 2010. Will climate change overwhelm fire management capacity? *Ecol. Model.* 221:1301–1309. ③

Wang, Y.; Flannigan, M.; Anderson, K. 2010. Correlations between forest fires in British Columbia, Canada, and sea surface temperature of the Pacific Ocean. *Ecol. Model.* 221:122–129. ③

Williamson, T.B.; Hessel, H.; Johnston, M.H. 2010. Adaptive capacity deficits and adaptive capacity of economic systems in climate change vulnerability assessment. For. Policy Econ. (In Press) ④

Williamson, T.B.; Watson, D.O. 2010. Assessment of community preference rankings of potential environmental effects of climate change using the method of paired comparisons. Clim. Change 99(3):589–612. ④

Wotton, B.M.; Nock, C.A.; Flannigan, M.D. 2010. Forest fire occurrence and climate change in Canada. Int. J. Wildland Fire 19:253–271. ③

Forest Diseases

Breeding and genetic resources of five-needle pines: ecophysiology, disease resistance and developmental biology. 2009. Noshad, D.; Noh, E.W.; King, J.; Sniezko, R., eds., 22–26 Sept. 2008, Yangyang, Republic of Korea. Korea Forest Research Institute, Seoul, Korea. ⑤

Exotic forest pests and forest certification. 2010. DesRochers, P. NRCan, CFS, Laurentian Forestry Centre, Québec, Que. Branching out from the Canadian Forest Service, Laurentian Forestry Centre. No. 60. 2 p. [Français : voir *Les Ravageurs...*] ②

Les Ravageurs forestiers exotiques et la certification forestière. 2010. DesRochers, P. RNCan, SCF, Centre de foresterie des Laurentides, Québec (Québec). L'Éclaircie du Service canadien des forêts, Centre de foresterie des Laurentides, no 60. 2 p. [English: see *Exotic forest...*] ②

Journal Articles and Other Contributions / Articles de revues scientifiques et autres collaborations

Aoun, M.; Jacobi, V.; Boyle, B.; Rioux, D.; Simard, M.; Bernier, L. 2010. Identification and profiling of American elm genes involved in a compatible interaction with the fungal pathogen *Ophiostoma novo-ulmi*. Chapter 76 in H. Antoun, T. Avis, L. Brisson, D. Prévost and M. Trepanier, eds. Biology of plant-microbe interactions, Vol. 7, APS Press, St. Paul, Minn. ②

Askew, S.E.; Shamoun, S.F.; van der Kamp, B.J. 2010. Assessment of *Colletotrichum gloeosporioides* as a biological control agent for hemlock dwarf mistletoe (*Arceuthobium tsugense*) For. Pathol. (In Press) ⑤

Bai, X.; Liu, J.-J.; Hao, X.; Dubeau, C.; Xiang, Y. 2010. Virus genomic cloning, bioinformatics and metagenomics. Pages 71–92 in A. Wang, ed. Principles and practice of advanced technology in plant virology. Research Signpost, 37/661 (2), Fort P.O. Trivandrum-695 023, Kerala, India. ⑤

Becker, E.M.; Sumampong, G.; Shamoun, S.F.; Elliott, M.; Varga, A.; Masri, S.; James, D.; Bailey, K.; Boyetchko, S. 2010. An evaluation of *Phytophthora ramorum* preventative treatments for nursery

Maladies forestières

and forest understory plants in British Columbia, Canada. Pages 288–291 in S.J. Frankel, J.T. Kliejunas, and K.M. Palmieri, technical coordinators. Proceedings of the Sudden Oak Death Fourth Science Symposium. Gen. Tech. Rep. PSW-GTR-229, 15–18 June 2009, Santa Cruz, Calif. U.S. Department of Agriculture, Forest Service, Pacific Southwest Research Station, Albany, Calif. ⑤

Cruickshank, M.G.; Jaquish, B.; Neme, A.F.L. 2010. Resistance of half-sib interior Douglas-fir families to *Armillaria ostoyae* in British Columbia following artificial inoculation. Can. J. For. Res. 40(1):155–166. ⑤

Elliott, M.; Sumampong, G.; Shamoun, S.F.; Becker, E.M.; Varga, A.; James, D.; Masri, S.; Grünwald, N.J. 2010. Phenotypic variation in *Phytophthora ramorum*: wild type vs non-wild type isolates. Pages 317–318 in S.J. Frankel, J.T. Kliejunas, and K.M. Palmieri, technical coordinators. Proceedings of the Sudden Oak Death Fourth Science Symposium. Gen. Rep. PSW-GTR-229, 15–18 June 2009, Santa Cruz, Calif. U.S. Department of Agriculture, Forest Service, Pacific Southwest Research Station, Albany, Calif. ⑤

Huang, C.; Jeng, R.; Sain, M.; Hubbes, M.; Dumas, M.T. 2010. Rapid differentiation of *Ophiostoma ulmi* and *Ophiostoma novo-ulmi* isolates by matrix-assisted-laser-desorption/ionization time-of-flight/time-of-flight mass spectrometry. For. Pathol. 40:1–6; doi:10.1111/j.1439-0329.2009.00597.x. ③

Islam, M.A.; Sturrock, R.N.; Williams, H.L.; Ekramoddoullah, A.K.M. 2010. Identification, characterization, and expression analyses of class II and IV chitinase genes from Douglas-fir seedlings infected by *Phellinus sulphurascens*. Phytopathology 100(4):356–366. ⑤

Joly, D.L.; Feau, N.; Tanguay, P.; Hamelin, R.C. 2010. Comparative analysis of secreted protein evolution using expressed sequence tags from four poplar leaf rusts (*Melampsora* spp.). BMC Genomics 11:422. ②

Laflamme, G. 2010. Root diseases in forest ecosystems. Can. J. Plant Pathol. 32:68–76. ②

Morrison, D.J. 2009. Epidemiology of *Armillaria root* disease in Douglas-fir plantations in the cedar-hemlock zone of the southern interior of British Columbia. *For. Pathol.* (In Press) ⑤

Noshad, D.; King, J.; Ekramoddoullah, A.K.M. 2009. In vitro and in vivo investigation into the characterization of resistance against white pine blister rust. Pages 79–80 in *Proceedings, Breeding and Genetic Resources of Five-Needle Pines: Ecophysiology, Disease Resistance and Developmental Biology*, 22–26 Sept. 2008, Yangyang, Republic of Korea. Korea Forest Research Institute, Seoul, Korea. ⑤

Ostry, M.E.; Laflamme, G.; Katovich, S.A. 2010. Silvicultural approaches for management of eastern white pine to minimize impacts of damaging agents. *For. Pathol.* 40:332–346. ②

Richardson, B.A.; Ekramoddoullah, A.K.M.; Liu, J.-J.; Kim, M.-S.; Klopfenstein, N.B. 2010. Current and future molecular approaches to investigate the white pine blister rust pathosystem. *For. Pathol.* 40(3–4):314–331. ⑤

Rioux, D. 2010. Structural defense mechanisms in trees: what's new? *Phytopathology* 100:S197. ②

Simard, M.; Brière, S.C.; Watson, A.K.; Rioux, D. 2010. Stem susceptibility of six eastern Canadian tree species to *Phytophthora ramorum*. *Phytopathology* 100:S197. ②

Tsui, C.K.M.; Wang, B.; Khadempour, L.; Alamouti, S.M.; Bohlmann, J.; Murray, B.W.; Hamelin, R.C. 2010. Rapid identification and detection of pine pathogenic fungi associated with mountain pine beetles by padlock probes. *J. Microbiol. Methods* 83:26–33. ②

Wu, Y.; Hao, X.; Li, Z.; Gu, P.; An, F.; Xiang, J.; Wang, H.; Luo, Z.; Liu, J.-J.; Xiang, Y. 2010. Identification of the phytoplasma associated with wheat blue dwarf disease in China. *Plant Dis.* 94(8):977–985. ⑤

Zhao, S.; Shamoun, S.F. 2010. Conidial morphology, structure and development in *Valdensinia heterodoxa*. *Mycology* 1(2):113–120. ⑤

Forest Ecology and Site Classification

Écologie forestière et classification des sites

Canadian Forest Ecosystem Classification system (CFEC). 2010. Baldwin, K. NRCan, CFS, Great Lakes Forestry Centre, Sault Ste. Marie, Ont. Frontline Express Note 38. 2 p. [Français : voir *Classification canadienne...*] ③

Classification canadienne des écosystèmes forestiers (CCEF). 2010. Baldwin, K. NRCan, SCF, Centre de foresterie des Grands Lacs, Sault St. Marie (Ontario). Nouvelles Express 38. 2 p. [English: see *Canadian Forest...*] ③

Comment les parcelles de rétention influent sur la biodiversité dans les blocs de coupe. 2010. Pyper, M.; Spence, J.R.; Langor, D.W. Réseau de gestion durable des forêts, Université d'Alberta, Edmonton (Alberta). Note Rech. 74. 5 p. [English: see *How retention patches...*] ④

Decreasing uncertainty in CBM-CFS3 estimates of forest soil C sources and sinks through use of long-term data from the Canadian Intersite Decomposition Experiment. 2009. Smyth, C.; Trofymow, J.A.; Kurz, W.A.; CIDET Working Group. NRCan, CFS, Pacific Forestry Centre, Victoria, B.C. Inf. Rep. BC-X-422. 46 p. ⑤

How retention patches influence biodiversity in cutblocks. 2010. Pyper, M.; Spence, J.R.; Langor, D.W. Sustainable Forest Management Network, University of Alberta, Edmonton, Alta. Res. Note 74. 5 p. [Français : voir *Comment les parcelles...*] ④

Paludification: causes and effects. 2009. Bernier, P.; Paré, D. NRCan, CFS, Laurentian Forestry Centre, Québec, Que. Branching

out from the Canadian Forest Service, Laurentian Forestry Centre. No. 56. 2 p. [Français : voir *La Paludification...*] ②

La Paludification : ses causes et ses effets. 2009. Bernier, P.; Paré, D. NRCan, SCF, Centre de foresterie des Laurentides, Québec (Québec). L'Éclaircie du Service canadien des forêts, Centre de foresterie des Laurentides, no 56. 2 p. [English: see *Paludification...*] ②

Re-establishment of ectomycorrhizae from refugia bordering regenerating Douglas-fir stands on Vancouver Island. 2009. Outerbridge, R.A.; Trofymow, J.A.; Lalumière, A. NRCan, CFS, Pacific Forestry Centre, Victoria, B.C. Inf. Rep. BC-X-418. 23 p. ⑤

Successional changes in plant species diversity in forest chronosequences on southern Vancouver Island. 2009. Ryan, M.W.; Fraser, D.F.; Marshall, V.G.; He, F. NRCan, CFS, Pacific Forestry Centre, Victoria, B.C. Inf. Rep. BC-X-421. 13 p. ⑤

Journal Articles and Other Contributions / Articles de revues scientifiques et autres collaborations

Arevalo, C.B.M.; Bhatti, J.S.; Chang, S.X.; Jassal, R.S.; Sidders, D.M. 2010. Soil respiration in four different land use systems in north central Alberta, Canada. *J. Geophys. Res.* 115:G01003,12p.; doi:10.1029/2009JG001006. ④

Barrette, M.; Bélanger, L.; De Grandpré, L. 2010. Preindustrial reconstruction of a perhumid midboreal landscape, Anticosti Island, Québec. *Can. J. For. Res.* 40:928–942. ②

Côté, G.; Bouchard, M.; Pothier, D.; Gauthier, S. 2010. Linking stand attributes to cartographic information for ecosystem management purposes in the boreal forest of eastern Québec. *For. Chron.* 86:511–519. ②

Dimitrov, D.D.; Grant, R.F.; Lafleur, P.M.; Humphreys, E.R. 2010. Modeling peat thermal regime of an ombrotrophic peatland with hummock-hollow microtopography. *Soil Sci. Soc. Am. J.* 74(4):1406–1425. ④

Dimitrov, D.D.; Grant, R.F.; Lafleur, P.M.; Humphreys, E.R. 2010. Modeling the subsurface hydrology of Mer Bleue Bog. *Soil Sci. Soc. Am. J.* 74(2):680–694. ④

Gauthier, S.; Boucher, D.; Morissette, J.; De Grandpré, L. 2010. Fifty-seven years of composition change in the eastern boreal forest of Canada. *J. Veg. Sci.* 21:772–785. ②

Gauthier, S.; Boucher, D.; Morissette, J.; De Grandpré, L. 2010. Fifty-seven years of composition change in the eastern boreal forest of Canada. *J. Veg. Sci.* 21:772–785. ②

Greene, R.; Luther, J.E.; Devillers, R.; Eddy, B. 2010. An approach to GIS-based multiple criteria decision analysis that integrates exploration and evaluation phases: case study in a forest-dominated landscape. *For. Ecol. Manag.* 200:2102–2114. ①

Hagemann, U.; Moroni, M.T.; Gleissner, J.; Makeschin, F. 2010. Accumulation and preservation of dead wood upon burial by bryophytes. *Ecosystems* 13:600–611. ①

Hearn, B.J.; Harrison, D.J.; Fuller, A.K.; Lundrigan, C.G.; Curran W.J. 2010. Paradigm shifts in habitat ecology of threatened Newfoundland martens. *J. Wildl. Manag.* 74:719–728. ①

Hermle, S.; Lavigne, M.B.; Bernier, P.Y.; Bergeron, O.; Paré, D. 2010. Component respiration, ecosystem respiration and net primary production of a mature black spruce forest in northern Quebec. *Tree Physiol.* 30:527–540. ①

Laganière, J.; Paré, D.; Bradley, R.L. 2010. How does a tree species influence litter decomposition? Separating the relative contribution of litter quality, litter mixing, and forest floor conditions. *Can. J. For. Res.* 40:465–475. ②

Li, Chao; Barclay, H.J.; Hans, H.; Liu, J.; Klos, R.; Carlson, G. 2010. Accuracy in population estimation: a methodological consideration. *Ecol. Complex.* 7:208–211. ④

Lindenmayer, D.B.; Hunter, M.L.; Burton, P.J.; Gibbons, P. 2009. Effects of logging on fire regimes in moist forests. *Conserv. Lett.* 2(6):271–277. ⑤

Loo, J.; Cwynar, L.; Freedman, W.; Ives, N. 2010. Changing forest landscapes in the Atlantic Maritime Ecozone. Pages 35–42 in D.F. McAlpine and I.M. Smith, eds. *Assessment of species diversity in the Atlantic Maritime Ecozone*. NRC Research Press, Ottawa. ①

Magnussen, S.; Smith, B.; Kleinn, C.; Sun, I.F. 2010. An urn model for species richness estimation in quadrat sampling from fixed-area populations. *Forestry* 83(3):293–306. ⑤

Manzoni, S.; Trofymow, J.A.; Jackson, R.B.; Porporato, A. 2010. Stoichiometric controls on carbon, nitrogen, and phosphorus dynamics in decomposing litter. *Ecol. Monogr.* 80(1):89–106. ⑤

Mayfield, M.M.; Bonser, S.P.; Morgan, J.W.; Aubin, I.; McNamara, S.; Vesk, P.A. 2010. What does species richness tell us about functional trait diversity? Predictions and evidence for responses of species and functional trait diversity to land-use change. *Glob. Ecol Biogeogr.* 19:423–431. ③

McLaughlin, J.W.; Webster, K.L. 2010. Alkalinity and acidity cycling and fluxes in an intermediate fen peatland in northern Ontario. *Biogeochemistry* 99:143–155. ③

Mitchell, M.J.; Lovett, G.; Bailey, S.; Beall, F.; Burns, D.; Buso, D.; Clair, T.A.; Courchesne, F.; Duchesne, L.; Eimers, C.; Fernandez, I.; Houle, D.; Jeffries, D.S.; Likens, G.E.; Moran, M.D.; Rogers, C.; Schwede, D.; Shanley, J.; Weathers, K.C.; Vet, R. 2010. Comparisons of watershed sulfur budgets in southeast Canada and northeast US: new approaches and implications. *Biogeochemistry*; doi:10.1007/s10533-010-9455-0.

Moroni, M.T.; Harris, D.D. 2010. Snag frequency, diameter and species distribution and input rate in Newfoundland boreal forests. *Forestry* 83:229–244. ①

Reyes, G.P.; Kneeshaw, D.; De Grandpré, L.; Leduc A. 2010. Changes in woody vegetation abundance and diversity after natural disturbances causing different levels of mortality. *J. Veg. Sci.* 21:406–417. ②

Webster, K.L.; Creed, I.F.; Beall, F.D.; Bourbonnière, R.A. 2010. A topographic template for estimating soil carbon pools in forested catchments. *Geoderma*; doi:10.1016/j.geoderma.2010.10.016.

Webster, K.L.; McLaughlin, J.W. 2010. Importance of the water table in controlling dissolved carbon along a fen nutrient gradient. *Soil Sci. Soc. Am. J.* 74:2254–2266. ③

Winder, R.S.; Dale, P.L.; Greer, C.W.; Levy-Booth, D.J. 2010. Development of a microbial indicator database for validating measures of sustainable forest soils. Pages 81–89 in V.V.S.R. Gupta, M. Ryder, and J. Radcliffe, eds. *The Rovira Rhizosphere Symposium. Celebrating 50 years of rhizosphere research*, 15 Aug. 2008, SARDI Plant Research Centre, Waite Campus, Adelaide. The Crawford Fund, Deakin ACT, Australia. ⑤

Work, T.T.; Jacobs, J.; Spence, J.R.; Volney, W.J.A. 2010. High levels of green-tree retention are required to preserve ground beetle biodiversity in boreal mixedwood forests. *Ecol. Appl.* 20(3):741–751. ④

Development and structure of Prometheus: the Canadian wildland fire growth simulation model. 2009. Tymstra, C.; Bryce, R.W.; Wotton, B.M.; Armitage, O.B. NRCan, CFS, Northern Forestry Centre, Edmonton, Alta. Inf. Rep. NOR-X-417. 100 p. ④

Historical frequency, intensity and extent of mountain pine beetle disturbance in British Columbia. 2010. Alfaro, R.I.; Campbell, E.; Hawkes, B.C. NRCan, CFS, Pacific Forestry Centre, Victoria, B.C. Mountain Pine Beetle Working Paper 2009-30. 52 p. ⑤

Mises à jour et révisions de la Méthode canadienne de prévision du comportement des incendies de forêt de 1992. 2009. Wotton, B.M.; Alexander, M.E.; Taylor, S.W. RNCan, SCF, Centre de foresterie des Grands Lacs, Sault Ste. Marie (Ontario). Rapport d'information GLC-X-10F. 47 p. [English: see *Updates and revisions...*] ③

The 1988 fires of Yellowstone and beyond as a wildland fire behavior case study. [Online only]. 2009. Alexander, M.E. USDA Forest Service, Wildland Fire Lessons Learned Center, Tucson, Ariz. 30 p.

Photo guide for quantitatively assessing the characteristics of forest fuels in a jack pine–black spruce chronosequence in the Northwest Territories. [Online only]. 2010. Lavoie, N.; Alexander, M.E.; Macdonald, S.E. NRCan, CFS, Northern Forestry Centre, Edmonton, Alta. Inf. Rep. NOR-X-419. 51 p.

Updates and revisions to the 1992 Canadian Forest Fire Behaviour Prediction System. 2009. Wotton, B.M.; Alexander, M.E.; Taylor, S.W. NRCan, CFS, Great Lakes Forestry Centre, Sault Ste. Marie, Ont. Inf. Rep. GLC-X-10. 45 p. [Français : voir *Mises à jour...*] ③

Journal Articles and Other Contributions / Articles de revues scientifiques et autres collaborations

Alexander, M.E. 2009. Are we abusing our use of models and modeling in wildland fire and fuel management? *Fire Manag. Today* 69(4):23–26. ④

Alexander, M.E. 2009. Opening remarks: the 1988 Yellowstone fires as a fire behavior case history. (Abstract). Page 8 in R.E. Masters, K.E.M. Galley, and D.G. Despain, eds. *The '88 fires: Yellowstone and beyond*, 22–27 Sept. 2008, Jackson, Wyoming. Tall Timbers Research Station, Tallahassee, Flor. ④

Alexander, M.E. 2009. Wildland fire behavior and “the course of science” flowchart: is there a connection? *Fire Manag. Today* 69(3):44–46. ④

Alexander, M.E. 2010. Fire behavior in moderately heavy logging slash: documenting the past with photographs. In D.X. Viegas,

ed. *Proceedings 6th International Conference on Forest Fire Research*, 15–18 Nov. 2010, Coimbra, Portugal. University of Coimbra, Coimbra, Portugal. ④

Alexander, M.E. 2010. Foliar moisture content input in the Canadian Forest Fire Behavior Prediction System for areas outside of Canada. In D.X. Viegas, ed. *Proceedings 6th International Conference on Forest Fire Research*, 15–18 Nov. 2010, Coimbra, Portugal. University of Coimbra, Coimbra, Portugal. ④

Alexander, M.E. 2010. Surface fire spread potential in trembling aspen during summer in the boreal forest region of Canada. *For. Chron.* 86(2):200–212. ④

Alexander, M.E.; Baxter, G.J.; Ackerman, M.Y. 2009. Is a wellsite opening a safety zone for a wildland firefighter or a survival zone, or neither? Page 110 in R.E. Masters, K.E.M. Galley, and D.G. Despain, eds. *The '88 fires: Yellowstone and beyond*, 22–27 Sept. 2008, Jackson, Wyoming. Tall Timbers Research Station, Tallahassee, Flor. ④

Alexander, M.E.; Cruz, M.G. 2009. Recent advances in modeling the onset of crowning and crown fire rate of spread (Abstract). Page 19 in R.E. Masters, K.E.M. Galley, and D.G. Despain, eds. *The '88 fires: Yellowstone and beyond*, 22–27 Sept. 2008, Jackson, Wyoming. Tall Timbers Research Station, Tallahassee, Flor. ④

Alexander, M.E.; Taylor, S.W. 2010. Wildland fire behavior case studies and the 1938 Honey fire controversy. *Fire Manag. Today* 70(1):15–25. ④

Anderson, K.R. 2010. A climatologically based long-range fire growth model. *Int. J. Wildland Fire* 19(7):879–894. ④

Anderson, K.R.; Englefield, P.; Little, J.M.; Reuter, G. 2009. An approach to operational forest fire growth predictions for Canada. *Int. J. Wildland Fire* 18(8):893–905. ④

Axelsson, J.N.; Alfaro, R.I.; Hawkes, B.C. 2010. Changes in stand structure in uneven-aged lodgepole pine stands impacted by mountain pine beetle epidemics and fires in central British Columbia. *For. Chron.* 86(1):87–99. ⑤

Bergeron, Y.; Cyr, D.; Girardin, M.P.; Carcaillet, C. 2010. Will climate change drive 21st century burn rates in Canadian boreal forest outside of its natural variability: collating global climate model experiments with sedimentary charcoal data. *Int. J. Wildland Fire* 19:1127–1139. ②

Beverly, J.; Bothwell, P.M.; Conner, J.C.R.; Herd, E.P.K. 2010. Assessing the exposure of the built environment to potential ignition sources generated from vegetative fuel. *Int. J. Wildland Fire* 19:299–313. ④

Boulanger, Y.; Sirois, L.; Hébert, C. 2010. Distribution of saproxylic beetles in a recently burnt landscape of the northern boreal forest of Québec. *For. Ecol. Manag.* 260:1114–1123. ②

Carcaillet, C.; Bergeron, Y.; Ali, A.A.; Gauthier, S.; Girardin, M.P.; Hély, C. 2010. Holocene fires in eastern Canada: towards a forest management perspective in light of future global changes. *PAGES News* 18:68–70. ②

Cruz, M.G.; Alexander, M.E. 2009. Assessing discontinuous fire behavior and uncertainty associated with the onset of crowning (Abstract). Page 20 *in* R.E. Masters, K.E.M. Galley, and D.G. Despain, eds. *The '88 fires: Yellowstone and beyond*, 22–27 Sept. 2008, Jackson, Wyoming. Tall Timbers Research Station, Tallahassee, Flor. ④

Cruz, M.G.; Alexander, M.E. 2010. Assessing crown fire potential in coniferous forests of western North America: a critique of current approaches and recent simulation studies. *Int. J. Wildland Fire* 19(4):377–398. ④

Cruz, M.G.; Alexander, M.E.; Wakimoto, R.H. 2010. Comment on “Estimating canopy fuel characteristics in five conifer stands in the western United States using tree and stand measurements”. *Can. J. For. Res.* 40(11):2262–2263. ④

Dowdy, A.J.; Mills, G.A.; de Groot, W. 2010. Index sensitivity analysis applied to the Canadian Forest Fire Weather Index and the McArthur Forest Fire Danger Index. *Meteorol. Appl.* 17:298–312. ③

Drobyshev, I.; Flannigan, M.D.; Bergeron, Y.; Girardin, M.P.; Suran, B. 2010. Variation in local weather explains differences in fire regimes within a Québec south-eastern boreal forest landscape. *Int. J. Wildland Fire* 19:1073–1082. ② ③

Girardin, M.P. 2010. Wildfire risk inferred from tree rings in the Central Laurentians of boreal Québec, Canada. *Dendrochronologia* 28:187–206. ②

Girardin, M.P.; Ali, A.A.; Hély, C. 2010. Wildfires in boreal ecosystems: past, present and some emerging trends. *Int. J. Wildland Fire* 19:991–995. ②

Hély, C.; Girardin, M.P.; Ali, A.A.; Carcaillet, C.; Brewer, S.; Bergeron, Y. 2010. Eastern boreal North American wildfire risk of the past 7000 years: a model-data comparison. *Geophys. Res. Lett.* 37, L14709, 6 p.; doi: 10.1029/2010GL043706. ②

Lindenmayer, D.B.; Hunter, M.L.; Burton, P.J.; Gibbons, P. 2009. Effects of logging on fire regimes in moist forests. *Conserv. Lett.* 2(6):271–277. ⑤

Madoui, A.; Leduc, A.; Gauthier, S.; Bergeron, Y. 2010. Spatial pattern analyses of post-fire residual stands in the black spruce boreal forest of western Quebec. *Int. J. Wildland Fire* 19:1110–1126. ②

Mansuy, N.; Gauthier, S.; Robitaille, A.; Bergeron, Y. 2010. The effects of surficial deposit-drainage combinations on spatial variations of fire cycles in the boreal forest of eastern Canada. *Int. J. Wildland Fire* 19:1083–1098. ②

Meyn, A.; Schmidlein, S.; Taylor, S.W.; Girardin, M.P.; Thonicke, K.; Cramer, W. 2010. Spatial variation of trends in wildfire and summer drought in British Columbia, Canada, 1920–2000. *Int. J. Wildland Fire* 19:272–283. ②

Moritz, M.A.; Krawchuk, M.A.; Parisien, M.-A. 2010. Pyrogeography: understanding the ecological niche of fire. *PAGES News* 18(2):83–85. ④

Parisien, M.-A.; Miller, C.; Ager, A.A.; Finney, M.A. 2010. Use of artificial landscapes to isolate controls on burn probability. *Landsc. Ecol.* 25(1):79–93. ④

Parisien, M.-A.; Parks, S.; Krawchuk, M.A.; Flannigan, M.D.; Bowman, L.; Moritz, M.A. 2010. Scale-dependent controls on the area burned in the boreal forest of Canada, 1980–2005. *Ecol. Appl.* (In Press) ④

Simpson, B.N.; Englefield, P.; Anderson, K.R. 2010. Fuel-type mapping for the CWFIS: past, present, and future. Pages 4–9 *in* A. Pankratz, ed. *The Canadian Smoke Newsletter*. Environment Canada, Edmonton, Alta. ④

Smith, D.R.; Kaduk, J.D.; Balzter, H.; Wooster, M.J.; Mottram, G.N.; G. Hartley, G.; Lynham, T.J.; Studens, J.; Curry, J.; Stocks, B.J. 2010. Soil surface CO₂ flux increases with successional time in a fire scar chronosequence of Canadian boreal jack pine forest. *Biogeosciences* 7:1375–1381. ③

Splawinski, T.B.; Greene, D.F.; Gauthier, S.; Bergeron, Y. 2010. Does the post-fire organic layer compress beneath the snowpack? *Int. J. Wildland Fire* 19:673–676. ②

Wang, Y.; Anderson, K.R. 2010. An evaluation of spatial and temporal patterns of lightning- and human-caused forest fires in Alberta, Canada, 1980–2007. *Int. J. Wildland Fire* 19(8):1059–1072. ④

Weise, D.R.; Wotton, B.M. 2010. Wildland-urban interface fire behaviour and fire modelling in live fuels. *Int. J. Wildland Fire* 19:149–152. ③

Forest Insects

Abundance of secondary structure in lodgepole pine stands affected by the mountain pine beetle in the Cariboo-Chilcotin. 2009. Coates, K.D.; Glover, T.; Henderson, B. NRCan,

Insectes forestiers

CFS, Pacific Forestry Centre, Victoria, B.C. Mountain Pine Beetle Working Paper 2009-20. 37 p. ⑤

Agrile du frêne. 2010. Lyons, B. RNCAN, SCF, Centre de foresterie des Grands Lacs, Sault St. Marie (Ontario). Note technique 110. 4 p. [English: see *Emerald ash borer*.] ③

L'Agrile du frêne : combattre pour ne pas abattre. 2010. Lavallée, R. RNCAN, SCF, Centre de foresterie des Laurentides, Québec (Québec). L'Éclaircie du Service canadien des forêts, Centre de foresterie des Laurentides, no 58. 2 p. [English: see *Protecting...*] ②

Atlas of the drepanosiphine aphids of the world. Part III. 2010. Quednau, F.W. Mem. Am. Entomol. Inst. Vol. 83. 361 p. The American Entomological Institute, Gainesville, Florida. ISBN 978-1-887988-27-8. US\$190.00 (See Priced Publications.)

Bioconversion of beetle killed lodgepole pine to bioethanol. 2009. Saddler, J. NRCAN, CFS, Pacific Forestry Centre, Victoria, B.C. Mountain Pine Beetle Working Paper 2009-24. 33 p. ⑤

Effects of acetone extractives in grey-stage mountain pine beetle-killed lodgepole pine on kraft mills. 2010. Allen, L.; Gagné, A. NRCAN, CFS, Pacific Forestry Centre, Victoria, B.C. Mountain Pine Beetle Working Paper 2009-28. 15 p. ⑤

Emerald ash borer. 2010. Lyons, B. NRCAN, CFS, Great Lakes Forestry Centre, Sault Ste. Marie, Ont. Frontline Technical Note 110. 4 p. [Français : voir *L'Agrile du frêne*.] ③

Feasibility of using X-ray scanning to characterize mountain pine beetle check severity for optimizing log sorting and lumber manufacturing processes. 2009. Brdicko, J. NRCAN, CFS, Pacific Forestry Centre, Victoria, B.C. Mountain Pine Beetle Working Paper 2009-25. 61 p. ⑤

Framework to support impact analyses of renewal strategies of forestlands affected by mountain pine beetle. 2009. Krčmar, E.; Bizikova, L.; Chan-McLeod, A.C. NRCAN, CFS, Pacific Forestry Centre, Victoria, B.C. Mountain Pine Beetle Working Paper 2009-22. 41 p. ⑤

Hemlock looper egg hatching: regular as clockwork. 2010. Delisle, J. NRCAN, CFS, Laurentian Forestry Centre, Québec, Que. Branching out from the Canadian Forest Service, Laurentian Forestry Centre. No. 57. 2 p. [Français : voir *Réglée comme...*] ②

Historical frequency, intensity and extent of mountain pine beetle disturbance in British Columbia. 2010. Alfaro, R.I.; Campbell, E.; Hawkes, B.C. NRCAN, CFS, Pacific Forestry Centre, Victoria, B.C. Mountain Pine Beetle Working Paper 2009-30. 52 p. ⑤

Improving the stability of oriented strand board manufactured from mountain pine beetle wood. 2009. Semple, K.; Cullis, I.; Evans, P. NRCAN, CFS, Pacific Forestry Centre, Victoria, B.C. Mountain Pine Beetle Working Paper 2009-18. 61 p. ⑤

Protecting ash trees from the emerald ash borer. 2010. Lavallée, R. NRCAN, CFS, Laurentian Forestry Centre, Québec,

Que. Branching out from the Canadian Forest Service, Laurentian Forestry Centre. No. 58. 2 p. [Français : voir *L'Agrile du frêne*.] ②

Quantifying the water resource impacts of mountain pine beetle and associated salvage harvest operations across a range of watershed scales: hydrologic modeling of the Fraser River Basin. 2010. Schnorbus, M.; Bennett, K.; Werner, A. NRCAN, CFS, Pacific Forestry Centre, Victoria, B.C. Inf. Rep. BC-X-423. 64 p. ⑤

Réglée comme une horloge : l'éclosion des œufs de l'arpenteuse de la pruche. 2010. Delisle, J. RNCAN, SCF, Centre de foresterie des Laurentides, Québec (Québec). L'Éclaircie du Service canadien des forêts, Centre de foresterie des Laurentides, no 57. 2 p. [English: see *Hemlock looper...*] ②

Review of adventive species of Coleoptera (Insecta) recorded from eastern Canada. 2010. Klimaszewski, J.; Langor, D.; Majka C.G.; Bouchard, P.; Bousquet, Y.; LeSage, L.; Smetana, A.; Sylvestre, P.; Pelletier, G.; Davies, A.; DesRochers, P.; Goulet, H.; Webster, R.; Sweeney, J. Pensoft Series Faunistica No. 94. Pensoft Publishers, Sophia and Moscow. 272 p. ISBN 978-9-546425-52-2. 55 Euros.

Spiny ash sawfly. 2010. Williams, D.J.M. NRCAN, CFS, Northern Forestry Centre, Edmonton, Alta. Forestry leaflet 37. [Français : voir *Tenthredine épineuse du frêne*.] ④

A survey of some microorganisms isolated from the spruce beetle in central British Columbia. 2010. Safranyik, L.; Whitney, H.S.; Bleiker, K.P. NRCAN, CFS, Pacific Forestry Centre, Victoria, B.C. Inf. Rep. BC-X-420. 17 p. ⑤

Tenthredine épineuse du frêne. 2010. Williams, D.J.M. RNCAN, SCF, Centre de foresterie du Nord, Edmonton (Alberta). Dépliant forestier 37. [English: see *Spiny ash sawfly*.] ④

Journal Articles and Other Contributions / Articles de revues scientifiques et autres collaborations

Abbott, B.; Stennes, B.; van Kooten, G.C. 2009. Mountain pine beetle, global markets, and the British Columbia forest economy. *Can. J. For. Res.* 39(7):1313–1321. ⑤

Axelsson, J.N.; Alfaro, R.I.; Hawkes, B.C. 2010. Changes in stand structure in uneven-aged lodgepole pine stands impacted by mountain pine beetle epidemics and fires in central British Columbia. *For. Chron.* 86(1):87–99. ⑤

Bater, C.W.; Wulder, M.A.; White, J.C.; Coops, N.C. 2010. Integration of LIDAR and Digital Aerial Imagery for detailed estimates of lodgepole pine (*Pinus contorta*) volume killed by mountain pine beetle (*Dendroctonus ponderosae*). *J. For.* 108(3):111–119. ⑤

Bentz, B.J.; Régnière, J.; Fettig, C.J.; Hansen, E.M.; Hayes, J.L.; Hicke, J.A.; Kelsey, R.G.; Negrón, J.F.; Seybold, S.J. 2010. Climate change and bark beetles of the western United States and Canada: direct and indirect effects. *BioScience* 60:602–613. ②

- Brown, M.; Black, T.A.; Nestic, Z.; Foord, V.N.; Spittlehouse, D.L.; Fredeen, A.L.; Grant, N.J.; Burton, P.J.; Trofymow, J.A. 2010. Impact of mountain pine beetle on the net ecosystem production of lodgepole pine stands in British Columbia. *Agric. For. Meteorol.* 150(2):254–264. ⑤
- Burton, P.J. 2010. Striving for sustainability and resilience in the face of unprecedented change: the case of the mountain pine beetle outbreak in British Columbia. *Sustainability* 2(8):2403–2423. ⑤
- Butt, C.; Quiring, D.; Hébert, C.; Delisle, J.; Berthiaume, R.; Bauce, E.; Royer, L. 2010. Influence of balsam fir (*Abies balsamea*) budburst phenology on hemlock looper (*Lambdina fiscellaria*). *Entomol. Exp. Appl.* 134:220–226. ②
- Cai, H.J.; You, M.-S.; Fu, J.-W.; Ryall, K.; Li, S.-Y. 2010. Lethal effects of pyrethrins on spruce budworm (*Choristoneura fumiferana*). *J. For. Res.* 21:350–354. ③
- Carleton, D.; Quiring, D.; Heard, S.; Hébert, C.; Delisle, J.; Berthiaume, R.; Bauce, E.; Royer, L. 2010. Density-dependent and density-independent responses of three species of *Telenomus* parasitoids of hemlock looper eggs. *Entomol. Exp. Appl.* 137:296–303. ②
- Carleton, D.; Quiring, D.; Heard, S.; Hébert, C.; Delisle, J.; Berthiaume, R.; Royer, L. 2010. Density-dependent and density-independent responses of three species of *Telenomus* parasitoids of hemlock looper eggs. *Entomol. Exp. Appl.* 137(3):296–303; doi:10.1111/j.1570-7458.2010.01065.x. ①
- Carter, M.E.; Smith, M.T.; Turgeon, J.J.; Harrison, R.G. 2009. Analysis of genetic diversity in an invasive population of Asian longhorned beetles in Ontario, Canada. *Can. Entomol.* 141:582–594. ③
- Coggins, S.B.; Coops, N.C.; Wulder, M.A. 2010. Estimates of bark beetle infestation expansion factors with adaptive cluster sampling. *Int. J. Pest Manag.* 57(1):11–21. ⑤
- Coggins, S.B.; Coops, N.C.; Wulder, M.A. 2010. Improvement of low level bark beetle damage estimates with adaptive cluster sampling. *Silva Fenn.* 44(2):289–301. ⑤
- Coops, N.C.; Gillanders, S.; Wulder, M.A.; Gergel, S.E.; Nelson, T.A.; Goodwin, N.R. 2010. Assessing changes in forest fragmentation following infestation using time series Landsat imagery. *For. Ecol. Manag.* 259(12):2355–2365. ⑤
- Coops, N.C.; Wulder, M.A. 2010. Estimating the reduction in gross primary production due to mountain pine beetle infestation using satellite observations. *Int. J. Remote Sens.* 31(7–8):2129–2138. ⑤
- deWaard, J.R.; Landry, J.-F.; Schmidt, B.C.; Derhousoff, J.; McLean, J.A.; Humble, L.M. 2009. In the dark in a large urban park: DNA barcodes illuminate cryptic and introduced moth species. *Biodivers. Conserv.* 18(4):3825–3839. ⑤
- Dodds, K.J.; de Groot, P.; Orwig, D.A. 2010. The impact of *Sirex noctilio* in *Pinus resinosa* and *Pinus sylvestris* stands in New York and Ontario. *Can. J. For. Res.* 40:212–223. ③
- Dymond, C.C.; Neilson, E.T.; Stinson, G.; Porter, K.B.; MacLean, D.A.; Gray, D.R.; Campagna, M.; Kurz, W.A. 2010. Future spruce budworm outbreak may create a carbon source in eastern Canadian forests. *Ecosystems* 13(6):917–931. ⑤
- Fry, H.R.; Quiring, D.T.; Ryall, K.L.; Dixon, P.L. 2010. Influence of intra-tree variation in phenology and oviposition site on the distribution and performance of *Ennomos subsignaria* on mature sycamore maple. *Ecol. Entomol.* 34:394–405. ①
- Goodwin, N.R.; Magnussen, S.; Coops, N.C.; Wulder, M.A. 2010. Curve fitting of time series Landsat imagery for characterising a mountain pine beetle infestation disturbance. *Int. J. Remote Sens.* 31(12):3263–3271. ⑤
- Grant, G.G.; Ryall, K.L.; Lyons, D.B.; Abou-Zaid, M.M. 2010. Differential response of male and female emerald ash borers (Col., Buprestidae) to (Z)-3-hexenol and manuka oil. *J. Appl. Entomol.* 134:26–33. ③
- Gray, D.R. 2010. Hitchhikers on trade routes: a phenology model estimates the probabilities of gypsy moth introduction and establishment. *Ecol. Appl.* 20:2300–2309. ①
- Haack, R.A.; Hérard, F.; Sun, J.; Turgeon, J.J. 2010. Managing invasive populations of Asian longhorned beetle and citrus longhorned beetle: a worldwide perspective. *Annu. Rev. Entomol.* 55:521–546. ③
- Hall, R.J.; Filiatrault, M.; Deschamps, A.; Arsenault, E. 2009. Mapping eastern spruce budworm cumulative defoliation severity from Landsat and SPOT. Pages 1190–1194 in C.A. Coburn and D.R. Peddle, eds. 30th Canadian Symposium on Remote Sensing, 22–25 June 2009, Lethbridge, Alberta. *Can. Remote Sens. Soc., Ottawa.* ④
- Humble, L.M. 2010. First North American records for *Heterarthrus vagans* (Hymenoptera: Tenthredinidae), a Palearctic leafmining sawfly of alder. *Can. Entomol.* 142(2):181–187. ⑤
- Humble, L.M.; deWaard, J.R.; Quinn, M. 2009. Delayed recognition of the European poplar shoot borer, *Gypsonoma aceriana* (Duponchel) (Lepidoptera: Tortricidae) in Canada. *J. Entomol. Soc. B.C.* 106:61–70. ⑤
- James, P.A.M.; Fleming, R.A.; Fortin, M.-J. 2010. Identifying significant scale-specific spatial boundaries using wavelets and null models: spruce budworm defoliation in Ontario, Canada as a case study. *Landsc. Ecol.* 25:873–887. ③
- Johns, R.; Quiring, D.T. 2010. Spatial heterogeneity within an evergreen conifer promotes foliage-age dietary mixing by a specialist herbivore. *Anim. Behav.* 80:659–666. ①

- Johns, R.; Quiring, D.T.; Lapointe, R.; Lucarotti, C.J. 2009. Foliage mixing within balsam fir increases the fitness of a generalist caterpillar. *Ecol. Entomol.* 34:624–631. ①
- Johns, R.; Quiring, D.T.; Ostaff, D.P. 2009. Sex biased intra-tree oviposition site selection and larval foraging behavior of a specialist herbivore. *Entomol. Exp. Appl.* 132:264–274. ①
- Johns, R.; Quiring, D.T.; Ostaff, D.P.; Bauce E. 2010. Intra-tree variation in foliage quality drives the adaptive sex-biased foraging behaviors of a specialist herbivore. *Oecologia* 163:935–947. ①
- Klimaszewski, J.; Pace, R.; Center, T.D.; Couture, J. 2010. A remarkable new species of *Himalusa* Pace from Thailand (Coleoptera, Staphylinidae, Aleocharinae): phytophagous aleocharine beetle with potential for bio-control of skunkvine-related weeds in the United States. *ZooKeys* 35:1–12. ②
- Koch, F.H.; Yemshanov, D.; Colunga-Garcia, M.; Magarey, R.D.; Smith, W.D. 2010. Potential establishment of alien-invasive forest insect species in the United States: where and how many? *Biol. Invasions*; doi:10.1007/s10530-010-9883-8.
- Kra, D.K.; Doumbia, M.; Klimaszewski, J.; Kwadjo, K.E. 2010. Distribution des Scarabaeidae (Coléoptères) le long d'un gradient d'utilisation des terres (Oumé – Côte d'Ivoire). *J. Anim. Plant Sci.* 6:571-578. ②
- Lemay, M.A.; Silk, P.J.; Sweeney, J.D. 2010. Calling behavior of *Tetropium fuscum* (Coleoptera: Cerambycidae: Spondylidinae). *Can. Entomol.* 142:256–260. ①
- Lyons, D.B.; Scarr, T.A., eds. 2010. Workshop proceedings: guiding principles for managing the emerald ash borer in urban environments. Ontario Ministry of Natural Resources, Forest Health and Silviculture Section, and NRCan, CFS, Great Lakes Forestry Centre, Sault Ste. Marie, Ont. 44 p. ③
- MacQuarrie, C.J.K.; Spence, J.R.; Langor, D.W. 2010. Using classification tree analysis to reveal causes of mortality in an insect population. *Agric. For. Entomol.* 12:143–149. ③
- Majka, C.G.; Johnson, C.; Langor, D.W. 2010. Contributions towards an understanding of the Atomariinae (Coleoptera, Cryptophagidae) of Atlantic Canada. *ZooKeys* 35:37–63. ④
- Majka, C.G.; Klimaszewski, J. 2009. *Aleochara sekanai* Klimaszewski: a significant southern and eastern range extension (Coleoptera: Staphylinidae). *Coleopt. Bull.* 63:454–455. ②
- Majka, C.G.; Klimaszewski, J. 2010. Contributions to the knowledge of the Aleocharinae (Coleoptera, Staphylinidae) in the Maritime Provinces of Canada. *ZooKeys* 46:15–39. ②
- Majka, C.G.; Langor, D.W. 2010. Contributions towards an understanding of the Cryptophaginae (Coleoptera, Cryptophagidae) of Atlantic Canada. *ZooKeys* 35:13–35. ④
- McKenzie, N.; Helson, B.; Thompson, D.; Otis, G.; McFarlane, J.; Buscarini, T.; Meating, J. 2010. Azadirachtin: an effective systemic insecticide for control of *Agrilus planipennis* (Coleoptera: Buprestidae). *J. Econ. Entomol.* 103:708–717. ③
- Meinander, M.; Klimaszewski, J.; Scudder, G.G.E. 2009. New distributional records for some Canadian Neuropterida (Insecta: Neuroptera, Megaloptera). *J. Entomol. Soc. BC* 106:11–15. ②
- Miller, D.R.; Millar, J.G.; Grant, G.G.; MacDonald, L.; DeBarr, G.L. 2010. (3Z,6Z,9Z,12Z,15Z)-pentacosapentaene and (9Z)-11-tetradecadienyl acetate: attractant lure blend for *Dioryctria amatella* (Lepidoptera: Pyralidae). *J. Entomol. Sci.* 45:54–57. ③
- Miller, D.R.; Millar, J.G.; Mangini, A.; Crowe, C.M.; Grant, G.G. 2010. (3Z,6Z,9Z,12Z,15Z)-pentacosapentaene and (Z)-11-hexadecenyl acetate: sex attractant blend for *Dioryctria amatella* (Lepidoptera: Pyralidae). *J. Econ. Entomol.* 103:1216–1221. ③
- Nealis, V.G.; Silk, P.J.; Turnquist, R.; Wu, J. 2010. Baited pheromone traps track changes in populations of western blackheaded budworm (Lepidoptera: Tortricidae). *Can. Entomol.* 142(5):458–465. ⑤
- Nealis, V.G.; Turnquist, R. 2010. Impact and recovery of western hemlock following disturbances by forestry and insect defoliation. *For. Ecol. Manag.* 260(5):699–706. ⑤
- Nisole, A.; Stewart, D.; Bowman, S.; Zhang, D.; Krell, P.J.; Doucet, D.; Cusson, M. 2010. Cloning and characterization of a *Gasp* homolog from the spruce budworm, *Choristoneura fumiferana*, and its putative role in cuticle formation. *J. Insect Physiol.* 56:1427–1435. ③
- Otvos, I.S.; Omendja, K.; Foord, S.; Conder, N.; Borecky, N.; Nevill, R.J. 2010. Preliminary hazard rating for forest tent caterpillar in British Columbia. *For. Chron.* 86(5):636–648. ⑤
- Pang, A.S.D. 2010. Possible role of plant allelochemical in clearance of bacteria from the gut of spruce budworm, *Choristoneura fumiferana*. *Open Microbiol. J.* 4:26–29; doi:10.2174/1874285801004010026. ③
- Perera, S.C.; Li, Z.; Pavlik, L.; Arif, B.M. 2010. Entomopoxviruses. Pages 83–102 in S. Asgari and K.N. Johnson, eds. *Insect virology*. Caister Academic Press, U.K. 436 p. ③
- Perera, S.C.; Wong, P.; Krell, P.J.; Arif, B.M. 2010. Expression of heterologous genes in the *Amsacta moorei* entomopoxvirus. *J. Virol. Methods* 165:1–8; doi:10.1016/j.jviromet.2009.05.015. ③
- Pohl, G.R.; Anweiler, G.G.; Schmidt, B.C.; Kondla, N.G. 2010. An annotated list of the Lepidoptera of Alberta, Canada. *ZooKeys* 38:1–549; doi: 10.3897/zookeys.38.383. ④
- Quednau, F.W. 2009. Phylogenetic aspects of the Saltusaphidinae. Pages 125–128 in *Proceedings of the 8th International Symposium on Aphids*, 8–12 June 2009, Catania, Italy. *Redia*, Vol. 92. ②

Rhains, M.; Fagan, W.F. 2010. Broad-scale latitudinal variation in female reproductive success contributes to the maintenance of a geographic range boundary in bagworms (Lepidoptera: Psychidae). *PLoS ONE* 5(11): e14166. ①

Rhains, M.; Heard, S.B.; Sweeney, J.D.; Silk, P.; Flaherty, L. 2010. Phenology and spatial distribution of native and exotic *Tetropium* longhorn beetles (Coleoptera: Cerambycidae). *Environ. Entomol.* 39(6). (In Press) ①

Ryall, K. 2010. Effects of larval host plant species on fecundity of the generalist insect herbivore *Ennomos subsignarius* (Lepidoptera: Geometridae). *Environ. Entomol.* 39:121–126. ③

Ryall, K.; Silk, P.J.; Wu, J.; Mayo, P.; Lemay, M.A.; MaGee, D. 2010. Sex pheromone chemistry and field trapping studies of the elm spanworm *Ennomos subsignaria* (Hübner) (Lepidoptera: Geometridae). *Naturwissenschaften* 97:717–724. ① ③

Safranyik, L.; Carroll, A.L.; Régnière, J.; Langor, D.W.; Riel, W.G., Shore, T.L.; Peter, B.; Cooke, B.J.; Nealis, V.G.; Taylor, S.W. 2010. Potential for range expansion of mountain pine beetle into the boreal forest of North America. *Can. Entomol.* 142:415–442. ② ⑤

Silk, P.J.; Lemay, M.A.; Leclair, G.; Sweeney, J.D.; Magee, D. 2010. Behavioral and electrophysiological responses of *Tetropium fuscum* (Coleoptera: Cerambycidae) to pheromone and spruce volatiles. *Environ. Entomol.* 39(6). (In press) ①

Simonsen, T.; Dombroskie, J.J.; Pohl, G.R. 2009. *Melitara* Walker (Pyralidae) in western Canada: the documentation of *M. subumbrella* (Dyar) in the Prairie Provinces demonstrates the value of regional collections and species lists. *J. Lepid. Soc.* 63(1):31–36. ④

Slack, J.M.; Lawrence, S.D.; Krell, P.J.; Arif, B.M. 2010. A soluble form of P74 can act as a *per os* infectivity factor to the *Autographa californica* multiple nucleopolyhedrovirus. *J. Gen. Virol.* 91:915–918. ③

Sweeney, J.D.; Silk, P.J.; Gutowski, J.M.; Wu, J.; Lemay, M.A.; Mayo, P.D.; MaGee, D.I. 2010. Effect of chirality, release rate, and host volatiles on responses of *Tetropium fuscum* (F.), *Tetropium cinnamopterum* (Kirby), and *Tetrobipium castaneum* (L.) to the aggregation pheromone, Fuscamol. *J. Chem. Ecol.* 36:1309–1321. ①

Turgeon, J.J.; Pedlar, J.; de Groot, P.; Smith, M.T.; Jones, C.; Orr, M.; Gasman, B. 2010. Density and location of simulated signs

of injury affect efficacy of ground surveys for Asian longhorned beetle. *Can. Entomol.* 142:80–96. ③

van Frankenhuyzen, K.; Espinasse, S. 2010. Observations on the feeding behaviour of late-instar larvae of *Choristoneura fumiferana*. *Can. Entomol.* 142:388–392. ③

van Frankenhuyzen, K.; Liu, Y.; Tonon, A. 2010. Interactions between *Bacillus thuringiensis* subsp. *kurstaki* HD-1 and midgut bacteria in larvae of gypsy moth and spruce budworm. *J. Invertebr. Pathol.* 103:124–131. ③

Venette, R.C.; Kriticos, D.J.; Magarey, R.D.; Koch, F.H.; Baker, R.H.A.; Worner, S.P.; Gómez Raboteaux, N.N.; McKenney, D.W.; Dobesberger, E.J.; Yemshanov, D.; De Barro, P.J.; Hutchison, W.D.; Fowler, G.; Kalaris, T.M.; Pedlar, J. 2010. Pest risk maps for invasive alien species: a roadmap for improvement. *BioScience* 60:349–362. ③

Whittome-Waygood, B.H.; Fraser, J.C.; Lucarotti, C.J.; Otvos, I.S.; Conder, N.; Levin, D.B. 2009. In vitro culture of *Lambdina fiscellaria lugubrosa* nucleopolyhedrovirus in heterologous cell lines. *In Vitro Cell. Dev. Biol. Anim.* 45(5–6):300–309. ⑤

Wu, Y.; Hao, X.; Li, Z.; Gu, P.; An, F.; Xiang, J.; Wang, H.; Luo, Z.; Liu, J.-J.; Xiang, Y. 2010. Identification of the phytoplasma associated with wheat blue dwarf disease in China. *Plant Dis.* 94(8):977–985. ⑤

Wulder, M.A.; Ortlepp, S.M.; White, J.C.; Coops, N.C.; Nelson, T.A. 2010. A provincial and regional assessment of the mountain pine beetle epidemic in British Columbia: 1999–2008. *J. Environ. Inf.* 15(1):1–13. ⑤

Yemshanov, D.; Koch, F.H.; Ben-Haim, Y.; Smith, W.D. 2010. Detection capacity, information gaps and the design of surveillance programs for invasive forest pests. *J. Environ. Manag.* 91:2535–2546. ③

Yemshanov, D.; Koch, F.H.; Ben-Haim, Y.; Smith, W.D. 2010. Robustness of risk maps and survey networks to knowledge gaps about a new invasive pest. *Risk Anal.* 30:261–276; doi:10.1111/j.1539-6924.2009.01284.x ③

Zhao, L.L.; Jiang, P.; Humble, L.M.; Sun, J. 2009. Within-tree distribution and attractant sampling of propagative pinewood nematode, *Bursaphelenchus xylophilus*: an early diagnosis approach. *For. Ecol. Manag.* 258(9):1932–1937. ⑤

Genetics, Tree Improvement, and Biodiversity

Génétique, amélioration des arbres et biodiversité

Breeding and genetic resources of five-needle pines: ecophysiology, disease resistance and developmental biology. 2009. Noshad, D.; Noh, E.W.; King, J.; Sniezko, R., eds.,

22–26 Sept. 2008, Yangyang, Republic of Korea. Korea Forest Research Institute, Seoul, Korea. ⑤

Journal Articles and Other Contributions / Articles de revues scientifiques et autres collaborations

Askew, S.E.; Shamoun, S.F.; van der Kamp, B.J. 2010. Assessment of *Colletotrichum gloeosporioides* as a biological control agent for hemlock dwarf mistletoe (*Arceuthobium tsugense*) For. Pathol. (In Press) ⑤

Atangana, A.R.; Beaulieu, J.; Khasa, D.P. 2010. Wild genetic diversity preservation in a small-sized first generation breeding population of *Allanblackia floribunda* (Clusiaceae). Tree Genet. Genomes 6:127–136. ②

Bai, X.; Liu, J.-J.; Hao, X.; Dubeau, C.; Xiang, Y. 2010. Virus genomic cloning, bioinformatics and metagenomics. Pages 71–92 in A. Wang, ed. Principles and practice of advanced technology in plant virology. Research Signpost, 37/661 (2), Fort P.O. Trivandrum-695 023, Kerala, India. ⑤

Beaulieu, J.; Bousquet, J. 2010. Facteurs génétiques affectant la variabilité des cernes annuels chez les espèces arborescentes nordiques. Pages 137-163 dans S. Payette et L. Filion. La dendroécologie : principes, méthodes et applications. Presses de l'Université Laval, Québec (Québec). ②

Becker, E.M.; Sumampong, G.; Shamoun, S.F.; Elliott, M.; Varga, A.; Masri, S.; James, D.; Bailey, K.; Boyetchko, S. 2010. An evaluation of *Phytophthora ramorum* preventative treatments for nursery and forest understory plants in British Columbia, Canada. Pages 288–291 in S.J. Frankel, J.T. Kliejunas, and K.M. Palmieri, technical coordinators. Proceedings of the Sudden Oak Death Fourth Science Symposium. Gen. Tech. Rep. PSW-GTR-229, 15–18 June 2009, Santa Cruz, Calif. U.S. Department of Agriculture, Forest Service, Pacific Southwest Research Station, Albany, Calif. ⑤

Bedon, F.; Bomal, C.; Caron, S.; Lévasseur, C.; Boyle, B.; Mansfield, S.D.; Schmidt, A.; Gershenzon, J.; Grima-Pettenati, J.; Séguin, A.; MacKay, J. 2010. Subgroup 4 R2R3-MYBs in conifer trees: gene family expansion and contribution to the isoprenoid- and flavonoid-oriented responses. J. Exp. Bot. 61:3847–3864. ②

Bonga, J.M.; Klimaszewska, K.K.; von Aderkas, P. 2010. Recalcitrance in clonal propagation, in particular of conifers. Plant Cell Tissue Organ Cult. 100:241–254. ① ②

Bonga, J.M.; von Aderkas, P.; Klimaszewska, K.K. 2009. Conifers: culture and genetic engineering. Pages 1724–1728 in M.C. Flickenger, ed. Encyclopedia of industrial biotechnology: bioprocess, bioseparation, and cell technology. Vol. 3. John Wiley and Sons, Inc., Hoboken, N.J. ①

Boyle, B.; Levée, V.; Hamel, L.-P.; Nicole, M.-C.; Séguin, A. 2010. Molecular and histochemical characterisation of two distinct poplar *Melampsora* leaf rust pathosystems. Plant Biol. 12:364–376. ②

Brousseau, P.-M.; Cloutier, C.; Hébert, C. 2010. Selected beetle assemblages captured in pitfall traps baited with deer dung or meat in balsam fir and sugar maple forests of central Quebec. Environ. Entomol. 39:1151–1158. ②

Le Code-barres génétique : une appellation d'origine contrôlée pour les champignons pathogènes des arbres. 2009. Tanguay, P.; Hamelin, R. RNCAN, SCF, Centre de foresterie des Laurentides, Québec (Québec). L'Éclaircie du Service canadien des forêts, Centre de foresterie des Laurentides, no 53. 2 p. [English: see *The DNA barcode...*] ②

The DNA barcode: a unique identifier for pathogenic forest fungi. 2009. Tanguay, P.; Hamelin, R. NRCAN, CFS, Laurentian Forestry Centre, Québec, Que. Branching out from the Canadian Forest Service, Laurentian Forestry Centre. No. 53. 2 p. [Français : voir *Le Code-barres...*] ②

L'Embryogenèse somatique : un mode de reproduction applicable aux conifères d'âge mûr? 2010. Klimaszewska, K. RNCAN, SCF, Centre de foresterie des Laurentides, Québec (Québec). L'Éclaircie du Service canadien des forêts, Centre de foresterie des Laurentides, no 61. 2 p. [English: see *Somatic embryogenesis...*] ②

Field guide for identifying apical bud break and bud formation stages in white spruce. 2010. Dhont, C.; Sylvestre, P.; Gros-Louis, M.-C.; Isabel, N. RNCAN, CFS, Laurentian Forestry Centre, Québec, Que. 18 p. [Français : voir *Guide-terrain...*] ②

Guide-terrain pour l'identification des stades de débournement et de formation du bourgeon apical chez l'épinette blanche. 2010. Dhont, C.; Sylvestre, P.; Gros-Louis, M.-C.; Isabel, N. RNCAN, SCF, Centre de foresterie des Laurentides, Québec (Québec). 18 p. [English: see *Field Guide...*] ②

Les Insectes : des indicateurs de biodiversité pour la forêt boréale? 2010. Hébert, C. RNCAN, SCF, Centre de foresterie des Laurentides, Québec (Québec). L'Éclaircie du Service canadien des forêts, Centre de foresterie des Laurentides, no 62. 2 p. [English: see *Using insects...*] ②

Optisource: a tool for optimizing seed transfer. 2009. Beaulieu, J. RNCAN, CFS, Laurentian Forestry Centre, Québec, Que. Branching out from the Canadian Forest Service, Laurentian Forestry Centre. No. 55. 2 p. [Français : voir *Optisource : un outil...*] ②

Optisource : un outil pour optimiser le transfert des semences. 2009. Beaulieu, J. RNCAN, SCF, Centre de foresterie des Laurentides, Québec (Québec). L'Éclaircie du Service canadien des forêts, Centre de foresterie des Laurentides, no 55. 2 p. [English: see *Optisource: a tool...*] ②

Somatic embryogenesis: a reproduction method applicable to mature conifers? 2010. Klimaszewska, K. RNCAN, CFS, Laurentian Forestry Centre, Québec, Que. Branching out from the Canadian Forest Service, Laurentian Forestry Centre. No. 61. 2 p. [Français : voir *L'Embryogenèse somatique...*] ②

Using insects as biodiversity indicators for the boreal forest. 2010. Hébert, C. RNCAN, CFS, Laurentian Forestry Centre, Québec, Que. Branching out from the Canadian Forest Service, Laurentian Forestry Centre. No. 62. 2 p. [Français : voir *Les Insectes...*] ②

- Cameron, S.I. 2010. Plant regeneration in Spanish cedar, *Cedrela odorata* L., using zygotic embryo explants from mature seed and improvement of embryogenetic nodule initiation by heat shock. *In Vitro Cell. Dev. Biol. Plant* 46:126–133. ①
- Castro, M.R.; Ragonezi, C.; Klimaszewska, K.; Lima, M.; de Oliveira, P.; Zavattieri, M.A. 2010. Mycorrhiza-like structures in rooted microshoots of *Pinus pinea* L. *Acta Hort.* (ISHS) 865:179–185. ②
- Clément, S.; Fillon, J.; Bousquet, J.; Beaulieu, J. 2010. TreeSNPs: a laboratory information management system (LIMS) dedicated to SNP discovery in trees. *Tree Genet. Genomes* 6:435–438. ②
- Côté, C.L.; Boileau, F.; Roy, V.; Ouellet, M.; Levasseur, C.; Morency, M.-J.; Cooke, J.E.K.; Séguin, A.; MacKay, J.J. 2010. Gene family structure, expression and functional analysis of HD-Zip III genes in angiosperm and gymnosperm forest trees. *BMC Plant Biol.* 10:273. ②
- Cruickshank, M.G.; Jaquish, B.; Nemeč, A.F.L. 2010. Resistance of half-sib interior Douglas-fir families to *Armillaria ostoyae* in British Columbia following artificial inoculation. *Can. J. For. Res.* 40(1):155–166. ⑤
- Daoust, G.; Klimaszewska, K.; Plourde, D. 2009. Somatic embryogenesis, a tool for accelerating the selection and deployment of hybrids of eastern white pine (*Pinus strobus*) and Himalayan white pine (*Pinus wallichiana*) resistant to white pine blister rust (*Cronartium ribicola*). Page 90 in *Proceedings, Breeding and Genetic Resources of Five-Needle Pines: Ecophysiology, Disease Resistance and Developmental Biology*, 22–26 Sept. 2008, Yangyang, Republic of Korea. Korea Forest Research Institute, Seoul, Korea. ②
- Dymond, C.C.; Titus, B.D.; Stinson, G.; Kurz, W.A. 2010. Future quantities and spatial distribution of harvesting residue and dead wood from natural disturbances in Canada. *For. Ecol. Manag.* 260(2):181–192. ⑤
- Elliott, M.; Sumampong, G.; Shamoun, S.F.; Becker, E.M.; Varga, A.; James, D.; Masri, S.; Grünwald, N.J. 2010. Phenotypic variation in *Phytophthora ramorum*: wild type vs non-wild type isolates. Pages 317–318 in S.J. Frankel, J.T. Kliejunas, and K.M. Palmieri, technical coordinators. *Proceedings of the Sudden Oak Death Fourth Science Symposium*. Gen. Tech. Rep. PSW-GTR-229, 15–18 June 2009, Santa Cruz, Calif. U.S. Department of Agriculture, Forest Service, Pacific Southwest Research Station, Albany, Calif. ⑤
- Gérardi, S.; Jaramillo-Correa, J.P.; Beaulieu, J.; Bousquet, J. 2010. From glacial refugia to modern populations: new assemblages of organelle genomes generated by differential cytoplasmic gene flow in transcontinental black spruce. *Mol. Ecol.* 19:5265–5280. ②
- Godbout, J.; Beaulieu, J.; Bousquet, J. 2010. Phylogeographic structure of jack pine (*Pinus banksiana*; Pinaceae) supports the existence of a coastal glacial refugium in northeastern North America. *Am. J. Bot.* 97:1903–1912. ②
- Klimaszewska, K.; Pelletier, G.; Overton, C.; Stewart, D.; Rutledge, R.G. 2010. Hormonally regulated overexpression of *Arabidopsis WUS* and conifer *LEC1 (CHAP3A)* in transgenic white spruce: implications for somatic embryo development and somatic seedling growth. *Plant Cell Rep.* 29:723–734. ②
- Legay, S.; Sivadon, P.; Blervacq, A.-S.; Pavy, N.; Baghdady, A.; Tremblay, L.; Levasseur, C.; Ladouce, N.; Lapierre, C.; Séguin, A.; Hawkins, S.; Mackay, J.; Grima-Pettenati, J. 2010. *EgMYB1*, an R2R3 MYB transcription factor from eucalyptus negatively regulates secondary cell wall formation in *Arabidopsis* and poplar. *New Phytol.* 188:774–786. ②
- Lenz, P.; Cloutier, A.; MacKay, J.; Beaulieu, J. 2010. Genetic control of wood properties in *Picea glauca*—an analysis of trends with cambial age. *Can. J. For. Res.* 40:703–715. ②
- Levy-Booth, D.J.; Winder, R.S. 2010. Quantification of nitrogen reductase and nitrite reductase gene abundance in soil of thinned and clear-cut Douglas-fir stands using real-time PCR. *Appl. Environ. Microbiol.* 76(21):7116–7125. ⑤
- Liu, J.-J.; Sturrock, R.N.; Ekramoddoullah, A.K.M. 2010. The superfamily of thaumatin-like proteins: its origin, evolution, and expression towards biological function. *Plant Cell Rep.* 29(5):419–436. ⑤
- MacDonald, J.E.; Owens, J.N. 2010. Physiology and growth of containerized coastal Douglas fir seedlings given different durations of short days to induce dormancy. *Hortscience* 45: 342–346. ①
- Major, I.T.; Nicole, M.-C.; Duplessis, S.; Séguin, A. 2010. Photosynthetic and respiratory changes in leaves of poplar elicited by rust infection. *Photosynth. Res.* 104:41–48. ②
- Major, J.E.; Mosseler, A.; Barsi, D.C.; Clouthier, A.; Campbell, M. 2009. Impact of three silvicultural treatments on weevil incidence, growth, phenology, and branch-level dynamics of *Pinus strobus* from large and small populations. *Can. J. For. Res.* 39:12–25. ①
- Meirmans, P.G.; Lamothe, M.; Gros-Louis, M.-C.; Khasa, D.; Périnet, P.; Bousquet, J.; Isabel, N. 2010. Complex patterns of hybridization between exotic and native North American poplar species. *Am. J. Bot.* 97:1688–1697. ②
- Molecular Ecology Resources Primer Development Consortium. 2010. Permanent genetic resources added to Molecular Ecology Resources Database 1 December 2009–31 January 2010. *Mol. Ecol. Resour.* 10:576–579; doi:10.1111/j.1755-0998.2010.02851.x ②
- Namroud, M.-C.; Guillet-Claude, C.; Mackay, J.; Isabel, N.; Bousquet, J. 2010. Molecular evolution of regulatory genes in spruces from different species and continents: heterogeneous patterns of linkage disequilibrium and selection but correlated recent demographic changes. *J. Mol. Evol.* 70:371–386. ②

Nisole, A.; Stewart, D.; Bowman, S.; Zhang, D.; Krell, P.J.; Doucet, D.; Cusson, M. 2010. Cloning and characterization of a *Gasp* homolog from the spruce budworm, *Choristoneura fumiferana*, and its putative role in cuticle formation. *J. Insect Physiol.* 56:1427–1435. ②

Noshad, D.; King, J.; Ekramoddoullah, A.K.M. 2009. In vitro and in vivo investigation into the characterization of resistance against white pine blister rust. Pages 79–80 in *Proceedings, Breeding and Genetic Resources of Five-Needle Pines: Ecophysiology, Disease Resistance and Developmental Biology*, 22–26 Sept. 2008, Yangyang, Republic of Korea. Korea Forest Research Institute, Seoul, Korea. ⑤

Park, S.-Y.; Klimaszewska, K.; Park, J.-Y.; Mansfield, S.D. 2010. Lodgepole pine: the first evidence of seed-based somatic embryogenesis and the expression of embryogenesis marker genes in shoot bud cultures of adult trees. *Tree Physiol.* 30:1469–1478. ②

Pechanova, O.; Hsu, C.-Y.; Adams, J.P.; Pechan, T.; Vandervelde, L.; Drnevich, J.; Jawdy, S.; Adeli, A.; Suttle, J.C.; Lawrence, A.M.; Tschaplinski, T.J.; Séguin, A.; Yuceer, C. 2010. Apoplast proteome reveals that extracellular matrix contributes to multistress response in poplar. *BMC Genomics* 11:674. ②

Ragonezi, C.; Castro, M.R.; Klimaszewska, K.; Lima, M.; Zavattieri, M.A. 2010. Influence of light quality and intensity on adventitious root formation in microshoots of *Pinus pinea* L. *Acta Hort.* (ISHS) 865:287–291. ②

Ragonezi, C.; Klimaszewska, K.; Castro, M.R.; Lima, M.; de Oliveira, P.; Zavattieri, M.A. 2010. Adventitious rooting of conifers: influence of physical and chemical factors. *Trees* 24:975–992. ②

Rutledge, R.G.; Stewart, D. 2010. Assessing the performance capabilities of LRE-based assays for absolute quantitative real-time PCR. *PLoS ONE* 5:e9731; doi:10.1371/journal.pone.0009731. ②

Schmidt, A.; Wächtler, B.; Temp, U.; Krekling, T.; Séguin, A.; Gershenzon, J. 2010. A bifunctional geranyl and geranylgeranyl diphosphate synthase is involved in terpene oleoresin formation in *Picea abies*. *Plant Physiol.* 152:639–655. ②

Stefani, F.O.P.; Hamelin, R.C. 2010. Current state of genetically modified plant impact on target and non-target fungi. *Environ. Rev.* 18:441–475. ②

Stefani, F.O.P.; Tanguay, P.; Pelletier, G.; Piché, Y.; Hamelin, R.C. 2010. Impact of endochitinase-transformed white spruce on soil fungal biomass and ectendomycorrhizal symbiosis. *Appl. Environ. Microbiol.* 76:2607–2614. ②

Thompson, S.L.; Lamothe, M.; Meirmans, P.G.; Périnet, P.; Isabel, N. 2010. Repeated unidirectional introgression towards *Populus balsamifera* in contact zones of exotic and native poplars. *Mol. Ecol.* 19:132–145. ②

Verrez, A.; Quiring, D.T.; Leinekugel Le Cocq, T.; Adams, G.; Park, Y.-S. 2010. Genetically based resistance to the white pine weevil in jack pine and eastern white pine. *For. Chron.* 86:775–779. ①

Volkoff, A.-N.; Jouan, V.; Urbach, S.; Samain, S.; Bergoin, M.; Wincker, P.; Demetree, E.; Cousserans, F.; Provost, B.; Coulibaly, F.; Legeai, F.; Béliveau, C.; Cusson, M.; Gyapay, G.; Drezen, J.M. 2010. Analysis of virion structural components reveals vestiges of the ancestral ichnovirus genome. *PLoS Pathogens* 6:e1000923; doi:10.1371/journal.ppat.1000923. ②

Wang, B.S.P.; Simpson, J.D. 2010. Dormancy and moist-chilling requirements for germination of white spruce seeds from various latitudes in Canada. Pages 265–271 in *Proceedings, Symposium on Research and Challenge in Technology of Seed Germination, Seedling Production, and Plantation*. 29–30 June 2009, Taipei, Taiwan. Taiwan Forestry Research Institute, Forestry Series No. 197. ①

Weng, Y.; Park, Y.S.; Simpson, J.D.; Mullin, T.J. 2009. Efficiencies of clonally replicated and seedling testing for spruce breeding and deployment strategies. *Silvae Genet.* 58:292–210. ①

Weng, Y.; Park, Y.S.; Simpson, J.D.; Tosh, K.; Fullarton, M. 2010. Tree improvement effects on tree size distributions for *Picea glauca* and *Picea mariana* in New Brunswick, Canada. *Scand. J. For. Res.* 25:10–20. ①

Work, T.T.; Jacobs, J.; Spence, J.R.; Volney, W.J.A. 2010. High levels of green-tree retention are required to preserve ground beetle biodiversity in boreal mixedwood forests. *Ecol. Appl.* 20(3):741–751.

Growth and Yield, Inventory, and Monitoring

Abundance of secondary structure in lodgepole pine stands affected by the mountain pine beetle in the Cariboo-Chilcotin. 2009. Coates, K.D.; Glover, T.; Henderson, B. NRCan, CFS, Pacific Forestry Centre, Victoria, B.C. Mountain Pine Beetle Working Paper 2009-20. 37 p. ⑤

Accroissement, inventaire et biosurveillance

Atlas des dispositifs expérimentaux de recherche forestière à long terme du Service canadien des forêts, Centre de foresterie des Laurentides. [En ligne seulement]. 2010. Delisle, C.; Archambault, L. RNCan, SCF, Centre de foresterie des Laurentides, Québec (Québec). Rapport d'information LAU-X-136F. [English: see *Atlas of long term...*]

Atlas of long-term forest research experimental sites of the Canadian Forest Service, Laurentian Forestry Centre. [Online only]. 2010. Delisle, C.; Archambault, L. NRCan, CFS, Laurentian Forestry Centre, Québec, Que. Inf. Rep. LAU-X-136E. [Français : voir *Atlas des dispositifs...*]

Decreasing uncertainty in CBM-CFS3 estimates of forest soil C sources and sinks through use of long-term data from the Canadian Intersite Decomposition Experiment. 2009. Smyth, C.; Trofymow, J.A.; Kurz, W.A.; CIDET Working Group. NRCan, CFS, Pacific Forestry Centre, Victoria, B.C. Inf. Rep. BC-X-422. 46 p. ⑤

Historical frequency, intensity and extent of mountain pine beetle disturbance in British Columbia. 2010. Alfaro, R.I.; Campbell, E.; Hawkes, B.C. NRCan, CFS, Pacific Forestry Centre, Victoria, B.C. Mountain Pine Beetle Working Paper 2009-30. 52 p. ⑤

The ITC suite manual: a semi-automatic individual tree crown (ITC) approach to forest inventories. 2010. Gougeon, F.A. NRCan, CFS, Pacific Forestry Centre, Victoria, B.C. 92 p. ⑤

A model for predicting forest yield across Canada. 2009. Bernier, P.; Ung, C.-H. NRCan, CFS, Laurentian Forestry Centre, Québec, Que. Branching out from the Canadian Forest Service, Laurentian Forestry Centre. No. 54. 2 p. [Français : voir *Un Modèle...*] ②

Un Modèle pour prédire le rendement des forêts à l'échelle canadienne. 2009. Bernier, P.; Ung, C.-H. RNCAN, SCF, Centre de foresterie des Laurentides, Québec (Québec). L'Éclaircie du Service canadien des forêts, Centre de foresterie des Laurentides, no 54. 2 p. [English: see *A model...*] ②

Re-establishment of ectomycorrhizae from refugia bordering regenerating Douglas-fir stands on Vancouver Island. 2009. Outerbridge, R.A.; Trofymow, J.A.; Lalumière, A. NRCan, CFS, Pacific Forestry Centre, Victoria, B.C. Inf. Rep. BC-X-418. 23 p. ⑤

Journal Articles and Other Contributions / Articles de revues scientifiques et autres collaborations

Arevalo, C.B.M.; Bhatti, J.S.; Chang, S.X.; Sidders, D.M. 2010. Distribution of recent photosynthates in saplings of two hybrid poplar clones. *Commun. Soil Sci. Plant Anal.* 41(8):1004–1015. ④

Arsenault, E.; Hall, R.J.; Hogg, E.H.; Michaelian, M.; Filiatrault, M. 2009. Using a canopy reflectance model for the detection of aspen dieback from Multi-temporal Landsat Thematic Mapper data. Pages 372–377 in C.A. Coburn and D.R. Peddle, eds. 30th Canadian Symposium on Remote Sensing, 22–25 June 2009, Lethbridge, Alberta. *Can. Remote Sens. Soc., Ottawa.* ④

Bater, C.W.; Wulder, M.A.; White, J.C.; Coops, N.C. 2010. Integration of LIDAR and digital aerial imagery for detailed estimates of lodgepole pine (*Pinus contorta*) volume killed by mountain pine beetle (*Dendroctonus ponderosae*). *J. For.* 108(3):111–119. ⑤

Bernier, P.Y.; Daigle, G.; Rivest, L.-P.; Ung, C.-H.; Labbé, F.; Bergeron, C.; Patry, A. 2010. From plots to landscape: a *k*-NN-based method for estimating stand-level merchantable volume in the Province of Québec, Canada. *For. Chron.* 86:461–468. ②

Brown, M.; Black, T.A.; Nestic, Z.; Foord, V.N.; Spittlehouse, D.L.; Fredeen, A.L.; Grant, N.J.; Burton, P.J.; Trofymow, J.A. 2010. Impact of mountain pine beetle on the net ecosystem production of lodgepole pine stands in British Columbia. *Agric. For. Meteorol.* 150(2):254–264. ⑤

Chhin, S.; Hogg, E.H.; Lieffers, V.J.; Huang, S. 2010. Growth–climate relationships vary with height along the stem in lodgepole pine. *Tree Physiol.* 30:335–345. ④

Coggins, S.B.; Coops, N.C.; Wulder, M.A. 2010. Estimates of bark beetle infestation expansion factors with adaptive cluster sampling. *Int. J. Pest Manag.* 57(1):11–21. ⑤

Coggins, S.B.; Coops, N.C.; Wulder, M.A. 2010. Improvement of low level bark beetle damage estimates with adaptive cluster sampling. *Silva Fenn.* 44(2):289–301. ⑤

Coops, N.C.; Gillanders, S.; Wulder, M.A.; Gergel, S.E.; Nelson, T.A.; Goodwin, N.R. 2010. Assessing changes in forest fragmentation following infestation using time series Landsat imagery. *For. Ecol. Manag.* 259(12):2355–2365. ⑤

Coops, N.C.; Wulder, M.A. 2010. Estimating the reduction in gross primary production due to mountain pine beetle infestation using satellite observations. *Int. J. Remote Sens.* 31(7–8):2129–2138. ⑤

Coulombe, S.; Bernier, P.Y.; Raulier, F. 2010. Uncertainty in detecting climate change impact on the projected yield of black spruce (*Picea mariana*). *For. Ecol. Manag.* 259:730–738. ②

Cruz, M.G.; Alexander, M.E.; Wakimoto, R.H. 2010. Comment on “Estimating canopy fuel characteristics in five conifer stands in the western United States using tree and stand measurements”. *Can. J. For. Res.* 40(11):2262–2263. ④

Duncanson, L.; Niemann, K.O.; Wulder, M.A. 2010. Estimating forest canopy height and terrain relief from GLAS waveform metrics. *Remote Sens. Environ.* 114(1):138–154. ⑤

Duncanson, L.; Niemann, K.O.; Wulder, M.A. 2010. Integration of GLAS and Landsat TM data for aboveground biomass estimation. *Can. J. Remote Sens.* 36(2):129–141. ⑤

Ferster, C.J.; Coops, N.C.; Trofymow, J.A. 2009. Aboveground large tree mass estimation in a coastal forest in British Columbia using plot-level metrics and individual tree detection from lidar. *Can. J. Remote Sens.* 35(3):270–275. ⑤

Gillis, M.D.; Boudewyn, P.A.; Power, K.; Russo, G. 2010. Development of Canada's national forest inventory. Pages 97–111, Chapter 4 in E.O. Tomppo, T. Gshwantner, M. Lawrence,

and R.E. McRoberts, eds. National forest inventories: pathways for common reporting. Springer, Heidelberg Dordrecht London New York. 612 p. ⑤

Goodwin, N.R.; Magnussen, S.; Coops, N.C.; Wulder, M.A. 2010. Curve fitting of time series Landsat imagery for characterising a mountain pine beetle infestation disturbance. *Int. J. Remote Sens.* 31(12):3263–3271. ⑤

Gougeon, F.A. 2010. Forest remote sensing in Canada and the individual tree crown (ITC) approach to forest inventories. *J. Fac. Agric. Shinshu Univ.* 46(1–2):85–92. ⑤

Gradowski, T.; Lieffers, V.J.; Landhäusser, S.M.; Sidders, D.M.; Volney, W.J.A.; Spence, J.R. 2010. Regeneration of *Populus* nine years after variable retention harvest in boreal mixedwood forests. *For. Ecol. Manag.* 259(3):383–389. ④

Hagemann, U.; Moroni, M.T.; Shaw, C.H.; Kurz, W.A.; Makeschin, F. 2010. Comparing measured and modelled forest carbon stocks in high-boreal forests of harvest and natural-disturbance origin in Labrador, Canada. *Ecol. Model.* 221(5):825–839. ④

Hall, R.J.; Filiatrault, M.; Deschamps, A.; Arsenault, E. 2009. Mapping eastern spruce budworm cumulative defoliation severity from Landsat and SPOT. Pages 1190–1194 in C.A. Coburn and D.R. Peddle, eds. 30th Canadian Symposium on Remote Sensing, 22–25 June 2009, Lethbridge, Alberta. *Can. Remote Sens. Soc., Ottawa.* ④

Hilker, T.; Hall, F.G.; Coops, N.C.; Lyapustin, A.; Wang, Y.; Nesic, Z.; Grant, N.J.; Black, T.A.; Wulder, M.A.; Kljun, N.; Hopkinson, C.; Chasmer, L. 2010. Remote sensing of photosynthetic light-use efficiency across two forested biomes: spatial scaling. *Remote Sens. Environ.* 114(12):2863–2874. ⑤

Hilker, T.; van Leeuwen, M.; Coops, N.C.; Wulder, M.A.; Newnham, G.J.; Jupp, D.L.B.; Culvenor, D.S. 2010. Comparing canopy metrics derived from terrestrial and airborne laser scanning in a Douglas-fir dominated forest stand. *Trees Struct. Funct.* 24(5):819–832. ⑤

Keefer, M.E.; Winder, R.S.; Hobby, T. 2010. Commercial development of non-timber forest resources: a case study of morels in the East Kootenay, British Columbia. *BC J. Ecosyst. Manag.* 11(1&2):39–51. ⑤

Li, Chao; Barclay, H.J.; Hans, H.; Liu, J.; Klos, R.; Carlson, G. 2010. Accuracy in population estimation: a methodological consideration. *Ecol. Complex.* 7:208–211. ④

Liu, C.; Ruel, J.-C.; Groot, A.; Zhang, S.Y. 2009. Model development for lumber volume recovery of natural balsam fir trees in Quebec, Canada. *For. Chron.* 85:870–877. ③

Long, J.A.; Nelson, T.A.; Wulder, M.A. 2010. Characterizing forest fragmentation: distinguishing change in composition from configuration. *Appl. Geogr.* 30(3):426–435. ⑤

Long, J.A.; Nelson, T.A.; Wulder, M.A. 2010. Local indicators for categorical data: impacts of scaling decisions. *Can. Geogr.* 54(1):15–28. ⑤

MacIsaac, D.A.; Krygier, R. 2009. Development and long-term evaluation of harvesting patterns to reduce windthrow risk of understorey spruce in aspen–white spruce mixedwood stands in Alberta, Canada. *Forestry* 82(3):323–342. ④

Magnussen, S.; McRoberts, R.E.; Tomppo, E.O. 2010. A resampling variance estimator for the k nearest neighbours technique. *Can. J. For. Res.* 40(4):648–658. ⑤

Magnussen, S.; Naesset, E.; Gobakken, T. 2010. Reliability of LiDAR derived predictors of forest inventory attributes: a case study with Norway spruce. *Remote Sens. Environ.* 114(4):700–712. ⑤

Magnussen, S.; Tomppo, E.O.; McRoberts, R.E. 2010. A model-assisted k -nearest neighbour approach to remove extrapolation bias. *Scand. J. For. Res.* 25(2):174–184. ⑤

Michaelian, M.; Hogg, E.H.; Hall, R.J.; Arsenault, E. 2010. Massive mortality of aspen following severe drought along the southern edge of the Canadian boreal forest. *Global Change Biol.* (In Press) ④

Mora, B.; Wulder, M.A.; White, J.C. 2010. Identifying leading species using tree crown metrics derived from very high spatial resolution imagery in a boreal forest environment. *Can. J. Remote Sens.* 36(4):332–344. ⑤

Mora, B.; Wulder, M.A.; White, J.C. 2010. Segment-constrained regression tree estimation of forest stand height from very high spatial resolution panchromatic imagery over a boreal environment. *Remote Sens. Environ.* 114(11):2474–2484. ⑤

Otvos, I.S.; Omendja, K.; Foord, S.; Conder, N.; Borecky, N.; Nevill, R.J. 2010. Preliminary hazard rating for forest tent caterpillar in British Columbia. *For. Chron.* 86(5):636–648. ⑤

Picard, N.; Magnussen, S.; Banak, L.N.; Namkossereana, S.; Yalibanda, Y. 2010. Permanent sample plots for natural tropical forests: a rationale with special emphasis on Central Africa. *Environ. Monit. Assess.* 164(1–4):279–295. ⑤

Pilger, N.; Peddle, D.R.; Hall, R.J. 2010. MFM CR modeling of forest stand height. Pages 245–248 in J.M. Piwowar, comp. Proceedings Canadian Association of Geographers, Canadian Cartographic Association, Canadian Geomorphology Research Group, and Canadian Remote Sensing Society, 1–5 June 2010, Regina, Saskatchewan. University of Regina, Regina, Sask. ④

Pitt, D.; Pineau, J. 2009. Forest inventory research at the Canadian Wood Fibre Centre: Notes from a research coordination workshop, 3–4 June 2009, Pointe Claire, Que. *For. Chron.* 85:859–869. ③

Pitt, D.G.; Comeau, P.G.; Parker, W.C.; MacIsaac, D.; McPherson, S.; Hoepfing, M.K.; Stinson, S.; Mihajlovich, M. 2010. Early vegetation control for the regeneration of a single-cohort, intimate mixture of white spruce and trembling aspen on upland boreal sites. *Can. J. For. Res.* 40:549–564. ③

Soenen, S.A.; Peddle, D.R.; Hall, R.J.; Coburn, C.A.; Hall, F.G. 2010. Estimating aboveground forest biomass from canopy reflectance model inversion in mountainous terrain. *Remote Sens. Environ.* 114(7):1325–1337. ④

Soverel, N.O.; Coops, N.C.; White, J.C.; Wulder, M.A. 2009. Characterizing the forest fragmentation of Canada's national parks. *Environ. Monit. Assess.* 164:481–499. ⑤

Stewart, B.P.; Wulder, M.A.; McDermid, G.J.; Nelson, T.A. 2009. Disturbance capture and attribution through the integration of Landsat and IRS-1C imagery. *Can. J. Remote Sens.* 35(6):523–533. ⑤

St-Onge, B.A.; Leboeuf, A.; Gougeon, F.A.; Létourneau, J.-P. 2009. Télédétection. Pages 451–479, Chapitre 9 *dans* Manuel de foresterie. Ordre des ingénieurs forestiers du Québec. Éditions MultiMondes, Québec (Québec). ⑤

White, J.C.; Gómez, C.; Wulder, M.A.; Coops, N.C. 2010. Characterizing temperate forest structural and spectral diversity with Hyperion EO-1 data. *Remote Sens. Environ.* 114:1576–1589. ⑤

Winder, R.S.; Dale, P.L.; Greer, C.W.; Levy-Booth, D.J. 2010. Development of a microbial indicator database for validating measures of sustainable forest soils. Pages 81–89 *in* V.V.S.R. Gupta, M. Ryder, and J. Radcliffe, ed. *The Rovira Rhizosphere Symposium. Celebrating 50 years of rhizosphere research*, 15 Aug. 2008, SARDI Plant Research Centre, Waite Campus, Adelaide. The Crawford Fund, Deakin ACT, Australia. ⑤

Wulder, M.A.; Nelson, T.A.; Long, J.A. 2010. Regionalization of landscape pattern indices using multivariate cluster analysis. *Environ. Manag.* 46(1):134–142. ⑤

Wulder, M.A.; Ortlepp, S.M.; White, J.C.; Coops, N.C.; Nelson, T.A. 2010. A provincial and regional assessment of the mountain pine beetle epidemic in British Columbia: 1999–2008. *J. Environ. Inf.* 15(1):1–13. ⑤

Wulder, M.A.; Stewart, B.P.; Andrew, M.E.; Smulders, M.; Nelson, T.A.; Coops, N.C.; Stenhouse, G.B. 2009. Remote sensing derived edge location, magnitude, and class transitions for ecological studies. *Can. J. Remote Sens.* 35(6):509–522. ⑤

Wulder, M.A.; White, J.C.; Coops, N.C.; Ortlepp, S.M. 2009. Remote sensing for studies of vegetation condition: theory and application. Pages 357–367, Chapter 25 *in* T.A. Warner and M.D. Nellis, eds. *The SAGE handbook of remote sensing*. Sage Press, SAGE Publications, Limited, London, U.K. 504 p. ⑤

Wulder, M.A.; White, J.C.; Masek, J.G.; Dwyer, J.; Roy, D.P. 2010. Continuity of Landsat observations: short term considerations. *Remote Sens. Environ.* (In Press) ⑤

Wulder, M.A.; White, J.C.; Stinson, G.; Hilker, T.; Kurz, W.A.; Coops, N.C.; St-Onge, B.A.; Trofymow, J.A. 2010. Implications of differing input data sources and approaches upon forest carbon stock estimation. *Environ. Monit. Assess.* 166(1–4):543–561. ⑤

Zhang, C.; Collins, M.J.; Leckie, D.G.; Gougeon, F.A. 2009. The synthetic crown recognition model for automatic image interpretation on UltraCamD imagery. Pages 1159–1165 *in* 30th Canadian Symposium on Remote Sensing, “Bridging Excellence”, 22–25 June 2009, Lethbridge, Alberta. Canadian Remote Sensing Society, Ottawa. ⑤

Zhao, S.; Shamoun, S.F. 2010. Conidial morphology, structure and development in *Valdensinia heterodoxa*. *Mycology* 1(2):113–120. ⑤

Impacts of Forestry Practices

Canadian Forest Service Science-Policy Notes. Does harvesting in Canada's boreal forest affect bird populations? [Online only]. 2010. NRCan, CFS, HQ, Ottawa. 4 p. [Français : voir *Notes du Service canadien...*]

Comment les parcelles de rétention influent sur la biodiversité dans les blocs de coupe. 2010. Pyper, M.; Spence, J.R.; Langor, D.W. Réseau de gestion durable des forêts, Université d'Alberta, Edmonton (Alberta). Note Rech. 74. 5 p. [English: see *How retention patches...*] ④

Incidences des pratiques forestières

Criteria and indicators for sustainable woodfuels. FAO Forestry Paper 160. 2010. Titus, B.D., contributing author. Food and Agriculture Organization of the United Nations (FAO), Rome. 92 p. ⑤

Forest regeneration 50 years after harvesting in the Lac Édouard Experimental Forest, La Mauricie National Park of Canada. 2010. Archambault, L.; Delisle, C.; Larocque, G.R. NRCan, CFS, Laurentian Forestry Centre, Québec, Que. Research Note 14. 4 p. [Français : voir *Régénération forestière...*] ②

How retention patches influence biodiversity in cutblocks.

2010. Pyper, M.; Spence, J.R.; Langor, D.W. Sustainable Forest Management Network, University of Alberta, Edmonton, Alta. Res. Note 74. 5 p. [Français : voir *Comment les parcelles...*] ④

Notes du Service canadien des forêts sur la science et les politiques. L'exploitation de la forêt boréale du Canada a-t-elle une incidence sur les populations d'oiseaux? [En ligne seulement].

2010. RNCAN, SCF, Administration centrale, Ottawa. 4 p. [English: see *Canadian Forest Service...*]

Quantifying the water resource impacts of mountain pine beetle and associated salvage harvest operations across a range of watershed scales: hydrologic modeling of the Fraser River Basin.

2010. Schnorbus, M.; Bennett, K.; Werner, A. NRCAN, CFS, Pacific Forestry Centre, Victoria, B.C. Inf. Rep. BC-X-423. 64 p. ⑤

Régénération de l'épinette et du tremble après des coupes à rétention variable sur les sites du projet EMEND.

2009. Lieffers, V.J.; Sidders, D.M.; Gradowski, T.; Landhäusser, S.M.; Frey, B.R.; Munson, A.D.; Keddy, T.J.; Volney, W.J.A.; Spence, J.R.; Blenis, P.V. Réseau de gestion durable des forêts, Université d'Alberta, Edmonton (Alberta). Note Rech. 41. 6 p. [English: see *Spruce and aspen...*] ④

Régénération forestière 50 ans après coupe dans la Forêt expérimentale du Lac Édouard, Parc national du Canada de la Mauricie, Québec.

2010. Archambault, L.; Delisle, C.; Larocque, G.R. RNCAN, SCF, Centre de foresterie des Laurentides, Québec (Québec). Note de recherche 14. 4 p. [English: see *Forest regeneration...*] ②

Spruce and aspen regeneration following variable retention harvests at EMEND.

2009. Lieffers, V.J.; Sidders, D.M.; Gradowski, T.; Landhäusser, S.M.; Frey, B.R.; Munson, A.D.; Keddy, T.J.; Volney, W.J.A.; Spence, J.R.; Blenis, P.V. Sustainable Forest Management Network, University of Alberta, Edmonton, Alta. Res. Note 41. 6 p. [Français : voir *Régénération de l'épinette...*] ④

Journal Articles and Other Contributions / Articles de revues scientifiques et autres collaborations

Brinkworth, B.; Thompson, D. 2009. [Online only]. The frog factor and ingredients of alarm. Canada Sprayer Guide, August 11, 2009. http://www.canadasprayerguide.com/feature_articles/2009/fa_2009_11.php

Fenton, N.J.; Bergeron, Y.; Paré, D. 2010. Decomposition rates of bryophytes in managed boreal forests: influence of bryophyte species and forest harvesting. *Plant Soil* 336:499–508. ②

Goodwin, N.R.; Magnussen, S.; Coops, N.C.; Wulder, M.A. 2010. Curve fitting of time series Landsat imagery for characterising a mountain pine beetle infestation disturbance. *Int. J. Remote Sens.* 31(12):3263–3271. ⑤

Gradowski, T.; Lieffers, V.J.; Landhäusser, S.M.; Sidders, D.M.; Volney, W.J.A.; Spence, J.R. 2010. Regeneration of *Populus* nine

years after variable retention harvest in boreal mixedwood forests. *For. Ecol. Manag.* 259(3):383–389. ④

Holmes, S.B.; Kreutzweiser, D.P.; Hamilton, P.S. 2010. Operational and economic feasibility of logging within forested riparian zones. *For. Chron.* 86:601–607. ③

Kreutzweiser, D.; Muto, E.; Holmes, S.; Gunn, J. 2010. Effects of upland clearcutting and riparian partial harvesting on leaf pack breakdown and aquatic invertebrates in boreal forest streams. *Freshw. Biol.* 25:2238–2252. ③

Lafleur, B.; Fenton, N.J.; Paré, D.; Simard, M.; Bergeron, Y. 2010. Contrasting effects of season and method of harvest on soil properties and the growth of black spruce regeneration in the boreal forested peatlands of eastern Canada. *Silva Fenn.* 44:799–813. ②

Lafleur, B.; Paré, D.; Fenton, N.J.; Bergeron, Y. 2010. Do harvest methods and soil type impact the regeneration and growth of black spruce stands in northwestern Quebec? *Can. J. For. Res.* 40:1843–1851. ②

Laliberté, E.; Wells, J.A.; Declerck, F.; Metcalfe, D.J.; Catterall, C.P.; Queiroz, C.; Aubin, I.; Bonser, S.P.; Ding, Y.; Fraterrigo, J.M.; McNamara, S.; Morgan, J.W.; Merlos, D.S.; Veski, P.A.; Mayfield, M.M. 2010. Land-use intensification reduces functional redundancy and response diversity in plant communities. *Ecol. Lett.* 13:76–86. ③

Lattimore, B.; Smith, C.T.; Titus, B.D.; Stupak, I.; Egnell, G. 2009. Environmental factors in woodfuel production: opportunities, risks, and criteria and indicators for sustainable practices. *Biomass Bioenergy* 33(10):1321–1342. ⑤

Lindenmayer, D.B.; Hunter, M.L.; Burton, P.J.; Gibbons, P. 2009. Effects of logging on fire regimes in moist forests. *Conserv. Lett.* 2(6):271–277. ⑤

MacIsaac, D.A.; Krygier, R. 2009. Development and long-term evaluation of harvesting patterns to reduce windthrow risk of understorey spruce in aspen–white spruce mixedwood stands in Alberta, Canada. *Forestry* 82(3):323–342. ④

Maillard, É.; Paré, D.; Munson, A.D. 2010. Soil carbon stocks and carbon stability in a twenty-year-old temperate plantation. *Soil Sci. Soc. Am. J.* 74:1775–1785. ②

Martineau-Delisle, C.; Nadeau, S. 2010. Assessing the effects of public participation processes from the point of view of participants: significance, achievements, and challenges. *For. Chron.* 86:753–765. ①

Stefani, F.O.P.; Moncalvo, J.-M.; Séguin, A.; Bérubé, J.A.; Hamelin, R.C. 2009. Impact of an 8-year-old transgenic poplar plantation on the ectomycorrhizal fungal community. *Appl. Environ. Microbiol.* 75:7527–7536. ②

Swift, D.E. 2004. Status of eastern white pine (*Pinus strobus* L.) in Kouchibouguac National Park. Unpublished (unedited) report submitted to Parks Canada. NRCan, CFS, Atlantic Forestry Centre, Fredericton, N.B. ①

Zhu, X.; Bourque, C. P.-A.; Taylor, S.; Cox, R.; Wentzell, C. 2010. Predicting the effects of woodcutting and moose browsing on forest development in Gros Morne National Park, Newfoundland, Canada. *For. Chron.* 86(2):178–192. ①

International Trade and Policy

Commerce international et politiques

Journal Articles and Other Contributions / Articles de revues scientifiques et autres collaborations

Abbott, B.; Stennes, B.; van Kooten, G.C. 2009. Mountain pine beetle, global markets, and the British Columbia forest economy. *Can. J. For. Res.* 39(7):1313–1321. ⑤

Silviculture

Sylviculture

Fast-growing plantations as alternative crops. 2010. McKenney, D.; Yemshanov, D.; Allen, D. NRCan, CFS, Great Lakes Forestry Centre, Sault Ste. Marie, Ont. *Frontline Express Note* 37. 2 p. [Français : voir *Les Plantations...*] ③

Les Plantations d'arbres à croissance rapide comme cultures de remplacement. 2010. McKenney, D.; Yemshanov, D.; Allen, D. RNCan, SCF, Centre de foresterie des Grands Lacs, Sault Ste. Marie (Ontario). *Nouvelles Express* 37. 2 p. [English: see *Fast-growing plantations...*] ③

Journal Articles and Other Contributions / Articles de revues scientifiques et autres collaborations

Larchevêque, M.; Larocque, G.R.; Desrochers, A.; Tremblay, F.; Gaussiran, S.; Boutin, R.; Brais, S.; Beaulieu, J.; Daoust, G.; Périnet, P. 2010. Juvenile productivity of five hybrid poplar clones and 20

genetically improved white and Norway spruces in boreal clay-belt of Quebec, Canada. *For. Chron.* 86:225–233. ②

Lu, C.; Ruel, J.-C.; Groot, A.; Zhang, S.Y. 2009. Model development for lumber volume recovery of natural balsam fir trees in Quebec, Canada. *For. Chron.* 85:870–877. ③

Parker, W.C.; Pitt, D.G.; Morneau, A.E. 2010. Influence of woody and herbaceous vegetation control on leaf gas exchange, water status, and nutrient relations of eastern white pine (*Pinus strobus* L.) seedlings planted in a central Ontario clearcut. *For. Ecol. Manag.* 260:2012–2022. ③

Stowe, D.C.; Lamhamedi, M.S.; Carles, S.; Fecteau, B.; Margolis, H.A.; Renaud, M.; Bernier, P.Y. 2010. Managing irrigation to reduce nutrient leaching in containerized white spruce seedling production. *New For.* 40:185–204. ②

Socioeconomics and Statistics

Socioéconomie et statistique

Causal factors behind household expenditure leakage and its effect on community resource dependence in Quebec. 2009. Kuhnke, D.H.; White, W.A. NRCan, CFS, Northern Forestry Centre, Edmonton, Alta. *Inf. Rep. NOR-X-418.* 55 p. ④

Effects of acetone extractives in grey-stage mountain pine beetle-killed lodgepole pine on kraft mills. 2010. Allen, L.; Gagné, A. NRCan, CFS, Pacific Forestry Centre, Victoria, B.C. *Mountain Pine Beetle Working Paper* 2009-28. 15 p. ⑤

Feasibility of using X-ray scanning to characterize mountain pine beetle check severity for optimizing log sorting and lumber manufacturing processes. 2009. Brdicko, J. NRCan, CFS, Pacific Forestry Centre, Victoria, B.C. *Mountain Pine Beetle Working Paper* 2009-25. 61 p. ⑤

Improving the stability of oriented strand board manufactured from mountain pine beetle wood. 2009. Semple, K.; Cullis, I.; Evans, P. NRCan, CFS, Pacific Forestry Centre, Victoria, B.C. *Mountain Pine Beetle Working Paper* 2009-18. 61 p. ⑤

Investissements dans la transformation de l'industrie forestière. Guide de l'évaluation environnementale. [En ligne seulement]. 2010. RNCAN, SCF, Administration centrale, Ottawa. 38 p. [English: see *Investments...Environmental assessment...*]

Investissements dans la transformation de l'industrie forestière. Guide de programme. [En ligne seulement]. 2010. RNCAN, SCF, Administration centrale, Ottawa. 18 p. [English: see *Investments...program guide.*]

Investissements dans la transformation de l'industrie forestière. Webinaire pour les demandeurs. [En ligne seulement]. 2010. RNCAN, SCF, Administration centrale, Ottawa. 13 p. [English: see *Investments...Applicant Webinar.*]

Investments in forest industry transformation. Applicant Webinar. [Online only]. 2010. RNCAN, CFS, HQ, Ottawa. 13 p. [Français: voir *Investissements (...) Webinaire pour les demandeurs.*]

Investments in forest industry transformation. Environmental assessment guide. [Online only]. 2010. RNCAN, CFS, HQ, Ottawa. 37 p. [Français: voir *Investissements (...) Guide de l'évaluation...*]

Investments in forest industry transformation: program guide. [Online only]. 2010. RNCAN, CFS, HQ, Ottawa. 14 p. [Français: voir *Investissements (...) Guide de programme.*]

The role of tariff and non-tariff trade barriers in the global forest products trade: a Canadian perspective. 2010. Sun, L.; Bogdanski, B.E.C.; Stennes, B.; van Kooten, G.C. RNCAN, CFS, Pacific Forestry Centre, Victoria, B.C. Inf. Rep. BC-X-424. 24 p. ⑤

Journal Articles and Other Contributions / Articles de revues scientifiques et autres collaborations

Abbott, B.; Stennes, B.; van Kooten, G.C. 2009. Mountain pine beetle, global markets, and the British Columbia forest economy. *Can. J. For. Res.* 39(7):1313–1321. ⑤

Huddart Kennedy, E.; Beckley, T.M.; McFarlane, B.L.; Nadeau, S. 2009. Why we don't "walk the talk": understanding the environmental values/behaviour gap in Canada. *Hum. Ecol. Rev.* 16:151–160. ①

Niquidet, K. 2010. Equity pricing in the forest sector: evidence from North American stock markets. *Can. J. For. Res.* 40(5):943–952. ⑤

Stennes, B.; Niquidet, K.; van Kooten, G.C. 2010. Implications of expanding bioenergy production from wood in British Columbia: an application of a regional wood fiber allocation model. *For. Sci.* 56(4):366–378. ⑤

Wellstead, A.M. 2010. Book review of *Setting the standard: certification, governance, and the Forest Stewardship Council*. *J. Nat. Resour. Policy Res.* 2(2):192–193. ④

Williamson, T.B.; Hessel, H.; Johnston, M.H. 2010. Adaptive capacity deficits and adaptive capacity of economic systems in climate change vulnerability assessment. *For. Policy Econ.* (In Press) ④

Williamson, T.B.; Watson, D.O. 2010. Assessment of community preference rankings of potential environmental effects of climate change using the method of paired comparisons. *Clim. Change* 99(3):589–612. ④

Sustainable Forest Management

Canadian Forest Service Science-Policy Notes. Is forest bioenergy good for the environment? [Online only]. 2010. RNCAN, CFS, HQ, Ottawa. 3 p. [Français: voir *Notes du Service canadien...*]

Criteria and indicators for sustainable woodfuels. FAO Forestry Paper 160. 2010. Titus, B.D., Contributing author. Food and Agriculture Organization of the United Nations (FAO), Rome. 92 p. ⑤

Marking Canada's progress in sustainable forest management. [Online only]. 2010. Canadian Council of Forest Ministers, Ottawa. 14 p. [Français: voir *Progrès en matière...*]

Notes du Service canadien des forêts sur la science et les politiques. La bioénergie forestière est-elle bénéfique pour

Aménagement durable des forêts

l'environnement? [En ligne seulement]. 2010. RNCAN, SCF, Administration centrale, Ottawa. 3 p. [English: see *Canadian Forest Service...*]

Old-growth boreal forests: unravelling the mysteries. 2010. De Grandpré, L. RNCAN, CFS, Laurentian Forestry Centre, Québec, Que. Branching out from the Canadian Forest Service, Laurentian Forestry Centre. No. 59. 2 p. [Français: voir *Les Vieilles forêts...*] ②

Photo guide for quantitatively assessing the characteristics of forest fuels in a jack pine–black spruce chronosequence in the Northwest Territories. 2010. Lavoie, N.; Alexander, M.E.; Macdonald, S.E. RNCAN, CFS, Northern Forestry Centre, Edmonton, Alta. Inf. Rep. NOR-X-419. 51 p. ④

Progrès en matière d'aménagement forestier durable au Canada. [En ligne seulement]. 2010. Conseil canadien des ministres des forêts, Ottawa. 14 p. [English: see *Marking Canada's progress...*]

Re-establishment of ectomycorrhizae from refugia bordering regenerating Douglas-fir stands on Vancouver Island. 2009. Outerbridge, R.A.; Trofymow, J.A.; Lalumière, A. NRCan, CFS, Pacific Forestry Centre, Victoria, B.C. Inf. Rep. BC-X-418. 23 p. ⑤

Les Vieilles forêts boréales : des forêts méconnues. 2010. De Grandpré, L. RNCan, SCF, Centre de foresterie des Laurentides, Québec (Québec). L'Éclaircie du Service canadien des forêts, Centre de foresterie des Laurentides, no 59. 2 p. [English: see *Old-growth...*] ②

Journal Articles and Other Contributions / Articles de revues scientifiques et autres collaborations

Burton, P.J. 2010. Striving for sustainability and resilience in the face of unprecedented change: the case of the mountain pine beetle outbreak in British Columbia. *Sustainability* 2(8):2403–2423. ⑤

Cyr, D.; Gauthier, S.; Etheridge, D.A.; Kayahara, G.J.; Bergeron, Y. 2010. A simple Bayesian Belief Network for estimating the proportion of old forest stands in the Clay Belt of Ontario using the provincial forest inventory. *Can. J. For. Res.* 40:573–584. ②

Dominy, S.W.J.; Gilsenan, R.; McKenney, D.W.; Allen, D.J.; Hatton, T.; Koven, A.; Cary, J.; Yemshanov, D.; Sidders, D. 2010. A retrospective and lessons learned from Natural Resources Canada's Forest 2020 afforestation initiative. *For. Chron.* 86:339–347. ③

Drapeau, P.; Leduc, A.; Kneeshaw, D.; Gauthier, S.; Bergeron, Y.; Imbeau, L. 2010. Paramètres de suivi de l'aménagement écosystémique en forêt boréale. Chapitre 25, pages 281-290, dans *Biodiversité, naturalité, humanité. Pour inspirer la gestion des forêts*, Éditions Tec & Doc (Lavoisier), France. ②

Gauthier, S.; Vaillancourt, M.-A.; De Grandpré, L.; Leduc, A.; Bergeron, Y.; Drapeau, P.; Jetté, J.-P. 2010. L'aménagement forestier écosystémique : une approche pour préserver la biodiversité

en forêt boréale. Chapitre 10, pages 95-105, dans *Biodiversité, naturalité, humanité. Pour inspirer la gestion des forêts*, Éditions Tec & Doc (Lavoisier), France. ②

Hartmann, H.; Daoust, G.; Bigué, B.; Messier, C. 2010. Negative or positive effects of plantation and intensive forestry on biodiversity: a matter of scale and perspective. *For. Chron.* 86:354–364. ②

Hilker, T.; van Leeuwen, M.; Coops, N.C.; Wulder, M.A.; Newnham, G.J.; Jupp, D.L.B.; Culvenor, D.S. 2010. Comparing canopy metrics derived from terrestrial and airborne laser scanning in a Douglas-fir dominated forest stand. *Trees Struct. Funct.* 24(5):819–832. ⑤

Kra, D.K.; Doumbia, M.; Klimaszewski, J. 2010. Assessment of beetle abundance and diversity by four methods of capture in the west-central part of Oumé, Ivory Coast. *J. Anim. Plant Sci.* 6:579–588. ②

Krasowski, M.J.; Lavigne, M.B.; Olesinski, J.; Bernier, P.Y. 2010. Advantages of long-term measurement of fine root demographics with a minirhizotron at two balsam fir sites. *Can. J. For. Res.* 40:1128–1135. ②

Le Goff, H.; De Grandpré, L.; Kneeshaw, D.; Bernier, P. 2010. L'aménagement durable des vieilles forêts boréales : mythes, pistes de solutions et défis. *For. Chron.* 86:63-69. ②

Le Goff, H.; De Grandpré, L.; Kneeshaw, D.; Bernier, P. 2010. Sustainable management of old-growth boreal forests: myths, possible solutions and challenges. *For. Chron.* 86:70–76. ②

Prévost, M.; Raymond, P.; Lussier, J.-M. 2010. Regeneration dynamics after patch cutting and scarification in yellow birch – conifer stands. *Can. J. For. Res.* 40:357–369. ②

Savage, D.W.; Martell, D.L.; Wotton, B.M. 2010. Evaluation of two risk mitigation strategies for dealing with fire-related uncertainty in timber supply modelling. *Can. J. For. Res.* 40:1136–1154. ③

Thiffault, E.; Paré, D.; Brais, S.; Titus, B.D. 2010. Intensive biomass removals and site productivity in Canada: a review of relevant issues. *For. Chron.* 86:36–42. ②

CANADIAN FOREST SERVICE | SERVICE CANADIEN DES FORÊTS



BOOKSTORE | LIBRAIRIE

Our online bookstore provides you with easier access to Canadian Forest Service publications.

bookstore.cfs.nrcan.gc.ca

Notre librairie en ligne vous facilite l'accès aux publications du Service canadien des forêts.

librairie.scf.nrcan.gc.ca

Thompson, D.; Chartrand, D.; Staznik, B.; Leach, J.; Hodgins, P. 2010. Integrating advanced technologies for optimization of aerial herbicide applications. *New For.* 40:45–66. ③

Titus, B.D.; Smith, T.; Puddister, D.; Richardson, J. 2010. Les assises scientifiques des directives et des politiques de l'exploitation durable de la biomasse forestière. [Éditorial]. *For. Chron.* 86(1):3–6. [English: see Titus...*The scientific foundation...Editorial.*] ⑤

Titus, B.D.; Smith, T.; Puddister, D.; Richardson, J. 2010. The scientific foundation for sustainable forest biomass harvesting guidelines and policies. *For. Chron.* 86(1):18–19. ⑤

Titus, B.D.; Smith, T.; Puddister, D.; Richardson, J. 2010. The scientific foundation for sustainable forest biomass harvesting guidelines and policies. [Editorial]. *For. Chron.* 86(1):3–6. [Français: voir Titus (...) *Les assises scientifiques (...) Éditorial.*] ⑤

Miscellaneous

Les Arbres de la forêt boréale (chaîne porte-clé, 8,5 cms × 5,5 cms). 2010. RNCAN, SCF, Centre de foresterie du Nord, Edmonton (Alberta). [English: see *Trees of the boreal...*] ④

Identification du dendroctone du pin ponderosa (chaîne porte-clés, 8,5 cms x 5,5 cms). 2007. RNCAN, SCF, Centre de foresterie du Nord, Edmonton (Alberta), Government of Alberta Sustainable Resource Development, and Alberta Forest Products Association, Edmonton (Alberta). [English: see *Mountain pine beetle...*] ④

Mountain pine beetle identification (key chain tags, 8,5 cms x 5,5 cms). 2007. RNCAN, CFS, Northern Forestry Centre, Edmonton, Alta., Government of Alberta Sustainable Resource Development, and Alberta Forest Products Association, Edmonton, Alta. [Français: voir *Identification du dendroctone...*] ④

Trees of the boreal forest (key chain tags, 8,5 cms × 5,5 cms). 2010. RNCAN, CFS, Northern Forestry Centre, Edmonton, Alta. [Français: voir *Les Arbres de la forêt...*] ④

Divers

Journal Articles and Other Contributions / Articles de revues scientifiques et autres collaborations

Hiratsuka, Y. 2010. Obituary: Dr. Robert Joseph Bandoni (1926–2009). *Mycoscience* 51:88–89. ④

McLeman, R.; Herold, S.; Reljic, Z.; Sawada, M.; McKenney, D. 2010. GIS-based modeling of drought and historical population change on the Canadian Prairies. *J. Hist. Geogr.* 36:43–56. ③

Stefani, F.O.P.; Sokolski, S.; Wurtz, T.L.; Piché, Y.; Hamelin, R.C.; Fortin, J.A.; Bérubé, J.A. 2010. *Morchella tomentosa*: a unique belowground structure and a new clade of morels. *Mycologia* 102:1082–1088; doi:10.3852/09-294. ②

Wetzel, S.; Swift, D.E.; Burgess, D.; Robinson, C. 2010. Research in Canada's national research forests—past, present and future. *For. Ecol. Manag.* (In Press) ③

CANADIAN FOREST SERVICE
SERVICE CANADIEN DES FORÊTS

WANT TO KNOW MORE ABOUT CANADA'S FORESTS? VISIT:

canadaforests.nrcan.gc.ca
cfs.nrcan.gc.ca

VOULEZ-VOUS EN SAVOIR D'AVANTAGE SUR LES FORÊTS DU CANADA? VISITEZ :

foretscanada.nrcan.gc.ca
scf.nrcan.gc.ca

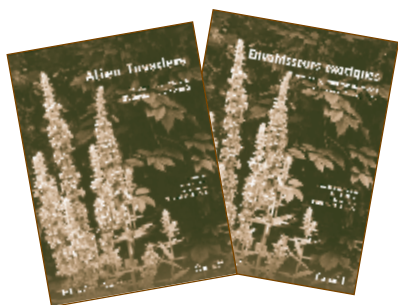
Canadian Government Publishing / Les Éditions du gouvernement du Canada

These publications are available through associated bookstores and other booksellers or by mail from:

Canadian Government Publishing
Ottawa, Ontario K1A 0S9
Tel.: 613-941-5995; Canada & US 1-800-635-7943
Fax: 613-954-5779; Canada & US 1-800-565-7757
Internet: publications.gc.ca
E-mail: publications@tpsgc-pwgsc.gc.ca

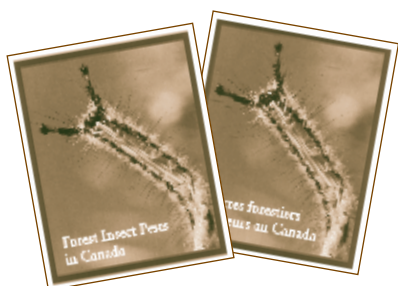
Les publications suivantes sont en vente par l'entremise des librairies associées et autres librairies, ou par la poste auprès des :

Éditions du gouvernement du Canada
Ottawa (Ontario) K1A 0S9
Tél. : 613-941-5995; Canada et É.-U. 1-800-635-7943
Fax : 613-954-5779; Canada et É.-U. 1-800-565-7757
Internet : publications.gc.ca
Courriel : publications@tpsgc-pwgsc.gc.ca



Alien invaders in Canada's waters, wetlands, and forests. 2002. Claudi, R.; Nantel, P.; Muckle-Jeffs, E.; eds. 60 color photos and maps. 320 p. Cat. No. Fo42-329/2002E.
ISBN 0-660-18825-2. \$30.00

Envahisseurs exotiques des eaux, milieux humides et forêts du Canada. 2002. Sous la dir. de R. Claudi, P. Nantel et E. Muckle-Jeffs. 60 photos couleurs et cartes. 320 p. N° de cat. Fo42-329/2002F.
ISBN 0-660-96686-7. 30,00 \$



Forest insect pests in Canada. 1995. Armstrong, J.A.; Ives, W.G.H.; eds. 134 color photos; 56 black & white photos; 112 illus. 742 p. Cat. No. Fo42-235/1995E.
ISBN 0-660-15945-7. \$69.95

Insectes forestiers ravageurs au Canada. 1995. Sous la dir. de J.A. Armstrong et W.G.H. Ives. 134 photos couleurs; 56 photos noir et blanc; 112 illustr. 732 p. N° de cat. Fo42-235/1995F.
ISBN 0-660-94939-3. 69,95 \$



Insects of eastern spruces, fir and hemlock. 1994. Rose, A.H.; Lindquist, O.H. Revised by P. Syme. 200 color photos. 159 p. Cat. No. Fo64-23/1994E.
ISBN 0-660-15112-X. \$39.95
PDF available at bookstore.cfs.nrcan.gc.ca

Insectes des épinettes, du sapin et de la pruche de l'est du Canada. 1994. Rose, A.H.; Lindquist, O.H. Révisé par P. Syme. 200 photos couleurs. 159 p. N° de cat. Fo64-23/1994F.
ISBN 0-660-94228-3. 39,95 \$
Disponible en format PDF à librairie.scf.nrcan.gc.ca



Tree diseases of eastern Canada. 1994. Myren, D.T.; Laflamme, G.; Singh, P.; Magasi, L.P.; Lachance, D.; eds. 276 color photos. 168 p. Cat. No. Fo42-186/1994E.
ISBN 0-660-14936-2.
PDF available at bookstore.cfs.nrcan.gc.ca

Maladies des arbres de l'est du Canada. 1994. Myren, D.T.; Laflamme, G.; Singh, P.; Magasi, L.P.; Lachance, D., réd. 276 photos couleurs. 159 p. N° de cat. Fo42-186/1994F.
ISBN 0-660-94154-6. 51,95 \$
Disponible en format PDF à librairie.scf.nrcan.gc.ca

These publications are available directly from the distributor at the following address:

UBC Press
c/o UTP Distribution
5201 Dufferin Street
Toronto, Ontario M3H 5T8
Phone orders: 1-800-565-9523 or 416-667-7791
Fax orders: 1-800-221-9985 or 416-667-7832
E-mail: utpbooks@utpress.utoronto.ca



Aboriginal plant use in Canada's northwest boreal forest. 2000. Marles, R.J.; Clavelle, C.; Monteleone, L.; Tays, N.; Burns, D. 200 color photos. 256 p.
Cloth: ISBN 0-7748-0737-7. \$75.00
Paper: ISBN 0-7748-0738-5. \$25.95



Canadian Forest Fire Behavior Prediction (FBP) System: interactive training and reference. 1998. Hirsch, K.G. Interactive, multimedia CD-ROM.
ISBN 0-660-176 00-9. \$129.95



Canadian Forest Fire Behavior Prediction (FBP) System: user's guide. 1996. Hirsch, K.G. 51 figs; 19 tables. 122 p. Cat. No. Fo29-34/7-1996E
ISBN 0-660-16389-6. \$14.95



DendroScan: a tree-ring width and density measurement system. 1996. Varem-Sanders, T.M.L.; Campbell, I.D. Spec. Rep. 10. Includes DOS-formatted disk and a precalibrated precision wedge. 131 p.
ISBN 0-660-16659-3. \$99.95



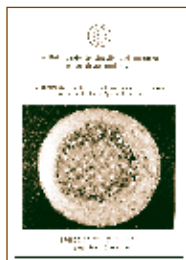
Distribution of severe dwarf mistletoe damage in west-central Canada. 1998. Brandt, J.P.; Brett, R.D.; Knowles, K.R.; Sproule, A. Spec. Rep. 13. Includes maps and CD-ROM with Arc/Info file; 16 color figs. 27 p.
ISBN 0-660-17533-9. \$29.95



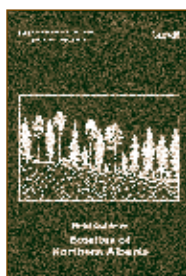
Ecological classification of Saskatchewan's mid-boreal ecoregions using resource maps and aerial photographs. 1999. Beckingham, J.D.; Futoransky, V.A.; Corns, I.G.W. Spec. Rep. 14. 5 aerial photo stereograms. 83 p.
ISBN 0-660-17864-8. \$19.95



Field guide to the Canadian Forest Fire Behavior Prediction (FBP) System. 1997. Taylor, S.W.; Pike, R.G.; Alex-ander, M.E. 16 color photos. 60 p.
Paper: ISBN 0-660-17100-7. \$19.95
Binder: ISBN 0-660-17099-X. \$24.95



A field guide to classify and measure aspen decay and stain. 1995. Hiratsuka, Y.; Stokes, T.; Chakravarty, P.; Morgan, D.J. 31 photos; 6 figs. 27 p.
ISBN 0-660-16039-0. \$9.95



Field guide to ecosites of northern Alberta. 1996. Beckingham, J.D.; Archibald, J.H. Spec. Rep. 5. 88 color photos; 88 botanical drawings; 24 figs; 1 folded map. 528 p.
Paper: ISBN 0-660-16369-1. \$29.95
Binder: ISBN 0-660-16386-1. \$34.95



Field guide to ecosites of southwestern Alberta. 1996. Archibald, J.H.; Klappstein, G.D.; Corns, I.G.W. Spec. Rep. 8. 113 photos; 112 botanical drawings; 24 figs. 492 p.
Paper: ISBN 0-660-16439-6. \$29.95
Binder: ISBN 0-660-16440-X. \$34.95



Field guide to ecosites of the mid-boreal ecoregion of Saskatchewan. 1996. Beckingham, J.D.; Nielsen, D.G.; Futoransky, V.A. Spec. Rep. 6. 109 color photos; 103 botanical drawings; 33 figs. 464 p.
Paper: ISBN 0-660-16387-X. \$29.95
Binder: ISBN 0-660-16388-8. \$34.95



Field guide to ecosites of west-central Alberta. 1996. Beckingham, J.D.; Corns, I.G.W.; Archibald, J.H. Spec. Rep. 9. 111 color photos; 106 botanical drawings; 40 figs.; 1 folded map. 540 p.

Paper: ISBN 0-660-16441-8. \$29.95
Binder: ISBN 0-660-16442-6. \$34.95



Field guide to forest ecosystems of west-central Alberta. 1986. Corns, I.G.W.; Annas, R.M. 80 photos; 80 botanical drawings; 1 folded map. 251 p.

ISBN 0-662-14644-1. \$19.95



A field guide to forest insects and diseases of the prairie provinces. 2004. Hiratsuka, Y.; Langor, D.W.; Crane, P.E. 2nd ed. Spec. Rep. 3. 582 color photos. 297 p.

ISBN 0-660-19368-X. \$29.95



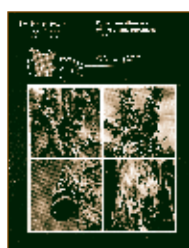
Forest ecosystem classification for Manitoba: field guide. 1995. Zoladeski, C.A.; Wickware, G.M.; Delorme, R.J.; Sims, R.A.; Corns, I.G.W. Spec. Rep. 2. 60 botanical drawings. 205 p.

Paper: ISBN 0-660-15944-9. \$24.95
Binder: ISBN 0-660-15944-X. \$29.95



Forest ecosystem toposequences in Manitoba. 1998. Zoladeski, C.A.; Delorme, R.J.; Wickware, G.M.; Corns, I.G.W.; Allan, D.T. Spec. Rep. 12. 12 photos; 10 air photostereographs; 1 map; 20 drawings; 10 figs. 63 p.

ISBN 0-662-26614-5. \$19.95



Forest tree diseases of the prairie provinces. 1987. Hiratsuka, Y. 189 color photos. 142 p.

ISBN 0662-15281-6. \$34.95



Indicator plant species in Canadian forests. 1997/1998. Ringius, G.S.; Sims, R.A. Illustrated by S.J. Meades. 180 botanical drawings; 80 range maps. 224 p.
Cloth: ISBN 0-660-174 69-3. \$39.95
Paper: ISBN 0-660-16823-5. \$19.95



Insects of eastern hardwood trees. 1997. Rose, A.H.; Lindquist, O.H. Revised by K.L. Nystrom. 506 color photos. 304 p.
ISBN 0-660-16903-7. \$45.95
PDF available at bookstore.cfs.nrcan.gc.ca



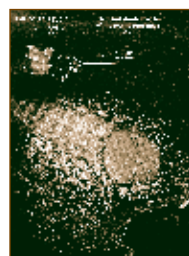
Insects of eastern larch, cedar and juniper. 2000. Rose, A.H.; Lindquist, O.H.; Nystrom, K.L. 150 color photos. 104 p.
ISBN 0-660-18074-X. \$32.95
PDF available at bookstore.cfs.nrcan.gc.ca



Insects of eastern pines. 1999. Rose, A.H.; Lindquist, O.H.; Nystrom, K.L. 190 color photos. 128 p.
ISBN 0-660-17720-X. \$35.95
PDF available at bookstore.cfs.nrcan.gc.ca



Seed germination of indigenous trees in Tanzania. 1998. Msanga, H.P. 18 photos; 142 drawings. 292 p.
ISBN 0-660-17707-2. \$24.95



Tree and shrub insects of the prairie provinces. 1988. Ives, W.G.H.; Wong, H.R. 1100 color photos; 12 figs. 327 p.
ISBN 0-662-15770-2. \$39.95

Les Presses de l'Université Laval

Publications vendues par l'entremise du distributeur :

Les Presses de l'Université Laval —
Les Éditions de l'IQRC
Bureau 3103, Pavillon Maurice-Pollack
Cité universitaire
Sainte-Foy (Québec) G1K 7P4
Tél. : 418-656-2803
Fax : 418-656-3305



Insectes des feuillus de l'est du Canada.

1997. Rose, A.H.; Lindquist, O.H. Révisé par K.L. Nystrom. 506 photos couleurs. 304 p. N° de cat. Fo64-29/1997F

ISBN 0-660-95565-2. 45,95 \$

Disponible en format PDF à librairie.scf.rncan.gc.ca



Insectes du mélèze, du thuya et du genévrier de l'est du Canada.

2000. Rose, A.H.; Lindquist, O.H.; Nystrom, K.L. 150 photos couleurs. 104 p. N° de cat. Fo64-28/2000F

ISBN 0-660-96300-0. 32,95 \$

Disponible en format PDF à librairie.scf.rncan.gc.ca



Insectes des pins de l'est du Canada.

1999. Rose, A.H.; Lindquist, O.H.; Nystrom K.L. 190 photos couleurs. 128 p.

N° de cat. Fo47-13/3/1999F

ISBN 0-660-96116-4. 35,95 \$

Disponible en format PDF à librairie.scf.rncan.gc.ca



Méthode canadienne de prévision du comportement des incendies de forêt (PCI) : guide de l'utilisateur.

2000. Hirsch, K.G. RNCAN, SCF, Centre de foresterie du Nord, Edmonton (Alberta). Rapport spécial 7. 51 illustrations; 19 tableaux. 122 p. N° de cat. Fo29-34/7-1996F

ISBN 0-660-96402-3. 14,95 \$



Plantes indicatrices des forêts canadiennes.

1997, 1998. Ringius, G.S.; Sims, R.A. Illustré par S.J. Meades. 180 illustrations botaniques; 80 cartes de répartition. 217 p. N° de cat. Fo42-264/1998F

Reliure souple : ISBN 0-660-95508-3. 19,95 \$

Reliure toile : ISBN 0-660-95958-5. 39,95 \$

Miscellaneous Publishers / Autres éditeurs

The American Entomological Institute

This publication is available directly from the publisher:

The American Entomological Institute
Online order: www.amentinst.org/memoirs.php



Atlas of the drepanosiphine aphids of the world. Part III.

2010. Quednau, F.W. Mem. Am. Entomol. Inst. Vol. 83. 361 p. The American Entomological Institute, Gainesville, Florida.

ISBN 978-1-887988-27-8. US\$190.00

The American Phytopathological Society

This publication is available directly from the publisher:

APS Press Headquarters
3340 Pilot Knob Road
Saint Paul, Minnesota, 55121-2097 USA
Tel.: 651-454-7250; 1-800-328-7560
Fax: 651-454-0766
E-mail: aps@sciosoc.org
Online order: www.shopapspress.org/ilgerufued.html



Illustrated genera of rust fungi.

3rd ed. 2003. Cummins, G.B.; Hiratsuka, Y. 53 color illustrations; 134 black & white illustrations. 223 p.

ISBN 0-89054-304-6. US\$65.00

Miscellaneous Publishers / Autres éditeurs

CRC Press

This priced publication is available directly from the publisher:

CRC Press
6000 Broken Sound Parkway, NW, Suite 300
Boca Raton, Florida 33487
Tel.: 1-800-272-7737
E-mail: orders@crcpress.com
Online order: www.crcpress.com



Understanding forest disturbance and spatial pattern: remote sensing and GIS approaches. 2006. Wulder, M.A.; Franklin, S.E., eds. 246 p.

ISBN 0-8493-3425-X. US\$99.95

Crown Publications

This publication is available directly from the distributor or at its storefront, both at the following address:

Crown Publications
521 Fort Street
Victoria, British Columbia V8W 1E7
Tel.: 250-386-4636
E-mail: crown@pinc.com



Field guide to forest damage in British Columbia. 1999. Henigman, J.; Ebata, T.; Allen, E.; Holt, J.; Pollard, A.; eds. Joint Pub. 17. Color photos. 348 p.

Binder: ISBN 0-7726-3866-7. \$40.00

Forest Gene Conservation Association

This publication is available directly from the distributor:

Forest Gene Conservation Association
Suite 233, 266 Charlotte Street
Peterborough, Ontario K9J 2V4
Tel.: 705-755-3284
Fax: 705-755-3292



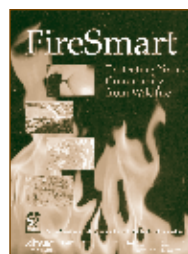
Insects of seed cones in eastern Canada: field guide. 2005. Turgeon, J.J.; de Groot, P.; Sweeney, J.D. 127 p.

ISBN 0-662-35099-5. \$20.00

Partners in Protection

This publication is available directly from the publisher:

Partners in Protection
P.O. Box 45047
Landsdowne Postal Station
Edmonton, Alberta T6H 3S0
Tel.: 780-435-7312
Download: www.partnersinprotection.ab.ca



FireSmart: protecting your community from wildfire. 2nd ed. 2003. 165 p.

ISBN 0-662-34064-7. \$15.00, including shipping.

Pensoft Publishers

This publication is available directly from the bookstore below:

NHBS Environment Bookstore
2-3 Wills Road
Totnes, Devon TQ9 5XN UK
Tel.: +44 (0)1803 865913
Fax : +44 (0)1803 865280
Email : customer.services@nhbs.co.uk
Online order: www.nhbs.com/services/pensoft.html



Catalogue of aleocharine rove beetles of Canada and Alaska (Coleoptera, Staphylinidae, Aleocharinae). 2007.

Gouix, N.; Klimaszewski, J. 17 color plates. 165 p.

ISBN 978-954-642-294-1. £58.50 (about \$120.00)

Pensoft Publishers

This publication is available directly from the publisher:

Pensoft Publishers
Online order: www.pensoft.net



Biodiversity, biosystematics, and ecology of Canadian Coleoptera, ZooKeys 2 (Special Issue). 2008. Majka, C.G.; Klimaszewski, J., eds. Pensoft Publishers, Sofia and Moscow. 406 p. ISBN 978-954-642-451-8. 84 Euros.

This publication is available directly from the publisher:

Pensoft Publishers
Online order: www.pensoft.net



Biodiversity, biosystematics, and ecology of Canadian Coleoptera II, ZooKeys 22 (Special Issue). 2009. Majka, C.G.; Klimaszewski, J.; eds. Pensoft Publishers, Sofia and Moscow. 375 p. ISSN 1313-2989. 64 Euros.

This publication is available directly from the publisher:

Pensoft Publishers
Online order: www.pensoft.net



Review of adventive species of Coleoptera (Insecta) recorded from eastern Canada. 2010. Klimaszewski, J.; Langor, D.; Majka C.G.; Bouchard, P.; Bousquet, Y.; LeSage, L.; Smetana, A.; Sylvestre, P.; Pelletier, G.; Davies, A.; DesRochers, P.; Goulet, H.; Webster, R.; Sweeney, J. Pensoft Series Faunistica No. 94. Pensoft Publishers, Sophia and Moscow. 272 p. ISBN 9789546425522. 55 Euros

Springer

This book is available directly from the publisher:

Springer
333 Meadowlands Parkway
Secaucus, New Jersey, 07094 USA
E-mail: service-ny@springer.com



Bioproducts from Canada's forests: new partnerships in the bioeconomy. 2006. Wetzel, S.; Duchesne, L.C.; Laporte, M.F. 257 p. ISBN 978-1-4020-4991-0. \$US139.00

Springer Distribution Centre

This publication is available directly from the distributor:

Springer Distribution Center
GmbH Haberstr. 7
Heidelberg Germany 69126
Fax: +49 (0) 6221-345-4229
E-mail: SDC-bookorder@springer.com



Sampling methods, remote sensing and GIS multiresource forest inventory. 2006. Köhl, M.; Magnussen, S.; Marchetti, M., eds. 374 p. ISBN 978-3-540-32571-0. \$200.00

Miscellaneous Publishers / Autres éditeurs

University of Alberta Press

This publication is available directly from the distributor at the following address:

University of Alberta Press
Georgetown Terminals Warehouses
34 Armstrong Avenue
Georgetown, Ontario L7G 4R9
Tel: 905-873-9781; 1-877-864-8477
Fax: 905-873-6170; 1-877-864-4272
E-mail: orders@gtwcanada.com



Rare vascular plants of Alberta. 2001. Kershaw, L.; Gould, J.; Johnson, D.; Lancaster, J.; eds. 415 color photos, 480 drawings, 528 p.

Cloth: ISBN 0-88864-380-2. \$75.00
Paper: ISBN 0-88864-319-5. \$29.95

At Your Local Bookseller / Dans toute bonne librairie



Aménagement écosystémique en forêt boréale. 2008. Sous la dir. de S. Gauthier, M.-A. Vaillancourt, A. Leduc, L. De Grandpré, D. Kneeshaw, H. Morin, P. Drapeau et Y. Bergeron. Les Presses de l'Université du Québec, Québec (Québec). 600 p.

ISBN 978-2-7605-1525-3. 69,00 \$



Les Arbres du Canada. 1996. Farrar, J.L. 580 photos couleurs; 1600 illustrations botaniques; 136 cartes de répartition. 512 p. Couverture rigide.

ISBN 2-7621-1824-7. 39,95 \$



Ecosystem management in the boreal forest. 2009. Gauthier, S.; Vaillancourt, M.-A.; Leduc, A.; De Grandpré, L.; Kneeshaw, D.; Morin, H.; Drapeau, P.; Bergeron, Y.; eds. Les Presses de l'Université du Québec, Québec, Que. 572 p.

ISBN 978-2-7605-2381-4. \$69.00.



The forests of Canada. 2003. Farr, K. 150 color photos. 152 p.

ISBN 0-660-19004-4. \$39.95



Les Forêts du Canada. 2003. Farr, K. 150 photos couleurs. 152 p.

ISBN 0-660-96807-X. 39,95 \$



Plants of the western boreal forest and aspen parkland. 1995. Johnson, D.; Kershaw, L.; MacKinnon, A.; Pojar, J. 800 color photos; 900 line drawings. 392 p.

ISBN 1-55105-058-7. \$24.95



Trees in Canada. 1995. Farrar, J.L. 580 color photos; 1600 botanical drawings; 136 range maps. 512 p.

Cloth: ISBN 1-55041-199-3. \$50.00

CANADIAN FOREST SERVICE SCIENCE-POLICY NOTES

NOTES DU SERVICE CANADIEN DES FORÊTS SUR LA SCIENCE ET LES POLITIQUES

The Canadian Forest Service, Natural Resources Canada, is pleased to present its latest Canadian Forest Service Science-Policy Notes. These Notes analyze current science-policy issues relevant to the forest sector. The Notes published in 2010 are:

- Does harvesting in Canada's boreal forest affect bird populations?
- Is forest bioenergy good for the environment?

The Notes are available in PDF format in the Bookstore, www.bookstore.cfs.nrcan.gc.ca.

If you wish to be notified when the next issue becomes available from the Canadian Forest Service Online Bookstore, send a message to Francine.Berube@nrcan.gc.ca.

Le Service canadien des forêts de Ressources naturelles Canada est fier de présenter les dernières Notes du Service canadien des forêts sur la science et les politiques. Ces notes analysent des questions d'actualité concernant le secteur des forêts. Les numéros publiés en 2010 sont les suivants :

- L'exploitation de la forêt boréale du Canada a-t-elle une incidence sur les populations d'oiseaux?
- La bioénergie forestière est-elle bénéfique pour l'environnement?

Ces notes sont maintenant disponibles en format PDF dans notre Librairie, www.librairie.scf.nrcan.gc.ca.

Si vous désirez être notifié à la parution d'un nouveau numéro dans la Librairie en ligne du Service canadien des forêts, veuillez envoyer un message à Francine.Berube@nrcan.gc.ca.



©Her Majesty the Queen in Right of Canada, represented by the Minister of Natural Resources Canada, 2011

ISSN 1183-7918 (Print)
ISSN 1702-3262 (Online)
Catalogue No. Fo12-24/20-2010
Catalogue No. Fo12-24/20-2010E-PDF

Information contained in this publication may be reproduced, in part or in whole, and by any means, for personal or public non-commercial purposes, without charge or further permission, unless otherwise specified.

You are asked to:

- exercise due diligence in ensuring the accuracy of the materials reproduced;
- indicate both the complete title of the materials reproduced as well as the author organization; and
- indicate that the reproduction is a copy of an official work that is published by the Government of Canada and that the reproduction has not been produced in affiliation with, or with the endorsement of the Government of Canada.

Commercial reproduction and distribution are prohibited except with written permission from the Government of Canada's copyright administrator, Public Works and Government Services Canada (PWGSC). For more information, please contact PWGSC at 613-996-6886 or at droitdauteur.copyright@tpsgc-pwgsc.gc.ca.

DISCLAIMER

Her Majesty is not responsible for the accuracy or completeness of the information contained in the reproduced material. Her Majesty shall at all times be indemnified and held harmless against any and all claims whatsoever arising out of negligence or other fault in the use of the information contained in this publication.

©Sa Majesté la Reine du chef du Canada, représentée par le ministre de Ressources naturelles Canada, 2011

ISSN 1183-7918 (Imprimé)
ISSN 1702-3262 (En ligne)
Numéro de catalogue Fo12-24/20-2010
Numéro de catalogue Fo12-24/20-2010F-PDF

Le contenu de cette publication peut être reproduit en tout ou en partie, et par quelque moyen que ce soit, sous réserve que la reproduction soit effectuée uniquement à des fins personnelles ou publiques mais non commerciales, sans frais ni autre permission, à moins d'avis contraire.

On demande seulement :

- de faire preuve de diligence raisonnable en assurant l'exactitude du matériel reproduit ;
- d'indiquer le titre complet du matériel reproduit et l'organisation qui en est l'auteur ;
- d'indiquer que la reproduction est une copie d'un document officiel publié par le gouvernement du Canada et que la reproduction n'a pas été faite en association avec le gouvernement du Canada ni avec l'appui de celui-ci.

La reproduction et la distribution à des fins commerciales sont interdites, sauf avec la permission écrite de l'administrateur des droits d'auteur de la Couronne du gouvernement du Canada, Travaux publics et Services gouvernementaux (TPSGC). Pour de plus amples renseignements, veuillez communiquer avec TPSGC au 613-996-6886 ou à droitdauteur.copyright@tpsgc-pwgsc.gc.ca.

AVERTISSEMENT

Sa Majesté n'est pas responsable de l'exactitude et de l'intégralité des renseignements contenus dans le matériel reproduit. Sa Majesté doit en tout temps être indemnisée et tenue exempte du paiement de toute réclamation qui découle de la négligence ou d'un autre manquement dans l'utilisation des renseignements contenus dans cette publication.

Bookstore: bookstore.cfs.nrcan.gc.ca

- ① **Natural Resources Canada, Canadian Forest Service
Atlantic Forestry Centre**
P.O. Box 4000
Fredericton, New Brunswick E3B 5P7
Tel.: 506-452-3500 Fax: 506-452-3525
- ② **Natural Resources Canada, Canadian Forest Service
Laurentian Forestry Centre**
1055 rue du P.E.P.S., P.O. Box 10380, Station Sainte-Foy
Québec, Québec G1V 4C7
Tel.: 418-648-5789 Fax: 418-648-2529
- ③ **Natural Resources Canada, Canadian Forest Service
Great Lakes Forestry Centre**
1219 Queen Street East
Sault Ste. Marie, Ontario P6A 2E5
Tel.: 705-949-9461 Fax: 705-541-5700
E-mail: publications@nrcan.gc.ca
- ④ **Natural Resources Canada, Canadian Forest Service
Northern Forestry Centre**
5320-122nd Street NW
Edmonton, Alberta T6H 3S5
Tel.: 780-435-7365 Fax: 780-435-7359
E-mail: publications@nofc.forestry.ca
- ⑤ **Natural Resources Canada, Canadian Forest Service
Pacific Forestry Centre**
506 West Burnside Road
Victoria, British Columbia V8Z 1M5
Tel.: 250-363-0600 Fax: 250-363-0775
E-mail: nperreau@nrcan.gc.ca
- ⑥ **Natural Resources Canada, Canadian Forest Service
Headquarters**
580 Booth Street, 15th Floor
Ottawa, Ontario K1A 0E4
Tel. 1-800-387-2000 Fax: 613-740-3114
E-mail: cfs-scf@nrcan.gc.ca
cfs-scf.publications@nrcan-nrcan.gc.ca

Librairie : librairie.scf.nrcan.gc.ca

- ① **Ressources naturelles Canada, Service canadien des forêts
Centre de foresterie de l'Atlantique**
C.P. 4000
Fredericton (Nouveau-Brunswick) E3B 5P7
Tél. : 506-452-3500 Fax : 506-452-3525
- ② **Ressources naturelles Canada, Service canadien des forêts
Centre de foresterie des Laurentides**
1055, rue du P.E.P.S., C.P. 10380, Succursale Sainte-Foy
Québec (Québec) G1V 4C7
Tél. : 418-648-5789 Fax : 418-648-2529
- ③ **Ressources naturelles Canada, Service canadien des forêts
Centre de foresterie des Grands Lacs**
1219 Queen Street East
Sault Ste. Marie (Ontario) P6A 2E5
Tél. : 705-949-9461 Fax : 705-541-5700
Courriel : publications@nrcan.gc.ca
- ④ **Ressources naturelles Canada, Service canadien des forêts
Centre de foresterie du Nord**
5320-122nd Street NW
Edmonton (Alberta) T6H 3S5
Tél. : 780-435-7365 Fax : 780-435-7359
Courriel : publications@nofc.forestry.ca
- ⑤ **Ressources naturelles Canada, Service canadien des forêts
Centre de foresterie du Pacifique**
506 West Burnside Road
Victoria (Colombie-Britannique) V8Z 1M5
Tél. : 250-363-0600 Fax : 250-363-0775
Courriel : nperreau@nrcan.gc.ca
- ⑥ **Ressources naturelles Canada, Service canadien des forêts
Administration centrale**
580, rue Booth, 15e étage
Ottawa (Ontario) K1A 0E4
Tél. : 1-800-387-2000 Fax : 613-740-3114
Courriel : scf-cfs@nrcan.gc.ca
cfs-scf.publications@nrcan-nrcan.gc.ca

Canadian Forest Service free publications may be ordered from the CFS Online Bookstore or by mail, fax, phone, or e-mail from the research establishment that publishes them. The originating establishment is indicated by a circled number after each publication cited in this issue.

Publications Digest is prepared and published by Science Program Branch, HQ, Canadian Forest Service, Ottawa. Copies may be obtained free of charge from Natural Resources Canada (address ⑥ above). PDF available from the CFS Online Bookstore.

Editor/Compiler: Francine Bérubé
Text Editor: Paula Irving
Graphic Designer: Julie Piché

Pour obtenir une publication gratuite du Service canadien des forêts, il faut la commander à partir de la librairie en ligne du SCF, ou par la poste, par fax, par téléphone ou par courriel, à l'établissement de recherche qui l'a publiée. L'établissement d'origine est indiqué par un numéro encerclé à la fin de chaque publication mentionnée dans ce numéro de *l'Abrégé*.

L'Abrégé des publications est publié par la Direction des programmes scientifiques du Service canadien des forêts à l'administration centrale, à Ottawa. Pour obtenir gratuitement des exemplaires de cette publication, veuillez vous adresser à Ressources naturelles Canada (adresse ⑥ ci-haut). Version PDF disponible à la librairie en ligne du SCF.

Révision-compilation : Francine Bérubé
Conception graphique : Julie Piché

To receive *Publications Digest* electronically, contact fberube@nrcan.gc.ca. You will be notified when the current issue is available from the Canadian Forest Service Online Bookstore (bookstore.cfs.nrcan.gc.ca).

Si vous désirez recevoir électroniquement *l'Abrégé des publications*, veuillez communiquer avec fberube@nrcan.gc.ca. Nous vous aviserons lorsque la parution d'un nouveau numéro sera disponible à la librairie en ligne du Service canadien des forêts (librairie.scf.nrcan.gc.ca).