

Catalogue no. 23-010-X

# Hog Statistics

Second quarter 2011



Statistics  
Canada

Statistique  
Canada

Canada

## How to obtain more information

For information about this product or the wide range of services and data available from Statistics Canada, visit our website at [www.statcan.gc.ca](http://www.statcan.gc.ca), e-mail us at [infostats@statcan.gc.ca](mailto:infostats@statcan.gc.ca), or telephone us, Monday to Friday from 8:30 a.m. to 4:30 p.m., at the following numbers:

### Statistics Canada's National Contact Centre

Toll-free telephone (Canada and the United States):

Inquiries line	1-800-263-1136
National telecommunications device for the hearing impaired	1-800-363-7629
Fax line	1-877-287-4369

Local or international calls:

Inquiries line	1-613-951-8116
Fax line	1-613-951-0581

### Depository Services Program

Inquiries line	1-800-635-7943
Fax line	1-800-565-7757

## To access this product

This product, Catalogue no. 23-010-X, is available free in electronic format. To obtain a single issue, visit our website at [www.statcan.gc.ca](http://www.statcan.gc.ca) and browse by "Key resource" > "Publications."

## Standards of service to the public

Statistics Canada is committed to serving its clients in a prompt, reliable and courteous manner. To this end, Statistics Canada has developed *standards of service* that its employees observe. To obtain a copy of these service standards, please contact Statistics Canada toll-free at 1-800-263-1136. The service standards are also published on [www.statcan.gc.ca](http://www.statcan.gc.ca) under "About us" > "The agency" > "Providing services to Canadians."

# Hog Statistics

Second quarter 2011

Published by authority of the Minister responsible for Statistics Canada

© Minister of Industry, 2011

All rights reserved. The content of this electronic publication may be reproduced, in whole or in part, and by any means, without further permission from Statistics Canada, subject to the following conditions: that it be done solely for the purposes of private study, research, criticism, review or newspaper summary, and/or for non-commercial purposes; and that Statistics Canada be fully acknowledged as follows: Source (or "Adapted from", if appropriate): Statistics Canada, year of publication, name of product, catalogue number, volume and issue numbers, reference period and page(s). Otherwise, no part of this publication may be reproduced, stored in a retrieval system or transmitted in any form, by any means—electronic, mechanical or photocopy—or for any purposes without prior written permission of Licensing Services, Information Management Division, Statistics Canada, Ottawa, Ontario, Canada K1A 0T6.

August 2011

Catalogue no. 23-010-X, vol. 10, no. 3

ISSN 1705-1207

Frequency: Quarterly

Ottawa

Cette publication est également disponible en français.

---

## **Note of appreciation**

*Canada owes the success of its statistical system to a long-standing partnership between Statistics Canada, the citizens of Canada, its businesses, governments and other institutions. Accurate and timely statistical information could not be produced without their continued cooperation and goodwill.*

# User information

---

## Symbols

The following standard symbols are used in Statistics Canada publications:

- . not available for any reference period
- .. not available for a specific reference period
- ... not applicable
- 0 true zero or a value rounded to zero
- 0<sup>s</sup> value rounded to 0 (zero) where there is a meaningful distinction between true zero and the value that was rounded
- p preliminary
- r revised
- x suppressed to meet the confidentiality requirements of the *Statistics Act*
- E use with caution
- F too unreliable to be published
- \* significantly different from reference category ( $p < 0.05$ )

## Acknowledgements

This publication was prepared by Donald Cutts, Jesus Dominguez, James Duffy and Susie Knox of the Livestock Estimation Unit, under the direction of Bill Parsons, Chief, Livestock Section and Bishnu Saha, Unit Head, Livestock Estimations.

Special thanks to Jeffrey Smith, Robert Pagnutti, Barbara McLaughlin, Sandra Venturino and the CANSIM and Smart Publishing teams for their support and contribution to this publication.

The support of Agriculture and Agri-Food Canada and the provincial focal points for their review of the data are also gratefully acknowledged.

# Table of contents

---

<b>Highlights</b>	<b>5</b>
<b>Analysis</b>	<b>6</b>
<b>Related products</b>	<b>9</b>
<b>Statistical tables</b>	
1 Hogs on farms	12
1-1 Canada	12
1-2 Eastern provinces	13
1-3 Newfoundland and Labrador	14
1-4 Prince Edward Island	15
1-5 Nova Scotia	16
1-6 New Brunswick	17
1-7 Quebec	18
1-8 Ontario	19
1-9 Western provinces	20
1-10 Manitoba	21
1-11 Saskatchewan	22
1-12 Alberta	23
1-13 British Columbia	24
2 Sows farrowed, pigs born and farrowing intentions	25
2-1 Eastern provinces	25
2-2 Western provinces	29
3 Hogs, supply and disposition	33
3-1 Eastern provinces	33
3-2 Western provinces	41
4 Hogs, number of farms reporting	49
4-1 Eastern provinces	49
4-2 Western provinces	50

## **Table of contents – continued**

5	Hogs, average number of hogs per farm reporting	51
5-1	Eastern provinces	51
5-2	Western provinces	52
6	Hog production - Canada	53
7	Hogs and pigs inventory number by class and quarter	54
7-1	United States and Canada	54
7-2	United States	55
7-3	Canada	56

## **Data quality, concepts and methodology**

Concepts and methodology	57
--------------------------	----

## **Charts**

1.	Total hog and sow inventories on July 1, Canada, 1991 to 2011	7
2.	Hog exports, quarterly, Canada, 2006 to 2011	7

## Highlights

---

- Canadian hog producers reported an estimated 11.9 million hogs on their farms as of July 1, 2011, up 0.8% from 11.8 million hogs on the same date in 2010.
- Farmers reported 1.3 million sows and gilts on farms, down 1.1% from July 1, 2010 and 5.1% below levels witnessed on July 1, 2009.
- During the second quarter of 2011, total hog exports amounted to 1.4 million head, down 3.1% from the same quarter in 2010.
- Hogs that were sent to slaughter totaled 5.1 million during the second quarter of 2011, down 1.3% from the same period in 2010.

# Analysis

## Hog statistics

As of July 1, 2011

As of July 1, 2011, Canadian hog producers reported 11.9 million hogs on their farms, up 0.8% from the same period a year earlier. It was the first increase in July inventories on a year-over-year basis since July 1, 2006 and the second consecutive quarter of growth.

Text table 1

### Hog inventories on July 1 and April 1, Canada and Provinces, 2010 to 2011

	July 1 2010 <sup>r</sup>	April 1 2011 <sup>r</sup>	July 1 2011	April to July 2011	July 2010 to July 2011
	thousands of head			percentage change	
<b>Canada</b>	<b>11,800.0</b>	<b>11,835.0</b>	<b>11,895.0</b>	<b>0.5</b>	<b>0.8</b>
<b>East</b>	<b>6,860.0</b>	<b>6,866.0</b>	<b>6,879.0</b>	<b>0.2</b>	<b>0.3</b>
Atlantic	130.4	134.7	139.0	3.2	6.6
Quebec	3,925.0	3,880.0	3,905.0	0.6	-0.5
Ontario	2,804.6	2,851.3	2,835.0	-0.6	1.1
<b>West</b>	<b>4,940.0</b>	<b>4,969.0</b>	<b>5,016.0</b>	<b>0.9</b>	<b>1.5</b>
Manitoba	2,605.0	2,615.0	2,615.0	0.0	0.4
Saskatchewan	755.0	795.0	825.0	3.8	9.3
Alberta	1,495.0	1,480.0	1,490.0	0.7	-0.3
British Columbia	85.0	79.0	86.0	8.9	1.2

**Note(s):** The superscript r stands for revised.

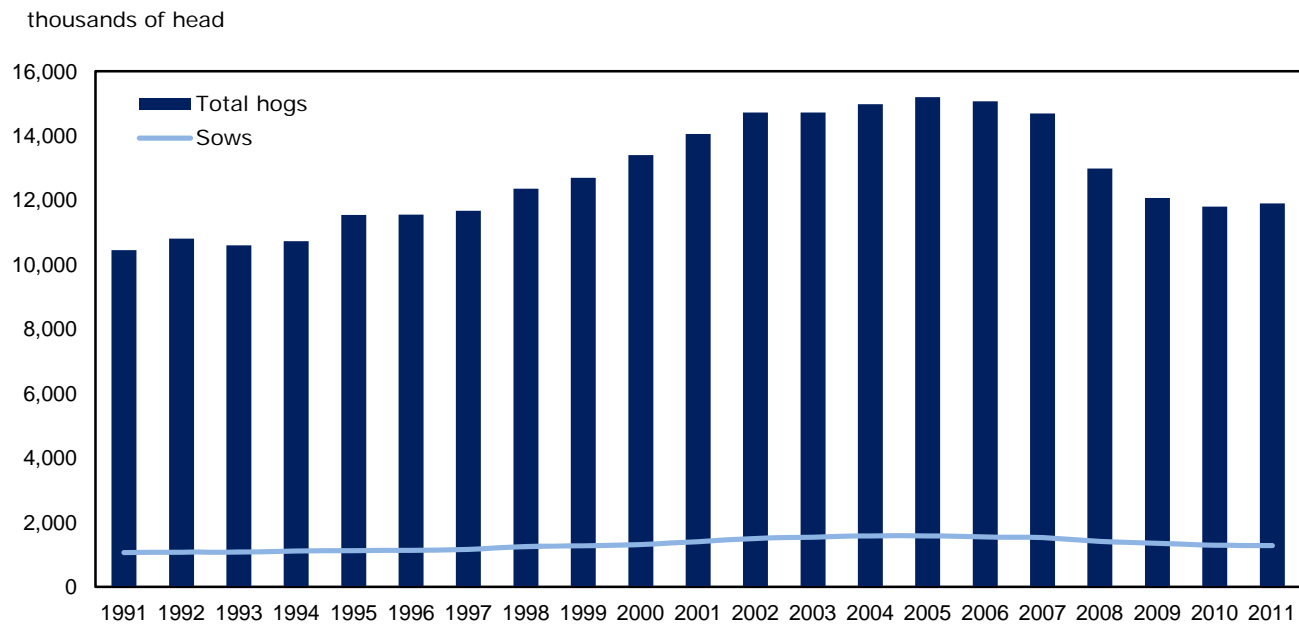
At July 1, 2011, hog producers reported an estimated 11.9 million hogs on their farms, up from 11.8 million hogs on the same date in 2010. Hog inventories grew 1.6% in the first quarter and 0.8% in the second quarter of 2011 on a year-over-year basis.

Quebec and Alberta reported total inventory declines from July 1, 2010 at 0.5% and 0.3% respectively. The Atlantic region and the remaining provinces reported gains in inventory levels.

Farmers reported 1.3 million sows and gilts on farms on July 1, 2011, down 1.1% from the same date a year earlier and 5.1% below the level on July 1, 2009. Hog farmers anticipate that the number of sows to farrow in Canada during the third and fourth quarters in 2011 will virtually remain unchanged from the same periods in 2010.



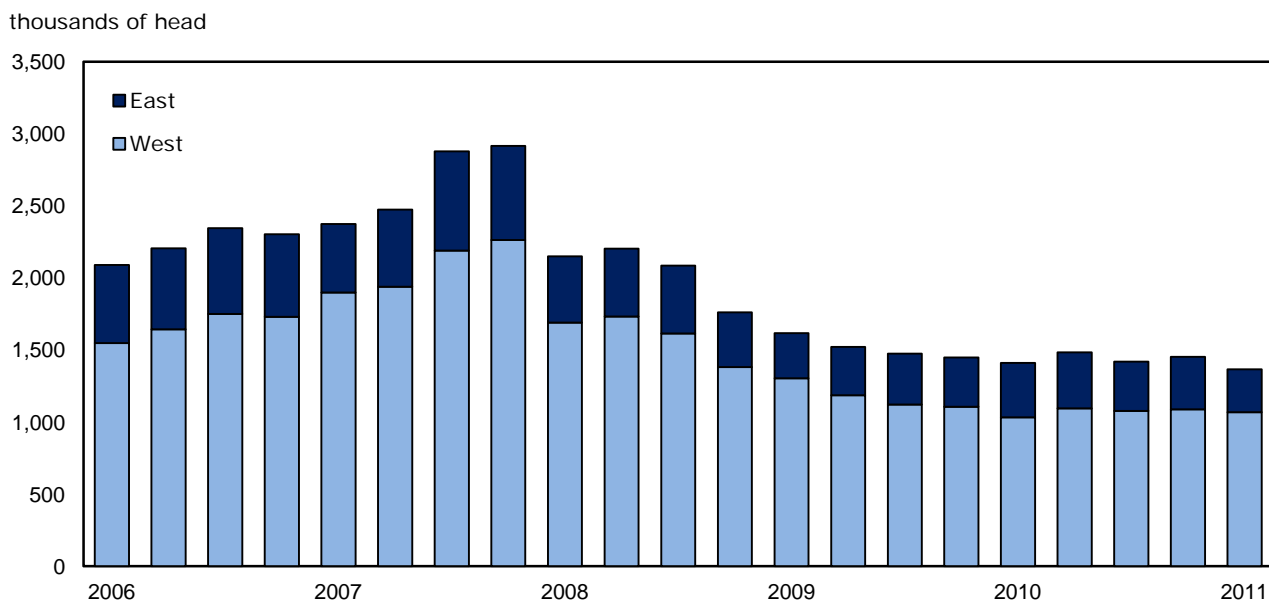
**Chart 1**  
**Total hog and sow inventories on July 1, Canada, 1991 to 2011**



During the second quarter of 2011, a total of 5.1 million hogs were sent to slaughter, down 1.3% from the same period in 2010. Canadian hog slaughter peaked in the fourth quarter of 2004 at just over 6.0 million head.

Hog exports amounted to 1.4 million head during the second quarter 2011, down 3.1% from the same quarter in 2010. Second-quarter exports were 42.5% below the peak of 2.4 million head recorded in July 2007.

**Chart 2**  
**Hog exports, quarterly, Canada, 2006 to 2011**



As of July 1, 2011, an estimated 6,920 Canadian farms reported hogs, down 2.7% on a year-over-year basis. The average number of hogs per operation increased from 1,660 to 1,719 in the same period.

## Related products

---

### Selected publications from Statistics Canada

---

23-011-X	Sheep Statistics
23-012-X	Cattle Statistics
21-206-X	Statistics on Income of Farm Operators
21-207-X	Statistics on Income of Farm Families
21-208-X	Statistics on Revenues and Expenses of Farms
23-009-X	Stocks of Frozen and Chilled Meats
23-501-X	Livestock Feed Requirements Study

---

### Selected CANSIM tables from Statistics Canada

---

002-0010	Supply and disposition of food in Canada, annual
002-0011	Food available in Canada, annual
002-0019	Food available by major groups in Canada, annual
003-0004	Number of hogs on farms at end of quarter, quarterly
003-0026	Cattle and calves, farm and meat production, annual
003-0028	Hogs, sheep and lambs, farm and meat production, annual
003-0031	Number of sheep and lambs on farms, annual
003-0032	Number of cattle, by class and farm type, annual
003-0080	Nutrients in the food supply, by source of nutritional equivalent and commodity, annual
003-0083	Cattle statistics, supply and demand of cattle, annual
003-0084	Cattle prices, steers, monthly
003-0085	Cattle and calves, number by class and calf crop, United States, annual
003-0086	Cattle, weighted average prices, steers, annual
003-0087	Hogs statistics, sows farrowed, pigs born and sows bred to farrow, quarterly

003-0088	Hogs statistics, supply and disposition of hogs, quarterly
003-0089	Hogs statistics, number of farms reporting and average number of hogs per farm, quarterly
003-0090	Hogs statistics, prices, monthly
003-0091	Hogs statistics, weighted average prices, annual
003-0092	Hogs and pigs statistics, inventory number by class and quarter, United States and Canada, quarterly
003-0093	Hogs and pigs statistics, inventory number by class and quarter, United States, quarterly
003-0094	Sheep statistics, supply and disposition of sheep and lambs, annual
003-0095	Sheep statistics, prices of lambs, monthly
003-0096	Sheep statistics, weighted average prices, lambs, annual
003-0097	Sheep statistics, quantity of wool purchased, used on farms, price and farm value, annual

---

### **Selected surveys from Statistics Canada**

---

3460	Livestock Survey
3465	Atlantic Agriculture Survey

---

### **Selected summary tables from Statistics Canada**

---

- *Cattle inventories, by province*
- *Pig inventories, by province (quarterly)*
- *Sheep inventories, by province*

# Statistical tables

---

**Table 1-1**  
**Hogs on farms — Canada**

	Total hogs	Breeding stock	Boars, 6 months and over	Sows and bred gilts	All other hogs	Under 20 kg	20 to 60 kg	Over 60 kg
thousands of head								
<b>At January 1</b>								
2004	14,725.0	1,615.3	39.2	1,576.1	13,109.7	4,544.5	4,370.5	4,194.7
2005	14,810.0	1,633.6	36.5	1,597.1	13,176.4	4,487.0	4,412.8	4,276.6
2006	15,110.0	1,605.3	34.7	1,570.6	13,504.7	4,475.8	4,623.0	4,405.9
2007	14,907.0	1,579.1	33.3	1,545.8	13,327.9	4,545.1	4,531.7	4,251.1
2008	13,810.0	1,512.2	29.7	1,482.5	12,297.8	4,471.9	3,962.0	3,863.9
2009	12,180.0	1,395.0	23.8	1,371.2	10,785.0	3,688.6	3,618.8	3,477.6
2010	11,835.0	1,332.0	21.6	1,310.4	10,503.0	3,598.5	3,604.6	3,299.9
2011	11,895.0	1,312.7	18.2	1,294.5	10,582.3	3,600.3	3,427.3	3,554.7
<b>At April 1</b>								
2004	14,675.0	1,623.2	38.7	1,584.5	13,051.8	4,435.6	4,514.3	4,101.9
2005	14,960.0	1,628.3	36.3	1,592.0	13,331.7	4,569.2	4,546.3	4,216.2
2006	15,030.0	1,596.4	34.3	1,562.1	13,433.6	4,532.4	4,616.6	4,284.6
2007	14,729.0	1,570.7	32.9	1,537.8	13,158.3	4,750.4	4,152.0	4,255.9
2008	13,000.0	1,474.5	28.5	1,446.0	11,525.5	4,272.8	3,646.0	3,606.7
2009	11,885.0	1,384.6	23.5	1,361.1	10,500.4	3,755.3	3,459.8	3,285.3
2010	11,650.0	1,313.8	19.9	1,293.9	10,336.2	3,504.5	3,428.4	3,403.3
2011	11,835.0	1,310.5	17.0	1,293.5	10,524.5	3,560.1	3,416.1	3,548.3
<b>At July 1</b>								
2004	14,980.0	1,627.0	38.0	1,589.0	13,353.0	4,615.9	4,488.7	4,248.4
2005	15,195.0	1,623.9	35.7	1,588.2	13,571.1	4,661.4	4,620.6	4,289.1
2006	15,065.0	1,586.5	34.1	1,552.4	13,478.5	4,566.9	4,641.5	4,270.1
2007	14,690.0	1,564.8	32.4	1,532.4	13,125.2	4,748.7	4,163.7	4,212.8
2008	12,980.0	1,446.0	27.3	1,418.7	11,534.0	4,214.3	3,651.0	3,668.7
2009	12,065.0	1,373.3	23.3	1,350.0	10,691.7	3,687.6	3,570.7	3,433.4
2010	11,800.0	1,315.4	20.1	1,295.3	10,484.6	3,634.2	3,405.4	3,445.0
2011	11,895.0	1,299.3	17.7	1,281.6	10,595.7	3,616.7	3,448.6	3,530.4
<b>At October 1</b>								
2004	14,845.0	1,628.1	37.1	1,591.0	13,216.9	4,462.5	4,465.8	4,288.6
2005	15,205.0	1,619.2	35.3	1,583.9	13,585.8	4,538.0	4,716.6	4,331.2
2006	14,900.0	1,582.2	33.6	1,548.6	13,317.8	4,480.1	4,522.8	4,314.9
2007	14,360.0	1,543.5	31.7	1,511.8	12,816.5	4,660.5	4,167.8	3,988.2
2008	12,745.0	1,417.3	26.1	1,391.2	11,327.7	3,902.6	3,684.8	3,740.3
2009	11,955.0	1,349.7	22.1	1,327.6	10,605.3	3,757.2	3,426.1	3,422.0
2010	11,885.0	1,307.4	19.7	1,287.7	10,577.6	3,724.5	3,330.9	3,522.2
percentage change from previous year								
<b>At January 1</b>								
2004	-0.1	3.0	-6.2	3.2	-0.5	4.0	-1.9	-3.6
2005	0.6	1.1	-6.9	1.3	0.5	-1.3	1.0	2.0
2006	2.0	-1.7	-4.9	-1.7	2.5	-0.2	4.8	3.0
2007	-1.3	-1.6	-4.0	-1.6	-1.3	1.5	-2.0	-3.5
2008	-7.4	-4.2	-10.8	-4.1	-7.7	-1.6	-12.6	-9.1
2009	-11.8	-7.8	-19.9	-7.5	-12.3	-17.5	-8.7	-10.0
2010	-2.8	-4.5	-9.2	-4.4	-2.6	-2.4	-0.4	-5.1
2011	0.5	-1.4	-15.7	-1.2	0.8	0.1	-4.9	7.7
<b>At April 1</b>								
2004	0.1	2.3	-4.2	2.5	-0.1	0.8	1.2	-2.5
2005	1.9	0.3	-6.2	0.5	2.1	3.0	0.7	2.8
2006	0.5	-2.0	-5.5	-1.9	0.8	-0.8	1.5	1.6
2007	-2.0	-1.6	-4.1	-1.6	-2.0	4.8	-10.1	-0.7
2008	-11.7	-6.1	-13.4	-6.0	-12.4	-10.1	-12.2	-15.3
2009	-8.6	-6.1	-17.5	-5.9	-8.9	-12.1	-5.1	-8.9
2010	-2.0	-5.1	-15.3	-4.9	-1.6	-6.7	-0.9	3.6
2011	1.6	-0.3	-14.6	0.0	1.8	1.6	-0.4	4.3
<b>At July 1</b>								
2004	1.8	2.3	-5.7	2.5	1.7	1.9	1.9	1.2
2005	1.4	-0.2	-6.1	-0.1	1.6	1.0	2.9	1.0
2006	-0.9	-2.3	-4.5	-2.3	-0.7	-2.0	0.5	-0.4
2007	-2.5	-1.4	-5.0	-1.3	-2.6	4.0	-10.3	-1.3
2008	-11.6	-7.6	-15.7	-7.4	-12.1	-11.3	-12.3	-12.9
2009	-7.0	-5.0	-14.7	-4.8	-7.3	-12.5	-2.2	-6.4
2010	-2.2	-4.2	-13.7	-4.1	-1.9	-1.4	-4.6	0.3
2011	0.8	-1.2	-11.9	-1.1	1.1	-0.5	1.3	2.5
<b>At October 1</b>								
2004	0.9	1.8	-7.0	2.1	0.8	-0.4	2.6	0.3
2005	2.4	-0.5	-4.9	-0.4	2.8	1.7	5.6	1.0
2006	-2.0	-2.3	-4.8	-2.2	-2.0	-1.3	-4.1	-0.4
2007	-3.6	-2.4	-5.7	-2.4	-3.8	4.0	-7.8	-7.6
2008	-11.2	-8.2	-17.7	-8.0	-11.6	-16.3	-11.6	-6.2
2009	-6.2	-4.8	-15.3	-4.6	-6.4	-3.7	-7.0	-8.5
2010	-0.6	-3.1	-10.9	-3.0	-0.3	-0.9	-2.8	2.9

**Table 1-2**  
**Hogs on farms — Eastern provinces**

	Total hogs	Breeding stock	Boars, 6 months and over	Sows and bred gilts	All other hogs	Under 20 kg	20 to 60 kg	Over 60 kg
thousands of head								
<b>At January 1</b>								
2004	8,397.0	895.7	19.1	876.6	7,501.3	2,596.2	2,471.3	2,433.8
2005	8,404.0	900.0	17.7	882.3	7,504.0	2,525.3	2,511.9	2,466.8
2006	8,619.0	880.4	16.8	863.6	7,738.6	2,570.1	2,608.2	2,560.3
2007	8,422.0	857.8	16.1	841.7	7,564.2	2,576.3	2,679.6	2,308.3
2008	7,898.0	826.2	14.2	812.0	7,071.8	2,508.5	2,373.9	2,189.4
2009	7,165.0	771.0	11.3	759.7	6,394.0	2,207.1	2,186.9	2,000.0
2010	6,920.0	748.3	10.2	738.1	6,171.7	2,073.9	2,202.3	1,895.5
2011	6,931.0	741.5	8.5	733.0	6,189.5	2,115.1	2,025.3	2,049.1
<b>At April 1</b>								
2004	8,377.0	902.0	19.0	883.0	7,475.0	2,534.2	2,606.0	2,334.8
2005	8,516.0	898.1	17.6	880.5	7,617.9	2,561.8	2,632.1	2,424.0
2006	8,544.0	874.4	16.6	857.8	7,669.6	2,579.4	2,671.4	2,418.8
2007	8,319.0	852.4	15.9	836.5	7,466.6	2,653.3	2,411.6	2,401.7
2008	7,517.0	797.6	13.4	784.2	6,719.4	2,445.1	2,191.0	2,083.3
2009	6,995.0	766.0	11.2	754.8	6,229.0	2,291.9	2,081.8	1,855.3
2010	6,764.0	730.4	9.5	720.9	6,033.6	1,984.6	2,090.8	1,958.2
2011	6,866.0	741.0	7.4	733.6	6,125.0	2,121.4	2,015.1	1,988.5
<b>At July 1</b>								
2004	8,555.0	899.0	18.3	880.7	7,656.0	2,569.0	2,635.1	2,451.9
2005	8,716.0	893.7	17.3	876.4	7,822.3	2,578.9	2,742.4	2,501.0
2006	8,505.0	863.3	16.4	846.9	7,641.7	2,565.9	2,634.1	2,441.7
2007	8,306.0	848.5	15.5	833.0	7,457.5	2,678.1	2,428.7	2,350.7
2008	7,499.0	789.9	12.7	777.2	6,709.1	2,430.7	2,196.2	2,082.2
2009	7,083.0	765.8	11.4	754.4	6,317.2	2,287.8	2,063.8	1,965.6
2010	6,860.0	734.7	9.8	724.9	6,125.3	2,143.5	2,003.1	1,978.7
2011	6,879.0	730.4	8.2	722.2	6,148.6	2,097.7	2,026.1	2,024.8
<b>At October 1</b>								
2004	8,485.0	897.8	18.0	879.8	7,587.2	2,478.3	2,592.2	2,516.7
2005	8,732.0	892.9	17.0	875.9	7,839.1	2,569.3	2,692.6	2,577.2
2006	8,407.0	861.7	16.3	845.4	7,545.3	2,550.4	2,636.0	2,358.9
2007	8,168.0	835.9	15.1	820.8	7,332.1	2,611.0	2,480.6	2,240.5
2008	7,410.0	777.2	12.1	765.1	6,632.8	2,283.4	2,154.5	2,194.9
2009	7,053.0	758.4	10.6	747.8	6,294.6	2,271.3	2,020.5	2,002.8
2010	6,917.0	732.3	9.7	722.6	6,184.7	2,187.4	1,933.5	2,063.8

**Table 1-3**  
**Hogs on farms — Newfoundland and Labrador**

	Total hogs	Breeding stock	Boars, 6 months and over	Sows and bred gilts	All other hogs	Under 20 kg	20 to 60 kg	Over 60 kg
thousands of head								
<b>At January 1</b>								
2004	2.3	0.3	0.0	0.3	2.0	0.7	0.7	0.6
2005	2.1	0.3	0.0	0.3	1.8	0.6	0.6	0.6
2006	1.8	0.3	0.0	0.3	1.5	0.5	0.5	0.5
2007	1.9	0.3	0.0	0.3	1.6	0.5	0.6	0.5
2008	1.4	0.2	0.0	0.2	1.2	0.5	0.4	0.3
2009	1.6	0.2	0.0	0.2	1.4	0.5	0.5	0.4
2010	1.7	0.2	0.0	0.2	1.5	0.5	0.8	0.2
2011	x	x	x	x	x	x	x	x
<b>At April 1</b>								
2004	2.7	0.3	0.0	0.3	2.4	0.9	0.9	0.6
2005	2.5	0.3	0.0	0.3	2.2	0.8	0.7	0.7
2006	2.0	0.3	0.0	0.3	1.7	0.6	0.6	0.5
2007	1.9	0.3	0.0	0.3	1.6	0.6	0.5	0.5
2008	1.5	0.2	0.0	0.2	1.3	0.5	0.4	0.4
2009	1.5	0.2	0.0	0.2	1.3	0.5	0.4	0.4
2010	1.7	0.2	0.0	0.2	1.5	0.5	0.8	0.2
2011	x	x	x	x	x	x	x	x
<b>At July 1</b>								
2004	2.6	0.3	0.0	0.3	2.3	0.9	0.9	0.5
2005	2.6	0.3	0.0	0.3	2.3	0.8	0.8	0.7
2006	2.0	0.3	0.0	0.3	1.7	0.6	0.6	0.5
2007	1.7	0.2	0.0	0.2	1.5	0.6	0.5	0.4
2008	1.5	0.2	0.0	0.2	1.3	0.5	0.4	0.4
2009	1.8	0.2	0.0	0.2	1.6	0.6	0.6	0.4
2010	1.6	0.2	0.0	0.2	1.4	0.5	0.6	0.3
2011	x	x	x	x	x	x	x	x
<b>At October 1</b>								
2004	2.5	0.3	0.0	0.3	2.2	0.8	0.8	0.6
2005	2.2	0.3	0.0	0.3	1.9	0.7	0.6	0.6
2006	2.0	0.3	0.0	0.3	1.7	0.6	0.6	0.5
2007	1.7	0.2	0.0	0.2	1.5	0.5	0.5	0.5
2008	1.7	0.2	0.0	0.2	1.5	0.5	0.5	0.5
2009	1.8	0.2	0.0	0.2	1.6	0.5	0.6	0.5
2010	1.7	0.2	0.0	0.2	1.5	0.5	0.6	0.4



**Table 1-4**  
**Hogs on farms — Prince Edward Island**

	Total hogs	Breeding stock	Boars, 6 months and over	Sows and bred gilts	All other hogs	Under 20 kg	20 to 60 kg	Over 60 kg
thousands of head								
<b>At January 1</b>								
2004	132.0	12.7	0.4	12.3	119.3	35.0	44.0	40.3
2005	127.0	12.7	0.4	12.3	114.3	33.4	43.0	37.9
2006	123.0	11.7	0.4	11.3	111.3	36.0	37.9	37.4
2007	123.5	11.5	0.3	11.2	112.0	36.2	38.1	37.7
2008	95.3	8.3	0.3	8.0	87.0	27.5	30.5	29.0
2009	51.3	4.8	0.1	4.7	46.5	15.0	15.5	16.0
2010	47.1	4.1	0.1	4.0	43.0	14.5	13.0	15.5
2011	44.0	4.3	0.1	4.2	39.7	13.0	14.5	12.2
<b>At April 1</b>								
2004	130.0	12.5	0.4	12.1	117.5	34.0	43.4	40.1
2005	126.0	12.5	0.4	12.1	113.5	34.0	40.9	38.6
2006	123.5	11.7	0.4	11.3	111.8	36.2	37.6	38.0
2007	118.0	11.0	0.4	10.6	107.0	32.8	38.0	36.2
2008	77.9	6.7	0.2	6.5	71.2	24.0	23.7	23.5
2009	47.8	4.7	0.2	4.5	43.1	13.6	14.5	15.0
2010	45.2	3.9	0.1	3.8	41.3	14.0	14.0	13.3
2011	45.0	4.7	0.1	4.6	40.3	13.5	14.3	12.5
<b>At July 1</b>								
2004	128.0	12.6	0.4	12.2	115.4	33.5	42.4	39.5
2005	125.0	12.0	0.4	11.6	113.0	34.5	40.5	38.0
2006	123.0	11.6	0.4	11.2	111.4	36.0	37.5	37.9
2007	111.0	10.4	0.4	10.0	100.6	30.1	34.7	35.8
2008	62.7	6.4	0.1	6.3	56.3	20.2	18.5	17.6
2009	48.8	4.8	0.2	4.6	44.0	15.0	13.0	16.0
2010	44.5	4.2	0.2	4.0	40.3	13.5	15.7	11.1
2011	49.0	5.2	0.2	5.0	43.8	16.5	13.2	14.1
<b>At October 1</b>								
2004	129.0	12.6	0.4	12.2	116.4	34.5	42.9	39.0
2005	125.0	11.8	0.4	11.4	113.2	36.5	39.0	37.7
2006	123.5	11.6	0.4	11.2	111.9	36.5	37.7	37.7
2007	106.9	9.8	0.3	9.5	97.1	30.0	34.0	33.1
2008	56.3	6.1	0.1	6.0	50.2	18.6	16.5	15.1
2009	47.9	4.5	0.2	4.3	43.4	14.5	12.9	16.0
2010	45.2	4.2	0.2	4.0	41.0	14.0	15.0	12.0

**Table 1-5**  
**Hogs on farms — Nova Scotia**

	Total hogs	Breeding stock	Boars, 6 months and over	Sows and bred gilts	All other hogs	Under 20 kg	20 to 60 kg	Over 60 kg
thousands of head								
<b>At January 1</b>								
2004	108.0	9.4	0.4	9.0	98.6	31.3	36.0	31.3
2005	101.0	9.1	0.4	8.7	91.9	28.8	33.5	29.6
2006	102.0	8.0	0.3	7.7	94.0	30.5	31.5	32.0
2007	93.0	7.3	0.3	7.0	85.7	26.5	29.5	29.7
2008	68.0	7.2	0.2	7.0	60.8	21.2	19.7	19.9
2009	28.3	7.0	0.2	6.8	21.3	11.0	5.5	4.8
2010	12.2	4.6	0.1	4.5	7.6	4.5	2.1	1.0
2011	x	x	x	x	x	x	x	x
<b>At April 1</b>								
2004	107.0	9.4	0.4	9.0	97.6	31.5	35.0	31.1
2005	102.0	9.1	0.4	8.7	92.9	29.1	33.8	30.0
2006	97.0	7.8	0.3	7.5	89.2	27.6	30.5	31.1
2007	90.0	7.2	0.3	6.9	82.8	25.0	28.8	29.0
2008	52.3	7.8	0.3	7.5	44.5	19.0	10.1	15.4
2009	25.3	5.7	0.2	5.5	19.6	9.1	5.5	5.0
2010	13.5	4.8	0.1	4.7	8.7	6.2	1.7	0.8
2011	x	x	x	x	x	x	x	x
<b>At July 1</b>								
2004	102.0	9.0	0.3	8.7	93.0	30.0	32.0	31.0
2005	102.0	8.3	0.3	8.0	93.7	30.3	32.4	31.0
2006	93.0	7.3	0.3	7.0	85.7	27.0	29.5	29.2
2007	87.5	7.1	0.3	6.8	80.4	24.0	28.4	28.0
2008	37.7	8.0	0.3	7.7	29.7	15.6	7.0	7.1
2009	16.4	4.1	0.1	4.0	12.3	4.5	2.2	5.6
2010	15.0	5.2	0.1	5.1	9.8	7.9	1.1	0.8
2011	x	x	x	x	x	x	x	x
<b>At October 1</b>								
2004	100.0	9.0	0.4	8.6	91.0	29.5	32.0	29.5
2005	100.5	8.3	0.3	8.0	92.2	29.0	31.7	31.5
2006	93.0	7.3	0.3	7.0	85.7	26.5	29.5	29.7
2007	78.9	6.9	0.3	6.6	72.0	23.3	23.7	25.0
2008	29.7	7.7	0.3	7.4	22.0	11.5	5.5	5.0
2009	14.4	4.4	0.1	4.3	10.0	5.0	2.5	2.5
2010	15.0	5.0	0.1	4.9	10.0	7.0	1.5	1.5

**Table 1-6**  
**Hogs on farms — New Brunswick**

	Total hogs	Breeding stock	Boars, 6 months and over	Sows and bred gilts	All other hogs	Under 20 kg	20 to 60 kg	Over 60 kg
thousands of head								
<b>At January 1</b>								
2004	124.0	12.3	0.3	12.0	111.7	41.0	36.9	33.8
2005	115.0	11.6	0.3	11.3	103.4	37.7	33.8	31.9
2006	104.0	12.4	0.2	12.2	91.6	35.0	28.5	28.1
2007	105.5	12.8	0.3	12.5	92.7	34.5	31.2	27.0
2008	91.3	13.3	0.3	13.0	78.0	31.0	27.0	20.0
2009	79.3	13.1	0.1	13.0	66.2	32.2	17.0	17.0
2010	68.2	9.6	0.1	9.5	58.6	25.0	18.2	15.4
2011	70.3	10.1	0.1	10.0	60.2	28.0	16.8	15.4
<b>At April 1</b>								
2004	125.0	11.8	0.3	11.5	113.2	42.0	37.0	34.2
2005	111.0	11.7	0.3	11.4	99.3	36.5	32.0	30.8
2006	104.2	12.3	0.2	12.1	91.9	34.0	29.5	28.4
2007	104.0	12.9	0.2	12.7	91.1	33.0	32.3	25.8
2008	90.2	13.2	0.2	13.0	77.0	35.0	25.0	17.0
2009	75.1	13.1	0.1	13.0	62.0	30.0	16.0	16.0
2010	68.6	9.4	0.1	9.3	59.2	26.0	17.2	16.0
2011	69.3	10.1	0.1	10.0	59.2	26.0	17.2	16.0
<b>At July 1</b>								
2004	123.0	11.6	0.3	11.3	111.4	41.4	36.0	34.0
2005	107.0	12.5	0.3	12.2	94.5	38.0	29.5	27.0
2006	107.4	12.5	0.2	12.3	94.9	35.0	30.5	29.4
2007	99.0	13.8	0.3	13.5	85.2	31.0	33.1	21.1
2008	85.1	13.1	0.1	13.0	72.0	35.4	20.4	16.2
2009	81.2	12.9	0.1	12.8	68.3	35.3	18.0	15.0
2010	69.3	9.6	0.1	9.5	59.7	27.0	16.9	15.8
2011	68.6	10.1	0.1	10.0	58.5	26.5	15.0	17.0
<b>At October 1</b>								
2004	119.0	11.6	0.3	11.3	107.4	39.2	35.0	33.2
2005	105.5	12.5	0.2	12.3	93.0	35.0	30.0	28.0
2006	107.5	12.6	0.3	12.3	94.9	35.0	31.0	28.9
2007	99.3	13.8	0.3	13.5	85.5	30.5	32.5	22.5
2008	81.0	13.1	0.1	13.0	67.9	33.0	17.5	17.4
2009	75.1	11.1	0.1	11.0	64.0	30.0	18.5	15.5
2010	70.1	9.6	0.1	9.5	60.5	28.0	17.0	15.5

**Table 1-7**  
**Hogs on farms — Quebec**

	Total hogs	Breeding stock	Boars, 6 months and over	Sows and bred gilts	All other hogs	Under 20 kg	20 to 60 kg	Over 60 kg
thousands of head								
<b>At January 1</b>								
2004	4,250.0	423.7	6.5	417.2	3,826.3	1,313.3	1,280.5	1,232.5
2005	4,280.0	422.8	6.3	416.5	3,857.2	1,302.9	1,285.2	1,269.1
2006	4,337.0	414.4	6.3	408.1	3,922.6	1,283.2	1,339.6	1,299.8
2007	4,174.0	403.2	6.2	397.0	3,770.8	1,290.4	1,300.8	1,179.6
2008	3,990.0	394.3	5.3	389.0	3,595.7	1,242.0	1,175.0	1,178.7
2009	3,900.0	386.2	4.2	382.0	3,513.8	1,144.3	1,183.1	1,186.4
2010	3,920.0	381.8	3.4	378.4	3,538.2	1,102.1	1,294.4	1,141.7
2011	3,900.0	371.7	2.7	369.0	3,528.3	1,126.2	1,150.8	1,251.3
<b>At April 1</b>								
2004	4,220.0	423.2	6.4	416.8	3,796.8	1,240.1	1,268.8	1,287.9
2005	4,265.0	423.6	6.3	417.3	3,841.4	1,289.2	1,241.6	1,310.6
2006	4,260.0	412.3	6.3	406.0	3,847.7	1,269.8	1,271.2	1,306.7
2007	4,155.0	402.7	6.2	396.5	3,752.3	1,304.8	1,197.0	1,250.5
2008	3,940.0	390.2	5.2	385.0	3,549.8	1,290.3	1,162.6	1,096.9
2009	3,870.0	383.3	4.2	379.1	3,486.7	1,263.4	1,180.4	1,042.9
2010	3,900.0	382.2	3.4	378.8	3,517.8	1,097.8	1,219.3	1,200.7
2011	3,880.0	370.2	2.6	367.6	3,509.8	1,149.8	1,155.9	1,204.1
<b>At July 1</b>								
2004	4,350.0	422.8	6.3	416.5	3,927.2	1,286.9	1,332.3	1,308.0
2005	4,384.0	420.6	6.3	414.3	3,963.4	1,245.9	1,405.8	1,311.7
2006	4,250.0	405.3	6.3	399.0	3,844.7	1,223.2	1,346.8	1,274.7
2007	4,120.0	399.7	5.7	394.0	3,720.3	1,347.3	1,169.2	1,203.8
2008	4,075.0	390.0	5.0	385.0	3,685.0	1,325.5	1,201.7	1,157.8
2009	3,870.0	386.2	4.2	382.0	3,483.8	1,224.7	1,159.7	1,099.4
2010	3,925.0	374.5	3.4	371.1	3,550.5	1,203.2	1,139.2	1,208.1
2011	3,905.0	362.8	2.8	360.0	3,542.2	1,144.6	1,158.6	1,239.0
<b>At October 1</b>								
2004	4,341.0	422.8	6.3	416.5	3,918.2	1,259.0	1,278.9	1,380.3
2005	4,385.0	418.1	6.3	411.8	3,966.9	1,284.0	1,307.8	1,375.1
2006	4,170.0	404.2	6.2	398.0	3,765.8	1,256.1	1,282.1	1,227.6
2007	4,050.0	396.6	5.6	391.0	3,653.4	1,311.7	1,215.6	1,126.1
2008	4,035.0	385.7	4.7	381.0	3,649.3	1,212.6	1,134.3	1,302.4
2009	3,900.0	382.6	3.6	379.0	3,517.4	1,200.9	1,142.2	1,174.3
2010	3,935.0	374.3	3.3	371.0	3,560.7	1,184.7	1,115.4	1,260.6

**Table 1-8**  
**Hogs on farms — Ontario**

	Total hogs	Breeding stock	Boars, 6 months and over	Sows and bred gilts	All other hogs	Under 20 kg	20 to 60 kg	Over 60 kg
thousands of head								
<b>At January 1</b>								
2004	3,780.7	437.3	11.5	425.8	3,343.4	1,174.9	1,073.2	1,095.3
2005	3,778.9	443.5	10.3	433.2	3,335.4	1,121.9	1,115.8	1,097.7
2006	3,951.2	433.6	9.6	424.0	3,517.6	1,184.9	1,170.2	1,162.5
2007	3,924.1	422.7	9.0	413.7	3,501.4	1,188.2	1,279.4	1,033.8
2008	3,652.0	402.9	8.1	394.8	3,249.1	1,186.3	1,121.3	941.5
2009	3,104.5	359.7	6.7	353.0	2,744.8	1,004.1	965.3	775.4
2010	2,870.8	348.0	6.5	341.5	2,522.8	927.3	873.8	721.7
2011	2,898.2	350.0	5.5	344.5	2,548.2	938.9	840.9	768.4
<b>At April 1</b>								
2004	3,792.3	444.8	11.5	433.3	3,347.5	1,185.7	1,220.9	940.9
2005	3,909.5	440.9	10.2	430.7	3,468.6	1,172.2	1,283.1	1,013.3
2006	3,957.3	430.0	9.4	420.6	3,527.3	1,211.2	1,302.0	1,014.1
2007	3,850.1	418.3	8.8	409.5	3,431.8	1,257.1	1,115.0	1,059.7
2008	3,355.1	379.5	7.5	372.0	2,975.6	1,076.3	969.2	930.1
2009	2,975.3	359.0	6.5	352.5	2,616.3	975.3	865.0	776.0
2010	2,735.0	329.9	5.8	324.1	2,405.1	840.1	837.8	727.2
2011	2,851.3	350.2	4.5	345.7	2,501.1	921.6	825.3	754.2
<b>At July 1</b>								
2004	3,849.4	442.7	11.0	431.7	3,406.7	1,176.3	1,191.5	1,038.9
2005	3,995.4	440.0	10.0	430.0	3,555.4	1,229.4	1,233.4	1,092.6
2006	3,929.6	426.3	9.2	417.1	3,503.3	1,244.1	1,189.2	1,070.0
2007	3,886.8	417.3	8.8	408.5	3,469.5	1,245.1	1,162.8	1,061.6
2008	3,237.0	372.2	7.2	365.0	2,864.8	1,033.5	948.2	883.1
2009	3,064.8	357.6	6.8	350.8	2,707.2	1,007.7	870.3	829.2
2010	2,804.6	341.0	6.0	335.0	2,463.6	891.4	829.6	742.6
2011	2,835.0	346.0	5.0	341.0	2,489.0	897.5	838.0	753.5
<b>At October 1</b>								
2004	3,793.5	441.5	10.6	430.9	3,352.0	1,115.3	1,202.6	1,034.1
2005	4,013.8	441.9	9.8	432.1	3,571.9	1,184.1	1,283.5	1,104.3
2006	3,911.0	425.7	9.1	416.6	3,485.3	1,195.7	1,255.1	1,034.5
2007	3,831.2	408.6	8.6	400.0	3,422.6	1,215.0	1,174.3	1,033.3
2008	3,206.3	364.4	6.9	357.5	2,841.9	1,007.2	980.2	854.5
2009	3,013.8	355.6	6.6	349.0	2,658.2	1,020.4	843.8	794.0
2010	2,850.0	339.0	6.0	333.0	2,511.0	953.2	784.0	773.8

**Table 1-9**  
**Hogs on farms — Western provinces**

	Total hogs	Breeding stock	Boars, 6 months and over	Sows and bred gilts	All other hogs	Under 20 kg	20 to 60 kg	Over 60 kg
thousands of head								
<b>At January 1</b>								
2004	6,328.0	719.6	20.1	699.5	5,608.4	1,948.3	1,899.2	1,760.9
2005	6,406.0	733.6	18.8	714.8	5,672.4	1,961.7	1,900.9	1,809.8
2006	6,491.0	724.9	17.9	707.0	5,766.1	1,905.7	2,014.8	1,845.6
2007	6,485.0	721.3	17.2	704.1	5,763.7	1,968.8	1,852.1	1,942.8
2008	5,912.0	686.0	15.5	670.5	5,226.0	1,963.4	1,588.1	1,674.5
2009	5,015.0	624.0	12.5	611.5	4,391.0	1,481.5	1,431.9	1,477.6
2010	4,915.0	583.7	11.4	572.3	4,331.3	1,524.6	1,402.3	1,404.4
2011	4,964.0	571.2	9.7	561.5	4,392.8	1,485.2	1,402.0	1,505.6
<b>At April 1</b>								
2004	6,298.0	721.2	19.7	701.5	5,576.8	1,901.4	1,908.3	1,767.1
2005	6,444.0	730.2	18.7	711.5	5,713.8	2,007.4	1,914.2	1,792.2
2006	6,486.0	722.0	17.7	704.3	5,764.0	1,953.0	1,945.2	1,865.8
2007	6,410.0	718.3	17.0	701.3	5,691.7	2,097.1	1,740.4	1,854.2
2008	5,483.0	676.9	15.1	661.8	4,806.1	1,827.7	1,455.0	1,523.4
2009	4,890.0	618.6	12.3	606.3	4,271.4	1,463.4	1,378.0	1,430.0
2010	4,886.0	583.4	10.4	573.0	4,302.6	1,519.9	1,337.6	1,445.1
2011	4,969.0	569.5	9.6	559.9	4,399.5	1,438.7	1,401.0	1,559.8
<b>At July 1</b>								
2004	6,425.0	728.0	19.7	708.3	5,697.0	2,046.9	1,853.6	1,796.5
2005	6,479.0	730.2	18.4	711.8	5,748.8	2,082.5	1,878.2	1,788.1
2006	6,560.0	723.2	17.7	705.5	5,836.8	2,001.0	2,007.4	1,828.4
2007	6,384.0	716.3	16.9	699.4	5,667.7	2,070.6	1,735.0	1,862.1
2008	5,481.0	656.1	14.6	641.5	4,824.9	1,783.6	1,454.8	1,586.5
2009	4,982.0	607.5	11.9	595.6	4,374.5	1,399.8	1,506.9	1,467.8
2010	4,940.0	580.7	10.3	570.4	4,359.3	1,490.7	1,402.3	1,466.3
2011	5,016.0	568.9	9.5	559.4	4,447.1	1,519.0	1,422.5	1,505.6
<b>At October 1</b>								
2004	6,360.0	730.3	19.1	711.2	5,629.7	1,984.2	1,873.6	1,771.9
2005	6,473.0	726.3	18.3	708.0	5,746.7	1,968.7	2,024.0	1,754.0
2006	6,493.0	720.5	17.3	703.2	5,772.5	1,929.7	1,886.8	1,956.0
2007	6,192.0	707.6	16.6	691.0	5,484.4	2,049.5	1,687.2	1,747.7
2008	5,335.0	640.1	14.0	626.1	4,694.9	1,619.2	1,530.3	1,545.4
2009	4,902.0	591.3	11.5	579.8	4,310.7	1,485.9	1,405.6	1,419.2
2010	4,968.0	575.1	10.0	565.1	4,392.9	1,537.1	1,397.4	1,458.4

**Table 1-10**  
**Hogs on farms — Manitoba**

	Total hogs	Breeding stock	Boars, 6 months and over	Sows and bred gilts	All other hogs	Under 20 kg	20 to 60 kg	Over 60 kg
thousands of head								
<b>At January 1</b>								
2004	2,852.0	357.7	6.7	351.0	2,494.3	924.7	830.7	738.9
2005	2,870.0	373.6	5.6	368.0	2,496.4	962.4	800.2	733.8
2006	2,940.0	373.2	5.2	368.0	2,566.8	916.3	871.8	778.7
2007	2,960.0	373.8	4.8	369.0	2,586.2	988.9	798.9	798.4
2008	2,810.0	362.2	4.2	358.0	2,447.8	1,083.2	684.0	680.6
2009	2,499.0	337.6	3.6	334.0	2,161.4	859.4	661.2	640.8
2010	2,530.0	326.0	3.4	322.6	2,204.0	864.2	686.4	653.4
2011	2,620.0	321.1	2.5	318.6	2,298.9	866.9	729.0	703.0
<b>At April 1</b>								
2004	2,840.0	362.3	6.3	356.0	2,477.7	940.5	827.7	709.5
2005	2,910.0	373.3	5.6	367.7	2,536.7	1,030.8	822.6	683.3
2006	2,920.0	371.6	5.1	366.5	2,548.4	938.1	852.9	757.4
2007	2,920.0	372.7	4.7	368.0	2,547.3	1,110.8	716.7	719.8
2008	2,660.0	359.1	4.1	355.0	2,300.9	1,052.2	642.2	606.5
2009	2,477.0	336.5	3.6	332.9	2,140.5	822.3	691.4	626.8
2010	2,550.0	328.5	2.9	325.6	2,221.5	845.2	649.7	726.6
2011	2,615.0	317.3	2.5	314.8	2,297.7	811.8	723.2	762.7
<b>At July 1</b>								
2004	2,890.0	368.3	6.3	362.0	2,521.7	937.0	822.2	762.5
2005	2,940.0	371.0	5.4	365.6	2,569.0	980.6	837.1	751.3
2006	2,980.0	373.0	5.0	368.0	2,607.0	930.2	905.1	771.7
2007	2,965.0	375.2	4.7	370.5	2,589.8	1,130.3	710.7	748.8
2008	2,720.0	343.9	3.9	340.0	2,376.1	1,046.4	669.0	660.7
2009	2,530.0	334.0	3.5	330.5	2,196.0	745.5	766.2	684.3
2010	2,605.0	327.9	2.9	325.0	2,277.1	841.0	700.8	735.3
2011	2,615.0	315.8	2.4	313.4	2,299.2	841.6	701.2	756.4
<b>At October 1</b>								
2004	2,859.0	370.8	5.8	365.0	2,488.2	957.5	796.4	734.3
2005	2,910.0	371.6	5.4	366.2	2,538.4	881.2	941.9	715.3
2006	2,950.0	372.4	4.9	367.5	2,577.6	949.0	829.7	798.9
2007	2,910.0	370.6	4.6	366.0	2,539.4	1,132.5	703.0	703.9
2008	2,670.0	341.1	4.1	337.0	2,328.9	981.5	717.6	629.8
2009	2,490.0	329.0	3.4	325.6	2,161.0	849.2	691.1	620.7
2010	2,620.0	324.3	2.8	321.5	2,295.7	879.8	740.3	675.6

**Table 1-11**  
**Hogs on farms — Saskatchewan**

	Total hogs	Breeding stock	Boars, 6 months and over	Sows and bred gilts	All other hogs	Under 20 kg	20 to 60 kg	Over 60 kg
thousands of head								
<b>At January 1</b>								
2004	1,265.0	128.6	5.2	123.4	1,136.4	341.9	433.1	361.4
2005	1,342.0	134.2	5.2	129.0	1,207.8	356.0	454.2	397.6
2006	1,375.0	133.8	5.0	128.8	1,241.2	373.7	474.0	393.5
2007	1,349.0	135.8	4.8	131.0	1,213.2	328.7	380.0	504.5
2008	1,180.0	127.5	4.4	123.1	1,052.5	312.0	307.2	433.3
2009	810.0	102.2	3.2	99.0	707.8	146.4	230.9	330.5
2010	780.0	89.2	2.8	86.4	690.8	186.1	218.6	286.1
2011	775.0	90.5	2.7	87.8	684.5	197.2	207.7	279.6
<b>At April 1</b>								
2004	1,275.0	130.8	5.3	125.5	1,144.2	315.5	409.8	418.9
2005	1,358.0	134.1	5.1	129.0	1,223.9	334.5	435.0	454.4
2006	1,380.0	134.4	4.9	129.5	1,245.6	349.8	439.0	456.8
2007	1,340.0	135.3	4.8	130.5	1,204.7	319.0	387.2	498.5
2008	1,002.0	125.4	4.3	121.1	876.6	213.6	271.4	391.6
2009	760.0	99.6	3.0	96.6	660.4	150.2	204.1	306.1
2010	750.0	89.8	2.6	87.2	660.2	175.9	207.0	277.3
2011	795.0	93.2	2.6	90.6	701.8	203.8	215.7	282.3
<b>At July 1</b>								
2004	1,350.0	134.1	5.3	128.8	1,215.9	438.8	363.9	413.2
2005	1,395.0	136.3	5.1	131.2	1,258.7	441.8	378.4	438.5
2006	1,389.0	135.8	4.9	130.9	1,253.2	412.5	390.0	450.7
2007	1,320.0	133.0	4.7	128.3	1,187.0	319.4	376.7	490.9
2008	971.0	123.8	4.2	119.6	847.2	192.1	259.6	395.5
2009	810.0	96.0	3.0	93.0	714.0	176.6	233.2	304.2
2010	755.0	90.1	2.6	87.5	664.9	199.5	198.2	267.2
2011	825.0	93.8	2.6	91.2	731.2	229.0	225.1	277.1
<b>At October 1</b>								
2004	1,335.0	132.5	5.2	127.3	1,202.5	402.1	410.1	390.3
2005	1,404.0	133.9	5.0	128.9	1,270.1	450.6	419.9	399.6
2006	1,374.0	134.2	4.8	129.4	1,239.8	320.0	397.5	522.3
2007	1,265.0	132.3	4.7	127.6	1,132.7	318.1	364.1	450.5
2008	900.0	112.8	3.8	109.0	787.2	161.4	251.4	374.4
2009	790.0	90.8	2.8	88.0	699.2	166.2	226.7	306.3
2010	770.0	90.1	2.6	87.5	679.9	199.9	210.8	269.2



**Table 1-12**  
**Hogs on farms — Alberta**

	Total hogs	Breeding stock	Boars, 6 months and over	Sows and bred gilts	All other hogs	Under 20 kg	20 to 60 kg	Over 60 kg
thousands of head								
<b>At January 1</b>								
2004	2,050.0	212.3	7.4	204.9	1,837.7	637.3	589.1	611.3
2005	2,045.0	206.1	7.3	198.8	1,838.9	603.0	605.0	630.9
2006	2,036.0	199.2	7.1	192.1	1,836.8	576.6	629.9	630.3
2007	2,045.0	193.4	7.0	186.4	1,851.6	607.5	641.0	603.1
2008	1,800.0	178.4	6.4	172.0	1,621.6	529.8	559.2	532.6
2009	1,590.0	167.3	5.3	162.0	1,422.7	437.8	512.8	472.1
2010	1,505.0	156.3	4.9	151.4	1,348.7	435.4	472.5	440.8
2011	1,490.0	150.9	4.3	146.6	1,339.1	397.4	443.0	498.7
<b>At April 1</b>								
2004	2,030.0	208.4	7.4	201.0	1,821.6	600.9	627.9	592.8
2005	2,025.0	202.7	7.3	195.4	1,822.3	597.7	615.7	608.9
2006	2,050.0	197.1	7.1	190.0	1,852.9	625.2	617.5	610.2
2007	2,020.0	191.9	6.9	185.0	1,828.1	611.3	607.2	609.6
2008	1,700.0	175.0	6.2	168.8	1,525.0	520.0	504.1	500.9
2009	1,540.0	165.2	5.2	160.0	1,374.8	454.6	454.9	465.3
2010	1,490.0	154.3	4.6	149.7	1,335.7	463.3	454.5	417.9
2011	1,480.0	149.7	4.2	145.5	1,330.3	399.6	440.0	490.7
<b>At July 1</b>								
2004	2,030.0	205.3	7.3	198.0	1,824.7	622.7	623.3	578.7
2005	2,000.0	204.0	7.2	196.8	1,796.0	615.1	621.9	559.0
2006	2,056.0	195.1	7.1	188.0	1,860.9	614.4	676.4	570.1
2007	1,970.0	189.5	6.9	182.6	1,780.5	582.2	615.2	583.1
2008	1,670.0	171.0	6.0	165.0	1,499.0	504.8	488.8	505.4
2009	1,530.0	161.5	5.0	156.5	1,368.5	441.9	476.5	450.1
2010	1,495.0	153.1	4.6	148.5	1,341.9	426.4	476.5	439.0
2011	1,490.0	149.8	4.2	145.6	1,340.2	424.6	469.3	446.3
<b>At October 1</b>								
2004	2,010.0	206.4	7.3	199.1	1,803.6	581.5	620.3	601.8
2005	2,020.0	202.5	7.2	195.3	1,817.5	598.9	620.0	598.6
2006	2,035.0	195.5	7.0	188.5	1,839.5	602.9	629.5	607.1
2007	1,890.0	186.6	6.8	179.8	1,703.4	557.2	588.0	558.2
2008	1,650.0	169.6	5.6	164.0	1,480.4	438.5	528.7	513.2
2009	1,515.0	157.4	4.9	152.5	1,357.6	436.3	455.2	466.1
2010	1,500.0	151.3	4.4	146.9	1,348.7	433.9	424.9	489.9

**Table 1-13**  
**Hogs on farms — British Columbia**

	Total hogs	Breeding stock	Boars, 6 months and over	Sows and bred gilts	All other hogs	Under 20 kg	20 to 60 kg	Over 60 kg
thousands of head								
<b>At January 1</b>								
2004	161.0	21.0	0.8	20.2	140.0	44.4	46.3	49.3
2005	149.0	19.7	0.7	19.0	129.3	40.3	41.5	47.5
2006	140.0	18.7	0.6	18.1	121.3	39.1	39.1	43.1
2007	131.0	18.3	0.6	17.7	112.7	43.7	32.2	36.8
2008	122.0	17.9	0.5	17.4	104.1	38.4	37.7	28.0
2009	116.0	16.9	0.4	16.5	99.1	37.9	27.0	34.2
2010	100.0	12.2	0.3	11.9	87.8	38.9	24.8	24.1
2011	79.0	8.7	0.2	8.5	70.3	23.7	22.3	24.3
<b>At April 1</b>								
2004	153.0	19.7	0.7	19.0	133.3	44.5	42.9	45.9
2005	151.0	20.1	0.7	19.4	130.9	44.4	40.9	45.6
2006	136.0	18.9	0.6	18.3	117.1	39.9	35.8	41.4
2007	130.0	18.4	0.6	17.8	111.6	56.0	29.3	26.3
2008	121.0	17.4	0.5	16.9	103.6	41.9	37.3	24.4
2009	113.0	17.3	0.5	16.8	95.7	36.3	27.6	31.8
2010	96.0	10.8	0.3	10.5	85.2	35.5	26.4	23.3
2011	79.0	9.3	0.3	9.0	69.7	23.5	22.1	24.1
<b>At July 1</b>								
2004	155.0	20.3	0.8	19.5	134.7	48.4	44.2	42.1
2005	144.0	18.9	0.7	18.2	125.1	45.0	40.8	39.3
2006	135.0	19.3	0.7	18.6	115.7	43.9	35.9	35.9
2007	129.0	18.6	0.6	18.0	110.4	38.7	32.4	39.3
2008	120.0	17.4	0.5	16.9	102.6	40.3	37.4	24.9
2009	112.0	16.0	0.4	15.6	96.0	35.8	31.0	29.2
2010	85.0	9.6	0.2	9.4	75.4	23.8	26.8	24.8
2011	86.0	9.5	0.3	9.2	76.5	23.8	26.9	25.8
<b>At October 1</b>								
2004	156.0	20.6	0.8	19.8	135.4	43.1	46.8	45.5
2005	139.0	18.3	0.7	17.6	120.7	38.0	42.2	40.5
2006	134.0	18.4	0.6	17.8	115.6	57.8	30.1	27.7
2007	127.0	18.1	0.5	17.6	108.9	41.7	32.1	35.1
2008	115.0	16.6	0.5	16.1	98.4	37.8	32.6	28.0
2009	107.0	14.1	0.4	13.7	92.9	34.2	32.6	26.1
2010	78.0	9.4	0.2	9.2	68.6	23.5	21.4	23.7

Table 2-1

## Sows farrowed, pigs born and farrowing intentions — Eastern provinces

	Newfoundland and Labrador	Prince Edward Island	Nova Scotia	New Brunswick	Quebec	Ontario	Eastern provinces	Canada
<b>January to March 2004</b>								
<b>Sows farrowed</b>								
Thousands of head	0.2	6.6	5.4	5.5	211.2	248.8	477.7	873.0
Percentage change from previous year	0.0	8.2	-3.6	-6.8	1.1	5.9	3.5	8.2
<b>Pigs born</b>								
Thousands of head	1.8	67.7	55.1	56.6	2,219.1	2,583.3	4,983.6	9,104.3
Percentage change from previous year	28.6	9.5	-2.5	-5.2	1.1	6.6	3.9	9.2
<b>April to June 2004</b>								
<b>Sows farrowed</b>								
Thousands of head	0.1	6.3	4.8	5.4	213.8	238.7	469.1	861.3
Percentage change from previous year	0.0	1.6	-9.4	-14.3	8.5	5.8	6.5	7.1
<b>Pigs born</b>								
Thousands of head	1.1	63.6	49.0	54.8	2,238.9	2,478.3	4,885.7	8,983.1
Percentage change from previous year	10.0	0.0	-8.4	-15.4	7.9	6.2	6.4	7.7
<b>July to September 2004</b>								
<b>Sows farrowed</b>								
Thousands of head	0.1	6.5	4.9	5.6	210.9	237.6	465.6	851.8
Percentage change from previous year	0.0	0.0	-7.5	-11.1	3.5	1.6	2.2	2.5
<b>Pigs born</b>								
Thousands of head	1.1	66.6	50.9	56.9	2,206.0	2,468.2	4,849.7	8,905.4
Percentage change from previous year	-8.3	-0.3	-6.3	-10.8	2.8	2.0	2.1	3.3
<b>October to December 2004</b>								
<b>Sows farrowed</b>								
Thousands of head	0.1	6.5	5.0	5.5	215.5	245.4	478.0	896.5
Percentage change from previous year	0.0	-3.0	-2.0	-11.3	2.5	-0.1	0.8	2.8
<b>Pigs born</b>								
Thousands of head	1.0	67.0	52.1	56.2	2,252.3	2,550.3	4,978.9	9,394.8
Percentage change from previous year	0.0	-3.0	0.0	-11.8	1.7	0.1	0.6	3.4
<b>January to March 2005</b>								
<b>Sows farrowed</b>								
Thousands of head	0.2	6.4	4.6	5.6	215.6	231.1	463.5	874.1
Percentage change from previous year	0.0	-3.0	-14.8	1.8	2.1	-7.1	-3.0	0.1
<b>Pigs born</b>								
Thousands of head	1.6	65.1	47.3	58.4	2,256.2	2,409.1	4,837.7	9,189.4
Percentage change from previous year	-11.1	-3.8	-14.2	3.2	1.7	-6.7	-2.9	0.9
<b>April to June 2005</b>								
<b>Sows farrowed</b>								
Thousands of head	0.1	6.1	4.4	5.9	212.9	222.0	451.4	852.5
Percentage change from previous year	0.0	-3.2	-8.3	9.3	-0.4	-7.0	-3.8	-1.0
<b>Pigs born</b>								
Thousands of head	1.4	61.6	45.3	60.9	2,230.7	2,316.6	4,716.5	8,983.4
Percentage change from previous year	27.3	-3.1	-7.6	11.1	-0.4	-6.5	-3.5	0.0
<b>July to September 2005</b>								
<b>Sows farrowed</b>								
Thousands of head	0.1	6.2	4.6	6.0	209.0	219.7	445.6	855.5
Percentage change from previous year	0.0	-4.6	-6.1	7.1	-0.9	-7.5	-4.3	0.4
<b>Pigs born</b>								
Thousands of head	0.7	64.0	47.3	62.9	2,186.9	2,292.1	4,653.9	9,033.6
Percentage change from previous year	-36.4	-3.9	-7.1	10.5	-0.9	-7.1	-4.0	1.4
<b>October to December 2005</b>								
<b>Sows farrowed</b>								
Thousands of head	0.1	5.8	4.6	5.9	203.9	218.6	438.9	852.7
Percentage change from previous year	0.0	-10.8	-8.0	7.3	-5.4	-10.9	-8.2	-4.9
<b>Pigs born</b>								
Thousands of head	1.0	58.3	48.0	61.0	2,132.3	2,279.2	4,579.8	9,024.8
Percentage change from previous year	0.0	-13.0	-7.9	8.5	-5.3	-10.6	-8.0	-3.9

Table 2-1 – continued

## Sows farrowed, pigs born and farrowing intentions — Eastern provinces

	Newfoundland and Labrador	Prince Edward Island	Nova Scotia	New Brunswick	Quebec	Ontario	Eastern provinces	Canada
<b>January to March 2006</b>								
<b>Sows farrowed</b>								
Thousands of head	0.2	5.9	4.3	6.1	202.2	223.1	441.8	856.1
Percentage change from previous year	0.0	-7.8	-6.5	8.9	-6.2	-3.5	-4.7	-2.1
<b>Pigs born</b>								
Thousands of head	1.5	60.3	44.6	63.1	2,116.8	2,332.6	4,618.9	9,075.5
Percentage change from previous year	-6.2	-7.4	-5.7	8.0	-6.2	-3.2	-4.5	-1.2
<b>April to June 2006</b>								
<b>Sows farrowed</b>								
Thousands of head	0.1	5.6	4.0	6.1	188.4	195.1	399.3	812.0
Percentage change from previous year	0.0	-8.2	-9.1	3.4	-11.5	-12.1	-11.5	-4.8
<b>Pigs born</b>								
Thousands of head	1.2	57.2	41.0	63.1	1,976.2	2,041.3	4,180.0	8,637.1
Percentage change from previous year	-14.3	-7.1	-9.5	3.6	-11.4	-11.9	-11.4	-3.9
<b>July to September 2006</b>								
<b>Sows farrowed</b>								
Thousands of head	0.1	5.9	4.0	6.1	188.4	204.6	409.1	815.9
Percentage change from previous year	0.0	-4.8	-13.0	1.7	-9.9	-6.9	-8.2	-4.6
<b>Pigs born</b>								
Thousands of head	1.2	61.4	41.5	64.7	1,971.1	2,140.8	4,280.7	8,695.2
Percentage change from previous year	71.4	-4.1	-12.3	2.9	-9.9	-6.6	-8.0	-3.7
<b>October to December 2006</b>								
<b>Sows farrowed</b>								
Thousands of head	0.1	5.9	4.0	5.9	200.1	218.0	434.0	845.7
Percentage change from previous year	0.0	1.7	-13.0	0.0	-1.9	-0.3	-1.1	-0.8
<b>Pigs born</b>								
Thousands of head	1.2	61.4	41.5	61.0	2,094.1	2,279.8	4,539.0	9,025.6
Percentage change from previous year	20.0	5.3	-13.5	0.0	-1.8	0.0	-0.9	0.0
<b>January to March 2007</b>								
<b>Sows farrowed</b>								
Thousands of head	0.1	5.3	3.8	6.1	197.4	203.1	415.8	824.7
Percentage change from previous year	-50.0	-10.2	-11.6	0.0	-2.4	-9.0	-5.9	-3.7
<b>Pigs born</b>								
Thousands of head	1.1	55.8	39.5	63.8	2,067.9	2,129.0	4,357.1	8,819.7
Percentage change from previous year	-26.7	-7.5	-11.4	1.1	-2.3	-8.7	-5.7	-2.8
<b>April to June 2007</b>								
<b>Sows farrowed</b>								
Thousands of head	0.1	4.8	4.1	6.0	187.3	195.0	397.3	809.5
Percentage change from previous year	0.0	-14.3	2.5	-1.6	-0.6	-0.1	-0.5	-0.3
<b>Pigs born</b>								
Thousands of head	1.1	49.5	42.2	62.7	1,963.8	2,045.1	4,164.4	8,678.0
Percentage change from previous year	-8.3	-13.5	2.9	-0.6	-0.6	0.2	-0.4	0.5
<b>July to September 2007</b>								
<b>Sows farrowed</b>								
Thousands of head	0.1	4.4	3.7	6.1	191.5	194.0	399.8	794.4
Percentage change from previous year	0.0	-25.4	-7.5	0.0	1.6	-5.2	-2.3	-2.6
<b>Pigs born</b>								
Thousands of head	1.2	47.5	38.5	63.2	2,003.9	2,033.2	4,187.5	8,511.6
Percentage change from previous year	0.0	-22.6	-7.2	-2.3	1.7	-5.0	-2.2	-2.1
<b>October to December 2007</b>								
<b>Sows farrowed</b>								
Thousands of head	0.1	4.2	3.5	5.9	195.2	211.1	420.0	828.8
Percentage change from previous year	0.0	-28.8	-12.5	0.0	-2.4	-3.2	-3.2	-2.0
<b>Pigs born</b>								
Thousands of head	1.0	44.0	36.8	62.0	2,043.5	2,209.5	4,396.8	8,882.3
Percentage change from previous year	-16.7	-28.3	-11.3	1.6	-2.4	-3.1	-3.1	-1.6

Table 2-1 – continued

## Sows farrowed, pigs born and farrowing intentions — Eastern provinces

	Newfoundland and Labrador	Prince Edward Island	Nova Scotia	New Brunswick	Quebec	Ontario	Eastern provinces	Canada
<b>January to March 2008</b>								
<b>Sows farrowed</b>								
Thousands of head	0.1	3.2	3.3	5.6	196.3	195.9	404.4	805.4
Percentage change from previous year	0.0	-39.6	-13.2	-8.2	-0.6	-3.5	-2.7	-2.3
<b>Pigs born</b>								
Thousands of head	1.1	34.0	34.2	59.0	2,060.8	2,050.6	4,239.7	8,658.2
Percentage change from previous year	0.0	-39.1	-13.4	-7.5	-0.3	-3.7	-2.7	-1.8
<b>April to June 2008</b>								
<b>Sows farrowed</b>								
Thousands of head	0.1	2.9	4.0	6.2	202.4	190.0	405.6	792.2
Percentage change from previous year	0.0	-39.6	-2.4	3.3	8.1	-2.6	2.1	-2.1
<b>Pigs born</b>								
Thousands of head	1.1	30.0	40.0	65.0	2,116.4	2,002.1	4,254.6	8,518.4
Percentage change from previous year	0.0	-39.4	-5.2	3.7	7.8	-2.1	2.2	-1.8
<b>July to September 2008</b>								
<b>Sows farrowed</b>								
Thousands of head	0.1	3.0	4.2	6.3	193.6	196.3	403.5	771.6
Percentage change from previous year	0.0	-31.8	13.5	3.3	1.1	1.2	0.9	-2.9
<b>Pigs born</b>								
Thousands of head	1.2	30.5	43.0	65.0	2,023.2	2,062.0	4,224.9	8,297.1
Percentage change from previous year	0.0	-35.8	11.7	2.8	1.0	1.4	0.9	-2.5
<b>October to December 2008</b>								
<b>Sows farrowed</b>								
Thousands of head	0.1	2.4	3.6	6.4	201.0	206.0	419.5	786.1
Percentage change from previous year	0.0	-42.9	2.9	8.5	3.0	-2.4	-0.1	-5.2
<b>Pigs born</b>								
Thousands of head	1.1	24.9	36.0	67.5	2,107.9	2,163.0	4,400.4	8,454.7
Percentage change from previous year	10.0	-43.4	-2.2	8.9	3.2	-2.1	0.1	-4.8
<b>January to March 2009</b>								
<b>Sows farrowed</b>								
Thousands of head	0.1	2.0	3.4	6.3	207.8	182.0	401.6	754.7
Percentage change from previous year	0.0	-37.5	3.0	12.5	5.9	-7.1	-0.7	-6.3
<b>Pigs born</b>								
Thousands of head	1.1	21.0	35.0	68.0	2,177.7	1,918.0	4,220.8	8,146.2
Percentage change from previous year	0.0	-38.2	2.3	15.3	5.7	-6.5	-0.4	-5.9
<b>April to June 2009</b>								
<b>Sows farrowed</b>								
Thousands of head	0.1	2.3	2.1	6.2	190.5	185.6	386.8	736.7
Percentage change from previous year	0.0	-20.7	-47.5	0.0	-5.9	-2.3	-4.6	-7.0
<b>Pigs born</b>								
Thousands of head	1.4	24.0	22.5	65.0	2,002.8	1,950.2	4,065.9	7,964.3
Percentage change from previous year	27.3	-20.0	-43.8	0.0	-5.4	-2.6	-4.4	-6.5
<b>July to September 2009</b>								
<b>Sows farrowed</b>								
Thousands of head	0.1	2.2	2.1	5.5	202.7	186.9	399.5	735.5
Percentage change from previous year	0.0	-26.7	-50.0	-12.7	4.7	-4.8	-1.0	-4.7
<b>Pigs born</b>								
Thousands of head	1.3	22.8	22.0	60.0	2,128.0	1,962.3	4,196.4	7,956.7
Percentage change from previous year	8.3	-25.2	-48.8	-7.7	5.2	-4.8	-0.7	-4.1
<b>October to December 2009</b>								
<b>Sows farrowed</b>								
Thousands of head	0.1	2.3	2.3	5.2	206.2	171.4	387.5	723.5
Percentage change from previous year	0.0	-4.2	-36.1	-18.8	2.6	-16.8	-7.6	-8.0
<b>Pigs born</b>								
Thousands of head	1.3	25.0	24.0	56.0	2,163.9	1,804.6	4,074.8	7,836.1
Percentage change from previous year	18.2	0.4	-33.3	-17.0	2.7	-16.6	-7.4	-7.3

Table 2-1 – continued

## Sows farrowed, pigs born and farrowing intentions — Eastern provinces

	Newfoundland and Labrador	Prince Edward Island	Nova Scotia	New Brunswick	Quebec	Ontario	Eastern provinces	Canada
<b>January to March 2010</b>								
<b>Sows farrowed</b>								
Thousands of head	0.1	2.3	2.4	5.0	204.2	169.3	383.3	723.0
Percentage change from previous year	0.0	15.0	-29.4	-20.6	-1.7	-7.0	-4.6	-4.2
<b>Pigs born</b>								
Thousands of head	1.3	26.1	26.0	53.5	2,138.5	1,785.7	4,031.1	7,837.3
Percentage change from previous year	18.2	24.3	-25.7	-21.3	-1.8	-6.9	-4.5	-3.8
<b>April to June 2010</b>								
<b>Sows farrowed</b>								
Thousands of head	0.1	2.3	2.6	5.2	191.4	172.0	373.6	702.5
Percentage change from previous year	0.0	0.0	23.8	-16.1	0.5	-7.3	-3.4	-4.6
<b>Pigs born</b>								
Thousands of head	1.1	26.6	28.0	55.9	2,013.8	1,805.2	3,930.6	7,614.6
Percentage change from previous year	-21.4	10.8	24.4	-14.0	0.5	-7.4	-3.3	-4.4
<b>July to September 2010</b>								
<b>Sows farrowed</b>								
Thousands of head	0.1	2.3	2.5	5.4	197.4	172.0	379.7	710.7
Percentage change from previous year	0.0	4.5	19.0	-1.8	-2.6	-8.0	-5.0	-3.4
<b>Pigs born</b>								
Thousands of head	1.3	25.5	27.0	59.5	2,064.8	1,811.6	3,989.7	7,695.8
Percentage change from previous year	0.0	11.8	22.7	-0.8	-3.0	-7.7	-4.9	-3.3
<b>October to December 2010</b>								
<b>Sows farrowed</b>								
Thousands of head	x	2.3	x	5.2	203.6	173.3	387.1	713.5
Percentage change from previous year	x	0.0	x	0.0	-1.3	1.1	-0.1	-1.4
<b>Pigs born</b>								
Thousands of head	x	26.0	x	57.0	2,128.5	1,824.2	4,065.3	7,718.8
Percentage change from previous year	x	4.0	x	1.8	-1.6	1.1	-0.2	-1.5
<b>January to March 2011</b>								
<b>Sows farrowed</b>								
Thousands of head	x	2.7	x	5.4	202.5	172.2	385.6	708.2
Percentage change from previous year	x	17.4	x	8.0	-0.8	1.7	0.6	-2.0
<b>Pigs born</b>								
Thousands of head	x	32.0	x	62.0	2,126.8	1,808.3	4,060.9	7,659.4
Percentage change from previous year	x	22.6	x	15.9	-0.5	1.3	0.7	-2.3
<b>April to June 2011</b>								
<b>Sows farrowed</b>								
Thousands of head	x	2.8	x	5.4	186.0	161.1	358.5	678.3
Percentage change from previous year	x	21.7	x	3.8	-2.8	-6.3	-4.0	-3.4
<b>Pigs born</b>								
Thousands of head	x	33.0	x	62.6	2,013.3	1,691.6	3,836.6	7,417.6
Percentage change from previous year	x	24.1	x	12.0	0.0	-6.3	-2.4	-2.6
<b>Farrowing intentions</b>								
<b>July to September 2011</b>								
Thousands of head	x	2.9	x	5.5	200.6	175.0	386.8	710.0
Percentage change from previous year	x	26.1	x	1.9	1.6	1.7	1.9	-0.1
<b>October to December 2011</b>								
Thousands of head	x	2.6	x	5.6	202.8	176.8	390.8	715.2
Percentage change from previous year	x	13.0	x	7.7	-0.4	2.0	1.0	0.2

Table 2-2

## Sows farrowed, pigs born and farrowing intentions — Western provinces

	Manitoba	Saskatchewan	Alberta	British Columbia	Western provinces	Canada
<b>January to March 2004</b>						
<b>Sows farrowed</b>						
Thousands of head	212.9	72.7	100.7	9.0	395.3	873.0
Percentage change from previous year	21.2	17.4	2.9	-7.2	14.5	8.2
<b>Pigs born</b>						
Thousands of head	2,264.6	740.6	1,025.8	89.7	4,120.7	9,104.3
Percentage change from previous year	24.1	18.7	3.0	-7.2	16.4	9.2
<b>April to June 2004</b>						
<b>Sows farrowed</b>						
Thousands of head	204.1	74.0	104.1	10.0	392.2	861.3
Percentage change from previous year	5.1	9.8	13.2	-2.0	7.8	7.1
<b>Pigs born</b>						
Thousands of head	2,177.3	752.1	1,067.2	100.8	4,097.4	8,983.1
Percentage change from previous year	6.9	10.6	14.2	-1.4	9.2	7.7
<b>July to September 2004</b>						
<b>Sows farrowed</b>						
Thousands of head	211.9	62.9	101.8	9.6	386.2	851.8
Percentage change from previous year	4.3	-2.3	4.0	0.0	3.0	2.5
<b>Pigs born</b>						
Thousands of head	2,269.1	644.8	1,044.8	97.0	4,055.7	8,905.4
Percentage change from previous year	6.2	-1.0	5.6	0.9	4.7	3.3
<b>October to December 2004</b>						
<b>Sows farrowed</b>						
Thousands of head	224.6	72.8	111.9	9.2	418.5	896.5
Percentage change from previous year	6.2	3.6	5.6	-11.5	5.1	2.8
<b>Pigs born</b>						
Thousands of head	2,419.9	748.7	1,155.1	92.2	4,415.9	9,394.8
Percentage change from previous year	8.0	4.8	7.0	-11.2	6.7	3.4
<b>January to March 2005</b>						
<b>Sows farrowed</b>						
Thousands of head	226.0	71.3	103.4	9.9	410.6	874.1
Percentage change from previous year	6.2	-1.9	2.7	10.0	3.9	0.1
<b>Pigs born</b>						
Thousands of head	2,448.8	732.1	1,071.5	99.3	4,351.7	9,189.4
Percentage change from previous year	8.1	-1.1	4.5	10.7	5.6	0.9
<b>April to June 2005</b>						
<b>Sows farrowed</b>						
Thousands of head	215.4	72.0	104.4	9.3	401.1	852.5
Percentage change from previous year	5.5	-2.7	0.3	-7.0	2.3	-1.0
<b>Pigs born</b>						
Thousands of head	2,350.6	738.0	1,083.6	94.7	4,266.9	8,983.4
Percentage change from previous year	8.0	-1.9	1.5	-6.1	4.1	0.0
<b>July to September 2005</b>						
<b>Sows farrowed</b>						
Thousands of head	222.4	70.5	107.9	9.1	409.9	855.5
Percentage change from previous year	5.0	12.1	6.0	-5.2	6.1	0.4
<b>Pigs born</b>						
Thousands of head	2,438.8	726.5	1,121.5	92.9	4,379.7	9,033.6
Percentage change from previous year	7.5	12.7	7.3	-4.2	8.0	1.4
<b>October to December 2005</b>						
<b>Sows farrowed</b>						
Thousands of head	229.3	66.7	108.2	9.6	413.8	852.7
Percentage change from previous year	2.1	-8.4	-3.3	4.3	-1.1	-4.9
<b>Pigs born</b>						
Thousands of head	2,527.9	689.6	1,130.4	97.1	4,445.0	9,024.8
Percentage change from previous year	4.5	-7.9	-2.1	5.3	0.7	-3.9

Table 2-2 – continued

## Sows farrowed, pigs born and farrowing intentions — Western provinces

	Manitoba	Saskatchewan	Alberta	British Columbia	Western provinces	Canada
<b>January to March 2006</b>						
<b>Sows farrowed</b>						
Thousands of head	222.9	72.8	109.8	8.8	414.3	856.1
Percentage change from previous year	-1.4	2.1	6.2	-11.1	0.9	-2.1
<b>Pigs born</b>						
Thousands of head	2,463.4	751.8	1,152.2	89.2	4,456.6	9,075.5
Percentage change from previous year	0.6	2.7	7.5	-10.2	2.4	-1.2
<b>April to June 2006</b>						
<b>Sows farrowed</b>						
Thousands of head	223.5	71.8	107.8	9.6	412.7	812.0
Percentage change from previous year	3.8	-0.3	3.3	3.2	2.9	-4.8
<b>Pigs born</b>						
Thousands of head	2,487.0	739.7	1,132.4	98.0	4,457.1	8,637.1
Percentage change from previous year	5.8	0.2	4.5	3.5	4.5	-3.9
<b>July to September 2006</b>						
<b>Sows farrowed</b>						
Thousands of head	221.1	72.2	104.5	9.0	406.8	815.9
Percentage change from previous year	-0.6	2.4	-3.2	-1.1	-0.8	-4.6
<b>Pigs born</b>						
Thousands of head	2,469.3	748.7	1,104.3	92.2	4,414.5	8,695.2
Percentage change from previous year	1.3	3.1	-1.5	-0.8	0.8	-3.7
<b>October to December 2006</b>						
<b>Sows farrowed</b>						
Thousands of head	225.7	71.7	105.0	9.3	411.7	845.7
Percentage change from previous year	-1.6	7.5	-3.0	-3.1	-0.5	-0.8
<b>Pigs born</b>						
Thousands of head	2,533.7	746.0	1,112.4	94.5	4,486.6	9,025.6
Percentage change from previous year	0.2	8.2	-1.6	-2.7	0.9	0.0
<b>January to March 2007</b>						
<b>Sows farrowed</b>						
Thousands of head	223.0	75.3	101.4	9.2	408.9	824.7
Percentage change from previous year	0.0	3.4	-7.7	4.5	-1.3	-3.7
<b>Pigs born</b>						
Thousands of head	2,509.8	781.3	1,077.7	93.8	4,462.6	8,819.7
Percentage change from previous year	1.9	3.9	-6.5	5.2	0.1	-2.8
<b>April to June 2007</b>						
<b>Sows farrowed</b>						
Thousands of head	230.2	74.3	98.4	9.3	412.2	809.5
Percentage change from previous year	3.0	3.5	-8.7	-3.1	-0.1	-0.3
<b>Pigs born</b>						
Thousands of head	2,600.3	770.8	1,047.1	95.4	4,513.6	8,678.0
Percentage change from previous year	4.6	4.2	-7.5	-2.7	1.3	0.5
<b>July to September 2007</b>						
<b>Sows farrowed</b>						
Thousands of head	221.0	71.7	92.4	9.5	394.6	794.4
Percentage change from previous year	0.0	-0.7	-11.6	5.6	-3.0	-2.6
<b>Pigs born</b>						
Thousands of head	2,497.0	746.7	982.7	97.7	4,324.1	8,511.6
Percentage change from previous year	1.1	-0.3	-11.0	6.0	-2.0	-2.1
<b>October to December 2007</b>						
<b>Sows farrowed</b>						
Thousands of head	228.5	76.4	94.6	9.3	408.8	828.8
Percentage change from previous year	1.2	6.6	-9.9	0.0	-0.7	-2.0
<b>Pigs born</b>						
Thousands of head	2,585.0	795.6	1,010.0	94.9	4,485.5	8,882.3
Percentage change from previous year	2.0	6.6	-9.2	0.4	0.0	-1.6



Table 2-2 – continued

## Sows farrowed, pigs born and farrowing intentions — Western provinces

	Manitoba	Saskatchewan	Alberta	British Columbia	Western provinces	Canada
<b>January to March 2008</b>						
<b>Sows farrowed</b>						
Thousands of head	227.6	72.2	92.0	9.2	401.0	805.4
Percentage change from previous year	2.1	-4.1	-9.3	0.0	-1.9	-2.3
<b>Pigs born</b>						
Thousands of head	2,576.3	760.7	987.0	94.5	4,418.5	8,658.2
Percentage change from previous year	2.6	-2.6	-8.4	0.7	-1.0	-1.8
<b>April to June 2008</b>						
<b>Sows farrowed</b>						
Thousands of head	210.0	76.0	91.2	9.4	386.6	792.2
Percentage change from previous year	-8.8	2.3	-7.3	1.1	-6.2	-2.1
<b>Pigs born</b>						
Thousands of head	2,379.4	809.1	978.6	96.7	4,263.8	8,518.4
Percentage change from previous year	-8.5	5.0	-6.5	1.4	-5.5	-1.8
<b>July to September 2008</b>						
<b>Sows farrowed</b>						
Thousands of head	205.8	66.4	87.2	8.7	368.1	771.6
Percentage change from previous year	-6.9	-7.4	-5.6	-8.4	-6.7	-2.9
<b>Pigs born</b>						
Thousands of head	2,335.5	712.4	934.8	89.5	4,072.2	8,297.1
Percentage change from previous year	-6.5	-4.6	-4.9	-8.4	-5.8	-2.5
<b>October to December 2008</b>						
<b>Sows farrowed</b>						
Thousands of head	206.7	60.6	90.0	9.3	366.6	786.1
Percentage change from previous year	-9.5	-20.7	-4.9	0.0	-10.3	-5.2
<b>Pigs born</b>						
Thousands of head	2,350.7	649.4	958.5	95.7	4,054.3	8,454.7
Percentage change from previous year	-9.1	-18.4	-5.1	0.8	-9.6	-4.8
<b>January to March 2009</b>						
<b>Sows farrowed</b>						
Thousands of head	208.3	52.8	84.0	8.0	353.1	754.7
Percentage change from previous year	-8.5	-26.9	-8.7	-13.0	-11.9	-6.3
<b>Pigs born</b>						
Thousands of head	2,375.0	568.2	899.8	82.4	3,925.4	8,146.2
Percentage change from previous year	-7.8	-25.3	-8.8	-12.8	-11.2	-5.9
<b>April to June 2009</b>						
<b>Sows farrowed</b>						
Thousands of head	206.0	57.3	78.9	7.7	349.9	736.7
Percentage change from previous year	-1.9	-24.6	-13.5	-18.1	-9.5	-7.0
<b>Pigs born</b>						
Thousands of head	2,346.5	626.3	846.0	79.6	3,898.4	7,964.3
Percentage change from previous year	-1.4	-22.6	-13.5	-17.7	-8.6	-6.5
<b>July to September 2009</b>						
<b>Sows farrowed</b>						
Thousands of head	201.4	49.0	77.7	7.9	336.0	735.5
Percentage change from previous year	-2.1	-26.2	-10.9	-9.2	-8.7	-4.7
<b>Pigs born</b>						
Thousands of head	2,310.8	535.6	832.4	81.5	3,760.3	7,956.7
Percentage change from previous year	-1.1	-24.8	-11.0	-8.9	-7.7	-4.1
<b>October to December 2009</b>						
<b>Sows farrowed</b>						
Thousands of head	199.6	48.8	80.3	7.3	336.0	723.5
Percentage change from previous year	-3.4	-19.5	-10.8	-21.5	-8.3	-8.0
<b>Pigs born</b>						
Thousands of head	2,294.5	532.9	858.8	75.1	3,761.3	7,836.1
Percentage change from previous year	-2.4	-17.9	-10.4	-21.5	-7.2	-7.3

Table 2-2 – continued

## Sows farrowed, pigs born and farrowing intentions — Western provinces

	Manitoba	Saskatchewan	Alberta	British Columbia	Western provinces	Canada
<b>January to March 2010</b>						
<b>Sows farrowed</b>						
Thousands of head	200.3	51.3	81.4	6.7	339.7	723.0
Percentage change from previous year	-3.8	-2.8	-3.1	-16.2	-3.8	-4.2
<b>Pigs born</b>						
Thousands of head	2,312.5	557.4	867.1	69.2	3,806.2	7,837.3
Percentage change from previous year	-2.6	-1.9	-3.6	-16.0	-3.0	-3.8
<b>April to June 2010</b>						
<b>Sows farrowed</b>						
Thousands of head	190.5	51.4	81.1	5.9	328.9	702.5
Percentage change from previous year	-7.5	-10.3	2.8	-23.4	-6.0	-4.6
<b>Pigs born</b>						
Thousands of head	2,196.5	562.3	864.5	60.7	3,684.0	7,614.6
Percentage change from previous year	-6.4	-10.2	2.2	-23.7	-5.5	-4.4
<b>July to September 2010</b>						
<b>Sows farrowed</b>						
Thousands of head	195.6	51.8	77.9	5.7	331.0	710.7
Percentage change from previous year	-2.9	5.7	0.3	-27.8	-1.5	-3.4
<b>Pigs born</b>						
Thousands of head	2,246.6	564.3	836.6	58.6	3,706.1	7,695.8
Percentage change from previous year	-2.8	5.4	0.5	-28.1	-1.4	-3.3
<b>October to December 2010</b>						
<b>Sows farrowed</b>						
Thousands of head	190.2	55.0	75.3	5.9	326.4	713.5
Percentage change from previous year	-4.7	12.7	-6.2	-19.2	-2.9	-1.4
<b>Pigs born</b>						
Thousands of head	2,186.2	597.5	809.2	60.6	3,653.5	7,718.8
Percentage change from previous year	-4.7	12.1	-5.8	-19.3	-2.9	-1.5
<b>January to March 2011</b>						
<b>Sows farrowed</b>						
Thousands of head	184.3	56.3	77.3	4.7	322.6	708.2
Percentage change from previous year	-8.0	9.7	-5.0	-29.9	-5.0	-2.0
<b>Pigs born</b>						
Thousands of head	2,128.2	597.2	824.7	48.4	3,598.5	7,659.4
Percentage change from previous year	-8.0	7.1	-4.9	-30.1	-5.5	-2.3
<b>April to June 2011</b>						
<b>Sows farrowed</b>						
Thousands of head	183.6	55.2	74.9	6.1	319.8	678.3
Percentage change from previous year	-3.6	7.4	-7.6	3.4	-2.8	-3.4
<b>Pigs born</b>						
Thousands of head	2,104.5	601.7	812.0	62.8	3,581.0	7,417.6
Percentage change from previous year	-4.2	7.0	-6.1	3.5	-2.8	-2.6
<b>Farrowing intentions</b>						
<b>July to September 2011</b>						
Thousands of head	184.3	55.1	77.9	5.9	323.2	710.0
Percentage change from previous year	-5.8	6.4	0.0	3.5	-2.4	-0.1
<b>October to December 2011</b>						
Thousands of head	185.0	55.6	78.1	5.7	324.4	715.2
Percentage change from previous year	-2.7	1.1	3.7	-3.4	-0.6	0.2

**Table 3-1**  
**Hogs, supply and disposition — Eastern provinces**

	Newfoundland and Labrador	Prince Edward Island	Nova Scotia	New Brunswick	Quebec	Ontario	Eastern provinces	Canada
thousands of head								
<b>January to March 2004</b>								
Beginning inventory	2.3	132.0	108.0	124.0	4,250.0	3,780.7	8,397.0	14,725.0
Pig crop <sup>1</sup>	1.6	59.8	49.1	51.1	2,023.9	2,330.7	4,516.2	8,321.1
Interprovincial imports	0.0	0.0	3.0	0.0	20.6	10.8	34.4	55.2
International imports	0.0	0.0	0.0	0.0	0.1	0.0	0.1	1.6
<b>Total supply</b>	<b>3.9</b>	<b>191.8</b>	<b>160.1</b>	<b>175.1</b>	<b>6,294.6</b>	<b>6,122.2</b>	<b>12,947.7</b>	<b>23,102.9</b>
Interprovincial exports	0.0	0.0	0.0	6.5	1.0	15.6	23.1	55.2
International exports <sup>2</sup>	0.0	0.0	0.0	0.2	3.3	875.1	878.6	2,209.4
Deaths and condemnations	0.1	3.2	2.7	2.2	121.1	112.2	241.5	431.0
Other disposition <sup>3</sup>	1.1	58.6	50.4	41.2	1,949.2	1,327.0	3,427.5	5,732.3
<b>Output</b>	<b>1.2</b>	<b>61.8</b>	<b>53.1</b>	<b>50.1</b>	<b>2,074.6</b>	<b>2,329.9</b>	<b>4,570.7</b>	<b>8,427.9</b>
Ending inventory	2.7	130.0	107.0	125.0	4,220.0	3,792.3	8,377.0	14,675.0
<b>Total disposition</b>	<b>3.9</b>	<b>191.8</b>	<b>160.1</b>	<b>175.1</b>	<b>6,294.6</b>	<b>6,122.2</b>	<b>12,947.7</b>	<b>23,102.9</b>
<b>April to June 2004</b>								
Beginning inventory	2.7	130.0	107.0	125.0	4,220.0	3,792.3	8,377.0	14,675.0
Pig crop <sup>1</sup>	0.9	56.6	43.2	49.4	2,044.9	2,229.9	4,424.9	8,214.6
Interprovincial imports	0.0	0.0	4.0	0.0	28.6	11.3	43.9	63.9
International imports	0.0	0.0	0.0	0.0	0.0	0.2	0.2	1.0
<b>Total supply</b>	<b>3.6</b>	<b>186.6</b>	<b>154.2</b>	<b>174.4</b>	<b>6,293.5</b>	<b>6,033.7</b>	<b>12,846.0</b>	<b>22,954.5</b>
Interprovincial exports	0.0	0.0	0.0	7.9	1.0	16.0	24.9	63.9
International exports <sup>2</sup>	0.0	1.2	0.0	0.5	1.4	771.1	774.2	2,033.6
Deaths and condemnations	0.0	3.0	2.6	2.2	132.2	105.3	245.3	425.9
Other disposition <sup>3</sup>	1.0	54.4	49.6	40.8	1,808.9	1,291.9	3,246.6	5,451.1
<b>Output</b>	<b>1.0</b>	<b>58.6</b>	<b>52.2</b>	<b>51.4</b>	<b>1,943.5</b>	<b>2,184.3</b>	<b>4,291.0</b>	<b>7,974.5</b>
Ending inventory	2.6	128.0	102.0	123.0	4,350.0	3,849.4	8,555.0	14,980.0
<b>Total disposition</b>	<b>3.6</b>	<b>186.6</b>	<b>154.2</b>	<b>174.4</b>	<b>6,293.5</b>	<b>6,033.7</b>	<b>12,846.0</b>	<b>22,954.5</b>
<b>July to September 2004</b>								
Beginning inventory	2.6	128.0	102.0	123.0	4,350.0	3,849.4	8,555.0	14,980.0
Pig crop <sup>1</sup>	1.1	60.1	45.0	51.3	2,014.8	2,225.0	4,397.3	8,136.5
Interprovincial imports	0.0	0.0	4.0	0.0	32.2	11.0	47.2	71.4
International imports	0.0	0.0	0.0	0.0	0.0	0.1	0.1	0.5
<b>Total supply</b>	<b>3.7</b>	<b>188.1</b>	<b>151.0</b>	<b>174.3</b>	<b>6,397.0</b>	<b>6,085.5</b>	<b>12,999.6</b>	<b>23,188.4</b>
Interprovincial exports	0.0	0.0	0.0	12.5	1.0	15.5	29.0	71.4
International exports <sup>2</sup>	0.0	0.3	0.0	0.3	5.2	806.2	812.0	2,187.4
Deaths and condemnations	0.1	3.0	2.6	2.2	140.0	110.5	258.4	445.8
Other disposition <sup>3</sup>	1.1	55.8	48.4	40.3	1,909.8	1,359.8	3,415.2	5,638.8
<b>Output</b>	<b>1.2</b>	<b>59.1</b>	<b>51.0</b>	<b>55.3</b>	<b>2,056.0</b>	<b>2,292.0</b>	<b>4,514.6</b>	<b>8,343.4</b>
Ending inventory	2.5	129.0	100.0	119.0	4,341.0	3,793.5	8,485.0	14,845.0
<b>Total disposition</b>	<b>3.7</b>	<b>188.1</b>	<b>151.0</b>	<b>174.3</b>	<b>6,397.0</b>	<b>6,085.5</b>	<b>12,999.6</b>	<b>23,188.4</b>
<b>October to December 2004</b>								
Beginning inventory	2.5	129.0	100.0	119.0	4,341.0	3,793.5	8,485.0	14,845.0
Pig crop <sup>1</sup>	0.9	60.0	46.1	50.7	2,054.5	2,296.8	4,509.0	8,570.1
Interprovincial imports	0.0	0.0	10.1	0.0	28.4	8.6	47.1	72.0
International imports	0.0	0.0	0.0	0.0	0.0	0.0	0.0	0.2
<b>Total supply</b>	<b>3.4</b>	<b>189.0</b>	<b>156.2</b>	<b>169.7</b>	<b>6,423.9</b>	<b>6,098.9</b>	<b>13,041.1</b>	<b>23,487.3</b>
Interprovincial exports	0.0	0.3	0.0	10.1	1.3	21.1	32.8	72.0
International exports <sup>2</sup>	0.0	0.0	0.0	0.1	10.8	688.0	698.9	2,080.7
Deaths and condemnations	0.1	3.2	2.8	2.3	145.9	121.9	276.2	474.6
Other disposition <sup>3</sup>	1.2	58.5	52.4	42.2	1,985.9	1,489.0	3,629.2	6,050.0
<b>Output</b>	<b>1.3</b>	<b>62.0</b>	<b>55.2</b>	<b>54.7</b>	<b>2,143.9</b>	<b>2,320.0</b>	<b>4,637.1</b>	<b>8,677.3</b>
Ending inventory	2.1	127.0	101.0	115.0	4,280.0	3,778.9	8,404.0	14,810.0
<b>Total disposition</b>	<b>3.4</b>	<b>189.0</b>	<b>156.2</b>	<b>169.7</b>	<b>6,423.9</b>	<b>6,098.9</b>	<b>13,041.1</b>	<b>23,487.3</b>

See notes at the end of the table.

Table 3-1 – continued

## Hogs, supply and disposition — Eastern provinces

	Newfoundland and Labrador	Prince Edward Island	Nova Scotia	New Brunswick	Quebec	Ontario	Eastern provinces	Canada
thousands of head								
<b>January to March 2005</b>								
Beginning inventory	2.1	127.0	101.0	115.0	4,280.0	3,778.9	8,404.0	14,810.0
Pig crop <sup>1</sup>	1.4	57.4	41.8	52.8	2,062.2	2,166.2	4,381.8	8,396.8
Interprovincial imports	0.0	0.0	6.5	0.0	30.0	10.8	47.3	79.2
International imports	0.0	0.0	0.0	0.0	0.0	0.0	0.0	0.1
<b>Total supply</b>	<b>3.5</b>	<b>184.4</b>	<b>149.3</b>	<b>167.8</b>	<b>6,372.2</b>	<b>5,955.9</b>	<b>12,833.1</b>	<b>23,286.1</b>
Interprovincial exports	0.0	0.2	0.0	15.0	1.0	16.3	32.5	79.2
International exports <sup>2</sup>	0.0	0.0	0.0	0.0	16.9	484.8	501.7	1,895.7
Deaths and condemnations	0.0	3.0	2.4	2.1	162.7	141.5	311.7	508.0
Other disposition <sup>3</sup>	1.0	55.2	44.9	39.7	1,926.6	1,403.8	3,471.2	5,843.2
<b>Output</b>	<b>1.0</b>	<b>58.4</b>	<b>47.3</b>	<b>56.8</b>	<b>2,107.2</b>	<b>2,046.4</b>	<b>4,317.1</b>	<b>8,326.1</b>
Ending inventory	2.5	126.0	102.0	111.0	4,265.0	3,909.5	8,516.0	14,960.0
<b>Total disposition</b>	<b>3.5</b>	<b>184.4</b>	<b>149.3</b>	<b>167.8</b>	<b>6,372.2</b>	<b>5,955.9</b>	<b>12,833.1</b>	<b>23,286.1</b>
<b>April to June 2005</b>								
Beginning inventory	2.5	126.0	102.0	111.0	4,265.0	3,909.5	8,516.0	14,960.0
Pig crop <sup>1</sup>	1.3	54.3	40.0	55.0	2,036.6	2,078.9	4,266.1	8,197.4
Interprovincial imports	0.0	0.0	8.5	0.0	31.2	11.3	51.0	83.0
International imports	0.0	0.0	0.0	0.0	0.0	0.0	0.0	0.3
<b>Total supply</b>	<b>3.8</b>	<b>180.3</b>	<b>150.5</b>	<b>166.0</b>	<b>6,332.8</b>	<b>5,999.7</b>	<b>12,833.1</b>	<b>23,240.7</b>
Interprovincial exports	0.0	0.2	0.0	18.0	1.0	16.0	35.2	83.0
International exports <sup>2</sup>	0.0	0.0	0.0	0.6	15.7	519.4	535.7	1,952.4
Deaths and condemnations	0.1	2.9	2.5	2.1	203.7	178.7	390.0	582.1
Other disposition <sup>3</sup>	1.1	52.2	46.0	38.3	1,728.4	1,290.2	3,156.2	5,428.2
<b>Output</b>	<b>1.2</b>	<b>55.3</b>	<b>48.5</b>	<b>59.0</b>	<b>1,948.8</b>	<b>2,004.3</b>	<b>4,117.1</b>	<b>8,045.7</b>
Ending inventory	2.6	125.0	102.0	107.0	4,384.0	3,995.4	8,716.0	15,195.0
<b>Total disposition</b>	<b>3.8</b>	<b>180.3</b>	<b>150.5</b>	<b>166.0</b>	<b>6,332.8</b>	<b>5,999.7</b>	<b>12,833.1</b>	<b>23,240.7</b>
<b>July to September 2005</b>								
Beginning inventory	2.6	125.0	102.0	107.0	4,384.0	3,995.4	8,716.0	15,195.0
Pig crop <sup>1</sup>	0.6	56.6	41.8	56.9	1,993.5	2,060.0	4,209.4	8,224.6
Interprovincial imports	0.0	0.0	7.0	0.0	33.0	11.0	51.0	85.2
International imports	0.0	0.0	0.0	0.0	0.0	0.0	0.0	0.3
<b>Total supply</b>	<b>3.2</b>	<b>181.6</b>	<b>150.8</b>	<b>163.9</b>	<b>6,410.5</b>	<b>6,066.4</b>	<b>12,976.4</b>	<b>23,505.1</b>
Interprovincial exports	0.0	0.1	0.0	19.0	1.0	15.5	35.6	85.2
International exports <sup>2</sup>	0.0	6.9	0.1	0.0	34.0	555.8	596.8	2,169.3
Deaths and condemnations	0.0	2.8	2.5	2.0	190.5	167.6	365.4	563.2
Other disposition <sup>3</sup>	1.0	46.8	47.7	37.4	1,800.0	1,313.7	3,246.6	5,482.4
<b>Output</b>	<b>1.0</b>	<b>56.6</b>	<b>50.3</b>	<b>58.4</b>	<b>2,025.5</b>	<b>2,052.6</b>	<b>4,244.4</b>	<b>8,300.1</b>
Ending inventory	2.2	125.0	100.5	105.5	4,385.0	4,013.8	8,732.0	15,205.0
<b>Total disposition</b>	<b>3.2</b>	<b>181.6</b>	<b>150.8</b>	<b>163.9</b>	<b>6,410.5</b>	<b>6,066.4</b>	<b>12,976.4</b>	<b>23,505.1</b>
<b>October to December 2005</b>								
Beginning inventory	2.2	125.0	100.5	105.5	4,385.0	4,013.8	8,732.0	15,205.0
Pig crop <sup>1</sup>	0.9	51.9	42.9	55.1	1,945.4	2,046.4	4,142.6	8,200.9
Interprovincial imports	0.0	0.0	7.9	0.0	28.2	10.9	47.0	83.5
International imports	0.0	0.0	0.0	0.0	0.0	0.0	0.0	0.1
<b>Total supply</b>	<b>3.1</b>	<b>176.9</b>	<b>151.3</b>	<b>160.6</b>	<b>6,358.6</b>	<b>6,071.1</b>	<b>12,921.6</b>	<b>23,489.5</b>
Interprovincial exports	0.0	0.2	0.0	17.0	1.4	22.2	40.8	83.5
International exports <sup>2</sup>	0.0	4.2	0.0	2.0	31.7	584.5	622.4	2,197.6
Deaths and condemnations	0.1	2.7	2.5	2.0	174.3	151.5	333.1	532.3
Other disposition <sup>3</sup>	1.2	46.8	46.8	35.6	1,814.2	1,361.7	3,306.3	5,566.1
<b>Output</b>	<b>1.3</b>	<b>53.9</b>	<b>49.3</b>	<b>56.6</b>	<b>2,021.6</b>	<b>2,119.9</b>	<b>4,302.6</b>	<b>8,379.5</b>
Ending inventory	1.8	123.0	102.0	104.0	4,337.0	3,951.2	8,619.0	15,110.0
<b>Total disposition</b>	<b>3.1</b>	<b>176.9</b>	<b>151.3</b>	<b>160.6</b>	<b>6,358.6</b>	<b>6,071.1</b>	<b>12,921.6</b>	<b>23,489.5</b>

See notes at the end of the table.

Table 3-1 – continued

## Hogs, supply and disposition — Eastern provinces

	Newfoundland and Labrador	Prince Edward Island	Nova Scotia	New Brunswick	Quebec	Ontario	Eastern provinces	Canada
thousands of head								
<b>January to March 2006</b>								
Beginning inventory	1.8	123.0	102.0	104.0	4,337.0	3,951.2	8,619.0	15,110.0
Pig crop <sup>1</sup>	1.5	53.8	39.9	57.0	1,934.0	2,095.7	4,181.9	8,256.7
Interprovincial imports	0.0	0.0	7.4	0.0	27.9	10.1	45.4	80.4
International imports	0.0	0.0	0.0	0.0	0.0	0.1	0.1	0.1
<b>Total supply</b>	<b>3.3</b>	<b>176.8</b>	<b>149.3</b>	<b>161.0</b>	<b>6,298.9</b>	<b>6,057.1</b>	<b>12,846.4</b>	<b>23,447.2</b>
Interprovincial exports	0.0	0.2	0.0	15.0	1.0	17.2	33.4	80.4
International exports <sup>2</sup>	0.0	0.1	0.1	5.9	12.2	592.1	610.4	2,136.5
Deaths and condemnations	0.1	2.8	2.6	2.1	163.7	144.5	315.8	516.8
Other disposition <sup>3</sup>	1.2	50.2	49.6	33.8	1,862.0	1,346.0	3,342.8	5,683.5
<b>Output</b>	<b>1.3</b>	<b>53.3</b>	<b>52.3</b>	<b>56.8</b>	<b>2,038.9</b>	<b>2,099.8</b>	<b>4,302.4</b>	<b>8,417.2</b>
Ending inventory	2.0	123.5	97.0	104.2	4,260.0	3,957.3	8,544.0	15,030.0
<b>Total disposition</b>	<b>3.3</b>	<b>176.8</b>	<b>149.3</b>	<b>161.0</b>	<b>6,298.9</b>	<b>6,057.1</b>	<b>12,846.4</b>	<b>23,447.2</b>
<b>April to June 2006</b>								
Beginning inventory	2.0	123.5	97.0	104.2	4,260.0	3,957.3	8,544.0	15,030.0
Pig crop <sup>1</sup>	1.2	50.5	36.2	58.2	1,807.7	1,826.2	3,780.0	7,875.0
Interprovincial imports	0.0	0.0	7.7	0.0	18.6	11.7	38.0	69.2
International imports	0.0	0.0	0.0	0.0	0.0	0.0	0.0	0.1
<b>Total supply</b>	<b>3.2</b>	<b>174.0</b>	<b>140.9</b>	<b>162.4</b>	<b>6,086.3</b>	<b>5,795.2</b>	<b>12,362.0</b>	<b>22,974.3</b>
Interprovincial exports	0.0	0.2	0.0	14.8	1.0	13.6	29.6	69.2
International exports <sup>2</sup>	0.0	0.0	0.0	5.7	14.2	520.6	540.5	2,090.0
Deaths and condemnations	0.1	2.6	4.8	2.1	154.6	136.4	300.6	498.7
Other disposition <sup>3</sup>	1.1	48.2	43.1	32.4	1,666.5	1,195.0	2,986.3	5,251.4
<b>Output</b>	<b>1.2</b>	<b>51.0</b>	<b>47.9</b>	<b>55.0</b>	<b>1,836.3</b>	<b>1,865.6</b>	<b>3,857.0</b>	<b>7,909.3</b>
Ending inventory	2.0	123.0	93.0	107.4	4,250.0	3,929.6	8,505.0	15,065.0
<b>Total disposition</b>	<b>3.2</b>	<b>174.0</b>	<b>140.9</b>	<b>162.4</b>	<b>6,086.3</b>	<b>5,795.2</b>	<b>12,362.0</b>	<b>22,974.3</b>
<b>July to September 2006</b>								
Beginning inventory	2.0	123.0	93.0	107.4	4,250.0	3,929.6	8,505.0	15,065.0
Pig crop <sup>1</sup>	1.2	53.8	36.7	58.0	1,804.3	1,921.2	3,875.2	7,930.0
Interprovincial imports	0.0	0.0	8.2	0.0	22.0	10.3	40.5	71.7
International imports	0.0	0.0	0.0	0.0	0.0	0.2	0.2	0.3
<b>Total supply</b>	<b>3.2</b>	<b>176.8</b>	<b>137.9</b>	<b>165.4</b>	<b>6,076.3</b>	<b>5,861.3</b>	<b>12,420.9</b>	<b>23,067.0</b>
Interprovincial exports	0.0	0.1	0.0	14.8	1.0	12.7	28.6	71.7
International exports <sup>2</sup>	0.0	0.0	0.1	8.0	11.0	543.5	562.6	2,205.6
Deaths and condemnations	0.1	2.8	2.3	2.2	133.0	117.7	258.1	460.8
Other disposition <sup>3</sup>	1.1	50.4	42.5	32.9	1,761.3	1,276.4	3,164.6	5,428.9
<b>Output</b>	<b>1.2</b>	<b>53.3</b>	<b>44.9</b>	<b>57.9</b>	<b>1,906.3</b>	<b>1,950.3</b>	<b>4,013.9</b>	<b>8,167.0</b>
Ending inventory	2.0	123.5	93.0	107.5	4,170.0	3,911.0	8,407.0	14,900.0
<b>Total disposition</b>	<b>3.2</b>	<b>176.8</b>	<b>137.9</b>	<b>165.4</b>	<b>6,076.3</b>	<b>5,861.3</b>	<b>12,420.9</b>	<b>23,067.0</b>
<b>October to December 2006</b>								
Beginning inventory	2.0	123.5	93.0	107.5	4,170.0	3,911.0	8,407.0	14,900.0
Pig crop <sup>1</sup>	1.2	53.8	36.7	54.6	1,916.2	2,042.7	4,105.2	8,215.8
Interprovincial imports	0.0	0.0	8.6	0.0	19.3	10.5	38.4	74.9
International imports	0.0	0.0	0.0	0.0	0.0	0.0	0.0	0.1
<b>Total supply</b>	<b>3.2</b>	<b>177.3</b>	<b>138.3</b>	<b>162.1</b>	<b>6,105.5</b>	<b>5,964.2</b>	<b>12,550.6</b>	<b>23,190.8</b>
Interprovincial exports	0.0	0.1	0.0	14.0	1.4	17.7	33.2	74.9
International exports <sup>2</sup>	0.0	0.0	0.0	4.8	16.4	573.7	594.9	2,344.9
Deaths and condemnations	0.1	2.8	2.3	2.2	114.2	114.8	236.4	438.8
Other disposition <sup>3</sup>	1.2	50.9	43.0	35.6	1,799.5	1,333.9	3,264.1	5,425.2
<b>Output</b>	<b>1.3</b>	<b>53.8</b>	<b>45.3</b>	<b>56.6</b>	<b>1,931.5</b>	<b>2,040.1</b>	<b>4,128.6</b>	<b>8,283.8</b>
Ending inventory	1.9	123.5	93.0	105.5	4,174.0	3,924.1	8,422.0	14,907.0
<b>Total disposition</b>	<b>3.2</b>	<b>177.3</b>	<b>138.3</b>	<b>162.1</b>	<b>6,105.5</b>	<b>5,964.2</b>	<b>12,550.6</b>	<b>23,190.8</b>

See notes at the end of the table.

Table 3-1 – continued

## Hogs, supply and disposition — Eastern provinces

	Newfoundland and Labrador	Prince Edward Island	Nova Scotia	New Brunswick	Quebec	Ontario	Eastern provinces	Canada
thousands of head								
<b>January to March 2007</b>								
Beginning inventory	1.9	123.5	93.0	105.5	4,174.0	3,924.1	8,422.0	14,907.0
Pig crop <sup>1</sup>	1.0	44.1	36.0	58.1	1,892.0	1,908.9	3,940.1	8,036.0
Interprovincial imports	0.0	0.0	6.0	0.0	25.7	10.1	41.8	74.9
International imports	0.0	0.0	0.0	0.0	0.1	0.2	0.3	0.4
<b>Total supply</b>	<b>2.9</b>	<b>167.6</b>	<b>135.0</b>	<b>163.6</b>	<b>6,091.8</b>	<b>5,843.3</b>	<b>12,404.2</b>	<b>23,018.3</b>
Interprovincial exports	0.0	0.2	0.0	12.9	1.0	15.2	29.3	74.9
International exports <sup>2</sup>	0.0	0.0	1.1	13.0	16.0	543.9	574.0	2,303.8
Deaths and condemnations	0.0	2.5	2.3	2.4	100.7	101.3	209.2	414.0
Other disposition <sup>3</sup>	1.0	46.9	41.6	31.3	1,819.1	1,332.8	3,272.7	5,496.6
<b>Output</b>	<b>1.0</b>	<b>49.6</b>	<b>45.0</b>	<b>59.6</b>	<b>1,936.8</b>	<b>1,993.2</b>	<b>4,085.2</b>	<b>8,289.3</b>
Ending inventory	1.9	118.0	90.0	104.0	4,155.0	3,850.1	8,319.0	14,729.0
<b>Total disposition</b>	<b>2.9</b>	<b>167.6</b>	<b>135.0</b>	<b>163.6</b>	<b>6,091.8</b>	<b>5,843.3</b>	<b>12,404.2</b>	<b>23,018.3</b>
<b>April to June 2007</b>								
Beginning inventory	1.9	118.0	90.0	104.0	4,155.0	3,850.1	8,319.0	14,729.0
Pig crop <sup>1</sup>	1.0	42.0	39.2	56.0	1,794.3	1,820.9	3,753.4	7,902.5
Interprovincial imports	0.0	0.0	3.4	0.0	23.4	11.4	38.2	68.4
International imports	0.0	0.0	0.0	0.0	0.1	0.1	0.2	0.3
<b>Total supply</b>	<b>2.9</b>	<b>160.0</b>	<b>132.6</b>	<b>160.0</b>	<b>5,972.8</b>	<b>5,682.5</b>	<b>12,110.8</b>	<b>22,700.2</b>
Interprovincial exports	0.0	0.2	0.0	7.5	1.0	16.4	25.1	68.4
International exports <sup>2</sup>	0.0	0.0	6.1	18.1	15.6	437.0	476.8	2,375.2
Deaths and condemnations	0.1	2.5	2.2	2.7	94.0	92.3	193.8	398.0
Other disposition <sup>3</sup>	1.1	46.3	36.8	32.7	1,742.2	1,250.0	3,109.1	5,168.6
<b>Output</b>	<b>1.2</b>	<b>49.0</b>	<b>45.1</b>	<b>61.0</b>	<b>1,852.8</b>	<b>1,795.7</b>	<b>3,804.8</b>	<b>8,010.2</b>
Ending inventory	1.7	111.0	87.5	99.0	4,120.0	3,886.8	8,306.0	14,690.0
<b>Total disposition</b>	<b>2.9</b>	<b>160.0</b>	<b>132.6</b>	<b>160.0</b>	<b>5,972.8</b>	<b>5,682.5</b>	<b>12,110.8</b>	<b>22,700.2</b>
<b>July to September 2007</b>								
Beginning inventory	1.7	111.0	87.5	99.0	4,120.0	3,886.8	8,306.0	14,690.0
Pig crop <sup>1</sup>	1.2	39.5	35.7	57.7	1,836.2	1,816.3	3,786.6	7,766.3
Interprovincial imports	0.0	0.0	1.2	0.0	25.0	11.3	37.5	69.6
International imports	0.0	0.0	0.0	0.0	0.2	0.3	0.5	0.7
<b>Total supply</b>	<b>2.9</b>	<b>150.5</b>	<b>124.4</b>	<b>156.7</b>	<b>5,981.4</b>	<b>5,714.7</b>	<b>12,130.6</b>	<b>22,526.6</b>
Interprovincial exports	0.0	0.1	0.0	14.8	1.0	11.7	27.6	69.6
International exports <sup>2</sup>	0.0	0.0	10.7	15.1	13.2	496.6	535.6	2,475.2
Deaths and condemnations	0.1	2.2	2.2	2.1	96.9	91.4	194.9	398.9
Other disposition <sup>3</sup>	1.1	41.3	32.6	25.4	1,820.3	1,283.8	3,204.5	5,222.9
<b>Output</b>	<b>1.2</b>	<b>43.6</b>	<b>45.5</b>	<b>57.4</b>	<b>1,931.4</b>	<b>1,883.5</b>	<b>3,962.6</b>	<b>8,166.6</b>
Ending inventory	1.7	106.9	78.9	99.3	4,050.0	3,831.2	8,168.0	14,360.0
<b>Total disposition</b>	<b>2.9</b>	<b>150.5</b>	<b>124.4</b>	<b>156.7</b>	<b>5,981.4</b>	<b>5,714.7</b>	<b>12,130.6</b>	<b>22,526.6</b>
<b>October to December 2007</b>								
Beginning inventory	1.7	106.9	78.9	99.3	4,050.0	3,831.2	8,168.0	14,360.0
Pig crop <sup>1</sup>	0.9	38.4	33.3	56.5	1,871.4	1,978.2	3,978.7	8,130.6
Interprovincial imports	0.0	0.0	1.0	0.0	47.5	10.4	58.9	94.1
International imports	0.0	0.0	0.0	0.0	0.0	0.0	0.0	0.2
<b>Total supply</b>	<b>2.6</b>	<b>145.3</b>	<b>113.2</b>	<b>155.8</b>	<b>5,968.9</b>	<b>5,819.8</b>	<b>12,205.6</b>	<b>22,584.9</b>
Interprovincial exports	0.0	0.1	0.0	14.7	1.4	37.1	53.3	94.1
International exports <sup>2</sup>	0.0	0.0	14.2	17.6	22.3	633.9	688.0	2,877.4
Deaths and condemnations	0.1	2.5	2.2	2.4	99.2	103.8	210.2	422.4
Other disposition <sup>3</sup>	1.1	47.4	28.8	29.8	1,856.0	1,393.0	3,356.1	5,381.0
<b>Output</b>	<b>1.2</b>	<b>50.0</b>	<b>45.2</b>	<b>64.5</b>	<b>1,978.9</b>	<b>2,167.8</b>	<b>4,307.6</b>	<b>8,774.9</b>
Ending inventory	1.4	95.3	68.0	91.3	3,990.0	3,652.0	7,898.0	13,810.0
<b>Total disposition</b>	<b>2.6</b>	<b>145.3</b>	<b>113.2</b>	<b>155.8</b>	<b>5,968.9</b>	<b>5,819.8</b>	<b>12,205.6</b>	<b>22,584.9</b>

See notes at the end of the table.

Table 3-1 – continued

## Hogs, supply and disposition — Eastern provinces

	Newfoundland and Labrador	Prince Edward Island	Nova Scotia	New Brunswick	Quebec	Ontario	Eastern provinces	Canada
	thousands of head							
<b>January to March 2008</b>								
Beginning inventory	1.4	95.3	68.0	91.3	3,990.0	3,652.0	7,898.0	13,810.0
Pig crop <sup>1</sup>	1.1	28.3	31.9	53.1	1,882.3	1,861.1	3,857.8	7,952.2
Interprovincial imports	0.0	0.0	0.5	0.0	111.2	10.1	121.8	156.0
International imports	0.0	0.0	0.0	0.0	0.0	0.3	0.3	0.5
<b>Total supply</b>	<b>2.5</b>	<b>123.6</b>	<b>100.4</b>	<b>144.4</b>	<b>5,983.5</b>	<b>5,523.5</b>	<b>11,877.9</b>	<b>21,918.7</b>
Interprovincial exports	0.0	1.3	0.0	12.0	1.0	95.1	109.4	156.0
International exports <sup>2</sup>	0.0	0.0	24.0	19.4	23.3	586.6	653.3	2,916.2
Deaths and condemnations	0.0	2.3	2.3	2.1	102.6	101.1	210.4	424.2
Other disposition <sup>3</sup>	1.0	42.1	21.8	20.7	1,916.6	1,385.6	3,387.8	5,422.3
<b>Output</b>	<b>1.0</b>	<b>45.7</b>	<b>48.1</b>	<b>54.2</b>	<b>2,043.5</b>	<b>2,168.4</b>	<b>4,360.9</b>	<b>8,918.7</b>
Ending inventory	1.5	77.9	52.3	90.2	3,940.0	3,355.1	7,517.0	13,000.0
<b>Total disposition</b>	<b>2.5</b>	<b>123.6</b>	<b>100.4</b>	<b>144.4</b>	<b>5,983.5</b>	<b>5,523.5</b>	<b>11,877.9</b>	<b>21,918.7</b>
<b>April to June 2008</b>								
Beginning inventory	1.5	77.9	52.3	90.2	3,940.0	3,355.1	7,517.0	13,000.0
Pig crop <sup>1</sup>	1.0	25.9	39.5	59.7	1,952.3	1,783.3	3,861.7	7,802.3
Interprovincial imports	0.0	0.0	0.5	0.0	147.2	10.1	157.8	201.1
International imports	0.0	0.0	0.0	0.0	0.1	0.3	0.4	0.6
<b>Total supply</b>	<b>2.5</b>	<b>103.8</b>	<b>92.3</b>	<b>149.9</b>	<b>6,039.6</b>	<b>5,148.8</b>	<b>11,536.9</b>	<b>21,004.0</b>
Interprovincial exports	0.0	4.1	0.0	19.9	1.0	120.6	145.6	201.1
International exports <sup>2</sup>	0.0	0.2	35.0	22.7	8.5	393.9	460.3	2,151.3
Deaths and condemnations	0.0	1.9	2.6	2.2	98.6	87.8	193.1	428.3
Other disposition <sup>3</sup>	1.0	34.9	17.0	20.0	1,856.5	1,309.5	3,238.9	5,243.3
<b>Output</b>	<b>1.0</b>	<b>41.1</b>	<b>54.6</b>	<b>64.8</b>	<b>1,964.6</b>	<b>1,911.8</b>	<b>4,037.9</b>	<b>8,024.0</b>
Ending inventory	1.5	62.7	37.7	85.1	4,075.0	3,237.0	7,499.0	12,980.0
<b>Total disposition</b>	<b>2.5</b>	<b>103.8</b>	<b>92.3</b>	<b>149.9</b>	<b>6,039.6</b>	<b>5,148.8</b>	<b>11,536.9</b>	<b>21,004.0</b>
<b>July to September 2008</b>								
Beginning inventory	1.5	62.7	37.7	85.1	4,075.0	3,237.0	7,499.0	12,980.0
Pig crop <sup>1</sup>	1.2	27.5	41.1	60.0	1,859.7	1,856.8	3,846.3	7,579.9
Interprovincial imports	0.0	0.0	0.0	0.0	143.6	11.3	154.9	196.0
International imports	0.0	0.0	0.0	0.0	0.1	0.2	0.3	0.8
<b>Total supply</b>	<b>2.7</b>	<b>90.2</b>	<b>78.8</b>	<b>145.1</b>	<b>6,078.4</b>	<b>5,105.3</b>	<b>11,500.5</b>	<b>20,756.7</b>
Interprovincial exports	0.0	0.1	0.0	19.8	1.0	127.8	148.7	196.0
International exports <sup>2</sup>	0.0	0.2	37.5	19.7	8.4	405.0	470.8	2,203.8
Deaths and condemnations	0.0	1.8	2.3	2.2	102.6	86.7	195.6	401.4
Other disposition <sup>3</sup>	1.0	31.8	9.3	22.4	1,931.4	1,279.5	3,275.4	5,210.5
<b>Output</b>	<b>1.0</b>	<b>33.9</b>	<b>49.1</b>	<b>64.1</b>	<b>2,043.4</b>	<b>1,899.0</b>	<b>4,090.5</b>	<b>8,011.7</b>
Ending inventory	1.7	56.3	29.7	81.0	4,035.0	3,206.3	7,410.0	12,745.0
<b>Total disposition</b>	<b>2.7</b>	<b>90.2</b>	<b>78.8</b>	<b>145.1</b>	<b>6,078.4</b>	<b>5,105.3</b>	<b>11,500.5</b>	<b>20,756.7</b>
<b>October to December 2008</b>								
Beginning inventory	1.7	56.3	29.7	81.0	4,035.0	3,206.3	7,410.0	12,745.0
Pig crop <sup>1</sup>	1.1	23.2	34.8	62.7	1,935.7	1,953.2	4,010.7	7,750.0
Interprovincial imports	0.0	0.0	0.0	0.0	149.7	10.4	160.1	210.3
International imports	0.0	0.0	0.0	0.0	0.1	0.0	0.1	0.7
<b>Total supply</b>	<b>2.8</b>	<b>79.5</b>	<b>64.5</b>	<b>143.7</b>	<b>6,120.5</b>	<b>5,169.9</b>	<b>11,580.9</b>	<b>20,706.0</b>
Interprovincial exports	0.0	0.1	0.0	20.0	1.4	136.3	157.8	210.3
International exports <sup>2</sup>	0.0	0.7	25.9	22.2	11.5	410.5	470.8	2,085.9
Deaths and condemnations	0.1	1.4	1.7	2.2	103.2	94.5	203.1	399.6
Other disposition <sup>3</sup>	1.1	26.0	8.6	20.0	2,104.4	1,424.1	3,584.2	5,830.2
<b>Output</b>	<b>1.2</b>	<b>28.2</b>	<b>36.2</b>	<b>64.4</b>	<b>2,220.5</b>	<b>2,065.4</b>	<b>4,415.9</b>	<b>8,526.0</b>
Ending inventory	1.6	51.3	28.3	79.3	3,900.0	3,104.5	7,165.0	12,180.0
<b>Total disposition</b>	<b>2.8</b>	<b>79.5</b>	<b>64.5</b>	<b>143.7</b>	<b>6,120.5</b>	<b>5,169.9</b>	<b>11,580.9</b>	<b>20,706.0</b>

See notes at the end of the table.

Table 3-1 – continued

## Hogs, supply and disposition — Eastern provinces

	Newfoundland and Labrador	Prince Edward Island	Nova Scotia	New Brunswick	Quebec	Ontario	Eastern provinces	Canada
	thousands of head							
<b>January to March 2009</b>								
Beginning inventory	1.6	51.3	28.3	79.3	3,900.0	3,104.5	7,165.0	12,180.0
Pig crop <sup>1</sup>	1.1	19.4	33.4	63.3	2,022.1	1,719.9	3,859.2	7,472.3
Interprovincial imports	0.0	0.0	0.0	0.0	120.4	10.1	130.5	189.7
International imports	0.0	0.0	0.0	0.0	0.1	0.4	0.5	0.9
<b>Total supply</b>	<b>2.7</b>	<b>70.7</b>	<b>61.7</b>	<b>142.6</b>	<b>6,042.6</b>	<b>4,834.9</b>	<b>11,155.2</b>	<b>19,842.9</b>
Interprovincial exports	0.0	0.0	18.0	14.4	1.0	85.1	118.5	189.7
International exports <sup>2</sup>	0.0	0.0	8.0	28.2	10.9	331.2	378.3	1,761.4
Deaths and condemnations	0.1	1.2	0.9	2.6	106.4	87.1	198.3	378.8
Other disposition <sup>3</sup>	1.1	21.7	9.5	22.3	2,054.3	1,356.2	3,465.1	5,628.0
<b>Output</b>	<b>1.2</b>	<b>22.9</b>	<b>36.4</b>	<b>67.5</b>	<b>2,172.6</b>	<b>1,859.6</b>	<b>4,160.2</b>	<b>7,957.9</b>
Ending inventory	1.5	47.8	25.3	75.1	3,870.0	2,975.3	6,995.0	11,885.0
<b>Total disposition</b>	<b>2.7</b>	<b>70.7</b>	<b>61.7</b>	<b>142.6</b>	<b>6,042.6</b>	<b>4,834.9</b>	<b>11,155.2</b>	<b>19,842.9</b>
<b>April to June 2009</b>								
Beginning inventory	1.5	47.8	25.3	75.1	3,870.0	2,975.3	6,995.0	11,885.0
Pig crop <sup>1</sup>	1.3	22.4	20.2	60.7	1,844.6	1,758.1	3,707.3	7,322.3
Interprovincial imports	0.0	0.0	0.0	0.0	115.6	10.1	125.7	190.3
International imports	0.0	0.0	0.0	0.0	0.0	0.0	0.0	0.5
<b>Total supply</b>	<b>2.8</b>	<b>70.2</b>	<b>45.5</b>	<b>135.8</b>	<b>5,830.2</b>	<b>4,743.5</b>	<b>10,828.0</b>	<b>19,398.1</b>
Interprovincial exports	0.0	0.0	22.5	17.2	1.0	70.2	110.9	190.3
International exports <sup>2</sup>	0.0	0.1	0.0	20.2	11.7	281.8	313.8	1,617.7
Deaths and condemnations	0.0	1.1	0.3	1.8	98.4	79.0	180.6	354.7
Other disposition <sup>3</sup>	1.0	20.2	6.3	15.4	1,849.1	1,247.7	3,139.7	5,170.4
<b>Output</b>	<b>1.0</b>	<b>21.4</b>	<b>29.1</b>	<b>54.6</b>	<b>1,960.2</b>	<b>1,678.7</b>	<b>3,745.0</b>	<b>7,333.1</b>
Ending inventory	1.8	48.8	16.4	81.2	3,870.0	3,064.8	7,083.0	12,065.0
<b>Total disposition</b>	<b>2.8</b>	<b>70.2</b>	<b>45.5</b>	<b>135.8</b>	<b>5,830.2</b>	<b>4,743.5</b>	<b>10,828.0</b>	<b>19,398.1</b>
<b>July to September 2009</b>								
Beginning inventory	1.8	48.8	16.4	81.2	3,870.0	3,064.8	7,083.0	12,065.0
Pig crop <sup>1</sup>	1.2	20.8	20.7	54.5	1,963.3	1,768.3	3,828.8	7,307.4
Interprovincial imports	0.0	0.0	0.0	0.0	118.6	11.3	129.9	198.5
International imports	0.0	0.0	0.0	0.0	0.1	0.2	0.3	1.0
<b>Total supply</b>	<b>3.0</b>	<b>69.6</b>	<b>37.1</b>	<b>135.7</b>	<b>5,952.0</b>	<b>4,844.6</b>	<b>11,042.0</b>	<b>19,571.9</b>
Interprovincial exports	0.0	0.0	18.5	17.8	1.0	85.4	122.7	198.5
International exports <sup>2</sup>	0.0	0.6	0.0	22.9	11.4	299.4	334.3	1,521.1
Deaths and condemnations	0.1	1.1	0.2	2.1	103.0	85.7	192.2	368.2
Other disposition <sup>3</sup>	1.1	20.0	4.0	17.8	1,936.6	1,360.3	3,339.8	5,529.1
<b>Output</b>	<b>1.2</b>	<b>21.7</b>	<b>22.7</b>	<b>60.6</b>	<b>2,052.0</b>	<b>1,830.8</b>	<b>3,989.0</b>	<b>7,616.9</b>
Ending inventory	1.8	47.9	14.4	75.1	3,900.0	3,013.8	7,053.0	11,955.0
<b>Total disposition</b>	<b>3.0</b>	<b>69.6</b>	<b>37.1</b>	<b>135.7</b>	<b>5,952.0</b>	<b>4,844.6</b>	<b>11,042.0</b>	<b>19,571.9</b>
<b>October to December 2009</b>								
Beginning inventory	1.8	47.9	14.4	75.1	3,900.0	3,013.8	7,053.0	11,955.0
Pig crop <sup>1</sup>	1.2	23.0	22.3	50.2	1,991.6	1,623.6	3,711.9	7,195.4
Interprovincial imports	0.0	0.0	0.0	0.0	110.0	10.4	120.4	167.7
International imports	0.0	0.0	0.0	0.0	0.1	0.5	0.6	0.9
<b>Total supply</b>	<b>3.0</b>	<b>70.9</b>	<b>36.7</b>	<b>125.3</b>	<b>6,001.7</b>	<b>4,648.3</b>	<b>10,885.9</b>	<b>19,319.0</b>
Interprovincial exports	0.0	0.0	21.5	13.0	1.4	74.3	110.2	167.7
International exports <sup>2</sup>	0.0	1.0	0.0	21.1	16.4	315.8	354.3	1,475.6
Deaths and condemnations	0.1	1.2	0.1	2.2	104.4	83.6	191.6	361.7
Other disposition <sup>3</sup>	1.2	21.6	2.9	20.8	1,959.5	1,303.8	3,309.8	5,479.0
<b>Output</b>	<b>1.3</b>	<b>23.8</b>	<b>24.5</b>	<b>57.1</b>	<b>2,081.7</b>	<b>1,777.5</b>	<b>3,965.9</b>	<b>7,484.0</b>
Ending inventory	1.7	47.1	12.2	68.2	3,920.0	2,870.8	6,920.0	11,835.0
<b>Total disposition</b>	<b>3.0</b>	<b>70.9</b>	<b>36.7</b>	<b>125.3</b>	<b>6,001.7</b>	<b>4,648.3</b>	<b>10,885.9</b>	<b>19,319.0</b>

See notes at the end of the table.



Table 3-1 – continued

## Hogs, supply and disposition — Eastern provinces

	Newfoundland and Labrador	Prince Edward Island	Nova Scotia	New Brunswick	Quebec	Ontario	Eastern provinces	Canada
	thousands of head							
<b>January to March 2010</b>								
Beginning inventory	1.7	47.1	12.2	68.2	3,920.0	2,870.8	6,920.0	11,835.0
Pig crop <sup>1</sup>	1.2	24.6	24.9	52.1	2,037.6	1,622.9	3,763.3	7,242.4
Interprovincial imports	0.0	0.0	0.0	0.0	159.8	10.2	170.0	205.9
International imports	0.0	0.0	0.0	0.0	0.1	0.5	0.6	0.9
<b>Total supply</b>	<b>2.9</b>	<b>71.7</b>	<b>37.1</b>	<b>120.3</b>	<b>6,117.5</b>	<b>4,504.4</b>	<b>10,853.9</b>	<b>19,284.2</b>
Interprovincial exports	0.0	0.0	21.3	20.0	1.0	122.1	164.4	205.9
International exports <sup>2</sup>	0.0	0.0	0.0	15.5	17.4	309.2	342.1	1,447.7
Deaths and condemnations	0.1	1.3	0.1	1.6	98.2	83.5	184.8	355.3
Other disposition <sup>3</sup>	1.1	25.2	2.2	14.6	2,100.9	1,254.6	3,398.6	5,625.3
<b>Output</b>	<b>1.2</b>	<b>26.5</b>	<b>23.6</b>	<b>51.7</b>	<b>2,217.5</b>	<b>1,769.4</b>	<b>4,089.9</b>	<b>7,634.2</b>
Ending inventory	1.7	45.2	13.5	68.6	3,900.0	2,735.0	6,764.0	11,650.0
<b>Total disposition</b>	<b>2.9</b>	<b>71.7</b>	<b>37.1</b>	<b>120.3</b>	<b>6,117.5</b>	<b>4,504.4</b>	<b>10,853.9</b>	<b>19,284.2</b>
<b>April to June 2010</b>								
Beginning inventory	1.7	45.2	13.5	68.6	3,900.0	2,735.0	6,764.0	11,650.0
Pig crop <sup>1</sup>	0.9	24.7	26.2	53.3	1,902.7	1,628.5	3,636.3	7,022.4
Interprovincial imports	0.0	0.0	0.0	0.0	58.6	14.5	73.1	115.8
International imports	0.0	0.0	0.0	0.0	0.1	0.1	0.2	0.5
<b>Total supply</b>	<b>2.6</b>	<b>69.9</b>	<b>39.7</b>	<b>121.9</b>	<b>5,861.4</b>	<b>4,378.1</b>	<b>10,473.6</b>	<b>18,788.7</b>
Interprovincial exports	0.0	0.0	22.0	19.0	1.0	28.3	70.3	115.8
International exports <sup>2</sup>	0.0	1.6	0.0	15.0	13.8	346.6	377.0	1,410.2
Deaths and condemnations	0.0	1.3	0.1	1.7	97.2	75.6	175.9	341.8
Other disposition <sup>3</sup>	1.0	22.5	2.6	16.9	1,824.4	1,123.0	2,990.4	5,120.9
<b>Output</b>	<b>1.0</b>	<b>25.4</b>	<b>24.7</b>	<b>52.6</b>	<b>1,936.4</b>	<b>1,573.5</b>	<b>3,613.6</b>	<b>6,988.7</b>
Ending inventory	1.6	44.5	15.0	69.3	3,925.0	2,804.6	6,860.0	11,800.0
<b>Total disposition</b>	<b>2.6</b>	<b>69.9</b>	<b>39.7</b>	<b>121.9</b>	<b>5,861.4</b>	<b>4,378.1</b>	<b>10,473.6</b>	<b>18,788.7</b>
<b>July to September 2010</b>								
Beginning inventory	1.6	44.5	15.0	69.3	3,925.0	2,804.6	6,860.0	11,800.0
Pig crop <sup>1</sup>	1.3	24.1	25.5	56.3	1,936.7	1,632.7	3,676.6	7,109.1
Interprovincial imports	0.0	0.0	0.0	0.0	42.4	12.6	55.0	96.7
International imports	0.0	0.0	0.0	0.0	0.1	0.4	0.5	1.0
<b>Total supply</b>	<b>2.9</b>	<b>68.6</b>	<b>40.5</b>	<b>125.6</b>	<b>5,904.2</b>	<b>4,450.3</b>	<b>10,592.1</b>	<b>19,006.8</b>
Interprovincial exports	0.0	0.0	23.0	15.3	1.0	18.4	57.7	96.7
International exports <sup>2</sup>	0.0	0.7	0.0	20.4	13.6	353.9	388.6	1,483.2
Deaths and condemnations	0.1	1.2	0.1	2.0	98.8	76.7	178.9	347.8
Other disposition <sup>3</sup>	1.1	21.5	2.4	17.8	1,855.8	1,151.3	3,049.9	5,194.1
<b>Output</b>	<b>1.2</b>	<b>23.4</b>	<b>25.5</b>	<b>55.5</b>	<b>1,969.2</b>	<b>1,600.3</b>	<b>3,675.1</b>	<b>7,121.8</b>
Ending inventory	1.7	45.2	15.0	70.1	3,935.0	2,850.0	6,917.0	11,885.0
<b>Total disposition</b>	<b>2.9</b>	<b>68.6</b>	<b>40.5</b>	<b>125.6</b>	<b>5,904.2</b>	<b>4,450.3</b>	<b>10,592.1</b>	<b>19,006.8</b>
<b>October to December 2010</b>								
Beginning inventory	x	45.2	x	70.1	3,935.0	2,850.0	6,917.0	11,885.0
Pig crop <sup>1</sup>	x	24.6	x	52.0	1,986.8	1,651.6	3,741.3	7,123.7
Interprovincial imports	x	0.0	x	0.0	42.3	10.9	54.7	98.5
International imports	x	0.0	x	0.0	0.0	0.1	0.1	0.6
<b>Total supply</b>	<b>x</b>	<b>69.8</b>	<b>x</b>	<b>122.1</b>	<b>5,964.1</b>	<b>4,512.6</b>	<b>10,713.1</b>	<b>19,107.8</b>
Interprovincial exports	x	1.5	x	18.2	1.4	11.3	54.5	98.5
International exports <sup>2</sup>	x	0.3	x	17.1	10.1	314.5	342.0	1,419.0
Deaths and condemnations	x	1.2	x	1.7	103.6	76.9	183.6	350.2
Other disposition <sup>3</sup>	x	22.8	x	14.8	1,949.0	1,211.7	3,202.0	5,345.1
<b>Output</b>	<b>x</b>	<b>25.8</b>	<b>x</b>	<b>51.8</b>	<b>2,064.1</b>	<b>1,614.4</b>	<b>3,782.1</b>	<b>7,212.8</b>
Ending inventory	x	44.0	x	70.3	3,900.0	2,898.2	6,931.0	11,895.0
<b>Total disposition</b>	<b>x</b>	<b>69.8</b>	<b>x</b>	<b>122.1</b>	<b>5,964.1</b>	<b>4,512.6</b>	<b>10,713.1</b>	<b>19,107.8</b>

See notes at the end of the table.

Table 3-1 – continued

## Hogs, supply and disposition — Eastern provinces

	Newfoundland and Labrador	Prince Edward Island	Nova Scotia	New Brunswick	Quebec	Ontario	Eastern provinces	Canada
	thousands of head							
<b>January to March 2011</b>								
Beginning inventory	x	44.0	x	70.3	3,900.0	2,898.2	6,931.0	11,895.0
Pig crop <sup>1</sup>	x	29.8	x	55.9	2,011.5	1,617.8	3,744.1	7,201.7
Interprovincial imports	x	0.0	x	0.0	48.4	11.2	61.1	106.4
International imports	x	0.0	x	0.0	0.1	0.2	0.3	0.8
<b>Total supply</b>	<b>x</b>	<b>73.8</b>	<b>x</b>	<b>126.2</b>	<b>5,960.0</b>	<b>4,527.4</b>	<b>10,736.5</b>	<b>19,203.9</b>
Interprovincial exports	x	1.5	x	20.0	1.0	15.7	63.4	106.4
International exports <sup>2</sup>	x	0.0	x	21.4	7.2	334.7	363.3	1,452.8
Deaths and condemnations	x	1.4	x	1.8	104.5	81.4	189.3	357.4
Other disposition <sup>3</sup>	x	25.9	x	13.7	1,967.3	1,244.3	3,254.5	5,452.3
<b>Output</b>	<b>x</b>	<b>28.8</b>	<b>x</b>	<b>56.9</b>	<b>2,080.0</b>	<b>1,676.1</b>	<b>3,870.5</b>	<b>7,368.9</b>
Ending inventory	x	45.0	x	69.3	3,880.0	2,851.3	6,866.0	11,835.0
<b>Total disposition</b>	<b>x</b>	<b>73.8</b>	<b>x</b>	<b>126.2</b>	<b>5,960.0</b>	<b>4,527.4</b>	<b>10,736.5</b>	<b>19,203.9</b>
<b>April to June 2011</b>								
Beginning inventory	x	45.0	x	69.3	3,880.0	2,851.3	6,866.0	11,835.0
Pig crop <sup>1</sup>	x	30.4	x	55.6	1,843.2	1,469.8	3,431.7	6,817.6
Interprovincial imports	x	0.0	x	0.0	46.1	11.5	57.6	105.9
International imports	x	0.0	x	0.0	0.1	0.3	0.4	0.7
<b>Total supply</b>	<b>x</b>	<b>75.4</b>	<b>x</b>	<b>124.9</b>	<b>5,769.4</b>	<b>4,332.9</b>	<b>10,355.7</b>	<b>18,759.2</b>
Interprovincial exports	x	4.0	x	22.0	1.0	11.3	66.5	105.9
International exports <sup>2</sup>	x	0.0	x	21.8	13.5	261.2	296.5	1,366.2
Deaths and condemnations	x	1.1	x	1.7	93.5	73.0	169.4	335.9
Other disposition <sup>3</sup>	x	21.3	x	10.8	1,756.4	1,152.4	2,944.3	5,056.2
<b>Output</b>	<b>x</b>	<b>26.4</b>	<b>x</b>	<b>56.3</b>	<b>1,864.4</b>	<b>1,497.9</b>	<b>3,476.7</b>	<b>6,864.2</b>
Ending inventory	x	49.0	x	68.6	3,905.0	2,835.0	6,879.0	11,895.0
<b>Total disposition</b>	<b>x</b>	<b>75.4</b>	<b>x</b>	<b>124.9</b>	<b>5,769.4</b>	<b>4,332.9</b>	<b>10,355.7</b>	<b>18,759.2</b>

1. Number of pigs born during the quarter that were either on hand at the end of the quarter or had been sold.

2. Export numbers from International Trade Division of Statistics Canada have been adjusted using secondary information to more accurately reflect province of origin. Canadian export totals remain unchanged.

3. Other disposition principally represents slaughter on a province of origin basis and may include hogs destined for export; varies by province.

**Table 3-2**  
**Hogs, supply and disposition — Western provinces**

	Manitoba	Saskatchewan	Alberta	British Columbia	Western provinces	Canada
	thousands of head					
<b>January to March 2004</b>						
Beginning inventory	2,852.0	1,265.0	2,050.0	161.0	6,328.0	14,725.0
Pig crop <sup>1</sup>	2,122.6	671.5	930.0	80.8	3,804.9	8,321.1
Interprovincial imports	16.1	0.0	4.7	0.0	20.8	55.2
International imports	0.2	0.6	0.7	0.0	1.5	1.6
<b>Total supply</b>	<b>4,990.9</b>	<b>1,937.1</b>	<b>2,985.4</b>	<b>241.8</b>	<b>10,155.2</b>	<b>23,102.9</b>
Interprovincial exports	12.4	10.0	5.0	4.7	32.1	55.2
International exports <sup>2</sup>	1,132.1	62.0	122.4	14.3	1,330.8	2,209.4
Deaths and condemnations	105.0	32.0	48.3	4.2	189.5	431.0
Other disposition <sup>3</sup>	901.4	558.1	779.7	65.6	2,304.8	5,732.3
<b>Output</b>	<b>2,150.9</b>	<b>662.1</b>	<b>955.4</b>	<b>88.8</b>	<b>3,857.2</b>	<b>8,427.9</b>
Ending inventory	2,840.0	1,275.0	2,030.0	153.0	6,298.0	14,675.0
<b>Total disposition</b>	<b>4,990.9</b>	<b>1,937.1</b>	<b>2,985.4</b>	<b>241.8</b>	<b>10,155.2</b>	<b>23,102.9</b>
<b>April to June 2004</b>						
Beginning inventory	2,840.0	1,275.0	2,030.0	153.0	6,298.0	14,675.0
Pig crop <sup>1</sup>	2,047.1	685.2	966.9	90.5	3,789.7	8,214.6
Interprovincial imports	11.2	0.0	8.8	0.0	20.0	63.9
International imports	0.5	0.3	0.0	0.0	0.8	1.0
<b>Total supply</b>	<b>4,898.8</b>	<b>1,960.5</b>	<b>3,005.7</b>	<b>243.5</b>	<b>10,108.5</b>	<b>22,954.5</b>
Interprovincial exports	19.0	6.0	5.0	9.0	39.0	63.9
International exports <sup>2</sup>	1,078.0	53.3	116.4	11.7	1,259.4	2,033.6
Deaths and condemnations	97.6	29.7	49.3	4.0	180.6	425.9
Other disposition <sup>3</sup>	814.2	521.5	805.0	63.8	2,204.5	5,451.1
<b>Output</b>	<b>2,008.8</b>	<b>610.5</b>	<b>975.7</b>	<b>88.5</b>	<b>3,683.5</b>	<b>7,974.5</b>
Ending inventory	2,890.0	1,350.0	2,030.0	155.0	6,425.0	14,980.0
<b>Total disposition</b>	<b>4,898.8</b>	<b>1,960.5</b>	<b>3,005.7</b>	<b>243.5</b>	<b>10,108.5</b>	<b>22,954.5</b>
<b>July to September 2004</b>						
Beginning inventory	2,890.0	1,350.0	2,030.0	155.0	6,425.0	14,980.0
Pig crop <sup>1</sup>	2,120.0	585.7	946.3	87.2	3,739.2	8,136.5
Interprovincial imports	14.7	0.0	9.5	0.0	24.2	71.4
International imports	0.0	0.4	0.0	0.0	0.4	0.5
<b>Total supply</b>	<b>5,024.7</b>	<b>1,936.1</b>	<b>2,985.8</b>	<b>242.2</b>	<b>10,188.8</b>	<b>23,188.4</b>
Interprovincial exports	17.7	10.0	5.0	9.7	42.4	71.4
International exports <sup>2</sup>	1,176.9	44.5	145.5	8.5	1,375.4	2,187.4
Deaths and condemnations	105.3	29.0	49.2	3.9	187.4	445.8
Other disposition <sup>3</sup>	865.8	517.6	776.1	64.1	2,223.6	5,638.8
<b>Output</b>	<b>2,165.7</b>	<b>601.1</b>	<b>975.8</b>	<b>86.2</b>	<b>3,828.8</b>	<b>8,343.4</b>
Ending inventory	2,859.0	1,335.0	2,010.0	156.0	6,360.0	14,845.0
<b>Total disposition</b>	<b>5,024.7</b>	<b>1,936.1</b>	<b>2,985.8</b>	<b>242.2</b>	<b>10,188.8</b>	<b>23,188.4</b>
<b>October to December 2004</b>						
Beginning inventory	2,859.0	1,335.0	2,010.0	156.0	6,360.0	14,845.0
Pig crop <sup>1</sup>	2,254.8	673.3	1,049.5	83.5	4,061.1	8,570.1
Interprovincial imports	17.1	0.0	7.8	0.0	24.9	72.0
International imports	0.1	0.1	0.0	0.0	0.2	0.2
<b>Total supply</b>	<b>5,131.0</b>	<b>2,008.4</b>	<b>3,067.3</b>	<b>239.5</b>	<b>10,446.2</b>	<b>23,487.3</b>
Interprovincial exports	13.3	12.0	5.0	8.9	39.2	72.0
International exports <sup>2</sup>	1,158.3	64.3	153.3	5.9	1,381.8	2,080.7
Deaths and condemnations	110.6	32.1	51.5	4.2	198.4	474.6
Other disposition <sup>3</sup>	978.8	558.0	812.5	71.5	2,420.8	6,050.0
<b>Output</b>	<b>2,261.0</b>	<b>666.4</b>	<b>1,022.3</b>	<b>90.5</b>	<b>4,040.2</b>	<b>8,677.3</b>
Ending inventory	2,870.0	1,342.0	2,045.0	149.0	6,406.0	14,810.0
<b>Total disposition</b>	<b>5,131.0</b>	<b>2,008.4</b>	<b>3,067.3</b>	<b>239.5</b>	<b>10,446.2</b>	<b>23,487.3</b>

See notes at the end of the table.

Table 3-2 – continued

## Hogs, supply and disposition — Western provinces

	Manitoba	Saskat- chewan	Alberta	British Columbia	Western provinces	Canada
	thousands of head					
<b>January to March 2005</b>						
Beginning inventory	2,870.0	1,342.0	2,045.0	149.0	6,406.0	14,810.0
Pig crop <sup>1</sup>	2,287.0	666.4	972.6	89.0	4,015.0	8,396.8
Interprovincial imports	12.1	0.0	19.8	0.0	31.9	79.2
International imports	0.0	0.0	0.1	0.0	0.1	0.1
<b>Total supply</b>	<b>5,169.1</b>	<b>2,008.4</b>	<b>3,037.5</b>	<b>238.0</b>	<b>10,453.0</b>	<b>23,286.1</b>
Interprovincial exports	14.5	10.0	5.0	17.2	46.7	79.2
International exports <sup>2</sup>	1,183.8	63.9	140.9	5.4	1,394.0	1,895.7
Deaths and condemnations	110.3	31.4	51.1	3.5	196.3	508.0
Other disposition <sup>3</sup>	950.5	545.1	815.5	60.9	2,372.0	5,843.2
<b>Output</b>	<b>2,259.1</b>	<b>650.4</b>	<b>1,012.5</b>	<b>87.0</b>	<b>4,009.0</b>	<b>8,326.1</b>
Ending inventory	2,910.0	1,358.0	2,025.0	151.0	6,444.0	14,960.0
<b>Total disposition</b>	<b>5,169.1</b>	<b>2,008.4</b>	<b>3,037.5</b>	<b>238.0</b>	<b>10,453.0</b>	<b>23,286.1</b>
<b>April to June 2005</b>						
Beginning inventory	2,910.0	1,358.0	2,025.0	151.0	6,444.0	14,960.0
Pig crop <sup>1</sup>	2,198.1	669.4	979.2	84.6	3,931.3	8,197.4
Interprovincial imports	11.2	0.0	20.8	0.0	32.0	83.0
International imports	0.2	0.0	0.1	0.0	0.3	0.3
<b>Total supply</b>	<b>5,119.5</b>	<b>2,027.4</b>	<b>3,025.1</b>	<b>235.6</b>	<b>10,407.6</b>	<b>23,240.7</b>
Interprovincial exports	19.0	6.0	5.0	17.8	47.8	83.0
International exports <sup>2</sup>	1,194.3	52.9	159.9	9.6	1,416.7	1,952.4
Deaths and condemnations	105.9	30.8	51.7	3.7	192.1	582.1
Other disposition <sup>3</sup>	860.3	542.7	808.5	60.5	2,272.0	5,428.2
<b>Output</b>	<b>2,179.5</b>	<b>632.4</b>	<b>1,025.1</b>	<b>91.6</b>	<b>3,928.6</b>	<b>8,045.7</b>
Ending inventory	2,940.0	1,395.0	2,000.0	144.0	6,479.0	15,195.0
<b>Total disposition</b>	<b>5,119.5</b>	<b>2,027.4</b>	<b>3,025.1</b>	<b>235.6</b>	<b>10,407.6</b>	<b>23,240.7</b>
<b>July to September 2005</b>						
Beginning inventory	2,940.0	1,395.0	2,000.0	144.0	6,479.0	15,195.0
Pig crop <sup>1</sup>	2,255.2	660.2	1,016.7	83.1	4,015.2	8,224.6
Interprovincial imports	14.7	0.0	19.5	0.0	34.2	85.2
International imports	0.0	0.0	0.3	0.0	0.3	0.3
<b>Total supply</b>	<b>5,209.9</b>	<b>2,055.2</b>	<b>3,036.5</b>	<b>227.1</b>	<b>10,528.7</b>	<b>23,505.1</b>
Interprovincial exports	17.7	10.9	5.0	16.0	49.6	85.2
International exports <sup>2</sup>	1,315.9	80.4	169.1	7.1	1,572.5	2,169.3
Deaths and condemnations	111.6	31.3	51.2	3.7	197.8	563.2
Other disposition <sup>3</sup>	854.7	528.6	791.2	61.3	2,235.8	5,482.4
<b>Output</b>	<b>2,299.9</b>	<b>651.2</b>	<b>1,016.5</b>	<b>88.1</b>	<b>4,055.7</b>	<b>8,300.1</b>
Ending inventory	2,910.0	1,404.0	2,020.0	139.0	6,473.0	15,205.0
<b>Total disposition</b>	<b>5,209.9</b>	<b>2,055.2</b>	<b>3,036.5</b>	<b>227.1</b>	<b>10,528.7</b>	<b>23,505.1</b>
<b>October to December 2005</b>						
Beginning inventory	2,910.0	1,404.0	2,020.0	139.0	6,473.0	15,205.0
Pig crop <sup>1</sup>	2,325.5	620.6	1,024.8	87.4	4,058.3	8,200.9
Interprovincial imports	17.1	0.0	19.4	0.0	36.5	83.5
International imports	0.1	0.0	0.0	0.0	0.1	0.1
<b>Total supply</b>	<b>5,252.7</b>	<b>2,024.6</b>	<b>3,064.2</b>	<b>226.4</b>	<b>10,567.9</b>	<b>23,489.5</b>
Interprovincial exports	13.3	9.0	5.0	15.4	42.7	83.5
International exports <sup>2</sup>	1,320.4	87.1	157.9	9.8	1,575.2	2,197.6
Deaths and condemnations	112.4	31.4	51.8	3.6	199.2	532.3
Other disposition <sup>3</sup>	866.6	522.1	813.5	57.6	2,259.8	5,566.1
<b>Output</b>	<b>2,312.7</b>	<b>649.6</b>	<b>1,028.2</b>	<b>86.4</b>	<b>4,076.9</b>	<b>8,379.5</b>
Ending inventory	2,940.0	1,375.0	2,036.0	140.0	6,491.0	15,110.0
<b>Total disposition</b>	<b>5,252.7</b>	<b>2,024.6</b>	<b>3,064.2</b>	<b>226.4</b>	<b>10,567.9</b>	<b>23,489.5</b>

See notes at the end of the table.

Table 3-2 – continued

## Hogs, supply and disposition — Western provinces

	Manitoba	Saskatchewan	Alberta	British Columbia	Western provinces	Canada
	thousands of head					
<b>January to March 2006</b>						
Beginning inventory	2,940.0	1,375.0	2,036.0	140.0	6,491.0	15,110.0
Pig crop <sup>1</sup>	2,269.6	684.2	1,041.8	79.2	4,074.8	8,256.7
Interprovincial imports	15.1	0.0	19.9	0.0	35.0	80.4
International imports	0.0	0.0	0.0	0.0	0.0	0.0
<b>Total supply</b>	<b>5,224.7</b>	<b>2,059.2</b>	<b>3,097.7</b>	<b>219.2</b>	<b>10,600.8</b>	<b>23,447.2</b>
Interprovincial exports	12.6	11.0	5.0	18.4	47.0	80.4
International exports <sup>2</sup>	1,295.8	87.2	137.2	5.9	1,526.1	2,136.5
Deaths and condemnations	112.1	32.7	52.9	3.3	201.0	516.8
Other disposition <sup>3</sup>	884.2	548.3	852.6	55.6	2,340.7	5,683.5
<b>Output</b>	<b>2,304.7</b>	<b>679.2</b>	<b>1,047.7</b>	<b>83.2</b>	<b>4,114.8</b>	<b>8,417.2</b>
Ending inventory	2,920.0	1,380.0	2,050.0	136.0	6,486.0	15,030.0
<b>Total disposition</b>	<b>5,224.7</b>	<b>2,059.2</b>	<b>3,097.7</b>	<b>219.2</b>	<b>10,600.8</b>	<b>23,447.2</b>
<b>April to June 2006</b>						
Beginning inventory	2,920.0	1,380.0	2,050.0	136.0	6,486.0	15,030.0
Pig crop <sup>1</sup>	2,311.4	673.3	1,022.9	87.4	4,095.0	7,875.0
Interprovincial imports	14.2	0.0	17.0	0.0	31.2	69.2
International imports	0.0	0.0	0.1	0.0	0.1	0.1
<b>Total supply</b>	<b>5,245.6</b>	<b>2,053.3</b>	<b>3,090.0</b>	<b>223.4</b>	<b>10,612.3</b>	<b>22,974.3</b>
Interprovincial exports	14.6	7.0	5.0	13.0	39.6	69.2
International exports <sup>2</sup>	1,313.5	86.0	139.1	10.9	1,549.5	2,090.0
Deaths and condemnations	109.9	32.1	52.3	3.8	198.1	498.7
Other disposition <sup>3</sup>	827.6	539.2	837.6	60.7	2,265.1	5,251.4
<b>Output</b>	<b>2,265.6</b>	<b>664.3</b>	<b>1,034.0</b>	<b>88.4</b>	<b>4,052.3</b>	<b>7,909.3</b>
Ending inventory	2,980.0	1,389.0	2,056.0	135.0	6,560.0	15,065.0
<b>Total disposition</b>	<b>5,245.6</b>	<b>2,053.3</b>	<b>3,090.0</b>	<b>223.4</b>	<b>10,612.3</b>	<b>22,974.3</b>
<b>July to September 2006</b>						
Beginning inventory	2,980.0	1,389.0	2,056.0	135.0	6,560.0	15,065.0
Pig crop <sup>1</sup>	2,295.7	681.0	995.9	82.2	4,054.8	7,930.0
Interprovincial imports	15.5	0.0	15.7	0.0	31.2	71.7
International imports	0.0	0.0	0.1	0.0	0.1	0.3
<b>Total supply</b>	<b>5,291.2</b>	<b>2,070.0</b>	<b>3,067.7</b>	<b>217.2</b>	<b>10,646.1</b>	<b>23,067.0</b>
Interprovincial exports	11.2	10.2	5.0	16.7	43.1	71.7
International exports <sup>2</sup>	1,366.4	121.8	147.7	7.1	1,643.0	2,205.6
Deaths and condemnations	113.7	33.5	52.1	3.4	202.7	460.8
Other disposition <sup>3</sup>	849.9	530.5	827.9	56.0	2,264.3	5,428.9
<b>Output</b>	<b>2,341.2</b>	<b>696.0</b>	<b>1,032.7</b>	<b>83.2</b>	<b>4,153.1</b>	<b>8,167.0</b>
Ending inventory	2,950.0	1,374.0	2,035.0	134.0	6,493.0	14,900.0
<b>Total disposition</b>	<b>5,291.2</b>	<b>2,070.0</b>	<b>3,067.7</b>	<b>217.2</b>	<b>10,646.1</b>	<b>23,067.0</b>
<b>October to December 2006</b>						
Beginning inventory	2,950.0	1,374.0	2,035.0	134.0	6,493.0	14,900.0
Pig crop <sup>1</sup>	2,347.6	672.7	1,005.6	84.7	4,110.6	8,215.8
Interprovincial imports	17.1	0.0	19.4	0.0	36.5	74.9
International imports	0.1	0.0	0.0	0.0	0.1	0.1
<b>Total supply</b>	<b>5,314.8</b>	<b>2,046.7</b>	<b>3,060.0</b>	<b>218.7</b>	<b>10,640.2</b>	<b>23,190.8</b>
Interprovincial exports	12.3	9.0	5.0	15.4	41.7	74.9
International exports <sup>2</sup>	1,426.1	159.6	155.5	8.8	1,750.0	2,344.9
Deaths and condemnations	114.0	33.5	51.2	3.7	202.4	438.8
Other disposition <sup>3</sup>	802.4	495.6	803.3	59.8	2,161.1	5,425.2
<b>Output</b>	<b>2,354.8</b>	<b>697.7</b>	<b>1,015.0</b>	<b>87.7</b>	<b>4,155.2</b>	<b>8,283.8</b>
Ending inventory	2,960.0	1,349.0	2,045.0	131.0	6,485.0	14,907.0
<b>Total disposition</b>	<b>5,314.8</b>	<b>2,046.7</b>	<b>3,060.0</b>	<b>218.7</b>	<b>10,640.2</b>	<b>23,190.8</b>

See notes at the end of the table.

Table 3-2 – continued

## Hogs, supply and disposition — Western provinces

	Manitoba	Saskatchewan	Alberta	British Columbia	Western provinces	Canada
thousands of head						
<b>January to March 2007</b>						
Beginning inventory	2,960.0	1,349.0	2,045.0	131.0	6,485.0	14,907.0
Pig crop <sup>1</sup>	2,327.4	709.1	973.7	85.7	4,095.9	8,036.0
Interprovincial imports	14.6	0.0	18.5	0.0	33.1	74.9
International imports	0.1	0.0	0.0	0.0	0.1	0.4
<b>Total supply</b>	<b>5,302.1</b>	<b>2,058.1</b>	<b>3,037.2</b>	<b>216.7</b>	<b>10,614.1</b>	<b>23,018.3</b>
Interprovincial exports	12.6	10.7	5.0	17.3	45.6	74.9
International exports <sup>2</sup>	1,410.9	170.3	142.7	5.9	1,729.8	2,303.8
Deaths and condemnations	115.5	34.4	51.4	3.5	204.8	414.0
Other disposition <sup>3</sup>	843.1	502.7	818.1	60.0	2,223.9	5,496.6
<b>Output</b>	<b>2,382.1</b>	<b>718.1</b>	<b>1,017.2</b>	<b>86.7</b>	<b>4,204.1</b>	<b>8,289.3</b>
Ending inventory	2,920.0	1,340.0	2,020.0	130.0	6,410.0	14,729.0
<b>Total disposition</b>	<b>5,302.1</b>	<b>2,058.1</b>	<b>3,037.2</b>	<b>216.7</b>	<b>10,614.1</b>	<b>23,018.3</b>
<b>April to June 2007</b>						
Beginning inventory	2,920.0	1,340.0	2,020.0	130.0	6,410.0	14,729.0
Pig crop <sup>1</sup>	2,419.0	701.7	943.1	85.3	4,149.1	7,902.5
Interprovincial imports	13.2	0.0	17.0	0.0	30.2	68.4
International imports	0.1	0.0	0.0	0.0	0.1	0.3
<b>Total supply</b>	<b>5,352.3</b>	<b>2,041.7</b>	<b>2,980.1</b>	<b>215.3</b>	<b>10,589.4</b>	<b>22,700.2</b>
Interprovincial exports	15.6	10.3	5.0	12.4	43.3	68.4
International exports <sup>2</sup>	1,526.5	214.9	149.2	7.8	1,898.4	2,375.2
Deaths and condemnations	115.0	34.5	51.0	3.7	204.2	398.0
Other disposition <sup>3</sup>	730.2	462.0	804.9	62.4	2,059.5	5,168.6
<b>Output</b>	<b>2,387.3</b>	<b>721.7</b>	<b>1,010.1</b>	<b>86.3</b>	<b>4,205.4</b>	<b>8,010.2</b>
Ending inventory	2,965.0	1,320.0	1,970.0	129.0	6,384.0	14,690.0
<b>Total disposition</b>	<b>5,352.3</b>	<b>2,041.7</b>	<b>2,980.1</b>	<b>215.3</b>	<b>10,589.4</b>	<b>22,700.2</b>
<b>July to September 2007</b>						
Beginning inventory	2,965.0	1,320.0	1,970.0	129.0	6,384.0	14,690.0
Pig crop <sup>1</sup>	2,327.2	676.9	888.8	86.8	3,979.7	7,766.3
Interprovincial imports	15.5	0.0	16.6	0.0	32.1	69.6
International imports	0.2	0.0	0.0	0.0	0.2	0.7
<b>Total supply</b>	<b>5,307.9</b>	<b>1,996.9</b>	<b>2,875.4</b>	<b>215.8</b>	<b>10,396.0</b>	<b>22,526.6</b>
Interprovincial exports	11.2	9.1	5.0	16.7	42.0	69.6
International exports <sup>2</sup>	1,546.3	242.3	147.2	3.8	1,939.6	2,475.2
Deaths and condemnations	115.7	34.9	49.7	3.7	204.0	398.9
Other disposition <sup>3</sup>	724.7	445.6	783.5	64.6	2,018.4	5,222.9
<b>Output</b>	<b>2,397.9</b>	<b>731.9</b>	<b>985.4</b>	<b>88.8</b>	<b>4,204.0</b>	<b>8,166.6</b>
Ending inventory	2,910.0	1,265.0	1,890.0	127.0	6,192.0	14,360.0
<b>Total disposition</b>	<b>5,307.9</b>	<b>1,996.9</b>	<b>2,875.4</b>	<b>215.8</b>	<b>10,396.0</b>	<b>22,526.6</b>
<b>October to December 2007</b>						
Beginning inventory	2,910.0	1,265.0	1,890.0	127.0	6,192.0	14,360.0
Pig crop <sup>1</sup>	2,418.8	735.2	913.8	84.1	4,151.9	8,130.6
Interprovincial imports	19.0	0.0	16.2	0.0	35.2	94.1
International imports	0.1	0.0	0.1	0.0	0.2	0.2
<b>Total supply</b>	<b>5,347.9</b>	<b>2,000.2</b>	<b>2,820.1</b>	<b>211.1</b>	<b>10,379.3</b>	<b>22,584.9</b>
Interprovincial exports	10.6	9.4	5.0	15.8	40.8	94.1
International exports <sup>2</sup>	1,662.6	357.2	163.8	5.8	2,189.4	2,877.4
Deaths and condemnations	122.3	39.0	47.2	3.7	212.2	422.4
Other disposition <sup>3</sup>	742.4	414.6	804.1	63.8	2,024.9	5,381.0
<b>Output</b>	<b>2,537.9</b>	<b>820.2</b>	<b>1,020.1</b>	<b>89.1</b>	<b>4,467.3</b>	<b>8,774.9</b>
Ending inventory	2,810.0	1,180.0	1,800.0	122.0	5,912.0	13,810.0
<b>Total disposition</b>	<b>5,347.9</b>	<b>2,000.2</b>	<b>2,820.1</b>	<b>211.1</b>	<b>10,379.3</b>	<b>22,584.9</b>

See notes at the end of the table.

Table 3-2 – continued

## Hogs, supply and disposition — Western provinces

	Manitoba	Saskatchewan	Alberta	British Columbia	Western provinces	Canada
thousands of head						
<b>January to March 2008</b>						
Beginning inventory	2,810.0	1,180.0	1,800.0	122.0	5,912.0	13,810.0
Pig crop <sup>1</sup>	2,421.1	699.1	890.8	83.4	4,094.4	7,952.2
Interprovincial imports	18.6	0.0	15.6	0.0	34.2	156.0
International imports	0.1	0.0	0.1	0.0	0.2	0.5
<b>Total supply</b>	<b>5,249.8</b>	<b>1,879.1</b>	<b>2,706.5</b>	<b>205.4</b>	<b>10,040.8</b>	<b>21,918.7</b>
Interprovincial exports	12.6	11.7	5.0	17.3	46.6	156.0
International exports <sup>2</sup>	1,749.4	347.0	163.4	3.1	2,262.9	2,916.2
Deaths and condemnations	124.4	41.7	44.3	3.4	213.8	424.2
Other disposition <sup>3</sup>	703.4	476.7	793.8	60.6	2,034.5	5,422.3
<b>Output</b>	<b>2,589.8</b>	<b>877.1</b>	<b>1,006.5</b>	<b>84.4</b>	<b>4,557.8</b>	<b>8,918.7</b>
Ending inventory	2,660.0	1,002.0	1,700.0	121.0	5,483.0	13,000.0
<b>Total disposition</b>	<b>5,249.8</b>	<b>1,879.1</b>	<b>2,706.5</b>	<b>205.4</b>	<b>10,040.8</b>	<b>21,918.7</b>
<b>April to June 2008</b>						
Beginning inventory	2,660.0	1,002.0	1,700.0	121.0	5,483.0	13,000.0
Pig crop <sup>1</sup>	2,236.7	738.3	880.0	85.6	3,940.6	7,802.3
Interprovincial imports	18.6	5.0	19.7	0.0	43.3	201.1
International imports	0.2	0.0	0.0	0.0	0.2	0.6
<b>Total supply</b>	<b>4,915.5</b>	<b>1,745.3</b>	<b>2,599.7</b>	<b>206.6</b>	<b>9,467.1</b>	<b>21,004.0</b>
Interprovincial exports	17.6	18.9	5.0	14.0	55.5	201.1
International exports <sup>2</sup>	1,259.1	285.4	140.2	6.3	1,691.0	2,151.3
Deaths and condemnations	152.2	36.4	42.9	3.7	235.2	428.3
Other disposition <sup>3</sup>	766.6	433.6	741.6	62.6	2,004.4	5,243.3
<b>Output</b>	<b>2,195.5</b>	<b>774.3</b>	<b>929.7</b>	<b>86.6</b>	<b>3,986.1</b>	<b>8,024.0</b>
Ending inventory	2,720.0	971.0	1,670.0	120.0	5,481.0	12,980.0
<b>Total disposition</b>	<b>4,915.5</b>	<b>1,745.3</b>	<b>2,599.7</b>	<b>206.6</b>	<b>9,467.1</b>	<b>21,004.0</b>
<b>July to September 2008</b>						
Beginning inventory	2,720.0	971.0	1,670.0	120.0	5,481.0	12,980.0
Pig crop <sup>1</sup>	2,161.4	648.9	843.5	79.8	3,733.6	7,579.9
Interprovincial imports	15.5	9.0	16.6	0.0	41.1	196.0
International imports	0.4	0.0	0.1	0.0	0.5	0.8
<b>Total supply</b>	<b>4,897.3</b>	<b>1,628.9</b>	<b>2,530.2</b>	<b>199.8</b>	<b>9,256.2</b>	<b>20,756.7</b>
Interprovincial exports	20.2	9.1	5.0	13.0	47.3	196.0
International exports <sup>2</sup>	1,319.4	270.1	140.0	3.5	1,733.0	2,203.8
Deaths and condemnations	125.7	34.8	41.7	3.6	205.8	401.4
Other disposition <sup>3</sup>	762.0	414.9	693.5	64.7	1,935.1	5,210.5
<b>Output</b>	<b>2,227.3</b>	<b>728.9</b>	<b>880.2</b>	<b>84.8</b>	<b>3,921.2</b>	<b>8,011.7</b>
Ending inventory	2,670.0	900.0	1,650.0	115.0	5,335.0	12,745.0
<b>Total disposition</b>	<b>4,897.3</b>	<b>1,628.9</b>	<b>2,530.2</b>	<b>199.8</b>	<b>9,256.2</b>	<b>20,756.7</b>
<b>October to December 2008</b>						
Beginning inventory	2,670.0	900.0	1,650.0	115.0	5,335.0	12,745.0
Pig crop <sup>1</sup>	2,178.8	597.6	877.6	85.3	3,739.3	7,750.0
Interprovincial imports	19.0	15.0	16.2	0.0	50.2	210.3
International imports	0.3	0.1	0.1	0.1	0.6	0.7
<b>Total supply</b>	<b>4,868.1</b>	<b>1,512.7</b>	<b>2,543.9</b>	<b>200.4</b>	<b>9,125.1</b>	<b>20,706.0</b>
Interprovincial exports	25.6	9.4	5.0	12.5	52.5	210.3
International exports <sup>2</sup>	1,173.1	269.8	167.9	4.3	1,615.1	2,085.9
Deaths and condemnations	117.3	33.4	42.2	3.6	196.5	399.6
Other disposition <sup>3</sup>	1,053.1	390.1	738.8	64.0	2,246.0	5,830.2
<b>Output</b>	<b>2,369.1</b>	<b>702.7</b>	<b>953.9</b>	<b>84.4</b>	<b>4,110.1</b>	<b>8,526.0</b>
Ending inventory	2,499.0	810.0	1,590.0	116.0	5,015.0	12,180.0
<b>Total disposition</b>	<b>4,868.1</b>	<b>1,512.7</b>	<b>2,543.9</b>	<b>200.4</b>	<b>9,125.1</b>	<b>20,706.0</b>

See notes at the end of the table.

Table 3-2 – continued

## Hogs, supply and disposition — Western provinces

	Manitoba	Saskatchewan	Alberta	British Columbia	Western provinces	Canada
	thousands of head					
<b>January to March 2009</b>						
Beginning inventory	2,499.0	810.0	1,590.0	116.0	5,015.0	12,180.0
Pig crop <sup>1</sup>	2,217.0	516.4	805.8	73.9	3,613.1	7,472.3
Interprovincial imports	18.6	25.0	15.6	0.0	59.2	189.7
International imports	0.1	0.3	0.0	0.0	0.4	0.9
<b>Total supply</b>	<b>4,734.7</b>	<b>1,351.7</b>	<b>2,411.4</b>	<b>189.9</b>	<b>8,687.7</b>	<b>19,842.9</b>
Interprovincial exports	37.6	11.7	5.0	16.9	71.2	189.7
International exports <sup>2</sup>	1,059.6	179.7	142.0	1.8	1,383.1	1,761.4
Deaths and condemnations	109.8	28.0	39.6	3.1	180.5	378.8
Other disposition <sup>3</sup>	1,050.7	372.3	684.8	55.1	2,162.9	5,628.0
<b>Output</b>	<b>2,257.7</b>	<b>591.7</b>	<b>871.4</b>	<b>76.9</b>	<b>3,797.7</b>	<b>7,957.9</b>
Ending inventory	2,477.0	760.0	1,540.0	113.0	4,890.0	11,885.0
<b>Total disposition</b>	<b>4,734.7</b>	<b>1,351.7</b>	<b>2,411.4</b>	<b>189.9</b>	<b>8,687.7</b>	<b>19,842.9</b>
<b>April to June 2009</b>						
Beginning inventory	2,477.0	760.0	1,540.0	113.0	4,890.0	11,885.0
Pig crop <sup>1</sup>	2,204.4	576.6	763.1	70.9	3,615.0	7,322.3
Interprovincial imports	23.6	29.4	11.6	0.0	64.6	190.3
International imports	0.4	0.0	0.1	0.0	0.5	0.5
<b>Total supply</b>	<b>4,705.4</b>	<b>1,366.0</b>	<b>2,314.8</b>	<b>183.9</b>	<b>8,570.1</b>	<b>19,398.1</b>
Interprovincial exports	38.0	23.9	5.0	12.5	79.4	190.3
International exports <sup>2</sup>	985.0	183.3	131.9	3.7	1,303.9	1,617.7
Deaths and condemnations	105.8	25.7	39.5	3.1	174.1	354.7
Other disposition <sup>3</sup>	1,046.6	323.1	608.4	52.6	2,030.7	5,170.4
<b>Output</b>	<b>2,175.4</b>	<b>556.0</b>	<b>784.8</b>	<b>71.9</b>	<b>3,588.1</b>	<b>7,333.1</b>
Ending inventory	2,530.0	810.0	1,530.0	112.0	4,982.0	12,065.0
<b>Total disposition</b>	<b>4,705.4</b>	<b>1,366.0</b>	<b>2,314.8</b>	<b>183.9</b>	<b>8,570.1</b>	<b>19,398.1</b>
<b>July to September 2009</b>						
Beginning inventory	2,530.0	810.0	1,530.0	112.0	4,982.0	12,065.0
Pig crop <sup>1</sup>	2,162.6	478.8	764.0	73.2	3,478.6	7,307.4
Interprovincial imports	27.0	30.0	11.6	0.0	68.6	198.5
International imports	0.1	0.0	0.6	0.0	0.7	1.0
<b>Total supply</b>	<b>4,719.7</b>	<b>1,318.8</b>	<b>2,306.2</b>	<b>185.2</b>	<b>8,529.9</b>	<b>19,571.9</b>
Interprovincial exports	36.8	25.0	5.0	9.0	75.8	198.5
International exports <sup>2</sup>	974.0	75.0	135.3	2.5	1,186.8	1,521.1
Deaths and condemnations	108.8	24.6	39.1	3.5	176.0	368.2
Other disposition <sup>3</sup>	1,110.1	404.2	611.8	63.2	2,189.3	5,529.1
<b>Output</b>	<b>2,229.7</b>	<b>528.8</b>	<b>791.2</b>	<b>78.2</b>	<b>3,627.9</b>	<b>7,616.9</b>
Ending inventory	2,490.0	790.0	1,515.0	107.0	4,902.0	11,955.0
<b>Total disposition</b>	<b>4,719.7</b>	<b>1,318.8</b>	<b>2,306.2</b>	<b>185.2</b>	<b>8,529.9</b>	<b>19,571.9</b>
<b>October to December 2009</b>						
Beginning inventory	2,490.0	790.0	1,515.0	107.0	4,902.0	11,955.0
Pig crop <sup>1</sup>	2,145.2	479.2	791.7	67.4	3,483.5	7,195.4
Interprovincial imports	23.0	15.0	9.3	0.0	47.3	167.7
International imports	0.3	0.0	0.0	0.0	0.3	0.9
<b>Total supply</b>	<b>4,658.5</b>	<b>1,284.2</b>	<b>2,316.0</b>	<b>174.4</b>	<b>8,433.1</b>	<b>19,319.0</b>
Interprovincial exports	37.0	9.4	5.0	6.1	57.5	167.7
International exports <sup>2</sup>	941.6	48.6	127.7	3.4	1,121.3	1,475.6
Deaths and condemnations	103.7	24.3	38.6	3.5	170.1	361.7
Other disposition <sup>3</sup>	1,046.2	421.9	639.7	61.4	2,169.2	5,479.0
<b>Output</b>	<b>2,128.5</b>	<b>504.2</b>	<b>811.0</b>	<b>74.4</b>	<b>3,518.1</b>	<b>7,484.0</b>
Ending inventory	2,530.0	780.0	1,505.0	100.0	4,915.0	11,835.0
<b>Total disposition</b>	<b>4,658.5</b>	<b>1,284.2</b>	<b>2,316.0</b>	<b>174.4</b>	<b>8,433.1</b>	<b>19,319.0</b>

See notes at the end of the table.



Table 3-2 – continued

## Hogs, supply and disposition — Western provinces

	Manitoba	Saskatchewan	Alberta	British Columbia	Western provinces	Canada
thousands of head						
<b>January to March 2010</b>						
Beginning inventory	2,530.0	780.0	1,505.0	100.0	4,915.0	11,835.0
Pig crop <sup>1</sup>	2,116.9	490.6	809.2	62.4	3,479.1	7,242.4
Interprovincial imports	15.8	10.0	10.1	0.0	35.9	205.9
International imports	0.3	0.0	0.0	0.0	0.3	0.9
<b>Total supply</b>	<b>4,663.0</b>	<b>1,280.6</b>	<b>2,324.3</b>	<b>162.4</b>	<b>8,430.3</b>	<b>19,284.2</b>
Interprovincial exports	23.4	9.0	5.0	4.1	41.5	205.9
International exports <sup>2</sup>	899.1	62.6	142.3	1.6	1,105.6	1,447.7
Deaths and condemnations	103.9	25.5	37.9	3.2	170.5	355.3
Other disposition <sup>3</sup>	1,086.6	433.5	649.1	57.5	2,226.7	5,625.3
<b>Output</b>	<b>2,113.0</b>	<b>530.6</b>	<b>834.3</b>	<b>66.4</b>	<b>3,544.3</b>	<b>7,634.2</b>
Ending inventory	2,550.0	750.0	1,490.0	96.0	4,886.0	11,650.0
<b>Total disposition</b>	<b>4,663.0</b>	<b>1,280.6</b>	<b>2,324.3</b>	<b>162.4</b>	<b>8,430.3</b>	<b>19,284.2</b>
<b>April to June 2010</b>						
Beginning inventory	2,550.0	750.0	1,490.0	96.0	4,886.0	11,650.0
Pig crop <sup>1</sup>	2,021.7	510.9	799.2	54.3	3,386.1	7,022.4
Interprovincial imports	15.7	16.5	10.5	0.0	42.7	115.8
International imports	0.2	0.0	0.1	0.0	0.3	0.5
<b>Total supply</b>	<b>4,587.6</b>	<b>1,277.4</b>	<b>2,299.8</b>	<b>150.3</b>	<b>8,315.1</b>	<b>18,788.7</b>
Interprovincial exports	21.0	15.0	5.0	4.5	45.5	115.8
International exports <sup>2</sup>	837.1	57.4	134.1	4.6	1,033.2	1,410.2
Deaths and condemnations	97.5	24.8	40.5	3.1	165.9	341.8
Other disposition <sup>3</sup>	1,027.0	425.2	625.2	53.1	2,130.5	5,120.9
<b>Output</b>	<b>1,982.6</b>	<b>522.4</b>	<b>804.8</b>	<b>65.3</b>	<b>3,375.1</b>	<b>6,988.7</b>
Ending inventory	2,605.0	755.0	1,495.0	85.0	4,940.0	11,800.0
<b>Total disposition</b>	<b>4,587.6</b>	<b>1,277.4</b>	<b>2,299.8</b>	<b>150.3</b>	<b>8,315.1</b>	<b>18,788.7</b>
<b>July to September 2010</b>						
Beginning inventory	2,605.0	755.0	1,495.0	85.0	4,940.0	11,800.0
Pig crop <sup>1</sup>	2,059.1	547.4	773.9	52.1	3,432.5	7,109.1
Interprovincial imports	15.5	16.0	10.0	0.2	41.7	96.7
International imports	0.1	0.0	0.4	0.0	0.5	1.0
<b>Total supply</b>	<b>4,679.7</b>	<b>1,318.4</b>	<b>2,279.3</b>	<b>137.3</b>	<b>8,414.7</b>	<b>19,006.8</b>
Interprovincial exports	19.0	13.0	5.0	2.0	39.0	96.7
International exports <sup>2</sup>	890.7	70.0	133.3	0.6	1,094.6	1,483.2
Deaths and condemnations	101.3	26.2	38.4	3.0	168.9	347.8
Other disposition <sup>3</sup>	1,048.7	439.2	602.6	53.7	2,144.2	5,194.1
<b>Output</b>	<b>2,059.7</b>	<b>548.4</b>	<b>779.3</b>	<b>59.3</b>	<b>3,446.7</b>	<b>7,121.8</b>
Ending inventory	2,620.0	770.0	1,500.0	78.0	4,968.0	11,885.0
<b>Total disposition</b>	<b>4,679.7</b>	<b>1,318.4</b>	<b>2,279.3</b>	<b>137.3</b>	<b>8,414.7</b>	<b>19,006.8</b>
<b>October to December 2010</b>						
Beginning inventory	2,620.0	770.0	1,500.0	78.0	4,968.0	11,885.0
Pig crop <sup>1</sup>	2,042.4	534.0	752.3	53.7	3,382.4	7,123.7
Interprovincial imports	17.0	16.0	10.3	0.5	43.8	98.5
International imports	0.3	0.0	0.2	0.0	0.5	0.6
<b>Total supply</b>	<b>4,679.7</b>	<b>1,320.0</b>	<b>2,262.8</b>	<b>132.2</b>	<b>8,394.7</b>	<b>19,107.8</b>
Interprovincial exports	24.0	10.9	5.0	4.1	44.0	98.5
International exports <sup>2</sup>	867.3	70.3	136.3	3.1	1,077.0	1,419.0
Deaths and condemnations	101.3	26.1	36.7	2.5	166.6	350.2
Other disposition <sup>3</sup>	1,067.1	437.7	594.8	43.5	2,143.1	5,345.1
<b>Output</b>	<b>2,059.7</b>	<b>545.0</b>	<b>772.8</b>	<b>53.2</b>	<b>3,430.7</b>	<b>7,212.8</b>
Ending inventory	2,620.0	775.0	1,490.0	79.0	4,964.0	11,895.0
<b>Total disposition</b>	<b>4,679.7</b>	<b>1,320.0</b>	<b>2,262.8</b>	<b>132.2</b>	<b>8,394.7</b>	<b>19,107.8</b>

See notes at the end of the table.

Table 3-2 – continued

## Hogs, supply and disposition — Western provinces

	Manitoba	Saskatchewan	Alberta	British Columbia	Western provinces	Canada
	thousands of head					
<b>January to March 2011</b>						
Beginning inventory	2,620.0	775.0	1,490.0	79.0	4,964.0	11,895.0
Pig crop <sup>1</sup>	2,031.0	586.5	796.9	43.2	3,457.6	7,201.7
Interprovincial imports	16.8	15.0	10.1	3.4	45.3	106.4
International imports	0.0	0.0	0.5	0.0	0.5	0.8
<b>Total supply</b>	<b>4,667.8</b>	<b>1,376.5</b>	<b>2,297.5</b>	<b>125.6</b>	<b>8,467.4</b>	<b>19,203.9</b>
Interprovincial exports	21.4	13.5	5.0	3.1	43.0	106.4
International exports <sup>2</sup>	856.2	74.3	158.8	0.2	1,089.5	1,452.8
Deaths and condemnations	101.1	27.8	37.0	2.2	168.1	357.4
Other disposition <sup>3</sup>	1,074.1	465.9	616.7	41.1	2,197.8	5,452.3
<b>Output</b>	<b>2,052.8</b>	<b>581.5</b>	<b>817.5</b>	<b>46.6</b>	<b>3,498.4</b>	<b>7,368.9</b>
Ending inventory	2,615.0	795.0	1,480.0	79.0	4,969.0	11,835.0
<b>Total disposition</b>	<b>4,667.8</b>	<b>1,376.5</b>	<b>2,297.5</b>	<b>125.6</b>	<b>8,467.4</b>	<b>19,203.9</b>
<b>April to June 2011</b>						
Beginning inventory	2,615.0	795.0	1,480.0	79.0	4,969.0	11,835.0
Pig crop <sup>1</sup>	1,981.7	573.2	776.3	54.7	3,385.9	6,817.6
Interprovincial imports	17.1	16.5	10.8	3.9	48.3	105.9
International imports	0.2	0.0	0.1	0.0	0.3	0.7
<b>Total supply</b>	<b>4,614.0</b>	<b>1,384.7</b>	<b>2,267.2</b>	<b>137.6</b>	<b>8,403.5</b>	<b>18,759.2</b>
Interprovincial exports	17.0	13.9	5.0	3.5	39.4	105.9
International exports <sup>2</sup>	851.0	73.1	145.6	0.0	1,069.7	1,366.2
Deaths and condemnations	98.5	26.6	39.0	2.4	166.5	335.9
Other disposition <sup>3</sup>	1,032.5	446.1	587.6	45.7	2,111.9	5,056.2
<b>Output</b>	<b>1,999.0</b>	<b>559.7</b>	<b>777.2</b>	<b>51.6</b>	<b>3,387.5</b>	<b>6,864.2</b>
Ending inventory	2,615.0	825.0	1,490.0	86.0	5,016.0	11,895.0
<b>Total disposition</b>	<b>4,614.0</b>	<b>1,384.7</b>	<b>2,267.2</b>	<b>137.6</b>	<b>8,403.5</b>	<b>18,759.2</b>

1. Number of pigs born during the quarter that were either on hand at the end of the quarter or had been sold.

2. Export numbers from International Trade Division of Statistics Canada have been adjusted using secondary information to more accurately reflect province of origin. Canadian export totals remain unchanged.

3. Other disposition principally represents slaughter on a province of origin basis and may include hogs destined for export; varies by province.

**Table 4-1**  
**Hogs, number of farms reporting — Eastern provinces**

	Newfoundland and Labrador	Prince Edward Island	Nova Scotia	New Brunswick	Quebec	Ontario	Eastern provinces	Canada
	number							
<b>2004</b>								
January 1st	25	175	175	160	2,640	4,300	7,475	13,375
April 1st	25	170	175	160	2,620	4,290	7,440	13,175
July 1st	25	165	170	160	2,620	4,290	7,430	13,025
October 1st	25	165	170	150	2,590	4,250	7,350	12,795
<b>2005</b>								
January 1st	25	160	170	150	2,570	4,220	7,295	12,615
April 1st	25	160	170	140	2,550	4,190	7,235	12,470
July 1st	25	155	165	140	2,530	4,170	7,185	12,270
October 1st	25	155	165	130	2,510	4,150	7,135	12,095
<b>2006</b>								
January 1st	25	150	165	130	2,490	4,120	7,080	11,860
April 1st	25	150	165	125	2,470	4,090	7,025	11,665
July 1st	25	145	160	125	2,450	4,050	6,955	11,465
October 1st	25	145	160	120	2,430	4,010	6,890	11,290
<b>2007</b>								
January 1st	25	145	160	120	2,400	3,970	6,820	11,120
April 1st	25	140	155	115	2,370	3,930	6,735	10,935
July 1st	25	130	145	115	2,340	3,890	6,645	10,755
October 1st	25	120	140	110	2,300	3,720	6,415	10,325
<b>2008</b>								
January 1st	20	110	125	110	2,250	3,500	6,115	9,815
April 1st	20	90	105	105	2,170	3,220	5,710	9,150
July 1st	20	80	95	100	2,170	3,050	5,515	8,845
October 1st	20	70	95	95	2,140	2,950	5,370	8,530
<b>2009</b>								
January 1st	20	60	90	90	2,060	2,900	5,220	8,220
April 1st	20	55	85	80	2,050	2,800	5,090	8,040
July 1st	20	50	75	80	2,020	2,750	4,995	7,890
October 1st	20	45	60	75	1,980	2,650	4,830	7,670
<b>2010</b>								
January 1st	20	40	60	75	1,890	2,550	4,635	7,400
April 1st	20	40	60	70	1,870	2,450	4,510	7,200
July 1st	15	50	70	60	1,865	2,410	4,470	7,110
October 1st	15	50	75	55	1,860	2,380	4,435	7,040
<b>2011</b>								
January 1st	x	45	x	50	1,840	2,380	4,405	6,995
April 1st	x	45	x	50	1,830	2,360	4,375	6,950
July 1st	x	45	x	50	1,810	2,350	4,345	6,920

**Table 4-2**  
**Hogs, number of farms reporting — Western provinces**

	Manitoba	Saskatchewan	Alberta	British Columbia	Western provinces	Canada
	number					
<b>2004</b>						
January 1st	1,440	1,410	2,140	910	5,900	13,375
April 1st	1,400	1,360	2,085	890	5,735	13,175
July 1st	1,380	1,300	2,025	890	5,595	13,025
October 1st	1,350	1,260	1,965	870	5,445	12,795
<b>2005</b>						
January 1st	1,330	1,210	1,910	870	5,320	12,615
April 1st	1,310	1,180	1,875	870	5,235	12,470
July 1st	1,290	1,130	1,825	840	5,085	12,270
October 1st	1,260	1,080	1,780	840	4,960	12,095
<b>2006</b>						
January 1st	1,230	1,020	1,710	820	4,780	11,860
April 1st	1,200	970	1,650	820	4,640	11,665
July 1st	1,180	930	1,600	800	4,510	11,465
October 1st	1,150	900	1,550	800	4,400	11,290
<b>2007</b>						
January 1st	1,140	870	1,500	790	4,300	11,120
April 1st	1,110	840	1,460	790	4,200	10,935
July 1st	1,100	830	1,400	780	4,110	10,755
October 1st	1,050	750	1,340	770	3,910	10,325
<b>2008</b>						
January 1st	1,000	700	1,260	740	3,700	9,815
April 1st	930	600	1,170	740	3,440	9,150
July 1st	910	570	1,120	730	3,330	8,845
October 1st	880	500	1,080	700	3,160	8,530
<b>2009</b>						
January 1st	830	450	1,020	700	3,000	8,220
April 1st	830	440	990	690	2,950	8,040
July 1st	830	430	950	685	2,895	7,890
October 1st	800	420	940	680	2,840	7,670
<b>2010</b>						
January 1st	790	410	890	675	2,765	7,400
April 1st	780	390	850	670	2,690	7,200
July 1st	760	385	830	665	2,640	7,110
October 1st	745	380	820	660	2,605	7,040
<b>2011</b>						
January 1st	745	380	810	655	2,590	6,995
April 1st	740	380	805	650	2,575	6,950
July 1st	735	385	805	650	2,575	6,920

**Table 5-1**  
**Hogs, average number of hogs per farm reporting — Eastern provinces**

	Newfoundland and Labrador	Prince Edward Island	Nova Scotia	New Brunswick	Quebec	Ontario	Eastern provinces	Canada
	number							
<b>2004</b>								
January 1st	85	754	617	775	1,610	879	1,123	1,101
April 1st	100	765	611	781	1,611	884	1,126	1,114
July 1st	96	776	600	769	1,660	897	1,151	1,150
October 1st	93	782	588	793	1,676	893	1,154	1,160
<b>2005</b>								
January 1st	84	794	594	767	1,665	895	1,152	1,174
April 1st	100	788	600	793	1,673	933	1,177	1,200
July 1st	104	806	618	764	1,733	958	1,213	1,238
October 1st	88	806	609	812	1,747	967	1,224	1,257
<b>2006</b>								
January 1st	72	820	618	800	1,742	959	1,217	1,274
April 1st	80	823	588	834	1,725	968	1,216	1,288
July 1st	80	848	581	859	1,735	970	1,223	1,314
October 1st	80	852	581	896	1,716	975	1,220	1,320
<b>2007</b>								
January 1st	76	852	581	879	1,739	988	1,235	1,341
April 1st	76	843	581	904	1,753	980	1,235	1,347
July 1st	68	854	603	861	1,761	999	1,250	1,366
October 1st	68	891	564	903	1,761	1,030	1,273	1,391
<b>2008</b>								
January 1st	70	866	544	830	1,773	1,043	1,292	1,407
April 1st	75	866	498	859	1,816	1,042	1,316	1,421
July 1st	75	784	397	851	1,878	1,061	1,360	1,467
October 1st	85	804	313	853	1,886	1,087	1,380	1,494
<b>2009</b>								
January 1st	80	855	314	881	1,893	1,071	1,373	1,482
April 1st	75	869	298	939	1,888	1,063	1,374	1,478
July 1st	90	976	219	1,015	1,916	1,114	1,418	1,529
October 1st	90	1,064	240	1,001	1,970	1,137	1,460	1,559
<b>2010</b>								
January 1st	85	1,178	203	909	2,074	1,126	1,493	1,599
April 1st	85	1,130	225	980	2,086	1,116	1,500	1,618
July 1st	107	890	214	1,155	2,105	1,164	1,535	1,660
October 1st	113	904	200	1,275	2,116	1,197	1,560	1,688
<b>2011</b>								
January 1st	x	978	x	1,406	2,120	1,217	1,573	1,701
April 1st	x	911	x	1,386	2,120	1,208	1,568	1,699
July 1st	x	1,089	x	1,372	2,157	1,206	1,583	1,719

**Table 5-2**  
**Hogs, average number of hogs per farm reporting — Western provinces**

	Manitoba	Saskatchewan	Alberta	British Columbia	Western provinces	Canada
	number					
<b>2004</b>						
January 1st	1,981	897	958	177	1,073	1,101
April 1st	2,029	938	974	172	1,098	1,114
July 1st	2,094	1,038	1,002	174	1,148	1,150
October 1st	2,118	1,060	1,023	179	1,168	1,160
<b>2005</b>						
January 1st	2,158	1,109	1,071	171	1,204	1,174
April 1st	2,221	1,151	1,080	174	1,231	1,200
July 1st	2,279	1,235	1,096	171	1,274	1,238
October 1st	2,310	1,300	1,135	165	1,305	1,257
<b>2006</b>						
January 1st	2,390	1,348	1,191	171	1,358	1,274
April 1st	2,433	1,423	1,242	166	1,398	1,288
July 1st	2,525	1,494	1,285	169	1,455	1,314
October 1st	2,565	1,527	1,313	168	1,476	1,320
<b>2007</b>						
January 1st	2,596	1,551	1,363	166	1,508	1,341
April 1st	2,631	1,595	1,384	165	1,526	1,347
July 1st	2,695	1,590	1,407	165	1,553	1,366
October 1st	2,771	1,687	1,410	165	1,584	1,391
<b>2008</b>						
January 1st	2,810	1,686	1,429	165	1,598	1,407
April 1st	2,860	1,670	1,453	164	1,594	1,421
July 1st	2,989	1,704	1,491	164	1,646	1,467
October 1st	3,034	1,800	1,528	164	1,688	1,494
<b>2009</b>						
January 1st	3,011	1,800	1,559	166	1,672	1,482
April 1st	2,984	1,727	1,556	164	1,658	1,478
July 1st	3,048	1,884	1,611	164	1,721	1,529
October 1st	3,113	1,881	1,612	157	1,726	1,559
<b>2010</b>						
January 1st	3,203	1,902	1,691	148	1,778	1,599
April 1st	3,269	1,923	1,753	143	1,816	1,618
July 1st	3,428	1,961	1,801	128	1,871	1,660
October 1st	3,517	2,026	1,829	118	1,907	1,688
<b>2011</b>						
January 1st	3,517	2,039	1,840	122	1,917	1,701
April 1st	3,534	2,039	1,839	120	1,922	1,699
July 1st	3,558	2,143	1,851	132	1,948	1,719

**Table 6**  
**Hog production - Canada**

	Farm production				Meat Production			
	Total slaughter	Exported alive	Imported alive	Farm production	Total slaughter	Average <sup>1</sup> cold trimmed weight	Total <sup>1</sup> cold trimmed weight	Edible offal
	thousands of head				kg		tonnes	
1984	13,886.0	1,346.5	..	15,232.5	13,886.0	75.2	1,043,770	31,493
1985	14,452.0	1,152.4	..	15,604.4	14,452.0	75.3	1,088,420	32,777
1986	14,398.7	502.2	..	14,900.9	14,398.7	76.0	1,093,920	32,656
1987	14,734.6	427.6	..	15,162.2	14,734.6	76.1	1,121,800	33,418
1988	15,438.5	868.3	3.1	16,303.7	15,438.5	76.5	1,181,620	35,014
1989	15,438.8	1,006.9	0.7	16,445.0	15,438.8	76.2	1,177,150	35,015
1990	14,682.9	891.7	0.6	15,574.0	14,682.9	76.5	1,123,850	33,300
1991	14,323.1	1,065.9	1.2	15,387.8	14,323.1	76.5	1,096,230	32,484
1992	15,468.3	671.9	1.2	16,139.0	15,468.3	78.1	1,207,700	35,082
1993	15,202.5	838.9	1.4	16,040.0	15,202.5	78.6	1,194,320	34,479
1994	15,475.7	915.4	4.5	16,386.6	15,475.7	79.4	1,229,380	56,157
1995	15,771.2	1,747.5	3.1	17,515.6	15,771.2	80.9	1,275,760	67,960
1996	15,177.9	2,780.5	2.2	17,956.2	15,177.9	80.9	1,227,760	75,730
1997	15,384.6	3,180.5	3.3	18,561.8	15,384.6	81.7	1,256,700	80,251
1998	16,942.5	4,122.7	9.4	21,055.8	16,942.5	82.2	1,393,610	85,865
1999	18,921.1	4,137.3	8.1	23,050.3	18,921.1	82.6	1,563,870	95,892
2000	19,684.4	4,359.5	7.9	24,036.0	19,684.4	83.3	1,639,980	107,144
2001	20,701.8	5,344.5	4.4	26,041.9	20,701.8	83.6	1,731,130	131,462
2002	22,139.9	5,740.2	13.8	27,866.3	22,139.9	83.9	1,857,180	140,595
2003	22,444.4	7,442.6	4.3	29,882.7	22,444.4	83.8	1,880,740	137,438
2004	22,872.2	8,511.1	3.3	31,380.0	22,872.2	84.6	1,934,740	140,058
2005	22,319.9	8,215.0	0.8	30,534.1	22,319.9	86.0	1,918,460	136,676
2006	21,789.0	8,777.0	0.6	30,565.4	21,789.0	87.2	1,899,660	133,425
2007	21,269.1	10,031.6	1.6	31,299.1	21,269.1	89.6	1,906,720	139,889
2008	21,706.3	9,357.2	2.6	31,060.9	21,706.3	89.7	1,947,830	162,456
2009	21,806.5	6,375.8	3.3	28,179.0	21,806.5	89.1	1,943,420	153,315
2010	21,284.6	5,760.1	2.8	27,041.9	21,284.6	90.5	1,925,930	149,645

1. Not including fats and edible offal.

**Table 7-1**  
**Hogs and pigs inventory number by class and quarter — United States and Canada <sup>1</sup>**

	2010	2011	2011 as percentage of 2010
	thousands of head		percent
<b>March inventory <sup>2</sup></b>			
<b>All hogs and pigs</b>	<b>75,218</b>	<b>75,644</b>	<b>101</b>
Kept for breeding	7,074	7,099	100
Market	68,144	68,546	101
Under 23 kg	22,530	22,994	102
23 to 53 kg	18,649	18,302	98
54 to 80 kg	14,083	14,513	103
Over 81 kg	12,883	12,737	99
Sows farrowed	3,595	3,564	99
Pig crop	34,839	35,188	101
<b>June inventory <sup>3</sup></b>			
<b>All hogs and pigs</b>	<b>76,450</b>	<b>76,895</b>	<b>101</b>
Kept for breeding	7,103	7,102	100
Market	69,347	69,793	101
Under 23 kg	23,244	23,583	101
23 to 53 kg	19,541	18,995	97
54 to 80 kg	13,817	14,631	106
Over 81 kg	12,746	12,584	99
Sows farrowed	3,632	3,555	98
Pig crop	35,752	35,669	100
<b>September inventory <sup>4</sup></b>			
<b>All hogs and pigs</b>	<b>77,856</b>	<b>..</b>	<b>..</b>
Kept for breeding	7,077	..	..
Market	70,779	..	..
Under 23 kg	23,587	..	..
23 to 53 kg	19,977	..	..
54 to 80 kg	14,479	..	..
Over 81 kg	12,737	..	..
Sows farrowed	3,655	..	..
Pig crop	35,980	..	..
<b>December inventory <sup>5</sup></b>			
<b>All hogs and pigs</b>	<b>76,820</b>	<b>..</b>	<b>..</b>
Kept for breeding	7,091	..	..
Market	69,729	..	..
Under 23 kg	23,003	..	..
23 to 53 kg	18,671	..	..
54 to 80 kg	14,427	..	..
Over 81 kg	13,628	..	..
Sows farrowed	3,595	..	..
Pig crop	35,613	..	..

- Figures may not add up to totals because of rounding.
- United States March 1 and Canadian April 1 inventory items.
- United States June 1 and Canadian July 1 inventory items.
- United States September 1 and Canadian October 1 inventory items.
- United States December 1 and Canadian January 1 (of the following year) inventory items.



**Table 7-2**  
**Hogs and pigs inventory number by class and quarter — United States 1,2**

	2010	2011	2011 as percentage of 2010
	thousands of head		percent
<b>March 1 inventory</b>			
<b>All hogs and pigs</b>	<b>63,568</b>	<b>63,809</b>	<b>100</b>
Kept for breeding	5,760	5,788	100
Market	57,808	58,021	100
Under 23 kg	18,767	18,898	101
23 to 53 kg	15,993	16,225	101
54 to 80 kg	12,307	12,311	100
Over 81 kg	10,742	10,587	99
Sows farrowed	2,872	2,856	99
Pig crop	27,597	27,986	101
<b>June 1 inventory</b>			
<b>All hogs and pigs</b>	<b>64,650</b>	<b>65,000</b>	<b>101</b>
Kept for breeding	5,788	5,803	100
Market	58,862	59,197	101
Under 23 kg	19,354	19,383	100
23 to 53 kg	16,902	16,861	100
54 to 80 kg	12,029	12,424	103
Over 81 kg	10,578	10,529	100
Sows farrowed	2,929	2,877	98
Pig crop	28,730	28,851	100
<b>September 1 inventory</b>			
<b>All hogs and pigs</b>	<b>65,971</b>	..	..
Kept for breeding	5,770	..	..
Market	60,201	..	..
Under 23 kg	19,613	..	..
23 to 53 kg	17,395	..	..
54 to 80 kg	12,674	..	..
Over 81 kg	10,520	..	..
Sows farrowed	2,944	..	..
Pig crop	28,871	..	..
<b>December 1 inventory</b>			
<b>All hogs and pigs</b>	<b>64,925</b>	..	..
Kept for breeding	5,778	..	..
Market	59,147	..	..
Under 23 kg	18,864	..	..
23 to 53 kg	16,519	..	..
54 to 80 kg	12,233	..	..
Over 81 kg	11,531	..	..
Sows farrowed	2,881	..	..
Pig crop	28,489	..	..

- Figures may not add up to totals because of rounding.
- Data includes boars.

**Table 7-3**  
**Hogs and pigs inventory number by class and quarter — Canada 1,2**

	2010	2011	2011 as percentage of 2010
	thousands of head		percent
<b>January 1 inventory</b>			
<b>All hogs and pigs</b>	<b>11,835</b>	<b>11,895</b>	<b>101</b>
Kept for breeding	1,332	1,313	99
Market	10,503	10,582	101
Under 23 kg	3,870	4,139	107
23 to 53 kg	2,793	2,152	77
54 to 80 kg	1,760	2,194	125
Over 81 kg	2,080	2,097	101
Sows farrowed (October to December)	724	714	99
Pig crop (October to December)	7,195	7,124	99
<b>April 1 inventory</b>			
<b>All hogs and pigs</b>	<b>11,650</b>	<b>11,835</b>	<b>102</b>
Kept for breeding	1,314	1,311	100
Market	10,336	10,525	102
Under 23 kg	3,763	4,096	109
23 to 53 kg	2,656	2,077	78
54 to 80 kg	1,776	2,202	124
Over 81 kg	2,141	2,150	100
Sows farrowed (January to March)	723	708	98
Pig crop (January to March)	7,242	7,202	99
<b>July 1 inventory</b>			
<b>All hogs and pigs</b>	<b>11,800</b>	<b>11,895</b>	<b>101</b>
Kept for breeding	1,315	1,299	99
Market	10,485	10,596	101
Under 23 kg	3,890	4,200	108
23 to 53 kg	2,639	2,134	81
54 to 80 kg	1,788	2,207	123
Over 81 kg	2,168	2,055	95
Sows farrowed (April to June)	703	678	97
Pig crop (April to June)	7,022	6,818	97
<b>October 1 inventory</b>			
<b>All hogs and pigs</b>	<b>11,885</b>	..	..
Kept for breeding	1,307	..	..
Market	10,578	..	..
Under 23 kg	3,974	..	..
23 to 53 kg	2,582	..	..
54 to 80 kg	1,805	..	..
Over 81 kg	2,217	..	..
Sows farrowed (July to September)	711	..	..
Pig crop (July to September)	7,109	..	..

1. Figures may not add up to totals because of rounding.
2. Data includes boars.

# Concepts and methodology

---

## Concepts

### Livestock statistics

Inventory levels of the various types of livestock intended for sale in Canada are measured at specific times throughout the year. Surveyed operations are requested to include all animals located on the farming operation, regardless of ownership. They are also asked to include animals owned but pastured on a community pasture, grazing co-op or public land. Producers are asked to exclude animals owned but kept on a farm, ranch or feedlot operated by someone else. Inventory levels are estimated for cattle, calves, pigs, sheep and lambs. Estimates are also produced for certain categories of animals on the basis of age, sex, weight and/or purpose i.e. breeding or slaughter.

Current information on livestock inventories and related statistics such as supply and disposition enable those active in the agricultural sector to observe and assess changes in the industry, measure performance and keep the agricultural community and general public informed of developments. The primary data users are federal and provincial governments, producer boards, farmers and farm organizations, private business, academic research institutions and students. Livestock data assists governments in formulating agricultural policies and developing programs. Farming organizations use statistics in developing recommendations for producers and governments. Farmers make increasing use of prices, production, and marketing statistics in planning their operations. In addition, these livestock statistics are used in the calculation of farm incomes and in the Canadian System of National Accounts for indicators such as gross domestic product.

## Methods

To produce livestock estimates, there are actually 6 different survey occasions. All of the survey occasions collect data primarily using Computer Assisted Telephone Interviews (CATI) although there are special procedures in place for the very large or complex operations.

Two of the occasions are the January Livestock Survey and the July Livestock Survey. These are large-scale general livestock surveys collecting data on cattle, hogs and sheep, referring to inventories at the 1st of the month. The probability samples include about 10,260 operations at January 1, and about 10,000 operations at July 1. These surveys collect data during a three-week period in the western provinces, Ontario and Quebec. Regardless of when operators respond, they are asked to report inventories as of January 1 or July 1. The livestock survey results are released, following processing and analysis, approximately seven weeks after the reference date.

Hog inventories are the focus of two other survey occasions collecting estimates of pig numbers at April 1 and October 1. This survey was initiated in 1998 as estimates from 1978 to 1997 were based solely on analytical tools. For the hog surveys, a sub-sample of the prior livestock survey is used. The probability samples are approximately 2,100 operations and 2,500 operations, respectively, at April 1 and October 1 and, similar to the livestock surveys, these CATI surveys cover the western provinces, Ontario and Quebec. Producers are requested to report their inventories as of the reference date, although the data are collected during a 7-day period near or before that date. The hog survey results are normally released three to four weeks after the reference date.

The June and November Atlantic Surveys are used to produce estimates for that region. These surveys are multi-purpose collecting data, primarily inventories, on livestock including cattle, hogs and sheep in addition to collecting data related to the area, yield and production of the principal field crops. The probability samples are about 1,000 operations in June and 1,100 operations in November. The results are released at the same time as the livestock results. For reference points where surveys do not exist for the Atlantic region, analytical tools are used to produce the estimates.

The total inventories are now distributed to a specific farm type, on the basis of survey results and sector level balance sheets. The two major categories are dairy and beef. The beef sector is then broken down to beef cattle on cow/calf and mixed beef and dairy operations; beef cattle on feeder, stocker/finish operations; and, beef cattle on feeding operations, which include feedlots.

Canadian exports to the United States are obtained from U.S. import custom documents and are officially released by the International Trade Division of Statistics Canada. These data try to register the province of origin of the commodity, but when unknown, will reflect the province of entry into the United States. Information from secondary sources is used by Agriculture Division of Statistics Canada to better estimate the province in which the commodity was raised/grown. Administrative data from the provinces are used to adjust the export numbers by province to better reflect provincial production. Though this methodology will result in different exports by province, the Canadian export totals will equal those released by International Trade Division. At release, some export data are unavailable. The missing data are imputed based on historical and auxiliary data sourced from the United States Animal and Plant Health Inspection Service. The imputed data are replaced with actual International Trade data when it becomes available.

To summarize, the livestock statistics are survey-based estimates. The survey relies on a list frame that is established every five years by the Census of Agriculture and updated to include new entrants, particularly large hog operations. The probability sample surveys are conducted by telephone. The survey results are analysed and corrected before the data are used to analyse the industry and fine-tune the estimates. The survey data are reviewed in a board environment before the commodity analyst works with the data primarily using supply-disposition analysis. The results of the industry analysis are reviewed by the board before being sent to the individual provinces. Once the data are finalised they are released to the public and published. The principal data released include inventories and summarized supply-disposition tables. The data also flow, via farm income estimates, to the Canadian System of National Accounts. In addition the data are used in the calculation of net farm income projections, produced by Agriculture and Agri-Food Canada in co-operation with Statistics Canada and the provinces.