

Table 1

## Railway Occurrence and Casualty

	January			Year To Date		
	2011	2010	2006-2010 Average	2011	2010	2006-2010 Average
<b>Accidents</b>	<b>94</b>	<b>87</b>	<b>106</b>	<b>94</b>	<b>87</b>	<b>106</b>
Main-Track Train Collisions	0	1	1	0	1	1
Main-Track Train Derailments - 1-2 cars	4	4	7	4	4	7
Main-Track Train Derailments - 3 or more cars	7	2	3	7	2	3
Crossings	15	21	24	15	21	24
Non-Main-Track Train Collisions	4	11	11	4	11	11
Non-Main-Track Train Derailments - 1-2 cars	43	31	39	43	31	39
Non-Main-Track Train Derailments - 3 or more cars	7	10	9	7	10	9
Collisions/Derailments Involving Track Units	3	1	2	3	1	2
Employee/Passenger	0	2	1	0	2	1
Trespassers	6	2	4	6	2	4
Fires/Explosions	1	1	1	1	1	1
Other	4	1	4	4	1	4
<b>Incidents</b>	<b>20</b>	<b>15</b>	<b>16</b>	<b>20</b>	<b>15</b>	<b>16</b>
Dangerous Goods Leaker	6	4	5	6	4	5
Main-track Switch in Abnormal Position	0	2	1	0	2	1
Movement Exceeds Limits of Authority	12	8	8	12	8	8
Runaway Rolling Stock	2	0	1	2	0	1
Others	0	1	1	0	1	1
<b>Million Train-miles</b>	<b>a</b>			<b>6.8</b>	<b>6.9</b>	<b>7.5</b>
<b>Accidents/Million Train-miles</b>				<b>13.8</b>	<b>12.6</b>	<b>14.1</b>
<b>Accidents Involving Dangerous Goods</b>	<b>17</b>	<b>8</b>	<b>16</b>	<b>17</b>	<b>8</b>	<b>16</b>
Main-track Train Derailments	4	0	2	4	0	2
Crossings	0	0	1	0	0	1
Non-Main-Track Train Collisions	1	3	4	1	3	4
Non-Main-Track Train Derailments	10	5	7	10	5	7
All Others	2	0	2	2	0	2
<b>Accidents with a DG Release</b>	<b>0</b>	<b>0</b>	<b>0</b>	<b>0</b>	<b>0</b>	<b>0</b>
<b>Accidents Involving Passenger Trains</b>	<b>5</b>	<b>6</b>	<b>6</b>	<b>5</b>	<b>6</b>	<b>6</b>
<b>Fatalities</b>	<b>7</b>	<b>6</b>	<b>6</b>	<b>7</b>	<b>6</b>	<b>6</b>
Crossings	2	3	3	2	3	3
Trespassers	5	1	3	5	1	3
All Others	0	2	0	0	2	0
<b>Serious Injuries</b>	<b>1</b>	<b>5</b>	<b>4</b>	<b>1</b>	<b>5</b>	<b>4</b>
Crossings	0	2	2	0	2	2
Trespassers	1	1	1	1	1	1
All Others	0	2	1	0	2	1

Data extracted February 18, 2011.

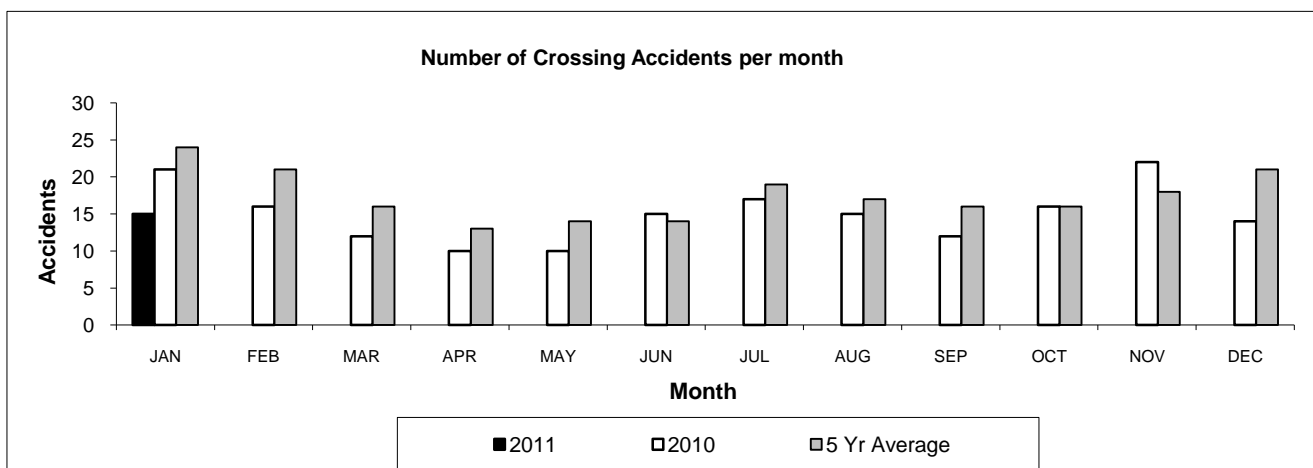
All 5-year averages have been rounded. The totals sometimes do not coincide to the sum of these averages.

a. Train-miles estimated. (Source: Transport Canada)

Table 2

## Railway crossing and trespasser accidents by province

	Crossings with Type Recorded				All Crossings		Trespasser	
	2011 - Year To Date*				Year To Date*		Year To Date*	
	Public Automated	Public Passive	Private	Farm	2011	2010	2011	2010
<b>Newfoundland</b>								
Accidents	0	0	0	0	0	0	0	0
Fatalities	0	0	0	0	0	0	0	0
Serious Injuries	0	0	0	0	0	0	0	0
<b>Nova Scotia</b>								
Accidents	0	0	0	0	0	2	0	0
Fatalities	0	0	0	0	0	1	0	0
Serious Injuries	0	0	0	0	0	1	0	0
<b>New Brunswick</b>								
Accidents	0	0	0	0	0	2	0	0
Fatalities	0	0	0	0	0	0	0	0
Serious Injuries	0	0	0	0	0	0	0	0
<b>Quebec</b>								
Accidents	0	0	0	0	0	4	0	0
Fatalities	0	0	0	0	0	0	0	0
Serious Injuries	0	0	0	0	0	0	0	0
<b>Ontario</b>								
Accidents	1	1	0	0	2	4	5	1
Fatalities	0	1	0	0	1	1	4	1
Serious Injuries	0	0	0	0	0	0	1	0
<b>Manitoba</b>								
Accidents	0	0	0	0	0	4	0	0
Fatalities	0	0	0	0	0	0	0	0
Serious Injuries	0	0	0	0	0	0	0	0
<b>Saskatchewan</b>								
Accidents	1	0	0	0	3	1	1	1
Fatalities	0	0	0	0	0	0	1	0
Serious Injuries	0	0	0	0	0	0	0	1
<b>Alberta</b>								
Accidents	5	2	0	1	9	4	0	0
Fatalities	1	0	0	0	1	1	0	0
Serious Injuries	0	0	0	0	0	1	0	0
<b>British Columbia</b>								
Accidents	1	0	0	0	1	0	0	0
Fatalities	0	0	0	0	0	0	0	0
Serious Injuries	0	0	0	0	0	0	0	0
<b>Northwest Territories</b>								
Accidents	0	0	0	0	0	0	0	0
Fatalities	0	0	0	0	0	0	0	0
Serious Injuries	0	0	0	0	0	0	0	0
<b>Canada</b>								
Accidents	8	3	0	1	15	21	6	2
Fatalities	1	1	0	0	2	3	5	1
Serious Injuries	0	0	0	0	0	2	1	1



Data extracted February 18, 2011.

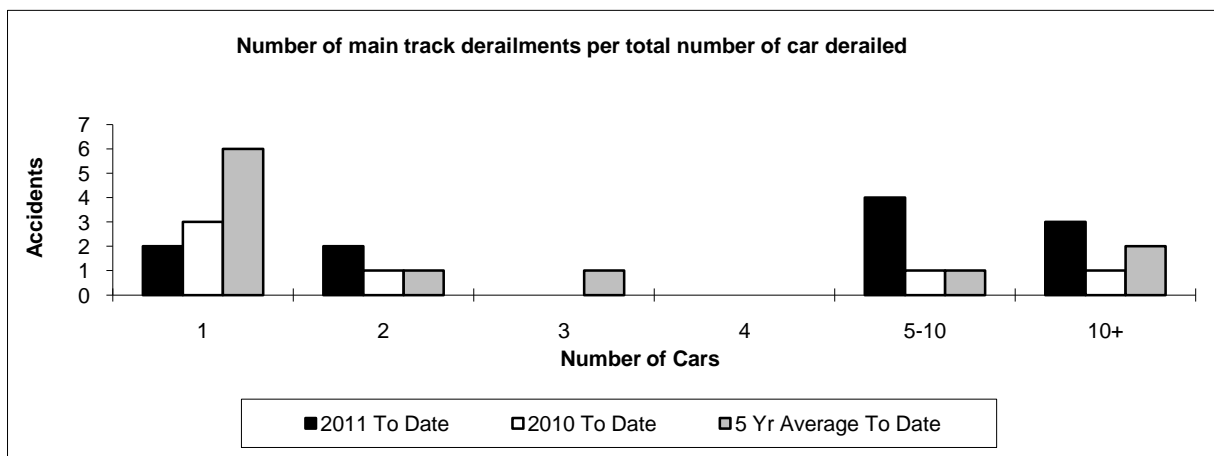
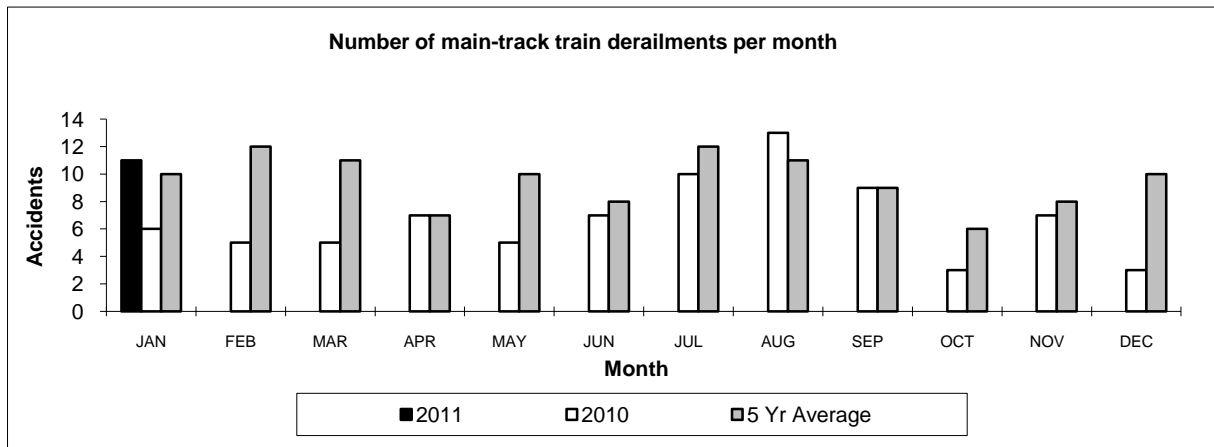
Year to date includes January only for this month.

Table 3

## Main-track train derailments by province

	January			Derailments with DG Involvement January		
	2011	2010	2006-2010 Average	2011	2010	2006-2010 Average
<b>Canada</b>	<b>11</b>	<b>6</b>	<b>10</b>	<b>4</b>	<b>0</b>	<b>2</b>
Newfoundland	1	2	1	0	0	0
Nova Scotia	0	0	0	0	0	0
New Brunswick	0	0	0	0	0	0
Quebec	0	0	1	0	0	0
Ontario	1	2	3	1	0	1
Manitoba	2	0	1	1	0	0
Saskatchewan	1	0	1	0	0	0
Alberta	5	0	1	2	0	0
British Columbia	1	2	2	0	0	0
Northwest Territories	0	0	0	0	0	0

\* There were no occurrences with dangerous goods release to date in 2011 or in 2010.



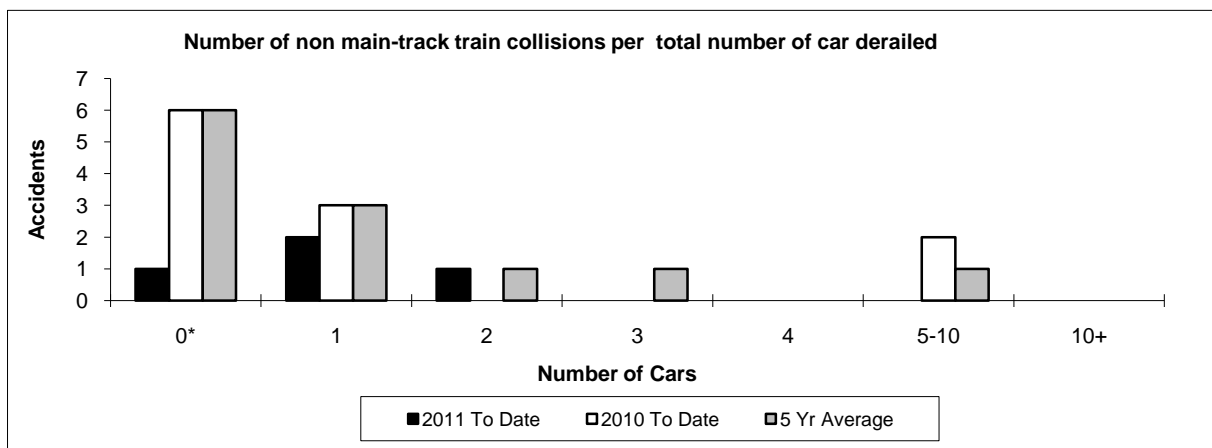
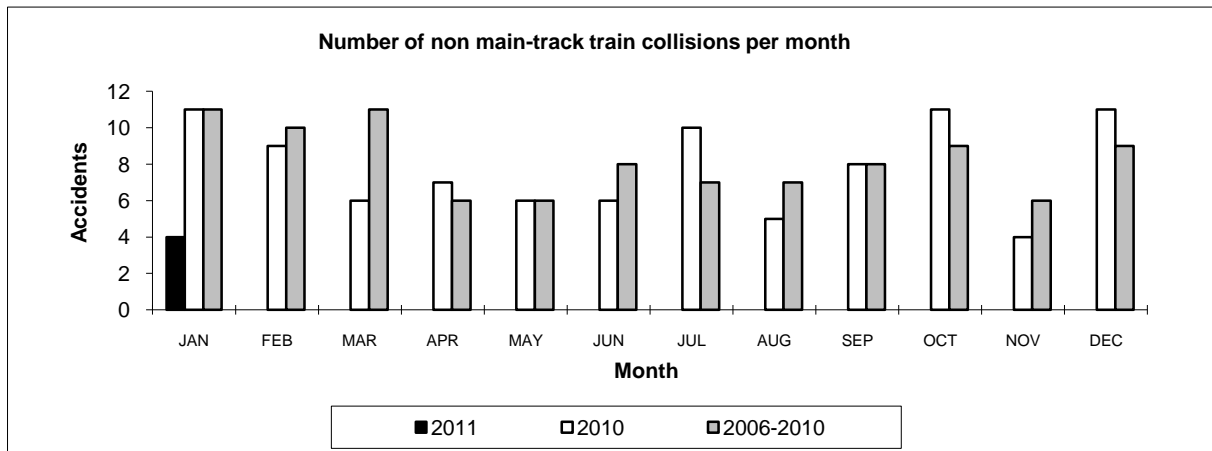
Data extracted February 18, 2011.

Table 4

## Non main-track train collisions by province

	January			Collisions with DG Involvement January		
	2011	2010	2006-2010 Average	2011	2010	2006-2010 Average
<b>Canada</b>	<b>4</b>	<b>11</b>	<b>11</b>	<b>1</b>	<b>3</b>	<b>4</b>
Newfoundland	0	0	0	0	0	0
Nova Scotia	0	0	0	0	0	0
New Brunswick	1	0	0	0	0	0
Quebec	0	1	2	0	1	1
Ontario	1	2	3	1	1	1
Manitoba	0	1	2	0	0	1
Saskatchewan	0	0	0	0	0	0
Alberta	1	3	1	0	0	1
British Columbia	1	4	2	0	1	0
Northwest Territories	0	0	0	0	0	0

\* There were no occurrences with dangerous goods release to date in 2011 or in 2010.



Data extracted February 18, 2011.

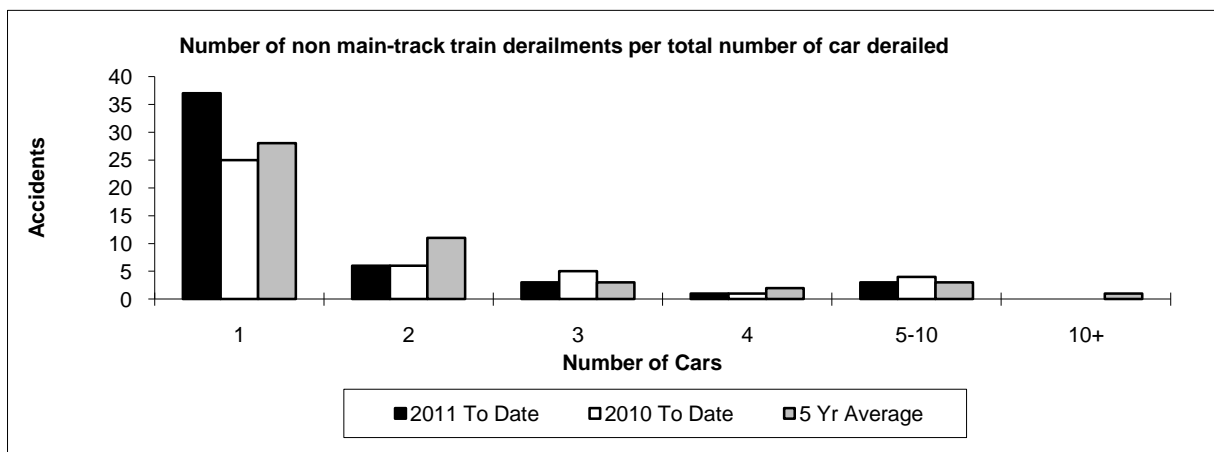
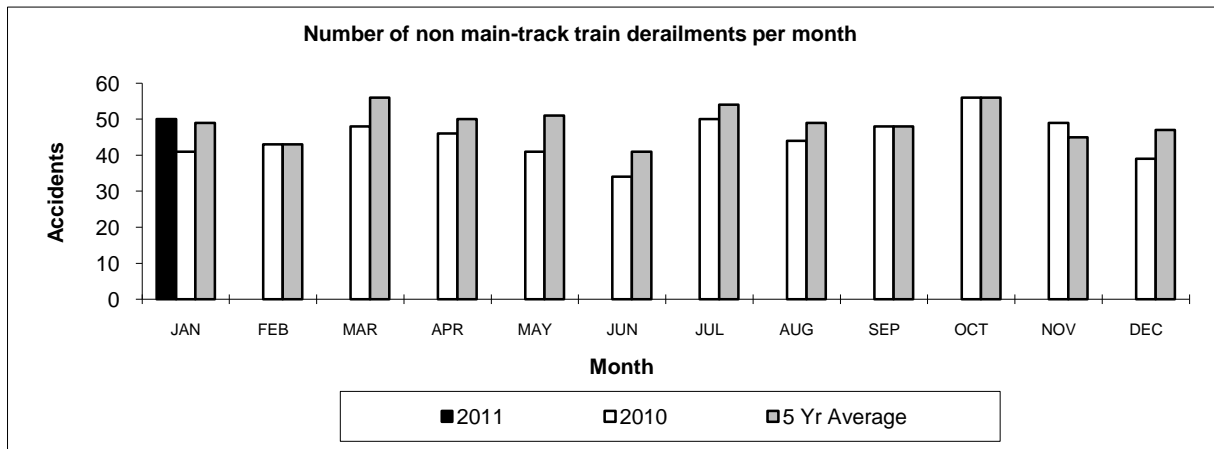
\*Number of collisions with no derailments.

Table 5

## Non main-track train derailments by province

	January			Derailments with DG Involvement January		
	2011	2010	2006-2010 Average	2011	2010	2006-2010 Average
<b>Canada</b>	<b>50</b>	<b>41</b>	<b>49</b>	<b>10</b>	<b>5</b>	<b>7</b>
Newfoundland	0	0	0	0	0	0
Nova Scotia	0	0	0	0	0	0
New Brunswick	1	1	1	0	0	0
Quebec	5	2	5	2	0	1
Ontario	6	4	10	1	0	1
Manitoba	5	8	5	1	1	1
Saskatchewan	9	4	5	0	0	0
Alberta	13	15	12	4	3	3
British Columbia	11	7	10	2	1	1
Northwest Territories	0	0	0	0	0	0

\* There were no occurrences with dangerous goods release to date in 2011 or in 2010.



Data extracted February 18, 2011.