

Table 1

## Railway Occurrence and Casualty

	June			January to June		
	2011	2010	2006-2010 Average	2011	2010	2006-2010 Average
<b>Accidents</b>	<b>78</b>	<b>79</b>	<b>85</b>	<b>537</b>	<b>496</b>	<b>586</b>
Main-Track Train Collisions	1	0	0	1	3	2
Main-Track Train Derailments - 1-2 cars	3	4	3	32	20	32
Main-Track Train Derailments - 3 or more cars	4	3	5	35	15	26
Crossings	8	15	14	74	84	102
Non-Main-Track Train Collisions	9	6	8	43	45	53
Non-Main-Track Train Derailments - 1-2 cars	26	29	31	212	208	224
Non-Main-Track Train Derailments - 3 or more cars	10	5	10	53	45	65
Collisions/Derailments Involving Track Units	2	2	2	14	9	13
Employee/Passenger	1	1	0	5	4	5
Trespassers	5	12	9	28	44	38
Fires/Explosions	9	2	2	15	8	7
Other	0	0	2	23	11	18
<b>Incidents</b>	<b>24</b>	<b>17</b>	<b>20</b>	<b>103</b>	<b>93</b>	<b>99</b>
Dangerous Goods Leaker	5	0	7	29	31	37
Main-track Switch in Abnormal Position	0	0	1	2	3	3
Movement Exceeds Limits of Authority	16	15	10	62	53	50
Runaway Rolling Stock	0	1	1	3	2	4
Others	3	1	1	7	4	5
<b>Million Train-miles</b>	<b>a</b>			<b>41.72</b>	<b>42</b>	<b>43.09</b>
<b>Accidents/Million Train-miles</b>				<b>12.87</b>	<b>11.81</b>	<b>13.6</b>
<b>Accidents Involving Dangerous Goods</b>	<b>9</b>	<b>9</b>	<b>11</b>	<b>75</b>	<b>66</b>	<b>84</b>
Main-track Train Derailments	3	1	2	15	5	11
Crossings	0	1	0	1	3	3
Non-Main-Track Train Collisions	2	1	2	12	13	19
Non-Main-Track Train Derailments	4	6	6	43	44	46
All Others	0	0	1	4	1	4
<b>Accidents with a DG Release</b>	<b>0</b>	<b>0</b>	<b>0</b>	<b>1</b>	<b>1</b>	<b>1</b>
<b>Accidents Involving Passenger Trains</b>	<b>1</b>	<b>5</b>	<b>6</b>	<b>31</b>	<b>31</b>	<b>34</b>
<b>Fatalities</b>	<b>2</b>	<b>10</b>	<b>7</b>	<b>28</b>	<b>41</b>	<b>39</b>
Crossings	0	1	1	12	12	13
Trespassers	2	9	6	16	27	24
All Others	0	0	0	0	2	2
<b>Serious Injuries</b>	<b>5</b>	<b>6</b>	<b>4</b>	<b>25</b>	<b>29</b>	<b>28</b>
Crossings	1	3	1	8	7	13
Trespassers	3	2	2	11	11	11
All Others	1	1	1	6	11	5

Data extracted July 18, 2011.

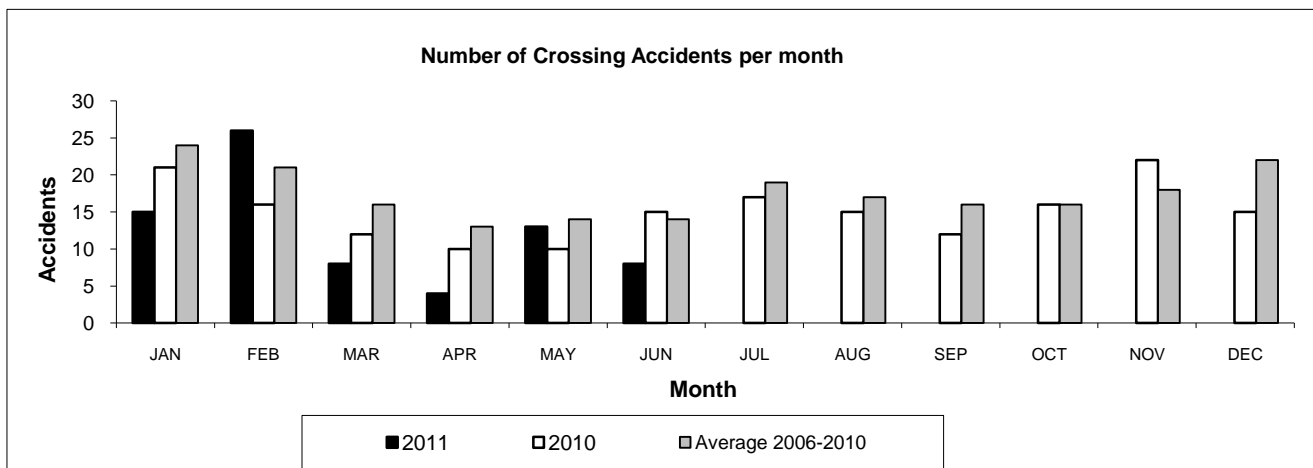
All 5-year averages have been rounded. The totals sometimes do not coincide to the sum of these averages.

a. Train-miles estimated. (Source: Transport Canada)

Table 2

## Railway crossing and trespasser accidents by province

	Crossings with Type Recorded				All Crossings		Trespasser	
	2011 - Year To Date*				Year To Date*		Year To Date*	
	Public Automated	Public Passive	Private	Farm	2011	2010	2011	2010
<b>Newfoundland</b>								
Accidents	0	0	0	0	0	0	0	0
Fatalities	0	0	0	0	0	0	0	0
Serious Injuries	0	0	0	0	0	0	0	0
<b>Nova Scotia</b>								
Accidents	0	0	1	0	1	2	0	0
Fatalities	0	0	0	0	0	1	0	0
Serious Injuries	0	0	0	0	0	1	0	0
<b>New Brunswick</b>								
Accidents	3	1	0	0	4	4	1	1
Fatalities	0	0	0	0	0	1	0	0
Serious Injuries	0	0	0	0	0	0	1	0
<b>Quebec</b>								
Accidents	1	2	1	2	6	11	1	9
Fatalities	1	0	0	1	2	1	1	5
Serious Injuries	0	0	0	0	0	0	0	3
<b>Ontario</b>								
Accidents	10	3	2	0	15	21	17	15
Fatalities	3	1	1	0	5	1	12	12
Serious Injuries	1	0	0	0	1	0	5	2
<b>Manitoba</b>								
Accidents	1	2	0	0	3	7	1	2
Fatalities	1	1	0	0	2	0	1	2
Serious Injuries	1	0	0	0	1	1	0	0
<b>Saskatchewan</b>								
Accidents	5	5	1	0	11	14	2	2
Fatalities	0	0	0	0	0	4	1	1
Serious Injuries	1	1	0	0	2	1	1	1
<b>Alberta</b>								
Accidents	13	10	0	2	25	17	2	5
Fatalities	1	1	0	0	2	4	1	3
Serious Injuries	2	1	0	0	3	3	0	2
<b>British Columbia</b>								
Accidents	5	3	0	1	9	8	4	10
Fatalities	0	0	0	1	1	0	0	4
Serious Injuries	1	0	0	0	1	1	4	3
<b>Northwest Territories</b>								
Accidents	0	0	0	0	0	0	0	0
Fatalities	0	0	0	0	0	0	0	0
Serious Injuries	0	0	0	0	0	0	0	0
<b>Canada</b>								
Accidents	38	26	5	5	74	84	28	44
Fatalities	6	3	1	2	12	12	16	27
Serious Injuries	6	2	0	0	8	7	11	11



Data extracted July 18, 2011.

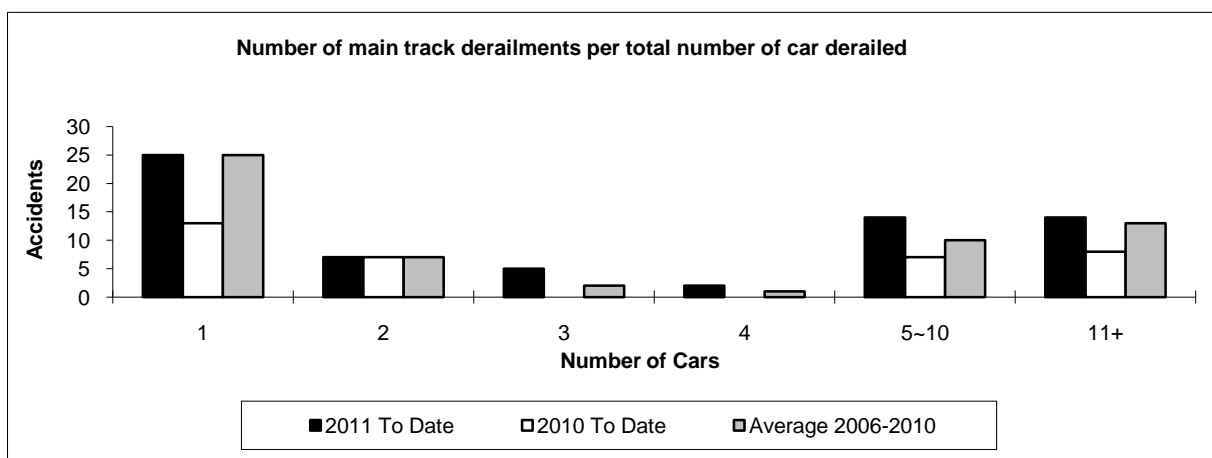
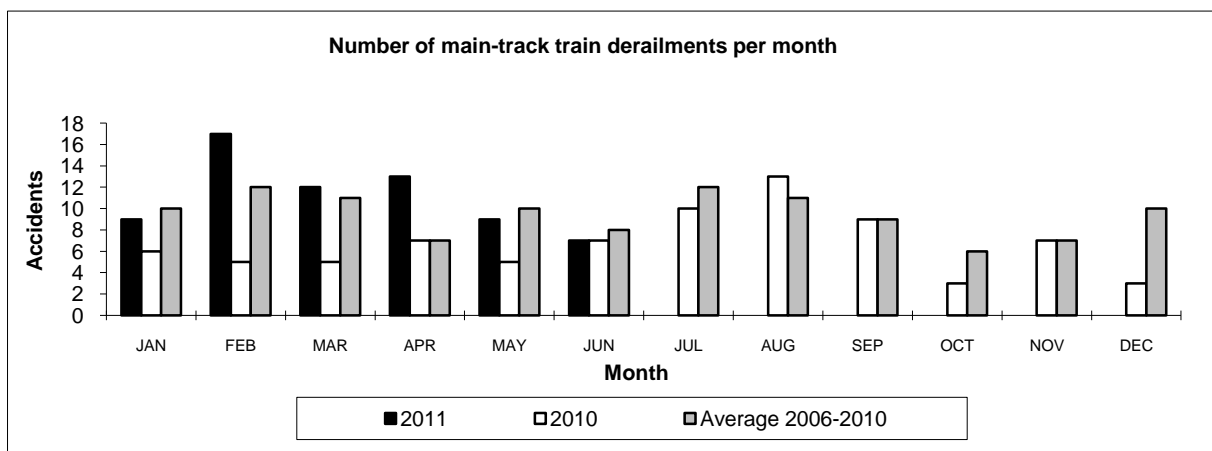
\*Year to date is from January to June.

Table 3

## Main-track train derailments by province

	January to June			Derailments with DG Involvement January to June		
	2011	2010	2006-2010 Average	2011	2010	2006-2010 Average
<b>Canada</b>	<b>67</b>	<b>35</b>	<b>58</b>	<b>15</b>	<b>5</b>	<b>11</b>
Newfoundland	1	3	1	0	0	0
Nova Scotia	0	0	1	0	0	0
New Brunswick	0	0	1	0	0	1
Quebec	6	3	6	1	0	1
Ontario	12	12	17	4	2	4
Manitoba	6	3	4	0	0	0
Saskatchewan	10	3	6	0	1	1
Alberta	16	4	9	6	0	2
British Columbia	16	7	13	4	2	2
Northwest Territories	0	0	0	0	0	0

\* There were no occurrences with dangerous goods release to date in 2011 or in 2010.



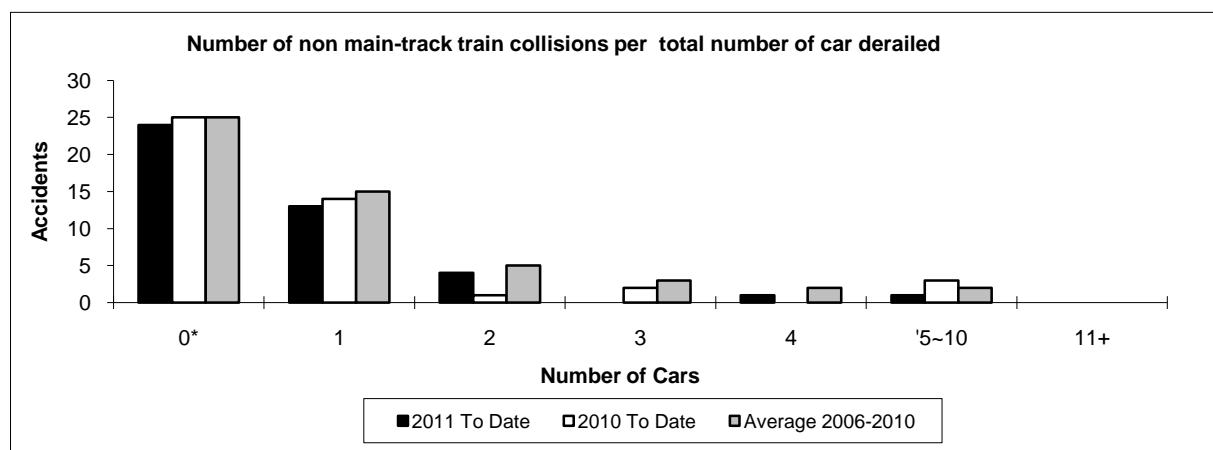
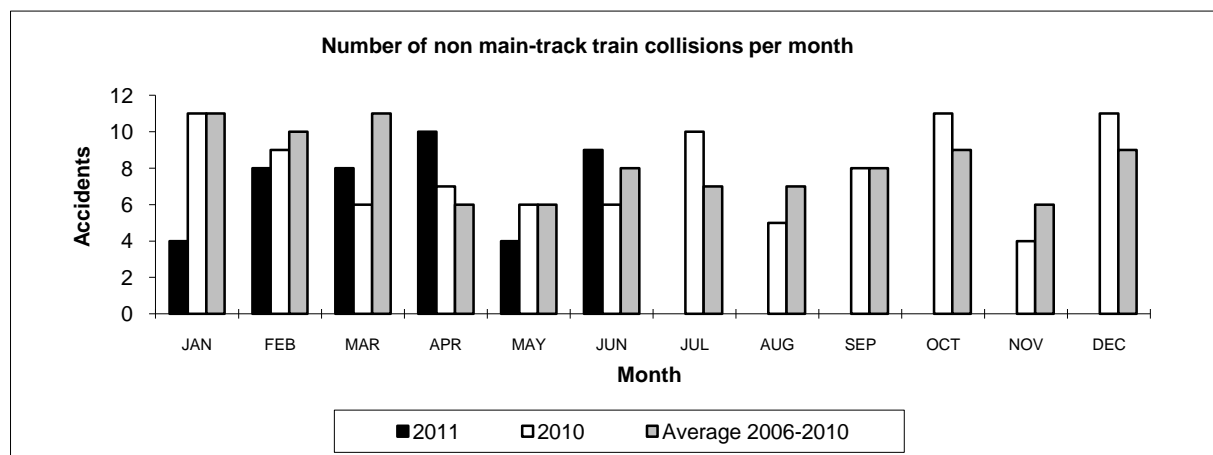
Data extracted July 18, 2011.

Table 4

## Non main-track train collisions by province

	January to June			Collisions with DG Involvement January to June		
	2011	2010	2006-2010 Average	2011	2010	2006-2010 Average
<b>Canada</b>	<b>43</b>	<b>45</b>	<b>53</b>	<b>12</b>	<b>13</b>	<b>19</b>
Newfoundland	0	0	0	0	0	0
Nova Scotia	0	0	0	0	0	0
New Brunswick	1	0	1	0	0	0
Quebec	7	8	7	1	3	2
Ontario	8	7	15	5	4	6
Manitoba	4	8	6	1	0	2
Saskatchewan	3	1	3	0	0	1
Alberta	7	9	10	1	3	5
British Columbia	13	12	9	4	3	2
Northwest Territories	0	0	0	0	0	0

\* There were no occurrences with dangerous goods release to date in 2011 or in 2010.



Data extracted July 18, 2011.

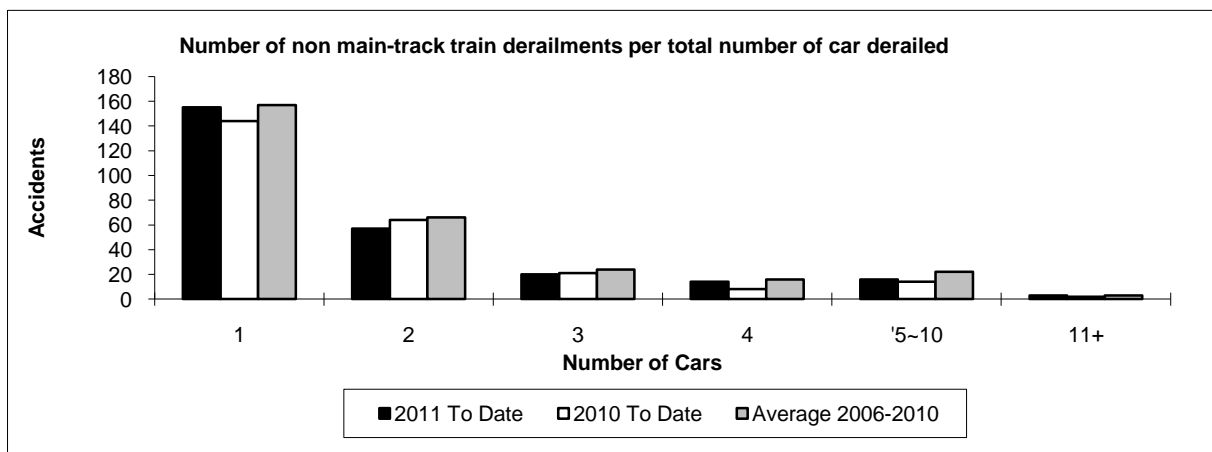
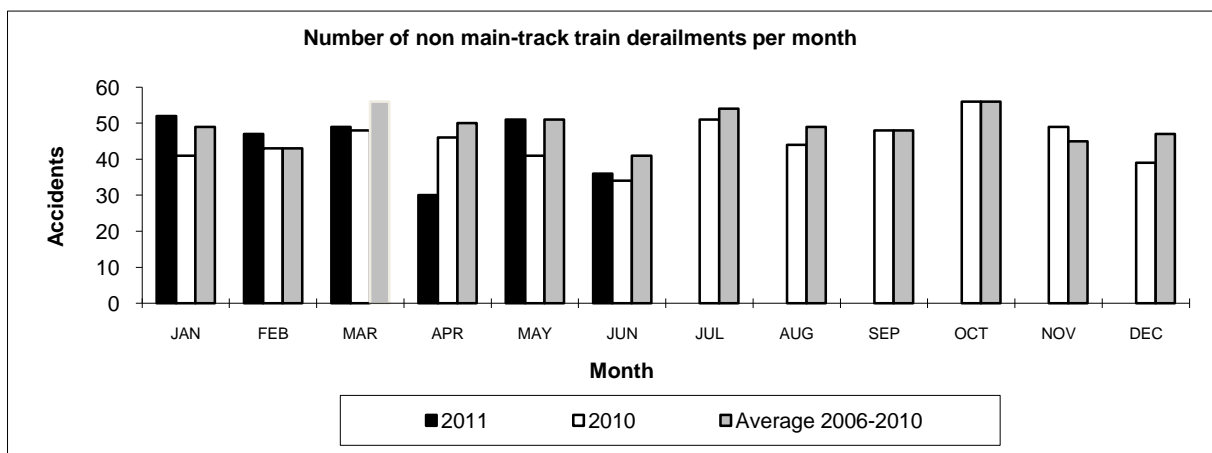
\*Number of collisions with no derailments.

Table 5

## Non main-track train derailments by province

	January to June			Derailments with DG Involvement January to June		
	2011	2010	2006-2010 Average	2011	2010	2006-2010 Average
<b>Canada</b>	<b>265</b>	<b>253</b>	<b>288</b>	<b>43</b>	<b>44</b>	<b>46</b>
Newfoundland	0	0	0	0	0	0
Nova Scotia	0	2	3	0	1	0
New Brunswick	7	7	7	0	3	2
Quebec	34	27	36	10	4	7
Ontario	49	51	70	10	8	11
Manitoba	27	28	29	2	7	6
Saskatchewan	52	24	27	2	2	3
Alberta	53	68	64	14	11	10
British Columbia	43	46	53	5	8	7
Northwest Territories	0	0	0	0	0	0

\* There were no occurrences with dangerous goods release to date in 2011 and 1 in 2010.



Data extracted July 18, 2011.