

Table 1

## Railway Occurrence and Casualty

	October			January to October		
	2012	2011	2007-2011 Average	2012	2011	2007-2011 Average
<b>Accidents</b>	<b>86</b>	<b>70</b>	<b>97</b>	<b>822</b>	<b>881</b>	<b>954</b>
Main-Track Train Collisions	0	1	1	6	2	5
Main-Track Train Derailments - 1-2 cars	3	1	2	24	37	46
Main-Track Train Derailments - 3 or more cars	1	3	3	31	53	46
Crossings	14	11	15	153	141	159
Non-Main-Track Train Collisions	9	7	8	76	79	81
Non-Main-Track Train Derailments - 1-2 cars	38	25	38	307	318	350
Non-Main-Track Train Derailments - 3 or more cars	10	6	12	92	96	110
Collisions/Derailments Involving Track Units	3	3	3	20	28	31
Employee/Passenger	0	0	1	5	11	10
Trespassers	3	8	10	67	58	71
Fires/Explosions	2	0	2	15	21	18
Other	3	5	2	26	37	29
<b>Incidents</b>	<b>18</b>	<b>15</b>	<b>17</b>	<b>179</b>	<b>170</b>	<b>174</b>
Dangerous Goods Leaker	5	2	5	57	49	58
Main-track Switch in Abnormal Position	0	3	1	4	8	6
Movement Exceeds Limits of Authority	12	7	9	104	93	91
Runaway Rolling Stock	1	2	2	9	11	10
Others	0	1	1	5	9	9
<b>Million Train-miles (a)</b>				<b>72.08</b>	<b>70.78</b>	<b>72.24</b>
<b>Accidents/Million Train-miles</b>				<b>11.40</b>	<b>12.45</b>	<b>13.21</b>
<b>Accidents Involving Dangerous Goods</b>	<b>14</b>	<b>6</b>	<b>13</b>	<b>98</b>	<b>109</b>	<b>126</b>
Main-track Train Derailments	1	1	1	6	20	18
Crossings	1	0	0	4	1	4
Non-Main-Track Train Collisions	2	0	2	16	18	27
Non-Main-Track Train Derailments	10	4	9	71	64	72
All Others	0	1	1	1	6	6
<b>Accidents with a DG Release</b>	<b>1</b>	<b>0</b>	<b>0</b>	<b>2</b>	<b>3</b>	<b>3</b>
<b>Accidents Involving Passenger Trains</b>	<b>4</b>	<b>7</b>	<b>7</b>	<b>36</b>	<b>58</b>	<b>60</b>
<b>Fatalities</b>	<b>1</b>	<b>8</b>	<b>9</b>	<b>71</b>	<b>60</b>	<b>67</b>
Crossings	1	1	2	26	23	21
Trespassers	0	7	7	42	36	44
All Others	0	0	0	3	1	1
<b>Serious Injuries</b>	<b>3</b>	<b>2</b>	<b>7</b>	<b>61</b>	<b>48</b>	<b>51</b>
Crossings	0	1	4	26	19	22
Trespassers	3	1	2	20	20	20
All Others	0	0	1	15	9	9

Data extracted November 21, 2012.

All 5-year averages have been rounded. The totals sometimes do not coincide to the sum of these averages.

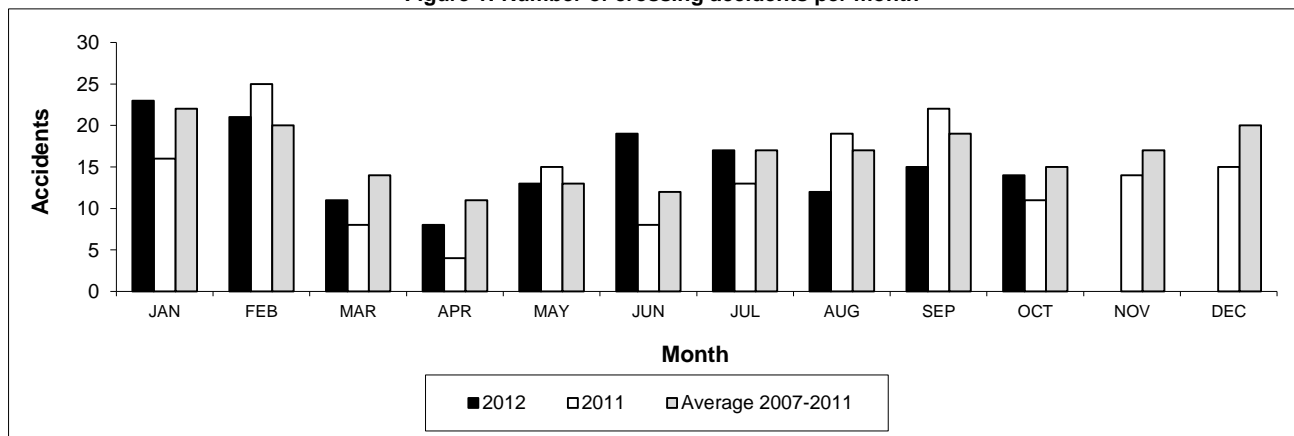
a. Train-miles estimated. (Source: Transport Canada)

Table 2

## Railway crossing and trespasser accidents by province

	Crossings with Type Recorded 2012 - Year To Date*				All Crossings Year To Date*		Trespasser Year To Date*	
	Public Automated	Public Passive	Private	Farm	2012	2011	2012	2011
<b>Newfoundland</b>								
Accidents	0	0	0	0	0	2	0	0
Fatalities	0	0	0	0	0	0	0	0
Serious Injuries	0	0	0	0	0	0	0	0
<b>Nova Scotia</b>								
Accidents	0	0	1	0	1	0	1	1
Fatalities	0	0	0	0	0	0	0	0
Serious Injuries	0	0	0	0	0	0	2	0
<b>New Brunswick</b>								
Accidents	2	0	0	1	3	6	1	2
Fatalities	1	0	0	0	1	2	1	1
Serious Injuries	0	0	0	0	0	0	0	1
<b>Quebec</b>								
Accidents	10	4	2	1	17	17	7	8
Fatalities	1	0	0	0	1	3	3	6
Serious Injuries	1	0	0	0	1	2	2	2
<b>Ontario</b>								
Accidents	18	9	3	0	31	31	28	26
Fatalities	6	2	0	0	8	8	18	20
Serious Injuries	1	5	1	0	7	6	9	6
<b>Manitoba</b>								
Accidents	8	9	1	0	19	6	3	1
Fatalities	1	1	0	0	2	2	3	1
Serious Injuries	2	5	0	0	7	1	0	0
<b>Saskatchewan</b>								
Accidents	7	13	1	1	26	18	6	2
Fatalities	0	7	0	1	8	1	4	1
Serious Injuries	1	1	1	0	3	2	0	1
<b>Alberta</b>								
Accidents	20	17	2	0	40	42	10	7
Fatalities	4	0	0	0	4	5	8	2
Serious Injuries	5	2	0	0	7	4	2	4
<b>British Columbia</b>								
Accidents	8	4	4	0	16	19	11	11
Fatalities	2	0	0	0	2	2	5	5
Serious Injuries	0	1	0	0	1	4	5	6
<b>Northwest Territories</b>								
Accidents	0	0	0	0	0	0	0	0
Fatalities	0	0	0	0	0	0	0	0
Serious Injuries	0	0	0	0	0	0	0	0
<b>Canada</b>								
Accidents	73	56	14	3	153	141	67	58
Fatalities	15	10	0	1	26	23	42	36
Serious Injuries	10	14	2	0	26	19	20	20

Figure 1: Number of crossing accidents per month



Data extracted November 21, 2012.

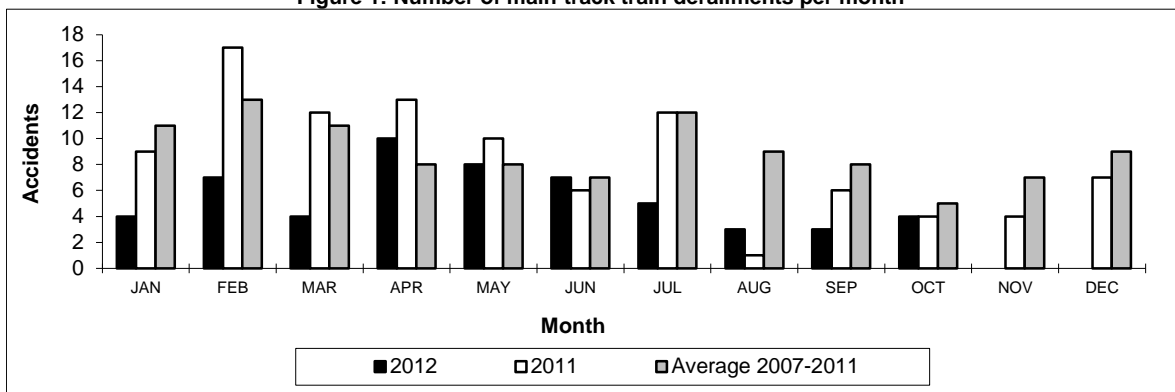
\*Year to date is from January to October.

**Table 3**  
**Main-track train derailments by province**

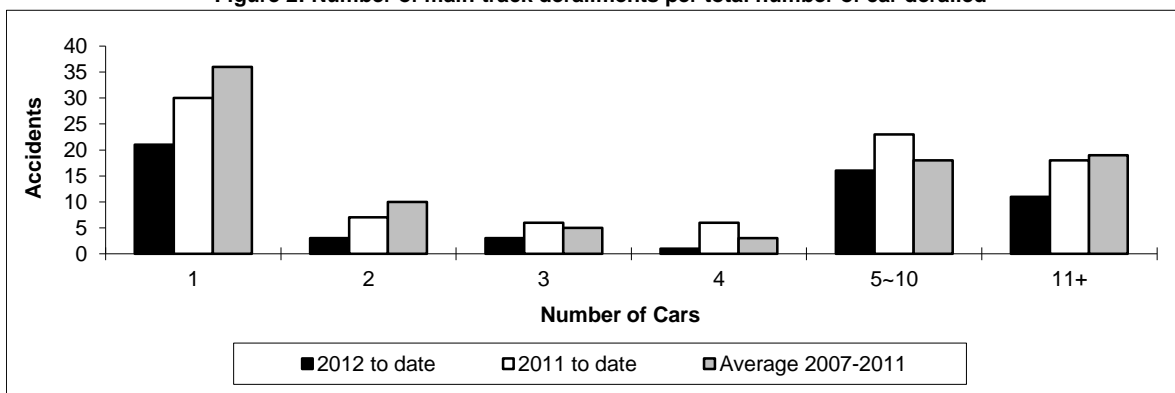
	January to October			Deraillments with DG Involvement January to October		
	2012	2011	2007-2011 Average	2012	2011	2007-2011 Average
<b>Canada</b>	<b>55</b>	<b>90</b>	<b>91</b>	<b>6</b>	<b>20</b>	<b>18</b>
Newfoundland	1	1	1	0	0	0
Nova Scotia	0	0	1	0	0	0
New Brunswick	0	0	2	0	0	1
Quebec	4	8	9	1	2	2
Ontario	6	21	25	1	5	6
Manitoba	5	10	8	0	0	0
Saskatchewan	4	11	10	1	0	1
Alberta	17	20	18	2	7	5
British Columbia	18	19	18	1	6	3
Northwest Territories	0	0	0	0	0	0

\* There was 1 occurrence with dangerous goods release to date in 2012 and 1 in 2011.

**Figure 1: Number of main-track train derailments per month**



**Figure 2: Number of main-track derailments per total number of cars derailed**



Data extracted November 21, 2012.

Table 4

## Non main-track train collisions by province

	January to October			Collisions with DG Involvement January to October		
	2012	2011	2007-2011 Average	2012	2011	2007-2011 Average
<b>Canada</b>	<b>76</b>	<b>79</b>	<b>81</b>	<b>16</b>	<b>18</b>	<b>27</b>
Newfoundland	0	0	0	0	0	0
Nova Scotia	0	0	0	0	0	0
New Brunswick	1	1	1	0	0	0
Quebec	7	11	8	3	2	2
Ontario	10	15	19	0	5	8
Manitoba	16	13	11	3	2	3
Saskatchewan	9	6	5	1	0	1
Alberta	22	16	20	5	4	9
British Columbia	11	17	15	4	5	4
Northwest Territories	0	0	0	0	0	0

\* There were no occurrences with dangerous goods release to date in 2012 or in 2011.

Figure 1: Number of non main-track train collisions per month

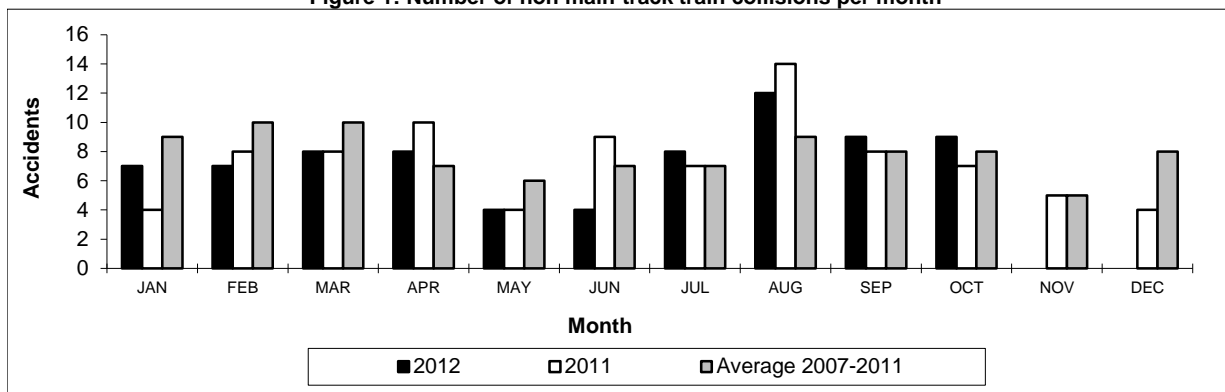
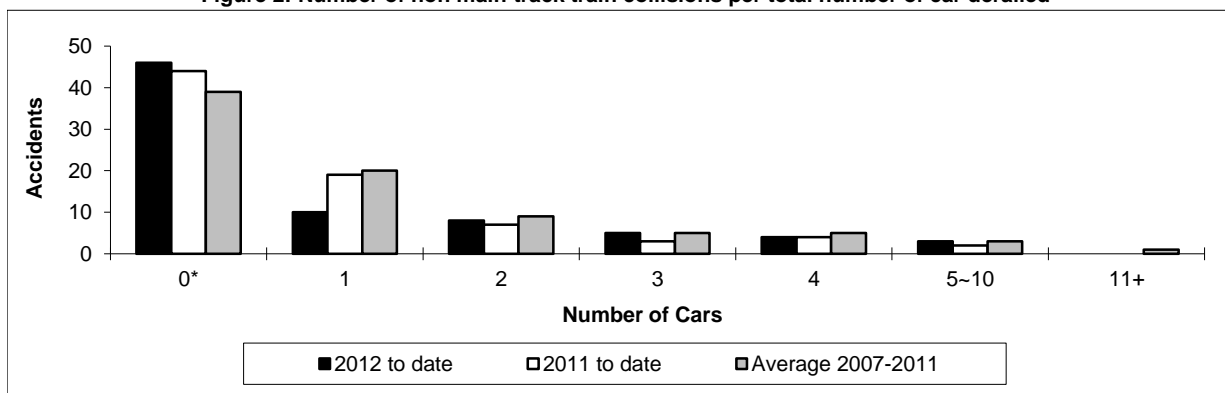


Figure 2: Number of non main-track train collisions per total number of car derailed



Data extracted November 21, 2012.

\*Number of collisions with no derailments.

Table 5

## Non main-track train derailments by province

	January to October			Derailments with DG Involvement January to October		
	2012	2011	2007-2011 Average	2012	2011	2007-2011 Average
<b>Canada</b>	<b>399</b>	<b>414</b>	<b>460</b>	<b>71</b>	<b>64</b>	<b>72</b>
Newfoundland	1	0	0	0	0	0
Nova Scotia	1	2	3	0	1	1
New Brunswick	5	11	9	1	1	2
Quebec	46	51	51	6	14	10
Ontario	78	87	105	11	14	16
Manitoba	50	43	51	8	4	8
Saskatchewan	49	67	52	6	3	4
Alberta	118	93	108	32	21	20
British Columbia	51	59	81	7	5	10
Northwest Territories	0	1	0	0	1	0

\* There were no occurrences with dangerous goods release to date in 2012 and 1 in 2011.

Figure 1: Number of non main-track train derailments per month

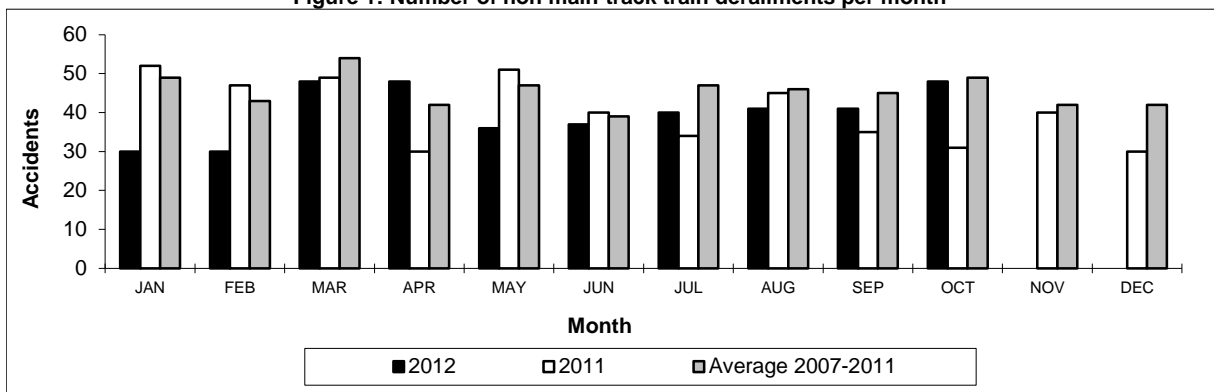
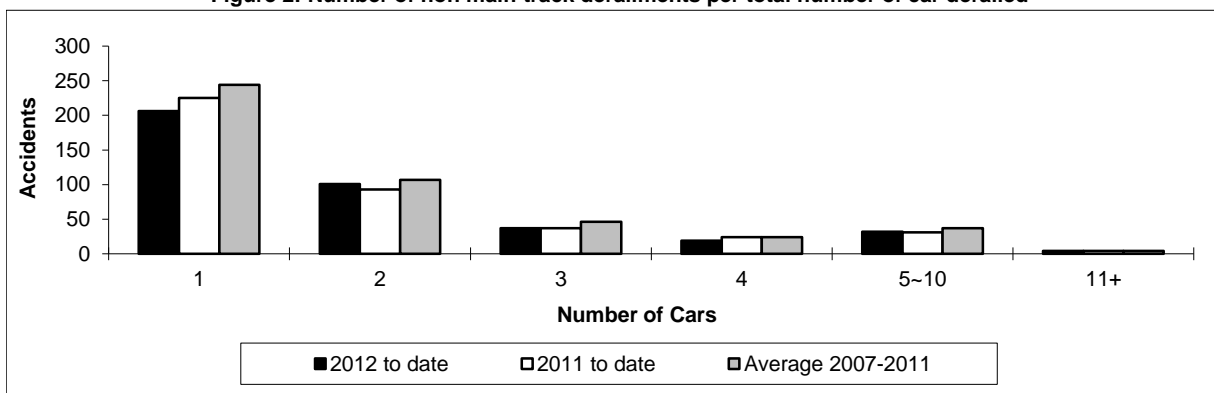


Figure 2: Number of non main-track derailments per total number of car derailed



Data extracted November 21, 2012.