

Table 1

Railway Occurrence and Casualty

	February			January to February		
	2012	2011	2007-2011 Average	2012	2011	2007-2011 Average
Accidents	78	109	98	156	205	199
Main-Track Train Collisions	0	0	0	1	0	1
Main-Track Train Derailments - 1-2 cars	3	10	7	3	13	14
Main-Track Train Derailments - 3 or more cars	4	7	6	8	13	10
Crossings	21	26	21	44	42	42
Non-Main-Track Train Collisions	7	8	10	14	12	19
Non-Main-Track Train Derailments - 1-2 cars	25	42	35	47	85	74
Non-Main-Track Train Derailments - 3 or more cars	5	5	8	13	14	18
Collisions/Derailments Involving Track Units	1	1	2	3	4	4
Employee/Passenger	1	1	1	1	1	2
Trespassers	4	1	3	10	7	6
Fires/Explosions	3	0	1	6	1	1
Other	3	8	5	5	13	8
Incidents	10	14	13	22	33	30
Dangerous Goods Leaker	3	1	3	5	7	9
Main-track Switch in Abnormal Position	0	0	0	0	0	1
Movement Exceeds Limits of Authority	6	11	8	14	23	17
Runaway Rolling Stock	1	1	0	2	2	1
Others	0	1	1	1	1	2
Million Train-miles (a)				14.38	13.2	13.83
Accidents/Million Train-miles				10.85	15.53	14.39
Accidents Involving Dangerous Goods	8	20	17	12	37	34
Main-track Train Derailments	1	3	3	1	6	6
Crossings	0	0	0	1	0	1
Non-Main-Track Train Collisions	1	3	4	2	4	6
Non-Main-Track Train Derailments	6	13	9	8	24	19
All Others	0	1	0	0	3	2
Accidents with a DG Release	0	0	0	1	0	0
Accidents Involving Passenger Trains	3	5	7	10	11	12
Fatalities	11	4	4	15	11	10
Crossings	5	3	2	6	5	5
Trespassers	3	1	2	6	6	4
All Others	3	0	0	3	0	1
Serious Injuries	13	7	6	22	8	9
Crossings	2	6	3	8	6	5
Trespassers	1	0	1	3	1	1
All Others	10	1	2	11	1	3

Data extracted March 15, 2012.

All 5-year averages have been rounded. The totals sometimes do not coincide to the sum of these averages.

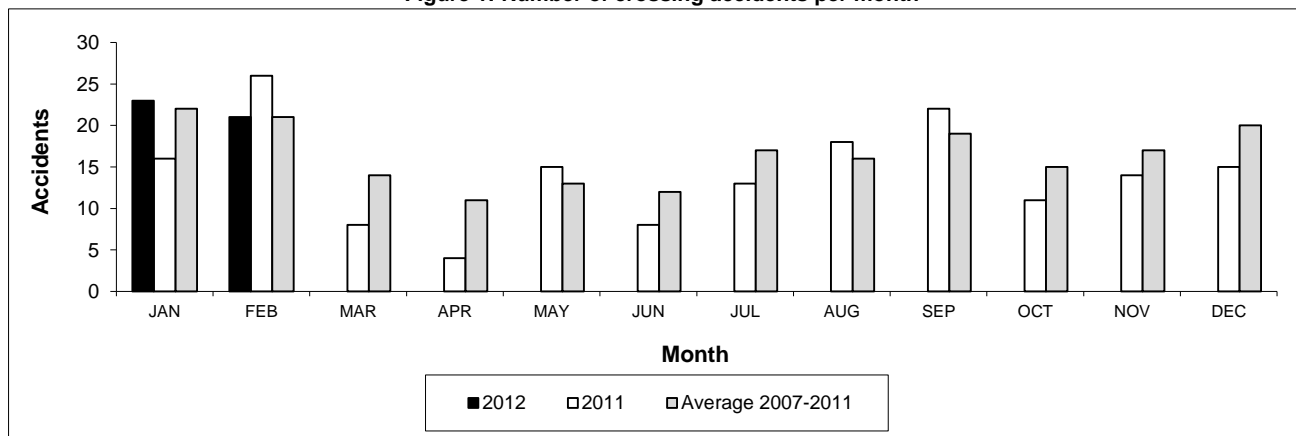
a. Train-miles estimated. (Source: Transport Canada)

Table 2

Railway crossing and trespasser accidents by province

	Crossings with Type Recorded 2012 - Year To Date*				All Crossings Year To Date*		Trespasser Year To Date*	
	Public Automated	Public Passive	Private	Farm	2012	2011	2012	2011
Newfoundland								
Accidents	0	0	0	0	0	0	0	0
Fatalities	0	0	0	0	0	0	0	0
Serious Injuries	0	0	0	0	0	0	0	0
Nova Scotia								
Accidents	0	0	1	0	1	1	0	0
Fatalities	0	0	0	0	0	0	0	0
Serious Injuries	0	0	0	0	0	0	0	0
New Brunswick								
Accidents	1	0	0	1	2	1	0	0
Fatalities	1	0	0	0	1	0	0	0
Serious Injuries	0	0	0	0	0	0	0	0
Quebec								
Accidents	2	1	0	0	3	1	1	0
Fatalities	0	0	0	0	0	0	0	0
Serious Injuries	0	0	0	0	0	0	0	0
Ontario								
Accidents	5	4	0	0	9	7	3	5
Fatalities	1	0	0	0	1	2	2	4
Serious Injuries	0	1	0	0	1	1	1	1
Manitoba								
Accidents	5	1	0	0	6	2	0	1
Fatalities	1	0	0	0	1	2	0	1
Serious Injuries	2	0	0	0	2	1	0	0
Saskatchewan								
Accidents	2	4	0	1	7	10	0	1
Fatalities	0	0	0	1	1	0	0	1
Serious Injuries	1	0	0	0	1	1	0	0
Alberta								
Accidents	3	3	0	0	6	16	3	0
Fatalities	0	0	0	0	0	1	2	0
Serious Injuries	3	1	0	0	4	2	1	0
British Columbia								
Accidents	5	2	3	0	10	4	3	0
Fatalities	2	0	0	0	2	0	2	0
Serious Injuries	0	0	0	0	0	1	1	0
Northwest Territories								
Accidents	0	0	0	0	0	0	0	0
Fatalities	0	0	0	0	0	0	0	0
Serious Injuries	0	0	0	0	0	0	0	0
Canada								
Accidents	23	15	4	2	44	42	10	7
Fatalities	5	0	0	1	6	5	6	6
Serious Injuries	6	2	0	0	8	6	3	1

Figure 1: Number of crossing accidents per month



Data extracted March 15, 2012.

*Year to date is from January to February.

Table 3
Main-track train derailments by province

	January to February			Derailments with DG Involvement January to February		
	2012	2011	2007-2011 Average	2012	2011	2007-2011 Average
Canada	11	26	24	1	6	6
Newfoundland	0	1	1	0	0	0
Nova Scotia	0	0	0	0	0	0
New Brunswick	0	0	0	0	0	0
Quebec	0	3	2	0	1	1
Ontario	2	3	6	0	1	3
Manitoba	0	2	2	0	0	0
Saskatchewan	1	2	2	0	0	0
Alberta	5	9	4	1	3	1
British Columbia	3	6	5	0	1	1
Northwest Territories	0	0	0	0	0	0

* There were no occurrences with dangerous goods release to date in 2012 or in 2011.

Figure 1: Number of main-track train derailments per month

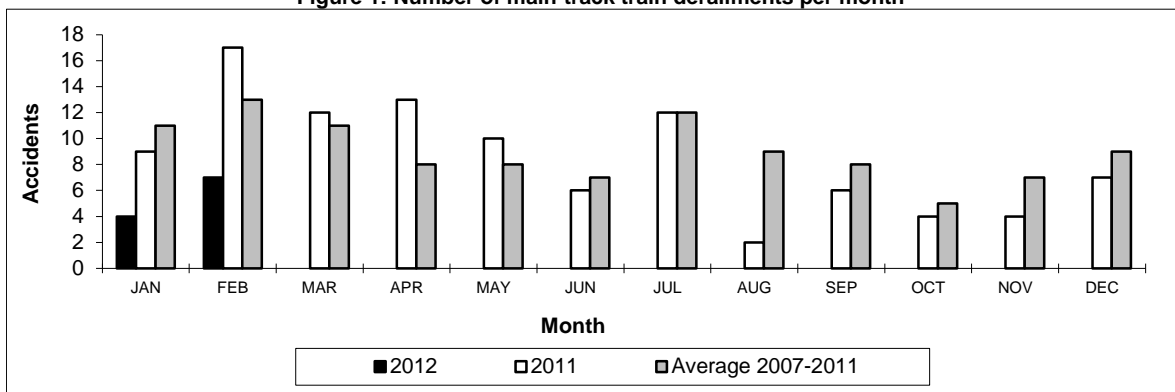
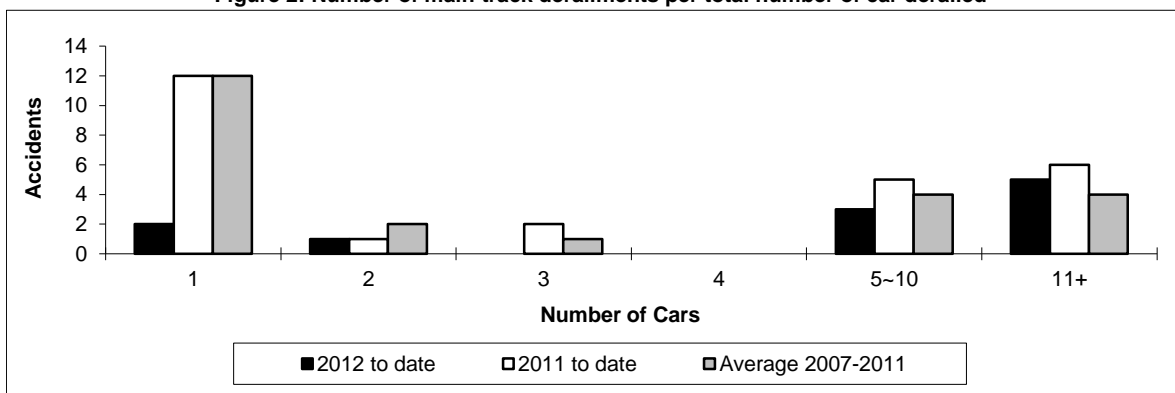


Figure 2: Number of main-track derailments per total number of car derailed



Data extracted March 15, 2012.

Table 4
Non main-track train collisions by province

	January to February			Collisions with DG Involvement January to February		
	2012	2011	2007-2011 Average	2012	2011	2007-2011 Average
Canada	14	12	19	2	4	6
Newfoundland	0	0	0	0	0	0
Nova Scotia	0	0	0	0	0	0
New Brunswick	0	1	0	0	0	0
Quebec	1	3	2	1	0	0
Ontario	1	4	6	0	3	2
Manitoba	5	0	2	0	0	1
Saskatchewan	0	0	1	0	0	0
Alberta	6	2	3	1	0	2
British Columbia	1	2	3	0	1	1
Northwest Territories	0	0	0	0	0	0

* There were no occurrences with dangerous goods release to date in 2012 or in 2011.

Figure 1: Number of non main-track train collisions per month

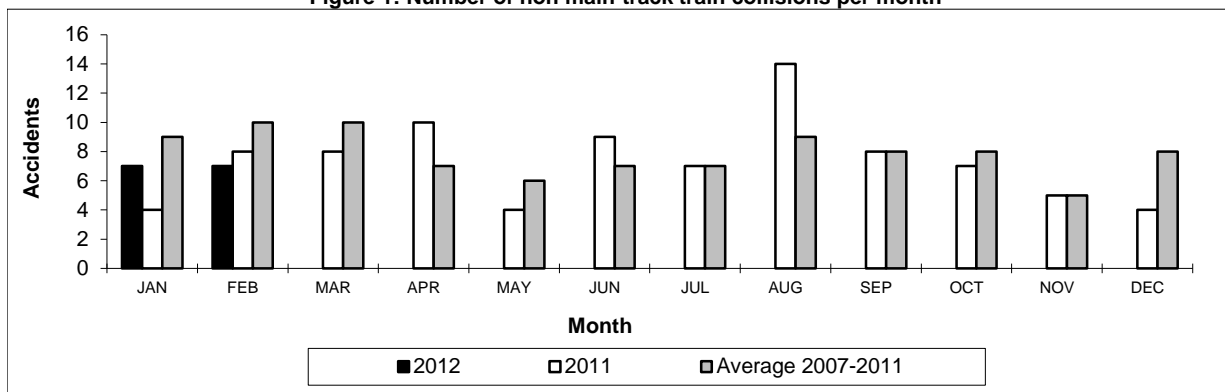
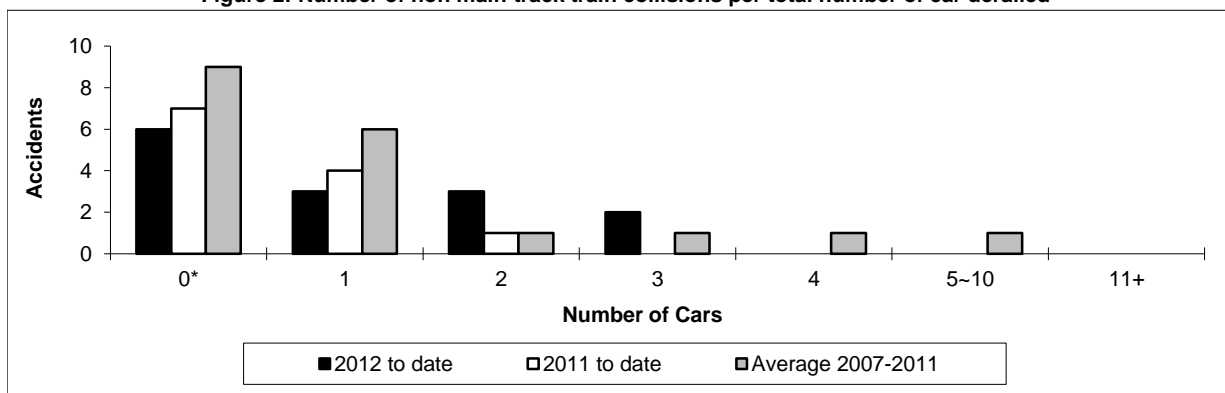


Figure 2: Number of non main-track train collisions per total number of car derailed



Data extracted March 15, 2012.

*Number of collisions with no derailments.

Table 5

Non main-track train derailments by province

	January to February			Derailments with DG Involvement January to February		
	2012	2011	2007-2011 Average	2012	2011	2007-2011 Average
Canada	60	99	91	8	24	19
Newfoundland	0	0	0	0	0	0
Nova Scotia	1	0	0	0	0	0
New Brunswick	0	2	1	0	0	0
Quebec	6	12	9	1	5	3
Ontario	15	20	18	1	7	4
Manitoba	7	8	11	1	1	2
Saskatchewan	7	18	10	1	1	1
Alberta	15	21	24	3	7	5
British Columbia	9	18	19	1	3	3
Northwest Territories	0	0	0	0	0	0

* There were no occurrences with dangerous goods release to date in 2012 or in 2011.

Figure 1: Number of non main-track train derailments per month

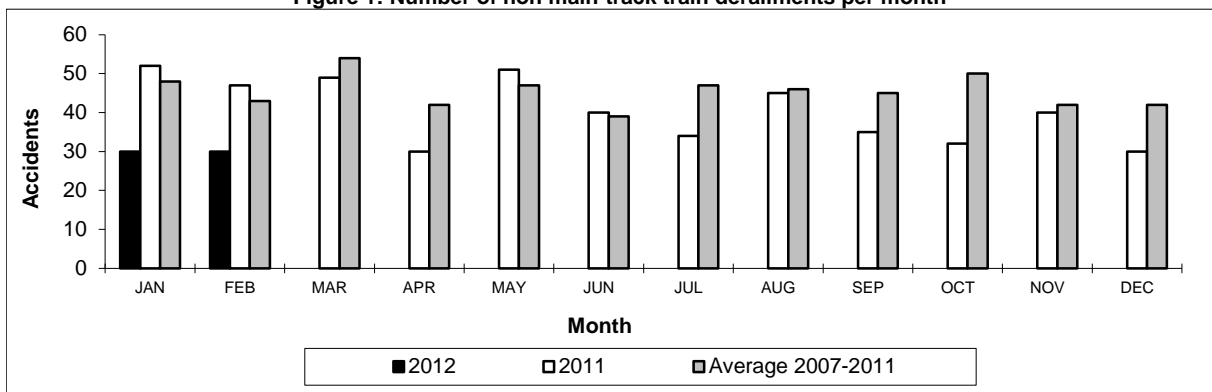
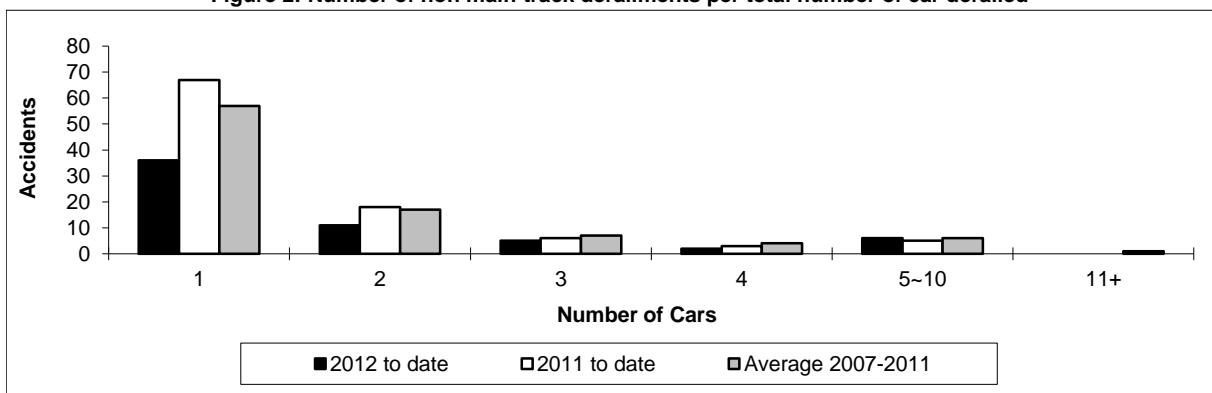


Figure 2: Number of non main-track derailments per total number of car derailed



Data extracted March 15, 2012.