

Table 1

Railway Occurrence and Casualty

	May			January to May		
	2012	2011	2007-2011 Average	2012	2011	2007-2011 Average
Accidents	70	96	93	398	460	478
Main-Track Train Collisions	1	0	0	3	0	2
Main-Track Train Derailments - 1-2 cars	3	4	4	15	29	27
Main-Track Train Derailments - 3 or more cars	4	6	4	18	32	23
Crossings	11	15	13	74	68	80
Non-Main-Track Train Collisions	4	4	6	34	34	41
Non-Main-Track Train Derailments - 1-2 cars	22	38	34	139	185	182
Non-Main-Track Train Derailments - 3 or more cars	12	13	13	50	44	53
Collisions/Derailments Involving Track Units	0	1	4	5	12	13
Employee/Passenger	0	3	1	2	5	5
Trespassers	8	7	9	31	22	27
Fires/Explosions	1	3	2	9	6	6
Other	3	2	3	14	23	19
Incidents	15	22	18	70	79	78
Dangerous Goods Leaker	4	6	6	26	24	28
Main-track Switch in Abnormal Position	1	2	1	2	2	2
Movement Exceeds Limits of Authority	10	13	10	36	46	42
Runaway Rolling Stock	0	0	1	3	3	3
Others	0	1	1	3	4	3
Million Train-miles (a)				35.69	34.59	35.95
Accidents/Million Train-miles				11.15	13.30	13.30
Accidents Involving Dangerous Goods	6	6	10	47	66	71
Main-track Train Derailments	1	1	1	4	12	11
Crossings	0	1	0	2	1	2
Non-Main-Track Train Collisions	0	1	2	8	10	15
Non-Main-Track Train Derailments	4	3	5	32	39	39
All Others	1	0	0	1	4	4
Accidents with a DG Release	0	2	0	1	2	1
Accidents Involving Passenger Trains	3	9	6	14	31	28
Fatalities	10	10	7	34	26	28
Crossings	4	6	3	12	13	12
Trespassers	6	4	4	19	13	15
All Others	0	0	0	3	0	1
Serious Injuries	4	6	6	33	21	22
Crossings	2	0	1	11	7	10
Trespassers	2	3	4	10	8	8
All Others	0	3	1	12	6	5

Data extracted June 18, 2012.

All 5-year averages have been rounded. The totals sometimes do not coincide to the sum of these averages.

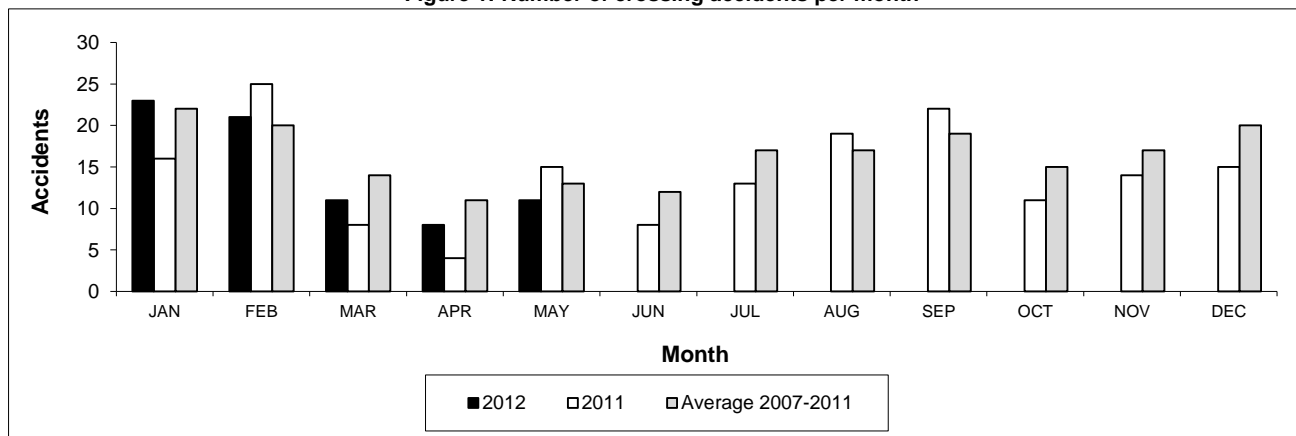
a. Train-miles estimated. (Source: Transport Canada)

Table 2

Railway crossing and trespasser accidents by province

	Crossings with Type Recorded 2012 - Year To Date*				All Crossings Year To Date*		Trespasser Year To Date*	
	Public Automated	Public Passive	Private	Farm	2012	2011	2012	2011
Newfoundland								
Accidents	0	0	0	0	0	0	0	0
Fatalities	0	0	0	0	0	0	0	0
Serious Injuries	0	0	0	0	0	0	0	0
Nova Scotia								
Accidents	0	0	1	0	1	0	1	0
Fatalities	0	0	0	0	0	0	0	0
Serious Injuries	0	0	0	0	0	0	2	0
New Brunswick								
Accidents	1	0	0	1	2	3	0	0
Fatalities	1	0	0	0	1	0	0	0
Serious Injuries	0	0	0	0	0	0	0	0
Quebec								
Accidents	5	2	0	0	7	5	1	1
Fatalities	1	0	0	0	1	2	0	1
Serious Injuries	0	0	0	0	0	0	0	0
Ontario								
Accidents	10	5	2	0	17	15	14	14
Fatalities	4	0	0	0	4	6	8	10
Serious Injuries	1	1	0	0	2	1	6	4
Manitoba								
Accidents	7	1	0	0	8	2	0	1
Fatalities	1	0	0	0	1	2	0	1
Serious Injuries	2	0	0	0	2	1	0	0
Saskatchewan								
Accidents	3	6	1	1	11	11	2	2
Fatalities	0	0	0	1	1	0	1	1
Serious Injuries	1	0	1	0	2	2	0	1
Alberta								
Accidents	7	9	1	0	17	23	8	1
Fatalities	2	0	0	0	2	2	7	0
Serious Injuries	3	2	0	0	5	2	1	0
British Columbia								
Accidents	6	2	3	0	11	9	5	3
Fatalities	2	0	0	0	2	1	3	0
Serious Injuries	0	0	0	0	0	1	1	3
Northwest Territories								
Accidents	0	0	0	0	0	0	0	0
Fatalities	0	0	0	0	0	0	0	0
Serious Injuries	0	0	0	0	0	0	0	0
Canada								
Accidents	39	25	8	2	74	68	31	22
Fatalities	11	0	0	1	12	13	19	13
Serious Injuries	7	3	1	0	11	7	10	8

Figure 1: Number of crossing accidents per month



Data extracted June 18, 2012.

*Year to date is from January to May.

Table 3
Main-track train derailments by province

	January to May			Derailments with DG Involvement January to May		
	2012	2011	2007-2011 Average	2012	2011	2007-2011 Average
Canada	33	61	51	4	12	11
Newfoundland	0	1	1	0	0	0
Nova Scotia	0	0	0	0	0	0
New Brunswick	0	0	1	0	0	1
Quebec	3	5	4	1	1	1
Ontario	5	10	14	1	4	4
Manitoba	1	8	5	0	0	0
Saskatchewan	2	10	5	1	0	0
Alberta	10	15	9	1	5	2
British Columbia	12	12	11	0	2	2
Northwest Territories	0	0	0	0	0	0

* There were no occurrences with dangerous goods release to date in 2012 or in 2011.

Figure 1: Number of main-track train derailments per month

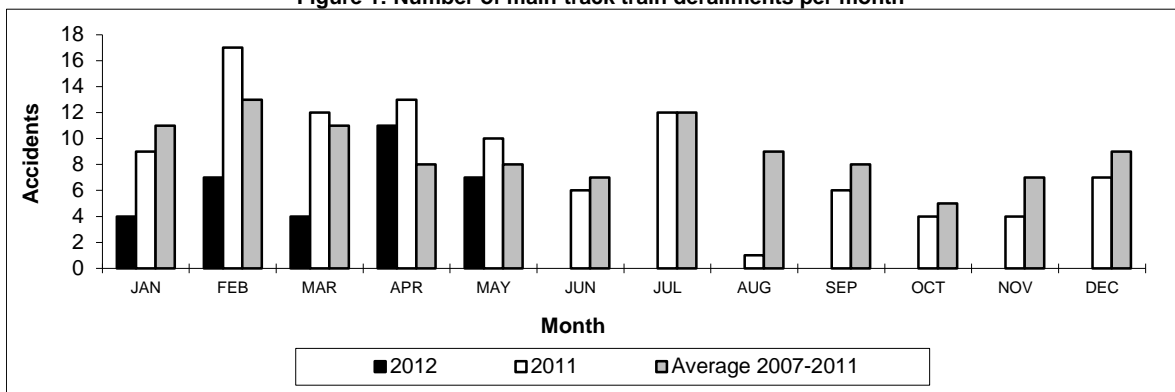
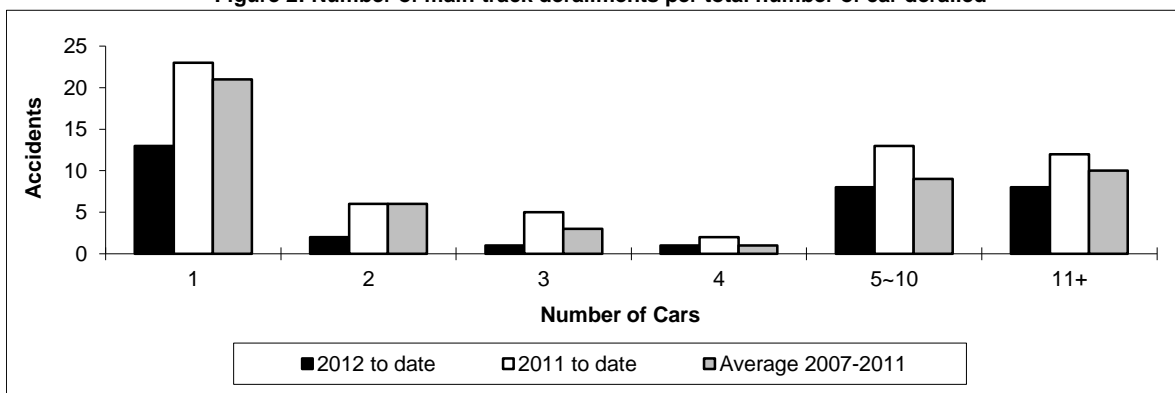


Figure 2: Number of main-track derailments per total number of car derailed



Data extracted June 18, 2012.

Table 4
Non main-track train collisions by province

	January to May			Collisions with DG Involvement January to May		
	2012	2011	2007-2011 Average	2012	2011	2007-2011 Average
Canada	34	34	41	8	10	15
Newfoundland	0	0	0	0	0	0
Nova Scotia	0	0	0	0	0	0
New Brunswick	0	1	0	0	0	0
Quebec	1	6	5	1	1	2
Ontario	4	6	12	0	4	5
Manitoba	8	3	5	2	1	2
Saskatchewan	2	2	3	1	0	0
Alberta	13	6	8	2	1	4
British Columbia	6	10	8	2	3	2
Northwest Territories	0	0	0	0	0	0

* There were no occurrences with dangerous goods release to date in 2012 or in 2011.

Figure 1: Number of non main-track train collisions per month

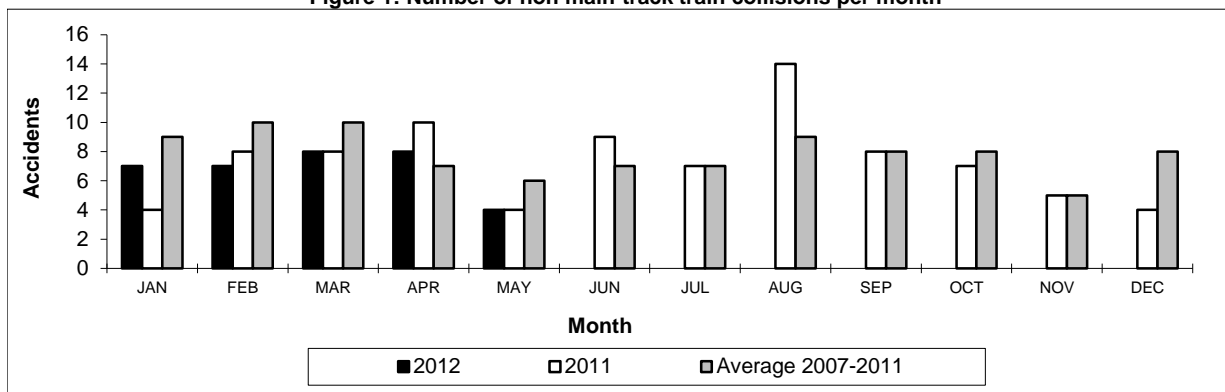
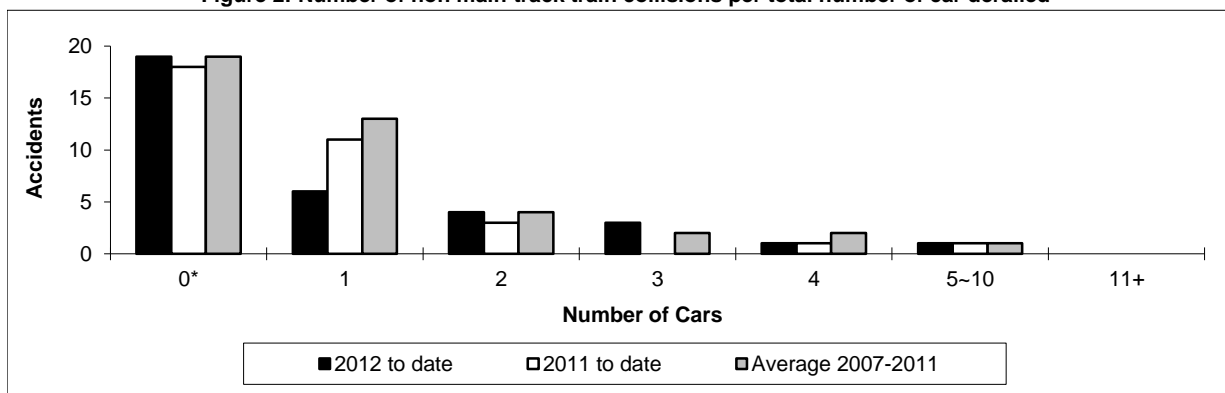


Figure 2: Number of non main-track train collisions per total number of car derailed



Data extracted June 18, 2012.

*Number of collisions with no derailments.

Table 5

Non main-track train derailments by province

	January to May			Derailments with DG Involvement January to May		
	2012	2011	2007-2011 Average	2012	2011	2007-2011 Average
Canada	190	229	235	32	39	39
Newfoundland	0	0	0	0	0	0
Nova Scotia	1	0	1	0	0	0
New Brunswick	3	6	4	0	0	1
Quebec	14	29	25	2	9	6
Ontario	40	47	53	7	9	8
Manitoba	23	21	26	5	2	5
Saskatchewan	31	47	28	4	2	2
Alberta	54	42	54	13	13	10
British Columbia	24	37	43	1	4	6
Northwest Territories	0	0	0	0	0	0

* There were no occurrences with dangerous goods release to date in 2012 and 1 in 2011.

Figure 1: Number of non main-track train derailments per month

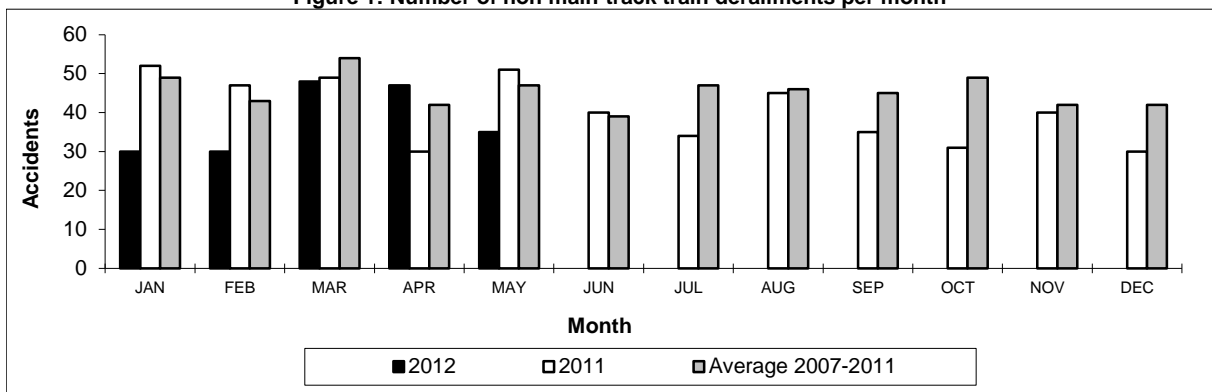
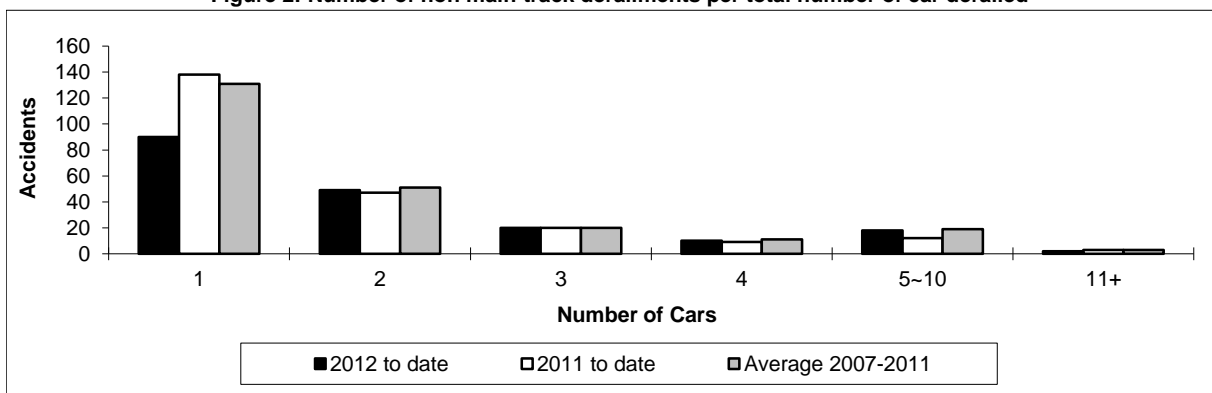


Figure 2: Number of non main-track derailments per total number of car derailed



Data extracted June 18, 2012.