

RCMP
YEAR IN
REVIEW
"B" DIVISION

NEWFOUNDLAND AND LABRADOR

10
11

RCMP



ROYAL CANADIAN MOUNTED POLICE





OATH OF OFFICE

I solemnly swear that I will faithfully, diligently and impartially execute and perform the duties required of me as a member of the Royal Canadian Mounted Police, and will well and truly obey and perform all lawful orders and instructions that I receive as such, without fear, favour or affection of or toward any person. So help me God.

Contact Us At:
Royal Canadian Mounted Police
Newfoundland and Labrador
P.O. Box 9700
100 East White Hills Road
St. John's, NL A1A 3T5
(709) 772-5465
www.rcmp.ca/nl

© 2011 Her Majesty the Queen in Right of Canada,
as represented by the Royal Canadian Mounted Police



OUR MISSION

The RCMP is Canada's national police service. Proud of our traditions and confident in meeting future challenges, we commit to preserve the peace, uphold the law and provide quality service in partnership with our communities.

OUR VISION

We will be a progressive, proactive and innovative organization, provide the highest quality service through dynamic leadership, education and technology in partnership with the diverse communities we serve, be accountable and efficient through shared decision-making, ensure a healthy work environment that encourages team building, open communication and mutual respect, promote safe communities and demonstrate leadership in the pursuit of excellence.

OUR CORE VALUES

Recognizing the dedication of all employees, we will create and maintain an environment of individual safety, well-being and development. We are guided by integrity, honesty, professionalism, compassion, respect and accountability.

OUR COMMITMENT TO COMMUNITIES

The employees of the RCMP are committed to our communities through unbiased and respectful treatment of all people, accountability, mutual problem solving, cultural sensitivity, enhancement of public safety, partnerships and consultation, open and honest communication, effective and efficient use of resources and quality and timely service.

Commissioner William Elliott and Assistant Commissioner Bill Smith stand with the "B" Division Management Team during meetings held in December 2010.

TABLE OF CONTENTS

Mission, Vision, Values, and our Commitment to Communities.....	3
From the Commanding Officer.....	4
"B" Division at a Glance.....	5
National Priorities.....	6
Provincial Priorities.....	7
Operational Support Services.....	8
Federal Policing Branch.....	9
Financial Crime.....	10
Traffic Services.....	11
Avalon East District.....	12
Trinity Conception District.....	13
Placentia Whitbourne District.....	14
Burin District.....	15
Clarenville Bonavista District.....	16
Gander Lewisporte District.....	17
Grand Falls Windsor District.....	18
Deer Lake District.....	19
Bay St. George District.....	20
Northern Peninsula District.....	21
Labrador District.....	22
Criminal Statistics.....	23
The Policing Landscape.....	24
Financial Report.....	25
Property Management Highlights.....	25
The Year Ahead.....	26

W. A. (BILL) SMITH

ASSISTANT COMMISSIONER

In 2010 the Royal Canadian Mounted Police celebrated 60 years of policing in this remarkable province. From our first days as a humble Provincial Force of nine we have grown into a Newfoundland and Labrador presence of over 550 RCMP members and 230 Civilian employees.

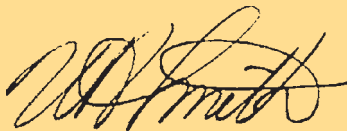
The RCMP has many reasons to be proud of its achievements in 2010-11, our anniversary year. Serious injury Collisions finished the year at 76, a reduction of 16% over the target of 91 and 39% below the benchmark used by Canada's Road Safety Vision 2010 program. Fatality Collisions are showing a downward trend as well. This important work will continue beyond 2011 through Canada's Road Safety Strategy 2015.

Districts continue to provide commendable police service. Success stories are too numerous to mention. I invite you to peruse the District Reports section of this year's report where each of our 11 Districts highlights 2010-11 accomplishments. Efforts to combat the increase in drug production and trafficking in the province continue. Six identified organized groups were disrupted in 2010-11 involving all three drug units across the province. In addition, a joint project involving an Organized Crime group trafficking in cocaine between British Columbia and Newfoundland and Labrador resulted in the arrest of several persons and the seizure of 7 kilograms of cocaine and \$900,000.00. Drug and Organized Crime Awareness initiatives have been enhanced as well. Over 31,000 people in this province attended Drug and Organized Crime Awareness presentations in 2010, an increase of 55% over last year.

2010-11 was not without its challenges. The devastation caused by Hurricane Igor in September directly impacted the lives of Newfoundlanders and Labradorians in over 100 communities. During the 6 day storm, when many communities were isolated and without power, RCMP resources from all over the province provided exemplary emergency response, which included reassurance patrols and delivery of emergency medications using the RCMP Twin Otter and Patrol Vessel Murray.

Our challenges make us stronger. They often strengthen our community and partner relationships and reinforce our commitment to make this province one of the safest in the country. But success would not be possible without the support of our community partners.

It is especially gratifying to know that RCMP efforts are valued by the people we serve. This appreciation was evident in a 2010 survey where 92% of the Newfoundlanders and Labradorians surveyed agreed they had trust and confidence in the RCMP. When our community leaders were asked if the RCMP provided high quality service, 90% agreed. With such tremendous support from our communities, it is no wonder we continue to make great strides forward in our prevention and enforcement efforts. I invite you to celebrate our recent accomplishments with us in this our "2010-2011 Year in Review".



W. A. (Bill) Smith
Assistant Commissioner
Royal Canadian Mounted Police
Commanding Officer, "B" Division



WHAT WE DO

While our most visible presence is on our roads and highways, our mandate is multi-faceted. We prevent and investigate crime, maintain order, enforce laws on matters as diverse as health and the protection of government revenues, contribute to national security, ensure the safety of state officials, visiting dignitaries and foreign missions, and provide vital operational support services to other police and law enforcement agencies.



An RCMP Member conducting General Policing duties.

WHO WE ARE

Air Services
 Auxiliary Constables
 Border Integrity
 Canadian Police Information Center (CPIC)
 Client Services
 Commercial Crime Section
 Community and Aboriginal Policing
 Corporate Management
 Crime Reduction Analysts
 Crime Stoppers
 Criminal Intelligence Analysis
 Criminal Operations Branch
 Customs and Excise
 Drug Awareness
 Drug Enforcement
 Electronic Surveillance Section
 Emergency Management
 Emergency Response Team
 Explosive Disposal
 Federal Enforcement
 Forensic Identification
 General Detachment Policing
 Health Services
 Human Resources
 Informatics
 Information Systems Management
 Integrated Technological Crime
 Internal Services
 International Peace Operations
 Internet Child Exploitation (ICE) Unit
 Major Case Management
 Major Crimes Unit
 Media Relations/Communications
 Member Employee Assistance Program
 National Security Enforcement
 National Sex Offender Registry (NSOIR)
 Operational Communications Center



Sgt. Chris Gladney chats with a young admirer after volunteering at the Janeway Children's Miracle Network Telethon.



S/Sgt. George Noseworthy, (previously the Northern Peninsula District Commander) is centered in this photograph as he briefs other policing agencies in the European Union Rule of Law Mission in Kosovo (EULEX) to support Kosovo authorities by monitoring, mentoring and advising local police in order to further develop and strengthen their multi-ethnic police service.

Operational Support Services
 Patrol Vessel Murray
 Police Dog Services
 Proceeds of Crime
 Protective Technical Security
 Provincial Policing
 Recruiting
 Security Engineering
 Source/Witness Protection
 Staff Relations Representative Program
 Tactical Troop
 Traffic Services
 Truth Verification
 Underwater Recovery Team
 Violent Crime Linkage Analysis (ViClas)
 VIP Security

NATIONAL PRIORITIES

National Security

The greatest threat to Canada's national security is the threat of terrorist criminal activity in Canada and abroad. The role of the RCMP is to understand, detect, disrupt/prevent and investigate that threat. It is necessary that we ensure that our response to the threat of terrorist criminal activity is strategically aligned, focused and centrally managed. To successfully detect, prevent/disrupt and investigate terrorist criminal activity, we need to continue to build new and strengthen existing partnerships and optimize enabling science and technology. The approach towards threats to national security is multi-faceted. Outreach/awareness, prevention, strategic analysis, information/intelligence sharing, and enforcement will require continued sound and rigorous stewardship of RCMP resources and effective communication.

Serious/Organized Crime

Organized Crime is defined as being composed of three or more persons, having as one of its main purposes a serious offence likely to result in a financial benefit. So, just about any type of illicit activity can be undertaken by organized crime groups, as long as there is money to be made. Identity theft, human trafficking, sex crimes against children, credit card fraud and counterfeit goods, just to name a few, can, and often do have links to organized crime.

The RCMP is committed to safe homes and safe communities for all Canadians, and to accomplish this we identified the fight against organized crime as a strategic priority way back in 2001. Using an intelligence-led, integrated approach, the RCMP is focusing its activities on reducing the threat and impact of organized crime. In fulfilling its mandate, the RCMP is working closely with domestic and international partners in a sustained effort to dismantle today's criminal groups.

Youth

A key objective of the RCMP's National Youth Strategy is working with young people to prevent crimes involving them either as victims or offenders. The RCMP sees young people as key players in the prevention of crime in their communities. It provides young people with opportunities to provide their perspective on issues that affect them. This enables police officers to more effectively interact with and understand youth. A by-youth, for-youth website (www.deal.org), operated by the Youth Engagement Section of the RCMP, helps facilitate the engagement process and works to raise awareness on topics such as bullying, internet safety, gangs and impaired driving, among others. The RCMP believes that long-term prevention of youth crime and victimization can only be accomplished in partnership with the community. We work closely with local organizations and social services so that young people who come into contact with the police, as either offenders or victims, receive the help they need to overcome challenges in their lives.

Aboriginal Communities

Delivering culturally competent police services provides the foundation necessary to build relationships and partnerships with the more than 600 Aboriginal communities we serve. Our shared and unique history with Canada's Aboriginal peoples provides an environment in which we can work collaboratively to improve community health and wellness. We are committed to continue building upon these relationships as we encourage, sustain and foster honest and open dialogue among our Aboriginal partners. As we work together, the RCMP is in a position to assist and advocate for Aboriginal communities at a local and national level.

We will continue to promote and encourage the recruitment of Aboriginal people as potential employees and police officers. We will work collaboratively with the communities to ensure enhanced and optimized service delivery by developing relevant and culturally competent police services, and contribute to the development of community by preventing crime through on-going social development.

Economic Integrity

The types of crimes driven by the motivation for profit are extensive and certainly not victimless. Illegal economic activity either robs or diverts funds away from hard-working Canadians. The confidence of Canadian consumers and investors in their economy can be shaken – their economic security undermined and their trust in institutions put at risk. The nature of crimes that affect the economy is rapidly changing. In the face of globalization and technological progress, criminals are operating beyond jurisdictions using sophisticated and continuously-evolving methods to find victims. Law enforcement plays an important role in strengthening and preserving the security and economic interests of Canada. However, maintaining Canada's Economic Integrity is a complex issue that must be tackled in cooperation with other law enforcement agencies, governments at all levels, the private sector and our international partners. Together, we must work to ensure that Canadians have confidence in their financial, currency and market systems.



RCMP Emergency Response Members in training.

PROVINCIAL PRIORITIES

Traffic Services

Traffic Collisions are the leading cause of death among Canadian youth and Impaired Driving is the leading criminal cause of death in Canada.

Providing safe highways to the citizens of Newfoundland and Labrador is a priority of the “B” Division Traffic Services Unit, as it is with every RCMP Member posted to this province. The Mission of our Traffic Services Program is to continue to improve Public Safety on our Highways, and our Vision is to have the safest roads in the world. We will achieve these results by focusing our educational and enforcement efforts on high risk driving activities which lead to death and injuries, such as the non-use of occupant restraints, driving while impaired, intersection violations, and aggressive driving.

The “B” Division Traffic Services Unit has worked together with RCMP officers from across the province to tackle this problem and our efforts are showing positive results with a steady reduction in the numbers of Newfoundlanders and Labradorians who are being killed and seriously injured annually on our highways.

Family Violence Initiatives

Family Violence is an ongoing provincial strategic priority for the Royal Canadian Mounted Police in Newfoundland and Labrador. It is defined as physical, sexual, emotional and/or psychological abuse of a partner, child, elderly person, or person in a dating relationship.

Whether it is happening to a youth being victimized through the internet, a spousal assault, child abuse, teen suicides or elder abuse, the response is a priority to all RCMP members in this province.

Each of the RCMP’s eleven districts throughout Newfoundland and Labrador focus on their priority family violence issue and implement strategies to prevent this crime. These district plans have already reduced assault complaints in several communities, increased prosecutions of domestic assaults, increased patrols of trouble areas and helped victims in obtaining Emergency Protection Orders.

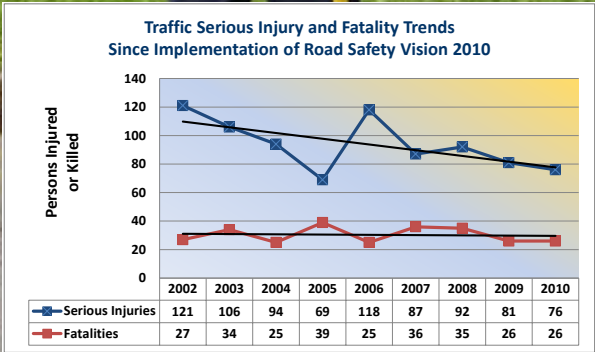
The district plans have enhanced awareness in schools and with partners through senior abuse awareness, bullying and dating violence presentations. Some of our family violence initiatives include suicide prevention programs for high-risk Labrador communities, and ongoing suicide prevention training is a priority for all RCMP members and front line employees. RCMP members also work closely with the Voice Against Violence committees throughout the province (www.bpvav.com).

The Amber Alert program was introduced in Newfoundland and Labrador in 2003. It is a



comprehensive program partnering the province’s law enforcement community, media broadcasting agencies and the public to provide a coordinated and rapid response to child abductions in Newfoundland and Labrador.

When an Amber Alert is initiated, Police will provide the public with immediate and up-to-date information through widespread media broadcasts and solicit the public’s help in the safe and swift return of the abducted child. The participation of the public is essential to the success of the AMBER Alert Program.



OPERATIONAL SUPPORT SERVICES

Operational Support Services (OSS) units provide an array of specialized services and expertise to frontline policing officers and enforcement units. They investigate major and serious crimes including homicides and internet child exploitation, respond to high-risk emergency situations, and work closely with government groups and agencies to develop violence prevention initiatives.

Services provided by OSS include but are not limited to: major crime investigation, forensic identification services, police dog services, public order units, underwater retrieval, crisis negotiation, operational communications and operational response and readiness.

2010 has been another successful year for the Crime Stoppers organization in this province with over 2000 tips being received, 33 arrests made, \$92,000.00 in property recovered, \$192,000.00 worth of drugs seized, and three weapons being taken off the street. Since its inception in 1992, Crime Stoppers has fielded 31,542 tips and helped solve 1494 crimes. The total amount of drugs and property recovered in Newfoundland and Labrador is near \$5.6 million.

One of the more positive initiatives that we have undertaken this year is the acquisition of the 911 cellular



are entered on the applicable data base accurately and in a timely manner. As an example, in the past year the ViClas and NSOIR unit worked together with the Royal Newfoundland Constabulary to successfully locate and prosecute an offender who had threatened to cause harm to several children. The RNC received the complaint and provided the information to ViClas/NSOIR. Through a series of tactical queries ViClas/NSOIR provided the RNC with a complete list of potential suspects within hours of the offence being reported.

Our Emergency Management Section has been busy this year with a number of initiatives, including the development of Business Continuity Plans and Emergency Operational Plans. Under the School Action for Emergencies (SAFE) program, the need for effective operational planning and support when responding to serious school incidents was identified by law enforcement on numerous occasions. Specific challenges and gaps in information accessibility and response protocols used by police have led to the development of site specific law enforcement programs. Working with schools within our jurisdiction, we have developed plans for first responders at school incidents and or community incidents that could impact the schools and its occupants.



services for RCMP areas of jurisdiction. In acquiring this service we bring a more streamline service to the people of Newfoundland and Labrador.

Our Operational Communications Center received 205,848 calls for service in 2010-11, an average of 550 calls per day (this doubled during Hurricane Igor!). In addition, our OCC Operators handle between 4000 and 6000 radio calls from members on patrol.

Both the National Sex Offender Integrated Registry (NSOIR) and Violent Crime Linkage Analysis (ViClas) work within their strategic priorities to ensure that all offenders



FEDERAL POLICING BRANCH

Federal Policing Units

The Federal Policing mandate does not afford as much visibility as our municipal and provincial policing partners, but we are just as active in our efforts to keep Canada and Canadians safe with a focus on national and border security, financial integrity, and organized crime.

Criminal Intelligence Program

The Division Criminal Intelligence Analytical Section (DCIAS) is responsible for assessment, monitoring and coordination of all criminal information pertaining to organized crime or other serious criminal activity in RCMP jurisdiction in the Province of Newfoundland and Labrador. The Intelligence Process utilized by DCIAS in the performance of its function utilizes five phases which includes Planning & Direction, Collection and Evaluation, Collation, Analysis as well as Reporting & Dissemination. The intelligence and analysis gathered also feeds into the Criminal Intelligence Service Newfoundland and Labrador (CISNL) Provincial Bureau which is instrumental in the development of the CISNL Annual Provincial Treat Assessment DCIAS has been a key partner in the disruption of eight (8) organized crime groups in the Province of Newfoundland and Labrador in fiscal year 2010-11 and the monitoring of the identified other groups.

Group trafficking in cocaine between British Columbia and Newfoundland and Labrador. This investigation resulted in the arrest of several persons and the seizure of 7 kilograms of cocaine and \$900,000.00. There are two full time Joint Forces Operations (JFO) on the West Coast of the Province which includes a street drug unit operating from Corner Brook RNC Detachment and a JFO Drug Section operating from the RCMP Corner Brook Drug Section office.

"B" Division Border Integrity

Border Integrity Units (Customs & Excise and Federal Enforcement Sections) are strategically located within the Division to ensure the security of Newfoundland and to protect citizens from terrorism, organized crime and other border related criminal activity. These sections are complemented by the Patrol Vessel Murray which is stationed at Burin on the south coast of the Province. We have a robust Coastal Air Watch program within the Division to encourage and enhance intelligence gathering within the Air and Marine environments. Our Customs and Excise Sections are pro-active in gathering intelligence and investigating contraband tobacco and alcohol smuggling and trafficking. Border Integrity has had a successful year and disrupted two Organized Crime Groups. The PV Murray continues to be a deterrent for



Contraband Liquor



The PV Murray with the Coast Guard



Contraband cigarettes



Ecstasy

Drug and Organized Crime Awareness Service (DOCAS)

"B" Division DOCAS has delivered presentations to over 31,000 people in 2010. DOCAS has rolled out two new programs: Kids & Drugs - a parent drug education program and Aboriginal Shield - a drug education for aboriginal youth. A new program called Drug Endangered Children will be rolled in 2011 and will raise community awareness regarding the dangers associated with drug production and trafficking and the impact on the children within the communities.

"B" Division Drug Enforcement Program

The "B" Division Drug Enforcement program experienced many successes in 2010-11. Of note were six disruptions of identified Organized Crime (O.C.) Groups. These investigations were carried out by the drug units in St. John's, Gander and Corner Brook. Also in 2010, St. John's Drug Section partnered with the Royal Newfoundland Constabulary (RNC) and conducted a joint investigation (Operation Razorback). This project involved an O.C.

illegal activity on the marine side and is active in gathering and reporting Marine Intelligence.

National Security Enforcement Section

Threats to our national security continue to persist. An evolving trend appears that terrorists are refocusing their large scale attacks to that of smaller more efficient attacks, thus, lessening the opportunities of detection. In "B" Division, critical infrastructure and accessibility continue to be opportunities for potential terrorists. Newfoundland and Labrador has three-quarters of the coastline of the Atlantic Region, it is the point-of-entry to the rest of Canada, Placentia Bay is the busiest Canadian port by tonnage, Newfoundland and Labrador produces approximately one-half the conventional light crude in Canada and supplies much of the Hydro-electricity to the eastern seaboard. "B" Division National Security Enforcement Section investigated approximately 100 tasks during 2010. Some of the more significant included bomb threats to airports in Newfoundland and the United States.

FINANCIAL CRIME

In 2010 this unit was kept busy with an assortment of major investigations. Two lengthy bankruptcy and fraud investigations which have been ongoing for several years are nearing completion. Both investigations have consumed significant resources and were investigated using Major Case Management and RCMP electronic case management software. At times all members of the unit were tasked with integral elements of these investigations.

In addition to these matters investigators were kept busy with other complex investigations; however, not to the degree of the two previously noted. Charges of fraud were laid against an individual in Gander in relation to the misappropriation of approximately \$132,000.00 from the local business development bank. This matter resulted in a guilty plea early in 2011. The unit is currently investigating several complaints of a similar nature.

Mass marketing fraud remains a concern and continues to be attempted within the province. Public awareness and prevention through the use of the media have resulted in few complaints of monetary loss by citizens of the Newfoundland and Labrador. Members of the unit have been called upon regularly to give presentations on identity theft and mass marketing fraud prevention throughout the province. A mass marketing investigation

from 2007 that resulted in convictions against two Grand Bank residents was heard in the Appeal Court in 2010. Both had appealed their conviction and sentence; the conviction was upheld but the sentence reduced on appeal.

In 2010 Commercial Crime Section undertook an objective of re-establishing and strengthening partnerships with clients whom we interact with on a regular basis. These clients include both provincial and federal partners.

Proceeds of Crime Unit

In 2010 the Proceeds of Crime Unit conducted a number of investigations involving organized crime groups in the province. In addition to these investigations the unit has made numerous applications to the court for forfeiture of property believed to be the proceeds of crime. These applications have resulted in the seizure of cash and vehicles.

The officer in charge of Financial Crime solicited the Royal Newfoundland Constabulary for a member to work in the unit with members of the RCMP. This was agreed to by the RNC for specific investigation with the member commencing his duties early in 2011. Funding is being sought from Ottawa to staff this position on a full time basis.



TRAFFIC SERVICES

During 2010 RCMP Traffic Services worked aggressively towards its goal to make the roadways in Newfoundland and Labrador the safest in Canada.

RCMP Traffic Services works within its strategic priorities to reduce fatal and serious collisions. These strategic priorities are impaired driving, seatbelt compliance, intersection safety, aggressive driving, criminal interdiction and unsafe speeds.

Traffic Services conduct large enforcement initiatives which complement daily enforcement activities by the various Traffic Services' Units across the province. These large enforcement initiatives have been very successful, sending a strong message to the motoring public and generating very positive media and public support.

Referred to in the media as the Labrador Patrol, the Northern Peninsula Patrol, the East Coast Patrol and the West Coast Patrol Traffic Services members benefitted from the RCMP Cessna Aircraft and Helicopter to target aggressive drivers.

Traffic Services Collision Analyst Program has six members who specialize in vehicle crash reconstruction and crime scene investigation. These members provide detailed



technical reports on vehicle collisions, from plan drawings to computer down loads from the vehicles which capture data related to the crash. The information provided by this component of the program aids in development of enforcement strategies.

Traffic Services Interdiction Program disrupts organized crime in the province. Traffic Services members are trained to look beyond the traffic stop which has resulted in large seizures of illegal drugs, monies and other contraband items. In 2010, \$1.4 million dollars of illegal drugs were seized by Traffic Services.

Traffic Services oversees the Drug Recognition Program. This RCMP program provides training for RCMP and RNC members. These trained police officers are able to target drivers who are impaired by drug.

All Traffic Services vehicles are equipped with modern equipment (multi mode radar, in car video and audio recording system, mobile work station) which enhances police service delivery to our communities.



AVALON EAST DISTRICT

Avalon East District RCMP incorporates Bell Island Detachment, Ferryland Detachment, Trepassey Detachment, Holyrood Detachment and General Investigation Section (plainclothes investigators).

Trepassey Detachment in partnership with the local high school, identified two deserving and involved young people, from within the community to represent the youth of community in the annual RCMP Commanding Officer's Youth Advisory Conference that took place at "B" Division Headquarters in October 2010. These young people took part in identifying some of the challenges facing youth today. The group also helped identify policing actions that were geared towards helping troubled youth.

Bell Island and Ferryland Detachments partnered in two All - Terrain Vehicles (ATV's) enforcement projects in Bay Bulls and on Bell Island. These projects were developed and planned in response to complaints received from the public and the local Municipal authorities over the improper use of ATV's within the communities. Trained members utilized police ATV's to enforce the plan. The plans were developed, approved and executed in both communities. ATV offences were investigated and charges laid where warranted. The visibility shown by these



police actions was well reported on by the general public and the local municipal councils. These initiatives are identified as part of the District's Annual Performance Plan.

Detachment members throughout the District actively partnered with Traffic Services to increase enforcement and enhance police presence in rural communities by having specific enforcement patrols in all four detachment areas. This supports our vision of safe communities and

addressed concerns of the rural communities about the need for increased police presence.

In keeping with the national priorities of responding to serious and organized crime, Holyrood Detachment investigated a serious home invasion that involved suspects from outside the district area breaking and entering a home while the home was occupied and assaulting the resident of the home. The investigation resulted in four persons being charged and convicted. During this investigation it was determined that this serious assault was in part the result of illegal drug activity. The victim of this attack was subsequently charged and convicted under the Controlled Drugs and Substances Act.

In keeping with our intelligence led policing priority, the Holyrood Detachment plainclothes unit commenced an investigation regarding a breach of the Controlled Drugs and Substances Act that involved a local resident receiving illegal drugs from the western part of the country, with the intent that it be sold here. The investigation resulted in the arrest of two persons from the area who have been subsequently charged with possession for the purpose of trafficking. The partnerships the RCMP enjoys with many government agencies proved to be a great asset in this investigation.

Ferryland Detachment members have commenced a drug awareness program with middle school students linked to the Kids and Drugs curriculum extracted from the Alberta Health Services. It is an educational program designed to show the middle school students the effects of drugs on them and their communities and how to say no.



TRINITY CONCEPTION DISTRICT

In January of 2011, Trinity Conception District members commenced an investigation that resulted from three males being arrested for break and enters in a neighbouring District. The complex investigation led investigators on a path that started in 2007 and covered several Districts. One of the individuals had been involved in break and enters within the Avalon Region for the last fifteen to twenty years.

Many of the more recent break and enters were committed at businesses in the Trinity Conception District area. The trio faces nine charges from this District alone, and were responsible for a considerable amount of damage as well as stolen money, material and drugs.

A number of charges were also laid in neighbouring Districts. The investigation showed that prolific offenders of this nature are not intimidated by alarm systems or other security features. They were prepared to travel significant distances to remote, rural areas to complete their objectives.

To fully address the issue of crime reduction in the province, law enforcement needs to disrupt not only organized crime groups, but also prolific offenders who disproportionately preoccupy the resources within

law enforcement and other government agencies. It has been proven in other regions of the country that additional analytical capacity, when combined with tactical operations can produce measurable reductions in crime. The provincial government has supported the establishment of a Crime Strategy Analyst in Trinity Conception District and we fully anticipate that the new analyst will be key in assisting our front line investigators in focusing on intelligence, investigation and enforcement initiatives associated with violent crimes, property crimes, and street level trafficking in illegal drugs.

Trinity Conception Members are actively involved in Drug Awareness programs. The Long term goals of the D.A.R.E. program include: a reduction in the supply of controlled substances as a result of reduced demand; more positive identification with police officers; improved decision-making in all life situations; and an overall reduction in criminality. The DARE program is a 10 week program, lessons are taught by uniform police officer in grade 5/6 classes. Lessons will last 45-60 minutes and involve students in a variety of exercises, both written and verbal. D.A.R.E. gives children skills to recognize and resist the subtle and overt pressures that cause them to experiment with drugs and alcohol.



Some tools carried by criminals show that they are well equipped and have a plan.

PLACENTIA / WHITBOURNE DISTRICT

Placentia Whitbourne District saw increased economic activity in the area over the past year which has resulted in an increase in overall calls for service. Construction and work at the Long Harbour site (VALE) and neighboring areas has resulted in substantial volumes of traffic traveling the highways. Sustained growth in the Long Harbour and Clarendville area is forecasted to continue over the next 5-10 years.

In addition to acknowledging the work of the police officers of the District over the past year we would be remiss if we left out the key contributions and roles that our key partnerships played. Placentia / Whitbourne has developed several key partnerships over the past number of years. Unfortunately, we cannot list all the partnerships but we would like to mention the outstanding contributions of a few.

As a District we enjoy meeting on a weekly basis with our local DFO officers, and this has grown into one of our strongest partnerships in the area. Over the year we have carried out Joint Air patrols (DFO plane), ATV / Snowmobile patrols that have resulted in Poaching and Impaired Charges throughout the year. In addition DFO has partnered with the District in performing several Road Checkstops, which have resulted in vehicle/ ATV seizures



Safety Bear with friends in Placentia

and various HTA, Criminal Code Charges. The RCMP Patrol Vessel Murray attended the District this past year. DFO Members joined District Members for patrols of the area.

Another strong partnership in the District is with local Ground Search and Rescue volunteers. Over the past year we have used this team to assist in locating several missing persons, carry out several training initiatives and they also assisted in providing a pivotal role in looking for physical evidence at a murder scene (wooded area) this past year. This team provides an invaluable service to the District, and certainly throughout the province.

Each member of the District is assigned as a liaison for a particular school in their respective areas. Over the past year we were successful in completing numerous DARE programs at several schools as well as Drug information sessions for teachers and staff throughout the detachment areas. During the past year members of the Placentia Detachment were part of a committee that successfully raised close to \$75,000.00 for a new playground at St Anne's Academy in Dunville. Not only did they raise the funds but they also enlisted the help of the community to assemble the structure.

In addition to a great working relationship with local schools, members of the District remain committed to the communities they work and live in. Their involvement in various associations goes a long way in promoting Crime Prevention in the areas. They coach or lead teams in basketball, volleyball, ice hockey, broomball, beavers, and cubs. District Police officers are also prominent members of various groups within the communities they live, for example, School Councils, Community Health Advisory Groups, Placentia Bay Security Groups, and church groups, to name a few.



RCMP Members in Placentia Whitbourne District aid in the movement of a wide load near the Long Harbour site



RCMP and DFO Members on patrol aboard the PV Murray

BURIN PENINSULA DISTRICT

The Burin Peninsula District's 2010-11 was a very eventful year. In June we hosted a "Friends of the Force" ball in conjunction with the 60th anniversary of the RCMP in Newfoundland and Labrador. The event was attended by three members of the Gendarmerie of St Pierre et Miquelon, Provincial Cabinet Minister Jackman and numerous mayors and council throughout Burin Peninsula. A total of 200 Friends of the Force were in attendance including the Commanding Officer, Assistant Commissioner Bill Smith. The remainder of the year was highlighted by two major events the communication blackout and Hurricane Igor.

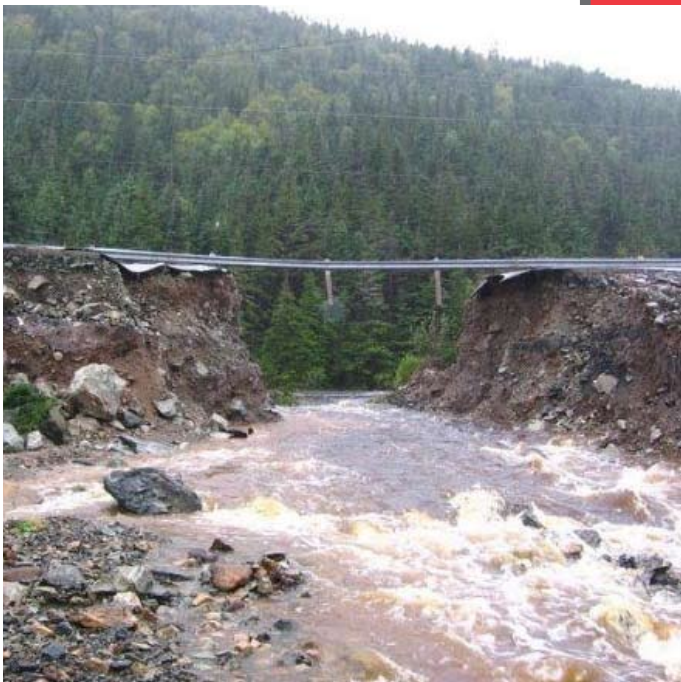
The communication blackout in September 2010 resulted in all forms of communication (radios, computers, cell phones, phones) not working. The blackout lasted for six hours and our ability to provide an effective service was seriously impaired. A severed optical cable some 100 miles from our location was later found to be the cause of the major disruption.

Hurricane Igor in September 2010 brought the wrath of Mother Nature to our doorstep. The storm washed out roads and isolated us from the rest of the island for more than six days. Twenty nine communities on the peninsula were cut off from the rest of the Peninsula. The Burin Peninsula endured fuel rationing and food shortages beginning the second day after the storm. Members were required to forge a raging river and continue police duties using a local municipal truck on the other side as a police vehicle. The members had to endure long shifts under less than desirable conditions at the same time dealing with flood conditions at their family homes.

In June 2010 the members of the Burin Peninsula District attended the RCMP S/Sgt. Major Vic Lundrigan Memorial softball tournament. This fundraiser for cancer has been an ongoing event for the last 25 years. The Burin Peninsula District team "Burin Baymen" was successful in capturing the championship trophy.



Sgt. Wayne Edgecombe inspects a bicycle at a local Bike Rodeo



Damage from Hurricane Igor in the Burin Peninsula community of Beau Bois



Hurricane Igor dumped over 200 mm's of rain on parts of the Burin Peninsula

In March 2011 Burin Peninsula District hosted the annual Mayor and Community leaders meeting in St. Lawrence to hear the policing needs of the elected officials and plot the Burin Peninsula District policy future for the upcoming year.

CLARENVILLE / BONAVISTA DISTRICT

During the past year, members of the Clarenville-Bonavista District RCMP have served their communities in many ways. The members have volunteered numerous hours of their time to partake in many community events.

Clarenville RCMP members partnered with the G.B. Cross Memorial Hospital in Clarenville to host a charity hockey game at the Clarenville Event Center. This friendly hockey game raised \$10,500 for the Discovery Heath Foundation.

In partnership with the Clarenville Area Crime Prevention Committee, the Detachment organized a Jail and Bail event. This very fun and successful event raised over \$4,700 for the Clarenville Area Crime Prevention Committee.

In the fall of 2010 the Clarenville-Bonavista District hosted the Annual Sgt. Reg Gulliford Memorial Golf Tournament. Over 100 golfers partook in this event at the Terra Nova Lodge golf course. Over \$4,500 was raised and donated to charity.

The close working relationship that the Clarenville RCMP has with its community also yielded fruitful dividends in the solving of numerous crimes in our area. This was evident with the successful apprehension of one

individual who was responsible for a rash of Break & Enters. The joint effort from the Clarenville Forensic Identification Unit, the Clarenville Detachment, and local citizens led to the arrest and successful conviction of one adult male for 16 Break & Enter offences.

One of the District's initiatives this year was to improve our interaction with youth in our communities and to increase education about drugs. In 2010 Clarenville-Bonavista District set out to dramatically increase the number of drug presentations provided to youth, be it in a school setting or as part of an offering to a youth group. The members provided ten drug presentations to youth in schools, youth groups, Girl Guides and more. This is in addition to presentations on other topics such as bullying and ATV safety and in addition to numerous DARE classes taught throughout the District during the school year.

On September 21, 2010 Hurricane Igor significantly impacted the Clarenville-Bonavista District and all the communities it serves. The excellent working relationship the RCMP has with its community partners was obvious in this time of crisis. The Department of Fisheries, Department of Defense, local Ground Search and Rescue Teams, fire departments, and local town councils and service districts worked hand in hand to help meet the needs of the people affected by this huge storm.

Hurricane Igor demonstrated the excellent partnership and working relationship that exist between the RCMP and the various provincial and federal agencies and their local communities.



Volunteers gather to clean up after the storm



Clarenville Bonavista RCMP team up with the Clarenville Caribous for the Discovery Health Care Foundation



Hurricane Igor devastates part of Clarenville

GANDER / LEWISPORTE DISTRICT

Glovertown RCMP members proudly attended the grand opening of a playground that youth within their policing area had taken upon themselves to rebuild. To acknowledge their efforts and to assist in raising much needed funds, the members took on the kids in an outdoor hockey game. The game was tied after three periods and went to nine shootout rounds. Everyone ended up a winner here as both sides gained respect for each other. The Mountie on patrol in this area is no longer a stranger, and in many cases is considered a friend.



Cpl. Ann Noel with a group of K-3 students. "Awareness is Your Shield" is a program that delivers creative, age-appropriate safety messages to children of this age.

Members had a busy year implementing Prevent Alcohol and Risk-Related Trauma in Youth (P.A.R.T.Y.) and Drug Abuse Resistance Education (D.A.R.E.) programs at schools throughout the District. D.A.R.E. is a police officer-led series of classroom lessons that teaches children from kindergarten through 12th grade how to resist peer pressure and live productive drug and violence-free lives. P.A.R.T.Y. is a reality-based drug and injury prevention program aimed at high school aged students. It is an interactive program which takes students through the path of an injury survivor. Both programs establish positive relationships between students and law enforcement, teachers, parents, and other community leaders. Every youngster should have the opportunity to grow-up healthy, safe, secure, and equipped with the skills needed to succeed in life.

Gander Lewisporte District members worked steadily to make the area roads safer. Forty-nine impaired drivers were charged through 2010-11. Members charged 2200 drivers with speeding, and laid an additional 400 seatbelt charges. Road safety is an on-going priority for members within this District. Members here charged 40 people with operating their vehicles while using a cell phone in 2010-11. Drivers are reminded of the need to stay focused on the driving task. The use of cell phones and other distractions impairs the driver's ability to safely control their vehicle and effectively monitor and respond to events occurring in the road traffic environment. These events are often unpredictable; they could be anything from a changing traffic signal, to a sudden appearance of a pedestrian or bicyclist, to another vehicle stopping directly ahead. There is no "safe time" for distractions while driving.

Gander Lewisporte District members took on Family Violence in 2010-11 by ensuring every single one of

its members received appropriate skills and education through training. Members here follow a collaborative and cooperative approach to addressing family violence by leading or partnering in community-based workshops on victims' issues, sexual assault, and relationship violence, and assisting communities in using problem-solving approaches to family violence.

Gander Lewisporte District is no stranger to violent crimes. Both armed robberies that occurred in Gander last year were solved through the efforts of the members within the District.

Gander Detachment has enjoyed a close partnership with Gander International Airport for many years. Its location and ability to handle large international aircraft has resulted in several unusual investigations over the past year, mostly involving foreign Nationals. Flights are often forced to divert to Gander as a result of unruly passengers causing disturbances aboard the aircraft. Most of these incidents result from the over-consumption of alcohol however are managed in an expeditious manner.



Cst. Andrew Lorette visits with students at Smallwood Academy during Police Week.



More than 60 operational and administrative Public Service Employees of "B" Division from across the Province gathered in Gander in May 2010 for their semi-annual meetings. A silent auction and ticket draws were held in aid of Cara House in memory of the recent passing of Marilyn Paul, Detachment Assistant at Glovertown Detachment. \$1021.00 was raised and presented to Cara House.

GRAND FALLS-WINDSOR DISTRICT

During the past year Grand Falls/Windsor District placed special emphasis on our School Liaison Program. This included several initiatives, including drop by visits, sports events, and Drug Awareness presentations. RCMP members here gave their best as they took on high school students in games of hockey and volley ball.

Members in Grand Falls Windsor District completed twelve D.A.R.E presentations in schools throughout the District. Members were also heavily involved in Bullying Prevention programs throughout the schools. Sixteen sessions were held with students in grades 1 through 9. The key to the program's success is the commitment to the program by school administrators, parents, teachers and non-teaching professionals – including police officers. Other D.A.R.E and Bullying Prevention sessions are already planned for the upcoming year.



This District also teamed up with Gander's 103 Search and Rescue Squadron and arranged a rappelling demonstration for students at a local High School. Following the well-received demonstration, RCMP and Squadron members attended the schools where they met and interacted with the students.

This district has also placed enhanced emphasis on Senior Awareness programs. In doing so we have completed two presentations to seniors on Anti-Fraud education and a plan is in place to increase these type of presentations. We have also completed presentations on Senior Safety to six different groups in the district. Personnel from the district sit on seven separate seniors-based committees. This allows members to address the concerns of seniors on a timely basis. In addition to this, we also have one member sitting on "The Age Friendly Board", designed and implemented to make Grand Falls Windsor increasingly more "Senior-Friendly".



Grand Falls Windsor members using a skidoo to search for a missing person.

During 2010-11, a multi-faceted approach was taken to Traffic Education and Enforcement. The District created a plan to focus on the Checkstop Program, Enforcement Initiatives and an Education Program that would in part focus on All-Terrain Vehicle Regulations. In pursuing our plan, members conducted numerous public and school presentations on Road Safety, All Terrain Vehicle operation, the Awareness is Your Shield Program, and the Selective Traffic Enforcement Program (STEP). The efforts put forth were fully supported by assistance from our Traffic Services members and the Provincial Highway Enforcement staff.

A December 26th missing person's report that captivated the Province's attention ended sadly with the discovery of his remains just as 2010-11 ended. The efforts of and cooperation of all those involved in the search was nothing short of incredible. Numerous RCMP resources, Newfoundland and Labrador Fire and Emergency Services, 103 Search and Rescue Squadron, the Canadian Rangers, the Exploit's Valley Ground Search and Rescue Team and many others assisted and searched until winter weather conditions forced its suspension. On March 15th, 2011, a person walking in the woods located the vehicle of the missing person in a densely wooded area that had not been searched previously. The search resumed and, while significant snow still hampered the efforts of the searches, some closure was brought to family members about three weeks later. The RCMP offers a heartfelt thank you to all those who assisted in this search, and recognizes the efforts of our partners and volunteers in the area.



Cst. James Barter displays the "Roll-Over" simulator to show the importance of wearing seat belts.

DEER LAKE DISTRICT

The RNC / RCMP Joint Forces Operation Street Level Drug Team has had a successful partnership over the past year in Deer Lake District that has led to several searches and seizures within both policing jurisdictions. RCMP member Cst. Duane Hogg has been proactive in intelligence gathering, surveillance and drug investigation and his work with RNC Cst. Jason Dobbin has resulted in the execution of several search warrants, as well as vehicle stops and arrests. In the past year, the J.F.O. has seized over \$60,000.00 worth of illegal street drugs, over \$11,000 of drug related cash and 32 charges have been laid. The section is expected to continue to improve in the 2011-2012 year and yield even more results as both forces are committed to this excellent partnership. Deer Lake District continues to prioritize intelligence gathering and the targeting of drug trafficking suspects in our District Annual Performance Plan and the J.F.O. are certainly contributing to this important initiative.



Sgt. Terry Foster and Cst. Leon Sheppard serve breakfast to patrons in support of the Ronald McDonald Foundation.

again this year in Deer Lake District. The combination of local knowledge and the prioritization of this initiative in the District Annual Performance Plan has resulted in District improvements in this area.



Baie Verte members and Special Olympians take part in the Law Enforcement Torch Run.

RCMP Deer Lake District members gathered information on a suspected cocaine dealer in the Howley area. The intelligence submitted resulted in a local Controlled Drug and Substances Act project that then involved RCMP Deer Lake District and Corner Brook Drug Section. An Undercover Operation commenced which resulted in an adult male of Howley being charged with two counts of Trafficking in Cocaine. The results of the investigation were well received by the residents of the Town of Howley.

Deer Lake District prioritized the investigation of all violent complaints in the 2010-11 Annual Performance Plan. This strategy paid off as violent incident charges surpassed the previous year's number of 65 with 83 charges laid in 2010-11. File reviews revealed that matters were investigated properly and thoroughly. Training in the District has been a key component to the improvement in this important area, as Corner Brook detachment's Cst. Natalie Hussey was trained as a facilitator in the District for the Collaborative Approach to Family Violence Investigation, as has instructed this course locally in Deer Lake District this year. The majority of the members in the District have Family Violence Investigation training as well as The Collaborative Approach to Child Sexual Abuse Investigation course has also been instructed locally over the past few years and



Cst LeRoy Pelley of Corner Brook Detachment making a very important donation.

On May 28th, 2010 a ceremony was held at "B" Division HQ to honor Auxiliary Constable Everett Hann of Corner Brook for 40 years of service with the Force. A/Cst. Hann joined as an Auxiliary Constable in 1970 at Corner Brook and has served alongside Regular Members in the area since then. The RCMP Auxiliary Constable Program offers specially trained volunteers the opportunity to contribute to their communities with experience they acquire from volunteering with the police; and volunteer he does, with some years exceeding 1000 hours! The ceremony was attended by the Commanding Officer of "B" Division, Assistant Commissioner Bill Smith who presented A/Cst. Hann with his certificate of service. One of A/Cst. Hann's sons is Cst. Michael Hann presently stationed in Avalon East District.



BAY ST. GEORGE DISTRICT

Bay St. George District serves a population of approximately 35,000 clients in 59 communities throughout the District. From Channel/Port aux Basques to Burgeo and all points in between, members here are actively involved in community based initiatives. Community, school and youth programs focusing on drug abuse, health and safety, violence and internet safety are priorities that also help bridge the gap with youth.

Members in Burgeo continue to be active in the Burgeo Figure Skating Club. This club was started in 2009 by Constables Trish Clough and Nicole Hepditch, both trained figure skaters. With other volunteers, their efforts brought the dream to reality and this year's Ice Show was a huge success.



Channel Port aux Basques members took part in a very successful fund raiser over Christmas for the Children's Wish Foundation. Approximately \$3000.00 was raised for this cause and it was strongly supported by the community.



Some Stephenville and area members did their part to raise funds and awareness for men's health, specifically prostate cancer. By sprouting moustaches, and through their actions and words, the members raised awareness during "Movember" by prompting private and public conversation around the often ignored issue of men's health.

In partnership with the Federation of Newfoundland Indians, four summer students were hired within the District. Their employment gave them the opportunity to



learn more about the RCMP, and in turn they provided some much needed help to the staff. This has been a largely successful endeavour over the years, and several young Newfoundlanders and Labradorians have joined the Force after participating in this program. Pictured here are Kelsey Collier, Desiree Foote, Kaitlyn Garnier and Voneta Hepditch with S/Sgt. Joe Sheen, Bay St. George District Commander.



Bay St. George District was honoured with a visit by the Commissioner in December 2010. Following a tour of the area, the Commissioner met with Stephenville Mayor Tom O'Brien and Stephenville Airport Chair Graham Armour.



Bay St. George District members carry some of the heaviest workloads in the Division. While this area has seen many high profile investigations over the past year, members here continue to deliver on the promise of Safe Homes, Safe Communities. Approximately 25 search warrants were executed in 2010-11 resulting in seizures of ecstasy, marijuana, hash oil, cocaine, crack cocaine, money, drug trafficking paraphernalia, cell phones, weapons and vehicles. Dozens were charged with offences ranging from simple possession to production.

NORTHERN PENINSULA DISTRICT

Members and staff in our district are very active in the local communities at all levels, and in particular, with the local youth. We are hockey and baseball coaches and involved with the Child Youth Network Committee in Plum Point that grew from the construction of the local youth center. All local schools are visited weekly or monthly by our members and presentations to the students/youth have been made on bullying, alcohol and drug abuse and DARE training has been delivered.

We have developed strong and supportive partnerships with local Mayors and Councils as pertains to youth, which is recognized in a letter from the Mayor of Roddickton to the Commanding Officer of "B" Division. The letter acknowledges increased police presence and "... a decrease in delinquency....creating a safe and healthy environment for our residents...This can indeed be attributed to (the members') dedication and involvement in various programs and functions in our town."

The extensive work with youth in our district has been recognized at both the local and provincial levels, with a district member having been nominated for both a Golden Spur Award and Police Officer of the Year Award. These nominations were based primarily on his work with local youth.

On August 14th 2010 the community of Conche unveiled a war memorial in their community. This was the first monument in Conche to recognize the numerous veterans from the area. The photo below was taken after the ceremony and includes all RCMP members in attendance with Korean War veteran Bill Kenney.

Members have made presentations to a local Family Resource Centre where the scope of family violence was discussed, including police response and options available to victims of domestic abuse. Avenues of assistance to victims of family violence were also offered and explained.

Members in this District also have an excellent working relationship with mental health professionals and hospital staff. This all started in 2007 with the creation of the Mental Health/Police Liaison committee. The team is comprised of an RCMP representative from St. Anthony, Flower's Cove and Roddickton Detachments, social workers, nurses, a psychiatrist, a physician, and the Regional Director of Mental Health and Addictions from Labrador-Grenfell Health. The committee meets monthly to discuss mutual concerns, gain a greater appreciation and awareness of our professions, roles, and responsibilities. This collaboration and understanding aids in providing quality service to our clients and the community. Using a team approach has really proved to be beneficial when dealing with complex issues or people who are in crisis.



LABRADOR DISTRICT

Labrador District is a distinct and unique territory, the largest and northernmost geographical region in Atlantic Canada. Home to approximately six percent of the province's population, the area is served by 10 detachments in three distinct regions including the North Coast, the central Lake Melville area and the South Coast Straits. Specialized units provided in the District include a General Investigative Section, Street Level Drugs Unit, Forensic Identification, Criminal Intelligence, Drug Awareness Coordinator, a Traffic Services, and Restorative Justice Coordinator.

The RCMP in Labrador has a long-standing commitment to the youth in the communities we police. Recognizing that crime prevention through social development is an effective means of providing youth with alternatives to negative involvement with the RCMP, members have been actively involved in educational activities. A developing local priority across the District in 2010-11 was educating youth about the problems related with and providing the skills to deal with bullying in their schools and communities. Members have assisted by attending schools regularly and providing anti-bullying presentations to students from all grade levels and in some cases have expanded the training to include staff and teachers. Communities have embraced Stand-Up

participated in the Roots of Empathy program and Forteau RCMP were kept busy with the P.A.R.T.Y. program. Members in Happy Valley-Goose Bay attended the schools regularly to assist in the weekly Exploratories Program and Nain RCMP members regularly opened up the Detachment to welcome pre-school students and those involved in the summer recreation program.

Labrador District is composed of many aboriginal communities including the Northern Inuit region of Nunatsiavut, the Southern Inuit region of Nunatukavut, the Innu communities of Sheshatshiu and Natuashish and the Métis. It has remained a District wide priority to provide services that are relevant to the communities we police and that are consistent with needs specific to the varying cultures.

Family Violence is an ongoing priority in Labrador District and due to many factors Labrador experiences high rates of violence in interpersonal relationships, high rates of child abuse and neglect and high rates of family violence, particularly abuse against women. Cognizant of the fact that many challenges in our communities contribute to this level of violence, Detachments are constantly seeking new and different ways to reach out to members of the community to assist with these challenges. Detachments continually liaise with local women's groups, shelters and safe houses and participate in joint training and community workshops and participate in Violence Awareness and Action training.

Members across the Labrador District are consistently developing partnerships and working together with others to create safer and healthy communities. Members are involved with Ground Search and Rescue Teams and have completed several successful searches. Detachments regularly participate in joint patrols with Department of Fisheries and Oceans, Inland Enforcement, participate in joint investigations and events with Child Youth and Family Services and the SPCA. Members in Cartwright offered a community presentation on additions in conjunction with CYFS and local church representatives. Members of the RCMP can be seen volunteering their own time for such events as the Labrador Winter Games, the Great Labrador Canoe Race, the Law Enforcement Torch Run, Cops for Cancer, and Terry Fox Runs. Members in Nain offered a free hair cutting clinic for the community and Hopedale Detachment participated in Winter Fest 2011.



The spoils of a drug search in Labrador.



Labrador District members get ready for Remembrance Day at the Royal Canadian Legion in Happy Valley Goose Bay.

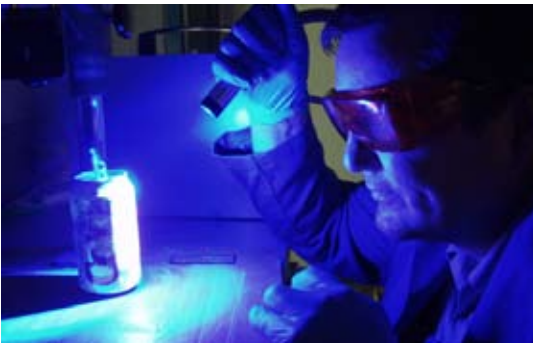
Against Bullying Day and in many Detachment areas members participated in the Stand-Up rallies and proudly sported their pink T-Shirts along with students and staff. The communities of Happy Valley-Goose Bay, Sheshatshiu, and Cartwright along with RCMP members and local Crime Prevention committees hosted the Half Pints, a group that travels all over the country and impart important lessons regarding bullying through interactive basketball games and classroom sessions. Members in Happy Valley-Goose Bay traded in their handcuffs for whistles and were actively involved in coaching youth basketball, soccer and wrestling teams, while members on the South Coast could often be found joining in on school volleyball and floor hockey games.

In addition to the ongoing youth projects across the District, many Detachments saw new projects off the ground in the past year; the Sheshatshiu Innu School

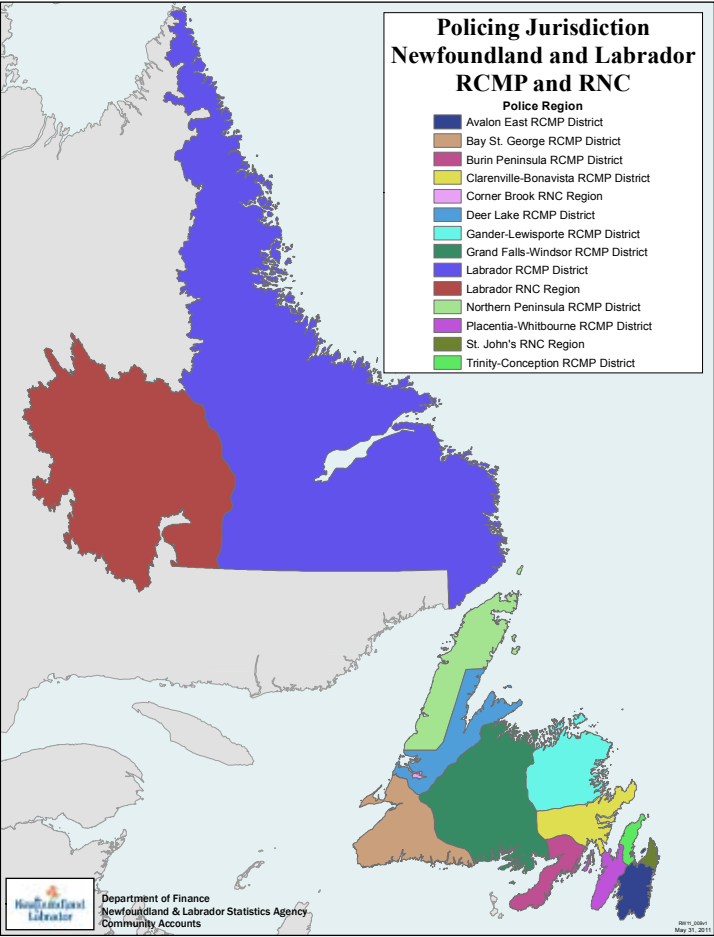
CRIMINAL STATISTICS

2010 CRIMINAL and OTHER ACTIVITY B Division (RCMP Jurisdiction Only)			
	2010	3 Yr Avg	% Change
Crimes Against Persons			
Homicide	2	1	100%
Other Offences Related to Death	10	10	0%
Robbery	45	32	41%
Sexual Assaults	269	292	-8%
Other Sexual Offences	128	119	8%
Assault	3076	3060	1%
Kidnapping/Hostage/Abduction	61	58	5%
Extortion/Harassment	1686	1479	14%
Total	5277	5051	4%
Crimes Against Property			
Break & Enter	1897	1628	17%
Theft of Motor Vehicle Under \$5000	125	133	-6%
Theft of Motor Vehicle Over \$5000	109	85	28%
Theft Over	63	55	15%
Theft Under	2330	2216	5%
Possession of Stolen Goods	159	138	15%
Fraud	435	425	2%
Arson	67	80	-16%
Mischief to Property	5980	6441	-7%
Total	11165	11201	0%
Other Criminal Code			
Offensive Weapons	194	187	4%
Public Order	17	14	21%
Offences Against Morals	60	55	9%
Corruption	95	85	12%
Offences related to criminal organization	2	1	100%
Terrorism related offences	0	0	0%
Other Criminal Code	4334	4512	-4%
Total	4702	4854	-3%
Total Criminal Code	21144	21106	0%
Federal			
Drug Enforcement - Production	61	50	22%
Drug Enforcement - Possession	461	421	10%
Drug Enforcement - Trafficking	825	585	41%
Drug Enforcement - Import/Export	8	5	60%
Drug Enforcement - Other	85	86	-1%
Customs and Excise	200	291	-31%
Youth Criminal Justice Act	214	232	-8%
Federal - General (Offences) - Except Traffic	443	430	3%
Federal - General (Other Activities) - Except Traffic	400	456	-12%
Total	2697	2556	6%
Provincial Statutes			
Liquor Act	834	879	-5%
Other Provincial Stats - Offences (Except Traffic)	1841	2140	-14%
Other Provincial Stats - Other Activities (Except Traffic)	4289	4578	-6%
Total	6964	7597	-8%
Traffic Collisions			
Fatals as a Result of Motor Vehicle Accidents	26	29	-10%
Injuries as a Result of Motor Vehicle Accidents	76	83	-8%
Property Damage MVAs (Reportable)	3262	3201	2%
Property Damage MVAs (Non Reportable)	506	517	-2%
Traffic Offences			
Provincial Traffic	29154	24305	20%
Other Traffic	246	274	-10%
CC Traffic	2450	2234	10%

Source: PROS Occurrence Stats. All data retrieved May 2011 based on actual numbers



THE POLICING LANDSCAPE



RCMP Property (Owned and Leased)

- Headquarters - 1
- Detachments, Patrol Cabins and Buildings - 70
- Residences - 160
- Federal Policing Offices - 5
- Radio Repeaters - 93

The RCMP in Newfoundland and Labrador polices:

- 303,805 square kilometres (82% of the geographic landmass of the Province)
- 296,768 people (59% of the population of Newfoundland and Labrador)
- 17, 542 kilometres of shoreline.



Cst.'s John Donaldson and Shannon McEntegart with Justin Beiber at the 2010 Juno Awards.

2010/2011 Division Establishment			
	Regular Members	Civilian Members	Public Service Employees
Provincial Contract	424	41	66.5
Community Tripartite Agreement	16	0	2
Federal	79	14	18
Protective Policing	1	0	0
Administration	8	1	9
Total	528	56	95.5

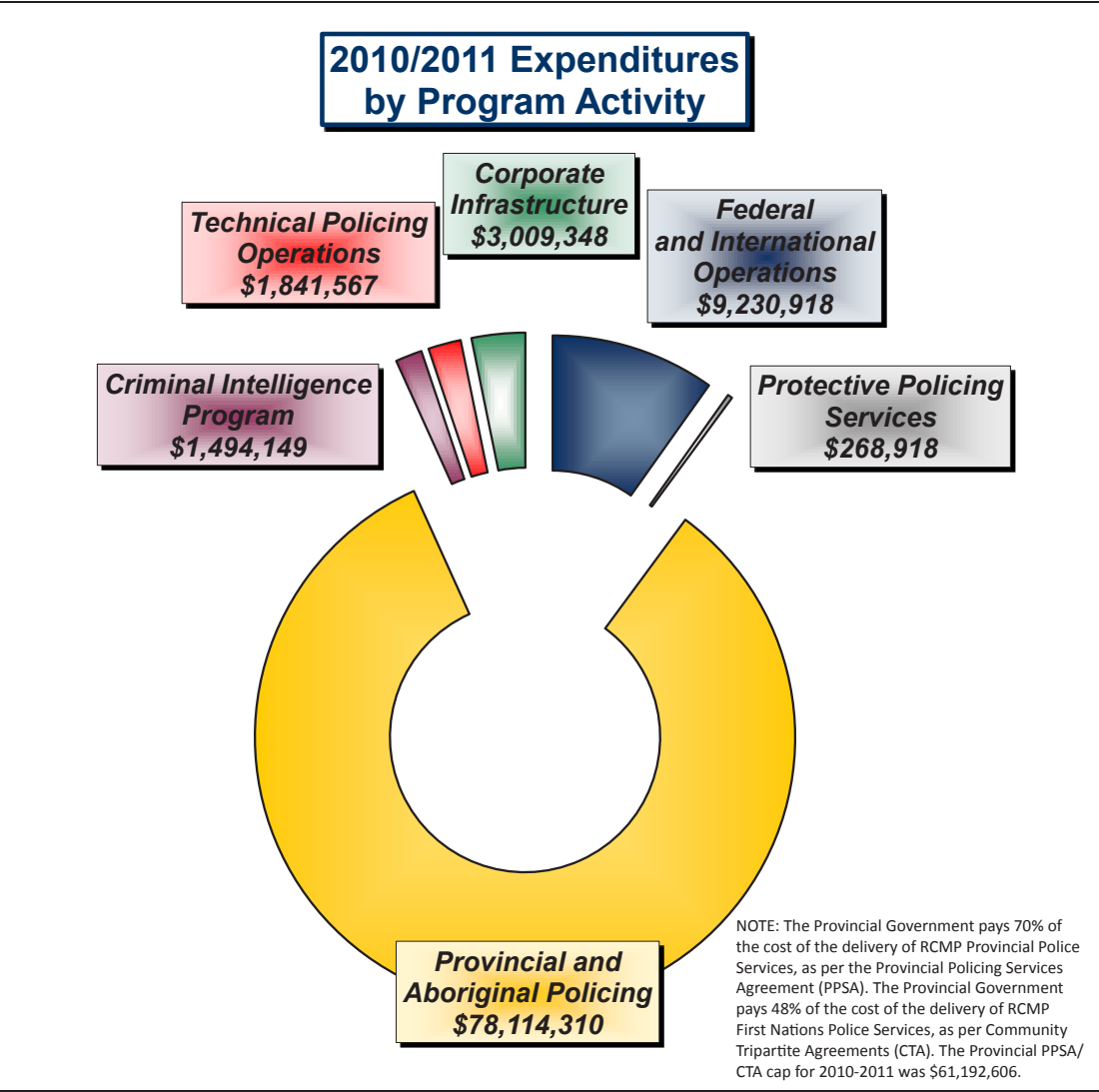
As of April 1, 2011

**How do Newfoundlanders and Labradorians feel about the RCMP?
(2010 Core Survey results)**

- 91% are satisfied with the RCMP's contribution to ensuring safe homes and communities for Canadians.
- 92% have trust and confidence in the RCMP.
- 84% feel that the RCMP has strong, reliable leaders.
- 98% feel that the RCMP's service is important for Canada.
- 93% feel that the RCMP demonstrates professionalism in its work.
- 94% feel that the RCMP is an organization with integrity.
- 87% feel that the RCMP is contributing to safer and healthier Aboriginal communities.
- 91% feel that the RCMP is sensitive to the needs of women.
- 88% feel that the RCMP is reducing the threat and impact of serious crime.
- 90% feel that RCMP personnel were courteous and respectful.



An RCMP member involved in a high risk arrest.



PROPERTY MANAGEMENT HIGHLIGHTS

New Buildings 2010/11

- Springdale Detachment - Completion 2011
- Bay Bulls Community Office - Lease
- Monkstown RR Site
- Bay L'Argent RR Site
- Gull Lake RR Site

New Residences 2010/11

- St Anthony MQ - RCMP Owned
- Twillingate MQ - Lease

Cell Retrofit 2010/11

- Goose Bay Cells - Completed
- Port aux Basques - Plans and Specs completed - Construction 2011

Detachment Upgrades 2010/11

- Burgeo Detachment Renovations
- Stephenville Detachment Exterior Lighting Replacement
- Corner Brook - New Emergency Power System
- Corner Brook - Major Electrical Upgrades
- Nain Detachment Renovations
- Nain Detachment Boiler Replacement
- HQ - Construct Storage Lot
- Fogo Detachment Renovations
- Goose Bay Detachment Upgrades
- Bonavista - Plans and Specs for new Emergency Power System - Construction 2011
- Placentia - Plans and Specs for new Emergency Power System - Construction 2011

Capital Projects 2010/11

- 20 Capital Projects in FY 2010/11. Allocation for this program was \$4,702,000.00

THE YEAR AHEAD

Fueled by mega project construction in several RCMP policed areas, 2011-12 is expected to be another year of solid economic prosperity in Newfoundland and Labrador. The economic outlook beyond 2011 is also looking very positive with mega project employment between 2010 and 2013 expected to total more than 25,000 person years. Muskrat Falls development between 2011-2017 would contribute an additional 8,600 person years of employment.

Given the anticipated growth in employment, population and spending in general, assessment and enhancement of RCMP police programs in affected areas will be a focal point of the Provincial RCMP strategy in 2012 and beyond. Comprehensive environmental scanning and a review of current crime trends actually began in 2010 and early indications are that mega project development, as was the case in the past, has already increased traffic violations, drug offences and other criminal activity. Throughout 2011-12, the RCMP will continue to work with provincial, community and industry partners to understand and effectively address policing issues associated with continued economic prosperity.

In concert with this analysis, the RCMP will continue the rollout of the Crime Reduction Program in the Province.

because each crime is dealt with individually. The Crime Reduction Program uses an intelligence-led, strategic approach to address this issue. With the assistance of a newly established Crime Reduction Analyst in Trinity Conception District this program will be implemented in several Districts in 2012.

In 2012, the RCMP will continue to tailor its police services to the needs of its communities through consultation and engagement of community leaders in the setting of priority policing issues. Action will be taken to address concerns and results will be communicated through enhanced reporting.

Youth Prevention and Awareness Programs were reviewed and validated in 2011 and in the coming years will be more focused on addressing issues specific to the unique communities we serve.

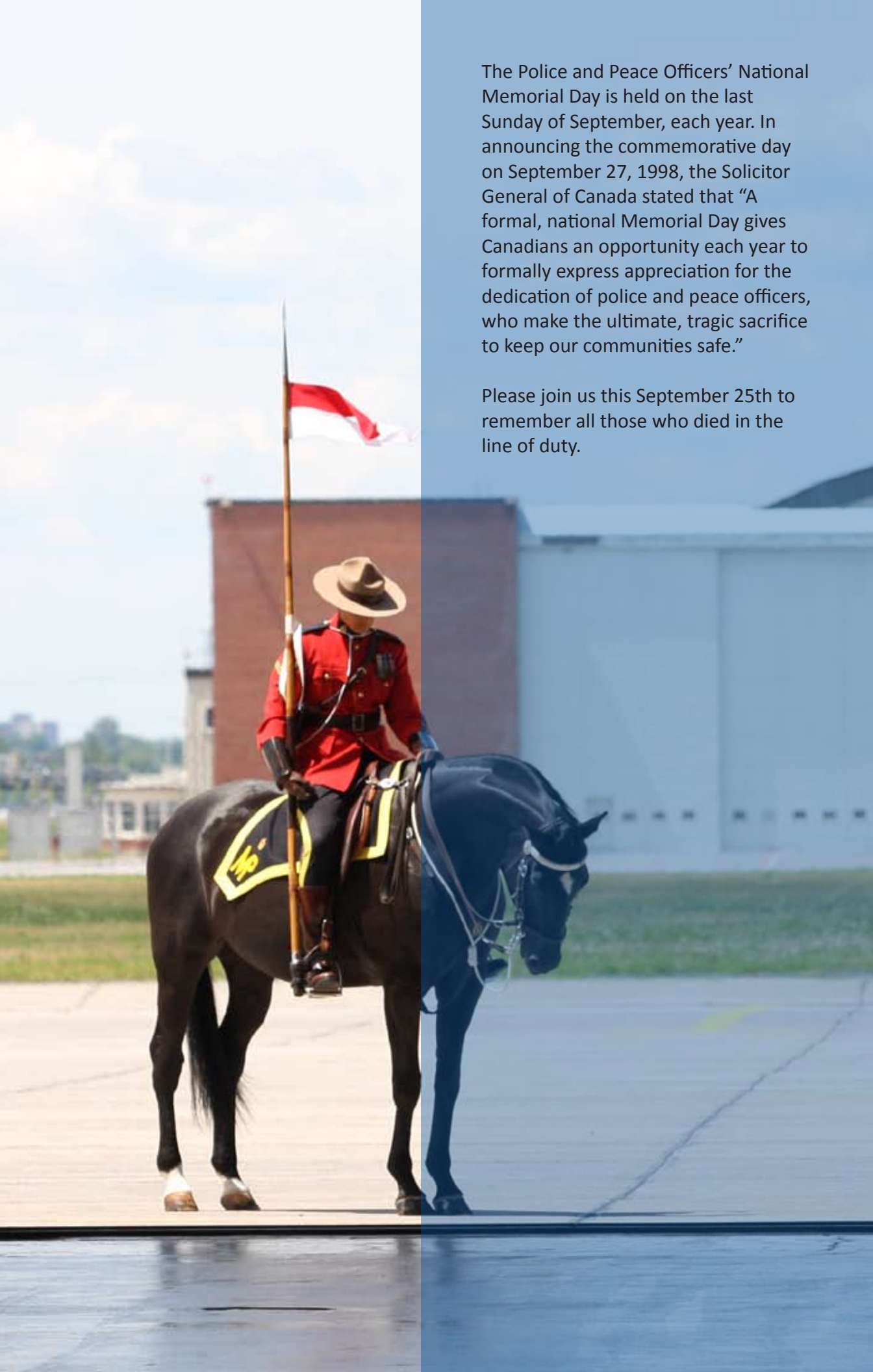
Operational policing units are the bread and butter of any enforcement agency. In an effort to increase member availability and police visibility in the communities we serve, and enhance member safety, operational members will receive additional equipment and training in 2012. Administrative support will be strengthened to allow members more time for community oriented duties.

Remembrance Day 2010 at Stephenville Detachment, Bay St. George District.



Crime Reduction teams target the most prolific offenders and offences in the community. These hard-core criminals commit a significant portion of the criminal activity in any given area but rarely see much jail time

The world famous RCMP Musical Ride will be in the Province from July 18th to July 28th, 2011, visiting Springdale, Bonavista, Conception Bay South, St. John's and Stephenville. Come out and share in the RCMP's rich history.



The Police and Peace Officers' National Memorial Day is held on the last Sunday of September, each year. In announcing the commemorative day on September 27, 1998, the Solicitor General of Canada stated that "A formal, national Memorial Day gives Canadians an opportunity each year to formally express appreciation for the dedication of police and peace officers, who make the ultimate, tragic sacrifice to keep our communities safe."

Please join us this September 25th to remember all those who died in the line of duty.

