



# EASTERN EDITION OF NOTICES TO MARINERS

Published monthly by the

CANADIAN COAST GUARD

NOTICES

**647 to 702**

## CONTENTS

	Page
SEC. I Safety and General Information .....	1 - 3
SEC. II Chart Corrections .....	4 - 17
SEC. III Radio Navigation Aids Corrections .....	NIL
SEC. IV Sailing Directions and Small Craft Guide Corrections.....	19 - 27
SEC. V Light List Corrections .....	29 - 33

Marine Navigation Services  
Directorate  
Marine Aids

**RECYCLED PAPER**

Internet: <http://www.notmar.com>

## EXPLANATORY NOTES

**Geographical positions** refer directly to the graduations of the largest scale Canadian Hydrographic chart unless otherwise indicated.

**Bearings** refer to the true compass and are measured clockwise from 000° (North) clockwise to 359°; those relating to lights are from seaward.

**Visibility** of lights is that in clear weather.

**Depths** - The units used for soundings (metres, fathoms or feet) are stated in the title of each chart.

**Elevations** are normally given above Higher High Water, Large Tides unless otherwise indicated.

**Original Canadian Information** - A star (\*) adjacent to the Notice number indicates that this notice is based on original Canadian information.

**Distances** may be calculated as follows:

1 nautical mile	= 1 852 metres (6,076.1 feet)
1 statute mile	= 1 609.3 metres (5,280 feet)
1 metre	= 3.28 feet

**Temporary & Preliminary Notices** are indicated by a (T) or a (P) after the Notice number. Nautical charts and publications are not hand amended for Temporary (T) and Preliminary (P) Notices to Mariners. Listings of Charts Affected by Temporary and Preliminary Notices to Mariners are revised and promulgated quarterly, in Section I. Reference should be made to the latest published listing and to the monthly editions of Notices to Mariners published subsequently.

**Please note that, in addition to the temporary and preliminary changes normally advertised as (T) and (P) Notices, there are a significant number of permanent changes to navigational aids that have been advertised as Preliminary Notices to Mariners while charts are being updated for new editions.**

**Marine Information Report & Suggestion Sheet** - Mariners are requested to notify the responsible authorities when new or suspected dangers to navigation are discovered, changes observed in aids to navigation or corrections to publications are seen to be necessary. Such communications can be made using the *Marine Information Report & Suggestion Sheet* inserted on the last page of each monthly edition of *Notices to Mariners*.

**Monthly edition of Notices to Mariners** - *Notices to Mariners* are issued free of charge on a monthly basis. Mariners now have a choice between specific *Regional* issue(s) they wish to receive. Requests to be placed on or removed from the mailing list should be made by using the form inserted on page *iii* of each monthly edition. Notification of changes to the mailing addresses, regional issues and/or number of copies required should also be transmitted by means of this form.

**Canadian Nautical Charts & Publications** - A source list of *Canadian Nautical Charts & publications* is published in *Notice No. 14* of the current *Annual Edition of Notices to Mariners*. The source supply and the prices effective at the time of printing are listed. This list is periodically updated in the monthly edition of *Notices to Mariners*.

*NOTE: Cette publication est aussi disponible en français.*

## DGPS INITIAL OPERATIONAL SERVICE

The Canadian Coast Guard (CCG) announces that the Differential Global Positioning Service (DGPS) Initial Operational Service (IOS) is available for positioning and navigation.

IOS means the service will provide a DGPS broadcast using the type 9 RTCM message for pseudorange corrections at a data transmission rate of 200 baud. Refer to Radio Aids to Marine Navigation (RAMN) for estimated advertised coverage for each differential station.

Although the service is IOS, users may experience service interruptions without advance notice. Further, CCG advises that IOS DGPS broadcasts should not be used under any circumstances where a sudden system failure or inaccuracy could constitute a safety hazard. Following a one year verification period, the DGPS service will be declared as being a Full Operational Service (FOS).

Users are also advised that differential corrections are based on the NAD 83 datum position of the reference station antenna and positions obtained using DGPS should be referenced to this coordinate system only. DGPS receivers must be set to the WGS 84 datum in order to obtain optimum positioning accuracy.

<b>Table of Stage 1 DGPS Reference Stations</b>					
<b>Station Name</b>	<b>Id Nos of Ref. Stations</b>	<b>DGPS Station ID</b>	<b>Geogr. Pos. Latitude Longitude</b>	<b>Frequency [khz]</b>	<b>Bits/sec.</b>
Alert Bay BC	300,301	909	50 35 N 126 55 W	309	200
Amphitrite Pt BC	302,303	908	48 55 N 125 32 W	315	200
Cardinal ON	308,309	919	44 47 N 75 25 W	306	200
St. Jean Richelieu QUÉ	312,313	929	45 19 N 73 18 W	296	200
Lauzon QUÉ	316,317	927	46 48 N 71 09 W	309	200
Partridge Island NB	326,327	939	45 14 N 66 03 W	295	200
Pt. Escuminac NB	332,333	936	47 04 N 64 47 W	319	200
Fox Island NS	336,337	934	45 19 N 61 04 W	307	200
Cape Race NFLD	338,339	940	46 39 N 53 04 W	315	200
Cape Ray NFLD	340,341	942	47 34 N 59 09 W	290	200

## **DGPS USER ALERT**

Currently, ten Phase 1 DGPS stations are providing Initial Operational Service (IOS) which was declared by Regional Notices to Mariners issued in September 1996. Another eight DGPS stations will be installed in 1997. Extensive validation of operational performance is being conducted throughout 1997. Full Operational Service (FOS) will follow after successful validation.

The Canadian Coast Guard has recently received reports of DGPS receivers apparently ignoring the broadcast alarm which should signal the immediate discontinuation of a particular satellite correction. Reports indicate that some user equipment does not properly recognize this "do-not-use" correction flag and as a result erroneously processes it as a correction. This can result in position errors as large as 15 kilometers while the receiver is in DGPS mode. DGPS users are advised that they should contact the manufacturer of their equipment immediately to determine if they require a receiver upgrade.

Apart from this, no major difficulties with DGPS implementation have been experienced to date nor are any expected in the future.

## **DISCREPANCY REPORT FOR DGPS USERS.**

The Canadian Coast Guard is currently implementing the Differential Global Positioning System in Canada. In August 1996, 10 DGPS stations were announced as providing an Initial Operational Service (IOS). Eight (8) additional DGPS stations will be implemented in the fall of 1997.

Following a service validation period, it is expected that the DGPS service will be announced as providing a Full Operational Service (FOS) in December 1997. The fully operational DGPS service is expected to meet the advertised Levels of Service standards and all service guarantees will be provided with FOS.

Throughout the service validation period, the Coast Guard will be conducting numerous tests of the differential service. To assist the Coast Guard in this validation testing, mariners are requested to complete the attached anomaly report. Please take note of any DGPS service anomalies you experience and forward the completed form to the Director Marine Aids, 344 Slater Street, 6th floor, Ottawa, Ontario, K1A 0E6.

## DGPS station anomaly report / Rapport d'anomalie des stations DGPS

With the purpose of constantly evaluating the quality of the DGPS service offered, the Canadian Coast Guard is providing the mariner with the following anomaly report. This report will allow us to get well-supported information concerning the anomaly and thus, will facilitate the identification of the origin of the problem. Please fill accordingly each section of this report and forward it by the suggested ways. You will find a legend at the end of this document.

Avec le souci d'évaluer constamment la qualité du service DGPS offert, la Garde côtière met à la disposition du navigateur le présent rapport d'anomalie. Ce rapport servira à bien documenter l'anomalie et, de ce fait, facilitera l'identification ou la recherche de la source du problème. Nous vous prions de bien remplir chaque section de ce rapport et de l'acheminer de la façon suggérée. Vous trouverez une légende à la fin de ce document.

### User informations / Renseignements sur l'utilisateur

Vessel name / Nom du navire: \_\_\_\_\_ Destination: \_\_\_\_\_  
Vessel position at the beginning of the anomaly /  
Position du navire au début de l'anomalie : \_\_\_\_\_  
Vessel position at the end of the anomaly /  
Position du navire à la fin de l'anomalie : \_\_\_\_\_

### Anomaly report / Rapport d'anomalie

Date and time of the anomaly / Date et heure de l'anomalie: \_\_\_\_\_ Duration / Durée: \_\_\_\_\_  
Number of satellites tracked on GPS receiver / Nombre de satellites reçus par le récepteur: \_\_\_\_\_  
DGPS site using / Station DGPS utilisée: Freq.: \_\_\_\_\_ kHz SS: \_\_\_\_\_ dB SNR: \_\_\_\_\_ dB  
DOP Geometry / Géométrie DOP : \_\_\_\_\_  
User receiver operates correctly with other DGPS sites? /  
Votre équipement DGPS fonctionne-t-il normalement à l'utilisation d'autres stations DGPS?: Yes/ Oui \_\_\_\_\_ No / Non \_\_\_\_\_  
Comments / Commentaires: \_\_\_\_\_  
\_\_\_\_\_  
\_\_\_\_\_  
\_\_\_\_\_

Point of contact / Personne-ressource: Name/ Nom: \_\_\_\_\_  
Phone / Téléphone : \_\_\_\_\_

### Weather conditions / Conditions météo

Winds / Vents : Direction: \_\_\_\_\_ Speed / Vitesse: \_\_\_\_\_ KTS  
Temp. °C: \_\_\_\_\_ VIS: \_\_\_\_\_ N.M.  
Sea State / État de la mer : \_\_\_\_\_  
Bearing and range to electrical storm /  
Direction et distance de l'orage : \_\_\_\_\_  
Time of the storm / Heure de l'orage: \_\_\_\_\_ UTC

## Essential informations on user equipment to fill / Renseignements indispensables sur l'équipement à remplir:

### User equipment informations / Renseignements sur l'équipement

GPS receiver / Récepteur GPS: Make / Fabricant: \_\_\_\_\_ Model: \_\_\_\_\_  
DGPS beacon receiver / Démodulateur DGPS: Make / Fabricant : \_\_\_\_\_ Model: \_\_\_\_\_  
Gyro interface with GPS / Gyro intégré avec le GPS? Yes / Oui : \_\_\_\_\_ No / Non : \_\_\_\_\_  
DGPS interfaced with an ECDIS / DGPS intégré dans un SVCEI? Yes / Oui: \_\_\_\_\_ No / Non : \_\_\_\_\_  
If yes, please fill below / Si oui, S.V.P. compléter ci-dessous:  
ECDIS / SVCEI: Make / Fabricant: \_\_\_\_\_ Model: \_\_\_\_\_  
Radar image interfaced / Image radar intégrée?: Yes / Oui: \_\_\_\_\_ No / Non: \_\_\_\_\_  
Gyro interfaced with ECDIS / Gyro intégré avec SVCEI? Yes / Oui: \_\_\_\_\_ No / Non: \_\_\_\_\_  
Permanent installation or in evaluation / Installation permanente ou en évaluation : \_\_\_\_\_

**This report can be sent the following ways / Ce rapport peut être acheminé selon les façons suivantes:**

- 1) Fax / Par télécopieur : 613-998-2428 attention AWAD.
- 2) Mail / Par la poste: Director Marine Aids  
344 Slater Street, 6 th floor  
Ottawa, Ontario  
K1A 0E6

**Canada**

<b>Legend/ Légende</b>
----------------------------

<b>Position</b>	:	Position can be provided by latitude, longitude, bearing and distance, location of a buoy, etc. La position peut être donnée en latitude, longitude, relèvement et distance, emplacement de bouée, etc.
<b>KTS</b>	:	Wind speed in knots / Vitesse du vent en noeuds.
<b>N.M.</b>	:	Visibility in Nautical Miles / Visibilité en milles nautiques.
<b>Freq. kHz</b>	:	Frequency in kilohertz / Fréquence en kilohertz .
<b>SS</b>	:	Signal strength in decibel / Force de signal en décibel.
<b>SNR</b>	:	Signal to noise ratio in decibel / Rapport signal-bruit en décibel .
<b>DOP (dilution of precision)</b>	:	Measure of the geometrical « strength » of the GPS satellite configuration. The DOP is measured on a scale of 1 to 10 / Mesure de la « force » géométrique de la configuration satellite. Le DOP est mesuré sur une échelle de 1 à 10
<b>SVCEI / ECDIS</b>	:	Electronic Chart Display and Information System / Système de Visualisation de Cartes Electroniques et d'Information .

## **IMPORTANT NOTICE TO USER**

### **The Canadian Coast Guard Marine Aids Modernization Program**

- The Canadian Coast Guard is initiating an aids to navigation modernization program which takes advantage of modern technology and will result in a more equitable, safe, cost-effective and environmentally friendly service across Canada. Low maintenance buoys, solar power, the elimination of diesel power and the application of national provision and design standards, will be used to realize these objectives.
- In consultation with local users, aids to navigation which are redundant, exceed the national standards or should not be publicly funded, will be downsized, privatized or discontinued.
- Regional plans as well as detailed Notices to Shipping and Notices to Mariners will be issued and distributed in the usual manner in advance of all changes to aids to navigation. All users are encouraged to participate in local consultations and to monitor these Notices. It will be every user's responsibility to adapt to the changes and to take the appropriate measures.

#### **1. Redundant Aids to Navigation**

Many conventional aids to navigation were established for commercial mariners who now use radar. As a result these users no longer require as many landfall shore lights, large lighted buoys and fog signals and support their discontinuance.

However, before these commercially redundant marine aids are removed, the Coast Guard is assessing, where required, the local needs of small craft operators and redesigning the old commercial aids to meet these needs within national provision policies and design standards.

Coast Guard policy does not provide for the retention of fog horns for pleasure craft, due to the high cost to provide such a service across Canada. However, where practical and where there is local support, the existing redundant fog horns are being transferred to local authorities at no cost.

The conversion of lightstations to solar power allows major economic and environmental benefits by allowing removal of fuel tanks and diesel generators. Although this eliminates the need for many structures, the Coast Guard will protect all heritage lightstations through continued operation or transfer to provincial, municipal or other authorities for local use.

## **2. Aids to Navigation Standards**

In consultation with local users, all aids to navigation systems across Canada are under review. National system design standards will be used to assess these systems. Systems that do not meet these standards will be upgraded; those systems that exceed them will be downsized.

Adjustments in some channels will result in an increase or a decrease in the number of buoys and/or the conversion of some lighted buoys to unlighted buoys displaying reflective material.

## **3. Private Aids to Navigation**

Although Coast Guard policy does not provide for the establishment of aids to navigation in inadequately charted waters, or where the traffic volume does not justify the cost of the system, some have been established in the past. These aids to navigation will be transferred to local authorities at no cost, with Coast Guard retaining design and regulatory authority under the *Private Buoy Regulations*

## **NEW INITIATIVES**

The Canadian Coast Guard is also introducing a new differential correction service to augment the satellite-based Global Positioning System (GPS), with 18 transmitting stations fully operational in 1998.

This Differential Global Positioning System (DGPS), will improve the accuracy and integrity of GPS and will enable mariners who are equipped with the appropriate receivers to identify their precise position in most major southern Canadian waters, including the Great Lakes and the St. Lawrence River.

The use of DGPS in conjunction with Electronic Chart Display and Information Systems (ECDIS), will greatly improve navigation accuracy. The expanding use of this new technology is expected to increase marine safety and thus provide greater environmental protection to Canadian waters. It is also believed that implementation of DGPS will allow further adjustment to conventional aids in the future.

All mariners and shipowners are encouraged to equip their vessels with GPS receivers which have the capability to receive the Differential signals, particularly where there is frequent risk of reduced visibility.

The Canadian Coast Guard believes that the availability of GPS, particularly when augmented by the Differential service, will make Loran C obsolete. Consultations are underway to assess the impact of discontinuing Loran C in Canada.

**NOTE: This Notice supersedes previous Notice to User concerning the Canadian Coast Guard Marine Aids Modernization Program.**



## **NEWFOUNDLAND REGION**

The Canadian Coast Guard is planning to further modernize its marine aids to navigation service. Changes will include adjusting all service levels to national standards between 1997 and the year 2000 and reducing some conventional aids services based on the availability of the Global Positioning System, Differential Global Positioning System (DGPS) and the Electronic Chart Display Information System (ECDIS). The new electronic systems will supplement the remaining conventional aids system, permitting continued maintenance of a safe service at lower cost

More detailed information concerning each of these proposed changes will be provided in each region or geographic area by Notices to Shipping and Notices to Mariners, allowing users time to comment prior to finalizing planned changes. Further Notices to Shipping and Notices to Mariners will also be issued at the time of all changes.

Mariners and representatives of user groups wishing to provide comments or recommendations on this or any subsequent notice may write to:

Aids to Navigation Superintendent  
Department of Fisheries & Oceans  
Canadian Coast Guard Directorate  
P.O. Box 5667  
St. John's, NFLD.  
A1C 5X1

## MARITIMES REGION

The Canadian Coast Guard is planning to further modernize its marine aids to navigation service. Changes will include adjusting all service levels to national standards between 1997 and the year 2000 and reducing some conventional aids services based on the availability of the Global Positioning System, Differential Global Positioning System (DGPS) and the Electronic Chart Display Information System (ECDIS). The new electronic systems will supplement the remaining conventional aids system, permitting continued maintenance of a safe service at lower cost

IMPLEMENTATION OF THE FOLLOWING CHANGES WILL BEGIN WITHIN COAST GUARD MARITIMES REGION ON APRIL 1, 1997.

MEASURES
1) Privatization of aids systems in pleasure craft channels and/or conversion of some lighted buoys to unlighted buoys and removal of some aids in pleasure craft channels.
2) Privatization of aids systems in inadequately and uncharted waters and where there is a low volume of users.
3) Aids to navigation systems in Saint-John and Yarmouth Harbours will be restructured to meet national standards.
4) Decommissioning of some lightstations (major reference lights) and downsizing of others to minor lights.
5) Discontinuance of some fog horns.
6) Removal of some coastal fixed and floating aids.

Over the next year, more detailed information concerning each of these proposed changes will be provided in each region or geographic area by Notices to Shipping and Notices to Mariners, allowing users time to comment prior to finalizing planned changes. Further Notices to Shipping and Notices to Mariners will also be issued at the time of all changes.

Mariners and representatives of user groups wishing to provide comments or recommendations on this or any subsequent notice may write to:

Regional Superintendent  
Aids to Navigation  
P.O. Box 1000  
Dartmouth, N.S.  
B2Y 3Z8  
(902) 426-3151

## LAURENTIAN REGION

The Canadian Coast Guard is planning to further modernize its marine aids to navigation service. Changes will include adjusting all service levels to national standards between 1997 and the year 2000 and reducing some conventional aids services based on the availability of the Global Positioning System, Differential Global Positioning System (DGPS) and the Electronic Chart Display Information System (ECDIS). The new electronic systems will supplement the remaining conventional aids system, permitting continued maintenance of a safe service at lower cost

IMPLEMENTATION OF THE FOLLOWING CHANGES WILL BEGIN ON APRIL 1, 1997.

MEASURES
1) Introduction of DGPS
2) Service reduction on 25% (79 lighted buoys removed and 75 converted into unlighted spar buoys) of buoys in commercial channels.
3) Removal of 12 major reference lights from the existing 25.
4) Privatization of 200 aids to navigation due to low volume of users and/or inadequately charted waters.
5) Removal of 33% (50) of reference or wharf-lights.
6) Conversion of 20% (29) of lighted buoys to unlighted buoys in pleasure craft channels.
7) Removal of 20 fixed aids in pleasure craft channels.

Notices to shipping (L-3072/96, L-3117/96 and L-0107/97) and a detailed Notice to mariners (859P/96) have been published lately, allowing users time to comment prior to finalizing planned changes. Further Notices to shipping and Notices to mariners will also be issued at the time of all changes.

Mariners and representatives of user groups wishing to receive a copy of the detailed Notice to mariners (859P/96) or to provide comments/recommendations on this notice may write to:

AIDS TO NAVIGATION SUPERINTENDENT  
101 CHAMPLAIN BOULEVARD, QUÉBEC (QUÉ), G1K7Y7

---

## CENTRAL & ARCTIC REGION

The Canadian Coast Guard is planning to further modernize its marine aids to navigation service. Changes will include adjusting all service levels to national standards between 1997 and the year 2000 and reducing some conventional aids services based on the availability of the Global Positioning System, Differential Global Positioning System (DGPS) and the Electronic Chart Display Information System (ECDIS). The new electronic systems will supplement the remaining conventional aids system, permitting continued maintenance of a safe service at lower cost

**Implementation of the following changes will begin within Coast Guard Central and Arctic region on April 1, 1997.**

MEASURES
1) Upgrading DGPS sites at Cardinal and Wiarton to Initial Operating Service to provide, with the United States Coast Guard, to provide complete coverage of the Great Lakes/St. Lawrence Seaway by December 1997.
2) Removal or divestiture of 700 floating and fixed aids to navigation in the Athabasca River System.
3) Removal of approximately 20 floating aids in the Western Arctic in Simpson Strait, Cambridge Bay, Gjoa Haven and Spence Bay.
4) Privatization of 30 buoys in the Napanee River and approximately 120 fixed and floating aids to navigation in Northern Ontario due to uncharted or inadequately charted waters .
5) Removal or divestiture of approximately 30 reference or wharf-lights in conjunction with Small Craft Harbours, or Ports and Harbours Canada initiatives.
6) Conversion of approximately 20 lighted buoys to unlighted buoys in pleasure craft channels.
7) Removal of 50 floating aids to navigation in commercial channels.
8) Divestiture of 1 light house and associated property.
9) Removal or transfer of 14 fog horns on Lake Superior.
10) Removal or downsizing of 31 large lighted floating aids to navigation on the Great Lakes.

Over the next year, more detailed information concerning each of these proposed changes will be provided in each region or geographic area by Notices to Shipping and Notices to Mariners, allowing users time to comment prior to finalizing planned changes. Further Notices to Shipping and Notices to Mariners will also be issued at the time of all changes.

Mariners and representatives of user groups wishing to provide comments or recommendations on this or any subsequent notice may write to:

Superintendent Marine Aids Program  
Central and Arctic Region  
201 Front Street North, Suite 703  
Sarnia, Ontario, N7T 8B1  
Telephone (519)383-1816  
Facsimile (519)383-1995

## MONTHLY EDITION OF NOTICES TO MARINERS

### MAILING LIST CHANGES

Director General,  
Marine Navigation Services Directorate,  
Canadian Coast Guard,  
Department of Fisheries and Oceans,  
Ottawa, Ontario,  
K1A 0E6

Telephone - (613) 990-3037  
Facsimile - (613) 998-8428

Please indicate which edition you would like to receive.

**EASTERN EDITION** (will be comprised of Arctic, Newfoundland, Maritimes, Gulf & River St. Lawrence and Central areas) \_\_\_\_\_

**WESTERN EDITION** (will be comprised of Arctic and Pacific areas) \_\_\_\_\_

**ADD** \_\_\_\_\_ **AMEND** \_\_\_\_\_ **REMOVE** \_\_\_\_\_ **NO. OF COPIES** \_\_\_\_\_

#### OLD ADDRESS

**NAME** .....

**STREET** ..... **APT** .....

**CITY** ..... **POSTAL CODE** .....

**PROVINCE** ..... **COUNTRY** .....

#### NEW ADDRESS

**NAME** .....

**STREET** ..... **APT** .....

**CITY** ..... **POSTAL CODE** .....

**PROVINCE** ..... **COUNTRY** .....

*ID number above address on label* .....

*or*

*Attach complete address label to this sheet*

## NATIONAL

<b>CANADIAN HYDROGRAPHIC SERVICE</b> Charts.....	701	1
- Raster Electronic Navigation Charts.....	700	1,2

## ARCTIC

<b>HUDSON BAY- MELVILLE BAY AND PRAIRIE BAY</b> - Chart amendment.....	660	15,16
- RANKIN INLET - Towers.....	657	16

## NEWFOUNDLAND

<b>LABRADOR COAST-</b> Chart amendment.....	675	6
- ST. LEWIS INLET - Results of survey.....	688	4,5
<b>NEWFOUNDLAND-</b> NOTRE-DAME BAY - Chart permanently withdrawn.....	686	3
- Light.....	647	4
- ST. GEORGE'S BAY - OFF TURF POINT - Buoy.....	669	5
- TRINITY BAY - BULL ARM - RAM HEAD- Sector light.....	684	4
- SIBLEYS COVE AND OLD PERLICAN - Light and buoys.....	699	4

## MARITIMES

<b>CAPE BRETON ISLAND-</b> GREAT BRAS D'OR AND ST. PATRICKS CHANNEL - Buoys.....	648(P)	5,6
<b>NOVA SCOTIA-</b> ECUM SECUM - Results of survey.....	702	16,17
- HALIFAX HARBOUR - Buoys.....	698	7
<b>UNITED STATES, EAST COAST-</b> Buoy.....	685	9

## GULF &amp; RIVER ST. LAWRENCE

<b>GULF OF ST. LAWRENCE-</b> BASSIN DE GASPÉ - MARINA DE GASPÉ - Lights.....	655	7
- CHALEUR BAY - POINTE TRACADIGACHE - Light.....	674	8
- NORTHUMBERLAND STRAIT - GOULET DE TERRE-NOIRE - Buoys.....	649	8
- SHIPPEGAN HARBOUR - Buoy.....	668	7,8
<b>PRINCE EDWARD ISLAND-</b> BIG TIGNISH - Buoy.....	687	2,3
- TRYON SHOALS - Buoy.....	696	6,7
<b>QUÉBEC-</b> RIVIÈRE RICHELIEU - POINTE HILLMAN - Buoy.....	680	11,12
<b>ST. LAWRENCE RIVER-</b> BAIE-COMEAU - Light buoy.....	683	8
- CAP À L'AIGLE - Light.....	672	9
- ÎLE VERTE - Light.....	673	9
- MONTREAL HARBOUR - ÎLE DESLAURIERS - Range lights.....	689	12
- ÎLE SAINTE-HÉLÈNE - Buoys.....	682	12
- QUAI ALEXANDRA - Maintained area.....	650	12
- PORT DE TROIS-RIVIÈRES - POINTE DES CHENAUX - Buoys.....	666	11
- PORTNEUF - Shoal depths.....	679(P)	10,11
- QUÉBEC HARBOUR - ANSE AU FOULON - Lights.....	654	9,10
- Range lights.....	667	10
- RIVIÈRE NICOLET - Buoys.....	677	11
- Buoys.....	678	3
- RIVIÈRE PORTNEUF - Buoy.....	671	8
- SAGUENAY RIVER - ANSE-DE-ROCHE - Light.....	676	9

## CENTRAL

<b>GREAT LAKES</b> - ST. CLAIR RIVER - CHENAL ÉCARTÉ - Daymarks.....	661	3
<b>LAKE ERIE</b> - ASHTABULA - Light.....	659	15
<b>LAKE HURON</b> -GEORGIAN BAY - O'DONNELL POINT - Light.....	658	15
- WICKSTEED POINT - Depths.....	662	15
<b>QUÉBEC</b> - OTTAWA RIVER - CARILLON TO LAC SAINT-LOUIS - Channel buoyed and light..	653	13
- ÎLE DES ALLUMETTES - Cribbs.....	663	14,15
- LAC DES DEUX-MONTAGNES - ANSE DE VAUDREUIL - Depths.....	692	13
- MOUTH OF SOUTH NATION RIVER - Buoy.....	681	14
<b>ST. LAWRENCE SEAWAY</b> - LAC SAINT-LOUIS - Buoyed channel.....	670	13
- LAKE ST. FRANCIS, WESTERN PORTION - Shoals.....	656	13,14

**NOTICES 664 AND 690 ARE NOT PUBLISHED**

# NUMERICAL INDEX OF CANADIAN CHARTS AFFECTED

Chart No.	Notice #	Page	Chart No.	Notice #	Page	Chart No.	Notice #	Page
1203	676	9	2202	658	15	4701	688	4,5
1226	683	8	2259	662	15	LC 4731	688	4,5
LC 1234	672	9	2289	658	15	LC 4850	699	4
LC 1235	673	9	2299	662	15	LC 4851	684	4
LC 1236	671	8	LC 4003	685	9	4885	669	5
1310	650	12	LC 4011	701	1	LC 4906	649	8
	682	12	LC 4013	696	6,7	LC 4913	668	7,8
	689	12	LC 4023	649	8	5031	688	4,5
1312	677	11		696	6,7	5396	657	16
1313	666	11	4203	698	7		660	15,16
	677	11	(Int. 4632)			5427	657	16
	701	1	LC 4234	702	16,17		660	15,16
1314	679(P)	10,11	LC 4235	702	16,17	5628	657	16
1315	654	9,10	4276	701	1			
1316	654	9,10	4278	648(P)	5,6			
	667	10	LC 4405	696	6,7			
1339	689	12	LC 4406	696	6,7			
1351	680	11,12	4416	655	7			
1410	670	13	4425	701	1			
1412	656	13,14	LC 4485	701	1			
1413	656	13,14	LC 4486	668	7,8			
1510	653	13		674	8			
	692	13	4531	647	4			
1511	681	14	4562	701	1			
1553	663	14,15	4569	701	1			
LC 2100	659	15	LC 4700	675	6			
LC 2201	658	15						



**\*701 CANADIAN HYDROGRAPHIC SERVICE Charts.**

CHART	TITLE & CONTENTS	SCALE	DATED	CAT #	PRICE
-------	------------------	-------	-------	-------	-------

**1. New Editions.**St. Lawrence River/Fleuve Saint-Laurent

1313	Batiscan au/to Lac Saint-Pierre	1:40 000	June 27/97	1	\$20.00
------	---------------------------------	----------	------------	---	---------

NOTE: This chart incorporates and cancels Notice 575(P)/94. This chart is affected by Notice 65(T)/95.

Atlantic Coast/Côte de l'Atlantique

LC 4011	Approaches to/Approches à Bay of Fundy	1:300 000	Oct. 31/97	1	20.00
---------	--	-----------	------------	---	-------

Nova Scotia/Nouvelle-Écosse

4276	Little Bras D'Or	1:5 000	July 25/97	1	20.00
------	------------------	---------	------------	---	-------

NOTE: This chart incorporates and cancels Notice 150(P)/97.

Gulf of St. Lawrence/Golfe du Saint-Laurent

LC 4485	Cap des Rosiers à/to Chandler	1:40 000	Sept. 26/97	2	20.00
---------	-------------------------------	----------	-------------	---	-------

NOTE: This chart is affected by Notices 603(T)/95 and 690(T)/96.

**2. Reprint.**Gulf of St. Lawrence/Golfe du Saint-Laurent

4425	Harbours on the North Shore/Havres sur la Côte Nord	-----	Oct. 17/97	1	20.00
------	---	-------	------------	---	-------

**3. Permanently withdrawn Charts.**

<u>Chart</u>	<u>Title</u>	<u>On Publication of Chart</u>
4562	Bonavista Bay and Outer Portion	4854
4569	Cape Bonavista	4854, 4855

(AMA8035-10-35)

(DFO-H97-081)

**\*700 CANADIAN HYDROGRAPHIC SERVICE Raster Electronic Navigation Charts.**

**Notes: (1) The following ENC products are only available from:**

**Nautical Data International Inc.**

**P.O. Box 127, Station C**

**St. John's, Newfoundland**

**A1C 5H5**

**Telephone: 1-800-563-0634 or 1-709-576-0634**

**Facsimile: 709-576-0636**

**(2) For licencing information and rates please contact the distributor, Nautical Data International Inc. (NDI) at the above-mentioned address.**

CHART	TITLE & CONTENTS	SCALE	DATED	CAT #	PRICE
<u>1. New Charts.</u>					
	<u>Prince Edward Island/Île-du-Prince-Édouard</u>				
4455R/M	Baie Washtawouka à/to Baie Piashti	-----	Oct. 20/89		See Note (2)
4456R/M	Baie Piashti à/to Petite Île au Marteau	-----	June 17/94		See Note (2)
	<u>Gulf of St. Lawrence/Golfe du Saint-Laurent</u>				
4469R/M	Île Plate à/to Île du Petit Mecatina	-----	Nov. 8/85		See Note (2)
4472R/M	Baie des Homards à/to Île de la Grande Passe	-----	Aug. 14/81		See Note (2)
	<u>Newfoundland/Terre-Neuve</u>				
4642R/M	St. Lawrence and Lamaline Harbours	-----	March 31/78		See Note (2)
4643R/M	Île Saint-Pierre (France)	-----	May 15/92		See Note (2)
4654R/M	Lark and York Harbours (Bay of Islands)	-----	Sept. 22/78		See Note (2)
4679R/M	Hawkes Bay, Port Saunders, Back Arm	-----	June 4/82		See Note (2)
4682R/M	Larkin Point to Cape Anguille	-----	May 1/87		See Note (2)
4817R/M	Bay Bulls to/à St. Mary's Bay	-----	April 11/86		See Note (2)
4830R/M	Great Bay de l'Eau and Approaches/et les Approches	-----	Feb. 14/86		See Note (2)
4831R/M	Fortune Bay - Northern Portion/Partie Nord	-----	Dec. 26/86		See Note (2)
4841R/M	Cape St. Mary's to/à Argentia	-----	May 19/89		See Note (2)
4842R/M	Cape Pine to/à Cape St. Mary's	-----	March 3/89		See Note (2)
4843R/M	Head of/Fond de St. Mary's Bay	-----	Jan. 28/83		See Note (2)
4849R/M	Plans in Conception Bay, Trinity Bay and Bonavista Harbour	-----	Dec. 30/88		See Note (2)
4851R/M	Trinity Bay - Southern Portion/Partie Sud	-----	Feb. 8/91		See Note (2)
4854R/M	Catalina Harbour to Cape Bonavista and Inner Gooseberry Island	-----	April 25/97		See Note (2)

(AMA8035-10-35)

(DFO-H97-082)

**\*687 PRINCE EDWARD ISLAND - BIG TIGNISH - Buoy.**

Green spar buoy JX3 (46°56'28".2 N 63°58'15".6 W) has been discontinued.

Digital data product 76286(4023) may also be affected. Contact Nautical Data International Inc. (NDI) or your local Value Added Remarketers (VAR) for updates.

(AMA8035-10-5-6)

(CCG-G97-019)

**\*661 GREAT LAKES - ST. CLAIR RIVER - CHENAL ÉCARTÉ - Daymarks.**

Reference: Notice 318(P)/95 cancelled.

This information is applicable to U.S. charts 14850 and 14852.

Chenal Écarté navigation daymarks numbered XE46 to XE68 have been permanently discontinued.

(AMA8035-10-28)

(CCG-B97-040)

**\*678 ST. LAWRENCE RIVER - RIVIÈRE NICOLET - Buoys.**

The following spar buoys are privately maintained by Club nautique de la Batture:

SE-3 (46°15'29".9 N 72°39'07".2 W)

SE-4 (46°15'30".5 N 72°39'10" W)

SE-5 (46°15'23".5 N 72°39'08".2 W)

SE-6 (46°15'23".2 N 72°39'10".1 W)

Green light buoy SE-7 has been replaced with a green spar buoy, marked "SE-7" "Priv"

Red light buoy SE-8 has been replaced with a red spar buoy, marked "SE-8" "Priv"

(AMA8035-10-5-9)

(CCG-L97-122B)

**\*686 NEWFOUNDLAND, SOUTHEAST COAST - NOTRE-DAME BAY - Chart permanently withdrawn.**

Chart 280 "Notre-Dame Bay", published by the British Admiralty has been permanently withdrawn.

NOTE: There is no new chart published for this area.

(AMA8035-10-1)

(BA-97-038)

**\*699 NEWFOUNDLAND, SOUTHEAST COAST - TRINITY BAY - SIBL EYS COVE AND OLD PERLICAN - Light and buoys.**

Chart (Last correction) - LC 4850(Inset, Old Perlican)(NAD 83)(3-6)(84/96) - LC 4850(NAD 83) (1,2)(84/96)

- |        |                              |         |                           |
|--------|------------------------------|---------|---------------------------|
| 1. Add | breakwater                   | joining | 48°02'37" N 53°06'18" W   |
|        |                              |         | 48 02 38.3 N 53 06 17 W   |
|        |                              | and     | 48 02 38.6 N 53 06 13.8 W |
| 2. Add | light "FI R"                 |         | 48 02 38.6 N 53 06 13.8 W |
| 3. Add | green spar buoy marked "TP1" |         | 48 05 30 N 53 01 00 W     |
| 4. Add | red spar buoy marked "TP2"   |         | 48 05 33 N 53 01 12 W     |
| 5. Add | red spar buoy marked "TP4"   |         | 48 05 22 N 53 00 55.8 W   |
| 6. Add | green spar buoy marked "TP3" |         | 48 05 18 N 53 00 45 W     |

NOTE: Digital data products 76146(4850) and 76147(4850) may also be affected. Contact Nautical Data International Inc. (NDI) or your local Value Added Remarketers (VAR) for updates.

(AMA8035-10-5-2)

(CCG-N97-046, N96-095, DFO-A97-061)

**\*684 NEWFOUNDLAND, SOUTHEAST COAST - TRINITY BAY - BULL ARM - RAM HEAD - Sector light.**

Chart (Last correction) - LC 4851(NAD 83)(1)(301/97)

- |        |                                |                                     |
|--------|--------------------------------|-------------------------------------|
| 1. Add | sector light "FRWG 15m (Priv)" | 47°44'47" N 53°50'30" W             |
|        | "Sector/Secteur", "PA"         | The light is visible over an arc of |
|        |                                | 005° red from 267°30' to 269°;      |
|        |                                | AIRW from 269° to 269°40'; white    |
|        |                                | from 269°40' to 270°20'; AIGW from  |
|        |                                | 270°20' to 271°; green from 271° to |
|        |                                | 272°30'.                            |

NOTE: Digital data product 76153(4851) may also be affected. Contact Nautical Data International Inc. (NDI) or your local Value Added Remarketers (VAR) for updates.

(AMA8035-10-7-2)

(CCG-N95-023, 048, 049, DFO-A97-056)

**\*647 NEWFOUNDLAND, NORTHEAST COAST - NOTRE DAME BAY - Light.**

Chart (Last correction) - 4531(NAD 27)(1)(114/97)

- |          |                                   |                                    |
|----------|-----------------------------------|------------------------------------|
| 1. Amend | FI 6s 38ft to read "FI G 6s 38ft" | 49°31'01" N 54°27'38".5 W (approx) |
|----------|-----------------------------------|------------------------------------|

NOTE: Digital data products 4531R/M and 76174(4531) may also be affected. Contact Nautical Data International Inc. (NDI) or your local Value Added Remarketers (VAR) for updates.

(AMA8035-10-7-2)

(CCG-N97-002, DFO-A97-028)

**\*688 LABRADOR COAST - ST. LEWIS INLET - Results of survey.**

Charts (Last correction) - 5031(NAD 83)(1,2)(512/97) - 4701(NAD 27)(2,3)(512/97) - LC 4731(4,5) (517/97)

- |           |                  |                                |
|-----------|------------------|--------------------------------|
| 1. Add    | rock awash       | 52°24'04".4 N 56°03'46".2 W    |
| 2. Delete | anchorage symbol | 52 24 00 N 56 03 29 W (approx) |

3. Add	rock awash	52 24 01.5 N 56 03 47 W
4. Add	rock awash	52 24 08 N 56 03 50 W
5. Delete	depth 10	52 24 05 N 56 04 15 W

(AMA8035-10-35)

(DFO-A97-054)

**\*669 NEWFOUNDLAND, WEST COAST - ST. GEORGE'S BAY - OFF TURF POINT - Buoy.**

Chart (Last correction) - 4885(NAD 27)(1)(331/94) - 4885(Inset, Flintkote Wharf/Quai)(NAD 27)(2) (331/94)

1. Add	red can mooring buoy "Priv"	48°26'39".2 N 58°28'34".7 W
2. Add	red can mooring buoy "Priv"	008°30' 105m from Flintkote Wharf light.

NOTE: (1) This buoy is moored to the bottom with 3 anchors, which are marked with red conical buoys. **Mariners are advised that the mooring and conical buoys are not to be used for navigational purposes.**

(2) Digital data products 76085(4885) and 76087(4885) may also be affected. Contact Nautical Data International Inc. (NDI) or your local Value Added Remarketers (VAR) for updates.

(AMA8035-10-5-2)

(CCG-N97-048, DFO-A97-058)

**\*648(P) CAPE BRETON ISLAND, ATLANTIC COAST - GREAT BRAS D'OR AND ST. PATRICKS CHANNEL - Buoys.**

Chart (Which will be affected) - 4278(NAD 27)(1-6) - 4278(Inset, Baddeck Harbour)(NAD 27)(5) - 4278(Inset, MacIvers Point to a Little Narrows)(NAD 27)(7-22)

1. Reposition	green spar buoy AA1	from 46°04'49" N 60°44'51" W to 46 04 54 N 60 44 48 W
2. Amend	Q21 to read "Q19" against green spar buoy	46 06 22 N 60 39 16 W
3. Reposition	bifurcation light buoy QA	from 46 05 56.5 N 60 40 28 W to 46 06 01.7 N 60 40 33.8 W
4. Add	red light buoy, "QR" marked "A2"	46 05 19.2 N 60 44 30.2 W
5. Reposition	green light buoy A3	from 46 05 04.5 N 60 44 50 W to 46 05 03.3 N 60 44 55.3 W
6. Reposition	red light buoy A4	from 46 04 57 N 60 46 21 W to 46 04 54.3 N 60 46 21.1 W
7. Reposition	red spar buoy A12	from 46 02 15.6 N 60 55 44.8 W to 46 02 18 N 60 55 44.9 W
8. Reposition	green light buoy A13	from 46°02'12" N 60°55'42".5 W to 46 02 12 N 60 55 42.7 W
9. Reposition	red light buoy A14	from 46 02 05 N 60 55 51 W to 46 02 05.1 N 60 55 50.4 W
10. Amend	Fl R to read "Q R" against red light buoy A14	46 02 05.1 N 60 55 50.4 W

11. Reposition	red light buoy A22	from 46 00 38 N 60 57 38 W to 46 00 38.9 N 60 57 36.8 W
12. Reposition	green spar buoy A23	from 46 00 28.7 N 60 57 36.8 W to 46 00 29.9 N 60 57 39 W
13. Reposition	red spar buoy A24	from 46 00 29.7 N 60 57 46.6 W to 46 00 30 N 60 57 46.2 W
14. Delete	west cardinal light buoy AH	46 00 20.5 N 60 57 44 W
15. Add	green light buoy "FI G", marked "A25"	46 00 20.1 N 60 57 45.7 W
16. Replace	green light buoy A17 with a green spar buoy, marked "A17"	46 01 48.5 N 60 56 21 W
17. Replace	green light buoy A19 with a green spar buoy, marked "A19"	46 01 35 N 60 56 57 W
18. Replace	red light buoy A16 with a red spar buoy, marked "A16"	46 01 58.5 N 60 56 01 W
19. Delete	green spar buoy AE3	46 00 22.1 N 60 57 15 W
20. Delete	red light buoy AE2	46 00 33 N 60 57 04 W
21. Delete	green spar buoy AE1	46 00 34 N 60 56 49.2 W
22. Delete	bifurcation light buoy AE	46 00 43 N 60 56 50 W

NOTE: (1) Digital data products 4278R/M and 76141(4278) may also be affected. Contact Nautical Data International Inc. (NDI) or your local Value Added Remarketers (VAR) for updates.  
(2) A new edition incorporating this information will be available at a later date.

(AMA8035-10-5-6)

(CCG-G97-033, 034, 038-058, DFO-A97-049)

**\*675 LABRADOR COAST - Chart amendment.**

Chart (Last correction) - LC 4700(1)(269/95)

1. Amend	scaling latitude from 54 degrees to "57 degrees".	54°17'00" N 63°30'00" W (approx.)
----------	---	-----------------------------------

(AMA8035-10-35)

(DFO-A97-067)

**\*696 PRINCE EDWARD ISLAND, SOUTH SHORE - TRYON SHOALS - Buoy.**

Charts (Last correction) - LC 4405(NAD 27)(1,2)(351/96) - LC 4406(NAD 27)(1,2)(377/97) - LC 4023 (NAD 27)(1,2)(410/97) - LC 4013(NAD 27)(1,2)(741/96)

Reference Notice: 131(P)/97.

1. Delete	BELL against red light buoy N14	46°08'45" N 63°32'00" W
2. Reposition	red light buoy N14	from 46 08 45 N 63 32 00 W to 46 09 39 N 63 31 45 W

NOTE: Digital data products 4013R/M, 4023R/M, 4405R/M, 4406R/M, 76161(4405), 76178(4406), 76204(4013) and 76286(4023) may also be affected. Contact Nautical Data International Inc. (NDI) or your local Value Added Remarketers (VAR) for updates.

(AMA8035-10-5-6)

(CCG-G97-037, DFO-A97-052)

**\*698 NOVA SCOTIA, SOUTHEAST COAST - HALIFAX HARBOUR - Buoys.**

Chart (Last correction) - 4203(Int. 4632)(NAD 83)(1,2)(615/97)

- |           |             |                           |
|-----------|-------------|---------------------------|
| 1. Delete | buoy NAVY A | 44°36'26" N 63°32'02".5 W |
| 2. Delete | buoy NAVY B | 44 36 34.5 N 63 32 08.5 W |

NOTE: Digital data products 4203R/M and 76002(4203) may also be affected. Contact Nautical Data International Inc. (NDI) or your local Value Added Remarketers (VAR) for updates.

(AMA8035-10-35)

(DFO-A97-057)

**\*655 GULF OF ST. LAWRENCE - BASSIN DE GASPÉ - MARINA DE GASPÉ - Lights.**

Chart (Last correction) - 4416(Inset, Marina de Gaspé)(3,4)(589/97) - 4416(1,2)(589/97)

- |        |                             |  |
|--------|-----------------------------|--|
| 1. Add | legend "Priv" against light | 48°49'40".3 N 64°28'29" W                                  |
| 2.     | legend "Priv" against light | 48 49 39.1 N 64 28 31.2 W                                  |
| 3.     | legend "Priv" against light | 310°30' 293m (961ft) from lower right corner of the inset  |
| 4.     | legend "Priv" against light | 299°30' 308m (1010ft) from lower right corner of the inset |

NOTE: Digital data products 4416R/M, 79089(4416) and 79090(4416) may also be affected. Contact Nautical Data International Inc. (NDI) or your local Value Added Remarketers (VAR) for updates.

(AMA8035-10-7-9)

(CCG-L97-111, 112, DFO-Q97-134)

**\*668 GULF OF ST. LAWRENCE - SHIPPEGAN HARBOUR - Buoy.**

Charts (Last correction) - LC 4913(NAD 83)(1)(412/97) - LC 4486(NAD 27)(2)(156/97)

- |               |                    |                                  |
|---------------|--------------------|----------------------------------|
| 1. Reposition | red light buoy TJ2 | from 47°42'12".2 N 64°39'01".6 W |
|               |                    | to 47 42 04 N 64 39 05 W         |
| 2. Reposition | red light buoy TJ2 | from 47 42 11 N 64 39 02 W       |
|               |                    | to 47 42 03.8 N 64 39 07.3 W     |

NOTE: Digital data products 4486R/M, 4913R/M and 76275(4913) may also be affected. Contact Nautical Data International Inc. (NDI) or your local Value Added Remarketers (VAR) for updates.

(AMA8035-10-5-6)

(CCG-G97-117, DFO-A97-059)

**\*649 GULF OF ST. LAWRENCE - NORTHUMBERLAND STRAIT - GOULET DE TERRE-NOIRE - Buoys.**

Charts (Last correction) - LC 4906(NAD 83)(1,2)(410/97) - LC 4023(NAD 27)(1,2)(410/97)

- |           |                                    |                                  |
|-----------|------------------------------------|----------------------------------|
| 1. Delete | green light buoy                   | 46°46'24" N 64°50'18" W (approx) |
| 2. Add    | red and white fairway lighted buoy | 46 46 24 N 64 50 18 W            |

"Mo(A)", "RW" marked "XX"

NOTE: Digital data products 4023R/M, 4906R/M, 76062(4906) and 76286(4023) may also be affected. Contact Nautical Data International Inc. (NDI) or your local Value Added Remarketers (VAR) for updates.

(AMA8035-10-5-6)

(CCG-G97-020, DFO-A97-055)

**\*674 GULF OF ST. LAWRENCE - CHALEUR BAY - POINTE TRACADIGACHE - Light.**

Chart (Last correction) - LC 4486(NAD 27)(1)(668/97)

Reference: Notice 859(P)/96.

1. Add legend "Priv" against light 48°05'12".8 N 66°07'31".8 W

NOTE: Digital data product 4486R/M may also be affected. Contact Nautical Data International Inc. (NDI) or your local Value Added Remarketers (VAR) for updates.

(AMA8035-10-7-9)

(CCG-L97-115, DFO-Q97-143)

**\*683 ST. LAWRENCE RIVER - BAIE-COMEAU - Light buoy.**

Chart (Last correction) - 1226(Plan, Baie-Comeau)(NAD 27)(1)(422/97) - 1226(Plan, Quai Public Public Wharf)(NAD 27)(1)(422/97)

1. Delete light buoy Marina Baie-Comeau 49°13'41" N 68°07'48" W

NOTE: Digital data products 1226R/M, 79048(1226) and 79049(1226) may also be affected. Contact Nautical Data International Inc. (NDI) or your local Value Added Remarketers (VAR) for updates.

(AMA8035-10-5-9)

(CCG-L97-119, DFO-Q97-146)

**\*671 ST. LAWRENCE RIVER - RIVIÈRE PORTNEUF - Buoy.**

Chart (Last correction) - LC 1236(NAD 83)(1)(642/97)

1. Delete light and bell buoy Marina Portneuf 48°36'49".5 N 69°03'54".8 W

NOTE: Digital data products 1236R/M and 79037(1236) may also be affected. Contact Nautical Data International Inc. (NDI) or your local Value Added Remarketers (VAR) for updates.

(AMA8035-10-5-9)

(CCG-L97-120, DFO-Q97-140)

**\*673 ST. LAWRENCE RIVER - ÎLE VERTE - Light.**

Chart (Last correction) - LC 1235(NAD 83)(1)(642/97)

1. Add legend "Priv" against light 48°02'22".4 N 69°24'22".7 W (approx)

NOTE: Digital data products 1235R/M and 79035(1235) may also be affected. Contact Nautical Data International Inc. (NDI) or your local Value Added Remarketers (VAR) for updates.

(AMA8035-10-7-9)

(CCG-L97-117, DFO-Q97-142)

**\*676 ST. LAWRENCE RIVER - SAGUENAY RIVER - ANSE-DE-ROCHE - Light.**

Chart (Last correction) - 1203(NAD 27)(1)(486/97)

1. Add legend "Priv" against light 48°13'05".6 N 69°52'32".4 W



NOTE: Digital data products 1203R/M and 79053(1203) may also be affected. Contact Nautical Data International Inc. (NDI) or your local Value Added Remarketers (VAR) for updates.

(AMA8035-10-7-9)

(CCG-L97-116, DFO-Q97-145)

**685 UNITED STATES, EAST COAST - Buoy.**

Chart (Last correction) - LC 4003(NAD 27)(1,2)(577/97)

1. Delete yellow light buoy 42°08'18" N 69°54'00" W

2. Add yellow light buoy "FI Y", "WHIS" 42 08 15.4 N 69 53 35.1 W

NOTE: Digital data product 4003R/M may also be affected. Contact Nautical Data International Inc. (NDI) or your local Value Added Remarketers (VAR) for updates.

(AMA8035-10-2)

(US-W97-020)

**\*672 ST. LAWRENCE RIVER - CAP À L'AIGLE - Light.**

Chart (Last correction) - LC 1234(Inset, Cap-à-l'Aigle)(NAD 27)(1)(486/97) - LC 1234(NAD 27) (1)(486/97)

1. Add legend "Priv" against light 47°39'45".8 N 70°05'47".8 W

NOTE: Digital data products 1234R/M, 79029(1234) and 79034(1234) may also be affected. Contact Nautical Data International Inc. (NDI) or your local Value Added Remarketers (VAR) for updates.

(AMA8035-10-7-9)

(CCG-L97-118, DFO-Q97-141)

**\*654 ST. LAWRENCE RIVER - QUÉBEC HARBOUR - ANSE AU FOULON - Lights.**

Charts (Last correction) - 1315(NAD 83)(1,2)(486/97) - 1316(NAD 83)(1,2)(486/97)

1. Add legend "Priv" against light 46°46'58".5 N 71°14'01".8 W

2. Add legend "Priv" against light 46 46 57.1 N 71 14 04 W

NOTE: Digital data products 1315R/M, 1316R/M, 79003(1316) and 79020(1315) may also be affected. Contact Nautical Data International Inc. (NDI) or your local Value Added Remarketers (VAR) for updates.

(AMA8035-10-7-9)

(DFO-Q97-132, CCG-L97-113, 114)

**\*667 ST. LAWRENCE RIVER - QUÉBEC HARBOUR - ANSE AU FOULON - Range lights.**

Chart (Last correction) - 1316(NAD 83)(1)(654/97)

1. Add legend "Priv" against front range light 46°47'02".4 N 71°14'14".8 W (approx.)

2. legend "Priv" against rear range light 46 47 02.1 N 71 14 14 W (approx.)

NOTE: Digital data products 1316R/M and 79003(1316) may also be affected. Contact Nautical Data International Inc. (NDI) or your local Value Added Remarketers (VAR) for updates.

(AMA8035-10-7-9)

(CCG-L97-133, DFO-Q97-138)

**\*679(P) ST. LAWRENCE RIVER - PORTNEUF - Shoal depths.**

Chart (Which will be affected) - 1314(Inset, Portneuf)(NAD 27)(1-11)

1. Delete	drying height 0 metre 7 decimetres	043°30' 518 m (1700 ft) from lower left corner of inset
2. Add	drying height 2 metres 7 decimetres	044°30' 517 m (1696 ft) from lower left corner of inset
3. Replace	1 metre 6 decimetres with 1 metre 2 decimetres	043° 369 m (1211 ft) from lower left corner of inset
4. Add	drying height 0 metre 8 decimetres	055° 492 m (1614 ft) from lower left corner of inset
5. Add	1 metre 3 decimetres	051°30' 418 m (1371 ft) from lower left corner of inset
6. Replace	3 metres 6 decimetres with 2 metres 5 decimetres	053°30' 416 m (1365 ft) from lower left corner of inset
7. Add	4 metres 4 decimetres	055° 369 m (1211 ft) from lower left corner of inset
8. Replace	6 metres 3 decimetres with 5 metres 7 decimetres	057°30' 407 m (1335 ft) from lower left corner of inset
9. Add	9 metres 4 decimetres	067° 339 m (1112 ft) from lower left corner of inset
10. Add	9 metres 6 decimetres	064°30' 404 m (1326 ft) from lower left corner of inset
11. Add	4 metres 6 decimetres	058° 577 m (1893 ft) from lower left corner of inset

NOTE: Digital data products 1314R/M and 79019(1314) may also be affected. Contact Nautical Data International Inc. (NDI) or your local Value Added Remarketers (VAR) for updates. A new edition of chart 1314 incorporating the above changes will be available at a later date.

(AMA8035-10-35)

(DFO-Q97-130)

**\*666 ST. LAWRENCE RIVER - PORT DE TROIS-RIVIÈRES - POINTE DES CHENAUx - Buoys.**

Chart (Last correction) - 1313(Inset, Port de Trois-Rivières)(NAD 83)(1-3)(362/97)

1. Delete	green lighted spar buoy CC1	46°21'19" N 72°30'33".3 W
2. Delete	red lighted spar buoy CC2	46 21 20.2 N 72 30 36.4 W
3. Delete	legend Chenal balisé/Channel Buoyed	46 21 26 N 72 30 24 W (approx)

NOTE: Digital data products 1313R/M and 79015(133) may also be affected. Contact Nautical Data International Inc. (NDI) or your local Value Added Remarketers (VAR) for updates.

(AMA8035-10-5-9)

(CCG-L97-129, 130, 131, DFO-Q97-136)

**\*677 ST. LAWRENCE RIVER - RIVIÈRE NICOLET - Buoys.**

Charts (Last correction) - 1313(NAD 83)(3-7) - 1312(NAD 83)(1,2,7)

Reference: Notice 800/91.

1. Replace	green light buoy SE1 with a green barrel buoy, marked "SE1" "Priv"	46°15'33".1 N 72°39'05".6 W
2. Replace	red light buoy SE2 with a red barrel buoy, marked "SE2" "Priv"	46 15 33.2 N 72 39 07.8 W
3. Delete	green light buoy SE1	46 15 33 N 72 39 07.1 W
4. Add	green barrel buoy marked "SE1" "Priv"	46 15 33.1 N 72 39 05.6 W
5. Delete	red light buoy SE2	46 15 33 N 72 39 09.4 W
6. Add	red barrel buoy marked "SE2" "Priv"	46 15 33.2 N 72 39 07.8 W
7. Amend	legend Chenal balisé/Channel Buoyed to read "Balisé privé/ Privately Buoyed"	46 15 20.5 N 72 39 28 W (approx.)

NOTE: Digital data products 1312R/M, 1313R/M, 79014(1313) and 79129(1312) may also be affected. Contact Nautical Data International Inc. (NDI) or your local Value Added Remarketers (VAR) for updates.

(AMA8035-10-5-9)

(CCG-L97-122, DFO-Q97-139)

**\*680 QUÉBEC - RIVIÈRE RICHELIEU - POINTE HILLMAN - Buoy.**

Chart - 1351(Sheet 3)(Pointe à la Meule à/to Pointe Naylor)(NAD 27)(1)

Reference: Notice 559/96.

1. Add	red lighted spar buoy "FI R" marked "E514" "Priv"	45°06'15".1 N 73°17'21".3 W
--------	---	-----------------------------

(AMA8035-10-5-9)

(CCG-L97-126, DFO-Q97-149)

**\*689 ST. LAWRENCE RIVER - MONTREAL HARBOUR - ÎLE DESLAURIERS - Range lights.**

Charts (Last correction) - 1339(NAD 27)(1,4,5)(646/97) - 1310(Compartment A-B)(NAD 83)(1-3) (650/97)

1. Delete	range lights	45°42'47".4 N 73°26'20" W (approx.)
2. Add	front range light "F G 11m"	45 42 44.8 N 73 26 22.8 W
3. Add	rear range light "F G & Iso G 2s 31m"	217°31' 2653.3m from front
4. Add	front range light "F G 36ft"	45 42 44.7 N 73 26 24.4 W
5. Add	rear range light "F G & Iso G 2s 102ft"	217°31' 2653.3m from front

NOTE: Digital data products 1310R/M, 1339R/M, 79001(1310) and 79013(1339) may also be affected. Contact Nautical Data International Inc. (NDI) or your local Value Added Remarketers (VAR) for updates.

(AMA8035-10-7-9)

(CCG-L97-105A, 106, DFO-Q97-132)

**\*682 ST. LAWRENCE RIVER - MONTREAL HARBOUR - ÎLE SAINTE-HÉLÈNE - Buoys.**

Chart (Last correction) - 1310(Compartment B-C)(NAD 83)(1,2)(650/97)

- |            |   |                             |
|------------|---|-----------------------------|
| 1. Delete  | green light buoy MT93   | 45°31'51".6 N 73°31'49".5 W |
| 2. Replace | red light buoy MT94 with a red spar<br>buoy marked, "MT94" "Priv" | 45 31 48.1 N 73 31 53 W     |

NOTE: Digital data products 1310R/M and 79080(1310) may also be affected. Contact Nautical Data International Inc. (NDI) or your local Value Added Remarketers (VAR) for updates.

(AMA8035-10-5-9)

(CCG-L97-123, 124, DFO-Q97-144)

**\*650 ST. LAWRENCE RIVER - MONTREAL HARBOUR - QUAI ALEXANDRA - Maintained area.**

Chart (Last correction) - 1310(Inset, Quai Alexandra)(NAD 83)(1,2)(486/97) - 1310(Compartment B-C) (NAD 83)(2)(486/97)

- |           |             |  |
|-----------|-------------|--|
| 1. Delete | 9,1m        | 45°29'51".8 N 73°32'57" W  |
| 2. Delete | pecked line | joining 45 29 30 N 73 32 58.2 W<br>and 45 30 00.4 N 73 32 54.9 W |

NOTE: Digital data products 1310R/M, 79002(1310) and 79080(1310) may also be affected. Contact Nautical Data International Inc. (NDI) or your local Value Added Remarketers (VAR) for updates.

(AMA8035-10-35)

(DFO-Q97-127)

**\*670 ST. LAWRENCE SEAWAY - LAC SAINT-LOUIS - Buoyed channel.**

Chart (Last correction) - 1410(NAD 83)(1,2)(376/97)

- |          |  |                                  |
|----------|--|----------------------------------|
| 1. Amend | legend Balisé/Buoyed to read<br>"Balisé/Buoyed (Priv)" | 45°24'07" N 73°45'06" W (approx) |
| 2. Add   | legend "Bouées (Priv) Buoys"                           | 45 25 53 N 73 41 32 W (approx)   |

NOTE: Digital data products 1410R/M and 79045(1410) may also be affected. Contact Nautical Data International Inc. (NDI) or your local Value Added Remarketers (VAR) for updates.

(AMA8035-10-5-9)

(CCG-L97-127, 132, DFO-Q97-137)

**\*692 QUÉBEC - OTTAWA RIVER - LAC DES DEUX-MONTAGNES - ANSE DE VAUDREUIL - Depths.**

Chart - 1510(Sheet 2)(Compartment B-C)(Baie de Vaudreuil à/to Laval)(NAD 27)(1,2)

Reference: Notice 436(T)/96 cancelled.

- |        |                        |                           |
|--------|------------------------|---------------------------|
| 1. Add | "4" feet               | 45°26'10".7 N 74°02'03" W |
| 2. Add | drying height "0" feet | 45 25 37.8 N 74 02 01.7 W |

NOTE: Digital data product 1510R/M may also be affected. Contact Nautical Data International Inc. (NDI) or your local Value Added Remarketers (VAR) for updates.

(AMA8035-10-35)

(DFO-Q97-150)

**\*653 QUÉBEC - OTTAWA RIVER - CARILLON TO LAC SAINT-LOUIS - Channel buoyed and light.**

Chart - 1510(Sheet 1)(Compartment A-B)(NAD 27)(1,2) - 1510(Sheet 1)(Inset, Oka)(NAD 27)(3)

- |           |  |   |
|-----------|--|---|
| 1. Amend  | legend Chenal balisé/Channel Buoyed to read "Chenal balisé (Priv)/Channel Buoyed (Priv)" | 45°31'40" N 74°20'05" W (approx)                        |
| 2. Delete | light  | 45 27 30.7 N 74 05 29.3 W                               |
| 3. Delete | light  | 312° 311m (1020ft) from lower right corner of the inset |

NOTE: Digital data product 1510R/M may also be affected. Contact Nautical Data International Inc. (NDI) or your local Value Added Remarketers (VAR) for updates.

(AMA8035-10-35)

(DFO-Q97-135, CCG-L97-107, 128)

**\*656 ST. LAWRENCE SEAWAY - LAKE ST. FRANCIS, WESTERN PORTIONS Shoals.**

Charts (Last correction) - 1413(NAD 27)(1-19)(488/95) - 1412(NAD 27)(15)(637/97)

- |            |                    |                             |
|------------|--------------------|-----------------------------|
| 1. Add     | depth of "12" feet | 44°59'57".3 N 74°41'41".9 W |
| 2. Add     | depth of "28" feet | 44 59 59.9 N 74 40 25.7 W   |
| 3. Add     | depth of "28" feet | 45 00 13.4 N 74 40 14 W     |
| 4. Add     | depth of "28" feet | 45°00'19".9 N 74°40'05".7 W |
| 5. Add     | depth of "27" feet | 45 00 24.1 N 74 40 02.2 W   |
| 6. Add     | depth of "25" feet | 45 01 13.6 N 74 39 13.7 W   |
| 7. Add     | depth of "20" feet | 45 01 26.6 N 74 38 20.2 W   |
| 8. Add     | depth of "28" feet | 45 02 42.6 N 74 34 14 W     |
| 9. Add     | depth of "22" feet | 45 03 58.7 N 74 31 32.3 W   |
| 10. Add    | depth of "28" feet | 45 04 00.9 N 74 31 32.7 W   |
| 11. Add    | depth of "28" feet | 45 05 14.7 N 74 29 50.9 W   |
| 12. Add    | depth of "25" feet | 45 05 34.1 N 74 29 37.1 W   |
| 13. Add    | depth of "23" feet | 45 05 18.3 N 74 29 39.8 W   |
| 14. Add    | depth of "28" feet | 45 06 00.3 N 74 29 11.3 W   |
| 15. Add    | depth of "23" feet | 45 07 33 N 74 25 55.7 W     |
| 16. Add    | depth of "16" feet | 45 05 11.1 N 74 29 47.9 W   |
| 17. Delete | depth of "28" feet | 45 01 13.5 N 74 39 12.2 W   |
| 18. Delete | depth of "29" feet | 45 00 23.2 N 74 40 02 W     |
| 19. Delete | depth of "30" feet | 45 00 13.5 N 74 40 13 W     |

NOTE: Digital data products 1412R/M, 1413R/M, 73028(1412), 73029(1413) and 73030(1413) may also be affected. Contact Nautical Data International Inc. (NDI) or your local Value Added Remarketers (VAR) for updates.

(AMA8035-10-35)

(DFO-C97-083)

**\*681 QUÉBEC - OTTAWA RIVER - MOUTH OF SOUTH NATION RIVER - Buoy.**

Chart - 1511(Sheet 2)(Becketts Creek à/to Pajaneauville)(NAD 27)(1)

- |            |   |                         |
|------------|---|-------------------------|
| 1. Replace | bifurcation light buoy MAD with a<br>portland bifurcation buoy "GRG"<br>marked "MAD" "Priv" | 45°34'42" N 75°06'09" W |
|------------|---|-------------------------|

NOTE: Digital data product 1511R/M may also be affected. Contact Nautical Data International Inc. (NDI) or your local Value Added Remarketers (VAR) for updates.

(AMA8035-10-5-9)

(CCG-L97-125, DFO-Q97-148)

**\*663 QUÉBEC - OTTAWA RIVER - ÎLE DES ALLUMETTES - Crib.**

Chart - 1553(Sheet 2)(Île d'Arcy to/à Balmer Bay)(NAD 27)(1-3)

- |           |                             |                         |
|-----------|-----------------------------|-------------------------|
| 1. Delete | crib and legend "Repd 1987" | 45°55'10" N 77°12'53" W |
| 2. Delete | crib and legend "Repd 1987" | 45 55 09 N 77 12 46 W   |
| 3. Delete | crib and legend "Repd 1987" | 45°55'14" N 77°12'37" W |

NOTE: Digital data product 1553R/M may also be affected. Contact Nautical Data International Inc. (NDI) or your local Value Added Remarketers (VAR) for updates.

(AMA8035-10-35)

(DFO-C97-134)

**\*658 LAKE HURON - GEORGIAN BAY - O'DONNELL POINT - Light.**

Charts (Last correction) - 2202(Sheet 2)(Compartment B-C)(Tomahawk Island to/à Twelve Mile Bay)(NAD 27)(1) - 2289(3)(435/97) - LC 2201(NAD 27)(2)(629/97)

- |        |            |                         |
|--------|------------|-------------------------|
| 1. Add | light "FI" | 45°05'02" N 80°05'54" W |
| 2. Add | light "FI" | 45 05 01 N 80 05 50 W   |
| 3. Add | light "FI" | 45 05 00 N 80 06 00 W   |

NOTE: Digital data products 2201R/M, 2202R/M, 73047(2289) and 73097(2201) may also be affected. Contact Nautical Data International Inc. (NDI) or your local Value Added Remarketers (VAR) for updates.

(AMA8035-10-7-13)

(CCG-D97-020, DFO-C97-107)

**\*659 LAKE ERIE - ASHTABULA - Light.**

Chart (Last correction) - LC 2100(NAD 27)(1)(592/97)

- |          |   |                             |
|----------|---|-----------------------------|
| 1. Amend | FI 5s 16m 17M to read "FI Y 6s 16m<br>8M" | 41°55'06".8 N 80°47'45".3 W |
|----------|---|-----------------------------|

NOTE: Digital data products LC 2100R/M and 73094(2100) may also be affected. Contact Nautical Data International Inc. (NDI) or your local Value Added Remarketers (VAR) for updates.

(AMA8035-10-35)

(DFO-C97-128)

**\*662 LAKE HURON - GEORGIAN BAY - WICKSTEED POINT - Depths.**

Charts (Last correction) - 2259(NAD 27)(1,3)(590/97) - 2299(NAD 27)(2)(590/97)

- |           |                    |                             |
|-----------|--------------------|-----------------------------|
| 1. Delete | depth of "10" feet | 46°09'33".5 N 82°38'05".5 W |
| 2. Delete | depth of "10" feet | 46 09 34 N 82 38 08 W       |
| 3. Add    | depth of "5" feet  | 46 09 34.3 N 82 38 04.8 W   |

NOTE: Digital data products 2259R/M, 2299R/M, 73045(2259) and 73059(2299) may also be affected. Contact Nautical Data International Inc. (NDI) or your local Value Added Remarketers (VAR) for updates.

(AMA8035-10-35)

(DFO-C97-133)

**\*660 HUDSON BAY - MELVILLE BAY AND PRAIRIE BAY - Chart amendment.**

Charts (Last correction) - 5396(1)(657/97) - 5427(2,3)(657/97)

- |           |   |                                  |
|-----------|---|----------------------------------|
| 1. Amend  | legend (See Chart 5445) to read<br>"(See Chart 5628)" | 62°46'16" N 91°50'42" W (approx) |
| 2. Delete | legend Chart 5445                                     | 62 44 15 N 91 52 09 W            |
| 3. Add    | legend "Chart 5628"                                   | 62 46 57 N 91 55 04 W            |

(AMA8035-10-35)

(DFO-C97-129)

**\*657 HUDSON BAY - RANKIN INLET - Towers.**

Charts (Last correction) - 5628(NAD 83)(1-4,7)(New Edition, August/97) - 5427(5,6,8)(639/97) - 5396(5,8)(639/97)

- |           |  |                             |
|-----------|--|-----------------------------|
| 1. Delete | radiobeacon  | 62°48'49".4 N 92°06'03".5 W |
| 2. Delete | aeronautical light                                       | 62 48 37.6 N 92 06 05.7 W   |
| 3. Add    | tower "Ro Tr R Lts (48)" metres                          | 62 48 36.8 N 92 06 10.4 W   |
| 4. Add    | tower "Ro Tr R Lts (46)" metres                          | 62 48 37.4 N 92 06 12 W     |
| 5. Delete | radiobeacon  | 62 48 48 N 92 06 04 W       |
| 6. Add    | tower "Ro Trs R Lts (157)" feet                          | 62 48 36 N 92 06 10 W       |
| 7. Add    | aeronautical radiobeacon "Aero RC,<br>W Lts (70)" metres | 62 49 30.4 N 92 06 34 W     |
| 8. Add    | aeronautical radiobeacon "Aero RC,<br>W Lts (230)" feet  | 62 49 29 N 92 06 34 W       |

(AMA8035-10-35)

(DFO-C97-103)

**\*702 NOVA SCOTIA, SOUTHEAST COAST - ECUM SECUM - Results of survey.**

Charts (Last correction) - LC 4234(NAD 83)(1-8)(456/97) - LC 4235(NAD 83)(1-8)(215/95) - LC 4235 (Inset, Ecum Secum)(NAD 83)(1)(215/95)

Reference: Notice 805(P)/92, paragraphs 38 to 45.

1. Add	"14 metres 9 decimetres"	44°52'41".9 N 62°06'18".1 W
2. Delete	21 metres 3 decimetres	close southward of (1)
3. Replace	2 metres 4 decimetres with "1 metre 9 decimetres"	44 57 13.5 N 62 05 39.6 W
4. Add	"7 metres 9 decimetres"	44 57 26.3 N 62 01 00.8 W
5. Replace	11 metres 6 decimetres with "8 metres 8 decimetres"	44 57 31 N 62 04 46.5 W
6. Replace	3 metres 9 decimetres with "2 metres 3 decimetres"	44 55 36.1 N 62 04 56.1 W
7. Replace	4 metres 6 decimetres with "1 metre 5 decimetres"	44 54 01.1 N 62 05 07.8 W
8. Replace	7 metres 6 decimetres with "4 metres 3 decimetres"	44°53'31" N 62°05'18".3 W

NOTE: Digital data products 4234R/M, 4235R/M, 76102(4235), 76104(4235) and 76109(4234) may also be affected. Contact Nautical Data International Inc. (NDI) or your local Value Added Remarketers (VAR) for updates.

(AMA8035-10-35)

(DFO-A97-077)



## IV

Monthly Edition No. 12/97

### SAILING DIRECTIONS AND SMALL CRAFT GUIDE CORRECTIONS

Labrador and Hudson Bay, Sixth Edition, 1988 —

Page 299 — Delete paragraph 181.

Page 336 — Delete paragraph 178.

Page 393 — Delete paragraph 30.

Page 396 — Paragraph 80, line 3

Cancel correction promulgated in Weekly Edition No. 31/93.

Delete: 3.3 and 4.6 m (1

Replace by: 3.2 and 4.6 m (10

Page 396 — Delete paragraph 83.

Page 397 — Paragraph 89, lines 4 and 5

Delete: 13.7 m (16 and 45

Replace by: 12.7 (16 and 42

Page 410 — Delete paragraph 15.

Page 415 — Delete paragraph 87.

Page 416 — Paragraph 96, line 6

Delete: 2.9 m (10 ft)

Replace by: 2.6 m (9 ft)

Page 416 — Paragraph 96, line 8

Delete: 3.4 m (11 ft)

Replace by: 3.1 m (10 ft)

Page 418 — Delete paragraph 118.

Gulf of St. Lawrence, First Edition, 1992 —

Page 42 — Paragraph 76, line 4

Delete: "The ... 61°33'W)"

Replace by: A private **light** (1485), situated on **Pointe Rockhill** (47°36'N,  
61°32'W), Grosse Île,

Page 136 — Paragraph 155, last line

Delete: 3.4

Replace by: 2.5

Page 163 — Paragraph 85, line 6

Delete: 1 mile

Replace by: about 1.2 miles



**SAILING DIRECTIONS AND SMALL CRAFT GUIDE CORRECTIONS**

Page 179 — Paragraph 208, line 4 – before “In”

Insert: A marina (Club Nautique New-Richmond Inc.) is situated on the east side of the wharf; facilities include water, power and a ramp.

Page 179 — Paragraph 211, line 4 – before “**light**”

Insert: private

Page 186 — Paragraph 260, last line – after “breakwater”

Insert: ; these lights are privately maintained.

ATL 101 — Newfoundland — Northeast and East Coasts, First Edition, 1997 —

Page 68 — Paragraph 48, lines 6 and 7

Delete: red and white bands

Replace by: a green and white daymark on three sides

ATL 110 — St. Lawrence River — Cap Whittle/Cap Gaspé to Les Escoumins, First Edition, 1992 —

Page 60 — Delete paragraph 101.

Page 61 — **RIVIÈRE PORTNEUF**Diagram

Replace red light buoy KRP2 with private spar buoy KRP2.

Replace green light buoy KRP3 with private spar buoy KRP3.

Replace red light buoy KRP4 with private spar buoy KRP4.

Replace red light buoy KRP6 with private spar buoy KRP6.

Replace red light buoy KRP8 with private spar buoy KRP8.

Replace green light buoy KRP9 with private spar buoy KRP9.

Page 70 — Paragraph 203, line 2

Delete: 1,302 ft (395 m)

Replace by: 1,350 ft (411 m)

Page 71 — Paragraph 214, lines 3 to 5

Delete: “and the ... Service”

ATL 111 — St. Lawrence River — Île Verte to Québec, First Edition, 1992 —

Page 3 — Delete paragraph 16

Replace by: 16 A buoyed channel leads to a public **wharf** situated at **Pointe à John**, the east entrance point of the bay. The wharf has a length of 110 m (361 ft) and its south face dries at low water. Silting was reported in the bend of the channel upstream of buoy KJ4 and lesser depths could be encountered. (See diagram **GRANDES-BERGERONNES** on page 63.)



## IV

Monthly Edition No. 12/97

### SAILING DIRECTIONS AND SMALL CRAFT GUIDE CORRECTIONS

Page 6 — Paragraph 52, lines 6 to 8

Delete: “A ... direction.”

Page 8 — Paragraph 73, line 2 – after “(1839)”

Insert: — private —

Page 12 — Paragraph 108, lines 3 to 5

Delete: “A ... structure.”

Page 33 — Paragraph 23, line 1 – after “seasonal” (Re: correction promulgated in Bi-weekly Edition No. 12/95)

Insert: and private

Page 48 — Paragraph 32, line 1 – after “(1789)”

Insert: — private —

Page 63 — Re: Diagram issued in Monthly Edition No. 7/96

Replace diagram **GRANDES-BERGERONNES** with diagram attached at the end of **Section IV** of this Monthly Edition.

ATL 112 — St. Lawrence River — Cap-Rouge to Montréal, First Edition, 1992 —

Page 15 — Paragraph 160, lines 4 to 6

Delete: “Approach ... wharf.”

Page 19 — Diagram **RIVIÈRE NICOLET**

Delete green light buoy SE1.

Add a private green barrel buoy marked SE1 @ 348° and 193 m from Nicolet sector light (2119.5).

Delete red light buoy SE2.

Add a private red barrel buoy marked SE2 @ 335<sup>1</sup>/<sub>2</sub>° and 210 m from Nicolet sector light (2119.5).

Add “Priv” @ 320<sup>1</sup>/<sub>2</sub>° and 116 m from Nicolet sector light (2119.5).

Add “Priv” @ 309<sup>1</sup>/<sub>2</sub>° and 172 m from Nicolet sector light (2119.5).

Add “Priv” @ 221<sup>1</sup>/<sub>2</sub>° and 144 m from Nicolet sector light (2119.5).

Add “Priv” @ 229<sup>1</sup>/<sub>2</sub>° and 180 m from Nicolet sector light (2119.5).

Replace green light buoy SE7 with a private barrel buoy marked SE7.

Replace red light buoy SE8 with a private barrel buoy marked SE8.

Page 38 — **Table 2.4 Port of Montréal Wharves**

Change the following information in the “**Depth**” column.

<b>Berth</b>	<b>Depth_</b>
	ft (m)

#### **Pointe du Moulin à Vent (Elevator no. 5)**

5W	29	(8.8)
6W	29	(8.8)
7W	29	(8.8)
9W	29	(8.8)
10W	29	(8.8)



## SAILING DIRECTIONS AND SMALL CRAFT GUIDE CORRECTIONS

Page 38 — **Table 2.4 Port of Montréal Wharves**

Delete the following information in the ‘**Remarks**’ column.

<b>Berth</b>	<b>Remarks</b>
5W	General cargo. Pipeline for vegetable oil.
9W	Grain unloading, 980 t/h.
10W	Grain unloading, 980 t/h.

CEN 301 — St. Lawrence River, Montréal to Kingston, First Edition, 1996 —

Page 6 — Paragraph 65, line 2 – before “buoyed”

Insert: privately

CEN 302 — Lake Ontario, First Edition, 1996 —

Page 36 — Paragraph 179, lines 3 and 4

Delete: and is marked by **buoys**

CEN 304 — Detroit River, Lake St Clair, St. Clair River, First Edition, 1996 —

Page 31 — Delete paragraph 55.

Great Lakes, Volume 2, Seventh Edition, 1993 —

Page 102 — Paragraph 57, last line

Add: A **light** is shown on an islet situated close SW of O’Donnell Point.

Small Craft Guide, Rideau Waterway and Ottawa River, Second Edition —

Chapter VII — Paragraph 93, line 3 (Re: correction promulgated in Monthly Edition No. 6/96)

Delete: bifurcation lighted buoy

Replace by: private bifurcation buoy

Small Craft Guide, Georgian Bay, Third Edition, 1988 —

Page 76 — Paragraph 322, last line

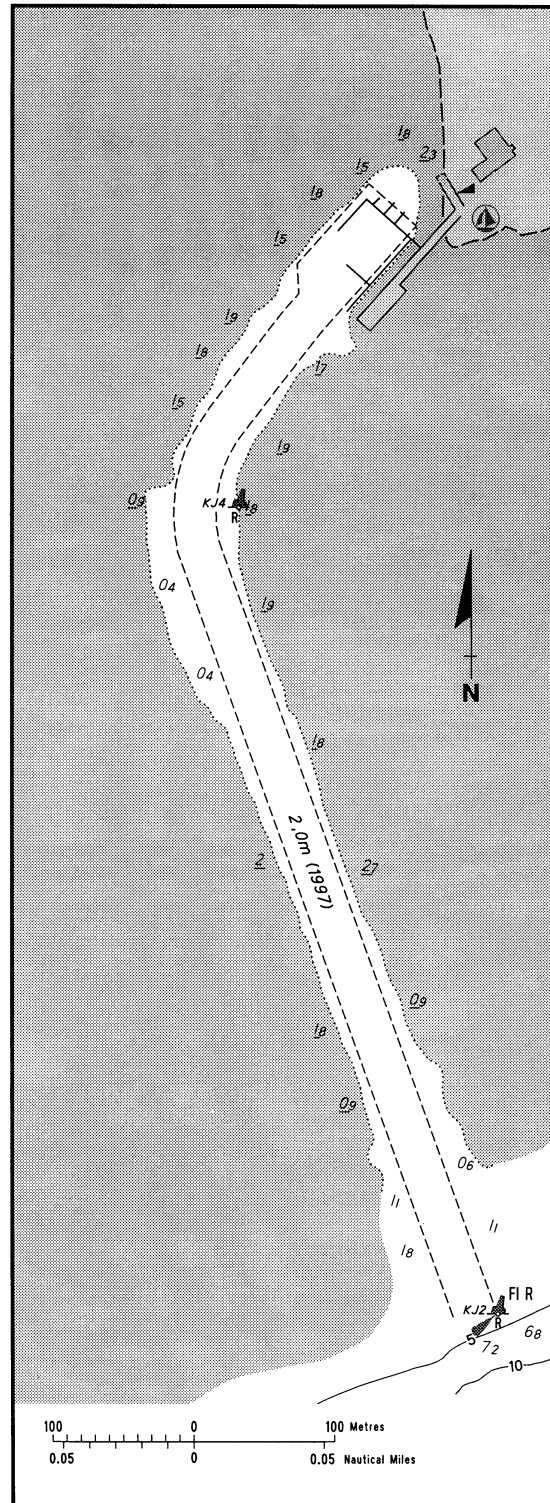
Add: A **light** is shown on an islet situated close SW of O’Donnell Point.

# IV

Monthly Edition No. 12/97

## SAILING DIRECTIONS AND SMALL CRAFT GUIDE CORRECTIONS

### GRANDES-BERGERONNES (Scale 1:5 000)



SOURCES: Surveyed by the Department of Public Works and Government Services in 1991, 94, 95 and 97.



No.	Name	Position ----- Latitude N. Longitude W.	Light Characteristics	Focal Height in m. above water	Nomi- nal Range	Description ----- Height in meters above ground	Remarks ----- Fog Signals
<u>Newfoundland</u>							
385	Steering Island	W. of Dog Bay Islands. 49 31 01 54 27 38.5	Fl G 6s	11.6	.....	Tower, green and white daymark on three sides. 4.9	Flash 0.5 s; eclipse 5.5 s Year round.  <b>Chart:4531 647/97</b>
470.4	Sibleys Cove	48 02 38.6 53 06 13.8	Fl R 6s	2.4	.....	Mast, red and white daymark. 2.1	Seasonal.  <b>Chart:4850 699/97</b>
<u>Atlantic</u>							
1014	Tryon Shoals light buoy N14	Off S. extremity of shoal. 46 09 39 63 31 45	Fl R 4s	.....	.....	Red, marked "N14".	Seasonal  <b>Chart:4405 696/97</b>
1152.8	Blacklands Gully light buoy XX	46 46 24 64 50 18	Mo(A) W	.....	.....	Red and white vertical stripes, marked "XX".	Seasonal  <b>Chart:4906 649/97</b>
1248	Shippegan light and bell buoy TJ2	S. entrance to Shippegan Gully. 47 42 04 64 39 05	Fl R 4s	.....	.....	Red, marked "TJ2".	Seasonal.  <b>Chart:4913 668/97</b>
1365 H1638	<b>Carleton</b>	On Pointe Tracadigache. 48 05 12.8 66 07 31.8	Fl R 5s	9.2	15	Red and white tower.	Flash every 5 s Seasonal. Privately maintained by Carleton City. <b>Chart:4486 674/97</b>
1417.4 H1752.2	Marina de Gaspé breakwater	On N. breakwater. 48 49 40.5 64 28 29.4	Iso Y 2s	7.0	.....	Red and white square skeleton tower. 4.6	Privately maintained by Club nautique Jacques-Cartier de Gaspé. Seasonal.  <b>Chart:4416 655/97</b>
1417.5 H1752.4	Marina de Gaspé entrance	On S. breakwater. 48 49 39.3 64 28 31.6	Fl G 6s	7.0	.....	Red and white square skeleton tower. 4.6	Privately maintained by Club nautique Jacques-Cartier de Gaspé. Flash 1 s; eclipse 5 s Seasonal.  <b>Chart:4416 655/97</b>
1716.5	Marina Baie- Comeau light buoy						Delete from List.  <b>Chart:1226 683/97</b>
1747.3	Marina Portneuf light and bell buoy						Delete from List.  <b>Chart:1236 671/97</b>
1762 H2148	Île Verte (East wharf)	On S. corner of wharf. 48 02 22.4 69 24 24.5	F G	5.6	7	Square skeleton tower. 4.6	Emergency light. Seasonal. Maintained by La Société Inter-Rives de l'Île-Verte.  <b>Chart:1235 673/97</b>
1789 H2128	Anse-de-Roche	On wharf on N. shore. 48 13 05.6 69 52 32.4	Iso R 2s	8.8	7	Red and white square skeleton tower. 6.1	Emergency light. Year round. Maintained by Municipalité de Sacré- Cœur.  <b>Chart:1203 676/97</b>

No.	Name	Position ----- Latitude N. Longitude W.	Light Characteristics	Focal Height in m. above water	Nomi- nal Range	Description ----- Height in meters above ground	Remarks ----- Fog Signals
-----	------	--	--------------------------	--	-----------------------	--	---------------------------------

## Atlantic (Cont'd)

1839 H2187	Cap à l'Aigle Marina breakwater	47 39 45.8 70 05 47.8	Fl Y 6s	6.4	7	Red and white square skeleton tower. 4.6	Flash 1 s; eclipse 5 s Emergency light. Seasonal. Privately maintained by Port de Refuge de Cap à l'Aigle. <b>Chart:1234 672/97</b>
1960.3 H2323.3	Quebec Yacht Club East	On outer end of E. breakwater. 46 46 58.4 71 14 03.5	F Y	5.0	7	Red and white square skeleton tower. 3.0	Emergency light. Seasonal. Maintained by Yacht Club de Québec. <b>Chart:1316 654/97</b>
1960.4 H2323	Québec Yacht Club range	46 47 02.1 71 14 14	F R	4.9	.....	Red and white square skeleton tower, fluorescent orange daymark, black vertical stripe. 3.0	Visible in line of range. Emergency light. Seasonal. Maintained by "Yacht Club de Québec".
1960.5 H2323.1		298°57' 19.6m from front.	F R	8.2	.....	Red and white square skeleton tower, fluorescent orange daymark, black vertical stripe. 6.1	Visible in line of range. Emergency light. Seasonal. Maintained by "Yacht Club de Québec". <b>Chart:1316 667/97</b>
1960.6 H2323.4	Québec Yacht Club West	On outer end of W. breakwater. 46 46 56.9 71 14 05.6	Iso W 2s	5.5	6	Red and white square skeleton tower. 3.4	Emergency light. Seasonal. Maintained by Yacht Club de Québec. <b>Chart:1316 654/97</b>
2084	Pointe des Chenaux light buoy CC2						Delete from List.. <b>Chart:1313 666/97</b>
2084.6	Pointe des Chenaux Outer light buoy CC1						Delete from List.. <b>Chart:1313 666/97</b>
2115	Rivière Nicolet East light buoy SE1						Delete from List. <b>Chart:1312 677/97</b>
2116	Rivière Nicolet West light buoy SE2						Delete from List. <b>Chart:1312 677/97</b>
2116.2	Rivière Nicolet Channel East light buoy SE7						Delete from List. <b>Chart:N/A 678/97</b>
2116.4	Rivière Nicolet Channel West light buoy SE8						Delete from List. <b>Chart:1312 678/97</b>

No.	Name	Position ----- Latitude N. Longitude W.	Light Characteristics	Focal Height in m. above water	Nomi- nal Range	Description ----- Height in meters above ground	Remarks ----- Fog Signals
-----	------	--	--------------------------	--	-----------------------	--	---------------------------------

Atlantic (Cont'd)

2263	Light buoy E514	45 06 15.1 73 17 21.3	Fl R 4s	.....	.....	Red spar marked "E514"	Seasonal. Operated by Marina E514. <b>Chart:1351 680/97</b>
2330 H2482	Île Deslauriers range	E. side of island. 45 42 44.8 73 26 22.8	F G	10.7	.....	Skeleton tower. 6.1	Operates at night. Visible in line of range. Year round.
2331 H2482.1		217°31' 2653.3m from front.	F G Iso G 2s	31.2 .....	..... 14	Skeleton tower. 25.4	Operates at night only. Visible in line of range. Year round. <b>Chart:1310 689/97</b>
2379.5	Light buoy MT93						Delete from list. <b>Chart:1310 682/97</b>
2379.6	Light buoy MT94						Delete from list. <b>Chart:1310 682/97</b>

Inland Waters

783	Kincardine range	Near W. end of N. pier. 44 10 42 81 38 38	F R	9.8	.....	Circular mast, white daymark, orange vertical stripe. 6.1	Seasonal Horn - Blast 3s; sil. 27s Horn points 330°. Seasonal.
784		105°16' 426.7m from front.	Fl R 5s	24.4	.....	White octagonal tower, orange vertical stripe. 19.2	Mariners requiring horn to be turned on can activate it clicking radio mike five times within a five (5) second window on channel 19 - 156.95 VHF. Horn can be activated with 1 watt power at 3 NM range. Horn will stay activated for 30 minutes and can be reactivated as required.  Seasonal <b>Chart:2261 Edn #12/97</b>
902.5	O'Donnell Point	45 05 02 80 05 54	Fl W 5s	14.7	.....	Red and white circular tower, fluorescent red and white rectangular daymark, red triangle in centre.	<b>Chart:2202 658/97</b>
1193	Club West Cardinal light buoy	45 25 49 73 41 23.4	Q(9) W 15s	.....	.....	Yellow, black and yellow, marked "CLUB".	Seasonal. Privately maintained by Société de Gestion Nauberges of Lachine. <b>Chart:1409 670/97</b>
1243	Pointe d'Oka						Delete from List. <b>Chart:1510 653/97</b>
1286.4	Mad bifurcation light buoy						Delete from List.. <b>Chart:1511 681/97</b>

**CANADIAN COAST GUARD  
MARINE INFORMATION REPORT AND SUGGESTION SHEET**

Navigating Officer or Observer: \_\_\_\_\_ Captain: \_\_\_\_\_

Ship (or address) \_\_\_\_\_

If Merchant Vessel add Line or

Company with Head Office address: \_\_\_\_\_

General locality: \_\_\_\_\_

Subject: \_\_\_\_\_

Approx. position: \_\_\_\_\_ Lat. \_\_\_\_\_ Long. \_\_\_\_\_

Chart No. used to plot: \_\_\_\_\_ (Corrected to N/N No. \_\_\_\_\_ of 19 \_\_\_\_\_)

Publications affected: (Quote Volume and page) \_\_\_\_\_

\* Full details (Attach additional sheets as necessary)

Time (UTC) \_\_\_\_\_ Date \_\_\_\_\_

**INSTRUCTIONS:**

Mariners are requested to notify the responsible authorities when new or suspected dangers to navigation are discovered, changes are observed in aids to navigation, or corrections to publications are seen to be necessary.

*\* In the case of new or suspected dangers to navigation, it is important that all details be given in order to aid with future investigations. Items of interest include heights, depths, physical description, type of bottom and equipment method used to position the item. It is helpful to mark details on chart, which will be promptly replaced by the Canadian Hydrographic Service.*

Reports should be made to the nearest Marine Communications and Traffic Services Centre and should be confirmed in writing to:

Director General, Marine Navigation Services Directorate,  
Canadian Coast Guard,  
Department of Fisheries and Oceans,  
Ottawa, Ontario, K1A 0E6

In the case of information concerning  
navigational aids or the List of Lights,  
Buoys and Fog Signals.

**OR**

Dominion Hydrographer,  
Canadian Hydrographic Service,  
Department of Fisheries and Oceans,  
Ottawa, Ontario, K1A 0E6

In the case of new or suspected  
dangers to navigation, or where  
corrections to "Sailing Directions"  
appear to be necessary.