



Natural Resources
Canada

Ressources naturelles
Canada



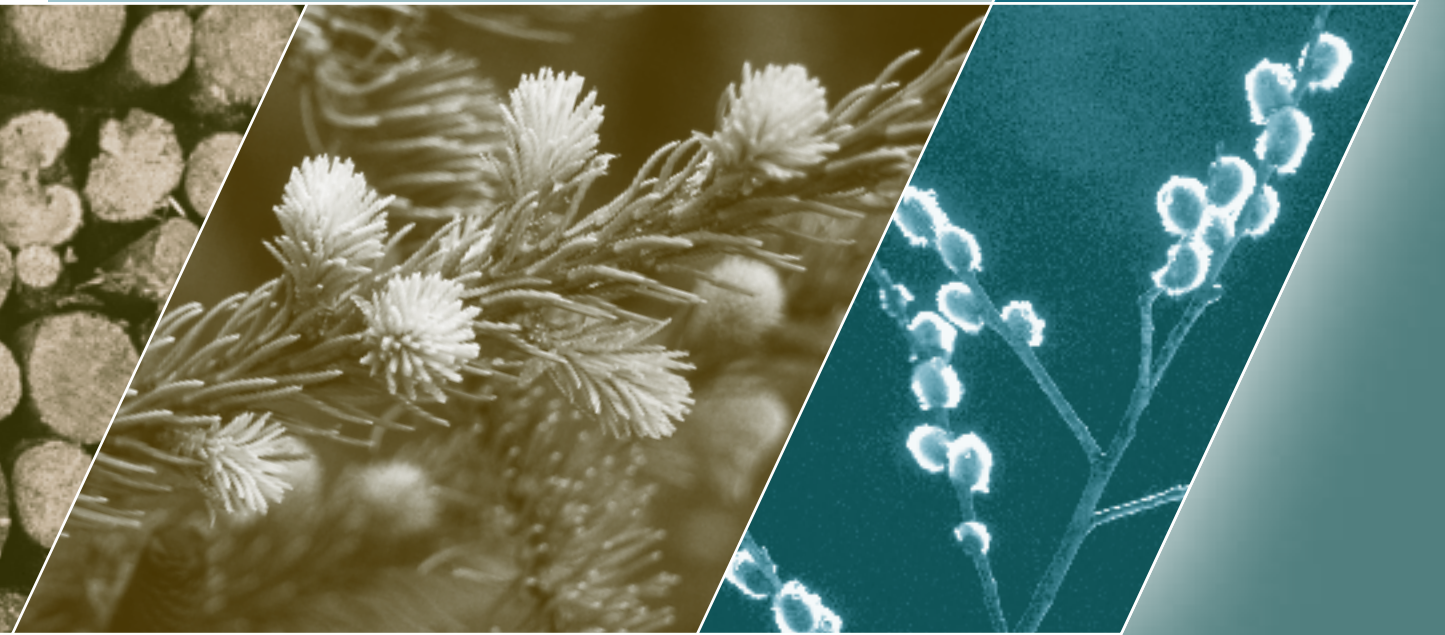
CANADIAN FOREST SERVICE

Publications Digest

SERVICE CANADIEN DES FORÊTS

Abrégé des publications

VOLUME 21, 2011



Canada

The State of Canada's Forests annual report for 2011 features an insightful review of Canada's forests and forest sector during the past year; statistical profiles for Canada and the provinces and territories; and a sample of the indicators for sustainable forest management (SFM), along with how Canada's forests are doing in key areas of SFM.

The publication is available on the Canadian Forest Service Publications site, cfs.nrcan.gc.ca/publications.

Le rapport annuel 2011 de **L'État des forêts au Canada** présente un examen approfondi des forêts et du secteur forestier au Canada au cours de la dernière année; des profils statistiques sur le Canada, les provinces et les territoires; et un échantillon des indicateurs d'aménagement forestier durable (AFD), assorti de l'information la plus récente sur la situation des forêts canadiennes dans les aspects clés de l'AFD.

Cette publication est disponible dans le site des Publications du Service canadien des forêts, scf.nrcan.gc.ca/publications.



**New!
Nouveau!**

CANADIAN FOREST SERVICE SPOTLIGHT ON SCIENCE SERVICE CANADIEN DES FORÊTS — LA SCIENCE EN VEDETTE

The Canadian Forest Service, Natural Resources Canada, is pleased to present its new series **Canadian Forest Service Spotlight on Science**. The articles focus on the science the Canadian Forest Service undertakes. The first article in the series is "The Probabilistic Fire Analysis System: Hot new tool in the wildfire management arsenal"

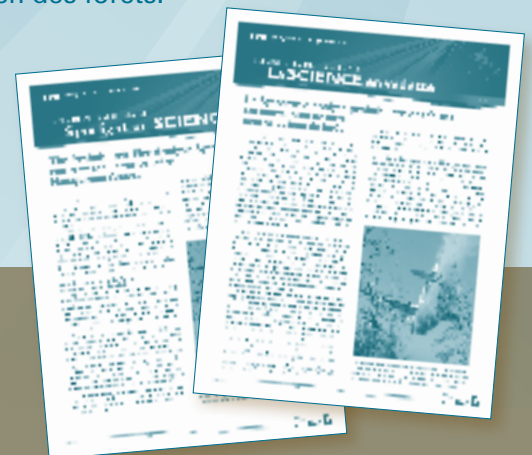
The article is available in PDF format on the Canadian Forest Service Publications site, cfs.nrcan.gc.ca/publications.

Le Service canadien des forêts de Ressources naturelles Canada est fier de présenter sa nouvelle série « **Service canadien des forêts — La science en vedette** ». Les articles portent sur la recherche entreprise au Service canadien des forêts. Le premier article de la série s'intitule *Le Système d'analyse probabiliste des feux : Un nouvel outil de lutte contre les feux de forêt*.

L'article est maintenant disponible en format PDF dans le site des Publications du Service canadien des forêts, scf.nrcan.gc.ca/publications.

If you wish to be notified when the next issue becomes available from the Canadian Forest Service Publications site, send a message to francine.berube@nrcan.gc.ca

Si vous désirez être avisé à la parution d'un nouveau numéro dans le site des Publications du Service canadien des forêts, veuillez envoyer un message à francine.berube@nrcan.gc.ca.



The **Publications Digest** lists publications from the research establishments and headquarters of the Canadian Forest Service (CFS), Natural Resources Canada (NRCan).

Most of these publications are distributed free and may be obtained by contacting the relevant CFS research establishment. The source of each publication is usually indicated by a circled number referring to an address listed on the last page. Publications may be ordered from the CFS Publications site or by mail, fax, phone, or e-mail (see the last page for detailed information). Online only publications are available from the CFS Publications site. Priced publications are listed on pages 28–34.

In some cases, an abstract or short description and/or a PDF format file of the publication is available from the CFS Publications site .

The language of each report is indicated by the language of the title. Reference to the availability of the report in the other official language may be found at the end of the bibliographic entry.

This issue includes all publications issued in 2011 and those not previously mentioned in the *Publications Digest*.

L'**Abrégé des publications** cite les publications des établissements de recherche et de l'administration centrale du Service canadien des forêts (SCF) de Ressources naturelles Canada (RNCan).

La plupart des publications sont gratuites et peuvent être obtenues auprès de l'établissement du SCF qui les a publiées. Un numéro encerclé indique habituellement cette source et renvoie le lecteur à la liste d'adresses qui se trouve à la dernière page de l'*Abrégé*. On peut commander les publications à partir du site des Publications du SCF, ou par la poste, par fax, par téléphone ou par courriel (voir les précisions à la dernière page). Les publications disponibles en ligne seulement se trouvent dans le site des Publications du SCF. Les publications tarifées sont énumérées aux pages 28 à 34.

Un résumé ou une courte description et/ou un fichier en format PDF de la publication est parfois offert dans le site des Publications du SCF.

La langue du titre indique dans quelle langue la publication est disponible. Si elle l'est dans l'autre langue officielle, un renvoi au titre approprié est donné à la fin de la notice bibliographique.

Ce numéro comprend toutes les publications distribuées en 2011 et les précédentes qui n'ont pas été mentionnées dans l'*Abrégé*.

CFS PUBLICATIONS SITE
cfs.nrcan.gc.ca/publications

SITE DES PUBLICATIONS DU SCF
scf.nrcan.gc.ca/publications

Table of Contents

Table des matières

General Information	4	Information générale
Climate Change and Atmospheric Influences	6	Changements climatiques et influences atmosphériques
Forest Diseases	9	Maladies forestières
Forest Ecology and Site Classification	10	Écologie forestière et classification des sites
Forest Fires	12	Incendies de forêt
Forest Insects	14	Insectes forestiers
Genetics, Tree Improvement, and Biodiversity	17	Génétique, amélioration des arbres et biodiversité
Growth and Yield, Inventory, and Monitoring	20	Accroissement, inventaire et biosurveillance
Impacts of Forestry Practices	22	Incidences des pratiques forestières
Silviculture	23	Sylviculture
Socioeconomics and Statistics	24	Socioéconomie et statistique
Sustainable Forest Management	25	Aménagement durable des forêts
Miscellaneous	26	Divers
Priced Publications	28	Publications tarifées
Establishment Addresses	36	Adresses des établissements

Boletín del Programa de Comunidades Forestales. Edición especial del Foro Global 2011: Exhibición de una selección de las iniciativas internacionales del PCF. [Online only]. 2011. NRCan, CFS, HQ, Ottawa. 6 p. [English: see *Forest...Global Forum...*; français : voir *Bulletin du Programme...*]

Les Brèves du Service canadien des forêts, Centre de foresterie des Laurentides. 2011. NRCan, SCF, Centre de foresterie des Laurentides, Québec (Québec). N° 24. 2 p. [English: see *In Brief...No. 24.*] ②

Les Brèves du Service canadien des forêts, Centre de foresterie des Laurentides. 2011. NRCan, SCF, Centre de foresterie des Laurentides, Québec (Québec). N° 25. 2 p. [English: see *In Brief...No. 25.*] ②

Les Brèves du Service canadien des forêts, Centre de foresterie des Laurentides. 2011. NRCan, SCF, Centre de foresterie des Laurentides, Québec (Québec). N° 26. 2 p. [English: see *In Brief...No. 26.*] ②

In Brief from the Canadian Forest Service, Laurentian Forestry Centre. 2011. NRCan, CFS, Laurentian Forestry Centre, Québec, Que. No. 24. 2 p. [Français : voir *Les Brèves (...)* N° 24.] ②

In Brief from the Canadian Forest Service, Laurentian Forestry Centre. 2011. NRCan, CFS, Laurentian Forestry Centre, Québec, Que. No. 25. 2 p. [Français : voir *Les Brèves (...)* N° 25.] ②

In Brief from the Canadian Forest Service, Laurentian Forestry Centre. 2011. NRCan, CFS, Laurentian Forestry Centre, Québec, Que. No. 26. 2 p. [Français : voir *Les Brèves (...)* N° 26.] ②

Bulletin du Programme des collectivités forestières. Édition spéciale du Forum mondial de 2011 : Montrant une sélection d'initiatives internationales du Programme des collectivités forestières. [En ligne seulement]. NRCan, SCF, Administration centrale, Ottawa. 6 p. [English: see *Forest...Global Forum...*]

Canadian Forest Service Science Highlights. How can we help preserve and learn from Aboriginal forestry knowledge? [Online only]. 2011. NRCan, CFS, Planning, Operations and Information Branch, Ottawa. 2 p. [Français : voir *Service (...)* *Comment pouvons-nous aider...*]

Canadian Forest Service Science Highlights. How will a new map help boreal forest research? [Online only]. 2011. NRCan, CFS, Planning, Operations and Information Branch, Ottawa. 2 p. [Français : voir *Service (...)* *Comment une nouvelle carte...*]

Centre de foresterie des Grands Lacs, Bulletin-é, numéro 12, hiver 2011. [En ligne seulement]. 2011. NRCan, SCF, Centre de

foresterie des Grands Lacs, Sault Ste. Marie (Ontario). [English: see *Great Lakes...Winter 2011.*]

Centre de foresterie des Grands Lacs, Bulletin-é, numéro 13, printemps 2011. [En ligne seulement]. 2011. NRCan, SCF, Centre de foresterie des Grands Lacs, Sault Ste. Marie (Ontario). [English: see *Great Lakes...Spring 2011.*]

Centre de foresterie des Grands Lacs, Bulletin-é, numéro 14, été 2011. [En ligne seulement]. 2011. NRCan, SCF, Centre de foresterie des Grands Lacs, Sault Ste. Marie (Ontario). [English: see *Great Lakes...Summer 2011.*]

Centre de foresterie des Grands Lacs, Bulletin-é, numéro 15, automne 2011. [En ligne seulement]. 2011. NRCan, SCF, Centre de foresterie des Grands Lacs, Sault Ste. Marie (Ontario). [English: see *Great Lakes...Fall 2011.*]

e-Nouvelles du Programme forestier des Premières nations, février-mars 2011. [En ligne seulement]. 2011. NRCan, SCF, Direction des programmes scientifiques, Affaires indiennes et du Nord Canada, Ottawa. 5 p. [English: see *First Nations...*]

Environmental Science Advisory Committee: 2009/2010 Annual Report. 2011. Environmental Science Advisory Committee, Canadian Forces Base Esquimalt, Department of National Defence/NRCan, CFS, Pacific Forestry Centre, Victoria, B.C. 118 p. ⑤

L'État des forêts au Canada. Rapport annuel 2011. 2011. NRCan, SCF, Direction de la planification, des opérations et de l'information, Ottawa. 47 p. [English: see *The State of Canada's Forests...*] ⑥

First Nations Forestry Program e-news, February-March 2011. [Online only]. 2011. NRCan, CFS, Science Program Branch, and Indian and Northern Affairs Canada, Ottawa. 4 p. [Français : voir *e-Nouvelles...*]

Forest Communities Program. FCP site fact sheets. [Online only]. 2011. NRCan, CFS, HQ, Ottawa. 25 p. [Français : voir *Programme des collectivités forestières. Fiches...*]

Forest Communities Program Newsletter. Global Forum 2011 Special Edition: Showcasing a selection of FCP's international initiatives. [Online only]. 2011. NRCan, CFS, HQ, Ottawa. 6 p. [Français : voir *Bulletin du Programme...*]

Forests for people. Celebrating Canada's forests in 2011. [Online only]. 2011. NRCan, CFS, Planning, Operations and Information Branch, Ottawa. 5 p. [Français : voir *Des forêts pour les populations...*]

Des forêts pour les populations. Célébrons les forêts canadiennes en 2011. [En ligne seulement]. 2011. RNCAN, SCF, Direction de la planification, des opérations et de l'information, Ottawa. 5 p. [English: see *Forests for people...*]

Great Lakes Forestry Centre e-bulletin, Issue 12, Winter 2011. [Online only]. 2011. NRCAN, CFS, Great Lakes Forestry Centre, Sault Ste. Marie, Ont. [Français : voir *Centre de foresterie (...) hiver 2011.*]

Great Lakes Forestry Centre e-bulletin, Issue 13, Spring 2011. [Online only]. 2011. NRCAN, CFS, Great Lakes Forestry Centre, Sault Ste. Marie, Ontario. [Français : voir *Centre de foresterie (...) printemps 2011.*]

Great Lakes Forestry Centre e-bulletin, Issue 14, Summer 2011. [Online only]. 2011. NRCAN, CFS, Great Lakes Forestry Centre, Sault Ste. Marie, Ontario. [Français : voir *Centre de foresterie (...) été 2011.*]

Great Lakes Forestry Centre e-bulletin, Issue 15, Fall 2011. [Online only]. 2011. NRCAN, CFS, Great Lakes Forestry Centre, Sault Ste. Marie, Ontario. [Français : voir *Centre de foresterie (...) automne 2011.*]

Info-Forêts. Mai 2011. Church, S., éditeur. RNCAN, SCF, Centre de foresterie du Pacifique (Colombie-Britannique). 12 p. [English: see *Information Forestry. May 2011.*] ⑤

Info-Forêts. Août 2011. Church, S., éditeur. RNCAN, SCF, Centre de foresterie du Pacifique (Colombie-Britannique). 12 p. [English: see *Information Forestry. August 2011.*] ⑤

Info-Forêts. Décembre 2011. Church, S., éditeur. RNCAN, SCF, Centre de foresterie du Pacifique (Colombie-Britannique). 8 p. [English: see *Information Forestry. December 2011.*] ⑤

Information Forestry. Mai 2011. Church, S., ed. NRCAN, CFS, Pacific Forestry Centre, Victoria, B.C. 12 p. [Français : voir *Info-Forêts. Mai 2011.*] ⑤

Information Forestry. August 2011. Church, S., ed. NRCAN, CFS, Pacific Forestry Centre, Victoria, B.C. 12 p. [Français : voir *Info-Forêts. Août 2011.*] ⑤

Information Forestry. December 2011. Church, S., ed. NRCAN, CFS, Pacific Forestry Centre, Victoria, B.C. 12 p. [Français : voir *Info-Forêts. Décembre 2011.*] ⑤

National Forest Week, September 18–24, 2011. Canada's natural resources: Forests for people. 2011. NRCAN, CFS, HQ, Ottawa. Poster. [Français : voir *Semaine nationale de l'arbre...*] ⑥

Northern Forestry Centre Publications, 2008–2010. 2011. Lefebvre, E.M. NRCAN, CFS, Northern Forestry Centre, Edmonton, Alta. Inf. Rep. NOR-X-420E. 26 p. [Français : voir *Publications du Centre...*] ④

Programme des collectivités forestières. Fiches d'information. [En ligne seulement]. 2011. RNCAN, SCF, Administration centrale, Ottawa. 25 p. [English: see *Forest Communities Program. FCP site...*]

Publications du Centre de foresterie du Nord, 2008-2010. 2011. Lefebvre, E.M. RNCAN, SCF, Centre de foresterie du Nord, Edmonton (Alta.) Rapport d'information NOR-X-420F. 27 p. [English: see *Northern Forestry Centre...*] ④

Rapport des activités entourant le 50^e anniversaire du Centre de foresterie des Laurentides. 2011. RNCAN, SCF, Centre de foresterie des Laurentides, Québec (Québec). 9 p. [English: see *Report on the...*] ②

La Recherche au Centre de foresterie des Laurentides de Ressources naturelles Canada. 2011. RNCAN, SCF, Centre de foresterie des Laurentides, Québec (Québec). 14 p. [English: see *Research at the...*] ②

Report on the Laurentian Forestry Centre's 50th anniversary activities. 2011. NRCAN, CFS, Laurentian Forestry Centre, Québec, Que. 9 p. [Français : voir *Rapport des activités...*] ②

Research at the Laurentian Forestry Centre of Natural Resources Canada. 2011. NRCAN, CFS, Laurentian Forestry Centre, Québec, Que. 14 p. [Français : voir *La Recherche...*] ②

Semaine nationale de l'arbre et des forêts du 18 au 24 septembre 2011. Les ressources naturelles du Canada : des forêts pour les populations. 2011. RNCAN, SCF, Administration centrale, Ottawa. Affiche. [English: see *National Forest Week...*] ⑥

Service canadien des forêts. Points saillants sur la science. Comment pouvons-nous aider à conserver les connaissances forestières des Autochtones et en tirer profit? [En ligne seulement]. 2011. RNCAN, SCF, Direction de la planification, des opérations et de l'information, Ottawa. 2 p. [English: see *Canadian...How can we help...*]

Service canadien des forêts. Points saillants sur la science. Comment une nouvelle carte aidera-t-elle la recherche sur la forêt boréale? [En ligne seulement]. 2011. RNCAN, SCF, Direction de la planification, des opérations et de l'information, Ottawa. 2 p. [English: see *Canadian...How will a new map...*]

The State of Canada's Forests. Annual Report 2011. 2011. NRCAN, CFS, Planning, Operations and Information Branch, Ottawa. 47 p. [Français : voir *L'État des forêts au Canada ...*] ⑥

Une vision de la foresterie des Premières Nations en 2020. Conseil national, Programme forestier des Premières Nations. 2011. Gouvernement du Canada, Ottawa. 18 p. [English: see *A vision for...*] ⑥

A vision for First Nations Forestry in 2020. National Council, First Nations Forestry Program. 2011. Government of Canada, Ottawa. 18 p. [Français : voir *Une vision...*] ⑥

Journal Articles and Other Contributions / Articles de revues scientifiques et autres collaborations

Wetzel, S.; Swift, D.E.; Burgess, D.; Robinson, C. 2011. Research in Canada's national research forests: past, present and future. *For. Ecol. Manag.* 261:893–899. ③

Climate Change and Atmospheric Influences

Canadian Carbon Program and Fluxnet research sites: Canadian Forest Service ground-level research. 2011. Reynolds, P.; Cameron, A. NRCan, CFS, Great Lakes Forestry Centre, Sault Ste. Marie, Ont. *Frontline Express* 43. 2 p. [Français : voir *Le Programme canadien du carbone...*] ③

Canadian Forest Service Science Highlights. How can forest products help mitigate climate change? [Online only]. 2011. NRCan, CFS, Planning, Operations and Information Branch, Ottawa. 2 p. [Français : voir *Service (...) Comment les produits forestiers...*]

Canadian Forest Service Science Highlights. How can we help Canada's forests adapt to climate change? [Online only]. 2011. NRCan, CFS, Planning, Operations and Information Branch, Ottawa. 2 p. [Français : voir *Service (...) Comment pouvons-nous aider...*]

Canadian Forest Service Science Highlights. How is drought affecting Canada's forests in a changing climate? [Online only]. 2011. NRCan, CFS, Planning, Operations and Information Branch, Ottawa. 2 p. [Français : voir *Service (...) Comment la sécheresse touche-t-elle...*]

Canadian Forest Service Science Highlights. Is climate change linked to elevated levels of sulphur in forest watersheds? [Online only]. 2011. NRCan, CFS, Planning, Operations and Information Branch, Ottawa. 2 p. [Français : voir *Service (...) Le changement climatique est-il lié...*]

Canadian Forest Service Science Highlights. Will climate change lead to more forest fires? [Online only]. 2011. NRCan, CFS, Planning, Operations and Information Branch, Ottawa. 2 p. [Français : voir *Service (...) Le changement climatique va-t-il...*]

Canadian forests exposed to the winds of change. 2011. Beaulieu, J. NRCan, CFS, Laurentian Forestry Centre, Québec, Que. Branching out from the Canadian Forest Service, Laurentian Forestry Centre. No. 70. 2 p. [Français : voir *Un vent de changement...*] ②

Le Centre de foresterie des Grands Lacs fait la lumière sur le rôle de la forêt boréale dans le cycle du carbone. 2011. Payne, N.

Changements climatiques et influences atmosphériques

NRCan, SCF, Centre de foresterie des Grands Lacs, Sault Ste Marie (Ontario). *Frontline* : Nouvelles express 42. 2 p. [English: see *Great Lakes Forestry...*] ③

Changement climatique et productivité forestière : une forêt de questions — Prise 2. 2010. Bernier, P. NRCan, SCF, Centre de foresterie des Laurentides, Québec (Québec). *L'éclaircie du Service canadien des forêts, Centre de foresterie des Laurentides.* N° 63. 2 p. [English: see *Climate change...*] ②

Climate change and forest productivity: questions abound—Take 2. 2010. Bernier, P. 2010. NRCan, CFS, Laurentian Forestry Centre, Québec, Que. Branching out from the Canadian Forest Service, Laurentian Forestry Centre. No. 63. 2 p. [Français : voir *Changement climatique...*] ②

Feux de forêt et changement climatique : le passé est-il garant de l'avenir? 2011. Girardin, M. NRCan, SCF, Centre de foresterie des Laurentides, Québec (Québec). *L'éclaircie du Service canadien des forêts, Centre de foresterie des Laurentides.* N° 69. 2 p. [English: see *Forest fires...*] ②

Forest fires and climate change: looking at the past to predict the future. 2011. Girardin, M. NRCan, CFS, Laurentian Forestry Centre, Québec, Que. Branching out from the Canadian Forest Service, Laurentian Forestry Centre. No. 69. 2 p. [Français : voir *Feux de forêt...*] ②

Great Lakes Forestry Centre research enhances understanding of boreal forest role in carbon cycle. 2011. Payne, N. NRCan, CFS, Great Lakes Forestry Centre, Sault Ste. Marie, Ont. *Frontline Express Note* 42. 2 p. [Français : voir *Le Centre de foresterie...*] ③

High-resolution interpolation of climate scenarios for Canada derived from general circulation model simulations. 2011. Price, D.T.; McKenney, D.W.; Joyce, L.A.; Siltanen, R.M.; Papadopol, P.; Lawrence, K. 2011. NRCan, CFS, Northern Forestry Centre, Edmonton, Alta. *Inf. Rep. NOR-X-421.* 126 p. ④

Impacts of climate change on mountain pine beetle habitat connectivity in western Canada. 2011. Riel, W.G.; Burnett, C.; Fall, A. NRCan, CFS, Pacific Forestry Centre, Victoria, B.C. *Mountain Pine Beetle Work. Pap.* 2010-04. 26 p. ⑤

Journal Articles and Other Contributions / Articles de revues scientifiques et autres collaborations

Mountain pine beetle range expansion: assessing the threat to Canada's boreal forest by evaluating the endemic niche. Final Report. Ver. 1.1. 2011. Bleiker, K.P.; Carroll, A.L.; Smith, G.D. NRCan, CFS, Pacific Forestry Centre, Victoria, B.C. Mountain Pine Beetle Work. Pap. 2010-02. 17 p. ⑤

Le Programme canadien du carbone et les sites du Réseau de recherche Fluxnet : Recherche au niveau du sol du Service canadien des forêts. 2011. Reynolds, P.; Cameron, A. RNCan, SCF, Centre de foresterie des Grands Lacs, Sault Ste Marie (Ontario). Frontline : Nouvelles express 43. 2 p. [English: see *Canadian Carbon Program...*] ③

Service canadien des forêts. Points saillants sur la science. Le changement climatique est-il lié aux niveaux élevés de soufre dans les bassins versants forestiers? [En ligne seulement]. 2011. RNCan, SCF, Direction de la planification, des opérations et de l'information, Ottawa. 2 p. [English: see *Canadian...Is climate change linked to...*] ③

Service canadien des forêts. Points saillants sur la science. Le changement climatique va-t-il entraîner un plus grand nombre de feux de forêt? [En ligne seulement]. 2011. RNCan, SCF, Direction de la planification, des opérations et de l'information, Ottawa. 2 p. [English: see *Canadian...Will climate change lead to...*] ③

Service canadien des forêts. Points saillants sur la science. Comment la sécheresse touche-t-elle les forêts du Canada dans un climat en évolution? [En ligne seulement]. 2011. RNCan, SCF, Direction de la planification, des opérations et de l'information, Ottawa. 2 p. [English: see *Canadian...How is drought affecting...*] ③

Service canadien des forêts. Points saillants sur la science. Comment les produits forestiers pourraient-ils contribuer à atténuer les changements climatiques? [En ligne seulement]. 2011. RNCan, SCF, Direction de la planification, des opérations et de l'information, Ottawa. 2 p. [English: see *Canadian...How can forest products...*] ③

Service canadien des forêts. Points saillants sur la science. Comment pouvons-nous aider les forêts du Canada à s'adapter aux changements climatiques? [En ligne seulement]. 2011. RNCan, SCF, Direction de la planification, des opérations et de l'information, Ottawa. 2 p. [English: see *Canadian...How can we help...*] ③

A synthesis of the hydrological consequences of large-scale mountain pine beetle disturbance. 2011. Schnorbus, M. NRCan, CFS, Pacific Forestry Centre, Victoria, B.C. Mountain Pine Beetle Work. Pap. 2010-01. 30 p. ⑤

Un vent de changement souffle sur les essences forestières canadiennes. 2011. Beaulieu, J. RNCan, SCF, Centre de foresterie des Laurentides, Québec (Québec). L'éclaircie du Service canadien des forêts, Centre de foresterie des Laurentides. N° 70. 2 p. [English: see *Canadian forests...*] ②

Aubin, I; Garbe, C.M.; Colombo, S.; Drever, C.R.; McKenney, D.W.; Messier, C.; Pedlar, J.; Saner, M.A.; Venier, L.; Wellstead, A.M.; Winder, R.; Witten, E.; Ste-Marie, C. 2011. Why we disagree about assisted migration: ethical implications of a key debate regarding the future of Canada's forests. *For. Chron.* 87(6):755-765. ③ ⑥

Beardmore, T; Winder, R. 2011. Review of science-based assessments of species vulnerability: contributions to decision-making for assisted migration. *For. Chron.* 87(6):745-754. ①

Bernier, P; Flanagan, L. 2011. Comment les cycles du carbone des forêts et des tourbières du Canada réagiront-ils face aux changements climatiques à venir? Pages 38-39 *dans* C. Coursolle, ed. *Écosystèmes en transition : carbone, climat et perturbations dans les forêts et les tourbières du Canada. Perspectives fournies par le réseau de recherche Fluxnet-Canada et le Programme canadien du carbone (2001-2011). Programme canadien du carbone et l'Université Laval, Québec (Québec).* 44 p. [English: see *Bernier, P...How might...*] ②

Bernier, P; Flanagan, L. 2011. How might the carbon cycle of Canada's forests and peatlands respond to future climate change? Pages 38-39 *in* C. Coursolle, ed. *Ecosystems in Flux: Carbon, Climate, and Disturbance in Northern Forests and Peatlands. Perspectives from the Fluxnet-Canada and Canadian Carbon Program Research Networks (2001-2011).* Canadian Carbon Program, Québec, Que. 42 p. [Français : voir *Bernier, P. (...) Comment les cycles...*] ②

Bernier, P.Y.; Desjardins, R.L.; Karimi-Zindashty, Y.; Worth, D.; Beaudoin, A.; Luo, Y.; Wang, S. 2011. Boreal lichen woodlands: a possible negative feedback to climate change in eastern North America. *Agric. For. Meteorol.* 151:521-528. ②

Beverly, J.L.; Flannigan, M.D.; Stocks, B.J.; Bothwell, P. 2011. The association between Northern Hemisphere climate patterns and interannual variability in Canadian wildfire activity. *Can. J. For. Res.* 41(11):2193-2201. ④

Bøggild, C.E.; Brandt, R.E.; Brown, K.J. 2010. The ablation zone in northeast Greenland: ice types, albedos and impurities. *J. Glaciol.* 56(195): 101-113. ④

Brassard, B.W.; Chen, H.Y.H.; Bergeron, Y.; Paré, D. 2011. Differences in fine root productivity between mixed- and single-species stands. *Funct. Ecol.* 25:238-246. ②

Brown, K. 2011. Nature's archives of global climate change. Pages 6-7 *in* Information Forestry Newsletter, Pacific Forestry Centre, August 2011. NRCan, CFS, Northern Forestry Centre, Edmonton, Alta. ④

Cai, T.; Price, D.T.; Orchansky, A.L.; Thomas, B.R. 2011. Carbon, water, and energy exchanges of a hybrid poplar plantation during the first five years following planting. *Ecosystems* 14(4):658-671. ④

- Candau, J.-N.; Fleming, R.A. 2011. Forecasting the response of spruce budworm defoliation to climate change in Ontario. *Can. J. For. Res.* 41:1948–1960. ③
- Carvalho, A.; Monteiro, A.; Flannigan, M.; Solman, S.; Miranda, A.J. Borrego, C. 2011. Forest fires in a changing climate and their impacts on air quality. *Atmos. Environ.* (31): 5545–5553. ④
- De Grandpré, L.; Tardif, J.C.; Hessel, A.; Pederson, N.; Conciatori, F.; Green, T.R.; Oyunsanaa, B.; Baatarbileg, N. 2011. Seasonal shift in the climate responses of *Pinus sibirica*, *Pinus sylvestris*, and *Larix sibirica* trees from semi-arid, north-central Mongolia. *Can. J. For. Res.* 41:1242–1255. ②
- Girardin, M. 2011. Feux de forêt et changement climatique. Pages 27-29 *dans* Actes du colloque « Les feux de forêt : science et défis d'aménagement ». RNCAN, SCF, 23-24 mars 2011, Saint-Félicien (Québec). Centre de foresterie des Laurentides, Québec (Québec). ②
- Girardin, M.P.; Bernier, P.Y.; Gauthier, S. 2011. Increasing potential NEP of eastern boreal North American forests constrained by decreasing wildfire activity. *Ecosphere* 2(3), Article 25:1–23. ②
- Govind, A.; Chen, J.M.; Bernier, P.; Margolis, H.; Guindon, L.; Beaudoin, A. 2011. Spatially distributed modeling of the long-term carbon balance of a boreal landscape. *Ecol. Model.* 222:2780–2795. ②
- Grant, R.F.; Humphreys, E.R.; Lafleur, P.M.; Dimitrov, D.D. 2011. Ecological controls on net ecosystem productivity of a mesic arctic tundra under current and future climates. *J. Geophys. Res.* 16: 17 p. ④
- Hilker, T.; Coops, N.C.; Hall, F.G.; Nichol, C.J.; Lyapustin, A.; Black, T.A.; Wulder, M.A.; Leuning, R.; Barr, A.; Hollinger, D.Y.; Munger, B.; Tucker, C.J. 2011. Inferring terrestrial photosynthetic light use efficiency of temperate ecosystems from space. *Geophys. Res. Biogeosci.* 116:G03014. 11 p. ⑤
- Hopkinson, R.F.; McKenney, D.W.; Milewska, E.J.; Hutchinson, M.F.; Papadopol, P.; Vincent, L.A. 2011. Impact of aligning climatological day on gridding daily maximum-minimum temperature and precipitation over Canada. *J. Appl. Meteorol. Climatol.* 50:1654–1665; doi: 10.1175/2011JAMC2684.1. ③
- Kurz, W.A. 2011. Carbon Budget Model of the Canadian Forest Sector (CBM-CFS3). Experiences in implementing a Tier 3 approach. Pages 39–47 *in* H.S. Eggleston, N. Srivastava, K. Tanabe, J. Baasansuren, and M. Fukuda, eds. IPCC 2011, Use of Models and Facility-Level Data in Greenhouse Gas Inventories. Proceedings, Report of IPCC Expert Meeting on Use of Models and Measurements in Greenhouse Gas Inventories. 9–11 August, 2010, Sydney, Australia. Institute for Global Environmental Strategies (IGES), Hayama, Japan. ⑤
- McKenney, D.W.; Pedlar, J.H.; Rood, R.B.; Price, D. 2011. Revisiting projected shifts in the climate envelopes of North American trees using updated general circulation models. *Global Change Biol.* 17:2720–2730; doi: 10.1111/j.1365-2486.2011.02413.x. ③
- Miao, Z.; Li, C. 2011. Predicting tree growth dynamics of boreal forest in response to climate change. Pages 176–205 *in* C. Li, R. Laforgezza, and J. Chen, eds. Landscape ecology in forest management and conservation: challenges and solutions for global change. Higher Education Press, Beijing and Springer, Berlin/Heidelberg. ④
- Michaelian, M.; Hogg, E.H.; Hall, R.J.; Arsenault, E. 2011. Massive mortality of aspen following severe drought along the southern edge of the Canadian boreal forest. *Global Change Biol.* 17(6):2084–2094. ④
- Paré, D.; Banville, J.L.; Garneau, M.; Bergeron, Y. 2011. Soil carbon stocks and soil carbon quality in the upland portion of a boreal landscape, James Bay, Quebec. *Ecosystems* 14:533–546. ②
- Régnière, J. 2012. Invasive species, climate change and forest health. Chapter 3, pages 27–37 *in* T.M. Schlichter and L. Montes, eds. Forests in Development: A Vital Balance. Springer, Dordrecht. ②
- Rose, N.-A.; Burton, P.J. 2011. Persistent climate corridors: the identification of climate refugia in British Columbia's Central Interior for the selection of candidate areas for conservation. *BC J. Ecosyst. Manag.* 12(1):101–117. ⑤
- Sáenz-Romero, C.; Rehfeldt, G.E.; Crookston, N.L.; Duval, P.; St-Amant, R.; Beaulieu, J.; Richardson, B.A. 2010. Spline models of contemporary, 2030, 2060 and 2090 climates for Mexico and their use in understanding climate-change impacts on the vegetation. *Clim. Change* 102:595–623. ②
- Smyth, C.E.; Kurz, W.A.; Trofymow, J.A.; CIDET Working Group 2011. Including the effects of water stress on decomposition in the Carbon Budget Model of the Canadian Forest Sector CBM-CFS3. *Ecol. Model.* 222(5):1080–1091. ⑤
- Ste-Marie, C. 2011. Chasing climate change—exploring the option of assisted migration. *For. Chron.* 87(6):708–710. [Français : voir *Ste-Marie (...)* À la poursuite...] ⑥
- Ste-Marie, C. 2011. À la poursuite des changements climatiques — Explorer l'option de la migration assistée. *For. Chron.* 87(6):708–710. [English: see *Ste-Marie...Chasing climate change...*] ⑥
- Ste-Marie, C.; Nelson, E.A.; Dabros, A.; Bonneau, M.-E. 2011. Assisted migration: introduction to a multifaceted concept. *For. Chron.* 87(6):724–730. ⑥
- Stinson, G.; Kurz, W.A.; Smyth, C.E.; Neilson, E.T.; Dymond, C.C.; Metsaranta, J.M.; Boisvenue, C.; Rampley, G.J.; Li, Q.; White, T.M.; Blain, D. 2011. An inventory-based analysis of Canada's managed forest carbon dynamics, 1990 to 2008. *Global Change Biol.* 17(6):2227–2244. ⑤

Sturrock, R.N.; Frankel, S.J.; Brown, A.V.; Hennon, P.E.; Kliejunas, J.T.; Lewis, K.J.; Worrall, J.J.; Woods, A.J. 2011. Climate change and forest diseases. *Plant Pathol.* 60(1):133–149. ⑤

Tardif, J.C.; Girardin, M.P.; Conciatori, F. 2011. Light rings as bioindicators of climate change in Interior North America. *Global Planet. Change* 79:134–144. ②

Tharayil, N.; Suseela, V.; Triebwasser, D.J.; Preston, C.M.; Gerard, P.D.; Dukes, J.S. 2011. Changes in the structural composition and reactivity of *Acer rubrum* leaf litter tannins exposed to warming and altered precipitation: climatic stress-induced tannins are more reactive. *New Phytol.* 191(1):132–145. ⑤

Waddington, J.M.; Thompson, D.K.; Wotton, M.; Quinton, W.L.; Flannigan, M.D.; Benscoter, B.W.; Baisley, S.A.; Turetsky, M.R. 2012. Examining the utility of the Canadian Forest Fire Weather Index System in boreal peatlands. *Can. J. For. Res.* 42:47–58. ③

Williamson, T.B.; Luckert, M.K.; Hauer, G.K. 2011. Economic concepts, methods, and tools for risk analysis in forestry under climate change. Pages 303–326 in V. Olej, I. Obršalová, and J. Krupa, eds. *Environmental modeling for sustainable regional development: system approaches and advanced methods*. IGI Global, Hershey, Pa. ④

Winder, R.S.; Nelson, E.A.; Beardmore, T. 2011. Ecological implications for assisted migration in Canadian forests. *For. Chron.* 87(6):731–744. ⑤

Yemshanov, D.; Biggs, J.; McKenney, D.W.; Lempiere, T. 2012. Effects of permanence requirements on afforestation choices for carbon sequestration for Ontario, Canada. *For. Policy Econ.* 14:6–18. ③

Forest Diseases

Le Compartimentage : un moyen de défense des arbres. 2011. Rioux, D. RNCan, SCF, Centre de foresterie des Laurentides, Québec (Québec). L'éclaircie du Service canadien des forêts, Centre de foresterie des Laurentides. N° 65. 2 p. [English: see *Compartmentalization...*] ②

Compartmentalization: a defense process in trees. 2011. Rioux, D. NRCan, CFS, Laurentian Forestry Centre, Québec, Que. Branching out from the Canadian Forest Service, Laurentian Forestry Centre. No. 65. 2 p. [Français : voir *Le Compartimentage...*] ②

Journal Articles and Other Contributions / Articles de revues scientifiques et autres collaborations

Askew, S.E.; Shamoun, S.F.; van der Kamp, B.J. 2011. Assessment of *Colletotrichum gloeosporioides* as a biological control agent for management of hemlock dwarf mistletoe (*Arceuthobium tsugense*). *For. Pathol.* 41(6):444–452. ⑤

Becker, E.M.; Rajakulendran, N.; Shamoun, S.F. 2011. *Trichoderma* spp.: antagonistic effects to *Phytophthora ramorum* growth and spore germination *in vitro*. Pages 173–174 in Plant Canada Conference Proceedings, 17–21 July, Halifax, N.S. *Plant Can.* ⑤

Bergeron, M.-J.; Leal, I.; Foord, B.; Ross, G.; Davis, C.; Slippers, B.; de Groot, P.; Hamelin, R.C. 2011. Putative origin of clonal lineages of *Amylostereum areolatum*, the fungal symbiont associated with *Sirex noctilio*, retrieved from *Pinus sylvestris*, in eastern Canada. *Fungal Biol.* 115:750–758. ②

Maladies forestières

Callan, B.E.; Wall, R.; Dale, P.L.; Joshi, V. 2011. *Phragmidium violaceum* on *Rubus armeniacus* and *R. laciniatus* in British Columbia. *N. Am. Fungi* 6(14):1–5. ⑤

Cleary, M.; Sturrock, R.N.; Hodge, J.C. 2011. Laminated root disease—stand establishment decision aid. *BC J. Ecosyst. Manag.* 12(2):17–20. ⑤

Cruickshank, M.G.; Morrison, D.J.; Lalumière, A. 2011. Site, plot, and individual tree yield reduction of interior Douglas-fir associated with non-lethal infection by *Armillaria* root disease in southern British Columbia. *For. Ecol. Manag.* 261(2):297–307. ⑤

Dumas, M.T. 2011. Stimulatory effect of ammonium lignosulfonate on germination and growth of *Phlebiopsis gigantea* spores. *For. Pathol.* 41:189–192. ③

Elliott, M.; Shamoun, S.F.; Sumampong, G.; James, D.; Masri, S.; Varga, A. 2011. Further studies on zoospore germination inhibition of three lineages of *Phytophthora ramorum* by chemical fungicides, and identification of a potential bacterial biocontrol agent. 2010. Pacific Division Meeting Abstracts. *Phytopathology* 101(6) Suppl.: S248. ⑤

Elliott, M.; Sumampong, G.; Varga, A.; Shamoun, S.F.; James, D.; Masri, S.; Grünwald, N.J. 2011. Phenotypic differences among three clonal lineages of *Phytophthora ramorum*. *For. Path.* 41:7–14. ⑤

Feau, N.; Vialle, A.; Allaire, M.; Maier, W.; Hamelin, R.C. 2011. DNA barcoding in the rust genus *Chrysomyxa* and its implications for the phylogeny of the genus. *Mycologia* 103:1250–1266. ②

Hunt, R.S.; Roke, G.; Cleary, M.; Carlson, M.; Berger, V. 2011. Dothistroma needle blight on western white pine in British Columbia. *Can. Plant Dis. Surv.* 91:158–167. ⑤

Jinek, A.; Simard, M.; Brière, S.C.; Watson, A.K.; Tweddell, R.J.; Rioux, D. 2011. Foliage susceptibility of six eastern Canadian forest tree species to *Phytophthora ramorum*. *Can. J. Plant Pathol.* 33:26–37. ②

Laflamme, G. 2009. Earliest documented report of Scleroderris canker in North America: damage believed until now to be caused by summer frost. *Phytoprotection* 90: 89–95. ②

Shamoun, S.F. 2011. From laboratory bench to marketplace—the “Chontrol” story: a legacy to government–academia–industry partnership. Abstracts, Annual Meeting, 2010: The Canadian Phytopathological Society. 2011. *Can. J. Plant Pathol.* 33(2): 291–292. ⑤

Shamoun, S.F.; Rioux, D. 2011. Sudden oak death (*Phytophthora ramorum*): research update, risk analysis and mitigation approach for Canada. Abstract. Pages 24–25 in Responding to Invasive Species Research Forum, 18–19 October, 2011, Richmond, B.C. Invasive Plant Council. B.C., Williams Lake, B.C. ⑤

Shamoun, S.F.; Rioux, D. 2011. *Phytophthora ramorum* (sudden oak death)—recent studies in Canada. Abstract. Pages 57–58 in Proceedings of the Forest Pest Management Forum 2010, November 30–December 2, 2010, Gatineau, Que. NRCan, CFS, Ottawa. ⑤

Smerlis, E.; Laflamme, G. 2010. Pathogenicity tests of *Gremmeniella abietina* var. *balsamea* isolated from balsam fir in Canada. *Phytoprotection* 91:19–21. ②

Vialle, A.; Frey, P.; Hambleton, S.; Bernier, L.; Hamelin, R.C. 2011. Poplar rust systematics and refinement of *Melampsora* species delineation. *Fungal Divers.* 50:227–248. ②

Warren, G.R.; Harrison, K.J.; Laflamme, G. 2011. New and updated information on Scleroderris canker in the Atlantic Provinces. *For. Chron.* 87(3):382–390. ① ②

Zamany, A.; Liu, J.-J.; Ekramoddoullah, A.; Sniezko, R. 2011. Antifungal activity of a *Pinus monticola* antimicrobial peptide 1 (Pm-AMP1) and its accumulation in western white pine infected with *Cronartium ribicola*. *Can. J. Microbiol.* 57(8):667–679. ⑤

Forest Ecology and Site Classification

Écologie forestière et classification des sites

Assurer la productivité à long terme des écosystèmes forestiers. 2011. Hazlett, P.; Fleming, R.L. NRCan, SCF, Centre de foresterie des Grands Lacs, Sault Ste. Marie (Ontario). *Frontline : Nouvelles express* 45. 2 p. [English: see *Ensuring long term...*] ③

Boreal caribou habitat and behaviour research. 2011. Thompson, I. NRCan, CFS, Great Lakes Forestry Centre, Sault Ste. Marie, Ont. *Frontline Express Note* 41. 2 p. [Français : voir *Recherche sur l'habitat...*] ③

Canadian Forest Service Science Highlights. What role does soil play in providing forest biomass for bioenergy? [Online only]. 2011. NRCan, CFS, Planning, Operations and Information Branch, Ottawa. 2 p. [Français : voir *Service canadien des forêts...*] ③

Circumboreal vegetation mapping project. 2011. Meades, B.; Baldwin, K. NRCan, CFS, Great Lakes Forestry Centre, Sault Ste. Marie, Ont. *Frontline Express Note* 49. 2 p. [Français : voir *Projet de cartographie...*] ③

Description des forêts de sapin baumier et d'épinette noire de Terre-Neuve à l'aide des séries de données provenant des placettes d'échantillonnage permanentes et des placettes d'échantillonnage temporaires du Newfoundland Forest Service. 2011. Moroni, M.T.; Harris, D.D. Rapport d'information M-X-224F. NRCan, SCF, Centre de foresterie de l'Atlantique,

Fredericton (Nouveau-Brunswick). [English: see *Newfoundland Balsam Fir...*] ①

Ensuring long-term productivity of forest ecosystems. 2011. Hazlett, P.; Fleming, R.L. NRCan, CFS, Great Lakes Forestry Centre, Sault Ste Marie, Ont. *Frontline Express* 45. 2 p. [Français : voir *Assurer la productivité...*] ③

Fine root density distribution and biomass in second- and third-growth Douglas-fir stands on Vancouver Island, British Columbia. 2011. Lalumière, A.; Trofymow, J.A. NRCan, CFS, Pacific Forestry Centre, Victoria, B.C. Inf. Rep. BC-X-428. 18 p. ⑤

La Gestion forestière et la martre d'Amérique. 2011. Thompson, I. NRCan, SCF, Centre de foresterie des Grands Lacs, Sault Ste. Marie (Ontario). *Frontline : Nouvelles express* 44. 2 p. [English: see *Managing forests...*] ③

Managing forests for pine marten. 2011. Thompson, I. NRCan, CFS, Great Lakes Forestry Centre, Sault Ste. Marie, Ont. *Frontline Express Note* 44. 2 p. [Français : voir *La Gestion forestière...*] ③

Newfoundland Balsam Fir and Black Spruce Forests Described by the Newfoundland Forest Service Permanent Sample Plot and Temporary Sample Plot Data Sets. 2011.

Moroni, M.T.; Harris, D.D. Inf. Rep. M-X-224E. NRCan, CFS, Atlantic Forestry Centre, Fredericton, N.B. [Français : voir *Description des forêts de sapin baumier...*] ①

Projet de cartographie de la végétation circumboréale (CVCB). 2011. Meades, B.; Baldwin, K. RNCAN, SCF, Centre de foresteries des Grands Lacs, Sault Ste. Marie (Ontario). Frontline : Nouvelles express 49. 2 p. [English: see *Circumboreal vegetation...*] ③

Recherche sur l'habitat et le comportement du caribou des bois. 2011. Thompson, I. RNCAN, SCF, Centre de foresterie des Grands Lacs, Sault Ste Marie (Ontario). Frontline : Nouvelles express 41. 2 p. [English: see *Boreal caribou habitat...*] ③

Service canadien des forêts. Points saillants sur la science. Quel rôle joue le sol dans la production de biomasse forestière destinée à la production de bioénergie? [En ligne seulement]. 2011. RNCAN, SCF, Direction de la planification, des opérations et de l'information, Ottawa. 2 p. [English: see *Canadian Forest Service...*]

Tendances des grands incendies de forêts au Canada, de 1959 à 2007. Biodiversité canadienne : état et tendances des écosystèmes en 2010. 2011. Krezek-Hanes, C.C.; Ahern, F.; Cantin, A.; Flannigan, M.D. RNCAN, SCF, Centre de foresterie du Nord, Edmonton (Alta.), et Cons. can. minist. ressour., Ottawa (Ont.). Rap. tech. thémat. 6. <http://www.biodivcanada.ca/default.asp?lang=Fr&n=137E1147-1> [English: see *Trends in large fires...*] ③ ④

Trends in large fires in Canada, 1959–2007. Canadian biodiversity: ecosystem status and trends 2010. 2011. Krezek-Hanes, C.C.; Ahern, F.; Cantin, A.; Flannigan, M.D. NRCan, CFS, Northern Forestry Centre, Edmonton, Alta., and Canadian Councils of Resource Ministers, Ottawa, Ont. Technical Thematic Report 6. <http://www.biodivcanada.ca/default.asp?lang=En&n=137E1147-0> [Français : voir *Tendances des grands incendies...*] ③ ④

Journal Articles and Other Contributions / Articles de revues scientifiques et autres collaborations

Andrew, M.E.; Wulder, M.A.; Coops, N.C. 2011. Identification of de facto protected areas in boreal Canada. *Biol. Conserv.* (In Press) ⑤

Arevalo, C.B.M.; Bhatti, J.S.; Chang, S.X.; Sidders, D. 2011. Land use change effects on ecosystem carbon balance: from agricultural to hybrid poplar plantation. *Agric. Ecosyst. Environ.* 141(3–4):342–349. ④

Bell, F.W.; Kershaw, M.; Aubin, I.; Thiffault, N.; Dacosta, J.; Wienczyk, A. 2011. Ecology and traits of plant species that compete with boreal and temperate forest conifers: an overview of available information and its use in forest management in Canada. *For. Chron.* 87:161–174. ③

Cavard, X.; Bergeron, Y.; Chen, H.Y.H.; Paré, D. 2011. Effect of forest canopy composition on soil nutrients and dynamics of the understorey: mixed canopies serve neither vascular nor bryophyte strata. *J. Veg. Sci.* 22:1105–1119. ②

Cavard, X.; Bergeron, Y.; Chen, H.Y.H.; Paré, D.; Laganière, J.; Brassard, B. 2011. Competition and facilitation between tree species change with stand development. *Oikos* 120:1683–1695. ②

De Grandpré, L.; Boucher, D.; Bergeron, Y.; Gagnon, D. 2011. Effects of small canopy gaps on boreal mixedwood understory vegetation dynamics. *Community Ecol.* 12:67–77. ②

Dimitrov, D.D.; Grant, R.F.; Lafleur, P.M.; Humphreys, E.R. 2010. Modeling the effects of hydrology on ecosystem respiration at Mer Bleue bog. *J. Geophys. Res.* 115:G04043:24 p. ④

Dimitrov, D.D.; Grant, R.F.; Lafleur, P.M.; Humphreys, E.R. 2011. Modeling the effects of hydrology on gross primary productivity and net ecosystem productivity at Mer Bleue bog. *J. Geophys. Res.* 116:G04010:17 p. ④

Ferster, C.J.; Trofymow, J.A.; Coops, N.C.; Chen, B.; Black, T.A.; Gougeon, F.A. 2011. Determination of ecosystem carbon-stock distributions in the flux footprint of an eddy-covariance tower in a coastal forest in British Columbia. *Can. J. For. Res.* 41(7):1369–1379. ⑤

Hazlett, P.W.; Curry, J.; Weldon, T.P. 2011. Assessing decadal change in mineral soil cation chemistry at the Turkey Lakes Watershed. *Soil Sci. Soc. Am. J.* 75:287–305. ③

Li, C.; Liu, J.; Laforteza, R.; Chen, J. 2011. Managing forest landscapes under global change scenarios. Pages 3–21 in C. Li, R. Laforteza, and J. Chen, eds. *Landscape ecology in forest management and conservation: challenges and solutions for global change.* Higher Education Press, Beijing and Springer, Berlin/Heidelberg. ④

Liu, S.; Yong, L.; Zhang, Y.; Guo, Z.; Zhang, L.; Li, C.; Wang, J. 2011. Landscape ecology contributions to forestry and forest management in China: progresses and research needs. Pages 22–45 in C. Li, R. Laforteza, and J. Chen, eds. *Landscape ecology in forest management and conservation: challenges and solutions for global change.* Higher Education Press, Beijing and Springer, Berlin/Heidelberg. ④

McMullin, R.T.; Thompson, I.D.; Lacey, B.W.; Newmaster, S.G. 2011. Estimating the biomass of woodland caribou forage lichens. *Can. J. For. Res.* 41:1961–1969. ③

Metsaranta, J.M.; Dymond, C.C.; Kurz, W.A.; Spittlehouse, D.L. 2011. Uncertainty of 21st century growing stocks and GHG balance of forests in British Columbia, Canada resulting from potential climate change impacts on ecosystem processes. *For. Ecol. Manag.* 262(5):827–837. ④

Mitchell, M.J.; Lovett, G.; Bailey, S.; Beall, F.; Burns, D.; Buso, D.; Clair, T.A.; Courchesne, F.; Duchesne, L.; Eimers, C.; Fernandez, I.; Houle, D.; Jeffries, D.S.; Likens, G.E.; Moran, M.D.; Rogers, C.; Schwede, D.; Shanley, J.; Weathers, K.C.; Vet, R. 2011. Comparisons of watershed sulfur budgets in southeast Canada and northeast US: new approaches and implications. *Biogeochemistry* 103:181–207. ③

Norris, C.E.; Preston, C.M.; Hogg, K.E.; Titus, B.D. 2011. The influence of condensed tannin structure on rate of microbial mineralization and reactivity to chemical assays. *J. Chem. Ecol.* 37(3):311–319. ⑤

Norris, C.E.; Quideau, S.A.; Bhatti, J.S.; Wasylishen, R.E. 2011. Soil carbon stabilization in jack pine stands along the Boreal Forest Transect Case Study. *Global Change Biol.* 17(1):480–494. ④

Pinno, B.; Bélanger, N. 2011. Estimating trembling aspen productivity in the boreal transition ecoregion of Saskatchewan using site and soil variables. *Can. J. Soil Sci.* 91(4):661–669. ④

Pinno, B.D.; Wilson, S.D. 2011. Ecosystem carbon changes with woody encroachment of grassland in the northern Great Plains. *Ecoscience* 18(2):157–163. ④

Rochon, C.; Paré, D.; Pélardy, N.; Khasa, D.P.; Fortin, J.A. 2011. Ecology and productivity of *Cantharellus cibarius* var. *roseocanus* in two eastern Canadian jack pine stands. *Botany* 89:663–675. ②

Smith, A.C.; Bhatti, J.S.; Hua, C.; Harmon, M.E.; Arp, P.A. 2011. Modelling above- and below-ground mass loss and N dynamics in wooden dowels (LIDET) placed across North and Central America biomes at the decadal time scale. *Ecol. Model.* 222(14):2276–2290. ④

Thompson, I.D.; Okabe, K.; Tylianakis, J.M.; Kumar, P.; Brockerhoff, E.G.; Schellhorn, N.A.; Parrotta, J.A.; Nasi, R. 2011. Forest biodiversity and the delivery of ecosystem goods and services: translating science into policy. *BioScience* 61:972–981. ③

Venier, L.A.; Holmes, S.B. 2010. A review of the interaction between forest birds and eastern spruce budworm. *Environ. Rev.* 19:191–207. ③

Venner, K.H.; Preston, C.M.; Prescott, C.E. 2011. Characteristics of wood wastes in British Columbia and their potential suitability as soil amendments and seedling growth media. *Agric. Inst. Can.* 91(1):95–106. ⑤

Webster, K.L.; Creed, I.F.; Beall, F.D.; Bourbonnière, R.A. 2011. A topographic template for estimating soil carbon pools in forested catchments. *Geoderma* 160:457–467. ③

White, J.C.; Wulder, M.A.; Gómez, C.; Stenhouse, G.B. 2011. A history of habitat dynamics: characterizing 35 years of stand replacing disturbance. *Can. J. Remote Sens.* 37(2):234–251. ⑤

Forest Fires

Incendies de forêt

Actes du colloque « Les feux de forêt : science et défis d'aménagement », 23-24 mars 2011, Saint-Félicien (Québec). 2011. RNCAN, SCF, Centre de foresterie des Laurentides, Québec (Québec). 150 p. ②

Canadian Forest Service Science Highlights. How can authorities help people mitigate the effects of wildfires? [Online only]. 2011. NRCAN, CFS, Planning, Operations and Information Branch, Ottawa. 2 p. [Français : voir *Service (...) Comment les autorités peuvent-elles...*]

Canadian Forest Service Science Highlights. How can modelling fire risk help fight forest fires? [Online only]. 2011. NRCAN, CFS, Planning, Operations and Information Branch, Ottawa. 2 p. [Français : voir *Service (...) Comment la modélisation des risques d'incendie...*]

Canadian Forest Service Science Highlights. Will climate change overwhelm fire suppression capacity? [Online only]. 2011. NRCAN, CFS, Planning, Operations and Information Branch, Ottawa. 2 p. [Français : voir *Service (...) Les changements climatiques dépasseront-ils...*]

Canadian Forest Service Spotlight on Science. The Probabilistic Fire Analysis System: Hot new tool in the wildfire management arsenal. [Online only]. 2011. NRCAN, CFS, HQ, Ottawa. 4 p. [Français : voir *Service (...) Le Système d'analyse probabiliste...*]

Global early warning system for wildland fire. 2011. de Groot, B. NRCAN, CFS, Great Lakes Forestry Centre, Sault Ste. Marie, Ont. *Frontline Express Note* 46. 2 p. [Français : voir *Système mondial d'alerte...*] ③

Service canadien des forêts. Points saillants sur la science. Comment la modélisation des risques d'incendie peut-elle contribuer à combattre les feux de forêt? [En ligne seulement]. 2011. RNCAN, SCF, Direction de la planification, des opérations et de l'information, Ottawa. 2 p. [English: see *Canadian...How can modelling fire risk...*]

Service canadien des forêts. Points saillants sur la science. Comment les autorités peuvent-elles aider les gens à atténuer les effets des feux de végétation? [En ligne seulement]. 2011. RNCAN, SCF, Direction de la planification,

des opérations et de l'information, Ottawa. 2 p. [English: see *Canadian...How can authorities...*]

Service canadien des forêts. Points saillants sur la science. Les changements climatiques dépasseront-ils la capacité d'extinction des feux de forêt? [En ligne seulement]. 2011. RNCAN, SCF, Direction de la planification, des opérations et de l'information, Ottawa. 2 p. [English: see *Canadian...Will climate change overwhelm...*]

Service canadien des forêts — La science en vedette. Le Système d'analyse probabiliste des feux : Un nouvel outil de lutte contre les feux de forêt. [En ligne seulement]. 2011. RNCAN, SCF, Administration centrale, Ottawa. 4 p. [English: see *Canadian...The Probabilistic Fire Analysis System...*]

Suivi des feux de forêt et estimations des émissions de carbone à l'aide de satellites. 2011. Lynham, T. RNCAN, SCF, Centre de foresteries des Grands Lacs, Sault Ste. Marie (Ontario). *Frontline : Nouvelles express* 48. 2 p. [English: see *The use of...*] ③

Système mondial d'alerte rapide pour les feux de végétation. 2011. de Groot, B. RNCAN, SCF, Centre de foresteries des Grands Lacs, Sault Ste. Marie (Ontario). *Frontline : Nouvelles express* 46. 2 p. [English: see *Global early warning...*] ③

The use of satellites to track forest fires and estimate carbon emissions. 2011. Lynham, T. RNCAN, CFS, Great Lakes Forestry Centre, Sault Ste. Marie, Ont. *Frontline Express Note* 48. 2 p. [Français : voir *Suivi des feux de forêt*] ③

Journal Articles and Other Contributions / Articles de revues scientifiques et autres collaborations

Angers, V.A.; Gauthier, S.; Drapeau, P.; Jayen, K.; Bergeron, Y. 2011. Tree mortality and snag dynamics in North American boreal tree species after a wildfire: a long-term study. *Int. J. Wildland Fire* 20:751-763. ②

Azeria, E.; Ibarzabal, J.; Boucher, J.; Hébert, C. 2011. Differential contribution of post-fire habitat legacies towards beta-diversity components of saproxylic beetles. Abstract. Page 33 in International Symposium on dynamics and ecological services of deadwood in forest ecosystems; 5-19 May 2011, Rouyn-Noranda, Quebec. ②

Bélanger, S.; Baucé, É.; Berthiaume, R.; Long, B.; Hébert, C. 2011. Développement d'un modèle de prédiction des dommages des larves de longicornes dans le bois récemment brûlé en forêt boréale. Pages 91-94 dans Actes du colloque « Les feux de forêt : science et défis d'aménagement ». RNCAN, SCF, 23-24 mars 2011, Saint-Félicien (Québec). Centre de foresterie des Laurentides, Québec (Québec). ②

Bélanger, S.; Baucé, É.; Hébert, C.; Long, B.; Berthiaume, R. 2011. Modelling woodborer damage in recently burned logs, as a function of temperature. Abstract. Page 34 in International

Symposium on dynamics and ecological services of deadwood in forest ecosystems; 5-19 May 2011, Rouyn-Noranda, Quebec. ②

Benscoter, B.W.; Thompson, D.K.; Waddington, J.M.; Flannigan, M.D.; Wotton, B.M.; de Groot, W.J.; Turetsky, M.R. 2011. Interactive effects of vegetation, soil moisture and bulk density on depth of burning of thick organic soils. *Int. J. Wildland Fire*. 20:418- 429. ③ ④

Berthiaume, R.; Hébert, C.; Boucher, J.; Baucé, E.; Ibarzabal, J. 2011. Peut-on prédire les dommages des perceurs du bois chez les arbres tués par le feu? Pages 84-88 dans Actes du colloque « Les feux de forêt : science et défis d'aménagement ». RNCAN, SCF, 23-24 mars 2011, Saint-Félicien (Québec). Centre de foresterie des Laurentides, Québec (Québec). ②

Beverly, J.L.; Bothwell, P. 2011. Wildfire evacuations in Canada 1980-2007. *Nat. Hazards* 59(1):571-596. ④

Boucher, J.; Ibarzabal, J.; Azeria, E.; Hébert, C. 2011. The origin of dead wood does matter for saproxylic beetles. Abstract. Page 35 in International Symposium on dynamics and ecological services of deadwood in forest ecosystems; 5-19 May 2011, Rouyn-Noranda, Quebec. ②

Boulanger, Y.; Sirois, L.; Hébert, C. 2011. Colonisation des brûlis par les espèces saproxyliques en forêt boréale. Pages 38-43 dans Actes du colloque « Les feux de forêt : science et défis d'aménagement ». RNCAN, SCF, 23-24 mars 2011, Saint-Félicien (Québec). Centre de foresterie des Laurentides, Québec (Québec). ②

Boulanger, Y.; Sirois, L.; Hébert, C. 2011. Fire severity as a determinant factor of the decomposition rate of fire-killed black spruce in the northern boreal forest. *Can. J. For. Res.* 41:370-379. ②

Domaine, É.; Bélanger, L.; Hébert, C. 2011. Impact des brûlages dirigés sur la régénération du pin blanc et la diversité entomologique. Pages 141-148 dans Actes du colloque « Les feux de forêt : science et défis d'aménagement ». RNCAN, SCF, 23-24 mars 2011, Saint-Félicien (Québec). Centre de foresterie des Laurentides, Québec (Québec). ②

French, N.H.; de Groot, W.J.; Jenkins, L.K.; Rogers, B.M.; Alvarado, E.; Amiro, B.; de Jong, B.; Goetz, S.; Hoy, E.; Hyer, E.; Keane, R.; Law, B.E.; McKenzie, D.; McNulty, S.G.; Ottmar, R.; Pérez-Salicrup, D.R.; Randerson, J.; Robertson, K.M.; Turetsky, M. 2011. Model comparisons for estimating carbon emissions from North American wildland fire. *J. Geophys. Res. Biogeosci.* 116; doi: 10.1029/2010JG001469. ③

Gauthier, S.; Noël, J.; Greene, D.F.; Bergeron, Y.; Boucher, D. 2011. Régénération naturelle et coupe de récupération. Pages 105-110 dans Actes du colloque « Les feux de forêt : science et défis d'aménagement ». RNCAN, SCF, 23-24 mars 2011, Saint-Félicien (Québec). Centre de foresterie des Laurentides, Québec (Québec). ②

Hébert, C. 2011. 50 ans et toujours dans le feu de l'action! Pages 17-24 *dans* Actes du colloque « Les feux de forêt : science et défis d'aménagement ». RNCAN, SCF, 23-24 mars 2011, Saint-Félicien (Québec). Centre de foresterie des Laurentides, Québec (Québec). ②

Hébert, C.; Azeria, E.; Pelletier, G.; Saint-Germain, M.; Drapeau, P. 2011. Insect succession in postfire black spruce forests: a 10-year study. Abstract. Page 47 *in* International Symposium on dynamics and ecological services of deadwood in forest ecosystems; 15–19 May 2011, Rouyn-Noranda, Québec. ②

Harris, L.M.; McGee, T.K.; McFarlane, B.L. 2011. Implementation of wildfire risk management by local governments in Alberta, Canada. *J. Environ. Plann. Manag.* 54(4):457–475. ④

Hirsch, K.G.; Thomas, P.A.; McAlpine, R.S. 2010. Wildland fire and its management—a look towards the future. Pages 183–211 *in* Fire in the Forest. Cambridge University Press, New York, N.Y. ④

Ibarzabal, J.; Azeria, E.T.; Hébert, C.; Boucher, J.; Imbeau, L.; Savard, J.-P. 2011. Impact de la récupération sur la diversité des oiseaux en forêt d'épinettes noires. Pages 63-67 *dans* Actes du colloque « Les feux de forêt : science et défis d'aménagement ». RNCAN, SCF, 23-24 mars 2011, Saint-Félicien (Québec). Centre de foresterie des Laurentides, Québec (Québec). ②

Keane, R.E.; Cary, G.J.; Flannigan, M.D. 2011. Challenges and needs in fire management: a landscape simulation modeling perspective. Pages 75–98 *in* C. Li, R. LaFortezza, and J. Chen, eds. Landscape ecology in forest management and conservation: challenges and solutions for global change. Higher Education Press, Beijing and Springer, Berlin/Heidelberg. ③ ④

Lavou, D.; Stocks, B.J. 2011. Emissions of air pollutants by Canadian wildfires from 2000 to 2004. *Int. J. Wildland Fire.* 20:17–34. ③

Li, C. 2010. Forest fire, friend or enemy? (in Chinese). *J. Nature Sci. Tech.* 182:42–46. ④

McFarlane, B.L.; McGee, T.K.; Faulkner, H. 2011. Complexity of homeowner wildfire risk mitigation: an integration of hazard theories. *Int. J. Wildland Fire* 20(8):921–931. ④

Metsaranta, J.M. 2010. Potentially limited detectability of short-term changes in boreal fire regimes: a simulation study. *Int. J. Wildland Fire* 19:1140–1146. ④

Nappi, A.; Déry, S.; Bujold, F.; Chabot, M.; Dumont, M.-C.; Duval, J.; Drapeau, P.; Gauthier, S.; Brais, S.; Peltier, J.; Bergeron, I. 2011.

La récolte dans les forêts brûlées — Enjeux et orientations pour un aménagement écosystémique. Ministère des Ressources naturelles et de la Faune du Québec, Direction de l'environnement et de la protection des forêts. ②

Ohlson, M.; Brown, K.J.; Birks, H.J.B.; Grytnes, J.-A.; Hornberg, G.; Niklasson, M.; Seppa, H.; Bradshaw, R.H.W. 2011. Invasion of Norway spruce diversifies the fire regime in boreal European forests. *J. Ecol.* 99(2):395–403. ④

Parisien, M.-A.; Parks, S.A.; Krawchuk, M.A.; Flannigan, M.D.; Bowman, L.M.; Moritz, M.A. 2011. Scale-dependent controls on the area burned in the boreal forest of Canada, 1980–2005. *Ecol. Appl.* 21(3):789–805; doi:10.1890/10-0326.1. ③ ④

Parisien, M.-A.; Parks, S.A.; Miller, C.; Krawchuk, M.A.; Heathcott, M.; Moritz, M.A. 2011. Contributions of ignitions, fuels, and weather to the spatial patterns of burn probability of a boreal landscape. *Ecosystems* 14(7):1141–1155. ④

Parks, S.A.; Parisien, M.-A.; Miller, C. 2011. Multi-scale evaluation of the environmental controls on burn probability in a southern Sierra Nevada landscape. *Int. J. Wildland Fire* 20(7):815–828. ④

Podur, J.; Wotton, B.M. 2011. Defining fire spread event days for fire-growth modelling. *Int. J. Wildland Fire.* 20:497–507. ③

Savage, D.W.; Martell, D.L.; Wotton, B.M. 2011. Forest management strategies for dealing with fire-related uncertainty when managing two forest seral stages. *Can. J. For. Res.* 41:309–320. ③

Shabbar, A.; Skinner, W.; Flannigan, M.D. 2011. Prediction of seasonal forest fire severity in Canada from large-scale climate patterns. *J. Appl. Meteorol. Climatol.* 50(4):785–799. ③ ④

Tian, X-R.; Shu, L-F.; Zhao, F-J.; Wang, M-Y; McRae, D.J. 2011. Future impacts of climate change on forest fire danger in northeastern China. *J. For. Res.* 22:437–446. ③

Tian, X-R.; McRae, D.J.; Jin, J.; Shu, L.; Zhao, F-J.; Wang, M. 2011. Wildfires and the Canadian Forest Fire Weather Index System for the Daxing'anling region of China. *Int. J. Wildland Fire* 20:963–973. ③

Wallenius, T.H.; Pennanen, J.; Burton, P.J. 2011. Long-term decreasing trend in forest fires in northwestern Canada. *Ecosphere* 2(5):art53. ⑤

Forest Insects

Asian longhorned beetle. 2011. Turgeon, J.J. NRCAN, CFS, Great Lakes Forestry Centre, Sault Ste. Marie, Ont. Frontline Express Note 39. 2 p. [Français : voir *Le Longicorne étoilé...*] ③

Insectes forestiers

Canadian Forest Service Science Highlights. Can science influence trade policy to protect Canada's forests? [Online only]. 2011. NRCAN, CFS, Planning, Operations and Information Branch, Ottawa. 2 p. [Français : voir *Service (...) La science peut-elle influencer...*]

Canadian Forest Service Science Highlights. How are we improving the detection of invasive forest insects? [Online only]. 2011. NRCan, CFS, Planning, Operations and Information Branch, Ottawa. 2 p. [Français : voir *Service (...) Comment améliorons-nous la détection...*]

Canadian Forest Service Science Highlights. How is the emerald ash borer jeopardizing the role of ash-dominated forests? [Online only]. 2011. NRCan, CFS, Planning, Operations and Information Branch, Ottawa. 2 p. [Français : voir *Service (...) Comment l'agrile du frêne...*]

Dépistage de l'agrile du frêne en milieu urbain par échantillonnage de branches. 2011. Ryall, K.L.; Fidgen, J.G.; Turgeon, J.J. RNCAN, SCF, Centre de foresteries des Grands Lacs, Sault Ste. Marie (Ontario). Frontline : Note technique 111. 3 p. [English: see *Detection of emerald ash borer*] ③

Detection of emerald ash borer in urban environments using branch sampling. 2011. Ryall, K.L.; Fidgen, J.G.; Turgeon, J.J. NRCAN, CFS, Great Lakes Forestry Centre, Sault Ste. Marie, Ont. Frontline: Technical Note 111. 3 p. [Français : voir *Dépistage de l'agrile...*] ③

Development and survival of the spruce beetle, *Dendroctonus rufipennis*, in stumps and windthrow. 2011. Safranyik, L. NRCAN, CFS, Pacific Forestry Centre, Victoria, B.C. Inf. Rep. BC-X-430. 21 p. ⑤

Forest health and mortality of advance regeneration following canopy tree mortality caused by the mountain pine beetle. 2011. Lewis, K.J. NRCAN, CFS, Pacific Forestry Centre, Victoria, B.C. Mountain Pine Beetle Work. Pap. 2010-03. 26 p. ⑤

Le Longicorne étoilé. 2011. Turgeon, J.J. RNCAN, SCF, Centre de foresterie des Grands Lacs, Sault Ste Marie (Ontario). Frontline : Nouvelles express 39. 2 p. [English: see *Asian longhorned beetle.*] ③

Mountain pine beetle: a synthesis of the ecological consequences of large-scale disturbances on sustainable forest management, with emphasis on biodiversity. 2011. Bunnell, F.L.; Kremsater, L.L.; Houde, I. NRCAN, CFS, Pacific Forestry Centre, Victoria, B.C. Inf. Rep. BC-X-426. 99 p. ⑤

Service canadien des forêts. Points saillants sur la science. Comment améliorons-nous la détection des insectes forestiers envahissants? [En ligne seulement]. 2011. RNCAN, SCF, Direction de la planification, des opérations et de l'information, Ottawa. 2 p. [English: see *Canadian...How are we improving the detection...*]

Service canadien des forêts. Points saillants sur la science. Comment l'agrile du frêne compromet-il le rôle des forêts dominées par le frêne? [En ligne seulement]. 2011. RNCAN, SCF, Direction de la planification, des opérations et de l'information, Ottawa. 2 p. [English: see *Canadian...How is the emerald ash borer...*]

Service canadien des forêts. Points saillants sur la science. La science peut-elle influencer sur les politiques commerciales afin de protéger les forêts canadiennes? [En ligne seulement]. 2011. RNCAN, SCF, Direction de la planification, des opérations et de l'information, Ottawa. 2 p. [English: see *Canadian...Can science influence...*]

Journal Articles and Other Contributions / Articles de revues scientifiques et autres collaborations

Ampasala, D.R.; Zheng, S.; Zhang, D.; Ladd, T.; Doucet, D.; Krell, P.; Retnakaran, A.; Feng, Q. 2011. An epidermis-specific chitin synthase cDNA in *Choristoneura fumiferana*: cloning, characterization, developmental and hormonal-regulated expression. *Arch. Insect Biochem. Physiol.* 76:83–95. ③

Arif, B.; Escasa, S.; Pavlik, L. 2011. Biology and genomics of viruses within the genus *Gammabaculovirus*. *Viruses* 3:2214–2222. ③

Bergeron, J.A.; Spence, J.R.; Volney, W.J.A. 2011. Landscape patterns of species-level association between ground-beetles and overstory trees in boreal forests of western Canada (Coleoptera, Carabidae). *ZooKeys* 147:577–600. ④

Bergeron, M.-J.; Leal, I.; Foord, B.; Ross, G.; Davis, C.; Slippers, B.; de Groot, P.; Hamelin, R.C. 2011. Putative origin of clonal lineages of *Amylostereum areolatum*, the fungal symbiont associated with *Sirex noctilio*, retrieved from *Pinus sylvestris*, in eastern Canada. *Fungal Biol.* 115:750–758. ③

Brunke, A.; Newton, A.; Klimaszewski, J.; Majka, C.; Marshall, S. 2011. Staphylinidae of eastern Canada and adjacent United States. Key to subfamilies; Staphylininae: Tribes and subtribes, and species of Staphylinina. *Can. J. Arthropod Identification* 12; doi:10.3752/cjai.2011.12. ②

Cadorette-Breton, Y.; Hébert, C.; Berthiaume, R.; Ibarzabal, J.; Bauge, É. 2011. Spatial segregation of three longhorned beetles in burned trees of the boreal forest. Poster abstract. Page 75 in International Symposium on dynamics and ecological services of deadwood in forest ecosystems; 15–19 May 2011, Rouyn-Noranda, Quebec. ②

Crosthwaite, J.C.; Sobek, S.; Lyons, D.B.; Bernard, M.A.; Sinclair, B.J. 2011. The overwintering physiology of the emerald ash borer, *Agrilus planipennis* Fairmaire (Coleoptera: Buprestidae). *J. Insect Physiol.* 57:166–173. ③

de Jong, J.; Theilmann, D.A.; Arif, B.M.; Krell, P.J. 2011. Immediate-early protein ME53 forms foci and colocalizes with GP64 and the major capsid protein VP39 at the cell membranes of *Autographa californica* multiple nucleopolyhedrovirus-infected cells. *J. Virol.* 85:9696–9707. ③

Dellinger, T.A.; Fidgen, J.G.; Salom, S.M. 2010. Sampling methods for forest and shade tree insects of North America, Volume 2. USDA For. Serv., Forest Health Technology Enterprise Team, Morgantown, W.Va. FHTET-2010-03. xii+347 p. ③

- deWaard, J.R.; Hebert, P.D.N.; Humble, L.M. 2011. A comprehensive DNA barcode library for the looper moths (Lepidoptera: Geometridae) of British Columbia, Canada. *PLoS ONE* 6(3):e18290. ⑤
- Duan, L.; Otvos, I.S.; Xu, L.B.; Conder, N.; Wang, Y. 2011. Comparison of the activities of three LdMNPV isolates in the laboratory against the Chinese strain of Asian gypsy moth. *Open Entomol. J.* 5:24–30. ⑤
- Fettig, C.J.; Fidge, J.G.; McClellan, Q.C.; Salom, S.M. 2010. Sampling methods for forest and shade tree insects of North America, Volume 1, 2nd ed. USDA For. Serv., Forest Health Technology Enterprise Team, Morgantown, W.Va. FHTET-2001-01. vii+273 p. ③
- Flaherty, L.; Sweeney, J.D.; Pureswaran, D.; Quiring, D.T. 2011. Influence of host tree condition on the performance of *Tetropium fuscum* (Coleoptera: Cerambycidae). *Environ. Entomol.* 40:1200–1209. ②
- Frank, J.H.; Klimaszewski, J.; Chandler, D.S. 2011. Additions to the Staphylinidae (Coleoptera) of the Cayman Islands. *Insecta Mundi* 0185:1–10. ②
- Grant, G.G.; Poland, T.M.; Ciaramitaro, T.; Lyons, D.B.; Jones, G.C. 2011. Comparison of male and female emerald ash borer (Coleoptera: Buprestidae) responses to phoebe oil and (Z)-3-hexenol lures in light green prism traps. *J. Econ. Entomol.* 104:73–179; doi: 10.1603/EC10197. ③
- Hamberger, B.; Ohnishi, T.; Hamberger, B.; Séguin, A.; Bohlmann, J. 2011. Evolution of diterpene metabolism: Sitka spruce CYP720B4 catalyzes multiple oxidations in resin acid biosynthesis of conifer defense against insects. *Plant Physiol.* 157:1677–1695. ②
- Hammond, H.E.J.; Williams, D.J. 2011. A revision of the Genus *Callimoxys* Kraatz (Coleoptera: Cerambycidae) in America north of Mexico and review of world species. *Coleopt. Bull.* 65(3):246–289. ④
- Hodgson, J.J.; Arif, B.M.; Krell, P.J. 2011. Interaction of *Autographa californica* multiple nucleopolyhedrovirus cathepsin protease progenitor (proV-CATH) with insect baculovirus chitinase as a mechanism for proV-CATH cellular retention. *J. Virol.* 85:3928–3929. ③
- Kaupp, W.J.; Barber, K.N.; Fick, W.E.; Ebling, P.M.; Ladd, T.R.; Holmes, S.B. 2011. Host-range testing of a mixture of two nucleopolyhedroviruses of *Choristoneura fumiferana* (Lepidoptera: Tortricidae). *Can. Entomol.* 143:165–177. ③
- Koch, F.H.; Yemshanov, D.; Colunga-Garcia, M.; Magarey, R.D.; Smith, W.D. 2011. Potential establishment of alien-invasive forest insect species in the United States: where and how many? *Biol. Invasions* 13:969–985. ③
- Kyei-Poku, G.; Gauthier, D.; Schwarz, R.; van Frankenhuyzen, K. 2011. Morphology, molecular characteristics and prevalence of a *Cystosporogenes* species (Microsporidia) isolated from *Agrilus anxius* (Coleoptera: Buprestidae). *J. Invertebr. Pathol.* 107:1–10. ③
- Lucarotti, C.J.; Whittome-Waygood, B.H.; Levin, D.B. 2011. Histology of the larval *Neodiprion abietis* (Hymenoptera: Diprionidae) digestive tract. *Psyche* 2011: Article ID 910286; doi:10.1155/2011/910286 ①
- MacQuarrie, C.J.K.; Cooke, B.J. 2011. Density-dependent population dynamics of mountain pine beetle in thinned and unthinned stands. *Can. J. For. Res.* 41(5):1031–1046. ③ ④
- Magarey, R.D.; Borchert, D.M.; Engle, J.S.; Colunga-Garcia, M.; Koch, F.H.; Yemshanov, D. 2011. Risk maps for targeting exotic plant pest detection programs in the United States. *OEPP/EPPO Bulletin* 41:46–56; doi: 10.1111/j.1365-2338.2011.02437.x. ③
- MaGee, D.I.; Silk, P.J.; Wu, J.; Mayo, P.D.; Ryall, K. 2011. Synthesis of chiral alkenyl epoxides: The sex pheromone of the elm spanworm *Ennomus subsignaria* (Hübner) (Lepidoptera: Geometridae). *Tetrahedron* 67:5329–5338; doi:10.1016/j.tet.2011.05.015. ③
- Majka, C.G.; Klimaszewski, J. 2011. Maritime Provinces Staphylinidae (Coleoptera): addenda and corrigenda. *ZooKeys* 126:77–80. ②
- Majka, C.G.; Langor, D. 2011. The bean weevils (Coleoptera: Chrysomelidae: Bruchinae) of Atlantic Canada. *J. Acadian Entomol. Soc.* 7:75–82. ④
- Majka, C.G.; Langor, D.W. 2011. The Oedemeridae (Coleoptera) of Atlantic Canada. *J. Acadian Entomol. Soc.* 7:1–6. ④
- Mlonyeni, X.O.; Wingfield, B.D.; Wingfield, M.J.; Ahumada, R.; Klasmer, P.; Leal, I.; de Groot, P.; Slippers, B. 2011. Extreme homozygosity in Southern Hemisphere populations of *Deladenus siricidicola*, a biological control agent of *Sirex noctilio*. *Biol. Control* 59:348–353. ③
- Pinzon, J.; Spence, J.R.; Langor, D.W. 2011. Spider assemblages in the overstory, understory, and ground layers of managed stands in the western boreal mixedwood forest of Canada. *Environ. Entomol.* 40(4):797–808. ④
- Rhainds, M.; MacKinnon, W.E.; Porter, K.B.; Sweeney, J.D.; Silk, P.J. 2011. Evidence for limited spatial spread in an exotic longhorn beetle, *Tetropium fuscum* (Coleoptera: Cerambycidae). *J. Econ. Entomol.* 104(6):1928–1933. ①
- Rocheffort, S.; Berthiaume, R.; Hébert, C.; Charest, M.; Bauce, É. 2011. Effect of temperature and host tree on cold hardiness of hemlock looper eggs along a latitudinal gradient. *J. Insect Physiol.* 57:751–759. ②
- Ryall, K.L.; Fidge, J.G.; Turgeon, J.J. 2011. Detectability of the emerald ash borer (Coleoptera: Buprestidae) in asymptomatic

urban trees by using branch samples. *Environ. Entomol.* 40:679–688. ③

Ryan, K.; Moncalvo, J.-M.; de Groot, P.; Smith, S.M. 2011. Interactions between the fungal symbiont of *Sirex noctilio* (Hymenoptera: Siricidae) and two bark beetle-vectored fungi. *Can. Entomol.* 143:334–235. ③

Roháček, J.; Barber, K.N. 2011. Quametopia, a new genus of Nearctic Anthomyzidae (Diptera), with description of two new species, immature stages and life history. *Eur. J. Entomol.* 108:287–326. ③

Silk, P.J.; Ryall, K.; Mayo, P.; Lemay, M.A.; Grant, G.; Crook, D.; Cosse, A.; Fraser, I.; Sweeney, J.D.; Lyons, D.B.; Pitt, D.; Scarr, T.; Magee, D. 2011. Evidence for a volatile pheromone in *Agrilus planipennis* Fairmaire (Coleoptera: Buprestidae) that increases attraction to a host foliar volatile. *Environ. Entomol.* 40:904–916. ③

Silk, P.J.; Sweeney, J.D.; Wu, J.; Sopow, S.; Mayo, P.D.; MaGee, D. 2011. Contact sex pheromones identified for two species of longhorned beetles (Coleoptera: Cerambycidae) *Tetropium fuscum* and *T. cinnamopterum* in the subfamily Spondylidinae. *Environ. Entomol.* 40(3):714–726. ①

Smith, G.D.; Carroll, A.L.; Lindgren, B.S. 2011. Facilitation in bark beetles: endemic mountain pine beetle gets a helping hand. *Agric. For. Entomol.* 13(1):37–43. ⑤

Sobek-Swant, S.; Crosthwaite, J.C.; Lyons, D.B.; Sinclair, B.J. 2012. Could phenotypic plasticity limit an invasive species? Incomplete reversibility of mid-winter deacclimation in emerald ash borer. *Biol. Invasions* 14:115–125; doi: 10.1007/s10530-011-9988-8. ③

Thumbi, D.K.; Eveleigh, R.J.M.; Lucarotti, C.J.; Lapointe, R.; Graham, R.I.; Pavlik, L.; Lauzon, H.A.M.; Arif, B.M. 2011. Complete sequence, analysis and organization of the *Orgyia leucostigma* nucleopolyhedrovirus genome. *Viruses* 3(11):2301–2327; doi: 10.3390/v3112301. ① ③

van Frankenhuyzen, K.; Ryall, K.; Liu, Y.; Meating, J.; Bolan, P.; Scarr, T. 2011. Prevalence of *Nosema* sp. (Microsporidia: Nosematidae) during an outbreak of the jack pine budworm in Ontario. *J. Invertebr. Pathol.* 108:201–208. ③

Williams, D.J.; Langor, D.W. 2011. Description of mature larvae of *Pissodes yunnanensis* Langor and Zhang and *Pissodes punctatus* Langor and Zhang (Coleoptera: Curculionidae) from China. *Coleopt. Bull.* 65(2):157–166. ④

Williams, D.J.; Langor, D.W. 2011. Distribution, species composition, and incidence of egg parasitoids of the forest tent caterpillar (Lepidoptera: Lasiocampidae), during a widespread outbreak in the Canadian prairies. *Can. Entomol.* 143(3):272–278. ④

Genetics, Tree Improvement, and Biodiversity

Génétique, amélioration des arbres et biodiversité

Canadian Forest Service Science Highlights. Can forest management sustain biodiversity by mimicking the natural forest? [Online only]. 2011. NRCan, CFS, Planning, Operations and Information Branch, Ottawa. 2 p. [Français : voir *Service (...) L'aménagement forestier peut-il...*]

Canadian Forest Service Science Highlights. How does the structural complexity of the eastern boreal forest affect biodiversity? [Online only]. 2011. NRCan, CFS, Planning, Operations and Information Branch, Ottawa. 2 p. [Français : voir *Service (...) Comment la complexité structurelle...*]

Ecogenomics: from laboratory to landscape. 2011. Isabel, N. NRCan, CFS, Laurentian Forestry Centre, Québec, Que. Branching out from the Canadian Forest Service, Laurentian Forestry Centre. No. 68. 2 p. [Français : voir *L'Écogénomique...*] ②

L'Écogénomique : du laboratoire au paysage. 2011. Isabel, N. NRCan, SCF, Centre de foresterie des Laurentides, Québec (Québec). L'éclaircie du Service canadien des forêts, Centre de foresterie des Laurentides. N° 68. 2 p. [English: see *Ecogenomics...*] ②

La Recherche sur la culture de tissus au SCF: historique, situation actuelle et avantages potentiels. 2011. Klimaszewska, K.; Park, Y.S.; Bonga, J.M. RNCAN, SCF, Centre de foresterie des Laurentides, Québec (Québec). 28 p. [English: see *Tissue culture research...*] ②

Service canadien des forêts. Points saillants sur la science. Comment la complexité structurelle de la forêt boréale de l'Est influence-t-elle la biodiversité? [En ligne seulement]. 2011. RNCAN, SCF, Direction de la planification, des opérations et de l'information, Ottawa. 2 p. [English: see *Canadian...How does the structural complexity...*]

Service canadien des forêts. Points saillants sur la science. L'aménagement forestier peut-il contribuer à maintenir la biodiversité en imitant la forêt naturelle? [En ligne seulement]. 2011. RNCAN, SCF, Direction de la planification, des opérations et de l'information, Ottawa. 2 p. [English: see *Canadian...Can forest management...*]

Tissue culture research at the CFS: its history, current status and potential benefits. 2011. Klimaszewska, K.; Park, Y.S.; Bonga, J.M. NRCan, CFS, Laurentian Forestry Centre, Québec, Que. 28 p. [Français : voir *La Recherche sur la culture...*] ②

Journal Articles and Other Contributions / Articles de revues scientifiques et autres collaborations

Atangana, A.R.; van der Vlis, E.; Khasa, D.P.; van Houten, D.; Beaulieu, J.; Hendrickx, H. 2011. Tree-to-tree variation in stearic and oleic acid content in seed fat from *Allanblackia floribunda* from wild stands: potential for tree breeding. *Food Chem.* 126:1579–1585. ②

Azeria, E.T.; Bouchard, M.; Pother, D.; Fortin, D.; Hébert, C. 2011. Using biodiversity deconstruction to disentangle assembly and diversity dynamics of understorey plants along post-fire succession in boreal forest. *Global Ecol. Biogeogr.* 20:119–133. ②

Azeria, E.T.; Ibarzabal, J.; Boucher, J.; Hébert, C. 2011. Towards a better understanding of beta diversity: deconstructing composition patterns of saproxylic beetles breeding in recently burnt boreal forests. Chapter 5, pages 75–94 in *Research in Biodiversity – Models and Applications*. InTech Open Access Publisher, Rijeka, Croatia. ②

Beaulieu, J.; Doerksen, T.; Boyle, B.; Clément, S.; Deslauriers, M.; Beauseigle, S.; Blais, S.; Poulin, P.-L.; Lenz, P.; Caron, S.; Rigault, P.; Bicho, P.; Bousquet, J.; MacKay, J. 2011. Association genetics of wood physical traits in the conifer white spruce and relationships with gene expression. *Genetics* 188:197–214. ②

Carles, S.; Lamhamedi, M.S.; Beaulieu, J.; Stowe, D.C.; Margolis, H.A. 2011. Differences in growth and mineral nutrition of seedlings produced from ten white spruce seed orchards. *New For.* 42:195–214. ②

Cusson, M.; Stoltz, D.; Lapointe, R.; Béliveau, C.; Nisole, A.; Volkoff, A.-N.; Drezen, J.-M.; Maaroufi, H.; Levesque, R.C. 2012. Genomics of banchine ichtnoviruses: insights into their relationship to bracoviruses and campoplegine ichtnoviruses. Chapter 6, pages 79–87 in N.E. Beckage and J.-M. Drezen, eds. *Parasitoid Viruses: Symbionts and Pathogens*, Academic Press, London. ②

Doerksen, T.K.; Deslauriers, M.; Beaulieu, J. 2011. Ecological and biological information improves inferred paternity in a white spruce breeding orchard. *Can. J. For. Res.* 41:1344–1351. ②

Dhont, C.; Bertrand, A.; Castonguay, Y.; Isabel, N. 2011. Changes of carbon and nitrogen metabolites in white spruce (*Picea glauca* (Moench) Voss) of contrasted growth phenotypes. *Trees* 25:711–723. ②

Dupuy, C.; Gundersen-Rindal, D.; Cusson, M. 2012. Genomics and replication of polydnviruses. Chapter 4, pages 47–61 in N.E. Beckage and J.-M. Drezen, eds. *Parasitoid Viruses: Symbionts and Pathogens*, Academic Press, London. ②

Germain, H.; Qu, N.; Cheng, Y.T.; Lee, E.; Huang, Y.; Dong, O.X.; Gannon, P.; Huang, S.; Ding, P.; Li, Y.; Sack, F.; Zhang, Y.; Li, X. 2010. MOS11: a new component in the mRNA export pathway. *PLoS Genet.* 6:e1001250. ②

Germain, H.; Séguin, A. 2011. Innate immunity: has poplar made its BED? *New Phytol.* 189:678–687. ②

Goodman, W.G.; Cusson, M. 2012. The juvenile hormones. Chapter 8, pages 310–365 in L.I. Gilbert, ed. *Insect Endocrinology*, Academic Press, London. ②

Gravel-Grenier, J.; Lamhamedi, M.S.; Beaulieu, J.; Carles, S.; Margolis, H.A.; Rioux, M.; Stowe, D.C.; Lapointe, L. 2011. Utilization of family genetic variability to improve the rooting ability of white spruce (*Picea glauca*) cuttings. *Can. J. For. Res.* 41:1308–1318. ②

Hamel, L.-P.; Benchabane, M.; Nicole, M.-C.; Major, I.T.; Morency, M.-J.; Pelletier, G.; Beaudoin, N.; Sheen, J.; Séguin, A. 2011. Stress-responsive mitogen-activated protein kinases interact with the EAR motif of a poplar zinc finger protein and mediate its degradation through the 26S proteasome. *Plant Physiol.* 157:1379–1393. ②

Islam, M.A.; Sturrock, R.N.; Ekramoddoullah, A.K.M. 2011. Conifer chitinases. In K. Al-Mughrabi, ed. *Plant science and biotechnology in North America: focus on Canada II*. *Americas J. Plant Sci. Biotechnol.* Vol. 5, Special Issue 1:22–36. ⑤

Janssen, P.; Hébert, C.; Fortin, D. 2011. Biodiversity conservation in old-growth boreal forest: black spruce and balsam fir snags harbour distinct assemblages of saproxylic beetles. *Biodivers. Conserv.* 20:2917–2932. ②

Kang, B.-Y.; Major, J.E.; Rajora, O.P. 2011. A high-density genetic linkage map of a black spruce (*Picea mariana*) × red spruce (*Picea rubens*) interspecific hybrid. *Genome* 54:128–143. ①

Klimaszewska, K.; Overton, C.; Stewart, D.; Rutledge, R.G. 2011. Initiation of somatic embryos and regeneration of plants from primordial shoots of 10-year-old somatic white spruce and expression profiles of 11 genes followed during the tissue culture process. *Planta* 233:635–647. ②

Lamarche, J.; Stefani, F.O.P.; Séguin, A.; Hamelin, R.C. 2011. Impact of endochitinase-transformed white spruce on soil fungal communities under greenhouse conditions. *FEMS Microbiol. Ecol.* 76:199–208. ②

Lemieux, M.J.; Beaulieu, J.; Bousquet, J. 2011. Chloroplast DNA polymorphisms in eastern hemlock: range-wide genogeographic analyses and implications for gene conservation. *Can. J. For. Res.* 41:1047–1059. ②

Lenz, P.; MacKay, J.; Rainville, A.; Cloutier, A.; Beaulieu, J. 2011. The influence of cambial age on breeding for wood properties in *Picea glauca*. *Tree Genet. Genomes* 7:641–653. ②

- Li, X.; Shamoun, S.F.; Nie, J.; Hammill, D.L.; De Boer, S.H. 2011. *Heterobasidion* populations in Canada are separated geographically and resemble *H. irregulare* and *H. occidentale* based on sequence analysis of housekeeping genes. Page 319 in Plant Canada Conference Proceedings, 17–21 July, 2011, Halifax, N.S. Plant Can. ⑤
- Liu, J.-J.; Ekramoddoullah, A.K.M. 2011. Genomic organization, induced expression and promoter activity of a resistance gene analog (PmTNL1) in western white pine (*Pinus monticola*). *Planta* 233:1041–1053. ⑤
- Liu, J.-J.; Sniezko, R.A.; Ekramoddoullah, A.K.M. 2011. Association of a novel *Pinus monticola* chitinase gene (PmCh4B) with quantitative resistance to *Cronartium ribicola*. *Phytopathology* 101(8):904–911. ⑤
- Liu, J.-J.; Xiang, Y. 2011. In silico mining and PCR-based approaches to transcription factor discovery in non-model plants: gene discovery of the WRKY transcription factors in conifers. Pages 21–43 (Chapter 2) in L. Yuan and S.E. Perry, eds. *Plant Transcription Factors: Methods and Protocols*, Methods in Molecular Biology 754. Humana Press, c/o Springer Science+Business Media, LLC, New York, N.Y. ⑤
- Lu, J.-J.; Hu, X.; Liu, J.-J.; Wang, H.-Z. Genetic diversity and population structure of 151 *Cymbidium sinense* cultivars. 2011. *J. Hortic. For.* 3(4):104–114. ⑤
- Pavy, N.; Namroud, M.-C.; Gagnon, F.; Isabel, N.; Bousquet, J. 2011. The heterogeneous levels of linkage disequilibrium in white spruce genes and comparative analysis with other conifers. *Heredity* <http://www.bioportfolio.com/resources/pmarticle/226332/The-Heterogeneous-Levels-Of-Linkage-Disequilibrium-In-White-Spruce-Genes-And-Comparative.html> ②
- Pelgas, B.; Bousquet, J.; Meirmans, P.G.; Ritland, K.; Isabel, N. 2011. QTL mapping in white spruce: gene maps and genomic regions underlying adaptive traits across pedigrees, years and environments. *BMC Genomics* 12:145. ②
- Prunier, J.; Laroche, J.; Beaulieu, J.; Bousquet, J. 2011. Scanning the genome for gene SNPs related to climate adaptation and estimating selection at the molecular level in boreal black spruce. *Mol. Ecol.* 20:1702–1716. ②
- Ritland, K.; Krutovsky, K.V.; Tsumura, Y.; Pelgas, B.; Isabel, N.; Bousquet, J. 2011. Genetic mapping in conifers. Chapter 5, pages 196–238 in C. Plomion, J. Bousquet, and C. Kole, eds. *Genetics, Genomics and Breeding of Conifers*. Edenbridge Science Publishers & CRC Press, New York. ②
- Rutledge, R.G. 2011. A Java program for LRE-based real-time qPCR that enables large-scale absolute quantification. *PLoS ONE* 6(3):e17636; doi: 10.1371/journal.pone.0017636 ②
- Sáenz-Romero, C.; Beaulieu, J.; Rehfeldt, G.E. 2011. Altitudinal genetic variation among *Pinus patula* populations from Oaxaca, México, in growth chambers simulating global warming temperatures. *Agrociencia* 45:399–411. ②
- Sáenz-Romero, C.; Ruiz-Talonia, L.F.; Beaulieu, J.; Sánchez-Vargas, N.M.; Rehfeldt, G.E. 2011. Genetic variation among *Pinus patula* populations along an altitudinal gradient. Two environment nursery tests. *Rev. Fitotec. Mex.* 34:19–25. ②
- Séguin, A. 2011. How could forest trees play an important role as feedstock for bioenergy production? *Curr. Opin. Environ. Sustain.* 3:90–94. ②
- Talbot, P.; Thompson, S.L.; Schroeder, W.; Isabel, N. 2011. An efficient single nucleotide polymorphism assay to diagnose the genomic identity of poplar species and hybrids on the Canadian prairies. *Can. J. For. Res.* 41:1102–1111. ②
- Volkoff, A.-N.; Drezen, J.-M.; Cusson, M.; Webb, B.A. 2012. The organization of genes encoding ichnovirus structural proteins. Chapter 3, pages 33–45 in N.E. Beckage and J.-M. Drezen, eds. *Parasitoid Viruses: Symbionts and Pathogens*, Academic Press, London. ②
- Wang, H.-Z.; Lu, J.-J.; Hu, X.; Liu, J.-J. 2011. Genetic variation and cultivar identification in *Cymbidium ensifolium*. *Plant Syst. Evol.* 293(1-4):101–110. ⑤
- Wei, X.-X.; Beaulieu, J.; Khasa, D.P.; Vargas-Hernández, J.; López-Upton, J.; Jaquish, B.; Bousquet, J. 2011. Range-wide chloroplast and mitochondrial DNA imprints reveal multiple lineages and complex biogeographic history for Douglas-fir. *Tree Genet. Genomes* 7:1025–1040. ②
- Weng, Y.; Park, Y.-S.; Krasowski, M.J.; Mullin, T.J. 2011. Allocation of varietal testing efforts for implementing conifer multi-varietal forestry using white spruce as a model species. *Ann. For. Sci.* 68:129–138. ①
- Williams, H.L.; Monge-Monge, K.S.; Otvos, I.S.; Reardon, R.C. 2011. Genotypic variation among Douglas-fir tussock moth nucleopolyhedrovirus (OpNPV) isolates in the western United States. *J. Invertebr. Pathol.* 108(1):13–21. ⑤

Growth and Yield, Inventory, and Monitoring

Canadian Forest Service Science Highlights. Can satellites help monitor biodiversity more effectively? [Online only]. 2011. NRCan, CFS, HQ, Ottawa. 1 p. [Français : voir *Service (...) Les satellites peuvent-ils aider...*]

Canadian Forest Service Science Highlights. How can boreal forest countries learn best practices from each other? [Online only]. 2011. NRCan, CFS, Planning, Operations and Information Branch, Ottawa. 2 p. [Français : voir *Service (...) Comment les pays couverts par des zones de forêts boréales...*]

Canadian Forest Service Science Highlights. How can a national forest inventory monitor forest sustainability? [Online only]. 2011. NRCan, CFS, Planning, Operations and Information Branch, Ottawa. 2 p. [Français : voir *Service (...) Comment un inventaire forestier national...*]

Condition, growth, and projected yield of lodgepole pine and interior spruce 20 years after rehabilitation of an understocked site in north-central British Columbia: the Stony Lake trial. 2011. Whitehead, R.J.; Cortini, F.; Taylor, S.W.; Linnell Nemec, A.F.; Goudie, J.W.; Vallentgoed, J.; Polsson, K.R. NRCan, CFS, Pacific Forestry Centre, Victoria, B.C. Inf. Rep. FI-X-006. 19 p. ⑤

Forest biomass harvesting: monitoring and validating the long-term effects. 2010. Thiffault, E. NRCan, CFS, Laurentian Forestry Centre, Québec, Que. Branching out from the Canadian Forest Service, Laurentian Forestry Centre. No. 64. 2 p. [Français : voir *La Récolte de la biomasse...*] ②

Guide — Mise en place d'un dispositif de suivi environnemental des effets de la récolte des résidus de coupe. 2011. Thiffault, E.; Paré, D.; Dagnault, S.; Morissette, J. NRCan, SCF, Centre de foresterie des Laurentides, Québec (Québec). 80 p. [English: see *Guidelines—Establishing...*] ②

Guidelines—Establishing permanent plots for monitoring the environmental effects of forest biomass harvesting. 2011. Thiffault, E.; Paré, D.; Dagnault, S.; Morissette, J. NRCan, CFS, Laurentian Forestry Centre, Québec, Que. 80 p. [Français : voir *Guide — Mise en place...*] ②

Mountain pine beetle survey in the Peace Region of British Columbia and adjacent areas in Alberta. 2011. Pellow, K.W.; Thandi, G.; Unger, L.S. NRCan, CFS, Pacific Forestry Centre, Victoria, B.C. Mountain Pine Beetle Work. Pap. 2010-05. 12 p. ⑤

La Récolte de la biomasse forestière : suivre et valider ses effets à long terme. 2010. Thiffault, E. NRCan, SCF, Centre de foresterie des Laurentides, Québec (Québec). L'éclaircie du Service canadien des forêts, Centre de foresterie des Laurentides. N° 64. 2 p. [English: see *Forest biomass...*] ②

Accroissement, inventaire et biosurveillance

Service canadien des forêts. Points saillants sur la science. Comment les pays couverts par des zones de forêts boréales pourraient-ils échanger entre eux leurs pratiques exemplaires? [En ligne seulement]. 2011. RNCan, SCF, Direction de la planification, des opérations et de l'information, Ottawa. 2 p. [English: see *Canadian...How can boreal forest countries...*]

Service canadien des forêts. Points saillants sur la science. Comment un inventaire forestier national peut-il permettre de surveiller la durabilité des forêts? [En ligne seulement]. 2011. RNCan, SCF, Direction de la planification, des opérations et de l'information, Ottawa. 2 p. [English: see *Canadian...How can a national forest inventory...*]

Service canadien des forêts. Points saillants sur la science. Les satellites peuvent-ils aider à surveiller plus efficacement la biodiversité? [En ligne seulement]. 2011. RNCan, SCF, Administration centrale, Ottawa. 1 p. [English: see *Canadian...Can satellites help monitor...*]

Journal Articles and Other Contributions / Articles de revues scientifiques et autres collaborations

Andrew, M.E.; Wulder, M.A. Idiosyncratic responses of Pacific salmon species to land cover, fragmentation, and scale. *Ecography* 34(5):780–797. ⑤

Andrew, M.E.; Wulder, M.A.; Coops, N.C. 2011. How do butterflies define ecosystems? A comparison of ecological regionalization schemes. *Biol. Conserv.* 144(5):1409–1418. ⑤

Andrew, M.E.; Wulder, M.A.; Coops, N.C. 2011. Patterns of protection and threats along productivity gradients in Canada. *Biol. Conserv.* 144: 2891–2901. ⑤

Andrew, M.E.; Wulder, M.A.; Coops, N.C.; Baillargeon, G. Beta-diversity gradients of butterflies along productivity axes. 2011. *Global Ecol. Biogeogr.* 20: ⑤

Bater, C.W.; Coops, N.C.; Wulder, M.A.; Hilker, T.; Nielsen, S.E.; McDermid, G.J.; Stenhouse, G.B. 2010. Using digital time-lapse cameras to monitor species-specific understorey and overstorey phenology in support of wildlife habitat assessment. *Environ. Monit. Assess.* 180:1–13. ⑤

Bater, C.W.; Coops, N.C.; Wulder, M.A.; Nielsen, S.E.; McDermid, G.J.; Stenhouse, G.B. 2011. Design and installation of a phenological camera network across an elevation gradient for habitat assessment. *Instrum. Sci. Technol.* 39(3):231–247. ⑤

Bater, C.W.; Wulder, M.A.; Coops, N.C.; Nelson, R.F.; Hilker, T.; Næsset, E. 2011. Stability of sample-based scanning LiDAR-

- derived vegetation metrics for forest monitoring. *IEEE Trans. Geosci. Remote Sens.* 49(6):2385–2392. ⑤
- Beaulieu, E.; Schneider, R.; Berninger, F.; Ung, C.-H.; Swift, D.E. 2011. Modeling jack pine branch characteristics in Eastern Canada. *For. Ecol. Manag.* 262:1748–1757. ②
- Beaulieu, J.; Raulier, F.; Prigent, G.; Bousquet, J. 2011. Predicting site index from climatic, edaphic, and stand structural properties for seven plantation-grown conifer species in Quebec. *Can. J. For. Res.* 41:682–693. ②
- Brassard, B.W.; Chen, H.Y.H.; Bergeron, Y.; Paré, D. 2011. Coarse root biomass allometric equations for *Abies balsamea*, *Picea mariana*, *Pinus banksiana*, and *Populus tremuloides* in the boreal forest of Ontario, Canada. *Biomass Bioenergy* 35:4189–4196. ②
- Coggins, S.B.; Coops, N.C.; Wulder, M.A.; Bater, C.W.; Ortlepp, S.M. 2011. Comparing the impacts of mitigation and non-mitigation on mountain pine beetle populations. *J. Environ. Manag.* 92(1):112–120. ⑤
- Coops, N.C.; Michaud, J.-S.; Andrew, M.E.; Wulder, M.A. 2011. Comparison of a regional-level habitat index derived from MERIS and MODIS estimates of canopy-absorbed photosynthetically active radiation. *Remote Sens. Lett.* 2(4):327–336. ⑤
- Côté, J.-F.; Fournier, R.A.; Egli, R. 2011. An architectural model of trees to estimate forest structural attributes using terrestrial LiDAR. *Environ. Model. Software* 26:761–777. ①
- Frazer, G.W.; Magnussen, S.; Wulder, M.A.; Niemann, K.O. 2011. Simulated impact of sample plot size and co-registration error on the accuracy and uncertainty of LiDAR-derived estimates of forest stand biomass. *Remote Sens. Environ.* 115(2):636–649. ⑤
- Gaulton, R.; Hilker, T.; Wulder, M.A.; Coops, N.C.; Stenhouse, G.B. 2011. Characterizing stand replacing disturbance in western Alberta grizzly bear habitat, using a satellite-derived high temporal and spatial resolution change sequence. *For. Ecol. Manag.* 261(4):865–877. ⑤
- Girardin, M.P.; Bernier, P.Y.; Raulier, F.; Tardif, J.C.; Conciatori, F.; Guo, X.J. 2011. Testing for a CO₂ fertilization effect on growth of Canadian boreal forests. *J. Geophys. Res.* 116, G01012, 16 p.; doi: 10.1029/2010JG001287. ②
- Gómez, C.; White, J.C.; Wulder, M.A. 2011. Characterizing the state and processes of change in a dynamic forest environment using hierarchical spatio-temporal segmentation. *Remote Sens. Environ.* 115(7):1665–1679. ⑤
- Gougeon, F.A.; Leckie, D.G. 2011. ITC analyses of the Petawawa Research Forest from satellite and aerial data in the joint presentation of the 32nd Canadian Symposium on Remote Sensing and the 14th Congress of L'Association québécoise de télédétection, 13–16 June, 2011, Sherbrooke, Que. [s.n], [s.1]. ⑤
- Gralewicz, N.J.; Nelson, T.A.; Wulder, M.A. 2011. Factors influencing national-scale wildfire susceptibility in Canada. *For. Ecol. Manag.* 265:20–29. ⑤
- Hall, R.J.; Skakun, R.S.; Beaudoin, A.; Wulder, M.A.; Arsenault, E.; Bernier, P.Y.; Guindon, L.; Luther, J.E.; Gillis, M.D. 2010. Approaches for forest biomass estimation and mapping in Canada. Pages 1988–1991 in *Geosci. Rem. Sens. Symp. 2010, IEEE International, 25–30 July 2010, Honolulu, Hawaii. IEEE-USA, Washington, DC.* ④
- Hilker, T.; Coops, N.C.; Gaulton, R.; Wulder, M.A.; Cranston, J.; Stenhouse, G.B. 2011. Biweekly disturbance capture and attribution: case study in western Alberta grizzly bear habitat. *J. Appl. Remote Sens.* 5:053568. ⑤
- Hilker, T.; Lepine, L.; Coops, N.C.; Jassal, R.S.; Black, T.A.; Wulder, M.A.; Ollinger, S.; Tsui, O.; Day, M. 2011. Assessing the impact of N-fertilization on biochemical composition and biomass of a Douglas-fir canopy—a remote sensing approach. *Agric. For. Meteorol.* (In Press) ⑤
- Li, S.; Hao, Q.; Swift, D.E.; Bourque, C.P.-A.; Meng, F.-R. 2011. A stand dynamic model for red pine plantations with different initial densities. *New For.* 41:41–53. ①
- Magnussen, S. 2011. A Horvitz–Thompson-type estimator of species richness. *Environmetrics* 22(7):901–910. ⑤
- Magnussen, S. 2011. Sample-based estimation of regional forest tree species richness. *Environ. Nat. Resour. Res.* 1(1):2–16. ⑤
- Magnussen, S.; Fehrman, L.; Platt, W.J. 2011. An adaptive composite density estimator for k-tree sampling. *Eur. J. For. Res.*; doi: 10.1007/s10342-011-0502-8. ⑤
- Magnussen, S.; McRoberts, R.E. 2011. A modified bootstrap procedure for cluster sampling variance estimation of species richness. *J. Appl. Stat.* 38(6):1223–1238. ⑤
- Masek, J.G.; Cohen, W.B.; Leckie, D.G.; Wulder, M.A.; Vargas, R.; de Jong, B.; Healey, S.P.; Law, B.; Birdsey, R.A.; Houghton, R.A.; Mildrexler, D.; Goward, S.N.; Smith, W.B. 2011. Recent rates of forest harvest and conversion in North America. *J. Geophys. Res.* 116:G00K03. 22 p. ⑤
- McRoberts, R.E.; Magnussen, S.; Tomppo, E.O.; Chirici, G. 2011. Parametric, bootstrap, and jackknife variance estimators for the k-Nearest Neighbors technique with illustrations using forest inventory and satellite image data. *Remote Sens. Environ.* 115(2): 3165–3174. ⑤
- Rivest, L.-P.; Bernier, P. 2011. Aspects statistiques de la gestion forestière. *Accromath* 6:22–27. ②
- Schneider, R.; Berninger, F.; Ung, C.-H.; Mäkelä, A.; Swift, D.E.; Zhang, S.Y.; Whitehead, D. 2011. Within crown variation in the relationship between foliage biomass and sapwood area in jack pine. *Tree Physiol.* 31:22–29. ②

Schneider, R.; Fortin, M.; Berninger, F.; Ung, C.-H.; Swift, D.E.; Zhang, S.Y. 2011. Modeling jack pine (*Pinus banksiana*) foliage density distribution. *For. Sci.* 57:180–188. ②

Schroeder, T.A.; Wulder, M.A.; Healey, S.P.; Moisen, G.G. 2011. Mapping wildfire and clearcut harvest disturbances in boreal forests with Landsat time series data. *Remote Sens. Environ.* 115(6):1421–1433. ⑤

van Leeuwen, M.; Hilker, T.; Coops, N.C.; Frazer, G.W.; Wulder, M.A.; Newnham, G.J.; Culvenor, D.S. 2011. Assessment of standing wood and fiber quality using ground and airborne laser scanning: a review. *For. Ecol. Manag.* 261(9):1467–1478. ⑤

Wang, M.; Bhatti, J.; Wang, Y.; Varem-Sanders, T. 2011. Examining the gain in model prediction accuracy using serial autocorrelation for dominant height prediction. *For. Sci.* 57(3):241–251. ④

White, J.C.; Wulder, M.A.; Gómez, C.; Stenhouse, G.B. 2011. A history of habitat dynamics: characterizing 35 years of stand replacing disturbance. *Can. J. Remote Sens.* 37(2):234–251. ⑤

Woods, M.; Pitt, D.; Penner, M.; Lim, K.; Nesbitt, D.; Etheridge, D.; Treitz, P. 2011. Operational implementation of a LiDAR inventory in boreal Ontario. *For. Chron.* 87:512–528. ③

Yang, H.; Kleinn, C.; Fehrmann, L.; Tang, S.; Magnussen, S. 2011. A new design for sampling with adaptive sample plots. *Environ. Ecol. Stat.* 18(2):223–237. ⑤

Impacts of Forestry Practices

Bio-indicateurs de l'état des cours d'eau des forêts boréales. 2011. Kreutzweiser, D. RNCAN, SCF, Centre de foresteries des Grands Lacs, Sault Ste. Marie (Ontario). *Frontline : Nouvelles express* 40. 2 p. [English: see *Stream bioindicators...*] ③.

Canadian Forest Service Science Highlights. How much biomass could be available to produce bioenergy after fires, insect outbreaks and harvesting? [Online only]. 2011. NRCAN, CFS, Planning, Operations and Information Branch, Ottawa. 2 p. [Français : voir *Service (...) Quelle pourrait être la quantité de biomasse...*]

Canadian Forest Service Science Highlights. What's the right harvesting balance to optimize regeneration in the western boreal forest? [Online only]. 2011. NRCAN, CFS, Planning, Operations and Information Branch, Ottawa. 2 p. [Français : voir *Service (...) Quelles pratiques d'exploitation forestière...*]

Fertilization and thinning effects on a Douglas-fir ecosystem at Shawnigan Lake: 32-year growth response. 2011. Omule, A.Y.; Mitchell, A.K.; Wagner, W.L. NRCAN, CFS, Pacific Forestry Centre, Victoria, B.C. Inf. Rep. FI-X-005. 22 p. ⑤

Service canadien des forêts. Points saillants sur la science. Quelle pourrait être la quantité de biomasse disponible à des fins de production de bioénergie par suite de feux de forêt, d'infestations d'insectes et d'exploitation forestière? [En ligne seulement]. 2011. RNCAN, SCF, Direction de la planification, des opérations et de l'information, Ottawa. 2 p. [English: see *Canadian...How much biomass...*]

Service canadien des forêts. Points saillants sur la science. Quelles pratiques d'exploitation forestière faut-il adopter pour optimiser la régénération dans les forêts boréales de

Incidences des pratiques forestières

l'Ouest? [En ligne seulement]. 2011. RNCAN, SCF, Direction de la planification, des opérations et de l'information, Ottawa. 2 p. [English: see *Canadian...What's the right harvesting balance...*]

Stream bioindicators in boreal forests. 2011. Kreutzweiser, D. NRCAN, CFS, Great Lakes Forestry Centre, Sault Ste Marie, Ont. *Frontline Express* 40. 2 p. [Français : voir *Bio-indicateurs de l'état...*] ③

Journal Articles and Other Contributions / Articles de revues scientifiques et autres collaborations

Amichev, B.Y.; Kurz, W.A.; Smyth, C.E.; Van Rees, K.C.J. 2011. The carbon implications of large-scale afforestation of agriculturally marginal land with short-rotation willow in Saskatchewan. *Global Change Biol. Bioenergy* 3(4):70–87. ⑤

Azeria, E.T.; Ibarzabal, J.; Hébert, C.; Boucher, J.; Imbeau, L.; Savard, J.-P.L. 2011. Differential response of bird functional traits to post-fire salvage logging in a boreal forest ecosystem. *Acta Oecol.* 37:220–229. ②

Bélanger-Morin, M.; Brodeur, J.; Hébert, C.; Berthiaume, R. 2011. Impact of partial cuts on xylophagous insect activity in the balsam fir-white birch domain. Poster abstract. Page 74 in *International Symposium on dynamics and ecological services of deadwood in forest ecosystems*; 15–19 May 2011, Rouyn-Noranda, Quebec. ②

Brooks, J.R.; Mitchell, A.K. 2011. Interpreting tree responses to thinning and fertilization using tree-ring stable isotopes. *New Phytol.* 190:770–782. ⑤

Cobb, T.P.; Morissette, J.L.; Jacobs, J.; Koivula, M.; Spence, J.R.; Langor, D.W. 2010. Effects of postfire salvage logging on deadwood-associated beetles. *Conserv. Biol.* 25(1):94–104. ④

Edge, C.B.; Gahl, M.K.; Pauli, B.D.; Thompson, D.G.; Houlahan, J.E. 2011. Exposure of juvenile green frogs (*Lithobates clamitans*) in littoral enclosures to a glyphosate-based herbicide. *Ecotoxicol. Environ. Saf.* 74:1363–1369; doi:10.1016/j.ecoenv.2011.04.020. ③

Fortin, D.; Hébert, C.; Légaré, J.-P.; Courbin, N.; Swiston, K.; Hodson, J.; LeBlanc, M.-L.; Dussault, C.; Pothier, D.; Ruel, J.-C.; Couturier, S. 2011. Partial harvesting in old-growth boreal forests and the preservation of animal diversity from ants to woodland caribou. Chapter 4, pages 115–136 in E.B. Wallace, ed. *Woodlands: Ecology, Management and Conservation*, Nova Science Publishers, Inc., Hauppauge, N.Y. ②

Grimalt, S.; Thompson, D.; Chartrand, D.; McFarlane, J.; Helson, B.; Lyons, B.; Meating, J.; Scarr, T. 2011. Foliar residue dynamics of azadirachtin following direct stem injection into white and green ash trees for control of emerald ash borer. *Pest Manag. Sci.* 67:1277–1284. ③

Grimalt, S.; Thompson, D. G.; Coppens, M.; Chartrand, D.T.; Shorney, T.; Meating, J.; Scarr, T. 2011. Analytical study of azadirachtin and 3-tigloylazadirachtol residues in foliage and phloem of hardwood tree species by liquid chromatography-electrospray mass spectrometry. 2011. *J. Agric. Food Chem.* 59:8070–8077. ③

Jeffrey, O.; Bauce, É.; Ibarzabal, J.; Hébert, C. 2011. Impact of salvage logging on saproxylic beetles living in black spruce

stumps: response of cerambycids. Poster abstract. Page 80 in *International Symposium on dynamics and ecological services of deadwood in forest ecosystems*; 15–19 May 2011, Rouyn-Noranda, Quebec. ②

Kreutzweiser, D.; Thompson, D.; Grimalt, S.; Chartrand, D.; Good, K.; Scarr, T. 2011. Environmental safety to decomposer invertebrates of azadirachtin (neem) as a systemic insecticide in trees to control emerald ash borer. *Ecotoxicol. Environ. Saf.* 74:1734–1741; doi:10.1016/j.ecoenv.2011.04.021. ③

Lafleur, B.; Paré, D.; Fenton, N.J.; Bergeron, Y. 2011. Growth and nutrition of black spruce seedlings in response to disruption of *Pleurozium* and *Sphagnum* moss carpets in boreal forested peatlands. *Plant Soil* 345:141–153. ②

Lafleur, B.; Paré, D.; Fenton, N.J.; Bergeron, Y. 2011. Growth of planted black spruce seedlings following mechanical site preparation in boreal forested peatlands with variable organic layer thickness: 5-year results. *Ann. For. Sci.* 68:1291–1302. ②

Muto, E.A.; Kreutzweiser, D.P.; Sibley, P.K. 2011. Over-winter decomposition and associated macroinvertebrate communities of three deciduous leaf species in forest streams on the Canadian Boreal Shield. *Hydrobiologia* 658:111–126. ③

Pan, Y.; Birdsey, R.A.; Fang, J.; Houghton, R.; Kauppi, P.E.; Kurz, W.A.; Phillips, O.L.; Shvidenko, A.; Lewis, S.L.; Canadell, J.G.; Ciais, P.; Jackson, R.B.; Pacala, S.; McGuire, A.D.; Piao, S.; Rautiainen, A.; Sitch, S.; Hayes, D. 2011. A large and persistent carbon sink in the world's forests. *Science* 333(6045):988–993. ⑤

Silviculture

Biolley: a tool for maximizing the value of selection cutting. 2011. Lussier, J.-M. NRCan, CFS, Laurentian Forestry Centre, Québec, Que. Branching out from the Canadian Forest Service, Laurentian Forestry Centre. No. 66. 2 p. [Français : voir *Biolley: un outil...*] ②

Biolley: un outil pour donner de la valeur au jardinage. 2011. Lussier, J.-M. RNCan, SCF, Centre de foresterie des Laurentides, Québec (Québec). L'éclaircie du Service canadien des forêts, Centre de foresterie des Laurentides. N° 66. 2 p. [English: see *Biolley: a tool...*] ②

L'Élagage, ou l'art d'intervenir au bon moment. 2011. Rioux, D. RNCan, SCF, Centre de foresterie des Laurentides, Québec (Québec). L'éclaircie du Service canadien des forêts, Centre de foresterie des Laurentides. N° 67. 2 p. [English: see *Pruning...*] ②

Pruning: timing is key. 2011. Rioux, D. NRCan, CFS, Laurentian Forestry Centre, Québec, Que. Branching out from the Canadian

Sylviculture

Forest Service, Laurentian Forestry Centre. No. 67. 2 p. [Français : voir *L'Élagage...*] ②

Journal Articles and Other Contributions / Articles de revues scientifiques et autres collaborations

Filipescu, C.N.; Comeau, P.G. 2011. Influence of *Populus tremuloides* density on air and soil temperature. *Scand. J. For. Res.* 26(5):421–428. ⑤

Fleming, R.L.; Smith, A.D. 2011. Examining 40-year stand development following vegetation control: white spruce planted in a trembling aspen dominated cutover. *Can. J. For. Res.* 41:728–739. ③

Groot, A.; Schneider, R. 2011. Predicting maximum branch diameter from crown dimensions, stand characteristics and tree species. *For. Chron.* 87:542–551. ③

Hoepting, M.K.; Wagner, R.G.; McLaughlin, J.; Pitt, D.G. 2011. Timing and duration of herbaceous vegetation control in northern conifer plantations: 15th year tree growth and soil nutrient effects. *For. Chron.* 87:398–413. ③

Larouche, C.; Ruel, J.-C.; Lussier, J.-M. 2011. Factors affecting northern white-cedar (*Thuja occidentalis*) seedling establishment and early growth in mixedwood stands. *Can. J. For. Res.* 41:568–582. ②

Levin, R.; Krigstin, S.; Wetzels, S. 2011. Biomass availability in eastern Ontario for bioenergy and wood pellet initiatives. *For. Chron.* 87:33–41. ③

Lussier, J.-M. 2009. Changing our mental model from growing volume to producing value: the case of uneven-aged hardwood management. *For. Chron.* 85(3):382–386. ②

Newton, P.F. 2012. A silvicultural decision-support algorithm for density regulation within peatland black spruce stands. *Comput. Electron. Agric.* 80:115–125. ③

Pitt, D.; Morneault, A.; Parker, W.; Lanteigne, L.; Hoepting, M.; Stinson, A. 2011. Influence of herbaceous and woody competition on white pine regeneration in a uniform shelterwood. *For. Chron.* 87:653–668. ③

Socioeconomics and Statistics

Le Bois nord-américain d'abord. Manuel des promoteurs. Exercice financier 2011-12. [En ligne seulement]. 2011. RNCAN, SCF, Direction de la politique, de l'économie et de l'industrie, Ottawa. 13 p. [English: see *North American Wood First... Handbook...*]

Le Bois nord-américain d'abord. Processus et critères d'évaluation. Exercice financier 2011-12. [En ligne seulement]. 2011. RNCAN, SCF, Direction de la politique, de l'économie et de l'industrie, Ottawa. 2 p. [English: see *North American Wood... Evaluation process...*]

Canada Wood. Evaluation process and criteria. Fiscal Year 2011–12. [Online only]. 2011. NRCAN, CFS, Policy, Economics and Industry Branch, Ottawa. 2 p. [Français : voir *Produits de bois canadien (...) Processus...*]

Canada Wood. Handbook for applicants. Fiscal year 2011–12. [Online only]. 2011. NRCAN, CFS, Policy, Economics and Industry Branch, Ottawa. 13 p. [Français : voir *Produits de bois canadien (...) Manuel...*]

Investissements dans la transformation de l'industrie forestière. Guide de programme. [En ligne seulement]. 2011. RNCAN, SCF, Direction de la politique, de l'économie et de l'industrie, Ottawa. 18 p. [English: see *Investments...Program Guide.*]

Investissements dans la transformation de l'industrie forestière (ITIF). Séminaire Web d'information à l'intention des demandeurs. 2^e appel de propositions, 2011. [En ligne seulement]. 2011. RNCAN, SCF, Direction de la politique, de l'économie et de l'industrie, Ottawa. 15 p. [English: see *Investments...Information Webinar...*]

Investments in Forest Industry Transformation (IFIT). Information Webinar for applicants. Call for proposals no. 2, 2011. [Online only]. 2011. NRCAN, CFS, Policy, Economics and Industry Branch, Ottawa. 15 p. [Français : voir *Investissements (...) Séminaire Web...*]

Socioéconomie et statistique

Investments in Forest Industry Transformation: Program Guide. [Online only]. 2011. NRCAN, CFS, Policy, Economics and Industry Branch, Ottawa. 15 p. [Français : voir *Investissements (...) Guide de programme.*]

Markets for forest products following a large disturbance: opportunities and challenges from the mountain pine beetle outbreak in western Canada. 2011. Bogdanski, B.E.C.; Sun, L.; Peter, B.; Stennes, B. NRCAN, CFS, Pacific Forestry Centre, Victoria, B.C. Inf. Rep. BC-X-429. 68 p. ⑤

Modelling bioenergy uptake in the British Columbia fibre allocation and transport model. 2011. Stennes, B.; Niquidet, K.; van Kooten, G.C. NRCAN, CFS, Pacific Forestry Centre, Victoria, B.C. Inf. Rep. BC-X-431. 23 p. ⑤

North American Wood First. Evaluation process and criteria. Fiscal year 2011–12. [Online only]. 2011. NRCAN, CFS, Policy, Economics and Industry Branch, Ottawa. 2 p. [Français : voir *Le Bois nord-américain (...) Processus et critères...*]

North American Wood First. Handbook for applicants. Fiscal year 2011–12. [Online only]. 2011. NRCAN, CFS, Policy, Economics and Industry Branch, Ottawa. 11 p. [Français : voir *Le Bois nord-américain (...) Manuel...*]

Prince Edward Island woodlot owners: current trends regarding their forest uses, management, and values. 2011. Nadeau, S. Inf. Rep. M-X-225E. NRCAN, CFS, Atlantic Forestry Centre, Fredericton, N.B. [Français : voir *Propriétaires de terrains boisés...*] ①

Produits de bois canadien. Manuel des promoteurs. Exercice financier 2011-12. [En ligne seulement]. 2011. RNCAN, SCF, Direction de la politique, de l'économie et de l'industrie, Ottawa. 15 p. [English: see *Canada Wood...Handbook...*]

Produits de bois canadien. Processus et critères d'évaluation. Exercice financier 2011-12. [En ligne seulement]. 2011. RNCAN,

SCF, Direction de la politique, de l'économie et de l'industrie, Ottawa. 2 p. [English: see *Canada Wood...Evaluation process...*]

Propriétaires de terrains boisés de l'Île-du-Prince-Édouard : tendances actuelles relatives à l'usage, à la gestion et aux valeurs. 2011. Nadeau, S. Rapport d'information 225F. RNCAN, SCF, Centre de foresterie de l'Atlantique, Fredericton (Nouveau-Brunswick). [English: see *Prince Edward Island...*] ①

Journal Articles and Other Contributions / Articles de revues scientifiques et autres collaborations

McFarlane, B.L.; Beckley, T.M.; Huddart-Kennedy, E.; Nadeau, S.; Wyatt, S. 2011. Public views on forest management: value orientation and forest dependency as indicators of diversity. *Can. J. For. Res.* 41(5):740–749. ④

McKenney, D.W.; Yemshanov, D.; Fraleigh, S.; Allen, D.; Preto, F. 2011. An economic assessment of the use of short-rotation coppice woody biomass to heat greenhouses in southern Canada. *Biomass Bioenergy* 35:374–384. ③

Puddister, D.; Dominy, S.W.J.; Baker, J.A.; Morris, D.M.; Maure, J.; Rice, J.A.; Jones, T.A.; Majumdar, I.; Hazlett, P.W.; Titus, B.D.; Fleming, R.L.; Wetzell, S. 2011. Opportunities and challenges for Ontario's forest bioeconomy. *For. Chron.* 87:468–477. ③

Stedman, R.C.; Patriquin, M.N.; Parks, J.R. 2011. Forest dependence and community well-being in rural Canada: a longitudinal analysis. *Forestry* 84(4):375–384. ④

Wellstead, A.M.; Stedman, R.C. 2010. Policy capacity and incapacity in Canada's federal government: the intersection of policy analysis and street-level bureaucracy. *Public Manag. Rev.* 12(6):893–910. ④

Wyatt, S.; Rousseau, M.-H.; Nadeau, S.; Thiffault, N.; Guay, L. 2011. Social concerns, risk and the acceptability of forest vegetation management alternatives: insights for managers. *For. Chron.* 87(2):274–289. ①

Yemshanov, D.; Koch, F.H.; Lyons, D.B.; Ducey, M.; Koehler, K. 2012. A dominance-based approach to map risks of ecological invasions in the presence of severe uncertainty. *Divers. Distrib.* 18:33–46; doi: 10.1111/j.1472-4642.2011.00848.x. ③

Yemshanov, D.; McKenney, D.W.; de Groot, P.; Haugen, D.; Pedlar, J.; Sidders, D.; Joss, B. 2011. A harvest failure approach to assess the threat from an invasive species. *J. Environ. Manag.* 92:205–213. ③

Sustainable Forest Management

Canadian Forest Service Science Highlights. Is logging riparian areas sustainable? [Online only]. 2011. NRCAN, CFS, Planning, Operations and Information Branch, Ottawa. 2 p. [Français : voir *Service (...) L'exploitation forestière des zones riveraines...*]

Foire aux questions (FAQ) sur l'utilisation d'herbicides dans les forêts canadiennes. 2011. Thompson, D.G.; Pitt, D.G. RNCAN, SCF, Centre de foresteries des Grands Lacs, Sault Ste. Marie (Ontario). *Frontline : Note technique* 112. 8 p. [English: see *Frequently asked...*] ③

Frequently asked questions (FAQ) on the use of herbicides in Canadian forestry. 2011. Thompson, D.G.; Pitt, D.G. NRCAN, CFS, Great Lakes Forestry Centre, Sault Ste. Marie, Ont. *Frontline Technical Note* 112. 8 p. [Français : voir *Foire aux questions...*] ③

Natural products research. 2011. Abou-Zaid, M. NRCAN, CFS, Great Lakes Forestry Centre, Sault Ste. Marie, Ont. *Frontline Express Note* 47. 2 p. [Français : voir *Recherche sur les produits.*] ③

Recherche sur les produits naturels. 2011. Abou-Zaid, M. RNCAN, SCF, Centre de foresteries des Grands Lacs, Sault Ste. Marie (Ontario). *Frontline : Nouvelles express* 47. 2 p. [English: see *Natural products research.*] ③

Aménagement durable des forêts

Service canadien des forêts. Points saillants sur la science. L'exploitation forestière des zones riveraines est-elle durable? [En ligne seulement]. 2011. RNCAN, SCF, Direction de la planification, des opérations et de l'information, Ottawa. 2 p. [English: *Canadian... Is logging riparian areas...*]

Journal Articles and Other Contributions / Articles de revues scientifiques et autres collaborations

Bilodeau-Gauthier, S.; Paré, D.; Messier, C.; Bélanger, N. 2011. Juvenile growth of hybrid poplars on acidic boreal soil determined by environmental effects of soil preparation, vegetation control, and fertilization. *For. Ecol. Manag.* 261:620–629. ②

Carles, S.; Lamhamedi, M.S.; Stowe, D.C.; Bernier, P.Y.; Veilleux, L.; Margolis, H.A. 2011. Relationships between frost hardiness, root growth potential, and photosynthesis of nursery-grown white spruce seedlings. *Ann. For. Sci.* 68:1303–1313. ②

Johnston, M.; Williamson, T.; Nelson, H.; Van Damme, L.; Ogden, A.; Hessel, H. 2011. Adaptive capacity of forest management systems on publicly owned forest landscapes in Canada. Pages 267–278, Chapter 19 in J.D. Ford and L. Berrang-Ford, eds. *Climate change adaptation in developed nations: from theory to practice. Advances in Global Change Research* 42. Springer, New York, N.Y. ④

Laganière, J.; Angers, D.A.; Paré, D.; Bergeron, Y.; Chen, H.Y.H. 2011. Black spruce soils accumulate more uncomplexed organic matter than aspen soils. *Soil Sci. Soc. Am. J.* 75:1125–1132. ②

Larocque, G.R.; Archambault, L.; Delisle, C. 2011. Development of the gap model ZELIG-CFS to predict the dynamics of North American mixed forest types with complex structures. *Ecol. Model.* 222:2570–2583. ②

Magnussen, S. 2011. Estimating change in species richness from repeated sampling of incidence data. *J. Environ. Ecol.* 2(1):1–21. ⑤

Paré, D.; Bernier, P.; Thiffault, E.; Titus, B.D. 2011. Le potentiel de la biomasse forestière comme source d'énergie pour le Canada. *For. Chron.* 87(3):345–350. ②

Paré, D.; Bernier, P.; Thiffault, E.; Titus, B.D. 2011. The potential of forest biomass as an energy supply for Canada. *For. Chron.* 87(1):71–76. ②

Teske, M.E.; Thistle, H.W.; Schou, W.C.; Miller, P.C.H.; Strager, J.M.; Richardson, B.; Butler Ellis, M.C.; Barry, J.W.; Twardus, D.B.; Thompson, D.G. 2011. A review of computer models for pesticide deposition prediction. *Trans. ASABE* 54:789–801. ③

Thiffault, E.; Hannam, K.D.; Paré, D.; Titus, B.D.; Hazlett, P.W.; Maynard, D.G.; Brais, S. 2011. Effects of forest biomass harvesting on soil productivity in boreal and temperate forests – a review. *Environ. Rev.* 19:278–309. ②

Wulder, M.A.; White, J.C.; Coops, N.C. 2011. Fragmentation regimes of Canada's forests. *Can. Geogr.* 55(3):288–300. ⑤

Miscellaneous

Journal Articles and Other Contributions / Articles de revues scientifiques et autres collaborations

Arif, B.M. 2011. Society of Invertebrate Pathology Founders' lecture 2010: Mauro Emilio Martignoni: a renaissance scientist in the 20th century. *J. Invertebr. Pathol.* 107:173–178. ③

Cai, H.; Li, S.; Ryall, K.; You, M.; Lin, S. 2011. Effects of intercropping of garlic or lettuce with Chinese cabbage on the development of larvae and pupae of diamondback moth (*Plutella xylostella*). *Afr. J. Agric. Res.* 6:3609–3615. ③

Cai, H.; You, M.; Ryall, K.; Li, S.; Wang, H. 2011. Physiological response of Chinese cabbage to intercropping systems. *Agron. J.* 103:331–336. ③

Larocque, G.R.; Bhatti, J.S.; Ascough II, J.C.; Liu, J.; Luckai, N.; Maily, D.; Archambault, L.; Gordon, A.M. 2011. An analytical framework to assist decision makers in the use of forest ecosystem model predictions. *Environ. Model. Software* 26:280–288. ②

Divers

Larocque, G.R.; Maily, D.; Yue, T.-X.; Anand, M.; Peng, C.; Kazanci, C.; Etterson, M.; Goethals, P.; Jorgensen, S.E.; Schramski, J.R.; McIntire, E.J.B.; Marceau, D.J.; Chen, B.; Chen, G.Q.; Yang, Z.F.; Novotna, B.; Luckai, N.; Bhatti, J.S.; Liu, J.; Munson, A.; Gordon, A.M.; Ascough II, J.C. 2011. Common challenges for ecological modelling: synthesis of facilitated discussions held at the symposia organized for the 2009 conference of the International Society for Ecological Modelling in Quebec City, Canada (October 6-9, 2009). *Ecol. Model.* 222:2456–2468. ②

Larocque, G.R.; Peng, C.; Anand, M.; Matejicek, L.; Komarov, A. 2011. Preface—Selected papers presented in oral and poster sessions at the 2009 conference of the International Society for Ecological Modelling (ISEM) in Quebec City, Canada, October 6-9, 2009. *Ecol. Model.* 222:2469–2470. ②

Larocque, G.R.; Yue, T.-X.; Peng, C.; Bhatti, J.; Etterson, M.A.; Kazanci, C.; Goethals, P. 2011. Preface—Selected papers presented in symposia organized at the 2009 conference of the International Society for Ecological Modelling (ISEM) in Quebec City, Canada, October 6-9, 2009. *Ecol. Model.* 222:2169–2171. ②

CANADIAN FOREST SERVICE / SERVICE CANADIEN DES FORÊTS

WANT TO KNOW MORE ABOUT CANADA'S FORESTS? VISIT:

cfs.nrcan.gc.ca

VOULEZ-VOUS EN SAVOIR D'AVANTAGE SUR LES FORÊTS DU CANADA? VISITEZ :

scf.nrcan.gc.ca

Trees in Canada *Les arbres du Canada*

The essential guide to tree
identification for the amateur
naturalist and forest science
professional

Now available

Fourteenth impression 2012

Le guide essentiel
d'identification des arbres
pour le naturaliste amateur et
le professionnel des sciences
de la forêt

Maintenant disponible

Septième tirage 2012

For ordering information, see page 34.

Pour commander, voir page 34.



Canadian Government Publishing / Les Éditions du gouvernement du Canada

These publications are available through associated bookstores and other booksellers or by mail from:

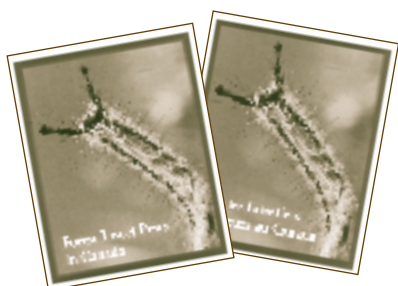
Canadian Government Publishing
Ottawa, Ontario K1A 0S9
Tel.: 613-941-5995; Canada & US 1-800-635-7943
Fax: 613-954-5779; Canada & US 1-800-565-7757
Internet: publications.gc.ca
E-mail: publications@tpsgc-pwgsc.gc.ca

Les publications suivantes sont en vente par l'entremise des librairies associées et autres librairies, ou par la poste auprès des :

Éditions du gouvernement du Canada
Ottawa (Ontario) K1A 0S9
Tél. : 613-941-5995; Canada et É.-U. 1-800-635-7943
Fax : 613-954-5779; Canada et É.-U. 1-800-565-7757
Internet : publications.gc.ca
Courriel : publications@tpsgc-pwgsc.gc.ca



Alien invaders in Canada's waters, wetlands, and forests. 2002. Claudi, R.; Nantel, P.; Muckle-Jeffs, E.; eds. 60 color photos and maps. 320 p. Cat. No. Fo42-329/2002E.
ISBN 0-660-18825-2. \$10.00



Envahisseurs exotiques des eaux, milieux humides et forêts du Canada. 2002. Sous la dir. de R. Claudi, P. Nantel et E. Muckle-Jeffs. 60 photos couleurs et cartes. 320 p. N° de cat. Fo42-329/2002F.
ISBN 0-660-96686-7. 10,00 \$



Forest insect pests in Canada. 1995. Armstrong, J.A.; Ives, W.G.H.; eds. 134 color photos; 56 black & white photos; 112 illus. 732 p. Cat. No. Fo42-235/1995E.
ISBN 0-660-15945-7. \$20.00



Insectes forestiers ravageurs au Canada. 1995. Sous la dir. de J.A. Armstrong et W.G.H. Ives. 134 photos couleurs; 56 photos noir et blanc; 112 illustr. 732 p. N° de cat. Fo42-235/1995F.
ISBN 0-660-94939-3. 20,00 \$

Insects of eastern spruces, fir and hemlock. 1994. Rose, A.H.; Lindquist, O.H. Revised by P. Syme. 200 color photos. 159 p. Cat. No. Fo64-23/1994E.
ISBN 0-660-15112-X. \$2.00
PDF available at cfs.nrcan.gc.ca/publications

Insectes des épinettes, du sapin et de la pruche de l'est du Canada. 1994. Rose, A.H.; Lindquist, O.H. Révisé par P. Syme. 200 photos couleurs. 159 p. N° de cat. Fo64-23/1994F.
ISBN 0-660-94228-3. 2,00 \$
Disponible en format PDF à scf.nrcan.gc.ca/publications

Tree diseases of eastern Canada. 1994. Myren, D.T.; Laflamme, G.; Singh, P.; Magasi, L.P.; Lachance, D.; eds. 276 color photos. 159 p. Cat. No. Fo42-186/1994E.
ISBN 0-660-14936-2
PDF available at cfs.nrcan.gc.ca/publications

Maladies des arbres de l'est du Canada. 1994. Myren, D.T.; Laflamme, G.; Singh, P.; Magasi, L.P.; Lachance, D., réd. 276 photos couleurs. 159 p. N° de cat. Fo42-186/1994F.
ISBN 0-660-94154-6. 51,95 \$
Disponible en format PDF à scf.nrcan.gc.ca/publications

These publications are available directly from the distributor at the following address:

UBC Press
c/o UTP Distribution
5201 Dufferin Street
Toronto, Ontario M3H 5T8
Phone orders: 1-800-565-9523 or 416-667-7791
Fax orders: 1-800-221-9985 or 416-667-7832
E-mail: utpbooks@utpress.utoronto.ca



Aboriginal plant use in Canada's northwest boreal forest. 2000. Marles, R.J.; Clavelle, C.; Monteleone, L.; Tays, N.; Burns, D. 200 color photos. 256 p.
Cloth: ISBN 0-7748-0737-7. \$75.00
Paper: ISBN 0-7748-0738-5. \$25.95



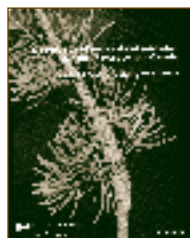
Canadian Forest Fire Behavior Prediction (FBP) System: interactive training and reference. 1998. Hirsch, K.G. Interactive, multimedia CD-ROM.
ISBN 0-660-176 00-9. \$129.95



Canadian Forest Fire Behavior Prediction (FBP) System: user's guide. 1996. Hirsch, K.G. 51 figs; 19 tables. 122 p. Cat. No. Fo29-34/7-1996E
ISBN 0-660-16389-6. \$14.95



DendroScan: a tree-ring width and density measurement system. 1996. Varem-Sanders, T.M.L.; Campbell, I.D. Spec. Rep. 10. Includes DOS-formatted disk and a precalibrated precision wedge. 131 p.
ISBN 0-660-16659-3. \$99.95



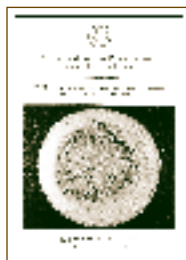
Distribution of severe dwarf mistletoe damage in west-central Canada. 1998. Brandt, J.P.; Brett, R.D.; Knowles, K.R.; Sproutle, A. Spec. Rep. 13. Includes maps and CD-ROM with Arc/Info file; 16 color figs. 27 p.
ISBN 0-660-17533-9. \$29.95



Ecological classification of Saskatchewan's mid-boreal ecoregions using resource maps and aerial photographs. 1999. Beckingham, J.D.; Futoransky, V.A.; Corns, I.G.W. Spec. Rep. 14. 5 aerial photo stereograms. 83 p.
ISBN 0-660-17864-8. \$19.95



Field guide to the Canadian Forest Fire Behavior Prediction (FBP) System. 1997. Taylor, S.W.; Pike, R.G.; Alexander, M.E. 16 color photos. 60 p.
Paper: ISBN 0-660-17100-7. \$19.95
Binder: ISBN 0-660-17099-X. \$24.95



A field guide to classify and measure aspen decay and stain. 1995. Hiratsuka, Y.; Stokes, T.; Chakravarty, P.; Morgan, D.J. 31 photos; 6 figs. 27 p.
ISBN 0-660-16039-0. \$9.95



Field guide to ecosites of northern Alberta. 1996. Beckingham, J.D.; Archibald, J.H. Spec. Rep. 5. 88 color photos; 88 botanical drawings; 24 figs; 1 folded map. 528 p.
Paper: ISBN 0-660-16369-1. \$29.95
Binder: ISBN 0-660-16386-1. \$34.95



Field guide to ecosites of southwestern Alberta. 1996. Archibald, J.H.; Klappstein, G.D.; Corns, I.G.W. Spec. Rep. 8. 113 photos; 112 botanical drawings; 24 figs. 492 p.
Paper: ISBN 0-660-16439-6. \$29.95
Binder: ISBN 0-660-16440-X. \$34.95



Field guide to ecosites of the mid-boreal ecoregions of Saskatchewan. 1996. Beckingham, J.D.; Nielsen, D.G.; Futoransky, V.A. Spec. Rep. 6. 109 color photos; 103 botanical drawings; 33 figs. 464 p.
Paper: ISBN 0-660-16387-X. \$29.95
Binder: ISBN 0-660-16388-8. \$34.95



Field guide to ecosites of west-central Alberta. 1996. Beckingham, J.D.; Corns, I.G.W.; Archibald, J.H. Spec. Rep. 9. 111 color photos; 106 botanical drawings; 40 figs.; 1 folded map. 540 p.

Paper: ISBN 0-660-16441-8. \$29.95
Binder: ISBN 0-660-16442-6. \$34.95



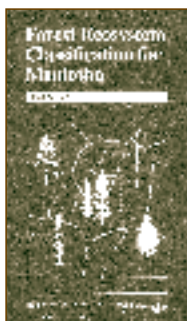
Field guide to forest ecosystems of west-central Alberta. 1986. Corns, I.G.W.; Annas, R.M. 80 photos; 80 botanical drawings; 1 folded map. 251 p.

ISBN 0-662-14644-1. \$19.95



A field guide to forest insects and diseases of the prairie provinces. 2004. Hiratsuka, Y.; Langor, D.W.; Crane, P.E. 2nd ed. Spec. Rep. 3. 582 color photos. 297 p.

ISBN 0-660-19368-X. \$29.95



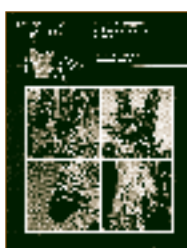
Forest ecosystem classification for Manitoba: field guide. 1995. Zoladeski, C.A.; Wickware, G.M.; Delorme, R.J.; Sims, R.A.; Corns, I.G.W. Spec. Rep. 2. 60 botanical drawings. 205 p.

Paper: ISBN 0-660-15944-9. \$24.95
Binder: ISBN 0-660-15944-X. \$29.95



Forest ecosystem toposequences in Manitoba. 1998. Zoladeski, C.A.; Delorme, R.J.; Wickware, G.M.; Corns, I.G.W.; Allan, D.T. Spec. Rep. 12. 12 photos; 10 air photostereographs; 1 map; 20 drawings; 10 figs. 63 p.

ISBN 0-662-26614-5. \$19.95



Forest tree diseases of the prairie provinces. 1987. Hiratsuka, Y. 189 color photos. 142 p.

ISBN 0662-15281-6. \$34.95



Indicator plant species in Canadian forests. 1997/1998. Ringius, G.S.; Sims, R.A. Illustrated by S.J. Meades. 180 botanical drawings; 80 range maps. 224 p.

Cloth: ISBN 0-660-174 69-3. \$39.95
Paper: ISBN 0-660-16823-5. \$19.95



Insects of eastern hardwood trees. 1997. Rose, A.H.; Lindquist, O.H. Revised by K.L. Nystrom. 506 color photos. 304 p.

ISBN 0-660-16903-7. \$45.95
PDF available at cfs.nrcan.gc.ca/publications



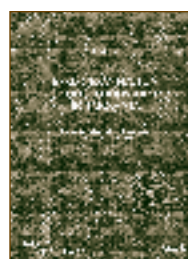
Insects of eastern larch, cedar and juniper. 2000. Rose, A.H.; Lindquist, O.H.; Nystrom, K.L. 150 color photos. 104 p.

ISBN 0-660-18074-X. \$32.95
PDF available at cfs.nrcan.gc.ca/publications



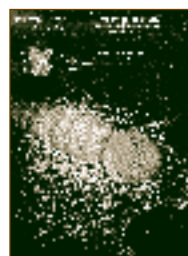
Insects of eastern pines. 1999. Rose, A.H.; Lindquist, O.H.; Nystrom, K.L. 190 color photos. 128 p.

ISBN 0-660-17720-X. \$35.95
PDF available at cfs.nrcan.gc.ca/publications



Seed germination of indigenous trees in Tanzania. 1998. Msanga, H.P. 18 photos; 142 drawings. 292 p.

ISBN 0-660-17707-2. \$24.95



Tree and shrub insects of the prairie provinces. 1988. Ives, W.G.H.; Wong, H.R. 1100 color photos; 12 figs. 327 p.

ISBN 0-662-15770-2. \$39.95

Les Presses de l'Université Laval

Publications vendues par l'entremise du distributeur :

Les Presses de l'Université Laval —
Les Éditions de l'IQRC
Bureau 3103, Pavillon Maurice-Pollack
Cité universitaire
Sainte-Foy (Québec) G1K 7P4
Tél. : 418-656-2803
Fax : 418-656-3305



Insectes des feuillus de l'est du Canada.

1997. Rose, A.H.; Lindquist, O.H. Révisé par K.L. Nystrom. 506 photos couleurs. 304 p. N° de cat. Fo64-29/1997F

ISBN 0-660-95565-2. 45,95 \$

Disponible en format PDF à scf.rncan.gc.ca/publications



Insectes du mélèze, du thuya et du genévrier de l'est du Canada.

2000. Rose, A.H.; Lindquist, O.H.; Nystrom, K.L. 150 photos couleurs. 104 p. N° de cat. Fo64-28/2000F

ISBN 0-660-96300-0. 32,95 \$

Disponible en format PDF à scf.rncan.gc.ca/publications



Insectes des pins de l'est du Canada.

1999. Rose, A.H.; Lindquist, O.H.; Nystrom K.L. 190 photos couleurs. 128 p.

N° de cat. Fo47-13/3/1999F

ISBN 0-660-96116-4. 35,95 \$

Disponible en format PDF à scf.rncan.gc.ca/publications



Méthode canadienne de prévision du comportement des incendies de forêt (PCI) : guide de l'utilisateur.

2000. Hirsch, K.G. RNCAN, SCF, Centre de foresterie du Nord, Edmonton (Alberta). Rapport spécial 7. 51 illustrations; 19 tableaux. 122 p. N° de cat. Fo29-34/7-1996F

ISBN 0-660-96402-3. 14,95 \$



Plantes indicatrices des forêts canadiennes.

1997, 1998. Ringius, G.S.; Sims, R.A. Illustré par S.J. Meades. 180 illustrations botaniques; 80 cartes de répartition. 217 p. N° de cat. Fo42-264/1998F

Reliure souple : ISBN 0-660-95508-3. 19,95 \$

Reliure toile : ISBN 0-660-95958-5. 39,95 \$

Miscellaneous Publishers / Autres éditeurs

The American Entomological Institute

This publication is available directly from the publisher:

The American Entomological Institute
Online order: www.amentinst.org/memoirs.php



Atlas of the drepanosiphine aphids of the world. Part III.

2010. Quednau, F.W. Mem. Am. Entomol. Inst. Vol. 83. 361 p. The American Entomological Institute, Gainesville, Florida.

ISBN 978-1-887988-27-8. US\$190.00

The American Phytopathological Society

This publication is available directly from the publisher:

APS Press Headquarters
3340 Pilot Knob Road
Saint Paul, Minnesota, 55121-2097 USA
Tel.: 651-454-7250; 1-800-328-7560
Fax: 651-454-0766
E-mail: aps@sciosoc.org
Online order: www.shopapspress.org/ilgerufued.html



Illustrated genera of rust fungi.

3rd ed. 2003. Cummins, G.B.; Hiratsuka, Y. 53 color illustrations; 134 black & white illustrations. 223 p.

ISBN 0-89054-304-6. US\$65.00

Miscellaneous Publishers / Autres éditeurs

CRC Press

This priced publication is available directly from the publisher:

CRC Press
6000 Broken Sound Parkway, NW, Suite 300
Boca Raton, Florida 33487
Tel.: 1-800-272-7737
E-mail: orders@crcpress.com
Online order: www.crcpress.com



Understanding forest disturbance and spatial pattern: remote sensing and GIS approaches. 2006. Wulder, M.A.; Franklin, S.E., eds. 246 p.

ISBN 0-8493-3425-X. US\$99.95

Crown Publications

This publication is available directly from the distributor or at its storefront, both at the following address:

Crown Publications
521 Fort Street
Victoria, British Columbia V8W 1E7
Tel.: 250-386-4636
E-mail: crown@pinc.com



Field guide to forest damage in British Columbia. 1999. Henigman, J.; Ebata, T.; Allen, E.; Holt, J.; Pollard, A.; eds. Joint Pub. 17. Color photos. 348 p.

Binder: ISBN 0-7726-3866-7. \$40.00

Forest Gene Conservation Association

This publication is available directly from the distributor:

Forest Gene Conservation Association
Suite 233, 266 Charlotte Street
Peterborough, Ontario K9J 2V4
Tel.: 705-755-3284
Fax: 705-755-3292



Insects of seed cones in eastern Canada: field guide. 2005. Turgeon, J.J.; de Groot, P.; Sweeney, J.D. 127 p.

ISBN 0-662-35099-5. \$20.00

Partners in Protection

This publication is available directly from the publisher:

Partners in Protection
P.O. Box 45047
Landsdowne Postal Station
Edmonton, Alberta T6H 3S0
Tel.: 780-435-7312
Download: www.partnersinprotection.ab.ca



FireSmart: protecting your community from wildfire. 2nd ed. 2003. 165 p.

ISBN 0-662-34064-7. \$15.00, including shipping.

Pensoft Publishers

This publication is available directly from the publisher:

Pensoft Publishers
Online order: www.pensoft.net



Aleocharine beetles (Coleoptera, Staphylinidae) of the province of Newfoundland and Labrador, Canada. 2011. Klimaszewski, J.; Langor, D.; Pelletier, G.; Bourdon, C.; Perdereau, L. Pensoft Series Faunistica No. 98. Pensoft Publishers, Sofia and Moscow. 314 p.

ISBN 9789546426048. €65

Pensoft Publishers

This publication is available directly from the publisher:

Pensoft Publishers
Online order: www.pensoft.net

This publication is available directly from the publisher:

Pensoft Publishers
Online order: www.pensoft.net

This publication is available directly from the bookstore below:

NHBS Environment Bookstore
2-3 Wills Road
Totnes, Devon TQ9 5XN UK
Tel.: +44 (0)1803 865913
Fax : +44 (0)1803 865280
Email : customer.services@nhbs.co.uk
Online order: www.nhbs.com/services/pensoft.html

This publication is available directly from the publisher:

Pensoft Publishers
Online order: www.pensoft.net

Springer

This book is available directly from the publisher:

Springer
333 Meadowlands Parkway
Secaucus, New Jersey, 07094 USA
E-mail: service-ny@springer.com

Springer Distribution Centre

This publication is available directly from the distributor:

Springer Distribution Center
GmbH Haberstr. 7
Heidelberg, Germany 69126
Fax: +49 (0) 6221-345-4229
E-mail: SDC-bookorder@springer.com



Biodiversity, biosystematics, and ecology of Canadian Coleoptera, ZooKeys 2 (Special Issue). 2008. Majka, C.G.; Klimaszewski, J., eds. Pensoft Publishers, Sofia and Moscow. 406 p.
ISBN 978-954-642-451-8. €84



Biodiversity, biosystematics, and ecology of Canadian Coleoptera II, ZooKeys 22 (Special Issue). 2009. Majka, C.G.; Klimaszewski, J.; eds. Pensoft Publishers, Sofia and Moscow. 375 p.
ISSN 1313-2989. €64



Catalogue of aleocharine rove beetles of Canada and Alaska (Coleoptera, Staphylinidae, Aleocharinae). 2007. Gouix, N.; Klimaszewski, J. 17 color plates. 165 p.
ISBN 978-954-642-294-1. £58.50 (about \$120.00)



Review of adventive species of Coleoptera (Insecta) recorded from eastern Canada. 2010. Klimaszewski, J.; Langor, D.; Majka C.G.; Bouchard, P.; Bousquet, Y.; LeSage, L.; Smetana, A.; Sylvestre, P.; Pelletier, G.; Davies, A.; DesRochers, P.; Goulet, H.; Webster, R.; Sweeney, J. Pensoft Series Faunistica No. 94. Pensoft Publishers, Sophia and Moscow. 272 p.
ISBN 9789546425522. €55



Bioproducts from Canada's forests: new partnerships in the bioeconomy. 2006. Wetzel, S.; Duchesne, L.C.; Laporte, M.F. 257 p.
ISBN 978-1-4020-4991-0. \$US139.00



Sampling methods, remote sensing and GIS multiresource forest inventory. 2006. Köhl, M.; Magnussen, S.; Marchetti, M., eds. 374 p.
ISBN 978-3-540-32571-0. \$200.00

Miscellaneous Publishers / Autres éditeurs

University of Alberta Press

This publication is available directly from the distributor at the following address:

University of Alberta Press
Georgetown Terminals Warehouses
34 Armstrong Avenue
Georgetown, Ontario L7G 4R9
Tel: 905-873-9781; 1-877-864-8477
Fax: 905-873-6170; 1-877-864-4272
E-mail: orders@gtwcanada.com



Rare vascular plants of Alberta. 2001. Kershaw, L.; Gould, J.; Johnson, D.; Lancaster, J.; eds. 415 color photos, 480 drawings, 528 p.

Cloth: ISBN 0-88864-380-2. \$75.00
Paper: ISBN 0-88864-319-5. \$29.95

At Your Local Bookseller / Dans toute bonne librairie



Aménagement écosystémique en forêt boréale. 2008. Sous la dir. de S. Gauthier, M.-A. Vaillancourt, A. Leduc, L. De Grandpré, D. Kneeshaw, H. Morin, P. Drapeau et Y. Bergeron. Les Presses de l'Université du Québec, Québec (Québec). 600 p.

ISBN 978-2-7605-1525-3. 69,00 \$



Les Arbres du Canada. 1996. Farrar, J.L. 580 photos couleurs; 1600 illustrations botaniques; 136 cartes de répartition. 512 p. Couverture rigide.

ISBN 2-7621-1824-7. 49,95 \$



Ecosystem management in the boreal forest. 2009. Gauthier, S.; Vaillancourt, M.-A.; Leduc, A.; De Grandpré, L.; Kneeshaw, D.; Morin, H.; Drapeau, P.; Bergeron, Y.; eds. Les Presses de l'Université du Québec, Québec, Que. 572 p.

ISBN 978-2-7605-2381-4. \$69.00.



The forests of Canada. 2003. Farr, K. 150 color photos. 152 p.

ISBN 0-660-19004-4. \$39.95



Les Forêts du Canada. 2003. Farr, K. 150 photos couleurs. 152 p.

ISBN 0-660-96807-X. 39,95 \$



Plants of the western boreal forest and aspen parkland. 1995. Johnson, D.; Kershaw, L.; MacKinnon, A.; Pojar, J. 800 color photos; 900 line drawings. 392 p.

ISBN 1-55105-058-7. \$24.95



Trees in Canada. 1995. Farrar, J.L. 580 color photos; 1600 botanical drawings; 136 range maps. 512 p.

Cloth: ISBN 1-55041-199-3. \$50.00

The Canadian Forest Service (CFS) Publications site, completely rebuilt in 2010, is now faster and more accessible. You can search, download, and order CFS publications with just a few clicks. The site, updated daily and dating back to 1905, includes more than 20 000 journal articles, reports, books, leaflets, and other publications prepared by CFS scientists and other professionals.

Come take a look!

cfs.nrcan.gc.ca/publications

Le site des Publications du Service canadien des forêts (SCF), complètement rebâtie en 2010, est maintenant plus rapide et plus accessible. Vous pouvez effectuer des recherches, télécharger des documents, et commander des publications du SCF en quelques étapes. Le site, mise à jour quotidiennement et datant de 1905, comprend plus de 20 000 articles de journaux, rapports, livres, dépliants et autres publications préparées par les scientifiques du SCF et d'autres professionnels.

Jetez-y un coup d'oeil!

scf.nrcan.gc.ca/publications



©Her Majesty the Queen in Right of Canada, represented by the Minister of Natural Resources Canada, 2012

Catalogue No. Fo12-24/21-2011
Catalogue No. Fo12-24/21-2011E-PDF
ISSN 1183-7918 (Print)
ISSN 1702-3262 (Online)

Information contained in this publication may be reproduced, in part or in whole, and by any means, for personal or public non-commercial purposes, without charge or further permission, unless otherwise specified.

You are asked to:

- exercise due diligence in ensuring the accuracy of the materials reproduced;
- indicate both the complete title of the materials reproduced as well as the author organization; and
- indicate that the reproduction is a copy of an official work that is published by the Government of Canada and that the reproduction has not been produced in affiliation with, or with the endorsement of, the Government of Canada.

Commercial reproduction and distribution are prohibited except with written permission from the Government of Canada's copyright administrator, Public Works and Government Services Canada (PWGSC). For more information, please contact PWGSC at 613-996-6886 or at droitdauteur.copyright@tpsgc-pwgsc.gc.ca.

DISCLAIMER

Her Majesty is not responsible for the accuracy or completeness of the information contained in the reproduced material. Her Majesty shall at all times be indemnified and held harmless against any and all claims whatsoever arising out of negligence or other fault in the use of the information contained in this publication.

©Sa Majesté la Reine du chef du Canada, représentée par le ministre de Ressources naturelles Canada, 2012

Numéro de catalogue Fo12-24/21-2011
Numéro de catalogue Fo12-24/21-2011F-PDF
ISSN 1183-7918 (Imprimé)
ISSN 1702-3262 (En ligne)

Le contenu de cette publication peut être reproduit en tout ou en partie, et par quelque moyen que ce soit, sous réserve que la reproduction soit effectuée uniquement à des fins personnelles ou publiques mais non commerciales, sans frais ni autre permission, à moins d'avis contraire.

On demande seulement :

- de faire preuve de diligence raisonnable en assurant l'exactitude du matériel reproduit ;
- d'indiquer le titre complet du matériel reproduit et l'organisation qui en est l'auteur ;
- d'indiquer que la reproduction est une copie d'un document officiel publié par le gouvernement du Canada et que la reproduction n'a pas été faite en association avec le gouvernement du Canada ni avec l'appui de celui-ci.

La reproduction et la distribution à des fins commerciales sont interdites, sauf avec la permission écrite de l'administrateur des droits d'auteur de la Couronne du gouvernement du Canada, Travaux publics et Services gouvernementaux (TPSGC). Pour de plus amples renseignements, veuillez communiquer avec TPSGC au 613-996-6886 ou à droitdauteur.copyright@tpsgc-pwgsc.gc.ca.

AVERTISSEMENT

Sa Majesté n'est pas responsable de l'exactitude et de l'intégralité des renseignements contenus dans le matériel reproduit. Sa Majesté doit en tout temps être indemnisée et tenue exempte du paiement de toute réclamation qui découle de la négligence ou d'un autre manquement dans l'utilisation des renseignements contenus dans cette publication.

Canadian Forest Service Publications:
cfs.nrcan.gc.ca/publications

- ① **Natural Resources Canada, Canadian Forest Service
Atlantic Forestry Centre**
P.O. Box 4000
Fredericton, New Brunswick E3B 5P7
Tel.: 506-452-3500 Fax: 506-452-3525
- ② **Natural Resources Canada, Canadian Forest Service
Laurentian Forestry Centre**
1055 rue du P.E.P.S., P.O. Box 10380, Station Sainte-Foy
Québec, Québec G1V 4C7
Tel.: 418-648-5789 Fax: 418-648-2529
- ③ **Natural Resources Canada, Canadian Forest Service
Great Lakes Forestry Centre**
1219 Queen Street East
Sault Ste. Marie, Ontario P6A 2E5
Tel.: 705-949-9461 Fax: 705-541-5700
E-mail: publications@nrcan.gc.ca
- ④ **Natural Resources Canada, Canadian Forest Service
Northern Forestry Centre**
5320-122nd Street NW
Edmonton, Alberta T6H 3S5
Tel.: 780-435-7365 Fax: 780-435-7359
E-mail: publications@nofc.forestry.ca
- ⑤ **Natural Resources Canada, Canadian Forest Service
Pacific Forestry Centre**
506 West Burnside Road
Victoria, British Columbia V8Z 1M5
Tel.: 250-363-0600 Fax: 250-363-0775
E-mail: PFCPublications@nrcan.gc.ca
- ⑥ **Natural Resources Canada, Canadian Forest Service
Headquarters**
580 Booth Street, 15th Floor
Ottawa, Ontario K1A 0E4
Tel. 1-800-387-2000 Fax: 613-740-3114
E-mail: cfs-scf.publications@nrcan-rncan.gc.ca

Publications du Service canadien des forêts :
scf.nrcan.gc.ca/publications

- ① **Ressources naturelles Canada, Service canadien des forêts
Centre de foresterie de l'Atlantique**
C.P. 4000
Fredericton (Nouveau-Brunswick) E3B 5P7
Tél. : 506-452-3500 Fax : 506-452-3525
- ② **Ressources naturelles Canada, Service canadien des forêts
Centre de foresterie des Laurentides**
1055, rue du P.E.P.S., C.P. 10380, Succursale Sainte-Foy
Québec (Québec) G1V 4C7
Tél. : 418-648-5789 Fax : 418-648-2529
- ③ **Ressources naturelles Canada, Service canadien des forêts
Centre de foresterie des Grands Lacs**
1219 Queen Street East
Sault Ste. Marie (Ontario) P6A 2E5
Tél. : 705-949-9461 Fax : 705-541-5700
Courriel : publications@nrcan.gc.ca
- ④ **Ressources naturelles Canada, Service canadien des forêts
Centre de foresterie du Nord**
5320-122nd Street NW
Edmonton (Alberta) T6H 3S5
Tél. : 780-435-7365 Fax : 780-435-7359
Courriel : publications@nofc.forestry.ca
- ⑤ **Ressources naturelles Canada, Service canadien des forêts
Centre de foresterie du Pacifique**
506 West Burnside Road
Victoria (Colombie-Britannique) V8Z 1M5
Tél. : 250-363-0600 Fax : 250-363-0775
Courriel : PFCPublications@nrcan.gc.ca
- ⑥ **Ressources naturelles Canada, Service canadien des forêts
Administration centrale**
580, rue Booth, 15e étage
Ottawa (Ontario) K1A 0E4
Tél. : 1-800-387-2000 Fax : 613-740-3114
Courriel : cfs-scf.publications@nrcan-rncan.gc.ca

Canadian Forest Service free publications may be ordered from the CFS Publications site or by mail, fax, phone, or e-mail from the research establishment that publishes them. The originating establishment is indicated by a circled number after each publication cited in this issue.

Publications Digest is prepared and published by Science Program Branch, HQ, Canadian Forest Service, Ottawa. Copies may be obtained free of charge from Natural Resources Canada (address ⑥ above). PDF available at cfs.nrcan.gc.ca/publications.

Editor/Compiler: Francine Bérubé
Text Editor: Paula Irving
Graphic Designer: Julie Piché

Pour obtenir une publication gratuite du Service canadien des forêts, il faut la commander à partir du site des Publications du SCF, ou par la poste, par fax, par téléphone ou par courriel, à l'établissement de recherche qui l'a publiée. L'établissement d'origine est indiqué par un numéro encerclé à la fin de chaque publication mentionnée dans ce numéro de *l'Abrégé*.

L'Abrégé des publications est publié par la Direction des programmes scientifiques du Service canadien des forêts à l'administration centrale, à Ottawa. Pour obtenir gratuitement des exemplaires de cette publication, veuillez vous adresser à Ressources naturelles Canada (adresse ⑥ ci-haut). Version PDF à scf.nrcan.gc.ca/publications.

Révision-compilation : Francine Bérubé
Conception graphique : Julie Piché

To receive *Publications Digest* electronically, contact fberube@nrcan.gc.ca. You will be notified when the current issue is available at cfs.nrcan.gc.ca/publications.

Si vous désirez recevoir électroniquement *l'Abrégé des publications*, veuillez communiquer avec fberube@nrcan.gc.ca. Nous vous aviserons lorsque la parution d'un nouveau numéro sera disponible à scf.nrcan.gc.ca/publications.

