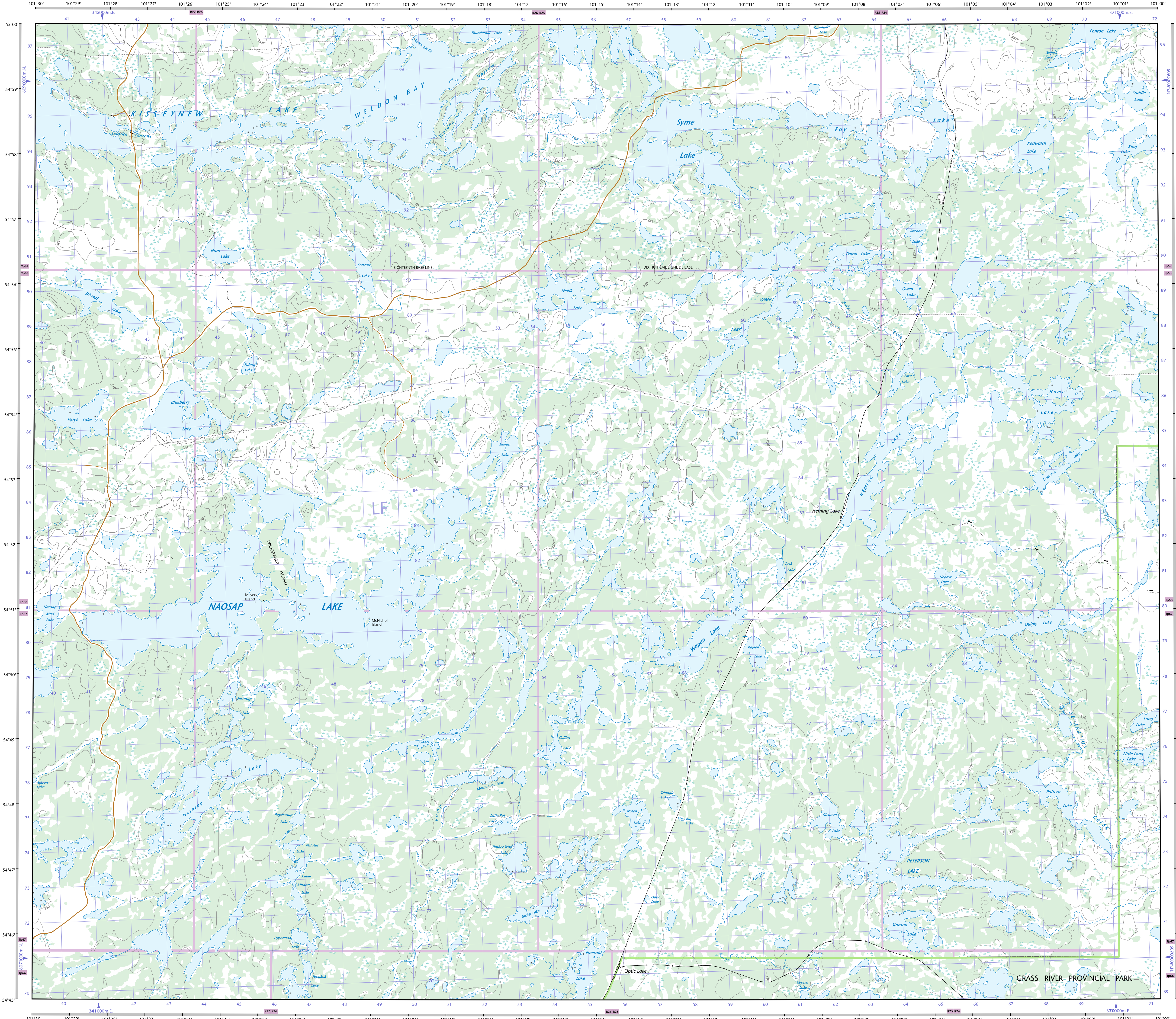
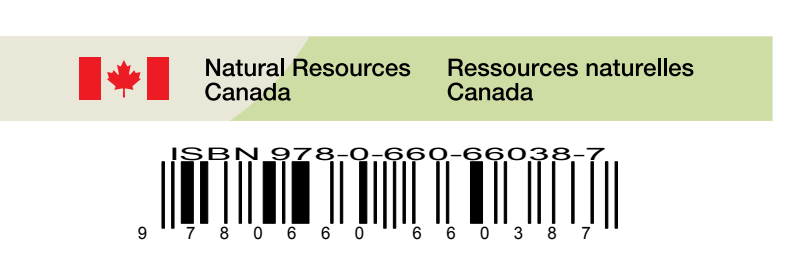
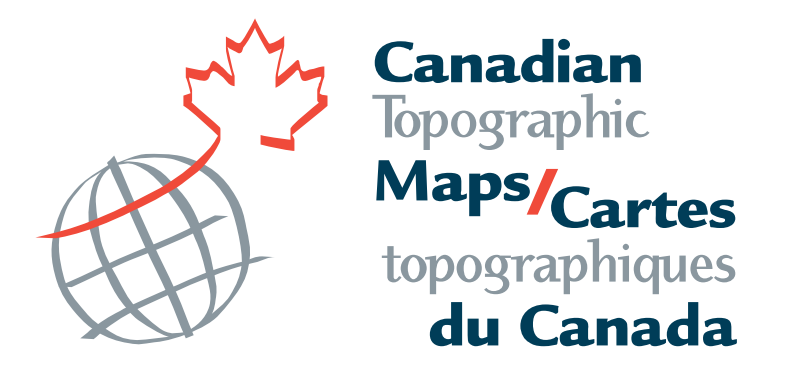
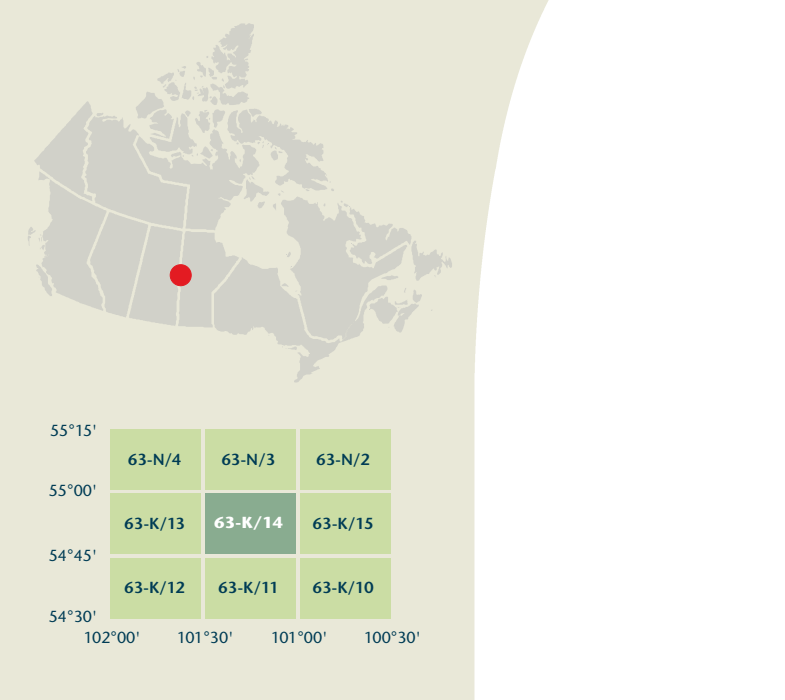


- Legend listing various symbols and their corresponding features: Road, Railway, Boundary, Pipeline, Airport, etc.



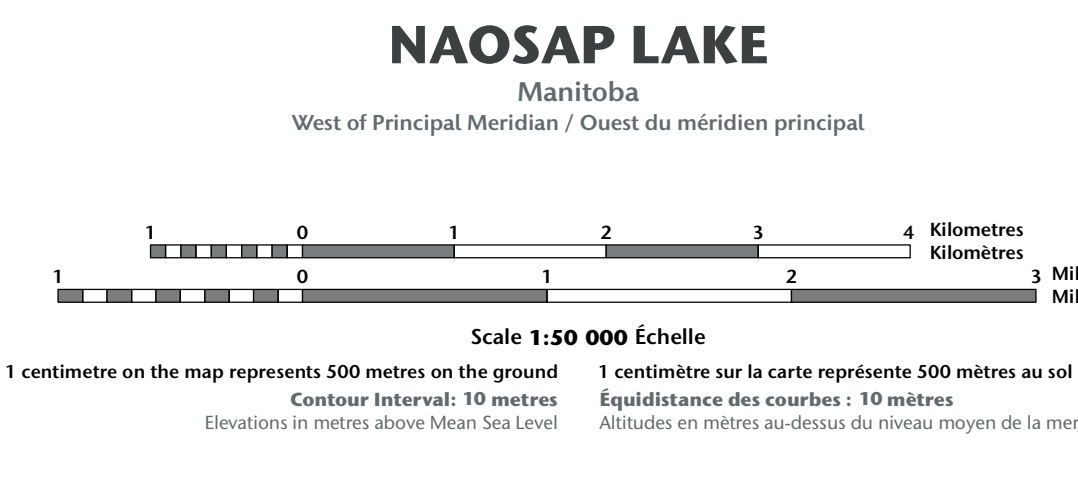
63-K/14 SCALE 1:50 000 EDITION 05 NAOSAP LAKE Manitoba



Produced on November 25, 2011, by the Centre for Topographic Information, Natural Resources Canada. Établi le 25 novembre 2011, par le Centre d'information topographique, Ressources naturelles Canada.

Map content validity dates: Road network, 1988 - 2000; Hydrographic network, 2006 - 2008; Vegetation, 2001; Buildings, 1988; Boundaries, 2004 - 2010; Toponymy, 2004 - 2010.

Dates de validité du contenu de la carte: Réseau routier, 1988 - 2000; Réseau hydrographique, 2006 - 2008; Végétation, 2001; Bâtiements, 1988; Limites, 2004 - 2010; Toponymie, 2004 - 2010.



Use diagram only to obtain numeric values. Approximate Mean Declination 2011 for centre of map: Annual change decreasing 11.6".

100 000 metre Square Identification. 1000 metre Universal Transverse Mercator Grid. Zone 14.

63-K/14 SCALE 1:50 000 EDITION 05 VERSION 00 SERIE A743. Produced / Carte imprimée: Cat. no. / No de cat. M116-200814-F04 ISBN 978-0-608-66038-9