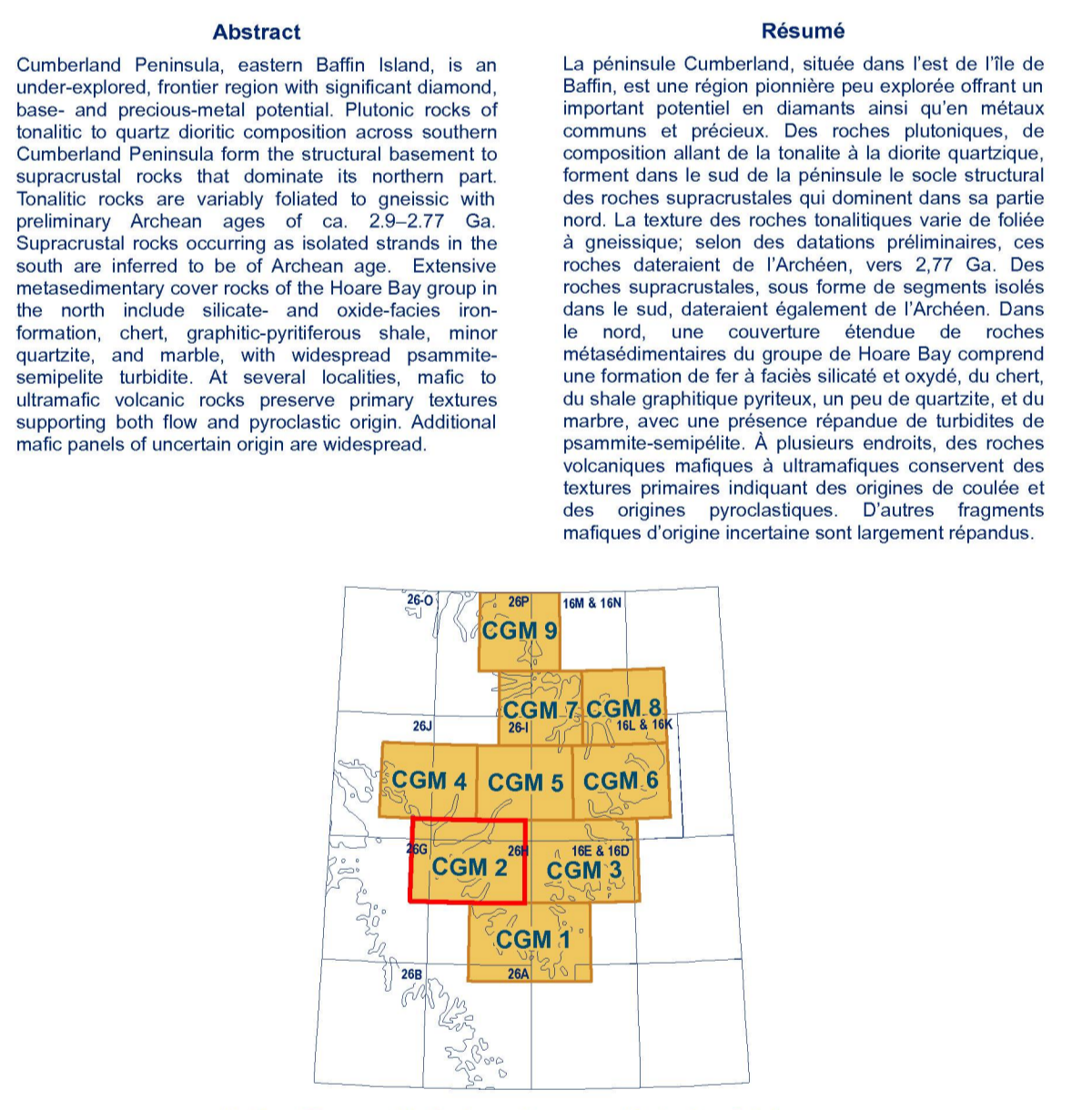
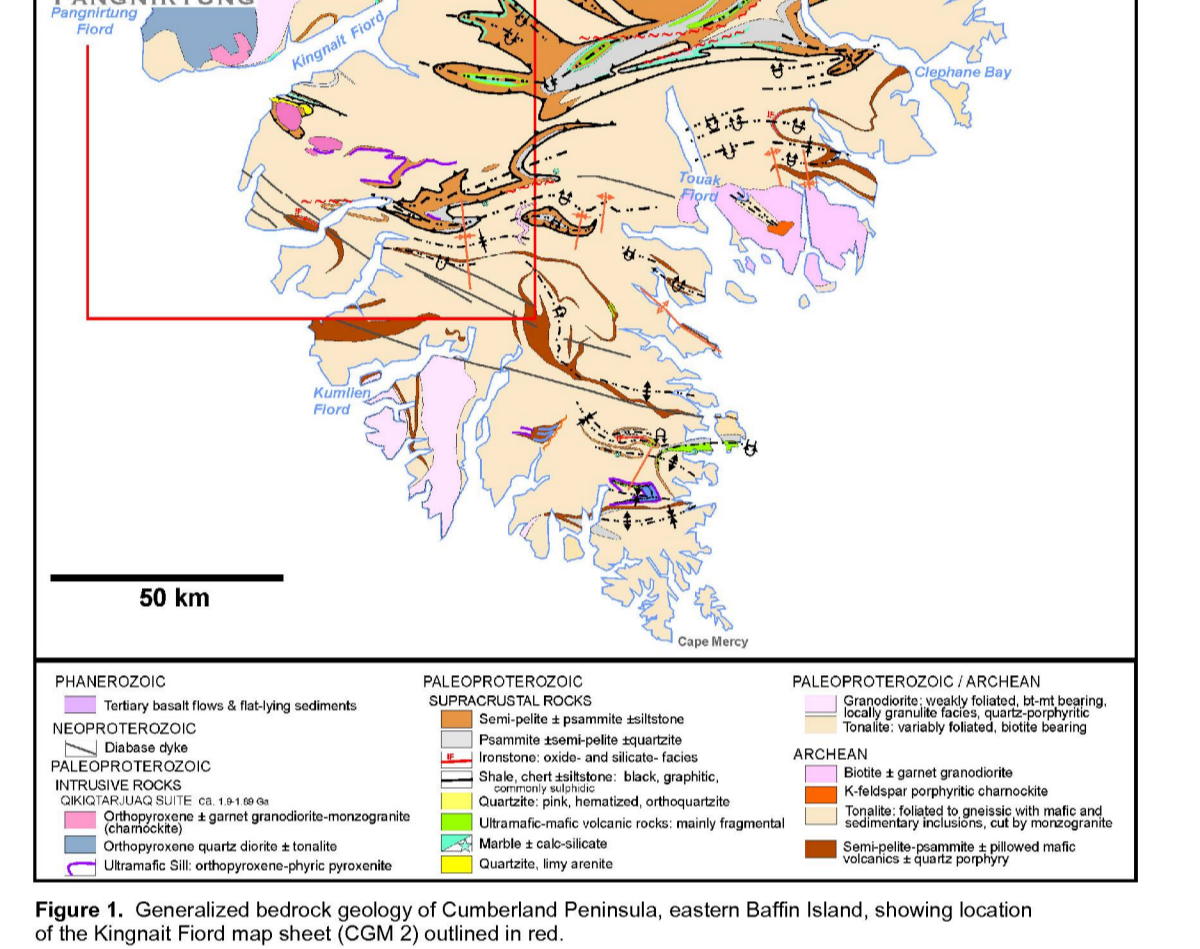
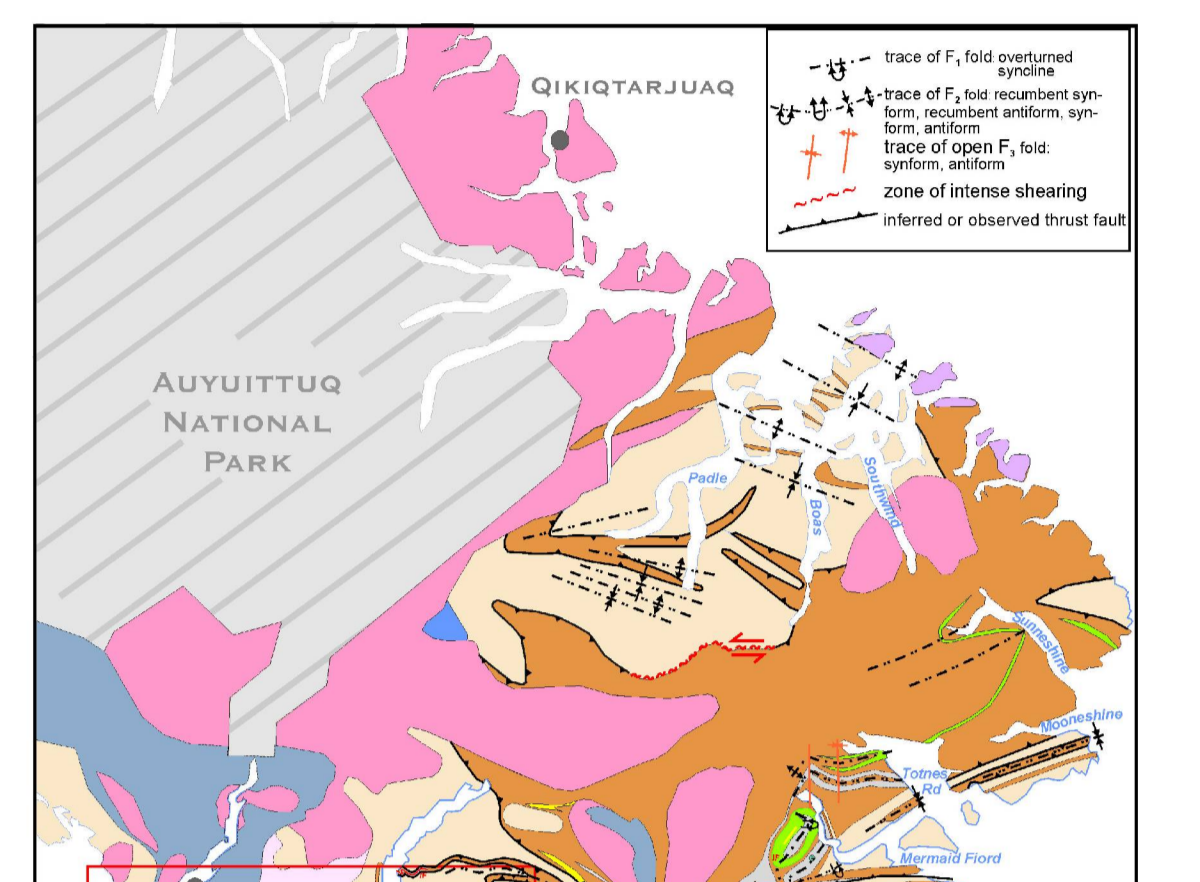
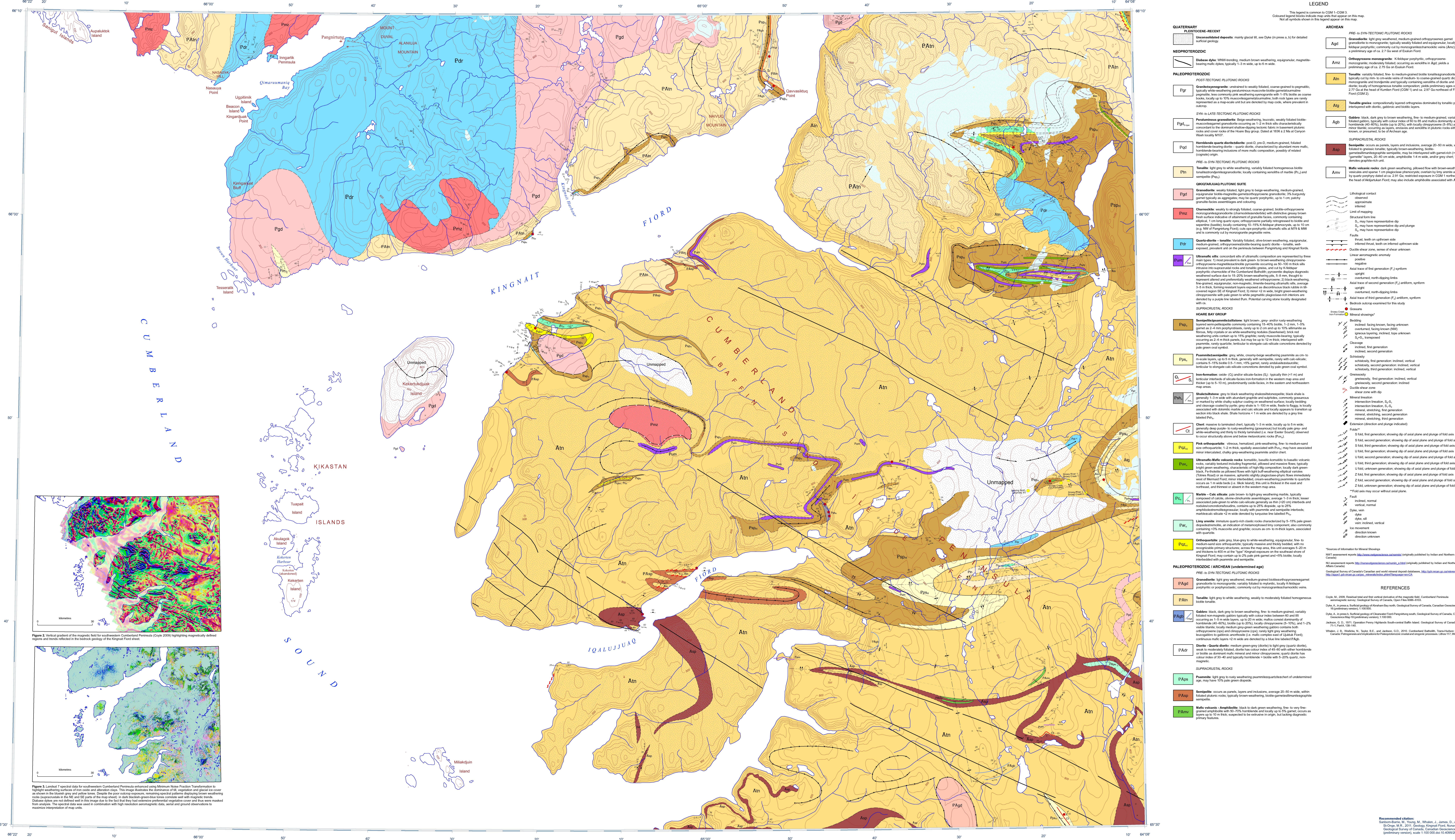


DESCRIPTIVE NOTES
The Kingnait Fiord map sheet, southeast Cumberland Peninsula, Baffin Island, is relatively poorly exposed compared to other parts of Cumberland Peninsula (Figure 1). Accordingly, newly available geoscientific data (CGM 2010 and CGM 2011) have been used to update the geoscientific map sheet for backscatter interpretation for the adjacent map sheets. The preliminary 1:500 000 scale map sheet is based on geoscientific data from the adjacent map sheets. This preliminary 1:500 000 scale map sheet is based on geoscientific data from the adjacent map sheets. This preliminary 1:500 000 scale map sheet is based on geoscientific data from the adjacent map sheets.



Cover Illustration: View to east of southwest shore of Kingnait Fiord where the foreground and background light cliff faces form a magnetically defined zone (CGM 2010) overlain with backscatter geology (Cumberland Peninsula). National Topographic System reference and index to adjoining published Geological Survey of Canada maps.

Canadian Geoscience Maps / Cartes géoscientifiques du Canada. Logo of Natural Resources Canada and the Geological Survey of Canada. Includes contact information and a small map of the region.



LEGEND
This legend is based on the CGM 1:500 000 scale map sheet. Coloured symbols indicate the main units that appear on the map. All units are shown in the legend.
QUATERNARY: PLEISTOCENE-RECENT (Pdr, Pgr), NEOPLEISTOCENE (Pgl), PALEOPROTEROZOIC (Pp).
ARCHEAN: PRE- to SYN-TECTONIC PLUTONIC ROCKS (PAn, PAp, PAs, PAt, PAr, PAm, PAv, PAw, PAz, PAa, PAc, PAe, PAf, PAg, PAh, PAi, PAj, PAk, PAL, PAN, PAP, PAS, PAT, PAR, PAM, PAW, PAZ, PAA, PAC, PAE, PAF, PAg, PAH, PAI, PAJ, PAK, PAL).
Detailed descriptions for each unit are provided in the legend table.