

2.4



Catalogue 92-311E

1991 Census Geography: A Historical Comparison

Geographic Reference

~~This book belongs to the Statistics Canada Library~~
~~Document de la Bibliothèque~~
~~This book is part of the Statistics Canada Library~~
~~Document de la Bibliothèque~~



1991

Census



Statistics
Canada

Statistique
Canada

Canada

How to Reach Us

Data in Many Forms...

Statistics Canada disseminates data in a variety of forms. In addition to diskette products and publications, both standard and special tabulations are available in print or electronic format. Maps and other geographic reference materials are available for some types of data. In some cases, workshops and seminars have been developed to provide additional information on some subjects.

How to Obtain More Information

Inquiries about products and services should be directed to your local Statistics Canada Reference Centre:

St. John's	1-800-565-7192	Winnipeg	(204) 983-4020
Halifax	(902) 426-5331	Regina	(306) 780-5405
Montréal	(514) 283-5725	Edmonton	(403) 495-3027
Ottawa	(613) 951-8116	Calgary	(403) 292-6717
Toronto	(416) 973-6586	Vancouver	(604) 666-3691

For users who reside outside the local dialing area of the Regional Reference Centres, a toll-free number is provided:

Newfoundland, Labrador, Nova Scotia, New Brunswick and Prince Edward Island	1-800-565-7192
Quebec	1-800-361-2831
Ontario	1-800-263-1136
Manitoba, Saskatchewan, Alberta and Northwest Territories	1-800-563-7828
British Columbia and Yukon	1-800-663-1551
Telecommunications Device for the Hearing Impaired	1-800-363-7629
Toll Free Order Only Line (Canada and United States)	1-800-267-6677

How to Order Products

Statistics Canada publications may be purchased from local authorized agents and other community bookstores, through the nearest Statistics Canada Regional Reference Centre, or by mail order to Marketing Division, Sales and Service, Statistics Canada, Ottawa K1A 0T6. Contact the nearest Statistics Canada Regional Reference Centre for more information on electronic products and services. See the order form at the end of this product for further details.



Statistics Canada

1991 Census Geography: A Historical Comparison

This book belongs to Census Text Production Services (Census Operations Division).

Ce livre appartient au Service de production des textes du recensement (Division des opérations du recensement).

Published by authority of the Minister responsible for Statistics Canada

©Minister of Industry, Science and Technology, 1993

All rights reserved. No part of this publication may be reproduced, stored in a retrieval system or transmitted in any form or by any means, electronic, mechanical, photocopying, recording or otherwise without prior written permission from Licence Services, Marketing Division, Statistics Canada, Ottawa, Ontario, Canada K1A 0T6.

August 1993

Price: Canada: \$20.00
United States: US\$24.00
Other Countries: US\$28.00

Catalogue No. 92-311 E

ISBN 0-660-14257-0

Ottawa

La version française de cette publication est disponible sur demande.

Note of Appreciation

Canada owes the success of its statistical system to a long-standing cooperation involving Statistics Canada, the population of Canada, its businesses and governments. Accurate and timely statistical information could not be produced without their continued cooperation and goodwill.

Canadian Cataloguing in Publication Data

Main entry under title:

1991 census geography : a historical comparison

Issued also in French under title: Géographie du recensement de 1991 : comparaison historique. ISBN 0-660-14257-0
CS92-311E

1. Census districts -- Canada. 2. Metropolitan areas -- Canada. 3. Election districts -- Canada. 4. Canada -- Census, 1991.
I. Statistics Canada. II. Title.

HA741.5.1991 N56 1993 304.6'0971 C93-099386-1

How to Cite This Document

Statistics Canada. 1991 Census Geography : a historical comparison. Ottawa: Industry, Science and Technology Canada, 1993.
1991 Census of Canada. Catalogue number 92-311E.

The paper used in this user documentation meets the minimum requirements of American National Standard for Information Sciences - Permanence of Paper for Printed Library Materials. ANSI Z39.48-1984



Preface

The census of Canada is an invaluable source of information on Canadians and their way of life. The census data allow individual researchers as well as academic, business, cultural, social and governmental organizations to undertake in-depth inquiries and analyses on social issues of interest and concern to all Canadians.

This publication is one of many reference products designed to assist users of census data in finding, understanding and comparing census information. It provides an overview of changes from 1986 to 1991 in the geographic areas used for disseminating census data. Some differences from previous censuses are also indicated, where applicable. The changes are described in terms of the geographic area concept and rules of definition, as well as the number of changes to the various geographic boundaries.

I would like to express my appreciation to the millions of Canadians who completed their questionnaire on June 4, 1991, as well as to all those who assisted Statistics Canada in planning and conducting the census.

Ivan P. Fellegi
Chief Statistician of Canada

Table of Contents

	Page
Introduction	1
Standard Geographic Areas - Definitions, Limits and Comparability	4
Legislative/Administrative Areas	4
Province/Territory	4
Subprovincial Region	4
Federal Electoral District	5
Census Division	7
Census Subdivision	9
Statistical Areas	12
Enumeration Area	12
Census Metropolitan Area (CMA) and Census Agglomeration (CA)	14
Primary Census Metropolitan Areas (PCMA) and Primary Census Agglomerations (PCA)	18
Consolidated and Regular Census Metropolitan Areas and Census Agglomerations	19
Census Metropolitan Area and Census Agglomeration Components	19
Census Metropolitan Area and Census Agglomeration Parts	21
Census Tract	21
Provincial Census Tract	25
Census Consolidated Subdivision	26
Urban and Rural Areas	27
Quasi-standard Geographic Areas - Definitions, Limits and Comparability	29
Township, Range and Meridian	29
Block-face	29
Postal Code	29
Unincorporated Place	30
Appendices	32
Appendix A - Census Divisions With 1986 Population Shift Equal to or Exceeding 100	32
Appendix B - Census Subdivisions With 1986 Population Shift Equal to or Exceeding 100	33
Appendix C - Summary of Census Division Changes in British Columbia, 1986-1991, Expressed by SGC Code	38
Notes, Footnotes and Abbreviations	39
For More Information	40
Reference Documents	40
Geographic Products and Services	45
Contacts	48
Regional Reference Centres	48
Depository Libraries	49
Additional References and Services	51

List of Tables

	Page
Table 1. Number of Subprovincial Regions by Province and Territory, 1986 and 1991	5
Table 2. Number of Federal Electoral Districts by Province and Territory, 1986 and 1991	6
Table 3. Census Division Changes by Province and Territory, 1986 and 1991	9
Table 4. Census Subdivision Changes by Province and Territory, 1986 and 1991	11
Table 5. Enumeration Area Changes by Province and Territory, 1986 and 1991	13
Table 6. Census Metropolitan Areas by Province, 1991	15
Table 7. Census Agglomerations by Province and Territory, 1991	16
Table 8. Census Agglomeration Counts by Province and Territory, 1986 and 1991	17
Table 9. Consolidated Census Metropolitan Areas and Consolidated Census Agglomerations With Their Constituent Primary Census Metropolitan Areas and Primary Census Agglomerations, 1991	20
Table 10. Tracted Centres by Province, 1991	22
Table 11. Census Tracts by Province, 1986 and 1991	23
Table 12. Census Tract Changes, 1986 and 1991	24
Table 13. Provincial Census Tract Changes by Province and Territory, 1986 and 1991	25
Table 14. Census Consolidated Subdivision Changes by Province and Territory, 1986 and 1991 ...	26
Table 15. Urban Area Changes by Province and Territory, 1986 and 1991	28
Table 16. Active Postal Codes by Province and Territory, 1986 and 1991	30

List of Figures

Figure 1. Hierarchy of Standard Geographic Areas, 1991	2
Figure 2. Hierarchy of Quasi-standard and User-defined Geographic Areas, 1991	3

Introduction

This paper is part of a series of reference documents to assist users in finding, understanding and comparing census data. In particular, it is prepared to aid users in the comprehension of standard and quasi-standard geographic terms and more importantly, in the comparison of geographic terms associated with the 1991 Census relative to the 1986 Census and to previous censuses where applicable. This reference document has been a catalogued publication since the 1986 Census.

Historical comparability has two main components: conceptual change, and changes to boundaries and/or geographic codes. First, the concept compares the 1991 Census definition and the 1986 Census definition. Second, many 1991 areas do not correspond to 1986 areas in terms of the geographic area covered. For example, in some cases an area was split to create two or more areas, or several areas were combined to form one area; these changes will be addressed for the geographic areas listed below. In some situations, however, a comprehensive study of these changes involves the use of such other reference documents as illustrative maps and reference lists. The section "For More Information" lists specific documents, as well as other products and services that can be consulted. These can be obtained by contacting the nearest Statistics Canada office. The data tables herein have been derived from the 1991 Census Geographic Data Base (CGDB) in the Geography Division of Statistics Canada.

Census data are tabulated and released for two kinds of standard geographical areas: legislative/administrative and statistical (Figure 1). Legislative/administrative entities are geographic areas which, for the most part, are defined by Canadian federal and provincial statutes, and respected by the census. There are five types of such entities:

- Provinces and territories (PRs)
- Subprovincial regions (SPRs)
- Federal electoral districts (FEDs)
- Census divisions (CDs)
- Census subdivisions (CSDs)

In some instances, census divisions and subdivisions are defined by Statistics Canada in cooperation with provincial authorities.

Statistical areas, in contrast to most administrative entities, are defined by Statistics Canada as part of the spatial frame used to collect and disseminate census data.

For the 1991 Census, statistical areas include:

- Enumeration areas (EAs)
- Census metropolitan areas (CMAs) / census agglomerations (CAs)
 - CMA/CA components
 - CMA/CA parts
- Primary census metropolitan areas (PCMAs) / primary census agglomerations (PCAs)
- Census tracts (CTs)
- Provincial census tracts (PCTs)
- Census consolidated subdivisions (CCSs)
- Urban areas (UAs)
- Rural areas

Other geographical units of a quasi-standard nature may be used for the dissemination of census data (Figure 2). They are:

- Township, range and meridian
- Postal codes
- Unincorporated places (UPs)

Census data may also be produced for user-defined areas. Query areas are created by aggregating small building-block units: block-faces covered in the Street Network File (primarily centres of more than 50,000 people) and enumeration areas elsewhere.

Figure 1. Hierarchy of Standard Geographic Areas, 1991

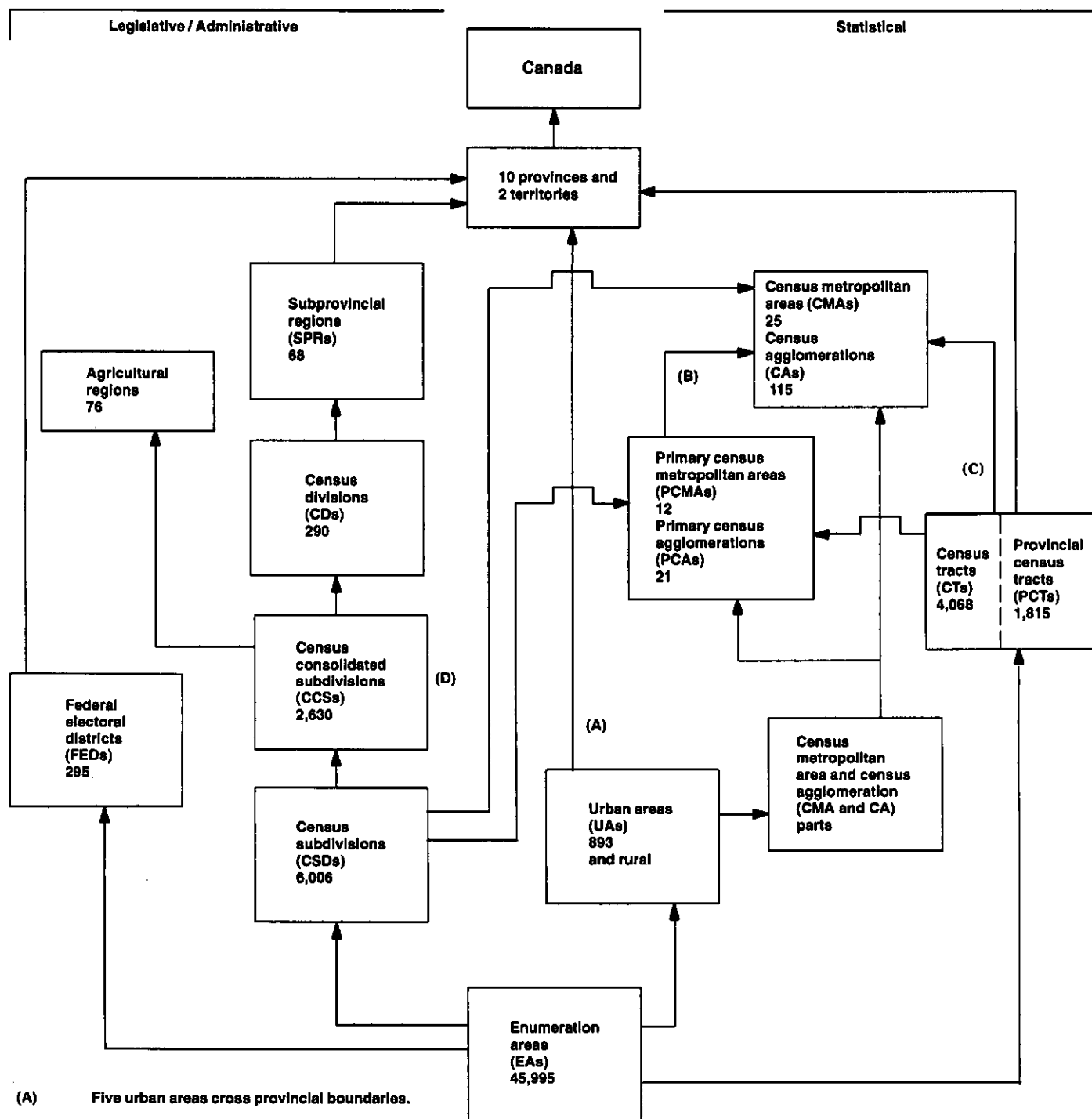
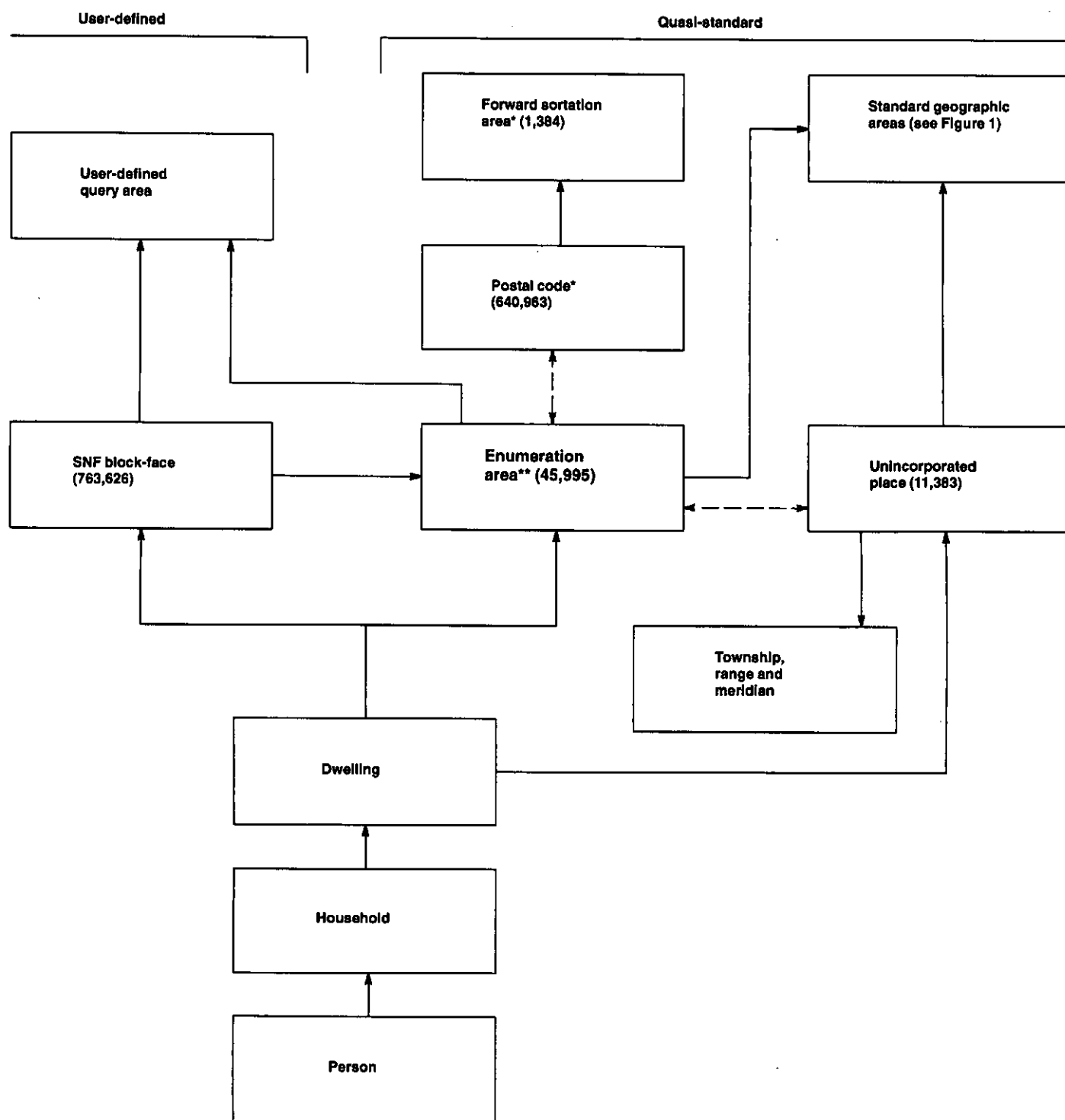


Figure 2. Hierarchy of Quasi-standard and User-defined Geographic Areas, 1991



* See the definition of postal code for further details.

** Enumeration areas are a standard geographic area (see Figure 1).

<- -> These are "many to many" relationships.

Standard Geographic Areas – Definitions, Limits and Comparability

Legislative/Administrative Areas

Province/Territory

The 10 provinces and two territories form the major geopolitical groupings of Canada. They are the basic units for which census data are tabulated and cross-classified.

Comparability of Concept

From a statistical point of view, this concept is consistent and comparable with censuses since 1951.

Comparability of Boundaries

Provincial and territorial boundaries did not change between 1986 and 1991.

Subprovincial Region

A subprovincial region (SPR) is a geographical unit smaller than a province (with the exception of Prince Edward Island and the Territories) made up of groupings of complete census divisions.

SPRs were created in response to the requirement for a geographical unit suitable for the analysis of regional economic activity. SPRs may be economic, administrative or planning regions. In Quebec and British Columbia they were designated by law. In the other provinces, SPRs were created in cooperation between Statistics Canada and the provincial/territorial authorities.

There are 68 subprovincial regions in Canada (Table 1). The 1991 SPRs coincide with Labour Force Survey economic regions, except in British Columbia. The SPRs in British Columbia respect the provincially defined development regions. In Quebec SPRs respect the provincially defined "régions administratives".

Comparability of Concept

The SPR concept did not change between 1986 and 1991.

Comparability of Boundaries

SPRs are generally unchanged from 1986 with the exception of Quebec, Alberta and British Columbia. In **Quebec**, SPRs reflect the new administrative regions which are aggregations of the latest census division structure (MRCs). In **Alberta**, the 1986 SPRs were replaced by the Labour Force Survey (LFS) economic regions at the request of the province. In **British Columbia**, the 1991 SPRs are equivalent to the new provincially defined economic development regions.

Table 1. Number of Subprovincial Regions by Province and Territory, 1986 and 1991

Province/territory	Number of 1991 SPRs	Number of 1986 SPRs
Newfoundland	4	4
Prince Edward Island	1	1
Nova Scotia	5	5
New Brunswick	5	5
Quebec	16	10
Ontario	5	5
Manitoba	8	8
Saskatchewan	6	6
Alberta	8	8
British Columbia	8	9
Yukon Territory	1	1
Northwest Territories	1	1
CANADA	68	63

Federal Electoral District

The term federal electoral district (FED) refers to any place or territorial area entitled to return a member to serve in the House of Commons. The legal limits and descriptions are the responsibility of the Chief Electoral Officer and are published in the Canada Gazette. FEDs are also used by Statistics Canada to organize census-taking. FED boundaries are required by law to be adjusted after each decennial census.

FED boundaries may cut across all geographic areas except provinces. It should be noted that federal electoral districts differ from provincial electoral districts.

The 1991 Census was taken according to the 1987 Representation Order of the Electoral Boundaries Readjustment Act, as amended in 1987. The Representation Order includes the legal descriptive limits for the FEDs. Based on this Order, there are 295 FEDs in Canada as shown in Table 2:

Table 2. Number of Federal Electoral Districts by Province and Territory, 1986 and 1991

Province/territory	Number of 1991 FEDs	Number of 1986 FEDs
Newfoundland	7	7
Prince Edward Island	4	4
Nova Scotia	11	11
New Brunswick	10	10
Quebec	75	75
Ontario	99	95
Manitoba	14	14
Saskatchewan	14	14
Alberta	26	21
British Columbia	32	28
Yukon Territory	1	1
Northwest Territories	2	2
CANADA	295	282

Comparability of Concept

The FED concept did not change between 1986 and 1991.

Comparability of Boundaries

The 1986 Census was conducted according to the 1976 Representation Order. A wide range of data (i.e. population, dwellings, households, families and income) was subsequently released according to the 1987 Representation Order. Only 13 of the 295 FEDs have the same limits as set out in the previous 1976 Representation Order. They are:

Nova Scotia	12 001 Annapolis Valley – Hants
	12 006 Cumberland – Colchester
	12 010 South Shore
	12 011 South West Nova
New Brunswick	13 005 Gloucester
	13 006 Madawaska – Victoria
	13 009 Restigouche
Ontario	35 037 Kingston and the Islands
	35 051 Niagara Falls
	35 072 Sarnia – Lambton
Yukon Territory	60 001 Yukon
Northwest Territories	61 001 Nunatsiaq
	61 002 Western Arctic

FED names may change through an Act of Parliament. The geographic reference date for FED name changes recognized by the 1991 Census is January 1, 1991. Seventeen name changes, effective for the 1991 Census, have taken place since the 1987 Representation Order was invoked. They are:

From	To
New Brunswick	
Restigouche	Restigouche – Chaleur
Fredericton	Fredericton – York-Sunbury
Gloucester	Acadie – Bathurst
Quebec	
Chapleau	Gatineau-La Lièvre
Saint-Laurent	Saint-Laurent – Cartierville
Montmorency – Orléans	Beauport – Montmorency – Orleans
Laval	Laval – Ouest (West)
Laval-des-Rapides	Laval Centre
Langelier	Québec
Duvernay	Laval – Est (East)
Ontario	
Markham	Markham – Whitchurch-Stouffville
Renfrew	Renfrew – Nipissing – Pembroke
Windsor – Lake St. Clair	Windsor – St. Clair
Brampton – Malton	Bramalea – Gore – Malton
Elgin	Elgin – Norfolk
Manitoba	
Selkirk	Selkirk – Red River
British Columbia	
Surrey – White Rock	Surrey – White Rock – South Langley

Census Division

Census division (CD) is the general term applying to geographic areas established by provincial law, which are intermediate geographic areas between the census subdivision and the province (eg. divisions, counties, regional districts, regional municipalities and seven other types of areas made up of groups of census subdivisions).

In Newfoundland, Manitoba, Saskatchewan and Alberta, provincial law does not provide for these geographic areas. Therefore, census divisions have been created by Statistics Canada in cooperation with provincial authorities. In all other provinces, the different types of census divisions and their limits are established by provincial law. There has been an increase from 266 census divisions in 1986 to 290 for the 1991 Census.

Census Division Types

Census divisions are classified into various types within the different provinces/territories. The table below shows the census division types by province:

Census division type	Province/territory
Division	Nfld., Man., Sask., Alta., Que.
County	P.E.I., N.S., N.B., Ont.
District	Ont.
District Municipality	Ont.

Metropolitan Municipality	Ont.
Region	B.C., Y.T., N.W.T.
Municipalité régionale de comté	Que.
Regional District	B.C.
Regional Municipality	Ont.
United Counties	Ont.
Communautés urbaines	Que.

In order to maintain the integrity of census subdivisions (which form the census division), census division boundaries in **New Brunswick** do not correspond exactly to legal county limits. The differences in boundaries are minimal.

For 1991 there is a completely new census division structure in **Quebec**. The CD structure now respects "municipalités régionales de comté (MRC)" or their equivalent.

In the **Northwest Territories**, census divisions respect the administrative units used by the government of the Northwest Territories. The Central Arctic Region is now called "Kitikmeot Region".

In the **Yukon Territory**, a CD structure has not been established. Therefore, in census tabulations reporting CDs for the Yukon Territory, the CD is equivalent to the entire territory.

Comparability of Concept

The CD concept did not change between 1986 and 1991.

Comparability of Boundaries

Census divisions tend to be stable over long periods of time and are therefore useful for historical comparisons. However, changes to the limits of CSDs can affect the limits of census divisions. In general, this type of change has minimal impact on historical comparability. Census division limits can also be affected by the restructuring of CD limits within provinces or territories. Historical comparability can be significantly affected by this type of change.

There were no changes to the CD types since the 1986 Census. The number of CDs in 1991 increased from 266 to 290. In **Quebec** the number of census divisions increased from 76 to 99 as a result of the implementation of MRCs (SGC manual, Volume 3). The following MRCs or their equivalents have been grouped to form one census division:

- the "territoire conventionné de la région de la Baie James" and "l'administration régionale Kativik", forming the "Territoire nordique" census division;
- the Minganie MRC and the "municipalité de la Côte-Nord-du-Golfe-Saint-Laurent", forming the "Minganie - Côte-Nord-du-Golfe-Saint-Laurent" census division;
- the Sept-Rivières MRC and the Caniapiscau MRC, forming the "Sept-Rivières - Caniapiscau" census division.

In **British Columbia**, the northern part of the Regional District of Peace River-Liard (CD 55) became a new CD. Included in this reorganization was the transfer of the northwest tip of the new CD to an adjacent CD. In addition, the Regional District of Greater Vancouver was extended. The CD changes, as they correspond to Standard Geographical Classification (SGC) code changes, are summarized in Appendix C.

A number of CDs were also affected by boundary changes between 1986 and 1991 (Table 3). With the exception of Prince Edward Island, Manitoba, Saskatchewan, and the Yukon and Northwest Territories, limit changes were experienced by each province/territory since the 1986 Census. However, only Nova Scotia, Quebec and British Columbia experienced CD limit changes which resulted in a net 1986 population shift of at least 100 during this period (see Appendix A).

Table 3. Census Division Changes by Province and Territory, 1986 and 1991

CDs	Canada	Nfld.	P.E.I.	N.S.	N.B.	Que.	Ont.	Man.	Sask.	Alta.	B.C.	Y.T.	N.W.T.
Number													
1986	266	10	3	18	15	76	49	23	18	19	29	1	5
1991	290	10	3	18	15	99	49	23	18	19	30	1	5
Net change	+24	0	0	0	0	+23	0	0	0	0	+1	0	0
Number added	100	0	0	0	0	99	0	0	0	0	1	0	0
Number deleted	76	0	0	0	0	76	0	0	0	0	0	0	0
Limit changes (1)	30	2	0	2	2	6	11	0	0	2	5	0	0
Limit changes >= 100 pop. (1), (2)	9	0	0	2	0	2	0	0	0	0	5	0	0
Notes:													
(1) Excludes limit changes due to CD deletions during the period 1986 to 1991.													
(2) CDs with a net 1986 population shift equal to or exceeding 100. For a complete list of these CDs, refer to Appendix A.													

Census Subdivision

Census subdivision (CSD) is a general term used to designate municipalities (as determined by provincial legislation) or their equivalent, e.g., Indian reserves, Indian settlements and unorganized territories. In Newfoundland, Nova Scotia and British Columbia, the term also describes areas which were created by Statistics Canada, in cooperation with the provinces, as equivalents for municipalities.

Municipalities are areas with corporate status which have precise limits, are governed by provincial and territorial acts, are characterized by some form of elected government, levy taxes and perform a range of municipal functions. All incorporated municipalities in Canada are recognized as census subdivisions.

Each census subdivision which straddles provincial limits is treated as a separate CSD. For example, parts of Flin Flon located in Manitoba and Saskatchewan are considered as separate CSDs; the same applies to the parts of Lloydminster located in Saskatchewan and Alberta.

Indian reserve refers to land set apart for the use and benefit of an Indian band. These lands are subject to the terms of the Indian Act. The legal title to these lands is vested in Her Majesty. Indian reserves are generally excluded from local jurisdiction and are administered by Indian and Northern Affairs Canada. For this reason, they are classified as CSDs by Statistics Canada.

Indian reserves populated on June 3, 1986, June 3, 1981 and June 1, 1976 have been recognized as CSDs in 1991. Those recognized by Indian and Northern Affairs Canada (INAC) as having a population of 10 or more inhabitants between June 3, 1986 and January 1, 1991 are also recognized as CSDs for the 1991 Census.

Indian settlements are recognized as census subdivisions with the cooperation of the provincial or territorial authorities. In general, Indian settlements are located in unorganized territory. Indian settlements, usually located on Crown lands, are not set apart for the use and benefit of an Indian band as is the case with Indian reserves. Beginning with the 1981 Census, each Indian settlement recognized by the census has been treated as a separate CSD and reported separately in census tables at the CSD level.

Unorganized territory refers to an area without municipal organization that is directly administered by the province or, when applicable, by the county. Such areas are generally characterized by low population density.

Census Subdivision Types

The census subdivision type indicates the municipal status of a census subdivision. CSDs are classified into various types according to official designations adopted by provincial or federal authorities. Since each province has its own municipal legislation, it is difficult to compare types of municipal organizations among provinces, except in the broadest terms. Municipalities designated in the same manner in different provinces often differ greatly in population. With the exception of unorganized territories, Indian reserves, Indian settlements, and hamlets in the Northwest Territories, settlements in the Yukon Territory, and subdivisions in British Columbia, Newfoundland, and Nova Scotia, the type indicates the municipal status (city, town, etc.) of a CSD. CSD types and their abbreviations are as follows:

BOR	Borough
C	City
CM	County (Municipality)
COM	Community
CT	Canton (Municipalité de)
CU	Cantons unis (Municipalité de)
DM	District (Municipality)
HAM	Hamlet
ID	Improvement District
IGD *	Indian Government District
LGD	Local Government District
LOT	Township and Royalty
MD	Municipal District
NH	Northern Hamlet
NV	Northern Village
P	Paroisse (Municipalité de)
PAR	Parish
R	Indian Reserve
RM	Rural Municipality
RV	Resort Village
SA	Special Area
SCM	Subdivision of County Municipality
SD	Sans désignation (Municipalité)
S-E	Indian Settlement
SET	Settlement
SRD	Subdivision of Regional District
SUN	Subdivision of Unorganized
SV	Summer Village
T	Town
TP	Township
TR *	Terres réservées
UNO	Unorganized - Non organisé
V	Ville
VC	Village Cri
VK	Village Naskapi
VL	Village
VN	Village nordique

* New CSD type in 1991.

Comparability of Concept

The CSD concept did not change between 1986 and 1991.

Comparability of Boundaries

The 1991 Census reflects the municipal structure as it was legally constituted on January 1, 1991. This pre-census reference date was adopted beginning with the 1981 Census, mainly because of the high number of revisions to CSDs between censuses, and their ripple effect on other geographical areas and the census enumeration process.

There were 6,006 CSDs in the 1991 Census compared to 6,009 in the 1986 Census. Between January 2, 1986 and January 1, 1991, numerous changes were made to CSDs. At the national level, a total of 101 CSDs were added and 104 were dissolved. Many of the CSD additions are concentrated within particular provinces or territories. Other changes in CSDs occurred as a result of name changes, status changes (e.g., a town becoming a city) and limit changes resulting from municipal annexations (Table 4). CSD changes occurred as a result of legislation passed by the respective provincial and territorial governments.

Table 4. Census Subdivision Changes by Province and Territory, 1986 and 1991

CSDs	Canada	Nfld.	P.E.I.	N.S.	N.B.	Que.	Ont.	Man.	Sask.	Alta.	B.C.	Y.T.	N.W.T.
Number													
1986	6,009	401	123	118	284	1,668	956	293	942	432	686	34	72
1991	6,006	404	126	118	287	1,637	951	293	953	438	691	36	72
Net change	-3	3	3	0	3	-31	-5	0	11	6	5	2	0
Number added	101	7	3	0	3	38	7	0	17	7	17	2	0
Number deleted	104	4	0	0	0	69	12	0	6	1	12	0	0
Name changes	235	0	4	0	11	186	9	4	2	2	14	0	3
Status changes	98	2	0	0	1	48	14	3	11	3	8	0	8
Limit changes (1)	1,031	48	71	8	37	252	155	20	209	103	122	6	0
Limit changes >= 100 pop. (1), (2)	166	23	8	4	8	52	15	0	11	11	33	1	0
Notes:													
(1) Excludes limit changes due to CSD deletions during the period 1986 to 1991.													
(2) CSDs with a net 1986 population shift equal to or exceeding 100. For a complete list of these CSDs, refer to Appendix B.													

Statistical Areas

Enumeration Area

An enumeration area (EA) is the geographic area canvassed by one Census Representative. EA criteria include:

- (1) **Dwellings** – the number of dwellings in an EA generally varies between a maximum of 375 households in large urban areas and a minimum of 125 in rural areas.
- (2) **Limits** – an EA never cuts across any geographic area recognized by the census.

There are exceptions to the number of households within an EA. An EA could be an apartment building, a hospital, a hotel, etc. In addition, because EA boundaries never cut across other geographic boundaries, EAs are sometimes created as “residual” areas. These areas may have as few as zero, one or two dwellings (and a resulting low or zero population), and cover either a small or large area. Three percent of the 45,995 EAs in the 1991 Census have a population of zero and another 1.7% have a population of 1 to 5. In 1986, 4% of the 44,042 EAs had no population and 1% had a population of 1 to 5.

EAs are as compact as possible to minimize travel and optimize Census Representative work. Also, EAs are delineated so that the Census Representative may locate them with little difficulty. Streets, railways and rivers are frequent EA boundaries.

EAs are primarily designed as census collection areas and not as data dissemination units. Figure 1 displays the hierarchical relationship between EAs and other standard statistical units.

Comparability of Concept

There was no change to the EA concept between 1986 and 1991.

Comparability of Boundaries

Every effort is made to limit the number of changes in EAs from one census to another. Nevertheless, many factors cause change. The boundaries and codes of enumeration areas change from census to census, reflecting population shifts, changes to municipal and statistical boundaries and changes to Census Representative workload criteria. In addition, in 1991 the extension of the mail-back collection methodology, the revised Federal Electoral District (FED) Representation Order and an extensive field check caused EA boundaries to change. In total, 62% of EA limits changed between 1986 and 1991. Between 1981 and 1986, 45% of the EA boundaries changed. Only 38% of 1991 EAs have the equivalent 1986 boundary. Comparable figures by province/territory appear in Table 5.

Table 5. Enumeration Area Changes by Province and Territory, 1986 and 1991

Province/territory	Number (1986)	Number (1991)	Number with no boundary change since 1986	% with no boundary change since 1986
Newfoundland	1,153	1,155	648	56
Prince Edward Island	258	249	64	26
Nova Scotia	1,411	1,442	478	33
New Brunswick	1,294	1,266	634	50
Quebec	10,431	10,912	3,488	32
Ontario	14,186	15,119	5,374	36
Manitoba	2,097	2,030	762	38
Saskatchewan	2,912	2,799	1,392	50
Alberta	4,655	4,602	2,174	47
British Columbia	5,371	6,162	2,236	36
Yukon Territory	106	97	49	51
Northwest Territories	168	162	88	54
CANADA	44,042	45,995	17,387	38

Census Metropolitan Area (CMA) and Census Agglomeration (CA)

In addition to comparing the CMA/CA and PCMA/PCA concepts and boundaries, this section will address CMA/CA components and CMA/CA parts.

The general concept of a census metropolitan area (CMA) or a census agglomeration (CA) is one of a large urban area, together with adjacent urban and rural areas which have a high degree of economic and social integration with that urban area.

A CMA is delineated around an urban area (called the **urbanized core**) with a population of at least 100,000 **based on the previous census**. Once an area becomes a CMA, it is retained in the program even if its population subsequently declines. There are 25 CMAs in Canada (Table 6).

A CA is delineated around an urban area (the urbanized core) of at least 10,000 population, based on the previous census. Once a CA attains an urbanized core population of at least 100,000, based on the previous census, it becomes a CMA. If the population of a CA drops below 10,000, it is deleted from the CA program. For the 1991 Census, there are 115 census agglomerations (Table 7).

The basic building block of the CMA/CA is the census subdivision (CSD). In order to be included in a CMA or CA, a census subdivision must meet at least one of the following criteria:

- (1) The CSD falls completely or partly inside the urbanized core.
- (2) At least 50% of the employed labour force **living** in the CSD, as determined from the 1981 place of work commuting flow data, **works** in the urbanized core.
- (3) At least 25% of the employed labour force **working** in the CSD, as determined from the 1981 place of work commuting flow data, **lives** in the urbanized core.
- (4) If the CSD meets the criteria for inclusion, but is not contiguous to a CMA or CA, the place of work commuting flow data are aggregated for all CSDs within the census consolidated subdivision (CCS). Inclusion or exclusion of the entire CCS within a CMA or CA is then determined.
- (5) If the commuting flow is less than 100 persons, CSDs are excluded from the CMA or CA, even if criteria (2) or (3) apply.
- (6) Even if criteria (2), (3), (4) or (5) apply, a CSD may be included or excluded to maintain the contiguity of the CMA or CA.

All criteria and conditions are listed by priority. A CSD meeting the criteria for more than one CMA/CA is included in the CMA or CA for which it has the highest ranked criterion. In the case of PCMAs/PCAs (see definition on page 18), if the CSDs meet criteria that have the same rank, the decision is based on the actual population or on the number of commuters involved.

Exceptions to the above delineation criteria may occasionally be made in certain special situations.

CMA/CA boundaries may not conform precisely with the main labour market area, since CMAs and CAs must respect CSD limits. In other words, if a CSD is relatively large and located on the edge of a CMA or CA, only those people living in the portion of the CSD which lies closest to the urban core are likely to be part of the labour market. The remainder of the CSD is likely to be outside the main labour market area but inside the CMA or CA. CMAs and CAs may also differ from administrative areas designated by local authorities for planning and other purposes. Furthermore, since CMA/CA boundaries for the 1991 Census are based upon 1981 Census commuting flow data, they may not reflect the current boundaries of economic and social integration of an urbanized area. The CMA and CA definitions should therefore be used with caution for non-statistical applications.

Table 6. Census Metropolitan Areas by Province, 1991

Newfoundland	Manitoba
St. John's	Winnipeg
Nova Scotia	Saskatchewan
Halifax	Regina
New Brunswick	Saskatoon
Saint John	Alberta
Quebec	Calgary
Chicoutimi - Jonquière	Edmonton
Montréal	British Columbia
Ottawa - Hull, Ont./Que. (1)	Vancouver
Québec	Victoria
Sherbrooke	
Trois-Rivières	
Ontario	
Hamilton	
Kitchener	
London	
Oshawa	
Ottawa - Hull, Ont./Que. (1)	
St. Catharines - Niagara	
Sudbury	
Thunder Bay	
Toronto	
Windsor	
Note:	
(1) A CMA whose border crosses a provincial limit is listed in both provinces.	

Table 7. Census Agglomerations by Province and Territory, 1991

Newfoundland	Ontario	Alberta
Corner Brook	Barrie	Camrose
Gander	Belleville	Fort McMurray
Grand Falls - Windsor	Brantford	Grand Centre *
Labrador City	Brockville	Grande Prairie
Prince Edward Island	Chatham	Lethbridge
Charlottetown	Cobourg	Lloydminster, Alta./Sask. (1)
Summerside	Collingwood	Medicine Hat
Nova Scotia	Cornwall	Red Deer
Kentville *	Elliot Lake	Wetaskiwin *
New Glasgow	Guelph	British Columbia
Sydney	Haileybury	Campbell River
Truro	Hawkesbury, Ont./Que. (1)	Chilliwack
New Brunswick	Kenora	Courtenay
Bathurst	Kingston	Cranbrook
Campbellton, N.B./Que. (1)	Kirkland Lake	Dawson Creek
Edmundston	Leamington	Duncan
Fredericton	Lindsay	Fort St. John
Moncton	Midland	Kamloops
Quebec	North Bay	Kelowna
Alma	Orillia	Kitimat
Baie-Comeau	Owen Sound	Matsqui
Campbellton, N.B./Que. (1)	Pembroke, Ont./Que. (1)	Nanaimo
Cowansville	Peterborough	Penticton
Dolbeau	Port Hope *	Port Alberni
Drummondville	Sarnia - Clearwater	Powell River
Granby	Sault Ste. Marie	Prince George
Hawkesbury, Ont./Que. (1)	Simcoe	Prince Rupert
Joliette	Stratford	Quesnel
La Tuque	Tillsonburg	Terrace
Lachute	Timmins	Vernon
Magog	Wallaceburg	Williams Lake
Matane	Woodstock	Yukon Territory
Pembroke, Ont./Que (1)	Manitoba	Whitehorse
Rimouski	Brandon	Northwest Territories
Rivière-du-Loup	Portage la Prairie	Yellowknife *
Rouyn-Noranda	Selkirk	
Saint-Georges	Thompson	
Saint-Hyacinthe	Saskatchewan	
Saint-Jean-sur-Richelieu	Estevan *	
Saint-Jérôme	Lloydminster, Alta./Sask. (1)	
Salaberry-de-Valleyfield	Moose Jaw	
Sept-Îles	North Battleford	
Shawinigan	Prince Albert	
Sorel	Swift Current	
Thetford Mines	Weyburn *	
Val-d'Or	Yorkton	
Victoriaville		
Notes:		
* New for 1991.		
(1) A CA whose boundary crosses a provincial border is listed in both provinces.		

Comparability of Concept

The CMA/CA concept did not change between 1986 and 1991.

Comparability of Boundaries

The CMA count remains at 25 for the 1991 Census. The 1991 CMA/CA delineations are based on place of work and place of residence data at the CSD level collected during the 1981 Census. The level of commuting required for a CSD to be included within a CMA or CA was raised from 40% to 50% for the 1986 Census. This change was implemented to maintain historical comparability and to control differences in the processing of place of work data between the 1971 and 1981 Censuses. Two other criteria were established in 1986. The CSDs began to require a commuting flow of at least 100 persons in order to be included. Also, CAs containing only one CSD were first permitted in 1986, whereas in 1981 at least two CSD components were required except for census-tracted CAs (see page 21 for the "census tract" definition).

The five CMAs with boundary changes involving population between 1986 and 1991 are Halifax, Toronto, Edmonton, Calgary and Victoria.

Seven new centres were added to the CA program in 1991. Thirty-five were added in 1986. Six CAs which existed in 1986 have failed to achieve the minimum 10,000 population in their urbanized cores and were deleted from the CA program in 1991. Twenty-three CAs also had boundary changes involving population over the same period. [They are: Charlottetown and Summerside, P.E.I.; Kentville, N.S.; La Tuque, Rivière-du-Loup, Rouyn-Noranda, Salaberry-de-Valleyfield, Thetford Mines and Victoriaville, Que.; Barrie, Belleville, Chatham, Kenora, Leamington, Midland and Port Hope, Ont.; Estevan and Weyburn, Sask.; Grande Centre and Wetaskiwin, Alta.; Cranbrook and Fort St. John, B.C.; and Yellowknife, N.W.T. (Table 8).] CAs dropped from the 1991 program are: Carbonear, Nfld.; Chibougamau and Montmagny, Que.; Kapuskasing, Ont.; Flin Flon, Man./Sask.; and Trail, B.C.

Table 8. Census Agglomeration Counts by Province and Territory, 1986 and 1991

Province	1991	1986	Net Change
Newfoundland	4	5	-1
Prince Edward Island	2	2	0
Nova Scotia	4	3	1
New Brunswick	5*	5*	0
Quebec	28*	30*	-2
Ontario	32*	32*	0
Manitoba	4*	5*	-1
Saskatchewan	8*	7*	1
Alberta	9*	7*	2
British Columbia	22	22	0
Yukon Territory	1	1	0
Northwest Territories	1	0	1
Total	115	114	1

* CAs that straddle provincial boundaries are indicated in both provinces.

Primary Census Metropolitan Areas (PCMA) and Primary Census Agglomerations (PCA)

The concept of a PCMA/PCA recognizes that adjacent CMAs and CAs are socially and economically integrated within a larger consolidated CMA or CA. Adjacent CMAs and CAs are consolidated into a single CMA or CA if the total commuting interchange between the two is equal to at least 35% of the employed labour force living in the smaller CMA or CA. The original CMAs or CAs are known as PCMA or PCA subregions of the CMA or CA (Table 9).

The following example, that of the Ottawa-Hull CMA (1991 Census), illustrates the PCMA/PCA concept. In 1991, the CMA of Ottawa-Hull contained the Kanata and Buckingham CSDs (among others). Both Buckingham and Kanata are also census agglomerations since they satisfy the criterion of an urbanized core of 10,000 population based on the previous census. However, since these two centres are adjacent to, and related both socially and economically to, the CMA of Ottawa-Hull and meet the consolidation criteria, they are grouped into one consolidated CMA, as shown below:

Ottawa - Hull CMA, 1991

Ottawa - Hull (PCMA)

Component CSDs are: Aylmer, Cantley, Chelsea, Clarence, Cumberland, Gatineau, Gloucester, Hull, La Pêche, Nepean, Osgoode, Ottawa, Pontiac, Rideau, Rockcliffe Park, Rockland, Val-des-Monts, Vanier

Buckingham (PCA)

Component CSDs are: Buckingham, Masson

Kanata (PCA)

Component CSDs are: Goulbourn, Kanata, West Carleton

Since the Buckingham CA, the Kanata CA and the Ottawa-Hull CMA were grouped to form one consolidated CMA (Ottawa-Hull), the original parts are now called the Ottawa-Hull PCMA, the Buckingham PCA, and the Kanata PCA.

Comparability of Concept

The PCMA/PCA concept did not change between 1986 and 1991. The PCMA/PCA concept was introduced in the 1986 Census.

Comparability of Boundaries

One PCA was added to the program in 1991 (Airdrie, Alberta) and is grouped with the new PCMA of Calgary, Alberta. In British Columbia, Sidney lost its PCA status when the Victoria urban core extended into the Sidney urban core. Sidney is now simply a CSD within the Victoria CMA.

Three PCMA/PCAs underwent boundary changes between 1986 and 1991. They are Toronto, Calgary and Edmonton.

Consolidated and Regular Census Metropolitan Areas and Census Agglomerations

Refer to "Primary Census Metropolitan Areas (PCMAS) and Primary Census Agglomerations (PCAs)" for information regarding consolidated CMAs or CAs. Regular CMAs and CAs, on the other hand, are free-standing. They are neither adjacent to another CMA or CA nor are they sufficiently related to another CMA or CA to be consolidated.

Consolidation has no effect on the total population covered by the CMA/CA program, but does take some CAs that would have existed separately and includes them in larger CMAs or CAs. They can be identified as primary census agglomerations (PCAs) within the larger CMA or CA.

Comparability of Concept

The consolidated CMA/CA concept did not change between 1986 and 1991. The concept of consolidated CMAs and CAs was created for the 1986 Census.

Comparability of Boundaries

Three consolidated CMAs/CAs had boundary changes involving population between 1986 and 1991. They are Toronto, Calgary and Edmonton.

Census Metropolitan Area and Census Agglomeration Components

Refers to the census subdivisions (CSDs) which form the building blocks of CMAs/CAs and PCMAS/PCAs.

Comparability of Concept

The CMA/CA components concept did not change between 1986 and 1991.

Comparability of Boundaries

The CMAs and CAs with component changes coincide with the CMAs and CAs that underwent boundary changes between 1986 and 1991.

Table 9. Consolidated Census Metropolitan Areas and Consolidated Census Agglomerations With Their Constituent Primary Census Metropolitan Areas and Primary Census Agglomerations, 1991

St. John's, Nfld. (CMA)	St. Catharines - Niagara, Ont. (CMA)
St. John's PCMA Conception Bay South PCA	St. Catharines - Niagara PCMA Fort Erie PCA
Sydney, N.S. (CA)	London, Ont. (CMA)
Sydney PCA Sydney Mines PCA	London PCMA St. Thomas PCA
Chicoutimi - Jonquière, Que. (CMA)	Sudbury, Ont. (CMA)
Chicoutimi - Jonquière PCMA La Baie PCA	Sudbury PCMA Valley East PCA
Montréal, Que. (CMA)	Calgary, Alta. (CMA)
Montréal PCMA Beloeil PCA Châteauguay PCA	Calgary PCMA Airdrie PCA
Ottawa - Hull, Ont./Que. (CMA)	Edmonton, Alta. (CMA)
Ottawa - Hull PCMA Buckingham PCA Kanata PCA	Edmonton PCMA Leduc PCA Spruce Grove PCA
Oshawa, Ont. (CMA)	Kelowna, B.C. (CA)
Oshawa PCMA Newcastle PCA	Central Okanagan, Subd. B PCA Kelowna PCA
Toronto, Ont. (CMA)	Vancouver, B.C. (CMA)
Toronto PCMA Halton Hills PCA Milton PCA Orangeville PCA	Vancouver PCMA Maple Ridge PCA

Census Metropolitan Area and Census Agglomeration Parts

The concept of CMA or CA parts distinguishes between central and peripheral urban and rural areas within a CMA or CA. Census metropolitan areas and census agglomerations may consist of three parts:

- (a) urbanized core: a large urban area, as defined by Statistics Canada, around which a CMA or a CA is delineated; the urbanized core must have a population (based upon the previous census) of at least 100,000, or between 10,000 and 99,999 in the case of a CA;
- (b) urban fringe: an urban area within a CMA or CA, but outside the urbanized core;
- (c) rural fringe: all territory within a CMA or CA lying outside urban areas.

While every CMA or CA has an urbanized core, it may or may not have urban or rural fringe parts.

Similarly, in consolidated CMAs and CAs, each of the constituent primary census metropolitan areas or primary census agglomerations has an urbanized core, but may or may not have urban or rural fringe parts. The total urbanized core of a consolidated CMA or CA is the sum of the urbanized cores of its constituent PCMA/PCAs. The urbanized core of a consolidated CMA/CA is not one single area; rather, it is an aggregation of the individual cores. Similarly, the population totals for urban fringe and rural fringe in a consolidated CMA or CA are the population totals of the constituent PCMA/PCA urban and rural fringe areas.

Comparability of Concept

The concept of CMA/CA parts did not change between 1986 and 1991.

Comparability of Boundaries

No new CMAs were created or deleted in 1991. Therefore, their urbanized cores remain the same. Seven new CAs were created. Therefore, their urbanized cores are added.

In 1991, the urbanized core of a PCA may have been the urban fringe of a 1986 CMA/CA. As a result, significant populations may be transferred from urban fringe to urbanized core. Consolidation has no effect on the total population in the CMA/CA program or in urban areas.

The Victoria CMA ceased to be a consolidated CMA in 1991. Therefore, the former PCA of Sidney became a CSD attached to the Victoria CMA and its urbanized core is now part of the urban fringe of the Victoria CMA.

The consolidated CMA of Calgary was created in 1991. It comprises the PCMA of Calgary and the PCA of Airdrie. Thus, the urbanized core of Airdrie is added to that of Calgary to total the entire urbanized core of the consolidated CMA of Calgary. Airdrie's urbanized core is new for 1991.

Census Tract

A census tract (CT) is a permanent small, neighbourhood-like or rural community-like area established in large urban-centred regions with the help of local specialists interested in urban and social science research.

Census tracts are delineated jointly by a local community and Statistics Canada according to the following criteria:

- (a) wherever possible, the boundaries must follow permanent and easily recognized physical features;
- (b) the population must be between 2,500 and 8,000 with a preferred average of 4,000 persons, except for census tracts in central business districts, major industrial zones or peripheral rural or urban areas that may have either a lower or higher population;
- (c) the area must be as homogeneous as possible in terms of economic status and social living conditions; and

(d) the shape must be as compact as possible.

All census metropolitan areas and census agglomerations which contain a census subdivision having 50,000 population or more at the previous census (Table 10) are eligible for a census tract program. Once a CMA or CA is added to the program, it is retained even if its population subsequently declines. While CT boundaries do not necessarily respect CSD boundaries, they do respect the boundaries of CMAs and CAs and their constituent PCMA's and PCAs.

Table 10. Tracted Centres by Province, 1991

Newfoundland	Manitoba
St. John's (CMA)	Winnipeg (CMA)
Nova Scotia	Saskatchewan
Halifax (CMA)	Regina (CMA)
	Saskatoon (CMA)
New Brunswick	Alberta
Moncton (CA)	
Saint John (CMA)	
Quebec	
Chicoutimi - Jonquière (CMA)	Calgary (CMA)
Montréal (CMA)	Edmonton (CMA)
Ottawa - Hull, Ont./Que. (CMA)	Lethbridge (CA)
Québec (CMA)	Red Deer (CA) *
Sherbrooke (CMA)	
Trois-Rivières (CMA)	
Ontario	British Columbia
Brantford (CA)	Kamloops (CA)
Guelph (CA)	Kelowna (CA)
Hamilton (CMA)	Matsqui (CA) *
Kingston (CA)	Prince George (CA)
Kitchener (CMA)	Vancouver (CMA)
London (CMA)	Victoria (CMA)
North Bay (CA)	
Oshawa (CMA)	
Ottawa - Hull, Ont./Que. (CMA)	
Peterborough (CA)	
Sarnia - Clearwater (CA)	
Sault Ste. Marie (CA)	
St. Catharines - Niagara (CMA)	
Sudbury (CMA)	
Thunder Bay (CMA)	
Toronto (CMA)	
Windsor (CMA)	
* New centres for 1991.	

Comparability of Concept

The census tract concept has remained unchanged since the 1981 Census.

Comparability of Boundaries

For the 1991 Census, two areas have been added to the CT program. The addition of the newly tracted centres of Matsqui, British Columbia and Red Deer, Alberta, brings to 39 the total number of centres in the CT program. There are 4,068 CTs in the 1991 Census, which represents an increase of 7% compared to 1986. Victoria, British Columbia and Edmonton, Alberta had significant CT changes from 1986 to 1991. These changes were attributable to losses of territory. Leduc and Parkland County within the Edmonton CMA lost territory to Improvement District No. 22 (now called Brazeau No. 77) outside the CMA. In the Victoria CMA, Capital Subdivision C was split; the CMA was changed, forcing CT changes.

After each census, when population counts are available for census tracts, the Geography Division of Statistics Canada reviews the census tracts delineated within a CMA or CA. This review, which is conducted in cooperation with local specialists, often results in census tract splits (where significant growth has occurred), or in combinations (which seldom occur) and additions. New tracts are defined when a CMA or CA acquires new component subdivisions and the coverage of census tracts must be expanded (Table 11).

Table 11. Census Tracts by Province, 1986 and 1991

Province	1991	1986
Newfoundland	40	39
Prince Edward Island	0	0
Nova Scotia	75	74
New Brunswick	67	64
Quebec	1,052	996
Ontario	1,731	1,610
Manitoba	156	148
Saskatchewan	98	91
Alberta	385	351
British Columbia	464	403
CANADA	4,068	3,776

Table 12 provides a more detailed breakdown of the number of CTs in 1986 and 1991, and provides a summary of the changes which occurred between these two censuses.

Table 12. Census Tract Changes by Province, 1986 and 1991

CMA/CA	Number of 1986 CTs	CTs modified for 1991	1986 CTs split for 1991	Split into	Added (+) or deleted (-)	Added for 1991	Deleted	Number of 1991 CTs
Brantford	21	5	0	0	0	0	0	21
Calgary	143	32	9	19	0	0	0	153
Chicoutimi - Jonquière	32	3	6	9	0	0	0	35
Edmonton	187	24	9	18	-1	0	1	195
Guelph	20	1	1	2	0	0	0	21
Halifax	74	2	1	2	0	0	0	75
Hamilton	151	27	9	21	0	0	0	163
Kamloops	22	0	0	0	0	0	0	22
Kelowna	25	1	2	3	0	0	0	26
Kingston	35	2	0	0	0	0	0	35
Kitchener	77	4	6	11	0	0	0	82
Lethbridge	21	0	0	0	0	0	0	21
London	88	7	0	0	0	0	0	88
Matsqui *	0	-	0	0	29	29	0	29
Moncton	22	1	2	3	0	0	0	23
Montréal	716	131	60	100	-7	0	7	749
North Bay	20	0	0	0	0	0	0	20
Oshawa	44	4	6	11	0	0	0	49
Ottawa - Hull	192	21	19	38	0	0	0	211
Peterborough	23	0	0	0	0	0	0	23
Prince George	23	0	0	0	0	0	0	23
Québec	138	16	18	32	0	0	0	152
Red Deer *	0	-	0	0	16	16	0	16
Regina	47	3	2	4	0	0	0	49
Saint John	42	4	4	6	0	0	0	44
Sarnia - Clearwater	24	0	0	0	0	0	0	24
Saskatoon	44	7	4	9	0	0	0	49
Sault Ste. Marie	23	0	0	0	0	0	0	23
Sherbrooke	31	7	0	0	0	0	0	31
St. Catharines - Niagara	83	0	0	0	0	0	0	83
St. John's	39	3	2	3	0	0	0	40
Sudbury	38	0	0	0	0	0	0	38
Thunder Bay	30	0	0	0	0	0	0	30
Toronto	731	57	55	135	1	1	0	812
Trois-Rivières	31	6	5	8	0	0	0	34
Vancouver	274	25	31	56	0	0	0	299
Victoria	59	10	12	19	-1	0	1	65
Windsor	58	3	1	2	0	0	0	59
Winnipeg	148	7	10	18	0	0	0	156
TOTALS	3,776	413	274	529	37	46	9	4,068

* New centres for 1991.

Provincial Census Tract

A provincial census tract (PCT) is a permanent small, urban and/or rural neighbourhood-like or community-like area outside CMAs and CAs having a census tract program. Populations of PCTs generally vary between 3,000 and 8,000 with a preferred average of 5,000. Boundaries, as much as possible, follow permanent physical features and/or geographical units suggested by authorities from the provinces and territories.

Comparability of Concept

The PCT concept did not change between 1986 and 1991.

Comparability of Boundaries

Changes to CTs can have an effect on PCTs. Between 1986 and 1991, many CMAs and CAs with a census tract program were expanded to include additional census subdivisions. Where this occurred, there was an expansion of the census tract coverage and consequently some PCTs were deleted or revised. PCTs in Red Deer, Alberta and Matsqui, British Columbia were replaced by census tracts. For 1991, PCTs were not updated except in the case of CT creation and boundary changes occurring as a result of other geographical unit boundary change (e.g., changes to a CSD). Table 13 provides a comparison of the total number of PCTs by province/territory for the 1986 and 1991 Censuses.

Table 13. Provincial Census Tract Changes by Province and Territory, 1986 and 1991

Province/ Territory	Number of 1986 PCTs	PCTs modified for 1991	1986 PCTs split for 1991	Split into	Added (+) or deleted (-)	Added for 1991	Deleted	Number of 1991 PCTs
Newfoundland	84	5	0	0	0	0	0	84
Prince Edward Island	26	4	0	0	0	0	0	26
Nova Scotia	117	3	0	0	0	0	0	117
New Brunswick	98	4	0	0	0	0	0	98
Quebec	491	27	0	0	0	0	0	491
Ontario	410	11	0	0	0	0	0	410
Manitoba	91	0	0	0	0	0	0	91
Saskatchewan	146	6	0	0	0	0	0	146
Alberta	169	10	0	0	-8	2	10	161
British Columbia	193	16	0	0	-14	0	14	179
Yukon Territory	5	0	0	0	0	0	0	5
Northwest Territories	7	0	0	0	0	0	0	7
TOTAL	1,837	86	0	0+	-22	2	24	1,815

Census Consolidated Subdivision

A census consolidated subdivision (CCS) is a grouping of small census subdivisions (CSDs) within a containing census subdivision, created for the convenience and ease of geographic reference.

Five rules are applied in delineating census consolidated subdivisions:

- (a) a CSD with a net land area greater than 25 square kilometres can form a CCS of its own;
- (b) a CSD with a net land area greater than 25 square kilometres which is surrounded on more than half its perimeter by another CSD is usually included as part of the CCS formed by the surrounding CSD;
- (c) CSDs having a net land area smaller than 25 square kilometres are usually grouped with a larger CSD;
- (d) a CSD with a population greater than 100,000 forms a CCS on its own;
- (e) the CCS's name usually coincides with its largest CSD component in terms of land area.

For the 1991 Census there are 2,630 census consolidated subdivisions compared to 2,628 in 1986.

Comparability of Concept

The CCS concept is unchanged since its introduction in 1976.

Comparability of Boundaries

Since CCSs are aggregations of CSDs, changes to the CSDs affect census consolidated subdivisions. Nationally, 83% of 1991 CCSs have the same limits as in the 1986 Census. Between the 1986 and 1981 Censuses, 63% of CCSs remained the same. The remaining 437 (or 17%) of CCSs have changed since 1986. It should be noted that only 110 of these changes involved populations equal to or exceeding 100 persons (Table 14).

Table 14. Census Consolidated Subdivision Changes by Province and Territory, 1986 and 1991

CCSs	Canada	Nfld.	P.E.I.	N.S.	N.B.	Que.	Ont.	Man.	Sask.	Alta.	B.C.	Y.T.	N.W.T.
Total number													
1986	2,628	87	68	54	150	1,153	527	127	302	72	82	1	5
1991	2,630	87	69	54	150	1,153	526	127	302	73	83	1	5
Net change	2	0	1	0	0	0	-1	0	0	1	1	0	0
Number added	54	0	1	0	1	41	4	0	2	1	4	0	0
Number deleted	52	0	0	0	1	41	5	0	2	0	3	0	0
Name changes	0	0	0	0	0	0	0	0	0	0	0	0	0
Status changes	0	0	0	0	0	0	0	0	0	0	0	0	0
Limit changes (1)	437	16	19	8	10	234	71	4	32	17	25	1	0
Limit changes >= 100 pop. (1), (2)	110	2	2	4	1	74	8	0	5	6	8	0	0
Notes:													
(1) Excludes limit changes due to CCS deletions during the period 1986 to 1991.													
(2) CCSs with a net 1986 population shift equal to or exceeding 100.													

Urban and Rural Areas

Urban areas are continuously built-up areas with a population concentration of 1,000 inhabitants or more and a population density of 400 or more persons per square kilometre, based on the previous census. To be considered as continuous, the built-up area must not have a discontinuity exceeding two kilometres.

Commercial, industrial and institutional land uses may be considered as urban even though they do not meet the population and density requirements. Examples include commercial and industrial areas, airports, parks, railway yards, cemeteries, etc.

Urban areas are not required to respect provincial or territorial boundaries. For the 1991 Census (as in the 1986 case), five urban areas cross provincial boundaries. They are:

Urban Area	Provinces
Campbellton	New Brunswick/Quebec
Hawkesbury	Ontario/Quebec
Ottawa – Hull	Ontario/Quebec
Flin Flon	Manitoba/Saskatchewan
Lloydminster	Alberta/Saskatchewan

Rural area, on the other hand, is all territory which lies outside urban areas.

Comparability of Concept

The criteria for defining urban and rural areas have not changed since the 1981 Census. The “2 kilometre” rule has been redefined to be road distance and not straight-line distance as in the 1986 Census.

Comparability of Boundaries

There were changes to urban areas in all provinces (Table 15). Most of the changes were minor; only 133 changes affected populations greater than 100. 32 urban areas were created but because such a large number of urban areas were deleted, the total number of urban areas across Canada has decreased. This drop in the number of urban areas is due mainly to a review of small urban areas. In many cases, these areas did not meet the density criteria and were deleted. In general, urban area changes are due to CSD changes and population growth.

Table 15. Urban Area Changes by Province and Territory, 1986 and 1991

Urban Areas	Canada	Nfld.	P.E.I.	N.S.	N.B.	Que.	Ont.	Man.	Sask.	Alta.	B.C.	Y.T.	N.W.T.
Total number													
1986	940	57	7	39	39*	242*	252*	41*	69*	100*	92	1	6
1991	893	42	7	38	36*	222*	246*	42*	69*	99*	92	1	4
Net change	-47	-15	0	-1	-3	-20	-6	1	0	-1	0	0	-2
Number added	32	0	0	1	1	4	11	2	5	3	5	0	0
Number deleted	79	15	0	2	4	24	17	1	5	4	5	0	2
Name changes	24	1	0	0	3	14	4	1	0	0	0	0	1
Limit changes	289	10	6	10	9	49	74	9	34	40	45	1	2
Limit changes >= 100 pop. (1), (2)	133	9	2	7	3	30	33	4	6	10	27	1	1
Notes:													
* Urban areas crossing provincial boundaries are counted in both provinces.													
(1) Excludes limit changes due to UA deletions during the period 1986 to 1991.													
(2) UAs with a net 1986 population shift equal to or exceeding 100.													

Quasi-standard Geographic Areas – Definitions, Limits and Comparability

Township, Range and Meridian

Township, range and meridian (TRM) identifies location according to a regular and systematic partitioning of the Prairie provinces into easily discernible rectangular parcels.

Comparability of Concept

There was no change to the TRM concept between 1986 and 1991.

Comparability of Boundaries

There were no changes to TRM boundaries between 1986 and 1991.

Block-face

Refers to one side of a city street, normally between consecutive intersections with streets or other features. The concept of a block-face is one of a small recognizable geographical unit to which census data may be associated. The goal is to approximate, through aggregation, user-defined query areas for census data extraction and tabulation (in areas covered by Street Network Files only).

Comparability of Concept

The block-face concept was refined in 1991, such that block-faces are now uniquely defined within an EA. In 1986, if an EA boundary cut across a block-face, the block-face representative point (formerly called "centroid" in 1986) was linked to both EAs and might have caused some inconsistencies in geocoding user-defined areas. In 1991, if an EA cuts across a block-face, two block-faces are defined, each with its unique representative point. In addition, apartment buildings, collective EAs and other sub-block-face EAs now have a unique block-face representative point. In 1986, they would have been linked to the block-face on which they were located. Only population and dwelling counts are available for individual block-faces.

Postal Code

The postal code is a six-character alpha-numeric code defined and maintained by Canada Post for the processing (sortation and delivery) of mail. The first three characters represent a set of well-defined and stable areas known as the Forward Sortation Area (FSA). Rural FSAs are identifiable by the presence of a zero in the second position of the FSA code.

The last three characters identify the Local Delivery Unit (LDU). Canada Post defines "urban" and "rural" for postal codes. The definitions may or may not coincide with Statistics Canada's definitions of "urban" and "rural". In urban areas, the LDU can specify a small and easily defined section within an FSA such as a block-face, an apartment building, an office building or a large firm or organization which does large-volume business with the post office.

In rural areas, the LDU denotes a service area – the area serviced by rural route delivery from a postal office or postal station.

Although a postal code is not a standard geographical area, these codes can be used, via geocoding, to retrieve census data and can be aggregated into other standard or non-standard areas.

Comparability of Concept

There were no changes to the postal code concept between 1986 and 1991; however, Canada Post has introduced some new types of postal codes.

Comparability of Boundaries

The number of active postal codes in Canada has increased from 590,107 at the time of the 1986 Census to 640,963 at the time of the 1991 Census – an increase of 50,856 (Table 16).

Table 16. Active Postal Codes by Province and Territory, 1986 and 1991

Province/Territory	June 1991	June 1986
Newfoundland	6,826	6,205
Prince Edward Island	2,666	2,459
Nova Scotia	17,871	16,951
New Brunswick	13,172	11,996
Quebec	163,971	151,126
Ontario	235,949	212,647
Manitoba	22,007	20,591
Saskatchewan	20,487	19,695
Alberta	58,616	53,830
British Columbia	98,091	93,395
Yukon Territory	781	761
Northwest Territories	526	451
CANADA	640,963	590,107

Although Forward Sortation Areas are fairly stable, postal codes within them can be created or retired. Postal codes are linked to block-face representative points in urban areas over 50,000 population and enumeration area representative points for small urban and rural areas. The geographic linkage is subject to change between censuses, to account for boundary adjustments, incorporations, dissolutions of census subdivisions or the creation/splitting of enumeration areas. All geographic changes require a corresponding re-establishment of the postal code linkage. This work is done after each census.

Comparability of census data for FSAs is possible from one census to another if the FSA is located in a built-up area where FSA boundaries are stable. Caution should be used, however, when comparing census data for rural FSAs and urban FSAs within fringe growth areas. These FSAs can be subject to boundary changes.

Unincorporated Place

Unincorporated place (UP), as it applies to rural areas, is a term denoting any cluster of five or more permanently occupied dwellings locally known by a specific name but not having a local government or legal limits. Unincorporated places are not reported if located in areas defined by the census as being urban.

While an unincorporated place is not a standard geographical area, population counts and locational information have been presented for unincorporated places for many censuses.

Comparability of Concept

The UP concept did not change between 1986 and 1991. UPs continue to be reported in rural areas only.

Comparability of Boundaries

Because census unincorporated places by definition are a group of dwellings and lack legal or official boundaries, they are identified primarily by census representatives during the collection phase and this identification involves a degree of individual judgement. Therefore, comparison of UPs and their population counts from one census to another is not recommended.

Appendix A

Census Divisions with 1986 Population Shift Equal to or Exceeding 100

Census division	1986 population based on 1986 boundary	1986 population based on 1991 boundary	Population shift
Nova Scotia			
Antigonish County	18,776	18,929	-153
Guysborough County	12,721	12,568	153
Quebec			
Bonaventure	21,712	20,616	1,096
Pabok	22,662	23,758	-1,096
British Columbia			
Central Fraser Valley Regional District	136,892	66,435	70,457
Fort Nelson-Liard Regional District *	0	5,138	5,138
Greater Vancouver Regional District	1,266,152	1,336,609	-70,457
Peace River Regional District	57,278	51,996	5,282
Stikine Region	2,022	2,166	-144

* Did not exist in 1986.

Appendix B

Census Subdivisions with 1986 Population Shift Equal to or Exceeding 100

Census subdivisions	1986 population based on 1986 boundary (1)	1986 population based on 1991 boundary	Population shift
Newfoundland			
Bauline, T	0	417	417
Bay Roberts, T	4,446	5,386	940
Brigus, T	856	994	138
Cape Broyle, COM	0	734	734
Cape St. George and Others, COM	1,505	1,311	-194
Charlottetown, COM	0	286	286
Conne River, T	592	92	-500
Division No. 1, Subd. I, SUN	753	270	-483
Division No. 1, Subd. K, SUN	830	3	-827
Division No. 1, Subd. L, SUN	1,331	1,163	-168
Division No. 1, Subd. M, SUN	1,301	854	-447
Division No. 1, Subd. U, SUN	2,311	1,577	-734
Division No. 4, Subd. E, SUN	2,940	3,134	194
Division No. 10, Subd. B, SUN	909	623	-286
Grand Falls-Windsor, T	0	14,666	14,666
Harbour Grace, T	3,053	3,604	551
Irishtown-Summerside, T	0	1,596	1,596
Logy Bay-Middle Cove-Outer Cove, T	0	1,767	1,767
North River, COM	214	604	390
Pouch Cove, T	1,576	1,961	385
Samiajij Miawpukek, R	0	500	500
St. John's Metropolitan Area, T	6,254	3,528	-2,726
Torbay, T	3,730	3,887	157
Prince Edward Island			
Kensington, T	1,105	1,249	144
Lot 19, LOT	1,759	1,583	-176
Lot 23, LOT	915	803	-112
North River, COM	1,732	1,462	-270
Resort Mun. Stan.B.-Hope R.-Bayv. -Cavend.-N.Rust., COM	0	261	261
Warren Grove, COM	0	289	289
Winsloe, COM	1,123	962	-161
Winsloe South, COM	0	161	161
Nova Scotia			
Antigonish, Subd. B, SCM	6,576	6,729	153
Cumberland, Subd. B, SCM	4,585	4,461	-124
Cumberland, Subd. C, SCM	4,783	4,907	124
Guysborough, MD	7,294	7,141	-153

Appendix B – Continued

Census Subdivisions with 1986 Population Shift Equal to or Exceeding 100

Census subdivisions	1986 population based on 1986 boundary (1)	1986 population based on 1991 boundary	Population shift
New Brunswick			
Chatham, PAR	3,776	3,495	-281
Chatham, T	6,219	6,500	281
Grande-Anse, VL	829	989	160
Le Goulet, VL	0	1,136	1,136
Maisonnette, VL	0	766	766
New Bandon, PAR	2,748	1,815	-933
Sainte-Marie – Saint-Raphaël, VL	0	1,241	1,241
Shippagan, PAR	8,467	6,090	-2,377
Quebec			
Albanel, SD	0	2,495	2,495
Amos, V	0	13,502	13,502
Amqui, V	4,249	4,349	100
Baie-d'Hudson, UNO	927	0	-927
Blanc-Sablon, SD	0	1,262	1,262
Bonne-Espérance, SD	0	850	850
Candiac, V	9,096	9,450	354
Cantley, SD	0	3,536	3,536
Côte-Nord-du-Golfe-Saint-Laurent, SD	5,315	3,038	-2,277
Deschaillons-sur-Saint-Laurent, SD	0	1,172	1,172
Deschambault, SD	0	1,237	1,237
Gatineau, V	81,244	77,708	-3,536
Kamouraska, SD	0	756	756
Kuujuarapik, VN	193	616	423
Lévis-Lauzon, V	0	37,699	37,699
L'Islet-sur-Mer, SD	0	1,883	1,883
La Bostonnais, SD	0	432	432
La Prairie, V	11,072	10,718	-354
Louiseville, V	0	8,062	8,062
Nemiscau, TR	3	375	372
Nemiscau (Lac Champion), VC	372	0	-372
Pakuashipi, S-E	0	165	165
Petit-Lac-Wayagamac, UNO	434	2	-432
Port-Daniel, SD	0	1,996	1,996
Povungnituk, VN	0	868	868
Rivière-Beaudette, SD	0	1,047	1,047
Rouyn-Noranda, V	0	26,189	26,189
Saint-Alexandre, SD	0	1,923	1,923
Saint-André, SD	0	723	723
Saint-Benoît-Joseph-Labre, P	2,191	2,091	-100
Saint-Bernard, SD	0	1,977	1,977
Saint-Gabriel, SD	0	1,320	1,320
Saint-Georges, V	0	18,075	18,075
Saint-Georges-de-Clarenceville, SD	0	828	828

Appendix B – Continued

Census Subdivisions with 1986 Population Shift Equal to or Exceeding 100

Census subdivisions	1986 population based on 1986 boundary (1)	1986 population based on 1991 boundary	Population shift
Saint-Joseph-de-Coleraine, SD	2,022	1,842	-180
Saint-Paulin, SD	0	1,615	1,615
Saint-Pierre-les-Becquets, SD	0	1,421	1,421
Saint-Polycarpe, SD	0	1,569	1,569
Saint-Timothée, SD	0	7,454	7,454
Saint-Zacharie, SD	0	2,306	2,306
Sainte-Angèle-de-Mérici, SD	0	1,286	1,286
Sainte-Anne-de-la-Pérade, SD	0	2,321	2,321
Sainte-Madeleine, VL	1,732	1,508	-224
Sainte-Marie-Madeleine, P	1,678	1,902	224
Sainte-Thècle, SD	0	2,887	2,887
Schefferville, V	0	322	322
Témiscaming, V	0	2,546	2,546
Thetford-Partie-Sud, CT	2,916	3,121	205
Val-Brillant, SD	0	1,101	1,101
Vallée-Jonction, SD	0	1,984	1,984
Whapmagoostui, TR	852	429	-423
Yamachiche, SD	0	2,740	2,740

Ontario

Alliston, Beeton, Tecumseth and Tottenham, T	0	16,733	16,733
Bradford West Gwillimbury, T	0	13,198	13,198
Brantford, TP	6,477	6,287	-190
Cochrane, Unorganized, North Part, UNO	5,165	4,621	-544
Essa, TP	13,321	12,558	-763
Hearst, T	5,559	6,066	507
Hope, TP	3,601	3,330	-271
Innisfil, T	0	15,334	15,334
Leamington, T	12,828	13,064	236
Mersea, TP	8,932	8,696	-236
Moore, TP	10,182	10,313	131
Paris, T	7,898	8,088	190
Port Hope, T	10,281	10,552	271
Sarnia-Clearwater, C	0	72,656	72,656
Savant Lake, S-E	0	224	224

Saskatchewan

Caron No. 162, RM	1,267	602	-665
Caronport, VL	0	665	665
Cochin, RV	0	173	173
Dorintosh, VL	0	124	124
Fort San, RV	0	245	245
Meadow Lake No. 588, RM	2,503	2,379	-124
Meota No. 468, RM	1,084	873	-211

Appendix B – Continued

Census Subdivisions with 1986 Population Shift Equal to or Exceeding 100

Census subdivisions	1986 population based on 1986 boundary (1)	1986 population based on 1991 boundary	Population shift
Mervin No. 499, RM	0	1,318	1,318
North Qu'Appelle No. 187, RM	956	711	-245
Pleasantdale, VL	0	119	119
Pleasantdale No. 398, RM	996	877	-119

Alberta

Banff, T	0	5,197	5,197
Bighorn No. 8, MD	0	1,101	1,101
Brazeau No. 77, MD	0	5,700	5,700
Calgary, C	636,104	636,843	739
Foothills No. 31, MD	9,398	9,243	-155
Improvement District No. 8, ID	1,106	5	-1,101
Improvement District No. 9, ID	6,063	866	-5,197
Improvement District No. 14, ID	8,230	8,590	360
Leduc County No. 25, CM	13,220	11,027	-2,193
Parkland County No. 31, CM	24,394	20,904	-3,490
Rocky View No. 44, MD	17,484	16,840	-644

British Columbia

Abbotsford, DM	14,496	14,690	194
Anmore, VL	0	449	449
Campbell River, DM	16,986	17,872	886
Capital, Subd. B, SRD	20,096	15,247	-4,849
Capital, Subd. C, SRD	8,129	7,882	-247
Capital, Subd. D, SRD	0	247	247
Cariboo, Subd. B, SRD	21,176	21,019	-157
Central Fraser Valley, Subd. A, SRD	311	117	-194
Columbia-Shuswap, Subd. C, SRD	12,520	10,092	-2,428
Colwood, C	11,546	11,432	-114
Comox-Strathcona, Subd. B, SRD	9,061	8,175	-886
Comox-Strathcona, Subd. C, SRD	19,035	18,924	-111
Courtenay, C	9,631	9,742	111
East Kootenay, Subd. A, SRD	4,237	3,871	-366
Enderby, C	1,714	1,842	128
Greater Vancouver, Subd. A, SRD	2,499	1,856	-643
Nanaimo, Subd. B, SRD	12,477	12,324	-153
North Okanagan, Subd. A, SRD	3,288	3,160	-128
North Okanagan, Subd. B, SRD	13,370	13,240	-130
Okanagan-Similkameen, Subd. B, SRD	9,027	7,692	-1,335
Oliver, T	1,963	3,298	1,335
One Hundred Mile House, VL	1,692	1,849	157
Parksville, C	5,828	5,972	144
Port Moody, C	15,754	15,948	194
Port Simpson 1, R	150	587	437

Appendix B – Concluded

Census Subdivisions with 1986 Population Shift Equal to or Exceeding 100

Census subdivisions	1986 population based on 1986 boundary (1)	1986 population based on 1991 boundary	Population shift
Radium Hot Springs, VL	0	366	366
Sechelt, DM	1,224	4,814	3,590
Sicamous, DM	0	2,428	2,428
Skeena-Queen Charlotte, Subd. A, SRD	861	191	-670
Sunshine Coast, Subd. A, SRD	12,253	8,697	-3,556
Tsimpsean 2, R	111	344	233
Vernon, C	20,241	20,371	130
View Royal, T	0	4,963	4,963

Yukon Territory

Yukon, Unorganized, UNO	2,772	2,669	-103
-------------------------	-------	-------	------

- (1) In this column, occurrences of zero (0) population represent census subdivisions that have been incorporated since January 1, 1986 with the following exceptions: Savant Lake, S-E that represents a boundary change; and Fort San, RV (was North Echo, RV) and Brazeau No. 77, MD (was Improvement District No. 222, MD) that represent name changes.

Appendix C

Summary of Census Division Changes in British Columbia, 1986-1991, Expressed by SGC Code

1986 SGC code	1991 SGC code	CSD name	Type
59 11 019	59 15 001	Langley	DM
59 11 025	59 15 002	Langley	C
59 11 803	59 15 813	Katzie 2	R
59 11 804	59 15 816	McMillan Island 6	R
59 11 805	59 15 825	Matsqui 4	R
59 55 038	59 59 005	Fort Nelson	T
59 55 049	59 59 009	Fort Nelson-Liard, Subd. A	SRD
59 55 805	59 59 805	Fontas 1	R
59 55 806	59 59 806	Fort Nelson 2	R
59 55 809	59 59 809	Kahntah 3	R
59 55 810	59 59 810	Prophet River 4	R
59 55 813	59 57 813	Lower Post	S-E
59 55 814	59 57 814	Liard River 3	R

Notes, Footnotes and Abbreviations

Abbreviation(s)

Nfld.	=	Newfoundland
P.E.I.	=	Prince Edward Island
N.S.	=	Nova Scotia
N.B.	=	New Brunswick
Que.	=	Quebec
Ont.	=	Ontario
Man.	=	Manitoba
Sask.	=	Saskatchewan
Alta.	=	Alberta
B.C.	=	British Columbia
Y.T.	=	Yukon Territory
N.W.T.	=	Northwest Territories

For More Information

Reference documents, geographic products and services related to the geographic areas mentioned in this document are contained herein. Answers to questions regarding concepts, publications, products, services and maps are available through Statistics Canada Regional Reference Centres. In addition, a number of documents dealing with various aspects of census geography are also available. Many of these are descriptive in nature and will be of interest to users wishing more detailed information on criteria, procedures, etc. A large body of analytical, developmental and evaluative work, as well as some historical research reports, are available to the user.

Reference Documents

Census Metropolitan Areas/Census Agglomerations

- Dubuisson, Raymond (1983). **Metropolitan Area Concepts in Canada and Selected Foreign Countries**, Geography Series Working Paper, No. 4 – GEO 83, Geography Division, Statistics Canada, 30 pp. (Bilingual)
- Kokich, George J.V. (1967). **The 1960 American and 1961 Canadian Census Delineation Rules for their Census Metropolitan Areas**, Census Division, Dominion Bureau of Statistics, 8 pp. (English / library E365E)
- Nadwodny, Richard and Puderer, Henry (1990). "Metropolitan Area Delineation: A Canadian – U.S. Comparison", **The Operational Geographer**, Vol. 8, No. 3, pp. 43-45.
- Nadwodny, Richard, Puderer, Henry and Forstall, Richard (1990). "Metropolitan Area Delineation: A Canadian – U.S. Comparison", paper presented at the Annual Meeting, American Population Association, May 3-5, 1990, Toronto, 28 pp.
- Parenteau, Robert F. (1978). **Census Agglomerations: Revision of the Limits for the 1976 Census**, Geography Series Working Paper, No. 6 – GEO 78, Demographic and Spatial Group, Census Characteristics Division, Statistics Canada, 28 pp. (Bilingual / library E124B)
- Parenteau, Robert F. (1978). **Census Metropolitan Areas: Revision of the Delineation Criteria and Limits for the 1976 Census**, Geography Series Working Paper, No. 7 – GEO 78, Demographic and Spatial Group, Census Characteristics Division, Statistics Canada, 55 pp. (Bilingual / library E125B)
- Rea, Willa (1992). "CMA/CA Program: A Comparison of CSD and EA Level Delineations", draft report, Geography Division, Statistics Canada.
- Ricour-Singh, Françoise (1972a). "Census Metropolitan Areas: Revision of the Concept, Criteria and Delineations for the 1971 Census", Geography Section, Census Division, Statistics Canada, 20 pp. and appendices. (English & French / library E127E)
- Ricour-Singh, Françoise (1972b). "1971 Census Agglomerations: Delineation and General Characteristics", Geography Section, Census Division, Statistics Canada, 27 pp. (English & French / library E128E)
- Ricour-Singh, Françoise (1979). **Growth of the Canadian Metropolitan Population, 1971-1976**, Geography Series Working Paper, No. 8 – GEO 79, Demographic and Spatial Group, Census Characteristics Division, Statistics Canada, 24 pp. (Bilingual / library E133B)
- Ross, Grafton (1976). "1971 Census Evaluation Project: Evaluation of the Delineation of Census Metropolitan Areas", Results Memorandum No. CDN 71-E-25, Census Characteristics Division, Statistics Canada, 43 pp. (English / library E207E)
- Ross, Grafton (1979). **Census Agglomerations: Revision of the Concept and Criteria for the 1981 Census**, Geography Series Working Paper, No. 10 – GEO 79, Spatial Delineation and Analysis Section, Geography Staff, Census Characteristics Division, Statistics Canada, 83 pp. (Bilingual / library E130B)

Ross, Grafton (1984). **Census Metropolitan Area/Census Agglomeration Program: A Review, 1941-1981**, Working Paper, No. 8 – GEO 84, Geography Division, Statistics Canada, 112 pp. (Bilingual)

Ross, Grafton (n.d.). "Poughkeepsie's Complaint: A Comment", unpublished report, Geography Division, Statistics Canada, 6 pp. (English / library E610E)

Ross, Grafton, Nadwodny, Richard and Rea, Willa (1991). "Census Metropolitan Area/Census Agglomeration Program: An Historical Review, 1941-1991", draft report, Geography Division, Statistics Canada.

Primary Census Metropolitan Areas/Primary Census Agglomerations

Mitchell, Rick (1988). "A New Geographic Concept from Statistics Canada – Metropolitan Subregions", **The Operational Geographer**, Vol. 6, No. 3, pp. 36-38.

Census Tracts/Provincial Census Tracts

Kokich, George J.V. (1969). "The Canadian Census Tract Manual", Geography Section, Census Division, Dominion Bureau of Statistics, 10 pp. (English)

Kokich, George J.V. (1970). **The 1971 Canadian Census Tract Program**, Proceedings of the Social Statistics Section, American Statistical Association, Washington, D.C., pp. 296-299 (English / library E250E)

Kokich, George J.V., Asselin, Romuald, and Campbell, Rosemary R. (1973). "The 1976 Canadian Census Tract Manual", Geography Section, Census Division, Statistics Canada, 11 pp. (English & French / library E363E)

Mitchell, Rick (1974). **The 1976 Census Tract Programme**, Working Paper No. 76-SM-2, Census Characteristics Division, Statistics Canada, 4 pp. (English & French)

Mitchell, Rick (1974). **The 1976 Provincial Census Tract Programme**, Working Paper No. 76-SM-3, Census Characteristics Division, Statistics Canada, 3 pp. (English)

Mitchell, Rick (1977). **Census Tract Programme: A Review 1941-1976**, Geography Series Working Paper, No. 4, Census Field, Statistics Canada, 58 pp. (Bilingual / library E121B)

Mitchell, Rick (1978). **The 1981 Canadian Census Tract Manual**, Geography Series Working Paper, No. 1 – GEO 78, Demographic and Spatial Group, Census Characteristics Division, Statistics Canada, 22 pp. and appendices. (Bilingual / library E122B)

Mitchell, Rick (1981). **Provincial Census Tracts: A User Survey**, Spatial Delineation and Analysis Section, Geography Staff, Statistics Canada, 22 pp. (English & French)

Mitchell, Rick (1983). **The 1986 Canadian Census Tract Manual**, Working Paper, No. 5 – GEO 83, Geography Division, Statistics Canada, 36 pp. and appendices. (Bilingual)

Mitchell, Rick and Dubuisson, Raymond (1983). **Census Tract Programme: A Review 1941-1981**, Working Paper, No. 7 – GEO 83, Geography Division, Statistics Canada, 60 pp. (Bilingual)

✓ Séguin, Michel B. (1978). **Provincial Census Tracts Programme**, Geography Series Working Paper, No. 5 – GEO 78, Demographic and Spatial Group, Census Characteristics Division, Statistics Canada, 13 pp. (Bilingual / library E131B)

Séguin, Michel B. and Mitchell, Rick (n.d.). **Report on a Survey of Users and Non-Users of Census Tracts**, Geography Series Working Paper, No. 3, Statistics Canada, 33 pp. (Bilingual / library E256B)

Statistics Canada (1988). **The 1991 Canadian Census Tract Manual**, Geography Division, Statistics Canada, 33 pp. and appendices. (English & French)

Census Divisions/Census Subdivisions

Ricour-Singh, Françoise (1982). **The Municipal Structure in Canada: Problems it Creates for Users of Statistics**, Geography Series Working Paper, No. 1 – GEO 82, Geography Division, Statistics Canada, 22 pp. (Bilingual)

Sewards, Crystal (1992). "The Municipal Structure in Canada: An Examination and Comparison of Provincial Legislation", unpublished report, Geography Division, Statistics Canada, 101 pp.

Statistics Canada (1982). **Processing Municipal Updates at Statistics Canada**, Working Paper, No. 3 – GEO 82, Geography Division, Statistics Canada, 66 pp. (Bilingual)

Wise, L.D. (1975). **Municipal Organization in Canada: How Census Keeps Up To Date With Its Many Revisions**, Geography Series Working Paper, No. 1E, Characteristics Division, Statistics Canada, 20 pp. (English & French / library E213E & E213F)

Census Consolidated Subdivisions

Ricour-Singh, Françoise (1978). **Census Consolidated Subdivisions: Origin, Definition and Application**, Geography Series Working Paper, No. 2 – GEO 78, Demographic and Spatial Group, Census Characteristics Division, Statistics Canada, 15 pp. (Bilingual / library E210B)

Subprovincial (Economic) Regions

Statistics Canada (1990). "Standard Subprovincial Regions, 1991", paper prepared for the Federal-Provincial Committee on Small Area Data, Meeting of November 20, 1990, Standards Division, 6 pp.

Urban/Rural

Fuller, A.M. (1992). "Alternative Frameworks for Rural Data", interim report to the Ad Hoc Committee on the Definition of Rural, Statistics Canada, 40 pp.

Kresovic, J.J. (1988). "Points to Consider When Studying the Rural-Urban Concept", unpublished report, Geography Division, Statistics Canada, 17 pp.

Parenteau, Robert F. (1978). **Typology of the Canadian Population: A Proposal for a Change in the Definition of Urban and Rural Population**, Geography Series Working Paper, No. 4 – GEO 78, Demographic and Spatial Group, Census Characteristics Division, Statistics Canada, 73 pp. (Bilingual / library E123B)

Parenteau, Robert F. (1980). **Is Canada Going Back to the Land?**, Geography Series Working Paper, No. 11 – GEO 79, Spatial Delineation and Analysis Section, Geography Staff, Census Characteristics Division, Statistics Canada, 35 pp. (Bilingual / library E126B)

Ricour-Singh, Françoise and Parenteau, Robert F. (1973). **Rural and Urban Concepts: Revision of Their Definition**, Demographic and Socio-Economic Series Working Paper, No. 16E, Statistics Canada, 28 pp. and appendices. (English & French / library E205)

Ricour-Singh, Françoise and Parenteau, Robert F. (1979). **Options for a Rural-Urban Definition and Their Implications**, Demographic and Socio-Economic Series, Statistics Canada, pp. 71-78. (English & French / library E561E & E561F)

Statistics Canada (1984). **Urban Growth in Canada**, 1981 Census Content Series, Catalogue 99-942, Ottawa: Minister of Supply and Services Canada. (English & French)

Wannell, Brenda and Ross, Grafton (1990). "Review of Existing Definitions of Rural and Urban Areas", unpublished report, Statistics Canada, 14 pp.

Place of Work

Gagnon, Réal (1975). **Étude de migrations pendulaires des travailleurs pour les Régions d'Ottawa - Hull et de Toronto**, Geography Series Working Paper, No. 2F, Characteristics Division, Statistics Canada, 53 pp. (English & French / library E137E & E137F)

Ricour, Françoise (1969). **The Place of Work in Canadian and Other Censuses**, Working Paper, Demographic and Socio-Economics Series, No. 2, Census Division, Dominion Bureau of Statistics, 19 pp. and appendices. (English / library E352E)

Simpson, J.K. & Katko, J.A.(n.d.). "Research Proposals for Place of Work Census Data", Census Division, Statistics Canada, unpublished report, 68 pp. (English)

Simpson, J.K. (1971). **Place of Work in the 1971 Census**. Population and Housing Working Paper, No. PH-PW-1, Census Division, Statistics Canada, 6 pp. (English)

Simpson, J.K. (1974). "Background Information on the 1971 Census Place of Work Data", Research Memorandum No. 71-PW-2, Characteristics Division, Statistics Canada, 16 pp. (English / library E209E)

Other

Hubert, Pierre J. (1977). "Quelques aspects de la géographie au recensement: hier, aujourd'hui et demain". Présenté au congrès sur la méthodologie de l'aménagement et du développement, Trois-Rivières. (French / library E120)

Parenteau, Robert F. (1976). "Evaluation of the Delineation of Geostatistical Areas", Census and Household Surveys Field, Statistics Canada, 38 pp. (English)

Parenteau, Robert F. (1982). "Le recensement de 1981 et la population canadienne", présenté au colloque sur l'exode urbain, ses causes, ses implications et son avenir, Montréal, 30 pp. (French / library E560F)

Puderer, Henry A. (1984). "Postal Code and the 1981 Canadian Census of Housing and Population". Paper presented at the Annual Meeting of Urban and Regional Information System Association, Seattle, August 12-15, 41 pp. (English / library E609)

Ricour-Singh, Françoise (1971). "Census Geostatistical Areas", Population and Housing Research Memorandum, No. PH-Geog-1, Census Division, Statistics Canada, 31 pp. English, 20 pp. French (English & French / library E204E & E204F)

Ricour-Singh, Françoise (1973). **Recommendations for Research Projects on Regions**, Demographic and Socio-Economic Series Working Paper, No. 15, Geography Section, Census Division, Statistics Canada, 26 pp. English, 24 pp. French (English & French / library E129E & E129F)

Ricour-Singh, Françoise (1984). "The Certification of the 1981 Census Population Counts", Geography Division, Statistics Canada, 46 pp. and appendices. (Bilingual / library E607B)

Statistics Canada (1978). **1976 Census Geographic Coding**, Geography Series Working Paper, No. 3 - GEO 78, Census Characteristics Division, Statistics Canada, 24 pp. (Bilingual / library E139B)

Statistics Canada (1982). **Geography and the 1981 Census of Canada**, Geography Series Working Paper, No. 2 – GEO 82, Geography Division, Statistics Canada, 48 pp. (Bilingual)

Statistics Canada (1983). **Block-face Geocoding Coverage for the 1971, 1976 and 1981 Censuses**, Working Paper, No. 6 – GEO 83, Geography Division, Statistics Canada, 91 pp. (Bilingual)

Geographic Products and Services

1. Maps

Reference maps: There are four types of reference maps available:

Enumeration area (EA) maps are subdivided into three series: Large urban centres (formerly G13 & G13A); small urban centres (formerly G14 & G16); and rural areas (formerly G12).

Census division (CD) and census subdivision (CSD) maps show boundaries for census divisions (areas such as counties and regional districts) and census subdivisions (such as cities and towns). Boundaries for census metropolitan areas and census agglomerations are also shown.

Census metropolitan area (CMA), census agglomeration (CA) and census tract (CT) maps show the boundaries of CSDs, CMA/CA parts and CTs. Publications in the Census Tract Profile series contain corresponding maps for each tracted CMA or CA.

The **Federal Electoral District (FED) Map** is a colour map showing the federal electoral districts of Canada according to the 1987 Representation Order.

2. Reference Lists

Enumeration Area Reference Lists: This is a series of national and regional products identifying the linkages between enumeration areas (EAs) and standard geographical areas (census tracts, census metropolitan areas and census agglomerations, census divisions and census subdivisions). Through these Enumeration Area Reference Lists users can determine to which higher levels of geography EAs are linked.

Equivalent Enumeration Areas, 1991 and 1986: This publication provides direct comparisons between 1991 and 1986 enumeration areas, with tables sorted by both 1991 and 1986 codes. As well, indexes to equivalent groups of EAs are provided for 1991 and 1986.

3. Reference Products

GEOREF: This is a new diskette product designed for IBM compatible micro-computers. This product is based on the enumeration area (EA) and links EAs to higher levels of geography. Software is included to allow users to display different standard geographical areas and their relationship to other geographical areas. For example, for any standard geographical area the component EAs can be listed. Or, vice-versa, any enumeration area's linkage to other standard geographical areas can be shown. GEOREF also features 1991 population and dwelling counts, selected land areas, and the EA representative point ("centroid"), as well as noting which census subdivisions (CSDs) are covered by the Street Network Files (SNFs).

Geography Guide Book: In easy to understand language, the *Geography Guide Book* situates and explains the applications of most of Statistics Canada's geographic areas and their geographic hierarchies. Five brief case studies show the reader what steps to follow in actual research situations. At the end of the Guide Book, all geographic terms are defined. A section describing related geographic products and services, as well as how to order them, rounds out the Guide Book.

Street Index: This paper product is an alphabetical listing of street and address ranges from the Street Network Files, linked to specific standard geographical areas. Three products will be available: (1) linkage to enumeration areas; (2) linkage to census divisions and census subdivisions; and (3) linkage to census tracts. The Street Indexes will be available as print-on-demand products by census metropolitan areas or census agglomerations which are in the census tract program. Coverage in those areas is restricted to those component CSDs having Street Network Files.

Complete On-line Guide To Geography: This electronic product is an interactive hypertext document with the TOOLBOOK® authoring environment and runs as a WINDOWS® application. It provides a quick and easy access to a number of spatial concepts of census geography. It consists of three parts: the Electronic Guide to Geography; Illustrated Glossary; Reference Dictionary. The system includes illustrations, definitions, case studies, learning activities and census geography user issues.

4. Digital Geographic Files

Street Network Files (SNFs): These computer files provide the street network for most large urban centres in Canada. They include streets, railroad tracks and other features, as well as relevant information such as street names and address ranges. Street Network Files are used as the base for a user's geographic application software for mapping purposes or special applications such as transportation planning or delivery services. The user should be aware of the vintages of the individual Street Network Files when considering the particular application.

Digital Boundary Files (DBFs): These digital boundaries are available for most levels of standard geography (from the enumeration area up to the province and territory). In combination with the user's appropriate software, these files provide the user with a spatial analytical tool for designing their own geographical areas (by aggregating standard geographical areas), for mapping, and for other data manipulation operations and analysis offered by the user's software.

Postal Code Conversion File (PCCF): This computer file links the six-character postal code with standard 1991 Census geographical areas (such as enumeration areas, municipalities (CSDs), census tracts, etc.). It also provides the {x,y} coordinates for a point representing the location of the postal code to support mapping applications.

Block-face Data File: The block-face is defined as one side of a street between two consecutive intersections in large urban centres. It is the smallest geographical unit available from Statistics Canada. This computer file relates the block-face to all standard levels of geography. Included in the file are the block-face representative point ("centroid"), the street names with corresponding address ranges, geographical area codes, and the block-face 1991 population and dwelling counts.

Place Name Master File: This is a computer file of all the names of census divisions, census subdivisions and unincorporated places and their 1991 census populations. It assists users in locating informal area names in standard geographical areas.

Geographic Attribute File: The Geographic Attribute File assigns to each 1991 Census enumeration area (the basic geographical unit of census data collection) all higher geographic levels by codes and names. It also locates each enumeration area representative point according to Universal Transverse Mercator (UTM) coordinates and Lambert coordinates, as well as by longitude and latitude. The 1991 population and private occupied dwelling counts for all enumeration areas are also presented. The same information is available with software in GEOREF.

5. Services

Geocoding Service: This custom service allows users to define their own geographical area of study for census data retrievals. This custom geography is produced from an aggregation at the block-face level in large urban areas, and at the enumeration area level for small urban and rural areas.

Custom Service: If the standard geography products do not satisfy a user's need, the Custom Service may be able to produce the product as a special request. Examples include special data retrievals or merges using any of the geography computer files (postal codes, attribute files, boundary files and street network files), special population compilations using basic census collection records, and digitizing user-defined boundaries for a user's own computer software. Some custom mapping is available.

Regional Reference Centres

Statistics Canada's regional reference centres provide a full range of census products and services. Each reference centre is equipped with a library and a sales counter where users can consult or purchase publications, microcomputer diskettes, microfiche, maps and more.

The staff of the regional reference centres provides consultative and research services in addition to providing after-sales service and support, including seminars and workshops on the use of Statistics Canada information.

Each centre has facilities to retrieve information from Statistics Canada's computerized data retrieval systems CANSIM and E-STAT. A telephone inquiry service is also available with toll-free numbers for regional users outside local calling areas. Call, write, fax or visit the nearest regional reference centre for more information.

Atlantic Region

Serving the provinces of Newfoundland and Labrador, Nova Scotia, Prince Edward Island and New Brunswick.

Advisory Services
Statistics Canada
Viking Building, 3rd Floor
Crosbie Road
St. John's, Newfoundland
A1B 3P2

Toll-free service: 1-800-565-7192
Fax number: (709) 772-6433

Advisory Services
Statistics Canada
North American Life Centre
1770 Market Street
Halifax, Nova Scotia
B3J 3M3

Toll-free service: 1-800-565-7192
Local calls: (902) 426-5331
Fax number: (902) 426-9538

Quebec Region

Advisory Services
Statistics Canada
200 René Lévesque Blvd. W.
Guy Favreau Complex
Suite 412, East Tower
Montréal, Quebec
H2Z 1X4

Toll-free service: 1-800-361-2831
Local calls: (514) 283-5725
Fax number: (514) 283-9350

National Capital Region

Statistical Reference Centre (NCR)
Statistics Canada
R.H. Coats Building Lobby
Holland Avenue
Ottawa, Ontario
K1A 0T6

If outside the local calling area, please dial the toll-free number for your region.

Local calls: (613) 951-8116
Fax number: (613) 951-0581

Ontario Region

Advisory Services
Statistics Canada
Arthur Meighen Building, 10th Floor
25 St. Clair Avenue East
Toronto, Ontario
M4T 1M4

Toll-free service: 1-800-263-1136
Local calls: (416) 973-6586
Fax number: (416) 973-7475

Pacific Region

Serving the province of British Columbia and the Yukon Territory.

Advisory Services
Statistics Canada
Sinclair Centre, Suite 300
757 West Hastings Street
Vancouver, British Columbia
V6C 3C9

Toll-free service: 1-800-663-1551
Local calls: (604) 666-3691
Fax number: (604) 666-4863

Prairie Region

Serving the provinces of Manitoba, Saskatchewan, Alberta and the Northwest Territories.

Advisory Services
Statistics Canada
MacDonald Building, Suite 300
344 Edmonton Street
Winnipeg, Manitoba
R3B 3L9

Toll-free service: 1-800-563-7828
Local calls: (204) 983-4020
Fax number: (204) 983-7543

Advisory Services
Statistics Canada
Avord Tower, 9th Floor
2002 Victoria Avenue
Regina, Saskatchewan
S4P 0R7

Toll-free service: 1-800-563-7828
Local calls: (306) 780-5405
Fax number: (306) 780-5403

Advisory Services
Statistics Canada
First Street Plaza, Room 401
138 - 4th Avenue South-East
Calgary, Alberta
T2G 4Z6

Toll-free service: 1-800-563-7828
Local calls: (403) 292-6717
Fax number: (403) 292-4958

Advisory Services
Statistics Canada
Park Square, 8th Floor
10001 Bellamy Hill
Edmonton, Alberta
T5J 3B6

Toll-free service: 1-800-563-7828
Local calls: (403) 495-3027
Fax number: (403) 495-5318

Telecommunications Device for the Hearing Impaired: 1-800-363-7629

Toll Free Order Only Line (Canada and United States): 1-800-267-6677

Depository Libraries

The Statistics Canada Library in Ottawa maintains complete current and historical records of all Statistics Canada publications, both catalogued and non-catalogued. The library staff is available to help users find the required information.

Statistics Canada Library
R.H. Coats Building, 2nd Floor
Tunney's Pasture
Ottawa, Ontario
K1A 0T6
Local calls: 613-951-8219/20
Fax: 1-613-951-0939

The following is a list of full depository libraries that receive all Statistics Canada publications and all other federal government publications.

Canada

Newfoundland

St. John's

Memorial University of Newfoundland
Queen Elizabeth II Library
St. John's, Newfoundland
A1B 3Y1

Prince Edward Island

Charlottetown

Government Services Library
Charlottetown, Prince Edward Island
C1A 3T2

Nova Scotia

Halifax

Dalhousie University
Killam Memorial Library
Halifax, Nova Scotia
B3H 4H8

Wolfville

Acadia University
Vaughan Memorial Library
Wolfville, Nova Scotia
B0P 1X0

New Brunswick

Fredericton

Legislative Library
Fredericton, New Brunswick
E3B 5H1

University of New Brunswick
Harriet Irving Library
Fredericton, New Brunswick
E3B 5H5

Moncton

Université de Moncton
Bibliothèque Champlain
Moncton, New Brunswick
E1A 3E9

Sackville

Mount Allison University
Ralph Pickard Bell Library
Sackville, New Brunswick
E0A 3C0

Quebec

Montréal

Municipal Library of Montréal
Montréal, Quebec
H2L 1L9

Services documentaires multimédia
Montréal, Quebec
H2C 1T1

Concordia University Library
Montréal, Quebec
H3G 1M8

McGill University
McLennan Library
Montréal, Quebec
H3A 1Y1

Université de Montréal
Bibliothèque des sciences humaines
et sociales
Montréal, Quebec
H3C 3T2

Université du Québec à Montréal
Bibliothèque
Montréal, Quebec
H2L 4S6

Québec

National Assembly Library
Québec, Quebec
G1A 1A5

Sherbrooke

Université de Sherbrooke
Bibliothèque générale
Cité universitaire
Sherbrooke, Quebec
J1K 2R1

Sainte-Foy

Université Laval
Bibliothèque générale
Sainte-Foy, Quebec
G1K 7P4

Ontario

Downsview

York University
Scott Library
Downsview, Ontario
M3J 2R6

Guelph

University of Guelph
Library
Guelph, Ontario
N1G 2W1

Hamilton

Hamilton Public Library
Hamilton, Ontario
L8R 3K1

McMaster University
Mills Memorial Library
Hamilton, Ontario
L8S 4L6

Kingston

Queen's University at Kingston
Douglas Library
Kingston, Ontario
K7L 3N6

London

The University of Western Ontario
D.B. Weldon Library
London, Ontario
N6A 3K7

Ottawa

Library of Parliament
Canadian Government Information
Section
Ottawa, Ontario
K1A 0A9

National Library of Canada
Ottawa, Ontario
K1A 0N4

University of Ottawa
Morisset Library
Ottawa, Ontario
K1N 9A5

Sudbury

Laurentian University of Sudbury
Library
Sudbury, Ontario
P3C 2C6

Thunder Bay

Lakehead University
Chancellor Paterson Library
Thunder Bay, Ontario
P7B 5E1

Thunder Bay Public Library
Thunder Bay, Ontario
P7E 1C2

Toronto

Legislative Library
Toronto, Ontario
M5S 1A5

Metropolitan Toronto Reference Library
Toronto, Ontario
M4W 2G8

University of Toronto
Robarts Library
Toronto, Ontario
M5S 1A5

Waterloo

University of Waterloo
Dana Porter Arts Library
Waterloo, Ontario
N2L 3G1

Windsor

Windsor Public Library
Windsor, Ontario
N9A 4M9

Manitoba

Winnipeg

Legislative Library
Winnipeg, Manitoba
R3C 0V8

The University of Manitoba
Elizabeth Dafoe Library
Winnipeg, Manitoba
R3T 2N2

Saskatchewan

Regina

Legislative Library
Regina, Saskatchewan
S4S 0B3

Saskatoon

University of Saskatchewan
The Main Library
Saskatoon, Saskatchewan
S7N 0W0

Alberta

Calgary

The University of Calgary
MacKimmie Library
Calgary, Alberta
T2N 1N4

Edmonton

Edmonton Public Library
Edmonton, Alberta
T5J 2V4

Legislative Library
Edmonton, Alberta
T5K 2B6

The University of Alberta
Library
Edmonton, Alberta
T6G 2J8

British Columbia

Burnaby

Simon Fraser University
Library
Burnaby, British Columbia
V5A 1S6

Vancouver

The University of British Columbia
Library
Vancouver, British Columbia
V6T 1Y3

Vancouver Public Library
Vancouver, British Columbia
V6Z 1X5

Victoria

Legislative Library
Victoria, British Columbia
V8V 1X4

University of Victoria
McPherson Library
Victoria, British Columbia
V8W 3H5

Northwest Territories

Yellowknife

Northwest Territories
Government Library
Yellowknife, Northwest Territories
X0E 1H0

Other Countries

Federal Republic of Germany

Preussischer Kulturbesitz
Staatsbibliothek
Abt. Amsdruckchriften U. Tausch
Postfach 1407
1000 Berlin 30
Germany

United Kingdom

The British Library
London, WC1B 3DG
England, United Kingdom

Japan

National Diet Library
Tokyo, Japan

United States of America

Library of Congress
Washington, D.C. 20540
United States of America

Additional References and Services

In addition to being available through Regional Reference Centres and depository libraries, Statistics Canada publications may be ordered through your **local bookstore** or **subscription agent**. Contact the nearest Regional Reference Centre for a list of Canadian outlets available, or consult the 1991 Census Catalogue (Catalogue No. 92-302E).

Secondary distributors offer data access and analytical support through a variety of consulting and computer-based services not available at Statistics Canada. The names and addresses of licensed distributors may be obtained from any Regional Reference Centre.

Statistics Canada provides **digital geographic products** which allow computer manipulation of geographic data. A customized retrieval service is available for users who wish to define their own geographic area of study. A variety of data retrieval files and services provide flexibility in selecting a geographic base.

A complete description of available digital files and services is documented in the 1991 Census Catalogue (Catalogue No. 92-302E).

Information concerning **census of agriculture products and services** may be found in the 1991 Census of Agriculture Products and Services publication, Catalogue No. 92-303, or by calling toll free 1-800-465-1991.

Users with special data requirements may request **post-census survey services**. Data are made available on microcomputer diskettes for use with spreadsheet software, or on paper output. For additional information, please contact the nearest Regional Reference Centre.

CANSIM, Statistics Canada's computerized database network and information retrieval service provides users with access to current and historical statistics in various forms including specialized data manipulation and analysis packages, graphics facilities and a bibliographic search service. For more information about CANSIM, contact the Marketing Division or any Regional Reference Centre.

Nuts and Bolts of Census Data

1991 Census Technical Reports provide users with data quality information. Census concepts, variables and their components, definitions, coverage, processing, data evaluation and limitations and much more are explained in detail in each report.



For a complete list of *Technical Reports* available, call
your nearest Statistics Canada Regional Reference Centre
or our national order line...

☎ 1 800 267-6677 ☎

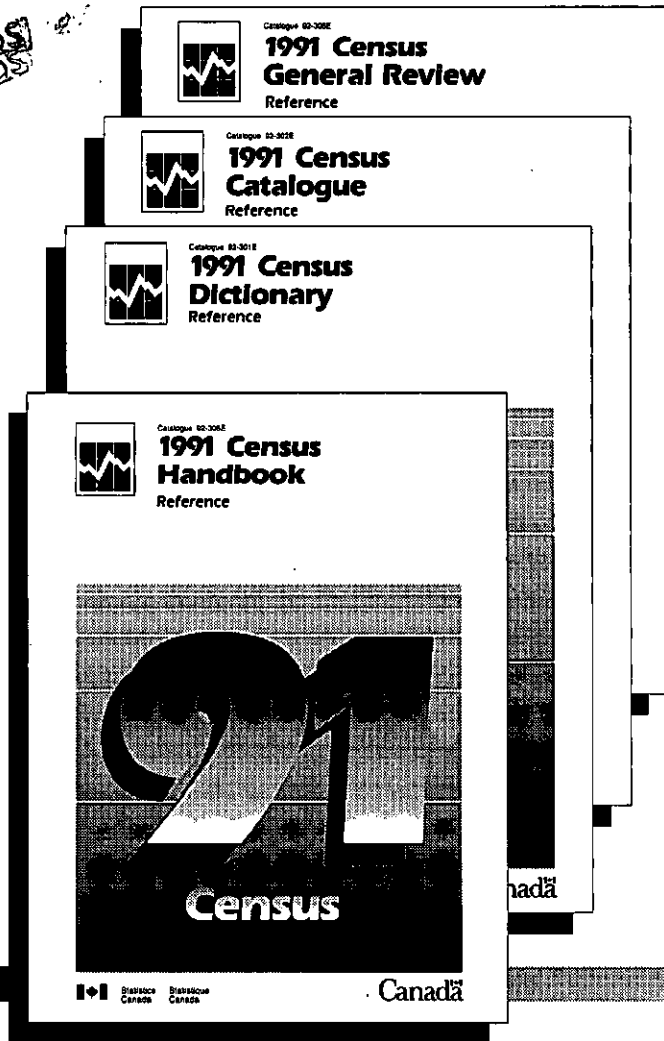


Canada



1010351870

**The Census
is the most
comprehensive
database
available in
Canada today...**
**are you sure
you're getting
everything
out of it?**



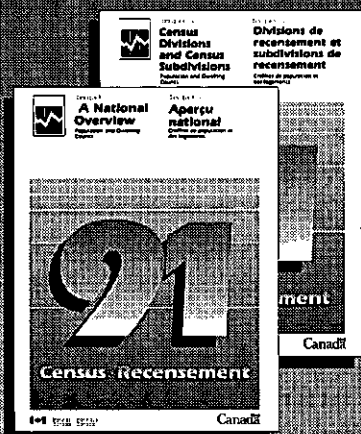
Taking full advantage of Canada's largest, most comprehensive social and economic database is often overwhelming, but the Census can be the most valuable business tool you will ever use. Statistics Canada has designed a series of 1991 General Reference Products to put the Census to work for you.

To order the *Census Dictionary*, *Census Handbook*, *Census General Review* or a *Census Catalogue* of products and services, call your nearest Statistics Canada Regional Reference Centre or our national order line...

 **1 800 267-6677** 

Geography products and services are available in many formats

Take advantage of them all!



Print



Diskette



Maps



Workshops

To order any geography products and services, call your nearest
Statistics Canada Regional Reference Centre or our national order line...

 **1 800 267-6677** 