

Table 1

Railway Occurrence and Casualty

	November			January to November		
	2012	2011	2007-2011 Average	2012	2011	2007-2011 Average
Accidents	78	75	85	911	956	1,040
Main-Track Train Collisions	0	0	1	6	2	5
Main-Track Train Derailments - 1-2 cars	5	3	3	29	40	49
Main-Track Train Derailments - 3 or more cars	0	1	4	30	54	49
Crossings	13	14	17	168	155	176
Non-Main-Track Train Collisions	7	5	5	87	84	86
Non-Main-Track Train Derailments - 1-2 cars	36	30	31	346	348	381
Non-Main-Track Train Derailments - 3 or more cars	4	10	12	98	106	122
Collisions/Derailments Involving Track Units	3	4	3	23	32	34
Employee/Passenger	1	0	1	6	11	11
Trespassers	4	4	4	70	62	75
Fires/Explosions	0	2	3	15	23	21
Other	3	2	3	31	39	31
Incidents	11	18	13	191	188	187
Dangerous Goods Leaker	2	2	3	59	51	61
Main-track Switch in Abnormal Position	1	2	1	5	10	7
Movement Exceeds Limits of Authority	8	11	7	112	104	99
Runaway Rolling Stock	0	2	1	9	13	10
Others	0	1	0	6	10	9
Million Train-miles (a)				79.1	78	79.5
Accidents/Million Train-miles				11.52	12.26	13.08
Accidents Involving Dangerous Goods	8	6	10	108	115	136
Main-track Train Derailments	0	0	1	5	20	19
Crossings	0	0	0	4	1	4
Non-Main-Track Train Collisions	2	1	1	20	19	27
Non-Main-Track Train Derailments	6	5	7	78	69	78
All Others	0	0	1	1	6	7
Accidents with a DG Release	0	0	0	2	3	3
Accidents Involving Passenger Trains	4	5	6	44	63	65
Fatalities	6	5	5	77	65	72
Crossings	1	1	1	27	24	23
Trespassers	4	4	3	46	40	48
All Others	1	0	0	4	1	1
Serious Injuries	6	2	4	67	50	55
Crossings	4	2	2	30	21	24
Trespassers	1	0	1	20	20	20
All Others	1	0	1	17	9	10

Data extracted November 17, 2012.

All 5-year averages have been rounded. The totals sometimes do not coincide to the sum of these averages.

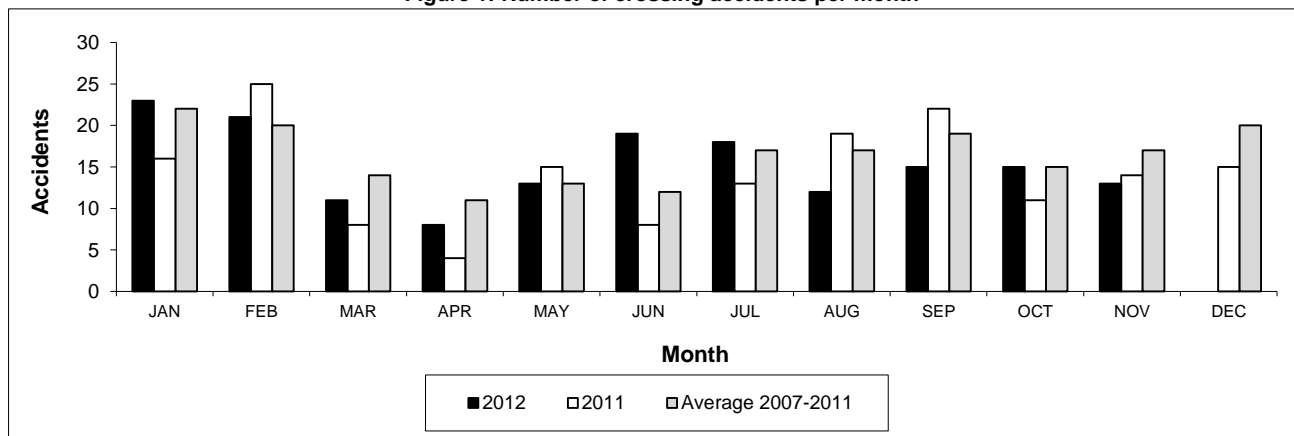
a. Train-miles estimated. (Source: Transport Canada)

Table 2

Railway crossing and trespasser accidents by province

	Crossings with Type Recorded 2012 - Year To Date*				All Crossings Year To Date*		Trespasser Year To Date*	
	Public Automated	Public Passive	Private	Farm	2012	2011	2012	2011
Newfoundland								
Accidents	0	0	0	0	0	2	0	0
Fatalities	0	0	0	0	0	0	0	0
Serious Injuries	0	0	0	0	0	0	0	0
Nova Scotia								
Accidents	0	0	1	0	1	0	0	1
Fatalities	0	0	0	0	0	0	0	0
Serious Injuries	0	0	0	0	0	0	0	0
New Brunswick								
Accidents	2	0	0	1	3	6	1	2
Fatalities	1	0	0	0	1	2	1	1
Serious Injuries	0	0	0	0	0	0	0	1
Quebec								
Accidents	10	4	2	1	18	22	8	8
Fatalities	1	0	0	0	1	3	5	6
Serious Injuries	1	0	0	0	1	4	2	2
Ontario								
Accidents	19	9	3	0	33	35	31	30
Fatalities	7	2	0	0	9	9	20	24
Serious Injuries	1	5	1	0	7	6	11	6
Manitoba								
Accidents	9	11	1	0	21	7	3	1
Fatalities	1	1	0	0	2	2	3	1
Serious Injuries	2	5	0	0	7	1	0	0
Saskatchewan								
Accidents	8	17	2	1	28	20	6	2
Fatalities	0	7	0	1	8	1	4	1
Serious Injuries	3	1	1	0	5	2	0	1
Alberta								
Accidents	22	18	3	0	44	44	10	7
Fatalities	4	0	0	0	4	5	8	2
Serious Injuries	5	2	0	0	7	4	2	4
British Columbia								
Accidents	11	4	5	0	20	19	11	11
Fatalities	2	0	0	0	2	2	5	5
Serious Injuries	1	1	1	0	3	4	5	6
Northwest Territories								
Accidents	0	0	0	0	0	0	0	0
Fatalities	0	0	0	0	0	0	0	0
Serious Injuries	0	0	0	0	0	0	0	0
Canada								
Accidents	81	63	17	3	168	155	70	62
Fatalities	16	10	0	1	27	24	46	40
Serious Injuries	13	14	3	0	30	21	20	20

Figure 1: Number of crossing accidents per month



Data extracted November 17, 2012.

*Year to date is from January to November.

Table 3
Main-track train derailments by province

	January to November			Derailments with DG Involvement January to November		
	2012	2011	2007-2011 Average	2012	2011	2007-2011 Average
Canada	59	94	98	5	20	19
Newfoundland	1	1	1	0	0	0
Nova Scotia	0	0	1	0	0	0
New Brunswick	0	0	2	0	0	1
Quebec	4	8	10	1	2	2
Ontario	6	24	26	1	5	6
Manitoba	6	10	8	0	0	0
Saskatchewan	4	11	11	1	0	1
Alberta	17	20	20	1	7	5
British Columbia	21	20	19	1	6	3
Northwest Territories	0	0	0	0	0	0

* There was 1 occurrence with dangerous goods release to date in 2012 and 1 in 2011.

Figure 1: Number of main-track train derailments per month

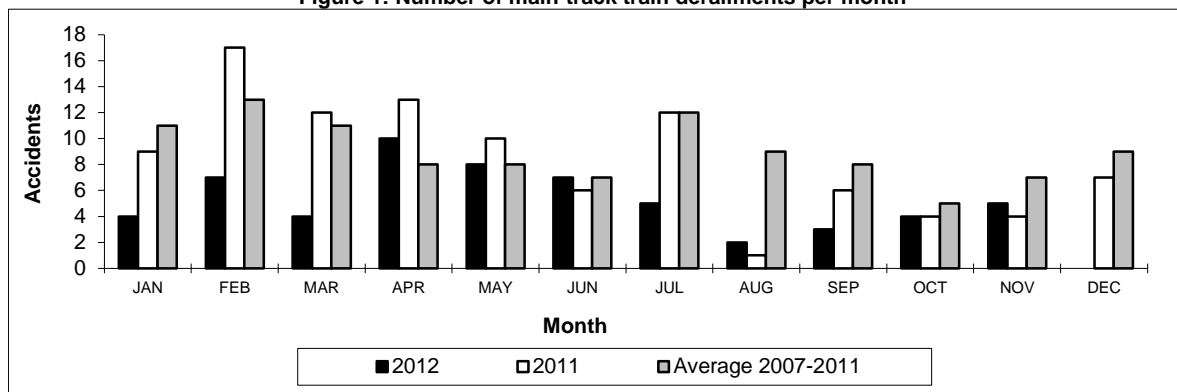
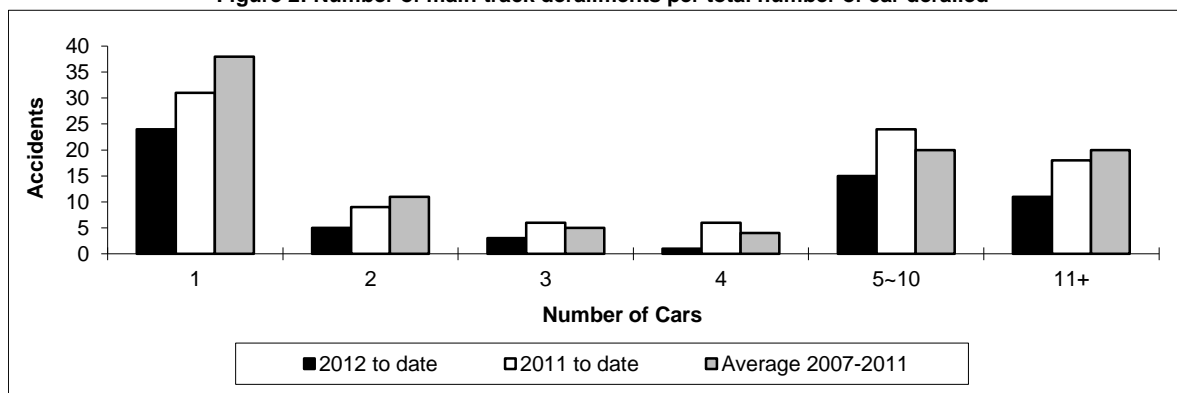


Figure 2: Number of main-track derailments per total number of cars derailed



Data extracted November 17, 2012.

Table 4

Non main-track train collisions by province

	January to November			Collisions with DG Involvement January to November		
	2012	2011	2007-2011 Average	2012	2011	2007-2011 Average
Canada	87	84	86	20	19	27
Newfoundland	0	0	0	0	0	0
Nova Scotia	0	0	0	0	0	0
New Brunswick	1	1	1	0	0	0
Quebec	8	12	8	4	3	2
Ontario	10	15	20	0	5	8
Manitoba	19	14	12	6	2	3
Saskatchewan	9	8	6	1	0	1
Alberta	27	16	22	5	4	9
British Columbia	13	18	15	4	5	4
Northwest Territories	0	0	0	0	0	0

* There were no occurrences with dangerous goods release to date in 2012 or in 2011.

Figure 1: Number of non main-track train collisions per month

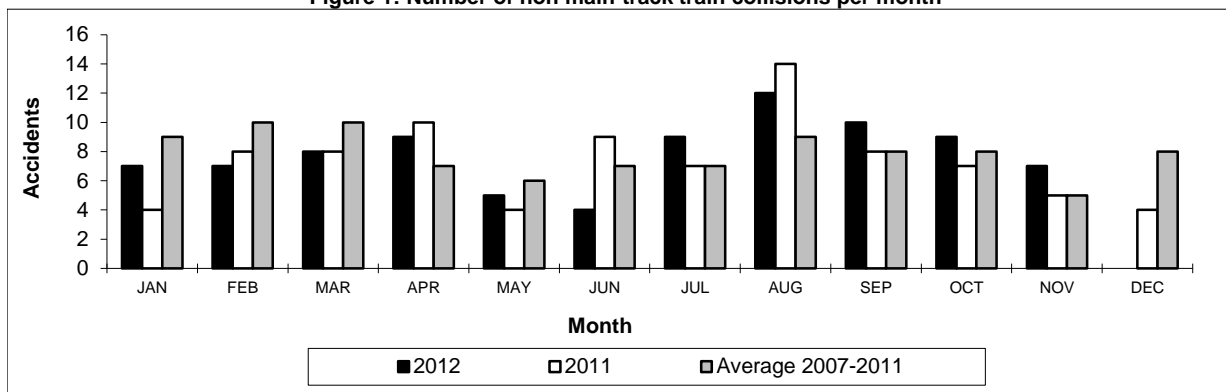
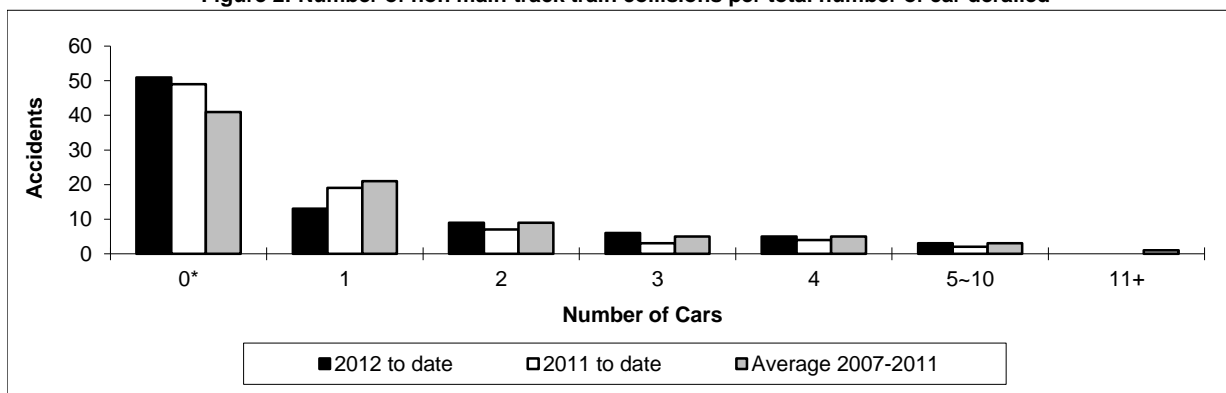


Figure 2: Number of non main-track train collisions per total number of car derailed



Data extracted November 17, 2012.

*Number of collisions with no derailments.

Table 5

Non main-track train derailments by province

	January to November			Derailments with DG Involvement January to November		
	2012	2011	2007-2011 Average	2012	2011	2007-2011 Average
Canada	445	454	503	78	69	78
Newfoundland	1	0	0	0	0	0
Nova Scotia	3	2	3	0	1	1
New Brunswick	6	11	10	1	1	2
Quebec	53	54	56	6	15	11
Ontario	85	99	116	11	14	18
Manitoba	53	50	56	8	5	9
Saskatchewan	55	74	56	7	3	4
Alberta	130	97	117	35	23	21
British Columbia	59	66	88	10	6	11
Northwest Territories	0	1	1	0	1	0

* There were no occurrences with dangerous goods release to date in 2012 and 1 in 2011.

Figure 1: Number of non main-track train derailments per month

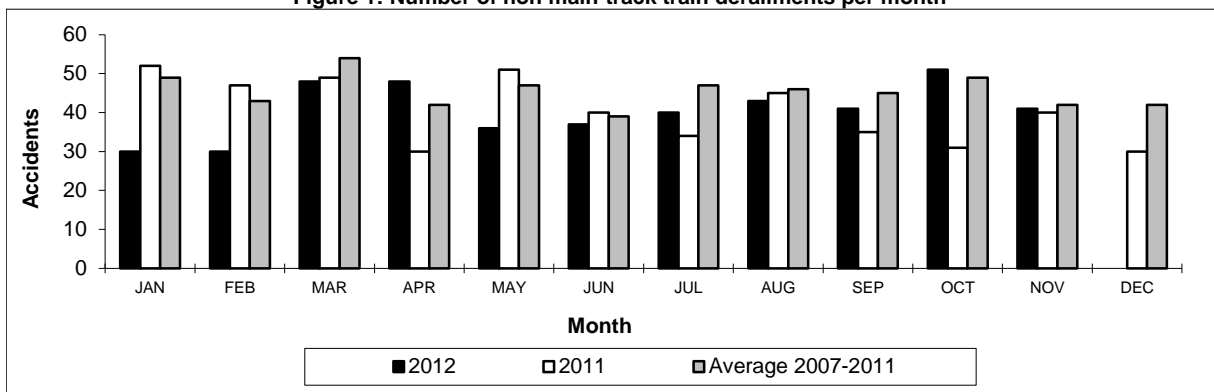
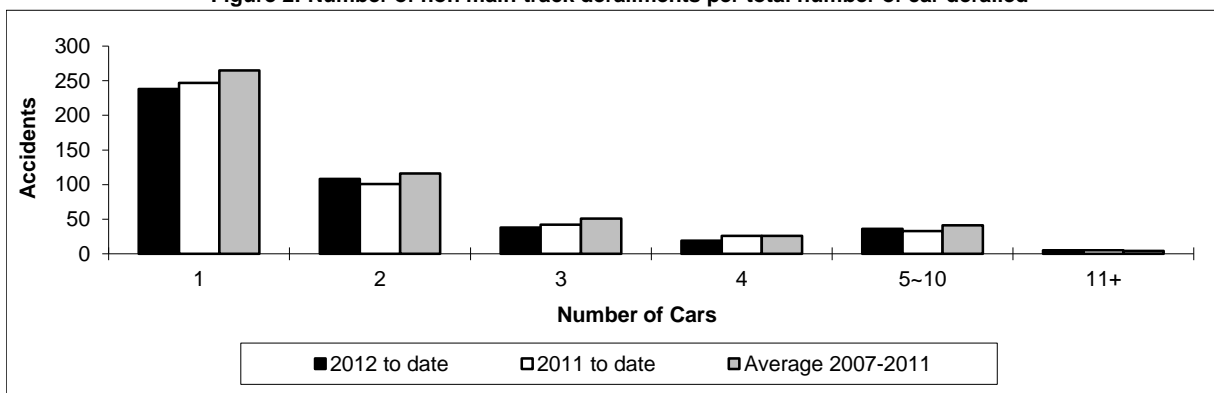


Figure 2: Number of non main-track derailments per total number of car derailed



Data extracted November 17, 2012.