

Table 1

Railway Occurrence and Casualty

	June			January to June		
	2013	2012	2008-2012 Average	2013	2012	2008-2012 Average
Accidents	71	79	78	514	486	527
Main-Track Train Collisions	0	1	1	3	5	3
Main-Track Train Derailments - 1-2 cars	4	2	3	27	17	26
Main-Track Train Derailments - 3 or more cars	5	5	3	19	23	24
Crossings	9	20	14	101	95	90
Non-Main-Track Train Collisions	6	4	7	39	43	47
Non-Main-Track Train Derailments - 1-2 cars	19	35	30	185	177	200
Non-Main-Track Train Derailments - 3 or more cars	12	2	7	52	52	56
Collisions/Derailments Involving Track Units	3	1	2	18	7	13
Employee/Passenger	1	0	0	5	2	4
Trespassers	7	7	8	33	39	35
Fires/Explosions	1	0	2	8	9	8
Other	4	2	2	22	17	20
Incidents	13	22	22	92	100	102
Dangerous Goods Leaker	5	7	6	29	42	36
Main-track Switch in Abnormal Position	1	2	1	6	3	3
Movement Exceeds Limits of Authority	7	12	13	43	48	55
Runaway Rolling Stock	0	1	1	8	4	4
Others	0	0	1	6	3	5
Million Train-miles (a)				42.3	43.07	42.56
Accidents/Million Train-miles				12.15	11.28	12.38
Accidents Involving Dangerous Goods	8	11	9	65	59	72
Main-track Train Derailments	1	0	1	7	4	9
Crossings	1	0	0	5	2	2
Non-Main-Track Train Collisions	3	1	1	16	10	14
Non-Main-Track Train Derailments	3	10	6	37	42	43
All Others	0	0	0	0	1	3
Accidents with a DG Release	0	0	0	2	1	1
Accidents Involving Passenger Trains	3	5	5	27	22	32
Fatalities	7	9	6	46	45	36
Crossings	2	6	2	19	18	14
Trespassers	5	3	5	24	24	21
All Others	0	0	0	3	3	1
Serious Injuries	3	9	5	15	40	29
Crossings	1	6	2	7	17	12
Trespassers	2	3	3	6	11	10
All Others	0	0	0	2	12	7

Data extracted July 19, 2013.

All 5-year averages have been rounded. The totals sometimes do not coincide to the sum of these averages.

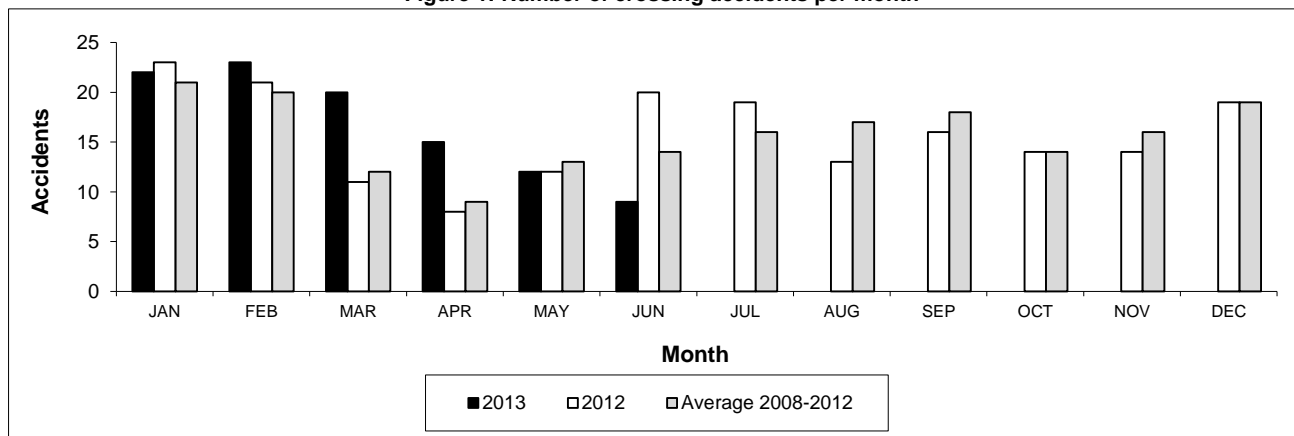
a. Train-miles estimated. (Source: Transport Canada)

Table 2

Railway crossing and trespasser accidents by province

	Crossings with Type Recorded 2013 - Year To Date*				All Crossings Year To Date*		Trespasser Year To Date*	
	Public Automated	Public Passive	Private	Farm	2013	2012	2013	2012
Newfoundland								
Accidents	0	0	0	0	0	0	0	0
Fatalities	0	0	0	0	0	0	0	0
Serious Injuries	0	0	0	0	0	0	0	0
Nova Scotia								
Accidents	0	0	0	0	0	1	0	0
Fatalities	0	0	0	0	0	0	0	0
Serious Injuries	0	0	0	0	0	0	0	0
New Brunswick								
Accidents	1	0	0	0	1	3	0	0
Fatalities	1	0	0	0	1	1	0	0
Serious Injuries	0	0	0	0	0	0	0	0
Quebec								
Accidents	6	0	2	0	9	11	4	5
Fatalities	2	0	0	0	2	1	2	2
Serious Injuries	1	0	0	0	1	1	2	1
Ontario								
Accidents	22	1	0	1	25	23	20	18
Fatalities	6	0	0	0	6	7	16	10
Serious Injuries	0	0	0	1	1	7	3	8
Manitoba								
Accidents	4	5	0	0	9	12	1	1
Fatalities	0	0	0	0	0	1	1	1
Serious Injuries	1	0	0	0	1	2	0	0
Saskatchewan								
Accidents	9	9	0	0	18	13	1	2
Fatalities	2	1	0	0	3	3	1	1
Serious Injuries	1	0	0	0	1	2	0	0
Alberta								
Accidents	13	12	2	0	28	21	3	8
Fatalities	4	1	0	0	5	3	1	7
Serious Injuries	0	1	0	0	1	5	1	1
British Columbia								
Accidents	7	3	0	0	11	11	4	5
Fatalities	2	0	0	0	2	2	3	3
Serious Injuries	0	1	0	0	2	0	0	1
Northwest Territories								
Accidents	0	0	0	0	0	0	0	0
Fatalities	0	0	0	0	0	0	0	0
Serious Injuries	0	0	0	0	0	0	0	0
Canada								
Accidents	62	30	4	1	101	95	33	39
Fatalities	17	2	0	0	19	18	24	24
Serious Injuries	3	2	0	1	7	17	6	11

Figure 1: Number of crossing accidents per month



Data extracted July 19, 2013.

*Year to date is from January to June.

Table 3
Main-track train derailments by province

	January to June			Derailments with DG Involvement January to June		
	2013	2012	2008-2012 Average	2013	2012	2008-2012 Average
Canada	46	40	50	7	4	9
Newfoundland	1	0	1	1	0	0
Nova Scotia	1	0	0	0	0	0
New Brunswick	0	0	0	0	0	0
Quebec	3	3	5	0	1	1
Ontario	10	6	13	2	1	4
Manitoba	3	2	5	0	0	0
Saskatchewan	8	3	5	2	1	1
Alberta	11	11	10	2	1	2
British Columbia	9	15	11	0	0	1
Northwest Territories	0	0	0	0	0	0

* There was 1 occurrence with dangerous goods release to date in 2013 and none in 2012.

Figure 1: Number of main-track train derailments per month

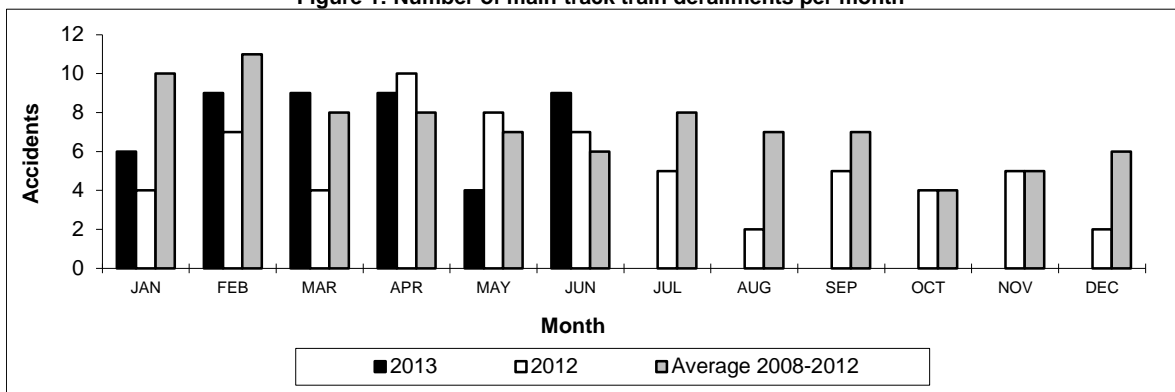
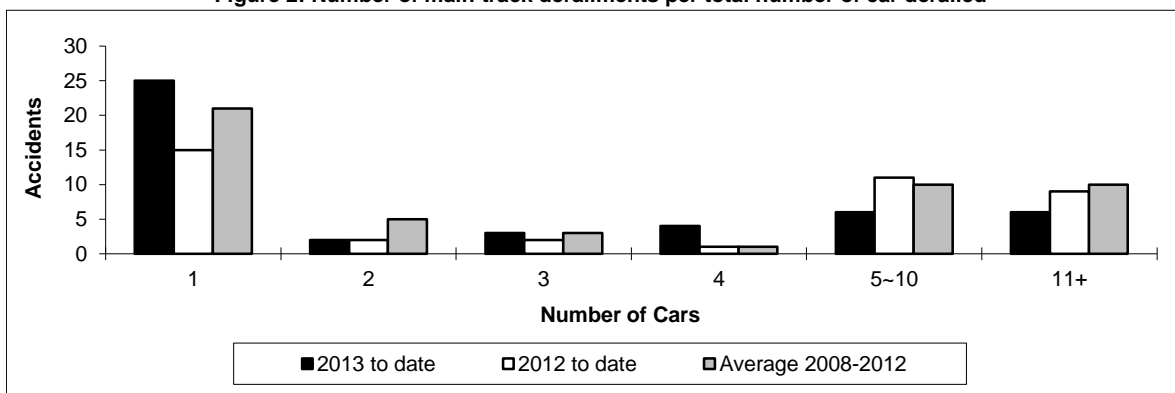


Figure 2: Number of main-track derailments per total number of car derailed



Data extracted July 19, 2013.

Table 4

Non main-track train collisions by province

	January to June			Collisions with DG Involvement January to June		
	2013	2012	2008-2012 Average	2013	2012	2008-2012 Average
Canada	39	43	47	16	10	14
Newfoundland	0	0	0	0	0	0
Nova Scotia	0	0	0	0	0	0
New Brunswick	0	0	0	0	0	0
Quebec	5	3	5	3	2	1
Ontario	7	5	11	2	0	4
Manitoba	9	8	6	3	4	2
Saskatchewan	3	4	3	1	1	0
Alberta	12	17	11	6	1	4
British Columbia	3	6	10	1	2	2
Northwest Territories	0	0	0	0	0	0

* There was 1 occurrence with dangerous goods release to date in 2013 and none in 2012.

Figure 1: Number of non main-track train collisions per month

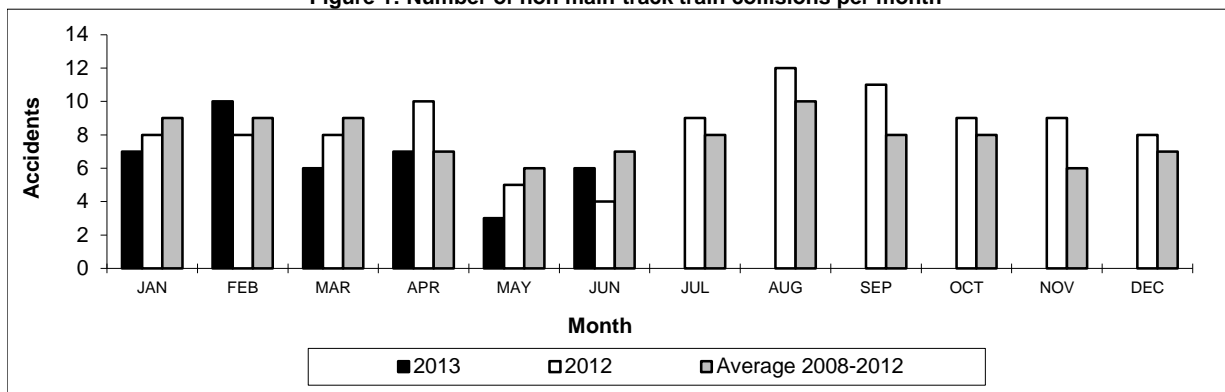
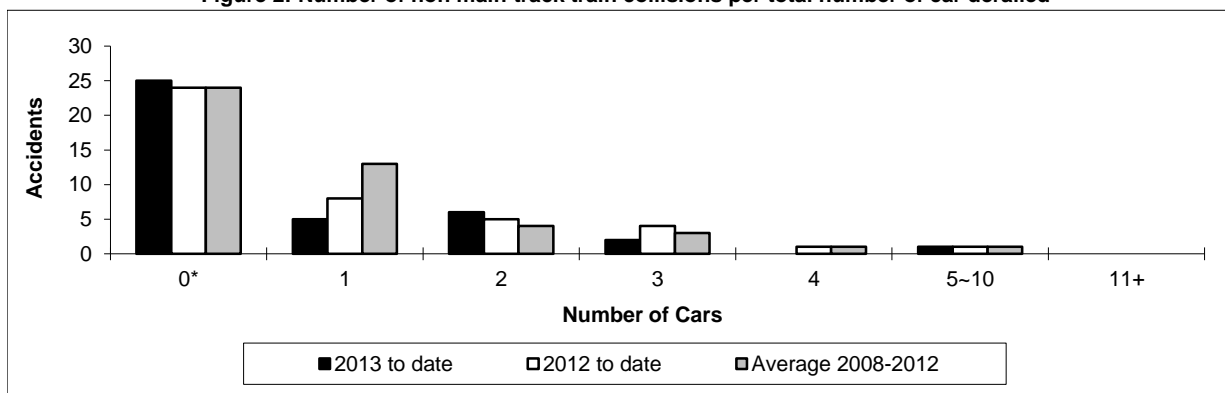


Figure 2: Number of non main-track train collisions per total number of car derailed



Data extracted July 19, 2013.

*Number of collisions with no derailments.

Table 5

Non main-track train derailments by province

	January to June			Derailments with DG Involvement January to June		
	2013	2012	2008-2012 Average	2013	2012	2008-2012 Average
Canada	237	229	256	37	42	43
Newfoundland	1	0	0	0	0	0
Nova Scotia	2	1	1	0	0	0
New Brunswick	3	3	5	1	0	1
Quebec	28	25	28	1	3	6
Ontario	37	46	53	8	9	9
Manitoba	26	28	30	4	6	6
Saskatchewan	44	33	31	5	4	2
Alberta	63	63	61	15	17	13
British Columbia	32	30	46	2	3	6
Northwest Territories	1	0	0	1	0	0

* There were no occurrences with dangerous goods release to date in 2013 or in 2012.

Figure 1: Number of non main-track train derailments per month

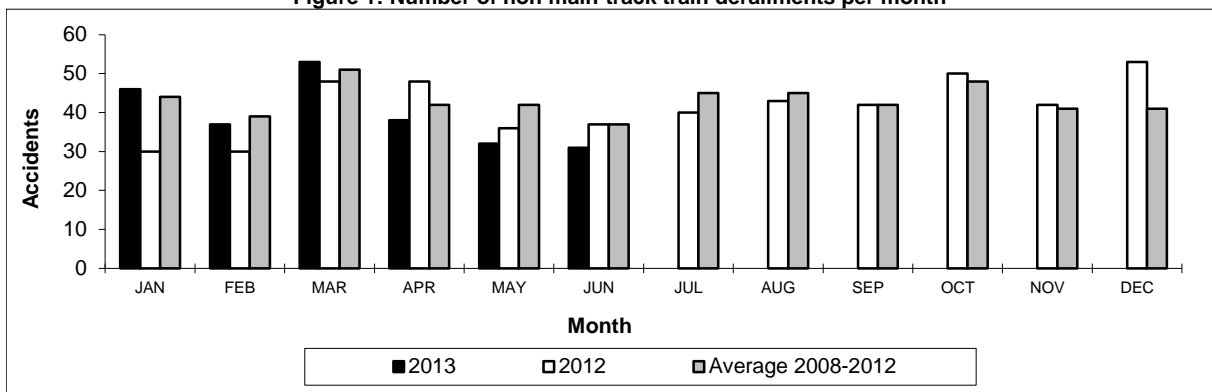
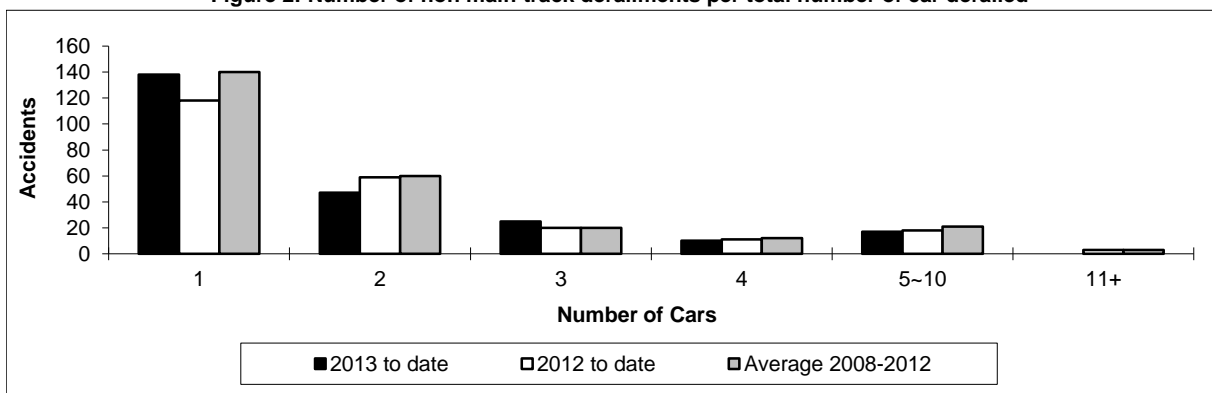


Figure 2: Number of non main-track derailments per total number of car derailed



Data extracted July 19, 2013.