

Dup.

1969-72 Newfoundland and Labrador Atlantic Salmon (Salmo salar) Commercial Catch Data

D. G. Reddin, and F. A. Day

Research and Resource Services
Department of Fisheries and Oceans
P. O. Box 5667
St. John's, Newfoundland, A1C 5X1

September 1980

**Canadian Data Report of
Fisheries and Aquatic Sciences
No. 220**



Canadian Data Report of Fisheries and Aquatic Sciences

These reports provide a medium for filing and archiving data compilations where little or no analysis is included. Such compilations commonly will have been prepared in support of other journal publications or reports. The subject matter of Data Reports reflects the broad interests and policies of the Department of Fisheries and Oceans, namely, fisheries management, technology and development, ocean sciences, and aquatic environments relevant to Canada.

Numbers 1-25 in this series were issued as Fisheries and Marine Service Data Records. Numbers 26-160 were issued as Department of Fisheries and the Environment, Fisheries and Marine Service Data Reports. The current series name was changed with report number 161.

Data Reports are not intended for general distribution and the contents must not be referred to in other publications without prior written clearance from the issuing establishment. The correct citation appears above the abstract of each report.

Rapport statistique canadien des sciences halieutiques et aquatiques

Ces rapports servent de base à la compilation des données de classement et d'archives pour lesquelles il y a peu ou point d'analyse. Cette compilation aura d'ordinaire été préparée pour appuyer d'autres publications ou rapports. Les sujets des Rapports statistiques reflètent la vaste gamme des intérêts et politiques du Ministère des Pêches et des Océans, notamment gestion des pêches, techniques et développement, sciences océaniques et environnements aquatiques, au Canada.

Les numéros 1 à 25 de cette série ont été publiés à titre de Records statistiques, Service des pêches et de la mer. Les numéros 26-160 ont été publiés à titre de Rapports statistiques du Service des pêches et de la mer, Ministère des Pêches et de l'Environnement. Le nom de la série a été modifié à partir du numéro 161.

Les Rapports statistiques ne sont pas préparés pour une vaste distribution et leur contenu ne doit pas être mentionné dans une publication sans autorisation écrite préalable de l'établissement auteur. Le titre exact paraît au haut du résumé de chaque rapport.

Canadian Data Report of
Fisheries and Aquatic Sciences 220

September 1980

1969-72 NEWFOUNDLAND AND LABRADOR ATLANTIC SALMON (SALMO SALAR)
COMMERCIAL CATCH DATA

by

D. G. Reddin, and F. A. Day

Research and Resource Services
Department of Fisheries and Oceans
P. O. Box 5667
St. John's, Newfoundland A1C 5X1

This is the ninth Data Report from
Research and Resource Services, St. John's, Newfoundland.

© Minister of Supply and Services Canada 1980

Cat. No. Fs 97-13/220

ISSN 0706-6465

Correct citation for this publication:

Reddin, D. G., and F. A. Day. 1980. 1969-72 Newfoundland and Labrador Atlantic salmon (Salmo salar) commercial catch data. Can. Data Rep. Fish. Aquat. Sci. 220: iv + 55 p.

CONTENTS

Abstract/Résumé	iv
Introduction	1
Data collection	1
Effort	2
Ice	2
Acknowledgments	2
References	2
Appendix 1. Licencing Data	11
(a) The total amount of salmon gear available to the fishery during 1969-72	
(b) The total number of licenced salmon fishermen, 1969-72	
Appendix 2. Catch Data	12
(a) The estimated size breakdown of salmon caught during the 1969-72 commercial fishery	
(b) Total landings of salmon by month for 1969-72 by Area and Section	
Appendix 3. Total landings of salmon by month and size for 1969-72 by Area and Section	24
Appendix 4. Seasonal landings of salmon by gear and size for 1969-72 by Area and Section	44

ABSTRACT

Reddin, D. G., and F. A. Day. 1980. 1969-72 Newfoundland and Labrador Atlantic salmon (Salmo salar) commercial catch data. Can. Data Rep. Fish. Aquat. Sci. 220: iv + 55 p.

Data on the Newfoundland and Labrador Atlantic salmon commercial fishery are presented by Statistical Section, Statistical Area and ICNAF Divisions for the years 1969-72. Data include all recorded effort information for 1969-72.

Key words: Atlantic salmon, catch, effort

RÉSUMÉ

Reddin, D. G., and F. A. Day. 1980. 1969-72 Newfoundland and Labrador Atlantic salmon (Salmo salar) commercial catch data. Can. Data Rep. Fish. Aquat. Sci. 220: iv + 55 p.

Les données sur la pêche commerciale du saumon de l'Atlantique à Terre-Neuve et au Labrador sont présentées par section statistique, zone statistique et division de l'ICNAF pour la période de 1969 à 1972. Les données comprennent toute l'information connue sur l'effort pour cette période.

INTRODUCTION

The reporting of the Atlantic salmon commercial catch data began with the 1952 fishing season (May and Lear 1971). Since then, reports have been published up to 1975 (Waldron 1974a, 1974b, 1974c; May and Lear 1971, and Reddin and Waldron 1976). Subsequently more accurate data have become available for the years 1969-72. This report is necessary to supplement and in some cases provide more accurate figures than what was available prior to this report.

The commercial salmon fishery is prosecuted around the coast of Newfoundland and Labrador and contributes much to both the inshore fishery and the provincial economy. The 1976 landed value was \$3,600,000 (Economics Branch) which was one-tenth of the total landed value of all inshore species. On an individual basis the salmon fishery can provide up to one-quarter (Chadwick et al. 1978) of a fishermen's income.

DATA COLLECTION

Two methods were used in the collection of the data presented in this report. The first records landings from the purchase slip receipts collected from fish plants and buyers around the province. The information recorded is the name of the fisherman, where landed, date landed, weight of fish landed, the type of gear used and size category of salmon. The second method supplements the purchase slips and is an estimation of "local sales". Local sales are all those salmon purchases that are unrecorded and include salmon the fishermen eat themselves or sell to next door neighbours, etc. It is estimated by the local Conservation and Protection officer in the area and added to the landings reported on purchase slips to give total landings.

The landings in this report were originally in pounds. These were converted to kilograms and then rounded off; thus there are some discrepancies in row and column totals.

The statistical codes used are those of the Economics Branch of the Department of Fisheries and Oceans (Waldron 1974). The Statistical Areas begin at Cape Norman on the Great Northern Peninsula and proceed clockwise around the coast of Newfoundland and then northward along the coast of Labrador to Cape Chidley. There are 14 Areas (A-N) and 49 Sections on the Island of Newfoundland. The entire coast of Labrador is included in Area 0 which is divided into four Sections (50-53) (Fig. 1 and 2). Tables 1 and 2 give Area and Section boundaries. The ICNAF unit divisions for Newfoundland are shown in Fig. 1.

Because of the pricing system, salmon caught commercially are sized into "small" category that are less than 2.7 kg and "large" that are greater than or equal to 2.7 kg. This approximates the size of one-sea-winter fish and multi-sea-winter fish (Lear and May 1972) (Tables 2.1, 2.4, 2.7, and 2.10).

EFFORT

The period of 1969-72 was a time of change for the salmon fishery. A licencing policy was established in 1971 and in 1972 the Port-aux-Basques drift net ban came into effect. As well, beginning in 1972 moonlighters who held other full-time jobs were gradually being eliminated from the fishery.

ICE

The ice condition off the coast of Newfoundland and Labrador from 1969 to 1972 is shown in Fig. 3, 4, 5 and 6. The extensiveness of ice cover has a bearing on when the commercial fishery can begin and when salmon will enter coastal waters.

ACKNOWLEDGMENTS

The authors acknowledge the assistance of Economics, and Conservation and Protection Branches who collected and summarized the data. B. Short, W. Penney, K. Hillier and L. Knight assisted with checking of tables and the conversions of pounds to kilograms. Mrs. Margaret Bursey and Mrs. Janice Lannon typed the manuscript. Mrs. Jean Maidment assisted with organization and checking of tables.

REFERENCES

- Chadwick, Michael, Rex Porter, and Dave Reddin. 1978. Atlantic Salmon Management Program Newfoundland and Labrador, 1978. The Atlantic Salmon Journal, No. 1, January 1978.
- Lear, W. H., and A. W. May. 1972. Size and age composition of the Newfoundland and Labrador commercial salmon catch. Fish. Mar. Serv. Tech. Rep. 353: 70 p.
- May, A. W., and W. H. Lear. 1971. Digest of Canadian Atlantic salmon catch statistics. Fish. Res. Board Can. Tech. Rep. 270: 106 p.
- Reddin, Dave, and D. E. Waldron. 1976. 1975 Newfoundland and Labrador Atlantic salmon commercial catch data. Fish. Mar. Serv. Tech. Rep. 684: 183 p.
- Waldron, Don E. 1974a. 1973 Newfoundland and Labrador Atlantic salmon commercial catch data, Resource Development Branch. Data Record Series No. NEW/D/-74-1: 127 p.
- 1974b. 1969-72 Newfoundland and Labrador Atlantic salmon commercial catch data, Resource Development Branch. Data Record Series No. NEW/D/-74-5: 196 p.
- 1974c. 1974 Newfoundland commercial Atlantic salmon fishery I. Preliminary Results for May and June. Resource Development Branch. Data Record Series No. NEW/D-74-8: 67 p.

Table 1. Statistical Areas for Newfoundland and Labrador.

Statistical Area	Range
A	Cape Norman to Cape St. John
B	Cape St. John to Cape Freels
C	Cape Freels to Cape Bonavista
D	Cape Bonavista to Grates Point
E	Grates Point to Cape St. Francis
F	Cape St. Francis to Cape Race
G	Cape Race to Cape St. Mary's
H	Cape St. Mary's to Point Crewe
I	Point Crewe to Pass Island
J	Pass Island to Cape Ray
K	Cape Ray to Cape St. George
L	Cape St. George to Cape St. Gregory
M	Cape St. Gregory to Point Riche
N	Point Riche to Cape Norman
O	(Lab.) Blanc Sablon to Cape Chidley

Table 2. Statistical Sections and Areas with their coastal ranges for Newfoundland and Labrador.

Statistical Section	Statistical Area	Range
01	A	Cape Norman to Cape Bauld
02	A	Cape Bauld to Goose Cove
03	A	Goose Cove to Cape Fox
04	A	Cape Fox to Partridge Point
05	A	Partridge Point to Cape St. John
06	B	Cape St. John to New Bay Head
07	B	New Bay Head to Farwell Head
08	B	Change Islands to Fogo Island
09	B	Farwell Head to Cape Freels
10	C	Cape Freels to New Port
11	C	New Port to Salvage
12	C	Salvage to Western Head
13	C	Western Head to Cape Bonavista
14	D	Cape Bonavista to South Head
15	D	South Head to Bonaventure Head
16	D	Bonaventure Head to West Random Head
17	D	West Random Head to Hopeall Head
18	D	Hopeall Head to Salvage Point
19	D	Salvage Point to Grates Point
20	E	Grates Point to Western Bay Head
21	E	Western Bay Head to Feather Point
22	E	Feather Point to Topsail
23	E	Topsail to Cape St. Francis
24	F	Cape St. Francis to Cape Spear
25	F	Cape Spear to Cape Broyle
26	F	Cape Broyle to Cape Race
27	G	Cape Race to Cape Pine
28	G	Cape Pine to Cape St. Mary's
29	H	Cape St. Mary's to Bauld Head
30	H	Bauld Head to Grandy Point
31	H	Grandy Point to Jean de Baie Head
32	H	Jean de Baie Head to Point Crewe
33	I	Point Crewe to Point Rosie
34	I	Point Rosie to Boxey Point
35	I	Boxey Point to Pass Island
36	J	Pass Island to Francois
37	J	Francois to Burgeo
38	J	Burgeo to Rose Blanche Head
39	J	Rose Blanche Head to Cape Ray
40	K	Cape Ray to Sandy Point
41	K	Sandy Point to Cape St. George
42	L	Cape St. George to Long Point
43	L	Long Point to Bluff Head
44	L	Bluff Head to Cape St. Gregory
45	M	Cape St. Gregory to Martins Point
46	M	Martins Point to Daniels Harbour
47	M	Daniels Harbour to Point Riche
48	N	Point Riche to Ferrole Point
49	N	Ferrole Point to Cape Norman
50	O	Blanc Sablon to Cape St. Charles
51	O	Cape St. Charles to Spotted Islands
52	O	Spotted Islands to Cape Harrison
53	O	Cape Harrison to Cape Chidley

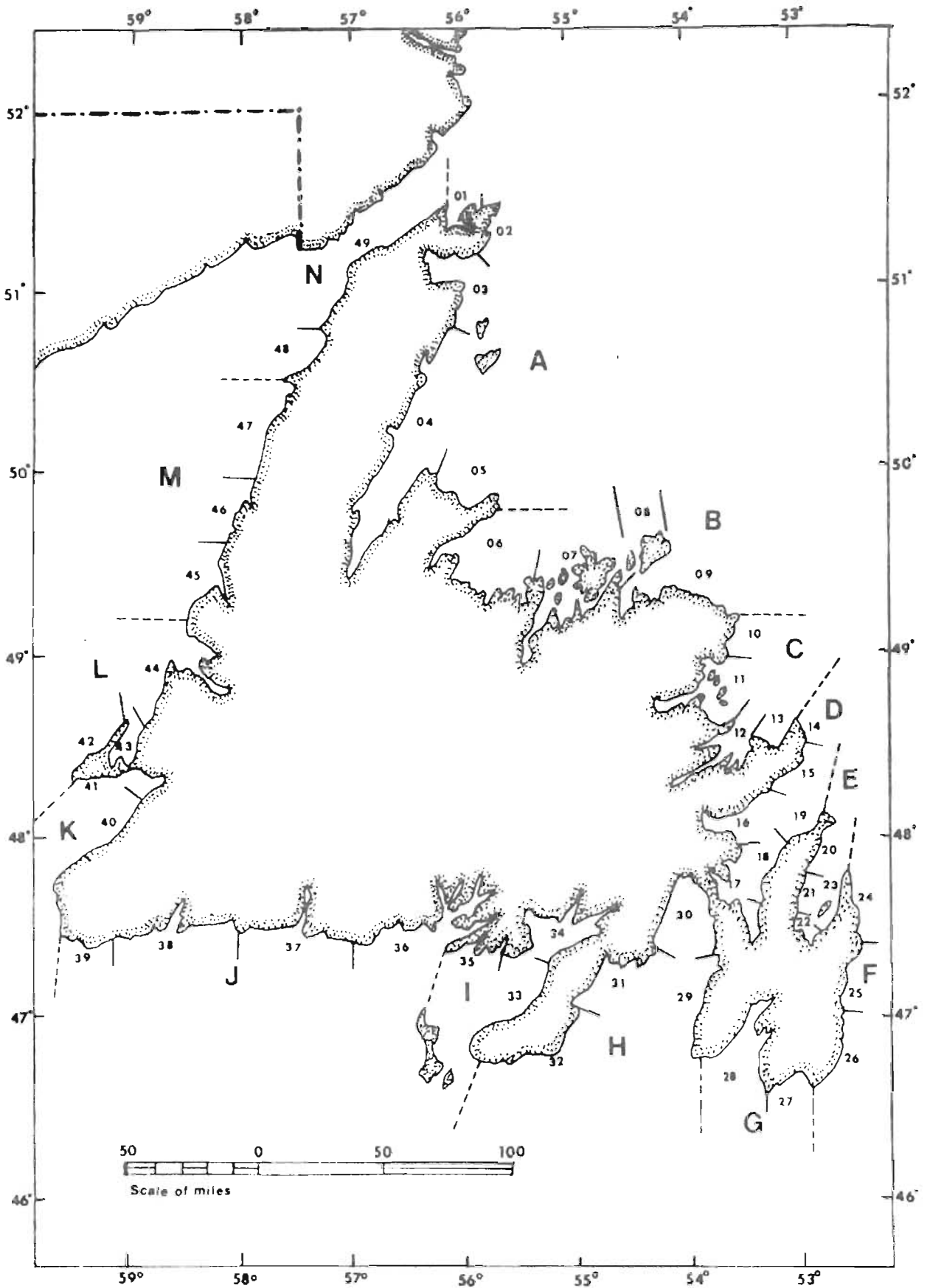


Fig. 1. Map showing the relationship between the Statistical Areas (dotted lines) and Sections (solid lines) for Newfoundland.

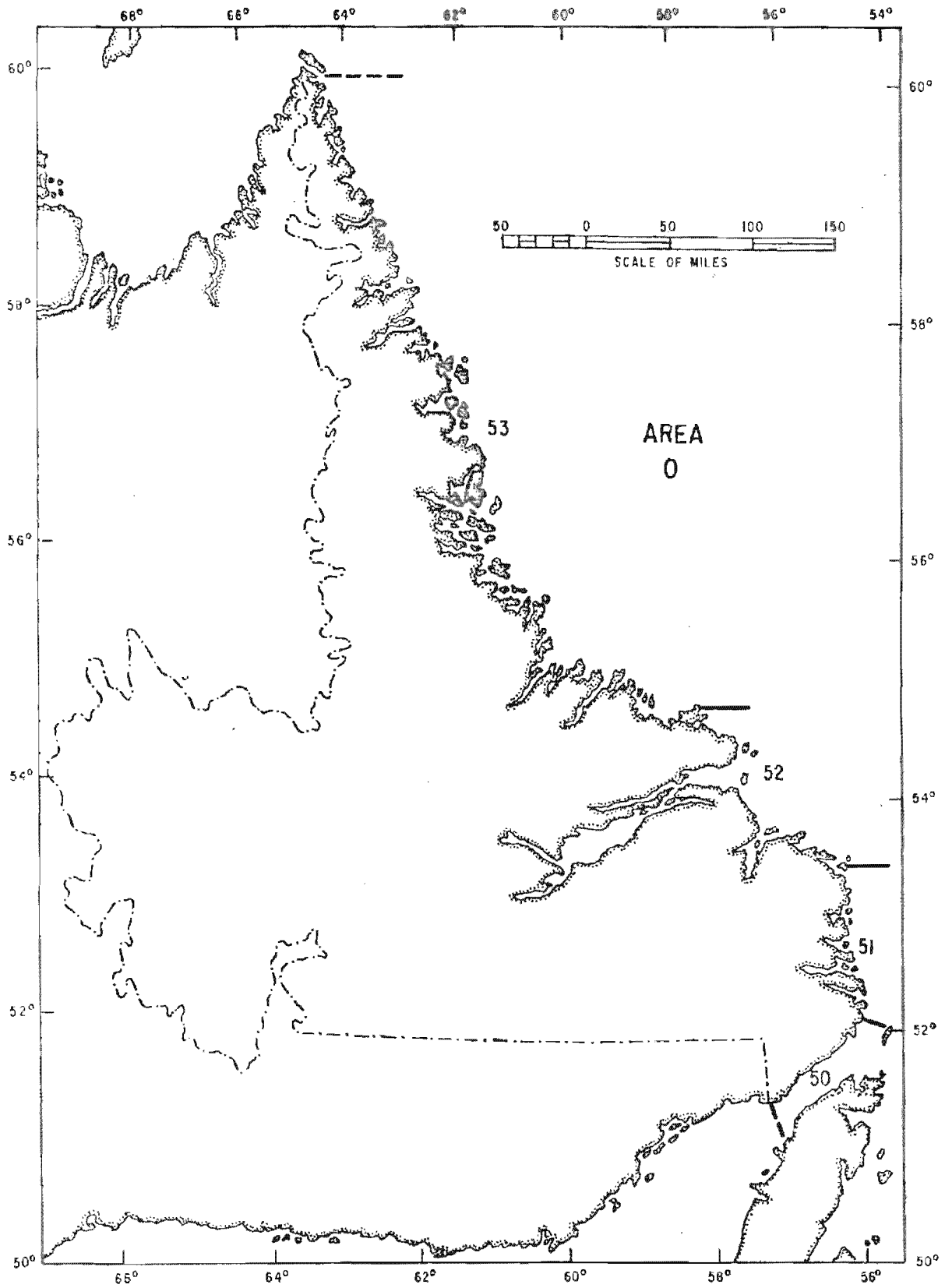


Fig. 2. Map showing the relationship between the Statistical Areas (dotted lines) and Sections (solid lines) for Labrador.

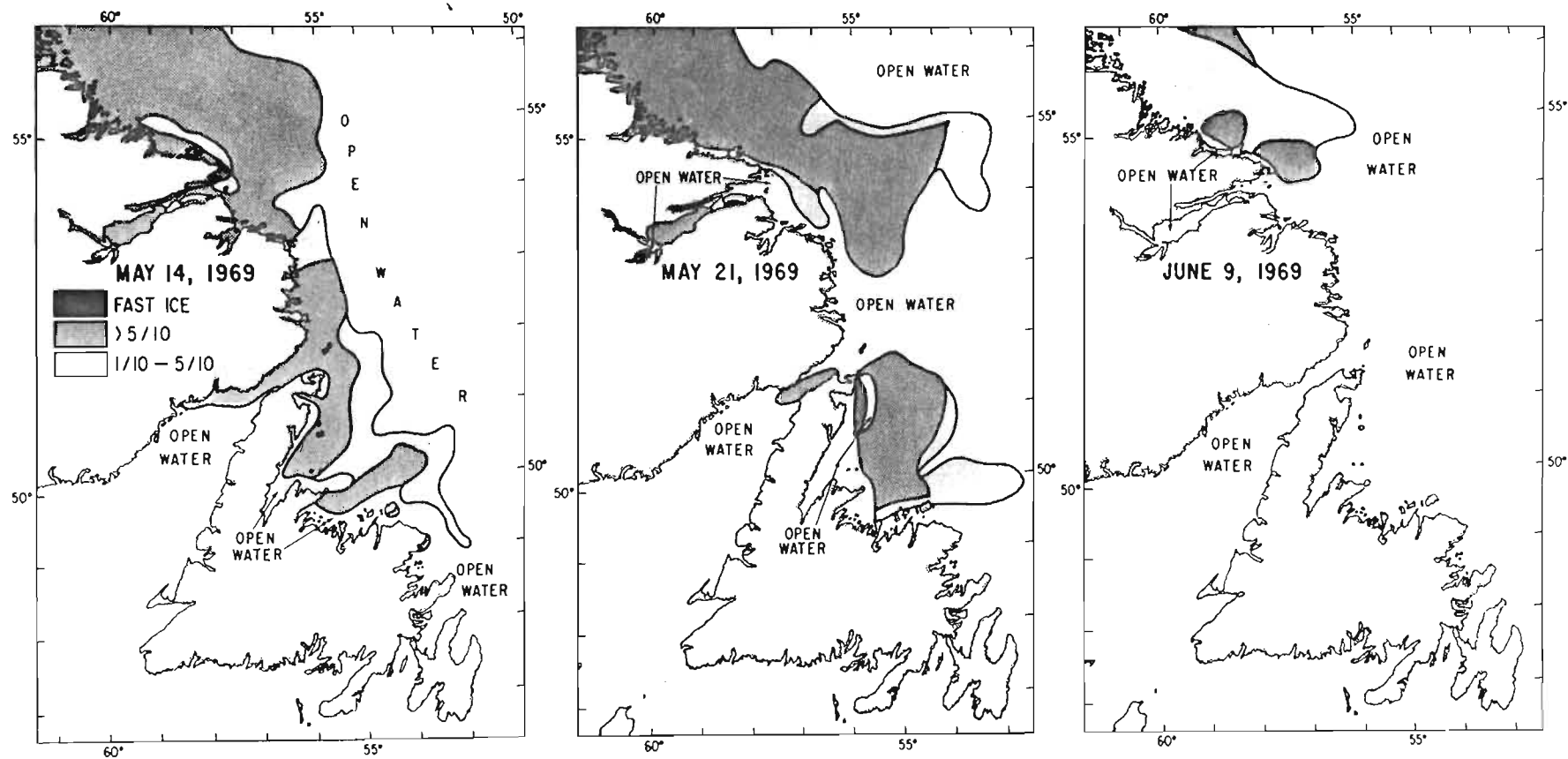


Fig. 3. The distribution of ice for Newfoundland during the 1969 commercial salmon fishery. Fractions indicate proportion of sea covered by ice.

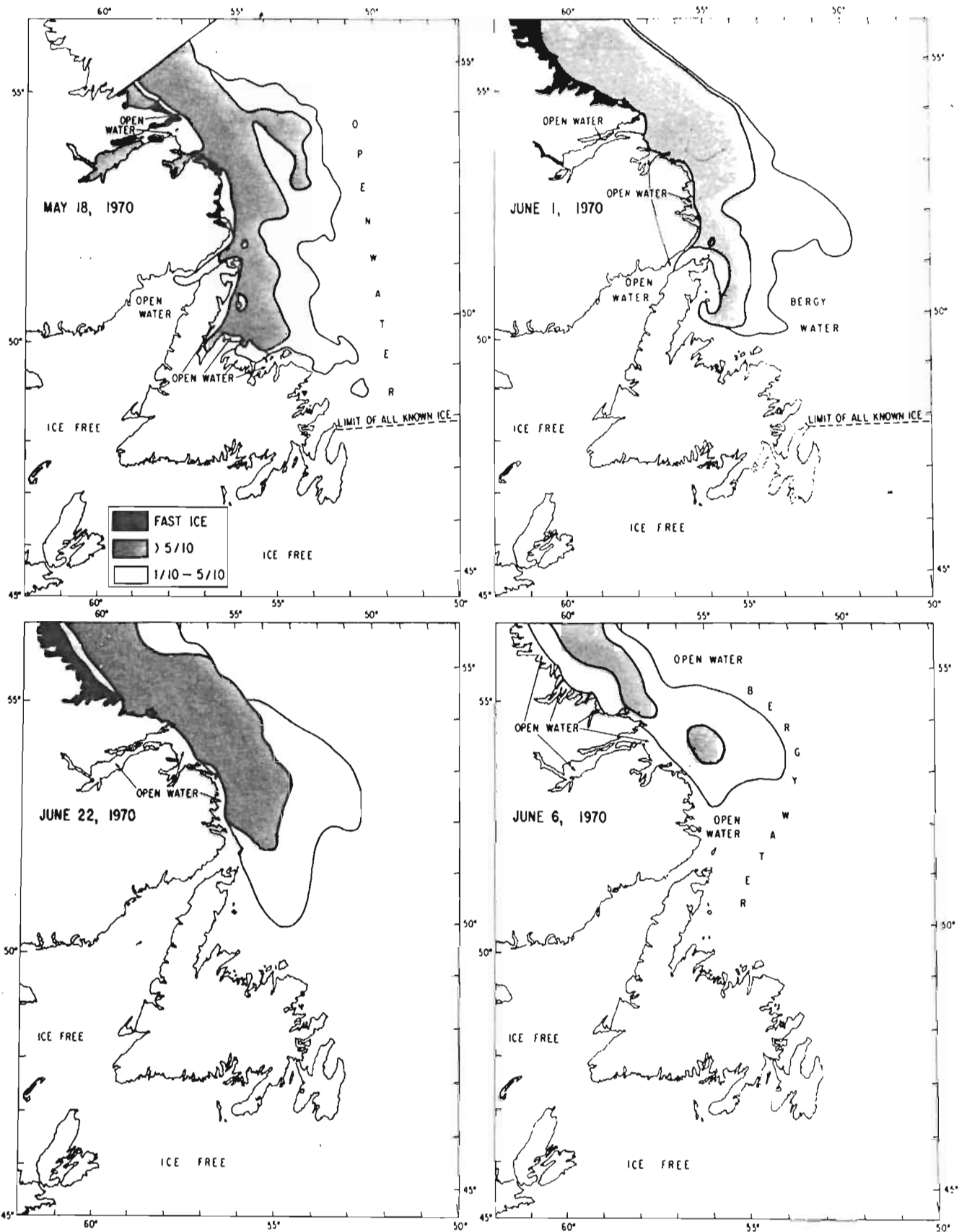


Fig. 4. The distribution of ice for Newfoundland during the 1970 commercial salmon fishery. Fractions indicate proportion of sea covered by ice.

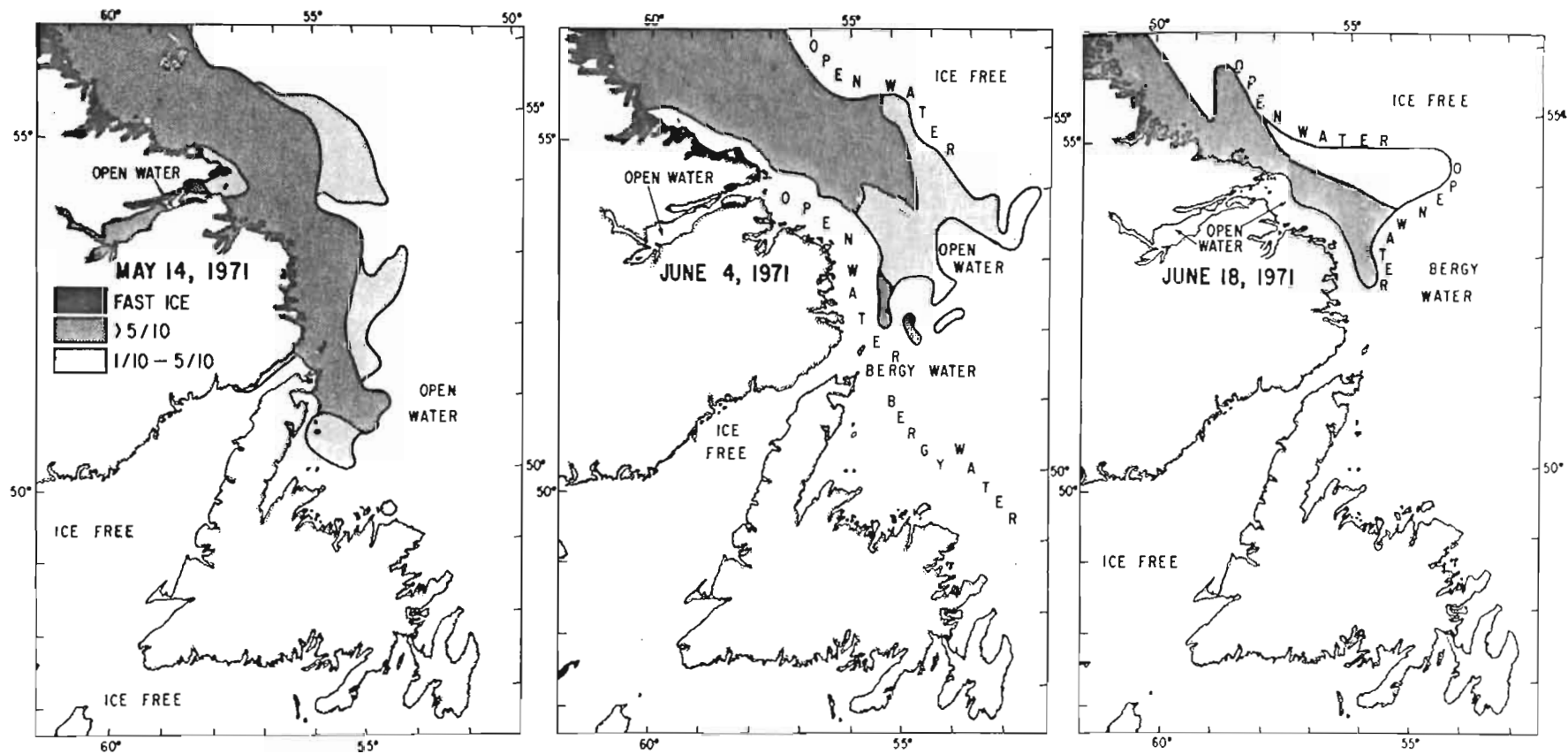


Fig. 5. The distribution of ice for Newfoundland during the 1971 commercial salmon fishery. Fractions indicate proportion of sea covered by ice.

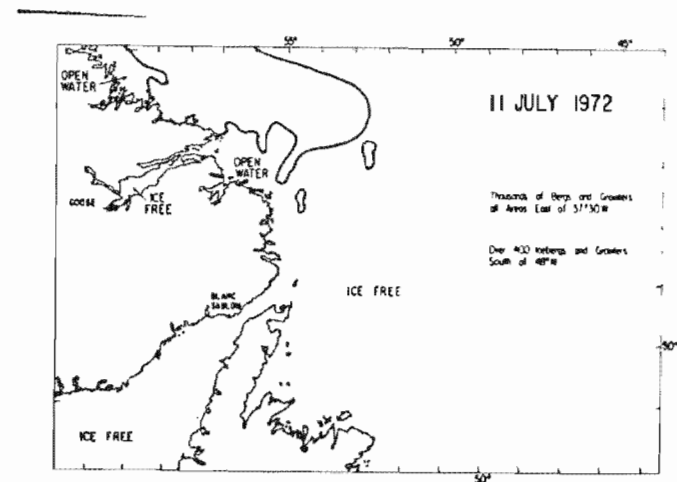
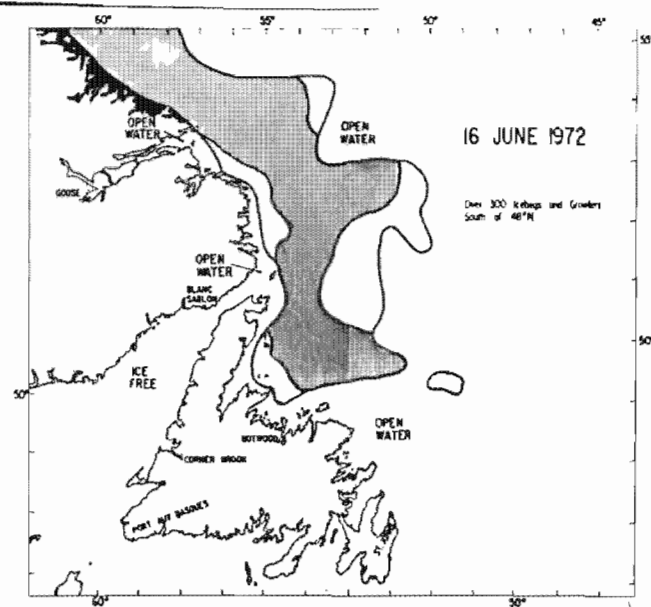
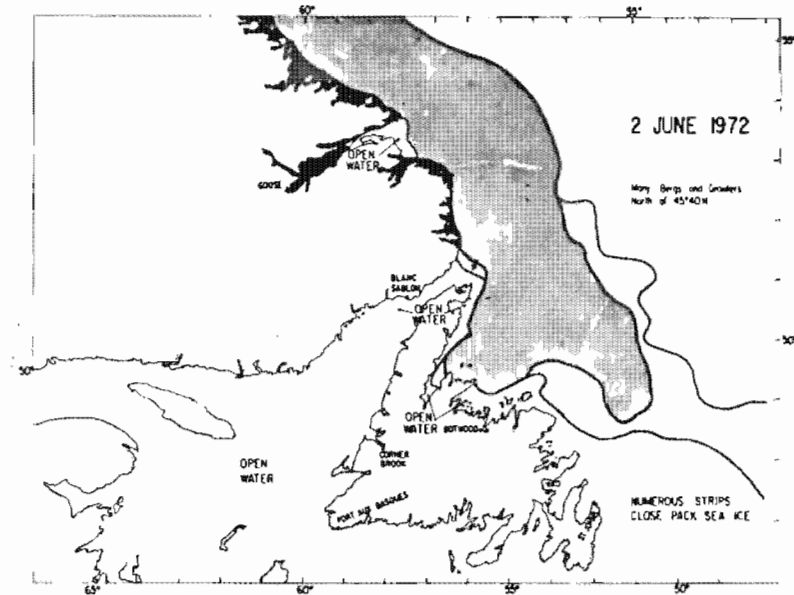
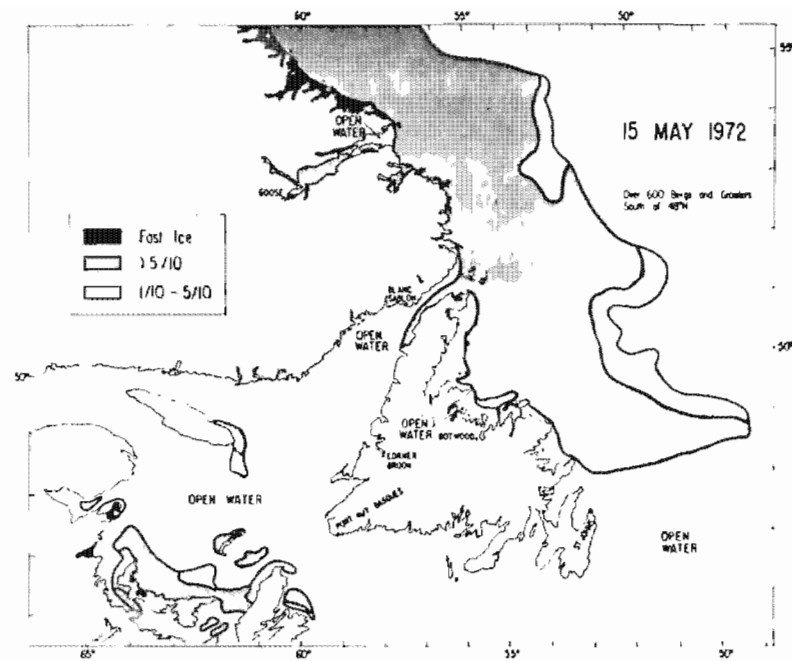


Fig. 6. The distribution of ice for Newfoundland during the 1972 commercial salmon fishery. Fractions indicate proportion of sea covered by ice.

APPENDIX 1

Table 1.1. The total amount of salmon gear (gear units) available to the fishery during 1969-72.

Area	1969	1970	1971	1972
A	2746	3258	2695	1525
B	2986	3648	2395	1694
C	1408	1615	1519	1116
D	900	1220	996	731
E	1107	1447	1605	1545
F	1409	929	1459	1685
G	200	258	200	126
H	732	669	525	303
I	436	451	436	342
J	1989	2361	1975	1050
K	218	226	337	260
L	221	153	248	258
M	163	156	168	126
N	76	104	74	44
O	2208	3052	2720	2795
Nfld.	14591	16495	14632	10805
Province	16799	19547	17352	13600

Table 1.2. The total number of licenced salmon fishermen, 1969-72.

Year	Nfld.	Labrador	Province
1969	-	-	6846
1970	-	-	7919
1971	5560	843	6403
1972	4273	703	4976

APPENDIX 2

Table 2.1. The estimated size breakdown of salmon with unsized proportioned to small or large caught during the 1969 commercial fishery.

Area	Kilograms			Estimated No. of fish		
	Small	Large	Total	Small	Large	Total
A	89,900	100,230	190,130	49,669	20,086	69,755
B	62,002	42,888	104,890	34,255	8,595	42,850
C	24,745	40,967	65,712	13,671	8,210	21,881
D	27,003	32,061	59,064	14,919	6,416	21,335
E	22,603	23,884	46,487	12,488	4,786	17,274
F	30,202	25,307	55,509	16,686	5,072	21,758
G*	3,612	10,127	13,739	1,996	2,029	4,025
H	45,283	7,163	52,446	25,018	1,436	26,454
I	12,829	13,088	25,917	7,088	2,623	9,711
J	39,961	254,742	294,703	22,078	51,050	73,128
K	21,702	13,516	35,218	11,990	2,709	14,699
L	8,948	4,714	13,662	4,944	945	5,889
M	10,981	4,627	15,608	6,067	928	6,995
N	3,049	3,281	6,330	1,685	657	2,342
Nfld.	402,820	576,595	979,415	222,554	115,542	338,096
O	71,896	389,481	461,377	39,722	78,052	117,774
Lab.	71,896	389,481	461,377	39,722	78,052	117,774
Prov.	474,716	966,076	1,440,792	262,276	193,594	455,870
Div. 2H	No sample		12,856	No sample		
Div. 2J	62,505	340,835	403,340	34,532	68,304	102,836
Div. 3K	145,576	148,163	293,739	80,429	29,692	110,120
Div. 3L	104,655	135,857	240,512	57,820	27,225	85,045
Div. 3PN	16,481	221,353	237,834	9,106	44,359	53,465
Div. 3PS	57,306	77,926	135,232	31,661	15,616	47,277
Div. 4R	42,596	74,671	117,267	23,533	14,964	38,497

*No sized sample; estimated from total H, I, J.

Table 2.2. Total landings (kg) of salmon by month and Area for 1969.

Statistical Area	May	June	July	August	October	November	December	Total
Area A		75,919	113,989	149		73		190,130
Area B	64	51,696	48,903	1,686	396	1,355	789	104,890
Area C	3,974	27,675	31,045	1,760	76	833	349	65,712
Area D	7,180	32,705	18,484	600		94		59,064
Area E	10,185	30,373	5,717	122		23	68	46,487
Area F	11,817	33,741	9,445	449		58		55,509
Area G	115	3,856	8,960	807				13,739
Area H	1,331	28,324	22,537	253				52,445
Area I		5,561	19,190	1,166				25,917
Area J	93,724	175,488	25,437	54				294,703
Area K	2,891	23,012	8,978	336				35,217
Area L	204	9,662	3,796					13,662
Area M	51	7,444	8,105	8				15,607
Area N		1,936	4,394					6,330
Nfld.	131,535	507,393	328,981	7,391	472	2,436	1,206	979,414
Area O		60,207	361,224	39,945				461,377
Labrador		60,207	361,224	39,945				461,377
Province	131,535	567,600	690,205	47,336	472	2,436	1,206	1,440,791
Div. 2H		0	1,542	11,314				12,856
Div. 2J		54,957	320,456	27,928				403,341
Div. 3K	64	127,530	161,697	1,836	396	1,428	789	293,740
Div. 3L	33,271	128,351	73,651	3,739	76	1,008	417	240,512
Div. 3PN	90,280	140,261	7,238	54				237,834
Div. 3PS	4,774	69,112	59,927	1,419				135,232
Div. 4R	3,146	47,389	65,695	1,046				117,276

Table 2.3. Total landings (kg) of salmon by month and Section for 1969.

Statistical Section	May	June	July	August	October	November	December	Total
SEC 01		85	1,195					1,280
SEC 02		22,471	27,877	24				50,371
SEC 03		5,706	21,215					26,921
SEC 04		25,619	55,439	103		73		81,233
SEC 05		22,038	8,263	23				30,325
SEC 06	10	34,153	30,350	307	37	341		65,197
SEC 07		7,709	4,892	1,137	59	498	327	14,622
SEC 08	54	4,474	5,465	52	299	517	463	11,325
SEC 09		5,361	8,195	191				13,746
SEC 10		3,231	9,812	1,051				14,094
SEC 11	24	5,297	8,358	655				14,334
SEC 12	1,530	6,857	6,393	54	5	176	84	15,100
SEC 13	2,420	12,290	6,481		71	657	264	22,184
SEC 14	316	1,315	2,463			68		4,161
SEC 15	127	3,521	7,613			4		11,265
SEC 16	183	1,572	2,997	220				4,972
SEC 17	2,245	11,604	1,612	203				15,665
SEC 18	2,626	4,692	1,923	175				9,417
SEC 19	1,683	10,001	1,876	2		23		13,584
SEC 20	1,146	2,698	1,676					5,519
SEC 21	642	2,453	1,344					4,439
SEC 22	3,885	5,524	1,336	122				10,866
SEC 23	4,511	19,699	1,361			23	68	25,662
SEC 24	5,691	17,657	2,180			26		25,553
SEC 25	3,985	9,284	4,240	122				17,631
SEC 26	2,141	6,801	3,025	327		32		12,326
SEC 27		1,724	862					2,586
SEC 28	115	2,132	8,099	807				11,153
SEC 29		17,848	2,830					20,679
SEC 30		2,268	3,666	149				6,083
SEC 31		3,300	5,616	22				8,938
SEC 32	1,331	4,907	10,424	82				16,744
SEC 33		2,803	5,107	1,168				9,076
SEC 34		109	4,523					4,632
SEC 35		2,649	9,560					12,209
SEC 36	1,256	19,897	13,408					34,561
SEC 37	2,187	15,330	4,791					22,309
SEC 38	20,287	59,740	2,329					82,356
SEC 39	69,994	80,525	4,908	54				155,478
SEC 40	445	7,836	2,710	111				11,102
SEC 41	2,446	15,176	6,269	225				24,115
SEC 42	44	359	163					566
SEC 43	38	82	27					147
SEC 44	122	9,221	3,606					12,949
SEC 45	51	5,253	5,153					10,457
SEC 46		1,510	2,083	8				3,602
SEC 47		681	868					1,549
SEC 48		1,707	1,798					3,505
SEC 49		229	2,596					2,825
SEC 50		3,954	25,547	522				30,023
SEC 51		40,688	109,533	3,427				153,648
SEC 52		15,521	208,113	8,175				231,808
SEC 53		45	18,031	27,821				45,898

Table 2.4. The estimated size breakdown of salmon with unsized proportioned to small or large caught during the 1970 commercial fishery.

Area	Kilograms			Estimated No. of fish		
	Small	Large	Total	Small	Large	Total
A	126,738	114,216	240,954	70,020	22,889	92,909
B	107,791	65,271	173,062	59,553	13,080	72,633
C	41,173	76,237	117,410	22,748	15,278	38,026
D	35,720	41,711	77,431	19,735	8,359	28,094
E	30,386	35,573	65,959	16,788	7,129	23,917
F	61,001	30,826	91,827	33,702	6,178	39,880
G	8,196	15,436	23,632	4,528	3,093	7,621
H	24,402	2,216	26,618	13,482	444	13,926
I	23,472	5,042	28,514	12,968	1,010	13,978
J	36,417	151,485	187,902	20,120	30,359	50,479
K	10,615	48,593	59,208	5,865	9,738	15,603
L	12,710	3,374	16,084	7,022	676	7,698
M	14,095	4,388	18,483	7,787	879	8,666
N	8,426	1,229	9,655	4,655	246	4,901
Nfld.	541,142	595,597	1,136,740	298,973	119,358	418,331
O	95,409	362,806	458,215	52,712	72,707	125,419
Lab.	95,409	362,806	458,215	52,712	72,707	125,419
Prov.	636,551	958,403	1,594,954	351,685	192,065	543,750
Div. 2H	0	0	12,224	0	0	0
Div. 2J	78,176	285,513	363,690	43,191	57,217	100,408
Div. 3K	227,795	185,946	413,741	125,854	37,264	163,118
Div. 3L	176,476	199,783	376,259	97,473	40,037	137,510
Div. 3PN	22,870	130,518	153,388	12,635	26,155	38,790
Div. 3PS	46,123	43,522	89,645	25,482	8,722	34,204
Div. 4R	54,391	131,579	185,970	30,050	26,368	56,418

Table 2.5. Total landings (kg) of salmon by month and Area for 1970.

Statistical Area	May	June	July	August	September	October	November	December	Total
AREA A		109,604	130,997	309		35		9	240,954
AREA B	19	51,499	120,777	752				16	173,063
AREA C	10,553	55,504	48,318	2,858		91		86	117,410
AREA D	15,808	34,625	26,983	6					77,431
AREA E	21,563	29,234	15,080					82	65,959
AREA F	30,570	44,246	16,978					33	91,827
AREA G	509	8,085	14,739	299					23,632
AREA H	6,247	4,745	15,625						26,618
AREA I	1,764	5,213	17,030	4,506					28,514
AREA J	38,878	129,447	19,565	13					187,902
Area K	4,274	43,185	11,125	624					59,208
AREA L	369	10,570	4,678	467					16,084
AREA M	273	11,936	5,781	494					18,484
AREA N		320	9,302	11				22	9,656
Nfld.	130,828	538,222	456,977	10,339	35	91	247		1,136,740
Area O		15,721	399,022	41,072	2,214	187			458,215
Labrador		15,721	399,022	41,072	2,214	187			458,215
Province	130,828	553,942	856,000	51,411	2,249	278	247		1,594,955
Div. 2H			3,145	7,413	1,703	0			12,261
Div. 2J		6,427	324,717	31,961	397	187			363,689
Div. 3K	19	161,024	251,576	1,061	35		25		413,740
Div. 3L	79,003	171,704	122,097	3,163		91	200		376,258
Div. 3PN	37,582	111,806	3,987	13					153,388
Div. 3PS	9,307	27,599	48,233	4,506					89,645
Div. 4R	4,916	75,383	102,243	3,295	113		22		185,972

Table 2.6. Total landings (kg) of salmon by month and Section for 1970.

Statistical Section	May	June	July	August	September	October	November	December	Total
SEC 01		78	198						276
SEC 02		23,661	32,454	195					56,309
SEC 03		9,367	24,285						33,652
SEC 04		56,739	61,299	86					118,124
SEC 05		19,758	12,762	29	35		9		32,593
SEC 06		28,343	56,385	95					84,823
SEC 07		7,496	7,871	10					15,396
SEC 08		7,988	24,107	107			16		32,218
SEC 09	19	7,672	32,394	541					40,626
SEC 10	24	6,294	10,134	554					17,007
SEC 11	2,060	13,829	27,789	2,238					45,916
SEC 12	4,019	10,909	3,944				7		18,879
SEC 13	4,450	24,472	6,451	66		91	79		35,608
SEC 14	587	1,261	1,769						3,617
SEC 15	1,093	3,776	10,383	6					15,258
SEC 16	830	3,038	5,776						9,643
SEC 17	7,058	8,244	2,944						18,245
SEC 18	1,931	8,387	4,372						14,691
SEC 19	4,309	9,929	1,739						15,977
SEC 20	3,418	3,393	2,459						9,276
SEC 21	2,979	3,188	4,550						10,718
SEC 22	8,751	8,643	5,321						22,714
SEC 23	6,415	14,005	2,750				82		23,251
SEC 24	10,365	20,959	5,051						36,375
SEC 25	13,823	17,070	8,367						39,259
SEC 26	6,382	6,217	3,561				33		16,193
SEC 27	54	1,633	3,402						5,089
SEC 28	455	6,452	11,337	299					18,543
SEC 29	93	902	980						1,975
SEC 30	280	1,984	1,497						3,762
SEC 31	1,383	181	3,980						5,544
SEC 32	4,492	1,677	9,168						15,337
SEC 33	1,764	112	4,374	3,962					10,212
SEC 34		3,695	3,260	544					7,498
SEC 35		1,406	9,397						10,803
SEC 36	483	6,215	14,183						20,880
SEC 37	813	11,426	1,394						13,633
SEC 38	13,226	40,949	956						55,132
SEC 39	24,356	70,857	3,031	13					98,257
SEC 40	1,454	17,109	4,162	199					22,924
SEC 41	2,820	26,075	6,963	425					36,283
SEC 42	192	515							708
SEC 43		113	571						684
SEC 44	177	9,941	4,107	467					14,692
SEC 45	239	9,767	2,656	490					13,153
SEC 46		2,125	2,953	4					5,082
SEC 47	34	44	171						249
SEC 48		154	1,569	11			13		1,756
SEC 49		166	7,733						7,899
SEC 50		8,873	62,276	1,480	113				72,742
SEC 51		6,839	243,780	4,141	125				254,885
SEC 52		9	82,093	12,566					94,668
SEC 53			10,872	22,885	1,975	187			35,920

Table 2.7. The estimated size breakdown of salmon with unsized proportioned to small or large caught during the 1971 commercial fishery.

Area	Kilograms			Estimated No. of fish		
	Small	Large	Total	Small	Large	Total
A	80954	180893	261847	44726	36251	80977
B	47560	112307	159867	26276	22506	48782
C	13952	82329	96281	7708	16499	24207
D	18403	52150	70553	10167	10451	20618
E	2436	49222	51658	1346	9864	11210
F	48404	40657	89061	26743	8148	34891
G	8327	435	8762	4601	87	4688
H	14756	6234	20990	8153	1249	9402
I	7682	12146	19828	4244	2434	6678
J	31640	81227	112867	17481	16278	33759
K	6798	20881	27679	3756	4185	7941
L	2279	579	2858	1259	116	1375
M	5022	2379	7401	2774	477	3251
N	3485	1643	5128	1925	329	2254
Nfld.	291698	643082	934780	161159	128874	290033
O	124311	516988	641299	68680	103605	172285
Labrador	124311	516988	641299	68680	103605	172285
Province	416009	1160070	1576079	229839	232479	462318
Div. 2H	4531	26178	30709	2503	5246	7749
Div. 2J	108584	414911	523495	5992	83150	89142
Div. 3K	128717	292523	421240	71114	58522	129736
Div. 3L	91522	224793	316315	50565	45049	95614
Div. 3PN	19084	62394	81978	10544	12604	23148
Div. 3PS	34995	36712	71707	19334	7357	26691
Div. 4R	23594	107039	130633	13036	21451	34487

Table 2.8. Total landings (kg) of salmon by month and Area for 1971.

Statistical Area	May	June	July	August	September	October	November	December	Total
Area A	4,497	138,623	114,107	4,438		14	168		261,847
Area B	8,733	98,208	47,175	5,007		75	462	207	159,867
Area C	31,657	47,585	15,695	1,245			27	72	96,281
Area D	20,728	34,526	15,282	17					70,553
Area E	17,803	25,809	7,992					54	51,659
Area F	55,967	25,040	8,045	8					89,060
Area G	11	4,139	4,612						8,762
Area H	2,978	6,896	10,745	30	340				20,990
Area I	481	10,429	8,832	85					19,828
Area J	23,061	74,927	14,879						112,867
Area K	4,389	15,094	7,744	451					27,679
Area L	177	1,214	1,467						2,859
Area M	288	3,153	3,378	581					7,400
Area N		1,439	3,681	9					5,128
Nfld.	170,771	487,081	263,637	11,871	340	89	657	333	934,780
Area O		83,827	503,946	36,964	16,562				641,299
Labrador		83,817	503,946	36,964	16,562				641,299
Province	170,771	570,909	767,583	48,835	16,902	89	657	333	1,576,079
Div. 2H			14,198	10,463	6,050				30,711
Div. 2J		55,523	431,325	26,175	10,494				523,517
Div. 3K	13,230	236,681	160,959	9,444		89	630	207	421,240
Div. 3L	126,166	137,098	51,627	1,271			27	127	316,315
Div. 3P _S	6,774	37,445	27,033	115	340				71,707
Div. 3P _N	19,746	54,807	7,424						81,977
Div. 4R	4,854	49,354	75,017	1,367	17				125,755

Table 2.9. Total landings (kg) of salmon by month and Section for 1971.

Statistical Section	May	June	July	August	September	October	November	December	Total
SEC 01		149	324						473
SEC 02	247	25,212	33,200	3,193					61,852
SEC 03		16,058	24,530						40,588
SEC 04	1,685	66,770	45,391	1,134			14		114,993
SEC 05	2,566	30,434	10,663	111		14	154		43,941
SEC 06	4,629	72,318	30,747	4,042			318		112,036
SEC 07	850	13,040	4,611	29		54	144	207	18,936
SEC 08	2,020	7,610	4,316	67		20			14,034
SEC 09	1,234	5,240	7,517	869					14,860
SEC 10	1,313	3,246	2,312	85					6,956
SEC 11	8,063	17,209	9,367	1,160					35,800
SEC 12	5,848	9,923	1,756				27		17,554
SEC 13	16,432	17,207	2,260					72	35,971
SEC 14	1,281	1,085	275						2,641
SEC 15	1,650	4,427	6,938	17					13,032
SEC 16	525	3,583	5,585						9,693
SEC 17	5,870	12,276	1,671						19,816
SEC 18	2,749	4,456	411						7,616
SEC 19	8,653	8,698	403						17,754
SEC 20	3,259	3,414	766						7,439
SEC 21	1,119	1,679	766						3,564
SEC 22	5,937	3,111	2,868						11,916
SEC 23	7,488	17,605	3,592					54	28,740
SEC 24	42,113	12,674	2,121						56,908
SEC 25	12,031	11,225	3,923						27,179
SEC 26	1,823	1,142	2,001	8					4,973
SEC 27		1,483	1,732						3,216
SEC 28	11	2,655	2,880						5,547
SEC 29		1,154	3,337	30					4,521
SEC 30	24	1,427	363						1,815
SEC 31	717	1,387	1,361		340				3,805
SEC 32	2,237	2,928	5,685						10,850
SEC 33	481	890	950						2,322
SEC 34		3,418	2,618						6,036
SEC 35		6,121	5,264	85					11,470
SEC 36	1,322	8,490	5,101						14,914
SEC 37	1,993	11,629	2,354						15,976
SEC 38	5,743	17,434	3,104						26,281
SEC 39	14,004	37,373	4,320						55,697
SEC 40	1,479	5,896	1,190	43					8,608
SEC 41	2,910	9,198	6,554	409					19,071
SEC 42	33	231	85						349
SEC 43		60							60
SEC 44	145	923	1,382						2,449
SEC 45	228	2,079	1,990	567					4,864
SEC 46	59	797	954	14					1,824
SEC 47		278	434						712
SEC 48		479	1,686						2,165
SEC 49		959	1,995	9					2,963
SEC 50		26,163	49,628	290	17				76,098
SEC 51		52,350	195,705	1,652					249,707
SEC 52		5,314	222,224	17,141					244,680
SEC 53			36,389	17,881	16,544				70,814

Table 2.10. The estimated size breakdown of salmon with unsized proportioned to small or large caught during the 1972 commercial fishery.

Area	Kilograms			Estimated No. of fish		
	Small	Large	Total	Small	Large	Total
A	60,657	139,178	199,835	33,512	27,891	61,403
B	37,439	56,384	93,823	20,685	11,299	31,984
C	22,601	29,634	52,235	12,487	5,939	18,426
D	32,203	29,290	61,492	17,792	5,870	23,662
E	13,312	22,142	35,454	7,355	4,437	11,792
F	33,228	17,018	50,247	18,358	3,411	21,769
G	7,307	2,882	10,189	4,037	578	4,615
H	69,840	29,291	99,131	38,586	5,870	44,456
I	4,495	27,514	32,009	2,483	5,514	7,997
J	50,053	108,575	158,628	27,654	21,759	49,413
K	14,846	18,037	32,883	8,202	3,615	11,817
L	9,542	2,653	12,195	5,272	532	5,804
M	8,122	5,716	13,838	4,487	1,145	5,632
N	3,732	2,183	5,915	2,062	437	2,499
Nfld.	367,377	490,497	857,872	202,972	98,297	301,269
O	93,044	444,410	537,454	51,406	89,060	140,466
Lab.	93,044	444,410	537,454	51,406	89,060	140,466
Prov.	460,421	934,907	1,395,328	254,376	187,356	441,732
Div.2H	1,581	18,600	20,181	839	3,728	4,567
Div.2J	59,973	299,950	359,924	33,134	60,118	93,252
Div.3K	98,096	195,164	293,260	54,197	39,111	93,308
Div.3L	108,677	100,941	209,618	60,043	20,229	80,272
Div.3PN	9,601	80,711	90,312	5,305	16,174	21,479
Div.3PS	114,787	84,670	199,457	63,418	16,968	80,386
Div.4R	56,213	166,504	222,717	31,057	33,369	64,425

Table 2.11. Total landings (kg) of salmon by month and Area for 1972.

Statistical Area	May	June	July	August	September	October	November	December	Total
Area A		9,922	188,365	1,549					199,835
Area B		32,133	52,880	7,958	8	31	811		93,822
Area C	2	30,623	20,981	629					52,235
Area D	108	38,133	23,184	68					61,492
Area E	1,155	24,107	10,051	27		113			35,453
Area F	2,987	33,488	13,356	416					50,247
Area G		3,295	6,549	345					10,189
Area H	1,424	63,603	27,618	5,670		816			99,131
Area I	694	22,349	8,965						32,009
Area J	15,337	111,168	31,738	385					158,628
Area K	1,252	21,202	10,429						32,883
Area L	11	5,465	6,673	45					12,195
Area M		3,947	8,868	1,023					13,838
Area N		90	5,580	245					5,915
Nfld.	22,970	399,525	415,236	18,360	8	961	811		857,872
Area O		135	440,293	90,623	6,403				537,454
Labrador		135	440,293	90,623	6,403				537,454
Province	22,970	399,660	855,529	108,983	6,412	961	811		1,395,326
Div. 2H			6,528	10,567	3,083				20,181
Div. 2J		103	284,387	72,029	3,294				359,924
Div. 3K		42,055	40,848	9,507	8	31	811		293,260
Div. 3L	4,252	129,646	240,848	1,485		113			209,616
Div. 3P _S	3,665	122,825	66,101	6,050		816			199,457
Div. 3P _N	13,790	74,296	2,220	5					90,311
Div. 4R ^N	1,263	30,720	181,942	8,742	14				222,717

Table 2.12. Total landings (kg) of salmon by month and Section for 1972.

Statistical Section	May	June	July	August	September	October	November	December	Total
SEC 01			397						397
SEC 02		385	29,751	233					30,369
SEC 03		142	25,099	73					25,314
SEC 04		5,145	117,165	526					122,835
SEC 05		4,250	15,953	716					20,919
SEC 06		12,508	33,231	6,097					51,886
SEC 07		817	2,537	120		31	594		4,099
SEC 08		6,303	8,905	898	8		218		16,331
SEC 09		12,504	8,158	844					21,506
SEC 10		1,510	6,012	100					7,621
SEC 11		11,540	7,707	493					19,740
SEC 12	2	6,387	4,660						11,049
SEC 13		11,186	2,603	36					13,825
SEC 14		1,735	454						2,189
SEC 15	4	3,820	10,942	19					14,784
SEC 16	25	22,762	5,873	49					28,710
SEC 17	15	3,754	3,724						7,493
SEC 18	7	1,413	528						1,948
SEC 19	58	4,648	1,663						6,369
SEC 20	88	6,999	4,257						11,343
SEC 21	86	513	131						730
SEC 22	491	7,451	2,996	27					10,965
SEC 23	490	9,145	2,667			113			12,415
SEC 24	1,469	8,905	4,795	299					15,469
SEC 25	923	17,586	7,528	117					26,155
SEC 26	595	6,997	1,032						8,624
SEC 27		1,357	1,563	45					2,965
SEC 28		1,938	4,986	299					7,224
SEC 29		2,575	1,745						4,319
SEC 30		2,388	1,929	5,670					9,986
SEC 31	318	23,407	7,035			816			31,576
SEC 32	1,107	35,234	16,909						53,250
SEC 33	18	4,378	3,659						8,055
SEC 34	109	8,818	1,614						10,541
SEC 35	567	9,154	3,692						13,413
SEC 36	1,028	12,947	28,835	380					43,190
SEC 37	518	23,925	683						25,127
SEC 38	6,901	49,399	938						57,239
SEC 39	6,889	24,897	1,282	5					33,072
SEC 40	311	6,799	2,124						9,233
SEC 41	941	14,404	8,305						23,650
SEC 42	11	196	337	14					557
SEC 43		51	98						149
SEC 44		5,218	6,238	31					11,488
SEC 45		2,934	6,226	1,016					10,176
SEC 46		997	2,246	7					3,251
SEC 47		16	396						411
SEC 48		90	740						830
SEC 49			4,839	245					5,085
SEC 50		4	64,292	6,275	14				70,584
SEC 51		91	230,294	37,152					267,537
SEC 52		40	125,409	19,182					144,631
SEC 53			20,298	28,015	6,390				54,702

APPENDIX 3

Table 3.1. Total landings (kg) of salmon by month, size and Area for 1969.

Statistical Area	May			June			July			August			September		
	Small	Large	Unsize	Small	Large	Unsize	Small	Large	Unsize	Small	Large	Unsize	Small	Large	Unsize
Area A				21,714	43,477	10,728	55,334	42,280	16,375	37	112				
Area B		10	54	5,842	5,831	40,024	15,299	8,792	24,811	47	24	1,616			
Area C	80	1,517	2,377	3,038	10,036	14,601	6,675	4,324	20,046	42	23	1,696			
Area D	29	531	6,621	4,485	11,977	16,243	7,607	1,831	9,046	2	56	542			
Area E			10,185	703	1,636	28,035	938	100	4,678			122			
Area F			11,817	1,242	1,911	30,588	2,423	1,160	5,862			449			
Area G			115	20		3,837	50		8,910			807			
Area H			1,331	1,944	498	25,882	2,815	242	19,480		13	239			
Area I				887	1,652	3,023	4,702	4,051	10,437			1,166			
Area J	915	47,688	45,121	16,266	138,284	20,938	13,229	7,886	4,323			54			
Area K		10	2,881	4,064	2,893	16,056	2,020	886	6,073			336			
Area L			204	3,267	2,015	4,380	861	161	2,775						
Area M			51	3,053	2,231	2,160	5,262	1,268	1,575	2	6				
Area N				323	913	700	1,114	633	2,647						
Nfld.	1,023	49,756	80,757	66,848	223,352	217,194	118,330	73,612	137,038	129	234	7,028			
Area O				2,406	56,576	1,225	53,599	248,138	59,487	375	709	38,861			
Labrador				2,406	56,576	1,225	53,599	248,138	59,487	375	709	38,861			
Province	1,023	49,756	80,757	69,253	279,928	218,419	171,930	321,751	196,525	504	943	45,889			
Div. 2H						0			1,542			11,314			
Div. 2J				2,235	52,069	652	46,919	217,021	56,516	303	600	27,025			
Div. 3K		10	54	27,556	49,308	50,666	70,389	50,244	41,065	83	136	1,616			
Div. 3L	108	2,048	31,115	9,487	25,560	93,306	17,693	7,414	48,543	44	78	3,616			
Div. 3PN	743	45,919	43,622	7,561	113,255	19,446	3,699	2,036	1,504			54			
Div. 3PS	171	1,769	2,834	11,537	27,178	30,397	17,048	10,143	32,737		13	1,406			
Div. 4R		10	3,136	10,878	12,558	23,954	16,102	34,893	14,619	74	115	858			

Table 3.1 (Cont'd.)

Statistical Area	October			November			December			Total			Total Combined	Est. No. fish	
	Small	Large	Unsize	Small	Large	Unsize	Small	Large	Unsize	Small	Large	Unsize		Small	Large
Area A					73					77,085	85,943	27,102	190,130	42,486	17,224
Area B			396			1,355			789	21,188	14,656	69,046	104,890	11,678	2,937
Area C			76		248	586			349	9,834	16,281	39,597	65,712	5,420	3,263
Area D						94				12,123	14,394	32,547	59,064	6,682	2,885
Area E						23			68	1,642	1,735	43,110	46,487	905	348
Area F						58				3,665	3,071	48,773	55,509	2,020	615
Area G										69		13,670	13,739	38	
Area H										4,760	753	46,933	52,445	2,523	151
Area I										5,589	5,702	14,626	25,917	3,080	1,143
Area J										30,410	193,857	70,436	294,703	16,761	38,853
Area K										6,084	3,789	25,345	35,217	3,353	759
Area L										4,128	2,175	7,359	13,662	2,275	436
Area M										8,317	3,505	3,786	15,607	4,584	702
Area N										1,437	1,546	3,347	6,330	792	310
Nfld.			472		320	2,116			1,206	186,330	347,408	445,676	979,414	102,696	69,627
Area O										56,380	305,424	99,573	461,377	31,074	61,213
Labrador Province			472		320	2,116			1,206	56,380	305,424	99,573	461,377	31,074	61,213
Div. 2H												12,856	12,856		
Div. 2J										49,457	269,690	84,193	403,340	28,054	56,782
Div. 3K			396		73	1,355			789	98,028	99,770	95,941	293,740	54,028	19,996
Div. 3L			76		248	760			417	27,333	35,482	177,697	240,512	15,065	7,111
Div. 3PN										12,003	161,209	64,622	237,834	6,615	32,309
Div. 3PS										28,756	39,103	67,373	135,232	15,849	7,837
Div. 4R										27,134	47,666	42,567	117,267	14,156	6,805

Table 3.2. Total landings (kg) of salmon by month, size and Section for 1969.

Statistical Section	May			June			July		
	Small	Large	Unsize	Small	Large	Unsize	Small	Large	Unsize
SEC 01						85	245	828	122
SEC 02				3,680	14,175	4,616	8,256	14,312	5,309
SEC 03				1,973	3,449	284	13,368	7,649	199
SEC 04				8,815	13,466	3,338	29,532	16,466	9,442
SEC 05				7,247	12,387	2,404	3,933	3,026	1,304
SEC 06		10		976	2,391	30,787	7,958	7,155	15,236
SEC 07				1,886	2,511	3,312	968	624	3,301
SEC 08			54	735	331	3,408	2,198	670	2,597
SEC 09				2,245	599	2,517	4,176	342	3,677
SEC 10				65		3,166	2,645		7,167
SEC 11			24	678	432	4,197	1,604	101	6,652
SEC 12	7	1,181	342	937	4,852	1,069	405	322	5,666
SEC 13	73	336	2,011	1,358	4,761	6,170	2,020	3,901	561
SEC 14			316			1,315			2,463
SEC 15			127	1,868	1,049	604	3,518	992	3,103
SEC 16		21	162	596	543	433	2,161	332	503
SEC 17			2,245	367	4,520	6,717	192	98	1,322
SEC 18			2,626	108	756	3,828	955	120	848
SEC 19	29	509	1,145	1,545	5,110	3,346	781	288	806
SEC 20			1,146	499	168	2,030	206	16	1,454
SEC 21			642	204	1,443	806	733	83	528
SEC 22			3,885			5,524			1,336
SEC 23			4,511		24	19,675			1,361
SEC 24			5,691			17,657	167	204	1,808
SEC 25			3,985	1,242	1,853	6,189	2,233	947	1,060
SEC 26			2,141		58	6,743	23	9	2,994
SEC 27						1,724			862
SEC 28			115	20		2,113	50		8,049
SEC 29						17,848			2,830
SEC 30				1,197	163	908	1,607	59	2,001
SEC 31						3,300			5,616
SEC 32			1,331	747	334	3,827	1,208	183	9,032
SEC 33				36	234	2,533	308	85	4,713
SEC 34						109			4,523
SEC 35				850	1,417	381	4,394	3,966	1,201
SEC 36	127	1,080	49	5,842	12,595	1,459	7,761	4,189	1,548
SEC 37	42	689	1,454	2,864	12,433	33	1,769	1,662	1,633
SEC 38	137	7,325	12,825	2,579	43,892	13,269	903	827	599
SEC 39	606	38,594	30,793	4,982	69,363	6,177	2,796	1,208	905
SEC 40			445	1,345	1,389	5,102	408	377	1,925
SEC 41		10	2,435	2,718	1,504	10,954	1,612	509	4,148
SEC 42			44		33	327			163
SEC 43			38			82			27
SEC 44			122	3,267	1,982	3,972	861	161	2,584
SEC 45			51	2,600	1,049	1,603	3,832	681	640
SEC 46				413	910	187	1,388	512	184
SEC 47				40	272	369	42	75	751
SEC 48				245	882	580	509	433	855
SEC 49				78	31	120	605	200	1,792
SEC 50				139	3,242	573	5,335	18,869	1,343
SEC 51				2,096	38,592		20,681	86,092	2,760
SEC 52				171	14,742	607	27,583	143,177	37,353
SEC 53						45			18,031

Table 3.2 (Cont'd.)

Statistical Section	August			September			October		
	Small	Large	Unsize	Small	Large	Unsize	Small	Large	Unsize
SEC 01									
SEC 02	8	15							
SEC 03									
SEC 04	18	84							
SEC 05	10	13							
SEC 06	6	13	288						37
SEC 07			1,137						59
SEC 08	41	11							299
SEC 09			191						
SEC 10	10		1,041						
SEC 11			655						
SEC 12	31	23							5
SEC 13									71
SEC 14									
SEC 15									
SEC 16	2		218						
SEC 17			203						
SEC 18		56	119						
SEC 19			2						
SEC 20									
SEC 21									
SEC 22			122						
SEC 23									
SEC 24									
SEC 25			122						
SEC 26			327						
SEC 27									
SEC 28			807						
SEC 29									
SEC 30		13	136						
SEC 31			22						
SEC 32			82						
SEC 33			1,166						
SEC 34									
SEC 35									
SEC 36									
SEC 37									
SEC 38									
SEC 39			54						
SEC 40			111						
SEC 41			225						
SEC 42									
SEC 43									
SEC 44									
SEC 45									
SEC 46	2	6							
SEC 47									
SEC 48									
SEC 49									
SEC 50			522						
SEC 51	375	615	2,438						
SEC 52		95	8,080						
SEC 53			27,821						

Table 3.2 (Cont'd.)

Statistical Section	November			Total			*Total Combined	Est. No. fish	
	Small	Large	Unsize	Small	Large	Unsize		Small	Large
SEC 01				245	828	207	1,280	135	166
SEC 02				11,944	28,502	9,925	50,371	6,583	5,712
SEC 03				15,341	11,097	483	26,921	8,455	2,224
SEC 04		73		38,365	30,089	12,779	81,233	21,145	6,030
SEC 05				11,191	15,426	3,708	30,325	6,168	3,092
SEC 06			341	8,940	9,568	46,689	65,197	4,927	1,918
SEC 07			498	2,854	3,135	8,633	14,622	1,573	628
SEC 08			517	2,974	1,012	7,339	11,325	1,639	203
SEC 09				6,421	941	6,384	13,746	3,539	189
SEC 10				2,721		11,373	14,094	1,500	
SEC 11				2,282	524	11,528	14,334	1,258	105
SEC 12		27	149	1,380	6,432	7,288	15,100	761	1,289
SEC 13		221	436	3,451	9,326	9,408	22,184	1,902	1,869
SEC 14			68			4,161	4,161		
SEC 15			4	5,386	2,041	3,838	11,265	2,969	409
SEC 16				2,760	896	1,316	4,972	1,521	180
SEC 17				559	4,618	10,488	15,665	308	925
SEC 18				1,063	932	7,422	9,417	586	187
SEC 19			23	2,355	5,908	5,322	13,584	1,298	1,184
SEC 20				705	185	4,630	5,519	389	37
SEC 21				937	1,527	1,975	4,439	516	306
SEC 22						10,866	10,866		
SEC 23			23		24	25,638	25,662		5
SEC 24			26	167	204	25,182	25,553	92	41
SEC 25				3,475	2,800	11,356	17,631	1,915	561
SEC 26			32	23	67	12,236	12,326	13	13
SEC 27						2,586	2,586		
SEC 28				69		11,084	11,153	38	
SEC 29						20,679	20,679		
SEC 30				2,805	235	3,045	6,084	1,546	47
SEC 31						8,938	8,938		
SEC 32				1,955	518	14,272	16,744	1,078	104
SEC 33				345	319	8,412	9,076	190	64
SEC 34						4,632	4,632		
SEC 35				5,244	5,383	1,582	12,209	2,890	1,079
SEC 36				13,730	17,864	2,976	34,561	7,568	3,580
SEC 37				4,677	14,784	2,848	22,309	2,578	2,963
SEC 38				3,619	52,044	26,692	82,356	1,995	10,431
SEC 39				8,384	109,165	37,929	155,478	4,621	21,879
SEC 40				1,753	1,766	7,583	11,102	966	354
SEC 41				4,330	2,023	17,761	24,115	2,387	405
SEC 42					33	533	566		7
SEC 43						147	147		
SEC 44				4,128	2,143	6,678	12,949	2,275	429
SEC 45				6,432	1,730	2,295	10,457	3,545	347
SEC 46				1,803	1,428	371	3,602	994	286
SEC 47				82	347	1,120	1,549	45	70
SEC 48				754	1,315	1,436	3,505	416	264
SEC 49				683	230	1,911	2,825	377	46
SEC 50				5,474	22,111	2,438	30,023	3,017	4,431
SEC 51				23,152	125,299	5,197	153,648	12,760	25,112
SEC 52				27,754	158,014	46,040	231,808	15,297	31,669
SEC 53						45,898	45,898		

* Totals include December landings

Table 3.3. Total landings (kg) of salmon by month, size and Area for 1970.

Statistical Area	May			June			July			August			September		
	Small	Large	Unsize	Small	Large	Unsize	Small	Large	Unsize	Small	Large	Unsize	Small	Large	Unsize
Area A				37,877	60,158	11,569	78,616	44,748	7,634	108	200		33	3	
Area B		19		14,814	13,732	22,952	32,031	14,473	74,273	115	212	425			
Area C	518	4,440	5,594	8,881	31,359	15,263	13,974	7,419	26,925	37	129	2,692			
Area D	2,492	2,142	11,174	5,007	15,561	14,066	11,243	4,183	11,557	3	3				
Area E	55	1,418	20,089	792	2,712	25,731	3,001	375	11,704						
Area F	301	1,632	28,636	3,760	2,843	37,643	7,571	1,402	8,005						
Area G			509			8,085			14,739			299			
Area H			6,247	749	100	3,896	891	49	14,685						
Area I			1,764	14		5,200	7,639	1,644	7,747			4,506			
Area J	130	2,658	36,090	9,106	53,651	66,689	4,591	1,197	13,777		13				
Area K	2	263	4,008	1,497	6,295	35,392	81	674	10,370			624			
Area L			369	2,866	981	6,723	1,192	114	3,372	383	84				
Area M		34	239	2,921	1,332	7,683	3,844	742	1,195	4		490			
Area N			6	44		270	3,811	509	4,982		5	7			
Nfld.	3,499	12,607	114,722	88,291	188,769	261,162	168,485	77,528	210,964	651	647	9,042	33	3	
Area O			265	15,450		6	76,287	299,164	23,571	8,587	9,106	23,383	22	97	2,053
Labrador Province			265	15,450		6	76,287	299,164	23,571	8,587	9,106	23,383	22	97	2,053
Div. 2H	3,499	12,607	114,722	88,556	204,218	261,168	244,772	376,692	234,535	9,238	9,753	32,421	55	100	2,053
Div. 2J						0	0	0	3,145	0	0	7,417	0	0	1,662
Div. 3K				131	6,296	0	63,550	248,190	12,977	8,221	8,067	15,674	22	97	278
Div. 3L		19		52,691	73,886	34,448	110,614	59,194	81,768	224	413	425	33	3	
Div. 3PN	3,367	9,633	66,003	18,440	52,475	100,788	35,789	13,378	72,930	40	132	2,991			
Div. 3PS	99	1,422	36,061	5,232	42,941	63,632	2,540	546	901		13				
Div. 4R	31	1,236	8,040	4,637	10,810	12,152	10,582	2,344	35,307			4,506			
	2	297	4,617	7,424	17,810	50,148	21,697	53,039	27,507	752	1,129	1,413			113

Table 3.3 (Cont'd.)

Statistical Area	October			November			December			Total			Total Combined	Est. No. fish	
	Small	Large	Unsize	Small	Large	Unsize	Small	Large	Unsize	Small	Large	Unsize		Small	Large
Area A						9				116,633	105,109	19,212	240,954	64,283	21,066
Area B						16				46,960	28,436	97,666	173,063	25,882	5,699
Area C			91			86				23,411	43,348	50,651	117,410	12,903	8,688
Area D										18,745	21,889	36,797	77,431	10,332	1,990
Area E						82				3,848	4,505	57,606	65,959	2,121	903
Area F						33				11,632	5,878	74,317	91,827	6,411	1,178
Area G												23,632	23,632		
Area H										1,641	149	24,828	26,618	904	30
Area I										7,653	1,644	19,217	28,514	4,218	330
Area J										13,827	57,519	116,556	187,902	3,457	5,229
Area K										1,580	7,233	50,395	59,208	871	1,450
Area L										4,441	1,179	10,464	16,084	2,448	236
Area M										6,769	2,107	9,607	18,484	3,731	422
Area N						22				3,817	557	5,281	9,656	2,104	112
Nfld.			91			247				260,959	279,553	596,228	1,136,740	143,820	56,027
Area O	35	152								85,196	323,969	49,050	458,215	46,956	64,929
Labrador Province	35	152	91			239				85,196	323,969	49,050	458,215	46,956	64,929
Div. 2H	0	0								346,154	603,522	645,278	1,594,955	190,783	120,957
Div. 2J	35	152								0	0	12,224	12,224		
Div. 3K						16				71,958	262,802	28,930	363,690	40,460	54,288
Div. 3L			91			200				163,562	133,514	116,665	413,740	90,147	26,759
Div. 3PN										57,637	75,619	243,003	376,259	31,767	15,155
Div. 3PS										7,871	44,922	100,604	153,388	4,338	9,003
Div. 4R						22				15,250	14,390	60,005	89,645	8,405	2,884
										29,876	72,275	83,820	185,970	15,666	12,868

Table 3.4. Total landings (kg) of salmon by month, size and Section for 1970.

Statistical Section	May			June			July		
	Small	Large	Unsize	Small	Large	Unsize	Small	Large	Unsize
SEC 01					5	74	32	27	139
SEC 02				2,124	12,643	8,894	10,958	18,062	3,434
SEC 03				1,893	7,332	142	17,576	6,244	463
SEC 04				24,591	29,961	2,187	42,243	16,002	3,054
SEC 05				9,269	10,217	272	7,804	4,413	544
SEC 06				4,161	4,071	20,111	8,690	2,578	45,117
SEC 07				4,106	1,471	1,919	2,172	1,196	4,524
SEC 08				3,402	4,532	54	15,580	7,836	691
SEC 09		19		3,146	3,658	868	5,589	2,864	23,941
SEC 10		17	7	1,771	1,656	2,867	3,883	3,652	2,599
SEC 11			2,060	3,065	3,351	7,413	3,809	2,397	21,583
SEC 12	505	2,055	1,459	723	6,760	3,426	1,161	323	2,460
SEC 13	14	2,368	2,068	3,323	19,592	1,557	5,121	1,046	283
SEC 14			587			1,261			1,769
SEC 15	4	59	1,031	801	762	2,213	5,313	2,764	2,325
SEC 16			830	752	648	1,638	4,112	1,109	555
SEC 17	14	4	7,040	599	3,531	4,113	294	65	2,584
SEC 18	137	590	1,205	1,168	4,280	2,940	486	37	3,849
SEC 19	2,338	1,490	482	1,688	6,339	1,901	1,037	207	495
SEC 20	37		3,381	588	883	1,927	359	78	2,022
SEC 21	18	1,418	1,543	204	1,822	1,163	2,642	298	1,611
SEC 22			8,751		7	8,636			5,321
SEC 23			6,415			14,005			2,750
SEC 24		103	10,262			20,959	199	385	4,467
SEC 25	36	38	13,749	2,798	2,385	11,887	4,721	743	2,903
SEC 26	265	1,491	4,626	962	459	4,796	2,651	274	635
SEC 27			54			1,633			3,402
SEC 28			455			6,452			11,337
SEC 29			93	8		894			980
SEC 30			280	741	100	1,144	891	49	557
SEC 31			1,383			181			3,980
SEC 32			4,492			1,677			9,168
SEC 33			1,764	14		99			4,374
SEC 34						3,695			3,260
SEC 35						1,406	7,639	1,644	113
SEC 36	15	467		1,884	3,499	832	1,017	290	12,875
SEC 37	15	769	29	1,990	7,212	2,224	1,034	361	
SEC 38	39	438	12,750	2,141	16,786	22,021	628	174	154
SEC 39	60	984	23,312	3,091	26,155	41,611	1,912	372	747
SEC 40		27	1,427	1,165	5,434	10,510	81	630	3,451
SEC 41	2	236	2,581	332	861	24,882		44	6,919
SEC 42			192			515			
SEC 43						113	522	21	29
SEC 44			177	2,866	981	6,094	670	93	3,344
SEC 45			239	1,961	812	6,994	1,894	138	624
SEC 46				960	511	654	1,942	557	454
SEC 47		34			10	34	7	46	118
SEC 48				6	44	104	754	283	532
SEC 49						166	3,057	226	4,450
SEC 50				128	8,739	6	11,326	43,502	7,448
SEC 51				137	6,702		46,262	194,555	2,963
SEC 52					9		18,618	60,430	3,045
SEC 53							80	678	10,114

Table 3.4 (Cont'd.)

Statistical Section	August			September			October		
	Small	Large	Unsize	Small	Large	Unsize	Small	Large	Unsize
SEC 01									
SEC 02	60	135							
SEC 03									
SEC 04	45	45							
SEC 05	8	20		33	3				
SEC 06	69	7	19						
SEC 07	2	7							
SEC 08	27	80							
SEC 09	18	117	406						
SEC 10	37	57	460						
SEC 11		6	2,232						
SEC 12									
SEC 13		66							91
SEC 14									
SEC 15	3	3							
SEC 16									
SEC 17									
SEC 18									
SEC 19									
SEC 20									
SEC 21									
SEC 22									
SEC 23									
SEC 24									
SEC 25									
SEC 26									
SEC 27									
SEC 28			299						
SEC 29									
SEC 30									
SEC 31									
SEC 32									
SEC 33			3,962						
SEC 34			544						
SEC 35									
SEC 36									
SEC 37									
SEC 38									
SEC 39		13							
SEC 40			199						
SEC 41			425						
SEC 42									
SEC 43									
SEC 44	383	84							
SEC 45			490						
SEC 46	4								
SEC 47									
SEC 48		5	7						
SEC 49									
SEC 50	331	857	292			113			
SEC 51	1,518	2,609	14			125			
SEC 52	6,679	5,598	289						
SEC 53	59	43	22,788	22	97	1,856	35	152	

Table 3.4 (Cont'd.)

Statistical Section	November			Total			* Total Combined	Est. No. fish	
	Small	Large	Unsize	Small	Large	Unsize		Small	Large
SEC 01				32	31	213	276	18	6
SEC 02				13,141	30,839	12,328	56,309	7,243	6,181
SEC 03				19,471	13,577	605	33,652	10,732	2,721
SEC 04				66,875	46,008	5,241	118,124	36,858	9,221
SEC 05			9	17,114	14,653	825	32,593	9,433	2,937
SEC 06				12,920	6,656	65,247	84,823	7,121	1,334
SEC 07				6,280	2,674	6,442	15,396	3,461	536
SEC 08			16	19,008	12,448	762	32,218	10,476	2,495
SEC 09				8,753	6,658	25,215	40,626	4,824	1,334
SEC 10				5,691	5,382	5,933	17,007	3,137	1,079
SEC 11				6,874	5,755	33,287	45,916	3,789	1,153
SEC 12			7	2,389	9,138	7,351	18,879	1,317	1,813
SEC 13			79	8,457	23,072	4,079	35,608	4,661	4,624
SEC 14						3,617	3,617		
SEC 15				6,121	3,588	5,548	15,258	3,374	719
SEC 16				4,864	1,757	3,022	9,643	2,681	352
SEC 17				908	3,600	13,728	18,245	500	722
SEC 18				1,790	4,907	7,994	14,691	987	983
SEC 19				5,063	8,036	2,878	15,977	2,790	1,611
SEC 20				985	961	7,330	9,276	543	193
SEC 21				2,864	3,538	4,317	10,718	1,578	709
SEC 22					7	22,708	22,714		1
SEC 23			82			23,251	23,251		
SEC 24				199	488	35,688	36,375	110	98
SEC 25				7,554	3,166	28,539	39,259	4,164	634
SEC 26			33	3,879	2,224	10,090	16,193	2,138	446
SEC 27						5,089	5,089		
SEC 28						18,543	18,543		
SEC 29				8		1,966	1,975	5	
SEC 30				1,632	149	1,980	3,762	900	30
SEC 31						5,544	5,544		
SEC 32						15,337	15,337		
SEC 33				14		10,199	10,212	8	
SEC 34						7,498	7,498		
SEC 35				7,639	1,644	1,520	10,803	4,211	330
SEC 36				2,917	4,256	13,708	20,880	1,608	853
SEC 37				3,040	8,341	2,253	13,633	1,675	1,672
SEC 38				2,808	17,398	34,925	55,132	1,548	3,487
SEC 39				5,063	27,524	65,679	98,266	2,791	5,516
SEC 40				1,246	6,091	15,587	22,924	687	1,221
SEC 41				334	1,141	34,808	36,283	184	229
SEC 42						708	708		
SEC 43				522	21	142	684	288	4
SEC 44				3,919	1,158	9,615	14,692	2,160	232
SEC 45				3,855	950	8,348	13,153	2,125	190
SEC 46				2,907	1,068	1,108	5,082	1,602	214
SEC 47				7	89	152	249	4	18
SEC 48			22	760	331	665	1,756	419	66
SEC 49				3,057	226	4,616	7,899	1,685	45
SEC 50				11,785	53,098	7,860	72,742	6,495	10,642
SEC 51				47,918	203,866	3,102	254,885	26,410	40,858
SEC 52				25,297	66,036	3,334	94,668	13,943	13,235
SEC 53				196	970	34,754	35,920	108	194

* Totals include December landings

Table 3.5. Total landings (kg) of salmon by month, size and Area for 1971.

Statistical Area	May			June			July			August			September		
	Small	Large	Unsize	Small	Large	Unsize	Small	Large	Unsize	Small	Large	Unsize	Small	Large	Unsize
Area A	112	3,593	791	20,857	109,051	8,715	54,541	56,063	3,503	9	26	4,403			
Area B	78	4,329	4,326	16,170	58,108	23,930	14,588	11,587	21,001	1,500	2,335	1,173			
Area C	341	19,499	11,817	3,457	24,120	20,008	3,937	2,123	9,635	37	48	1,160			
Area D	135	11,633	8,960	2,996	17,240	14,289	8,132	3,027	4,123		17				
Area E	140	2,397	15,267	85	2,416	23,308	15	16	7,961						
Area F		15	55,952	2,756	4,508	17,776	3,834	1,018	3,193	8					
Area G			11	329	20	3,789	54		4,558						
Area H		2	2,977	559	99	6,238	279	253	10,213				30		340
Area I			481	1,942	4,594	3,892	2,463	2,285	4,085		85				
Area J	103	3,036	19,922	10,185	40,052	24,690	7,672	3,020	4,188						
Area K		62	4,327	219	2,257	12,618	882	438	6,424			451			
Area L			177	352	156	707	890	160	418						
Area M		27	261	425	687	2,041	1,755	305	1,319		14	567			
Area N				317	214	908	1,582	681	1,417			9			
Nfld.	909	44,594	125,269	60,649	263,522	162,910	100,623	80,976	82,038	1,554	2,525	7,792			340
Area O				3,344	79,713	770	106,937	385,910	11,099	9,176	21,794	5,993	1,387	15,157	17
Labrador Province				3,444	79,713	770	106,937	385,910	11,099	9,176	21,794	5,993	1,387	15,157	17
Div. 2H							1,841	12,351		2,171	8,283	9	517	5,533	
Div. 2J				2,638	52,885		94,920	326,851	9,533	6,998	13,482	5,694	870	9,624	
Div. 3K	190	7,923	5,117	37,020	167,141	32,520	69,123	67,641	24,194	1,509	2,361	5,575			
Div. 3L	616	33,544	92,006	9,263	48,304	79,171	15,972	6,185	29,470	45	65	1,160			
Div. 3P ^N	37	471	19,238	5,458	26,628	22,720	3,148	1,385	2,846						
Div. 3P ^S	66	2,567	4,141	7,228	18,117	12,100	7,266	4,173	15,594		85	30			340
Div. 4R		89	4,765	2,026	30,160	17,169	15,291	48,300	11,449	7	43	1,317			17

Table 3.5 (Cont'd.)

Statistical Area	October			November			December			Total			Total	Est. No. fish	
	Small	Large	Unsize	Small	Large	Unsize	Small	Large	Unsize	Small	Large	Unsize	Combined	Small	Large
Area A		14				168				75,519	168,748	17,580	261,847	41,622	33,820
Area B			75			462			207	32,336	76,358	51,173	159,867	17,822	15,304
Area C						27		72		7,772	45,862	42,647	96,281	4,284	9,192
Area D										11,263	31,918	27,372	70,553	6,208	6,397
Area E									54	239	4,829	46,590	51,659	132	968
Area F										6,598	5,542	76,921	89,060	3,636	1,111
Area G										383	20	8,359	8,762	211	4
Area H										838	354	19,798	20,990	462	71
Area I										4,405	6,965	8,458	19,828	2,428	1,396
Area J										17,960	46,107	48,800	112,867	9,899	9,241
Area K										1,101	2,757	23,821	27,679	607	553
Area L										1,241	315	1,302	2,859	684	63
Area M										2,180	1,033	4,188	7,400	1,201	207
Area N										1,899	895	2,334	5,128	1,047	179
Nfld.		14	75			657		72	261	163,734	391,704	379,342	934,780	90,242	78,705
Area O										120,845	502,575	17,879	641,299	66,604	100,725
Labrador Province		14	75			657			333	120,845	502,575	17,879	641,299	66,604	100,725
Div. 2H										284,579	894,279	397,221	1,576,078	156,846	179,230
Div. 2J										4,529	26,167	13	30,709	8,338	12,211
Div. 3K										105,426	402,842	15,227	523,495	56,476	75,440
Div. 3L		14	75			630			207	107,841	245,080	68,319	421,240	59,437	49,119
Div. 3PN						27			127	26,255	88,171	201,889	316,315	14,471	17,671
Div. 3PS										8,643	28,485	44,850	81,978	4,764	5,709
Div. 4R										14,560	24,942	32,205	71,707	8,025	4,999
										17,324	78,592	34,717	130,633	8,232	14,083

Table 3.6. Total landings (kg) of salmon by month, size and Section for 1971.

Statistical Section	May			June			July		
	Small	Large	Unsize	Small	Large	Unsize	Small	Large	Unsize
SEC 01				7	17	125	6	8	309
SEC 02	4	227	16	1,090	20,839	3,283	9,668	22,154	1,378
SEC 03				3,009	12,423	626	14,670	9,359	501
SEC 04	93	1,366	226	14,081	51,827	862	24,971	19,525	894
SEC 05	15	2,061	549	2,669	23,944	3,820	5,226	5,017	420
SEC 06	23	2,285	2,320	12,929	42,923	16,465	9,316	8,853	12,561
SEC 07		539	311	1,024	8,802	3,213	1,194	1,051	2,366
SEC 08	55	1,274	691	1,269	5,029	1,312	2,338	1,442	536
SEC 09		230	1,004	948	1,353	2,939	1,740	241	5,537
SEC 10	235	289	789	337	1,519	1,390	987	597	728
SEC 11	43	833	7,187	1,703	3,801	11,705	1,645	618	7,104
SEC 12	18	4,798	1,032	622	7,296	2,004	630	157	969
SEC 13	45	13,579	2,808	795	11,503	4,908	676	751	833
SEC 14	5	771	506	98	665	322	46	3	226
SEC 15	9	411	1,231	1,908	1,922	597	4,989	1,565	383
SEC 16	7	115	403	532	1,196	1,856	1,957	699	2,929
SEC 17		1,579	4,291	58	4,101	8,117	836	484	352
SEC 18		509	2,240	52	1,536	2,868	129	48	234
SEC 19	115	8,248	290	349	7,820	529	175	228	
SEC 20	140	2,236	884	82	2,282	1,050	15	16	734
SEC 21		161	958	3	134	1,542			766
SEC 22			5,937			3,111			2,868
SEC 23			7,488			17,605			3,592
SEC 24			42,113		281	12,392		66	2,055
SEC 25		15	12,016	2,442	3,927	4,865	2,722	707	494
SEC 26			1,823	313	309	519	1,112	245	644
SEC 27				329	20	1,134	54		1,678
SEC 28			11			2,655			2,880
SEC 29						1,154			3,337
SEC 30			24	32	56	1,339			363
SEC 31			717			1,387			1,361
SEC 32		2	2,235	527	43	2,358	279	253	5,154
SEC 33			481	137		754			950
SEC 34				1,001	74	2,342	430	39	2,150
SEC 35				805	4,520	796	2,033	2,247	984
SEC 36	47	1,218	57	2,218	6,450	823	3,049	1,046	1,007
SEC 37	20	1,347	626	2,509	7,974	1,146	1,476	589	289
SEC 38	5		5,738	2,466	11,049	3,919	930	643	1,531
SEC 39	33	471	13,500	2,992	15,579	18,801	2,217	742	1,361
SEC 40		62	1,417	187	2,164	3,545	11	147	1,031
SEC 41			2,910	32	93	9,073	871	290	5,393
SEC 42			33			231			85
SEC 43					6	54			
SEC 44			145	352	150	421	890	160	332
SEC 45			228	264	192	1,623	1,040	92	859
SEC 46		27	33	114	296	387	708	152	94
SEC 47				47	199	32	7	62	365
SEC 48				200	156	123	830	485	371
SEC 49				117	58	785	753	196	1,046
SEC 50				541	24,853	770	7,961	40,389	1,277
SEC 51				2,670	49,680		44,269	148,316	3,120
SEC 52				133	5,181		49,586	165,941	6,697
SEC 53							5,122	31,263	4

Table 3.6 (Cont'd.)

Statistical Section	August			September			October		
	Small	Large	Unsize	Small	Large	Unsize	Small	Large	Unsize
SEC 01									
SEC 02		15	3,178						
SEC 03									
SEC 04			1,134						
SEC 05	9	11	91				14		
SEC 06	1,447	2,320	274						
SEC 07			29						54
SEC 08	52	15							20
SEC 09			869						
SEC 10	37	48							
SEC 11			1,160						
SEC 12									
SEC 13									
SEC 14									
SEC 15		17							
SEC 16									
SEC 17									
SEC 18									
SEC 19									
SEC 20									
SEC 21									
SEC 22									
SEC 23									
SEC 24									
SEC 25									
SEC 26	8								
SEC 27									
SEC 28									
SEC 29			30						
SEC 30									
SEC 31						340			
SEC 32									
SEC 33									
SEC 34									
SEC 35		85							
SEC 36									
SEC 37									
SEC 38									
SEC 39									
SEC 40			43						
SEC 41			409						
SEC 42									
SEC 43									
SEC 44									
SEC 45			567						
SEC 46		14							
SEC 47									
SEC 48									
SEC 49			9						
SEC 50			290						17
SEC 51	181	442	1,028						
SEC 52	5,629	6,846	4,667						
SEC 53	3,366	14,506	9	1,387	15,157				

Table 3.6 (Cont'd.)

Statistical Section	November			Total			* Total Combined	Est. No. fish	
	Small	Large	Unsize	Small	Large	Unsize		Small	Large
SEC 01				14	25	434	473	8	5
SEC 02				10,762	43,235	7,855	61,852	5,931	8,665
SEC 03				17,679	21,782	1,127	40,588	9,744	4,365
SEC 04			14	39,145	72,718	3,130	114,993	21,575	14,574
SEC 05			154	7,920	30,987	5,034	43,941	4,365	6,210
SEC 06			318	23,716	56,381	31,939	112,036	13,071	11,300
SEC 07			144	2,219	10,392	6,325	18,936	1,223	2,083
SEC 08				3,715	7,760	2,560	14,034	2,047	1,555
SEC 09				2,687	1,824	10,349	14,860	1,481	366
SEC 10				1,595	2,454	2,908	6,956	879	492
SEC 11				3,391	5,253	27,156	35,800	1,869	1,053
SEC 12			27	1,270	12,251	4,033	17,554	700	2,455
SEC 13				1,516	25,905	8,550	35,971	836	5,192
SEC 14				149	1,439	1,054	2,641	82	288
SEC 15				6,906	3,916	2,211	13,032	3,806	785
SEC 16				2,496	2,010	5,188	9,693	1,376	403
SEC 17				893	6,164	12,759	19,816	492	1,235
SEC 18				181	2,092	5,342	7,616	100	419
SEC 19				639	16,297	819	17,754	352	3,266
SEC 20				237	4,534	2,668	7,439	131	909
SEC 21				3	295	3,266	3,564	2	59
SEC 22						11,916	11,916		
SEC 23						28,740	28,740		
SEC 24					347	56,560	56,908		70
SEC 25				5,165	4,639	17,375	27,179	2,847	930
SEC 26				1,433	555	2,986	4,973	790	111
SEC 27				383	20	2,812	3,216	211	4
SEC 28						5,547	5,547		
SEC 29						4,521	4,521		
SEC 30				32	56	1,727	1,815	18	11
SEC 31						3,805	3,805		
SEC 32				806	298	9,746	10,850	444	60
SEC 33				137		2,185	2,322	75	
SEC 34				1,431	113	4,492	6,036	789	23
SEC 35				2,838	6,852	1,780	11,470	1,564	1,372
SEC 36				5,313	7,713	1,887	14,914	2,928	1,546
SEC 37				4,004	9,909	2,062	15,976	2,207	1,986
SEC 38				3,401	11,692	11,188	26,281	1,874	2,343
SEC 39				5,242	16,792	33,662	55,697	2,889	3,365
SEC 40				199	2,374	6,036	8,608	110	476
SEC 41				903	383	17,785	19,071	498	77
SEC 42						349	349		
SEC 43					6	54	50		1
SEC 44				1,241	309	899	2,449	684	62
SEC 45				1,304	284	3,277	4,864	719	57
SEC 46				822	488	514	1,824	453	98
SEC 47				54	261	397	712	30	52
SEC 48				1,030	641	494	2,165	568	128
SEC 49				869	254	1,839	2,963	479	51
SEC 50				8,502	65,242	2,355	76,098	4,686	13,076
SEC 51				47,121	198,438	4,148	249,707	25,971	39,771
SEC 52				55,348	177,968	11,364	244,680	30,505	35,668
SEC 53				9,874	60,927	13	70,814	5,442	12,211

* Totals include December landings

Table 3.7. Total landings (kg) of salmon by month, size and Area for 1972.

Statistical Area	May			June			July			August			September		
	Small	Large	Unsize	Small	Large	Unsize	Small	Large	Unsize	Small	Large	Unsize	Small	Large	Unsize
Area A				317	5,835	3,770	54,105	118,954	15,307	133	388	1,027			
Area B				2,660	11,464	18,008	9,866	7,396	35,619	43	60	7,855		8	
Area C			2	5,965	14,653	10,005	8,029	3,719	9,233	69	67	493			
Area D		5	103	12,101	18,019	8,013	12,611	4,473	6,100	46	21				
Area E			1,155	303	2,761	21,038	1,886	880	7,286			27			
Area F	57	5	2,926	10,728	6,543	16,217	3,462	761	9,134	85	32	299			
Area G				207	52	3,036	797	344	5,408			345			
Area H			1,424	1,537	578	61,488	845	421	26,352			5,670			
Area I			694	680	6,373	15,296	758	2,429	5,733						
Area J	97	1,938	13,302	9,974	53,295	47,898	19,897	9,548	2,293	50	334				
Area K		6	1,246	1,041	2,705	17,456	1,700	620	8,109						
Area L			11	2,058	789	2,618	3,984	846	1,843		45				
Area M				593	1,568	1,786	3,785	1,513	3,570			1,023			
Area N				9	65	11	586	278	4,716			245			
Nfld.	154	1,953	20,863	48,173	124,702	226,596	122,309	152,179	140,749	427	948	16,985		8	
Area O				11	124		73,172	383,709	8,041	16,417	41,394	8,183	633	5,757	14
Labrador				11	124		73,172	383,709	8,041	16,417	41,394	8,183	633	5,757	14
Province	154	1,953	20,863	48,184	124,826	226,596	195,481	535,888	148,790	16,843	42,342	25,168	633	5,765	14
Div. 2H							221	6,307		1,113	8,637	817	183	2,903	
Div. 2J				11	103		43,591	259,352	5,444	13,904	27,462	6,663	450	2,844	
Div. 3K				2,977	17,299	21,778	63,971	126,350	50,529	176	448	8,882		8	
Div. 3L	57	10	4,186	29,304	42,028	58,309	26,785	10,177	37,161	200	120	1,164			
Div. 3PH	82	957	12,752	2,968	28,514	42,814	479	200	1,542		5				
Div. 3PS	16	982	2,668	9,223	31,732	81,868	21,020	12,199	32,837	50	330	5,670			
Div. 4R		6	1,257	3,701	5,144	21,375	39,409	121,300	21,233	1,400	5,338	2,004			0

Table 3.7 (Cont'd.)

Statistical Area	October			November			December			Total			Total Combined	Est. no. fish	
	Small	Large	Unsize	Small	Large	Unsize	Small	Large	Unsize	Small	Large	Unsize		Small	Large
Area A										54,555	125,176	20,104	199,835	30,067	30,773
Area B			31							12,569	18,929	62,325	93,822	6,927	4,636
Area C										14,063	18,439	19,733	52,235	7,751	4,516
Area D										24,758	22,518	14,217	61,492	13,645	5,516
Area E			113							2,189	3,641	29,624	35,453	1,097	911
Area F										14,331	7,340	28,576	50,247	9,027	1,839
Area G										1,004	396	8,789	10,189	633	99
Area H			816							2,382	999	95,750	99,131	1,250	250
Area I										1,438	8,802	21,769	32,009	755	2,205
Area J										30,018	65,116	63,494	158,628	15,757	16,313
Area K										2,741	3,330	26,812	32,883	1,373	834
Area L										6,042	1,680	4,473	12,195	3,027	421
Area M										4,378	3,081	6,379	13,838	2,194	772
Area N										595	348	4,972	5,915	298	87
Nfld.			961							171,062	279,794	407,016	857,872	93,801	69,061
Area O										90,233	430,984	16,237	537,454	45,211	107,849
Labrador										90,233	430,984	16,237	537,454	45,211	107,849
Province			961							261,295	710,778	423,253	1,395,326	139,012	176,910
Div. 2H										1,517	17,847	817	20,181	3,604	11,692
Div. 2J										57,956	289,861	12,107	359,924	30,958	84,732
Div. 3K			31							67,124	144,105	82,031	293,260	36,997	35,410
Div. 3L			113							56,345	52,334	100,939	209,616	39,080	17,517
Div. 3PN										3,530	20,674	57,108	90,311	1,853	7,434
Div. 3PS			816							30,309	45,243	123,905	199,457	15,392	11,329
Div. 4R										44,510	131,838	46,369	222,717	18,048	13,649

Table 3.8. Total landings (kg) of salmon by month, size and Section for 1972.

Statistical Section	May			June			July		
	Small	Large	Unsize	Small	Large	Unsize	Small	Large	Unsize
SEC 01									397
SEC 02				19	362	4	4,489	23,077	2,186
SEC 03					20	122	8,706	16,012	381
SEC 04				175	3,820	1,150	39,050	73,627	4,488
SEC 05				123	1,632	2,495	1,860	6,238	7,855
SEC 06				923	3,612	7,974	3,040	4,083	26,158
SEC 07					9	808	156	73	2,307
SEC 08				1,204	4,652	447	6,165	2,555	185
SEC 09				533	3,192	8,779	504	685	6,970
SEC 10				316	573	621	3,880	1,935	197
SEC 11				1,722	2,413	7,405	910	228	6,568
SEC 12			2	1,219	3,773	1,395	1,701	1,006	1,954
SEC 13				2,708	7,894	584	1,539	550	514
SEC 14				194	560	981			454
SEC 15			4	1,623	791	1,406	8,173	2,360	408
SEC 16		5	20	9,462	11,937	1,364	3,030	918	1,926
SEC 17			15	619	727	2,408	724	621	2,380
SEC 18			7	42	645	725	130	32	367
SEC 19			58	160	3,359	1,129	554	543	567
SEC 20			88	303	2,761	3,934	1,886	880	1,491
SEC 21			86			513			131
SEC 22			491			7,451			2,996
SEC 23			490			9,145			2,667
SEC 24			1,469			8,905			4,795
SEC 25			923	7,897	4,526	5,164	3,320	699	3,509
SEC 26	57	5	533	2,831	2,017	2,149	142	61	829
SEC 27				154	47	1,157	76	63	1,424
SEC 28				54	5	1,880	721	281	3,983
SEC 29						2,575			1,745
SEC 30				1,537	548	303	845	421	663
SEC 31			318			23,407			7,035
SEC 32			1,107		30	35,203			16,909
SEC 33			18			4,378			3,659
SEC 34			109			8,818			1,614
SEC 35			567	680	6,373	2,100	758	2,429	506
SEC 36	13	527	489	2,495	9,116	1,335	19,131	9,239	464
SEC 37	3	455	61	4,511	15,665	3,749	286	110	288
SEC 38	56		6,846	2,010	15,957	31,432	250	117	572
SEC 39	26	957	5,906	958	12,557	11,382	229	83	970
SEC 40			311	157	2,151	4,490	113	349	1,661
SEC 41		6	935	884	554	12,966	1,586	270	6,448
SEC 42			11			196	16	249	71
SEC 43						51	54	5	39
SEC 44				2,058	789	2,371	3,914	591	1,733
SEC 45				514	1,021	1,399	2,175	645	3,407
SEC 46				79	532	387	1,476	711	59
SEC 47					16		134	156	105
SEC 48				9	70	11	335	225	180
SEC 49							251	53	4,536
SEC 50					4		20,204	41,546	2,542
SEC 51					91		33,956	215,468	
SEC 52				11	29		18,005	107,404	
SEC 53							1,007	19,291	

Table 3.8 (Cont'd.)

Statistical Section	August			September			October		
	Small	Large	Unsize	Small	Large	Unsize	Small	Large	Unsize
SEC 01									
SEC 02	26	197	9						
SEC 03		73							
SEC 04	96	93	337						
SEC 05	11	25	680						
SEC 06			6,097						
SEC 07			120						31
SEC 08	43	60	795		8				
SEC 09			844						
SEC 10	51	49							
SEC 11			493						
SEC 12									
SEC 13	18	18							
SEC 14									
SEC 15	7	11							
SEC 16	39	10							
SEC 17									
SEC 18									
SEC 19									
SEC 20									
SEC 21									
SEC 22			27						
SEC 23									113
SEC 24			299						
SEC 25	85	32							
SEC 26									
SEC 27			45						
SEC 28			299						
SEC 29									
SEC 30			5,670						
SEC 31									816
SEC 32									
SEC 33									
SEC 34									
SEC 35									
SEC 36	50	330							
SEC 37									
SEC 38									
SEC 39		5							
SEC 40									
SEC 41									
SEC 42		14							
SEC 43									
SEC 44		31							
SEC 45			1,016						
SEC 46			7						
SEC 47									
SEC 48									
SEC 49			245						
SEC 50	1,050	4,545	680			14			
SEC 51	4,210	8,313	5,499						
SEC 52	5,605	6,914	6,663						
SEC 53	5,552	21,622	841	633	5,847				

Table 3.8 (Cont'd.)

Statistical Section	November			Total			*Total Combined	Est. No. fish	
	Small	Large	Unsize	Small	Large	Unsize		Small	Large
SEC 01						397	397		
SEC 02				4,534	23,636	2,199	30,369	2,499	5,790
SEC 03				8,706	16,105	503	25,314	4,799	3,945
SEC 04				39,321	77,539	5,975	122,835	21,572	18,994
SEC 05				1,994	7,896	11,030	20,919	1,099	1,934
SEC 06				3,964	7,694	40,228	51,886	2,185	1,885
SEC 07			594	156	83	3,860	4,099	86	20
SEC 08			218	7,412	7,275	1,644	16,331	4,085	1,782
SEC 09				1,037	3,876	16,593	21,506	572	949
SEC 10				4,247	2,556	818	7,621	2,341	626
SEC 11				2,632	2,641	14,466	19,740	1,451	647
SEC 12				2,920	4,778	3,351	11,049	1,609	1,317
SEC 13				4,264	8,463	1,098	13,825	2,350	2,332
SEC 14				194	560	1,435	2,189	107	154
SEC 15				9,804	3,162	1,818	14,784	5,404	271
SEC 16				12,530	12,869	3,310	28,710	6,906	3,547
SEC 17				1,343	1,347	4,802	7,493	722	367
SEC 18				172	677	1,099	1,948	86	184
SEC 19				714	3,902	1,753	6,369	358	976
SEC 20				2,189	3,641	5,513	11,343	1,097	911
SEC 21						730	730		
SEC 22						10,965	10,965		
SEC 23						12,415	12,415		
SEC 24						15,469	15,469		
SEC 25				11,301	5,258	9,596	26,155	5,663	1,316
SEC 26				3,030	2,082	3,512	8,624	1,518	521
SEC 27				230	109	2,626	2,965	115	27
SEC 28				775	286	6,163	7,224	388	72
SEC 29						4,319	4,319		
SEC 30				2,382	969	6,636	9,986	1,193	243
SEC 31						31,576	31,576		
SEC 32					30	53,219	53,250		8
SEC 33						8,055	8,055		
SEC 34						10,541	10,541		
SEC 35				1,438	8,802	3,173	13,413	721	2,203
SEC 36				21,690	19,212	2,288	43,190	10,868	4,808
SEC 37				4,799	16,230	4,098	25,127	2,519	4,066
SEC 38				2,317	16,073	38,849	57,239	1,216	4,027
SEC 39				1,213	13,601	18,259	33,072	637	3,407
SEC 40				271	2,500	6,462	9,233	142	626
SEC 41				2,470	830	20,349	23,650	1,297	208
SEC 42				16	263	278	557	9	71
SEC 43				54	5	91	149	28	1
SEC 44				5,972	1,412	4,104	11,488	3,135	380
SEC 45				2,689	1,666	5,821	10,176	1,411	460
SEC 46				1,555	1,243	453	3,251	816	334
SEC 47				134	172	105	411	70	46
SEC 48				344	295	191	830	181	79
SEC 49				251	53	4,781	5,085	132	14
SEC 50				21,254	46,095	3,235	70,584	11,156	11,535
SEC 51				38,166	223,872	5,499	267,537	19,123	56,085
SEC 52				23,621	114,347	6,663	144,631	11,835	28,647
SEC 53				7,192	46,669	841	54,702	3,604	11,692

* Totals include December landings.

APPENDIX 4

Table 4.1. Seasonal landings (kg) of salmon by gear, size and Area for 1969.

Statistical Area	Salmon surface gill nets				Salmon traps				Unspecified gear			
	Small	Large	Unsize	Total	Small	Large	Unsize	Total	Small	Large	Unsize	Total
Area A	76,918	85,164	27,057	189,140	84	33	45	162	83	746		829
Area B	20,481	13,855	61,873	96,209	155	578	7,051	7,784	552	223	122	897
Area C	6,231	6,473	35,245	47,949	1,077	1,057	787	2,922	2,526	8,751	3,564	14,842
Area D	11,263	9,712	30,166	51,141	793	1,926	1,490	4,209	66	2,756	891	3,714
Area E	1,372	1,644	42,930	45,945		33	156	189	270	59	24	353
Area F	3,516	2,775	43,530	49,820	6	14	3,394	3,414	143	283	1,849	2,275
Area G			13,574	13,574	20		95	115	50			50
Area H	4,407	742	46,275	51,424			227	227	352	10	431	794
Area I	5,589	5,632	14,326	25,547						70	301	371
Area J	25,766	100,510	38,129	164,406	26	29	127	181	4,618	93,319	32,180	130,117
Area K	5,531	3,324	25,091	33,947	41	79		120	512	386	254	1,151
Area L	3,895	2,078	7,351	13,324			8	8	233	98		330
Area M	3,818	1,438	3,662	8,919	45	121	82	248	4,453	1,945	42	6,441
Area N	1,342	1,318	2,395	5,055			907	907	95	228	45	368
Nfld.	170,130	234,666	391,604	796,400	2,247	3,869	14,369	20,484	13,954	108,874	39,703	162,532
Area O	55,920	305,069	98,685	459,674	323	187	880	1,398	137	168		305
Labrador	55,920	305,069	98,685	459,674	323	187	880	1,398	137	168		305
Province	226,050	539,735	490,289	1,256,075	2,569	4,057	15,256	21,882	14,091	109,042	39,703	162,837
Div. 2H			12,857	12,857								
Div. 2J	48,997	269,336	83,418	401,751	323	187	774	1,284	137	169		306
Div. 3K	97,154	98,265	88,723	284,142	239	611	7,096	7,946	635	895	122	1,652
Div. 3L	22,381	20,603	165,445	208,430	1,896	3,030	5,923	10,848	3,055	11,849	6,329	21,233
Div. 3PN	10,485	72,762	32,771	116,017		24	127	151	1,518	88,423	31,725	121,666
Div. 3PS	25,277	34,123	65,959	125,359	26	5	227	257	3,453	4,976	1,187	9,615
Div. 4R	21,755	44,647	41,116	107,518	86	200	1,110	1,396	5,293	2,730	341	8,364

174

Table 4.2. Seasonal landings (kg) of salmon by gear, size and Section for 1969.

Statistical Section	Salmon surface gill nets				Salmon traps			
	Small	Large	Unsize	Total	Small	Large	Unsize	Total
SEC 01	245	755	207	1,207				
SEC 02	11,784	27,818	9,925	49,526	78	29		107
SEC 03	15,341	11,097	483	26,921				
SEC 04	38,360	30,068	12,734	81,163	5	4	44	54
SEC 05	11,189	15,426	3,708	30,323	2			2
SEC 06	8,782	9,471	41,149	59,402	9	9	5,418	5,436
SEC 07	2,783	2,574	7,452	12,809	70	561	1,182	1,813
SEC 08	2,495	869	6,887	10,251	76	9	451	536
SEC 09	6,421	941	6,384	13,746				
SEC 10	2,428		11,351	13,779	217			217
SEC 11	2,263	524	11,431	14,218	2		89	91
SEC 12	547	3,631	6,945	11,123	2	255	304	562
SEC 13	992	2,318	5,518	8,829	856	802	394	2,052
SEC 14			4,161	4,161				
SEC 15	5,384	1,994	3,838	11,216				
SEC 16	2,743	896	1,316	4,956				
SEC 17	480	667	9,834	10,982	69	1,344	215	1,629
SEC 18	823	457	6,467	7,747	240	421	749	1,410
SEC 19	1,833	5,697	4,549	12,079	484	161	525	1,170
SEC 20	705	176	4,619	5,499		9		9
SEC 21	667	1,468	1,975	4,110				
SEC 22			10,698	10,698			156	156
SEC 23			25,638	25,638		24	24	48
SEC 24	167	192	22,854	23,213			1,086	1,086
SEC 25	3,326	2,524	9,663	15,513	6	5	1,391	1,402
SEC 26	23	58	11,013	11,094		9	917	926
SEC 27			2,495	2,495			91	91
SEC 28			11,080	11,080	20		5	25
SEC 29	2,452		20,679	23,131				
SEC 30	2,452	229	2,390	5,072			227	227
SEC 31			8,938	8,938				
SEC 32	1,955	513	14,268	16,736				
SEC 33	345	249	8,112	8,705				
SEC 34			4,632	4,632				
SEC 35	5,244	5,383	1,582	12,209				
SEC 36	11,685	14,314	2,613	28,611	26	5		31
SEC 37	3,597	13,435	2,746	19,777				
SEC 38	3,505	44,052	20,249	67,805		24	127	151
SEC 39	6,979	28,710	12,522	48,212				
SEC 40	1,241	1,391	7,330	9,962				
SEC 41	4,290	1,934	17,761	23,985	41	79		120
SEC 42			533	533				
SEC 43			147	147				
SEC 44	3,895	2,078	6,671	12,644			8	8
SEC 45	2,512	747	2,278	5,537	41	80		121
SEC 46	1,252	513	298	2,063		22	68	90
SEC 47	55	179	1,085	1,319	4	19	14	36
SEC 48	659	1,088	1,390	3,137				
SEC 49	683	230	1,004	1,918			907	907
SEC 50	5,474	22,111	2,325	29,910			113	113
SEC 51	22,692	124,947	4,678	152,318	323	187	519	1,029
SEC 52	27,754	158,011	45,784	231,549			255	255
SEC 53			45,898	45,898				

Table 4.2 (Cont'd.)

Statistical Section	Unspecified gear			Total
	Small	Large	Unsize	
SEC 01		73		73
SEC 02	83	655		738
SEC 03				
SEC 04		17		17
SEC 05				
SEC 06	149	89	122	360
SEC 07				
SEC 08	403	134		537
SEC 09				
SEC 10	76		22	98
SEC 11	17		8	25
SEC 12	831	2,546	39	3,415
SEC 13	1,603	6,206	3,495	11,304
SEC 14				
SEC 15	2	47		49
SEC 16	16			16
SEC 17	10	2,606	438	3,054
SEC 18		53	206	259
SEC 19	38	50	247	335
SEC 20			11	11
SEC 21	270	59		329
SEC 22			13	13
SEC 23				
SEC 24		11	1,242	1,253
SEC 25	143	271	302	716
SEC 26			305	305
SEC 27				
SEC 28	50			50
SEC 29				
SEC 30	352	6	427	785
SEC 31				
SEC 32		5	4	9
SEC 33		70	301	371
SEC 34				
SEC 35				
SEC 36	2,020	3,546	354	5,919
SEC 37	1,080	1,349	102	2,532
SEC 38	113	7,969	6,317	14,399
SEC 39	1,404	80,455	25,407	107,266
SEC 40	512	375	254	1,140
SEC 41		10		10
SEC 42		33		33
SEC 43				
SEC 44	233	65		298
SEC 45	3,879	904	16	4,799
SEC 46	551	893	5	1,448
SEC 47	24	149	21	194
SEC 48	95	228	45	368
SEC 49				
SEC 50				
SEC 51	137	164		301
SEC 52		4		4
SEC 53				

Table 4.3. Seasonal landings (kg) of salmon by gear, size and Area for 1970.

Statistical Area	Salmon surface gill nets				Salmon traps				Unspecified gear			
	Small	Large	Unsize	Total	Small	Large	Unsize	Total	Small	Large	Unsize	Total
Area A	114,862	104,668	19,212	238,741	1,771	435		2,206		7		7
Area B	39,427	24,022	72,738	136,187			21,719	21,719	7,534	4,414	3,209	15,157
Area C	16,553	26,843	47,571	90,967	2,255	4,226	3,056	9,537	4,603	12,278	24	16,905
Area D	16,375	19,276	26,419	62,070	995	1,352	5,143	7,489	1,373	1,261	5,235	7,872
Area E	2,239	4,370	55,220	61,828	82	22	2,321	2,424	1,528	113	66	1,706
Area F	10,765	5,811	74,004	90,580	765	42	252	1,059	102	24	61	187
Area G			23,551	23,551							82	82
Area H	404	60	23,361	23,825	1,237	88	1,243	2,569			224	224
Area I	7,653	1,644	19,197	28,494							20	20
Area J	13,337	43,453	67,491	124,282			908	908	493	14,066	48,166	62,724
Area K	1,212	6,847	49,816	57,875					369	386	578	1,333
Area L	4,407	1,163	10,238	15,807				227	34	16		50
Area M	4,665	1,837	8,099	14,601	2,104	270	1,508	3,883				
Area N	1,141	389	3,451	4,980	2,497	169	1,831	4,497	179			179
Nfld.	233,039	240,374	500,357	973,779	11,707	6,604	38,207	56,518	16,216	32,566	57,664	106,446
Area O	85,180	323,944	49,039	458,163			11	11	15	25		40
Labrador	85,180	323,944	49,039	458,163			11	11	15	25		40
Province	318,219	564,318	549,396	1,431,942	11,707	6,604	38,218	56,529	16,231	32,596	57,664	106,491
Div. 2H	0	0	12,261	12,261								
Div. 2J	71,940	262,776	28,918	363,634			11	11	15	25		40
Div. 3K	154,257	128,650	91,746	374,652	1,771	435	21,719	23,925	7,534	4,421	3,209	15,164
Div. 3L	45,932	56,300	226,764	328,996	4,097	5,642	10,771	20,510	7,608	13,677	5,468	26,753
Div. 3PN	7,546	30,969	51,521	90,037			908	908	325	13,953	48,166	62,443
Div. 3PS	13,847	14,189	58,518	86,554	1,237	88	1,243	2,569	168	113	266	525
Div. 4R	24,694	71,434	79,676	175,804	4,601	439	3,566	8,606	581	402	578	1,561

Table 4.4. Seasonal landings (kg) of salmon by gear, size and Section for 1970.

Statistical Section	Salmon surface gill nets				Salmon traps			
	Small	Large	Unsize	Total	Small	Large	Unsize	Total
SEC 01	32	31	213	276				
SEC 02	13,141	30,839	12,328	56,309				
SEC 03	19,471	13,577	605	33,652				
SEC 04	65,127	45,619	5,241	115,987	1,747	389		2,136
SEC 05	17,090	14,601	825	32,517	24	45		69
SEC 06	12,713	6,236	42,587	61,536			21,719	21,719
SEC 07	4,949	1,781	6,442	13,172				
SEC 08	13,678	10,089	762	24,529				
SEC 09	8,087	5,916	22,947	36,950				
SEC 10	5,198	4,963	5,931	16,092			2	2
SEC 11	6,231	4,937	31,019	42,187		317	2,268	2,585
SEC 12	1,340	6,925	7,166	15,431	558	645	166	1,369
SEC 13	3,784	10,018	3,455	17,257	1,697	3,265	619	5,581
SEC 14	3,617			3,617				
SEC 15	5,793	3,067	5,548	14,409	13	78		91
SEC 16	4,273	1,535	2,968	8,776	154	112	54	321
SEC 17	601	3,482	7,118	11,201	22	20	1,662	1,704
SEC 18	967	3,635	4,420	9,022	800	1,141	3,426	5,367
SEC 19	4,742	7,556	2,747	15,046	6			6
SEC 20	880	863	7,266	9,009	35		64	99
SEC 21	1,359	3,500	4,115	8,974	47	22	147	216
SEC 22		7	20,587	20,594			2,109	2,109
SEC 23			23,251	23,251				
SEC 24	199	488	35,670	36,358				
SEC 25	7,189	3,104	28,336	38,629	365	37	196	598
SEC 26	3,377	2,219	9,998	15,593	400	5	56	461
SEC 27			5,089	5,089				
SEC 28			18,461	18,461				
SEC 29	8		1,912	1,920			54	54
SEC 30	395	60	1,627	2,083	1,237	89	347	1,672
SEC 31			4,753	4,753			792	792
SEC 32			15,068	15,069			50	50
SEC 33	14		10,179	10,192				
SEC 34			7,498	7,498				
SEC 35	7,639	1,644	1,520	10,803				
SEC 36	2,917	4,256	13,708	20,880				
SEC 37	2,874	8,228	2,253	13,354	2	5		7
SEC 38	2,797	15,917	27,762	46,476				
SEC 39	4,750	15,052	23,759	43,561			908	908
SEC 40	877	5,706	15,068	21,651				
SEC 41	334	1,141	34,749	36,224				
SEC 42			708	708				
SEC 43	522	21	142	684				
SEC 44	3,885	1,142	9,388	14,415			227	227
SEC 45	1,797	700	7,418	9,916	2,057	250	930	3,237
SEC 46	2,864	1,061	541	4,465	43	7	567	617
SEC 47	2	141	219	249	5	13	11	29
SEC 48	581	331	579	1,492			85	85
SEC 49	560	58	2,871	3,611	2,497	169	1,745	4,411
SEC 50	11,785	53,097	7,860	72,742				
SEC 51	47,917	203,865	3,102	254,885				
SEC 52	25,282	66,011	3,323	94,616			11	11
SEC 53	196	970	34,754	35,920				

Table 4.4 (Cont'd.)

Statistical Section	Unspecified gear			Total
	Small	Large	Unsize	
SEC 01				
SEC 02				
SEC 03				
SEC 04				
SEC 05		7		7
SEC 06	207	420	941	1,568
SEC 07	1,331	893		2,224
SEC 08	5,330	2,359		7,689
SEC 09	665	742	2,268	3,675
SEC 10	494	419		913
SEC 11	643	501	0	1,144
SEC 12	491	1,569	19	2,078
SEC 13	2,976	9,790	5	12,771
SEC 14				
SEC 15	315	443		758
SEC 16	437	110		547
SEC 17	285	98	4,957	5,341
SEC 18	23	131	148	302
SEC 19	314	480	131	925
SEC 20	70	98		167
SEC 21	1,458	15	55	1,528
SEC 22			11	11
SEC 23				
SEC 24			17	17
SEC 25		24	7	32
SEC 26	102		36	138
SEC 27				
SEC 28			82	82
SEC 29				
SEC 30			6	6
SEC 31				
SEC 32			218	218
SEC 33			20	20
SEC 34				
SEC 35				
SEC 36				
SEC 37	166	113		279
SEC 38	11	1,481	7,163	8,655
SEC 39	313	12,471	41,002	53,783
SEC 40	369	386	519	1,274
SEC 41			59	59
SEC 42				
SEC 43				
SEC 44	34	16		50
SEC 45				
SEC 46				
SEC 47				
SEC 48	179			179
SEC 49				
SEC 50				
SEC 51				
SEC 52	15	25		40
SEC 53				

Table 4.5. Seasonal landings (kg) of salmon by gear, size and Area for 1971.

Statistical Area	Salmon surface gill nets				Salmon traps				Unspecified gear			
	Small	Large	Unsize	Total	Small	Large	Unsize	Total	Small	Large	Unsize	Total
Area A	74,672	168,179	17,133	259,984	847	553	431	1,831		16	16	32
Area B	32,139	75,775	48,291	156,205	191	381	2,881	3,453	7	202		209
Area C	7,035	37,195	41,151	85,380	737	8,667	1,354	10,759			142	142
Area D	7,046	29,487	24,366	60,899	4,213	2,259	2,565	9,037	5	171	442	618
Area E	220	4,357	45,552	50,129	17	464	1,038	1,520	3	7		10
Area F	6,550	5,537	74,862	86,949	48	5	1,888	1,940			171	171
Area G	383	20	7,415	7,819			943	943				
Area H	838	350	18,134	19,321		5	1,664	1,669				
Area I	4,405	6,965	8,077	19,447			381	381				
Area J	17,905	44,754	37,038	99,696			454	454	55	1,354	11,309	12,717
Area K	1,101	2,757	23,758	27,616			63	63				
Area L	1,241	309	1,291	2,841		6		6			11	11
Area M	1,620	743	4,132	6,495	559	291	51	900				
Area N	1,621	808	1,894	4,323	206	45	440	690	73	43		115
Nfld.	156,775	377,235	353,099	887,108	6,817	12,676	14,153	33,646	142	1,793	12,091	14,025
Area O	120,826	502,479	17,875	641,181					18	96	4	118
Labrador	120,826	502,479	17,875	641,181					18	96	4	118
Province	277,601	879,714	370,973	1,528,289	6,817	12,676	14,153	33,646	160	1,888	12,095	14,143
Div. 2H	4,538	26,028	9	30,575					18	96	4	118
Div. 2J	105,400	402,885	15,228	523,513								
Div. 3K	10,797	243,929	64,990	415,716	1,038	934	3,312	5,284	7	218	16	240
Div. 3L	21,233	76,596	193,346	291,175	5,015	11,396	7,789	24,199	7	179	613	799
Div. 3PS	14,560	24,937	30,160	69,658		5	2,045	2,050				
Div. 3PN	8,587	27,131	33,088	68,807			454	454	55	1,354	11,309	12,717
Div. 4R	16,495	78,208	34,152	128,854	765	342	553	1,660	73	43	11	127

Table 4.6. Seasonal landings (kg) of salmon by gear, size and Section for 1971.

Statistical Section	Salmon surface gill nets				Salmon traps			
	Small	Large	Unsize	Total	Small	Large	Unsize	Total
SEC 01	14	25	434	473				
SEC 02	10,757	43,213	7,840	61,809	5	6		11
SEC 03	17,651	21,762	742	40,155	28	20	385	433
SEC 04	38,342	72,401	3,084	113,827	803	317	45	1,165
SEC 05	7,908	30,777	5,034	43,719	12	210		222
SEC 06	23,622	56,124	30,088	109,834	93	190	1,851	2,134
SEC 07	2,219	10,392	5,937	18,548			388	388
SEC 08	3,611	7,434	2,401	13,446	97	191	159	447
SEC 09	2,687	1,824	9,865	14,377			484	484
SEC 10	1,595	2,454	2,906	6,956				
SEC 11	3,391	5,253	27,014	35,658				
SEC 12	1,089	9,422	4,031	14,541	181	2,829	2	3,012
SEC 13	960	20,067	7,198	28,225	556	5,838	1,352	7,746
SEC 14	126	1,437	677	2,241	23	1	376	401
SEC 15	3,625	2,671	851	7,146	3,279	1,129	949	5,357
SEC 16	1,663	1,535	4,998	8,196	830	420	163	1,414
SEC 17	865	6,160	12,109	19,134	29	4	646	678
SEC 18	129	1,387	4,912	6,428	53	705	430	1,188
SEC 19	639	16,297	819	17,754				
SEC 20	217	4,191	2,668	7,076	17	336		353
SEC 21	3	166	2,994	3,163		129	272	401
SEC 22			11,150	11,150			766	766
SEC 23			28,740	28,740				
SEC 24		347	56,336	56,683			225	225
SEC 25	5,165	4,639	16,261	26,065			943	943
SEC 26	1,385	550	2,265	4,200	48	5	721	773
SEC 27	383	20	2,812	3,216				
SEC 28			4,603	4,603			943	943
SEC 29			3,933	3,933			588	588
SEC 30	32	56	1,031	1,119			696	696
SEC 31			3,425	3,425			380	380
SEC 32	806	293	9,746	10,846		5		5
SEC 33	137		2,185	2,322				
SEC 34	1,431	113	4,111	5,655			381	381
SEC 35	2,838	6,852	1,780	11,470				
SEC 36	5,313	7,713	1,887	14,914				
SEC 37	4,002	9,909	2,062	15,976				
SEC 38	3,396	11,535	10,628	25,559				
SEC 39	5,192	15,596	22,460	43,248			454	454
SEC 40	199	2,374	5,979	8,552			57	57
SEC 41	903	383	17,778	19,064			6	6
SEC 42			349	349				
SEC 43			54	54		6		6
SEC 44	1,241	309	887	2,438				
SEC 45	1,304	284	3,260	4,848			16	16
SEC 46	263	197	479	940	559	291	34	884
SEC 47	54	261	397	712				
SEC 48	1,030	641	494	2,165				
SEC 49	591	167	1,400	2,157	206	45	440	690
SEC 50	8,502	65,242	2,355	76,098				
SEC 51	47,121	198,438	4,148	249,707				
SEC 52	55,348	177,968	11,364	244,680				
SEC 53	9,856	60,831	9	70,695				

Table 4.6 (Cont'd.)

Statistical Section	Unspecified gear			Total
	Small	Large	Unsize	
SEC 01				
SEC 02		16	16	32
SEC 03				
SEC 04				
SEC 05				
SEC 06		67		67
SEC 07				
SEC 08	7	135		142
SEC 09				
SEC 10				
SEC 11			142	142
SEC 12				
SEC 13				
SEC 14				
SEC 15	2	117	411	529
SEC 16	2	55	27	84
SEC 17			5	5
SEC 18				
SEC 19				
SEC 20	3	7		10
SEC 21				
SEC 22				
SEC 23				
SEC 24				
SEC 25			171	171
SEC 26				
SEC 27				
SEC 28				
SEC 29				
SEC 30				
SEC 31				
SEC 32				
SEC 33				
SEC 34				
SEC 35				
SEC 36				
SEC 37				
SEC 38	5	157	559	722
SEC 39	50	1,196	10,749	11,995
SEC 40				
SEC 41				
SEC 42				
SEC 43				
SEC 44			11	11
SEC 45				
SEC 46				
SEC 47				
SEC 48				
SEC 49	73	43		115
SEC 50				
SEC 51				
SEC 52				
SEC 53	18	96	4	118

Table 4.7. Seasonal landings (kg) of salmon by gear, size and Area for 1972.

Statistical Area	Salmon surface gill nets				Salmon traps				Unspecified gear			
	Small	Large	Unsize	Total	Small	Large	Unsize	Total	Small	Large	Unsize	Total
Area A	54,516	124,877	19,631	199,024	39	299	473	811				
Area B	11,085	15,894	61,318	88,297	1,484	3,035	1,007	5,526				
Area C	11,700	15,872	19,532	47,104	2,325	2,559	201	5,085	38	8		46
Area D	24,676	22,212	13,297	60,185	82	306	900	1,288			19	19
Area E	2,035	3,551	29,223	34,809	154	90	401	645				
Area F	14,331	7,340	27,705	49,376			871	871				
Area G	1,004	396	8,381	9,781			408	408				
Area H	2,382	999	77,826	81,207			17,788	17,788			136	136
Area I	1,438	8,802	21,769	32,009								
Area J	30,018	65,116	62,635	157,769			859	859				
Area K	2,657	3,223	26,735	32,615	84	108	77	269				
Area L	6,042	1,680	4,473	12,195								
Area M	4,074	2,845	6,379	13,298	304	236		540				
Area N	588	306	4,969	5,863	6	42	3	51				
Nfld.	166,547	273,111	383,872	823,530	4,470	6,675	22,989	34,134	38	8	155	201
Area O	90,233	430,984	16,183	537,400			54	54				
Labrador	90,233	430,984	16,183	537,400			54	54				
Province	256,780	704,095	400,055	1,360,930	4,470	6,675	23,043	34,188	38	8	155	201
Div. 2H	1,517	17,847	817	20,181								
Div. 2J	57,956	289,861	12,107	359,924								
Div. 3K	65,601	140,771	80,552	286,924	1,523	3,334	1,534	6,391				
Div. 3L	53,746	49,371	98,138	201,255	2,561	2,955	2,781	8,297	33	8	9	55
Div. 3PN	3,530	29,674	56,644	89,848			519	519				
Div. 3PS	30,310	45,243	105,641	181,194			18,128	18,128			136	136
Div. 4R	44,306	131,452	45,784	221,542	394	386	204	984				

Table 4.8. Seasonal landings (kg) of salmon by gear, size and section for 1972.

Statistical Section	Salmon surface gill nets				Salmon traps			
	Small	Large	Unsize	Total	Small	Large	Unsize	Total
SEC 01			397	397				
SEC 02	4,495	23,337	2,195	30,027	39	299	4	342
SEC 03	8,706	16,105	342	25,153			161	161
SEC 04	39,321	77,539	5,667	122,527			308	308
SEC 05	1,994	7,896	11,030	20,920				
SEC 06	3,964	7,694	39,947	51,605			231	281
SEC 07	156	83	3,860	4,099				
SEC 08	5,928	4,251	918	11,097	1,484	3,024	726	5,234
SEC 09	1,037	3,866	16,593	21,496		11		11
SEC 10	4,247	2,556	818	7,621				
SEC 11	2,403	2,483	14,375	19,261	230	158	91	479
SEC 12	2,522	4,062	3,275	9,859	362	709	76	1,147
SEC 13	2,529	6,771	1,063	10,363	1,735	1,692	34	3,461
SEC 14	194	560	1,414	2,168			21	21
SEC 15	9,804	3,162	1,818	14,784				
SEC 16	12,530	12,869	3,251	28,650			59	59
SEC 17	1,343	1,288	4,126	6,757		59	676	735
SEC 18	90	430	934	1,454	82	247	145	474
SEC 19	714	3,902	1,753	6,369				
SEC 20	2,035	3,551	5,454	11,040	154	90	60	304
SEC 21			730	730				
SEC 22			10,624	10,624				
SEC 23			12,415	12,415			341	341
SEC 24			14,870	14,870			599	599
SEC 25	11,301	5,258	9,596	26,155				
SEC 26	3,030	2,082	3,240	8,352			272	272
SEC 27	230	109	2,626	2,965				
SEC 28	775	286	5,754	6,815			408	408
SEC 29			1,711	1,711			2,608	2,608
SEC 30	2,382	969	6,590	9,941			45	45
SEC 31			20,772	20,772			10,669	10,669
SEC 32		30	48,754	48,784			4,466	4,466
SEC 33			8,055	8,055				
SEC 34			10,541	10,541				
SEC 35	1,438	8,802	3,173	13,413				
SEC 36	21,691	19,212	1,948	42,851			340	340
SEC 37	4,799	16,230	4,098	25,127				
SEC 38	2,317	16,073	38,395	56,785			454	454
SEC 39	1,213	13,601	18,194	33,008			65	65
SEC 40	218	2,414	6,406	9,038	53	87	57	197
SEC 41	2,439	809	20,329	23,577	31	21	20	72
SEC 42	16	263	278	557				
SEC 43	54	5	91	150				
SEC 44	5,972	1,412	4,104	11,488				
SEC 45	2,526	1,594	5,821	9,941	163	71		234
SEC 46	1,548	1,239	453	3,240	7	4		11
SEC 47		11	105	116	134	161		295
SEC 48	337	253	188	778	6	42	3	51
SEC 49	251	53	4,781	5,085				
SEC 50	21,254	49,095	3,181	70,526			54	54
SEC 51	38,166	223,872	5,499	267,537				
SEC 52	23,621	114,347	6,663	144,631				
SEC 53	7,192	46,669	841	54,702				

Table 4.8 (Cont'd.)

Statistical Section	Unspecified gear			Total
	Small	Large	Unsize	
SEC 01				
SEC 02				
SEC 03				
SEC 04				
SEC 05				
SEC 06				
SEC 07				
SEC 08				
SEC 09				
SEC 10				
SEC 11				
SEC 12	38	8		46
SEC 13				
SEC 14				
SEC 15				
SEC 16				
SEC 17				
SEC 18				19
SEC 19				
SEC 20				
SEC 21				
SEC 22				
SEC 23				
SEC 24				
SEC 25				
SEC 26				
SEC 27				
SEC 28				
SEC 29				
SEC 30				
SEC 31			136	136
SEC 32				
SEC 33				
SEC 34				
SEC 35				
SEC 36				
SEC 37				
SEC 38				
SEC 39				
SEC 40				
SEC 41				
SEC 42				
SEC 43				
SEC 44				
SEC 45				
SEC 46				
SEC 47				
SEC 48				
SEC 49				
SEC 50				
SEC 51				
SEC 52				
SEC 53				

