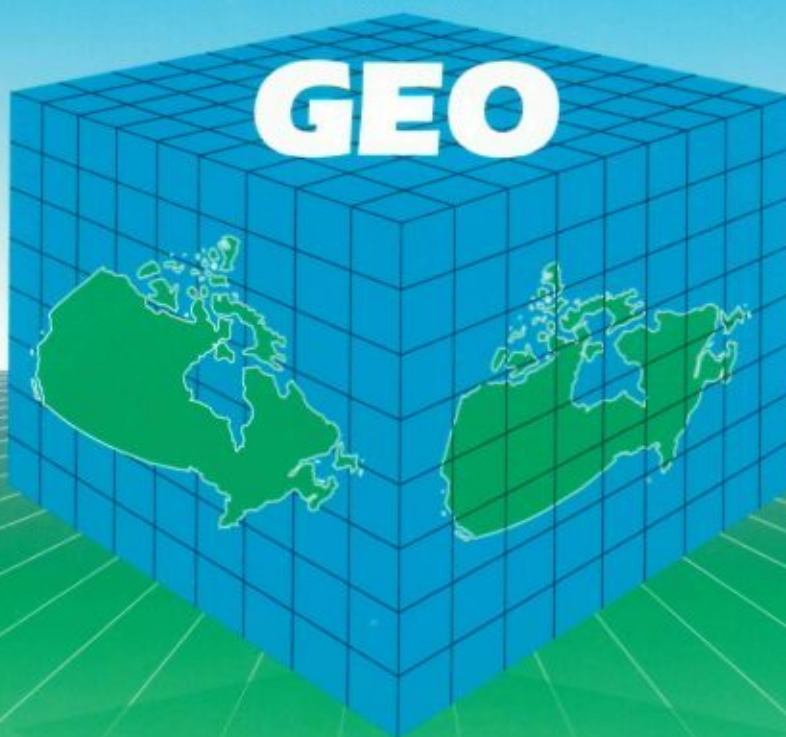


92F0008E  
1992  
c.2

# GEO

1991 GEOGRAPHY  
CATALOGUE  
NOVEMBER 1992

1991 CENSUS  
RECENSEMENT DE 1991



Statistics  
Canada

Statistique  
Canada

Canada

## How to Reach Us

### To Obtain More Information

Inquiries about products and services should be directed to one of the following Statistics Canada Reference Centres:

St. John's	(709) 772-4073
Halifax	(902) 426-5331
Montréal	(514) 283-5725
Ottawa	(613) 951-8116
Toronto	(416) 973-6586
Winnipeg	(204) 983-4020
Régina	(306) 780-5405
Edmonton	(403) 495-3027
Calgary	(403) 292-6717
Vancouver	(604) 666-3691

A toll-free number is provided in all provinces and territories, for users who reside outside the local dialing area of any of the Regional Reference Centres.

## Pour nous joindre

### Comment obtenir d'autres renseignements

Toute demande de renseignements au sujet des produits et services doit être adressée à l'un des Centres de consultation de Statistique Canada suivants :

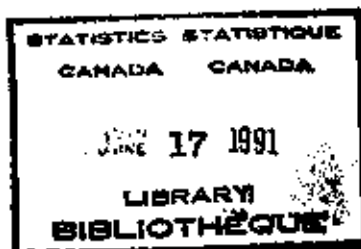
Un numéro d'appel sans frais est offert, dans toutes les provinces et territoires, aux utilisateurs qui habitent à l'extérieur du secteur d'appel local des Centres régionaux de consultation.

Newfoundland and Labrador/Terre-Neuve et Labrador	1-800-565-7192
Nova Scotia, New Brunswick and Prince Edward Island/ Nouvelle-Écosse, Nouveau-Brunswick et Île-du-Prince-Édouard	1-800-565-7192
Quebec/Québec	1-800-361-2831
Ontario	1-800-263-1136
Manitoba	1-800-542-3404
Saskatchewan	1-800-667-7164
Alberta	1-800-282-3907
Southern Alberta/Sud de l'Alberta	1-800-472-9708
British Columbia (South and Central)/ Colombie-Britannique (sud et centre)	1-800-663-1551
Yukon and Northern B.C. (area served by NORTHWESTEL Inc.)/ Yukon et nord de la C.-B. (territoire desservi par la NORTHWESTEL Inc.)	Zenith/Zénith 08913
Northwest Territories (area served by NORTHWESTEL Inc.)/ Territoires du Nord-Ouest (territoire desservi par la NORTHWESTEL Inc.)	Call collect/ (403)-495-3028 appelez à frais virés (403) 495-3028

Telecommunications Device for the Hearing Impaired/ Appareil de télécommunications pour malentendants	1-800-363-7629
--	----------------

#51481

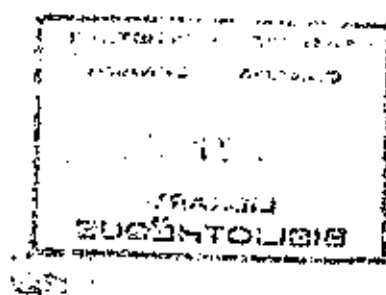
C. &  
CAI  
STC135  
92W33



## 1991 GEOGRAPHY CATALOGUE

NOVEMBER 1992

Version française disponible sur demande



## TABLE OF CONTENTS

<b>1. Geographic Reference Products</b>	<b>2</b>
1.1 Reference Maps	2
1.1.1 Enumeration Area Maps	2
1.1.2 Census Division and Census Subdivision Maps	3
1.1.3 Census Metropolitan Area, Census Agglomeration and Census Tract Maps	3
1.1.4 Federal Electoral District Map	4
1.2 Enumeration Area Reference Lists	4
1.2.1 Census Tracts	4
1.2.2 Census Metropolitan Areas and Census Agglomerations	4
1.2.3 Census Divisions and Census Subdivisions	5
1.2.4 Equivalent Enumeration Areas, 1991 and 1986	5
1.2.5 Provincial Census Tracts	5
1.3 Other Geographic Reference Products	6
1.3.1 Standard Geographical Classification: SGC, 1991	6
1.3.2 Geography Guide Book	7
1.3.3 1991 Census Geography: A Historical Comparison	7
1.3.4 Geocoding Coverage for the 1991 Census	8
1.3.5 GEOREF (Geographic Information Reference System)	8
1.3.6 1991 Census Dictionary	9
1.3.7 1991 Census Catalogue (Second Edition)	9
1.3.8 Street Index	9
1.3.9 Complete On-line Guide to Geography	10
<b>2. Geography Data Products</b>	<b>11</b>
2.1 Population and Dwelling Counts Series	11
2.1.1 Population and Dwelling Counts-A National Overview	11
2.1.2 Population and Dwelling Counts-Federal Electoral Districts	11
2.1.3 Population and Dwelling Counts-Census Metropolitan Areas and Census Agglomerations	12
2.1.4 Population and Dwelling Counts-Census Divisions and Census Subdivisions	12
2.1.5 Population and Dwelling Counts-Urban Areas	13
2.1.6 Population and Dwelling Counts-Unincorporated Places	13
2.1.7 Population and Dwelling Counts-Place Name Lists	14
2.1.8 Population and Dwelling Counts-Supplementary Tables	14
2.2 Metropolitan Atlas Series	15
<b>3. Digital Geographic Products</b>	<b>17</b>
3.1 Digital Boundary File	17
3.2 Postal Code Conversion File	21

## TABLE OF CONTENTS

3.3 Block-face Data File .....	21
3.4 Street Network Files .....	22
3.5 Place Name Master File .....	24
3.6 Geographic Attribute File .....	24
4. Geography Services .....	25
4.1 Geocoding Service .....	25
4.2 Custom Services .....	25
5. Glossary .....	26
6. Appendices .....	33
Appendix 1 - Estimated Number of Reference Maps by Province or Territory .....	34
Appendix 2 - Estimated Number of Series 1 Maps and Number of Census Tracts by Tracted CMA and CA .....	35
Appendix 3 - Reference Map Sheets .....	37
Appendix 4 - List of CSDs Covered by Street Network Files .....	40
7. Regional Reference Centres .....	50

IBM® is a registered trademark of the International Business Machines Corporation.

DOS® is a registered trademark of Microsoft Corporation.

ARC/INFO® is a registered trademark of Environmental Systems Research Institute Inc.

WINDOWS® is a registered trademark of Microsoft Corporation.

TOOLBOOK® is a registered trademark of Asymetrix Corporation.

## 1991 GEOGRAPHY CATALOGUE

Geography Division maintains a spatially referenced geographic database in support of the Census of Population and Agriculture, the Standard Geographical Classification and other Statistics Canada programs. The division also develops geographical concepts, delineates geographic areas, produces maps and other published reference materials, produces files on magnetic tape and diskette, and offers a variety of services.

This catalogue provides information about the products and services produced by Statistics Canada's Geography Division. It contains short descriptions of the products and services, along with the most current information on the release dates and prices.

Prices and other details quoted in the Geography Catalogue were accurate at the time of distribution. Please contact the nearest Statistics Canada Regional Reference Centre for up-to-date prices and release dates. Prices are exclusive of the Goods and Services Tax (G.S.T.).

The 1991 Geography Catalogue is divided into four sections:

The first section describes most of the geographical reference tools available from Statistics Canada. These tools, including maps, publications and diskette products, provide definitions for geographical concepts and allow users to locate the appropriate geographic areas for their census data. Some, such as *GEOREF*, also provide 1991 Census population and dwelling counts.

The second section is devoted to geography data products, including the *Population and Dwelling Counts Series* from the 1991 Census and the *1991 Metropolitan Atlas Series*. These provide census data at various levels of geography.

The third section is a comprehensive collection of digital products offered by the Geography Division. Products include boundary files, postal code conversion files and street networks at various geographic levels.

The fourth section outlines Geography Division's custom services. We are available for consultation on how Geography products and services can best be applied or customized.

## 1. Geographic Reference Products

Geographic Reference Products allow users to locate the geographic areas appropriate to their census and other data needs.

Reference maps identify census geographic areas and assist users in locating boundaries, allowing them to relate census data to actual physical locations. Reference maps are available for geographic areas that range in size from enumeration areas, census tracts (neighbourhoods), census subdivisions (municipalities), and census divisions (counties), to census agglomerations and census metropolitan areas (large urban centres), and federal electoral districts (Members of Parliament's ridings).

*Enumeration Area Reference Lists* provide lists of enumeration areas and show their corresponding areas in the geographic hierarchy.

**GEOREF** (Geographic Information Reference System), is a new, microcomputer based system (IBM® compatible) geographic reference tool. It's user-friendly software allows users to explore relationships between geographic areas and to display 1991 population and dwelling counts.

Other products that explain geographic areas and terms as well as providing information on historical comparability are also available.

### 1.1 Reference Maps

Geographic Reference Maps allow users to obtain specific census data by locating target areas as accurately as possible. Statistics Canada offers two series of maps: the Enumeration Area Maps, which are printed upon request and three-colour Reference Maps, which are available individually or as a set.

#### 1.1.1 Enumeration Area Maps

**Description:** Three series of enumeration area reference maps have been developed to situate enumeration areas within various levels of geography. These series are similar to the G-86 series produced for the 1986 Census. All depict the enumeration area as their smallest reference unit. The maps also include roads, railroads, hydrography and other notable physical features.

**Series 1: Large Urban Centres (formerly G-13 and G-13A series)** Release: Starting September, 1992  
Service No.: 627-003 Price: Canada \$10.00/map\*

This series depicts enumeration areas (EA) within urban centres with a population of 50,000 and over that are part of the census tract program. Also shown on the maps are census tract, census subdivision, federal electoral district, census metropolitan area and census agglomeration boundaries. Phased release began in September 1992 and ends in December 1992. (See Appendix 1 - Number of 1991 Reference Maps by Province/Territory, Appendix 2 - Estimated Number of Series 1 Maps and Number of Census Tracts by Tracted CMA and CA and Appendix 3 - Reference Map Sheets - for a sample.)

\*When more than 10 Series 1 EA maps are purchased together, the unit price is \$7.50.



### 1.1.1 Enumeration Area Maps (cont'd.)

**Series 2: Small Urban Centres (formerly G-14 and G-16 series)**  
**Service No.: 627-004**

**Release: Available**  
**Price: Canada \$10.00/map**

This series depicts enumeration areas within census subdivisions and unincorporated places. Federal electoral districts are also shown on the maps. (See Appendix 1 - Number of 1991 Reference Maps by Province and Appendix 3 - Reference Map Sheets - for a sample.)

**Series 3: Rural Areas (formerly G-12 series)**  
**Service No.: 627-005**

**Release: Available**  
**Price: Canada \$10.00/map**

This series depicts enumeration areas in rural areas. Also shown are census subdivision, census division, federal electoral district, census metropolitan area and census agglomeration boundaries. (See Appendix 1 - Number of 1991 Reference Maps by Province and Appendix 3 - Reference Map Sheets - for a sample.)

### 1.1.2 Census Division and Census Subdivision Maps

**Description:** These provincial maps show the boundaries for census divisions (areas such as counties and regional districts) and census subdivisions (such as cities, municipalities, towns, villages, settlements, other local municipal entities and townships). Also shown are the boundaries for census metropolitan areas and census agglomerations. Each province is covered by one to four maps, with scales ranging from 1:375,000 to 1:6,000,000. The base map, produced by Energy, Mines and Resources Canada, includes water bodies, major roads and railroads.

**Catalogue No.: 92-319 ISBN: 0-660-57112-9**  
**Release: Available**  
**Price: Canada: \$75.00 US: US \$90.00 Other Countries: US \$105.00**  
**(per set)**

The maps in this series are also available separately for \$5.00 each. (Service Number: 627-006)

### 1.1.3 Census Metropolitan Area, Census Agglomeration and Census Tract Maps

**Description:** These maps show the boundaries of census subdivisions, census metropolitan area/census agglomeration parts (urbanized core, urban fringe, rural fringe) and, where applicable, census tracts, primary census metropolitan areas and primary census agglomerations. Also shown are rivers, lakes, railroad tracks, provincial boundaries and other significant features. The map scales range from 1:25,000 to 1:2,000,000.

The publications in the *Census Tract Profile* series contain corresponding maps for each tracted census metropolitan area and census agglomeration.

**Catalogue No.: 92-320 ISBN: 0-660-57113-7**  
**Release: Available**  
**Price: Canada: \$75.00 US: US \$90.00 Other Countries: US \$105.00**  
**(per set)**

The maps in this series are also available separately for \$5.00 each. (Service Number: 627-007)

### 1.1.4 Federal Electoral District Map

**Description:** This colour map (78.8 cm by 27.8 cm) shows the federal electoral districts of Canada according to the 1987 Representation Order. It also depicts major rivers, lakes and time zones. This map is included in the publication *Population and Dwelling Counts - Federal Electoral Districts* and in the *Profiles of Federal Electoral Districts - Part A and Part B*. It was produced by Energy, Mines and Resources Canada for the Office of the Chief Electoral Officer, Elections Canada.

**Not Catalogued/Service No.:** 627-006  
**Release:** Available  
**Price:** Canada: \$5.00  
 (per map)

## 1.2 Enumeration Area Reference Lists

**Description:** The information available in this series assists the user in relating enumeration areas to other geographic levels. The enumeration area is the smallest standard geographic unit and serves as the key to building geographic hierarchies. A user is thereby able to situate a particular enumeration area by census tract, census subdivision and federal electoral district. This information is presented by region and by type of geographical unit.

### 1.2.1 Census Tracts

**Catalogue No.:** 92-312      **ISBN:** 0-660-57105-6  
**Release:** Available  
**Price:** Canada: \$35.00    US: US \$42.00    Other Countries: US \$49.00

**Table Titles:**

1. Enumeration Area Reference Lists for Census Tracts, 1991
2. Index 1. Census Subdivisions in Alphabetical Order, 1991
3. Index 2. Primary Census Metropolitan Areas and Primary Census Agglomerations in Alphabetical Order, 1991.

### 1.2.2 Census Metropolitan Areas and Census Agglomerations

**Catalogue No.:** 92-313      **ISBN:** 0-660-57106-4  
**Release:** Available  
**Price:** Canada: \$30.00    US: US \$36.00    Other Countries: US \$42.00

**Table Titles:**

1. Enumeration Area Reference Lists for Census Metropolitan Areas and Census Agglomerations, Showing Census Metropolitan Area and Census Agglomeration Components, 1991
2. Enumeration Area Reference Lists for Census Metropolitan Areas, Census Agglomerations and Provincial Census Tracts, 1991
3. Index 1. Census Subdivisions in Alphabetical Order, 1991
4. Index 2. Primary Census Metropolitan Areas and Primary Census Agglomerations in Alphabetical Order, 1991

### 1.2.3 Census Divisions and Census Subdivisions

<b>Release:</b>	<b>Available</b>		
<b>Atlantic Provinces</b>	<b>Catalogue No.:</b>	<b>92-314</b>	<b>ISBN: 0-660-57107-2</b>
<b>Price:</b>	Canada: \$25.00	US: US \$30.00	Other Countries: US \$35.00
<b>Quebec</b>	<b>Catalogue No.:</b>	<b>92-315</b>	<b>ISBN: 0-660-57108-0</b>
<b>Price:</b>	Canada: \$25.00	US: US \$30.00	Other Countries: US \$35.00
<b>Ontario</b>	<b>Catalogue No.:</b>	<b>92-316</b>	<b>ISBN: 0-660-57109-9</b>
<b>Price:</b>	Canada: \$25.00	US: US \$30.00	Other Countries: US \$35.00
<b>Western Provinces and the Territories</b>	<b>Catalogue No.:</b>	<b>92-317</b>	<b>ISBN: 0-660-57110-2</b>
<b>Price:</b>	Canada: \$30.00	US: US \$36.00	Other Countries: US \$42.00

**Table Titles:**

1. Enumeration Area Reference Lists for Census Divisions and Census Subdivisions, Showing Urban and Rural Designation, 1991
2. Index 1. Census Subdivisions in Alphabetical Order, 1991
3. Index 2. Urban Areas in Alphabetical Order, 1991
4. Index 3. Census Divisions in Standard Geographical Classification Code Order, 1991
5. Index 4. Census Consolidated Subdivisions in Alphabetical Order, 1991

### 1.2.4 Equivalent Enumeration Areas, 1991 and 1986

**Description:** This publication provides comparisons between 1991 and 1986 enumeration areas, so the user can equate the new areas to the previous ones. Indexes for equivalent groups of enumeration areas are provided for 1991 and 1986.

<b>Catalogue No.:</b>	<b>92-318</b>	<b>ISBN: 0-660-57111-0</b>	
<b>Release:</b>	November, 1992		
<b>Price:</b>	Canada: \$55.00	US: US \$66.00	Other Countries: US \$77.00

**Table Titles:**

1. Equivalent 1991 and 1986 Enumeration Areas, Sorted by 1991 Enumeration Area Code
2. Equivalent 1991 and 1986 Enumeration Areas, Sorted by 1986 Enumeration Area Code
3. Equivalent Groups of 1991 and 1986 Enumeration Areas, Sorted by 1991 Enumeration Area Code
4. Index to Equivalent Groups for 1991 Enumeration Areas, 1991 Census
5. Index to Equivalent Groups for 1986 Enumeration Areas, 1991 Census

### 1.2.6 Provincial Census Tracts

**Description:** These are print-on-demand tables, available for four regions: Atlantic Provinces, Quebec, Ontario and Western Provinces and the Territories.

**Not Catalogued**

**Release:** To be announced

### 1.2.6 Provincial Census Tracts (cont'd.)

**Price:** Based on the extraction from the Electronic Shelf. Contact your nearest Statistics Canada Regional Reference Centre for more information.

**Table Titles:**

D9144 Enumeration Area Reference Lists for Provincial Census Tracts, 1991

D9145 Index - Census Subdivisions in Alphabetical Order, 1991

### 1.3 Other Geographic Reference Products

These other geographic reference products describe geographic areas and terms. They also give information on historical comparability:

#### 1.3.1 Standard Geographical Classification: SGC, 1991

**Description:** The Standard Geographical Classification (SGC) is a system of names and codes representing areas of Canada. It consists of a three-tiered hierarchy - province, county and municipality. The SGC is used to identify information for particular geographical areas and to tabulate statistics.

The 1991 SGC, which replaces the 1986 version as the official geographical classification of Statistics Canada, is organized into three volumes.

##### 1.3.1.1 Standard Geographical Classification: SGC, 1991, Volume 1, The Classification

**Description:** *Volume I, The Classification*, is designed as a reference and coding manual. *The Classification* volume contains tables of SGC units with their names and codes and an alphabetical index of place names. It also covers related areas based upon the SGC.

**Catalogue No.:** 12-571      **ISBN:** 0-660-56557-9  
**Release:** Available  
**Price:** Canada: \$75.00    US: US \$90.00    Other Countries: US \$105.00

##### 1.3.1.2 Standard Geographical Classification: SGC, 1991, Volume 2, Reference Maps

**Description:** *Volume II, Reference Maps*, shows the boundaries, names and codes of SGC areas. See description for 92-319 for information on ordering individual map sheets.

**Catalogue No.:** 12-572      **ISBN:** 0-660-56558-7  
**Release:** Available  
**Price:** Canada: \$75.00    US: US \$90.00    Other Countries: US \$105.00

##### 1.3.1.3 Standard Geographical Classification: SGC, 1991, Volume 3, Changes - 1986 to 1991

**Description:** *Volume III, Changes - 1986 to 1991*, contains lists of changes which have affected boundaries, names and codes of municipalities.

**Catalogue No.:** 12-573      **ISBN:** 0-660-56559-5

### 1.3.1.3 Standard Geographical Classification: SGC, 1991, Volume 3, Changes - 1986 to 1991 (cont'd.)

Release: Available  
 Price: Canada: \$66.00 US: US \$79.00 Other Countries: US \$92.00

### 1.3.2 Geography Guide Book

**Description:** In easy to understand language, the *Geography Guide Book* situates and explains the applications of most of Statistics Canada's geographic areas and their geographic hierarchies. Five brief case studies show the reader what steps to follow in actual research situations. At the end of the Guide Book, all geographic terms are defined. A section describing related geographic products and services, as well as how to order them, rounds out the Guide Book.

Catalogue No.: 92-310E ISBN: 0-660-14256-2  
 92-310F 0-660-83508-6  
 Release: March, 1993  
 Price: Canada: \$10.00 US: US \$12.00 Other Countries: US \$14.00

### 1.3.3 1991 Census Geography: A Historical Comparison

**Description:** This publication will assist the user in understanding the various changes that have occurred to census geographic areas. It defines the geographic areas covered in the 1991 Census and compares them with the areas from 1986. This information is provided for standard census areas such as census subdivisions, census tracts and federal electoral districts, and for non-standard geographies such as block-faces and postal codes.

Catalogue No.: 92-311E ISBN: 0-660-14257-0  
 92-311F 0-660-93507-4  
 Release: January, 1993  
 Price: Canada: \$20.00 US: US \$24.00 Other Countries: US \$28.00

#### Table Titles:

1. Number of Subprovincial Regions by Province and Territory, 1986 and 1991
2. Number of Federal Electoral Districts by Province and Territory, 1986 and 1991
3. Census Division Changes by Province and Territory, 1986 and 1991
4. Census Subdivision Changes by Province and Territory, 1986 and 1991
5. Enumeration Area Changes by Province and Territory, 1986 and 1991
6. Census Metropolitan Areas by Province, 1991
7. Census Agglomerations by Province and Territory, 1991
8. Census Agglomeration Counts by Province and Territory, 1986 and 1991
9. Consolidated Census Metropolitan Areas and Consolidated Census Agglomerations With Their Constituent Primary Census Metropolitan Areas and Primary Census Agglomerations, 1991
10. Tracted Centres by Province, 1991
11. Census Tracts by Province, 1986 and 1991
12. Census Tract Changes, 1986 and 1991
13. Provincial Census Tract Changes by Province and Territory, 1986 and 1991
14. Census Consolidated Subdivision Changes by Province and Territory, 1986 and 1991
15. Urban Area Changes by Province and Territory, 1986 and 1991

### 1.3.3 1991 Census Geography: A Historical Comparison (cont'd.)

#### Table Titles (cont'd.):

16. Active Postal Codes by Province and Territory, 1986 and 1991

### 1.3.4 Geocoding Coverage for the 1991 Census

**Description:** This newly created document is intended to help users determine what information is available at the block-face level. A block-face is one side of a street between two consecutive intersections. Maps and definitions are also included, as well as a table indicating the availability of census data at the block-face level for 44 census metropolitan areas and census agglomerations.

**Not Catalogued/Service No.:** 627-002  
**Release:** November, 1992  
**Price:** Canada: \$25.00

#### Table Titles:

1. Population Distribution and Block-face Geocoding for Provinces and Territories, 1991 Census - 100% Data
2. Availability of Census Data at the Block-face and Enumeration Area Level, by Census Subdivision, 1991 Census - 100% Data

### 1.3.5 GEOREF (Geographic Information Reference System)

**Description:** This is a new user-friendly software and data product (called *GEO-INFO* in the first edition of the 1991 Census Catalogue) designed to provide the user with a wide selection of geographic information. The system is based on the enumeration area, from which all the higher levels of geography can be determined. For each type of geographical unit, the name and code of standard geographic areas, population counts, dwelling counts and selected land area are available. GEOREF will run on IBM®-compatible personal computers using DOS®.

**Catalogue No.:** Canada 92-345D      ISBN: 0-660-57281-8  
**Release:** March, 1993  
**Price:** Canada: \$500.00      US: US \$525.00      Other Countries: US \$550.00

GEOREF diskettes for any one region: \$250.00      US: US \$275.00      Other Countries: US \$300.00  
 GEOREF diskettes for any two regions: \$350.00      US: US \$375.00      Other Countries: US \$400.00  
 GEOREF diskettes for any three regions: \$450.00      US: US \$475.00      Other Countries: US \$500.00

**Catalogue No.:**  
**Atlantic Provinces** 92-321D      ISBN: 0-660-57282-6  
**Quebec** 92-322D      ISBN: 0-660-57283-4  
**Ontario** 92-323D      ISBN: 0-660-57284-2  
**Western Provinces and the Territories** 92-324D      ISBN: 0-660-57285-0

### 1.3.6 1991 Census Dictionary

**Description:** The *1991 Census Dictionary* provides detailed information on all of the concepts, variables and geographic elements of the 1991 Census. The information provided for each variable includes a definition, a historical summary, the related population, the associated census question number(s), applicable response categories or classifications and special remarks. The *1991 Census Dictionary* is indexed with a comprehensive subject index. This publication is an essential census reference tool which helps census data users to more easily understand and correctly interpret census data.

The *1991 Census Electronic Dictionary* is based on the print version. All concepts and definitions are searchable by keywords. Also, the software allows printing and saving of specified definitions to file. This electronic product is intended to support other 1991 Census electronic products. The electronic formats are IBM® personal computer compatible diskettes that operate from DOS®.

<b>Catalogue No.</b>	92-301E	<b>ISBN:</b>	0-660-14250-3
	92-301ED		0-660-14308-9
<b>Release:</b>	Available		
<b>Price:</b>	Canada: \$40.00	US: US \$48.00	Other Countries: US \$56.00

### 1.3.7 1991 Census Catalogue (Second Edition)

**Description:** The *1991 Census Catalogue* is the first stop when searching for census products and services. The catalogue provides full product descriptions including information on release date, price, medium, table titles and catalogue numbers. How to order the products is fully explained, and an order form is provided to make it simpler. Also included in the catalogue are descriptions of the various services available to census data users.

<b>Catalogue No.</b>	92-302E	<b>ISBN:</b>	0-660-14252-X
<b>Release:</b>	March, 1993 (First edition - 92-302EP - is available.)		
<b>Price:</b>	Canada: \$15.00	US: US \$18.00	Other Countries: US \$21.00
	(No additional charge if users subscribe to both editions.)		

### 1.3.8 Street Index

**Description:** This is an alphabetical listing of street and address ranges from the Street Network Files, linked to specific standard geographic areas.

Three products, each showing a different linkage, will be available:

- (1) street and address linkage to enumeration areas;
- (2) street and address linkage to census divisions and census subdivisions; and
- (3) street and address linkage to census tracts.

These listings will show street name, type, direction, odd and even address ranges, abbreviated municipality name, and the code for the geographic area requested.

The Street Index listings will be available as print-on-demand products for census metropolitan areas (CMAs) and census agglomerations (CAs) that have a corresponding Street Network File.

**1.3.8 Street Index (cont'd.)**

**Service No.:** 627-010  
**Format:** Print only  
**Release:** To be announced.  
**Price:** To be announced.

**1.3.9 Complete On-line Guide to Geography**

**Description:** This electronic product is an interactive hypertext document with the TOOLBOOK® authoring environment and runs as a WINDOWS® application. It provides a quick and easy access to a number of spatial concepts to census geography. It consists of three parts:

*Electronic Guide to Geography* - Statistics Canada's census geography basics, products and services, case studies and learning activities;

*Illustrated Glossary* - explanatory definitions and illustrations, national and metropolitan hierarchies;

*Reference Dictionary* - definitions, rules, user issues, applicable censuses and footnotes.

This guide is particularly useful for users and educators and quickly illustrates specialized geography concepts and products.

**Service No.:** To be announced  
**Format:** 3.5" IBM® compatible diskettes  
**Release:** To be announced  
**Price:** To be announced



## 2. Geography Data Products

### 2.1 Population and Dwelling Counts Series

The publications in this series present the final, unrounded counts for all of Canada. The percentage change in the population from 1986 to 1991 is also included as well as the total land area (in square kilometres). The first six publications provide the counts for population and dwellings by type of geographic area. The three remaining publications serve as reference tools for locating particular places and identifying their relationship to other geographic units; these are presented by geographic regions of Canada. Data are also available on demand from the Electronic Shelf for enumeration areas, census tracts and other geographic areas.

#### 2.1.1 Population and Dwelling Counts - A National Overview

**Description:** This publication presents the 1991 population counts for Canada, provinces and territories, as well as most of the smaller levels of geography. The tables provide an overall picture of national counts with many census-to-census comparisons.

**Catalogue No.:** 93-301 **ISBN:** 0-660-57277-X

**Release:** Available

**Price:** Canada: \$20.00 US: US \$24.00 Other Countries: US \$28.00

**Table Titles:**

1. Population and Dwelling Counts, for Canada, Provinces and Territories, 1986 and 1991 - 100% Data
2. Population Distribution, for Canada, Provinces and Territories, 1951 and 1991 - 100% Data
3. Population and Dwelling Counts, for Federal Electoral Districts, 1986 and 1991 - 100% Data
4. Population and Dwelling Counts, for Census Divisions, 1986 and 1991 - 100% Data
5. Population and Dwelling Counts, for Census Metropolitan Areas in Decreasing Order of 1991 Population, 1986 and 1991 - 100% Data
6. Population and Dwelling Counts, for Census Agglomerations 1986 and 1991 - 100% Data
7. Population Distribution Inside and Outside the Census Metropolitan Areas and Census Agglomerations, for Canada, Provinces and Territories, 1991 - 100% Data
8. Urban and Rural Population, for Provinces and Territories, 1991 - 100% Data
9. Canada's Largest Census Subdivisions by Population, 1991 - 100% Data
10. Census Subdivisions With the Greatest Percentage Population Growth, 1986-1991 - 100% Data
11. Census Subdivisions With the Greatest Percentage Population Decline, 1986-1991 - 100% Data

#### 2.1.2 Population and Dwelling Counts - Federal Electoral Districts

**Description:** The information presented in this publication covers all 295 federal electoral districts (FEDs) according to the 1987 Representation Order. Also included is a reference map of Canada (78.8 cm by 27.8 cm) showing the boundaries of FEDs.

## 2.1.2 Population and Dwelling Counts - Federal Electoral Districts (cont'd.)

Catalogue No.: 93-302 ISBN: 0-660-57278-8  
 Release: Available  
 Price: Canada: \$30.00 US: US \$36.00 Other Countries: US \$42.00

### Table Titles:

1. Population and Dwelling Counts, for Federal Electoral Districts, 1986 and 1991 - 100% Data
2. Population Counts, for Federal Electoral Districts and Census Subdivisions, 1991 - 100% Data

## 2.1.3 Population and Dwelling Counts - Census Metropolitan Areas and Census Agglomerations

**Description:** The tables in this publication provide population counts for both census metropolitan areas (CMAs) and census agglomerations (CAs), for 1986 and 1991. National and provincial rankings are also included.

Catalogue No.: 93-303 ISBN: 0-660-57279-6  
 Release: Available  
 Price: Canada: \$30.00 US: US \$36.00 Other Countries: US \$42.00

### Table Titles:

1. Population and Dwelling Counts, for Census Metropolitan Areas in Alphabetical Order, 1986 and 1991 - 100% Data
2. Population and Dwelling Counts, for Census Agglomerations in Alphabetical Order, 1986 and 1991 - 100% Data
3. Census Metropolitan Areas and Census Agglomerations in Decreasing Population Order, 1991 - 100% Data
4. Population and Dwelling Counts, for Census Metropolitan Areas and Census Agglomerations With Primary Census Metropolitan Areas, Primary Census Agglomerations and Component Census Subdivisions, 1986 and 1991 - 100% Data
5. Population Counts, for Census Metropolitan Areas and Census Agglomerations, Urbanized Core and Fringe With Primary Census Metropolitan Areas, Primary Census Agglomerations and Urban Areas, 1991 - 100% Data

## 2.1.4 Population and Dwelling Counts - Census Divisions and Census Subdivisions

**Description:** This publication covers two very popular levels of geography: the census division (counties, regional districts and other similar geographic areas) and the census subdivision (cities, municipalities, towns, townships, villages, Indian reserves and other similarly recognized regions). The tables present census subdivisions by census division with corresponding counts, as well as national and provincial rankings. A geographic index is included.

Catalogue No.: 93-304 ISBN: 0-660-57115-3  
 Release: Available  
 Price: Canada: \$50.00 US: US \$60.00 Other Countries: US \$70.00

#### 2.1.4 Population and Dwelling Counts - Census Divisions and Census Subdivisions (cont'd.)

**Catalogue No.:** 93-304D\*      **ISBN:** 0-660-57286-9  
**Release:** Available  
**Price:** Canada: \$100.00      US: US \$125.00      Other Countries: US \$150.00

**Table Titles:**

1. Population and Dwelling Counts, for Census Divisions, 1986 and 1991 - 100% Data
2. Population and Dwelling Counts, for Census Divisions and Census Subdivisions, 1986 and 1991 - 100% Data
3. Geographic Index - Census Subdivisions in Alphabetical Order, 1991\*

\*Not applicable to 93-304D.

#### 2.1.5 Population and Dwelling Counts - Urban Areas

**Description:** This publication covers areas which are defined as being urban according to population density and size.

**Catalogue No.:** 93-305      **ISBN:** 0-660-57116-1  
**Release:** Available  
**Price:** Canada: \$35.00      US: US \$42.00      Other Countries: US \$49.00

**Table Titles:**

1. Population and Dwelling Counts, for Urban Areas, 1986 and 1991 - 100% Data
2. Population Counts, for Urban Areas With Census Subdivisions, 1991 - 100% Data
3. Population Counts, for Urban Population Size Groups and Rural Areas by Census Division, 1991 - 100% Data
4. Urban and Rural Population by Census Division and Census Subdivision, 1991 - 100% Data

#### 2.1.6 Population and Dwelling Counts - Unincorporated Places

**Description:** An unincorporated place is a cluster of dwellings (i.e. settlement) lacking legal limits or local government in rural areas. This publication indicates in which province or territory, census division or census subdivision such places belong. The information presented here covers all of Canada; a similar but more detailed report is available by region in the *Place Name List* series.

**Catalogue No.:** 93-306      **ISBN:** 0-660-57117-X  
**Release:** April, 1993  
**Price:** Canada: \$45.00      US: US \$64.00      Other Countries: US \$83.00

**Table Title:**

1. Population Counts, for Unincorporated Places in Alphabetical Order, for Provinces and Territories, 1991 - 100% Data

## 2.1.7 Population and Dwelling Counts - Place Name Lists

**Description:** These publications will assist the user in researching geographic areas. Population counts are provided for each place. Shown are links to higher geographic levels such as census divisions and census consolidated subdivisions. Other geographical information includes latitude and longitude coordinates, map location (National Topographic System) and Standard Geographical Classification (SGC) codes for further reference.

<b>Release:</b>	June, 1993		
<b>Atlantic Provinces</b>	<b>Catalogue No.:</b>	93-307	<b>ISBN: 0-660-57118-8</b>
<b>Price:</b>	Canada: \$45.00	US: US \$54.00	Other Countries: US \$63.00
<b>Quebec and Ontario</b>	<b>Catalogue No.:</b>	93-308	<b>ISBN: 0-660-57119-6</b>
<b>Price:</b>	Canada: \$45.00	US: US \$54.00	Other Countries: US \$63.00
<b>Western Provinces and the Territories</b>	<b>Catalogue No.:</b>	93-309	<b>ISBN: 0-660-57120-X</b>
<b>Price:</b>	Canada: \$45.00	US: US \$54.00	Other Countries: US \$63.00

### Table Titles:

1. Population Counts and Geographic Location, for Census Subdivisions and Unincorporated Places, 1991 - 100% Data
2. Population Counts, for Census Subdivisions and Unincorporated Places by Census Division and Census Consolidated Subdivision, 1991 - 100% Data

## 2.1.8 Population and Dwelling Counts - Supplementary Tables

**Description:** The Electronic Shelf is a new data service for the 1991 Census. Users are able to select individual tables in either print or electronic form, in a variety of commonly used commercial software data formats.

**Price:** Based on the extraction from the Electronic Shelf. Contact your nearest Statistics Canada Regional Reference Centre for more information.

### Table Titles:

D9133	Population and Dwelling Counts, for Federal Electoral Districts and Enumeration Areas, 1991 - 100% Data
<b>Release:</b>	Available
D9134	Population and Dwelling Counts, for Census Tracts by Census Metropolitan Area or Census Agglomeration, 1986 and 1991 - 100% Data
<b>Release:</b>	Available
D9135	Population and Dwelling Counts, for Provincial Census Tracts, 1986 and 1991 - 100% Data
<b>Release:</b>	To be announced
D9136	Population Counts, for Census Divisions, Census Consolidated Subdivisions and Census Subdivisions, 1991 - 100% Data
<b>Release:</b>	To be announced

## 2.1.8 Population and Dwelling Counts - Supplementary Tables (cont'd.)

D9143 Population and Dwelling Counts, for Urban Areas, 1986 and 1991 - 100% Data  
Release: To be announced

## 2.2 Metropolitan Atlas Series

**Description:** Each of the 12 publications in this series is an economic and demographic study of a major Canadian census metropolitan area. Census data are displayed on easy-to-read dot distribution maps and multicolour choropleth maps. Popular themes such as income, education, age and language are visually interpreted by census tract on a series of maps and graphics in each publication. These maps summarize economic and demographic characteristics and highlight their spatial dimensions to pinpoint areas of concentration, facilitate comparisons and reveal changing patterns - helping users to better understand the cities in which they live. Overviews, definitions and summary notes are also included with these products.

**Format:** Print format only  
**Release:** March, 1994

### St. John's

<b>Catalogue No.:</b>	95-305	<b>ISBN:</b>	0-660-57178-1
<b>Price:</b>	Canada: \$48.00	US: US \$58.00	Other Countries: US \$67.00

### Halifax

<b>Catalogue No.:</b>	95-316	<b>ISBN:</b>	0-660-57189-7
<b>Price:</b>	Canada: \$48.00	US: US \$58.00	Other Countries: US \$67.00

### Montréal

<b>Catalogue No.:</b>	95-331	<b>ISBN:</b>	0-660-57204-4
<b>Price:</b>	Canada: \$48.00	US: US \$58.00	Other Countries: US \$67.00

### Québec

<b>Catalogue No.:</b>	95-334	<b>ISBN:</b>	0-660-57207-9
<b>Price:</b>	Canada: \$48.00	US: US \$58.00	Other Countries: US \$67.00

### Hamilton

<b>Catalogue No.:</b>	95-343	<b>ISBN:</b>	0-660-57216-8
<b>Price:</b>	Canada: \$48.00	US: US \$58.00	Other Countries: US \$67.00

### Ottawa-Hull

<b>Catalogue No.:</b>	95-362	<b>ISBN:</b>	0-660-57225-7
<b>Price:</b>	Canada: \$48.00	US: US \$58.00	Other Countries: US \$67.00

## 2.2 Metropolitan Atlas Series (cont'd.)

### Toronto

Catalogue No.:	95-355	ISBN:	0-660-57228-4
Price:	Canada: \$48.00	US: US \$58.00	Other Countries: US \$67.00

### Winnipeg

Catalogue No.:	95-362	ISBN:	0-660-57235-4
Price:	Canada: \$48.00	US: US \$58.00	Other Countries: US \$67.00

### Regina

Catalogue No.:	95-369	ISBN:	0-660-57242-7
Price:	Canada: \$48.00	US: US \$58.00	Other Countries: US \$67.00

### Calgary

Catalogue No.:	95-376	ISBN:	0-660-57249-4
Price:	Canada: \$48.00	US: US \$58.00	Other Countries: US \$67.00

### Edmonton

Catalogue No.:	95-379	ISBN:	0-660-57252-4
Price:	Canada: \$48.00	US: US \$58.00	Other Countries: US \$67.00

### Vancouver

Catalogue No.:	95-390	ISBN:	0-660-57263-X
Price:	Canada: \$48.00	US: US \$58.00	Other Countries: US \$67.00

### 3. Digital Geographic Products

#### 3.1 Digital Boundary Files

**Description:** The Digital Boundary Files comprise a library of geographic boundaries in digital form for most levels of geography (from the enumeration area up to the province and territory). With the appropriate software, Digital Boundary Files provide the framework for computer analysis and mapping. These files can also be used to create new geographic areas by aggregating standard geographic areas, and for other data manipulations available with the user's software.

This is the first time that an enumeration area (EA) boundary file has been available as a standard geography product.

Since these digital boundaries reflect the actual boundaries required to enumerate all the households in Canada, boundaries running through water bodies (such as lakes and oceans) may appear as straight lines, rather than following the shoreline. Thus, the digital boundary files may not be suitable for mapping applications where realistic shoreline is important, or for analysis requiring the computation of real land area.

All other Digital Boundary Files are created by aggregating the component enumeration area boundaries.

**Format:** ARC/INFO® Export; **Projections:** Lambert, Lat./Long.  
**Media:** tape 1600 or 6250 BPI, IBM®-compatible diskette 3.5" or 5.25"

**Release:** December, 1992

**Price:** The Digital Boundary Files are packaged by type of geographic boundary (e.g. enumeration areas, census subdivisions, census consolidated subdivisions, census divisions, urban areas, federal electoral districts, provinces and territories) and coverage (e.g. Canada, province or territory, census metropolitan area or census agglomeration).

- A. Enumeration Area Boundary Files, Census Subdivision Boundary Files and Census Consolidated Subdivision Boundary Files are available as standard packages for Canada and the provinces and territories. These files are priced at \$1.00 per geographic unit plus \$100.00 service fee per boundary file type. If more than one province or territory is ordered within a given type, then the service fee is applied only once. In the case of the Enumeration Area Boundary Files, the standard package also contains all other higher-order boundaries that are available (e.g. census divisions) at no extra charge. The number of geographic units and service numbers appear in the following table.

### 3.1 Digital Boundary Files (cont'd.)

Geographic Boundary File	Enumeration Areas (EA)	Census Subdivisions (CSD)	Census Consolidated Subdivision (CCS)
Geographic Coverage			
Prices in Canadian \$	Add \$100 to each order	Add \$100 to each order	Add \$100 to each order
<b>CANADA</b>	<b>45,995</b>	<b>6,006</b>	<b>2,630</b>
Newfoundland	1,155	404	87
Prince Edward Island	249	126	69
Nova Scotia	1,442	118	54
New Brunswick	1,266	287	150
Quebec	10,912	1,637	1,153
Ontario	15,119	951	526
Manitoba	2,030	293	127
Saskatchewan	2,799	953	302
Alberta	4,602	438	73
British Columbia	6,162	691	83
Yukon Territory	97	36	1
Northwest Territories	162	72	5
<b>Service No.</b>	<b>627-011</b>	<b>627-012</b>	<b>627-012</b>



### 3.1 Digital Boundary Files (cont'd.)

- B. The Provinces and Territories, Federal Electoral Districts, Urban Areas and Census Divisions Digital Boundary Files are available as standard packages for Canada. Their prices are:

Service No.		Nº. of areas	PRICE (CANADA \$)
627-012	<u>Provinces and Territories Boundary File (Canada)</u>	12	112.00
627-012	<u>Federal Electoral Districts Boundary File (Canada)</u>	295	395.00
627-012	<u>Urban Areas Boundary File (Canada)</u>	883	983.00
627-012	<u>Census Divisions Boundary File (Canada)</u>	290	390.00

- C. The Census Tracts Boundary Files are available as standard packages for Canada, the provinces and census metropolitan areas/census agglomerations (CMAs/CAs). These files are priced at \$1.00 per geographic unit plus \$100.00 service fee. If more than one province or CMA/CA file is ordered, then the service fee is applied only once. The prices are:

Service No.		PRICE (CANADA \$) (add \$100 per order)
627-013	<u>Census Tracts Boundary File</u> <u>(Census Metropolitan Areas/Census Agglomerations)</u>	
	Total - CANADA (all tracted areas)	4,068
	<b>NEWFOUNDLAND</b>	40
	St. John's (CMA)	40
	<b>NOVA SCOTIA</b>	75
	Halifax (CMA)	75
	<b>NEW BRUNSWICK</b>	67
	Saint John (CMA)	44
	Moncton (CA)	23
	<b>QUEBEC (excludes Ottawa)</b>	1,052
	Chicoutimi-Jonquière (CMA)	35
	Montréal (CMA)	749
	Ottawa-Hull (CMA) (including Ottawa = 211) - Quebec part only	51
	Québec (CMA)	152
	Sherbrooke (CMA)	31
	Trois Rivières (CMA)	34

## 3.1 Digital Boundary Files (cont'd.)

	PRICE (CANADA \$) (add \$100 per order)
<u>Census Tracts Boundary File</u>	
<u>(Census Metropolitan Areas/Census Agglomerations) (cont'd.)</u>	
<b>ONTARIO</b> (this count excludes Hull)	1,731
Brantford (CA)	21
Guelph (CA)	21
Hamilton (CMA)	163
Kingston (CA)	35
Kitchener (CMA)	82
London (CMA)	88
North Bay (CA)	20
Oshawa (CMA)	49
Ottawa-Hull (CMA) (Including Hull = 211) - Ontario part only	160
Peterborough (CA)	23
Samia-Clearwater (CA)	24
Sault Ste. Marie (CA)	23
St. Catharines-Niagara (CMA)	83
Sudbury (CMA)	38
Thunder Bay (CMA)	30
Toronto (CMA)	812
Windsor (CMA)	59
<b>MANITOBA</b>	158
Winnipeg (CMA)	156
<b>SASKATCHEWAN</b>	98
Regina (CMA)	49
Saskatoon (CMA)	49
<b>ALBERTA</b>	385
Calgary (CMA)	153
Edmonton (CMA)	195
Lethbridge (CA)	21
Red Deer (CA)	16
<b>BRITISH COLUMBIA</b>	484
Kamloops (CA)	22
Kelowna (CA)	26
Matsqui (CA)	29
Prince George (CA)	23
Vancouver (CMA)	299
Victoria (CMA)	65

Custom orders for other digital boundary files using standard boundaries are available upon request.

### 3.2 Postal Code Conversion File

**Description:** This file links the six-character postal code with the standard 1991 Census geographic areas (such as enumeration areas, municipalities, census tracts, etc.). It also provides the x,y coordinates for a point representing the location of the postal code to support mapping applications.

**Service No.:** 627-016

**Format:** EBCDIC, ASCII; **Media:** tape (1600 or 6250 BPI), cartridge (3800 BPI), IBM®-compatible diskette (3.5" or 5.25") (ASCII)

**Release:** Available

**Price:**

#### COVERAGE AREA

CANADA \$  
(Add \$100 per order)

Canada	18,900.00
Newfoundland	210.00
Prince Edward Island	80.00
Nova Scotia	530.00
New Brunswick	400.00
Quebec	4,800.00
Ontario	6,900.00
Manitoba	670.00
Saskatchewan	670.00
Alberta	1,800.00
British Columbia	2,900.00
Yukon Territory	20.00
Northwest Territories	20.00

### 3.3 Block-face Data File

**Description:** The information in this file uses the smallest geographical unit available from Statistics Canada, namely the block-face in urban centres covered by Street Network Files. A block-face is one side of a city street between two consecutive intersections. This file contains 1991 Census population and dwelling counts for block-faces. It also links the block-face to all higher levels of geography (enumeration areas and above) through geographical codes. The block-face representative point (centroid) coordinates and address ranges are also provided.

**Service No.:** 627-017

**Format:** ASCII; **Media:** tape 1600 or 6250 BPI

**Release:** March, 1993

**Price:** To be announced.

### 3.4 Street Network Files (formerly Area Master Files)

**Description:** These files provide the street network for most large urban centres in Canada. They include streets, railroad tracks and other pertinent features such as street names and address ranges. In combination with the user's appropriate software, Street Network Files are useful for route planning, delivery services and mapping. The user should be aware of the vintages of the individual Street Network Files when considering a particular application.

**Format:** a) ARC/INFO® Export, Projection: Lat./Long.

b) AMF formats: ASCII (110 bytes), EBCDIC (95 bytes), Projection: UTM

**Media:** tape 1600 or 6250 BPI, IBM®-compatible diskette 3.5" or 5.25", tape cartridge 80

**Release:** Phased release began in July, 1992

**Price:** The prices for Street Network Files are established at \$0.45 per block (polygon). A \$100.00 processing fee is added to each order.

Note in the table below that those CMA/CAs marked with an \* are only partly covered by Street Network Files. (See Appendix 4 for a detailed list of all census subdivisions covered.)

Service No.	<u>CENSUS METROPOLITAN AREAS</u>	CANADA \$ (add \$100 per order)
627-101	Calgary*	3,643.00
627-102	Chicoutimi-Jonquière*	974.00
627-103	Edmonton*	2,896.00
627-104	Halifax*	1,031.00
627-105	Hamilton	3,315.00
627-106	Kitchener	1,831.00
627-107	London	2,291.00
627-108	Montréal*	13,648.00
627-109	Oshawa	1,472.00
627-110	Ottawa-Hull	5,468.00
627-111	Québec*	3,587.00
627-112	Regina*	1,179.00
627-113	Saint-John*	662.00
627-114	Saskatoon*	1,111.00
627-115	Sherbrooke*	459.00
627-116	St. Catharines-Niagara	4,611.00
627-117	St. John's*	424.00
627-118	Sudbury*	590.00
627-119	Thunder Bay*	834.00
627-120	Toronto*	11,944.00
627-121	Trois Rivières*	826.00

## 3.4 Street Network Files (cont'd.)

		CANADA \$ (add \$100 per order)
627-122	Vancouver	8,711.00
627-123	Victoria	1,694.00
627-124	Windsor*	1,193.00
627-125	Winnipeg	3,678.00
627-126	<b>SUBTOTAL - CENSUS METROPOLITAN AREAS</b>	<b>78,096.00</b>
<b><u>CENSUS AGGLOMERATIONS</u></b>		
627-127	Belleville*	236.00
627-128	Brantford	676.00
627-129	Fredericton*	399.00
627-130	Guelph	557.00
627-131	Kamloops*	447.00
627-132	Kelowna	617.00
627-133	Kingston*	497.00
627-134	Lethbridge	483.00
627-135	Matsqui	321.00
627-136	Moncton	1,006.00
627-137	North Bay	537.00
627-138	Peterborough*	442.00
627-139	Prince George	611.00
627-140	Red Deer	355.00
627-141	Saint-Jérôme*	166.00
627-142	Sarnia	680.00
627-143	Sault Ste. Marie	581.00
627-144	Stratford	199.00
627-145	Woodstock	237.00
627-146	<b>SUB TOTAL - CENSUS AGGLOMERATIONS</b>	<b>9,049.00</b>
<b><u>OTHER</u></b>		
627-147	Benito	10.00
627-148	Brock	195.00
627-149	Fergus	69.00
627-150	Scugog	171.00
627-151	Wellesley	72.00
627-152	West Lincoln	448.00
627-153	Wilmot	135.00

### 3.4 Street Network Files (cont'd.)

627-154	SUBTOTAL - OTHER	1,100.00
627-155	GRAND TOTAL - ALL STREET NETWORK FILES	\$1,245.00

Custom orders for these files are available upon request.

### 3.5 Place Name Master File

**Description:** The Place Name Master File is a file containing the "master" list of place names with 1991 Standard Geographical Classification (SGC) codes and, where known, enumeration area (EA) codes. This list accumulates the place names published in the SGC with additional names or alternative names/spellings of places encountered by the census representatives during 1991 Census collection. The population counts of all census divisions, census consolidated subdivisions and census subdivisions, as well as unincorporated places for which a population was reported in the 1991 Census are also included. ("Unincorporated Places" refers to a cluster of five or more permanently occupied dwellings in a rural area.)

**Service No.:** 627-018  
**Format:** To be announced  
**Release:** March, 1993  
**Price:** To be announced

### 3.6 Geographic Attribute File

**Description:** The Geographic Attribute File assigns to each 1991 Census enumeration area (the basic geographical unit of census data collection) all higher geographic levels by codes and names. It also locates each enumeration area representative point according to Universal Transverse Mercator (UTM) coordinates and Lambert coordinates, as well as by longitude and latitude. The 1991 population and private occupied dwelling counts for all enumeration areas are also presented. The same information is available with software in GEOREF.

**Service No.:** 627-015  
**Format:** ASCII; Media: tape 1600 or 6250 BPI  
**Release:** March, 1993  
**Price:** To be announced

## **4. Geography Services**

### **4.1 Geocoding Service**

**Description:** The geocoding process allows users to define their own geographic area of study regardless of standard boundaries. This custom geography is produced from an aggregation at the block-face level for large urban centres and at the enumeration area level for small urban centres and rural areas. Census data for these custom areas can also be purchased.

**Service No.:** 627-201

**Release:** The boundary definition service is now available.

**Price:** Geocoding is priced at a minimum base of \$40.00 per polygon plus \$350.00.

### **4.2 Custom Services**

**Description:** If the standard geography products do not satisfy a user's need, Custom Services may be able to produce the product as a special request. Examples include special data retrievals or merges using any of the geography files (postal codes, attribute files, boundary files and street network files), special population compilations using basic census collection records and digitizing user-defined boundaries for a user's own computer software. Some custom mapping is available.

**Service No.:** 627-202

**Release:** Service is available with the release of the required files.

**Price:** The minimum cost for this service is \$350.00. Estimates will be provided based on the complexity of the request.

## 5. Glossary

### Block-Face

The general concept of a block-face is one of a small, recognizable geographical unit to which census data can be associated. The goal is to approximate, through aggregation, user-defined query areas for census data extraction and tabulation. The block-face refers to one side of a city street, normally between consecutive intersections with streets or other physical features (such as creeks or railways).

### Census Agglomeration (CA)

The general concept of a census agglomeration (CA) is one of a large urban area, together with adjacent urban and rural areas which have a high degree of economic and social integration with that urban area.

A CA is delineated around an urban area (called the urbanized core and having a population of at least 10,000, based on the previous census). Once a CA attains an urbanized core population of at least 100,000, based on the previous census, it becomes a census metropolitan area (CMA).

### Census Consolidated Subdivisions (CCS)

The concept of a census consolidated subdivision is a grouping of small census subdivisions within a containing census subdivision, created for the convenience and ease of geographic referencing.

Census consolidated subdivisions are defined within census divisions according to the following criteria:

- (1) A census subdivision with a net land area greater than 25 square kilometres can form a CCS of its own.
- (2) A census subdivision with a net land area greater than 25 square kilometres and surrounded on more than half its perimeter by another census subdivision is usually included as part of the CCS formed by the surrounding census subdivision.
- (3) Census subdivisions having a net land area smaller than 25 kilometres are usually grouped with a larger census subdivision.
- (4) A census subdivision with a population greater than 100,000 according to the last census usually forms a CCS on its own.
- (5) The census consolidated subdivision's name usually coincides with its largest census subdivision component in terms of land area.

### Census Division (CD)

Refers to the general term applying to geographic areas established by provincial law, which are intermediate geographic areas between the census subdivision and the province (e.g. divisions, counties, regional districts, regional municipalities and seven other types of geographic areas made up of groups of census subdivisions).

In Newfoundland, Manitoba, Saskatchewan and Alberta, provincial law does not provide for these administrative geographic areas. Therefore, census divisions have been created by Statistics Canada in co-operation with these provinces.



## Glossary (cont'd.)

### Census Metropolitan Area (CMA)

The general concept of a census metropolitan area (CMA) is one of a very large urban area, together with adjacent urban and rural areas which have a high degree of economic and social integration with that urban area.

A CMA is delineated around an urban area (called the urbanized core and having a population of at least 100,000, based on the previous census). Once an area becomes a CMA, it is retained in the program even if its population subsequently declines.

Smaller urban areas, centred on urbanized cores of a population of at least 10,000, are included in the census agglomeration (CA) program.

### Census Subdivision (CSD)

Refers to the general term applying to municipalities (as determined by provincial legislation) or their equivalent, e.g., Indian reserves, Indian settlements and unorganized territories.

In Newfoundland, Nova Scotia and British Columbia, the term also describes geographic areas that have been created by Statistics Canada in co-operation with the provinces as equivalents for municipalities.

### Census Tract (CT)

The general concept of a census tract (CT) is that of a permanent, small urban neighbourhood-like or rural community-like area established in large urban-centred regions with the help of local specialists interested in urban and social science research.

Census tracts are delineated jointly by a local committee and Statistics Canada according to the following criteria:

- (1) Whenever possible, census tract boundaries must follow permanent and easily recognizable physical features.
- (2) The population of a census tract must be between 2,500 and 8,000, with a preferred average of 4,000 persons, except for those census tracts in central business districts, in other major commercial and industrial zones, or in peripheral rural or urban areas that may have either a lower or higher population.
- (3) When first delineated, or subsequently subdivided, census tracts must be as homogeneous as possible in terms of the economic status and social living conditions of their populations.
- (4) Their shape must be as compact as possible.

All census metropolitan areas (CMAs) and census agglomerations (CAs) in Canada containing a census subdivision (CSD), i.e. municipality, having a population of 50,000 or more at the previous census, are eligible for a census tract program. Once a census metropolitan area or census agglomeration is added to the program, it is retained even if the population subsequently decreases below 50,000. CSDs already within a tracted CMA do not qualify for a separate CT program when they reach a population of 50,000.

## 5. Glossary (cont'd.)

### CMA/CA Component

Refers to the census subdivisions (CSDs) which form the building blocks of a census metropolitan area (CMA), census agglomeration (CA), primary census metropolitan area (PCMA) or primary census agglomeration (PCA).

### CMA/CA Parts

The concept of CMA/CA parts distinguishes between central and peripheral urban and rural areas within a census metropolitan area (CMA) or a census agglomeration (CA). There are three CMA/CA parts: urbanized core, urban fringe and rural fringe.

**Urbanized core:** A large urban area around which a CMA or a CA is delineated. The urbanized core must have a population (based on the previous census) of at least 100,000 in the case of a CMA, or between 10,000 and 99,999 in the case of a CA.

**Urban fringe:** An urban area within a CMA or CA, but outside the urbanized core.

**Rural fringe:** All territory within a CMA or CA lying outside urban areas.

### Electronic Shelf

This is a new data service for the 1991 Census. For some products, geographic detail not included in the published program will be available.

Users are able to select individual tables in either print or electronic format in a variety of commonly used commercial software data formats.

### Enumeration Area (EA)

An enumeration area (EA) is the geographic area canvassed by one census representative.

### Federal Electoral District (FED)

A federal electoral district refers to any place or territorial area entitled to return a member to serve in the House of Commons (source: Canada Elections Act, 1990). There are 295 FEDs in Canada according to the 1987 Representation Order.

Federal electoral districts are defined according to the following criteria:

- (1) the legal limits and descriptions are the responsibility of the Chief Electoral Officer and are published in the Canada Gazette;
- (2) FED limits are usually revised every 10 years after the results of the decennial census.

## Glossary (cont'd.)

### Geocoding

Geocoding refers to the technique that is used to geographically code and link census households to small geographical units. This supports the retrieval service (commonly known as the geocoding service) by user-specified query areas.

### Map Projection

#### Latitude/Longitude

A system of measuring location on the surface of the earth which recognizes that the earth is spherical.

The latitude measures the angle north or south of the equator from 0 degrees at the equator (normally in degrees, minutes and seconds) to 90 degrees at the poles. For the land mass of Canada, the latitudes range from roughly 42 to 83 degrees north.

Longitude corresponds to the angle (normally in degrees, minutes and seconds) west of the prime meridian which runs through Greenwich, England. For the land mass of Canada, the longitude ranges from roughly 52 degrees to 141 degrees west.

#### Universal Transverse Mercator (UTM)

An internationally standardized grid system which involves dividing the earth into 60 separate zones of six degrees of longitude each. Canada is divided into 16 zones bearing numbers 7 to 22 from west to east. For the UTM, the Transverse Mercator projection is employed (Gauss-Kruger type).

West-east positions (eastings) are measured from a separate point for each zone. Eastings are counted from the central meridian (called the 500,000-metre line), those to the west of it having an easting value of less than 500,000 and those to the east of it having a value greater than 500,000. Eastings are all greater than 0 and less than 1,000,000.

South-north positions (northings) are designated by their distance in metres from the equator. Because Canada's southernmost point is about 4,620,000 metres from the equator, all points in Canada have a northing value greater than 4,620,000.

#### Lambert Conformal Conic Projection

A map projection which is widely used for mapping Canada on one sheet, since it provides good directional and shape relationships for mid-latitude regions having a mainly east-to-west extent. Standard parallels at 49° N and 77° N are most commonly used, as well as a central meridian at 91° 52' W.

Locations are specified in easting and northing coordinates in metres relative to a pre-defined origin.

## 5. Glossary (cont'd.)

### Primary Census Metropolitan Area (PCMA) - Primary Census Agglomeration (PCA)

The primary census metropolitan area (PCMA) or primary census agglomeration (PCA) concept recognizes the fact that adjacent census metropolitan areas (CMAs) and census agglomerations (CAs) are socially and economically integrated within a larger consolidated CMA or CA.

Adjacent CMAs and CAs are consolidated into a single CMA or CA if the total commuting interchange between the two is equal to at least 35% of the employed labour force living in the smaller CMA or CA, based on the previous census. The original CMAs or CAs are known as PCMA or PCA subregions of the CMA or CA.

### Province

Refers to the major political division of Canada. From a statistical point of view, it is a basic unit for which data are tabulated and cross-classified.

### Provincial Census Tract (PCT)

The general concept of a provincial census tract (PCT) is that of a permanent, small, urban and/or rural neighbourhood-like or community-like area outside those census metropolitan areas (CMAs) and census agglomerations (CAs) having a census tract (CT) program. Taken together, CTs and PCTs cover all of Canada.

Provincial census tracts are delineated to encompass populations between 3,000 and 8,000, with a preferred average of 5,000. Boundaries, as much as possible, follow permanent physical features.

### Representative Point

A representative point (formerly called a centroid) is a pair of coordinate values (x,y) that represents a geographic entity for the purpose of assigning aggregate data to that entity. For the 1991 Census, representative points were generated for enumeration areas (EA) and block-faces. An enumeration area representative point is located either near a cluster(s) of buildings and/or streets, or at the visual centre of the EA. A block-face representative point is located at the mid-point of the block-face, set back a perpendicular distance of 22 meters from the street centre line.

### Rural Area

The general concept of a rural area is that of a sparsely populated area.

Statistics Canada defined rural areas as those areas of Canada lying outside urban areas.

## 5. Glossary (cont'd.)

### Standard Geographical Classification (SGC)

The Standard Geographical Classification (SGC) is Statistics Canada's official classification of geographic areas in Canada. The SGC provides unique numeric identification of three types of geographic areas. These are:

- provinces and territories;
- census divisions (CDs);
- census subdivisions (CSDs).

The three geographic areas are hierarchically related. Census subdivisions (CSDs) aggregate to census divisions (CDs), which in turn aggregate to a province or territory. This relationship is reflected in the seven-digit code:

Province/Territory	Census division	Census subdivision
XX - 2 digits	XX - 2 digits	XXX - 3 digits

### Subprovincial Region (SPR)

Refers to a subprovincial geographical unit smaller than a province (with the exception of Prince Edward Island and the Territories) made up of groupings of complete census divisions.

The subprovincial regions were created in response to the requirement for a geographical unit suitable for the analysis of regional economic activity. Such a unit is small enough to permit regional analysis, yet large enough to include a sufficient number of respondents, such that, after confidential data are suppressed, a broad range of statistics can still be released. The regions are based upon work by Camu, Weeks and Sametz in the 1950s with minor adjustments over the years to accommodate changes in census division boundaries and the views of provincial officials.

Subprovincial regions may be economic, administrative or planning regions. In some provinces, these regions are designated by law. In other provinces, the regions were created by agreement between Statistics Canada and the province or territories concerned.

### Territory

Refers to two major political divisions of Canada, namely Yukon and Northwest Territories. From a statistical point of view, these territories are equivalent to provinces, i.e. a basic unit for which data are tabulated and cross-classified.

## 5. Glossary (cont'd.)

### Unincorporated Place

The concept of unincorporated place (UP) is that of a cluster of dwellings (i.e. a settlement) lacking legal limits or local government.

A UP is defined as any cluster of five or more occupied dwellings in rural areas, locally known by a specific name, but not having a local government or legal limits. A UP has the same Standard Geographical Classification (SGC) code as the census subdivision (CSD) in which it is located. However, UPs are distinct from CSDs in that a UP has no legal status or limit.

### Urban Area (UA)

The general concept of an urban area (UA) is that of an area containing a dense concentration of population.

Statistics Canada defines an urban area as an area which has attained a population concentration of at least 1,000, and a population density of at least 400 per square kilometre, at the previous census. All territory lying outside urban areas is considered rural. Taken together, urban and rural areas cover all of Canada.

Urban areas separated by gaps of less than two kilometres are combined to form a single urban area.

## 6. APPENDICES

## ESTIMATED NUMBER OF REFERENCE MAPS BY PROVINCE OR TERRITORY

SERIES 1			SERIES 2		SERIES 3				
PROVINCE/TERRITORY	EAs-Large urban automated	EAs- Large urban manual	EAs- Small urban CSDs	EAs- Small urban CSD part	EAs- Rural	CD/ CSD	CMA /CA /CT	FED	TOTAL # MAPS
NEWFOUNDLAND	16	14	43	0	147	1	6	1	228
NOVA SCOTIA	34	17	39	8	93	1	6	1	199
PRINCE EDWARD ISLAND	0	0	9	0	15	1	2	1	28
NEW BRUNSWICK	84	8	30	2	94	1	8	1	228
QUEBEC	300	64	203	14	412	4	42	1	1,040
ONTARIO	1100	65	137	29	291	2	58	1	1,673
MANITOBA	46	0	26	3	226	2	6	1	310
SASKATCHEWAN	33	9	46	1	409	2	12	1	513
ALBERTA	120	36	57	4	317	2	13	1	550
BRITISH COLUMBIA	250	4	84	28	423	3	29	1	822
NORTHWEST TERRITORIES	0	0	6	1	1	1	1	1	11
YUKON TERRITORY	0	0	4	0	1	1	1	1	8
Total # maps	1,983	207	684	90	2,429	21	184	12	5,610



## Appendix 2

## Estimated Number of Series 1 Maps and Number of Census Tracts by Tracted CMA and CA

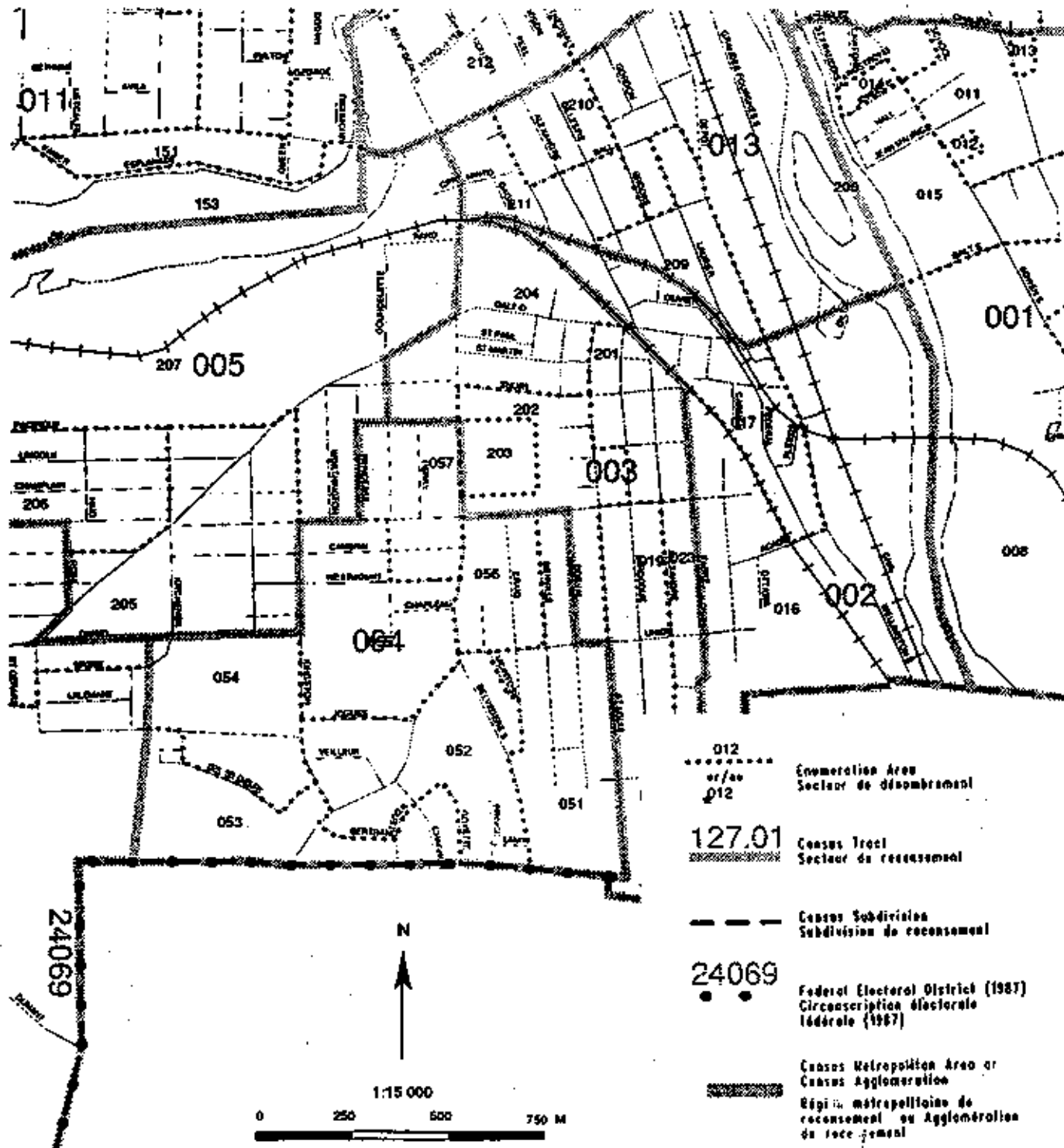
PROVINCE	CMA/CA	Estimated Number of Maps	Number of Census Tracts
Newfoundland	St. John's (CMA)	15	40
Nova Scotia	Halifax (CMA)	26	75
New Brunswick	Saint John (CMA)	17	44
	Moncton (CA)	27	23
Quebec	Chicoutimi-Jonquière (CMA)	26	35
	Montréal (CMA)	159	749
	Ottawa-Hull (CMA) (includes Ontario part)	103	211
	Québec (CMA)	64	152
	Sherbrooke (CMA)	8	31
	Trois Rivières (CMA)	13	34
Ontario	Brantford (CA)	25	21
	Guelph (CA)	18	21
	Hamilton (CMA)	60	163
	Kingston (CA)	11	35
	Kitchener (CMA)	41	82
	London (CMA)	42	88
	North Bay (CA)	24	20
	Oshawa (CMA)	33	49

	Ottawa-Hull (CMA) (includes Quebec part)	103	211
	Peterborough (CA)	11	23
	Samia-Clearwater (CA)	20	24
	Sault Ste. Marie (CA)	15	23
	St. Catharines-Niagara (CMA)	104	83
	Sudbury (CMA)	21	38
	Thunder Bay (CMA)	22	30
	Toronto (CMA)	435	812
	Windsor (CMA)	18	59
Manitoba	Winnipeg (CMA)	66	156
Saskatchewan	Regina (CMA)	23	49
	Saskatoon (CMA)	15	49
Alberta	Calgary (CMA)	47	153
	Edmonton (CMA)	39	196
	Lethbridge (CA)	15	21
	Red Deer (CA)	9	16
British Columbia	Kamloops (CA)	27	22
	Kelowna (CA)	35	26
	Matsqui (CA)	14	29
	Prince George (CA)	17	23
	Vancouver (CMA)	127	299
	Victoria (CMA)	50	65

## Appendix 3

## Series 1: Large Urban Centres (formerly G-13 and G-13A series)

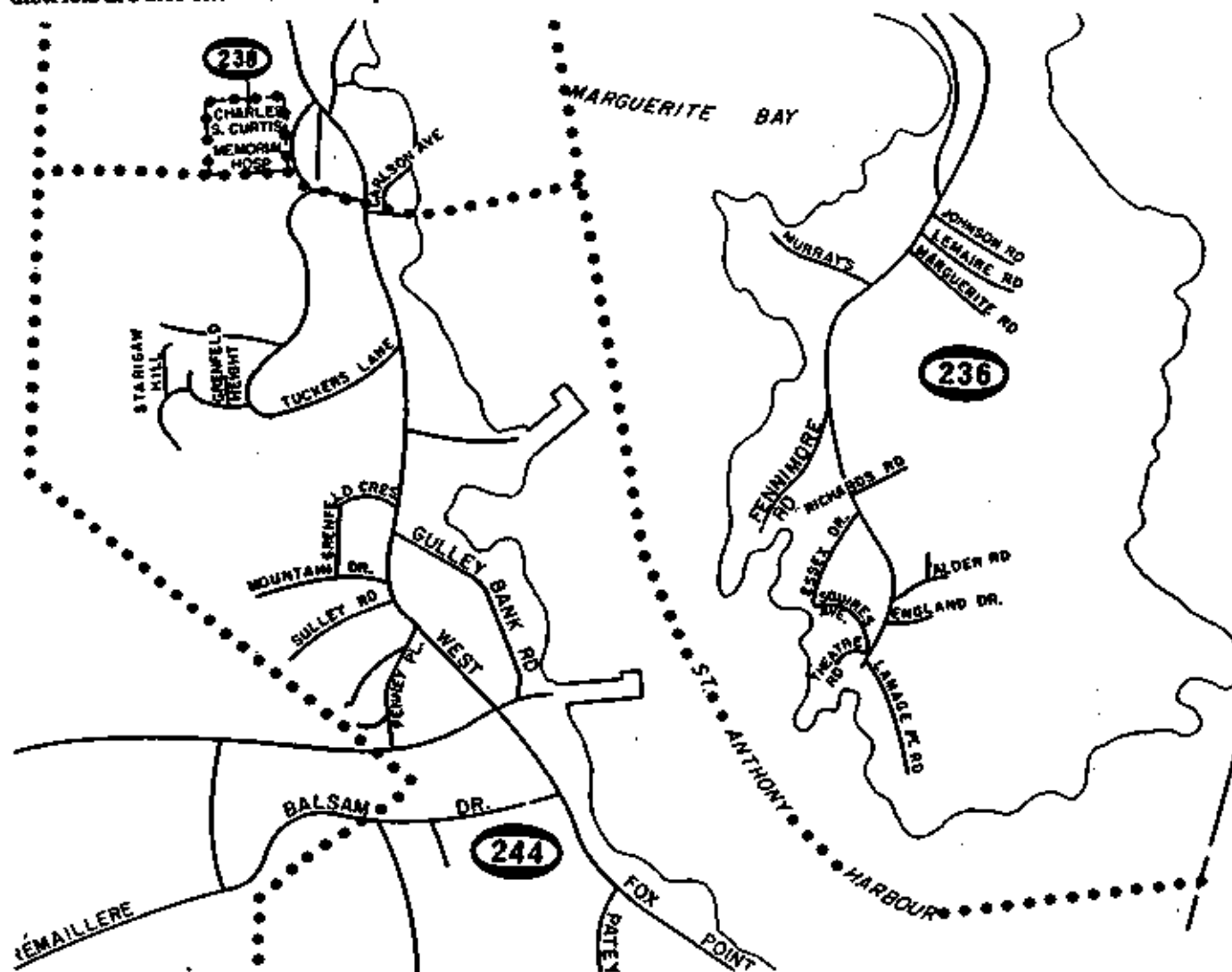
This series depicts enumeration areas within urban centres with a population of 50,000 and over. Also shown on the maps are census tract, census subdivision, federal electoral district, census metropolitan area and census agglomeration boundaries.



## Appendix 3 (cont'd.)

## Series 2: Small Urban Centres (formerly G-14 and G-16 series)

This series depicts enumeration areas within census subdivisions and unincorporated places. Federal electoral districts are also shown on the maps.



Enumeration Area

Census Subdivision

Federal Electoral District

.....

-----

● ● ●

001

24001

Secteur de dénombrement

Subdivision de recensement

Circonscription électorale fédérale

Geography Division,  
Statistics Canada

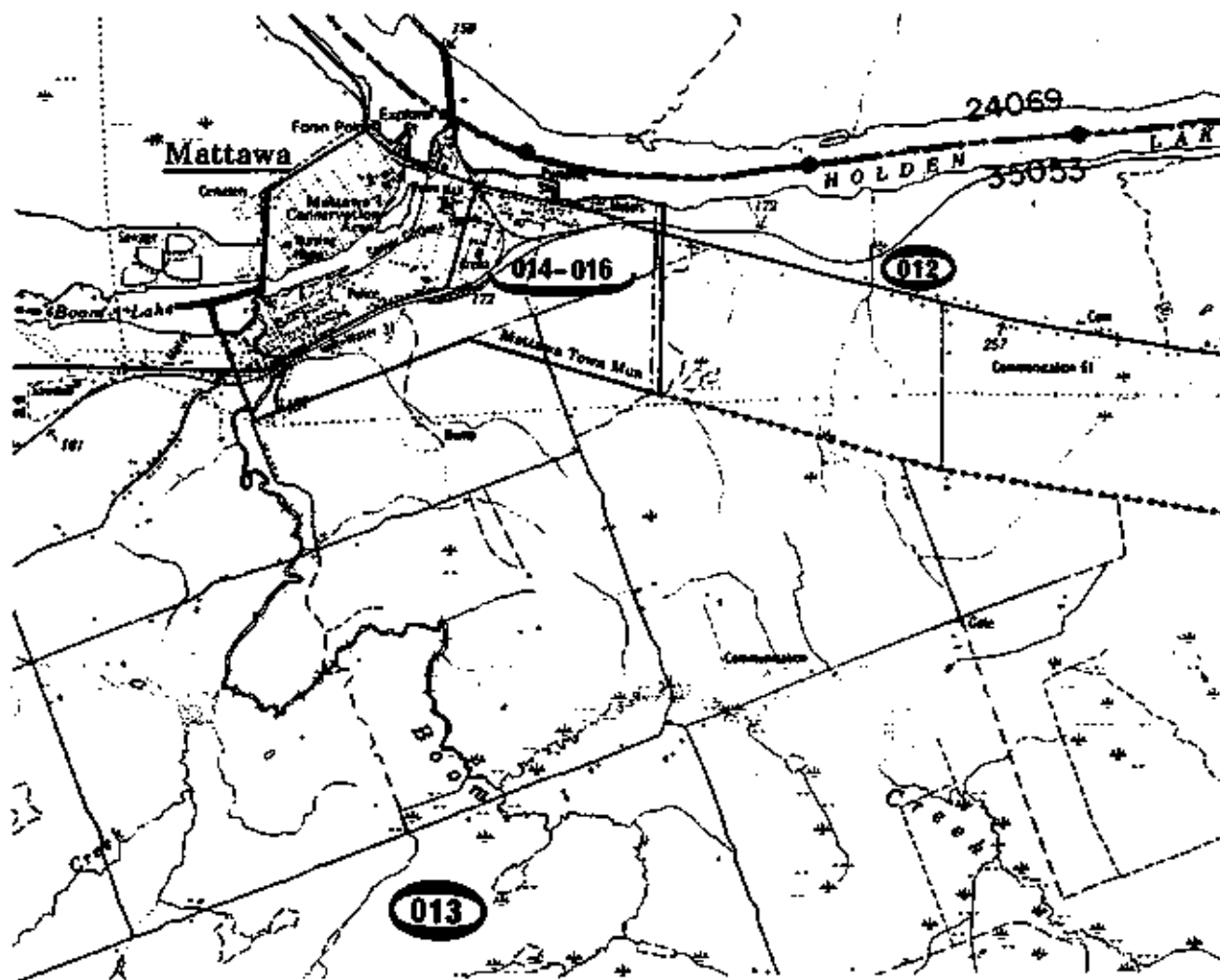
Division de la géographie,  
Statistique Canada

FED 10004 CEF

## Appendix 3 (cont'd.)

## Series 3: Rural Areas (formerly G-12 series)

This series depicts enumeration areas in rural areas. Also shown are census subdivision, census division, federal electoral district, census metropolitan area and census agglomeration boundaries.



1991 **CENSUS** CANADA  
RECENSEMENT

Enumeration Area

Census Subdivision

Census Division

Federal Electoral District

Census Metropolitan Area (CMA) or  
Census Agglomeration Area (CA)Geography Division,  
Statistics Canada

Secteur de dénombrement

Subdivision de recensement

Division de recensement

Circonscription électorale fédérale

Région métropolitaine de recensement (RMR) ou  
Agglomération de recensement (AR)Division de la géographie,  
Statistique Canada

## Appendix 4

The following list provides the census subdivisions (CSDs) found within Census Metropolitan Areas (CMAs) and Census Agglomerations (CAs) covered by the Street Network File.

### PROVINCE

#### CMA NAME

CSD Name

### NEWFOUNDLAND

#### ST. JOHN'S CMA

St. John's, C  
Wedgewood Park, T

### NOVA SCOTIA

#### HALIFAX CMA

Bedford, T  
Dartmouth, C  
Halifax, C

### NEW BRUNSWICK

#### MONCTON CA

Coverdale, PAR  
Dorchester, PAR  
Fort Folly 1, R  
Hillsborough, PAR

Dieppe, T  
Dorchester, VL  
Saint-Joseph, VL  
Hillsborough, VL

Moncton, C  
Riverview, T

Moncton, PAR  
Salisbury, VL

#### SAINT JOHN CMA

Saint John, C

#### FREDERICTON CA

Devon 30, R  
Fredericton, C  
Saint Mary's 24, R

## Appendix 4 (cont'd.)

QUEBEC**CHICOUTIMI - JONQUIÈRE CMA**

Chicoutimi, V  
 Jonquière, V  
 La Bale, V

**MONTREAL CMA**

Anjou, V  
 Beauharnois, V  
 Blainville, V  
 Bois-des-Filion, V

Brossard, V  
 Carignan, V  
 Charlemagne, V  
 Deux-Montagnes, V

L'Île-Dorval, V  
 Lachine, V  
 Kirkland, V  
 L'Île-Perrot, V

Lachenaie, V  
 Verdun, V  
 Le Gardeur, V  
 Léry, V

Lorraine, V  
 Mascouche, V  
 Mirabel, V  
 Outremont, V

Montréal, V  
 Montréal-Est, V  
 Montréal-Ouest, V  
 Hampstead, V

Ottoburn Park, V  
 Roxboro, V  
 Pincourt, V  
 Dollard-des-Ormeaux, V

Saint-Léonard, V  
 Beloeil, V  
 Boisbriand, V  
 Boucherville, V

Candiac, V  
 Chambly, V  
 Châteauguay, V  
 Dorion, V

Dorval, C  
 Greenfield Park, V  
 Beaconsfield, V  
 La Prairie, V

LaSalle, V  
 Laval, V  
 LeMoyne, V  
 Longueuil, V

Maple Grove, V  
 McMasterville, VL  
 Mont-Royal, V  
 Mont-Saint-Hilaire, V

Westmount, V  
 Montréal-Nord, V  
 Côte-Saint-Luc, C  
 Saint-Pierre, V

Pierrefonds, V  
 Sainte-Genève, V  
 Pointe-Claire, V  
 Repentigny, V

**Appendix 4 (cont'd.)****MONTREAL CMA (cont'd.)**

Richelieu, V	Rosemere, V
Saint-Amable, SD	Saint-Basile-le-Grand, V
Saint-Bruno-de-Montarville, V	Saint-Eustache, V
Saint-Hubert, V	Saint-Lambert, V
Saint-Laurent, V	Saint-Mathieu-de-Beloeil, P
Saint-Raphaël-de-L'Île-Bizard, P	Sainte-Marthe-sur-le-Lac, V
Sainte-Julie, V	Senneville, VL
Sainte-Thérèse, V	
Bale-d'Urfé, V	Sainte-Anne-de-Bellevue, V
Terrasse-Vaudreuil, SD	Verennes, V
L'Île-Cadieux, V	Vaudreuil, V
Vaudreuil-sur-le-Lac, VL	

**OTTAWA - HULL CMA (Québec Part)**

Aylmer, V	Buckingham, V
Chelsea, SD	Gatineau, V
Cantley, SD	Hull, V
La Pêche, SD	Masson, V
Pontiac, SD	Val-des-Monts, SD

**QUÉBEC CMA**

Beauport, V	Barnières, SD
Cap-Rouge, V	Charlesbourg, V
Charny, V	L'Ancienne-Lorette, V
Lorretteville, V	Wendake, R
Notre-Dame-des-Anges, P	Québec, V
Saint-Étienne-de-Lauzon, SD	Saint-Jean-Chrysostome, V
Saint-Lambert-de-Lauzon, P	Saint-Nicolas, V
Saint-Rédempteur, V	Saint-Romuald, V
Sainte-Foy, V	Sainte-Hélène-de-Breakeville, P
Sillery, V	Vanier, V

**SHERBROOKE CMA**

Sherbrooke, V



**Appendix 4 (cont'd.)****TROIS-RIVIÈRES CMA**

Cap-de-la-Madeleine, V  
Trois-Rivières, V  
Trois-Rivières-Ouest, V

**SAINT-JÉRÔME CA**

Saint-Jérôme, V

**ONTARIO****BRANTFORD CA**

Brantford, C  
Brantford, TP  
Paris, T

**GUELPH CA**

Eramosa, TP  
Guelph, C  
Guelph, TP

**HAMILTON CMA**

Ancaster, T  
Dundas, T  
Glanbrook, TP  
Hamilton, C

Burlington, C  
Flamborough, T  
Grimsby, T  
Stoney Creek, C

**KINGSTON CA**

Kingston, C  
Kingston, TP

**KITCHENER CMA**

Cambridge, C  
North Dumfries, TP  
Woolwich, TP

Kitchener, C  
Waterloo, C

**Appendix 4 (cont'd.)****LONDON CMA**

Delaware, TP  
 London, C  
 North Dorchester, TP  
 Southwold, TP

Westminster, T  
 St. Thomas, C

Lobo, TP  
 London, TP  
 Port Stanley, VL  
 West Nisouri, TP

Belmont, VL  
 Yarmouth, TP

**NORTH BAY CA**

East Ferris, TP  
 Nipissing 10, R  
 North Bay, C  
 North Himsworth, TP

**OSHAWA CMA**

Newcastle, T  
 Oshawa, C  
 Whitby, T

**OTTAWA-HULL CMA (Ontario Part)**

Clarence, TP  
 Gloucester, C  
 Kanata, C  
 Osgoode, TP

Rideau, TP  
 Rockland, T  
 West Carleton, TP

Cumberland, TP  
 Goulbourn, TP  
 Nepean, C  
 Ottawa, C

Rockcliffe Park, VL  
 Vanier, C

**PETERBOROUGH CA**

Peterborough, C

**SARNIA-CLEARWATER CA**

Moore, TP  
 Point Edward, VL  
 Sarnia-Clearwater, C  
 Sarnia 45, R

## Appendix 4 (cont'd.)

**SAULT STE. MARIE CA**

Garden River 14, R  
 Laird, TP  
 Prince, TP  
 Rankin Location 15D, R

Macdonald Meredith  
 and Aberdeen Additional, TP  
 Sault Ste. Marie, C

**ST. CATHARINES - NIAGARA CMA**

Fort Erie, T  
 Niagara Falls, C  
 Pelham, T  
 St. Catharines, C  
 Wainfleet, TP

Lincoln, T  
 Niagara-On-The-Lake, T  
 Port Colborne, C  
 Thorold, C  
 Welland, C

**SUDBURY CMA**

Sudbury, C

**THUNDER BAY CA**

Thunder Bay, C

**TORONTO CMA**

Ajax, T  
 Brampton, C  
 East York, BOR  
 Georgina, T

Aurora, T  
 East Gwillimbury, T  
 Etobicoke, C  
 Georgina Island 33, R

Halton Hills, T  
 King, TP  
 Mississauga, C  
 North York, C

Milton, T  
 Markham, T  
 Newmarket, T  
 Oakville, T

Pickering, T  
 Scarborough, C  
 Uxbridge, TP  
 Whitchurch-Stouffville, T

Richmond Hill, T  
 Toronto, C  
 Vaughan, C  
 York, C

**WINDSOR CMA**

Colchester North, TP  
 Essex, T  
 Windsor, C

**Appendix 4 (cont'd.)****WOODSTOCK CA**

Woodstock, C

**BELLEVILLE CA**

Belleville, C

**STRATFORD CA**

Stratford, C

**OUTSIDE CMA/CA****BROCK (Ontario)**

Brock, TP

**FERGUS (Ontario)**

Fergus, T

**SCUGOG (Ontario)**Scugog, TP  
Scugog 34, R**WELLESLEY (Ontario)**

Wellesley, TP

**WEST LINCOLN (Ontario)**

West Lincoln, TP

**WILMOT (Ontario)**

Wilmot, TP

**Appendix 4 (cont'd.)****MANITOBA****WINNIPEG CMA**

East St. Paul, RM  
 Rosser, RM  
 St. Francois Xavier, RM  
 West St. Paul, RM

Ritchot, RM  
 Springfield, RM  
 Tache, RM  
 Winnipeg, C

**OUTSIDE CMA/CA****BENITO (Manitoba)**

Benito, VL

**SASKATCHEWAN****REGINA CMA**

Lumeden, T  
 Regina, C  
 Sherwood No. 159, RM  
 Grand Coulee, VL

**SASKATOON CMA**

Saskatoon, C

**ALBERTA****CALGARY CMA**

Calgary, C

**EDMONTON CMA**

Edmonton, C

**LETHBRIDGE CA**

Lethbridge, C

**RED DEER CA**

Red Deer, C

## Appendix 4 (cont'd.)

BRITISH COLUMBIA**KAMLOOPS CA**

Kamloops, C  
Kamloops 1, R

**KELOWNA CA**

Duck Lake 7, R	Kelowna, C
Central Okanagan Subd. B, SRD	
Peachland, DM	Tsinstikeptum 9, R
Tsinstikeptum 10, R	

**MATSQUI CA**

Matsqui, DM	Matsqui Main 2, R
-------------	-------------------

**PRINCE GEORGE CA**

Prince George, C

**VANCOUVER CMA**

Burnaby, DM	Coquitlam, DM
Coquitlam 1, R	Delta, DM
Tsawwassen, R	Musqueam 4, R
Anmore, VL	Barnston Island 3, R
Belcarra, VL	Greater Vancouver, Subd. A, SRD
Lions Bay, VL	Katzie 2, R
Langley, C	Langley, DM
Matsqui 4, R	McMillan Island 6, R
Katzie 1, R	Langley 5, R
Maple Ridge, DM	Whonnock 1, R
New Westminster, C	North Vancouver, C
Mission 1, R	North Vancouver, DM
Burrard Inlet 3, R	Seymour Creek 2, R
Pitt Meadows, DM	Port Coquitlam, C
Coquitlam 2, R	Port Moody, C
Richmond, C	Surrey, DM

## Appendix 4 (cont'd.)

## VANCOUVER CMA (cont'd.)

University Endowment Area, SRD

Vancouver, C

West Vancouver, DM

White Rock, C

Musqueam 2, R

Capilano 5, R

Semiahmoo, R

## VICTORIA CMA

Becher Bay 1, R

Colwood, C

Metchosin, DM

View Royal, T

Capital Subd. B, SRD

Esquimalt, DM

New Songhees 1A, R

Capital Subd. C, SRD

Sooke 1, R

Central Saanich, DM

South Saanich 1, R

Cole Bay 3, R

Sooke 2, R

East Saanich 2, R

Esquimalt, R

North Saanich, DM

Union Bay 4, R

Saanich, DM

Victoria, C

Oak Bay, DM

Sidney, T

## OUTSIDE CMA/CA

Gordon River 2, R

Pacheena 1, R

Capital Subd. D, SRD

**7. Regional Reference Centres**

**Newfoundland and Labrador**  
Advisory Services  
3rd Floor, Viking Building  
Crosble Road  
St. John's, Newfoundland  
A1B 3P2  
Local calls: 772-4073  
Toll-free: 1-800-563-4255  
Fax: 1-709-772-6433

**Manitoba**  
Advisory Services  
Suite 300  
MacDonald Building  
344 Edmonton Street  
Winnipeg, Manitoba  
R3B 3L9  
Local calls: 983-4020  
Toll-free: 1-800-642-3404  
Fax: 1-204-983-7543

**Maritime Provinces**  
Advisory Services  
North American Life Centre  
3rd Floor  
1770 Market Street  
Halifax, Nova Scotia  
B3J 3M3  
Local calls: 426-5331  
Toll-free: 1-800-565-7192  
Fax: 1-902-426-9538

**Saskatchewan**  
Advisory Services  
9th Floor  
Avord Tower  
2002 Victoria Avenue  
Regina, Saskatchewan  
S4P 0R7  
Local calls: 780-5405  
Toll-free: 1-800-667-7164  
Fax: 1-306-780-5403

**Quebec**  
Advisory Services  
200 René-Lévesque Blvd. West  
Guy Favreau Complex  
Suite 412, East Tower  
Montréal, Quebec  
H2Z 1X4  
Local calls: 283-5725  
Toll-free: 1-800-361-2631  
Fax: 1-514-283-9350

**Alberta and Northwest Territories**  
Advisory Services  
8th Floor, Park Square  
10001 Bellamy Hill  
Edmonton, Alberta  
T5J 3B6  
Local calls: 495-3027  
Toll-free: 1-800-282-3907  
N.W.T.: Call collect 1-403-495-3028  
Fax: 1-403-495-3028



## 7. Regional Reference Centres (cont'd.)

**National Capital Region**  
 Statistical Reference Centre  
 Lobby, R.H. Coats Bldg.  
 Tunney's Pasture, Holland Ave.  
 Ottawa, Ontario  
 K1A 0T8  
 Local calls: 951-8116  
 If outside the local calling  
 area, dial the toll-free  
 number for your province.  
 Fax: 1-613-951-0581

**Southern Alberta**  
 Advisory Services  
 Room 401, First Street Plaza  
 138-4th Avenue South East  
 Calgary, Alberta  
 T2G 4Z6  
 Local calls: 292-6717  
 Toll-free: 1-800-472-9708  
 Fax: 1-403-292-4958

**Ontario**  
 Advisory Services  
 10th Floor  
 Arthur Melghen Building  
 25 St. Clair Avenue East  
 Toronto, Ontario  
 M4T 1M4  
 Local calls: 973-6586  
 Toll-free: 1-800-263-1136  
 Fax: 1-416-973-7475

**British Columbia and Yukon**  
 Advisory Services  
 Suite 440F, 3rd Floor  
 Federal Building  
 Sinclair Centre  
 757 West Hastings St.  
 Vancouver, British Columbia  
 V6C 3C9  
 Local calls: 666-3691  
 Toll-free: 1-800-663-1551  
 (except Atlin, B.C.)  
 Yukon and Atlin, B.C.  
 Zenith 08913  
 Fax: 1-604-666-4863

**Telecommunications Device for the Hearing Impaired 1-800-363-7629**

2- 908

STATISTICS CANADA LIBRARY  
BIBLIOTHEQUE STATISTIQUE CANADA



1010142157

## **GEOGRAPHIC PRODUCTS FEEDBACK**

Please tell us what you think of our products.  
Send your written comments or suggestions to:

Marketing Section  
Geography Division  
Statistics Canada  
3rd Floor, Jean Talon Building  
Tunney's Pasture  
Ottawa, Ontario  
K1A 0T6

or fax them to:

(613) 951-0569

To order, or for further information, contact your nearest  
Statistics Canada Regional Reference Centre.

---

## **COMMENTAIRES SUR LES PRODUITS GÉOGRAPHIQUES**

Auriez-vous l'obligeance de nous informer de ce que vous pensez de nos produits.  
Faites parvenir vos commentaires ou suggestions par écrit à :

Section de Marketing  
Division de la géographie  
Statistique Canada  
3<sup>e</sup> étage, Édifice Jean-Talon  
Parc Tunney  
Ottawa (Ontario)  
K1A 0T6

ou par télécopieur au

(613) 951-0569

Pour commander ou pour obtenir plus de renseignements, communiquez avec  
le Centre régional de consultation de Statistique Canada le plus proche.

