



Transport
Canada

Transports
Canada

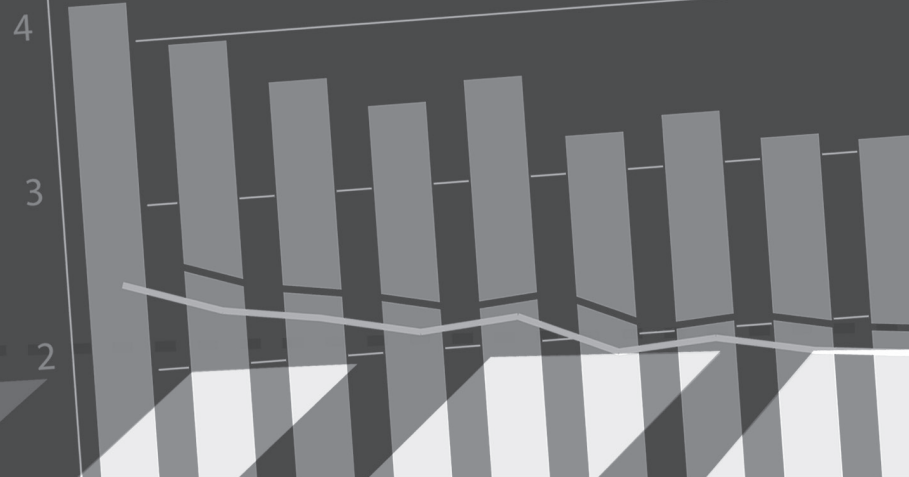


Canadian Motor Vehicle Traffic

Collision Statistics

2010

Collected in cooperation with the Canadian Council
of Motor Transport Administrators



© Her Majesty the Queen in Right of Canada, represented by the Minister of Transport, 2012.

Cette publication est aussi disponible en français sous le titre Statistiques sur les collisions de la route au Canada 2010.

For a print copy or an accessible version of this publication, please visit <http://transact-en.tc.gc.ca> or contact Transport Canada's Publications Order Desk at 1-888-830-4911 — International at 613-991-4071.

Catalogue No.: T45-3/2010E-PDF

ISBN: 1701-6223

Permission to reproduce

Transport Canada grants permission to copy and/or reproduce the contents of this publication for personal and public non-commercial use. Users must reproduce the materials accurately, identify Transport Canada as the source and not present theirs as an official version, or as having been produced with the help or the endorsement of Transport Canada.

To request permission to reproduce materials from this publication for commercial purposes, contact:

Publishing and Depository Services
Public Works and Government Services Canada
Ottawa ON K1A 0S5
droitdauteur.copyright@tpsgc-pwgsc.gc.ca

To find out more about national road safety programs or initiatives, call Transport Canada toll free at 1-800-333-0371 or e-mail us at roadsafetywebmail@tc.gc.ca. You can also visit our web site at www.tc.gc.ca/roadsafety or the Canadian Council of Motor Transport Administrators' web site at www.ccmta.ca.

More detailed motor vehicle collision data can be queried using the National Collision Database (NCDB) On-Line tool located at www.tc.gc.ca/VehicleCollisions.

INTRODUCTION

Transport Canada's National Collision Database (NCDB) contains data on all reportable motor vehicle collisions in Canada that the provinces and territories provide each year. Every year, the number of fatalities and serious injuries on Canada's roads continue to decrease despite the fact that the number of vehicles continue to increase. The year 2010 saw fewer motor vehicle casualty collisions in Canada than in previous years. The number of motor vehicle fatalities and serious injuries also continued their downward trend. In fact, they were the lowest since the data were first collected in the early 1970's. The federal, provincial and territorial governments in Canada work to improve road safety to reduce the number of fatalities and serious injuries and to achieve the safest roads in the world.

- In 2010, the number of motor vehicle fatalities was 2,227; down slightly from 2,230 in 2009.
- The downward trend for serious injuries continued as well, dropping to 11,226 in 2010; down 5.1 per cent from 2009 (11,829).
- The number of fatalities per 100,000 population was 6.5 in 2010, slightly lower than 6.6 in 2009.
- Young driver and passenger fatalities continued to be very noticeable in motor vehicle collision statistics. Nearly 23 per cent of motor vehicle fatalities were 15-to-24 year olds in 2010, even though this age group makes up only 13 per cent of the Canadian population.
- In 2010, while about 57 per cent of fatal collisions took place on rural roads, 73 per cent of recorded injury collisions took place in urban areas.



COLLISIONS AND CASUALTIES 1991–2010

YEAR	COLLISIONS		VICTIMS		
	FATAL ¹	PERSONAL INJURY ²	FATALITIES ³	SERIOUS INJURIES ⁴	INJURIES ⁵ (TOTAL)
1991	3,228	170,693	3,690	26,035	249,217
1992	3,073	169,640	3,501	25,521	249,823
1993	3,121	168,106	3,615	23,902	247,593
1994	2,837	164,642	3,230	22,830	241,899
1995	2,817	161,950	3,313	21,494	238,458
1996	2,740	153,944	3,129	18,734	227,283
1997	2,660	147,549	3,076	17,294	217,401
1998	2,583	145,615	2,919	16,197	213,319
1999	2,632	148,683	2,980	16,187	218,457
2000	2,547	153,300	2,903	15,583	222,869
2001*	2,413	148,996	2,756	15,285	216,489
2002	2,583	153,859	2,921	15,907	222,707
2003	2,489	150,545	2,779	15,125	216,210
2004	2,436	145,248	2,731	15,591	206,229
2005	2,551	145,603	2,898	15,814	204,764
2006	2,599	142,513 ^r	2,870 ^r	15,676 ^r	199,970 ^r
2007	2,462	138,612 ^r	2,755 ^r	14,235 ^r	192,744 ^r
2008	2,182	127,648 ^r	2,434 ^r	12,722 ^r	176,455 ^r
2009	2,011	123,516 ^r	2,230 ^r	11,829 ^r	171,415 ^r
2010	2,000	123,141	2,227	11,226	170,629

1. "Fatal collisions" include all reported motor vehicle crashes that resulted in at least one death, where death occurred within 30 days of the collision, except in Quebec (eight days).
2. Personal injury collisions" include all reported motor vehicle crashes which resulted in at least one injury but not death within 30 days of the collision, except in Quebec (eight days).
3. "Fatalities" include all those who died as a result of a reported traffic collision within 30 days of its occurrence, except in Quebec (eight days).
4. "Serious injuries" include persons admitted to hospital for treatment or observation. Serious injuries were estimated from 1991 to 2010 because several jurisdictions under-reported these numbers.
5. "Total injuries" include all reported severity of injuries ranging from minimal to serious.

* Data for Nunavut are not reported for 2001, except for fatalities.

^r Revised.

FATALITIES AND INJURIES BY AGE GROUP 2010

AGE GROUP (YRS)	FATALITIES	SERIOUS INJURIES	INJURIES (TOTAL)
0–4	18	110	2,342
5–14	43	391	7,200
15–19	234	1,317	19,841
20–24	277	1,466	21,532
25–34	321	1,983	30,734
35–44	293	1,618	25,775
45–54	347	1,748	26,026
55–64	269	1,220	16,861
65 +	406	1,136	14,679
NOT STATED	19	237	5,639
TOTAL	2,227	11,226	170,629

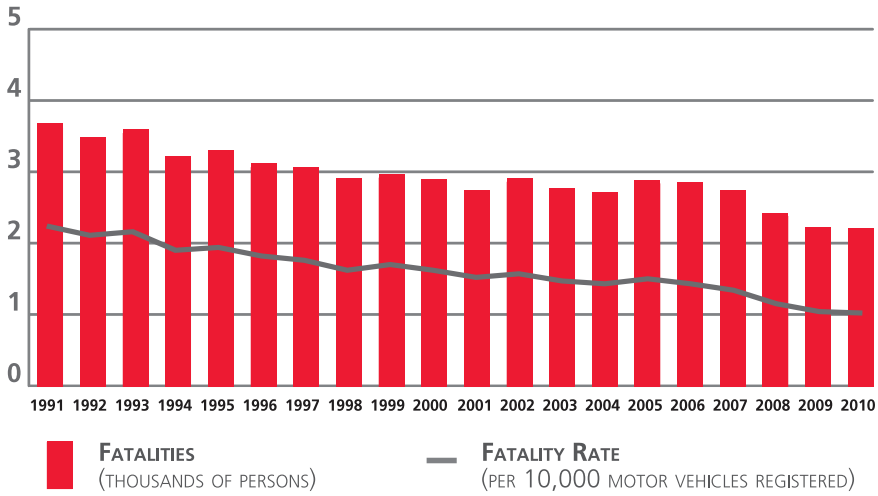
FATALITIES BY ROAD USER CLASS 2006–2010

ROAD USER CLASS		2006	2007	2008	2009	2010
DRIVERS	#	1,519 ^r	1,434 ^r	1,316 ^r	1,172 ^r	1,148
	%	52.9 ^r	52.1 ^r	54.1 ^r	52.6 ^r	51.5
PASSENGERS	#	617 ^r	608 ^r	498 ^r	442 ^r	480
	%	21.5 ^r	22.1 ^r	20.5 ^r	19.8 ^r	21.6
PEDESTRIANS	#	371 ^r	375 ^r	305 ^r	317 ^r	296
	%	12.9 ^r	13.6 ^r	12.5 ^r	14.2 ^r	13.3
BICYCLISTS	#	75 ^r	66 ^r	43 ^r	44 ^r	60
	%	2.6 ^r	2.4 ^r	1.8 ^r	2.0 ^r	2.7
MOTORCYCLISTS*	#	217 ^r	222 ^r	219 ^r	198 ^r	189
	%	7.6 ^r	8.1 ^r	9.0 ^r	8.9 ^r	8.5
NOT STATED/OTHER	#	71 ^r	50 ^r	53 ^r	57 ^r	54
	%	2.5 ^r	1.8 ^r	2.2 ^r	2.6 ^r	2.4
TOTAL	#	2,870 ^r	2,755 ^r	2,434 ^r	2,230 ^r	2,227
	%	100.0	100.0	100.0	100.0	100.0

* Includes moped riders.

^r Revised.

FATALITIES 1991-2010



CASUALTY RATES 2010

	PER 100,000 POPULATION ¹		PER BILLION VEHICLE-KILOMETRES ²		PER 100,000 LICENSED DRIVERS	
	FATALITIES	INJURIES	FATALITIES	INJURIES	FATALITIES	INJURIES
CANADA	6.5	500.0	6.6	504.1	9.5	724.8
N.L.	5.5	404.1	5.8	426.2	7.7	567.1
P.E.I.	6.3	451.9	6.9	493.7	9.1	655.0
N.S.	7.4	513.0	6.9	476.9	10.2	707.5
N.B.	12.4	458.7	11.5	425.9	16.9	626.5
QUE.	6.1	548.6	6.6	594.2	9.4	849.5
ONT.	4.3	477.3	4.5	498.3	6.2	682.9
MAN.	7.0	570.5	7.2	583.9	11.0	891.1
SASK.	16.0	625.9	12.8	499.5	23.1	905.3
ALTA.	9.2	490.5	6.6	349.5	12.4	655.8
B.C.	8.0	461.5	10.1	579.3	11.6	665.7
Y.T.	11.6	636.6	7.9	433.9	15.4	848.5
N.W.T.	6.8	257.8	9.4	353.6	12.1	455.9
NVT.	6.1	124.9	60.2	1,234.6	48.3	989.4

1. Statistics Canada, Annual Demographic Estimates: Canada, Provinces and Territories, 2011, Catalogue No. 91-215-X.

2. Statistics Canada, Canadian Vehicle Survey, Catalogue No. 53-223-XIE.

Notes: Vehicle Kilometres data for 2010 were estimated using average annual growth rates for the previous five years.

Data for Ontario are preliminary.

PERCENTAGE OF DRIVER AND PASSENGER FATALITIES AND SERIOUS INJURIES BY AGE GROUP 2010

AGE GROUP (YRS)	FATALITIES		SERIOUS INJURIES	
	DRIVERS	PASSENGERS	DRIVERS	PASSENGERS
0-4	0.0	2.6	0.0	2.9
5-14	0.0	5.1	0.2	6.9
15-19	8.8	19.8	9.4	18.9
20-24	13.5	14.6	14.2	14.7
25-34	16.6	12.6	19.7	16.1
35-44	13.9	10.9	16.5	9.8
45-54	16.8	8.7	16.3	10.0
55-64	13.1	7.5	12.5	6.7
65 +	16.9	17.6	10.8	9.9
NOT STATED	0.3	0.6	0.3	4.2
TOTAL	100.0	100.0	100.0	100.0

NUMBER OF LICENSED DRIVERS BY GENDER AND BY AGE 2010

AGE GROUP (YRS)	MALES	FEMALES	TOTAL
<16	29,103	21,063	50,166
16-19	592,496	529,891	1,122,387
20-24	954,906	884,699	1,839,605
25-34	2,052,639	1,978,825	4,031,464
35-44	2,185,512	2,094,919	4,280,431
45-54	2,538,035	2,398,377	4,936,411
55-64	2,006,515	1,863,204	3,869,719
65 +	1,841,901	1,568,929	3,410,830
NOT STATED	1	0	1
TOTAL	12,201,108	11,339,907	23,541,015

LICENSED DRIVERS AND MOTOR VEHICLE REGISTRATIONS BY TYPE OF VEHICLE (IN THOUSANDS) 1991-2010

	LICENSED DRIVERS ¹	LIGHT-DUTY VEHICLES ²	COMMERCIAL VEHICLES ³	MOTOR-CYCLES ⁴
1991	18,090	12,578	3,516	350
1992	18,465	12,781	3,461	339
1993	18,843	12,925	3,455	337
1994	19,243	13,131	3,510	330
1995	19,327	13,192	3,535	320
1996	19,964	13,251	3,620	312
1997	20,148	13,515	3,684	319
1998	20,744	13,887	3,767	334
1999	20,934	16,538	722	274
2000	20,593	16,832	739	311
2001	20,879	17,055	729	318
2002	21,163	17,543	724	350
2003	21,436	17,755	740	373
2004	21,673	17,920	752	409
2005	21,937	18,124	786	443
2006	22,278	18,739	841	485
2007	22,606	19,199	872	522
2008	22,972	19,613	907	567
2009	23,198	19,877	915	595
2010	23,541	20,272 ^e	941 ^e	637 ^e

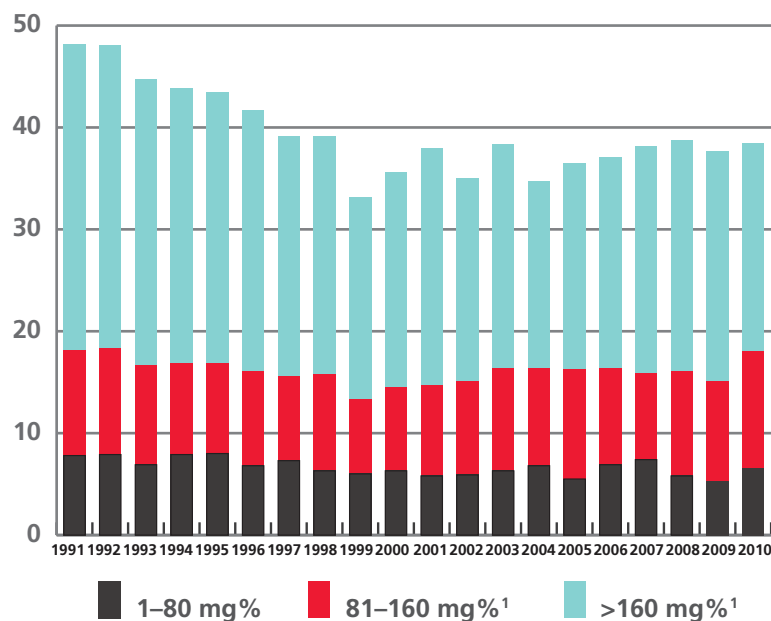
1. Excludes temporary permits prior to 1999.
2. Pre-1999, these registrations include passenger automobiles. From 1999, light-duty vehicles include passenger type vehicles (automobiles, passenger vans), light trucks and vans (less than 4,500 kg).
3. Pre-1999, these registrations include trucks, buses and other commercial vehicles, such as vans. From 1999, these registrations include commercial vehicles (trucks and buses) greater than 4,500 kg.
4. Includes mopeds.
- e Estimated.

Note: Vehicle Registration data for 2010 were estimated using average annual growth rates for the previous three years.

Source: 1989 to 1998: Statistics Canada, Catalogue No. 53-219, "Road Motor Vehicles - Registrations".
From 1999, the motor vehicle registration data are from Statistics Canada, CANSIM, Table 405-0004.
From 1999 the licensed driver data were provided by each jurisdiction.

The decline in police reporting in British Columbia in years 1996 through 2004 has affected the British Columbia totals and, to a lesser extent, national totals reported in this publication.

PERCENTAGE OF FATALLY INJURED DRIVERS TESTED AND FOUND TO HAVE BEEN DRINKING (BAC* >0 mg%) 1991-2010



* BAC: Blood Alcohol Concentration.
mg%: Weight of alcohol in the bloodstream stated as milligrams in 100 millilitres of blood.

1. Before 2001, BAC categories were reported as 81-150 mg% and >150 mg%.

Note: 2010 data are preliminary.

Source: The alcohol crash problem in Canada, Canadian Council of Motor Transport Administrators.

PERCENTAGE OF DRIVER AND PASSENGER FATALITIES AND SERIOUS INJURIES WHERE VICTIMS WERE NOT USING SEAT BELTS 2006-2010

	2006	2007	2008	2009	2010
DRIVERS					
FATALITIES	36.9	35.3	34.9	33.6	34.0
SERIOUS INJURIES	16.2	16.0	15.6	14.5	12.9
PASSENGERS					
FATALITIES	38.7	39.1	38.3	36.3	40.4
SERIOUS INJURIES	24.6	24.8	21.6	23.3	20.5

Note: "Serious Injuries" include victims admitted to hospital for treatment or observation.

PERCENTAGE OF FATALITIES AND SERIOUS INJURIES BY ROAD USER CLASS 2010

ROAD USER CLASS	FATALITIES	SERIOUS INJURIES
DRIVERS	51.5	46.0
PASSENGERS	21.6	22.6
PEDESTRIANS	13.3	13.5
BICYCLISTS	2.7	3.9
MOTORCYCLISTS	8.5	11.5
NOT STATED/OTHER	2.4	2.5
TOTAL	100.0	100.0

NUMBER OF COLLISIONS BY LOCATION 2010

LOCATION	FATAL	PERSONAL INJURY
URBAN ¹	834	91,434
RURAL ²	1,131	29,716
NOT STATED	35	1,991
TOTAL	2,000	123,141

1. Urban includes: (a) metropolitan roads and streets and other urban areas, or (b) a speed limit at the collision site of 60 km/h or less.

2. Rural includes: (a) primary or secondary highways, as well as local roads, or (b) a speed limit at the collision site exceeding 60 km/h.

Note: In Alberta, New Brunswick, Manitoba, and Saskatchewan, "urban" includes any area within the corporate boundaries of a city, town, village or hamlet. "Rural" includes any area outside of what is defined as "urban".