

Canadian Manuscript Report of  
Fisheries and Aquatic Sciences 2617

2002

GROUND FISH RESEARCH CRUISES CONDUCTED BY THE PACIFIC BIOLOGICAL  
STATION, FISHERIES AND OCEANS CANADA, 1944 - 2002

by

C.A. Sinclair<sup>1</sup> and N. Olsen<sup>2</sup>

Fisheries and Oceans Canada  
Science Branch, Pacific Region  
Pacific Biological Station  
Nanaimo, British Columbia  
V9T 6N7

<sup>1</sup>106 Newdale Place, Nanaimo, B.C., V9V 1A8

<sup>2</sup> Reprint requests.

© Her Majesty the Queen in Right of Canada, 2002  
as represented by the Minister of Fisheries and Oceans

Cat. No. Fs 97-4/2617E

ISSN-0706-6473

Correct citation for this publication:

Sinclair, C.A. and N. Olsen. 2002. Groundfish research cruises conducted by the Pacific Biological Station, Fisheries and Oceans Canada, 1944-2002. *Can. Manusc. Rep. Fish. Aquat. Sci.* 2617: 91 p.

## TABLE OF CONTENTS

ABSTRACT.....	iv
RÉSUMÉ.....	iv
1.0 INTRODUCTION.....	1
2.0 METHODS.....	1
3.0 GFCruise DATABASE.....	1
3.1 CRUISE TABLE.....	2
3.2 PRINCIPAL PUBLICATION TABLE.....	3
3.4 AUTHOR TABLE.....	3
3.5 PUBLICATION SERIES TABLE.....	4
3.6 C_PP, PP_A, MP_A ASSOCIATIVE TABLES.....	4
4.0 REPORTS.....	4
5.0 ACKNOWLEDGEMENTS.....	4
6.0 LITERATURE CITED.....	5
7.0 APPENDICES.....	10

## LIST OF FIGURES

Figure 1 Entity relationship diagram of GFCruise.....	2
---	---

## LIST OF TABLES

Table 1 Fields in GFCruise tables.....	6
--	---

m W.E., North Pacific, Canada

Cruises  
cruise reports  
ground fisheries  
data bases

iv

## ABSTRACT

Sinclair, C.A. and N. Olsen. 2002. Groundfish research cruises conducted by the Pacific Biological Station, Fisheries and Oceans, Canada, 1944-2002. *Can. Manuscr. Rep. Fish. Aquat. Sci.* 2617: 91 p.

Fisheries and Oceans Canada, at the Pacific Biological Station, conducted over 600 groundfish research and charter cruises from 1944 to 2002. Cruises have been catalogued in GFCruise, an on-line database. This report serves as a user guide to the metadata database and provides appendix tables that summarize cruise information. This metadata database will be updated as information on new or old cruises become available. Ongoing work will populate GFCruise with information on the status and location of the data pertaining to these cruises.

## RÉSUMÉ

Sinclair, C.A. and N. Olsen. 2002. Groundfish research cruises conducted by the Pacific Biological Station, Fisheries and Oceans, Canada, 1944-2002. *Can. Manuscr. Rep. Fish. Aquat. Sci.* 2617: 91 p.

Pêches et Océans Canada a conduit plus de 600 croisières de recherche à partir de sa Station biologique du Pacifique entre 1944 et 2002. Les croisières ont été cataloguées sur GFCruise, une base de données en ligne. Le présent rapport fait office de guide de l'utilisateur pour cette base de méta-données et contient des tables en annexe qui résument les données concernant chaque croisière. Cette base de méta-données sera mise à jour au fur et à mesure de la compilation des résultats des sorties anciennes et nouvelles. Les tâches en cours consistent à entrer des informations sur le statut et l'emplacement des données concernant ces croisières.



## 1.0 INTRODUCTION

We have compiled a catalogue of over 652 groundfish research cruises, conducted on the Pacific coast of Canada by, or for, the Fisheries Research Board of Canada, and the Department of Fisheries and Oceans (DFO), Canada, from 1944 to 2002. This document describes the relational database GFCruise which manages this catalogue. This compilation follows from earlier work by Kate Rutherford, who assembled in 1982, a collection of published groundfish cruise reports, and Thomson *et al.* (1999, unpublished), which focused primarily on identifying rockfish cruises.

GFCruise will be updated as information on new or old cruises become available. The catalogue provides a listing of each cruise and will eventually identify links to groundfish archival repositories or databases that contain the data from each cruise.

Funds from the National Data Holdings Project facilitated the reinvigoration of this Groundfish Data Recovery sub-project. This document represents completion of Phase 1: identification of groundfish cruises to 2002. Phase 2, 80% complete, locates and examines the status of all data pertaining to these cruises, as well as provide cost estimates to bring these data on-line. This information is currently being added to a DATA\_STATUS table. Phase 3, will provide a prioritized development sequence for the data recovery. Phase 4, will involve conversion and upload of the data to the archival database, GFBio. GFBio is a biological samples and research cruise database maintained by the Groundfish Section, within the Stock Assessment Division, Science Branch, Fisheries and Oceans Canada, at the Pacific Biological Station.

## 2.0 METHODS

The catalogue was prepared in three steps. We first updated the Thomson *et al.* 1999 catalogue by adding more recent cruises and expanding on details from published reports. In the second step, we located and added additional cruises described in published reports obtained from DFO groundfish staff and the Pacific Biological Station library, DFO WAVES on-line database; [http://inter01.dfo-mpo.gc.ca/wasvesdocs/waves\\_mainmenu.html](http://inter01.dfo-mpo.gc.ca/wasvesdocs/waves_mainmenu.html). In the final step, we asked current and retired staff to review listings and identify any missing cruises.

## 3.0 GFCRUISE DATABASE

GFCruise is a SQL Server database (Figure 1), which resides on a DFO Intranet server, (Groundfish Section, Stock Assessment Division, Pacific Region, Science Branch); <http://pacpbsgfdb/gfsaor>. Users are provided access on the DFO Intranet through a Microsoft Access'97 front end.

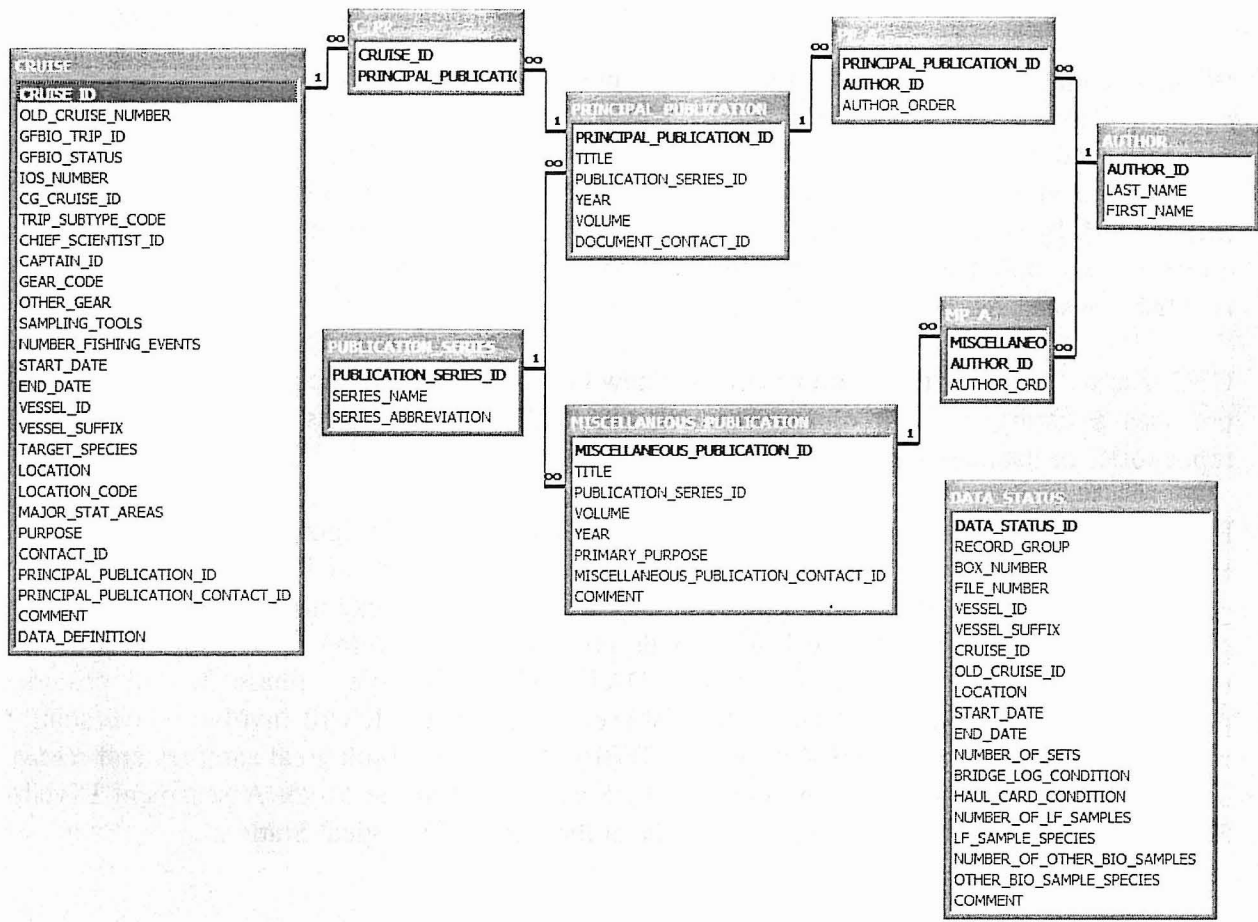


Figure 1 Entity relationship diagram of GFCruise.

### 3.1 CRUISE TABLE

The *CRUISE* table is the primary table containing the metadata for all cruises (Figure 1, Table 1). Each cruise is linked to the title of the published report (if a report has been published) that describes the data for the cruise. The title is stored in the *PRINCIPAL\_PUBLICATION* table and the authors are found in the *AUTHOR* table. The *PUBLICATION\_SERIES* table describes the type of series for the report.

*CRUISE\_ID* is a unique cruise identification number created for each cruise to eliminate problems associated with duplicate cruise numbers used in reports. For example, a shellfish trawl cruise aboard the G. B. Reed could have the same cruise number as a groundfish G. B. Reed cruise. The *CRUISE\_ID* is different from the trip identification of GFBio, *GFBIO\_TRIP\_ID*. The format for the unique cruise number is a 2 to 4 character vessel identifier, followed by a 4 character year code, followed by a 2 character sequential cruise number. For example, a cruise on the CCGS W. E. Ricker in the year 2000 would be coded WER2000-01. If data for a particular cruise are found in

GFBio, the *CRUISE\_ID* of GFCruise is linked to the *GFBIO\_TRIP\_ID* of GFBio. The data from GFCruise now complements the data found in GFBio for that particular cruise.

Two fields in the table provide information on the status and availability of the cruise data. *GFBIO\_STATUS* indicates the current status of the data in GFBio. A code of “*Complete*”, indicates that all data are in GFBio. “*Partial*”, indicates that only some of the data, usually one or two selected species, are found in GFBio. “*Not in GFBio*”, indicates that none of the related data are in GFBio. *DATA\_DEFINITION* specifies in general if raw and/or electronic data are available and where they can be found. This field also describes any discrepancies or caveats about the data. The *DATA\_STATUS* table, being developed in Phase 2 and 3, will provide further details of the raw and electronic data and will be used to establish a priority sequence for each cruise for input into GFBio.

### 3.2 *PRINCIPAL PUBLICATION* TABLE

The *PRINCIPAL\_PUBLICATION* table captures all pertinent information about the principal publication of the cruise, if there is one available (Figure 1, Table 1). It is usually a cruise or data report. The table includes title, publication year, publication series, volume number, whether or not a copy is available, and a link to the *AUTHOR* table. In some cases, there are additional secondary publications related to a cruise. These publications are identified in the *COMMENT* field of the *CRUISE* table and are linked through the *C\_PP* associative table (Figure 1).

### 3.3 *MISCELLANEOUS PUBLICATION* TABLE

The *MISCELLANEOUS\_PUBLICATION* table captures information similar to the *PRINCIPAL\_PUBLICATION* table (Figure 1, Table 1) as described above. However, data in this table relate to publications which are not directly associated to a groundfish cruise but may be of interest to groundfish investigators. They typically relate to non-groundfish cruises that appear to contain groundfish data. For example, they may relate to cruises that focused primarily on herring or salmon. We have kept track of these documents to assist future data recovery efforts. The *PRIMARY\_PURPOSE* describes the main purpose of the publication. The *COMMENT* field provides additional information.

### 3.4 *AUTHOR* TABLE

The *AUTHOR* table lists all of the authors that have contributed to the reports found in the *PRINCIPAL\_PUBLICATION* and *MISCELLANEOUS\_PUBLICATION* tables. (Figure 1, Table 1).

### 3.5 *PUBLICATION SERIES* TABLE

The *PUBLICATION\_SERIES* table describes the type of publication series for the report. For example, whether it is a manuscript, technical, or data report (Figure 1, Table 1).

### 3.6 *C\_PP, PP\_A, MP\_A* ASSOCIATIVE TABLES

The tables *C\_PP*, *PP\_A* and *MP\_A* are associative tables which link the main tables (Figure 1, Table 1).

The *C\_PP* table links a cruise to any additional secondary publications related to the cruise.

The *PP\_A* table links the principal publication to the authors of the publication.

The *MP\_A* table links the publications found in the *MISCELLANEOUS\_PUBLICATION* table to the authors of the publication.

## 4.0 REPORTS

A collection of standard GFCruise reports is available on the DFO Intranet server; <http://pacpbsgfdb/gfsaor>. Current reports include:

- Historic Groundfish Cruises (summary) – lists all cruises in GFCruise (Appendix 1).
- Historic Groundfish Cruises (detail) – lists a detailed report of cruises in GFCruise.
- Groundfish Cruise Primary Publications – lists primary cruise publications from the *PRINCIPAL\_PUBLICATION* table (Appendix 2).
- Groundfish Cruise Miscellaneous Publications – lists a detailed report of publications from the *MISCELLANEOUS\_PUBLICATION* table.
- Number of Cruises Conducted by Vessel – lists a summary of the total number of research, charter, observed domestic (commercial) and non-observed domestic (port sample)cruises for each vessel (Appendix 3).

## 5.0 ACKNOWLEDGEMENTS

We appreciate the guidance and support Rick Stanley provided throughout the project and helpful comments in the writing of this manuscript. Kate Rutherford, Wendy Mitton, Brian Krishka were helpful in providing cruise data and insight to early cruises. A special thanks to Jergen Westrheim for reviewing G. B. Reed cruises and his attention to detail. Ken Cooke for his review and editorial comments and Jon Schnute for bringing to our attention the need for this work.

## 6.0 LITERATURE CITED

Thomson, A. J., N. Olsen and J. T. Schnute. (1999, unpublished). A database of Pacific Biological Station groundfish research cruise data collections and the development of a methodology for their input into the GFBio Oracle Database. Can. Manuscr. Rep. Fish. Aquat. Sci. xxxx:xx p.

Table 1 Fields in GFCruise tables.

*CRUISE* Table

<b>Field</b>	<b>Field Description</b>
CRUISE_ID	Unique cruise identification number. Format is a 2 to 4 character vessel identifier followed by a 4 character year code, followed by a 2 character sequential cruise number, example WER2000-01.
OLD_CRUISE_NUMBER	Cruise number used in report when cruise was conducted.
GFBIO_TRIP_ID	Unique trip identification number assigned to cruise in GFBio.
GFBIO_STATUS	Status of data in GFBio. <i>Complete</i> (all data), <i>Partial</i> (known partial data), <i>Not in GFBio</i> (no data in GFBio).
IOS_NUMBER	IOS number assigned to vessel.if cruise collected CTD data.
CG_CRUISE_ID	Canadian Coast Guard cruise number given to a cruise.
TRIP_SUBTYPE_CODE	Type of trip. Example, charter, research. Name retrieved from GFBio Trip Sub-Type Table.
CHIEF_SCIENTIST_ID	Person in charge of cruise. Name of chief scientist retrieved from GFBio Employee Table.
CAPTAIN_ID	Captain of vessel. Name of captain retrieved from GFBio Captain Table.
GEAR_CODE	Principal type of gear. Gear name retrieved from GFBio Gear Table.
OTHER_GEAR	Other gear types that may have been used during the cruise.
SAMPLING_TOOLS	Types of sampling, if any, performed during cruise. Example, tagging, otolith.
NUMBER_FISHING_EVENTS	Number of sets, tows or fishing events that took place during the survey.
START_DATE	Year, month, day cruise started (dd/mm/yyyy). If possible, departure date.
END_DATE	Year, month, day cruise ended (dd/mm/yyyy). If possible, return date.
VESSEL_ID	Unique code assigned to a vessel (from GFBio).
VESSEL_SUFFIX	Unique code assigned to link VESSEL_ID with CFV (from GFBio). The correct vessel name is retrieved.
TARGET_SPECIES	Names of targeted research species for the cruise.
LOCATION	Names of locations fished during cruise.
LOCATION_CODE	Fishing locations for GFBio.
MAJOR_STAT_AREAS	Major statistical areas fished (PMFC).
PURPOSE	Intent of the cruise.
CONTACT_ID	Contact person in charge of data for cruise. Name retrieved

	from GFBio Employee Table.
PRINCIPAL_PUBLICATION_ID	Unique number given to publication to link title of publication and volume. Publication name and volume number retrieved from Principal Publication Table.
PRINCIPAL_PUBLICATION_CONTACT_ID	Name of DFO person who possesses report.
COMMENT	Additional comments about the cruise.
DATA_DEFINITION	Comments, discrepancies or caveats about the data.

*PRINCIPAL PUBLICATION* Table

Field	Field Description
PRINCIPAL_PUBLICATION_ID	Unique sequential number.
TITLE	Report title as printed on report.
PUBLICATION_SERIES_ID	Code assigned to publication series for the report. Series name retrieved from Publication Series Table.
YEAR	Year of publication.
VOLUME	Volume number.
DOCUMENT_CONTACT_ID	Name of DFO person who possesses report.

*MISCELLANEOUS PUBLICATION* Table

Field	Field Description
MISCELLANEOUS_PUBLICATION_ID	Unique sequential number.
TITLE	Report title as printed on report.
PUBLICATION_SERIES_ID	Code assigned to publication series for the report. Series name retrieved from Publication Series Table.
VOLUME	Volume number.
YEAR	Year of publication.
PRIMARY_PURPOSE	Summary about the purpose of the report or information the report describes.
MISCELLANEOUS_PUBLICATION_CONTACT_ID	Name of DFO person who possesses report.
COMMENT	Additional information taken from the report that can be of use to investigators.

*AUTHOR* Table

<b>Field</b>	<b>Field Description</b>
AUTHOR_ID	Unique sequential number.
LAST_NAME	Author last name.
FIRST_NAME	Author initials as printed on report.

*PUBLICATION SERIES* Table

<b>Field</b>	<b>Field Description</b>
PUBLICATION_SERIES_ID	Unique sequential number.
SERIES_NAME	Name of the series.
SERIES_ABBREVIATION	Abbreviated code given to the series.

*C\_PP* Table

<b>Field</b>	<b>Field Description</b>
CRUISE_ID	Unique cruise identification number. Format is a 2 to 4 character vessel identifier followed by a 4 character year code, followed by a 2 character sequential cruise number, example WER2000-01
PRINCIPAL_PUBLICATION_ID	Unique sequential number.

*PP\_A* Table

<b>Field</b>	<b>Field Description</b>
PRINCIPAL_PUBLICATION_ID	Unique sequential number.
AUTHOR_ID	Unique sequential number.
AUTHOR_ORDER	Order of authors from the publication.



*MP\_A* Table

<b>Field</b>	<b>Field Description</b>
MISCELLANEOUS_PUBLICATION_ID	Unique sequential number.
AUTHOR_ID	Unique sequential number.
AUTHOR_ORDER	Order of authors from the publication.

7.0 APPENDICES

Appendix 1. Historic Groundfish Cruises (summary)

Appendix 2. Groundfish Cruise Primary Publications

Appendix 3. Number of Cruises Conducted by Vessel

## Appendix 1. Historic Groundfish Cruises

<i>START DATE</i>	<i>VESSEL NAME</i>	<i>TARGET_SPECIES</i>	<i>LOCATION</i>	<i>CRUISE_ID</i>
<b>1944</b>				
01/10/1944	PHYLLIS CARLYLE	Skate, Pacific cod, flathead, ratfish	Mainland Inlets South of Smith Sound to Seymour	PCL1944-01
01/11/1944	PHYLLIS CARLYLE	Ratfish, Pacific cod, flounder, lingcod, lemon sole, dogfish, skate, flathead sole, herring, blackcod, rock sole	Mainland Inlets South of Smith Sound to Seymour	PCL1944-02
01/04/1944	ZENARDI	Butter sole, flounder	Queen Charlotte Island Inlets	ZEN1944-01
<b>1945</b>				
01/02/1945	PHYLLIS CARLYLE	Butter sole, flounder	Queen Charlotte Island Inlets	PCL1945-01
01/03/1945	PHYLLIS CARLYLE	Shrimp, sole, flounder, butter sole, skate	Mainland Inlets North of and including Smith Sound, Queen Charlotte Island Inlets	PCL1945-02
<b>1946</b>				
01/01/1946	SEINER	Pacific cod, butter sole	Queen Charlotte Island Inlets	SEI1946-01
<b>1947</b>				
01/05/1947	AP KNIGHT	Sole, ratfish	Mainland Inlets North of and including Smith Sound	APK1947-01
01/06/1947	INVESTIGATOR #1	Rock sole, sand sole, flounder, crab	Queen Charlotte Island Inlets	INV1947-01
01/07/1947	INVESTIGATOR #1	Dover sole, rex sole, flounder, halibut, skate, lingcod, petrale sole, dogfish, slender sole, blackcod, lemon sole, halibut	Clayoquot Sound, Nootka Sound, Esperanza Inlet	INV1947-02
01/11/1947	INVESTIGATOR #1	Skate, flathead sole, whiting, Pacific cod	Mainland Inlets North of and including Smith Sound	INV1947-03
01/12/1947	INVESTIGATOR #1	Pacific cod, ratfish, rock sole	Mainland Inlets South of Smith Sound to Seymour	INV1947-04
01/02/1947	THELMA S	Skate, flounder, tomcod, lemon sole, butter sole	Queen Charlotte Island Inlets	TMS1947-01
<b>1948</b>				
01/04/1948	INVESTIGATOR #1	Dogfish, lemon sole, flounder, skate, shrimp, eel-pout, flathead sole, whiting, tomcod, Pacific cod, rock sole	Mainland Inlets South of Smith Sound to Seymour	INV1948-01
01/04/1948	REUBINA	Pacific cod, rock cod	Mainland Inlets South of Smith Sound to Seymour	RBN1948-01
<b>1950</b>				
01/04/1950	INVESTIGATOR #1	Rock sole, lemon sole, flathead sole, skate, starry flounder, Pacific cod, Dover sole	Mainland Inlets North of and including Smith Sound	INV1950-01
01/06/1950	INVESTIGATOR #1	Dogfish, ratfish, tomcod, lemon sole	Nootka Sound, Esperanza Inlet	INV1950-02
01/09/1950	INVESTIGATOR #1	Skate, Pacific cod, lemon sole, flounder, rock sole, sponges, crab	Mainland Inlets North of and including Smith Sound, Queen Charlotte Island Inlets	INV1950-03

<i>START DATE</i>	<i>VESSEL NAME</i>	<i>TARGET_SPECIES</i>	<i>LOCATION</i>	<i>CRUISE_ID</i>
<b>1951</b>				
01/02/1951	INVESTIGATOR #1	Ratfish, flathead sole	Mainland Inlets North of and including Smith Sound	INV1951-01
01/05/1951	INVESTIGATOR #1	Flathead sole, lemon sole, rock sole	Mainland Inlets North of and including Smith Sound	INV1951-02
01/09/1951	INVESTIGATOR #1	Ratfish, petrale sole, skate, dogfish, lingcod	Clayoquot Sound	INV1951-03
<b>1952</b>				
01/09/1952	ATTA BOY	Lemon sole, rock sole, shrimp, prawn, crab	Queen Charlotte Island Inlets	ATT1952-01
01/02/1952	INVESTIGATOR #1	Lemon sole, skate, flathead sole, rock sole, crab	Mainland Inlets South of Smith Sound to Seymour	INV1952-01
01/08/1952	INVESTIGATOR #1	Lingcod, petrale sole, rock sole, Dover sole, butter sole, crab, lemon sole, prawn, flathead sole	Clayoquot Sound, Nootka Sound, Esperanza Inlet, Checleset Bay	INV1952-02
<b>1953</b>				
01/01/1953	CAPE NORMAN	Pacific cod, tomcod, sculpin, butter sole, flounder, sand sole, lemon sole, rock sole, dogfish, ratfish	Queen Charlotte Island Inlets	CPN1953-01
01/03/1953	INVESTIGATOR #1	Shrimp, ratfish, blackcod, lemon sole, herring, sand sole	Mainland Inlets South of Smith Sound to Seymour	INV1953-01
07/07/1953	INVESTIGATOR #1	Dogfish, lemon sole, skate	Queen Charlotte Island Inlets	INV1953-02
01/10/1953	INVESTIGATOR #1	Ratfish, Pacific cod, sole, flounder, Dover sole, lemon sole, rex sole	Mainland Inlets South of Smith Sound to Seymour	INV1953-03
<b>1954</b>				
09/07/1954	INVESTIGATOR #1	Rocksole, groundfish	Hecate Strait	INV1954-01
<b>1955</b>				
01/08/1955	INVESTIGATOR #1	Flathead sole, shrimp, Pacific hake, sablefish, ratfish	Mainland Inlets North of and including Smith Sound	INV1955-01
<b>1957</b>				
01/02/1957	INVESTIGATOR #1	Lingcod, ratfish	Mainland Inlets South of Smith Sound to Seymour	INV1957-01
01/12/1957	INVESTIGATOR #1	Pacific cod, dogfish	Mainland Inlets South of Smith Sound to Seymour	INV1957-02
<b>1958</b>				
01/08/1958	INVESTIGATOR #1	Butter sole, lemon sole, yellowfin sole, dogfish	Queen Charlotte Island Inlets	INV1958-01
<b>1959</b>				
05/06/1959	INVESTIGATOR #1	Shrimp, rock sole, lingcod, lemon sole, crab, prawn, ratfish	Barkley Sound, Clayoquot Sound, Nootka Sound, Esperanza Inlet	INV1959-01
01/07/1959	INVESTIGATOR #1	Skate, crab, flounder, flathead sole, rex sole, whiting, sole	Mainland Inlets North of and including Smith Sound, Queen Charlotte Island Inlets	INV1959-02

<i>START DATE</i>	<i>VESSEL NAME</i>	<i>TARGET_SPECIES</i>	<i>LOCATION</i>	<i>CRUISE_ID</i>
<b>1960</b>				
01/01/1960	AP KNIGHT	Ratfish, lemon sole, rockfish	Mainland Inlets North of and including Smith Sound	APK1960-01
31/01/1960	AP KNIGHT	Pacific cod		APK1960-03
01/02/1960	AP KNIGHT	Pacific cod, skate, yellowfin sole, starry flounder, ratfish, shrimp, prawn	Mainland Inlets North of and including Smith Sound	APK1960-02
23/06/1960	AP KNIGHT	Rock sole, petrale sole		APK1960-04
<b>1961</b>				
29/01/1961	AP KNIGHT	Pacific cod		APK1961-02
03/02/1961	AP KNIGHT	Pacific cod, skate, yellowfin sole, starry flounder, ratfish	Mainland Inlets North of and including Smith Sound	APK1961-01
09/02/1961	AP KNIGHT	Pacific cod		APK1961-03
02/03/1961	AP KNIGHT	Pacific hake		APK1961-04
06/05/1961	AP KNIGHT	Pacific cod		APK1961-05
04/06/1961	AP KNIGHT	Pacific cod		APK1961-06
22/07/1961	INVESTIGATOR #1	Rocksole, lemon sole		INV1961-01
<b>1962</b>				
29/01/1962	AP KNIGHT	Pelagic fish, invertebrates	Saanich Inlet, Strait of Georgia (off Ballenas Islands)	APK1962-01
09/05/1962	AP KNIGHT	Pelagic fish, invertebrates	Saanich Inlet, Strait of Georgia (off Ballenas Islands)	APK1962-02
20/05/1962	AP KNIGHT	Pacific hake, slender sole		APK1962-04
03/07/1962	AP KNIGHT	Pelagic fish, invertebrates	Strait of Georgia (off Ballenas Islands)	APK1962-03
09/09/1962	AP KNIGHT	Pacific cod		APK1962-05
<b>1963</b>				
01/05/1963	AP KNIGHT	Shrimp, Pacific hake, ratfish, eel-pout, tomcod, lemon sole, starry flounder, crab	Clayoquot Sound, Nootka Sound, Esperanza Inlet	APK1963-01
01/08/1963	AP KNIGHT	Shrimp, prawn, lemon sole, skate, whiting, flounder	Queen Charlotte Island Inlets	APK1963-02
20/09/1963	AP KNIGHT	Brill		APK1963-03
19/02/1963	G. B. REED	Groundfish, shrimp	Queen Charlotte Sound	GBR1963-03
02/07/1963	G. B. REED	Groundfish, Pacific ocean perch, halibut	Queen Charlotte Sound, Dixon Entrance, Eastern Gulf of Alaska	GBR1963-06
20/08/1963	G. B. REED	Groundfish, Pacific ocean perch, pink shrimp, sidestripe shrimp, king crab	Seward Gully to Trinity Islands, Marmot, Chiniak, Barnabas, Kiavak Gullies, Kodiak Island	GBR1963-07
16/03/1963	INVESTIGATOR #1	Groundfish, shrimp	Queen Charlotte Sound (Smith Sound)	INV1963-01
<b>1964</b>				

<i>START DATE</i>	<i>VESSEL NAME</i>	<i>TARGET_SPECIES</i>	<i>LOCATION</i>	<i>CRUISE_ID</i>
08/05/1964	AP KNIGHT	Pacific cod		APK1964-02
24/05/1964	AP KNIGHT	Pacific ocean perch, ratfish, Dover sole, Pacific hake, shrimp, rex sole, flathead sole, crab, skate	Mainland Inlets North of and including Smith Sound	APK1964-01
25/08/1964	AP KNIGHT	Lingcod, brill		APK1964-03
24/02/1964	G. B. REED	Pacific ocean perch, flatfish	Queen Charlotte Sound, West Coast Vancouver Island	GBR1964-02
06/06/1964	G. B. REED	Groundfish	Queen Charlotte Sound (continental slope to Dellwood Hills)	GBR1964-06
27/07/1964	G. B. REED	Groundfish, Pacific ocean perch, halibut	Queen Charlotte Sound, North Pacific Ocean (Chirikof Island to Unalaska Island)	GBR1964-01
27/10/1964	G. B. REED	Groundfish, herring	West Coast Queen Charlotte Islands	GBR1964-12
01/04/1964	INVESTIGATOR #1	Blackcod, whiting, prawn, shrimp	Mainland Inlets North of and including Smith Sound	INV1964-01
01/05/1964	INVESTIGATOR #1	Rockfish, shrimp, prawns, ratfish, sole, sculpin	Mainland Inlets North of and including Smith Sound	INV1964-02
14/10/1964	INVESTIGATOR #1	Blackcod, ratfish, Pacific hake, shrimp	Mainland Inlets North of and including Smith Sound	INV1964-03
11/12/1964	INVESTIGATOR #1	Pacific hake, ratfish, rockfish, shrimp, blackcod	Mainland Inlets North of and including Smith Sound	INV1964-04
<b>1965</b>				
05/05/1965	AP KNIGHT	Pacific cod		APK1965-01
05/06/1965	AP KNIGHT	Pacific cod		APK1965-02
29/01/1965	G. B. REED	Pacific ocean perch	Queen Charlotte Sound, Queen Charlotte Islands, Gulf of Alaska	GBR1965-01
14/02/1965	G. B. REED	Pacific ocean perch, halibut	Kodiak Island and Yukatat Areas of the Gulf of Alaska	GBR1965-02
08/07/1965	G. B. REED	Groundfish	Queen Charlotte Islands	GBR1965-07
23/08/1965	G. B. REED	Benthic invertebrates, Pacific ocean perch, groundfish	Queen Charlotte Sound, Cape Spencer (Alaska) to Cape Blanco (Oregon)	GBR1965-03
10/07/1965	OCEAN TRAVELLER	Groundfish	Southern Hecate Strait	OTV1965-01
03/08/1965	OCEAN TRAVELLER	Groundfish	Southern Hecate Strait	OTV1965-02
25/08/1965	OCEAN TRAVELLER	Groundfish	Southern Hecate Strait	OTV1965-03
15/09/1965	OCEAN TRAVELLER	Groundfish	Southern Hecate Strait	OTV1965-04
<b>1966</b>				
06/06/1966	AP KNIGHT	Groundfish larval, juvenile fish	Strait of Georgia	APK1966-01
22/02/1966	G. B. REED	Groundfish, rock sole, Pacific cod, dogfish, Pacific ocean perch	Hecate Strait, Dixon Entrance, Queen Charlotte Sound (Smith Sound)	GBR1966-03

<i>START DATE</i>	<i>VESSEL NAME</i>	<i>TARGET_SPECIES</i>	<i>LOCATION</i>	<i>CRUISE_ID</i>
23/08/1966	G. B. REED	Pacific ocean perch, halibut	Goose Island Bank, Dixon Entrance, Southeast Alaska, West and Southeast Coast Queen Charlotte Islands	GBR1966-02
21/09/1966	G. B. REED	Pacific ocean perch	West Coast Vancouver Island, Southwest LaPerouse	GBR1966-01
14/05/1966	OCEAN TRAVELLER	Groundfish	Southern Hecate Strait	OTV1966-01
06/06/1966	OCEAN TRAVELLER	Groundfish	Southern Hecate Strait	OTV1966-02
29/06/1966	OCEAN TRAVELLER	Groundfish	Southern Hecate Strait	OTV1966-03
18/07/1966	OCEAN TRAVELLER	Groundfish	Southern Hecate Strait	OTV1966-04
<b>1967</b>				
01/02/1967	G. B. REED	Rockfish, Pacific ocean perch	La Perouse Bank, Vancouver Island	GBR1967-01
06/09/1967	G. B. REED	Pacific ocean perch, halibut	Southern Queen Charlotte Sound, Southeastern Alaska (Cape Ommaney)	GBR1967-03
22/09/1967	SHARLENE K	Groundfish, Pacific cod, petrale sole, lingcod	La Perouse Bank	SK1967-01
<b>1968</b>				
02/02/1968	G. B. REED	Pacific cod	Hecate Strait	GBR1968-01
02/04/1968	G. B. REED	Rockfish, Pacific ocean perch, halibut	West Coast Vancouver Island	GBR1968-02
13/08/1968	ROYAL CANADIAN	Rockfish, herring	Queen Charlotte Islands	RC1968-01
<b>1969</b>				
01/04/1969	AP KNIGHT			APK1969-02
02/12/1969	AP KNIGHT	Groundfish, dogfish	Southeast Coast Vancouver Island	APK1969-01
17/01/1969	G. B. REED			GBR1969-02
11/02/1969	G. B. REED	Rockfish, Pacific ocean perch, halibut	West Coast Vancouver Island, Southwest Coast Vancouver Island	GBR1969-01
18/06/1969	G. B. REED	Pacific ocean perch, rockfish	South Queen Charlotte Sound, Southwest Vancouver Island (La Perouse Bank), California (Monterey Bay)	GBR1969-03
08/09/1969	G. B. REED	Rockfish, Pacific ocean perch, halibut	Southwest Vancouver Island, Queen Charlotte Sound	GBR1969-04
08/10/1969	G. B. REED			GBR1969-05
<b>1970</b>				
10/02/1970	AP KNIGHT	Groundfish, dogfish	Southeast Coast Vancouver Island	APK1970-01
11/05/1970	AP KNIGHT	Sablefish	Bull Harbour, Port Hardy	APK1970-03
07/07/1970	AP KNIGHT	Sablefish	Port Hardy	APK1970-04
20/07/1970	AP KNIGHT	Groundfish, dogfish	Southeast Coast Vancouver Island	APK1970-02

<i>START DATE</i>	<i>VESSEL NAME</i>	<i>TARGET_SPECIES</i>	<i>LOCATION</i>	<i>CRUISE_ID</i>
26/10/1970	AP KNIGHT			APK1970-05
02/11/1970	AP KNIGHT			APK1970-06
01/12/1970	AP KNIGHT			APK1970-07
08/12/1970	AP KNIGHT			APK1970-08
05/03/1970	G. B. REED	Rockfish, Pacific ocean perch	Southeastern Alaska, Queen Charlotte Sound, Southwest Vancouver Island	GBR1970-01
07/08/1970	G. B. REED	Groundfish	La Perouse Bank	GBR1970-03
23/08/1970	G. B. REED	Sablefish	Minstrel Island, Port Hardy, Fort Rupert	GBR1970-02
09/09/1970	G. B. REED	Rockfish, Pacific ocean perch	Southwest Coast Vancouver Island	GBR1970-05
<b>1971</b>				
18/01/1971	AP KNIGHT	Pacific herring, groundfish	Southwest Coast Vancouver Island	APK1971-01
16/03/1971	AP KNIGHT	Pacific herring	Southwest Coast Vancouver Island	APK1971-06
21/07/1971	AP KNIGHT	Pacific herring	Juan de Fuca Strait	APK1971-07
28/08/1971	AP KNIGHT	Pacific herring	Juan de Fuca Strait	APK1971-02
29/09/1971	AP KNIGHT	Pacific herring	Juan de Fuca Strait	APK1971-03
03/11/1971	AP KNIGHT	Pacific herring	Juan de Fuca Strait	APK1971-08
18/11/1971	AP KNIGHT	Spiny dogfish	Southeast Coast Vancouver Island	APK1971-05
08/12/1971	AP KNIGHT	Pacific herring	Juan de Fuca Strait	APK1971-04
01/12/1971	CHIMO NO I	Sablefish, blackcod	Bute Inlet, Hornfray Channel, Pryce Channel, Jervis Inlet	CHI1971-01
09/06/1971	G. B. REED	Groundfish, Pacific ocean perch	Queen Charlotte Sound	GBR1971-06
05/08/1971	G. B. REED	Pacific ocean perch	Cape Ommaney (Alaska), Dixon Entrance, Queen Charlotte Sound (North of Goose Island Bank)	GBR1971-08
01/10/1971	G. B. REED	Pacific ocean perch, redstripe rockfish, yellowmouth rockfish	Southern Queen Charlotte Sound	GBR1971-09
<b>1972</b>				
24/10/1972	AP KNIGHT	Groundfish, spiny dogfish	Southeast Coast Vancouver Island	APK1972-01
02/05/1972	CHIMO NO I	Sablefish, blackcod	Whale Channel, Fisher Channel and Fitz Hugh Sound, Northwest Coast Vancouver Island	CHI1972-01
13/01/1972	G. B. REED	Pacific herring	Southwest Coast Vancouver Island	GBR1972-01
06/03/1972	G. B. REED	Pacific herring	Southwest Coast Vancouver Island	GBR1972-02
11/04/1972	G. B. REED	Pacific herring	Southwest Coast Vancouver Island	GBR1972-03



<i>START DATE</i>	<i>VESSEL NAME</i>	<i>TARGET_SPECIES</i>	<i>LOCATION</i>	<i>CRUISE_ID</i>
13/06/1972	G. B. REED	Pacific ocean perch, rockfish	Queen Charlotte Sound	GBR1972-04
09/08/1972	G. B. REED	Sablefish	Northeastern Vancouver Island	GBR1972-05
09/09/1972	G. B. REED	Pacific ocean perch	Southwest Coast Vancouver Island	GBR1972-06
18/10/1972	G. B. REED	Pacific herring, dogfish	La Perouse Bank	GBR1972-07
15/09/1972	GAMBLER I			GAM1972-01
09/10/1972	GAMBLER I			GAM1972-02
09/09/1972	OGON (USSR)	Pacific ocean perch	Southwest Coast Vancouver Island	OG1972-01
26/08/1972	RUPERT BRAND V	Groundfish	Hecate Strait, Queen Charlotte Sound	RBV1972-01
11/09/1972	RUPERT BRAND V	Groundfish	Southeast edge of Goose Island Bank	RBV1972-02
27/09/1972	RUPERT BRAND V	Groundfish	Queen Charlotte Sound	RBV1972-03
18/10/1972	RUPERT BRAND V	Groundfish	Queen Charlotte Sound	RBV1972-04
07/11/1972	RUPERT BRAND V	Groundfish	Queen Charlotte Sound	RBV1972-05
28/11/1972	RUPERT BRAND V	Groundfish	Queen Charlotte Sound	RBV1972-06

**1973**

13/02/1973	AP KNIGHT	Groundfish, spiny dogfish, Pacific hake	Southeast Coast Vancouver Island	APK1973-01
22/10/1973	AP KNIGHT	Groundfish, spiny dogfish	Southeast Coast Vancouver Island	APK1973-02
17/01/1973	G. B. REED	Herring, dogfish	La Perouse Bank	GBR1973-04
13/03/1973	G. B. REED	Herring, dogfish	La Perouse Bank	GBR1973-05
05/06/1973	G. B. REED	Groundfish, rockfish	Queen Charlotte Sound, Hecate Strait	GBR1973-01
05/09/1973	G. B. REED	Pacific ocean perch	Queen Charlotte Sound (Goose Island Gully and Mitchell's Gully), Hecate	GBR1973-02
11/10/1973	G. B. REED	Pacific herring	Southwest Coast Vancouver Island	GBR1973-03
23/01/1973	GAIL BERNICE	Groundfish	Hecate Strait, Queen Charlotte Sound, Southwest Vancouver Island	GB1973-01
15/02/1973	GAIL BERNICE	Groundfish	Hecate Strait, Queen Charlotte Sound, Southwest Vancouver Island	GB1973-02
05/03/1973	GAIL BERNICE	Groundfish	Hecate Strait, Queen Charlotte Sound, Southwest Vancouver Island	GB1973-03
26/03/1973	GAIL BERNICE	Groundfish	Hecate Strait, Queen Charlotte Sound	GB1973-04
11/04/1973	GAIL BERNICE	Groundfish	Hecate Strait, Queen Charlotte Sound	GB1973-05
28/04/1973	GAIL BERNICE	Groundfish	Hecate Strait, Queen Charlotte Sound	GB1973-06

<i>START DATE</i>	<i>VESSEL NAME</i>	<i>TARGET_SPECIES</i>	<i>LOCATION</i>	<i>CRUISE_ID</i>
12/05/1973	GAIL BERNICE	Groundfish	Hecate Strait, Queen Charlotte Sound	GB1973-07
29/05/1973	GAIL BERNICE	Groundfish	Hecate Strait, Queen Charlotte Sound	GB1973-08
14/06/1973	GAIL BERNICE	Groundfish	Hecate Strait, Queen Charlotte Sound	GB1973-09
03/08/1973	GAIL BERNICE	Groundfish	Hecate Strait, Queen Charlotte Sound	GB1973-10
29/09/1973	GAIL BERNICE	Groundfish	Hecate Strait, Queen Charlotte Sound	GB1973-11
20/10/1973	GAIL BERNICE	Groundfish	Hecate Strait, Queen Charlotte Sound	GB1973-12
12/11/1973	GAIL BERNICE	Groundfish	Hecate Strait, Queen Charlotte Sound	GB1973-13
01/12/1973	GAIL BERNICE	Groundfish	Hecate Strait, Queen Charlotte Sound	GB1973-14
17/07/1973	GAMBLER I			GAM1973-03
20/08/1973	GAMBLER I			GAM1973-01
28/08/1973	GAMBLER I			GAM1973-02
05/09/1973	NORTHERN BREEZE			NB1973-01
<b>1974</b>				
12/03/1974	AP KNIGHT			APK1974-06
21/05/1974	AP KNIGHT	Groundfish, Pacific hake, walleye pollock	Strait of Georgia	APK1974-01
29/07/1974	AP KNIGHT	Pacific hake, walleye pollock	Strait of Georgia	APK1974-02
03/10/1974	AP KNIGHT	Pacific hake, walleye pollock	Strait of Georgia	APK1974-03
15/10/1974	AP KNIGHT	Groundfish, dogfish	Southeast Coast Vancouver Island	APK1974-04
18/11/1974	AP KNIGHT	Pacific hake, walleye pollock	Strait of Georgia	APK1974-05
19/07/1974	CALIGUS	Groundfish	Strait of Georgia	CLG1974-02
02/10/1974	CALIGUS	Pacific hake, walleye pollock	Gulf Islands, North shore of Vancouver Island (between Nanaimo and Cape Mudge)	CLG1974-01
09/12/1974	CALIGUS	Pacific hake, walleye pollock, Pacific cod, lingcod	Strait of Georgia, Stuart Channel	CLG1974-03
05/02/1974	G. B. REED	Groundfish, dogfish	Strait of Georgia	GBR1974-01
04/03/1974	G. B. REED	Groundfish, dogfish, Pacific pollock, Pacific cod	Strait of Georgia, Juan de Fuca Strait	GBR1974-02
04/06/1974	G. B. REED	Rockfish, groundfish	Queen Charlotte Sound	GBR1974-04
07/08/1974	G. B. REED	Herring, Pacific hake, rockfish, dogfish, pollock	Southwest Coast Vancouver Island	GBR1974-05
04/09/1974	G. B. REED	Groundfish, Pacific ocean perch	Queen Charlotte Sound, Hecate Strait	GBR1974-06
08/10/1974	G. B. REED	Herring, Pacific hake, rockfish, dogfish, pollock	Southwest Coast Vancouver Island	GBR1974-07

<i>START DATE</i>	<i>VESSEL NAME</i>	<i>TARGET_SPECIES</i>	<i>LOCATION</i>	<i>CRUISE_ID</i>
06/02/1974	GAIL BERNICE	Groundfish	Southern Hecate Strait, Queen Charlotte Sound, Southwest Vancouver Island	GB1974-01
20/02/1974	GAIL BERNICE	Groundfish	Southern Hecate Strait, Queen Charlotte Sound, Southwest Vancouver Island	GB1974-02
12/03/1974	GAIL BERNICE	Groundfish	Southern Hecate Strait, Queen Charlotte Sound, Southwest Vancouver Island	GB1974-03
<b>1975</b>				
07/04/1975	AP KNIGHT	Pacific hake, walleye pollock, spiny dogfish	Strait of Georgia	APK1975-01
05/05/1975	AP KNIGHT	Pacific hake, walleye pollock	Strait of Georgia	APK1975-02
02/06/1975	AP KNIGHT	Pacific hake, pollock, rockfish, dogfish	Strait of Georgia	APK1975-03
14/01/1975	CALIGUS	Pacific hake, walleye pollock, Pacific cod, lingcod	Strait of Georgia, Stuart Channel	CLG1975-01
13/02/1975	CALIGUS	Pacific hake, walleye pollock, Pacific cod, lingcod	Strait of Georgia, Stuart Channel	CLG1975-02
11/03/1975	CALIGUS	Pacific hake, walleye pollock, Pacific cod, lingcod	Strait of Georgia, Stuart Channel	CLG1975-03
14/04/1975	CALIGUS	Pacific hake, walleye pollock, Pacific cod, lingcod	Strait of Georgia, Stuart Channel	CLG1975-04
20/05/1975	CALIGUS	Pacific hake, walleye pollock, Pacific cod, lingcod	Strait of Georgia, Stuart Channel	CLG1975-05
25/06/1975	CALIGUS	Pacific hake, walleye pollock, Pacific cod, lingcod	Strait of Georgia, Stuart Channel	CLG1975-06
03/07/1975	CALIGUS	Pacific hake, walleye pollock, Pacific cod, lingcod	Strait of Georgia, Stuart Channel	CLG1975-07
28/10/1975	CALIGUS	Pacific hake, walleye pollock, Pacific cod, lingcod	Strait of Georgia, Stuart Channel	CLG1975-08
26/11/1975	CALIGUS	Pacific hake, walleye pollock, Pacific cod, lingcod	Strait of Georgia, Stuart Channel	CLG1975-09
16/12/1975	CALIGUS	Pacific hake, walleye pollock, Pacific cod, lingcod	Strait of Georgia, Stuart Channel	CLG1975-10
06/01/1975	G. B. REED	Pacific hake, walleye pollock	Strait of Georgia	GBR1975-01
06/01/1975	G. B. REED	Pacific hake, walleye pollock, dogfish	Strait of Georgia	GBR1975-11
10/02/1975	G. B. REED	Pacific hake, walleye pollock, dogfish	Strait of Georgia	GBR1975-12
25/02/1975	G. B. REED	Pacific hake, walleye pollock, spiny dogfish, Pacific cod, lingcod, English sole	Strait of Georgia	GBR1975-02
17/03/1975	G. B. REED	Pacific hake, pollock, spiny dogfish	Strait of Georgia	GBR1975-15
08/04/1975	G. B. REED	Groundfish, Pacific cod	Hecate Strait, Southwest Vancouver Island	GBR1975-04
02/06/1975	G. B. REED	Pacific hake, walleye pollock, dogfish	Strait of Georgia	GBR1975-13
16/06/1975	G. B. REED	Pacific hake, walleye pollock, spiny dogfish	Strait of Georgia	GBR1975-07
08/07/1975	G. B. REED	Groundfish, Pacific cod	Hecate Strait, Southwest Vancouver Island	GBR1975-05

<i>START DATE</i>	<i>VESSEL NAME</i>	<i>TARGET_SPECIES</i>	<i>LOCATION</i>	<i>CRUISE_ID</i>
10/09/1975	G. B. REED	Herring, Pacific hake, rockfish, dogfish, pollock	Southwest Coast Vancouver Island	GBR1975-08
07/10/1975	G. B. REED	Groundfish, Pacific cod	Hecate Strait, Southwest Vancouver Island	GBR1975-03
12/11/1975	G. B. REED	Herring, Pacific hake, rockfish, dogfish, pollock	Southwest Coast Vancouver Island	GBR1975-09
01/12/1975	G. B. REED	Pacific hake, walleye pollock, spiny dogfish	Strait of Georgia	GBR1975-10
24/07/1975	WESTERN MAID	Pacific hake, walleye pollock, Pacific cod, lingcod	Strait of Georgia, Stuart Channel	WMD1975-01
18/08/1975	WESTERN MAID	Pacific hake, walleye pollock, Pacific cod, lingcod	Strait of Georgia, Stuart Channel	WMD1975-02
24/09/1975	WESTERN MAID	Pacific hake, walleye pollock, Pacific cod, lingcod	Strait of Georgia, Stuart Channel	WMD1975-03
31/10/1975	WESTERN MAID	Pacific hake, walleye pollock, Pacific cod, lingcod	Strait of Georgia, Stuart Channel	WMD1975-04
27/11/1975	WESTERN MAID	Pacific hake, walleye pollock, Pacific cod, lingcod	Strait of Georgia, Stuart Channel	WMD1975-05
<b>1976</b>				
12/01/1976	AP KNIGHT	Pacific hake, walleye pollock, dogfish	Strait of Georgia	APK1976-01
13/07/1976	ARCTIC HARVESTER	Pacific hake, walleye pollock, spiny dogfish	Strait of Georgia, Juan de Fuca Strait, West Coast Vancouver Island and United States	AH1976-01
16/09/1976	ARCTIC HARVESTER			AH1976-03
01/11/1976	ARCTIC HARVESTER	Rockfish, Pacific hake, walleye pollock, Pacific herring, spiny dogfish,	Southwest Coast Vancouver Island	AH1976-02
28/01/1976	CALIGUS	Pacific hake, walleye pollock, Pacific cod, lingcod	Strait of Georgia, Stuart Channel	CLG1976-01
30/03/1976	CALIGUS	Pacific hake, walleye pollock, Pacific cod, lingcod	Strait of Georgia, Stuart Channel	CLG1976-02
27/04/1976	CALIGUS	Pacific hake, walleye pollock, Pacific cod, lingcod	Strait of Georgia, Stuart Channel	CLG1976-03
13/05/1976	CALIGUS	Pacific hake, walleye pollock, Pacific cod, lingcod	Strait of Georgia, Stuart Channel	CLG1976-04
16/06/1976	CALIGUS	Pacific hake, walleye pollock, Pacific cod, lingcod	Strait of Georgia, Stuart Channel	CLG1976-05
14/07/1976	CALIGUS	Pacific hake, walleye pollock, Pacific cod, lingcod	Strait of Georgia, Stuart Channel	CLG1976-06
16/08/1976	CALIGUS	Pacific hake, walleye pollock, Pacific cod, lingcod	Strait of Georgia, Stuart Channel	CLG1976-07
29/09/1976	CALIGUS	Pacific hake, walleye pollock, Pacific cod, lingcod	Strait of Georgia, Stuart Channel	CLG1976-08
03/11/1976	CALIGUS	Pacific hake, walleye pollock, Pacific cod, lingcod	Strait of Georgia, Stuart Channel	CLG1976-09
12/01/1976	G. B. REED	Pacific hake, walleye pollock, dogfish	Strait of Georgia	GBR1976-13
13/01/1976	G. B. REED	Pacific hake, walleye pollock, spiny dogfish	Strait of Georgia	GBR1976-01
10/02/1976	G. B. REED	Pacific cod	Hecate Strait, Southwest Vancouver Island	GBR1976-02

<i>START DATE</i>	<i>VESSEL NAME</i>	<i>TARGET_SPECIES</i>	<i>LOCATION</i>	<i>CRUISE_ID</i>
22/03/1976	G. B. REED	Pacific hake, walleye pollock, dogfish	Strait of Georgia	GBR1976-10
25/05/1976	G. B. REED	Pacific hake, walleye pollock, spiny dogfish	Strait of Georgia	GBR1976-04
06/07/1976	G. B. REED	Pacific cod, Pacific ocean perch	Southwest Coast Vancouver Island	GBR1976-06
08/09/1976	G. B. REED	Pacific ocean perch	Queen Charlotte Sound (Goose Island Gully and Mitchell's Gully)	GBR1976-08
09/09/1976	G. B. REED	Rockfish, Pacific ocean perch	Queen Charlotte Sound	GBR1976-07
09/09/1976	JOHN M. COBB (USA)	Rockfish, Pacific ocean perch	Queen Charlotte Sound	COB1976-01
26/02/1976	WESTERN MAID	Pacific hake, walleye pollock, Pacific cod, lingcod	Strait of Georgia, Stuart Channel	WMD1976-01
02/04/1976	WESTERN MAID	Pacific hake, walleye pollock, Pacific cod, lingcod	Strait of Georgia, Stuart Channel	WMD1976-02
28/05/1976	WESTERN MAID	Pacific hake, pollock, lingcod, dogfish, Pacific cod	Strait of Georgia, Stuart Channel	WMD1976-08
15/07/1976	WESTERN MAID	Pacific hake, walleye pollock, Pacific cod, lingcod	Strait of Georgia, Stuart Channel	WMD1976-03
30/08/1976	WESTERN MAID	Pacific hake, walleye pollock, Pacific cod, lingcod	Strait of Georgia, Stuart Channel	WMD1976-04
01/09/1976	WESTERN MAID	Pacific hake, walleye pollock, Pacific cod, lingcod	Strait of Georgia, Stuart Channel	WMD1976-05
01/10/1976	WESTERN MAID	Pacific hake, walleye pollock, Pacific cod, lingcod	Strait of Georgia, Stuart Channel	WMD1976-06
04/11/1976	WESTERN MAID	Pacific cod, pollock, Pacific hake	Strait of Georgia, Stuart Channel	WMD1976-09
13/12/1976	WESTERN MAID	Pacific hake, walleye pollock, Pacific cod, lingcod	Strait of Georgia, Stuart Channel	WMD1976-07
09/09/1976	WESTNESS (USA)	Rockfish, Pacific ocean perch	Queen Charlotte Sound	WES1976-01
<b>1977</b>				
10/03/1977	ARCTIC HARVESTER	Rockfish, Pacific hake, walleye pollock, Pacific herring, spiny dogfish,	Southwest Coast Vancouver Island	AH1977-01
26/03/1977	ARCTIC HARVESTER	Blackcod, dogfish	Strait of Juan de Fuca, LaPerouse, West Coast Vancouver Island	AH1977-06
08/08/1977	ARCTIC HARVESTER	Spiny dogfish	Hecate Strait	AH1977-04
03/09/1977	ARCTIC HARVESTER	Sablefish	West Coast Vancouver Island	AH1977-05
11/10/1977	ARCTIC HARVESTER	Blackcod	West Queen Charlotte Sound	AH1977-03
22/11/1977	ARCTIC HARVESTER	Lingcod, rockfish	West Coast Vancouver Island	AH1977-02
03/02/1977	BLUE WATERS	Dover sole	Dixon Entrance, Northern Hecate Strait	BW1977-01
26/07/1977	CALEDONIAN	Sablefish		CAL1977-01
14/01/1977	CALIGUS	Pacific hake, walleye pollock, Pacific cod, lingcod	Strait of Georgia, Stuart Channel	CLG1977-01
16/05/1977	CALIGUS	Dogfish, Pacific hake, pollock	Strait of Georgia	CLG1977-02
04/08/1977	CALIGUS	Pacific hake	Strait of Georgia, Maude Island, Yellow Pt.	CLG1977-03

<i>START DATE</i>	<i>VESSEL NAME</i>	<i>TARGET_SPECIES</i>	<i>LOCATION</i>	<i>CRUISE_ID</i>
05/12/1977	CALIGUS	Dogfish, Pacific hake, pollock, lingcod, Pacific cod	Strait of Georgia, Stuart Channel, Porlier Pass	CLG1977-04
20/07/1977	EASTWARD HO	Pollock, lingcod, dogfish		EH1977-01
19/09/1977	EASTWARD HO	Pollock, dogfish, rockfish		EH1977-02
08/03/1977	G. B. REED	Pacific cod	Southwest Coast Vancouver Island	GBR1977-01
03/05/1977	G. B. REED	Shrimp, lingcod	West Coast Vancouver Island, La Perouse	GBR1977-06
30/05/1977	G. B. REED	Pacific hake	Strait of Georgia	GBR1977-07
01/06/1977	G. B. REED	Rockfish, Pacific hake, walleye pollock, Pacific herring, spiny dogfish,	Southwest Coast Vancouver Island	GBR1977-03
22/08/1977	G. B. REED	Pacific ocean perch	Queen Charlotte Sound (Goose Island Gully and Mitchell's Gully)	GBR1977-04
13/09/1977	G. B. REED	Rockfish, Pacific hake, walleye pollock, Pacific herring, spiny dogfish,	Southwest Coast Vancouver Island	GBR1977-05
06/07/1977	LINDA	Sablefish	West Coast Queen Charlotte Islands	LIN1977-01
03/02/1977	NEMESIS	Dover sole	Dixon Entrance, Northern Hecate Strait	NEM1977-01
17/02/1977	ROYAL CANADIAN	Lingcod		RC1977-01
03/02/1977	SCOTIA BAY	Dover sole	Dixon Entrance, Northern Hecate Strait	SB1977-01
<b>1978</b>				
17/01/1978	ANDONIS	Pacific cod	Southwest Coast Vancouver Island	ADN1978-01
04/01/1978	ARCTIC HARVESTER	Dover sole	West Coast Queen Charlotte Islands	AH1978-10
24/01/1978	ARCTIC HARVESTER	Rockfish, Pacific herring	Queen Charlotte Sound	AH1978-01
27/02/1978	ARCTIC HARVESTER	Pacific cod	Southwest Coast Vancouver Island	AH1978-03
14/03/1978	ARCTIC HARVESTER	Walleye pollock, Pacific hake	Dixon Entrance, Hecate Strait, Strait of Georgia	AH1978-04
11/05/1978	ARCTIC HARVESTER	Rockfish	West Coast Queen Charlotte Islands	AH1978-02
08/06/1978	ARCTIC HARVESTER	Spiny dogfish	Hecate Strait	AH1978-06
06/07/1978	ARCTIC HARVESTER	Lingcod	Strait of Georgia, Southwest Coast Vancouver Island	AH1978-07
07/09/1978	ARCTIC HARVESTER	Pacific hake, dogfish		AH1978-11
08/09/1978	ARCTIC HARVESTER	Lingcod	Southwest Coast Vancouver Island	AH1978-08
21/09/1978	ARCTIC HARVESTER	Pollock	Queen Charlotte Sound, Dixon Entrance	AH1978-05
03/10/1978	ARCTIC HARVESTER	Sablefish, Pacific ocean perch	Southwest Coast Vancouver Island	AH1978-09
19/06/1978	BLUE WATERS	Rockfish	West Coast Queen Charlotte Islands	BW1978-01

<i>START DATE</i>	<i>VESSEL NAME</i>	<i>TARGET_SPECIES</i>	<i>LOCATION</i>	<i>CRUISE_ID</i>
15/07/1978	BLUE WATERS	Rockfish	West Coast Queen Charlotte Islands	BW1978-02
05/09/1978	BLUE WATERS	Rockfish	Northwest Coast Vancouver Island	BW1978-03
03/10/1978	BLUE WATERS	Rockfish, greenies rockfish, redstripe rockfish, Pacific herring, Pacific ocean perch, turbot, chiono	Queen Charlotte Sound	BW1978-04
05/04/1978	CALIGUS	Walleye pollock, Pacific hake	Dixon Entrance, Hecate Strait, Strait of Georgia	CLG1978-01
22/10/1978	CANADIAN #1	Pacific herring	West Coast Vancouver Island, Queen Charlotte Sound, Hecate Strait	CNO1978-01
21/07/1978	FREEPORT	Rockfish, Pacific ocean perch, Dover sole	Dixon Entrance - Cape Ommaney Region	FRP1978-01
24/01/1978	G. B. REED	Rockfish, Pacific herring	Queen Charlotte Sound	GBR1978-02
24/01/1978	G. B. REED	Rockfish	Queen Charlotte Sound	GBR1978-03
17/04/1978	G. B. REED	Walleye pollock, Pacific hake	Dixon Entrance, Hecate Strait, Strait of Georgia	GBR1978-01
24/05/1978	G. B. REED	Pacific hake		GBR1978-08
05/07/1978	G. B. REED	Pelagic fish, walleye pollock	Dixon Entrance, Chatham Sound, Northern Hecate Strait	GBR1978-06
28/07/1978	G. B. REED	Dover sole, Pacific ocean perch	Northwest Queen Charlotte Islands	GBR1978-07
29/08/1978	G. B. REED	Pacific ocean perch, walleye pollock, turbot, blackcod, dogfish, Dover sole	Queen Charlotte Sound, Hecate Strait	GBR1978-04
02/10/1978	G. B. REED	Rockfish	Queen Charlotte Sound	GBR1978-05
21/07/1978	HEIDI-J (USA)	Rockfish, Pacific ocean perch, Dover sole	Dixon Entrance - Cape Ommaney Region	HJ1978-01
05/07/1978	NEMESIS	Chinook salmon, dogfish, eulachon, halibut, lingcod, Pacific cod, pollock, blackcod, sole, rockfish	Dixon Entrance	NEM1978-01
21/07/1978	NORE-DICK (USA)	Rockfish, Pacific ocean perch, Dover sole	Dixon Entrance - Cape Ommaney Region	ND1978-01
16/05/1978	SEAPAK	Sablefish	West Coast Queen Charlotte Islands	SPK1978-01
14/06/1978	SEAPAK	Sablefish	Queen Charlotte Sound, West Coast Vancouver Island	SPK1978-02
03/10/1978	SEAPAK	Sablefish	West Coast Queen Charlotte Islands	SPK1978-03
26/06/1978	SUN MAIDEN	Lingcod	Southwest Coast Vancouver Island	SM1978-01
<b>1979</b>				
15/01/1979	ANDONIS	Pacific cod	Strait of Georgia	ADN1979-01
22/01/1979	ARCTIC HARVESTER	Walleye pollock, ratfish, yellowtail rockfish, turbot, English sole	Dixon Entrance, Northern Hecate Strait	AH1979-01
24/08/1979	ARCTIC HARVESTER	Rockfish		AH1979-03
04/09/1979	ARCTIC HARVESTER	Rockfish, Pacific ocean perch	Langara Island, north of 54° N, West Coast of Vancouver Island	AH1979-02

<i>START DATE</i>	<i>VESSEL NAME</i>	<i>TARGET_SPECIES</i>	<i>LOCATION</i>	<i>CRUISE_ID</i>
22/05/1979	BLUE WATERS	Rockfish	West Coast Queen Charlotte Islands	BW1979-02
12/07/1979	BLUE WATERS	Rockfish, Pacific ocean perch	Langara Island, north of 54° N, West Coast of Vancouver Island	BW1979-03
18/09/1979	BLUE WATERS	Dover sole	Eastern Dixon Entrance	BW1979-04
30/09/1979	BLUE WATERS	Sablefish	Queen Charlotte Sound, Hecate Strait	BW1979-05
14/03/1979	CALIGUS	Pacific hake, pollock		CLG1979-01
16/02/1979	CALLISTRATUS	Pacific hake, walleye pollock, spiny dogfish	Strait of Georgia	CLS1979-01
10/03/1979	CALLISTRATUS	Pacific hake, walleye pollock, spiny dogfish	Strait of Georgia	CLS1979-02
12/05/1979	CALLISTRATUS	Pacific hake, walleye pollock, spiny dogfish	Strait of Georgia	CLS1979-03
13/05/1979	CALLISTRATUS	Pacific hake	West Coast Vancouver Island	CLS1979-04
22/06/1979	CALLISTRATUS	Pacific hake	West Coast Vancouver Island	CLS1979-05
10/08/1979	EASTWARD HO	Sablefish	West Coast Queen Charlotte Islands	EH1979-01
22/01/1979	G. B. REED	Walleye pollock	Dixon Entrance, Northern Hecate Strait	GBR1979-04
26/06/1979	G. B. REED	Pacific cod	Hecate Strait, Dixon Entrance, Queen Charlotte	GBR1979-03
06/09/1979	G. B. REED	Groundfish, Pacific cod	Hecate Strait, Queen Charlotte Sound	GBR1979-01
29/10/1979	G. B. REED	Walleye pollock, herring, Pacific hake, eulachon	Southwest Coast Vancouver Island	GBR1979-02
14/02/1979	PACIFIC EAGLE	Pacific cod	Southwest Coast Vancouver Island	PE1979-01
03/03/1979	PACIFIC EAGLE	Pacific cod	Southwest Coast Vancouver Island	PE1979-02
11/03/1979	SCOTIA BAY	Walleye pollock	Dixon Entrance, Hecate Strait, Southeastern Alaska	SB1979-02
20/07/1979	SCOTIA BAY	Rockfish, Pacific ocean perch	Langara Island, north of 54° N, West Coast of Vancouver Island	SB1979-01
01/05/1979	SEAPAK	Sablefish	West Coast Vancouver Island	SPK1979-01
31/05/1979	SEAPAK	Sablefish	West Coast Queen Charlotte Islands	SPK1979-02
07/09/1979	SOUTHWARD HO	Rockfish	Queen Charlotte Sound	SH1979-01
01/11/1979	SOUTHWARD HO	Sablefish	Queen Charlotte Sound, Hecate Strait	SH1979-02
18/09/1979	VIKING STAR	Rockfish	West Coast Queen Charlotte Islands	VS1979-01
<b>1980</b>				
08/08/1980	BLUE WATERS	Yellowtail rockfish	Southwest Vancouver Island, Northwest Vancouver Island, Queen Charlotte Sound	BW1980-01



<i>START DATE</i>	<i>VESSEL NAME</i>	<i>TARGET_SPECIES</i>	<i>LOCATION</i>	<i>CRUISE_ID</i>
22/01/1980	CALLISTRATUS	Rockfish, walleye pollock	West Coast Vancouver Island	CLS1980-01
07/02/1980	CALLISTRATUS	Rockfish, sablefish		CLS1980-02
03/11/1980	EASTWARD HO	Pacific herring	East Coast Vancouver Island	EH1980-01
04/06/1980	G. B. REED	Walleye pollock, Pacific herring, yellowtail rockfish, sablefish	Dixon Entrance, North End Hecate Strait	GBR1980-04
09/09/1980	G. B. REED	Pacific herring, pelagic fish	West Coast Vancouver Island	GBR1980-01
03/11/1980	G. B. REED	Pacific herring, pelagic fish	West Coast Vancouver Island	GBR1980-02
03/11/1980	HOWE BAY	Pacific herring	Southwest Coast Vancouver Island	HB1980-01
19/09/1980	JEANNA MARIE	Blackcod		JM1980-01
16/10/1980	JEANNA MARIE	Blackcod		JM1980-02
19/03/1980	LA PORSCHE	Sablefish	North West Coast Vancouver Island	LP1980-01
11/06/1980	MELIBE	Lingcod	Strait of Georgia	MLB1980-01
09/06/1980	NUCLEUS	Turbot	Hecate Strait	NUC1980-01
11/08/1980	NUCLEUS	Rock sole, English sole	Northern Hecate Strait	NUC1980-02
23/05/1980	OCEAN KING	Yellowtail rockfish	Southwest Vancouver Island, Northwest Vancouver Island, Queen Charlotte Sound	OK1980-01
09/09/1980	OCEAN KING	Pacific herring	Southwest Coast Vancouver Island	OK1980-02
23/09/1980	PACIFIC TRIDENT	Sablefish	Hecate Strait, Queen Charlotte Sound	PTT1980-01
10/03/1980	SUN MAIDEN	Walleye pollock, Pacific hake	Strait of Georgia	SM1980-02
15/05/1980	SUN MAIDEN	Pacific herring	Hecate Strait, Dixon Entrance	SM1980-01
01/08/1980	SUNNFJORD	English sole, rock sole	Hecate Strait	SUN1980-01
21/04/1980	TAHLOK	Lingcod	Strait of Georgia	THK1980-01
25/01/1980	TALAPUS	Sablefish	West Coast Queen Charlotte Islands	TPS1980-01
17/03/1980	TALAPUS	Sablefish	Queen Charlotte Sound	TPS1980-02
28/06/1980	VIKING STAR	Sablefish	West Coast Queen Charlotte Islands, Dixon Entrance	VS1980-02
28/08/1980	VIKING STAR	Rockfish, sablefish	Bowie Seamount, West Langara Island	VS1980-01
05/05/1980	WESTERLY WIND	Sablefish	Central Inlets of British Columbia	WW1980-01
<b>1981</b>				
01/02/1981	ARCTIC HARVESTER	Dover sole	West Coast Vancouver Island	AH1981-01
20/02/1981	ARCTIC HARVESTER	Pacific hake, walleye pollock, spiny dogfish	Strait of Georgia	AH1981-02
24/03/1981	ARCTIC HARVESTER	Pacific hake, walleye pollock, spiny dogfish	Strait of Georgia	AH1981-03
09/04/1981	ARCTIC HARVESTER	Pacific hake, walleye pollock, spiny dogfish	Strait of Georgia	AH1981-04

<i>START DATE</i>	<i>VESSEL NAME</i>	<i>TARGET_SPECIES</i>	<i>LOCATION</i>	<i>CRUISE_ID</i>
22/04/1981	ARCTIC HARVESTER	Pacific hake, walleye pollock, spiny dogfish	Strait of Georgia	AH1981-05
06/08/1981	ARCTIC OCEAN	Rock sole, English sole	Hecate Strait	AO1981-01
10/07/1981	CALLISTRATUS	Pollock		CLS1981-01
12/01/1981	G. B. REED	Pacific hake, walleye pollock	Strait of Georgia	GBR1981-01
09/02/1981	G. B. REED	Pacific hake, walleye pollock	Strait of Georgia	GBR1981-02
09/03/1981	G. B. REED	Pacific herring	Southwest Coast Vancouver Island	GBR1981-03
13/04/1981	G. B. REED	Pacific hake, walleye pollock	Strait of Georgia	GBR1981-04
03/07/1981	G. B. REED	Yellowtail rockfish	West Coast Vancouver Island, Queen Charlotte	GBR1981-06
14/08/1981	G. B. REED	Sablefish	Hecate Strait, Queen Charlotte Sound	GBR1981-08
08/09/1981	G. B. REED	Pacific herring, spiny dogfish, Pacific hake, yellowtail rockfish, walleye	West Coast Vancouver Island	GBR1981-07
27/02/1981	GAMBLER I	Lingcod	Strait of Georgia	GAM1981-01
09/03/1981	HOWE BAY	Pacific herring	Southwest Coast Vancouver Island	HB1981-01
01/02/1981	JEANNA MARIE	Blackcod		JM1981-01
15/03/1981	LA POINTE	Sablefish	West Coast Queen Charlotte Islands	LPT1981-01
09/03/1981	MARWOOD	Pacific herring	Southwest Coast Vancouver Island	MW1981-01
25/11/1981	OCEAN PEARL	Sablefish	West Coast Queen Charlotte Islands, Queen Charlotte Sound, West Coast Vancouver Island	OPL1981-01
12/06/1981	SEAPAK	Sablefish	West Coast Queen Charlotte Islands	SPK1981-01
11/08/1981	STAR WARS II	Rougheye rockfish, yelloweye rockfish	Bowie Seamount	SW1981-01
08/09/1981	SUN MAIDEN	Pacific herring, spiny dogfish, Pacific hake, yellowtail rockfish, walleye	West Coast Vancouver Island	SM1981-01
07/06/1981	TAHLOK	Lingcod	Strait of Georgia	THK1981-01
03/06/1981	TENACIOUS	Pacific ocean perch	Southern Hecate Strait (Moresby Gully), Queen Charlotte Islands	TN1981-01
20/06/1981	TENACIOUS			TN1981-02
<b>1982</b>				
02/11/1982	ARRAN TIDE II	Lingcod	Strait of Georgia (Campbell River)	ARR1982-01
27/04/1982	FREE ENTERPRISE NO 1	Rock sole	Hecate Strait	FE1982-01
06/04/1982	G. B. REED	Pacific hake, dogfish, pollock	Strait of Georgia, Halibut Bank	GBR1982-02
22/06/1982	G. B. REED	Spiny dogfish	Strait of Georgia	GBR1982-01
12/07/1982	G. B. REED	Groundfish, Pacific cod, rock sole, lingcod	Queen Charlotte Sound, Hecate Strait	GBR1982-03

<i>START DATE</i>	<i>VESSEL NAME</i>	<i>TARGET_SPECIES</i>	<i>LOCATION</i>	<i>CRUISE_ID</i>
07/09/1982	G. B. REED	Spiny dogfish	Hecate Strait	GBR1982-04
08/11/1982	G. B. REED	Rockfish, Pacific ocean perch	Southwest Vancouver Island, Queen Charlotte Sound, Hecate Strait, West Queen Charlotte Islands, Dixon Entrance	GBR1982-05
22/02/1982	GAMBLER I	Lingcod	Strait of Georgia	GAM1982-01
04/05/1982	JEANNA MARIE	Sablefish	West Coast Queen Charlotte Islands	JM1982-01
15/07/1982	JEANNA MARIE	Sablefish		JM1982-02
04/11/1982	MISS QUADRA	Lingcod	Strait of Georgia (Campbell River)	MQD1982-01
24/07/1982	NORE-DICK (USA)	Spiny dogfish	Hecate Strait	ND1982-01
01/04/1982	NUCLEUS	Rock sole, English sole	Hecate Strait	NUC1982-01
17/01/1982	OCEAN PEARL	Sablefish		OPL1982-02
29/07/1982	OCEAN PEARL	Blackcod	Queen Charlotte Sound	OPL1982-03
22/10/1982	OCEAN PEARL	Sablefish	West Coast Vancouver Island, Queen Charlotte Sound, West Coast Queen	OPL1982-01
14/07/1982	PACIFIC EAGLE	Lingcod	Southwest Vancouver Island	PE1982-01
17/03/1982	ROSE SPIT	Spiny dogfish	Strait of Georgia	RSP1982-01
03/05/1982	SUN MAIDEN	Yellowtail rockfish	Southwest Vancouver Island, Northwest Washington	SM1982-01

**1983**

04/01/1983	BREAKAWAY	Lingcod	Strait of Georgia (Pender Harbour)	BKW1983-01
12/04/1983	DOUBLE DECKER	English sole, rock sole	Hecate Strait	DD1983-01
18/01/1983	FRASER BELLE	Lingcod	Strait of Georgia (Stuart Island)	FRB1983-01
05/07/1983	FREE ENTERPRISE NO 1	Rockfish	Dixon Entrance, Southeast Alaska Region	FE1983-02
31/07/1983	FREE ENTERPRISE NO 1	Pacific ocean perch	Queen Charlotte Sound (Goose Island Gully)	FE1983-01
07/02/1983	G. B. REED	Pacific hake, walleye pollock, spiny dogfish	Strait of Georgia	GBR1983-01
18/04/1983	G. B. REED	Pacific hake, walleye pollock, spiny dogfish	Strait of Georgia	GBR1983-02
06/06/1983	G. B. REED	English sole	Hecate Strait	GBR1983-03
05/07/1983	G. B. REED	Rockfish	Dixon Entrance, Southeast Alaska Region	GBR1983-04
15/08/1983	G. B. REED	Pacific hake	Lower West Coast Vancouver Island	GBR1983-06
20/09/1983	G. B. REED	Groundfish, Pacific cod	Queen Charlotte Sound, Hecate Strait	GBR1983-05
13/03/1983	JEANNA MARIE	Sablefish, halibut	West Coast Queen Charlotte Islands	JM1983-02

<i>START DATE</i>	<i>VESSEL NAME</i>	<i>TARGET_SPECIES</i>	<i>LOCATION</i>	<i>CRUISE_ID</i>
10/08/1983	JEANNA MARIE	Sablefish	West Coast Queen Charlotte Islands	JM1983-03
21/11/1983	JEANNA MARIE	Sablefish	West Coast Vancouver Island, West Coast Queen Charlotte Islands	JM1983-01
15/08/1983	MARWOOD	Pacific hake	Lower West Coast Vancouver Island	MW1983-01
17/10/1983	MISS QUADRA	Lingcod	Strait of Georgia (Campbell River)	MQD1983-01
15/06/1983	OCEAN PEARL	Blackcod, halibut	Queen Charlotte Sound	OPL1983-01
10/08/1983	OCEAN SELECTOR	Pacific ocean perch	Queen Charlotte Sound (Goose Island Gully)	OS1983-01
15/03/1983	PACIFIC TITAN	Blackcod, halibut	West Coast Vancouver Island	PT1983-01
05/08/1983	PACIFIC TITAN	Blackcod	West Coast Vancouver Island	PT1983-02
<b>1984</b>				
28/05/1984	ARCTIC OCEAN	Groundfish	Hecate Strait	AO1984-01
08/01/1984	BREAKAWAY	Lingcod	Strait of Georgia (Pender Harbour, Stuart Island)	BKW1984-01
24/07/1984	CABEZON	Dogfish, rockfish, lingcod	Strait of Georgia	CAB1984-01
02/10/1984	CABEZON	Dogfish, rockfish, lingcod	Strait of Georgia	CAB1984-02
15/10/1984	CANADIAN #1	Pacific herring	Northern Hecate Strait, Dixon Entrance, Chatham Sound	CNO1984-01
10/04/1984	DOUBLE DECKER	Rock sole, English sole	Hecate Strait	DD1984-01
14/08/1984	EASTWARD HO	Pacific ocean perch	Queen Charlotte Sound	EH1984-01
15/02/1984	FRASER BELLE	Lingcod	Strait of Georgia (Pender Harbour, Stuart Island)	FRB1984-01
19/03/1984	G. B. REED	Pacific hake, walleye pollock, spiny dogfish	Strait of Georgia	GBR1984-02
16/04/1984	G. B. REED	Sablefish	West Coast Vancouver Island, Queen Charlotte	GBR1984-05
24/05/1984	G. B. REED	Groundfish	Hecate Strait	GBR1984-03
14/08/1984	G. B. REED	Pacific ocean perch	Queen Charlotte Sound	GBR1984-01
19/09/1984	G. B. REED	Groundfish, Pacific hake	West Coast Vancouver Island, Hecate Strait, Queen Charlotte Sound	GBR1984-06
15/10/1984	G. B. REED	Pacific herring	Northern Hecate Strait, Dixon Entrance, Chatham Sound	GBR1984-04
23/03/1984	JEANNA MARIE	Sablefish	West Coast Queen Charlotte Islands	JM1984-02
09/05/1984	JEANNA MARIE	Sablefish	West Coast Queen Charlotte Islands	JM1984-01
18/05/1984	JEANNA MARIE	Sablefish	West Coast Queen Charlotte Islands	JM1984-03
04/07/1984	KETA	Dogfish, rockfish, lingcod	Strait of Georgia	KET1984-01
14/08/1984	KETA	Dogfish, rockfish, lingcod	Strait of Georgia	KET1984-02
12/07/1984	LA PORSCHE	Sablefish		LP1984-01

<i>START DATE</i>	<i>VESSEL NAME</i>	<i>TARGET_SPECIES</i>	<i>LOCATION</i>	<i>CRUISE_ID</i>
20/11/1984	MISS QUADRA	Lingcod	Strait of Georgia	MQD1984-01
19/04/1984	OCEAN PEARL	Sablefish	Queen Charlotte Sound	OPL1984-01
20/11/1984	PANDORA II	Dogfish, rockfish, lingcod	Strait of Georgia	PDA1984-01
17/03/1984	VELMA C	Dogfish	Strait of Georgia	VMC1984-01
16/10/1984	VICTOR F	Sablefish		VCF1984-01
20/11/1984	WHALER (FOR JIG SURVEYS)	Dogfish, rockfish, lingcod	Strait of Georgia	WHA1984-01

**1985**

28/10/1985	BLACK HEART	Lingcod, rockfish	Strait of Georgia Gulf Island Region	BH1985-01
16/01/1985	BREAKAWAY	Lingcod	Strait of Georgia	BKW1985-01
11/06/1985	CABEZON	Rockfish, dogfish, lingcod	Strait of Georgia	CAB1985-01
21/01/1985	CALIGUS	Pollock		CLG1985-01
18/02/1985	CALIGUS	Pollock, blackcod		CLG1985-02
23/04/1985	CHALLENGER	Sablefish	West Coast Vancouver Island	CHG1985-01
29/05/1985	CHALLENGER	Sablefish	West Coast Vancouver Island	CHG1985-02
10/08/1985	EASTWARD HO	Pacific hake, sablefish, spiny dogfish, Pacific herring	Southwest Coast Vancouver Island	EH1985-01
15/01/1985	G. B. REED	Pacific herring	Hecate Strait, Queen Charlotte Islands	GBR1985-04
27/02/1985	G. B. REED	Dogfish		GBR1985-11
18/03/1985	G. B. REED	Pacific hake, walleye pollock, spiny dogfish	Strait of Georgia	GBR1985-05
20/04/1985	G. B. REED	Sablefish		GBR1985-09
07/06/1985	G. B. REED	Groundfish	Hecate Strait, Queen Charlotte Sound	GBR1985-01
03/07/1985	G. B. REED	Sablefish		GBR1985-10
22/07/1985	G. B. REED	Pacific herring	Hecate Strait	GBR1985-06
20/08/1985	G. B. REED	Lingcod	Southwest Vancouver Island, Queen Charlotte Sound	GBR1985-08
23/09/1985	G. B. REED	Groundfish	Hecate Strait, Queen Charlotte Sound	GBR1985-03
21/10/1985	G. B. REED	Pacific ocean perch	Southwest Vancouver Island, Queen Charlotte Sound, Hecate Strait, West Queen Charlotte Islands, Dixo	GBR1985-02
26/11/1985	G. B. REED	Pacific herring	Hecate Strait	GBR1985-07
24/07/1985	HOWE BAY	Silvergray rockfish, canary rockfish	West Coast Vancouver Island	HB1985-01
08/09/1985	HOWE BAY	Rockfish	Southwest Coast Vancouver Island, U.S. waters off Cape Flattery	HB1985-04
30/03/1985	JEANNA MARIE	Sablefish	West Coast Queen Charlotte Islands	JM1985-01
23/08/1985	LA PORSCHE	Blackcod	Bowie Seamount	LP1985-01

<i>START DATE</i>	<i>VESSEL NAME</i>	<i>TARGET_SPECIES</i>	<i>LOCATION</i>	<i>CRUISE_ID</i>
09/04/1985	SUNNFJORD	Flatfish, rock sole, English sole	Hecate Strait	SUN1985-02
26/11/1985	SUNNFJORD	Pacific herring	Hecate Strait	SUN1985-01
12/10/1985	VICTOR F	Sablefish		VCF1985-01
04/09/1985	ZODIAC (FOR JIG SURVEYS)	Rockfish	Strait of Georgia	ZOD1985-01
<b>1986</b>				
28/07/1986	ARCTIC OCEAN	Silvergray rockfish, canary rockfish	West Coast Vancouver Island	AO1986-01
02/06/1986	CABEZON	Rockfish, lingcod	Strait of Georgia	CAB1986-01
12/08/1986	CALEDONIAN	Pacific hake, sablefish, spiny dogfish, Pacific herring	Lower West Coast Vancouver Island	CAL1986-01
30/01/1986	DOUBLE DECKER	Groundfish	Hecate Strait	DD1986-01
17/06/1986	DUNLOP	Rockfish, lingcod	Strait of Georgia	DUN1986-01
27/01/1986	G. B. REED	Groundfish	Hecate Strait	GBR1986-01
02/04/1986	G. B. REED	Sablefish larval	West Coast Vancouver Island	GBR1986-02
10/05/1986	G. B. REED	Sablefish larval	West Coast Vancouver Island	GBR1986-03
15/10/1986	VELMA C	Dogfish		VMC1986-01
12/05/1986	VICIOUS FISHER	Sablefish	West Coast Vancouver Island	VF1986-01
23/10/1986	VICTOR F	Sablefish		VCF1986-01
08/08/1986	W. E. RICKER	Coho, sablefish		WER1986-02
25/11/1986	W. E. RICKER	Pacific cod, English sole	Hecate Strait	WER1986-01
<b>1987</b>				
22/05/1987	ARCTIC HARVESTER	Rockfish		AH1987-01
15/01/1987	BLACK HEART	Lingcod, rockfish	Strait of Georgia Gulf Island Region	BH1987-01
11/12/1987	BLACK HEART	Lingcod, rockfish	Strait of Georgia Gulf Island Region	BH1987-02
02/06/1987	CABEZON	Rockfish, lingcod	Strait of Georgia, Johnstone Strait	CAB1987-01
19/08/1987	CALEDONIAN	Pacific hake, sablefish, spiny dogfish, Pacific herring	Southwest Coast Vancouver Island	CAL1987-01
17/05/1987	CARMANAH NO 1	Rockfish		CMH1987-01
27/05/1987	EASTWARD HO	Groundfish	Hecate Strait	EH1987-01
22/10/1987	HOWE BAY	Rockfish		HB1987-01
22/01/1987	LA PORSCHE	Sablefish	Bowie Seamount	LP1987-02
08/02/1987	LA PORSCHE	Sablefish	Bowie Seamount	LP1987-03
12/02/1987	LA PORSCHE	Sablefish	Bowie and Union Seamounts	LP1987-01
05/01/1987	NUCLEUS	Pacific cod, English sole	Hecate Strait	NUC1987-01
02/09/1987	OCEAN PEARL	Sablefish, rockfish		OPL1987-01
05/06/1987	TAHLOK	Pacific hake	Alberni Inlet	THK1987-01

<i>START DATE</i>	<i>VESSEL NAME</i>	<i>TARGET_SPECIES</i>	<i>LOCATION</i>	<i>CRUISE_ID</i>
11/09/1987	VICIOUS FISHER	Sablefish		VF1987-01
18/02/1987	W. E. RICKER	Chinook, blackcod, Pacific hake	West Coast Vancouver Island	WER1987-06
19/03/1987	W. E. RICKER	Sablefish	West Coast Vancouver Island	WER1987-04
14/07/1987	W. E. RICKER	Pacific herring	Hecate Strait	WER1987-01
15/08/1987	W. E. RICKER	Pacific hake, sablefish, spiny dogfish, Pacific herring	Southwest Coast Vancouver Island	WER1987-05
02/11/1987	W. E. RICKER	Pacific cod, English sole	Hecate Strait	WER1987-03
14/11/1987	W. E. RICKER	Pacific herring	Hecate Strait	WER1987-02
16/06/1987	WHALER (FOR JIG SURVEYS)	Rockfish, lingcod	Strait of Georgia, Johnstone Strait	WHA1987-01
<b>1988</b>				
17/06/1988	CABEZON	Rockfish, lingcod	Strait of Georgia (Discovery Passage - Campbell River)	CAB1988-01
17/06/1988	DUNLOP	Rockfish, lingcod	Strait of Georgia (Johnstone Strait)	DUN1988-01
31/10/1988	EASTWARD HO	Yellowtail rockfish, silvergray rockfish, canary rockfish	Queen Charlotte Sound, Northwest Coast Vancouver Island	EH1988-01
07/12/1988	JOHN P. TULLY	Pacific herring	Hecate Strait	JPT1988-01
07/06/1988	LANA JANINE	Sablefish	Cape St. James	LJ1988-01
12/03/1988	OCEAN PEARL	Sablefish	Queen Charlotte Sound	OPL1988-01
22/03/1988	SUN MAIDEN	Pacific hake, pollock, dogfish	Strait of Georgia	SM1988-01
04/08/1988	SUN MAIDEN	Pacific hake, dogfish, lingcod, pollock, Pacific cod	West Coast Vancouver Island, La Perouse Bank	SM1988-02
09/05/1988	TENDER I	Rockfish, lingcod	Strait of Georgia (Stuart Island)	TD1988-01
28/10/1988	VICIOUS FISHER	Sablefish	West Coast Vancouver Island, West Coast Queen Charlotte Islands	VF1988-01
18/03/1988	W. E. RICKER	Pollock, Pacific hake, dogfish, cat shark, herring	Strait of Georgia	WER1988-02
16/04/1988	W. E. RICKER	Pacific hake, herring	West Coast Vancouver Island	WER1988-03
03/08/1988	W. E. RICKER	Groundfish	West Coast Vancouver Island	WER1988-04
16/08/1988	W. E. RICKER	Pacific hake, pollock, dogfish	West Coast Vancouver Island	WER1988-01
<b>1989</b>				
30/01/1989	BLUE WATERS	Pacific cod, English sole	Hecate Strait	BW1989-01
15/08/1989	CALEDONIAN	Rockfish, lingcod	Northwestern Vancouver Island	CAL1989-01
08/05/1989	CALIGUS			CLG1989-01
24/05/1989	EASTWARD HO	Groundfish	Hecate Strait	EH1989-01
13/08/1989	GAIL BERNICE	Pacific hake, rockfish	West Coast Vancouver Island, La Perouse Bank	GB1989-01
13/03/1989	JOHN P. TULLY	Rockfish, Pacific ocean perch	West Coast Vancouver Island (Brooks Bay)	JPT1989-01

<i>START DATE</i>	<i>VESSEL NAME</i>	<i>TARGET_SPECIES</i>	<i>LOCATION</i>	<i>CRUISE_ID</i>
19/10/1989	LA PORSCHE	Sablefish	West Coast Vancouver Island, West Coast Queen Charlotte Islands	LP1989-01
13/08/1989	OCEAN KING	Pacific hake	La Perouse Bank	OK1989-01
12/07/1989	OCEAN SELECTOR	Pacific ocean perch, rockfish	West Coast Queen Charlotte Islands, West Coast Vancouver Island, Queen Charlotte Sound	OS1989-01
13/03/1989	VELMA C	Rockfish, Pacific ocean perch	West Coast Vancouver Island (Brooks Bay)	VMC1989-01
10/10/1989	VELMA C	Dogfish		VMC1989-02
28/01/1989	VICIOUS FISHER	Sablefish		VF1989-01
<b>1990</b>				
08/05/1990	CALIGUS			CLG1990-01
15/10/1990	EASTWARD HO	Rockfish, Pacific ocean perch	Queen Charlotte Sound	EH1990-01
15/08/1990	HOWE BAY	Pacific hake, lingcod, dogfish, sablefish, blackcod, halibut, Pacific herring, Pacific cod, pollock	La Perouse Bank	HB1990-01
08/11/1990	VIKING STAR	Sablefish	West Coast Vancouver Island, West Coast Queen Charlotte Islands	VS1990-01
17/02/1990	W. E. RICKER	Pacific hake, dogfish	West Coast Vancouver Island, Washington, Oregon, California	WER1990-05
14/03/1990	W. E. RICKER	Rockfish	Northwest Coast Vancouver Island, Queen Charlotte	WER1990-01
13/08/1990	W. E. RICKER	Pacific hake	Lower West Coast Vancouver Island, Queen Charlotte	WER1990-02
15/10/1990	W. E. RICKER	Rockfish, Pacific ocean perch	Queen Charlotte Sound, West Coast Vancouver Island	WER1990-03
03/12/1990	W. E. RICKER	Pacific herring	Hecate Strait	WER1990-04
<b>1991</b>				
31/07/1991	CALEDONIAN	Pacific hake	La Perouse Bank	CAL1991-01
15/07/1991	CALIGUS	Lingcod	Strait of Georgia	CLG1991-01
16/03/1991	GAIL BERNICE	Pacific hake	Strait of Georgia	GB1991-01
05/06/1991	ISLAND SUN	Rockfish	West Coast Vancouver Island	IS1991-01
06/02/1991	W. E. RICKER	Pacific hake, halibut	West Coast Vancouver Island, La Perouse Bank, South to Central California	WER1991-06
11/03/1991	W. E. RICKER	Rockfish, Pacific ocean perch	Queen Charlotte Sound (Goose Island Bank)	WER1991-01
13/05/1991	W. E. RICKER	Rockfish, spiny dogfish	West Coast Vancouver Island	WER1991-02
03/06/1991	W. E. RICKER	Groundfish	Hecate Strait	WER1991-03
13/08/1991	W. E. RICKER	Pacific hake	Lower West Coast Vancouver Island, Queen Charlotte	WER1991-07



<i>START DATE</i>	<i>VESSEL NAME</i>	<i>TARGET_SPECIES</i>	<i>LOCATION</i>	<i>CRUISE_ID</i>
09/10/1991	W. E. RICKER	Sablefish	West Coast Vancouver Island, West Coast Queen Charlotte Islands	WER1991-04
13/11/1991	W. E. RICKER	Rockfish, yellowtail rockfish	West Coast Vancouver Island	WER1991-05
<b>1992</b>				
05/06/1992	BILLS SKIFF(JIG SURVEYS)	Rockfish	Johnstone Strait	BSK1992-01
02/06/1992	CABEZON	Rockfish	Johnstone Strait	CAB1992-01
01/06/1992	DUNLOP	Rockfish	Johnstone Strait	DUN1992-01
20/05/1992	HOPE BAY	Pacific hake	West Coast Vancouver Island, Juan de Fuca	HPB1992-01
07/06/1992	TENDER I	Rockfish	Johnstone Strait	TD11992-01
27/02/1992	W. E. RICKER	Pacific hake		WER1992-08
16/04/1992	W. E. RICKER	Pacific ocean perch	Queen Charlotte Sound	WER1992-01
30/07/1992	W. E. RICKER	Pacific hake, dogfish	La Perouse Bank	WER1992-07
08/08/1992	W. E. RICKER	Pacific hake	Lower West Coast Vancouver Island, Queen Charlotte	WER1992-06
21/09/1992	W. E. RICKER	Pacific cod, halibut	Southwest Coast Vancouver Island.	WER1992-02
13/10/1992	W. E. RICKER	Sablefish	West Coast Vancouver Island, West Coast Queen Charlotte Islands	WER1992-03
30/11/1992	W. E. RICKER	Pacific herring	Hecate Strait	WER1992-04
02/12/1992	W. E. RICKER	Pacific herring	Hecate Strait	WER1992-05
<b>1993</b>				
17/05/1993	HOPE BAY	Pacific hake	West Coast Vancouver Island	HPB1993-01
18/03/1993	W. E. RICKER	Pacific hake, dogfish, pollock, cat shark, herring	Strait of Georgia	WER1993-04
17/05/1993	W. E. RICKER	Groundfish	Hecate Strait	WER1993-07
09/06/1993	W. E. RICKER	Pacific ocean perch	Queen Charlotte Sound	WER1993-01
19/06/1993	W. E. RICKER	Rockfish, Pacific ocean perch	Langara Spit	WER1993-08
04/08/1993	W. E. RICKER	Pacific hake	La Perouse Bank	WER1993-03
18/08/1993	W. E. RICKER	Pacific hake	West Coast Vancouver Island	WER1993-02
19/10/1993	W. E. RICKER	Sablefish	West Coast Vancouver Island, West Coast Queen Charlotte Islands	WER1993-06
22/11/1993	W. E. RICKER	Pacific herring	Hecate Strait	WER1993-09
<b>1994</b>				
13/10/1994	LA PORSCHE	Sablefish	Queen Charlotte Islands	LP1994-01
20/06/1994	OCEAN SELECTOR	Rockfish, Pacific ocean perch, yellowmouth rockfish	Queen Charlotte Sound (Goose Island Gully)	OS1994-01
28/05/1994	TENYO MARU	Pacific hake	South Coast Vancouver Island	TM1994-01

<i>START DATE</i>	<i>VESSEL NAME</i>	<i>TARGET_SPECIES</i>	<i>LOCATION</i>	<i>CRUISE_ID</i>
28/05/1994	W. E. RICKER	Pacific hake	South Coast Vancouver Island	WER1994-02
29/06/1994	W. E. RICKER	Rockfish	Queen Charlotte Sound (Goose Island Gully)	WER1994-01
21/07/1994	W. E. RICKER	Pacific hake	West Coast Vancouver Island, Oregon Coast	WER1994-05
03/08/1994	W. E. RICKER	Pacific hake	La Perouse Bank	WER1994-04
15/08/1994	W. E. RICKER	Pacific hake	Southern Vancouver Island, Queen Charlotte Sound	WER1994-03
18/10/1994	WESTERN VIKING	Sablefish	West Coast Vancouver Island	WV1994-01

**1995**

11/09/1995	FROSTI	Pacific ocean perch, yellowmouth rockfish, redstripe rockfish, shortspine thornyhead	Queen Charlotte Sound (Goose Island Gully)	FST1995-01
08/12/1995	GULF SPIRIT	Pacific hake	Strait of Georgia	GFS1995-01
08/10/1995	OCEAN PEARL	Sablefish	West Coast Vancouver Island	OPL1995-01
13/02/1995	OCEAN SELECTOR	Dover sole	West Coast Vancouver Island	OS1995-02
11/09/1995	OCEAN SELECTOR	Pacific ocean perch, yellowmouth rockfish, redstripe rockfish, shortspine thornyhead	Queen Charlotte Sound (Goose Island Gully)	OS1995-01
02/05/1995	REGAL SPIRIT	Pacific hake	Strait of Georgia	RGS1995-01
11/10/1995	VICTOR F	Sablefish	Queen Charlotte Islands, Queen Charlotte Sound	VCF1995-01
01/10/1995	VIKING SUNRISE	Sablefish	Queen Charlotte Islands	VSR1995-01
23/05/1995	W. E. RICKER	Groundfish	Hecate Strait	WER1995-02
01/08/1995	W. E. RICKER	Pacific hake	La Perouse Bank	WER1995-01
12/08/1995	W. E. RICKER	Pacific hake	Southern Queen Charlotte Sound	WER1995-03

**1996**

09/09/1996	CALEDONIAN	Rockfish, Pacific ocean perch	Southwest Coast Vancouver Island	CAL1996-01
08/02/1996	GULF SPIRIT	Pacific hake	Strait of Georgia	GFS1996-02
01/05/1996	GULF SPIRIT	Pacific hake	Strait of Georgia	GFS1996-01
26/09/1996	OCEAN PEARL	Sablefish	West Coast Vancouver Island, Queen Charlotte	OPL1996-01
08/10/1996	OCEAN PEARL	Sablefish	Pisces Canyon	OPL1996-02
01/06/1996	STEADFAST	Groundfish	Hecate Strait	STD1996-01
30/09/1996	VIKING STAR	Sablefish	Queen Charlotte Sound, West Coast Queen Charlotte Islands, North and Central Coast Mainland Inlets	VS1996-01
10/05/1996	VIKING SUNRISE	Sablefish	West Coast Vancouver Island, Queen Charlotte Sound, West Coast Queen	VSR1996-01
20/02/1996	W. E. RICKER	Pacific hake	Strait of Georgia	WER1996-07

<i>START DATE</i>	<i>VESSEL NAME</i>	<i>TARGET_SPECIES</i>	<i>LOCATION</i>	<i>CRUISE_ID</i>
26/02/1996	W. E. RICKER	Pacific hake	Strait of Georgia	WER1996-02
10/03/1996	W. E. RICKER	Pacific hake	Strait of Georgia	WER1996-08
30/05/1996	W. E. RICKER	Groundfish	Hecate Strait	WER1996-03
02/07/1996	W. E. RICKER	Rockfish	Langara Spit	WER1996-04
14/07/1996	W. E. RICKER	Pacific ocean perch	Queen Charlotte Sound	WER1996-01
30/07/1996	W. E. RICKER	Pacific hake, herring	La Perouse Bank	WER1996-05
13/08/1996	W. E. RICKER	Pacific hake	Continental shelf off British Columbia to Queen Charlotte Sound	WER1996-06
<b>1997</b>				
26/09/1997	OCEAN PEARL	Sablefish	West Coast Vancouver Island, Queen Charlotte Sound, West Coast Queen Charlotte Islands, North and Central Coast Mainland Inlets	OPL1997-01
05/09/1997	OCEAN SELECTOR	Groundfish, Pacific ocean perch, rougheye rockfish, silvergray rockfish, redstripe rockfish	West Coast Queen Charlotte Islands	OS1997-01
20/05/1997	VIKING SUNRISE	Sablefish	West Coast Vancouver Island, Queen Charlotte Sound, West Coast Queen	VSR1997-01
24/02/1997	W. E. RICKER	Pacific hake	Strait of Georgia	WER1997-03
02/08/1997	W. E. RICKER	Pacific hake, herring	La Perouse Bank	WER1997-01
10/08/1997	W. E. RICKER	Pacific hake	West Coast Vancouver Island, West Coast Queen Charlotte Islands, Hecate	WER1997-02
<b>1998</b>				
16/01/1998	FROSTI	Widow rockfish	Northwest Coast Vancouver Island (Triangle Island)	FST1998-01
04/08/1998	MILLER FREEMAN(USA)	Pacific hake	West Coast Vancouver Island, Queen Charlotte Sound, West Coast Queen Charlotte Islands, South East	MFR1998-01
22/09/1998	OCEAN PEARL	Sablefish	West Coast Vancouver Island, Queen Charlotte Sound, West Coast Queen Charlotte Islands, North and Central Coast Mainland Inlets	OPL1998-01
16/01/1998	W. E. RICKER	Widow rockfish	Northwest Coast Vancouver Island (Triangle Island)	WER1998-02
16/03/1998	W. E. RICKER	Pacific hake	Strait of Georgia	WER1998-05
05/06/1998	W. E. RICKER	Groundfish	Hecate Strait	WER1998-01
27/07/1998	W. E. RICKER	Pacific hake, herring	West Coast Vancouver Island, La Perouse Bank	WER1998-03
04/08/1998	W. E. RICKER	Pacific hake	West Coast Vancouver Island, Queen Charlotte Sound, West Coast Queen Charlotte Islands, South East	WER1998-04

<i>START DATE</i>	<i>VESSEL NAME</i>	<i>TARGET_SPECIES</i>	<i>LOCATION</i>	<i>CRUISE_ID</i>
<b>1999</b>				
29/09/1999	OCEAN PEARL	Sablefish	West Coast Vancouver Island, Queen Charlotte Sound, West Coast Queen Charlotte Islands, North and Central Coast Mainland Inlets	OPL1999-01
28/01/1999	VIKING STORM	Widow rockfish	Triangle Island and Goletas Channel Northeast Vancouver Island	VST1999-01
15/01/1999	W. E. RICKER	Widow rockfish	Triangle Island and Goletas Channel Northeast Vancouver Island	WER1999-04
21/02/1999	W. E. RICKER	Pacific hake	Strait of Georgia	WER1999-03
02/06/1999	W. E. RICKER	Groundfish	Queen Charlotte Sound	WER1999-01
10/08/1999	W. E. RICKER	Herring, Pacific hake, chinook, sardine	West Coast Vancouver Island, La Perouse Bank	WER1999-05
17/08/1999	W. E. RICKER	Pacific hake	West Coast Vancouver Island, Queen Charlotte Sound, West Coast Queen Charlotte Islands, South East	WER1999-02
<b>2000</b>				
08/10/2000	PACIFIC VIKING	Sablefish	West Coast Vancouver Island, Queen Charlotte Sound, West Coast Queen Charlotte Islands, North and Central Coast Mainland Inlets	PVK2000-01
01/04/2000	W. E. RICKER	Pacific hake	Strait of Georgia, Juan de Fuca	WER2000-02
31/05/2000	W. E. RICKER	Groundfish	Hecate Strait	WER2000-03
25/07/2000	W. E. RICKER	Chinook, coho	La Perouse Bank	WER2000-05
08/08/2000	W. E. RICKER	Pacific hake	West Coast Vancouver Island, Dixon Entrance, Hecate Strait, Queen	WER2000-01
15/08/2000	W. E. RICKER	Pacific hake	Strait of Georgia	WER2000-04
<b>2001</b>				
06/10/2001	OCEAN PEARL	Sablefish	West Coast Vancouver Island, Queen Charlotte Sound, West Coast Queen Charlotte Islands, North and Central Coast Mainland Inlets	OPL2001-01
10/01/2001	W. E. RICKER	Pacific hake, whiting	West Coast of Canada and United States	WER2001-04
27/03/2001	W. E. RICKER	Pacific hake, dogfish	Strait of Georgia, West Coast Vancouver Island	WER2001-05
28/05/2001	W. E. RICKER	Groundfish, flatfish	Hecate Strait	WER2001-01
24/07/2001	W. E. RICKER	Pacific hake, whiting	West Coast of Canada and United States	WER2001-03
25/08/2001	W. E. RICKER	Tanner crab, rockfish	West Coast Vancouver Island	WER2001-02

<i>START DATE</i>	<i>VESSEL NAME</i>	<i>TARGET_SPECIES</i>	<i>LOCATION</i>	<i>CRUISE_ID</i>
<b>2002</b>				
10/06/2002	VIKING STORM	Rock sole, English sole, Dover sole, petrale sole, arrowtooth flounder, Pacific cod	Hecate Strait	VST2002-01
12/02/2002	W. E. RICKER	Pacific hake	Strait of Georgia, adjacent inlets, Gulf Island channels	WER2002-01
18/03/2002	W. E. RICKER	Pacific hake	West Coast Vancouver Island	WER2002-02

Appendix 2. Groundfish Cruise Primary

<i>CRUISE ID</i>	<i>REPORT TITLE</i>	<i>PRINCIPAL AUTHOR</i>	<i>GFBIO TRIP ID</i>	<i>GFBIO STATUS</i>
ADN1978-01	A pilot tagging study of Pacific cod in Georgia Strait, January 17-February 2, 1978	LEAMAN, B.M.		Not in GFBio
ADN1979-01	Pacific cod tagging, Georgia Strait January 15-19, 1979	FOUCHER, R.P.		Not in GFBio
AH1976-01	Observations on the biology of Pacific hake, walleye pollock and spiny dogfish in the Strait of Georgia, Juan de Fuca Strait and off the West Coast of Vancouver Island and the United States Arctic Harvester July 13-24, 1976	BEAMISH, R.J.		Not in GFBio
AH1976-02	Midwater trawl tows and catches made on ARCTIC HARVESTER 76-2, 77-1 and G.B REED 77-1, 77-2 off the southwest of Vancouver Island	BARNER, L.W.		Not in GFBio
AH1976-03				Not in GFBio
AH1977-01	Midwater trawl tows and catches made on ARCTIC HARVESTER 76-2, 77-1 and G.B REED 77-1, 77-2 off the southwest of Vancouver Island	BARNER, L.W.		Not in GFBio
AH1977-02	Study of the biology of lingcod off the west coast of Vancouver Island, M/V ARCTIC HARVESTER, November 22-December 2, 1977	CASS, A.J.		Not in GFBio
AH1977-03	ARCTIC HARVESTER groundfish cruise no. 77-3 (October 11-28, 1977)	DAVENPORT, D.		Not in GFBio
AH1977-04	Data for the biology and diet studies of spiny dogfish ( <i>Squalus acanthias</i> ) in Hecate Strait, B.C. August 1977 and June 1978	MCFARLANE, G.A.		Not in GFBio
AH1977-05	A summary of sablefish tagging studies conducted during 1977 by the Pacific Biological Station	BEAMISH, R.J.		Not in GFBio
AH1977-06				Not in GFBio
AH1978-01	Midwater trawl tows and catches made on ARCTIC HARVESTER cruise 78-1 and G.B. REED cruise 78-1 (January 24 - February 10, 1978), Queen Charlotte Sound	BARNER, L.W.		Not in GFBio

<i>CRUISE ID</i>	<i>REPORT TITLE</i>	<i>PRINCIPAL AUTHOR</i>	<i>GFBIO TRIP ID</i>	<i>GFBIO STATUS</i>
AH1978-02	Rockfish survey off the west coast of the Queen Charlotte Islands made on ARCTIC HARVESTER hydroacoustic cruise 78-2, 1978	BARNER, L.W.		Not in GFBio
AH1978-03	ARCTIC HARVESTER groundfish cruise no. 78-3 (February 27 - March 10, 1978)	HARLING, W.R.		Not in GFBio
AH1978-04	An examination of the biology and distribution of walleye pollock in Dixon Entrance, Hecate Strait, the mainland inlets off Queen Charlotte Sound, and in the Strait of Georgia during March 14-April 21, 1978	THOMPSON, J.M.		Not in GFBio
AH1978-05	Walleye pollock study in Queen Charlotte sound and Dixon Entrance during September 21-29, 1978: MV/ Arctic Harvester	THOMPSON, J.M.		Not in GFBio
AH1978-06	Data for the biology and diet studies of spiny dogfish ( <i>Squalus acanthias</i> ) in Hecate Strait, B.C. August 1977 and June 1978	MCFARLANE, G.A.		Not in GFBio
AH1978-07	A summary of lingcod tagging studies conducted in 1978 by the Pacific Biological Station	CASS, A.J.		Not in GFBio
AH1978-08	A summary of lingcod tagging studies conducted in 1978 by the Pacific Biological Station	CASS, A.J.		Not in GFBio
AH1978-09	Exploratory bottom trawling for sablefish Southwest of Vancouver Island, 1978	SIGMUND, N.	10332	Partial
AH1978-10	Industrial Development Program explorations for Dover sole ( <i>Microstomus pacificus</i> ) off northwestern British Columbia, January 1978	HARLING, W.R.		Not in GFBio
AH1978-11				Not in GFBio
AH1979-01	Midwater and bottom trawl tows and catches made on MV ARCTIC HARVESTER cruise AH79-1, January 22 - February 9, 1979 in Dixon	BARNER, L.W.		Not in GFBio
AH1979-02	Data collected during rockfish ( <i>Sebastes</i> Spp.) assessments of the West Langara Island and West Coast Vancouver Island fishing grounds in 1979	LAPI, L.A.		Not in GFBio
AH1979-03			10919	Complete

<i>CRUISE ID</i>	<i>REPORT TITLE</i>	<i>PRINCIPAL AUTHOR</i>	<i>GFBIO TRIP ID</i>	<i>GFBIO STATUS</i>
AH1981-01	Catches and trawl locations of M/V ARCTIC HARVESTER during the Dover sole biomass survey off the west coast of Vancouver Island,	CARTER, E.W.		Not in GFBio
AH1981-02	Observations on the biology and distribution of Pacific hake, walleye pollock, and spiny dogfish in the Strait of Georgia, February 20-May 2, and July 3,	MACFARLANE, G.A.		Not in GFBio
AH1981-03	Observations on the biology and distribution of Pacific hake, walleye pollock, and spiny dogfish in the Strait of Georgia, February 20-May 2, and July 3,	MACFARLANE, G.A.		Not in GFBio
AH1981-04	Observations on the biology and distribution of Pacific hake, walleye pollock, and spiny dogfish in the Strait of Georgia, February 20-May 2, and July 3,	MACFARLANE, G.A.		Not in GFBio
AH1981-05	Observations on the biology and distribution of Pacific hake, walleye pollock, and spiny dogfish in the Strait of Georgia, February 20-May 2, and July 3,	MACFARLANE, G.A.		Not in GFBio
AH1987-01				Not in GFBio
AO1981-01	Trawl survey of juvenile flatfish in Hecate Strait, M/V Arctic Ocean, August 6-21, 1981	FARGO, J.		Not in GFBio
AO1984-01	ARCTIC OCEAN assemblage survey of Hecate Strait, May 28-June 17, 1984	FARGO, J.	39678	Complete
AO1986-01	Cruise details and biological observations from rockfish charters to the West Coast of Vancouver Island aboard the FV HOWE BAY, July 24-31 and August 24-29, 1985 and the FV ARCTIC OCEAN, July 28-August 5, 1986	STANLEY, R.D.	10367	Partial
APK1947-01	An index to trawling activity in British Columbia inlets by the Fisheries Research Board, 1944-1966	LEVINGS, C.D.		Not in GFBio
APK1960-01	An index to trawling activity in British Columbia inlets by the Fisheries Research Board, 1944-1966	LEVINGS, C.D.		Not in GFBio
APK1960-02	An index to trawling activity in British Columbia inlets by the Fisheries Research Board, 1944-1966	LEVINGS, C.D.		Not in GFBio
APK1960-03				Not in GFBio



<i>CRUISE ID</i>	<i>REPORT TITLE</i>	<i>PRINCIPAL AUTHOR</i>	<i>GFBIO TRIP ID</i>	<i>GFBIO STATUS</i>
APK1960-04				Not in GFBio
APK1961-01	An index to trawling activity in British Columbia inlets by the Fisheries Research Board, 1944-1966	LEVINGS, C.D.		Not in GFBio
APK1961-02				Not in GFBio
APK1961-03				Not in GFBio
APK1961-04				Not in GFBio
APK1961-05				Not in GFBio
APK1961-06				Not in GFBio
APK1962-01	Exploratory studies of the echo scattering layers in Sannich Inlet and the Strait of Georgia, British Columbia	BARRACLOUGH, W.E.		Not in GFBio
APK1962-02	Exploratory studies of the echo scattering layers in Sannich Inlet and the Strait of Georgia, British Columbia	BARRACLOUGH, W.E.		Not in GFBio
APK1962-03	Exploratory studies of the echo scattering layers in Sannich Inlet and the Strait of Georgia, British Columbia	BARRACLOUGH, W.E.		Not in GFBio
APK1962-04				Not in GFBio
APK1962-05				Not in GFBio
APK1963-01	An index to trawling activity in British Columbia inlets by the Fisheries Research Board, 1944-1966	LEVINGS, C.D.		Not in GFBio
APK1963-02	An index to trawling activity in British Columbia inlets by the Fisheries Research Board, 1944-1966	LEVINGS, C.D.		Not in GFBio

<i>CRUISE ID</i>	<i>REPORT TITLE</i>	<i>PRINCIPAL AUTHOR</i>	<i>GFBIO TRIP ID</i>	<i>GFBIO STATUS</i>
APK1963-03				Not in GFBio
APK1964-01	An index to trawling activity in British Columbia inlets by the Fisheries Research Board, 1944-1966	LEVINGS, C.D.		Not in GFBio
APK1964-02				Not in GFBio
APK1964-03				Not in GFBio
APK1965-01				Not in GFBio
APK1965-02				Not in GFBio
APK1966-01	Number, size composition and food of larval and juvenile fish caught with a two-boat surface trawl in the Strait of Georgia June 6-8, 1966	BARRACLOUGH, W.E.		Not in GFBio
APK1969-01	A.P. KNIGHT groundfish cruise no. 69-1, December 2-11, 1969	SMITH, M.S.		Not in GFBio
APK1969-02				Not in GFBio
APK1970-01	A.P. KNIGHT groundfish cruise no. 70-1, February 10-19, 1970	SMITH, M.S.		Not in GFBio
APK1970-02	A.P. KNIGHT groundfish cruise no. 70-2, July 20-23, 1970	SMITH, M.S.		Not in GFBio
APK1970-03	Juvenile sablefish cruises in 1970, including length, weight, girth and age data	KENNEDY, W.A.		Not in GFBio
APK1970-04	Juvenile sablefish cruises in 1970, including length, weight, girth and age data	KENNEDY, W.A.		Not in GFBio
APK1970-05				Not in GFBio
APK1970-06				Not in GFBio

<i>CRUISE ID</i>	<i>REPORT TITLE</i>	<i>PRINCIPAL AUTHOR</i>	<i>GFBIO TRIP ID</i>	<i>GFBIO STATUS</i>
APK1970-07				Not in GFBio
APK1970-08				Not in GFBio
APK1971-01	The offshore herring survey of southwest Vancouver Island, 1971. Report on A.P. KNIGHT cruises APK 71-1 (January 18 - February 4) and APK 71-2 (March 16 - April 1)	BARNER, L.W.		Not in GFBio
APK1971-02	A herring survey of Juan de Fuca Strait in 1971. Report on A.P. KNIGHT cruises APK 71-3, -4, -5, -6, and -7 (July 22 - December 12)	TAYLOR, F.H.C.		Not in GFBio
APK1971-03	A herring survey of Juan de Fuca Strait in 1971. Report on A.P. KNIGHT cruises APK 71-3, -4, -5, -6, and -7 (July 22 - December 12)	TAYLOR, F.H.C.		Not in GFBio
APK1971-04	A herring survey of Juan de Fuca Strait in 1971. Report on A.P. KNIGHT cruises APK 71-3, -4, -5, -6, and -7 (July 22 - December 12)	TAYLOR, F.H.C.		Not in GFBio
APK1971-05	A.P. KNIGHT groundfish cruise no. 71-1, November 18-25, 1971	SMITH, M.S.		Not in GFBio
APK1971-06	The offshore herring survey of southwest Vancouver Island, 1971. Report on A.P. KNIGHT cruises APK 71-1 (January 18 - February 4) and APK 71-2 (March 16 - April 1)	BARNER, L.W.		Not in GFBio
APK1971-07	A herring survey of Juan de Fuca Strait in 1971. Report on A.P. KNIGHT cruises APK 71-3, -4, -5, -6, and -7 (July 22 - December 12)	TAYLOR, F.H.C.		Not in GFBio
APK1971-08	A herring survey of Juan de Fuca Strait in 1971. Report on A.P. KNIGHT cruises APK 71-3, -4, -5, -6, and -7 (July 22 - December 12)	TAYLOR, F.H.C.		Not in GFBio
APK1972-01	A.P. KNIGHT groundfish cruise no. 72-1, October 24 - November 2 and November 23, 1972	SMITH, M.S.		Not in GFBio
APK1973-01	A.P. KNIGHT groundfish cruise no. 73-1, February 13-14, 1973	SMITH, M.S.		Not in GFBio
APK1973-02	A.P. KNIGHT groundfish cruise no. 73-2, October 22-30, 1973	SMITH, M.S.		Not in GFBio

<i>CRUISE ID</i>	<i>REPORT TITLE</i>	<i>PRINCIPAL AUTHOR</i>	<i>GFBIO TRIP ID</i>	<i>GFBIO STATUS</i>
APK1974-01	A.P. KNIGHT groundfish cruise no. 74-1, May 21-24, 1974 (Data record)	BEAMISH, R.J.		Not in GFBio
APK1974-02	Pacific hake and walleye pollock study Strait of Georgia cruise, A.P. KNIGHT, July 29-31, 1974	BEAMISH, R.J.		Not in GFBio
APK1974-03	Pacific hake and walleye pollock study, Strait of Georgia cruise, A.P. KNIGHT, October 3-9, 1974	BEAMISH, R.J.		Not in GFBio
APK1974-04	A.P. KNIGHT groundfish cruise no. 74-2, October 15-17, 1974 (Data record)	SMITH, M.S.		Not in GFBio
APK1974-05	Pacific hake and walleye pollock study, Strait of Georgia cruise, A.P. KNIGHT, November 18-20, 1974	BEAMISH, R.J.		Not in GFBio
APK1974-06				Not in GFBio
APK1975-01	Pacific hake and walleye pollock study, Strait of Georgia cruise, A.P. KNIGHT, April 7-18, 1975	BEAMISH, R.J.		Not in GFBio
APK1975-02	Pacific hake and walleye pollock study, Strait of Georgia cruise, A.P. KNIGHT, May 5-14, 1975	BEAMISH, R.J.		Not in GFBio
APK1975-03				Not in GFBio
APK1976-01	Midwater trawl tows and catches made on G.B. REED cruises 75-1, -2, and -3, and GBR 76-1 and -2 in the Strait of Georgia	BARNER, L.W.		Not in GFBio
ARR1982-01	Lingcod tagging study in the Strait of Georgia, November 1982-March 1983	CASS, A.J.		Not in GFBio
ATT1952-01	An index to trawling activity in British Columbia inlets by the Fisheries Research Board, 1944-1966	LEVINGS, C.D.		Not in GFBio
BH1985-01	Lingcod hook and line survey in the Gulf Island region (Statistical area 17) of the Strait of Georgia, October-December 1985	CASS, A.J.		Not in GFBio
BH1987-01	Hook and line survey of lingcod ( <i>Ophiodon elongatus</i> ) and rockfish ( <i>Sebastes</i> spp.) stocks in the Gulf Islands region (MSA 17) of the Strait of Georgia, January and February, 1987	HAND, C.M.		Not in GFBio

<i>CRUISE ID</i>	<i>REPORT TITLE</i>	<i>PRINCIPAL AUTHOR</i>	<i>GFBIO TRIP ID</i>	<i>GFBIO STATUS</i>
BH1987-02	Hook and line survey of lingcod ( <i>Ophiodon elongatus</i> ) stocks in the Gulf Islands Region (MSA17) of the Strait of Georgia, 1985 to 1988	HAND, C.M.		Not in GFBio
BKW1983-01	Lingcod tagging study in the Strait of Georgia, November 1982-March 1983	CASS, A.J.		Not in GFBio
BKW1984-01	Lingcod tagging study in the Strait of Georgia, 1983-84	CASS, A.J.		Not in GFBio
BKW1985-01				Not in GFBio
BSK1992-01	1992 research catch and effort data on nearshore reef-fishes in British Columbia statistical Area 12	YAMANAKA, K.L.	44123	Complete
BW1977-01	Industrial Development Program explorations for Dover sole ( <i>Microstomus pacificus</i> ) off northwestern British Columbia, during February 1977	HARLING, W.R.	25394	Partial
BW1978-01	Catches and trawl locations of the M/V Blue Waters during rockfish exploration and assessment cruises to the West Coast of the Queen Charlotte Islands and the Northwest Coast of Vancouver Island in 1978	NAGTEGAAL, D.A.		Not in GFBio
BW1978-02	Catches and trawl locations of the M/V Blue Waters during rockfish exploration and assessment cruises to the West Coast of the Queen Charlotte Islands and the Northwest Coast of Vancouver Island in 1978	NAGTEGAAL, D.A.		Not in GFBio
BW1978-03	Catches and trawl locations of the M/V Blue Waters during rockfish exploration and assessment cruises to the West Coast of the Queen Charlotte Islands and the Northwest Coast of Vancouver Island in 1978	NAGTEGAAL, D.A.	10573	Partial
BW1978-04	Midwater and bottom trawl tows and catches made by M.V. Blue Waters BW 78-3, Queen Charlotte Sound, October 3-23, 1978	BARNER, L.W.	10917	Partial
BW1979-02	Catches and trawl locations of the M/V Blue Waters during rockfish exploration and assessment cruise to the west coast of the Queen Charlotte	NAGTEGAAL, D.A.		Not in GFBio
BW1979-03	Data collected during rockfish ( <i>Sebastes</i> Spp.) assessments of the West Langara Island and West Coast Vancouver Island fishing grounds in 1979	LAPI, L.A.		Not in GFBio
BW1979-04	Dover sole tagging, Eastern Dixon Entrance, September 18-29, 1979	STOCKER, M.		Not in GFBio

<i>CRUISE ID</i>	<i>REPORT TITLE</i>	<i>PRINCIPAL AUTHOR</i>	<i>GFBIO TRIP ID</i>	<i>GFBIO STATUS</i>
BW1979-05	A summary of sablefish tagging and biological studies conducted during 1979 by the Pacific Biological Station	BEAMISH, R.J.		Not in GFBio
BW1980-01	Rockfish tagging cruises off Southwest Vancouver Island (M/V Ocean King) and off Northwest Vancouver Island and in Queen Charlotte Sound (M/V Blue Waters) During 1980	SHAW, W.		Not in GFBio
BW1989-01	Reproductive biology of Pacific cod and English sole from the cruise of the F/V BLUE WATERS to Hecate Strait, January 30 to February 11, 1989	FOUCHER, R.P.		Not in GFBio
CAB1984-01	A summary of research catch and effort data for nearshore reef-fishes collected during 1984 in MSA 15 and 16 of the Strait of Georgia	RICHARDS, L.J.	44091	Complete
CAB1984-02	A summary of research catch and effort data for nearshore reef-fishes collected during 1984 in MSA 15 and 16 of the Strait of Georgia	RICHARDS, L.J.	44093	Complete
CAB1985-01	1985 research catch and effort data on nearshore reef-fishes in the Strait of Georgia B.C. (Statistical areas 15 and 16)	RICHARDS, L.J.	44111	Complete
CAB1986-01	1986 research catch and effort data on nearshore reef-fishes in British Columbia statistical areas 12, 13, and 16	RICHARDS, L.J.	44114	Complete
CAB1987-01	1987 research catch and effort data on nearshore reef-fishes in British Columbia statistical areas 12 and 13	RICHARDS, L.J.	44116	Complete
CAB1988-01	1988 research catch and effort data on nearshore reef-fishes in British Columbia statistical areas 12 and 13	RICHARDS, L.J.	44119	Complete
CAB1992-01	1992 research catch and effort data on nearshore reef-fishes in British Columbia statistical Area 12	YAMANAKA, K.L.	44121	Complete
CAL1977-01				Not in GFBio
CAL1986-01	Biological and species interaction survey of Pacific hake, sablefish, spiny dogfish and Pacific Herring off the Southwest Coast of Vancouver Island. F/V Caledonian, August 12-25, 1986	SHAW, W.		Not in GFBio

<i>CRUISE ID</i>	<i>REPORT TITLE</i>	<i>PRINCIPAL AUTHOR</i>	<i>GFBIO TRIP ID</i>	<i>GFBIO STATUS</i>
CAL1987-01	Biological and species interaction survey of Pacific hake, sablefish, spiny dogfish and Pacific herring off the Southwest Coast of Vancouver Island, August 1987	SHAW, W.		Not in GFBio
CAL1989-01	Experimental gill net fishing on trawlable and untrawlable areas off Northwestern Vancouver Island, from the MV Caledonian August 15-28, 1989	MATTHEWS, K.R.		Not in GFBio
CAL1991-01			30604	Complete
CAL1996-01	Bottom trawl survey for rockfish off the Southwest Coast of Vancouver Island, September 9 to 27, 1996	OLSEN, N.	30624	Complete
CHG1985-01	A summary of sablefish tagging and biological studies conducted during 1982-1987 by the Pacific Biological Station	MURIE, D.J.		Not in GFBio
CHG1985-02	A summary of sablefish tagging and biological studies conducted during 1982-1987 by the Pacific Biological Station	MURIE, D.J.		Not in GFBio
CHI1971-01	Trap fishing black cod British Columbia, 1971-1972	WEBB, L.A.		Not in GFBio
CHI1972-01	Trap fishing black cod British Columbia, 1971-1972	WEBB, L.A.		Not in GFBio
CLG1974-01	A bottom trawl study of Pacific Hake and walleye pollock along the inshore areas adjacent to Vancouver Island in the Strait of Georgia	BEAMISH, R.J.		Not in GFBio
CLG1974-02	An initial study of fishes inhabiting the surface waters of the Strait of Georgia. M.V. Caligus July - August, 1974	BEAMISH, R.J.		Not in GFBio
CLG1974-03	Growth of young Pacific hake, walleye pollock, Pacific cod and lingcod in Stuart Channel in 1975	BEAMISH, R.J.		Not in GFBio
CLG1975-01	Growth of young Pacific hake, walleye pollock, Pacific cod and lingcod in Stuart Channel in 1975	BEAMISH, R.J.		Not in GFBio
CLG1975-02	Growth of young Pacific hake, walleye pollock, Pacific cod and lingcod in Stuart Channel in 1975	BEAMISH, R.J.		Not in GFBio

<i>CRUISE ID</i>	<i>REPORT TITLE</i>	<i>PRINCIPAL AUTHOR</i>	<i>GFBIO TRIP ID</i>	<i>GFBIO STATUS</i>
CLG1975-03	Growth of young Pacific hake, walleye pollock, Pacific cod and lingcod in Stuart Channel in 1975	BEAMISH, R.J.		Not in GFBio
CLG1975-04	Growth of young Pacific hake, walleye pollock, Pacific cod and lingcod in Stuart Channel in 1975	BEAMISH, R.J.		Not in GFBio
CLG1975-05	Growth of young Pacific hake, walleye pollock, Pacific cod and lingcod in Stuart Channel in 1975	BEAMISH, R.J.		Not in GFBio
CLG1975-06	Growth of young Pacific hake, walleye pollock, Pacific cod and lingcod in Stuart Channel in 1975	BEAMISH, R.J.		Not in GFBio
CLG1975-07	Growth of young Pacific hake, walleye pollock, Pacific cod and lingcod in Stuart Channel in 1975	BEAMISH, R.J.		Not in GFBio
CLG1975-08	Growth of young Pacific hake, walleye pollock, Pacific cod and lingcod in Stuart Channel in 1975	BEAMISH, R.J.		Not in GFBio
CLG1975-09	Growth of young Pacific hake, walleye pollock, Pacific cod and lingcod in Stuart Channel in 1975	BEAMISH, R.J.		Not in GFBio
CLG1975-10	Growth of young Pacific hake, walleye pollock, Pacific cod and lingcod in Stuart Channel in 1975	BEAMISH, R.J.		Not in GFBio
CLG1976-01	Growth of young Pacific hake, walleye pollock, Pacific cod and lingcod in Stuart Channel, British Columbia in 1976	BEAMISH, R.J.		Not in GFBio
CLG1976-02	Growth of young Pacific hake, walleye pollock, Pacific cod and lingcod in Stuart Channel, British Columbia in 1976	BEAMISH, R.J.		Not in GFBio
CLG1976-03	Growth of young Pacific hake, walleye pollock, Pacific cod and lingcod in Stuart Channel, British Columbia in 1976	BEAMISH, R.J.		Not in GFBio
CLG1976-04	Growth of young Pacific hake, walleye pollock, Pacific cod and lingcod in Stuart Channel, British Columbia in 1976	BEAMISH, R.J.		Not in GFBio
CLG1976-05	Growth of young Pacific hake, walleye pollock, Pacific cod and lingcod in Stuart Channel, British Columbia in 1976	BEAMISH, R.J.		Not in GFBio



<i>CRUISE ID</i>	<i>REPORT TITLE</i>	<i>PRINCIPAL AUTHOR</i>	<i>GFBIO TRIP ID</i>	<i>GFBIO STATUS</i>
CLG1976-06	Growth of young Pacific hake, walleye pollock, Pacific cod and lingcod in Stuart Channel, British Columbia in 1976	BEAMISH, R.J.		Not in GFBio
CLG1976-07	Growth of young Pacific hake, walleye pollock, Pacific cod and lingcod in Stuart Channel, British Columbia in 1976	BEAMISH, R.J.		Not in GFBio
CLG1976-08	Growth of young Pacific hake, walleye pollock, Pacific cod and lingcod in Stuart Channel, British Columbia in 1976	BEAMISH, R.J.		Not in GFBio
CLG1976-09	Growth of young Pacific hake, walleye pollock, Pacific cod and lingcod in Stuart Channel, British Columbia in 1976	BEAMISH, R.J.		Not in GFBio
CLG1977-01	Growth of young Pacific hake, walleye pollock, Pacific cod and lingcod in Stuart Channel, British Columbia in 1976	BEAMISH, R.J.		Not in GFBio
CLG1977-02				Not in GFBio
CLG1977-03				Not in GFBio
CLG1977-04				Not in GFBio
CLG1978-01	An examination of the biology and distribution of walleye pollock in Dixon Entrance, Hecate Strait, the mainland inlets off Queen Charlotte Sound, and in the Strait of Georgia during March 14-April 21, 1978	THOMPSON, J.M.		Not in GFBio
CLG1979-01				Not in GFBio
CLG1985-01				Not in GFBio
CLG1985-02				Not in GFBio
CLG1989-01				Not in GFBio
CLG1990-01				Not in GFBio

<i>CRUISE ID</i>	<i>REPORT TITLE</i>	<i>PRINCIPAL AUTHOR</i>	<i>GFBIO TRIP ID</i>	<i>GFBIO STATUS</i>
CLG1991-01	Bottom trawl survey of young-of-the-year lingcod ( <i>Ophiodon elongatus</i> ) in the Strait of Georgia by the R/V Caligus, June 15-August 3, 1991	WORKMAN, G.D.		Not in GFBio
CLS1979-01	Study of the biology and distribution of Pacific hake during the first commercial fishery conducted in the Strait of Georgia by the M/V Callistratus February 16-17, March 10-April 3, and May 12, 1979	MACFARLANE, G.A.		Not in GFBio
CLS1979-02	Study of the biology and distribution of Pacific hake during the first commercial fishery conducted in the Strait of Georgia by the M/V Callistratus February 16-17, March 10-April 3, and May 12, 1979	MACFARLANE, G.A.		Not in GFBio
CLS1979-03	Study of the biology and distribution of Pacific hake during the first commercial fishery conducted in the Strait of Georgia by the M/V Callistratus February 16-17, March 10-April 3, and May 12, 1979	MACFARLANE, G.A.		Not in GFBio
CLS1979-04	A preliminary report of Pacific hake studies conducted off the West Coast of Vancouver Island	BEAMISH, R.J.		Not in GFBio
CLS1979-05	A preliminary report of Pacific hake studies conducted off the West Coast of Vancouver Island	BEAMISH, R.J.		Not in GFBio
CLS1980-01	Exploratory midwater fishing for rockfish off the West Coast of Vancouver Island January 22-February 1, 1980	RICHARDS, J.E.	10922	Partial
CLS1980-02				Not in GFBio
CLS1981-01				Not in GFBio
CMH1987-01				Not in GFBio
CNO1978-01	Report on cruise 78-1 of CANADIAN No. 1 October 22 - November 3, 1978	MILLER, D.C.		Not in GFBio
CNO1984-01	Hydroacoustic herring survey results and trawl catches from Hecate Strait, October 15 to November 5, 1984. G.B. REED cruise GBR84C and M.V. CANADIAN #1 cruise CAN84-1	KIESER, R.		Not in GFBio

<i>CRUISE ID</i>	<i>REPORT TITLE</i>	<i>PRINCIPAL AUTHOR</i>	<i>GFBIO TRIP ID</i>	<i>GFBIO STATUS</i>
COB1976-01	Comparative otter trawling experiment in Queen Charlotte Sound, British Columbia, Canada, September 1976	KIMURA, D.K.		Not in GFBio
CPN1953-01	An index to trawling activity in British Columbia inlets by the Fisheries Research Board, 1944-1966	LEVINGS, C.D.		Not in GFBio
DD1983-01	Trawl survey of juvenile flatfish in Hecate Strait by the M/V Double Decker, April 12-29, 1983	FARGO, J.		Not in GFBio
DD1984-01	Trawl survey of juvenile flatfish in Hecate Strait by the M/V Double Decker, April 10-27, 1984	FARGO, J.		Not in GFBio
DD1986-01	F/V DOUBLE DECKER species assemblages survey of Hecate Strait, Jan. 30-Feb. 19, 1986	FARGO, J.		Not in GFBio
DUN1986-01	1986 research catch and effort data on nearshore reef-fishes in British Columbia statistical areas 12, 13, and 16	RICHARDS, L.J.	44115	Complete
DUN1988-01	1988 research catch and effort data on nearshore reef-fishes in British Columbia statistical areas 12 and 13	RICHARDS, L.J.	44120	Complete
DUN1992-01	1992 research catch and effort data on nearshore reef-fishes in British Columbia statistical Area 12	YAMANAKA, K.L.	44122	Complete
EH1977-01				Not in GFBio
EH1977-02				Not in GFBio
EH1979-01	A summary of sablefish tagging and biological studies conducted during 1979 by the Pacific Biological Station	BEAMISH, R.J.		Not in GFBio
EH1980-01	Midwater trawl tows and catches made on M/V EASTWARD HO cruise EH80-1 east coast of Vancouver Island, November 3-21, 1980	BARNER, L.W.		Not in GFBio
EH1984-01	Catches and trawl locations of R/V G.B. REED and M/V EASTWARD HO during the Pacific ocean perch assessment cruise to Queen Charlotte Sound, August-September, 1984	NAGTEGAAL, D.A.	36844	Complete

<i>CRUISE ID</i>	<i>REPORT TITLE</i>	<i>PRINCIPAL AUTHOR</i>	<i>GFBIO TRIP ID</i>	<i>GFBIO STATUS</i>
<i>EH1985-01</i>	Biological and species interaction survey of Pacific hake, sablefish, spiny dogfish and Pacific herring off the Southwest Coast of Vancouver Island. FV Eastward Ho, August 10-22, 1985	SHAW, W.		Not in GFBio
<i>EH1987-01</i>	FV EASTWARD HO assemblage survey of Hecate Strait, May 27-June 16, 1987	FARGO, J.	34426	Complete
<i>EH1988-01</i>	Cruise details and biological information from the shelf rockfish sampling cruise aboard the FV EASTWARD HO, October 31-November 24, 1988	GILLESPIE, G.E.	10374	Complete
<i>EH1989-01</i>	FV Eastward Ho assemblage survey of Hecate Strait, May 24-June 13, 1989	ANTONSEN, B.L.	33945	Complete
<i>EH1990-01</i>	W.E. RICKER and EASTWARD HO cruise to study the effect of trawling on rockfish behaviour, October 15-27, 1990	KIESER, R.		Not in GFBio
<i>FE1982-01</i>	Rock sole tagging in Hecate Strait, April 27-May 11, 1982	HARLING, W.R.		Not in GFBio
<i>FE1983-01</i>	Pacific ocean perch data collected during jointly funded cruises aboard the (M/V Ocean Selector) (August 10-22) and the (M/V Free Enterprise No. 1) (July 31-August 9), 1983	NAGTEGAAL, D.A.		Not in GFBio
<i>FE1983-02</i>	Biomass survey of rockfish stocks in the Dixon Entrance-Southeast Alaska Region, July 5-22, 1983 (R/V G.B. REED and M/V FREE ENTERPRISE NO.	LEAMAN, B.M.		Not in GFBio
<i>FRB1983-01</i>	Lingcod tagging study in the Strait of Georgia, November 1982-March 1983	CASS, A.J.		Not in GFBio
<i>FRB1984-01</i>	Lingcod tagging study in the Strait of Georgia, 1983-84	CASS, A.J.		Not in GFBio
<i>FRP1978-01</i>	FREEPORT groundfish cruise no. 78-1 July 21 - August 11, 1978	SHAW, W.		Not in GFBio
<i>FST1995-01</i>	Bottom trawl survey for rockfish in Queen Charlotte Sound, September 11 to 22, 1995	YAMANAKA, K.L.	31245	Complete
<i>FST1998-01</i>	An acoustic biomass survey of the Triangle Island widow rockfish ( <i>Sebastes entomelas</i> ) aggregation by Fisheries and Oceans, Canada and the Canadian Groundfish Research and Conservation Society, January 16 - February 7,	STANLEY, R.D.	24046	Complete

<i>CRUISE ID</i>	<i>REPORT TITLE</i>	<i>PRINCIPAL AUTHOR</i>	<i>GFBIO TRIP ID</i>	<i>GFBIO STATUS</i>
GAM1972-01				Not in GFBio
GAM1972-02				Not in GFBio
GAM1973-01				Not in GFBio
GAM1973-02				Not in GFBio
GAM1973-03				Not in GFBio
GAM1981-01	A preliminary study of variability in year-class abundance of post-larval and juvenile lingcod in the Strait of Georgia during 1980-82	CASS, A.J.		Not in GFBio
GAM1982-01	A preliminary study of variability in year-class abundance of post-larval and juvenile lingcod in the Strait of Georgia during 1980-82	CASS, A.J.		Not in GFBio
GB1973-01	IDB - supported Gail Bernice groundfish cruises 73-1 to 73-3 to Hecate Strait, Queen Charlotte Sound and Southwest Vancouver Island January 23 - March 18, 1973	FORRESTER, C.R.	21655	Partial
GB1973-02	IDB - supported Gail Bernice groundfish cruises 73-1 to 73-3 to Hecate Strait, Queen Charlotte Sound and Southwest Vancouver Island January 23 - March 18, 1973	FORRESTER, C.R.		Not in GFBio
GB1973-03	IDB - supported Gail Bernice groundfish cruises 73-1 to 73-3 to Hecate Strait, Queen Charlotte Sound and Southwest Vancouver Island January 23 - March 18, 1973	FORRESTER, C.R.		Not in GFBio
GB1973-04	IDB - supported Gail Bernice groundfish cruises 73-4 to 73-8 to South Hecate Strait and Queen Charlotte Sound March 26-June 27, 1973	FORRESTER, C.R.		Not in GFBio
GB1973-05	IDB - supported Gail Bernice groundfish cruises 73-4 to 73-8 to South Hecate Strait and Queen Charlotte Sound March 26-June 27, 1973	FORRESTER, C.R.		Not in GFBio
GB1973-06	IDB - supported Gail Bernice groundfish cruises 73-4 to 73-8 to South Hecate Strait and Queen Charlotte Sound March 26-June 27, 1973	FORRESTER, C.R.		Not in GFBio

<i>CRUISE ID</i>	<i>REPORT TITLE</i>	<i>PRINCIPAL AUTHOR</i>	<i>GFBIO TRIP ID</i>	<i>GFBIO STATUS</i>
GB1973-07	IDB - supported Gail Bernice groundfish cruises 73-4 to 73-8 to South Hecate Strait and Queen Charlotte Sound March 26-June 27, 1973	FORRESTER, C.R.		Not in GFBio
GB1973-08	IDB - supported Gail Bernice groundfish cruises 73-4 to 73-8 to South Hecate Strait and Queen Charlotte Sound March 26-June 27, 1973	FORRESTER, C.R.		Not in GFBio
GB1973-09	IDB - supported Gail Bernice groundfish cruises 73-4 to 73-8 to South Hecate Strait and Queen Charlotte Sound March 26-June 27, 1973	FORRESTER, C.R.		Not in GFBio
GB1973-10	IDB - supported Gail Bernice groundfish cruises 73-10 to 73-14 to Hecate Strait and Queen Charlotte Sound, August 3-December 16, 1973 (Data)	CHILTON, D.E.		Not in GFBio
GB1973-11	IDB - supported Gail Bernice groundfish cruises 73-10 to 73-14 to Hecate Strait and Queen Charlotte Sound, August 3-December 16, 1973 (Data)	CHILTON, D.E.		Not in GFBio
GB1973-12	IDB - supported Gail Bernice groundfish cruises 73-10 to 73-14 to Hecate Strait and Queen Charlotte Sound, August 3-December 16, 1973 (Data)	CHILTON, D.E.		Not in GFBio
GB1973-13	IDB - supported Gail Bernice groundfish cruises 73-10 to 73-14 to Hecate Strait and Queen Charlotte Sound, August 3-December 16, 1973 (Data)	CHILTON, D.E.		Not in GFBio
GB1973-14	IDB - supported Gail Bernice groundfish cruises 73-10 to 73-14 to Hecate Strait and Queen Charlotte Sound, August 3-December 16, 1973 (Data)	CHILTON, D.E.		Not in GFBio
GB1974-01	IDB - supported Gail Bernice groundfish cruises 74-1 to 74-3 to Hecate Strait, Queen Charlotte Sound and Southwest Vancouver Island February 6 - March 21, 1974 (Data Record)	CHILTON, D.E.		Not in GFBio
GB1974-02	IDB - supported Gail Bernice groundfish cruises 74-1 to 74-3 to Hecate Strait, Queen Charlotte Sound and Southwest Vancouver Island February 6 - March 21, 1974 (Data Record)	CHILTON, D.E.		Not in GFBio
GB1974-03	IDB - supported Gail Bernice groundfish cruises 74-1 to 74-3 to Hecate Strait, Queen Charlotte Sound and Southwest Vancouver Island February 6 - March 21, 1974 (Data Record)	CHILTON, D.E.		Not in GFBio
GB1999-01			23820	Complete

<i>CRUISE ID</i>	<i>REPORT TITLE</i>	<i>PRINCIPAL AUTHOR</i>	<i>GFBIO TRIP ID</i>	<i>GFBIO STATUS</i>
GB1991-01				Not in GFBio
GBR1963-03	G.B. REED groundfish cruise reports, 1963-66	WESTRHEIM, S.J.		Not in GFBio
GBR1963-06	G.B. REED groundfish cruise reports, 1963-66	WESTRHEIM, S.J.		Not in GFBio
GBR1963-07	G.B. REED groundfish cruise reports, 1963-66	WESTRHEIM, S.J.		Not in GFBio
GBR1964-01	G.B. REED groundfish cruise reports, 1963-66	WESTRHEIM, S.J.		Not in GFBio
GBR1964-02	G.B. REED groundfish cruise reports, 1963-66	WESTRHEIM, S.J.		Not in GFBio
GBR1964-06	Midwater trawl catches from Queen Charlotte Sound and the open ocean adjacent to the Queen Charlotte Islands	TAYLOR, F.H.C.		Not in GFBio
GBR1964-12	Midwater trawl catches from Queen Charlotte Sound and the open ocean adjacent to the Queen Charlotte Islands	TAYLOR, F.H.C.		Not in GFBio
GBR1965-01	G.B. REED groundfish cruise reports, 1963-66	WESTRHEIM, S.J.		Not in GFBio
GBR1965-02	Report on the trawling operations of the Canadian research vessel G.B. Reed in the Kodiak Island and Yakutat Areas of the Gulf of Alaska from February 14 to February 28, 1965	WESTRHEIM, S.J.		Not in GFBio
GBR1965-03	Catch rates, size composition, and sex ratio of Pacific ocean perch ( <i>Sebastes alutus</i> ) caught in the Eastern North Pacific Ocean (Cape Spencer, Alaska to Cape Blanco, Oregon) by the G.B. Reed,	WESTRHEIM, S.J.		Not in GFBio
GBR1965-07	Midwater trawl catches from Queen Charlotte Sound and the open ocean adjacent to the Queen Charlotte Islands	TAYLOR, F.H.C.		Not in GFBio
GBR1966-01	G.B. REED groundfish cruise reports, 1963-66	WESTRHEIM, S.J.		Not in GFBio
GBR1966-02	G.B. REED groundfish cruise reports, 1963-66	WESTRHEIM, S.J.	41333	Complete

<i>CRUISE ID</i>	<i>REPORT TITLE</i>	<i>PRINCIPAL AUTHOR</i>	<i>GFBIO TRIP ID</i>	<i>GFBIO STATUS</i>
GBR1966-03	Cruise report for the G.B. Reed groundfish cruise No. 66-1, February 22-March 18, 1966.	ANON,	34513	Partial
GBR1967-01	G.B. REED groundfish cruise No. 67-1, February 1 to April 24, 1967	HARLING, W.R.		Not in GFBio
GBR1967-03	G.B. REED groundfish cruise No. 67-2, September 6 to October 4, 1967	WESTRHEIM, S.J.	41313	Complete
GBR1968-01	Report on groundfish cruise of C.G.S. G.B. Reed to Hecate Strait in February 1968	LEVINGS, C.D.		Not in GFBio
GBR1968-02	G.B. REED groundfish cruise No. 68-2, April 2 to June 11, 1968	HARLING, W.R.		Not in GFBio
GBR1969-01	G.B. REED groundfish cruise No. 69-1, February 11-27, 1969	WESTRHEIM, S.J.		Not in GFBio
GBR1969-02				Not in GFBio
GBR1969-03	G.B. REED groundfish cruise No. 69-2, June 18 - July 2, 1969	WESTRHEIM, S.J.		Not in GFBio
GBR1969-04	G.B. REED groundfish cruise No. 69-3, September 8 to 25, 1969	HARLING, W.R.	41133	Complete
GBR1969-05				Not in GFBio
GBR1970-01	G.B. REED groundfish cruise No. 70-1 March 5-June 18, 1970	HARLING, W.R.		Not in GFBio
GBR1970-02	Juvenile sablefish cruises in 1970, including length, weight, girth and age data	KENNEDY, W.A.		Not in GFBio
GBR1970-03	G.B. REED groundfish cruise No. 70-2, August 7-20, 1970	WESTRHEIM, S.J.		Not in GFBio
GBR1970-05	G.B. REED groundfish cruise No. 70-3, September 9 to 25 1970	HARLING, W.R.	41295	Complete
GBR1971-06	G.B. REED groundfish cruise No. 71-1 June 9 to 29, 1971	DAVENPORT, D.		Not in GFBio



<i>CRUISE ID</i>	<i>REPORT TITLE</i>	<i>PRINCIPAL AUTHOR</i>	<i>GFBIO TRIP ID</i>	<i>GFBIO STATUS</i>
GBR1971-08	G.B. REED groundfish cruise No. 71-2, August 5 to September 2, 1971	WESTRHEIM, S.J.		Not in GFBio
GBR1971-09	G.B. REED groundfish cruise No. 71-3 October 1-29, 1971	HARLING, W.R.	40657	Complete
GBR1972-01	The offshore herring survey of southwest Vancouver Island, 1972. Report on G.B. REED cruises GBR 72-1 (January 13-28), GBR 72-2 (March 6-24, and GBR 72-3 (April 11-27)	TAYLOR, F.H.C.		Not in GFBio
GBR1972-02	The offshore herring survey of southwest Vancouver Island, 1972. Report on G.B. REED cruises GBR 72-1 (January 13-28), GBR 72-2 (March 6-24, and GBR 72-3 (April 11-27)	TAYLOR, F.H.C.		Not in GFBio
GBR1972-03	The offshore herring survey of southwest Vancouver Island, 1972. Report on G.B. REED cruises GBR 72-1 (January 13-28), GBR 72-2 (March 6-24, and GBR 72-3 (April 11-27)	TAYLOR, F.H.C.		Not in GFBio
GBR1972-04	G.B. REED groundfish cruise No. 72-1 June 13-29, 1972	WESTRHEIM, S.J.		Not in GFBio
GBR1972-05	More about juvenile sablefish tagging Northeastern Vancouver Island, 1972	KENNEDY, W.A.		Not in GFBio
GBR1972-06	G.B. REED groundfish cruise No. 72-3 September 9-28, 1972	WESTRHEIM, S.J.		Not in GFBio
GBR1972-07	The offshore herring survey off Southwest Vancouver Island in 1972 and 1973. Report on G.B. Reed cruises GBR 72-4 (October 18-November 2) GBR 73-1 (January 17-31) and GBR 73-2 (March 13-29)	BARNER, L.W.		Not in GFBio
GBR1973-01	G.B. REED groundfish cruise No. 73-1 June 5-July 26, 1973	WESTRHEIM, S.J.		Not in GFBio
GBR1973-02	G.B. REED groundfish cruise No. 73-2 September 5-25, 1973	HARLING, W.R.	40537	Complete
GBR1973-03	Herring survey off southwest Vancouver Island in 1973 cruise GBR73-3	BARNER, L.W.		Not in GFBio
GBR1973-04	The offshore herring survey off Southwest Vancouver Island in 1972 and 1973. Report on G.B. Reed cruises GBR 72-4 (October 18-November 2) GBR 73-1 (January 17-31) and GBR 73-2 (March 13-29)	BARNER, L.W.		Not in GFBio

<i>CRUISE ID</i>	<i>REPORT TITLE</i>	<i>PRINCIPAL AUTHOR</i>	<i>GFBIO TRIP ID</i>	<i>GFBIO STATUS</i>
GBR1973-05	The offshore herring survey off Southwest Vancouver Island in 1972 and 1973. Report on G.B. Reed cruises GBR 72-4 (October 18-November 2) GBR 73-1 (January 17-31) and GBR 73-2 (March 13-29)	BARNER, L.W.		Not in GFBio
GBR1974-01	G.B. REED groundfish cruise No. 74-1, February 5-22, 1974	WESTRHEIM, S.J.		Not in GFBio
GBR1974-02	G.B. REED groundfish cruise No. 74-2 March 4-15, 1974 (Data record)	JONES, B.C.		Not in GFBio
GBR1974-04	G.B. REED groundfish cruise No. 74-3 June 4-26, 1974 (Data Record)	WESTRHEIM, S.J.		Not in GFBio
GBR1974-05	Midwater trawl tows and catches made on G.B. REED cruises GBR 74-1, -2 and GBR 75-4, -5 off the southwest coast of Vancouver Island	BARNER, L.W.		Not in GFBio
GBR1974-06	G.B. REED groundfish cruise No. 74-4 September 4-25, 1974 (Data Record)	WESTRHEIM, S.J.		Not in GFBio
GBR1974-07	Midwater trawl tows and catches made on G.B. REED cruises GBR 74-1, -2 and GBR 75-4, -5 off the southwest coast of Vancouver Island	BARNER, L.W.		Not in GFBio
GBR1975-01	Hake and pollock study, Strait of Georgia cruise, G.B. REED January 6 - February 21, 1975	BEAMISH, R.J.		Not in GFBio
GBR1975-02	Hake and pollock study, Strait of Georgia bottom trawl cruise G.B. Reed, February 25-March 13, 1975	WEIR, K.R.		Not in GFBio
GBR1975-03	G.B. REED groundfish cruise No. 75-3 (October 7-24, 1975)	HARLING, W.R.		Not in GFBio
GBR1975-04	G.B. REED groundfish cruises 75-1 (April 8-24) and 75-2 (July 8-24) (data record)	WESTRHEIM, S.J.		Not in GFBio
GBR1975-05	G.B. REED groundfish cruises 75-1 (April 8-24) and 75-2 (July 8-24) (data record)	WESTRHEIM, S.J.		Not in GFBio
GBR1975-07	Hake and pollock study, Strait of Georgia cruise G.B. REED June 16-27, 1975	BEAMISH, R.J.		Not in GFBio
GBR1975-08	Midwater trawl tows and catches made on G.B. REED cruises GBR 74-1, -2 and GBR 75-4, -5 off the southwest coast of Vancouver Island	BARNER, L.W.		Not in GFBio

<i>CRUISE ID</i>	<i>REPORT TITLE</i>	<i>PRINCIPAL AUTHOR</i>	<i>GFBIO TRIP ID</i>	<i>GFBIO STATUS</i>
GBR1975-09	Midwater trawl tows and catches made on G.B. REED cruises GBR 74-1, -2 and GBR 75-4, -5 off the southwest coast of Vancouver Island	BARNER, L.W.		Not in GFBio
GBR1975-10	Hake and pollock study, Strait of Georgia cruise RV G.B. REED, December 1-12, 1975	SCARSBROOK, R.		Not in GFBio
GBR1975-11	Midwater trawl tows and catches made on G.B. REED cruises 75-1, -2, and -3, and GBR 76-1 and -2 in the Strait of Georgia	BARNER, L.W.		Not in GFBio
GBR1975-12	Midwater trawl tows and catches made on G.B. REED cruises 75-1, -2, and -3, and GBR 76-1 and -2 in the Strait of Georgia	BARNER, L.W.		Not in GFBio
GBR1975-13	Midwater trawl tows and catches made on G.B. REED cruises 75-1, -2, and -3, and GBR 76-1 and -2 in the Strait of Georgia	BARNER, L.W.		Not in GFBio
GBR1975-15	Hake and pollock study, Strait of Georgia cruise G.B. Reed - March 17-24, 1975	CASS, A.J.		Not in GFBio
GBR1976-01	Hake and pollock study, Strait of Georgia cruise, G.B. REED January 13-28, 1976	CASS, A.J.		Not in GFBio
GBR1976-02	G.B. REED groundfish cruise No. 76-1 (February 10-26, 1976)	WESTRHEIM, S.J.		Not in GFBio
GBR1976-04	An examination of the biology and distribution of walleye pollock in the Strait of Georgia. RV G.B. REED, May 25-June 18, 1976	SHAW, W.		Not in GFBio
GBR1976-06	G.B. REED groundfish cruise No. 76-2 (July 6-20, 1976)	WESTRHEIM, S.J.		Not in GFBio
GBR1976-07	Comparative otter trawling experiment in Queen Charlotte Sound, British Columbia, Canada, September 1976	KIMURA, D.K.		Not in GFBio
GBR1976-08	G.B. REED groundfish cruise No. 76-3, September 8-27, 1976	WESTRHEIM, S.J.	40057	Complete
GBR1976-10	Midwater trawl tows and catches made on G.B. REED cruises 75-1, -2, and -3, and GBR 76-1 and -2 in the Strait of Georgia	BARNER, L.W.		Not in GFBio
GBR1976-13	Midwater trawl tows and catches made on G.B. REED cruises 75-1, -2, and -3, and GBR 76-1 and -2 in the Strait of Georgia	BARNER, L.W.		Not in GFBio

<i>CRUISE ID</i>	<i>REPORT TITLE</i>	<i>PRINCIPAL AUTHOR</i>	<i>GFBIO TRIP ID</i>	<i>GFBIO STATUS</i>
GBR1977-01	G.B. REED groundfish cruise No. 77-1 (March 8-30, 1977)	WESTRHEIM, S.J.		Not in GFBio
GBR1977-03	Midwater trawl tows and catches made on ARCTIC HARVESTER 76-2, 77-1 and G.B. REED 77-1, 77-2 off the southwest of Vancouver Island	BARNER, L.W.		Not in GFBio
GBR1977-04	G.B. REED groundfish cruise No. 77-3 August 22 to September 8, 1977	HARLING, W.R.	40037	Complete
GBR1977-05	Midwater trawl tows and catches made on ARCTIC HARVESTER 76-2, 77-1 and G.B. REED 77-1, 77-2 off the southwest of Vancouver Island	BARNER, L.W.		Not in GFBio
GBR1977-06				Not in GFBio
GBR1977-07				Not in GFBio
GBR1978-01	An examination of the biology and distribution of walleye pollock in Dixon Entrance, Hecate Strait, the mainland inlets of Queen Charlotte Sound, and in the Strait of Georgia during March 14-April 21, 1978	THOMPSON, J.M.		Not in GFBio
GBR1978-02	Midwater trawl tows and catches made on ARCTIC HARVESTER cruise 78-1 and G.B. REED cruise 78-1 (January 24 - February 10, 1978), Queen Charlotte Sound	BARNER, L.W.		Not in GFBio
GBR1978-03	Hydroacoustic and fishing surveys of Queen Charlotte Sound, January 26 - February 10, and October 2-21, 1978	TAYLOR, F.H.C.		Not in GFBio
GBR1978-04	G.B. REED groundfish cruise No. 78-7, August 29-September 19, 1978	HARLING, W.R.		Not in GFBio
GBR1978-05	Hydroacoustic and fishing surveys of Queen Charlotte Sound, January 26 - February 10, and October 2-21, 1978	TAYLOR, F.H.C.		Not in GFBio
GBR1978-06	Hydroacoustic and fishing surveys for walleye pollock in Dixon Entrance and nearby areas, July 5-23, 1978	TAYLOR, F.H.C.		Not in GFBio
GBR1978-07	Trawling survey for Dover sole off northwest Queen Charlotte Islands, (G.B. REED cruise no. 78-6), July 28-August 10, 1978	HARLING, W.R.		Not in GFBio

<i>CRUISE ID</i>	<i>REPORT TITLE</i>	<i>PRINCIPAL AUTHOR</i>	<i>GFBIO TRIP ID</i>	<i>GFBIO STATUS</i>
GBR1978-08				Not in GFBio
GBR1979-01	G.B. REED groundfish cruise No. 79-6, September 6-21, 1979	WESTRHEIM, S.J.		Not in GFBio
GBR1979-02	Midwater tows and catches made on G.B. REED cruise, GBR79-7 off southwest coast of Vancouver Island, October 29 - November 16, 1979	BARNER, L.W.		Not in GFBio
GBR1979-03	G.B. REED groundfish cruise No. 79-4, June 26 - July 13, 1979	WESTRHEIM, S.J.		Not in GFBio
GBR1979-04	Hydroacoustic and fishing surveys for walleye pollock (Thereagra chalcogramma) in Dixon Entrance and Northern Hecate Strait, January 22-February 9, 1979	TAYLOR, F.H.C.		Not in GFBio
GBR1980-01	Distribution and abundance of herring and other pelagic fish off the West Coast of Vancouver Island in September, November, 1980, and March, 1981, and in the Strait of Georgia in November, 1980	TAYLOR, F.H.C.		Not in GFBio
GBR1980-02	Distribution and abundance of herring and other pelagic fish off the West Coast of Vancouver Island in September, November, 1980, and March, 1981, and in the Strait of Georgia in November, 1980	TAYLOR, F.H.C.		Not in GFBio
GBR1980-04	Midwater trawl tows and catches made on G.B. REED cruise GBR80-6, Dixon Entrance and north end Hecate Straits, June 4-24, 1980	BARNER, L.W.		Not in GFBio
GBR1981-01	Midwater trawl tows and catches made on C.G.S. G.B. REED GBR81-1 Strait of Georgia, January 12-23, 1981	BARNER, L.W.		Not in GFBio
GBR1981-02	Midwater trawl tows and catches made on C.G.S. G.B. Reed cruise GBR81-2, February 9-20, 1981 and GBR81-4, April 13-24, 1981, Strait of Georgia	BARNER, L.W.		Not in GFBio
GBR1981-03	Midwater trawl tows and catches made on C.G.S. G.B. REED cruise GBR81-3, M/V HOWE BAY cruise HB81-1, and M/V MARWOOD cruise MW81-1 off the southwest coast of Vancouver Island March 9-27, 1981	MCCARTER, P.B.		Not in GFBio
GBR1981-04	Midwater trawl tows and catches made on C.G.S. G.B. Reed cruise GBR81-2, February 9-20, 1981 and GBR81-4, April 13-24, 1981, Strait of Georgia	BARNER, L.W.		Not in GFBio

<i>CRUISE ID</i>	<i>REPORT TITLE</i>	<i>PRINCIPAL AUTHOR</i>	<i>GFBIO TRIP ID</i>	<i>GFBIO STATUS</i>
GBR1981-06	Rockfish tagging cruise in Queen Charlotte Sound, R/V G.B. REED, July 3-17, 1981	NAGTEGAAL, D.A.		Not in GFBio
GBR1981-07	Midwater trawl tows and catches made on M/V SUN MAIDEN cruise SM81-1 and C.G.S. G.B. REED cruise GBR81-8, September 8-25, 1981	BARNER, L.W.		Not in GFBio
GBR1981-08	A summary of sablefish tagging and biological studies conducted during 1980 and 1981 by the Pacific Biological Station	BEAMISH, R.J.		Not in GFBio
GBR1982-01	Results of Spiny dogfish ( <i>Squalus acanthias</i> ) tagging in British Columbia waters during 1982 and 1983	SAUNDERS, M.W.		Not in GFBio
GBR1982-02				Not in GFBio
GBR1982-03	G.B. REED groundfish cruise No. 82-2, July 12-29, 1982	WESTRHEIM, S.J.		Not in GFBio
GBR1982-04	Abundance, distribution, and biology of spiny dogfish ( <i>Squalus acanthias</i> ) in Hecate Strait during Sept. 7-Oct. 1, 1982	SAUNDERS, M.W.		Not in GFBio
GBR1982-05	Rockfish fecundity cruise (GBR-R82-1), November 8-28, 1982	LEAMAN, B.M.		Not in GFBio
GBR1983-01	Biological survey of Pacific hake, walleye pollock and spiny dogfish in selected inshore areas and in the open waters of the Strait of Georgia, R/V G.B. REED, February 7-28 and April 18-24, 1983	SHAW, W.		Not in GFBio
GBR1983-02	Biological survey of Pacific hake, walleye pollock and spiny dogfish in selected inshore areas and in the open waters of the Strait of Georgia, R/V G.B. REED, February 7-28 and April 18-24, 1983	SHAW, W.		Not in GFBio
GBR1983-03	English sole tagging in Hecate Strait, R/V G.B. REED, June 6-24, 1983	FARGO, J.		Not in GFBio
GBR1983-04	Biomass survey of rockfish stocks in the Dixon Entrance-Southeast Alaska Region, July 5-22, 1983 (R/V G.B. REED and M/V FREE ENTERPRISE NO.	LEAMAN, B.M.		Not in GFBio
GBR1983-05	G.B. REED groundfish cruise No. 83-5, September 20 - October 6, 1983	WESTRHEIM, S.J.		Not in GFBio

<i>CRUISE ID</i>	<i>REPORT TITLE</i>	<i>PRINCIPAL AUTHOR</i>	<i>GFBIO TRIP ID</i>	<i>GFBIO STATUS</i>
GBR1983-06	A hydroacoustic survey for Pacific hake on the Continental Shelf off British Columbia and Washington from 48 to 49 degrees north latitude: August 22 to September 8, 1983	BARNER, L.W.		Not in GFBio
GBR1984-01	Catches and trawl locations of RV G.B. REED and MV EASTWARD HO during the Pacific ocean perch assessment cruise to Queen Charlotte Sound, August-September, 1984	NAGTEGAAL, D.A.	36864	Complete
GBR1984-02	Biological survey of Pacific hake, walleye pollock and spiny dogfish in the Strait of Georgia, RV G.B. REED, March 19-30, 1984	SHAW, W.		Not in GFBio
GBR1984-03	G.B. REED groundfish cruise No. 84-3, May 24-June 14, 1984	WESTRHEIM, S.J.	38645	Complete
GBR1984-04	Hydroacoustic herring survey results and trawl catches from Hecate Strait, October 15 to November 5, 1984. G.B. REED cruise GBR84C and M.V. CANADIAN #1 cruise CAN84-1	KIESER, R.		Not in GFBio
GBR1984-05	Distribution and abundance of larval sablefish ( <i>Anoplopoma fimbria</i> ) in the surface waters off the West Coast of Vancouver Island, April 16 to May 10, 1985	SHAW, W.		Not in GFBio
GBR1984-06				Not in GFBio
GBR1985-01	Groundfish food-resource division sub-project of the Hecate Strait Project RV G.B. REED cruises in Hecate Strait, B.C. during June 7-17 and September 23-October 4, 1985	SAUNDERS, M.W.		Not in GFBio
GBR1985-02	Rockfish reproductive biology cruise (GBR-R85-1) October 21-November 9, 1985	LEAMAN, B.M.		Not in GFBio
GBR1985-03	Groundfish food-resource division sub-project of the Hecate Strait Project RV G.B. REED cruises in Hecate Strait, B.C. during June 7-17 and September 23-October 4, 1985	SAUNDERS, M.W.		Not in GFBio
GBR1985-04	Herring survey off Queen Charlotte Islands and Hecate Strait January 15-31, 1985 Cruise G.B.R. 85-1	MCCARTER, P.B.		Not in GFBio
GBR1985-05	Biological survey of Pacific hake, walleye pollock and spiny dogfish in the Strait of Georgia, RV G.B. REED, March 18-29, 1985	SHAW, W.		Not in GFBio

<i>CRUISE ID</i>	<i>REPORT TITLE</i>	<i>PRINCIPAL AUTHOR</i>	<i>GFBIO TRIP ID</i>	<i>GFBIO STATUS</i>
GBR1985-06	Hecate Strait herring survey July 22-August 8, 1985 G.B. REED cruise 85-8	MCCARTER, P.B.		Not in GFBio
GBR1985-07	Hydroacoustic herring survey results and trawl catches from Hecate Strait, November 26 to December 12, 1985. G.B. REED cruise GBR85E and M.V. SUNNFJORD cruise SUN85-1	MCCARTER, P.B.		Not in GFBio
GBR1985-08	Lingcod maturity cruise off southwest Vancouver Island and in Queen Charlotte Sound, R/V G.B. REED, August 20-September 5, 1985	CASS, A.J.		Not in GFBio
GBR1985-09				Not in GFBio
GBR1985-10				Not in GFBio
GBR1985-11				Not in GFBio
GBR1986-01	FRV G.B. REED assemblage survey of Hecate Strait, January 27-February 18, 1986	FOUCHER, R.P.		Not in GFBio
GBR1986-02	Distribution and abundance of larval sablefish ( <i>Anoplopoma fimbria</i> ) off the West Coast of Vancouver Island, April 2-18, May 10-18, 1986	SHAW, W.		Not in GFBio
GBR1986-03	Distribution and abundance of larval sablefish ( <i>Anoplopoma fimbria</i> ) off the West Coast of Vancouver Island, April 2-18, May 10-18, 1986	SHAW, W.		Not in GFBio
GFS1995-01				Not in GFBio
GFS1996-01				Not in GFBio
GFS1996-02				Not in GFBio
HB1980-01	Midwater trawl tows and catches made on M/V HOWE BAY cruise HB80-1, southwest coast of Vancouver Island, November 3-21, 1980	BARNER, L.W.		Not in GFBio
HB1981-01	Midwater trawl tows and catches made on C.G.S. G.B. REED cruise GBR81-3, M/V HOWE BAY cruise HB81-1, and M/V MARWOOD cruise MW81-1 off the southwest coast of Vancouver Island March 9-27, 1981	MCCARTER, P.B.		Not in GFBio



<i>CRUISE ID</i>	<i>REPORT TITLE</i>	<i>PRINCIPAL AUTHOR</i>	<i>GFBIO TRIP ID</i>	<i>GFBIO STATUS</i>
HB1985-01	Cruise details and biological observations from rockfish charters to the West Coast of Vancouver Island aboard the F/V HOWE BAY, July 24-31 and August 24-29, 1985 and the F/V ARCTIC OCEAN, July 28-August 5, 1986	STANLEY, R.D.	10361	Partial
HB1985-04	Biomass survey of rockfish stocks off the Southwest Coast of Vancouver Island, September 8-22, 1985 (MV Howe Bay)	LEAMAN, B.M.	41273	Complete
HB1987-01				Not in GFBio
HB1990-01			28743	Complete
HJ1978-01	HEIDI-J and NORE-DICK, groundfish cruise no. 78-1 July 21 - August 11, 1978	SHAW, W.		Not in GFBio
HPB1992-01				Not in GFBio
HPB1993-01				Not in GFBio
INV1947-01	An index to trawling activity in British Columbia inlets by the Fisheries Research Board, 1944-1966	LEVINGS, C.D.		Not in GFBio
INV1947-02	An index to trawling activity in British Columbia inlets by the Fisheries Research Board, 1944-1966	LEVINGS, C.D.		Not in GFBio
INV1947-03	An index to trawling activity in British Columbia inlets by the Fisheries Research Board, 1944-1966	LEVINGS, C.D.		Not in GFBio
INV1947-04	An index to trawling activity in British Columbia inlets by the Fisheries Research Board, 1944-1966	LEVINGS, C.D.		Not in GFBio
INV1948-01	An index to trawling activity in British Columbia inlets by the Fisheries Research Board, 1944-1966	LEVINGS, C.D.		Not in GFBio
INV1950-01	An index to trawling activity in British Columbia inlets by the Fisheries Research Board, 1944-1966	LEVINGS, C.D.		Not in GFBio
INV1950-02	An index to trawling activity in British Columbia inlets by the Fisheries Research Board, 1944-1966	LEVINGS, C.D.		Not in GFBio

<i>CRUISE ID</i>	<i>REPORT TITLE</i>	<i>PRINCIPAL AUTHOR</i>	<i>GFBIO TRIP ID</i>	<i>GFBIO STATUS</i>
INV1950-03	An index to trawling activity in British Columbia inlets by the Fisheries Research Board, 1944-1966	LEVINGS, C.D.		Not in GFBio
INV1951-01	An index to trawling activity in British Columbia inlets by the Fisheries Research Board, 1944-1966	LEVINGS, C.D.		Not in GFBio
INV1951-02	An index to trawling activity in British Columbia inlets by the Fisheries Research Board, 1944-1966	LEVINGS, C.D.		Not in GFBio
INV1951-03	An index to trawling activity in British Columbia inlets by the Fisheries Research Board, 1944-1966	LEVINGS, C.D.		Not in GFBio
INV1952-01	An index to trawling activity in British Columbia inlets by the Fisheries Research Board, 1944-1966	LEVINGS, C.D.		Not in GFBio
INV1952-02	An index to trawling activity in British Columbia inlets by the Fisheries Research Board, 1944-1966	LEVINGS, C.D.		Not in GFBio
INV1953-01	An index to trawling activity in British Columbia inlets by the Fisheries Research Board, 1944-1966	LEVINGS, C.D.		Not in GFBio
INV1953-02	An index to trawling activity in British Columbia inlets by the Fisheries Research Board, 1944-1966	LEVINGS, C.D.		Not in GFBio
INV1953-03	An index to trawling activity in British Columbia inlets by the Fisheries Research Board, 1944-1966	LEVINGS, C.D.		Not in GFBio
INV1954-01				
INV1955-01	An index to trawling activity in British Columbia inlets by the Fisheries Research Board, 1944-1966	LEVINGS, C.D.		Not in GFBio
INV1957-01	An index to trawling activity in British Columbia inlets by the Fisheries Research Board, 1944-1966	LEVINGS, C.D.		Not in GFBio
INV1957-02	An index to trawling activity in British Columbia inlets by the Fisheries Research Board, 1944-1966	LEVINGS, C.D.		Not in GFBio

<i>CRUISE ID</i>	<i>REPORT TITLE</i>	<i>PRINCIPAL AUTHOR</i>	<i>GFBIO TRIP ID</i>	<i>GFBIO STATUS</i>
INV1958-01	An index to trawling activity in British Columbia inlets by the Fisheries Research Board, 1944-1966	LEVINGS, C.D.		Not in GFBio
INV1959-01	An index to trawling activity in British Columbia inlets by the Fisheries Research Board, 1944-1966	LEVINGS, C.D.		Not in GFBio
INV1959-02	An index to trawling activity in British Columbia inlets by the Fisheries Research Board, 1944-1966	LEVINGS, C.D.		Not in GFBio
INV1961-01			25063	Complete
INV1963-01	G.B. REED groundfish cruise reports, 1963-66	WESTRHEIM, S.J.		Not in GFBio
INV1964-01	An index to trawling activity in British Columbia inlets by the Fisheries Research Board, 1944-1966	LEVINGS, C.D.		Not in GFBio
INV1964-02	An index to trawling activity in British Columbia inlets by the Fisheries Research Board, 1944-1966	LEVINGS, C.D.		Not in GFBio
INV1964-03	An index to trawling activity in British Columbia inlets by the Fisheries Research Board, 1944-1966	LEVINGS, C.D.		Not in GFBio
INV1964-04	An index to trawling activity in British Columbia inlets by the Fisheries Research Board, 1944-1966	LEVINGS, C.D.		Not in GFBio
IS1991-01	Cruise details and biological information from the juvenile rockfish surveys aboard the RV W.E. RICKER, May 13-25, 1991, and the FV ISLAND SUN, Jun 3-11, 1991	GILLESPIE, G.E.	29122	Partial
JM1980-01				Not in GFBio
JM1980-02				Not in GFBio
JM1981-01				Not in GFBio
JM1982-01				Not in GFBio

<i>CRUISE ID</i>	<i>REPORT TITLE</i>	<i>PRINCIPAL AUTHOR</i>	<i>GFBIO TRIP ID</i>	<i>GFBIO STATUS</i>
JM1982-02				Not in GFBio
JM1983-01	A summary of sablefish tagging and biological studies conducted during 1982-1987 by the Pacific Biological Station	MURIE, D.J.		Not in GFBio
JM1983-02				Not in GFBio
JM1983-03				Not in GFBio
JM1984-01	A summary of sablefish tagging and biological studies conducted during 1982-1987 by the Pacific Biological Station	MURIE, D.J.		Not in GFBio
JM1984-02				Not in GFBio
JM1984-03				Not in GFBio
JM1985-01	A summary of sablefish tagging and biological studies conducted during 1982-1987 by the Pacific Biological Station	MURIE, D.J.		Not in GFBio
JPT1988-01	Hydroacoustic herring survey results from Hecate Strait, December 7-18, 1988. J.P. Tully Cruise JPT88A	MCCARTER, P.B.		Not in GFBio
JPT1989-01	Exploratory fishing and hydroacoustic observations of rockfish off Brooks Peninsula, Vancouver Island, from the MV VELMA C and CSS JOHN P. TULLY, March 13-23, 1989	MATTHEWS, K.R.		Not in GFBio
KET1984-01	A summary of research catch and effort data for nearshore reef-fishes collected during 1984 in MSA 15 and 16 of the Strait of Georgia	RICHARDS, L.J.	44090	Complete
KET1984-02	A summary of research catch and effort data for nearshore reef-fishes collected during 1984 in MSA 15 and 16 of the Strait of Georgia	RICHARDS, L.J.	44092	Complete
LJ1977-01	A summary of sablefish tagging studies conducted during 1977 by the Pacific Biological Station	BEAMISH, R.J.		Not in GFBio
LJ1988-01				Not in GFBio

<i>CRUISE ID</i>	<i>REPORT TITLE</i>	<i>PRINCIPAL AUTHOR</i>	<i>GFBIO TRIP ID</i>	<i>GFBIO STATUS</i>
LP1980-01	A summary of sablefish tagging and biological studies conducted during 1980 and 1981 by the Pacific Biological Station	BEAMISH, R.J.		Not in GFBio
LP1984-01				Not in GFBio
LP1985-01				Not in GFBio
LP1987-01	A summary of sablefish tagging and biological studies conducted during 1982-1987 by the Pacific Biological Station	MURIE, D.J.		Not in GFBio
LP1987-02				Not in GFBio
LP1987-03				Not in GFBio
LP1989-01	Cruise details of sablefish ( <i>Anoplocoma fimbria</i> ) surveys conducted in B.C. waters 1988-1993	SMITH, M.S.	43910	Complete
LP1994-01	Cruise details of sablefish ( <i>Anoplocoma fimbria</i> ) surveys conducted in B.C. waters, 1994-1995	DOWNES, A.J.	43630	Complete
LPT1981-01	A summary of sablefish tagging and biological studies conducted during 1980 and 1981 by the Pacific Biological Station	BEAMISH, R.J.		Not in GFBio
MFR1998-01	Echo Integration-trawl survey of Pacific hake, <i>Merluccius productus</i> , off the Pacific Coast of the United States and Canada during July-August, 1998	WILSON, S.J.		Not in GFBio
MLB1980-01	A preliminary study of variability in year-class abundance of post-larval and juvenile lingcod in the Strait of Georgia during 1980-82	CASS, A.J.		Not in GFBio
MCD1982-01	Lingcod tagging study in the Strait of Georgia, November 1982-March 1983	CASS, A.J.		Not in GFBio
MCD1983-01	Lingcod tagging study in the Strait of Georgia, 1983-84	CASS, A.J.		Not in GFBio
MCD1984-01				Not in GFBio

<i>CRUISE ID</i>	<i>REPORT TITLE</i>	<i>PRINCIPAL AUTHOR</i>	<i>GFBIO TRIP ID</i>	<i>GFBIO STATUS</i>
MW1981-01	Midwater trawl tows and catches made on C.G.S. G.B. REED cruise GBR81-3, MV HOWE BAY cruise HB81-1, and MV MARWOOD cruise MW81-1 off the southwest coast of Vancouver Island March 9-27, 1981	MCCARTER, P.B.	10923	Partial
MW1983-01	A hydroacoustic survey for Pacific hake on the Continental Shelf off British Columbia and Washington from 48 to 49 degrees north latitude: August 22 to September 8, 1983	BARNER, L.W.		Not in GFBio
NB1973-01				Not in GFBio
ND1978-01	HEIDI-J and NORE-DICK, groundfish cruise no. 78-1 July 21 - August 11, 1978	SHAW, W.		Not in GFBio
ND1982-01	Results of Spiny dogfish ( <i>Squalus acanthias</i> ) tagging in British Columbia waters during 1982 and 1983	SAUNDERS, M.W.		Not in GFBio
NEM1977-01	Industrial Development Program explorations for Dover sole ( <i>Microstomus pacificus</i> ) off northwestern British Columbia, during February 1977	HARLING, W.R.	25400	Partial
NEM1978-01	Midwater and bottom trawl tows and catches made by MV Nemesis No. 78-1 July 5-23, 1978 in Dixon Entrance	BARNER, L.W.		Not in GFBio
NUC1980-01	Turbot biomass survey of Hecate Strait, June 9-21, 1980	FARGO, J.	41112	Complete
NUC1980-02	Juvenile flatfish survey of MV Nucleus in Hecate Strait, August 11-25, 1980	STOCKER, M.		Not in GFBio
NUC1982-01	Hecate Strait survey, MV Nucleus, April 1-18, 1982	FARGO, J.		Not in GFBio
NUC1987-01	Cruise of the FV NUCLEUS, January 5-17, 1987 to Hecate Strait to study reproductive biology of Pacific cod and English sole	FOUCHER, R.P.		Not in GFBio
OG1972-01	Echo-sounder and trawl net calibration studies with the G.B. Reed and Ogon September 1972	WESTRHEIM, S.J.		Not in GFBio
OK1980-01	Rockfish tagging cruises off Southwest Vancouver Island (MV Ocean King) and off Northwest Vancouver Island and in Queen Charlotte Sound (MV Blue Waters) During 1980	SHAW, W.	11110	Partial

<i>CRUISE ID</i>	<i>REPORT TITLE</i>	<i>PRINCIPAL AUTHOR</i>	<i>GFBIO TRIP ID</i>	<i>GFBIO STATUS</i>
OK1980-02	Midwater trawl tows and catches made on MV Ocean King cruise OK80-1, southwest coast Vancouver Island, September 9-27, 1980	BARNER, L.W.		Not in GFBio
OK1989-01			28785	Complete
OPL1981-01	A summary of sablefish tagging and biological studies conducted during 1980 and 1981 by the Pacific Biological Station	BEAMISH, R.J.		Not in GFBio
OPL1982-01	A summary of sablefish tagging and biological studies conducted during 1982-1987 by the Pacific Biological Station	MURIE, D.J.		Not in GFBio
OPL1982-02				Not in GFBio
OPL1982-03				Not in GFBio
OPL1983-01				Not in GFBio
OPL1984-01	A summary of sablefish tagging and biological studies conducted during 1982-1987 by the Pacific Biological Station	MURIE, D.J.		Not in GFBio
OPL1987-01				Not in GFBio
OPL1988-01				Not in GFBio
OPL1995-01	Cruise details of sablefish ( <i>Anoplopoma fimbria</i> ) surveys conducted in B.C. waters, 1994-1995	DOWNES, A.J.	43270	Complete
OPL1996-01			43039	Complete
OPL1996-02				Not in GFBio
OPL1997-01			42699	Complete
OPL1998-01			41122	Complete

<i>CRUISE ID</i>	<i>REPORT TITLE</i>	<i>PRINCIPAL AUTHOR</i>	<i>GFBIO TRIP ID</i>	<i>GFBIO STATUS</i>
OPL1999-01			40589	Complete
OPL2001-01			43233	Complete
OS1983-01	Pacific ocean perch data collected during jointly funded cruises aboard the (M/V Ocean Selector) (August 10-22) and the (M/V Free Enterprise No. 1) (July 31-August 9), 1983	NAGTEGAAL, D.A.		Not in GFBio
OS1989-01	Rockfish sampling cruise: FV OCEAN SELECTOR, July 12 to 30, 1989	GILLESPIE, G.E.	10378	Complete
OS1994-01	Bottom trawl and exploratory hydroacoustic survey for rockfish in Queen Charlotte Sound, June 20 to July 7, 1994	HAND, C.M.	30744	Complete
OS1995-01	Bottom trawl survey for rockfish in Queen Charlotte Sound, September 11 to 22, 1995	YAMANAKA, K.L.	31244	Complete
OS1995-02	Results of the Dover sole ( <i>Microstomus pacificus</i> ) biomass survey conducted off the West Coast of Vancouver Island February 13-27, 1995	FARGO, J.		Not in GFBio
OS1997-01	Results from a bottom trawl survey of rockfish stocks off the West Coast of the Queen Charlotte Islands, September 5 to 23, 1997	WORKMAN, G.D.	29804	Complete
OTV1965-01	Results of exploratory fishing for groundfish in Hecate Strait in 1965	THOMSON, J.A.		Not in GFBio
OTV1965-02	Results of exploratory fishing for groundfish in Hecate Strait in 1965	THOMSON, J.A.		Not in GFBio
OTV1965-03	Results of exploratory fishing for groundfish in Hecate Strait in 1965	THOMSON, J.A.		Not in GFBio
OTV1965-04	Results of exploratory fishing for groundfish in Hecate Strait in 1965	THOMSON, J.A.		Not in GFBio
OTV1966-01	Results of exploratory fishing for groundfish in Hecate Strait in 1966	THOMSON, J.A.		Not in GFBio
OTV1966-02	Results of exploratory fishing for groundfish in Hecate Strait in 1966	THOMSON, J.A.		Not in GFBio



<i>CRUISE ID</i>	<i>REPORT TITLE</i>	<i>PRINCIPAL AUTHOR</i>	<i>GFBIO TRIP ID</i>	<i>GFBIO STATUS</i>
OTV1966-03	Results of exploratory fishing for groundfish in Hecate Strait in 1966	THOMSON, J.A.		Not in GFBio
OTV1966-04	Results of exploratory fishing for groundfish in Hecate Strait in 1966	THOMSON, J.A.		Not in GFBio
PCL1944-01	An index to trawling activity in British Columbia inlets by the Fisheries Research Board, 1944-1966	LEVINGS, C.D.		Not in GFBio
PCL1944-02	An index to trawling activity in British Columbia inlets by the Fisheries Research Board, 1944-1966	LEVINGS, C.D.		Not in GFBio
PCL1945-01	An index to trawling activity in British Columbia inlets by the Fisheries Research Board, 1944-1966	LEVINGS, C.D.		Not in GFBio
PCL1945-02	An index to trawling activity in British Columbia inlets by the Fisheries Research Board, 1944-1966	LEVINGS, C.D.		Not in GFBio
PDA1984-01	A summary of research catch and effort data for nearshore reef-fishes collected during 1984 in MSA 15 and 16 of the Strait of Georgia	RICHARDS, L.J.		Not in GFBio
PE1979-01	Pacific cod tagging and stock monitoring off Southwest Vancouver Island, February-March 1979. (Pacific Eagle Groundfish Cruises 79-1 and 79-2)	FOUCHER, R.P.		Not in GFBio
PE1979-02	Pacific cod tagging and stock monitoring off Southwest Vancouver Island, February-March 1979. (Pacific Eagle Groundfish Cruises 79-1 and 79-2)	FOUCHER, R.P.		Not in GFBio
PE1982-01	Lingcod tagging study off southwest Vancouver Island, MV PACIFIC EAGLE - July 14-27, 1982	CASS, A.J.		Not in GFBio
PT1983-01				Not in GFBio
PT1983-02				Not in GFBio
PTT1980-01	A summary of sablefish tagging and biological studies conducted during 1980 and 1981 by the Pacific Biological Station	BEAMISH, R.J.		Not in GFBio
PVK2000-01			40517	Complete

<i>CRUISE ID</i>	<i>REPORT TITLE</i>	<i>PRINCIPAL AUTHOR</i>	<i>GFBIO TRIP ID</i>	<i>GFBIO STATUS</i>
RBN1948-01	An index to trawling activity in British Columbia inlets by the Fisheries Research Board, 1944-1966	LEVINGS, C.D.		Not in GFBio
RBV1972-01	IDB - supported Rupert Brand V groundfish cruises 72-1 to 72-6 to Queen Charlotte Sound August 26 - December 12, 1972	FORRESTER, C.R.		Not in GFBio
RBV1972-02	IDB - supported Rupert Brand V groundfish cruises 72-1 to 72-6 to Queen Charlotte Sound August 26 - December 12, 1972	FORRESTER, C.R.		Not in GFBio
RBV1972-03	IDB - supported Rupert Brand V groundfish cruises 72-1 to 72-6 to Queen Charlotte Sound August 26 - December 12, 1972	FORRESTER, C.R.		Not in GFBio
RBV1972-04	IDB - supported Rupert Brand V groundfish cruises 72-1 to 72-6 to Queen Charlotte Sound August 26 - December 12, 1972	FORRESTER, C.R.		Not in GFBio
RBV1972-05	IDB - supported Rupert Brand V groundfish cruises 72-1 to 72-6 to Queen Charlotte Sound August 26 - December 12, 1972	FORRESTER, C.R.		Not in GFBio
RBV1972-06	IDB - supported Rupert Brand V groundfish cruises 72-1 to 72-6 to Queen Charlotte Sound August 26 - December 12, 1972	FORRESTER, C.R.		Not in GFBio
RC1968-01	Royal Canadian midwater trawl cruise No. 68-3, August 13-29, 1968	HARLING, W.R.		Not in GFBio
RC1977-01				Not in GFBio
RGS1995-01				Not in GFBio
RSP1982-01	Results of Spiny dogfish ( <i>Squalus acanthias</i> ) tagging in British Columbia waters during 1982 and 1983	SAUNDERS, M.W.		Not in GFBio
SB1977-01	Industrial Development Program explorations for Dover sole ( <i>Microstomus pacificus</i> ) off northwestern British Columbia, during February 1977	HARLING, W.R.	25436	Partial
SB1979-01	Data collected during rockfish ( <i>Sebastes</i> Spp.) assessments of the West Langara Island and West Coast Vancouver Island fishing grounds in 1979	LAPI, L.A.		Not in GFBio

<i>CRUISE ID</i>	<i>REPORT TITLE</i>	<i>PRINCIPAL AUTHOR</i>	<i>GFBIO TRIP ID</i>	<i>GFBIO STATUS</i>
SB1979-02	Walleye pollock spawning study in Dixon Entrance and Hecate Strait; MV Scotia Bay, March 11-30, 1979	THOMPSON, J.M.		Not in GFBio
SE1946-01	An index to trawling activity in British Columbia inlets by the Fisheries Research Board, 1944-1966	LEVINGS, C.D.		Not in GFBio
SH1979-01	Catches and trawl locations of the MV Southward Ho during a rockfish exploration and assessment cruise to Queen Charlotte Sound, September 7-27, 1979	NAGTEGAAL, D.A.	10921	Complete
SH1979-02	A summary of sablefish tagging and biological studies conducted during 1979 by the Pacific Biological Station	BEAMISH, R.J.		Not in GFBio
SK1967-01	A trip on the trawler Sharlene K, September 1967	KENNEDY, W.A.		Not in GFBio
SM1978-01	A summary of lingcod tagging studies conducted in 1978 by the Pacific Biological Station	CASS, A.J.		Not in GFBio
SM1980-01	Report on May 15-27, 1980 cruise of FV SUN MAIDEN	MILLER, D.C.		Not in GFBio
SM1980-02	Strait of Georgia pollock survey during 1980 roe fishery: MV Sun Maiden	ROBINSON, C.K.		Not in GFBio
SM1981-01	Midwater trawl tows and catches made on MV SUN MAIDEN cruise SM81-1 and C.G.S. G.B. REED cruise GBR81-8, September 8-25, 1981	BARNER, L.W.		Not in GFBio
SM1982-01	Rockfish tagging off Southwest Vancouver Island and off Northwest Washington, MV Sun Maiden, May 3-17, 1982	CARTER, E.W.		Not in GFBio
SM1988-01				Not in GFBio
SM1988-02				Not in GFBio
SPK1978-01	A summary of sablefish tagging and exploratory trapping studies conducted during 1978 by the Pacific Biological Station	BEAMISH, R.J.		Not in GFBio
SPK1978-02	A summary of sablefish tagging and exploratory trapping studies conducted during 1978 by the Pacific Biological Station	BEAMISH, R.J.		Not in GFBio

<i>CRUISE ID</i>	<i>REPORT TITLE</i>	<i>PRINCIPAL AUTHOR</i>	<i>GFBIO TRIP ID</i>	<i>GFBIO STATUS</i>
SPK1978-03	A summary of sablefish tagging and exploratory trapping studies conducted during 1978 by the Pacific Biological Station	BEAMISH, R.J.		Not in GFBio
SPK1979-01	A summary of sablefish tagging and biological studies conducted during 1979 by the Pacific Biological Station	BEAMISH, R.J.		Not in GFBio
SPK1979-02	A summary of sablefish tagging and biological studies conducted during 1979 by the Pacific Biological Station	BEAMISH, R.J.		Not in GFBio
SPK1981-01	A summary of sablefish tagging and biological studies conducted during 1980 and 1981 by the Pacific Biological Station	BEAMISH, R.J.		Not in GFBio
STD1996-01	R/V W.E. RICKER and F/V STEADFAST trawl survey of Hecate Strait, May 30 - June 13, 1996	WORKMAN, G.D.	27118	Partial
SUN1980-01	A study of trawl mesh selectivity for English sole and rock sole in Hecate Strait, August 1-5, 1980	STANLEY, R.D.		Not in GFBio
SUN1985-01	Hydroacoustic herring survey results and trawl catches from Hecate Strait, November 26 to December 12, 1985. G.B. REED cruise GBR85E and M.V. SUNNFJORD cruise SUN85-1	MCCARTER, P.B.		Not in GFBio
SUN1985-02	Trawl survey of juvenile flatfish in Hecate Strait by the F.V. SUNNFJORD, April 9-26, 1985	FARGO, J.		Not in GFBio
SW1981-01	Exploratory fishing of Bowie Seamount by the M/V Star Wars 11 August 11-23, 1981	CARTER, E.W.		Not in GFBio
TD11988-01	1988 research catch and effort data on nearshore reef-fishes in British Columbia statistical areas 12 and 13	RICHARDS, L.J.	44118	Complete
TD11992-01	1992 research catch and effort data on nearshore reef-fishes in British Columbia statistical Area 12	YAMANAKA, K.L.	44124	Complete
THK1980-01	A preliminary study of variability in year-class abundance of post-larval and juvenile lingcod in the Strait of Georgia during 1980-82	CASS, A.J.		Not in GFBio
THK1981-01	A preliminary study of variability in year-class abundance of post-larval and juvenile lingcod in the Strait of Georgia during 1980-82	CASS, A.J.		Not in GFBio

<i>CRUISE ID</i>	<i>REPORT TITLE</i>	<i>PRINCIPAL AUTHOR</i>	<i>GFBIO TRIP ID</i>	<i>GFBIO STATUS</i>
THK1987-01				Not in GFBio
TM1994-01	A hydroacoustic survey on the Continental Shelf off British Columbia to evaluate new fisheries acoustic instrumentation and to obtain Pacific hake stock assessment information, May 28 - June 4, 1994	KIESER, R.	45596	Complete
TMS1947-01	An index to trawling activity in British Columbia inlets by the Fisheries Research Board, 1944-1966	LEVINGS, C.D.		Not in GFBio
TN1981-01	Catches and trawl locations of M/V Tenacious during the rockfish biomass survey in Southern Hecate Strait (Moresby Gully), June, 1981	CARTER, E.W.		Not in GFBio
TN1981-02				Not in GFBio
TPS1980-01	A summary of sablefish tagging and biological studies conducted during 1980 and 1981 by the Pacific Biological Station	BEAMISH, R.J.		Not in GFBio
TPS1980-02	A summary of sablefish tagging and biological studies conducted during 1980 and 1981 by the Pacific Biological Station	BEAMISH, R.J.		Not in GFBio
VCF1984-01				Not in GFBio
VCF1985-01				Not in GFBio
VCF1986-01				Not in GFBio
VCF1995-01	Cruise details of sablefish ( <i>Anoplopoma fimbria</i> ) surveys conducted in B.C. waters, 1994-1995	DOWNES, A.J.	43330	Complete
VF1986-01				Not in GFBio
VF1987-01				Not in GFBio
VF1988-01	Cruise details of sablefish ( <i>Anoplopoma fimbria</i> ) surveys conducted in B.C. waters 1988-1993	SMITH, M.S.	43990	Complete

<i>CRUISE ID</i>	<i>REPORT TITLE</i>	<i>PRINCIPAL AUTHOR</i>	<i>GFBIO TRIP ID</i>	<i>GFBIO STATUS</i>
VF1989-01				Not in GFBio
VMC1984-01				Not in GFBio
VMC1986-01				Not in GFBio
VMC1989-01	Exploratory fishing and hydroacoustic observations of rockfish off Brooks Peninsula, Vancouver Island, from the MV VELMA C and CSS JOHN P. TULLY, March 13-23, 1989	MATTHEWS, K.R.		Not in GFBio
VMC1989-02				Not in GFBio
VS1979-01	Exploratory fishing by the automated longliner M/V VIKING STAR off the west coast of the Queen Charlotte Islands, September 1979	MCCARTER, P.B.		Not in GFBio
VS1980-01	Exploratory fishing of Bowie Seamount by the automated longliner M/V Viking Star August 28-September 12, 1980	CARTER, E.W.		Not in GFBio
VS1980-02	A summary of sablefish tagging and biological studies conducted during 1980 and 1981 by the Pacific Biological Station	BEAMISH, R.J.		Not in GFBio
VS1990-01	Cruise details of sablefish ( <i>Anoplocoma fimbria</i> ) surveys conducted in B.C. waters 1988-1993	SMITH, M.S.	43750	Complete
VS1996-01			43210	Complete
VSR1995-01	Cruise details of sablefish ( <i>Anoplopoma fimbria</i> ) surveys conducted in B.C. waters, 1994-1995	DOWNES, A.J.	43350	Complete
VSR1996-01			43024	Complete
VSR1997-01			42760	Complete
VST1999-01	Use and calibration of a quantitative acoustic system on a commercial fishing vessel.	WYETH, M.R.	29116	Complete

<i>CRUISE ID</i>	<i>REPORT TITLE</i>	<i>PRINCIPAL AUTHOR</i>	<i>GFBIO TRIP ID</i>	<i>GFBIO STATUS</i>
VST2002-01				Not in GFBio
WER1986-01	Studies on the reproductive biology of Pacific cod and English sole in Hecate Strait from the cruise of the FRV W.E. RICKER, November 25-29, 1986	TYLER, A.V.		Not in GFBio
WER1986-02				Not in GFBio
WER1987-01	Hydroacoustic herring survey results and trawl catches from Hecate Strait, July 14-27, 1987, W.E. RICKER cruise WER87F	MCCARTER, P.B.		Not in GFBio
WER1987-02	Hydroacoustic herring survey results and trawl catches from Hecate Strait, November 14-24, 1987. W.E. RICKER cruise WER87J	MCCARTER, P.B.		Not in GFBio
WER1987-03	Cruise of the FRV W.E. RICKER, November 2-13, 1987 to Hecate Strait to study reproductive biology of Pacific cod and English sole	TYLER, A.V.		Not in GFBio
WER1987-04	A summary of sablefish tagging and biological studies conducted during 1982-1987 by the Pacific Biological Station	MURIE, D.J.		Not in GFBio
WER1987-05	Biological and species interaction survey of Pacific hake, sablefish, spiny dogfish and Pacific herring off the Southwest Coast of Vancouver Island, August 1987	SHAW, W.		Not in GFBio
WER1987-06				Not in GFBio
WER1988-01			23048	Complete
WER1988-02				Not in GFBio
WER1988-03				Not in GFBio
WER1988-04				Not in GFBio
WER1990-01	W.E. RICKER hydroacoustic cruise to study rockfish behaviour off Northern Vancouver Island, March 14-23, 1990	LEAMAN, B.M.		Not in GFBio

<i>CRUISE ID</i>	<i>REPORT TITLE</i>	<i>PRINCIPAL AUTHOR</i>	<i>GFBIO TRIP ID</i>	<i>GFBIO STATUS</i>
WER1990-02	A hydroacoustic survey of Pacific hake on the Continental Shelf off British Columbia from the Canada/U.S. Boundary to Queen Charlotte Sound: August 13 to 31, 1990	SAUNDERS, M.W.	23976	Complete
WER1990-03	W.E. RICKER and EASTWARD HO cruise to study the effect of trawling on rockfish behaviour, October 15-27, 1990	KIESER, R.		Not in GFBio
WER1990-04	Hydroacoustic herring survey results from Hecate Strait December 3-15, 1990. W.E. Ricker Cruise 90HER2	MCCARTER, P.B.		Not in GFBio
WER1990-05				Not in GFBio
WER1991-01	Cruise details and biological information from the Pacific ocean perch larval survey aboard The R/V W.E. RICKER March 11-29, 1991	GILLESPIE, G.E.		Not in GFBio
WER1991-02	Cruise details and biological information from the juvenile rockfish surveys aboard the R/V W.E. RICKER, May 13-25, 1991, and the FV ISLAND SUN, Jun 3-11, 1991	GILLESPIE, G.E.	29119	Partial
WER1991-03	R/V W.E. RICKER assemblage survey of Hecate Strait, June 3-22, 1991	WILSON, S.J.	38644	Complete
WER1991-04	Cruise details of sablefish ( <i>Anoplocoma fimbria</i> ) surveys conducted in B.C. waters 1988-1993	SMITH, M.S.	43673	Complete
WER1991-05	Experimental hydroacoustic estimation of rockfish ( <i>Sebastes</i> spp.) biomass off Vancouver Island, November 13-25, 1991	KIESER, R.		Not in GFBio
WER1991-06				Not in GFBio
WER1991-07	A hydroacoustic survey of Pacific hake on the Continental Shelf off British Columbia from the Canada/U.S. Boundary to Queen Charlotte Sound: August 13 to 28, 1991	COOKE, K.D.	24017	Complete
WER1992-01	Cruise details and biological information from the Pacific ocean perch larval surveys aboard the R/V W.E. Ricker, April 16-30 1992, and June 9-18 1993	CORNTHWAITE, A.M.		Not in GFBio
WER1992-02	R/V W.E. RICKER juvenile Pacific cod ( <i>Gadus macrocephalus</i> ) survey off the southwest coast of Vancouver Island, September 21 - October 2, 1992	HAND, C.M.		Not in GFBio



<i>CRUISE ID</i>	<i>REPORT TITLE</i>	<i>PRINCIPAL AUTHOR</i>	<i>GFBIO TRIP ID</i>	<i>GFBIO STATUS</i>
WER1992-03	Cruise details of sablefish ( <i>Anoploploma fimbria</i> ) surveys conducted in B.C. waters 1988-1993	SMITH, M.S.	43670	Complete
WER1992-04	Hydroacoustic herring survey results from Hecate Strait November 30 - December 10, 1992 : W.E. RICKER cruise 92HER	MCCARTER, P.B.		Not in GFBio
WER1992-05	Hydroacoustic herring survey results from Hecate Strait, December 2-14, 1992 : W.E. RICKER cruise 91 HER	MCCARTER, P.B.		Not in GFBio
WER1992-06	Hydroacoustic survey of Pacific hake on the Continental shelf off British Columbia from the Canada/U.S. Boundary to Queen Charlotte Sound: August 8 to September 2, 1992	ANDREWS, W.T.	24018	Complete
WER1992-07			27097	Complete
WER1992-08				Not in GFBio
WER1993-01	Cruise details and biological information from the Pacific ocean perch larval surveys aboard the R/V W.E. Ricker, April 16-30 1992, and June 9-18 1993	CORNTHWAITE, A.M.		Not in GFBio
WER1993-02			24019	Complete
WER1993-03			28670	Complete
WER1993-04				Not in GFBio
WER1993-06	Cruise details of sablefish ( <i>Anoploploma fimbria</i> ) surveys conducted in B.C. waters 1988-1993	SMITH, M.S.	43650	Complete
WER1993-07	R/V W.E. RICKER assemblage survey of Hecate Strait, May 17 - June 3, 1993	HAND, C.M.	30664	Complete
WER1993-08	Cruise details and biological information from the Pacific ocean perch monitoring survey, R/V W.E. RICKER, June 19-30, 1993	LEAMAN, B.M.		Not in GFBio
WER1993-09	Hydroacoustic herring survey results from Hecate Strait November 22 - December 2, 1993: W.E. Ricker cruise 93HER	MCCARTER, P.B.		Not in GFBio

<i>CRUISE ID</i>	<i>REPORT TITLE</i>	<i>PRINCIPAL AUTHOR</i>	<i>GFBIO TRIP ID</i>	<i>GFBIO STATUS</i>
WER1994-01	Bottom trawl and exploratory hydroacoustic survey for rockfish in Queen Charlotte Sound, June 20 to July 7, 1994	HAND, C.M.		Not in GFBio
WER1994-02	A hydroacoustic survey on the Continental Shelf off British Columbia to evaluate new fisheries acoustic instrumentation and to obtain Pacific hake stock assessment information, May 28 - June 4, 1994	KIESER, R.	45577	Complete
WER1994-03	A hydroacoustic survey of Pacific hake on the Continental Shelf off British Columbia from the Canada/U.S. Boundary to Queen Charlotte Sound: August 15-31, 1994	COOKE, K.D.	24040	Complete
WER1994-04			28576	Complete
WER1994-05				Not in GFBio
WER1995-01			28837	Complete
WER1995-02	R/V W.E. RICKER assemblage survey of Hecate Strait, May 23-June 9, 1995	WORKMAN, G.D.	28763	Complete
WER1995-03			25739	Complete
WER1996-01	Cruise details and biological information from the Pacific ocean perch larval survey, R/V W.E. Ricker, July 14-18, 1996	CORNTHWAITE, A.M.		Not in GFBio
WER1996-02	A hydroacoustic survey of Pacific hake in the Strait of Georgia, British Columbia, Canada, February 20 - March 5, 1996	KIESER, R.		Not in GFBio
WER1996-03	R/V W.E. RICKER and F/V STEADFAST trawl survey of Hecate Strait, May 30 - June 13, 1996	WORKMAN, G.D.	27117	Complete
WER1996-04	Cruise details and biological information from the Pacific ocean perch monitoring survey, R/V W.E. RICKER, July 2-13, 1996	LEAMAN, B.M.	30864	Complete
WER1996-05			29098	Complete
WER1996-06			44170	Complete

<i>CRUISE ID</i>	<i>REPORT TITLE</i>	<i>PRINCIPAL AUTHOR</i>	<i>GFBIO TRIP ID</i>	<i>GFBIO STATUS</i>
WER1996-07	A hydroacoustic survey of Pacific hake in the Strait of Georgia, British Columbia, Canada, February 20 - March 5, 1996	KIESER, R.		Not in GFBio
WER1996-08				Not in GFBio
WER1997-01			30645	Complete
WER1997-02			23717	Complete
WER1997-03			14882	Complete
WER1998-01	CCGS W.E. RICKER, assemblage trawl survey of Hecate Strait, June 5-17, 1998	CHOROMANSKI, E.M.	33863	Complete
WER1998-02	An acoustic biomass survey of the Triangle Island widow rockfish ( <i>Sebastes entomelas</i> ) aggregation by Fisheries and Oceans, Canada and the Canadian Groundfish Research and Conservation Society, January 16 - February 7, 1998	STANLEY, R.D.		Not in GFBio
WER1998-03				Not in GFBio
WER1998-04	Echo Integration-trawl survey of Pacific hake, <i>Merluccius productus</i> , off the Pacific Coast of the United States and Canada during July-August, 1998	WILSON, S.J.	44050	Complete
WER1998-05				Not in GFBio
WER1999-01	Groundfish trawl survey of Queen Charlotte Sound, Canada, using CCGS W.E. RICKER, June 2-16, 1999	CHOROMANSKI, E.M.	31224	Complete
WER1999-02			45156	Complete
WER1999-03			45476	Complete
WER1999-04	Use and calibration of a quantitative acoustic system on a commercial fishing vessel.	WYETH, M.R.	29117	Complete

<i>CRUISE ID</i>	<i>REPORT TITLE</i>	<i>PRINCIPAL AUTHOR</i>	<i>GFBIO TRIP ID</i>	<i>GFBIO STATUS</i>
WER1999-05				Not in GFBio
WER2000-01			36804	Complete
WER2000-02			43771	Complete
WER2000-03	Species assemblage trawl survey of Hecate Strait, CCGS W.E. RICKER, May 31- June 13, 2000	CHOROMANSKI, E.M.	34586	Complete
WER2000-04				Not in GFBio
WER2000-05				Not in GFBio
WER2001-01			41853	Complete
WER2001-02				Not in GFBio
WER2001-03			41873	Complete
WER2001-04			38524	Complete
WER2001-05			40557	Complete
WER2002-01			42759	Complete
WER2002-02			43370	Complete
WES1976-01	Comparative otter trawling experiment in Queen Charlotte Sound, British Columbia, Canada, September 1976	KIMURA, D.K.		Not in GFBio
WHA1984-01	A summary of research catch and effort data for nearshore reef-fishes collected during 1984 in MSA 15 and 16 of the Strait of Georgia	RICHARDS, L.J.	44094	Complete

<i>CRUISE ID</i>	<i>REPORT TITLE</i>	<i>PRINCIPAL AUTHOR</i>	<i>GFBIO TRIP ID</i>	<i>GFBIO STATUS</i>
WHA1987-01	1987 research catch and effort data on nearshore reef-fishes in British Columbia statistical areas 12 and 13	RICHARDS, L.J.	44117	Complete
WMD1975-01	Growth of young Pacific hake, walleye pollock, Pacific cod and lingcod in Stuart Channel in 1975	BEAMISH, R.J.		Not in GFBio
WMD1975-02	Growth of young Pacific hake, walleye pollock, Pacific cod and lingcod in Stuart Channel in 1975	BEAMISH, R.J.		Not in GFBio
WMD1975-03	Growth of young Pacific hake, walleye pollock, Pacific cod and lingcod in Stuart Channel in 1975	BEAMISH, R.J.		Not in GFBio
WMD1975-04	Growth of young Pacific hake, walleye pollock, Pacific cod and lingcod in Stuart Channel in 1975	BEAMISH, R.J.		Not in GFBio
WMD1975-05	Growth of young Pacific hake, walleye pollock, Pacific cod and lingcod in Stuart Channel in 1975	BEAMISH, R.J.		Not in GFBio
WMD1976-01	Growth of young Pacific hake, walleye pollock, Pacific cod and lingcod in Stuart Channel, British Columbia in 1976	BEAMISH, R.J.		Not in GFBio
WMD1976-02	Growth of young Pacific hake, walleye pollock, Pacific cod and lingcod in Stuart Channel, British Columbia in 1976	BEAMISH, R.J.		Not in GFBio
WMD1976-03	Growth of young Pacific hake, walleye pollock, Pacific cod and lingcod in Stuart Channel, British Columbia in 1976	BEAMISH, R.J.		Not in GFBio
WMD1976-04	Growth of young Pacific hake, walleye pollock, Pacific cod and lingcod in Stuart Channel, British Columbia in 1976	BEAMISH, R.J.		Not in GFBio
WMD1976-05	Growth of young Pacific hake, walleye pollock, Pacific cod and lingcod in Stuart Channel, British Columbia in 1976	BEAMISH, R.J.		Not in GFBio
WMD1976-06	Growth of young Pacific hake, walleye pollock, Pacific cod and lingcod in Stuart Channel, British Columbia in 1976	BEAMISH, R.J.		Not in GFBio
WMD1976-07	Growth of young Pacific hake, walleye pollock, Pacific cod and lingcod in Stuart Channel, British Columbia in 1976	BEAMISH, R.J.		Not in GFBio

<i>CRUISE ID</i>	<i>REPORT TITLE</i>	<i>PRINCIPAL AUTHOR</i>	<i>GFBIO TRIP ID</i>	<i>GFBIO STATUS</i>
WMD1976-08				Not in GFBio
WMD1976-09				Not in GFBio
WV1994-01	Cruise details of sablefish ( <i>Anoplopoma fimbria</i> ) surveys conducted in B.C. waters, 1994-1995	DOWNES, A.J.	43390	Complete
WW1980-01	A summary of sablefish tagging and biological studies conducted during 1980 and 1981 by the Pacific Biological Station	BEAMISH, R.J.		Not in GFBio
ZEN1944-01	An index to trawling activity in British Columbia inlets by the Fisheries Research Board, 1944-1966	LEVINGS, C.D.		Not in GFBio
ZOD1985-01	1985 research catch and effort data on nearshore reef-fishes in the Strait of Georgia B.C. (Statistical areas 15 and 16)	RICHARDS, L.J.	44113	Complete

Appendix 3. Number of Cruises Conducted by

VESSEL NAME	FROM - TO DATES	NUMBER OF CRUISES	RESEARCH	CHARTER	OBSERVED DOMESTIC
ANDONIS	1978 - 1979	2		2	
AP KNIGHT	1947 - 1976	56	56		
ARCTIC HARVESTER	1976 - 1987	29		27	2
ARCTIC OCEAN	1981 - 1986	3		3	
ARRAN TIDE II	1982 - 1982	1		1	
ATTA BOY	1952 - 1952	1		1	
BILLS SKIFF(JIG SURVEYS)	1992 - 1992	1	1		
BLACK HEART	1985 - 1987	3		3	
BLUE WATERS	1977 - 1989	11		11	
BREAKAWAY	1983 - 1985	3		3	
CABEZON	1984 - 1992	7	7		
CALEDONIAN	1977 - 1996	6		6	
CALIGUS	1974 - 1991	33	33		
CALLISTRATUS	1979 - 1981	8		2	6
CANADIAN #1	1978 - 1984	2		2	
CAPE NORMAN	1953 - 1953	1		1	
CARMAHAH NO 1	1987 - 1987	1		1	
CHALLENGER	1985 - 1985	2		2	
CHIMO NO I	1971 - 1972	2		2	

VESSEL NAME	FROM - TO DATES	NUMBER OF CRUISES	RESEARCH	CHARTER	OBSERVED DOMESTIC
DOUBLE DECKER	1983 - 1986	3		3	
DUNLOP	1986 - 1992	3	3		
EASTWARD HO	1977 - 1990	10		8	2
FRASER BELLE	1983 - 1984	2		2	
FREE ENTERPRISE NO 1	1982 - 1983	3		3	
FREEPORT	1978 - 1978	1		1	
FROSTI	1995 - 1998	2		2	
G. B. REED	1963 - 1986	128	128		
GAIL BERNICE	1973 - 1989	18		18	
GAMBLER I	1972 - 1982	7		7	
GULF SPIRIT	1995 - 1996	3			3
HEIDI-J (USA)	1978 - 1978	1		1	
HOPE BAY	1992 - 1993	2		2	
HOWE BAY	1980 - 1990	6		6	
INVESTIGATOR #1	1947 - 1964	29	29		
ISLAND SUN	1991 - 1991	1		1	
JEANNA MARIE	1980 - 1985	12		3	9
JOHN M. COBB (USA)	1976 - 1976	1		1	
JOHN P. TULLY	1988 - 1989	2	2		
KETA	1984 - 1984	2	2		



VESSEL NAME	FROM - TO DATES	NUMBER OF CRUISES	RESEARCH	CHARTER	OBSERVED DOMESTIC
LA POINTE	1981 - 1981	1		1	
LA PORSCHE	1980 - 1994	8		8	
LANA JANINE	1988 - 1988	1			1
LINDA	1977 - 1977	1		1	
MARWOOD	1981 - 1983	2		2	
MELIBE	1980 - 1980	1	1		
MILLER FREEMAN(USA)	1998 - 1998	1	1		
MISS QUADRA	1982 - 1984	3		3	
NEMESIS	1977 - 1978	2		2	
NORE-DICK (USA)	1978 - 1982	2		2	
NORTHERN BREEZE	1973 - 1973	1		1	
NUCLEUS	1980 - 1987	4		4	
OCEAN KING	1980 - 1989	3		3	
OCEAN PEARL	1981 - 2001	15	1	.14	
OCEAN SELECTOR	1983 - 1997	6		6	
OCEAN TRAVELLER	1965 - 1966	8		8	
OGON (USSR)	1972 - 1972	1	1		
PACIFIC EAGLE	1979 - 1982	3		3	
PACIFIC TITAN	1983 - 1983	2			2
PACIFIC TRIDENT	1980 - 1980	1		1	

VESSEL NAME	FROM - TO DATES	NUMBER OF CRUISES	RESEARCH	CHARTER	OBSERVED DOMESTIC
PACIFIC VIKING	2000 - 2000	1		1	
PANDORA II	1984 - 1984	1		1	
PHYLLIS CARLYLE	1944 - 1945	4		4	
REGAL SPIRIT	1995 - 1995	1			1
REUBINA	1948 - 1948	1		1	
ROSE SPIT	1982 - 1982	1		1	
ROYAL CANADIAN	1968 - 1977	2		2	
RUPERT BRAND V	1972 - 1972	6		6	
SCOTIA BAY	1977 - 1979	3		3	
SEAPAK	1978 - 1981	6		6	
SEINER	1946 - 1946	1		1	
SHARLENE K	1967 - 1967	1			1
SOUTHWARD HO	1979 - 1979	2		2	
STAR WARS II	1981 - 1981	1		1	
STEADFAST	1996 - 1996	1		1	
SUN MAIDEN	1978 - 1988	7		7	
SUNNFJORD	1980 - 1985	3		3	
TAHLOK	1980 - 1987	3	3		
TALAPUS	1980 - 1980	2		2	
TENACIOUS	1981 - 1981	2		2	

VESSEL NAME	FROM - TO DATES	NUMBER OF CRUISES	RESEARCH	CHARTER	OBSERVED DOMESTIC
TENDER I	1988 - 1992	2	2		
TENYO MARU	1994 - 1994	1	1		
THELMA S	1947 - 1947	1		1	
VELMA C	1984 - 1989	4		4	
VICIOUS FISHER	1986 - 1989	4		2	2
VICTOR F	1984 - 1995	4		4	
VIKING STAR	1979 - 1996	5		5	
VIKING STORM	1999 - 2002	2		2	
VIKING SUNRISE	1995 - 1997	3		3	
W. E. RICKER	1986 - 2002	81	81		
WESTERLY WIND	1980 - 1980	1		1	
WESTERN MAID	1975 - 1976	14		12	2
WESTERN VIKING	1994 - 1994	1		1	
WESTNESS (USA)	1976 - 1976	1		1	
WHALER (FOR JIG SURVEYS)	1984 - 1987	2	2		
ZENARDI	1944 - 1944	1		1	
ZODIAC (FOR JIG SURVEYS)	1985 - 1985	1	1		