

Pipelines are the safest method to transport products, such as natural gas, oil or other commodities, across the country. If these pipelines are damaged the results could be very serious. You have an important role to play to ensure safety. Please, call before you dig.

### Call Before You Dig

You must call and obtain written approval from the pipeline company before mechanically excavating and constructing within the right of way or mechanically excavating within 30 metres (100 feet) of the right of way. If you are unable to reach an agreement with the pipeline company, contact the National Energy Board at 1-800-899-1265.

### Did you know?

- Unauthorized construction, installation of a facility or excavation over or near a pipeline is illegal.
- The pipeline company must inform you within 10-business days whether permission for your project has been granted or refused. If permission has been refused, the pipeline company must inform you of the reasons.
- The pipeline company has three business days to respond to a request to locate its pipeline.



**Pipeline signs and marker posts do not indicate the exact location of a pipeline or right of way. ALWAYS call before you dig.**

### The Pipeline Right of Way

A pipeline is installed within a strip of land referred to as a right of way. The pipeline company has acquired rights to use this land for the construction, operation and maintenance of its pipelines, however, ownership of the land remains with the landowner.

All activities within the right of way are governed by the NEB Act, the *NEB Pipeline Crossing Regulations, Parts I and II*, and easement agreements negotiated between the landowner and the pipeline company.

To ensure safety, you will need to contact the company to get written approval for a number of different activities on the right of way. These activities include, but are not limited to.

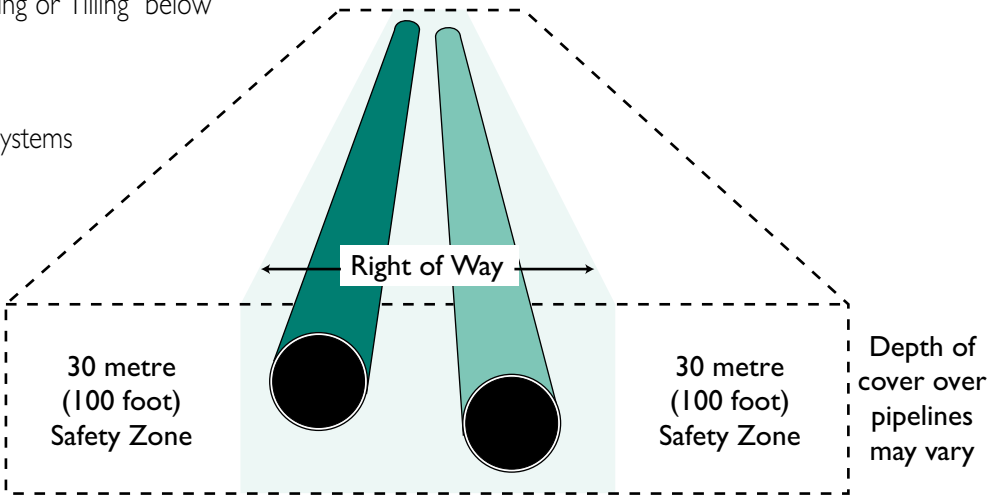
- Operating vehicles or mobile equipment over the right of way where a roadway does not exist
- Reducing the depth of soil covering the pipeline
- Agricultural Ploughing or Tilling below 30 cm (1 foot)
- Ground levelling
- Installing drainage systems
- Augering

### The Safety Zone

The Safety Zone extends 30 metres (100 feet) on either side of the right of way. To ensure safety, excavation using mechanical equipment or explosives within this zone requires approval from the pipeline company. However, the existence of the safety zone does not preclude development of the land.

### Prohibited Area

When a pipeline company receives a request to locate its pipes, the company may designate a restricted area. The restricted area is situated in the vicinity of the proposed project and may extend beyond the 30 metre safety zone. No excavation may be performed in this area until the pipes are located and marked by the pipeline company or, until the expiry of three working days after the date of the request, whichever occurs first. This period of time may be extended if both you and the pipeline company agree.



A pipeline right of way may contain more than one pipeline

### Safety Checklist

- Plan your activity** — Identify the precise location of your work; check records for evidence of pipeline easements or other buried facilities.
- Visit the site** and look for pipeline warning signs or pipeline marker posts.
- Contact the pipeline company** and obtain a copy of the pipeline company's guidelines for ground disturbances.
- Obtain** the pipeline company's written approval for the crossing.
- Make a locate request** (by contacting the one-call centre, where a one-call centre exists, by phone or through their website, or calling the pipeline company where there is no one-call centre) to have the pipeline located.
- Be on site** when the pipe is located and know the meaning of the pipeline markers.
- Give 3 working days** notice to the pipeline company prior to the commencement of the approved activity unless otherwise agreed on by the pipeline company and the applicant.
- Hand expose the pipe** prior to any ground disturbance within 3 metres of the pipe.
- Notify the pipeline company** one working day before backfilling over the pipe.
- IMMEDIATELY NOTIFY THE PIPELINE COMPANY IF YOU COME IN TO CONTACT WITH THE PIPE.**
- ALWAYS** follow the instructions of a pipeline company representative.

## NEB Regulated Pipelines

The main pipelines regulated by the NEB are operated by:

**Alliance Pipeline Ltd.**

**Enbridge Pipelines Inc.**

**Enbridge Pipelines (NW) Inc.**

**Foothills Pipe Lines Ltd.**

**Gazoduc Trans Québec & Maritimes Inc.**

**Kinder Morgan Cochin ULC**

**Maritimes & Northeast Pipeline Management Ltd.**

**NOVA Gas Transmission Ltd.**

**Trans Mountain Pipeline Inc.**

**Trans-Northern Pipelines Inc.**

**TransCanada PipeLines Limited**

**Westcoast Energy Inc., carrying on business as Spectra Energy Transmission**

Many smaller pipelines are also regulated by the NEB. If you have a question about the NEB's jurisdiction over a particular pipeline, please call us at 1-800-899-1265 or visit our Web site at [www.neb-one.gc.ca](http://www.neb-one.gc.ca).

**Working together for pipeline safety.**

**National Web Portal:**  
**[www.clickbeforeyoudig.com](http://www.clickbeforeyoudig.com)**

## Provincial One-Call Centres:

<b>Québec</b>	Info-Excavation: 1-800-663-9228 <a href="http://www.info-ex.com">www.info-ex.com</a>
<b>Ontario</b>	Ontario One Call: 1-800-400-2255 <a href="http://www.on1call.com">www.on1call.com</a>
<b>Manitoba</b>	Click Before You Dig Manitoba: 1-800-940-3447 <a href="http://www.clickbeforeyoudigmb.com">www.clickbeforeyoudigmb.com</a>
<b>Saskatchewan</b>	Sask First Call: 1-866-828-4888 <a href="http://www.sask1stcall.com">www.sask1stcall.com</a>
<b>Alberta</b>	Alberta One Call Corporation: 1-800-242-3447 <a href="http://www.alberta1call.com">www.alberta1call.com</a>
<b>British Columbia</b>	BC One Call: 1-800-474-6886 <a href="http://www.bcone1call.bc.ca">www.bcone1call.bc.ca</a>

## About the National Energy Board

The National Energy Board regulates pipelines, energy development and trade in the Canadian public interest.

The NEB regulates activities on or adjacent to rights of way under Board jurisdiction in the interests of the protection of property, the environment, and the safety of the public and of the pipeline company's employees. NEB staff regularly perform audits and inspections of pipeline companies to ensure their compliance.

## Contact the NEB

Each excavation or construction activity is unique, and this guide cannot deal with all cases. If you need further assistance with any excavation or construction activity near a federally regulated pipeline, please call us at 1-800-899-1265 and ask for the Operations Inspector responsible for pipeline crossings or email [info@neb-one.gc.ca](mailto:info@neb-one.gc.ca).

The *National Energy Board Act*; the *National Energy Board Pipeline Crossing Regulations, Parts I and II*; *Excavation and Construction Near Pipelines* and other NEB publications are available from:

## Library and Publication Services

National Energy Board  
517 Tenth Avenue SW  
Calgary, Alberta T2R 0A8  
E-mail: [publications@neb-one.gc.ca](mailto:publications@neb-one.gc.ca)  
Telephone: 403-299-4800  
Telephone (toll free): 1-800-899-1265  
Facsimile: 403-292-5576  
Facsimile (toll free): 1-877-288-8803  
TTY (teletype): 1-800-632-1663

Our publications are also available on our Website:  
[www.neb-one.gc.ca](http://www.neb-one.gc.ca)

Paper: NE23-55/2014E  
978-1-100-24863-9

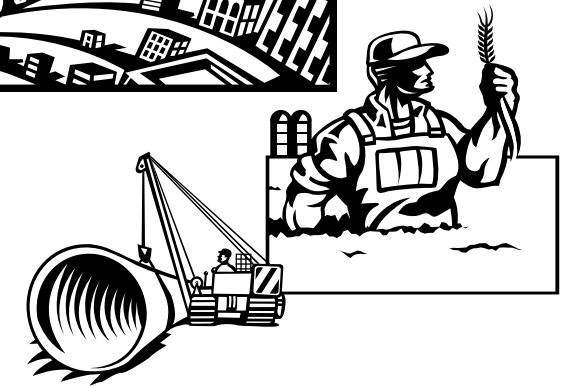
PDF: NE23-55/2014E-PDF  
978-1-100-24864-6



National Energy  
Board

Office national  
de l'énergie

# Living and Working Near Pipelines



Canada