

Catalogue no. 71-001-X

Labour Force Information

Friday, August 15, 2014

July 13 to 19, 2014



Statistics
Canada

Statistique
Canada

Canada

How to obtain more information

For information about this product or the wide range of services and data available from Statistics Canada, visit our website, www.statcan.gc.ca.

You can also contact us by

e-mail at infostats@statcan.gc.ca

telephone, from Monday to Friday, 8:30 a.m. to 4:30 p.m., at the following toll-free numbers:

- | | |
|---|----------------|
| • Statistical Information Service | 1-800-263-1136 |
| • National telecommunications device for the hearing impaired | 1-800-363-7629 |
| • Fax line | 1-877-287-4369 |

Depository Services Program

- | | |
|------------------|----------------|
| • Inquiries line | 1-800-635-7943 |
| • Fax line | 1-800-565-7757 |

To access this product

This product, Catalogue no. 71-001-X, is available free in electronic format. To obtain a single issue, visit our website, www.statcan.gc.ca and browse by "Key resource" > "Publications."

Standards of service to the public

Statistics Canada is committed to serving its clients in a prompt, reliable and courteous manner. To this end, this agency has developed standards of service that its employees observe. To obtain a copy of these service standards, please contact Statistics Canada toll-free at 1-800-263-1136. The service standards are also published at www.statcan.gc.ca under "About us" > "The agency" > "Providing services to Canadians."

Statistics Canada
Labour Statistics Division
Labour Force Survey Program

Labour Force Information

Friday, August 15, 2014

July 13 to 19, 2014

Published by authority of the Minister responsible for Statistics Canada

© Minister of Industry, 2014

All rights reserved. Use of this publication is governed by the Statistics Canada
Open License Agreement.

<http://www.statcan.gc.ca/reference/licence-eng.html>

August 2014

Catalogue no. 71-001-X

ISSN 1492-5478

Frequency: Monthly

Ottawa

Cette publication est également disponible en français.

Note of appreciation

Canada owes the success of its statistical system to a long-standing partnership between Statistics Canada, the citizens of Canada, its businesses, governments and other institutions. Accurate and timely statistical information could not be produced without their continued cooperation and goodwill.

User information

Symbols

The following standard symbols are used in Statistics Canada publications:

- . not available for any reference period
- .. not available for a specific reference period
- ... not applicable
- 0 true zero or a value rounded to zero
- 0^s value rounded to 0 (zero) where there is a meaningful distinction between true zero and the value that was rounded
- p preliminary
- r revised
- x suppressed to meet the confidentiality requirements of the *Statistics Act*
- E use with caution
- F too unreliable to be published
- * significantly different from reference category ($p < 0.05$)

Special requests (\$)

Custom tabulations can be arranged on an ad hoc or regular basis. This service enables you to specify tables and time series to meet your own requirements. The cost varies according to the request. For more information, contact us toll-free at 1-866-873-8788 or e-mail us at labour@statcan.gc.ca.

Schedule of LFS releases

Release date

January 10, 2014
February 7, 2014
March 7, 2014
April 4, 2014
May 9, 2014
June 6, 2014
July 11, 2014
August 8, 2014
September 5, 2014
October 10, 2014
November 7, 2014
December 5, 2014

Reference period

December 8 to 14, 2013
January 12 to 18, 2014
February 9 to 15, 2014
March 9 to 15, 2014
April 13 to 19, 2014
May 11 to 17, 2014
June 15 to 21, 2014
July 13 to 19, 2014
August 10 to 16, 2014
September 14 to 20, 2014
October 12 to 18, 2014
November 9 to 15, 2014

Table of contents

Highlights	5
Analysis — July 2014	6
Charts	
1. Employment and unemployment indicators, Canada, seasonally adjusted	9
2. Employment and unemployment indicators, Canada, seasonally adjusted	10
3. Index of employment by industry, Canada, seasonally adjusted, January 2011=100	11
4. Index of employment by industry, Canada, seasonally adjusted, January 2011=100	12
5. Index of employment by industry, Canada, seasonally adjusted, January 2011=100	13
6. Index of employment by province, seasonally adjusted, January 2011=100	14
7. Index of employment by province, seasonally adjusted, January 2011=100	15
Related products	16
Statistical tables	
1 Labour force characteristics by age and sex, Canada, seasonally adjusted	26
2 Employment by class of worker and industry, Canada, seasonally adjusted	28
3 Labour force characteristics by province, seasonally adjusted	29
4 Selected labour force characteristics (seasonally adjusted)	31
4-1 Newfoundland and Labrador	31
4-2 Prince Edward Island	32
4-3 Nova Scotia	33
4-4 New Brunswick	34
4-5 Quebec	35
4-6 Ontario	36
4-7 Manitoba	37
4-8 Saskatchewan	38
4-9 Alberta	39
4-10 British Columbia	40
5 Labour force characteristics by census metropolitan area (seasonally adjusted)	41
5-1 3 month moving average	41
5-2 Monthly	46

Table of contents – continued

6	Labour force characteristics	47
6-1	by province and economic region, unadjusted for seasonality, 3 month moving average ending in July 2013 and July 2014	47
6-2	by territories, unadjusted for seasonality, 3 month moving average ending in July 2013 and July 2014	52
7	Average usual hours and wages of employees by selected characteristics, Canada, unadjusted for seasonality	53
8	Regional unemployment rates used by the Employment Insurance Program, seasonally adjusted, 3 month moving average	54
9	Students and other persons aged 15 to 24 (unadjusted)	56
9-1	by detailed age groups	56
9-2	by province	57

Data quality, concepts and methodology

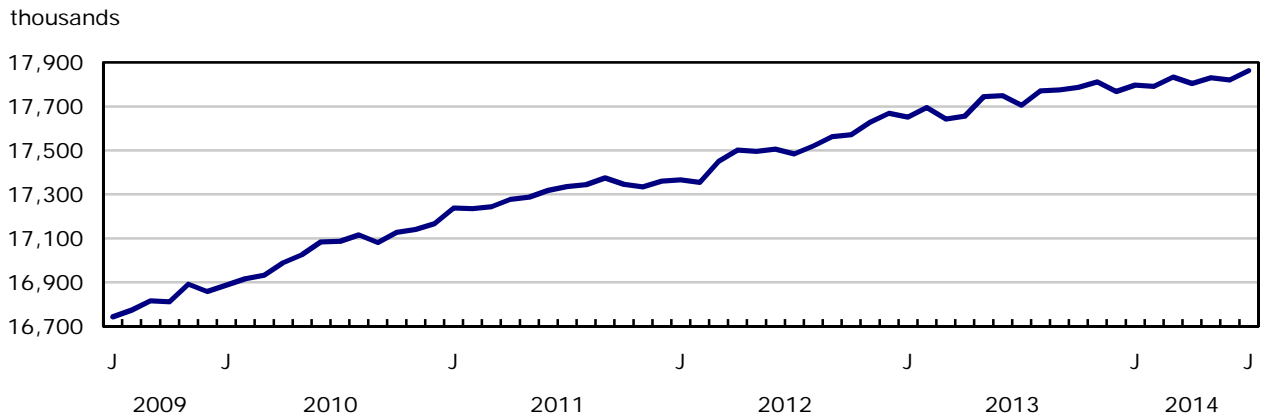
Data quality	59
--------------	----

Highlights

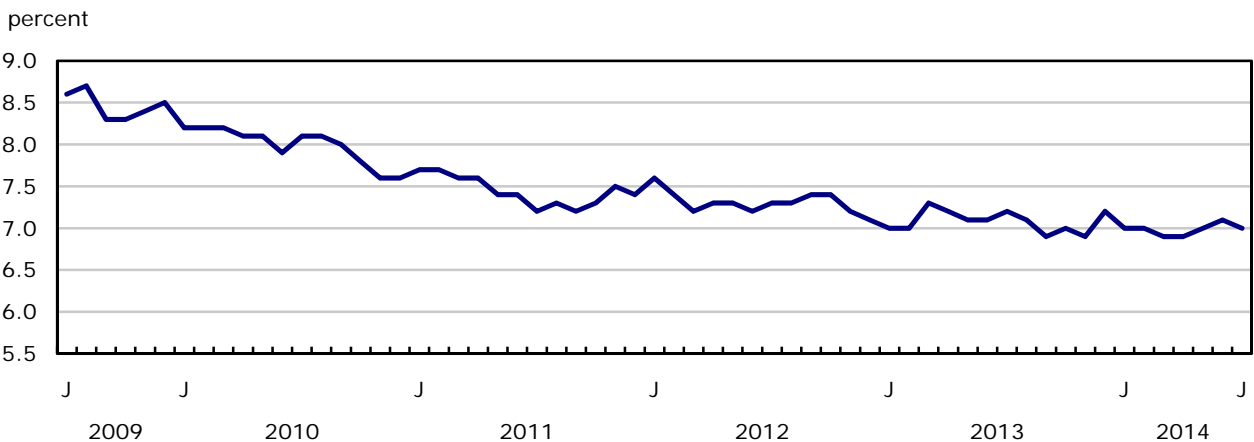
Employment rose by 42,000 in July, the result of an increase in part-time work (+60,000). The unemployment rate declined 0.1 percentage points to 7.0%.

Chart 1
Employment and unemployment rates, Canada, seasonally adjusted

Employment



Unemployment rate



Analysis — July 2014

Employment rose by 42,000 in July, the result of an increase in part-time work (+60,000). The unemployment rate declined 0.1 percentage points to 7.0%.

In the 12 months to July, employment increased by 157,000 or 0.9%, with most of the growth in part-time work. The total hours worked were up slightly (+0.3%) compared with July 2013.

In July, employment increased among people aged 25 to 54 and youths aged 15 to 24, while it fell among people aged 55 and over.

Provincially, employment increased in Ontario and Newfoundland and Labrador, while it declined in Nova Scotia and New Brunswick.

In July, there were more people employed in educational services and in information, culture and recreation. At the same time, employment declined in construction as well as health care and social assistance.

Private sector employment increased in July, while the number of self-employed declined.

Adjusted to the concepts used in the United States, the unemployment rate in Canada was 6.1% in July, compared with the US rate of 6.2%.

Gains among youths and people aged 25 to 54

Employment rose by 38,000 among people aged 25 to 54 in July, and their unemployment rate declined by 0.1 percentage points to 6.0%. Compared with 12 months earlier, employment for this age group was little changed.

In July, employment among youths aged 15 to 24 increased by 34,000, but the unemployment rate was little changed at 13.1% as more youths participated in the labour market. Despite the employment increase in July, employment levels were little changed from 12 months earlier.

Employment fell by 30,000 among people aged 55 and over, partly offsetting gains in June. Compared with 12 months earlier, employment was up 151,000 (+4.5%). These gains were mainly the result of a 3.2% growth in the population of this age group.

Provincial Summary

Employment increased by 40,000 in Ontario in July, offsetting a decline the previous month. The unemployment rate remained at 7.5% as more people participated in the labour market. Compared with July 2013, employment in the province was up 60,000 (+0.9%).

Following three consecutive months of decline, employment in Newfoundland and Labrador grew by 4,700 in July. The unemployment rate was little changed at 12.4% as more people participated in the labour market. Despite the July gain, employment in the province declined by 5,000 (-2.2%) compared with 12 months earlier.

Employment in Nova Scotia declined 3,900, pushing the unemployment rate up 0.7 percentage points to 9.4%. On a year-over-year basis, employment in the province was down 10,000 (-2.2%).

In New Brunswick, the number of people working fell by 3,400. The unemployment rate was 10.0%, little changed from a month earlier, as fewer people participated in the labour market. Compared with a year earlier, employment in the province was virtually unchanged.

In July, employment was little changed in Saskatchewan. However, a decline in the number of people searching for work pushed the unemployment rate down 0.7 percentage points to 3.2%, the lowest rate in the province since comparable data became available in 1976. Compared with a year earlier, employment in the province was up 8,200 (+1.5%).

Industry perspective

Employment in educational services increased by 46,000 in July, mainly in primary and secondary schools in Ontario (see "Seasonal adjustment" and "Educational services" in the Note to readers).

In July, there were 17,000 more people employed in information, culture and recreation. Compared with a recent low in July 2013, employment in this industry has increased by 55,000 (+7.3%).

The number of people employed in construction declined by 39,000 in July, offsetting an increase in the previous month. Compared with 12 months earlier, employment in this industry was down 46,000 (-3.4%), the result of declines in the fall of 2013.

Employment in health care and social assistance fell by 26,000 in July, mostly in the social assistance sector in Quebec. Compared with a recent low in July 2013, employment in this industry was up 90,000 (+4.2%).

Private sector employment increased by 55,000 in July, while the number of public sector employees edged up slightly and self-employment declined by 37,000. Compared with 12 months earlier, the number of employees increased in both the private sector (+1.2% or +141,000) and the public sector (+1.9% or +69,000). Self-employment was down 2.0% (-54,000) over this 12-month period.

Summer employment for students

From May to August, the Labour Force Survey collects labour market data about young people aged 15 to 24 who were attending school full time in March and who intend to return to school full time in the fall. The published data are not seasonally adjusted; therefore, comparisons can only be made on a year-over-year basis.

Compared with July 2013, employment was up 32,000 among students aged 20 to 24, the result of an increase in part-time work. The rate of employment for this group was little changed at 71.1%, as employment and the number of returning students increased at a similar pace. Their unemployment rate was 8.1%, also little changed compared with a year earlier.

The employment rate for students aged 17 to 19 was 58.8% in July, similar to the rate observed 12 months earlier. Their unemployment rate was little changed at 17.0%.

Among students aged 15 to 16, the rate of employment was 29.1%, virtually unchanged compared with July 2013. Their unemployment rate was 28.6%, also little changed from 12 months earlier.

Canada-United States comparison

Adjusted to US concepts, the unemployment rate in Canada was 6.1% in July, compared with 6.2% in the United States. In the 12 months to July, the unemployment rate in Canada was down 0.2 percentage points, while the rate in the US fell 1.1 percentage points.

In July, the employment rate in Canada (adjusted to US concepts) was 62.1%, compared with 59.0% in the US. For further information, see "*The labour market in Canada and the United States since the last recession, 2007 to 2014*".

Note to readers

The Labour Force Survey (LFS) estimates for July 2014 are for the week of July 13 to 19.

The LFS estimates are based on a sample and are therefore subject to sampling variability. As a result, monthly estimates will show more variability than trends observed over longer time periods. For more information, see "*Interpreting Monthly Changes in Employment from the Labour Force Survey*." Estimates for smaller geographic areas or industries also have more variability. For an explanation of sampling variability of estimates and how to use standard errors to assess this variability, consult the "Data quality" section of the publication Labour Force Information (71-001-X).

This analysis focuses on differences between estimates that are statistically significant at the 68% confidence level.

The **employment rate** is the number of employed persons as a percentage of the population 15 years of age and over. The rate for a particular group (for example, youths aged 15 to 24) is the number employed in that group as a percentage of the population for that group.

The **unemployment rate** is the number unemployed as a percentage of the labour force (employed and unemployed).

The **participation rate** is the number of employed and unemployed as a percentage of the population. For more detailed information, see the Guide to the Labour Force Survey (71-543-G).

Seasonal adjustment

Unless otherwise stated, this release presents seasonally adjusted estimates, which facilitates comparisons by removing the effects of seasonal variations. For more information on seasonal adjustment, see *Seasonally adjusted data – Frequently asked questions*.

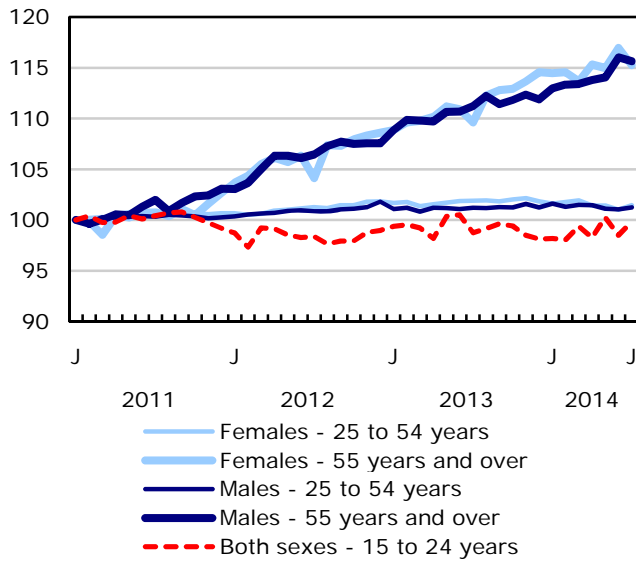
Each year, LFS estimates for the previous three years are revised using the latest seasonal factors.

Educational services

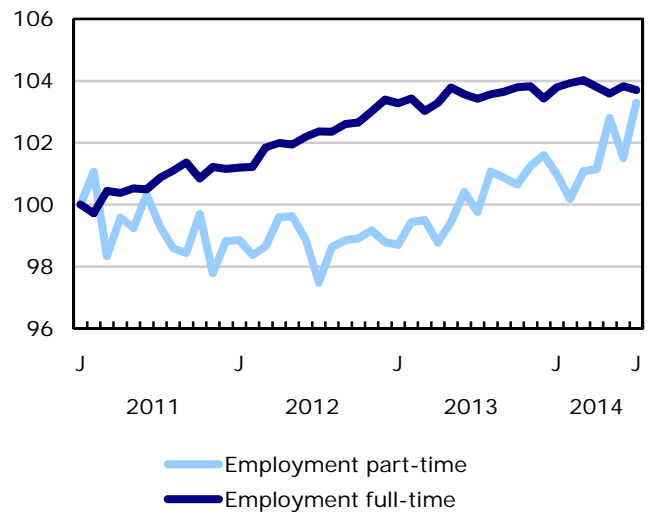
The LFS seasonal adjustment process removes typical seasonal patterns in the monthly data, according to trends established in previous years. While there have been larger movements in educational services employment in summer months in recent years, there has not been a consistent pattern in the magnitude or direction of these changes.

Chart 1
Employment and unemployment indicators, Canada, seasonally adjusted

Employment index, January 2011=100



Employment index, January 2011=100



Employment index, January 2011=100

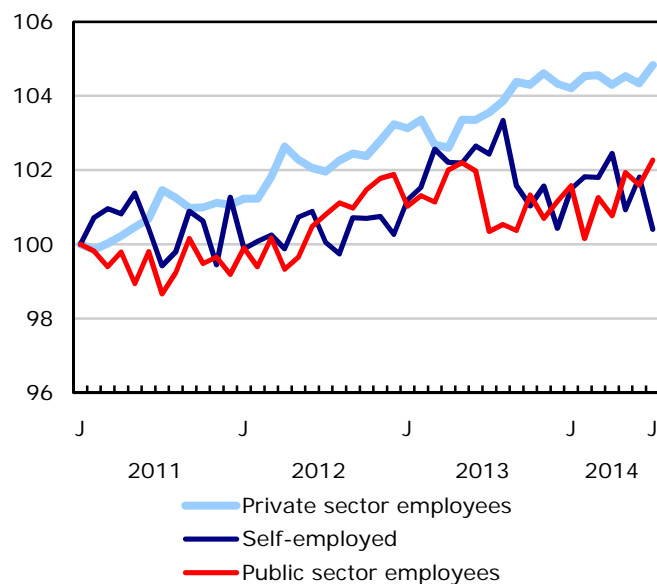
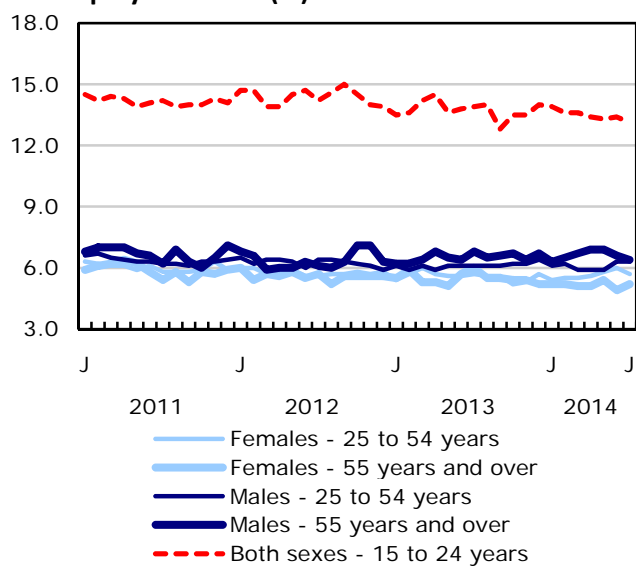
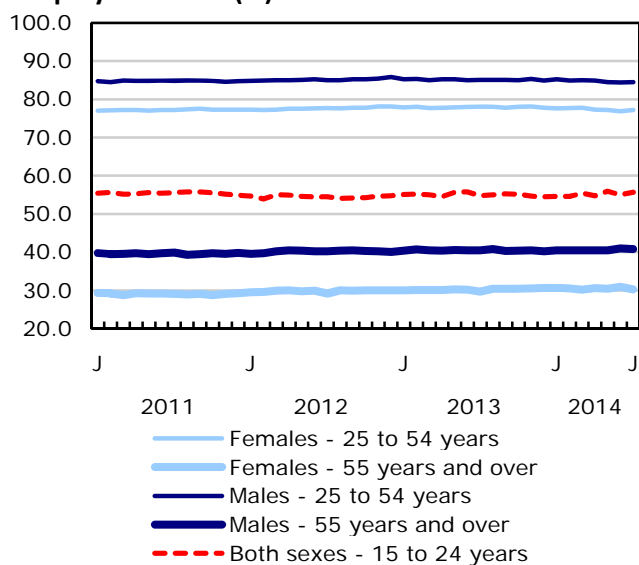


Chart 2
Employment and unemployment indicators, Canada, seasonally adjusted

Unemployment rate (%)



Employment rate (%)



Participation rate (%)

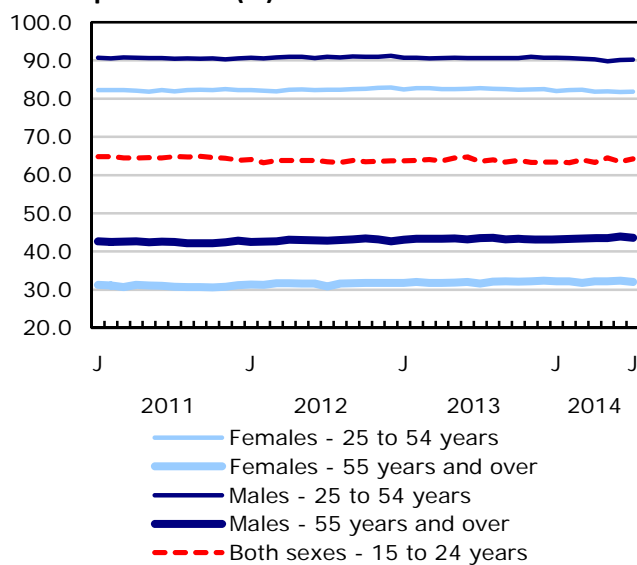


Chart 3
Index of employment by industry, Canada, seasonally adjusted, January 2011=100

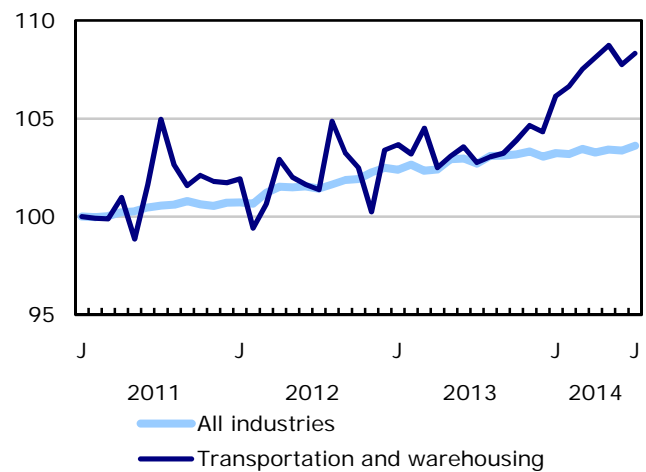
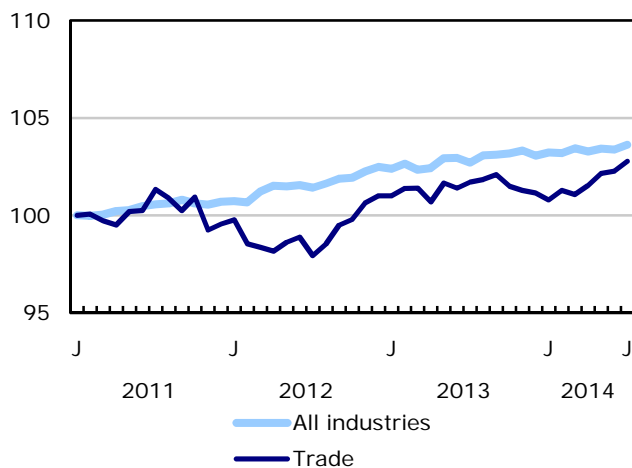
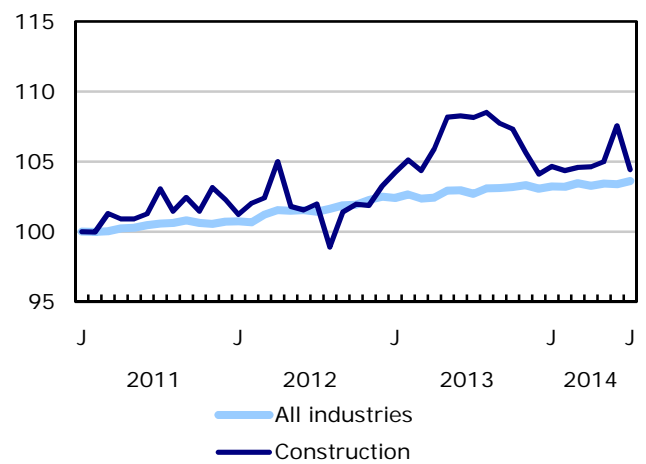
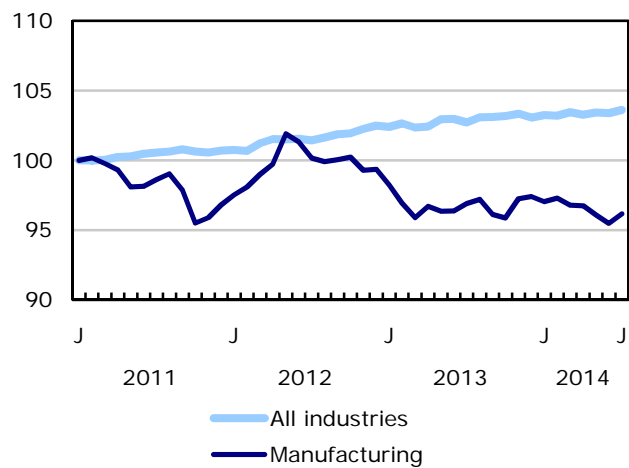
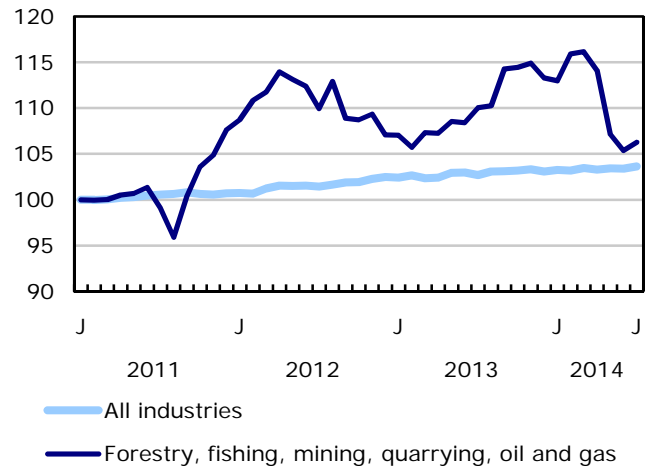
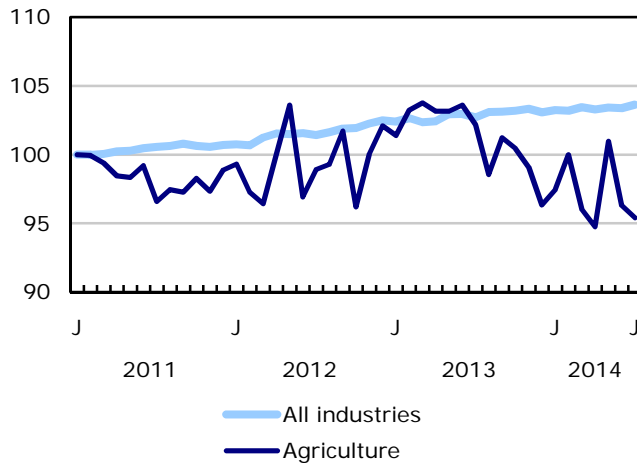


Chart 4
Index of employment by industry, Canada, seasonally adjusted, January 2011=100

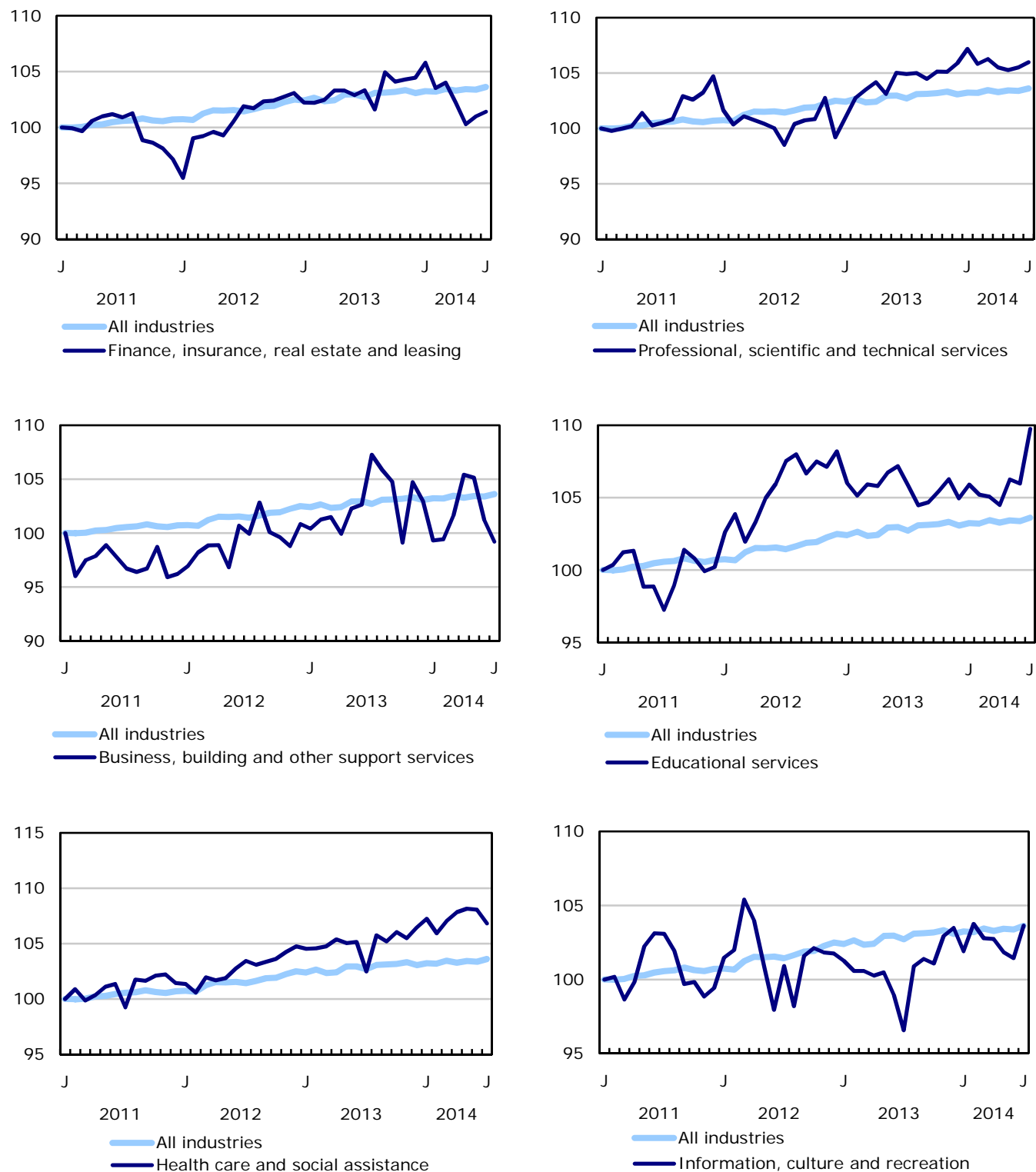


Chart 5
Index of employment by industry, Canada, seasonally adjusted, January 2011=100

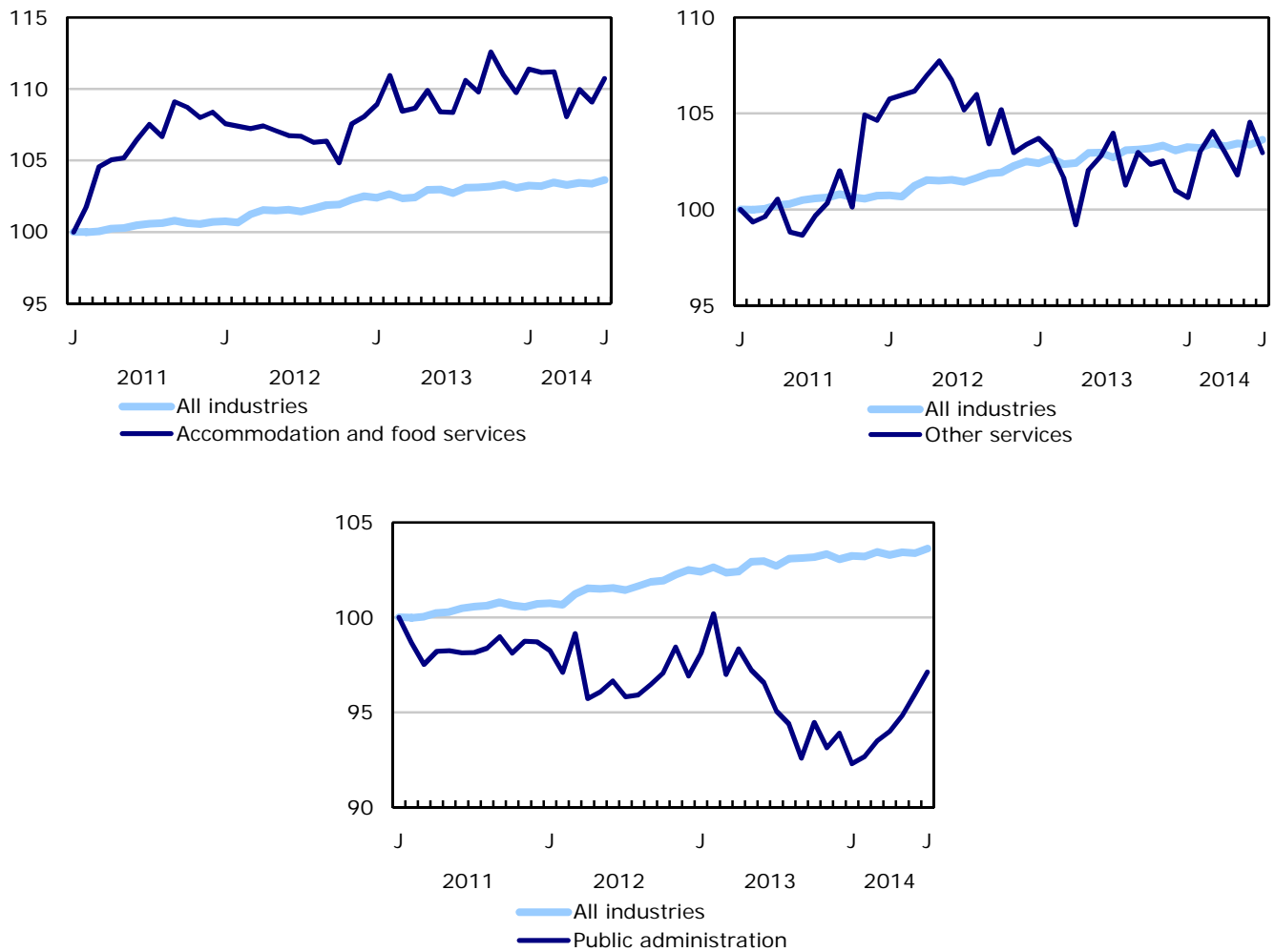


Chart 6
Index of employment by province, seasonally adjusted, January 2011=100

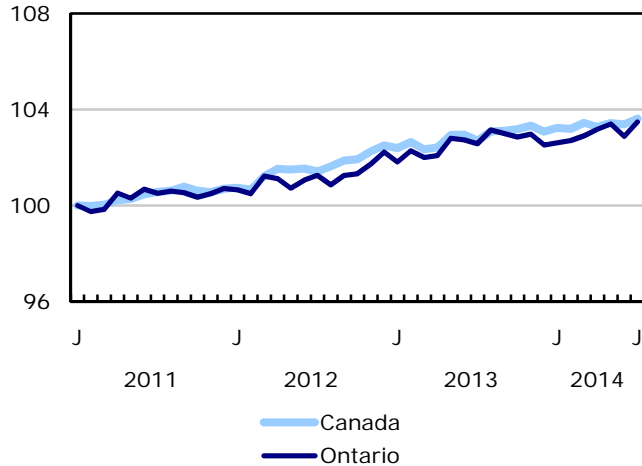
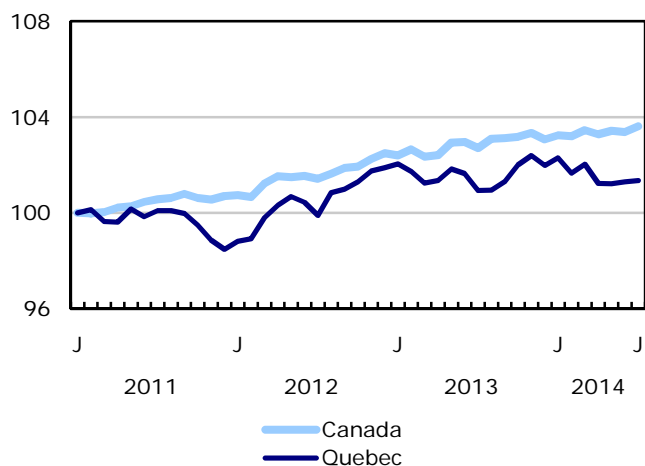
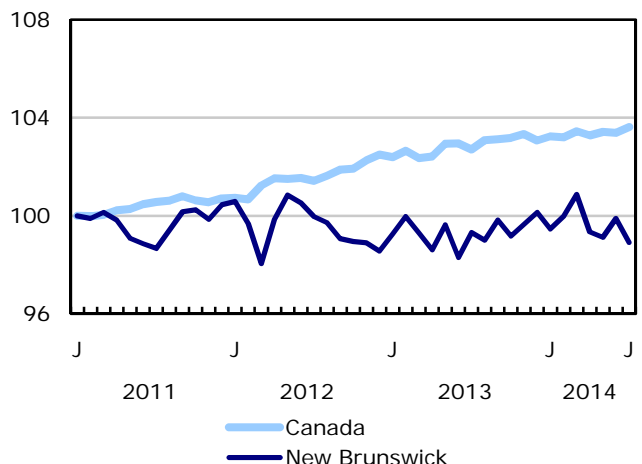
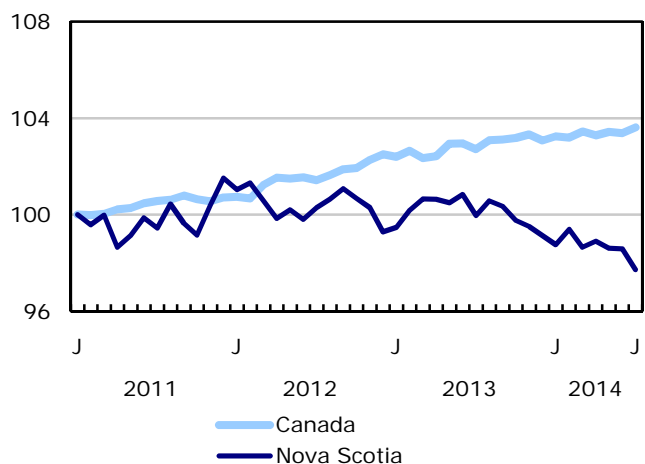
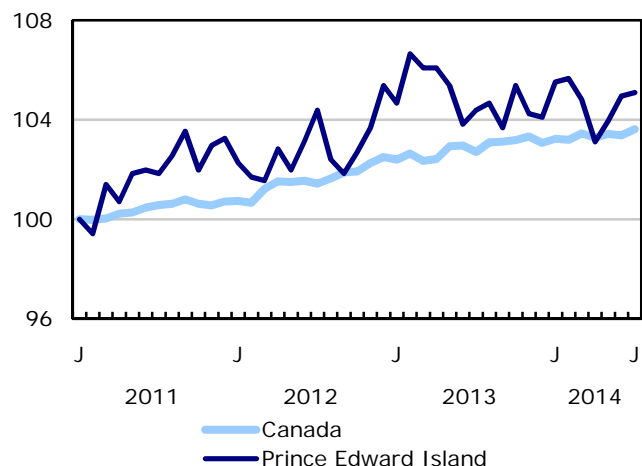
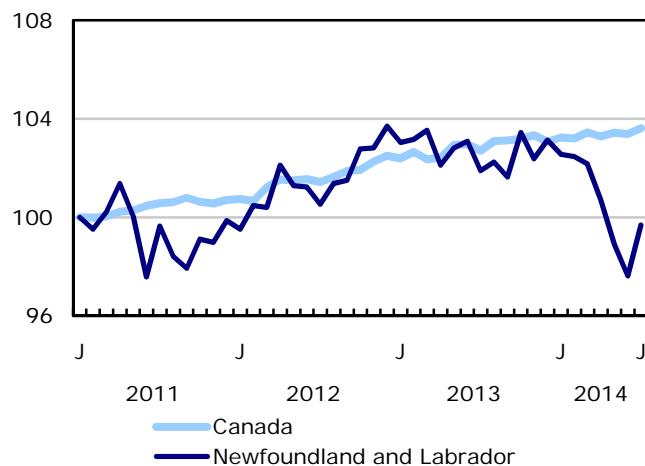
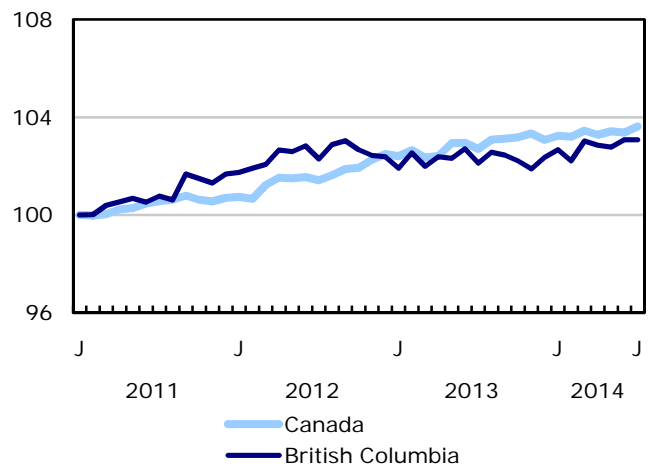
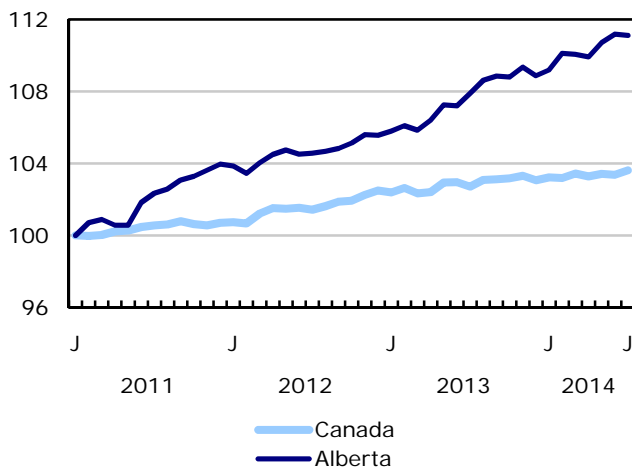
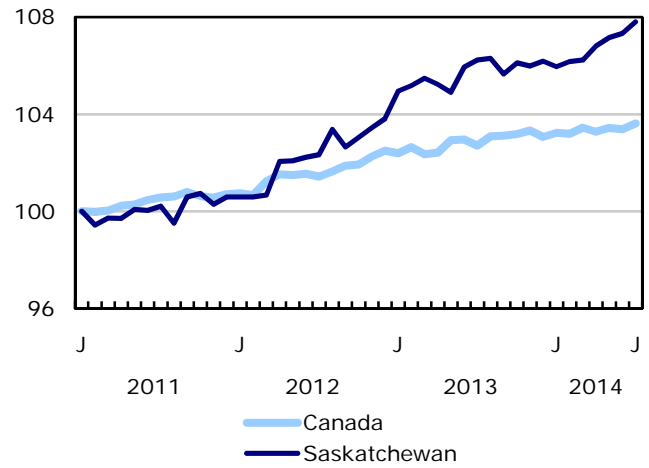
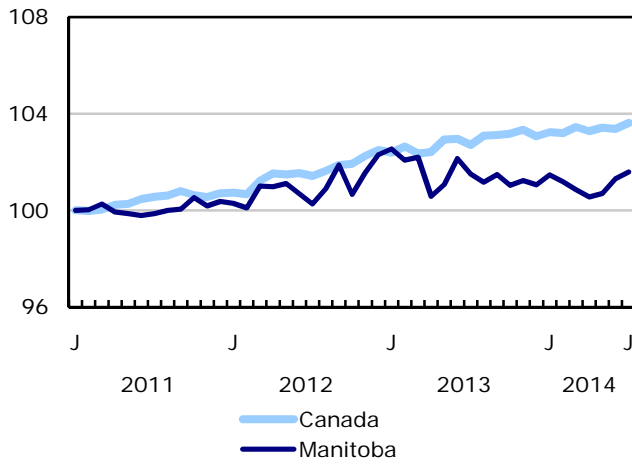


Chart 7
Index of employment by province, seasonally adjusted, January 2011=100



Related products

Selected publications from Statistics Canada

71-222-X	The Canadian Labour Market at a Glance
71-526-X	Methodology of the Canadian Labour Force Survey
71-543-G	Guide to the Labour Force Survey
71-544-X	Labour Force Survey Products and Services
71-587-X	Aboriginal Peoples Living Off-reserve in Western Canada: Estimates from the Labour Force Survey
71-588-X	The Aboriginal Labour Force Analysis Series
71-606-X	The Immigrant Labour Force Analysis Series
71F0031X	Improvements to the Labour Force Survey (LFS)
71M0001X	Labour Force Survey Microdata File
75-001-X	Perspectives on Labour and Income (from 1989 to 2012)
75-004-M	Labour Statistics: Research Papers
75-006-X	Insight on Canadian Society

Selected CANSIM tables from Statistics Canada

282-0001	Labour force survey estimates (LFS), by sex and detailed age group, unadjusted for seasonality, monthly
282-0002	Labour force survey estimates (LFS), by sex and detailed age group, annual
282-0003	Labour force survey estimates (LFS), by educational attainment, sex and age group, unadjusted for seasonality, monthly
282-0004	Labour force survey estimates (LFS), by educational attainment, sex and age group, annual
282-0005	Labour force survey estimates (LFS), by full- and part-time students during school months, sex and age group, unadjusted for seasonality, monthly
282-0006	Labour force survey estimates (LFS), by students during summer months, sex and age group, unadjusted for seasonality, monthly

282-0007	Labour force survey estimates (LFS), by North American Industry Classification System (NAICS), sex and age group, unadjusted for seasonality, monthly
282-0008	Labour force survey estimates (LFS), by North American Industry Classification System (NAICS), sex and age group, annual
282-0009	Labour force survey estimates (LFS), by National Occupational Classification for Statistics (NOC-S) and sex, unadjusted for seasonality, monthly
282-0010	Labour force survey estimates (LFS), by National Occupational Classification for Statistics (NOC-S) and sex, annual
282-0011	Labour force survey estimates (LFS), employment by class of worker, North American Industry Classification System (NAICS) and sex, unadjusted for seasonality, monthly
282-0012	Labour force survey estimates (LFS), employment by class of worker, North American Industry Classification System (NAICS) and sex, annual
282-0013	Labour force survey estimates (LFS), part-time employment by reason for part-time work, sex and age group, unadjusted for seasonality, monthly
282-0014	Labour force survey estimates (LFS), part-time employment by reason for part-time work, sex and age group, annual
282-0015	Labour force survey estimates (LFS), by usual hours worked, main or all jobs, sex and age group, unadjusted for seasonality, monthly
282-0016	Labour force survey estimates (LFS), by usual hours worked, main or all jobs, sex and age group, annual
282-0017	Labour force survey estimates (LFS), by actual hours worked, main or all jobs, sex and age group, unadjusted for seasonality, monthly
282-0018	Labour force survey estimates (LFS), by actual hours worked, main or all jobs, sex and age group, annual
282-0019	Labour force survey estimates (LFS), by usual hours worked, class of worker, North American Industry Classification System (NAICS) and sex, unadjusted for seasonality, monthly
282-0020	Labour force survey estimates (LFS), by usual hours worked, class of worker, North American Industry Classification System (NAICS) and sex, annual
282-0021	Labour force survey estimates (LFS), by actual hours worked, class of worker, North American Industry Classification System (NAICS) and sex, unadjusted for seasonality, monthly
282-0022	Labour force survey estimates (LFS), by actual hours worked, class of worker, North American Industry Classification System (NAICS) and sex, annual
282-0023	Labour force survey estimates (LFS), by usual hours worked, class of worker, National Occupational Classification for Statistics (NOC-S) and sex, unadjusted for seasonality, monthly
282-0024	Labour force survey estimates (LFS), by usual hours worked, class of worker, National Occupational Classification for Statistics (NOC-S) and sex, annual
282-0025	Labour force survey estimates (LFS), by actual hours worked, class of worker, National Occupational Classification for Statistics (NOC-S) and sex, unadjusted for seasonality, monthly

282-0026	Labour force survey estimates (LFS), by actual hours worked, class of worker, National Occupational Classification for Statistics (NOC-S) and sex, annual
282-0027	Labour force survey estimates (LFS), by total and average usual and actual hours worked, main or all jobs, type of work, sex and age group, unadjusted for seasonality, monthly
282-0028	Labour force survey estimates (LFS), by total and average usual and actual hours worked, main or all jobs, type of work, sex and age group, annual
282-0029	Labour force survey estimates (LFS), average days lost for personal reasons per full-time employee by North American Industry Classification System (NAICS), sex and age group, annual
282-0030	Labour force survey estimates (LFS), average days lost for personal reasons per full-time employee by National Occupational Classification for Statistics (NOC-S), sex and age group, annual
282-0031	Labour force survey estimates (LFS), multiple jobholders by North American Industry Classification System (NAICS), sex and age group, annual
282-0032	Labour force survey estimates (LFS), multiple jobholders by North American Industry Classification System (NAICS), sex and age group, unadjusted for seasonality, monthly
282-0033	Labour force survey estimates (LFS), multiple jobholders by National Occupational Classification for Statistics (NOC-S), sex and age group, unadjusted for seasonality, monthly
282-0034	Labour force survey estimates (LFS), multiple jobholders by National Occupational Classification for Statistics (NOC-S), sex and age group, annual
282-0035	Labour force survey estimates (LFS), multiple jobholders by usual hours worked at main and all jobs, unadjusted for seasonality, monthly
282-0036	Labour force survey estimates (LFS), multiple jobholders by usual hours worked at main and all jobs, annual
282-0037	Labour force survey estimates (LFS), job tenure by type of work, sex and age group, unadjusted for seasonality, monthly
282-0038	Labour force survey estimates (LFS), job tenure by type of work, sex and age group, annual
282-0039	Labour force survey estimates (LFS), job tenure by National Occupational Classification for Statistics (NOC-S) and sex, unadjusted for seasonality, monthly
282-0040	Labour force survey estimates (LFS), job tenure by National Occupational Classification for Statistics (NOC-S) and sex, annual
282-0041	Labour force survey estimates (LFS), job tenure by North American Industry Classification System (NAICS) and sex, unadjusted for seasonality, monthly
282-0042	Labour force survey estimates (LFS), job tenure by North American Industry Classification System (NAICS) and sex, annual
282-0047	Labour force survey estimates (LFS), duration of unemployment by sex and age group, unadjusted for seasonality, monthly
282-0048	Labour force survey estimates (LFS), duration of unemployment by sex and age group, annual

282-0049	Labour force survey estimates (LFS), unemployment by type of work sought and search method, sex and age group, unadjusted for seasonality, monthly
282-0050	Labour force survey estimates (LFS), unemployment by type of work sought and search method, sex and age group, annual
282-0051	Labour force survey estimates (LFS), retirement age by class of worker and sex, annual
282-0054	Labour force survey estimates (LFS), by provinces and economic regions based on 2006 Census boundaries, 3-month moving average, unadjusted for seasonality, monthly
282-0055	Labour force survey estimates (LFS), by provinces, territories and economic regions based on 2006 Census boundaries, annual
282-0060	Labour force survey estimates (LFS), employment by economic region and North American Industry Classification System (NAICS), 3-month moving average, unadjusted for seasonality, monthly
282-0061	Labour force survey estimates (LFS), employment by economic region and North American Industry Classification System (NAICS), annual
282-0062	Labour force survey estimates (LFS), employment by economic region and National Occupational Classification for Statistics (NOC-S), 3-month moving average, unadjusted for seasonality, monthly
282-0063	Labour force survey estimates (LFS), employment by economic region and National Occupational Classification for Statistics (NOC-S), annual
282-0069	Labour force survey estimates (LFS), wages of employees by type of work, National Occupational Classification for Statistics (NOC-S), sex and age group, unadjusted for seasonality, monthly
282-0070	Labour force survey estimates (LFS), wages of employees by type of work, National Occupational Classification for Statistics (NOC-S), sex and age group, annual
282-0071	Labour force survey estimates (LFS), wages of employees by type of work, North American Industry Classification System (NAICS), sex and age group, unadjusted for seasonality, monthly
282-0072	Labour force survey estimates (LFS), wages of employees by type of work, North American Industry Classification System (NAICS), sex and age group, annual
282-0073	Labour force survey estimates (LFS), wages of employees by job permanence, union coverage, sex and age group, unadjusted for seasonality, monthly
282-0074	Labour force survey estimates (LFS), wages of employees by job permanence, union coverage, sex and age group, annual
282-0075	Labour force survey estimates (LFS), employees by establishment size, North American Industry Classification System (NAICS), sex and age group, unadjusted for seasonality, monthly
282-0076	Labour force survey estimates (LFS), employees by establishment size, North American Industry Classification System (NAICS), sex and age group, annual
282-0077	Labour force survey estimates (LFS), employees by union coverage, North American Industry Classification System (NAICS), sex and age group, unadjusted for seasonality, monthly

282-0078	Labour force survey estimates (LFS), employees by union coverage, North American Industry Classification System (NAICS), sex and age group, annual
282-0079	Labour force survey estimates (LFS), employees by job permanency, North American Industry Classification System (NAICS), sex and age group, unadjusted for seasonality, monthly
282-0080	Labour force survey estimates (LFS), employees by job permanency, North American Industry Classification System (NAICS), sex and age group, annual
282-0081	Labour force survey estimates (LFS), employees working overtime (weekly) by National Occupational Classification for Statistics (NOC-S), sex and age group, unadjusted for seasonality, monthly
282-0082	Labour force survey estimates (LFS), employees working overtime (weekly) by National Occupational Classification for Statistics (NOC-S), sex and age group, annual
282-0083	Labour force survey estimates (LFS), employees working overtime (weekly) by North American Industry Classification System (NAICS), sex and age group, unadjusted for seasonality, monthly
282-0084	Labour force survey estimates (LFS), employees working overtime (weekly) by North American Industry Classification System (NAICS), sex and age group, annual
282-0085	Labour force survey estimates (LFS), supplementary unemployment rates by sex and age group, unadjusted for seasonality, monthly
282-0086	Labour force survey estimates (LFS), supplementary unemployment rates by sex and age group, annual
282-0087	Labour force survey estimates (LFS), by sex and age group, seasonally adjusted and unadjusted, monthly
282-0088	Labour force survey estimates (LFS), employment by North American Industry Classification System (NAICS), seasonally adjusted and unadjusted, monthly
282-0089	Labour force survey estimates (LFS), employment by class of worker and sex, seasonally adjusted and unadjusted, monthly
282-0092	Labour force survey estimates (LFS), actual hours worked by North American Industry Classification System (NAICS), seasonally adjusted, monthly
282-0093	Labour force survey estimates (LFS), employment by National Occupational Classification for Statistics (NOC-S), seasonally adjusted, monthly
282-0094	Labour force survey estimates (LFS), by North American Industry Classification System (NAICS), Canada, seasonally adjusted, monthly
282-0095	Labour force survey estimates (LFS), by full- and part-time students during school months, sex and age group, annual
282-0100	Labour force survey estimates (LFS), by territories, sex and age group, 3-month moving average, seasonally adjusted and unadjusted, monthly
282-0101	Labour force survey estimates (LFS), by immigrant status, age group, Canada, regions, provinces and Montreal, Toronto, Vancouver census metropolitan areas, 3-month moving average, unadjusted for seasonality, monthly

282-0102	Labour force survey estimates (LFS), by immigrant status, age group, Canada, regions, provinces and Montreal, Toronto, Vancouver census metropolitan areas, annual
282-0103	Labour force survey estimates (LFS), by immigrant status, sex and detailed age group, Canada, 3-month moving average, unadjusted for seasonality, monthly
282-0104	Labour force survey estimates (LFS), by immigrant status, sex and detailed age group, Canada, annual
282-0105	Labour force survey estimates (LFS), by immigrant status, educational attainment, sex and age group, Canada, 3-month moving average, unadjusted for seasonality, monthly
282-0106	Labour force survey estimates (LFS), by immigrant status, educational attainment, sex and age group, Canada, annual
282-0107	Labour force survey estimates (LFS), by immigrant status, country of birth, sex and age group, Canada, 3-month moving average, unadjusted for seasonality, monthly
282-0108	Labour force survey estimates (LFS), by immigrant status, country of birth, sex and age group, Canada, annual
282-0109	Labour force survey estimates (LFS), by census metropolitan area based on 2006 census boundaries, sex and age group, 3-month moving average, unadjusted for seasonality, monthly
282-0110	Labour force survey estimates (LFS), by census metropolitan area based on 2006 census boundaries, sex and age group, annual
282-0111	Labour force survey estimates (LFS), employment by census metropolitan area based on 2006 census boundaries and North American Industry Classification System (NAICS), 3-month moving average, unadjusted for seasonality, monthly
282-0112	Labour force survey estimates (LFS), employment by census metropolitan area based on 2006 census boundaries and North American Industry Classification System (NAICS), annual
282-0113	Labour force survey estimates (LFS), employment by census metropolitan area based on 2006 census boundaries and National Occupational Classification for Statistics (NOC-S), 3-month moving average, unadjusted for seasonality, monthly
282-0114	Labour force survey estimates (LFS), employment by census metropolitan area based on 2006 census boundaries and National Occupational Classification for Statistics (NOC-S), annual
282-0115	Labour force survey estimates (LFS), by selected census agglomerations based on 2006 census boundaries, annual
282-0116	Labour force survey estimates (LFS), by census metropolitan area based on 2006 census boundaries, 3-month moving average, seasonally adjusted and unadjusted, monthly
282-0117	Labour force survey estimates (LFS), by Montréal, Toronto and Vancouver census metropolitan areas based on 2006 census boundaries, seasonally adjusted and unadjusted, monthly
282-0118	Labour force survey estimates (LFS), by urban and rural areas based on 2006 census boundaries, sex and age group, unadjusted for seasonality, monthly

282-0119	Labour force survey estimates (LFS), by urban and rural areas based on 2006 census boundaries, sex and age group, annual
282-0120	Labour force survey estimates (LFS), employment by urban and rural areas based on 2006 census boundaries, class of worker and North American Industry Classification System (NAICS), unadjusted for seasonality, monthly
282-0121	Labour force survey estimates (LFS), employment by urban and rural areas based on 2006 census boundaries, class of worker and North American Industry Classification System (NAICS), annual
282-0200	Labour force survey estimates (LFS), weekly wage distributions of employees by type of work, North American Industry Classification System (NAICS) and sex, unadjusted for seasonality, monthly
282-0201	Labour force survey estimates (LFS), weekly wage distributions of employees by type of work, North American Industry Classification System (NAICS) and sex, annual
282-0202	Labour force survey estimates (LFS), weekly wage distributions of employees by type of work, National Occupational Classification for Statistics (NOC-S) and sex, unadjusted for seasonality, monthly
282-0203	Labour force survey estimates (LFS), weekly wage distributions of employees by type of work, National Occupational Classification for Statistics (NOC-S) and sex, annual
282-0204	Labour force survey estimates (LFS), hourly wage distributions of employees by type of work, North American Industry Classification System (NAICS) and sex, unadjusted for seasonality, monthly
282-0205	Labour force survey estimates (LFS), hourly wage distributions of employees by type of work, North American Industry Classification System (NAICS) and sex, annual
282-0206	Labour force survey estimates (LFS), hourly wage distribution of employees by type of work, National Occupational Classification for Statistics (NOC-S) and sex, unadjusted for seasonality, monthly
282-0207	Labour force survey estimates (LFS), hourly wage distribution of employees by type of work, National Occupational Classification for Statistics (NOC-S) and sex, annual
282-0208	Labour force survey estimates (LFS), by educational degree, sex and age group, unadjusted for seasonality, monthly
282-0209	Labour force survey estimates (LFS), by educational degree, sex and age group, annual
282-0210	Labour force survey estimates (LFS), by family type and family age composition, unadjusted for seasonality, monthly
282-0211	Labour force survey estimates (LFS), by family type and family age composition, annual
282-0212	Labour force survey estimates (LFS), hours lost by employees by reason absent full and part week and sex, unadjusted for seasonality, monthly
282-0213	Labour force survey estimates (LFS), hours lost by employees by reason absent full and part week and sex, annual

282-0214	Labour force survey estimates (LFS), activity prior to unemployment by sex and age group, unadjusted for seasonality, monthly
282-0215	Labour force survey estimates (LFS), activity prior to unemployment by sex and age group, annual
282-0216	Labour force survey estimates (LFS), reason for leaving job during previous year by sex and age group, unadjusted for seasonality, monthly
282-0217	Labour force survey estimates (LFS), reason for leaving job during previous year by sex and age group, annual
282-0218	Labour force survey estimates (LFS), reason for not looking for work, by sex and age group, unadjusted for seasonality, monthly
282-0219	Labour force survey estimates (LFS), reason for not looking for work, by sex and age group, annual
282-0220	Labour Force Survey estimates (LFS), employees by union status, sex and age group, Canada and provinces, annual
282-0221	Labour Force Survey estimates (LFS), employees by union status, sex, age group and education level, Canada, annual
282-0222	Labour Force Survey estimates (LFS), employees by union status and National Occupational Classification (NOC-S), Canada, annual
282-0223	Labour Force Survey estimates (LFS), employees by union status, North American Industry Classification System (NAICS) and sex, Canada, annual
282-0224	Labour Force Survey estimates (LFS), employees by union status, establishment size, job tenure, type of work and job permanency, Canada, annual
282-0225	Labour Force Survey estimates (LFS), average weekly earnings, average hourly wage rate and average usual weekly hours by union status and type of work, Canada and provinces, annual

Selected surveys from Statistics Canada

3701	Labour Force Survey
------	---------------------

Selected summary tables from Statistics Canada

- *Labour force characteristics*
- *Employment by industry*
- *Days lost per worker due to illness or disability, by sex, by province*

- *Economic indicators, by province and territory (monthly and quarterly)*
- *Labour force and participation rates by sex and age group*
- *Labour force, employment and unemployment, levels and rates, by province*
- *Employment by industry and sex*
- *Full-time and part-time employment by sex and age group*
- *Labour force characteristics by age and sex*
- *Distribution of employed people, by industry, by province*
- *Labour force characteristics, population 15 years and older, by census metropolitan area*
- *Labour force characteristics, population 15 years and older, by economic region, by province*
- *Days lost per worker by reason, by provinces*
- *Days lost per worker by industry and sex*
- *People employed, by educational attainment*
- *Reasons for part-time work by sex and age group*
- *Self-employment, historical summary*
- *Employment by age, sex, type of work, class of worker and province (monthly)*
- *Employment by major industry group, seasonally adjusted, by province (monthly)*
- *Actual hours worked per week by industry, seasonally adjusted (monthly)*
- *Average hourly wages of employees by selected characteristics and occupation, unadjusted data, by province (monthly)*
- *Labour force characteristics, seasonally adjusted, by province (monthly)*
- *Labour force characteristics, unadjusted, by province (monthly)*
- *Labour force characteristics, seasonally adjusted, by census metropolitan area (3 month moving average)*
- *Labour force characteristics, unadjusted, by census metropolitan area (3 month moving average)*
- *Labour force characteristics, unadjusted, by economic region (3 month moving average)*
- *Labour force characteristics by immigrant status of population aged 25 to 54, by province*
- *Labour force characteristics by immigrant status of population aged 25 to 54, by educational attainment*
- *Labour force characteristics by immigrant status, by detailed age group*
- *Labour force characteristics by immigrant status of population aged 25 to 54, by country of birth*

Statistical tables

Table 1
Labour force characteristics by age and sex, Canada, seasonally adjusted

	June 2014	July 2014	S.E. ¹	Change from			Percent change from		
				last month	last December	twelve months ago	last month	last December	twelve months ago
in thousands (except rates)									
15 years and over, both sexes									
Population	29,036.8	29,069.6	...	32.8	225.9	374.2	0.1	0.8	1.3
Labour force	19,190.2	19,214.9	29.0	24.7	63.5	139.3	0.1	0.3	0.7
Employment	17,820.7	17,862.4	28.5	41.7	94.5	156.8	0.2	0.5	0.9
Employment full-time	14,429.9	14,411.8	38.8	-18.1	37.6	38.5	-0.1	0.3	0.3
Employment part-time	3,390.7	3,450.6	36.0	59.9	56.9	118.4	1.8	1.7	3.6
Unemployment	1,369.5	1,352.5	24.6	-17.0	-31.0	-17.5	-1.2	-2.2	-1.3
Participation rate	66.1	66.1	0.1	0.0	-0.3	-0.4
Unemployment rate	7.1	7.0	0.1	-0.1	-0.2	-0.2
Employment rate	61.4	61.4	0.1	0.0	-0.2	-0.3
Part-time rate	19.0	19.3	0.2	0.3	0.2	0.5
15 to 24 years, both sexes									
Population	4,423.7	4,421.5	...	-2.2	-18.4	-28.6	0.0	-0.4	-0.6
Labour force	2,807.6	2,837.6	17.0	30.0	21.5	7.4	1.1	0.8	0.3
Employment	2,431.1	2,464.9	15.8	33.8	43.0	27.4	1.4	1.8	1.1
Employment full-time	1,256.6	1,260.2	18.7	3.6	10.8	-7.5	0.3	0.9	-0.6
Employment part-time	1,174.5	1,204.7	19.7	30.2	32.2	34.8	2.6	2.7	3.0
Unemployment	376.5	372.7	14.5	-3.8	-21.6	-20.0	-1.0	-5.5	-5.1
Participation rate	63.5	64.2	0.4	0.7	0.8	0.6
Unemployment rate	13.4	13.1	0.5	-0.3	-0.9	-0.8
Employment rate	55.0	55.7	0.4	0.7	1.2	0.9
Part-time rate	48.3	48.9	0.7	0.6	0.5	0.9
25 years and over, men									
Population	12,057.9	12,075.6	...	17.7	124.4	205.4	0.1	1.0	1.7
Labour force	8,692.5	8,696.4	15.3	3.9	58.2	91.2	0.0	0.7	1.1
Employment	8,139.9	8,145.7	16.3	5.8	63.4	76.4	0.1	0.8	0.9
Employment full-time	7,503.5	7,494.4	21.9	-9.1	53.3	55.2	-0.1	0.7	0.7
Employment part-time	636.4	651.3	18.1	14.9	10.1	21.3	2.3	1.6	3.4
Unemployment	552.6	550.7	14.5	-1.9	-5.1	14.7	-0.3	-0.9	2.7
Participation rate	72.1	72.0	0.1	-0.1	-0.3	-0.5
Unemployment rate	6.4	6.3	0.2	-0.1	-0.1	0.1
Employment rate	67.5	67.5	0.1	0.0	-0.1	-0.5
Part-time rate	7.8	8.0	0.2	0.2	0.1	0.2
25 years and over, women									
Population	12,555.2	12,572.6	...	17.4	120.0	197.6	0.1	1.0	1.6
Labour force	7,690.1	7,680.9	16.8	-9.2	-16.2	40.8	-0.1	-0.2	0.5
Employment	7,249.6	7,251.8	16.3	2.2	-12.0	53.0	0.0	-0.2	0.7
Employment full-time	5,669.8	5,657.2	25.3	-12.6	-26.5	-9.3	-0.2	-0.5	-0.2
Employment part-time	1,579.8	1,594.6	23.9	14.8	14.5	62.3	0.9	0.9	4.1
Unemployment	440.5	429.1	13.5	-11.4	-4.2	-12.3	-2.6	-1.0	-2.8
Participation rate	61.3	61.1	0.1	-0.2	-0.7	-0.6
Unemployment rate	5.7	5.6	0.2	-0.1	0.0	-0.2
Employment rate	57.7	57.7	0.1	0.0	-0.6	-0.5
Part-time rate	21.8	22.0	0.3	0.2	0.2	0.7
25 to 54 years, both sexes									
Population	14,698.0	14,708.0	...	10.0	67.6	95.9	0.1	0.5	0.7
Labour force	12,628.0	12,651.8	22.1	23.8	-27.9	-7.3	0.2	-0.2	-0.1
Employment	11,853.1	11,890.8	23.5	37.7	-20.4	-21.7	0.3	-0.2	-0.2
Unemployment	774.9	761.0	18.5	-13.9	-7.5	14.5	-1.8	-1.0	1.9
Participation rate	85.9	86.0	0.2	0.1	-0.6	-0.6
Unemployment rate	6.1	6.0	0.1	-0.1	-0.1	0.1
Employment rate	80.6	80.8	0.2	0.2	-0.6	-0.7
25 to 54 years, men									
Population	7,358.8	7,364.0	...	5.2	36.4	52.5	0.1	0.5	0.7
Labour force	6,629.7	6,643.5	14.2	13.8	-2.0	20.1	0.2	0.0	0.3
Employment	6,212.7	6,224.4	15.9	11.7	1.0	2.9	0.2	0.0	0.0
Unemployment	417.0	419.1	13.4	2.1	-2.9	17.2	0.5	-0.7	4.3
Participation rate	90.1	90.2	0.2	0.1	-0.5	-0.4
Unemployment rate	6.3	6.3	0.2	0.0	-0.1	0.2
Employment rate	84.4	84.5	0.2	0.1	-0.4	-0.6

See notes at the end of the table.

Table 1 – continued

Labour force characteristics by age and sex, Canada, seasonally adjusted

	June 2014	July 2014	S.E. ¹	Change from			Percent change from		
				last month	last December	twelve months ago	last month	last December	twelve months ago
in thousands (except rates)									
25 to 54 years, women									
Population	7,339.2	7,344.0	...	4.8	31.2	43.5	0.1	0.4	0.6
Labour force	5,998.3	6,008.3	16.2	10.0	-25.9	-27.4	0.2	-0.4	-0.5
Employment	5,640.4	5,666.4	16.4	26.0	-21.3	-24.6	0.5	-0.4	-0.4
Unemployment	357.9	341.8	12.5	-16.1	-4.7	-2.8	-4.5	-1.4	-0.8
Participation rate	81.7	81.8	0.2	0.1	-0.7	-0.9
Unemployment rate	6.0	5.7	0.2	-0.3	0.0	0.0
Employment rate	76.9	77.2	0.2	0.3	-0.6	-0.8
55 years and over, both sexes									
Population	9,915.1	9,940.1	...	25.0	176.7	306.9	0.3	1.8	3.2
Labour force	3,754.6	3,725.5	18.0	-29.1	70.0	139.2	-0.8	1.9	3.9
Employment	3,536.5	3,506.6	17.9	-29.9	71.7	151.1	-0.8	2.1	4.5
Unemployment	218.2	218.9	9.6	0.7	-1.7	-11.9	0.3	-0.8	-5.2
Participation rate	37.9	37.5	0.2	-0.4	0.1	0.3
Unemployment rate	5.8	5.9	0.3	0.1	-0.1	-0.5
Employment rate	35.7	35.3	0.2	-0.4	0.1	0.5
55 years and over, men									
Population	4,699.1	4,711.6	...	12.5	88.0	152.9	0.3	1.9	3.4
Labour force	2,062.8	2,052.9	11.8	-9.9	60.2	71.1	-0.5	3.0	3.6
Employment	1,927.2	1,921.3	11.9	-5.9	62.4	73.6	-0.3	3.4	4.0
Unemployment	135.5	131.6	7.0	-3.9	-2.2	-2.5	-2.9	-1.6	-1.9
Participation rate	43.9	43.6	0.3	-0.3	0.5	0.1
Unemployment rate	6.6	6.4	0.3	-0.2	-0.3	-0.4
Employment rate	41.0	40.8	0.3	-0.2	0.6	0.3
55 years and over, women									
Population	5,216.0	5,228.5	...	12.5	88.7	154.0	0.2	1.7	3.0
Labour force	1,691.8	1,672.6	12.3	-19.2	9.7	68.1	-1.1	0.6	4.2
Employment	1,609.2	1,585.3	12.2	-23.9	9.3	77.5	-1.5	0.6	5.1
Unemployment	82.6	87.3	6.3	4.7	0.5	-9.4	5.7	0.6	-9.7
Participation rate	32.4	32.0	0.2	-0.4	-0.4	0.4
Unemployment rate	4.9	5.2	0.4	0.3	0.0	-0.8
Employment rate	30.9	30.3	0.2	-0.6	-0.4	0.6

1. Average standard error of change in two consecutive months (see "Sampling Errors" in Data Quality for further explanations).

Note(s): Related CANSIM table 282-0087. The sum of individual categories may not always add to the total due to rounding.

Table 2
Employment by class of worker and industry, Canada, seasonally adjusted

	June 2014	July 2014	S.E. ¹	Change from			Percent change from		
				last month	last December	twelve months ago	last month	last December	twelve months ago
in thousands									
Class of worker									
Employees	15,115.9	15,194.6	35.6	78.7	94.9	210.3	0.5	0.6	1.4
Self-employed ²	2,704.8	2,667.8	25.9	-37.0	-0.4	-53.5	-1.4	0.0	-2.0
Public/private sector employees									
Public sector employees	3,637.8	3,662.0	25.0	24.2	39.7	68.9	0.7	1.1	1.9
Private sector employees	11,478.0	11,532.6	38.2	54.6	55.2	141.4	0.5	0.5	1.2
Industry	17,820.7	17,862.4	28.5	41.7	94.5	156.8	0.2	0.5	0.9
Goods-producing sector	3,852.1	3,825.8	26.0	-26.3	-48.3	-84.1	-0.7	-1.2	-2.2
Agriculture	299.2	296.4	7.8	-2.8	-2.9	-21.0	-0.9	-1.0	-6.6
Forestry, fishing, mining, quarrying, oil and gas extraction ³	351.3	354.3	7.9	3.0	-23.4	-12.6	0.9	-6.2	-3.4
Utilities	153.7	153.5	5.3	-0.2	-3.7	9.2	-0.1	-2.4	6.4
Construction	1,337.1	1,298.3	17.6	-38.8	3.9	-46.3	-2.9	0.3	-3.4
Manufacturing	1,710.9	1,723.4	18.9	12.5	-22.1	-13.2	0.7	-1.3	-0.8
Services-producing sector	13,968.6	14,036.6	34.4	68.0	142.8	240.9	0.5	1.0	1.7
Trade	2,726.1	2,739.8	24.3	13.7	43.5	28.5	0.5	1.6	1.1
Transportation and warehousing	897.4	902.1	14.6	4.7	33.2	46.3	0.5	3.8	5.4
Finance, insurance, real estate and leasing	1,096.8	1,101.2	16.7	4.4	-33.0	-20.9	0.4	-2.9	-1.9
Professional, scientific and technical services	1,364.1	1,369.9	18.7	5.8	1.1	13.9	0.4	0.1	1.0
Business, building and other support services	703.5	689.5	14.2	-14.0	-26.2	-56.0	-2.0	-3.7	-7.5
Educational services	1,292.1	1,338.2	16.2	46.1	58.5	47.7	3.6	4.6	3.7
Health care and social assistance	2,238.5	2,212.7	19.4	-25.8	8.1	89.8	-1.2	0.4	4.2
Information, culture and recreation	790.1	807.2	14.8	17.1	1.2	55.0	2.2	0.1	7.3
Accommodation and food services	1,125.5	1,142.4	17.1	16.9	10.0	24.3	1.5	0.9	2.2
Other services	787.7	775.6	13.5	-12.1	14.7	-7.7	-1.5	1.9	-1.0
Public administration	946.6	958.0	12.4	11.4	31.7	20.2	1.2	3.4	2.2

1. Average standard error of change in two consecutive months (see "Sampling Errors" in Data Quality for further explanations).

2. Includes both incorporated and unincorporated working owners, self-employed persons who do not have a business and persons working in a family business without pay.

3. Also referred to as Natural resources.

Note(s): Related CANSIM Tables 282-0088, 282-0089. The sum of individual categories may not always add to the total due to rounding.

Table 3
Labour force characteristics by province, seasonally adjusted

	June 2014	July 2014	S.E. ¹	Change from			Percent change from		
				last month	last December	twelve months ago	last month	last December	twelve months ago
in thousands (except rates)									
Newfoundland and Labrador									
Population	427.5	427.3	...	-0.2	-2.3	-2.3	0.0	-0.5	-0.5
Labour force	253.1	258.1	1.8	5.0	-4.3	-2.1	2.0	-1.6	-0.8
Employment	221.5	226.2	2.0	4.7	-7.8	-5.0	2.1	-3.3	-2.2
Employment full-time	185.1	189.0	2.4	3.9	-9.8	-7.6	2.1	-4.9	-3.9
Employment part-time	36.5	37.1	1.9	0.6	2.0	2.4	1.6	5.7	6.9
Unemployment	31.6	32.0	1.8	0.4	3.6	3.0	1.3	12.7	10.3
Participation rate	59.2	60.4	0.4	1.2	-0.7	-0.2
Unemployment rate	12.5	12.4	0.7	-0.1	1.6	1.3
Employment rate	51.8	52.9	0.5	1.1	-1.6	-0.9
Prince Edward Island									
Population	121.6	121.7	...	0.1	0.7	0.8	0.1	0.6	0.7
Labour force	82.3	82.0	0.6	-0.3	-1.3	-1.7	-0.4	-1.6	-2.0
Employment	74.2	74.3	0.7	0.1	0.7	0.5	0.1	1.0	0.7
Employment full-time	61.8	62.6	0.9	0.8	0.8	1.5	1.3	1.3	2.5
Employment part-time	12.3	11.7	0.7	-0.6	-0.1	-0.9	-4.9	-0.8	-7.1
Unemployment	8.1	7.7	0.7	-0.4	-2.0	-2.3	-4.9	-20.6	-23.0
Participation rate	67.7	67.4	0.5	-0.3	-1.4	-1.8
Unemployment rate	9.8	9.4	0.8	-0.4	-2.2	-2.5
Employment rate	61.0	61.1	0.6	0.1	0.3	0.1
Nova Scotia									
Population	780.4	780.5	...	0.1	-1.0	-0.9	0.0	-0.1	-0.1
Labour force	489.4	489.2	2.6	-0.2	-5.7	-8.2	0.0	-1.2	-1.6
Employment	447.0	443.1	2.7	-3.9	-6.4	-10.1	-0.9	-1.4	-2.2
Employment full-time	364.6	359.4	3.5	-5.2	-0.5	-6.5	-1.4	-0.1	-1.8
Employment part-time	82.4	83.8	3.3	1.4	-5.8	-3.4	1.7	-6.5	-3.9
Unemployment	42.4	46.0	2.3	3.6	0.6	1.8	8.5	1.3	4.1
Participation rate	62.7	62.7	0.3	0.0	-0.6	-1.0
Unemployment rate	8.7	9.4	0.5	0.7	0.2	0.5
Employment rate	57.3	56.8	0.3	-0.5	-0.7	-1.2
New Brunswick									
Population	619.9	620.0	...	0.1	0.1	0.1	0.0	0.0	0.0
Labour force	390.4	388.2	2.2	-2.2	-3.5	-1.7	-0.6	-0.9	-0.4
Employment	352.8	349.4	2.3	-3.4	-4.3	-1.4	-1.0	-1.2	-0.4
Employment full-time	296.0	291.7	3.0	-4.3	-4.4	-1.0	-1.5	-1.5	-0.3
Employment part-time	56.8	57.7	2.5	0.9	0.1	-0.3	1.6	0.2	-0.5
Unemployment	37.6	38.9	2.2	1.3	0.9	-0.3	3.5	2.4	-0.8
Participation rate	63.0	62.6	0.4	-0.4	-0.6	-0.3
Unemployment rate	9.6	10.0	0.5	0.4	0.3	-0.1
Employment rate	56.9	56.4	0.4	-0.5	-0.7	-0.2
Quebec									
Population	6,742.0	6,748.2	...	6.2	34.2	53.2	0.1	0.5	0.8
Labour force	4,374.9	4,375.6	15.0	0.7	-8.4	19.2	0.0	-0.2	0.4
Employment	4,018.5	4,020.4	14.9	1.9	-25.1	16.3	0.0	-0.6	0.4
Employment full-time	3,239.6	3,218.8	19.8	-20.8	-21.1	-8.4	-0.6	-0.7	-0.3
Employment part-time	778.9	801.6	18.5	22.7	-3.9	24.8	2.9	-0.5	3.2
Unemployment	356.4	355.1	12.9	-1.3	16.5	2.7	-0.4	4.9	0.8
Participation rate	64.9	64.8	0.2	-0.1	-0.5	-0.3
Unemployment rate	8.1	8.1	0.3	0.0	0.4	0.0
Employment rate	59.6	59.6	0.2	0.0	-0.7	-0.2
Ontario									
Population	11,336.0	11,345.6	...	9.6	78.0	134.7	0.1	0.7	1.2
Labour force	7,463.4	7,500.3	19.8	36.9	34.0	53.6	0.5	0.5	0.7
Employment	6,900.8	6,940.3	18.7	39.5	63.5	60.3	0.6	0.9	0.9
Employment full-time	5,575.9	5,578.4	26.0	2.5	0.9	8.0	0.0	0.0	0.1
Employment part-time	1,324.9	1,362.0	24.2	37.1	62.8	52.4	2.8	4.8	4.0
Unemployment	562.7	559.9	17.1	-2.8	-29.6	-6.9	-0.5	-5.0	-1.2
Participation rate	65.8	66.1	0.2	0.3	-0.2	-0.3
Unemployment rate	7.5	7.5	0.2	0.0	-0.4	-0.1
Employment rate	60.9	61.2	0.2	0.3	0.2	-0.2

See notes at the end of the table.

Table 3 – continued

Labour force characteristics by province, seasonally adjusted

	June 2014	July 2014	S.E. ¹	Change from			Percent change from		
				last month	last December	twelve months ago	last month	last December	twelve months ago
in thousands (except rates)									
Manitoba									
Population	985.9	987.2	...	1.3	8.3	13.4	0.1	0.8	1.4
Labour force	668.3	669.3	2.7	1.0	1.8	-0.7	0.1	0.3	-0.1
Employment	632.1	633.8	2.7	1.7	3.3	0.5	0.3	0.5	0.1
Employment full-time	510.0	507.3	3.8	-2.7	-3.0	-3.7	-0.5	-0.6	-0.7
Employment part-time	122.1	126.4	3.5	4.3	6.3	4.0	3.5	5.2	3.3
Unemployment	36.3	35.5	2.1	-0.8	-1.5	-1.1	-2.2	-4.1	-3.0
Participation rate	67.8	67.8	0.3	0.0	-0.4	-1.0
Unemployment rate	5.4	5.3	0.3	-0.1	-0.2	-0.2
Employment rate	64.1	64.2	0.3	0.1	-0.2	-0.8
Saskatchewan									
Population	842.5	843.6	...	1.1	9.4	16.8	0.1	1.1	2.0
Labour force	586.9	585.3	2.5	-1.6	4.9	3.7	-0.3	0.8	0.6
Employment	564.0	566.5	2.6	2.5	8.5	8.2	0.4	1.5	1.5
Employment full-time	466.6	470.6	3.5	4.0	13.1	10.7	0.9	2.9	2.3
Employment part-time	97.3	95.9	3.2	-1.4	-4.6	-2.6	-1.4	-4.6	-2.6
Unemployment	22.9	18.8	1.8	-4.1	-3.6	-4.5	-17.9	-16.1	-19.3
Participation rate	69.7	69.4	0.3	-0.3	-0.2	-0.9
Unemployment rate	3.9	3.2	0.3	-0.7	-0.7	-0.8
Employment rate	66.9	67.2	0.3	0.3	0.3	-0.3
Alberta									
Population	3,278.7	3,288.4	...	9.7	66.1	108.3	0.3	2.1	3.4
Labour force	2,400.9	2,395.1	9.4	-5.8	46.1	73.3	-0.2	2.0	3.2
Employment	2,284.1	2,282.6	10.0	-1.5	45.9	66.1	-0.1	2.1	3.0
Employment full-time	1,910.6	1,900.2	12.8	-10.4	26.6	40.8	-0.5	1.4	2.2
Employment part-time	373.5	382.5	11.5	9.0	19.4	25.4	2.4	5.3	7.1
Unemployment	116.8	112.5	7.4	-4.3	0.3	7.3	-3.7	0.3	6.9
Participation rate	73.2	72.8	0.3	-0.4	-0.1	-0.2
Unemployment rate	4.9	4.7	0.3	-0.2	-0.1	0.2
Employment rate	69.7	69.4	0.3	-0.3	0.0	-0.3
British Columbia									
Population	3,902.3	3,907.1	...	4.8	32.3	50.2	0.1	0.8	1.3
Labour force	2,480.6	2,471.9	10.3	-8.7	-0.1	4.1	-0.4	0.0	0.2
Employment	2,325.8	2,325.8	10.3	0.0	16.1	21.4	0.0	0.7	0.9
Employment full-time	1,819.7	1,833.9	14.7	14.2	35.3	4.8	0.8	2.0	0.3
Employment part-time	506.1	491.9	13.8	-14.2	-19.2	16.6	-2.8	-3.8	3.5
Unemployment	154.8	146.1	8.3	-8.7	-16.2	-17.3	-5.6	-10.0	-10.6
Participation rate	63.6	63.3	0.3	-0.3	-0.5	-0.7
Unemployment rate	6.2	5.9	0.3	-0.3	-0.7	-0.7
Employment rate	59.6	59.5	0.3	-0.1	-0.1	-0.2

1. Average standard error of change in two consecutive months (see "Sampling Errors" in Data Quality for further explanations).

Note(s): Related CANSIM Table 282-0087. The sum of individual categories may not always add to the total due to rounding.

Table 4-1
Selected labour force characteristics (seasonally adjusted) — Newfoundland and Labrador

	June 2014	July 2014	S.E. ¹	Change from			Percent change from		
				last month	last December	twelve months ago	last month	last December	twelve months ago
in thousands (except rates)									
Both sexes, 15 years and over									
Population	427.5	427.3	...	-0.2	-2.3	-2.3	0.0	-0.5	-0.5
Labour force	253.1	258.1	1.8	5.0	-4.3	-2.1	2.0	-1.6	-0.8
Employment	221.5	226.2	2.0	4.7	-7.8	-5.0	2.1	-3.3	-2.2
Employment full-time	185.1	189.0	2.4	3.9	-9.8	-7.6	2.1	-4.9	-3.9
Unemployment	31.6	32.0	1.8	0.4	3.6	3.0	1.3	12.7	10.3
Participation rate	59.2	60.4	0.4	1.2	-0.7	-0.2
Unemployment rate	12.5	12.4	0.7	-0.1	1.6	1.3
Employment rate	51.8	52.9	0.5	1.1	-1.6	-0.9
Part-time rate	16.5	16.4	0.8	-0.1	1.4	1.4
Both sexes, 15 to 24 years									
Population	56.6	56.4	...	-0.2	-1.5	-2.1	-0.4	-2.6	-3.6
Labour force	30.5	32.8	1.0	2.3	-1.0	-1.4	7.5	-3.0	-4.1
Employment	26.1	27.6	1.1	1.5	-0.2	-1.2	5.7	-0.7	-4.2
Unemployment	4.4	5.2	0.9	0.8	-0.8	-0.2	18.2	-13.3	-3.7
Participation rate	53.9	58.2	1.7	4.3	-0.2	-0.3
Unemployment rate	14.4	15.9	2.6	1.5	-1.9	0.1
Employment rate	46.1	48.9	1.8	2.8	0.9	-0.3
Part-time rate	41.4	41.3	3.6	-0.1	-0.1	-4.2
Men, 25 years and over									
Population	179.0	179.0	...	0.0	-0.5	-0.2	0.0	-0.3	-0.1
Labour force	117.2	119.8	1.1	2.6	0.9	1.9	2.2	0.8	1.6
Employment	98.9	101.3	1.2	2.4	-4.4	-2.4	2.4	-4.2	-2.3
Unemployment	18.3	18.5	1.1	0.2	5.3	4.3	1.1	40.2	30.3
Participation rate	65.5	66.9	0.6	1.4	0.7	1.1
Unemployment rate	15.6	15.4	0.9	-0.2	4.3	3.4
Employment rate	55.3	56.6	0.7	1.3	-2.3	-1.3
Part-time rate	6.7	7.4	0.8	0.7	2.4	3.0
Women, 25 years and over									
Population	191.9	191.9	...	0.0	-0.3	0.0	0.0	-0.2	0.0
Labour force	105.4	105.5	1.0	0.1	-4.2	-2.6	0.1	-3.8	-2.4
Employment	96.5	97.2	1.1	0.7	-3.3	-1.5	0.7	-3.3	-1.5
Unemployment	8.9	8.3	1.0	-0.6	-0.9	-1.1	-6.7	-9.8	-11.7
Participation rate	54.9	55.0	0.5	0.1	-2.1	-1.3
Unemployment rate	8.4	7.9	0.9	-0.5	-0.5	-0.8
Employment rate	50.3	50.7	0.6	0.4	-1.6	-0.7
Part-time rate	19.8	18.8	1.4	-1.0	0.5	1.6
Industry									
	221.5	226.2	2.0	4.7	-7.8	-5.0	2.1	-3.3	-2.2
Goods-producing sector									
Agriculture	48.0	50.0	1.8	2.0	-6.9	-4.2	4.2	-12.1	-7.7
Forestry, fishing, mining, quarrying, oil and gas extraction ²	1.2	0.8	0.4	-0.4	-1.0	-0.1	-33.3	-55.6	-11.1
	14.6	15.5	1.0	0.9	-2.6	-2.2	6.2	-14.4	-12.4
Utilities	2.5	2.3	0.3	-0.2	0.0	0.2	-8.0	0.0	9.5
Construction	20.5	20.6	1.3	0.1	-0.3	-1.5	0.5	-1.4	-6.8
Manufacturing	9.3	10.7	1.0	1.4	-3.1	-0.6	15.1	-22.5	-5.3
Services-producing sector									
Trade	173.5	176.2	2.1	2.7	-0.9	-0.8	1.6	-0.5	-0.5
Transportation and warehousing	37.7	36.9	1.4	-0.8	-1.2	-0.1	-2.1	-3.1	-0.3
Finance, insurance, real estate and leasing	11.9	12.5	0.7	0.6	2.1	2.4	5.0	20.2	23.8
Professional, scientific and technical services	7.9	8.5	0.7	0.6	-0.9	-0.4	7.6	-9.6	-4.5
Business, building and other support services	10.2	10.1	0.8	-0.1	0.9	0.3	-1.0	9.8	3.1
Educational services	5.4	6.0	0.6	0.6	0.5	0.6	11.1	9.1	11.1
Health care and social assistance	17.6	17.3	1.0	-0.3	-0.9	-0.5	-1.7	-4.9	-2.8
Information, culture and recreation	35.5	36.1	1.2	0.6	-0.5	-1.3	1.7	-1.4	-3.5
Accommodation and food services	7.0	7.4	0.7	0.4	0.0	1.0	5.7	0.0	15.6
Other services	13.4	13.9	1.0	0.5	0.1	0.3	3.7	0.7	2.2
Public administration	11.0	10.9	0.8	-0.1	0.0	-2.1	-0.9	0.0	-16.2
	15.9	16.6	0.9	0.7	-0.9	-1.0	4.4	-5.1	-5.7

1. Average standard error of change in two consecutive months (see "Sampling Errors" in Data Quality for further explanations).

2. Also referred to as Natural resources.

Note(s): Related CANSIM Tables 282-0087, 282-0088. The sum of individual categories may not always add to the total due to rounding.

Table 4-2
Selected labour force characteristics (seasonally adjusted) — Prince Edward Island

	June 2014	July 2014	S.E. ¹	Change from			Percent change from		
				last month	last December	twelve months ago	last month	last December	twelve months ago
in thousands (except rates)									
Both sexes, 15 years and over									
Population	121.6	121.7	...	0.1	0.7	0.8	0.1	0.6	0.7
Labour force	82.3	82.0	0.6	-0.3	-1.3	-1.7	-0.4	-1.6	-2.0
Employment	74.2	74.3	0.7	0.1	0.7	0.5	0.1	1.0	0.7
Employment full-time	61.8	62.6	0.9	0.8	0.8	1.5	1.3	1.3	2.5
Unemployment	8.1	7.7	0.7	-0.4	-2.0	-2.3	-4.9	-20.6	-23.0
Participation rate	67.7	67.4	0.5	-0.3	-1.4	-1.8
Unemployment rate	9.8	9.4	0.8	-0.4	-2.2	-2.5
Employment rate	61.0	61.1	0.6	0.1	0.3	0.1
Part-time rate	16.6	15.7	1.0	-0.8	-0.3	-1.3
Both sexes, 15 to 24 years									
Population	19.4	19.4	...	0.0	-0.2	-0.4	0.0	-1.0	-2.0
Labour force	13.7	13.4	0.4	-0.3	-0.1	-0.9	-2.2	-0.7	-6.3
Employment	11.7	11.0	0.4	-0.7	-0.3	-0.5	-6.0	-2.7	-4.3
Unemployment	2.0	2.4	0.3	0.4	0.1	-0.5	20.0	4.3	-17.2
Participation rate	70.6	69.1	1.9	-1.5	0.2	-3.1
Unemployment rate	14.6	17.9	2.4	3.3	0.9	-2.4
Employment rate	60.3	56.7	1.8	-3.6	-1.0	-1.4
Part-time rate	44.4	40.9	3.7	-3.5	2.0	1.8
Men, 25 years and over									
Population	49.1	49.2	...	0.1	0.6	0.7	0.2	1.2	1.4
Labour force	35.2	35.4	0.3	0.2	-0.3	-0.7	0.6	-0.8	-1.9
Employment	32.4	32.6	0.4	0.2	1.1	1.0	0.6	3.5	3.2
Unemployment	2.9	2.8	0.4	-0.1	-1.4	-1.7	-3.4	-33.3	-37.8
Participation rate	71.7	72.0	0.7	0.3	-1.5	-2.4
Unemployment rate	8.2	7.9	1.1	-0.3	-3.9	-4.6
Employment rate	66.0	66.3	0.9	0.3	1.5	1.1
Part-time rate	6.2	4.6	1.0	-1.6	-3.7	-2.0
Women, 25 years and over									
Population	53.1	53.2	...	0.1	0.4	0.6	0.2	0.8	1.1
Labour force	33.3	33.1	0.3	-0.2	-0.9	-0.2	-0.6	-2.6	-0.6
Employment	30.0	30.6	0.4	0.6	-0.2	-0.1	2.0	-0.6	-0.3
Unemployment	3.2	2.5	0.3	-0.7	-0.7	-0.2	-21.9	-21.9	-7.4
Participation rate	62.7	62.2	0.6	-0.5	-2.2	-1.1
Unemployment rate	9.6	7.6	1.0	-2.0	-1.8	-0.5
Employment rate	56.5	57.5	0.7	1.0	-0.8	-0.9
Part-time rate	17.3	18.6	1.5	1.3	3.4	-0.9
Industry									
Goods-producing sector	74.2	74.3	0.7	0.1	0.7	0.5	0.1	1.0	0.7
Agriculture	17.8	18.1	0.6	0.3	1.7	0.1	1.7	10.4	0.6
Forestry, fishing, mining, quarrying, oil and gas extraction ²	3.6	3.5	0.3	-0.1	0.5	-0.4	-2.8	16.7	-10.3
Utilities	2.6	2.7	0.3	0.1	0.0	0.2	3.8	0.0	8.0
Construction	0.4	0.4	0.1	0.0	0.0	0.0	0.0	0.0	0.0
Manufacturing	5.9	5.9	0.3	0.0	0.5	0.0	0.0	9.3	0.0
Services-producing sector	5.4	5.6	0.4	0.2	0.7	0.4	3.7	14.3	7.7
Trade	56.3	56.2	0.7	-0.1	-1.0	0.4	-0.2	-1.7	0.7
Transportation and warehousing	11.2	11.2	0.5	0.0	0.2	0.3	0.0	1.8	2.8
Finance, insurance, real estate and leasing	3.0	3.1	0.2	0.1	0.3	0.7	3.3	10.7	29.2
Professional, scientific and technical services	2.5	2.4	0.2	-0.1	-0.8	0.1	-4.0	-25.0	4.3
Business, building and other support services	2.9	2.6	0.3	-0.3	-0.5	-0.1	-10.3	-16.1	-3.7
Educational services	2.3	2.2	0.3	-0.1	0.1	0.1	-4.3	4.8	4.8
Health care and social assistance	6.4	6.1	0.4	-0.3	-0.1	0.0	-4.7	-1.6	0.0
Information, culture and recreation	9.7	10.3	0.4	0.6	0.3	0.3	6.2	3.0	3.0
Accommodation and food services	2.8	2.6	0.3	-0.2	0.0	-0.6	-7.1	0.0	-18.8
Other services	5.2	5.0	0.4	-0.2	-0.2	-0.4	-3.8	-3.8	-7.4
Public administration	3.6	3.6	0.3	0.0	-0.2	0.3	0.0	-5.3	9.1
	6.8	7.3	0.3	0.5	0.1	-0.2	7.4	1.4	-2.7

1. Average standard error of change in two consecutive months (see "Sampling Errors" in Data Quality for further explanations).

2. Also referred to as Natural resources.

Note(s): Related CANSIM Tables 282-0087, 282-0088. The sum of individual categories may not always add to the total due to rounding.

Table 4-3
Selected labour force characteristics (seasonally adjusted) — Nova Scotia

	June 2014	July 2014	S.E. ¹	Change from			Percent change from		
				last month	last December	twelve months ago	last month	last December	twelve months ago
in thousands (except rates)									
Both sexes, 15 years and over									
Population	780.4	780.5	...	0.1	-1.0	-0.9	0.0	-0.1	-0.1
Labour force	489.4	489.2	2.6	-0.2	-5.7	-8.2	0.0	-1.2	-1.6
Employment	447.0	443.1	2.7	-3.9	-6.4	-10.1	-0.9	-1.4	-2.2
Employment full-time	364.6	359.4	3.5	-5.2	-0.5	-6.5	-1.4	-0.1	-1.8
Unemployment	42.4	46.0	2.3	3.6	0.6	1.8	8.5	1.3	4.1
Participation rate	62.7	62.7	0.3	0.0	-0.6	-1.0
Unemployment rate	8.7	9.4	0.5	0.7	0.2	0.5
Employment rate	57.3	56.8	0.3	-0.5	-0.7	-1.2
Part-time rate	18.4	18.9	0.7	0.5	-1.0	-0.3
Both sexes, 15 to 24 years									
Population	113.2	112.9	...	-0.3	-2.1	-3.3	-0.3	-1.8	-2.8
Labour force	72.6	74.9	1.6	2.3	-0.5	-1.0	3.2	-0.7	-1.3
Employment	60.8	58.3	1.5	-2.5	-2.4	-4.4	-4.1	-4.0	-7.0
Unemployment	11.8	16.6	1.5	4.8	1.9	3.4	40.7	12.9	25.8
Participation rate	64.1	66.3	1.4	2.2	0.7	1.0
Unemployment rate	16.3	22.2	1.8	5.9	2.7	4.8
Employment rate	53.7	51.6	1.3	-2.1	-1.2	-2.4
Part-time rate	40.6	45.8	2.7	5.2	0.0	0.8
Men, 25 years and over									
Population	316.0	316.2	...	0.2	0.3	0.9	0.1	0.1	0.3
Labour force	211.4	209.7	1.4	-1.7	-3.1	-0.4	-0.8	-1.5	-0.2
Employment	191.6	192.8	1.6	1.2	-0.7	1.1	0.6	-0.4	0.6
Unemployment	19.7	16.9	1.4	-2.8	-2.4	-1.5	-14.2	-12.4	-8.2
Participation rate	66.9	66.3	0.4	-0.6	-1.1	-0.3
Unemployment rate	9.3	8.1	0.6	-1.2	-1.0	-0.7
Employment rate	60.6	61.0	0.5	0.4	-0.3	0.2
Part-time rate	8.7	8.8	0.8	0.0	-0.7	0.6
Women, 25 years and over									
Population	351.2	351.4	...	0.2	0.7	1.4	0.1	0.2	0.4
Labour force	205.4	204.6	1.5	-0.8	-2.1	-6.8	-0.4	-1.0	-3.2
Employment	194.6	192.1	1.5	-2.5	-3.2	-6.7	-1.3	-1.6	-3.4
Unemployment	10.8	12.6	1.2	1.8	1.2	0.0	16.7	10.5	0.0
Participation rate	58.5	58.2	0.4	-0.3	-0.7	-2.2
Unemployment rate	5.3	6.2	0.5	0.9	0.7	0.2
Employment rate	55.4	54.7	0.4	-0.7	-1.0	-2.1
Part-time rate	21.0	20.9	1.1	-0.1	-1.4	-0.9
Industry									
Industry	447.0	443.1	2.7	-3.9	-6.4	-10.1	-0.9	-1.4	-2.2
Goods-producing sector									
Agriculture	73.8	75.2	2.2	1.4	-9.3	-9.9	1.9	-11.0	-11.6
Forestry, fishing, mining, quarrying, oil and gas extraction ²	4.8	5.1	0.7	0.3	-0.2	-1.3	6.2	-3.8	-20.3
Utilities	9.4	9.8	0.9	0.4	-1.5	-2.0	4.3	-13.3	-16.9
Construction	2.9	3.0	0.5	0.1	-1.3	-1.8	3.4	-30.2	-37.5
Manufacturing	29.0	28.6	1.6	-0.4	-4.5	-3.8	-1.4	-13.6	-11.7
	27.8	28.7	1.3	0.9	-1.8	-0.9	3.2	-5.9	-3.0
Services-producing sector									
Trade	373.2	367.9	2.9	-5.3	2.9	-0.2	-1.4	0.8	-0.1
Transportation and warehousing	69.6	70.7	1.9	1.1	-1.9	-1.6	1.6	-2.6	-2.2
Finance, insurance, real estate and leasing	20.9	19.5	1.1	-1.4	1.1	1.5	-6.7	6.0	8.3
Professional, scientific and technical services	23.8	22.9	1.1	-0.9	0.1	1.1	-3.8	0.4	5.0
Business, building and other support services	28.1	28.3	1.3	0.2	2.9	-0.4	0.7	11.4	-1.4
Educational services	20.0	18.6	1.3	-1.4	-4.6	-4.5	-7.0	-19.8	-19.5
Health care and social assistance	38.5	36.5	1.5	-2.0	0.2	-1.5	-5.2	0.6	-3.9
Information, culture and recreation	71.5	71.0	1.7	-0.5	-0.3	1.1	-0.7	-0.4	1.6
Accommodation and food services	22.2	22.0	1.2	-0.2	2.1	2.2	-0.9	10.6	11.1
Other services	33.4	32.2	1.6	-1.2	3.8	3.0	-3.6	13.4	10.3
Public administration	16.9	16.5	1.0	-0.4	-1.1	-2.4	-2.4	-6.2	-12.7
	28.4	29.7	1.1	1.3	0.6	1.4	4.6	2.1	4.9

1. Average standard error of change in two consecutive months (see "Sampling Errors" in Data Quality for further explanations).

2. Also referred to as Natural resources.

Note(s): Related CANSIM Tables 282-0087, 282-0088. The sum of individual categories may not always add to the total due to rounding.

Table 4-4
Selected labour force characteristics (seasonally adjusted) — New Brunswick

	June 2014	July 2014	S.E. ¹	Change from			Percent change from		
				last month	last December	twelve months ago	last month	last December	twelve months ago
in thousands (except rates)									
Both sexes, 15 years and over									
Population	619.9	620.0	...	0.1	0.1	0.1	0.0	0.0	0.0
Labour force	390.4	388.2	2.2	-2.2	-3.5	-1.7	-0.6	-0.9	-0.4
Employment	352.8	349.4	2.3	-3.4	-4.3	-1.4	-1.0	-1.2	-0.4
Employment full-time	296.0	291.7	3.0	-4.3	-4.4	-1.0	-1.5	-1.5	-0.3
Unemployment	37.6	38.9	2.2	1.3	0.9	-0.3	3.5	2.4	-0.8
Participation rate	63.0	62.6	0.4	-0.4	-0.6	-0.3
Unemployment rate	9.6	10.0	0.5	0.4	0.3	-0.1
Employment rate	56.9	56.4	0.4	-0.5	-0.7	-0.2
Part-time rate	16.1	16.5	0.7	0.4	0.2	0.0
Both sexes, 15 to 24 years									
Population	86.1	85.9	...	-0.2	-1.6	-2.6	-0.2	-1.8	-2.9
Labour force	54.1	55.1	1.3	1.0	-0.8	3.0	1.8	-1.4	5.8
Employment	45.8	46.1	1.3	0.3	-2.0	3.4	0.7	-4.2	8.0
Unemployment	8.3	9.1	1.2	0.8	1.2	-0.3	9.6	15.2	-3.2
Participation rate	62.8	64.1	1.5	1.3	0.2	5.2
Unemployment rate	15.3	16.5	2.0	1.2	2.4	-1.5
Employment rate	53.2	53.7	1.5	0.5	-1.3	5.5
Part-time rate	40.2	41.2	3.0	1.0	0.3	-5.4
Men, 25 years and over									
Population	256.2	256.3	...	0.1	0.9	1.4	0.0	0.4	0.5
Labour force	172.8	172.2	1.3	-0.6	-1.7	-1.6	-0.3	-1.0	-0.9
Employment	155.4	154.1	1.4	-1.3	-1.3	-0.7	-0.8	-0.8	-0.5
Unemployment	17.3	18.1	1.4	0.8	-0.5	-0.9	4.6	-2.7	-4.7
Participation rate	67.4	67.2	0.5	-0.2	-0.9	-1.0
Unemployment rate	10.0	10.5	0.8	0.5	-0.2	-0.4
Employment rate	60.7	60.1	0.5	-0.6	-0.7	-0.6
Part-time rate	6.4	6.6	0.7	0.2	0.2	0.8
Women, 25 years and over									
Population	277.6	277.8	...	0.2	0.8	1.2	0.1	0.3	0.4
Labour force	163.6	160.9	1.2	-2.7	-0.9	-3.1	-1.7	-0.6	-1.9
Employment	151.6	149.2	1.3	-2.4	-1.0	-4.1	-1.6	-0.7	-2.7
Unemployment	12.0	11.7	1.1	-0.3	0.1	0.9	-2.5	0.9	8.3
Participation rate	58.9	57.9	0.4	-1.0	-0.5	-1.4
Unemployment rate	7.3	7.3	0.7	0.0	0.1	0.7
Employment rate	54.6	53.7	0.5	-0.9	-0.5	-1.7
Part-time rate	18.9	19.2	1.0	0.4	0.6	0.1
Industry									
	352.8	349.4	2.3	-3.4	-4.3	-1.4	-1.0	-1.2	-0.4
Goods-producing sector									
	72.7	69.1	1.9	-3.6	-8.8	-11.6	-5.0	-11.3	-14.4
Agriculture	3.5	3.6	0.5	0.1	-0.3	-0.8	2.9	-7.7	-18.2
Forestry, fishing, mining, quarrying, oil and gas extraction ²	10.6	10.3	0.8	-0.3	-2.4	-1.5	-2.8	-18.9	-12.7
Utilities	4.5	3.3	0.4	-1.2	-0.8	-0.9	-26.7	-19.5	-21.4
Construction	27.2	26.4	1.3	-0.8	-2.7	-4.3	-2.9	-9.3	-14.0
Manufacturing	26.9	25.5	1.2	-1.4	-2.6	-4.2	-5.2	-9.3	-14.1
Services-producing sector									
	280.2	280.3	2.3	0.1	4.5	10.3	0.0	1.6	3.8
Trade	59.1	56.8	1.6	-2.3	-2.3	6.2	-3.9	-3.9	12.3
Transportation and warehousing	16.4	15.0	0.9	-1.4	-1.6	-3.6	-8.5	-9.6	-19.4
Finance, insurance, real estate and leasing	15.7	15.1	0.8	-0.6	-2.0	-0.8	-3.8	-11.7	-5.0
Professional, scientific and technical services	18.8	18.9	0.9	0.1	3.6	4.6	0.5	23.5	32.2
Business, building and other support services	17.6	18.4	1.1	0.8	1.7	2.2	4.5	10.2	13.6
Educational services	26.2	26.9	1.2	0.7	-0.4	-0.7	2.7	-1.5	-2.5
Health care and social assistance	49.4	49.5	1.4	0.1	0.1	-2.1	0.2	0.2	-4.1
Information, culture and recreation	10.8	11.8	0.8	1.0	0.5	-2.2	9.3	4.4	-15.7
Accommodation and food services	24.4	25.1	1.2	0.7	1.8	2.5	2.9	7.7	11.1
Other services	16.9	17.2	0.9	0.3	1.8	2.0	1.8	11.7	13.2
Public administration	25.1	25.5	1.0	0.4	1.1	2.0	1.6	4.5	8.5

1. Average standard error of change in two consecutive months (see "Sampling Errors" in Data Quality for further explanations).

2. Also referred to as Natural resources.

Note(s): Related CANSIM Tables 282-0087, 282-0088. The sum of individual categories may not always add to the total due to rounding.

Table 4-5
Selected labour force characteristics (seasonally adjusted) — Quebec

	June 2014	July 2014	S.E. ¹	Change from			Percent change from		
				last month	last December	twelve months ago	last month	last December	twelve months ago
in thousands (except rates)									
Both sexes, 15 years and over									
Population	6,742.0	6,748.2	...	6.2	34.2	53.2	0.1	0.5	0.8
Labour force	4,374.9	4,375.6	15.0	0.7	-8.4	19.2	0.0	-0.2	0.4
Employment	4,018.5	4,020.4	14.9	1.9	-25.1	16.3	0.0	-0.6	0.4
Employment full-time	3,239.6	3,218.8	19.8	-20.8	-21.1	-8.4	-0.6	-0.7	-0.3
Unemployment	356.4	355.1	12.9	-1.3	16.5	2.7	-0.4	4.9	0.8
Participation rate	64.9	64.8	0.2	-0.1	-0.5	-0.3
Unemployment rate	8.1	8.1	0.3	0.0	0.4	0.0
Employment rate	59.6	59.6	0.2	0.0	-0.7	-0.2
Part-time rate	19.4	19.9	0.4	0.6	0.0	0.5
Both sexes, 15 to 24 years									
Population	968.6	967.7	...	-0.9	-6.9	-11.4	-0.1	-0.7	-1.2
Labour force	639.1	645.7	8.5	6.6	-2.6	-2.8	1.0	-0.4	-0.4
Employment	552.0	569.5	8.0	17.5	4.9	14.9	3.2	0.9	2.7
Unemployment	87.1	76.2	7.2	-10.9	-7.5	-17.7	-12.5	-9.0	-18.8
Participation rate	66.0	66.7	0.9	0.7	0.2	0.5
Unemployment rate	13.6	11.8	1.0	-1.8	-1.1	-2.7
Employment rate	57.0	58.9	0.8	1.9	1.0	2.3
Part-time rate	52.6	53.3	1.6	0.7	-0.4	-1.6
Men, 25 years and over									
Population	2,843.6	2,847.3	...	3.7	21.8	34.1	0.1	0.8	1.2
Labour force	1,974.5	1,979.9	8.3	5.4	1.2	5.7	0.3	0.1	0.3
Employment	1,809.3	1,806.7	8.9	-2.6	-24.3	-19.0	-0.1	-1.3	-1.0
Unemployment	165.2	173.2	7.7	8.0	25.5	24.7	4.8	17.3	16.6
Participation rate	69.4	69.5	0.3	0.1	-0.5	-0.7
Unemployment rate	8.4	8.7	0.4	0.3	1.2	1.2
Employment rate	63.6	63.5	0.3	-0.1	-1.3	-1.4
Part-time rate	8.3	8.4	0.5	0.1	-0.6	0.4
Women, 25 years and over									
Population	2,929.8	2,933.2	...	3.4	19.3	30.6	0.1	0.7	1.1
Labour force	1,761.3	1,749.9	8.3	-11.4	-7.1	16.2	-0.6	-0.4	0.9
Employment	1,657.3	1,644.2	8.4	-13.1	-5.7	20.4	-0.8	-0.3	1.3
Unemployment	104.1	105.7	7.1	1.6	-1.4	-4.2	1.5	-1.3	-3.8
Participation rate	60.1	59.7	0.3	-0.4	-0.6	0.0
Unemployment rate	5.9	6.0	0.4	0.1	-0.1	-0.3
Employment rate	56.6	56.1	0.3	-0.5	-0.5	0.2
Part-time rate	20.4	21.1	0.7	0.7	0.6	1.0
Industry	4,018.5	4,020.4	14.9	1.9	-25.1	16.3	0.0	-0.6	0.4
Goods-producing sector									
Agriculture	56.6	52.1	3.5	-4.5	-0.6	-2.2	-8.0	-1.1	-4.1
Forestry, fishing, mining, quarrying, oil and gas extraction ²	29.8	30.3	2.4	0.5	2.9	-1.3	1.7	10.6	-4.1
Utilities	35.6	32.9	2.8	-2.7	-1.6	4.1	-7.6	-4.6	14.2
Construction	242.0	232.9	7.9	-9.1	-18.9	-24.0	-3.8	-7.5	-9.3
Manufacturing	476.7	492.5	10.2	15.8	-0.7	-15.2	3.3	-0.1	-3.0
Services-producing sector									
Trade	3,177.8	3,179.7	17.3	1.9	-6.2	55.0	0.1	-0.2	1.8
Transportation and warehousing	635.5	647.1	12.3	11.6	13.5	7.8	1.8	2.1	1.2
Finance, insurance, real estate and leasing	184.6	185.3	6.9	0.7	-7.5	25.7	0.4	-3.9	16.1
Professional, scientific and technical services	236.4	231.7	7.6	-4.7	2.5	3.6	-2.0	1.1	1.6
Business, building and other support services	298.7	296.3	9.3	-2.4	-13.0	-8.0	-0.8	-4.2	-2.6
Educational services	144.2	139.9	6.7	-4.3	-9.0	-18.6	-3.0	-6.0	-11.7
Health care and social assistance	279.8	261.8	8.3	-18.0	-26.2	-16.2	-6.4	-9.1	-5.8
Information, culture and recreation	558.0	534.2	10.9	-23.8	-28.5	3.0	-4.3	-5.1	0.6
Accommodation and food services	193.4	205.9	7.8	12.5	15.4	30.9	6.5	8.1	17.7
Other services	253.1	276.6	8.8	23.5	25.5	24.7	9.3	10.2	9.8
Public administration	167.7	170.3	7.0	2.6	1.7	-6.9	1.6	1.0	-3.9
	226.4	230.6	6.3	4.2	19.3	9.0	1.9	9.1	4.1

1. Average standard error of change in two consecutive months (see "Sampling Errors" in Data Quality for further explanations).

2. Also referred to as Natural resources.

Note(s): Related CANSIM Tables 282-0087, 282-0088. The sum of individual categories may not always add to the total due to rounding.

Table 4-6
Selected labour force characteristics (seasonally adjusted) — Ontario

	June 2014	July 2014	S.E. ¹	Change from			Percent change from		
				last month	last December	twelve months ago	last month	last December	twelve months ago
in thousands (except rates)									
Both sexes, 15 years and over									
Population	11,336.0	11,345.6	...	9.6	78.0	134.7	0.1	0.7	1.2
Labour force	7,463.4	7,500.3	19.8	36.9	34.0	53.6	0.5	0.5	0.7
Employment	6,900.8	6,940.3	18.7	39.5	63.5	60.3	0.6	0.9	0.9
Employment full-time	5,575.9	5,578.4	26.0	2.5	0.9	8.0	0.0	0.0	0.1
Unemployment	562.7	559.9	17.1	-2.8	-29.6	-6.9	-0.5	-5.0	-1.2
Participation rate	65.8	66.1	0.2	0.3	-0.2	-0.3
Unemployment rate	7.5	7.5	0.2	0.0	-0.4	-0.1
Employment rate	60.9	61.2	0.2	0.3	0.2	-0.2
Part-time rate	19.2	19.6	0.3	0.4	0.7	0.6
Both sexes, 15 to 24 years									
Population	1,774.4	1,772.9	...	-1.5	-8.9	-13.0	-0.1	-0.5	-0.7
Labour force	1,078.9	1,102.5	11.9	23.6	25.8	20.7	2.2	2.4	1.9
Employment	912.9	928.1	10.8	15.2	31.6	21.1	1.7	3.5	2.3
Unemployment	166.0	174.4	10.4	8.4	-5.7	-0.4	5.1	-3.2	-0.2
Participation rate	60.8	62.2	0.7	1.4	1.8	1.6
Unemployment rate	15.4	15.8	0.9	0.4	-0.9	-0.4
Employment rate	51.4	52.3	0.6	0.9	2.0	1.5
Part-time rate	52.5	54.0	1.3	1.5	2.2	3.0
Men, 25 years and over									
Population	4,637.7	4,643.0	...	5.3	41.8	71.6	0.1	0.9	1.6
Labour force	3,355.2	3,349.7	10.1	-5.5	10.3	22.5	-0.2	0.3	0.7
Employment	3,150.0	3,146.9	10.5	-3.1	34.4	23.5	-0.1	1.1	0.8
Unemployment	205.2	202.8	9.8	-2.4	-24.0	-1.0	-1.2	-10.6	-0.5
Participation rate	72.3	72.1	0.2	-0.2	-0.5	-0.7
Unemployment rate	6.1	6.1	0.3	0.0	-0.7	0.0
Employment rate	67.9	67.8	0.2	-0.1	0.2	-0.5
Part-time rate	8.1	8.3	0.4	0.3	0.7	0.2
Women, 25 years and over									
Population	4,923.9	4,929.7	...	5.8	45.1	76.2	0.1	0.9	1.6
Labour force	3,029.3	3,048.1	11.5	18.8	-2.1	10.4	0.6	-0.1	0.3
Employment	2,837.8	2,865.4	11.0	27.6	-2.3	15.8	1.0	-0.1	0.6
Unemployment	191.4	182.7	9.5	-8.7	0.2	-5.4	-4.5	0.1	-2.9
Participation rate	61.5	61.8	0.2	0.3	-0.6	-0.8
Unemployment rate	6.3	6.0	0.3	-0.3	0.0	-0.2
Employment rate	57.6	58.1	0.2	0.5	-0.6	-0.6
Part-time rate	20.8	20.9	0.5	0.0	0.0	0.1
Industry	6,900.8	6,940.3	18.7	39.5	63.5	60.3	0.6	0.9	0.9
Goods-producing sector	1,391.2	1,380.2	17.0	-11.0	-16.6	-52.5	-0.8	-1.2	-3.7
Agriculture	82.5	82.8	4.0	0.3	0.1	-2.4	0.4	0.1	-2.8
Forestry, fishing, mining, quarrying, oil and gas extraction ²	36.4	30.9	2.6	-5.5	-7.3	-10.0	-15.1	-19.1	-24.4
Utilities	58.1	60.2	3.3	2.1	-0.5	1.6	3.6	-0.8	2.7
Construction	466.8	461.2	11.4	-5.6	13.9	-17.7	-1.2	3.1	-3.7
Manufacturing	747.5	745.1	13.4	-2.4	-22.9	-23.9	-0.3	-3.0	-3.1
Services-producing sector	5,509.5	5,560.1	22.9	50.6	80.1	112.8	0.9	1.5	2.1
Trade	1,038.4	1,044.7	16.4	6.3	20.1	30.5	0.6	2.0	3.0
Transportation and warehousing	325.6	329.1	10.1	3.5	15.8	-8.8	1.1	5.0	-2.6
Finance, insurance, real estate and leasing	498.9	502.9	12.5	4.0	-19.8	-16.4	0.8	-3.8	-3.2
Professional, scientific and technical services	583.7	597.0	13.1	13.3	10.3	22.4	2.3	1.8	3.9
Business, building and other support services	305.5	305.1	10.3	-0.4	-11.0	-23.4	-0.1	-3.5	-7.1
Educational services	528.4	567.8	11.0	39.4	57.0	47.6	7.5	11.2	9.2
Health care and social assistance	818.9	818.4	12.5	-0.5	24.8	44.8	-0.1	3.1	5.8
Information, culture and recreation	326.9	333.9	10.3	7.0	0.1	27.3	2.1	0.0	8.9
Accommodation and food services	418.8	419.4	11.2	0.6	5.7	-2.4	0.1	1.4	-0.6
Other services	294.6	279.2	8.8	-15.4	-10.7	0.7	-5.2	-3.7	0.3
Public administration	369.7	362.6	8.4	-7.1	-12.2	-9.3	-1.9	-3.3	-2.5

1. Average standard error of change in two consecutive months (see "Sampling Errors" in Data Quality for further explanations).

2. Also referred to as Natural resources.

Note(s): Related CANSIM Tables 282-0087, 282-0088. The sum of individual categories may not always add to the total due to rounding.

Table 4-7
Selected labour force characteristics (seasonally adjusted) — Manitoba

	June 2014	July 2014	S.E. ¹	Change from			Percent change from		
				last month	last December	twelve months ago	last month	last December	twelve months ago
in thousands (except rates)									
Both sexes, 15 years and over									
Population	985.9	987.2	...	1.3	8.3	13.4	0.1	0.8	1.4
Labour force	668.3	669.3	2.7	1.0	1.8	-0.7	0.1	0.3	-0.1
Employment	632.1	633.8	2.7	1.7	3.3	0.5	0.3	0.5	0.1
Employment full-time	510.0	507.3	3.8	-2.7	-3.0	-3.7	-0.5	-0.6	-0.7
Unemployment	36.3	35.5	2.1	-0.8	-1.5	-1.1	-2.2	-4.1	-3.0
Participation rate	67.8	67.8	0.3	0.0	-0.4	-1.0
Unemployment rate	5.4	5.3	0.3	-0.1	-0.2	-0.2
Employment rate	64.1	64.2	0.3	0.1	-0.2	-0.8
Part-time rate	19.3	19.9	0.5	0.6	0.9	0.6
Both sexes, 15 to 24 years									
Population	164.5	164.5	...	0.0	-0.3	-0.3	0.0	-0.2	-0.2
Labour force	110.5	112.1	1.6	1.6	0.0	-1.9	1.4	0.0	-1.7
Employment	100.1	100.2	1.6	0.1	0.0	0.4	0.1	0.0	0.4
Unemployment	10.4	11.9	1.3	1.5	0.0	-2.3	14.4	0.0	-16.2
Participation rate	67.2	68.1	0.9	0.9	0.1	-1.1
Unemployment rate	9.4	10.6	1.1	1.2	0.0	-1.9
Employment rate	60.9	60.9	0.9	0.0	0.1	0.3
Part-time rate	45.4	44.9	1.9	-0.4	2.9	-0.4
Men, 25 years and over									
Population	403.2	403.9	...	0.7	4.6	7.3	0.2	1.2	1.8
Labour force	299.9	300.0	1.4	0.1	4.4	3.0	0.0	1.5	1.0
Employment	286.9	286.9	1.5	0.0	4.7	1.1	0.0	1.7	0.4
Unemployment	12.9	13.1	1.2	0.2	-0.3	1.9	1.6	-2.2	17.0
Participation rate	74.4	74.3	0.4	-0.1	0.3	-0.6
Unemployment rate	4.3	4.4	0.4	0.1	-0.1	0.6
Employment rate	71.2	71.0	0.4	-0.2	0.3	-1.1
Part-time rate	7.2	8.6	0.6	1.4	1.8	1.8
Women, 25 years and over									
Population	418.1	418.7	...	0.6	3.9	6.2	0.1	0.9	1.5
Labour force	257.9	257.2	1.6	-0.7	-2.6	-1.8	-0.3	-1.0	-0.7
Employment	245.0	246.7	1.6	1.7	-1.4	-1.0	0.7	-0.6	-0.4
Unemployment	12.9	10.6	1.1	-2.3	-1.1	-0.6	-17.8	-9.4	-5.4
Participation rate	61.7	61.4	0.4	-0.3	-1.2	-1.4
Unemployment rate	5.0	4.1	0.4	-0.9	-0.4	-0.2
Employment rate	58.6	58.9	0.4	0.3	-0.9	-1.1
Part-time rate	22.9	23.0	0.9	0.1	-0.8	-0.3
Industry									
	632.1	633.8	2.7	1.7	3.3	0.5	0.3	0.5	0.1
Goods-producing sector									
Agriculture	142.9	146.8	2.4	3.9	1.6	-0.6	2.7	1.1	-0.4
Forestry, fishing, mining, quarrying, oil and gas extraction ²	21.3	23.6	1.2	2.3	1.1	-0.5	10.8	4.9	-2.1
Utilities	6.8	7.3	0.6	0.5	0.3	-0.4	7.4	4.3	-5.2
Construction	9.5	9.9	0.5	0.4	1.3	1.9	4.2	15.1	23.8
Manufacturing	43.2	43.6	1.6	0.4	1.6	0.2	0.9	3.8	0.5
	62.1	62.5	1.7	0.4	-2.6	-1.8	0.6	-4.0	-2.8
Services-producing sector									
Trade	489.1	487.0	3.2	-2.1	1.8	1.1	-0.4	0.4	0.2
Transportation and warehousing	96.8	93.4	2.0	-3.4	-2.6	0.1	-3.5	-2.7	0.1
Finance, insurance, real estate and leasing	36.4	35.6	1.4	-0.8	-3.4	-1.7	-2.2	-8.7	-4.6
Professional, scientific and technical services	33.9	34.3	1.2	0.4	0.1	1.8	1.2	0.3	5.5
Business, building and other support services	26.9	25.0	1.1	-1.9	-2.8	-4.5	-7.1	-10.1	-15.3
Educational services	17.8	16.5	1.2	-1.3	-3.0	-2.5	-7.3	-15.4	-13.2
Health care and social assistance	49.9	51.7	1.6	1.8	3.0	2.8	3.6	6.2	5.7
Information, culture and recreation	101.0	102.6	1.9	1.6	6.1	8.0	1.6	6.3	8.5
Accommodation and food services	24.3	24.5	1.2	0.2	0.8	-0.1	0.8	3.4	-0.4
Other services	37.9	39.0	1.6	1.1	0.7	-1.8	2.9	1.8	-4.4
Public administration	26.5	27.7	1.2	1.2	1.4	-2.4	4.5	5.3	-8.0
	37.7	36.6	1.2	-1.1	1.4	1.4	-2.9	4.0	4.0

1. Average standard error of change in two consecutive months (see "Sampling Errors" in Data Quality for further explanations).

2. Also referred to as Natural resources.

Note(s): Related CANSIM Tables 282-0087, 282-0088. The sum of individual categories may not always add to the total due to rounding.

Table 4-8
Selected labour force characteristics (seasonally adjusted) — Saskatchewan

	June 2014	July 2014	S.E. ¹	Change from			Percent change from		
				last month	last December	twelve months ago	last month	last December	twelve months ago
in thousands (except rates)									
Both sexes, 15 years and over									
Population	842.5	843.6	...	1.1	9.4	16.8	0.1	1.1	2.0
Labour force	586.9	585.3	2.5	-1.6	4.9	3.7	-0.3	0.8	0.6
Employment	564.0	566.5	2.6	2.5	8.5	8.2	0.4	1.5	1.5
Employment full-time	466.6	470.6	3.5	4.0	13.1	10.7	0.9	2.9	2.3
Unemployment	22.9	18.8	1.8	-4.1	-3.6	-4.5	-17.9	-16.1	-19.3
Participation rate	69.7	69.4	0.3	-0.3	-0.2	-0.9
Unemployment rate	3.9	3.2	0.3	-0.7	-0.7	-0.8
Employment rate	66.9	67.2	0.3	0.3	0.3	-0.3
Part-time rate	17.3	16.9	0.6	-0.3	-1.1	-0.7
Both sexes, 15 to 24 years									
Population	136.6	136.5	...	-0.1	-0.3	-0.2	-0.1	-0.2	-0.1
Labour force	91.1	89.7	1.4	-1.4	-2.6	-6.1	-1.5	-2.8	-6.4
Employment	83.2	84.3	1.4	1.1	-2.0	-5.3	1.3	-2.3	-5.9
Unemployment	7.9	5.5	1.1	-2.4	-0.5	-0.7	-30.4	-8.3	-11.3
Participation rate	66.7	65.7	1.1	-1.0	-1.8	-4.4
Unemployment rate	8.7	6.1	1.1	-2.6	-0.4	-0.4
Employment rate	60.9	61.8	1.1	0.9	-1.3	-3.7
Part-time rate	36.7	37.6	1.9	0.9	-2.0	1.3
Men, 25 years and over									
Population	350.3	351.0	...	0.7	5.6	9.9	0.2	1.6	2.9
Labour force	270.3	270.1	1.3	-0.2	3.9	5.0	-0.1	1.5	1.9
Employment	262.4	262.8	1.4	0.4	4.5	6.7	0.2	1.7	2.6
Unemployment	8.0	7.2	1.0	-0.8	-0.8	-1.8	-10.0	-10.0	-20.0
Participation rate	77.2	77.0	0.4	-0.2	-0.1	-0.7
Unemployment rate	3.0	2.7	0.4	-0.3	-0.3	-0.7
Employment rate	74.9	74.9	0.4	0.0	0.1	-0.2
Part-time rate	6.4	6.1	0.6	-0.4	-0.4	-0.8
Women, 25 years and over									
Population	355.6	356.1	...	0.5	4.0	7.1	0.1	1.1	2.0
Labour force	225.5	225.5	1.5	0.0	3.7	4.7	0.0	1.7	2.1
Employment	218.4	219.4	1.5	1.0	5.9	6.7	0.5	2.8	3.1
Unemployment	7.1	6.1	1.0	-1.0	-2.3	-2.0	-14.1	-27.4	-24.7
Participation rate	63.4	63.3	0.4	-0.1	0.3	0.0
Unemployment rate	3.1	2.7	0.4	-0.4	-1.1	-1.0
Employment rate	61.4	61.6	0.4	0.2	1.0	0.7
Part-time rate	22.8	22.0	1.0	-0.8	-1.2	-0.7
Industry									
Industry	564.0	566.5	2.6	2.5	8.5	8.2	0.4	1.5	1.5
Goods-producing sector									
Goods-producing sector	158.6	161.2	2.6	2.6	8.5	13.6	1.6	5.6	9.2
Agriculture	44.5	45.4	1.7	0.9	1.2	3.3	2.0	2.7	7.8
Forestry, fishing, mining, quarrying, oil and gas extraction ²	25.4	26.2	1.2	0.8	3.3	2.7	3.1	14.4	11.5
Utilities	7.2	6.7	0.5	-0.5	0.0	0.8	-6.9	0.0	13.6
Construction	52.5	54.3	1.8	1.8	5.6	7.5	3.4	11.5	16.0
Manufacturing	28.9	28.6	1.3	-0.3	-1.6	-0.6	-1.0	-5.3	-2.1
Services-producing sector									
Services-producing sector	405.3	405.3	3.2	0.0	0.0	-5.4	0.0	0.0	-1.3
Trade	86.7	85.0	2.1	-1.7	2.3	2.2	-2.0	2.8	2.7
Transportation and warehousing	27.4	26.0	1.2	-1.4	-3.6	-1.0	-5.1	-12.2	-3.7
Finance, insurance, real estate and leasing	31.4	30.7	1.3	-0.7	1.1	1.3	-2.2	3.7	4.4
Professional, scientific and technical services	28.3	28.0	1.3	-0.3	-1.9	-0.3	-1.1	-6.4	-1.1
Business, building and other support services	13.1	12.4	1.0	-0.7	-1.1	-1.7	-5.3	-8.1	-12.1
Educational services	44.2	48.4	1.4	4.2	3.1	2.6	9.5	6.8	5.7
Health care and social assistance	71.7	68.4	1.7	-3.3	-2.7	-6.3	-4.6	-3.8	-8.4
Information, culture and recreation	17.7	18.7	1.1	1.0	-2.0	-2.0	5.6	-9.7	-9.7
Accommodation and food services	30.3	32.5	1.6	2.2	1.2	1.2	7.3	3.8	3.8
Other services	23.9	23.1	1.2	-0.8	0.4	-3.4	-3.3	1.8	-12.8
Public administration	30.7	32.0	1.2	1.3	3.2	1.8	4.2	11.1	6.0

1. Average standard error of change in two consecutive months (see "Sampling Errors" in Data Quality for further explanations).

2. Also referred to as Natural resources.

Note(s): Related CANSIM Tables 282-0087, 282-0088. The sum of individual categories may not always add to the total due to rounding.

Table 4-9
Selected labour force characteristics (seasonally adjusted) — Alberta

	June 2014	July 2014	S.E. ¹	Change from			Percent change from		
				last month	last December	twelve months ago	last month	last December	twelve months ago
in thousands (except rates)									
Both sexes, 15 years and over									
Population	3,278.7	3,288.4	...	9.7	66.1	108.3	0.3	2.1	3.4
Labour force	2,400.9	2,395.1	9.4	-5.8	46.1	73.3	-0.2	2.0	3.2
Employment	2,284.1	2,282.6	10.0	-1.5	45.9	66.1	-0.1	2.1	3.0
Employment full-time	1,910.6	1,900.2	12.8	-10.4	26.6	40.8	-0.5	1.4	2.2
Unemployment	116.8	112.5	7.4	-4.3	0.3	7.3	-3.7	0.3	6.9
Participation rate	73.2	72.8	0.3	-0.4	-0.1	-0.2
Unemployment rate	4.9	4.7	0.3	-0.2	-0.1	0.2
Employment rate	69.7	69.4	0.3	-0.3	0.0	-0.3
Part-time rate	16.4	16.8	0.5	0.4	0.5	0.6
Both sexes, 15 to 24 years									
Population	518.1	518.9	...	0.8	2.6	5.3	0.2	0.5	1.0
Labour force	351.9	356.1	5.3	4.2	8.1	4.9	1.2	2.3	1.4
Employment	316.5	320.9	5.3	4.4	4.2	-2.7	1.4	1.3	-0.8
Unemployment	35.4	35.2	4.2	-0.2	4.0	7.6	-0.6	12.8	27.5
Participation rate	67.9	68.6	1.0	0.7	1.2	0.2
Unemployment rate	10.1	9.9	1.1	-0.2	0.9	2.0
Employment rate	61.1	61.8	1.0	0.7	0.5	-1.2
Part-time rate	36.9	35.0	1.8	-1.9	-1.4	-2.9
Men, 25 years and over									
Population	1,404.6	1,409.4	...	4.8	34.0	55.1	0.3	2.5	4.1
Labour force	1,139.7	1,141.5	4.9	1.8	32.7	42.6	0.2	2.9	3.9
Employment	1,094.9	1,102.1	5.8	7.2	42.5	48.7	0.7	4.0	4.6
Unemployment	44.8	39.4	4.7	-5.4	-9.8	-6.1	-12.1	-19.9	-13.4
Participation rate	81.1	81.0	0.4	-0.1	0.4	-0.1
Unemployment rate	3.9	3.5	0.4	-0.4	-0.9	-0.6
Employment rate	78.0	78.2	0.4	0.2	1.2	0.4
Part-time rate	5.2	5.5	0.5	0.3	-0.5	-0.4
Women, 25 years and over									
Population	1,356.0	1,360.1	...	4.1	29.5	48.0	0.3	2.2	3.7
Labour force	909.3	897.5	5.6	-11.8	5.3	25.9	-1.3	0.6	3.0
Employment	872.7	859.6	5.4	-13.1	-0.8	20.1	-1.5	-0.1	2.4
Unemployment	36.6	37.9	3.8	1.3	6.1	5.8	3.6	19.2	18.1
Participation rate	67.1	66.0	0.4	-1.1	-1.1	-0.4
Unemployment rate	4.0	4.2	0.4	0.2	0.6	0.5
Employment rate	64.4	63.2	0.4	-1.2	-1.5	-0.8
Part-time rate	22.9	24.4	0.9	1.5	2.9	3.9
Industry	2,284.1	2,282.6	10.0	-1.5	45.9	66.0	-0.1	2.1	3.0
Goods-producing sector									
Agriculture	61.5	56.9	4.3	-4.6	-0.5	-9.1	-7.5	-0.9	-13.8
Forestry, fishing, mining, quarrying, oil and gas extraction ²	170.0	172.1	5.9	2.1	-13.1	1.7	1.2	-7.1	1.0
Utilities	18.7	16.8	2.3	-1.9	-5.9	0.0	-10.2	-26.0	0.0
Construction	261.0	245.0	7.7	-16.0	12.8	12.9	-6.1	5.5	5.6
Manufacturing	147.2	155.2	5.3	8.0	16.6	17.3	5.4	12.0	12.5
Services-producing sector									
Trade	1,625.8	1,636.6	12.8	10.8	36.0	43.3	0.7	2.2	2.7
Transportation and warehousing	329.8	344.1	8.5	14.3	17.0	10.2	4.3	5.2	3.1
Finance, insurance, real estate and leasing	128.7	123.3	5.3	-5.4	3.5	4.9	-4.2	2.9	4.1
Professional, scientific and technical services	100.7	104.7	4.8	4.0	-1.2	-2.1	4.0	-1.1	-2.0
Business, building and other support services	189.7	190.5	6.2	0.8	8.6	7.8	0.4	4.7	4.3
Educational services	80.8	78.6	4.5	-2.2	3.4	1.5	-2.7	4.5	1.9
Health care and social assistance	139.4	135.3	5.2	-4.1	7.5	10.1	-2.9	5.9	8.1
Information, culture and recreation	240.1	243.4	6.5	3.3	2.2	14.4	1.4	0.9	6.3
Accommodation and food services	70.9	71.1	4.2	0.2	-2.7	-9.7	0.3	-3.7	-12.0
Other services	132.3	134.1	6.0	1.8	-14.9	-0.8	1.4	-10.0	-0.6
Public administration	121.4	116.1	5.2	-5.3	8.3	1.5	-4.4	7.7	1.3
	91.9	95.5	4.2	3.6	4.5	5.7	3.9	4.9	6.3

1. Average standard error of change in two consecutive months (see "Sampling Errors" in Data Quality for further explanations).

2. Also referred to as Natural resources.

Note(s): Related CANSIM Tables 282-0087, 282-0088. The sum of individual categories may not always add to the total due to rounding.

Table 4-10
Selected labour force characteristics (seasonally adjusted) — British Columbia

	June 2014	July 2014	S.E. ¹	Change from			Percent change from		
				last month	last December	twelve months ago	last month	last December	twelve months ago
in thousands (except rates)									
Both sexes, 15 years and over									
Population	3,902.3	3,907.1	...	4.8	32.3	50.2	0.1	0.8	1.3
Labour force	2,480.6	2,471.9	10.3	-8.7	-0.1	4.1	-0.4	0.0	0.2
Employment	2,325.8	2,325.8	10.3	0.0	16.1	21.4	0.0	0.7	0.9
Employment full-time	1,819.7	1,833.9	14.7	14.2	35.3	4.8	0.8	2.0	0.3
Unemployment	154.8	146.1	8.3	-8.7	-16.2	-17.3	-5.6	-10.0	-10.6
Participation rate	63.6	63.3	0.3	-0.3	-0.5	-0.7
Unemployment rate	6.2	5.9	0.3	-0.3	-0.7	-0.7
Employment rate	59.6	59.5	0.3	-0.1	-0.1	-0.2
Part-time rate	21.8	21.1	0.6	-0.6	-1.0	0.5
Both sexes, 15 to 24 years									
Population	586.1	586.3	...	0.2	0.4	-0.6	0.0	0.1	-0.1
Labour force	365.1	355.2	6.0	-9.9	-4.9	-7.1	-2.7	-1.4	-2.0
Employment	321.9	319.0	5.6	-2.9	9.3	1.8	-0.9	3.0	0.6
Unemployment	43.2	36.2	4.8	-7.0	-14.3	-8.8	-16.2	-28.3	-19.6
Participation rate	62.3	60.6	1.0	-1.7	-0.9	-1.1
Unemployment rate	11.8	10.2	1.2	-1.6	-3.8	-2.2
Employment rate	54.9	54.4	0.9	-0.5	1.5	0.4
Part-time rate	47.6	46.8	2.1	-0.8	-1.8	3.6
Men, 25 years and over									
Population	1,618.1	1,620.4	...	2.3	15.4	24.7	0.1	1.0	1.5
Labour force	1,116.3	1,118.2	5.4	1.9	10.1	13.2	0.2	0.9	1.2
Employment	1,058.1	1,059.5	5.6	1.4	6.8	16.5	0.1	0.6	1.6
Unemployment	58.2	58.7	4.9	0.5	3.3	-3.3	0.9	6.0	-5.3
Participation rate	69.0	69.0	0.3	0.0	0.0	-0.2
Unemployment rate	5.2	5.2	0.4	0.0	0.2	-0.4
Employment rate	65.4	65.4	0.3	0.0	-0.2	0.0
Part-time rate	9.6	9.4	0.6	-0.1	-0.5	0.0
Women, 25 years and over									
Population	1,698.0	1,700.4	...	2.4	16.6	26.2	0.1	1.0	1.6
Labour force	999.2	998.5	6.1	-0.7	-5.3	-2.1	-0.1	-0.5	-0.2
Employment	945.7	947.3	6.0	1.6	-0.1	3.1	0.2	0.0	0.3
Unemployment	53.4	51.2	4.7	-2.2	-5.2	-5.2	-4.1	-9.2	-9.2
Participation rate	58.8	58.7	0.4	-0.1	-0.9	-1.1
Unemployment rate	5.3	5.1	0.5	-0.2	-0.5	-0.5
Employment rate	55.7	55.7	0.4	0.0	-0.6	-0.7
Part-time rate	26.6	25.6	1.0	-1.0	-1.4	0.2
Industry	2,325.8	2,325.8	10.3	0.0	16.1	21.4	0.0	0.7	0.9
Goods-producing sector	449.1	448.6	9.5	-0.5	-4.0	-0.5	-0.1	-0.9	-0.1
Agriculture	21.4	24.1	2.6	2.7	-1.3	-6.7	12.6	-5.1	-21.8
Forestry, fishing, mining, quarrying, oil and gas extraction ²	49.3	48.8	3.4	-0.5	-2.0	0.0	-1.0	-3.9	0.0
Utilities	15.8	16.7	1.7	0.9	3.7	3.6	5.7	28.5	27.5
Construction	186.2	183.6	6.8	-2.6	-8.5	-14.8	-1.4	-4.4	-7.5
Manufacturing	176.4	175.5	6.0	-0.9	4.3	17.5	-0.5	2.5	11.1
Services-producing sector	1,876.7	1,877.2	12.4	0.5	20.1	21.9	0.0	1.1	1.2
Trade	365.0	348.4	8.8	-16.6	-5.5	-22.1	-4.5	-1.6	-6.0
Transportation and warehousing	141.7	143.5	5.3	1.8	19.1	25.4	1.3	15.4	21.5
Finance, insurance, real estate and leasing	145.1	154.0	5.7	8.9	2.7	-9.2	6.1	1.8	-5.6
Professional, scientific and technical services	178.9	183.9	6.8	5.0	3.2	-9.4	2.8	1.8	-4.9
Business, building and other support services	96.7	86.1	4.9	-10.6	-10.2	-8.1	-11.0	-10.6	-8.6
Educational services	169.8	175.0	6.1	5.2	1.4	5.0	3.1	0.8	2.9
Health care and social assistance	280.9	284.8	6.7	3.9	11.6	20.5	1.4	4.2	7.8
Information, culture and recreation	110.9	109.8	5.4	-1.1	-11.8	5.0	-1.0	-9.7	4.8
Accommodation and food services	169.3	167.1	6.6	-2.2	-8.9	0.4	-1.3	-5.1	0.2
Other services	103.2	106.2	4.7	3.0	8.7	4.9	2.9	8.9	4.8
Public administration	115.2	118.6	4.4	3.4	10.0	9.7	3.0	9.2	8.9

1. Average standard error of change in two consecutive months (see "Sampling Errors" in Data Quality for further explanations).

2. Also referred to as Natural resources.

Note(s): Related CANSIM Tables 282-0087, 282-0088. The sum of individual categories may not always add to the total due to rounding.

Table 5-1

Labour force characteristics by census metropolitan area (seasonally adjusted) — 3 month moving average

	June 2014	July 2014	S.E. ¹	Change from			Percent change from		
				last month	last December	twelve months ago	last month	last December	twelve months ago
in thousands (except rates)									
St. John's, Newfoundland and Labrador									
Population	168.3	168.3	...	0.0	0.8	2.1	0.0	0.5	1.3
Labour force	116.0	115.2	0.8	-0.8	-1.1	-0.2	-0.7	-0.9	-0.2
Employment	108.1	107.6	0.8	-0.5	-1.9	-1.0	-0.5	-1.7	-0.9
Unemployment	7.9	7.6	0.4	-0.3	0.7	0.8	-3.8	10.1	11.8
Participation rate	68.9	68.4	0.5	-0.5	-1.0	-1.0
Unemployment rate	6.8	6.6	0.3	-0.2	0.7	0.7
Employment rate	64.2	63.9	0.5	-0.3	-1.5	-1.4
Halifax, Nova Scotia									
Population	350.4	350.6	...	0.2	1.5	3.3	0.1	0.4	1.0
Labour force	240.7	239.5	1.2	-1.2	-5.5	-3.5	-0.5	-2.2	-1.4
Employment	227.5	225.8	1.2	-1.7	-2.4	-2.1	-0.7	-1.1	-0.9
Unemployment	13.2	13.7	0.7	0.5	-3.1	-1.3	3.8	-18.5	-8.7
Participation rate	68.7	68.3	0.3	-0.4	-1.9	-1.7
Unemployment rate	5.5	5.7	0.3	0.2	-1.2	-0.5
Employment rate	64.9	64.4	0.3	-0.5	-1.0	-1.2
Moncton, New Brunswick									
Population	120.5	120.6	...	0.1	1.1	1.9	0.1	0.9	1.6
Labour force	81.6	80.1	0.8	-1.5	0.3	1.5	-1.8	0.4	1.9
Employment	76.7	75.4	0.8	-1.3	1.8	2.6	-1.7	2.4	3.6
Unemployment	4.9	4.7	0.4	-0.2	-1.4	-1.1	-4.1	-23.0	-19.0
Participation rate	67.7	66.4	0.7	-1.3	-0.4	0.2
Unemployment rate	6.0	5.9	0.5	-0.1	-1.7	-1.5
Employment rate	63.7	62.5	0.7	-1.2	0.9	1.2
Saint John, New Brunswick									
Population	106.9	106.9	...	0.0	0.1	0.2	0.0	0.1	0.2
Labour force	70.4	70.0	0.6	-0.4	-1.8	0.1	-0.6	-2.5	0.1
Employment	65.0	64.8	0.7	-0.2	-2.1	2.5	-0.3	-3.1	4.0
Unemployment	5.4	5.3	0.4	-0.1	0.4	-2.3	-1.9	8.2	-30.3
Participation rate	65.9	65.5	0.6	-0.4	-1.7	0.0
Unemployment rate	7.7	7.6	0.6	-0.1	0.8	-3.3
Employment rate	60.8	60.6	0.7	-0.2	-2.0	2.2
Saguenay, Quebec									
Population	126.3	126.4	...	0.1	-0.1	-0.1	0.1	-0.1	-0.1
Labour force	77.5	78.6	0.8	1.1	-0.4	2.2	1.4	-0.5	2.9
Employment	70.0	71.0	0.8	1.0	-2.2	0.7	1.4	-3.0	1.0
Unemployment	7.5	7.6	0.4	0.1	1.8	1.5	1.3	31.0	24.6
Participation rate	61.4	62.2	0.6	0.8	-0.3	1.8
Unemployment rate	9.7	9.7	0.5	0.0	2.4	1.7
Employment rate	55.4	56.2	0.7	0.8	-1.7	0.6
Québec, Quebec									
Population	652.6	653.2	...	0.6	3.3	5.7	0.1	0.5	0.9
Labour force	450.0	456.6	3.4	6.6	9.7	17.8	1.5	2.2	4.1
Employment	425.6	430.7	3.4	5.1	4.8	13.4	1.2	1.1	3.2
Unemployment	24.3	25.9	1.5	1.6	4.9	4.5	6.6	23.3	21.0
Participation rate	69.0	69.9	0.5	0.9	1.1	2.1
Unemployment rate	5.4	5.7	0.3	0.3	1.0	0.8
Employment rate	65.2	65.9	0.5	0.7	0.4	1.5
Sherbrooke, Quebec									
Population	171.5	171.8	...	0.3	1.6	2.7	0.2	0.9	1.6
Labour force	105.9	105.2	1.2	-0.7	4.1	3.5	-0.7	4.1	3.4
Employment	97.3	97.4	1.2	0.1	3.4	3.6	0.1	3.6	3.8
Unemployment	8.5	7.8	0.5	-0.7	0.7	-0.1	-8.2	9.9	-1.3
Participation rate	61.7	61.2	0.7	-0.5	1.8	1.1
Unemployment rate	8.0	7.4	0.4	-0.6	0.4	-0.4
Employment rate	56.7	56.7	0.7	0.0	1.5	1.2

See notes at the end of the table.

Table 5-1 – continued

Labour force characteristics by census metropolitan area (seasonally adjusted) — 3 month moving average

	June 2014	July 2014	S.E. ¹	Change from			Percent change from		
				last month	last December	twelve months ago	last month	last December	twelve months ago
in thousands (except rates)									
Trois-Rivières, Quebec									
Population	127.3	127.4	...	0.1	0.5	0.8	0.1	0.4	0.6
Labour force	73.8	74.1	0.8	0.3	1.6	2.3	0.4	2.2	3.2
Employment	67.6	68.4	0.8	0.8	1.9	3.7	1.2	2.9	5.7
Unemployment	6.2	5.6	0.4	-0.6	-0.4	-1.4	-9.7	-6.7	-20.0
Participation rate	58.0	58.2	0.7	0.2	1.1	1.5
Unemployment rate	8.4	7.6	0.5	-0.8	-0.7	-2.1
Employment rate	53.1	53.7	0.6	0.6	1.3	2.6
Montréal, Quebec									
Population	3,325.2	3,329.1	...	3.9	22.6	38.3	0.1	0.7	1.2
Labour force	2,191.2	2,199.5	7.7	8.3	-20.3	-19.5	0.4	-0.9	-0.9
Employment	2,009.8	2,007.8	7.9	-2.0	-34.2	-28.6	-0.1	-1.7	-1.4
Unemployment	181.4	191.6	4.8	10.2	13.9	9.0	5.6	7.8	4.9
Participation rate	65.9	66.1	0.2	0.2	-1.0	-1.3
Unemployment rate	8.3	8.7	0.2	0.4	0.7	0.5
Employment rate	60.4	60.3	0.2	-0.1	-1.5	-1.6
Ottawa-Gatineau, Ontario/Quebec									
Population	1,079.8	1,081.1	...	1.3	8.7	14.8	0.1	0.8	1.4
Labour force	753.9	754.6	3.8	0.7	11.3	14.2	0.1	1.5	1.9
Employment	703.2	706.3	3.9	3.1	9.3	14.8	0.4	1.3	2.1
Unemployment	50.7	48.4	1.8	-2.3	2.1	-0.4	-4.5	4.5	-0.8
Participation rate	69.8	69.8	0.4	0.0	0.5	0.4
Unemployment rate	6.7	6.4	0.2	-0.3	0.2	-0.2
Employment rate	65.1	65.3	0.4	0.2	0.3	0.4
Ottawa-Gatineau, Quebec part, Ontario/Quebec									
Population	268.5	268.9	...	0.4	2.1	3.5	0.1	0.8	1.3
Labour force	185.6	185.3	1.4	-0.3	2.6	6.2	-0.2	1.4	3.5
Employment	173.9	173.2	1.4	-0.7	3.2	5.5	-0.4	1.9	3.3
Unemployment	11.8	12.1	0.6	0.3	-0.6	0.8	2.5	-4.7	7.1
Participation rate	69.1	68.9	0.5	-0.2	0.4	1.4
Unemployment rate	6.4	6.5	0.3	0.1	-0.5	0.2
Employment rate	64.8	64.4	0.5	-0.4	0.7	1.2
Ottawa-Gatineau, Ontario part, Ontario/Quebec									
Population	811.3	812.2	...	0.9	6.6	11.3	0.1	0.8	1.4
Labour force	568.3	569.4	3.5	1.1	8.8	8.1	0.2	1.6	1.4
Employment	529.3	533.1	3.7	3.8	6.1	9.3	0.7	1.2	1.8
Unemployment	39.0	36.3	1.7	-2.7	2.7	-1.2	-6.9	8.0	-3.2
Participation rate	70.0	70.1	0.4	0.1	0.5	0.0
Unemployment rate	6.9	6.4	0.3	-0.5	0.4	-0.3
Employment rate	65.2	65.6	0.5	0.4	0.2	0.2
Kingston, Ontario									
Population	136.7	136.9	...	0.2	1.1	1.6	0.1	0.8	1.2
Labour force	88.6	88.2	0.8	-0.4	-1.0	1.6	-0.5	-1.1	1.8
Employment	82.8	82.6	0.8	-0.2	-1.1	1.7	-0.2	-1.3	2.1
Unemployment	5.7	5.6	0.3	-0.1	0.2	-0.1	-1.8	3.7	-1.8
Participation rate	64.8	64.4	0.6	-0.4	-1.3	0.4
Unemployment rate	6.4	6.3	0.4	-0.1	0.2	-0.3
Employment rate	60.6	60.3	0.6	-0.3	-1.3	0.5
Peterborough, Ontario									
Population	103.7	103.7	...	0.0	0.2	0.3	0.0	0.2	0.3
Labour force	65.8	67.4	1.0	1.6	6.1	3.6	2.4	10.0	5.6
Employment	59.4	61.6	1.1	2.2	4.0	3.9	3.7	6.9	6.8
Unemployment	6.4	5.8	0.5	-0.6	2.1	-0.3	-9.4	56.8	-4.9
Participation rate	63.5	65.0	1.0	1.5	5.8	3.3
Unemployment rate	9.7	8.6	0.8	-1.1	2.6	-1.0
Employment rate	57.3	59.4	1.1	2.1	3.7	3.6

See notes at the end of the table.

Table 5-1 – continued

Labour force characteristics by census metropolitan area (seasonally adjusted) — 3 month moving average

	June 2014	July 2014	S.E. ¹	Change from			Percent change from		
				last month	last December	twelve months ago	last month	last December	twelve months ago
in thousands (except rates)									
Oshawa, Ontario									
Population	319.2	319.6	...	0.4	3.1	5.3	0.1	1.0	1.7
Labour force	218.5	220.9	1.6	2.4	7.9	6.7	1.1	3.7	3.1
Employment	202.8	204.4	1.6	1.6	6.3	4.1	0.8	3.2	2.0
Unemployment	15.7	16.5	0.8	0.8	1.6	2.7	5.1	10.7	19.6
Participation rate	68.5	69.1	0.5	0.6	1.8	0.9
Unemployment rate	7.2	7.5	0.4	0.3	0.5	1.1
Employment rate	63.5	64.0	0.5	0.5	1.4	0.3
Toronto, Ontario									
Population	5,059.1	5,066.2	...	7.1	52.4	92.8	0.1	1.0	1.9
Labour force	3,408.0	3,395.5	10.3	-12.5	-28.5	-6.0	-0.4	-0.8	-0.2
Employment	3,139.4	3,118.5	10.6	-20.9	-15.0	-16.4	-0.7	-0.5	-0.5
Unemployment	268.5	277.0	6.3	8.5	-13.4	10.4	3.2	-4.6	3.9
Participation rate	67.4	67.0	0.2	-0.4	-1.3	-1.4
Unemployment rate	7.9	8.2	0.2	0.3	-0.3	0.4
Employment rate	62.1	61.6	0.2	-0.5	-0.9	-1.4
Hamilton, Ontario									
Population	637.2	637.7	...	0.5	3.9	6.8	0.1	0.6	1.1
Labour force	413.3	414.8	3.2	1.5	16.0	13.6	0.4	4.0	3.4
Employment	383.4	386.3	3.3	2.9	13.9	9.5	0.8	3.7	2.5
Unemployment	29.9	28.5	1.4	-1.4	2.0	4.1	-4.7	7.5	16.8
Participation rate	64.9	65.0	0.5	0.1	2.1	1.4
Unemployment rate	7.2	6.9	0.4	-0.3	0.3	0.8
Employment rate	60.2	60.6	0.5	0.4	1.8	0.9
St. Catharines-Niagara, Ontario									
Population	341.8	341.9	...	0.1	0.6	1.2	0.0	0.2	0.4
Labour force	211.8	210.0	1.7	-1.8	-2.4	-1.1	-0.8	-1.1	-0.5
Employment	195.1	193.5	1.8	-1.6	0.0	-0.1	-0.8	0.0	-0.1
Unemployment	16.8	16.5	0.8	-0.3	-2.4	-1.0	-1.8	-12.7	-5.7
Participation rate	62.0	61.4	0.5	-0.6	-0.8	-0.6
Unemployment rate	7.9	7.9	0.4	0.0	-1.0	-0.4
Employment rate	57.1	56.6	0.5	-0.5	-0.1	-0.2
Kitchener-Cambridge-Waterloo, Ontario									
Population	423.6	424.0	...	0.4	3.3	5.9	0.1	0.8	1.4
Labour force	302.5	302.6	2.0	0.1	-9.5	-0.7	0.0	-3.0	-0.2
Employment	283.0	283.7	2.1	0.7	-8.9	4.1	0.2	-3.0	1.5
Unemployment	19.5	18.9	1.1	-0.6	-0.6	-4.8	-3.1	-3.1	-20.3
Participation rate	71.4	71.4	0.5	0.0	-2.8	-1.1
Unemployment rate	6.4	6.2	0.3	-0.2	0.0	-1.6
Employment rate	66.8	66.9	0.5	0.1	-2.7	0.0
Brantford, Ontario									
Population	109.9	109.9	...	0.0	0.4	0.7	0.0	0.4	0.6
Labour force	73.6	73.1	0.8	-0.5	2.5	-0.3	-0.7	3.5	-0.4
Employment	68.7	68.3	0.8	-0.4	1.4	-0.2	-0.6	2.1	-0.3
Unemployment	4.9	4.8	0.3	-0.1	1.2	-0.1	-2.0	33.3	-2.0
Participation rate	67.0	66.5	0.8	-0.5	2.0	-0.7
Unemployment rate	6.7	6.6	0.5	-0.1	1.5	-0.1
Employment rate	62.5	62.1	0.7	-0.4	1.0	-0.6
Guelph, Ontario									
Population	118.9	119.1	...	0.2	1.2	2.0	0.2	1.0	1.7
Labour force	80.3	82.4	0.9	2.1	4.2	2.5	2.6	5.4	3.1
Employment	74.1	76.3	0.9	2.2	4.1	2.5	3.0	5.7	3.4
Unemployment	6.3	6.1	0.5	-0.2	0.1	0.1	-3.2	1.7	1.7
Participation rate	67.5	69.2	0.8	1.7	2.9	1.0
Unemployment rate	7.8	7.4	0.6	-0.4	-0.3	-0.1
Employment rate	62.3	64.1	0.8	1.8	2.9	1.1

See notes at the end of the table.

Table 5-1 – continued

Labour force characteristics by census metropolitan area (seasonally adjusted) — 3 month moving average

	June 2014	July 2014	S.E. ¹	Change from			Percent change from		
				last month	last December	twelve months ago	last month	last December	twelve months ago
in thousands (except rates)									
London, Ontario									
Population	423.5	423.9	...	0.4	2.5	4.3	0.1	0.6	1.0
Labour force	264.0	266.1	2.2	2.1	2.6	-2.3	0.8	1.0	-0.9
Employment	244.3	246.4	2.1	2.1	3.2	0.6	0.9	1.3	0.2
Unemployment	19.6	19.6	1.0	0.0	-0.7	-3.0	0.0	-3.4	-13.3
Participation rate	62.3	62.8	0.5	0.5	0.3	-1.2
Unemployment rate	7.4	7.4	0.4	0.0	-0.3	-1.0
Employment rate	57.7	58.1	0.5	0.4	0.4	-0.5
Windsor, Ontario									
Population	270.5	270.6	...	0.1	0.8	1.5	0.0	0.3	0.6
Labour force	162.8	163.8	1.6	1.0	-3.3	-5.1	0.6	-2.0	-3.0
Employment	148.3	149.6	1.6	1.3	-4.7	-3.9	0.9	-3.0	-2.5
Unemployment	14.6	14.2	0.8	-0.4	1.4	-1.2	-2.7	10.9	-7.8
Participation rate	60.2	60.5	0.6	0.3	-1.4	-2.3
Unemployment rate	9.0	8.7	0.5	-0.3	1.0	-0.4
Employment rate	54.8	55.3	0.6	0.5	-1.9	-1.7
Barrie, Ontario									
Population	167.4	167.5	...	0.1	1.4	2.4	0.1	0.8	1.5
Labour force	118.5	118.8	1.3	0.3	2.3	-2.8	0.3	2.0	-2.3
Employment	110.8	111.5	1.3	0.7	1.1	0.4	0.6	1.0	0.4
Unemployment	7.7	7.3	0.7	-0.4	1.2	-3.2	-5.2	19.7	-30.5
Participation rate	70.8	70.9	0.8	0.1	0.8	-2.8
Unemployment rate	6.5	6.1	0.5	-0.4	0.9	-2.5
Employment rate	66.2	66.6	0.8	0.4	0.1	-0.7
Greater Sudbury, Ontario									
Population	138.2	138.2	...	0.0	0.0	0.0	0.0	0.0	0.0
Labour force	87.2	87.4	0.8	0.2	-1.8	-0.9	0.2	-2.0	-1.0
Employment	81.1	81.4	0.8	0.3	-1.7	-0.9	0.4	-2.0	-1.1
Unemployment	6.1	6.1	0.4	0.0	0.0	0.1	0.0	0.0	1.7
Participation rate	63.1	63.2	0.6	0.1	-1.3	-0.7
Unemployment rate	7.0	7.0	0.4	0.0	0.2	0.2
Employment rate	58.7	58.9	0.6	0.2	-1.2	-0.7
Thunder Bay, Ontario									
Population	103.6	103.6	...	0.0	0.2	0.3	0.0	0.2	0.3
Labour force	64.9	65.6	0.6	0.7	0.0	-1.4	1.1	0.0	-2.1
Employment	61.6	62.3	0.6	0.7	0.5	-0.7	1.1	0.8	-1.1
Unemployment	3.4	3.2	0.3	-0.2	-0.6	-0.9	-5.9	-15.8	-22.0
Participation rate	62.6	63.3	0.6	0.7	-0.1	-1.6
Unemployment rate	5.2	4.9	0.4	-0.3	-0.9	-1.2
Employment rate	59.5	60.1	0.6	0.6	0.3	-0.9
Winnipeg, Manitoba									
Population	653.0	654.1	...	1.1	7.3	12.1	0.2	1.1	1.9
Labour force	443.4	443.4	1.3	0.0	-1.6	-4.5	0.0	-0.4	-1.0
Employment	417.5	417.6	1.4	0.1	-1.8	-2.8	0.0	-0.4	-0.7
Unemployment	25.9	25.8	0.8	-0.1	0.1	-1.7	-0.4	0.4	-6.2
Participation rate	67.9	67.8	0.2	-0.1	-1.0	-2.0
Unemployment rate	5.8	5.8	0.2	0.0	0.0	-0.3
Employment rate	63.9	63.8	0.2	-0.1	-1.0	-1.7
Regina, Saskatchewan									
Population	190.1	190.5	...	0.4	3.2	5.7	0.2	1.7	3.1
Labour force	138.5	138.0	0.8	-0.5	-1.4	-1.3	-0.4	-1.0	-0.9
Employment	133.5	133.4	0.8	-0.1	0.0	-1.0	-0.1	0.0	-0.7
Unemployment	5.0	4.6	0.3	-0.4	-1.4	-0.4	-8.0	-23.3	-8.0
Participation rate	72.9	72.4	0.4	-0.5	-2.0	-3.0
Unemployment rate	3.6	3.3	0.2	-0.3	-1.0	-0.3
Employment rate	70.2	70.0	0.4	-0.2	-1.2	-2.7

See notes at the end of the table.

Table 5-1 – continued

Labour force characteristics by census metropolitan area (seasonally adjusted) — 3 month moving average

	June 2014	July 2014	S.E. ¹	Change from			Percent change from		
				last month	last December	twelve months ago	last month	last December	twelve months ago
in thousands (except rates)									
Saskatoon, Saskatchewan									
Population	244.2	245.0	...	0.8	5.6	10.1	0.3	2.3	4.3
Labour force	174.7	175.4	1.0	0.7	3.3	6.4	0.4	1.9	3.8
Employment	168.1	169.2	1.0	1.1	4.3	6.9	0.7	2.6	4.3
Unemployment	6.6	6.1	0.5	-0.5	-1.1	-0.6	-7.6	-15.3	-9.0
Participation rate	71.5	71.6	0.4	0.1	-0.3	-0.3
Unemployment rate	3.8	3.5	0.3	-0.3	-0.7	-0.5
Employment rate	68.8	69.1	0.4	0.3	0.2	0.0
Calgary, Alberta									
Population	1,135.9	1,140.4	...	4.5	26.0	45.0	0.4	2.3	4.1
Labour force	837.9	840.8	3.5	2.9	11.0	30.4	0.3	1.3	3.8
Employment	792.7	796.3	3.8	3.6	5.7	27.9	0.5	0.7	3.6
Unemployment	45.1	44.4	2.0	-0.7	5.2	2.4	-1.6	13.3	5.7
Participation rate	73.8	73.7	0.3	-0.1	-0.8	-0.3
Unemployment rate	5.4	5.3	0.2	-0.1	0.6	0.1
Employment rate	69.8	69.8	0.3	0.0	-1.1	-0.3
Edmonton, Alberta									
Population	1,062.4	1,066.3	...	3.9	22.4	39.4	0.4	2.1	3.8
Labour force	787.5	787.2	3.8	-0.3	19.2	30.5	0.0	2.5	4.0
Employment	744.3	743.8	3.9	-0.5	18.1	24.4	-0.1	2.5	3.4
Unemployment	43.2	43.4	2.1	0.2	1.1	6.1	0.5	2.6	16.4
Participation rate	74.1	73.8	0.4	-0.3	0.2	0.1
Unemployment rate	5.5	5.5	0.3	0.0	0.0	0.6
Employment rate	70.1	69.8	0.4	-0.3	0.3	-0.3
Kelowna, British Columbia									
Population	152.9	153.1	...	0.2	1.2	2.0	0.1	0.8	1.3
Labour force	94.4	98.4	1.8	4.0	0.3	1.3	4.2	0.3	1.3
Employment	89.4	93.8	1.8	4.4	2.6	4.7	4.9	2.9	5.3
Unemployment	4.9	4.6	0.8	-0.3	-2.3	-3.4	-6.1	-33.3	-42.5
Participation rate	61.7	64.3	1.2	2.6	-0.3	0.0
Unemployment rate	5.2	4.7	0.8	-0.5	-2.3	-3.5
Employment rate	58.5	61.3	1.2	2.8	1.3	2.3
Abbotsford-Mission, British Columbia									
Population	149.0	149.2	...	0.2	1.3	2.1	0.1	0.9	1.4
Labour force	99.7	98.3	0.8	-1.4	-3.9	-3.6	-1.4	-3.8	-3.5
Employment	92.1	90.3	0.8	-1.8	-3.8	-3.3	-2.0	-4.0	-3.5
Unemployment	7.6	8.0	0.4	0.4	-0.1	-0.3	5.3	-1.2	-3.6
Participation rate	66.9	65.9	0.6	-1.0	-3.2	-3.4
Unemployment rate	7.6	8.1	0.4	0.5	0.2	0.0
Employment rate	61.8	60.5	0.6	-1.3	-3.1	-3.1
Vancouver, British Columbia									
Population	2,133.6	2,137.7	...	4.1	25.5	41.8	0.2	1.2	2.0
Labour force	1,378.6	1,382.4	5.1	3.8	15.8	23.4	0.3	1.2	1.7
Employment	1,301.9	1,304.3	5.2	2.4	24.9	35.4	0.2	1.9	2.8
Unemployment	76.7	78.2	2.9	1.5	-9.0	-11.9	2.0	-10.3	-13.2
Participation rate	64.6	64.7	0.2	0.1	0.0	-0.1
Unemployment rate	5.6	5.7	0.2	0.1	-0.7	-0.9
Employment rate	61.0	61.0	0.2	0.0	0.4	0.5
Victoria, British Columbia									
Population	306.8	307.1	...	0.3	1.6	2.6	0.1	0.5	0.9
Labour force	191.3	192.6	1.6	1.3	2.0	-1.4	0.7	1.0	-0.7
Employment	181.3	182.6	1.7	1.3	0.5	-0.4	0.7	0.3	-0.2
Unemployment	10.0	10.0	0.6	0.0	1.5	-1.0	0.0	17.6	-9.1
Participation rate	62.4	62.7	0.5	0.3	0.3	-1.0
Unemployment rate	5.2	5.2	0.3	0.0	0.7	-0.5
Employment rate	59.1	59.5	0.5	0.4	-0.1	-0.6

1. Average standard error of change in two consecutive months (see "Sampling Errors" in Data Quality for further explanations).

Note(s): Estimates in this table are based on 2006 census boundaries. Related CANSIM Table 282-0116. The sum of individual categories may not always add to the total due to rounding.

Table 5-2
Labour force characteristics by census metropolitan area (seasonally adjusted) — Monthly

	June 2014	July 2014	S.E. ¹	Change from			Percent change from		
				last month	last December	twelve months ago	last month	last December	twelve months ago
in thousands (except rates)									
Montréal, Quebec									
Population	3,329.2	3,333.0	...	3.8	23.7	38.4	0.1	0.7	1.2
Labour force	2,198.4	2,215.3	15.5	16.9	-7.0	-5.5	0.8	-0.3	-0.2
Employment	2,004.7	2,016.2	15.5	11.5	-18.0	-21.4	0.6	-0.9	-1.1
Unemployment	193.7	199.0	11.1	5.3	10.9	15.8	2.7	5.8	8.6
Participation rate	66.0	66.5	0.5	0.5	-0.7	-0.9
Unemployment rate	8.8	9.0	0.5	0.2	0.5	0.8
Employment rate	60.2	60.5	0.5	0.3	-1.0	-1.3
Toronto, Ontario									
Population	5,066.7	5,073.4	...	6.7	52.5	91.0	0.1	1.0	1.8
Labour force	3,388.4	3,384.4	21.6	-4.0	-49.2	-18.5	-0.1	-1.4	-0.5
Employment	3,106.1	3,102.4	21.0	-3.7	-30.1	-27.8	-0.1	-1.0	-0.9
Unemployment	282.3	282.0	15.2	-0.3	-19.1	9.3	-0.1	-6.3	3.4
Participation rate	66.9	66.7	0.4	-0.2	-1.7	-1.6
Unemployment rate	8.3	8.3	0.4	0.0	-0.5	0.3
Employment rate	61.3	61.2	0.4	-0.1	-1.2	-1.6
Vancouver, British Columbia									
Population	2,138.0	2,141.9	...	3.9	26.8	42.3	0.2	1.3	2.0
Labour force	1,385.4	1,381.6	10.8	-3.8	-1.9	19.3	-0.3	-0.1	1.4
Employment	1,306.5	1,306.8	10.7	0.3	10.6	38.8	0.0	0.8	3.1
Unemployment	78.9	74.8	7.1	-4.1	-12.5	-19.5	-5.2	-14.3	-20.7
Participation rate	64.8	64.5	0.5	-0.3	-0.9	-0.4
Unemployment rate	5.7	5.4	0.5	-0.3	-0.9	-1.5
Employment rate	61.1	61.0	0.5	-0.1	-0.3	0.6

1. Average standard error of change in two consecutive months (see "Sampling Errors" in Data Quality for further explanations).

Note(s): Estimates in this table are based on 2006 census boundaries. Related CANSIM Table 282-0117. The sum of individual categories may not always add to the total due to rounding.

Table 6-1

Labour force characteristics by province and economic region, ¹ unadjusted for seasonality, 3 month moving average ending in July 2013 and July 2014

	Population	Labour force			Participation rate	Unemployment rate	Employment rate
		Labour force	Employment	Unemployment			
		in thousands					
Canada ²							
2013	28,657.2	19,379.4	18,010.4	1,368.9	67.6	7.1	62.8
2014	29,034.2	19,500.3	18,125.0	1,375.3	67.2	7.1	62.4
Newfoundland and Labrador							
2013	429.5	270.9	243.3	27.6	63.1	10.2	56.6
2014	427.6	264.8	234.9	29.8	61.9	11.3	54.9
Avalon Peninsula [1010]							
2013	224.4	150.6	139.3	11.3	67.1	7.5	62.1
2014	225.3	147.8	135.9	11.8	65.6	8.0	60.3
South Coast-Burin Peninsula [1020]							
2013	29.8	17.1	14.4	2.6	57.4	15.2	48.3
2014	29.1	15.7	13.1	2.7	54.0	17.2	45.0
West Coast-Northern Peninsula-Labrador [1030]							
2013	85.8	52.2	45.3	6.9	60.8	13.2	52.8
2014	85.0	51.2	44.0	7.1	60.2	13.9	51.8
Notre Dame-Central Bonavista Bay [1040]							
2013	89.5	51.0	44.2	6.8	57.0	13.3	49.4
2014	88.3	50.1	41.9	8.2	56.7	16.4	47.5
Prince Edward Island							
2013	120.8	86.2	78.2	8.0	71.4	9.3	64.7
2014	121.6	85.9	78.7	7.2	70.6	8.4	64.7
Nova Scotia							
2013	781.3	510.6	467.6	43.0	65.4	8.4	59.8
2014	780.5	500.9	457.6	43.3	64.2	8.6	58.6
Cape Breton [1210]							
2013	109.7	66.8	58.9	7.9	60.9	11.8	53.7
2014	108.1	62.2	53.7	8.4	57.5	13.5	49.7
North Shore [1220]							
2013	128.7	78.5	70.7	7.8	61.0	9.9	54.9
2014	127.8	78.5	70.0	8.5	61.4	10.8	54.8
Annapolis Valley [1230]							
2013	99.3	62.4	57.2	5.2	62.8	8.3	57.6
2014	98.7	62.0	56.8	5.2	62.8	8.4	57.5
Southern [1240]							
2013	96.3	56.6	50.5	6.2	58.8	11.0	52.4
2014	95.2	55.2	48.7	6.5	58.0	11.8	51.2
Halifax [1250]							
2013	347.3	246.3	230.3	16.0	70.9	6.5	66.3
2014	350.6	243.0	228.3	14.7	69.3	6.0	65.1
New Brunswick							
2013	619.8	400.5	361.1	39.4	64.6	9.8	58.3
2014	620.1	400.0	362.1	37.9	64.5	9.5	58.4
Campbellton-Miramichi [1310]							
2013	126.2	76.5	65.3	11.3	60.6	14.8	51.7
2014	124.6	72.2	61.0	11.2	57.9	15.5	49.0
Moncton-Richibucto [1320]							
2013	174.7	115.5	106.1	9.5	66.1	8.2	60.7
2014	176.1	120.8	112.5	8.4	68.6	7.0	63.9
Saint John-St. Stephen [1330]							
2013	144.5	94.5	84.4	10.1	65.4	10.7	58.4
2014	144.4	95.4	87.6	7.8	66.1	8.2	60.7

See notes at the end of the table.

Table 6-1 – continued

Labour force characteristics by province and economic region, ¹ unadjusted for seasonality, 3 month moving average ending in July 2013 and July 2014

	Population	Labour force			Participation rate	Unemployment rate	Employment rate
		Labour force	Employment	Unemployment			
	in thousands						
Fredericton-Oromocto [1340]							
2013	110.8	71.2	66.8	4.4	64.3	6.2	60.3
2014	111.9	70.5	63.3	7.3	63.0	10.4	56.6
Edmundston-Woodstock [1350]							
2013	63.6	42.7	38.5	4.2	67.1	9.8	60.5
2014	63.0	41.1	37.8	3.3	65.2	8.0	60.0
Quebec							
2013	6,689.8	4,437.8	4,109.5	328.3	66.3	7.4	61.4
2014	6,741.9	4,439.6	4,100.6	339.0	65.9	7.6	60.8
Gaspésie-Îles-de-la-Madeleine [2410]							
2013	78.3	45.0	38.7	6.3	57.5	14.0	49.4
2014	77.8	47.1	41.4	5.8	60.5	12.3	53.2
Bas-Saint-Laurent [2415]							
2013	165.8	98.7	91.8	7.0	59.5	7.1	55.4
2014	164.9	93.7	86.5	7.2	56.8	7.7	52.5
Capitale-Nationale [2420]							
2013	598.6	406.0	384.8	21.2	67.8	5.2	64.3
2014	603.5	415.7	393.3	22.3	68.9	5.4	65.2
Chaudière-Appalaches [2425]							
2013	336.7	227.9	215.2	12.8	67.7	5.6	63.9
2014	337.4	232.2	218.3	13.9	68.8	6.0	64.7
Estrie [2430]							
2013	262.6	168.3	157.1	11.2	64.1	6.7	59.8
2014	264.8	165.1	153.7	11.3	62.3	6.8	58.0
Centre-du-Québec [2433]							
2013	193.2	127.0	118.1	8.9	65.7	7.0	61.1
2014	194.1	122.0	114.8	7.2	62.9	5.9	59.1
Montréal [2435]							
2013	1,214.8	839.1	786.9	52.2	69.1	6.2	64.8
2014	1,224.8	850.3	798.4	51.9	69.4	6.1	65.2
Montréal [2440]							
2013	1,646.3	1,090.7	986.8	104.0	66.3	9.5	59.9
2014	1,663.4	1,077.2	960.8	116.4	64.8	10.8	57.8
Laval [2445]							
2013	343.9	238.7	223.5	15.2	69.4	6.4	65.0
2014	348.7	245.7	226.7	19.0	70.5	7.7	65.0
Lanaudière [2450]							
2013	402.4	266.4	246.5	19.9	66.2	7.5	61.3
2014	406.9	265.5	248.2	17.3	65.2	6.5	61.0
Laurentides [2455]							
2013	476.6	330.0	309.2	20.8	69.2	6.3	64.9
2014	482.2	317.2	299.4	17.8	65.8	5.6	62.1
Outaouais [2460]							
2013	314.3	205.0	192.0	13.0	65.2	6.3	61.1
2014	318.1	208.2	193.5	14.7	65.5	7.1	60.8
Abitibi-Témiscamingue [2465]							
2013	118.0	80.1	73.4	6.6	67.9	8.2	62.2
2014	118.0	80.9	75.5	5.4	68.6	6.7	64.0
Mauricie [2470]							
2013	222.2	119.1	107.7	11.4	53.6	9.6	48.5
2014	221.9	125.8	114.4	11.4	56.7	9.1	51.6

See notes at the end of the table.

Table 6-1 – continued

Labour force characteristics by province and economic region, ¹ unadjusted for seasonality, 3 month moving average ending in July 2013 and July 2014

	Population	Labour force			Participation rate	Unemployment rate	Employment rate
		Labour force	Employment	Unemployment			
	in thousands						
Saguenay-Lac-Saint-Jean [2475]							
2013	225.0	136.8	124.6	12.2	60.8	8.9	55.4
2014	224.3	141.2	128.2	12.9	63.0	9.1	57.2
Côte-Nord and Nord-du-Québec [2480, 2490]							
2013	90.9	58.9	53.3	5.6	64.8	9.5	58.6
2014	91.0	51.9	47.4	4.4	57.0	8.5	52.1
Ontario							
2013	11,197.5	7,560.0	6,974.4	585.6	67.5	7.7	62.3
2014	11,335.0	7,610.3	7,018.6	591.6	67.1	7.8	61.9
Ottawa [3510]							
2013	1,074.5	741.2	690.6	50.5	69.0	6.8	64.3
2014	1,086.4	757.0	706.7	50.4	69.7	6.7	65.0
Kingston-Pembroke [3515]							
2013	373.1	229.3	214.1	15.2	61.5	6.6	57.4
2014	374.7	238.5	217.4	21.1	63.7	8.8	58.0
Muskoka-Kawartha [3520]							
2013	321.2	191.3	175.4	15.9	59.6	8.3	54.6
2014	322.6	206.0	193.4	12.6	63.9	6.1	60.0
Toronto [3530]							
2013	5,232.9	3,619.6	3,316.3	303.4	69.2	8.4	63.4
2014	5,326.6	3,624.4	3,302.8	321.6	68.0	8.9	62.0
Kitchener-Waterloo-Barrie [3540]							
2013	1,064.1	770.4	714.6	55.8	72.4	7.2	67.2
2014	1,079.3	770.7	724.9	45.8	71.4	5.9	67.2
Hamilton-Niagara Peninsula [3550]							
2013	1,188.1	767.9	715.8	52.1	64.6	6.8	60.2
2014	1,197.7	776.9	722.2	54.7	64.9	7.0	60.3
London [3560]							
2013	549.0	365.0	335.4	29.6	66.5	8.1	61.1
2014	554.0	360.1	333.8	26.3	65.0	7.3	60.3
Windsor-Sarnia [3570]							
2013	518.8	322.8	294.0	28.8	62.2	8.9	56.7
2014	519.3	327.7	301.1	26.6	63.1	8.1	58.0
Stratford-Bruce Peninsula [3580]							
2013	245.6	161.7	153.0	8.8	65.8	5.4	62.3
2014	245.6	161.9	154.6	7.2	65.9	4.4	62.9
Northeast [3590]							
2013	457.2	278.4	260.2	18.2	60.9	6.5	56.9
2014	455.8	280.4	261.4	19.0	61.5	6.8	57.3
Northwest [3595]							
2013	172.9	112.3	105.0	7.3	65.0	6.5	60.7
2014	173.0	106.6	100.4	6.3	61.6	5.9	58.0
Manitoba							
2013	972.9	678.0	642.0	35.9	69.7	5.3	66.0
2014	985.9	675.5	639.6	35.9	68.5	5.3	64.9
Southeast [4610]							
2013	85.3	62.0	59.9	2.1	72.7	3.4	70.2
2014	86.6	59.0	56.6	2.4	68.1	4.1	65.4
South Central [4620]							
2013	48.9	33.1	32.4	0.7	67.7	2.1	66.3
2014	49.7	34.7	33.3	1.4	69.8	4.0	67.0

See notes at the end of the table.

Table 6-1 – continued

Labour force characteristics by province and economic region, ¹ unadjusted for seasonality, 3 month moving average ending in July 2013 and July 2014

	Population	Labour force			Participation rate	Unemployment rate	Employment rate
		Labour force	Employment	Unemployment			
		in thousands					
Southwest [4630]							
2013	84.2	58.6	56.9	1.7	69.6	2.9	67.6
2014	84.6	57.6	55.6	2.1	68.1	3.6	65.7
North Central [4640]							
2013	36.9	26.1	25.4	0.7	70.7	2.7	68.8
2014	37.2	26.0	24.7	1.3	69.9	5.0	66.4
Winnipeg [4650]							
2013	585.8	411.2	384.6	26.6	70.2	6.5	65.7
2014	596.1	407.3	382.8	24.5	68.3	6.0	64.2
Interlake [4660]							
2013	73.6	49.0	47.2	1.8	66.6	3.7	64.1
2014	74.3	53.3	51.5	1.8	71.7	3.4	69.3
Parklands and North [4670, 4680]							
2013	58.2	37.8	35.5	2.3	64.9	6.1	61.0
2014	57.3	37.5	35.1	2.4	65.4	6.4	61.3
Saskatchewan							
2013	825.0	588.4	564.4	24.0	71.3	4.1	68.4
2014	842.4	595.0	574.3	20.7	70.6	3.5	68.2
Regina-Moose Mountain [4710]							
2013	246.9	185.2	178.9	6.2	75.0	3.3	72.5
2014	253.2	185.1	179.1	6.0	73.1	3.2	70.7
Swift Current-Moose Jaw [4720]							
2013	81.3	54.7	53.1	1.6	67.3	2.9	65.3
2014	81.6	54.6	53.3	1.3	66.9	2.4	65.3
Saskatoon-Biggar [4730]							
2013	278.9	202.5	193.9	8.5	72.6	4.2	69.5
2014	288.4	209.6	202.7	6.9	72.7	3.3	70.3
Yorkton-Melville [4740]							
2013	62.4	40.4	38.6	1.8	64.7	4.5	61.9
2014	62.3	39.9	38.8	1.1	64.0	2.8	62.3
Prince Albert and Northern [4750, 4760]							
2013	155.5	105.7	99.9	5.8	68.0	5.5	64.2
2014	156.9	105.8	100.5	5.3	67.4	5.0	64.1
Alberta							
2013	3,168.1	2,348.2	2,235.0	113.2	74.1	4.8	70.5
2014	3,277.5	2,425.4	2,308.8	116.6	74.0	4.8	70.4
Lethbridge-Medicine Hat [4810]							
2013	227.1	150.7	143.0	7.7	66.4	5.1	63.0
2014	231.9	148.8	142.7	6.2	64.2	4.2	61.5
Camrose-Drumheller [4820]							
2013	159.8	115.7	111.3	4.3	72.4	3.7	69.6
2014	162.5	114.4	110.9	3.6	70.4	3.1	68.2
Calgary [4830]							
2013	1,177.7	882.1	836.5	45.6	74.9	5.2	71.0
2014	1,224.6	915.4	868.0	47.5	74.8	5.2	70.9
Banff-Jasper-Rocky Mountain House [4840]							
2013	73.9	56.1	54.0	2.1	75.9	3.7	73.1
2014	76.4	59.4	57.7	1.7	77.7	2.9	75.5

See notes at the end of the table.

Table 6-1 – continued

Labour force characteristics by province and economic region, ¹ unadjusted for seasonality, 3 month moving average ending in July 2013 and July 2014

	Population	Labour force			Participation rate	Unemployment rate	Employment rate
		Labour force	Employment	Unemployment			
		in thousands					
Red Deer [4850]							
2013	161.7	125.2	118.2	6.9	77.4	5.5	73.1
2014	166.3	127.9	124.3	3.6	76.9	2.8	74.7
Edmonton [4860]							
2013	1,062.8	785.9	747.7	38.2	73.9	4.9	70.4
2014	1,102.2	822.9	778.4	44.5	74.7	5.4	70.6
Athabasca-Grande Prairie-Peace River [4870]							
2013	195.4	146.1	141.3	4.8	74.8	3.3	72.3
2014	199.1	145.8	140.0	5.7	73.2	3.9	70.3
Wood Buffalo-Cold Lake [4880]							
2013	109.6	86.3	82.9	3.5	78.7	4.1	75.6
2014	114.5	90.8	86.9	3.9	79.3	4.3	75.9
British Columbia							
2013	3,852.4	2,498.9	2,335.0	163.9	64.9	6.6	60.6
2014	3,901.8	2,502.9	2,349.7	153.2	64.1	6.1	60.2
Vancouver Island and Coast [5910]							
2013	661.0	404.1	378.2	25.9	61.1	6.4	57.2
2014	665.0	387.4	362.3	25.1	58.3	6.5	54.5
Lower Mainland-Southwest [5920]							
2013	2,388.0	1,571.7	1,465.5	106.2	65.8	6.8	61.4
2014	2,433.9	1,596.4	1,500.5	95.9	65.6	6.0	61.7
Thompson-Okanagan [5930]							
2013	434.1	269.9	252.2	17.7	62.2	6.6	58.1
2014	435.1	272.5	256.8	15.7	62.6	5.8	59.0
Kootenay [5940]							
2013	126.2	81.7	77.2	4.5	64.7	5.5	61.2
2014	125.9	74.8	70.4	4.4	59.4	5.9	55.9
Cariboo [5950]							
2013	125.8	87.7	82.5	5.2	69.7	5.9	65.6
2014	125.1	92.1	86.6	5.5	73.6	6.0	69.2
North Coast and Nechako [5960, 5970]							
2013	65.1	43.5	41.0	2.6	66.8	6.0	63.0
2014	64.0	41.4	36.7	4.7	64.7	11.4	57.3
Northeast [5980]							
2013	52.3	40.2	38.4	1.8	76.9	4.5	73.4
2014	52.8	38.3	36.5	1.8	72.5	4.7	69.1

1. For geographic descriptions of economic regions, refer to the Guide to the Labour Force Survey (catalogue number 71-543-GIE).

2. Estimates for Canada are a sum of the provincial totals and exclude estimates from Yukon, Northwest Territories and Nunavut.

Note(s): Related CANSIM table 282-0054.

Table 6-2
Labour force characteristics by territories, unadjusted for seasonality, 3 month moving average ending in
July 2013 and July 2014

	Population	Labour force			Participation rate	Unemployment rate	Employment rate
		Labour force	Employment	Unemployment			
		in thousands			percent		
Yukon ¹							
2013	27.6	21.0	19.9	1.0	76.1	4.8	72.1
2014	27.5	21.4	20.7	0.7	77.8	3.3	75.3
Northwest Territories ²							
2013	31.9	25.5	23.6	1.9	79.9	7.5	74.0
2014	31.8	24.4	22.2	2.2	76.7	9.0	69.8
Nunavut ³							
2013	21.6	14.9	12.9	2.0	69.1	13.6	59.7
2014	22.8	14.1	12.1	2.0	61.6	13.9	53.0

1. Since 1992, the Labour force survey (LFS) has been conducted in the Yukon, using an alternative methodology that accommodates some of the operational difficulties inherent to remote locales. These estimates are not included in the national totals. In 1995, the LFS in the Yukon underwent a sample redesign. One result of the redesign was that the covered population increased from 85% to 92%, which is reflected by the sharp increase in the three month moving averages estimates of January, February and March of 1995 for all the level estimates. Users are therefore warned to be cautious when comparing estimates before January 1995 to estimates for January 1995 and forward.
2. Since 2001, the Labour force survey (LFS) has been administered in the Northwest Territories, using an alternative methodology that accommodates some of the operational difficulties inherent to remote locales. These estimates are not included in national totals.
3. Since 2004, the Labour force survey (LFS) has been administered in Nunavut, using an alternative methodology that accommodates some of the operational difficulties inherent to remote locales. These estimates are 3-month moving averages and are not included in national totals. From January 2004 to December 2007, estimates represent about 70% of all Nunavut residents aged 15 and over. Starting in January 2008, coverage was extended to 92%, so that by March 2008, the 3-month moving average is completely based on the extended coverage. Because of the large difference in coverage, users are recommended not to compare estimates prior to January 2008 with data afterwards. The January and February 2008 3-month moving average estimates are based on a mix of both coverages, since the extended coverage was introduced in January 2008. Estimates from January 2004 to December 2007 are based on the 10 largest communities in Nunavut: Iqaluit, Rankin Inlet, Cambridge Bay, Kugluktuk, Baker Lake, Arviat, Pond Inlet, Cape Dorset, Pangnirtung, Igloolik. Estimates from March 2008 to present cover the above communities as well as: Taloyoak, Gjoa Haven, Kugaaruk, Coral Harbour, Repulse Bay, Qikiqtarjuaq, Arctic Bay, Hall Beach, Clyde River.

Note(s): Related CANSIM table 282-0100.

Table 7
Average usual hours and wages of employees by selected characteristics, Canada, unadjusted for seasonality

	Employees				Full-time			Part-time		
	Number	Average weekly hours	Average weekly wages	Average hourly wages	Number	Average weekly hours	Average weekly wages	Number	Average weekly hours	Average weekly wages
	thousands		current dollars		thousands		current dollars	thousands		current dollars
July 2014										
15 years and over	15,462.6	36.0	899.74	24.24	12,968.6	39.4	1,010.37	2,493.9	18.6	324.42
15 to 24 years	2,751.5	30.9	462.56	14.25	1,739.8	38.6	607.51	1,011.7	17.6	213.29
25 years and over	12,711.1	37.1	994.37	26.41	11,228.8	39.5	1,072.80	1,482.2	19.3	400.28
Men	7,933.6	38.3	1,016.27	25.96	7,149.0	40.5	1,095.86	784.6	18.1	291.09
Women	7,529.0	33.6	776.94	22.44	5,819.6	37.9	905.36	1,709.3	18.9	339.72
Union coverage										
Union coverage	4,573.1	36.6	1,039.05	28.14	4,029.6	38.7	1,115.22	543.4	20.3	474.26
No union coverage	10,889.5	35.8	841.23	22.61	8,939.0	39.6	963.11	1,950.5	18.2	282.68
Job permanency										
Permanent	13,062.7	36.6	951.03	25.34	11,299.3	39.3	1,045.50	1,763.4	19.2	345.66
Temporary	2,399.8	32.7	620.58	18.29	1,669.3	39.5	772.62	730.5	17.2	273.16
Occupation										
Management	900.6	39.7	1,569.74	39.71	884.2	40.1	1,590.05	16.5	17.6	480.96
Business, finance and administrative	2,812.9	35.6	845.68	23.33	2,437.5	38.2	920.41	375.4	18.8	360.34
Natural and applied sciences	1,299.7	38.8	1,330.30	34.17	1,261.6	39.4	1,354.54	38.1	19.2	526.96
Health	1,094.6	33.9	952.04	28.07	843.3	37.8	1,065.41	251.3	20.7	571.61
Social science, education, government service and religion	1,359.8	35.1	1,091.45	30.84	1,168.5	37.9	1,184.41	191.3	18.4	523.62
Art, culture, recreation and sport	450.1	33.8	742.47	21.62	347.1	39.1	876.17	103.0	15.7	291.68
Sales and service	4,028.2	31.9	551.56	16.35	2,698.3	38.5	706.55	1,329.9	18.4	237.09
Trades, transport and equipment operators	2,303.8	40.6	995.33	24.27	2,185.6	41.8	1,031.19	118.2	19.1	331.90
Occupations unique to primary industry	384.9	41.5	869.40	20.32	354.3	43.6	922.21	30.6	17.7	258.57
Occupations unique to processing, manufacturing and utilities	827.9	39.1	822.32	20.67	788.2	40.2	851.64	39.7	17.7	240.07
July 2013										
15 years and over	15,248.9	36.1	881.91	23.75	12,864.9	39.4	986.90	2,384.0	18.5	315.36
15 to 24 years	2,705.1	31.0	450.80	13.89	1,737.0	38.5	587.39	968.2	17.5	205.76
25 years and over	12,543.7	37.2	974.89	25.87	11,127.9	39.5	1,049.26	1,415.8	19.1	390.30
Men	7,827.5	38.4	994.47	25.38	7,064.9	40.6	1,070.89	762.6	18.1	286.52
Women	7,421.4	33.7	763.20	22.02	5,800.0	37.9	884.60	1,621.4	18.6	328.92
Union coverage										
Union coverage	4,559.6	36.4	1,018.48	27.64	4,004.8	38.7	1,096.14	554.8	19.9	457.90
No union coverage	10,689.3	36.0	823.66	22.09	8,860.1	39.7	937.53	1,829.1	18.0	272.12
Job permanency										
Permanent	12,899.2	36.7	932.63	24.82	11,222.7	39.3	1,021.45	1,676.5	19.1	338.05
Temporary	2,349.7	32.8	603.49	17.85	1,642.2	39.7	750.79	707.5	16.9	261.59
Occupation										
Management	927.9	39.6	1,505.34	38.08	905.9	40.2	1,529.32	22.1	18.0	522.01
Business, finance and administrative	2,851.0	35.8	837.19	23.01	2,495.4	38.3	908.97	355.6	18.3	333.40
Natural and applied sciences	1,156.8	38.7	1,274.10	32.93	1,124.4	39.2	1,295.64	32.4	19.9	527.05
Health	1,031.3	33.9	966.69	28.46	801.9	37.7	1,078.41	229.3	20.6	576.05
Social science, education, government service and religion	1,359.4	35.3	1,089.00	30.64	1,176.4	38.0	1,182.18	183.0	18.3	490.03
Art, culture, recreation and sport	420.7	34.1	779.30	22.59	333.5	38.9	898.86	87.3	15.8	322.59
Sales and service	3,969.4	32.0	543.62	16.06	2,692.4	38.5	690.61	1,277.0	18.3	233.72
Trades, transport and equipment operators	2,316.5	40.5	970.44	23.63	2,192.7	41.7	1,007.78	123.8	19.1	308.99
Occupations unique to primary industry	378.7	41.2	851.96	20.07	337.7	44.3	929.59	40.9	16.3	211.64
Occupations unique to processing, manufacturing and utilities	837.2	39.5	784.74	19.68	804.7	40.3	804.88	32.5	20.2	286.67

Note(s): Related CANSIM Tables 282-0023, 282-0069, 282-0073.

Table 8**Regional unemployment rates used by the Employment Insurance Program, ¹ seasonally adjusted, 3 month moving average**

Region	Effective from August 10, 2014 to September 6, 2014
	percent
Newfoundland and Labrador	
01. St. John's	6.6
02. Newfoundland and Labrador	17.5
Prince Edward Island	
03. Prince Edward Island	10.6
Nova Scotia	
04. Eastern Nova Scotia	15.5
05. Western Nova Scotia	11.1
06. Halifax	5.7
New Brunswick	
07. Fredericton-Moncton-Saint John	7.4
08. Madawaska-Charlotte	10.0
09. Restigouche-Albert	16.4
Quebec	
10. Gaspésie-Îles-de-la-Madeleine	15.7
11. Québec	5.7
12. Trois-Rivières	7.5
13. South Central Quebec	5.6
14. Sherbrooke	6.7
15. Montérégie	7.2
16. Montréal	8.9
17. Central Quebec	8.1
18. Northwestern Quebec	9.3
19. Bas-Saint-Laurent-Côte-Nord	10.4
20. Gatineau	6.6
21. Saguenay	9.6
Ontario	
22. Ottawa	6.3
23. Eastern Ontario	7.3
24. Kingston	6.3
25. Central Ontario	7.4
26. Oshawa	7.5
27. Toronto	8.1
28. Hamilton	6.7
29. St. Catharines	7.8
30. London	7.6
31. Niagara	8.3
32. Windsor	8.9
33. Kitchener	6.3
34. Huron	7.6
35. South Central Ontario	5.5
36. Sudbury	6.8
37. Thunder Bay	5.1
38. Northern Ontario	11.6
Manitoba	
39. Winnipeg	5.7
40. Southern Manitoba	6.0
41. Northern Manitoba	31.8
Saskatchewan	
42. Regina	3.3
43. Saskatoon	3.6
44. Southern Saskatchewan	6.0
45. Northern Saskatchewan	17.0
Alberta	
46. Calgary	5.3
47. Edmonton	5.6
48. Northern Alberta	7.8
49. Southern Alberta	4.6

See notes at the end of the table.

Table 8 – continued

Regional unemployment rates used by the Employment Insurance Program, ¹ seasonally adjusted, 3 month moving average

Region	Effective from August 10, 2014 to September 6, 2014
	percent
British Columbia	
50. Southern Interior British Columbia	7.4
51. Abbotsford	8.2
52. Vancouver	5.7
53. Victoria	6.0
54. Southern Coastal British Columbia	8.9
55. Northern British Columbia	11.4
Territories	
56. Yukon ²	25.0
57. Northwest Territories ²	25.0
58. Nunavut ²	25.0

1. The boundaries of these regions are determined by Employment and Social Development Canada (ESDC). For geographic descriptions and maps of employment insurance regions, see the ESDC website: <http://srv129.services.gc.ca/eiregions/en/geocont.aspx>.

2. This rate is provided by Employment and Social Development Canada (ESDC).

Note(s): All geographic regions are based on the 1996 Census boundaries.

Table 9-1
Students and other persons aged 15 to 24 (unadjusted) by detailed age groups

	July 2012	July 2013	July 2014	S.E. ¹	Change from		Percent change from	
					last year	two years ago	last year	two years ago
in thousands								
Students 15 to 24 years ²								
Population	2,395.3	2,371.6	2,380.6	30.5	9.0	-14.7	0.4	-0.6
Labour force	1,526.4	1,500.2	1,518.2	31.6	18.0	-8.2	1.2	-0.5
Employment	1,269.1	1,251.1	1,278.2	29.5	27.1	9.1	2.2	0.7
Full-time employment	631.4	579.0	579.9	20.7	0.9	-51.5	0.2	-8.2
Part-time employment	637.7	672.1	698.3	23.4	26.2	60.6	3.9	9.5
Unemployment	257.4	249.1	240.0	15.3	-9.1	-17.4	-3.7	-6.8
Participation rate	63.7	63.3	63.8	1.0	0.5	0.1
Unemployment rate	16.9	16.6	15.8	1.0	-0.8	-1.1
Employment rate	53.0	52.8	53.7	1.0	0.9	0.7
Part-time rate	50.2	53.7	54.6	1.4	0.9	4.4
Students 15 to 16 years ²								
Population	754.8	743.3	723.6	5.0	-19.7	-31.2	-2.7	-4.1
Labour force	318.1	303.5	295.0	11.7	-8.5	-23.1	-2.8	-7.3
Employment	218.7	212.3	210.7	10.3	-1.6	-8.0	-0.8	-3.7
Full-time employment	61.4	48.3	54.8	4.1	6.5	-6.6	13.5	-10.7
Part-time employment	157.4	164.0	155.9	9.7	-8.1	-1.5	-4.9	-1.0
Unemployment	99.3	91.2	84.4	7.7	-6.8	-14.9	-7.5	-15.0
Participation rate	42.1	40.8	40.8	1.5	0.0	-1.3
Unemployment rate	31.2	30.0	28.6	2.6	-1.4	-2.6
Employment rate	29.0	28.6	29.1	1.4	0.5	0.1
Part-time rate	72.0	77.2	74.0	1.9	-3.3	2.0
Students 17 to 19 years ²								
Population	892.7	900.0	898.0	16.1	-2.0	5.3	-0.2	0.6
Labour force	636.4	638.1	635.9	17.5	-2.2	-0.5	-0.3	-0.1
Employment	523.6	531.1	527.8	16.8	-3.3	4.2	-0.6	0.8
Full-time employment	233.4	215.7	224.7	11.1	9.0	-8.7	4.2	-3.7
Part-time employment	290.2	315.4	303.1	14.8	-12.3	12.9	-3.9	4.4
Unemployment	112.8	107.1	108.1	10.0	1.0	-4.7	0.9	-4.2
Participation rate	71.3	70.9	70.8	1.6	-0.1	-0.5
Unemployment rate	17.7	16.8	17.0	1.6	0.2	-0.7
Employment rate	58.7	59.0	58.8	1.6	-0.2	0.1
Part-time rate	55.4	59.4	57.4	2.0	-2.0	2.0
Students 20 to 24 years ²								
Population	747.9	728.3	759.0	24.8	30.7	11.1	4.2	1.5
Labour force	571.9	558.6	587.2	22.5	28.6	15.3	5.1	2.7
Employment	526.7	507.7	539.7	21.2	32.0	13.0	6.3	2.5
Full-time employment	336.6	315.1	300.4	16.4	-14.7	-36.2	-4.7	-10.8
Part-time employment	190.1	192.7	239.3	15.1	46.6	49.2	24.2	25.9
Unemployment	45.2	50.8	47.6	8.5	-3.2	2.4	-6.3	5.3
Participation rate	76.5	76.7	77.4	1.8	0.7	0.9
Unemployment rate	7.9	9.1	8.1	1.5	-1.0	0.2
Employment rate	70.4	69.7	71.1	1.9	1.4	0.7
Part-time rate	36.1	38.0	44.3	2.4	6.4	8.2
Other persons aged 15 to 24³								
Population	2,062.9	2,078.5	2,040.9	30.5	-37.6	-22.0	-1.8	-1.1
Labour force	1,727.3	1,757.9	1,747.4	30.0	-10.5	20.1	-0.6	1.2
Employment	1,521.7	1,550.7	1,549.1	29.0	-1.6	27.4	-0.1	1.8
Full-time employment	1,191.7	1,216.8	1,199.1	27.5	-17.7	7.4	-1.5	0.6
Part-time employment	330.0	333.9	350.0	18.3	16.1	20.0	4.8	6.1
Unemployment	205.6	207.1	198.3	14.1	-8.8	-7.3	-4.2	-3.6
Participation rate	83.7	84.6	85.6	0.8	1.0	1.9
Unemployment rate	11.9	11.8	11.3	0.8	-0.4	-0.6
Employment rate	73.8	74.6	75.9	1.0	1.3	2.1
Part-time rate	21.7	21.5	22.6	1.1	1.1	0.9

1. Average standard error of change over the year (see "Sampling Errors" in Data Quality for further explanations).

2. Students are persons aged 15 to 24 who attended school full-time in March and who are planning to return to school in the fall.

3. Other persons are all other youths aged 15 to 24 who are not included in the student population.

Note(s): Related CANSIM Table 282-0006.

Table 9-2
Students and other persons aged 15 to 24 (unadjusted) by province

	Population	Labour force					Participation rate	Unemployment rate	Employment rate
		Labour force	Employment	Full-time employment	Part-time employment	Unemployment			
in thousands									
Students ¹									
Newfoundland and Labrador									
July 2013	31.5	21.0	18.3	10.7	7.6	2.7	66.7	12.9	58.1
July 2014	31.6	21.4	18.2	10.7	7.5	3.2	67.7	15.0	57.6
Prince Edward Island									
July 2013	10.2	8.4	7.5	4.6	2.9	1.0	82.4	11.9	73.5
July 2014	10.0	8.3	7.3	4.6	2.7	1.0	83.0	12.0	73.0
Nova Scotia									
July 2013	60.9	40.4	32.2	15.9	16.3	8.2	66.3	20.3	52.9
July 2014	57.3	38.8	30.9	16.0	14.9	7.8	67.7	20.1	53.9
New Brunswick									
July 2013	44.1	29.9	25.1	13.8	11.3	4.8	67.8	16.1	56.9
July 2014	39.6	27.7	22.8	12.2	10.5	5.0	69.9	18.1	57.6
Quebec									
July 2013	560.4	395.8	335.5	143.3	192.2	60.3	70.6	15.2	59.9
July 2014	558.5	397.1	346.8	160.4	186.4	50.3	71.1	12.7	62.1
Ontario									
July 2013	997.1	599.3	479.0	223.8	255.2	120.2	60.1	20.1	48.0
July 2014	1,015.3	637.1	516.8	219.7	297.0	120.3	62.7	18.9	50.9
Manitoba									
July 2013	78.0	51.4	44.0	21.9	22.1	7.4	65.9	14.4	56.4
July 2014	78.2	50.0	42.7	18.7	24.0	7.2	63.9	14.4	54.6
Saskatchewan									
July 2013	63.5	44.3	40.9	23.5	17.4	3.5	69.8	7.9	64.4
July 2014	65.6	41.1	37.7	18.9	18.9	3.3	62.7	8.0	57.5
Alberta									
July 2013	237.7	158.5	144.6	70.4	74.2	13.9	66.7	8.8	60.8
July 2014	237.5	152.7	131.3	65.5	65.9	21.4	64.3	14.0	55.3
British Columbia									
July 2013	288.3	151.2	124.1	51.1	72.9	27.1	52.4	17.9	43.0
July 2014	286.9	144.1	123.6	53.2	70.4	20.4	50.2	14.2	43.1
Other persons aged 15-24 ²									
Newfoundland and Labrador									
July 2013	26.9	22.5	18.4	14.7	3.7	4.0	83.6	17.8	68.4
July 2014	24.8	20.3	17.0	14.7	2.4	3.2	81.9	15.8	68.5
Prince Edward Island									
July 2013	9.7	9.2	7.7	6.8	0.8	1.5	94.8	16.3	79.4
July 2014	9.5	8.3	7.2	6.2	0.9	1.3	87.4	15.7	75.8
Nova Scotia									
July 2013	55.3	48.9	43.1	34.0	9.3	5.8	88.4	11.9	77.9
July 2014	55.6	48.8	39.0	29.7	9.3	9.8	87.8	20.1	70.1
New Brunswick									
July 2013	44.3	34.9	28.8	22.8	6.0	6.1	78.8	17.5	65.0
July 2014	46.3	39.9	34.2	28.1	6.2	5.7	86.2	14.3	73.9
Quebec									
July 2013	418.8	352.5	311.8	252.2	59.6	40.6	84.2	11.5	74.5
July 2014	409.2	350.1	316.3	250.3	65.9	33.9	85.6	9.7	77.3
Ontario									
July 2013	788.8	659.9	566.6	421.2	145.4	93.3	83.7	14.1	71.8
July 2014	757.6	644.2	551.9	402.7	149.1	92.3	85.0	14.3	72.8
Manitoba									
July 2013	86.8	75.5	67.2	51.8	15.5	8.2	87.0	10.9	77.4
July 2014	86.2	75.0	68.3	54.6	13.8	6.6	87.0	8.8	79.2
Saskatchewan									
July 2013	73.2	63.7	59.5	51.7	7.7	4.2	87.0	6.6	81.3
July 2014	70.9	60.2	57.0	50.7	6.4	3.1	84.9	5.1	80.4
Alberta									
July 2013	275.9	235.5	218.1	183.4	34.7	17.3	85.4	7.3	79.1
July 2014	281.3	246.3	228.4	197.1	31.4	17.9	87.6	7.3	81.2

See notes at the end of the table.

Table 9-2 – continued

Students and other persons aged 15 to 24 (unadjusted) by province

	Population	Labour force					Participation rate	Unemployment rate	Employment rate
		Labour force	Employment	Full-time employment	Part-time employment	Unemployment			
		in thousands							
British Columbia									
July 2013	298.7	255.5	229.4	178.3	51.1	26.2	85.5	10.3	76.8
July 2014	299.5	254.3	229.7	165.2	64.5	24.6	84.9	9.7	76.7

1. Students are persons aged 15 to 24 who attended school full-time in March and who are planning to return to school in the fall.

2. Other persons are all other youths aged 15 to 24 who are not included in the student population.

Note(s): Related CANSIM Table 282-0006.

Data quality

About the Labour Force Survey

The statistics contained in this report are based on information obtained through a sample survey of 56,000 representative households across the country. The Labour Force Survey, started in November 1945, was taken at quarterly intervals until November 1952. It has been carried out monthly since then. The information generated by the survey has expanded considerably over the years with a major redesign of the survey content in 1976 and again in 1997, and provides a rich and detailed picture of the Canadian labour market.

The sample used in the Labour Force Survey has been designed to represent all persons in the population 15 years of age and over residing in the provinces of Canada, with the exception of the following: persons living on Indian reserves, full-time members of the armed forces and people living in institutions (for example, inmates of penal institutions and patients in hospitals or nursing homes who have resided in the institution for more than six months). Monthly estimates of employment, unemployment and persons not in the labour force refer to the specific week covered by the survey each month, normally the week containing the 15th day.

Definitions and explanations

The **labour force** is composed of those members of the civilian non-institutional population 15 years of age and over who, during the reference week, were employed or unemployed.

Employed persons are those who, during the reference week:

- (a) did any work at all
- (b) had a job but were not at work

A person is considered to be **full-time** if his/her usual hours at the main job are 30 or more hours per week. When the number of hours worked at the main job is usually less than 30 hours per week then he/she is considered to be **part-time**.

Unemployed persons are those who, during the reference week:

- (a) were without work, had actively looked for work in the past four weeks (ending with reference week), and were available for work;
- (b) had not actively looked for work in the past four weeks but were on temporary layoff and were available for work;
- (c) had not actively looked for work in the past four weeks but had a new job to start in four weeks or less from the reference week, and were available for work.

Persons in the civilian non-institutional population 15 years of age and over who, during the reference week, were neither employed nor unemployed are classified as **not in the labour force**.

The **unemployment rate** represents the number of unemployed persons expressed as a percentage of the labour force. The unemployment rate for a particular group (age, sex, etc.) is the number unemployed in that group expressed as a percentage of the labour force for that group.

The **participation rate** represents the labour force expressed as a percentage of the population 15 years of age and over. The participation rate for a particular group (age, sex, etc.) is the labour force in that group expressed as a percentage of the population for that group.

The **employment rate (formerly the employment/population ratio)** represents the number of persons employed expressed as a percentage of the population 15 years of age and over. The employment rate for a particular group (age, sex, etc.) is the number employed in that group expressed as a percentage of the population for that group.

The **part-time rate** represents the number of persons employed part-time expressed as a percentage of the employed. The part-time rate for a particular group (age, sex, etc.) is the number employed part-time in that group expressed as a percentage of the employed for that group.

All geographic regions are based on the 2006 Census boundaries.

Seasonal adjustment

Fluctuations in economic time series are caused by seasonal, cyclical and irregular movements. A seasonally adjusted series is one from which seasonal movements have been eliminated. Seasonal movements are defined as those which are caused by regular annual events such as climate, holidays, vacation periods and cycles related to crops, production and retail sales associated with Christmas and Easter. The seasonally adjusted series contains irregular as well as longer-term cyclical fluctuations.

The seasonally adjusted series are revised each year to take into account current data and to generate new forecast factors for the next twelve months. The data are therefore subject to slight revisions in future issues of this publication.

Sampling variability of estimates

Estimates in this publication are based on the Labour Force Survey, a monthly survey of approximately 56,000 households across Canada. Because the entire population is not surveyed, the estimates are subject to sampling error. While the published estimate is the best available indicator of the real value, changes in the level of any estimates between two months can be the result of a true change or sampling variability. The sampling error can be estimated by calculating the standard error for the published estimate or statistic. These standard errors have been included in the publication tables, in order to assist users in interpreting the data. They are based on 12-month averages and are updated twice a year, in February and August.

Interpretation based on standard error

Two thirds of the time (68%), a change greater than the sampling error indicates a real change. The larger the change compared to the standard error, the better the chance that we are observing a real change, as opposed to a change due to sampling variability. At the 95% level, in order to ensure that change is real, the change in the estimate must be greater than twice the sampling error.

Movements in estimates that are smaller than the sampling error are less likely to reflect a real change and more likely to be due to sampling variability. While the above is true for monthly movements, one can have more confidence in a series of consecutive movements in the same direction, even though some of the monthly movements may be smaller than the sampling error.

Interpretation based on confidence intervals

Confidence intervals provide another way of looking at the variability inherent in estimates of sample surveys. To illustrate how to calculate the confidence interval, let us say that one month the published estimate for total employment rose by 16,000 to reach 16,500,000. The associated standard error for the movement estimate is 27,200. The standard error used to interpret the movement estimate indicates that:

- There are approximately two chances in three (68%) that the real value of the movement between the two months falls within the range -11,200 to +43,200 (16,000 + or – one standard error).
- There are approximately nine chances in ten (90%) that the real value of the movement between the two months falls within the range -27,520 to +59,520 (16,000 + or – 1.6 times the standard error).
- There are approximately nineteen chances in twenty (95%) that the real value of the movement between the two months falls within the range -38,400 to +70,400 (16,000 + or – two standard errors).

For more detailed explanations on sampling variability of estimates, and in particular for information on how to assess the variability of level estimates, consult the Data quality section of the *Guide to the Labour Force Survey*, (71-543-G) on page 27.

Documentation

For more detailed information about the Labour Force Survey, see the following documents:

- Overview of the Labour Force Survey
- Guide to the Labour Force Survey (71-543-G)
- Data quality statement
- Methodology of the Canadian Labour Force Survey (71-526-X)
- LFS *geographical maps*