



The Strategic Partnerships Initiative



Inaugural Report



Government
of Canada

Gouvernement
du Canada

Canada



www.aandc.gc.ca

1-800-567-9604
TTY only 1-866-553-0554

QS-6348-000-EE-A1
Catalog: R1-61/2014E-PDF
ISSN: 2368-7509

© Her Majesty the Queen in right of Canada,
represented by the Minister of Aboriginal Affairs and Northern Development, 2015

This Publication is also available in French under the title:
[Initiative sur les partenariats stratégiques – *Premier rapport*](#)

Table of Contents

Message from the Minister of Aboriginal Affairs and Northern Development	2
Introduction	3
The Strategic Partnerships Initiative	4
Ontario's Ring of Fire	7
British Columbia Mining Initiative	9
Ontario Off-Grid Energy Strategy	11
Lower Churchill Hydroelectric Project	13
First Nations Power Authority	15
Atlantic Commercial Fisheries Diversification Initiative	17
Aboriginal Agriculture Initiative	19
Aboriginal Forestry Initiative	21
Annex A - What has been done?	23





Message from the Minister of Aboriginal Affairs and Northern Development

From vast natural forests and rich mineral deposits to renewable energy, sustainable fisheries and growing agribusiness, Canada's diverse natural resource base continues to fuel our economy.

More than \$650 billion is expected to be invested in resource development projects across Canada over the next 10 years that will create jobs, promote growth and provide economic benefits for generations to come.

Aboriginal people, in particular, stand to benefit from the long-term prosperity that resource development projects bring to Canada. With a significant land and resource base and a growing business sector, Aboriginal communities are uniquely positioned to partner with industry. As the fastest growing segment of the population, Aboriginal youth are essential to the workforce of today and tomorrow.

The responsible development of Canada's resources continues to be a key priority and our Government is taking concrete steps to ensure that developments are in the interest of all Canadians. Aboriginal participation in these opportunities has been enhanced through the launch of the Strategic Partnerships Initiative in 2010 under the Federal Framework for Aboriginal Economic Development.

Over the past 4 years, the Strategic Partnerships Initiative has changed the way federal government departments and agencies work together and has proven to be a catalyst for establishing new partnerships with the private sector and increasing Aboriginal participation in resource developments across Canada.

Today, I am pleased to present the inaugural report for this innovative program. On behalf of Aboriginal Affairs and Northern Development Canada, I would like to thank all of the program partners for their ongoing support and commitment to Aboriginal economic development. Together, our contributions are helping ensure that Canada's natural resource wealth reaches all Canadians.

The Honourable Bernard Valcourt, P.C., M.P.

Introduction

In June 2009, the Government of Canada released the Federal Framework for Aboriginal Economic Development. The Framework provides a focused approach for the federal government to align investments, respond to new and changing economic conditions and lever partnerships in order to address persistent barriers that impede the full participation of Aboriginal people in the Canadian economy.

The importance of partnerships in supporting Aboriginal economic development cannot be overstated. The Framework is based on the premise that the federal government cannot act alone; that significant progress can only be made through partnerships across federal departments, with other levels of government, Aboriginal organizations and communities and the private sector.

The launch of the Framework has helped improve horizontal collaboration among federal partners on key opportunities through a focused, whole-of-government approach. With the ultimate goal of ensuring Aboriginal people can enjoy the same opportunities for employment, income and wealth creation as other Canadians, the Framework has positioned the Government of Canada to act more strategically to support Aboriginal economic development.

In June 2010, the launch of the Strategic Partnerships Initiative established a key mechanism for federal partners to make collective investment decisions and address gaps in existing programs that would otherwise limit or exclude Aboriginal participation in economic development.

It is in the interests of all Canadians – both Aboriginal and non-Aboriginal – to ensure that First Nations, Métis and Inuit people are full participants in the economy and are able to make a meaningful contribution to strengthening Canada's economic performance.

*Federal Framework for Aboriginal
Economic Development, 2009*



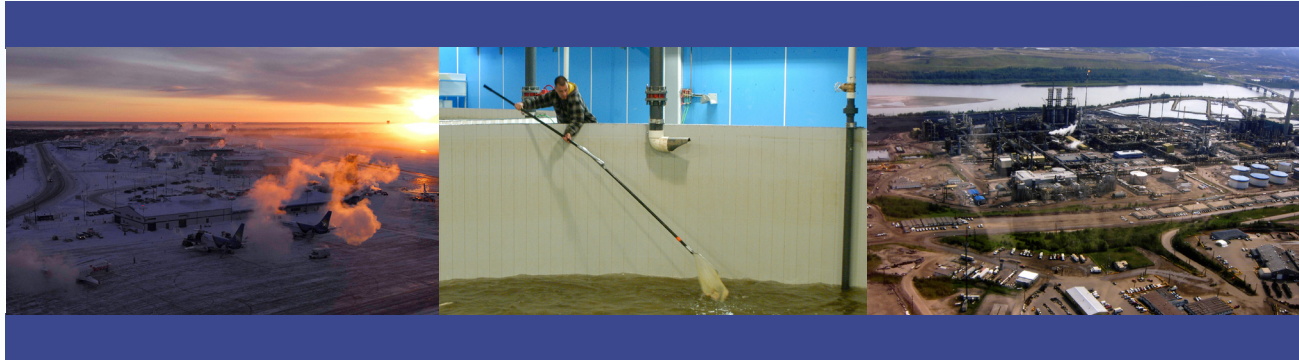
The Strategic Partnerships Initiative (SPI)

The Strategic Partnerships Initiative (SPI) is an innovative program designed to increase Aboriginal participation in complex economic development opportunities, particularly in the natural resource sectors where projects are emerging at an unprecedented rate across the country. Before the SPI, funding decisions were typically made individually by federal departments and agencies and in isolation of a broader strategy.

With 15 partnering federal departments and agencies and shared terms and conditions, the program enables federal partners to more easily work together to prioritize and sequence investments, assess and make project approvals, leverage non-federal sources of funding, monitor progress and report on outcomes.

Partnering Federal Departments and Agencies

- Aboriginal Affairs and Northern Development Canada
- Agriculture and Agri-Food Canada
- Canada Economic Development for Québec Regions
- Canadian Environmental Assessment Agency
- Canadian Northern Economic Development Agency
- Employment and Social Development Canada
- Environment Canada
- Federal Economic Development Agency for Southern Ontario
- Federal Economic Development Initiative for Northern Ontario
- Fisheries and Oceans Canada
- Industry Canada
- Natural Resources Canada
- Parks Canada
- Status of Women Canada
- Western Economic Diversification



This innovative approach eliminates the need for clients to navigate multiple application processes across federal departments in order to obtain funding to participate in a particular economic opportunity. This approach is particularly beneficial in providing a single-window for supporting Aboriginal participation in major resource development projects, due to the number of federal departments and agencies that play a role.

Focused on supporting community economic development readiness, the program assists Aboriginal communities in planning and preparing for employment and business opportunities associated with resource developments and other major projects. Through multi-year strategies and investments, the program enables longer term planning and certainty for Aboriginal communities pursuing economic opportunities.

How the Program Works

The program's horizontal approach to decision-making is achieved through a governance structure where federal partners work to identify emerging opportunities across the country that are economically significant and which require the involvement of multiple departments. Proposals for funding are then developed in collaboration with key federal partners and brought forward for approval by a senior-level committee.

In order to clearly identify the specific activities, deliverables and milestones to be achieved by an investment under the program, work plans are developed in collaboration with Aboriginal communities, and other partners, including private sector organizations.

An annual budget of \$14.45 million is available to support projects in key sectors of the Canadian economy such as mining, fisheries, forestry, agriculture and energy. The funding is administered through umbrella terms and conditions that create the flexibility for signatories to engage in projects where they may have been otherwise limited.

Building on Success

Between 2010 and 2013, the Strategic Partnerships Initiative (SPI) supported 284 Aboriginal communities across the country in pursuing economic development opportunities, resulting in 75 new partnerships and more than \$65 million in additional funding leveraged from other sources. Highlights of some of the projects funded under SPI over the past 3 years are provided in the following pages.

Mining

Ontario's Ring Of Fire	Page 7
British Columbia Mining Initiative	Page 9

Energy

Ontario Off-Grid Energy Strategy	Page 11
Lower Churchill Hydroelectric Project	Page 13
First Nations Power Authority	Page 15

Fisheries

Atlantic Commercial Fisheries Diversification Initiative	Page 17
--	---------

Agriculture

Aboriginal Agriculture Initiative	Page 19
---	---------

Forestry

Aboriginal Forestry Initiative	Page 21
--------------------------------------	---------

In his report to the Prime Minister on November 29, 2013, the Special Federal Representative for West Coast Energy Infrastructure highlighted the success that SPI has had in addressing gaps and targeting specific resource sectors to help prepare Aboriginal communities for economic opportunities. With an unprecedented number of natural resource development projects planned across Canada in the next 10 years, SPI will play an increasingly important role in helping Aboriginal communities engage with industry, prepare for employment and business opportunities and participate in joint ventures.



Ontario's Ring of Fire

SPI Investment: \$7.98M

Investments are Building Capacity in Remote Ontario First Nations

Located in the James Bay Lowlands, the Ring of Fire is the name given to the 4,000 square kilometer-area of high mineral deposits where major exploration and development is occurring.

Minerals in the region represent one of the most promising development opportunities in northern Ontario in nearly a century. Estimates suggest that current discoveries of nickel, copper and platinum could result in decades of production activity.

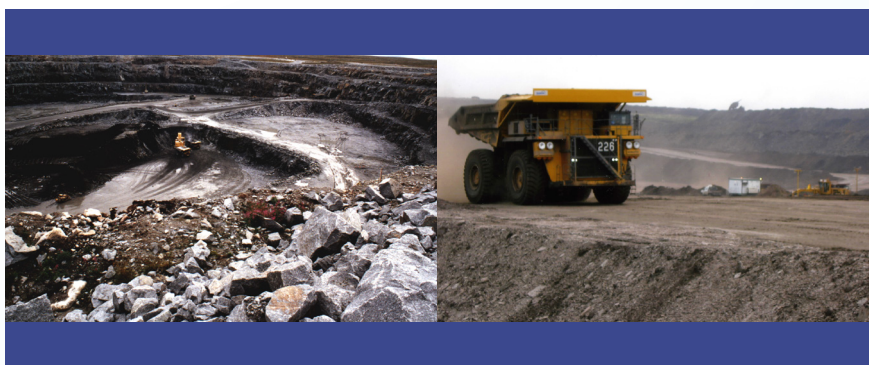
The Ring of Fire deposits also represent the most significant chromite discovery made in North America, and possibly one of the largest in the world, estimated to be worth as much as \$50 billion. The deposits lie within the traditional territories of several remote First Nation communities.

Since 2010, the Strategic Partnerships Initiative (SPI) has been coordinating the efforts of federal partners, helping establish partnerships with industry and preparing First Nations for economic opportunities offered by the Ring of Fire mining development.

In particular, SPI was a catalyst for the development of a federal Action Plan to support First Nations participation in the Ring of Fire through sequenced and targeted actions and investments that focused on the development of social infrastructure as a critical first step in preparing communities for economic opportunities presented by the Ring of Fire.

The Harper Government is committed to working closely with the First Nation communities located near the Ring of Fire to ensure that they realize fully the economic benefits of this once-in-a-lifetime opportunity.

*The Honourable Tony Clement,
Minister for Federal Economic Development
Initiative for Northern Ontario, May 2013*



Initial investments focused on economic development readiness and building community awareness of potential employment and business opportunities in the 9 First Nations located in close proximity to the mining development. Specifically, \$8 million in investments were made for the development of strategic governance plans, community engagement strategies, socio-economic baseline studies and land use plans. In addition, the targeted approach across programs led to the expansion of Active Measures programming to new communities to help their members become job-ready.

SPI funding also enabled a trilateral cost-sharing arrangement with the province and industry to support all 9 First Nations to undertake engagement activities with industry, to support communication with community members and to coordinate activities across communities, for example related to infrastructure planning.

SPI investments have supported Four Rivers Environmental – a Matawa Service Group established to assist First Nations in building capacity to manage their land and water resources and conduct environmental research. Four Rivers provides information and education about mining, environmental advisory services, as well as land and resource management training to First Nations impacted by the Ring of Fire mining development.

SPI investments in the Ring of Fire have leveraged \$2.2 million from industry and a further \$6.2 million from other federal and non-federal sources.





British Columbia Mining Initiative

SPI Investment: \$775K

Partnerships are Building Readiness in BC's First Nations

British Columbia's mining strategy under the BC Jobs Plan outlines a number of goals to strengthen BC's mining sector. A key component of the Province's strategy for achieving their vision for mineral exploration and mining includes building partnerships with First Nations, presenting significant economic opportunities for the province's 203 First Nations communities.

BC has announced new projects in the Northeast, North Coast and Cariboo regions of the province. Under the strategy, the construction of eight new mines and expansion of nine existing mines will result in an estimated \$1.6 billion increase in annual revenue and the creation of thousands of jobs by 2020.

These projects represent major employment and business opportunities for BC First Nations. The mining sector is already the largest employer of Aboriginal people in BC, and new developments will further benefit local communities and their members over the long term.

Strategic Partnerships Initiative (SPI) funding has been used to support a number of capacity development initiatives and workshops delivered by regional Aboriginal organizations focused on securing sustainable benefits for communities and their members throughout the mining life cycle. To date, 25 communities have participated, gaining knowledge and accessing the expertise to help them negotiate agreements with industry.



You may be helping one candidate with one job, but you're impacting so many others...if you take one community (of 300-400 people) for example, and they can land 30 full-time jobs at a mine year-round, they'll make a big impact.

*- Sharon McLeod, Program Coach
at BC AMTA*

Through funding made available under SPI, the British Columbia Aboriginal Mine Training Association (BC AMTA) is working with various industry partners, governments, and educators to provide essential skills upgrading, occupation-specific and trades training, apprenticeships, and support services that balance individual interests with workforce needs.

In partnership with First Nation communities and private sector partners, the BC First Nations Energy and Mining Council is supporting First Nation capacity development to enter into negotiations with industry proponents. This initiative included the development of a partnership engagement strategy, First Nations mining protocols, and templates for Impact and Benefit Agreements.

Investments made through SPI have also facilitated the negotiation of advanced exploration and mine development projects between a number of BC First Nations communities and mining companies, resulting in two finalized exploration agreements.





Ontario Off-Grid Energy Strategy

SPI Investment: \$3.87M

Opportunities for Development in Remote Northern Ontario First Nations

Building on the Province's *Growth Plan for Northern Ontario*, energy developments in the region will help meet the growing demand for power required to unlock the region's natural resource potential. These developments have the potential to create employment and business opportunities for communities, increase the supply of renewable, clean energy, and connect remote First Nations to the provincial power grid.

The Strategic Partnerships Initiative (SPI) supported an Ontario off-grid energy strategy focused on preparing communities to participate in energy-related developments as alternatives to diesel generated power. As a result of investments made under SPI, several First Nations are partnering with industry to advance energy projects. In April 2013, 13 First Nations and Goldcorp Inc. signed an agreement to formally incorporate Wataynikaneyap Power. Wataynikaneyap Power is focused on a project to construct, own, and operate a transmission line to connect and service fifteen or more remote First Nation communities currently reliant on diesel fuel for heating and electricity.

These off-grid communities face significant challenges as a result of their reliance on diesel fuel as a source of energy. Dependency on high cost unreliable sources of power for electricity and heating directly affects the social fabric of off-grid communities.

Transmission will provide reliable, affordable power for residents, businesses, and industry in the region and unlock opportunities for First Nation economic development. The proposed new transmission lines to Pickle Lake and beyond will also help to service mining activity in the area including Goldcorp's Musselwhite Mine and proposed mines within the Ring of Fire.



The SPI investment enhanced community awareness and understanding related to the complexities and benefits of transmission connection, enabled planning for economic and business opportunities, and provided access to expertise to explore financing options for proposed transmission projects. These activities ultimately led to successful partnership negotiations and the establishment of Wataynikaneyap Power. Under the agreement, First Nations will eventually own 100% of the infrastructure, as Goldcorp works with communities to develop capacity and transition to full equity ownership.

In addition to transmission projects, the Off-Grid Strategy supports initiatives associated with hydroelectric and renewable energy developments, bringing significant opportunity to the region for employment and business prospects, and the benefits associated with reduced reliance on diesel. Increased electrical capacity also serves to address other community priorities, including meeting the power demands of water and wastewater distribution systems, community housing, health and education facilities, and other community infrastructure.





Lower Churchill Hydroelectric Project

SPI Investment: \$480K

Partnerships Working to Meet Labour Market Demands

The Lower Churchill Hydroelectric project in Newfoundland and Labrador has been identified as the best undeveloped hydroelectric project in North America. To be developed in 2 phases, the proposed installations at Muskrat Falls and Gull Island have the combined capacity to power an estimated 1.5 million homes annually. This capacity more than meets the domestic energy requirements of the Province.

Electricity generated from the first phase at Muskrat Falls will provide sufficient capacity for future industrial developments and an opportunity for the Province to export surplus power to other jurisdictions who are seeking access to clean, renewable sources of energy.

Consistent with the Government of Newfoundland and Labrador's Energy Plan, electricity generated from the Lower Churchill project will replace oil-fired generation, reducing greenhouse gas emissions by more than one million tonnes annually, and end the Province's dependence on fossil-fuels as a source of energy. In addition to the generating station, development of the Lower Churchill project also involves the construction of several transmission links.

Together, this represents more than 8,600 person years of employment in more than 70 different occupations in the province between 2011 and 2017 and is anticipated to generate \$3.5 billion in economic benefits, nationally.

The project will have a lasting benefit to the Innu people, all people of Labrador, the people on the island of Newfoundland, the people of Nova Scotia, Atlantic Canada and all Canadians. Innu will have first priority for jobs and contracts, but we are pleased that there are enough opportunities available to benefit all Labradorians!

- Grand Chief Joseph Riche



The Labrador Aboriginal Training Partnership (LATP) was established in 2009 to respond to the need for a coordinated and direct approach to enhancing community readiness of Aboriginal communities in the vicinity of major resource projects in the Atlantic. A partnership between Labrador's three Aboriginal groups – Innu Nation, Nunatsiavut Government, NunatuKavut Community Council (formally Labrador Métis Nation) and Nalcor Energy, the LATP provides training to enable Aboriginal peoples to obtain employment in the Lower Churchill project.

Since 2011, the Strategic Partnerships Initiative (SPI) has been building on the work of the LATP by supporting the economic development readiness of Aboriginal groups. SPI funds have been used to support the development of economic and business capacity in Aboriginal communities in order to ensure they are able to benefit from opportunities arising from the Lower Churchill Hydroelectric Project. Specifically, funding has supported an environmental scan of the opportunities associated with the project and the creation of a labour force database to assist Aboriginal communities in assessing skills and capacity gaps to better prepare for existing and future employment and business opportunities. To date, the initiative has assisted 23 Aboriginal communities in preparing for and benefitting from the economic and business opportunities presented by the Lower Churchill development.





First Nations Power Authority

SPI Investment: \$1.19M

Connecting Saskatchewan First Nations with Energy Opportunities

Saskatchewan's growing demand for power has prompted SaskPower to set an ambitious goal of developing 3,000 megawatts of new and replacement energy generation over the next decade. This will require significant involvement from independent power producers with many new power generation projects involving First Nation lands or interests.

With industry looking to partner with local communities, and the province eager to engage First Nations in developing power projects, Saskatchewan First Nations are poised to benefit from significant development opportunities.

In response to the need for access to expertise to successfully negotiate with partners and develop projects, the Strategic Partnerships Initiative (SPI) helped establish the First Nations Power Authority (FNPA) to help advance First Nations-led renewable energy projects and facilitate partnerships with proponents.

SPI investments provided Saskatchewan First Nations with funding required to establish the FNPA, negotiate a master agreement with the provincial utility (SaskPower), and access expertise in the development of power projects.



FNPA's model is unique to Canada, helping connect industry partners with First Nation proponents. By working directly with power developers, First Nations can bring long-term benefits to their communities through enhanced capacity, jobs, infrastructure, and new business opportunities. The FNPA also works exclusively with SaskPower to coordinate development opportunities under a master agreement, establishing a single window for the coordination and advancement of projects, including providing a mechanism to negotiate Power Purchase Agreements.

For the Meadow Lake Tribal Council, a signed 25-year Power Purchase Agreement with SaskPower provided the necessary security to access financing to build a \$150 million biomass facility that will generate up to 36 megawatts of renewable low-emissions power – enough to power approximately 30,000 homes.

The power plant will create 25 permanent jobs for its operation, in addition to the 300 positions required over the 2-year construction period. The biomass centre will run on residue from the NorSask Forest Products sawmill, strengthening the 160 jobs at the mill, and contributing to jobs and investments in spin-off industries to service the power plant, including an anticipated 600 jobs in harvesting and trucking in the region.

Through the FNPA, SaskPower is considering other projects for the creation of green energy that will provide economic development opportunities in other local First Nation communities.



SaskPower is looking for new pathways and partnerships to generate and deliver power across the province, including in the north. At the same time, First Nations want to lever value from their assets to bring long-term employment into communities and establish ongoing sources of revenue.

*- Leah Nelson Guay, Acting Executive Director,
First Nations Power Authority*



Atlantic Commercial Fisheries Diversification Initiative

SPI Investment: \$8.47M

Diversifying Economies in the Atlantic Region

Contributing \$2 billion a year to the economy, Canada has one of the most valuable and diverse commercial fishing industries in the world. Aboriginal Canadians play a key role in the industry, and continue to rely on fishing as an essential source of income. The fisheries sector has become increasingly vital to the Mi'kmaq and Maliseet First Nations in the Atlantic and the Gaspé region of Québec, bringing jobs, growth and economic prosperity to many communities. The fisheries sector provides a potential economic return that exceeds \$45 million annually for local communities.

In 2006, decreased stock levels in some fish species, especially snow crab, low seafood prices, reduced revenues and high operating costs, put pressure on Aboriginal fisheries enterprises to be more efficient and diversified.

The Atlantic Commercial Fisheries Diversification Initiative (ACFDI) involved a unique partnership between Aboriginal Affairs and Northern Development Canada (AANDC), the Department of Fisheries and Oceans and the Atlantic Policy Congress of First Nations Chiefs Secretariat. Launched in September 2010, the ACFDI - the first project supported under the Strategic Partnerships Initiative (SPI) - helped the Mi'kmaq and Maliseet First Nations diversify their fish enterprises and pursue economic opportunities in new areas of the fisheries sector.

These measures clearly demonstrate the work accomplished in partnership with government to help further the aspirations of all our communities involved in the Atlantic fisheries today and toward a better future.

- Chief Lawrence Paul, co-chair of the Atlantic Policy Congress



Results include the launch of 22 new fisheries-related ventures in aquaculture production, marketing, transportation, vessel repair and ice production, with 252 related jobs in the participating communities, and generating projected annual sales revenues of \$27.8 million. The investment also supported diversification projects related to fish buying, packaging, processing and marketing, commercial fisheries-related services, aquaculture and recreational tourism.

Through seed funding for new businesses and training and professional services, the ACFDI has increased business planning and management capacity among the Mi'kmaq and Maliseet First Nations. First Nation managers of fisheries enterprises also received training in financial management, fisheries operational management, strategic business planning, project management and human resource management. A three-year strategy ending in March 2013, ACFDI helped Atlantic First Nations to strengthen and expand their fisheries operations while increasing employment and wealth creation in their communities.





Aboriginal Agriculture Initiative

SPI Investment: \$1.31M

Growing New Opportunities in Aboriginal Communities

With a growing arable land base, Aboriginal producers are becoming an increasingly important segment of the agriculture and agri-food sector in Canada.

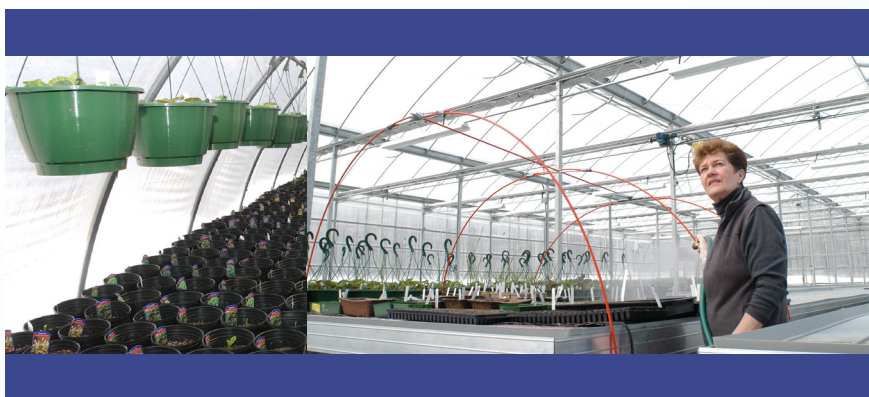
Following the global economic downturn in 2009, the value of Canada's trade in the sector is now on the rise with export growth focused on primary agriculture products; an area where Aboriginal involvement in the sector is highest.

Restructuring and diversification efforts continue in response to changing market conditions. Renewed interest in locally-produced food in Canada has been particularly pronounced in some Aboriginal communities. Locally-grown food offers a cost-effective alternative to remote communities, where the availability of healthy, fresh food is scarce and/or costly, and provides economic development opportunities through business creation and employment.

Through the Strategic Partnerships Initiative (SPI), Agriculture and Agri-food Canada (AAFC) and other partners worked together to develop a strategy identifying barriers to Aboriginal participation in the agriculture sector, and an approach to align and target federal investments to diversify and expand Aboriginal-owned agriculture operations.

This initiative has created a sense of hope and prosperity in our community through the creation of jobs...the youth are now hopeful that with the expansion of the orchards they will be able to have a job right on the reserve.

- Francis Bellegarde, Black Bear Orchards



The Aboriginal Agriculture Initiative (AAI) was a three-year initiative targeting agriculture-related economic development opportunities for Aboriginal people that advanced innovation and competitiveness, built capacity in agricultural land management and planning, and engaged Aboriginal youth in the many career opportunities presented by the agriculture and agri-product sector.

SPI investments supported a number of projects including the Flying Dust First Nation's Riverside Market Garden and the Little Black Bear Saskatoon Berry production facility. Black Bear Orchards in Saskatchewan's Little Black Bear First Nation is now in a position to expand due to the demand for its products and is looking to diversify its product line.

The AAI focused investments in the provinces of British Columbia, Ontario and Saskatchewan, supporting 22 agri-businesses and training for 109 community members. Fifty-five jobs were created and agricultural production in these provinces was increased by 740 acres.





Aboriginal Forestry Initiative

SPI Investment: \$3.95M

Engaging Communities in Sustainable Forest Activities

Forestry plays a key role in the local economies of many Aboriginal communities across Canada, with over 16,000 Aboriginal workers currently employed in the sector.

The importance of forestry is increasing as Aboriginal communities manage larger volumes of forest timber assets through self-government agreements, land claim settlements, treaty land entitlements, and additions to reserves.

First Nations are also pursuing co-management agreements with industry and provincial and territorial governments in order to secure access to Crown land allocations and tenure to participate in significant opportunities off-reserve.

Canada's forest sector is undergoing unprecedented transformation, which has led to a growing resurgence of economic activity and new opportunities for Aboriginal communities located within the country's valuable forest regions.

These opportunities are driven by innovation that supports a value-added forest sector, including developing projects in the areas of bio-energy, forestry services, and innovative wood products.

This funding will support our efforts to complete forest inventories and sustainability analyses for broad forest areas so First Nations and communities can benefit from the strategic development of biomass energy and forest resource development opportunities in the NWT.

- Honourable J. Michael Miltenberger, Minister of Environment and Natural Resources, GNWT



Aboriginal economic development in the forest sector has, however, been impeded by several factors, including a lack of financial capital and skilled human labour.

The Strategic Partnerships Initiative enabled Natural Resources Canada's Canadian Forest Service to implement the Aboriginal Forestry Initiative (AFI) which identified and supported projects designed to meet the unique forestry opportunities of First Nations.

In partnership with over 15 federal departments and agencies, the AFI engaged Aboriginal communities and forestry stakeholders to identify priority areas for investment with a goal of facilitating business opportunities and enhancing the creation and exchange of knowledge around Aboriginal participation in Canada's forest sector.

The AFI supported 30 projects with diverse approaches to meeting forestry opportunities across Canada, leading to the development of 36 partnerships aimed at strengthening the capacity of 117 First Nations and Aboriginal organizations in the forestry sector.



Aboriginal peoples view forestry "as one of the main ways out of economic depression and as a vehicle for job creation, community stability, and environmental and cultural enhancement... for these reasons, forestry in the broadest sense of economic, social and environmental development is especially important to Aboriginal people."

*– the Intertribal Forestry Association
of British Columbia*

What has been done?

Between 2010 and 2013, the Strategic Partnerships Initiative (SPI) supported 13 distinct initiatives. The following chart identifies the funding provided under SPI in addition to the funding leveraged from other sources.

Mining					
Initiative	Fiscal Year	CONTRIBUTION FUNDING			
		SPI \$	Other Federal \$	Non-Federal \$	Private \$
Ontario's Ring of Fire	2010-2011	1,875,000	3,182,000	0	0
	2011-2012	3,150,000	157,224	2,374,598	1,100,000
	2012-2013	2,950,000	275,562	200,000	1,100,000
British Columbia Mining Initiative	2010-2011	0	0	0	0
	2011-2012	525,000	205,000	175,000	0
	2012-2013	250,000	0	1,051,596	125,000
Matimékush Lac-John Mining Initiative	2010-2011	0	0	0	0
	2011-2012	100,000	0	0	0
	2012-2013	200,000	50,000	730,000	0
NRCAN Policy Initiative (All Funding In O&M)	2010-2011	375,000	0	0	0
	2011-2012	415,650	0	0	0
	2012-2013	455,000	0	0	0

Fisheries					
Initiative	Fiscal Year	CONTRIBUTION FUNDING			
		SPI \$	Other Federal \$	Non-Federal \$	Private \$
Atlantic Commercial Fisheries Diversification Initiative	2010-2011	2,490,000	0	200,000	0
	2011-2012	2,940,000	341,844	551,393	156,494
	2012-2013	3,044,780	1,835,346	2,105,015	0



Energy

Initiative	Fiscal Year	CONTRIBUTION FUNDING			
		SPI \$	Other Federal \$	Non-Federal \$	Private \$
Ontario Off-Grid Energy Strategy	2010-2011	872,000	372,800	3,600,000	1,000,000
	2011-2012	1,535,000	826,700	757,724	13,201,587
	2012-2013	1,470,000	153,507	0	1,172,000
British Columbia Remote Communities Electrification	2010-2011	465,000	35,000	5,000	0
	2011-2012	2,294,000	4,370,928	0	1,683,100
	2012-2013	2,137,220	2,209,941	35,000	939,388
First Nations Power Authority	2010-2011	330,400	30,400	0	0
	2011-2012	460,000	200,000	0	0
	2012-2013	400,000	0	0	0
Lower Churchill Hydroelectric Project	2010-2011	0	0	0	0
	2011-2012	300,000	85,500	50,000	83,500
	2012-2013	180,000	27,200	0	0
Alberta Oil Sands	2010-2011	0	0	0	0
	2011-2012	350,000	510,000	60,000	60,000
	2012-2013	0	0	0	0
NWT Biomass Energy Strategy	2010-2011	0	0	0	0
	2011-2012	846,000	90,000	1,333,000	0
	2012-2013	350,000	1,000,000	0	0

Agriculture

Initiative	Fiscal Year	CONTRIBUTION FUNDING			
		SPI \$	Other Federal \$	Non-Federal \$	Private \$
Aboriginal Agriculture Initiative	2010-2011	0	0	0	0
	2011-2012	0	0	0	0
	2012-2013	1,318,000	0	0	1,201,510

Forestry

Initiative	Fiscal Year	CONTRIBUTION FUNDING			
		SPI \$	Other Federal \$	Non-Federal \$	Private \$
Aboriginal Forestry Initiative	2010-2011	0	0	0	0
	2011-2012	1,950,000	1,951,062	4,028,606	0
	2012-2013	2,000,000	4,308,406	5,512,988	0