



Agriculture
Canada

Canadian Agriculture Library
Bibliothèque canadienne de l'agriculture
Ottawa K1A 0C5

OATS IN CANADA



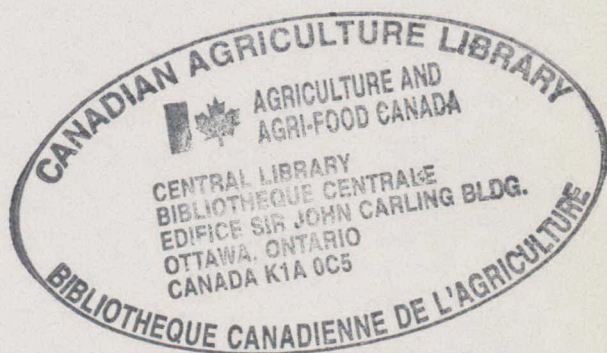
CANADA

Department of Agriculture

Publication 554
FARMERS' BULLETIN 27
Revision

ARCH
630.4
C212
P 554
1948

Published by authority of the Rt. Hon. James G. Gardiner, Minister of Agriculture, Ottawa.



C A N A D A
DEPARTMENT OF AGRICULTURE
EXPERIMENTAL FARMS SERVICE

Cereal Division

C. H. Goulden (Dominion Cerealists)
J. G. C. Fraser (Chief Assistant)
P. R. Cowan (Barley and Peas)
A. G. O. Whiteside (Wheat Quality and Winter Wheat)
R. A. Derick (Oats)
W. G. McGregor (Flax, Beans and Buckwheat)
F. Gfeller (Spring Wheat)
D. G. Hamilton (Oats)
H. Miller (Flour Quality)
J. Edgar (Wheat Quality and Winter Wheat)

DOMINION LABORATORY OF CEREAL BREEDING, WINNIPEG, MAN.

R. F. Peterson (Officer in Charge)
J. N. Welsh (Oats)
A. B. Masson (Foundation Stocks, Seed Distribution)
A. B. Campbell (Spring Wheat)
R. H. Cunningham (Technician)

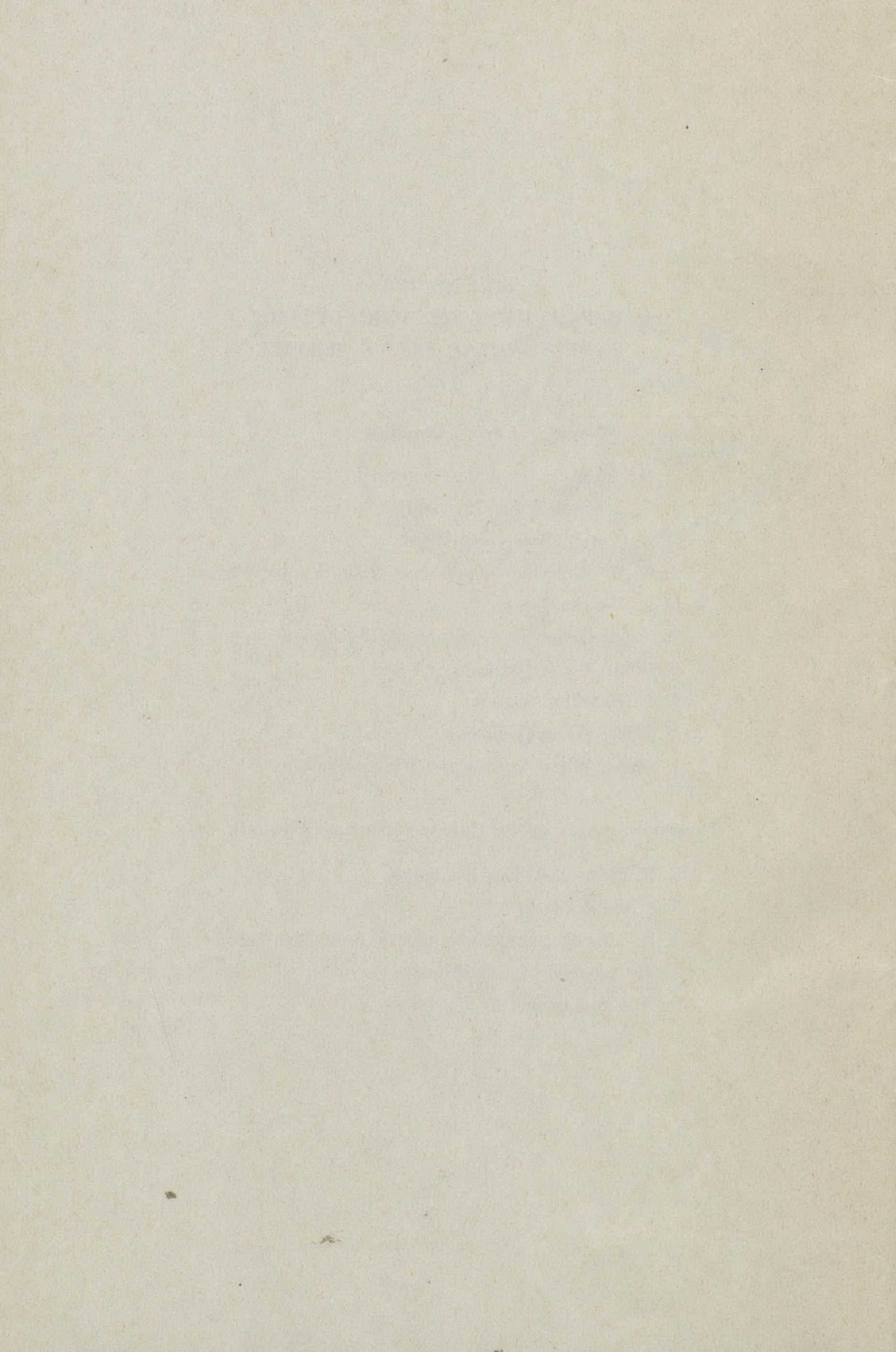
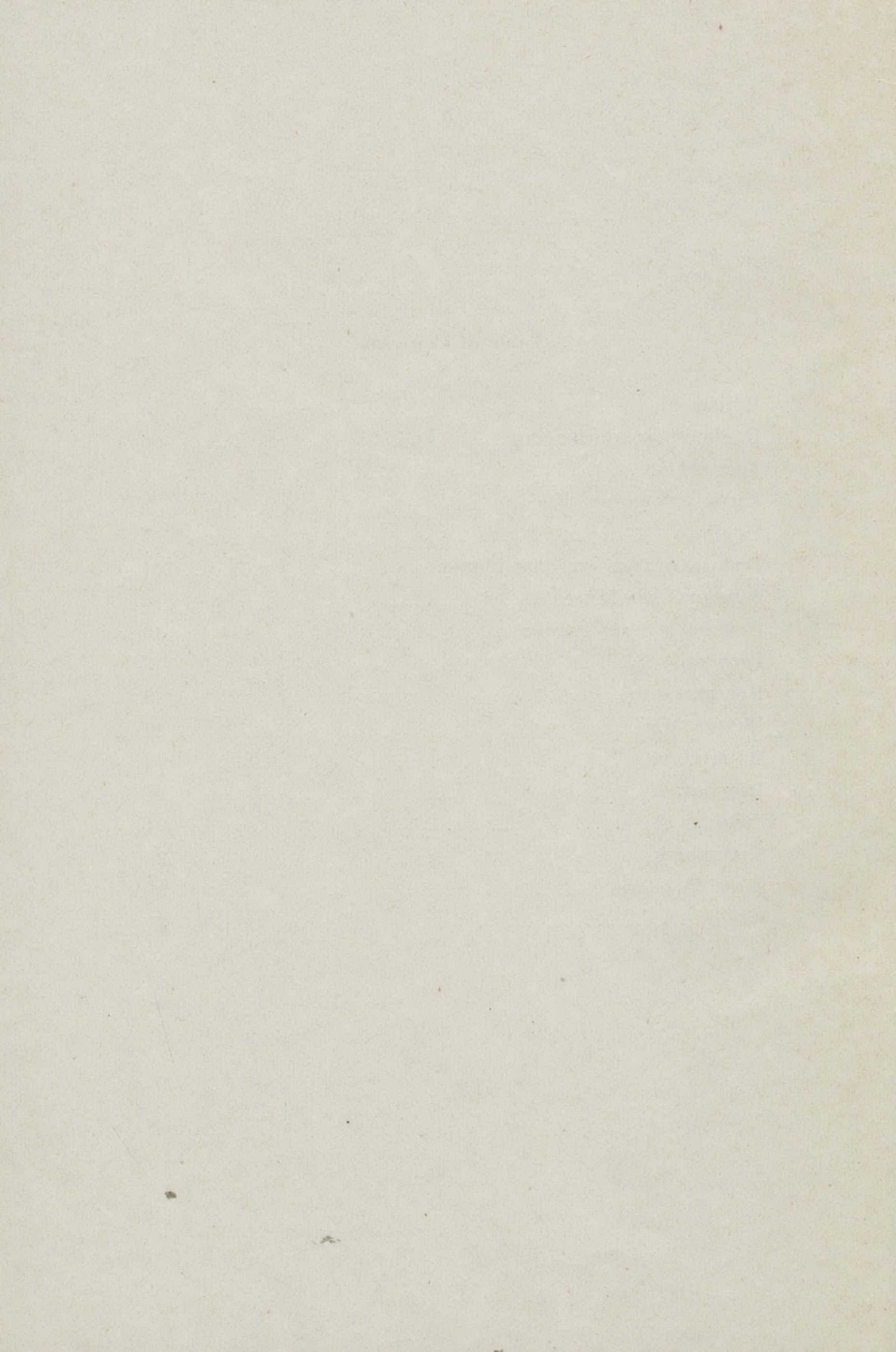


Table of Contents

	PAGE
INTRODUCTION	5
DISTRIBUTION & PRODUCTION	5
ADAPTATION	6
UTILIZATION OF THE CROP	7
VARIETIES	7
DISEASES OF OATS AND THEIR CONTROL	11
OATS IN GRAIN MIXTURES	16
OATS FOR HAY AND PASTURE	16
LODGING	17
HULLESS OATS	18
WINTER OATS	19
QUALITY	19
DROUGHT	21
FROST	21
SHATTERING	21
FALSE WILD OATS	21
WEEDS	22



OATS IN CANADA

by

R. A. Derick and D. G. Hamilton*

INTRODUCTION

THE purpose of this bulletin is two-fold. In the first place it summarizes certain phases of the results of experimental work with oats carried on by the Experimental Farm Service. In the second place, it gives a brief history of the oat crop and discusses varieties, diseases and other subjects of vital interest to the grower.

As a cultivated crop, oats is of more recent origin than wheat or barley. Records show that common oats probably originated under cooler, more moist conditions than wheat, but it is not possible to trace the origin of the oat plant from ancient history as can be done with wheat. From information available it appears that the cultivation of oats dates back only to the beginning of the Christian era, before which time most writers refer to oats as a weed.

The earliest records on cultivated oats refer to two types, namely, oats which were used for breadmaking and oats sown particularly for fodder. These records indicate that the crop was first brought under cultivation from its wild state in parts of Central Europe and in Western Asia. Wild forms, however, were probably known by the ancient Greeks but no record is available indicating that the grain was used for food. It is probable that oats were used mainly in the form of grass or hay.

The oat plant was introduced into the North American colonies soon after the Europeans had settled there. Records show that oat crops were grown on the Elizabeth Islands in 1602; in Newfoundland in 1622, and in Massachusetts Bay in 1629. It is thought that the first Scottish settlers introduced oats to Canada. The climate of this country is particularly favourable to oat production and now more bushels of oats per capita are grown in Canada than in any other country.

DISTRIBUTION AND PRODUCTION

The oat crop ranks second in total value among grain crops in Canada as a whole, but in Ontario and other Eastern Provinces it takes first place by a large margin.

The greatest volume of oats is produced in Manitoba, Saskatchewan and Alberta, 71% of the Canadian total having been produced in these provinces in 1945. In Eastern Canada the value of the oat crop is less than hay and clover in Ontario and Quebec and less than hay, clover and potatoes in the Maritime Provinces. In Manitoba, oats is third in value, being lower than wheat and barley, while in Saskatchewan and Alberta the crop holds second place to wheat.

* Senior Cerealist and Cerealist respectively. Cereal Division, Central Experimental Farm, Ottawa.

While the production of oats in British Columbia is, on the average, only slightly more than one per cent of the total Canadian production, the yield per acre is substantially higher than in any other province.

Table I, which was compiled from reports of the Agricultural Division, Dominion Bureau of Statistics, shows the acreage and production of oats by provinces in Canada based on the 1945 crop.

TABLE I: *Distribution of acreage and production of oats, by provinces, 1945*

Province	Area in acres	Production in bushels	Av. Yield per Acre in bushels 1941-45
Prince Edward Island.....	119,000	4,403,000	33.4
Nova Scotia.....	68,200	1,910,000	33.4
New Brunswick.....	202,000	6,464,000	33.2
Quebec.....	1,654,000	37,877,000	25.9
Ontario.....	1,522,000	53,879,000	34.8
Manitoba.....	1,697,000	54,500,000	37.5
Saskatchewan.....	5,717,000	143,000,000	32.2
Alberta.....	3,335,000	76,000,000	33.8
British Columbia.....	79,000	3,563,000	48.3
Canada.....	14,393,200	381,596,000	34.7

ADAPTATION

A large part of the area under crop production in Canada is well suited to the growing of oats. While the oat crop thrives best under cool moist conditions and on soil of good fertility, it is grown successfully under a variety of soil types, moisture and temperature conditions and often on land considered too low in fertility for barley or wheat. Many low yields result either from the generally accepted opinion that "oats will grow anywhere" or from a lack of appreciation that to get maximum yields, good soil management must be practised.

The water requirement of the oat crop is higher than that of wheat or barley but this requirement is limited to some extent by temperature. In areas where moisture is limited, the average daily temperature is often lower than in areas of higher precipitation. The lower temperature tends to offset, in part, the low precipitation and provide conditions suitable for the production of good crops.

Since oats draw heavily on moisture, this crop favours soils that do not dry out quickly. Clay and clay loams may be considered as most suitable for the production of oats. Lighter soils although more dependent on the proper distribution of moisture, will normally produce fair yields of good quality.

Soils high in fertility tend to produce rank growth which is susceptible to lodging, therefore, the oat crop is usually preceded by crops which demand greater soil fertility and which do not readily suffer from lodging.

Varieties differ in their environmental requirements, and in many cases, even within a comparatively small area, soil type plays a large part in determining the best variety to grow.

Extensive tests and observations have shown that oats should be sown early, at approximately two and one half bushels per acre under normal moisture conditions for best results. In the dry areas, however, this rate of seeding should be reduced.

UTILIZATION OF THE CROP

Oats are used as a general purpose feed for livestock more than other cereal crops and are particularly valuable for horses. When mixed with more highly concentrated feeds they constitute a standard feed for all classes of livestock and poultry. From the standpoint of feeding value, oats may be classed with wheat in protein content but have a higher fat and vitamin B₁ content than either wheat or barley. Oats have a relatively high percentage of fibre which is of value in many rations. In total digestible nutrients per pound, oats are lower than wheat or barley. The comparative chemical analyses of the three crops are shown in Table II taken from Bulletin 127, Dominion Department of Agriculture.

TABLE II: *Comparative analysis of oats, barley and wheat*

Variety	Water	Ash	Crude Protein	Fibre	N-free Extract	Fat	T.D.N.*
	%	%	%	%	%	%	lb.
Oats.....	9.2	3.5	12.4	10.9	59.6	4.4	70.4
Barley.....	9.3	9.3	11.5	4.6	69.8	2.1	79.4
Wheat.....	10.2	1.9	12.4	2.2	71.2	2.1	80.1

* Total digestible nutrients per 100 pounds.

A comparatively small proportion of the oat crop in Canada is used for human consumption. In the milling of oats for this purpose, the hull and the adhering portions are removed, while the germ and other vitamin and mineral rich parts are retained. Oat cereals are high in energy value and provide a good source of protein. Oatmeal is richer than whole wheat in certain important vitamins, notably vitamin B₁. In addition oatmeal is a rich source of iron and is well supplied with phosphorus.

Oat hulls are now used commercially in the production of furfural. This substance is used to some extent in the manufacture and processing of resins and also in the refinement of lubricating oils.

While the utilization of oat and other cereal straws has been the subject of considerable research work in Canada, these studies have not as yet resulted in the commercial use of such material. Much information, however, has been obtained and there seems little doubt that in the not-too-distant future there will be developments in the commercial utilization of oat straw.

VARIETIES

In every oat producing country, varieties or types are being grown that have some particular adaptation to the prevailing environmental conditions. In those

areas where growing conditions are satisfactory for the production of both high quality and high yield, the varieties used belong mainly to the species *Avena sativa*, and represent the highest standard of excellence in cultivated oats. In the more arid areas, types are grown that are more closely related to the wild species, since such forms are in general, more resistant to drought and heat.

Oat varieties differ widely in colour of hull or lemma. In the common oat species, (*A. sativa*) there are groups of varieties with white, yellow, grey and black hull colours. Good varieties exist in each of these colour groups, but the demand of the trade in any oat producing country may influence the colour type generally grown. In European countries coloured varieties predominate in many oat growing areas. In Canada the trade demands a white oat and practically no coloured varieties are being grown. In the United States the market classes include varieties having the lemma colours; white, red, grey and black. Yellow varieties are classed as white.

There are comparatively few oat varieties that are well adapted to the wide diversity of soils and climate found in Canada. For many years the old varieties Banner and Victory were grown extensively in both Eastern and Western Canada. Both are still grown to a considerable extent but with the development of new disease-resistant varieties in recent years these older varieties are rapidly losing their popularity.

The use of better adapted varieties and of good quality seed is becoming more wide-spread among growers throughout the country. Lesser known varieties highly recommended by salesmen have often been sold to growers at high prices. Too often such varieties have proved unadapted and inferior to the standard varieties recommended by experimental institutions. Varieties respond differently to different seasonal conditions and the one that gives the best results from year to year regardless of season must be considered the most desirable one to use.

Early varieties are available that mature in from eighty to ninety days. These are suitable where the land is late for seeding or when an early crop is desired. Early varieties are also useful when mixtures of barley and oats are being grown or as a nurse crop for grasses and clovers. Crop seasons vary widely from year to year and it often happens that in some years early varieties are the high yielders, whereas in other years late varieties are more productive. It remains, therefore, for each grower to study his particular local conditions in order to determine the relative merits of early and late varieties. In certain areas, early fall frosts may be the determining factor in the choice of early or later maturing varieties.

It is difficult as a rule to distinguish between oat varieties and it is usually necessary to study characters of the growing plant in conjunction with panicle and grain characters before a reasonably accurate identification can be made. Brief notes are given below on the origin and description of the more common oat varieties being grown in Canada at present.

Alaska.—This variety is of unknown origin and was introduced into Canada in 1900 from the United States. It is early maturing and of high quality, carrying only about 20 per cent hull. Alaska has relatively long straw but tillers rather sparsely. The grain yield is normally somewhat lower than that of the better yielding later maturing varieties, but on account of its low hull percentage, the yield of oats per acre is fairly good under Eastern conditions. Alaska is susceptible to the rusts and smuts and has lost much of its popularity in recent years in favour of newer disease-resistant varieties. This variety is not adapted to drought areas of the West, but has been grown to some extent in northern areas where moisture is not a limiting factor, and where early maturity is essential.

Ajax.—Ajax was developed at the Dominion Laboratory of Cereal Breeding, Winnipeg, Man., from a cross between Victory and Hajira and first distributed in 1941. This variety is early maturing, high yielding and has good length and strength of straw. The kernels of Ajax are white and rather small. Ajax is moderately resistant to stem rust and has shown wide adaptability to the soils and climate of Canada.

Abegweit.—Abegweit was selected from the cross Erban \times Vanguard at the Cereal Division, Central Experimental Farm, Ottawa. This strain, formerly known as 2806-K, proved well adapted to the Maritime Provinces and particularly to Prince Edward Island. This variety is similar to Erban in plant and kernel characteristics, but carries some resistance to crown rust and moderate resistance to stem rust. Abegweit has the same parentage as Beaver but is two to three days later maturing. Certified seed was distributed to growers in Prince Edward Island in 1947.

Beaver.—This variety was developed at the Cereal Division, Central Experimental Farm, Ottawa, from the cross Erban \times Vanguard. Like Abegweit, Beaver carries some resistance to crown rust and moderate resistance to stem rust. This variety has proven fairly well adapted to conditions in Eastern Canada, having good kernel size and fair straw strength. Beaver is classed as a medium early maturing variety and was first distributed to growers in Ontario in 1945.

Banner.—Banner is a medium late maturing variety introduced from the United States by the Ontario Agricultural College in 1890. Many strains of Banner have been selected by institutions in Canada, among which Banner Ott.49 and Banner M.C.44 have proved to be two of the best. This variety is of fair quality, producing straw of good length and of fair strength. It is a good yielder, and being widely adapted to Canadian conditions, has been one of the most popular varieties. Banner is susceptible to the rusts and smuts and is rapidly losing popularity in favour of disease-resistant varieties, particularly in the rust areas.

Beacon.—Beacon was developed at the Cereal Division, Central Experimental Farm, Ottawa, from a multiple cross involving the following parents: Gold Rain, Alaska, Legacy, Victoria, Vanguard and R.L. 453. Because of its medium short straw, good root anchorage and consequent lodging resistance, Beacon was considered to be specially adapted to fertile soils. This variety is medium early maturing and possesses good resistance to crown rust and moderate resistance to stem rust. The kernels are short and plump when grown under normal conditions. After its release, Beacon proved susceptible to a new disease called Victoria blight, caused by the fungus *Helminthosporium victoriae*. This disease will undoubtedly limit the acreage sown to this variety.

Brighton.—Brighton is a hulless variety developed at the Cereal Division, Central Experimental Farm, Ottawa, from a cross between Markton and Laurel. This variety is high yielding in the hulless oat class, medium early maturing and is highly resistant to the smuts. It is not so strong in the straw as Laurel, but is grown in all areas where hulless oats are used.

Bambu.—Bambu is a Swedish variety developed from the cross (Abundance \times Victory) \times (Victory \times Storm Mogul). This variety was licensed for sale in Canada in 1946 with the recommendation that its distribution be confined to the lower mainland of the Fraser River Valley in British Columbia. Bambu is medium early maturing and is reported to be resistant to lodging on soils of high nitrogen content.

Cartier.—This variety was produced at Macdonald College, Que., from a cross between Alaska and Early Triumph. Cartier is early maturing and practically

identical with Alaska in plant characters but is somewhat higher yielding. It has been grown quite widely in Quebec and parts of Ontario but on account of its susceptibility to rusts, it has been replaced in some areas by rust-resistant varieties.

Clinton.—Clinton was developed at the Iowa Agricultural Experiment Station, Ames, Iowa, from the cross (Richland \times Green Russian) \times Bond. Clinton has yellow grain colour, plump kernels and thin hulls. The straw is mid-tall and strong. It has good resistance to the rusts and smuts and to Victoria blight. Clinton was licensed for sale in Canada in 1947 and reports from growers in south-western Ontario are satisfactory on the basis of one year's observation.

Erban.—Erban is a production of the Ontario Agricultural College, Guelph, resulting from a cross between Early Ripe and Banner. Seed was distributed to farmers in fairly large quantities for the first time in 1935. Erban has white grain colour, resistance to smuts and some resistance to crown rust. It is medium early maturing, high yielding and has proved well adapted in Ontario and many other sections of Eastern Canada.

Eagle.—Eagle is an introduction from Sweden, the result of a cross between Victory and Von Lochow's Yellow. The latter parent is adapted to dry conditions in parts of Europe, has long thin kernels and is weak in the straw. Eagle is medium late maturing and similar to Victory in many respects, but is a little earlier and shorter and stronger in the straw. It is grown to some extent in central Alberta and British Columbia.

Exeter.—This variety was developed from the cross Victory \times Rusota at the Dominion Laboratory of Cereal Breeding, Winnipeg, Man. Exeter has approximately the same maturity, straw qualities and kernel type as the Victory parent along with moderate resistance to stem rust. It is adapted chiefly to the later oat growing sections of the stem rust areas of the west and to a limited extent to the central areas of British Columbia.

Fortune.—Fortune was developed at the University of Saskatchewan from the double cross Victory (Victory \times Richland) \times (Markton \times Victory). It is a little earlier maturing, taller and stronger strawed than Exeter with a lower hull percentage and slightly smaller kernel. Fortune has stem rust resistance similar to Exeter and is also highly resistant to the smuts. It also has the ability to resist sprouting after maturity under wet conditions.

Garry.—Garry was developed at the Dominion Laboratory of Cereal Breeding, Winnipeg, Man. from a cross between Victory and R.L. 1272, the latter coming from the cross Victoria \times (Banner \times Hajira). This variety is resistant to all prevailing races of crown and stem rust found in Canada and also the smuts, but is susceptible to Victoria blight. Garry has good straw and an attractive kernel. It is somewhat limited in its adaptability and yielding capacity but on account of its rust and smut resistance offers crop insurance against these hazards.

Legacy.—This variety was developed from a cross between Banner Ott.49 and 80 Day (Ott. 42), originally made in 1906 at the Cereal Division, Central Experimental Farm, Ottawa. Legacy is a white oat in the mid-season maturity class. It is susceptible to the rusts and smuts and, therefore, is grown only in rust-free areas. Legacy has shown adaptability to conditions in central Alberta.

Larain.—This variety comes from a cross between Gold Rain and Alaska made at the Cereal Division, Central Experimental Farm, Ottawa. The final selection was made at the Experimental Station, Lacombe, Alta. It is early maturing and very low in percentage hull, but is susceptible to the rusts and smuts.

The straw is of medium length and reasonably strong. Because of its early maturity, it is grown to some extent in central Alberta where early fall frosts are common.

Laurel.—Laurel is a hulless variety developed at the Cereal Division, Central Experimental Farm, Ottawa, from a cross between Banner and Chinese Hulless made in 1922. Although this variety is susceptible to the rusts and smuts it is more resistant to lodging than most other varieties. Laurel is medium early maturing and has large kernels.

Mabel.—Mabel is an early maturing variety developed at Macdonald College, Que., from a cross between O.A.C.72 and Early Ripe. This variety has some resistance to crown rust and also to the smuts. The grain is light buff in colour, but has a very thin hull. Mabel is grown to a considerable extent in parts of Quebec where early maturity is advantageous.

Roxton.—Roxton was developed at Macdonald College, Que., from a cross involving the following parents: Siberian, Joannette, O.A.C.72 and Early Ripe. Roxton is a medium late maturing variety ripening a day or two later than Banner. It is a long strawed, high yielding variety possessing considerable resistance to both stem and crown rust and producing grain with a very low hull content. Roxton is grown mainly in Quebec and eastern Ontario, particularly on the lighter soils.

Victory.—This variety was originated by the Swedish Seed Association in Sweden as a selection from an old European variety called Milton. Victory was introduced into Canada in 1911 and quickly proved to be well adapted to Canadian conditions. It possesses many desirable characters such as good yield, fairly strong straw and good weight per bushel. Victory is medium late maturing and on account of its short broad grain makes an excellent exhibition oat. It is susceptible to the rusts and smuts and, therefore, has been replaced in many areas by disease-resistant varieties.

Vanguard.—Vanguard was introduced in 1936 in Western Canada as the first variety developed in Canada with moderate resistance to stem rust. It was produced at the Dominion Laboratory of Cereal Breeding, Winnipeg, Man., from a cross between Banner and Hajira. This variety has medium maturity, fair straw strength and resembles the Banner parent in kernel type. It is susceptible to the smuts and crown rust.

Vicland.—This variety was developed at the Wisconsin Agricultural Experiment Station from a cross between Victoria and Richland and licensed in Canada in 1945. It is early maturing with rather short, fine straw of medium strength. Vicland is moderately resistant to stem rust and to the smuts. It has rather small yellow kernels and has been grown to some extent in southwestern Ontario. It is susceptible to Victoria blight.

DISEASES OF OATS AND THEIR CONTROL

Diseases of the oat crop in Canada cause annual losses of millions of dollars. Some of these losses may be avoided completely or considerably reduced by practising seed treatment, soil management, crop sequence or by growing resistant varieties. Most diseases depend upon a particular set of environmental conditions for suitable development and thus annual or seasonal variations in weather conditions may determine the prevalence of a disease or the severity of attack. In some areas certain diseases rarely appear partly because of isolation from sources of infection or because of an unfavourable environment for a particular disease.

Most of the oat diseases commonly found in Canada at the present time have been present in varying degrees since the early years of production. However, some diseases not previously known in the country have appeared in recent years and have now become quite serious. With several of the more important diseases annual losses are being reduced greatly by the use of resistant varieties.

Of the many diseases that attack oats, the rusts and smuts are the most common and cause the most damage. Both stem and leaf rust are common throughout the greater part of Canada, but in general, stem rust is more prevalent in Western Canada whereas leaf or crown rust is usually more widely distributed in the East. The two rusts are quite distinct in appearance and in their life histories.

Stem Rust.—Stem rust attacks particularly the stem but in severe epidemics it may be found on the leaves and glumes. The pustules are reddish brown in colour, oblong in shape and usually begin to appear on the oat plants before heading. In contrast to crown rust, the pustules of stem rust are darker in colour and cause a distinct rupturing of the plant epidermis. The pustules on the oat plant are filled with spores which are rapidly scattered by the wind to infect nearby plants or those in more distant oat fields. Air currents transport the spores great distances. Investigations have shown that spores may be carried by the wind from the grain growing areas of the United States to Western Canada to start the early summer infections in that area. Most of the stem rust infection in the West originates in this manner although some primary infection does come from the barberry as described below.

During humid weather, which is very favourable for rust development, the first infections spread rapidly and may result in a destructive rust epidemic. Cool dry weather hinders the spread of the disease. The red rust stage is followed by the black stage as the crop matures. The black colour is due to the black overwintering spores formed in the same pustules. The black spores which have overwintered on stubble, etc., germinate in the spring and are able to infect only the leaves of the common barberry, the alternate host of stem rust. Spores from small cup-like bodies formed on the under surface of the barberry leaves are able to infect susceptible oat plants in the early summer. In Eastern Canada, a great deal of the early summer infection may be traced to the barberry, although it is probable that a certain amount is started by spores blowing in from other regions.

Stem rust lowers both the yield and quality of the grain, depending on the severity of attack and on the stage of growth at which rust develops.

Crown Rust.—Crown rust of oats, at first, forms small bright orange-yellow pustules which are found almost entirely on the leaf blades and sheaths. Later-formed pustules are larger. They are long and somewhat irregular in shape. There is no conspicuous rupturing of the plant surface at the border of the pustule as with stem rust. The pustules of the black spore stage are covered by a thin layer of epidermis and hence are less noticeable than those of stem rust. The overwintering black spores germinate in the spring and cause elevated orange-yellow lesions to form on the leaves of the European buckthorn. The spores are then carried by the wind from the buckthorn to infect the young oat crop. In Eastern Canada observations on crown rust have shown that infection is often more localized than that of stem rust and usually the centre of primary infection can be traced to nearby buckthorn bushes. Secondary infection, which comes from an earlier infected oat plant, is responsible for the main losses. Where crown rust infection is heavy both the yield and quality of the grain are lowered and lodging may result.

The rusts, unlike the smuts, are not readily controlled by any simple process. The eradication of common barberry and European buckthorn from areas where

these two hosts are found would undoubtedly lessen the ravages of rust. Such a practice has met with success in wide areas of the North Central United States. Some organized effort has been made in Ontario to eradicate the alternate host of both rusts. These diseases have been controlled successfully by dusting the crop with sulphur but the cost of treatment makes it impracticable.

There are thirteen known races of oat stem rust and over fifty races of crown rust. All of these are not common in Canada and only a few races may be serious in any one area. The contributions of the plant breeders have proved that the most practical method of combating the oat rusts is by developing and growing resistant varieties.

Smuts.—There are two kinds of smut that attack oats, namely, loose and covered. The smut replaces the sound grains with a dark spore mass. Loose smut is more conspicuous just as the oats come into head before the spores are carried away to neighbouring healthy plants by the wind. Covered smut is not so noticeable, but at threshing time the affected heads are broken up and the spores scattered over the grain.

Both smuts may be controlled by seed treatment. Organic mercury dusts have proved to be very effective for controlling smuts and if used correctly they have no harmful effect on seed germination. Ceresan applied at the rate of one-half ounce per bushel is recommended. The Ceresan must be thoroughly mixed with the grain. For treating small seed lots, the dust and the grain may be mixed by some hand method, but for larger lots best results are obtained if a seed treating machine is used.* Ceresan, which is applied at the rate of one-half ounce per bushel, costs about three cents for each bushel of treated grain. On hulless oats copper carbonate at the rate of three ounces per bushel or Ceresan at slightly less than the above recommended amount may be used to control smut.

Although smut-resistant oat varieties are now becoming available, it does not mean that seed treatment may be neglected since there are several other seed- and soil-borne disease organisms against which Ceresan is a protectant.

Root-Rots.—Root-rot diseases of small grains have received careful study in Canada during recent years by the Division of Botany and Plant Pathology. These diseases have been found to be particularly prevalent in the Prairie Provinces, although they are present in all parts of the Dominion. The fungi that cause root-rots are in the soil, on crop refuse or carried on the seed. They may attack the roots, crowns and basal parts of the stems from the time the seeds germinate until the plants are mature. Infected seedlings seldom recover full vigour, while many actually die. Certain farm practices have been found to have a bearing on the control of root-rots. These are, crop rotations, early seeding and the use of treated seed of good vitality.

A new root-rot disease commonly called Victoria blight and caused by the fungus *Helminthosporium victoriae* was found for the first time in Canada in 1947. This disease attacks only certain varieties, that is, those that have the South American variety Victoria as a parent and possess its resistance to crown rust. In infected plants the base of the stem and adjoining roots are rotted, accompanied by a striping and reddening of the leaves. Such plants are loosely attached to the soil and may lodge. Towards maturity the disease is readily identified by the browning of the lower parts of the stem along with the appearance of black spore masses on the lower joints or nodes. Many stems may break over at this stage, particularly at the joints. Where infection is heavy, the threshed grain is usually discoloured and very poorly filled.

* For further information regarding dusting machines apply to the Cereal Division, Central Experimental Farm, Ottawa, or to the Division of Botany and Plant Pathology, Science Service, Ottawa.

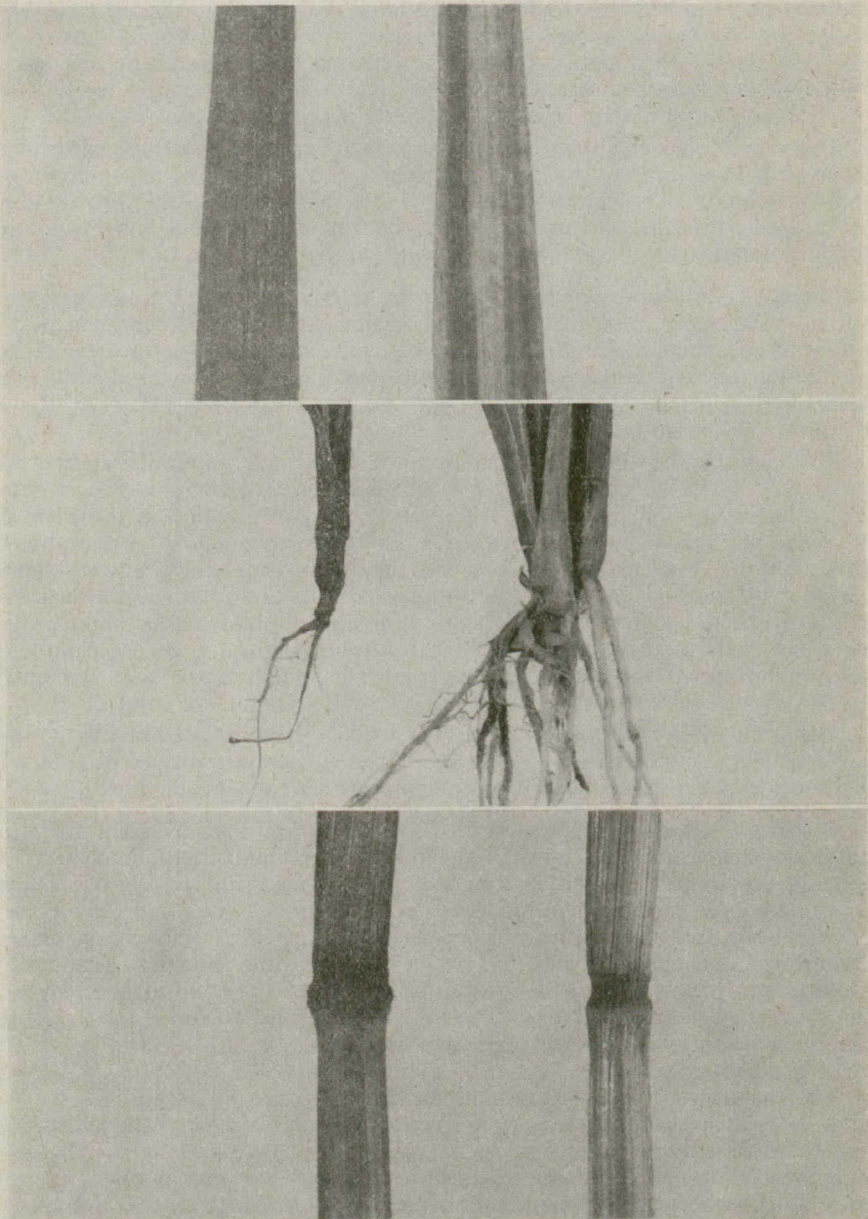


Fig. 1a (upper)—Typical leaf symptoms characteristic of Victoria blight. *Left*—healthy leaf; *right*—diseased leaf showing longitudinal reddish brown striping.

Fig. 1b (middle) *Left*—young plant severely infected by Victoria blight showing rotted condition of root and base of stem, and stunting of plant. *Right*—healthy resistant plant.

Fig. 1c (lower)—*Left*—Ripe stem of oat plant infected by Victoria blight. The black spore masses at the lower nodes or joints at harvest time are characteristic of this disease. *Right*—Healthy resistant stem.

The spores of the fungus which causes this blight are both soil- and seed-borne. Before a susceptible variety may be grown on infected soil, the land should be planted to some other crop for two or three years. In order to help eliminate the danger of seed-borne infection it is necessary to treat the seed with Ceresan two or three weeks before planting. As is the case with many other diseases, the practical means of overcoming this disease is to develop resistant varieties. Much progress has already been made in this regard.

Halo Blight.—Halo Blight, a bacterial disease, is often prevalent in the more humid areas of Canada. The losses from this disease are small in comparison with those from the rusts and smuts. Symptoms usually appear on the leaves of plants six to eight inches tall, in the form of small oval, light green, water soaked blotches surrounded by a light yellow zone which has the appearance of a "halo". The blotches later enlarge and turn light brown in the centre. An abundance of moisture is necessary for a rapid spread of the disease.

Halo blight seems to be more prevalent on light sandy soils, lacking in acidity and potassium. The disease is seldom found on heavy clay soils. Seed treatment and crop rotation help to reduce the amount of disease. Halo blight should not be confused with "grey speck" which is described below.

Helminthosporium Leaf Blotch.—Although this disease is of minor importance it is commonly found on most of the oat varieties grown in Canada. It is characterized by leaf blotches which are irregular in shape, light reddish brown in colour and having sunken centres. Where infection is heavy the leaf blades turn yellow. Seed treatment and crop rotation help to control it.

Blast.—The term "blast" has been given to a type of spikelet sterility commonly found in the oat crop and which presumably lowers the yield quite considerably in some seasons. These sterile spikelets show up as white, empty glumes at the time of heading, particularly towards the bottom of the panicle. The amount of blast is often very high and in some years reaches as much as 30 per cent.

The cause of oat blast has been traced to environment, and its presence is a symptom of subnormal growth conditions. The growth period most susceptible to adverse weather conditions or soil deficiency in so far as blast is concerned is about six to eight weeks after seeding. Blast is increased also by late seeding. Some varieties are more susceptible to blasting than others.

From investigations carried on by the writers it seems probable that the production of blasted spikelets in oats is nature's way of reaching a balance between the yield potentialities of the plant and the general growth conditions to which the plant is subjected.

Grey Speck.—The non-parasitic disease called "grey speck" is caused by a deficiency of available manganese. Experiments have indicated that certain soil bacteria may be responsible for converting soluble manganese in the soil into insoluble forms thus making it unavailable to the plant. The disease has been found in many areas in Canada, particularly on alkaline soils. The symptoms on the oat plant take the form of light green to grey flecks on the leaves. The flecked areas may enlarge and dry out. The plants may be stunted in growth while the leaves may be narrow and more erect than usual. Some varieties show resistance to grey speck. Application of manganese compounds to the soil or to the plants in the form of spray, in certain cases, has controlled this deficiency disease.

Diseases of less importance such as bacterial stripe blight, septoria leaf blotch, anthracnose and others cause some damage to the oat crop in Canada but on the whole have never become serious. These are mostly leaf infections.

OATS IN GRAIN MIXTURES

The practice of sowing grain mixtures, chiefly oats and barley, appears to be steadily increasing in Canada. While mixtures are not grown extensively in Western Canada they do occupy a place second only to oats in Ontario, Quebec and the Maritimes. The main reason for this growing interest in mixtures is based on the assumption that a ready mixed crop of greater volume will result than when the crops are grown separately. Where soil conditions are uneven due to contour, fertility or drainage or where the seeding season is abnormal it may be difficult to decide whether to sow the crops singly or in mixture. Frequently the common tendency is to sow the two together with the hope that a crop of satisfactory yield and quality may result. Another reason for the wide use of oats in mixture with barley is due partly to the greater strength of straw of the oats and partly because these two crops form a standard feed mixture on the average mixed farm. Apart from uneven fertility, etc., in many cases mixtures are now being grown on the poorer soils. Since oats will thrive on less fertile soils than barley it may be better to avoid growing barley either alone or in mixture on such land.

Since oats and barley are two of the best adapted crops for conditions in Eastern Canada, one might expect to obtain better success with this mixture than when oats are grown with other crops. The mixing of wheat or peas with oats is common among some dairy farmers mainly to increase the protein content of the feed. In general, success or failure with mixtures is dependent upon the varieties used, maturity of varieties, date of seeding and proportions of seed used, soil fertility, etc.

From a labour standpoint it is easier to produce a "ready-mixed" crop than to grow each crop separately and then have to mix them by hand. However, if a farmer has reason to believe that a particular field will produce more pounds per acre of one crop than another when grown by itself then, obviously, it will pay to grow the single crop and make up the desired feed mixture later.

OATS FOR HAY AND PASTURE

Oats cannot be excelled in the Maritimes, Quebec and eastern Ontario as an emergency or supplementary hay or pasture crop. The young oat plants are very high in protein and could even be classed among the concentrates so far as this feed constituent is concerned. Oats allowed to reach the milk or early dough stage make excellent hay and can be considered comparable to good timothy hay both in quality and palatability.

Oats will not stand as much continuous grazing as will the clovers and grasses owing to the nature of the root system and, therefore, care must be taken to avoid over-grazing and excessive tramping. For pasture purposes oats may be seeded at different times during the summer if such feed is required throughout the season, since oats may be grazed in four to five weeks after seeding. The usual practice, however, is to use this crop as a supplementary pasture during the hot part of the summer when the regular pastures are short. Oats will normally make a satisfactory growth after having been grazed off once or even twice, provided care is taken not to allow the stock to damage the roots too severely. A rate of seeding, slightly heavier than for grain production, is recommended when seeding oats for pasture.

Experimental work carried on by the Experimental Farms Service has shown that certain varieties are better able than others to produce abundant leaves and tillers and consequently to provide greater yields of forage. Some varieties also have the ability to recover more quickly than others after having been grazed.

When oats are seeded for pasture or hay in late spring or early summer, the use of rust-resistant varieties becomes more important, since the environment during this period may be more favourable for severe rust infections. Recommendations regarding varieties of oats for hay and pasture may be obtained from the Forage Crop Division, Central Experimental Farm, Ottawa.

LODGING

Lodging is often responsible for great losses to the oat crop in Canada. This is particularly true in those areas where moisture is abundant, where storms commonly occur or where the soil is rich in nitrogen or deficient in minerals. A lodged crop lowers the yield and quality of the grain; harvesting is made difficult and expensive, and severe damage to new seeding may result.

The actual damage caused by lodging depends largely on the stage of growth at which the crop goes down. When the crop lodges in the green condition the plants usually bend over at the ground level. During heavy storms much pressure is exerted on the stems and particularly at the point of anchorage to the ground. Varieties which are not too tall and which have thick stems near the bottom as well as large and branching anchor roots giving maximum support are the ones which do not lodge readily.

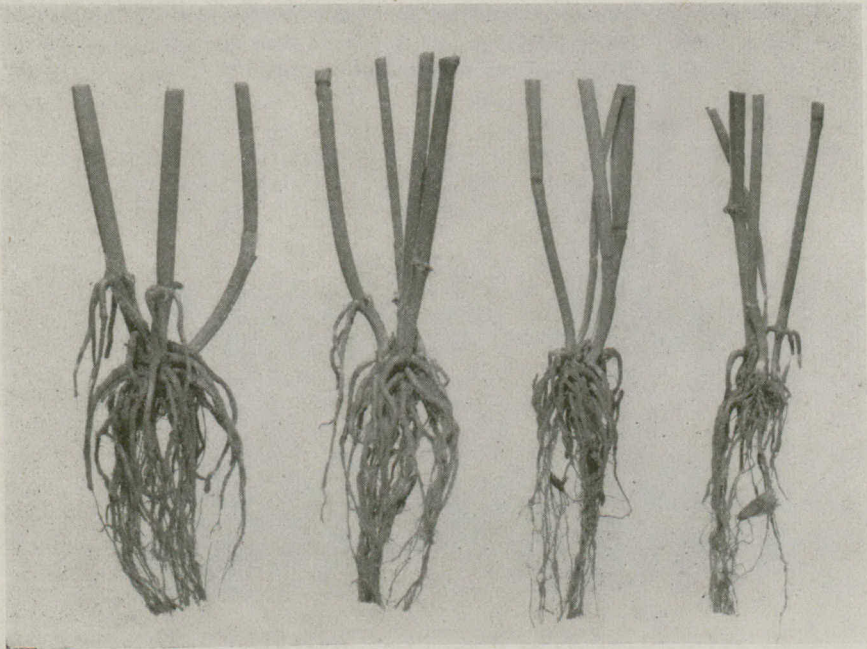


Fig. 2—Left—Two plants with large wide, spreading anchor roots and thick stems characteristic of lodging resistant varieties. Right—Two plants with small, non-spreading roots and thin stems characteristic of lodging susceptible varieties.

Lodging, prior to maturity, is most common in crops grown on very fertile land or on soils having an abundance of nitrogen such as legume sod or muck soils. Where moisture is the limiting factor in crop production the effect of pre-

vious crops on lodging is less noticeable. It is well known that phosphate fertilizers are important for good plant development and tend to hasten maturity of the crop, thereby lessening the damage from lodging caused by late summer storms.

Results of experimental work on Dominion Experimental Farms bear evidence that as the rate of seeding increases the amount of lodging may also increase, due to plants being more spindly as a result of competition. Early seeding has tended to produce crops with stronger straw. This may be due to a more suitable growing season which allows for better plant development. Early sown crops also have a greater chance of escaping heavy storms. Grazing or clipping the young oat crop to check growth and lessen the amount of lodging, although practised in parts of Great Britain, has seldom given satisfactory results in Canada.

Another type of lodging may occur as the grain approaches maturity when the straws gradually lose their flexibility and become brittle. At this stage breaking occurs higher up in the stem. This is particularly true in the case of an over-ripe crop, and is a great hindrance to combining. The production of oat varieties to resist lodging has been a problem of major importance at many plant breeding institutions. One of the main projects of the Cereal Division involves a study of the various factors concerned with lodging resistance. It has been found that varieties differ widely not only in internal stem structure and size but also in anchor root development. Such findings have had a direct bearing on the problem of producing a variety that will stand up under conditions of high fertility and abundant moisture and at the same time fulfil the requirements of high yield and good quality. Considerable progress has resulted from the efforts of the Cereal Division to develop lodging-resistant oat varieties, notably in the case of Beacon and Garry.



Fig. 3—Improvement of lodging resistance in oats by breeding. Plots at Central Experimental Farm.

HULLESS OATS

Hulless oats, so called because the kernels thresh free of the hulls, are recorded as having been grown and used as human food in Oriental Asia as long ago as the fifth century. Other records show that this crop was quite widely grown in England as early as the sixteenth century.

When hulless oats were first introduced into Canada, they were looked upon more as a novelty than as having a useful place on the average mixed farm. Actually they were introduced primarily for the benefit of farmers living in outlying districts, remote from grinding mills, and who might find it of advantage to grow a type of oats that could be fed to young stock and poultry without being ground and might even be used as porridge for human consumption.

Feeding tests conducted within the Experimental Farms Service have shown that hullless oats or oat groats are superior to hulled oats when used in the chop for young pigs. Evidence from the same source shows too, that in a general way hullless oats can be profitably fed to all classes of poultry in preference to hulled oats and particularly to young birds. While machines for dehulling ordinary oats are now available at moderate cost, there are some who prefer to grow hullless oats to supply the need for such feed.

Normally, the best varieties of hullless oats yield slightly less than the better varieties of hulled oats even when allowance is made for lack of hull. The lack of higher yielding, well adapted, disease resistant varieties, together with a tendency to shatter when ripe and the danger of heating in storage, undoubtedly explains why hullless oats have not shown a greater increase in popularity. It is true also that unless reselection of the hullless type is carried on fairly regularly the crop will gradually revert to the hulled type since in most hullless varieties a small percentage of hulled or intermediate hulled plants appear and as these increase, the proportion of hullless to hulled grain decreases.

Up to recent years the most commonly grown varieties in Canada were Laurel and Liberty. In 1942 the variety Brighton was introduced by the Cereal Division, Central Experimental Farm. This variety is resistant to the smuts but not to the rusts. Brighton is large seeded and high yielding but has somewhat weaker straw than Laurel, one of its parents. Hullless oats are usually sown at the rate of 75 pounds per acre. Harvesting should not be delayed after the crop reaches the early dough stage on account of the danger of loss from shattering.

WINTER OATS

There are no oat varieties that will withstand the low temperature of the normal Canadian winter except in the case of a small area on Vancouver Island. Although winter oats are grown successfully in many parts of the United States and in other countries, none of the varieties used can survive the winters in latitudes as far north as Canada.

There are no winter oat varieties that possess a degree of hardiness equal to that found in wheat, rye or even barley. If it were possible to develop winter oat varieties that could survive in Canada they would be of great benefit, especially in those areas where spring droughts are common or where spring seeding is often delayed by unfavourable weather.

On Vancouver Island, in some years, even spring varieties seeded in the fall will survive the winter. At present, the efforts of the Cereal Division aim to improve winter oat varieties for growing on Vancouver Island. For the rest of Canada it seems that totally new sources of winter hardiness must be found and used to breed hardier oats. In doing this one cannot foresee what degree of success will result or how long it may take.

QUALITY

Quality in oats is partly determined by the proportion of hull to kernel. The hull or outer covering of the oat grain consists largely of fibrous material, very

similar to oat straw in feeding value and making up, on the average, from twenty-five to thirty per cent of the bulk, in well cleaned oats. The weight of oats in Canada seldom falls below thirty-four pounds per bushel under normal conditions chiefly because of the use of high quality varieties and the natural adaptation of the crop.

Percentage hull is a definite varietal characteristic, some varieties running as low as twenty per cent while others run as high as thirty-five per cent or even more. Both soil and season influence hull percentage, and it is not uncommon to find a normally good quality variety producing a relatively high percentage of hull when grown under adverse conditions. Since each variety is capable of producing a normal crop only under a specific set of conditions, any variation from these conditions in the nature of longer or shorter growing season, periods of drought or wet weather at critical times in the growth of the plants, will tend to influence the percentage of hull. It is for this reason that the quality of oats varies widely from year to year even when good seed of the same variety is used.

Percentage hull is usually lower in the earlier maturing varieties, but this is not always the case. In Canada, however, all the commonly grown early varieties are low in hull percentage and are, therefore, of high quality. Since early varieties normally yield less than later maturing ones, it becomes necessary to balance the higher quality of the former against the better yield of the latter in deciding which type to grow for feed purposes. Quite apart from quality, however, soil or climatic conditions are often the deciding factors in the choice of early or late varieties.

Weight per measured bushel is not always an indication of good quality in oats, since the weight of a sample depends not only on the proportion of kernel to hull, but also on the shape of the grain, presence of awns, hull tips and trash that tend to prevent the grains from packing closely together. Many varieties, low in hull percentage and possessing other desirable characters, have long, rather slim grains with an extended hull tip. The grain of such varieties does not pack well and a low weight per bushel is the result. If, however, the awns and hull tips are removed by clipping or scutching, the weight and general quality of the sample can be materially increased. It is clear, therefore, that low weight per bushel does not necessarily mean poor quality, since the low weight may be the result of lack of preparation of the sample. If a crop of oats produces a good weight per bushel, it is a strong indication that the variety used is adapted to the soil type and other growth conditions under which it has been grown.

As with other plant characters oat varieties may differ also in percentage protein and other chemical constituents. For example, from an analysis made by the Division of Chemistry, the grain of Mabel carried two to three per cent more protein than Banner based on a three-year average.

Quality in oat straw is also a varietal characteristic. Analyses based on protein and fibre content have shown that there is not always an association between high quality grain and high quality straw. Seasonal influences play a large part in determining the quality of oat straw and although the feeding value may be low at all times, palatability may be greatly affected by growing conditions and methods of handling.

Thus, the first consideration in improving the feeding quality of oats, is to use a well adapted variety possessing a reasonably low percentage of hull and known to be a good yielder. Thorough cleaning of the grain with modern machinery will reduce the amount of fibre in oats quite considerably not only by removing light grains and chaff but also by breaking off hull tips which help to lower the weight per bushel.

DROUGHT

As stated previously the oat crop requires a plentiful supply of moisture throughout its growing period for maximum development. Some areas in Canada normally suffer from too little moisture and/or a high degree of evaporation which tend to increase the hazards of growing this crop. In these areas, which include large acreages in both Saskatchewan and Alberta and to a limited extent in Manitoba, drought periods may occur at various times during the growing season to an extent where crop failures are frequent.

Insufficient moisture for normal germination results in poor stands. Drought conditions during the early period of growth tend to produce weakened plants and sparse tillering. The effect of drought in the latter part of the growing season results in reduced filling and yield. Early seeding as well as the use of early maturing varieties often enables the crop to escape drought damage during the later stages of growth.

In Canada, efforts are being made to locate varieties from foreign sources which have shown resistance to drought in different parts of the world. With some of these it is hoped that drought resistance may be incorporated into the better Canadian varieties.

FROST

Frost damage, either in the spring or fall, becomes a hazard to oat production in certain areas in Canada. This is particularly important where the frost-free growing period is short. Usually oats are able to make a better recovery from spring frost injury than some of the other cereals. Early fall frost damage is particularly detrimental when oats are to be used for seed.

SHATTERING

Losses due to shattering are common in the drier oat growing areas and particularly when the crop is left standing until over-ripe for straight combining or because of bad weather at harvest time.

While comparatively little investigational work has been done on the cause of shattering in oats, there is evidence which shows that some varieties shatter more than others when grown under a common environment and that this difference is associated with the basal attachment of the grain to the peduncle. Varieties having an angle of attachment similar to wild oats are more susceptible to conditions favouring shattering. A greater total area of grain attachment also appears to be related to shattering resistance.

FALSE WILD OATS

False wild oats have been a topic of much scientific interest during the past two decades, particularly with regard to their origin. These forms resemble wild oats in that they possess strong, bent awns, darkened at the base, and a horseshoe-shaped depression, often referred to as a suckermouth, at the base of the grain, partially surrounded by a conspicuous tuft of fine hairs. False wild oats are usually characterized further by possessing the same grain colour and shape as that of the variety in which they are found. Since the sucker-mouth at the attachment point or base of the grain is the same as in wild oats, the seeds drop off even before maturity. Fortunately, however, false wild oats do not possess the delayed germination characteristic of wild oats and few if any survive the average Canadian winter. Thus the problem of control in the case of false wild oats is confined to other measures than cultural.

Much controversy has arisen over the origin of these forms and even now there exists some difference of opinion in this regard. It appears from the work

of many investigators that the so-called wild oat type originates directly from common oats as a result of certain changes in the carriers of the hereditary material or in some cases from natural crossing between wild oats and common oats. The evidence, however, appears to favour the theory that these forms occur most frequently as a result of hereditary changes, and further that some varieties are more susceptible to such changes than others.

Apart from the true false wild oat, carrying the wild oat characters of awns, base attachment and hairs, there are other forms possessing these characters in a reduced or intermediate condition. These intermediate forms originate in a similar manner to the true false wild oat but are unstable and segregate into normal oats, intermediate false wild, and pure breeding false wild. These intermediate forms are hard to detect in a sample of oats without close examination and are quite impossible to remove with grain cleaning equipment. The true false wild, while easily distinguished in the field, is also impossible to separate from common oats by machinery. The only hope of controlling these forms, therefore, lies in pulling the plants in the growing crop. Fortunately for the seed oat grower, these types of false wild oats are not classed among the noxious weeds and a liberal allowance is made for their presence even in the highest grades of registered seed. When seed stocks get badly polluted with false wild oats, it is best to secure new seed.

WEEDS

Weeds constitute one of the worst enemies of the farmer. They rob the soil of fertility and moisture, increase the cost of handling, lower the market grade of the crop and often smother new seeding of grass and clover.

In Eastern Canada where the type of farming lends itself to longer rotations, weeds are more easily kept under control than is the case where land is cropped almost exclusively to grain as practised in large acreages of Western Canada.

Since oats are used extensively as a nurse crop for seeding down to grasses and clovers it is perhaps even more important that weeds be kept under control in this crop than in the case of other cereals. Seed surveys made from time to time in various parts of the country have shown that too many weedy grain fields are the direct result of insufficient attention being given to the sowing of weed-free seed.

The annual weeds most prevalent in the oat crop are, mustard, stinkweed, lambs quarters and pig weed. Among the perennials, the most common are couch grass, Canada thistle, sowthistle and chicory. There are other weeds both annual and perennial which may be important in certain localities. Most annual weeds and certain perennials can be controlled effectively by application of the selective weed killer 2,4-D. Detailed information regarding weed control may be obtained from the Field Husbandry Division, Central Experimental Farm, Ottawa.

In many areas of the country, particularly in Western Canada, wild oats are a serious menace to the production of oats and other cereals. Wild oats lower the yield and value of both feed and seed crops. They shatter readily at maturity and furthermore have the characteristic of delayed germination lasting two or more years. After surface cultivation, many of the small cut or broken pieces of underground stems of the seedlings of wild oat plants will take root again and produce new plants. Such characteristics make this weed a difficult one to control, particularly in areas where continuous grain production is practised.

Wild oats are on the average higher in fibre and slightly lower in protein than cultivated oats. The lower grades of feed oats may contain percentages of wild oats ranging up to forty-nine per cent in the lowest grade. While the use of these grades of feed oats is considered fairly satisfactory from a nutritional standpoint, such a practice favours the spread of this weed. When oats are sold as groats,

i.e., oats with the hulls removed, they usually contain a high percentage of dehulled wild oats. Oat groats are of particular value as a starter feed for poultry and young stock.

With modern grain cleaning equipment wild oats can be separated from wheat almost completely. With oats and barley it is practically impossible to make a thorough separation. Special wild oat separators are on the market which are quite efficient, but separating devices must be used in conjunction with other control methods in coping with the problem of wild oat eradication. Efforts have been made by the plant breeder to develop larger seeded varieties in order that the slender seeded wild oats may be more easily separated by ordinary seed cleaning methods.

Cultural practices such as summerfallowing, shallow after-harvest cultivation, extra spring cultivation, rotations involving sod or smother crops and the sowing of clean seed, all constitute effective measures of control. More specific information regarding the control of wild oats may be obtained from the Field Husbandry Division, Central Experimental Farm, Ottawa, or from the nearest Dominion Experimental Station.



Fig. 4—Harvesting oats at the Central Experimental Farm, Ottawa.

Profitable oat production depends upon the elimination of as many of the above mentioned hazards as possible. To accomplish this there must be the closest co-operation between the plant breeder and the grower. The successful utilization of the varieties which the plant breeder creates is greatly dependent on the practices followed by the grower. While the plant breeder may develop varieties having combined resistance to many diseases it may still be necessary for the grower to use the latest seed treatment recommendations and to follow suitable rotations as a precaution in eliminating other diseases. Again, the breeder may create new varieties that have resistance to lodging but the grower in the use of such varieties must guard against excessive fertility and heavy rates of seeding to aid in overcoming this hazard. Similarly the grower must follow good farm management practices such as maintenance of fertility and the control of weeds to obtain maximum yields, conservation of moisture to limit the effects of drought, and early seeding to avoid late frost. Lack of soil fertility is one of the main reasons for low yields in any crop. The plant breeder can do little to overcome this hazard. It must be met largely by the grower himself.

EXPERIMENTAL FARMS SERVICE

Director, E. S. Archibald, B.A., B.S.A., LL.D., D.Sc.

Associate Director, E. S. Hopkins, B.S.A., M.S., Ph.D.

Dominion Field Husbandman.....	P. O. Ripley, B.S.A., M.S., Ph.D.
Dominion Horticulturist.....	M. B. Davis, B.S.A., M.Sc.
Dominion Cerealist.....	C. H. Goulden, B.S.A., M.S.A., Ph.D.
Dominion Animal Husbandman.....	G. W. Muir, B.S.A.
Dominion Agrostologist.....	T. M. Stevenson, Ph.D.
Chief, Poultry Division.....	H. S. Gutteridge, B.S.A., M.Sc.
Chief, Tobacco Division.....	N. A. MacRae, B.A., M.Sc., Ph.D.
Dominion Apiarist.....	C. B. Gooderham, B.S.A.
Chief Supervisor of Illustration Stations.....	J. C. Moynan, B.S.A.
Economic Fibre Specialist.....	R. J. Hutchinson

PRINCE EDWARD ISLAND

Superintendent, Experimental Station, Charlottetown, R. C. Parent, B.S.A., M.S.A.

Superintendent, Experimental Fox Ranch, Summerside, C. K. Gunn, B.Sc., Ph.D.

NOVA SCOTIA

Superintendent, Experimental Farm, Nappan, W. W. Baird, B.S.A.

Superintendent, Experimental Station, Kentville, A. Kelsall, B.S.A.

NEW BRUNSWICK

Superintendent, Experimental Station, Fredericton, S. A. Hilton, B.S.A., M.Sc.

QUEBEC

Superintendent, Experimental Station, Lennoxville, J. A. Ste. Marie, B.S.A.

Superintendent, Experimental Station, Ste-Anne-de-la-Pocatière, J. B. Pelletier, M.Sc.

Superintendent, Experimental Station, L'Assomption, R. Bordeleau, B.S.A.

Superintendent, Experimental Station, Normandin, A. Belzile, B.S.A.

Officer in Charge, Experimental Substation, Ste-Clothilde, F. S. Browne, B.S.A.

ONTARIO

Central Experimental Farm, Ottawa.

Superintendent, Experimental Station, Kapuskasing, E. T. Goring, B.S.A.

Superintendent, Experimental Station, Harrow, H. F. Murwin, B.S.A.

Officer in Charge, Experimental Substation, Delhi, F. A. Stinson, B.S.A., M.Sc.

MANITOBA

Superintendent, Experimental Farm, Brandon, R. M. Hopper, B.S.A., M.S.

Superintendent, Experimental Station, Morden, W. R. Leslie, B.S.A.

SASKATCHEWAN

Superintendent, Experimental Farm, Indian Head, W. H. Gibson, B.S.A.

Superintendent, Experimental Station, Scott, G. D. Matthews, B.S.A.

Superintendent, Experimental Station, Swift Current, Vacant

Superintendent, Experimental Station, Melfort, H. E. Wilson, B.S.A.

Superintendent, Experimental Substation, Regina, J. R. Foster, B.S.A.

Superintendent, Forest Nursery Station, Indian Head, John Walker, M.S.

Superintendent, Forest Nursery Station, Sutherland, W. L. Kerr, M.Sc.

ALBERTA

Superintendent, Experimental Station, Lacombe, G. E. DeLong, B.S.A., M.Sc.

Superintendent, Experimental Station, Lethbridge, A. E. Palmer, B.Sc., M.Sc.

Superintendent, Experimental Station, Beaverlodge, E. C. Stacey, B.A., M.Sc.

Officer in Charge, Experimental Substation, Fort Vermilion, V. J. Lowe

Officer in Charge, Range Experiment Station, Manyberries, H. F. Peters, B.Sc.

BRITISH COLUMBIA

Superintendent, Experiment Farm, Agassiz, W. H. Hicks, B.S.A.

Superintendent, Experimental Station, Summerland, R. C. Palmer, M.S.A.

Superintendent, Experimental Station, Prince George, F. V. Hutton, B.S.A.

Superintendent, Experimental Station, Seaside, J. J. Woods, M.Sc.

Officer in Charge, Experimental Substation, Smithers, W. T. Burns, B.S.A., M.Sc.

YUKON AND NORTHWEST TERRITORIES

Officer in Charge, Experimental Substation, Whitehorse, Y.T., J. W. Abbott

Officer in Charge, Experimental Substation, Fort Simpson, N.W.T., J. A. Gilbey, B.S.A., M.Sc.

CANADIAN AGRICULTURE LIBRARY



BIBLIOTHEQUE CANADIENNE DE L'AGRICULTURE

3 9073 00142071 2

OTTAWA
EDMOND CLOUTIER, C.M.G., B.A., L.Ph
KING S PRINTER AND CONTROLLER OF STATIONERY
1948