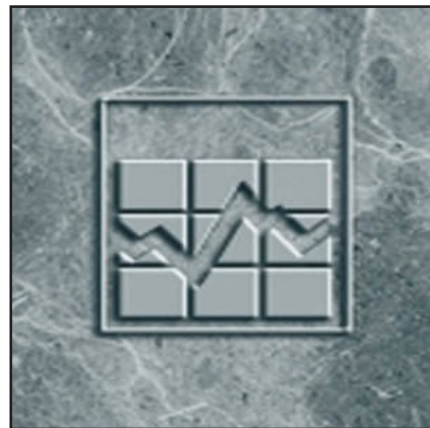


Catalogue no. 75F0002M — No. 003
ISSN 1707-2840
ISBN 978-0-660-05697-5

Income Research Paper Series

Canadian Income Survey: Population rebasing, 2006 to 2013



Release date: July 8, 2016



Statistics
Canada

Statistique
Canada

Canada

How to obtain more information

For information about this product or the wide range of services and data available from Statistics Canada, visit our website, www.statcan.gc.ca.

You can also contact us by

email at STATCAN.infostats-infostats.STATCAN@canada.ca

telephone, from Monday to Friday, 8:30 a.m. to 4:30 p.m., at the following toll-free numbers:

- | | |
|---|----------------|
| • Statistical Information Service | 1-800-263-1136 |
| • National telecommunications device for the hearing impaired | 1-800-363-7629 |
| • Fax line | 1-877-287-4369 |

Depository Services Program

- | | |
|------------------|----------------|
| • Inquiries line | 1-800-635-7943 |
| • Fax line | 1-800-565-7757 |

Standards of service to the public

Statistics Canada is committed to serving its clients in a prompt, reliable and courteous manner. To this end, Statistics Canada has developed standards of service that its employees observe. To obtain a copy of these service standards, please contact Statistics Canada toll-free at 1-800-263-1136. The service standards are also published on www.statcan.gc.ca under “Contact us” > “Standards of service to the public.”

Note of appreciation

Canada owes the success of its statistical system to a long-standing partnership between Statistics Canada, the citizens of Canada, its businesses, governments and other institutions. Accurate and timely statistical information could not be produced without their continued co-operation and goodwill.

Standard table symbols

The following symbols are used in Statistics Canada publications:

- | | |
|----------------|--|
| . | not available for any reference period |
| .. | not available for a specific reference period |
| ... | not applicable |
| 0 | true zero or a value rounded to zero |
| 0 ^s | value rounded to 0 (zero) where there is a meaningful distinction between true zero and the value that was rounded |
| ^p | preliminary |
| ^r | revised |
| x | suppressed to meet the confidentiality requirements of the <i>Statistics Act</i> |
| ^E | use with caution |
| F | too unreliable to be published |
| * | significantly different from reference category ($p < 0.05$) |

Published by authority of the Minister responsible for Statistics Canada

© Minister of Industry, 2016

All rights reserved. Use of this publication is governed by the Statistics Canada [Open Licence Agreement](#).

An HTML version is also available.

Cette publication est aussi disponible en français.

Contents

Abstract	5
1.0 Introduction	6
2.0 Geographic boundary changes	7
3.0 Impact on population counts	8
4.0 Impact on survey estimates	10
4.1 Family type	10
4.2 Income	10
4.3 Low Income	14
5.0 References	16
6.0 Charts	17
6.1 Comparison of revised and unrevised low income rates for all persons, Newfoundland and Labrador, 2006 to 2013	17
6.2 Comparison of revised and unrevised low income rates for all persons, Prince Edward Island, 2006 to 2013	18
6.3 Comparison of revised and unrevised low income rates for all persons, Nova Scotia, 2006 to 2013	19
6.4 Comparison of revised and unrevised low income rates for all persons, New Brunswick, 2006 to 2013	20
6.5 Comparison of revised and unrevised low income rates for all persons, Québec, 2006 to 2013	21
6.6 Comparison of revised and unrevised low income rates for all persons, Ontario, 2006 to 2013	22
6.7 Comparison of revised and unrevised low income rates for all persons, Manitoba, 2006 to 2013	23
6.8 Comparison of revised and unrevised low income rates for all persons, Saskatchewan, 2006 to 2013	24
6.9 Comparison of revised and unrevised low income rates for all persons, Alberta, 2006 to 2013	25
6.10 Comparison of revised and unrevised low income rates for all persons, British Columbia, 2006 to 2013	26
7.0 Tables	27
7.1 Comparison of revised and unrevised population estimates by economic family type, Newfoundland and Labrador, 2009, 2011 and 2013	27
7.2 Comparison of revised and unrevised population estimates by economic family type, Prince Edward Island, 2009, 2011 and 2013	27
7.3 Comparison of revised and unrevised population estimates by economic family type, Nova Scotia, 2009, 2011 and 2013	28
7.4 Comparison of revised and unrevised population estimates by economic family type, New Brunswick, 2009, 2011 and 2013	28

7.5	Comparison of revised and unrevised population estimates by economic family type, Québec, 2009, 2011 and 2013	29
7.6	Comparison of revised and unrevised population estimates by economic family type, Ontario, 2009, 2011 and 2013	29
7.7	Comparison of revised and unrevised population estimates by economic family type, Manitoba, 2009, 2011 and 2013	30
7.8	Comparison of revised and unrevised population estimates by economic family type, Saskatchewan, 2009, 2011 and 2013	30
7.9	Comparison of revised and unrevised population estimates by economic family type, Alberta, 2009, 2011 and 2013	31
7.10	Comparison of revised and unrevised population estimates by economic family type, British Columbia, 2009, 2011 and 2013	31
7.11	Comparison of revised and unrevised income and low-income estimates, Newfoundland and Labrador, 2009, 2011 and 2013	32
7.12	Comparison of revised and unrevised income and low-income estimates, Prince Edward Island, 2009, 2011 and 2013	33
7.13	Comparison of revised and unrevised income and low-income estimates, Nova Scotia, 2009, 2011 and 2013	34
7.14	Comparison of revised and unrevised income and low-income estimates, New Brunswick, 2009, 2011 and 2013	35
7.15	Comparison of revised and unrevised income and low-income estimates, Québec, 2009, 2011 and 2013	36
7.16	Comparison of revised and unrevised income and low-income estimates, Ontario, 2009, 2011 and 2013	37
7.17	Comparison of revised and unrevised income and low-income estimates, Manitoba, 2009, 2011 and 2013	38
7.18	Comparison of revised and unrevised income and low-income estimates, Saskatchewan, 2009, 2011 and 2013	39
7.19	Comparison of revised and unrevised income and low-income estimates, Alberta, 2009, 2011 and 2013	40
7.20	Comparison of revised and unrevised income and low-income estimates, British Columbia, 2009, 2011 and 2013	41

Abstract

Periodically, income statistics are updated to reflect the most recent population estimates from the Census. Accordingly, with the release of the 2014 data from the Canadian Income Survey, Statistics Canada has revised estimates for 2006 to 2013 using new population totals from the 2011 Census. This paper provides unrevised estimates alongside revised estimates for key income series, indicating where the revisions were significant.

1.0 Introduction

The Canadian Income Survey (CIS) is an important source of Canadian data on family, household and personal income. Starting with the 2012 reference year, annual individual and family income data has been produced by the CIS. The CIS is a cross-sectional survey developed to provide information on the income and income sources of Canadians, along with their individual and household characteristics. CIS reports on many of the same statistics as its predecessor, the Survey of Labour and Income Dynamics (SLID), which last reported on income for the 2011 reference year. Together, the results from these surveys provide the Canadian income estimates¹.

Statistics Canada has long had a process in place by which survey estimates are revised once a new series of postcensal population estimates becomes available. Just as a historical revision of the Labour Force Survey was done in 2015 (Statistics Canada, 2015b), a revision to the Canadian income estimates was also required. Previous to this revision, the Canadian income estimates were based on 2006 Census population counts. With the release of new census data in 2015, all survey data are now based on population estimates from the 2011 Census. As a result of this revision, the total target population² for 2013 was revised downward by 0.3%.

With the availability of new Census information, surveys can improve the representativeness of their samples by adjusting the survey weights. Since some of these surveys' population estimates for certain population sub-groups correspond to known population totals for a given year, after reweighting, income estimates are of better quality and the various estimates from the survey and from external sources are more comparable (Tremblay, 2005). To adjust the weights, these surveys use various provincial counts: counts of individuals by age group and gender, counts of economic families and households by size, and counts of individuals by wage class based on administrative tax data (LaRoche, 2007).

In January 2015, the Demography Division within Statistics Canada released the new population, economic family and household estimates derived from the 2011 Census (Statistics Canada, 2016a). Individual counts and the distribution of economic families and households by size were all revised. The total Canadian population fell slightly following the revision, and there were slight changes to the economic family and household sizes. These new population estimates were used to recalculate the survey weights between 2006 and 2013, inclusively.

As part of this revision, geographic boundary changes have also been introduced. Census Metropolitan Areas (CMAs), Economic Regions (ERs) and Census Agglomerations (CAs) are now based on the 2011 Census boundaries rather than the 2006 boundaries.

This paper presents a summary of the changes in the key national and provincial estimates produced by CIS and SLID as a result of the revision. Section 2 briefly describes the geographic boundary changes. Section 3 discusses the direct effect on population counts for individuals, households and economic families. Section 4 deals with the indirect effect of the revision on the main survey estimates, namely population counts by family type, income and low income. Lastly, various tables and charts comparing revised and unrevised estimates by province are provided.

1. The Canadian income estimates are based on data from the following surveys: the Survey of Consumer Finances (SCF) from 1976 to 1992, a combination of the SCF and the Survey of Labour and Income Dynamics (SLID) from 1993 to 1997, the SLID from 1998 to 2011 and the Canadian Income Survey (CIS) beginning in 2012. A previous revision to income data was designed to improve comparability between SLID and CIS estimates as described in Statistics Canada (2015a).

2. The CIS target population consists of all individuals in Canada, excluding residents of the Yukon, the Northwest Territories and Nunavut, residents of institutions, persons living on reserves and other Aboriginal settlements in the provinces and members of the Canadian Forces living in military camps.

2.0 Geographic boundary changes

With the change to the 2011 Standard Geographical Classification (SGC) from the 2006 SGC, boundaries were modified for some of the sub-provincial areas such as Census Metropolitan Areas (CMAs), Economic Regions (ERs) and Census Agglomerations (CAs). Specifically, seven existing CMAs had boundary modifications between the 2006 SGC and the 2011 SGC. These are, in Quebec: Saguenay, Québec, Sherbrooke, Trois-Rivières, Montréal, the Quebec part of Ottawa-Gatineau; and in Ontario: Guelph. Also, as a result of the move to the 2011 SGC, there were small boundary changes for three ERs: Campbellton-Miramichi and Fredericton-Oromocto in New Brunswick; and North Coast and Nechako in British Columbia. Sub-provincial data from 2011 to 2013 were revised to reflect these changes.

Overall, the modifications to the CMA and ER boundaries resulted in minimal changes to the population counts, income and low income estimates.

3.0 Impact on population counts

In 2015, the Demography Division of Statistics Canada revised the population counts. As a result, the target population counts for the years 2006 to 2013 were revised using the 2011 Census base. At the Canada level, little difference was observed (Table 3.1) between the revised and unrevised populations (-0.3% in 2013). Overall, the population estimates were revised downward for each of the years.

At the provincial level, Manitoba (-1.2% in 2013) and British Columbia (-1.7% in 2013) both experienced the largest downward revisions, while Newfoundland and Labrador experienced the largest upward revision (3.2% in 2013). Prince Edward Island, Ontario, Manitoba and British Columbia each experienced downward revisions for all of the years, while Newfoundland and Labrador and Québec experienced upward revisions for each of the years.

Table 3.1

Percentage change between revised and unrevised population estimates, Canada and provinces, 2006 to 2013

	2006	2007	2008	2009	2010	2011	2012	2013
	percentage change (%)							
Canada	-0.1	-0.2	-0.3	-0.3	-0.3	-0.2	-0.2	-0.3
Newfoundland and Labrador	0.1	0.6	1.2	1.8	2.3	2.9	3.3	3.2
Prince Edward Island	-0.2	-0.5	-0.8	-0.7	-0.3	-0.4	-0.3	-0.3
Nova Scotia	-0.1	-0.2	-0.2	-0.2	-0.1	0.0	-0.1	-0.2
New Brunswick	0.0	0.0	0.0	0.1	0.1	0.2	0.2	0.1
Québec	0.1	0.2	0.3	0.4	0.6	0.6	0.7	0.6
Ontario	-0.1	-0.3	-0.5	-0.6	-0.5	-0.6	-0.6	-0.6
Manitoba	-0.8	-0.9	-1.1	-1.3	-1.5	-1.4	-1.2	-1.2
Saskatchewan	-0.1	0.2	0.5	0.7	0.8	0.9	0.9	0.5
Alberta	-0.1	0.0	0.1	0.3	0.3	0.5	0.5	0.1
British Columbia	-0.5	-0.8	-1.1	-1.4	-1.7	-1.7	-1.6	-1.7

Source: Statistics Canada, Demography Division, Special Tabulation.

At the Canada level, as with the changes to the population counts, the number of households changed little between the revised and unrevised data (Table 3.2). One person households and households with three or more persons witnessed relatively small changes, while households with two persons experienced a relatively larger change. In general, the number of two person households was downwardly revised for all the years (ranging from -0.2% to -2.2%), while the number of households with three or more persons was unchanged or upwardly revised for all the years (up to 0.7%).

Table 3.2

Percentage change between the revised and unrevised number of households, by household size, Canada, 2006 to 2013

	2006	2007	2008	2009	2010	2011	2012	2013
	percentage change (%)							
Households with 1 person	0.0	0.0	-0.1	-0.1	0.3	0.7	0.8	0.2
Households with 2 persons	-0.2	-0.4	-0.7	-1.3	-1.8	-2.1	-1.8	-2.2
Households with 3 or more persons	0.0	0.2	0.4	0.4	0.6	0.7	0.7	0.4

Source: Statistics Canada, Demography Division, Special Tabulation.

The number of economic families with three or more persons observed little change in each of the years (Table 3.3). While economic families with two persons experienced consistently downward revisions, ranging from -0.2% to -2.3%, the number of persons not in an economic family experienced consistently upward revisions, ranging from 0.3% to 3.9%.

Table 3.3**Percentage change between the revised and unrevised number of economic families, by economic family size, Canada, 2006 to 2013**

	2006	2007	2008	2009	2010	2011	2012	2013
	percentage change (%)							
Persons not in an economic family	0.3	0.9	1.3	1.8	2.8	3.6	3.9	3.4
Economic families with 2 persons	-0.2	-0.3	-0.7	-1.3	-1.8	-2.2	-1.9	-2.3
Economic families with 3 or more persons	-0.1	0.0	0.0	0.0	0.1	0.1	0.0	-0.4

Source: Statistics Canada, Demography Division, Special Tabulation.

4.0 Impact on survey estimates

The Canadian income estimates have been recalculated to take into account the introduction of the 2011 Census population counts. In general, these revisions had only minor impacts on the estimates. In evaluating the effects of the historical revision on the Canadian income estimates, the first focus was on population estimates by family type followed by income and then low income. As estimates are based on probability samples, differences between estimates are reported only where they are statistically significant at the 95% confidence interval. Also, since the impact of the revision is generally similar in magnitude for all the revised years, the analysis will be limited to 2009, 2011 and 2013.

4.1 Family type

Overall, there were a large number of statistically significant changes in the estimates by family type (Table 4.1), although they tended to be small in magnitude. At the Canada level, the number of persons in economic families and persons not in an economic family was downwardly revised slightly (-0.3% in 2013). If this grouping is separated, the number of persons in economic families experienced a downward revision (-0.9% in 2013), while the number of persons not in an economic family experienced an upward revision (3.4% in 2013). In 2013, the downward revision in persons in economic families was largely driven by couple (-2.7%) and lone-parent families (-3.0%). The upward revision in the number of persons not in an economic family was mostly driven by non-elderly persons (3.6% in 2013).

Table 4.1

Comparison of revised and unrevised population estimates by economic family type, Canada, 2009, 2011 and 2013

	2009			2011			2013		
	Unrevised	Revised	Change	Unrevised	Revised	Change	Unrevised	Revised	Change
	('000)		%	('000)		%	('000)		%
Economic families and persons not in an economic family	32,962	32,870	-0.3 [†]	33,666	33,589	-0.2 [†]	34,459	34,367	-0.3 [†]
Economic families	28,075	27,897	-0.6 [†]	28,637	28,377	-0.9 [†]	29,266	28,998	-0.9 [†]
Elderly families	3,304	3,263	-1.2 [†]	3,482	3,427	-1.6 [†]	3,835	3,794	-1.1 [†]
Elderly couples	2,435	2,400	-1.4 [†]	2,529	2,484	-1.8 [†]	2,758	2,729	-1.1 [†]
Other elderly families	870	863	-0.8	953	943	-1.0	1,077	1,064	-1.2 [†]
Non-elderly families	24,771	24,634	-0.6 [†]	25,156	24,950	-0.8 [†]	25,432	25,204	-0.9 [†]
Couples	4,541	4,474	-1.5 [†]	4,623	4,497	-2.7 [†]	4,640	4,517	-2.7 [†]
Couples with children	12,349	12,338	-0.1	12,433	12,416	-0.1	12,350	12,330	-0.2
Couples with other relatives	3,575	3,507	-1.9 [†]	3,783	3,742	-1.1 [†]	3,831	3,834	0.1
Lone-parent families	1,699	1,736	2.2 [†]	1,667	1,686	1.1 [†]	1,749	1,696	-3.0 [†]
Male lone-parent families	259	268	3.5 [†]	290	287	-1.0	332	319	-3.9
Female lone-parent families	1,441	1,468	1.9 [†]	1,377	1,399	1.6 [†]	1,417	1,377	-2.8 [†]
Other non-elderly families	2,606	2,579	-1.0 [†]	2,649	2,608	-1.5 [†]	2,862	2,827	-1.2 [†]
Persons not in an economic family	4,887	4,973	1.8 [†]	5,029	5,212	3.6 [†]	5,192	5,369	3.4 [†]
Elderly persons not in an economic family	1,266	1,291	2.0 [†]	1,312	1,363	3.9 [†]	1,406	1,445	2.8 [†]
Elderly males not in an economic family	368	376	2.2 [†]	402	423	5.2 [†]	438	457	4.3 [†]
Elderly females not in an economic family	898	915	1.9 [†]	910	940	3.3 [†]	968	988	2.1 [†]
Non-elderly persons not in an economic family	3,621	3,683	1.7 [†]	3,717	3,850	3.6 [†]	3,786	3,924	3.6 [†]
Non-elderly males not in an economic family	2,132	2,163	1.5 [†]	2,205	2,275	3.2 [†]	2,177	2,236	2.7 [†]
Non-elderly females not in an economic family	1,489	1,520	2.1 [†]	1,512	1,575	4.2 [†]	1,610	1,688	4.8 [†]

[†] denotes changes that are statistically significant at the 95% confidence level.

Source: Statistics Canada, Survey of Labour and Income Dynamics and Canadian Income Survey. CANSIM table 206-0011.

At the provincial level, there was an even split between the provinces that experienced a downward revision compared to those that experienced an upward revision for the broad grouping of number of persons in economic families and persons not in an economic family (Tables 7.1 to 7.10).

4.2 Income

Overall, the historical revision had a minimal effect on the average and median income estimates. The largest impacts of the revision were on the median market income and median after-tax income (Table 4.2). The median market income was downwardly revised slightly for the broad category of economic families and persons not in

an economic family (-0.2% in 2009 and -1.0% in 2011 and 2013). A similar pattern was observed in the revisions to median after-tax income (-0.4% in 2009, -1.0% in 2011 and -0.7% in 2013).

Table 4.2

Comparison of revised and unrevised income estimates, Canada, 2009, 2011 and 2013

	2009			2011			2013		
	Unrevised	Revised	Change	Unrevised	Revised	Change	Unrevised	Revised	Change
	2013 constant dollars		%	2013 constant dollars		%	2013 constant dollars		%
Median market income									
Economic families and persons not in an economic family	48,600	48,500	-0.2 [†]	48,700	48,200	-1.0 [†]	50,600	50,100	-1.0 [†]
Economic families	68,800	68,900	0.1	70,500	70,700	0.3 [†]	72,600	73,100	0.7 [†]
Persons not in an economic family	21,600	21,700	0.5	20,800	21,000	1.0	23,100	23,300	0.9
Median government transfers									
Economic families and persons not in an economic family	5,500	5,500	0.0	5,300	5,200	-1.9 [†]	5,300	5,200	-1.9 [†]
Economic families	6,800	6,700	-1.5	6,300	6,300	0.0	7,000	7,000	0.0
Persons not in an economic family	1,700	1,700	0.0	1,900	1,900	0.0	1,600	1,500	-6.3
Median total income									
Economic families and persons not in an economic family	58,400	58,200	-0.3 [†]	58,300	57,800	-0.9 [†]	60,500	60,000	-0.8 [†]
Economic families	78,900	79,000	0.1	80,000	80,200	0.3	82,600	83,100	0.6 [†]
Persons not in an economic family	29,500	29,500	0.0	28,100	28,200	0.4	31,000	31,000	0.0
Median income tax									
Economic families and persons not in an economic family	5,800	5,700	-1.7 [†]	6,000	5,900	-1.7 [†]	6,400	6,400	0.0
Economic families	8,700	8,700	0.0	9,400	9,400	0.0	9,800	9,900	1.0 [†]
Persons not in an economic family	2,300	2,300	0.0	2,000	2,000	0.0	2,400	2,400	0.0
Median after-tax income									
Economic families and persons not in an economic family	52,200	52,000	-0.4 [†]	51,800	51,300	-1.0 [†]	53,500	53,100	-0.7 [†]
Economic families	69,700	69,700	0.0	70,400	70,500	0.1 [†]	72,200	72,500	0.4 [†]
Persons not in an economic family	27,100	27,100	0.0	26,000	26,100	0.4	28,200	28,200	0.0

[†] denotes changes that are statistically significant at the 95% confidence level.

Source: Statistics Canada, Survey of Labour and Income Dynamics and Canadian Income Survey. CANSIM table 206-0011.

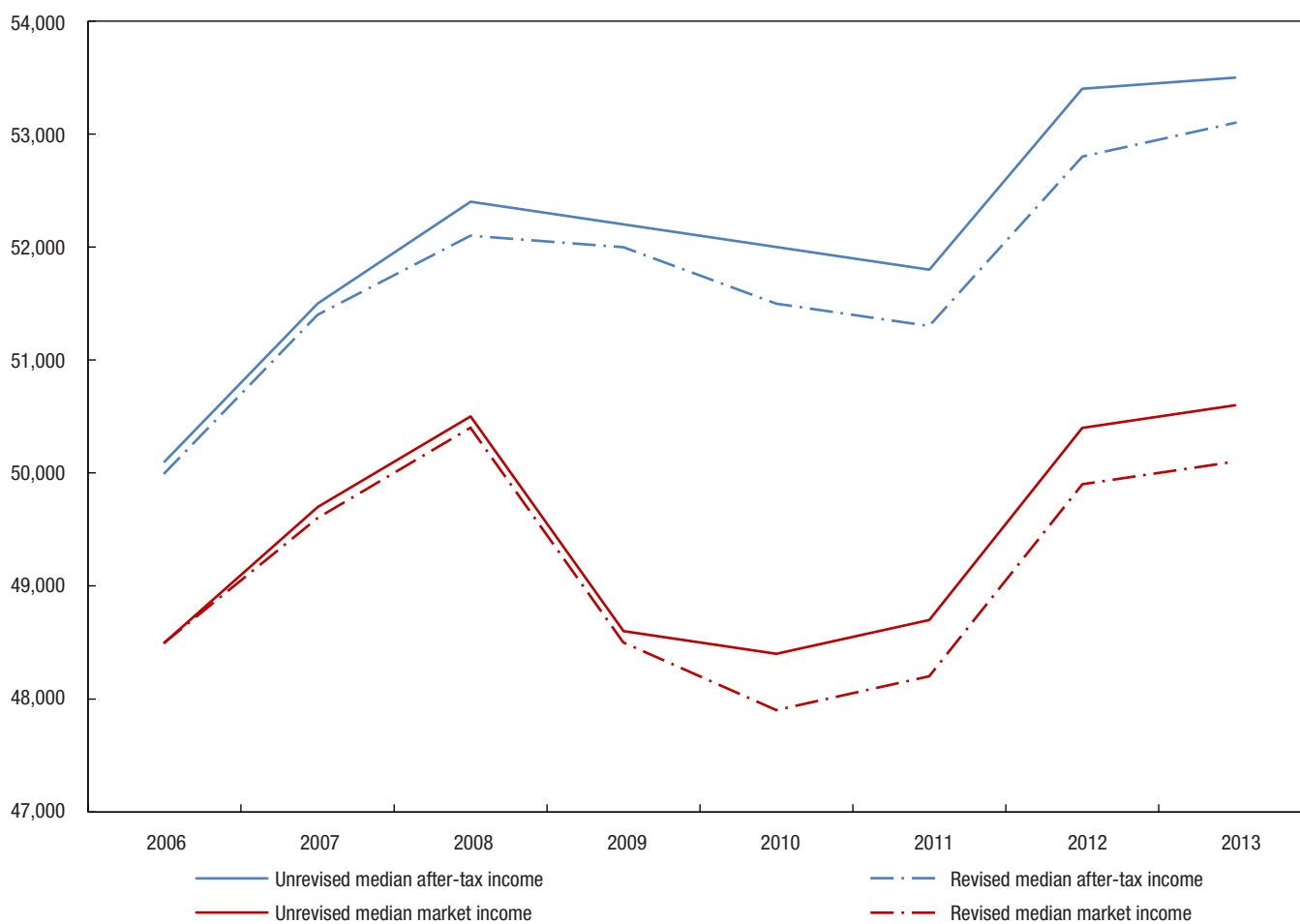
At the provincial level and for the broad category of economic families and persons not in an economic family, the median after-tax income in Ontario was revised downward for each of the years. In general, the Atlantic Provinces experienced no statistically significant changes within this broad category. In Manitoba, both the median market income and the median after-tax income were revised upward in some years, while in Alberta, both medians were revised downward in some years (Tables 7.11 to 7.20).

While the revision brought about slight changes to the income estimates, as mentioned above, there was very little impact on the trends (Chart 4.1, 4.2 and 4.3). In general, the historical revision produced a time series that is comparable to the original ones, regardless of the economic family type analysed.

Chart 4.1

Comparison of revised and unrevised median after-tax income and median market income for economic families and persons not in an economic family, Canada, 2006 to 2013

2013 constant dollars



Source: Statistics Canada, Survey of Labour and Income Dynamics and Canadian Income Survey. CANSIM table 206-0011.

Chart 4.2**Comparison of revised and unrevised median after-tax income and median market income for economic families, Canada, 2006 to 2013**

2013 constant dollars

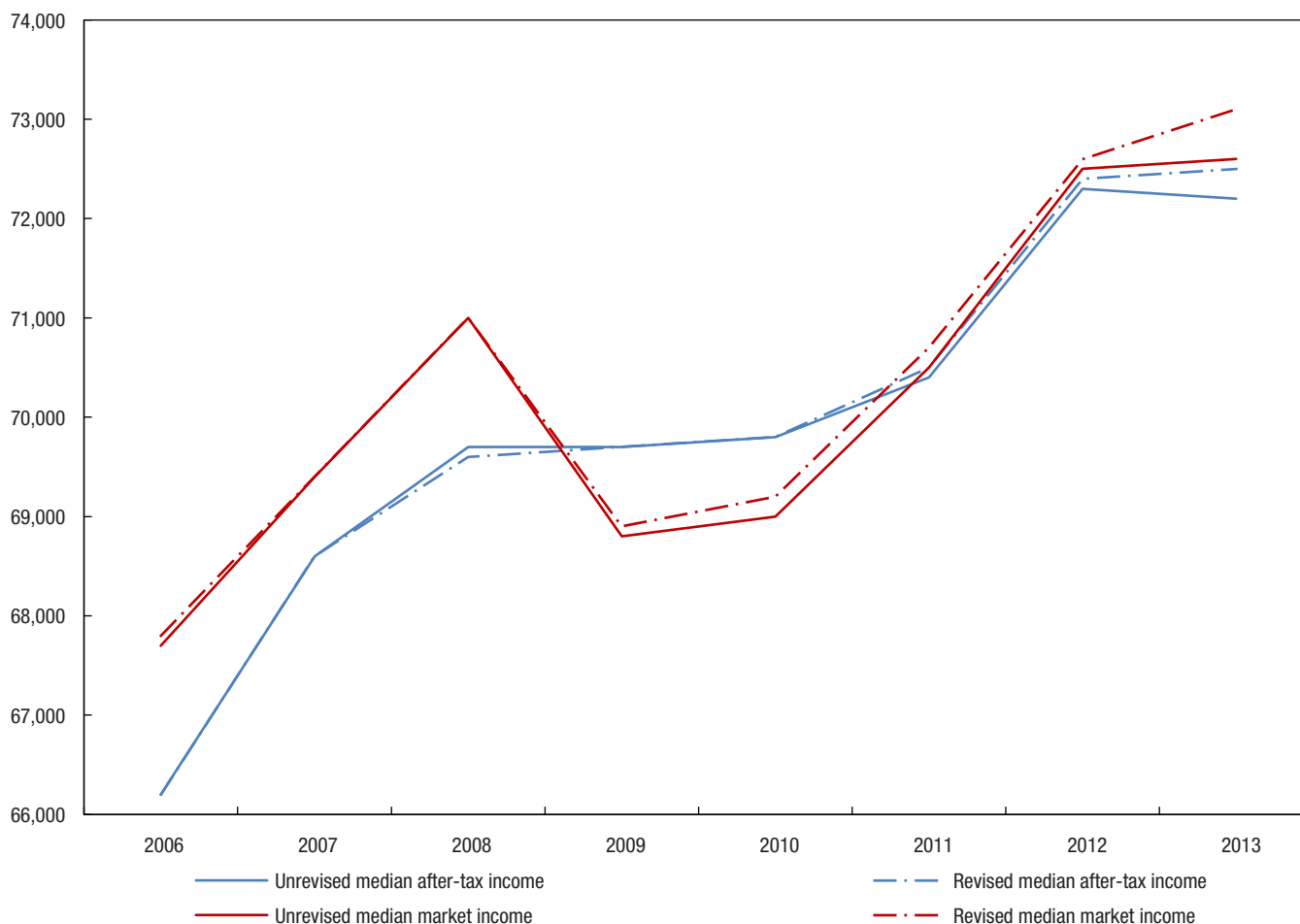
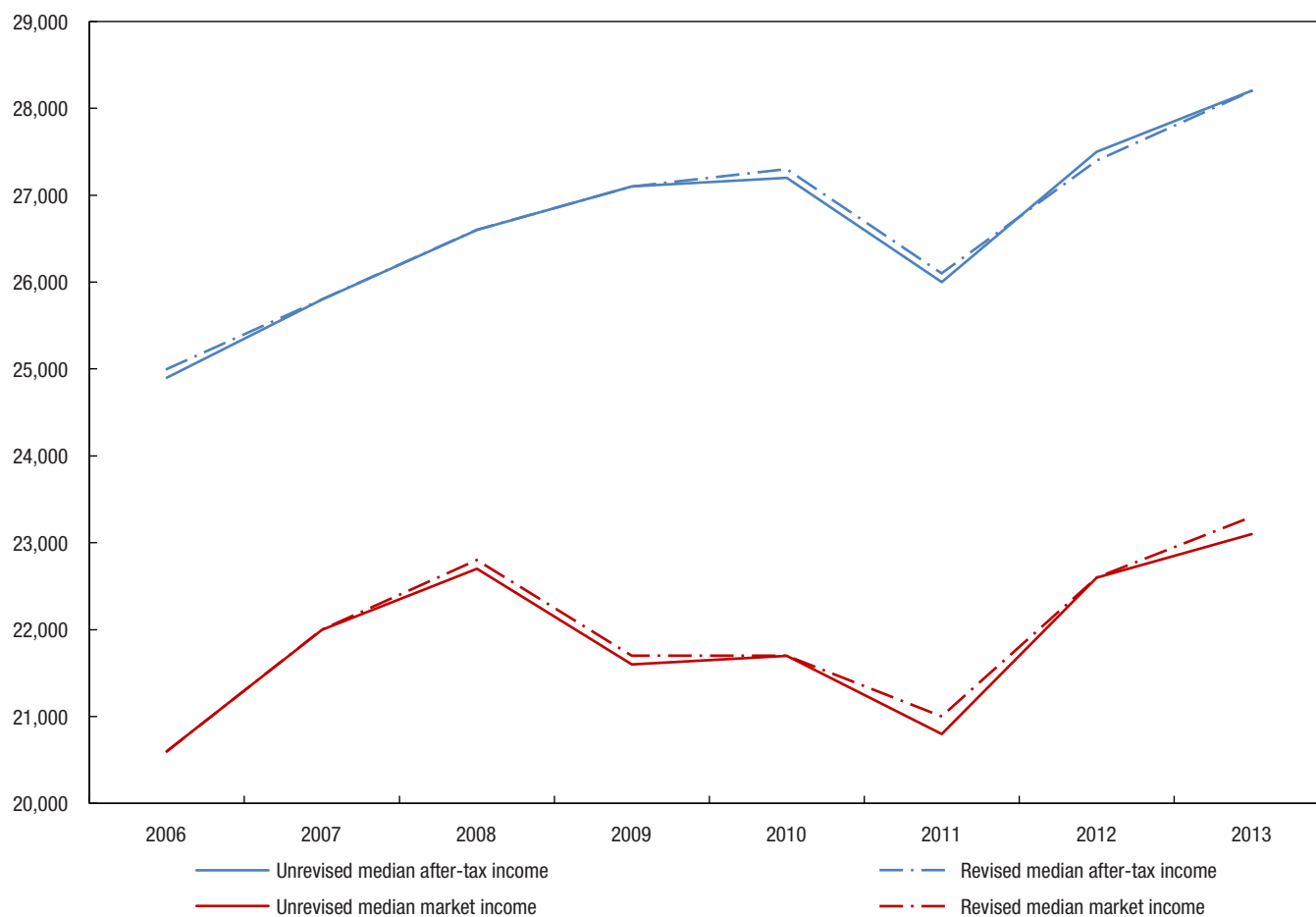
**Source:** Statistics Canada, Survey of Labour and Income Dynamics and Canadian Income Survey. CANSIM table 206-0011.

Chart 4.3
Comparison of revised and unrevised median after-tax income and median market income for persons not in an economic family, Canada, 2006 to 2013

2013 constant dollars



Source: Statistics Canada, Survey of Labour and Income Dynamics and Canadian Income Survey. CANSIM table 206-0011.

4.3 Low Income

Low income statistics can be produced using the following three low income lines (Statistics Canada, 2016b): Statistics Canada's Low Income Cut-offs (LICO) and Low Income Measure (LIM) as well as the Market Basket Measure³ (MBM) developed by Employment and Social Development Canada (EDSC).

In general, low income rates based on these measures for all persons were revised slightly (Table 4.3 and Chart 4.4). All three were similarly affected and all, in general, experienced either no change or only very small changes. At the Canada level, for all persons, the only low income rate that had a statistically significant change was the one using the LICO after-tax (LICO-AT) thresholds.

3. As part of the historical revision, the components of the MBM that use Census data for weighting purposes were also revised, for reference years 2011 to 2013, using the 2011 Census population counts (Hatfield et al., 2010). Additionally, a new region for Census Agglomerations with a population between 100,000 and 499,999 has been added in Alberta. Thresholds have been calculated for this region beginning in 2011.

Table 4.3

Comparison of unrevised and revised low income rates for all persons, Canada, 2009, 2011 and 2013

	2009			2011			2013		
	Unrevised	Revised	Change	Unrevised	Revised	Change	Unrevised	Revised	Change
	%		p.p.	%		p.p.	%		p.p.
Percentage of persons in low income									
Low Income Measure (LIM) after-tax	13.7	13.7	0.0	13.3	13.3	0.0	13.5	13.4	-0.1
Low Income Cut-offs (LICO) after-tax	10.1	10.1	0.0	9.6	9.6	0.0	9.7	9.8	0.1 [†]
Market Basket Measure (MBM)	12.7	12.7	0.0	12.6	12.7	0.1	12.1	12.1	0.0

[†] denotes changes that are statistically significant at the 95% confidence level.

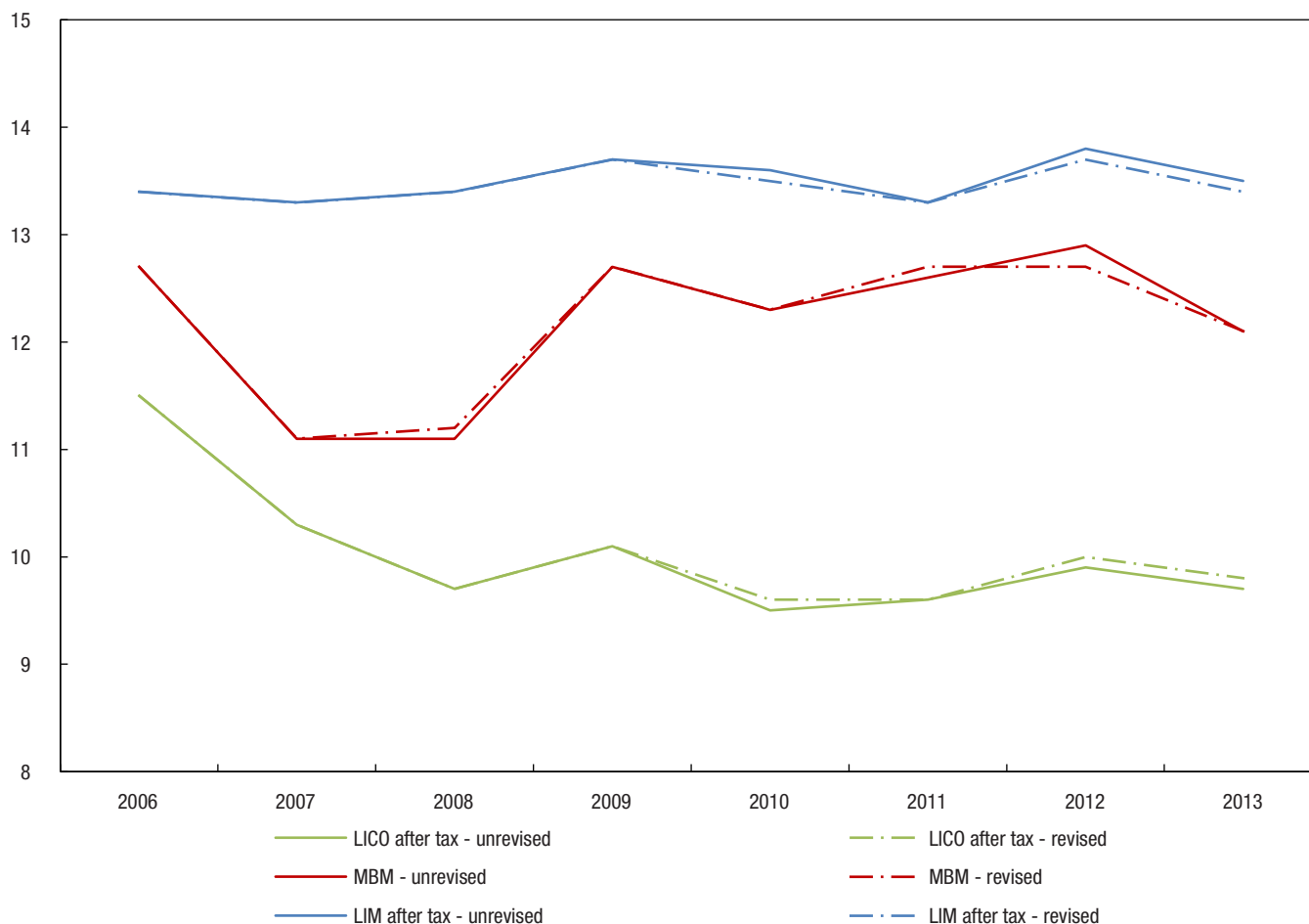
p.p. percentage points

Source: Statistics Canada, Survey of Labour and Income Dynamics and Canadian Income Survey. CANSIM table 206-0041.

Chart 4.4

Comparison of unrevised and revised low income rates for all persons, Canada, 2006 to 2013

rate (%)



Source: Statistics Canada, Survey of Labour and Income Dynamics and Canadian Income Survey. CANSIM table 206-0041.

The provincial low income statistics, for all the revised years, can be seen in Charts 6.1 to 6.10. Correspondingly, the numeric values for the provincial low income statistics for the selected reference years (2009, 2011 and 2013) can be found at the bottom of Tables 7.11 to 7.20. Over all the years, and for all persons, Nova Scotia (in 2013), Québec (in 2011) and Manitoba (in 2009 and 2013) were the only provinces that experienced a statistically significant change using all three measures of low income.

5.0 References

LaRoche, Sylvie (2007). "Longitudinal and Cross-Sectional Weighting of the Survey of Labour and Income Dynamics, 2003". Statistics Canada, Income Research Paper Series. Catalogue no. 75F0002MIE— no. 007, October 2007.

<http://www.statcan.gc.ca/pub/75f0002m/75f0002m2007007-eng.pdf>

Hatfield, Michael, Wendy Pyper and Burton Gustajtis. (2010). "First Comprehensive Review of the Market Basket Measure of Low Income". Applied Research Branch paper. Human Resources and Skills Development Canada. Summer.

<http://publications.gc.ca/site/eng/372293/publication.html>

Statistics Canada (2015a). Revisions to 2006 to 2011 income data. Catalogue no. 75F0002M, no. 3. December 17, 2015.

<http://www.statcan.gc.ca/pub/75f0002m/75f0002m2015003-eng.pdf>

Statistics Canada (2015b). Improvements to the Labour Force Survey (LFS), "The 2015 Revisions of the Labour Force Survey (LFS)". Catalogue no. 71F0031X. January 2015.

<http://www.statcan.gc.ca/pub/71f0031x/71f0031x2015001-eng.pdf>

Statistics Canada (2016a). "Population and Family Estimation Methods at Statistics Canada". Catalogue no. 91-528-X, March 2016.

<http://www.statcan.gc.ca/pub/91-528-x/91-528-x2015001-eng.pdf>

Statistics Canada (2016b). "Low Income Lines: What they are and how they are created". Catalogue no. 75F0002M, no. 2. July 2016.

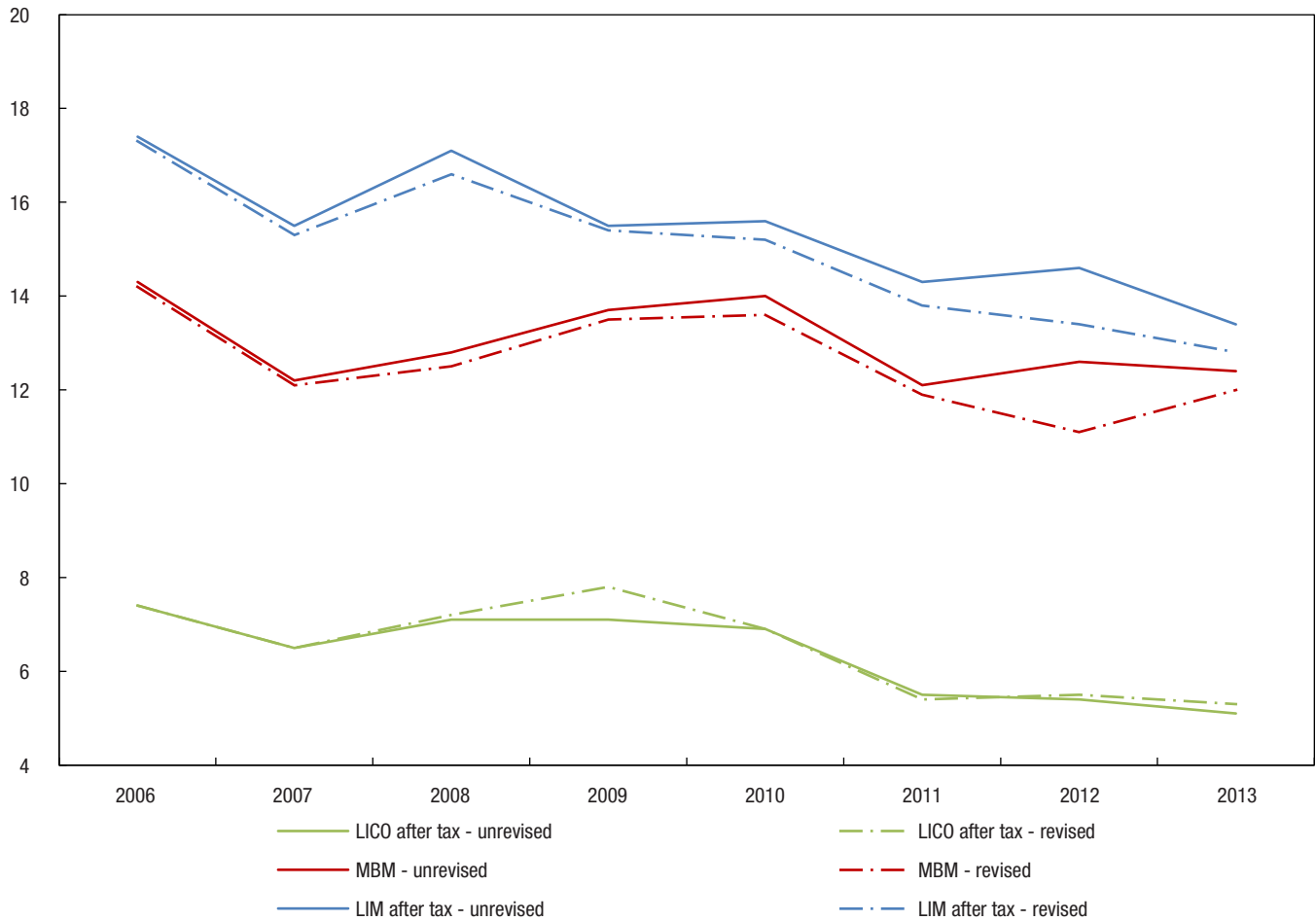
<http://www.statcan.gc.ca/pub/75f0002m/75f0002m2016002-eng.pdf>

Tremblay, J. (2005). "Aperçu de la stratégie de calage harmonisée des statistiques du revenu de Statistique Canada". Proceedings of the Survey Methods Section of the Annual Meeting of the Statistical Society of Canada, June 2005.

6.0 Charts

Chart 6.1
Comparison of unrevised and revised low income rates for all persons, Newfoundland and Labrador, 2006 to 2013

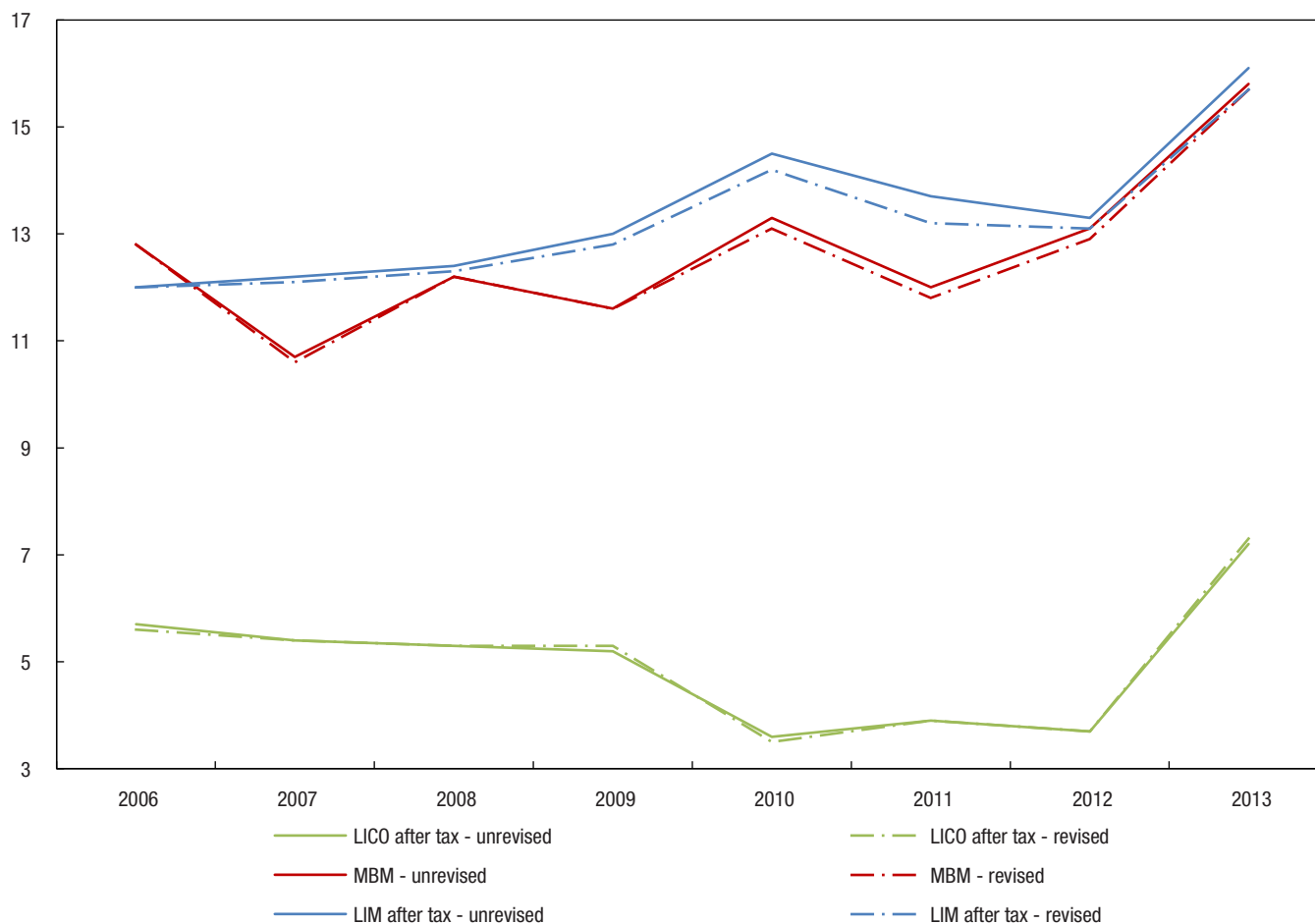
rate (%)



Source: Statistics Canada, Survey of Labour and Income Dynamics and Canadian Income Survey. CANSIM table 206-0041.

Chart 6.2
Comparison of unrevised and revised low income rates for all persons, Prince Edward Island, 2006 to 2013

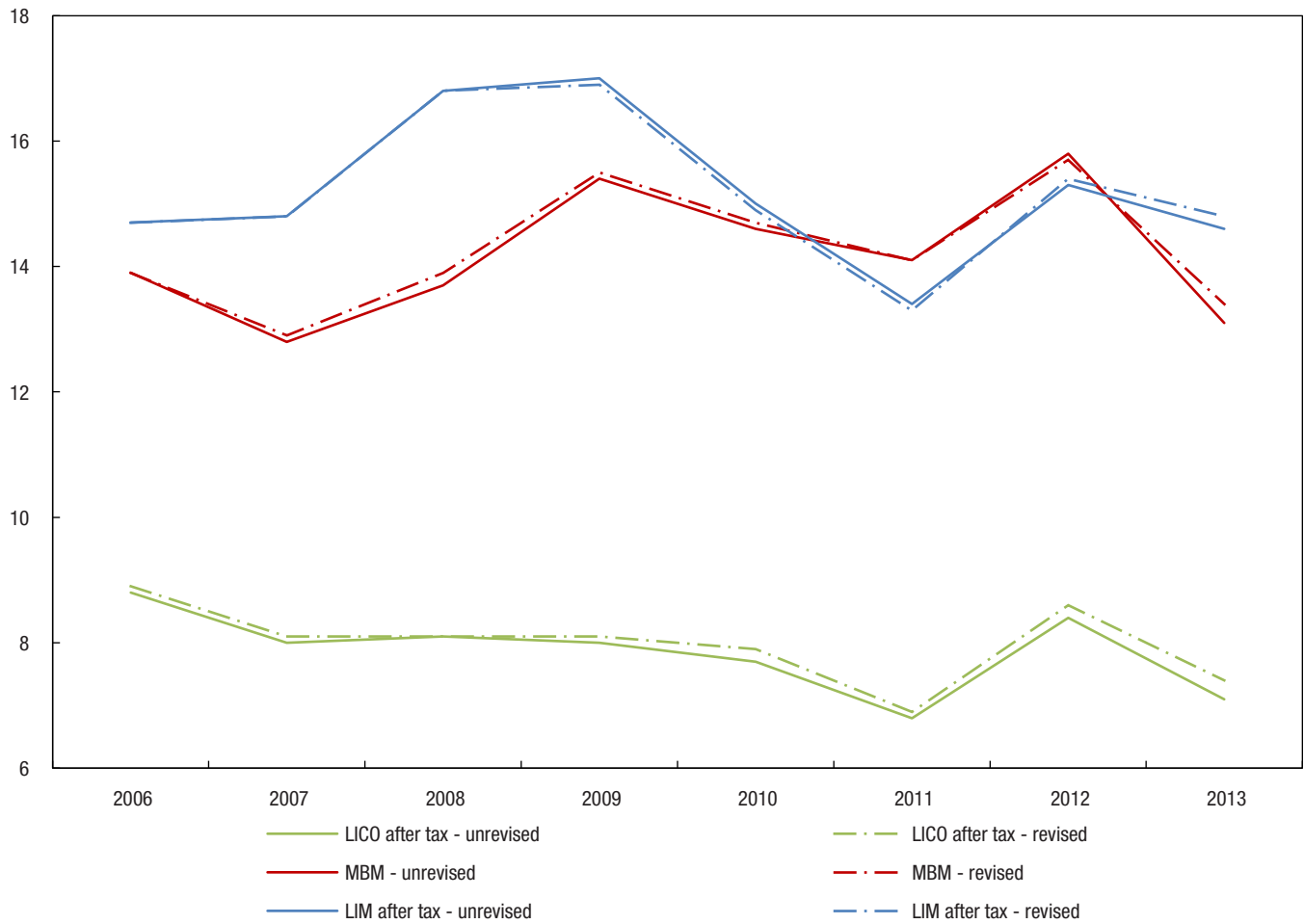
rate (%)



Source: Statistics Canada, Survey of Labour and Income Dynamics and Canadian Income Survey. CANSIM table 206-0041.

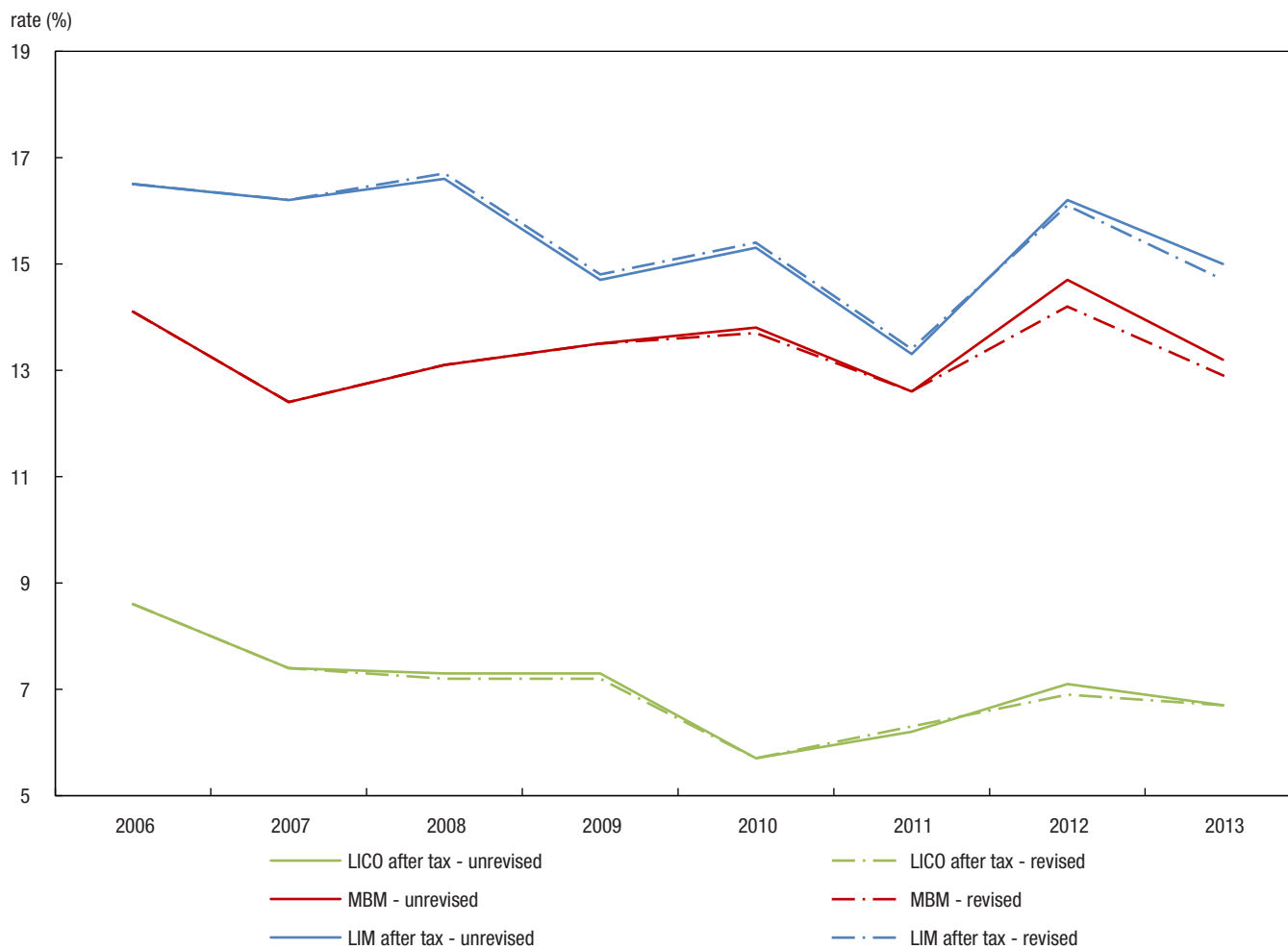
Chart 6.3
Comparison of unrevised and revised low income rates for all persons, Nova Scotia, 2006 to 2013

rate (%)



Source: Statistics Canada, Survey of Labour and Income Dynamics and Canadian Income Survey. CANSIM table 206-0041.

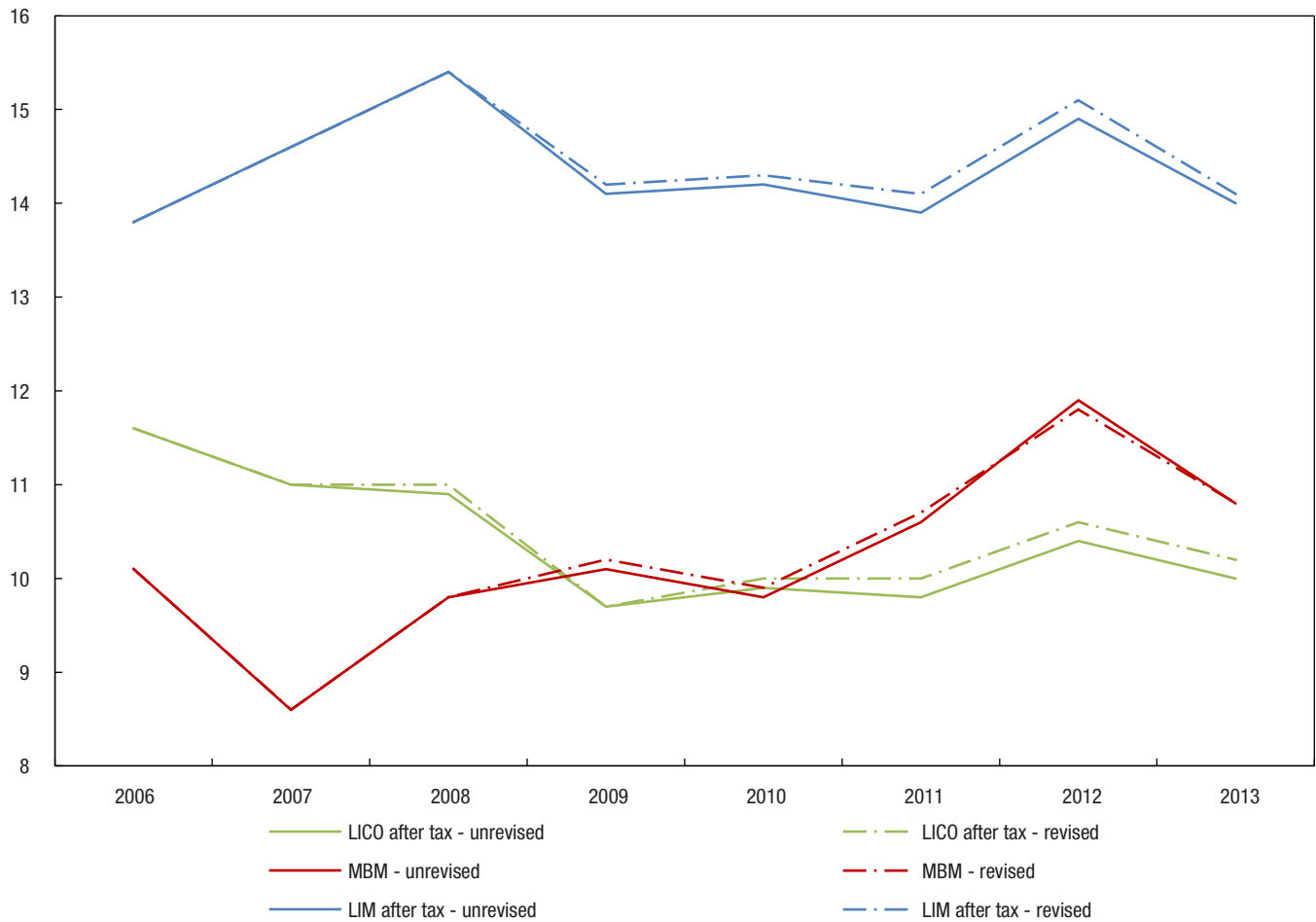
Chart 6.4
Comparison of unrevised and revised low income rates for all persons, New Brunswick, 2006 to 2013



Source: Statistics Canada, Survey of Labour and Income Dynamics and Canadian Income Survey. CANSIM table 206-0041.

Chart 6.5
Comparison of unrevised and revised low income rates for all persons, Quebec, 2006 to 2013

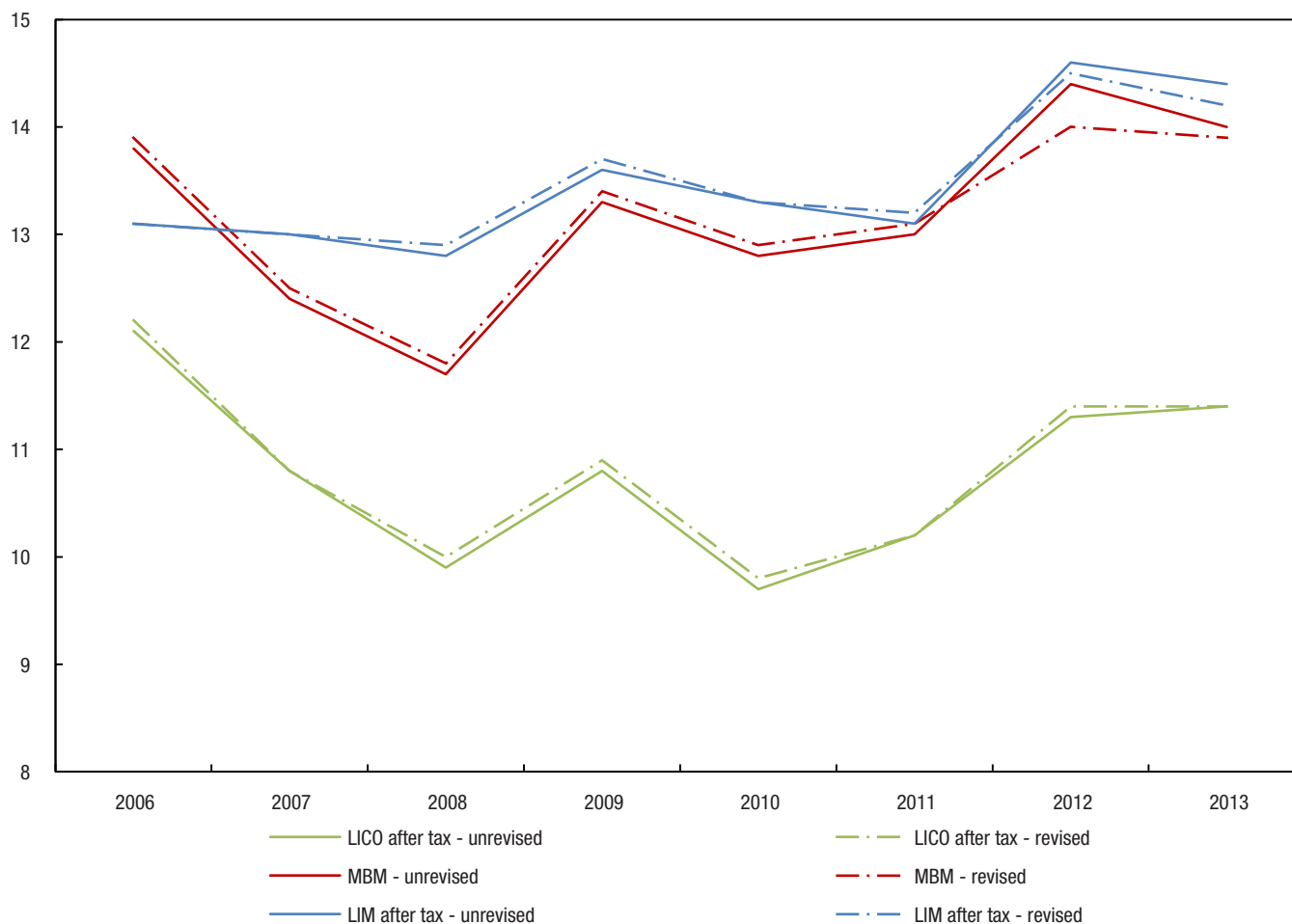
rate (%)



Source: Statistics Canada, Survey of Labour and Income Dynamics and Canadian Income Survey. CANSIM table 206-0041.

Chart 6.6
Comparison of unrevised and revised low income rates for all persons, Ontario, 2006 to 2013

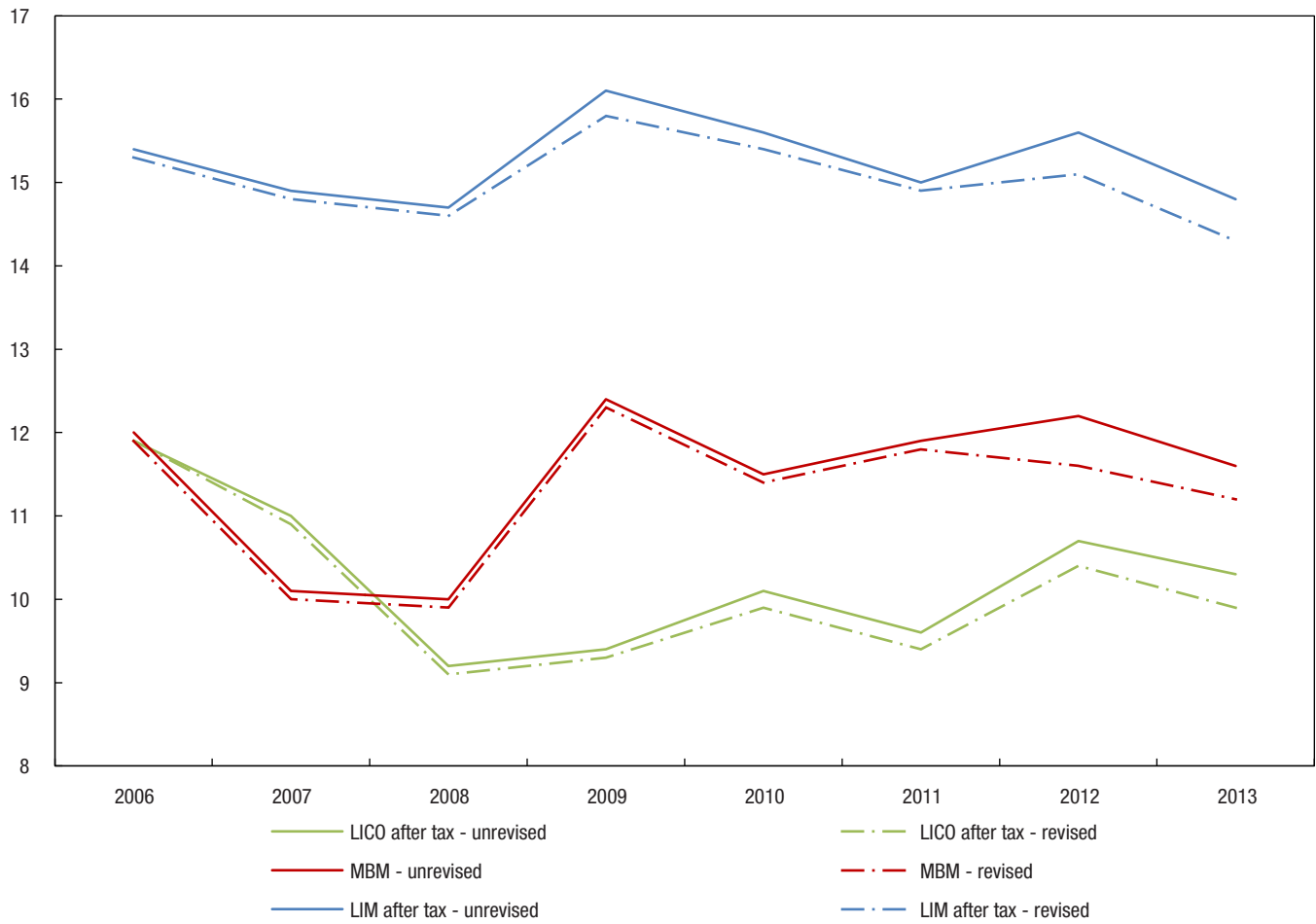
rate (%)



Source: Statistics Canada, Survey of Labour and Income Dynamics and Canadian Income Survey. CANSIM table 206-0041.

Chart 6.7
Comparison of unrevised and revised low income rates for all persons, Manitoba, 2006 to 2013

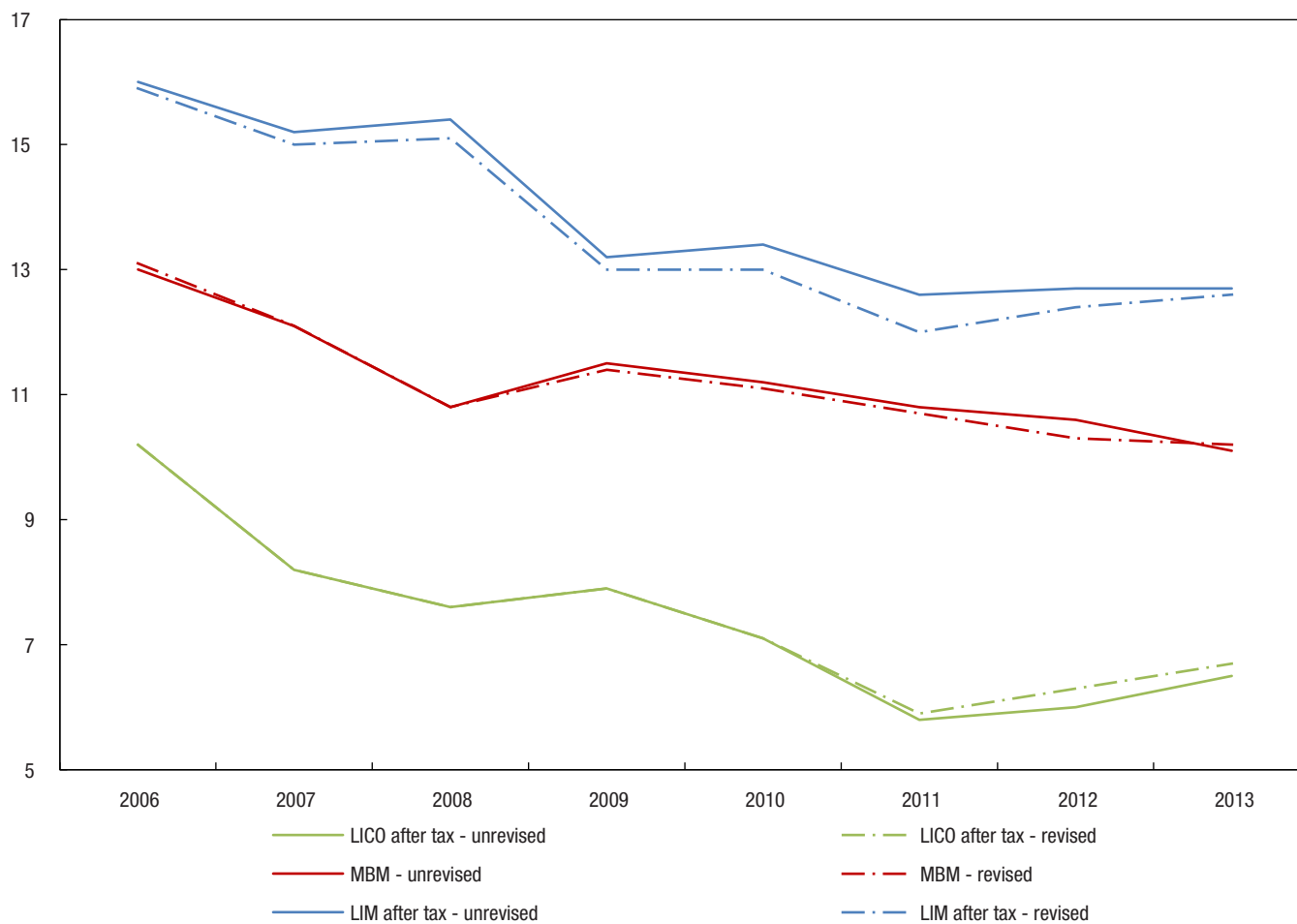
rate (%)



Source: Statistics Canada, Survey of Labour and Income Dynamics and Canadian Income Survey. CANSIM table 206-0041.

Chart 6.8
Comparison of unrevised and revised low income rates for all persons, Saskatchewan, 2006 to 2013

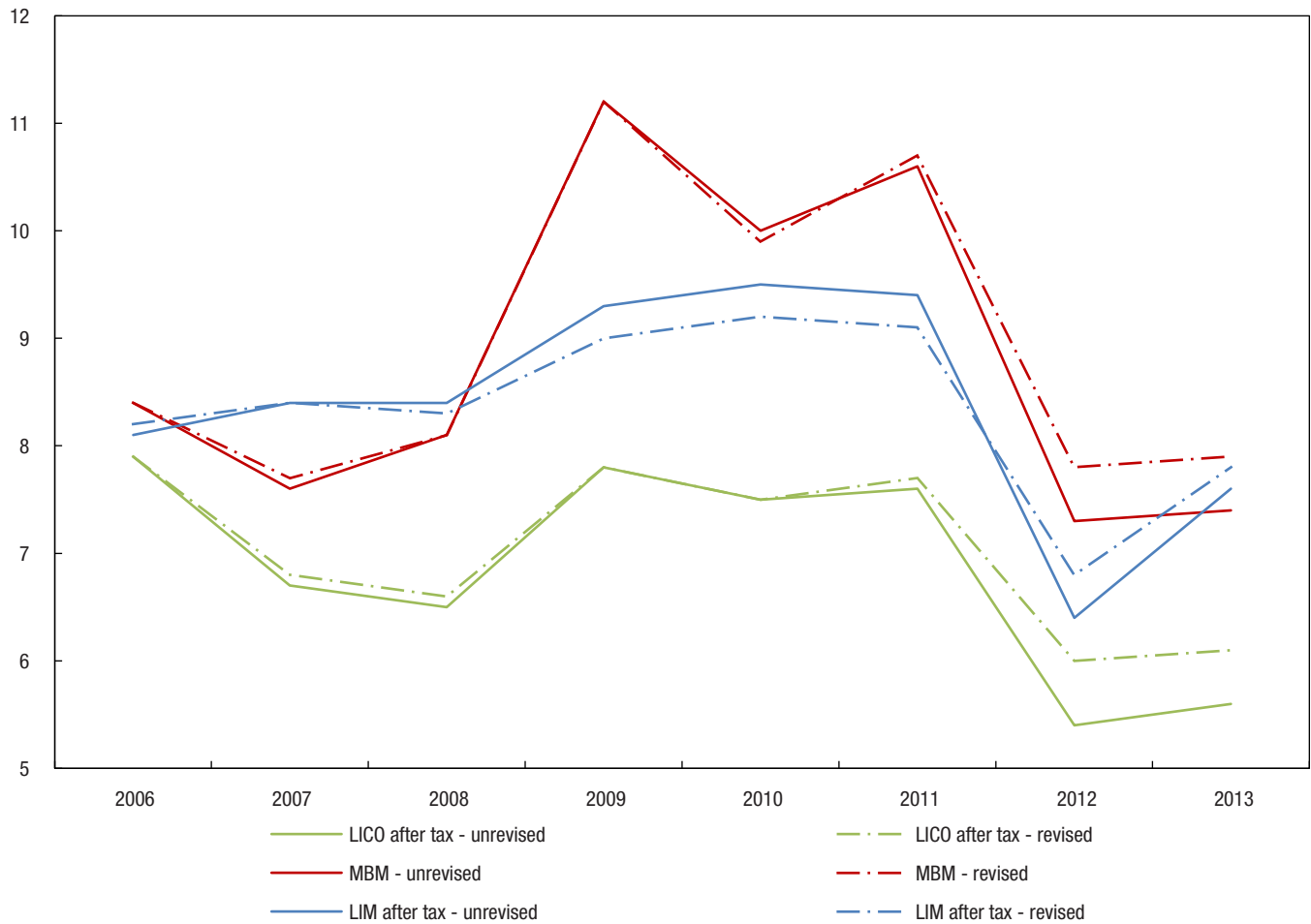
rate (%)



Source: Statistics Canada, Survey of Labour and Income Dynamics and Canadian Income Survey. CANSIM table 206-0041.

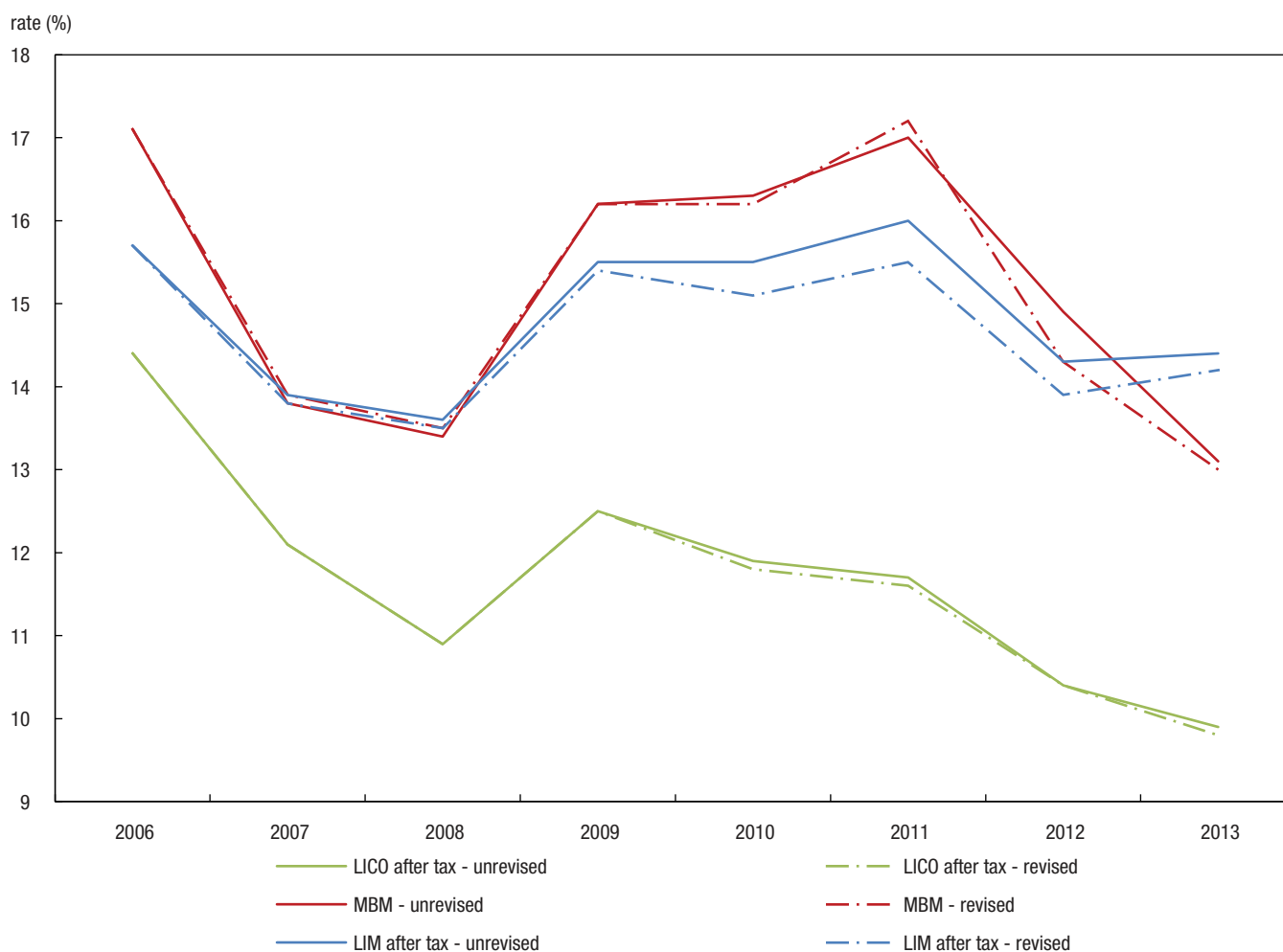
Chart 6.9
Comparison of unrevised and revised low income rates for all persons, Alberta, 2006 to 2013

rate (%)



Source: Statistics Canada, Survey of Labour and Income Dynamics and Canadian Income Survey. CANSIM table 206-0041.

Chart 6.10
Comparison of unrevised and revised low income rates for all persons, British Columbia, 2006 to 2013



Source: Statistics Canada, Survey of Labour and Income Dynamics and Canadian Income Survey. CANSIM table 206-0041.

7.0 Tables

Table 7.1

Comparison of revised and unrevised population estimates by economic family type, Newfoundland and Labrador, 2009, 2011 and 2013

	2009			2011			2013		
	Unrevised	Revised	Change	Unrevised	Revised	Change	Unrevised	Revised	Change
	('000)		%	('000)		%	('000)		%
Economic families and persons not in an economic family	503	512	1.8 [†]	503	518	3.0 [†]	504	520	3.2 [†]
Economic families	442	450	1.8 [†]	440	452	2.7 [†]	437	450	3.0 [†]
Elderly families	62	62	0.0	63	65	3.2	69	70	1.4
Elderly couples	45	46	2.2	49	50	2.0	55	55	0.0
Other elderly families	17	17	0.0	13	15	15.4	14	15	7.1
Non-elderly families	380	388	2.1 [†]	377	387	2.7 [†]	367	380	3.5 [†]
Couples	84	86	2.4 [†]	76	83	9.2 [†]	81	87	7.4 [†]
Couples with children	169	179	5.9 [†]	163	187	14.7 [†]	155	165	6.5 [†]
Couples with other relatives	61	62	1.6	60	58	-3.3	61	66	8.2
Lone-parent families	33	25	-24.2 [†]	36	17	-52.8 [†]	42	25	-40.5 [†]
Male lone-parent families	F	F	F	F	F	F	F	F	F
Female lone-parent families	28	21	-25.0 [†]	27	13	-51.9 [†]	34	20	-41.2 [†]
Other non-elderly families	34	36	5.9	43	41	-4.7	30	36	20.0
Persons not in an economic family	61	62	1.6 [†]	63	66	4.8 [†]	67	70	4.5 [†]
Elderly persons not in an economic family	16	15	-6.3	22	22	0.0	21	20	-4.8 [†]
Elderly males not in an economic family	F	F	F	7	6	-14.3	F	F	F
Elderly females not in an economic family	12	12	0.0	16	15	-6.3	15	14	-6.7
Non-elderly persons not in an economic family	45	47	4.4 [†]	41	45	9.8 [†]	46	50	8.7 [†]
Non-elderly males not in an economic family	25	26	4.0 [†]	22	25	13.6 [†]	26	28	7.7
Non-elderly females not in an economic family	20	21	5.0	18	20	11.1 [†]	20	22	10.0

F too unreliable to be published

† denotes changes that are statistically significant at the 95% confidence level

Source: Statistics Canada, Survey of Labour and Income Dynamics and Canadian Income Survey. CANSIM table 206-0011.

Table 7.2

Comparison of revised and unrevised population estimates by economic family type, Prince Edward Island, 2009, 2011 and 2013

	2009			2011			2013		
	Unrevised	Revised	Change	Unrevised	Revised	Change	Unrevised	Revised	Change
	('000)		%	('000)		%	('000)		%
Economic families and persons not in an economic family	139	138	-0.7 [†]	143	142	-0.7 [†]	144	143	-0.7 [†]
Economic families	120	119	-0.8 [†]	123	122	-0.8 [†]	123	123	0.0
Elderly families	16	15	-6.3 [†]	17	18	5.9 [†]	19	19	0.0
Elderly couples	12	12	0.0	13	13	0.0	13	13	0.0
Other elderly families	F	F	F	F	F	F	5	5	0.0
Non-elderly families	105	104	-1.0 [†]	106	105	-0.9 [†]	105	104	-1.0 [†]
Couples	19	20	5.3 [†]	20	20	0.0	23	23	0.0
Couples with children	51	51	0.0	49	49	0.0	52	53	1.9
Couples with other relatives	16	16	0.0	21	21	0.0	16	15	-6.3
Lone-parent families	9	9	0.0	8	7	-12.5	7	7	0.0
Male lone-parent families	F	F	F	F	F	F	F	F	F
Female lone-parent families	8	8	0.0	7	7	0.0	6	6	0.0
Other non-elderly families	9	9	0.0	8	8	0.0	6	6	0.0
Persons not in an economic family	19	19	0.0	20	20	0.0	20	21	5.0 [†]
Elderly persons not in an economic family	5	5	0.0	6	6	0.0	7	6	-14.3 [†]
Elderly males not in an economic family	F	F	F	F	F	F	F	F	F
Elderly females not in an economic family	4	4	0.0	4	4	0.0	4	4	0.0
Non-elderly persons not in an economic family	14	14	0.0	13	14	7.7 [†]	14	14	0.0
Non-elderly males not in an economic family	7	7	0.0	8	8	0.0	7	8	14.3
Non-elderly females not in an economic family	7	7	0.0	5	6	20.0 [†]	6	7	16.7 [†]

F too unreliable to be published

† denotes changes that are statistically significant at the 95% confidence level

Source: Statistics Canada, Survey of Labour and Income Dynamics and Canadian Income Survey. CANSIM table 206-0011.

Table 7.3

Comparison of revised and unrevised population estimates by economic family type, Nova Scotia, 2009, 2011 and 2013

	2009			2011			2013		
	Unrevised	Revised	Change	Unrevised	Revised	Change	Unrevised	Revised	Change
	('000)		%	('000)		%	('000)		%
Economic families and persons not in an economic family	914	912	-0.2 [†]	915	915	0.0	914	913	-0.1 [†]
Economic families	765	760	-0.7 [†]	764	759	-0.7 [†]	760	753	-0.9 [†]
Elderly families	109	107	-1.8 [†]	105	103	-1.9 [†]	122	120	-1.6 [†]
Elderly couples	81	80	-1.2 [†]	83	81	-2.4 [†]	88	86	-2.3 [†]
Other elderly families	28	27	-3.6	23	23	0.0	34	34	0.0
Non-elderly families	656	653	-0.5 [†]	658	655	-0.5 [†]	638	633	-0.8 [†]
Couples	151	151	0.0	151	151	0.0	149	148	-0.7 [†]
Couples with children	304	302	-0.7 [†]	297	296	-0.3 [†]	283	279	-1.4 [†]
Couples with other relatives	99	96	-3.0 [†]	99	97	-2.0 [†]	89	88	-1.1
Lone-parent families	48	50	4.2 [†]	48	48	0.0	46	47	2.2
Male lone-parent families	F	F	F	F	F	F	F	F	F
Female lone-parent families	42	44	4.8 [†]	41	40	-2.4 [†]	37	37	0.0
Other non-elderly families	54	54	0.0	63	63	0.0	71	71	0.0
Persons not in an economic family	149	151	1.3 [†]	151	156	3.3 [†]	154	160	3.9 [†]
Elderly persons not in an economic family	43	43	0.0	46	46	0.0	48	48	0.0
Elderly males not in an economic family	11	11	0.0	15	15	0.0	15	16	6.7
Elderly females not in an economic family	33	32	-3.0 [†]	31	31	0.0	33	33	0.0
Non-elderly persons not in an economic family	105	108	2.9 [†]	105	110	4.8 [†]	106	111	4.7 [†]
Non-elderly males not in an economic family	52	55	5.8 [†]	54	59	9.3 [†]	53	58	9.4 [†]
Non-elderly females not in an economic family	53	53	0.0	51	51	0.0	53	54	1.9 [†]

F too unreliable to be published

† denotes changes that are statistically significant at the 95% confidence level

Source: Statistics Canada, Survey of Labour and Income Dynamics and Canadian Income Survey. CANSIM table 206-0011.

Table 7.4

Comparison of revised and unrevised population estimates by economic family type, New Brunswick, 2009, 2011 and 2013

	2009			2011			2013		
	Unrevised	Revised	Change	Unrevised	Revised	Change	Unrevised	Revised	Change
	('000)		%	('000)		%	('000)		%
Economic families and persons not in an economic family	727	728	0.1 [†]	731	733	0.3 [†]	730	731	0.1 [†]
Economic families	621	623	0.3 [†]	623	625	0.3 [†]	618	620	0.3 [†]
Elderly families	84	83	-1.2 [†]	90	89	-1.1	100	100	0.0
Elderly couples	64	63	-1.6 [†]	68	68	0.0	72	72	0.0
Other elderly families	20	20	0.0	22	22	0.0	28	28	0.0
Non-elderly families	537	539	0.4 [†]	533	536	0.6 [†]	518	520	0.4 [†]
Couples	121	123	1.7 [†]	128	132	3.1 [†]	124	128	3.2 [†]
Couples with children	263	265	0.8 [†]	236	240	1.7 [†]	235	239	1.7 [†]
Couples with other relatives	76	75	-1.3 [†]	73	74	1.4	70	71	1.4
Lone-parent families	42	41	-2.4 [†]	52	47	-9.6 [†]	49	43	-12.2 [†]
Male lone-parent families	F	F	F	F	F	F	F	F	F
Female lone-parent families	38	37	-2.6 [†]	46	42	-8.7 [†]	42	37	-11.9 [†]
Other non-elderly families	35	35	0.0	42	43	2.4	39	40	2.6
Persons not in an economic family	106	105	-0.9 [†]	109	107	-1.8 [†]	112	110	-1.8 [†]
Elderly persons not in an economic family	28	28	0.0	33	33	0.0	34	33	-2.9 [†]
Elderly males not in an economic family	8	8	0.0	11	11	0.0	10	10	0.0
Elderly females not in an economic family	20	19	-5.0 [†]	22	22	0.0	24	23	-4.2 [†]
Non-elderly persons not in an economic family	78	77	-1.3 [†]	75	75	0.0	78	77	-1.3 [†]
Non-elderly males not in an economic family	39	40	2.6 [†]	39	39	0.0	44	45	2.3 [†]
Non-elderly females not in an economic family	39	38	-2.6 [†]	37	36	-2.7 [†]	34	32	-5.9 [†]

F too unreliable to be published

† denotes changes that are statistically significant at the 95% confidence level

Source: Statistics Canada, Survey of Labour and Income Dynamics and Canadian Income Survey. CANSIM table 206-0011.

Table 7.5

Comparison of revised and unrevised population estimates by economic family type, Québec, 2009, 2011 and 2013

	2009			2011			2013		
	Unrevised	Revised	Change	Unrevised	Revised	Change	Unrevised	Revised	Change
	('000)		%	('000)		%	('000)		%
Economic families and persons not in an economic family	7,694	7,727	0.4 [†]	7,842	7,890	0.6 [†]	7,975	8,024	0.6 [†]
Economic families	6,391	6,383	-0.1 [†]	6,504	6,483	-0.3 [†]	6,583	6,577	-0.1 [†]
Elderly families	812	810	-0.2 [†]	844	839	-0.6 [†]	871	873	0.2
Elderly couples	625	621	-0.6 [†]	646	641	-0.8 [†]	703	703	0.0
Other elderly families	188	189	0.5 [†]	198	197	-0.5	168	170	1.2
Non-elderly families	5,579	5,574	-0.1 [†]	5,660	5,644	-0.3 [†]	5,713	5,704	-0.2 [†]
Couples	1,125	1,121	-0.4 [†]	1,140	1,131	-0.8 [†]	1,196	1,187	-0.8 [†]
Couples with children	2,726	2,720	-0.2 [†]	2,768	2,754	-0.5 [†]	2,621	2,633	0.5
Couples with other relatives	707	712	0.7 [†]	770	777	0.9 [†]	763	786	3.0 [†]
Lone-parent families	451	452	0.2	401	400	-0.2	457	418	-8.5 [†]
Male lone-parent families	81	81	0.0	88	86	-2.3 [†]	130	119	-8.5
Female lone-parent families	371	371	0.0	314	315	0.3	327	299	-8.6 [†]
Other non-elderly families	570	569	-0.2	580	582	0.3	675	681	0.9
Persons not in an economic family	1,303	1,344	3.1 [†]	1,338	1,407	5.2 [†]	1,392	1,448	4.0 [†]
Elderly persons not in an economic family	345	358	3.8 [†]	365	389	6.6 [†]	424	444	4.7 [†]
Elderly males not in an economic family	96	98	2.1 [†]	115	122	6.1 [†]	130	137	5.4 [†]
Elderly females not in an economic family	249	260	4.4 [†]	250	267	6.8 [†]	294	307	4.4 [†]
Non-elderly persons not in an economic family	958	985	2.8 [†]	973	1,019	4.7 [†]	968	1,003	3.6 [†]
Non-elderly males not in an economic family	580	600	3.4 [†]	582	612	5.2 [†]	552	572	3.6 [†]
Non-elderly females not in an economic family	377	385	2.1 [†]	391	406	3.8 [†]	416	431	3.6 [†]

† denotes changes that are statistically significant at the 95% confidence level

Source: Statistics Canada, Survey of Labour and Income Dynamics and Canadian Income Survey. CANSIM table 206-0011.

Table 7.6

Comparison of revised and unrevised population estimates by economic family type, Ontario, 2009, 2011 and 2013

	2009			2011			2013		
	Unrevised	Revised	Change	Unrevised	Revised	Change	Unrevised	Revised	Change
	('000)		%	('000)		%	('000)		%
Economic families and persons not in an economic family	12,911	12,837	-0.6 [†]	13,188	13,112	-0.6 [†]	13,465	13,387	-0.6 [†]
Economic families	11,238	11,119	-1.1 [†]	11,462	11,320	-1.2 [†]	11,671	11,538	-1.1 [†]
Elderly families	1,262	1,243	-1.5 [†]	1,366	1,347	-1.4 [†]	1,521	1,507	-0.9 [†]
Elderly couples	868	860	-0.9 [†]	920	913	-0.8 [†]	1,009	1,003	-0.6 [†]
Other elderly families	394	383	-2.8 [†]	446	434	-2.7 [†]	512	504	-1.6 [†]
Non-elderly families	9,976	9,876	-1.0 [†]	10,096	9,973	-1.2 [†]	10,150	10,031	-1.2 [†]
Couples	1,532	1,501	-2.0 [†]	1,586	1,521	-4.1 [†]	1,544	1,483	-4.0 [†]
Couples with children	5,022	4,996	-0.5	5,111	5,068	-0.8 [†]	5,022	4,989	-0.7 [†]
Couples with other relatives	1,660	1,576	-5.1 [†]	1,610	1,570	-2.5 [†]	1,714	1,703	-0.6 [†]
Lone-parent families	639	711	11.3 [†]	628	686	9.2 [†]	665	679	2.1 [†]
Male lone-parent families	94	107	13.8 [†]	107	115	7.5 [†]	89	90	1.1
Female lone-parent families	545	604	10.8 [†]	521	571	9.6 [†]	576	588	2.1 [†]
Other non-elderly families	1,123	1,093	-2.7 [†]	1,160	1,127	-2.8 [†]	1,205	1,176	-2.4 [†]
Persons not in an economic family	1,673	1,718	2.7 [†]	1,726	1,792	3.8 [†]	1,794	1,849	3.1 [†]
Elderly persons not in an economic family	474	490	3.4 [†]	456	480	5.3 [†]	470	489	4.0 [†]
Elderly males not in an economic family	137	143	4.4 [†]	133	143	7.5 [†]	148	155	4.7 [†]
Elderly females not in an economic family	336	347	3.3 [†]	323	337	4.3 [†]	323	333	3.1 [†]
Non-elderly persons not in an economic family	1,199	1,228	2.4 [†]	1,270	1,312	3.3 [†]	1,323	1,361	2.9 [†]
Non-elderly males not in an economic family	687	700	1.9 [†]	750	768	2.4 [†]	763	770	0.9 [†]
Non-elderly females not in an economic family	512	529	3.3 [†]	520	544	4.6 [†]	560	590	5.4 [†]

† denotes changes that are statistically significant at the 95% confidence level

Source: Statistics Canada, Survey of Labour and Income Dynamics and Canadian Income Survey. CANSIM table 206-0011.

Table 7.7

Comparison of revised and unrevised population estimates by economic family type, Manitoba, 2009, 2011 and 2013

	2009			2011			2013		
	Unrevised	Revised	Change	Unrevised	Revised	Change	Unrevised	Revised	Change
	('000)		%	('000)		%	('000)		%
Economic families and persons not in an economic family	1,144	1,130	-1.2 [†]	1,173	1,157	-1.4 [†]	1,198	1,185	-1.1 [†]
Economic families	972	962	-1.0 [†]	998	986	-1.2 [†]	1,019	1,010	-0.9 [†]
Elderly families	104	103	-1.0 [†]	120	119	-0.8 [†]	128	127	-0.8 [†]
Elderly couples	82	81	-1.2 [†]	87	86	-1.1 [†]	99	98	-1.0 [†]
Other elderly families	22	23	4.5	32	33	3.1	29	29	0.0
Non-elderly families	868	859	-1.0 [†]	878	867	-1.3 [†]	891	883	-0.9 [†]
Couples	159	156	-1.9 [†]	160	154	-3.8 [†]	156	152	-2.6 [†]
Couples with children	437	435	-0.5 [†]	446	441	-1.1 [†]	441	440	-0.2
Couples with other relatives	117	117	0.0	120	122	1.7 [†]	122	125	2.5 [†]
Lone-parent families	83	80	-3.6 [†]	69	67	-2.9 [†]	78	72	-7.7 [†]
Male lone-parent families	F	F	F	12	11	-8.3	11	10	-9.1 [†]
Female lone-parent families	76	73	-3.9 [†]	57	56	-1.8	66	63	-4.5 [†]
Other non-elderly families	72	71	-1.4	83	82	-1.2 [†]	94	93	-1.1
Persons not in an economic family	172	167	-2.9 [†]	175	171	-2.3 [†]	179	175	-2.2 [†]
Elderly persons not in an economic family	54	53	-1.9 [†]	47	47	0.0	52	51	-1.9 [†]
Elderly males not in an economic family	18	18	0.0	13	13	0.0	15	15	0.0
Elderly females not in an economic family	36	35	-2.8 [†]	34	33	-2.9 [†]	37	36	-2.7 [†]
Non-elderly persons not in an economic family	118	114	-3.4 [†]	128	124	-3.1 [†]	127	124	-2.4 [†]
Non-elderly males not in an economic family	75	72	-4.0 [†]	77	74	-3.9 [†]	70	67	-4.3 [†]
Non-elderly females not in an economic family	43	43	0.0	51	51	0.0	57	57	0.0

F too unreliable to be published

† denotes changes that are statistically significant at the 95% confidence level

Source: Statistics Canada, Survey of Labour and Income Dynamics and Canadian Income Survey. CANSIM table 206-0011.

Table 7.8

Comparison of revised and unrevised population estimates by economic family type, Saskatchewan, 2009, 2011 and 2013

	2009			2011			2013		
	Unrevised	Revised	Change	Unrevised	Revised	Change	Unrevised	Revised	Change
	('000)		%	('000)		%	('000)		%
Economic families and persons not in an economic family	962	969	0.7 [†]	989	999	1.0 [†]	1,028	1,033	0.5 [†]
Economic families	807	814	0.9 [†]	830	835	0.6 [†]	865	865	0.0
Elderly families	96	95	-1.0	97	96	-1.0	106	105	-0.9
Elderly couples	80	79	-1.3 [†]	82	80	-2.4 [†]	85	84	-1.2
Other elderly families	16	16	0.0	15	16	6.7	21	22	4.8
Non-elderly families	711	718	1.0 [†]	733	739	0.8 [†]	759	760	0.1
Couples	149	148	-0.7	161	159	-1.2 [†]	156	153	-1.9 [†]
Couples with children	355	361	1.7 [†]	376	381	1.3 [†]	396	397	0.3
Couples with other relatives	91	100	9.9 [†]	77	86	11.7 [†]	75	83	10.7 [†]
Lone-parent families	73	66	-9.6 [†]	66	55	-16.7 [†]	60	51	-15.0 [†]
Male lone-parent families	F	F	F	F	F	F	F	F	F
Female lone-parent families	62	56	-9.7 [†]	56	48	-14.3 [†]	51	44	-13.7 [†]
Other non-elderly families	43	43	0.0	53	58	9.4 [†]	73	76	4.1
Persons not in an economic family	155	155	0.0	160	163	1.9 [†]	163	168	3.1 [†]
Elderly persons not in an economic family	48	48	0.0	48	48	0.0	50	48	-4.0 [†]
Elderly males not in an economic family	14	14	0.0	14	14	0.0	16	16	0.0
Elderly females not in an economic family	34	34	0.0	34	34	0.0	33	33	0.0
Non-elderly persons not in an economic family	107	108	0.9	111	115	3.6 [†]	113	120	6.2 [†]
Non-elderly males not in an economic family	65	65	0.0	70	72	2.9 [†]	64	69	7.8 [†]
Non-elderly females not in an economic family	43	43	0.0	42	43	2.4 [†]	49	51	4.1 [†]

F too unreliable to be published

† denotes changes that are statistically significant at the 95% confidence level

Source: Statistics Canada, Survey of Labour and Income Dynamics and Canadian Income Survey. CANSIM table 206-0011.

Table 7.9

Comparison of revised and unrevised population estimates by economic family type, Alberta, 2009, 2011 and 2013

	2009			2011			2013		
	Unrevised	Revised	Change	Unrevised	Revised	Change	Unrevised	Revised	Change
	('000)		%	('000)		%	('000)		%
Economic families and persons not in an economic family	3,595	3,606	0.3 [†]	3,715	3,735	0.5 [†]	3,955	3,961	0.2 [†]
Economic families	3,057	3,068	0.4 [†]	3,165	3,148	-0.5 [†]	3,402	3,358	-1.3 [†]
Elderly families	280	277	-1.1	281	272	-3.2 [†]	338	327	-3.3 [†]
Elderly couples	219	212	-3.2 [†]	222	211	-5.0 [†]	262	251	-4.2 [†]
Other elderly families	61	65	6.6	59	62	5.1	76	76	0.0
Non-elderly families	2,777	2,791	0.5 [†]	2,884	2,875	-0.3 [†]	3,064	3,031	-1.1 [†]
Couples	563	546	-3.0 [†]	563	528	-6.2 [†]	588	559	-4.9 [†]
Couples with children	1,455	1,471	1.1	1,462	1,477	1.0 [†]	1,602	1,607	0.3
Couples with other relatives	350	371	6.0 [†]	408	419	2.7 [†]	433	427	-1.4
Lone-parent families	133	114	-14.3 [†]	175	172	-1.7	135	137	1.5
Male lone-parent families	27	25	-7.4	25	23	-8.0 [†]	F	F	F
Female lone-parent families	105	89	-15.2 [†]	150	149	-0.7	109	109	0.0
Other non-elderly families	276	289	4.7 [†]	276	280	1.4	307	301	-2.0 [†]
Persons not in an economic family	538	539	0.2 [†]	550	587	6.7 [†]	553	603	9.0 [†]
Elderly persons not in an economic family	87	88	1.1	107	114	6.5 [†]	100	106	6.0 [†]
Elderly males not in an economic family	24	25	4.2	31	34	9.7 [†]	29	32	10.3 [†]
Elderly females not in an economic family	62	62	0.0	76	81	6.6 [†]	71	75	5.6 [†]
Non-elderly persons not in an economic family	451	451	0.0	444	473	6.5 [†]	453	497	9.7 [†]
Non-elderly males not in an economic family	284	277	-2.5 [†]	288	296	2.8 [†]	273	290	6.2 [†]
Non-elderly females not in an economic family	167	174	4.2 [†]	156	177	13.5 [†]	180	207	15.0 [†]

F too unreliable to be published

† denotes changes that are statistically significant at the 95% confidence level

Source: Statistics Canada, Survey of Labour and Income Dynamics and Canadian Income Survey. CANSIM table 206-0011.

Table 7.10

Comparison of revised and unrevised population estimates by economic family type, British Columbia, 2009, 2011 and 2013

	2009			2011			2013		
	Unrevised	Revised	Change	Unrevised	Revised	Change	Unrevised	Revised	Change
	('000)		%	('000)		%	('000)		%
Economic families and persons not in an economic family	4,373	4,312	-1.4 [†]	4,466	4,391	-1.7 [†]	4,545	4,470	-1.7 [†]
Economic families	3,660	3,599	-1.7 [†]	3,730	3,648	-2.2 [†]	3,787	3,704	-2.2 [†]
Elderly families	479	467	-2.5 [†]	498	479	-3.8 [†]	561	545	-2.9 [†]
Elderly couples	358	347	-3.1 [†]	358	343	-4.2 [†]	372	363	-2.4 [†]
Other elderly families	121	120	-0.8	140	136	-2.9 [†]	189	181	-4.2 [†]
Non-elderly families	3,181	3,131	-1.6 [†]	3,231	3,170	-1.9 [†]	3,227	3,159	-2.1 [†]
Couples	637	622	-2.4 [†]	639	619	-3.1 [†]	624	597	-4.3 [†]
Couples with children	1,566	1,559	-0.4 [†]	1,524	1,523	-0.1	1,544	1,526	-1.2 [†]
Couples with other relatives	399	382	-4.3 [†]	544	518	-4.8 [†]	488	470	-3.7 [†]
Lone-parent families	188	189	0.5	184	186	1.1	210	218	3.8 [†]
Male lone-parent families	F	F	F	F	F	F	42	44	4.8 [†]
Female lone-parent families	164	164	0.0	158	159	0.6	168	174	3.6 [†]
Other non-elderly families	390	379	-2.8 [†]	340	323	-5.0 [†]	361	348	-3.6 [†]
Persons not in an economic family	713	713	0.0	737	742	0.7 [†]	758	767	1.2 [†]
Elderly persons not in an economic family	166	163	-1.8 [†]	180	179	-0.6	200	199	-0.5
Elderly males not in an economic family	54	54	0.0	61	63	3.3	67	70	4.5 [†]
Elderly females not in an economic family	113	109	-3.5 [†]	119	115	-3.4 [†]	133	129	-3.0 [†]
Non-elderly persons not in an economic family	547	550	0.5 [†]	557	563	1.1 [†]	558	568	1.8 [†]
Non-elderly males not in an economic family	319	321	0.6 [†]	316	322	1.9 [†]	324	329	1.5 [†]
Non-elderly females not in an economic family	228	229	0.4	241	242	0.4	234	238	1.7 [†]

F too unreliable to be published

† denotes changes that are statistically significant at the 95% confidence level

Source: Statistics Canada, Survey of Labour and Income Dynamics and Canadian Income Survey. CANSIM table 206-0011.

Table 7.11

Comparison of revised and unrevised income and low-income estimates, Newfoundland and Labrador, 2009, 2011 and 2013

	2009			2011			2013		
	Unrevised	Revised	Change	Unrevised	Revised	Change	Unrevised	Revised	Change
	2013 constant dollars		%	2013 constant dollars		%	2013 constant dollars		%
Median market income									
Economic families and persons not in an economic family	35,900	35,900	0.0	39,100	39,400	0.8	47,400	46,600	-1.7
Economic families	48,100	48,200	0.2	52,000	55,200	6.2	59,900	61,400	2.5
Persons not in an economic family	12,700	12,600	-0.8	11,000	F	F	19,900	19,300	-3.0
Median government transfers									
Economic families and persons not in an economic family	12,700	12,900	1.6	12,300	12,500	1.6	10,500	10,600	1.0
Economic families	14,900	15,600	4.7 [†]	12,600	12,900	2.4	11,800	12,800	8.5
Persons not in an economic family	6,300	6,300	0.0	11,900	11,500	-3.4	7,200	7,200	0.0
Median total income									
Economic families and persons not in an economic family	51,600	52,000	0.8	51,300	51,800	1.0	60,100	60,100	0.0
Economic families	64,300	65,800	2.3	67,600	70,700	4.6 [†]	75,800	77,200	1.8
Persons not in an economic family	21,800	21,800	0.0	23,900	23,500	-1.7	31,200	30,900	-1.0
Median income tax									
Economic families and persons not in an economic family	4,300	4,300	0.0	4,900	5,000	2.0	7,000	6,800	-2.9
Economic families	6,400	6,400	0.0	7,700	7,900	2.6	9,400	9,300	-1.1
Persons not in an economic family	F	F	F	F	F	F	2,500	2,500	0.0
Median after-tax income									
Economic families and persons not in an economic family	47,900	48,000	0.2	47,200	47,300	0.2	53,200	53,500	0.6
Economic families	58,100	59,100	1.7	60,600	63,100	4.1 [†]	66,600	68,200	2.4
Persons not in an economic family	21,400	21,400	0.0	23,200	22,900	-1.3	28,700	27,900	-2.8
	Unrevised	Revised	Change	Unrevised	Revised	Change	Unrevised	Revised	Change
	%		p.p.	%		p.p.	%		p.p.
Percentage of persons in low income									
Low Income Measure (LIM) after-tax	15.5	15.4	-0.1	14.3	13.8	-0.5	13.4	12.8	-0.6
Low Income Cut-offs (LICO) after-tax	7.1	7.8	0.7 [†]	5.5	5.4	-0.1	5.1	5.3	0.2
Market Basket Measure (MBM)	13.7	13.5	-0.2	12.1	11.9	-0.2	12.4	12.0	-0.4

F too unreliable to be published

[†] denotes changes that are statistically significant at the 95% confidence level

p.p. percentage points

Sources: Statistics Canada, Survey of Labour and Income Dynamics and Canadian Income Survey. CANSIM tables 206-0011 and 206-0041.

Table 7.12

Comparison of revised and unrevised income and low-income estimates, Prince Edward Island, 2009, 2011 and 2013

	2009			2011			2013		
	Unrevised	Revised	Change	Unrevised	Revised	Change	Unrevised	Revised	Change
	2013 constant dollars		%	2013 constant dollars		%	2013 constant dollars		%
Median market income									
Economic families and persons not in an economic family	39,600	39,600	0.0	40,400	40,500	0.2	40,100	40,100	0.0
Economic families	54,900	55,100	0.4	55,200	55,200	0.0	61,600	61,000	-1.0
Persons not in an economic family	18,800	18,500	-1.6	18,100	18,200	0.6	18,800	20,300	8.0
Median government transfers									
Economic families and persons not in an economic family	10,700	10,400	-2.8	10,900	10,600	-2.8	11,200	11,400	1.8
Economic families	12,300	12,300	0.0	12,000	12,200	1.7	12,400	12,600	1.6
Persons not in an economic family	F	F	F	9,600	8,900	-7.3	8,200	8,100	-1.2
Median total income									
Economic families and persons not in an economic family	53,900	54,300	0.7	52,100	52,100	0.0	55,600	55,900	0.5
Economic families	68,100	68,300	0.3	70,300	70,300	0.0	75,300	75,100	-0.3
Persons not in an economic family	26,900	26,900	0.0	27,100	27,100	0.0	28,900	28,900	0.0
Median income tax									
Economic families and persons not in an economic family	5,100	5,100	0.0	5,800	5,800	0.0	6,500	6,500	0.0
Economic families	6,900	7,000	1.4	8,800	8,800	0.0	10,000	9,900	-1.0
Persons not in an economic family	2,500	2,600	4.0	3,200	3,400	6.3	3,200	3,200	0.0
Median after-tax income									
Economic families and persons not in an economic family	48,300	48,300	0.0	46,800	46,800	0.0	48,700	48,800	0.2
Economic families	61,000	61,200	0.3	61,400	61,400	0.0	64,900	64,900	0.0
Persons not in an economic family	24,600	24,600	0.0	24,200	24,300	0.4	25,600	25,700	0.4
	Unrevised	Revised	Change	Unrevised	Revised	Change	Unrevised	Revised	Change
	%		p.p.	%		p.p.	%		p.p.
Percentage of persons in low income									
Low Income Measure (LIM) after-tax	13.0	12.8	-0.2	13.7	13.2	-0.5 [†]	16.1	15.7	-0.4 [†]
Low Income Cut-offs (LICO) after-tax	5.2	5.3	0.1	3.9	3.9	0.0	7.2	7.3	0.1
Market Basket Measure (MBM)	11.6	11.6	0.0	12.0	11.8	-0.2	15.8	15.7	-0.1

F too unreliable to be published

[†] denotes changes that are statistically significant at the 95% confidence level

p.p. percentage points

Sources: Statistics Canada, Survey of Labour and Income Dynamics and Canadian Income Survey. CANSIM tables 206-0011 and 206-0041.

Table 7.13

Comparison of revised and unrevised income and low-income estimates, Nova Scotia, 2009, 2011 and 2013

	2009			2011			2013		
	Unrevised	Revised	Change	Unrevised	Revised	Change	Unrevised	Revised	Change
	2013 constant dollars		%	2013 constant dollars		%	2013 constant dollars		%
Median market income									
Economic families and persons not in an economic family	39,800	39,700	-0.3	41,700	41,300	-1.0	43,800	43,400	-0.9
Economic families	57,900	57,500	-0.7	62,800	62,800	0.0	62,600	62,500	-0.2
Persons not in an economic family	16,100	16,100	0.0	17,100	17,100	0.0	20,500	20,400	-0.5
Median government transfers									
Economic families and persons not in an economic family	6,500	6,400	-1.5	7,500	7,500	0.0	7,400	7,300	-1.4
Economic families	7,600	7,500	-1.3	8,700	8,600	-1.1	8,900	8,800	-1.1
Persons not in an economic family	F	F	F	6,400	6,300	-1.6	4,500	4,400	-2.2
Median total income									
Economic families and persons not in an economic family	49,900	49,400	-1.0	53,900	53,400	-0.9	53,500	53,200	-0.6
Economic families	67,500	67,200	-0.4	73,800	73,600	-0.3	74,600	74,300	-0.4
Persons not in an economic family	23,400	23,500	0.4	25,600	25,500	-0.4	29,300	29,200	-0.3
Median income tax									
Economic families and persons not in an economic family	4,700	4,600	-2.1	5,700	5,600	-1.8	5,900	5,900	0.0
Economic families	7,400	7,400	0.0	9,500	9,500	0.0	9,400	9,300	-1.1
Persons not in an economic family	F	F	F	2,100	2,100	0.0	2,400	2,300	-4.2
Median after-tax income									
Economic families and persons not in an economic family	45,700	45,300	-0.9	47,300	47,100	-0.4	47,600	47,200	-0.8
Economic families	60,300	59,600	-1.2	63,300	63,200	-0.2	64,300	64,300	0.0
Persons not in an economic family	22,400	22,400	0.0	23,500	23,400	-0.4	26,500	26,400	-0.4
	Unrevised	Revised	Change	Unrevised	Revised	Change	Unrevised	Revised	Change
	%		p.p.	%		p.p.	%		p.p.
Percentage of persons in low income									
Low Income Measure (LIM) after-tax	17.0	16.9	-0.1	13.4	13.3	-0.1	14.6	14.8	0.2†
Low Income Cut-offs (LICO) after-tax	8.0	8.1	0.1†	6.8	6.9	0.1	7.1	7.4	0.3†
Market Basket Measure (MBM)	15.4	15.5	0.1†	14.1	14.1	0.0	13.1	13.4	0.3†

F too unreliable to be published

† denotes changes that are statistically significant at the 95% confidence level

p.p. percentage points

Sources: Statistics Canada, Survey of Labour and Income Dynamics and Canadian Income Survey. CANSIM tables 206-0011 and 206-0041.

Table 7.14

Comparison of revised and unrevised income and low-income estimates, New Brunswick, 2009, 2011 and 2013

	2009			2011			2013		
	Unrevised	Revised	Change	Unrevised	Revised	Change	Unrevised	Revised	Change
	2013 constant dollars		%	2013 constant dollars		%	2013 constant dollars		%
Median market income									
Economic families and persons not in an economic family	38,500	38,600	0.3	39,800	40,100	0.8	39,900	40,100	0.5
Economic families	56,000	55,600	-0.7	55,500	56,200	1.3	56,400	56,900	0.9
Persons not in an economic family	16,900	16,900	0.0	16,800	16,800	0.0	19,000	18,800	-1.1
Median government transfers									
Economic families and persons not in an economic family	8,100	8,100	0.0	8,900	8,900	0.0	8,400	8,500	1.2
Economic families	9,500	9,500	0.0	10,000	10,000	0.0	10,600	10,600	0.0
Persons not in an economic family	5,900	5,900	0.0	7,100	7,400	4.2	F	F	F
Median total income									
Economic families and persons not in an economic family	50,000	50,000	0.0	51,100	51,300	0.4	51,300	51,600	0.6
Economic families	68,100	68,000	-0.1	68,200	68,600	0.6	68,800	68,900	0.1
Persons not in an economic family	24,500	24,500	0.0	24,800	24,700	-0.4	26,700	26,700	0.0
Median income tax									
Economic families and persons not in an economic family	4,600	4,600	0.0	5,000	5,100	2.0	5,300	5,400	1.9
Economic families	7,100	7,000	-1.4	7,500	7,600	1.3	8,000	8,100	1.3
Persons not in an economic family	F	F	F	1,500	1,500	0.0	2,100	2,100	0.0
Median after-tax income									
Economic families and persons not in an economic family	45,900	45,900	0.0	45,800	46,200	0.9	46,600	46,900	0.6
Economic families	60,500	60,500	0.0	62,000	62,300	0.5	60,700	61,000	0.5
Persons not in an economic family	23,200	23,200	0.0	23,300	23,100	-0.9	25,000	25,000	0.0
	Unrevised	Revised	Change	Unrevised	Revised	Change	Unrevised	Revised	Change
	%		p.p.	%		p.p.	%		p.p.
Percentage of persons in low income									
Low Income Measure (LIM) after-tax	14.7	14.8	0.1 [†]	13.3	13.4	0.1	15.0	14.7	-0.3 [†]
Low Income Cut-offs (LICO) after-tax	7.3	7.2	-0.1	6.2	6.3	0.1	6.7	6.7	0.0
Market Basket Measure (MBM)	13.5	13.5	0.0	12.6	12.6	0.0	13.2	12.9	-0.3 [†]

F too unreliable to be published

[†] denotes changes that are statistically significant at the 95% confidence level

p.p. percentage points

Sources: Statistics Canada, Survey of Labour and Income Dynamics and Canadian Income Survey. CANSIM tables 206-0011 and 206-0041.

Table 7.15

Comparison of revised and unrevised income and low-income estimates, Québec, 2009, 2011 and 2013

	2009			2011			2013		
	Unrevised	Revised	Change	Unrevised	Revised	Change	Unrevised	Revised	Change
	2013 constant dollars		%	2013 constant dollars		%	2013 constant dollars		%
Median market income									
Economic families and persons not in an economic family	41,000	40,700	-0.7	41,600	41,100	-1.2	41,800	41,400	-1.0 [†]
Economic families	61,200	61,000	-0.3	61,100	60,400	-1.1	62,600	62,700	0.2
Persons not in an economic family	19,300	19,300	0.0	20,000	20,000	0.0	19,700	19,400	-1.5
Median government transfers									
Economic families and persons not in an economic family	7,700	7,700	0.0	7,100	7,100	0.0	7,800	7,900	1.3
Economic families	9,100	9,100	0.0	8,100	8,100	0.0	9,000	9,000	0.0
Persons not in an economic family	F	F	F	4,700	4,900	4.3	4,600	4,700	2.2
Median total income									
Economic families and persons not in an economic family	51,500	51,000	-1.0 [†]	52,300	51,500	-1.5 [†]	53,300	52,700	-1.1 [†]
Economic families	71,600	71,300	-0.4	71,300	71,100	-0.3	74,800	75,100	0.4
Persons not in an economic family	25,900	25,900	0.0	27,700	27,600	-0.4	28,100	27,800	-1.1
Median income tax									
Economic families and persons not in an economic family	5,100	5,000	-2.0	5,900	5,700	-3.4 [†]	5,800	5,600	-3.4 [†]
Economic families	8,000	8,000	0.0	8,800	8,700	-1.1	9,600	9,600	0.0
Persons not in an economic family	1,700	1,700	0.0	2,200	2,200	0.0	1,900	1,800	-5.3
Median after-tax income									
Economic families and persons not in an economic family	46,300	45,800	-1.1 [†]	46,200	45,300	-1.9 [†]	47,400	47,000	-0.8
Economic families	63,000	62,800	-0.3	62,300	62,100	-0.3	64,900	65,000	0.2
Persons not in an economic family	24,700	24,700	0.0	25,300	25,300	0.0	25,800	25,800	0.0
	Unrevised	Revised	Change	Unrevised	Revised	Change	Unrevised	Revised	Change
	%		p.p.	%		p.p.	%		p.p.
Percentage of persons in low income									
Low Income Measure (LIM) after-tax	14.1	14.2	0.1	13.9	14.1	0.2 [†]	14.0	14.1	0.1
Low Income Cut-offs (LICO) after-tax	9.7	9.7	0.0	9.8	10.0	0.2 [†]	10.0	10.2	0.2 [†]
Market Basket Measure (MBM)	10.1	10.2	0.1 [†]	10.6	10.7	0.1 [†]	10.8	10.8	0.0

F too unreliable to be published

† denotes changes that are statistically significant at the 95% confidence level

p.p. percentage points

Sources: Statistics Canada, Survey of Labour and Income Dynamics and Canadian Income Survey. CANSIM tables 206-0011 and 206-0041.

Table 7.16

Comparison of revised and unrevised income and low-income estimates, Ontario, 2009, 2011 and 2013

	2009			2011			2013		
	Unrevised	Revised	Change	Unrevised	Revised	Change	Unrevised	Revised	Change
	2013 constant dollars		%	2013 constant dollars		%	2013 constant dollars		%
Median market income									
Economic families and persons not in an economic family	53,400	52,700	-1.3 [†]	51,700	51,200	-1.0	51,600	51,400	-0.4
Economic families	72,500	72,300	-0.3	72,700	72,800	0.1	73,800	73,900	0.1
Persons not in an economic family	21,300	21,300	0.0	20,100	20,200	0.5	23,100	24,000	3.9
Median government transfers									
Economic families and persons not in an economic family	5,700	5,600	-1.8	5,100	5,100	0.0	5,400	5,300	-1.9 [†]
Economic families	6,300	6,200	-1.6	6,200	6,200	0.0	7,100	7,100	0.0
Persons not in an economic family	F	F	F	1,700	1,700	0.0	1,600	1,500	-6.3
Median total income									
Economic families and persons not in an economic family	63,600	62,900	-1.1 [†]	62,100	61,800	-0.5	61,300	60,900	-0.7
Economic families	81,300	80,800	-0.6 [†]	82,500	82,400	-0.1	83,300	83,700	0.5 [†]
Persons not in an economic family	30,700	31,100	1.3	27,100	27,500	1.5	31,200	31,800	1.9
Median income tax									
Economic families and persons not in an economic family	6,400	6,300	-1.6 [†]	6,100	6,100	0.0	6,200	6,200	0.0
Economic families	8,800	8,800	0.0	9,300	9,400	1.1	9,300	9,400	1.1
Persons not in an economic family	2,600	2,700	3.8	1,900	2,000	5.3	2,500	2,600	4.0
Median after-tax income									
Economic families and persons not in an economic family	56,600	56,200	-0.7 [†]	55,900	55,200	-1.3 [†]	55,500	55,200	-0.5 [†]
Economic families	72,100	71,600	-0.7 [†]	73,100	73,000	-0.1	73,400	73,700	0.4
Persons not in an economic family	28,500	28,800	1.1	26,000	26,200	0.8	28,600	28,800	0.7
	Unrevised	Revised	Change	Unrevised	Revised	Change	Unrevised	Revised	Change
	%		p.p.	%		p.p.	%		p.p.
Percentage of persons in low income									
Low Income Measure (LIM) after-tax	13.6	13.7	0.1	13.1	13.2	0.1	14.4	14.2	-0.2 [†]
Low Income Cut-offs (LICO) after-tax	10.8	10.9	0.1	10.2	10.2	0.0	11.4	11.4	0.0
Market Basket Measure (MBM)	13.3	13.4	0.1 [†]	13.0	13.1	0.1 [†]	14.0	13.9	-0.1 [†]

F too unreliable to be published

† denotes changes that are statistically significant at the 95% confidence level

p.p. percentage points

Sources: Statistics Canada, Survey of Labour and Income Dynamics and Canadian Income Survey. CANSIM tables 206-0011 and 206-0041.

Table 7.17

Comparison of revised and unrevised income and low-income estimates, Manitoba, 2009, 2011 and 2013

	2009			2011			2013		
	Unrevised	Revised	Change	Unrevised	Revised	Change	Unrevised	Revised	Change
	2013 constant dollars		%	2013 constant dollars		%	2013 constant dollars		%
Median market income									
Economic families and persons not in an economic family	47,500	48,200	1.5 [†]	46,800	47,400	1.3	51,200	51,900	1.4
Economic families	69,300	69,700	0.6	69,600	70,900	1.9 [†]	72,200	73,100	1.2
Persons not in an economic family	21,300	21,800	2.3	23,800	23,900	0.4	24,500	25,300	3.3
Median government transfers									
Economic families and persons not in an economic family	4,500	4,400	-2.2	3,700	3,600	-2.7	4,500	4,400	-2.2
Economic families	5,400	5,300	-1.9	5,000	4,900	-2.0	5,300	5,300	0.0
Persons not in an economic family	F	F	F	1,300	1,300	0.0	F	F	F
Median total income									
Economic families and persons not in an economic family	57,100	57,400	0.5	56,500	57,100	1.1	60,400	61,000	1.0
Economic families	77,300	78,700	1.8	77,000	77,400	0.5	80,600	81,300	0.9
Persons not in an economic family	31,400	31,400	0.0	30,800	31,000	0.6	32,000	32,100	0.3
Median income tax									
Economic families and persons not in an economic family	6,300	6,500	3.2	6,600	6,800	3.0 [†]	7,100	7,300	2.8
Economic families	9,500	9,800	3.2 [†]	10,100	10,300	2.0	10,600	10,800	1.9
Persons not in an economic family	3,000	3,100	3.3	3,100	3,200	3.2	3,500	3,500	0.0
Median after-tax income									
Economic families and persons not in an economic family	50,300	50,900	1.2 [†]	50,300	50,600	0.6	52,800	53,500	1.3 [†]
Economic families	67,400	67,900	0.7	67,100	67,600	0.7	69,700	70,100	0.6
Persons not in an economic family	28,000	28,000	0.0	27,500	27,500	0.0	28,900	29,100	0.7
	Unrevised	Revised	Change	Unrevised	Revised	Change	Unrevised	Revised	Change
	%		p.p.	%		p.p.	%		p.p.
Percentage of persons in low income									
Low Income Measure (LIM) after-tax	16.1	15.8	-0.3 [†]	15.0	14.9	-0.1	14.8	14.3	-0.5 [†]
Low Income Cut-offs (LICO) after-tax	9.4	9.3	-0.1 [†]	9.6	9.4	-0.2 [†]	10.3	9.9	-0.4 [†]
Market Basket Measure (MBM)	12.4	12.3	-0.1 [†]	11.9	11.8	-0.1	11.6	11.2	-0.4 [†]

F too unreliable to be published

† denotes changes that are statistically significant at the 95% confidence level

p.p. percentage points

Sources: Statistics Canada, Survey of Labour and Income Dynamics and Canadian Income Survey. CANSIM tables 206-0011 and 206-0041.

Table 7.18

Comparison of revised and unrevised income and low-income estimates, Saskatchewan, 2009, 2011 and 2013

	2009			2011			2013		
	Unrevised	Revised	Change	Unrevised	Revised	Change	Unrevised	Revised	Change
	2013 constant dollars		%	2013 constant dollars		%	2013 constant dollars		%
Median market income									
Economic families and persons not in an economic family	51,500	52,000	1.0	53,500	53,200	-0.6	56,500	55,500	-1.8
Economic families	76,300	77,800	2.0 [†]	78,600	80,000	1.8 [†]	80,800	81,400	0.7
Persons not in an economic family	19,300	19,100	-1.0	25,500	25,300	-0.8	27,100	26,300	-3.0
Median government transfers									
Economic families and persons not in an economic family	3,900	3,900	0.0	3,900	3,900	0.0	3,200	3,000	-6.3
Economic families	4,300	4,300	0.0	4,600	4,800	4.3	3,900	3,800	-2.6
Persons not in an economic family	F	F	F	F	F	F	F	F	F
Median total income									
Economic families and persons not in an economic family	57,900	58,400	0.9	61,300	61,300	0.0	65,600	64,900	-1.1
Economic families	84,900	86,800	2.2 [†]	87,100	88,600	1.7 [†]	88,700	89,700	1.1
Persons not in an economic family	27,800	27,500	-1.1	32,400	32,200	-0.6	33,600	32,800	-2.4
Median income tax									
Economic families and persons not in an economic family	5,800	5,900	1.7	6,700	6,600	-1.5	7,100	7,000	-1.4
Economic families	9,700	9,900	2.1	10,800	11,100	2.8 [†]	10,800	10,900	0.9
Persons not in an economic family	F	F	F	2,800	2,700	-3.6	2,700	2,600	-3.7
Median after-tax income									
Economic families and persons not in an economic family	51,900	52,500	1.2	54,100	54,100	0.0	57,600	56,800	-1.4
Economic families	75,000	76,000	1.3	75,900	77,500	2.1 [†]	77,300	78,200	1.2
Persons not in an economic family	26,400	26,100	-1.1	29,600	29,500	-0.3	30,400	30,100	-1.0
	Unrevised	Revised	Change	Unrevised	Revised	Change	Unrevised	Revised	Change
	%		p.p.	%		p.p.	%		p.p.
Percentage of persons in low income									
Low Income Measure (LIM) after-tax	13.2	13.0	-0.2 [†]	12.6	12.0	-0.6 [†]	12.7	12.6	-0.1
Low Income Cut-offs (LICO) after-tax	7.9	7.9	0.0	5.8	5.9	0.1	6.5	6.7	0.2 [†]
Market Basket Measure (MBM)	11.5	11.4	-0.1	10.8	10.7	-0.1	10.1	10.2	0.1

F too unreliable to be published

† denotes changes that are statistically significant at the 95% confidence level

p.p. percentage points

Sources: Statistics Canada, Survey of Labour and Income Dynamics and Canadian Income Survey. CANSIM tables 206-0011 and 206-0041.

Table 7.19

Comparison of revised and unrevised income and low-income estimates, Alberta, 2009, 2011 and 2013

	2009			2011			2013		
	Unrevised	Revised	Change	Unrevised	Revised	Change	Unrevised	Revised	Change
	2013 constant dollars		%	2013 constant dollars		%	2013 constant dollars		%
Median market income									
Economic families and persons not in an economic family	67,000	67,500	0.7	67,300	65,700	-2.4 [†]	76,100	73,200	-3.8 [†]
Economic families	91,400	93,400	2.2 [†]	94,400	94,900	0.5	100,500	100,500	0.0
Persons not in an economic family	35,700	35,700	0.0	29,700	29,600	-0.3	37,000	36,500	-1.4
Median government transfers									
Economic families and persons not in an economic family	1,700	1,700	0.0	1,400	1,400	0.0	1,200	1,200	0.0
Economic families	2,900	2,900	0.0	2,500	2,500	0.0	2,400	2,400	0.0
Persons not in an economic family	400	400	0.0	400	400	0.0	300	300	0.0
Median total income									
Economic families and persons not in an economic family	74,500	74,800	0.4	74,600	72,300	-3.1 [†]	83,400	81,300	-2.5 [†]
Economic families	98,700	100,500	1.8 [†]	100,800	101,600	0.8	107,300	107,300	0.0
Persons not in an economic family	39,100	39,000	-0.3	36,200	35,900	-0.8	41,400	40,200	-2.9
Median income tax									
Economic families and persons not in an economic family	8,800	9,000	2.3	8,900	8,600	-3.4	10,300	9,900	-3.9 [†]
Economic families	12,200	12,400	1.6	13,500	13,500	0.0	14,700	14,700	0.0
Persons not in an economic family	4,000	4,000	0.0	3,500	3,500	0.0	4,400	4,200	-4.5
Median after-tax income									
Economic families and persons not in an economic family	64,300	64,400	0.2	64,500	63,200	-2.0 [†]	70,700	69,400	-1.8 [†]
Economic families	84,900	86,800	2.2 [†]	86,500	86,700	0.2	91,500	91,500	0.0
Persons not in an economic family	33,900	33,900	0.0	32,700	32,600	-0.3	36,400	35,600	-2.2
	Unrevised	Revised	Change	Unrevised	Revised	Change	Unrevised	Revised	Change
	%		p.p.	%		p.p.	%		p.p.
Percentage of persons in low income									
Low Income Measure (LIM) after-tax	9.3	9.0	-0.3 [†]	9.4	9.1	-0.3 [†]	7.6	7.8	0.2
Low Income Cut-offs (LICO) after-tax	7.8	7.8	0.0	7.6	7.7	0.1 [†]	5.6	6.1	0.5 [†]
Market Basket Measure (MBM)	11.2	11.2	0.0	10.6	10.7	0.1	7.4	7.9	0.5 [†]

† denotes changes that are statistically significant at the 95% confidence level

p.p. percentage points

Sources: Statistics Canada, Survey of Labour and Income Dynamics and Canadian Income Survey. CANSIM tables 206-0011 and 206-0041.

Table 7.20

Comparison of revised and unrevised income and low-income estimates, British Columbia, 2009, 2011 and 2013

	2009			2011			2013		
	Unrevised	Revised	Change	Unrevised	Revised	Change	Unrevised	Revised	Change
	2013 constant dollars		%	2013 constant dollars		%	2013 constant dollars		%
Median market income									
Economic families and persons not in an economic family	47,000	47,100	0.2	45,600	45,600	0.0	50,800	50,800	0.0
Economic families	69,400	69,600	0.3	70,400	71,100	1.0	73,200	73,500	0.4
Persons not in an economic family	24,100	24,600	2.1	19,100	19,300	1.0	23,700	24,300	2.5
Median government transfers									
Economic families and persons not in an economic family	3,900	3,900	0.0	4,700	4,500	-4.3 [†]	4,100	3,900	-4.9 [†]
Economic families	5,100	5,100	0.0	5,500	5,500	0.0	5,800	5,800	0.0
Persons not in an economic family	F	F	F	F	F	F	F	F	F
Median total income									
Economic families and persons not in an economic family	56,400	56,400	0.0	54,900	55,400	0.9	60,200	60,000	-0.3
Economic families	80,900	81,300	0.5	79,800	80,800	1.3	83,300	83,700	0.5
Persons not in an economic family	29,000	29,200	0.7	26,000	26,500	1.9	31,000	31,500	1.6
Median income tax									
Economic families and persons not in an economic family	4,400	4,500	2.3	4,400	4,500	2.3	5,500	5,600	1.8
Economic families	7,300	7,400	1.4	8,000	8,200	2.5 [†]	8,600	8,700	1.2
Persons not in an economic family	1,400	1,500	7.1	F	F	F	2,000	2,100	5.0
Median after-tax income									
Economic families and persons not in an economic family	51,400	51,400	0.0	49,800	49,800	0.0	53,900	53,900	0.0
Economic families	72,800	73,100	0.4	71,800	73,000	1.7 [†]	74,100	74,300	0.3
Persons not in an economic family	27,600	27,700	0.4	24,200	24,200	0.0	28,400	28,600	0.7
	Unrevised	Revised	Change	Unrevised	Revised	Change	Unrevised	Revised	Change
	%		p.p.	%		p.p.	%		p.p.
Percentage of persons in low income									
Low Income Measure (LIM) after-tax	15.5	15.4	-0.1	16.0	15.5	-0.5 [†]	14.4	14.2	-0.2
Low Income Cut-offs (LICO) after-tax	12.5	12.5	0.0	11.7	11.6	-0.1	9.9	9.8	-0.1 [†]
Market Basket Measure (MBM)	16.2	16.2	0.0	17.0	17.2	0.2	13.1	13.0	-0.1

F too unreliable to be published

[†] denotes changes that are statistically significant at the 95% confidence level

p.p. percentage points

Sources: Statistics Canada, Survey of Labour and Income Dynamics and Canadian Income Survey. CANSIM tables 206-0011 and 206-0041.