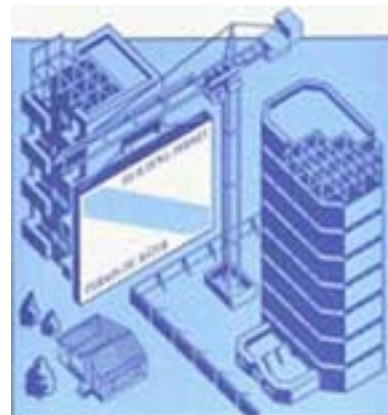




Catalogue no. 64-001-XIE

# Building permits

September 2005



Statistics  
Canada

Statistique  
Canada

Canada

## How to obtain more information

Specific inquiries about this product and related statistics or services should be directed to: Current investment indicators section, Investment and capital stock division, Statistics Canada, Ottawa, Ontario, K1A 0T6 (telephone: (613) 951-4646).

For information on the wide range of data available from Statistics Canada, you can contact us by calling one of our toll free numbers. You can also contact us by e-mail or by visiting our website.

National inquiries line **1 800 263-1136**

National telecommunications device for the hearing impaired **1 800 363-7629**

Depository Services Program inquiries **1 800 700-1033**

Fax line for Depository Services Program **1 800 889-9734**

E-mail inquiries ***infostats@statcan.ca***

Website ***www.statcan.ca***

## Ordering and subscription information

This product, Catalogue no. 64-001-XIE, is published monthly in electronic format on the Statistics Canada Internet site at a single price of CAN\$15.00 per issue (PDF) and CAN\$156.00 for a one-year subscription (HTML). To obtain single issues or to subscribe, visit our website at ***www.statcan.ca***, and select Products and Services.

## Standards of service to the public

Statistics Canada is committed to serving its clients in a prompt, reliable and courteous manner and in the official language of their choice. To this end, the Agency has developed *standards of service* which its employees observe in serving its clients. To obtain a copy of these service standards, please contact Statistics Canada toll free at 1 800 263-1136. The service standards are also published on ***www.statcan.ca*** under About Statistics Canada > Providing services to Canadians.



Statistics Canada  
Investment and capital stock division  
Current investment indicators section

# Building permits

September 2005

Published by authority of the Minister responsible for Statistics Canada

© Minister of Industry, 2005

All rights reserved. Use of this product is limited to the licensee and its employees. The product cannot be reproduced and transmitted to any person or organization outside of the licensee's organization.

Reasonable rights of use of the content of this product are granted solely for personal, corporate or public policy research, or educational purposes. This permission includes the use of the content in analyses and the reporting of results and conclusions, including the citation of limited amounts of supporting data extracted from the data product in these documents. These materials are solely for non-commercial purposes. In such cases, the source of the data must be acknowledged as follows: Source (or "Adapted from", if appropriate): Statistics Canada, name of product, catalogue, volume and issue numbers, reference period and page(s). Otherwise, users shall seek prior written permission of Licensing Services, Marketing Division, Statistics Canada, Ottawa, Ontario, Canada, K1A 0T6.

November 2005

Catalogue no. 64-001-XIE, Vol. 49, No. 9

ISSN 1480-7475

Frequency: Monthly

Ottawa

La version française de cette publication est disponible sur demande (n° 64-001-XIF au catalogue).

---

## **Note of appreciation**

*Canada owes the success of its statistical system to a long standing partnership between Statistics Canada, the citizens of Canada, its businesses, governments and other institutions. Accurate and timely statistical information could not be produced without their continued cooperation and goodwill.*

# User information

---

## Symbols

The following standard symbols are used in Statistics Canada publications:

- . not available for any reference period
- .. not available for a specific reference period
- ... not applicable
- 0 true zero or a value rounded to zero
- 0<sup>s</sup> value rounded to 0 (zero) where there is a meaningful distinction between true zero and the value that was rounded
- p preliminary
- r revised
- x suppressed to meet the confidentiality requirements of the *Statistics Act*
- E use with caution
- F too unreliable to be published

## Acknowledgements

This publication was prepared under the direction of:

- P. Koumanakos, Director, Investment and Capital Stock Division
- M. Labonté, Chief, Current Investment Indicators Section
- É. Saint-Pierre, Unit Head, Residential Sector, Current Investment Indicators
- D. Legault, Programmer-Analyst, Current Investment Indicators Section

## Important notice

Changes in boundaries, status or names of geographical entities that occurred before January 2005, are reflected in this publication. These geographical changes may be obtained by writing to:

Statistics Canada  
Investment and Capital Stock Division  
Current Investment Indicators Section  
9 D-2, Jean Talon Building  
Tunney's Pasture  
Ottawa, Ontario  
K1A 0T6  
or by telephoning: (613) 951-4646

# Table of contents

---

|  |           |
|--|-----------|
| <b>Highlights</b>  | <b>5</b>  |
| <b>Analysis – September 2005</b>   | <b>6</b>  |
| Residential sector: Rebound in the multi-family component  | 6         |
| Non-residential: Declines in institutional and industrial intentions   | 7         |
| <b>Related products</b>  | <b>12</b> |
| <b>Statistical tables</b>  |           |
| <b>1</b> Total value of building permits, provinces and territories, seasonally adjusted   | 15        |
| <b>2</b> Non-residential value of building permits, provinces and territories, seasonally adjusted   | 15        |
| <b>3</b> Residential value of building permits, provinces and territories, seasonally adjusted   | 16        |
| <b>4</b> Number of dwelling units authorized, province and territories, seasonally adjusted at annual rate                                       | 16        |
| <b>5</b> Dwelling units, value of residential and non-residential building permits, provinces and territories, seasonally adjusted, 2005         | 17        |
| <b>6</b> Dwelling units, value of residential and non-residential building permits, census metropolitan areas, seasonally adjusted, 2005         | 19        |
| <b>7</b> Dwelling units, provinces and territories, unadjusted, 2005   | 22        |
| <b>8</b> Dwelling units, census metropolitan areas, unadjusted, September 2005   | 24        |
| <b>9</b> Dwelling units, census metropolitan areas, unadjusted, cumulative, January - September 2005   | 25        |
| <b>10</b> Value of residential and non-residential building permits, provinces and territories, Unadjusted, 2005                                 | 26        |
| <b>11</b> Value of residential and non-residential building permits, census metropolitan areas, unadjusted, September 2005                       | 28        |
| <b>12</b> Value of residential and non-residential building permits, census metropolitan areas, unadjusted, cumulative, January - September 2005 | 29        |
| <b>13</b> Value of the non-residential permits by type of building, provinces and territories, September 2005                                    | 30        |
| <b>Data quality, concepts and methodology</b>  |           |
| Description - Monthly survey of building permits   | 31        |
| Data source and methodology  | 32        |
| Concepts and variables measured  | 34        |
| Building categories  | 35        |
| Data accuracy  | 37        |
| Comparability of data and related sources  | 38        |

## Table of contents – continued

### Appendix

|                               |    |
|-------------------------------|----|
| I. Geographical abbreviations | 39 |
|-------------------------------|----|

### Charts

|   |    |
|---|----|
| 1. Total value of building permits                          | 8  |
| 2. Residential value of building permits - Total            | 8  |
| 3. Number of dwelling units - Single and multiple           | 9  |
| 4. Non residential value of building permits - Total        | 9  |
| 5. Commercial value of building permits                     | 10 |
| 6. Industrial value of building permits                     | 10 |
| 7. Institutional and governmental value of building permits | 11 |

## Highlights

---

- The value of building permits retreated in September from the record high a month earlier, despite an on-going gain in the value of construction intentions in the housing sector. Contractors took out \$5.1 billion in permits in September, down 5.3% from August.

## Analysis – September 2005

---

The value of building permits retreated in September from the record high a month earlier, despite an on-going gain in the value of construction intentions in the housing sector.

Contractors took out \$5.1 billion in permits in September, down 5.3% from August. A plunge in non-residential intentions far offset the fifth monthly gain in the housing sector during the last six months.

The value of non-residential permits totalled \$1.9 billion, down 17.1% from the record \$2.3 billion reached in August. A strong decline in institutional permits was behind the drop. Even so, the value of non-residential construction intentions remained 20.2% above the average monthly level last year.

### Note to readers

Unless otherwise stated, this release presents seasonally adjusted data, which ease comparisons by removing the effects of seasonal variations.

The Building Permits Survey covers 2,380 municipalities representing 95% of the population. It provides an early indication of building activity. The communities representing the other 5% of the population are very small, and their levels of building activity have little impact on the total.

The value of planned construction activities shown in this release excludes engineering projects (e.g., waterworks, sewers or culverts) and land.

In the housing sector, municipalities issued \$3.3 billion in permits, up 3.2% from August, thanks to gains in both the single- and multi-family components.

On a year-to-date basis, the total value of building permits reached \$45.2 billion between January and September, up 10.7% from the first nine months of 2004.

In the non-residential sector, permits have been on an upward trend since the beginning of 2004. So far this year, contractors have taken out \$16.8 billion in industrial, institutional and commercial permits, up a resounding 24.2% from the same period last year, the result of massive investment projects in several provinces.

The value of proposed non-residential projects has already surpassed last year's annual total in five provinces: Newfoundland and Labrador, Prince Edward Island, Saskatchewan, Alberta and British Columbia.

In the residential sector, the cumulative value of permits is up 4.1% so far this year to \$28.4 billion. However, this gain was the result of the increase in the price of new dwellings. The number of new units approved since the beginning of the year has declined 3.3% to 175,560, compared with the first nine month of 2004.

Regionally, year-to-date gains (in dollars) in building permits in Calgary, Edmonton and Vancouver have largely surpassed increases in all other census metropolitan areas. In Calgary and Edmonton, the strength came from both housing and non-residential permits. In Vancouver, the non-residential sector solely fuelled the advance.

### Residential sector: Rebound in the multi-family component

The value of multi-family permits reached \$1.2 billion in September, an 8.3% rebound from August. This gain followed two consecutive monthly declines.

At the same time, the value of single-family permits edged up 0.6%. Over the last quarter, the monthly value of single-family dwellings has changed little at around \$2.1 billion.



Advantageous mortgage rates have combined with the favourable employment situation to have a positive impact on the housing sector. However, September's plunge in consumer confidence, higher costs for utilities and the anticipation of rising mortgage rates might have started to erode the demand for new dwellings.

Except for Alberta and British Columbia, every province recorded advances in the value of housing permits in September. The largest gain came from Quebec, where the value of multi-family dwellings rebounded after an important decline in August.

Despite the decline in the value of housing permits in Alberta and British Columbia in September, the numbers remained high when compared with 2004. On a year-to-date basis, the largest increase in the value of housing permits came from Alberta (+22.3%) and British Columbia (+12.0%).

The high price tag associated with the purchase of a new single-family dwelling has induced a shift in demand. The demand for new single-family dwellings has definitely slowed as the number of new units approved has fallen for a third consecutive quarter.

The number of new single-family units approved between January and September declined 6.5% compared with the same period last year. On the other hand, the number of multi-family units was up 0.5%.

New multi-family dwellings represented 48.3% of all units approved since the beginning of the year, their highest share since 1982.

### **Non-residential: Declines in institutional and industrial intentions**

The 17.1% decline in non-residential permits in September was the result of retreats in two sectors: industrial and institutional.

Institutional permits fell 47.5% to \$401 million, their lowest level in eight months. This followed an exceptional month in August, which was largely the result of big medical projects in Ontario. As a result, the value of institutional permits in Ontario plunged 69.5% to \$148 million, the largest drop among the provinces.

Industrial intentions tumbled 22.1% to \$346 million, with the biggest decline in communication and utility buildings. Again, Ontario posted the largest decline in industrial intentions, a 28.7% decrease to \$136 million.

Commercial intentions rose 7.0% in September to \$1.1 billion, the third highest level on record. This came on the heels of a 31.0% gain in August. September's increase was mainly the result of gains in hotels, restaurants and recreational buildings. Ontario recorded the strongest gain in this component.

Non-residential permits fell in 14 out of the 28 census metropolitan areas, Ottawa recording the strongest decrease. In August, Ottawa had the biggest gain, thanks to a rise in construction intentions in the medical building category. The largest increase in September occurred in Hamilton, the result of a strong gain in the warehouse category.

Provincially, the largest decrease (in dollars) in September occurred in Ontario where the value plunged 24.5% to \$806 million, but still remained 11.3% higher than the average monthly level in 2004. Only Nova Scotia and Saskatchewan recorded increases.

Contractors took out \$16.8 billion worth of non-residential permits between January and September, up 24.2% from the same period of 2004. The rise was due to the increases in all three components. The commercial sector experienced the biggest gain, surging 23.5% to \$9.2 billion.

Permits for industrial projects moved up 27.4% to \$3.0 billion, while intentions in the institutional sector rose 23.6% to \$4.6 billion.

Several factors served to maintain a fertile environment for construction intentions: strength in retail sales, lower vacancy rates for office buildings in the past few quarters, favourable interest rates and record profits posted by large corporations. Furthermore, manufacturers are slightly more bullish about production prospects for the last quarter of 2005, according to the latest Business Condition Survey.

Among the provinces, the largest cumulative increase in the non-residential sector was in Alberta where intentions recorded an outstanding 80.0% rise to \$3.0 billion. The strength was widespread across the province. The strongest decrease occurred in Quebec where intentions fell 6.6% to \$2.6 billion.

Chart 1

Total value of building permits

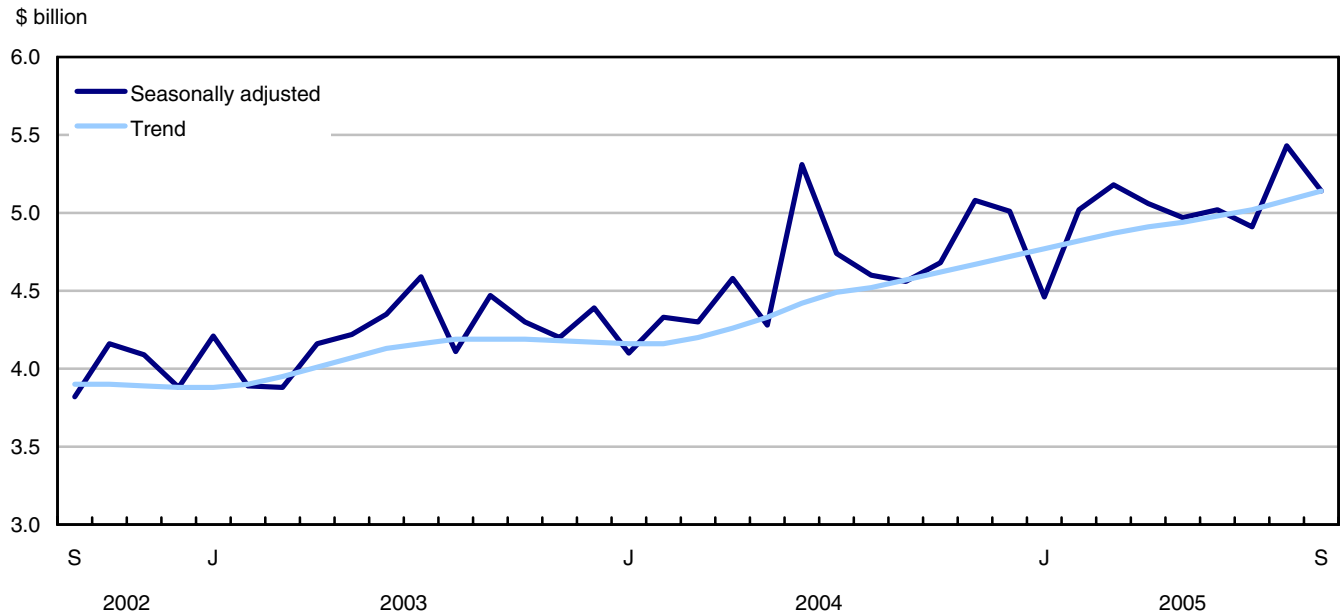


Chart 2

Residential value of building permits - Total

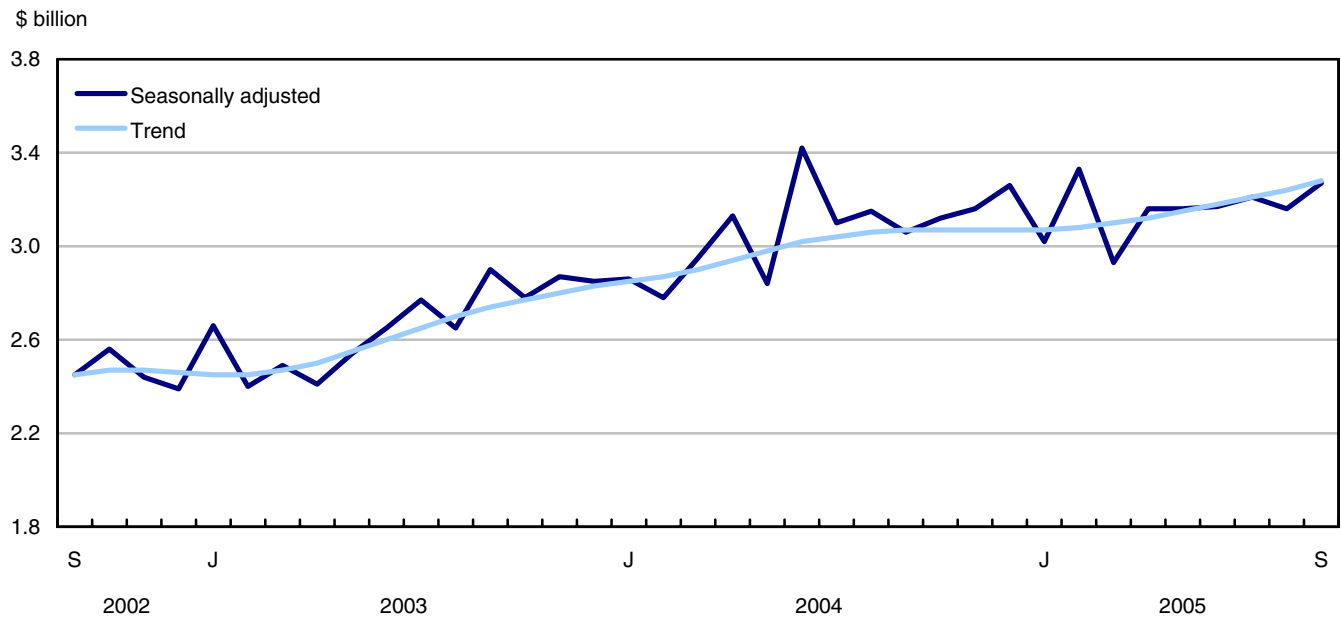


Chart 3

Number of dwelling units - Single and multiple

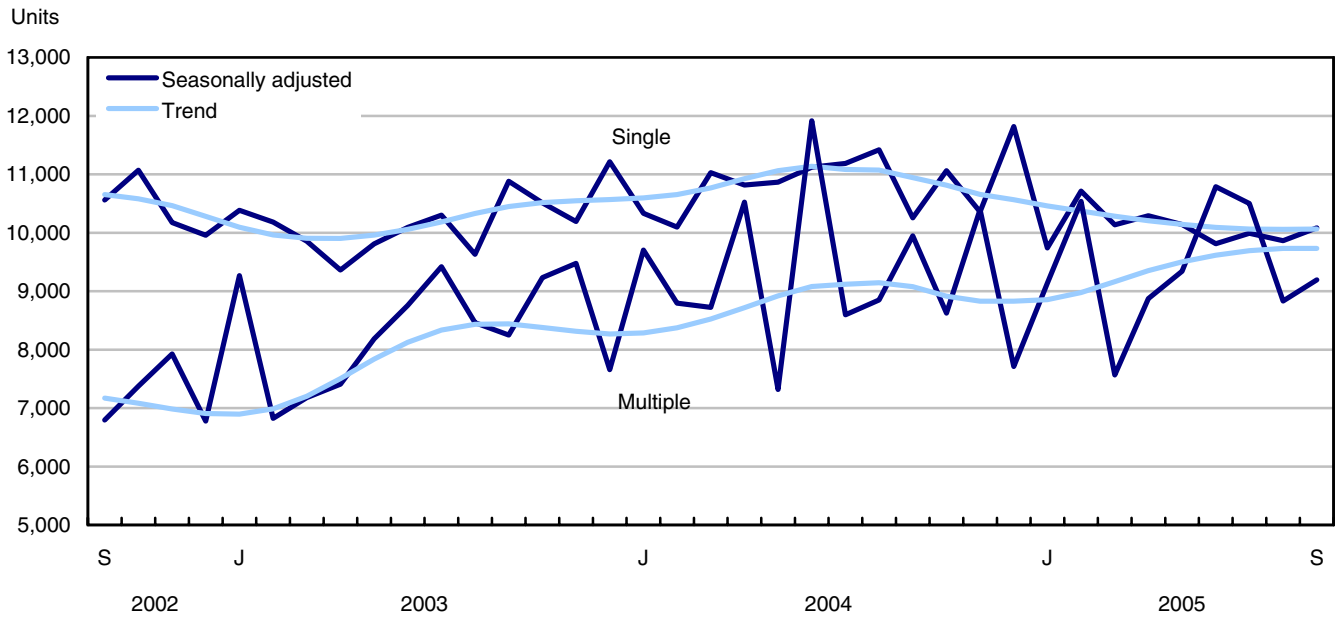


Chart 4

Non residential value of building permits - Total

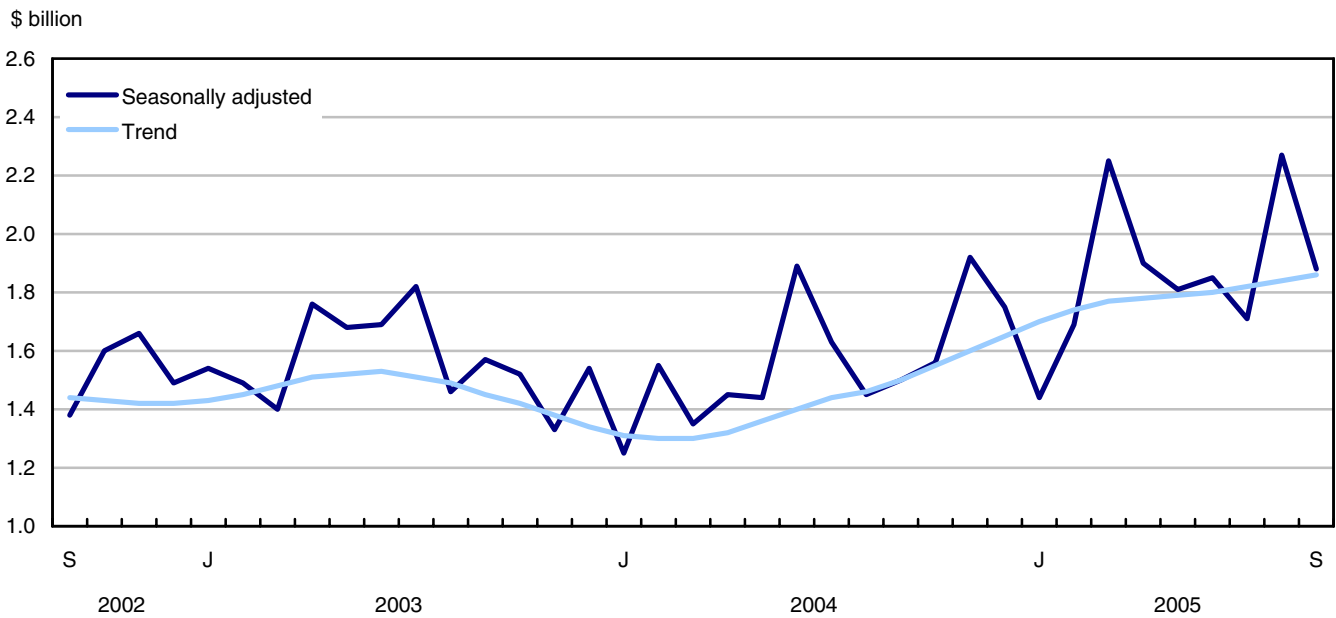


Chart 5

Commercial value of building permits

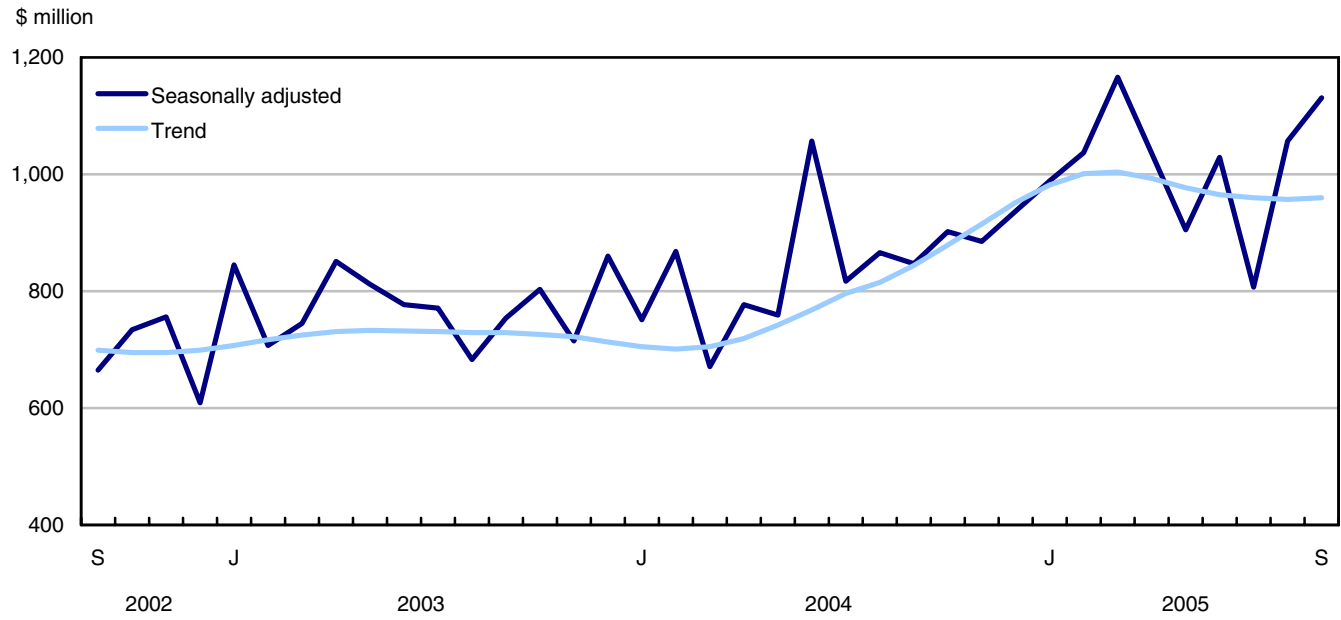


Chart 6

Industrial value of building permits

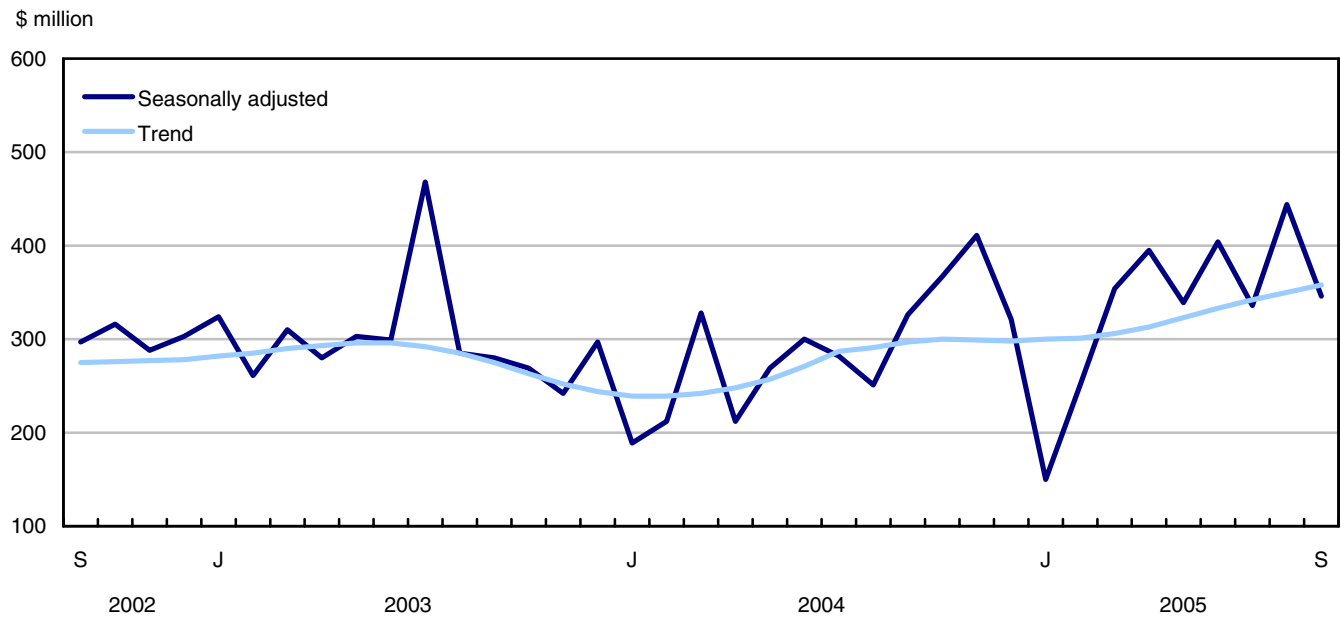
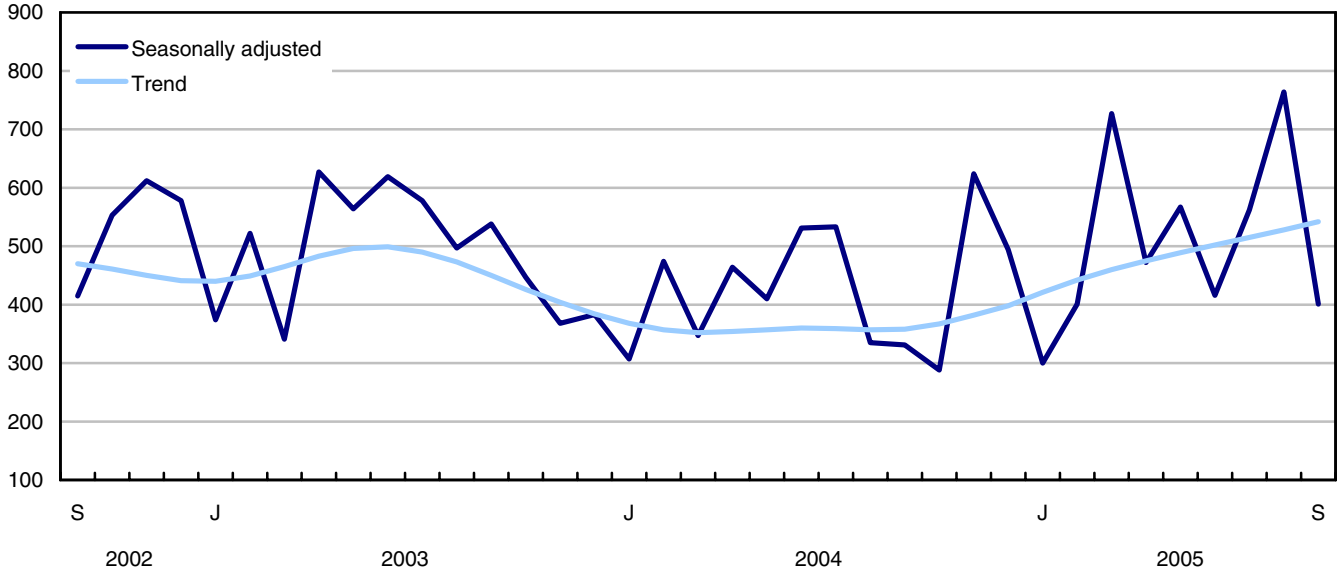


Chart 7

Institutional and governmental value of building permits

\$ million



## Related products

---

### Selected publications from Statistics Canada

---

|          |                                  |
|----------|----------------------------------|
| 62-202-X | Spending patterns in Canada      |
| 64-203-X | Building permits, annual summary |

---

### Selected technical and analytical products from Statistics Canada

---

|                 |  |
|-----------------|--|
| 62F0014M1996002 | An analysis of some construction price index methodologies |
|-----------------|--|

---

### Selected CANSIM tables from Statistics Canada

---

|          |   |
|----------|---|
| 026-0001 | Building permits, residential values and number of units, by type of dwelling   |
| 026-0002 | Building permits, dwelling units by type of dwelling and area   |
| 026-0003 | Building permits, values by activity sector   |
| 026-0004 | Building permits, values by activity sector and area  |
| 026-0005 | Building permits, non-residential values by type of structure   |
| 026-0006 | Building permits, by type of structure and area, seasonally adjusted  |
| 026-0007 | Building permits, dwelling units by type of structure and value and by activity sector                                      |
| 026-0008 | Building permits, values by activity sector, seasonally adjusted and unadjusted   |
| 026-0010 | Building permits, residential and non-residential values by type of structure for Canada and urban centres, 10,000 and over |
| 026-0015 | Building permits, leading indicators and indexes, seasonally adjusted   |

---

### Selected surveys from Statistics Canada

---

|      |                         |
|------|-------------------------|
| 2802 | Building Permits Survey |
|------|-------------------------|

---

## **Selected tables of Canadian statistics from Statistics Canada**

---

- *Value of building permits, by provinces and territories (monthly), by provinces and territories (monthly)*
- *Value of building permits, by census metropolitan areas (monthly)*
- *Economic indicators, by provinces and territories (monthly and quarterly)*
- *Value of building permits, by provinces and territories*
- *Value of building permits by type*

# Statistical tables

---

---



Table 1

## Total value of building permits, provinces and territories, seasonally adjusted

|                           | 2005                   |                     | September<br>to<br>August | August<br>to<br>July | July<br>to<br>June | June<br>to<br>May | May<br>to<br>April | April<br>to<br>March |
|---------------------------|------------------------|---------------------|---------------------------|----------------------|--------------------|-------------------|--------------------|----------------------|
|                           | September <sup>p</sup> | August <sup>r</sup> |                           |                      |                    |                   |                    |                      |
|                           | thousands of dollars   |                     | percentage change         |                      |                    |                   |                    |                      |
| <b>Canada</b>             | <b>5,144,299</b>       | <b>5,429,974</b>    | <b>-5.3</b>               | <b>10.6</b>          | <b>-2.2</b>        | <b>1.0</b>        | <b>-1.8</b>        | <b>-2.2</b>          |
| Newfoundland and Labrador | 50,293                 | 49,068              | 2.5                       | 69.5                 | -47.7              | 48.2              | -8.9               | -39.6                |
| Prince Edward Island      | 19,934                 | 42,556              | -53.2                     | 153.6                | -13.1              | 48.5              | -62.7              | 201.9                |
| Nova Scotia               | 119,600                | 95,553              | 25.2                      | -11.4                | 2.0                | -2.3              | -6.7               | 20.5                 |
| New Brunswick             | 98,846                 | 97,415              | 1.5                       | 14.1                 | 17.3               | -1.5              | 17.8               | 8.3                  |
| Quebec                    | 1,075,743              | 989,866             | 8.7                       | -9.5                 | 6.7                | 4.7               | 5.6                | 12.0                 |
| Ontario                   | 1,906,253              | 2,159,552           | -11.7                     | 20.4                 | -7.2               | -0.9              | -0.4               | -4.2                 |
| Manitoba                  | 95,506                 | 95,708              | -0.2                      | 15.9                 | -43.0              | 47.7              | 16.6               | -7.3                 |
| Saskatchewan              | 84,028                 | 74,634              | 12.6                      | 9.9                  | 21.9               | -50.7             | 98.5               | -34.7                |
| Alberta                   | 775,267                | 846,750             | -8.4                      | 1.8                  | 13.0               | -5.6              | -14.0              | -7.9                 |
| British Columbia          | 906,323                | 965,338             | -6.1                      | 25.2                 | -10.7              | 7.3               | -6.6               | -4.9                 |
| Yukon Territory           | 8,389                  | 4,164               | 101.5                     | -33.9                | 293.1              | -83.4             | 122.2              | 72.7                 |
| Northwest Territories     | 3,484                  | 3,475               | 0.3                       | -85.5                | 181.7              | 25.3              | -40.8              | 236.4                |
| Nunavut                   | 633                    | 5,895               | -89.3                     | 201.8                | 731.1              | ...               | ...                | ...                  |

Table 2

## Non-residential value of building permits, provinces and territories, seasonally adjusted

|                           | 2005                   |                     | September<br>to<br>August | August<br>to<br>July | July<br>to<br>June | June<br>to<br>May | May<br>to<br>April | April<br>to<br>March |
|---------------------------|------------------------|---------------------|---------------------------|----------------------|--------------------|-------------------|--------------------|----------------------|
|                           | September <sup>p</sup> | August <sup>r</sup> |                           |                      |                    |                   |                    |                      |
|                           | thousands of dollars   |                     | percentage change         |                      |                    |                   |                    |                      |
| <b>Canada</b>             | <b>1,878,396</b>       | <b>2,265,870</b>    | <b>-17.1</b>              | <b>32.8</b>          | <b>-7.7</b>        | <b>2.1</b>        | <b>-4.9</b>        | <b>-15.3</b>         |
| Newfoundland and Labrador | 14,800                 | 16,076              | -7.9                      | 50.8                 | -55.9              | 160.7             | -11.4              | -75.9                |
| Prince Edward Island      | 9,692                  | 33,874              | -71.4                     | 558.4                | 13.9               | 28.3              | -85.4              | 661.6                |
| Nova Scotia               | 51,506                 | 30,897              | 66.7                      | -28.2                | 40.5               | -24.9             | 11.8               | 27.0                 |
| New Brunswick             | 51,232                 | 57,340              | -10.7                     | 37.3                 | 32.0               | 14.1              | 30.8               | 8.4                  |
| Quebec                    | 290,659                | 342,205             | -15.1                     | 31.0                 | -15.9              | -7.4              | 12.0               | 11.8                 |
| Ontario                   | 806,136                | 1,068,193           | -24.5                     | 69.6                 | -12.5              | -0.1              | -9.9               | -11.9                |
| Manitoba                  | 29,877                 | 34,147              | -12.5                     | 11.3                 | -65.3              | 87.1              | 81.7               | -33.7                |
| Saskatchewan              | 55,842                 | 48,114              | 16.1                      | 26.9                 | 52.9               | -59.2             | 119.5              | -54.3                |
| Alberta                   | 319,569                | 329,291             | -3.0                      | -3.9                 | 20.6               | 0.1               | -25.3              | -22.9                |
| British Columbia          | 245,133                | 300,650             | -18.5                     | 6.9                  | -13.4              | 17.8              | 2.1                | -29.4                |
| Yukon Territory           | 2,502                  | 2,565               | -2.5                      | -2.8                 | 690.4              | -88.6             | 74.0               | 154.1                |
| Northwest Territories     | 1,227                  | 1,433               | -14.4                     | -92.3                | 268.5              | 70.6              | -58.6              | 1,619.3              |
| Nunavut                   | 221                    | 1,085               | -79.6                     | 923.6                | 221.2              | ...               | ...                | ...                  |

Table 3

## Residential value of building permits, provinces and territories, seasonally adjusted

|                           | 2005                   |                     | September<br>to<br>August | August<br>to<br>July | July<br>to<br>June | June<br>to<br>May | May<br>to<br>April | April<br>to<br>March |
|---------------------------|------------------------|---------------------|---------------------------|----------------------|--------------------|-------------------|--------------------|----------------------|
|                           | September <sup>p</sup> | August <sup>r</sup> |                           |                      |                    |                   |                    |                      |
|                           | thousands of dollars   |                     | percentage change         |                      |                    |                   |                    |                      |
| <b>Canada</b>             | <b>3,265,903</b>       | <b>3,164,104</b>    | <b>3.2</b>                | <b>-1.3</b>          | <b>1.1</b>         | <b>0.3</b>        | <b>0.1</b>         | <b>7.8</b>           |
| Newfoundland and Labrador | 35,493                 | 32,992              | 7.6                       | 80.5                 | -41.3              | 11.0              | -8.1               | 25.3                 |
| Prince Edward Island      | 10,242                 | 8,682               | 18.0                      | -25.4                | -21.4              | 56.0              | -11.1              | 27.5                 |
| Nova Scotia               | 68,094                 | 64,656              | 5.3                       | -0.2                 | -13.8              | 11.3              | -15.1              | 17.7                 |
| New Brunswick             | 47,614                 | 40,075              | 18.8                      | -8.2                 | 6.0                | -10.9             | 11.2               | 8.3                  |
| Quebec                    | 785,084                | 647,661             | 21.2                      | -22.2                | 16.5               | 10.9              | 2.6                | 12.0                 |
| Ontario                   | 1,100,117              | 1,091,359           | 0.8                       | -6.2                 | -4.0               | -1.3              | 6.2                | 2.1                  |
| Manitoba                  | 65,629                 | 61,561              | 6.6                       | 18.7                 | -8.0               | 11.0              | -12.6              | 13.0                 |
| Saskatchewan              | 28,186                 | 26,520              | 6.3                       | -11.6                | -3.0               | -40.9             | 78.7               | 9.5                  |
| Alberta                   | 455,698                | 517,459             | -11.9                     | 5.9                  | 8.2                | -8.8              | -5.8               | 7.1                  |
| British Columbia          | 661,190                | 664,688             | -0.5                      | 35.7                 | -9.1               | 1.9               | -10.6              | 13.0                 |
| Yukon Territory           | 5,887                  | 1,599               | 268.2                     | -56.3                | 188.5              | -81.1             | 153.0              | 43.4                 |
| Northwest Territories     | 2,257                  | 2,042               | 10.5                      | -62.2                | 55.8               | -9.6              | -11.4              | 44.8                 |
| Nunavut                   | 412                    | 4,810               | -91.4                     | 160.4                | 814.4              | ...               | ...                | ...                  |

Table 4

## Number of dwelling units authorized, province and territories, seasonally adjusted at annual rate

|                           | 2005                   |                     | September<br>to<br>August | August<br>to<br>July | July<br>to<br>June | June<br>to<br>May | May<br>to<br>April | April<br>to<br>March |
|---------------------------|------------------------|---------------------|---------------------------|----------------------|--------------------|-------------------|--------------------|----------------------|
|                           | September <sup>p</sup> | August <sup>r</sup> |                           |                      |                    |                   |                    |                      |
|                           | units                  |                     | percentage change         |                      |                    |                   |                    |                      |
| <b>Canada</b>             | <b>231,348</b>         | <b>224,364</b>      | <b>3.1</b>                | <b>-8.8</b>          | <b>-0.5</b>        | <b>5.7</b>        | <b>1.7</b>         | <b>8.3</b>           |
| Newfoundland and Labrador | 2,328                  | 2,508               | -7.2                      | 57.1                 | -43.2              | 23.2              | 2.2                | -1.1                 |
| Prince Edward Island      | 864                    | 900                 | -4.0                      | -16.7                | -12.6              | 47.1              | -5.4               | 12.1                 |
| Nova Scotia               | 6,144                  | 4,596               | 33.7                      | -17.6                | -15.9              | 10.8              | -5.0               | 20.7                 |
| New Brunswick             | 5,424                  | 4,152               | 30.6                      | -9.9                 | 4.9                | -17.6             | 46.5               | 15.2                 |
| Quebec                    | 59,376                 | 50,592              | 17.4                      | -32.0                | 20.6               | 24.3              | 5.2                | 15.0                 |
| Ontario                   | 72,276                 | 69,924              | 3.4                       | -9.2                 | -13.0              | 12.2              | 0.1                | 4.7                  |
| Manitoba                  | 5,604                  | 4,668               | 20.1                      | 13.4                 | -2.6               | 8.3               | -21.9              | 24.9                 |
| Saskatchewan              | 3,072                  | 2,304               | 33.3                      | -9.4                 | -16.9              | -38.0             | 102.5              | 5.2                  |
| Alberta                   | 35,784                 | 40,584              | -11.8                     | -3.3                 | 10.9               | -19.5             | -0.7               | 6.2                  |
| British Columbia          | 39,816                 | 43,464              | -8.4                      | 34.5                 | -11.5              | 6.7               | -4.1               | 7.1                  |
| Yukon Territory           | 552                    | 96                  | 475.0                     | -71.4                | 211.1              | -80.9             | 193.8              | 0.0                  |
| Northwest Territories     | 84                     | 72                  | 16.7                      | -71.4                | 75.0               | -33.3             | -28.0              | -13.8                |
| Nunavut                   | 24                     | 504                 | -95.2                     | 740.0                | ...                | ...               | ...                | ...                  |

Table 5

## Dwelling units, value of residential and non-residential building permits, provinces and territories, seasonally adjusted, 2005

|                                  | Number of dwelling units |           |                 | Estimated value of construction |                 |            |                                |            |            |
|----------------------------------|--------------------------|-----------|-----------------|---------------------------------|-----------------|------------|--------------------------------|------------|------------|
|                                  | Singles <sup>1</sup>     | Multiples | Total dwellings | Residential                     | Non-residential |            |                                | Total      |            |
|                                  |                          |           |                 |                                 | Industrial      | Commercial | Institutional and governmental |            |            |
|                                  | units                    |           |                 | thousands of dollars            |                 |            |                                |            |            |
| <b>Canada</b>                    |                          |           |                 |                                 |                 |            |                                |            |            |
| August r                         | 9,865                    | 8,832     | 18,697          | 3,164,104                       | 444,475         | 1,057,043  | 764,352                        | 2,265,870  | 5,429,974  |
| September p                      | 10,085                   | 9,194     | 19,279          | 3,265,903                       | 346,112         | 1,130,911  | 401,373                        | 1,878,396  | 5,144,299  |
| Cumulative Jan. - Sept. 2005     | 90,776                   | 84,770    | 175,546         | 28,403,746                      | 3,021,413       | 9,156,813  | 4,611,099                      | 16,789,325 | 45,193,071 |
| Cumulative Jan. - Sept. 2004     | 97,124                   | 84,374    | 181,498         | 27,293,508                      | 2,371,421       | 7,412,984  | 3,731,693                      | 13,516,098 | 40,809,606 |
| <b>Newfoundland and Labrador</b> |                          |           |                 |                                 |                 |            |                                |            |            |
| August r                         | 163                      | 46        | 209             | 32,992                          | 4,367           | 11,284     | 425                            | 16,076     | 49,068     |
| September p                      | 147                      | 47        | 194             | 35,493                          | 784             | 11,880     | 2,136                          | 14,800     | 50,293     |
| Cumulative Jan. - Sept. 2005     | 1,385                    | 326       | 1,711           | 257,357                         | 40,525          | 88,948     | 14,793                         | 144,266    | 401,623    |
| Cumulative Jan. - Sept. 2004     | 1,582                    | 391       | 1,973           | 262,483                         | 6,566           | 65,715     | 26,894                         | 99,175     | 361,658    |
| <b>Prince Edward Island</b>      |                          |           |                 |                                 |                 |            |                                |            |            |
| August r                         | 62                       | 13        | 75              | 8,682                           | 979             | 32,275     | 620                            | 33,874     | 42,556     |
| September p                      | 54                       | 18        | 72              | 10,242                          | 568             | 8,746      | 378                            | 9,692      | 19,934     |
| Cumulative Jan. - Sept. 2005     | 552                      | 144       | 696             | 97,567                          | 26,682          | 64,670     | 6,747                          | 98,099     | 195,666    |
| Cumulative Jan. - Sept. 2004     | 653                      | 130       | 783             | 95,767                          | 5,013           | 28,272     | 15,557                         | 48,842     | 144,609    |
| <b>Nova Scotia</b>               |                          |           |                 |                                 |                 |            |                                |            |            |
| August r                         | 273                      | 110       | 383             | 64,656                          | 4,361           | 23,692     | 2,844                          | 30,897     | 95,553     |
| September p                      | 261                      | 251       | 512             | 68,094                          | 9,474           | 39,015     | 3,017                          | 51,506     | 119,600    |
| Cumulative Jan. - Sept. 2005     | 2,434                    | 1,472     | 3,906           | 580,561                         | 55,071          | 191,896    | 46,350                         | 293,317    | 873,878    |
| Cumulative Jan. - Sept. 2004     | 2,639                    | 1,616     | 4,255           | 575,314                         | 27,446          | 187,569    | 52,598                         | 267,613    | 842,927    |
| <b>New Brunswick</b>             |                          |           |                 |                                 |                 |            |                                |            |            |
| August r                         | 222                      | 124       | 346             | 40,075                          | 3,351           | 32,867     | 21,122                         | 57,340     | 97,415     |
| September p                      | 250                      | 202       | 452             | 47,614                          | 14,320          | 23,029     | 13,883                         | 51,232     | 98,846     |
| Cumulative Jan. - Sept. 2005     | 2,158                    | 973       | 3,131           | 372,385                         | 49,642          | 163,610    | 61,870                         | 275,122    | 647,507    |
| Cumulative Jan. - Sept. 2004     | 2,278                    | 773       | 3,051           | 366,260                         | 26,474          | 122,718    | 71,912                         | 221,104    | 587,364    |
| <b>Quebec</b>                    |                          |           |                 |                                 |                 |            |                                |            |            |
| August r                         | 2,055                    | 2,161     | 4,216           | 647,661                         | 87,383          | 188,813    | 66,009                         | 342,205    | 989,866    |
| September p                      | 2,156                    | 2,792     | 4,948           | 785,084                         | 67,285          | 144,663    | 78,711                         | 290,659    | 1,075,743  |
| Cumulative Jan. - Sept. 2005     | 18,631                   | 22,992    | 41,623          | 6,146,278                       | 630,846         | 1,466,572  | 542,419                        | 2,639,837  | 8,786,115  |
| Cumulative Jan. - Sept. 2004     | 19,626                   | 22,419    | 42,045          | 5,854,914                       | 579,301         | 1,483,254  | 764,030                        | 2,826,585  | 8,681,499  |
| <b>Ontario</b>                   |                          |           |                 |                                 |                 |            |                                |            |            |
| August r                         | 3,256                    | 2,571     | 5,827           | 1,091,359                       | 190,896         | 391,987    | 485,310                        | 1,068,193  | 2,159,552  |
| September p                      | 3,283                    | 2,740     | 6,023           | 1,100,117                       | 136,038         | 522,136    | 147,962                        | 806,136    | 1,906,253  |
| Cumulative Jan. - Sept. 2005     | 31,540                   | 28,776    | 60,316          | 10,745,598                      | 1,199,801       | 3,573,610  | 2,272,538                      | 7,045,949  | 17,791,547 |
| Cumulative Jan. - Sept. 2004     | 38,099                   | 28,214    | 66,313          | 11,216,823                      | 1,187,793       | 3,076,738  | 1,896,181                      | 6,160,712  | 17,377,535 |
| <b>Manitoba</b>                  |                          |           |                 |                                 |                 |            |                                |            |            |
| August r                         | 304                      | 85        | 389             | 61,561                          | 8,023           | 20,948     | 5,176                          | 34,147     | 95,708     |
| September p                      | 369                      | 98        | 467             | 65,629                          | 8,856           | 14,940     | 6,081                          | 29,877     | 95,506     |
| Cumulative Jan. - Sept. 2005     | 2,705                    | 552       | 3,257           | 492,781                         | 47,461          | 219,266    | 84,559                         | 351,286    | 844,067    |
| Cumulative Jan. - Sept. 2004     | 2,839                    | 850       | 3,689           | 510,959                         | 54,007          | 213,468    | 101,125                        | 368,600    | 879,559    |
| <b>Saskatchewan</b>              |                          |           |                 |                                 |                 |            |                                |            |            |
| August r                         | 139                      | 53        | 192             | 26,520                          | 19,138          | 21,174     | 7,802                          | 48,114     | 74,634     |
| September p                      | 136                      | 120       | 256             | 28,186                          | 4,252           | 14,631     | 36,959                         | 55,842     | 84,028     |
| Cumulative Jan. - Sept. 2005     | 1,359                    | 834       | 2,193           | 284,665                         | 59,643          | 181,376    | 131,985                        | 373,004    | 657,669    |
| Cumulative Jan. - Sept. 2004     | 1,401                    | 1,009     | 2,410           | 299,203                         | 35,881          | 156,253    | 86,507                         | 278,641    | 577,844    |
| <b>Alberta</b>                   |                          |           |                 |                                 |                 |            |                                |            |            |
| August r                         | 2,124                    | 1,258     | 3,382           | 517,459                         | 86,809          | 179,775    | 62,707                         | 329,291    | 846,750    |
| September p                      | 2,172                    | 810       | 2,982           | 455,698                         | 87,726          | 178,986    | 52,857                         | 319,569    | 775,267    |
| Cumulative Jan. - Sept. 2005     | 19,241                   | 12,138    | 31,379          | 4,341,910                       | 653,296         | 1,666,495  | 685,292                        | 3,005,083  | 7,346,993  |
| Cumulative Jan. - Sept. 2004     | 16,948                   | 11,927    | 28,875          | 3,548,791                       | 225,360         | 1,092,293  | 352,109                        | 1,669,762  | 5,218,553  |

See footnotes at the end of the table.

Table 5 – continued

**Dwelling units, value of residential and non-residential building permits, provinces and territories, seasonally adjusted, 2005**

|                              | Number of dwelling units |           |                 | Estimated value of construction |                 |            |                                |           | Total     |
|------------------------------|--------------------------|-----------|-----------------|---------------------------------|-----------------|------------|--------------------------------|-----------|-----------|
|                              | Singles <sup>1</sup>     | Multiples | Total dwellings | Residential                     | Non-residential |            |                                | Total     |           |
|                              |                          |           |                 |                                 | Industrial      | Commercial | Institutional and governmental |           |           |
|                              | units                    |           |                 | thousands of dollars            |                 |            |                                |           |           |
| <b>British Columbia</b>      |                          |           |                 |                                 |                 |            |                                |           |           |
| August <sup>r</sup>          | 1,253                    | 2,369     | 3,622           | 664,688                         | 37,498          | 153,203    | 109,949                        | 300,650   | 965,338   |
| September <sup>p</sup>       | 1,209                    | 2,109     | 3,318           | 661,190                         | 16,409          | 169,774    | 58,950                         | 245,133   | 906,323   |
| Cumulative Jan. - Sept. 2005 | 10,501                   | 16,449    | 26,950          | 5,021,952                       | 247,457         | 1,502,723  | 759,055                        | 2,509,235 | 7,531,187 |
| Cumulative Jan. - Sept. 2004 | 10,731                   | 16,873    | 27,604          | 4,482,760                       | 219,517         | 941,764    | 324,133                        | 1,485,414 | 5,968,174 |
| <b>Yukon Territory</b>       |                          |           |                 |                                 |                 |            |                                |           |           |
| August <sup>r</sup>          | 8                        | 0         | 8               | 1,599                           | 0               | 234        | 2,331                          | 2,565     | 4,164     |
| September <sup>p</sup>       | 41                       | 5         | 46              | 5,887                           | 400             | 1,663      | 439                            | 2,502     | 8,389     |
| Cumulative Jan. - Sept. 2005 | 172                      | 20        | 192             | 29,491                          | 2,901           | 6,805      | 4,365                          | 14,071    | 43,562    |
| Cumulative Jan. - Sept. 2004 | 178                      | 26        | 204             | 28,706                          | 998             | 3,887      | 26,910                         | 31,795    | 60,501    |
| <b>Northwest Territories</b> |                          |           |                 |                                 |                 |            |                                |           |           |
| August <sup>r</sup>          | 4                        | 2         | 6               | 2,042                           | 736             | 640        | 57                             | 1,433     | 3,475     |
| September <sup>p</sup>       | 7                        | 0         | 7               | 2,257                           | 0               | 1,227      | 0                              | 1,227     | 3,484     |
| Cumulative Jan. - Sept. 2005 | 91                       | 52        | 143             | 25,927                          | 7,151           | 29,936     | 1,122                          | 38,209    | 64,136    |
| Cumulative Jan. - Sept. 2004 | 131                      | 61        | 192             | 35,531                          | 2,965           | 38,489     | 5,217                          | 46,671    | 82,202    |
| <b>Nunavut</b>               |                          |           |                 |                                 |                 |            |                                |           |           |
| August <sup>r</sup>          | 2                        | 40        | 42              | 4,810                           | 934             | 151        | 0                              | 1,085     | 5,895     |
| September <sup>p</sup>       | 0                        | 2         | 2               | 412                             | 0               | 221        | 0                              | 221       | 633       |
| Cumulative Jan. - Sept. 2005 | 7                        | 42        | 49              | 7,274                           | 937             | 906        | 4                              | 1,847     | 9,121     |
| Cumulative Jan. - Sept. 2004 | 19                       | 85        | 104             | 15,997                          | 100             | 2,564      | 8,520                          | 11,184    | 27,181    |

1. Included in this category are the following types of dwellings: single-detached, mobile home and cottage.

Table 6

## Dwelling units, value of residential and non-residential building permits, census metropolitan areas, seasonally adjusted, 2005

|   | Number of dwelling units |           |                 | Estimated value of construction |                 |            |                                |           | Total     |
|---|--------------------------|-----------|-----------------|---------------------------------|-----------------|------------|--------------------------------|-----------|-----------|
|   | Singles <sup>1</sup>     | Multiples | Total dwellings | Residential                     | Non-residential |            |                                | Total     |           |
|   |                          |           |                 |                                 | Industrial      | Commercial | Institutional and governmental |           |           |
|   | units                    |           |                 | thousands of dollars            |                 |            |                                |           |           |
| <b>Abbotsford, British Columbia</b>             |                          |           |                 |                                 |                 |            |                                |           |           |
| August <sup>r</sup>                             | 52                       | 83        | 135             | 17,119                          | 3,756           | 1,053      | 81                             | 4,890     | 22,009    |
| September <sup>p</sup>                          | 37                       | 85        | 122             | 17,476                          | 1,124           | 3          | 296                            | 1,423     | 18,899    |
| Cumulative Jan. - Sept. 2005                    | 437                      | 487       | 924             | 128,720                         | 28,074          | 22,323     | 55,660                         | 106,057   | 234,777   |
| Cumulative Jan. - Sept. 2004                    | 546                      | 248       | 794             | 102,794                         | 29,538          | 6,714      | 11,896                         | 48,148    | 150,942   |
| <b>Calgary, Alberta</b>                         |                          |           |                 |                                 |                 |            |                                |           |           |
| August <sup>r</sup>                             | 820                      | 407       | 1,227           | 205,273                         | 27,158          | 66,000     | 10,825                         | 103,983   | 309,256   |
| September <sup>p</sup>                          | 844                      | 184       | 1,028           | 165,718                         | 6,623           | 83,077     | 26,222                         | 115,922   | 281,640   |
| Cumulative Jan. - Sept. 2005                    | 6,950                    | 4,173     | 11,123          | 1,653,599                       | 129,002         | 681,229    | 357,520                        | 1,167,751 | 2,821,350 |
| Cumulative Jan. - Sept. 2004                    | 6,184                    | 4,736     | 10,920          | 1,435,925                       | 47,694          | 475,575    | 159,093                        | 682,362   | 2,118,287 |
| <b>Edmonton, Alberta</b>                        |                          |           |                 |                                 |                 |            |                                |           |           |
| August <sup>r</sup>                             | 651                      | 506       | 1,157           | 172,398                         | 8,308           | 57,409     | 25,057                         | 90,774    | 263,172   |
| September <sup>p</sup>                          | 680                      | 366       | 1,046           | 151,496                         | 23,708          | 34,097     | 13,226                         | 71,031    | 222,527   |
| Cumulative Jan. - Sept. 2005                    | 5,964                    | 5,174     | 11,138          | 1,385,397                       | 107,687         | 380,188    | 196,699                        | 684,574   | 2,069,971 |
| Cumulative Jan. - Sept. 2004                    | 5,041                    | 5,152     | 10,193          | 1,068,829                       | 48,567          | 278,949    | 57,963                         | 385,479   | 1,454,308 |
| <b>Greater Sudbury / Grand Sudbury, Ontario</b> |                          |           |                 |                                 |                 |            |                                |           |           |
| August <sup>r</sup>                             | 39                       | 2         | 41              | 7,036                           | 1,192           | 2,378      | 2,779                          | 6,349     | 13,385    |
| September <sup>p</sup>                          | 34                       | 0         | 34              | 6,465                           | 6,335           | 791        | 1,555                          | 8,681     | 15,146    |
| Cumulative Jan. - Sept. 2005                    | 291                      | 11        | 302             | 55,526                          | 13,969          | 35,442     | 30,936                         | 80,347    | 135,873   |
| Cumulative Jan. - Sept. 2004                    | 260                      | 5         | 265             | 48,741                          | 4,147           | 22,333     | 25,780                         | 52,260    | 101,001   |
| <b>Halifax, Nova Scotia</b>                     |                          |           |                 |                                 |                 |            |                                |           |           |
| August <sup>r</sup>                             | 100                      | 76        | 176             | 30,435                          | 637             | 11,236     | 2,700                          | 14,573    | 45,008    |
| September <sup>p</sup>                          | 109                      | 142       | 251             | 33,732                          | 2,943           | 11,087     | 963                            | 14,993    | 48,725    |
| Cumulative Jan. - Sept. 2005                    | 947                      | 1,037     | 1,984           | 295,468                         | 23,839          | 87,414     | 24,849                         | 136,102   | 431,570   |
| Cumulative Jan. - Sept. 2004                    | 1,206                    | 1,304     | 2,510           | 335,191                         | 6,214           | 78,497     | 35,926                         | 120,637   | 455,828   |
| <b>Hamilton, Ontario</b>                        |                          |           |                 |                                 |                 |            |                                |           |           |
| August <sup>r</sup>                             | 108                      | 140       | 248             | 41,642                          | 2,130           | 25,749     | 24,355                         | 52,234    | 93,876    |
| September <sup>p</sup>                          | 87                       | 183       | 270             | 42,560                          | 6,786           | 72,066     | 21,301                         | 100,153   | 142,713   |
| Cumulative Jan. - Sept. 2005                    | 1,084                    | 1,582     | 2,666           | 477,133                         | 19,838          | 200,861    | 133,345                        | 354,044   | 831,177   |
| Cumulative Jan. - Sept. 2004                    | 1,794                    | 1,630     | 3,424           | 532,232                         | 36,641          | 141,976    | 75,930                         | 254,547   | 786,779   |
| <b>Kingston, Ontario</b>                        |                          |           |                 |                                 |                 |            |                                |           |           |
| August <sup>r</sup>                             | 55                       | 7         | 62              | 9,848                           | 960             | 2,004      | 4,382                          | 7,346     | 17,194    |
| September <sup>p</sup>                          | 21                       | 9         | 30              | 4,682                           | 473             | 4,796      | 1,227                          | 6,496     | 11,178    |
| Cumulative Jan. - Sept. 2005                    | 417                      | 171       | 588             | 87,037                          | 5,651           | 40,699     | 14,606                         | 60,956    | 147,993   |
| Cumulative Jan. - Sept. 2004                    | 571                      | 267       | 838             | 105,104                         | 4,273           | 25,625     | 43,302                         | 73,200    | 178,304   |
| <b>Kitchener, Ontario</b>                       |                          |           |                 |                                 |                 |            |                                |           |           |
| August <sup>r</sup>                             | 176                      | 139       | 315             | 47,545                          | 7,434           | 11,939     | 1,568                          | 20,941    | 68,486    |
| September <sup>p</sup>                          | 133                      | 97        | 230             | 34,859                          | 1,165           | 11,646     | 131                            | 12,942    | 47,801    |
| Cumulative Jan. - Sept. 2005                    | 1,574                    | 1,384     | 2,958           | 444,525                         | 42,752          | 146,742    | 74,674                         | 264,168   | 708,693   |
| Cumulative Jan. - Sept. 2004                    | 1,637                    | 1,132     | 2,769           | 400,015                         | 54,627          | 136,358    | 87,840                         | 278,825   | 678,840   |
| <b>London, Ontario</b>                          |                          |           |                 |                                 |                 |            |                                |           |           |
| August <sup>r</sup>                             | 195                      | 43        | 238             | 40,392                          | 6,019           | 15,697     | 6,109                          | 27,825    | 68,217    |
| September <sup>p</sup>                          | 164                      | 201       | 365             | 44,650                          | 13,439          | 15,096     | 3,396                          | 31,931    | 76,581    |
| Cumulative Jan. - Sept. 2005                    | 1,532                    | 1,288     | 2,820           | 395,475                         | 57,592          | 129,654    | 57,191                         | 244,437   | 639,912   |
| Cumulative Jan. - Sept. 2004                    | 1,714                    | 760       | 2,474           | 354,637                         | 29,997          | 82,505     | 150,039                        | 262,541   | 617,178   |
| <b>Montréal, Quebec</b>                         |                          |           |                 |                                 |                 |            |                                |           |           |
| August <sup>r</sup>                             | 791                      | 1,238     | 2,029           | 320,544                         | 32,108          | 118,863    | 15,321                         | 166,292   | 486,836   |
| September <sup>p</sup>                          | 902                      | 1,789     | 2,691           | 448,248                         | 32,046          | 65,835     | 56,758                         | 154,639   | 602,887   |
| Cumulative Jan. - Sept. 2005                    | 7,500                    | 14,644    | 22,144          | 3,232,135                       | 332,677         | 803,103    | 237,522                        | 1,373,302 | 4,605,437 |
| Cumulative Jan. - Sept. 2004                    | 8,601                    | 14,049    | 22,650          | 3,162,030                       | 226,133         | 750,669    | 433,385                        | 1,410,187 | 4,572,217 |

See footnotes at the end of the table.

Table 6 – continued

**Dwelling units, value of residential and non-residential building permits, census metropolitan areas, seasonally adjusted, 2005**

|  | Number of dwelling units |           |                 | Estimated value of construction |                      |            |                                |         | Total     |
|--|--------------------------|-----------|-----------------|---------------------------------|----------------------|------------|--------------------------------|---------|-----------|
|  | Singles <sup>1</sup>     | Multiples | Total dwellings | Residential                     | Non-residential      |            |                                | Total   |           |
|  |                          |           |                 |                                 | Industrial           | Commercial | Institutional and governmental |         |           |
|  | units                    |           |                 |                                 | thousands of dollars |            |                                |         |           |
| <b>Oshawa, Ontario</b>                               |                          |           |                 |                                 |                      |            |                                |         |           |
| August <sup>r</sup>                                  | 59                       | 217       | 276             | 47,036                          | 41,023               | 32,230     | 1,654                          | 74,907  | 121,943   |
| September <sup>p</sup>                               | 128                      | 37        | 165             | 35,276                          | 247                  | 52,078     | 3,791                          | 56,116  | 91,392    |
| Cumulative Jan. - Sept. 2005                         | 1,435                    | 858       | 2,293           | 439,397                         | 75,653               | 142,631    | 50,285                         | 268,569 | 707,966   |
| Cumulative Jan. - Sept. 2004                         | 1,354                    | 995       | 2,349           | 421,789                         | 20,711               | 99,925     | 49,216                         | 169,852 | 591,641   |
| <b>Ottawa-Gatineau, Ontario part, Ontario/Quebec</b> |                          |           |                 |                                 |                      |            |                                |         |           |
| August <sup>r</sup>                                  | 227                      | 340       | 567             | 91,090                          | 4,490                | 37,404     | 153,272                        | 195,166 | 286,256   |
| September <sup>p</sup>                               | 207                      | 302       | 509             | 83,130                          | 1,326                | 62,795     | 30,980                         | 95,101  | 178,231   |
| Cumulative Jan. - Sept. 2005                         | 1,874                    | 2,026     | 3,900           | 665,853                         | 30,342               | 314,808    | 453,856                        | 799,006 | 1,464,859 |
| Cumulative Jan. - Sept. 2004                         | 2,519                    | 3,323     | 5,842           | 907,637                         | 9,710                | 323,583    | 82,214                         | 415,507 | 1,323,144 |
| <b>Ottawa-Gatineau, Quebec part, Ontario/Quebec</b>  |                          |           |                 |                                 |                      |            |                                |         |           |
| August <sup>r</sup>                                  | 122                      | 94        | 216             | 30,663                          | 97                   | 1,215      | 1,102                          | 2,414   | 33,077    |
| September <sup>p</sup>                               | 158                      | 71        | 229             | 33,548                          | 474                  | 5,701      | 91                             | 6,266   | 39,814    |
| Cumulative Jan. - Sept. 2005                         | 1,042                    | 572       | 1,614           | 241,708                         | 9,697                | 52,369     | 7,614                          | 69,680  | 311,388   |
| Cumulative Jan. - Sept. 2004                         | 1,259                    | 1,036     | 2,295           | 315,039                         | 7,714                | 92,205     | 10,628                         | 110,547 | 425,586   |
| <b>Québec, Quebec</b>                                |                          |           |                 |                                 |                      |            |                                |         |           |
| August <sup>r</sup>                                  | 206                      | 182       | 388             | 56,917                          | 3,843                | 31,263     | 3,881                          | 38,987  | 95,904    |
| September <sup>p</sup>                               | 215                      | 266       | 481             | 66,104                          | 4,549                | 31,254     | 2,658                          | 38,461  | 104,565   |
| Cumulative Jan. - Sept. 2005                         | 2,063                    | 2,662     | 4,725           | 647,616                         | 17,900               | 192,224    | 53,940                         | 264,064 | 911,680   |
| Cumulative Jan. - Sept. 2004                         | 2,025                    | 2,700     | 4,725           | 581,694                         | 18,129               | 204,722    | 105,069                        | 327,920 | 909,614   |
| <b>Regina, Saskatchewan</b>                          |                          |           |                 |                                 |                      |            |                                |         |           |
| August <sup>r</sup>                                  | 41                       | 30        | 71              | 8,056                           | 2,810                | 4,529      | 2,945                          | 10,284  | 18,340    |
| September <sup>p</sup>                               | 28                       | 50        | 78              | 6,969                           | 675                  | 3,776      | 3,065                          | 7,516   | 14,485    |
| Cumulative Jan. - Sept. 2005                         | 392                      | 326       | 718             | 81,102                          | 8,025                | 56,053     | 40,629                         | 104,707 | 185,809   |
| Cumulative Jan. - Sept. 2004                         | 449                      | 330       | 779             | 97,256                          | 18,314               | 46,278     | 22,851                         | 87,443  | 184,699   |
| <b>Saguenay, Quebec</b>                              |                          |           |                 |                                 |                      |            |                                |         |           |
| August <sup>r</sup>                                  | 29                       | 15        | 44              | 9,745                           | 6,285                | 1,380      | 675                            | 8,340   | 18,085    |
| September <sup>p</sup>                               | 26                       | 16        | 42              | 8,769                           | 418                  | 4,574      | 3,636                          | 8,628   | 17,397    |
| Cumulative Jan. - Sept. 2005                         | 215                      | 185       | 400             | 68,713                          | 24,374               | 23,386     | 10,900                         | 58,660  | 127,373   |
| Cumulative Jan. - Sept. 2004                         | 257                      | 142       | 399             | 62,671                          | 7,104                | 23,268     | 9,552                          | 39,924  | 102,595   |
| <b>Saint John, New Brunswick</b>                     |                          |           |                 |                                 |                      |            |                                |         |           |
| August <sup>r</sup>                                  | 46                       | 8         | 54              | 8,012                           | 2,751                | 1,213      | 0                              | 3,964   | 11,976    |
| September <sup>p</sup>                               | 50                       | 0         | 50              | 6,403                           | 561                  | 3,808      | 9,000                          | 13,369  | 19,772    |
| Cumulative Jan. - Sept. 2005                         | 409                      | 79        | 488             | 68,954                          | 14,791               | 25,764     | 10,365                         | 50,920  | 119,874   |
| Cumulative Jan. - Sept. 2004                         | 376                      | 84        | 460             | 59,027                          | 4,497                | 15,852     | 9,359                          | 29,708  | 88,735    |
| <b>Saskatoon, Saskatchewan</b>                       |                          |           |                 |                                 |                      |            |                                |         |           |
| August <sup>r</sup>                                  | 55                       | 17        | 72              | 9,992                           | 13,823               | 4,835      | 1,623                          | 20,281  | 30,273    |
| September <sup>p</sup>                               | 69                       | 70        | 139             | 14,267                          | 1,940                | 6,065      | 2,297                          | 10,302  | 24,569    |
| Cumulative Jan. - Sept. 2005                         | 573                      | 362       | 935             | 117,545                         | 44,972               | 63,468     | 42,187                         | 150,627 | 268,172   |
| Cumulative Jan. - Sept. 2004                         | 572                      | 567       | 1,139           | 127,787                         | 8,620                | 52,918     | 10,779                         | 72,317  | 200,104   |
| <b>Sherbrooke, Quebec</b>                            |                          |           |                 |                                 |                      |            |                                |         |           |
| August <sup>r</sup>                                  | 41                       | 55        | 96              | 13,168                          | 0                    | 4,482      | 658                            | 5,140   | 18,308    |
| September <sup>p</sup>                               | 45                       | 27        | 72              | 12,447                          | 1,648                | 3,298      | 355                            | 5,301   | 17,748    |
| Cumulative Jan. - Sept. 2005                         | 477                      | 341       | 818             | 119,152                         | 12,062               | 35,771     | 19,381                         | 67,214  | 186,366   |
| Cumulative Jan. - Sept. 2004                         | 445                      | 541       | 986             | 125,282                         | 6,246                | 38,489     | 14,772                         | 59,507  | 184,789   |
| <b>St. Catharines-Niagara, Ontario</b>               |                          |           |                 |                                 |                      |            |                                |         |           |
| August <sup>r</sup>                                  | 85                       | 32        | 117             | 22,956                          | 4,927                | 18,479     | 16,249                         | 39,655  | 62,611    |
| September <sup>p</sup>                               | 77                       | 67        | 144             | 23,731                          | 1,636                | 3,751      | 579                            | 5,966   | 29,697    |
| Cumulative Jan. - Sept. 2005                         | 756                      | 348       | 1,104           | 207,893                         | 17,792               | 100,385    | 84,242                         | 202,419 | 410,312   |
| Cumulative Jan. - Sept. 2004                         | 1,017                    | 416       | 1,433           | 247,589                         | 18,069               | 105,520    | 28,998                         | 152,587 | 400,176   |

See footnotes at the end of the table.

Table 6 – continued

## Dwelling units, value of residential and non-residential building permits, census metropolitan areas, seasonally adjusted, 2005

|  | Number of dwelling units |           |                 | Estimated value of construction |                 |            |                                |           |           |
|--|--------------------------|-----------|-----------------|---------------------------------|-----------------|------------|--------------------------------|-----------|-----------|
|  | Singles <sup>1</sup>     | Multiples | Total dwellings | Residential                     | Non-residential |            |                                | Total     |           |
|  |                          |           |                 |                                 | Industrial      | Commercial | Institutional and governmental |           |           |
|  | units                    |           |                 | thousands of dollars            |                 |            |                                |           |           |
| <b>St. John's, Newfoundland and Labrador</b> |                          |           |                 |                                 |                 |            |                                |           |           |
| August <sup>r</sup>                          | 111                      | 38        | 149             | 24,125                          | 750             | 9,342      | 14                             | 10,106    | 34,231    |
| September <sup>p</sup>                       | 95                       | 43        | 138             | 27,325                          | 446             | 7,754      | 1,168                          | 9,368     | 36,693    |
| Cumulative Jan. - Sept. 2005                 | 845                      | 271       | 1,116           | 174,388                         | 35,316          | 65,982     | 5,798                          | 107,096   | 281,484   |
| Cumulative Jan. - Sept. 2004                 | 1,160                    | 343       | 1,503           | 197,663                         | 4,488           | 51,219     | 20,577                         | 76,284    | 273,947   |
| <b>Thunder Bay, Ontario</b>                  |                          |           |                 |                                 |                 |            |                                |           |           |
| August <sup>r</sup>                          | 20                       | 1         | 21              | 4,792                           | 42              | 1,364      | 3,671                          | 5,077     | 9,869     |
| September <sup>p</sup>                       | 27                       | 2         | 29              | 5,598                           | 23              | 2,880      | 1,308                          | 4,211     | 9,809     |
| Cumulative Jan. - Sept. 2005                 | 151                      | 55        | 206             | 35,161                          | 12,646          | 25,847     | 27,808                         | 66,301    | 101,462   |
| Cumulative Jan. - Sept. 2004                 | 208                      | 8         | 216             | 39,851                          | 12,779          | 28,249     | 11,188                         | 52,216    | 92,067    |
| <b>Toronto, Ontario</b>                      |                          |           |                 |                                 |                 |            |                                |           |           |
| August <sup>r</sup>                          | 1,071                    | 1,391     | 2,462           | 489,897                         | 70,916          | 149,954    | 100,359                        | 321,229   | 811,126   |
| September <sup>p</sup>                       | 1,211                    | 1,397     | 2,608           | 516,650                         | 58,364          | 244,636    | 57,403                         | 360,403   | 877,053   |
| Cumulative Jan. - Sept. 2005                 | 10,661                   | 17,636    | 28,297          | 5,063,799                       | 569,248         | 1,643,639  | 784,353                        | 2,997,240 | 8,061,039 |
| Cumulative Jan. - Sept. 2004                 | 14,433                   | 16,793    | 31,226          | 5,491,611                       | 572,341         | 1,505,629  | 918,247                        | 2,996,217 | 8,487,828 |
| <b>Trois-Rivières, Quebec</b>                |                          |           |                 |                                 |                 |            |                                |           |           |
| August <sup>r</sup>                          | 73                       | 57        | 130             | 20,201                          | 2,150           | 648        | 691                            | 3,489     | 23,690    |
| September <sup>p</sup>                       | 37                       | 49        | 86              | 10,889                          | 7,430           | 1,413      | 1,426                          | 10,269    | 21,158    |
| Cumulative Jan. - Sept. 2005                 | 325                      | 297       | 622             | 90,733                          | 15,863          | 25,999     | 6,344                          | 48,206    | 138,939   |
| Cumulative Jan. - Sept. 2004                 | 305                      | 312       | 617             | 84,017                          | 11,089          | 29,039     | 22,932                         | 63,060    | 147,077   |
| <b>Vancouver, British Columbia</b>           |                          |           |                 |                                 |                 |            |                                |           |           |
| August <sup>r</sup>                          | 499                      | 1,454     | 1,953           | 402,167                         | 23,355          | 79,868     | 36,358                         | 139,581   | 541,748   |
| September <sup>p</sup>                       | 444                      | 1,621     | 2,065           | 436,193                         | 5,025           | 98,942     | 39,142                         | 143,109   | 579,302   |
| Cumulative Jan. - Sept. 2005                 | 3,708                    | 10,414    | 14,122          | 2,780,871                       | 98,243          | 927,349    | 363,520                        | 1,389,112 | 4,169,983 |
| Cumulative Jan. - Sept. 2004                 | 4,196                    | 12,769    | 16,965          | 2,839,731                       | 80,435          | 628,463    | 138,239                        | 847,137   | 3,686,868 |
| <b>Victoria, British Columbia</b>            |                          |           |                 |                                 |                 |            |                                |           |           |
| August <sup>r</sup>                          | 101                      | 95        | 196             | 36,335                          | 892             | 19,902     | 995                            | 21,789    | 58,124    |
| September <sup>p</sup>                       | 96                       | 24        | 120             | 32,012                          | 746             | 36,420     | 2,719                          | 39,885    | 71,897    |
| Cumulative Jan. - Sept. 2005                 | 861                      | 976       | 1,837           | 338,537                         | 8,456           | 135,828    | 33,733                         | 178,017   | 516,554   |
| Cumulative Jan. - Sept. 2004                 | 876                      | 800       | 1,676           | 280,598                         | 6,965           | 43,228     | 58,122                         | 108,315   | 388,913   |
| <b>Windsor, Ontario</b>                      |                          |           |                 |                                 |                 |            |                                |           |           |
| August <sup>r</sup>                          | 113                      | 30        | 143             | 27,186                          | 12,097          | 12,956     | 6,707                          | 31,760    | 58,946    |
| September <sup>p</sup>                       | 106                      | 36        | 142             | 23,159                          | 4,040           | 4,714      | 4,218                          | 12,972    | 36,131    |
| Cumulative Jan. - Sept. 2005                 | 889                      | 314       | 1,203           | 206,826                         | 25,311          | 62,667     | 54,362                         | 142,340   | 349,166   |
| Cumulative Jan. - Sept. 2004                 | 1,250                    | 586       | 1,836           | 292,947                         | 15,686          | 100,917    | 12,204                         | 128,807   | 421,754   |
| <b>Winnipeg, Manitoba</b>                    |                          |           |                 |                                 |                 |            |                                |           |           |
| August <sup>r</sup>                          | 168                      | 63        | 231             | 37,046                          | 1,961           | 11,105     | 4,805                          | 17,871    | 54,917    |
| September <sup>p</sup>                       | 226                      | 40        | 266             | 37,649                          | 6,495           | 9,933      | 3,050                          | 19,478    | 57,127    |
| Cumulative Jan. - Sept. 2005                 | 1,521                    | 321       | 1,842           | 281,167                         | 15,001          | 156,493    | 66,539                         | 238,033   | 519,200   |
| Cumulative Jan. - Sept. 2004                 | 1,710                    | 593       | 2,303           | 310,585                         | 26,729          | 143,854    | 85,429                         | 256,012   | 566,597   |

1. Included in this category are the following types of dwellings: single-detached, mobile home and cottage.

Table 7

## Dwelling units, provinces and territories, unadjusted, 2005

|                                  | Singles,<br>includes<br>mobile<br>homes | Cottages | Doubles | Rows   | Apartments | Conversions | Total<br>dwellings |
|----------------------------------|---|----------|---------|--------|------------|-------------|--------------------|
| Number of dwelling units         |   |          |         |        |            |             |                    |
| <b>Canada</b>                    |   |          |         |        |            |             |                    |
| August <sup>r</sup>              | 10,692                                  | 79       | 1,136   | 1,838  | 5,371      | 545         | 19,661             |
| September <sup>p</sup>           | 10,564                                  | 98       | 883     | 2,120  | 5,779      | 245         | 19,689             |
| Cumulative Jan. - Sept. 2005     | 93,996                                  | 593      | 9,054   | 17,451 | 51,937     | 3,775       | 176,806            |
| Cumulative Jan. - Sept. 2004     | 101,970                                 | 724      | 8,734   | 16,926 | 54,169     | 3,558       | 186,081            |
| <b>Newfoundland and Labrador</b> |   |          |         |        |            |             |                    |
| August <sup>r</sup>              | 187                                     | 0        | 0       | 0      | 52         | 2           | 241                |
| September <sup>p</sup>           | 188                                     | 1        | 2       | 0      | 59         | 1           | 251                |
| Cumulative Jan. - Sept. 2005     | 1,411                                   | 12       | 28      | 5      | 284        | 12          | 1,752              |
| Cumulative Jan. - Sept. 2004     | 1,663                                   | 14       | 68      | 40     | 220        | 58          | 2,063              |
| <b>Prince Edward Island</b>      |   |          |         |        |            |             |                    |
| August <sup>r</sup>              | 73                                      | 6        | 8       | 0      | 5          | 0           | 92                 |
| September <sup>p</sup>           | 58                                      | 11       | 4       | 0      | 12         | 2           | 87                 |
| Cumulative Jan. - Sept. 2005     | 528                                     | 46       | 50      | 3      | 87         | 4           | 718                |
| Cumulative Jan. - Sept. 2004     | 648                                     | 51       | 42      | 40     | 43         | 5           | 829                |
| <b>Nova Scotia</b>               |   |          |         |        |            |             |                    |
| August <sup>r</sup>              | 337                                     | 19       | 31      | 25     | 28         | 26          | 466                |
| September <sup>p</sup>           | 282                                     | 11       | 20      | 7      | 220        | 7           | 547                |
| Cumulative Jan. - Sept. 2005     | 2,557                                   | 87       | 129     | 140    | 1,125      | 83          | 4,121              |
| Cumulative Jan. - Sept. 2004     | 2,716                                   | 80       | 134     | 59     | 1,382      | 44          | 4,415              |
| <b>New Brunswick</b>             |   |          |         |        |            |             |                    |
| August <sup>r</sup>              | 273                                     | 16       | 24      | 0      | 66         | 34          | 413                |
| September <sup>p</sup>           | 327                                     | 11       | 24      | 12     | 163        | 3           | 540                |
| Cumulative Jan. - Sept. 2005     | 2,270                                   | 84       | 133     | 59     | 698        | 84          | 3,328              |
| Cumulative Jan. - Sept. 2004     | 2,399                                   | 78       | 91      | 102    | 529        | 52          | 3,251              |
| <b>Quebec</b>                    |   |          |         |        |            |             |                    |
| August <sup>r</sup>              | 1,917                                   | 23       | 177     | 174    | 1,397      | 149         | 3,837              |
| September <sup>p</sup>           | 2,165                                   | 38       | 280     | 104    | 2,384      | 89          | 5,060              |
| Cumulative Jan. - Sept. 2005     | 19,310                                  | 211      | 2,177   | 804    | 15,941     | 1,802       | 40,245             |
| Cumulative Jan. - Sept. 2004     | 20,589                                  | 249      | 1,884   | 1,041  | 16,362     | 1,800       | 41,925             |
| <b>Ontario</b>                   |   |          |         |        |            |             |                    |
| August <sup>r</sup>              | 3,645                                   | 8        | 585     | 883    | 1,043      | 250         | 6,414              |
| September <sup>p</sup>           | 3,506                                   | 14       | 345     | 1,308  | 910        | 104         | 6,187              |
| Cumulative Jan. - Sept. 2005     | 32,462                                  | 104      | 3,798   | 10,043 | 13,081     | 1,416       | 60,904             |
| Cumulative Jan. - Sept. 2004     | 40,217                                  | 152      | 3,991   | 9,718  | 13,870     | 906         | 68,854             |
| <b>Manitoba</b>                  |   |          |         |        |            |             |                    |
| August <sup>r</sup>              | 366                                     | 0        | 49      | 14     | 22         | 0           | 451                |
| September <sup>p</sup>           | 386                                     | 3        | 0       | 12     | 86         | 1           | 488                |
| Cumulative Jan. - Sept. 2005     | 2,898                                   | 8        | 60      | 106    | 377        | 11          | 3,460              |
| Cumulative Jan. - Sept. 2004     | 3,097                                   | 35       | 54      | 14     | 780        | 4           | 3,984              |
| <b>Saskatchewan</b>              |   |          |         |        |            |             |                    |
| August <sup>r</sup>              | 171                                     | 0        | 12      | 0      | 40         | 1           | 224                |
| September <sup>p</sup>           | 138                                     | 0        | 14      | 9      | 96         | 1           | 258                |
| Cumulative Jan. - Sept. 2005     | 1,430                                   | 5        | 94      | 87     | 644        | 11          | 2,271              |
| Cumulative Jan. - Sept. 2004     | 1,508                                   | 4        | 74      | 146    | 758        | 32          | 2,522              |
| <b>Alberta</b>                   |   |          |         |        |            |             |                    |
| August <sup>r</sup>              | 2,333                                   | 3        | 195     | 415    | 812        | 1           | 3,759              |
| September <sup>p</sup>           | 2,175                                   | 3        | 154     | 155    | 469        | 9           | 2,965              |
| Cumulative Jan. - Sept. 2005     | 19,754                                  | 20       | 2,089   | 2,155  | 8,095      | 59          | 32,172             |
| Cumulative Jan. - Sept. 2004     | 17,594                                  | 23       | 1,807   | 1,460  | 8,498      | 392         | 29,774             |
| <b>British Columbia</b>          |   |          |         |        |            |             |                    |
| August <sup>r</sup>              | 1,367                                   | 2        | 55      | 327    | 1,864      | 82          | 3,697              |
| September <sup>p</sup>           | 1,289                                   | 3        | 37      | 513    | 1,376      | 28          | 3,246              |
| Cumulative Jan. - Sept. 2005     | 11,106                                  | 9        | 490     | 4,031  | 11,517     | 291         | 27,444             |
| Cumulative Jan. - Sept. 2004     | 11,223                                  | 31       | 575     | 4,296  | 11,581     | 263         | 27,969             |



Table 7 – continued

## Dwelling units, provinces and territories, unadjusted, 2005

|                              | Singles,<br>includes<br>mobile<br>homes | Cottages | Doubles | Rows | Apartments | Conversions | Total<br>dwellings |
|------------------------------|---|----------|---------|------|------------|-------------|--------------------|
| Number of dwelling units     |   |          |         |      |            |             |                    |
| <b>Yukon Territory</b>       |   |          |         |      |            |             |                    |
| August <sup>r</sup>          | 12                                      | 2        | 0       | 0    | 0          | 0           | 14                 |
| September <sup>p</sup>       | 40                                      | 3        | 3       | 0    | 2          | 0           | 48                 |
| Cumulative Jan. - Sept. 2005 | 177                                     | 7        | 6       | 0    | 12         | 2           | 204                |
| Cumulative Jan. - Sept. 2004 | 167                                     | 7        | 7       | 10   | 7          | 2           | 200                |
| <b>Northwest Territories</b> |   |          |         |      |            |             |                    |
| August <sup>r</sup>          | 9                                       | 0        | 0       | 0    | 2          | 0           | 11                 |
| September <sup>p</sup>       | 10                                      | 0        | 0       | 0    | 0          | 0           | 10                 |
| Cumulative Jan. - Sept. 2005 | 86                                      | 0        | 0       | 18   | 34         | 0           | 138                |
| Cumulative Jan. - Sept. 2004 | 130                                     | 0        | 5       | 0    | 56         | 0           | 191                |
| <b>Nunavut</b>               |   |          |         |      |            |             |                    |
| August <sup>r</sup>          | 2                                       | 0        | 0       | 0    | 40         | 0           | 42                 |
| September <sup>p</sup>       | 0                                       | 0        | 0       | 0    | 2          | 0           | 2                  |
| Cumulative Jan. - Sept. 2005 | 7                                       | 0        | 0       | 0    | 42         | 0           | 49                 |
| Cumulative Jan. - Sept. 2004 | 19                                      | 0        | 2       | 0    | 83         | 0           | 104                |

Table 8

## Dwelling units, census metropolitan areas, unadjusted, September 2005

|  | Singles,<br>includes<br>mobile<br>homes | Cottages | Doubles | Rows | Apartments | Conversions | Total<br>dwellings |
|--|---|----------|---------|------|------------|-------------|--------------------|
|  | Number of dwelling units                |          |         |      |            |             |                    |
| Abbotsford, British Columbia                     | 40                                      | 0        | 0       | 0    | 77         | 0           | 117                |
| Calgary, Alberta                                 | 806                                     | 0        | 67      | 69   | 20         | 0           | 962                |
| Edmonton, Alberta                                | 650                                     | 0        | 60      | 30   | 213        | 7           | 960                |
| Greater Sudbury / Grand Sudbury,<br>Ontario      | 34                                      | 1        | 0       | 0    | 0          | 0           | 35                 |
| Halifax, Nova Scotia                             | 101                                     | 1        | 16      | 4    | 119        | 3           | 244                |
| Hamilton, Ontario                                | 90                                      | 0        | 6       | 140  | 20         | 4           | 260                |
| Kingston, Ontario                                | 20                                      | 2        | 2       | 0    | 6          | 0           | 30                 |
| Kitchener, Ontario                               | 138                                     | 0        | 12      | 61   | 16         | 1           | 228                |
| London, Ontario                                  | 170                                     | 0        | 7       | 17   | 162        | 1           | 357                |
| Montréal, Quebec                                 | 871                                     | 0        | 111     | 50   | 1,582      | 40          | 2,654              |
| Oshawa, Ontario                                  | 133                                     | 0        | 34      | 0    | 0          | 0           | 167                |
| Ottawa-Gatineau, Ontario/Quebec                  | 367                                     | 1        | 74      | 148  | 120        | 9           | 719                |
| Ottawa-Gatineau, Ontario part,<br>Ontario/Quebec | 215                                     | 0        | 45      | 148  | 79         | 8           | 495                |
| Ottawa-Gatineau, Quebec part,<br>Ontario/Quebec  | 152                                     | 1        | 29      | 0    | 41         | 1           | 224                |
| Québec, Quebec                                   | 208                                     | 0        | 19      | 47   | 187        | 12          | 473                |
| Regina, Saskatchewan                             | 26                                      | 0        | 0       | 9    | 41         | 0           | 76                 |
| Saguenay, Quebec                                 | 25                                      | 0        | 2       | 0    | 8          | 6           | 41                 |
| Saint John, New Brunswick                        | 63                                      | 2        | 0       | 0    | 0          | 0           | 65                 |
| Saskatoon, Saskatchewan                          | 63                                      | 0        | 14      | 0    | 55         | 1           | 133                |
| Sherbrooke, Quebec                               | 42                                      | 1        | 2       | 0    | 24         | 1           | 70                 |
| St. Catharines-Niagara, Ontario                  | 80                                      | 0        | 2       | 38   | 0          | 22          | 142                |
| St. John's, Newfoundland and Labrador            | 121                                     | 0        | 2       | 0    | 55         | 1           | 179                |
| Thunder Bay, Ontario                             | 28                                      | 0        | 0       | 0    | 2          | 0           | 30                 |
| Toronto, Ontario                                 | 1,259                                   | 0        | 179     | 620  | 474        | 22          | 2,554              |
| Trois-Rivières, Quebec                           | 36                                      | 0        | 0       | 0    | 47         | 2           | 85                 |
| Vancouver, British Columbia                      | 479                                     | 0        | 10      | 359  | 1,085      | 21          | 1,954              |
| Victoria, British Columbia                       | 104                                     | 0        | 6       | 0    | 16         | 0           | 126                |
| Windsor, Ontario                                 | 110                                     | 0        | 8       | 22   | 3          | 0           | 143                |
| Winnipeg, Manitoba                               | 217                                     | 0        | 0       | 12   | 28         | 0           | 257                |

Table 9

## Dwelling units, census metropolitan areas, unadjusted, cumulative, January - September 2005

|  | Singles,<br>includes<br>mobile<br>homes | Cottages | Doubles | Rows  | Apartments | Conversions | Total<br>dwellings |
|--|---|----------|---------|-------|------------|-------------|--------------------|
|  | Number of dwelling units                |          |         |       |            |             |                    |
| Abbotsford, British Columbia                     | 467                                     | 0        | 2       | 83    | 382        | 2           | 936                |
| Calgary, Alberta                                 | 7,098                                   | 0        | 733     | 889   | 2,859      | 1           | 11,580             |
| Edmonton, Alberta                                | 6,123                                   | 1        | 767     | 591   | 3,710      | 29          | 11,221             |
| Greater Sudbury / Grand Sudbury,<br>Ontario      | 319                                     | 1        | 0       | 0     | 12         | 0           | 332                |
| Halifax, Nova Scotia                             | 1,033                                   | 5        | 72      | 107   | 797        | 61          | 2,075              |
| Hamilton, Ontario                                | 1,062                                   | 0        | 164     | 693   | 530        | 201         | 2,650              |
| Kingston, Ontario                                | 447                                     | 6        | 32      | 3     | 153        | 5           | 646                |
| Kitchener, Ontario                               | 1,646                                   | 0        | 91      | 611   | 601        | 135         | 3,084              |
| London, Ontario                                  | 1,582                                   | 0        | 43      | 418   | 812        | 19          | 2,874              |
| Montréal, Quebec                                 | 7,638                                   | 0        | 737     | 372   | 10,674     | 1,062       | 20,483             |
| Oshawa, Ontario                                  | 1,502                                   | 0        | 427     | 252   | 51         | 142         | 2,374              |
| Ottawa-Gatineau, Ontario/Quebec                  | 3,054                                   | 6        | 320     | 1,168 | 968        | 119         | 5,635              |
| Ottawa-Gatineau, Ontario part,<br>Ontario/Quebec | 1,975                                   | 0        | 193     | 1,099 | 687        | 70          | 4,024              |
| Ottawa-Gatineau, Quebec part,<br>Ontario/Quebec  | 1,079                                   | 6        | 127     | 69    | 281        | 49          | 1,611              |
| Québec, Quebec                                   | 2,166                                   | 5        | 487     | 212   | 1,682      | 97          | 4,649              |
| Regina, Saskatchewan                             | 416                                     | 0        | 0       | 49    | 277        | 0           | 742                |
| Saguenay, Quebec                                 | 230                                     | 5        | 23      | 6     | 87         | 41          | 392                |
| Saint John, New Brunswick                        | 425                                     | 7        | 4       | 3     | 66         | 6           | 511                |
| Saskatoon, Saskatchewan                          | 577                                     | 0        | 72      | 2     | 279        | 10          | 940                |
| Sherbrooke, Quebec                               | 497                                     | 1        | 26      | 0     | 224        | 63          | 811                |
| St. Catharines-Niagara, Ontario                  | 786                                     | 1        | 54      | 208   | 15         | 59          | 1,123              |
| St. John's, Newfoundland and Labrador            | 877                                     | 0        | 28      | 5     | 232        | 8           | 1,150              |
| Thunder Bay, Ontario                             | 169                                     | 0        | 1       | 0     | 47         | 2           | 219                |
| Toronto, Ontario                                 | 10,949                                  | 0        | 2,344   | 5,334 | 9,189      | 566         | 28,382             |
| Trois-Rivières, Quebec                           | 343                                     | 0        | 10      | 12    | 169        | 91          | 625                |
| Vancouver, British Columbia                      | 3,879                                   | 0        | 188     | 2,923 | 7,111      | 152         | 14,253             |
| Victoria, British Columbia                       | 898                                     | 1        | 18      | 134   | 724        | 34          | 1,809              |
| Windsor, Ontario                                 | 905                                     | 0        | 82      | 105   | 87         | 20          | 1,199              |
| Winnipeg, Manitoba                               | 1,578                                   | 0        | 56      | 100   | 165        | 0           | 1,899              |

Table 10

## Value of residential and non-residential building permits, provinces and territories, Unadjusted, 2005

|                                  | Value of construction |                 |            |                                | Total      |
|----------------------------------|-----------------------|-----------------|------------|--------------------------------|------------|
|                                  | Residential           | Non-residential |            |                                |            |
|                                  |                       | Industrial      | Commercial | Institutional and governmental |            |
| thousands of dollars             |                       |                 |            |                                |            |
| <b>Canada</b>                    |                       |                 |            |                                |            |
| August r                         | 3,424,740             | 437,178         | 1,210,932  | 840,257                        | 5,913,107  |
| September p                      | 3,372,184             | 339,464         | 1,222,422  | 402,235                        | 5,336,305  |
| Cumulative Jan. - Sept. 2005     | 28,793,716            | 3,026,514       | 9,036,490  | 4,536,177                      | 45,392,897 |
| Cumulative Jan. - Sept. 2004     | 28,352,000            | 2,434,341       | 7,437,670  | 3,653,454                      | 41,877,465 |
| <b>Newfoundland and Labrador</b> |                       |                 |            |                                |            |
| August r                         | 39,319                | 4,367           | 9,145      | 425                            | 53,256     |
| September p                      | 41,753                | 784             | 17,895     | 2,136                          | 62,568     |
| Cumulative Jan. - Sept. 2005     | 268,754               | 40,525          | 82,347     | 14,793                         | 406,419    |
| Cumulative Jan. - Sept. 2004     | 283,294               | 6,566           | 55,684     | 26,894                         | 372,438    |
| <b>Prince Edward Island</b>      |                       |                 |            |                                |            |
| August r                         | 10,978                | 979             | 32,275     | 620                            | 44,852     |
| September p                      | 11,946                | 568             | 8,746      | 378                            | 21,638     |
| Cumulative Jan. - Sept. 2005     | 98,211                | 26,682          | 64,670     | 6,747                          | 196,310    |
| Cumulative Jan. - Sept. 2004     | 103,680               | 5,013           | 28,272     | 15,557                         | 152,522    |
| <b>Nova Scotia</b>               |                       |                 |            |                                |            |
| August r                         | 79,945                | 4,361           | 23,692     | 2,844                          | 110,842    |
| September p                      | 73,677                | 9,474           | 39,015     | 3,017                          | 125,183    |
| Cumulative Jan. - Sept. 2005     | 622,507               | 55,071          | 191,896    | 46,350                         | 915,824    |
| Cumulative Jan. - Sept. 2004     | 609,785               | 27,446          | 187,569    | 52,598                         | 877,398    |
| <b>New Brunswick</b>             |                       |                 |            |                                |            |
| August r                         | 51,343                | 3,351           | 32,867     | 21,122                         | 108,683    |
| September p                      | 57,159                | 14,320          | 23,029     | 13,883                         | 108,391    |
| Cumulative Jan. - Sept. 2005     | 396,986               | 49,642          | 163,610    | 61,870                         | 672,108    |
| Cumulative Jan. - Sept. 2004     | 391,615               | 26,474          | 122,718    | 71,912                         | 612,719    |
| <b>Quebec</b>                    |                       |                 |            |                                |            |
| August r                         | 632,845               | 87,383          | 200,571    | 84,725                         | 1,005,524  |
| September p                      | 794,415               | 67,285          | 159,156    | 85,000                         | 1,105,856  |
| Cumulative Jan. - Sept. 2005     | 6,100,466             | 630,846         | 1,376,748  | 550,705                        | 8,658,765  |
| Cumulative Jan. - Sept. 2004     | 5,956,609             | 579,301         | 1,399,267  | 748,790                        | 8,683,967  |
| <b>Ontario</b>                   |                       |                 |            |                                |            |
| August r                         | 1,213,518             | 183,599         | 488,557    | 542,499                        | 2,428,173  |
| September p                      | 1,183,379             | 129,390         | 568,116    | 142,535                        | 2,023,420  |
| Cumulative Jan. - Sept. 2005     | 10,842,384            | 1,204,902       | 3,553,969  | 2,189,330                      | 17,790,585 |
| Cumulative Jan. - Sept. 2004     | 11,694,105            | 1,250,713       | 3,114,807  | 1,833,182                      | 17,892,807 |
| <b>Manitoba</b>                  |                       |                 |            |                                |            |
| August r                         | 72,196                | 8,023           | 25,517     | 5,176                          | 110,912    |
| September p                      | 73,858                | 8,856           | 18,413     | 6,081                          | 107,208    |
| Cumulative Jan. - Sept. 2005     | 530,884               | 47,461          | 207,986    | 84,559                         | 870,890    |
| Cumulative Jan. - Sept. 2004     | 555,092               | 54,007          | 212,674    | 101,125                        | 922,898    |
| <b>Saskatchewan</b>              |                       |                 |            |                                |            |
| August r                         | 32,826                | 19,138          | 23,913     | 7,802                          | 83,679     |
| September p                      | 31,585                | 4,252           | 18,508     | 36,959                         | 91,304     |
| Cumulative Jan. - Sept. 2005     | 303,654               | 59,643          | 184,048    | 131,985                        | 679,330    |
| Cumulative Jan. - Sept. 2004     | 323,759               | 35,881          | 165,328    | 86,507                         | 611,475    |
| <b>Alberta</b>                   |                       |                 |            |                                |            |
| August r                         | 561,136               | 86,809          | 196,113    | 62,707                         | 906,765    |
| September p                      | 470,267               | 87,726          | 174,656    | 52,857                         | 785,506    |
| Cumulative Jan. - Sept. 2005     | 4,471,807             | 653,296         | 1,645,054  | 685,292                        | 7,455,449  |
| Cumulative Jan. - Sept. 2004     | 3,686,060             | 225,360         | 1,142,909  | 352,109                        | 5,406,438  |
| <b>British Columbia</b>          |                       |                 |            |                                |            |
| August r                         | 721,244               | 37,498          | 177,257    | 109,949                        | 1,045,948  |
| September p                      | 624,367               | 16,409          | 191,777    | 58,950                         | 891,503    |
| Cumulative Jan. - Sept. 2005     | 5,095,130             | 247,457         | 1,528,515  | 759,055                        | 7,630,157  |
| Cumulative Jan. - Sept. 2004     | 4,667,850             | 219,517         | 963,502    | 324,133                        | 6,175,002  |

Table 10 – continued

## Value of residential and non-residential building permits, provinces and territories, Unadjusted, 2005

|                              | Value of construction |                 |            |                                      | Total  |
|------------------------------|-----------------------|-----------------|------------|--------------------------------------|--------|
|                              | Residential           | Non-residential |            |                                      |        |
|                              |                       | Industrial      | Commercial | Institutional<br>and<br>governmental |        |
| thousands of dollars         |                       |                 |            |                                      |        |
| <b>Yukon Territory</b>       |                       |                 |            |                                      |        |
| August r                     | 2,538                 | 0               | 234        | 2,331                                | 5,103  |
| September p                  | 7,109                 | 400             | 1,663      | 439                                  | 9,611  |
| Cumulative Jan. - Sept. 2005 | 29,732                | 2,901           | 6,805      | 4,365                                | 43,803 |
| Cumulative Jan. - Sept. 2004 | 28,623                | 998             | 3,887      | 26,910                               | 60,418 |
| <b>Northwest Territories</b> |                       |                 |            |                                      |        |
| August r                     | 2,042                 | 736             | 640        | 57                                   | 3,475  |
| September p                  | 2,257                 | 0               | 1,227      | 0                                    | 3,484  |
| Cumulative Jan. - Sept. 2005 | 25,927                | 7,151           | 29,936     | 1,122                                | 64,136 |
| Cumulative Jan. - Sept. 2004 | 35,531                | 2,965           | 38,489     | 5,217                                | 82,202 |
| <b>Nunavut</b>               |                       |                 |            |                                      |        |
| August r                     | 4,810                 | 934             | 151        | 0                                    | 5,895  |
| September p                  | 412                   | 0               | 221        | 0                                    | 633    |
| Cumulative Jan. - Sept. 2005 | 7,274                 | 937             | 906        | 4                                    | 9,121  |
| Cumulative Jan. - Sept. 2004 | 15,997                | 100             | 2,564      | 8,520                                | 27,181 |

Table 11

## Value of residential and non-residential building permits, census metropolitan areas, unadjusted, September 2005

|   | Value of construction |                 |            |                                      | Total   |
|---|-----------------------|-----------------|------------|--------------------------------------|---------|
|   | Residential           | Non-residential |            |                                      |         |
|   |                       | Industrial      | Commercial | Institutional<br>and<br>governmental |         |
|   | thousands of dollars  |                 |            |                                      |         |
| Abbotsford, British Columbia                  | 15,533                | 1,124           | 3          | 296                                  | 16,956  |
| Calgary, Alberta                              | 162,306               | 6,623           | 72,749     | 26,222                               | 267,900 |
| Edmonton, Alberta                             | 145,629               | 23,708          | 29,858     | 13,226                               | 212,421 |
| Greater Sudbury / Grand Sudbury, Ontario      | 6,955                 | 5,429           | 835        | 1,425                                | 14,644  |
| Halifax, Nova Scotia                          | 31,711                | 2,943           | 11,087     | 963                                  | 46,704  |
| Hamilton, Ontario                             | 43,393                | 5,816           | 76,116     | 19,519                               | 144,844 |
| Kingston, Ontario                             | 4,988                 | 405             | 5,066      | 1,124                                | 11,583  |
| Kitchener, Ontario                            | 36,336                | 998             | 12,301     | 120                                  | 49,755  |
| London, Ontario                               | 46,260                | 11,517          | 15,944     | 3,112                                | 76,833  |
| Montréal, Quebec                              | 435,515               | 32,046          | 69,997     | 54,684                               | 592,242 |
| Oshawa, Ontario                               | 37,368                | 212             | 55,005     | 3,474                                | 96,059  |
| Ottawa-Gatineau, Ontario/Quebec               | 117,598               | 1,610           | 72,385     | 28,476                               | 220,069 |
| Ottawa-Gatineau, Ontario part, Ontario/Quebec | 85,304                | 1,136           | 66,324     | 28,388                               | 181,152 |
| Ottawa-Gatineau, Quebec part, Ontario/Quebec  | 32,294                | 474             | 6,061      | 88                                   | 38,917  |
| Québec, Quebec                                | 63,963                | 4,549           | 33,230     | 2,561                                | 104,303 |
| Regina, Saskatchewan                          | 7,510                 | 675             | 4,837      | 3,065                                | 16,087  |
| Saguenay, Quebec                              | 8,468                 | 418             | 4,863      | 3,503                                | 17,252  |
| Saint John, New Brunswick                     | 8,336                 | 561             | 3,808      | 9,000                                | 21,705  |
| Saskatoon, Saskatchewan                       | 15,429                | 1,940           | 7,768      | 2,297                                | 27,434  |
| Sherbrooke, Quebec                            | 11,997                | 1,648           | 3,507      | 342                                  | 17,494  |
| St. Catharines-Niagara, Ontario               | 24,846                | 1,402           | 3,962      | 531                                  | 30,741  |
| St. John's, Newfoundland and Labrador         | 30,810                | 446             | 13,769     | 1,168                                | 46,193  |
| Thunder Bay, Ontario                          | 6,001                 | 20              | 3,042      | 1,199                                | 10,262  |
| Toronto, Ontario                              | 533,601               | 50,018          | 258,385    | 52,601                               | 894,605 |
| Trois-Rivières, Quebec                        | 10,549                | 7,430           | 1,502      | 1,374                                | 20,855  |
| Vancouver, British Columbia                   | 382,472               | 5,025           | 111,923    | 39,142                               | 538,562 |
| Victoria, British Columbia                    | 31,337                | 746             | 41,198     | 2,719                                | 76,000  |
| Windsor, Ontario                              | 24,416                | 3,462           | 4,979      | 3,865                                | 36,722  |
| Winnipeg, Manitoba                            | 40,313                | 6,495           | 10,897     | 3,050                                | 60,755  |

Table 12

## Value of residential and non-residential building permits, census metropolitan areas, unadjusted, cumulative, January - September 2005

|   | Value of construction |                 |            |                                      | Total     |
|---|-----------------------|-----------------|------------|--------------------------------------|-----------|
|   | Residential           | Non-residential |            |                                      |           |
|   |                       | Industrial      | Commercial | Institutional<br>and<br>governmental |           |
|   | thousands of dollars  |                 |            |                                      |           |
| Abbotsford, British Columbia                  | 130,745               | 28,074          | 21,168     | 55,660                               | 235,647   |
| Calgary, Alberta                              | 1,694,679             | 129,002         | 702,077    | 357,520                              | 2,883,278 |
| Edmonton, Alberta                             | 1,405,996             | 107,687         | 385,560    | 196,699                              | 2,095,942 |
| Greater Sudbury / Grand Sudbury, Ontario      | 60,615                | 13,101          | 34,165     | 31,787                               | 139,668   |
| Halifax, Nova Scotia                          | 312,912               | 23,839          | 87,414     | 24,849                               | 449,014   |
| Hamilton, Ontario                             | 478,308               | 18,203          | 203,959    | 120,672                              | 821,142   |
| Kingston, Ontario                             | 93,653                | 5,060           | 37,877     | 14,069                               | 150,659   |
| Kitchener, Ontario                            | 462,382               | 38,040          | 146,183    | 68,973                               | 715,578   |
| London, Ontario                               | 403,315               | 55,781          | 130,389    | 53,018                               | 642,503   |
| Montréal, Quebec                              | 3,092,001             | 332,677         | 737,505    | 242,225                              | 4,404,408 |
| Oshawa, Ontario                               | 453,780               | 71,198          | 144,603    | 41,765                               | 711,346   |
| Ottawa-Gatineau, Ontario/Quebec               | 940,200               | 40,921          | 350,061    | 444,844                              | 1,776,026 |
| Ottawa-Gatineau, Ontario part, Ontario/Quebec | 694,645               | 31,224          | 298,782    | 437,882                              | 1,462,533 |
| Ottawa-Gatineau, Quebec part, Ontario/Quebec  | 245,555               | 9,697           | 51,279     | 6,962                                | 313,493   |
| Québec, Quebec                                | 629,672               | 17,900          | 189,249    | 51,484                               | 888,305   |
| Regina, Saskatchewan                          | 86,140                | 8,025           | 54,634     | 40,629                               | 189,428   |
| Saguenay, Quebec                              | 70,377                | 24,374          | 22,516     | 10,040                               | 127,307   |
| Saint John, New Brunswick                     | 70,813                | 14,791          | 25,764     | 10,365                               | 121,733   |
| Saskatoon, Saskatchewan                       | 123,200               | 44,972          | 63,262     | 42,187                               | 273,621   |
| Sherbrooke, Quebec                            | 120,456               | 12,062          | 34,590     | 22,731                               | 189,839   |
| St. Catharines-Niagara, Ontario               | 215,343               | 16,792          | 102,668    | 70,755                               | 405,558   |
| St. John's, Newfoundland and Labrador         | 178,796               | 35,316          | 59,381     | 5,798                                | 279,291   |
| Thunder Bay, Ontario                          | 39,139                | 13,223          | 23,763     | 24,690                               | 100,815   |
| Toronto, Ontario                              | 5,036,016             | 546,150         | 1,616,358  | 706,485                              | 7,905,009 |
| Trois-Rivières, Quebec                        | 92,600                | 15,863          | 22,552     | 5,490                                | 136,505   |
| Vancouver, British Columbia                   | 2,831,728             | 98,243          | 934,099    | 363,520                              | 4,227,590 |
| Victoria, British Columbia                    | 348,299               | 8,456           | 138,038    | 33,733                               | 528,526   |
| Windsor, Ontario                              | 210,616               | 23,750          | 64,320     | 49,950                               | 348,636   |
| Winnipeg, Manitoba                            | 295,559               | 15,001          | 146,875    | 66,539                               | 523,974   |

Table 13

## Value of the non-residential permits by type of building, provinces and territories, September 2005

|  | Canada           | Newfoundland and Labrador | Prince Edward Island | Nova Scotia      | New Brunswick   | Quebec                | Ontario        |
|--|------------------|---------------------------|----------------------|------------------|-----------------|-----------------------|----------------|
| thousands of dollars   |                  |                           |                      |                  |                 |                       |                |
| <b>Total non-residential</b>   | <b>1,964,121</b> | <b>20,815</b>             | <b>9,692</b>         | <b>51,506</b>    | <b>51,232</b>   | <b>311,441</b>        | <b>840,041</b> |
| <b>Industrial</b>  | <b>339,464</b>   | <b>784</b>                | <b>568</b>           | <b>9,474</b>     | <b>14,320</b>   | <b>67,285</b>         | <b>129,390</b> |
| Factories, plants  | 219,586          | 0                         | 435                  | 4,013            | 11,143          | 40,000                | 81,093         |
| Transportation, utilities  | 23,098           | 0                         | 0                    | 760              | 0               | 7,035                 | 5,299          |
| Mining and agriculture   | 36,912           | 0                         | 0                    | 3,000            | 2,166           | 8,285                 | 14,169         |
| Minor industrial projects, new and improvements <sup>1</sup>                     | 59,868           | 784                       | 133                  | 1,701            | 1,011           | 11,965                | 28,829         |
| <b>Commercial</b>  | <b>1,222,422</b> | <b>17,895</b>             | <b>8,746</b>         | <b>39,015</b>    | <b>23,029</b>   | <b>159,156</b>        | <b>568,116</b> |
| Trade and services   | 266,492          | 6,008                     | 6,246                | 22,261           | 11,455          | 48,405                | 87,322         |
| Warehouses   | 172,319          | 4,100                     | 980                  | 1,800            | 5,513           | 6,558                 | 71,854         |
| Service stations   | 23,154           | 2,150                     | 0                    | 0                | 0               | 2,650                 | 9,134          |
| Office buildings   | 261,281          | 2,100                     | 0                    | 8,638            | 0               | 35,927                | 158,792        |
| Recreation   | 164,710          | 0                         | 1,000                | 800              | 1,428           | 6,368                 | 106,274        |
| Hotels, restaurants  | 133,636          | 850                       | 0                    | 1,191            | 1,690           | 25,025                | 34,218         |
| Laboratories   | 39,909           | 0                         | 0                    | 0                | 0               | 0                     | 38,909         |
| Minor commercial projects, new and improvements <sup>1</sup>                     | 160,921          | 2,687                     | 520                  | 4,325            | 2,943           | 34,223                | 61,613         |
| <b>Institutional and governmental</b>  | <b>402,235</b>   | <b>2,136</b>              | <b>378</b>           | <b>3,017</b>     | <b>13,883</b>   | <b>85,000</b>         | <b>142,535</b> |
| Schools, education   | 188,792          | 0                         | 250                  | 1,143            | 2,203           | 50,137                | 70,487         |
| Hospitals, medical   | 57,255           | 961                       | 0                    | 250              | 0               | 7,785                 | 8,594          |
| Welfare, home  | 56,809           | 0                         | 0                    | 0                | 7,480           | 6,126                 | 14,640         |
| Churches, religion   | 14,043           | 0                         | 0                    | 550              | 436             | 975                   | 4,743          |
| Government buildings   | 56,232           | 0                         | 0                    | 600              | 2,784           | 13,977                | 31,635         |
| Minor institutional and governmental projects, new and improvements <sup>1</sup> | 29,104           | 1,175                     | 128                  | 474              | 980             | 6,000                 | 12,436         |
|  | Manitoba         | Saskatchewan              | Alberta              | British Columbia | Yukon Territory | Northwest Territories | Nunavut        |
| thousands of dollars   |                  |                           |                      |                  |                 |                       |                |
| <b>Total non-residential</b>   | <b>33,350</b>    | <b>59,719</b>             | <b>315,239</b>       | <b>267,136</b>   | <b>2,502</b>    | <b>1,227</b>          | <b>221</b>     |
| <b>Industrial</b>  | <b>8,856</b>     | <b>4,252</b>              | <b>87,726</b>        | <b>16,409</b>    | <b>400</b>      | <b>0</b>              | <b>0</b>       |
| Factories, plants  | 1,250            | 2,457                     | 74,094               | 5,101            | 0               | 0                     | 0              |
| Transportation, utilities  | 4,875            | 0                         | 3,427                | 1,302            | 400             | 0                     | 0              |
| Mining and agriculture   | 700              | 0                         | 4,098                | 4,494            | 0               | 0                     | 0              |
| Minor industrial projects, new and improvements <sup>1</sup>                     | 2,031            | 1,795                     | 6,107                | 5,512            | 0               | 0                     | 0              |
| <b>Commercial</b>  | <b>18,413</b>    | <b>18,508</b>             | <b>174,656</b>       | <b>191,777</b>   | <b>1,663</b>    | <b>1,227</b>          | <b>221</b>     |
| Trade and services   | 4,900            | 4,390                     | 50,344               | 24,539           | 0               | 622                   | 0              |
| Warehouses   | 2,514            | 2,924                     | 44,184               | 31,892           | 0               | 0                     | 0              |
| Service stations   | 0                | 2,700                     | 4,740                | 1,780            | 0               | 0                     | 0              |
| Office buildings   | 1,370            | 4,327                     | 23,928               | 26,199           | 0               | 0                     | 0              |
| Recreation   | 2,725            | 600                       | 6,310                | 37,690           | 1,515           | 0                     | 0              |
| Hotels, restaurants  | 900              | 0                         | 21,560               | 48,202           | 0               | 0                     | 0              |
| Laboratories   | 0                | 700                       | 0                    | 300              | 0               | 0                     | 0              |
| Minor commercial projects, new and improvements <sup>1</sup>                     | 6,004            | 2,867                     | 23,590               | 21,175           | 148             | 605                   | 221            |
| <b>Institutional and governmental</b>  | <b>6,081</b>     | <b>36,959</b>             | <b>52,857</b>        | <b>58,950</b>    | <b>439</b>      | <b>0</b>              | <b>0</b>       |
| Schools, education   | 1,796            | 4,915                     | 29,093               | 28,497           | 271             | 0                     | 0              |
| Hospitals, medical   | 1,800            | 30,538                    | 4,140                | 3,187            | 0               | 0                     | 0              |
| Welfare, home  | 1,580            | 0                         | 6,000                | 20,983           | 0               | 0                     | 0              |
| Churches, religion   | 0                | 0                         | 7,043                | 296              | 0               | 0                     | 0              |
| Government buildings   | 291              | 0                         | 4,695                | 2,250            | 0               | 0                     | 0              |
| Minor institutional and governmental projects, new and improvements <sup>1</sup> | 614              | 1,506                     | 1,886                | 3,737            | 168             | 0                     | 0              |

1. Refer to projects valued at less than \$250,000 for which the breakdown by type of building is not available.



## Description - Monthly survey of building permits

---

The following information should be used to ensure a clear understanding of the basic concepts that define the data provided in this product, of the underlying methodology of the survey, and of key aspects of the data quality. This information will provide you with a better understanding of the strengths and limitations of the data, and of how they can be effectively used and analysed. The information may be of particular importance to you when making comparisons with data from other surveys or sources of information, and in drawing conclusions regarding change over time.

## Data source and methodology

---

The purpose of the **Monthly Survey of Building Permits** issued by Canadian municipalities is to collect data on construction intentions. The results of this survey are used by C.M.H.C. (Canada Mortgage and Housing Corporation) as a reference base for conducting a monthly survey of housing starts and completions in accordance with its mandate. The statistics on building permits are also essential for the computation of capital expenditures. Furthermore, since the issuance of a building permit is one of the first steps in the construction process, these statistics are widely used as a leading indicator of building activity.

**General methodology** : The Building Permits Survey covers all Canadian municipalities that issue permits. The number of Canadian municipalities currently surveyed exceeds 2,380, representing all the provinces and territories. They account for 95% of the Canadian population. Participation in the survey is mandatory; the survey does not use a predetermined sample of municipalities. The communities representing the other 5% of the population are very small, and their level of building activity have little impact on the total. In practice, all urban agglomerations are represented in the survey, as well as a fair percentage of rural municipalities. With certain exceptions, the minimum coverage corresponds to the municipalities already included in the Housing Starts and Completions C.M.H.C.'s Survey. Non-responding municipalities that issue permits are urged on a regular basis to respond to the Building Permit Survey. Therefore, the number of municipalities covered is increasing continually.

The survey is usually conducted by mail, although certain municipalities choose to respond by telephone. The municipal officer responsible for issuing permits is asked to fill out a form each month describing all major construction projects.

The municipalities forward a copy of their completed report to Statistics Canada Head Office and another copy to the local office of the Canada Mortgage and Housing Corporation (C.M.H.C.). To reduce their overhead, an increasing number of respondents are producing a computerized report. Only those municipalities that are late in reporting and that are included in the above-mentioned C.M.H.C. survey are subject to follow-up by telephone.

The reports received at Statistics Canada Head Office are verified, coded and processed.

Strict quality control procedures are applied to ensure that collection, coding and data processing are as accurate as possible. Checks are also performed on totals and the magnitude of data. Reports that fail to meet the quality standards are subject to verification and are corrected as required.

Imputations are required for each characteristic for which no report has been received. These are calculated automatically, subject to certain constraints, by applying to previously used values, the month-to-month and year-to-year changes in similar values of responding municipalities and the historical pattern of the missing municipalities. No estimation is done for lack of coverage, concealment or the underevaluation of permits issued. For this reason, the sampling error cannot be computed.

The monthly statistics are not corrected for cancelled or expired permits. According to the municipal officers, the proportion of cancelled and unused permits is below 5%.

**Reference period** : The reference period for data collection purposes is the calendar month. Reports from municipalities which are part of a census metropolitan area or a census agglomeration must be received within 20 days following the month of reference. The other municipalities have 30 days to produce their reports. Results are released between 35 and 40 days after the end of the reference month. Annual data for the preceding calendar year are released with the data for the January survey month.

**Revisions** : Two types of revisions can affect the results of the Building Permits Survey:

### Revisions due to the correction of coding errors

These types of revisions are done on a monthly basis only to the data pertaining to the month preceding the reference period.

### Revisions due to the addition of late reports

Late reports for the month preceding the reference period are incorporated into the survey results on a continuing basis. However, reports received after the two-month deadline following the reference month are introduced only at the end of the year. As a result, the data for the last twelve months are subject to revision.

**Seasonal adjustment** : Seasonal changes cause predictable fluctuations in the data. The data series disseminated includes both seasonally adjusted (i.e., excludes predictable annual influences) and the unadjusted data. Seasonally adjusted data for the total number of housing units as well as for the aggregate value of building permits are obtained indirectly, i.e., by adding their seasonally adjusted components. The total number of dwelling units is obtained by summing the seasonally adjusted data for single-family and multiple-use units; the total value of building permits is obtained by summing the following elements: single-family and multiple-family dwellings, industrial, commercial and institutional. Some series contain no apparent seasonality. In these cases, unadjusted values have been tabulated and aggregated to the adjusted values of the other series. At the end of the year, the chronological series adjusted for seasonality are revised to take into account the most recent seasonal fluctuations. Generally, these revisions apply only to the last three years in the series. The revised data are introduced into the CANSIM databank.

## Concepts and variables measured

---

The statistical data presented in this product refers to the number of dwelling units authorized and the **value of building permits**. The value of the permits reported includes the following expenditures: materials, labour, profit and overhead. The cost of land is never included in the estimated value of the permit while acquisition costs (legal fees, surveying fees and accrued interest) may be included at times.

The classification used in this publication deals strictly with structures for which a building permit was issued. Permits are generally issued for the following: construction of new buildings, alterations, additions, renovations, etc. Minor repair jobs such as painting, tiling, roofing, etc., for which no permit is required, and engineering work (such as dams, roads, pipelines, etc.), which, by definition, is not a building, are not included in the building permit series. Estimates of such work may be obtained from the publications *Capital expenditures by type of asset* (cat. no. 61-223-X) and *Private and Public Investment in Canada Intentions* (cat. no. 61-205-X).

The description given by the municipalities as to the type of building (box #6 of Section A on the form) and the type of work involved (box #7 of Section A on the form) forms the basis for classification. The classification of buildings into major groups and subgroups is based on the following: intended use in the case of new buildings; present or intended use of buildings to which improvements are to be made; present use of the existing structure where the proposed construction is intended to provide additional facilities; principal use of the structure where the proposed construction has more than one intended use; however, where the building contains dwellings, the value of the construction is divided between residential and non-residential use.

## Building categories

---

This publication, uses the following classification for the **value of permits issued** for construction of new buildings or for improvements: residential, industrial, commercial, institutional and government.

**Residential.** Includes all buildings intended for private occupancy whether on a permanent basis or not. Dwellings are divided into the following types: single-family, mobile, cottage, semi-detached, row house and apartment building.

**Industrial.** Includes all buildings used for manufacturing and processing; transportation, communication and other utilities, and agriculture, forestry and mining.

**Commercial.** Includes all buildings used to house activities related to the tertiary sector, such as stores, warehouses, garages, office buildings, theatres, hotels, funeral parlours and beauty salons.

**Institutional and Government .** Includes expenditures made by the community, public and government for buildings and structures like schools, universities, hospitals, clinics, churches, homes for the aged.

The **number of dwelling units** indicates the number of self contained dwelling units created. This should not be confused with the number of structures. For example, an apartment building containing six dwellings will be shown as six dwelling units. When an existing structure is converted into additional housing units, the number of units added is included. This publication uses the following classification for dwelling units:

**Single-family.** Refers to dwellings commonly called "**single house**". It includes single dwellings that are completely isolated on all sides, including single dwellings linked to other dwellings below ground. Included are bungalows, split levels, two-storey single-family homes built by conventional methods or prefabricated.

**Mobile homes .** Refers to houses designed and constructed to be transported on their own chassis and for easy moving.

**Cottage.** Refers to dwellings that cannot be occupied year-round or on a permanent basis because the facilities required for comfort are inadequate.

**Double or Semi-detached .** Refers to dwellings in which each of the two dwellings are side by side and joined by a common wall or garage, but not attached to any other building and surrounded by open space.

**Row Dwellings .** Refers to a row of three or more dwellings attached to each other without dwellings above or below.

**Apartment Building .** Includes dwellings in a variety of buildings such as duplexes, semi-detached duplexes, triplexes, row duplexes, apartments as such and dwellings adjacent to non-residential structures.

**Conversion.** Refers to the number of dwellings added by conversion of existing structures.

## Geographic classification

Geographic entities are classified according to Standard Geographical Classification (SGC) used by Statistics Canada. Each reporting entity is assigned a twelve-digit SGC code for identification according to the following geographic levels:

**Province and territory (PR) :** There are ten provinces and three territories.

**Economic region (ER) :** Refers to intraprovincial regions established by the Standards Division of Statistics Canada. There are seventy-six ERs.

**Census division (CD)** : Refers to a group of census subdivisions established by provincial law. There are two hundred and ninety-one CDs (data on this geographic group is available on request).

**Census metropolitan area (CMA)** : Its delineation corresponds to the 2001 Census definition. The term CMA refers to the main labour market area of an urban area (the urbanized core) of at least 100,000 population, based on the Census population figures. The twenty-seven CMAs are shown in this publication. Although the 2001 Census defines the Ottawa-Hull area as a single CMA, the area is shown in this publication as two separate entities since it is located in two different provinces.

**Census agglomeration (CA)** : Refers to the smaller labour market area of an urbanized core of at least 10,000 population, as defined by the 2001 Census. There are one hundred and eighteen CAs in Canada. When a CA overlaps the boundaries of two provinces, it is shown partly in each province. The Lloydminster agglomeration is an exception to this rule. It is treated as if it was totally located in Alberta.

**Other municipalities of at least 10,000 population** : Refers to municipalities not included in census agglomerations but with populations of at least 10,000 inhabitants. The distinction is made between these municipalities and CAs in order to permit comparison between the Building Permits Survey and the Housing Starts and Completions Survey which refers to this geographical concept.

**Rural area** : Refers to all geographic entities not included in a CMA or CA and not identified as an urban centre by the Canada Mortgage and Housing Corporation.

**Census subdivision (CSD)** : Refers to the general term applying to municipalities, Indian reserves, Indian settlements and unorganized territories. However, since Indian reserves and settlements do not issue building permits, they are not included in this publication.

**Non-standard geographic unit** : The geographic units shown in this publication do not all satisfy the above definition of census subdivision. Some provincial or municipal administrations producing monthly reports do not correspond to the official geographic entities; they are nevertheless shown in this publication under the geographic entity used by these administrations. These so-called non-standard geographic units are few in number and are mostly concentrated in the Maritime provinces.

### **Territorial revisions**

Territorial boundaries were established according to the 2001 Census definitions. Changes in boundaries, status or name of census subdivisions between censuses are introduced in this publication on a yearly basis. Changes affecting the other geographic units (CMAs, CAs, CDs and ERs) are introduced every five years, eighteen months following the census.

## Data accuracy

---

Since the building permit data are extracted from municipal administrative documents, two types of response errors are possible: errors attributable to the permit applicant and errors in transcription by the responding municipality. However, experience has shown that transcription errors are not very common and the increasing number of municipalities producing computerized reports tends to reduce the frequency of this type of error. Errors attributable to an understatement of the cost of construction are more probable. Since permit fees are in most cases based on the value of the construction, this leads unquestionably to under-estimation of project values.

The other source of error are the processing error and the non-response error. In 2004, more than 99% of the municipalities covered by the survey sent their monthly Building Permits reports.

## Comparability of data and related sources

---

Comparison of data must be done with reservation considering that the methods of issuing permits and the methods of estimating building values can differ from one municipality to another. Also, comparisons involving different periods must take into account the constant increase in the number of municipalities participating in the survey.

This publication contains only part of the data produced on building permits. However, you may order unpublished tables or address special requests, to the Current Investment Indicators Section ((613) 951-4646 or 1-800-579-8533). The series presented here is also available on CANSIM: Tables 026-0001 to 026-0008, 026-0010 and 026-0015.



# Appendix I

---

## Geographical abbreviations

|        |  |
|--------|--|
| A.R.   | Agglomération de recensement           |
| BOR    | Borough                                |
| C      | City                                   |
| C.A.   | Census Agglomeration                   |
| CC     | Chartered Community                    |
| CDR    | Census Division Remainder              |
| CM     | County (Municipality)                  |
| C.M.A. | Census Metropolitan Area               |
| COM    | Community                              |
| CR     | County Remainder                       |
| CT     | Canton                                 |
| CU     | Cantons-Unis                           |
| DM     | District (Municipality)                |
| HAM    | Hamlet                                 |
| ID     | Improvement District                   |
| IGD    | Indian Government District             |
| LGD    | Local Government District              |
| LOT    | Lot and Royalty                        |
| M      | Municipalité                           |
| MD     | Municipal District                     |
| NH     | Northern Hamlet                        |
| NT     | Northern Town                          |
| NV     | Northern Village                       |
| N.W.T. | NorthWest Territories                  |
| P      | Paroisse                               |
| PAR    | Parish                                 |
| PD     | Planning District                      |
| PDR    | Planning District Remainder            |
| RCR    | Rural County Remainder                 |
| RGM    | Regional Municipality                  |
| R.M.R. | Région métropolitaine de recensement   |
| RDR    | Regional District Remainder            |
| RM     | Rural Municipality                     |
| RV     | Resort Village                         |
| SA     | Special Area                           |
| S-E    | Indian Settlement/Établissement indien |
| SCM    | Subdivision of County Municipality     |
| SD     | Sans désignation                       |
| SET    | Settlement                             |
| SM     | Specialize Municipality                |
| SRD    | Subdivision of Regional District       |
| SUN    | Subdivision of Unorganized District    |
| SV     | Summer Village                         |
| T      | Town                                   |
| T.N.O. | Territoires du Nord-Ouest              |

|     |                          |
|-----|--------------------------|
| TP  | Township                 |
| UCR | Urban County Remainder   |
| UNO | Unorganized/Non organisé |
| V   | Ville                    |
| VC  | Village Cri              |
| VL  | Village                  |
| VN  | Village Nordique         |