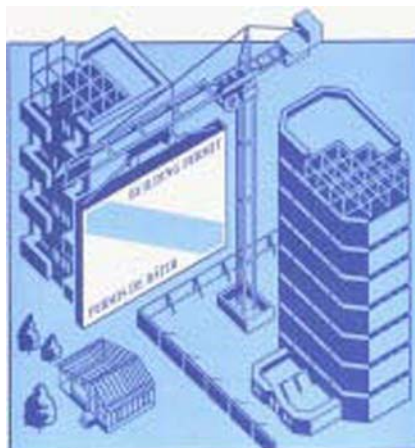




Building Permits

November 2004



How to obtain more information

Specific inquiries about this product and related statistics or services should be directed to: Current Investment Indicators Section, Investment and Capital Stock Division, Statistics Canada, Ottawa, Ontario, K1A 0T6 (telephone: (613) 951-4646).

For information on the wide range of data available from Statistics Canada, you can contact us by calling one of our toll-free numbers. You can also contact us by e-mail or by visiting our website.

| | |
|--------------------------------------------------------------------|-----------------------------|
| National inquiries line | 1 800 263-1136 |
| National telecommunications device for the hearing impaired | 1 800 363-7629 |
| Depository Services Program inquiries | 1 800 700-1033 |
| Fax line for Depository Services Program | 1 800 889-9734 |
| E-mail inquiries | infostats@statcan.ca |
| Website | www.statcan.ca |

Ordering and subscription information

This product, catalogue no. 64-001-XIE, is published monthly in electronic format at a price of CAN\$15.00 per issue and CAN\$156.00 for a one-year subscription. To obtain a single issue or to subscribe visit our website at www.statcan.ca and select Our Products and Services.

Standards of service to the public

Statistics Canada is committed to serving its clients in a prompt, reliable and courteous manner and in the official language of their choice. To this end, the Agency has developed standards of service which its employees observe in serving its clients. To obtain a copy of these service standards, please contact Statistics Canada toll free at 1 800 263-1136.



Statistics Canada
Investment and Capital Stock Division
Current Investment Indicators Section

Building Permits

November 2004

Published by authority of the Minister responsible for Statistics Canada

© Minister of Industry, 2005

All rights reserved. No part of this publication may be reproduced, stored in a retrieval system or transmitted in any form or by any means, electronic, mechanical, photocopying, recording or otherwise without prior written permission from Licence Services, Marketing Division, Statistics Canada, Ottawa, Ontario, Canada K1A 0T6.

January 2005

Catalogue no. 64-001-XIE, Vol. 48, no. 11
ISSN 1480-7475

Frequency: Monthly

Ottawa

La version française de cette publication est disponible sur demande (n° 64-001-XIF au catalogue).

Note of appreciation

Canada owes the success of its statistical system to a long-standing partnership between Statistics Canada, the citizens of Canada, its businesses, governments and other institutions. Accurate and timely statistical information could not be produced without their continued cooperation and goodwill.

Symbols

The following standard symbols are used in Statistics Canada publications:

- . not available for any reference period
- .. not available for a specific reference period
- ... not applicable
- 0 true zero or a value rounded to zero
- 0^s value rounded to 0 (zero) where there is a meaningful distinction between true zero and the value that was rounded
- ^P preliminary
- ^r revised
- x suppressed to meet the confidentiality requirements of the *Statistics Act*
- ^E use with caution
- F too unreliable to be published

This publication was prepared under the direction of:

- **P. Koumanakos**, Director, Investment and Capital Stock Division
- **M. Labonté**, Chief, Current Investment Indicators Section
- **É. Saint-Pierre**, Unit Head, Residential Sector, Current Investment Indicators
- **D. Legault**, Programmer-Analyst, Current Investment Indicators Section

Geographical Abbreviations

| | | | | | |
|--------|---|------------------------------|--------|---|----------------------------------------|
| A.R. | – | Agglomération de recensement | PD | – | Planning District |
| BOR | – | Borough | PDR | – | Planning District Remainder |
| C | – | City | RCR | – | Rural County Remainder |
| C.A. | – | Census Agglomeration | RGM | – | Regional Municipality |
| CC | – | Chartered Community | R.M.R. | – | Région métropolitaine de recensement |
| CDR | – | Census Division Remainder | RDR | – | Regional District Remainder |
| CM | – | County (Municipality) | RM | – | Rural Municipality |
| C.M.A. | – | Census Metropolitan Area | RV | – | Resort Village |
| COM | – | Community | SA | – | Special Area |
| CR | – | County Remainder | S–E | – | Indian Settlement/Établissement indien |
| CT | – | Canton | SCM | – | Subdivision of County Municipality |
| CU | – | Cantons-Unis | SD | – | Sans désignation |
| DM | – | District (Municipality) | SET | – | Settlement |
| HAM | – | Hamlet | SM | – | Specialize Municipality |
| ID | – | Improvement District | SRD | – | Subdivision of Regional District |
| IGD | – | Indian Government District | SUN | – | Subdivision of Unorganized District |
| LGD | – | Local Government District | SV | – | Summer Village |
| LOT | – | Lot and Royalty | T | – | Town |
| M | – | Municipalité | T.N.O. | – | Territoires du Nord-Ouest |
| MD | – | Municipal District | TP | – | Township |
| NH | – | Northern Hamlet | UCR | – | Urban County Remainder |
| NT | – | Northern Town | UNO | – | Unorganized/Non organisé |
| NV | – | Northern Village | V | – | Ville |
| N.W.T. | – | NorthWest Territories | VC | – | Village Cri |
| P | – | Paroisse | VL | – | Village |
| PAR | – | Parish | VN | – | Village Nordique |

Important Notice

Changes in boundaries, status or names of geographical entities that occurred before January 2004, are reflected in this publication. These geographical changes may be obtained by writing to:

Statistics Canada
 Investment and Capital Stock Division
 Current Investment Indicators Section
 9 D-2, Jean Talon Building
 Tunney's Pasture
 Ottawa, Ontario
 K1A 0T6
 or by telephoning: (613) 951-4646
 bdp_information@statcan.ca

Note on CANSIM

The data published in Building Permits (Catalogue no. 64-001-XIE) are also available in machine readable form through CANSIM (Canadian Socio-Economic Information Management System). Users interested in accessing data via CANSIM should contact one of Statistics Canada's regional centres at the numbers listed on the inside front cover of this publication, or contact the Marketing Division, Statistics Canada, R.H. Coats Building, Ottawa, Ontario, K1A 0T6 (613) 951-8200.

Table of Contents

| | Page |
|---------------------------------------------------------------------------------------------------------------------------|------|
| Part I – Analysis | |
| Highlights | v |
| Monthly Review | v |
| Charts | vii |
| Part II – Tables (Seasonally Adjusted) | |
| 1. Total Value of Building Permits, Provinces and Territories, Seasonally Adjusted (Current Periods) | 1 |
| 2. Non-residential Value of Building Permits, Provinces and Territories (Current Periods) | 1 |
| 3. Residential Value of Building Permits, Provinces and Territories (Current Periods) | 2 |
| 4. Number of Dwelling Units Authorized, Provinces and Territories, Seasonally Adjusted at Annual Rate (Current Periods) | 2 |
| 5. Dwelling Units, Value of Residential and Non-residential Building Permits, Provinces and Territories (Current Periods) | 3 |
| 6. Dwelling Units, Value of Residential and Non-residential Building Permits, Census Metropolitan Areas (Current Periods) | 5 |
| Part III – Tables (Unadjusted) | |
| 7. Dwelling Units, Provinces and Territories (Current Periods) | 8 |
| 8. Dwelling Units, Census Metropolitan Areas (Current Periods) | 10 |
| 9. Dwelling Units, Census Metropolitan Areas (Cumulative) | 11 |
| 10. Value of Residential and Non-residential Building Permits, Provinces and Territories (Current Periods) | 12 |
| 11. Value of Residential and Non-residential Building Permits, Census Metropolitan Areas (Current Periods) | 14 |
| 12. Value of Residential and Non-residential Building Permits, Census Metropolitan Areas (Cumulative) | 15 |
| 13. Value of the Non-residential Permits by Type of Building, Provinces and Territories (Current Periods) | 16 |
| Part IV – Monthly Survey of Building Permits – Data Quality, Concepts and Methodology | |
| Data Quality, Concepts and Methodology | 17 |
| Data Sources and Methodology | 17 |
| Concepts and Variables Measured | 18 |
| Data Accuracy | 19 |
| Comparability of Data and Related Sources | 20 |
| Related Products and Services | 20 |
| Survey Form | 21 |

Part I – Analysis

Highlights

The value of building permits surged to their second highest level on record in November in the wake of strong gains in the non-residential sector and continuing growth in the residential sector.

In total, municipalities issued \$5.0 billion in permits, up 9.3% from October. This level was second only to the \$5.4 billion worth of construction intentions in June.

In the non-residential sector, contractors took out permits worth \$1.85 billion, a 20.8% increase from October. This level was the second highest during the past fifteen years, surpassed only by intentions worth \$1.91 billion in June this year.

November's increase was a third consecutive monthly gain for the non-residential sector. The growth was fuelled by strong construction intentions for institutional buildings, and to a lesser extent by the gains in the industrial and commercial components.

In the residential sector, the picture remained positive. The value of housing permits issued by municipalities totalled \$3.1 billion, up 3.5% from October. A surge in demand for new multi-family dwelling units more than offset a decline in the single-family component.

On a year-to-date basis, the total value of building permits reached \$50.5 billion between January and November, up 9.0% from the same period last year. This advance was entirely the result of a 15.2% increase in residential construction intentions. The value of permits in the non-residential sector fell 1.3%.

The cumulative value so far this year is just \$252 million short of the total value of \$50.8 billion for all of 2003, which was a record. Consequently, the value of building permits will reach a new annual peak in 2004.

Regionally, the metropolitan areas of Vancouver and Montreal recorded by far the largest dollar gains on a year-to-date basis. In both regions, the value of building permits was up by more than \$1 billion dollars compared with the first 11 months of 2003. This was due to tremendous demand for new housing.

Surge in value of multi-family permits

Building permits for multi-family dwellings rose 22.0% in November to \$1.1 billion, as proposed projects for apartment-condominiums units soared. At the same time, the value of permits for single-family units declined 4.7% to \$2.0 billion.

Among the factors that contributed to the strength in the housing sector were: advantageous mortgage rates; creation of full-time jobs in 2004; and tight vacancy rates for apartments in large metropolitan areas such as Vancouver and Montreal.

At the provincial level, all provinces except for Ontario and Saskatchewan showed gains in November in housing intentions. The largest gain (in dollars) occurred in Quebec, where the value of residential permits increased 23.3% to a record high of \$844 million.

Between January and November, the total value of permits for single-family dwellings reached \$22.3 billion, up 12.0% from the same period in 2003. Construction intentions for multi-family dwellings increased 22.0% to \$11.1 billion. The high level of construction for multi-family dwellings helped increase vacancy rates for apartment buildings at the national level.

Since January, municipalities have authorized a total of 222,215 new dwellings units, the highest level for the first 11 months since 1987, when 230,940 new units were approved. Just under half (47%) of these units were multi-family dwellings, the highest proportion since 1982.

Non-residential sector: Several projects in the pipe

Following three monthly declines, construction intentions for buildings in the institutional category totalled \$561 million in November, up a solid 86.3% from October. Simultaneous large increases in the value of permits related to education buildings, medical buildings and social service buildings led this component to its highest value since July 2003.

Construction intentions in the industrial sector recorded their third double-digit increase in a row. In November, they totalled \$396 million, up 13.8%, a gain which was due to projects related to the utility, transportation category.

The value of permits in the commercial component increased 1.3% to \$896 million on the strength of construction intentions for warehouses. Declines in permits for laboratories and hotels and restaurants partly offset the increase.

These results were in line with recent positive indicators, such as record high retail sales in October. Overall, consumer spending in retail stores has been advancing steadily since the start of 2004, except for a decline in April. In addition, third-quarter operating profits rose for a ninth consecutive year-over-year advance. However, signs suggest momentum has slowed for manufacturers because of the rising value of the Canadian dollar and high input prices.

Provincially, the largest gains (in dollars) occurred in British Columbia and Ontario. The 150.2% gain in British Columbia came from projects for manufacturing buildings and social service buildings. In Ontario, an 18.2% increase was related to projects in the medical and educational categories.

On a year-to-date basis, municipalities issued \$17.1 billion worth of building permits from January to November, down 1.3% from the same period in 2003.

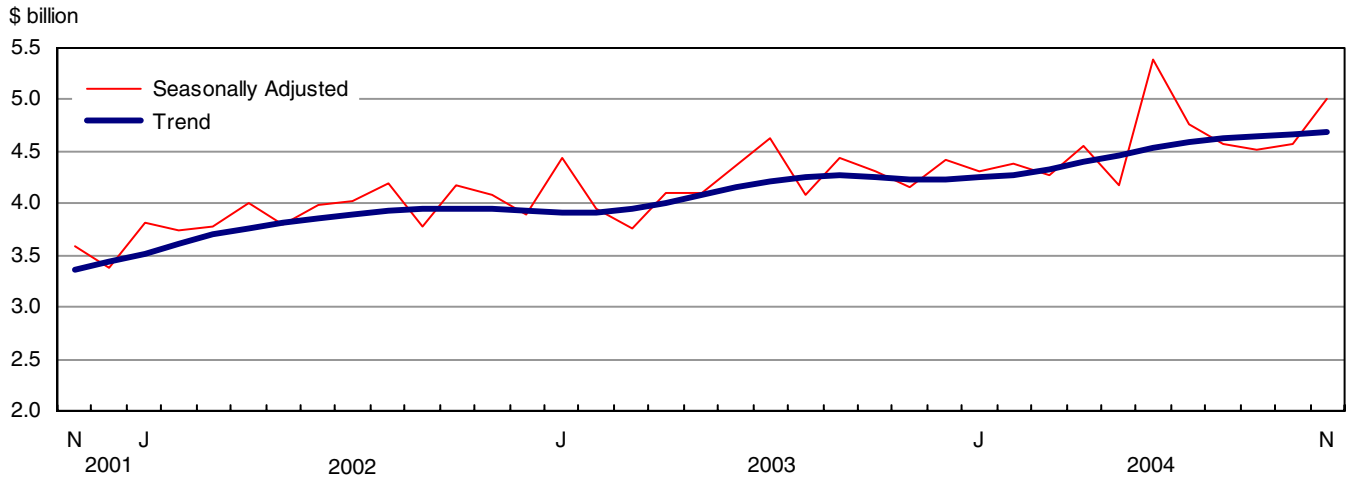
The cumulative value of permits in the commercial sector was up 10.0% from 2003. Construction intentions for industrial permits were down 4.2%, while intentions in the institutional sector were down 16.8%.

Non-residential permits have dropped in five provinces so far this year, the largest decline in Ontario (-5.5%). Quebec posted the largest gain (+6.7%).

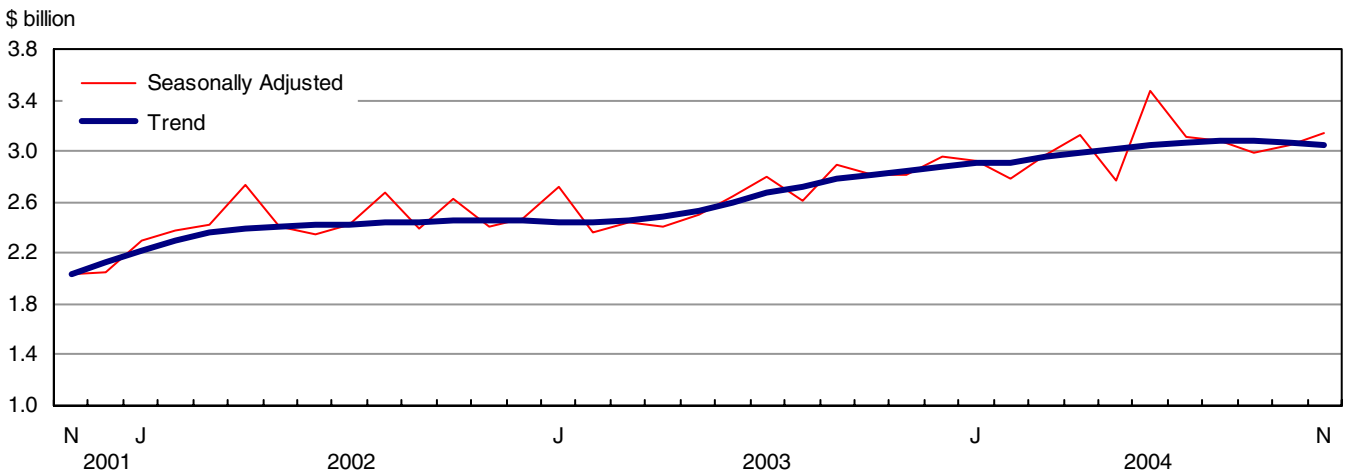
Among the metropolitan areas, strong construction intentions in the commercial sector led Vancouver and Toronto to the strongest dollar advances in the cumulative value of non-residential permits. Increases on a year-to-date basis occurred in 15 of 28 metropolitan areas.

Building permits - Canada

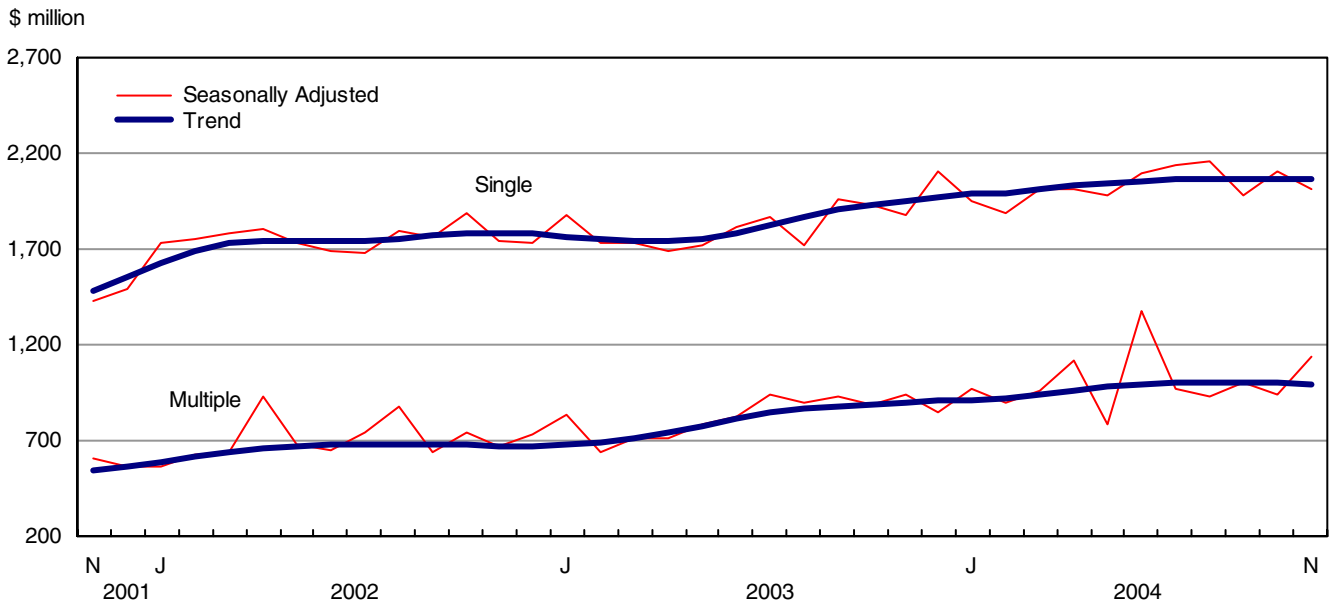
Total value of building permits



Residential value - Total

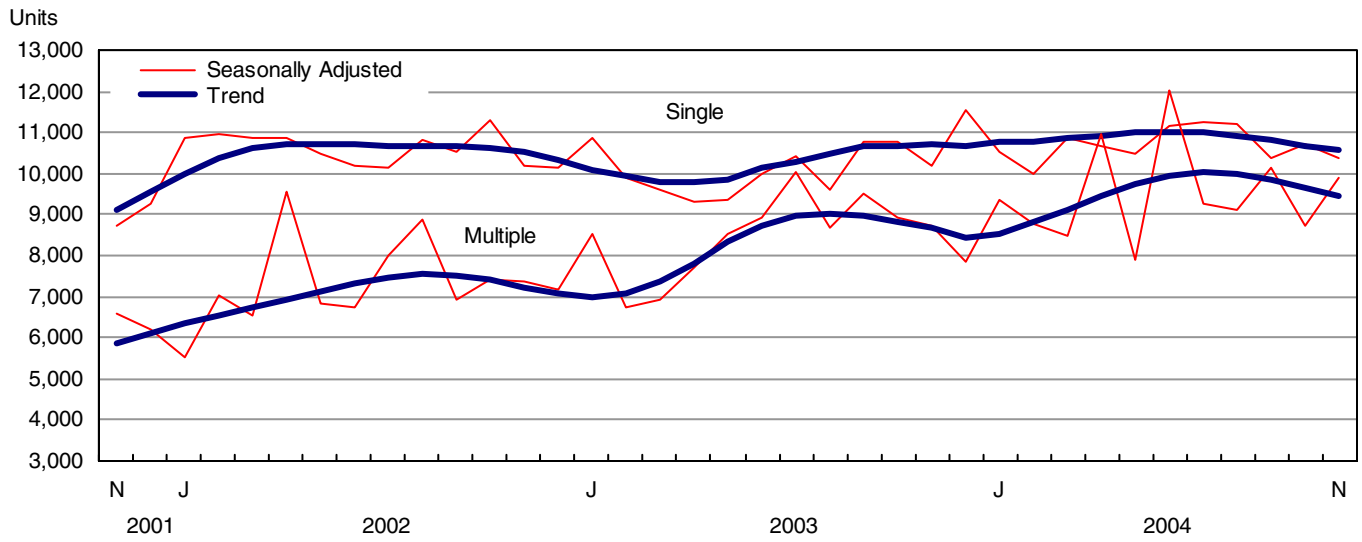


Residential value - single and multiple

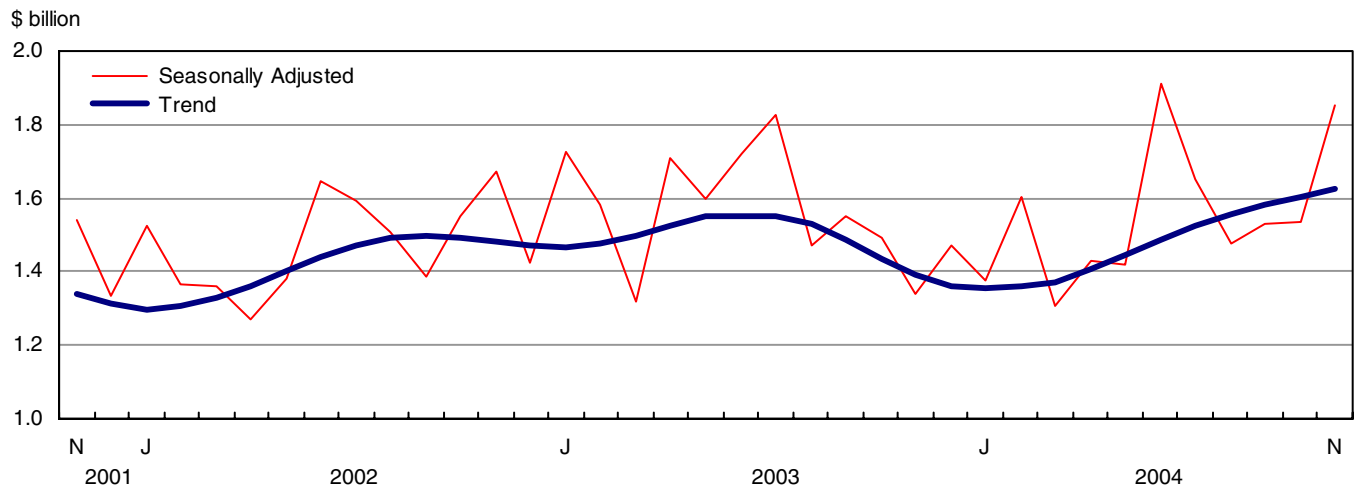


Building permits - Canada

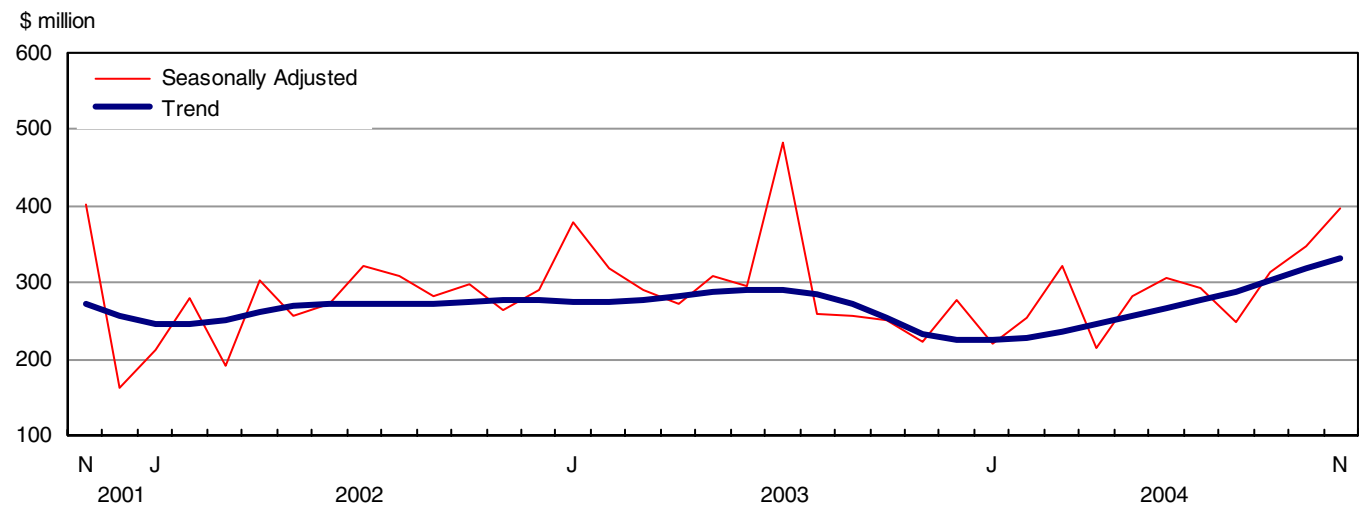
Number of dwelling units - single and multiple



Non residential value - Total

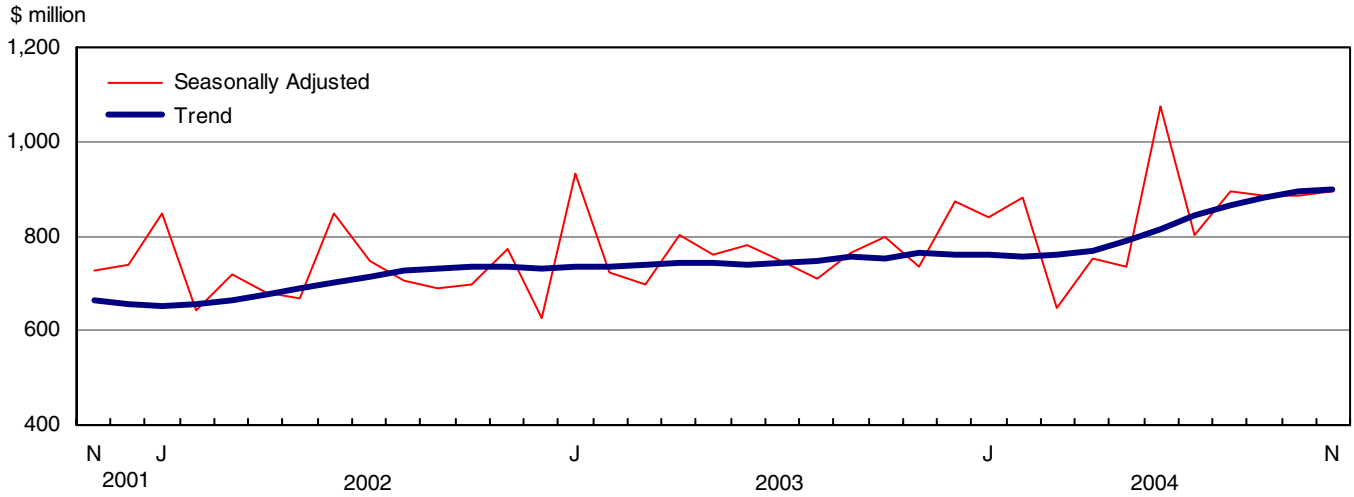


Industrial value

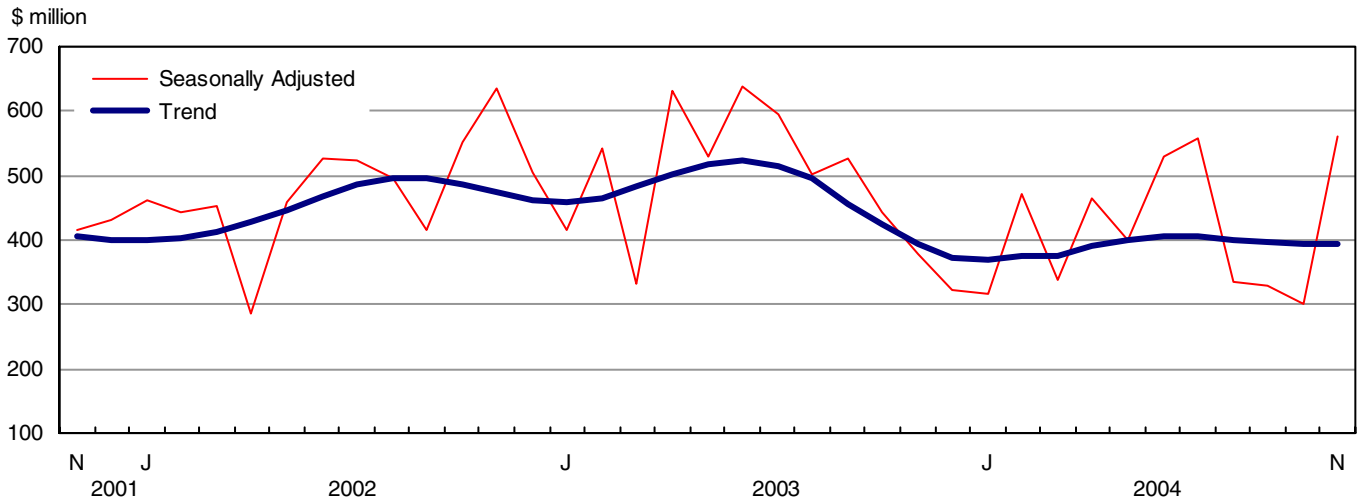


Building permits - Canada

Commercial value



Institutional and Governmental value



ELECTRONIC PUBLICATIONS AVAILABLE AT
www.statcan.ca



Part II – Tables (Seasonally Adjusted)

Table 1

Total Value of Building Permits, Provinces and Territories, Seasonally Adjusted

| Province/Territory | 2004 | | Nov. - Oct. | Oct. - Sept. | Sept. - Aug. | Aug. - July | July - June | June - May |
|---------------------------|-----------------------|----------------------|-------------------|--------------|--------------|-------------|--------------|-------------|
| | November ^p | October ^r | | | | | | |
| | thousands of dollars | | percentage change | | | | | |
| Canada | 5,002,446 | 4,576,279 | 9.3 | 1.4 | -1.1 | -4.1 | -11.5 | 28.6 |
| Newfoundland and Labrador | 42,108 | 59,431 | -29.1 | 51.4 | -18.5 | 20.5 | 0.7 | -11.6 |
| Prince Edward Island | 19,651 | 30,468 | -35.5 | 112.7 | -7.7 | -34.1 | 33.1 | 34.9 |
| Nova Scotia | 102,749 | 90,887 | 13.1 | 13.0 | -23.4 | -1.0 | -0.2 | -2.5 |
| New Brunswick | 62,267 | 102,153 | -39.0 | 20.4 | 29.5 | -5.8 | -13.5 | 33.6 |
| Québec | 1,177,060 | 958,856 | 22.8 | 2.4 | 3.3 | -4.7 | -14.3 | 17.4 |
| Ontario | 1,913,182 | 1,978,166 | -3.3 | 3.9 | -9.0 | -1.6 | -3.2 | 35.3 |
| Manitoba | 92,145 | 85,511 | 7.8 | -30.1 | 37.3 | -15.0 | -29.0 | 73.6 |
| Saskatchewan | 70,246 | 69,525 | 1.0 | -17.2 | 22.8 | 10.1 | 13.3 | -28.5 |
| Alberta | 764,868 | 631,874 | 21.0 | 13.1 | 1.0 | -12.4 | 16.1 | -10.7 |
| British Columbia | 752,821 | 547,573 | 37.5 | -16.3 | 7.6 | -4.1 | -40.7 | 84.0 |
| Yukon | 1,772 | 9,718 | -81.8 | 202.0 | -29.9 | -3.7 | -6.9 | -81.5 |
| Northwest Territories | 2,928 | 11,830 | -75.2 | -57.4 | 262.8 | -11.0 | 14.3 | -3.4 |
| Nunavut | 649 | 287 | 126.1 | -93.2 | 36.8 | 53.4 | 77.5 | -41.6 |

Table 2

Non-Residential Value of Building Permits, Provinces and Territories, Seasonally Adjusted

| Province/Territory | 2004 | | Nov. - Oct. | Oct. - Sept. | Sept. - Aug. | Aug. - July | July - June | June - May |
|---------------------------|-----------------------|----------------------|-------------------|--------------|--------------|--------------|--------------|-------------|
| | November ^p | October ^r | | | | | | |
| | thousands of dollars | | percentage change | | | | | |
| Canada | 1,852,990 | 1,533,913 | 20.8 | 0.2 | 3.5 | -10.5 | -13.6 | 34.7 |
| Newfoundland and Labrador | 7,652 | 25,500 | -70.0 | 182.3 | -52.2 | 40.6 | 50.7 | -24.0 |
| Prince Edward Island | 7,226 | 20,487 | -64.7 | 1,816.5 | -85.5 | -43.4 | 200.8 | -12.7 |
| Nova Scotia | 40,789 | 35,006 | 16.5 | 24.1 | -21.1 | 42.5 | -44.6 | 24.4 |
| New Brunswick | 19,426 | 61,530 | -68.4 | 33.8 | 115.1 | -34.2 | -21.7 | 90.3 |
| Québec | 333,177 | 274,578 | 21.3 | -3.0 | 1.7 | -7.4 | -28.5 | 38.6 |
| Ontario | 851,918 | 720,646 | 18.2 | 1.7 | 5.0 | -15.9 | -4.9 | 44.0 |
| Manitoba | 33,866 | 33,579 | 0.9 | -46.3 | 72.9 | 6.7 | -57.5 | 140.3 |
| Saskatchewan | 32,571 | 29,370 | 10.9 | -31.3 | 50.9 | -15.2 | 18.9 | -31.3 |
| Alberta | 295,080 | 231,876 | 27.3 | 51.1 | -7.2 | -26.9 | 28.6 | -17.1 |
| British Columbia | 229,015 | 91,532 | 150.2 | -47.8 | -14.3 | 23.6 | -36.3 | 88.0 |
| Yukon | 728 | 5,220 | -86.1 | 927.6 | -61.2 | -31.7 | 103.2 | -96.3 |
| Northwest Territories | 1,467 | 4,589 | -68.0 | -75.3 | 292.8 | 73.2 | 11.7 | -45.8 |
| Nunavut | 75 | 0 | ... | -100.0 | 3.2 | 94.7 | 47.5 | -65.2 |

Table 3

Residential Value of Building Permits, Provinces and Territories, Seasonally Adjusted

| Province/Territory | 2004 | | Nov. - Oct. | Oct. - Sept. | Sept. - Aug. | Aug. - July | July - June | June - May |
|-----------------------|-----------------------|----------------------|-------------------|--------------|--------------|-------------|--------------|-------------|
| | November ^p | October ^r | | | | | | |
| | thousands of dollars | | percentage change | | | | | |
| Canada | 3,149,456 | 3,042,366 | 3.5 | 2.0 | -3.4 | -0.8 | -10.3 | 25.4 |
| Newfoundland | 34,456 | 33,931 | 1.5 | 12.3 | 3.3 | 10.3 | -13.8 | -7.2 |
| Prince Edward Island | 12,425 | 9,981 | 24.5 | -24.7 | 63.2 | -22.4 | -21.6 | 64.1 |
| Nova Scotia | 61,960 | 55,881 | 10.9 | 7.0 | -24.6 | -14.5 | 32.7 | -16.0 |
| New Brunswick | 42,841 | 40,623 | 5.5 | 4.5 | -12.0 | 19.2 | -4.9 | 1.4 |
| Québec | 843,883 | 684,278 | 23.3 | 4.8 | 4.1 | -3.4 | -5.6 | 7.4 |
| Ontario | 1,061,264 | 1,257,520 | -15.6 | 5.1 | -15.6 | 7.1 | -2.2 | 30.4 |
| Manitoba | 58,279 | 51,932 | 12.2 | -13.3 | 12.9 | -25.3 | 4.2 | 31.0 |
| Saskatchewan | 37,675 | 40,155 | -6.2 | -2.4 | 2.9 | 39.6 | 7.4 | -25.2 |
| Alberta | 469,788 | 399,998 | 17.4 | -1.2 | 4.5 | -4.2 | 10.2 | -7.3 |
| British Columbia | 523,806 | 456,041 | 14.9 | -4.7 | 18.7 | -13.9 | -42.2 | 82.7 |
| Yukon | 1,044 | 4,498 | -76.8 | 66.0 | -17.4 | 15.0 | -31.8 | 70.2 |
| Northwest Territories | 1,461 | 7,241 | -79.8 | -21.3 | 214.4 | -50.1 | 15.5 | 54.8 |
| Nunavut | 574 | 287 | 100.0 | -91.2 | 51.2 | 40.6 | 89.5 | -19.9 |

Table 4

Number of Dwelling Units Authorized, Provinces and Territories, Seasonally Adjusted at Annual Rate

| Province/Territory | 2004 | | Nov. - Oct. | Oct. - Sept. | Sept. - Aug. | Aug. - July | July - June | June - May |
|---------------------------|-----------------------|----------------------|-------------------|--------------|--------------|-------------|--------------|-------------|
| | November ^p | October ^r | | | | | | |
| | units | | percentage change | | | | | |
| Canada | 243,228 | 233,568 | 4.1 | -5.2 | 1.2 | -0.9 | -11.7 | 26.0 |
| Newfoundland and Labrador | 2,676 | 2,796 | -4.3 | 10.4 | 1.4 | -10.0 | 0.4 | 2.7 |
| Prince Edward Island | 1,032 | 912 | 13.2 | -9.5 | 47.4 | -27.8 | -37.3 | 23.5 |
| Nova Scotia | 4,956 | 4,152 | 19.4 | 1.5 | -34.0 | -18.5 | 44.1 | -28.6 |
| New Brunswick | 3,900 | 4,668 | -16.5 | 9.0 | -3.0 | 33.3 | -22.3 | -8.3 |
| Québec | 64,608 | 58,140 | 11.1 | -0.4 | 4.3 | -2.5 | -0.9 | 2.6 |
| Ontario | 74,724 | 86,364 | -13.5 | -0.1 | -14.8 | 10.8 | -6.1 | 36.7 |
| Manitoba | 4,620 | 3,972 | 16.3 | -22.1 | 20.1 | -35.0 | -7.9 | 51.8 |
| Saskatchewan | 3,060 | 4,860 | -37.0 | 13.4 | 11.2 | 47.9 | 5.3 | -26.4 |
| Alberta | 46,104 | 35,244 | 30.8 | -7.9 | 10.5 | -17.4 | 12.4 | -7.7 |
| British Columbia | 37,368 | 30,864 | 21.1 | -24.0 | 40.1 | -4.6 | -50.4 | 117.9 |
| Yukon | 108 | 384 | -71.9 | 88.2 | -37.0 | 58.8 | -51.4 | 105.9 |
| Northwest Territories | 48 | 1,188 | -96.0 | 43.5 | 1,280.0 | -66.7 | -21.1 | 137.5 |
| Nunavut | 24 | 24 | 0.0 | -90.9 | 144.4 | -30.8 | 225.0 | -55.6 |

Table 5

Dwelling Units, Value of Residential and Non-residential Building Permits, Provinces and Territories, Seasonally Adjusted, 2004

| Month | Number of dwelling units | | | Estimated value of construction | | | | | |
|----------------------------------|--------------------------|-----------|-----------------|---------------------------------|-----------------|------------|--------------------------------|------------|------------|
| | Singles ¹ | Multiples | Total dwellings | Residential | Non-residential | | | Total | |
| | | | | | Industrial | Commercial | Institutional and governmental | | |
| | units | | | thousands of dollars | | | | | |
| Canada | | | | | | | | | |
| October ^f | 10,722 | 8,742 | 19,464 | 3,042,366 | 348,271 | 884,597 | 301,045 | 1,533,913 | 4,576,279 |
| November ^p | 10,400 | 9,869 | 20,269 | 3,149,456 | 396,493 | 895,764 | 560,733 | 1,852,990 | 5,002,446 |
| Cumulative Jan. - Nov. 2004 | 117,602 | 104,605 | 222,207 | 33,420,731 | 3,199,692 | 9,295,904 | 4,604,142 | 17,099,738 | 50,520,469 |
| Cumulative Jan. - Nov. 2003 | 110,889 | 92,239 | 203,128 | 29,023,129 | 3,341,138 | 8,450,491 | 5,535,820 | 17,327,449 | 46,350,578 |
| Newfoundland and Labrador | | | | | | | | | |
| October ^f | 171 | 62 | 233 | 33,931 | 930 | 18,114 | 6,456 | 25,500 | 59,431 |
| November ^p | 170 | 53 | 223 | 34,456 | 1,076 | 5,774 | 802 | 7,652 | 42,108 |
| Cumulative Jan. - Nov. 2004 | 1,951 | 489 | 2,440 | 341,946 | 8,565 | 87,241 | 34,152 | 129,958 | 471,904 |
| Cumulative Jan. - Nov. 2003 | 1,695 | 379 | 2,074 | 265,247 | 10,329 | 80,927 | 20,198 | 111,454 | 376,701 |
| Prince Edward Island | | | | | | | | | |
| October ^f | 65 | 11 | 76 | 9,981 | 142 | 20,305 | 40 | 20,487 | 30,468 |
| November ^p | 63 | 23 | 86 | 12,425 | 2,290 | 888 | 4,048 | 7,226 | 19,651 |
| Cumulative Jan. - Nov. 2004 | 746 | 167 | 913 | 114,342 | 7,529 | 58,270 | 11,416 | 77,215 | 191,557 |
| Cumulative Jan. - Nov. 2003 | 554 | 232 | 786 | 80,647 | 7,729 | 57,180 | 13,120 | 78,029 | 158,676 |
| Nova Scotia | | | | | | | | | |
| October ^f | 268 | 78 | 346 | 55,881 | 5,034 | 27,827 | 2,145 | 35,006 | 90,887 |
| November ^p | 245 | 168 | 413 | 61,960 | 14,967 | 23,138 | 2,684 | 40,789 | 102,749 |
| Cumulative Jan. - Nov. 2004 | 3,083 | 1,921 | 5,004 | 683,636 | 47,983 | 256,313 | 57,452 | 361,748 | 1,045,384 |
| Cumulative Jan. - Nov. 2003 | 2,936 | 1,943 | 4,879 | 614,713 | 60,415 | 204,715 | 58,581 | 323,711 | 938,424 |
| New Brunswick | | | | | | | | | |
| October ^f | 233 | 156 | 389 | 40,623 | 2,894 | 17,527 | 41,109 | 61,530 | 102,153 |
| November ^p | 265 | 60 | 325 | 42,841 | 3,739 | 13,812 | 1,875 | 19,426 | 62,267 |
| Cumulative Jan. - Nov. 2004 | 2,832 | 983 | 3,815 | 460,204 | 33,117 | 146,244 | 114,766 | 294,127 | 754,331 |
| Cumulative Jan. - Nov. 2003 | 2,373 | 1,243 | 3,616 | 372,378 | 48,293 | 177,816 | 49,816 | 275,925 | 648,303 |
| Quebec | | | | | | | | | |
| October ^f | 2,416 | 2,429 | 4,845 | 684,278 | 50,732 | 144,390 | 79,456 | 274,578 | 958,856 |
| November ^p | 2,434 | 2,950 | 5,384 | 843,883 | 79,783 | 162,002 | 91,392 | 333,177 | 1,177,060 |
| Cumulative Jan. - Nov. 2004 | 24,551 | 28,637 | 53,188 | 7,328,447 | 759,719 | 1,847,104 | 956,093 | 3,562,916 | 10,891,363 |
| Cumulative Jan. - Nov. 2003 | 22,010 | 23,909 | 45,919 | 5,844,059 | 776,716 | 1,711,396 | 852,474 | 3,340,586 | 9,184,645 |
| Ontario | | | | | | | | | |
| October ^f | 4,117 | 3,080 | 7,197 | 1,257,520 | 172,719 | 415,498 | 132,429 | 720,646 | 1,978,166 |
| November ^p | 3,409 | 2,818 | 6,227 | 1,061,264 | 153,091 | 383,732 | 315,095 | 851,918 | 1,913,182 |
| Cumulative Jan. - Nov. 2004 | 45,324 | 35,412 | 80,736 | 13,539,719 | 1,551,933 | 3,844,061 | 2,344,380 | 7,740,374 | 21,280,093 |
| Cumulative Jan. - Nov. 2003 | 45,107 | 36,109 | 81,216 | 13,064,356 | 1,776,690 | 3,449,523 | 2,966,313 | 8,192,526 | 21,256,882 |
| Manitoba | | | | | | | | | |
| October ^f | 304 | 27 | 331 | 51,932 | 2,817 | 23,718 | 7,044 | 33,579 | 85,511 |
| November ^p | 379 | 6 | 385 | 58,279 | 3,646 | 24,332 | 5,888 | 33,866 | 92,145 |
| Cumulative Jan. - Nov. 2004 | 3,545 | 881 | 4,426 | 621,475 | 59,791 | 260,808 | 114,094 | 434,693 | 1,056,168 |
| Cumulative Jan. - Nov. 2003 | 2,722 | 1,230 | 3,952 | 475,527 | 82,352 | 252,380 | 173,421 | 508,153 | 983,680 |
| Saskatchewan | | | | | | | | | |
| October ^f | 146 | 259 | 405 | 40,155 | 5,814 | 19,879 | 3,677 | 29,370 | 69,525 |
| November ^p | 190 | 65 | 255 | 37,675 | 4,916 | 22,268 | 5,387 | 32,571 | 70,246 |
| Cumulative Jan. - Nov. 2004 | 1,786 | 1,329 | 3,115 | 384,960 | 46,611 | 190,185 | 95,353 | 332,149 | 717,109 |
| Cumulative Jan. - Nov. 2003 | 1,560 | 1,453 | 3,013 | 323,489 | 29,371 | 193,919 | 147,516 | 370,806 | 694,295 |

Table 5

Dwelling Units, Value of Residential and Non-residential Building Permits, Provinces and Territories, Seasonally Adjusted, 2004 – Concluded

| Month | Number of dwelling units | | | Estimated value of construction | | | | | |
|------------------------------|--------------------------|-----------|-----------------|---------------------------------|-----------------|------------|--------------------------------|-----------|-----------|
| | Singles ¹ | Multiples | Total dwellings | Residential | Non-residential | | | Total | |
| | | | | | Industrial | Commercial | Institutional and governmental | | |
| | units | | | thousands of dollars | | | | | |
| Alberta | | | | | | | | | |
| October ^f | 1,834 | 1,103 | 2,937 | 399,998 | 92,163 | 129,570 | 10,143 | 231,876 | 631,874 |
| November ^p | 2,090 | 1,752 | 3,842 | 469,788 | 64,489 | 162,836 | 67,755 | 295,080 | 764,868 |
| Cumulative Jan. - Nov. 2004 | 20,407 | 15,057 | 35,464 | 4,359,396 | 377,461 | 1,386,012 | 427,941 | 2,191,414 | 6,550,810 |
| Cumulative Jan. - Nov. 2003 | 19,948 | 12,648 | 32,596 | 3,851,593 | 312,190 | 1,231,599 | 698,709 | 2,242,498 | 6,094,091 |
| British Columbia | | | | | | | | | |
| October ^f | 1,138 | 1,434 | 2,572 | 456,041 | 14,598 | 61,541 | 15,393 | 91,532 | 547,573 |
| November ^p | 1,140 | 1,974 | 3,114 | 523,806 | 68,221 | 96,132 | 64,662 | 229,015 | 752,821 |
| Cumulative Jan. - Nov. 2004 | 13,016 | 19,474 | 32,490 | 5,496,774 | 302,203 | 1,166,450 | 403,889 | 1,872,542 | 7,369,316 |
| Cumulative Jan. - Nov. 2003 | 11,643 | 12,835 | 24,478 | 4,045,315 | 232,984 | 1,039,602 | 473,312 | 1,745,898 | 5,791,213 |
| Yukon Territory | | | | | | | | | |
| October ^f | 22 | 10 | 32 | 4,498 | 0 | 4,952 | 268 | 5,220 | 9,718 |
| November ^p | 9 | 0 | 9 | 1,044 | 190 | 143 | 395 | 728 | 1,772 |
| Cumulative Jan. - Nov. 2004 | 180 | 36 | 216 | 32,078 | 1,188 | 8,982 | 27,573 | 37,743 | 69,821 |
| Cumulative Jan. - Nov. 2003 | 184 | 15 | 199 | 25,966 | 562 | 15,075 | 6,963 | 22,600 | 48,566 |
| Northwest Territories | | | | | | | | | |
| October ^f | 8 | 91 | 99 | 7,241 | 428 | 1,276 | 2,885 | 4,589 | 11,830 |
| November ^p | 4 | 0 | 4 | 1,461 | 10 | 707 | 750 | 1,467 | 2,928 |
| Cumulative Jan. - Nov. 2004 | 158 | 152 | 310 | 45,943 | 3,517 | 42,082 | 4,933 | 50,532 | 96,475 |
| Cumulative Jan. - Nov. 2003 | 131 | 184 | 315 | 45,867 | 3,503 | 18,463 | 8,718 | 30,684 | 76,551 |
| Nunavut | | | | | | | | | |
| October ^f | 0 | 2 | 2 | 287 | 0 | 0 | 0 | 0 | 287 |
| November ^p | 2 | 0 | 2 | 574 | 75 | 0 | 0 | 75 | 649 |
| Cumulative Jan. - Nov. 2004 | 23 | 67 | 90 | 11,811 | 75 | 2,152 | 12,100 | 14,327 | 26,138 |
| Cumulative Jan. - Nov. 2003 | 26 | 59 | 85 | 13,972 | 4 | 17,896 | 66,679 | 84,579 | 98,551 |

¹ Included in this category are the following types of dwellings: single-detached, mobile home and cottage.

Table 6

Dwelling Units, Value of Residential and Non-residential Building Permits, Census Metropolitan Areas, Seasonally Adjusted, 2004

| Month | Number of dwelling units | | | Estimated value of construction | | | | | |
|-------------------------------------|--------------------------|-----------|-----------------|---------------------------------|-----------------|------------|--------------------------------|-----------|-----------|
| | Singles ¹ | Multiples | Total dwellings | Residential | Non-residential | | | Total | |
| | | | | | Industrial | Commercial | Institutional and governmental | | |
| | units | | | thousands of dollars | | | | | |
| Abbotsford, British Columbia | | | | | | | | | |
| October ^f | 52 | 0 | 52 | 10,129 | 1,568 | 782 | 0 | 2,350 | 12,479 |
| November ^p | 92 | 28 | 120 | 19,146 | 903 | 514 | 4,415 | 5,832 | 24,978 |
| Cumulative Jan. - Nov. 2004 | 648 | 240 | 888 | 123,110 | 32,009 | 8,438 | 16,296 | 56,743 | 179,853 |
| Cumulative Jan. - Nov. 2003 | 724 | 137 | 861 | 110,323 | 15,986 | 21,980 | 11,410 | 49,376 | 159,699 |
| Calgary, Alberta | | | | | | | | | |
| October ^f | 658 | 665 | 1,323 | 178,284 | 4,742 | 35,926 | 3,155 | 43,823 | 222,107 |
| November ^p | 782 | 607 | 1,389 | 180,090 | 9,984 | 56,246 | 11,111 | 77,341 | 257,431 |
| Cumulative Jan. - Nov. 2004 | 7,584 | 6,198 | 13,782 | 1,799,628 | 62,420 | 590,586 | 173,359 | 826,365 | 2,625,993 |
| Cumulative Jan. - Nov. 2003 | 7,784 | 4,759 | 12,543 | 1,642,917 | 85,842 | 493,892 | 373,484 | 953,218 | 2,596,135 |
| Edmonton, Alberta | | | | | | | | | |
| October ^f | 578 | 190 | 768 | 95,030 | 40,674 | 43,702 | 4,337 | 88,713 | 183,743 |
| November ^p | 596 | 760 | 1,356 | 132,322 | 16,595 | 72,803 | 21,105 | 110,503 | 242,825 |
| Cumulative Jan. - Nov. 2004 | 6,155 | 6,183 | 12,338 | 1,292,750 | 105,836 | 396,118 | 83,405 | 585,359 | 1,878,109 |
| Cumulative Jan. - Nov. 2003 | 5,811 | 5,144 | 10,955 | 1,100,143 | 53,657 | 322,793 | 123,337 | 499,787 | 1,599,930 |
| Greater Sudbury, Ontario | | | | | | | | | |
| October ^f | 31 | 1 | 32 | 5,770 | 2,716 | 1,363 | 420 | 4,499 | 10,269 |
| November ^p | 28 | 3 | 31 | 4,855 | 858 | 3,909 | 3,793 | 8,560 | 13,415 |
| Cumulative Jan. - Nov. 2004 | 318 | 13 | 331 | 56,508 | 8,242 | 27,704 | 22,859 | 58,805 | 115,313 |
| Cumulative Jan. - Nov. 2003 | 288 | 11 | 299 | 52,941 | 4,032 | 19,100 | 18,003 | 41,135 | 94,076 |
| Halifax, Nova Scotia | | | | | | | | | |
| October ^f | 121 | 50 | 171 | 29,737 | 2,420 | 18,712 | 817 | 21,949 | 51,686 |
| November ^p | 103 | 142 | 245 | 36,640 | 12,123 | 12,552 | 998 | 25,673 | 62,313 |
| Cumulative Jan. - Nov. 2004 | 1,404 | 1,496 | 2,900 | 401,796 | 20,757 | 109,761 | 37,741 | 168,259 | 570,055 |
| Cumulative Jan. - Nov. 2003 | 1,389 | 1,548 | 2,937 | 369,929 | 28,281 | 108,338 | 26,607 | 163,226 | 533,155 |
| Hamilton, Ontario | | | | | | | | | |
| October ^f | 109 | 78 | 187 | 39,615 | 379 | 9,434 | 791 | 10,604 | 50,219 |
| November ^p | 153 | 84 | 237 | 41,029 | 1,801 | 15,904 | 1,967 | 19,672 | 60,701 |
| Cumulative Jan. - Nov. 2004 | 1,986 | 1,863 | 3,849 | 606,356 | 39,010 | 160,260 | 79,779 | 279,049 | 885,405 |
| Cumulative Jan. - Nov. 2003 | 1,588 | 1,408 | 2,996 | 455,228 | 95,654 | 123,702 | 345,806 | 565,162 | 1,020,390 |
| Kingston, Ontario | | | | | | | | | |
| October ^f | 44 | 0 | 44 | 6,989 | 1,735 | 6,266 | 136 | 8,137 | 15,126 |
| November ^p | 86 | 7 | 93 | 12,986 | 250 | 973 | 9,862 | 11,085 | 24,071 |
| Cumulative Jan. - Nov. 2004 | 671 | 275 | 946 | 119,590 | 6,310 | 31,686 | 52,051 | 90,047 | 209,637 |
| Cumulative Jan. - Nov. 2003 | 683 | 410 | 1,093 | 121,366 | 5,308 | 41,643 | 28,760 | 75,711 | 197,077 |
| Kitchener, Ontario | | | | | | | | | |
| October ^f | 217 | 208 | 425 | 56,412 | 6,610 | 10,948 | 5,803 | 23,361 | 79,773 |
| November ^p | 202 | 125 | 327 | 50,380 | 3,922 | 25,889 | 462 | 30,273 | 80,653 |
| Cumulative Jan. - Nov. 2004 | 2,069 | 1,529 | 3,598 | 511,327 | 65,930 | 173,276 | 114,028 | 353,234 | 864,561 |
| Cumulative Jan. - Nov. 2003 | 2,386 | 1,608 | 3,994 | 542,550 | 62,106 | 165,888 | 80,534 | 308,528 | 851,078 |
| London, Ontario | | | | | | | | | |
| October ^f | 171 | 57 | 228 | 36,466 | 3,916 | 24,982 | 9,448 | 38,346 | 74,812 |
| November ^p | 158 | 39 | 197 | 31,604 | 2,820 | 6,934 | 30,690 | 40,444 | 72,048 |
| Cumulative Jan. - Nov. 2004 | 2,016 | 862 | 2,878 | 419,094 | 36,016 | 119,631 | 190,755 | 346,402 | 765,496 |
| Cumulative Jan. - Nov. 2003 | 1,672 | 910 | 2,582 | 332,282 | 53,592 | 131,357 | 152,090 | 337,039 | 669,321 |
| Montréal, Quebec | | | | | | | | | |
| October ^f | 1,148 | 1,437 | 2,585 | 379,951 | 19,128 | 85,845 | 48,436 | 153,409 | 533,360 |
| November ^p | 1,098 | 1,880 | 2,978 | 497,950 | 38,995 | 84,354 | 82,513 | 205,862 | 703,812 |
| Cumulative Jan. - Nov. 2004 | 10,948 | 17,993 | 28,941 | 3,994,056 | 321,200 | 953,458 | 555,546 | 1,830,204 | 5,824,260 |
| Cumulative Jan. - Nov. 2003 | 9,515 | 14,221 | 23,736 | 3,046,172 | 235,857 | 973,452 | 472,447 | 1,681,756 | 4,727,928 |

Table 6

Dwelling Units, Value of Residential and Non-residential Building Permits, Census Metropolitan Areas, Seasonally Adjusted, 2004 – Continued

| Month | Number of dwelling units | | | Estimated value of construction | | | | | |
|------------------------------------------------------|--------------------------|-----------|-----------------|---------------------------------|-----------------|------------|--------------------------------|---------|-----------|
| | Singles ¹ | Multiples | Total dwellings | Residential | Non-residential | | | Total | |
| | | | | | Industrial | Commercial | Institutional and governmental | | |
| | units | | | thousands of dollars | | | | | |
| Oshawa, Ontario | | | | | | | | | |
| October ^f | 103 | 132 | 235 | 38,422 | 3,700 | 7,204 | 10,103 | 21,007 | 59,429 |
| November ^p | 82 | 45 | 127 | 24,478 | 11,167 | 10,290 | 5,185 | 26,642 | 51,120 |
| Cumulative Jan. - Nov. 2004 | 1,450 | 1,262 | 2,712 | 474,356 | 36,226 | 109,397 | 64,304 | 209,927 | 684,283 |
| Cumulative Jan. - Nov. 2003 | 2,374 | 1,337 | 3,711 | 645,887 | 110,197 | 101,707 | 194,066 | 405,970 | 1,051,857 |
| Ottawa-Gatineau, Ontario part, Ontario/Quebec | | | | | | | | | |
| October ^f | 245 | 383 | 628 | 86,503 | 849 | 30,748 | 1,908 | 33,505 | 120,008 |
| November ^p | 229 | 471 | 700 | 108,295 | 2,867 | 27,963 | 12,767 | 43,597 | 151,892 |
| Cumulative Jan. - Nov. 2004 | 2,912 | 4,351 | 7,263 | 1,081,548 | 13,944 | 372,551 | 105,559 | 492,054 | 1,573,602 |
| Cumulative Jan. - Nov. 2003 | 2,988 | 3,476 | 6,464 | 965,924 | 24,242 | 452,964 | 137,560 | 614,766 | 1,580,690 |
| Ottawa-Gatineau, Quebec part, Ontario/Quebec | | | | | | | | | |
| October ^f | 132 | 109 | 241 | 28,450 | 2,920 | 2,616 | 1,469 | 7,005 | 35,455 |
| November ^p | 138 | 128 | 266 | 34,443 | 47 | 10,715 | 1,179 | 11,941 | 46,384 |
| Cumulative Jan. - Nov. 2004 | 1,553 | 1,257 | 2,810 | 372,447 | 13,881 | 104,553 | 17,815 | 136,249 | 508,696 |
| Cumulative Jan. - Nov. 2003 | 1,471 | 1,537 | 3,008 | 354,001 | 4,244 | 69,420 | 36,239 | 109,903 | 463,904 |
| Québec, Quebec | | | | | | | | | |
| October ^f | 234 | 236 | 470 | 60,997 | 1,580 | 13,162 | 4,549 | 19,291 | 80,288 |
| November ^p | 204 | 384 | 588 | 74,167 | 2,351 | 19,198 | 760 | 22,309 | 96,476 |
| Cumulative Jan. - Nov. 2004 | 2,413 | 3,351 | 5,764 | 706,983 | 24,378 | 252,998 | 118,821 | 396,197 | 1,103,180 |
| Cumulative Jan. - Nov. 2003 | 2,581 | 2,970 | 5,551 | 625,906 | 38,298 | 217,497 | 60,664 | 316,459 | 942,365 |
| Regina, Saskatchewan | | | | | | | | | |
| October ^f | 39 | 34 | 73 | 9,349 | 3,379 | 3,609 | 2,025 | 9,013 | 18,362 |
| November ^p | 59 | 53 | 112 | 12,986 | 411 | 11,819 | 941 | 13,171 | 26,157 |
| Cumulative Jan. - Nov. 2004 | 545 | 417 | 962 | 118,989 | 22,104 | 60,248 | 25,817 | 108,169 | 227,158 |
| Cumulative Jan. - Nov. 2003 | 482 | 420 | 902 | 95,848 | 2,443 | 88,756 | 58,223 | 149,422 | 245,270 |
| Saguenay, Quebec | | | | | | | | | |
| October ^f | 28 | 22 | 50 | 6,400 | 663 | 1,176 | 2,258 | 4,097 | 10,497 |
| November ^p | 10 | 14 | 24 | 3,864 | 842 | 1,851 | 307 | 3,000 | 6,864 |
| Cumulative Jan. - Nov. 2004 | 242 | 170 | 412 | 60,905 | 11,403 | 27,997 | 11,663 | 51,063 | 111,968 |
| Cumulative Jan. - Nov. 2003 | 256 | 176 | 432 | 61,374 | 12,047 | 33,671 | 21,466 | 67,184 | 128,558 |
| Saint John, New Brunswick | | | | | | | | | |
| October ^f | 32 | 37 | 69 | 7,956 | 108 | 1,578 | 1,310 | 2,996 | 10,952 |
| November ^p | 57 | 4 | 61 | 7,007 | 1,591 | 1,439 | 319 | 3,349 | 10,356 |
| Cumulative Jan. - Nov. 2004 | 463 | 125 | 588 | 74,130 | 6,196 | 18,869 | 10,988 | 36,053 | 110,183 |
| Cumulative Jan. - Nov. 2003 | 430 | 148 | 578 | 66,474 | 4,792 | 34,441 | 6,989 | 46,222 | 112,696 |
| Saskatoon, Saskatchewan | | | | | | | | | |
| October ^f | 66 | 200 | 266 | 21,582 | 630 | 9,942 | 694 | 11,266 | 32,848 |
| November ^p | 57 | 5 | 62 | 9,506 | 2,446 | 5,590 | 2,856 | 10,892 | 20,398 |
| Cumulative Jan. - Nov. 2004 | 689 | 768 | 1,457 | 157,252 | 11,696 | 64,947 | 14,329 | 90,972 | 248,224 |
| Cumulative Jan. - Nov. 2003 | 618 | 996 | 1,614 | 149,211 | 11,482 | 44,070 | 29,808 | 85,360 | 234,571 |
| Sherbrooke, Quebec | | | | | | | | | |
| October ^f | 45 | 195 | 240 | 22,069 | 712 | 4,612 | 2,113 | 7,437 | 29,506 |
| November ^p | 59 | 41 | 100 | 14,070 | 447 | 3,419 | 77 | 3,943 | 18,013 |
| Cumulative Jan. - Nov. 2004 | 567 | 759 | 1,326 | 156,663 | 8,885 | 50,352 | 13,482 | 72,719 | 229,382 |
| Cumulative Jan. - Nov. 2003 | 581 | 614 | 1,195 | 137,022 | 12,558 | 28,622 | 29,562 | 70,742 | 207,764 |
| St. Catharines-Niagara, Ontario | | | | | | | | | |
| October ^f | 94 | 17 | 111 | 22,143 | 2,879 | 7,408 | 1,779 | 12,066 | 34,209 |
| November ^p | 91 | 33 | 124 | 23,769 | 2,655 | 9,031 | 1,109 | 12,795 | 36,564 |
| Cumulative Jan. - Nov. 2004 | 1,176 | 473 | 1,649 | 289,090 | 24,003 | 127,673 | 35,503 | 187,179 | 476,269 |
| Cumulative Jan. - Nov. 2003 | 1,083 | 271 | 1,354 | 227,722 | 19,599 | 112,579 | 98,151 | 230,329 | 458,051 |

Table 6

Dwelling Units, Value of Residential and Non-residential Building Permits, Census Metropolitan Areas, Seasonally Adjusted, 2004 – Concluded

| Month | Number of dwelling units | | | Estimated value of construction | | | | | |
|----------------------------------------------------------|--------------------------|-----------|-----------------|---------------------------------|-----------------|------------|--------------------------------|-----------|------------|
| | Singles ¹ | Multiples | Total dwellings | Residential | Non-residential | | | Total | |
| | | | | | Industrial | Commercial | Institutional and governmental | | |
| | units | | | thousands of dollars | | | | | |
| St. John's, Newfoundland and Labrador^f | | | | | | | | | |
| October ^f | 126 | 34 | 160 | 25,313 | 0 | 15,921 | 5,689 | 21,610 | 46,923 |
| November ^p | 94 | 52 | 146 | 22,823 | 144 | 4,937 | 642 | 5,723 | 28,546 |
| Cumulative Jan. - Nov. 2004 | 1,370 | 414 | 1,784 | 250,509 | 4,625 | 67,749 | 26,908 | 99,282 | 349,791 |
| Cumulative Jan. - Nov. 2003 | 1,149 | 323 | 1,472 | 191,049 | 4,232 | 53,245 | 14,416 | 71,893 | 262,942 |
| Thunder Bay, Ontario | | | | | | | | | |
| October ^f | 19 | 5 | 24 | 4,656 | 170 | 1,122 | 3,425 | 4,717 | 9,373 |
| November ^p | 23 | 2 | 25 | 4,418 | 579 | 932 | 138 | 1,649 | 6,067 |
| Cumulative Jan. - Nov. 2004 | 230 | 15 | 245 | 45,284 | 12,796 | 28,634 | 15,725 | 57,155 | 102,439 |
| Cumulative Jan. - Nov. 2003 | 226 | 86 | 312 | 43,637 | 14,771 | 20,122 | 29,454 | 64,347 | 107,984 |
| Toronto, Ontario | | | | | | | | | |
| October ^f | 1,550 | 1,805 | 3,355 | 627,740 | 102,734 | 236,106 | 56,739 | 395,579 | 1,023,319 |
| November ^p | 901 | 1,562 | 2,463 | 424,404 | 96,903 | 218,889 | 221,616 | 537,408 | 961,812 |
| Cumulative Jan. - Nov. 2004 | 17,071 | 20,840 | 37,911 | 6,624,190 | 788,743 | 1,968,679 | 1,170,584 | 3,928,006 | 10,552,196 |
| Cumulative Jan. - Nov. 2003 | 17,738 | 23,476 | 41,214 | 6,808,661 | 852,091 | 1,642,965 | 1,248,603 | 3,743,659 | 10,552,320 |
| Trois-Rivières, Quebec | | | | | | | | | |
| October ^f | 39 | 48 | 87 | 11,789 | 590 | 1,964 | 4,352 | 6,906 | 18,695 |
| November ^p | 35 | 35 | 70 | 9,947 | 898 | 937 | 573 | 2,408 | 12,355 |
| Cumulative Jan. - Nov. 2004 | 369 | 441 | 810 | 103,791 | 14,398 | 32,660 | 27,499 | 74,557 | 178,348 |
| Cumulative Jan. - Nov. 2003 | 317 | 347 | 664 | 91,650 | 34,791 | 31,836 | 32,678 | 99,305 | 190,955 |
| Vancouver, British Columbia | | | | | | | | | |
| October ^f | 429 | 1,098 | 1,527 | 274,025 | 4,030 | 31,942 | 6,938 | 42,910 | 316,935 |
| November ^p | 396 | 1,406 | 1,802 | 286,274 | 43,152 | 56,485 | 26,133 | 125,770 | 412,044 |
| Cumulative Jan. - Nov. 2004 | 5,022 | 14,595 | 19,617 | 3,408,981 | 127,617 | 766,110 | 171,310 | 1,065,037 | 4,474,018 |
| Cumulative Jan. - Nov. 2003 | 4,824 | 8,702 | 13,526 | 2,462,106 | 86,107 | 534,550 | 209,613 | 830,270 | 3,292,376 |
| Victoria, British Columbia | | | | | | | | | |
| October ^f | 87 | 161 | 248 | 40,576 | 641 | 1,834 | 708 | 3,183 | 43,759 |
| November ^p | 86 | 73 | 159 | 34,951 | 252 | 12,362 | 177 | 12,791 | 47,742 |
| Cumulative Jan. - Nov. 2004 | 1,051 | 957 | 2,008 | 353,663 | 7,858 | 62,283 | 59,007 | 129,148 | 482,811 |
| Cumulative Jan. - Nov. 2003 | 1,027 | 907 | 1,934 | 290,704 | 20,250 | 131,234 | 73,932 | 225,416 | 516,120 |
| Windsor, Ontario | | | | | | | | | |
| October ^f | 109 | 111 | 220 | 34,190 | 1,190 | 17,742 | 10,931 | 29,863 | 64,053 |
| November ^p | 89 | 60 | 149 | 23,771 | 761 | 3,651 | 232 | 4,644 | 28,415 |
| Cumulative Jan. - Nov. 2004 | 1,412 | 824 | 2,236 | 346,439 | 18,383 | 121,580 | 23,842 | 163,805 | 510,244 |
| Cumulative Jan. - Nov. 2003 | 1,570 | 701 | 2,271 | 349,296 | 47,556 | 96,137 | 66,404 | 210,097 | 559,393 |
| Winnipeg, Manitoba | | | | | | | | | |
| October ^f | 169 | 1 | 170 | 26,910 | 849 | 22,255 | 3,275 | 26,379 | 53,289 |
| November ^p | 196 | 0 | 196 | 32,992 | 2,050 | 17,707 | 3,198 | 22,955 | 55,947 |
| Cumulative Jan. - Nov. 2004 | 2,094 | 594 | 2,688 | 369,983 | 29,628 | 181,755 | 91,902 | 303,285 | 673,268 |
| Cumulative Jan. - Nov. 2003 | 1,547 | 924 | 2,471 | 287,696 | 27,946 | 196,918 | 120,984 | 345,848 | 633,544 |

¹ Included in this category are the following types of dwellings: single-detached, mobile home and cottage.

Part III – Tables (Unadjusted)

Table 7

Dwelling Units, Provinces and Territories, Unadjusted, 2004

| Month | Number of dwelling unit | | | | | | Total dwellings |
|----------------------------------------------|--------------------------------|----------|---------|--------|------------|-------------|-----------------|
| | Singles, includes mobile homes | Cottages | Doubles | Rows | Apartments | Conversions | |
| Canada | | | | | | | |
| October ^f | 10,893 | 77 | 1,439 | 1,948 | 4,619 | 627 | 19,603 |
| November ^p | 9,012 | 44 | 934 | 2,310 | 7,574 | 282 | 20,156 |
| Cumulative Jan. - Nov. 2004 | 121,699 | 814 | 11,137 | 21,094 | 66,214 | 4,477 | 225,435 |
| Cumulative Jan. - Nov. 2003 | 114,446 | 778 | 11,988 | 19,272 | 56,249 | 4,654 | 207,387 |
| Newfoundland and Labrador^f | | | | | | | |
| October ^f | 202 | 1 | 22 | 2 | 54 | 2 | 283 |
| November ^p | 122 | 0 | 55 | 0 | 16 | 1 | 194 |
| Cumulative Jan. - Nov. 2004 | 1,967 | 15 | 145 | 42 | 284 | 60 | 2,513 |
| Cumulative Jan. - Nov. 2003 | 1,791 | 22 | 16 | 78 | 274 | 34 | 2,215 |
| Prince Edward Island | | | | | | | |
| October ^f | 65 | 3 | 0 | 3 | 8 | 0 | 79 |
| November ^p | 49 | 1 | 3 | 0 | 19 | 2 | 74 |
| Cumulative Jan. - Nov. 2004 | 724 | 48 | 44 | 43 | 72 | 9 | 940 |
| Cumulative Jan. - Nov. 2003 | 544 | 40 | 22 | 35 | 156 | 19 | 816 |
| Nova Scotia | | | | | | | |
| October ^f | 278 | 12 | 18 | 0 | 87 | 4 | 399 |
| November ^p | 205 | 7 | 6 | 28 | 140 | 8 | 394 |
| Cumulative Jan. - Nov. 2004 | 3,206 | 98 | 164 | 87 | 1,602 | 56 | 5,213 |
| Cumulative Jan. - Nov. 2003 | 2,981 | 98 | 263 | 121 | 1,476 | 88 | 5,027 |
| New Brunswick | | | | | | | |
| October ^f | 242 | 8 | 25 | 21 | 103 | 8 | 407 |
| November ^p | 171 | 13 | 8 | 5 | 32 | 15 | 244 |
| Cumulative Jan. - Nov. 2004 | 2,805 | 97 | 122 | 128 | 658 | 77 | 3,887 |
| Cumulative Jan. - Nov. 2003 | 2,498 | 67 | 103 | 88 | 965 | 89 | 3,810 |
| Quebec | | | | | | | |
| October ^f | 2,355 | 24 | 309 | 93 | 1,914 | 137 | 4,832 |
| November ^p | 2,128 | 16 | 297 | 115 | 3,426 | 140 | 6,122 |
| Cumulative Jan. - Nov. 2004 | 25,188 | 282 | 2,522 | 1,260 | 21,644 | 2,082 | 52,978 |
| Cumulative Jan. - Nov. 2003 | 22,810 | 282 | 1,849 | 854 | 18,562 | 2,152 | 46,509 |
| Ontario | | | | | | | |
| October ^f | 4,407 | 20 | 802 | 1,125 | 839 | 141 | 7,334 |
| November ^p | 2,933 | 5 | 275 | 1,289 | 1,657 | 81 | 6,240 |
| Cumulative Jan. - Nov. 2004 | 47,680 | 163 | 5,080 | 12,136 | 16,330 | 1,122 | 82,511 |
| Cumulative Jan. - Nov. 2003 | 46,653 | 163 | 7,100 | 11,761 | 15,849 | 1,725 | 83,251 |
| Manitoba | | | | | | | |
| October ^f | 306 | 2 | 1 | 0 | 26 | 0 | 335 |
| November ^p | 268 | 0 | 2 | 0 | 4 | 1 | 275 |
| Cumulative Jan. - Nov. 2004 | 3,656 | 37 | 57 | 14 | 808 | 5 | 4,577 |
| Cumulative Jan. - Nov. 2003 | 2,863 | 21 | 63 | 43 | 1,117 | 7 | 4,114 |

Table 7

Dwelling Units, Provinces and Territories, Unadjusted, 2004 – Concluded

| Month | Number of dwelling unit | | | | | | Total dwellings |
|------------------------------|--------------------------------|----------|---------|-------|------------|-------------|-----------------|
| | Singles, includes mobile homes | Cottages | Doubles | Rows | Apartments | Conversions | |
| Saskatchewan | | | | | | | |
| October ^f | 133 | 1 | 24 | 184 | 51 | 2 | 395 |
| November ^p | 138 | 2 | 4 | 7 | 53 | 1 | 205 |
| Cumulative Jan. - Nov. 2004 | 1,780 | 7 | 102 | 337 | 858 | 35 | 3,119 |
| Cumulative Jan. - Nov. 2003 | 1,599 | 11 | 50 | 463 | 874 | 69 | 3,066 |
| Alberta | | | | | | | |
| October ^f | 1,784 | 1 | 179 | 189 | 800 | 3 | 2,956 |
| November ^p | 1,992 | 0 | 228 | 501 | 928 | 3 | 3,652 |
| Cumulative Jan. - Nov. 2004 | 21,035 | 24 | 2,191 | 2,045 | 10,321 | 398 | 36,014 |
| Cumulative Jan. - Nov. 2003 | 20,347 | 50 | 1,857 | 2,248 | 8,529 | 104 | 33,135 |
| British Columbia | | | | | | | |
| October ^f | 1,069 | 5 | 59 | 331 | 634 | 330 | 2,428 |
| November ^p | 993 | 0 | 56 | 365 | 1,299 | 30 | 2,743 |
| Cumulative Jan. - Nov. 2004 | 13,276 | 36 | 698 | 4,992 | 13,412 | 625 | 33,039 |
| Cumulative Jan. - Nov. 2003 | 12,013 | 20 | 637 | 3,518 | 8,286 | 361 | 24,835 |
| Yukon Territory | | | | | | | |
| October ^f | 42 | 0 | 0 | 0 | 10 | 0 | 52 |
| November ^p | 8 | 0 | 0 | 0 | 0 | 0 | 8 |
| Cumulative Jan. - Nov. 2004 | 217 | 7 | 7 | 10 | 17 | 2 | 260 |
| Cumulative Jan. - Nov. 2003 | 181 | 3 | 2 | 0 | 10 | 3 | 199 |
| Northwest Territories | | | | | | | |
| October ^f | 10 | 0 | 0 | 0 | 91 | 0 | 101 |
| November ^p | 3 | 0 | 0 | 0 | 0 | 0 | 3 |
| Cumulative Jan. - Nov. 2004 | 142 | 0 | 5 | 0 | 147 | 0 | 294 |
| Cumulative Jan. - Nov. 2003 | 141 | 0 | 0 | 63 | 121 | 0 | 325 |
| Nunavut | | | | | | | |
| October ^f | 0 | 0 | 0 | 0 | 2 | 0 | 2 |
| November ^p | 2 | 0 | 0 | 0 | 0 | 0 | 2 |
| Cumulative Jan. - Nov. 2004 | 23 | 0 | 0 | 0 | 61 | 6 | 90 |
| Cumulative Jan. - Nov. 2003 | 25 | 1 | 26 | 0 | 30 | 3 | 85 |

Table 8
Dwelling Units, Census Metropolitan Areas, Unadjusted, November 2004

| Census Metropolitan Areas | Number of dwelling unit | | | | | | Total dwellings |
|-----------------------------------------------|--------------------------------|----------|---------|------|------------|-------------|-----------------|
| | Singles, includes mobile homes | Cottages | Doubles | Rows | Apartments | Conversions | |
| Abbotsford, British Columbia | 85 | 0 | 0 | 0 | 24 | 0 | 109 |
| Calgary, Alberta | 772 | 0 | 46 | 73 | 447 | 0 | 1,338 |
| Edmonton, Alberta | 589 | 0 | 166 | 234 | 307 | 1 | 1,297 |
| Greater Sudbury, Ontario | 25 | 0 | 0 | 0 | 4 | 0 | 29 |
| Halifax, Nova Scotia | 99 | 1 | 4 | 28 | 105 | 5 | 242 |
| Hamilton, Ontario | 136 | 0 | 12 | 70 | 19 | 0 | 237 |
| Kingston, Ontario | 76 | 0 | 2 | 6 | 0 | 0 | 84 |
| Kitchener, Ontario | 179 | 0 | 4 | 72 | 71 | 4 | 330 |
| London, Ontario | 140 | 0 | 0 | 45 | 2 | 0 | 187 |
| Montréal, Quebec | 1,074 | 0 | 109 | 43 | 2,392 | 47 | 3,665 |
| Oshawa, Ontario | 73 | 0 | 17 | 37 | 0 | 1 | 128 |
| Ottawa-Gatineau, Ontario/Quebec | 337 | 0 | 66 | 257 | 407 | 17 | 1,084 |
| Ottawa-Gatineau, Ontario part, Ontario/Quebec | 203 | 0 | 22 | 257 | 282 | 9 | 773 |
| Ottawa-Gatineau, Quebec part, Ontario/Quebec | 134 | 0 | 44 | 0 | 125 | 8 | 311 |
| Québec, Quebec | 200 | 0 | 38 | 63 | 406 | 22 | 729 |
| Regina, Saskatchewan | 54 | 0 | 0 | 0 | 53 | 0 | 107 |
| Saguenay, Quebec | 10 | 0 | 10 | 0 | 8 | 1 | 29 |
| Saint John, New Brunswick | 40 | 2 | 0 | 0 | 4 | 0 | 46 |
| Saskatoon, Saskatchewan | 53 | 0 | 4 | 0 | 0 | 1 | 58 |
| Sherbrooke, Quebec | 57 | 0 | 2 | 0 | 54 | 2 | 115 |
| St. Catharines-Niagara, Ontario | 81 | 0 | 8 | 26 | 5 | 1 | 121 |
| St. John's, Newfoundland and Labrador | 85 | 0 | 55 | 0 | 16 | 0 | 156 |
| Thunder Bay, Ontario | 20 | 0 | 2 | 0 | 0 | 0 | 22 |
| Toronto, Ontario | 799 | 0 | 130 | 595 | 1,127 | 36 | 2,687 |
| Trois-Rivières, Quebec | 34 | 0 | 28 | 0 | 16 | 4 | 82 |
| Vancouver, British Columbia | 366 | 0 | 34 | 308 | 833 | 22 | 1,563 |
| Victoria, British Columbia | 79 | 0 | 4 | 5 | 48 | 5 | 141 |
| Windsor, Ontario | 79 | 0 | 16 | 11 | 45 | 0 | 151 |
| Winnipeg, Manitoba | 159 | 0 | 0 | 0 | 0 | 0 | 159 |

Table 9

Dwelling Units, Census Metropolitan Areas, Unadjusted, January - November 2004

| Census Metropolitan Areas | Number of dwelling unit | | | | | | Total dwellings |
|-----------------------------------------------|--------------------------------|----------|---------|-------|------------|-------------|-----------------|
| | Singles, includes mobile homes | Cottages | Doubles | Rows | Apartments | Conversions | |
| Abbotsford, British Columbia | 658 | 0 | 0 | 20 | 232 | 1 | 911 |
| Calgary, Alberta | 7,733 | 0 | 767 | 962 | 4,442 | 22 | 13,926 |
| Edmonton, Alberta | 6,303 | 0 | 1,016 | 577 | 4,129 | 363 | 12,388 |
| Greater Sudbury, Ontario | 342 | 1 | 4 | 0 | 11 | 0 | 358 |
| Halifax, Nova Scotia | 1,476 | 3 | 84 | 79 | 1,304 | 30 | 2,976 |
| Hamilton, Ontario | 2,117 | 0 | 111 | 945 | 625 | 123 | 3,921 |
| Kingston, Ontario | 722 | 4 | 24 | 36 | 214 | 3 | 1,003 |
| Kitchener, Ontario | 2,134 | 0 | 152 | 607 | 686 | 58 | 3,637 |
| London, Ontario | 2,110 | 0 | 14 | 447 | 429 | 19 | 3,019 |
| Montréal, Quebec | 11,291 | 0 | 881 | 858 | 13,977 | 1,257 | 28,264 |
| Oshawa, Ontario | 1,570 | 0 | 584 | 543 | 34 | 10 | 2,741 |
| Ottawa-Gatineau, Ontario/Quebec | 4,637 | 10 | 655 | 2,508 | 2,222 | 107 | 10,139 |
| Ottawa-Gatineau, Ontario part, Ontario/Quebec | 3,077 | 1 | 294 | 2,481 | 1,422 | 48 | 7,323 |
| Ottawa-Gatineau, Quebec part, Ontario/Quebec | 1,560 | 9 | 361 | 27 | 800 | 59 | 2,816 |
| Québec, Quebec | 2,525 | 11 | 386 | 251 | 2,484 | 173 | 5,830 |
| Regina, Saskatchewan | 559 | 1 | 2 | 0 | 414 | 1 | 977 |
| Saguenay, Quebec | 252 | 6 | 40 | 1 | 73 | 51 | 423 |
| Saint John, New Brunswick | 475 | 20 | 6 | 2 | 110 | 7 | 620 |
| Saskatoon, Saskatchewan | 714 | 0 | 84 | 322 | 345 | 19 | 1,484 |
| Sherbrooke, Quebec | 596 | 0 | 26 | 0 | 722 | 41 | 1,385 |
| St. Catharines-Niagara, Ontario | 1,248 | 0 | 69 | 231 | 153 | 21 | 1,722 |
| St. John's, Newfoundland and Labrador | 1,400 | 0 | 135 | 42 | 230 | 48 | 1,855 |
| Thunder Bay, Ontario | 254 | 1 | 10 | 5 | 0 | 2 | 272 |
| Toronto, Ontario | 17,813 | 1 | 3,139 | 5,392 | 11,615 | 427 | 38,387 |
| Trois-Rivières, Quebec | 386 | 1 | 90 | 0 | 272 | 21 | 770 |
| Vancouver, British Columbia | 5,119 | 0 | 244 | 4,015 | 10,075 | 490 | 19,943 |
| Victoria, British Columbia | 1,057 | 11 | 34 | 179 | 699 | 49 | 2,029 |
| Windsor, Ontario | 1,485 | 0 | 179 | 262 | 311 | 1 | 2,238 |
| Winnipeg, Manitoba | 2,173 | 0 | 46 | 5 | 543 | 0 | 2,767 |

Table 10

Value of Residential and Non-residential Building Permits, Provinces and Territories, Unadjusted, 2004

| Month | Value of construction (thousands of dollars) | | | | Total |
|----------------------------------|----------------------------------------------|-----------------|------------|--------------------------------|------------|
| | Residential | Non-residential | | | |
| | | Industrial | Commercial | Institutional and governmental | |
| Canada | | | | | |
| October ^f | 3,070,973 | 369,852 | 996,169 | 338,170 | 4,775,164 |
| November ^p | 3,010,066 | 384,821 | 917,213 | 710,429 | 5,022,529 |
| Cumulative Jan. - Nov. 2004 | 34,327,161 | 3,193,875 | 9,338,976 | 4,684,066 | 51,544,078 |
| Cumulative Jan. - Nov. 2003 | 29,864,446 | 3,361,055 | 8,574,808 | 5,524,378 | 47,324,687 |
| Newfoundland and Labrador | | | | | |
| October ^f | 37,768 | 930 | 26,143 | 6,456 | 71,297 |
| November ^p | 26,314 | 1,076 | 10,539 | 802 | 38,731 |
| Cumulative Jan. - Nov. 2004 | 343,798 | 8,565 | 91,990 | 34,152 | 478,505 |
| Cumulative Jan. - Nov. 2003 | 284,100 | 10,329 | 86,474 | 20,198 | 401,101 |
| Prince Edward Island | | | | | |
| October ^f | 9,877 | 142 | 20,305 | 40 | 30,364 |
| November ^p | 9,036 | 2,290 | 888 | 4,048 | 16,262 |
| Cumulative Jan. - Nov. 2004 | 116,128 | 7,529 | 58,270 | 11,416 | 193,343 |
| Cumulative Jan. - Nov. 2003 | 86,020 | 7,729 | 57,180 | 13,120 | 164,049 |
| Nova Scotia | | | | | |
| October ^f | 59,427 | 5,034 | 28,765 | 2,145 | 95,371 |
| November ^p | 55,821 | 14,967 | 24,894 | 2,684 | 98,366 |
| Cumulative Jan. - Nov. 2004 | 726,146 | 47,983 | 240,422 | 57,452 | 1,072,003 |
| Cumulative Jan. - Nov. 2003 | 638,235 | 60,415 | 208,664 | 58,581 | 965,895 |
| New Brunswick | | | | | |
| October ^f | 44,796 | 2,894 | 17,527 | 41,109 | 106,326 |
| November ^p | 30,839 | 3,739 | 13,812 | 1,875 | 50,265 |
| Cumulative Jan. - Nov. 2004 | 466,018 | 33,117 | 146,244 | 114,766 | 760,145 |
| Cumulative Jan. - Nov. 2003 | 398,207 | 48,293 | 177,816 | 49,816 | 674,132 |
| Quebec | | | | | |
| October ^f | 698,382 | 57,309 | 201,943 | 82,446 | 1,040,080 |
| November ^p | 861,323 | 82,982 | 211,421 | 112,185 | 1,267,911 |
| Cumulative Jan. - Nov. 2004 | 7,506,927 | 728,271 | 1,809,845 | 944,504 | 10,989,547 |
| Cumulative Jan. - Nov. 2003 | 6,002,608 | 769,995 | 1,713,213 | 863,606 | 9,349,422 |
| Ontario | | | | | |
| October ^f | 1,290,299 | 187,723 | 417,657 | 166,564 | 2,062,243 |
| November ^p | 1,039,866 | 138,220 | 410,439 | 443,998 | 2,032,523 |
| Cumulative Jan. - Nov. 2004 | 14,037,602 | 1,577,564 | 3,933,972 | 2,435,893 | 21,985,031 |
| Cumulative Jan. - Nov. 2003 | 13,447,785 | 1,803,328 | 3,505,176 | 2,943,739 | 21,700,028 |
| Manitoba | | | | | |
| October ^f | 51,745 | 2,817 | 28,097 | 7,044 | 89,703 |
| November ^p | 40,697 | 3,646 | 21,287 | 5,888 | 71,518 |
| Cumulative Jan. - Nov. 2004 | 645,523 | 59,791 | 262,524 | 114,094 | 1,081,932 |
| Cumulative Jan. - Nov. 2003 | 498,828 | 82,352 | 256,565 | 173,421 | 1,011,166 |
| Saskatchewan | | | | | |
| October ^f | 37,569 | 5,814 | 17,033 | 3,677 | 64,093 |
| November ^p | 26,500 | 4,916 | 20,957 | 5,387 | 57,760 |
| Cumulative Jan. - Nov. 2004 | 387,438 | 46,611 | 203,308 | 95,353 | 732,710 |
| Cumulative Jan. - Nov. 2003 | 332,963 | 29,371 | 201,491 | 147,516 | 711,341 |

Table 10

Value of Residential and Non-residential Building Permits, Provinces and Territories, Unadjusted, 2004 – Concluded

| Month | Value of construction (thousands of dollars) | | | | Total |
|------------------------------|----------------------------------------------|-----------------|------------|--------------------------------|-----------|
| | Residential | Non-residential | | | |
| | | Industrial | Commercial | Institutional and governmental | |
| Alberta | | | | | |
| October ^r | 395,535 | 92,163 | 148,408 | 10,143 | 646,249 |
| November ^p | 448,668 | 64,489 | 125,236 | 67,755 | 706,148 |
| Cumulative Jan. - Nov. 2004 | 4,449,027 | 377,461 | 1,415,601 | 427,941 | 6,670,030 |
| Cumulative Jan. - Nov. 2003 | 3,942,697 | 312,190 | 1,267,534 | 698,709 | 6,221,130 |
| British Columbia | | | | | |
| October ^r | 431,030 | 14,598 | 84,063 | 15,393 | 545,084 |
| November ^p | 467,714 | 68,221 | 76,890 | 64,662 | 677,487 |
| Cumulative Jan. - Nov. 2004 | 5,553,907 | 302,203 | 1,123,584 | 403,889 | 7,383,583 |
| Cumulative Jan. - Nov. 2003 | 4,144,935 | 232,984 | 1,049,261 | 473,312 | 5,900,492 |
| Yukon Territory | | | | | |
| October ^r | 7,017 | 0 | 4,952 | 268 | 12,237 |
| November ^p | 1,253 | 190 | 143 | 395 | 1,981 |
| Cumulative Jan. - Nov. 2004 | 36,893 | 1,188 | 8,982 | 27,573 | 74,636 |
| Cumulative Jan. - Nov. 2003 | 28,229 | 562 | 15,075 | 6,963 | 50,829 |
| Northwest Territories | | | | | |
| October ^r | 7,241 | 428 | 1,276 | 2,885 | 11,830 |
| November ^p | 1,461 | 10 | 707 | 750 | 2,928 |
| Cumulative Jan. - Nov. 2004 | 45,943 | 3,517 | 42,082 | 4,933 | 96,475 |
| Cumulative Jan. - Nov. 2003 | 45,867 | 3,503 | 18,463 | 8,718 | 76,551 |
| Nunavut | | | | | |
| October ^r | 287 | 0 | 0 | 0 | 287 |
| November ^p | 574 | 75 | 0 | 0 | 649 |
| Cumulative Jan. - Nov. 2004 | 11,811 | 75 | 2,152 | 12,100 | 26,138 |
| Cumulative Jan. - Nov. 2003 | 13,972 | 4 | 17,896 | 66,679 | 98,551 |

Table 11**Value of Residential and Non-residential Building Permits, Census Metropolitan Areas, Unadjusted, November 2004**

| Census Metropolitan Areas | Value of construction (thousands of dollars) | | | | Total |
|-----------------------------------------------|----------------------------------------------|-----------------|------------|--------------------------------|-----------|
| | Residential | Non-residential | | | |
| | | Industrial | Commercial | Institutional and governmental | |
| Abbotsford, British Columbia | 17,111 | 903 | 387 | 4,415 | 22,816 |
| Calgary, Alberta | 182,280 | 9,984 | 39,221 | 11,111 | 242,596 |
| Edmonton, Alberta | 136,133 | 16,595 | 50,766 | 21,105 | 224,599 |
| Greater Sudbury, Ontario | 4,446 | 745 | 4,094 | 5,515 | 14,800 |
| Halifax, Nova Scotia | 35,333 | 12,123 | 12,552 | 998 | 61,006 |
| Hamilton, Ontario | 39,800 | 1,564 | 16,656 | 2,860 | 60,880 |
| Kingston, Ontario | 11,894 | 217 | 1,019 | 14,340 | 27,470 |
| Kitchener, Ontario | 49,930 | 3,406 | 27,114 | 672 | 81,122 |
| London, Ontario | 30,027 | 2,449 | 7,262 | 44,626 | 84,364 |
| Montréal, Quebec | 549,376 | 41,857 | 115,233 | 103,184 | 809,650 |
| Oshawa, Ontario | 23,920 | 9,698 | 10,777 | 7,539 | 51,934 |
| Ottawa-Gatineau, Ontario/Quebec | 154,227 | 2,540 | 43,924 | 20,038 | 220,729 |
| Ottawa-Gatineau, Ontario part, Ontario/Quebec | 117,531 | 2,490 | 29,286 | 18,564 | 167,871 |
| Ottawa-Gatineau, Quebec part, Ontario/Quebec | 36,696 | 50 | 14,638 | 1,474 | 52,858 |
| Québec, Quebec | 81,935 | 2,524 | 26,226 | 950 | 111,635 |
| Regina, Saskatchewan | 11,503 | 411 | 11,348 | 941 | 24,203 |
| Saguenay, Quebec | 4,209 | 904 | 2,529 | 384 | 8,026 |
| Saint John, New Brunswick | 6,167 | 1,591 | 1,439 | 319 | 9,516 |
| Saskatoon, Saskatchewan | 8,008 | 2,446 | 5,367 | 2,856 | 18,677 |
| Sherbrooke, Quebec | 14,625 | 480 | 4,670 | 96 | 19,871 |
| St. Catharines-Niagara, Ontario | 22,723 | 2,306 | 9,458 | 1,613 | 36,100 |
| St. John's, Newfoundland and Labrador | 20,981 | 144 | 9,081 | 642 | 30,848 |
| Thunder Bay, Ontario | 4,002 | 503 | 976 | 200 | 5,681 |
| Toronto, Ontario | 450,710 | 84,153 | 229,244 | 322,245 | 1,086,352 |
| Trois-Rivières, Quebec | 10,459 | 964 | 1,280 | 716 | 13,419 |
| Vancouver, British Columbia | 270,848 | 43,152 | 42,534 | 26,133 | 382,667 |
| Victoria, British Columbia | 32,182 | 252 | 9,309 | 177 | 41,920 |
| Windsor, Ontario | 23,418 | 661 | 3,824 | 337 | 28,240 |
| Winnipeg, Manitoba | 25,412 | 2,050 | 15,113 | 3,198 | 45,773 |

Table 12

Value of Residential and Non-residential Building Permits, Census Metropolitan Areas, Unadjusted, January – November 2004

| Census Metropolitan Areas | Value of construction (thousands of dollars) | | | | Total |
|-----------------------------------------------|----------------------------------------------|-----------------|------------|--------------------------------|------------|
| | Residential | Non-residential | | | |
| | | Industrial | Commercial | Institutional and governmental | |
| Abbotsford, British Columbia | 124,240 | 32,009 | 8,310 | 16,296 | 180,855 |
| Calgary, Alberta | 1,826,424 | 62,420 | 597,113 | 173,359 | 2,659,316 |
| Edmonton, Alberta | 1,316,373 | 105,836 | 396,698 | 83,405 | 1,902,312 |
| Greater Sudbury, Ontario | 61,228 | 8,545 | 30,036 | 24,253 | 124,062 |
| Halifax, Nova Scotia | 412,673 | 20,757 | 109,761 | 37,741 | 580,932 |
| Hamilton, Ontario | 624,896 | 39,646 | 169,467 | 79,707 | 913,716 |
| Kingston, Ontario | 128,657 | 6,316 | 33,190 | 55,917 | 224,080 |
| Kitchener, Ontario | 522,970 | 67,383 | 179,706 | 93,218 | 863,277 |
| London, Ontario | 436,354 | 36,861 | 112,582 | 200,012 | 785,809 |
| Montréal, Quebec | 4,055,567 | 295,310 | 929,765 | 562,497 | 5,843,139 |
| Oshawa, Ontario | 490,687 | 35,387 | 119,648 | 64,754 | 710,476 |
| Ottawa-Gatineau, Ontario/Quebec | 1,495,075 | 26,428 | 494,402 | 115,192 | 2,131,097 |
| Ottawa-Gatineau, Ontario part, Ontario/Quebec | 1,115,490 | 13,793 | 388,613 | 99,072 | 1,616,968 |
| Ottawa-Gatineau, Quebec part, Ontario/Quebec | 379,585 | 12,635 | 105,789 | 16,120 | 514,129 |
| Québec, Quebec | 722,536 | 22,639 | 238,138 | 110,074 | 1,093,387 |
| Regina, Saskatchewan | 122,460 | 22,104 | 62,697 | 25,817 | 233,078 |
| Saguenay, Quebec | 65,562 | 11,223 | 28,186 | 12,379 | 117,350 |
| Saint John, New Brunswick | 77,188 | 6,196 | 18,869 | 10,988 | 113,241 |
| Saskatoon, Saskatchewan | 161,503 | 11,696 | 69,259 | 14,329 | 256,787 |
| Sherbrooke, Quebec | 164,694 | 8,096 | 47,950 | 13,305 | 234,045 |
| St. Catharines-Niagara, Ontario | 302,964 | 24,490 | 122,927 | 31,850 | 482,231 |
| St. John's, Newfoundland and Labrador | 251,703 | 4,625 | 73,909 | 26,908 | 357,145 |
| Thunder Bay, Ontario | 50,012 | 13,640 | 30,433 | 14,893 | 108,978 |
| Toronto, Ontario | 6,801,095 | 805,769 | 1,988,702 | 1,278,697 | 10,874,263 |
| Trois-Rivières, Quebec | 106,685 | 12,794 | 32,214 | 27,425 | 179,118 |
| Vancouver, British Columbia | 3,439,672 | 127,617 | 736,074 | 171,310 | 4,474,673 |
| Victoria, British Columbia | 358,625 | 7,858 | 57,234 | 59,007 | 482,724 |
| Windsor, Ontario | 356,558 | 17,882 | 123,540 | 24,863 | 522,843 |
| Winnipeg, Manitoba | 383,610 | 29,628 | 183,345 | 91,902 | 688,485 |

Table 13

Value of the Non-residential Permits by Type of Building, Provinces and Territories, November 2004

| Type of building | Canada | N.L. | P.E.I. | N.S. | N.B. | Que. | Ont. | Man. | Sask. | Alta | B.C. | Yukon | N.W.T. | Nunavut |
|----------------------------------------------------------------------------------------|------------------|---------------|--------------|---------------|---------------|----------------|----------------|---------------|---------------|----------------|----------------|------------|--------------|-----------|
| thousands of dollars | | | | | | | | | | | | | | |
| Total non-residential | 2,012,463 | 12,417 | 7,226 | 42,545 | 19,426 | 406,588 | 992,657 | 30,821 | 31,260 | 257,480 | 209,773 | 728 | 1,467 | 75 |
| Industrial | 384,821 | 1,076 | 2,290 | 14,967 | 3,739 | 82,982 | 138,220 | 3,646 | 4,916 | 64,489 | 68,221 | 190 | 10 | 75 |
| Factories, plants | 231,980 | 0 | 250 | 1,000 | 768 | 57,199 | 98,014 | 2,675 | 1,280 | 12,423 | 58,371 | 0 | 0 | 0 |
| Transportation, utilities | 71,241 | 592 | 1,950 | 12,000 | 690 | 8,557 | 5,529 | 0 | 1,874 | 38,949 | 1,100 | 0 | 0 | 0 |
| Mining and agriculture | 24,814 | 0 | 0 | 880 | 900 | 3,556 | 7,595 | 0 | 0 | 7,208 | 4,675 | 0 | 0 | 0 |
| Minor industrial projects, new and improvements ¹ | 56,786 | 484 | 90 | 1,087 | 1,381 | 13,670 | 27,082 | 971 | 1,762 | 5,909 | 4,075 | 190 | 10 | 75 |
| Commercial | 917,213 | 10,539 | 888 | 24,894 | 13,812 | 211,421 | 410,439 | 21,287 | 20,957 | 125,236 | 76,890 | 143 | 707 | 0 |
| Trade and services | 259,090 | 5,795 | 400 | 17,430 | 3,687 | 88,653 | 101,864 | 8,338 | 7,115 | 19,320 | 6,488 | 0 | 0 | 0 |
| Warehouses | 149,268 | 0 | 0 | 0 | 0 | 24,986 | 82,108 | 0 | 4,143 | 28,287 | 9,487 | 0 | 257 | 0 |
| Service stations | 17,524 | 0 | 0 | 964 | 5,377 | 2,800 | 1,560 | 750 | 0 | 3,723 | 2,350 | 0 | 0 | 0 |
| Office buildings | 173,461 | 1,200 | 0 | 1,947 | 391 | 34,446 | 71,679 | 1,750 | 5,920 | 30,489 | 25,639 | 0 | 0 | 0 |
| Recreation | 92,622 | 0 | 0 | 650 | 350 | 11,258 | 69,860 | 935 | 336 | 3,713 | 5,520 | 0 | 0 | 0 |
| Hotels, restaurants | 68,238 | 2,350 | 0 | 0 | 0 | 14,399 | 23,370 | 3,959 | 0 | 16,529 | 7,631 | 0 | 0 | 0 |
| Laboratories | 835 | 0 | 0 | 0 | 0 | 0 | 835 | 0 | 0 | 0 | 0 | 0 | 0 | 0 |
| Minor commercial projects, new and improvements ¹ | 156,175 | 1,194 | 488 | 3,903 | 4,007 | 34,879 | 59,163 | 5,555 | 3,443 | 23,175 | 19,775 | 143 | 450 | 0 |
| Institutional and governmental | 710,429 | 802 | 4,048 | 2,684 | 1,875 | 112,185 | 443,998 | 5,888 | 5,387 | 67,755 | 64,662 | 395 | 750 | 0 |
| Schools, education | 287,369 | 0 | 3,824 | 0 | 0 | 73,247 | 176,172 | 1,670 | 2,663 | 19,835 | 9,958 | 0 | 0 | 0 |
| Hospitals, medical | 211,374 | 0 | 0 | 0 | 620 | 5,147 | 192,557 | 710 | 0 | 11,351 | 989 | 0 | 0 | 0 |
| Welfare, home | 138,857 | 0 | 0 | 0 | 0 | 13,857 | 43,813 | 330 | 522 | 33,550 | 46,785 | 0 | 0 | 0 |
| Churches, religion | 8,197 | 0 | 0 | 750 | 0 | 1,289 | 2,560 | 1,670 | 328 | 650 | 950 | 0 | 0 | 0 |
| Government buildings | 33,637 | 0 | 0 | 1,035 | 0 | 11,913 | 15,862 | 912 | 370 | 300 | 2,495 | 0 | 750 | 0 |
| Minor institutional and governmental projects, new and improvements ¹ | 30,995 | 802 | 224 | 899 | 1,255 | 6,732 | 13,034 | 596 | 1,504 | 2,069 | 3,485 | 395 | 0 | 0 |

¹ Refer to projects valued at less than \$250,000 for which the breakdown by type of building is not available.

Part IV – Monthly Survey of Building Permits - Data Quality, Concepts and Methodology

The following information should be used to ensure a clear understanding of the basic concepts that define the data provided in this product, of the underlying methodology of the survey, and of key aspects of the data quality. This information will provide you with a better understanding of the strengths and limitations of the data, and of how they can be effectively used and analysed. The information may be of particular importance to you when making comparisons with data from other surveys or sources of information, and in drawing conclusions regarding change over time.

Data Sources and Methodology

The purpose of the *Monthly Survey of Building Permits* issued by Canadian municipalities is to collect data on construction intentions. The results of this survey are used by C.M.H.C. (Canada Mortgage and Housing Corporation) as a reference base for conducting a monthly survey of housing starts and completions in accordance with its mandate. The statistics on building permits are also essential for the computation of capital expenditures. Furthermore, since the issuance of a building permit is one of the first steps in the construction process, these statistics are widely used as a leading indicator of building activity.

General methodology : The Building Permits Survey covers all Canadian municipalities that issue permits. The number of Canadian municipalities currently surveyed exceeds 2,350, representing all the provinces and territories. They account for 95% of the Canadian population. Participation in the survey is mandatory; the survey does not use a predetermined sample of municipalities. The communities representing the other 5% of the population are very small, and their level of building activity have little impact on the total. In practice, all urban agglomerations are represented in the survey, as well as a fair percentage of rural municipalities. With certain exceptions, the minimum coverage corresponds to the municipalities already included in the Housing Starts and Completions C.M.H.C.'s Survey. Non-responding municipalities that issue permits are urged on a regular basis to respond to the Building Permit Survey. Therefore, the number of municipalities covered is increasing continually.

The survey is usually conducted by mail, although certain municipalities choose to respond by telephone. The municipal officer responsible for issuing permits is asked to fill out a form each month describing all major construction projects.

The municipalities forward a copy of their completed report to Statistics Canada Head Office and another copy to the local office of the Canada Mortgage and Housing Corporation (C.M.H.C.). To reduce their overhead, an increasing number of respondents are producing a computerized report. Only those municipalities that are late in reporting and that are included in the above-mentioned C.M.H.C. survey are subject to follow-up by telephone.

The reports received at Statistics Canada Head Office are verified, coded and processed.

Strict quality control procedures are applied to ensure that collection, coding and data processing are as accurate as possible. Checks are also performed on totals and the magnitude of data. Reports that fail to meet the quality standards are subject to verification and are corrected as required.

Imputations are required for each characteristic for which no report has been received. These are calculated automatically, subject to certain constraints, by applying to previously used values, the month-to-month and year-to-year changes in similar values of responding municipalities and the historical pattern of the missing municipalities. No estimation is done for lack of coverage, concealment or the underevaluation of permits issued. For this reason, the sampling error cannot be computed.

The monthly statistics are not corrected for cancelled or expired permits. According to the municipal officers, the proportion of cancelled and unused permits is below 5%.

Reference period : The reference period for data collection purposes is the calendar month. Reports from municipalities which are part of a census metropolitan area or a census agglomeration must be received within 20 days following the month of reference. The other municipalities have 30 days to produce their reports. Results are released between 35 and 40 days after the end of the reference month. Annual data for the preceding calendar year are released with the data for the January survey month.

Revisions : Two types of revisions can affect the results of the Building Permits Survey:

Revisions Due to the Correction of Coding Errors

These types of revisions are done on a monthly basis only to the data pertaining to the month preceding the reference period.

Revisions Due to the addition of Late Reports

Late reports for the month preceding the reference period are incorporated into the survey results on a continuing basis. However, reports received after the two-month deadline following the reference month are introduced only at the end of the year. As a result, the data for the last twelve months are subject to revision.

Seasonal Adjustment : Seasonal changes cause predictable fluctuations in the data. The data series disseminated includes both seasonally adjusted (i.e., excludes predictable annual influences) and the unadjusted data. Seasonally adjusted data for the total number of housing units as well as for the aggregate value of building permits are obtained indirectly, i.e., by adding their seasonally adjusted components. The total number of dwelling units is obtained by summing the seasonally adjusted data for single-family and multiple-use units; the total value of building permits is obtained by summing the following elements: single-family and multiple-family dwellings, industrial, commercial and institutional. Some series contain no apparent seasonality. In these cases, unadjusted values have been tabulated and aggregated to the adjusted values of the other series. At the end of the year, the chronological series adjusted for seasonality are revised to take into account the most recent seasonal fluctuations. Generally, these revisions apply only to the last three years in the series. The revised data are introduced into the CANSIM databank.

Concepts and Variables Measured

The statistical data presented in this product refers to the number of dwelling units authorized and the **value of building permits**. The value of the permits reported includes the following expenditures: materials, labour, profit and overhead. The cost of land is never included in the estimated value of the permit while acquisition costs (legal fees, surveying fees and accrued interest) may be included at times.

The classification used in this publication deals strictly with structures for which a building permit was issued. Permits are generally issued for the following: construction of new buildings, alterations, additions, renovations, etc. Minor repair jobs such as painting, tiling, roofing, etc., for which no permit is required, and engineering work (such as dams, roads, pipelines, etc.), which, by definition, is not a building, are not included in the building permit series. Estimates of such work may be obtained from the publications Capital expenditures by type of asset (cat. no. 61-223) and Private and Public Investment in Canada Intentions (cat. no. 61-205).

The description given by the municipalities as to the type of building (box #6 of Section A on the form) and the type of work involved (box #7 of Section A on the form) forms

the basis for classification. The classification of buildings into major groups and subgroups is based on the following: intended use in the case of new buildings; present or intended use of buildings to which improvements are to be made; present use of the existing structure where the proposed construction is intended to provide additional facilities; principal use of the structure where the proposed construction has more than one intended use; however, where the building contains dwellings, the value of the construction is divided between residential and non-residential use.

Building Categories

This publication, uses the following classification for the **value of permits issued** for construction of new buildings or for improvements: residential, industrial, commercial, institutional and government.

Residential. Includes all buildings intended for private occupancy whether on a permanent basis or not. Dwellings are divided into the following types: single-family, mobile, cottage, semi-detached, row house and apartment building.

Industrial. Includes all buildings used for manufacturing and processing; transportation, communication and other utilities, and agriculture, forestry and mining.

Commercial. Includes all buildings used to house activities related to the tertiary sector, such as stores, warehouses, garages, office buildings, theatres, hotels, funeral parlours and beauty salons.

Institutional and Government. Includes expenditures made by the community, public and government for buildings and structures like schools, universities, hospitals, clinics, churches, homes for the aged.

The **number of dwelling units** indicates the number of self contained dwelling units created. This should not be confused with the number of structures. For example, an apartment building containing six dwellings will be shown as six dwelling units. When an existing structure is converted into additional housing units, the number of units added is included. This publication uses the following classification for dwelling units:

Single-family. Refers to dwellings commonly called “**single house**”. It includes single dwellings that are completely isolated on all sides, including single dwellings linked to other dwellings below ground. Included are bungalows, split levels, two-storey single-family homes built by conventional methods or prefabricated.

Mobile homes. Refers to houses designed and constructed to be transported on their own chassis and for easy moving.

Cottage. Refers to dwellings that cannot be occupied year-round or on a permanent basis because the facilities required for comfort are inadequate.

Double or Semi-detached. Refers to dwellings in which each of the two dwellings are side by side and joined by a common wall or garage, but not attached to any other building and surrounded by open space.

Row Dwellings. Refers to a row of three or more dwellings attached to each other without dwellings above or below.

Apartment Building. Includes dwellings in a variety of buildings such as duplexes, semi-detached duplexes, triplexes, row duplexes, apartments as such and dwellings adjacent to non-residential structures.

Conversion. Refers to the number of dwellings added by conversion of existing structures.

Geographic Classification

Geographic entities are classified according to Standard Geographical Classification (SGC) used by Statistics Canada. Each reporting entity is assigned a twelve-digit SGC code for identification according to the following geographic levels:

Province and Territory (PR) : There are ten provinces and three territories.

Economic Region (ER) : Refers to intraprovincial regions established by the Standards Division of Statistics Canada. There are seventy-six ERs.

Census Division (CD) : Refers to a group of census subdivisions established by provincial law. There are two hundred and ninety-one CDs (data on this geographic group is available on request).

Census Metropolitan Area (CMA) : Its delineation corresponds to the 2001 Census definition. The term CMA refers to the main labour market area of an urban area (the urbanized core) of at least 100,000 population, based on the Census population figures. The twenty-seven CMAs are shown in this publication. Although the 2001 Census defines the Ottawa-Gatineau area as a single CMA, the area is also shown in this publication as two separate entities since it is located in two different provinces.

Census Agglomeration (CA) : Refers to the smaller labour market area of an urbanized core of at least 10,000 population, as defined by the 2001 Census. There are one hundred and eighteen CAs in Canada. When a CA overlaps the boundaries of two provinces, it is shown partly in each province. The Lloydminster agglomeration is an exception to this rule. It is treated as if it was totally located in Alberta.

Other Municipalities of at Least 10,000 Population : Refers to municipalities not included in census agglomerations but with populations of at least 10,000 inhabitants. The distinction is made between these municipalities and CAs in order to permit comparison between the Building Permits Survey and the Housing Starts and Completions Survey which refers to this geographical concept.

Rural Area : Refers to all geographic entities not included in a CMA or CA and not identified as an urban centre by the Canada Mortgage and Housing Corporation.

Census Subdivision (CSD) : Refers to the general term applying to municipalities, Indian reserves, Indian settlements and unorganized territories. However, since Indian reserves and settlements do not issue building permits, they are not included in this publication.

Non-standard Geographic Unit : The geographic units shown in this publication do not all satisfy the above definition of census subdivision. Some provincial or municipal administrations producing monthly reports do not correspond to the official geographic entities; they are nevertheless shown in this publication under the geographic entity used by these administrations. These so-called non-standard geographic units are few in number and are mostly concentrated in the Maritime provinces.

Territorial revisions

Territorial boundaries were established according to the 2001 Census definitions. Changes in boundaries, status or name of census subdivisions between censuses are introduced in this publication on a yearly basis. Changes affecting the other geographic units (CMAs, CAs, CDs and ERs) are introduced every five years, eighteen months following the census.

Data Accuracy

Since the building permit data are extracted from municipal administrative documents, two types of response errors are possible: errors attributable to the permit applicant and errors in transcription by the responding municipality. However, experience has shown that transcription errors are not very common and the increasing number of municipalities producing computerized reports tends to reduce the frequency of this type of error. Errors attributable to an understatement of the cost of construction are more probable. Since permit fees are in most cases based on the value of the construction, this leads unquestionably to under-estimation of project values.

The other source of error are the processing error and the non-response error. In 2003, 99% of the municipalities covered by the survey sent their monthly Building Permits reports.

Comparability of Data and Related Sources

Comparison of data must be done with reservation considering that the methods of issuing permits and the methods of estimating building values can differ from one municipality to another. Also, comparisons involving different periods must take into account the constant increase in the number of municipalities participating in the survey.

This publication contains only part of the data produced on building permits. However, you may order unpublished tables or address special requests, to the Current Investment Indicators Section ((613) 951-4646 or 1-800-579-8533). The series presented here is also available on CANSIM: Tables 026-0001 to 026-0008, 026-0010 and 026-0015.

Related Products and Services

Selected Related Publications

Catalogue

62-202 Spending patterns in Canada

75-202 Income in Canada.

61-205 Private and public investment in Canada, intentions

61-206 Private and public investment in Canada, intentions



Building and demolition permits

Monthly Report

Permis de construction et de démolition

Rapport mensuel



| | | | |
|--------------|--|----------------------------------------------------------------------------------------------------------------------------------------|--|
| 1 | | <i>If necessary, please update corresponding information – Si nécessaire, veuillez mettre à jour les renseignements correspondants</i> | |
| 2 | | Reporting Entity Name – Nom de l'entité rapportante | |
| 3 | | Municipal Status (if applicable) – Statut municipal (s'il y a lieu) | |
| 4 | | Address – Adresse | |
| 5 | | 6 | |
| City – Ville | | Postal Code – Code postal | |
| 7 | | Contact Name – Nom du contact | |
| 8 | | Contact Title – Titre du contact | |
| 9 | | Language of Preference – Langue de préférence | |
| | | 1 <input type="checkbox"/> English 2 <input type="checkbox"/> Français | |
| 10 | | Telephone Number – Numéro de téléphone | |

| General Information | Renseignements généraux |
|----------------------------------------------------------------------------------------------------------------------------------------------------------------------------------------------------------------------------------------------------------------------------------------------------------------------------------------------------------------------------------------------------------------------------------------------------------------------------------------------------------------------------------------------------------------------------------------------------------------------------------------------|-------------------------------------------------------------------------------------------------------------------------------------------------------------------------------------------------------------------------------------------------------------------------------------------------------------------------------------------------------------------------------------------------------------------------------------------------------------------------------------------------------------------------------------------------------------------------------------------------------------------------------------------------------------------------------------------------------|
| Confidential when completed. | Confidentiel une fois rempli. |
| The collection of this information is authorized by the Statistics Act, Revised Statutes of Canada, 1985, Chapter S19. | La collecte de cette information est autorisée par la Loi sur la statistique, Lois révisées du Canada, 1985, chapitre S19. |
| To avoid duplication of enquiry and to provide consistent statistics, this survey is being conducted under cooperative agreements, made in accordance with the Statistics Act, Revised Statutes of Canada, 1985, Chapter S19 under Section 11 for the exchange of information with: the Manitoba Bureau of Statistics, the Saskatchewan Bureau of Statistics and the British Columbia Central Statistics Bureau for respondents in each of the respective provinces; and under Section 12 for joint collection and sharing information with: the Northwest Territories Bureau of Statistics and the Canada Mortgage and Housing Corporation. | Afin d'éviter tout chevauchement des enquêtes et de fournir des statistiques uniformes, Statistique Canada mène cette enquête aux termes d'accords conjoints conclus en vertu de l'article 11 de la Loi sur la statistique, Lois révisées du Canada, 1985, chapitre S19 pour l'échange de renseignements avec: le «Manitoba Bureau of Statistics», le «Saskatchewan Bureau of Statistics» et le «British Columbia Central Statistics Bureau» pour les répondants de ces différentes provinces; et en vertu de l'article 12 pour le rassemblement conjoint et l'échange de renseignements avec: le «Northwest Territories Bureau of Statistics» et la Société canadienne d'hypothèques et de logement. |
| Agreements coming under Section 12 of the Canada Statistics Act shall not apply to any respondent who give notice in writing to the Chief Statistician that he/she objects to the sharing of the information. | Les accords aux termes de l'article 12 de la Loi sur la statistique ne s'appliquent pas aux répondants qui s'opposent à l'échange de renseignements dans une lettre jointe au questionnaire dûment rempli et adressé au statisticien en chef du Canada. |
| Results of this survey will enable Statistics Canada to estimate residential and non-residential construction activity at various geographical level. The latter are published monthly in Catalogue 64-001, Building Permits. | Les résultats de cette enquête permettront à Statistique Canada d'estimer l'activité de la construction résidentielle et non résidentielle à différents niveaux géographiques. Ces derniers sont publiés mensuellement dans Permis de bâtir, n° 64-001 au catalogue. |
| PLEASE REFER TO THE SURVEY REPORTING GUIDE AND SELF CODING GUIDE WHEN COMPLETING YOUR REPORT. If you require additional copies of these guides please contact us at 1-888-404-3339. | VEUILLEZ CONSULTER LE GUIDE DE DÉCLARATION DE L'ENQUÊTE ET LE GUIDE POUR AUTOCODAGE POUR REMPLIR VOTRE RAPPORT. Si vous avez besoin des copies supplémentaires, veuillez communiquer au 1-888-404-3339. |

| | | |
|----------------------------------------------------------------------------------------------------------------------------------------------------------|--------------------------------|-----------------------------------------------------------------------------------------------------------------------------------------------------------------------------------|
| 11 | Coverage Profile Update | Mise à jour du profil de couverture |
| Is the geographical coverage of this monthly report different from that of your last report due to a change in boundaries, level of administration, etc. | | Est-ce que la couverture géographique de ce rapport mensuel est différente de celle de votre rapport précédent dû à un changement de frontières, du niveau d'administration, etc. |
| 1 <input type="checkbox"/> Yes Oui | | 2 <input type="checkbox"/> No Non |

| | | | |
|---------------------------------------------------------------------------------------------------------------------------------------|-----------------------------------------|------------------------------------------------------------------------------------------------------------------------------------------------------------------------------|----------------------------------------------------|
| 12 | Reporting Period – Période visée | 13 | Stock Requirements – Besoins de fournitures |
| Please use a separate form for each month being reported. <i>Veuillez utiliser un formulaire différent pour chaque mois rapporté.</i> | | <i>If forms or return envelopes are required, please check: Si vous avez besoin de formulaires ou d'enveloppes de retour, prière de l'indiquer:</i> | |
| Year <input type="text"/> <input type="text"/> <input type="text"/> <input type="text"/> <input type="text"/> Année | | 1 <input type="checkbox"/> Forms <input type="checkbox"/> Statistics Canada Return Envelopes Formulaires <input type="checkbox"/> Enveloppes de retour Statistique Canada | |
| Month <input type="text"/> <input type="text"/> Mois | | 3 <input type="checkbox"/> CMHC Return Envelopes Enveloppes de retour SCHL | |

| | | | |
|------------------------------------------------------------------------------------------------------------------------|--|-------------------------------------------------------------------------------------------------------------------------------------------------------------------|--|
| 14 | | Nil Report – Rapport nul | |
| Report Prepared by – Rapport préparé par | | <i>If no permits were issued during the month, simply check the box below: Si aucun permis n'a été émis durant le mois, cochez simplement la case ci-dessous:</i> | |
| Signature: <input type="text"/> | | 1 <input type="checkbox"/> No Permits Aucun permis | |
| Year <input type="text"/> <input type="text"/> <input type="text"/> <input type="text"/> <input type="text"/> Année | | Statistics Canada Use – Usage Statistique Canada | |
| Month <input type="text"/> <input type="text"/> Mois | | MP <input type="checkbox"/> T <input type="checkbox"/> Status-État <input type="text"/> Int I.D. – Id. de l'int. <input type="text"/> | |
| Day <input type="text"/> <input type="text"/> <input type="text"/> Jour | | | |

7-6100-151: 2000-10-25 STC/SCT-480-60049 SQC/SCT-480-60049

Section A: Major Construction: Projets de construction majeurs

| 1 | 2 | 3 | 4 | 5 | 6 | 7 | 8 | 9 | 10 | 11 |
|-------------------------|--------------------------------|-------------------------------------------------------------|---------------------------------------------------------------|-------------------------------------------|-----------------------------------------------------|------------------------------------------------|---------------------------------------------|--------------------------------------|----------------------------------------------------------------------------------------------------------|-------------------------|
| Line No. N° de ligne | Permit No. Numéro du permis | Name and Address of Owner Nom et adresse du propriétaire | Name and Address of Builder Nom et adresse du constructeur | Construction Location Site des travaux | Type of Building Code Code pour type de bâtiment | Type of Work Code Code pour type de travaux | Value of Construction Valeur des travaux | Dwelling Units Unités de logement | Total Building Area Aire totale du bâtiment | Line No. N° de ligne |
| | | | | | | | \$ | Created Créées | Check one: Cochez: | |
| | | | | | | | | Lost Supprimées | 1 <input type="checkbox"/> Ft ² /Pl ² 2 <input type="checkbox"/> M ² | |
| 01 | | | | | | | ,000 | | | 01 |
| 02 | | | | | | | ,000 | | | 02 |
| 03 | | | | | | | ,000 | | | 03 |
| 04 | | | | | | | ,000 | | | 04 |
| 05 | | | | | | | ,000 | | | 05 |
| 06 | | | | | | | ,000 | | | 06 |
| 07 | | | | | | | ,000 | | | 07 |
| 08 | | | | | | | ,000 | | | 08 |
| 09 | | | | | | | ,000 | | | 09 |
| 10 | | | | | | | ,000 | | | 10 |
| 11 | | | | | | | ,000 | | | 11 |
| 12 | | | | | | | ,000 | | | 12 |
| 13 | | | | | | | ,000 | | | 13 |
| 14 | | | | | | | ,000 | | | 14 |

For Information Only - Pour information seulement

Section B: Minor Residential Additions and Renovations – Additions et rénovations résidentielles mineures

| Permits valued at less than \$50,000 Permis évalués à moins de \$50,000 | | Line No. No. de ligne | Value of Permits Valeur des permis \$ | Number of Permits Nombre de permis |
|----------------------------------------------------------------------------|-------------------------------------------|--------------------------|------------------------------------------|---------------------------------------|
| New garages and carports Garages et abris d'auto neufs | Single dwellings Logements simples | 01 | .000 | |
| | Multiple dwellings Logements multiples | 02 | .000 | |
| New inground swimming pools Piscines creusées neuves | Single dwellings Logements simples | 03 | .000 | |
| | Multiple dwellings Logements multiples | 04 | .000 | |
| Other improvements Autres améliorations | Single dwellings Logements simples | 05 | .000 | |
| | Multiple dwellings Logements multiples | 06 | .000 | |
| Totals for this section Totaux de cette section | | 07 | .000 | |

Section C: Minor Non-Residential Projects – Projets non résidentiels mineurs

| Permits valued at less than \$250,000 Permis évalués à moins de \$250,000 | | Line No. No. de ligne | Value of Permits Valeur des permis \$ | Number of Permits Nombre de permis |
|------------------------------------------------------------------------------|-------------------------------------------------------|--------------------------|------------------------------------------|---------------------------------------|
| Industrial Industriel | New construction Construction neuve | 08 | .000 | |
| | Additions and renovations Additions et rénovations | 09 | .000 | |
| Commercial | New construction Construction neuve | 10 | .000 | |
| | Additions and renovations Additions et rénovations | 11 | .000 | |
| Institutional and Governmental Institutionnel et gouvernemental | New construction Construction neuves | 12 | .000 | |
| | Additions and renovations Additions et rénovations | 13 | .000 | |
| Totals for this section Totaux de cette section | | 14 | .000 | |

Section D: Residential Demolitions – Démolitions résidentielles

| Type of dwelling Type de logement | None Aucune | Single-detached Maison individuelle | Cottage Chalet | Semi-detached Semi-détaché | Row Rangée | Apartment Appartement |
|--------------------------------------------------------------------------|-------------------------------------|----------------------------------------|-------------------|-------------------------------|---------------|--------------------------|
| | <input checked="" type="checkbox"/> | | | | | |
| No. of dwelling units demolished Nombre d'unités de logement démolies | 1 <input type="checkbox"/> | | | | | |

Confidentiality

Confidentialité

Statistics Canada is prohibited by law from publishing any statistics which would divulge information obtained from this survey that relates to any identifiable business without the previous written consent of that business. The data reported on this questionnaire will be treated in strict confidence, used for statistical purposes and published in aggregate form only. The confidentiality provisions of the Statistics Act are not affected by either the Access to Information Act or any other legislation.

La loi interdit à Statistique Canada de publier des statistiques recueillies au cours de cette enquête qui permettraient d'identifier une entreprise sans que celle-ci en ait donné l'autorisation par écrit au préalable. Les données déclarées sur ce questionnaire resteront confidentielles. Elles serviront exclusivement à des fins statistiques et elles seront publiées seulement de façons agrégées. Les dispositions de la Loi sur la statistique qui traitent de la confidentialité ne sont modifiées d'aucune façon par la Loi sur l'accès à l'information ou toute autre loi.

General Instructions

Directives générales

Please complete your monthly report in triplicate and send:
 ► one copy to **Statistics Canada** in pre-addressed envelope
 ► one copy to the local office of the **Canada Mortgage and Housing Corporation** in pre-addressed envelope
 ► keep one copy for your files
 Please forward your completed report no later than **10 days after the end of the reporting period**.
 Note: Shaded cells are for Statistics Canada use only.

Veillez remplir votre rapport mensuel en trois exemplaires et:
 ► faire parvenir une copie à **Statistique Canada** dans l'enveloppe pré-adressée
 ► faire parvenir une copie au bureau régional de la **Société canadienne d'hypothèques et de logement** dans l'enveloppe pré-adressée
 ► garder une copie pour vos dossiers
 Veuillez remplir et nous faire parvenir votre rapport au plus tard **10 jours après la fin du mois**.
 N.B. Les cases ombrées du formulaire sont strictement réservées à l'usage de Statistique Canada.

Correspondence

Correspondance

► **If you need more forms or return envelopes do ONE ONLY of the following:**

- Check off the appropriate box(es) in the **"Stock Requirements"** section, page 1, cell 13 of the questionnaire.
- Telephone us.
- Send us a FAX.
- Contact us via "internet e-mail".

► **Do you have questions regarding the survey?**
 ► **Do you need help in completing the form?**
 ► **Do you require additional copies of the "Survey Reporting Guide" and/or the "Self Coding Guide"?**

Telephone: 1-888-404-3339 (toll free)
 FAX: 1-888-505-8091 (toll free)
 Internet: bdps@stcinet.statcan.ca

► **Si vous avez besoin d'autres formulaires ou d'enveloppes de retour faites seulement un des suivants.**

- Cochez le ou les case(s) appropriée(s) à la section **"Besoins de fournitures"**, page 1, case 13 du questionnaire.
- Veuillez nous téléphoner.
- Veuillez nous faire parvenir un FAX.
- Veuillez nous faire parvenir un message par "courrier électronique".

► **Avez-vous des questions ayant trait à l'enquête?**
 ► **Avez-vous besoin d'aide à compléter le formulaire?**
 ► **Avez-vous besoin des copies supplémentaires du "Guide de déclaration de l'enquête" et/ou le "Guide pour autocodage"?**

Téléphone: 1-888-404-3339 (sans frais)
 FAX: 1-888-505-8091 (sans frais)
 Internet: bdps@stcinet.statcan.ca

If you chose to transmit the questionnaire or information to Statistics Canada by facsimile or internet e-mail communication, please be advised that there could be a risk of disclosure during the communication process. However, upon receipt of your communication, Statistics Canada will provide the guaranteed level of protection afforded to all information collected under the authority of the Statistics Act.

Si vous nous transmettez le questionnaire ou de l'information par télécopieur ou par courrier électronique Statistique Canada tient à vous avertir que la transmission des renseignements peut poser un risque de divulgation. Toutefois, dès la réception du document, Statistique Canada offrira le niveau de protection garanti pour tous les renseignements recueillis aux termes de la Loi sur la statistique.