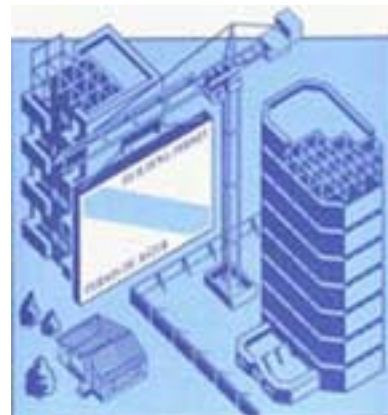




Catalogue no. 64-001-XIE

# Building Permits

January 2007



Statistics  
Canada

Statistique  
Canada

Canada

## **How to obtain more information**

Specific inquiries about this product and related statistics or services should be directed to: Current investment indicators section, Investment and capital stock division, Statistics Canada, Ottawa, Ontario, K1A 0T6 (telephone: (613) 951-6321).

For information on the wide range of data available from Statistics Canada, you can contact us by calling one of our toll free numbers. You can also contact us by e-mail or by visiting our website at [www.statcan.ca](http://www.statcan.ca).

National inquiries line **1-800-263-1136**

National telecommunications device for the hearing impaired **1-800-363-7629**

Depository Services Program inquiries **1-800-700-1033**

Fax line for Depository Services Program **1-800-889-9734**

E-mail inquiries [\*\*infostats@statcan.ca\*\*](mailto:infostats@statcan.ca)

Website [\*\*www.statcan.ca\*\*](http://www.statcan.ca)

## **Information to access the product**

This product, catalogue no. 64-001-XIE, is available for free in electronic format. To obtain a single issue, visit our website at [www.statcan.ca](http://www.statcan.ca) and select Publications.

## **Standards of service to the public**

Statistics Canada is committed to serving its clients in a prompt, reliable, courteous, and fair manner. To this end, the Agency has developed standards of service that its employees observe in serving its clients. To obtain a copy of these service standards, please contact Statistics Canada toll free at 1-800-263-1136. The service standards are also published on [www.statcan.ca](http://www.statcan.ca) under About us > Providing services to Canadians.



Statistics Canada  
Investment and Capital Stock Division  
Current investment indicators section

# Building Permits

January 2007

Published by authority of the Minister responsible for Statistics Canada

© Minister of Industry, 2007

All rights reserved. The content of this electronic publication may be reproduced, in whole or in part, and by any means, without further permission from Statistics Canada, subject to the following conditions: that it be done solely for the purposes of private study, research, criticism, review or newspaper summary, and/or for non-commercial purposes; and that Statistics Canada be fully acknowledged as follows: Source (or "Adapted from", if appropriate): Statistics Canada, year of publication, name of product, catalogue number, volume and issue numbers, reference period and page(s). Otherwise, no part of this publication may be reproduced, stored in a retrieval system or transmitted in any form, by any means—electronic, mechanical or photocopy—or for any purposes without prior written permission of Licensing Services, Client Services Division, Statistics Canada, Ottawa, Ontario, Canada K1A 0T6.

March 2007

Catalogue no. 64-001-XIE, Vol. 51, No. 1

ISSN 1480-7475

Frequency: Monthly

Ottawa

La version française de cette publication est disponible sur demande (n° 64-001-XIF au catalogue).

---

#### **Note of appreciation**

*Canada owes the success of its statistical system to a long standing partnership between Statistics Canada, the citizens of Canada, its businesses, governments and other institutions. Accurate and timely statistical information could not be produced without their continued cooperation and goodwill.*

# User information

---

## Symbols

The following standard symbols are used in Statistics Canada publications:

- . not available for any reference period
- .. not available for a specific reference period
- ... not applicable
- 0 true zero or a value rounded to zero
- 0<sup>s</sup> value rounded to 0 (zero) where there is a meaningful distinction between true zero and the value that was rounded
- p preliminary
- r revised
- x suppressed to meet the confidentiality requirements of the *Statistics Act*
- E use with caution
- F too unreliable to be published

## Acknowledgements

This publication was prepared under the direction of:

- D. McDowell, Director, Investment and Capital Stock Division
- M. Labonté, Chief, Current Investment Indicators Section
- É. Saint-Pierre, Unit Head, Residential Sector, Current Investment Indicators
- D. Legault, Programmer-Analyst, Current Investment Indicators Section

## Important notice

Changes in boundaries, status or names of geographical entities that occurred before January 2006, are reflected in this publication. These geographical changes may be obtained by writing to:

Statistics Canada  
Investment and Capital Stock Division  
Current Investment Indicators Section  
9 D-2, Jean Talon Building  
Tunney's Pasture  
Ottawa, Ontario  
K1A 0T6  
or by telephoning: (613) 951-6321

# Table of contents

---

|   |           |
|---|-----------|
| <b>Highlights</b>   | <b>5</b>  |
| <b>Analysis – January 2007</b>  | <b>6</b>  |
| Residential: Record-high value of single-family permits   | 6         |
| Non-residential: Strong rebound in institutional and industrial components  | 7         |
| Metropolitan areas: Strong growth in Toronto and Vancouver  | 7         |
| <b>Related products</b>   | <b>12</b> |
| <b>Statistical tables</b>   |           |
| 1 Total value of building permits, provinces and territories, seasonally adjusted   | 15        |
| 2 Non-residential value of building permits, provinces and territories, seasonally adjusted   | 15        |
| 3 Residential value of building permits, provinces and territories, seasonally adjusted   | 16        |
| 4 Number of dwelling units authorized, province and territories, seasonally adjusted at annual rate                                     | 16        |
| 5 Dwelling units, value of residential and non-residential building permits, provinces and territories, seasonally adjusted, 2007       | 17        |
| 6 Dwelling units, value of residential and non-residential building permits, census metropolitan areas, seasonally adjusted, 2007       | 19        |
| 7 Dwelling units, provinces and territories, unadjusted, 2007   | 23        |
| 8 Dwelling units, census metropolitan areas, unadjusted, January 2007   | 25        |
| 9 Dwelling units, census metropolitan areas, unadjusted, cumulative, January - January 2007   | 26        |
| 10 Value of residential and non-residential building permits, provinces and territories, unadjusted, 2007                               | 27        |
| 11 Value of residential and non-residential building permits, census metropolitan areas, unadjusted, January 2007                       | 29        |
| 12 Value of residential and non-residential building permits, census metropolitan areas, unadjusted, cumulative, January - January 2007 | 30        |
| 13 Value of the non-residential permits by type of building, provinces and territories, January 2007                                    | 31        |
| <b>Data quality, concepts and methodology</b>   |           |
| Description - Monthly survey of building permits  | 32        |
| Data source and methodology   | 33        |
| Concepts and variables measured   | 35        |
| Building categories   | 36        |
| Data accuracy   | 38        |
| Comparability of data and related sources   | 39        |

## Table of contents – continued

### Appendix

|   |                            |    |
|---|----------------------------|----|
| I | Geographical abbreviations | 40 |
|---|----------------------------|----|

### Charts

|    |  |    |
|----|--|----|
| 1. | Total value of building permits                          | 8  |
| 2. | Residential value of building permits - Total            | 8  |
| 3. | Number of dwelling units - Single and multiple           | 9  |
| 4. | Non residential value of building permits - Total        | 9  |
| 5. | Commercial value of building permits                     | 10 |
| 6. | Industrial value of building permits                     | 10 |
| 7. | Institutional and governmental value of building permits | 11 |

## Highlights

---

- The value of building permits surged to their highest level ever in January, thanks to huge gains in the value of residential and non-residential permits. It was the third time in four months that the \$6-billion mark was surpassed.

## Analysis – January 2007

---

The value of building permits surged to their highest level ever in January, thanks to huge gains in the value of residential and non-residential permits. It was the third time in four months that the \$6-billion mark was surpassed.

Builders took out a record \$6.3 billion in building permits in January. January's level was 11.3% higher than December 2006.

These results point to a busy spring on building sites as building permits are a leading indicator for construction activity.

The value of non-residential permits increased 19.3% to a record \$2.6 billion in January, the third monthly gain in four months. January's gain was due largely to surges in the values of both industrial and institutional permits in Ontario.

In the residential sector, the value of building permits rose 6.3% to \$3.7 billion after two monthly declines. This was the third highest monthly level on record. Intentions increased in both single- and multi-family components.

### Note to readers

Unless otherwise stated, this release presents seasonally adjusted data, which ease comparisons by removing the effects of seasonal variations.

The Building Permits Survey covers 2,380 municipalities representing 95% of the population. It provides an early indication of building activity. The communities representing the other 5% of the population are very small, and their levels of building activity have little impact on the total.

The value of planned construction activities shown in this release excludes engineering projects (e.g., waterworks, sewers or culverts) and land.

For the purpose of the Building Permits release, the census metropolitan area of Ottawa—Gatineau is divided into two areas: Ottawa—Gatineau (Quebec part) and Ottawa—Gatineau (Ontario part).

Provincially, the largest gain (in dollars) occurred in Ontario, where municipalities approved \$2.6 billion worth of permits in January, thanks to a new record high in the non-residential sector.

On the other hand, the value of building permits fell in six provinces. The biggest decline in terms of dollars occurred in Alberta, where a large drop in commercial and industrial permits more than offset a gain in the housing sector.

### Residential: Record-high value of single-family permits

Municipalities set a record for the value of building permits for single-family units for a second consecutive month. They issued \$2.4 billion in single-family permits, up 2.8% from December. A major contributing factor was higher construction costs.

Demand remained high for single-family dwellings, as municipalities authorized 10,220 new units, a slight 0.6% decline from December. This level was 3.0% higher than the monthly average of 9,920 units set in 2006.

The demand for new-single family units has been on an upward trend since the middle of 2006.

Following two monthly declines, the value of multi-family permits rebounded, rising 13.8% in January to \$1.3 billion. The increase was powered by gains in the three types of multi-family dwellings (apartments/condominiums, semi-detached and row houses).



In January alone, permits for 10,005 new multi-family units were issued, up 27.4% from December. A vast majority of the January permits were for new apartments/condominiums.

Among the provinces, six showed increases in their value of housing permits in January. The largest gains (in dollars) were recorded in British Columbia (+16.7% to \$719 million) and in Alberta (+15.1% to \$758 million). The gains in both provinces were due to jumps in the values of single- and multi-family permits.

The housing sector continued to be positively affected by the very dynamic economy in Western Canada. Other contributing factors were advantageous mortgage rates, the continued strength in full-time employment and in personal disposable income as well as the high level of immigration.

### **Non-residential: Strong rebound in institutional and industrial components**

Strong growth in the values of both institutional and industrial permits was the main factor behind the new monthly record in the non-residential sector.

Permits in the institutional sector rebounded a spectacular 69.3% to \$620 million, after falling 51.1% in December. It was a fourth monthly increase over the last six months, and was largely the result of higher construction intentions for medical and educational buildings.

Among provinces, six showed gains in the institutional sector. The largest gain (in dollars) was recorded in Ontario (+115.0% to \$337 million).

The value of institutional permits has been on an upward trend since February 2006.

In the industrial sector, the value of permits surged 45.9% to \$650 million. The big gain, which followed an 11.1% decline in December, was the result of large increases in the manufacturing and utility building categories in Ontario. Alberta showed the biggest drop (in dollars) on the heels of a 125.6% gain in December.

The value of industrial permits has been on an upward trend since January 2006.

Commercial sector permits fell 2.6% from December to \$1.3 billion. Behind this decline was the lower demand for permits associated with warehouses and recreation buildings. Despite the retreat, the value of commercial building permits in January remained 12.0% higher than the average monthly level in 2006.

Provincially, the biggest gain (in dollars) in the non-residential sector occurred in Ontario, where all three components (commercial, industrial and institutional) registered huge gains. In contrast, the largest decline (in dollars) occurred in Alberta, the result of important drops in the industrial and commercial components.

Several economic factors were consistent with the strength in the non-residential sector, including growth in consumer spending and declining vacancy rates for industrial and commercial buildings. In addition, corporate operating profits hit a record high in 2006.

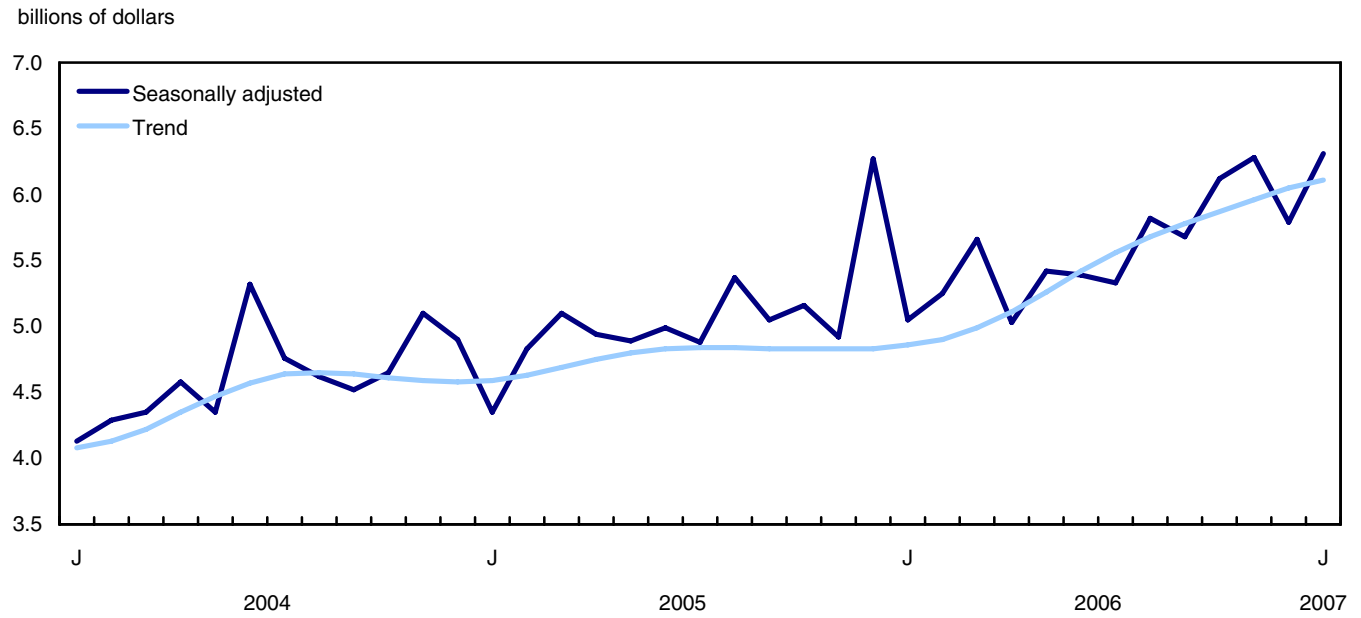
### **Metropolitan areas: Strong growth in Toronto and Vancouver**

Among the 34 census metropolitan areas, 16 showed higher value of permits compared with December 2006. Toronto and Vancouver had the strongest increases (in dollars), the result of strength in both the residential and non-residential sectors. In Toronto, the value of non-residential permits hit its highest value since March 2005.

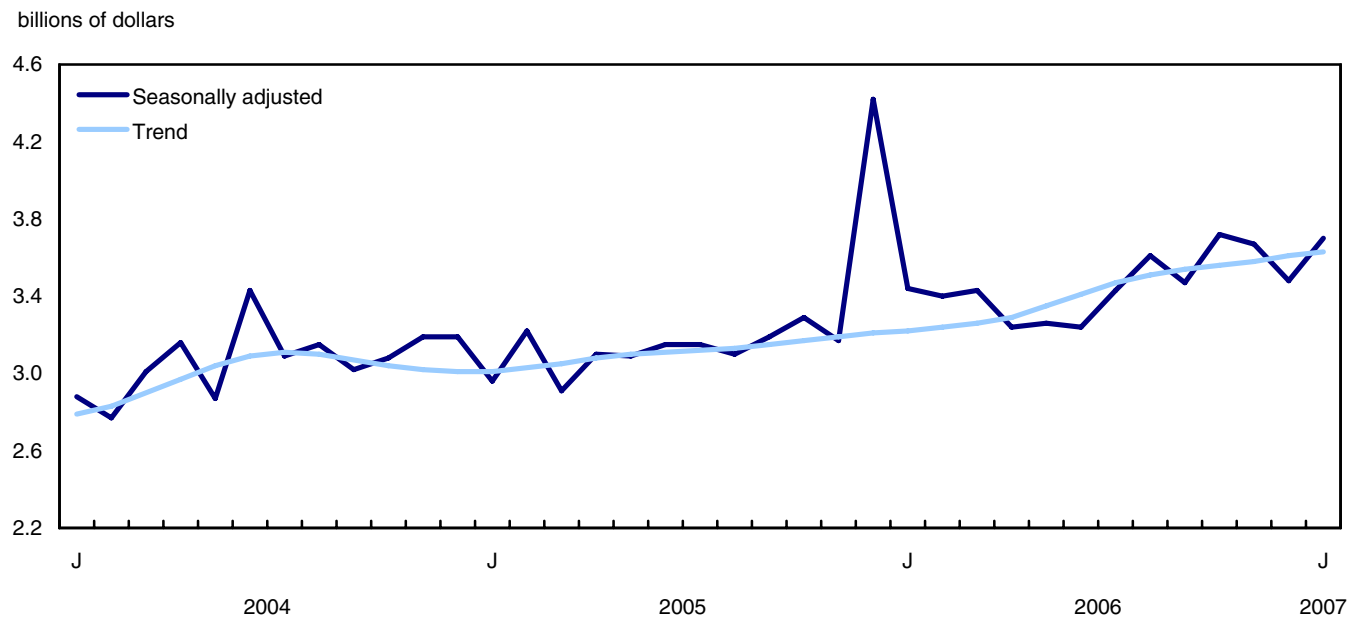
The value of building permits hit a new high in January in Greater Sudbury.

In contrast, the largest decline occurred in Halifax where decreases in both the residential and non-residential sectors led the value of permits to its lowest level since February 2005.

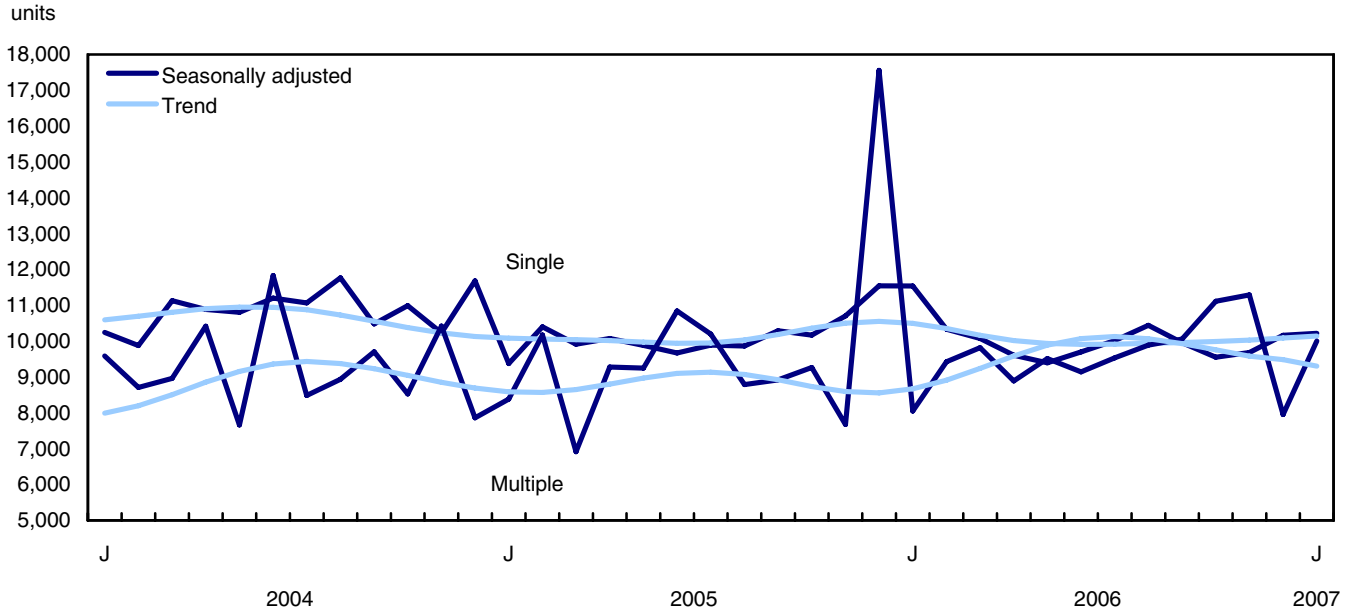
**Chart 1**  
Total value of building permits



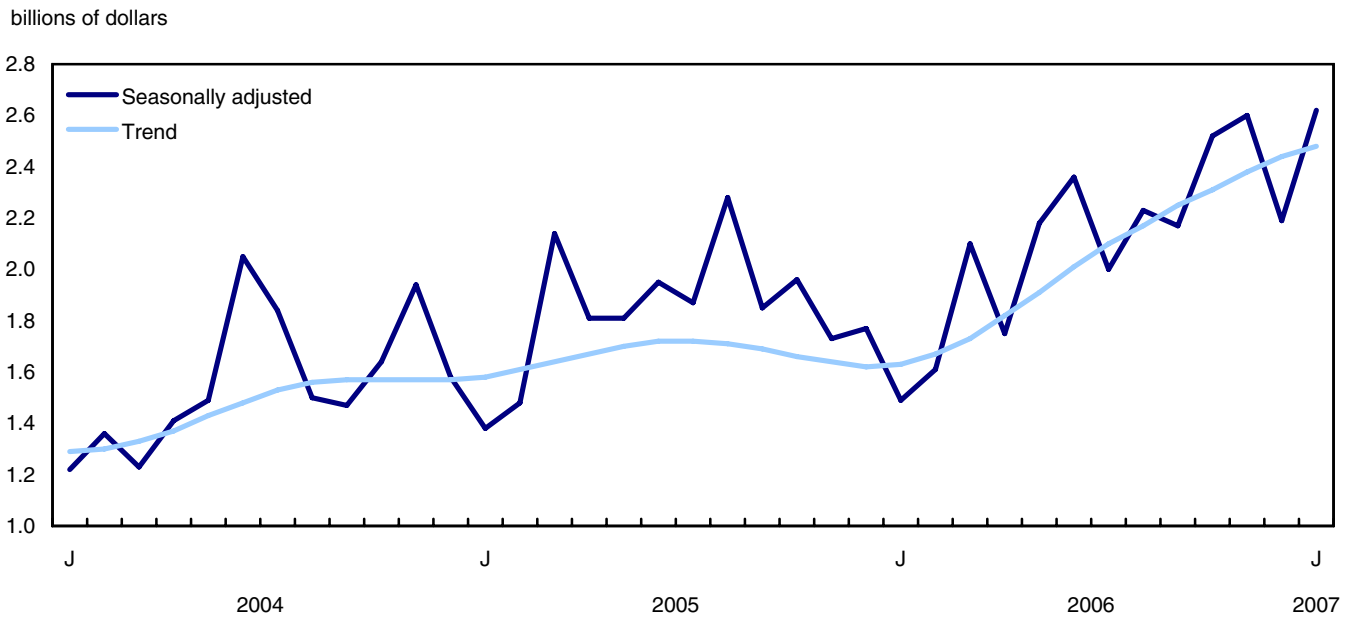
**Chart 2**  
Residential value of building permits - Total



**Chart 3**  
**Number of dwelling units - Single and multiple**

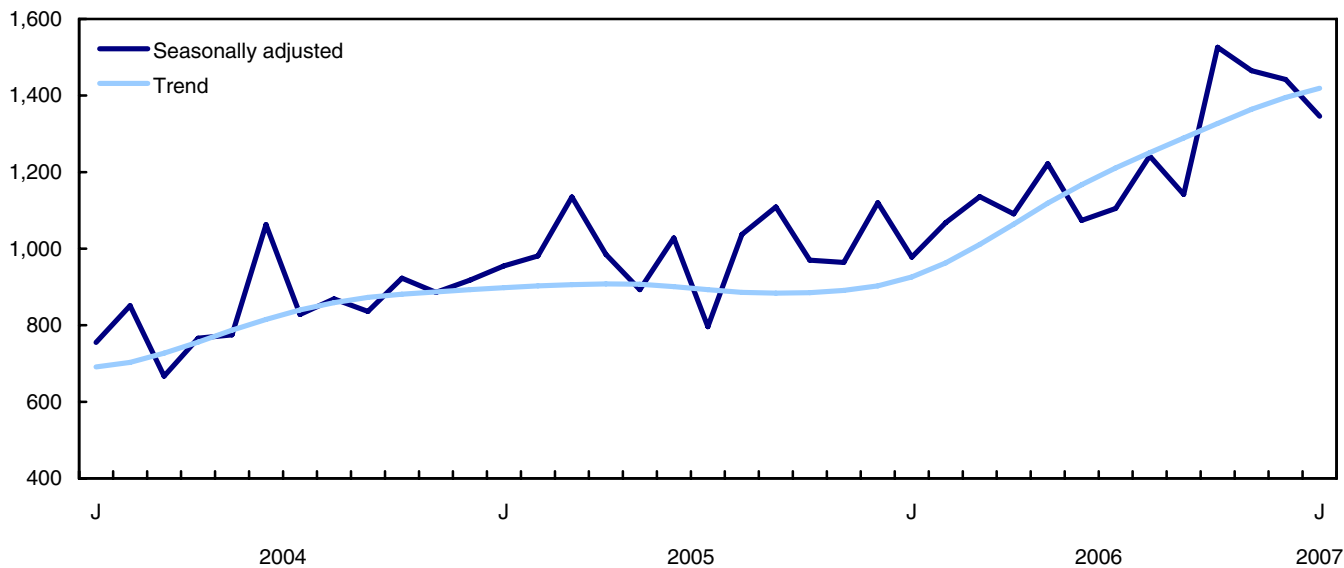


**Chart 4**  
**Non residential value of building permits - Total**



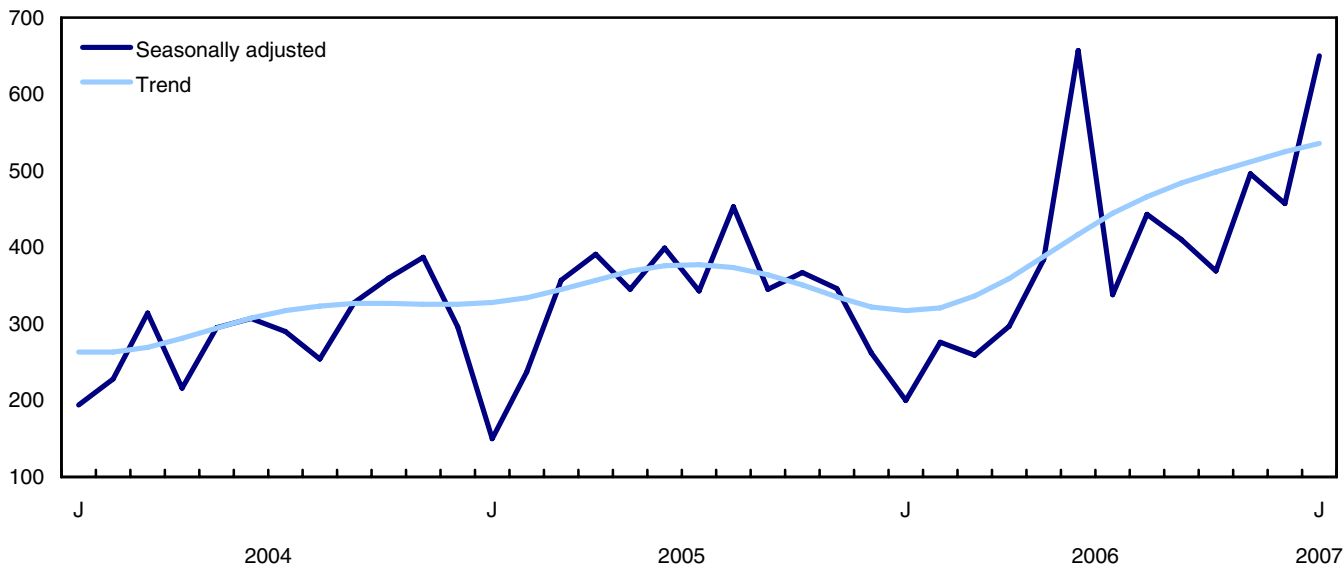
**Chart 5**  
Commercial value of building permits

millions of dollars



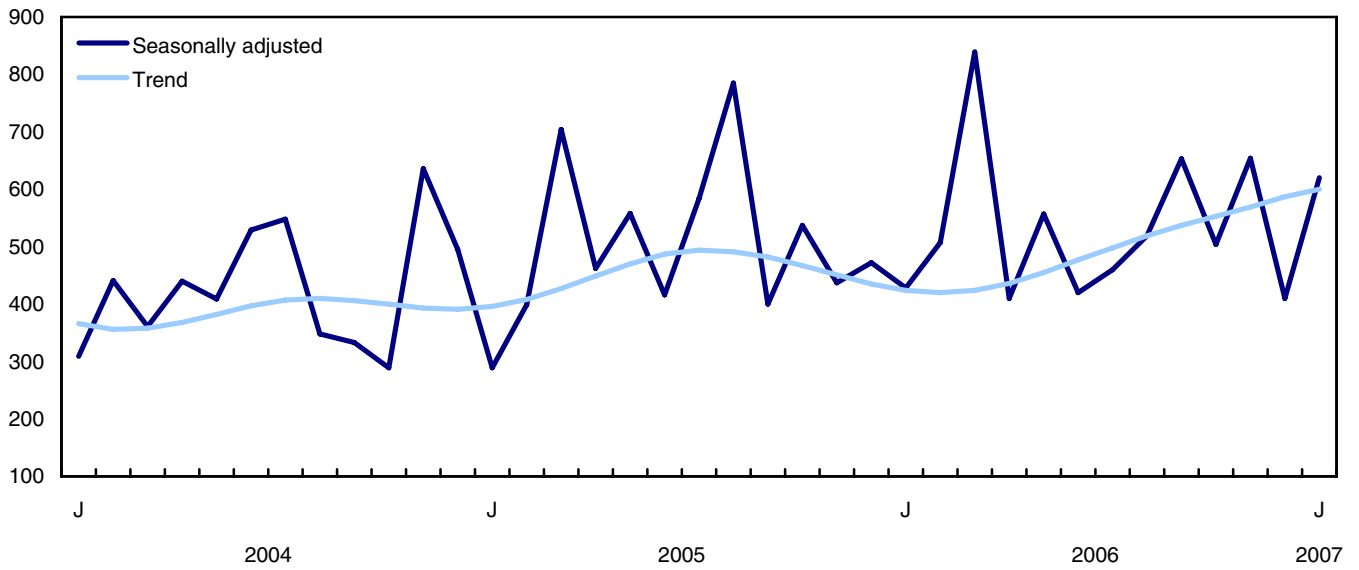
**Chart 6**  
Industrial value of building permits

millions of dollars



**Chart 7**  
**Institutional and governmental value of building permits**

millions of dollars



## Related products

---

### Selected publications from Statistics Canada

---

|          |   |
|----------|---|
| 61-205-X | Private and Public Investment in Canada, Intentions |
| 62-202-X | Spending Patterns in Canada                         |
| 64-203-X | Building Permits, Annual Summary                    |

---

### Selected technical and analytical products from Statistics Canada

---

|                 |  |
|-----------------|--|
| 62F0014M1996002 | An Analysis of Some Construction Price Index Methodologies |
|-----------------|--|

---

### Selected CANSIM tables from Statistics Canada

---

|          |  |
|----------|--|
| 026-0001 | Building permits, residential values and number of units, by type of dwelling, monthly   |
| 026-0002 | Building permits, dwelling units by type of dwelling and area, monthly   |
| 026-0003 | Building permits, values by activity sector, monthly   |
| 026-0004 | Building permits, values by activity sector and area, monthly  |
| 026-0005 | Building permits, non-residential values by type of structure, monthly   |
| 026-0006 | Building permits, by type of structure and area, seasonally adjusted, monthly  |
| 026-0007 | Building permits, dwelling units by type of structure and value and by activity sector, monthly                                      |
| 026-0008 | Building permits, values by activity sector, seasonally adjusted and unadjusted, monthly   |
| 026-0010 | Building permits, residential and non-residential values by type of structure for Canada and urban centres, 10,000 and over, monthly |
| 026-0015 | Building permits, leading indicators and indexes, seasonally adjusted, monthly   |

---

## **Selected surveys from Statistics Canada**

---

|      |                         |
|------|-------------------------|
| 2802 | Building Permits Survey |
|------|-------------------------|

---

## **Selected summary tables from Statistics Canada**

---

- *Value of building permits, by province and territory (monthly)*
- *Value of building permits, by census metropolitan area (monthly)*
- *Economic indicators, by province and territory (monthly and quarterly)*
- *Value of building permits, by province and territory*
- *Value of building permits by type*

# Statistical tables

---

---



**Table 1**  
**Total value of building permits, provinces and territories, seasonally adjusted**

|                           | 2007                 |                       | 2006                 |                       | January<br>to<br>December | December<br>to<br>November | November<br>to<br>October | October<br>to<br>September | September<br>to<br>August | August<br>to<br>July |  |
|---------------------------|----------------------|-----------------------|----------------------|-----------------------|---------------------------|----------------------------|---------------------------|----------------------------|---------------------------|----------------------|--|
|                           | January <sup>p</sup> | December <sup>r</sup> | January <sup>p</sup> | December <sup>r</sup> |                           |                            |                           |                            |                           |                      |  |
|                           | thousands of dollars |                       |                      |                       | percentage change         |                            |                           |                            |                           |                      |  |
| <b>Canada</b>             | <b>6,313,402</b>     | <b>5,672,730</b>      |                      |                       | <b>11.3</b>               | <b>-9.0</b>                | <b>-1.0</b>               | <b>11.7</b>                | <b>-4.8</b>               | <b>7.3</b>           |  |
| Newfoundland and Labrador | 42,541               | 37,620                |                      |                       | 13.1                      | -64.2                      | 190.1                     | -25.4                      | 8.7                       | 8.1                  |  |
| Prince Edward Island      | 12,548               | 13,289                |                      |                       | -5.6                      | -2.9                       | -45.0                     | 95.1                       | -41.0                     | 18.5                 |  |
| Nova Scotia               | 80,406               | 140,242               |                      |                       | -42.7                     | 27.2                       | -11.5                     | 35.3                       | -13.5                     | 24.7                 |  |
| New Brunswick             | 61,610               | 67,337                |                      |                       | -8.5                      | -41.9                      | 65.6                      | 5.8                        | -30.0                     | 30.6                 |  |
| Quebec                    | 983,389              | 1,061,508             |                      |                       | -7.4                      | 9.5                        | -24.5                     | 25.3                       | 3.1                       | 0.0                  |  |
| Ontario                   | 2,645,116            | 2,019,226             |                      |                       | 31.0                      | -4.6                       | 5.3                       | 4.5                        | -13.0                     | 18.1                 |  |
| Manitoba                  | 114,104              | 115,039               |                      |                       | -0.8                      | -16.2                      | 41.3                      | -27.3                      | 32.3                      | -35.0                |  |
| Saskatchewan              | 108,827              | 82,817                |                      |                       | 31.4                      | -11.6                      | -2.8                      | -30.7                      | 61.6                      | -34.0                |  |
| Alberta                   | 1,192,217            | 1,284,221             |                      |                       | -7.2                      | 0.4                        | -6.0                      | 9.2                        | -0.7                      | 5.0                  |  |
| British Columbia          | 1,062,684            | 842,427               |                      |                       | 26.1                      | -34.1                      | 8.1                       | 27.5                       | -5.8                      | 5.4                  |  |
| Yukon Territory           | 4,388                | 4,043                 |                      |                       | 8.5                       | 153.2                      | -69.3                     | -54.4                      | 16.8                      | 90.3                 |  |
| Northwest Territories     | 4,218                | 403                   |                      |                       | 946.7                     | -83.1                      | -13.2                     | -61.6                      | -17.3                     | 232.7                |  |
| Nunavut                   | 1,354                | 4,558                 |                      |                       | -70.3                     | -51.8                      | 666.0                     | -2.0                       | -69.0                     | -65.5                |  |

**Table 2**  
**Non-residential value of building permits, provinces and territories, seasonally adjusted**

|                           | 2007                 |                       | 2006                 |                       | January<br>to<br>December | December<br>to<br>November | November<br>to<br>October | October<br>to<br>September | September<br>to<br>August | August<br>to<br>July |  |
|---------------------------|----------------------|-----------------------|----------------------|-----------------------|---------------------------|----------------------------|---------------------------|----------------------------|---------------------------|----------------------|--|
|                           | January <sup>p</sup> | December <sup>r</sup> | January <sup>p</sup> | December <sup>r</sup> |                           |                            |                           |                            |                           |                      |  |
|                           | thousands of dollars |                       |                      |                       | percentage change         |                            |                           |                            |                           |                      |  |
| <b>Canada</b>             | <b>2,617,064</b>     | <b>2,194,506</b>      |                      |                       | <b>19.3</b>               | <b>-15.6</b>               | <b>3.2</b>                | <b>16.1</b>                | <b>-2.8</b>               | <b>11.4</b>          |  |
| Newfoundland and Labrador | 14,549               | 6,539                 |                      |                       | 122.5                     | -91.7                      | 712.5                     | -65.8                      | 74.3                      | 30.5                 |  |
| Prince Edward Island      | 3,028                | 3,160                 |                      |                       | -4.2                      | 2.8                        | -73.7                     | 276.1                      | -73.1                     | 25.5                 |  |
| Nova Scotia               | 20,886               | 53,208                |                      |                       | -60.7                     | 100.0                      | -28.8                     | 32.8                       | -40.5                     | 16.7                 |  |
| New Brunswick             | 20,127               | 29,726                |                      |                       | -32.3                     | -61.0                      | 199.5                     | -18.6                      | -41.3                     | 47.1                 |  |
| Quebec                    | 332,116              | 409,458               |                      |                       | -18.9                     | 27.5                       | -26.2                     | 21.2                       | 1.1                       | 9.1                  |  |
| Ontario                   | 1,364,417            | 767,636               |                      |                       | 77.7                      | -21.4                      | 25.9                      | 2.7                        | -6.9                      | 19.5                 |  |
| Manitoba                  | 35,910               | 42,074                |                      |                       | -14.7                     | -26.4                      | 80.7                      | -52.6                      | 93.8                      | -59.4                |  |
| Saskatchewan              | 41,896               | 27,199                |                      |                       | 54.0                      | -40.7                      | 10.4                      | -53.0                      | 82.0                      | -51.4                |  |
| Alberta                   | 434,619              | 626,068               |                      |                       | -30.6                     | 6.4                        | -5.3                      | 12.0                       | 5.8                       | 42.5                 |  |
| British Columbia          | 343,672              | 226,516               |                      |                       | 51.7                      | -46.4                      | -19.6                     | 116.9                      | -22.8                     | -5.9                 |  |
| Yukon Territory           | 1,771                | 1,605                 |                      |                       | 10.3                      | 376.3                      | -82.5                     | -73.9                      | -0.9                      | 187.9                |  |
| Northwest Territories     | 4,043                | 214                   |                      |                       | 1,789.3                   | -84.3                      | -9.6                      | -68.0                      | -18.2                     | 787.8                |  |
| Nunavut                   | 30                   | 1,103                 |                      |                       | -97.3                     | 267.7                      | ...                       | -100.0                     | -99.5                     | -81.8                |  |

**Table 3**  
**Residential value of building permits, provinces and territories, seasonally adjusted**

|                           | 2007                 |                       | 2006                 |                       | January<br>to<br>December | December<br>to<br>November | November<br>to<br>October | October<br>to<br>September | September<br>to<br>August | August<br>to<br>July |  |
|---------------------------|----------------------|-----------------------|----------------------|-----------------------|---------------------------|----------------------------|---------------------------|----------------------------|---------------------------|----------------------|--|
|                           | January <sup>p</sup> | December <sup>r</sup> | January <sup>p</sup> | December <sup>r</sup> |                           |                            |                           |                            |                           |                      |  |
|                           | thousands of dollars |                       |                      |                       | percentage change         |                            |                           |                            |                           |                      |  |
| <b>Canada</b>             | <b>3,696,338</b>     | <b>3,478,224</b>      |                      |                       | <b>6.3</b>                | <b>-4.3</b>                | <b>-3.8</b>               | <b>9.0</b>                 | <b>-6.1</b>               | <b>5.0</b>           |  |
| Newfoundland and Labrador | 27,992               | 31,081                |                      |                       | -9.9                      | 17.2                       | -0.2                      | 31.1                       | -28.8                     | -1.6                 |  |
| Prince Edward Island      | 9,520                | 10,129                |                      |                       | -6.0                      | -4.5                       | -19.7                     | 36.9                       | -4.4                      | 11.4                 |  |
| Nova Scotia               | 59,520               | 87,034                |                      |                       | -31.6                     | 4.1                        | -4.1                      | 36.4                       | 8.1                       | 32.0                 |  |
| New Brunswick             | 41,483               | 37,611                |                      |                       | 10.3                      | -5.3                       | -10.9                     | 27.6                       | -15.4                     | 14.1                 |  |
| Quebec                    | 651,273              | 652,050               |                      |                       | -0.1                      | 0.6                        | -23.6                     | 27.5                       | 4.3                       | -4.4                 |  |
| Ontario                   | 1,280,699            | 1,251,590             |                      |                       | 2.3                       | 9.8                        | -7.7                      | 5.6                        | -16.5                     | 17.2                 |  |
| Manitoba                  | 78,194               | 72,965                |                      |                       | 7.2                       | -8.8                       | 22.3                      | -1.8                       | 0.4                       | -5.5                 |  |
| Saskatchewan              | 66,931               | 55,618                |                      |                       | 20.3                      | 16.4                       | -12.9                     | 8.0                        | 35.2                      | 23.0                 |  |
| Alberta                   | 757,598              | 658,153               |                      |                       | 15.1                      | -4.7                       | -6.6                      | 6.9                        | -5.4                      | -11.6                |  |
| British Columbia          | 719,012              | 615,911               |                      |                       | 16.7                      | -28.1                      | 30.1                      | -4.1                       | 2.2                       | 11.7                 |  |
| Yukon Territory           | 2,617                | 2,438                 |                      |                       | 7.3                       | 93.5                       | -61.5                     | -18.7                      | 73.4                      | -8.7                 |  |
| Northwest Territories     | 175                  | 189                   |                      |                       | -7.4                      | -81.4                      | -17.5                     | -49.2                      | -15.4                     | 47.7                 |  |
| Nunavut                   | 1,324                | 3,455                 |                      |                       | -61.7                     | -62.3                      | 641.7                     | -1.2                       | -38.8                     | 198.7                |  |

**Table 4**  
**Number of dwelling units authorized, province and territories, seasonally adjusted at annual rate**

|                           | 2007                 |                       | 2006                 |                       | January<br>to<br>December | December<br>to<br>November | November<br>to<br>October | October<br>to<br>September | September<br>to<br>August | August<br>to<br>July |  |
|---------------------------|----------------------|-----------------------|----------------------|-----------------------|---------------------------|----------------------------|---------------------------|----------------------------|---------------------------|----------------------|--|
|                           | January <sup>p</sup> | December <sup>r</sup> | January <sup>p</sup> | December <sup>r</sup> |                           |                            |                           |                            |                           |                      |  |
|                           | units                |                       |                      |                       | percentage change         |                            |                           |                            |                           |                      |  |
| <b>Canada</b>             | <b>242,688</b>       | <b>217,596</b>        |                      |                       | <b>11.5</b>               | <b>-9.2</b>                | <b>-4.6</b>               | <b>7.8</b>                 | <b>-4.8</b>               | <b>1.2</b>           |  |
| Newfoundland and Labrador | 1,908                | 2,544                 |                      |                       | -25.0                     | 35.0                       | -9.8                      | 34.9                       | -28.3                     | 2.3                  |  |
| Prince Edward Island      | 708                  | 864                   |                      |                       | -18.1                     | -14.3                      | 1.2                       | 15.3                       | -2.7                      | 25.4                 |  |
| Nova Scotia               | 3,816                | 6,012                 |                      |                       | -36.5                     | -18.4                      | 0.7                       | 19.8                       | 35.7                      | 33.9                 |  |
| New Brunswick             | 2,952                | 3,156                 |                      |                       | -6.5                      | -22.0                      | -12.5                     | 41.0                       | -25.8                     | 27.3                 |  |
| Quebec                    | 48,456               | 46,452                |                      |                       | 4.3                       | -6.6                       | -24.1                     | 42.0                       | -9.4                      | 7.0                  |  |
| Ontario                   | 76,992               | 70,200                |                      |                       | 9.7                       | 3.1                        | -4.8                      | 2.9                        | -12.4                     | 4.4                  |  |
| Manitoba                  | 6,924                | 5,784                 |                      |                       | 19.7                      | -24.6                      | 61.0                      | -9.8                       | 1.9                       | -3.4                 |  |
| Saskatchewan              | 5,592                | 4,248                 |                      |                       | 31.6                      | 18.0                       | -29.2                     | 8.4                        | 64.3                      | 48.8                 |  |
| Alberta                   | 50,496               | 42,936                |                      |                       | 17.6                      | -9.7                       | -0.3                      | -8.5                       | 1.0                       | -19.3                |  |
| British Columbia          | 44,676               | 35,160                |                      |                       | 27.1                      | -26.6                      | 16.9                      | -4.2                       | 0.8                       | 14.3                 |  |
| Yukon Territory           | 108                  | 84                    |                      |                       | 28.6                      | -41.7                      | -45.5                     | -26.7                      | 114.3                     | 7.7                  |  |
| Northwest Territories     | 0                    | 0                     |                      |                       | ...                       | -100.0                     | -50.0                     | 0.0                        | -28.6                     | 75.0                 |  |
| Nunavut                   | 60                   | 156                   |                      |                       | -61.5                     | -70.5                      | 450.0                     | 33.3                       | -25.0                     | 166.7                |  |

**Table 5**  
**Dwelling units, value of residential and non-residential building permits, provinces and territories, seasonally adjusted, 2007**

|                                  | Number of dwelling units |           |                 | Estimated value of construction |                 |            |                                |           | Total     |
|----------------------------------|--------------------------|-----------|-----------------|---------------------------------|-----------------|------------|--------------------------------|-----------|-----------|
|                                  | Singles <sup>1</sup>     | Multiples | Total dwellings | Residential                     | Non-residential |            |                                | Total     |           |
|                                  |                          |           |                 |                                 | Industrial      | Commercial | Institutional and governmental |           |           |
|                                  | units                    |           |                 | thousands of dollars            |                 |            |                                |           |           |
| <b>Canada</b>                    |                          |           |                 |                                 |                 |            |                                |           |           |
| December <sup>r</sup>            | 10,277                   | 7,856     | 18,133          | 3,478,224                       | 445,876         | 1,382,068  | 366,562                        | 2,194,506 | 5,672,730 |
| January <sup>p</sup>             | 10,219                   | 10,005    | 20,224          | 3,696,338                       | 650,317         | 1,346,288  | 620,459                        | 2,617,064 | 6,313,402 |
| Cumulative Jan. - Jan. 2007      | 10,219                   | 10,005    | 20,224          | 3,696,338                       | 650,317         | 1,346,288  | 620,459                        | 2,617,064 | 6,313,402 |
| Cumulative Jan. - Jan. 2006      | 11,050                   | 7,034     | 18,084          | 3,140,169                       | 203,955         | 933,977    | 355,871                        | 1,493,803 | 4,633,972 |
| <b>Newfoundland and Labrador</b> |                          |           |                 |                                 |                 |            |                                |           |           |
| December <sup>r</sup>            | 168                      | 44        | 212             | 31,081                          | 734             | 4,644      | 1,161                          | 6,539     | 37,620    |
| January <sup>p</sup>             | 155                      | 4         | 159             | 27,992                          | 7,531           | 6,210      | 808                            | 14,549    | 42,541    |
| Cumulative Jan. - Jan. 2007      | 155                      | 4         | 159             | 27,992                          | 7,531           | 6,210      | 808                            | 14,549    | 42,541    |
| Cumulative Jan. - Jan. 2006      | 196                      | 26        | 222             | 30,174                          | 3               | 3,861      | 537                            | 4,401     | 34,575    |
| <b>Prince Edward Island</b>      |                          |           |                 |                                 |                 |            |                                |           |           |
| December <sup>r</sup>            | 72                       | 0         | 72              | 10,129                          | 2,227           | 853        | 80                             | 3,160     | 13,289    |
| January <sup>p</sup>             | 59                       | 0         | 59              | 9,520                           | 380             | 2,648      | 0                              | 3,028     | 12,548    |
| Cumulative Jan. - Jan. 2007      | 59                       | 0         | 59              | 9,520                           | 380             | 2,648      | 0                              | 3,028     | 12,548    |
| Cumulative Jan. - Jan. 2006      | 38                       | 32        | 70              | 8,490                           | 252             | 1,784      | 2,441                          | 4,477     | 12,967    |
| <b>Nova Scotia</b>               |                          |           |                 |                                 |                 |            |                                |           |           |
| December <sup>r</sup>            | 280                      | 221       | 501             | 87,034                          | 3,126           | 48,343     | 1,739                          | 53,208    | 140,242   |
| January <sup>p</sup>             | 283                      | 35        | 318             | 59,520                          | 3,860           | 13,630     | 3,396                          | 20,886    | 80,406    |
| Cumulative Jan. - Jan. 2007      | 283                      | 35        | 318             | 59,520                          | 3,860           | 13,630     | 3,396                          | 20,886    | 80,406    |
| Cumulative Jan. - Jan. 2006      | 361                      | 58        | 419             | 73,920                          | 2,059           | 16,106     | 882                            | 19,047    | 92,967    |
| <b>New Brunswick</b>             |                          |           |                 |                                 |                 |            |                                |           |           |
| December <sup>r</sup>            | 192                      | 71        | 263             | 37,611                          | 940             | 19,666     | 9,120                          | 29,726    | 67,337    |
| January <sup>p</sup>             | 238                      | 8         | 246             | 41,483                          | 276             | 18,803     | 1,048                          | 20,127    | 61,610    |
| Cumulative Jan. - Jan. 2007      | 238                      | 8         | 246             | 41,483                          | 276             | 18,803     | 1,048                          | 20,127    | 61,610    |
| Cumulative Jan. - Jan. 2006      | 253                      | 15        | 268             | 43,962                          | 910             | 21,964     | 30,355                         | 53,229    | 97,191    |
| <b>Quebec</b>                    |                          |           |                 |                                 |                 |            |                                |           |           |
| December <sup>r</sup>            | 2,108                    | 1,763     | 3,871           | 652,050                         | 68,613          | 254,396    | 86,449                         | 409,458   | 1,061,508 |
| January <sup>p</sup>             | 2,016                    | 2,022     | 4,038           | 651,273                         | 31,876          | 208,567    | 91,673                         | 332,116   | 983,389   |
| Cumulative Jan. - Jan. 2007      | 2,016                    | 2,022     | 4,038           | 651,273                         | 31,876          | 208,567    | 91,673                         | 332,116   | 983,389   |
| Cumulative Jan. - Jan. 2006      | 1,781                    | 1,970     | 3,751           | 532,998                         | 35,963          | 200,317    | 38,994                         | 275,274   | 808,272   |
| <b>Ontario</b>                   |                          |           |                 |                                 |                 |            |                                |           |           |
| December <sup>r</sup>            | 3,422                    | 2,428     | 5,850           | 1,251,590                       | 193,008         | 417,990    | 156,638                        | 767,636   | 2,019,226 |
| January <sup>p</sup>             | 3,300                    | 3,116     | 6,416           | 1,280,699                       | 538,028         | 489,640    | 336,749                        | 1,364,417 | 2,645,116 |
| Cumulative Jan. - Jan. 2007      | 3,300                    | 3,116     | 6,416           | 1,280,699                       | 538,028         | 489,640    | 336,749                        | 1,364,417 | 2,645,116 |
| Cumulative Jan. - Jan. 2006      | 3,549                    | 2,753     | 6,302           | 1,243,177                       | 129,213         | 343,473    | 160,188                        | 632,874   | 1,876,051 |
| <b>Manitoba</b>                  |                          |           |                 |                                 |                 |            |                                |           |           |
| December <sup>r</sup>            | 320                      | 162       | 482             | 72,965                          | 1,238           | 27,956     | 12,880                         | 42,074    | 115,039   |
| January <sup>p</sup>             | 288                      | 289       | 577             | 78,194                          | 13,651          | 16,194     | 6,065                          | 35,910    | 114,104   |
| Cumulative Jan. - Jan. 2007      | 288                      | 289       | 577             | 78,194                          | 13,651          | 16,194     | 6,065                          | 35,910    | 114,104   |
| Cumulative Jan. - Jan. 2006      | 318                      | 290       | 608             | 76,149                          | 630             | 18,440     | 7,888                          | 26,958    | 103,107   |
| <b>Saskatchewan</b>              |                          |           |                 |                                 |                 |            |                                |           |           |
| December <sup>r</sup>            | 229                      | 125       | 354             | 55,618                          | 579             | 18,860     | 7,760                          | 27,199    | 82,817    |
| January <sup>p</sup>             | 370                      | 96        | 466             | 66,931                          | 1,244           | 23,599     | 17,053                         | 41,896    | 108,827   |
| Cumulative Jan. - Jan. 2007      | 370                      | 96        | 466             | 66,931                          | 1,244           | 23,599     | 17,053                         | 41,896    | 108,827   |
| Cumulative Jan. - Jan. 2006      | 293                      | 12        | 305             | 42,232                          | 2,435           | 14,573     | 24,742                         | 41,750    | 83,982    |
| <b>Alberta</b>                   |                          |           |                 |                                 |                 |            |                                |           |           |
| December <sup>r</sup>            | 2,412                    | 1,166     | 3,578           | 658,153                         | 158,354         | 430,516    | 37,198                         | 626,068   | 1,284,221 |
| January <sup>p</sup>             | 2,479                    | 1,729     | 4,208           | 757,598                         | 31,509          | 353,129    | 49,981                         | 434,619   | 1,192,217 |
| Cumulative Jan. - Jan. 2007      | 2,479                    | 1,729     | 4,208           | 757,598                         | 31,509          | 353,129    | 49,981                         | 434,619   | 1,192,217 |
| Cumulative Jan. - Jan. 2006      | 2,907                    | 861       | 3,768           | 595,266                         | 17,362          | 190,593    | 16,774                         | 224,729   | 819,995   |

See footnotes at the end of the table.

Table 5 – continued

**Dwelling units, value of residential and non-residential building permits, provinces and territories, seasonally adjusted, 2007**

|                              | Number of dwelling units |           |                 | Residential          | Estimated value of construction |            |                                |         | Total     |
|------------------------------|--------------------------|-----------|-----------------|----------------------|---------------------------------|------------|--------------------------------|---------|-----------|
|                              | Singles <sup>1</sup>     | Multiples | Total dwellings |                      | Non-residential                 |            |                                | Total   |           |
|                              |                          |           |                 |                      | Industrial                      | Commercial | Institutional and governmental |         |           |
|                              | units                    |           |                 | thousands of dollars |                                 |            |                                |         |           |
| <b>British Columbia</b>      |                          |           |                 |                      |                                 |            |                                |         |           |
| December <sup>r</sup>        | 1,064                    | 1,866     | 2,930           | 615,911              | 17,057                          | 157,514    | 51,945                         | 226,516 | 842,427   |
| January <sup>p</sup>         | 1,019                    | 2,704     | 3,723           | 719,012              | 21,962                          | 209,595    | 112,115                        | 343,672 | 1,062,684 |
| Cumulative Jan. - Jan. 2007  | 1,019                    | 2,704     | 3,723           | 719,012              | 21,962                          | 209,595    | 112,115                        | 343,672 | 1,062,684 |
| Cumulative Jan. - Jan. 2006  | 1,318                    | 1,016     | 2,334           | 489,980              | 14,958                          | 122,712    | 72,796                         | 210,466 | 700,446   |
| <b>Yukon Territory</b>       |                          |           |                 |                      |                                 |            |                                |         |           |
| December <sup>r</sup>        | 5                        | 2         | 7               | 2,438                | 0                               | 13         | 1,592                          | 1,605   | 4,043     |
| January <sup>p</sup>         | 9                        | 0         | 9               | 2,617                | 0                               | 200        | 1,571                          | 1,771   | 4,388     |
| Cumulative Jan. - Jan. 2007  | 9                        | 0         | 9               | 2,617                | 0                               | 200        | 1,571                          | 1,771   | 4,388     |
| Cumulative Jan. - Jan. 2006  | 35                       | 1         | 36              | 3,729                | 20                              | 29         | 138                            | 187     | 3,916     |
| <b>Northwest Territories</b> |                          |           |                 |                      |                                 |            |                                |         |           |
| December <sup>r</sup>        | 0                        | 0         | 0               | 189                  | 0                               | 214        | 0                              | 214     | 403       |
| January <sup>p</sup>         | 0                        | 0         | 0               | 175                  | 0                               | 4,043      | 0                              | 4,043   | 4,218     |
| Cumulative Jan. - Jan. 2007  | 0                        | 0         | 0               | 175                  | 0                               | 4,043      | 0                              | 4,043   | 4,218     |
| Cumulative Jan. - Jan. 2006  | 1                        | 0         | 1               | 92                   | 150                             | 125        | 136                            | 411     | 503       |
| <b>Nunavut</b>               |                          |           |                 |                      |                                 |            |                                |         |           |
| December <sup>r</sup>        | 5                        | 8         | 13              | 3,455                | 0                               | 1,103      | 0                              | 1,103   | 4,558     |
| January <sup>p</sup>         | 3                        | 2         | 5               | 1,324                | 0                               | 30         | 0                              | 30      | 1,354     |
| Cumulative Jan. - Jan. 2007  | 3                        | 2         | 5               | 1,324                | 0                               | 30         | 0                              | 30      | 1,354     |
| Cumulative Jan. - Jan. 2006  | 0                        | 0         | 0               | 0                    | 0                               | 0          | 0                              | 0       | 0         |

1. Included in this category are the following types of dwellings: single-detached, mobile home and cottage.

**Table 6**  
**Dwelling units, value of residential and non-residential building permits, census metropolitan areas, seasonally adjusted, 2007**

|                                     | Number of dwelling units |           |                 | Estimated value of construction |                 |            |                                |         | Total   |
|-------------------------------------|--------------------------|-----------|-----------------|---------------------------------|-----------------|------------|--------------------------------|---------|---------|
|                                     | Singles <sup>1</sup>     | Multiples | Total dwellings | Residential                     | Non-residential |            |                                | Total   |         |
|                                     |                          |           |                 |                                 | Industrial      | Commercial | Institutional and governmental |         |         |
|                                     | units                    |           |                 | thousands of dollars            |                 |            |                                |         |         |
| <b>Abbotsford, British Columbia</b> |                          |           |                 |                                 |                 |            |                                |         |         |
| December <sup>r</sup>               | 30                       | 3         | 33              | 5,117                           | 2,680           | 4,428      | 0                              | 7,108   | 12,225  |
| January <sup>p</sup>                | 39                       | 267       | 306             | 46,410                          | 454             | 2,025      | 0                              | 2,479   | 48,889  |
| Cumulative Jan. - Jan. 2007         | 39                       | 267       | 306             | 46,410                          | 454             | 2,025      | 0                              | 2,479   | 48,889  |
| Cumulative Jan. - Jan. 2006         | 32                       | 190       | 222             | 21,802                          | 3,771           | 107        | 335                            | 4,213   | 26,015  |
| <b>Barrie, Ontario</b>              |                          |           |                 |                                 |                 |            |                                |         |         |
| December <sup>r</sup>               | 39                       | 5         | 44              | 10,498                          | 640             | 13,003     | 161                            | 13,804  | 24,302  |
| January <sup>p</sup>                | 36                       | 4         | 40              | 8,962                           | 1,388           | 4,553      | 406                            | 6,347   | 15,309  |
| Cumulative Jan. - Jan. 2007         | 36                       | 4         | 40              | 8,962                           | 1,388           | 4,553      | 406                            | 6,347   | 15,309  |
| Cumulative Jan. - Jan. 2006         | 55                       | 16        | 71              | 16,682                          | 127             | 7,625      | 224                            | 7,976   | 24,658  |
| <b>Brantford, Ontario</b>           |                          |           |                 |                                 |                 |            |                                |         |         |
| December <sup>r</sup>               | 24                       | 30        | 54              | 7,422                           | 1,273           | 7,512      | 5,733                          | 14,518  | 21,940  |
| January <sup>p</sup>                | 14                       | 9         | 23              | 2,753                           | 80              | 1,561      | 4,747                          | 6,388   | 9,141   |
| Cumulative Jan. - Jan. 2007         | 14                       | 9         | 23              | 2,753                           | 80              | 1,561      | 4,747                          | 6,388   | 9,141   |
| Cumulative Jan. - Jan. 2006         | 32                       | 83        | 115             | 12,933                          | 423             | 764        | 10                             | 1,197   | 14,130  |
| <b>Calgary, Alberta</b>             |                          |           |                 |                                 |                 |            |                                |         |         |
| December <sup>r</sup>               | 643                      | 534       | 1,177           | 213,937                         | 9,336           | 242,142    | 9,073                          | 260,551 | 474,488 |
| January <sup>p</sup>                | 604                      | 251       | 855             | 201,941                         | 7,661           | 209,221    | 16,713                         | 233,595 | 435,536 |
| Cumulative Jan. - Jan. 2007         | 604                      | 251       | 855             | 201,941                         | 7,661           | 209,221    | 16,713                         | 233,595 | 435,536 |
| Cumulative Jan. - Jan. 2006         | 1,050                    | 163       | 1,213           | 215,862                         | 1,521           | 66,476     | 3,504                          | 71,501  | 287,363 |
| <b>Edmonton, Alberta</b>            |                          |           |                 |                                 |                 |            |                                |         |         |
| December <sup>r</sup>               | 746                      | 249       | 995             | 198,424                         | 6,254           | 86,417     | 7,207                          | 99,878  | 298,302 |
| January <sup>p</sup>                | 722                      | 851       | 1,573           | 260,029                         | 14,485          | 52,615     | 22,304                         | 89,404  | 349,433 |
| Cumulative Jan. - Jan. 2007         | 722                      | 851       | 1,573           | 260,029                         | 14,485          | 52,615     | 22,304                         | 89,404  | 349,433 |
| Cumulative Jan. - Jan. 2006         | 775                      | 402       | 1,177           | 187,311                         | 7,152           | 38,792     | 2,272                          | 48,216  | 235,527 |
| <b>Greater Sudbury, Ontario</b>     |                          |           |                 |                                 |                 |            |                                |         |         |
| December <sup>r</sup>               | 21                       | 0         | 21              | 4,502                           | 8,087           | 1,998      | 0                              | 10,085  | 14,587  |
| January <sup>p</sup>                | 6                        | 0         | 6               | 1,615                           | 9,142           | 3,828      | 95,579                         | 108,549 | 110,164 |
| Cumulative Jan. - Jan. 2007         | 6                        | 0         | 6               | 1,615                           | 9,142           | 3,828      | 95,579                         | 108,549 | 110,164 |
| Cumulative Jan. - Jan. 2006         | 12                       | 0         | 12              | 2,904                           | 281             | 555        | 966                            | 1,802   | 4,706   |
| <b>Guelph, Ontario</b>              |                          |           |                 |                                 |                 |            |                                |         |         |
| December <sup>r</sup>               | 50                       | 59        | 109             | 16,673                          | 1,039           | 1,729      | 0                              | 2,768   | 19,441  |
| January <sup>p</sup>                | 32                       | 23        | 55              | 8,059                           | 70              | 4,466      | 180                            | 4,716   | 12,775  |
| Cumulative Jan. - Jan. 2007         | 32                       | 23        | 55              | 8,059                           | 70              | 4,466      | 180                            | 4,716   | 12,775  |
| Cumulative Jan. - Jan. 2006         | 49                       | 25        | 74              | 12,980                          | 3,872           | 3,404      | 4,281                          | 11,557  | 24,537  |
| <b>Halifax, Nova Scotia</b>         |                          |           |                 |                                 |                 |            |                                |         |         |
| December <sup>r</sup>               | 118                      | 221       | 339             | 55,342                          | 100             | 42,418     | 180                            | 42,698  | 98,040  |
| January <sup>p</sup>                | 80                       | 18        | 98              | 21,256                          | 280             | 9,510      | 46                             | 9,836   | 31,092  |
| Cumulative Jan. - Jan. 2007         | 80                       | 18        | 98              | 21,256                          | 280             | 9,510      | 46                             | 9,836   | 31,092  |
| Cumulative Jan. - Jan. 2006         | 108                      | 13        | 121             | 22,936                          | 424             | 10,898     | 413                            | 11,735  | 34,671  |
| <b>Hamilton, Ontario</b>            |                          |           |                 |                                 |                 |            |                                |         |         |
| December <sup>r</sup>               | 98                       | 155       | 253             | 48,051                          | 2,055           | 7,616      | 5,056                          | 14,727  | 62,778  |
| January <sup>p</sup>                | 204                      | 223       | 427             | 70,324                          | 577             | 10,230     | 3,554                          | 14,361  | 84,685  |
| Cumulative Jan. - Jan. 2007         | 204                      | 223       | 427             | 70,324                          | 577             | 10,230     | 3,554                          | 14,361  | 84,685  |
| Cumulative Jan. - Jan. 2006         | 126                      | 88        | 214             | 44,210                          | 4,090           | 22,651     | 23,632                         | 50,373  | 94,583  |
| <b>Kelowna, British Columbia</b>    |                          |           |                 |                                 |                 |            |                                |         |         |
| December <sup>r</sup>               | 116                      | 79        | 195             | 40,645                          | 479             | 4,342      | 377                            | 5,198   | 45,843  |
| January <sup>p</sup>                | 74                       | 32        | 106             | 27,852                          | 1,890           | 4,534      | 0                              | 6,424   | 34,276  |
| Cumulative Jan. - Jan. 2007         | 74                       | 32        | 106             | 27,852                          | 1,890           | 4,534      | 0                              | 6,424   | 34,276  |
| Cumulative Jan. - Jan. 2006         | 74                       | 13        | 87              | 22,395                          | 197             | 2,273      | 240                            | 2,710   | 25,105  |

See footnotes at the end of the table.

Table 6 – continued

## Dwelling units, value of residential and non-residential building permits, census metropolitan areas, seasonally adjusted, 2007

|  | Number of dwelling units |           |                 | Residential          | Estimated value of construction |            |                                |         | Total   |
|--|--------------------------|-----------|-----------------|----------------------|---------------------------------|------------|--------------------------------|---------|---------|
|  | Singles <sup>1</sup>     | Multiples | Total dwellings |                      | Non-residential                 |            |                                | Total   |         |
|  |                          |           |                 |                      | Industrial                      | Commercial | Institutional and governmental |         |         |
|  | units                    |           |                 | thousands of dollars |                                 |            |                                |         |         |
| <b>Kingston, Ontario</b>                             |                          |           |                 |                      |                                 |            |                                |         |         |
| December <sup>r</sup>                                | 29                       | 4         | 33              | 4,502                | 7,034                           | 38,839     | 5,501                          | 51,374  | 55,876  |
| January <sup>p</sup>                                 | 19                       | 2         | 21              | 3,655                | 661                             | 1,483      | 4,786                          | 6,930   | 10,585  |
| Cumulative Jan. - Jan. 2007                          | 19                       | 2         | 21              | 3,655                | 661                             | 1,483      | 4,786                          | 6,930   | 10,585  |
| Cumulative Jan. - Jan. 2006                          | 12                       | 12        | 24              | 3,517                | 120                             | 4,233      | 91                             | 4,444   | 7,961   |
| <b>Kitchener, Ontario</b>                            |                          |           |                 |                      |                                 |            |                                |         |         |
| December <sup>r</sup>                                | 96                       | 120       | 216             | 34,484               | 3,623                           | 12,130     | 4,132                          | 19,885  | 54,369  |
| January <sup>p</sup>                                 | 81                       | 155       | 236             | 31,956               | 1,707                           | 7,736      | 11                             | 9,454   | 41,410  |
| Cumulative Jan. - Jan. 2007                          | 81                       | 155       | 236             | 31,956               | 1,707                           | 7,736      | 11                             | 9,454   | 41,410  |
| Cumulative Jan. - Jan. 2006                          | 160                      | 143       | 303             | 50,004               | 1,846                           | 30,868     | 489                            | 33,203  | 83,207  |
| <b>London, Ontario</b>                               |                          |           |                 |                      |                                 |            |                                |         |         |
| December <sup>r</sup>                                | 146                      | 315       | 461             | 63,182               | 1,897                           | 1,943      | 47,906                         | 51,746  | 114,928 |
| January <sup>p</sup>                                 | 170                      | 28        | 198             | 36,672               | 1,563                           | 8,838      | 25,385                         | 35,786  | 72,458  |
| Cumulative Jan. - Jan. 2007                          | 170                      | 28        | 198             | 36,672               | 1,563                           | 8,838      | 25,385                         | 35,786  | 72,458  |
| Cumulative Jan. - Jan. 2006                          | 203                      | 340       | 543             | 69,502               | 150                             | 23,863     | 1,844                          | 25,857  | 95,359  |
| <b>Moncton, New Brunswick</b>                        |                          |           |                 |                      |                                 |            |                                |         |         |
| December <sup>r</sup>                                | 64                       | 48        | 112             | 13,492               | 319                             | 5,366      | 500                            | 6,185   | 19,677  |
| January <sup>p</sup>                                 | 73                       | 0         | 73              | 9,355                | 85                              | 1,999      | 374                            | 2,458   | 11,813  |
| Cumulative Jan. - Jan. 2007                          | 73                       | 0         | 73              | 9,355                | 85                              | 1,999      | 374                            | 2,458   | 11,813  |
| Cumulative Jan. - Jan. 2006                          | 34                       | 1         | 35              | 4,536                | 641                             | 6,543      | 0                              | 7,184   | 11,720  |
| <b>Montréal, Quebec</b>                              |                          |           |                 |                      |                                 |            |                                |         |         |
| December <sup>r</sup>                                | 773                      | 1,098     | 1,871           | 313,619              | 24,311                          | 149,469    | 15,403                         | 189,183 | 502,802 |
| January <sup>p</sup>                                 | 779                      | 896       | 1,675           | 270,083              | 17,950                          | 126,940    | 52,042                         | 196,932 | 467,015 |
| Cumulative Jan. - Jan. 2007                          | 779                      | 896       | 1,675           | 270,083              | 17,950                          | 126,940    | 52,042                         | 196,932 | 467,015 |
| Cumulative Jan. - Jan. 2006                          | 789                      | 843       | 1,632           | 250,820              | 26,091                          | 137,775    | 19,715                         | 183,581 | 434,401 |
| <b>Oshawa, Ontario</b>                               |                          |           |                 |                      |                                 |            |                                |         |         |
| December <sup>r</sup>                                | 97                       | 10        | 107             | 24,562               | 80                              | 3,775      | 282                            | 4,137   | 28,699  |
| January <sup>p</sup>                                 | 71                       | 17        | 88              | 22,058               | 75,538                          | 2,183      | 377                            | 78,098  | 100,156 |
| Cumulative Jan. - Jan. 2007                          | 71                       | 17        | 88              | 22,058               | 75,538                          | 2,183      | 377                            | 78,098  | 100,156 |
| Cumulative Jan. - Jan. 2006                          | 175                      | 42        | 217             | 59,171               | 438                             | 3,311      | 16                             | 3,765   | 62,936  |
| <b>Ottawa-Gatineau, Ontario part, Ontario/Quebec</b> |                          |           |                 |                      |                                 |            |                                |         |         |
| December <sup>r</sup>                                | 114                      | 259       | 373             | 61,929               | 1,818                           | 21,714     | 5,767                          | 29,299  | 91,228  |
| January <sup>p</sup>                                 | 140                      | 108       | 248             | 41,729               | 23,063                          | 80,004     | 40,911                         | 143,978 | 185,707 |
| Cumulative Jan. - Jan. 2007                          | 140                      | 108       | 248             | 41,729               | 23,063                          | 80,004     | 40,911                         | 143,978 | 185,707 |
| Cumulative Jan. - Jan. 2006                          | 135                      | 127       | 262             | 46,929               | 1,533                           | 43,596     | 11,127                         | 56,256  | 103,185 |
| <b>Ottawa-Gatineau, Quebec part, Ontario/Quebec</b>  |                          |           |                 |                      |                                 |            |                                |         |         |
| December <sup>r</sup>                                | 122                      | 63        | 185             | 26,962               | 56                              | 5,429      | 1,780                          | 7,265   | 34,227  |
| January <sup>p</sup>                                 | 93                       | 133       | 226             | 26,103               | 23                              | 3,477      | 13,444                         | 16,944  | 43,047  |
| Cumulative Jan. - Jan. 2007                          | 93                       | 133       | 226             | 26,103               | 23                              | 3,477      | 13,444                         | 16,944  | 43,047  |
| Cumulative Jan. - Jan. 2006                          | 82                       | 482       | 564             | 47,565               | 0                               | 3,803      | 2,296                          | 6,099   | 53,664  |
| <b>Peterborough, Ontario</b>                         |                          |           |                 |                      |                                 |            |                                |         |         |
| December <sup>r</sup>                                | 10                       | 20        | 30              | 5,252                | 303                             | 546        | 10                             | 859     | 6,111   |
| January <sup>p</sup>                                 | 3                        | 2         | 5               | 1,476                | 142                             | 497        | 0                              | 639     | 2,115   |
| Cumulative Jan. - Jan. 2007                          | 3                        | 2         | 5               | 1,476                | 142                             | 497        | 0                              | 639     | 2,115   |
| Cumulative Jan. - Jan. 2006                          | 16                       | 0         | 16              | 4,161                | 40                              | 5,873      | 5,098                          | 11,011  | 15,172  |
| <b>Québec, Quebec</b>                                |                          |           |                 |                      |                                 |            |                                |         |         |
| December <sup>r</sup>                                | 213                      | 73        | 286             | 46,514               | 31,091                          | 19,660     | 43,592                         | 94,343  | 140,857 |
| January <sup>p</sup>                                 | 212                      | 220       | 432             | 55,021               | 1,743                           | 24,766     | 14,085                         | 40,594  | 95,615  |
| Cumulative Jan. - Jan. 2007                          | 212                      | 220       | 432             | 55,021               | 1,743                           | 24,766     | 14,085                         | 40,594  | 95,615  |
| Cumulative Jan. - Jan. 2006                          | 211                      | 100       | 311             | 40,644               | 1,130                           | 6,377      | 1,652                          | 9,159   | 49,803  |

See footnotes at the end of the table.

Table 6 – continued

## Dwelling units, value of residential and non-residential building permits, census metropolitan areas, seasonally adjusted, 2007

|  | Number of dwelling units |           |                 | Estimated value of construction |                 |            |                                |         |           |
|--|--------------------------|-----------|-----------------|---------------------------------|-----------------|------------|--------------------------------|---------|-----------|
|  | Singles <sup>1</sup>     | Multiples | Total dwellings | Residential                     | Non-residential |            |                                | Total   |           |
|  |                          |           |                 |                                 | Industrial      | Commercial | Institutional and governmental |         |           |
|  | units                    |           |                 | thousands of dollars            |                 |            |                                |         |           |
| <b>Regina, Saskatchewan</b>                  |                          |           |                 |                                 |                 |            |                                |         |           |
| December <sup>r</sup>                        | 104                      | 34        | 138             | 25,487                          | 185             | 3,931      | 5,246                          | 9,362   | 34,849    |
| January <sup>p</sup>                         | 103                      | 0         | 103             | 15,854                          | 370             | 13,969     | 5,115                          | 19,454  | 35,308    |
| Cumulative Jan. - Jan. 2007                  | 103                      | 0         | 103             | 15,854                          | 370             | 13,969     | 5,115                          | 19,454  | 35,308    |
| Cumulative Jan. - Jan. 2006                  | 109                      | 6         | 115             | 16,227                          | 380             | 1,958      | 7,133                          | 9,471   | 25,698    |
| <b>Saguenay, Quebec</b>                      |                          |           |                 |                                 |                 |            |                                |         |           |
| December <sup>r</sup>                        | 6                        | 2         | 8               | 1,781                           | 35              | 1,242      | 0                              | 1,277   | 3,058     |
| January <sup>p</sup>                         | 12                       | 11        | 23              | 3,142                           | 15              | 1,296      | 25                             | 1,336   | 4,478     |
| Cumulative Jan. - Jan. 2007                  | 12                       | 11        | 23              | 3,142                           | 15              | 1,296      | 25                             | 1,336   | 4,478     |
| Cumulative Jan. - Jan. 2006                  | 11                       | 14        | 25              | 2,714                           | 115             | 368        | 660                            | 1,143   | 3,857     |
| <b>Saint John, New Brunswick</b>             |                          |           |                 |                                 |                 |            |                                |         |           |
| December <sup>r</sup>                        | 30                       | 1         | 31              | 6,560                           | 484             | 3,245      | 325                            | 4,054   | 10,614    |
| January <sup>p</sup>                         | 84                       | 7         | 91              | 15,326                          | 130             | 6,255      | 0                              | 6,385   | 21,711    |
| Cumulative Jan. - Jan. 2007                  | 84                       | 7         | 91              | 15,326                          | 130             | 6,255      | 0                              | 6,385   | 21,711    |
| Cumulative Jan. - Jan. 2006                  | 76                       | 8         | 84              | 14,404                          | 201             | 2,593      | 0                              | 2,794   | 17,198    |
| <b>Saskatoon, Saskatchewan</b>               |                          |           |                 |                                 |                 |            |                                |         |           |
| December <sup>r</sup>                        | 64                       | 83        | 147             | 16,975                          | 394             | 11,170     | 2,140                          | 13,704  | 30,679    |
| January <sup>p</sup>                         | 174                      | 94        | 268             | 30,499                          | 351             | 6,689      | 9,691                          | 16,731  | 47,230    |
| Cumulative Jan. - Jan. 2007                  | 174                      | 94        | 268             | 30,499                          | 351             | 6,689      | 9,691                          | 16,731  | 47,230    |
| Cumulative Jan. - Jan. 2006                  | 121                      | 3         | 124             | 15,060                          | 1,245           | 10,269     | 12,396                         | 23,910  | 38,970    |
| <b>Sherbrooke, Quebec</b>                    |                          |           |                 |                                 |                 |            |                                |         |           |
| December <sup>r</sup>                        | 31                       | 44        | 75              | 9,816                           | 143             | 1,868      | 350                            | 2,361   | 12,177    |
| January <sup>p</sup>                         | 49                       | 50        | 99              | 13,081                          | 230             | 3,093      | 630                            | 3,953   | 17,034    |
| Cumulative Jan. - Jan. 2007                  | 49                       | 50        | 99              | 13,081                          | 230             | 3,093      | 630                            | 3,953   | 17,034    |
| Cumulative Jan. - Jan. 2006                  | 55                       | 23        | 78              | 10,681                          | 2,300           | 574        | 50                             | 2,924   | 13,605    |
| <b>St. Catharines-Niagara, Ontario</b>       |                          |           |                 |                                 |                 |            |                                |         |           |
| December <sup>r</sup>                        | 64                       | 26        | 90              | 18,929                          | 788             | 9,286      | 75                             | 10,149  | 29,078    |
| January <sup>p</sup>                         | 46                       | 4         | 50              | 11,185                          | 560             | 7,977      | 393                            | 8,930   | 20,115    |
| Cumulative Jan. - Jan. 2007                  | 46                       | 4         | 50              | 11,185                          | 560             | 7,977      | 393                            | 8,930   | 20,115    |
| Cumulative Jan. - Jan. 2006                  | 62                       | 37        | 99              | 19,669                          | 509             | 9,841      | 300                            | 10,650  | 30,319    |
| <b>St. John's, Newfoundland and Labrador</b> |                          |           |                 |                                 |                 |            |                                |         |           |
| December <sup>r</sup>                        | 99                       | 44        | 143             | 23,315                          | 14              | 2,955      | 1,161                          | 4,130   | 27,445    |
| January <sup>p</sup>                         | 92                       | 4         | 96              | 16,854                          | 491             | 4,701      | 788                            | 5,980   | 22,834    |
| Cumulative Jan. - Jan. 2007                  | 92                       | 4         | 96              | 16,854                          | 491             | 4,701      | 788                            | 5,980   | 22,834    |
| Cumulative Jan. - Jan. 2006                  | 129                      | 24        | 153             | 22,187                          | 0               | 2,831      | 477                            | 3,308   | 25,495    |
| <b>Thunder Bay, Ontario</b>                  |                          |           |                 |                                 |                 |            |                                |         |           |
| December <sup>r</sup>                        | 16                       | 0         | 16              | 3,198                           | 460             | 6,751      | 4,555                          | 11,766  | 14,964    |
| January <sup>p</sup>                         | 7                        | 0         | 7               | 1,279                           | 285             | 865        | 7,814                          | 8,964   | 10,243    |
| Cumulative Jan. - Jan. 2007                  | 7                        | 0         | 7               | 1,279                           | 285             | 865        | 7,814                          | 8,964   | 10,243    |
| Cumulative Jan. - Jan. 2006                  | 9                        | 2         | 11              | 2,378                           | 2,203           | 2,133      | 337                            | 4,673   | 7,051     |
| <b>Toronto, Ontario</b>                      |                          |           |                 |                                 |                 |            |                                |         |           |
| December <sup>r</sup>                        | 1,769                    | 1,055     | 2,824           | 654,728                         | 100,351         | 229,744    | 47,289                         | 377,384 | 1,032,112 |
| January <sup>p</sup>                         | 1,635                    | 2,314     | 3,949           | 799,029                         | 114,668         | 273,361    | 62,468                         | 450,497 | 1,249,526 |
| Cumulative Jan. - Jan. 2007                  | 1,635                    | 2,314     | 3,949           | 799,029                         | 114,668         | 273,361    | 62,468                         | 450,497 | 1,249,526 |
| Cumulative Jan. - Jan. 2006                  | 1,367                    | 1,532     | 2,899           | 581,417                         | 67,378          | 137,465    | 27,712                         | 232,555 | 813,972   |
| <b>Trois-Rivières, Quebec</b>                |                          |           |                 |                                 |                 |            |                                |         |           |
| December <sup>r</sup>                        | 71                       | 24        | 95              | 14,872                          | 2,614           | 27,635     | 3,975                          | 34,224  | 49,096    |
| January <sup>p</sup>                         | 19                       | 85        | 104             | 13,861                          | 416             | 3,175      | 0                              | 3,591   | 17,452    |
| Cumulative Jan. - Jan. 2007                  | 19                       | 85        | 104             | 13,861                          | 416             | 3,175      | 0                              | 3,591   | 17,452    |
| Cumulative Jan. - Jan. 2006                  | 22                       | 74        | 96              | 12,354                          | 259             | 2,569      | 2,663                          | 5,491   | 17,845    |

See footnotes at the end of the table.

Table 6 – continued

**Dwelling units, value of residential and non-residential building permits, census metropolitan areas, seasonally adjusted, 2007**

|                                    | Number of dwelling units |           |                 | Residential          | Estimated value of construction |            |                                |         | Total   |
|------------------------------------|--------------------------|-----------|-----------------|----------------------|---------------------------------|------------|--------------------------------|---------|---------|
|                                    | Singles <sup>1</sup>     | Multiples | Total dwellings |                      | Non-residential                 |            |                                | Total   |         |
|                                    |                          |           |                 |                      | Industrial                      | Commercial | Institutional and governmental |         |         |
|                                    | units                    |           |                 | thousands of dollars |                                 |            |                                |         |         |
| <b>Vancouver, British Columbia</b> |                          |           |                 |                      |                                 |            |                                |         |         |
| December <sup>r</sup>              | 313                      | 1,201     | 1,514           | 328,574              | 8,135                           | 89,631     | 34,986                         | 132,752 | 461,326 |
| January <sup>p</sup>               | 375                      | 1,835     | 2,210           | 436,601              | 8,563                           | 133,306    | 75,237                         | 217,106 | 653,707 |
| Cumulative Jan. - Jan. 2007        | 375                      | 1,835     | 2,210           | 436,601              | 8,563                           | 133,306    | 75,237                         | 217,106 | 653,707 |
| Cumulative Jan. - Jan. 2006        | 483                      | 564       | 1,047           | 248,566              | 4,723                           | 78,691     | 53,670                         | 137,084 | 385,650 |
| <b>Victoria, British Columbia</b>  |                          |           |                 |                      |                                 |            |                                |         |         |
| December <sup>r</sup>              | 68                       | 82        | 150             | 30,964               | 382                             | 8,288      | 1,437                          | 10,107  | 41,071  |
| January <sup>p</sup>               | 71                       | 159       | 230             | 45,343               | 1,662                           | 3,121      | 32,923                         | 37,706  | 83,049  |
| Cumulative Jan. - Jan. 2007        | 71                       | 159       | 230             | 45,343               | 1,662                           | 3,121      | 32,923                         | 37,706  | 83,049  |
| Cumulative Jan. - Jan. 2006        | 117                      | 32        | 149             | 36,803               | 227                             | 9,991      | 2,190                          | 12,408  | 49,211  |
| <b>Windsor, Ontario</b>            |                          |           |                 |                      |                                 |            |                                |         |         |
| December <sup>r</sup>              | 27                       | 43        | 70              | 7,055                | 257                             | 4,411      | 1,131                          | 5,799   | 12,854  |
| January <sup>p</sup>               | 13                       | 4         | 17              | 3,973                | 77                              | 7,570      | 8,725                          | 16,372  | 20,345  |
| Cumulative Jan. - Jan. 2007        | 13                       | 4         | 17              | 3,973                | 77                              | 7,570      | 8,725                          | 16,372  | 20,345  |
| Cumulative Jan. - Jan. 2006        | 74                       | 124       | 198             | 47,621               | 1,148                           | 1,783      | 42,826                         | 45,757  | 93,378  |
| <b>Winnipeg, Manitoba</b>          |                          |           |                 |                      |                                 |            |                                |         |         |
| December <sup>r</sup>              | 198                      | 160       | 358             | 50,508               | 951                             | 25,007     | 3,241                          | 29,199  | 79,707  |
| January <sup>p</sup>               | 154                      | 239       | 393             | 47,236               | 866                             | 13,579     | 4,618                          | 19,063  | 66,299  |
| Cumulative Jan. - Jan. 2007        | 154                      | 239       | 393             | 47,236               | 866                             | 13,579     | 4,618                          | 19,063  | 66,299  |
| Cumulative Jan. - Jan. 2006        | 186                      | 282       | 468             | 54,032               | 113                             | 17,265     | 7,848                          | 25,226  | 79,258  |

1. Included in this category are the following types of dwellings: single-detached, mobile home and cottage.



**Table 7**  
**Dwelling units, provinces and territories, unadjusted, 2007**

|                                      | Singles,<br>includes<br>mobile<br>homes | Cottages | Doubles | Rows  | Apartments | Conversions | Total<br>dwellings |
|--------------------------------------|---|----------|---------|-------|------------|-------------|--------------------|
| number of dwelling units             |   |          |         |       |            |             |                    |
| <b>Canada</b>                        |   |          |         |       |            |             |                    |
| December <sup>r</sup>                | 6,337                                   | 19       | 680     | 1,655 | 5,363      | 284         | 14,338             |
| January <sup>p</sup>                 | 6,575                                   | 9        | 840     | 1,935 | 5,761      | 271         | 15,391             |
| Cumulative Jan. - Jan. 2007          | 6,575                                   | 9        | 840     | 1,935 | 5,761      | 271         | 15,391             |
| Cumulative Jan. - Jan. 2006          | 6,861                                   | 17       | 743     | 1,455 | 3,187      | 430         | 12,693             |
| <b>Newfoundland and<br/>Labrador</b> |   |          |         |       |            |             |                    |
| December <sup>r</sup>                | 66                                      | 0        | 0       | 1     | 43         | 0           | 110                |
| January <sup>p</sup>                 | 39                                      | 0        | 0       | 0     | 4          | 0           | 43                 |
| Cumulative Jan. - Jan. 2007          | 39                                      | 0        | 0       | 0     | 4          | 0           | 43                 |
| Cumulative Jan. - Jan. 2006          | 51                                      | 0        | 16      | 4     | 4          | 2           | 77                 |
| <b>Prince Edward Island</b>          |   |          |         |       |            |             |                    |
| December <sup>r</sup>                | 27                                      | 3        | 0       | 0     | 0          | 0           | 30                 |
| January <sup>p</sup>                 | 14                                      | 0        | 0       | 0     | 0          | 0           | 14                 |
| Cumulative Jan. - Jan. 2007          | 14                                      | 0        | 0       | 0     | 0          | 0           | 14                 |
| Cumulative Jan. - Jan. 2006          | 10                                      | 0        | 0       | 0     | 32         | 0           | 42                 |
| <b>Nova Scotia</b>                   |   |          |         |       |            |             |                    |
| December <sup>r</sup>                | 149                                     | 1        | 0       | 11    | 210        | 0           | 371                |
| January <sup>p</sup>                 | 105                                     | 4        | 23      | 0     | 4          | 8           | 144                |
| Cumulative Jan. - Jan. 2007          | 105                                     | 4        | 23      | 0     | 4          | 8           | 144                |
| Cumulative Jan. - Jan. 2006          | 124                                     | 2        | 4       | 6     | 42         | 6           | 184                |
| <b>New Brunswick</b>                 |   |          |         |       |            |             |                    |
| December <sup>r</sup>                | 76                                      | 0        | 7       | 0     | 44         | 20          | 147                |
| January <sup>p</sup>                 | 43                                      | 1        | 0       | 5     | 2          | 1           | 52                 |
| Cumulative Jan. - Jan. 2007          | 43                                      | 1        | 0       | 5     | 2          | 1           | 52                 |
| Cumulative Jan. - Jan. 2006          | 54                                      | 1        | 0       | 1     | 4          | 10          | 70                 |
| <b>Quebec</b>                        |   |          |         |       |            |             |                    |
| December <sup>r</sup>                | 1,101                                   | 6        | 181     | 42    | 1,591      | 85          | 3,006              |
| January <sup>p</sup>                 | 853                                     | 2        | 150     | 125   | 587        | 126         | 1,843              |
| Cumulative Jan. - Jan. 2007          | 853                                     | 2        | 150     | 125   | 587        | 126         | 1,843              |
| Cumulative Jan. - Jan. 2006          | 742                                     | 5        | 68      | 190   | 542        | 212         | 1,759              |
| <b>Ontario</b>                       |   |          |         |       |            |             |                    |
| December <sup>r</sup>                | 2,230                                   | 5        | 254     | 1,006 | 1,048      | 95          | 4,638              |
| January <sup>p</sup>                 | 2,540                                   | 2        | 331     | 1,098 | 1,487      | 63          | 5,521              |
| Cumulative Jan. - Jan. 2007          | 2,540                                   | 2        | 331     | 1,098 | 1,487      | 63          | 5,521              |
| Cumulative Jan. - Jan. 2006          | 2,450                                   | 6        | 373     | 715   | 1,380      | 172         | 5,096              |
| <b>Manitoba</b>                      |   |          |         |       |            |             |                    |
| December <sup>r</sup>                | 171                                     | 0        | 2       | 0     | 160        | 0           | 333                |
| January <sup>p</sup>                 | 143                                     | 0        | 25      | 27    | 236        | 1           | 432                |
| Cumulative Jan. - Jan. 2007          | 143                                     | 0        | 25      | 27    | 236        | 1           | 432                |
| Cumulative Jan. - Jan. 2006          | 171                                     | 0        | 12      | 0     | 278        | 0           | 461                |
| <b>Saskatchewan</b>                  |   |          |         |       |            |             |                    |
| December <sup>r</sup>                | 143                                     | 0        | 10      | 12    | 101        | 2           | 268                |
| January <sup>p</sup>                 | 155                                     | 0        | 0       | 90    | 0          | 6           | 251                |
| Cumulative Jan. - Jan. 2007          | 155                                     | 0        | 0       | 90    | 0          | 6           | 251                |
| Cumulative Jan. - Jan. 2006          | 108                                     | 0        | 8       | 0     | 4          | 0           | 120                |
| <b>Alberta</b>                       |   |          |         |       |            |             |                    |
| December <sup>r</sup>                | 1,735                                   | 2        | 187     | 203   | 786        | 4           | 2,917              |
| January <sup>p</sup>                 | 1,907                                   | 0        | 272     | 231   | 1,196      | 2           | 3,608              |
| Cumulative Jan. - Jan. 2007          | 1,907                                   | 0        | 272     | 231   | 1,196      | 2           | 3,608              |
| Cumulative Jan. - Jan. 2006          | 2,174                                   | 1        | 236     | 158   | 315        | 3           | 2,887              |
| <b>British Columbia</b>              |   |          |         |       |            |             |                    |
| December <sup>r</sup>                | 633                                     | 2        | 35      | 375   | 1,379      | 78          | 2,502              |
| January <sup>p</sup>                 | 772                                     | 0        | 39      | 359   | 2,245      | 62          | 3,477              |
| Cumulative Jan. - Jan. 2007          | 772                                     | 0        | 39      | 359   | 2,245      | 62          | 3,477              |
| Cumulative Jan. - Jan. 2006          | 973                                     | 2        | 26      | 381   | 586        | 24          | 1,992              |

Table 7 – continued

Dwelling units, provinces and territories, unadjusted, 2007

|                              | Singles,<br>includes<br>mobile<br>homes | Cottages | Doubles | Rows | Apartments | Conversions | Total<br>dwellings |
|------------------------------|---|----------|---------|------|------------|-------------|--------------------|
|                              | number of dwelling units                |          |         |      |            |             |                    |
| <b>Yukon Territory</b>       |   |          |         |      |            |             |                    |
| December <sup>r</sup>        | 1                                       | 0        | 2       | 0    | 0          | 0           | 3                  |
| January <sup>p</sup>         | 1                                       | 0        | 0       | 0    | 0          | 0           | 1                  |
| Cumulative Jan. - Jan. 2007  | 1                                       | 0        | 0       | 0    | 0          | 0           | 1                  |
| Cumulative Jan. - Jan. 2006  | 3                                       | 0        | 0       | 0    | 0          | 1           | 4                  |
| <b>Northwest Territories</b> |   |          |         |      |            |             |                    |
| December <sup>r</sup>        | 0                                       | 0        | 0       | 0    | 0          | 0           | 0                  |
| January <sup>p</sup>         | 0                                       | 0        | 0       | 0    | 0          | 0           | 0                  |
| Cumulative Jan. - Jan. 2007  | 0                                       | 0        | 0       | 0    | 0          | 0           | 0                  |
| Cumulative Jan. - Jan. 2006  | 1                                       | 0        | 0       | 0    | 0          | 0           | 1                  |
| <b>Nunavut</b>               |   |          |         |      |            |             |                    |
| December <sup>r</sup>        | 5                                       | 0        | 2       | 5    | 1          | 0           | 13                 |
| January <sup>p</sup>         | 3                                       | 0        | 0       | 0    | 0          | 2           | 5                  |
| Cumulative Jan. - Jan. 2007  | 3                                       | 0        | 0       | 0    | 0          | 2           | 5                  |
| Cumulative Jan. - Jan. 2006  | 0                                       | 0        | 0       | 0    | 0          | 0           | 0                  |

**Table 8**  
**Dwelling units, census metropolitan areas, unadjusted, January 2007**

|  | Singles,<br>includes<br>mobile<br>homes | Cottages | Doubles | Rows | Apartments | Conversions | Total<br>dwellings |
|--|---|----------|---------|------|------------|-------------|--------------------|
|  | number of dwelling units                |          |         |      |            |             |                    |
| Abbotsford, British Columbia                     | 35                                      | 0        | 0       | 82   | 185        | 0           | 302                |
| Barrie, Ontario                                  | 32                                      | 0        | 0       | 0    | 0          | 4           | 36                 |
| Brantford, Ontario                               | 12                                      | 0        | 0       | 9    | 0          | 0           | 21                 |
| Calgary, Alberta                                 | 555                                     | 0        | 58      | 143  | 49         | 1           | 806                |
| Edmonton, Alberta                                | 664                                     | 0        | 186     | 70   | 595        | 0           | 1,515              |
| Greater Sudbury, Ontario                         | 5                                       | 0        | 0       | 0    | 0          | 0           | 5                  |
| Guelph, Ontario                                  | 28                                      | 0        | 0       | 15   | 0          | 8           | 51                 |
| Halifax, Nova Scotia                             | 42                                      | 0        | 18      | 0    | 0          | 0           | 60                 |
| Hamilton, Ontario                                | 179                                     | 0        | 0       | 149  | 74         | 0           | 402                |
| Kelowna, British Columbia                        | 66                                      | 0        | 0       | 12   | 20         | 0           | 98                 |
| Kingston, Ontario                                | 16                                      | 0        | 2       | 0    | 0          | 1           | 19                 |
| Kitchener, Ontario                               | 71                                      | 0        | 4       | 33   | 115        | 3           | 226                |
| London, Ontario                                  | 149                                     | 0        | 10      | 16   | 0          | 2           | 177                |
| Moncton, New Brunswick                           | 13                                      | 0        | 0       | 0    | 0          | 0           | 13                 |
| Montréal, Quebec                                 | 379                                     | 0        | 53      | 55   | 335        | 55          | 877                |
| Oshawa, Ontario                                  | 62                                      | 0        | 4       | 13   | 0          | 0           | 79                 |
| Ottawa-Gatineau, Ontario/Quebec                  | 168                                     | 0        | 36      | 102  | 41         | 3           | 350                |
| Ottawa-Gatineau, Ontario part,<br>Ontario/Quebec | 123                                     | 0        | 36      | 69   | 0          | 3           | 231                |
| Ottawa-Gatineau, Quebec part,<br>Ontario/Quebec  | 45                                      | 0        | 0       | 33   | 41         | 0           | 119                |
| Peterborough, Ontario                            | 3                                       | 0        | 0       | 2    | 0          | 0           | 5                  |
| Québec, Quebec                                   | 103                                     | 0        | 37      | 2    | 70         | 13          | 225                |
| Regina, Saskatchewan                             | 50                                      | 0        | 0       | 0    | 0          | 0           | 50                 |
| Saguenay, Quebec                                 | 6                                       | 0        | 0       | 0    | 4          | 2           | 12                 |
| Saint John, New Brunswick                        | 15                                      | 0        | 0       | 5    | 2          | 0           | 22                 |
| Saskatoon, Saskatchewan                          | 85                                      | 0        | 0       | 90   | 0          | 4           | 179                |
| Sherbrooke, Quebec                               | 24                                      | 0        | 5       | 0    | 22         | 1           | 52                 |
| St. Catharines-Niagara, Ontario                  | 40                                      | 0        | 0       | 4    | 0          | 0           | 44                 |
| St. John's, Newfoundland and Labrador            | 33                                      | 0        | 0       | 0    | 4          | 0           | 37                 |
| Thunder Bay, Ontario                             | 6                                       | 0        | 0       | 0    | 0          | 0           | 6                  |
| Toronto, Ontario                                 | 1,437                                   | 0        | 243     | 755  | 1,291      | 25          | 3,751              |
| Trois-Rivières, Quebec                           | 9                                       | 0        | 44      | 0    | 0          | 3           | 56                 |
| Vancouver, British Columbia                      | 335                                     | 0        | 26      | 209  | 1,559      | 42          | 2,171              |
| Victoria, British Columbia                       | 64                                      | 0        | 4       | 10   | 133        | 12          | 223                |
| Windsor, Ontario                                 | 11                                      | 0        | 4       | 0    | 0          | 0           | 15                 |
| Winnipeg, Manitoba                               | 101                                     | 0        | 3       | 27   | 209        | 0           | 340                |

**Table 9**  
**Dwelling units, census metropolitan areas, unadjusted, cumulative, January - January 2007**

|  | Singles,<br>includes<br>mobile<br>homes | Cottages | Doubles | Rows | Apartments | Conversions | Total<br>dwellings |
|--|---|----------|---------|------|------------|-------------|--------------------|
|  | number of dwelling units                |          |         |      |            |             |                    |
| Abbotsford, British Columbia                     | 35                                      | 0        | 0       | 82   | 185        | 0           | 302                |
| Barrie, Ontario                                  | 32                                      | 0        | 0       | 0    | 0          | 4           | 36                 |
| Brantford, Ontario                               | 12                                      | 0        | 0       | 9    | 0          | 0           | 21                 |
| Calgary, Alberta                                 | 555                                     | 0        | 58      | 143  | 49         | 1           | 806                |
| Edmonton, Alberta                                | 664                                     | 0        | 186     | 70   | 595        | 0           | 1,515              |
| Greater Sudbury, Ontario                         | 5                                       | 0        | 0       | 0    | 0          | 0           | 5                  |
| Guelph, Ontario                                  | 28                                      | 0        | 0       | 15   | 0          | 8           | 51                 |
| Halifax, Nova Scotia                             | 42                                      | 0        | 18      | 0    | 0          | 0           | 60                 |
| Hamilton, Ontario                                | 179                                     | 0        | 0       | 149  | 74         | 0           | 402                |
| Kelowna, British Columbia                        | 66                                      | 0        | 0       | 12   | 20         | 0           | 98                 |
| Kingston, Ontario                                | 16                                      | 0        | 2       | 0    | 0          | 1           | 19                 |
| Kitchener, Ontario                               | 71                                      | 0        | 4       | 33   | 115        | 3           | 226                |
| London, Ontario                                  | 149                                     | 0        | 10      | 16   | 0          | 2           | 177                |
| Moncton, New Brunswick                           | 13                                      | 0        | 0       | 0    | 0          | 0           | 13                 |
| Montréal, Quebec                                 | 379                                     | 0        | 53      | 55   | 335        | 55          | 877                |
| Oshawa, Ontario                                  | 62                                      | 0        | 4       | 13   | 0          | 0           | 79                 |
| Ottawa-Gatineau, Ontario/Quebec                  | 168                                     | 0        | 36      | 102  | 41         | 3           | 350                |
| Ottawa-Gatineau, Ontario part,<br>Ontario/Quebec | 123                                     | 0        | 36      | 69   | 0          | 3           | 231                |
| Ottawa-Gatineau, Quebec part,<br>Ontario/Quebec  | 45                                      | 0        | 0       | 33   | 41         | 0           | 119                |
| Peterborough, Ontario                            | 3                                       | 0        | 0       | 2    | 0          | 0           | 5                  |
| Québec, Quebec                                   | 103                                     | 0        | 37      | 2    | 70         | 13          | 225                |
| Regina, Saskatchewan                             | 50                                      | 0        | 0       | 0    | 0          | 0           | 50                 |
| Saguenay, Quebec                                 | 6                                       | 0        | 0       | 0    | 4          | 2           | 12                 |
| Saint John, New Brunswick                        | 15                                      | 0        | 0       | 5    | 2          | 0           | 22                 |
| Saskatoon, Saskatchewan                          | 85                                      | 0        | 0       | 90   | 0          | 4           | 179                |
| Sherbrooke, Quebec                               | 24                                      | 0        | 5       | 0    | 22         | 1           | 52                 |
| St. Catharines-Niagara, Ontario                  | 40                                      | 0        | 0       | 4    | 0          | 0           | 44                 |
| St. John's, Newfoundland and Labrador            | 33                                      | 0        | 0       | 0    | 4          | 0           | 37                 |
| Thunder Bay, Ontario                             | 6                                       | 0        | 0       | 0    | 0          | 0           | 6                  |
| Toronto, Ontario                                 | 1,437                                   | 0        | 243     | 755  | 1,291      | 25          | 3,751              |
| Trois-Rivières, Quebec                           | 9                                       | 0        | 44      | 0    | 0          | 3           | 56                 |
| Vancouver, British Columbia                      | 335                                     | 0        | 26      | 209  | 1,559      | 42          | 2,171              |
| Victoria, British Columbia                       | 64                                      | 0        | 4       | 10   | 133        | 12          | 223                |
| Windsor, Ontario                                 | 11                                      | 0        | 4       | 0    | 0          | 0           | 15                 |
| Winnipeg, Manitoba                               | 101                                     | 0        | 3       | 27   | 209        | 0           | 340                |

**Table 10**  
**Value of residential and non-residential building permits, provinces and territories, unadjusted, 2007**

|                                  | Value of construction |                 |            |                                | Total     |
|----------------------------------|-----------------------|-----------------|------------|--------------------------------|-----------|
|                                  | Residential           | Non-residential |            |                                |           |
|                                  |                       | Industrial      | Commercial | Institutional and governmental |           |
| thousands of dollars             |                       |                 |            |                                |           |
| <b>Canada</b>                    |                       |                 |            |                                |           |
| December <sup>r</sup>            | 2,530,814             | 431,159         | 1,247,059  | 349,759                        | 4,558,791 |
| January <sup>p</sup>             | 2,761,995             | 490,413         | 1,083,634  | 614,460                        | 4,950,502 |
| Cumulative Jan. - Jan. 2007      | 2,761,995             | 490,413         | 1,083,634  | 614,460                        | 4,950,502 |
| Cumulative Jan. - Jan. 2006      | 2,165,290             | 177,670         | 688,987    | 349,879                        | 3,381,826 |
| <b>Newfoundland and Labrador</b> |                       |                 |            |                                |           |
| December <sup>r</sup>            | 15,309                | 734             | 4,644      | 1,161                          | 21,848    |
| January <sup>p</sup>             | 7,684                 | 7,531           | 6,210      | 808                            | 22,233    |
| Cumulative Jan. - Jan. 2007      | 7,684                 | 7,531           | 6,210      | 808                            | 22,233    |
| Cumulative Jan. - Jan. 2006      | 10,366                | 3               | 3,861      | 537                            | 14,767    |
| <b>Prince Edward Island</b>      |                       |                 |            |                                |           |
| December <sup>r</sup>            | 4,473                 | 2,227           | 853        | 80                             | 7,633     |
| January <sup>p</sup>             | 2,230                 | 380             | 2,648      | 0                              | 5,258     |
| Cumulative Jan. - Jan. 2007      | 2,230                 | 380             | 2,648      | 0                              | 5,258     |
| Cumulative Jan. - Jan. 2006      | 3,587                 | 252             | 1,784      | 2,441                          | 8,064     |
| <b>Nova Scotia</b>               |                       |                 |            |                                |           |
| December <sup>r</sup>            | 59,835                | 3,126           | 48,343     | 1,739                          | 113,043   |
| January <sup>p</sup>             | 25,894                | 3,860           | 13,630     | 3,396                          | 46,780    |
| Cumulative Jan. - Jan. 2007      | 25,894                | 3,860           | 13,630     | 3,396                          | 46,780    |
| Cumulative Jan. - Jan. 2006      | 32,770                | 2,059           | 16,106     | 882                            | 51,817    |
| <b>New Brunswick</b>             |                       |                 |            |                                |           |
| December <sup>r</sup>            | 17,095                | 940             | 19,666     | 9,120                          | 46,821    |
| January <sup>p</sup>             | 8,693                 | 276             | 18,803     | 1,048                          | 28,820    |
| Cumulative Jan. - Jan. 2007      | 8,693                 | 276             | 18,803     | 1,048                          | 28,820    |
| Cumulative Jan. - Jan. 2006      | 9,187                 | 910             | 21,964     | 30,355                         | 62,416    |
| <b>Quebec</b>                    |                       |                 |            |                                |           |
| December <sup>r</sup>            | 424,087               | 68,613          | 252,594    | 69,646                         | 814,940   |
| January <sup>p</sup>             | 303,507               | 31,876          | 139,005    | 85,674                         | 560,062   |
| Cumulative Jan. - Jan. 2007      | 303,507               | 31,876          | 139,005    | 85,674                         | 560,062   |
| Cumulative Jan. - Jan. 2006      | 252,750               | 35,963          | 135,906    | 33,002                         | 457,621   |
| <b>Ontario</b>                   |                       |                 |            |                                |           |
| December <sup>r</sup>            | 908,479               | 178,291         | 334,526    | 156,638                        | 1,577,934 |
| January <sup>p</sup>             | 1,051,914             | 378,124         | 353,086    | 336,749                        | 2,119,873 |
| Cumulative Jan. - Jan. 2007      | 1,051,914             | 378,124         | 353,086    | 336,749                        | 2,119,873 |
| Cumulative Jan. - Jan. 2006      | 940,876               | 102,928         | 209,809    | 160,188                        | 1,413,801 |
| <b>Manitoba</b>                  |                       |                 |            |                                |           |
| December <sup>r</sup>            | 45,605                | 1,238           | 27,956     | 12,880                         | 87,679    |
| January <sup>p</sup>             | 50,416                | 13,651          | 16,194     | 6,065                          | 86,326    |
| Cumulative Jan. - Jan. 2007      | 50,416                | 13,651          | 16,194     | 6,065                          | 86,326    |
| Cumulative Jan. - Jan. 2006      | 50,323                | 630             | 18,440     | 7,888                          | 77,281    |
| <b>Saskatchewan</b>              |                       |                 |            |                                |           |
| December <sup>r</sup>            | 34,645                | 579             | 18,860     | 7,760                          | 61,844    |
| January <sup>p</sup>             | 33,433                | 1,244           | 23,599     | 17,053                         | 75,329    |
| Cumulative Jan. - Jan. 2007      | 33,433                | 1,244           | 23,599     | 17,053                         | 75,329    |
| Cumulative Jan. - Jan. 2006      | 18,751                | 2,435           | 14,573     | 24,742                         | 60,501    |
| <b>Alberta</b>                   |                       |                 |            |                                |           |
| December <sup>r</sup>            | 505,246               | 158,354         | 403,752    | 37,198                         | 1,104,550 |
| January <sup>p</sup>             | 631,354               | 31,509          | 314,643    | 49,981                         | 1,027,487 |
| Cumulative Jan. - Jan. 2007      | 631,354               | 31,509          | 314,643    | 49,981                         | 1,027,487 |
| Cumulative Jan. - Jan. 2006      | 455,545               | 17,362          | 154,781    | 16,774                         | 644,462   |
| <b>British Columbia</b>          |                       |                 |            |                                |           |
| December <sup>r</sup>            | 511,483               | 17,057          | 134,535    | 51,945                         | 715,020   |
| January <sup>p</sup>             | 644,941               | 21,962          | 191,543    | 112,115                        | 970,561   |
| Cumulative Jan. - Jan. 2007      | 644,941               | 21,962          | 191,543    | 112,115                        | 970,561   |
| Cumulative Jan. - Jan. 2006      | 390,469               | 14,958          | 111,609    | 72,796                         | 589,832   |

Table 10 – continued

Value of residential and non-residential building permits, provinces and territories, unadjusted, 2007

|                              | Value of construction |                 |            |                                | Total |
|------------------------------|-----------------------|-----------------|------------|--------------------------------|-------|
|                              | Residential           | Non-residential |            |                                |       |
|                              |                       | Industrial      | Commercial | Institutional and governmental |       |
| thousands of dollars         |                       |                 |            |                                |       |
| <b>Yukon Territory</b>       |                       |                 |            |                                |       |
| December <sup>r</sup>        | 913                   | 0               | 13         | 1,592                          | 2,518 |
| January <sup>p</sup>         | 430                   | 0               | 200        | 1,571                          | 2,201 |
| Cumulative Jan. - Jan. 2007  | 430                   | 0               | 200        | 1,571                          | 2,201 |
| Cumulative Jan. - Jan. 2006  | 574                   | 20              | 29         | 138                            | 761   |
| <b>Northwest Territories</b> |                       |                 |            |                                |       |
| December <sup>r</sup>        | 189                   | 0               | 214        | 0                              | 403   |
| January <sup>p</sup>         | 175                   | 0               | 4,043      | 0                              | 4,218 |
| Cumulative Jan. - Jan. 2007  | 175                   | 0               | 4,043      | 0                              | 4,218 |
| Cumulative Jan. - Jan. 2006  | 92                    | 150             | 125        | 136                            | 503   |
| <b>Nunavut</b>               |                       |                 |            |                                |       |
| December <sup>r</sup>        | 3,455                 | 0               | 1,103      | 0                              | 4,558 |
| January <sup>p</sup>         | 1,324                 | 0               | 30         | 0                              | 1,354 |
| Cumulative Jan. - Jan. 2007  | 1,324                 | 0               | 30         | 0                              | 1,354 |
| Cumulative Jan. - Jan. 2006  | 0                     | 0               | 0          | 0                              | 0     |

**Table 11**  
**Value of residential and non-residential building permits, census metropolitan areas, unadjusted, January 2007**

|   | Value of construction |                 |            |                                | Total     |
|---|-----------------------|-----------------|------------|--------------------------------|-----------|
|   | Residential           | Non-residential |            |                                |           |
|   |                       | Industrial      | Commercial | Institutional and governmental |           |
|   | thousands of dollars  |                 |            |                                |           |
| Abbotsford, British Columbia                  | 45,429                | 454             | 2,025      | 0                              | 47,908    |
| Barrie, Ontario                               | 7,750                 | 1,388           | 3,352      | 406                            | 12,896    |
| Brantford, Ontario                            | 2,444                 | 80              | 1,149      | 4,747                          | 8,420     |
| Calgary, Alberta                              | 184,816               | 7,661           | 209,221    | 16,713                         | 418,411   |
| Edmonton, Alberta                             | 242,356               | 14,485          | 52,615     | 22,304                         | 331,760   |
| Greater Sudbury, Ontario                      | 1,394                 | 9,142           | 2,818      | 95,579                         | 108,933   |
| Guelph, Ontario                               | 7,173                 | 70              | 3,288      | 180                            | 10,711    |
| Halifax, Nova Scotia                          | 12,470                | 280             | 9,510      | 46                             | 22,306    |
| Hamilton, Ontario                             | 64,752                | 577             | 7,531      | 3,554                          | 76,414    |
| Kelowna, British Columbia                     | 24,761                | 1,890           | 4,534      | 0                              | 31,185    |
| Kingston, Ontario                             | 3,179                 | 661             | 1,092      | 4,786                          | 9,718     |
| Kitchener, Ontario                            | 29,416                | 1,707           | 5,695      | 11                             | 36,829    |
| London, Ontario                               | 32,166                | 1,563           | 6,506      | 25,385                         | 65,620    |
| Moncton, New Brunswick                        | 1,864                 | 85              | 1,999      | 374                            | 4,322     |
| Montréal, Quebec                              | 152,197               | 17,950          | 91,967     | 52,042                         | 314,156   |
| Oshawa, Ontario                               | 19,469                | 75,538          | 1,607      | 377                            | 96,991    |
| Ottawa-Gatineau, Ontario/Quebec               | 52,455                | 23,086          | 61,414     | 54,355                         | 191,310   |
| Ottawa-Gatineau, Ontario part, Ontario/Quebec | 37,623                | 23,063          | 58,895     | 40,911                         | 160,492   |
| Ottawa-Gatineau, Quebec part, Ontario/Quebec  | 14,832                | 23              | 2,519      | 13,444                         | 30,818    |
| Peterborough, Ontario                         | 1,303                 | 142             | 366        | 0                              | 1,811     |
| Québec, Quebec                                | 30,981                | 1,743           | 17,943     | 14,085                         | 64,752    |
| Regina, Saskatchewan                          | 8,345                 | 370             | 13,969     | 5,115                          | 27,799    |
| Saguenay, Quebec                              | 1,761                 | 15              | 939        | 25                             | 2,740     |
| Saint John, New Brunswick                     | 3,538                 | 130             | 6,255      | 0                              | 9,923     |
| Saskatoon, Saskatchewan                       | 20,818                | 351             | 6,689      | 9,691                          | 37,549    |
| Sherbrooke, Quebec                            | 7,337                 | 230             | 2,241      | 630                            | 10,438    |
| St. Catharines-Niagara, Ontario               | 9,709                 | 560             | 5,872      | 393                            | 16,534    |
| St. John's, Newfoundland and Labrador         | 6,537                 | 491             | 4,701      | 788                            | 12,517    |
| Thunder Bay, Ontario                          | 1,100                 | 285             | 637        | 7,814                          | 9,836     |
| Toronto, Ontario                              | 728,792               | 114,668         | 201,235    | 62,468                         | 1,107,163 |
| Trois-Rivières, Quebec                        | 8,107                 | 416             | 2,300      | 0                              | 10,823    |
| Vancouver, British Columbia                   | 418,007               | 8,563           | 133,306    | 75,237                         | 635,113   |
| Victoria, British Columbia                    | 41,965                | 1,662           | 3,121      | 32,923                         | 79,671    |
| Windsor, Ontario                              | 3,491                 | 77              | 5,573      | 8,725                          | 17,866    |
| Winnipeg, Manitoba                            | 36,642                | 866             | 13,579     | 4,618                          | 55,705    |

**Table 12**  
**Value of residential and non-residential building permits, census metropolitan areas, unadjusted, cumulative,**  
**January - January 2007**

|   | Value of construction |                 |            |                                | Total     |
|---|-----------------------|-----------------|------------|--------------------------------|-----------|
|   | Residential           | Non-residential |            |                                |           |
|   |                       | Industrial      | Commercial | Institutional and governmental |           |
|   | thousands of dollars  |                 |            |                                |           |
| Abbotsford, British Columbia                  | 45,429                | 454             | 2,025      | 0                              | 47,908    |
| Barrie, Ontario                               | 7,750                 | 1,388           | 3,352      | 406                            | 12,896    |
| Brantford, Ontario                            | 2,444                 | 80              | 1,149      | 4,747                          | 8,420     |
| Calgary, Alberta                              | 184,816               | 7,661           | 209,221    | 16,713                         | 418,411   |
| Edmonton, Alberta                             | 242,356               | 14,485          | 52,615     | 22,304                         | 331,760   |
| Greater Sudbury, Ontario                      | 1,394                 | 9,142           | 2,818      | 95,579                         | 108,933   |
| Guelph, Ontario                               | 7,173                 | 70              | 3,288      | 180                            | 10,711    |
| Halifax, Nova Scotia                          | 12,470                | 280             | 9,510      | 46                             | 22,306    |
| Hamilton, Ontario                             | 64,752                | 577             | 7,531      | 3,554                          | 76,414    |
| Kelowna, British Columbia                     | 24,761                | 1,890           | 4,534      | 0                              | 31,185    |
| Kingston, Ontario                             | 3,179                 | 661             | 1,092      | 4,786                          | 9,718     |
| Kitchener, Ontario                            | 29,416                | 1,707           | 5,695      | 11                             | 36,829    |
| London, Ontario                               | 32,166                | 1,563           | 6,506      | 25,385                         | 65,620    |
| Moncton, New Brunswick                        | 1,864                 | 85              | 1,999      | 374                            | 4,322     |
| Montréal, Quebec                              | 152,197               | 17,950          | 91,967     | 52,042                         | 314,156   |
| Oshawa, Ontario                               | 19,469                | 75,538          | 1,607      | 377                            | 96,991    |
| Ottawa-Gatineau, Ontario/Quebec               | 52,455                | 23,086          | 61,414     | 54,355                         | 191,310   |
| Ottawa-Gatineau, Ontario part, Ontario/Quebec | 37,623                | 23,063          | 58,895     | 40,911                         | 160,492   |
| Ottawa-Gatineau, Quebec part, Ontario/Quebec  | 14,832                | 23              | 2,519      | 13,444                         | 30,818    |
| Peterborough, Ontario                         | 1,303                 | 142             | 366        | 0                              | 1,811     |
| Québec, Quebec                                | 30,981                | 1,743           | 17,943     | 14,085                         | 64,752    |
| Regina, Saskatchewan                          | 8,345                 | 370             | 13,969     | 5,115                          | 27,799    |
| Saguenay, Quebec                              | 1,761                 | 15              | 939        | 25                             | 2,740     |
| Saint John, New Brunswick                     | 3,538                 | 130             | 6,255      | 0                              | 9,923     |
| Saskatoon, Saskatchewan                       | 20,818                | 351             | 6,689      | 9,691                          | 37,549    |
| Sherbrooke, Quebec                            | 7,337                 | 230             | 2,241      | 630                            | 10,438    |
| St. Catharines-Niagara, Ontario               | 9,709                 | 560             | 5,872      | 393                            | 16,534    |
| St. John's, Newfoundland and Labrador         | 6,537                 | 491             | 4,701      | 788                            | 12,517    |
| Thunder Bay, Ontario                          | 1,100                 | 285             | 637        | 7,814                          | 9,836     |
| Toronto, Ontario                              | 728,792               | 114,668         | 201,235    | 62,468                         | 1,107,163 |
| Trois-Rivières, Quebec                        | 8,107                 | 416             | 2,300      | 0                              | 10,823    |
| Vancouver, British Columbia                   | 418,007               | 8,563           | 133,306    | 75,237                         | 635,113   |
| Victoria, British Columbia                    | 41,965                | 1,662           | 3,121      | 32,923                         | 79,671    |
| Windsor, Ontario                              | 3,491                 | 77              | 5,573      | 8,725                          | 17,866    |
| Winnipeg, Manitoba                            | 36,642                | 866             | 13,579     | 4,618                          | 55,705    |



**Table 13**  
**Value of the non-residential permits by type of building, provinces and territories, January 2007**

|  | Canada           | Newfoundland<br>and<br>Labrador | Prince<br>Edward<br>Island | Nova<br>Scotia      | New<br>Brunswick   | Quebec                   | Ontario          |
|--|------------------|---------------------------------|----------------------------|---------------------|--------------------|--------------------------|------------------|
| thousands of dollars   |                  |                                 |                            |                     |                    |                          |                  |
| <b>Total non-residential</b>   | <b>2,188,507</b> | <b>14,549</b>                   | <b>3,028</b>               | <b>20,886</b>       | <b>20,127</b>      | <b>256,555</b>           | <b>1,067,959</b> |
| <b>Industrial</b>  | <b>490,413</b>   | <b>7,531</b>                    | <b>380</b>                 | <b>3,860</b>        | <b>276</b>         | <b>31,876</b>            | <b>378,124</b>   |
| Factories, plants  | 332,029          | 7,000                           | 0                          | 930                 | 0                  | 19,265                   | 262,131          |
| Transportation, utilities  | 87,023           | 466                             | 0                          | 2,519               | 0                  | 2,495                    | 69,813           |
| Mining and agriculture   | 35,034           | 0                               | 0                          | 0                   | 0                  | 4,331                    | 29,904           |
| Minor industrial projects, new<br>and improvements <sup>1</sup>                        | 36,327           | 65                              | 380                        | 411                 | 276                | 5,785                    | 16,276           |
| <b>Commercial</b>  | <b>1,083,634</b> | <b>6,210</b>                    | <b>2,648</b>               | <b>13,630</b>       | <b>18,803</b>      | <b>139,005</b>           | <b>353,086</b>   |
| Trade and services   | 296,029          | 1,800                           | 0                          | 7,850               | 14,227             | 40,866                   | 55,194           |
| Warehouses   | 56,752           | 0                               | 0                          | 0                   | 0                  | 4,384                    | 4,606            |
| Service stations   | 7,962            | 0                               | 0                          | 0                   | 0                  | 0                        | 4,337            |
| Office buildings   | 435,316          | 617                             | 0                          | 665                 | 950                | 35,337                   | 195,474          |
| Recreation   | 56,340           | 2,362                           | 0                          | 0                   | 0                  | 8,000                    | 24,730           |
| Hotels, restaurants  | 95,308           | 0                               | 2,000                      | 1,680               | 1,175              | 24,751                   | 17,220           |
| Laboratories   | 1,845            | 0                               | 0                          | 0                   | 0                  | 0                        | 0                |
| Minor commercial projects,<br>new and improvements <sup>1</sup>                        | 134,082          | 1,431                           | 648                        | 3,435               | 2,451              | 25,667                   | 51,525           |
| <b>Institutional and<br/>governmental</b>  | <b>614,460</b>   | <b>808</b>                      | <b>0</b>                   | <b>3,396</b>        | <b>1,048</b>       | <b>85,674</b>            | <b>336,749</b>   |
| Schools, education   | 173,839          | 300                             | 0                          | 0                   | 370                | 28,758                   | 69,170           |
| Hospitals, medical   | 266,693          | 0                               | 0                          | 0                   | 0                  | 40,135                   | 212,218          |
| Welfare, home  | 97,649           | 0                               | 0                          | 300                 | 0                  | 10,764                   | 24,940           |
| Churches, religion   | 26,901           | 0                               | 0                          | 0                   | 0                  | 850                      | 14,401           |
| Government buildings   | 31,088           | 340                             | 0                          | 2,274               | 393                | 1,524                    | 9,030            |
| Minor institutional and<br>governmental projects,<br>new and improvements <sup>1</sup> | 18,290           | 168                             | 0                          | 822                 | 285                | 3,643                    | 6,990            |
|  | Manitoba         | Saskatchewan                    | Alberta                    | British<br>Columbia | Yukon<br>Territory | Northwest<br>Territories | Nunavut          |
| thousands of dollars   |                  |                                 |                            |                     |                    |                          |                  |
| <b>Total non-residential</b>   | <b>35,910</b>    | <b>41,896</b>                   | <b>396,133</b>             | <b>325,620</b>      | <b>1,771</b>       | <b>4,043</b>             | <b>30</b>        |
| <b>Industrial</b>  | <b>13,651</b>    | <b>1,244</b>                    | <b>31,509</b>              | <b>21,962</b>       | <b>0</b>           | <b>0</b>                 | <b>0</b>         |
| Factories, plants  | 9,235            | 0                               | 21,941                     | 11,527              | 0                  | 0                        | 0                |
| Transportation, utilities  | 3,800            | 0                               | 4,542                      | 3,388               | 0                  | 0                        | 0                |
| Mining and agriculture   | 0                | 0                               | 0                          | 799                 | 0                  | 0                        | 0                |
| Minor industrial projects, new<br>and improvements <sup>1</sup>                        | 616              | 1,244                           | 5,026                      | 6,248               | 0                  | 0                        | 0                |
| <b>Commercial</b>  | <b>16,194</b>    | <b>23,599</b>                   | <b>314,643</b>             | <b>191,543</b>      | <b>200</b>         | <b>4,043</b>             | <b>30</b>        |
| Trade and services   | 5,070            | 2,200                           | 122,508                    | 46,314              | 0                  | 0                        | 0                |
| Warehouses   | 3,667            | 3,210                           | 25,505                     | 15,380              | 0                  | 0                        | 0                |
| Service stations   | 0                | 375                             | 1,450                      | 1,800               | 0                  | 0                        | 0                |
| Office buildings   | 2,410            | 2,329                           | 108,441                    | 89,093              | 0                  | 0                        | 0                |
| Recreation   | 0                | 0                               | 5,630                      | 15,618              | 0                  | 0                        | 0                |
| Hotels, restaurants  | 0                | 12,622                          | 27,321                     | 4,680               | 0                  | 3,859                    | 0                |
| Laboratories   | 0                | 0                               | 1,845                      | 0                   | 0                  | 0                        | 0                |
| Minor commercial projects,<br>new and improvements <sup>1</sup>                        | 5,047            | 2,863                           | 21,943                     | 18,658              | 200                | 184                      | 30               |
| <b>Institutional and<br/>governmental</b>  | <b>6,065</b>     | <b>17,053</b>                   | <b>49,981</b>              | <b>112,115</b>      | <b>1,571</b>       | <b>0</b>                 | <b>0</b>         |
| Schools, education   | 340              | 10,805                          | 4,784                      | 59,312              | 0                  | 0                        | 0                |
| Hospitals, medical   | 3,670            | 0                               | 9,420                      | 1,250               | 0                  | 0                        | 0                |
| Welfare, home  | 0                | 0                               | 20,678                     | 39,490              | 1,477              | 0                        | 0                |
| Churches, religion   | 1,000            | 1,000                           | 2,550                      | 7,100               | 0                  | 0                        | 0                |
| Government buildings   | 0                | 5,000                           | 9,077                      | 3,450               | 0                  | 0                        | 0                |
| Minor institutional and<br>governmental projects,<br>new and improvements <sup>1</sup> | 1,055            | 248                             | 3,472                      | 1,513               | 94                 | 0                        | 0                |

1. Refer to projects valued at less than \$250,000 for which the breakdown by type of building is not available.

## Description - Monthly survey of building permits

---

The following information should be used to ensure a clear understanding of the basic concepts that define the data provided in this product, of the underlying methodology of the survey, and of key aspects of the data quality. This information will provide you with a better understanding of the strengths and limitations of the data, and of how they can be effectively used and analysed. The information may be of particular importance to you when making comparisons with data from other surveys or sources of information, and in drawing conclusions regarding change over time.

## Data source and methodology

---

The purpose of the **Monthly Survey of Building Permits** issued by Canadian municipalities is to collect data on construction intentions. The results of this survey are used by C.M.H.C. (Canada Mortgage and Housing Corporation) as a reference base for conducting a monthly survey of housing starts and completions in accordance with its mandate. The statistics on building permits are also essential for the computation of capital expenditures. Furthermore, since the issuance of a building permit is one of the first steps in the construction process, these statistics are widely used as a leading indicator of building activity.

**General methodology** : The Building Permits Survey covers all Canadian municipalities that issue permits. The number of Canadian municipalities currently surveyed approximately 2,400, representing all the provinces and territories. They account for 95% of the Canadian population. Participation in the survey is mandatory; the survey does not use a predetermined sample of municipalities. The communities representing the other 5% of the population are very small, and their level of building activity have little impact on the total. In practice, all urban agglomerations are represented in the survey, as well as a fair percentage of rural municipalities. With certain exceptions, the minimum coverage corresponds to the municipalities already included in the Housing Starts and Completions C.M.H.C.'s Survey. Non-responding municipalities that issue permits are urged on a regular basis to respond to the Building Permit Survey. Therefore, the number of municipalities covered is increasing continually.

The survey is usually conducted by mail, although certain municipalities choose to respond by telephone. The municipal officer responsible for issuing permits is asked to fill out a form each month describing all major construction projects.

The municipalities forward a copy of their completed report to Statistics Canada Head Office and another copy to the local office of the Canada Mortgage and Housing Corporation (C.M.H.C.). To reduce their overhead, an increasing number of respondents are producing a computerized report. Only those municipalities that are late in reporting and that are included in the above-mentioned C.M.H.C. survey are subject to follow-up by telephone.

The reports received at Statistics Canada Head Office are verified, coded and processed.

Strict quality control procedures are applied to ensure that collection, coding and data processing are as accurate as possible. Checks are also performed on totals and the magnitude of data. Reports that fail to meet the quality standards are subject to verification and are corrected as required.

Imputations are required for each characteristic for which no report has been received. These are calculated automatically, subject to certain constraints, by applying to previously used values, the month-to-month and year-to-year changes in similar values of responding municipalities and the historical pattern of the missing municipalities. No estimation is done for lack of coverage, concealment or the underevaluation of permits issued. For this reason, the sampling error cannot be computed.

The monthly statistics are not corrected for cancelled or expired permits. According to the municipal officers, the proportion of cancelled and unused permits is below 5%.

**Reference period** : The reference period for data collection purposes is the calendar month. Reports from municipalities which are part of a census metropolitan area or a census agglomeration must be received within 20 days following the month of reference. The other municipalities have 30 days to produce their reports. Results are released between 35 and 40 days after the end of the reference month. Annual data for the preceding calendar year are released with the data for the January survey month.

**Revisions** : Two types of revisions can affect the results of the Building Permits Survey:

### Revisions due to the correction of coding errors

These types of revisions are done on a monthly basis only to the data pertaining to the month preceding the reference period.

### Revisions due to the addition of late reports

Late reports for the month preceding the reference period are incorporated into the survey results on a continuing basis. However, reports received after the two-month deadline following the reference month are introduced only at the end of the year. As a result, the data for the last twelve months are subject to revision.

**Seasonal adjustment** : Seasonal changes cause predictable fluctuations in the data. The data series disseminated includes both seasonally adjusted (i.e., excludes predictable annual influences) and the unadjusted data. Seasonally adjusted data for the total number of housing units as well as for the aggregate value of building permits are obtained indirectly, i.e., by adding their seasonally adjusted components. The total number of dwelling units is obtained by summing the seasonally adjusted data for single-family and multiple-use units; the total value of building permits is obtained by summing the following elements: single-family and multiple-family dwellings, industrial, commercial and institutional. Some series contain no apparent seasonality. In these cases, unadjusted values have been tabulated and aggregated to the adjusted values of the other series. At the end of the year, the chronological series adjusted for seasonality are revised to take into account the most recent seasonal fluctuations. Generally, these revisions apply only to the last three years in the series. The revised data are introduced into the CANSIM databank.

## Concepts and variables measured

---

The statistical data presented in this product refers to the number of dwelling units authorized and the **value of building permits**. The value of the permits reported includes the following expenditures: materials, labour, profit and overhead. The cost of land is never included in the estimated value of the permit while acquisition costs (legal fees, surveying fees and accrued interest) may be included at times.

The classification used in this publication deals strictly with structures for which a building permit was issued. Permits are generally issued for the following: construction of new buildings, alterations, additions, renovations, etc. Minor repair jobs such as painting, tiling, roofing, etc., for which no permit is required, and engineering work (such as dams, roads, pipelines, etc.), which, by definition, is not a building, are not included in the building permit series. Estimates of such work may be obtained on Cansim, tables 029-0039 to 029-0040 for the «Capital expenditures by type of asset» and tables 029-0005 to 029-0024 and 032-0001 to 032-0002 for the «Private and Public Investment in Canada Intentions» (cat. no. 61-205-X).

The description given by the municipalities as to the type of building (box #6 of Section A on the form) and the type of work involved (box #7 of Section A on the form) forms the basis for classification. The classification of buildings into major groups and subgroups is based on the following: intended use in the case of new buildings; present or intended use of buildings to which improvements are to be made; present use of the existing structure where the proposed construction is intended to provide additional facilities; principal use of the structure where the proposed construction has more than one intended use; however, where the building contains dwellings, the value of the construction is divided between residential and non-residential use.

## Building categories

---

This publication, uses the following classification for the **value of permits issued** for construction of new buildings or for improvements: residential, industrial, commercial, institutional and government.

**Residential.** Includes all buildings intended for private occupancy whether on a permanent basis or not. Dwellings are divided into the following types: single-family, mobile, cottage, semi-detached, row house and apartment building.

**Industrial.** Includes all buildings used for manufacturing and processing; transportation, communication and other utilities, and agriculture, forestry and mining.

**Commercial.** Includes all buildings used to house activities related to the tertiary sector, such as stores, warehouses, garages, office buildings, theatres, hotels, funeral parlours and beauty salons.

**Institutional and Government .** Includes expenditures made by the community, public and government for buildings and structures like schools, universities, hospitals, clinics, churches, homes for the aged.

The **number of dwelling units** indicates the number of self contained dwelling units created. This should not be confused with the number of structures. For example, an apartment building containing six dwellings will be shown as six dwelling units. When an existing structure is converted into additional housing units, the number of units added is included. This publication uses the following classification for dwelling units:

**Single-family.** Refers to dwellings commonly called "**single house**". It includes single dwellings that are completely isolated on all sides, including single dwellings linked to other dwellings below ground. Included are bungalows, split levels, two-storey single-family homes built by conventional methods or prefabricated.

**Mobile homes .** Refers to houses designed and constructed to be transported on their own chassis and for easy moving.

**Cottage.** Refers to dwellings that cannot be occupied year-round or on a permanent basis because the facilities required for comfort are inadequate.

**Double or Semi-detached .** Refers to dwellings in which each of the two dwellings are side by side and joined by a common wall or garage, but not attached to any other building and surrounded by open space.

**Row Dwellings .** Refers to a row of three or more dwellings attached to each other without dwellings above or below.

**Apartment Building .** Includes dwellings in a variety of buildings such as duplexes, semi-detached duplexes, triplexes, row duplexes, apartments as such and dwellings adjacent to non-residential structures.

**Conversion.** Refers to the number of dwellings added by conversion of existing structures.

## Geographic classification

Geographic entities are classified according to Standard Geographical Classification (SGC) used by Statistics Canada. Each reporting entity is assigned a twelve-digit SGC code for identification according to the following geographic levels:

**Province and territory (PR) :** There are ten provinces and three territories.

**Economic region (ER) :** Refers to intraprovincial regions established by the Standards Division of Statistics Canada. There are seventy-six ERs.

**Census division (CD)** : Refers to a group of census subdivisions established by provincial law. There are two hundred and eighty-eight CDs (data on this geographic group is available on request).

**Census metropolitan area (CMA)** : Its delineation corresponds to the 2006 Census definition. The term CMA refers to the main labour market area of an urban area (the urbanized core) of at least 100,000 population, based on the Census population figures. The thirty-three CMAs are shown in this publication. Although the 2006 Census defines the Ottawa-Gatineau area as a single CMA, the area is shown in this publication as two separate entities since it is located in two different provinces.

**Census agglomeration (CA)** : Refers to the smaller labour market area of an urbanized core of at least 10,000 population, as defined by the 2006 Census. There are one hundred and eleven CAs in Canada. When a CA overlaps the boundaries of two provinces, it is shown partly in each province. The Lloydminster agglomeration is an exception to this rule. It is treated as if it was totally located in Alberta.

**Other municipalities of at least 10,000 population** : Refers to municipalities not included in census agglomerations but with populations of at least 10,000 inhabitants. The distinction is made between these municipalities and CAs in order to permit comparison between the Building Permits Survey and the Housing Starts and Completions Survey which refers to this geographical concept.

**Rural area** : Refers to all geographic entities not included in a CMA or CA and not identified as an urban centre by the Canada Mortgage and Housing Corporation.

**Census subdivision (CSD)** : Refers to the general term applying to municipalities, Indian reserves, Indian settlements and unorganized territories. However, since Indian reserves and settlements do not issue building permits, they are not included in this publication.

**Non-standard geographic unit** : The geographic units shown in this publication do not all satisfy the above definition of census subdivision. Some provincial or municipal administrations producing monthly reports do not correspond to the official geographic entities; they are nevertheless shown in this publication under the geographic entity used by these administrations. These so-called non-standard geographic units are few in number and are mostly concentrated in the Maritime provinces.

### **Territorial revisions**

Territorial boundaries were established according to the 2006 Census definitions. Changes in boundaries, status or name of census subdivisions between censuses are introduced in this publication on a yearly basis. Changes affecting the other geographic units (CMAs, CAs, CDs and ERs) are introduced every five years, eighteen months following the census.

## Data accuracy

---

Since the building permit data are extracted from municipal administrative documents, two types of response errors are possible: errors attributable to the permit applicant and errors in transcription by the responding municipality. However, experience has shown that transcription errors are not very common and the increasing number of municipalities producing computerized reports tends to reduce the frequency of this type of error. Errors attributable to an understatement of the cost of construction are more probable. Since permit fees are in most cases based on the value of the construction, this leads unquestionably to under-estimation of project values.

The other source of error are the processing error and the non-response error. In 2006, more than 99% of the municipalities covered by the survey sent their monthly Building Permits reports.



## Comparability of data and related sources

---

Comparison of data must be done with reservation considering that the methods of issuing permits and the methods of estimating building values can differ from one municipality to another. Also, comparisons involving different periods must take into account the constant increase in the number of municipalities participating in the survey.

This publication contains only part of the data produced on building permits. However, you may order unpublished tables or address special requests, to the Current Investment Indicators Section ((613) 951-6321 or 1-800-579-8533). The series presented here is also available on CANSIM: Tables 026-0001 to 026-0008, 026-0010 and 026-0015.

# Appendix I

---

## Geographical abbreviations

|        |  |
|--------|--|
| A.R.   | Agglomération de recensement           |
| BOR    | Borough                                |
| C      | City                                   |
| C.A.   | Census Agglomeration                   |
| CC     | Chartered Community                    |
| CDR    | Census Division Remainder              |
| CM     | County (Municipality)                  |
| C.M.A. | Census Metropolitan Area               |
| COM    | Community                              |
| CR     | County Remainder                       |
| CT     | Canton                                 |
| CU     | Cantons-Unis                           |
| DM     | District (Municipality)                |
| HAM    | Hamlet                                 |
| ID     | Improvement District                   |
| IGD    | Indian Government District             |
| LGD    | Local Government District              |
| LOT    | Lot and Royalty                        |
| M      | Municipalité                           |
| MD     | Municipal District                     |
| NH     | Northern Hamlet                        |
| NT     | Northern Town                          |
| NV     | Northern Village                       |
| N.W.T. | NorthWest Territories                  |
| P      | Paroisse                               |
| PAR    | Parish                                 |
| PD     | Planning District                      |
| PDR    | Planning District Remainder            |
| RCR    | Rural County Remainder                 |
| RGM    | Regional Municipality                  |
| R.M.R. | Région métropolitaine de recensement   |
| RDR    | Regional District Remainder            |
| RM     | Rural Municipality                     |
| RV     | Resort Village                         |
| SA     | Special Area                           |
| S-E    | Indian Settlement/Établissement indien |
| SCM    | Subdivision of County Municipality     |
| SD     | Sans désignation                       |
| SET    | Settlement                             |
| SM     | Specialize Municipality                |
| SRD    | Subdivision of Regional District       |
| SUN    | Subdivision of Unorganized District    |
| SV     | Summer Village                         |

|        |                           |
|--------|---------------------------|
| T      | Town                      |
| T.N.O. | Territoires du Nord-Ouest |
| TP     | Township                  |
| UCR    | Urban County Remainder    |
| UNO    | Unorganized/Non organisé  |
| V      | Ville                     |
| VC     | Village Cri               |
| VL     | Village                   |
| VN     | Village Nordique          |