



Catalogue no. 67-002-XIE

Canada's international transactions in securities

June 2004



Statistics
Canada

Statistique
Canada

Canada

How to obtain more information

Specific inquiries about this product and related statistics or services should be directed to: Balance of Payments Division, Statistics Canada, Ottawa, Ontario, K1A 0T6 (telephone: (613) 951-1855); infobalance@statcan.ca).

For information on the wide range of data available from Statistics Canada, you can contact us by calling one of our toll-free numbers. You can also contact us by e-mail or by visiting our Web site.

National inquiries line	1 800 263-1136
National telecommunications device for the hearing impaired	1 800 363-7629
Depository Services Program inquiries	1 800 700-1033
Fax line for Depository Services Program	1 800 889-9734
E-mail inquiries	infostats@statcan.ca
Web site	www.statcan.ca

Ordering and subscription information

This product, Catalogue no. 67-002-XIE, is published monthly in electronic format on the Statistics Canada Internet site at a price of CDN \$15.00 per issue and CDN \$142.00 for a one-year subscription. To obtain single issues or to subscribe visit our Web site at www.statcan.ca, and select Products and Services.

This product is also available in print through a Print-on-Demand service, at a price of CDN \$41.00 per issue and CDN \$282.00 for a one-year subscription. The following additional shipping charges apply for delivery outside Canada:

	Single issue	Annual subscription
United States	CDN \$ 6.00	CDN \$ 72.00
Other countries	CDN \$ 10.00	CDN \$ 120.00

All prices exclude sales taxes.

The printed version can be ordered by

- Phone (Canada and United States) **1 800 267-6677**
- Fax (Canada and United States) **1 877 287-4369**
- E-mail **infostats@statcan.ca**
- Mail
Statistics Canada
Dissemination Division
Circulation Management
120 Parkdale Avenue
Ottawa, Ontario K1A 0T6
- And, in person at the Statistics Canada Regional Centre nearest you.

When notifying us of a change in your address, please provide both old and new addresses.

Standards of service to the public

Statistics Canada is committed to serving its clients in a prompt, reliable and courteous manner and in the official language of their choice. To this end, the Agency has developed standards of service which its employees observe in serving its clients. To obtain a copy of these service standards, please contact Statistics Canada toll free at 1 800 263-1136.



Statistics Canada
Balance of Payments Division

System of National Accounts

Canada's international transactions in securities

June 2004

Published by authority of the Minister responsible for Statistics Canada

© Minister of Industry, 2004

All rights reserved. No part of this publication may be reproduced, stored in a retrieval system or transmitted in any form or by any means, electronic, mechanical, photocopying, recording or otherwise without prior written permission from Licence Services, Marketing Division, Statistics Canada, Ottawa, Ontario, Canada K1A 0T6.

August 2004

Catalogue no.67-002-XIE, Vol. 70, no. 6

Frequency: Monthly

ISSN 1488-4860

Ottawa

La version française de cette publication est disponible sur demande (n° 67-002-XIF au catalogue).

Note of appreciation

Canada owes the success of its statistical system to a long-standing partnership between Statistics Canada, the citizens of Canada, its businesses, governments and other institutions. Accurate and timely statistical information could not be produced without their continued cooperation and goodwill.

Symbol

The following standard symbols are used in this Statistics Canada publication:

- . not available for any reference period
- .. not available for a specific reference period
- ... not applicable
- 0 true zero or a value rounded to zero
- 0^s value rounded to 0 (zero) where there is a meaningful distinction between true zero and the value that was rounded
- P preliminary
- r revised
- x suppressed to meet the confidentiality requirements of the Statistics Act
- E use with caution
- F too unreliable to be published

Notes

Throughout this report:

- totals may not add due to rounding;
- a minus sign indicates the purchase of securities from non-residents, that is an outflow of capital from Canada;
- Other EU Countries include: Belgium, Denmark, France, Germany, Greece, Ireland, Italy, Luxembourg, the Netherlands, Portugal, Spain, from January 1995, Austria, Finland and Sweden; from May 2004, Cyprus, the Czech Republic, Estonia, Hungary, Latvia, Lithuania, Malta, Poland, the Slovak Republic and Slovenia.
- Other OECD Countries include: Australia, Iceland, New Zealand, Norway, Switzerland, Turkey; from July 1994, Mexico; from December 1995 up to April 2004, the Czech Republic; from May 1996 up to April 2004, Hungary; from November 1996 up to April 2004, Poland; from December 1996, Republic of Korea; from January 2001 up to April 2004, the Slovak Republic; up to December 1994, Austria, Finland and Sweden.
- This publication was prepared by:

John Côté, David Filiplic, Barry Mersereau, Carole Parent, Stavros Iliadis, Robert Théberge, Catherine Boies, and Art Ridgeway.

The System of National Accounts

In Canada, the National Accounts have been developed since the close of the Second World War in a series of publications relating to their constituent parts. These have now reached a stage of evolution where they can be termed a "System of National Accounts". For purposes of identification, all publications (containing tables of statistics, descriptions of conceptual frameworks and descriptions of sources and methods) which make up this System carry the term "System of National Accounts" as a general title.

The System of National Accounts in Canada consists of several parts. The annual and quarterly Income and Expenditure Accounts (included with Catalogue Nos. carrying the prefix 13) were, historically speaking, the first set of statistics to be referred to with the title "National Accounts" (National Accounts, Income and Expenditure). The Balance of International Payments data (Catalogue Nos. with prefix 67) are also part of the System of National Accounts and they, in fact, pre-date the Income and Expenditure Accounts.

Greatly expanded structural detail on industries and on goods and services is portrayed in the Input-Output Tables of the System (Catalogue Nos. with prefix 15). The Catalogue Nos. carrying the prefix 15 also provide measures of the contribution of each industry to total Gross Domestic Product at basic prices as well as Productivity Measures.

Both the Input-Output tables and the estimates of Gross Domestic Product by Industry use the establishment as the primary unit of industrial production. Measures of financial transactions are provided by the Financial Flow Accounts (Catalogue Nos. with prefix 13). Types of lenders and financial instruments are the primary detail in these statistics and the legal entity is the main unit of classification of transactors. Balance sheets of outstanding assets and liabilities are published annually.

The System of National Accounts provides an overall conceptually integrated framework in which the various parts can be considered as interrelated sub-systems. At present, direct comparisons amongst those parts which use the establishment as the basic unit and those which use the legal entity can be carried out only at highly aggregated levels of data. However, Statistics Canada is continuing research on enterprise company establishment relationships; it may eventually be feasible to reclassify the data which are on one basis (say the establishment basis) to correspond to the units employed on another (the company or the enterprise basis).

In its broad outline, the Canadian System of National Accounts bears a close relationship to the international standard as described in *System of National Accounts, 1993*, a joint publication of the Commission of the European Communities, International Monetary Fund, Organisation for Economic Co-operation and Development, United Nations and World Bank.

Table of Contents

	Page
June 2004 - Analysis	7
About the figures	6
Tables	
Guide to Tables: Where to Locate Data by Table Number	10
CANSIM II Tables Correspondence	10
Canadian and Foreign Securities	
1. Portfolio Transactions with Non-residents in Securities	11
Canadian Securities	
2. Portfolio Transactions with Non-residents in Canadian Bonds, by Sector and Type of Transaction	12
3. Portfolio Transactions with Non-residents in Canadian Bonds, by Geographical Area and Type of Transaction	20
4. Portfolio Transactions with Non-residents in Canadian Bonds, by Geographical Area	27
5. Portfolio Transactions with Non-residents in Canadian Bonds, by Type and Currency of Issue	28
6. Portfolio Transactions with Non-residents in Canadian Money Market Instruments, by Sector, Sales and Purchases	30
7. Portfolio Transactions with Non-residents in Canadian Money Market Instruments, by Geographical Area, Sales and Purchases	33
8. Portfolio Transactions with Non-residents in Canadian Stocks, by Geographical Area and Type of Transaction	35
9. Portfolio Transactions with Non-residents in Canadian Stocks, by Geographical Area	39
Foreign Securities	
10. Portfolio Transactions with Non-residents in Foreign Securities by Instrument and Sector, Purchases and Sales	40

Table of Contents - Concluded

	Page
Tables	
11. Portfolio Transactions with Non-residents in Foreign Bonds, by Geographical Area, Purchases and Sales	41
12. Portfolio Transactions with Non-residents in Foreign Stocks, by Geographical Area, Purchases and Sales	43
Supplementary Tables	
13. Loans under Repurchase Agreements, Transactions with Non-residents by Canadian and Foreign Securities	46
14. Loans under Repurchase Agreements, Transactions with Non-residents in Assets and Liabilities	48
15. Portfolio Investment in Canadian Bonds, by Sector, Period-end Positions held by Non-residents	50
16. Portfolio Investment in Canadian Bonds, by Geographical Area, Period-end Positions held by Non-residents	51
17. Portfolio Investment in Canadian Money Market Instruments, by Sector, Period-end Positions held by Non-residents	52
18. Portfolio Investment in Canadian Money Market Instruments, by Geographical Area, Period-end Positions held by Non-residents	53
19. Selected Stock Prices and Capital Market Yields	54
For Further Reading	56
List of Published Research Papers	57

About The Figures

The series on international security transactions cover portfolio transactions in stocks, bonds and Canadian money market securities between non-residents and residents of Canada. The series include trade in outstanding issues, new issues, retirements, and change in interest payable and are further segmented by issuing sector and major geographic area. The principle guiding their construction is that a change of ownership occurs between residents of a foreign country and Canada. These series form an integral part of Canada's balance of payments. Certain types of security transactions, which are excluded from this publication, are classified to other balance of payments series as follows:

- security transactions representing direct investment capital by principal owners of an enterprise, e.g. parent companies subscribing to new stocks;
- foreign securities held as part of Canada's official international reserves or by Canadian banks for their own account;
- foreign money market securities because their measurement is largely through foreign banking data whose level of detail precludes a separate specification.

Security transactions are recorded before charges for fees and commissions. The value used is the transaction price and the timing of a transaction's recording is generally the delivery or settlement date.

The quality of foreign portfolio investment data in Canadian stocks, bonds and money market paper is good. The flows are reported on a monthly survey sent to the major investment dealers, pension funds, and the largest debt issuing institutions such as the provinces and their enterprises. Historically, the response rate has been well over 90%. A considerable effort is made to identify the various sectors and institutions which issue securities to non-residents; the data may, at times, be revised when new transactors are identified or information becomes available through annual surveys. The coverage is validated against administrative data and the annual census survey of foreign holdings of Canadian portfolio investments.

The quality of estimates of Canadian investment in foreign stocks and bonds is not as good as it is difficult to identify all Canadian residents making portfolio investments abroad. A considerable effort is made to identify the various Canadian institutions which invest in foreign securities and survey them on a monthly basis however individuals in the personal sector using foreign investment firms are harder to identify thereby weakening the estimates. The quality of the data has improved significantly with a series of annual surveys on Canadian portfolio investment abroad that began at year-end 1997. The inaugural survey was carried out as part of an international effort to improve data on external portfolio investment. Fully 35 countries participated in the portfolio survey, co-ordinated by the International Monetary Fund.

For transactions in outstanding securities, the data are largely derived from a monthly survey of investment dealers and of other financial institutions such as mutual funds, pension funds and trust companies which regularly buy or sell securities directly through dealers or brokers outside Canada. The data for new issues and retirements are obtained from survey and non-survey sources such as prospectuses, summaries prepared by dealers and other institutions, press reports, etc.

For a fuller description of the sources and methods employed in the construction of these series, please refer to the publication *Canada's Balance of International Payments and International Investment Position - Concepts, Sources, Methods and Products* (Catalogue nos. 67-506-XPE or 67-506-XIE).

Canada's international transactions in securities

June 2004

Although foreign investors continued to increase their holdings of Canadian securities, acquiring \$815 million in June, it was half of May's investment. June's investment was the result of purchases of Canadian money market paper as non-residents reduced holdings of both Canadian stocks and bonds.

Meanwhile, for the first time since January, Canadian investors sold off some of their holdings of foreign securities (\$1.2 billion).

Investment in Canadian money market paper continues as bonds slide

After heavy buying in May, foreign investors added a further \$1.6 billion to their holdings of Canadian money market paper in June, the largest increase since November 2002. June's foreign investment was in issues of government and government enterprises as corporate paper experienced a slight decrease. Investors out of Asia were by far the biggest purchasers in June, buying \$1.3 billion. Over the second quarter of 2004, foreign investors purchased \$1.8 billion of Canadian money market paper—largely offsetting the \$2.8 billion divested during the first quarter.

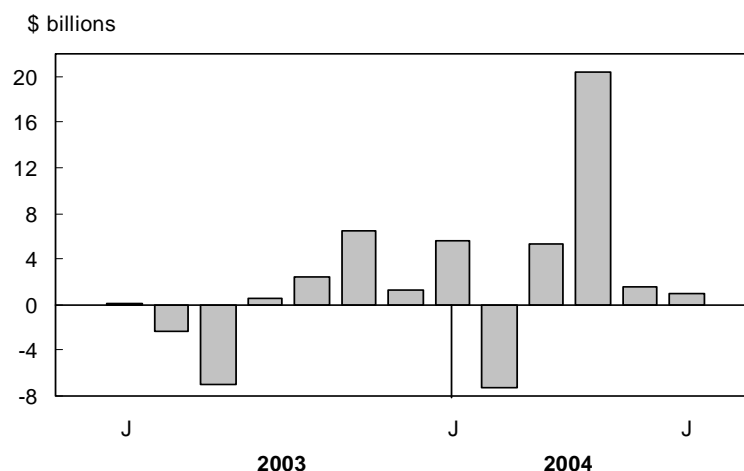
For only the second time this year, foreign investors decreased their holdings of Canadian bonds, which fell by \$299 million in June. This was in contrast to the \$1.7 billion purchased in May. Much of the reversal was because of \$2.6 billion in net retirements, the largest amount since January 2003. Retirements of provincial government issues made up the bulk of this figure. In the second quarter of 2004, foreign investors purchased \$2.3 billion in Canadian bonds compared with \$2.0 billion for the previous quarter and \$6.2 billion over the same quarter of last year.

Holdings of Canadian stocks down for a second straight month

Foreign holdings of Canadian stocks fell for the second straight month in June as foreign investors sold off \$523 mil-

Chart 1

Foreign investment in Canadian securities¹

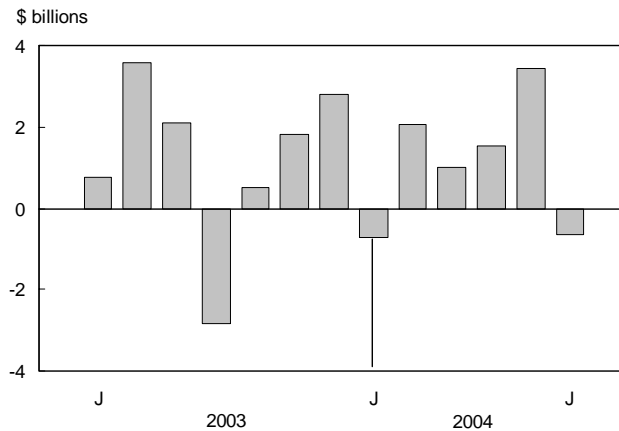


¹Includes bonds, stocks and money market paper.

Chart 2

Canadian investment in foreign securities¹

Reverse of balance of payments signs



¹Includes bonds, and stocks.

lion worth. As in May, the decline was wholly concentrated in outstanding issues. Much of the decline in June was attributable to European investors shedding some of their holdings of outstanding Canadian shares. Following a robust \$5.6 billion increase in the first quarter, non-residents' holdings of outstanding Canadian shares remained virtually unchanged in the second quarter of 2004. Including other transactions however, the second quarter investment by foreign investors was \$18.7 billion, which included the largest Canadian takeover ever of a foreign company.

Canadians unload foreign securities

For the first time since January of this year, Canadian investors sold off some of their holdings of foreign securities (\$1.2 billion). After purchasing \$1.3 billion of foreign stocks in May, Canadian investors sold \$782 million in June. While Canadian investors continued to invest in US equities, they shied away from overseas stocks, selling off \$1.8 billion, the biggest divestment of overseas equities since October 2002.

Following six consecutive months of purchases totalling \$8.3 billion in foreign bonds, Canadians turned around and sold off \$413 million in June. US treasuries, which were a favored investment for Canadians over the six months of accumulation, were the hardest hit in June with \$581 million in sales.

Related market information**Interest Rates**

In June, Canadian short-term interest rates increased three basis points to 2.01% and US rates increased 25 basis points to 1.27%. While still favouring investment in Canada, the differential between the two countries fell to 0.74%, its lowest point since April 2002.

Canadian long-term interest rates climbed six basis points to 4.83% while US rates dropped five basis points to 4.62. This caused the differential between the two countries to increase in Canada's favour from 0.10% the month before to 0.21%.

Stock Prices

Both Canadian and American stock prices increased for the second straight month in June. The S&P/TSX composite index increased 1.5% to 8,545.6 while the Standard and Poor's composite index rose 1.8% to 1,140.8. For the year, the indices were up 3.9% and 2.6% respectively.

The Canadian dollar

The Canadian dollar advanced 1.62 cents US in June ending the month at 74.97 US cents. Since the end of 2003, the Canadian dollar has lost just over 2 cents American.

Definitions

The data series on international security transactions cover portfolio transactions in stocks and bonds (both Canadian and foreign issues) and Canadian money market instruments.

Stocks include common and preferred equities, as well as warrants.

Debt securities include bonds and money market instruments.

Bonds have an original term to maturity of more than one year.

Money market instruments have an original term to maturity of one year or less. **Government of Canada paper** includes treasury bills and US-dollar Canada bills. **Other money market instruments** include treasury bills and other paper issued by other Canadian governments or their enterprises, bankers' acceptances, bearer demand notes of banks, commercial paper and other short-term paper.

GUIDE TO TABLES: Where to Locate Data by Table Number ¹

Transactions	Canadian securities			Foreign securities		Loans
	Bonds	Money market	Stocks	Bonds	Stocks	
	table numbers					
Total (Net)	1	1	1	1	1	
Sector	2	6		10	10	14
Geographic ²	3 4	7	8 9	11	12	
Currency	5					
Type ³	2 3 5		8			13
Sales/Purchases	2 3	6 7	8	10 11	10 12	13 14
Period-end Positions						
Sector	15	17				
Geographic ²	16	18				

¹ Tables 1-14 include monthly, quarterly and annual data; tables 15-18 include quarterly and annual data; and table 19 has monthly data only.

² Other EU Countries include: Belgium, Denmark, France, Germany, Greece, Ireland, Italy, Luxembourg, the Netherlands, Portugal, Spain, and from January 1995, Austria, Finland and Sweden.

Other OECD Countries include: Australia, Iceland, New Zealand, Norway, Switzerland, Turkey; from July 1994, Mexico; from December 1995, the Czech Republic; from May 1996, Hungary; from November 1996, Poland; from December 1996, Republic of Korea; from January 2001, the Slovak Republic; up to December 1994, Austria, Finland and Sweden.

³ Type consists of new issues, retirements, trade in outstanding, and change in interest payable.

Note: Table 19 shows selected stock market composite indexes and market yields.

CANSIM II Tables Correspondence

Table Number Cat. #67-002-XIE	Table Titles (CANSIM II)	CANSIM II Table Number		
		Annual	Quarterly	Monthly
1, 2, 5, 6, 10, 14	International transactions in securities, portfolio transactions and repo loans, net and gross sales and purchases, by type and sector	376-0018	376-0019	376-0020
3, 4	International transactions in securities, portfolio transactions with non-residents in Canadian bonds, by type	376-0021	376-0024	376-0027
7, 11, 12	International transactions in securities, portfolio transactions with non-residents in Canadian money market, foreign bonds, and foreign stocks, by type	376-0023	376-0026	376-0029
8, 9	International transactions in securities, portfolio transactions with non-residents in Canadian stocks, by type	376-0022	376-0025	376-0028
15, 16, 17, 18	International investment position, foreign portfolio investment, Canadian bonds and Canadian money market, by sector			376-0058

Table 1
Portfolio Transactions with Non-residents in Securities

Period	Canadian Securities				Foreign Securities ²			
	Bonds ¹	Stocks	Money Market ¹	Total	Bonds	Stocks	Total	
V No. A	113046	113075	113078	113045	113132	113135	113131	
Q	113218	113247	113250	113217	113304	113307	113303	
M	113390	113419	113422	113389	113446	113449	113445	
millions of dollars								
1992	18,766	1,036	4,898	24,701	-1,401	-10,348	-11,749	
1993	31,446	12,056	9,296	52,799	-5,071	-12,811	-17,881	
1994	15,995	6,412	905	23,312	435	-9,362	-8,927	
1995	30,730	-4,242	-1,254	25,233	-1,085	-6,247	-7,331	
1996	17,953	8,034	-7,319	18,668	-2,070	-17,247	-19,317	
1997	6,166	7,645	2,369	16,181	-6,642	-5,207	-11,849	
1998	10,337	14,311	130	24,779	-7,064	-15,433	-22,497	
1999	2,602	14,346	-13,209	3,738	-2,477	-20,623	-23,101	
2000	-21,458	35,232	824	14,598	-3,963	-59,965	-63,927	
2001	41,733	4,125	-7,349	38,509	-1,920	-35,653	-37,573	
2002	18,684	-1,531	3,782	20,935	-6,229	-18,858	-25,087	
2003	7,000	12,931	-1,461	18,469	-8,071	-4,449	-12,519	
2002	II	2,895	4,781	344	8,020	-2,299	-4,688	-6,987
	III	5,655	-4,076	-1,791	-213	-1,472	-2,210	-3,682
	IV	3,635	1,724	3,925	9,283	-16	-2,907	-2,923
2003	I	9,131	-265	-910	7,956	-3,501	2,151	-1,349
	II	6,161	2,575	467	9,204	-2,664	-540	-3,204
	III	-12,240	5,394	-1,975	-8,820	-5	-2,807	-2,812
	IV	3,947	5,227	956	10,130	-1,901	-3,253	-5,154
2004	I	2,040	4,401	-2,772	3,668	-2,612	277	-2,336
	II	2,329	18,723	1,841	22,892	-3,026	-739	-3,765
2002	J	-1,128	4,460	397	3,729	-480	-1,844	-2,325
	J	-53	-3,432	207	-3,278	-509	-308	-816
	A	2,902	279	-1,246	1,935	795	-1,271	-476
	S	2,806	-923	-753	1,130	-1,758	-631	-2,389
	O	4,672	-218	424	4,877	2,826	-76	2,751
	N	966	993	2,258	4,216	-3,241	-2,832	-6,073
	D	-2,003	949	1,243	189	398	1	399
2003	J	-3,219	-645	500	-3,363	-639	257	-382
	F	5,056	758	-945	4,869	-1,579	-82	-1,661
	M	7,293	-378	-465	6,450	-1,283	1,976	693
	A	3,404	416	958	4,778	-1,666	553	-1,114
	M	3,087	1,800	-643	4,244	-373	-973	-1,346
	J	-330	360	152	182	-625	-120	-744
	J	-3,974	1,972	-370	-2,371	-2,386	-1,181	-3,566
	A	-7,667	1,303	-602	-6,965	-340	-1,740	-2,080
	S	-600	2,119	-1,003	516	2,720	114	2,834
	O	1,162	798	405	2,365	297	-804	-508
	N	4,197	2,241	-8	6,430	88	-1,918	-1,830
	D	-1,411	2,188	559	1,336	-2,286	-531	-2,817
2004	J	4,547	2,581	-1,441	5,688	-362	1,082	720
	F	-3,717	-2,016	-1,602	-7,335	-1,228	-817	-2,044
	M	1,210	3,836	270	5,315	-1,023	12	-1,012
	A	896	20,958	-1,395	20,459	-1,347	-173	-1,520
	M	1,731	-1,712	1,599	1,617	-2,091	-1,348	-3,439
	J	-299	-523	1,637	815	413	782	1,195

1. Inclusive of new issues, retirements, trade in outstanding and change in interest payable. For Money Market, change in interest payable is included from Jan. 2003
 2. Transactions in foreign money market securities are not available.

Note: Throughout tables 1-14 a minus sign indicates the purchase of securities from non-residents, that is an outflow of capital from Canada.

Table 2
Portfolio Transactions with Non-residents in Canadian Bonds, by Sector and Type of Transaction

Period		Federal Government									Total
		New Issues and Retirements			Outstanding Issues			Interest			
		New Issues	Retirements	Total	Sales	Purchases	Total	Accrued	Paid	Change in interest payable	
V No.	A	113055	113062	113175	113088	113095	113048	113182	113189	113069	113196
	Q	113227	113234	113347	113260	113267	113220	113354	113361	113241	113368
	M	113399	113406	113519	113432	113439	113392	113526	113533	113413	113540
millions of dollars											
1992		0	-5,134	-5,134	248,358	-239,869	8,488	6,166	-5,901	265	3,619
1993		0	-6,253	-6,253	367,574	-354,188	13,386	6,656	-6,369	287	7,420
1994		5,311	-3,855	1,456	509,724	-513,971	-4,246	6,336	-5,859	477	-2,314
1995		3,103	-4,079	-976	458,633	-445,295	13,338	6,322	-6,018	304	12,666
1996		4,807	-6,597	-1,790	651,568	-642,554	9,014	6,688	-6,497	191	7,414
1997		2,773	-7,086	-4,313	1,010,613	-1,011,942	-1,330	6,836	-6,726	110	-5,532
1998		12,470	-9,222	3,249	801,584	-811,655	-10,071	6,135	-5,823	312	-6,510
1999		4,494	-7,136	-2,642	516,376	-510,494	5,882	5,728	-5,914	-185	3,055
2000		0	-11,357	-11,357	350,351	-349,441	911	5,430	-5,790	-360	-10,806
2001		648	-11,402	-10,754	340,279	-337,209	3,070	4,958	-5,118	-160	-7,843
2002		0	-5,482	-5,482	341,127	-331,177	9,950	4,422	-4,648	-225	4,243
2003		0	-12,159	-12,159	520,551	-528,261	-7,710	4,112	-4,323	-210	-20,080
2002	II	0	-865	-865	74,410	-75,001	-591	1,075	-1,262	-186	-1,642
	III	0	-2,427	-2,427	105,458	-101,716	3,742	1,099	-815	284	1,600
	IV	0	-1,540	-1,540	89,021	-81,644	7,376	1,163	-1,919	-756	5,081
2003	I	0	-2,413	-2,413	112,656	-106,105	6,552	1,145	-641	503	4,642
	II	0	-2,983	-2,983	150,366	-150,158	208	1,143	-1,503	-360	-3,135
	III	0	-4,577	-4,577	138,323	-150,767	-12,444	973	-742	231	-16,790
	IV	0	-2,186	-2,186	119,206	-121,231	-2,025	852	-1,436	-585	-4,796
2004	I	0	-202	-202	123,562	-125,543	-1,981	814	-271	542	-1,641
	II	0	-859	-859	122,487	-118,901	3,585	776	-893	-117	2,609
2002	J	0	-35	-35	24,336	-25,146	-810	353	-1,128	-775	-1,620
	J	0	-1,267	-1,267	32,339	-30,394	1,946	365	-328	37	715
	A	0	0	0	39,585	-36,590	2,995	375	-68	307	3,301
	S	0	-1,159	-1,159	33,534	-34,732	-1,198	359	-418	-59	-2,417
	O	0	0	0	35,977	-30,481	5,497	384	-47	337	5,834
	N	0	0	0	33,936	-31,755	2,181	386	-446	-60	2,121
	D	0	-1,540	-1,540	19,107	-19,409	-302	393	-1,426	-1,033	-2,875
2003	J	0	0	0	32,161	-31,536	625	392	-10	382	1,007
	F	0	-2,413	-2,413	35,800	-30,353	5,447	358	-202	155	3,190
	M	0	0	0	44,695	-44,216	479	395	-429	-34	445
	A	0	0	0	41,278	-39,864	1,414	383	-93	290	1,704
	M	0	0	0	54,608	-52,788	1,820	400	0	400	2,220
	J	0	-2,983	-2,983	54,480	-57,507	-3,027	360	-1,410	-1,050	-7,060
	J	0	-244	-244	53,569	-59,892	-6,322	357	-281	75	-6,491
	A	0	-750	-750	38,353	-44,115	-5,762	328	-59	269	-6,243
	S	0	-3,583	-3,583	46,401	-46,760	-359	288	-402	-114	-4,056
	O	0	-4	-4	45,186	-46,791	-1,606	291	-46	245	-1,364
	N	0	-265	-265	36,410	-34,502	1,908	282	-378	-97	1,546
	D	0	-1,918	-1,918	37,610	-39,938	-2,328	278	-1,012	-733	-4,979
2004	J	0	0	0	45,922	-41,722	4,200	281	-8	272	4,472
	F	0	-202	-202	38,084	-42,505	-4,421	264	-55	209	-4,414
	M	0	0	0	39,557	-41,316	-1,759	269	-208	61	-1,698
	A	0	0	0	40,894	-40,878	16	258	-91	168	184
	M	0	0	0	38,681	-37,974	707	263	0	263	970
	J	0	-859	-859	42,911	-40,049	2,862	254	-803	-548	1,455

Table 2
Portfolio Transactions with Non-residents in Canadian Bonds, by Sector and Type of Transaction - Continued

		Federal Government Enterprises									
		New Issues and Retirements			Outstanding Issues			Interest			Total
Period		New Issues	Retirements	Total	Sales	Purchases	Total	Accrued	Paid	Change in interest payable	
V No.	A	113056	113063	113176	113089	113096	113049	113183	113190	113070	113197
	Q	113228	113235	113348	113261	113268	113221	113355	113362	113242	113369
	M	113400	113407	113520	113433	113440	113393	113527	113534	113414	113541
millions of dollars											
1992		2,301	-2,914	-614	486	-315	170	836	-815	21	-422
1993		3,637	-2,331	1,305	275	-330	-55	820	-806	14	1,264
1994		3,046	-2,083	963	743	-670	73	853	-862	-9	1,027
1995		1,840	-561	1,278	781	-737	44	793	-776	17	1,339
1996		2,224	-1,946	278	686	-747	-62	715	-706	9	225
1997		2,711	-1,916	794	2,737	-2,826	-89	789	-751	39	744
1998		3,827	-3,467	360	1,967	-1,811	155	816	-791	25	541
1999		4,735	-3,548	1,186	2,620	-1,822	798	862	-857	5	1,989
2000		4,037	-5,141	-1,104	1,392	-1,235	156	880	-916	-37	-984
2001		5,177	-4,051	1,126	2,157	-1,343	814	798	-809	-11	1,929
2002		13,131	-4,925	8,206	9,737	-6,948	2,790	1,003	-843	160	11,156
2003		11,704	-3,401	8,304	12,277	-10,065	2,212	1,397	-1,185	211	10,728
2002	II	4,129	-2,918	1,210	2,336	-1,399	937	221	-373	-151	1,996
	III	3,143	-541	2,602	2,717	-1,764	953	268	-130	139	3,694
	IV	3,190	-1,364	1,826	2,803	-2,729	74	300	-215	84	1,984
2003	I	2,932	-1,033	1,899	2,555	-1,776	779	317	-278	39	2,718
	II	2,673	-993	1,680	4,218	-1,931	2,287	330	-251	79	4,046
	III	2,932	-481	2,451	3,173	-3,335	-162	373	-378	-5	2,284
	IV	3,168	-893	2,275	2,331	-3,023	-692	377	-279	97	1,680
2004	I	2,401	-83	2,318	5,207	-3,977	1,231	400	-422	-22	3,527
	II	2,903	-1,611	1,292	3,576	-3,129	447	433	-250	183	1,922
2002	J	3,182	-167	3,015	1,660	-660	1,000	74	-132	-58	3,958
	J	487	-80	407	279	-442	-163	86	-39	47	291
	A	819	-34	786	629	-478	151	90	-32	58	994
	S	1,837	-427	1,410	1,809	-844	965	92	-58	34	2,408
	O	547	-13	534	416	-471	-55	100	-38	63	542
	N	147	-442	-295	365	-911	-546	96	-65	31	-809
	D	2,496	-909	1,587	2,022	-1,347	675	103	-113	-9	2,252
2003	J	216	-553	-338	518	-572	-54	107	-26	81	-311
	F	739	-275	463	874	-505	369	97	-43	53	886
	M	1,977	-204	1,773	1,164	-699	465	113	-208	-95	2,143
	A	73	-4	69	404	-671	-267	111	-26	85	-113
	M	250	-885	-634	460	-749	-289	110	-81	29	-895
	J	2,350	-104	2,245	3,354	-511	2,843	109	-143	-35	5,054
	J	448	-152	296	1,149	-530	619	126	-36	89	1,004
	A	386	-267	119	827	-1,890	-1,063	125	-53	72	-871
	S	2,099	-63	2,036	1,197	-915	282	122	-288	-167	2,151
	O	106	0	106	315	-749	-434	128	-59	69	-259
	N	709	-788	-78	248	-921	-673	121	-59	61	-690
	D	2,353	-106	2,247	1,767	-1,353	415	128	-161	-33	2,629
2004	J	37	-7	30	1,192	-701	491	134	-25	109	631
	F	140	-49	92	741	-1,208	-467	126	-53	74	-302
	M	2,224	-27	2,197	3,274	-2,067	1,207	139	-344	-205	3,199
	A	392	-363	29	1,669	-722	946	141	-45	97	1,072
	M	579	-116	464	669	-1,320	-651	148	-38	110	-77
	J	1,931	-1,132	799	1,238	-1,087	152	143	-167	-24	927

Table 2
Portfolio Transactions with Non-residents in Canadian Bonds, by Sector and Type of Transaction - Continued

		Provincial Governments									
		New Issues and Retirements			Outstanding Issues			Interest			Total
Period		New Issues	Retirements	Total	Sales	Purchases	Total	Accrued	Paid	Change in interest payable	
V No.	A	113057	113064	113177	113090	113097	113050	113184	113191	113071	113198
	Q	113229	113236	113349	113262	113269	113222	113356	113363	113243	113370
	M	113401	113408	113521	113434	113441	113394	113528	113535	113415	113542
millions of dollars											
1992		15,067	-4,342	10,725	7,201	-6,069	1,131	5,214	-4,928	286	12,143
1993		21,571	-4,459	17,112	15,413	-15,602	-189	6,536	-5,968	568	17,491
1994		19,941	-5,156	14,785	20,430	-22,040	-1,611	7,751	-7,331	420	13,595
1995		12,165	-4,763	7,402	12,710	-12,970	-260	8,340	-8,223	117	7,260
1996		15,781	-9,991	5,789	10,477	-11,714	-1,237	8,174	-8,212	-37	4,515
1997		10,271	-11,182	-911	11,593	-12,942	-1,349	7,962	-7,968	-6	-2,265
1998		11,219	-11,003	216	15,086	-15,671	-585	7,930	-8,010	-80	-449
1999		6,802	-11,971	-5,169	16,560	-17,278	-718	7,707	-7,772	-64	-5,951
2000		3,846	-12,838	-8,992	15,434	-14,056	1,378	7,183	-7,354	-172	-7,786
2001		11,916	-12,105	-189	10,406	-9,160	1,245	6,887	-6,788	98	1,155
2002		11,968	-11,792	176	11,495	-11,091	404	6,668	-6,806	-139	442
2003		13,653	-12,300	1,353	11,453	-11,731	-277	6,021	-6,105	-83	992
2002	II	1,843	-4,121	-2,279	2,751	-2,298	453	1,659	-1,497	163	-1,663
	III	3,722	-3,620	102	3,222	-3,298	-76	1,657	-1,972	-316	-290
	IV	4,964	-1,799	3,165	2,858	-2,953	-95	1,663	-1,263	400	3,470
2003	I	5,275	-6,475	-1,200	3,175	-2,724	450	1,557	-1,934	-377	-1,127
	II	6,110	-2,414	3,696	3,444	-3,514	-70	1,508	-1,329	179	3,804
	III	1,023	-846	176	2,523	-3,136	-613	1,501	-1,662	-161	-597
	IV	1,246	-2,565	-1,319	2,312	-2,356	-44	1,455	-1,180	275	-1,088
2004	I	707	-1,736	-1,030	2,753	-2,117	637	1,418	-1,697	-279	-672
	II	1,749	-4,903	-3,154	2,277	-2,719	-443	1,426	-1,382	45	-3,552
2002	J	865	-3,520	-2,655	976	-838	138	536	-786	-250	-2,767
	J	2,193	-2,535	-342	661	-821	-161	558	-924	-366	-869
	A	0	-495	-495	973	-699	273	556	-512	45	-177
	S	1,530	-590	940	1,589	-1,778	-189	542	-537	5	756
	O	1,498	-588	909	1,114	-1,009	105	558	-347	211	1,225
	N	1,434	-326	1,107	946	-959	-13	542	-290	252	1,346
	D	2,032	-884	1,148	799	-985	-186	562	-625	-63	899
2003	J	524	-4,712	-4,188	940	-941	-1	554	-916	-362	-4,551
	F	3,333	-1,051	2,282	1,068	-1,179	-111	480	-629	-149	2,022
	M	1,418	-712	705	1,167	-605	562	523	-389	134	1,402
	A	4,101	-1,380	2,721	1,246	-1,088	158	505	-515	-10	2,868
	M	1,341	-206	1,134	1,113	-1,054	58	515	-155	360	1,553
	J	668	-828	-159	1,085	-1,372	-286	488	-659	-171	-616
	J	872	-458	415	922	-1,021	-99	509	-696	-187	129
	A	150	-250	-99	492	-1,147	-655	508	-441	67	-688
	S	0	-139	-139	1,109	-968	141	484	-525	-41	-39
	O	0	-473	-473	886	-925	-39	494	-261	233	-279
	N	1,246	-918	328	875	-798	77	472	-296	177	581
	D	0	-1,174	-1,174	551	-634	-83	489	-624	-134	-1,391
2004	J	500	-1,575	-1,075	686	-747	-61	479	-666	-187	-1,323
	F	207	-1	206	1,023	-735	288	455	-622	-167	326
	M	0	-161	-161	1,044	-635	409	485	-409	75	324
	A	200	-1,435	-1,235	750	-674	77	470	-528	-58	-1,217
	M	1,549	-123	1,426	568	-1,243	-675	491	-208	283	1,035
	J	0	-3,346	-3,346	959	-803	156	466	-646	-180	-3,370

Table 2
Portfolio Transactions with Non-residents in Canadian Bonds, by Sector and Type of Transaction - Continued

Provincial Government Enterprises											
Period	New Issues and Retirements			Outstanding Issues			Interest			Total	
	New Issues	Retirements	Total	Sales	Purchases	Total	Accrued	Paid	Change in interest payable		
											V No.
	Q	113230	113237	113350	113263	113270	113223	113357	113364	113244	113371
	M	113402	113409	113522	113435	113442	113395	113529	113536	113416	113543
millions of dollars											
1992		5,365	-3,835	1,530	7,064	-9,229	-2,165	3,128	-3,077	50	-584
1993		5,149	-3,135	2,013	4,743	-5,990	-1,247	3,064	-2,987	77	844
1994		5,423	-1,567	3,856	4,482	-5,531	-1,049	3,280	-3,163	116	2,923
1995		2,367	-2,515	-148	4,094	-4,891	-796	3,388	-3,371	18	-927
1996		2,000	-2,730	-730	2,584	-3,703	-1,119	3,022	-3,074	-52	-1,901
1997		1,448	-3,668	-2,220	2,811	-3,254	-443	2,904	-2,887	17	-2,646
1998		2,459	-2,354	105	4,685	-5,477	-792	2,887	-2,817	70	-617
1999		137	-4,106	-3,969	4,313	-4,474	-161	2,624	-2,733	-109	-4,239
2000		199	-1,818	-1,619	2,138	-2,099	39	2,398	-2,390	7	-1,572
2001		1,058	-4,075	-3,017	1,606	-1,867	-261	2,191	-2,280	-89	-3,367
2002		0	-2,996	-2,996	943	-988	-44	1,893	-1,926	-33	-3,073
2003		0	-1,479	-1,479	1,143	-1,334	-190	1,577	-1,617	-40	-1,709
2002	II	0	-1,730	-1,730	258	-196	61	475	-472	3	-1,666
	III	0	-375	-375	291	-217	74	460	-526	-66	-366
	IV	0	-63	-63	235	-335	-100	460	-304	156	-8
2003	I	0	-768	-768	370	-399	-28	426	-571	-145	-941
	II	0	-240	-240	316	-206	110	396	-350	46	-83
	III	0	-471	-471	229	-572	-343	388	-445	-57	-871
	IV	0	0	0	228	-158	71	368	-252	116	186
2004	I	0	-62	-62	320	-182	138	367	-485	-118	-42
	II	0	-780	-780	210	-309	-100	371	-321	49	-830
2002	J	0	-737	-737	59	-30	30	152	-159	-8	-715
	J	0	-375	-375	114	-44	71	154	-239	-86	-389
	A	0	0	0	86	-66	21	155	-192	-37	-16
	S	0	0	0	90	-108	-17	151	-95	56	39
	O	0	-5	-5	122	-257	-135	156	-126	30	-110
	N	0	-19	-19	49	-44	5	150	-77	73	60
	D	0	-39	-39	64	-34	30	154	-102	52	43
2003	J	0	0	0	72	-130	-58	153	-217	-65	-123
	F	0	-762	-762	58	-82	-24	131	-186	-55	-841
	M	0	-6	-6	240	-187	54	142	-167	-25	23
	A	0	-187	-187	34	-38	-4	135	-135	0	-191
	M	0	-24	-24	177	-100	77	134	-81	52	106
	J	0	-29	-29	106	-69	37	127	-133	-6	2
	J	0	-280	-280	85	-112	-27	133	-215	-82	-389
	A	0	-59	-59	76	-401	-326	132	-147	-15	-400
	S	0	-132	-132	68	-59	10	123	-83	40	-82
	O	0	0	0	102	-54	49	124	-111	13	62
	N	0	0	0	54	-46	8	120	-63	56	64
	D	0	0	0	72	-58	14	124	-78	46	60
2004	J	0	-1	-1	151	-46	104	123	-175	-52	52
	F	0	0	0	109	-41	69	118	-145	-27	42
	M	0	-61	-61	60	-95	-35	126	-165	-39	-136
	A	0	-92	-92	43	-49	-6	122	-112	11	-87
	M	0	0	0	14	-38	-24	129	-83	46	22
	J	0	-688	-688	153	-223	-70	119	-127	-7	-766

Table 2
Portfolio Transactions with Non-residents in Canadian Bonds, by Sector and Type of Transaction - Continued

Period		Municipalities									Total
		New Issues and Retirements			Outstanding Issues			Interest			
		New Issues	Retirements	Total	Sales	Purchases	Total	Accrued	Paid	Change in interest payable	
V No.	A	113059	113066	113179	113092	113099	113052	113186	113193	113073	113200
	Q	113231	113238	113351	113264	113271	113224	113358	113365	113245	113372
	M	113403	113410	113523	113436	113443	113396	113530	113537	113417	113544
millions of dollars											
1992		972	-839	133	168	-139	30	440	-424	16	179
1993		808	-682	127	325	-166	159	467	-450	17	303
1994		905	-383	522	196	-126	70	499	-484	15	606
1995		413	-850	-437	155	-83	72	483	-510	-27	-392
1996		416	-490	-74	225	-96	129	496	-502	-6	49
1997		209	-512	-303	183	-128	55	475	-509	-34	-282
1998		0	-302	-302	303	-103	200	468	-484	-16	-119
1999		57	-553	-496	149	-127	22	437	-460	-23	-496
2000		66	-587	-521	144	-107	37	412	-422	-10	-494
2001		333	-933	-601	464	-240	224	355	-370	-15	-391
2002		0	-1,054	-1,054	295	-261	34	296	-337	-41	-1,061
2003		425	-998	-573	486	-164	322	226	-260	-33	-284
2002	II	0	-306	-306	102	-56	46	76	-108	-32	-292
	III	0	-135	-135	72	-21	51	73	-54	20	-65
	IV	0	-440	-440	74	-131	-57	67	-82	-15	-512
2003	I	163	-341	-178	249	-47	202	62	-76	-14	10
	II	101	-231	-130	121	-46	75	58	-83	-25	-80
	III	0	-297	-297	62	-49	13	55	-43	12	-273
	IV	161	-129	32	55	-22	32	52	-58	-6	59
2004	I	0	-81	-81	112	-74	38	51	-48	3	-40
	II	0	-327	-327	129	-24	105	48	-78	-30	-252
2002	J	0	-17	-17	42	-8	34	24	-23	1	19
	J	0	-120	-120	24	-4	20	25	-28	-3	-103
	A	0	-1	-1	22	-8	14	25	-11	14	27
	S	0	-15	-15	26	-9	17	24	-15	9	10
	O	0	-333	-333	15	-121	-106	24	-29	-5	-444
	N	0	0	0	47	-7	40	21	-28	-7	32
	D	0	-107	-107	13	-3	9	22	-25	-3	-100
2003	J	0	-4	-4	105	-2	103	21	-20	1	100
	F	163	-51	112	33	-1	32	20	-11	9	153
	M	0	-286	-286	111	-44	67	21	-45	-24	-243
	A	0	-4	-4	26	-3	24	19	-5	14	34
	M	0	-120	-120	35	-10	25	20	-51	-32	-127
	J	101	-106	-6	59	-33	27	19	-27	-8	13
	J	0	-122	-122	20	-34	-14	19	-16	3	-133
	A	0	-1	-1	4	-2	2	18	-13	5	6
	S	0	-174	-174	38	-14	25	18	-14	4	-146
	O	0	0	0	30	-11	19	18	-8	9	28
	N	0	-93	-93	17	-2	14	17	-29	-12	-91
	D	161	-36	126	8	-9	-1	18	-20	-3	122
2004	J	0	-65	-65	2	-24	-22	17	-18	-1	-88
	F	0	-15	-15	55	-21	34	16	-14	2	21
	M	0	-1	-1	55	-29	26	17	-16	1	26
	A	0	0	0	9	-12	-3	17	-5	12	8
	M	0	-327	-327	99	-10	89	16	-42	-26	-264
	J	0	0	0	22	-2	20	15	-31	-17	3

Table 2
Portfolio Transactions with Non-residents in Canadian Bonds, by Sector and Type of Transaction - Continued

		All Governments and their enterprises									
		New Issues and Retirements			Outstanding Issues			Interest			Total
Period		New Issues	Retirements	Total	Sales	Purchases	Total	Accrued	Paid	Change in interest payable	
	V No. A Q M	113204 113376 113548	113205 113377 113549	113203 113375 113547	113207 113379 113551	113208 113380 113552	113206 113378 113550	113210 113382 113554	113211 113383 113555	113209 113381 113553	113202 113374 113546
millions of dollars											
1992		23,705	-17,064	6,641	263,276	-255,622	7,654	15,784	-15,146	638	14,934
1993		31,165	-16,860	14,304	388,330	-376,277	12,053	17,542	-16,579	963	27,320
1994		34,626	-13,044	21,582	535,575	-542,338	-6,763	18,719	-17,699	1,019	15,838
1995		19,888	-12,769	7,119	476,374	-463,975	12,399	19,326	-18,897	428	19,947
1996		25,228	-21,754	3,473	665,539	-658,814	6,725	19,094	-18,989	104	10,303
1997		17,412	-24,363	-6,952	1,027,937	-1,031,092	-3,155	18,965	-18,840	126	-9,981
1998		29,975	-26,348	3,627	823,625	-834,716	-11,092	18,236	-17,925	311	-7,154
1999		16,224	-27,314	-11,089	540,019	-534,195	5,824	17,359	-17,736	-376	-5,642
2000		8,148	-31,741	-23,593	369,459	-366,938	2,521	16,303	-16,873	-570	-21,642
2001		19,132	-32,566	-13,435	354,912	-349,819	5,093	15,189	-15,365	-176	-8,518
2002		25,099	-26,249	-1,149	363,598	-350,464	13,134	14,282	-14,560	-278	11,707
2003		25,783	-30,337	-4,554	545,911	-551,554	-5,643	13,334	-13,490	-156	-10,353
2002	II	5,971	-9,941	-3,970	79,857	-78,950	907	3,508	-3,711	-204	-3,267
	III	6,865	-7,097	-232	111,760	-107,016	4,744	3,558	-3,497	60	4,573
	IV	8,154	-5,206	2,948	94,990	-87,792	7,197	3,652	-3,783	-131	10,015
2003	I	8,369	-11,029	-2,660	119,005	-111,051	7,955	3,506	-3,500	7	5,302
	II	8,883	-6,861	2,022	158,465	-155,855	2,610	3,434	-3,514	-80	4,552
	III	3,955	-6,672	-2,718	144,309	-157,858	-13,549	3,290	-3,270	19	-16,247
	IV	4,575	-5,774	-1,198	124,132	-126,790	-2,659	3,103	-3,205	-102	-3,959
2004	I	3,108	-2,164	944	131,955	-131,893	62	3,049	-2,923	126	1,133
	II	4,653	-8,480	-3,827	128,678	-125,083	3,595	3,054	-2,924	130	-103
2002	J	4,047	-4,476	-429	27,074	-26,682	392	1,138	-2,227	-1,089	-1,126
	J	2,679	-4,376	-1,697	33,418	-31,704	1,713	1,188	-1,559	-371	-355
	A	819	-530	290	41,294	-37,841	3,453	1,202	-815	387	4,130
	S	3,367	-2,192	1,175	37,048	-37,471	-422	1,168	-1,123	45	797
	O	2,045	-940	1,105	37,643	-32,338	5,305	1,222	-586	636	7,046
	N	1,581	-787	794	35,343	-33,675	1,667	1,196	-907	289	2,750
	D	4,528	-3,479	1,050	22,004	-21,779	225	1,234	-2,290	-1,056	219
2003	J	739	-5,269	-4,529	33,795	-33,181	614	1,227	-1,189	38	-3,878
	F	4,235	-4,552	-317	37,834	-32,120	5,714	1,086	-1,072	14	5,410
	M	3,395	-1,208	2,187	47,376	-45,749	1,627	1,194	-1,238	-45	3,769
	A	4,174	-1,576	2,598	42,988	-41,664	1,324	1,153	-773	380	4,302
	M	1,591	-1,235	356	56,392	-54,701	1,691	1,178	-369	810	2,857
	J	3,118	-4,050	-932	59,085	-59,491	-406	1,103	-2,372	-1,270	-2,607
	J	1,320	-1,256	64	55,745	-61,588	-5,843	1,143	-1,244	-102	-5,880
	A	536	-1,326	-790	39,750	-47,554	-7,804	1,112	-713	399	-8,196
	S	2,099	-4,090	-1,992	48,814	-48,716	98	1,035	-1,313	-278	-2,171
	O	106	-477	-371	46,519	-48,530	-2,010	1,054	-485	570	-1,812
	N	1,955	-2,064	-109	37,603	-36,270	1,334	1,011	-825	186	1,411
	D	2,514	-3,233	-718	40,009	-41,991	-1,983	1,038	-1,895	-857	-3,558
2004	J	537	-1,647	-1,110	47,954	-43,241	4,712	1,034	-892	142	3,744
	F	347	-267	80	40,012	-44,509	-4,498	979	-889	91	-4,327
	M	2,224	-250	1,974	43,990	-44,142	-152	1,036	-1,143	-106	1,715
	A	592	-1,890	-1,297	43,364	-42,335	1,029	1,008	-780	229	-39
	M	2,129	-565	1,563	40,031	-40,585	-554	1,048	-371	677	1,686
	J	1,931	-6,025	-4,094	45,283	-42,163	3,119	997	-1,773	-776	-1,750

Table 2
Portfolio Transactions with Non-residents in Canadian Bonds, by Sector and Type of Transaction - Continued

		Corporations									
		New Issues and Retirements			Outstanding Issues			Interest			Total
Period		New Issues	Retirements	Total	Sales	Purchases	Total	Accrued	Paid	Change in interest payable	
		V No.	A	113060	113067	113180	113093	113100	113053	113187	
	Q	113232	113239	113352	113265	113272	113225	113359	113366	113246	113373
	M	113404	113411	113524	113437	113444	113397	113531	113538	113418	113545
millions of dollars											
1992		9,921	-7,374	2,546	4,731	-3,401	1,330	4,678	-4,723	-44	3,832
1993		12,966	-10,463	2,503	8,531	-6,815	1,717	5,088	-5,181	-93	4,126
1994		8,637	-9,360	-722	7,548	-6,696	853	5,527	-5,501	26	156
1995		18,112	-7,451	10,660	5,137	-5,391	-254	6,332	-5,955	377	10,783
1996		18,368	-11,066	7,303	6,209	-6,012	198	6,819	-6,670	149	7,650
1997		21,484	-7,272	14,212	9,646	-8,066	1,580	7,538	-7,182	356	16,147
1998		25,633	-10,743	14,890	9,205	-7,057	2,148	9,175	-8,722	453	17,491
1999		17,739	-11,683	6,056	14,222	-12,444	1,778	10,062	-9,652	410	8,243
2000		12,821	-14,366	-1,545	24,938	-23,609	1,330	9,829	-9,429	400	184
2001		63,397	-17,949	45,448	23,827	-20,058	3,769	10,911	-9,877	1,034	50,250
2002		26,002	-20,343	5,659	22,376	-21,535	841	12,941	-12,464	477	6,977
2003		31,198	-18,857	12,341	18,417	-14,072	4,344	12,020	-11,353	667	17,353
2002	II	10,294	-4,476	5,819	6,116	-5,684	432	3,225	-3,313	-89	6,162
	III	5,403	-5,364	39	6,290	-5,916	374	3,303	-2,633	670	1,083
	IV	3,911	-9,118	-5,207	4,845	-5,377	-532	3,258	-3,900	-642	-6,380
2003	I	5,328	-2,730	2,598	4,274	-3,618	656	3,097	-2,522	575	3,829
	II	8,850	-8,150	700	6,246	-5,129	1,117	2,937	-3,144	-207	1,610
	III	4,980	-3,065	1,915	4,252	-2,771	1,481	3,011	-2,400	611	4,007
	IV	12,039	-4,911	7,128	3,644	-2,553	1,091	2,974	-3,287	-312	7,907
2004	I	4,484	-4,740	-256	3,587	-3,070	517	2,968	-2,322	647	907
	II	5,584	-3,686	1,897	2,833	-1,985	848	3,060	-3,374	-314	2,432
2002	J	3,163	-2,942	221	1,560	-1,478	82	1,062	-1,368	-305	-2
	J	1,750	-1,689	61	1,873	-1,967	-94	1,108	-774	334	301
	A	102	-1,455	-1,353	1,839	-1,859	-21	1,114	-968	146	-1,228
	S	3,551	-2,220	1,331	2,578	-2,090	488	1,081	-892	190	2,009
	O	830	-2,386	-1,556	1,261	-2,144	-883	1,111	-1,046	65	-2,375
	N	626	-2,547	-1,921	1,700	-1,395	305	1,065	-1,232	-167	-1,784
	D	2,455	-4,184	-1,729	1,884	-1,837	47	1,083	-1,622	-539	-2,222
2003	J	202	-791	-590	1,898	-1,059	839	1,078	-668	410	659
	F	1,187	-1,078	109	986	-1,446	-461	961	-963	-2	-354
	M	3,939	-860	3,079	1,390	-1,113	278	1,059	-891	167	3,524
	A	931	-2,388	-1,457	1,912	-1,469	443	998	-881	117	-898
	M	2,538	-2,472	66	2,554	-2,355	199	991	-1,024	-34	230
	J	5,381	-3,290	2,092	1,781	-1,305	475	948	-1,238	-290	2,277
	J	2,141	-930	1,211	1,631	-1,250	380	1,013	-698	315	1,907
	A	1,469	-1,323	146	887	-673	214	1,025	-856	169	529
	S	1,370	-813	557	1,735	-848	887	974	-846	127	1,572
	O	3,688	-1,632	2,056	1,502	-709	794	992	-869	123	2,973
	N	3,442	-1,081	2,361	1,183	-765	418	966	-958	8	2,786
	D	4,909	-2,198	2,711	959	-1,079	-120	1,017	-1,460	-444	2,147
2004	J	1,026	-957	69	1,449	-1,174	275	995	-536	459	803
	F	1,854	-1,452	402	935	-778	157	957	-906	51	610
	M	1,604	-2,331	-727	1,203	-1,118	85	1,017	-880	137	-506
	A	1,793	-1,298	495	1,242	-930	312	993	-864	130	936
	M	825	-899	-75	678	-492	185	1,052	-1,118	-66	45
	J	2,966	-1,489	1,477	913	-562	351	1,014	-1,392	-377	1,451

Table 2
Portfolio Transactions with Non-residents in Canadian Bonds, by Sector and Type of Transaction - Concluded

		Total, All sectors									
		New Issues and Retirements			Outstanding Issues			Interest			Total
Period		New Issues	Retirements	Total	Sales	Purchases	Total	Accrued	Paid	Change in interest payable	
	V No.	A	113054	113061	113174	113087	113094	113047	113181	113188	113068
	Q	113226	113233	113346	113259	113266	113219	113353	113360	113240	113367
	M	113398	113405	113518	113431	113438	113391	113525	113532	113412	113539
millions of dollars											
1992		33,626	-24,439	9,187	268,007	-259,023	8,984	20,462	-19,868	594	18,766
1993		44,130	-27,323	16,807	396,861	-383,091	13,770	22,630	-21,760	870	31,446
1994		43,263	-22,403	20,860	543,123	-549,033	-5,910	24,246	-23,200	1,045	15,995
1995		38,000	-20,220	17,780	481,511	-469,366	12,145	25,657	-24,852	805	30,730
1996		43,596	-32,820	10,776	671,749	-664,826	6,923	25,913	-25,659	254	17,953
1997		38,895	-31,635	7,260	1,037,583	-1,039,159	-1,576	26,503	-26,021	482	6,166
1998		55,608	-37,092	18,517	832,829	-841,773	-8,944	27,411	-26,646	765	10,337
1999		33,963	-38,997	-5,034	554,241	-546,639	7,602	27,421	-27,388	33	2,602
2000		20,969	-46,107	-25,139	394,398	-390,547	3,851	26,132	-26,302	-170	-21,458
2001		82,529	-50,516	32,013	378,739	-369,877	8,862	26,100	-25,242	858	41,733
2002		51,101	-46,592	4,510	385,975	-372,000	13,975	27,223	-27,024	199	18,684
2003		56,980	-49,193	7,787	564,328	-565,627	-1,299	25,354	-24,842	511	7,000
2002	II	16,266	-14,417	1,849	85,973	-84,634	1,339	6,732	-7,025	-293	2,895
	III	12,269	-12,461	-193	118,050	-112,933	5,118	6,861	-6,131	730	5,655
	IV	12,065	-14,324	-2,258	99,835	-93,169	6,666	6,910	-7,683	-773	3,635
2003	I	13,698	-13,759	-61	123,280	-114,669	8,610	6,604	-6,022	582	9,131
	II	17,733	-15,012	2,722	164,711	-160,985	3,726	6,371	-6,658	-287	6,161
	III	8,935	-9,738	-803	148,561	-160,629	-12,068	6,301	-5,670	631	-12,240
	IV	16,615	-10,685	5,930	127,776	-129,344	-1,568	6,078	-6,492	-414	3,947
2004	I	7,592	-6,904	688	135,542	-134,963	579	6,018	-5,245	773	2,040
	II	10,236	-12,166	-1,930	131,511	-127,068	4,443	6,114	-6,298	-184	2,329
2002	J	7,210	-7,418	-208	28,633	-28,160	474	2,201	-3,595	-1,394	-1,128
	J	4,429	-6,065	-1,636	35,291	-33,671	1,620	2,296	-2,333	-37	-53
	A	921	-1,985	-1,063	43,133	-39,700	3,433	2,315	-1,782	533	2,902
	S	6,918	-4,412	2,506	39,626	-39,561	65	2,250	-2,015	235	2,806
	O	2,875	-3,326	-451	38,904	-34,482	4,422	2,333	-1,632	701	4,672
	N	2,207	-3,335	-1,128	37,043	-35,071	1,972	2,260	-2,139	122	966
	D	6,983	-7,663	-680	23,888	-23,616	272	2,317	-3,912	-1,595	-2,003
2003	J	941	-6,060	-5,119	35,693	-34,241	1,453	2,305	-1,858	448	-3,219
	F	5,422	-5,631	-208	38,819	-33,566	5,253	2,046	-2,035	12	5,056
	M	7,334	-2,068	5,266	48,767	-46,862	1,905	2,252	-2,130	122	7,293
	A	5,105	-3,964	1,140	44,900	-43,133	1,767	2,151	-1,654	497	3,404
	M	4,129	-3,707	422	58,945	-57,056	1,890	2,169	-1,393	776	3,087
	J	8,500	-7,340	1,160	60,866	-60,796	70	2,051	-3,611	-1,560	-330
	J	3,461	-2,186	1,276	57,376	-62,838	-5,462	2,156	-1,942	213	-3,974
	A	2,005	-2,649	-644	40,637	-48,227	-7,591	2,137	-1,569	568	-7,667
	S	3,468	-4,903	-1,434	50,549	-49,564	985	2,008	-2,159	-151	-600
	O	3,794	-2,109	1,685	48,022	-49,238	-1,217	2,046	-1,354	693	1,162
	N	5,397	-3,145	2,252	38,786	-37,035	1,751	1,977	-1,783	194	4,197
	D	7,423	-5,431	1,992	40,968	-43,070	-2,103	2,054	-3,355	-1,301	-1,411
2004	J	1,563	-2,604	-1,040	49,402	-44,415	4,987	2,028	-1,427	601	4,547
	F	2,201	-1,719	482	40,947	-45,287	-4,341	1,936	-1,794	142	-3,717
	M	3,828	-2,581	1,246	45,193	-45,261	-67	2,053	-2,023	31	1,210
	A	2,385	-3,188	-803	44,607	-43,266	1,341	2,002	-1,644	358	896
	M	2,954	-1,465	1,489	40,708	-41,077	-369	2,100	-1,489	611	1,731
	J	4,897	-7,514	-2,616	46,196	-42,725	3,470	2,012	-3,164	-1,153	-299

Table 3
Portfolio Transactions with Non-residents in Canadian Bonds, by Geographical Area and Type of Transaction

		United States									
		New Issues and Retirements			Outstanding Issues			Interest			Total
Period		New Issues	Retirements	Total	Sales	Purchases	Total	Accrued	Paid	Change in interest payable	
V No.	A	115098	115099	115097	115101	115102	115100	115104	115105	115103	115096
	Q	115247	115248	115246	115250	115251	115249	115253	115254	115252	115245
	M	115396	115397	115395	115399	115400	115398	115402	115403	115401	115394
millions of dollars											
1992		15,883	-7,417	8,466	99,692	-93,220	6,472	7,341	-7,062	279	15,217
1993		22,310	-9,495	12,815	192,239	-182,689	9,550	9,024	-8,492	532	22,897
1994		13,863	-7,417	6,446	265,974	-264,341	1,633	10,622	-10,152	470	8,549
1995		20,052	-7,760	12,292	199,489	-193,467	6,023	11,557	-10,981	576	18,891
1996		25,276	-9,201	16,075	331,764	-330,277	1,487	12,418	-11,837	581	18,143
1997		19,546	-11,136	8,409	639,823	-641,411	-1,588	13,408	-12,979	429	7,251
1998		27,415	-11,203	16,213	560,602	-572,610	-12,008	14,221	-13,612	609	4,813
1999		18,531	-14,309	4,222	324,168	-321,879	2,288	14,791	-14,830	-39	6,472
2000		11,141	-17,014	-5,873	230,619	-233,803	-3,184	14,398	-14,422	-24	-9,081
2001		62,221	-21,957	40,264	208,059	-206,728	1,330	15,726	-14,847	880	42,474
2002		32,086	-22,296	9,790	241,177	-229,377	11,799	17,410	-17,137	274	21,862
2003		30,724	-20,520	10,204	333,398	-341,576	-8,178	15,945	-15,434	511	2,536
2002	II	8,345	-4,856	3,489	55,813	-52,146	3,667	4,321	-4,249	72	7,228
	III	8,525	-7,795	730	77,747	-71,313	6,433	4,400	-4,074	326	7,489
	IV	7,303	-7,457	-154	57,749	-58,440	-690	4,414	-4,668	-254	-1,099
2003	I	7,529	-4,187	3,341	70,525	-68,066	2,459	4,202	-3,892	310	6,111
	II	7,861	-7,329	532	93,408	-93,698	-290	4,005	-4,109	-105	137
	III	3,192	-3,923	-731	91,329	-100,267	-8,937	3,952	-3,631	320	-9,348
	IV	12,142	-5,080	7,062	78,135	-79,545	-1,410	3,786	-3,801	-15	5,636
2004	I	4,386	-3,802	585	86,539	-84,345	2,194	3,797	-3,348	449	3,228
	II	6,866	-3,974	2,892	83,996	-83,348	648	3,905	-3,972	-67	3,473
2002	J	4,682	-3,483	1,199	17,859	-17,491	369	1,412	-1,938	-526	1,041
	J	2,562	-4,389	-1,827	24,517	-20,096	4,420	1,472	-1,442	30	2,623
	A	729	-954	-225	28,944	-27,794	1,150	1,486	-1,444	42	966
	S	5,233	-2,452	2,782	24,286	-23,423	863	1,442	-1,187	255	3,900
	O	2,249	-2,663	-415	22,276	-22,697	-421	1,494	-1,251	244	-592
	N	1,392	-1,752	-360	20,902	-20,672	229	1,441	-1,318	123	-7
	D	3,662	-3,042	620	14,572	-15,070	-498	1,478	-2,099	-621	-499
2003	J	77	-1,994	-1,917	21,187	-20,893	294	1,466	-1,336	130	-1,494
	F	2,380	-1,458	922	24,202	-19,275	4,927	1,302	-1,383	-81	5,767
	M	5,072	-735	4,337	25,137	-27,899	-2,762	1,435	-1,173	262	1,837
	A	1,674	-2,115	-441	24,121	-22,388	1,734	1,363	-1,187	177	1,470
	M	2,093	-1,643	450	30,336	-32,000	-1,665	1,357	-921	436	-779
	J	4,094	-3,571	522	38,951	-39,310	-359	1,284	-2,001	-717	-554
	J	801	-1,322	-521	36,421	-39,988	-3,567	1,351	-1,205	146	-3,943
	A	1,460	-941	519	25,933	-30,781	-4,848	1,343	-1,283	60	-4,268
	S	931	-1,660	-729	28,976	-29,498	-522	1,258	-1,143	115	-1,136
	O	3,555	-1,968	1,587	28,539	-29,552	-1,012	1,268	-1,006	262	836
	N	4,225	-898	3,327	25,002	-24,043	960	1,231	-1,046	185	4,472
	D	4,362	-2,214	2,148	24,593	-25,951	-1,358	1,287	-1,749	-462	328
2004	J	842	-791	51	31,553	-26,870	4,683	1,271	-1,037	234	4,969
	F	1,495	-1,022	473	27,126	-29,176	-2,050	1,225	-1,238	-13	-1,590
	M	2,049	-1,989	60	27,860	-28,299	-439	1,301	-1,073	228	-151
	A	1,793	-891	902	27,541	-28,033	-493	1,271	-1,139	133	542
	M	1,714	-410	1,304	29,003	-28,722	281	1,344	-1,022	322	1,907
	J	3,359	-2,673	686	27,452	-26,593	859	1,290	-1,811	-522	1,023

Table 3
Portfolio Transactions with Non-residents in Canadian Bonds, by Geographical Area and Type of Transaction - Continued

		United Kingdom									
		New Issues and Retirements			Outstanding Issues			Interest			Total
Period		New Issues	Retirements	Total	Sales	Purchases	Total	Accrued	Paid	Change in interest payable	
V No.	A	115108	115109	115107	115111	115112	115110	115114	115115	115113	115106
	Q	115257	115258	115256	115260	115261	115259	115263	115264	115262	115255
	M	115406	115407	115405	115409	115410	115408	115412	115413	115411	115404
millions of dollars											
1992		2,562	-2,167	396	108,832	-110,933	-2,102	1,732	-2,006	-274	-1,981
1993		4,708	-3,308	1,400	123,231	-114,821	8,410	1,892	-2,427	-535	9,275
1994		4,503	-2,146	2,357	213,480	-216,424	-2,944	1,997	-2,370	-373	-960
1995		1,289	-1,672	-382	232,868	-226,881	5,987	2,186	-2,752	-566	5,039
1996		6,795	-3,710	3,086	263,999	-263,387	612	2,225	-2,814	-588	3,110
1997		9,774	-3,191	6,583	280,334	-279,522	812	2,342	-2,972	-630	6,765
1998		13,134	-7,372	5,762	193,081	-191,256	1,825	2,222	-2,825	-603	6,984
1999		10,418	-4,002	6,416	187,887	-186,554	1,333	2,226	-2,796	-570	7,179
2000		7,650	-8,827	-1,177	121,463	-116,317	5,146	2,341	-2,845	-503	3,466
2001		10,004	-9,119	885	128,053	-123,342	4,711	2,276	-3,021	-744	4,851
2002		12,815	-5,731	7,084	96,401	-97,749	-1,348	2,407	-2,947	-540	5,196
2003		14,959	-8,485	6,474	168,639	-169,061	-421	2,557	-3,036	-480	5,573
2002	II	5,945	-1,832	4,113	20,912	-21,912	-1,000	574	-686	-111	3,001
	III	2,669	-1,316	1,353	24,900	-28,586	-3,686	619	-543	76	-2,256
	IV	3,002	-2,175	827	27,493	-23,833	3,660	639	-1,102	-463	4,025
2003	I	3,854	-1,259	2,595	37,207	-33,325	3,882	658	-649	9	6,486
	II	5,996	-2,612	3,384	50,410	-53,113	-2,703	657	-750	-93	588
	III	3,663	-2,572	1,090	42,531	-43,834	-1,303	632	-580	51	-161
	IV	1,446	-2,041	-595	38,490	-38,788	-298	610	-1,057	-447	-1,341
2004	I	1,529	-950	579	32,052	-32,874	-821	601	-667	-66	-309
	II	2,603	-2,908	-305	31,596	-30,979	616	611	-698	-87	224
2002	J	1,554	-472	1,082	7,654	-6,922	733	194	-432	-238	1,576
	J	1,480	-599	881	6,548	-8,753	-2,205	207	-165	42	-1,281
	A	177	-80	97	8,366	-8,306	60	209	-84	125	282
	S	1,013	-637	376	9,986	-11,527	-1,542	203	-293	-91	-1,257
	O	610	-44	567	10,962	-8,632	2,330	213	-113	100	2,997
	N	603	-483	120	11,233	-9,127	2,106	211	-304	-93	2,133
	D	1,789	-1,648	140	5,298	-6,074	-776	215	-685	-470	-1,105
2003	J	640	-511	129	11,076	-9,759	1,316	219	-86	134	1,579
	F	2,647	-459	2,189	10,174	-10,222	-48	207	-214	-8	2,133
	M	567	-290	277	15,958	-13,343	2,614	232	-349	-117	2,775
	A	2,979	-238	2,742	16,383	-16,799	-416	227	-128	99	2,424
	M	1,055	-384	672	19,593	-20,053	-460	226	-151	75	287
	J	1,961	-1,991	-29	14,434	-16,260	-1,826	204	-471	-268	-2,123
	J	2,293	-174	2,119	15,916	-16,225	-309	218	-135	84	1,894
	A	546	-309	236	10,085	-12,156	-2,071	216	-81	135	-1,700
	S	824	-2,089	-1,265	16,531	-15,454	1,077	198	-365	-167	-355
	O	205	-97	108	16,379	-16,148	231	208	-132	75	415
	N	357	-1,019	-662	9,677	-9,168	509	199	-285	-86	-239
	D	884	-925	-42	12,434	-13,472	-1,038	203	-640	-437	-1,516
2004	J	639	-316	323	11,379	-10,943	436	201	-89	111	871
	F	499	-321	178	9,595	-11,452	-1,857	194	-295	-101	-1,780
	M	391	-312	78	11,078	-10,479	599	206	-283	-77	600
	A	592	-634	-41	12,389	-11,430	960	201	-141	61	979
	M	966	-429	538	7,569	-8,530	-961	212	-175	37	-386
	J	1,044	-1,845	-801	11,637	-11,019	618	198	-383	-185	-369

Table 3
Portfolio Transactions with Non-residents in Canadian Bonds, by Geographical Area and Type of Transaction - Continued

Period		Other EU Countries									Total
		New Issues and Retirements			Outstanding Issues			Interest			
		New Issues	Retirements	Total	Sales	Purchases	Total	Accrued	Paid	Change in interest payable	
V No.	A	115118	115119	115117	115121	115122	115120	115124	115125	115123	115116
	Q	115267	115268	115266	115270	115271	115269	115273	115274	115272	115265
	M	115416	115417	115415	115419	115420	115418	115422	115423	115421	115414
millions of dollars											
1992		5,898	-5,012	886	15,980	-15,378	602	2,925	-3,079	-154	1,334
1993		5,961	-4,588	1,372	18,122	-17,871	251	3,251	-3,157	94	1,717
1994		8,646	-4,721	3,925	18,977	-19,364	-387	3,587	-3,227	360	3,899
1995		5,413	-3,402	2,011	12,108	-13,423	-1,316	3,801	-3,537	264	959
1996		4,554	-6,629	-2,075	18,209	-17,214	995	3,603	-3,478	125	-954
1997		3,411	-5,535	-2,124	24,641	-24,633	8	3,389	-3,170	219	-1,896
1998		8,557	-4,447	4,110	33,290	-34,064	-774	3,660	-3,301	358	3,694
1999		1,724	-5,965	-4,241	19,918	-18,414	1,504	3,641	-3,385	256	-2,481
2000		183	-7,252	-7,068	17,469	-15,235	2,233	3,253	-3,183	70	-4,765
2001		7,111	-5,988	1,123	17,057	-16,482	575	2,991	-2,408	583	2,281
2002		3,931	-7,105	-3,174	19,533	-17,468	2,066	3,005	-2,797	208	-900
2003		7,110	-7,391	-281	21,726	-22,864	-1,138	2,837	-2,630	207	-1,212
2002	II	1,509	-2,557	-1,048	3,789	-3,456	334	736	-865	-129	-843
	III	630	-1,209	-579	6,442	-4,957	1,485	768	-657	111	1,017
	IV	652	-2,314	-1,662	5,511	-4,727	784	773	-729	44	-833
2003	I	945	-3,193	-2,247	6,636	-5,418	1,218	726	-631	96	-934
	II	2,751	-1,873	878	5,341	-5,280	60	714	-811	-98	841
	III	1,232	-665	567	5,412	-7,776	-2,364	700	-621	80	-1,717
	IV	2,182	-1,661	521	4,337	-4,390	-53	696	-567	130	598
2004	I	989	-1,546	-556	7,227	-7,356	-129	685	-526	158	-527
	II	349	-2,118	-1,769	5,303	-4,749	554	667	-794	-127	-1,342
2002	J	702	-959	-257	1,116	-946	170	243	-426	-183	-269
	J	216	-401	-185	1,761	-2,103	-342	256	-391	-135	-662
	A	0	-370	-370	2,489	-945	1,544	259	-76	183	1,356
	S	414	-437	-24	2,192	-1,909	283	254	-190	63	323
	O	16	-161	-145	1,641	-659	982	263	-103	159	996
	N	59	-806	-747	1,953	-2,656	-703	253	-261	-8	-1,458
	D	577	-1,347	-770	1,918	-1,412	506	257	-364	-107	-371
2003	J	0	-915	-915	1,165	-1,454	-289	258	-233	25	-1,179
	F	0	-1,705	-1,705	1,703	-1,784	-81	224	-174	50	-1,737
	M	945	-572	373	3,768	-2,180	1,588	245	-224	21	1,982
	A	175	-437	-262	1,116	-1,633	-517	235	-202	34	-745
	M	740	-803	-62	2,292	-1,949	343	245	-199	46	327
	J	1,836	-634	1,202	1,932	-1,698	235	234	-411	-177	1,259
	J	0	-159	-159	1,600	-3,587	-1,987	241	-356	-116	-2,261
	A	0	-251	-251	1,531	-2,431	-901	234	-49	185	-967
	S	1,232	-255	977	2,282	-1,758	524	226	-215	11	1,511
	O	0	-2	-2	1,177	-1,580	-403	235	-86	149	-256
	N	429	-741	-312	2,040	-1,697	343	224	-224	1	31
	D	1,753	-918	835	1,120	-1,112	8	237	-257	-20	823
2004	J	82	-1,324	-1,243	3,648	-3,573	75	235	-183	52	-1,116
	F	0	-166	-166	1,045	-1,321	-276	219	-97	122	-320
	M	908	-55	852	2,534	-2,461	72	231	-247	-16	909
	A	0	-1,168	-1,168	1,024	-1,115	-90	222	-237	-15	-1,273
	M	137	-281	-144	1,839	-1,775	64	227	-196	31	-48
	J	213	-670	-457	2,439	-1,860	579	218	-361	-142	-20

Table 3
Portfolio Transactions with Non-residents in Canadian Bonds, by Geographical Area and Type of Transaction - Continued

		Japan									
		New Issues and Retirements			Outstanding Issues			Interest			Total
Period		New Issues	Retirements	Total	Sales	Purchases	Total	Accrued	Paid	Change in interest payable	
V No.	A	115128	115129	115127	115131	115132	115130	115134	115135	115133	115126
	Q	115277	115278	115276	115280	115281	115279	115283	115284	115282	115275
	M	115426	115427	115425	115429	115430	115428	115432	115433	115431	115424
millions of dollars											
1992		4,288	-3,568	721	22,027	-19,864	2,163	4,425	-3,528	897	3,781
1993		3,752	-3,331	421	16,731	-22,455	-5,724	4,377	-3,421	956	-4,347
1994		6,225	-2,071	4,154	5,633	-11,378	-5,745	3,539	-2,908	631	-960
1995		4,697	-2,857	1,840	6,967	-8,368	-1,401	3,350	-2,899	451	890
1996		5,707	-4,326	1,381	21,013	-19,116	1,897	3,060	-2,674	387	3,665
1997		4,632	-4,546	86	26,753	-29,232	-2,480	3,091	-2,584	507	-1,887
1998		1,632	-5,387	-3,754	7,873	-10,283	-2,411	2,854	-2,408	446	-5,719
1999		1,765	-6,671	-4,906	7,064	-5,526	1,538	2,645	-2,267	378	-2,990
2000		959	-5,353	-4,394	6,624	-6,613	11	2,431	-2,098	333	-4,050
2001		2,568	-5,015	-2,447	8,110	-6,818	1,291	2,115	-1,774	341	-815
2002		118	-4,040	-3,922	9,480	-10,080	-600	1,798	-1,382	416	-4,106
2003		235	-3,455	-3,219	17,960	-13,546	4,414	1,705	-1,287	418	1,613
2002	II	0	-2,011	-2,011	1,530	-2,584	-1,054	452	-439	13	-3,052
	III	118	-952	-834	2,470	-2,527	-57	430	-265	165	-726
	IV	0	-597	-597	4,158	-2,580	1,577	443	-407	36	1,017
2003	I	0	-1,707	-1,707	3,074	-3,606	-532	414	-267	146	-2,092
	II	0	-797	-797	8,273	-3,450	4,823	415	-362	53	4,079
	III	58	-573	-515	3,809	-3,712	97	443	-276	167	-250
	IV	177	-378	-201	2,803	-2,778	25	433	-382	52	-124
2004	I	0	-195	-195	1,908	-3,487	-1,579	403	-233	170	-1,603
	II	34	-766	-732	2,675	-2,116	559	387	-312	75	-98
2002	J	0	-1,249	-1,249	550	-948	-398	144	-325	-181	-1,828
	J	118	-218	-100	559	-1,350	-791	145	-77	69	-823
	A	0	-329	-329	628	-431	196	144	-72	72	-61
	S	0	-404	-404	1,283	-745	538	140	-117	24	157
	O	0	-16	-16	1,981	-765	1,216	148	-39	109	1,309
	N	0	-163	-163	1,193	-1,313	-121	145	-79	66	-217
	D	0	-418	-418	984	-503	482	149	-288	-139	-75
2003	J	0	-1,207	-1,207	894	-952	-59	148	-73	75	-1,191
	F	0	-345	-345	715	-1,280	-564	128	-53	75	-834
	M	0	-155	-155	1,466	-1,374	91	138	-141	-4	-67
	A	0	-355	-355	2,051	-1,058	993	132	-36	95	733
	M	0	-209	-209	4,014	-1,143	2,871	142	-26	116	2,777
	J	0	-233	-233	2,208	-1,249	960	142	-299	-158	569
	J	58	-29	29	1,392	-1,270	122	149	-34	115	266
	A	0	-175	-175	1,793	-1,039	754	150	-60	91	670
	S	0	-369	-369	624	-1,402	-779	144	-182	-38	-1,186
	O	0	0	0	732	-900	-167	147	-27	120	-48
	N	177	-36	141	768	-652	116	142	-63	78	335
	D	0	-342	-342	1,303	-1,226	77	145	-292	-146	-411
2004	J	0	0	0	421	-775	-354	142	-40	102	-253
	F	0	-39	-39	639	-1,068	-429	128	-35	93	-374
	M	0	-156	-156	849	-1,644	-796	133	-158	-25	-977
	A	0	-27	-27	867	-489	378	128	-28	100	452
	M	34	-123	-89	473	-671	-198	132	-15	117	-169
	J	0	-616	-616	1,334	-956	378	127	-270	-143	-381

Table 3
Portfolio Transactions with Non-residents in Canadian Bonds, by Geographical Area and Type of Transaction - Continued

Period		Other OECD Countries									
		New Issues and Retirements			Outstanding Issues			Interest			Total
		New Issues	Retirements	Total	Sales	Purchases	Total	Accrued	Paid	Change in interest payable	
V No.	A	115138	115139	115137	115141	115142	115140	115144	115145	115143	115136
	Q	115287	115288	115286	115290	115291	115289	115293	115294	115292	115285
	M	115436	115437	115435	115439	115440	115438	115442	115443	115441	115434
millions of dollars											
1992		3,658	-4,914	-1,256	1,718	-1,854	-136	2,624	-2,868	-244	-1,636
1993		4,840	-5,428	-588	3,090	-2,149	941	2,534	-2,785	-251	102
1994		4,454	-4,986	-532	3,091	-2,040	1,051	2,671	-2,826	-155	364
1995		3,786	-3,019	768	3,684	-3,491	194	2,760	-2,850	-90	871
1996		1,042	-6,087	-5,045	5,165	-4,955	210	2,504	-2,769	-265	-5,100
1997		1,322	-4,786	-3,464	5,253	-5,164	89	2,200	-2,308	-108	-3,483
1998		3,229	-5,120	-1,891	7,875	-6,242	1,633	2,140	-2,235	-95	-353
1999		1,024	-4,174	-3,151	3,514	-3,239	275	1,993	-2,125	-132	-3,008
2000		132	-3,918	-3,786	5,853	-6,109	-256	1,814	-1,982	-169	-4,210
2001		575	-5,210	-4,635	8,158	-7,452	705	1,416	-1,656	-240	-4,169
2002		1,502	-5,059	-3,557	8,800	-8,397	404	1,190	-1,400	-210	-3,363
2003		2,450	-5,835	-3,385	11,524	-11,808	-284	976	-1,137	-162	-3,831
2002	II	267	-2,071	-1,804	1,558	-1,780	-222	299	-398	-100	-2,126
	III	138	-774	-636	3,184	-2,567	617	292	-297	-5	-24
	IV	949	-1,322	-373	2,208	-1,927	281	288	-419	-131	-224
2003	I	844	-1,984	-1,140	3,374	-3,001	373	264	-274	-10	-777
	II	607	-1,410	-803	3,783	-3,332	451	250	-281	-31	-383
	III	594	-1,691	-1,097	2,209	-3,204	-995	239	-257	-18	-2,111
	IV	405	-749	-344	2,158	-2,272	-114	223	-325	-102	-560
2004	I	509	-299	210	1,473	-1,609	-136	218	-208	10	83
	II	68	-1,602	-1,534	2,999	-2,921	78	218	-214	4	-1,451
2002	J	234	-814	-579	444	-896	-452	95	-202	-108	-1,139
	J	0	-306	-306	878	-406	471	98	-129	-31	134
	A	0	-168	-168	1,420	-1,117	303	99	-53	45	181
	S	138	-300	-162	886	-1,044	-158	95	-115	-20	-340
	O	0	-394	-394	1,030	-964	66	97	-84	13	-315
	N	118	-70	48	777	-622	155	94	-116	-22	181
	D	831	-858	-27	401	-341	60	97	-219	-122	-89
2003	J	224	-1,225	-1,001	830	-840	-10	95	-86	9	-1,001
	F	0	-658	-658	1,380	-755	624	80	-103	-23	-56
	M	620	-102	518	1,165	-1,405	-241	88	-85	4	281
	A	58	-650	-591	857	-868	-11	83	-64	19	-583
	M	240	-480	-240	1,415	-1,141	275	86	-52	34	69
	J	309	-281	28	1,510	-1,323	187	81	-166	-85	130
	J	309	-463	-155	836	-1,128	-293	84	-91	-7	-454
	A	0	-891	-891	499	-1,109	-611	80	-44	36	-1,465
	S	286	-338	-52	875	-966	-92	74	-122	-48	-191
	O	0	-4	-4	687	-782	-95	76	-59	17	-82
	N	143	-292	-149	585	-816	-231	73	-107	-34	-413
	D	262	-453	-192	885	-673	212	74	-159	-85	-65
2004	J	0	-153	-153	416	-763	-348	74	-38	36	-465
	F	207	-99	108	439	-420	19	70	-71	-1	126
	M	303	-47	255	618	-426	192	75	-100	-25	422
	A	0	-313	-313	587	-603	-16	73	-54	19	-309
	M	68	-174	-106	878	-944	-66	74	-42	32	-140
	J	0	-1,115	-1,115	1,534	-1,374	160	71	-119	-47	-1,002

Table 3
Portfolio Transactions with Non-residents in Canadian Bonds, by Geographical Area and Type of Transaction - Continued

Period		All Other Countries									Total
		New Issues and Retirements			Outstanding Issues			Interest			
		New Issues	Retirements	Total	Sales	Purchases	Total	Accrued	Paid	Change in interest payable	
V No.	A	115148	115149	115147	115151	115152	115150	115154	115155	115153	115146
	Q	115297	115298	115296	115300	115301	115299	115303	115304	115302	115295
	M	115446	115447	115445	115449	115450	115448	115452	115453	115451	115444
millions of dollars											
1992		1,337	-1,362	-25	19,760	-17,774	1,986	1,415	-1,326	90	2,051
1993		2,560	-1,172	1,387	43,448	-43,107	341	1,551	-1,477	74	1,803
1994		5,572	-1,063	4,509	35,969	-35,486	483	1,830	-1,718	112	5,104
1995		2,762	-1,511	1,251	26,395	-23,737	2,658	2,004	-1,833	171	4,080
1996		222	-2,868	-2,646	31,599	-29,877	1,721	2,102	-2,089	13	-911
1997		211	-2,440	-2,230	60,779	-59,197	1,582	2,073	-2,010	63	-585
1998		1,641	-3,563	-1,922	30,108	-27,318	2,790	2,315	-2,265	49	917
1999		503	-3,876	-3,374	11,691	-11,027	664	2,125	-1,985	140	-2,570
2000		903	-3,743	-2,840	12,371	-12,470	-100	1,895	-1,772	123	-2,817
2001		50	-3,226	-3,176	9,302	-9,054	249	1,576	-1,537	38	-2,889
2002		649	-2,360	-1,711	10,584	-8,929	1,654	1,413	-1,361	52	-5
2003		1,503	-3,508	-2,005	11,081	-6,772	4,309	1,335	-1,318	17	2,320
2002	II	199	-1,089	-890	2,372	-2,757	-385	349	-387	-38	-1,313
	III	189	-416	-227	3,308	-2,982	326	351	-295	57	155
	IV	160	-460	-300	2,716	-1,662	1,053	353	-358	-5	749
2003	I	526	-1,429	-903	2,462	-1,253	1,209	340	-309	30	336
	II	518	-990	-471	3,496	-2,113	1,383	331	-344	-13	899
	III	196	-314	-118	3,270	-1,836	1,434	335	-305	31	1,347
	IV	263	-776	-513	1,853	-1,571	282	329	-360	-31	-262
2004	I	178	-112	66	6,343	-5,292	1,050	314	-263	51	1,168
	II	316	-798	-482	4,943	-2,955	1,988	324	-306	18	1,524
2002	J	38	-440	-403	1,008	-957	52	113	-272	-159	-510
	J	53	-152	-98	1,028	-962	66	117	-130	-12	-45
	A	16	-83	-68	1,287	-1,107	180	119	-53	66	178
	S	120	-181	-61	993	-913	80	115	-112	3	22
	O	0	-48	-48	1,014	-766	249	119	-42	77	278
	N	35	-62	-27	986	-681	305	115	-60	55	334
	D	124	-349	-225	715	-216	499	119	-256	-137	137
2003	J	0	-208	-208	542	-343	200	119	-44	75	67
	F	395	-1,007	-611	646	-250	396	106	-107	-1	-217
	M	130	-214	-84	1,274	-660	614	115	-158	-43	486
	A	218	-171	47	372	-387	-15	111	-37	73	105
	M	0	-188	-188	1,295	-769	525	113	-44	69	406
	J	300	-630	-330	1,829	-956	873	107	-262	-155	388
	J	0	-38	-38	1,212	-639	572	113	-121	-8	526
	A	0	-83	-83	796	-710	86	113	-52	61	64
	S	196	-192	3	1,262	-486	777	109	-132	-23	757
	O	34	-38	-4	507	-277	230	113	-43	70	297
	N	66	-158	-93	714	-659	55	108	-59	49	11
	D	163	-579	-416	632	-635	-4	108	-258	-150	-570
2004	J	0	-19	-19	1,985	-1,490	495	106	-41	65	541
	F	0	-72	-72	2,102	-1,851	251	100	-59	41	221
	M	178	-21	157	2,255	-1,951	304	108	-163	-55	406
	A	0	-156	-156	2,198	-1,596	602	106	-46	60	506
	M	34	-48	-14	946	-435	511	111	-40	71	568
	J	282	-594	-313	1,799	-923	876	107	-221	-113	450

Table 3
Portfolio Transactions with Non-residents in Canadian Bonds, by Geographical Area and Type of Transaction - Concluded

		Total All Countries									
		New Issues and Retirements			Outstanding Issues			Interest			Total
Period		New Issues	Retirements	Total	Sales	Purchases	Total	Accrued	Paid	Change in interest payable	
V No.	A	113054	113061	113174	113087	113094	113047	113181	113188	113068	113195
	Q	113226	113233	113346	113259	113266	113219	113353	113360	113240	113367
	M	113398	113405	113518	113431	113438	113391	113525	113532	113412	113539
millions of dollars											
1992		33,626	-24,439	9,187	268,007	-259,023	8,984	20,462	-19,868	594	18,766
1993		44,130	-27,323	16,807	396,861	-383,091	13,770	22,630	-21,760	870	31,446
1994		43,263	-22,403	20,860	543,123	-549,033	-5,910	24,246	-23,200	1,045	15,995
1995		38,000	-20,220	17,780	481,511	-469,366	12,145	25,657	-24,852	805	30,730
1996		43,596	-32,820	10,776	671,749	-664,826	6,923	25,913	-25,659	254	17,953
1997		38,895	-31,635	7,260	1,037,583	-1,039,159	-1,576	26,503	-26,021	482	6,166
1998		55,608	-37,092	18,517	832,829	-841,773	-8,944	27,411	-26,646	765	10,337
1999		33,963	-38,997	-5,034	554,241	-546,639	7,602	27,421	-27,388	33	2,602
2000		20,969	-46,107	-25,139	394,398	-390,547	3,851	26,132	-26,302	-170	-21,458
2001		82,529	-50,516	32,013	378,739	-369,877	8,862	26,100	-25,242	858	41,733
2002		51,101	-46,592	4,510	385,975	-372,000	13,975	27,223	-27,024	199	18,684
2003		56,980	-49,193	7,787	564,328	-565,627	-1,299	25,354	-24,842	511	7,000
2002	II	16,266	-14,417	1,849	85,973	-84,634	1,339	6,732	-7,025	-293	2,895
	III	12,269	-12,461	-193	118,050	-112,933	5,118	6,861	-6,131	730	5,655
	IV	12,065	-14,324	-2,258	99,835	-93,169	6,666	6,910	-7,683	-773	3,635
2003	I	13,698	-13,759	-61	123,280	-114,669	8,610	6,604	-6,022	582	9,131
	II	17,733	-15,012	2,722	164,711	-160,985	3,726	6,371	-6,658	-287	6,161
	III	8,935	-9,738	-803	148,561	-160,629	-12,068	6,301	-5,670	631	-12,240
	IV	16,615	-10,685	5,930	127,776	-129,344	-1,568	6,078	-6,492	-414	3,947
2004	I	7,592	-6,904	688	135,542	-134,963	579	6,018	-5,245	773	2,040
	II	10,236	-12,166	-1,930	131,511	-127,068	4,443	6,114	-6,298	-184	2,329
2002	J	7,210	-7,418	-208	28,633	-28,160	474	2,201	-3,595	-1,394	-1,128
	J	4,429	-6,065	-1,636	35,291	-33,671	1,620	2,296	-2,333	-37	-53
	A	921	-1,985	-1,063	43,133	-39,700	3,433	2,315	-1,782	533	2,902
	S	6,918	-4,412	2,506	39,626	-39,561	65	2,250	-2,015	235	2,806
	O	2,875	-3,326	-451	38,904	-34,482	4,422	2,333	-1,632	701	4,672
	N	2,207	-3,335	-1,128	37,043	-35,071	1,972	2,260	-2,139	122	966
	D	6,983	-7,663	-680	23,888	-23,616	272	2,317	-3,912	-1,595	-2,003
2003	J	941	-6,060	-5,119	35,693	-34,241	1,453	2,305	-1,858	448	-3,219
	F	5,422	-5,631	-208	38,819	-33,566	5,253	2,046	-2,035	12	5,056
	M	7,334	-2,068	5,266	48,767	-46,862	1,905	2,252	-2,130	122	7,293
	A	5,105	-3,964	1,140	44,900	-43,133	1,767	2,151	-1,654	497	3,404
	M	4,129	-3,707	422	58,945	-57,056	1,890	2,169	-1,393	776	3,087
	J	8,500	-7,340	1,160	60,866	-60,796	70	2,051	-3,611	-1,560	-330
	J	3,461	-2,186	1,276	57,376	-62,838	-5,462	2,156	-1,942	213	-3,974
	A	2,005	-2,649	-644	40,637	-48,227	-7,591	2,137	-1,569	568	-7,667
	S	3,468	-4,903	-1,434	50,549	-49,564	985	2,008	-2,159	-151	-600
	O	3,794	-2,109	1,685	48,022	-49,238	-1,217	2,046	-1,354	693	1,162
	N	5,397	-3,145	2,252	38,786	-37,035	1,751	1,977	-1,783	194	4,197
	D	7,423	-5,431	1,992	40,968	-43,070	-2,103	2,054	-3,355	-1,301	-1,411
2004	J	1,563	-2,604	-1,040	49,402	-44,415	4,987	2,028	-1,427	601	4,547
	F	2,201	-1,719	482	40,947	-45,287	-4,341	1,936	-1,794	142	-3,717
	M	3,828	-2,581	1,246	45,193	-45,261	-67	2,053	-2,023	31	1,210
	A	2,385	-3,188	-803	44,607	-43,266	1,341	2,002	-1,644	358	896
	M	2,954	-1,465	1,489	40,708	-41,077	-369	2,100	-1,489	611	1,731
	J	4,897	-7,514	-2,616	46,196	-42,725	3,470	2,012	-3,164	-1,153	-299

Table 4
Portfolio Transactions with Non-residents in Canadian Bonds, by Geographical Area

Period	United States	United Kingdom	Other EU Countries	Japan	Other OECD Countries	Other Countries	Total
V No. A	115096	115106	115116	115126	115136	115146	113195
Q	115245	115255	115265	115275	115285	115295	113367
M	115394	115404	115414	115424	115434	115444	113539
millions of dollars							
1992	15,217	-1,981	1,334	3,781	-1,636	2,051	18,766
1993	22,897	9,275	1,717	-4,347	102	1,803	31,446
1994	8,549	-960	3,899	-960	364	5,104	15,995
1995	18,891	5,039	959	890	871	4,080	30,730
1996	18,143	3,110	-954	3,665	-5,100	-911	17,953
1997	7,251	6,765	-1,896	-1,887	-3,483	-585	6,166
1998	4,813	6,984	3,694	-5,719	-353	917	10,337
1999	6,472	7,179	-2,481	-2,990	-3,008	-2,570	2,602
2000	-9,081	3,466	-4,765	-4,050	-4,210	-2,817	-21,458
2001	42,474	4,851	2,281	-815	-4,169	-2,889	41,733
2002	21,862	5,196	-900	-4,106	-3,363	-5	18,684
2003	2,536	5,573	-1,212	1,613	-3,831	2,320	7,000
2002 II	7,228	3,001	-843	-3,052	-2,126	-1,313	2,895
III	7,489	-2,256	1,017	-726	-24	155	5,655
IV	-1,099	4,025	-833	1,017	-224	749	3,635
2003 I	6,111	6,486	-934	-2,092	-777	336	9,131
II	137	588	841	4,079	-383	899	6,161
III	-9,348	-161	-1,717	-250	-2,111	1,347	-12,240
IV	5,636	-1,341	598	-124	-560	-262	3,947
2004 I	3,228	-309	-527	-1,603	83	1,168	2,040
II	3,473	224	-1,342	-98	-1,451	1,524	2,329
2002 J	1,041	1,576	-269	-1,828	-1,139	-510	-1,128
J	2,623	-1,281	-662	-823	134	-45	-53
A	966	282	1,356	-61	181	178	2,902
S	3,900	-1,257	323	157	-340	22	2,806
O	-592	2,997	996	1,309	-315	278	4,672
N	-7	2,133	-1,458	-217	181	334	966
D	-499	-1,105	-371	-75	-89	137	-2,003
2003 J	-1,494	1,579	-1,179	-1,191	-1,001	67	-3,219
F	5,767	2,133	-1,737	-834	-56	-217	5,056
M	1,837	2,775	1,982	-67	281	486	7,293
A	1,470	2,424	-745	733	-583	105	3,404
M	-779	287	327	2,777	69	406	3,087
J	-554	-2,123	1,259	569	130	388	-330
J	-3,943	1,894	-2,261	266	-454	526	-3,974
A	-4,268	-1,700	-967	670	-1,465	64	-7,667
S	-1,136	-355	1,511	-1,186	-191	757	-600
O	836	415	-256	-48	-82	297	1,162
N	4,472	-239	31	335	-413	11	4,197
D	328	-1,516	823	-411	-65	-570	-1,411
2004 J	4,969	871	-1,116	-253	-465	541	4,547
F	-1,590	-1,780	-320	-374	126	221	-3,717
M	-151	600	909	-977	422	406	1,210
A	542	979	-1,273	452	-309	506	896
M	1,907	-386	-48	-169	-140	568	1,731
J	1,023	-369	-20	-381	-1,002	450	-299

Table 5
Portfolio Transactions with Non-residents in Canadian Bonds, by Type and Currency of Issue

Period	New Issues				Retirements				Outstanding				
	Canadian dollars	U.S. dollars	Other currencies	Total	Canadian dollars	U.S. dollars	Other currencies	Total	Canadian dollars	U.S. dollars	Other currencies	Total	
V No.	A	113160	113165	113170	113054	113161	113166	113171	113061	113162	113167	113172	113047
	Q	113332	113337	113342	113226	113333	113338	113343	113233	113334	113339	113344	113219
	M	113504	113509	113514	113398	113505	113510	113515	113405	113506	113511	113516	113391
millions of dollars													
1992		5,808	22,828	4,989	33,626	-9,751	-10,194	-4,494	-24,439	8,984	8,984
1993		11,328	27,887	4,914	44,130	-11,835	-10,505	-4,982	-27,323	13,770	13,770
1994		7,912	23,041	12,310	43,263	-9,262	-7,340	-5,801	-22,403	-5,277	-576	-57	-5,910
1995		3,125	24,291	10,584	38,000	-6,955	-9,095	-4,171	-20,220	12,694	-533	-16	12,145
1996		4,078	26,855	12,663	43,596	-13,635	-12,609	-6,576	-32,820	8,125	-1,154	-48	6,923
1997		2,233	26,130	10,532	38,895	-7,780	-15,582	-8,273	-31,635	-765	-674	-137	-1,576
1998		5,170	34,762	15,677	55,608	-14,531	-13,865	-8,696	-37,092	-6,160	-2,615	-168	-8,944
1999		4,172	25,112	4,680	33,963	-9,204	-21,669	-8,125	-38,997	8,916	-1,330	16	7,602
2000		1,755	15,212	4,001	20,969	-14,556	-21,413	-10,139	-46,107	2,786	929	136	3,851
2001		4,023	66,160	12,345	82,529	-16,757	-25,686	-8,073	-50,516	8,255	647	-41	8,862
2002		10,674	35,123	5,305	51,101	-9,932	-30,196	-6,464	-46,592	14,447	-509	37	13,975
2003		12,236	34,007	10,738	56,980	-17,028	-25,971	-6,195	-49,193	-439	-762	-98	-1,299
2002	II	3,154	10,178	2,934	16,266	-3,405	-9,887	-1,125	-14,417	1,396	-54	-2	1,339
	III	2,301	9,546	421	12,269	-2,121	-7,883	-2,457	-12,461	5,927	-818	9	5,118
	IV	2,817	8,063	1,186	12,065	-2,975	-9,334	-2,015	-14,324	6,745	-126	47	6,666
2003	I	2,183	8,322	3,192	13,698	-1,018	-10,618	-2,122	-13,759	8,934	-251	-72	8,610
	II	4,958	9,707	3,068	17,733	-5,825	-8,140	-1,047	-15,012	3,804	-42	-37	3,726
	III	2,544	3,478	2,912	8,935	-5,185	-2,897	-1,656	-9,738	-11,862	-218	12	-12,068
	IV	2,550	12,500	1,565	16,615	-4,999	-4,316	-1,370	-10,685	-1,315	-251	-2	-1,568
2004	I	2,747	4,435	409	7,592	-1,074	-4,117	-1,712	-6,904	723	-142	-2	579
	II	2,632	7,022	583	10,236	-3,625	-5,177	-3,364	-12,166	4,812	-359	-10	4,443
2002	J	2,367	4,756	87	7,210	-1,228	-5,830	-360	-7,418	475	18	-19	474
	J	0	4,149	280	4,429	-526	-4,809	-730	-6,065	1,748	-142	14	1,620
	A	0	894	28	921	-236	-916	-832	-1,985	3,692	-252	-7	3,433
	S	2,301	4,504	114	6,918	-1,359	-2,158	-895	-4,412	487	-424	2	65
	O	0	2,438	437	2,875	-131	-2,901	-295	-3,326	4,531	-111	1	4,422
	N	279	1,860	68	2,207	-201	-2,219	-915	-3,335	1,738	227	7	1,972
	D	2,538	3,765	681	6,983	-2,643	-4,215	-805	-7,663	476	-243	38	272
2003	J	299	293	349	941	-133	-5,311	-616	-6,060	1,649	-188	-7	1,453
	F	606	3,002	1,814	5,422	-79	-4,464	-1,087	-5,631	5,699	-378	-67	5,253
	M	1,278	5,027	1,029	7,334	-806	-843	-419	-2,068	1,587	315	3	1,905
	A	2,045	2,971	89	5,105	-517	-2,862	-584	-3,964	1,838	-70	-1	1,767
	M	200	2,208	1,721	4,129	-979	-2,410	-319	-3,707	1,833	88	-32	1,890
	J	2,713	4,528	1,258	8,500	-4,329	-2,867	-144	-7,340	133	-60	-3	70
	J	591	1,008	1,862	3,461	-372	-1,287	-527	-2,186	-5,472	7	2	-5,462
	A	188	1,718	99	2,005	-992	-922	-735	-2,649	-7,276	-302	-13	-7,591
	S	1,765	752	952	3,468	-3,821	-688	-394	-4,903	885	78	22	985
	O	0	3,707	87	3,794	-386	-1,723	0	-2,109	-1,147	-38	-31	-1,217
	N	161	5,196	40	5,397	-851	-1,645	-649	-3,145	1,874	-134	11	1,751
	D	2,388	3,597	1,438	7,423	-3,763	-948	-721	-5,431	-2,042	-79	19	-2,103
2004	J	602	855	106	1,563	-84	-1,197	-1,323	-2,604	5,045	-59	1	4,987
	F	0	1,949	252	2,201	-806	-913	0	-1,719	-4,220	-122	1	-4,341
	M	2,146	1,631	51	3,828	-185	-2,007	-389	-2,581	-102	39	-4	-67
	A	200	2,042	143	2,385	-64	-1,468	-1,655	-3,188	1,391	-20	-29	1,341
	M	250	2,307	396	2,954	-537	-770	-157	-1,465	-187	-202	21	-369
	J	2,182	2,672	43	4,897	-3,024	-2,938	-1,552	-7,514	3,609	-137	-2	3,470

Table 5
Portfolio Transactions with Non-residents in Canadian Bonds, by Type and Currency of Issue - Concluded

Period	Change in interest payable				Total			
	Canadian dollars	U.S. dollars	Other currencies	Total	Canadian dollars	U.S. dollars	Other currencies	Total
V No. A	113163	113168	113173	113068	113159	113164	113169	113158
Q	113335	113340	113345	113240	113331	113336	113341	113330
M	113507	113512	113517	113412	113503	113508	113513	113502
millions of dollars								
1992	262	299	34	594	5,304	12,933	529	18,766
1993	421	505	-57	870	13,684	17,887	-125	31,446
1994	426	529	89	1,045	-6,201	15,655	6,541	15,995
1995	241	494	70	805	9,105	15,157	6,468	30,730
1996	-3	255	1	254	-1,435	13,347	6,041	17,953
1997	40	411	31	482	-6,272	10,285	2,153	6,166
1998	-40	592	212	765	-15,563	18,874	7,026	10,337
1999	-247	303	-23	33	3,637	2,416	-3,452	2,602
2000	-342	309	-137	-170	-10,357	-4,963	-6,138	-21,458
2001	-409	819	448	858	-4,888	41,942	4,679	41,733
2002	8	184	7	199	15,197	4,602	-1,115	18,684
2003	87	297	127	511	-5,144	7,572	4,572	7,000
2002 II	-533	139	102	-293	612	375	1,909	2,895
2002 III	637	216	-123	730	6,744	1,061	-2,150	5,655
2002 IV	-658	-59	-56	-773	5,929	-1,457	-837	3,635
2003 I	590	-53	45	582	10,689	-2,601	1,043	9,131
2003 II	-517	168	62	-287	2,420	1,694	2,047	6,161
2003 III	470	189	-28	631	-14,033	553	1,240	-12,240
2003 IV	-456	-7	48	-414	-4,220	7,926	241	3,947
2004 I	480	272	20	773	2,876	448	-1,285	2,040
2004 II	-198	38	-24	-184	3,620	1,524	-2,816	2,329
2002 J	-1,126	-274	6	-1,394	488	-1,331	-285	-1,128
2002 J	349	-144	-243	-37	1,571	-946	-678	-53
2002 A	414	-6	125	533	3,870	-281	-687	2,902
2002 S	-126	366	-5	235	1,303	2,288	-785	2,806
2002 O	375	224	102	701	4,776	-350	246	4,672
2002 N	384	-182	-80	122	2,200	-315	-919	966
2002 D	-1,417	-100	-78	-1,595	-1,047	-793	-164	-2,003
2003 J	411	3	34	448	2,226	-5,203	-241	-3,219
2003 F	330	-353	34	12	6,556	-2,194	694	5,056
2003 M	-151	296	-23	122	1,907	4,795	590	7,293
2003 A	427	59	10	497	3,793	98	-486	3,404
2003 M	444	312	20	776	1,499	198	1,390	3,087
2003 J	-1,389	-203	32	-1,560	-2,872	1,398	1,143	-330
2003 J	435	-11	-210	213	-4,817	-283	1,127	-3,974
2003 A	436	-17	149	568	-7,643	477	-501	-7,667
2003 S	-401	217	34	-151	-1,573	359	614	-600
2003 O	334	250	109	693	-1,199	2,195	165	1,162
2003 N	313	-88	-31	194	1,498	3,329	-630	4,197
2003 D	-1,102	-169	-30	-1,301	-4,519	2,402	706	-1,411
2004 J	348	190	63	601	5,911	-210	-1,153	4,547
2004 F	288	-158	12	142	-4,738	756	264	-3,717
2004 M	-155	240	-55	31	1,703	-98	-396	1,210
2004 A	261	57	40	358	1,788	610	-1,502	896
2004 M	359	291	-39	611	-116	1,626	221	1,731
2004 J	-819	-310	-24	-1,153	1,948	-712	-1,534	-299

Table 6
Portfolio Transactions with Non-residents in Canadian Money Market Instruments, by Sector, Sales and Purchases

		Federal Government								
		Direct			Enterprises			Total		
Period		Sales	Purchases	Net	Sales	Purchases	Net	Sales	Purchases	Net
V No.	A	113143	113152	113081	113144	113153	113082	113142	113151	113080
	Q	113315	113324	113253	113316	113325	113254	113314	113323	113252
	M	113457	113466	113425	113458	113467	113426	113456	113465	113424
millions of dollars										
1992		140,424	-138,508	1,915	58,925	-59,138	-214	199,348	-197,647	1,701
1993		157,051	-146,112	10,939	32,408	-33,017	-610	189,459	-179,129	10,329
1994		266,691	-263,960	2,731	24,761	-25,422	-660	291,452	-289,381	2,071
1995		246,238	-246,957	-719	22,112	-22,904	-792	268,350	-269,861	-1,511
1996		282,373	-290,065	-7,691	25,747	-25,851	-104	308,121	-315,916	-7,795
1997		183,471	-185,759	-2,288	23,555	-21,938	1,617	207,026	-207,697	-671
1998		108,887	-111,333	-2,446	59,269	-57,908	1,361	168,156	-169,241	-1,085
1999		79,772	-86,349	-6,577	56,505	-57,984	-1,479	136,277	-144,333	-8,056
2000		65,723	-66,857	-1,134	38,455	-38,923	-468	104,177	-105,780	-1,603
2001		37,501	-42,079	-4,578	34,163	-34,074	89	71,665	-76,153	-4,489
2002		42,004	-40,024	1,980	58,878	-58,438	440	100,882	-98,463	2,420
2003		55,948	-54,943	1,005	41,960	-42,545	-584	97,908	-97,488	421
2002	II	9,428	-8,539	889	14,930	-15,882	-952	24,358	-24,421	-62
	III	9,960	-10,090	-130	15,205	-16,572	-1,367	25,165	-26,662	-1,497
	IV	11,827	-10,437	1,390	13,325	-12,029	1,296	25,152	-22,466	2,686
2003	I	12,617	-12,962	-344	14,228	-13,480	748	26,846	-26,442	403
	II	11,662	-10,274	1,388	10,113	-10,545	-433	21,775	-20,819	955
	III	14,505	-14,467	38	8,149	-8,899	-751	22,653	-23,366	-713
	IV	17,164	-17,241	-77	9,471	-9,619	-149	26,634	-26,860	-225
2004	I	12,271	-14,147	-1,877	8,351	-8,700	-349	20,622	-22,847	-2,225
	II	17,756	-17,593	163	13,453	-11,985	1,468	31,209	-29,577	1,632
2002	J	4,073	-3,392	681	4,632	-5,070	-437	8,705	-8,461	243
	J	2,237	-1,869	368	6,203	-6,490	-288	8,440	-8,360	80
	A	3,768	-4,090	-322	4,953	-5,528	-575	8,721	-9,618	-897
	S	3,954	-4,131	-176	4,049	-4,553	-504	8,004	-8,684	-680
	O	3,551	-3,542	9	4,320	-4,318	2	7,871	-7,860	11
	N	2,443	-1,888	555	5,572	-4,661	911	8,015	-6,549	1,466
	D	5,833	-5,007	825	3,433	-3,050	384	9,266	-8,057	1,209
2003	J	4,004	-4,405	-401	5,448	-4,425	1,023	9,451	-8,830	622
	F	2,903	-3,495	-591	6,462	-6,093	368	9,365	-9,588	-223
	M	5,711	-5,062	648	2,319	-2,962	-643	8,029	-8,025	5
	A	3,786	-2,654	1,132	2,149	-2,309	-160	5,935	-4,963	973
	M	3,101	-3,307	-206	4,732	-5,117	-384	7,833	-8,424	-591
	J	4,775	-4,313	463	3,231	-3,120	111	8,006	-7,433	574
	J	4,498	-4,641	-143	3,157	-2,887	270	7,655	-7,527	127
	A	4,470	-4,701	-231	2,671	-2,998	-327	7,141	-7,699	-558
	S	5,537	-5,125	412	2,321	-3,015	-694	7,858	-8,140	-282
	O	3,822	-3,799	23	3,502	-3,403	99	7,324	-7,202	122
	N	5,186	-5,799	-614	3,307	-3,016	291	8,493	-8,815	-322
	D	8,156	-7,642	514	2,661	-3,200	-539	10,817	-10,842	-25
2004	J	4,714	-5,791	-1,077	2,998	-3,059	-61	7,712	-8,850	-1,138
	F	3,265	-4,904	-1,639	2,649	-3,057	-407	5,914	-7,961	-2,047
	M	4,292	-3,452	839	2,704	-2,584	120	6,996	-6,037	959
	A	4,993	-5,988	-995	3,685	-2,997	687	8,678	-8,986	-308
	M	4,656	-4,083	573	4,206	-4,045	161	8,863	-8,128	735
	J	8,107	-7,522	585	5,562	-4,942	620	13,669	-12,464	1,205

Table 6
Portfolio Transactions with Non-residents in Canadian Money Market Instruments, by Sector, Sales and Purchases - Continued

		Provincial Governments ¹								
		Direct			Enterprises			Total		
Period		Sales	Purchases	Net	Sales	Purchases	Net	Sales	Purchases	Net
V No.	A	113146	113155	113084	113147	113156	113085	113145	113154	113083
	Q	113318	113327	113256	113319	113328	113257	113317	113326	113255
	M	113460	113469	113428	113461	113470	113429	113459	113468	113427
millions of dollars										
1992		23,508	-22,035	1,473	5,661	-5,625	36	29,169	-27,660	1,509
1993		19,970	-19,822	148	2,740	-2,605	135	22,709	-22,427	283
1994		22,498	-23,540	-1,042	5,421	-5,382	39	27,919	-28,922	-1,003
1995		16,428	-15,931	497	5,012	-5,078	-66	21,440	-21,009	431
1996		18,719	-19,921	-1,202	8,365	-8,399	-34	27,084	-28,320	-1,236
1997		18,644	-20,211	-1,567	7,733	-6,656	1,076	26,377	-26,867	-491
1998		15,036	-13,568	1,468	7,431	-7,960	-530	22,466	-21,528	938
1999		16,849	-17,003	-154	2,994	-4,085	-1,091	19,843	-21,088	-1,245
2000		16,592	-15,304	1,288	2,036	-2,378	-342	18,628	-17,682	946
2001		16,234	-17,271	-1,037	209	-184	24	16,443	-17,455	-1,012
2002		15,406	-15,529	-123	382	-393	-11	15,788	-15,922	-134
2003		6,308	-7,783	-1,475	339	-313	25	6,646	-8,096	-1,450
2002	II	4,771	-4,240	531	137	-71	67	4,908	-4,310	598
	III	2,919	-3,624	-705	76	-74	2	2,994	-3,698	-704
	IV	4,352	-4,272	80	88	-158	-70	4,441	-4,430	10
2003	I	2,107	-3,784	-1,677	207	-18	189	2,314	-3,802	-1,487
	II	1,668	-1,436	232	35	-48	-13	1,703	-1,484	219
	III	1,082	-1,498	-415	41	-194	-153	1,123	-1,692	-568
	IV	1,450	-1,065	385	55	-53	2	1,505	-1,118	387
2004	I	1,538	-1,752	-214	47	-51	-4	1,585	-1,803	-218
	II	1,842	-1,473	369	42	-6	36	1,883	-1,478	405
2002	J	1,544	-1,791	-247	91	-13	77	1,634	-1,804	-170
	J	1,044	-1,272	-227	31	-32	-1	1,076	-1,304	-228
	A	955	-1,131	-176	17	-7	10	972	-1,138	-166
	S	920	-1,221	-302	27	-35	-8	947	-1,256	-309
	O	1,395	-1,338	57	28	-18	11	1,424	-1,356	68
	N	1,522	-1,515	6	38	-49	-11	1,560	-1,565	-4
	D	1,435	-1,419	16	22	-92	-70	1,457	-1,510	-53
2003	J	932	-1,226	-294	51	-11	40	983	-1,237	-254
	F	722	-1,689	-966	156	-5	151	879	-1,694	-815
	M	453	-869	-416	0	-2	-2	453	-871	-418
	A	536	-619	-83	7	-8	-1	543	-627	-84
	M	467	-318	149	26	-24	1	493	-343	151
	J	665	-499	166	2	-16	-14	667	-515	152
	J	382	-566	-185	12	-42	-30	394	-609	-215
	A	356	-483	-127	16	-139	-123	371	-622	-251
	S	345	-448	-103	13	-12	1	358	-461	-103
	O	474	-513	-39	31	-3	28	505	-516	-11
	N	457	-291	166	24	-48	-24	481	-339	142
	D	519	-261	258	0	-2	-2	519	-263	256
2004	J	498	-501	-2	4	-8	-4	502	-508	-6
	F	521	-608	-88	15	-10	5	536	-618	-83
	M	519	-643	-124	28	-33	-5	547	-676	-129
	A	538	-657	-120	0	0	0	538	-657	-120
	M	390	-331	58	0	0	0	390	-331	58
	J	915	-484	431	42	-6	36	956	-490	466

1. Includes municipalities.

Table 6
Portfolio Transactions with Non-residents in Canadian Money Market Instruments, by Sector, Sales and Purchases - Concluded

		Total								
		Governments ¹			Corporations			Total		
Period		Sales	Purchases	Net	Sales	Purchases	Net	Sales	Purchases	Net
V No.	A	113141	113150	113079	113148	113157	113086	113140	113149	113078
	Q	113313	113322	113251	113320	113329	113258	113312	113321	113250
	M	113455	113464	113423	113462	113471	113430	113454	113463	113422
millions of dollars										
1992		228,517	-225,307	3,210	25,694	-24,005	1,688	254,211	-249,312	4,898
1993		212,168	-201,556	10,612	33,922	-35,238	-1,316	246,090	-236,793	9,296
1994		319,371	-318,303	1,068	52,027	-52,190	-163	371,398	-370,493	905
1995		289,790	-290,870	-1,080	45,954	-46,128	-174	335,744	-336,998	-1,254
1996		335,204	-344,235	-9,031	54,013	-52,301	1,712	389,217	-396,536	-7,319
1997		233,403	-234,564	-1,161	82,853	-79,323	3,531	316,257	-313,887	2,369
1998		190,622	-190,770	-147	125,726	-125,449	277	316,349	-316,218	130
1999		156,121	-165,421	-9,301	78,817	-82,726	-3,909	234,938	-248,147	-13,209
2000		122,805	-123,462	-657	95,126	-93,646	1,481	217,931	-217,107	824
2001		88,108	-93,609	-5,501	100,017	-101,865	-1,848	188,125	-195,474	-7,349
2002		116,670	-114,385	2,285	75,873	-74,376	1,497	192,543	-188,761	3,782
2003		104,555	-105,584	-1,029	112,523	-112,955	-432	217,077	-218,539	-1,461
2002	II	29,266	-28,731	535	16,300	-16,492	-192	45,566	-45,222	344
	III	28,159	-30,360	-2,201	19,161	-18,751	409	47,320	-49,111	-1,791
	IV	29,593	-26,897	2,696	22,103	-20,874	1,229	51,696	-47,771	3,925
2003	I	29,160	-30,244	-1,084	18,561	-18,387	174	47,721	-48,631	-910
	II	23,478	-22,304	1,174	20,547	-21,254	-707	44,024	-43,557	467
	III	23,777	-25,058	-1,281	33,141	-33,835	-694	56,918	-58,893	-1,975
	IV	28,140	-27,978	162	40,274	-39,480	794	68,414	-67,458	956
2004	I	22,207	-24,650	-2,443	21,628	-21,957	-329	43,835	-46,607	-2,772
	II	33,092	-31,056	2,037	16,495	-16,691	-196	49,588	-47,747	1,841
2002	J	10,339	-10,266	73	5,360	-5,036	324	15,699	-15,302	397
	J	9,516	-9,664	-148	6,686	-6,330	355	16,201	-15,994	207
	A	9,693	-10,756	-1,063	6,027	-6,210	-183	15,721	-16,966	-1,246
	S	8,950	-9,940	-990	6,448	-6,211	237	15,398	-16,151	-753
	O	9,294	-9,216	79	6,741	-6,396	345	16,035	-15,611	424
	N	9,576	-8,114	1,462	8,232	-7,436	796	17,808	-15,550	2,258
	D	10,723	-9,567	1,156	7,130	-7,042	88	17,853	-16,609	1,243
2003	J	10,434	-10,066	368	6,129	-5,996	133	16,563	-16,062	500
	F	10,243	-11,282	-1,038	6,419	-6,326	93	16,662	-17,608	-945
	M	8,483	-8,896	-414	6,014	-6,065	-51	14,496	-14,961	-465
	A	6,478	-5,589	889	6,137	-6,068	69	12,615	-11,657	958
	M	8,326	-8,767	-440	6,913	-7,116	-203	15,239	-15,882	-643
	J	8,673	-7,948	726	7,496	-8,070	-574	16,170	-16,018	152
	J	8,049	-8,136	-87	12,546	-12,828	-282	20,595	-20,965	-370
	A	7,512	-8,321	-809	10,612	-10,405	207	18,124	-18,726	-602
	S	8,216	-8,601	-385	9,983	-10,602	-618	18,199	-19,202	-1,003
	O	7,830	-7,718	111	14,541	-14,247	294	22,370	-21,965	405
	N	8,974	-9,154	-181	11,968	-11,795	173	20,942	-20,950	-8
	D	11,336	-11,105	231	13,765	-13,437	328	25,102	-24,543	559
2004	J	8,214	-9,358	-1,144	7,805	-8,101	-296	16,019	-17,460	-1,441
	F	6,450	-8,579	-2,129	5,839	-5,312	528	12,289	-13,891	-1,602
	M	7,543	-6,712	831	7,984	-8,544	-561	15,527	-15,257	270
	A	9,215	-9,643	-428	4,875	-5,843	-968	14,090	-15,485	-1,395
	M	9,252	-8,459	793	5,799	-4,993	806	15,051	-13,453	1,599
	J	14,625	-12,953	1,671	5,821	-5,855	-34	20,446	-18,809	1,637

1. Including their enterprises.

Table 7
Portfolio Transactions with Non-residents in Canadian Money Market Instruments, by Geographical Area, Sales and Purchases

Period	United States			United Kingdom			Other EU Countries		
	Sales	Purchases	Net	Sales	Purchases	Net	Sales	Purchases	Net
V No. A	115158	115159	115157	115161	115162	115160	115164	115165	115163
Q	115307	115308	115306	115310	115311	115309	115313	115314	115312
M	115456	115457	115455	115459	115460	115458	115462	115463	115461
millions of dollars									
1992	144,134	-136,996	7,139	47,023	-47,219	-197	9,019	-9,076	-57
1993	112,572	-110,281	2,290	60,490	-59,137	1,353	9,222	-8,354	868
1994	205,916	-208,650	-2,734	50,928	-48,176	2,752	14,656	-15,217	-561
1995	130,015	-130,886	-871	82,318	-81,802	516	24,414	-24,438	-24
1996	142,725	-142,526	199	138,898	-143,085	-4,187	55,309	-54,889	421
1997	193,601	-189,520	4,081	35,006	-36,449	-1,443	44,643	-42,967	1,676
1998	229,670	-231,113	-1,443	30,314	-28,745	1,569	9,785	-10,047	-262
1999	171,931	-179,099	-7,169	26,830	-29,800	-2,970	7,790	-7,911	-121
2000	157,827	-156,451	1,376	21,463	-22,934	-1,471	8,960	-9,453	-493
2001	142,735	-146,747	-4,011	13,881	-14,585	-704	7,628	-7,974	-347
2002	144,184	-143,278	906	16,691	-15,609	1,082	4,811	-4,743	68
2003	163,606	-164,071	-465	20,034	-21,710	-1,677	2,559	-2,675	-116
2002 II	35,298	-34,612	686	2,710	-3,450	-741	1,124	-1,266	-141
III	35,690	-36,900	-1,210	4,291	-4,310	-20	792	-1,138	-346
IV	38,753	-36,758	1,995	3,231	-2,914	317	1,559	-1,074	485
2003 I	33,759	-35,158	-1,399	5,126	-5,683	-558	980	-628	352
II	31,727	-31,759	-32	4,442	-3,871	571	526	-829	-303
III	45,857	-47,206	-1,349	3,362	-3,943	-581	578	-651	-73
IV	52,263	-49,948	2,315	7,104	-8,213	-1,109	475	-567	-92
2004 I	28,407	-30,867	-2,460	4,946	-5,172	-225	614	-373	241
II	31,973	-31,460	513	7,945	-7,735	209	772	-491	281
2002 J	12,328	-11,110	1,218	1,398	-1,386	12	218	-594	-376
J	12,844	-12,743	101	1,032	-822	210	192	-263	-72
A	12,327	-13,105	-779	788	-1,275	-488	310	-477	-168
S	10,520	-11,052	-532	2,471	-2,213	258	290	-397	-107
O	11,856	-12,225	-369	881	-805	76	586	-286	300
N	13,423	-12,057	1,365	1,039	-863	176	430	-313	117
D	13,474	-12,476	998	1,312	-1,246	65	544	-475	69
2003 J	12,264	-11,812	452	1,549	-1,755	-205	403	-243	160
F	11,419	-12,613	-1,194	1,851	-1,920	-69	261	-232	29
M	10,076	-10,733	-657	1,725	-2,008	-283	316	-153	162
A	8,446	-7,883	563	1,389	-1,117	272	137	-89	48
M	11,656	-11,814	-158	1,075	-1,388	-312	197	-454	-257
J	11,625	-12,062	-437	1,978	-1,366	611	192	-287	-94
J	16,982	-16,853	129	680	-1,224	-544	347	-231	116
A	14,870	-15,375	-504	1,195	-1,048	147	117	-227	-110
S	14,005	-14,979	-974	1,487	-1,671	-184	114	-193	-79
O	18,364	-17,783	580	1,105	-1,269	-165	120	-85	36
N	16,022	-15,340	682	2,120	-2,633	-513	206	-248	-42
D	17,877	-16,824	1,053	3,879	-4,310	-431	149	-234	-85
2004 J	10,992	-12,450	-1,458	1,452	-1,658	-206	339	-129	210
F	6,992	-8,435	-1,444	2,319	-2,191	128	159	-83	76
M	10,424	-9,981	442	1,175	-1,323	-148	117	-161	-45
A	10,030	-11,093	-1,063	2,165	-1,845	320	119	-80	39
M	10,093	-8,781	1,313	2,193	-2,172	22	259	-159	100
J	11,850	-11,587	264	3,586	-3,718	-132	394	-251	143

Table 7
Portfolio Transactions with Non-residents in Canadian Money Market Instruments, by Geographical Area,
Sales and Purchases - Concluded

Period	Japan			Other OECD Countries			All Other Countries			Total		
	Sales	Purchases	Net	Sales	Purchases	Net	Sales	Purchases		Sales	Purchases	Net
V No. A	115167	115168	115166	115170	115171	115169	115173	115174	115172	113140	113149	113078
Q	115316	115317	115315	115319	115320	115318	115322	115323	115321	113312	113321	113250
M	115465	115466	115464	115468	115469	115467	115471	115472	115470	113454	113463	113422
millions of dollars												
1992	3,993	-5,328	-1,335	11,607	-13,042	-1,435	38,435	-37,652	784	254,211	-249,312	4,898
1993	5,145	-5,516	-371	15,356	-13,944	1,412	43,305	-39,561	3,744	246,090	-236,793	9,296
1994	1,865	-2,009	-144	23,696	-22,007	1,689	74,337	-74,433	-96	371,398	-370,493	905
1995	1,165	-1,371	-206	16,395	-17,240	-845	81,437	-81,261	176	335,744	-336,998	-1,254
1996	2,473	-1,833	641	10,062	-11,675	-1,613	39,749	-42,529	-2,780	389,217	-396,536	-7,319
1997	542	-1,070	-527	11,692	-10,840	853	30,771	-33,042	-2,270	316,257	-313,887	2,369
1998	166	-282	-115	16,530	-16,166	364	29,883	-29,866	17	316,349	-316,218	130
1999	195	-161	35	6,368	-6,878	-510	21,824	-24,297	-2,474	234,938	-248,147	-13,209
2000	452	-296	155	8,033	-8,265	-232	21,196	-19,708	1,488	217,931	-217,107	824
2001	263	-438	-175	5,164	-6,020	-856	18,454	-19,709	-1,255	188,125	-195,474	-7,349
2002	185	-176	10	5,705	-4,919	786	20,968	-20,037	931	192,543	-188,761	3,782
2003	339	-319	20	2,583	-2,560	23	27,957	-27,204	753	217,077	-218,539	-1,461
2002 II	55	-35	19	1,404	-1,327	77	4,975	-4,531	443	45,566	-45,222	344
III	49	-54	-5	1,071	-1,429	-358	5,427	-5,279	147	47,320	-49,111	-1,791
IV	34	-40	-6	2,022	-1,198	824	6,095	-5,786	309	51,696	-47,771	3,925
2003 I	49	-50	-1	703	-600	103	7,105	-6,512	593	47,721	-48,631	-910
II	101	-74	27	530	-593	-63	6,698	-6,430	267	44,024	-43,557	467
III	101	-99	2	620	-551	70	6,400	-6,444	-44	56,918	-58,893	-1,975
IV	88	-96	-8	729	-816	-87	7,754	-7,818	-64	68,414	-67,458	956
2004 I	33	-54	-21	3,062	-3,055	7	6,772	-7,087	-315	43,835	-46,607	-2,772
II	102	-38	63	717	-709	7	8,079	-7,313	766	49,588	-47,747	1,841
2002 J	18	-17	2	143	-617	-473	1,594	-1,579	15	15,699	-15,302	397
J	15	-22	-7	426	-542	-116	1,694	-1,602	92	16,201	-15,994	207
A	14	-13	1	326	-429	-103	1,957	-1,667	290	15,721	-16,966	-1,246
S	21	-20	1	320	-458	-138	1,776	-2,011	-235	15,398	-16,151	-753
O	10	-11	-1	899	-458	441	1,804	-1,827	-23	16,035	-15,611	424
N	8	-8	-1	642	-370	272	2,267	-1,938	328	17,808	-15,550	2,258
D	17	-21	-4	481	-370	112	2,025	-2,021	4	17,853	-16,609	1,243
2003 J	15	-23	-8	273	-292	-18	2,058	-1,939	120	16,563	-16,062	500
F	17	-13	4	220	-122	97	2,894	-2,707	187	16,662	-17,608	-945
M	17	-14	3	210	-185	24	2,152	-1,866	286	14,496	-14,961	-465
A	40	-11	29	237	-276	-39	2,366	-2,280	86	12,615	-11,657	958
M	14	-21	-6	119	-125	-7	2,178	-2,081	97	15,239	-15,882	-643
J	47	-42	5	175	-192	-17	2,154	-2,069	85	16,170	-16,018	152
J	36	-35	0	264	-273	-8	2,287	-2,349	-62	20,595	-20,965	-370
A	34	-28	6	95	-84	10	1,813	-1,964	-151	18,124	-18,726	-602
S	31	-35	-4	262	-193	68	2,300	-2,131	170	18,199	-19,202	-1,003
O	38	-27	11	232	-245	-13	2,511	-2,556	-44	22,370	-21,965	405
N	28	-30	-2	325	-363	-39	2,240	-2,335	-95	20,942	-20,950	-8
D	23	-40	-17	172	-207	-36	3,003	-2,927	75	25,102	-24,543	559
2004 J	13	-22	-9	782	-785	-3	2,441	-2,415	26	16,019	-17,460	-1,441
F	12	-19	-8	908	-872	36	1,900	-2,290	-390	12,289	-13,891	-1,602
M	8	-12	-4	1,372	-1,398	-26	2,432	-2,382	50	15,527	-15,257	270
A	9	-16	-7	346	-434	-89	1,422	-2,017	-595	14,090	-15,485	-1,395
M	10	-9	1	112	-116	-3	2,384	-2,217	167	15,051	-13,453	1,599
J	83	-13	70	259	-160	99	4,274	-3,079	1,194	20,446	-18,809	1,637

Table 8
Portfolio Transactions with Non-residents in Canadian Stocks, by Geographical Area and Type of Transaction

Period	United States					United Kingdom					
	Outstanding Issues			Other Transactions ¹	Total	Outstanding Issues			Other Transactions ¹	Total	
	Sales	Purchases	Net			Sales	Purchases	Net			
V No.	A	115217	115218	115216	115215	115214	115222	115223	115221	115220	115219
	Q	115366	115367	115365	115364	115363	115371	115372	115370	115369	115368
	M	115515	115516	115514	115513	115512	115520	115521	115519	115518	115517
millions of dollars											
1992		13,274	-12,619	654	450	1,105	1,419	-1,605	-186	74	-112
1993		28,210	-18,540	9,670	1,385	11,055	2,713	-2,350	363	171	534
1994		33,521	-28,639	4,882	1,095	5,977	4,022	-4,059	-37	306	269
1995		25,974	-28,810	-2,836	1,384	-1,452	4,578	-6,127	-1,549	141	-1,408
1996		46,055	-41,871	4,185	3,460	7,645	7,098	-8,375	-1,278	403	-874
1997		68,900	-64,552	4,347	3,093	7,440	11,716	-10,160	1,556	152	1,708
1998		89,550	-89,827	-277	16,679	16,402	7,926	-8,896	-970	-8	-978
1999		87,658	-74,734	12,924	4,262	17,187	11,367	-8,551	2,816	57	2,873
2000		165,571	-137,931	27,640	5,622	33,263	20,349	-19,741	608	218	825
2001		127,138	-122,341	4,797	2,381	7,178	24,111	-26,641	-2,530	40	-2,490
2002		115,672	-119,359	-3,687	4,910	1,223	35,270	-38,042	-2,772	123	-2,649
2003		142,681	-131,212	11,470	1,168	12,638	32,299	-35,177	-2,878	0	-2,878
2002	II	30,711	-29,328	1,383	3,801	5,184	8,230	-8,561	-331	77	-253
	III	26,499	-33,045	-6,547	2,044	-4,503	6,363	-6,434	-71	45	-26
	IV	29,647	-29,029	619	1,155	1,774	8,168	-8,560	-391	0	-391
2003	I	29,643	-28,038	1,605	15	1,619	6,215	-7,716	-1,501	0	-1,501
	II	31,744	-28,672	3,071	372	3,444	7,301	-8,615	-1,314	0	-1,314
	III	36,434	-31,593	4,842	436	5,277	9,500	-9,450	51	0	51
	IV	44,861	-42,909	1,952	345	2,297	9,283	-9,397	-114	0	-114
2004	I	52,012	-47,383	4,629	-1,574	3,055	10,613	-9,533	1,080	4	1,085
	II	47,249	-46,812	438	18,603	19,041	11,010	-11,558	-548	43	-505
2002	J	10,821	-10,325	496	3,287	3,784	4,563	-4,295	268	77	346
	J	9,936	-14,021	-4,084	231	-3,854	1,461	-1,181	280	0	280
	A	7,942	-9,122	-1,180	1,460	280	1,657	-1,875	-218	45	-173
	S	8,620	-9,903	-1,282	353	-929	3,245	-3,378	-133	0	-133
	O	10,162	-11,187	-1,025	534	-491	1,662	-1,750	-89	0	-89
	N	9,498	-8,681	817	271	1,088	2,283	-2,595	-312	0	-312
	D	9,987	-9,160	827	349	1,176	4,224	-4,215	9	0	9
2003	J	9,936	-9,814	122	2	123	596	-1,040	-444	0	-444
	F	9,744	-9,031	713	10	723	2,756	-2,775	-19	0	-19
	M	9,963	-9,193	770	4	774	2,862	-3,900	-1,038	0	-1,038
	A	9,456	-8,625	831	-151	681	1,572	-1,646	-74	0	-74
	M	10,622	-9,000	1,622	821	2,442	1,266	-2,079	-813	0	-813
	J	11,666	-11,048	618	-298	321	4,463	-4,889	-426	0	-426
	J	11,689	-10,135	1,554	302	1,856	3,024	-2,655	369	0	369
	A	11,468	-9,200	2,269	23	2,291	1,774	-2,709	-935	0	-935
	S	13,276	-12,258	1,019	111	1,130	4,702	-4,086	616	0	616
	O	14,776	-15,017	-241	304	62	2,723	-2,584	139	0	139
	N	14,519	-14,130	388	-76	313	1,663	-1,883	-220	0	-220
	D	15,566	-13,761	1,805	117	1,922	4,897	-4,930	-32	0	-32
2004	J	16,144	-14,971	1,173	1,132	2,305	2,340	-2,348	-8	0	-8
	F	16,783	-14,817	1,966	-3,322	-1,356	2,335	-2,517	-183	0	-183
	M	19,085	-17,595	1,490	616	2,106	5,938	-4,668	1,271	4	1,275
	A	17,744	-15,750	1,994	18,506	20,500	2,451	-2,370	82	7	88
	M	14,868	-16,316	-1,448	65	-1,382	3,026	-3,506	-480	28	-451
	J	14,637	-14,746	-109	31	-77	5,533	-5,683	-150	8	-142

1. Other Transactions include new issues, retirements and/or withdrawals from the market due to activities such as takeovers.

Table 8
Portfolio Transactions with Non-residents in Canadian Stocks, by Geographical Area and Type of Transaction - Continued

Period	Other EU Countries					Japan					
	Outstanding Issues			Other Transactions ¹	Total	Outstanding Issues			Other Transactions ¹	Total	
	Sales	Purchases	Net			Sales	Purchases	Net			
V No.	A	115227	115228	115226	115225	115224	115232	115233	115231	115230	115229
	Q	115376	115377	115375	115374	115373	115381	115382	115380	115379	115378
	M	115525	115526	115524	115523	115522	115530	115531	115529	115528	115527
millions of dollars											
1992		929	-997	-67	75	8	186	-135	51	16	67
1993		2,176	-2,066	110	156	266	259	-247	12	16	28
1994		2,433	-2,495	-63	178	116	1,004	-727	277	27	304
1995		2,427	-3,255	-828	101	-726	304	-340	-36	10	-27
1996		2,852	-3,333	-481	416	-64	659	-373	286	9	295
1997		3,530	-3,965	-435	122	-313	1,343	-996	347	5	352
1998		5,590	-5,905	-315	5	-310	339	-796	-457	0	-457
1999		8,544	-13,113	-4,569	109	-4,460	759	-291	467	0	467
2000		18,547	-21,853	-3,307	-1,009	-4,316	510	-687	-177	0	-177
2001		37,624	-38,777	-1,153	-291	-1,443	124	-279	-155	0	-155
2002		13,241	-14,705	-1,464	16	-1,448	92	-156	-64	0	-64
2003		8,025	-7,630	395	2,588	2,982	17	-18	-1	0	-1
2002	II	5,009	-5,186	-177	10	-168	30	-28	2	0	2
	III	1,645	-1,522	123	4	127	34	-42	-8	0	-8
	IV	1,603	-1,791	-188	2	-186	20	-16	4	0	4
2003	I	1,744	-1,918	-174	37	-137	4	-4	-1	0	-1
	II	2,056	-1,721	335	0	335	4	-4	0	0	0
	III	2,012	-1,873	139	49	189	5	-4	1	0	1
	IV	2,213	-2,118	95	2,501	2,597	5	-5	-1	0	-1
2004	I	3,168	-2,395	772	174	946	12	-48	-35	0	-35
	II	1,625	-1,764	-140	7	-133	14	-9	5	0	5
2002	J	2,749	-2,538	211	0	211	14	-13	2	0	2
	J	621	-552	69	0	69	25	-4	21	0	21
	A	265	-332	-67	4	-63	7	-21	-13	0	-13
	S	759	-638	121	0	121	1	-18	-16	0	-16
	O	478	-381	97	2	99	16	-8	8	0	8
	N	568	-574	-6	0	-6	1	-4	-3	0	-3
	D	557	-836	-279	0	-279	4	-4	-1	0	-1
2003	J	579	-800	-221	0	-221	1	-2	-1	0	-1
	F	544	-438	106	37	142	1	-1	0	0	0
	M	621	-680	-58	0	-58	1	-1	0	0	0
	A	523	-600	-78	0	-78	2	-1	1	0	1
	M	558	-522	36	0	36	2	-2	0	0	0
	J	975	-599	377	0	377	1	-1	0	0	0
	J	879	-762	117	34	151	1	-1	0	0	0
	A	438	-433	5	2	7	1	-1	0	0	0
	S	694	-677	17	14	31	3	-2	1	0	1
	O	557	-484	74	52	126	2	-3	-1	0	-1
	N	694	-558	136	2,207	2,343	1	-1	0	0	0
	D	962	-1,076	-114	242	128	2	-1	1	0	1
2004	J	842	-638	204	174	378	4	-2	1	0	1
	F	647	-711	-64	0	-64	4	-42	-38	0	-38
	M	1,679	-1,047	632	0	632	4	-3	1	0	1
	A	595	-582	13	4	17	2	-3	-1	0	-1
	M	496	-429	68	0	68	6	-1	4	0	4
	J	533	-754	-221	3	-218	6	-5	2	0	2

1. Other Transactions include new issues, retirements and/or withdrawals from the market due to activities such as takeovers.

Table 8
Portfolio Transactions with Non-residents in Canadian Stocks, by Geographical Area and Type of Transaction - Continued

Period	Other OECD Countries					All Other Countries					
	Outstanding Issues			Other Transactions ¹	Total	Outstanding Issues			Other Transactions ¹	Total	
	Sales	Purchases	Net			Sales	Purchases	Net			
V No.	A	115237	115238	115236	115235	115234	115242	115243	115241	115240	115239
	Q	115386	115387	115385	115384	115383	115391	115392	115390	115389	115388
	M	115535	115536	115534	115533	115532	115540	115541	115539	115538	115537
millions of dollars											
1992		526	-556	-31	82	51	823	-937	-114	32	-82
1993		1,473	-1,487	-14	82	68	2,567	-2,550	17	88	105
1994		1,544	-1,549	-5	213	208	3,496	-4,114	-619	157	-462
1995		1,366	-2,147	-781	49	-732	3,856	-3,810	46	56	101
1996		2,496	-2,663	-167	242	75	6,676	-5,977	699	260	958
1997		2,597	-2,884	-287	87	-200	7,456	-8,997	-1,541	199	-1,342
1998		2,465	-2,355	110	-7	102	12,782	-13,230	-448	-1	-449
1999		2,077	-2,551	-474	81	-392	22,361	-23,715	-1,354	24	-1,330
2000		3,083	-3,174	-91	5,326	5,235	37,509	-37,167	342	59	401
2001		2,142	-1,877	264	20	284	40,413	-40,307	106	646	752
2002		1,827	-1,781	46	1,188	1,234	48,538	-48,634	-95	269	173
2003		2,685	-2,364	320	188	508	29,544	-29,868	-323	5	-319
2002	II	537	-610	-73	162	88	11,639	-11,711	-72	0	-72
	III	454	-348	107	366	473	12,223	-12,375	-152	12	-140
	IV	427	-392	35	648	683	12,836	-12,996	-160	0	-160
2003	I	385	-422	-37	0	-37	10,412	-10,625	-213	4	-209
	II	460	-382	78	0	78	7,140	-7,107	32	0	32
	III	765	-641	124	0	124	6,274	-6,522	-248	0	-248
	IV	1,074	-919	155	188	342	5,719	-5,614	105	0	105
2004	I	1,087	-959	127	0	127	5,647	-6,593	-945	168	-778
	II	1,097	-924	174	1	174	6,384	-6,256	128	13	141
2002	J	212	-176	36	169	205	4,064	-4,151	-87	0	-87
	J	168	-143	25	135	160	3,913	-4,022	-109	0	-109
	A	148	-97	51	137	188	4,327	-4,280	47	12	59
	S	139	-108	30	94	124	3,983	-4,073	-90	0	-90
	O	126	-141	-15	391	376	4,690	-4,812	-122	0	-122
	N	149	-100	50	257	306	4,393	-4,474	-81	0	-81
	D	152	-151	1	0	1	3,753	-3,710	42	0	42
2003	J	125	-150	-26	0	-26	3,739	-3,815	-76	0	-76
	F	136	-158	-22	0	-22	3,709	-3,776	-67	0	-67
	M	125	-114	10	0	10	2,964	-3,034	-70	4	-66
	A	123	-101	22	0	22	2,652	-2,788	-136	0	-136
	M	158	-114	44	0	44	2,075	-1,983	92	0	92
	J	180	-167	13	0	13	2,413	-2,336	77	0	77
	J	191	-155	37	0	37	2,039	-2,479	-441	0	-441
	A	208	-231	-23	0	-23	2,035	-2,073	-38	0	-38
	S	366	-256	111	0	111	2,200	-1,969	231	0	231
	O	360	-271	89	188	276	2,166	-1,970	196	0	196
	N	353	-341	12	0	12	1,646	-1,853	-206	0	-206
	D	360	-307	54	0	54	1,906	-1,791	116	0	116
2004	J	370	-305	65	0	65	1,627	-1,955	-328	168	-161
	F	341	-284	57	0	57	1,633	-2,065	-432	0	-432
	M	376	-370	6	0	6	2,388	-2,573	-185	0	-185
	A	436	-315	121	0	121	2,427	-2,196	232	0	232
	M	389	-374	15	0	15	2,135	-2,114	21	13	34
	J	272	-235	37	1	38	1,822	-1,947	-125	0	-125

1. Other Transactions include new issues, retirements and/or withdrawals from the market due to activities such as takeovers.

Table 8
Portfolio Transactions with Non-residents in Canadian Stocks, by Geographical Area and Type of Transaction - Concluded

Period	Total				Other Transactions ¹	Total
	Outstanding Issues			Net		
	Sales	Purchases				
V No. A	113138	113139	113076		113077	113075
Q	113310	113311	113248		113249	113247
M	113452	113453	113420		113421	113419
millions of dollars						
1992	17,156	-16,849	307		729	1,036
1993	37,398	-27,240	10,158		1,899	12,056
1994	46,020	-41,584	4,436		1,976	6,412
1995	38,505	-44,489	-5,984		1,741	-4,242
1996	65,836	-62,592	3,244		4,791	8,034
1997	95,542	-91,555	3,987		3,658	7,645
1998	118,654	-121,010	-2,357		16,668	14,311
1999	132,766	-122,954	9,812		4,534	14,346
2000	245,570	-220,553	25,016		10,215	35,232
2001	231,551	-230,222	1,329		2,796	4,125
2002	214,642	-222,678	-8,037		6,505	-1,531
2003	215,251	-206,269	8,983		3,948	12,931
2002 II	56,156	-55,425	731		4,050	4,781
III	47,217	-53,765	-6,548		2,472	-4,076
IV	52,702	-52,783	-81		1,805	1,724
2003 I	48,402	-48,723	-321		56	-265
II	48,704	-46,501	2,203		372	2,575
III	54,990	-50,082	4,908		486	5,394
IV	63,155	-60,962	2,193		3,034	5,227
2004 I	72,539	-66,911	5,629		-1,228	4,401
II	67,379	-67,323	56		18,667	18,723
2002 J	22,424	-21,497	927		3,533	4,460
J	16,124	-19,922	-3,798		366	-3,432
A	14,345	-15,726	-1,381		1,659	279
S	16,748	-18,118	-1,370		447	-923
O	17,133	-18,279	-1,146		928	-218
N	16,892	-16,427	465		528	993
D	18,677	-18,077	600		349	949
2003 J	14,975	-15,622	-647		2	-645
F	16,890	-16,178	712		46	758
M	16,536	-16,923	-387		8	-378
A	14,327	-13,760	566		-151	416
M	14,680	-13,701	979		821	1,800
J	19,698	-19,040	658		-298	360
J	17,824	-16,188	1,636		336	1,972
A	15,925	-14,646	1,279		25	1,303
S	21,242	-19,248	1,994		125	2,119
O	20,585	-20,330	255		544	798
N	18,876	-18,767	109		2,131	2,241
D	23,694	-21,865	1,828		359	2,188
2004 J	21,327	-20,220	1,107		1,474	2,581
F	21,743	-20,436	1,306		-3,322	-2,016
M	29,470	-26,254	3,215		620	3,836
A	23,656	-21,215	2,441		18,517	20,958
M	20,920	-22,740	-1,819		107	-1,712
J	22,803	-23,369	-566		42	-523

1. Other Transactions include new issues, retirements and/or withdrawals from the market due to activities such as takeovers.

Table 9
Portfolio Transactions with Non-residents in Canadian Stocks, by Geographical Area

Period	United States	United Kingdom	Other EU Countries	Japan	Other OECD Countries	Other Countries	Total
V No. A	115214	115219	115224	115229	115234	115239	113075
Q	115363	115368	115373	115378	115383	115388	113247
M	115512	115517	115522	115527	115532	115537	113419
millions of dollars							
1992	1,105	-112	8	67	51	-82	1,036
1993	11,055	534	266	28	68	105	12,056
1994	5,977	269	116	304	208	-462	6,412
1995	-1,452	-1,408	-726	-27	-732	101	-4,242
1996	7,645	-874	-64	295	75	958	8,034
1997	7,440	1,708	-313	352	-200	-1,342	7,645
1998	16,402	-978	-310	-457	102	-449	14,311
1999	17,187	2,873	-4,460	467	-392	-1,330	14,346
2000	33,263	825	-4,316	-177	5,235	401	35,232
2001	7,178	-2,490	-1,443	-155	284	752	4,125
2002	1,223	-2,649	-1,448	-64	1,234	173	-1,531
2003	12,638	-2,878	2,982	-1	508	-319	12,931
2002 II	5,184	-253	-168	2	88	-72	4,781
III	-4,503	-26	127	-8	473	-140	-4,076
IV	1,774	-391	-186	4	683	-160	1,724
2003 I	1,619	-1,501	-137	-1	-37	-209	-265
II	3,444	-1,314	335	0	78	32	2,575
III	5,277	51	189	1	124	-248	5,394
IV	2,297	-114	2,597	-1	342	105	5,227
2004 I	3,055	1,085	946	-35	127	-778	4,401
II	19,041	-505	-133	5	174	141	18,723
2002 J	3,784	346	211	2	205	-87	4,460
J	-3,854	280	69	21	160	-109	-3,432
A	280	-173	-63	-13	188	59	279
S	-929	-133	121	-16	124	-90	-923
O	-491	-89	99	8	376	-122	-218
N	1,088	-312	-6	-3	306	-81	993
D	1,176	9	-279	-1	1	42	949
2003 J	123	-444	-221	-1	-26	-76	-645
F	723	-19	142	0	-22	-67	758
M	774	-1,038	-58	0	10	-66	-378
A	681	-74	-78	1	22	-136	416
M	2,442	-813	36	0	44	92	1,800
J	321	-426	377	0	13	77	360
J	1,856	369	151	0	37	-441	1,972
A	2,291	-935	7	0	-23	-38	1,303
S	1,130	616	31	1	111	231	2,119
O	62	139	126	-1	276	196	798
N	313	-220	2,343	0	12	-206	2,241
D	1,922	-32	128	1	54	116	2,188
2004 J	2,305	-8	378	1	65	-161	2,581
F	-1,356	-183	-64	-38	57	-432	-2,016
M	2,106	1,275	632	1	6	-185	3,836
A	20,500	88	17	-1	121	232	20,958
M	-1,382	-451	68	4	15	34	-1,712
J	-77	-142	-218	2	38	-125	-523

Table 10
Portfolio Transactions with Non-residents in Foreign Securities by Instrument and Sector, Purchases and Sales

Period	Foreign Bonds						Foreign Stocks						Total Foreign Securities
	U.S. Government	Other U.S.	Other foreign	Total			U.S.	Other foreign	Total				
				Purchases	Sales	Net			Purchases	Sales	Net		
V No.	A	113212	113213	113214	113133	113134	113132	113215	113216	113136	113137	113135	113131
	Q	113384	113385	113386	113305	113306	113304	113387	113388	113308	113309	113307	113303
	M	113556	113557	113558	113447	113448	113446	113559	113560	113450	113451	113449	113445
millions of dollars													
1992		-1,033	-769	401	-80,577	79,176	-1,401	-6,802	-3,546	-42,478	32,130	-10,348	-11,749
1993		-1,761	-1,500	-1,809	-78,658	73,588	-5,071	-5,488	-7,323	-62,079	49,268	-12,811	-17,881
1994		1,831	-295	-1,101	-134,369	134,803	435	-1,797	-7,565	-71,541	62,179	-9,362	-8,927
1995		644	-427	-1,301	-159,914	158,830	-1,085	-1,443	-4,803	-82,714	76,468	-6,247	-7,331
1996		1,047	-2,478	-638	-221,467	219,397	-2,070	-5,533	-11,714	-98,522	81,275	-17,247	-19,317
1997		-825	-2,794	-3,024	-248,518	241,876	-6,642	-938	-4,269	-162,184	156,977	-5,207	-11,849
1998		-2,841	-2,944	-1,279	-361,203	354,139	-7,064	-10,162	-5,271	-163,865	148,433	-15,433	-22,497
1999		-1,205	443	-1,715	-245,256	242,778	-2,477	-14,986	-5,637	-260,481	239,858	-20,623	-23,101
2000		-1,507	-2,121	-335	-306,167	302,204	-3,963	-29,082	-30,883	-366,135	306,171	-59,965	-63,927
2001		-2,345	226	198	-377,653	375,732	-1,920	-20,914	-14,739	-351,281	315,628	-35,653	-37,573
2002		-4,054	-876	-1,299	-530,567	524,337	-6,229	-16,964	-1,894	-665,632	646,774	-18,858	-25,087
2003		-3,891	-2,098	-2,082	-506,414	498,344	-8,071	-3,258	-1,191	-593,636	589,187	-4,449	-12,519
2002	II	-2,127	-509	338	-128,497	126,198	-2,299	-2,917	-1,772	-181,953	177,265	-4,688	-6,987
	III	-1,340	727	-859	-165,776	164,304	-1,472	-2,080	-129	-166,242	164,033	-2,210	-3,682
	IV	1,073	-38	-1,050	-136,075	136,059	-16	-5,062	2,155	-180,424	177,518	-2,907	-2,923
2003	I	-2,052	-352	-1,096	-109,800	106,300	-3,501	1,290	861	-150,481	152,633	2,151	-1,349
	II	-3,554	66	824	-140,416	137,752	-2,664	-594	54	-144,382	143,842	-540	-3,204
	III	2,082	-1,159	-928	-146,871	146,866	-5	-2,276	-530	-137,329	134,522	-2,807	-2,812
	IV	-367	-652	-882	-109,327	107,426	-1,901	-1,677	-1,576	-161,444	158,191	-3,253	-5,154
2004	I	-419	-954	-1,239	-125,649	123,037	-2,612	-2,467	2,744	-130,142	130,419	277	-2,336
	II	-2,208	-591	-228	-141,448	138,422	-3,026	-2,552	1,814	-167,099	166,361	-739	-3,765
2002	J	72	-511	-42	-41,501	41,020	-480	-1,498	-346	-55,186	53,342	-1,844	-2,325
	J	-1,427	286	633	-70,490	69,981	-509	-646	338	-47,624	47,317	-308	-816
	A	2,021	-342	-885	-53,996	54,790	795	-969	-301	-64,588	63,317	-1,271	-476
	S	-1,934	783	-607	-41,290	39,532	-1,758	-465	-166	-54,030	53,399	-631	-2,389
	O	3,270	-83	-361	-50,388	53,215	2,826	-1,965	1,890	-58,334	58,258	-76	2,751
	N	-3,662	679	-258	-52,197	48,956	-3,241	-2,628	-204	-58,294	55,462	-2,832	-6,073
	D	1,466	-635	-432	-33,490	33,888	398	-468	469	-63,797	63,798	1	399
2003	J	-585	426	-479	-32,913	32,275	-639	357	-100	-55,490	55,747	257	-382
	F	-957	-657	34	-35,805	34,226	-1,579	-181	100	-45,484	45,403	-82	-1,661
	M	-510	-122	-651	-41,082	39,799	-1,283	1,114	862	-49,507	51,483	1,976	693
	A	-2,033	349	18	-41,629	39,963	-1,666	1,155	-603	-47,189	47,741	553	-1,114
	M	111	-428	-56	-44,154	43,781	-373	-1,269	296	-47,486	46,513	-973	-1,346
	J	-1,632	146	862	-54,633	54,008	-625	-480	360	-49,707	49,588	-120	-744
	J	-1,143	-783	-459	-51,589	49,203	-2,386	-1,002	-178	-44,816	43,636	-1,181	-3,566
	A	171	-345	-166	-50,357	50,017	-340	-1,099	-642	-45,320	43,580	-1,740	-2,080
	S	3,054	-31	-302	-44,925	47,645	2,720	-176	290	-47,193	47,307	114	2,834
	O	1,292	-1,110	115	-42,081	42,377	297	-191	-614	-64,050	63,246	-804	-508
	N	8	4	76	-31,439	31,527	88	-1,000	-918	-51,661	49,743	-1,918	-1,830
	D	-1,667	454	-1,073	-35,808	33,522	-2,286	-487	-44	-45,733	45,202	-531	-2,817
2004	J	211	-412	-160	-35,614	35,253	-362	253	829	-41,381	42,463	1,082	720
	F	-486	-388	-354	-41,510	40,283	-1,228	-1,652	835	-49,120	48,304	-817	-2,044
	M	-144	-154	-726	-48,525	47,501	-1,023	-1,068	1,079	-39,641	39,653	12	-1,012
	A	-1,274	252	-326	-52,649	51,301	-1,347	-73	-100	-48,626	48,453	-173	-1,520
	M	-1,514	-524	-53	-43,218	41,126	-2,091	-1,454	107	-63,096	61,749	-1,348	-3,439
	J	581	-318	151	-45,582	45,995	413	-1,025	1,807	-55,377	56,158	782	1,195

Table 11
Portfolio Transactions with Non-residents in Foreign Bonds, by Geographical Area, Purchases and Sales

Period	United States			United Kingdom			Other EU Countries			
	Purchases	Sales	Net	Purchases	Sales	Net	Purchases	Sales	Net	
V No.	A	115177	115178	115176	115180	115181	115179	115183	115184	115182
	Q	115326	115327	115325	115329	115330	115328	115332	115333	115331
	M	115475	115476	115474	115478	115479	115477	115481	115482	115480
millions of dollars										
1992		-75,367	73,092	-2,274	-2,010	1,916	-94	-2,059	2,061	1
1993		-70,068	66,018	-4,050	-4,197	3,229	-969	-2,093	1,564	-529
1994		-109,689	110,484	795	-20,022	19,178	-843	-1,469	1,466	-3
1995		-132,156	131,308	-848	-20,830	20,837	7	-1,626	1,957	331
1996		-192,320	189,761	-2,559	-18,195	18,391	196	-4,316	4,782	466
1997		-203,928	196,934	-6,994	-33,965	34,565	600	-1,801	2,056	255
1998		-318,339	309,520	-8,818	-32,136	32,943	808	-2,180	2,084	-96
1999		-207,759	203,149	-4,609	-29,772	29,762	-10	-4,287	4,557	270
2000		-265,124	261,923	-3,201	-22,692	21,732	-960	-15,301	14,758	-543
2001		-348,017	344,663	-3,354	-12,090	13,205	1,116	-9,093	8,717	-375
2002		-482,335	479,042	-3,293	-34,514	28,371	-6,143	-8,523	8,411	-112
2003		-445,936	441,235	-4,702	-38,563	33,204	-5,359	-6,439	6,199	-240
2002	II	-115,264	112,398	-2,865	-9,759	9,185	-574	-1,867	1,725	-141
	III	-151,600	151,251	-348	-10,854	8,588	-2,266	-2,294	2,398	104
	IV	-123,822	125,434	1,612	-8,939	6,481	-2,458	-2,196	2,560	364
2003	I	-93,962	93,921	-41	-11,705	8,973	-2,732	-2,022	1,818	-204
	II	-123,554	120,831	-2,722	-10,456	9,960	-496	-885	1,316	431
	III	-131,640	130,728	-912	-8,418	7,818	-601	-1,605	2,044	439
	IV	-96,780	95,754	-1,026	-7,985	6,454	-1,531	-1,927	1,021	-907
2004	I	-104,453	101,405	-3,048	-13,030	7,329	-5,701	-2,731	2,436	-295
	II	-118,656	113,823	-4,834	-14,868	11,016	-3,852	-2,554	2,368	-186
2002	J	-37,024	36,367	-657	-3,470	3,164	-307	-466	317	-149
	J	-65,806	64,438	-1,368	-3,834	3,213	-621	-352	1,091	739
	A	-47,972	49,923	1,951	-5,068	3,712	-1,356	-766	800	34
	S	-37,822	36,891	-931	-1,952	1,663	-290	-1,176	507	-669
	O	-46,734	50,454	3,720	-2,341	1,624	-717	-851	639	-212
	N	-47,671	44,256	-3,416	-3,492	3,491	-2	-762	709	-53
	D	-29,416	30,725	1,308	-3,106	1,367	-1,739	-583	1,212	629
2003	J	-28,617	28,824	207	-3,253	2,603	-650	-525	422	-103
	F	-30,843	30,648	-195	-3,348	2,225	-1,123	-948	840	-108
	M	-34,502	34,449	-53	-5,104	4,145	-959	-549	557	8
	A	-36,590	35,929	-661	-3,544	2,582	-962	-206	304	99
	M	-39,103	37,556	-1,547	-2,743	3,226	484	-368	347	-21
	J	-47,861	47,347	-514	-4,169	4,151	-18	-312	665	353
	J	-46,279	43,748	-2,531	-3,100	3,017	-84	-211	611	400
	A	-45,879	44,983	-895	-2,205	2,009	-196	-643	329	-314
	S	-39,482	41,997	2,514	-3,113	2,792	-321	-751	1,105	354
	O	-36,594	37,092	498	-3,565	3,098	-467	-902	350	-552
	N	-28,425	28,356	-69	-2,016	1,566	-450	-293	206	-87
	D	-31,762	30,307	-1,455	-2,404	1,790	-613	-733	464	-268
2004	J	-30,658	30,705	47	-3,248	2,465	-783	-584	861	277
	F	-35,633	32,932	-2,701	-3,866	2,818	-1,048	-275	413	138
	M	-38,162	37,768	-393	-5,915	2,046	-3,869	-1,873	1,162	-711
	A	-45,660	40,999	-4,662	-5,095	4,350	-745	-972	587	-385
	M	-35,618	34,205	-1,413	-4,628	3,008	-1,620	-693	673	-21
	J	-37,378	38,619	1,241	-5,144	3,657	-1,487	-889	1,109	220

Table 11
Portfolio Transactions with Non-residents in Foreign Bonds, by Geographical Area, Purchases and Sales -
Concluded

Period	Japan			Other OECD Countries			All Other Countries			Total			
	Purchases	Sales	Net	Purchases	Sales	Net	Purchases	Sales	Net	Purchases	Sales	Net	
V No.	A	115186	115187	115185	115189	115190	115188	115192	115193	115191	113133	113134	113132
	Q	115335	115336	115334	115338	115339	115337	115341	115342	115340	113305	113306	113304
	M	115484	115485	115483	115487	115488	115486	115490	115491	115489	113447	113448	113446
millions of dollars													
1992		-575	1,259	684	-38	59	22	-527	788	261	-80,577	79,176	-1,401
1993		-1,014	1,056	42	-134	311	177	-1,151	1,410	259	-78,658	73,588	-5,071
1994		-2,047	2,129	82	-168	289	121	-974	1,258	283	-134,369	134,803	435
1995		-2,809	2,335	-475	-218	174	-44	-2,275	2,219	-56	-159,914	158,830	-1,085
1996		-3,571	2,783	-787	-138	440	301	-2,926	3,240	314	-221,467	219,397	-2,070
1997		-3,523	942	-2,581	-156	192	36	-5,144	7,186	2,042	-248,518	241,876	-6,642
1998		-1,795	553	-1,243	-433	587	153	-6,320	8,452	2,132	-361,203	354,139	-7,064
1999		-1,238	912	-325	-651	573	-79	-1,550	3,826	2,276	-245,256	242,778	-2,477
2000		-576	439	-137	-516	675	159	-1,958	2,677	719	-306,167	302,204	-3,963
2001		-1,239	985	-254	-776	912	136	-6,438	7,249	811	-377,653	375,732	-1,920
2002		-729	661	-68	-701	1,441	740	-3,765	6,412	2,646	-530,567	524,337	-6,229
2003		-1,043	531	-512	-1,336	1,454	118	-13,095	15,720	2,625	-506,414	498,344	-8,071
2002	II	-249	137	-112	-301	736	435	-1,058	2,017	959	-128,497	126,198	-2,299
	III	-76	140	63	-183	214	31	-769	1,713	944	-165,776	164,304	-1,472
	IV	-225	205	-20	-90	300	210	-802	1,079	276	-136,075	136,059	-16
2003	I	-381	63	-318	-385	345	-40	-1,345	1,179	-166	-109,800	106,300	-3,501
	II	-296	155	-140	-212	353	142	-5,013	5,136	123	-140,416	137,752	-2,664
	III	-208	167	-41	-318	337	20	-4,682	5,772	1,090	-146,871	146,866	-5
	IV	-158	146	-12	-422	418	-4	-2,055	3,633	1,579	-109,327	107,426	-1,901
2004	I	-422	182	-240	-289	194	-95	-4,724	11,491	6,766	-125,649	123,037	-2,612
	II	-130	254	124	-485	570	84	-4,755	10,392	5,637	-141,448	138,422	-3,026
2002	J	-12	4	-8	-54	441	387	-474	728	253	-41,501	41,020	-480
	J	-5	80	75	-30	58	28	-463	1,101	638	-70,490	69,981	-509
	A	-36	24	-13	-41	26	-15	-113	306	193	-53,996	54,790	795
	S	-35	36	1	-112	131	19	-193	306	113	-41,290	39,532	-1,758
	O	-97	37	-60	-34	131	97	-332	330	-1	-50,388	53,215	2,826
	N	-119	62	-57	-11	98	87	-141	341	200	-52,197	48,956	-3,241
	D	-10	106	97	-45	71	26	-330	407	77	-33,490	33,888	398
2003	J	-239	12	-227	-118	231	113	-162	183	21	-32,913	32,275	-639
	F	-41	30	-11	-170	56	-114	-455	427	-28	-35,805	34,226	-1,579
	M	-101	22	-80	-97	58	-39	-728	568	-160	-41,082	39,799	-1,283
	A	-121	28	-94	-51	61	10	-1,117	1,059	-59	-41,629	39,963	-1,666
	M	-57	59	1	-52	87	35	-1,831	2,507	676	-44,154	43,781	-373
	J	-117	69	-48	-109	205	96	-2,064	1,571	-494	-54,633	54,008	-625
	J	-88	58	-31	-199	208	9	-1,712	1,563	-149	-51,589	49,203	-2,386
	A	-84	25	-59	-50	66	16	-1,496	2,606	1,109	-50,357	50,017	-340
	S	-36	84	48	-69	64	-5	-1,474	1,604	130	-44,925	47,645	2,720
	O	-127	110	-17	-57	95	37	-836	1,633	797	-42,081	42,377	297
	N	-10	12	3	-133	138	5	-562	1,249	687	-31,439	31,527	88
	D	-21	24	2	-232	185	-46	-656	751	94	-35,808	33,522	-2,286
2004	J	-74	14	-60	-32	57	25	-1,018	1,151	133	-35,614	35,253	-362
	F	-158	72	-85	-66	47	-18	-1,513	4,000	2,487	-41,510	40,283	-1,228
	M	-191	96	-94	-192	90	-102	-2,193	6,340	4,147	-48,525	47,501	-1,023
	A	-12	115	103	-86	206	120	-823	5,044	4,221	-52,649	51,301	-1,347
	M	-101	101	0	-59	89	30	-2,119	3,050	931	-43,218	41,126	-2,091
	J	-17	38	20	-341	275	-66	-1,813	2,297	484	-45,582	45,995	413

Table 12
Portfolio Transactions with Non-residents in Foreign Stocks, by Geographical Area, Purchases and Sales

Period	United States			United Kingdom			Other EU Countries			
	Purchases	Sales	Net	Purchases	Sales	Net	Purchases	Sales	Net	
V No.	A	115196	115197	115195	115199	115200	115198	115202	115203	115201
	Q	115345	115346	115344	115348	115349	115347	115351	115352	115350
	M	115494	115495	115493	115497	115498	115496	115500	115501	115499
millions of dollars										
1992		-33,796	26,488	-7,308	-3,378	1,541	-1,837	-1,198	1,086	-111
1993		-47,291	41,370	-5,921	-2,639	1,491	-1,149	-2,245	1,306	-939
1994		-54,206	51,444	-2,761	-2,992	2,184	-808	-2,224	1,601	-623
1995		-63,184	60,033	-3,151	-3,637	3,656	20	-4,447	3,701	-746
1996		-71,550	61,787	-9,763	-4,379	2,931	-1,447	-4,912	3,414	-1,498
1997		-130,658	126,474	-4,184	-5,535	4,430	-1,105	-5,998	5,337	-661
1998		-126,354	113,442	-12,913	-5,744	5,420	-324	-9,814	10,610	796
1999		-197,973	176,579	-21,394	-14,327	14,378	51	-11,956	12,751	795
2000		-257,744	220,083	-37,660	-41,200	35,474	-5,726	-35,487	17,253	-18,234
2001		-223,791	200,215	-23,575	-86,707	80,295	-6,412	-16,117	14,066	-2,052
2002		-337,081	312,652	-24,428	-269,923	267,945	-1,978	-20,164	19,726	-437
2003		-227,237	228,400	1,163	-297,222	293,969	-3,252	-18,298	15,550	-2,748
2002	II	-81,606	77,177	-4,429	-81,604	79,136	-2,467	-7,759	7,698	-61
	III	-85,376	78,479	-6,897	-70,659	71,075	416	-2,915	3,246	332
	IV	-86,447	82,686	-3,761	-77,368	76,010	-1,359	-5,112	4,736	-376
2003	I	-73,947	72,897	-1,051	-62,516	64,917	2,400	-3,677	3,128	-549
	II	-59,796	59,200	-596	-68,209	66,986	-1,223	-6,651	6,004	-647
	III	-47,540	48,689	1,149	-72,466	70,036	-2,430	-3,999	3,587	-412
	IV	-45,953	47,614	1,661	-94,030	92,031	-1,999	-3,971	2,831	-1,141
2004	I	-49,658	53,452	3,794	-63,663	60,439	-3,224	-4,695	5,001	305
	II	-41,425	42,442	1,017	-106,115	105,672	-443	-10,755	10,585	-169
2002	J	-27,896	25,298	-2,598	-22,293	21,058	-1,235	-1,827	2,391	564
	J	-29,942	27,545	-2,396	-14,809	14,627	-182	-966	1,490	524
	A	-28,245	25,101	-3,145	-32,391	32,709	318	-768	773	5
	S	-27,189	25,833	-1,356	-23,460	23,739	280	-1,180	983	-197
	O	-31,383	31,186	-198	-21,662	21,548	-114	-2,078	1,747	-331
	N	-28,540	25,908	-2,632	-23,486	22,678	-807	-1,586	1,153	-433
	D	-26,523	25,592	-931	-32,220	31,783	-437	-1,448	1,836	388
2003	J	-23,521	23,580	59	-27,696	28,578	882	-1,262	1,004	-257
	F	-22,381	22,113	-268	-17,969	17,926	-43	-1,137	902	-235
	M	-28,045	27,204	-842	-16,851	18,413	1,561	-1,278	1,222	-56
	A	-25,012	25,594	582	-15,903	16,350	447	-3,165	1,967	-1,197
	M	-19,220	17,359	-1,861	-22,889	21,677	-1,212	-2,183	2,529	345
	J	-15,564	16,247	683	-29,417	28,959	-458	-1,303	1,508	206
	J	-15,268	17,482	2,214	-24,799	21,424	-3,376	-1,201	906	-295
	A	-17,148	16,752	-396	-21,590	21,435	-156	-1,360	1,091	-269
	S	-15,124	14,455	-669	-26,077	27,178	1,101	-1,437	1,590	152
	O	-17,036	19,125	2,089	-38,621	37,451	-1,170	-1,286	894	-391
	N	-15,095	14,284	-811	-27,916	27,959	43	-1,784	1,109	-676
	D	-13,822	14,204	382	-27,493	26,620	-872	-901	827	-74
2004	J	-17,412	18,691	1,279	-17,792	16,320	-1,472	-1,305	1,982	676
	F	-16,877	19,301	2,424	-26,353	24,553	-1,799	-1,752	1,280	-472
	M	-15,369	15,460	91	-19,518	19,566	47	-1,639	1,740	101
	A	-14,094	15,057	963	-27,293	27,347	55	-3,606	3,429	-178
	M	-13,037	13,900	863	-42,409	40,858	-1,551	-4,312	4,015	-297
	J	-14,294	13,486	-808	-36,414	37,466	1,052	-2,836	3,142	306

Table 12
Portfolio Transactions with Non-residents in Foreign Stocks, by Geographical Area, Purchases and Sales -
Concluded

Period	Japan			Other OECD Countries			All Other Countries			Total		
	Purchases	Sales	Net	Purchases	Sales	Net	Purchases	Sales	Net	Purchases	Sales	Net
V No. A	115205	115206	115204	115208	115209	115207	115211	115212	115210	113136	113137	113135
Q	115354	115355	115353	115357	115358	115356	115360	115361	115359	113308	113309	113307
M	115503	115504	115502	115506	115507	115505	115509	115510	115508	113450	113451	113449
millions of dollars												
1992	-725	521	-204	-598	448	-150	-2,784	2,047	-737	-42,478	32,130	-10,348
1993	-1,873	726	-1,147	-824	627	-197	-7,206	3,748	-3,458	-62,079	49,268	-12,811
1994	-3,223	1,531	-1,693	-1,058	865	-194	-7,838	4,554	-3,284	-71,541	62,179	-9,362
1995	-3,062	1,874	-1,188	-2,029	1,048	-981	-6,355	6,155	-200	-82,714	76,468	-6,247
1996	-2,447	1,678	-768	-1,757	1,576	-181	-13,478	9,889	-3,588	-98,522	81,275	-17,247
1997	-4,394	4,870	476	-2,228	2,218	-10	-13,371	13,647	276	-162,184	156,977	-5,207
1998	-3,817	2,206	-1,612	-2,787	3,086	299	-15,349	13,669	-1,680	-163,865	148,433	-15,433
1999	-5,277	5,560	283	-4,242	4,274	32	-26,706	26,316	-390	-260,481	239,858	-20,623
2000	-4,973	7,097	2,124	-6,532	6,532	-1	-20,200	19,732	-468	-366,135	306,171	-59,965
2001	-5,221	4,166	-1,055	-5,644	4,529	-1,115	-13,801	12,356	-1,444	-351,281	315,628	-35,653
2002	-4,714	5,191	477	-5,674	4,552	-1,122	-28,077	36,708	8,631	-665,632	646,774	-18,858
2003	-5,468	5,456	-13	-8,669	5,787	-2,883	-36,742	40,025	3,283	-593,636	589,187	-4,449
2002 II	-1,131	1,095	-35	-1,427	1,361	-66	-8,427	10,798	2,371	-181,953	177,265	-4,688
2002 III	-678	1,119	441	-1,002	736	-265	-5,613	9,378	3,764	-166,242	164,033	-2,210
2002 IV	-1,588	1,894	306	-1,635	1,363	-272	-8,274	10,828	2,554	-180,424	177,518	-2,907
2003 I	-853	1,097	245	-1,217	1,255	38	-8,271	9,338	1,067	-150,481	152,633	2,151
2003 II	-817	825	8	-2,509	1,168	-1,341	-6,401	9,658	3,258	-144,382	143,842	-540
2003 III	-2,027	1,481	-546	-1,991	1,583	-407	-9,306	9,145	-160	-137,329	134,522	-2,807
2003 IV	-1,772	2,052	280	-2,953	1,780	-1,173	-12,765	11,884	-881	-161,444	158,191	-3,253
2004 I	-1,960	1,583	-376	-3,013	3,006	-7	-7,154	6,938	-215	-130,142	130,419	277
2004 II	-895	1,148	253	-1,400	1,999	598	-6,509	4,514	-1,994	-167,099	166,361	-739
2002 J	-373	512	139	-417	542	125	-2,381	3,541	1,160	-55,186	53,374	-1,844
2002 J	-182	591	409	-444	393	-51	-1,282	2,671	1,389	-47,624	47,317	-308
2002 A	-316	294	-21	-271	177	-94	-2,597	4,263	1,666	-64,588	63,317	-1,271
2002 S	-180	234	53	-287	166	-120	-1,735	2,443	709	-54,030	53,399	-631
2002 O	-486	551	65	-659	420	-239	-2,065	2,807	741	-58,334	58,258	-76
2002 N	-575	773	198	-514	289	-224	-3,592	4,659	1,067	-58,294	55,462	-2,832
2002 D	-527	570	43	-462	653	192	-2,617	3,363	746	-63,797	63,798	1
2003 J	-328	304	-24	-448	376	-72	-2,236	1,905	-331	-55,490	55,747	257
2003 F	-183	253	69	-350	406	57	-3,463	3,802	339	-45,484	45,403	-82
2003 M	-342	541	199	-420	473	54	-2,571	3,631	1,060	-49,507	51,483	1,976
2003 A	-269	291	22	-330	301	-29	-2,511	3,238	728	-47,189	47,741	553
2003 M	-306	313	7	-659	306	-353	-2,228	4,329	2,101	-47,486	46,513	-973
2003 J	-242	221	-21	-1,520	561	-959	-1,662	2,091	429	-49,707	49,588	-120
2003 J	-403	364	-40	-506	442	-64	-2,639	3,019	380	-44,816	43,636	-1,181
2003 A	-693	443	-250	-664	582	-82	-3,865	3,277	-588	-45,320	43,580	-1,740
2003 S	-931	674	-257	-821	559	-262	-2,802	2,850	48	-47,193	47,307	114
2003 O	-1,132	1,280	148	-1,238	614	-624	-4,737	3,882	-856	-64,050	63,246	-804
2003 N	-498	534	36	-1,397	623	-773	-4,971	5,233	262	-51,661	49,743	-1,918
2003 D	-142	239	97	-318	543	224	-3,057	2,769	-288	-45,733	45,202	-531
2004 J	-891	896	5	-1,387	1,425	38	-2,594	3,149	555	-41,381	42,463	1,082
2004 F	-710	357	-353	-1,086	1,103	17	-2,344	1,710	-634	-49,120	48,304	-817
2004 M	-359	331	-28	-540	478	-62	-2,216	2,079	-137	-39,641	39,653	12
2004 A	-350	378	27	-812	444	-367	-2,471	1,798	-673	-48,626	48,453	-173
2004 M	-247	386	139	-326	1,099	773	-2,766	1,492	-1,274	-63,096	61,749	-1,348
2004 J	-298	385	87	-263	455	193	-1,271	1,224	-47	-55,377	56,158	782

Supplementary Tables

Table 13
Loans under Repurchase Agreements, Transactions with Non-residents, by Canadian and Foreign Securities

Period	Canadian Securities								
	Assets			Liabilities			Total		
	Sales	Purchases	Net	Sales	Purchases	Net	Sales	Purchases	Net
	millions of dollars								
1995	1,049,198	-1,049,106	91	518,819	-520,392	-1,574	1,568,016	-1,569,499	-1,482
1996	1,156,654	-1,158,039	-1,385	639,384	-637,107	2,276	1,796,038	-1,795,146	891
1997	1,939,429	-1,952,179	-12,750	1,209,742	-1,204,877	4,865	3,149,171	-3,157,056	-7,885
1998	1,763,140	-1,746,743	16,397	1,248,719	-1,250,578	-1,859	3,011,859	-2,997,321	14,538
1999	1,264,495	-1,260,766	3,729	611,068	-611,198	-130	1,875,563	-1,871,963	3,599
2000	1,069,882	-1,070,113	-231	522,128	-520,156	1,972	1,592,010	-1,590,268	1,742
2001	676,252	-676,945	-694	655,136	-656,700	-1,564	1,331,388	-1,333,645	-2,257
2002	526,098	-529,875	-3,777	873,344	-867,807	5,537	1,399,442	-1,397,682	1,760
2003	732,914	-730,904	2,010	1,136,897	-1,133,193	3,705	1,869,812	-1,864,097	5,715
2002 II	109,563	-106,584	2,979	213,957	-217,048	-3,091	323,520	-323,632	-112
III	148,954	-150,839	-1,884	237,829	-233,989	3,839	386,783	-384,828	1,955
IV	152,527	-153,830	-1,303	235,491	-233,575	1,916	388,018	-387,405	613
2003 I	198,401	-201,145	-2,744	277,500	-276,053	1,447	475,901	-477,198	-1,297
II	166,459	-163,550	2,908	287,705	-290,392	-2,687	454,164	-453,943	221
III	178,689	-180,611	-1,922	293,411	-293,691	-280	472,100	-474,302	-2,202
IV	189,365	-185,598	3,767	278,281	-273,056	5,225	467,646	-458,654	8,992
2004 I	174,170	-173,643	527	276,998	-275,388	1,610	451,168	-449,031	2,137
II	188,341	-190,394	-2,054	275,838	-275,145	693	464,179	-465,539	-1,360
2002 J	41,462	-44,564	-3,102	68,379	-66,550	1,829	109,841	-111,114	-1,273
J	48,295	-46,892	1,402	79,656	-79,375	281	127,951	-126,267	1,684
A	44,898	-44,767	132	71,883	-69,882	2,001	116,781	-114,648	2,133
S	55,761	-59,179	-3,418	86,289	-84,733	1,556	142,051	-143,912	-1,862
O	67,430	-66,815	615	87,943	-88,087	-144	155,373	-154,901	472
N	46,289	-43,949	2,339	65,203	-69,844	-4,641	111,491	-113,793	-2,302
D	38,808	-43,066	-4,258	82,346	-75,645	6,701	121,154	-118,711	2,443
2003 J	55,050	-55,837	-787	86,733	-87,342	-608	141,783	-143,178	-1,395
F	59,781	-58,542	1,240	83,221	-84,607	-1,386	143,002	-143,148	-146
M	83,570	-86,766	-3,196	107,546	-104,105	3,441	191,116	-190,871	244
A	63,530	-60,028	3,502	90,599	-94,058	-3,458	154,129	-154,086	44
M	56,354	-51,059	5,295	81,703	-86,189	-4,486	138,057	-137,248	809
J	46,575	-52,463	-5,888	115,403	-110,146	5,257	161,978	-162,609	-631
J	72,700	-74,456	-1,756	106,499	-102,112	4,387	179,199	-176,568	2,631
A	48,694	-46,677	2,016	89,250	-90,487	-1,237	137,944	-137,164	780
S	57,296	-59,478	-2,182	97,661	-101,092	-3,431	154,957	-160,570	-5,612
O	63,681	-64,359	-678	100,487	-96,786	3,702	164,168	-161,144	3,024
N	56,756	-50,838	5,918	76,301	-82,356	-6,055	133,057	-133,194	-138
D	68,929	-70,402	-1,473	101,492	-93,914	7,578	170,422	-164,316	6,106
2004 J	47,788	-49,607	-1,818	84,932	-86,245	-1,313	132,721	-135,851	-3,131
F	51,200	-48,443	2,757	80,074	-79,380	694	131,274	-127,823	3,451
M	75,181	-75,593	-412	111,992	-109,764	2,228	187,173	-185,357	1,816
A	59,414	-58,683	731	107,151	-105,645	1,506	166,565	-164,328	2,237
M	58,392	-54,470	3,922	78,337	-84,942	-6,605	136,729	-139,412	-2,683
J	70,535	-77,242	-6,707	90,350	-84,558	5,792	160,885	-161,800	-915

Table 13**Loans under Repurchase Agreements, Transactions with Non-residents, by Canadian and Foreign Securities**
- Concluded

Period	Foreign Securities								
	Assets			Liabilities			Total		
	Sales	Purchases	Net	Sales	Purchases	Net	Sales	Purchases	Net
	millions of dollars								
1995	52,457	-53,294	-837	24,868	-25,059	-192	77,325	-78,353	-1,028
1996	288,577	-287,744	833	94,759	-92,948	1,811	383,336	-380,692	2,644
1997	138,829	-139,923	-1,094	79,890	-81,283	-1,392	218,720	-221,206	-2,486
1998	89,541	-89,619	-79	81,845	-82,178	-333	171,386	-171,797	-411
1999	138,123	-138,016	107	104,832	-104,544	288	242,955	-242,561	394
2000	158,151	-158,302	-152	106,230	-105,657	573	264,381	-263,960	421
2001	143,503	-144,093	-590	154,178	-155,954	-1,776	297,681	-300,047	-2,366
2002	258,124	-260,154	-2,030	273,748	-274,612	-865	531,872	-534,766	-2,894
2003	281,591	-280,595	995	284,903	-284,469	434	566,494	-565,064	1,430
2002 II	53,777	-53,093	684	77,771	-76,769	1,002	131,548	-129,861	1,687
III	74,409	-75,917	-1,507	93,757	-94,779	-1,022	168,166	-170,695	-2,529
IV	79,939	-80,274	-336	59,289	-59,241	48	139,227	-139,515	-288
2003 I	71,331	-71,673	-342	75,057	-73,689	1,367	146,388	-145,362	1,025
II	88,500	-87,114	1,386	88,954	-89,382	-427	177,454	-176,495	959
III	56,665	-56,018	647	79,699	-79,441	258	136,364	-135,459	905
IV	65,095	-65,790	-695	41,193	-41,957	-764	106,287	-107,747	-1,460
2004 I	80,154	-79,907	247	49,208	-49,063	145	129,363	-128,971	392
II	73,323	-68,929	4,394	64,346	-59,621	4,725	137,669	-128,551	9,119
2002 J	23,901	-23,045	856	34,343	-33,447	896	58,244	-56,492	1,752
J	31,566	-31,858	-292	45,152	-44,665	487	76,718	-76,522	196
A	23,311	-22,757	554	28,360	-29,196	-836	51,671	-51,954	-283
S	19,533	-21,302	-1,769	20,244	-20,918	-673	39,777	-42,219	-2,442
O	28,139	-28,913	-774	15,883	-16,262	-379	44,022	-45,175	-1,153
N	24,120	-24,101	19	23,690	-23,320	370	47,810	-47,421	389
D	27,680	-27,260	419	19,716	-19,659	57	47,396	-46,920	476
2003 J	19,415	-19,595	-180	18,462	-18,018	444	37,877	-37,613	264
F	26,037	-26,446	-408	28,355	-28,243	112	54,392	-54,689	-297
M	25,879	-25,633	246	28,240	-27,428	812	54,118	-53,060	1,058
A	28,841	-27,895	946	29,708	-29,945	-237	58,550	-57,840	709
M	31,161	-31,161	0	33,266	-33,361	-95	64,427	-64,522	-95
J	28,498	-28,058	440	25,980	-26,075	-95	54,478	-54,133	345
J	22,376	-22,452	-76	37,991	-38,748	-757	60,367	-61,200	-833
A	15,209	-14,094	1,115	25,599	-24,686	913	40,809	-38,780	2,029
S	19,080	-19,472	-393	16,109	-16,007	102	35,188	-35,479	-291
O	26,418	-27,321	-903	12,897	-13,826	-929	39,315	-41,147	-1,832
N	21,266	-21,495	-229	11,510	-11,607	-97	32,775	-33,102	-327
D	17,411	-16,975	437	16,786	-16,524	262	34,197	-33,499	698
2004 J	21,248	-21,461	-213	12,050	-11,371	679	33,298	-32,832	466
F	30,249	-30,059	191	18,539	-19,237	-699	48,788	-49,296	-508
M	28,657	-28,388	269	18,620	-18,455	165	47,276	-46,843	433
A	28,965	-27,603	1,362	20,118	-17,917	2,202	49,083	-45,519	3,564
M	24,302	-22,115	2,187	22,460	-20,177	2,283	46,762	-42,292	4,471
J	20,057	-19,212	845	21,768	-21,528	240	41,824	-40,740	1,085

Table 14
Loans under Repurchase Agreements, Transactions with Non-residents in Assets and Liabilities

Period	Government of Canada						Other Canadian Securities			Foreign Securities			Total			
	Bonds			Treasury Bills			Purchases	Sales	Net	Purchases	Sales	Net	Purchases	Sales	Net	
	Purchases	Sales	Net	Purchases	Sales	Net										
Assets																
V No.	113104	113103	113102	113107	113106	113105	113110	113109	113108	113113	113112	113111	113115	113114	113101	
Q	113276	113275	113274	113279	113278	113277	113282	113281	113280	113285	113284	113283	113287	113286	113273	
M	113475	113474	113473	113478	113477	113476	113481	113480	113479	113484	113483	113482	113486	113485	113472	
millions of dollars																
1995	-983,387	982,496	-891	-58,891	59,772	881	-6,829	6,930	101	-53,294	52,457	-837	-1,102,400	1,101,655	-746	
1996	-1,079,203	1,077,382	-1,821	-65,538	65,932	394	-13,299	13,340	42	-287,744	288,577	833	-1,445,784	1,445,231	-552	
1997	-1,726,139	1,714,998	-11,141	-194,417	193,942	-474	-31,624	30,489	-1,135	-139,923	138,829	-1,094	-2,092,102	2,078,258	-13,844	
1998	-1,665,277	1,680,951	15,674	-61,564	63,290	1,726	-19,902	18,899	-1,003	-89,619	89,541	-79	-1,836,362	1,852,681	16,319	
1999	-1,148,452	1,153,431	4,980	-73,300	73,875	574	-39,014	37,189	-1,825	-138,016	138,123	107	-1,398,782	1,402,618	3,836	
2000	-1,019,010	1,019,383	373	-21,813	21,714	-98	-29,290	28,785	-506	-158,302	158,151	-152	-1,228,415	1,228,033	-382	
2001	-638,372	639,489	1,117	-12,741	11,360	-1,381	-25,833	25,403	-430	-144,093	143,503	-590	-821,039	819,755	-1,284	
2002	-469,256	464,010	-5,245	-24,634	25,778	1,144	-35,985	36,310	325	-260,154	258,124	-2,030	-790,029	784,223	-5,807	
2003	-651,293	653,594	2,302	-24,263	23,741	-522	-55,349	55,580	231	-280,595	281,591	995	-1,011,499	1,014,505	3,006	
2002	II	-93,255	96,914	3,659	-7,122	6,412	-710	-6,207	6,237	30	-53,093	53,777	684	-159,677	163,340	3,663
	III	-137,083	135,407	-1,676	-4,094	5,110	1,016	-9,661	8,438	-1,224	-75,917	74,409	-1,507	-226,755	223,364	-3,391
	IV	-134,667	132,199	-2,468	-6,645	6,701	56	-12,518	13,626	1,108	-80,274	79,939	-336	-234,104	232,465	-1,639
2003	I	-184,457	181,972	-2,485	-4,368	4,338	-30	-12,320	12,091	-229	-71,673	71,331	-342	-272,818	269,732	-3,086
	II	-150,725	154,900	4,175	-5,365	5,444	79	-7,460	6,115	-1,346	-87,114	88,500	1,386	-250,664	254,959	4,294
	III	-161,465	159,285	-2,180	-6,802	6,516	-286	-12,344	12,888	545	-56,018	56,665	647	-236,629	235,354	-1,275
	IV	-154,646	157,437	2,791	-7,727	7,443	-284	-23,225	24,485	1,260	-65,790	65,095	-695	-251,389	254,460	3,072
2004	I	-150,478	149,577	-901	-6,247	6,873	626	-16,917	17,720	802	-79,907	80,154	247	-253,550	254,324	774
	II	-165,173	162,279	-2,894	-4,529	4,321	-208	-20,693	21,741	1,048	-68,929	73,323	4,394	-259,324	261,664	2,340
2002	J	-41,101	38,270	-2,831	-1,768	1,404	-364	-1,695	1,788	93	-23,045	23,901	856	-67,609	65,364	-2,245
	J	-43,277	43,588	311	-1,541	2,522	981	-2,075	2,185	110	-31,858	31,566	-292	-78,750	79,860	1,110
	A	-40,732	40,474	-258	-1,240	1,375	135	-2,795	3,049	254	-22,757	23,311	554	-67,524	68,209	685
	S	-53,075	51,345	-1,730	-1,314	1,213	-100	-4,791	3,203	-1,588	-21,302	19,533	-1,769	-80,481	75,294	-5,187
	O	-57,078	57,227	149	-2,897	2,670	-227	-2,897	7,533	693	-28,913	28,139	-774	-95,728	95,569	-159
	N	-38,900	41,453	2,553	-1,919	1,470	-449	-3,130	3,365	235	-24,101	24,120	19	-68,050	70,409	2,358
	D	-38,688	33,518	-5,170	-1,829	2,561	732	-2,548	2,728	180	-27,260	27,680	419	-70,326	66,488	-3,839
2003	J	-48,837	48,514	-322	-1,085	614	-470	-5,915	5,921	6	-19,595	19,415	-180	-75,431	74,465	-967
	F	-55,301	56,537	1,236	-296	491	195	-2,944	2,753	-192	-26,446	26,037	-408	-84,987	85,819	832
	M	-80,319	76,920	-3,399	-2,987	3,232	245	-3,460	3,417	-43	-25,633	25,879	246	-112,399	109,448	-2,951
	A	-55,464	58,758	3,294	-2,548	2,443	-105	-2,016	2,328	312	-27,895	28,841	946	-87,923	92,371	4,448
	M	-47,245	52,251	5,007	-2,527	2,736	209	-1,287	1,366	79	-31,161	31,161	0	-82,219	87,515	5,295
	J	-48,017	43,890	-4,126	-290	264	-26	-4,157	2,421	-1,736	-28,058	28,498	440	-80,522	75,073	-5,449
	J	-66,165	63,758	-2,407	-2,312	2,404	92	-5,979	6,537	558	-22,452	22,376	-76	-96,908	95,076	-1,832
	A	-42,393	44,615	2,223	-2,897	2,651	-246	-1,388	1,428	40	-14,094	15,209	1,115	-60,771	63,903	3,132
	S	-52,907	50,912	-1,996	-1,594	1,461	-133	-4,977	4,924	-53	-19,472	19,080	-393	-78,950	76,376	-2,575
	O	-57,444	57,109	-335	-381	430	49	-6,534	6,142	-392	-27,321	26,418	-903	-91,679	90,098	-1,581
	N	-41,461	47,429	5,968	-3,375	3,015	-360	-6,002	6,311	309	-21,495	21,266	-229	-72,333	78,021	5,689
	D	-55,741	52,898	-2,842	-3,971	3,998	27	-10,690	12,033	1,343	-16,975	17,411	437	-87,376	86,341	-1,036
2004	J	-37,043	35,289	-1,754	-3,742	3,604	-137	-8,822	8,895	74	-21,461	21,248	-213	-71,068	69,037	-2,031
	F	-42,588	45,442	2,854	-1,593	1,742	149	-4,262	4,016	-246	-30,059	30,249	191	-78,502	81,450	2,948
	M	-70,847	68,846	-2,001	-913	1,527	614	-3,834	4,808	974	-28,388	28,657	269	-103,981	103,838	-143
	A	-51,135	52,261	1,126	-1,079	1,031	-48	-6,469	6,122	-347	-27,603	28,965	1,362	-86,286	88,378	2,093
	M	-46,635	51,716	5,081	-2,262	2,200	-62	-5,572	4,476	-1,096	-22,115	24,302	2,187	-76,584	82,694	6,110
	J	-67,403	58,302	-9,101	-1,188	1,090	-97	-8,652	11,142	2,491	-19,212	20,057	845	-96,454	90,591	-5,862

Table 14
Loans under Repurchase Agreements, Transactions with Non-residents in Assets and Liabilities - Concluded

Period	Government of Canada						Other Canadian Securities			Foreign Securities			Total			
	Bonds			Treasury Bills			Sales	Purchases	Net	Sales	Purchases	Net	Sales	Purchases	Net	
	Sales	Purchases	Net	Sales	Purchases	Net										
Liabilities																
V No.	A	113118	113119	113117	113121	113122	113120	113124	113125	113123	113127	113128	113126	113129	113130	113116
	Q	113290	113291	113289	113293	113294	113292	113296	113297	113295	113299	113300	113298	113301	113302	113288
	M	113489	113490	113488	113492	113493	113491	113495	113496	113494	113498	113499	113497	113500	113501	113487
millions of dollars																
1995		494,998	-496,237	-1,239	20,990	-21,457	-468	2,831	-2,698	133	24,868	-25,059	-192	543,687	-545,452	-1,765
1996		609,631	-607,714	1,918	27,955	-27,653	302	1,798	-1,741	57	94,759	-92,948	1,811	734,142	-730,055	4,088
1997		1,098,201	-1,094,328	3,873	109,134	-107,258	1,876	2,407	-3,291	-884	79,890	-81,283	-1,392	1,289,632	-1,286,159	3,473
1998		1,102,789	-1,102,977	-188	143,910	-144,306	-396	2,020	-3,295	-1,275	81,845	-82,178	-333	1,330,564	-1,332,756	-2,192
1999		586,226	-585,920	306	18,471	-17,405	1,066	6,371	-7,873	-1,502	104,832	-104,544	288	715,900	-715,742	158
2000		490,097	-486,514	3,583	17,857	-18,798	-941	14,174	-14,843	-669	106,230	-105,657	573	628,358	-625,813	2,545
2001		615,126	-616,614	-1,488	14,745	-14,915	-170	25,266	-25,171	95	154,178	-155,954	-1,776	809,314	-812,654	-3,339
2002		725,613	-720,979	4,634	41,999	-41,564	434	105,732	-105,263	469	273,748	-274,612	-865	1,147,091	-1,142,419	4,673
2003		929,521	-929,310	211	43,613	-42,417	1,196	163,763	-161,466	2,298	284,903	-284,469	434	1,421,800	-1,417,661	4,139
2002	II	192,910	-196,476	-3,566	14,275	-13,910	365	6,772	-6,662	110	77,771	-76,769	1,002	291,728	-293,817	-2,089
	III	191,192	-187,843	3,349	7,277	-7,615	-339	39,360	-38,530	829	93,757	-94,779	-1,022	331,585	-328,768	2,817
	IV	169,910	-167,769	2,140	13,189	-12,867	322	52,392	-52,939	-546	59,289	-59,241	48	294,780	-292,816	1,964
2003	I	228,692	-227,489	1,204	9,778	-9,705	73	39,030	-38,860	171	75,057	-73,689	1,367	352,557	-349,742	2,814
	II	255,114	-257,536	-2,422	9,937	-9,966	-29	22,655	-22,890	-235	88,954	-89,362	-427	376,660	-379,774	-3,114
	III	252,698	-253,376	-678	4,991	-5,030	-38	35,722	-35,285	436	79,699	-79,441	258	373,110	-373,132	-22
	IV	193,017	-190,909	2,108	18,907	-17,716	1,191	66,357	-64,431	1,926	41,193	-41,957	-764	319,473	-315,013	4,461
2004	I	194,544	-190,447	4,097	14,281	-15,677	-1,396	68,173	-69,264	-1,091	49,208	-49,063	145	326,206	-324,452	1,755
	II	200,851	-202,868	-2,017	8,899	-8,809	91	66,088	-63,468	2,619	64,346	-59,621	4,725	340,184	-334,766	5,418
2002	J	56,229	-53,042	3,187	10,421	-11,639	-1,218	1,729	-1,868	-140	34,343	-33,447	896	102,722	-99,997	2,725
	J	71,078	-70,517	561	5,517	-6,005	-488	3,061	-2,853	208	45,152	-44,665	487	124,808	-124,039	769
	A	54,672	-53,343	1,329	828	-739	89	16,383	-15,799	584	28,360	-29,196	-836	100,243	-99,078	1,165
	S	65,442	-63,983	1,459	931	-871	60	19,916	-19,878	37	20,244	-20,918	-673	106,534	-105,651	883
	O	59,884	-60,879	-995	4,464	-3,698	766	23,595	-23,510	85	15,883	-16,262	-379	103,825	-104,349	-523
	N	47,599	-52,280	-4,680	2,028	-2,158	-130	15,575	-15,406	169	23,690	-23,320	370	88,892	-93,164	-4,271
	D	62,427	-54,611	7,816	6,698	-7,012	-314	13,222	-14,022	-800	19,716	-19,659	57	102,062	-95,304	6,758
2003	J	68,580	-69,681	-1,101	3,624	-3,173	451	14,529	-14,488	42	18,462	-18,018	444	105,195	-105,360	-165
	F	65,458	-67,820	-2,362	4,767	-3,915	852	12,996	-12,872	124	28,355	-28,243	112	111,576	-112,850	-1,274
	M	94,655	-89,988	4,666	1,387	-2,617	-1,230	11,505	-11,500	5	28,240	-27,428	812	135,786	-131,533	4,253
	A	77,577	-81,684	-4,107	2,097	-1,759	338	10,925	-10,615	310	29,708	-29,945	-237	120,308	-124,003	-3,695
	M	75,069	-79,131	-4,061	2,569	-2,643	-74	4,065	-4,416	-351	33,266	-33,361	-95	114,969	-119,550	-4,581
	J	102,468	-96,722	5,746	5,270	-5,565	-294	7,665	-7,860	-195	25,980	-26,075	-95	141,383	-136,221	5,162
	J	94,079	-90,863	3,216	1,756	-1,427	329	10,665	-9,822	842	37,991	-38,748	-757	144,491	-140,861	3,630
	A	76,417	-77,476	-1,059	1,344	-1,647	-303	11,489	-11,364	126	25,599	-24,686	913	114,850	-115,173	-323
	S	82,202	-85,037	-2,835	1,891	-1,956	-64	13,568	-14,099	-531	16,109	-16,007	102	113,770	-117,099	-3,329
	O	74,702	-72,892	1,809	3,064	-2,366	698	22,722	-21,527	1,195	12,897	-13,826	-929	113,385	-110,611	2,773
	N	49,616	-56,640	-7,024	5,006	-4,520	486	21,679	-21,196	483	11,510	-11,607	-97	87,811	-93,964	-6,153
	D	68,699	-61,377	7,323	10,837	-10,829	8	21,956	-21,708	248	16,786	-16,524	262	118,278	-110,438	7,840
2004	J	55,193	-56,660	-1,467	8,226	-8,528	-302	21,514	-21,057	457	12,050	-11,371	679	96,982	-97,616	-634
	F	53,518	-52,110	1,408	4,677	-5,132	-455	21,879	-22,138	-259	18,539	-19,237	-699	98,613	-98,617	-4
	M	85,833	-81,677	4,156	1,379	-2,017	-639	24,781	-26,069	-1,289	18,620	-18,455	165	130,612	-128,219	2,393
	A	78,560	-79,668	-1,108	4,795	-4,454	341	23,795	-21,523	2,273	20,118	-17,917	2,202	127,269	-123,561	3,708
	M	55,136	-62,398	-7,262	675	-493	183	22,526	-22,052	474	22,460	-20,177	2,283	100,797	-105,119	-4,322
	J	67,156	-60,803	6,353	3,428	-3,862	-433	19,766	-19,894	-127	21,768	-21,528	240	112,118	-106,086	6,032

Table 15
Portfolio Investment in Canadian Bonds, by Sector, Period-end Positions held by Non-residents

End of period	All Governments and their enterprises							Corporations	Total		
	Federal Government			Provincial Governments			Municipal Governments			Total	
	Direct	Enterprises	Total	Direct	Enterprises	Total					
V No. A	236511	236512	236510	236514	236515	236513	236516	..	236517	236509	
V No. M	21241183	21241182	21241181	21241186	21241185	21241184	21241187	..	21241188	21241180	
millions of dollars											
1992	68,659	9,695	78,354	69,573	33,603	103,176	4,999	186,529	57,647	244,176	
1993	77,491	11,320	88,810	89,972	35,730	125,703	5,396	219,909	64,231	284,140	
1994	75,698	12,995	88,693	109,748	41,396	151,143	6,030	245,867	71,004	316,871	
1995	87,588	11,092	98,680	115,119	39,763	154,882	6,291	259,853	81,845	341,698	
1996	95,885	11,249	107,133	116,781	37,745	154,526	6,238	267,897	89,954	357,852	
1997	92,761	11,933	104,694	114,266	35,527	149,793	5,962	260,449	107,450	367,898	
1998	89,126	13,498	102,624	125,074	37,597	162,671	6,112	271,406	134,366	405,772	
1999	91,131	15,017	106,148	112,496	30,973	143,469	5,434	255,051	134,341	389,392	
2000	81,198	14,652	95,850	105,005	29,904	134,909	4,979	235,738	136,702	372,440	
2001	74,717	16,943	91,660	108,474	27,581	136,055	4,589	232,304	194,571	426,875	
2002	79,986	28,334	108,320	112,090	24,626	136,716	3,655	248,691	199,457	448,148	
2003	58,368	36,845	95,213	101,618	19,348	120,966	3,243	219,422	185,901	405,323	
2002	J	72,493	22,119	94,612	104,364	24,014	128,379	4,131	227,121	196,675	423,797
	J	74,073	22,903	96,976	106,967	24,533	131,501	4,082	232,558	204,605	437,163
	A	77,025	23,725	100,750	105,668	24,195	129,863	4,094	234,708	200,498	435,206
	S	75,056	26,291	101,347	107,720	24,624	132,344	4,128	237,818	205,877	443,695
	O	80,184	26,584	106,768	107,292	24,117	131,409	3,671	241,848	200,163	442,012
	N	82,297	25,854	108,151	109,116	24,285	133,401	3,713	245,265	199,294	444,559
	D	79,986	28,334	108,320	112,090	24,626	136,716	3,655	248,691	199,457	448,148
2003	J	80,454	27,545	107,999	104,690	23,618	128,308	3,714	240,021	194,216	434,237
	F	83,027	28,128	111,154	104,814	22,259	127,073	3,836	242,064	189,406	431,470
	M	83,041	30,113	113,154	105,468	21,961	127,429	3,582	244,166	191,129	435,294
	A	84,641	29,700	114,341	106,681	21,353	128,034	3,599	245,974	186,481	432,454
	M	86,109	28,263	114,371	105,406	20,680	126,086	3,443	243,900	179,796	423,695
	J	78,973	33,008	111,980	103,193	20,384	123,576	3,420	238,977	178,488	417,464
	J	73,480	34,459	107,938	106,074	20,698	126,772	3,325	238,036	186,797	424,832
	A	67,132	33,457	100,589	104,286	20,111	124,397	3,309	228,295	184,654	412,949
	S	63,089	35,472	98,561	103,878	19,711	123,589	3,178	225,328	183,053	408,381
	O	61,473	34,962	96,435	101,865	19,367	121,233	3,180	220,848	182,364	403,212
	N	62,989	34,144	97,133	102,031	19,236	121,267	3,093	221,493	183,241	404,735
	D	58,368	36,845	95,213	101,618	19,348	120,966	3,243	219,422	185,901	405,323
2004	J	63,102	37,932	101,034	102,208	19,747	121,955	3,180	226,168	185,996	412,164
	F	58,925	37,670	96,594	102,897	19,908	122,805	3,197	222,597	188,149	410,745
	M	56,989	40,742	97,730	102,002	19,458	121,460	3,199	222,390	184,252	406,642
	A	58,140	42,218	100,358	103,051	20,075	123,126	3,234	226,717	191,539	418,256
	M	59,361	42,092	101,453	104,069	20,039	124,108	2,978	228,538	190,946	419,484
	J	60,249	42,705	102,955	99,091	18,910	118,001	2,953	223,909	188,647	412,557

Table 16
Portfolio Investment in Canadian Bonds, by Geographical Area, Period-end Positions held by Non-residents

End of period	United States	United Kingdom	Other EU Countries	Japan	Other OECD Countries	Other Countries	Total	
V No. A	235438	235460	235504	235526	235548	235570	235413	
V No. M	21241195	21241194	21241193	21241192	21241191	21241190	21241189	
millions of dollars								
1992	89,664	19,247	35,444	50,269	32,797	16,755	244,176	
1993	115,927	26,371	41,315	47,906	33,811	18,810	284,140	
1994	132,430	27,449	49,104	45,455	37,192	25,241	316,871	
1995	146,504	33,598	50,012	44,464	38,454	28,667	341,698	
1996	165,812	35,118	49,211	46,160	33,558	27,993	357,852	
1997	179,873	34,888	48,051	45,366	30,564	29,156	367,898	
1998	195,133	37,705	59,655	45,021	34,194	34,063	405,772	
1999	194,794	37,024	54,559	41,313	31,141	30,561	389,392	
2000	194,720	39,033	48,504	35,892	26,782	27,509	372,440	
2001	248,956	44,912	51,604	34,191	23,707	23,505	426,875	
2002	264,524	51,116	54,775	32,059	22,406	23,268	448,148	
2003	229,586	50,916	53,753	31,616	18,182	21,270	405,323	
2002	J	249,561	47,141	52,416	30,647	21,770	22,261	423,797
	J	259,853	48,497	52,828	30,900	22,218	22,867	437,163
	A	256,064	49,733	53,521	30,729	22,041	23,117	435,206
	S	263,670	49,616	54,428	30,889	22,130	22,962	443,695
	O	260,233	50,894	54,359	31,715	21,773	23,037	442,012
	N	261,784	52,568	53,218	31,673	21,959	23,356	444,559
	D	264,524	51,116	54,775	32,059	22,406	23,268	448,148
2003	J	254,116	53,029	52,944	30,195	20,999	22,954	434,237
	F	254,114	54,204	50,671	29,289	20,689	22,502	431,470
	M	253,580	56,567	52,434	29,115	21,010	22,589	435,294
	A	250,167	57,259	52,476	29,466	20,693	22,395	432,454
	M	243,219	54,012	52,590	31,214	20,440	22,220	423,695
	J	238,005	52,626	52,878	31,471	20,268	22,215	417,464
	J	242,516	55,172	51,973	32,258	20,195	22,719	424,832
	A	235,547	52,541	50,544	33,063	18,749	22,507	412,949
	S	229,225	52,965	52,682	32,075	18,634	22,799	408,381
	O	226,125	52,801	51,454	31,923	18,304	22,604	403,212
	N	227,754	52,171	52,092	32,067	18,159	22,491	404,735
	D	229,586	50,916	53,753	31,616	18,182	21,270	405,323
2004	J	234,938	52,736	53,471	30,902	18,252	21,865	412,164
	F	234,685	52,792	53,318	29,626	18,507	21,818	410,745
	M	230,626	52,978	53,275	28,957	18,597	22,209	406,642
	A	240,082	54,971	52,682	29,308	18,476	22,737	418,256
	M	240,502	54,823	52,999	29,143	18,784	23,233	419,484
	J	236,029	54,370	52,272	28,631	17,772	23,483	412,557

Table 17
Portfolio Investment in Canadian Money Market Instruments, by Sector, Period-end Positions held by Non-residents

End of period	All Governments and their enterprises						Total	Corporations	Total	
	Federal Government			Provincial Governments						
	Direct	Enterprises	Total	Direct	Enterprises	Total				
V No. A	235620	235621	235619	235623	235624	235622	..	235625	235618	
V No. M	21241199	21241198	21241197	21241202	21241201	21241200	..	21241203	21241196	
millions of dollars										
1992	21,700	6,105	27,805	4,678	429	5,107	32,912	3,192	36,104	
1993	32,792	5,716	38,508	4,908	576	5,483	43,991	1,910	45,901	
1994	35,843	5,309	41,152	3,924	634	4,558	45,710	1,819	47,529	
1995	30,706	5,171	35,877	4,421	773	5,194	41,072	3,041	44,113	
1996	24,277	5,241	29,518	3,520	725	4,245	33,762	4,371	38,134	
1997	21,744	7,082	28,827	1,904	1,865	3,768	32,595	7,906	40,501	
1998	19,298	8,972	28,270	3,427	1,420	4,847	33,117	8,152	41,269	
1999	12,721	7,110	19,831	3,496	310	3,806	23,637	4,038	27,675	
2000	11,587	6,610	18,197	4,545	0	4,545	22,743	5,219	27,961	
2001	7,439	6,782	14,222	3,586	24	3,610	17,831	3,632	21,464	
2002	9,419	7,198	16,617	3,446	15	3,461	20,078	5,111	25,189	
2003	10,521	4,922	15,443	1,473	4	1,477	16,921	4,467	21,388	
2002	J	8,159	7,146	15,305	4,036	81	4,117	19,423	3,457	22,880
	J	8,527	6,981	15,508	3,847	83	3,930	19,438	3,851	23,289
	A	8,205	6,367	14,572	3,657	92	3,749	18,322	3,653	21,974
	S	8,029	5,899	13,928	3,371	86	3,457	17,386	3,908	21,294
	O	8,038	5,868	13,906	3,412	97	3,509	17,415	4,233	21,647
	N	8,594	6,784	15,377	3,422	85	3,507	18,885	5,015	23,900
	D	9,419	7,198	16,617	3,446	15	3,461	20,078	5,111	25,189
2003	J	9,169	7,662	16,831	2,835	43	2,878	19,709	5,312	25,020
	F	8,572	7,830	16,402	1,826	190	2,016	18,418	5,349	23,768
	M	9,216	7,108	16,323	1,396	186	1,582	17,906	5,274	23,180
	A	10,341	6,794	17,135	1,288	183	1,470	18,605	5,297	23,903
	M	10,120	6,029	16,149	1,389	176	1,565	17,714	5,012	22,726
	J	10,578	6,046	16,624	1,538	159	1,698	18,321	4,413	22,735
	J	10,445	6,487	16,932	1,400	135	1,535	18,468	4,173	22,641
	A	10,212	6,068	16,280	1,258	11	1,269	17,550	4,366	21,916
	S	10,614	5,246	15,860	1,129	12	1,141	17,001	3,723	20,725
	O	10,625	5,229	15,854	1,068	40	1,108	16,963	3,994	20,957
	N	10,008	5,453	15,461	1,220	6	1,225	16,687	4,148	20,835
	D	10,521	4,922	15,443	1,473	4	1,477	16,921	4,467	21,388
2004	J	9,449	4,963	14,412	1,495	0	1,495	15,907	4,206	20,113
	F	7,811	4,594	12,405	1,416	5	1,421	13,826	4,745	18,572
	M	8,636	4,628	13,264	1,275	0	1,275	14,539	4,154	18,693
	A	7,662	5,527	13,189	1,200	0	1,200	14,389	3,251	17,640
	M	8,233	5,662	13,895	1,251	0	1,251	15,147	4,047	19,194
	J	8,810	6,152	14,962	1,653	35	1,688	16,650	3,982	20,632

Table 18
Portfolio Investment in Canadian Money Market Instruments, by Geographical Area, Period-end Positions held by Non-residents

End of period	United States	United Kingdom	Other EU Countries	Japan	Other OECD Countries	Other Countries	Total	
<i>V No. A</i>	235441	235463	235507	235529	235551	235573	235416	
<i>v No. M</i>	21241210	21241209	21241208	21241207	21241206	21241205	21241204	
	millions of dollars							
1992	18,789	4,420	1,661	733	2,684	7,817	36,104	
1993	21,515	5,773	2,558	361	4,132	11,561	45,901	
1994	19,398	8,525	2,040	217	5,885	11,465	47,529	
1995	18,240	9,778	1,819	10	4,101	10,165	44,113	
1996	20,680	4,819	1,922	651	2,495	7,567	38,134	
1997	24,149	4,072	3,628	124	3,414	5,115	40,501	
1998	22,993	5,781	3,462	8	3,904	5,120	41,269	
1999	15,934	4,765	2,302	43	1,991	2,640	27,675	
2000	17,097	3,220	1,544	198	1,771	4,131	27,961	
2001	13,581	2,785	1,198	23	915	2,961	21,464	
2002	14,444	3,869	1,269	32	1,701	3,874	25,189	
2003	13,383	3,850	238	44	391	3,481	21,388	
2002	J	13,503	3,536	1,130	43	1,234	3,433	22,880
	J	13,778	3,770	1,059	36	1,118	3,528	23,289
	A	12,940	3,274	891	37	1,015	3,817	21,974
	S	12,467	3,544	784	38	877	3,583	21,294
	O	12,047	3,601	1,084	37	1,317	3,560	21,647
	N	13,422	3,781	1,200	37	1,589	3,870	23,900
	D	14,444	3,869	1,269	32	1,701	3,874	25,189
2003	J	15,175	5,759	495	21	368	3,201	25,020
	F	13,783	5,615	522	23	463	3,362	23,768
	M	13,071	5,335	678	21	484	3,591	23,180
	A	13,535	5,555	721	44	442	3,605	23,903
	M	13,112	5,023	449	33	433	3,675	22,726
	J	12,590	5,597	354	36	416	3,743	22,735
	J	12,953	5,087	469	37	408	3,687	22,641
	A	12,338	5,218	416	39	415	3,491	21,916
	S	11,244	4,976	338	34	482	3,651	20,725
	O	11,739	4,763	372	45	468	3,572	20,957
	N	12,348	4,260	326	43	428	3,431	20,835
	D	13,383	3,850	238	44	391	3,481	21,388
2004	J	12,066	3,700	455	40	377	3,475	20,113
	F	10,669	3,862	525	34	413	3,068	18,572
	M	10,968	3,814	435	30	381	3,066	18,693
	A	10,165	4,198	467	23	299	2,489	17,640
	M	11,455	4,249	557	23	294	2,616	19,194
	J	11,800	4,093	673	49	376	3,641	20,632

Table 19
Selected Stock Prices and Capital Market Yields

Period		Stocks prices		Selected capital market yields			
		Canada	United States	Long-term			
		Toronto Stock Exchange S&P/TSX Composite Index 1975 = 1,000	Standard and Poor's Composite 500 1941 - 43 = 10	Canadian industrials average ⁽¹⁾	Government of Canada ⁽²⁾	United States government ⁽³⁾	
2000	J	10,195.5	1,454.6	6.95	5.93	6.11	
	J	10,406.3	1,430.8	6.87	5.85	6.04	
	A	11,247.9	1,517.7	6.78	5.77	5.81	
	S	10,377.9	1,436.5	6.72	5.75	5.83	
	O	9,639.6	1,429.4	6.76	5.72	5.67	
	N	8,819.9	1,315.0	6.70	5.54	5.55	
	D	8,933.7	1,320.3	6.58	5.35	5.11	
2001	J	9,321.9	1,366.0	6.46	5.39	5.19	
	F	8,078.7	1,239.9	6.38	5.36	4.92	
	M	7,608.0	1,160.3	6.37	5.41	4.97	
	A	7,946.3	1,249.5	6.52	5.66	5.28	
	M	8,161.9	1,255.8	6.86	5.96	5.54	
	J	7,736.4	1,224.4	6.59	5.73	5.26	
	J	7,689.7	1,211.2	6.64	5.76	5.20	
	A	7,399.2	1,133.6	6.24	5.36	4.78	
	S	6,838.6	1,040.9	6.26	5.32	4.65	
	O	6,885.7	1,059.8	5.81	4.86	4.30	
	N	7,425.7	1,139.5	6.35	5.36	4.98	
	D	7,688.4	1,148.1	6.27	5.44	5.22	
	2002	J	7,648.5	1,130.2	6.12	5.42	5.02
F		7,637.5	1,106.7	6.01	5.31	4.84	
M		7,851.5	1,147.4	6.46	5.79	5.35	
A		7,663.4	1,076.9	6.21	5.64	5.11	
M		7,656.1	1,067.1	6.13	5.49	5.11	
J		7,145.6	989.8	6.08	5.37	4.75	
J		6,605.4	911.6	6.18	5.23	4.51	
A		6,612.0	916.1	6.05	5.14	4.22	
S		6,180.4	815.3	5.87	4.92	3.77	
O		6,248.8	885.8	6.10	5.16	3.99	
N		6,570.4	936.3	5.96	5.18	4.26	
D		6,614.5	879.8	5.60	4.88	3.95	
2003		J	6,569.5	855.7	5.76	5.02	4.06
		F	6,555.1	841.2	5.68	4.93	3.78
	M	6,343.3	848.2	5.96	5.13	3.96	
	A	6,586.1	916.9	5.61	4.90	3.89	
	M	6,859.8	963.6	5.21	4.50	3.44	
	J	6,983.1	974.5	5.05	4.37	3.38	
	J	7,257.9	990.3	5.36	4.78	4.34	
	A	7,510.3	1,008.0	5.49	4.96	4.54	
	S	7,421.1	1,006.6	5.13	4.64	4.16	
	O	7,772.7	1,050.7	5.30	4.85	4.31	
	N	7,859.4	1,058.3	5.21	4.79	4.25	
	D	8,220.9	1,111.9	5.01	4.66	4.27	
	2004	J	8,521.4	1,131.1	4.86	4.61	4.22
		F	8,788.5	1,144.9	4.63	4.41	4.02
M		8,585.9	1,126.2	4.57	4.33	3.86	
A		8,244.0	1,107.3	4.97	4.71	4.50	
M		8,417.3	1,120.7	5.13	4.77	4.67	
J		8,545.6	1,140.8	5.28	4.83	4.62	

(1) Last business day. Weighted mid-term bond index based on forty bonds covering a 5 to 15 year spectrum. Scotia Capital Inc.

(2) Mid-market closing prices for last Wednesday of direct issues due or callable in 10 years.

(3) Daily average for last week of issues due or callable in 10 years. United States Federal Reserve Bulletin.

Source: Bank of Canada, except as indicated.

Table 19
Selected Stock Prices and Capital Market Yields - Concluded

		Selected capital market yields					Forward premium (+) or discount (-) United-States dollar in Canada 3 month ⁽⁸⁾
		Short-term					
		Finance company paper 3 month	Commercial paper 3 month	Treasury bills 3 month			
Period		Canadian ⁽⁴⁾	United States ⁽⁵⁾	Canadian ⁽⁶⁾	United States ⁽⁷⁾	Eurodollars ⁽⁸⁾	
2000	J	5.89	6.67	5.53	5.67	6.88	-0.93
	J	5.88	6.59	5.61	6.01	6.81	-0.89
	A	5.90	6.57	5.58	6.11	6.75	-0.85
	S	5.83	6.55	5.56	6.03	6.75	-0.84
	O	5.85	6.60	5.61	6.18	6.81	-0.91
	N	5.89	6.57	5.62	6.18	6.81	-0.87
	D	5.71	6.31	5.49	5.66	6.50	-0.72
2001	J	5.29	5.32	5.11	5.11	5.45	-0.11
	F	5.05	4.94	4.87	4.87	5.13	-0.05
	M	4.66	4.74	4.58	4.22	4.97	-0.21
	A	4.49	4.24	4.43	3.72	4.37	0.18
	M	4.49	3.94	4.34	3.58	4.02	0.52
	J	4.38	3.68	4.30	3.47	3.74	0.70
	J	4.22	3.61	4.07	3.48	3.74	0.55
	A	3.96	3.39	3.80	3.33	3.58	0.50
	S	3.19	2.52	3.05	2.34	2.98	0.64
	O	2.45	2.12	2.34	2.13	2.44	0.33
	N	2.17	2.00	2.07	1.84	2.38	0.20
	D	2.08	1.89	1.95	1.70	2.22	0.20
2002	J	2.07	1.76	1.96	1.65	2.15	0.23
	F	2.16	1.82	2.05	1.73	2.22	0.25
	M	2.36	1.94	2.30	1.79	2.28	0.41
	A	2.46	1.77	2.37	1.72	2.44	0.62
	M	2.68	1.77	2.60	1.73	2.09	0.85
	J	2.78	1.75	2.70	1.70	2.06	1.01
	J	2.88	1.82	2.81	1.68	2.06	1.10
	A	3.09	1.73	2.96	1.62	2.06	1.27
	S	2.90	1.74	2.83	1.63	2.03	1.21
	O	2.83	1.63	2.73	1.58	2.00	1.24
	N	2.85	1.35	2.71	1.23	1.74	1.44
	D	2.83	1.33	2.63	1.19	1.74	1.47
2003	J	2.91	1.25	2.83	1.17	1.68	1.60
	F	2.97	1.25	2.88	1.17	1.68	1.68
	M	3.28	1.20	3.14	1.13	1.65	2.07
	A	3.35	1.23	3.19	1.13	1.65	2.18
	M	3.27	1.20	3.16	1.07	1.65	2.11
	J	3.11	0.89	3.07	0.92	1.39	2.20
	J	2.89	1.06	2.81	0.90	1.49	1.91
	A	2.80	1.02	2.71	0.95	1.39	1.79
	S	2.64	1.04	2.58	0.94	1.39	1.71
	O	2.71	1.06	2.64	0.92	1.39	1.67
	N	2.73	1.08	2.67	0.93	1.39	1.68
	D	2.66	1.04	2.57	0.90	1.39	1.60
2004	J	2.37	1.02	2.25	0.88	1.36	1.35
	F	2.25	0.98	2.13	0.93	1.36	1.21
	M	2.10	1.03	1.98	0.94	1.36	1.05
	A	2.05	1.09	1.95	0.94	1.39	0.94
	M	2.07	1.10	1.98	1.02	1.46	0.86
	J	2.10	1.40	2.01	1.27	1.71	0.58

(4) Last Wednesday.

(5) Last Wednesday. Adjusted to 365-day true yield basis from 360-day basis.

(6) Average of rates of Thursday tender following the last Wednesday.

(7) Average of rates of the last full week of the month ending Friday.

(8) Expressed as annual yield. Last Wednesday.

Source: Bank of Canada, except as indicated.

FOR FURTHER READING**Selected Publications from Statistics Canada**

	<u>Catalogue</u>	<u>Internet</u>
Canada's Balance of International Payments, <i>Quarterly, Bilingual</i>	67-001-XPB	67-001-XIB
Canada's International Transactions in Securities, <i>Monthly, English and French</i>	print on demand	67-002-XIE 67-002-XIF
Canada's International Investment Position, <i>Quarterly, English</i>		67-202-XIE 67-202-XIF
Canada's International Trade in Services, <i>Annual, Bilingual</i>		67-203-XIB
Canadian Economic Accounts Quarterly Review, <i>Quarterly, English</i>		13-010-XIE 13-010-XIF
Canada's Balance of International Payments and International Investment Position Concepts, Sources, Methods and Products <i>Occasional, English</i> New edition, July 2000	67-506-XPE 67-506-XPF	67-506-XIE 67-506-XIF
Canada's Balance of International Payments, Historical Statistics 1926 to 1990 ⁽¹⁾, <i>Occasional, Bilingual</i>	67-508-XPB	
Canadian Economic Observer, <i>Monthly, Bilingual</i>	11-010-XPB	

1. Starting with 1992, the first quarter editions of 67-001-XPB contain the update to the data published in 67-508-XPB.

To order a publication you may telephone 1-613-951-7277 or use facsimile number 1-613-951-1584.
For toll free in Canada only, telephone 1-800-267-6677. When ordering by telephone or facsimile, a written confirmation is not required.

List of Published Research Papers

	<u>Published</u>	<u>Catalogue</u>
1. <i>Non-corporate Foreign Investment in Canadian Real Estate, 1977 to 1980</i> (Teresa M. Omiecinski)	1983	67F0001MPB97001
2. <i>Foreign Investment in the Canadian Bond Market, 1978 to 1990</i> (Lucie Laliberté)	1990	67F0001MPB97002
3. <i>Characteristics of Canadian Importing Firms, 1978 to 1986</i> (Barry Mersereau)	1992	67F0001MPB97003
4. <i>The Statistical Discrepancy in Canada's Balance of Payments, 1962 to 1991</i> (Fred Barzyk and Lucie Laliberté)	1992	67F0001MPB97004
5. <i>Canada's Public Debt Held by Non-Residents: Historical Perspectives, 1926 to 1992</i> (Lucie Laliberté, Christian Lajule and Diane Thibault)	1993	67F0001MPB97005
6. <i>Globalisation and Canada's International Investment Position, 1950 to 1992,</i> (Lucie Laliberté)	1993	67F0001MPB97006
7. <i>The Foreign Investment of Canadian Trusteed Pension Funds, 1970 to 1992</i> (Jean-Pierre Corbeil and Thomas Dufour)	1993	67F0001MPB97007
8. <i>Recent Trends in Canadian Direct Investment Abroad - The Rise of Canadian Multinationals, 1969 to 1992</i> (Frank Chow)	1993	67F0001MPB97008
9. <i>Direct Investment Profits - in Canada and Abroad, 1983 to 1993</i> (Diane Thibault and Emmanuel Manolikakis)	1994	67F0001MPB97009
10. <i>Development of the Balance of Payments nomenclature</i> (Gerard Meagher)	1996	67F0001MPB97010
11. <i>Reconciliation of the Canada-United States Current Account, 1994 and 1995</i> (Lucie Laliberté and Anthony J. DiLullo)	1996	67F0001MPB97011
12. <i>Measurement of Foreign Portfolio Investment in Canadian Bonds</i> (Lucie Laliberté and Réjean Tremblay)	1996	67F0001MPB97012
13. <i>Implementation in Canada of the International Standards for Service Trade - On With the Fifth</i> (Hugh Henderson)	1996	67F0001MPB97013
14. <i>Repo transactions between residents of Canada and non-residents,</i> (Éric Boulay)	1997	67F0001MPB97014
15. <i>Canada's International Legal Services, 1995 and 1996</i> (Colleen Cardillo)	1997	67F0001MPB97015

	<u>Published</u>	<u>Catalogue</u>
16. <i>Canada's International Management Consulting, 1990 to 1996 (Willa Rea)</i>	1997	67F0001MPB97016
17. <i>Canada's Implementation of BPM-5, 1997</i>	1997	67F0001MPB97017
18. <i>Reconciliation of the Canada-United States Current Account, 1996 and 1997 (Anthony J. DiLullo and Hugh Henderson)</i>	1999	67F0001MPB99018
19. <i>Issues in Provincializing Foreign Direct Investment (Rosemary Bender)</i>	1999	67F0001MPB99019
20. <i>Foreign Direct Investment: A Driving Force in Economic Globalization (Christian Lajule)</i>	2000	67F0001MPB00020
21. <i>Foreign Affiliate Trade Statistics - Measuring Economic Globalization A Canadian Perspective - from Research to Reality (Colleen Cardillo)</i>	2000	67F0001MPB01021

Economic Analysis Research Paper Series

004 <i>Foreign Affiliate Trade Statistics - 1999 How Goods and Services are Delivered in International Markets (Colleen Cardillo)</i>	2002	11F0027MIE2002004
013 <i>Foreign Affiliate Trade Statistics - Canadian Operations Abroad, 1999 to 2001 (Michael Marth)</i>	2003	11F0027MIE2003013

How to Order Research Papers

By phone: (613) 951-1855
By fax: (613) 951-9031
By Mail: Statistics Canada
 Balance of Payments Division
 Ottawa, Ontario
 K1A 0T6

You can order our Research Papers for a fee of \$5.00 per copy.

These papers are posted on our Web site at: <http://www.statcan.ca/english/services>



Retain for future reference

Balance of Payments Division List of Publications

Canada's Balance of International Payments

(the First quarter 1997 issue provides comprehensive historical coverage from 1926 to 1996) - presents Canada's economic transactions with non-residents under two main accounts: the current account which covers goods, services, investment income and current transfers; and the capital and finance account which covers capital transfers as well as both borrowings from and investments in foreign countries. The transactions are presented quarterly and annually with six broad geographical areas.

67-001-XPB
67-001-XIB

Canada's International Transactions in Securities

presents Canada's portfolio transactions in Canadian and foreign bonds and stocks and in Canadian money market securities with non-residents. New issues, retirements and trade in outstanding securities are covered as well as repurchase agreements. Monthly gross and net transactions are presented geographically according to six broad geographical areas.

67-002-XIE
67-002-XIF

Canada's International Investment Position

(the 1996 issue provides comprehensive historical data from 1926 to 1996) - presents Canada's asset position with and liability position to non-residents, including a detailed breakdown by claims (direct investment by country, portfolio, etc.) and by six broad geographical areas. The data include the foreign holding of Canada's public debt.

67-202-XIE
67-202-XIF

Canada's International Trade in Services

presents Canada's annual service transactions with non-residents. Travel, transportation, commercial services and government services which are presented by three broad geographical areas: United States, European Union and other countries. Commercial services are further categorized by industry; country of control (Canada, United States, Other); whether the service is with foreign affiliated companies or non-affiliates; and with a detailed country breakdown for commercial services.

67-203-XIB

How to Order

By phone: (613) 951-7277 or 1 800 267-6677
By fax: (613) 951-1584 or 1 800-889-9734
By Internet: order@statcan.ca
By Mail: Statistics Canada
Operations and Integration Division
Circulation Management
Ottawa, Ontario
K1A 0T6

Catalogue no.	Frequency	By issue (all prices in Canadian dollars)				Annual Subscription/ (all prices in Canadian dollars)			
		Canada	United States	Other countries	Internet	Canada	United States	Other countries	Internet
67-001-XPB	Quarterly	\$41.00	\$44.00	\$48.00	\$32.00	\$133.00	\$157.00	\$173.00	\$100.00
67-002-XIE	Monthly				\$15.00				\$142.00
67-002 Print on demand	Monthly	\$41.00	\$47.00	\$51.00					
67-202-XIE	Quarterly				\$23.00				\$51.00
67-203-XIB	Annual				\$30.00				