



Catalogue no. 67-002-XIE

Canada's international transactions in securities

September 2003



Statistics
Canada

Statistique
Canada

Canada

How to obtain more information

Specific inquiries about this product and related statistics or services should be directed to: Balance of Payments Division, Statistics Canada, Ottawa, Ontario, K1A 0T6 (telephone: (613) 951-1855).

For information on the wide range of data available from Statistics Canada, you can contact us by calling one of our toll-free numbers. You can also contact us by e-mail or by visiting our Web site.

National inquiries line	1 800 263-1136
National telecommunications device for the hearing impaired	1 800 363-7629
Depository Services Program inquiries	1 800 700-1033
Fax line for Depository Services Program	1 800 889-9734
E-mail inquiries	infostats@statcan.ca
Web site	www.statcan.ca

Ordering and subscription information

This product, Catalogue no. 67-002-XIE, is published monthly in electronic format on the Statistics Canada Internet site at a price of CDN \$15.00 per issue and CDN \$142.00 for a one-year subscription. To obtain single issues or to subscribe visit our Web site at www.statcan.ca, and select Products and Services.

This product is also available in print through a Print-on-Demand service, at a price of CDN \$41.00 per issue and CDN \$282.00 for a one-year subscription. The following additional shipping charges apply for delivery outside Canada:

	Single issue	Annual subscription
United States	CDN \$ 6.00	CDN \$ 72.00
Other countries	CDN \$ 10.00	CDN \$ 120.00

All prices exclude sales taxes.

The printed version can be ordered by

- Phone (Canada and United States) **1 800 267-6677**
- Fax (Canada and United States) **1 877 287-4369**
- E-mail **order@statcan.ca**
- Mail Statistics Canada
Dissemination Division
Circulation Management
120 Parkdale Avenue
Ottawa, Ontario K1A 0T6
- And, in person at the Statistics Canada Regional Centre nearest you.

When notifying us of a change in your address, please provide both old and new addresses.

Standards of service to the public

Statistics Canada is committed to serving its clients in a prompt, reliable and courteous manner and in the official language of their choice. To this end, the Agency has developed standards of service which its employees observe in serving its clients. To obtain a copy of these service standards, please contact Statistics Canada toll free at 1 800 263-1136.



Statistics Canada
Balance of Payments Division

System of National Accounts

Canada's international transactions in securities

September 2003

Published by authority of the Minister responsible for Statistics Canada

© Minister of Industry, 2003

All rights reserved. No part of this publication may be reproduced, stored in a retrieval system or transmitted in any form or by any means, electronic, mechanical, photocopying, recording or otherwise without prior written permission from Licence Services, Marketing Division, Statistics Canada, Ottawa, Ontario, Canada K1A 0T6.

November 2003

Catalogue no.67-002-XIE, Vol. 69, no. 9

Frequency: Monthly

ISSN 1488-4860

Ottawa

La version française de cette publication est disponible sur demande (n° 67-002-XIF au catalogue).

Note of appreciation

Canada owes the success of its statistical system to a long-standing partnership between Statistics Canada, the citizens of Canada, its businesses, governments and other institutions. Accurate and timely statistical information could not be produced without their continued cooperation and goodwill.

Symbol

The following standard symbols are used in this Statistics Canada publication:

.. not available for a specific reference period

Notes

Throughout this report:

- totals may not add due to rounding;
- a minus sign indicates the purchase of securities from non-residents, that is an outflow of capital from Canada;
- Other EU Countries include: Belgium, Denmark, France, Germany, Greece, Ireland, Italy, Luxembourg, the Netherlands, Portugal, Spain, and from January 1995, Austria, Finland and Sweden.
- Other OECD Countries include: Australia, Iceland, New Zealand, Norway, Switzerland, Turkey; from July 1994, Mexico; from December 1995, the Czech Republic; from May 1996, Hungary; from November 1996, Poland; from December 1996, Republic of Korea; from January 2001, the Slovak Republic; up to December 1994, Austria, Finland and Sweden.
- This publication was prepared by:

John Côté, Don Granger, Barry Mersereau, Carole Parent, Takeyce F. S. Mais, Robert Théberge, Catherine Boies, and Art Ridgeway.

The System of National Accounts

In Canada, the National Accounts have been developed since the close of the Second World War in a series of publications relating to their constituent parts. These have now reached a stage of evolution where they can be termed a "System of National Accounts". For purposes of identification, all publications (containing tables of statistics, descriptions of conceptual frameworks and descriptions of sources and methods) which make up this System carry the term "System of National Accounts" as a general title.

The System of National Accounts in Canada consists of several parts. The annual and quarterly Income and Expenditure Accounts (included with Catalogue Nos. carrying the prefix 13) were, historically speaking, the first set of statistics to be referred to with the title "National Accounts" (National Accounts, Income and Expenditure). The Balance of International Payments data (Catalogue Nos. with prefix 67) are also part of the System of National Accounts and they, in fact, pre-date the Income and Expenditure Accounts.

Greatly expanded structural detail on industries and on goods and services is portrayed in the Input-Output Tables of the System (Catalogue Nos. with prefix 15). The Catalogue Nos. carrying the prefix 15 also provide measures of the contribution of each industry to total Gross Domestic Product at basic prices as well as Productivity Measures.

Both the Input-Output tables and the estimates of Gross Domestic Product by Industry use the establishment as the primary unit of industrial production. Measures of financial transactions are provided by the Financial Flow Accounts (Catalogue Nos. with prefix 13). Types of lenders and financial instruments are the primary detail in these statistics and the legal entity is the main unit of classification of transactors. Balance sheets of outstanding assets and liabilities are published annually.

The System of National Accounts provides an overall conceptually integrated framework in which the various parts can be considered as interrelated sub-systems. At present, direct comparisons amongst those parts which use the establishment as the basic unit and those which use the legal entity can be carried out only at highly aggregated levels of data. However, Statistics Canada is continuing research on enterprise company establishment relationships; it may eventually be feasible to reclassify the data which are on one basis (say the establishment basis) to correspond to the units employed on another (the company or the enterprise basis).

In its broad outline, the Canadian System of National Accounts bears a close relationship to the international standard as described in *System of National Accounts, 1993*, a joint publication of the Commission of the European Communities, International Monetary Fund, Organisation for Economic Co-operation and Development, United Nations and World Bank.

Table of Contents

	Page
September 2003 - Analysis	7
About the figures	6
Table	
Guide to Tables: Where to Locate Data by Table Number	10
CANSIM II Table Correspondence	10
Canadian and Foreign Securities	
1. Portfolio Transactions with Non-residents in Securities	11
Canadian Securities	
2. Portfolio Transactions with Non-residents in Canadian Bonds, by Sector and Type of Transaction	12
3. Portfolio Transactions with Non-residents in Canadian Bonds, by Geographical Area and Type of Transaction	20
4. Portfolio Transactions with Non-residents in Canadian Bonds, by Geographical Area	27
5. Portfolio Transactions with Non-residents in Canadian Bonds, by Type and Currency of Issue	28
6. Portfolio Transactions with Non-residents in Canadian Money Market Instruments, by Sector, Sales and Purchases	30
7. Portfolio Transactions with Non-residents in Canadian Money Market Instruments, by Geographical Area, Sales and Purchases	33
8. Portfolio Transactions with Non-residents in Canadian Stocks, by Geographical Area and Type of Transaction	35
9. Portfolio Transactions with Non-residents in Canadian Stocks, by Geographical Area	39
Foreign Securities	
10. Portfolio Transactions with Non-residents in Foreign Securities by Instrument and Sector, Purchases and Sales	40

Table of Contents - Concluded

	Page
Table	
11. Portfolio Transactions with Non-residents in Foreign Bonds, by Geographical Area, Purchases and Sales	41
12. Portfolio Transactions with Non-residents in Foreign Stocks, by Geographical Area, Purchases and Sales	43
Supplementary Tables	
13. Loans under Repurchase Agreements, Transactions with Non-residents by Canadian and Foreign Securities	46
14. Loans under Repurchase Agreements, Transactions with Non-residents in Assets and Liabilities	48
15. Portfolio Investment in Canadian Bonds, by Sector, Period-end Positions held by Non-residents	50
16. Portfolio Investment in Canadian Bonds, by Geographical Area, Period-end Positions held by Non-residents	51
17. Portfolio Investment in Canadian Money Market Instruments, by Sector, Period-end Positions held by Non-residents	52
18. Portfolio Investment in Canadian Money Market Instruments, by Geographical Area, Period-end Positions held by Non-residents	53
19. Selected Stock Prices and Capital Market Yields	54
For Further Reading	56
List of Published Research Papers	57

ABOUT THE FIGURES

The series on international security transactions cover portfolio transactions in stocks, bonds and Canadian money market securities between non-residents and residents of Canada. The series include trade in outstanding issues, new issues, retirements, and change in interest payable and are further segmented by issuing sector and major geographic area. The principle guiding their construction is that a change of ownership occurs between residents of a foreign country and Canada. These series form an integral part of Canada's balance of payments. Certain types of security transactions, which are excluded from this publication, are classified to other balance of payments series as follows:

- security transactions representing direct investment capital by principal owners of an enterprise, e.g. parent companies subscribing to new stocks;
- foreign securities held as part of Canada's official international reserves or by Canadian banks for their own account;
- foreign money market securities because their measurement is largely through foreign banking data whose level of detail precludes a separate specification.

Security transactions are recorded before charges for fees and commissions. The value used is the transaction price and the timing of a transaction's recording is generally the delivery or settlement date.

The quality of foreign portfolio investment data in Canadian stocks, bonds and money market paper is good. The flows are reported on a monthly survey sent to the major investment dealers, pension funds, and the largest debt issuing institutions such as the provinces and their enterprises. Historically, the response rate has been well over 90%. A considerable effort is made to identify the various sectors and institutions which issue securities to non-residents; the data may, at times, be revised when new transactors are identified or information becomes available through annual surveys. The coverage is validated against administrative data and the annual census survey of foreign holdings of Canadian portfolio investments.

The quality of estimates of Canadian investment in foreign stocks and bonds is not as good as it is difficult to identify all Canadian residents making portfolio investments abroad. A considerable effort is made to identify the various Canadian institutions which invest in foreign securities and survey them on a monthly basis however individuals in the personal sector using foreign investment firms are harder to identify thereby weakening the estimates. The quality of the data has improved significantly with a series of annual surveys on Canadian portfolio investment abroad that began at year-end 1997. The inaugural survey was carried out as part of an international effort to improve data on external portfolio investment. Fully 35 countries participated in the portfolio survey, co-ordinated by the International Monetary Fund.

For transactions in outstanding securities, the data are largely derived from a monthly survey of investment dealers and of other financial institutions such as mutual funds, pension funds and trust companies which regularly buy or sell securities directly through dealers or brokers outside Canada. The data for new issues and retirements are obtained from survey and non-survey sources such as prospectuses, summaries prepared by dealers and other institutions, press reports, etc.

For a fuller description of the sources and methods employed in the construction of these series, please refer to the publication *Canada's Balance of International Payments and International Investment Position - Concepts, Sources, Methods and Products* (Catalogue nos. 67-506-XPE or 67-506-XIE).

Canada's international transactions in securities

September 2003

Foreign investors added to their holdings of Canadian equities in September but reduced their investment in Canadian debt instruments.

Meanwhile, Canadian investors turned away from foreign bonds in September for the first time this year, following eight months of steady accumulation.

Foreign investors continue to buy Canadian stocks

Foreign investors acquired another \$2.1 billion of Canadian stock in September to bring the total for the third quarter to \$5.3 billion. This follows purchases of \$2.6 billion worth in the second quarter. Canadian share prices have risen 17.0% over these two quarters.

American investors purchased \$8.5 billion in Canadian equities over the last two quarters, while investors from other countries reduced their holdings by \$0.6 billion.

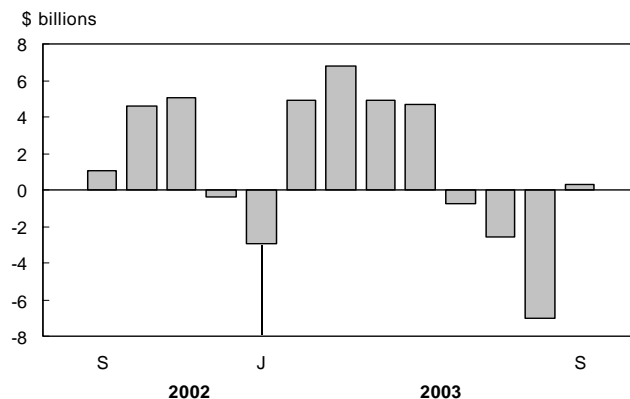
Foreign holdings of Canadian debt continues to drop

Foreign investors continued to reduce their holdings of Canadian bonds in September, but by much less than in the previous two months. The small \$0.7 billion reduction in September nevertheless brought the total decline since June to \$12.9 billion, reversing about three-quarters of the \$17.5 billion in foreign purchases in the first five months of 2003.

In September, there were \$1.4 billion more in retirements of foreign-held Canadian bonds than there were in new

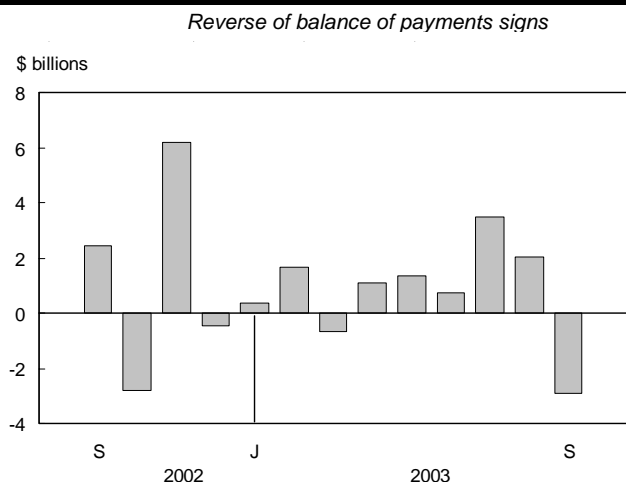
Chart 1

Foreign investment in Canadian securities¹



¹Includes bonds, stocks and money market paper.

Chart 2

Canadian investment in foreign securities¹

¹Includes bonds, and stocks.

placements abroad. Total retirements of \$4.7 billion were dominated by federal government issues. New issues, which totalled \$3.2 billion, were floated solely by federal business enterprises and private corporations.

From June to September, foreign holdings of Canadian bonds denominated in Canadian dollars declined by a total of \$17.3 billion. However, foreign holdings of Canadian bonds denominated in other currencies, mainly US-dollars, have risen \$4.4 billion. During this four-month period, the rapid appreciation of the Canadian dollar during the first part of the year took a pause.

This reduction in Canadian dollar-denominated bonds is in sharp contrast to the first five months of this year when the dollar appreciated rapidly and foreign investors purchased \$16.5 billion of these bonds.

Foreign holdings of Canadian money market paper decline

Foreign investors reduced their holdings of Canadian money market instruments by \$1.2 billion in September. This represents the seventh reduction in the first nine months of 2003, bringing the total cumulative reduction so far this year to \$4.0 billion. This reduction was spread across several sectors, including \$1.8 billion in provincial government, \$1.6 billion in corporate and \$1.2 billion in federal enterprise holdings. However, the total reduction over this nine-month period does include a \$0.6 billion increase in foreign holdings of federal treasury bills.

In September, the gap between Canadian and US short-term interest rates fell to 164 basis points, its lowest level of the year. This reduced differential in favour of investing in Canada resulted from a drop of 13 basis points in Canadian short-term rates, while US rates were virtually unchanged at their recent historical lows.

Canadian investment in foreign securities falls

Canadian investment in foreign bonds fell \$2.7 billion in September, with US treasury bonds taking the largest hit. This decline, the first in eight months, follows an accumulation of \$8.9 billion in foreign bonds since January, which was made up of \$6.6 billion in US treasury bonds, \$1.4 billion in other US bonds and \$0.9 billion in overseas bonds.

Canadian investors also reduced their holdings of foreign stocks by \$177 million, after acquiring \$3.9 billion worth over the previous four months.

Related market information**Interest Rates**

In September, the gap between Canadian and US short-term interest rates narrowed to its lowest level this year. After peaking at 215 basis points in June 2003, the differential, which favours investment in Canada, declined to 164 basis points. Since June, Canadian rates fell 49 basis points to 2.58% in September. Over this same period, US rates have held in a very narrow range, between 0.90% and 0.95%.

Canadian and American long-term interest rates both fell in September, 32 basis points in Canada and 38 basis points in the United States. The result was a 6-basis-point increase to 48 basis points in the differential, favouring investment in Canada.

Stock Prices

After five consecutive monthly gains, totalling 18.4% from March to August, Canadian stock prices recorded a small 1.2% decline in September. The close of 7421.1 on the S&P/TSX composite index in September still represents a 17.0% gain from the year's low set in March. A small decline in US stock prices in September followed six consecutive monthly gains totalling 19.8%.

Canadian dollar

With gains of nearly two full cents in September and almost one full cent in August, the Canadian dollar recovered almost the entire three cents it lost in July. September's close of 74.08 US cents is only marginally below the high close of 74.21 US cents in June. The Canadian dollar gained 16.9% against the US dollar from the beginning of the year to September.

Definitions

The data series on international security transactions cover portfolio transactions in stocks and bonds (both Canadian and foreign issues) and Canadian money market instruments.

Stocks include common and preferred equities, as well as warrants.

Debt securities include bonds and money market instruments.

Bonds have an original term to maturity of more than one year.

Money market instruments have an original term to maturity of one year or less. Government of Canada paper includes treasury bills and US-dollar Canada bills. Other money market instruments include treasury bills and other paper issued by other Canadian governments or their enterprises, bankers' acceptances, bearer demand notes of banks, commercial paper and other short-term paper.

GUIDE TO TABLES: Where to Locate Data by Table Number ¹

Transactions	Canadian securities			Foreign securities		Loans
	Bonds	Money market	Stocks	Bonds	Stocks	
	table numbers					
Total (Net)	1	1	1	1	1	
Sector	2	6		10	10	14
Geographic ²	3 4	7	8 9	11	12	
Currency	5					
Type ³	2 3 5		8			13
Sales/Purchases	2 3	6 7	8	10 11	10 12	13 14
Period-end Positions						
Sector	15	17				
Geographic ²	16	18				

¹ Tables 1-14 include monthly, quarterly and annual data; tables 15-18 include quarterly and annual data; and table 19 has monthly data only.

² Other EU Countries include: Belgium, Denmark, France, Germany, Greece, Ireland, Italy, Luxembourg, the Netherlands, Portugal, Spain, and from January 1995, Austria, Finland and Sweden.

Other OECD Countries include: Australia, Iceland, New Zealand, Norway, Switzerland, Turkey; from July 1994, Mexico; from December 1995, the Czech Republic; from May 1996, Hungary; from November 1996, Poland; from December 1996, Republic of Korea; from January 2001, the Slovak Republic; up to December 1994, Austria, Finland and Sweden.

³ Type consists of new issues, retirements, trade in outstanding, and change in interest payable.

Note: Table 19 shows selected stock market composite indexes and market yields.

CANSIM II Tables Correspondence

Table Number Cat. #67-002-XIE	Table Titles (CANSIM II)	CANSIM II Table Number		
		Annual	Quarterly	Monthly
1, 2, 5, 6, 10, 14	International transactions in securities, portfolio transactions and repo loans, net and gross sales and purchases, by type and sector	376-0018	376-0019	376-0020
3, 4	International transactions in securities, portfolio transactions with non-residents in Canadian bonds, by type	376-0021	376-0024	376-0027
7, 11, 12	International transactions in securities, portfolio transactions with non-residents in Canadian money market, foreign bonds, and foreign stocks, by type	376-0023	376-0026	376-0029
8, 9	International transactions in securities, portfolio transactions with non-residents in Canadian stocks, by type	376-0022	376-0025	376-0028
15, 16, 17, 18	International investment position, foreign portfolio investment, Canadian bonds and Canadian money market, by sector			376-0058

Table 1
Portfolio Transactions with Non-residents in Securities

Period	Canadian Securities				Foreign Securities ²		
	Bonds ¹	Stocks	Money Market	Total	Bonds	Stocks	Total
V No. A	113046	113075	113078	113045	113132	113135	113131
Q	113218	113247	113250	113217	113304	113307	113303
M	113390	113419	113422	113389	113446	113449	113445
millions of dollars							
1990	14,678	-1,735	5,642	18,584	-75	-2,521	-2,596
1991	28,063	-990	4,428	31,501	-1,661	-10,004	-11,665
1992	18,766	1,036	4,898	24,701	-1,401	-10,348	-11,749
1993	31,446	12,056	9,296	52,799	-5,071	-12,811	-17,881
1994	15,995	6,412	905	23,312	435	-9,362	-8,927
1995	30,730	-4,242	-1,254	25,233	-1,085	-6,247	-7,331
1996	17,953	8,034	-7,319	18,668	-2,070	-17,247	-19,317
1997	6,166	7,645	2,369	16,181	-6,642	-5,207	-11,849
1998	10,337	14,311	130	24,779	-7,064	-15,433	-22,497
1999	2,602	14,346	-13,209	3,738	-2,477	-20,623	-23,101
2000	-21,710	35,237	824	14,351	-3,963	-59,870	-63,832
2001	37,351	4,667	-7,349	34,669	-1,920	-35,653	-37,573
2002	18,712	-1,436	3,782	21,058	-6,243	-18,707	-24,950
2001 III	1,234	-3,455	-3,957	-6,179	-1,354	-3,518	-4,871
IV	20,066	629	1,826	22,521	301	-5,505	-5,204
2002 I	6,154	-3,865	1,305	3,594	-2,442	-8,993	-11,435
II	3,766	4,781	344	8,891	-2,298	-4,567	-6,866
III	5,102	-4,076	-1,791	-766	-1,472	-2,250	-3,722
IV	3,691	1,724	3,925	9,339	-32	-2,897	-2,928
2003 I	9,889	-265	-830	8,793	-3,501	2,159	-1,342
II	7,030	2,575	-766	8,840	-2,664	-546	-3,210
III	-12,303	5,327	-2,378	-9,354	18	-2,607	-2,589
2001 S	-6,784	-340	-1,357	-8,481	-1,945	-1,891	-3,837
O	13,881	-1,315	1,188	13,754	2,432	142	2,574
N	7,759	520	-1,708	6,570	1,107	-949	159
D	-1,574	1,424	2,346	2,197	-3,238	-4,698	-7,936
2002 J	-143	-96	343	104	1,108	-500	608
F	2,780	-234	-289	2,257	-3,865	-5,667	-9,532
M	3,517	-3,535	1,250	1,232	315	-2,826	-2,510
A	1,754	-222	-103	1,429	-1,759	-2,218	-3,977
M	2,230	543	50	2,823	-59	-548	-607
J	-218	4,460	397	4,639	-480	-1,802	-2,282
J	-82	-3,432	207	-3,307	-508	-350	-858
A	2,431	279	-1,246	1,464	795	-1,216	-421
S	2,752	-923	-753	1,076	-1,758	-685	-2,443
O	4,428	-218	424	4,634	2,827	-22	2,806
N	1,816	993	2,258	5,066	-3,264	-2,928	-6,192
D	-2,553	949	1,243	-361	405	52	458
2003 J	-3,110	-645	799	-2,956	-639	257	-382
F	5,110	758	-926	4,941	-1,579	-82	-1,661
M	7,889	-378	-703	6,808	-1,283	1,983	701
A	3,906	416	621	4,943	-1,666	558	-1,109
M	3,754	1,800	-890	4,663	-373	-984	-1,357
J	-629	360	-496	-766	-625	-120	-744
J	-3,975	1,887	-509	-2,597	-2,375	-1,100	-3,475
A	-7,670	1,300	-655	-7,026	-339	-1,684	-2,023
S	-657	2,141	-1,214	269	2,732	177	2,909

1 Inclusive of new issues, retirements, trade in outstanding and change in interest payable.

2 Transactions in foreign money market securities are not available.

Note: Throughout tables 1-14 a minus sign indicates the purchase of securities from non-residents, that is an outflow of capital from Canada.

Table 2
Portfolio Transactions with Non-residents in Canadian Bonds, by Sector and Type of Transaction

Period		Federal Government									Total
		New Issues and Retirements			Outstanding Issues			Interest			
		New Issues	Retirements	Total	Sales	Purchases	Total	Accrued	Paid	Change in interest payable	
V No.	A	113055	113062	113175	113088	113095	113048	113182	113189	113069	113196
	Q	113227	113234	113347	113260	113267	113220	113354	113361	113241	113368
	M	113399	113406	113519	113432	113439	113392	113526	113533	113413	113540
millions of dollars											
1990		0	-4,755	-4,755	126,026	-113,731	12,296	5,174	-5,021	152	7,692
1991		0	-4,523	-4,523	169,630	-157,639	11,991	5,829	-5,705	123	7,592
1992		0	-5,134	-5,134	248,358	-239,869	8,488	6,166	-5,901	265	3,619
1993		0	-6,253	-6,253	367,574	-354,188	13,386	6,656	-6,369	287	7,420
1994		5,311	-3,855	1,456	509,724	-513,971	-4,246	6,336	-5,859	477	-2,314
1995		3,103	-4,079	-976	458,633	-445,295	13,338	6,322	-6,018	304	12,666
1996		4,807	-6,597	-1,790	651,568	-642,554	9,014	6,688	-6,497	191	7,414
1997		2,773	-7,086	-4,313	1,010,613	-1,011,942	-1,330	6,836	-6,726	110	-5,532
1998		12,470	-9,222	3,249	801,584	-811,655	-10,071	6,135	-5,823	312	-6,510
1999		4,494	-7,136	-2,642	516,376	-510,494	5,882	5,728	-5,914	-185	3,055
2000		0	-11,357	-11,357	350,351	-349,441	911	5,430	-5,790	-360	-10,806
2001		648	-11,402	-10,754	340,279	-337,209	3,070	4,958	-5,118	-160	-7,843
2002		0	-6,132	-6,132	341,127	-331,177	9,950	4,421	-4,619	-198	3,620
2001	III	0	-4,328	-4,328	68,091	-67,607	484	1,226	-897	328	-3,516
	IV	0	-1,402	-1,402	82,046	-82,664	-618	1,167	-1,825	-658	-2,678
2002	I	0	-651	-651	72,239	-72,816	-577	1,086	-653	433	-795
	II	0	-865	-865	74,410	-75,001	-591	1,075	-1,262	-186	-1,642
	III	0	-2,427	-2,427	105,458	-101,716	3,742	1,099	-815	284	1,599
	IV	0	-2,190	-2,190	89,021	-81,644	7,376	1,161	-1,890	-728	4,458
2003	I	0	-2,413	-2,413	112,656	-106,105	6,552	1,142	-639	503	4,642
	II	0	-3,633	-3,633	150,366	-150,158	208	1,138	-1,472	-334	-3,760
	III	0	-4,677	-4,677	138,323	-150,767	-12,444	960	-727	232	-16,888
2001	S	0	-4,328	-4,328	25,119	-26,113	-993	388	-618	-230	-5,551
	O	0	-78	-78	29,420	-28,596	824	398	-105	293	1,039
	N	0	0	0	32,886	-32,388	498	387	-434	-47	450
	D	0	-1,324	-1,324	19,741	-21,680	-1,940	382	-1,286	-904	-4,167
2002	J	0	-476	-476	23,498	-25,296	-1,798	377	-74	303	-1,971
	F	0	-161	-161	19,337	-18,413	924	336	-219	117	880
	M	0	-14	-14	29,404	-29,107	297	373	-359	13	296
	A	0	-830	-830	23,683	-22,962	721	356	-134	222	113
	M	0	0	0	26,391	-26,893	-502	367	0	367	-135
	J	0	-35	-35	24,336	-25,146	-810	353	-1,128	-775	-1,620
	J	0	-1,267	-1,267	32,339	-30,394	1,946	365	-328	37	715
	A	0	0	0	39,585	-36,590	2,995	375	-68	307	3,301
	S	0	-1,159	-1,159	33,534	-34,732	-1,198	359	-418	-59	-2,417
	O	0	0	0	35,977	-30,481	5,497	384	-47	337	5,834
	N	0	0	0	33,936	-31,755	2,181	386	-446	-60	2,121
	D	0	-2,190	-2,190	19,107	-19,409	-302	391	-1,397	-1,005	-3,497
2003	J	0	0	0	32,161	-31,536	625	391	-10	381	1,006
	F	0	-2,413	-2,413	35,800	-30,353	5,447	357	-202	154	3,189
	M	0	0	0	44,695	-44,216	479	394	-426	-32	447
	A	0	0	0	41,278	-39,864	1,414	382	-93	289	1,703
	M	0	0	0	54,608	-52,788	1,820	399	0	399	2,219
	J	0	-3,633	-3,633	54,480	-57,507	-3,027	357	-1,380	-1,022	-7,682
	J	0	-294	-294	53,569	-59,892	-6,322	352	-281	71	-6,546
	A	0	-800	-800	38,353	-44,115	-5,762	324	-59	265	-6,298
	S	0	-3,583	-3,583	46,401	-46,760	-359	284	-387	-103	-4,045

Table 2
Portfolio Transactions with Non-residents in Canadian Bonds, by Sector and Type of Transaction - Continued

		Federal Government Enterprises									
		New Issues and Retirements			Outstanding Issues			Interest			Total
Period		New Issues	Retirements	Total	Sales	Purchases	Total	Accrued	Paid	Change in interest payable	
V No.	A	113056	113063	113176	113089	113096	113049	113183	113190	113070	113197
	Q	113228	113235	113348	113261	113268	113221	113355	113362	113242	113369
	M	113400	113407	113520	113433	113440	113393	113527	113534	113414	113541
millions of dollars											
1990		1,585	-1,720	-136	409	-505	-95	863	-841	22	-209
1991		1,941	-2,517	-576	725	-313	411	788	-829	-42	-206
1992		2,301	-2,914	-614	486	-315	170	836	-815	21	-422
1993		3,637	-2,331	1,305	275	-330	-55	820	-806	14	1,264
1994		3,046	-2,083	963	743	-670	73	853	-862	-9	1,027
1995		1,840	-561	1,278	781	-737	44	793	-776	17	1,339
1996		2,224	-1,946	278	686	-747	-62	715	-706	9	225
1997		2,711	-1,916	794	2,737	-2,826	-89	789	-751	39	744
1998		3,827	-3,467	360	1,967	-1,811	155	816	-791	25	541
1999		4,735	-3,548	1,186	2,620	-1,822	798	862	-857	5	1,989
2000		3,955	-5,141	-1,186	1,392	-1,235	156	860	-898	-38	-1,067
2001		5,203	-4,051	1,152	2,157	-1,343	814	785	-790	-5	1,961
2002		13,030	-4,902	8,128	9,737	-6,948	2,790	1,003	-843	160	11,077
2001	III	1,071	-805	266	366	-190	176	199	-88	111	552
	IV	1,548	-1,243	305	684	-561	123	199	-209	-10	417
2002	I	2,568	-102	2,466	1,881	-1,055	826	214	-125	89	3,381
	II	4,129	-2,909	1,219	2,336	-1,399	937	221	-373	-152	2,004
	III	3,143	-541	2,602	2,717	-1,764	953	268	-130	138	3,694
	IV	3,190	-1,350	1,840	2,803	-2,729	74	300	-215	84	1,998
2003	I	3,325	-1,018	2,307	2,555	-1,776	779	318	-277	41	3,128
	II	2,810	-978	1,832	4,218	-1,931	2,287	335	-251	83	4,202
	III	2,482	-466	2,016	3,176	-3,337	-162	379	-381	-2	1,852
2001	S	444	-548	-104	140	-50	89	64	-32	33	18
	O	513	-68	446	105	-166	-61	67	-38	29	414
	N	459	-1,043	-584	262	-193	69	65	-94	-29	-543
	D	576	-133	443	316	-202	114	66	-77	-11	546
2002	J	137	-41	97	152	-48	104	69	-23	45	247
	F	1,795	-16	1,778	1,564	-820	744	64	-42	22	2,544
	M	636	-45	591	165	-188	-22	81	-59	22	590
	A	27	-1,298	-1,271	401	-416	-15	76	-120	-44	-1,329
	M	920	-1,454	-534	275	-324	-49	71	-122	-50	-633
	J	3,182	-158	3,024	1,660	-660	1,000	74	-132	-58	3,966
	J	487	-80	407	279	-442	-163	86	-39	47	291
	A	819	-34	786	629	-478	151	90	-32	58	994
	S	1,837	-427	1,410	1,809	-844	965	92	-58	33	2,408
	O	547	-13	534	416	-471	-55	100	-38	63	542
	N	147	-428	-281	365	-911	-546	96	-65	31	-795
	D	2,496	-909	1,587	2,022	-1,347	675	103	-113	-9	2,252
2003	J	216	-553	-338	518	-572	-54	107	-26	81	-311
	F	739	-275	463	874	-505	369	97	-44	53	886
	M	2,371	-189	2,182	1,164	-699	465	114	-207	-93	2,553
	A	73	-4	69	404	-671	-267	113	-26	87	-112
	M	250	-885	-634	460	-749	-289	112	-82	30	-894
	J	2,487	-89	2,398	3,354	-511	2,843	110	-144	-33	5,208
	J	220	-152	68	1,149	-530	619	128	-37	91	778
	A	372	-267	105	827	-1,890	-1,063	127	-53	74	-884
	S	1,890	-48	1,843	1,200	-918	282	124	-290	-167	1,958

Table 2
Portfolio Transactions with Non-residents in Canadian Bonds, by Sector and Type of Transaction - Continued

Period		Provincial Governments									Total
		New Issues and Retirements			Outstanding Issues			Interest			
		New Issues	Retirements	Total	Sales	Purchases	Total	Accrued	Paid	Change in interest payable	
V No.	A	113057	113064	113177	113090	113097	113050	113184	113191	113071	113198
	Q	113229	113236	113349	113262	113269	113222	113356	113363	113243	113370
	M	113401	113408	113521	113434	113441	113394	113528	113535	113415	113542
millions of dollars											
1990		6,142	-2,250	3,892	2,173	-2,465	-292	3,441	-3,348	93	3,692
1991		16,974	-5,910	11,064	5,607	-4,287	1,320	4,171	-3,673	498	12,882
1992		15,067	-4,342	10,725	7,201	-6,069	1,131	5,214	-4,928	286	12,143
1993		21,571	-4,459	17,112	15,413	-15,602	-189	6,536	-5,968	568	17,491
1994		19,941	-5,156	14,785	20,430	-22,040	-1,611	7,751	-7,331	420	13,595
1995		12,165	-4,763	7,402	12,710	-12,970	-260	8,340	-8,223	117	7,260
1996		15,781	-9,991	5,789	10,477	-11,714	-1,237	8,174	-8,212	-37	4,515
1997		10,271	-11,182	-911	11,593	-12,942	-1,349	7,962	-7,968	-6	-2,265
1998		11,219	-11,003	216	15,086	-15,671	-585	7,930	-8,010	-80	-449
1999		6,802	-11,971	-5,169	16,560	-17,278	-718	7,707	-7,772	-64	-5,951
2000		3,846	-12,838	-8,992	15,434	-14,056	1,378	7,183	-7,354	-172	-7,786
2001		11,816	-12,105	-289	10,406	-9,160	1,245	6,886	-6,788	98	1,054
2002		11,613	-11,691	-78	11,354	-10,665	688	6,672	-6,813	-141	470
2001	III	852	-1,552	-701	2,911	-2,202	710	1,721	-1,868	-147	-138
	IV	3,394	-3,631	-238	3,357	-2,620	737	1,734	-1,347	388	887
2002	I	1,440	-2,252	-813	2,629	-2,435	193	1,688	-2,075	-387	-1,006
	II	1,843	-4,100	-2,258	2,716	-2,192	524	1,660	-1,499	161	-1,572
	III	3,722	-3,620	102	3,187	-3,192	-5	1,659	-1,976	-317	-219
	IV	4,609	-1,718	2,890	2,822	-2,846	-24	1,665	-1,264	401	3,267
2003	I	5,275	-6,455	-1,180	3,175	-2,724	450	1,562	-1,939	-377	-1,107
	II	6,110	-2,294	3,816	3,444	-3,514	-70	1,514	-1,334	180	3,925
	III	1,023	-826	196	2,466	-3,137	-671	1,509	-1,667	-158	-633
2001	S	200	-122	78	1,101	-724	377	567	-484	83	538
	O	2,071	-2,554	-483	1,471	-1,157	314	588	-463	125	-44
	N	1,323	-1,062	261	1,057	-685	372	566	-264	302	935
	D	0	-15	-15	829	-778	51	580	-620	-39	-4
2002	J	232	-122	110	902	-822	80	585	-950	-365	-175
	F	811	-1,262	-450	1,257	-903	353	526	-679	-154	-250
	M	396	-869	-472	470	-711	-240	578	-446	132	-581
	A	48	-601	-553	916	-710	206	555	-555	0	-347
	M	930	0	930	835	-679	157	569	-158	411	1,498
	J	865	-3,499	-2,634	964	-803	162	536	-786	-250	-2,723
	J	2,193	-2,535	-342	649	-786	-137	559	-925	-367	-846
	A	0	-495	-495	961	-664	297	557	-513	45	-154
	S	1,530	-590	940	1,577	-1,742	-165	543	-538	5	780
	O	1,143	-557	585	1,102	-974	128	559	-344	215	928
	N	1,434	-326	1,107	934	-923	11	543	-292	251	1,369
	D	2,032	-835	1,198	787	-950	-163	564	-628	-64	970
2003	J	524	-4,712	-4,188	940	-941	-1	556	-918	-362	-4,551
	F	3,333	-1,051	2,282	1,068	-1,179	-111	481	-631	-149	2,022
	M	1,418	-692	725	1,167	-605	562	525	-391	134	1,422
	A	4,101	-1,330	2,771	1,246	-1,088	158	506	-516	-10	2,918
	M	1,341	-206	1,134	1,113	-1,054	58	517	-156	361	1,553
	J	668	-758	-89	1,085	-1,372	-286	491	-661	-171	-546
	J	872	-458	415	922	-1,021	-99	511	-698	-186	130
	A	150	-250	-99	498	-1,148	-650	511	-443	68	-682
	S	0	-119	-119	1,046	-968	78	487	-527	-40	-81

Table 2
Portfolio Transactions with Non-residents in Canadian Bonds, by Sector and Type of Transaction - Continued

		Provincial Government Enterprises									
		New Issues and Retirements			Outstanding Issues			Interest			Total
Period		New Issues	Retirements	Total	Sales	Purchases	Total	Accrued	Paid	Change in interest payable	
V No.	A	113058	113065	113178	113091	113098	113051	113185	113192	113072	113199
	Q	113230	113237	113350	113263	113270	113223	113357	113364	113244	113371
	M	113402	113409	113522	113435	113442	113395	113529	113536	113416	113543
millions of dollars											
1990		3,416	-1,612	1,804	1,524	-2,111	-587	2,566	-2,521	46	1,262
1991		7,584	-1,848	5,736	5,451	-5,932	-481	2,917	-2,687	229	5,484
1992		5,365	-3,835	1,530	7,064	-9,229	-2,165	3,128	-3,077	50	-584
1993		5,149	-3,135	2,013	4,743	-5,990	-1,247	3,064	-2,987	77	844
1994		5,423	-1,567	3,856	4,482	-5,531	-1,049	3,280	-3,163	116	2,923
1995		2,367	-2,515	-148	4,094	-4,891	-796	3,388	-3,371	18	-927
1996		2,000	-2,730	-730	2,584	-3,703	-1,119	3,022	-3,074	-52	-1,901
1997		1,448	-3,668	-2,220	2,811	-3,254	-443	2,904	-2,887	17	-2,646
1998		2,459	-2,354	105	4,685	-5,477	-792	2,887	-2,817	70	-617
1999		137	-4,106	-3,969	4,313	-4,474	-161	2,624	-2,733	-109	-4,239
2000		199	-1,818	-1,619	2,138	-2,099	39	2,398	-2,390	7	-1,572
2001		1,058	-4,075	-3,017	1,606	-1,867	-261	2,191	-2,280	-89	-3,367
2002		0	-2,996	-2,996	943	-988	-44	1,893	-1,926	-33	-3,073
2001	III	0	-543	-543	244	-361	-117	539	-589	-49	-710
	IV	0	-1,093	-1,093	182	-259	-77	530	-420	110	-1,060
2002	I	0	-828	-828	160	-239	-80	498	-624	-126	-1,033
	II	0	-1,730	-1,730	258	-196	61	475	-472	3	-1,666
	III	0	-375	-375	291	-217	74	461	-526	-66	-366
	IV	0	-63	-63	235	-335	-100	460	-304	156	-8
2003	I	0	-768	-768	370	-399	-28	426	-571	-145	-941
	II	0	-350	-350	316	-206	110	395	-345	50	-189
	III	0	-501	-501	229	-572	-343	386	-442	-56	-900
2001	S	0	-2	-2	18	-110	-92	176	-92	84	-10
	O	0	0	0	92	-157	-65	181	-128	54	-11
	N	0	-973	-973	52	-59	-7	175	-149	25	-954
	D	0	-120	-120	38	-43	-6	174	-143	31	-95
2002	J	0	-174	-174	32	-118	-87	175	-240	-65	-326
	F	0	-593	-593	64	-60	4	154	-222	-68	-657
	M	0	-61	-61	64	-61	3	169	-162	7	-51
	A	0	-250	-250	123	-117	6	162	-160	2	-242
	M	0	-744	-744	76	-50	26	162	-153	9	-709
	J	0	-737	-737	59	-30	30	152	-159	-8	-715
	J	0	-375	-375	114	-44	71	154	-239	-86	-389
	A	0	0	0	86	-66	21	155	-192	-37	-16
	S	0	0	0	90	-108	-17	151	-95	56	39
	O	0	-5	-5	122	-257	-135	156	-126	30	-110
	N	0	-19	-19	49	-44	5	150	-77	73	60
	D	0	-39	-39	64	-34	30	154	-102	52	43
2003	J	0	0	0	72	-130	-58	153	-217	-65	-123
	F	0	-762	-762	58	-82	-24	131	-186	-55	-841
	M	0	-6	-6	240	-187	54	142	-167	-25	23
	A	0	-292	-292	34	-38	-4	135	-131	4	-292
	M	0	-24	-24	177	-100	77	133	-81	52	106
	J	0	-34	-34	106	-69	37	127	-133	-6	-3
	J	0	-310	-310	85	-112	-27	132	-214	-82	-419
	A	0	-59	-59	76	-401	-326	131	-146	-15	-399
	S	0	-132	-132	68	-59	10	122	-82	40	-82

Table 2
Portfolio Transactions with Non-residents in Canadian Bonds, by Sector and Type of Transaction - Continued

Period		Municipalities									Total
		New Issues and Retirements			Outstanding Issues			Interest			
		New Issues	Retirements	Total	Sales	Purchases	Total	Accrued	Paid	Change in interest payable	
V No.	A	113059	113066	113179	113092	113099	113052	113186	113193	113073	113200
	Q	113231	113238	113351	113264	113271	113224	113358	113365	113245	113372
	M	113403	113410	113523	113436	113443	113396	113530	113537	113417	113544
millions of dollars											
1990		269	-501	-233	70	-101	-31	435	-441	-6	-270
1991		763	-687	76	80	-105	-24	420	-399	21	72
1992		972	-839	133	168	-139	30	440	-424	16	179
1993		808	-682	127	325	-166	159	467	-450	17	303
1994		905	-383	522	196	-126	70	499	-484	15	606
1995		413	-850	-437	155	-83	72	483	-510	-27	-392
1996		416	-490	-74	225	-96	129	496	-502	-6	49
1997		209	-512	-303	183	-128	55	475	-509	-34	-282
1998		0	-302	-302	303	-103	200	468	-484	-16	-119
1999		57	-553	-496	149	-127	22	437	-460	-23	-496
2000		132	-587	-455	144	-107	37	412	-420	-8	-426
2001		333	-933	-601	464	-240	224	356	-370	-15	-391
2002		0	-1,054	-1,054	295	-261	33	300	-341	-41	-1,062
2001	III	0	-151	-151	83	-132	-48	84	-62	22	-177
	IV	159	-72	87	237	-59	178	84	-75	9	275
2002	I	0	-172	-172	47	-53	-6	80	-95	-15	-193
	II	0	-306	-306	102	-56	46	77	-108	-31	-291
	III	0	-135	-135	72	-21	51	75	-56	18	-66
	IV	0	-440	-440	74	-131	-58	68	-82	-14	-511
2003	I	163	-341	-178	249	-47	202	63	-77	-14	10
	II	101	-201	-100	121	-46	75	59	-84	-25	-50
	III	0	-282	-282	62	-49	13	56	-44	12	-258
2001	S	0	-113	-113	29	-4	24	27	-20	7	-81
	O	0	-8	-8	98	-7	91	28	-25	3	85
	N	159	-51	108	55	-10	45	28	-26	2	154
	D	0	-13	-13	85	-42	43	29	-24	5	36
2002	J	0	-156	-156	25	-4	21	28	-39	-11	-146
	F	0	0	0	5	-24	-19	25	-11	14	-5
	M	0	-16	-16	17	-24	-8	27	-46	-18	-42
	A	0	-1	-1	49	-46	4	27	-11	15	18
	M	0	-288	-288	10	-2	8	26	-73	-47	-327
	J	0	-17	-17	42	-8	34	25	-23	1	19
	J	0	-120	-120	24	-4	20	25	-30	-5	-105
	A	0	-1	-1	22	-8	14	25	-11	14	28
	S	0	-15	-15	26	-9	17	24	-15	9	11
	O	0	-333	-333	15	-121	-106	24	-29	-5	-444
	N	0	0	0	47	-7	39	22	-28	-6	33
	D	0	-107	-107	13	-3	9	22	-25	-3	-100
2003	J	0	-4	-4	105	-2	103	22	-21	1	100
	F	163	-51	112	33	-1	32	20	-11	9	153
	M	0	-286	-286	111	-44	67	21	-45	-24	-243
	A	0	-4	-4	26	-3	24	20	-5	14	34
	M	0	-120	-120	35	-10	25	20	-52	-32	-127
	J	101	-76	24	59	-33	27	19	-27	-8	44
	J	0	-122	-122	20	-34	-14	19	-17	3	-133
	A	0	-1	-1	4	-2	2	19	-14	5	6
	S	0	-159	-159	38	-14	25	18	-14	4	-131

Table 2
Portfolio Transactions with Non-residents in Canadian Bonds, by Sector and Type of Transaction - Continued

		All Governments and their enterprises									
		New Issues and Retirements			Outstanding Issues			Interest			Total
Period		New Issues	Retirements	Total	Sales	Purchases	Total	Accrued	Paid	Change in interest payable	
V No.	A	113204	113205	113203	113207	113208	113206	113210	113211	113209	113202
	Q	113376	113377	113375	113379	113380	113378	113382	113383	113381	113374
	M	113548	113549	113547	113551	113552	113550	113554	113555	113553	113546
millions of dollars											
1990		11,411	-10,840	571	130,202	-118,913	11,289	12,479	-12,172	307	12,167
1991		27,263	-15,485	11,778	181,493	-168,276	13,217	14,125	-13,294	830	25,825
1992		23,705	-17,064	6,641	263,276	-255,622	7,654	15,784	-15,146	638	14,934
1993		31,165	-16,860	14,304	388,330	-376,277	12,053	17,542	-16,579	963	27,320
1994		34,626	-13,044	21,582	535,575	-542,338	-6,763	18,719	-17,699	1,019	15,838
1995		19,888	-12,769	7,119	476,374	-463,975	12,399	19,326	-18,897	428	19,947
1996		25,228	-21,754	3,473	665,539	-658,814	6,725	19,094	-18,989	104	10,303
1997		17,412	-24,363	-6,952	1,027,937	-1,031,092	-3,155	18,965	-18,840	126	-9,981
1998		29,975	-26,348	3,627	823,625	-834,716	-11,092	18,236	-17,925	311	-7,154
1999		16,224	-27,314	-11,089	540,019	-534,195	5,824	17,359	-17,736	-376	-5,642
2000		8,132	-31,741	-23,609	369,459	-366,938	2,521	16,283	-16,853	-570	-21,658
2001		19,058	-32,566	-13,508	354,912	-349,819	5,093	15,176	-15,346	-171	-8,586
2002		24,643	-26,774	-2,131	363,456	-350,039	13,417	14,289	-14,542	-253	11,033
2001	III	1,923	-7,380	-5,457	71,696	-70,492	1,204	3,769	-3,504	264	-3,988
	IV	5,100	-7,442	-2,341	86,507	-86,163	343	3,715	-3,876	-161	-2,159
2002	I	4,007	-4,005	3	76,955	-76,599	356	3,565	-3,571	-6	353
	II	5,971	-9,911	-3,940	79,822	-78,844	977	3,509	-3,714	-205	-3,167
	III	6,865	-7,098	-232	111,725	-106,910	4,815	3,561	-3,503	58	4,641
	IV	7,799	-5,761	2,038	94,954	-87,686	7,268	3,654	-3,755	-101	9,205
2003	I	8,763	-10,994	-2,231	119,005	-111,051	7,955	3,511	-3,502	8	5,732
	II	9,021	-7,456	1,564	158,465	-155,855	2,610	3,441	-3,486	-45	4,129
	III	3,505	-6,752	-3,248	144,255	-157,862	-13,607	3,290	-3,261	28	-16,826
2001	S	644	-5,112	-4,468	26,406	-27,001	-595	1,222	-1,245	-23	-5,087
	O	2,585	-2,708	-123	31,186	-30,083	1,103	1,263	-759	504	1,483
	N	1,940	-3,129	-1,188	34,312	-33,335	977	1,220	-967	253	42
	D	576	-1,605	-1,030	21,009	-22,745	-1,736	1,232	-2,149	-918	-3,684
2002	J	369	-968	-599	24,609	-26,288	-1,679	1,234	-1,327	-93	-2,370
	F	2,606	-2,032	574	22,226	-20,220	2,006	1,104	-1,173	-69	2,511
	M	1,032	-1,004	28	30,120	-30,091	29	1,227	-1,071	156	213
	A	75	-2,979	-2,905	25,172	-24,250	922	1,174	-980	195	-1,787
	M	1,850	-2,486	-636	27,587	-27,947	-360	1,196	-506	690	-306
	J	4,047	-4,446	-399	27,062	-26,647	415	1,139	-2,228	-1,089	-1,073
	J	2,679	-4,376	-1,697	33,406	-31,669	1,737	1,189	-1,562	-373	-333
	A	819	-530	290	41,283	-37,806	3,477	1,203	-816	387	4,154
	S	3,367	-2,192	1,175	37,037	-37,435	-399	1,169	-1,125	45	821
	O	1,690	-909	781	37,631	-32,303	5,328	1,223	-583	640	6,750
	N	1,581	-773	808	35,331	-33,640	1,691	1,196	-908	288	2,787
	D	4,528	-4,079	449	21,992	-21,744	249	1,234	-2,264	-1,030	-332
2003	J	739	-5,269	-4,529	33,795	-33,181	614	1,228	-1,192	37	-3,879
	F	4,235	-4,552	-317	37,834	-32,120	5,714	1,087	-1,074	13	5,409
	M	3,789	-1,173	2,615	47,376	-45,749	1,627	1,196	-1,237	-41	4,202
	A	4,174	-1,631	2,543	42,988	-41,664	1,324	1,156	-772	384	4,251
	M	1,591	-1,235	356	56,392	-54,701	1,691	1,181	-370	811	2,858
	J	3,256	-4,590	-1,335	59,085	-59,491	-406	1,104	-2,344	-1,240	-2,980
	J	1,092	-1,336	-244	55,745	-61,588	-5,843	1,143	-1,246	-103	-6,189
	A	522	-1,376	-854	39,756	-47,556	-7,799	1,112	-715	397	-8,257
	S	1,890	-4,040	-2,150	48,754	-48,718	35	1,034	-1,300	-266	-2,380

Table 2
Portfolio Transactions with Non-residents in Canadian Bonds, by Sector and Type of Transaction - Continued

Period		Corporations									Total
		New Issues and Retirements			Outstanding Issues			Interest			
		New Issues	Retirements	Total	Sales	Purchases	Total	Accrued	Paid	Change in interest payable	
V No.	A	113060	113067	113180	113093	113100	113053	113187	113194	113074	113201
	Q	113232	113239	113352	113265	113272	113225	113359	113366	113246	113373
	M	113404	113411	113524	113437	113444	113397	113531	113538	113418	113545
millions of dollars											
1990		5,688	-2,752	2,936	1,259	-1,774	-515	4,365	-4,275	89	2,510
1991		7,119	-5,010	2,109	3,154	-3,046	107	4,488	-4,466	21	2,238
1992		9,921	-7,374	2,546	4,731	-3,401	1,330	4,678	-4,723	-44	3,832
1993		12,966	-10,463	2,503	8,531	-6,815	1,717	5,088	-5,181	-93	4,126
1994		8,637	-9,360	-722	7,548	-6,696	853	5,527	-5,501	26	156
1995		18,112	-7,451	10,660	5,137	-5,391	-254	6,332	-5,955	377	10,783
1996		18,368	-11,066	7,303	6,209	-6,012	198	6,819	-6,670	149	7,650
1997		21,484	-7,272	14,212	9,646	-8,066	1,580	7,538	-7,182	356	16,147
1998		25,633	-10,743	14,890	9,205	-7,057	2,148	9,175	-8,722	453	17,491
1999		17,739	-11,683	6,056	14,222	-12,444	1,778	10,062	-9,652	410	8,243
2000		12,246	-14,003	-1,756	24,938	-23,609	1,330	9,818	-9,443	375	-52
2001		58,924	-17,768	41,156	23,827	-20,058	3,769	10,904	-9,891	1,013	45,937
2002		25,313	-19,163	6,150	22,251	-21,195	1,056	12,957	-12,484	473	7,680
2001	III	9,782	-5,024	4,758	5,115	-4,952	163	2,792	-2,491	301	5,222
	IV	23,866	-3,153	20,713	4,674	-3,478	1,196	3,105	-2,789	316	22,225
2002	I	6,219	-1,600	4,620	5,094	-4,472	622	3,143	-2,584	559	5,800
	II	10,481	-4,100	6,380	6,085	-5,599	486	3,213	-3,146	67	6,933
	III	4,951	-5,590	-640	6,258	-5,832	426	3,312	-2,638	674	461
	IV	3,663	-7,873	-4,211	4,814	-5,292	-477	3,289	-4,116	-827	-5,514
2003	I	5,283	-2,391	2,892	4,274	-3,618	656	3,079	-2,470	609	4,157
	II	8,720	-6,678	2,042	6,246	-5,129	1,117	2,931	-3,188	-257	2,901
	III	4,854	-2,488	2,366	4,252	-2,771	1,481	3,020	-2,343	676	4,523
2001	S	1,063	-2,643	-1,580	794	-955	-161	934	-891	44	-1,697
	O	12,670	-1,341	11,329	2,013	-1,243	770	992	-693	299	12,398
	N	8,176	-890	7,286	1,455	-1,210	245	1,029	-843	186	7,717
	D	3,021	-922	2,099	1,206	-1,025	181	1,084	-1,253	-170	2,110
2002	J	2,135	-478	1,657	1,763	-1,547	216	1,083	-729	354	2,227
	F	392	-433	-41	1,646	-1,335	311	978	-979	-1	269
	M	3,693	-689	3,004	1,686	-1,591	95	1,081	-876	205	3,304
	A	3,737	-594	3,143	2,264	-2,123	141	1,067	-810	257	3,542
	M	3,520	-1,320	2,199	2,271	-2,027	244	1,088	-995	93	2,536
	J	3,224	-2,186	1,038	1,549	-1,449	100	1,059	-1,342	-283	855
	J	1,681	-1,701	-20	1,863	-1,938	-76	1,110	-762	347	252
	A	165	-2,035	-1,870	1,829	-1,831	-3	1,117	-966	151	-1,722
	S	3,105	-1,854	1,251	2,567	-2,062	505	1,086	-910	176	1,931
	O	846	-2,175	-1,329	1,251	-2,116	-865	1,118	-1,246	-128	-2,322
	N	689	-1,809	-1,121	1,690	-1,367	323	1,074	-1,248	-174	-971
	D	2,128	-3,889	-1,761	1,873	-1,809	65	1,097	-1,622	-525	-2,222
2003	J	186	-714	-528	1,898	-1,059	839	1,071	-613	459	769
	F	1,172	-1,003	169	986	-1,446	-461	955	-963	-8	-299
	M	3,924	-674	3,251	1,390	-1,113	278	1,053	-894	159	3,687
	A	916	-1,801	-884	1,912	-1,469	443	994	-898	96	-346
	M	2,524	-1,766	758	2,554	-2,355	199	989	-1,049	-60	896
	J	5,280	-3,112	2,168	1,781	-1,305	475	949	-1,241	-293	2,351
	J	2,058	-603	1,455	1,631	-1,250	380	1,014	-636	378	2,214
	A	1,455	-1,253	202	887	-673	214	1,028	-857	171	586
	S	1,340	-631	709	1,735	-848	887	977	-850	128	1,723

Table 2
Portfolio Transactions with Non-residents in Canadian Bonds, by Sector and Type of Transaction - Concluded

Period		Total, All sectors									Total
		New Issues and Retirements			Outstanding Issues			Interest			
		New Issues	Retirements	Total	Sales	Purchases	Total	Accrued	Paid	Change in interest payable	
V No.	A	113054	113061	113174	113087	113094	113047	113181	113188	113068	113195
	Q	113226	113233	113346	113259	113266	113219	113353	113360	113240	113367
	M	113398	113405	113518	113431	113438	113391	113525	113532	113412	113539
millions of dollars											
1990		17,099	-13,591	3,508	131,461	-120,687	10,774	16,844	-16,448	396	14,678
1991		34,382	-20,495	13,887	184,646	-171,322	13,324	18,612	-17,761	852	28,063
1992		33,626	-24,439	9,187	268,007	-259,023	8,984	20,462	-19,868	594	18,766
1993		44,130	-27,323	16,807	396,861	-383,091	13,770	22,630	-21,760	870	31,446
1994		43,263	-22,403	20,860	543,123	-549,033	-5,910	24,246	-23,200	1,045	15,995
1995		38,000	-20,220	17,780	481,511	-469,366	12,145	25,657	-24,852	805	30,730
1996		43,596	-32,820	10,776	671,749	-664,826	6,923	25,913	-25,659	254	17,953
1997		38,895	-31,635	7,260	1,037,583	-1,039,159	-1,576	26,503	-26,021	482	6,166
1998		55,608	-37,092	18,517	832,829	-841,773	-8,944	27,411	-26,646	765	10,337
1999		33,963	-38,997	-5,034	554,241	-546,639	7,602	27,421	-27,388	33	2,602
2000		20,378	-45,744	-25,366	394,398	-390,547	3,851	26,101	-26,296	-195	-21,710
2001		77,982	-50,335	27,647	378,739	-369,877	8,862	26,080	-25,238	842	37,351
2002		49,956	-45,937	4,019	385,708	-371,234	14,474	27,246	-27,027	220	18,712
2001	III	11,705	-12,404	-699	76,811	-75,444	1,367	6,561	-5,995	565	1,234
	IV	28,967	-10,594	18,372	91,180	-89,641	1,539	6,820	-6,665	155	20,066
2002	I	10,227	-5,604	4,623	82,050	-81,071	978	6,708	-6,155	553	6,154
	II	16,452	-14,011	2,440	85,906	-84,443	1,463	6,723	-6,860	-137	3,766
	III	11,816	-12,688	-872	117,983	-112,741	5,242	6,873	-6,141	732	5,102
	IV	11,462	-13,634	-2,173	99,769	-92,978	6,791	6,943	-7,871	-928	3,691
2003	I	14,046	-13,385	661	123,280	-114,669	8,610	6,590	-5,972	618	9,889
	II	17,741	-14,135	3,606	164,711	-160,985	3,726	6,372	-6,674	-302	7,030
	III	8,359	-9,241	-882	148,507	-160,633	-12,126	6,309	-5,604	705	-12,303
2001	S	1,707	-7,755	-6,048	27,200	-27,956	-757	2,156	-2,136	21	-6,784
	O	15,254	-4,048	11,206	33,199	-31,326	1,873	2,255	-1,453	802	13,881
	N	10,116	-4,019	6,097	35,767	-34,546	1,222	2,249	-1,810	440	7,759
	D	3,596	-2,527	1,069	22,214	-23,770	-1,555	2,315	-3,403	-1,087	-1,574
2002	J	2,504	-1,446	1,059	26,372	-27,835	-1,463	2,317	-2,056	262	-143
	F	2,998	-2,465	533	23,872	-21,555	2,317	2,082	-2,152	-70	2,780
	M	4,725	-1,694	3,031	31,805	-31,681	124	2,308	-1,947	361	3,517
	A	3,812	-3,573	239	27,436	-26,373	1,063	2,241	-1,789	452	1,754
	M	5,369	-3,806	1,563	29,858	-29,974	-116	2,283	-1,500	783	2,230
	J	7,271	-6,632	639	28,611	-28,096	516	2,198	-3,570	-1,372	-218
	J	4,360	-6,077	-1,717	35,268	-33,607	1,661	2,299	-2,325	-26	-82
	A	984	-2,565	-1,580	43,111	-39,637	3,474	2,319	-1,782	537	2,431
	S	6,472	-4,046	2,425	39,603	-39,497	106	2,255	-2,034	221	2,752
	O	2,536	-3,083	-547	38,882	-34,419	4,463	2,341	-1,829	512	4,428
	N	2,270	-2,583	-313	37,021	-35,007	2,014	2,271	-2,156	115	1,816
	D	6,656	-7,968	-1,312	23,866	-23,553	313	2,331	-3,885	-1,554	-2,553
2003	J	926	-5,983	-5,057	35,693	-34,241	1,453	2,300	-1,804	495	-3,110
	F	5,407	-5,555	-148	38,819	-33,566	5,253	2,041	-2,037	4	5,110
	M	7,713	-1,847	5,866	48,767	-46,862	1,905	2,249	-2,131	118	7,889
	A	5,090	-3,432	1,659	44,900	-43,133	1,767	2,150	-1,669	480	3,906
	M	4,115	-3,001	1,114	58,945	-57,056	1,890	2,170	-1,420	750	3,754
	J	8,536	-7,702	834	60,866	-60,796	70	2,053	-3,585	-1,533	-629
	J	3,151	-1,939	1,211	57,376	-62,838	-5,462	2,157	-1,882	276	-3,975
	A	1,977	-2,630	-652	40,643	-48,229	-7,586	2,140	-1,572	568	-7,670
	S	3,231	-4,672	-1,441	50,489	-49,566	922	2,012	-2,150	-139	-657

Table 3
Portfolio Transactions with Non-residents in Canadian Bonds, by Geographical Area and Type of Transaction

		United States									
		New Issues and Retirements			Outstanding Issues			Interest			Total
Period		New Issues	Retirements	Total	Sales	Purchases	Total	Accrued	Paid	Change in interest payable	
V No.	A	115098	115099	115097	115101	115102	115100	115104	115105	115103	115096
	Q	115247	115248	115246	115250	115251	115249	115253	115254	115252	115245
	M	115396	115397	115395	115399	115400	115398	115402	115403	115401	115394
millions of dollars											
1990		10,058	-3,239	6,818	46,306	-43,081	3,225	5,257	-5,123	134	10,177
1991		13,668	-5,861	7,807	73,932	-72,386	1,546	6,280	-6,080	199	9,552
1992		15,883	-7,417	8,466	99,692	-93,220	6,472	7,341	-7,062	279	15,217
1993		22,310	-9,495	12,815	192,239	-182,689	9,550	9,024	-8,492	532	22,897
1994		13,863	-7,417	6,446	265,974	-264,341	1,633	10,622	-10,152	470	8,549
1995		20,052	-7,760	12,292	199,489	-193,467	6,023	11,557	-10,981	576	18,891
1996		25,276	-9,201	16,075	331,764	-330,277	1,487	12,418	-11,837	581	18,143
1997		19,546	-11,136	8,409	639,823	-641,411	-1,588	13,408	-12,979	429	7,251
1998		27,415	-11,203	16,213	560,602	-572,610	-12,008	14,221	-13,612	609	4,813
1999		18,531	-14,309	4,222	324,168	-321,879	2,288	14,791	-14,830	-39	6,472
2000		10,977	-16,651	-5,674	230,619	-233,803	-3,184	14,415	-14,451	-36	-8,894
2001		57,718	-21,781	35,937	208,059	-206,728	1,330	15,754	-14,877	878	38,145
2002		31,075	-21,700	9,376	240,913	-228,609	12,304	17,455	-17,170	286	21,966
2001	III	8,314	-7,930	384	44,840	-45,222	-381	4,015	-4,011	3	6
	IV	21,754	-4,175	17,579	52,309	-52,661	-352	4,260	-3,766	494	17,721
2002	I	7,570	-2,773	4,797	49,803	-47,286	2,517	4,274	-4,150	124	7,438
	II	8,532	-4,451	4,081	55,746	-51,954	3,793	4,315	-4,095	220	8,093
	III	8,235	-7,708	527	77,680	-71,121	6,559	4,416	-4,076	341	7,426
	IV	6,739	-6,768	-29	57,684	-58,248	-564	4,450	-4,849	-399	-992
2003	I	7,404	-3,898	3,506	70,525	-68,066	2,459	4,186	-3,833	353	6,318
	II	7,689	-7,051	637	93,408	-93,698	-290	3,993	-4,120	-126	222
	III	2,949	-3,485	-536	91,275	-100,271	-8,996	3,941	-3,557	384	-9,148
2001	S	952	-5,940	-4,988	16,833	-16,452	381	1,323	-1,222	101	-4,507
	O	11,817	-2,160	9,658	17,680	-17,480	200	1,389	-1,030	359	10,217
	N	7,747	-1,084	6,663	19,992	-20,104	-112	1,410	-1,031	378	6,929
	D	2,190	-932	1,258	14,637	-15,077	-440	1,462	-1,705	-243	574
2002	J	2,165	-771	1,394	15,145	-14,637	508	1,473	-1,554	-81	1,821
	F	1,534	-1,343	190	13,230	-11,343	1,887	1,328	-1,474	-146	1,931
	M	3,871	-658	3,213	21,428	-21,306	122	1,473	-1,122	351	3,687
	A	2,704	-1,160	1,544	17,385	-14,492	2,893	1,439	-1,206	233	4,671
	M	1,085	-594	490	20,523	-20,035	488	1,466	-976	490	1,469
	J	4,743	-2,697	2,046	17,838	-17,426	411	1,410	-1,914	-504	1,954
	J	2,619	-4,401	-1,782	24,495	-20,033	4,462	1,476	-1,432	44	2,724
	A	792	-1,221	-429	28,922	-27,730	1,192	1,491	-1,445	47	810
	S	4,824	-2,086	2,738	24,264	-23,359	905	1,449	-1,199	250	3,892
	O	1,949	-2,421	-472	22,254	-22,633	-379	1,504	-1,444	60	-791
	N	1,455	-1,000	455	20,880	-20,608	272	1,453	-1,336	117	844
	D	3,335	-3,348	-13	14,550	-15,006	-456	1,493	-2,069	-576	-1,045
2003	J	62	-1,917	-1,856	21,187	-20,893	294	1,460	-1,283	177	-1,385
	F	2,365	-1,382	982	24,202	-19,275	4,927	1,297	-1,386	-89	5,820
	M	4,978	-599	4,379	25,137	-27,899	-2,762	1,429	-1,164	265	1,882
	A	1,660	-2,040	-381	24,121	-22,388	1,734	1,358	-1,203	155	1,509
	M	2,079	-937	1,142	30,336	-32,000	-1,665	1,354	-948	407	-116
	J	3,950	-4,074	-124	38,951	-39,310	-359	1,281	-1,969	-688	-1,171
	J	718	-1,046	-328	36,421	-39,988	-3,567	1,346	-1,144	202	-3,693
	A	1,446	-921	525	25,940	-30,783	-4,843	1,340	-1,286	54	-4,264
	S	785	-1,519	-734	28,915	-29,500	-585	1,254	-1,126	128	-1,191

Table 3
Portfolio Transactions with Non-residents in Canadian Bonds, by Geographical Area and Type of Transaction - Continued

		United Kingdom									
		New Issues and Retirements			Outstanding Issues			Interest			Total
Period		New Issues	Retirements	Total	Sales	Purchases	Total	Accrued	Paid	Change in interest payable	
V No.	A	115108	115109	115107	115111	115112	115110	115114	115115	115113	115106
	Q	115257	115258	115256	115260	115261	115259	115263	115264	115262	115255
	M	115406	115407	115405	115409	115410	115408	115412	115413	115411	115404
millions of dollars											
1990		582	-1,099	-517	51,201	-47,572	3,629	1,168	-1,461	-293	2,819
1991		2,915	-1,805	1,110	68,703	-62,887	5,817	1,709	-1,872	-163	6,764
1992		2,562	-2,167	396	108,832	-110,933	-2,102	1,732	-2,006	-274	-1,981
1993		4,708	-3,308	1,400	123,231	-114,821	8,410	1,892	-2,427	-535	9,275
1994		4,503	-2,146	2,357	213,480	-216,424	-2,944	1,997	-2,370	-373	-960
1995		1,289	-1,672	-382	232,868	-226,881	5,987	2,186	-2,752	-566	5,039
1996		6,795	-3,710	3,086	263,999	-263,387	612	2,225	-2,814	-588	3,110
1997		9,774	-3,191	6,583	280,334	-279,522	812	2,342	-2,972	-630	6,765
1998		13,134	-7,372	5,762	193,081	-191,256	1,825	2,222	-2,825	-603	6,984
1999		10,418	-4,002	6,416	187,887	-186,554	1,333	2,226	-2,796	-570	7,179
2000		7,662	-8,827	-1,165	121,463	-116,317	5,146	2,317	-2,820	-503	3,478
2001		9,757	-9,119	639	128,053	-123,342	4,711	2,252	-3,017	-765	4,584
2002		12,846	-5,730	7,116	96,400	-97,750	-1,350	2,409	-2,945	-537	5,229
2001	III	1,598	-1,021	576	20,700	-21,425	-725	547	-584	-36	-185
	IV	3,824	-2,112	1,711	28,231	-26,108	2,123	575	-924	-349	3,486
2002	I	1,252	-361	891	23,095	-23,417	-322	573	-619	-46	523
	II	5,968	-1,832	4,136	20,912	-21,913	-1,001	575	-676	-101	3,034
	III	2,646	-1,363	1,283	24,900	-28,586	-3,686	620	-544	76	-2,327
	IV	2,980	-2,175	806	27,493	-23,833	3,659	640	-1,106	-466	3,999
2003	I	4,499	-1,249	3,250	37,207	-33,325	3,882	660	-651	9	7,141
	II	5,975	-2,532	3,444	50,410	-53,113	-2,703	665	-746	-81	660
	III	3,341	-2,567	773	42,531	-43,834	-1,303	639	-580	59	-471
2001	S	650	-512	139	6,417	-8,664	-2,247	181	-357	-176	-2,285
	O	1,729	-391	1,338	11,508	-9,559	1,949	190	-83	107	3,395
	N	1,618	-1,503	115	11,114	-10,365	750	190	-298	-108	757
	D	477	-218	258	5,608	-6,185	-576	195	-543	-348	-666
2002	J	339	-133	207	8,456	-8,405	51	197	-77	120	377
	F	753	-35	718	7,900	-7,203	697	179	-196	-17	1,398
	M	159	-194	-34	6,739	-7,809	-1,070	198	-346	-148	-1,253
	A	1,108	-408	699	6,867	-8,215	-1,348	189	-135	54	-595
	M	3,283	-952	2,331	6,391	-6,776	-385	192	-109	83	2,029
	J	1,577	-472	1,105	7,654	-6,922	733	195	-433	-238	1,600
	J	1,480	-599	881	6,548	-8,753	-2,205	208	-167	41	-1,283
	A	177	-127	50	8,366	-8,306	60	209	-84	125	235
	S	990	-637	353	9,986	-11,527	-1,542	203	-293	-90	-1,279
	O	571	-44	527	10,962	-8,632	2,330	213	-117	96	2,953
	N	603	-483	120	11,233	-9,127	2,106	211	-304	-93	2,133
	D	1,807	-1,648	158	5,298	-6,074	-776	216	-684	-469	-1,087
2003	J	640	-511	129	11,076	-9,759	1,316	220	-86	134	1,579
	F	2,647	-459	2,189	10,174	-10,222	-48	207	-214	-7	2,133
	M	1,212	-280	932	15,958	-13,343	2,614	233	-351	-118	3,428
	A	2,979	-169	2,810	16,383	-16,799	-416	230	-125	105	2,499
	M	1,055	-384	672	19,593	-20,053	-460	229	-151	79	290
	J	1,941	-1,979	-38	14,434	-16,260	-1,826	206	-471	-265	-2,129
	J	2,066	-179	1,887	15,916	-16,225	-309	221	-133	87	1,665
	A	531	-309	222	10,085	-12,156	-2,071	218	-80	138	-1,711
	S	743	-2,079	-1,335	16,531	-15,454	1,077	200	-366	-166	-424

Table 3
Portfolio Transactions with Non-residents in Canadian Bonds, by Geographical Area and Type of Transaction - Continued

Period		Other EU Countries									Total
		New Issues and Retirements			Outstanding Issues			Interest			
		New Issues	Retirements	Total	Sales	Purchases	Total	Accrued	Paid	Change in interest payable	
V No.	A	115118	115119	115117	115121	115122	115120	115124	115125	115123	115116
	Q	115267	115268	115266	115270	115271	115269	115273	115274	115272	115265
	M	115416	115417	115415	115419	115420	115418	115422	115423	115421	115414
millions of dollars											
1990		2,043	-3,696	-1,653	8,022	-7,672	350	2,562	-2,968	-406	-1,708
1991		6,844	-4,314	2,530	8,898	-7,127	1,770	2,702	-2,840	-138	4,162
1992		5,898	-5,012	886	15,980	-15,378	602	2,925	-3,079	-154	1,334
1993		5,961	-4,588	1,372	18,122	-17,871	251	3,251	-3,157	94	1,717
1994		8,646	-4,721	3,925	18,977	-19,364	-387	3,587	-3,227	360	3,899
1995		5,413	-3,402	2,011	12,108	-13,423	-1,316	3,801	-3,537	264	959
1996		4,554	-6,629	-2,075	18,209	-17,214	995	3,603	-3,478	125	-954
1997		3,411	-5,535	-2,124	24,641	-24,633	8	3,389	-3,170	219	-1,896
1998		8,557	-4,447	4,110	33,290	-34,064	-774	3,660	-3,301	358	3,694
1999		1,724	-5,965	-4,241	19,918	-18,414	1,504	3,641	-3,385	256	-2,481
2000		183	-7,252	-7,068	17,469	-15,235	2,233	3,257	-3,187	70	-4,765
2001		7,307	-5,988	1,319	17,057	-16,482	575	3,000	-2,413	588	2,482
2002		3,408	-7,073	-3,665	19,533	-17,468	2,066	2,993	-2,792	201	-1,398
2001	III	937	-502	436	4,799	-4,289	510	756	-425	331	1,277
	IV	2,714	-1,230	1,484	4,213	-4,864	-650	769	-616	153	987
2002	I	1,086	-915	171	3,791	-4,328	-537	726	-545	181	-185
	II	1,310	-2,557	-1,247	3,789	-3,456	334	735	-861	127	-1,040
	III	512	-1,287	-775	6,442	-4,957	1,485	764	-657	107	817
	IV	499	-2,314	-1,814	5,511	-4,727	784	768	-729	39	-991
2003	I	971	-3,178	-2,206	6,636	-5,418	1,218	719	-624	95	-893
	II	2,933	-1,723	1,210	5,341	-5,280	60	708	-809	-101	1,170
	III	1,190	-665	526	5,412	-7,776	-2,364	698	-608	90	-1,748
2001	S	0	-4	-4	1,774	-1,672	102	249	-138	111	210
	O	1,517	-565	953	1,778	-2,133	-354	259	-108	151	749
	N	706	-249	457	1,995	-1,818	178	251	-172	79	714
	D	491	-417	74	440	-913	-474	258	-335	-77	-477
2002	J	0	-216	-216	1,359	-2,161	-802	253	-206	47	-971
	F	392	-426	-34	938	-1,339	-401	225	-191	34	-401
	M	694	-273	421	1,494	-828	666	248	-148	100	1,187
	A	0	-680	-680	1,482	-1,362	120	242	-232	10	-550
	M	807	-918	-111	1,191	-1,148	43	250	-207	43	-24
	J	503	-959	-456	1,116	-946	170	242	-422	-180	-465
	J	215	-401	-186	1,761	-2,103	-342	255	-391	-136	-664
	A	0	-448	-448	2,489	-945	1,544	257	-76	182	1,277
	S	297	-437	-141	2,192	-1,909	283	252	-191	62	204
	O	16	-161	-145	1,641	-659	982	261	-103	158	995
	N	59	-806	-747	1,953	-2,656	-703	252	-261	-9	-1,460
	D	425	-1,347	-923	1,918	-1,412	506	256	-365	-109	-526
2003	J	0	-915	-915	1,165	-1,454	-289	256	-233	22	-1,181
	F	0	-1,705	-1,705	1,703	-1,784	-81	222	-174	48	-1,739
	M	971	-557	414	3,768	-2,180	1,588	242	-217	25	2,028
	A	175	-323	-148	1,116	-1,633	-517	233	-203	30	-634
	M	740	-803	-62	2,292	-1,949	343	243	-199	44	325
	J	2,018	-597	1,420	1,932	-1,698	235	232	-407	-175	1,480
	J	0	-174	-174	1,600	-3,587	-1,987	240	-357	-117	-2,278
	A	0	-251	-251	1,531	-2,431	-901	233	-50	184	-968
	S	1,190	-240	950	2,282	-1,758	524	225	-201	24	1,498

Table 3
Portfolio Transactions with Non-residents in Canadian Bonds, by Geographical Area and Type of Transaction - Continued

		Japan									
		New Issues and Retirements			Outstanding Issues			Interest			Total
Period		New Issues	Retirements	Total	Sales	Purchases	Total	Accrued	Paid	Change in interest payable	
V No.	A	115128	115129	115127	115131	115132	115130	115134	115135	115133	115126
	Q	115277	115278	115276	115280	115281	115279	115283	115284	115282	115275
	M	115426	115427	115425	115429	115430	115428	115432	115433	115431	115424
millions of dollars											
1990		1,236	-1,894	-658	15,795	-12,850	2,945	4,255	-3,121	1,134	3,421
1991		3,125	-2,897	229	16,723	-15,516	1,207	4,067	-3,140	927	2,362
1992		4,288	-3,568	721	22,027	-19,864	2,163	4,425	-3,528	897	3,781
1993		3,752	-3,331	421	16,731	-22,455	-5,724	4,377	-3,421	956	-4,347
1994		6,225	-2,071	4,154	5,633	-11,378	-5,745	3,539	-2,908	631	-960
1995		4,697	-2,857	1,840	6,967	-8,368	-1,401	3,350	-2,899	451	890
1996		5,707	-4,326	1,381	21,013	-19,116	1,897	3,060	-2,674	387	3,665
1997		4,632	-4,546	86	26,753	-29,232	-2,480	3,091	-2,584	507	-1,887
1998		1,632	-5,387	-3,754	7,873	-10,283	-2,411	2,854	-2,408	446	-5,719
1999		1,765	-6,671	-4,906	7,064	-5,526	1,538	2,645	-2,267	378	-2,990
2000		959	-5,353	-4,394	6,624	-6,613	11	2,431	-2,083	348	-4,035
2001		2,524	-5,015	-2,491	8,110	-6,818	1,291	2,115	-1,774	341	-859
2002		0	-4,027	-4,027	9,480	-10,080	-600	1,802	-1,385	417	-4,210
2001	III	856	-1,153	-298	2,003	-1,080	924	527	-334	193	819
	IV	543	-1,716	-1,172	2,149	-2,239	-90	513	-518	-5	-1,267
2002	I	0	-405	-405	1,322	-2,388	-1,066	473	-271	202	-1,269
	II	0	-2,011	-2,011	1,530	-2,584	-1,054	454	-439	15	-3,051
	III	0	-1,014	-1,014	2,470	-2,527	-57	431	-267	164	-908
	IV	0	-597	-597	4,158	-2,580	1,577	444	-407	37	1,018
2003	I	0	-1,707	-1,707	3,074	-3,606	-532	413	-267	146	-2,092
	II	0	-710	-710	8,273	-3,450	4,823	415	-361	54	4,167
	III	58	-573	-515	3,809	-3,712	97	443	-275	168	-250
2001	S	105	-514	-409	1,054	-288	766	173	-162	11	368
	O	60	-295	-235	1,042	-1,435	-393	178	-64	114	-514
	N	45	-835	-790	600	-382	218	168	-115	53	-519
	D	439	-586	-147	507	-422	85	167	-339	-172	-235
2002	J	0	-7	-7	195	-1,290	-1,095	165	-75	90	-1,012
	F	0	-336	-336	551	-435	116	146	-67	79	-142
	M	0	-61	-61	576	-664	-87	162	-129	33	-116
	A	0	-594	-594	545	-950	-405	153	-70	83	-916
	M	0	-167	-167	434	-686	-251	155	-44	111	-307
	J	0	-1,249	-1,249	550	-948	-398	145	-325	-180	-1,828
	J	0	-218	-218	559	-1,350	-791	146	-77	69	-940
	A	0	-392	-392	628	-431	196	145	-72	73	-123
	S	0	-404	-404	1,283	-745	538	141	-119	22	156
	O	0	-16	-16	1,981	-765	1,216	148	-39	109	1,309
	N	0	-163	-163	1,193	-1,313	-121	146	-79	67	-217
	D	0	-418	-418	984	-503	482	150	-288	-138	-75
2003	J	0	-1,207	-1,207	894	-952	-59	148	-73	75	-1,191
	F	0	-345	-345	715	-1,280	-564	128	-53	75	-834
	M	0	-155	-155	1,466	-1,374	91	138	-141	-4	-67
	A	0	-268	-268	2,051	-1,058	993	132	-36	96	821
	M	0	-209	-209	4,014	-1,143	2,871	142	-26	116	2,777
	J	0	-233	-233	2,208	-1,249	960	142	-299	-158	569
	J	58	-29	29	1,392	-1,270	122	149	-34	115	266
	A	0	-175	-175	1,793	-1,039	754	150	-60	91	670
	S	0	-369	-369	624	-1,402	-779	144	-182	-38	-1,186

Table 3
Portfolio Transactions with Non-residents in Canadian Bonds, by Geographical Area and Type of Transaction - Continued

Period		Other OECD Countries									Total
		New Issues and Retirements			Outstanding Issues			Interest			
		New Issues	Retirements	Total	Sales	Purchases	Total	Accrued	Paid	Change in interest payable	
V No.	A	115138	115139	115137	115141	115142	115140	115144	115145	115143	115136
	Q	115287	115288	115286	115290	115291	115289	115293	115294	115292	115285
	M	115436	115437	115435	115439	115440	115438	115442	115443	115441	115434
millions of dollars											
1990		2,889	-3,162	-272	558	-534	24	2,612	-2,817	-205	-454
1991		5,703	-4,338	1,365	1,453	-1,413	39	2,668	-2,737	-69	1,335
1992		3,658	-4,914	-1,256	1,718	-1,854	-136	2,624	-2,868	-244	-1,636
1993		4,840	-5,428	-588	3,090	-2,149	941	2,534	-2,785	-251	102
1994		4,454	-4,986	-532	3,091	-2,040	1,051	2,671	-2,826	-155	364
1995		3,786	-3,019	768	3,684	-3,491	194	2,760	-2,850	-90	871
1996		1,042	-6,087	-5,045	5,165	-4,955	210	2,504	-2,769	-265	-5,100
1997		1,322	-4,786	-3,464	5,253	-5,164	89	2,200	-2,308	-108	-3,483
1998		3,229	-5,120	-1,891	7,875	-6,242	1,633	2,140	-2,235	-95	-353
1999		1,024	-4,174	-3,151	3,514	-3,239	275	1,993	-2,125	-132	-3,008
2000		132	-3,918	-3,786	5,853	-6,109	-256	1,814	-1,983	-168	-4,210
2001		676	-5,210	-4,535	8,158	-7,452	705	1,420	-1,657	-237	-4,066
2002		2,086	-5,058	-2,972	8,800	-8,397	403	1,213	-1,409	-197	-2,765
2001	III	0	-815	-815	2,732	-2,288	444	344	-321	23	-348
	IV	131	-892	-761	1,714	-1,940	-226	336	-455	-120	-1,107
2002	I	319	-813	-494	1,851	-2,123	-272	313	-287	26	-740
	II	443	-2,071	-1,629	1,558	-1,780	-222	304	-401	-98	-1,948
	III	241	-852	-611	3,184	-2,567	617	299	-301	-2	3
	IV	1,083	-1,321	-238	2,208	-1,927	281	296	-419	-123	-81
2003	I	671	-1,984	-1,313	3,374	-3,001	373	272	-286	-14	-954
	II	668	-1,268	-600	3,783	-3,332	451	257	-286	-29	-177
	III	580	-1,701	-1,121	2,209	-3,204	-995	247	-272	-25	-2,141
2001	S	0	-146	-146	395	-480	-85	111	-116	-5	-237
	O	131	-418	-287	262	-321	-59	115	-114	1	-346
	N	0	-210	-210	1,053	-1,116	-63	109	-131	-21	-295
	D	0	-263	-263	399	-503	-104	111	-210	-99	-466
2002	J	0	-200	-200	649	-870	-222	109	-93	16	-406
	F	319	-269	50	389	-662	-273	97	-113	-16	-239
	M	0	-343	-343	813	-591	222	108	-81	26	-95
	A	0	-446	-446	555	-428	127	103	-92	11	-308
	M	33	-812	-779	558	-455	103	104	-104	0	-676
	J	410	-814	-404	444	-896	-452	97	-205	-109	-965
	J	0	-306	-306	878	-406	471	101	-129	-28	137
	A	0	-246	-246	1,420	-1,117	303	101	-53	48	105
	S	241	-300	-59	886	-1,044	-158	98	-119	-22	-238
	O	0	-394	-394	1,030	-964	66	99	-84	15	-313
	N	118	-70	48	777	-622	155	97	-116	-19	184
	D	965	-857	108	401	-341	60	101	-220	-119	48
2003	J	224	-1,225	-1,001	830	-840	-10	98	-86	12	-998
	F	0	-658	-658	1,380	-755	624	83	-103	-21	-54
	M	447	-102	345	1,165	-1,405	-241	91	-97	-6	98
	A	58	-524	-466	857	-868	-11	86	-65	21	-456
	M	240	-480	-240	1,415	-1,141	275	88	-52	37	72
	J	369	-263	106	1,510	-1,323	187	83	-169	-86	207
	J	309	-473	-165	836	-1,128	-293	87	-91	-4	-462
	A	0	-891	-891	499	-1,109	-611	83	-44	39	-1,462
	S	272	-338	-66	875	-966	-92	77	-136	-59	-217

Table 3
Portfolio Transactions with Non-residents in Canadian Bonds, by Geographical Area and Type of Transaction - Continued

Period		All Other Countries									Total
		New Issues and Retirements			Outstanding Issues			Interest			
		New Issues	Retirements	Total	Sales	Purchases	Total	Accrued	Paid	Change in interest payable	
V No.	A	115148	115149	115147	115151	115152	115150	115154	115155	115153	115146
	Q	115297	115298	115296	115300	115301	115299	115303	115304	115302	115295
	M	115446	115447	115445	115449	115450	115448	115452	115453	115451	115444
millions of dollars											
1990		292	-502	-210	9,579	-8,979	600	989	-957	32	423
1991		2,126	-1,279	847	14,938	-11,993	2,945	1,187	-1,091	96	3,888
1992		1,337	-1,362	-25	19,760	-17,774	1,986	1,415	-1,326	90	2,051
1993		2,560	-1,172	1,387	43,448	-43,107	341	1,551	-1,477	74	1,803
1994		5,572	-1,063	4,509	35,969	-35,486	483	1,830	-1,718	112	5,104
1995		2,762	-1,511	1,251	26,395	-23,737	2,658	2,004	-1,833	171	4,080
1996		222	-2,868	-2,646	31,599	-29,877	1,721	2,102	-2,089	13	-911
1997		211	-2,440	-2,230	60,779	-59,197	1,582	2,073	-2,010	63	-585
1998		1,641	-3,563	-1,922	30,108	-27,318	2,790	2,315	-2,265	49	917
1999		503	-3,876	-3,374	11,691	-11,027	664	2,125	-1,985	140	-2,570
2000		465	-3,743	-3,278	12,371	-12,470	-100	1,867	-1,772	95	-3,283
2001		0	-3,221	-3,221	9,302	-9,054	249	1,539	-1,501	38	-2,935
2002		541	-2,350	-1,809	10,582	-8,931	1,651	1,375	-1,325	50	-109
2001	III	0	-982	-982	1,737	-1,141	596	372	-321	51	-334
	IV	0	-469	-469	2,564	-1,830	735	367	-386	-18	247
2002	I	0	-338	-338	2,188	-1,529	659	349	-283	66	387
	II	199	-1,089	-890	2,372	-2,758	-386	340	-386	-46	-1,322
	III	182	-463	-281	3,307	-2,982	325	342	-295	47	90
	IV	160	-459	-300	2,716	-1,662	1,053	344	-361	-17	737
2003	I	500	-1,369	-869	2,462	-1,253	1,209	339	-311	28	369
	II	476	-851	-375	3,496	-2,113	1,383	333	-352	-19	989
	III	240	-249	-9	3,270	-1,836	1,434	341	-313	28	1,454
2001	S	0	-639	-639	726	-399	327	119	-140	-20	-333
	O	0	-220	-220	929	-399	530	124	-54	70	379
	N	0	-138	-138	1,012	-761	251	121	-62	59	172
	D	0	-111	-111	624	-670	-46	123	-270	-147	-305
2002	J	0	-118	-118	569	-472	96	120	-51	69	48
	F	0	-56	-56	864	-573	291	109	-111	-2	233
	M	0	-164	-164	755	-483	272	120	-121	-1	106
	A	0	-285	-285	602	-926	-324	115	-54	60	-549
	M	161	-363	-202	761	-875	-114	116	-61	55	-260
	J	38	-440	-403	1,008	-957	51	110	-271	-162	-513
	J	46	-152	-105	1,028	-962	66	114	-129	-15	-55
	A	16	-130	-115	1,287	-1,107	179	116	-52	63	128
	S	120	-181	-61	992	-913	80	112	-114	-1	17
	O	0	-48	-48	1,014	-766	249	116	-42	74	275
	N	35	-62	-27	986	-681	305	112	-60	53	331
	D	124	-349	-225	715	-216	499	116	-259	-143	131
2003	J	0	-208	-208	542	-343	200	119	-44	74	66
	F	395	-1,007	-611	646	-250	396	106	-107	-1	-217
	M	105	-154	-50	1,274	-660	614	115	-160	-45	519
	A	218	-108	110	372	-387	-15	111	-38	73	168
	M	0	-188	-188	1,295	-769	525	114	-45	69	406
	J	258	-555	-297	1,829	-956	873	108	-269	-161	415
	J	0	-38	-38	1,212	-639	572	115	-122	-7	527
	A	0	-83	-83	796	-710	86	115	-52	62	65
	S	240	-127	113	1,262	-486	777	111	-138	-27	862

Table 3
Portfolio Transactions with Non-residents in Canadian Bonds, by Geographical Area and Type of Transaction - Concluded

		Total All Countries									
		New Issues and Retirements			Outstanding Issues			Interest			Total
Period		New Issues	Retirements	Total	Sales	Purchases	Total	Accrued	Paid	Change in interest payable	
V No.	A	113054	113061	113174	113087	113094	113047	113181	113188	113068	113195
	Q	113226	113233	113346	113259	113266	113219	113353	113360	113240	113367
	M	113398	113405	113518	113431	113438	113391	113525	113532	113412	113539
millions of dollars											
1990		17,099	-13,591	3,508	131,461	-120,687	10,774	16,844	-16,448	396	14,678
1991		34,382	-20,495	13,887	184,646	-171,322	13,324	18,612	-17,761	852	28,063
1992		33,626	-24,439	9,187	268,007	-259,023	8,984	20,462	-19,868	594	18,766
1993		44,130	-27,323	16,807	396,861	-383,091	13,770	22,630	-21,760	870	31,446
1994		43,263	-22,403	20,860	543,123	-549,033	-5,910	24,246	-23,200	1,045	15,995
1995		38,000	-20,220	17,780	481,511	-469,366	12,145	25,657	-24,852	805	30,730
1996		43,596	-32,820	10,776	671,749	-664,826	6,923	25,913	-25,659	254	17,953
1997		38,895	-31,635	7,260	1,037,583	-1,039,159	-1,576	26,503	-26,021	482	6,166
1998		55,608	-37,092	18,517	832,829	-841,773	-8,944	27,411	-26,646	765	10,337
1999		33,963	-38,997	-5,034	554,241	-546,639	7,602	27,421	-27,388	33	2,602
2000		20,378	-45,744	-25,366	394,398	-390,547	3,851	26,101	-26,296	-195	-21,710
2001		77,982	-50,335	27,647	378,739	-369,877	8,862	26,080	-25,238	842	37,351
2002		49,956	-45,937	4,019	385,708	-371,234	14,474	27,246	-27,027	220	18,712
2001	III	11,705	-12,404	-699	76,811	-75,444	1,367	6,561	-5,995	565	1,234
	IV	28,967	-10,594	18,372	91,180	-89,641	1,539	6,820	-6,665	155	20,066
2002	I	10,227	-5,604	4,623	82,050	-81,071	978	6,708	-6,155	553	6,154
	II	16,452	-14,011	2,440	85,906	-84,443	1,463	6,723	-6,860	-137	3,766
	III	11,816	-12,688	-872	117,983	-112,741	5,242	6,873	-6,141	732	5,102
	IV	11,462	-13,634	-2,173	99,769	-92,978	6,791	6,943	-7,871	-928	3,691
2003	I	14,046	-13,385	661	123,280	-114,669	8,610	6,590	-5,972	618	9,889
	II	17,741	-14,135	3,606	164,711	-160,985	3,726	6,372	-6,674	-302	7,030
	III	8,359	-9,241	-882	148,507	-160,633	-12,126	6,309	-5,604	705	-12,303
2001	S	1,707	-7,755	-6,048	27,200	-27,956	-757	2,156	-2,136	21	-6,784
	O	15,254	-4,048	11,206	33,199	-31,326	1,873	2,255	-1,453	802	13,881
	N	10,116	-4,019	6,097	35,767	-34,546	1,222	2,249	-1,810	440	7,759
	D	3,596	-2,527	1,069	22,214	-23,770	-1,555	2,315	-3,403	-1,087	-1,574
2002	J	2,504	-1,446	1,059	26,372	-27,835	-1,463	2,317	-2,056	262	-143
	F	2,998	-2,465	533	23,872	-21,555	2,317	2,082	-2,152	-70	2,780
	M	4,725	-1,694	3,031	31,805	-31,681	124	2,308	-1,947	361	3,517
	A	3,812	-3,573	239	27,436	-26,373	1,063	2,241	-1,789	452	1,754
	M	5,369	-3,806	1,563	29,858	-29,974	-116	2,283	-1,500	783	2,230
	J	7,271	-6,632	639	28,611	-28,096	516	2,198	-3,570	-1,372	-218
	J	4,360	-6,077	-1,717	35,268	-33,607	1,661	2,299	-2,325	-26	-82
	A	984	-2,565	-1,580	43,111	-39,637	3,474	2,319	-1,782	537	2,431
	S	6,472	-4,046	2,425	39,603	-39,497	106	2,255	-2,034	221	2,752
	O	2,536	-3,083	-547	38,882	-34,419	4,463	2,341	-1,829	512	4,428
	N	2,270	-2,583	-313	37,021	-35,007	2,014	2,271	-2,156	115	1,816
	D	6,656	-7,968	-1,312	23,866	-23,553	313	2,331	-3,885	-1,554	-2,553
2003	J	926	-5,983	-5,057	35,693	-34,241	1,453	2,300	-1,804	495	-3,110
	F	5,407	-5,555	-148	38,819	-33,566	5,253	2,041	-2,037	4	5,110
	M	7,713	-1,847	5,866	48,767	-46,862	1,905	2,249	-2,131	118	7,889
	A	5,090	-3,432	1,659	44,900	-43,133	1,767	2,150	-1,669	480	3,906
	M	4,115	-3,001	1,114	58,945	-57,056	1,890	2,170	-1,420	750	3,754
	J	8,536	-7,702	834	60,866	-60,796	70	2,053	-3,585	-1,533	-629
	J	3,151	-1,939	1,211	57,376	-62,838	-5,462	2,157	-1,882	276	-3,975
	A	1,977	-2,630	-652	40,643	-48,229	-7,586	2,140	-1,572	568	-7,670
	S	3,231	-4,672	-1,441	50,489	-49,566	922	2,012	-2,150	-139	-657

Table 4
Portfolio Transactions with Non-residents in Canadian Bonds, by Geographical Area

Period	United States	United Kingdom	Other EU Countries	Japan	Other OECD Countries	Other Countries	Total
V No. A	115096	115106	115116	115126	115136	115146	113195
Q	115245	115255	115265	115275	115285	115295	113367
M	115394	115404	115414	115424	115434	115444	113539
millions of dollars							
1990	10,177	2,819	-1,708	3,421	-454	423	14,678
1991	9,552	6,764	4,162	2,362	1,335	3,888	28,063
1992	15,217	-1,981	1,334	3,781	-1,636	2,051	18,766
1993	22,897	9,275	1,717	-4,347	102	1,803	31,446
1994	8,549	-960	3,899	-960	364	5,104	15,995
1995	18,891	5,039	959	890	871	4,080	30,730
1996	18,143	3,110	-954	3,665	-5,100	-911	17,953
1997	7,251	6,765	-1,896	-1,887	-3,483	-585	6,166
1998	4,813	6,984	3,694	-5,719	-353	917	10,337
1999	6,472	7,179	-2,481	-2,990	-3,008	-2,570	2,602
2000	-8,894	3,478	-4,765	-4,035	-4,210	-3,283	-21,710
2001	38,145	4,584	2,482	-859	-4,066	-2,935	37,351
2002	21,966	5,229	-1,398	-4,210	-2,765	-109	18,712
2001 III	6	-185	1,277	819	-348	-334	1,234
IV	17,721	3,486	987	-1,267	-1,107	247	20,066
2002 I	7,438	523	-185	-1,269	-740	387	6,154
II	8,093	3,034	-1,040	-3,051	-1,948	-1,322	3,766
III	7,426	-2,327	817	-908	3	90	5,102
IV	-992	3,999	-991	1,018	-81	737	3,691
2003 I	6,318	7,141	-893	-2,092	-954	369	9,889
II	222	660	1,170	4,167	-177	989	7,030
III	-9,148	-471	-1,748	-250	-2,141	1,454	-12,303
2001 S	-4,507	-2,285	210	368	-237	-333	-6,784
O	10,217	3,395	749	-514	-346	379	13,881
N	6,929	757	714	-519	-295	172	7,759
D	574	-666	-477	-235	-466	-305	-1,574
2002 J	1,821	377	-971	-1,012	-406	48	-143
F	1,931	1,398	-401	-142	-239	233	2,780
M	3,687	-1,253	1,187	-116	-95	106	3,517
A	4,671	-595	-550	-916	-308	-549	1,754
M	1,469	2,029	-24	-307	-676	-260	2,230
J	1,954	1,600	-465	-1,828	-965	-513	-218
J	2,724	-1,283	-664	-940	137	-55	-82
A	810	235	1,277	-123	105	128	2,431
S	3,892	-1,279	204	156	-238	17	2,752
O	-791	2,953	995	1,309	-313	275	4,428
N	844	2,133	-1,460	-217	184	331	1,816
D	-1,045	-1,087	-526	-75	48	131	-2,553
2003 J	-1,385	1,579	-1,181	-1,191	-998	66	-3,110
F	5,820	2,133	-1,739	-834	-54	-217	5,110
M	1,882	3,428	2,028	-67	98	519	7,889
A	1,509	2,499	-634	821	-456	168	3,906
M	-116	290	325	2,777	72	406	3,754
J	-1,171	-2,129	1,480	569	207	415	-629
J	-3,693	1,665	-2,278	266	-462	527	-3,975
A	-4,264	-1,711	-968	670	-1,462	65	-7,670
S	-1,191	-424	1,498	-1,186	-217	862	-657

Table 5
Portfolio transactions with Non-residents in Canadian Bonds, by Type and Currency of Issue

Period	New Issues				Retirements				Outstanding				
	Canadian dollars	U.S. dollars	Other currencies	Total	Canadian dollars	U.S. dollars	Other currencies	Total	Canadian dollars	U.S. dollars	Other currencies	Total	
V No.	A	113160	113165	113170	113054	113161	113166	113171	113061	113162	113167	113172	113047
	Q	113332	113337	113342	113226	113333	113338	113343	113233	113334	113339	113344	113219
	M	113504	113509	113514	113398	113505	113510	113515	113405	113506	113511	113516	113391
millions of dollars													
1990		2,107	10,628	4,364	17,099	-6,351	-5,150	-2,091	-13,591	10,774	10,774
1991		12,701	17,289	4,392	34,382	-8,348	-8,585	-3,561	-20,495	13,324	13,324
1992		5,808	22,828	4,989	33,626	-9,751	-10,194	-4,494	-24,439	8,984	8,984
1993		11,328	27,887	4,914	44,130	-11,835	-10,505	-4,982	-27,323	13,770	13,770
1994		7,912	23,041	12,310	43,263	-9,262	-7,340	-5,801	-22,403	-5,277	-576	-57	-5,910
1995		3,125	24,291	10,584	38,000	-6,955	-9,095	-4,171	-20,220	12,694	-533	-16	12,145
1996		4,078	26,855	12,663	43,596	-13,635	-12,609	-6,576	-32,820	8,125	-1,154	-48	6,923
1997		2,233	26,130	10,532	38,895	-7,780	-15,582	-8,273	-31,635	-765	-674	-137	-1,576
1998		5,170	34,762	15,677	55,608	-14,531	-13,865	-8,696	-37,092	-6,160	-2,615	-168	-8,944
1999		4,172	25,112	4,680	33,963	-9,204	-21,669	-8,125	-38,997	8,916	-1,330	16	7,602
2000		1,755	14,610	4,013	20,378	-14,556	-21,049	-10,139	-45,744	2,786	929	136	3,851
2001		4,162	61,655	12,165	77,982	-16,752	-25,509	-8,073	-50,335	8,255	647	-41	8,862
2002		10,570	34,236	5,150	49,956	-10,492	-29,000	-6,445	-45,937	14,945	-509	37	14,474
2001	III	1,053	8,909	1,743	11,705	-6,094	-5,161	-1,149	-12,404	1,340	71	-44	1,367
	IV	1,474	23,346	4,146	28,967	-3,432	-5,983	-1,180	-10,594	1,030	484	25	1,539
2002	I	2,299	7,164	764	10,227	-1,431	-3,324	-848	-5,604	505	490	-17	978
	II	3,154	10,364	2,934	16,452	-3,405	-9,482	-1,125	-14,011	1,519	-54	-2	1,463
	III	2,301	9,249	267	11,816	-2,033	-8,197	-2,457	-12,688	6,051	-818	9	5,242
	IV	2,817	7,459	1,186	11,462	-3,623	-7,997	-2,015	-13,634	6,870	-126	47	6,791
2003	I	2,577	8,277	3,192	14,046	-873	-10,389	-2,122	-13,385	8,934	-251	-72	8,610
	II	5,177	9,496	3,068	17,741	-6,308	-6,781	-1,046	-14,135	3,804	-42	-37	3,726
	III	2,358	3,234	2,766	8,359	-5,155	-2,429	-1,656	-9,241	-11,918	-220	12	-12,126
2001	S	300	1,321	86	1,707	-4,790	-2,411	-554	-7,755	-744	-8	-5	-757
	O	1,000	12,398	1,856	15,254	-1,211	-2,557	-280	-4,048	1,531	337	4	1,873
	N	474	8,258	1,383	10,116	-132	-3,062	-824	-4,019	994	192	35	1,222
	D	0	2,689	907	3,596	-2,089	-363	-75	-2,527	-1,495	-45	-15	-1,555
2002	J	232	2,272	0	2,504	-230	-1,204	-12	-1,446	-1,484	-2	23	-1,463
	F	2,067	904	26	2,998	-705	-1,068	-692	-2,465	1,791	561	-34	2,317
	M	0	3,987	738	4,725	-497	-1,053	-144	-1,694	198	-69	-5	124
	A	48	3,194	569	3,812	-1,323	-2,036	-214	-3,573	1,103	-26	-14	1,063
	M	739	2,353	2,277	5,369	-853	-2,402	-551	-3,806	-100	-46	31	-116
	J	2,367	4,817	87	7,271	-1,228	-5,044	-360	-6,632	517	18	-19	516
	J	0	4,198	162	4,360	-498	-4,849	-730	-6,077	1,789	-142	14	1,661
	A	0	956	28	984	-236	-1,496	-832	-2,565	3,734	-252	-7	3,474
	S	2,301	4,094	77	6,472	-1,299	-1,852	-895	-4,046	528	-424	2	106
	O	0	2,099	437	2,536	-127	-2,662	-295	-3,083	4,573	-111	1	4,463
	N	279	1,922	68	2,270	-201	-1,467	-915	-2,583	1,780	227	7	2,014
	D	2,538	3,438	681	6,656	-3,295	-3,868	-805	-7,968	518	-243	38	313
2003	J	299	277	349	926	-133	-5,234	-616	-5,983	1,649	-188	-7	1,453
	F	606	2,987	1,814	5,407	-79	-4,389	-1,087	-5,555	5,699	-378	-67	5,253
	M	1,671	5,013	1,029	7,713	-661	-767	-419	-1,847	1,587	315	3	1,905
	A	2,045	2,956	89	5,090	-570	-2,278	-584	-3,432	1,838	-70	-1	1,767
	M	200	2,194	1,721	4,115	-979	-1,704	-319	-3,001	1,833	88	-32	1,890
	J	2,932	4,346	1,258	8,536	-4,759	-2,799	-143	-7,702	133	-60	-3	70
	J	546	808	1,796	3,151	-452	-960	-527	-1,939	-5,472	7	2	-5,462
	A	188	1,704	85	1,977	-1,042	-852	-735	-2,630	-7,268	-305	-13	-7,586
	S	1,623	722	885	3,231	-3,661	-617	-394	-4,672	822	78	22	922

Table 5
Portfolio transactions with Non-residents in Canadian Bonds, by Type and Currency of Issue - Concluded

Period	Change in interest payable				Total			
	Canadian dollars	U.S. dollars	Other currencies	Total	Canadian dollars	U.S. dollars	Other currencies	Total
V No. A	113163	113168	113173	113068	113159	113164	113169	113158
Q	113335	113340	113345	113240	113331	113336	113341	113330
M	113507	113512	113517	113412	113503	113508	113513	113502
millions of dollars								
1990	260	14	122	396	6,790	5,492	2,396	14,678
1991	623	190	39	852	18,300	8,894	869	28,063
1992	262	299	34	594	5,304	12,933	529	18,766
1993	421	505	-57	870	13,684	17,887	-125	31,446
1994	426	529	89	1,045	-6,201	15,655	6,541	15,995
1995	241	494	70	805	9,105	15,157	6,468	30,730
1996	-3	255	1	254	-1,435	13,347	6,041	17,953
1997	40	411	31	482	-6,272	10,285	2,153	6,166
1998	-40	592	212	765	-15,563	18,874	7,026	10,337
1999	-247	303	-23	33	3,637	2,416	-3,452	2,602
2000	-342	269	-121	-195	-10,357	-5,242	-6,111	-21,710
2001	-402	818	426	842	-4,737	37,611	4,477	37,351
2002	33	181	6	220	15,056	4,908	-1,252	18,712
2001 III	477	-1	89	565	-3,224	3,819	639	1,234
IV	-727	665	217	155	-1,655	18,512	3,209	20,066
2002 I	559	-88	82	553	1,932	4,241	-20	6,154
II	-534	293	103	-137	735	1,121	1,910	3,766
III	634	220	-123	732	6,953	454	-2,304	5,102
IV	-627	-245	-56	-928	5,437	-909	-838	3,691
2003 I	592	-19	45	618	11,229	-2,383	1,043	9,889
II	-483	119	62	-302	2,190	2,792	2,048	7,030
III	480	252	-27	705	-14,235	837	1,095	-12,303
2001 S	-268	286	3	21	-5,502	-812	-470	-6,784
O	206	448	149	802	1,526	10,626	1,729	13,881
N	366	60	14	440	1,702	5,449	608	7,759
D	-1,299	157	55	-1,087	-4,883	2,438	871	-1,574
2002 J	355	-157	63	262	-1,127	910	74	-143
F	236	-312	6	-70	3,389	85	-694	2,780
M	-32	381	13	361	-331	3,246	601	3,517
A	278	170	5	452	106	1,302	347	1,754
M	313	379	92	783	98	284	1,848	2,230
J	-1,124	-255	7	-1,372	531	-464	-285	-218
J	348	-129	-245	-26	1,639	-922	-798	-82
A	413	-1	125	537	3,911	-793	-687	2,431
S	-127	350	-3	221	1,403	2,169	-820	2,752
O	379	30	103	512	4,825	-643	246	4,428
N	383	-188	-80	115	2,241	494	-919	1,816
D	-1,389	-87	-79	-1,554	-1,629	-760	-165	-2,553
2003 J	411	51	34	495	2,226	-5,094	-241	-3,110
F	329	-359	34	4	6,554	-2,139	694	5,110
M	-148	289	-23	118	2,449	4,850	590	7,889
A	431	39	10	480	3,745	647	-486	3,906
M	445	286	20	750	1,500	864	1,390	3,754
J	-1,360	-205	32	-1,533	-3,054	1,281	1,144	-629
J	435	50	-210	276	-4,942	-95	1,062	-3,975
A	435	-16	149	568	-7,687	531	-515	-7,670
S	-390	218	34	-139	-1,606	401	548	-657

Table 6
Portfolio Transactions with Non-residents in Canadian Money Market Instruments, by Sector, Sales and Purchases

		Federal Government								
		Direct			Enterprises			Total		
Period		Sales	Purchases	Net	Sales	Purchases	Net	Sales	Purchases	Net
V No.	A	113143	113152	113081	113144	113153	113082	113142	113151	113080
	Q	113315	113324	113253	113316	113325	113254	113314	113323	113252
	M	113457	113466	113425	113458	113467	113426	113456	113465	113424
millions of dollars										
1990		59,553	-56,135	3,418	5,571	-5,818	-246	65,125	-61,953	3,172
1991		78,368	-76,080	2,288	15,965	-12,971	2,994	94,333	-89,051	5,282
1992		140,424	-138,508	1,915	58,925	-59,138	-214	199,348	-197,647	1,701
1993		157,051	-146,112	10,939	32,408	-33,017	-610	189,459	-179,129	10,329
1994		266,691	-263,960	2,731	24,761	-25,422	-660	291,452	-289,381	2,071
1995		246,238	-246,957	-719	22,112	-22,904	-792	268,350	-269,861	-1,511
1996		282,373	-290,065	-7,691	25,747	-25,851	-104	308,121	-315,916	-7,795
1997		183,471	-185,759	-2,288	23,555	-21,938	1,617	207,026	-207,697	-671
1998		108,887	-111,333	-2,446	59,269	-57,908	1,361	168,156	-169,241	-1,085
1999		79,772	-86,349	-6,577	56,505	-57,984	-1,479	136,277	-144,333	-8,056
2000		65,723	-66,857	-1,134	38,455	-38,923	-468	104,177	-105,780	-1,603
2001		37,501	-42,079	-4,578	34,163	-34,074	89	71,665	-76,153	-4,489
2002		42,004	-40,024	1,980	58,878	-58,438	440	100,882	-98,463	2,420
2001	III	6,300	-9,404	-3,104	8,363	-8,003	359	14,663	-17,407	-2,745
	IV	8,876	-7,597	1,279	8,689	-8,653	35	17,564	-16,250	1,315
2002	I	10,790	-10,959	-169	15,417	-13,955	1,462	26,207	-24,914	1,293
	II	9,428	-8,539	889	14,930	-15,882	-952	24,358	-24,421	-62
	III	9,960	-10,090	-130	15,205	-16,572	-1,367	25,165	-26,662	-1,497
	IV	11,827	-10,437	1,390	13,325	-12,029	1,296	25,152	-22,466	2,686
2003	I	12,278	-13,212	-934	14,297	-13,940	357	26,575	-27,152	-577
	II	11,420	-10,074	1,346	10,281	-11,035	-754	21,701	-21,109	592
	III	14,253	-14,074	179	8,296	-9,055	-759	22,548	-23,129	-580
2001	S	1,908	-2,946	-1,037	2,684	-2,042	642	4,593	-4,988	-395
	O	2,480	-1,929	551	3,007	-2,728	279	5,488	-4,657	830
	N	2,661	-3,159	-498	3,071	-3,605	-533	5,733	-6,764	-1,031
	D	3,734	-2,508	1,226	2,610	-2,320	290	6,344	-4,829	1,516
2002	J	3,403	-3,860	-457	3,100	-2,606	494	6,503	-6,467	37
	F	3,610	-3,779	-169	6,543	-6,229	314	10,153	-10,008	145
	M	3,777	-3,320	457	5,774	-5,120	655	9,551	-8,440	1,111
	A	2,440	-2,714	-274	5,306	-5,377	-70	7,746	-8,091	-344
	M	2,916	-2,433	483	4,992	-5,436	-444	7,908	-7,869	39
	J	4,073	-3,392	681	4,632	-5,070	-437	8,705	-8,461	243
	J	2,237	-1,869	368	6,203	-6,490	-288	8,440	-8,360	80
	A	3,768	-4,090	-322	4,953	-5,528	-575	8,721	-9,618	-897
	S	3,954	-4,131	-176	4,049	-4,553	-504	8,004	-8,684	-680
	O	3,551	-3,542	9	4,320	-4,318	2	7,871	-7,860	11
	N	2,443	-1,888	555	5,572	-4,661	911	8,015	-6,549	1,466
	D	5,833	-5,007	825	3,433	-3,050	384	9,266	-8,057	1,209
2003	J	3,868	-4,407	-539	5,504	-4,514	990	9,372	-8,920	451
	F	2,813	-3,509	-696	6,475	-6,436	40	9,289	-9,945	-656
	M	5,597	-5,296	300	2,318	-2,991	-673	7,915	-8,287	-372
	A	3,719	-2,638	1,081	2,146	-2,432	-286	5,866	-5,070	795
	M	3,010	-3,237	-227	4,868	-5,247	-379	7,878	-8,484	-606
	J	4,691	-4,199	492	3,266	-3,355	-89	7,957	-7,554	403
	J	4,433	-4,576	-142	3,265	-2,873	393	7,699	-7,448	250
	A	4,365	-4,454	-89	2,676	-3,048	-372	7,041	-7,502	-461
	S	5,455	-5,045	410	2,354	-3,134	-779	7,809	-8,178	-369

Table 6
Portfolio Transactions with Non-residents in Canadian Money Market Instruments, by Sector, Sales and Purchases - Continued

Period		Provincial Governments ¹								
		Direct			Enterprises			Total		
		Sales	Purchases	Net	Sales	Purchases	Net	Sales	Purchases	Net
V No.	A	113146	113155	113084	113147	113156	113085	113145	113154	113083
	Q	113318	113327	113256	113319	113328	113257	113317	113326	113255
	M	113460	113469	113428	113461	113470	113429	113459	113468	113427
millions of dollars										
1990		6,831	-5,493	1,338	311	-377	-66	7,141	-5,870	1,272
1991		5,640	-4,727	913	396	-374	22	6,036	-5,101	935
1992		23,508	-22,035	1,473	5,661	-5,625	36	29,169	-27,660	1,509
1993		19,970	-19,822	148	2,740	-2,605	135	22,709	-22,427	283
1994		22,498	-23,540	-1,042	5,421	-5,382	39	27,919	-28,922	-1,003
1995		16,428	-15,931	497	5,012	-5,078	-66	21,440	-21,009	431
1996		18,719	-19,921	-1,202	8,365	-8,399	-34	27,084	-28,320	-1,236
1997		18,644	-20,211	-1,567	7,733	-6,656	1,076	26,377	-26,867	-491
1998		15,036	-13,568	1,468	7,431	-7,960	-530	22,466	-21,528	938
1999		16,849	-17,003	-154	2,994	-4,085	-1,091	19,843	-21,088	-1,245
2000		16,592	-15,304	1,288	2,036	-2,378	-342	18,628	-17,682	946
2001		16,234	-17,271	-1,037	209	-184	24	16,443	-17,455	-1,012
2002		15,406	-15,529	-123	382	-393	-11	15,788	-15,922	-134
2001	III	3,312	-4,387	-1,074	30	-21	8	3,342	-4,408	-1,066
	IV	4,119	-3,634	484	131	-119	12	4,250	-3,753	496
2002	I	3,364	-3,393	-29	81	-90	-10	3,445	-3,483	-38
	II	4,771	-4,240	531	137	-71	67	4,908	-4,310	598
	III	2,919	-3,624	-705	76	-74	2	2,994	-3,698	-704
	IV	4,352	-4,272	80	88	-158	-70	4,441	-4,430	10
2003	I	3,802	-4,299	-497	262	-39	224	4,064	-4,337	-273
	II	2,892	-3,500	-607	52	-53	-1	2,944	-3,553	-609
	III	1,248	-1,976	-728	66	-250	-184	1,314	-2,226	-913
2001	S	1,135	-1,257	-123	12	-10	2	1,147	-1,268	-121
	O	1,028	-1,192	-164	31	-38	-7	1,059	-1,230	-171
	N	1,369	-1,374	-5	68	-52	16	1,437	-1,426	11
	D	1,722	-1,069	653	32	-29	3	1,754	-1,097	656
2002	J	1,076	-1,176	-99	26	-21	5	1,102	-1,197	-95
	F	1,257	-888	369	18	-27	-9	1,275	-915	360
	M	1,031	-1,330	-299	36	-41	-5	1,067	-1,371	-304
	A	1,338	-863	475	30	-31	-1	1,368	-894	474
	M	1,889	-1,585	303	17	-26	-10	1,905	-1,612	293
	J	1,544	-1,791	-247	91	-13	77	1,634	-1,804	-170
	J	1,044	-1,272	-227	31	-32	-1	1,076	-1,304	-228
	A	955	-1,131	-176	17	-7	10	972	-1,138	-166
	S	920	-1,221	-302	27	-35	-8	947	-1,256	-309
	O	1,395	-1,338	57	28	-18	11	1,424	-1,356	68
	N	1,522	-1,515	6	38	-49	-11	1,560	-1,565	-4
	D	1,435	-1,419	16	22	-92	-70	1,457	-1,510	-53
2003	J	1,618	-1,284	334	54	-22	33	1,673	-1,306	367
	F	1,481	-1,937	-456	208	-15	193	1,689	-1,952	-263
	M	703	-1,077	-375	0	-2	-2	703	-1,080	-377
	A	1,268	-1,471	-203	13	-7	6	1,281	-1,478	-197
	M	858	-887	-29	28	-26	2	886	-913	-27
	J	766	-1,142	-375	10	-20	-10	777	-1,162	-385
	J	519	-926	-408	2	-53	-51	521	-980	-459
	A	380	-652	-272	51	-184	-134	431	-836	-406
	S	349	-398	-49	13	-12	1	362	-410	-48

¹ Includes municipalities.

Table 6
Portfolio Transactions with Non-residents in Canadian Money Market Instruments, by Sector, Sales and Purchases - Concluded

Period	Total									
	Governments ¹			Corporations			Total			
	Sales	Purchases	Net	Sales	Purchases	Net	Sales	Purchases	Net	
V No.	A	113141	113150	113079	113148	113157	113086	113140	113149	113078
	Q	113313	113322	113251	113320	113329	113258	113312	113321	113250
	M	113455	113464	113423	113462	113471	113430	113454	113463	113422
millions of dollars										
1990		72,266	-67,822	4,444	23,339	-22,141	1,198	95,605	-89,963	5,642
1991		100,370	-94,152	6,217	22,307	-24,096	-1,789	122,677	-118,249	4,428
1992		228,517	-225,307	3,210	25,694	-24,005	1,688	254,211	-249,312	4,898
1993		212,168	-201,556	10,612	33,922	-35,238	-1,316	246,090	-236,793	9,296
1994		319,371	-318,303	1,068	52,027	-52,190	-163	371,398	-370,493	905
1995		289,790	-290,870	-1,080	45,954	-46,128	-174	335,744	-336,998	-1,254
1996		335,204	-344,235	-9,031	54,013	-52,301	1,712	389,217	-396,536	-7,319
1997		233,403	-234,564	-1,161	82,853	-79,323	3,531	316,257	-313,887	2,369
1998		190,622	-190,770	-147	125,726	-125,449	277	316,349	-316,218	130
1999		156,121	-165,421	-9,301	78,817	-82,726	-3,909	234,938	-248,147	-13,209
2000		122,805	-123,462	-657	95,126	-93,646	1,481	217,931	-217,107	824
2001		88,108	-93,609	-5,501	100,017	-101,865	-1,848	188,125	-195,474	-7,349
2002		116,670	-114,385	2,285	75,873	-74,376	1,497	192,543	-188,761	3,782
2001	III	18,005	-21,816	-3,811	24,144	-24,290	-146	42,149	-46,106	-3,957
	IV	21,814	-20,003	1,811	25,153	-25,138	15	46,967	-45,141	1,826
2002	I	29,652	-28,397	1,255	18,309	-18,259	50	47,961	-46,656	1,305
	II	29,266	-28,731	535	16,300	-16,492	-192	45,566	-45,222	344
	III	28,159	-30,360	-2,201	19,161	-18,751	409	47,320	-49,111	-1,791
	IV	29,593	-26,897	2,696	22,103	-20,874	1,229	51,696	-47,771	3,925
2003	I	30,640	-31,490	-850	19,047	-19,027	20	49,686	-50,517	-830
	II	24,645	-24,662	-17	19,645	-20,394	-749	44,290	-45,055	-766
	III	23,862	-25,355	-1,493	31,651	-32,536	-885	55,513	-57,891	-2,378
2001	S	5,739	-6,255	-516	5,688	-6,529	-841	11,427	-12,784	-1,357
	O	6,546	-5,887	659	7,662	-7,133	529	14,209	-13,021	1,188
	N	7,170	-8,190	-1,020	10,692	-11,380	-688	17,862	-19,570	-1,708
	D	8,098	-5,926	2,172	6,799	-6,625	175	14,897	-12,551	2,346
2002	J	7,606	-7,664	-58	6,908	-6,507	401	14,514	-14,171	343
	F	11,428	-10,923	506	5,516	-6,311	-794	16,945	-17,234	-289
	M	10,618	-9,811	807	5,884	-5,441	443	16,502	-15,252	1,250
	A	9,114	-8,984	130	5,452	-5,685	-233	14,566	-14,669	-103
	M	9,813	-9,480	332	5,488	-5,770	-282	15,301	-15,251	50
	J	10,339	-10,266	73	5,360	-5,036	324	15,699	-15,302	397
	J	9,516	-9,664	-148	6,686	-6,330	355	16,201	-15,994	207
	A	9,693	-10,756	-1,063	6,027	-6,210	-183	15,721	-16,966	-1,246
	S	8,950	-9,940	-990	6,448	-6,211	237	15,398	-16,151	-753
	O	9,294	-9,216	79	6,741	-6,396	345	16,035	-15,611	424
	N	9,576	-8,114	1,462	8,232	-7,436	796	17,808	-15,550	2,258
	D	10,723	-9,567	1,156	7,130	-7,042	88	17,853	-16,609	1,243
2003	J	11,045	-10,226	818	5,714	-5,733	-19	16,758	-15,960	799
	F	10,977	-11,896	-919	5,994	-6,002	-8	16,972	-17,898	-926
	M	8,618	-9,367	-750	7,339	-7,292	47	15,956	-16,659	-703
	A	7,147	-6,548	598	5,958	-5,935	23	13,104	-12,483	621
	M	8,765	-9,397	-633	6,258	-6,515	-258	15,022	-15,913	-890
	J	8,734	-8,716	18	7,429	-7,943	-514	16,163	-16,659	-496
	J	8,219	-8,428	-209	12,160	-12,460	-300	20,379	-20,888	-509
	A	7,471	-8,339	-867	10,489	-10,277	212	17,960	-18,615	-655
	S	8,172	-8,589	-417	9,002	-9,799	-797	17,173	-18,387	-1,214

¹ Including their enterprises.

Table 7
Portfolio Transactions with Non-residents in Canadian Money Market Instruments, by Geographical Area, Sales and Purchases

Period	United States			United Kingdom			Other EU Countries		
	Sales	Purchases	Net	Sales	Purchases	Net	Sales	Purchases	Net
V No. A	115158	115159	115157	115161	115162	115160	115164	115165	115163
Q	115307	115308	115306	115310	115311	115309	115313	115314	115312
M	115456	115457	115455	115459	115460	115458	115462	115463	115461
millions of dollars									
1990	47,288	-44,772	2,516	7,468	-7,575	-107	4,185	-3,444	740
1991	56,134	-55,137	997	20,406	-17,375	3,031	4,230	-4,758	-528
1992	144,134	-136,996	7,139	47,023	-47,219	-197	9,019	-9,076	-57
1993	112,572	-110,281	2,290	60,490	-59,137	1,353	9,222	-8,354	868
1994	205,916	-208,650	-2,734	50,928	-48,176	2,752	14,656	-15,217	-561
1995	130,015	-130,886	-871	82,318	-81,802	516	24,414	-24,438	-24
1996	142,725	-142,526	199	138,898	-143,085	-4,187	55,309	-54,889	421
1997	193,601	-189,520	4,081	35,006	-36,449	-1,443	44,643	-42,967	1,676
1998	229,670	-231,113	-1,443	30,314	-28,745	1,569	9,785	-10,047	-262
1999	171,931	-179,099	-7,169	26,830	-29,800	-2,970	7,790	-7,911	-121
2000	157,827	-156,451	1,376	21,463	-22,934	-1,471	8,960	-9,453	-493
2001	142,735	-146,747	-4,011	13,881	-14,585	-704	7,628	-7,974	-347
2002	144,184	-143,278	906	16,691	-15,609	1,082	4,811	-4,743	68
2001 III	31,228	-34,406	-3,179	4,128	-4,426	-298	1,707	-1,882	-175
IV	38,193	-36,541	1,652	2,621	-2,421	200	1,215	-1,088	127
2002 I	34,442	-35,008	-566	6,459	-4,934	1,525	1,336	-1,265	71
II	35,298	-34,612	686	2,710	-3,450	-741	1,124	-1,266	-141
III	35,690	-36,900	-1,210	4,291	-4,310	-20	792	-1,138	-346
IV	38,753	-36,758	1,995	3,231	-2,914	317	1,559	-1,074	485
2003 I	35,890	-36,543	-653	3,779	-3,975	-195	1,496	-1,247	249
II	31,705	-32,520	-814	3,251	-3,060	191	953	-1,243	-289
III	44,553	-46,144	-1,591	2,689	-2,841	-152	854	-1,064	-210
2001 S	8,277	-9,743	-1,465	1,253	-1,093	160	355	-387	-32
O	11,386	-11,013	373	822	-488	334	353	-185	169
N	15,008	-15,524	-516	551	-1,248	-697	439	-543	-104
D	11,800	-10,004	1,795	1,247	-685	562	423	-360	63
2002 J	11,077	-10,966	111	1,509	-1,233	276	267	-284	-17
F	12,720	-12,907	-187	2,048	-1,538	509	494	-772	-278
M	10,645	-11,134	-489	2,902	-2,163	740	574	-209	365
A	11,045	-11,070	-25	769	-1,318	-549	367	-391	-25
M	11,926	-12,433	-507	543	-746	-204	540	-281	259
J	12,328	-11,110	1,218	1,398	-1,386	12	218	-594	-376
J	12,844	-12,743	101	1,032	-822	210	192	-263	-72
A	12,327	-13,105	-779	788	-1,275	-488	310	-477	-168
S	10,520	-11,052	-532	2,471	-2,213	258	290	-397	-107
O	11,856	-12,225	-369	881	-805	76	586	-286	300
N	13,423	-12,057	1,365	1,039	-863	176	430	-313	117
D	13,474	-12,476	998	1,312	-1,246	65	544	-475	69
2003 J	12,639	-11,474	1,166	1,265	-1,366	-101	533	-371	163
F	11,752	-13,062	-1,310	1,227	-1,237	-9	480	-493	-13
M	11,498	-12,007	-509	1,287	-1,372	-85	483	-383	99
A	8,852	-8,443	408	967	-713	255	300	-311	-11
M	11,354	-11,575	-221	704	-1,064	-361	329	-610	-280
J	11,500	-12,502	-1,002	1,580	-1,283	297	323	-322	2
J	16,919	-16,804	114	530	-781	-251	377	-377	0
A	14,709	-15,226	-518	907	-881	26	265	-282	-18
S	12,926	-14,113	-1,187	1,251	-1,179	72	212	-404	-192

Table 7
Portfolio Transactions with Non-residents in Canadian Money Market Instruments, by Geographical Area,
Sales and Purchases - Concluded

Period	Japan			Other OECD Countries			All Other Countries			Total		
	Sales	Purchases	Net	Sales	Purchases	Net	Sales	Purchases		Sales	Purchases	Net
V No. A	115167	115168	115166	115170	115171	115169	115173	115174	115172	113140	113149	113078
Q	115316	115317	115315	115319	115320	115318	115322	115323	115321	113312	113321	113250
M	115465	115466	115464	115468	115469	115467	115471	115472	115470	113454	113463	113422
millions of dollars												
1990	3,947	-4,253	-306	9,298	-7,644	1,654	23,420	-22,275	1,145	95,605	-89,963	5,642
1991	5,592	-4,432	1,160	13,896	-13,750	146	22,419	-22,797	-378	122,677	-118,249	4,428
1992	3,993	-5,328	-1,335	11,607	-13,042	-1,435	38,435	-37,652	784	254,211	-249,312	4,898
1993	5,145	-5,516	-371	15,356	-13,944	1,412	43,305	-39,561	3,744	246,090	-236,793	9,296
1994	1,865	-2,009	-144	23,696	-22,007	1,689	74,337	-74,433	-96	371,398	-370,493	905
1995	1,165	-1,371	-206	16,395	-17,240	-845	81,437	-81,261	176	335,744	-336,998	-1,254
1996	2,473	-1,833	641	10,062	-11,675	-1,613	39,749	-42,529	-2,780	389,217	-396,536	-7,319
1997	542	-1,070	-527	11,692	-10,840	853	30,771	-33,042	-2,270	316,257	-313,887	2,369
1998	166	-282	-115	16,530	-16,166	364	29,883	-29,866	17	316,349	-316,218	130
1999	195	-161	35	6,368	-6,878	-510	21,824	-24,297	-2,474	234,938	-248,147	-13,209
2000	452	-296	155	8,033	-8,265	-232	21,196	-19,708	1,488	217,931	-217,107	824
2001	263	-438	-175	5,164	-6,020	-856	18,454	-19,709	-1,255	188,125	-195,474	-7,349
2002	185	-176	10	5,705	-4,919	786	20,968	-20,037	931	192,543	-188,761	3,782
2001 III	34	-83	-49	1,398	-1,577	-178	3,653	-3,732	-79	42,149	-46,106	-3,957
2001 IV	23	-123	-100	1,190	-1,283	-94	3,726	-3,685	40	46,967	-45,141	1,826
2002 I	47	-46	1	1,207	-964	243	4,471	-4,440	31	47,961	-46,656	1,305
2002 II	55	-35	19	1,404	-1,327	77	4,975	-4,531	443	45,566	-45,222	344
2002 III	49	-54	-5	1,071	-1,429	-358	5,427	-5,279	147	47,320	-49,111	-1,791
2002 IV	34	-40	-6	2,022	-1,198	824	6,095	-5,786	309	51,696	-47,771	3,925
2003 I	36	-44	-8	1,447	-1,570	-123	7,038	-7,138	-100	49,686	-50,517	-830
2003 II	69	-61	8	1,207	-1,243	-36	7,105	-6,929	176	44,290	-45,055	-766
2003 III	38	-42	-4	1,059	-1,278	-219	6,320	-6,523	-203	55,513	-57,891	-2,378
2001 S	6	-7	0	401	-405	-4	1,134	-1,149	-15	11,427	-12,784	-1,357
2001 O	6	-8	-2	395	-204	191	1,247	-1,123	123	14,209	-13,021	1,188
2001 N	6	-8	-2	575	-748	-173	1,282	-1,500	-217	17,862	-19,570	-1,708
2001 D	11	-108	-96	220	-332	-112	1,196	-1,062	134	14,897	-12,551	2,346
2002 J	22	-16	6	124	-165	-41	1,515	-1,506	8	14,514	-14,171	343
2002 F	10	-17	-7	267	-509	-242	1,406	-1,490	-85	16,945	-17,234	-289
2002 M	15	-12	2	816	-290	525	1,551	-1,443	107	16,502	-15,252	1,250
2002 A	17	-7	11	760	-386	374	1,608	-1,497	110	14,566	-14,669	-103
2002 M	19	-12	7	500	-324	176	1,773	-1,455	318	15,301	-15,251	50
2002 J	18	-17	2	143	-617	-473	1,594	-1,579	15	15,699	-15,302	397
2002 J	15	-22	-7	426	-542	-116	1,694	-1,602	92	16,201	-15,994	207
2002 A	14	-13	1	326	-429	-103	1,957	-1,667	290	15,721	-16,966	-1,246
2002 S	21	-20	1	320	-458	-138	1,776	-2,011	-235	15,398	-16,151	-753
2002 O	10	-11	-1	899	-458	441	1,804	-1,827	-23	16,035	-15,611	424
2002 N	8	-8	-1	642	-370	272	2,267	-1,938	328	17,808	-15,550	2,258
2002 D	17	-21	-4	481	-370	112	2,025	-2,021	4	17,853	-16,609	1,243
2003 J	12	-23	-11	401	-522	-121	1,908	-2,204	-296	16,758	-15,960	799
2003 F	11	-10	2	582	-520	62	2,919	-2,576	343	16,972	-17,898	-926
2003 M	13	-11	2	464	-527	-63	2,212	-2,358	-146	15,956	-16,659	-703
2003 A	40	-15	25	484	-598	-114	2,461	-2,403	58	13,104	-12,483	621
2003 M	14	-25	-10	342	-387	-44	2,279	-2,253	26	15,022	-15,913	-890
2003 J	15	-22	-7	381	-258	123	2,365	-2,273	91	16,163	-16,659	-496
2003 J	8	-14	-6	336	-515	-179	2,210	-2,397	-187	20,379	-20,888	-509
2003 A	16	-10	6	311	-264	47	1,752	-1,951	-199	17,960	-18,615	-655
2003 S	14	-18	-4	412	-499	-87	2,358	-2,174	183	17,173	-18,387	-1,214

Table 8
Portfolio Transactions with Non-residents in Canadian Stocks, by Geographical Area and Type of Transaction

Period	United States						United Kingdom					
	Outstanding Issues			Other Transactions ¹	Total	Outstanding Issues			Other Transactions ¹	Total		
	Sales	Purchases	Net			Sales	Purchases	Net				
V No.	A	115217	115218	115216	115215	115214	115222	115223	115221	115220	115219	
	Q	115366	115367	115365	115364	115363	115371	115372	115370	115369	115368	
	M	115515	115516	115514	115513	115512	115520	115521	115519	115518	115517	
millions of dollars												
1990		10,825	-12,444	-1,619	144	-1,476	2,017	-2,011	6	22	28	
1991		9,978	-12,147	-2,169	706	-1,463	2,469	-2,166	303	50	353	
1992		13,274	-12,619	654	450	1,105	1,419	-1,605	-186	74	-112	
1993		28,210	-18,540	9,670	1,385	11,055	2,713	-2,350	363	171	534	
1994		33,521	-28,639	4,882	1,095	5,977	4,022	-4,059	-37	306	269	
1995		25,974	-28,810	-2,836	1,384	-1,452	4,578	-6,127	-1,549	141	-1,408	
1996		46,055	-41,871	4,185	3,460	7,645	7,098	-8,375	-1,278	403	-874	
1997		68,900	-64,552	4,347	3,093	7,440	11,716	-10,160	1,556	152	1,708	
1998		89,550	-89,827	-277	16,679	16,402	7,926	-8,896	-970	-8	-978	
1999		87,658	-74,734	12,924	4,262	17,187	11,367	-8,551	2,816	57	2,873	
2000		165,571	-137,931	27,640	5,628	33,268	20,349	-19,741	608	218	825	
2001		127,138	-122,341	4,797	2,923	7,719	24,111	-26,641	-2,530	40	-2,490	
2002		115,672	-119,359	-3,687	4,910	1,223	35,270	-38,042	-2,772	123	-2,649	
2001	III	26,881	-26,621	260	-3,001	-2,740	4,964	-5,289	-324	25	-299	
	IV	29,079	-28,135	944	911	1,854	8,273	-9,287	-1,015	-58	-1,073	
2002	I	28,816	-27,958	858	-2,090	-1,232	12,509	-14,488	-1,979	0	-1,979	
	II	30,711	-29,328	1,383	3,801	5,184	8,230	-8,561	-331	77	-253	
	III	26,499	-33,045	-6,547	2,044	-4,503	6,363	-6,434	-71	45	-26	
	IV	29,647	-29,029	619	1,155	1,774	8,168	-8,560	-391	0	-391	
2003	I	29,643	-28,038	1,605	15	1,619	6,215	-7,716	-1,501	0	-1,501	
	II	31,744	-28,672	3,071	372	3,444	7,301	-8,615	-1,314	0	-1,314	
	III	36,428	-31,590	4,838	227	5,065	9,500	-9,450	50	0	50	
2001	S	11,117	-10,722	395	-193	202	2,387	-2,426	-39	0	-39	
	O	11,437	-10,303	1,135	-2,394	-1,259	1,063	-1,467	-403	-58	-462	
	N	9,746	-10,165	-418	1,306	887	2,885	-2,908	-23	0	-23	
	D	7,895	-7,668	227	1,999	2,226	4,324	-4,912	-588	0	-588	
2002	J	9,382	-9,002	380	15	395	1,266	-1,669	-403	0	-403	
	F	9,857	-9,593	264	-864	-600	7,285	-7,205	80	0	80	
	M	9,577	-9,363	214	-1,241	-1,027	3,958	-5,614	-1,656	0	-1,656	
	A	10,382	-10,240	143	166	309	1,494	-1,525	-31	0	-31	
	M	9,507	-8,764	744	348	1,091	2,173	-2,741	-568	0	-568	
	J	10,821	-10,325	496	3,287	3,784	4,563	-4,295	268	77	346	
	J	9,936	-14,021	-4,084	231	-3,854	1,461	-1,181	280	0	280	
	A	7,942	-9,122	-1,180	1,460	280	1,657	-1,875	-218	45	-173	
	S	8,620	-9,903	-1,282	353	-929	3,245	-3,378	-133	0	-133	
	O	10,162	-11,187	-1,025	534	-491	1,662	-1,750	-89	0	-89	
	N	9,498	-8,681	817	271	1,088	2,283	-2,595	-312	0	-312	
	D	9,987	-9,160	827	349	1,176	4,224	-4,215	9	0	9	
2003	J	9,936	-9,814	122	2	123	596	-1,040	-444	0	-444	
	F	9,744	-9,031	713	10	723	2,756	-2,775	-19	0	-19	
	M	9,963	-9,193	770	4	774	2,862	-3,900	-1,038	0	-1,038	
	A	9,456	-8,625	831	-151	681	1,572	-1,646	-74	0	-74	
	M	10,622	-9,000	1,622	821	2,442	1,266	-2,079	-813	0	-813	
	J	11,666	-11,048	618	-298	321	4,463	-4,889	-426	0	-426	
	J	11,689	-10,135	1,554	71	1,625	3,024	-2,655	369	0	369	
	A	11,462	-9,197	2,265	23	2,288	1,774	-2,709	-935	0	-935	
	S	13,276	-12,258	1,019	133	1,152	4,702	-4,086	616	0	616	

¹ Other Transactions include new issues, retirements and/or withdrawals from the market due to activities such as takeovers.

Table 8
Portfolio Transactions with Non-residents in Canadian Stocks, by Geographical Area and Type of Transaction - Continued

Period	Other EU Countries						Japan				
	Outstanding Issues			Other Transactions ¹	Total	Outstanding Issues			Other Transactions ¹	Total	
	Sales	Purchases	Net			Sales	Purchases	Net			
V No. A	115227	115228	115226	115225	115224	115232	115233	115231	115230	115229	
Q	115376	115377	115375	115374	115373	115381	115382	115380	115379	115378	
M	115525	115526	115524	115523	115522	115530	115531	115529	115528	115527	
millions of dollars											
1990	1,469	-1,606	-136	51	-86	88	-190	-101	0	-101	
1991	1,329	-1,411	-82	71	-10	242	-133	110	3	113	
1992	929	-997	-67	75	8	186	-135	51	16	67	
1993	2,176	-2,066	110	156	266	259	-247	12	16	28	
1994	2,433	-2,495	-63	178	116	1,004	-727	277	27	304	
1995	2,427	-3,255	-828	101	-726	304	-340	-36	10	-27	
1996	2,852	-3,333	-481	416	-64	659	-373	286	9	295	
1997	3,530	-3,965	-435	122	-313	1,343	-996	347	5	352	
1998	5,590	-5,905	-315	5	-310	339	-796	-457	0	-457	
1999	8,544	-13,113	-4,569	109	-4,460	759	-291	467	0	467	
2000	18,547	-21,853	-3,307	-1,009	-4,316	510	-687	-177	0	-177	
2001	37,624	-38,777	-1,153	-291	-1,443	124	-279	-155	0	-155	
2002	13,241	-14,705	-1,464	16	-1,448	92	-156	-64	0	-64	
2001	III	7,603	-7,779	-176	0	-176	23	-57	-35	0	-35
	IV	5,877	-6,472	-595	-325	-920	17	-34	-17	0	-17
2002	I	4,984	-6,206	-1,221	0	-1,221	8	-70	-62	0	-62
	II	5,009	-5,186	-177	10	-168	30	-28	2	0	2
	III	1,645	-1,522	123	4	127	34	-42	-8	0	-8
	IV	1,603	-1,791	-188	2	-186	20	-16	4	0	4
2003	I	1,744	-1,918	-174	37	-137	4	-4	-1	0	-1
	II	2,056	-1,721	335	0	335	4	-4	0	0	0
	III	2,012	-1,873	139	49	189	5	-4	1	0	1
2001	S	1,759	-1,974	-216	0	-216	2	-31	-29	0	-29
	O	3,177	-3,468	-291	0	-291	11	-3	8	0	8
	N	1,764	-2,077	-313	0	-313	5	-10	-5	0	-5
	D	936	-927	9	-325	-316	1	-22	-20	0	-20
2002	J	1,083	-1,159	-76	0	-76	1	-10	-9	0	-9
	F	1,574	-1,660	-87	0	-87	1	-25	-23	0	-23
	M	2,328	-3,386	-1,058	0	-1,058	6	-36	-30	0	-30
	A	683	-1,131	-448	10	-438	6	-13	-7	0	-7
	M	1,577	-1,518	60	0	60	10	-3	7	0	7
	J	2,749	-2,538	211	0	211	14	-13	2	0	2
	J	621	-552	69	0	69	25	-4	21	0	21
	A	265	-332	-67	4	-63	7	-21	-13	0	-13
	S	759	-638	121	0	121	1	-18	-16	0	-16
	O	478	-381	97	2	99	16	-8	8	0	8
	N	568	-574	-6	0	-6	1	-4	-3	0	-3
	D	557	-836	-279	0	-279	4	-4	-1	0	-1
2003	J	579	-800	-221	0	-221	1	-2	-1	0	-1
	F	544	-438	106	37	142	1	-1	0	0	0
	M	621	-680	-58	0	-58	1	-1	0	0	0
	A	523	-600	-78	0	-78	2	-1	1	0	1
	M	558	-522	36	0	36	2	-2	0	0	0
	J	975	-599	377	0	377	1	-1	0	0	0
	J	879	-762	117	33	150	1	-1	0	0	0
	A	438	-433	5	2	7	1	-1	0	0	0
	S	694	-677	17	14	31	3	-2	1	0	1

1 Other Transactions include new issues, retirements and/or withdrawals from the market due to activities such as takeovers.

Table 8
Portfolio Transactions with Non-residents in Canadian Stocks, by Geographical Area and Type of Transaction - Continued

Period	Other OECD Countries						All Other Countries				
	Outstanding Issues			Other Transactions ¹	Total	Outstanding Issues			Other Transactions ¹	Total	
	Sales	Purchases	Net			Sales	Purchases	Net			
V No.	A	115237	115238	115236	115235	115234	115242	115243	115241	115240	115239
	Q	115386	115387	115385	115384	115383	115391	115392	115390	115389	115388
	M	115535	115536	115534	115533	115532	115540	115541	115539	115538	115537
millions of dollars											
1990		521	-569	-48	39	-9	953	-1,059	-106	14	-92
1991		467	-569	-102	137	35	1,576	-1,600	-24	6	-18
1992		526	-556	-31	82	51	823	-937	-114	32	-82
1993		1,473	-1,487	-14	82	68	2,567	-2,550	17	88	105
1994		1,544	-1,549	-5	213	208	3,496	-4,114	-619	157	-462
1995		1,366	-2,147	-781	49	-732	3,856	-3,810	46	56	101
1996		2,496	-2,663	-167	242	75	6,676	-5,977	699	260	958
1997		2,597	-2,884	-287	87	-200	7,456	-8,997	-1,541	199	-1,342
1998		2,465	-2,355	110	-7	102	12,782	-13,230	-448	-1	-449
1999		2,077	-2,551	-474	81	-392	22,361	-23,715	-1,354	24	-1,330
2000		3,083	-3,174	-91	5,326	5,235	37,509	-37,167	342	59	401
2001		2,142	-1,877	264	20	284	40,413	-40,307	106	646	752
2002		1,827	-1,781	46	1,188	1,234	48,538	-48,634	-95	363	268
2001	III	471	-412	60	0	60	8,587	-8,852	-265	0	-265
	IV	469	-461	8	0	8	10,768	-10,652	115	661	776
2002	I	408	-431	-22	12	-10	11,841	-11,552	289	351	640
	II	537	-610	-73	162	88	11,639	-11,711	-72	0	-72
	III	454	-348	107	366	473	12,223	-12,375	-152	12	-140
	IV	427	-392	35	648	683	12,836	-12,996	-160	0	-160
2003	I	385	-422	-37	0	-37	10,412	-10,625	-213	4	-209
	II	460	-382	78	0	78	7,140	-7,107	32	0	32
	III	765	-641	124	146	270	6,274	-6,522	-248	0	-248
2001	S	130	-213	-83	0	-83	2,187	-2,362	-175	0	-175
	O	143	-155	-11	0	-11	4,141	-4,102	40	661	700
	N	150	-143	7	0	7	4,031	-4,066	-34	0	-34
	D	177	-164	13	0	13	2,595	-2,485	110	0	110
2002	J	121	-129	-8	0	-8	3,958	-3,953	5	0	5
	F	138	-147	-8	12	4	3,316	-2,924	392	0	392
	M	149	-155	-6	0	-6	4,567	-4,675	-109	351	242
	A	136	-216	-79	-7	-86	3,126	-3,096	31	0	31
	M	189	-219	-30	0	-30	4,448	-4,464	-16	0	-16
	J	212	-176	36	169	205	4,064	-4,151	-87	0	-87
	J	168	-143	25	135	160	3,913	-4,022	-109	0	-109
	A	148	-97	51	137	188	4,327	-4,280	47	12	59
	S	139	-108	30	94	124	3,983	-4,073	-90	0	-90
	O	126	-141	-15	391	376	4,690	-4,812	-122	0	-122
	N	149	-100	50	257	306	4,393	-4,474	-81	0	-81
	D	152	-151	1	0	1	3,753	-3,710	42	0	42
2003	J	125	-150	-26	0	-26	3,739	-3,815	-76	0	-76
	F	136	-158	-22	0	-22	3,709	-3,776	-67	0	-67
	M	125	-114	10	0	10	2,964	-3,034	-70	4	-66
	A	123	-101	22	0	22	2,652	-2,788	-136	0	-136
	M	158	-114	44	0	44	2,075	-1,983	92	0	92
	J	180	-167	13	0	13	2,413	-2,336	77	0	77
	J	191	-155	37	146	183	2,039	-2,479	-441	0	-441
	A	208	-231	-23	0	-23	2,035	-2,073	-38	0	-38
	S	366	-256	111	0	111	2,200	-1,969	231	0	231

1 Other Transactions include new issues, retirements and/or withdrawals from the market due to activities such as takeovers.

Table 8
Portfolio Transactions with Non-residents in Canadian Stocks, by Geographical Area and Type of Transaction - Concluded

Period	Total				
	Outstanding Issues			Other Transactions ¹	Total
	Sales	Purchases	Net		
V No. A	113138	113139	113076	113077	113075
Q	113310	113311	113248	113249	113247
M	113452	113453	113420	113421	113419
millions of dollars					
1990	15,875	-17,880	-2,005	269	-1,735
1991	16,061	-18,025	-1,964	974	-990
1992	17,156	-16,849	307	729	1,036
1993	37,398	-27,240	10,158	1,899	12,056
1994	46,020	-41,584	4,436	1,976	6,412
1995	38,505	-44,489	-5,984	1,741	-4,242
1996	65,836	-62,592	3,244	4,791	8,034
1997	95,542	-91,555	3,987	3,658	7,645
1998	118,654	-121,010	-2,357	16,668	14,311
1999	132,766	-122,954	9,812	4,534	14,346
2000	245,570	-220,553	25,016	10,221	35,237
2001	231,551	-230,222	1,329	3,338	4,667
2002	214,642	-222,678	-8,037	6,600	-1,436
2001 III	48,530	-49,010	-480	-2,976	-3,455
IV	54,483	-55,042	-559	1,188	629
2002 I	58,567	-60,704	-2,138	-1,727	-3,865
II	56,156	-55,425	731	4,050	4,781
III	47,217	-53,765	-6,548	2,472	-4,076
IV	52,702	-52,783	-81	1,805	1,724
2003 I	48,402	-48,723	-321	56	-265
II	48,704	-46,501	2,203	372	2,575
III	54,984	-50,079	4,905	422	5,327
2001 S	17,582	-17,729	-147	-193	-340
O	19,973	-19,497	476	-1,791	-1,315
N	18,582	-19,368	-786	1,306	520
D	15,929	-16,178	-249	1,673	1,424
2002 J	15,811	-15,922	-111	15	-96
F	22,171	-21,553	618	-852	-234
M	20,584	-23,229	-2,645	-890	-3,535
A	15,829	-16,220	-391	169	-222
M	17,903	-17,708	196	348	543
J	22,424	-21,497	927	3,533	4,460
J	16,124	-19,922	-3,798	366	-3,432
A	14,345	-15,726	-1,381	1,659	279
S	16,748	-18,118	-1,370	447	-923
O	17,133	-18,279	-1,146	928	-218
N	16,892	-16,427	465	528	993
D	18,677	-18,077	600	349	949
2003 J	14,975	-15,622	-647	2	-645
F	16,890	-16,178	712	46	758
M	16,536	-16,923	-387	8	-378
A	14,327	-13,760	566	-151	416
M	14,680	-13,701	979	821	1,800
J	19,698	-19,040	658	-298	360
J	17,824	-16,188	1,636	251	1,887
A	15,918	-14,643	1,275	25	1,300
S	21,242	-19,248	1,993	147	2,141

1 Other Transactions include new issues, retirements and/or withdrawals from the market due to activities such as takeovers.

Table 9
Portfolio Transactions with Non-residents in Canadian Stocks, by Geographical Area

Period	United States	United Kingdom	Other EU Countries	Japan	Other OECD Countries	Other Countries	Total
V No. A	115214	115219	115224	115229	115234	115239	113075
Q	115363	115368	115373	115378	115383	115388	113247
M	115512	115517	115522	115527	115532	115537	113419
millions of dollars							
1990	-1,476	28	-86	-101	-9	-92	-1,735
1991	-1,463	353	-10	113	35	-18	-990
1992	1,105	-112	8	67	51	-82	1,036
1993	11,055	534	266	28	68	105	12,056
1994	5,977	269	116	304	208	-462	6,412
1995	-1,452	-1,408	-726	-27	-732	101	-4,242
1996	7,645	-874	-64	295	75	958	8,034
1997	7,440	1,708	-313	352	-200	-1,342	7,645
1998	16,402	-978	-310	-457	102	-449	14,311
1999	17,187	2,873	-4,460	467	-392	-1,330	14,346
2000	33,268	825	-4,316	-177	5,235	401	35,237
2001	7,719	-2,490	-1,443	-155	284	752	4,667
2002	1,223	-2,649	-1,448	-64	1,234	268	-1,436
2001 III	-2,740	-299	-176	-35	60	-265	-3,455
IV	1,854	-1,073	-920	-17	8	776	629
2002 I	-1,232	-1,979	-1,221	-62	-10	640	-3,865
II	5,184	-253	-168	2	88	-72	4,781
III	-4,503	-26	127	-8	473	-140	-4,076
IV	1,774	-391	-186	4	683	-160	1,724
2003 I	1,619	-1,501	-137	-1	-37	-209	-265
II	3,444	-1,314	335	0	78	32	2,575
III	5,065	50	189	1	270	-248	5,327
2001 S	202	-39	-216	-29	-83	-175	-340
O	-1,259	-462	-291	8	-11	700	-1,315
N	887	-23	-313	-5	7	-34	520
D	2,226	-588	-316	-20	13	110	1,424
2002 J	395	-403	-76	-9	-8	5	-96
F	-600	80	-87	-23	4	392	-234
M	-1,027	-1,656	-1,058	-30	-6	242	-3,535
A	309	-31	-438	-7	-86	31	-222
M	1,091	-568	60	7	-30	-16	543
J	3,784	346	211	2	205	-87	4,460
J	-3,854	280	69	21	160	-109	-3,432
A	280	-173	-63	-13	188	59	279
S	-929	-133	121	-16	124	-90	-923
O	-491	-89	99	8	376	-122	-218
N	1,088	-312	-6	-3	306	-81	993
D	1,176	9	-279	-1	1	42	949
2003 J	123	-444	-221	-1	-26	-76	-645
F	723	-19	142	0	-22	-67	758
M	774	-1,038	-58	0	10	-66	-378
A	681	-74	-78	1	22	-136	416
M	2,442	-813	36	0	44	92	1,800
J	321	-426	377	0	13	77	360
J	1,625	369	150	0	183	-441	1,887
A	2,288	-935	7	0	-23	-38	1,300
S	1,152	616	31	1	111	231	2,141

Table 10**Portfolio Transactions with Non-residents in Foreign Securities by Instrument and Sector, Purchases and Sales**

Period	Foreign Bonds						Foreign Stocks					Total Foreign Securities	
	U.S. Government	Other U.S.	Other foreign	Total			U.S.	Other foreign	Total				
				Purchases	Sales	Net			Purchases	Sales	Net		
V No.	A	113212	113213	113214	113133	113134	113132	113215	113216	113136	113137	113135	113131
	Q	113384	113385	113386	113305	113306	113304	113387	113388	113308	113309	113307	113303
	M	113556	113557	113558	113447	113448	113446	113559	113560	113450	113451	113449	113445
millions of dollars													
1990		645	-51	-669	-50,316	50,241	-75	-1,986	-535	-27,482	24,961	-2,521	-2,596
1991		-428	-598	-635	-54,494	52,833	-1,661	-7,404	-2,600	-39,388	29,384	-10,004	-11,665
1992		-1,033	-769	401	-80,577	79,176	-1,401	-6,802	-3,546	-42,478	32,130	-10,348	-11,749
1993		-1,761	-1,500	-1,809	-78,658	73,588	-5,071	-5,488	-7,323	-62,079	49,268	-12,811	-17,881
1994		1,831	-295	-1,101	-134,369	134,803	435	-1,797	-7,565	-71,541	62,179	-9,362	-8,927
1995		644	-427	-1,301	-159,914	158,830	-1,085	-1,443	-4,803	-82,714	76,468	-6,247	-7,331
1996		1,047	-2,478	-638	-221,467	219,397	-2,070	-5,533	-11,714	-98,522	81,275	-17,247	-19,317
1997		-825	-2,794	-3,024	-248,518	241,876	-6,642	-938	-4,269	-162,184	156,977	-5,207	-11,849
1998		-2,841	-2,944	-1,279	-361,203	354,139	-7,064	-10,162	-5,271	-163,865	148,433	-15,433	-22,497
1999		-1,205	443	-1,715	-245,256	242,778	-2,477	-14,986	-5,637	-260,481	239,858	-20,623	-23,101
2000		-1,507	-2,121	-335	-306,167	302,204	-3,963	-29,051	-30,818	-366,040	306,171	-59,870	-63,832
2001		-2,345	226	198	-377,653	375,732	-1,920	-20,914	-14,739	-351,281	315,628	-35,653	-37,573
2002		-4,042	-890	-1,311	-527,917	521,674	-6,243	-16,767	-1,940	-665,305	646,598	-18,707	-24,950
2001	III	-1,294	-113	53	-69,509	68,156	-1,354	-3,048	-470	-76,874	73,356	-3,518	-4,871
	IV	700	-789	390	-111,272	111,572	301	-4,463	-1,042	-116,479	110,974	-5,505	-5,204
2002	I	-1,659	-1,055	273	-99,594	97,152	-2,442	-6,870	-2,122	-136,949	127,956	-8,993	-11,435
	II	-2,127	-509	338	-127,872	125,574	-2,298	-2,853	-1,715	-181,829	177,262	-4,567	-6,866
	III	-1,339	727	-859	-165,151	163,680	-1,472	-1,912	-338	-166,278	164,028	-2,250	-3,722
	IV	1,084	-53	-1,062	-135,300	135,268	-32	-5,132	2,235	-180,249	177,352	-2,897	-2,928
2003	I	-2,052	-352	-1,096	-109,800	106,300	-3,501	1,297	861	-150,474	152,633	2,159	-1,342
	II	-3,554	66	824	-140,416	137,752	-2,664	-600	54	-144,377	143,831	-546	-3,210
	III	2,089	-1,146	-925	-146,813	146,831	18	-2,275	-332	-136,966	134,359	-2,607	-2,589
2001	S	-2,472	332	195	-22,628	20,683	-1,945	-1,845	-47	-32,115	30,223	-1,891	-3,837
	O	2,614	-427	245	-26,749	29,181	2,432	-119	261	-32,703	32,845	142	2,574
	N	1,364	-243	-14	-46,141	47,248	1,107	-141	-807	-41,518	40,570	-949	159
	D	-3,279	-118	159	-38,381	35,143	-3,238	-4,202	-496	-42,257	37,559	-4,698	-7,936
2002	J	1,654	-522	-23	-36,686	37,794	1,108	138	-639	-34,004	33,504	-500	608
	F	-3,702	-328	164	-30,273	26,408	-3,865	-4,804	-862	-50,010	44,344	-5,667	-9,532
	M	389	-205	132	-32,635	32,950	315	-2,204	-621	-52,934	50,109	-2,826	-2,510
	A	-1,944	-46	231	-41,088	39,329	-1,759	-896	-1,321	-45,263	43,045	-2,218	-3,977
	M	-255	47	149	-45,491	45,432	-59	-481	-66	-81,424	80,876	-548	-607
	J	73	-511	-42	-41,292	40,812	-480	-1,475	-327	-55,143	53,341	-1,802	-2,282
	J	-1,427	286	633	-70,282	69,773	-508	-590	240	-47,664	47,315	-350	-858
	A	2,021	-342	-885	-53,788	54,582	795	-913	-302	-64,531	63,315	-1,216	-421
	S	-1,933	783	-607	-41,082	39,324	-1,758	-409	-276	-54,082	53,397	-685	-2,443
	O	3,288	-91	-369	-50,098	52,925	2,827	-1,938	1,917	-58,276	58,254	-22	2,806
	N	-3,686	679	-258	-51,988	48,724	-3,264	-2,750	-178	-58,231	55,303	-2,928	-6,192
	D	1,482	-641	-435	-33,213	33,618	405	-443	496	-63,742	63,795	52	458
2003	J	-585	426	-479	-32,913	32,275	-639	357	-100	-55,490	55,747	257	-382
	F	-957	-657	34	-35,805	34,226	-1,579	-181	100	-45,484	45,403	-82	-1,661
	M	-510	-122	-651	-41,082	39,799	-1,283	1,122	862	-49,500	51,483	1,983	701
	A	-2,033	349	18	-41,629	39,963	-1,666	1,160	-603	-47,184	47,741	558	-1,109
	M	111	-428	-56	-44,154	43,781	-373	-1,280	296	-47,485	46,502	-984	-1,357
	J	-1,632	146	862	-54,633	54,008	-625	-480	360	-49,707	49,588	-120	-744
	J	-1,133	-783	-459	-51,579	49,203	-2,375	-1,000	-100	-44,686	43,586	-1,100	-3,475
	A	172	-345	-166	-50,350	50,011	-339	-1,096	-587	-45,214	43,530	-1,684	-2,023
	S	3,049	-18	-299	-44,884	47,617	2,732	-178	355	-47,067	47,244	177	2,909

Table 11
Portfolio Transactions with Non-residents in Foreign Bonds, by Geographical Area, Purchases and Sales

Period	United States			United Kingdom			Other EU Countries		
	Purchases	Sales	Net	Purchases	Sales	Net	Purchases	Sales	Net
V No. A	115177	115178	115176	115180	115181	115179	115183	115184	115182
Q	115326	115327	115325	115329	115330	115328	115332	115333	115331
M	115475	115476	115474	115478	115479	115477	115481	115482	115480
millions of dollars									
1990	-46,742	47,042	300	-1,275	696	-579	-1,573	1,723	150
1991	-50,671	48,629	-2,042	-922	702	-220	-1,873	1,876	4
1992	-75,367	73,092	-2,274	-2,010	1,916	-94	-2,059	2,061	1
1993	-70,068	66,018	-4,050	-4,197	3,229	-969	-2,093	1,564	-529
1994	-109,689	110,484	795	-20,022	19,178	-843	-1,469	1,466	-3
1995	-132,156	131,308	-848	-20,830	20,837	7	-1,626	1,957	331
1996	-192,320	189,761	-2,559	-18,195	18,391	196	-4,316	4,782	466
1997	-203,928	196,934	-6,994	-33,965	34,565	600	-1,801	2,056	255
1998	-318,339	309,520	-8,818	-32,136	32,943	808	-2,180	2,084	-96
1999	-207,759	203,149	-4,609	-29,772	29,762	-10	-4,287	4,557	270
2000	-265,124	261,923	-3,201	-22,692	21,732	-960	-15,301	14,758	-543
2001	-348,017	344,663	-3,354	-12,090	13,205	1,116	-9,093	8,717	-375
2002	-479,686	476,379	-3,307	-34,514	28,371	-6,143	-8,523	8,411	-112
2001 III	-64,190	61,409	-2,781	-2,709	3,181	472	-1,393	1,175	-218
IV	-104,035	103,642	-393	-3,277	4,442	1,165	-957	790	-166
2002 I	-91,025	89,334	-1,691	-4,962	4,117	-844	-2,166	1,728	-438
II	-114,639	111,774	-2,865	-9,759	9,185	-574	-1,867	1,725	-141
III	-150,975	150,627	-348	-10,854	8,588	-2,266	-2,294	2,398	104
IV	-123,046	124,643	1,597	-8,939	6,481	-2,458	-2,196	2,560	364
2003 I	-93,962	93,921	-41	-11,705	8,973	-2,732	-2,022	1,818	-204
II	-123,554	120,831	-2,722	-10,456	9,960	-496	-885	1,316	431
III	-131,582	130,693	-889	-8,418	7,818	-601	-1,605	2,044	439
2001 S	-20,925	17,540	-3,385	-896	1,949	1,054	-471	347	-125
O	-24,184	26,789	2,606	-1,292	1,078	-215	-484	303	-182
N	-43,991	44,597	606	-888	1,781	893	-361	262	-99
D	-35,860	32,255	-3,605	-1,097	1,583	486	-112	226	114
2002 J	-33,174	34,837	1,663	-1,953	1,433	-520	-798	426	-371
F	-27,689	23,930	-3,760	-1,674	1,669	-4	-470	379	-91
M	-30,161	30,567	406	-1,335	1,015	-320	-898	922	24
A	-36,268	35,206	-1,062	-3,301	2,497	-803	-911	1,121	210
M	-41,555	40,409	-1,146	-2,988	3,524	536	-490	287	-202
J	-36,816	36,159	-657	-3,470	3,164	-307	-466	317	-149
J	-65,598	64,230	-1,368	-3,834	3,213	-621	-352	1,091	739
A	-47,764	49,715	1,951	-5,068	3,712	-1,356	-766	800	34
S	-37,614	36,682	-931	-1,952	1,663	-290	-1,176	507	-669
O	-46,444	50,164	3,721	-2,341	1,624	-717	-851	639	-212
N	-47,463	44,024	-3,439	-3,492	3,491	-2	-762	709	-53
D	-29,139	30,455	1,315	-3,106	1,367	-1,739	-583	1,212	629
2003 J	-28,617	28,824	207	-3,253	2,603	-650	-525	422	-103
F	-30,843	30,648	-195	-3,348	2,225	-1,123	-948	840	-108
M	-34,502	34,449	-53	-5,104	4,145	-959	-549	557	8
A	-36,590	35,929	-661	-3,544	2,582	-962	-206	304	99
M	-39,103	37,556	-1,547	-2,743	3,226	484	-368	347	-21
J	-47,861	47,347	-514	-4,169	4,151	-18	-312	665	353
J	-46,269	43,748	-2,521	-3,100	3,017	-84	-211	611	400
A	-45,871	44,977	-894	-2,205	2,009	-196	-643	329	-314
S	-39,442	41,968	2,526	-3,113	2,792	-321	-751	1,105	354

Table 11
Portfolio Transactions with Non-residents in Foreign Bonds, by Geographical Area, Purchases and Sales -
Concluded

Period	Japan			Other OECD Countries			All Other Countries			Total			
	Purchases	Sales	Net	Purchases	Sales	Net	Purchases	Sales	Net	Purchases	Sales	Net	
V No. A	115186	115187	115185	115189	115190	115188	115192	115193	115191	113133	113134	113132	
Q	115335	115336	115334	115338	115339	115337	115341	115342	115340	113305	113306	113304	
M	115484	115485	115483	115487	115488	115486	115490	115491	115489	113447	113448	113446	
millions of dollars													
1990	-228	296	67	-95	209	114	-403	276	-127	-50,316	50,241	-75	
1991	-367	582	215	-18	12	-6	-643	1,031	389	-54,494	52,833	-1,661	
1992	-575	1,259	684	-38	59	22	-527	788	261	-80,577	79,176	-1,401	
1993	-1,014	1,056	42	-134	311	177	-1,151	1,410	259	-78,658	73,588	-5,071	
1994	-2,047	2,129	82	-168	289	121	-974	1,258	283	-134,369	134,803	435	
1995	-2,809	2,335	-475	-218	174	-44	-2,275	2,219	-56	-159,914	158,830	-1,085	
1996	-3,571	2,783	-787	-138	440	301	-2,926	3,240	314	-221,467	219,397	-2,070	
1997	-3,523	942	-2,581	-156	192	36	-5,144	7,186	2,042	-248,518	241,876	-6,642	
1998	-1,795	553	-1,243	-433	587	153	-6,320	8,452	2,132	-361,203	354,139	-7,064	
1999	-1,238	912	-325	-651	573	-79	-1,550	3,826	2,276	-245,256	242,778	-2,477	
2000	-576	439	-137	-516	675	159	-1,958	2,677	719	-306,167	302,204	-3,963	
2001	-1,239	985	-254	-776	912	136	-6,438	7,249	811	-377,653	375,732	-1,920	
2002	-729	661	-68	-701	1,441	740	-3,765	6,412	2,646	-527,917	521,674	-6,243	
2001	III	-116	227	111	-349	269	-80	-752	1,895	1,143	-69,509	68,156	-1,354
	IV	-464	375	-89	-100	165	65	-2,438	2,158	-280	-111,272	111,572	301
2002	I	-179	179	1	-127	191	64	-1,136	1,603	467	-99,594	97,152	-2,442
	II	-249	137	-112	-301	736	435	-1,058	2,017	959	-127,872	125,574	-2,298
	III	-76	140	63	-183	214	31	-769	1,713	944	-165,151	163,680	-1,472
	IV	-225	205	-20	-90	300	210	-802	1,079	276	-135,300	135,268	-32
2003	I	-381	63	-318	-385	345	-40	-1,345	1,179	-166	-109,800	106,300	-3,501
	II	-296	155	-140	-212	353	142	-5,013	5,136	123	-140,416	137,752	-2,664
	III	-208	167	-41	-318	337	20	-4,682	5,772	1,090	-146,813	146,831	18
2001	S	-18	156	138	-65	116	51	-253	575	321	-22,628	20,683	-1,945
	O	-299	217	-83	-27	61	34	-463	734	271	-26,749	29,181	2,432
	N	-18	55	37	-41	43	2	-842	510	-332	-46,141	47,248	1,107
	D	-147	104	-44	-31	61	30	-1,133	914	-219	-38,381	35,143	-3,238
2002	J	-93	61	-32	-53	102	50	-615	934	319	-36,686	37,794	1,108
	F	-18	50	33	-44	51	7	-379	329	-50	-30,273	26,408	-3,865
	M	-68	68	0	-30	38	8	-143	340	197	-32,635	32,950	315
	A	-210	112	-98	-143	96	-47	-256	297	41	-41,088	39,329	-1,759
	M	-27	20	-7	-104	199	95	-328	993	665	-45,491	45,432	-59
	J	-12	4	-8	-54	441	387	-474	728	253	-41,292	40,812	-480
	J	-5	80	75	-30	58	28	-463	1,101	638	-70,282	69,773	-508
	A	-36	24	-13	-41	26	-15	-113	306	193	-53,788	54,582	795
	S	-35	36	1	-112	131	19	-193	306	113	-41,082	39,324	-1,758
	O	-97	37	-60	-34	131	97	-332	330	-1	-50,098	52,925	2,827
	N	-119	62	-57	-11	98	87	-141	341	200	-51,988	48,724	-3,264
	D	-10	106	97	-45	71	26	-330	407	77	-33,213	33,618	405
2003	J	-239	12	-227	-118	231	113	-162	183	21	-32,913	32,275	-639
	F	-41	30	-11	-170	56	-114	-455	427	-28	-35,805	34,226	-1,579
	M	-101	22	-80	-97	58	-39	-728	568	-160	-41,082	39,799	-1,283
	A	-121	28	-94	-51	61	10	-1,117	1,059	-59	-41,629	39,963	-1,666
	M	-57	59	1	-52	87	35	-1,831	2,507	676	-44,154	43,781	-373
	J	-117	69	-48	-109	205	96	-2,064	1,571	-494	-54,633	54,008	-625
	J	-88	58	-31	-199	208	9	-1,712	1,563	-149	-51,579	49,203	-2,375
	A	-84	25	-59	-50	66	16	-1,496	2,606	1,109	-50,350	50,011	-339
	S	-36	84	48	-69	64	-5	-1,474	1,604	130	-44,884	47,617	2,732

Table 12
Portfolio Transactions with Non-residents in Foreign Stocks, by Geographical Area, Purchases and Sales

Period	United States			United Kingdom			Other EU Countries		
	Purchases	Sales	Net	Purchases	Sales	Net	Purchases	Sales	Net
V No. A	115196	115197	115195	115199	115200	115198	115202	115203	115201
Q	115345	115346	115344	115348	115349	115347	115351	115352	115350
M	115494	115495	115493	115497	115498	115496	115500	115501	115499
millions of dollars									
1990	-21,759	20,240	-1,519	-1,467	939	-528	-966	877	-89
1991	-31,222	23,397	-7,824	-2,531	1,678	-853	-1,003	898	-105
1992	-33,796	26,488	-7,308	-3,378	1,541	-1,837	-1,198	1,086	-111
1993	-47,291	41,370	-5,921	-2,639	1,491	-1,149	-2,245	1,306	-939
1994	-54,206	51,444	-2,761	-2,992	2,184	-808	-2,224	1,601	-623
1995	-63,184	60,033	-3,151	-3,637	3,656	20	-4,447	3,701	-746
1996	-71,550	61,787	-9,763	-4,379	2,931	-1,447	-4,912	3,414	-1,498
1997	-130,658	126,474	-4,184	-5,535	4,430	-1,105	-5,998	5,337	-661
1998	-126,354	113,442	-12,913	-5,744	5,420	-324	-9,814	10,610	796
1999	-197,973	176,579	-21,394	-14,327	14,378	51	-11,956	12,751	795
2000	-257,713	220,083	-37,630	-41,136	35,474	-5,661	-35,487	17,253	-18,234
2001	-223,791	200,215	-23,575	-86,707	80,295	-6,412	-16,117	14,066	-2,052
2002	-336,855	312,482	-24,373	-269,904	267,943	-1,961	-20,081	19,725	-356
2001 III	-51,118	48,229	-2,889	-18,059	17,757	-302	-3,174	3,181	7
IV	-66,855	63,206	-3,649	-40,626	39,602	-1,024	-3,544	2,490	-1,054
2002 I	-83,614	74,308	-9,306	-40,279	41,725	1,445	-4,366	4,046	-320
II	-81,540	77,175	-4,365	-81,575	79,136	-2,438	-7,730	7,698	-32
III	-85,347	78,476	-6,870	-70,724	71,074	350	-2,915	3,245	331
IV	-86,354	82,523	-3,832	-77,327	76,009	-1,318	-5,071	4,736	-335
2003 I	-73,940	72,897	-1,043	-62,516	64,917	2,400	-3,677	3,128	-549
II	-59,791	59,189	-602	-68,209	66,986	-1,223	-6,651	6,004	-647
III	-47,432	48,582	1,150	-72,424	70,019	-2,404	-3,842	3,569	-272
2001 S	-20,898	19,089	-1,809	-8,127	8,081	-45	-1,326	1,549	223
O	-20,548	21,012	464	-9,489	8,833	-656	-991	844	-147
N	-22,315	22,285	-30	-15,613	15,560	-53	-1,443	755	-688
D	-23,992	19,909	-4,083	-15,525	15,209	-315	-1,110	891	-219
2002 J	-24,776	25,667	891	-5,116	4,396	-720	-1,301	1,387	86
F	-29,115	22,991	-6,124	-16,412	17,450	1,038	-1,201	1,084	-117
M	-29,723	25,649	-4,074	-18,751	19,878	1,127	-1,864	1,576	-288
A	-25,525	23,561	-1,964	-13,318	13,813	495	-2,951	2,477	-475
M	-28,143	28,317	173	-45,974	44,266	-1,708	-2,961	2,831	-131
J	-27,872	25,298	-2,574	-22,283	21,058	-1,225	-1,817	2,391	573
A	-29,950	27,545	-2,405	-14,841	14,626	-215	-966	1,490	523
J	-28,189	25,100	-3,089	-32,391	32,708	318	-768	773	5
S	-27,209	25,832	-1,377	-23,492	23,739	247	-1,180	983	-197
O	-31,353	31,182	-171	-21,648	21,548	-100	-2,064	1,747	-317
N	-28,506	25,751	-2,755	-23,471	22,678	-793	-1,573	1,153	-419
D	-26,495	25,590	-905	-32,207	31,783	-424	-1,434	1,836	402
2003 J	-23,521	23,580	59	-27,696	28,578	882	-1,262	1,004	-257
F	-22,381	22,113	-268	-17,969	17,926	-43	-1,137	902	-235
M	-28,038	27,204	-834	-16,851	18,413	1,561	-1,278	1,222	-56
A	-25,007	25,594	587	-15,903	16,350	447	-3,165	1,967	-1,197
M	-19,220	17,348	-1,872	-22,889	21,677	-1,212	-2,183	2,529	345
J	-15,564	16,247	683	-29,417	28,959	-458	-1,303	1,508	206
J	-15,234	17,450	2,216	-24,772	21,418	-3,354	-1,149	900	-249
A	-17,115	16,721	-394	-21,587	21,429	-158	-1,308	1,086	-223
S	-15,083	14,411	-672	-26,065	27,173	1,108	-1,384	1,583	200

Table 12
Portfolio Transactions with Non-residents in Foreign Stocks, by Geographical Area, Purchases and Sales -
Concluded

Period	Japan			Other OECD Countries			All Other Countries			Total		
	Purchases	Sales	Net	Purchases	Sales	Net	Purchases	Sales	Net	Purchases	Sales	Net
V No. A	115205	115206	115204	115208	115209	115207	115211	115212	115210	113136	113137	113135
Q	115354	115355	115353	115357	115358	115356	115360	115361	115359	113308	113309	113307
M	115503	115504	115502	115506	115507	115505	115509	115510	115508	113450	113451	113449
millions of dollars												
1990	-517	553	37	-1,528	1,319	-208	-1,246	1,032	-214	-27,482	24,961	-2,521
1991	-1,244	715	-529	-663	530	-133	-2,724	2,166	-559	-39,388	29,384	-10,004
1992	-725	521	-204	-598	448	-150	-2,784	2,047	-737	-42,478	32,130	-10,348
1993	-1,873	726	-1,147	-824	627	-197	-7,206	3,748	-3,458	-62,079	49,268	-12,811
1994	-3,223	1,531	-1,693	-1,058	865	-194	-7,838	4,554	-3,284	-71,541	62,179	-9,362
1995	-3,062	1,874	-1,188	-2,029	1,048	-981	-6,355	6,155	-200	-82,714	76,468	-6,247
1996	-2,447	1,678	-768	-1,757	1,576	-181	-13,478	9,889	-3,588	-98,522	81,275	-17,247
1997	-4,394	4,870	476	-2,228	2,218	-10	-13,371	13,647	276	-162,184	156,977	-5,207
1998	-3,817	2,206	-1,612	-2,787	3,086	299	-15,349	13,669	-1,680	-163,865	148,433	-15,433
1999	-5,277	5,560	283	-4,242	4,274	32	-26,706	26,316	-390	-260,481	239,858	-20,623
2000	-4,973	7,097	2,124	-6,532	6,532	-1	-20,200	19,732	-468	-366,040	306,171	-59,870
2001	-5,221	4,166	-1,055	-5,644	4,529	-1,115	-13,801	12,356	-1,444	-351,281	315,628	-35,653
2002	-4,714	5,189	475	-5,674	4,552	-1,122	-28,077	36,708	8,631	-665,305	646,598	-18,707
2001 III	-899	1,039	141	-1,167	903	-264	-2,457	2,248	-209	-76,874	73,356	-3,518
IV	-899	1,143	244	-1,097	891	-207	-3,458	3,643	186	-116,479	110,974	-5,505
2002 I	-1,318	1,082	-236	-1,610	1,092	-518	-5,762	5,704	-58	-136,949	127,956	-8,993
II	-1,131	1,095	-36	-1,427	1,361	-66	-8,427	10,798	2,371	-181,829	177,262	-4,567
III	-678	1,118	441	-1,002	736	-265	-5,613	9,378	3,764	-166,278	164,028	-2,250
IV	-1,588	1,894	306	-1,635	1,363	-272	-8,274	10,828	2,554	-180,249	177,352	-2,897
2003 I	-853	1,097	245	-1,217	1,255	38	-8,271	9,338	1,067	-150,474	152,633	2,159
II	-817	825	8	-2,509	1,168	-1,341	-6,400	9,658	3,258	-144,377	143,831	-546
III	-1,989	1,472	-517	-1,982	1,571	-411	-9,297	9,144	-153	-136,966	134,359	-2,607
2001 S	-403	397	-6	-435	289	-146	-925	818	-108	-32,115	30,223	-1,891
O	-252	374	122	-387	272	-115	-1,036	1,511	475	-32,703	32,845	142
N	-341	395	54	-408	301	-107	-1,398	1,273	-125	-41,518	40,570	-949
D	-305	373	68	-302	317	16	-1,024	860	-165	-42,257	37,559	-4,698
2002 J	-533	264	-269	-473	300	-173	-1,805	1,489	-316	-34,004	33,504	-500
F	-475	530	56	-554	376	-178	-2,253	1,912	-341	-50,010	44,344	-5,667
M	-310	287	-23	-583	416	-167	-1,704	2,303	599	-52,934	50,109	-2,826
A	-339	260	-79	-383	343	-40	-2,747	2,591	-156	-45,263	43,045	-2,218
M	-419	322	-96	-628	476	-152	-3,300	4,666	1,366	-81,424	80,876	-548
J	-373	512	139	-417	542	125	-2,381	3,541	1,160	-55,143	53,341	-1,802
J	-182	590	409	-444	393	-51	-1,282	2,671	1,389	-47,664	47,315	-350
A	-316	294	-21	-271	177	-94	-2,597	4,263	1,666	-64,531	63,315	-1,216
S	-180	234	53	-287	166	-120	-1,735	2,443	709	-54,082	53,397	-685
O	-486	551	65	-659	420	-239	-2,065	2,807	741	-58,276	58,254	-22
N	-575	773	198	-514	289	-224	-3,592	4,659	1,067	-58,231	55,303	-2,928
D	-527	570	43	-462	653	192	-2,617	3,363	746	-63,742	63,795	52
2003 J	-328	304	-24	-448	376	-72	-2,236	1,905	-331	-55,490	55,747	257
F	-183	253	69	-350	406	57	-3,463	3,802	339	-45,484	45,403	-82
M	-342	541	199	-420	473	54	-2,571	3,631	1,060	-49,500	51,483	1,983
A	-269	291	22	-330	301	-29	-2,511	3,238	728	-47,184	47,741	558
M	-306	313	7	-659	306	-353	-2,227	4,329	2,101	-47,485	46,502	-984
J	-242	221	-21	-1,520	561	-959	-1,662	2,091	429	-49,707	49,588	-120
J	-390	361	-30	-503	438	-65	-2,636	3,018	382	-44,686	43,586	-1,100
A	-681	440	-240	-661	578	-83	-3,862	3,276	-586	-45,214	43,530	-1,684
S	-918	672	-247	-818	555	-263	-2,798	2,850	51	-47,067	47,244	177

Supplementary Tables

Table 13
Loans under Repurchase Agreements, Transactions with Non-residents, by Canadian and Foreign Securities

Period	Canadian Securities								
	Assets			Liabilities			Total		
	Sales	Purchases	Net	Sales	Purchases	Net	Sales	Purchases	Net
	millions of dollars								
1995	1,049,198	-1,049,106	91	518,819	-520,392	-1,574	1,568,016	-1,569,499	-1,482
1996	1,156,654	-1,158,039	-1,385	639,384	-637,107	2,276	1,796,038	-1,795,146	891
1997	1,939,429	-1,952,179	-12,750	1,209,742	-1,204,877	4,865	3,149,171	-3,157,056	-7,885
1998	1,763,140	-1,746,743	16,397	1,248,719	-1,250,578	-1,859	3,011,859	-2,997,321	14,538
1999	1,264,495	-1,260,766	3,729	611,068	-611,198	-130	1,875,563	-1,871,963	3,599
2000	1,069,882	-1,070,113	-231	522,128	-520,156	1,972	1,592,010	-1,590,268	1,742
2001	676,252	-676,945	-694	655,136	-656,700	-1,564	1,331,388	-1,333,645	-2,257
2002	526,098	-529,875	-3,777	873,344	-867,807	5,537	1,399,442	-1,397,682	1,760
2001 III	124,717	-124,904	-187	173,932	-174,311	-379	298,649	-299,216	-566
IV	144,710	-146,418	-1,708	161,190	-161,671	-481	305,900	-308,088	-2,189
2002 I	115,054	-118,623	-3,568	186,067	-183,194	2,873	301,121	-301,817	-695
II	109,563	-106,584	2,979	213,957	-217,048	-3,091	323,520	-323,632	-112
III	148,954	-150,839	-1,884	237,829	-233,989	3,839	386,783	-384,828	1,955
IV	152,527	-153,830	-1,303	235,491	-233,575	1,916	388,018	-387,405	613
2003 I	198,401	-201,145	-2,744	277,500	-276,053	1,447	475,901	-477,198	-1,297
II	166,459	-163,550	2,908	287,705	-290,392	-2,687	454,164	-453,943	221
III	178,689	-180,611	-1,922	293,411	-293,691	-280	472,100	-474,302	-2,202
2001 S	37,562	-40,123	-2,561	52,271	-48,546	3,724	89,833	-88,670	1,163
O	48,405	-50,804	-2,400	49,694	-50,579	-885	98,099	-101,383	-3,284
N	55,694	-52,926	2,768	54,154	-55,777	-1,622	109,849	-108,703	1,146
D	40,611	-42,687	-2,076	57,342	-55,315	2,027	97,952	-98,002	-50
2002 J	38,786	-39,991	-1,206	57,450	-56,744	705	96,235	-96,736	-500
F	31,767	-30,416	1,351	65,125	-65,804	-679	96,892	-96,221	672
M	44,502	-48,215	-3,714	63,492	-60,646	2,847	107,994	-108,861	-867
A	35,371	-30,568	4,804	76,369	-79,001	-2,631	111,741	-109,568	2,173
M	32,730	-31,453	1,277	69,209	-71,498	-2,289	101,938	-102,950	-1,012
J	41,462	-44,564	-3,102	68,379	-66,550	1,829	109,841	-111,114	-1,273
J	48,295	-46,892	1,402	79,656	-79,375	281	127,951	-126,267	1,684
A	44,898	-44,767	132	71,883	-69,882	2,001	116,781	-114,648	2,133
S	55,761	-59,179	-3,418	86,289	-84,733	1,556	142,051	-143,912	-1,862
O	67,430	-66,815	615	87,943	-88,087	-144	155,373	-154,901	472
N	46,289	-43,949	2,339	65,203	-69,844	-4,641	111,491	-113,793	-2,302
D	38,808	-43,066	-4,258	82,346	-75,645	6,701	121,154	-118,711	2,443
2003 J	55,050	-55,837	-787	86,733	-87,342	-608	141,783	-143,178	-1,395
F	59,781	-58,542	1,240	83,221	-84,607	-1,386	143,002	-143,148	-146
M	83,570	-86,766	-3,196	107,546	-104,105	3,441	191,116	-190,871	244
A	63,530	-60,028	3,502	90,599	-94,058	-3,458	154,129	-154,086	44
M	56,354	-51,059	5,295	81,703	-86,189	-4,486	138,057	-137,248	809
J	46,575	-52,463	-5,888	115,403	-110,146	5,257	161,978	-162,609	-631
J	72,700	-74,456	-1,756	106,499	-102,112	4,387	179,199	-176,568	2,631
A	48,694	-46,677	2,016	89,250	-90,487	-1,237	137,944	-137,164	780
S	57,296	-59,478	-2,182	97,661	-101,092	-3,431	154,957	-160,570	-5,612

Table 13
Loans under Repurchase Agreements, Transactions with Non-residents, by Canadian and Foreign Securities
 - Concluded

Period	Foreign Securities								
	Assets			Liabilities			Total		
	Sales	Purchases	Net	Sales	Purchases	Net	Sales	Purchases	Net
	millions of dollars								
1995	52,457	-53,294	-837	24,868	-25,059	-192	77,325	-78,353	-1,028
1996	288,577	-287,744	833	94,759	-92,948	1,811	383,336	-380,692	2,644
1997	138,829	-139,923	-1,094	79,890	-81,283	-1,392	218,720	-221,206	-2,486
1998	89,541	-89,619	-79	81,845	-82,178	-333	171,386	-171,797	-411
1999	138,123	-138,016	107	104,832	-104,544	288	242,955	-242,561	394
2000	158,151	-158,302	-152	106,230	-105,657	573	264,381	-263,960	421
2001	143,503	-144,093	-590	154,178	-155,954	-1,776	297,681	-300,047	-2,366
2002	258,124	-260,154	-2,030	273,748	-274,612	-865	531,872	-534,766	-2,894
2001 III	30,813	-30,583	230	13,592	-13,908	-316	44,405	-44,491	-86
IV	57,031	-57,677	-646	57,342	-57,916	-575	114,372	-115,593	-1,221
2002 I	49,999	-50,871	-871	42,931	-43,824	-893	92,930	-94,694	-1,764
II	53,777	-53,093	684	77,771	-76,769	1,002	131,548	-129,861	1,687
III	74,409	-75,917	-1,507	93,757	-94,779	-1,022	168,166	-170,695	-2,529
IV	79,939	-80,274	-336	59,289	-59,241	48	139,227	-139,515	-288
2003 I	71,331	-71,673	-342	75,057	-73,689	1,367	146,388	-145,362	1,025
II	88,500	-87,114	1,386	88,954	-89,382	-427	177,454	-176,495	959
III	56,665	-56,018	647	79,699	-79,441	258	136,364	-135,459	905
2001 S	5,828	-5,734	94	4,260	-4,297	-37	10,088	-10,031	57
O	15,252	-15,345	-92	22,215	-21,998	216	37,467	-37,343	124
N	17,704	-18,695	-991	18,801	-19,822	-1,022	36,505	-38,517	-2,013
D	24,074	-23,637	437	16,326	-16,095	231	40,400	-39,732	668
2002 J	18,172	-19,587	-1,414	11,185	-12,319	-1,134	29,358	-31,905	-2,548
F	17,236	-17,560	-324	14,823	-14,526	297	32,059	-32,086	-27
M	14,591	-13,724	867	16,923	-16,979	-56	31,514	-30,703	811
A	14,388	-14,589	-201	22,327	-22,198	129	36,715	-36,787	-72
M	15,488	-15,458	29	21,101	-21,124	-23	36,589	-36,582	7
J	23,901	-23,045	856	34,343	-33,447	896	58,244	-56,492	1,752
J	31,566	-31,858	-292	45,152	-44,665	487	76,718	-76,522	196
A	23,311	-22,757	554	28,360	-29,196	-836	51,671	-51,954	-283
S	19,533	-21,302	-1,769	20,244	-20,918	-673	39,777	-42,219	-2,442
O	28,139	-28,913	-774	15,883	-16,262	-379	44,022	-45,175	-1,153
N	24,120	-24,101	19	23,690	-23,320	370	47,810	-47,421	389
D	27,680	-27,260	419	19,716	-19,659	57	47,396	-46,920	476
2003 J	19,415	-19,595	-180	18,462	-18,018	444	37,877	-37,613	264
F	26,037	-26,446	-408	28,355	-28,243	112	54,392	-54,689	-297
M	25,879	-25,633	246	28,240	-27,428	812	54,118	-53,060	1,058
A	28,841	-27,895	946	29,708	-29,945	-237	58,550	-57,840	709
M	31,161	-31,161	0	33,266	-33,361	-95	64,427	-64,522	-95
J	28,498	-28,058	440	25,980	-26,075	-95	54,478	-54,133	345
J	22,376	-22,452	-76	37,991	-38,748	-757	60,367	-61,200	-833
A	15,209	-14,094	1,115	25,599	-24,686	913	40,809	-38,780	2,029
S	19,080	-19,472	-393	16,109	-16,007	102	35,188	-35,479	-291

Table 14
Loans under Repurchase Agreements, Transactions with Non-residents in Assets and Liabilities

Period	Government of Canada						Other Canadian Securities			Foreign Securities			Total			
	Bonds			Treasury Bills			Purchases	Sales	Net	Purchases	Sales	Net	Purchases	Sales	Net	
V No.	A	113104	113103	113102	113107	113106										113105
Q	113276	113275	113274	113279	113278	113277	113282	113281	113280	113285	113284	113283	113287	113286	113273	
M	113475	113474	113473	113478	113477	113476	113481	113480	113479	113484	113483	113482	113486	113485	113472	
Assets																
millions of dollars																
1995		-983,387	982,496	-891	-58,891	59,772	881	-6,829	6,930	101	-53,294	52,457	-837	-1,102,400	1,101,655	-746
1996		-1,079,203	1,077,382	-1,821	-65,538	65,932	394	-13,299	13,340	42	-287,744	288,577	833	-1,445,784	1,445,231	-552
1997		-1,726,139	1,714,998	-11,141	-194,417	193,942	-474	-31,624	30,489	-1,135	-139,923	138,829	-1,094	-2,092,102	2,078,258	-13,844
1998		-1,665,277	1,680,951	15,674	-61,564	63,290	1,726	-19,902	18,899	-1,003	-89,619	89,541	-79	-1,836,362	1,852,681	16,319
1999		-1,148,452	1,153,431	4,980	-73,300	73,875	574	-39,014	37,189	-1,825	-138,016	138,123	107	-1,398,782	1,402,618	3,836
2000		-1,019,010	1,019,383	373	-21,813	21,714	-98	-29,290	28,785	-506	-158,302	158,151	-152	-1,228,415	1,228,033	-382
2001		-638,372	639,489	1,117	-12,741	11,360	-1,381	-25,833	25,403	-430	-144,093	143,503	-590	-821,039	819,755	-1,284
2002		-469,256	464,010	-5,245	-24,634	25,778	1,144	-35,985	36,310	325	-260,154	258,124	-2,030	-790,029	784,223	-5,807
2001	III	-116,958	116,870	-88	-1,038	495	-543	-6,908	7,352	444	-30,583	30,813	230	-155,488	155,530	43
	IV	-125,011	124,469	-542	-11,144	10,209	-935	-10,263	10,031	-231	-57,677	57,031	-646	-204,094	201,740	-2,354
2002	I	-104,251	99,491	-4,760	-6,773	7,555	781	-7,598	8,009	410	-50,871	49,999	-871	-169,493	165,053	-4,440
	II	-93,255	96,914	3,659	-7,122	6,412	-710	-6,207	6,237	30	-53,093	53,777	684	-159,677	163,340	3,663
	III	-137,083	135,407	-1,676	-4,094	5,110	1,016	-9,661	8,438	-1,224	-75,917	74,409	-1,507	-226,755	223,364	-3,391
	IV	-134,667	132,199	-2,468	-6,645	6,701	56	-12,518	13,626	1,108	-80,274	79,939	-336	-234,104	232,465	-1,639
2003	I	-184,457	181,972	-2,485	-4,368	4,338	-30	-12,320	12,091	-229	-71,673	71,331	-342	-272,818	269,732	-3,086
	II	-150,725	154,900	4,175	-5,365	5,444	79	-7,460	6,115	-1,346	-87,114	88,500	1,386	-250,664	254,959	4,294
	III	-161,465	159,285	-2,180	-6,802	6,516	-286	-12,344	12,888	545	-56,018	56,665	647	-236,629	235,354	-1,275
2001	S	-37,184	34,662	-2,522	-406	180	-226	-2,533	2,720	187	-5,734	5,828	94	-45,857	43,390	-2,467
	O	-45,773	43,581	-2,192	-1,304	1,276	-29	-3,727	3,548	-179	-15,345	15,252	-92	-66,149	63,657	-2,492
	N	-44,410	47,373	2,963	-5,064	4,755	-309	-3,452	3,566	114	-18,695	17,704	-991	-71,621	73,399	1,777
	D	-34,828	33,515	-1,313	-4,775	4,178	-597	-3,084	2,917	-166	-23,637	24,074	437	-66,324	64,685	-1,640
2002	J	-31,467	29,331	-2,135	-5,888	6,497	609	-2,636	2,957	321	-19,587	18,172	-1,414	-59,578	56,958	-2,620
	F	-27,830	28,923	1,093	-80	444	364	-2,506	2,400	-106	-17,560	17,236	-324	-47,976	49,003	1,027
	M	-44,954	41,237	-3,718	-805	613	-192	-2,456	2,652	196	-13,724	14,591	867	-61,939	59,092	-2,847
	A	-25,249	30,382	5,133	-2,272	2,073	-200	-3,046	2,917	-130	-14,589	14,388	-201	-45,157	49,759	4,603
	M	-26,905	28,261	1,357	-3,081	2,936	-146	-1,467	1,533	66	-15,458	15,488	29	-46,911	48,217	1,306
	J	-41,101	38,270	-2,831	-1,768	1,404	-364	-1,695	1,788	93	-23,045	23,901	856	-67,609	65,364	-2,245
	J	-43,277	43,588	311	-1,541	2,522	981	-2,075	2,185	110	-31,858	31,566	-292	-78,750	79,860	1,110
	A	-40,732	40,474	-258	-1,240	1,375	135	-2,795	3,049	254	-22,757	23,311	554	-67,524	68,209	685
	S	-53,075	51,345	-1,730	-1,314	1,213	-100	-4,791	3,203	-1,588	-21,302	19,533	-1,769	-80,481	75,294	-5,187
	O	-57,078	57,227	149	-2,897	2,670	-227	-6,840	7,533	693	-28,913	28,139	-774	-95,728	95,569	-159
	N	-38,900	41,453	2,553	-1,919	1,470	-449	-3,130	3,365	235	-24,101	24,120	19	-68,050	70,409	2,358
	D	-38,688	33,518	-5,170	-1,829	2,561	732	-2,548	2,728	180	-27,260	27,680	419	-70,326	66,488	-3,839
2003	J	-48,837	48,514	-322	-1,085	614	-470	-5,915	5,921	6	-19,595	19,415	-180	-75,431	74,465	-967
	F	-55,301	56,537	1,236	-296	491	195	-2,944	2,753	-192	-26,446	26,037	-408	-84,987	85,819	832
	M	-80,319	76,920	-3,399	-2,987	3,232	245	-3,460	3,417	-43	-25,633	25,879	246	-112,399	109,448	-2,951
	A	-55,464	58,758	3,294	-2,548	2,443	-105	-2,016	2,328	312	-27,895	28,841	946	-87,923	92,371	4,448
	M	-47,245	52,251	5,007	-2,527	2,736	209	-1,287	1,366	79	-31,161	31,161	0	-82,219	87,515	5,295
	J	-48,017	43,890	-4,126	-290	264	-26	-4,157	2,421	-1,736	-28,058	28,498	440	-80,522	75,073	-5,449
	J	-66,165	63,758	-2,407	-2,312	2,404	92	-5,979	6,537	558	-22,452	22,376	-76	-96,908	95,076	-1,832
	A	-42,393	44,615	2,223	-2,897	2,651	-246	-1,388	1,428	40	-14,094	15,209	1,115	-60,771	63,903	3,132
	S	-52,907	50,912	-1,996	-1,594	1,461	-133	-4,977	4,924	-53	-19,472	19,080	-393	-78,950	76,376	-2,575

Table 15
Portfolio Investment in Canadian Bonds, by Sector, Period-end Positions held by Non-residents

End of period	All Governments and their enterprises								Corporations	Total	
	Federal Government			Provincial Governments			Municipal Governments	Total			
	Direct	Enterprises	Total	Direct	Enterprises	Total					
V No. A	236511	236512	236510	236514	236515	236513	236516	..	236517	236509	
V No. M	21241183	21241182	21241181	21241186	21241185	21241184	21241187	..	21241188	21241180	
millions of dollars											
1990	56,454	9,753	66,207	40,980	26,997	67,977	4,647	138,831	49,305	188,135	
1991	64,159	9,508	73,667	53,712	32,308	86,020	4,695	164,382	51,173	215,555	
1992	68,659	9,695	78,354	69,573	33,603	103,176	4,999	186,529	57,647	244,176	
1993	77,491	11,320	88,810	89,972	35,730	125,703	5,396	219,909	64,231	284,140	
1994	75,698	12,995	88,693	109,748	41,396	151,143	6,030	245,867	71,004	316,871	
1995	87,588	11,092	98,680	115,119	39,763	154,882	6,291	259,853	81,845	341,698	
1996	95,885	11,249	107,133	116,781	37,745	154,526	6,238	267,897	89,954	357,852	
1997	92,761	11,933	104,694	114,266	35,527	149,793	5,962	260,449	107,450	367,898	
1998	89,126	13,498	102,624	125,074	37,597	162,671	6,112	271,406	134,366	405,772	
1999	91,131	15,017	106,148	112,496	30,973	143,469	5,434	255,051	134,341	389,392	
2000	81,198	14,059	95,257	105,003	29,906	134,909	4,995	235,162	136,684	371,846	
2001	74,717	16,453	91,170	108,371	27,583	135,954	4,606	231,731	189,621	421,351	
2002	79,336	28,315	107,651	112,018	24,628	136,646	3,731	248,027	195,649	443,676	
2001	S	77,229	16,052	93,281	108,323	28,540	136,863	4,368	234,512	166,314	400,827
	O	78,510	16,506	95,016	108,300	28,643	136,943	4,447	236,406	179,407	415,813
	N	78,529	15,850	94,379	108,121	27,429	135,550	4,580	234,509	185,561	420,070
	D	74,717	16,453	91,170	108,371	27,583	135,954	4,606	231,731	189,621	421,351
2002	J	72,627	17,080	89,707	107,034	27,089	134,123	4,472	228,303	190,920	419,223
	F	73,792	19,862	93,654	107,881	26,671	134,552	4,493	232,699	192,883	425,582
	M	74,036	20,419	94,455	107,047	26,526	133,573	4,447	232,475	195,416	427,891
	A	74,188	18,972	93,160	106,180	25,999	132,179	4,481	229,820	195,323	425,144
	M	73,839	18,147	91,986	106,360	24,780	131,140	4,147	227,273	192,277	419,549
	J	72,493	22,109	94,602	104,422	24,017	128,439	4,200	227,241	192,876	420,117
	J	74,073	22,884	96,957	107,050	24,535	131,585	4,153	232,695	200,587	433,282
	A	77,025	23,705	100,731	105,773	24,198	129,971	4,163	234,865	196,050	430,915
	S	75,056	26,272	101,327	107,849	24,626	132,475	4,199	238,002	201,274	439,275
	O	80,185	26,565	106,749	107,129	24,119	131,248	3,741	241,738	195,603	437,341
	N	82,297	25,848	108,145	108,974	24,287	133,262	3,784	245,191	195,505	440,696
	D	79,336	28,315	107,651	112,018	24,628	136,646	3,731	248,027	195,649	443,676
2003	J	79,804	27,525	107,329	104,974	23,770	128,744	3,713	239,786	192,346	432,132
	F	82,375	28,108	110,483	105,098	22,408	127,506	3,836	241,824	187,639	429,463
	M	82,391	30,506	112,897	105,772	22,107	127,880	3,581	244,358	189,547	433,905
	A	83,990	30,094	114,083	107,035	21,392	128,426	3,598	246,108	185,483	431,590
	M	85,456	28,658	114,114	105,761	20,712	126,472	3,442	244,028	179,513	423,541
	J	77,673	33,559	111,231	103,618	20,408	124,026	3,449	238,707	178,288	416,995
	J	72,125	34,778	106,903	106,502	20,699	127,200	3,354	237,458	186,877	424,335
	A	65,722	33,765	99,487	104,696	20,110	124,806	3,338	227,631	184,795	412,426
	S	61,689	35,589	97,278	104,268	19,706	123,974	3,222	224,475	183,310	407,785

Table 16
Portfolio Investment in Canadian Bonds, by Geographical Area, Period-end Positions held by Non-residents

End of period	United States	United Kingdom	Other EU Countries	Japan	Other OECD Countries	Other Countries	Total
V No. A	235438	235460	235504	235526	235548	235570	235413
V No. M	21241195	21241194	21241193	21241192	21241191	21241190	21241189
millions of dollars							
1990	58,452	14,558	28,234	44,063	32,286	10,542	188,135
1991	68,088	21,502	33,165	45,047	33,290	14,462	215,555
1992	89,664	19,247	35,444	50,269	32,797	16,755	244,176
1993	115,927	26,371	41,315	47,906	33,811	18,810	284,140
1994	132,430	27,449	49,104	45,455	37,192	25,241	316,871
1995	146,504	33,598	50,012	44,464	38,454	28,667	341,698
1996	165,812	35,118	49,211	46,160	33,558	27,993	357,852
1997	179,873	34,888	48,051	45,366	30,564	29,156	367,898
1998	195,133	37,705	59,655	45,021	34,194	34,063	405,772
1999	194,794	37,024	54,559	41,313	31,141	30,561	389,392
2000	195,126	38,424	48,569	35,907	26,794	27,026	371,846
2001	244,466	44,082	51,872	34,163	23,823	22,946	421,351
2002	260,759	51,052	54,090	31,946	23,118	22,710	443,676
2001							
S	223,890	41,641	51,043	36,627	24,472	23,155	400,827
O	235,964	44,342	51,830	35,873	24,268	23,537	415,813
N	241,181	44,133	52,137	35,017	24,082	23,520	420,070
D	244,466	44,082	51,872	34,163	23,823	22,946	421,351
2002							
J	245,586	44,509	50,146	32,918	23,160	22,903	419,223
F	249,242	45,913	50,622	33,051	23,453	23,301	425,582
M	252,376	44,816	51,299	33,040	23,341	23,019	427,891
A	251,668	43,902	51,261	32,474	23,243	22,596	425,144
M	245,885	45,340	51,377	32,131	22,517	22,299	419,549
J	245,884	47,226	52,140	30,714	22,308	21,845	420,117
J	256,108	48,584	52,554	30,851	22,762	22,422	433,282
A	252,221	49,772	53,167	30,618	22,508	22,630	430,915
S	259,752	49,632	53,955	30,777	22,699	22,461	439,275
O	256,096	50,868	53,884	31,607	22,344	22,542	437,341
N	258,459	52,542	52,742	31,564	22,533	22,855	440,696
D	260,759	51,052	54,090	31,946	23,118	22,710	443,676
2003							
J	251,854	53,151	52,275	30,195	21,712	22,944	432,132
F	251,950	54,326	50,000	29,289	21,405	22,492	429,463
M	251,309	57,326	51,834	29,115	21,551	22,769	433,905
A	247,968	58,088	51,986	29,551	21,360	22,637	431,590
M	241,749	54,841	52,093	31,294	21,104	22,459	423,541
J	235,733	53,428	52,624	31,551	21,018	22,641	416,995
J	240,452	55,743	51,707	32,342	20,942	23,148	424,335
A	233,471	53,100	50,275	33,145	19,497	22,937	412,426
S	226,918	53,436	52,423	32,155	19,364	23,490	407,785

Table 17
Portfolio Investment in Canadian Money Market Instruments, by Sector, Period-end Positions held by Non-residents

End of period	All Governments and their enterprises						Total	Corporations	Total	
	Federal Government			Provincial Governments						
	Direct	Enterprises	Total	Direct	Enterprises	Total				
V No. A	235620	235621	235619	235623	235624	235622	..	235625	235618	
V No. M	21241199	21241198	21241197	21241202	21241201	21241200	..	21241203	21241196	
millions of dollars										
1990	17,491	2,991	20,483	2,291	304	2,595	23,078	3,324	26,402	
1991	19,781	5,898	25,680	2,988	327	3,315	28,995	1,540	30,534	
1992	21,700	6,105	27,805	4,678	429	5,107	32,912	3,192	36,104	
1993	32,792	5,716	38,508	4,908	576	5,483	43,991	1,910	45,901	
1994	35,843	5,309	41,152	3,924	634	4,558	45,710	1,819	47,529	
1995	30,706	5,171	35,877	4,421	773	5,194	41,072	3,041	44,113	
1996	24,277	5,241	29,518	3,520	725	4,245	33,762	4,371	38,134	
1997	21,744	7,082	28,827	1,904	1,865	3,768	32,595	7,906	40,501	
1998	19,298	8,972	28,270	3,427	1,420	4,847	33,117	8,152	41,269	
1999	12,721	7,110	19,831	3,496	310	3,806	23,637	4,038	27,675	
2000	11,587	6,610	18,197	4,545	0	4,545	22,743	5,219	27,961	
2001	7,439	6,782	14,222	3,586	24	3,610	17,831	3,632	21,464	
2002	9,419	7,198	16,617	3,446	15	3,461	20,078	5,111	25,189	
2001	S	6,030	6,726	12,756	3,090	12	3,102	15,858	3,611	19,470
	O	6,582	7,018	13,600	2,934	5	2,939	16,539	4,060	20,599
	N	6,084	6,471	12,556	2,916	21	2,937	15,493	3,451	18,943
	D	7,439	6,782	14,222	3,586	24	3,610	17,831	3,632	21,464
2002	J	6,982	7,267	14,249	3,482	29	3,511	17,760	4,030	21,789
	F	6,813	7,602	14,415	3,863	20	3,883	18,298	3,242	21,540
	M	7,270	8,246	15,516	3,557	15	3,572	19,088	3,683	22,771
	A	6,996	8,127	15,123	4,013	14	4,027	19,150	3,436	22,587
	M	7,479	7,605	15,083	4,290	4	4,294	19,378	3,137	22,515
	J	8,159	7,146	15,305	4,036	81	4,117	19,423	3,457	22,880
	J	8,527	6,981	15,508	3,847	83	3,930	19,438	3,851	23,289
	A	8,205	6,367	14,572	3,657	92	3,749	18,322	3,653	21,974
	S	8,029	5,899	13,928	3,371	86	3,457	17,386	3,908	21,294
	O	8,038	5,868	13,906	3,412	97	3,509	17,415	4,233	21,647
	N	8,594	6,784	15,377	3,422	85	3,507	18,885	5,015	23,900
	D	9,419	7,198	16,617	3,446	15	3,461	20,078	5,111	25,189
2003	J	9,392	8,087	17,478	3,748	48	3,796	21,274	5,056	26,330
	F	8,696	8,049	16,745	3,271	236	3,507	20,253	5,020	25,272
	M	8,997	7,347	16,343	2,887	232	3,119	19,463	5,055	24,517
	A	10,078	7,006	17,084	2,665	234	2,899	19,982	5,053	25,035
	M	9,851	6,531	16,382	2,599	228	2,827	19,209	4,748	23,958
	J	10,342	6,527	16,870	2,211	216	2,427	19,297	4,221	23,518
	J	10,200	6,999	17,199	1,841	170	2,011	19,210	3,942	23,152
	A	10,111	6,600	16,711	1,556	37	1,593	18,304	4,149	22,453
	S	10,521	5,757	16,278	1,485	35	1,521	17,799	3,343	21,142

Table 18
Portfolio Investment in Canadian Money Market Instruments, by Geographical Area, Period-end Positions held by Non-residents

End of period	United States	United Kingdom	Other EU Countries	Japan	Other OECD Countries	Other Countries	Total	
V No. A	235441	235463	235507	235529	235551	235573	235416	
v No. M	21241210	21241209	21241208	21241207	21241206	21241205	21241204	
millions of dollars								
1990	10,286	1,586	2,242	900	3,977	7,411	26,402	
1991	11,090	4,617	1,675	2,068	4,055	7,031	30,534	
1992	18,789	4,420	1,661	733	2,684	7,817	36,104	
1993	21,515	5,773	2,558	361	4,132	11,561	45,901	
1994	19,398	8,525	2,040	217	5,885	11,465	47,529	
1995	18,240	9,778	1,819	10	4,101	10,165	44,113	
1996	20,680	4,819	1,922	651	2,495	7,567	38,134	
1997	24,149	4,072	3,628	124	3,414	5,115	40,501	
1998	22,993	5,781	3,462	8	3,904	5,120	41,269	
1999	15,934	4,765	2,302	43	1,991	2,640	27,675	
2000	17,097	3,220	1,544	198	1,771	4,131	27,961	
2001	13,581	2,785	1,198	23	915	2,961	21,464	
2002	14,444	3,869	1,269	32	1,701	3,874	25,189	
2001	S	11,723	2,706	1,070	123	1,008	2,840	19,470
	O	12,114	2,962	1,240	121	1,200	2,963	20,599
	N	11,574	2,343	1,135	119	1,027	2,745	18,943
	D	13,581	2,785	1,198	23	915	2,961	21,464
2002	J	13,681	3,057	1,180	29	874	2,970	21,789
	F	13,525	3,573	903	22	632	2,886	21,540
	M	13,019	4,310	1,268	24	1,157	2,993	22,771
	A	12,927	3,748	1,244	35	1,532	3,102	22,587
	M	12,315	3,527	1,503	42	1,708	3,419	22,515
	J	13,503	3,536	1,130	43	1,234	3,433	22,880
	J	13,778	3,770	1,059	36	1,118	3,528	23,289
	A	12,940	3,274	891	37	1,015	3,817	21,974
	S	12,467	3,544	784	38	877	3,583	21,294
	O	12,047	3,601	1,084	37	1,317	3,560	21,647
	N	13,422	3,781	1,200	37	1,589	3,870	23,900
	D	14,444	3,869	1,269	32	1,701	3,874	25,189
2003	J	16,010	3,712	1,431	21	1,580	3,576	26,330
	F	14,614	3,658	1,418	23	1,641	3,918	25,272
	M	14,070	3,557	1,517	25	1,578	3,771	24,517
	A	14,404	3,782	1,506	49	1,464	3,829	25,035
	M	14,049	3,370	1,226	39	1,419	3,854	23,958
	J	13,118	3,653	1,227	32	1,542	3,945	23,518
	J	13,337	3,440	1,228	26	1,363	3,758	23,152
	A	12,787	3,455	1,210	33	1,410	3,559	22,453
	S	11,523	3,508	1,017	29	1,323	3,742	21,142

Table 19
Selected Stock Prices and Capital Market Yields

Period		Stocks prices		Selected capital market yields		
		Canada	United States	Long-term		
		Toronto Stock Exchange S&P/TSX Composite Index 1975 = 1,000	Standard and Poor's Composite 500 1941 - 43 = 10	Canadian industrials average ⁽¹⁾	Government of Canada ⁽²⁾	United States government ⁽³⁾
1999	S	6,957.7	1,282.7	6.54	5.77	5.97
	O	7,256.2	1,362.9	6.99	6.26	6.19
	N	7,523.2	1,388.9	6.81	6.02	6.09
	D	8,413.8	1,469.3	6.96	6.18	6.40
2000	J	8,481.1	1,394.5	7.14	6.44	6.69
	F	9,129.0	1,366.4	6.99	6.19	6.44
	M	9,462.4	1,498.6	6.84	6.03	6.18
	A	9,347.6	1,452.4	6.73	6.10	6.14
	M	9,252.0	1,420.6	7.05	6.00	6.29
	J	10,195.5	1,454.6	6.95	5.93	6.11
	J	10,406.3	1,430.8	6.87	5.85	6.04
	A	11,247.9	1,517.7	6.78	5.77	5.81
	S	10,377.9	1,436.5	6.72	5.75	5.83
	O	9,639.6	1,429.4	6.76	5.72	5.67
	N	8,819.9	1,315.0	6.70	5.54	5.55
	D	8,933.7	1,320.3	6.58	5.35	5.11
2001	J	9,321.9	1,366.0	6.46	5.39	5.19
	F	8,078.7	1,239.9	6.38	5.36	4.92
	M	7,608.0	1,160.3	6.37	5.41	4.97
	A	7,946.3	1,249.5	6.52	5.66	5.28
	M	8,161.9	1,255.8	6.86	5.96	5.54
	J	7,736.4	1,224.4	6.59	5.73	5.26
	J	7,689.7	1,211.2	6.64	5.76	5.20
	A	7,399.2	1,133.6	6.24	5.36	4.78
	S	6,838.6	1,040.9	6.26	5.32	4.65
	O	6,885.7	1,059.8	5.81	4.86	4.30
	N	7,425.7	1,139.5	6.35	5.36	4.98
	D	7,688.4	1,148.1	6.27	5.44	5.22
2002	J	7,648.5	1,130.2	6.12	5.42	5.02
	F	7,637.5	1,106.7	6.01	5.31	4.84
	M	7,851.5	1,147.4	6.46	5.79	5.35
	A	7,663.4	1,076.9	6.21	5.64	5.11
	M	7,656.1	1,067.1	6.13	5.49	5.11
	J	7,145.6	989.8	6.08	5.37	4.75
	J	6,605.4	911.6	6.18	5.23	4.51
	A	6,612.0	916.1	6.05	5.14	4.22
	S	6,180.4	815.3	5.87	4.92	3.77
	O	6,248.8	885.8	6.10	5.16	3.99
	N	6,570.4	936.3	5.96	5.18	4.26
	D	6,614.5	879.8	5.60	4.88	3.95
2003	J	6,569.5	855.7	5.76	5.02	4.06
	F	6,555.1	841.2	5.68	4.93	3.78
	M	6,343.3	848.2	5.96	5.13	3.96
	A	6,586.1	916.9	5.61	4.90	3.89
	M	6,859.8	963.6	5.21	4.50	3.44
	J	6,983.1	974.5	5.05	4.37	3.38
	J	7,257.9	990.3	5.36	4.78	4.34
	A	7,510.3	1,008.0	5.49	4.96	4.54
	S	7,421.1	1,006.6	5.13	4.64	4.16

(1) Last business day. Weighted mid-term bond index based on forty bonds covering a 5 to 15 year spectrum. Scotia Capital Inc.

(2) Mid-market closing prices for last Wednesday of direct issues due or callable in 10 years.

(3) Daily average for last week of issues due or callable in 10 years. United States Federal Reserve Bulletin.

Source: Bank of Canada, except as indicated.

Table 19
Selected Stock Prices and Capital Market Yields - Concluded

		Selected capital market yields					Forward premium (+) or discount (-) United-States dollar in Canada 3 month ⁽⁸⁾
		Short-term					
		Finance company paper 3 month	Commercial paper 3 month	Treasury bills 3 month			
Period		Canadian ⁽⁴⁾	United States ⁽⁵⁾	Canadian ⁽⁶⁾	United States ⁽⁷⁾	Eurodollars ⁽⁸⁾	
1999	S	4.83	5.36	4.66	4.65	5.99	-0.77
	O	5.05	5.98	4.87	4.96	6.15	-0.99
	N	5.05	5.85	4.73	5.12	6.15	-1.02
	D	5.27	5.76	4.85	5.17	6.08	-0.89
2000	J	5.25	5.89	5.05	5.41	6.15	-0.31
	F	5.31	5.95	4.96	5.62	6.21	-0.83
	M	5.46	6.18	5.27	5.71	6.65	-0.89
	A	5.62	6.26	5.43	5.62	6.46	-0.82
	M	5.98	6.72	5.67	5.73	6.97	-0.89
	J	5.89	6.67	5.53	5.67	6.88	-0.93
	J	5.88	6.59	5.61	6.01	6.81	-0.89
	A	5.90	6.57	5.58	6.11	6.75	-0.85
	S	5.83	6.55	5.56	6.03	6.75	-0.84
	O	5.85	6.60	5.61	6.18	6.81	-0.91
	N	5.89	6.57	5.62	6.18	6.81	-0.87
	D	5.71	6.31	5.49	5.66	6.50	-0.72
2001	J	5.29	5.32	5.11	5.11	5.45	-0.11
	F	5.05	4.94	4.87	4.87	5.13	-0.05
	M	4.66	4.74	4.58	4.22	4.97	-0.21
	A	4.49	4.24	4.43	3.72	4.37	0.18
	M	4.49	3.94	4.34	3.58	4.02	0.52
	J	4.38	3.68	4.30	3.47	3.74	0.70
	J	4.22	3.61	4.07	3.48	3.74	0.55
	A	3.96	3.39	3.80	3.33	3.58	0.50
	S	3.19	2.52	3.05	2.34	2.98	0.64
	O	2.45	2.12	2.34	2.13	2.44	0.33
	N	2.17	2.00	2.07	1.84	2.38	0.20
	D	2.08	1.89	1.95	1.70	2.22	0.20
2002	J	2.07	1.76	1.96	1.65	2.15	0.23
	F	2.16	1.82	2.05	1.73	2.22	0.25
	M	2.36	1.94	2.30	1.79	2.28	0.41
	A	2.46	1.77	2.37	1.72	2.44	0.62
	M	2.68	1.77	2.60	1.73	2.09	0.85
	J	2.78	1.75	2.70	1.70	2.06	1.01
	J	2.88	1.82	2.81	1.68	2.06	1.10
	A	3.09	1.73	2.96	1.62	2.06	1.27
	S	2.90	1.74	2.83	1.63	2.03	1.21
	O	2.83	1.63	2.73	1.58	2.00	1.24
	N	2.85	1.35	2.71	1.23	1.74	1.44
	D	2.83	1.33	2.63	1.19	1.74	1.47
2003	J	2.91	1.25	2.83	1.17	1.68	1.60
	F	2.97	1.25	2.88	1.17	1.68	1.68
	M	3.28	1.20	3.14	1.13	1.65	2.07
	A	3.35	1.23	3.19	1.13	1.65	2.18
	M	3.27	1.20	3.16	1.07	1.65	2.11
	J	3.11	0.89	3.07	0.92	1.39	2.20
	J	2.89	1.06	2.81	0.90	1.49	1.91
	A	2.80	1.02	2.71	0.95	1.39	1.79
	S	2.64	1.04	2.58	0.94	1.39	1.71

(4) Last Wednesday.

(5) Last Wednesday. Adjusted to 365-day true yield basis from 360-day basis.

(6) Average of rates of Thursday tender following the last Wednesday.

(7) Average of rates of the last full week of the month ending Friday.

(8) Expressed as annual yield. Last Wednesday.

Source: Bank of Canada, except as indicated.

FOR FURTHER READING**Selected Publications from Statistics Canada**

	<u>Catalogue</u>	<u>Internet</u>
Canada's Balance of International Payments, <i>Quarterly, Bilingual</i>	67-001-XPB	67-001-XIB
Canada's International Transactions in Securities, <i>Monthly, English and French</i>	print on demand	67-002-XIE 67-002-XIF
Canada's International Investment Position, <i>Quarterly, English</i>		67-202-XIE 67-202-XIF
Canada's International Trade in Services, <i>Annual, Bilingual</i>		67-203-XIB
Canadian Economic Accounts Quarterly Review, <i>Quarterly, English</i>		13-010-XIE 13-010-XIF
Canada's Balance of International Payments and International Investment Position Concepts, Sources, Methods and Products <i>Occasional, English</i> New edition, July 2000	67-506-XPE 67-506-XPB	67-506-XIE 67-506-XIF
Canada's Balance of International Payments, Historical Statistics 1926 to 1990 ⁽¹⁾, <i>Occasional, Bilingual</i>	67-508-XPB	
Canadian Economic Observer, <i>Monthly, Bilingual</i>	11-010-XPB	

(1) Starting with 1992, the first quarter editions of 67-001-XPB contain the update to the data published in 67-508-XPB.

To order a publication you may telephone 1-613-951-7277 or use facsimile number 1-613-951-1584.
For toll free in Canada only, telephone 1-800-267-6677. When ordering by telephone or facsimile, a written confirmation is not required.

List of Published Research Papers

	<u>Published</u>	<u>Catalogue</u>
1. <i>Non-corporate Foreign Investment in Canadian Real Estate, 1977-1980 (Teresa M. Omiecinski)</i>	1983	67F0001MPB97001
2. <i>Foreign Investment in the Canadian Bond Market, 1978 to 1990 (Lucie Laliberté)</i>	1990	67F0001MPB97002
3. <i>Characteristics of Canadian Importing Firms, 1978-1986 (Barry Mersereau)</i>	1992	67F0001MPB97003
4. <i>The Statistical Discrepancy in Canada's Balance of Payments, 1962-1991 (Fred Barzyk and Lucie Laliberté)</i>	1992	67F0001MPB97004
5. <i>Canada's Public Debt Held by Non-Residents: Historical Perspectives, 1926-1992 (Lucie Laliberté, Christian Lajule and Diane Thibault)</i>	1993	67F0001MPB97005
6. <i>Globalisation and Canada's International Investment Position, 1950-1992, (Lucie Laliberté)</i>	1993	67F0001MPB97006
7. <i>The Foreign Investment of Canadian Trusteed Pension Funds, 1970-1992 (Jean-Pierre Corbeil and Thomas Dufour)</i>	1993	67F0001MPB97007
8. <i>Recent Trends in Canadian Direct Investment Abroad - The Rise of Canadian Multinationals, 1969-1992 (Frank Chow)</i>	1993	67F0001MPB97008
9. <i>Direct Investment Profits - in Canada and Abroad, 1983-1993 (Diane Thibault and Emmanuel Manolikakis)</i>	1994	67F0001MPB97009
10. <i>Development of the Balance of Payments nomenclature (Gerard Meagher)</i>	1996	67F0001MPB97010
11. <i>Reconciliation of the Canada-United States Current Account, 1994 and 1995 (Lucie Laliberté and Anthony J. DiLullo)</i>	1996	67F0001MPB97011
12. <i>Measurement of Foreign Portfolio Investment in Canadian Bonds (Lucie Laliberté and Réjean Tremblay)</i>	1996	67F0001MPB97012
13. <i>Implementation in Canada of the International Standards for Service Trade - On With the Fifth (Hugh Henderson)</i>	1996	67F0001MPB97013
14. <i>Repo transactions between residents of Canada and non-residents, 1991-1995 (Éric Boulay)</i>	1997	67F0001MPB97014
15. <i>Canada's International Legal Services, 1995-1996 (Colleen Cardillo)</i>	1997	67F0001MPB97015

	<u>Published</u>	<u>Catalogue</u>
16. <i>Canada's International Management Consulting, 1990-1996 (Willa Rea)</i>	1997	67F0001MPB97016
17. <i>Canada's Implementation of BPM-5, 1997</i>	1997	67F0001MPB97017
18. <i>Reconciliation of the Canada-United States Current Account, 1997 and 1998 (Anthony J. DiLullo and Hugh Henderson)</i>	1999	67F0001MPB99018
19. <i>Issues in Provincializing Foreign Direct Investment (Rosemary Bender)</i>	1999	67F0001MPB99019
20. <i>Foreign Direct Investment: A Driving Force in Economic Globalization (Christian Lajule)</i>	2000	67F0001MPB00020
21. <i>Foreign Affiliate Trade Statistics - Measuring Economic Globalization A Canadian Perspective - from Research to Reality (Colleen Cardillo)</i>	2000	67F0001MPB01021

Economic Analysis Research Paper Series

004 <i>Foreign Affiliate Trade Statistics - 1999 How Goods and Services are Delivered in International Markets (Colleen Cardillo)</i>	2002	004
013 <i>Foreign Affiliate Trade Statistics - Canadian Operations Abroad, 1999 to 2001 (Michael Marth)</i>	2003	013

How to Order Research Papers

By phone: (613) 951-1855
By fax: (613) 951-9031
By Mail: Statistics Canada
 Balance of Payments Division
 Ottawa, Ontario
 K1A 0T6

You can order our Research Papers for a fee of \$5.00 per copy.

These papers are posted on our Web site at: <http://www.statcan.ca/english/services>



Retain for future reference

Balance of Payments Division List of Publications

Canada's Balance of International Payments

(the First quarter 1997 issue provides comprehensive historical coverage from 1926 to 1996) - presents Canada's economic transactions with non-residents under two main accounts: the current account which covers goods, services, investment income and current transfers; and the capital and finance account which covers capital transfers as well as both borrowings from and investments in foreign countries. The transactions are presented quarterly and annually with six broad geographical areas.

67-001-XPB
67-001-XIB

Canada's International Transactions in Securities

presents Canada's portfolio transactions in Canadian and foreign bonds and stocks and in Canadian money market securities with non-residents. New issues, retirements and trade in outstanding securities are covered as well as repurchase agreements. Monthly gross and net transactions are presented geographically according to six broad geographical areas.

67-002-XIE
67-002-XIF

Canada's International Investment Position

(the 1996 issue provides comprehensive historical data from 1926 to 1996) - presents Canada's asset position with and liability position to non-residents, including a detailed breakdown by claims (direct investment by country, portfolio, etc.) and by six broad geographical areas. The data include the foreign holding of Canada's public debt.

67-202-XIE
67-202-XIF

Canada's International Trade in Services

presents Canada's annual service transactions with non-residents. Travel, transportation, commercial services and government services which are presented by three broad geographical areas: United States, European Union and other countries. Commercial services are further categorized by industry; country of control (Canada, United States, Other); whether the service is with foreign affiliated companies or non-affiliates; and with a detailed country breakdown for commercial services.

67-203-XIB

How to Order

By phone: (613) 951-7277 or 1 800 267-6677
By fax: (613) 951-1584 or 1 800-889-9734
By Internet: order@statcan.ca
By Mail: Statistics Canada
Operations and Integration Division
Circulation Management
Ottawa, Ontario
K1A 0T6

Catalogue no.	Frequency	By issue (all prices in Canadian dollars)				Annual Subscription/ (all prices in Canadian dollars)			
		Canada	United States	Other countries	Internet	Canada	United States	Other countries	Internet
67-001-XPB	Quarterly	\$41.00	\$44.00	\$48.00	\$32.00	\$133.00	\$157.00	\$173.00	\$100.00
67-002-XIE	Monthly				\$15.00				\$142.00
67-002 Print on demand	Monthly	\$41.00	\$47.00	\$51.00					
67-202-XIE	Quarterly				\$23.00				\$51.00
67-203-XIB	Annual				\$30.00				