



Catalogue no. 67-002-XIE

Canada's International Transactions in Securities

November 2002



Statistics
Canada

Statistique
Canada

Canada

How to obtain more information

Specific inquiries about this product and related statistics or services should be directed to: Balance of Payments Division, Statistics Canada, Ottawa, Ontario, K1A 0T6 (telephone: (613) 951-1855).

For information on the wide range of data available from Statistics Canada, you can contact us by calling one of our toll-free numbers. You can also contact us by e-mail or by visiting our Web site.

National inquiries line	1 800 263-1136
National telecommunications device for the hearing impaired	1 800 363-7629
Depository Services Program inquiries	1 800 700-1033
Fax line for Depository Services Program	1 800 889-9734
E-mail inquiries	infostats@statcan.ca
Web site	www.statcan.ca

Ordering and subscription information

This product, Catalogue no. 67-002-XIE, is published monthly in electronic format on the Statistics Canada Internet site at a price of CDN \$14.00 per issue and CDN \$132.00 for a one-year subscription. To obtain single issues or to subscribe visit our Web site at www.statcan.ca, and select Products and Services.

This product is also available in print through a Print-on-Demand service, at a price of CDN \$29.00 per issue and CDN \$282.00 for a one-year subscription. The following additional shipping charges apply for delivery outside Canada:

	Single issue	Annual subscription
United States	CDN \$ 6.00	CDN \$ 72.00
Other countries	CDN \$ 10.00	CDN \$ 120.00

All prices exclude sales taxes.

The printed version can be ordered by

- Phone (Canada and United States) **1 800 267-6677**
- Fax (Canada and United States) **1 877 287-4369**
- E-mail **order@statcan.ca**
- Mail Statistics Canada
Dissemination Division
Circulation Management
120 Parkdale Avenue
Ottawa, Ontario K1A 0T6
- And, in person at the Statistics Canada Regional Centre nearest you.

When notifying us of a change in your address, please provide both old and new addresses.

Standards of service to the public

Statistics Canada is committed to serving its clients in a prompt, reliable and courteous manner and in the official language of their choice. To this end, the Agency has developed standards of service which its employees observe in serving its clients. To obtain a copy of these service standards, please contact Statistics Canada toll free at 1 800 263-1136.



Statistics Canada
Balance of Payments Division

System of National Accounts

Canada's International Transactions in Securities

November 2002

Published by authority of the Minister responsible for Statistics Canada

© Minister of Industry, 2003

All rights reserved. No part of this publication may be reproduced, stored in a retrieval system or transmitted in any form or by any means, electronic, mechanical, photocopying, recording or otherwise without prior written permission from Licence Services, Marketing Division, Statistics Canada, Ottawa, Ontario, Canada K1A 0T6.

January 2003

Catalogue no.67-002-XIE, Vol. 68, no. 11

Frequency: Monthly

ISSN 1488-4860

Ottawa

La version française de cette publication est disponible sur demande (n° 67-002-XIF au catalogue).

Note of appreciation

Canada owes the success of its statistical system to a long-standing partnership between Statistics Canada, the citizens of Canada, its businesses, governments and other institutions. Accurate and timely statistical information could not be produced without their continued cooperation and goodwill.

Symbol

The following standard symbols are used in this Statistics Canada publication:

.. not available for a specific reference period

Notes

Throughout this report:

- totals may not add due to rounding;
- a minus sign indicates the purchase of securities from non-residents, i.e. an outflow of capital from Canada;
- Other EU Countries include: Belgium, Denmark, France, Germany, Greece, Ireland, Italy, Luxembourg, the Netherlands, Portugal, Spain, and from January 1995, Austria, Finland and Sweden.
- Other OECD Countries include: Australia, Iceland, New Zealand, Norway, Switzerland, Turkey; from July 1994, Mexico; from December 1995, the Czech Republic; from May 1996, Hungary; from November 1996, Poland; from December 1996, Republic of Korea; from January 2001, the Slovak Republic; up to December 1994, Austria, Finland and Sweden.
- This publication was prepared by:

John Côté, Don Granger, Barry Mersereau, Carole Parent, Samdai Ramnanan, Robert Théberge, Catherine Boies, and Art Ridgeway.

The paper used in this publication meets the minimum requirements of American National Standard for Information Sciences - Permanence of Paper for Printed Library Materials, ANSI Z39.48 - 1984.



The System of National Accounts

In Canada, the National Accounts have been developed since the close of the Second World War in a series of publications relating to their constituent parts. These have now reached a stage of evolution where they can be termed a "System of National Accounts". For purposes of identification, all publications (containing tables of statistics, descriptions of conceptual frameworks and descriptions of sources and methods) which make up this System carry the term "System of National Accounts" as a general title.

The System of National Accounts in Canada consists of several parts. The annual and quarterly Income and Expenditure Accounts (included with Catalogue Nos. carrying the prefix 13) were, historically speaking, the first set of statistics to be referred to with the title "National Accounts" (National Accounts, Income and Expenditure). The Balance of International Payments data (Catalogue Nos. with prefix 67) are also part of the System of National Accounts and they, in fact, pre-date the Income and Expenditure Accounts.

Greatly expanded structural detail on industries and on goods and services is portrayed in the Input-Output Tables of the System (Catalogue Nos. with prefix 15). The Catalogue Nos. carrying the prefix 15 also provide measures of the contribution of each industry to total Gross Domestic Product at basic prices as well as Productivity Measures.

Both the Input-Output tables and the estimates of Gross Domestic Product by Industry use the establishment as the primary unit of industrial production. Measures of financial transactions are provided by the Financial Flow Accounts (Catalogue Nos. with prefix 13). Types of lenders and financial instruments are the primary detail in these statistics and the legal entity is the main unit of classification of transactors. Balance sheets of outstanding assets and liabilities are published annually.

The System of National Accounts provides an overall conceptually integrated framework in which the various parts can be considered as interrelated sub-systems. At present, direct comparisons amongst those parts which use the establishment as the basic unit and those which use the legal entity can be carried out only at highly aggregated levels of data. However, Statistics Canada is continuing research on enterprise company establishment relationships; it may eventually be feasible to reclassify the data which are on one basis (say the establishment basis) to correspond to the units employed on another (the company or the enterprise basis).

In its broad outline, the Canadian System of National Accounts bears a close relationship to the international standard as described in *System of National Accounts, 1993*, a joint publication of the Commission of the European Communities, International Monetary Fund, Organisation for Economic Co-operation and Development, United Nations and World Bank.

Table of Contents

	Page
November 2002 - Analysis	7
About the figures	6
Table	
Guide to Tables: Where to Locate Data by Table Number	10
CANSIM II Table Correspondence	10
Canadian and Foreign Securities	
1. Portfolio Transactions with Non-residents in Securities	11
Canadian Securities	
2. Portfolio Transactions with Non-residents in Canadian Bonds, by Sector and Type of Transaction	12
3. Portfolio Transactions with Non-residents in Canadian Bonds, by Geographical Area and Type of Transaction	20
4. Portfolio Transactions with Non-residents in Canadian Bonds, by Geographical Area	27
5. Portfolio Transactions with Non-residents in Canadian Bonds, by Type and Currency of Issue	28
6. Portfolio Transactions with Non-residents in Canadian Money Market Instruments, by Sector, Sales and Purchases	30
7. Portfolio Transactions with Non-residents in Canadian Money Market Instruments, by Geographical Area, Sales and Purchases	33
8. Portfolio Transactions with Non-residents in Canadian Stocks, by Geographical Area and Type of Transaction	35
9. Portfolio Transactions with Non-residents in Canadian Stocks, by Geographical Area	39
Foreign Securities	
10. Portfolio Transactions with Non-residents in Foreign Securities by Instrument and Sector, Purchases and Sales	40

Table of Contents - Concluded

	Page
Table	
11. Portfolio Transactions with Non-residents in Foreign Bonds, by Geographical Area, Purchases and Sales	41
12. Portfolio Transactions with Non-residents in Foreign Stocks, by Geographical Area, Purchases and Sales	43
Supplementary Tables	
13. Loans under Repurchase Agreements, Transactions with Non-residents by Canadian and Foreign Securities	46
14. Loans under Repurchase Agreements, Transactions with Non-residents in Assets and Liabilities	48
15. Portfolio Investment in Canadian Bonds, by Sector, Period-end Positions held by Non-residents	50
16. Portfolio Investment in Canadian Bonds, by Geographical Area, Period-end Positions held by Non-residents	51
17. Portfolio Investment in Canadian Money Market Instruments, by Sector, Period-end Positions held by Non-residents	52
18. Portfolio Investment in Canadian Money Market Instruments, by Geographical Area, Period-end Positions held by Non-residents	53
19. Selected Stock Prices and Capital Market Yields	54
For Further Reading	56
List of Published Research Papers	57

ABOUT THE FIGURES

The series on international security transactions cover portfolio transactions in stocks, bonds and Canadian money market securities between non-residents and residents of Canada. The series include trade in outstanding issues, new issues, retirements, and change in interest payable and are further segmented by issuing sector and major geographic area. The principle guiding their construction is that a change of ownership occurs between residents of a foreign country and Canada. These series form an integral part of Canada's balance of payments. Certain types of security transactions, which are excluded from this publication, are classified to other balance of payments series as follows:

- security transactions representing direct investment capital by principal owners of an enterprise, e.g. parent companies subscribing to new stocks;
- foreign securities held as part of Canada's official international reserves or by Canadian banks for their own account;
- foreign money market securities because their measurement is largely through foreign banking data whose level of detail precludes a separate specification.

Security transactions are recorded before charges for fees and commissions. The value used is the transaction price and the timing of a transaction's recording is generally the delivery or settlement date.

The quality of foreign portfolio investment data in Canadian stocks, bonds and money market paper is good. The flows are reported on a monthly survey sent to the major investment dealers, pension funds, and the largest debt issuing institutions such as the provinces and their enterprises. Historically, the response rate has been well over 90%. A considerable effort is made to identify the various sectors and institutions which issue securities to non-residents; the data may, at times, be revised when new transactors are identified or information becomes available through annual surveys. The coverage is validated against administrative data and the annual census survey of foreign holdings of Canadian portfolio investments.

The quality of estimates of Canadian investment in foreign stocks and bonds is not as good as it is difficult to identify all Canadian residents making portfolio investments abroad. A considerable effort is made to identify the various Canadian institutions which invest in foreign securities and survey them on a monthly basis however individuals in the personal sector using foreign investment firms are harder to identify thereby weakening the estimates. The quality of the data has improved significantly with a series of annual surveys on Canadian portfolio investment abroad that began at year-end 1997. The inaugural survey was carried out as part of an international effort to improve data on external portfolio investment. Fully 35 countries participated in the portfolio survey, co-ordinated by the International Monetary Fund.

For transactions in outstanding securities, the data are largely derived from a monthly survey of investment dealers and of other financial institutions such as mutual funds, pension funds and trust companies which regularly buy or sell securities directly through dealers or brokers outside Canada. The data for new issues and retirements are obtained from survey and non-survey sources such as prospectuses, summaries prepared by dealers and other institutions, press reports, etc.

For a fuller description of the sources and methods employed in the construction of these series, please refer to the publication *Canada's Balance of International Payments and International Investment Position - Concepts, Sources, Methods and Products* (Catalogue nos. 67-506-XPE or 67-506-XIE).

CANADA'S INTERNATIONAL TRANSACTIONS IN SECURITIES

November 2002

Foreign investors bought \$5.0 billion of Canadian securities in November, their largest investment in a year. They added to their holdings of both debt securities and equities. At the same time, Canadian investors bought heavily into both foreign bonds and stocks. The \$5.7 billion invested in foreign securities in November was the 2nd highest of 2002.

Foreign investors increased their holdings of bonds and money market paper

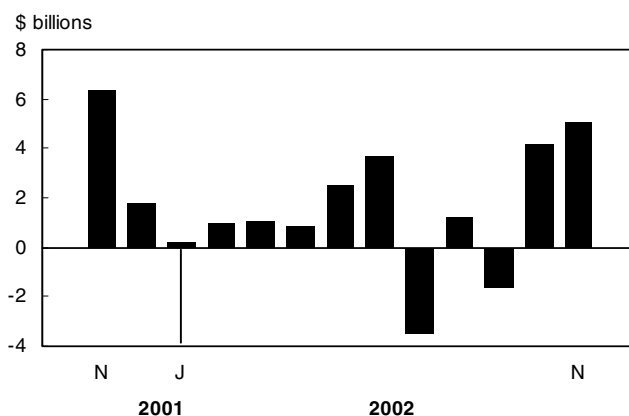
After making their largest year-to-date investment of \$4.3 billion in Canadian bonds in October, foreign investors added a further \$1.8 billion to their holdings in November. This brought the cumulative foreign investment in Canadian bonds for the first eleven months of this year to \$14.9 billion, well below the \$35.6 billion invested in the same eleven-month period of 2001.

The investment in Canadian bonds in November was again mainly in secondary market bonds issued by the Government of Canada; this has been the case so far through the second half of 2002. In the first half (January through June), foreign investment came via the primary market (new issues less retirements) as Canadian companies borrowed heavily in foreign markets. November's investment was spread between European (\$1.0 billion) and American (\$0.7 billion) investors, a change from October when the investment came from European and Asian investors with American investors being sellers for the first time in over a year.

In November, foreign investors made their largest and only second significant investment in 2002 in Canadian money market paper. November's \$2.2 billion investment was spread over paper issued by federal enterprises, federal treasury bills and corporate paper; geographically, it came from American, European and Asian investors. For 11 months of 2002, the \$2.5 billion foreign investment contrasted sharply with a divestment of almost \$10 billion for the same eleven-month period of 2001. Coincident with November's investment is a Canada-US short-term rate differential, which now stands at its highest point in favour of investing in Canada in recent years. In November, US

Chart 1

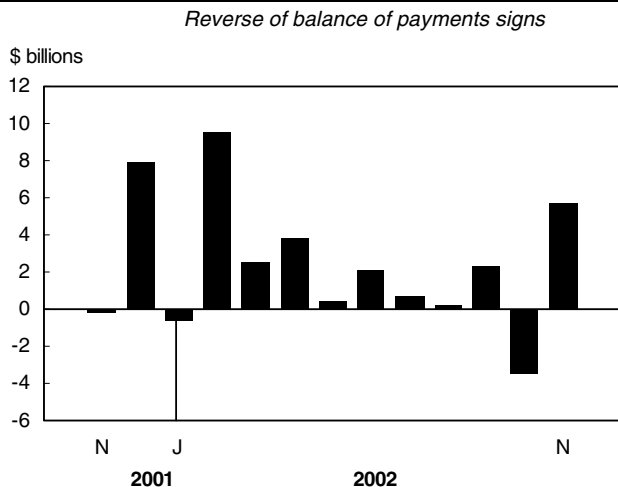
Foreign investment in Canadian securities¹



¹Includes bonds, stocks and money market paper.

Chart 2

Canadian investment in foreign securities¹



¹Includes bonds, and stocks.

short-term rates declined more than their Canadian counterparts, widening the gap to 148 basis points from 115 basis points in October.

Foreign investors halt their selling of Canadian stocks

Foreign investors increased their holdings of Canadian stocks by \$1.0 billion in November, ending two months of reductions totalling \$1.5 billion. In fact, after selling a large \$7.6 billion of secondary market shares over four months from July to October, foreign investors returned with a small \$0.5 billion investment in November. Added to November's investment was a similar \$0.5 billion investment in new corporate shares sold in foreign markets. Canadian stock prices recorded a 5.1% gain in November, the best monthly gain since November of 2001. This 322-point advance in the S&P/TSX composite index in November 2002 was a partial turnaround for stock prices that have declined 1,440 points in the first 10 months of 2002.

Canadian investors resume their investments in both foreign bonds and stocks

Canadian demand for foreign securities strengthened in November; the \$5.7 billion investment was the 2nd highest of 2002. After selling a near record \$2.8 billion of mainly US treasury bonds in October, Canadians invested heavily in US treasuries in November with purchases of \$3.3 billion. With the erratic investment pattern in foreign bonds, Canadian investors have accumulated \$6.6 billion over the first eleven months of 2002. This compares to a small divestment of \$1.4 billion over the same eleven-month period of 2001.

Canadian investors made their largest investment in foreign stocks in eight months with a \$2.4 billion investment in November. However, the cumulative investment in foreign equities in 2002 through November (\$16.5 billion) is just half that for the same eleven months of 2001. November's investment was directed over 90 percent to US equities where stock prices (Standard & Poor's composite 500 index) gained 5.7% in November added to the 8.6% rise in October.

Related market information**Interest rates**

In November, a larger decline in US short-term rates than those in Canada pushed the gap to 148 basis points from 115 basis points in October. Continuing to favour investment in Canada, US short-term rates fell to their lowest level in recent years at 1.23 percent compared to 2.71 percent for Canadian short-term rates.

On the long-term side, the differential favouring investment in Canada retreated to 92 basis points from 117 points in October, the high of recent years. This happened when Canadian rates rose by a small amount compared to a much larger 27 basis points jump in comparable American rates. In general, the gap favouring investment Canada has grown since late 2000.

Stock prices

Canadian stock prices recorded a 5.1% gain in November, the best monthly gain since November of 2001. This 322-point advance in the S&P/TSX composite index in November 2002 was a partial turnaround for stock prices that have declined 1,440 points in the first 10 months of 2002.

By comparison, American stock prices (Standard & Poor's composite 500 index) rose by 5.7% in November following the stronger 8.6% rise in October. This latest two-month recovery of 14.8% in American stock prices by far outpaces the 6.3% gain in Canadian prices over the same two-month period.

Canadian dollar

After posting a strong US1.20 cents gain against the US dollar in October, the Canadian dollar gave back a quarter of that gain in November closing at US63.90 cents. November's close drifted into the lower half of the range of monthly closes in 2002, reaching a high in June of US65.95 cents versus the low point in February of US62.42 cents.

Definitions

*The data series on international security transactions cover portfolio transactions in **stocks and bonds** (both Canadian and foreign issues) and Canadian **money market instruments (or paper)**.*

***Stocks** include common and preferred equities, as well as warrants.*

***Debt securities** include bonds and money market instruments.*

***Bonds** have an original term to maturity of more than one year.*

***Money market instruments** have an original term to maturity of one year or less. **Government of Canada paper** include treasury bills and US-dollar Canada bills. **Other money market instruments** include treasury bills and other paper issued by other Canadian governments or their enterprises, bankers' acceptances, bearer demand notes of banks, commercial paper and other short-term paper.*

GUIDE TO TABLES: Where to Locate Data by Table Number ¹

Transactions	Canadian securities			Foreign securities		Loans
	Bonds	Money market	Stocks	Bonds	Stocks	
	table numbers					
Total (Net)	1	1	1	1	1	
Sector	2	6		10	10	14
Geographic ²	3 4	7	8 9	11	12	
Currency	5					
Type ³	2 3 5		8			13
Sales/Purchases	2 3	6 7	8	10 11	10 12	13 14
Period-end Positions						
Sector	15	17				
Geographic ²	16	18				

¹ Tables 1-14 include monthly, quarterly and annual data; tables 15-18 include quarterly and annual data; and table 19 has monthly data only.

² Other EU Countries include: Belgium, Denmark, France, Germany, Greece, Ireland, Italy, Luxembourg, the Netherlands, Portugal, Spain, and from January 1995, Austria, Finland and Sweden.

Other OECD Countries include: Australia, Iceland, New Zealand, Norway, Switzerland, Turkey; from July 1994, Mexico; from December 1995, the Czech Republic; from May 1996, Hungary; from November 1996, Poland; from December 1996, Republic of Korea; from January 2001, the Slovak Republic; up to December 1994, Austria, Finland and Sweden.

³ Type consists of new issues, retirements, trade in outstanding, and change in interest payable.

Note: Table 19 shows selected stock market composite indexes and market yields.

CANSIM II Tables Correspondence

Table Number Cat. #67-002-XIE	Table Titles (CANSIM II)	CANSIM II Table Number		
		Annual	Quarterly	Monthly
1, 2, 5, 6, 10, 14	International transactions in securities, portfolio transactions and repo loans, net and gross sales and purchases, by type and sector	376-0018	376-0019	376-0020
3, 4	International transactions in securities, portfolio transactions with non-residents in Canadian bonds, by type	376-0021	376-0024	376-0027
7, 11, 12	International transactions in securities, portfolio transactions with non-residents in Canadian money market, foreign bonds, and foreign stocks, by type	376-0023	376-0026	376-0029
8, 9	International transactions in securities, portfolio transactions with non-residents in Canadian stocks, by type	376-0022	376-0025	376-0028
15, 17	International investment position, foreign portfolio investment in Canadian bonds and Canadian money market	376-0039		
15, 17	International investment position, foreign portfolio investment in Canada, by sector	376-0040		
16, 18	International investment position	376-0037		
15, 16, 17, 18	International investment position, foreign portfolio investment, Canadian bonds and Canadian money market, by sector		376-0042	

Table 1
Portfolio Transactions with Non-residents in Securities

Period	Canadian Securities				Foreign Securities ²		
	Bonds ¹	Stocks	Money Market	Total	Bonds	Stocks	Total
V No. A	113046	113075	113078	113045	113132	113135	113131
Q	113218	113247	113250	113217	113304	113307	113303
M	113390	113419	113422	113389	113446	113449	113445
millions of dollars							
1989	18,187	3,885	1,139	23,212	-1,602	-3,867	-5,470
1990	14,678	-1,735	5,642	18,584	-75	-2,521	-2,596
1991	28,063	-990	4,428	31,501	-1,661	-10,004	-11,665
1992	18,766	1,036	4,898	24,701	-1,401	-10,348	-11,749
1993	31,446	12,056	9,296	52,799	-5,071	-12,811	-17,881
1994	15,995	6,412	905	23,312	435	-9,362	-8,927
1995	30,730	-4,242	-1,254	25,233	-1,085	-6,247	-7,331
1996	17,953	8,034	-7,319	18,668	-2,070	-17,247	-19,317
1997	6,166	7,645	2,369	16,181	-6,642	-5,207	-11,849
1998	10,337	14,311	130	24,779	-7,064	-15,433	-22,497
1999	2,310	14,063	-13,118	3,255	-2,477	-20,590	-23,067
2000	-22,655	34,973	1,707	14,025	-3,958	-58,316	-62,274
2001	33,609	4,608	-7,349	30,868	-1,882	-35,836	-37,718
2000 III	-3,820	9,492	-2,756	2,916	-4,837	-9,499	-14,335
IV	-4,509	-8,010	3,083	-9,437	2,352	-20,250	-17,897
2001 I	6,843	6,406	-4,896	8,354	-1,039	-13,898	-14,937
II	7,352	852	-322	7,882	189	-12,452	-12,263
III	921	-3,540	-3,957	-6,576	-1,345	-4,129	-5,474
IV	18,493	890	1,826	21,209	313	-5,356	-5,043
2002 I	4,853	-3,961	1,305	2,198	-2,434	-8,945	-11,380
II	2,026	4,692	344	7,061	-2,289	-4,034	-6,324
III	2,032	-4,159	-1,791	-3,918	-1,458	-1,693	-3,151
2000 N	336	-1,579	-149	-1,392	2,860	-1,330	1,530
D	-4,367	-18,816	2,140	-21,042	103	-15,963	-15,860
2001 J	1,470	2,311	-710	3,071	-2,199	-6,654	-8,853
F	-129	2,702	-3,116	-544	2,434	-3,830	-1,396
M	5,502	1,393	-1,069	5,826	-1,273	-3,414	-4,688
A	5,458	-1,076	590	4,971	338	-4,014	-3,676
M	4,575	-2,625	769	2,720	-972	-6,453	-7,426
J	-2,681	4,554	-1,682	191	823	-1,985	-1,162
J	-218	-3,386	-1,512	-5,116	462	-910	-447
A	7,687	212	-1,088	6,811	135	-1,375	-1,240
S	-6,547	-366	-1,357	-8,270	-1,942	-1,844	-3,787
O	13,217	-1,353	1,235	13,099	2,436	190	2,626
N	7,259	823	-1,732	6,350	1,113	-900	213
D	-1,984	1,420	2,323	1,760	-3,236	-4,646	-7,882
2002 J	-61	-123	343	160	1,110	-488	623
F	1,503	-267	-282	953	-3,863	-5,645	-9,508
M	3,411	-3,571	1,244	1,085	318	-2,813	-2,494
A	1,224	-247	-103	874	-1,756	-2,035	-3,791
M	1,970	513	50	2,533	-57	-373	-430
J	-1,169	4,426	397	3,655	-476	-1,626	-2,102
J	-288	-3,460	223	-3,525	-506	-176	-682
A	2,219	253	-1,261	1,211	800	-1,018	-219
S	101	-952	-753	-1,604	-1,752	-498	-2,250
O	4,276	-549	436	4,162	2,825	628	3,454
N	1,757	1,016	2,246	5,019	-3,263	-2,443	-5,707

1 Inclusive of new issues, retirements, trade in outstanding and change in interest payable.

2 Transactions in foreign money market securities are not available.

Note: Throughout tables 1-14 a minus sign indicates the purchase of securities from non-residents, i.e. an outflow of capital from Canada.

Table 2
Portfolio Transactions with Non-residents in Canadian Bonds, by Sector and Type of Transaction

Period		Federal Government									Total
		New Issues and Retirements			Outstanding Issues			Interest			
		New Issues	Retirements	Total	Sales	Purchases	Total	Accrued	Paid	Change in interest payable	
V No.	A	113055	113062	113175	113088	113095	113048	113182	113189	113069	113196
	Q	113227	113234	113347	113260	113267	113220	113354	113361	113241	113368
	M	113399	113406	113519	113432	113439	113392	113526	113533	113413	113540
millions of dollars											
1989		0	-3,276	-3,276	82,621	-68,951	13,670	4,269	-4,184	85	10,479
1990		0	-4,755	-4,755	126,026	-113,731	12,296	5,174	-5,021	152	7,692
1991		0	-4,523	-4,523	169,630	-157,639	11,991	5,829	-5,705	123	7,592
1992		0	-5,134	-5,134	248,358	-239,869	8,488	6,166	-5,901	265	3,619
1993		0	-6,253	-6,253	367,574	-354,188	13,386	6,656	-6,369	287	7,420
1994		5,311	-3,855	1,456	509,724	-513,971	-4,246	6,336	-5,859	477	-2,314
1995		3,103	-4,079	-976	458,633	-445,295	13,338	6,322	-6,018	304	12,666
1996		4,807	-6,597	-1,790	651,568	-642,554	9,014	6,688	-6,497	191	7,414
1997		2,773	-7,086	-4,313	1,010,613	-1,011,942	-1,330	6,836	-6,726	110	-5,532
1998		12,470	-9,222	3,249	801,584	-811,655	-10,071	6,135	-5,823	312	-6,510
1999		4,494	-7,136	-2,642	516,376	-510,494	5,882	5,577	-5,810	-233	3,007
2000		0	-11,357	-11,357	350,351	-349,441	911	5,220	-5,444	-225	-10,671
2001		648	-11,402	-10,754	340,279	-337,209	3,070	4,662	-4,739	-76	-7,760
2000	III	0	-3,021	-3,021	80,478	-81,533	-1,055	1,283	-1,105	178	-3,897
	IV	0	-3,315	-3,315	76,548	-73,752	2,796	1,245	-1,763	-519	-1,038
2001	I	648	-716	-68	97,247	-95,554	1,693	1,208	-854	354	1,978
	II	0	-4,955	-4,955	92,895	-91,384	1,512	1,214	-1,355	-142	-3,585
	III	0	-4,328	-4,328	68,091	-67,607	484	1,149	-790	360	-3,484
	IV	0	-1,402	-1,402	82,046	-82,664	-618	1,091	-1,740	-648	-2,668
2002	I	0	-651	-651	72,239	-72,816	-577	1,086	-653	433	-795
	II	0	-1,165	-1,165	74,410	-75,001	-591	1,072	-1,255	-183	-1,939
	III	0	-3,327	-3,327	105,458	-101,716	3,742	1,092	-766	327	742
2000	N	0	0	0	23,028	-22,449	580	411	-384	26	606
	D	0	-3,243	-3,243	25,028	-23,626	1,402	413	-1,294	-880	-2,721
2001	J	0	-598	-598	34,300	-32,886	1,414	420	-4	416	1,232
	F	0	-21	-21	26,414	-28,861	-2,447	374	-143	232	-2,237
	M	648	-97	551	36,533	-33,807	2,726	413	-707	-293	2,984
	A	0	-107	-107	30,096	-27,599	2,497	408	-52	356	2,746
	M	0	-1,574	-1,574	34,590	-34,992	-402	424	38	462	-1,514
	J	0	-3,274	-3,274	28,210	-28,793	-583	382	-1,341	-960	-4,817
	J	0	0	0	20,183	-21,141	-958	391	-93	298	-660
	A	0	0	0	22,788	-20,353	2,435	395	16	411	2,846
	S	0	-4,328	-4,328	25,119	-26,113	-993	363	-712	-349	-5,671
	O	0	-78	-78	29,420	-28,596	824	373	-5	368	1,114
	N	0	0	0	32,886	-32,388	498	362	-341	21	518
	D	0	-1,324	-1,324	19,741	-21,680	-1,940	356	-1,394	-1,037	-4,301
2002	J	0	-476	-476	23,498	-25,296	-1,798	377	-74	303	-1,971
	F	0	-161	-161	19,337	-18,413	924	336	-219	117	880
	M	0	-14	-14	29,404	-29,107	297	373	-359	13	296
	A	0	-1,130	-1,130	23,683	-22,962	721	355	-134	221	-188
	M	0	0	0	26,391	-26,893	-502	365	0	365	-136
	J	0	-35	-35	24,336	-25,146	-810	351	-1,121	-769	-1,615
	J	0	-1,267	-1,267	32,339	-30,394	1,946	363	-328	35	713
	A	0	0	0	39,585	-36,590	2,995	374	-68	305	3,300
	S	0	-2,059	-2,059	33,534	-34,732	-1,198	356	-369	-14	-3,271
	O	0	0	0	35,977	-30,481	5,497	378	-47	331	5,828
	N	0	0	0	33,936	-31,755	2,181	381	-446	-66	2,116

Table 2
Portfolio Transactions with Non-residents in Canadian Bonds, by Sector and Type of Transaction - Continued

Federal Government Enterprises											
Period	New Issues and Retirements			Outstanding Issues			Interest			Total	
	New Issues	Retirements	Total	Sales	Purchases	Total	Accrued	Paid	Change in interest payable		
V No.	A	113056	113063	113176	113089	113096	113049	113183	113190	113070	113197
	Q	113228	113235	113348	113261	113268	113221	113355	113362	113242	113369
	M	113400	113407	113520	113433	113440	113393	113527	113534	113414	113541
millions of dollars											
1989		1,624	-1,330	294	745	-555	191	868	-866	3	488
1990		1,585	-1,720	-136	409	-505	-95	863	-841	22	-209
1991		1,941	-2,517	-576	725	-313	411	788	-829	-42	-206
1992		2,301	-2,914	-614	486	-315	170	836	-815	21	-422
1993		3,637	-2,331	1,305	275	-330	-55	820	-806	14	1,264
1994		3,046	-2,083	963	743	-670	73	853	-862	-9	1,027
1995		1,840	-561	1,278	781	-737	44	793	-776	17	1,339
1996		2,224	-1,946	278	686	-747	-62	715	-706	9	225
1997		2,711	-1,916	794	2,737	-2,826	-89	789	-751	39	744
1998		3,827	-3,467	360	1,967	-1,811	155	816	-791	25	541
1999		4,735	-3,548	1,186	2,620	-1,822	798	865	-860	5	1,989
2000		3,955	-5,141	-1,186	1,392	-1,235	156	864	-902	-38	-1,067
2001		4,635	-4,051	584	2,157	-1,343	814	786	-793	-8	1,390
2000	III	431	-841	-410	209	-288	-80	208	-106	101	-388
	IV	726	-761	-35	568	-445	124	209	-231	-23	66
2001	I	389	-463	-74	637	-309	329	197	-106	91	346
	II	2,130	-1,539	590	470	-284	187	191	-389	-198	580
	III	825	-805	20	366	-190	176	199	-88	111	306
	IV	1,291	-1,243	48	684	-561	123	198	-210	-12	158
2002	I	1,570	-78	1,492	1,881	-1,055	826	205	-112	93	2,411
	II	3,387	-2,902	485	2,336	-1,399	937	203	-381	-178	1,244
	III	1,487	-541	946	2,717	-1,764	953	243	-122	121	2,020
2000	N	626	-171	455	114	-102	12	69	-90	-21	445
	D	76	-571	-494	360	-230	130	70	-94	-24	-389
2001	J	21	-1	20	214	-137	78	68	-18	49	147
	F	0	-194	-194	97	-71	26	61	-50	11	-157
	M	368	-269	100	326	-101	226	69	-38	31	356
	A	460	-816	-356	52	-22	30	65	-134	-69	-395
	M	0	-553	-553	56	-165	-109	64	-177	-113	-776
	J	1,670	-170	1,500	363	-97	266	63	-78	-16	1,750
	J	248	-63	186	113	-91	22	68	-24	44	251
	A	338	-195	143	114	-49	65	67	-33	34	242
	S	239	-548	-309	140	-50	89	64	-31	33	-187
	O	500	-68	432	105	-166	-61	67	-38	29	400
	N	352	-1,043	-691	262	-193	69	65	-94	-29	-651
	D	439	-133	306	316	-202	114	66	-78	-12	409
2002	J	137	-33	104	152	-48	104	68	-23	45	253
	F	815	0	815	1,564	-820	744	63	-42	21	1,580
	M	617	-45	572	165	-188	-22	75	-48	27	577
	A	16	-1,298	-1,282	401	-416	-15	70	-119	-49	-1,346
	M	843	-1,454	-611	275	-324	-49	65	-120	-54	-714
	J	2,528	-150	2,378	1,660	-660	1,000	67	-142	-74	3,304
	J	487	-80	407	279	-442	-163	79	-37	42	286
	A	813	-34	779	629	-478	151	82	-29	53	983
	S	187	-427	-240	1,809	-844	965	82	-56	26	751
	O	547	0	547	416	-471	-55	88	-37	51	543
	N	147	-322	-175	365	-911	-546	84	-61	24	-697

Table 2
Portfolio Transactions with Non-residents in Canadian Bonds, by Sector and Type of Transaction - Continued

		Provincial Governments									
		New Issues and Retirements			Outstanding Issues			Interest			Total
Period		New Issues	Retirements	Total	Sales	Purchases	Total	Accrued	Paid	Change in interest payable	
V No.	A	113057	113064	113177	113090	113097	113050	113184	113191	113071	113198
	Q	113229	113236	113349	113262	113269	113222	113356	113363	113243	113370
	M	113401	113408	113521	113434	113441	113394	113528	113535	113415	113542
millions of dollars											
1989		4,157	-3,126	1,031	2,252	-2,532	-280	3,318	-3,312	6	757
1990		6,142	-2,250	3,892	2,173	-2,465	-292	3,441	-3,348	93	3,692
1991		16,974	-5,910	11,064	5,607	-4,287	1,320	4,171	-3,673	498	12,882
1992		15,067	-4,342	10,725	7,201	-6,069	1,131	5,214	-4,928	286	12,143
1993		21,571	-4,459	17,112	15,413	-15,602	-189	6,536	-5,968	568	17,491
1994		19,941	-5,156	14,785	20,430	-22,040	-1,611	7,751	-7,331	420	13,595
1995		12,165	-4,763	7,402	12,710	-12,970	-260	8,340	-8,223	117	7,260
1996		15,781	-9,991	5,789	10,477	-11,714	-1,237	8,174	-8,212	-37	4,515
1997		10,271	-11,182	-911	11,593	-12,942	-1,349	7,962	-7,968	-6	-2,265
1998		11,219	-11,003	216	15,086	-15,671	-585	7,930	-8,010	-80	-449
1999		6,802	-11,971	-5,169	16,560	-17,278	-718	7,699	-7,765	-65	-5,952
2000		3,829	-12,838	-9,008	15,434	-14,056	1,378	7,179	-7,351	-172	-7,802
2001		11,816	-12,054	-238	10,406	-9,160	1,245	6,890	-6,792	98	1,106
2000	III	785	-2,345	-1,560	3,618	-3,219	399	1,779	-2,022	-243	-1,404
	IV	0	-2,742	-2,742	4,785	-3,547	1,238	1,776	-1,464	312	-1,192
2001	I	3,065	-3,242	-177	2,575	-2,302	272	1,726	-2,179	-453	-358
	II	4,505	-3,628	877	1,562	-2,036	-474	1,706	-1,395	311	714
	III	852	-1,552	-701	2,911	-2,202	710	1,722	-1,870	-148	-139
	IV	3,394	-3,631	-238	3,357	-2,620	737	1,736	-1,347	389	889
2002	I	1,440	-2,252	-813	2,629	-2,435	193	1,689	-2,076	-387	-1,006
	II	1,692	-4,100	-2,409	2,716	-2,192	524	1,661	-1,499	162	-1,723
	III	3,722	-3,620	102	3,187	-3,192	-5	1,658	-1,976	-319	-221
2000	N	0	-890	-890	1,190	-959	231	583	-333	250	-409
	D	0	-267	-267	2,136	-1,405	730	595	-577	18	482
2001	J	1,566	-152	1,414	1,192	-991	200	592	-873	-281	1,333
	F	862	-2,187	-1,325	541	-474	67	540	-809	-269	-1,527
	M	637	-903	-266	842	-838	5	594	-497	97	-164
	A	1,827	-670	1,157	399	-724	-325	571	-460	111	943
	M	634	-1,489	-856	514	-669	-154	582	-236	346	-664
	J	2,045	-1,469	576	649	-644	5	553	-699	-147	435
	J	0	-502	-502	779	-694	85	574	-819	-245	-661
	A	652	-929	-277	1,031	-784	247	580	-565	15	-15
	S	200	-122	78	1,101	-724	377	567	-485	82	537
	O	2,071	-2,554	-483	1,471	-1,157	314	589	-464	125	-44
	N	1,323	-1,062	261	1,057	-685	372	567	-264	302	935
	D	0	-15	-15	829	-778	51	581	-619	-38	-2
2002	J	232	-122	110	902	-822	80	585	-950	-365	-175
	F	811	-1,262	-450	1,257	-903	353	526	-679	-154	-250
	M	396	-869	-472	470	-711	-240	578	-446	131	-581
	A	48	-601	-553	916	-710	206	555	-555	0	-347
	M	930	0	930	835	-679	157	569	-158	411	1,498
	J	714	-3,499	-2,785	964	-803	162	537	-786	-250	-2,874
	J	2,193	-2,535	-342	649	-786	-137	558	-925	-367	-846
	A	0	-495	-495	961	-664	297	557	-513	44	-154
	S	1,530	-590	940	1,577	-1,742	-165	543	-539	4	779
	O	1,143	-557	585	1,102	-974	128	558	-344	215	928
	N	1,434	-326	1,107	934	-923	11	543	-292	251	1,369

Table 2
Portfolio Transactions with Non-residents in Canadian Bonds, by Sector and Type of Transaction - Continued

Provincial Government Enterprises											
Period	New Issues and Retirements			Outstanding Issues			Interest			Total	
	New Issues	Retirements	Total	Sales	Purchases	Total	Accrued	Paid	Change in interest payable		
V No.	A	113058	113065	113178	113091	113098	113051	113185	113192	113072	113199
	Q	113230	113237	113350	113263	113270	113223	113357	113364	113244	113371
	M	113402	113409	113522	113435	113442	113395	113529	113536	113416	113543
millions of dollars											
1989		2,252	-2,342	-89	1,875	-1,536	339	2,531	-2,513	18	268
1990		3,416	-1,612	1,804	1,524	-2,111	-587	2,566	-2,521	46	1,262
1991		7,584	-1,848	5,736	5,451	-5,932	-481	2,917	-2,687	229	5,484
1992		5,365	-3,835	1,530	7,064	-9,229	-2,165	3,128	-3,077	50	-584
1993		5,149	-3,135	2,013	4,743	-5,990	-1,247	3,064	-2,987	77	844
1994		5,423	-1,567	3,856	4,482	-5,531	-1,049	3,280	-3,163	116	2,923
1995		2,367	-2,515	-148	4,094	-4,891	-796	3,388	-3,371	18	-927
1996		2,000	-2,730	-730	2,584	-3,703	-1,119	3,022	-3,074	-52	-1,901
1997		1,448	-3,668	-2,220	2,811	-3,254	-443	2,904	-2,887	17	-2,646
1998		2,459	-2,354	105	4,685	-5,477	-792	2,887	-2,817	70	-617
1999		137	-4,106	-3,969	4,313	-4,474	-161	2,614	-2,723	-108	-4,239
2000		199	-1,818	-1,619	2,138	-2,099	39	2,385	-2,377	8	-1,572
2001		1,058	-3,788	-2,730	1,606	-1,867	-261	2,186	-2,267	-81	-3,073
2000	III	0	-311	-311	322	-422	-100	592	-607	-14	-426
	IV	0	-424	-424	477	-343	134	597	-424	173	-118
2001	I	0	-1,275	-1,275	465	-446	19	572	-754	-182	-1,438
	II	1,058	-1,113	-55	714	-801	-87	546	-512	34	-109
	III	0	-433	-433	244	-361	-117	538	-585	-47	-597
	IV	0	-966	-966	182	-259	-77	530	-416	114	-929
2002	I	0	-938	-938	160	-239	-80	497	-627	-130	-1,148
	II	0	-1,795	-1,795	258	-196	61	473	-493	-20	-1,754
	III	0	-375	-375	291	-217	74	457	-523	-66	-366
2000	N	0	-19	-19	122	-97	25	196	-115	81	86
	D	0	-192	-192	197	-136	62	200	-160	40	-90
2001	J	0	-241	-241	282	-151	131	197	-278	-81	-191
	F	0	-25	-25	112	-130	-17	179	-222	-43	-86
	M	0	-1,009	-1,009	70	-165	-95	195	-253	-58	-1,162
	A	0	-343	-343	99	-148	-49	183	-173	10	-382
	M	1,058	-771	287	318	-306	13	185	-148	38	338
	J	0	0	0	297	-348	-50	177	-191	-14	-64
	J	0	-366	-366	107	-193	-86	183	-274	-91	-543
	A	0	-65	-65	119	-58	61	180	-220	-40	-44
	S	0	-2	-2	18	-110	-92	176	-91	85	-9
	O	0	0	0	92	-157	-65	181	-126	55	-10
	N	0	-935	-935	52	-59	-7	175	-148	27	-915
	D	0	-31	-31	38	-43	-6	174	-142	33	-4
2002	J	0	-174	-174	32	-118	-87	175	-240	-65	-326
	F	0	-703	-703	64	-60	4	153	-226	-72	-772
	M	0	-61	-61	64	-61	3	168	-161	7	-51
	A	0	-250	-250	123	-117	6	161	-159	2	-242
	M	0	-744	-744	76	-50	26	161	-152	9	-709
	J	0	-802	-802	59	-30	30	151	-182	-31	-804
	J	0	-375	-375	114	-44	71	153	-238	-86	-389
	A	0	0	0	86	-66	21	154	-191	-37	-16
	S	0	0	0	90	-108	-17	150	-94	57	39
	O	0	-5	-5	122	-257	-135	155	-125	30	-110
	N	0	-19	-19	49	-44	5	149	-76	74	60

Table 2
Portfolio Transactions with Non-residents in Canadian Bonds, by Sector and Type of Transaction - Continued

		Municipalities									
		New Issues and Retirements			Outstanding Issues			Interest			Total
Period		New Issues	Retirements	Total	Sales	Purchases	Total	Accrued	Paid	Change in interest payable	
V No.	A	113059	113066	113179	113092	113099	113052	113186	113193	113073	113200
	Q	113231	113238	113351	113264	113271	113224	113358	113365	113245	113372
	M	113403	113410	113523	113436	113443	113396	113530	113537	113417	113544
millions of dollars											
1989		401	-471	-69	103	-149	-45	459	-444	15	-99
1990		269	-501	-233	70	-101	-31	435	-441	-6	-270
1991		763	-687	76	80	-105	-24	420	-399	21	72
1992		972	-839	133	168	-139	30	440	-424	16	179
1993		808	-682	127	325	-166	159	467	-450	17	303
1994		905	-383	522	196	-126	70	499	-484	15	606
1995		413	-850	-437	155	-83	72	483	-510	-27	-392
1996		416	-490	-74	225	-96	129	496	-502	-6	49
1997		209	-512	-303	183	-128	55	475	-509	-34	-282
1998		0	-302	-302	303	-103	200	468	-484	-16	-119
1999		57	-505	-448	149	-127	22	444	-467	-23	-449
2000		132	-587	-455	144	-107	37	418	-426	-8	-426
2001		333	-933	-601	464	-240	224	360	-375	-15	-391
2000	III	38	-83	-45	75	-18	57	105	-75	30	43
	IV	28	-228	-200	33	-30	3	103	-105	-1	-199
2001	I	174	-392	-218	43	-22	20	97	-116	-19	-216
	II	0	-319	-319	101	-27	74	93	-120	-28	-272
	III	0	-151	-151	83	-132	-48	85	-63	22	-177
	IV	159	-72	87	237	-59	178	85	-76	9	275
2002	I	0	-157	-157	47	-53	-6	80	-95	-16	-179
	II	0	-291	-291	102	-56	46	77	-104	-28	-273
	III	0	-120	-120	72	-21	51	74	-57	18	-52
2000	N	0	-195	-195	14	-11	4	33	-47	-14	-205
	D	0	-33	-33	14	-7	7	34	-30	5	-22
2001	J	0	0	0	12	-7	5	34	-39	-5	0
	F	0	-103	-103	18	-7	10	31	-18	13	-80
	M	174	-290	-116	13	-7	5	33	-59	-26	-137
	A	0	-2	-2	38	-7	31	31	-11	20	48
	M	0	-75	-75	28	-11	17	32	-73	-41	-99
	J	0	-242	-242	34	-8	26	29	-36	-6	-222
	J	0	-38	-38	41	-118	-77	29	-33	-4	-118
	A	0	0	0	13	-9	4	29	-10	19	23
	S	0	-113	-113	29	-4	24	27	-20	7	-81
	O	0	-8	-8	98	-7	91	28	-26	3	85
	N	159	-51	108	55	-10	45	28	-26	1	154
	D	0	-13	-13	85	-42	43	29	-24	5	36
2002	J	0	-156	-156	25	-4	21	28	-39	-11	-146
	F	0	0	0	5	-24	-19	25	-11	14	-5
	M	0	-1	-1	17	-24	-8	27	-46	-19	-27
	A	0	-1	-1	49	-46	4	26	-12	15	17
	M	0	-288	-288	10	-2	8	26	-70	-44	-324
	J	0	-2	-2	42	-8	34	24	-23	1	34
	J	0	-120	-120	24	-4	20	25	-31	-5	-105
	A	0	-1	-1	22	-8	14	25	-11	14	27
	S	0	0	0	26	-9	17	24	-15	9	26
	O	0	-333	-333	15	-121	-106	24	-29	-5	-444
	N	0	0	0	47	-7	39	22	-28	-7	32

Table 2
Portfolio Transactions with Non-residents in Canadian Bonds, by Sector and Type of Transaction - Continued

All Governments and their enterprises											
Period	New Issues and Retirements			Outstanding Issues			Interest			Total	
	New Issues	Retirements	Total	Sales	Purchases	Total	Accrued	Paid	Change in interest payable		
V No.	A	113204	113205	113203	113207	113208	113206	113210	113211	113209	113202
	Q	113376	113377	113375	113379	113380	113378	113382	113383	113381	113374
	M	113548	113549	113547	113551	113552	113550	113554	113555	113553	113546
millions of dollars											
1989		8,434	-10,543	-2,109	87,596	-73,722	13,874	11,445	-11,317	127	11,892
1990		11,411	-10,840	571	130,202	-118,913	11,289	12,479	-12,172	307	12,167
1991		27,263	-15,485	11,778	181,493	-168,276	13,217	14,125	-13,294	830	25,825
1992		23,705	-17,064	6,641	263,276	-255,622	7,654	15,784	-15,146	638	14,934
1993		31,165	-16,860	14,304	388,330	-376,277	12,053	17,542	-16,579	963	27,320
1994		34,626	-13,044	21,582	535,575	-542,338	-6,763	18,719	-17,699	1,019	15,838
1995		19,888	-12,769	7,119	476,374	-463,975	12,399	19,326	-18,897	428	19,947
1996		25,228	-21,754	3,473	665,539	-658,814	6,725	19,094	-18,989	104	10,303
1997		17,412	-24,363	-6,952	1,027,937	-1,031,092	-3,155	18,965	-18,840	126	-9,981
1998		29,975	-26,348	3,627	823,625	-834,716	-11,092	18,236	-17,925	311	-7,154
1999		16,224	-27,266	-11,042	540,019	-534,195	5,824	17,199	-17,624	-425	-5,643
2000		8,115	-31,741	-23,626	369,459	-366,938	2,521	16,066	-16,501	-435	-21,540
2001		18,490	-32,228	-13,739	354,912	-349,819	5,093	14,884	-14,966	-82	-8,727
2000	III	1,254	-6,602	-5,348	84,702	-85,479	-778	3,968	-3,915	53	-6,073
	IV	754	-7,471	-6,717	82,412	-78,118	4,294	3,930	-3,987	-58	-2,480
2001	I	4,276	-6,089	-1,813	100,967	-98,633	2,334	3,800	-4,009	-209	312
	II	7,693	-11,555	-3,862	95,743	-94,531	1,211	3,749	-3,771	-23	-2,673
	III	1,677	-7,270	-5,593	71,696	-70,492	1,204	3,694	-3,396	298	-4,091
	IV	4,844	-7,315	-2,471	86,507	-86,163	343	3,641	-3,789	-148	-2,276
2002	I	3,010	-4,076	-1,066	76,955	-76,599	356	3,556	-3,563	-7	-717
	II	5,078	-10,253	-5,175	79,822	-78,844	977	3,485	-3,732	-247	-4,444
	III	5,209	-7,983	-2,774	111,725	-106,910	4,815	3,525	-3,444	80	2,122
2000	N	626	-1,275	-649	24,468	-23,618	850	1,291	-970	322	523
	D	76	-4,306	-4,230	27,735	-25,403	2,332	1,313	-2,154	-841	-2,739
2001	J	1,587	-991	595	36,001	-34,172	1,828	1,311	-1,213	98	2,521
	F	862	-2,530	-1,668	27,182	-29,543	-2,361	1,185	-1,243	-58	-4,087
	M	1,828	-2,568	-740	37,784	-34,917	2,867	1,305	-1,554	-249	1,878
	A	2,287	-1,938	349	30,684	-28,500	2,184	1,259	-831	428	2,961
	M	1,691	-4,462	-2,770	35,506	-36,142	-636	1,286	-595	692	-2,715
	J	3,715	-5,155	-1,440	29,553	-29,889	-336	1,204	-2,346	-1,142	-2,919
	J	248	-969	-720	21,224	-22,237	-1,013	1,245	-1,243	2	-1,732
	A	990	-1,189	-199	24,066	-21,253	2,813	1,251	-813	438	3,052
	S	439	-5,112	-4,673	26,406	-27,001	-595	1,198	-1,340	-142	-5,411
	O	2,571	-2,708	-136	31,186	-30,083	1,103	1,238	-658	580	1,546
	N	1,834	-3,091	-1,258	34,312	-33,335	977	1,196	-874	322	41
	D	439	-1,516	-1,077	21,009	-22,745	-1,736	1,207	-2,257	-1,049	-3,863
2002	J	369	-961	-591	24,609	-26,288	-1,679	1,233	-1,327	-94	-2,364
	F	1,627	-2,126	-499	22,226	-20,220	2,006	1,102	-1,176	-74	1,433
	M	1,014	-989	24	30,120	-30,091	29	1,220	-1,060	160	214
	A	64	-3,279	-3,215	25,172	-24,250	922	1,167	-979	189	-2,104
	M	1,772	-2,486	-714	27,587	-27,947	-360	1,187	-499	688	-386
	J	3,242	-4,488	-1,246	27,062	-26,647	415	1,130	-2,254	-1,124	-1,954
	J	2,679	-4,376	-1,697	33,406	-31,669	1,737	1,178	-1,559	-381	-341
	A	813	-530	283	41,283	-37,806	3,477	1,192	-812	380	4,140
	S	1,717	-3,077	-1,360	37,037	-37,435	-399	1,154	-1,073	82	-1,677
	O	1,690	-895	795	37,631	-32,303	5,328	1,203	-581	622	6,745
	N	1,581	-668	913	35,331	-33,640	1,691	1,179	-903	276	2,880

Table 2
Portfolio Transactions with Non-residents in Canadian Bonds, by Sector and Type of Transaction - Continued

Period		Corporations									Total
		New Issues and Retirements			Outstanding Issues			Interest			
		New Issues	Retirements	Total	Sales	Purchases	Total	Accrued	Paid	Change in interest payable	
V No.	A	113060	113067	113180	113093	113100	113053	113187	113194	113074	113201
	Q	113232	113239	113352	113265	113272	113225	113359	113366	113246	113373
	M	113404	113411	113524	113437	113444	113397	113531	113538	113418	113545
millions of dollars											
1989		9,237	-3,151	6,086	1,357	-1,377	-20	3,900	-3,671	229	6,294
1990		5,688	-2,752	2,936	1,259	-1,774	-515	4,365	-4,275	89	2,510
1991		7,119	-5,010	2,109	3,154	-3,046	107	4,488	-4,466	21	2,238
1992		9,921	-7,374	2,546	4,731	-3,401	1,330	4,678	-4,723	-44	3,832
1993		12,966	-10,463	2,503	8,531	-6,815	1,717	5,088	-5,181	-93	4,126
1994		8,637	-9,360	-722	7,548	-6,696	853	5,527	-5,501	26	156
1995		18,112	-7,451	10,660	5,137	-5,391	-254	6,332	-5,955	377	10,783
1996		18,368	-11,066	7,303	6,209	-6,012	198	6,819	-6,670	149	7,650
1997		21,484	-7,272	14,212	9,646	-8,066	1,580	7,538	-7,182	356	16,147
1998		25,633	-10,743	14,890	9,205	-7,057	2,148	9,175	-8,722	453	17,491
1999		17,533	-11,768	5,765	14,222	-12,444	1,778	10,073	-9,663	410	7,953
2000		11,650	-14,437	-2,787	24,938	-23,609	1,330	9,860	-9,518	342	-1,116
2001		58,337	-20,706	37,631	23,677	-19,728	3,949	11,018	-10,262	756	42,336
2000	III	5,207	-2,815	2,393	4,496	-4,847	-352	2,450	-2,238	212	2,253
	IV	716	-2,584	-1,869	6,692	-6,822	-130	2,499	-2,529	-30	-2,029
2001	I	10,804	-5,321	5,483	7,791	-6,943	848	2,437	-2,237	201	6,531
	II	13,747	-5,496	8,251	6,173	-4,520	1,653	2,629	-2,508	121	10,024
	III	9,821	-5,289	4,532	5,078	-4,870	208	2,821	-2,549	271	5,012
	IV	23,964	-4,600	19,365	4,636	-3,396	1,241	3,131	-2,968	163	20,769
2002	I	6,219	-1,975	4,245	5,094	-4,472	622	3,074	-2,370	704	5,571
	II	10,481	-4,413	6,067	6,085	-5,599	486	3,141	-3,224	-83	6,470
	III	4,951	-5,995	-1,045	6,258	-5,832	426	3,233	-2,705	529	-90
2000	N	180	-699	-518	2,823	-2,646	177	820	-667	154	-187
	D	157	-1,210	-1,053	2,072	-2,427	-355	839	-1,059	-219	-1,627
2001	J	670	-2,156	-1,486	1,782	-1,395	387	816	-768	49	-1,051
	F	5,154	-1,447	3,706	2,355	-2,070	285	755	-790	-34	3,957
	M	4,981	-1,718	3,263	3,654	-3,478	176	866	-680	186	3,624
	A	3,249	-1,611	1,639	2,143	-1,347	796	849	-787	62	2,497
	M	9,179	-2,332	6,847	2,651	-2,354	297	890	-745	145	7,290
	J	1,318	-1,553	-235	1,378	-819	559	890	-976	-86	238
	J	2,634	-1,267	1,367	1,513	-1,536	-23	931	-762	169	1,513
	A	6,061	-1,856	4,205	2,784	-2,406	377	945	-892	53	4,635
	S	1,126	-2,166	-1,039	781	-928	-146	945	-895	50	-1,136
	O	12,673	-2,014	10,659	2,000	-1,215	785	1,001	-774	227	11,671
	N	8,208	-1,408	6,800	1,443	-1,183	260	1,038	-879	159	7,218
	D	3,084	-1,178	1,906	1,193	-997	196	1,092	-1,315	-222	1,879
2002	J	2,135	-638	1,497	1,763	-1,547	216	1,060	-470	591	2,304
	F	392	-579	-187	1,646	-1,335	311	957	-1,011	-54	70
	M	3,693	-758	2,935	1,686	-1,591	95	1,057	-890	168	3,197
	A	3,737	-752	2,985	2,264	-2,123	141	1,043	-841	202	3,328
	M	3,520	-1,475	2,044	2,271	-2,027	244	1,063	-996	67	2,356
	J	3,224	-2,186	1,038	1,549	-1,449	100	1,035	-1,388	-353	786
	J	1,681	-1,855	-174	1,863	-1,938	-76	1,084	-782	303	52
	A	165	-2,192	-2,027	1,829	-1,831	-3	1,090	-981	109	-1,921
	S	3,105	-1,948	1,157	2,567	-2,062	505	1,059	-942	117	1,779
	O	846	-2,261	-1,415	1,251	-2,116	-865	1,091	-1,279	-189	-2,469
	N	689	-1,933	-1,244	1,690	-1,367	323	1,048	-1,250	-201	-1,122

Table 2
Portfolio Transactions with Non-residents in Canadian Bonds, by Sector and Type of Transaction - Concluded

		Total, All sectors									
		New Issues and Retirements			Outstanding Issues			Interest			Total
Period		New Issues	Retirements	Total	Sales	Purchases	Total	Accrued	Paid	Change in interest payable	
V No.	A	113054	113061	113174	113087	113094	113047	113181	113188	113068	113195
	Q	113226	113233	113346	113259	113266	113219	113353	113360	113240	113367
	M	113398	113405	113518	113431	113438	113391	113525	113532	113412	113539
millions of dollars											
1989		17,672	-13,695	3,977	88,953	-75,100	13,854	15,344	-14,988	356	18,187
1990		17,099	-13,591	3,508	131,461	-120,687	10,774	16,844	-16,448	396	14,678
1991		34,382	-20,495	13,887	184,646	-171,322	13,324	18,612	-17,761	852	28,063
1992		33,626	-24,439	9,187	268,007	-259,023	8,984	20,462	-19,868	594	18,766
1993		44,130	-27,323	16,807	396,861	-383,091	13,770	22,630	-21,760	870	31,446
1994		43,263	-22,403	20,860	543,123	-549,033	-5,910	24,246	-23,200	1,045	15,995
1995		38,000	-20,220	17,780	481,511	-469,366	12,145	25,657	-24,852	805	30,730
1996		43,596	-32,820	10,776	671,749	-664,826	6,923	25,913	-25,659	254	17,953
1997		38,895	-31,635	7,260	1,037,583	-1,039,159	-1,576	26,503	-26,021	482	6,166
1998		55,608	-37,092	18,517	832,829	-841,773	-8,944	27,411	-26,646	765	10,337
1999		33,757	-39,034	-5,277	554,241	-546,639	7,602	27,272	-27,287	-15	2,310
2000		19,765	-46,178	-26,413	394,398	-390,547	3,851	25,926	-26,019	-93	-22,655
2001		76,826	-52,934	23,893	378,589	-369,547	9,042	25,902	-25,228	674	33,609
2000	III	6,461	-9,417	-2,955	89,197	-90,327	-1,129	6,417	-6,153	265	-3,820
	IV	1,470	-10,055	-8,586	89,104	-84,940	4,164	6,429	-6,516	-88	-4,509
2001	I	15,081	-11,410	3,670	108,757	-105,576	3,181	6,238	-6,246	-9	6,843
	II	21,440	-17,050	4,389	101,915	-99,051	2,864	6,377	-6,280	98	7,352
	III	11,498	-12,559	-1,061	76,774	-75,361	1,412	6,514	-5,945	569	921
	IV	28,808	-11,914	16,894	91,143	-89,559	1,584	6,772	-6,757	15	18,493
2002	I	9,229	-6,051	3,178	82,050	-81,071	978	6,630	-5,933	697	4,853
	II	15,559	-14,667	892	85,906	-84,443	1,463	6,626	-6,956	-330	2,026
	III	10,160	-13,978	-3,818	117,983	-112,741	5,242	6,758	-6,149	609	2,032
2000	N	807	-1,974	-1,167	27,290	-26,263	1,027	2,112	-1,636	476	336
	D	233	-5,516	-5,282	29,807	-27,830	1,977	2,153	-3,213	-1,061	-4,367
2001	J	2,256	-3,147	-891	37,783	-35,568	2,215	2,127	-1,981	146	1,470
	F	6,016	-3,977	2,039	29,537	-31,613	-2,076	1,940	-2,032	-92	-129
	M	6,809	-4,286	2,523	41,438	-38,395	3,043	2,170	-2,233	-63	5,502
	A	5,536	-3,549	1,987	32,827	-29,847	2,980	2,108	-1,618	490	5,458
	M	10,871	-6,794	4,077	38,158	-38,496	-338	2,176	-1,340	837	4,575
	J	5,033	-6,708	-1,675	30,931	-30,708	223	2,093	-3,322	-1,229	-2,681
	J	2,882	-2,235	647	22,737	-23,773	-1,036	2,175	-2,005	170	-218
	A	7,051	-3,046	4,005	26,849	-23,659	3,190	2,197	-1,705	492	7,687
	S	1,565	-7,278	-5,713	27,187	-27,929	-742	2,142	-2,235	-93	-6,547
	O	15,244	-4,721	10,523	33,186	-31,298	1,888	2,239	-1,432	807	13,217
	N	10,042	-4,499	5,542	35,755	-34,518	1,237	2,234	-1,753	480	7,259
	D	3,522	-2,694	829	22,202	-23,742	-1,540	2,299	-3,571	-1,272	-1,984
2002	J	2,504	-1,599	906	26,372	-27,835	-1,463	2,293	-1,796	497	-61
	F	2,018	-2,705	-687	23,872	-21,555	2,317	2,059	-2,187	-128	1,503
	M	4,707	-1,747	2,959	31,805	-31,681	124	2,278	-1,950	328	3,411
	A	3,801	-4,031	-230	27,436	-26,373	1,063	2,211	-1,820	391	1,224
	M	5,292	-3,961	1,330	29,858	-29,974	-116	2,250	-1,495	756	1,970
	J	6,466	-6,674	-208	28,611	-28,096	516	2,165	-3,642	-1,476	-1,169
	J	4,360	-6,232	-1,871	35,268	-33,607	1,661	2,263	-2,341	-78	-288
	A	978	-2,721	-1,744	43,111	-39,637	3,474	2,282	-1,793	489	2,219
	S	4,822	-5,025	-203	39,603	-39,497	106	2,213	-2,015	198	101
	O	2,536	-3,157	-621	38,882	-34,419	4,463	2,293	-1,860	433	4,276
	N	2,270	-2,601	-331	37,021	-35,007	2,014	2,227	-2,153	75	1,757

Table 3
Portfolio Transactions with Non-residents in Canadian Bonds, by Geographical Area and Type of Transaction

		United States									
		New Issues and Retirements			Outstanding Issues			Interest			Total
Period		New Issues	Retirements	Total	Sales	Purchases	Total	Accrued	Paid	Change in interest payable	
V No.	A	115098	115099	115097	115101	115102	115100	115104	115105	115103	115096
	Q	115247	115248	115246	115250	115251	115249	115253	115254	115252	115245
	M	115396	115397	115395	115399	115400	115398	115402	115403	115401	115394
millions of dollars											
1989		5,237	-4,022	1,215	30,526	-28,015	2,510	4,707	-4,828	-121	3,604
1990		10,058	-3,239	6,818	46,306	-43,081	3,225	5,257	-5,123	134	10,177
1991		13,668	-5,861	7,807	73,932	-72,386	1,546	6,280	-6,080	199	9,552
1992		15,883	-7,417	8,466	99,692	-93,220	6,472	7,341	-7,062	279	15,217
1993		22,310	-9,495	12,815	192,239	-182,689	9,550	9,024	-8,492	532	22,897
1994		13,863	-7,417	6,446	265,974	-264,341	1,633	10,622	-10,152	470	8,549
1995		20,052	-7,760	12,292	199,489	-193,467	6,023	11,557	-10,981	576	18,891
1996		25,276	-9,201	16,075	331,764	-330,277	1,487	12,418	-11,837	581	18,143
1997		19,546	-11,136	8,409	639,823	-641,411	-1,588	13,408	-12,979	429	7,251
1998		27,415	-11,203	16,213	560,602	-572,610	-12,008	14,221	-13,612	609	4,813
1999		18,806	-14,309	4,497	324,168	-321,879	2,288	14,506	-14,620	-114	6,672
2000		10,967	-16,792	-5,825	230,619	-233,803	-3,184	14,128	-13,984	144	-8,865
2001		56,900	-24,163	32,737	207,909	-206,398	1,511	15,481	-14,761	720	34,967
2000	III	5,752	-2,862	2,891	53,521	-57,494	-3,974	3,485	-3,630	-145	-1,228
	IV	389	-3,188	-2,800	50,446	-48,305	2,141	3,578	-3,297	281	-378
2001	I	11,418	-4,422	6,996	60,630	-58,280	2,351	3,542	-3,718	-176	9,171
	II	15,192	-6,254	8,938	50,204	-50,401	-196	3,801	-3,277	524	9,266
	III	8,353	-8,069	284	44,803	-45,139	-336	3,946	-3,936	10	-42
	IV	21,936	-5,418	16,518	52,272	-52,579	-307	4,192	-3,830	362	16,573
2002	I	6,996	-3,228	3,768	49,803	-47,286	2,517	4,201	-3,930	272	6,557
	II	8,412	-5,100	3,312	55,746	-51,954	3,793	4,227	-4,149	78	7,183
	III	7,395	-9,013	-1,618	77,680	-71,121	6,559	4,313	-4,075	237	5,178
2000	N	15	-486	-470	14,268	-13,257	1,011	1,177	-761	416	957
	D	56	-1,568	-1,512	18,434	-18,160	275	1,204	-1,502	-299	-1,536
2001	J	2,011	-1,653	358	20,233	-19,567	666	1,189	-1,282	-93	931
	F	4,403	-1,275	3,128	17,792	-18,195	-403	1,096	-1,178	-82	2,643
	M	5,004	-1,493	3,510	22,605	-20,517	2,088	1,257	-1,259	-2	5,597
	A	4,986	-844	4,142	16,581	-15,519	1,062	1,240	-993	247	5,452
	M	9,372	-3,573	5,799	19,953	-20,978	-1,025	1,295	-639	656	5,431
	J	834	-1,837	-1,004	13,670	-13,904	-234	1,266	-1,645	-380	-1,617
	J	1,975	-886	1,088	11,991	-13,035	-1,044	1,317	-1,316	1	45
	A	5,364	-1,764	3,600	15,992	-15,679	313	1,327	-1,259	68	3,980
	S	1,014	-5,419	-4,404	16,820	-16,425	396	1,302	-1,361	-59	-4,068
	O	11,880	-2,807	9,073	17,667	-17,452	215	1,366	-979	387	9,675
	N	7,803	-1,557	6,246	19,979	-20,077	-97	1,388	-955	433	6,582
	D	2,253	-1,054	1,199	14,625	-15,050	-425	1,439	-1,896	-457	316
2002	J	2,165	-931	1,234	15,145	-14,637	508	1,450	-1,295	155	1,897
	F	959	-1,550	-590	13,230	-11,343	1,887	1,306	-1,509	-203	1,094
	M	3,871	-747	3,124	21,428	-21,306	122	1,446	-1,127	319	3,566
	A	2,699	-1,618	1,081	17,385	-14,492	2,893	1,411	-1,237	174	4,149
	M	1,007	-749	258	20,523	-20,035	488	1,436	-976	460	1,206
	J	4,705	-2,733	1,972	17,838	-17,426	411	1,380	-1,936	-556	1,827
	J	2,619	-4,556	-1,937	24,495	-20,033	4,462	1,444	-1,451	-7	2,518
	A	792	-1,377	-586	28,922	-27,730	1,192	1,458	-1,459	-1	605
	S	3,984	-3,079	904	24,264	-23,359	905	1,412	-1,166	245	2,054
	O	1,949	-2,507	-558	22,254	-22,633	-379	1,461	-1,475	-14	-952
	N	1,455	-1,123	332	20,880	-20,608	272	1,411	-1,337	75	678

Table 3
Portfolio Transactions with Non-residents in Canadian Bonds, by Geographical Area and Type of Transaction - Continued

		United Kingdom									
		New Issues and Retirements			Outstanding Issues			Interest			Total
Period		New Issues	Retirements	Total	Sales	Purchases	Total	Accrued	Paid	Change in interest payable	
V No.	A	115108	115109	115107	115111	115112	115110	115114	115115	115113	115106
	Q	115257	115258	115256	115260	115261	115259	115263	115264	115262	115255
	M	115406	115407	115405	115409	115410	115408	115412	115413	115411	115404
millions of dollars											
1989		1,240	-1,246	-5	28,945	-25,826	3,119	884	-1,229	-345	2,768
1990		582	-1,099	-517	51,201	-47,572	3,629	1,168	-1,461	-293	2,819
1991		2,915	-1,805	1,110	68,703	-62,887	5,817	1,709	-1,872	-163	6,764
1992		2,562	-2,167	396	108,832	-110,933	-2,102	1,732	-2,006	-274	-1,981
1993		4,708	-3,308	1,400	123,231	-114,821	8,410	1,892	-2,427	-535	9,275
1994		4,503	-2,146	2,357	213,480	-216,424	-2,944	1,997	-2,370	-373	-960
1995		1,289	-1,672	-382	232,868	-226,881	5,987	2,186	-2,752	-566	5,039
1996		6,795	-3,710	3,086	263,999	-263,387	612	2,225	-2,814	-588	3,110
1997		9,774	-3,191	6,583	280,334	-279,522	812	2,342	-2,972	-630	6,765
1998		13,134	-7,372	5,762	193,081	-191,256	1,825	2,222	-2,825	-603	6,984
1999		9,933	-4,002	5,931	187,887	-186,554	1,333	2,188	-2,748	-560	6,704
2000		7,646	-8,797	-1,151	121,463	-116,317	5,146	2,286	-2,813	-526	3,468
2001		10,940	-9,092	1,848	128,053	-123,342	4,711	2,341	-3,039	-698	5,861
2000	III	431	-2,042	-1,612	23,956	-22,756	1,201	598	-552	45	-365
	IV	1,081	-2,522	-1,441	29,895	-27,966	1,929	571	-912	-340	147
2001	I	3,168	-1,822	1,345	38,160	-36,487	1,673	571	-630	-59	2,959
	II	2,438	-4,155	-1,717	40,961	-39,322	1,640	578	-883	-306	-383
	III	1,352	-1,007	345	20,700	-21,425	-725	574	-579	-5	-384
	IV	3,982	-2,108	1,875	28,231	-26,108	2,123	617	-946	-329	3,669
2002	I	1,109	-388	721	23,095	-23,417	-322	564	-621	-57	342
	II	5,255	-1,874	3,380	20,912	-21,913	-1,001	563	-694	-131	2,248
	III	2,488	-1,383	1,105	24,900	-28,586	-3,686	603	-527	76	-2,505
2000	N	791	-260	531	9,844	-10,158	-314	188	-275	-87	130
	D	178	-2,093	-1,915	8,336	-7,154	1,182	190	-503	-313	-1,046
2001	J	238	-623	-386	13,732	-12,242	1,490	193	-133	61	1,165
	F	1,517	-458	1,058	10,002	-10,464	-462	179	-181	-2	594
	M	1,413	-741	673	14,426	-13,781	645	199	-317	-118	1,200
	A	506	-1,599	-1,093	13,399	-11,019	2,380	193	-190	3	1,290
	M	865	-466	399	15,329	-15,103	227	201	-187	14	639
	J	1,067	-2,090	-1,022	12,233	-13,201	-967	184	-506	-322	-2,312
	J	0	-254	-254	6,662	-7,617	-956	188	-159	29	-1,181
	A	907	-241	665	7,621	-5,143	2,478	196	-83	113	3,256
	S	445	-512	-66	6,417	-8,664	-2,247	191	-337	-146	-2,460
	O	2,131	-390	1,741	11,508	-9,559	1,949	204	-89	114	3,805
	N	1,511	-1,499	12	11,114	-10,365	750	204	-296	-92	670
	D	340	-218	121	5,608	-6,185	-576	210	-561	-351	-806
2002	J	339	-126	214	8,456	-8,405	51	194	-77	117	382
	F	628	-68	560	7,900	-7,203	697	176	-200	-24	1,233
	M	141	-194	-52	6,739	-7,809	-1,070	194	-344	-150	-1,273
	A	1,102	-408	693	6,867	-8,215	-1,348	185	-134	51	-604
	M	3,283	-952	2,331	6,391	-6,776	-385	188	-107	81	2,027
	J	870	-514	356	7,654	-6,922	733	190	-453	-263	825
	J	1,480	-599	881	6,548	-8,753	-2,205	202	-164	38	-1,286
	A	170	-127	43	8,366	-8,306	60	204	-81	123	226
	S	838	-657	181	9,986	-11,527	-1,542	197	-281	-84	-1,445
	O	571	-30	541	10,962	-8,632	2,330	207	-116	90	2,961
	N	603	-377	225	11,233	-9,127	2,106	206	-299	-93	2,239

Table 3
Portfolio Transactions with Non-residents in Canadian Bonds, by Geographical Area and Type of Transaction - Continued

		Other EU Countries									
		New Issues and Retirements			Outstanding Issues			Interest			Total
Period		New Issues	Retirements	Total	Sales	Purchases	Total	Accrued	Paid	Change in interest payable	
V No.	A	115118	115119	115117	115121	115122	115120	115124	115125	115123	115116
	Q	115267	115268	115266	115270	115271	115269	115273	115274	115272	115265
	M	115416	115417	115415	115419	115420	115418	115422	115423	115421	115414
millions of dollars											
1989		4,246	-3,946	300	4,692	-3,404	1,288	2,580	-2,935	-355	1,233
1990		2,043	-3,696	-1,653	8,022	-7,672	350	2,562	-2,968	-406	-1,708
1991		6,844	-4,314	2,530	8,898	-7,127	1,770	2,702	-2,840	-138	4,162
1992		5,898	-5,012	886	15,980	-15,378	602	2,925	-3,079	-154	1,334
1993		5,961	-4,588	1,372	18,122	-17,871	251	3,251	-3,157	94	1,717
1994		8,646	-4,721	3,925	18,977	-19,364	-387	3,587	-3,227	360	3,899
1995		5,413	-3,402	2,011	12,108	-13,423	-1,316	3,801	-3,537	264	959
1996		4,554	-6,629	-2,075	18,209	-17,214	995	3,603	-3,478	125	-954
1997		3,411	-5,535	-2,124	24,641	-24,633	8	3,389	-3,170	219	-1,896
1998		8,557	-4,447	4,110	33,290	-34,064	-774	3,660	-3,301	358	3,694
1999		1,724	-5,918	-4,194	19,918	-18,414	1,504	3,660	-3,405	254	-2,436
2000		182	-7,252	-7,069	17,469	-15,235	2,233	3,266	-3,191	75	-4,761
2001		5,870	-6,124	-254	17,057	-16,482	575	2,921	-2,381	540	861
2000	III	0	-745	-745	5,801	-3,805	1,996	796	-694	103	1,354
	IV	0	-1,514	-1,514	2,909	-2,604	305	793	-728	65	-1,144
2001	I	161	-1,794	-1,633	3,715	-3,333	382	757	-764	-7	-1,257
	II	2,474	-2,532	-58	4,330	-3,997	333	704	-606	98	373
	III	937	-518	420	4,799	-4,289	510	731	-425	306	1,236
	IV	2,299	-1,281	1,017	4,213	-4,864	-650	729	-587	142	509
2002	I	947	-915	33	3,791	-4,328	-537	729	-542	186	-318
	II	1,419	-2,556	-1,137	3,789	-3,456	334	737	-860	-123	-927
	III	215	-1,287	-1,072	6,442	-4,957	1,485	768	-664	103	516
2000	N	0	-156	-156	639	-683	-45	260	-216	44	-157
	D	0	-1,051	-1,051	1,232	-880	352	266	-364	-98	-797
2001	J	0	-94	-94	866	-491	376	265	-257	8	290
	F	96	-1,125	-1,029	726	-519	208	237	-286	-49	-870
	M	65	-576	-511	2,122	-2,324	-201	255	-221	34	-678
	A	0	-386	-386	1,305	-1,789	-484	240	-123	117	-753
	M	0	-1,341	-1,341	1,196	-1,032	164	238	-174	64	-1,113
	J	2,474	-805	1,669	1,828	-1,176	653	226	-308	-82	2,239
	J	659	-180	480	1,096	-781	315	244	-189	55	849
	A	278	-313	-35	1,929	-1,836	93	248	-92	155	214
	S	0	-26	-26	1,774	-1,672	102	240	-144	96	172
	O	1,102	-587	515	1,778	-2,133	-354	247	-104	143	303
	N	706	-256	450	1,995	-1,818	178	238	-169	69	697
	D	491	-439	52	440	-913	-474	244	-314	-70	-492
2002	J	0	-216	-216	1,359	-2,161	-802	254	-206	48	-970
	F	253	-426	-172	938	-1,339	-401	226	-189	37	-537
	M	694	-273	421	1,494	-828	666	249	-147	102	1,189
	A	0	-680	-680	1,482	-1,362	120	243	-232	11	-549
	M	807	-918	-111	1,191	-1,148	43	251	-205	45	-22
	J	612	-958	-347	1,116	-946	170	243	-423	-179	-356
	J	215	-401	-186	1,761	-2,103	-342	256	-391	-135	-663
	A	0	-448	-448	2,489	-945	1,544	259	-76	183	1,278
	S	0	-437	-437	2,192	-1,909	283	253	-198	55	-99
	O	16	-161	-145	1,641	-659	982	261	-103	158	995
	N	59	-806	-747	1,953	-2,656	-703	253	-261	-8	-1,459

Table 3
Portfolio Transactions with Non-residents in Canadian Bonds, by Geographical Area and Type of Transaction - Continued

		Japan									
		New Issues and Retirements			Outstanding Issues			Interest			Total
Period		New Issues	Retirements	Total	Sales	Purchases	Total	Accrued	Paid	Change in interest payable	
V No.	A	115128	115129	115127	115131	115132	115130	115134	115135	115133	115126
	Q	115277	115278	115276	115280	115281	115279	115283	115284	115282	115275
	M	115426	115427	115425	115429	115430	115428	115432	115433	115431	115424
millions of dollars											
1989		2,205	-1,009	1,197	15,604	-11,524	4,080	3,930	-2,645	1,285	6,561
1990		1,236	-1,894	-658	15,795	-12,850	2,945	4,255	-3,121	1,134	3,421
1991		3,125	-2,897	229	16,723	-15,516	1,207	4,067	-3,140	927	2,362
1992		4,288	-3,568	721	22,027	-19,864	2,163	4,425	-3,528	897	3,781
1993		3,752	-3,331	421	16,731	-22,455	-5,724	4,377	-3,421	956	-4,347
1994		6,225	-2,071	4,154	5,633	-11,378	-5,745	3,539	-2,908	631	-960
1995		4,697	-2,857	1,840	6,967	-8,368	-1,401	3,350	-2,899	451	890
1996		5,707	-4,326	1,381	21,013	-19,116	1,897	3,060	-2,674	387	3,665
1997		4,632	-4,546	86	26,753	-29,232	-2,480	3,091	-2,584	507	-1,887
1998		1,632	-5,387	-3,754	7,873	-10,283	-2,411	2,854	-2,408	446	-5,719
1999		1,765	-6,755	-4,991	7,064	-5,526	1,538	2,686	-2,308	378	-3,074
2000		373	-5,676	-5,303	6,624	-6,613	11	2,449	-2,115	334	-4,958
2001		2,441	-4,955	-2,515	8,110	-6,818	1,291	2,105	-1,763	342	-881
2000	III	79	-1,910	-1,830	1,287	-1,248	39	608	-420	188	-1,603
	IV	0	-1,313	-1,313	1,181	-1,665	-484	584	-581	3	-1,795
2001	I	21	-771	-750	2,037	-1,912	125	541	-335	206	-420
	II	1,105	-1,333	-228	1,920	-1,588	333	530	-570	-41	64
	III	856	-1,153	-298	2,003	-1,080	924	524	-330	194	820
	IV	460	-1,698	-1,239	2,149	-2,239	-90	510	-528	-18	-1,346
2002	I	0	-405	-405	1,322	-2,388	-1,066	473	-273	200	-1,271
	II	0	-2,011	-2,011	1,530	-2,584	-1,054	454	-468	-14	-3,079
	III	0	-1,014	-1,014	2,470	-2,527	-57	431	-269	163	-909
2000	N	0	-757	-757	284	-638	-354	192	-136	55	-1,056
	D	0	-47	-47	653	-514	139	191	-347	-156	-65
2001	J	8	-142	-134	1,094	-1,131	-37	188	-82	105	-66
	F	0	-327	-327	158	-394	-236	169	-94	75	-488
	M	13	-301	-289	785	-387	398	184	-159	26	135
	A	44	-106	-62	605	-540	65	177	-91	86	89
	M	634	-448	185	284	-522	-238	181	-87	94	41
	J	427	-779	-351	1,031	-526	506	171	-392	-221	-67
	J	248	-435	-187	397	-376	21	176	-75	101	-66
	A	502	-204	298	552	-415	137	176	-95	81	516
	S	105	-514	-409	1,054	-288	766	172	-160	13	370
	O	0	-277	-277	1,042	-1,435	-393	177	-63	114	-556
	N	21	-835	-814	600	-382	218	167	-114	53	-543
	D	439	-586	-147	507	-422	85	166	-350	-184	-247
2002	J	0	-7	-7	195	-1,290	-1,095	165	-75	90	-1,012
	F	0	-336	-336	551	-435	116	146	-68	78	-142
	M	0	-61	-61	576	-664	-87	162	-130	32	-116
	A	0	-594	-594	545	-950	-405	153	-70	83	-916
	M	0	-167	-167	434	-686	-251	156	-44	112	-307
	J	0	-1,249	-1,249	550	-948	-398	145	-354	-209	-1,857
	J	0	-218	-218	559	-1,350	-791	146	-77	69	-940
	A	0	-392	-392	628	-431	196	145	-72	73	-123
	S	0	-404	-404	1,283	-745	538	141	-120	21	155
	O	0	-16	-16	1,981	-765	1,216	148	-39	109	1,310
	N	0	-163	-163	1,193	-1,313	-121	146	-79	67	-216

Table 3
Portfolio Transactions with Non-residents in Canadian Bonds, by Geographical Area and Type of Transaction - Continued

Period		Other OECD Countries									Total
		New Issues and Retirements			Outstanding Issues			Interest			
		New Issues	Retirements	Total	Sales	Purchases	Total	Accrued	Paid	Change in interest payable	
V No.	A	115138	115139	115137	115141	115142	115140	115144	115145	115143	115136
	Q	115287	115288	115286	115290	115291	115289	115293	115294	115292	115285
	M	115436	115437	115435	115439	115440	115438	115442	115443	115441	115434
millions of dollars											
1989		3,676	-3,107	569	1,110	-748	361	2,484	-2,656	-172	758
1990		2,889	-3,162	-272	558	-534	24	2,612	-2,817	-205	-454
1991		5,703	-4,338	1,365	1,453	-1,413	39	2,668	-2,737	-69	1,335
1992		3,658	-4,914	-1,256	1,718	-1,854	-136	2,624	-2,868	-244	-1,636
1993		4,840	-5,428	-588	3,090	-2,149	941	2,534	-2,785	-251	102
1994		4,454	-4,986	-532	3,091	-2,040	1,051	2,671	-2,826	-155	364
1995		3,786	-3,019	768	3,684	-3,491	194	2,760	-2,850	-90	871
1996		1,042	-6,087	-5,045	5,165	-4,955	210	2,504	-2,769	-265	-5,100
1997		1,322	-4,786	-3,464	5,253	-5,164	89	2,200	-2,308	-108	-3,483
1998		3,229	-5,120	-1,891	7,875	-6,242	1,633	2,140	-2,235	-95	-353
1999		1,024	-4,174	-3,151	3,514	-3,239	275	2,017	-2,148	-131	-3,007
2000		132	-3,918	-3,786	5,853	-6,109	-256	1,837	-2,009	-172	-4,214
2001		676	-5,399	-4,723	8,158	-7,452	705	1,421	-1,672	-251	-4,268
2000	III	0	-873	-873	1,316	-1,543	-226	448	-422	26	-1,074
	IV	0	-907	-907	1,940	-2,408	-468	429	-531	-102	-1,477
2001	I	314	-1,832	-1,518	1,479	-1,448	31	389	-415	-26	-1,514
	II	231	-1,781	-1,550	2,234	-1,777	457	358	-475	-118	-1,211
	III	0	-842	-842	2,732	-2,288	444	343	-326	17	-381
	IV	131	-944	-812	1,714	-1,940	-226	332	-456	-124	-1,163
2002	I	177	-813	-635	1,851	-2,123	-272	314	-285	30	-878
	II	237	-2,071	-1,835	1,558	-1,780	-222	303	-398	-95	-2,151
	III	0	-852	-852	3,184	-2,567	617	296	-303	-7	-243
2000	N	0	-236	-236	880	-1,008	-128	140	-154	-15	-378
	D	0	-414	-414	580	-533	47	143	-221	-79	-445
2001	J	0	-528	-528	686	-729	-43	138	-146	-9	-580
	F	0	-535	-535	213	-167	46	122	-142	-20	-509
	M	314	-769	-455	579	-551	28	129	-127	2	-425
	A	0	-430	-430	570	-358	212	121	-123	-2	-220
	M	0	-665	-665	526	-420	106	122	-150	-28	-587
	J	231	-686	-455	1,137	-998	139	114	-202	-88	-404
	J	0	-381	-381	2,155	-1,687	469	117	-128	-12	76
	A	0	-293	-293	181	-120	61	116	-82	33	-198
	S	0	-168	-168	395	-480	-85	111	-115	-4	-258
	O	131	-440	-309	262	-321	-59	114	-118	-4	-372
	N	0	-218	-218	1,053	-1,116	-63	108	-134	-25	-307
	D	0	-285	-285	399	-503	-104	110	-204	-94	-484
2002	J	0	-200	-200	649	-870	-222	110	-93	17	-405
	F	177	-269	-92	389	-662	-273	97	-112	-15	-379
	M	0	-343	-343	813	-591	222	107	-80	28	-94
	A	0	-446	-446	555	-428	127	103	-92	11	-308
	M	33	-812	-779	558	-455	103	104	-103	1	-675
	J	204	-814	-610	444	-896	-452	96	-203	-107	-1,169
	J	0	-306	-306	878	-406	471	100	-129	-29	136
	A	0	-246	-246	1,420	-1,117	303	100	-53	47	104
	S	0	-300	-300	886	-1,044	-158	96	-121	-25	-483
	O	0	-394	-394	1,030	-964	66	98	-84	14	-314
	N	118	-70	48	777	-622	155	95	-116	-21	182

Table 3
Portfolio Transactions with Non-residents in Canadian Bonds, by Geographical Area and Type of Transaction - Continued

		All Other Countries									
		New Issues and Retirements			Outstanding Issues			Interest			Total
Period		New Issues	Retirements	Total	Sales	Purchases	Total	Accrued	Paid	Change in interest payable	
V No.	A	115148	115149	115147	115151	115152	115150	115154	115155	115153	115146
	Q	115297	115298	115296	115300	115301	115299	115303	115304	115302	115295
	M	115446	115447	115445	115449	115450	115448	115452	115453	115451	115444
millions of dollars											
1989		1,067	-366	701	8,077	-5,582	2,495	759	-694	65	3,262
1990		292	-502	-210	9,579	-8,979	600	989	-957	32	423
1991		2,126	-1,279	847	14,938	-11,993	2,945	1,187	-1,091	96	3,888
1992		1,337	-1,362	-25	19,760	-17,774	1,986	1,415	-1,326	90	2,051
1993		2,560	-1,172	1,387	43,448	-43,107	341	1,551	-1,477	74	1,803
1994		5,572	-1,063	4,509	35,969	-35,486	483	1,830	-1,718	112	5,104
1995		2,762	-1,511	1,251	26,395	-23,737	2,658	2,004	-1,833	171	4,080
1996		222	-2,868	-2,646	31,599	-29,877	1,721	2,102	-2,089	13	-911
1997		211	-2,440	-2,230	60,779	-59,197	1,582	2,073	-2,010	63	-585
1998		1,641	-3,563	-1,922	30,108	-27,318	2,790	2,315	-2,265	49	917
1999		506	-3,877	-3,370	11,691	-11,027	664	2,214	-2,058	157	-2,550
2000		465	-3,743	-3,278	12,371	-12,470	-100	1,959	-1,906	53	-3,325
2001		0	-3,200	-3,200	9,302	-9,054	249	1,633	-1,612	22	-2,930
2000	III	199	-985	-786	3,316	-3,481	-165	483	-435	48	-903
	IV	0	-610	-610	2,733	-1,991	742	473	-467	6	137
2001	I	0	-769	-769	2,736	-4,116	-1,380	438	-384	54	-2,096
	II	0	-996	-996	2,265	-1,967	298	408	-468	-60	-757
	III	0	-970	-970	1,737	-1,141	596	396	-350	46	-327
	IV	0	-465	-465	2,564	-1,830	735	392	-410	-19	251
2002	I	0	-303	-303	2,188	-1,529	659	348	-283	65	421
	II	237	-1,054	-817	2,372	-2,758	-386	342	-387	-45	-1,248
	III	62	-428	-366	3,307	-2,982	325	348	-311	36	-5
2000	N	0	-79	-79	1,376	-519	857	155	-93	62	840
	D	0	-344	-344	571	-590	-19	159	-275	-115	-478
2001	J	0	-107	-107	1,171	-1,408	-237	155	-81	74	-270
	F	0	-256	-256	645	-1,873	-1,228	137	-152	-15	-1,499
	M	0	-406	-406	920	-835	85	145	-151	-5	-327
	A	0	-184	-184	367	-622	-256	136	-98	39	-401
	M	0	-301	-301	868	-440	428	139	-102	37	164
	J	0	-512	-512	1,031	-904	126	132	-268	-136	-521
	J	0	-99	-99	437	-276	161	135	-138	-4	57
	A	0	-231	-231	574	-465	108	134	-93	41	-81
	S	0	-639	-639	726	-399	327	127	-118	9	-304
	O	0	-220	-220	929	-399	530	132	-78	53	363
	N	0	-134	-134	1,012	-761	251	129	-86	42	160
	D	0	-111	-111	624	-670	-46	131	-245	-114	-272
2002	J	0	-118	-118	569	-472	96	120	-51	69	48
	F	0	-56	-56	864	-573	291	108	-110	-1	233
	M	0	-129	-129	755	-483	272	120	-123	-3	140
	A	0	-285	-285	602	-926	-324	115	-55	61	-548
	M	161	-363	-202	761	-875	-114	116	-61	56	-260
	J	76	-405	-330	1,008	-957	51	111	-272	-162	-440
	J	46	-152	-105	1,028	-962	66	116	-130	-14	-53
	A	16	-130	-115	1,287	-1,107	179	117	-53	65	129
	S	0	-146	-146	992	-913	80	114	-129	-15	-81
	O	0	-48	-48	1,014	-766	249	118	-42	76	277
	N	35	-62	-27	986	-681	305	115	-60	55	333

Table 3
Portfolio Transactions with Non-residents in Canadian Bonds, by Geographical Area and Type of Transaction - Concluded

		Total All Countries									
		New Issues and Retirements			Outstanding Issues			Interest			Total
Period		New Issues	Retirements	Total	Sales	Purchases	Total	Accrued	Paid	Change in interest payable	
V No.	A	113054	113061	113174	113087	113094	113047	113181	113188	113068	113195
	Q	113226	113233	113346	113259	113266	113219	113353	113360	113240	113367
	M	113398	113405	113518	113431	113438	113391	113525	113532	113412	113539
millions of dollars											
1989		17,672	-13,695	3,977	88,953	-75,100	13,854	15,344	-14,988	356	18,187
1990		17,099	-13,591	3,508	131,461	-120,687	10,774	16,844	-16,448	396	14,678
1991		34,382	-20,495	13,887	184,646	-171,322	13,324	18,612	-17,761	852	28,063
1992		33,626	-24,439	9,187	268,007	-259,023	8,984	20,462	-19,868	594	18,766
1993		44,130	-27,323	16,807	396,861	-383,091	13,770	22,630	-21,760	870	31,446
1994		43,263	-22,403	20,860	543,123	-549,033	-5,910	24,246	-23,200	1,045	15,995
1995		38,000	-20,220	17,780	481,511	-469,366	12,145	25,657	-24,852	805	30,730
1996		43,596	-32,820	10,776	671,749	-664,826	6,923	25,913	-25,659	254	17,953
1997		38,895	-31,635	7,260	1,037,583	-1,039,159	-1,576	26,503	-26,021	482	6,166
1998		55,608	-37,092	18,517	832,829	-841,773	-8,944	27,411	-26,646	765	10,337
1999		33,757	-39,034	-5,277	554,241	-546,639	7,602	27,272	-27,287	-15	2,310
2000		19,765	-46,178	-26,413	394,398	-390,547	3,851	25,926	-26,019	-93	-22,655
2001		76,826	-52,934	23,893	378,589	-369,547	9,042	25,902	-25,228	674	33,609
2000	III	6,461	-9,417	-2,955	89,197	-90,327	-1,129	6,417	-6,153	265	-3,820
	IV	1,470	-10,055	-8,586	89,104	-84,940	4,164	6,429	-6,516	-88	-4,509
2001	I	15,081	-11,410	3,670	108,757	-105,576	3,181	6,238	-6,246	-9	6,843
	II	21,440	-17,050	4,389	101,915	-99,051	2,864	6,377	-6,280	98	7,352
	III	11,498	-12,559	-1,061	76,774	-75,361	1,412	6,514	-5,945	569	921
	IV	28,808	-11,914	16,894	91,143	-89,559	1,584	6,772	-6,757	15	18,493
2002	I	9,229	-6,051	3,178	82,050	-81,071	978	6,630	-5,933	697	4,853
	II	15,559	-14,667	892	85,906	-84,443	1,463	6,626	-6,956	-330	2,026
	III	10,160	-13,978	-3,818	117,983	-112,741	5,242	6,758	-6,149	609	2,032
2000	N	807	-1,974	-1,167	27,290	-26,263	1,027	2,112	-1,636	476	336
	D	233	-5,516	-5,282	29,807	-27,830	1,977	2,153	-3,213	-1,061	-4,367
2001	J	2,256	-3,147	-891	37,783	-35,568	2,215	2,127	-1,981	146	1,470
	F	6,016	-3,977	2,039	29,537	-31,613	-2,076	1,940	-2,032	-92	-129
	M	6,809	-4,286	2,523	41,438	-38,395	3,043	2,170	-2,233	-63	5,502
	A	5,536	-3,549	1,987	32,827	-29,847	2,980	2,108	-1,618	490	5,458
	M	10,871	-6,794	4,077	38,158	-38,496	-338	2,176	-1,340	837	4,575
	J	5,033	-6,708	-1,675	30,931	-30,708	223	2,093	-3,322	-1,229	-2,681
	J	2,882	-2,235	647	22,737	-23,773	-1,036	2,175	-2,005	170	-218
	A	7,051	-3,046	4,005	26,849	-23,659	3,190	2,197	-1,705	492	7,687
	S	1,565	-7,278	-5,713	27,187	-27,929	-742	2,142	-2,235	-93	-6,547
	O	15,244	-4,721	10,523	33,186	-31,298	1,888	2,239	-1,432	807	13,217
	N	10,042	-4,499	5,542	35,755	-34,518	1,237	2,234	-1,753	480	7,259
	D	3,522	-2,694	829	22,202	-23,742	-1,540	2,299	-3,571	-1,272	-1,984
2002	J	2,504	-1,599	906	26,372	-27,835	-1,463	2,293	-1,796	497	-61
	F	2,018	-2,705	-687	23,872	-21,555	2,317	2,059	-2,187	-128	1,503
	M	4,707	-1,747	2,959	31,805	-31,681	124	2,278	-1,950	328	3,411
	A	3,801	-4,031	-230	27,436	-26,373	1,063	2,211	-1,820	391	1,224
	M	5,292	-3,961	1,330	29,858	-29,974	-116	2,250	-1,495	756	1,970
	J	6,466	-6,674	-208	28,611	-28,096	516	2,165	-3,642	-1,476	-1,169
	J	4,360	-6,232	-1,871	35,268	-33,607	1,661	2,263	-2,341	-78	-288
	A	978	-2,721	-1,744	43,111	-39,637	3,474	2,282	-1,793	489	2,219
	S	4,822	-5,025	-203	39,603	-39,497	106	2,213	-2,015	198	101
	O	2,536	-3,157	-621	38,882	-34,419	4,463	2,293	-1,860	433	4,276
	N	2,270	-2,601	-331	37,021	-35,007	2,014	2,227	-2,153	75	1,757

Table 4
Portfolio Transactions with Non-residents in Canadian Bonds, by Geographical Area

Period	United States	United Kingdom	Other EU Countries	Japan	Other OECD Countries	Other Countries	Total
V No. A	115096	115106	115116	115126	115136	115146	113195
Q	115245	115255	115265	115275	115285	115295	113367
M	115394	115404	115414	115424	115434	115444	113539
millions of dollars							
1989	3,604	2,768	1,233	6,561	758	3,262	18,187
1990	10,177	2,819	-1,708	3,421	-454	423	14,678
1991	9,552	6,764	4,162	2,362	1,335	3,888	28,063
1992	15,217	-1,981	1,334	3,781	-1,636	2,051	18,766
1993	22,897	9,275	1,717	-4,347	102	1,803	31,446
1994	8,549	-960	3,899	-960	364	5,104	15,995
1995	18,891	5,039	959	890	871	4,080	30,730
1996	18,143	3,110	-954	3,665	-5,100	-911	17,953
1997	7,251	6,765	-1,896	-1,887	-3,483	-585	6,166
1998	4,813	6,984	3,694	-5,719	-353	917	10,337
1999	6,672	6,704	-2,436	-3,074	-3,007	-2,550	2,310
2000	-8,865	3,468	-4,761	-4,958	-4,214	-3,325	-22,655
2001	34,967	5,861	861	-881	-4,268	-2,930	33,609
2000 III	-1,228	-365	1,354	-1,603	-1,074	-903	-3,820
IV	-378	147	-1,144	-1,795	-1,477	137	-4,509
2001 I	9,171	2,959	-1,257	-420	-1,514	-2,096	6,843
II	9,266	-383	373	64	-1,211	-757	7,352
III	-42	-384	1,236	820	-381	-327	921
IV	16,573	3,669	509	-1,346	-1,163	251	18,493
2002 I	6,557	342	-318	-1,271	-878	421	4,853
II	7,183	2,248	-927	-3,079	-2,151	-1,248	2,026
III	5,178	-2,505	516	-909	-243	-5	2,032
2000 N	957	130	-157	-1,056	-378	840	336
D	-1,536	-1,046	-797	-65	-445	-478	-4,367
2001 J	931	1,165	290	-66	-580	-270	1,470
F	2,643	594	-870	-488	-509	-1,499	-129
M	5,597	1,200	-678	135	-425	-327	5,502
A	5,452	1,290	-753	89	-220	-401	5,458
M	5,431	639	-1,113	41	-587	164	4,575
J	-1,617	-2,312	2,239	-67	-404	-521	-2,681
J	45	-1,181	849	-66	76	57	-218
A	3,980	3,256	214	516	-198	-81	7,687
S	-4,068	-2,460	172	370	-258	-304	-6,547
O	9,675	3,805	303	-556	-372	363	13,217
N	6,582	670	697	-543	-307	160	7,259
D	316	-806	-492	-247	-484	-272	-1,984
2002 J	1,897	382	-970	-1,012	-405	48	-61
F	1,094	1,233	-537	-142	-379	233	1,503
M	3,566	-1,273	1,189	-116	-94	140	3,411
A	4,149	-604	-549	-916	-308	-548	1,224
M	1,206	2,027	-22	-307	-675	-260	1,970
J	1,827	825	-356	-1,857	-1,169	-440	-1,169
J	2,518	-1,286	-663	-940	136	-53	-288
A	605	226	1,278	-123	104	129	2,219
S	2,054	-1,445	-99	155	-483	-81	101
O	-952	2,961	995	1,310	-314	277	4,276
N	678	2,239	-1,459	-216	182	333	1,757

Table 5
Portfolio transactions with Non-residents in Canadian Bonds, by Type and Currency of Issue

Period	New Issues				Retirements				Outstanding				
	Canadian dollars	U.S. dollars	Other currencies	Total	Canadian dollars	U.S. dollars	Other currencies	Total	Canadian dollars	U.S. dollars	Other currencies	Total	
V No.	A	113160	113165	113170	113054	113161	113166	113171	113061	113162	113167	113172	113047
	Q	113332	113337	113342	113226	113333	113338	113343	113233	113334	113339	113344	113219
	M	113504	113509	113514	113398	113505	113510	113515	113405	113506	113511	113516	113391
millions of dollars													
1989		5,813	7,009	4,849	17,672	-3,552	-8,122	-2,020	-13,695	13,854	13,854
1990		2,107	10,628	4,364	17,099	-6,351	-5,150	-2,091	-13,591	10,774	10,774
1991		12,701	17,289	4,392	34,382	-8,348	-8,585	-3,561	-20,495	13,324	13,324
1992		5,808	22,828	4,989	33,626	-9,751	-10,194	-4,494	-24,439	8,984	8,984
1993		11,328	27,887	4,914	44,130	-11,835	-10,505	-4,982	-27,323	13,770	13,770
1994		7,912	23,041	12,310	43,263	-9,262	-7,340	-5,801	-22,403	-5,277	-576	-57	-5,910
1995		3,125	24,291	10,584	38,000	-6,955	-9,095	-4,171	-20,220	12,694	-533	-16	12,145
1996		4,078	26,855	12,663	43,596	-13,635	-12,609	-6,576	-32,820	8,125	-1,154	-48	6,923
1997		2,233	26,130	10,532	38,895	-7,780	-15,582	-8,273	-31,635	-765	-674	-137	-1,576
1998		5,170	34,762	15,677	55,608	-14,531	-13,865	-8,696	-37,092	-6,160	-2,615	-168	-8,944
1999		3,975	25,102	4,680	33,757	-9,204	-21,669	-8,162	-39,034	8,916	-1,330	16	7,602
2000		1,754	14,599	3,411	19,765	-14,623	-21,093	-10,462	-46,178	2,786	929	136	3,851
2001		4,139	60,269	12,419	76,826	-16,513	-28,436	-7,984	-52,934	8,436	647	-41	9,042
2000	III	0	5,960	501	6,461	-3,840	-2,533	-3,043	-9,417	-1,810	692	-11	-1,129
	IV	129	1,063	278	1,470	-4,653	-4,000	-1,402	-10,055	3,265	903	-4	4,164
2001	I	578	11,569	2,934	15,081	-1,943	-7,065	-2,402	-11,410	2,977	197	7	3,181
	II	1,033	16,727	3,680	21,440	-5,220	-8,559	-3,271	-17,050	2,999	-105	-29	2,864
	III	1,053	8,702	1,743	11,498	-5,961	-5,449	-1,149	-12,559	1,385	71	-44	1,412
	IV	1,474	23,271	4,062	28,808	-3,390	-7,362	-1,162	-11,914	1,075	484	25	1,584
2002	I	1,320	7,164	746	9,229	-1,436	-3,766	-848	-6,051	505	490	-17	978
	II	2,852	9,792	2,915	15,559	-3,664	-9,878	-1,125	-14,667	1,519	-54	-2	1,463
	III	651	9,249	260	10,160	-2,854	-8,666	-2,457	-13,978	6,051	-818	9	5,242
2000	N	0	613	193	807	-218	-832	-924	-1,974	985	76	-34	1,027
	D	101	132	0	233	-4,189	-1,293	-34	-5,516	1,428	518	30	1,977
2001	J	0	2,236	21	2,256	-153	-2,312	-682	-3,147	2,212	8	-5	2,215
	F	200	4,419	1,397	6,016	-880	-2,216	-881	-3,977	-2,127	36	15	-2,076
	M	378	4,914	1,517	6,809	-910	-2,537	-839	-4,286	2,892	153	-2	3,043
	A	0	5,492	44	5,536	-725	-2,120	-704	-3,549	3,051	-82	11	2,980
	M	0	9,430	1,441	10,871	-601	-5,241	-952	-6,794	-433	81	14	-338
	J	1,033	1,805	2,195	5,033	-3,894	-1,199	-1,616	-6,708	381	-104	-55	223
	J	0	2,005	877	2,882	-848	-935	-452	-2,235	-1,064	52	-24	-1,036
	A	753	5,518	780	7,051	-323	-2,581	-143	-3,046	3,177	27	-15	3,190
	S	300	1,179	86	1,565	-4,790	-1,934	-554	-7,278	-729	-8	-5	-742
	O	1,000	12,448	1,797	15,244	-1,206	-3,253	-263	-4,721	1,546	337	4	1,888
	N	474	8,208	1,359	10,042	-95	-3,580	-824	-4,499	1,009	192	35	1,237
	D	0	2,616	907	3,522	-2,089	-529	-75	-2,694	-1,480	-45	-15	-1,540
2002	J	232	2,272	0	2,504	-230	-1,356	-12	-1,599	-1,484	-2	23	-1,463
	F	1,088	904	26	2,018	-815	-1,198	-692	-2,705	1,791	561	-34	2,317
	M	0	3,987	719	4,707	-392	-1,211	-144	-1,747	198	-69	-5	124
	A	48	3,189	563	3,801	-1,623	-2,194	-214	-4,031	1,103	-26	-14	1,063
	M	739	2,276	2,277	5,292	-853	-2,557	-551	-3,961	-100	-46	31	-116
	J	2,065	4,327	75	6,466	-1,187	-5,127	-360	-6,674	517	18	-19	516
	J	0	4,198	162	4,360	-498	-5,004	-730	-6,232	1,789	-142	14	1,661
	A	0	956	21	978	-236	-1,653	-832	-2,721	3,734	-252	-7	3,474
	S	651	4,094	77	4,822	-2,120	-2,010	-895	-5,025	528	-424	2	106
	O	0	2,099	437	2,536	-127	-2,735	-295	-3,157	4,573	-111	1	4,463
	N	279	1,922	68	2,270	-201	-1,485	-915	-2,601	1,780	227	7	2,014

Table 5
Portfolio transactions with Non-residents in Canadian Bonds, by Type and Currency of Issue - Concluded

Period	Change in interest payable				Total			
	Canadian dollars	U.S. dollars	Other currencies	Total	Canadian dollars	U.S. dollars	Other currencies	Total
V No. A	113163	113168	113173	113068	113159	113164	113169	113158
Q	113335	113340	113345	113240	113331	113336	113341	113330
M	113507	113512	113517	113412	113503	113508	113513	113502
millions of dollars								
1989	477	-231	110	356	16,591	-1,343	2,939	18,187
1990	260	14	122	396	6,790	5,492	2,396	14,678
1991	623	190	39	852	18,300	8,894	869	28,063
1992	262	299	34	594	5,304	12,933	529	18,766
1993	421	505	-57	870	13,684	17,887	-125	31,446
1994	426	529	89	1,045	-6,201	15,655	6,541	15,995
1995	241	494	70	805	9,105	15,157	6,468	30,730
1996	-3	255	1	254	-1,435	13,347	6,041	17,953
1997	40	411	31	482	-6,272	10,285	2,153	6,166
1998	-40	592	212	765	-15,563	18,874	7,026	10,337
1999	-297	304	-23	-15	3,391	2,408	-3,489	2,310
2000	-209	250	-135	-93	-10,291	-5,315	-7,049	-22,655
2001	-302	524	453	674	-4,241	33,004	4,846	33,609
2000 III	401	62	-198	265	-5,249	4,181	-2,752	-3,820
IV	-552	313	152	-88	-1,812	-1,721	-977	-4,509
2001 I	403	-358	-54	-9	2,015	4,343	485	6,843
II	-506	411	194	98	-1,694	8,473	573	7,352
III	513	-40	97	569	-3,010	3,284	647	921
IV	-712	511	216	15	-1,552	16,904	3,141	18,493
2002 I	562	56	78	697	951	3,944	-41	4,853
II	-577	170	77	-330	131	29	1,865	2,026
III	656	71	-118	609	4,504	-164	-2,307	2,032
2000 N	460	33	-17	476	1,227	-109	-782	336
D	-1,248	159	28	-1,061	-3,908	-483	24	-4,367
2001 J	470	-305	-18	146	2,529	-374	-685	1,470
F	290	-382	0	-92	-2,517	1,857	531	-129
M	-357	330	-36	-63	2,003	2,860	639	5,502
A	350	67	73	490	2,675	3,357	-575	5,458
M	410	346	81	837	-624	4,615	584	4,575
J	-1,266	-2	40	-1,229	-3,745	500	564	-2,681
J	417	-232	-15	170	-1,495	891	386	-218
A	481	-93	104	492	4,089	2,872	727	7,687
S	-385	285	7	-93	-5,604	-478	-465	-6,547
O	288	367	152	807	1,628	9,899	1,690	13,217
N	440	24	16	480	1,829	4,844	586	7,259
D	-1,440	120	48	-1,272	-5,009	2,161	864	-1,984
2002 J	356	79	62	497	-1,126	993	72	-61
F	233	-366	5	-128	2,297	-99	-695	1,503
M	-26	343	11	328	-220	3,050	582	3,411
A	274	114	3	391	-199	1,083	339	1,224
M	312	354	90	756	97	26	1,847	1,970
J	-1,162	-298	-17	-1,476	232	-1,080	-321	-1,169
J	342	-176	-244	-78	1,632	-1,123	-798	-288
A	407	-44	126	489	3,905	-993	-693	2,219
S	-93	291	0	198	-1,033	1,952	-817	101
O	363	-31	101	433	4,809	-777	244	4,276
N	368	-215	-78	75	2,225	449	-917	1,757

Table 6
Portfolio Transactions with Non-residents in Canadian Money Market Instruments, by Sector, Sales and Purchases

		Federal Government								
		Direct			Enterprises			Total		
Period		Sales	Purchases	Net	Sales	Purchases	Net	Sales	Purchases	Net
V No.	A	113143	113152	113081	113144	113153	113082	113142	113151	113080
	Q	113315	113324	113253	113316	113325	113254	113314	113323	113252
	M	113457	113466	113425	113458	113467	113426	113456	113465	113424
millions of dollars										
1989		66,353	-65,869	484	10,902	-10,641	261	77,255	-76,510	745
1990		59,553	-56,135	3,418	5,571	-5,818	-246	65,125	-61,953	3,172
1991		78,368	-76,080	2,288	15,965	-12,971	2,994	94,333	-89,051	5,282
1992		140,424	-138,508	1,915	58,925	-59,138	-214	199,348	-197,647	1,701
1993		157,051	-146,112	10,939	32,408	-33,017	-610	189,459	-179,129	10,329
1994		266,691	-263,960	2,731	24,761	-25,422	-660	291,452	-289,381	2,071
1995		246,238	-246,957	-719	22,112	-22,904	-792	268,350	-269,861	-1,511
1996		282,373	-290,065	-7,691	25,747	-25,851	-104	308,121	-315,916	-7,795
1997		183,471	-185,759	-2,288	23,555	-21,938	1,617	207,026	-207,697	-671
1998		108,887	-111,333	-2,446	59,269	-57,908	1,361	168,156	-169,241	-1,085
1999		83,523	-90,008	-6,485	56,505	-57,984	-1,479	140,028	-147,992	-7,964
2000		65,879	-67,013	-1,134	38,455	-38,923	-468	104,334	-105,936	-1,603
2001		38,173	-42,751	-4,578	34,163	-34,074	89	72,337	-76,825	-4,489
2000	III	16,149	-18,369	-2,220	9,808	-9,682	126	25,957	-28,051	-2,094
	IV	13,989	-13,692	297	8,108	-8,357	-249	22,097	-22,050	47
2001	I	13,643	-14,924	-1,281	7,653	-7,556	97	21,296	-22,480	-1,184
	II	9,307	-10,779	-1,472	9,459	-9,862	-403	18,766	-20,641	-1,875
	III	6,300	-9,404	-3,104	8,363	-8,003	359	14,663	-17,407	-2,745
	IV	8,923	-7,644	1,279	8,689	-8,653	35	17,611	-16,297	1,315
2002	I	10,796	-10,966	-169	15,417	-13,955	1,462	26,213	-24,920	1,293
	II	9,428	-8,539	889	14,930	-15,882	-952	24,358	-24,421	-62
	III	9,975	-10,105	-130	15,205	-16,572	-1,367	25,180	-26,677	-1,497
2000	N	3,841	-4,645	-804	2,946	-3,459	-513	6,787	-8,104	-1,318
	D	5,757	-4,927	830	2,716	-2,541	175	8,473	-7,468	1,004
2001	J	3,893	-4,096	-203	1,979	-1,473	506	5,872	-5,569	303
	F	3,961	-5,014	-1,053	2,798	-3,449	-651	6,759	-8,463	-1,704
	M	5,789	-5,814	-25	2,876	-2,634	242	8,665	-8,448	217
	A	3,175	-3,883	-708	2,609	-3,227	-618	5,784	-7,110	-1,326
	M	3,191	-3,297	-106	4,116	-3,666	450	7,307	-6,964	344
	J	2,941	-3,599	-657	2,734	-2,969	-235	5,675	-6,567	-892
	J	2,305	-3,260	-955	2,872	-2,938	-67	5,177	-6,198	-1,022
	A	2,087	-3,199	-1,112	2,807	-3,023	-216	4,894	-6,222	-1,328
	S	1,908	-2,946	-1,037	2,684	-2,042	642	4,593	-4,988	-395
	O	2,527	-1,929	598	3,007	-2,728	279	5,535	-4,657	877
	N	2,661	-3,183	-521	3,071	-3,605	-533	5,733	-6,787	-1,055
	D	3,734	-2,532	1,202	2,610	-2,320	290	6,344	-4,852	1,492
2002	J	3,403	-3,860	-457	3,100	-2,606	494	6,503	-6,467	37
	F	3,617	-3,779	-162	6,543	-6,229	314	10,159	-10,008	152
	M	3,777	-3,327	450	5,774	-5,120	655	9,551	-8,446	1,105
	A	2,440	-2,714	-274	5,306	-5,377	-70	7,746	-8,091	-344
	M	2,916	-2,433	483	4,992	-5,436	-444	7,908	-7,869	39
	J	4,073	-3,392	681	4,632	-5,070	-437	8,705	-8,461	243
	J	2,253	-1,869	383	6,203	-6,490	-288	8,455	-8,360	96
	A	3,768	-4,106	-337	4,953	-5,528	-575	8,721	-9,634	-912
	S	3,954	-4,131	-176	4,049	-4,553	-504	8,004	-8,684	-680
	O	3,563	-3,542	22	4,320	-4,318	2	7,883	-7,860	23
	N	2,443	-1,900	544	5,572	-4,661	911	8,015	-6,561	1,454

Table 6
Portfolio Transactions with Non-residents in Canadian Money Market Instruments, by Sector, Sales and Purchases - Continued

		Provincial Governments ¹								
		Direct			Enterprises			Total		
Period		Sales	Purchases	Net	Sales	Purchases	Net	Sales	Purchases	Net
V No.	A	113146	113155	113084	113147	113156	113085	113145	113154	113083
	Q	113318	113327	113256	113319	113328	113257	113317	113326	113255
	M	113460	113469	113428	113461	113470	113429	113459	113468	113427
millions of dollars										
1989		3,502	-3,196	306	330	-300	29	3,832	-3,496	336
1990		6,831	-5,493	1,338	311	-377	-66	7,141	-5,870	1,272
1991		5,640	-4,727	913	396	-374	22	6,036	-5,101	935
1992		23,508	-22,035	1,473	5,661	-5,625	36	29,169	-27,660	1,509
1993		19,970	-19,822	148	2,740	-2,605	135	22,709	-22,427	283
1994		22,498	-23,540	-1,042	5,421	-5,382	39	27,919	-28,922	-1,003
1995		16,428	-15,931	497	5,012	-5,078	-66	21,440	-21,009	431
1996		18,719	-19,921	-1,202	8,365	-8,399	-34	27,084	-28,320	-1,236
1997		18,644	-20,211	-1,567	7,733	-6,656	1,076	26,377	-26,867	-491
1998		15,036	-13,568	1,468	7,431	-7,960	-530	22,466	-21,528	938
1999		16,849	-17,003	-154	2,994	-4,085	-1,091	19,843	-21,088	-1,245
2000		16,592	-14,422	2,171	2,036	-2,378	-342	18,628	-16,799	1,829
2001		16,234	-17,271	-1,037	209	-184	24	16,443	-17,455	-1,012
2000	III	3,361	-3,321	39	292	-395	-103	3,653	-3,717	-63
	IV	5,056	-3,449	1,607	500	-787	-287	5,555	-4,236	1,320
2001	I	4,378	-5,714	-1,336	20	-8	12	4,398	-5,723	-1,324
	II	4,425	-3,535	890	28	-36	-8	4,453	-3,571	882
	III	3,312	-4,387	-1,074	30	-21	8	3,342	-4,408	-1,066
	IV	4,119	-3,634	484	131	-119	12	4,250	-3,753	496
2002	I	3,364	-3,393	-29	81	-90	-10	3,445	-3,483	-38
	II	4,771	-4,240	531	137	-71	67	4,908	-4,310	598
	III	2,919	-3,624	-705	76	-74	2	2,994	-3,698	-704
2000	N	2,028	-943	1,085	4	-475	-471	2,031	-1,418	614
	D	1,628	-1,223	405	1	-4	-3	1,630	-1,228	402
2001	J	1,581	-2,047	-465	6	0	6	1,587	-2,047	-459
	F	1,459	-1,995	-536	10	-4	6	1,469	-1,999	-530
	M	1,338	-1,673	-335	4	-4	0	1,342	-1,677	-335
	A	2,023	-1,307	716	22	-17	5	2,046	-1,325	721
	M	1,360	-1,202	159	5	-11	-6	1,366	-1,212	153
	J	1,042	-1,026	15	0	-8	-8	1,042	-1,034	8
	J	924	-1,836	-912	13	-11	1	937	-1,847	-910
	A	1,253	-1,293	-40	5	0	5	1,259	-1,293	-35
	S	1,135	-1,257	-123	12	-10	2	1,147	-1,268	-121
	O	1,028	-1,192	-164	31	-38	-7	1,059	-1,230	-171
	N	1,369	-1,374	-5	68	-52	16	1,437	-1,426	11
	D	1,722	-1,069	653	32	-29	3	1,754	-1,097	656
2002	J	1,076	-1,176	-99	26	-21	5	1,102	-1,197	-95
	F	1,257	-888	369	18	-27	-9	1,275	-915	360
	M	1,031	-1,330	-299	36	-41	-5	1,067	-1,371	-304
	A	1,338	-863	475	30	-31	-1	1,368	-894	474
	M	1,889	-1,585	303	17	-26	-10	1,905	-1,612	293
	J	1,544	-1,791	-247	91	-13	77	1,634	-1,804	-170
	J	1,044	-1,272	-227	31	-32	-1	1,076	-1,304	-228
	A	955	-1,131	-176	17	-7	10	972	-1,138	-166
	S	920	-1,221	-302	27	-35	-8	947	-1,256	-309
	O	1,395	-1,338	57	28	-18	11	1,424	-1,356	68
	N	1,522	-1,515	6	38	-49	-11	1,560	-1,565	-4

¹ Includes municipalities.

Table 6
Portfolio Transactions with Non-residents in Canadian Money Market Instruments, by Sector, Sales and Purchases - Concluded

Period		Total								
		Governments ¹			Corporations			Total		
		Sales	Purchases	Net	Sales	Purchases	Net	Sales	Purchases	Net
V No.	A	113141	113150	113079	113148	113157	113086	113140	113149	113078
	Q	113313	113322	113251	113320	113329	113258	113312	113321	113250
	M	113455	113464	113423	113462	113471	113430	113454	113463	113422
millions of dollars										
1989		81,087	-80,007	1,080	10,675	-10,615	59	91,762	-90,622	1,139
1990		72,266	-67,822	4,444	23,339	-22,141	1,198	95,605	-89,963	5,642
1991		100,370	-94,152	6,217	22,307	-24,096	-1,789	122,677	-118,249	4,428
1992		228,517	-225,307	3,210	25,694	-24,005	1,688	254,211	-249,312	4,898
1993		212,168	-201,556	10,612	33,922	-35,238	-1,316	246,090	-236,793	9,296
1994		319,371	-318,303	1,068	52,027	-52,190	-163	371,398	-370,493	905
1995		289,790	-290,870	-1,080	45,954	-46,128	-174	335,744	-336,998	-1,254
1996		335,204	-344,235	-9,031	54,013	-52,301	1,712	389,217	-396,536	-7,319
1997		233,403	-234,564	-1,161	82,853	-79,323	3,531	316,257	-313,887	2,369
1998		190,622	-190,770	-147	125,726	-125,449	277	316,349	-316,218	130
1999		159,871	-169,081	-9,209	78,817	-82,726	-3,909	238,689	-251,806	-13,118
2000		122,962	-122,736	226	95,126	-93,646	1,481	218,088	-216,381	1,707
2001		88,780	-94,281	-5,501	100,017	-101,865	-1,848	188,797	-196,145	-7,349
2000	III	29,610	-31,768	-2,158	21,554	-22,152	-598	51,164	-53,920	-2,756
	IV	27,652	-26,285	1,367	28,288	-26,573	1,715	55,940	-52,858	3,083
2001	I	25,694	-28,202	-2,508	26,441	-28,828	-2,388	52,135	-57,031	-4,896
	II	23,219	-24,213	-993	24,279	-23,609	671	47,499	-47,821	-322
	III	18,005	-21,816	-3,811	24,144	-24,290	-146	42,149	-46,106	-3,957
	IV	21,861	-20,050	1,811	25,153	-25,138	15	47,014	-45,188	1,826
2002	I	29,658	-28,404	1,255	18,309	-18,259	50	47,968	-46,663	1,305
	II	29,266	-28,731	535	16,300	-16,492	-192	45,566	-45,222	344
	III	28,175	-30,375	-2,201	19,161	-18,751	409	47,335	-49,127	-1,791
2000	N	8,818	-9,522	-704	7,905	-7,350	555	16,723	-16,872	-149
	D	10,102	-8,696	1,406	11,145	-10,411	734	21,247	-19,107	2,140
2001	J	7,459	-7,616	-157	9,873	-10,426	-554	17,332	-18,042	-710
	F	8,228	-10,462	-2,234	7,451	-8,333	-882	15,679	-18,795	-3,116
	M	10,008	-10,125	-117	9,117	-10,069	-952	19,125	-20,194	-1,069
	A	7,830	-8,435	-605	8,736	-7,541	1,195	16,566	-15,976	590
	M	8,673	-8,176	497	7,695	-7,423	273	16,368	-15,599	769
	J	6,717	-7,602	-885	7,848	-8,645	-797	14,565	-16,246	-1,682
	J	6,113	-8,045	-1,932	8,216	-7,796	420	14,329	-15,842	-1,512
	A	6,152	-7,515	-1,363	10,240	-9,965	275	16,392	-17,480	-1,088
	S	5,739	-6,255	-516	5,688	-6,529	-841	11,427	-12,784	-1,357
	O	6,593	-5,887	706	7,662	-7,133	529	14,256	-13,021	1,235
	N	7,170	-8,213	-1,043	10,692	-11,380	-688	17,862	-19,593	-1,732
	D	8,098	-5,949	2,149	6,799	-6,625	175	14,897	-12,574	2,323
2002	J	7,606	-7,664	-58	6,908	-6,507	401	14,514	-14,171	343
	F	11,435	-10,923	512	5,516	-6,311	-794	16,951	-17,234	-282
	M	10,618	-9,817	801	5,884	-5,441	443	16,502	-15,258	1,244
	A	9,114	-8,984	130	5,452	-5,685	-233	14,566	-14,669	-103
	M	9,813	-9,480	332	5,488	-5,770	-282	15,301	-15,251	50
	J	10,339	-10,266	73	5,360	-5,036	324	15,699	-15,302	397
	J	9,531	-9,664	-132	6,686	-6,330	355	16,217	-15,994	223
	A	9,693	-10,772	-1,079	6,027	-6,210	-183	15,721	-16,982	-1,261
	S	8,950	-9,940	-990	6,448	-6,211	237	15,398	-16,151	-753
	O	9,307	-9,216	91	6,741	-6,396	345	16,047	-15,611	436
	N	9,576	-8,126	1,450	8,232	-7,436	796	17,808	-15,562	2,246

¹ Including their enterprises.

Table 7
Portfolio Transactions with Non-residents in Canadian Money Market Instruments, by Geographical Area, Sales and Purchases

Period	United States			United Kingdom			Other EU Countries		
	Sales	Purchases	Net	Sales	Purchases	Net	Sales	Purchases	Net
V No. A	115158	115159	115157	115161	115162	115160	115164	115165	115163
Q	115307	115308	115306	115310	115311	115309	115313	115314	115312
M	115456	115457	115455	115459	115460	115458	115462	115463	115461
millions of dollars									
1989	50,956	-51,202	-247	8,377	-8,209	168	3,467	-3,515	-48
1990	47,288	-44,772	2,516	7,468	-7,575	-107	4,185	-3,444	740
1991	56,134	-55,137	997	20,406	-17,375	3,031	4,230	-4,758	-528
1992	144,134	-136,996	7,139	47,023	-47,219	-197	9,019	-9,076	-57
1993	112,572	-110,281	2,290	60,490	-59,137	1,353	9,222	-8,354	868
1994	205,916	-208,650	-2,734	50,928	-48,176	2,752	14,656	-15,217	-561
1995	130,015	-130,886	-871	82,318	-81,802	516	24,414	-24,438	-24
1996	142,725	-142,526	199	138,898	-143,085	-4,187	55,309	-54,889	421
1997	193,601	-189,520	4,081	35,006	-36,449	-1,443	44,643	-42,967	1,676
1998	229,670	-231,113	-1,443	30,314	-28,745	1,569	9,785	-10,047	-262
1999	175,681	-182,759	-7,077	26,830	-29,800	-2,970	7,790	-7,911	-121
2000	157,984	-155,725	2,259	21,463	-22,934	-1,471	8,960	-9,453	-493
2001	143,407	-147,418	-4,011	13,881	-14,585	-704	7,628	-7,974	-347
2000 III	37,441	-39,955	-2,514	4,338	-5,141	-803	2,571	-2,618	-47
IV	42,948	-40,099	2,849	3,573	-3,801	-228	1,595	-1,685	-89
2001 I	39,469	-43,080	-3,611	3,051	-3,549	-497	2,565	-2,554	11
II	34,470	-33,344	1,126	4,081	-4,189	-108	2,141	-2,451	-310
III	31,228	-34,406	-3,179	4,128	-4,426	-298	1,707	-1,882	-175
IV	38,240	-36,588	1,652	2,621	-2,421	200	1,215	-1,088	127
2002 I	34,448	-35,014	-566	6,459	-4,934	1,525	1,336	-1,265	71
II	35,298	-34,612	686	2,710	-3,450	-741	1,124	-1,266	-141
III	35,706	-36,916	-1,210	4,291	-4,310	-20	792	-1,138	-346
2000 N	12,313	-12,419	-107	987	-1,371	-384	525	-624	-99
D	16,514	-14,490	2,023	1,460	-1,535	-75	496	-389	107
2001 J	13,754	-14,665	-911	1,084	-731	352	295	-423	-128
F	12,180	-14,051	-1,872	667	-1,464	-797	671	-883	-213
M	13,535	-14,364	-829	1,301	-1,354	-52	1,599	-1,247	352
A	11,827	-10,660	1,166	1,122	-1,177	-54	796	-964	-168
M	11,953	-11,342	611	1,308	-1,353	-46	768	-600	167
J	10,691	-11,342	-651	1,651	-1,659	-8	577	-887	-310
J	10,686	-11,806	-1,119	1,591	-1,789	-198	539	-580	-41
A	12,264	-12,858	-594	1,284	-1,544	-260	813	-914	-102
S	8,277	-9,743	-1,465	1,253	-1,093	160	355	-387	-32
O	11,433	-11,013	420	822	-488	334	353	-185	169
N	15,008	-15,547	-539	551	-1,248	-697	439	-543	-104
D	11,800	-10,028	1,772	1,247	-685	562	423	-360	63
2002 J	11,077	-10,966	111	1,509	-1,233	276	267	-284	-17
F	12,727	-12,907	-181	2,048	-1,538	509	494	-772	-278
M	10,645	-11,141	-496	2,902	-2,163	740	574	-209	365
A	11,045	-11,070	-25	769	-1,318	-549	367	-391	-25
M	11,926	-12,433	-507	543	-746	-204	540	-281	259
J	12,328	-11,110	1,218	1,398	-1,386	12	218	-594	-376
J	12,859	-12,743	116	1,032	-822	210	192	-263	-72
A	12,327	-13,121	-794	788	-1,275	-488	310	-477	-168
S	10,520	-11,052	-532	2,471	-2,213	258	290	-397	-107
O	11,868	-12,225	-356	881	-805	76	586	-286	300
N	13,423	-12,069	1,354	1,039	-863	176	430	-313	117

Table 7
Portfolio Transactions with Non-residents in Canadian Money Market Instruments, by Geographical Area,
Sales and Purchases - Concluded

Period	Japan			Other OECD Countries			All Other Countries			Total		
	Sales	Purchases	Net	Sales	Purchases	Net	Sales	Purchases		Sales	Purchases	Net
V No. A	115167	115168	115166	115170	115171	115169	115173	115174	115172	113140	113149	113078
Q	115316	115317	115315	115319	115320	115318	115322	115323	115321	113312	113321	113250
M	115465	115466	115464	115468	115469	115467	115471	115472	115470	113454	113463	113422
millions of dollars												
1989	2,338	-1,518	819	5,698	-5,760	-63	20,926	-20,417	509	91,762	-90,622	1,139
1990	3,947	-4,253	-306	9,298	-7,644	1,654	23,420	-22,275	1,145	95,605	-89,963	5,642
1991	5,592	-4,432	1,160	13,896	-13,750	146	22,419	-22,797	-378	122,677	-118,249	4,428
1992	3,993	-5,328	-1,335	11,607	-13,042	-1,435	38,435	-37,652	784	254,211	-249,312	4,898
1993	5,145	-5,516	-371	15,356	-13,944	1,412	43,305	-39,561	3,744	246,090	-236,793	9,296
1994	1,865	-2,009	-144	23,696	-22,007	1,689	74,337	-74,433	-96	371,398	-370,493	905
1995	1,165	-1,371	-206	16,395	-17,240	-845	81,437	-81,261	176	335,744	-336,998	-1,254
1996	2,473	-1,833	641	10,062	-11,675	-1,613	39,749	-42,529	-2,780	389,217	-396,536	-7,319
1997	542	-1,070	-527	11,692	-10,840	853	30,771	-33,042	-2,270	316,257	-313,887	2,369
1998	166	-282	-115	16,530	-16,166	364	29,883	-29,866	17	316,349	-316,218	130
1999	195	-161	35	6,368	-6,878	-510	21,824	-24,297	-2,474	238,689	-251,806	-13,118
2000	452	-296	155	8,033	-8,265	-232	21,196	-19,708	1,488	218,088	-216,381	1,707
2001	263	-438	-175	5,164	-6,020	-856	18,454	-19,709	-1,255	188,797	-196,145	-7,349
2000 III	64	-43	21	1,858	-1,625	233	4,893	-4,538	354	51,164	-53,920	-2,756
IV	267	-160	107	1,538	-1,559	-21	6,019	-5,553	465	55,940	-52,858	3,083
2001 I	184	-210	-26	943	-1,324	-381	5,923	-6,314	-391	52,135	-57,031	-4,896
II	23	-23	-1	1,632	-1,836	-204	5,152	-5,978	-826	47,499	-47,821	-322
III	34	-83	-49	1,398	-1,577	-178	3,653	-3,732	-79	42,149	-46,106	-3,957
IV	23	-123	-100	1,190	-1,283	-94	3,726	-3,685	40	47,014	-45,188	1,826
2002 I	47	-46	1	1,207	-964	243	4,471	-4,440	31	47,968	-46,663	1,305
II	55	-35	19	1,404	-1,327	77	4,975	-4,531	443	45,566	-45,222	344
III	49	-54	-5	1,071	-1,429	-358	5,427	-5,279	147	47,335	-49,127	-1,791
2000 N	48	-16	32	608	-655	-47	2,243	-1,787	456	16,723	-16,872	-149
D	212	-137	75	482	-393	89	2,084	-2,163	-79	21,247	-19,107	2,140
2001 J	10	-46	-36	67	-83	-16	2,122	-2,093	28	17,332	-18,042	-710
F	65	-54	10	327	-612	-284	1,769	-1,730	40	15,679	-18,795	-3,116
M	109	-109	0	549	-630	-81	2,032	-2,491	-459	19,125	-20,194	-1,069
A	2	-5	-3	617	-672	-55	2,201	-2,498	-297	16,566	-15,976	590
M	10	-11	-1	680	-463	217	1,649	-1,829	-179	16,368	-15,599	769
J	10	-7	3	335	-700	-366	1,302	-1,651	-350	14,565	-16,246	-1,682
J	18	-20	-2	307	-356	-49	1,188	-1,291	-103	14,329	-15,842	-1,512
A	9	-56	-47	690	-816	-126	1,332	-1,292	40	16,392	-17,480	-1,088
S	6	-7	0	401	-405	-4	1,134	-1,149	-15	11,427	-12,784	-1,357
O	6	-8	-2	395	-204	191	1,247	-1,123	123	14,256	-13,021	1,235
N	6	-8	-2	575	-748	-173	1,282	-1,500	-217	17,862	-19,593	-1,732
D	11	-108	-96	220	-332	-112	1,196	-1,062	134	14,897	-12,574	2,323
2002 J	22	-16	6	124	-165	-41	1,515	-1,506	8	14,514	-14,171	343
F	10	-17	-7	267	-509	-242	1,406	-1,490	-85	16,951	-17,234	-282
M	15	-12	2	816	-290	525	1,551	-1,443	107	16,502	-15,258	1,244
A	17	-7	11	760	-386	374	1,608	-1,497	110	14,566	-14,669	-103
M	19	-12	7	500	-324	176	1,773	-1,455	318	15,301	-15,251	50
J	18	-17	2	143	-617	-473	1,594	-1,579	15	15,699	-15,302	397
J	15	-22	-7	426	-542	-116	1,694	-1,602	92	16,217	-15,994	223
A	14	-13	1	326	-429	-103	1,957	-1,667	290	15,721	-16,982	-1,261
S	21	-20	1	320	-458	-138	1,776	-2,011	-235	15,398	-16,151	-753
O	10	-11	-1	899	-458	441	1,804	-1,827	-23	16,047	-15,611	436
N	8	-8	-1	642	-370	272	2,267	-1,938	328	17,808	-15,562	2,246

Table 8
Portfolio Transactions with Non-residents in Canadian Stocks, by Geographical Area and Type of Transaction

Period	United States						United Kingdom					
	Outstanding Issues			Other Transactions ¹	Total	Outstanding Issues			Other Transactions ¹	Total		
	Sales	Purchases	Net			Sales	Purchases	Net				
V No.	A	115217	115218	115216	115215	115214	115222	115223	115221	115220	115219	
	Q	115366	115367	115365	115364	115363	115371	115372	115370	115369	115368	
	M	115515	115516	115514	115513	115512	115520	115521	115519	115518	115517	
millions of dollars												
1989		16,934	-13,320	3,615	433	4,047	2,550	-2,934	-384	137	-247	
1990		10,825	-12,444	-1,619	144	-1,476	2,017	-2,011	6	22	28	
1991		9,978	-12,147	-2,169	706	-1,463	2,469	-2,166	303	50	353	
1992		13,274	-12,619	654	450	1,105	1,419	-1,605	-186	74	-112	
1993		28,210	-18,540	9,670	1,385	11,055	2,713	-2,350	363	171	534	
1994		33,521	-28,639	4,882	1,095	5,977	4,022	-4,059	-37	306	269	
1995		25,974	-28,810	-2,836	1,384	-1,452	4,578	-6,127	-1,549	141	-1,408	
1996		46,055	-41,871	4,185	3,460	7,645	7,098	-8,375	-1,278	403	-874	
1997		68,900	-64,552	4,347	3,093	7,440	11,716	-10,160	1,556	152	1,708	
1998		89,550	-89,827	-277	16,679	16,402	7,926	-8,896	-970	-8	-978	
1999		87,650	-74,741	12,910	4,038	16,948	11,365	-8,553	2,812	57	2,869	
2000		165,532	-137,963	27,569	5,628	33,196	20,337	-19,752	585	218	802	
2001		127,097	-122,379	4,718	2,923	7,641	24,091	-26,662	-2,571	40	-2,531	
2000	III	39,055	-31,367	7,688	1,875	9,564	5,221	-5,183	38	2	41	
	IV	37,888	-40,166	-2,278	-10,493	-12,771	5,709	-6,569	-860	45	-815	
2001	I	40,658	-38,245	2,413	3,813	6,226	5,507	-5,692	-185	26	-159	
	II	30,497	-29,360	1,137	1,199	2,336	5,358	-6,383	-1,025	48	-978	
	III	26,873	-26,630	243	-3,001	-2,758	4,960	-5,293	-333	25	-308	
	IV	29,070	-28,145	925	911	1,836	8,266	-9,295	-1,029	-58	-1,087	
2002	I	28,806	-27,967	840	-2,090	-1,251	12,499	-14,500	-2,001	0	-2,001	
	II	30,701	-29,337	1,364	3,801	5,165	8,224	-8,568	-344	77	-267	
	III	26,490	-33,056	-6,566	2,044	-4,522	6,358	-6,439	-81	45	-36	
2000	N	10,166	-12,456	-2,290	1,046	-1,244	1,375	-2,095	-719	23	-697	
	D	12,491	-11,124	1,367	-20,366	-18,999	2,874	-2,694	180	23	203	
2001	J	12,291	-10,677	1,614	637	2,251	1,603	-1,569	34	20	54	
	F	12,345	-12,269	76	3,101	3,178	1,155	-1,806	-650	4	-646	
	M	16,022	-15,299	723	74	797	2,749	-2,317	432	2	434	
	A	8,660	-9,093	-433	140	-294	886	-1,560	-674	4	-670	
	M	10,759	-10,081	678	-2,844	-2,167	1,711	-1,902	-191	3	-188	
	J	11,079	-10,187	892	3,904	4,797	2,761	-2,921	-160	40	-120	
	J	7,569	-8,157	-589	-2,947	-3,536	741	-685	55	25	80	
	A	8,191	-7,747	444	139	583	1,835	-2,180	-345	0	-345	
	S	11,113	-10,725	388	-193	195	2,385	-2,428	-43	0	-43	
	O	11,434	-10,306	1,128	-2,394	-1,266	1,063	-1,468	-405	-58	-464	
	N	9,743	-10,168	-425	1,306	881	2,883	-2,910	-27	0	-27	
	D	7,893	-7,670	222	1,999	2,221	4,320	-4,916	-596	0	-596	
2002	J	9,379	-9,005	374	15	389	1,265	-1,671	-405	0	-405	
	F	9,854	-9,596	258	-864	-607	7,279	-7,211	69	0	69	
	M	9,574	-9,366	208	-1,241	-1,033	3,954	-5,619	-1,664	0	-1,664	
	A	10,379	-10,243	136	166	302	1,493	-1,527	-33	0	-33	
	M	9,504	-8,766	738	348	1,085	2,171	-2,743	-572	0	-572	
	J	10,818	-10,328	490	3,287	3,777	4,559	-4,298	261	77	339	
	J	9,933	-14,025	-4,092	231	-3,862	1,460	-1,182	278	0	278	
	A	7,940	-9,125	-1,185	1,460	275	1,655	-1,876	-221	45	-176	
	S	8,617	-9,906	-1,289	353	-936	3,243	-3,381	-138	0	-138	
	O	10,165	-11,063	-899	60	-839	1,663	-1,748	-85	0	-85	
	N	9,340	-8,517	823	271	1,094	2,273	-2,583	-309	0	-309	

¹ Other Transactions include new issues, retirements and/or withdrawals from the market due to activities such as takeovers.

Table 8
Portfolio Transactions with Non-residents in Canadian Stocks, by Geographical Area and Type of Transaction - Continued

Period	Other EU Countries					Japan					
	Outstanding Issues			Other Transactions ¹	Total	Outstanding Issues			Other Transactions ¹	Total	
	Sales	Purchases	Net			Sales	Purchases	Net			
V No.	A	115227	115228	115226	115225	115224	115232	115233	115231	115230	115229
	Q	115376	115377	115375	115374	115373	115381	115382	115380	115379	115378
	M	115525	115526	115524	115523	115522	115530	115531	115529	115528	115527
millions of dollars											
1989		1,834	-1,833	1	153	154	234	-261	-27	10	-17
1990		1,469	-1,606	-136	51	-86	88	-190	-101	0	-101
1991		1,329	-1,411	-82	71	-10	242	-133	110	3	113
1992		929	-997	-67	75	8	186	-135	51	16	67
1993		2,176	-2,066	110	156	266	259	-247	12	16	28
1994		2,433	-2,495	-63	178	116	1,004	-727	277	27	304
1995		2,427	-3,255	-828	101	-726	304	-340	-36	10	-27
1996		2,852	-3,333	-481	416	-64	659	-373	286	9	295
1997		3,530	-3,965	-435	122	-313	1,343	-996	347	5	352
1998		5,590	-5,905	-315	5	-310	339	-796	-457	0	-457
1999		8,539	-13,120	-4,580	109	-4,471	758	-291	467	0	467
2000		18,521	-21,883	-3,362	-1,009	-4,371	510	-688	-178	0	-178
2001		37,914	-39,208	-1,294	-291	-1,584	124	-279	-156	0	-156
2000	III	3,123	-3,271	-147	0	-147	73	-70	3	0	3
	IV	8,350	-7,352	998	-1,074	-76	69	-95	-26	0	-26
2001	I	13,259	-12,997	262	5	267	19	-100	-81	0	-81
	II	10,839	-11,575	-736	30	-707	65	-88	-22	0	-22
	III	7,591	-7,792	-200	0	-200	23	-57	-35	0	-35
	IV	6,225	-6,845	-619	-325	-945	17	-34	-17	0	-17
2002	I	4,980	-6,212	-1,232	0	-1,232	8	-71	-62	0	-62
	II	5,004	-5,192	-189	10	-179	30	-28	2	0	2
	III	1,642	-1,525	117	4	121	34	-42	-8	0	-8
2000	N	2,202	-1,917	285	0	285	8	-8	0	0	0
	D	2,570	-1,870	699	-1,066	-367	37	-8	29	0	29
2001	J	4,563	-4,598	-35	0	-35	11	-32	-21	0	-21
	F	3,766	-3,548	218	0	218	3	-29	-26	0	-26
	M	4,930	-4,850	80	5	85	4	-38	-34	0	-34
	A	3,485	-3,674	-189	11	-179	33	-59	-26	0	-26
	M	2,927	-3,254	-327	19	-308	7	-7	0	0	0
	J	4,427	-4,647	-220	0	-220	25	-22	4	0	4
	J	2,811	-2,786	25	0	25	11	-12	-1	0	-1
	A	3,025	-3,028	-3	0	-3	10	-14	-5	0	-5
	S	1,756	-1,978	-222	0	-222	2	-31	-29	0	-29
	O	3,362	-3,666	-305	0	-305	11	-3	8	0	8
	N	1,929	-2,250	-321	0	-321	5	-10	-5	0	-5
	D	935	-929	6	-325	-319	1	-22	-20	0	-20
2002	J	1,081	-1,161	-80	0	-80	1	-10	-9	0	-9
	F	1,572	-1,662	-90	0	-90	1	-25	-23	0	-23
	M	2,327	-3,389	-1,062	0	-1,062	6	-36	-30	0	-30
	A	682	-1,133	-451	10	-442	6	-13	-7	0	-7
	M	1,575	-1,519	56	0	56	10	-3	7	0	7
	J	2,747	-2,540	207	0	207	14	-13	2	0	2
	J	620	-553	67	0	67	25	-4	21	0	21
	A	264	-333	-68	4	-64	7	-21	-13	0	-13
	S	758	-639	118	0	118	1	-18	-16	0	-16
	O	479	-381	98	2	100	16	-8	8	0	8
	N	569	-573	-4	0	-4	1	-4	-3	0	-3

1 Other Transactions include new issues, retirements and/or withdrawals from the market due to activities such as takeovers.

Table 8
Portfolio Transactions with Non-residents in Canadian Stocks, by Geographical Area and Type of Transaction - Continued

Period	Other OECD Countries						All Other Countries					
	Outstanding Issues			Other Transactions ¹	Total	Outstanding Issues			Other Transactions ¹	Total		
	Sales	Purchases	Net			Sales	Purchases	Net				
V No.	A	115237	115238	115236	115235	115234	115242	115243	115241	115240	115239	
	Q	115386	115387	115385	115384	115383	115391	115392	115390	115389	115388	
	M	115535	115536	115534	115533	115532	115540	115541	115539	115538	115537	
millions of dollars												
1989		868	-1,012	-143	107	-37	1,122	-1,161	-39	24	-15	
1990		521	-569	-48	39	-9	953	-1,059	-106	14	-92	
1991		467	-569	-102	137	35	1,576	-1,600	-24	6	-18	
1992		526	-556	-31	82	51	823	-937	-114	32	-82	
1993		1,473	-1,487	-14	82	68	2,567	-2,550	17	88	105	
1994		1,544	-1,549	-5	213	208	3,496	-4,114	-619	157	-462	
1995		1,366	-2,147	-781	49	-732	3,856	-3,810	46	56	101	
1996		2,496	-2,663	-167	242	75	6,676	-5,977	699	260	958	
1997		2,597	-2,884	-287	87	-200	7,456	-8,997	-1,541	199	-1,342	
1998		2,465	-2,355	110	-7	102	12,782	-13,230	-448	-1	-449	
1999		2,074	-2,554	-479	81	-398	22,350	-23,726	-1,376	24	-1,352	
2000		3,073	-3,184	-111	5,326	5,215	37,463	-37,213	249	59	308	
2001		2,132	-1,886	246	20	266	42,713	-42,387	326	646	972	
2000	III	672	-605	66	-1	66	7,023	-7,056	-33	0	-34	
	IV	767	-696	71	5,254	5,325	7,679	-7,327	352	0	352	
2001	I	599	-517	82	3	85	11,126	-11,058	67	0	67	
	II	597	-492	105	16	122	9,897	-9,780	116	-15	101	
	III	469	-414	56	0	56	8,572	-8,867	-296	0	-296	
	IV	467	-463	4	0	4	13,119	-12,681	438	661	1,099	
2002	I	406	-433	-26	12	-14	11,821	-11,572	249	351	599	
	II	535	-613	-79	162	83	11,619	-11,731	-113	0	-113	
	III	452	-349	103	366	469	12,201	-12,396	-195	12	-182	
2000	N	333	-179	154	0	154	1,913	-1,991	-78	0	-78	
	D	189	-201	-12	0	-12	2,127	-1,797	330	0	330	
2001	J	250	-170	80	0	80	4,316	-4,334	-18	0	-18	
	F	214	-198	16	0	16	2,475	-2,513	-38	0	-38	
	M	135	-149	-14	3	-11	4,335	-4,212	122	0	122	
	A	165	-163	2	7	9	2,974	-2,891	82	0	82	
	M	237	-182	55	10	64	3,420	-3,431	-11	-15	-26	
	J	195	-147	48	0	48	3,503	-3,458	45	0	45	
	J	157	-84	73	0	73	3,310	-3,338	-27	0	-27	
	A	182	-115	67	0	67	3,078	-3,163	-85	0	-85	
	S	130	-214	-85	0	-85	2,184	-2,366	-183	0	-183	
	O	143	-155	-13	0	-13	4,134	-4,109	25	661	686	
	N	149	-143	6	0	6	5,170	-4,881	289	0	289	
	D	176	-165	11	0	11	3,815	-3,691	124	0	124	
2002	J	121	-130	-9	0	-9	3,951	-3,959	-8	0	-8	
	F	137	-147	-10	12	2	3,310	-2,929	381	0	381	
	M	148	-156	-7	0	-7	4,559	-4,683	-125	351	226	
	A	136	-217	-81	-7	-88	3,121	-3,101	20	0	20	
	M	188	-220	-32	0	-32	4,440	-4,472	-32	0	-32	
	J	211	-176	35	169	203	4,057	-4,158	-101	0	-101	
	J	167	-144	24	135	159	3,906	-4,029	-123	0	-123	
	A	147	-97	50	137	187	4,319	-4,287	32	12	44	
	S	138	-109	29	94	123	3,976	-4,080	-104	0	-104	
	O	117	-133	-16	391	376	4,696	-4,805	-109	0	-109	
	N	139	-90	49	257	306	4,373	-4,440	-67	0	-67	

1 Other Transactions include new issues, retirements and/or withdrawals from the market due to activities such as takeovers.

Table 8
Portfolio Transactions with Non-residents in Canadian Stocks, by Geographical Area and Type of Transaction - Concluded

Period	Total				Other Transactions ¹	Total
	Outstanding Issues			Net		
	Sales	Purchases				
V No. A	113138	113139		113076	113077	113075
Q	113310	113311		113248	113249	113247
M	113452	113453		113420	113421	113419
millions of dollars						
1989	23,543	-20,521		3,022	863	3,885
1990	15,875	-17,880		-2,005	269	-1,735
1991	16,061	-18,025		-1,964	974	-990
1992	17,156	-16,849		307	729	1,036
1993	37,398	-27,240		10,158	1,899	12,056
1994	46,020	-41,584		4,436	1,976	6,412
1995	38,505	-44,489		-5,984	1,741	-4,242
1996	65,836	-62,592		3,244	4,791	8,034
1997	95,542	-91,555		3,987	3,658	7,645
1998	118,654	-121,010		-2,357	16,668	14,311
1999	132,737	-122,984		9,753	4,309	14,063
2000	245,436	-220,684		24,752	10,221	34,973
2001	234,072	-232,801		1,270	3,338	4,608
2000 III	55,167	-47,552		7,615	1,877	9,492
IV	60,462	-62,205		-1,743	-6,267	-8,010
2001 I	71,167	-68,609		2,558	3,848	6,406
II	57,252	-57,678		-425	1,278	852
III	48,488	-49,052		-564	-2,976	-3,540
IV	57,164	-57,462		-298	1,188	890
2002 I	58,520	-60,754		-2,233	-1,727	-3,961
II	56,112	-55,470		642	4,050	4,692
III	47,177	-53,807		-6,631	2,472	-4,159
2000 N	15,998	-18,646		-2,648	1,069	-1,579
D	20,288	-17,694		2,593	-21,409	-18,816
2001 J	23,034	-21,380		1,654	657	2,311
F	19,959	-20,363		-404	3,105	2,702
M	28,175	-26,866		1,308	85	1,393
A	16,202	-17,440		-1,238	161	-1,076
M	19,060	-18,857		203	-2,828	-2,625
J	21,990	-21,381		610	3,944	4,554
J	14,599	-15,063		-464	-2,922	-3,386
A	16,320	-16,247		73	139	212
S	17,569	-17,743		-173	-193	-366
O	20,145	-19,707		438	-1,791	-1,353
N	19,879	-20,362		-483	1,306	823
D	17,140	-17,393		-253	1,673	1,420
2002 J	15,798	-15,936		-138	15	-123
F	22,154	-21,569		585	-852	-267
M	20,568	-23,249		-2,680	-890	-3,571
A	15,817	-16,233		-416	169	-247
M	17,888	-17,723		165	348	513
J	22,407	-21,514		893	3,533	4,426
J	16,111	-19,936		-3,825	366	-3,460
A	14,333	-15,739		-1,406	1,659	253
S	16,733	-18,132		-1,399	447	-952
O	17,135	-18,138		-1,003	453	-549
N	16,695	-16,207		488	528	1,016

1 Other Transactions include new issues, retirements and/or withdrawals from the market due to activities such as takeovers.

Table 9
Portfolio Transactions with Non-residents in Canadian Stocks, by Geographical Area

Period	United States	United Kingdom	Other EU Countries	Japan	Other OECD Countries	Other Countries	Total
V No. A	115214	115219	115224	115229	115234	115239	113075
Q	115363	115368	115373	115378	115383	115388	113247
M	115512	115517	115522	115527	115532	115537	113419
millions of dollars							
1989	4,047	-247	154	-17	-37	-15	3,885
1990	-1,476	28	-86	-101	-9	-92	-1,735
1991	-1,463	353	-10	113	35	-18	-990
1992	1,105	-112	8	67	51	-82	1,036
1993	11,055	534	266	28	68	105	12,056
1994	5,977	269	116	304	208	-462	6,412
1995	-1,452	-1,408	-726	-27	-732	101	-4,242
1996	7,645	-874	-64	295	75	958	8,034
1997	7,440	1,708	-313	352	-200	-1,342	7,645
1998	16,402	-978	-310	-457	102	-449	14,311
1999	16,948	2,869	-4,471	467	-398	-1,352	14,063
2000	33,196	802	-4,371	-178	5,215	308	34,973
2001	7,641	-2,531	-1,584	-156	266	972	4,608
2000 III	9,564	41	-147	3	66	-34	9,492
IV	-12,771	-815	-76	-26	5,325	352	-8,010
2001 I	6,226	-159	267	-81	85	67	6,406
II	2,336	-978	-707	-22	122	101	852
III	-2,758	-308	-200	-35	56	-296	-3,540
IV	1,836	-1,087	-945	-17	4	1,099	890
2002 I	-1,251	-2,001	-1,232	-62	-14	599	-3,961
II	5,165	-267	-179	2	83	-113	4,692
III	-4,522	-36	121	-8	469	-182	-4,159
2000 N	-1,244	-697	285	0	154	-78	-1,579
D	-18,999	203	-367	29	-12	330	-18,816
2001 J	2,251	54	-35	-21	80	-18	2,311
F	3,178	-646	218	-26	16	-38	2,702
M	797	434	85	-34	-11	122	1,393
A	-294	-670	-179	-26	9	82	-1,076
M	-2,167	-188	-308	0	64	-26	-2,625
J	4,797	-120	-220	4	48	45	4,554
J	-3,536	80	25	-1	73	-27	-3,386
A	583	-345	-3	-5	67	-85	212
S	195	-43	-222	-29	-85	-183	-366
O	-1,266	-464	-305	8	-13	686	-1,353
N	881	-27	-321	-5	6	289	823
D	2,221	-596	-319	-20	11	124	1,420
2002 J	389	-405	-80	-9	-9	-8	-123
F	-607	69	-90	-23	2	381	-267
M	-1,033	-1,664	-1,062	-30	-7	226	-3,571
A	302	-33	-442	-7	-88	20	-247
M	1,085	-572	56	7	-32	-32	513
J	3,777	339	207	2	203	-101	4,426
J	-3,862	278	67	21	159	-123	-3,460
A	275	-176	-64	-13	187	44	253
S	-936	-138	118	-16	123	-104	-952
O	-839	-85	100	8	376	-109	-549
N	1,094	-309	-4	-3	306	-67	1,016

Table 10
Portfolio Transactions with Non-residents in Foreign Securities by Instrument and Sector, Purchases and Sales

Period	Foreign Bonds						Foreign Stocks						Total Foreign Securities
	U.S. Government	Other U.S.	Other foreign	Total			U.S.	Other foreign	Total				
				Purchases	Sales	Net			Purchases	Sales	Net		
V No.	A	113212	113213	113214	113133	113134	113132	113215	113216	113136	113137	113135	113131
	Q	113384	113385	113386	113305	113306	113304	113387	113388	113308	113309	113307	113303
	M	113556	113557	113558	113447	113448	113446	113559	113560	113450	113451	113449	113445
millions of dollars													
1989		-866	-289	-447	-50,141	48,539	-1,602	-3,544	-323	-29,094	25,227	-3,867	-5,470
1990		645	-51	-669	-50,316	50,241	-75	-1,986	-535	-27,482	24,961	-2,521	-2,596
1991		-428	-598	-635	-54,494	52,833	-1,661	-7,404	-2,600	-39,388	29,384	-10,004	-11,665
1992		-1,033	-769	401	-80,577	79,176	-1,401	-6,802	-3,546	-42,478	32,130	-10,348	-11,749
1993		-1,761	-1,500	-1,809	-78,658	73,588	-5,071	-5,488	-7,323	-62,079	49,268	-12,811	-17,881
1994		1,831	-295	-1,101	-134,369	134,803	435	-1,797	-7,565	-71,541	62,179	-9,362	-8,927
1995		644	-427	-1,301	-159,914	158,830	-1,085	-1,443	-4,803	-82,714	76,468	-6,247	-7,331
1996		1,047	-2,478	-638	-221,467	219,397	-2,070	-5,533	-11,714	-98,522	81,275	-17,247	-19,317
1997		-825	-2,794	-3,024	-248,518	241,876	-6,642	-938	-4,269	-162,184	156,977	-5,207	-11,849
1998		-2,841	-2,944	-1,279	-361,203	354,139	-7,064	-10,162	-5,271	-163,865	148,433	-15,433	-22,497
1999		-1,205	443	-1,715	-245,255	242,779	-2,477	-14,911	-5,679	-275,821	255,231	-20,590	-23,067
2000		-1,507	-2,117	-335	-306,164	302,206	-3,958	-28,942	-29,374	-382,233	323,917	-58,316	-62,274
2001		-2,345	264	198	-377,541	375,658	-1,882	-20,403	-15,433	-373,648	337,812	-35,836	-37,718
2000	III	-4,071	-550	-216	-61,248	56,411	-4,837	-7,987	-1,512	-88,723	79,225	-9,499	-14,335
	IV	3,012	-1,009	349	-82,911	85,264	2,352	-5,770	-14,479	-103,319	83,069	-20,250	-17,897
2001	I	-1,439	751	-350	-102,101	101,062	-1,039	-7,814	-6,084	-90,262	76,364	-13,898	-14,937
	II	-311	394	106	-94,716	94,904	189	-5,344	-7,108	-82,198	69,746	-12,452	-12,263
	III	-1,294	-104	53	-69,481	68,137	-1,345	-2,924	-1,205	-82,892	78,762	-4,129	-5,474
	IV	700	-777	390	-111,242	111,555	313	-4,321	-1,035	-118,295	112,939	-5,356	-5,043
2002	I	-1,659	-1,048	273	-99,590	97,155	-2,434	-6,830	-2,115	-136,924	127,979	-8,945	-11,380
	II	-2,127	-500	338	-127,868	125,578	-2,289	-2,303	-1,731	-181,312	177,278	-4,034	-6,324
	III	-1,339	740	-859	-165,145	163,687	-1,458	-1,354	-338	-165,752	164,059	-1,693	-3,151
2000	N	2,546	-11	324	-25,986	28,846	2,860	-1,238	-92	-28,277	26,947	-1,330	1,530
	D	15	-86	174	-23,628	23,731	103	-2,376	-13,587	-39,770	23,807	-15,963	-15,860
2001	J	-2,661	623	-162	-36,509	34,310	-2,199	-3,520	-3,134	-34,868	28,214	-6,654	-8,853
	F	2,177	147	109	-25,295	27,729	2,434	-2,518	-1,312	-26,442	22,612	-3,830	-1,396
	M	-956	-20	-298	-40,298	39,024	-1,273	-1,776	-1,639	-28,952	25,538	-3,414	-4,688
	A	19	191	128	-37,325	37,663	338	-2,883	-1,131	-24,998	20,984	-4,014	-3,676
	M	-1,574	625	-23	-34,240	33,267	-972	-2,402	-4,051	-32,332	25,878	-6,453	-7,426
	J	1,245	-422	1	-23,151	23,974	823	-59	-1,926	-24,869	22,884	-1,985	-1,162
	J	246	168	49	-22,373	22,836	462	90	-1,000	-21,547	20,637	-910	-447
	A	933	-606	-191	-24,489	24,625	135	-1,213	-162	-28,661	27,286	-1,375	-1,240
	S	-2,472	335	195	-22,619	20,676	-1,942	-1,801	-43	-32,684	30,839	-1,844	-3,787
	O	2,614	-423	245	-26,739	29,175	2,436	-75	265	-33,052	33,242	190	2,626
	N	1,364	-238	-14	-46,131	47,243	1,113	-93	-807	-41,866	40,966	-900	213
	D	-3,279	-116	159	-38,372	35,136	-3,236	-4,153	-493	-43,378	38,731	-4,646	-7,882
2002	J	1,654	-520	-23	-36,685	37,795	1,110	146	-634	-33,997	33,510	-488	623
	F	-3,702	-325	164	-30,272	26,409	-3,863	-4,787	-857	-49,999	44,355	-5,645	-9,508
	M	389	-202	132	-32,633	32,951	318	-2,189	-624	-52,928	50,115	-2,813	-2,494
	A	-1,944	-42	231	-41,086	39,331	-1,756	-717	-1,319	-45,088	43,052	-2,035	-3,791
	M	-255	49	149	-45,491	45,433	-57	-291	-82	-81,254	80,880	-373	-430
	J	73	-507	-42	-41,291	40,814	-476	-1,295	-331	-54,971	53,345	-1,626	-2,102
	J	-1,427	288	633	-70,280	69,774	-506	-414	238	-47,496	47,320	-176	-682
	A	2,021	-336	-885	-53,785	54,585	800	-718	-301	-64,350	63,331	-1,018	-219
	S	-1,933	789	-607	-41,079	39,327	-1,752	-223	-276	-53,906	53,408	-498	-2,250
	O	3,288	-93	-369	-50,097	52,922	2,825	-1,408	2,036	-56,854	57,483	628	3,454
	N	-3,681	675	-258	-51,973	48,710	-3,263	-2,228	-216	-56,586	54,142	-2,443	-5,707

Table 11
Portfolio Transactions with Non-residents in Foreign Bonds, by Geographical Area, Purchases and Sales

Period	United States			United Kingdom			Other EU Countries		
	Purchases	Sales	Net	Purchases	Sales	Net	Purchases	Sales	Net
V No. A	115177	115178	115176	115180	115181	115179	115183	115184	115182
Q	115326	115327	115325	115329	115330	115328	115332	115333	115331
M	115475	115476	115474	115478	115479	115477	115481	115482	115480
millions of dollars									
1989	-47,750	46,538	-1,213	-1,386	1,056	-331	-471	164	-307
1990	-46,742	47,042	300	-1,275	696	-579	-1,573	1,723	150
1991	-50,671	48,629	-2,042	-922	702	-220	-1,873	1,876	4
1992	-75,367	73,092	-2,274	-2,010	1,916	-94	-2,059	2,061	1
1993	-70,068	66,018	-4,050	-4,197	3,229	-969	-2,093	1,564	-529
1994	-109,689	110,484	795	-20,022	19,178	-843	-1,469	1,466	-3
1995	-132,156	131,308	-848	-20,830	20,837	7	-1,626	1,957	331
1996	-192,320	189,761	-2,559	-18,195	18,391	196	-4,316	4,782	466
1997	-203,928	196,934	-6,994	-33,965	34,565	600	-1,801	2,056	255
1998	-318,339	309,520	-8,818	-32,136	32,943	808	-2,180	2,084	-96
1999	-207,758	203,150	-4,609	-29,772	29,762	-10	-4,287	4,557	270
2000	-265,121	261,924	-3,197	-22,692	21,732	-960	-15,301	14,758	-543
2001	-347,905	344,590	-3,316	-12,090	13,205	1,116	-9,093	8,717	-375
2000 III	-52,288	47,945	-4,344	-5,166	4,895	-271	-3,252	3,045	-207
IV	-70,584	72,645	2,060	-6,405	6,552	146	-4,720	4,897	178
2001 I	-91,988	91,152	-836	-3,082	2,841	-241	-4,508	4,578	70
II	-87,750	88,424	674	-3,021	2,742	-279	-2,235	2,175	-60
III	-64,162	61,390	-2,772	-2,709	3,181	472	-1,393	1,175	-218
IV	-104,006	103,624	-381	-3,277	4,442	1,165	-957	790	-166
2002 I	-91,021	89,337	-1,684	-4,962	4,117	-844	-2,166	1,728	-438
II	-114,635	111,779	-2,856	-9,759	9,185	-574	-1,867	1,725	-141
III	-150,968	150,634	-334	-10,854	8,588	-2,266	-2,294	2,398	104
2000 N	-20,832	23,556	2,724	-3,618	3,500	-118	-1,150	1,445	295
D	-19,412	19,375	-37	-1,159	1,288	129	-2,437	2,510	73
2001 J	-31,080	29,023	-2,057	-1,532	1,522	-11	-2,331	2,167	-164
F	-23,452	25,568	2,115	-641	618	-23	-819	1,025	206
M	-37,456	36,561	-895	-909	701	-208	-1,358	1,386	28
A	-35,094	35,869	775	-1,091	798	-293	-662	524	-137
M	-31,796	31,137	-659	-1,150	1,111	-39	-567	449	-118
J	-20,859	21,418	559	-780	832	52	-1,006	1,201	195
J	-20,258	21,330	1,072	-1,106	586	-521	-469	432	-37
A	-22,989	22,526	-463	-707	646	-61	-452	396	-56
S	-20,916	17,534	-3,382	-896	1,949	1,054	-471	347	-125
O	-24,174	26,784	2,610	-1,292	1,078	-215	-484	303	-182
N	-43,980	44,592	612	-888	1,781	893	-361	262	-99
D	-35,852	32,249	-3,603	-1,097	1,583	486	-112	226	114
2002 J	-33,173	34,838	1,665	-1,953	1,433	-520	-798	426	-371
F	-27,688	23,931	-3,758	-1,674	1,669	-4	-470	379	-91
M	-30,160	30,568	409	-1,335	1,015	-320	-898	922	24
A	-36,266	35,207	-1,059	-3,301	2,497	-803	-911	1,121	210
M	-41,554	40,410	-1,144	-2,988	3,524	536	-490	287	-202
J	-36,814	36,161	-653	-3,470	3,164	-307	-466	317	-149
J	-65,596	64,231	-1,365	-3,834	3,213	-621	-352	1,091	739
A	-47,762	49,718	1,956	-5,068	3,712	-1,356	-766	800	34
S	-37,610	36,685	-925	-1,952	1,663	-290	-1,176	507	-669
O	-46,445	50,163	3,719	-2,341	1,624	-717	-851	639	-212
N	-47,457	44,018	-3,439	-3,492	3,490	-2	-762	709	-53

Table 11
Portfolio Transactions with Non-residents in Foreign Bonds, by Geographical Area, Purchases and Sales -
Concluded

Period	Japan			Other OECD Countries			All Other Countries			Total			
	Purchases	Sales	Net	Purchases	Sales	Net	Purchases	Sales	Net	Purchases	Sales	Net	
V No. A	115186	115187	115185	115189	115190	115188	115192	115193	115191	113133	113134	113132	
Q	115335	115336	115334	115338	115339	115337	115341	115342	115340	113305	113306	113304	
M	115484	115485	115483	115487	115488	115486	115490	115491	115489	113447	113448	113446	
millions of dollars													
1989	-67	194	127	-114	289	175	-353	297	-55	-50,141	48,539	-1,602	
1990	-228	296	67	-95	209	114	-403	276	-127	-50,316	50,241	-75	
1991	-367	582	215	-18	12	-6	-643	1,031	389	-54,494	52,833	-1,661	
1992	-575	1,259	684	-38	59	22	-527	788	261	-80,577	79,176	-1,401	
1993	-1,014	1,056	42	-134	311	177	-1,151	1,410	259	-78,658	73,588	-5,071	
1994	-2,047	2,129	82	-168	289	121	-974	1,258	283	-134,369	134,803	435	
1995	-2,809	2,335	-475	-218	174	-44	-2,275	2,219	-56	-159,914	158,830	-1,085	
1996	-3,571	2,783	-787	-138	440	301	-2,926	3,240	314	-221,467	219,397	-2,070	
1997	-3,523	942	-2,581	-156	192	36	-5,144	7,186	2,042	-248,518	241,876	-6,642	
1998	-1,795	553	-1,243	-433	587	153	-6,320	8,452	2,132	-361,203	354,139	-7,064	
1999	-1,238	912	-325	-651	573	-79	-1,550	3,826	2,276	-245,255	242,779	-2,477	
2000	-576	439	-137	-516	675	159	-1,958	2,677	719	-306,164	302,206	-3,958	
2001	-1,239	985	-254	-776	912	136	-6,438	7,249	811	-377,541	375,658	-1,882	
2000	III	-111	75	-36	-63	121	59	-368	331	-37	-61,248	56,411	-4,837
	IV	-160	83	-77	-328	304	-24	-713	783	69	-82,911	85,264	2,352
2001	I	-502	235	-268	-216	242	26	-1,804	2,016	211	-102,101	101,062	-1,039
	II	-156	148	-8	-110	236	125	-1,443	1,180	-264	-94,716	94,904	189
	III	-116	227	111	-349	269	-80	-752	1,895	1,143	-69,481	68,137	-1,345
	IV	-464	375	-89	-100	165	65	-2,438	2,158	-280	-111,242	111,555	313
2002	I	-179	179	1	-127	191	64	-1,136	1,603	467	-99,590	97,155	-2,434
	II	-249	137	-112	-301	736	435	-1,058	2,017	959	-127,868	125,578	-2,289
	III	-76	140	63	-183	214	31	-769	1,713	944	-165,145	163,687	-1,458
2000	N	-112	21	-91	-76	78	2	-198	246	48	-25,986	28,846	2,860
	D	-32	23	-9	-136	87	-49	-453	448	-5	-23,628	23,731	103
2001	J	-119	28	-92	-136	190	54	-1,310	1,380	70	-36,509	34,310	-2,199
	F	-168	144	-23	-30	29	-2	-185	345	160	-25,295	27,729	2,434
	M	-215	62	-153	-50	24	-27	-309	290	-19	-40,298	39,024	-1,273
	A	-72	63	-9	-60	76	15	-346	333	-13	-37,325	37,663	338
	M	-34	39	5	-35	51	16	-658	480	-178	-34,240	33,267	-972
	J	-51	47	-4	-15	109	94	-440	367	-73	-23,151	23,974	823
	J	-56	26	-30	-271	135	-137	-213	327	115	-22,373	22,836	462
	A	-42	44	3	-13	19	5	-286	993	707	-24,489	24,625	135
	S	-18	156	138	-65	116	51	-253	575	321	-22,619	20,676	-1,942
	O	-299	217	-83	-27	61	34	-463	734	271	-26,739	29,175	2,436
	N	-18	55	37	-41	43	2	-842	510	-332	-46,131	47,243	1,113
	D	-147	104	-44	-31	61	30	-1,133	914	-219	-38,372	35,136	-3,236
2002	J	-93	61	-32	-53	102	50	-615	934	319	-36,685	37,795	1,110
	F	-18	50	33	-44	51	7	-379	329	-50	-30,272	26,409	-3,863
	M	-68	68	0	-30	38	8	-143	340	197	-32,633	32,951	318
	A	-210	112	-98	-143	96	-47	-256	297	41	-41,086	39,331	-1,756
	M	-27	20	-7	-104	199	95	-328	993	665	-45,491	45,433	-57
	J	-12	4	-8	-54	441	387	-474	728	253	-41,291	40,814	-476
	J	-5	80	75	-30	58	28	-463	1,101	638	-70,280	69,774	-506
	A	-36	24	-13	-41	26	-15	-113	306	193	-53,785	54,585	800
	S	-35	36	1	-112	131	19	-193	306	113	-41,079	39,327	-1,752
	O	-97	37	-60	-31	128	97	-332	330	-1	-50,097	52,922	2,825
	N	-119	62	-57	-6	94	88	-136	337	201	-51,973	48,710	-3,263

Table 12
Portfolio Transactions with Non-residents in Foreign Stocks, by Geographical Area, Purchases and Sales

Period	United States			United Kingdom			Other EU Countries		
	Purchases	Sales	Net	Purchases	Sales	Net	Purchases	Sales	Net
V No. A	115196	115197	115195	115199	115200	115198	115202	115203	115201
Q	115345	115346	115344	115348	115349	115347	115351	115352	115350
M	115494	115495	115493	115497	115498	115496	115500	115501	115499
millions of dollars									
1989	-24,352	20,871	-3,480	-1,198	899	-299	-1,134	1,020	-114
1990	-21,759	20,240	-1,519	-1,467	939	-528	-966	877	-89
1991	-31,222	23,397	-7,824	-2,531	1,678	-853	-1,003	898	-105
1992	-33,796	26,488	-7,308	-3,378	1,541	-1,837	-1,198	1,086	-111
1993	-47,291	41,370	-5,921	-2,639	1,491	-1,149	-2,245	1,306	-939
1994	-54,206	51,444	-2,761	-2,992	2,184	-808	-2,224	1,601	-623
1995	-63,184	60,033	-3,151	-3,637	3,656	20	-4,447	3,701	-746
1996	-71,550	61,787	-9,763	-4,379	2,931	-1,447	-4,912	3,414	-1,498
1997	-130,658	126,474	-4,184	-5,535	4,430	-1,105	-5,998	5,337	-661
1998	-126,354	113,442	-12,913	-5,744	5,420	-324	-9,814	10,610	796
1999	-197,991	176,560	-21,431	-29,658	29,762	104	-11,952	12,756	804
2000	-257,719	220,073	-37,646	-58,502	53,567	-4,935	-35,474	17,264	-18,210
2001	-222,703	199,511	-23,192	-109,466	103,149	-6,317	-16,106	14,074	-2,032
2000 III	-63,695	53,212	-10,482	-14,702	14,229	-473	-3,401	3,887	486
IV	-65,001	56,579	-8,422	-14,735	13,466	-1,269	-16,644	4,769	-11,875
2001 I	-58,254	49,058	-9,196	-20,018	17,586	-2,432	-4,617	3,982	-635
II	-47,012	39,377	-7,635	-23,120	20,489	-2,631	-4,774	20,489	-355
III	-50,845	48,054	-2,791	-23,613	23,331	-282	-3,172	3,182	10
IV	-66,591	63,022	-3,569	-42,716	41,744	-972	-3,542	2,491	-1,051
2002 I	-83,624	74,297	-9,327	-40,259	41,747	1,488	-4,363	4,048	-315
II	-81,054	77,160	-3,894	-81,560	79,149	-2,411	-7,725	7,703	-21
III	-84,873	78,451	-6,422	-70,680	71,117	437	-2,913	3,247	335
2000 N	-19,534	17,753	-1,782	-4,691	4,523	-168	-1,614	1,752	138
D	-20,719	16,944	-3,775	-3,311	2,785	-526	-13,684	1,592	-12,092
2001 J	-22,138	17,806	-4,332	-8,217	6,853	-1,365	-1,612	1,520	-92
F	-17,885	15,164	-2,721	-4,937	4,319	-618	-1,404	1,146	-258
M	-18,232	16,088	-2,144	-6,864	6,414	-450	-1,601	1,315	-286
A	-16,377	13,029	-3,348	-5,100	4,879	-221	-807	1,317	510
M	-16,765	13,956	-2,809	-10,788	8,609	-2,179	-1,908	1,208	-699
J	-13,870	12,392	-1,478	-7,232	7,001	-231	-2,059	1,893	-166
J	-15,027	15,186	158	-3,167	3,118	-49	-1,093	860	-233
A	-15,010	13,838	-1,173	-11,657	11,460	-197	-753	772	19
S	-20,807	19,031	-1,776	-8,789	8,753	-37	-1,326	1,550	224
O	-20,459	20,952	493	-9,930	9,287	-643	-990	844	-146
N	-22,227	22,224	-4	-16,052	16,016	-36	-1,442	755	-687
D	-23,905	19,847	-4,058	-16,734	16,442	-293	-1,109	892	-218
2002 J	-24,777	25,667	890	-5,113	4,399	-714	-1,300	1,387	87
F	-29,121	22,985	-6,136	-16,400	17,463	1,063	-1,200	1,084	-116
M	-29,726	25,645	-4,081	-18,746	19,884	1,139	-1,863	1,978	-286
A	-25,361	23,557	-1,804	-13,312	13,820	508	-2,950	2,478	-471
M	-27,985	28,309	324	-45,969	44,269	-1,700	-2,959	2,833	-126
J	-27,708	25,294	-2,414	-22,280	21,060	-1,219	-1,816	2,392	576
J	-29,786	27,542	-2,244	-14,839	14,629	-210	-966	1,491	525
A	-28,035	25,086	-2,949	-32,366	32,733	367	-768	773	5
S	-27,051	25,823	-1,229	-23,476	23,756	280	-1,179	983	-196
O	-30,084	30,498	414	-21,592	21,535	-57	-2,002	1,714	-288
N	-27,066	24,736	-2,330	-23,383	22,622	-761	-1,510	1,120	-390

Table 12
Portfolio Transactions with Non-residents in Foreign Stocks, by Geographical Area, Purchases and Sales -
Concluded

Period	Japan			Other OECD Countries			All Other Countries			Total		
	Purchases	Sales	Net	Purchases	Sales	Net	Purchases	Sales	Net	Purchases	Sales	Net
V No. A	115205	115206	115204	115208	115209	115207	115211	115212	115210	113136	113137	113135
Q	115354	115355	115353	115357	115358	115356	115360	115361	115359	113308	113309	113307
M	115503	115504	115502	115506	115507	115505	115509	115510	115508	113450	113451	113449
millions of dollars												
1989	-655	755	100	-1,082	988	-94	-674	694	21	-29,094	25,227	-3,867
1990	-517	553	37	-1,528	1,319	-208	-1,246	1,032	-214	-27,482	24,961	-2,521
1991	-1,244	715	-529	-663	530	-133	-2,724	2,166	-559	-39,388	29,384	-10,004
1992	-725	521	-204	-598	448	-150	-2,784	2,047	-737	-42,478	32,130	-10,348
1993	-1,873	726	-1,147	-824	627	-197	-7,206	3,748	-3,458	-62,079	49,268	-12,811
1994	-3,223	1,531	-1,693	-1,058	865	-194	-7,838	4,554	-3,284	-71,541	62,179	-9,362
1995	-3,062	1,874	-1,188	-2,029	1,048	-981	-6,355	6,155	-200	-82,714	76,468	-6,247
1996	-2,447	1,678	-768	-1,757	1,576	-181	-13,478	9,889	-3,588	-98,522	81,275	-17,247
1997	-4,394	4,870	476	-2,228	2,218	-10	-13,371	13,647	276	-162,184	156,977	-5,207
1998	-3,817	2,206	-1,612	-2,787	3,086	299	-15,349	13,669	-1,680	-163,865	148,433	-15,433
1999	-5,274	5,561	287	-4,240	4,277	37	-26,706	26,316	-390	-275,821	255,231	-20,590
2000	-4,967	7,106	2,140	-6,528	6,536	8	-19,043	19,371	328	-382,233	323,917	-58,316
2001	-5,211	4,172	-1,039	-5,640	4,531	-1,109	-14,521	12,374	-2,147	-373,648	337,812	-35,836
2000 III	-1,281	1,894	613	-1,321	1,296	-25	-4,323	4,706	383	-88,723	79,225	-9,499
2000 IV	-1,064	1,601	537	-1,732	1,999	268	-4,143	4,655	512	-103,319	83,069	-20,250
2001 I	-1,193	1,014	-180	-1,798	1,304	-494	-4,382	3,422	-960	-90,262	76,364	-13,898
2001 II	-2,223	973	-1,250	-1,580	1,434	-146	-3,488	3,054	-434	-82,198	69,746	-12,452
2001 III	-897	1,041	144	-1,166	903	-263	-3,198	2,251	-947	-82,892	78,762	-4,129
2001 IV	-898	1,144	247	-1,096	891	-205	-3,453	3,647	194	-118,295	112,939	-5,356
2002 I	-1,316	1,084	-232	-1,609	1,092	-516	-5,754	5,711	-43	-136,924	127,979	-8,945
2002 II	-1,129	1,096	-33	-1,427	1,361	-65	-8,417	10,808	2,391	-181,312	177,278	-4,034
2002 III	-677	1,120	443	-1,001	737	-264	-5,608	9,386	3,779	-165,752	164,059	-1,693
2000 N	-508	564	56	-544	839	295	-1,386	1,518	132	-28,277	26,947	-1,330
2000 D	-312	506	194	-498	536	38	-1,246	1,444	199	-39,770	23,807	-15,963
2001 J	-397	320	-77	-687	408	-278	-1,817	1,306	-511	-34,868	28,214	-6,654
2001 F	-335	406	71	-471	523	52	-1,411	1,053	-357	-26,442	22,612	-3,830
2001 M	-462	287	-175	-641	372	-268	-1,154	1,062	-92	-28,952	25,538	-3,414
2001 A	-1,117	270	-847	-478	548	71	-1,119	941	-178	-24,998	20,984	-4,014
2001 M	-656	411	-244	-807	517	-289	-1,409	1,176	-233	-32,332	25,878	-6,453
2001 J	-450	292	-158	-296	368	72	-961	937	-24	-24,869	22,884	-1,985
2001 J	-237	332	95	-482	314	-168	-1,540	827	-713	-21,547	20,637	-910
2001 A	-257	311	54	-250	300	50	-734	605	-129	-28,661	27,286	-1,375
2001 S	-402	398	-5	-435	289	-146	-924	819	-105	-32,684	30,839	-1,844
2001 O	-252	375	123	-387	272	-115	-1,034	1,512	479	-33,052	33,242	190
2001 N	-341	396	55	-408	301	-106	-1,396	1,274	-122	-41,866	40,966	-900
2001 D	-305	374	69	-302	318	16	-1,023	861	-162	-43,378	38,731	-4,646
2002 J	-532	265	-267	-472	300	-172	-1,803	1,492	-311	-33,997	33,510	-488
2002 F	-474	531	57	-554	376	-178	-2,250	1,914	-336	-49,999	44,355	-5,645
2002 M	-310	288	-22	-582	416	-166	-1,701	2,305	604	-52,928	50,115	-2,813
2002 A	-339	260	-78	-383	344	-39	-2,743	2,593	-150	-45,088	43,052	-2,035
2002 M	-418	323	-96	-627	476	-151	-3,296	4,671	1,375	-81,254	80,880	-373
2002 J	-372	513	141	-416	542	126	-2,378	3,544	1,166	-54,971	53,345	-1,626
2002 J	-181	591	410	-444	393	-51	-1,281	2,674	1,394	-47,496	47,320	-176
2002 A	-315	295	-21	-270	177	-93	-2,595	4,267	1,672	-64,350	63,331	-1,018
2002 S	-180	234	54	-287	167	-120	-1,733	2,445	713	-53,906	53,408	-498
2002 O	-465	540	75	-650	389	-261	-2,062	2,807	745	-56,854	57,483	628
2002 N	-555	763	208	-499	251	-248	-3,572	4,650	1,078	-56,586	54,142	-2,443

Supplementary Tables

Table 13
Loans under Repurchase Agreements, Transactions with Non-residents, by Canadian and Foreign Securities

Period	Canadian Securities								
	Assets			Liabilities			Total		
	Sales	Purchases	Net	Sales	Purchases	Net	Sales	Purchases	Net
	millions of dollars								
1995	1,049,198	-1,049,106	91	518,819	-520,392	-1,574	1,568,016	-1,569,499	-1,482
1996	1,156,654	-1,158,039	-1,385	639,384	-637,107	2,276	1,796,038	-1,795,146	891
1997	1,939,429	-1,952,179	-12,750	1,209,742	-1,204,877	4,865	3,149,171	-3,157,056	-7,885
1998	1,763,140	-1,746,743	16,397	1,248,719	-1,250,578	-1,859	3,011,859	-2,997,321	14,538
1999	1,264,495	-1,260,766	3,729	611,068	-611,198	-130	1,875,563	-1,871,963	3,599
2000	1,069,882	-1,070,113	-231	522,128	-520,156	1,972	1,592,010	-1,590,268	1,742
2001	676,252	-676,945	-694	655,136	-656,700	-1,564	1,331,388	-1,333,645	-2,257
2000 III	214,427	-216,088	-1,662	121,914	-121,111	802	336,340	-337,199	-859
IV	222,902	-221,942	960	145,123	-144,821	302	368,025	-366,763	1,262
2001 I	239,816	-237,947	1,869	164,387	-165,880	-1,493	404,204	-403,827	376
II	167,009	-167,676	-668	155,626	-154,838	789	322,635	-322,514	121
III	124,717	-124,904	-187	173,932	-174,311	-379	298,649	-299,216	-566
IV	144,710	-146,418	-1,708	161,190	-161,671	-481	305,900	-308,088	-2,189
2002 I	115,054	-118,623	-3,568	186,067	-183,194	2,873	301,121	-301,817	-695
II	109,563	-106,584	2,979	213,957	-217,048	-3,091	323,520	-323,632	-112
III	148,954	-150,839	-1,884	237,829	-233,989	3,839	386,783	-384,828	1,955
2000 N	80,515	-76,392	4,123	47,194	-50,597	-3,403	127,709	-126,989	720
D	56,028	-58,587	-2,560	54,065	-50,032	4,033	110,093	-108,619	1,473
2001 J	102,453	-103,146	-693	56,752	-58,996	-2,244	159,206	-162,142	-2,936
F	66,231	-62,657	3,574	45,893	-48,972	-3,078	112,124	-111,628	495
M	71,132	-72,144	-1,012	61,742	-57,913	3,829	132,874	-130,057	2,817
A	51,921	-51,237	684	53,306	-54,507	-1,201	105,227	-105,743	-516
M	54,148	-52,528	1,621	49,885	-52,205	-2,321	104,033	-104,733	-700
J	60,939	-63,912	-2,973	52,436	-48,125	4,310	113,375	-112,037	1,338
J	46,700	-45,189	1,511	63,939	-64,655	-715	110,640	-109,844	796
A	40,455	-39,592	863	57,722	-61,110	-3,388	98,176	-100,702	-2,525
S	37,562	-40,123	-2,561	52,271	-48,546	3,724	89,833	-88,670	1,163
O	48,405	-50,804	-2,400	49,694	-50,579	-885	98,099	-101,383	-3,284
N	55,694	-52,926	2,768	54,154	-55,777	-1,622	109,849	-108,703	1,146
D	40,611	-42,687	-2,076	57,342	-55,315	2,027	97,952	-98,002	-50
2002 J	38,786	-39,991	-1,206	57,450	-56,744	705	96,235	-96,736	-500
F	31,767	-30,416	1,351	65,125	-65,804	-679	96,892	-96,221	672
M	44,502	-48,215	-3,714	63,492	-60,646	2,847	107,994	-108,861	-867
A	35,371	-30,568	4,804	76,369	-79,001	-2,631	111,741	-109,568	2,173
M	32,730	-31,453	1,277	69,209	-71,498	-2,289	101,938	-102,950	-1,012
J	41,462	-44,564	-3,102	68,379	-66,550	1,829	109,841	-111,114	-1,273
J	48,295	-46,892	1,402	79,656	-79,375	281	127,951	-126,267	1,684
A	44,898	-44,767	132	71,883	-69,882	2,001	116,781	-114,648	2,133
S	55,761	-59,179	-3,418	86,289	-84,733	1,556	142,051	-143,912	-1,862
O	67,430	-66,815	615	87,943	-88,087	-144	155,373	-154,901	472
N	46,289	-43,949	2,339	65,203	-69,844	-4,641	111,491	-113,793	-2,302

Table 13
Loans under Repurchase Agreements, Transactions with Non-residents, by Canadian and Foreign Securities
 - Concluded

Period	Foreign Securities								
	Assets			Liabilities			Total		
	Sales	Purchases	Net	Sales	Purchases	Net	Sales	Purchases	Net
	millions of dollars								
1995	52,457	-53,294	-837	24,868	-25,059	-192	77,325	-78,353	-1,028
1996	288,577	-287,744	833	94,759	-92,948	1,811	383,336	-380,692	2,644
1997	138,829	-139,923	-1,094	79,890	-81,283	-1,392	218,720	-221,206	-2,486
1998	89,541	-89,619	-79	81,845	-82,178	-333	171,386	-171,797	-411
1999	138,123	-138,016	107	104,832	-104,544	288	242,955	-242,561	394
2000	158,151	-158,302	-152	106,230	-105,657	573	264,381	-263,960	421
2001	143,503	-144,093	-590	154,178	-155,954	-1,776	297,681	-300,047	-2,366
2000 III	52,187	-50,644	1,543	23,912	-23,716	197	76,099	-74,359	1,739
IV	42,544	-42,475	69	44,296	-43,629	667	86,840	-86,104	736
2001 I	32,285	-32,011	275	46,545	-47,419	-874	78,830	-79,430	-599
II	23,374	-23,822	-448	36,699	-36,711	-12	60,073	-60,533	-460
III	30,813	-30,583	230	13,592	-13,908	-316	44,405	-44,491	-86
IV	57,031	-57,677	-646	57,342	-57,916	-575	114,372	-115,593	-1,221
2002 I	49,999	-50,871	-871	42,931	-43,824	-893	92,930	-94,694	-1,764
II	53,777	-53,093	684	77,771	-76,769	1,002	131,548	-129,861	1,687
III	74,409	-75,917	-1,507	93,757	-94,779	-1,022	168,166	-170,695	-2,529
2000 N	8,663	-8,350	313	12,952	-12,609	343	21,615	-20,959	656
D	14,865	-14,880	-14	16,152	-15,726	426	31,018	-30,606	412
2001 J	14,227	-14,158	69	17,431	-17,844	-413	31,658	-32,002	-344
F	8,774	-8,532	243	16,463	-16,596	-133	25,238	-25,128	110
M	9,284	-9,321	-37	12,651	-12,979	-328	21,935	-22,301	-365
A	7,812	-8,129	-316	10,506	-10,556	-50	18,318	-18,684	-366
M	10,634	-10,112	522	11,969	-11,895	74	22,603	-22,007	596
J	4,928	-5,582	-654	14,224	-14,260	-36	19,152	-19,842	-690
J	14,735	-15,193	-458	3,915	-3,472	443	18,650	-18,665	-15
A	10,250	-9,657	593	5,418	-6,139	-721	15,668	-15,796	-128
S	5,828	-5,734	94	4,260	-4,297	-37	10,088	-10,031	57
O	15,252	-15,345	-92	22,215	-21,998	216	37,467	-37,343	124
N	17,704	-18,695	-991	18,801	-19,822	-1,022	36,505	-38,517	-2,013
D	24,074	-23,637	437	16,326	-16,095	231	40,400	-39,732	668
2002 J	18,172	-19,587	-1,414	11,185	-12,319	-1,134	29,358	-31,905	-2,548
F	17,236	-17,560	-324	14,823	-14,526	297	32,059	-32,086	-27
M	14,591	-13,724	867	16,923	-16,979	-56	31,514	-30,703	811
A	14,388	-14,589	-201	22,327	-22,198	129	36,715	-36,787	-72
M	15,488	-15,458	29	21,101	-21,124	-23	36,589	-36,582	7
J	23,901	-23,045	856	34,343	-33,447	896	58,244	-56,492	1,752
J	31,566	-31,858	-292	45,152	-44,665	487	76,718	-76,522	196
A	23,311	-22,757	554	28,360	-29,196	-836	51,671	-51,954	-283
S	19,533	-21,302	-1,769	20,244	-20,918	-673	39,777	-42,219	-2,442
O	28,139	-28,913	-774	15,883	-16,262	-379	44,022	-45,175	-1,153
N	24,120	-24,101	19	23,690	-23,320	370	47,810	-47,421	389

Table 14
Loans under Repurchase Agreements, Transactions with Non-residents in Assets and Liabilities

Period	Government of Canada						Other Canadian Securities			Foreign Securities			Total			
	Bonds			Treasury Bills			Purchases	Sales	Net	Purchases	Sales	Net	Purchases	Sales	Net	
	Purchases	Sales	Net	Purchases	Sales	Net										
Assets																
<i>V No.</i>	<i>A</i>	<i>113104</i>	<i>113103</i>	<i>113102</i>	<i>113107</i>	<i>113106</i>	<i>113105</i>	<i>113110</i>	<i>113109</i>	<i>113108</i>	<i>113113</i>	<i>113112</i>	<i>113111</i>	<i>113115</i>	<i>113114</i>	<i>113101</i>
<i>Q</i>		<i>113276</i>	<i>113275</i>	<i>113274</i>	<i>113279</i>	<i>113278</i>	<i>113277</i>	<i>113282</i>	<i>113281</i>	<i>113280</i>	<i>113285</i>	<i>113284</i>	<i>113283</i>	<i>113287</i>	<i>113286</i>	<i>113273</i>
<i>M</i>		<i>113475</i>	<i>113474</i>	<i>113473</i>	<i>113478</i>	<i>113477</i>	<i>113476</i>	<i>113481</i>	<i>113480</i>	<i>113479</i>	<i>113484</i>	<i>113483</i>	<i>113482</i>	<i>113486</i>	<i>113485</i>	<i>113472</i>
millions of dollars																
1995		-983,387	982,496	-891	-58,891	59,772	881	-6,829	6,930	101	-53,294	52,457	-837	-1,102,400	1,101,655	-746
1996		-1,079,203	1,077,382	-1,821	-65,538	65,932	394	-13,299	13,340	42	-287,744	288,577	833	-1,445,784	1,445,231	-552
1997		-1,726,139	1,714,998	-11,141	-194,417	193,942	-474	-31,624	30,489	-1,135	-139,923	138,829	-1,094	-2,092,102	2,078,258	-13,844
1998		-1,665,277	1,680,951	15,674	-61,564	63,290	1,726	-19,902	18,899	-1,003	-89,619	89,541	-79	-1,836,362	1,852,681	16,319
1999		-1,148,452	1,153,431	4,980	-73,300	73,875	574	-39,014	37,189	-1,825	-138,016	138,123	107	-1,398,782	1,402,618	3,836
2000		-1,019,010	1,019,383	373	-21,813	21,714	-98	-29,290	28,785	-506	-158,302	158,151	-152	-1,228,415	1,228,033	-382
2001		-638,372	639,489	1,117	-12,741	11,360	-1,381	-25,833	25,403	-430	-144,093	143,503	-590	-821,039	819,755	-1,284
2000	III	-210,059	208,631	-1,428	-879	860	-18	-5,150	4,935	-215	-50,644	52,187	1,543	-266,732	266,613	-119
	IV	-203,162	204,059	898	-12,900	13,134	234	-5,881	5,709	-171	-42,475	42,544	69	-264,417	265,446	1,029
2001	I	-232,852	234,830	1,977	-394	539	146	-4,701	4,447	-254	-32,011	32,285	275	-269,958	272,101	2,144
	II	-163,550	163,320	-230	-165	116	-49	-3,961	3,572	-389	-23,822	23,374	-448	-191,499	190,383	-1,116
	III	-116,958	116,870	-88	-1,038	495	-543	-6,908	7,352	444	-30,583	30,813	230	-155,488	155,530	43
	IV	-125,011	124,469	-542	-11,144	10,209	-935	-10,263	10,031	-231	-57,677	57,031	-646	-204,094	201,740	-2,354
2002	I	-104,251	99,491	-4,760	-6,773	7,555	781	-7,598	8,009	410	-50,871	49,999	-871	-169,493	165,053	-4,440
	II	-93,255	96,914	3,659	-7,122	6,412	-710	-6,207	6,237	30	-53,093	53,777	684	-159,677	163,340	3,663
	III	-137,083	135,407	-1,676	-4,094	5,110	1,016	-9,661	8,438	-1,224	-75,917	74,409	-1,507	-226,755	223,364	-3,391
2000	N	-72,150	75,849	3,700	-2,169	2,538	369	-2,074	2,128	55	-8,350	8,663	313	-84,742	89,178	4,436
	D	-55,699	53,481	-2,218	-827	585	-242	-2,062	1,962	-100	-14,880	14,865	-14	-73,467	70,893	-2,574
2001	J	-100,975	100,168	-807	-391	537	146	-1,779	1,748	-31	-14,158	14,227	69	-117,304	116,680	-624
	F	-61,451	65,271	3,820	0	0	0	-1,205	960	-246	-8,532	8,774	243	-71,188	75,005	3,817
	M	-70,426	69,390	-1,036	-2	2	0	-1,716	1,740	23	-9,321	9,284	-37	-81,465	80,416	-1,049
	A	-49,975	50,564	589	-3	99	96	-1,259	1,258	-1	-8,129	7,812	-316	-59,365	59,733	368
	M	-51,243	52,911	1,668	-18	18	0	-1,267	1,220	-48	-10,112	10,634	522	-62,640	64,782	2,143
	J	-62,332	59,845	-2,488	-145	0	-145	-1,435	1,095	-340	-5,582	4,928	-654	-69,494	65,867	-3,626
	J	-43,186	44,519	1,334	-97	0	-97	-1,907	2,181	275	-15,193	14,735	-458	-60,382	61,435	1,053
	A	-36,589	37,689	1,100	-535	315	-219	-2,469	2,451	-18	-9,657	10,250	593	-49,248	50,705	1,456
	S	-37,184	34,662	-2,522	-406	180	-226	-2,533	2,720	187	-5,734	5,828	94	-45,857	43,390	-2,467
	O	-45,773	43,581	-2,192	-1,304	1,276	-29	-3,727	3,548	-179	-15,345	15,252	-92	-66,149	63,657	-2,492
	N	-44,410	47,373	2,963	-5,064	4,755	-309	-3,452	3,566	114	-18,695	17,704	-991	-71,621	73,399	1,777
	D	-34,828	33,515	-1,313	-4,775	4,178	-597	-3,084	2,917	-166	-23,637	24,074	437	-66,324	64,685	-1,640
2002	J	-31,467	29,331	-2,135	-5,888	6,497	609	-2,636	2,957	321	-19,587	18,172	-1,414	-59,578	56,958	-2,620
	F	-27,830	28,923	1,093	-80	444	364	-2,506	2,400	-106	-17,560	17,236	-324	-47,976	49,003	1,027
	M	-44,954	41,237	-3,718	-805	613	-192	-2,456	2,652	196	-13,724	14,591	867	-61,939	59,092	-2,847
	A	-25,249	30,382	5,133	-2,272	2,073	-200	-3,046	2,917	-130	-14,589	14,388	-201	-45,157	49,759	4,603
	M	-26,905	28,261	1,357	-3,081	2,936	-146	-1,467	1,533	66	-15,458	15,488	29	-46,911	48,217	1,306
	J	-41,101	38,270	-2,831	-1,768	1,404	-364	-1,695	1,788	93	-23,045	23,901	856	-67,609	65,364	-2,245
	J	-43,277	43,588	311	-1,541	2,522	981	-2,075	2,185	110	-31,858	31,566	-292	-78,750	79,860	1,110
	A	-40,732	40,474	-258	-1,240	1,375	135	-2,795	3,049	254	-22,757	23,311	554	-67,524	68,209	685
	S	-53,075	51,345	-1,730	-1,314	1,213	-100	-4,791	3,203	-1,588	-21,302	19,533	-1,769	-80,481	75,294	-5,187
	O	-57,078	57,227	149	-2,897	2,670	-227	-6,840	7,533	693	-28,913	28,139	-774	-95,728	95,569	-159
	N	-38,900	41,453	2,553	-1,919	1,470	-449	-3,130	3,365	235	-24,101	24,120	19	-68,050	70,409	2,358

Table 14
Loans under Repurchase Agreements, Transactions with Non-residents in Assets and Liabilities - Concluded

Period	Government of Canada						Other Canadian Securities			Foreign Securities			Total			
	Bonds			Treasury Bills			Sales	Purchases	Net	Sales	Purchases	Net	Sales	Purchases	Net	
	Sales	Purchases	Net	Sales	Purchases	Net										
Liabilities																
V No.	A	113118	113119	113117	113121	113122	113120	113124	113125	113123	113127	113128	113126	113129	113130	113116
	Q	113290	113291	113289	113293	113294	113292	113296	113297	113295	113299	113300	113298	113301	113302	113288
	M	113489	113490	113488	113492	113493	113491	113495	113496	113494	113498	113499	113497	113500	113501	113487
millions of dollars																
1995		494,998	-496,237	-1,239	20,990	-21,457	-468	2,831	-2,698	133	24,868	-25,059	-192	543,687	-545,452	-1,765
1996		609,631	-607,714	1,918	27,955	-27,653	302	1,798	-1,741	57	94,759	-92,948	1,811	734,142	-730,055	4,088
1997		1,098,201	-1,094,328	3,873	109,134	-107,258	1,876	2,407	-3,291	-884	79,890	-81,283	-1,392	1,289,632	-1,286,159	3,473
1998		1,102,789	-1,102,977	-188	143,910	-144,306	-396	2,020	-3,295	-1,275	81,845	-82,178	-333	1,330,564	-1,332,756	-2,192
1999		586,226	-585,920	306	18,471	-17,405	1,066	6,371	-7,873	-1,502	104,832	-104,544	288	715,900	-715,742	158
2000		490,097	-486,514	3,583	17,857	-18,798	-941	14,174	-14,843	-669	106,230	-105,657	573	628,358	-625,813	2,545
2001		615,126	-616,614	-1,488	14,745	-14,915	-170	25,266	-25,171	95	154,178	-155,954	-1,776	809,314	-812,654	-3,339
2000	III	115,585	-114,259	1,326	1,630	-1,949	-319	4,699	-4,903	-204	23,912	-23,716	197	145,826	-144,827	999
	IV	132,478	-132,217	261	7,750	-7,536	214	4,895	-5,068	-173	44,296	-43,629	667	189,419	-188,450	969
2001	I	155,740	-156,933	-1,194	6,021	-5,967	54	2,627	-2,980	-353	46,545	-47,419	-874	210,933	-213,299	-2,367
	II	146,929	-146,026	902	3,136	-3,216	-80	5,562	-5,596	-34	36,699	-36,711	-12	192,325	-191,548	777
	III	165,549	-166,164	-615	606	-628	-22	7,778	-7,519	259	13,592	-13,908	-316	187,524	-188,219	-695
	IV	146,909	-147,491	-582	4,982	-5,104	-122	9,299	-9,076	223	57,342	-57,916	-575	218,532	-219,587	-1,055
2002	I	171,601	-168,890	2,711	7,258	-7,172	86	7,208	-7,132	76	42,931	-43,824	-893	228,998	-227,018	1,981
	II	192,910	-196,476	-3,566	14,275	-13,910	365	6,772	-6,662	110	77,771	-76,769	1,002	291,728	-293,817	-2,089
	III	191,192	-187,843	3,349	7,277	-7,615	-339	39,360	-38,530	829	93,757	-94,779	-1,022	331,585	-328,768	2,817
2000	N	42,875	-46,444	-3,568	2,644	-2,424	220	1,675	-1,729	-54	12,952	-12,609	343	60,145	-63,206	-3,060
	D	48,453	-44,409	4,044	4,242	-4,196	46	1,369	-1,426	-57	16,152	-15,726	426	70,217	-65,758	4,459
2001	J	52,540	-55,012	-2,472	3,440	-3,086	354	773	-898	-125	17,431	-17,844	-413	74,183	-76,839	-2,656
	F	43,135	-45,686	-2,551	2,026	-2,343	-317	732	-942	-211	16,463	-16,596	-133	62,356	-65,568	-3,211
	M	60,065	-56,235	3,829	555	-538	17	1,123	-1,140	-17	12,651	-12,979	-328	74,393	-70,892	3,501
	A	51,064	-52,417	-1,353	1,450	-1,309	141	792	-781	11	10,506	-10,556	-50	63,812	-65,062	-1,251
	M	46,942	-49,191	-2,249	281	-366	-86	2,662	-2,649	14	11,969	-11,895	74	61,854	-64,100	-2,246
	J	48,922	-44,419	4,503	1,406	-1,540	-135	2,108	-2,166	-58	14,224	-14,260	-36	66,660	-62,385	4,274
	J	61,218	-61,955	-737	48	-70	-22	2,673	-2,629	44	3,915	-3,472	443	67,854	-68,127	-273
	A	55,135	-58,540	-3,405	145	-145	0	2,442	-2,425	17	5,418	-6,139	-721	63,140	-67,249	-4,109
	S	49,196	-45,669	3,527	413	-413	0	2,663	-2,465	198	4,260	-4,297	-37	56,530	-52,843	3,687
	O	45,681	-46,572	-891	672	-590	82	3,342	-3,418	-75	22,215	-21,998	216	71,909	-72,578	-669
	N	47,629	-49,739	-2,109	3,143	-2,726	417	3,382	-3,312	70	18,801	-19,822	-1,022	72,955	-75,599	-2,644
	D	53,599	-51,180	2,419	1,167	-1,788	-621	2,575	-2,347	229	16,326	-16,095	231	73,668	-71,410	2,258
2002	J	50,772	-50,329	442	4,822	-4,395	426	1,856	-2,020	-163	11,185	-12,319	-1,134	68,635	-69,063	-428
	F	60,769	-61,008	-239	2,169	-2,599	-430	2,188	-2,198	-10	14,823	-14,526	297	79,948	-80,330	-382
	M	60,060	-57,553	2,507	268	-178	90	3,164	-2,915	249	16,923	-16,979	-56	80,415	-77,625	2,790
	A	73,248	-75,908	-2,661	568	-563	4	2,554	-2,529	25	22,327	-22,198	129	98,697	-101,199	-2,502
	M	63,434	-67,526	-4,092	3,286	-1,707	1,578	2,489	-2,265	224	21,101	-21,124	-23	90,310	-92,621	-2,312
	J	56,229	-53,042	3,187	10,421	-11,639	-1,218	1,729	-1,868	-140	34,343	-33,447	896	102,722	-99,997	2,725
	J	71,078	-70,517	561	5,517	-6,005	-488	3,061	-2,853	208	45,152	-44,665	487	124,808	-124,039	769
	A	54,672	-53,343	1,329	828	-739	89	16,383	-15,799	584	28,360	-29,196	-836	100,243	-99,078	1,165
	S	65,442	-63,983	1,459	931	-871	60	19,916	-19,878	37	20,244	-20,918	-673	106,534	-105,651	883
	O	59,884	-60,879	-995	4,464	-3,698	766	23,595	-23,510	85	15,883	-16,262	-379	103,825	-104,349	-523
	N	47,599	-52,280	-4,680	2,028	-2,158	-130	15,575	-15,406	169	23,690	-23,320	370	88,892	-93,164	-4,271

Table 15
Portfolio Investment in Canadian Bonds, by Sector, Period-end Positions held by Non-residents

End of period	All Governments and their enterprises							Corporations	Total		
	Federal Government			Provincial Governments			Municipal Governments			Total	
	Direct	Enterprises	Total	Direct	Enterprises	Total					
V No.	A	236511	236512	236510	236514	236515	236513	236516	..	236517	236509
	Q	236533	236534	236532	236536	236537	236535	236538	..	236539	236531
millions of dollars											
1988		38,781	10,432	49,213	36,748	25,528	62,277	5,038	116,528	39,586	156,114
1989		48,895	9,655	58,550	36,094	25,059	61,152	4,802	124,505	45,438	169,943
1990		56,454	9,753	66,207	40,980	26,997	67,977	4,647	138,831	49,305	188,135
1991		64,159	9,508	73,667	53,712	32,308	86,020	4,695	164,382	51,173	215,555
1992		68,659	9,695	78,354	69,573	33,603	103,176	4,999	186,529	57,647	244,176
1993		77,491	11,320	88,810	89,972	35,730	125,703	5,396	219,909	64,231	284,140
1994		75,698	12,995	88,693	109,748	41,396	151,143	6,030	245,867	71,004	316,871
1995		87,588	11,092	98,680	115,119	39,763	154,882	6,291	259,853	81,845	341,698
1996		95,885	11,249	107,133	116,781	37,745	154,526	6,238	267,897	89,954	357,852
1997		92,761	11,933	104,694	114,266	35,527	149,793	5,962	260,449	107,450	367,898
1998		89,126	13,498	102,624	125,074	37,597	162,671	6,112	271,406	134,366	405,772
1999		91,131	15,017	106,148	112,496	30,973	143,469	5,434	255,051	134,641	389,692
2000		81,196	14,059	95,255	104,986	29,906	134,892	4,995	235,143	135,938	371,081
2001		74,280	15,874	90,154	108,368	27,877	136,245	4,606	231,005	186,130	417,135
1997	I	91,754	11,230	102,984	116,396	37,724	154,121	6,120	263,225	92,891	356,115
	II	93,844	12,535	106,379	115,992	37,217	153,210	5,912	265,501	95,546	361,048
	III	97,122	12,246	109,368	116,878	36,576	153,454	5,856	268,679	97,511	366,190
	IV	92,761	11,933	104,694	114,266	35,527	149,793	5,962	260,449	107,450	367,898
1998	I	94,271	12,087	106,358	112,340	35,686	148,027	5,854	260,239	109,695	369,934
	II	90,595	13,271	103,866	113,656	37,093	150,749	5,725	260,341	120,492	380,833
	III	86,479	13,535	100,014	120,013	37,914	157,928	5,912	263,854	130,579	394,433
	IV	89,126	13,498	102,624	125,074	37,597	162,671	6,112	271,406	134,366	405,772
1999	I	86,586	13,380	99,966	119,346	34,757	154,103	5,687	259,756	137,261	397,017
	II	86,678	15,526	102,204	113,805	32,787	146,592	5,511	254,307	137,706	392,012
	III	87,275	14,645	101,920	114,727	32,868	147,594	5,453	254,967	139,993	394,959
	IV	91,131	15,017	106,148	112,496	30,973	143,469	5,434	255,051	134,641	389,692
2000	I	85,677	14,890	100,567	108,473	30,568	139,042	5,185	244,793	135,218	380,011
	II	85,842	14,394	100,236	108,003	30,242	138,245	5,160	243,641	135,266	378,907
	III	82,013	14,053	96,067	106,495	29,986	136,481	5,173	237,721	138,672	376,393
	IV	81,196	14,059	95,255	104,986	29,906	134,892	4,995	235,143	135,938	371,081
2001	I	83,478	14,722	98,200	106,225	29,366	135,591	4,772	238,563	147,881	386,444
	II	79,018	14,900	93,918	103,215	28,236	131,451	4,419	229,787	152,312	382,099
	III	76,791	15,736	92,527	108,318	28,704	137,021	4,368	233,917	164,105	398,022
	IV	74,280	15,874	90,154	108,368	27,877	136,245	4,606	231,005	186,130	417,135
2002	I	74,036	18,578	92,614	107,060	26,416	133,476	4,412	230,503	190,897	421,399
	II	72,193	19,492	91,685	104,284	23,842	128,126	4,183	223,994	188,137	412,132
	III	73,856	21,894	95,749	107,709	24,451	132,161	4,196	232,106	195,736	427,842

Table 16
Portfolio Investment in Canadian Bonds, by Geographical Area, Period-end Positions held by Non-residents

End of period	United States	United Kingdom	Other EU Countries	Japan	Other OECD Countries	Other Countries	Total
V No. A	235438	235460	235504	235526	235548	235570	235413
Q	236556	236557	236558	236559	236560	236561	236555
millions of dollars							
1988	45,148	8,086	26,561	39,482	29,962	6,876	156,114
1989	47,847	10,728	28,207	43,153	29,971	10,037	169,943
1990	58,452	14,558	28,234	44,063	32,286	10,542	188,135
1991	68,088	21,502	33,165	45,047	33,290	14,462	215,555
1992	89,664	19,247	35,444	50,269	32,797	16,755	244,176
1993	115,927	26,371	41,315	47,906	33,811	18,810	284,140
1994	132,430	27,449	49,104	45,455	37,192	25,241	316,871
1995	146,504	33,598	50,012	44,464	38,454	28,667	341,698
1996	165,812	35,118	49,211	46,160	33,558	27,993	357,852
1997	179,873	34,888	48,051	45,366	30,564	29,156	367,898
1998	195,133	37,705	59,655	45,021	34,194	34,063	405,772
1999	194,810	36,700	54,438	42,077	31,100	30,566	389,692
2000	195,024	38,104	48,447	35,722	26,753	27,031	371,081
2001	241,549	47,043	48,549	33,942	23,080	22,972	417,135
1997	I 166,691	34,605	48,497	45,117	32,725	28,481	356,115
	II 167,617	36,967	47,739	46,758	33,087	28,880	361,048
	III 175,359	35,429	47,749	47,490	31,883	28,281	366,190
	IV 179,873	34,888	48,051	45,366	30,564	29,156	367,898
1998	I 180,747	32,758	50,210	43,651	31,155	31,412	369,934
	II 186,785	34,302	51,738	42,909	32,385	32,713	380,833
	III 190,558	35,738	57,735	42,696	34,050	33,656	394,433
	IV 195,133	37,705	59,655	45,021	34,194	34,063	405,772
1999	I 195,070	37,035	56,901	43,389	31,862	32,760	397,017
	II 194,705	35,887	55,632	42,031	31,412	32,344	392,012
	III 194,894	36,953	56,392	43,048	32,177	31,495	394,959
	IV 194,810	36,700	54,438	42,077	31,100	30,566	389,692
2000	I 192,564	35,341	51,372	40,945	30,358	29,432	380,011
	II 192,476	40,185	48,616	40,190	29,264	28,176	378,907
	III 195,989	38,144	48,699	38,510	27,822	27,229	376,393
	IV 195,024	38,104	48,447	35,722	26,753	27,031	371,081
2001	I 212,478	42,013	46,713	34,973	25,318	24,949	386,444
	II 214,420	41,093	45,333	34,316	23,472	23,465	382,099
	III 221,960	43,802	48,670	36,467	23,946	23,177	398,022
	IV 241,549	47,043	48,549	33,942	23,080	22,972	417,135
2002	I 246,929	43,597	51,429	33,027	23,316	23,102	421,399
	II 239,584	45,218	52,381	30,675	22,075	22,199	412,132
	III 250,704	47,364	53,893	30,737	22,218	22,926	427,842

Table 17
Portfolio Investment in Canadian Money Market Instruments, by Sector, Period-end Positions held by Non-residents

End of period	All Governments and their enterprises							Corporations	Total	
	Federal Government			Provincial Governments			Total			
	Direct	Enterprises	Total	Direct	Enterprises	Total				
V No.	A	235620	235621	235619	235623	235624	235622	..	235625	235618
	Q	236542	236543	236541	236545	236546	236544	..	236547	236540
millions of dollars										
1988		13,428	2,853	16,281	658	354	1,012	17,293	2,124	19,417
1989		14,041	3,094	17,135	951	373	1,324	18,460	2,152	20,611
1990		17,491	2,991	20,483	2,291	304	2,595	23,078	3,324	26,402
1991		19,781	5,898	25,680	2,988	327	3,315	28,995	1,540	30,534
1992		21,700	6,105	27,805	4,678	429	5,107	32,912	3,192	36,104
1993		32,792	5,716	38,508	4,908	576	5,483	43,991	1,910	45,901
1994		35,843	5,309	41,152	3,924	634	4,558	45,710	1,819	47,529
1995		30,706	5,171	35,877	4,421	773	5,194	41,072	3,041	44,113
1996		24,277	5,241	29,518	3,520	725	4,245	33,762	4,371	38,134
1997		21,744	7,082	28,827	1,904	1,865	3,768	32,595	7,906	40,501
1998		19,298	8,972	28,270	3,427	1,420	4,847	33,117	8,152	41,269
1999		12,813	7,110	19,922	3,199	310	3,509	23,431	4,038	27,469
2000		11,679	6,610	18,289	5,125	0	5,125	23,414	5,219	28,632
2001		7,531	6,782	14,313	4,201	24	4,226	18,538	3,632	22,171
1997	I	27,657	5,732	33,389	1,935	1,098	3,033	36,422	5,401	41,823
	II	21,104	5,664	26,768	2,409	1,476	3,885	30,654	4,768	35,422
	III	20,490	5,612	26,102	1,719	2,011	3,730	29,832	5,493	35,325
	IV	21,744	7,082	28,827	1,904	1,865	3,768	32,595	7,906	40,501
1998	I	20,028	7,155	27,183	2,476	2,070	4,546	31,729	9,054	40,783
	II	18,336	6,706	25,043	2,130	1,698	3,829	28,871	7,870	36,741
	III	20,341	7,351	27,692	2,944	1,575	4,518	32,210	7,312	39,522
	IV	19,298	8,972	28,270	3,427	1,420	4,847	33,117	8,152	41,269
1999	I	19,440	7,039	26,479	2,515	1,118	3,633	30,111	6,595	36,706
	II	17,549	6,363	23,912	2,513	878	3,392	27,303	5,179	32,482
	III	14,615	6,803	21,419	2,929	578	3,506	24,925	3,771	28,696
	IV	12,813	7,110	19,922	3,199	310	3,509	23,431	4,038	27,469
2000	I	14,192	6,761	20,953	3,774	638	4,412	25,365	5,140	30,505
	II	13,602	6,728	20,329	3,749	375	4,123	24,453	4,146	28,599
	III	11,382	6,861	18,243	3,526	276	3,802	22,046	3,583	25,628
	IV	11,679	6,610	18,289	5,125	0	5,125	23,414	5,219	28,632
2001	I	10,498	6,777	17,274	3,884	12	3,897	21,171	3,089	24,260
	II	9,126	6,327	15,453	4,695	4	4,699	20,152	3,722	23,873
	III	6,122	6,726	12,847	3,700	12	3,712	16,560	3,611	20,171
	IV	7,531	6,782	14,313	4,201	24	4,226	18,538	3,632	22,171
2002	I	7,361	8,246	15,607	4,174	15	4,188	19,796	3,683	23,479
	II	8,251	7,146	15,397	4,622	81	4,703	20,100	3,457	23,557
	III	8,120	5,899	14,020	3,985	86	4,071	18,090	3,908	21,999

Table 18
Portfolio Investment in Canadian Money Market Instruments, by Geographical Area, Period-end Positions held by Non-residents

End of period		United States	United Kingdom	Other EU Countries	Japan	Other OECD Countries	Other Countries	Total
V No.	A	235441	235463	235507	235529	235551	235573	235416
	Q	236549	236550	236551	236552	236553	236554	236548
millions of dollars								
1988		8,079	1,525	1,497	395	2,299	5,622	19,417
1989		7,787	1,693	1,447	1,214	2,232	6,237	20,611
1990		10,286	1,586	2,242	900	3,977	7,411	26,402
1991		11,090	4,617	1,675	2,068	4,055	7,031	30,534
1992		18,789	4,420	1,661	733	2,684	7,817	36,104
1993		21,515	5,773	2,558	361	4,132	11,561	45,901
1994		19,398	8,525	2,040	217	5,885	11,465	47,529
1995		18,240	9,778	1,819	10	4,101	10,165	44,113
1996		20,680	4,819	1,922	651	2,495	7,567	38,134
1997		24,149	4,072	3,628	124	3,414	5,115	40,501
1998		22,993	5,781	3,462	8	3,904	5,120	41,269
1999		15,728	4,765	2,302	43	1,991	2,640	27,469
2000		17,768	3,220	1,544	198	1,771	4,131	28,632
2001		14,288	2,785	1,198	23	915	2,961	22,171
1997	I	23,122	4,221	3,440	618	3,255	7,168	41,823
	II	20,447	3,154	2,955	336	2,706	5,825	35,422
	III	20,290	4,001	3,258	229	2,170	5,377	35,325
	IV	24,149	4,072	3,628	124	3,414	5,115	40,501
1998	I	20,290	6,374	3,985	102	4,951	5,080	40,783
	II	19,589	5,205	3,720	43	2,946	5,238	36,741
	III	23,046	4,428	3,293	27	2,957	5,771	39,522
	IV	22,993	5,781	3,462	8	3,904	5,120	41,269
1999	I	20,501	6,632	2,313	9	1,956	5,294	36,706
	II	19,449	5,477	1,952	24	1,615	3,966	32,482
	III	17,427	5,141	2,059	57	1,486	2,526	28,696
	IV	15,728	4,765	2,302	43	1,991	2,640	27,469
2000	I	17,908	5,457	2,200	71	1,850	3,020	30,505
	II	17,659	4,328	1,677	70	1,554	3,311	28,599
	III	14,914	3,536	1,632	91	1,789	3,666	25,628
	IV	17,768	3,220	1,544	198	1,771	4,131	28,632
2001	I	14,536	2,862	1,556	172	1,390	3,744	24,260
	II	15,395	2,960	1,244	171	1,187	2,916	23,873
	III	12,424	2,706	1,070	123	1,008	2,840	20,171
	IV	14,288	2,785	1,198	23	915	2,961	22,171
2002	I	13,727	4,310	1,268	24	1,157	2,993	23,479
	II	14,180	3,536	1,130	43	1,234	3,433	23,557
	III	13,172	3,544	784	38	877	3,583	21,999

Table 19
Selected Stock Prices and Capital Market Yields

Period		Stocks prices		Selected capital market yields		
		Canada	United States	Long-term		
		Toronto Stock Exchange S&P/TSX Composite Index 1975 = 1,000	Standard and Poor's Composite 500 1941 - 43 = 10	Canadian industrials average ⁽¹⁾	Government of Canada ⁽²⁾	United States government ⁽³⁾
1998	N	6,343.9	1,164.3	5.98	5.18	4.83
	D	6,485.9	1,229.2	5.77	4.89	4.65
1999	J	6,729.3	1,279.6	5.76	4.89	4.68
	F	6,312.7	1,238.3	6.06	5.26	5.18
	M	6,597.8	1,286.6	5.83	5.05	5.25
	A	7,014.7	1,335.2	5.89	5.14	5.27
	M	6,841.8	1,301.7	6.21	5.42	5.55
	J	7,010.1	1,372.7	6.28	5.46	5.81
	J	7,081.0	1,328.7	6.44	5.62	5.81
	A	6,970.8	1,320.4	6.36	5.55	5.73
	S	6,957.7	1,282.7	6.54	5.77	5.97
	O	7,256.2	1,362.9	6.99	6.26	6.19
	N	7,523.2	1,388.9	6.81	6.02	6.09
	D	8,413.8	1,469.3	6.96	6.18	6.40
	2000	J	8,481.1	1,394.5	7.14	6.44
F		9,129.0	1,366.4	6.99	6.19	6.44
M		9,462.4	1,498.6	6.84	6.03	6.18
A		9,347.6	1,452.4	6.73	6.10	6.14
M		9,252.0	1,420.6	7.05	6.00	6.29
J		10,195.5	1,454.6	6.95	5.93	6.11
J		10,406.3	1,430.8	6.87	5.85	6.04
A		11,247.9	1,517.7	6.78	5.77	5.81
S		10,377.9	1,436.5	6.72	5.75	5.83
O		9,639.6	1,429.4	6.76	5.72	5.67
N		8,819.9	1,315.0	6.70	5.54	5.55
D		8,933.7	1,320.3	6.58	5.35	5.11
2001		J	9,321.9	1,366.0	6.46	5.39
	F	8,078.7	1,239.9	6.38	5.36	4.92
	M	7,608.0	1,160.3	6.37	5.41	4.97
	A	7,946.3	1,249.5	6.52	5.66	5.28
	M	8,161.9	1,255.8	6.86	5.96	5.54
	J	7,736.4	1,224.4	6.59	5.73	5.26
	J	7,689.7	1,211.2	6.64	5.76	5.20
	A	7,399.2	1,133.6	6.24	5.36	4.78
	S	6,838.6	1,040.9	6.26	5.32	4.65
	O	6,885.7	1,059.8	5.81	4.86	4.30
	N	7,425.7	1,139.5	6.35	5.36	4.98
	D	7,688.4	1,148.1	6.27	5.44	5.22
	2002	J	7,648.5	1,130.2	6.12	5.42
F		7,637.5	1,106.7	6.01	5.31	4.84
M		7,851.5	1,147.4	6.46	5.79	5.35
A		7,663.4	1,076.9	6.21	5.64	5.11
M		7,656.1	1,067.1	6.13	5.49	5.11
J		7,145.6	989.8	6.08	5.37	4.75
J		6,605.4	911.6	6.18	5.23	4.51
A		6,612.0	916.1	6.05	5.14	4.22
S		6,180.4	815.3	5.87	4.92	3.77
O		6,248.8	885.8	6.10	5.16	3.99
N		6,570.4	936.3	5.96	5.18	4.26

(1) Last business day. Weighted mid-term bond index based on forty bonds covering a 5 to 15 year spectrum. Scotia Capital Inc.

(2) Mid-market closing prices for last Wednesday of direct issues due or callable in 10 years.

(3) Daily average for last week of issues due or callable in 10 years. United States Federal Reserve Bulletin.

Source: Bank of Canada, except as indicated.

Table 19
Selected Stock Prices and Capital Market Yields - Concluded

		Selected capital market yields					Forward premium (+) or discount (-) United-States dollar in Canada 3 month ⁽⁸⁾
		Short-term					
		Finance company paper 3 month	Commercial paper 3 month	Treasury bills 3 month			
Period		Canadian ⁽⁴⁾	United States ⁽⁵⁾	Canadian ⁽⁶⁾	United States ⁽⁷⁾	Eurodollars ⁽⁸⁾	
1998	N	5.09	5.07	4.78	4.47	5.48	-0.18
	D	5.02	4.93	4.66	4.44	5.29	-0.18
1999	J	5.01	4.82	4.68	4.35	5.20	0.05
	F	5.04	4.88	4.87	4.53	5.26	0.05
	M	4.85	4.89	4.63	4.39	5.16	-0.13
	A	4.80	4.85	4.60	4.39	5.04	-0.19
	M	4.71	4.90	4.48	4.52	5.10	-0.28
	J	4.86	5.24	4.56	4.61	5.35	-0.58
	J	4.91	5.17	4.71	4.59	5.39	-0.43
	A	4.87	5.37	4.68	4.81	5.54	-0.62
	S	4.83	5.36	4.66	4.65	5.99	-0.77
	O	5.05	5.98	4.87	4.96	6.15	-0.99
	N	5.05	5.85	4.73	5.12	6.15	-1.02
	D	5.27	5.76	4.85	5.17	6.08	-0.89
2000	J	5.25	5.89	5.05	5.41	6.15	-0.31
	F	5.31	5.95	4.96	5.62	6.21	-0.83
	M	5.46	6.18	5.27	5.71	6.65	-0.89
	A	5.62	6.26	5.43	5.62	6.46	-0.82
	M	5.98	6.72	5.67	5.73	6.97	-0.89
	J	5.89	6.67	5.53	5.67	6.88	-0.93
	J	5.88	6.59	5.61	6.01	6.81	-0.89
	A	5.90	6.57	5.58	6.11	6.75	-0.85
	S	5.83	6.55	5.56	6.03	6.75	-0.84
	O	5.85	6.60	5.61	6.03	6.81	-0.91
	N	5.89	6.57	5.62	6.18	6.81	-0.87
	D	5.71	6.31	5.49	5.66	6.50	-0.72
2001	J	5.29	5.32	5.11	5.11	5.45	-0.11
	F	5.05	4.94	4.87	4.87	5.13	-0.05
	M	4.66	4.74	4.58	4.22	4.97	-0.21
	A	4.49	4.24	4.43	3.72	4.37	0.18
	M	4.49	3.94	4.34	3.58	4.02	0.52
	J	4.38	3.68	4.30	3.47	3.74	0.70
	J	4.22	3.61	4.07	3.48	3.74	0.55
	A	3.96	3.39	3.80	3.33	3.58	0.50
	S	3.19	2.52	3.05	2.34	2.98	0.64
	O	2.45	2.12	2.34	2.13	2.44	0.33
	N	2.17	2.00	2.07	1.84	2.38	0.20
	D	2.08	1.89	1.95	1.70	2.22	0.20
2002	J	2.07	1.76	1.96	1.65	2.15	0.23
	F	2.16	1.82	2.05	1.73	2.22	0.25
	M	2.36	1.94	2.30	1.79	2.28	0.41
	A	2.46	1.77	2.37	1.72	2.44	0.62
	M	2.68	1.77	2.60	1.73	2.09	0.85
	J	2.78	1.75	2.70	1.70	2.06	1.01
	J	2.88	1.82	2.81	1.68	2.06	1.10
	A	3.09	1.73	2.96	1.62	2.06	1.27
	S	2.90	1.74	2.83	1.63	2.03	1.21
	O	2.83	1.63	2.73	1.58	2.00	1.24
	N	2.85	1.35	2.71	1.23	1.74	1.44

(4) Last Wednesday.

(5) Last Wednesday. Adjusted to 365-day true yield basis from 360-day basis.

(6) Average of rates of Thursday tender following the last Wednesday.

(7) Average of rates of the last full week of the month ending Friday.

(8) Expressed as annual yield. Last Wednesday.

Source: Bank of Canada, except as indicated.

FOR FURTHER READING

Selected Publications from Statistics Canada

	<u>Catalogue</u>	<u>Internet</u>
Canada's Balance of International Payments, <i>Quarterly, Bilingual</i>	67-001-XPB	67-001-XIB
Canada's International Transactions in Securities, <i>Monthly, English and French</i>	print on demand	67-002-XIE 67-002-XIF
Canada's International Investment Position, <i>Annual, Bilingual</i>	67-202-XPB	67-202-XIB
Canada's International Trade in Services, <i>Annual, Bilingual</i>	67-203-XPB	67-203-XIB
Canada's Balance of International Payments and International Investment Position <i>Concepts, Sources, Methods and Products</i> <i>Occasional, English</i> <i>New edition, July 2000</i>	67-506-XPE 67-506-XPF	67-506-XIE 67-506-XIF
Canada's Balance of International Payments, Historical Statistics 1926 to 1990 ⁽¹⁾, <i>Occasional, Bilingual</i>	67-508-XPB	
Canadian Economic Observer, <i>Monthly, Bilingual</i>	11-010-XPB	

(1) Starting with 1992, the first quarter editions of 67-001-XPB contain the update to the data published in 67-508-XPB.

To order a publication you may telephone 1-613-951-7277 or use facsimile number 1-613-951-1584.
For toll free in Canada only, telephone 1-800-267-6677. When ordering by telephone or facsimile, a written confirmation is not required.

List of Published Research Papers

	<i>Published</i>	<i>Catalogue</i>
1. <i>Non-corporate Foreign Investment in Canadian Real Estate, 1977-1980 (Teresa M. Omiecinski)</i>	1983	67F0001MPB97001
2. <i>Foreign Investment in the Canadian Bond Market, 1978 to 1990 (Lucie Laliberté)</i>	1990	67F0001MPB97002
3. <i>Characteristics of Canadian Importing Firms, 1978-1986 (Barry Mersereau)</i>	1992	67F0001MPB97003
4. <i>The Statistical Discrepancy in Canada's Balance of Payments, 1962-1991 (Fred Barzyk and Lucie Laliberté)</i>	1992	67F0001MPB97004
5. <i>Canada's Public Debt Held by Non-Residents: Historical Perspectives, 1926-1992 (Lucie Laliberté, Christian Lajule and Diane Thibault)</i>	1993	67F0001MPB97005
6. <i>Globalisation and Canada's International Investment Position, 1950-1992, (Lucie Laliberté)</i>	1993	67F0001MPB97006
7. <i>The Foreign Investment of Canadian Trusteed Pension Funds, 1970-1992 (Jean-Pierre Corbeil and Thomas Dufour)</i>	1993	67F0001MPB97007
8. <i>Recent Trends in Canadian Direct Investment Abroad - The Rise of Canadian Multinationals, 1969-1992 (Frank Chow)</i>	1993	67F0001MPB97008
9. <i>Direct Investment Profits - in Canada and Abroad, 1983-1993 (Diane Thibault and Emmanuel Manolikakis)</i>	1994	67F0001MPB97009
10. <i>Development of the Balance of Payments nomenclature (Gerard Meagher)</i>	1996	67F0001MPB97010
11. <i>Reconciliation of the Canada-United States Current Account, 1994 and 1995 (Lucie Laliberté and Anthony J. DiLullo)</i>	1996	67F0001MPB97011
12. <i>Measurement of Foreign Portfolio Investment in Canadian Bonds (Lucie Laliberté and Réjean Tremblay)</i>	1996	67F0001MPB97012
13. <i>Implementation in Canada of the International Standards for Service Trade - On With the Fifth (Hugh Henderson)</i>	1996	67F0001MPB97013
14. <i>Repo transactions between residents of Canada and non-residents, 1991-1995 (Éric Boulay)</i>	1997	67F0001MPB97014
15. <i>Canada's International Legal Services, 1995-1996 (Colleen Cardillo)</i>	1997	67F0001MPB97015

	<i>Published</i>	<i>Catalogue</i>
16. <i>Canada's International Management Consulting, 1990-1996 (Willa Rea)</i>	1997	67F0001MPB97016
17. <i>Canada's Implementation of BPM-5, 1997</i>	1997	67F0001MPB97017
18. <i>Reconciliation of the Canada-United States Current Account, 1997 and 1998 (Anthony J. DiLullo and Hugh Henderson)</i>	1999	67F0001MPB99018
19. <i>Issues in Provincializing Foreign Direct Investment (Rosemary Bender)</i>	1999	67F0001MPB99019
20. <i>Foreign Direct Investment: A Driving Force in Economic Globalization (Christian Lajule)</i>	2000	67F0001MPB00020
21. <i>Foreign Affiliate Trade Statistics - Measuring Economic Globalization A Canadian Perspective - from Research to Reality (Colleen Cardillo)</i>	2000	67F0001MPB01021

Economic Analysis Research Paper Series

004 <i>Foreign Affiliate Trade Statistics - 1999 How Goods and Services are Delivered in International Markets (Colleen Cardillo)</i>	2002	004
---	------	-----

How to Order Research Papers

By phone: (613) 951-1855
By fax: (613) 951-9031
By Mail: Statistics Canada
 Balance of Payments Division
 Ottawa, Ontario
 K1A 0T6

You can order our Research Papers for a fee of \$5.00 per copy.

These papers are posted on our Web site at: <http://www.statcan.ca/english/services>



Retain for future reference

Balance of Payments Division List of Publications

Canada's Balance of International Payments

(the First quarter 1997 issue provides comprehensive historical coverage from 1926 to 1996) - presents Canada's economic transactions with non-residents under two main accounts: the current account which covers goods, services, investment income and current transfers; and the capital and finance account which covers capital transfers as well as both borrowings from and investments in foreign countries. The transactions are presented quarterly and annually with six broad geographical areas.

67-001-XPB

Canada's International Transactions in Securities

presents Canada's portfolio transactions in Canadian and foreign bonds and stocks and in Canadian money market securities with non-residents. New issues, retirements and trade in outstanding securities are covered as well as repurchase agreements. Monthly gross and net transactions are presented geographically according to six broad geographical areas.

67-002-XIE
67-002-XIF

Canada's International Investment Position

(the 1996 issue provides comprehensive historical data from 1926 to 1996) - presents Canada's asset position with and liability position to non-residents, including a detailed breakdown by claims (direct investment by country, portfolio, etc.) and by six broad geographical areas. The data include the foreign holding of Canada's public debt.

67-202-XPB

Canada's International Transactions in Services

presents Canada's annual service transactions with non-residents. Travel, transportation, commercial services and government services which are presented by three broad geographical areas: United States, European Union and other countries. Commercial services are further categorized by industry; country of control (Canada, United States, Other); whether the service is with foreign affiliated companies or non-affiliates; and with a detailed country breakdown for commercial services.

67-203-XPB

How to Order

By phone: (613) 951-7277 or 1 800 267-6677
By fax: (613) 951-1584 or 1 800-889-9734
By Internet: order@statcan.ca.
By Mail: Statistics Canada
 Operations and Integration Division
 Circulation Management
 Ottawa, Ontario
 K1A 0T6

Catalogue no.	Frequency	By issue (all prices in Canadian dollars)				Annual Subscription/ (all prices in Canadian dollars)			
		Canada	United States	Other countries	Internet	Canada	United States	Other countries	Internet
67-001-XPB	Quarterly	\$38.00	\$44.00	\$48.00	\$29.00	\$124.00	\$148.00	\$164.00	\$93.00
67-002-XIE	Monthly				\$14.00				\$132.00
67-002 Print on demand	Monthly	\$29.00	\$35.00	\$39.00					
67-202-XPB	Annual	\$52.00	\$58.00	\$62.00	\$39.00				
67-203-XPB	Annual	\$40.00	\$46.00	\$50.00	\$30.00				