



Catalogue no. 67-002-XIE

# Canada's international transactions in securities

December 2003



Statistics  
Canada

Statistique  
Canada

Canada

## How to obtain more information

Specific inquiries about this product and related statistics or services should be directed to: Balance of Payments Division, Statistics Canada, Ottawa, Ontario, K1A 0T6 (telephone: (613) 951-1855); [infobalance@statcan.ca](mailto:infobalance@statcan.ca)).

For information on the wide range of data available from Statistics Canada, you can contact us by calling one of our toll-free numbers. You can also contact us by e-mail or by visiting our Web site.

<b>National inquiries line</b>	<b>1 800 263-1136</b>
<b>National telecommunications device for the hearing impaired</b>	<b>1 800 363-7629</b>
<b>Depository Services Program inquiries</b>	<b>1 800 700-1033</b>
<b>Fax line for Depository Services Program</b>	<b>1 800 889-9734</b>
<b>E-mail inquiries</b>	<b><a href="mailto:infostats@statcan.ca">infostats@statcan.ca</a></b>
<b>Web site</b>	<b><a href="http://www.statcan.ca">www.statcan.ca</a></b>

## Ordering and subscription information

This product, Catalogue no. 67-002-XIE, is published monthly in electronic format on the Statistics Canada Internet site at a price of CDN \$15.00 per issue and CDN \$142.00 for a one-year subscription. To obtain single issues or to subscribe visit our Web site at [www.statcan.ca](http://www.statcan.ca), and select Products and Services.

This product is also available in print through a Print-on-Demand service, at a price of CDN \$41.00 per issue and CDN \$282.00 for a one-year subscription. The following additional shipping charges apply for delivery outside Canada:

	<b>Single issue</b>	<b>Annual subscription</b>
<b>United States</b>	CDN \$ 6.00	CDN \$ 72.00
<b>Other countries</b>	CDN \$ 10.00	CDN \$ 120.00

All prices exclude sales taxes.

The printed version can be ordered by

- Phone (Canada and United States) **1 800 267-6677**
- Fax (Canada and United States) **1 877 287-4369**
- E-mail **[infostats@statcan.ca](mailto:infostats@statcan.ca)**
- Mail Statistics Canada  
Dissemination Division  
Circulation Management  
120 Parkdale Avenue  
Ottawa, Ontario K1A 0T6
- And, in person at the Statistics Canada Regional Centre nearest you.

When notifying us of a change in your address, please provide both old and new addresses.

## Standards of service to the public

Statistics Canada is committed to serving its clients in a prompt, reliable and courteous manner and in the official language of their choice. To this end, the Agency has developed standards of service which its employees observe in serving its clients. To obtain a copy of these service standards, please contact Statistics Canada toll free at 1 800 263-1136.



Statistics Canada  
Balance of Payments Division

System of National Accounts

# Canada's international transactions in securities

December 2003

Published by authority of the Minister responsible for Statistics Canada

© Minister of Industry, 2004

All rights reserved. No part of this publication may be reproduced, stored in a retrieval system or transmitted in any form or by any means, electronic, mechanical, photocopying, recording or otherwise without prior written permission from Licence Services, Marketing Division, Statistics Canada, Ottawa, Ontario, Canada K1A 0T6.

February 2004

Catalogue no.67-002-XIE, Vol. 69, no. 12

Frequency: Monthly

ISSN 1488-4860

Ottawa

La version française de cette publication est disponible sur demande (n° 67-002-XIF au catalogue).

---

## Note of appreciation

*Canada owes the success of its statistical system to a long-standing partnership between Statistics Canada, the citizens of Canada, its businesses, governments and other institutions. Accurate and timely statistical information could not be produced without their continued cooperation and goodwill.*

## Symbol

The following standard symbols are used in this Statistics Canada publication:

.. not available for a specific reference period

## Notes

Throughout this report:

- totals may not add due to rounding;
- a minus sign indicates the purchase of securities from non-residents, that is an outflow of capital from Canada;
- Other EU Countries include: Belgium, Denmark, France, Germany, Greece, Ireland, Italy, Luxembourg, the Netherlands, Portugal, Spain, and from January 1995, Austria, Finland and Sweden.
- Other OECD Countries include: Australia, Iceland, New Zealand, Norway, Switzerland, Turkey; from July 1994, Mexico; from December 1995, the Czech Republic; from May 1996, Hungary; from November 1996, Poland; from December 1996, Republic of Korea; from January 2001, the Slovak Republic; up to December 1994, Austria, Finland and Sweden.
- This publication was prepared by:

John Côté, Don Granger, Barry Mersereau, Carole Parent, Stavros Iliadis, Robert Théberge, Catherine Boies, and Art Ridgeway.

## The System of National Accounts

In Canada, the National Accounts have been developed since the close of the Second World War in a series of publications relating to their constituent parts. These have now reached a stage of evolution where they can be termed a "System of National Accounts". For purposes of identification, all publications (containing tables of statistics, descriptions of conceptual frameworks and descriptions of sources and methods) which make up this System carry the term "System of National Accounts" as a general title.

The System of National Accounts in Canada consists of several parts. The annual and quarterly Income and Expenditure Accounts (included with Catalogue Nos. carrying the prefix 13) were, historically speaking, the first set of statistics to be referred to with the title "National Accounts" (National Accounts, Income and Expenditure). The Balance of International Payments data (Catalogue Nos. with prefix 67) are also part of the System of National Accounts and they, in fact, pre-date the Income and Expenditure Accounts.

Greatly expanded structural detail on industries and on goods and services is portrayed in the Input-Output Tables of the System (Catalogue Nos. with prefix 15). The Catalogue Nos. carrying the prefix 15 also provide measures of the contribution of each industry to total Gross Domestic Product at basic prices as well as Productivity Measures.

Both the Input-Output tables and the estimates of Gross Domestic Product by Industry use the establishment as the primary unit of industrial production. Measures of financial transactions are provided by the Financial Flow Accounts (Catalogue Nos. with prefix 13). Types of lenders and financial instruments are the primary detail in these statistics and the legal entity is the main unit of classification of transactors. Balance sheets of outstanding assets and liabilities are published annually.

The System of National Accounts provides an overall conceptually integrated framework in which the various parts can be considered as interrelated sub-systems. At present, direct comparisons amongst those parts which use the establishment as the basic unit and those which use the legal entity can be carried out only at highly aggregated levels of data. However, Statistics Canada is continuing research on enterprise company establishment relationships; it may eventually be feasible to reclassify the data which are on one basis (say the establishment basis) to correspond to the units employed on another (the company or the enterprise basis).

In its broad outline, the Canadian System of National Accounts bears a close relationship to the international standard as described in *System of National Accounts, 1993*, a joint publication of the Commission of the European Communities, International Monetary Fund, Organisation for Economic Co-operation and Development, United Nations and World Bank.

## Table of Contents

	Page
<b>December 2003 - Analysis</b>	7
About the figures	6
<b>Table</b>	
Guide to Tables: Where to Locate Data by Table Number	10
CANSIM II Table Correspondence	10
<b>Canadian and Foreign Securities</b>	
1. Portfolio Transactions with Non-residents in Securities	11
<b>Canadian Securities</b>	
2. Portfolio Transactions with Non-residents in Canadian Bonds, by Sector and Type of Transaction	12
3. Portfolio Transactions with Non-residents in Canadian Bonds, by Geographical Area and Type of Transaction	20
4. Portfolio Transactions with Non-residents in Canadian Bonds, by Geographical Area	27
5. Portfolio Transactions with Non-residents in Canadian Bonds, by Type and Currency of Issue	28
6. Portfolio Transactions with Non-residents in Canadian Money Market Instruments, by Sector, Sales and Purchases	30
7. Portfolio Transactions with Non-residents in Canadian Money Market Instruments, by Geographical Area, Sales and Purchases	33
8. Portfolio Transactions with Non-residents in Canadian Stocks, by Geographical Area and Type of Transaction	35
9. Portfolio Transactions with Non-residents in Canadian Stocks, by Geographical Area	39
<b>Foreign Securities</b>	
10. Portfolio Transactions with Non-residents in Foreign Securities by Instrument and Sector, Purchases and Sales	40

**Table of Contents - Concluded**

	Page
<b>Table</b>	
11. Portfolio Transactions with Non-residents in Foreign Bonds, by Geographical Area, Purchases and Sales	41
12. Portfolio Transactions with Non-residents in Foreign Stocks, by Geographical Area, Purchases and Sales	43
<b>Supplementary Tables</b>	
13. Loans under Repurchase Agreements, Transactions with Non-residents by Canadian and Foreign Securities	46
14. Loans under Repurchase Agreements, Transactions with Non-residents in Assets and Liabilities	48
15. Portfolio Investment in Canadian Bonds, by Sector, Period-end Positions held by Non-residents	50
16. Portfolio Investment in Canadian Bonds, by Geographical Area, Period-end Positions held by Non-residents	51
17. Portfolio Investment in Canadian Money Market Instruments, by Sector, Period-end Positions held by Non-residents	52
18. Portfolio Investment in Canadian Money Market Instruments, by Geographical Area, Period-end Positions held by Non-residents	53
19. Selected Stock Prices and Capital Market Yields	54
<b>For Further Reading</b>	56
<b>List of Published Research Papers</b>	57

## ABOUT THE FIGURES

The series on international security transactions cover portfolio transactions in stocks, bonds and Canadian money market securities between non-residents and residents of Canada. The series include trade in outstanding issues, new issues, retirements, and change in interest payable and are further segmented by issuing sector and major geographic area. The principle guiding their construction is that a change of ownership occurs between residents of a foreign country and Canada. These series form an integral part of Canada's balance of payments. Certain types of security transactions, which are excluded from this publication, are classified to other balance of payments series as follows:

- security transactions representing direct investment capital by principal owners of an enterprise, e.g. parent companies subscribing to new stocks;
- foreign securities held as part of Canada's official international reserves or by Canadian banks for their own account;
- foreign money market securities because their measurement is largely through foreign banking data whose level of detail precludes a separate specification.

Security transactions are recorded before charges for fees and commissions. The value used is the transaction price and the timing of a transaction's recording is generally the delivery or settlement date.

The quality of foreign portfolio investment data in Canadian stocks, bonds and money market paper is good. The flows are reported on a monthly survey sent to the major investment dealers, pension funds, and the largest debt issuing institutions such as the provinces and their enterprises. Historically, the response rate has been well over 90%. A considerable effort is made to identify the various sectors and institutions which issue securities to non-residents; the data may, at times, be revised when new transactors are identified or information becomes available through annual surveys. The coverage is validated against administrative data and the annual census survey of foreign holdings of Canadian portfolio investments.

The quality of estimates of Canadian investment in foreign stocks and bonds is not as good as it is difficult to identify all Canadian residents making portfolio investments abroad. A considerable effort is made to identify the various Canadian institutions which invest in foreign securities and survey them on a monthly basis however individuals in the personal sector using foreign investment firms are harder to identify thereby weakening the estimates. The quality of the data has improved significantly with a series of annual surveys on Canadian portfolio investment abroad that began at year-end 1997. The inaugural survey was carried out as part of an international effort to improve data on external portfolio investment. Fully 35 countries participated in the portfolio survey, co-ordinated by the International Monetary Fund.

For transactions in outstanding securities, the data are largely derived from a monthly survey of investment dealers and of other financial institutions such as mutual funds, pension funds and trust companies which regularly buy or sell securities directly through dealers or brokers outside Canada. The data for new issues and retirements are obtained from survey and non-survey sources such as prospectuses, summaries prepared by dealers and other institutions, press reports, etc.

For a fuller description of the sources and methods employed in the construction of these series, please refer to the publication *Canada's Balance of International Payments and International Investment Position - Concepts, Sources, Methods and Products* (Catalogue nos. 67-506-XPE or 67-506-XIE).



## Canada's international transactions in securities

### December 2003

Foreign investors continued to add significantly to their holdings of Canadian stocks in December but reduced their holdings of debt securities, both bonds and money market paper.

Meanwhile, Canadian investors continued their purchases of foreign securities, but switched their acquisitions mainly to foreign bonds in December from equities the month before.

### Foreign investors again acquire sizable amounts of Canadian stocks

With Canadian stock prices posting some of their best gains of the year in December, foreign investors continued to add to their holdings of Canadian stocks, buying \$2.2 billion worth in the month. Trading volume in Canadian stocks with foreign investors was up as well, climbing to \$45.6 billion in December, the highest turnover since the \$55.0 billion in March 2001. American investors did the bulk of the buying in December, as they have for all of 2003. Of the \$12.9 billion increase in foreign holdings of Canadian equities in 2003, 70% was in existing shares. A major part of the balance came from new treasury shares issued by a Canadian company exchanged in the acquisition of a foreign company.

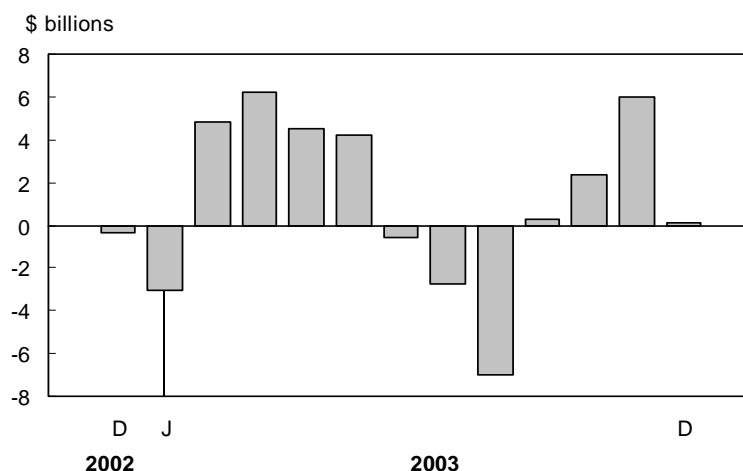
Canadian stock prices closed the year with a strong 4.6% advance in December, second only to the 4.7% recorded in October. The S&P/TSX composite index closed the year at 8,220.9, a 24.3% advance for 2003 and a return to a level last witnessed almost three full years ago, in January 2001.

### Foreign holdings of bonds and money market instruments go down

After accumulating \$5.3 billion worth of Canadian bonds over October and November, foreign investors reduced their holdings by \$1.6 billion in December. The reduction was concentrated in federally and provincially issued bonds.

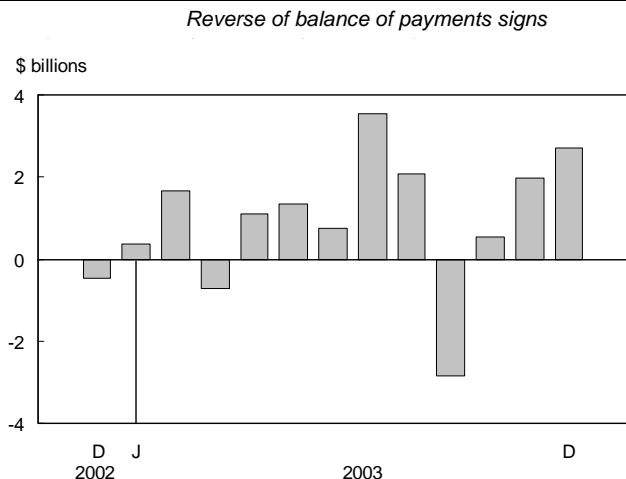
#### Chart 1

#### Foreign investment in Canadian securities<sup>1</sup>



<sup>1</sup>Includes bonds, stocks and money market paper.

## Chart 2

Canadian investment in foreign securities<sup>1</sup>

<sup>1</sup>Includes bonds, and stocks.

However, a large part of the decrease was offset by foreign buying of bonds issued by federal enterprises and corporations; most of this came from new bonds sold in foreign markets.

On a currency basis, foreign investors reduced their holdings of Canadian dollar-denominated bonds in December but bought issues denominated in foreign currencies. For 2003, they sold \$5.1 billion of Canadian dollar-denominated bonds, but increased their holdings of US dollar-denominated bonds by \$7.5 billion and those of bonds denominated in other foreign currencies by \$4.3 billion. The total foreign investment of \$6.7 billion in Canadian bonds came 60% from Asian investors, with the remaining 40% coming from Americans investors. Europeans recorded no new investment for the year as a whole.

Foreign holdings of Canadian money market paper fell by \$0.5 billion in December, following a similarly small reduction in November. Foreign investors have reduced their holdings of Canadian short-term paper in 9 of 12 months of 2003, for a total reduction over the year of \$4.4 billion. This more than reversed the \$3.8 billion they accumulated in 2002. The foreign divestment in 2003 was spread across paper issued by corporations and governments and their enterprises, except federal treasury bills.

In December, the gap between Canadian and US short-term interest rates narrowed by 7 basis points to 167 basis points, well below the high of 215 basis points recorded in June. Canadian interest rates, at 2.57% in December, were at their lowest level since April 2002, while American rates, at 0.90%, matched their historical low set in July 2003.

### Canadian investors continue their purchases of foreign securities, especially foreign bonds

Canadian investors added a further \$2.7 billion to their holdings of foreign securities in December, \$2.3 billion of which was invested in bonds. November's investment of \$2.0 billion, however, was heavily weighted toward stocks. The \$12.5 billion investment in foreign securities for all of 2003 was directed two-thirds to foreign bonds with one-third to foreign stocks. This investment was half the \$25.0 billion invested in foreign securities in 2002, of which 75% went to stocks and 25%, to bonds.

**Related market information****Interest Rates**

*In December, the gap between Canadian and US short-term interest rates, favouring investment in Canada, narrowed by 7 basis points to 167 basis points, well below the June high of 215 basis points. Canadian interest rates fell 10 basis points to 2.57% in December, their lowest level since April 2002. American rates fell marginally to 0.90%, matching the historical low set earlier in July 2003.*

*Canadian long-term interest rates fell 13 basis points to 4.66% in December, while American rates rose by 2 basis points to 4.27%. This caused the differential, which favours investment in Canada, to fall to just 39 basis points, the narrowest gap since May 2002.*

**Stock Prices**

*Canadian stock prices closed the year with a strong 4.6% advance in December. The S&P/TSX composite index, at 8,220.9, represented a 24.3% advance in 2003, returning share prices to a level not witnessed in almost three full years (since January 2001).*

*American stock prices also ended 2003 with a strong 5.1% gain in December, bringing the year's gain to 26.4%. The Standard & Poor's composite 500 index closed December at 1,111.9, a level last recorded in March 2002.*

**Canadian dollar**

*The Canadian dollar chalked up its fifth consecutive gain against the US dollar in December to close 2003 at 77.13 US cents. The Canadian dollar registered gains against its American counterpart in eleven of the twelve months of 2003, up 21.7% or 13.7 US cents over the year.*

**Definitions**

*The data series on international security transactions cover portfolio transactions in stocks and bonds (both Canadian and foreign issues) and Canadian money market instruments.*

**Stocks** include common and preferred equities, as well as warrants.

**Debt securities** include bonds and money market instruments.

**Bonds** have an original term to maturity of more than one year.

**Money market instruments** have an original term to maturity of one year or less. **Government of Canada paper** includes treasury bills and US-dollar Canada bills. **Other money market instruments** include treasury bills and other paper issued by other Canadian governments or their enterprises, bankers' acceptances, bearer demand notes of banks, commercial paper and other short-term paper.

### GUIDE TO TABLES: Where to Locate Data by Table Number <sup>1</sup>

Transactions	Canadian securities			Foreign securities		Loans
	Bonds	Money market	Stocks	Bonds	Stocks	
	table numbers					
Total (Net)	1	1	1	1	1	
Sector	2	6		10	10	14
Geographic <sup>2</sup>	3 4	7	8 9	11	12	
Currency	5					
Type <sup>3</sup>	2 3 5		8			13
Sales/Purchases	2 3	6 7	8	10 11	10 12	13 14
<b>Period-end Positions</b>						
Sector	15	17				
Geographic <sup>2</sup>	16	18				

<sup>1</sup> Tables 1-14 include monthly, quarterly and annual data; tables 15-18 include quarterly and annual data; and table 19 has monthly data only.

<sup>2</sup> Other EU Countries include: Belgium, Denmark, France, Germany, Greece, Ireland, Italy, Luxembourg, the Netherlands, Portugal, Spain, and from January 1995, Austria, Finland and Sweden.

Other OECD Countries include: Australia, Iceland, New Zealand, Norway, Switzerland, Turkey; from July 1994, Mexico; from December 1995, the Czech Republic; from May 1996, Hungary; from November 1996, Poland; from December 1996, Republic of Korea; from January 2001, the Slovak Republic; up to December 1994, Austria, Finland and Sweden.

<sup>3</sup> Type consists of new issues, retirements, trade in outstanding, and change in interest payable.

**Note:** Table 19 shows selected stock market composite indexes and market yields.

### CANSIM II Tables Correspondence

Table Number Cat. #67-002-XIE	Table Titles (CANSIM II)	CANSIM II Table Number		
		Annual	Quarterly	Monthly
1, 2, 5, 6, 10, 14	International transactions in securities, portfolio transactions and repo loans, net and gross sales and purchases, by type and sector	376-0018	376-0019	376-0020
3, 4	International transactions in securities, portfolio transactions with non-residents in Canadian bonds, by type	376-0021	376-0024	376-0027
7, 11, 12	International transactions in securities, portfolio transactions with non-residents in Canadian money market, foreign bonds, and foreign stocks, by type	376-0023	376-0026	376-0029
8, 9	International transactions in securities, portfolio transactions with non-residents in Canadian stocks, by type	376-0022	376-0025	376-0028
15, 16, 17, 18	International investment position, foreign portfolio investment, Canadian bonds and Canadian money market, by sector			376-0058

**Table 1**  
**Portfolio Transactions with Non-residents in Securities**

Period	Canadian Securities				Foreign Securities <sup>2</sup>		
	Bonds <sup>1</sup>	Stocks	Money Market	Total	Bonds	Stocks	Total
V No. A	113046	113075	113078	113045	113132	113135	113131
Q	113218	113247	113250	113217	113304	113307	113303
M	113390	113419	113422	113389	113446	113449	113445
millions of dollars							
1991	28,063	-990	4,428	31,501	-1,661	-10,004	-11,665
1992	18,766	1,036	4,898	24,701	-1,401	-10,348	-11,749
1993	31,446	12,056	9,296	52,799	-5,071	-12,811	-17,881
1994	15,995	6,412	905	23,312	435	-9,362	-8,927
1995	30,730	-4,242	-1,254	25,233	-1,085	-6,247	-7,331
1996	17,953	8,034	-7,319	18,668	-2,070	-17,247	-19,317
1997	6,166	7,645	2,369	16,181	-6,642	-5,207	-11,849
1998	10,337	14,311	130	24,779	-7,064	-15,433	-22,497
1999	2,602	14,346	-13,209	3,738	-2,477	-20,623	-23,101
2000	-21,710	35,237	824	14,351	-3,963	-59,870	-63,832
2001	37,351	4,667	-7,349	34,669	-1,920	-35,653	-37,573
2002	18,712	-1,436	3,782	21,058	-6,243	-18,707	-24,950
2003	6,663	12,888	-4,373	15,179	-8,196	-4,323	-12,519
2001 IV	20,066	629	1,826	22,521	301	-5,505	-5,204
2002 I	6,154	-3,865	1,305	3,594	-2,442	-8,993	-11,435
II	3,766	4,781	344	8,891	-2,298	-4,567	-6,866
III	5,102	-4,076	-1,791	-766	-1,472	-2,250	-3,722
IV	3,691	1,724	3,925	9,339	-32	-2,897	-2,928
2003 I	9,141	-265	-876	8,000	-3,501	2,159	-1,342
II	6,312	2,575	-766	8,122	-2,664	-546	-3,210
III	-12,536	5,394	-2,336	-9,478	11	-2,775	-2,764
IV	3,746	5,184	-395	8,535	-2,043	-3,161	-5,204
2001 D	-1,574	1,424	2,346	2,197	-3,238	-4,698	-7,936
2002 J	-143	-96	343	104	1,108	-500	608
F	2,780	-234	-289	2,257	-3,865	-5,667	-9,532
M	3,517	-3,535	1,250	1,232	315	-2,826	-2,510
A	1,754	-222	-103	1,429	-1,759	-2,218	-3,977
M	2,230	543	50	2,823	-59	-548	-607
J	-218	4,460	397	4,639	-480	-1,802	-2,282
J	-82	-3,432	207	-3,307	-508	-350	-858
A	2,431	279	-1,246	1,464	795	-1,216	-421
S	2,752	-923	-753	1,076	-1,758	-685	-2,443
O	4,428	-218	424	4,634	2,827	-22	2,806
N	1,816	993	2,258	5,066	-3,264	-2,928	-6,192
D	-2,553	949	1,243	-361	405	52	458
2003 J	-3,218	-645	799	-3,064	-639	257	-382
F	5,056	758	-972	4,843	-1,579	-82	-1,661
M	7,302	-378	-703	6,222	-1,283	1,983	701
A	3,449	416	621	4,486	-1,666	558	-1,109
M	3,310	1,800	-890	4,220	-373	-984	-1,357
J	-448	360	-496	-584	-625	-120	-744
J	-4,198	1,972	-509	-2,735	-2,375	-1,157	-3,532
A	-7,679	1,303	-613	-6,989	-334	-1,741	-2,075
S	-659	2,119	-1,214	246	2,720	123	2,843
O	1,219	798	351	2,368	293	-823	-530
N	4,110	2,198	-282	6,027	-76	-1,883	-1,959
D	-1,584	2,188	-464	140	-2,260	-455	-2,715

1 Inclusive of new issues, retirements, trade in outstanding and change in interest payable.

2. Transactions in foreign money market securities are not available.

Note: Throughout tables 1-14 a minus sign indicates the purchase of securities from non-residents, that is an outflow of capital from Canada.

**Table 2**  
**Portfolio Transactions with Non-residents in Canadian Bonds, by Sector and Type of Transaction**

Period		Federal Government									Total
		New Issues and Retirements			Outstanding Issues			Interest			
		New Issues	Retirements	Total	Sales	Purchases	Total	Accrued	Paid	Change in interest payable	
V No.	A	113055	113062	113175	113088	113095	113048	113182	113189	113069	113196
	Q	113227	113234	113347	113260	113267	113220	113354	113361	113241	113368
	M	113399	113406	113519	113432	113439	113392	113526	113533	113413	113540
millions of dollars											
1991		0	-4,523	-4,523	169,630	-157,639	11,991	5,829	-5,705	123	7,592
1992		0	-5,134	-5,134	248,358	-239,869	8,488	6,166	-5,901	265	3,619
1993		0	-6,253	-6,253	367,574	-354,188	13,386	6,656	-6,369	287	7,420
1994		5,311	-3,855	1,456	509,724	-513,971	-4,246	6,336	-5,859	477	-2,314
1995		3,103	-4,079	-976	458,633	-445,295	13,338	6,322	-6,018	304	12,666
1996		4,807	-6,597	-1,790	651,568	-642,554	9,014	6,688	-6,497	191	7,414
1997		2,773	-7,086	-4,313	1,010,613	-1,011,942	-1,330	6,836	-6,726	110	-5,532
1998		12,470	-9,222	3,249	801,584	-811,655	-10,071	6,135	-5,823	312	-6,510
1999		4,494	-7,136	-2,642	516,376	-510,494	5,882	5,728	-5,914	-185	3,055
2000		0	-11,357	-11,357	350,351	-349,441	911	5,430	-5,790	-360	-10,806
2001		648	-11,402	-10,754	340,279	-337,209	3,070	4,958	-5,118	-160	-7,843
2002		0	-6,132	-6,132	341,127	-331,177	9,950	4,421	-4,619	-198	3,620
2003		0	-12,159	-12,159	520,551	-528,261	-7,710	4,112	-4,323	-210	-20,080
2001	IV	0	-1,402	-1,402	82,046	-82,664	-618	1,167	-1,825	-658	-2,678
2002	I	0	-651	-651	72,239	-72,816	-577	1,086	-653	433	-795
	II	0	-865	-865	74,410	-75,001	-591	1,075	-1,262	-186	-1,642
	III	0	-2,427	-2,427	105,458	-101,716	3,742	1,099	-815	284	1,599
	IV	0	-2,190	-2,190	89,021	-81,644	7,376	1,161	-1,890	-728	4,458
2003	I	0	-2,413	-2,413	112,656	-106,105	6,552	1,145	-641	503	4,642
	II	0	-2,983	-2,983	150,366	-150,158	208	1,143	-1,502	-359	-3,135
	III	0	-4,577	-4,577	138,323	-150,767	-12,444	973	-742	231	-16,790
	IV	0	-2,186	-2,186	119,206	-121,231	-2,025	852	-1,437	-585	-4,797
2001	D	0	-1,324	-1,324	19,741	-21,680	-1,940	382	-1,286	-904	-4,167
2002	J	0	-476	-476	23,498	-25,296	-1,798	377	-74	303	-1,971
	F	0	-161	-161	19,337	-18,413	924	336	-219	117	880
	M	0	-14	-14	29,404	-29,107	297	373	-359	13	296
	A	0	-830	-830	23,683	-22,962	721	356	-134	222	113
	M	0	0	0	26,391	-26,893	-502	367	0	367	-135
	J	0	-35	-35	24,336	-25,146	-810	353	-1,128	-775	-1,620
	J	0	-1,267	-1,267	32,339	-30,394	1,946	365	-328	37	715
	A	0	0	0	39,585	-36,590	2,995	375	-68	307	3,301
	S	0	-1,159	-1,159	33,534	-34,732	-1,198	359	-418	-59	-2,417
	O	0	0	0	35,977	-30,481	5,497	384	-47	337	5,834
	N	0	0	0	33,936	-31,755	2,181	386	-446	-60	2,121
	D	0	-2,190	-2,190	19,107	-19,409	-302	391	-1,397	-1,005	-3,497
2003	J	0	0	0	32,161	-31,536	625	392	-10	382	1,007
	F	0	-2,413	-2,413	35,800	-30,353	5,447	358	-202	155	3,190
	M	0	0	0	44,695	-44,216	479	395	-429	-34	445
	A	0	0	0	41,278	-39,864	1,414	383	-93	290	1,704
	M	0	0	0	54,608	-52,788	1,820	400	0	400	2,220
	J	0	-2,983	-2,983	54,480	-57,507	-3,027	360	-1,409	-1,049	-7,059
	J	0	-244	-244	53,569	-59,892	-6,322	357	-281	75	-6,491
	A	0	-750	-750	38,353	-44,115	-5,762	328	-59	269	-6,243
	S	0	-3,583	-3,583	46,401	-46,760	-359	288	-402	-114	-4,056
	O	0	-4	-4	45,186	-46,791	-1,606	291	-46	245	-1,364
	N	0	-265	-265	36,410	-34,502	1,908	282	-378	-97	1,546
	D	0	-1,918	-1,918	37,610	-39,938	-2,328	278	-1,013	-734	-4,980

**Table 2**  
**Portfolio Transactions with Non-residents in Canadian Bonds, by Sector and Type of Transaction - Continued**

		Federal Government Enterprises									
		New Issues and Retirements			Outstanding Issues			Interest			Total
Period		New Issues	Retirements	Total	Sales	Purchases	Total	Accrued	Paid	Change in interest payable	
V No.	A	113056	113063	113176	113089	113096	113049	113183	113190	113070	113197
	Q	113228	113235	113348	113261	113268	113221	113355	113362	113242	113369
	M	113400	113407	113520	113433	113440	113393	113527	113534	113414	113541
millions of dollars											
1991		1,941	-2,517	-576	725	-313	411	788	-829	-42	-206
1992		2,301	-2,914	-614	486	-315	170	836	-815	21	-422
1993		3,637	-2,331	1,305	275	-330	-55	820	-806	14	1,264
1994		3,046	-2,083	963	743	-670	73	853	-862	-9	1,027
1995		1,840	-561	1,278	781	-737	44	793	-776	17	1,339
1996		2,224	-1,946	278	686	-747	-62	715	-706	9	225
1997		2,711	-1,916	794	2,737	-2,826	-89	789	-751	39	744
1998		3,827	-3,467	360	1,967	-1,811	155	816	-791	25	541
1999		4,735	-3,548	1,186	2,620	-1,822	798	862	-857	5	1,989
2000		3,955	-5,141	-1,186	1,392	-1,235	156	860	-898	-38	-1,067
2001		5,203	-4,051	1,152	2,157	-1,343	814	785	-790	-5	1,961
2002		13,030	-4,902	8,128	9,737	-6,948	2,790	1,003	-843	160	11,077
2003		11,303	-3,401	7,902	12,277	-10,065	2,212	1,393	-1,185	208	10,322
2001	IV	1,548	-1,243	305	684	-561	123	199	-209	-10	417
2002	I	2,568	-102	2,466	1,881	-1,055	826	214	-125	89	3,381
	II	4,129	-2,909	1,219	2,336	-1,399	937	221	-373	-152	2,004
	III	3,143	-541	2,602	2,717	-1,764	953	268	-130	138	3,694
	IV	3,190	-1,350	1,840	2,803	-2,729	74	300	-215	84	1,998
2003	I	2,932	-1,033	1,899	2,555	-1,776	779	317	-278	39	2,718
	II	2,592	-993	1,598	4,218	-1,931	2,287	330	-251	79	3,964
	III	2,624	-481	2,142	3,173	-3,335	-162	372	-378	-6	1,974
	IV	3,156	-893	2,263	2,331	-3,023	-692	375	-279	95	1,666
2001	D	576	-133	443	316	-202	114	66	-77	-11	546
2002	J	137	-41	97	152	-48	104	69	-23	45	247
	F	1,795	-16	1,778	1,564	-820	744	64	-42	22	2,544
	M	636	-45	591	165	-188	-22	81	-59	22	590
	A	27	-1,298	-1,271	401	-416	-15	76	-120	-44	-1,329
	M	920	-1,454	-534	275	-324	-49	71	-122	-50	-633
	J	3,182	-158	3,024	1,660	-660	1,000	74	-132	-58	3,966
	J	487	-80	407	279	-442	-163	86	-39	47	291
	A	819	-34	786	629	-478	151	90	-32	58	994
	S	1,837	-427	1,410	1,809	-844	965	92	-58	33	2,408
	O	547	-13	534	416	-471	-55	100	-38	63	542
	N	147	-428	-281	365	-911	-546	96	-65	31	-795
	D	2,496	-909	1,587	2,022	-1,347	675	103	-113	-9	2,252
2003	J	216	-553	-338	518	-572	-54	107	-26	81	-311
	F	739	-275	463	874	-505	369	97	-43	53	886
	M	1,977	-204	1,773	1,164	-699	465	113	-208	-95	2,143
	A	73	-4	69	404	-671	-267	111	-26	85	-113
	M	250	-885	-634	460	-749	-289	110	-81	29	-895
	J	2,268	-104	2,164	3,354	-511	2,843	109	-143	-35	4,973
	J	220	-152	68	1,149	-530	619	126	-36	89	776
	A	372	-267	105	827	-1,890	-1,063	125	-53	72	-886
	S	2,032	-63	1,969	1,197	-915	282	121	-288	-167	2,084
	O	94	0	94	315	-749	-434	127	-59	68	-272
	N	709	-788	-78	248	-921	-673	120	-59	61	-691
	D	2,353	-106	2,247	1,767	-1,353	415	128	-161	-33	2,629

**Table 2**  
**Portfolio Transactions with Non-residents in Canadian Bonds, by Sector and Type of Transaction - Continued**

		Provincial Governments									
		New Issues and Retirements			Outstanding Issues			Interest			Total
Period		New Issues	Retirements	Total	Sales	Purchases	Total	Accrued	Paid	Change in interest payable	
V No.	A	113057	113064	113177	113090	113097	113050	113184	113191	113071	113198
	Q	113229	113236	113349	113262	113269	113222	113356	113363	113243	113370
	M	113401	113408	113521	113434	113441	113394	113528	113535	113415	113542
millions of dollars											
1991		16,974	-5,910	11,064	5,607	-4,287	1,320	4,171	-3,673	498	12,882
1992		15,067	-4,342	10,725	7,201	-6,069	1,131	5,214	-4,928	286	12,143
1993		21,571	-4,459	17,112	15,413	-15,602	-189	6,536	-5,968	568	17,491
1994		19,941	-5,156	14,785	20,430	-22,040	-1,611	7,751	-7,331	420	13,595
1995		12,165	-4,763	7,402	12,710	-12,970	-260	8,340	-8,223	117	7,260
1996		15,781	-9,991	5,789	10,477	-11,714	-1,237	8,174	-8,212	-37	4,515
1997		10,271	-11,182	-911	11,593	-12,942	-1,349	7,962	-7,968	-6	-2,265
1998		11,219	-11,003	216	15,086	-15,671	-585	7,930	-8,010	-80	-449
1999		6,802	-11,971	-5,169	16,560	-17,278	-718	7,707	-7,772	-64	-5,951
2000		3,846	-12,838	-8,992	15,434	-14,056	1,378	7,183	-7,354	-172	-7,786
2001		11,816	-12,105	-289	10,406	-9,160	1,245	6,886	-6,788	98	1,054
2002		11,613	-11,691	-78	11,354	-10,665	688	6,672	-6,813	-141	470
2003		13,653	-12,200	1,453	11,453	-11,731	-277	6,027	-6,105	-77	1,098
2001	IV	3,394	-3,631	-238	3,357	-2,620	737	1,734	-1,347	388	887
2002	I	1,440	-2,252	-813	2,629	-2,435	193	1,688	-2,075	-387	-1,006
	II	1,843	-4,100	-2,258	2,716	-2,192	524	1,660	-1,499	161	-1,572
	III	3,722	-3,620	102	3,187	-3,192	-5	1,659	-1,976	-317	-219
	IV	4,609	-1,718	2,890	2,822	-2,846	-24	1,665	-1,264	401	3,267
2003	I	5,275	-6,475	-1,200	3,175	-2,724	450	1,557	-1,934	-377	-1,127
	II	6,110	-2,314	3,796	3,444	-3,514	-70	1,509	-1,329	180	3,906
	III	1,023	-846	176	2,523	-3,136	-613	1,503	-1,662	-159	-595
	IV	1,246	-2,565	-1,319	2,312	-2,356	-44	1,458	-1,180	278	-1,086
2001	D	0	-15	-15	829	-778	51	580	-620	-39	-4
2002	J	232	-122	110	902	-822	80	585	-950	-365	-175
	F	811	-1,262	-450	1,257	-903	353	526	-679	-154	-250
	M	396	-869	-472	470	-711	-240	578	-446	132	-581
	A	48	-601	-553	916	-710	206	555	-555	0	-347
	M	930	0	930	835	-679	157	569	-158	411	1,498
	J	865	-3,499	-2,634	964	-803	162	536	-786	-250	-2,723
	J	2,193	-2,535	-342	649	-786	-137	559	-925	-367	-846
	A	0	-495	-495	961	-664	297	557	-513	45	-154
	S	1,530	-590	940	1,577	-1,742	-165	543	-538	5	780
	O	1,143	-557	585	1,102	-974	128	559	-344	215	928
	N	1,434	-326	1,107	934	-923	11	543	-292	251	1,369
	D	2,032	-835	1,198	787	-950	-163	564	-628	-64	970
2003	J	524	-4,712	-4,188	940	-941	-1	554	-916	-362	-4,551
	F	3,333	-1,051	2,282	1,068	-1,179	-111	480	-629	-149	2,022
	M	1,418	-712	705	1,167	-605	562	523	-389	134	1,402
	A	4,101	-1,330	2,771	1,246	-1,088	158	505	-515	-10	2,918
	M	1,341	-206	1,134	1,113	-1,054	58	515	-155	361	1,553
	J	668	-778	-109	1,085	-1,372	-286	489	-659	-171	-566
	J	872	-458	415	922	-1,021	-99	510	-696	-186	130
	A	150	-250	-99	492	-1,147	-655	509	-441	68	-687
	S	0	-139	-139	1,109	-968	141	485	-525	-40	-38
	O	0	-473	-473	886	-925	-39	494	-261	234	-278
	N	1,246	-918	328	875	-798	77	473	-296	177	582
	D	0	-1,174	-1,174	551	-634	-83	490	-624	-134	-1,390



**Table 2**  
**Portfolio Transactions with Non-residents in Canadian Bonds, by Sector and Type of Transaction - Continued**

		Provincial Government Enterprises									
		New Issues and Retirements			Outstanding Issues			Interest			Total
Period		New Issues	Retirements	Total	Sales	Purchases	Total	Accrued	Paid	Change in interest payable	
V No.	A	113058	113065	113178	113091	113098	113051	113185	113192	113072	113199
	Q	113230	113237	113350	113263	113270	113223	113357	113364	113244	113371
	M	113402	113409	113522	113435	113442	113395	113529	113536	113416	113543
millions of dollars											
1991		7,584	-1,848	5,736	5,451	-5,932	-481	2,917	-2,687	229	5,484
1992		5,365	-3,835	1,530	7,064	-9,229	-2,165	3,128	-3,077	50	-584
1993		5,149	-3,135	2,013	4,743	-5,990	-1,247	3,064	-2,987	77	844
1994		5,423	-1,567	3,856	4,482	-5,531	-1,049	3,280	-3,163	116	2,923
1995		2,367	-2,515	-148	4,094	-4,891	-796	3,388	-3,371	18	-927
1996		2,000	-2,730	-730	2,584	-3,703	-1,119	3,022	-3,074	-52	-1,901
1997		1,448	-3,668	-2,220	2,811	-3,254	-443	2,904	-2,887	17	-2,646
1998		2,459	-2,354	105	4,685	-5,477	-792	2,887	-2,817	70	-617
1999		137	-4,106	-3,969	4,313	-4,474	-161	2,624	-2,733	-109	-4,239
2000		199	-1,818	-1,619	2,138	-2,099	39	2,398	-2,390	7	-1,572
2001		1,058	-4,075	-3,017	1,606	-1,867	-261	2,191	-2,280	-89	-3,367
2002		0	-2,996	-2,996	943	-988	-44	1,893	-1,926	-33	-3,073
2003		0	-1,479	-1,479	1,143	-1,334	-190	1,577	-1,617	-40	-1,709
2001	IV	0	-1,093	-1,093	182	-259	-77	530	-420	110	-1,060
2002	I	0	-828	-828	160	-239	-80	498	-624	-126	-1,033
	II	0	-1,730	-1,730	258	-196	61	475	-472	3	-1,666
	III	0	-375	-375	291	-217	74	461	-526	-66	-366
	IV	0	-63	-63	235	-335	-100	460	-304	156	-8
2003	I	0	-768	-768	370	-399	-28	426	-571	-145	-941
	II	0	-240	-240	316	-206	110	396	-350	46	-83
	III	0	-471	-471	229	-572	-343	388	-445	-57	-871
	IV	0	0	0	228	-158	71	368	-252	116	186
2001	D	0	-120	-120	38	-43	-6	174	-143	31	-95
2002	J	0	-174	-174	32	-118	-87	175	-240	-65	-326
	F	0	-593	-593	64	-60	4	154	-222	-68	-657
	M	0	-61	-61	64	-61	3	169	-162	7	-51
	A	0	-250	-250	123	-117	6	162	-160	2	-242
	M	0	-744	-744	76	-50	26	162	-153	9	-709
	J	0	-737	-737	59	-30	30	152	-159	-8	-715
	J	0	-375	-375	114	-44	71	154	-239	-86	-389
	A	0	0	0	86	-66	21	155	-192	-37	-16
	S	0	0	0	90	-108	-17	151	-95	56	39
	O	0	-5	-5	122	-257	-135	156	-126	30	-110
	N	0	-19	-19	49	-44	5	150	-77	73	60
	D	0	-39	-39	64	-34	30	154	-102	52	43
2003	J	0	0	0	72	-130	-58	153	-217	-65	-123
	F	0	-762	-762	58	-82	-24	131	-186	-55	-841
	M	0	-6	-6	240	-187	54	142	-167	-25	23
	A	0	-187	-187	34	-38	-4	135	-135	0	-191
	M	0	-24	-24	177	-100	77	134	-81	52	106
	J	0	-29	-29	106	-69	37	127	-133	-6	2
	J	0	-280	-280	85	-112	-27	133	-215	-82	-389
	A	0	-59	-59	76	-401	-326	132	-147	-15	-400
	S	0	-132	-132	68	-59	10	123	-83	40	-82
	O	0	0	0	102	-54	49	124	-111	13	62
	N	0	0	0	54	-46	8	120	-63	56	64
	D	0	0	0	72	-58	14	124	-78	46	60

**Table 2**  
**Portfolio Transactions with Non-residents in Canadian Bonds, by Sector and Type of Transaction - Continued**

Period		Municipalities									Total
		New Issues and Retirements			Outstanding Issues			Interest			
		New Issues	Retirements	Total	Sales	Purchases	Total	Accrued	Paid	Change in interest payable	
V No.	A	113059	113066	113179	113092	113099	113052	113186	113193	113073	113200
	Q	113231	113238	113351	113264	113271	113224	113358	113365	113245	113372
	M	113403	113410	113523	113436	113443	113396	113530	113537	113417	113544
millions of dollars											
1991		763	-687	76	80	-105	-24	420	-399	21	72
1992		972	-839	133	168	-139	30	440	-424	16	179
1993		808	-682	127	325	-166	159	467	-450	17	303
1994		905	-383	522	196	-126	70	499	-484	15	606
1995		413	-850	-437	155	-83	72	483	-510	-27	-392
1996		416	-490	-74	225	-96	129	496	-502	-6	49
1997		209	-512	-303	183	-128	55	475	-509	-34	-282
1998		0	-302	-302	303	-103	200	468	-484	-16	-119
1999		57	-553	-496	149	-127	22	437	-460	-23	-496
2000		132	-587	-455	144	-107	37	412	-420	-8	-426
2001		333	-933	-601	464	-240	224	356	-370	-15	-391
2002		0	-1,054	-1,054	295	-261	33	300	-341	-41	-1,062
2003		264	-998	-734	486	-164	322	226	-260	-34	-446
2001	IV	159	-72	87	237	-59	178	84	-75	9	275
2002	I	0	-172	-172	47	-53	-6	80	-95	-15	-193
	II	0	-306	-306	102	-56	46	77	-108	-31	-291
	III	0	-135	-135	72	-21	51	75	-56	18	-66
	IV	0	-440	-440	74	-131	-58	68	-82	-14	-511
2003	I	163	-341	-178	249	-47	202	62	-76	-14	10
	II	101	-231	-130	121	-46	75	58	-83	-25	-80
	III	0	-297	-297	62	-49	13	55	-43	12	-273
	IV	0	-129	-129	55	-22	32	52	-58	-6	-103
2001	D	0	-13	-13	85	-42	43	29	-24	5	36
2002	J	0	-156	-156	25	-4	21	28	-39	-11	-146
	F	0	0	0	5	-24	-19	25	-11	14	-5
	M	0	-16	-16	17	-24	-8	27	-46	-18	-42
	A	0	-1	-1	49	-46	4	27	-11	15	18
	M	0	-288	-288	10	-2	8	26	-73	-47	-327
	J	0	-17	-17	42	-8	34	25	-23	1	19
	J	0	-120	-120	24	-4	20	25	-30	-5	-105
	A	0	-1	-1	22	-8	14	25	-11	14	28
	S	0	-15	-15	26	-9	17	24	-15	9	11
	O	0	-333	-333	15	-121	-106	24	-29	-5	-444
	N	0	0	0	47	-7	39	22	-28	-6	33
	D	0	-107	-107	13	-3	9	22	-25	-3	-100
2003	J	0	-4	-4	105	-2	103	21	-20	1	100
	F	163	-51	112	33	-1	32	20	-11	9	153
	M	0	-286	-286	111	-44	67	21	-45	-24	-243
	A	0	-4	-4	26	-3	24	19	-5	14	34
	M	0	-120	-120	35	-10	25	20	-51	-32	-127
	J	101	-106	-6	59	-33	27	19	-27	-8	13
	J	0	-122	-122	20	-34	-14	19	-16	3	-133
	A	0	-1	-1	4	-2	2	18	-13	5	6
	S	0	-174	-174	38	-14	25	18	-14	4	-146
	O	0	0	0	30	-11	19	18	-8	9	28
	N	0	-93	-93	17	-2	14	17	-29	-12	-91
	D	0	-36	-36	8	-9	-1	17	-20	-3	-40

**Table 2**  
**Portfolio Transactions with Non-residents in Canadian Bonds, by Sector and Type of Transaction - Continued**

		All Governments and their enterprises									
		New Issues and Retirements			Outstanding Issues			Interest			Total
Period		New Issues	Retirements	Total	Sales	Purchases	Total	Accrued	Paid	Change in interest payable	
V No.	A	113204	113205	113203	113207	113208	113206	113210	113211	113209	113202
	Q	113376	113377	113375	113379	113380	113378	113382	113383	113381	113374
	M	113548	113549	113547	113551	113552	113550	113554	113555	113553	113546
millions of dollars											
1991		27,263	-15,485	11,778	181,493	-168,276	13,217	14,125	-13,294	830	25,825
1992		23,705	-17,064	6,641	263,276	-255,622	7,654	15,784	-15,146	638	14,934
1993		31,165	-16,860	14,304	388,330	-376,277	12,053	17,542	-16,579	963	27,320
1994		34,626	-13,044	21,582	535,575	-542,338	-6,763	18,719	-17,699	1,019	15,838
1995		19,888	-12,769	7,119	476,374	-463,975	12,399	19,326	-18,897	428	19,947
1996		25,228	-21,754	3,473	665,539	-658,814	6,725	19,094	-18,989	104	10,303
1997		17,412	-24,363	-6,952	1,027,937	-1,031,092	-3,155	18,965	-18,840	126	-9,981
1998		29,975	-26,348	3,627	823,625	-834,716	-11,092	18,236	-17,925	311	-7,154
1999		16,224	-27,314	-11,089	540,019	-534,195	5,824	17,359	-17,736	-376	-5,642
2000		8,132	-31,741	-23,609	369,459	-366,938	2,521	16,283	-16,853	-570	-21,658
2001		19,058	-32,566	-13,508	354,912	-349,819	5,093	15,176	-15,346	-171	-8,586
2002		24,643	-26,774	-2,131	363,456	-350,039	13,417	14,289	-14,542	-253	11,033
2003		25,220	-30,237	-5,017	545,911	-551,554	-5,643	13,336	-13,489	-154	-10,814
2001	IV	5,100	-7,442	-2,341	86,507	-86,163	343	3,715	-3,876	-161	-2,159
2002	I	4,007	-4,005	3	76,955	-76,599	356	3,565	-3,571	-6	353
	II	5,971	-9,911	-3,940	79,822	-78,844	977	3,509	-3,714	-205	-3,167
	III	6,865	-7,098	-232	111,725	-106,910	4,815	3,561	-3,503	58	4,641
	IV	7,799	-5,761	2,038	94,954	-87,686	7,268	3,654	-3,755	-101	9,205
2003	I	8,369	-11,029	-2,660	119,005	-111,051	7,955	3,506	-3,500	7	5,302
	II	8,802	-6,761	2,041	158,465	-155,855	2,610	3,435	-3,514	-78	4,572
	III	3,646	-6,672	-3,026	144,309	-157,858	-13,549	3,291	-3,270	21	-16,554
	IV	4,402	-5,774	-1,372	124,132	-126,790	-2,659	3,103	-3,206	-103	-4,134
2001	D	576	-1,605	-1,030	21,009	-22,745	-1,736	1,232	-2,149	-918	-3,684
2002	J	369	-968	-599	24,609	-26,288	-1,679	1,234	-1,327	-93	-2,370
	F	2,606	-2,032	574	22,226	-20,220	2,006	1,104	-1,173	-69	2,511
	M	1,032	-1,004	28	30,120	-30,091	29	1,227	-1,071	156	213
	A	75	-2,979	-2,905	25,172	-24,250	922	1,174	-980	195	-1,787
	M	1,850	-2,486	-636	27,587	-27,947	-360	1,196	-506	690	-306
	J	4,047	-4,446	-399	27,062	-26,647	415	1,139	-2,228	-1,089	-1,073
	J	2,679	-4,376	-1,697	33,406	-31,669	1,737	1,189	-1,562	-373	-333
	A	819	-530	290	41,283	-37,806	3,477	1,203	-816	387	4,154
	S	3,367	-2,192	1,175	37,037	-37,435	-399	1,169	-1,125	45	821
	O	1,690	-909	781	37,631	-32,303	5,328	1,223	-583	640	6,750
	N	1,581	-773	808	35,331	-33,640	1,691	1,196	-908	288	2,787
	D	4,528	-4,079	449	21,992	-21,744	249	1,234	-2,264	-1,030	-332
2003	J	739	-5,269	-4,529	33,795	-33,181	614	1,227	-1,189	38	-3,878
	F	4,235	-4,552	-317	37,834	-32,120	5,714	1,086	-1,072	14	5,410
	M	3,395	-1,208	2,187	47,376	-45,749	1,627	1,194	-1,238	-45	3,769
	A	4,174	-1,526	2,648	42,988	-41,664	1,324	1,153	-773	380	4,352
	M	1,591	-1,235	356	56,392	-54,701	1,691	1,179	-369	810	2,857
	J	3,037	-4,000	-963	59,085	-59,491	-406	1,103	-2,372	-1,269	-2,638
	J	1,092	-1,256	-164	55,745	-61,588	-5,843	1,143	-1,244	-101	-6,107
	A	522	-1,326	-804	39,750	-47,554	-7,804	1,112	-713	399	-8,210
	S	2,032	-4,090	-2,058	48,814	-48,716	98	1,035	-1,312	-278	-2,237
	O	94	-477	-383	46,519	-48,530	-2,010	1,055	-485	570	-1,824
	N	1,955	-2,064	-109	37,603	-36,270	1,334	1,011	-825	186	1,411
	D	2,353	-3,233	-880	40,009	-41,991	-1,983	1,037	-1,896	-858	-3,721

**Table 2**  
**Portfolio Transactions with Non-residents in Canadian Bonds, by Sector and Type of Transaction - Continued**

Period		Corporations									Total
		New Issues and Retirements			Outstanding Issues			Interest			
		New Issues	Retirements	Total	Sales	Purchases	Total	Accrued	Paid	Change in interest payable	
V No.	A	113060	113067	113180	113093	113100	113053	113187	113194	113074	113201
	Q	113232	113239	113352	113265	113272	113225	113359	113366	113246	113373
	M	113404	113411	113524	113437	113444	113397	113531	113538	113418	113545
millions of dollars											
1991		7,119	-5,010	2,109	3,154	-3,046	107	4,488	-4,466	21	2,238
1992		9,921	-7,374	2,546	4,731	-3,401	1,330	4,678	-4,723	-44	3,832
1993		12,966	-10,463	2,503	8,531	-6,815	1,717	5,088	-5,181	-93	4,126
1994		8,637	-9,360	-722	7,548	-6,696	853	5,527	-5,501	26	156
1995		18,112	-7,451	10,660	5,137	-5,391	-254	6,332	-5,955	377	10,783
1996		18,368	-11,066	7,303	6,209	-6,012	198	6,819	-6,670	149	7,650
1997		21,484	-7,272	14,212	9,646	-8,066	1,580	7,538	-7,182	356	16,147
1998		25,633	-10,743	14,890	9,205	-7,057	2,148	9,175	-8,722	453	17,491
1999		17,739	-11,683	6,056	14,222	-12,444	1,778	10,062	-9,652	410	8,243
2000		12,246	-14,003	-1,756	24,938	-23,609	1,330	9,818	-9,443	375	-52
2001		58,924	-17,768	41,156	23,827	-20,058	3,769	10,904	-9,891	1,013	45,937
2002		25,313	-19,163	6,150	22,251	-21,195	1,056	12,957	-12,484	473	7,680
2003		30,912	-18,451	12,461	18,417	-14,072	4,344	12,031	-11,359	672	17,477
2001	IV	23,866	-3,153	20,713	4,674	-3,478	1,196	3,105	-2,789	316	22,225
2002	I	6,219	-1,600	4,620	5,094	-4,472	622	3,143	-2,584	559	5,800
	II	10,481	-4,100	6,380	6,085	-5,599	486	3,213	-3,146	67	6,933
	III	4,951	-5,590	-640	6,258	-5,832	426	3,312	-2,638	674	461
	IV	3,663	-7,873	-4,211	4,814	-5,292	-477	3,289	-4,116	827	-5,514
2003	I	5,328	-2,727	2,601	4,274	-3,618	656	3,097	-2,514	583	3,840
	II	8,762	-7,927	835	6,246	-5,129	1,117	2,939	-3,152	-212	1,740
	III	4,964	-3,050	1,914	4,252	-2,771	1,481	3,016	-2,392	623	4,018
	IV	11,858	-4,747	7,111	3,644	-2,553	1,091	2,979	-3,301	-322	7,880
2001	D	3,021	-922	2,099	1,206	-1,025	181	1,084	-1,253	-170	2,110
2002	J	2,135	-478	1,657	1,763	-1,547	216	1,083	-729	354	2,227
	F	392	-433	-41	1,646	-1,335	311	978	-979	-1	269
	M	3,693	-689	3,004	1,686	-1,591	95	1,081	-876	205	3,304
	A	3,737	-594	3,143	2,264	-2,123	141	1,067	-810	257	3,542
	M	3,520	-1,320	2,199	2,271	-2,027	244	1,088	-995	93	2,536
	J	3,224	-2,186	1,038	1,549	-1,449	100	1,059	-1,342	-283	855
	J	1,681	-1,701	-20	1,863	-1,938	-76	1,110	-762	347	252
	A	165	-2,035	-1,870	1,829	-1,831	-3	1,117	-966	151	-1,722
	S	3,105	-1,854	1,251	2,567	-2,062	505	1,086	-910	176	1,931
	O	846	-2,175	-1,329	1,251	-2,116	-865	1,118	-1,246	-128	-2,322
	N	689	-1,809	-1,121	1,690	-1,367	323	1,074	-1,248	-174	-971
	D	2,128	-3,889	-1,761	1,873	-1,809	65	1,097	-1,622	-525	-2,222
2003	J	202	-791	-590	1,898	-1,059	839	1,078	-667	411	660
	F	1,187	-1,078	109	986	-1,446	-461	961	-963	-2	-354
	M	3,939	-858	3,082	1,390	-1,113	278	1,059	-885	174	3,533
	A	931	-2,387	-1,456	1,912	-1,469	443	998	-888	110	-903
	M	2,538	-2,251	287	2,554	-2,355	199	992	-1,024	-33	453
	J	5,293	-3,289	2,004	1,781	-1,305	475	950	-1,239	-290	2,190
	J	2,141	-930	1,211	1,631	-1,250	380	1,014	-696	318	1,909
	A	1,469	-1,323	146	887	-673	214	1,026	-856	171	531
	S	1,354	-798	556	1,735	-848	887	975	-840	135	1,578
	O	3,598	-1,468	2,131	1,502	-709	794	993	-875	119	3,043
	N	3,363	-1,081	2,282	1,183	-765	418	968	-968	0	2,699
	D	4,896	-2,198	2,697	959	-1,079	-120	1,018	-1,459	-440	2,137

**Table 2**  
**Portfolio Transactions with Non-residents in Canadian Bonds, by Sector and Type of Transaction - Concluded**

		Total, All sectors									
		New Issues and Retirements			Outstanding Issues			Interest			Total
Period		New Issues	Retirements	Total	Sales	Purchases	Total	Accrued	Paid	Change in interest payable	
		V No.	A	113054	113061	113174	113087	113094	113047	113181	113188
	Q	113226	113233	113346	113259	113266	113219	113353	113360	113240	113367
	M	113398	113405	113518	113431	113438	113391	113525	113532	113412	113539
millions of dollars											
1991		34,382	-20,495	13,887	184,646	-171,322	13,324	18,612	-17,761	852	28,063
1992		33,626	-24,439	9,187	268,007	-259,023	8,984	20,462	-19,868	594	18,766
1993		44,130	-27,323	16,807	396,861	-383,091	13,770	22,630	-21,760	870	31,446
1994		43,263	-22,403	20,860	543,123	-549,033	-5,910	24,246	-23,200	1,045	15,995
1995		38,000	-20,220	17,780	481,511	-469,366	12,145	25,657	-24,852	805	30,730
1996		43,596	-32,820	10,776	671,749	-664,826	6,923	25,913	-25,659	254	17,953
1997		38,895	-31,635	7,260	1,037,583	-1,039,159	-1,576	26,503	-26,021	482	6,166
1998		55,608	-37,092	18,517	832,829	-841,773	-8,944	27,411	-26,646	765	10,337
1999		33,963	-38,997	-5,034	554,241	-546,639	7,602	27,421	-27,388	33	2,602
2000		20,378	-45,744	-25,366	394,398	-390,547	3,851	26,101	-26,296	-195	-21,710
2001		77,982	-50,335	27,647	378,739	-369,877	8,862	26,080	-25,238	842	37,351
2002		49,956	-45,937	4,019	385,708	-371,234	14,474	27,246	-27,027	220	18,712
2003		56,132	-48,688	7,444	564,328	-565,627	-1,299	25,367	-24,849	518	6,663
2001	IV	28,967	-10,594	18,372	91,180	-89,641	1,539	6,820	-6,665	155	20,066
2002	I	10,227	-5,604	4,623	82,050	-81,071	978	6,708	-6,155	553	6,154
	II	16,452	-14,011	2,440	85,906	-84,443	1,463	6,723	-6,860	-137	3,766
	III	11,816	-12,688	-872	117,983	-112,741	5,242	6,873	-6,141	732	5,102
	IV	11,462	-13,634	-2,173	99,769	-92,978	6,791	6,943	-7,871	-928	3,691
2003	I	13,698	-13,756	-59	123,280	-114,669	8,610	6,604	-6,014	590	9,141
	II	17,564	-14,688	2,876	164,711	-160,985	3,726	6,375	-6,665	-291	6,312
	III	8,611	-9,723	-1,112	148,561	-160,629	-12,068	6,306	-5,662	644	-12,536
	IV	16,259	-10,521	5,739	127,776	-129,344	-1,568	6,082	-6,507	-425	3,746
2001	D	3,596	-2,527	1,069	22,214	-23,770	-1,555	2,315	-3,403	-1,087	-1,574
2002	J	2,504	-1,446	1,059	26,372	-27,835	-1,463	2,317	-2,056	262	-143
	F	2,998	-2,465	533	23,872	-21,555	2,317	2,082	-2,152	-70	2,780
	M	4,725	-1,694	3,031	31,805	-31,681	124	2,308	-1,947	361	3,517
	A	3,812	-3,573	239	27,436	-26,373	1,063	2,241	-1,789	452	1,754
	M	5,369	-3,806	1,563	29,858	-29,974	-116	2,283	-1,500	783	2,230
	J	7,271	-6,632	639	28,611	-28,096	516	2,198	-3,570	-1,372	-218
	J	4,360	-6,077	-1,717	35,268	-33,607	1,661	2,299	-2,325	-26	-82
	A	984	-2,565	-1,580	43,111	-39,637	3,474	2,319	-1,782	537	2,431
	S	6,472	-4,046	2,425	39,603	-39,497	106	2,255	-2,034	221	2,752
	O	2,536	-3,083	-547	38,882	-34,419	4,463	2,341	-1,829	512	4,428
	N	2,270	-2,583	-313	37,021	-35,007	2,014	2,271	-2,156	115	1,816
	D	6,656	-7,968	-1,312	23,866	-23,553	313	2,331	-3,885	-1,554	-2,553
2003	J	941	-6,060	-5,119	35,693	-34,241	1,453	2,305	-1,857	449	-3,218
	F	5,422	-5,631	-208	38,819	-33,566	5,253	2,046	-2,035	12	5,056
	M	7,334	-2,066	5,268	48,767	-46,862	1,905	2,252	-2,123	129	7,302
	A	5,105	-3,913	1,192	44,900	-43,133	1,767	2,151	-1,661	490	3,449
	M	4,129	-3,486	643	58,945	-57,056	1,890	2,170	-1,393	777	3,310
	J	8,331	-7,290	1,041	60,866	-60,796	70	2,053	-3,611	-1,558	-448
	J	3,233	-2,186	1,048	57,376	-62,838	-5,462	2,157	-1,941	217	-4,198
	A	1,991	-2,649	-658	40,637	-48,227	-7,591	2,139	-1,569	570	-7,679
	S	3,386	-4,888	-1,502	50,549	-49,564	985	2,010	-2,152	-142	-659
	O	3,692	-1,945	1,748	48,022	-49,238	-1,217	2,048	-1,359	688	1,219
	N	5,318	-3,145	2,173	38,786	-37,035	1,751	1,979	-1,793	185	4,110
	D	7,249	-5,431	1,818	40,968	-43,070	-2,103	2,056	-3,354	-1,299	-1,584

**Table 3**  
**Portfolio Transactions with Non-residents in Canadian Bonds, by Geographical Area and Type of Transaction**

		United States									
		New Issues and Retirements			Outstanding Issues			Interest			Total
Period		New Issues	Retirements	Total	Sales	Purchases	Total	Accrued	Paid	Change in interest payable	
V No.	A	115098	115099	115097	115101	115102	115100	115104	115105	115103	115096
	Q	115247	115248	115246	115250	115251	115249	115253	115254	115252	115245
	M	115396	115397	115395	115399	115400	115398	115402	115403	115401	115394
millions of dollars											
1991		13,668	-5,861	7,807	73,932	-72,386	1,546	6,280	-6,080	199	9,552
1992		15,883	-7,417	8,466	99,692	-93,220	6,472	7,341	-7,062	279	15,217
1993		22,310	-9,495	12,815	192,239	-182,689	9,550	9,024	-8,492	532	22,897
1994		13,863	-7,417	6,446	265,974	-264,341	1,633	10,622	-10,152	470	8,549
1995		20,052	-7,760	12,292	199,489	-193,467	6,023	11,557	-10,981	576	18,891
1996		25,276	-9,201	16,075	331,764	-330,277	1,487	12,418	-11,837	581	18,143
1997		19,546	-11,136	8,409	639,823	-641,411	-1,588	13,408	-12,979	429	7,251
1998		27,415	-11,203	16,213	560,602	-572,610	-12,008	14,221	-13,612	609	4,813
1999		18,531	-14,309	4,222	324,168	-321,879	2,288	14,791	-14,830	-39	6,472
2000		10,977	-16,651	-5,674	230,619	-233,803	-3,184	14,415	-14,451	-36	-8,894
2001		57,718	-21,781	35,937	208,059	-206,728	1,330	15,754	-14,877	878	38,145
2002		31,075	-21,700	9,376	240,913	-228,609	12,304	17,455	-17,170	286	21,966
2003		30,438	-20,115	10,323	333,398	-341,576	-8,178	15,956	-15,440	516	2,661
2001	IV	21,754	-4,175	17,579	52,309	-52,661	-352	4,260	-3,766	494	17,721
2002	I	7,570	-2,773	4,797	49,803	-47,286	2,517	4,274	-4,150	124	7,438
	II	8,532	-4,451	4,081	55,746	-51,954	3,793	4,315	-4,095	220	8,093
	III	8,235	-7,708	527	77,680	-71,121	6,559	4,416	-4,076	341	7,426
	IV	6,739	-6,768	-29	57,684	-58,248	-564	4,450	-4,849	-399	-992
2003	I	7,529	-4,185	3,344	70,525	-68,066	2,459	4,202	-3,884	318	6,121
	II	7,773	-7,106	667	93,408	-93,698	-290	4,007	-4,117	-109	268
	III	3,176	-3,908	-732	91,329	-100,267	-8,937	3,956	-3,624	332	-9,337
	IV	11,960	-4,916	7,044	78,135	-79,545	-1,410	3,790	-3,816	-25	5,609
2001	D	2,190	-932	1,258	14,637	-15,077	-440	1,462	-1,705	-243	574
2002	J	2,165	-771	1,394	15,145	-14,637	508	1,473	-1,554	-81	1,821
	F	1,534	-1,343	190	13,230	-11,343	1,887	1,328	-1,474	-146	1,931
	M	3,871	-658	3,213	21,428	-21,306	122	1,473	-1,122	351	3,687
	A	2,704	-1,160	1,544	17,385	-14,492	2,893	1,439	-1,206	233	4,671
	M	1,085	-594	490	20,523	-20,035	488	1,466	-976	490	1,469
	J	4,743	-2,697	2,046	17,838	-17,426	411	1,410	-1,914	-504	1,954
	J	2,619	-4,401	-1,782	24,495	-20,033	4,462	1,476	-1,432	44	2,724
	A	792	-1,221	-429	28,922	-27,730	1,192	1,491	-1,445	47	810
	S	4,824	-2,086	2,738	24,264	-23,359	905	1,449	-1,199	250	3,892
	O	1,949	-2,421	-472	22,254	-22,633	-379	1,504	-1,444	60	-791
	N	1,455	-1,000	455	20,880	-20,608	272	1,453	-1,336	117	844
	D	3,335	-3,348	-13	14,550	-15,006	-456	1,493	-2,069	-576	-1,045
2003	J	77	-1,994	-1,917	21,187	-20,893	294	1,466	-1,335	131	-1,492
	F	2,380	-1,458	922	24,202	-19,275	4,927	1,302	-1,383	-81	5,767
	M	5,072	-733	4,339	25,137	-27,899	-2,762	1,435	-1,166	269	1,846
	A	1,674	-2,113	-439	24,121	-22,388	1,734	1,363	-1,194	170	1,465
	M	2,093	-1,422	671	30,336	-32,000	-1,665	1,358	-921	437	-556
	J	4,006	-3,571	434	38,951	-39,310	-359	1,286	-2,002	-716	-641
	J	801	-1,322	-521	36,421	-39,988	-3,567	1,352	-1,204	148	-3,941
	A	1,460	-941	519	25,933	-30,781	-4,848	1,345	-1,283	62	-4,267
	S	915	-1,645	-730	28,976	-29,498	-522	1,259	-1,137	122	-1,129
	O	3,465	-1,804	1,661	28,539	-29,552	-1,012	1,269	-1,012	257	906
	N	4,146	-898	3,248	25,002	-24,043	960	1,233	-1,056	177	4,385
	D	4,349	-2,214	2,135	24,593	-25,951	-1,358	1,288	-1,748	-459	318

**Table 3**  
**Portfolio Transactions with Non-residents in Canadian Bonds, by Geographical Area and Type of Transaction - Continued**

Period		United Kingdom									Total
		New Issues and Retirements			Outstanding Issues			Interest			
		New Issues	Retirements	Total	Sales	Purchases	Total	Accrued	Paid	Change in interest payable	
V No.	A	115108	115109	115107	115111	115112	115110	115114	115115	115113	115106
	Q	115257	115258	115256	115260	115261	115259	115263	115264	115262	115255
	M	115406	115407	115405	115409	115410	115408	115412	115413	115411	115404
millions of dollars											
1991		2,915	-1,805	1,110	68,703	-62,887	5,817	1,709	-1,872	-163	6,764
1992		2,562	-2,167	396	108,832	-110,933	-2,102	1,732	-2,006	-274	-1,981
1993		4,708	-3,308	1,400	123,231	-114,821	8,410	1,892	-2,427	-535	9,275
1994		4,503	-2,146	2,357	213,480	-216,424	-2,944	1,997	-2,370	-373	-960
1995		1,289	-1,672	-382	232,868	-226,881	5,987	2,186	-2,752	-566	5,039
1996		6,795	-3,710	3,086	263,999	-263,387	612	2,225	-2,814	-588	3,110
1997		9,774	-3,191	6,583	280,334	-279,522	812	2,342	-2,972	-630	6,765
1998		13,134	-7,372	5,762	193,081	-191,256	1,825	2,222	-2,825	-603	6,984
1999		10,418	-4,002	6,416	187,887	-186,554	1,333	2,226	-2,796	-570	7,179
2000		7,662	-8,827	-1,165	121,463	-116,317	5,146	2,317	-2,820	-503	3,478
2001		9,757	-9,119	639	128,053	-123,342	4,711	2,252	-3,017	-765	4,584
2002		12,846	-5,730	7,116	96,400	-97,750	-1,350	2,409	-2,945	-537	5,229
2003		14,557	-8,472	6,085	168,639	-169,061	-421	2,554	-3,037	-483	5,181
2001	IV	3,824	-2,112	1,711	28,231	-26,108	2,123	575	-924	-349	3,486
2002	I	1,252	-361	891	23,095	-23,417	-322	573	-619	-46	523
	II	5,968	-1,832	4,136	20,912	-21,913	-1,001	575	-676	-101	3,034
	III	2,646	-1,363	1,283	24,900	-28,586	-3,686	620	-544	76	-2,327
	IV	2,980	-2,175	806	27,493	-23,833	3,659	640	-1,106	-466	3,999
2003	I	3,854	-1,259	2,595	37,207	-33,325	3,882	658	-649	9	6,486
	II	5,915	-2,599	3,315	50,410	-53,113	-2,703	657	-750	-93	519
	III	3,355	-2,572	782	42,531	-43,834	-1,303	631	-580	50	-470
	IV	1,434	-2,041	-607	38,490	-38,788	-298	608	-1,057	-449	-1,355
2001	D	477	-218	258	5,608	-6,185	-576	195	-543	-348	-666
2002	J	339	-133	207	8,456	-8,405	51	197	-77	120	377
	F	753	-35	718	7,900	-7,203	697	179	-196	-17	1,398
	M	159	-194	-34	6,739	-7,809	-1,070	198	-346	-148	-1,253
	A	1,108	-408	699	6,867	-8,215	-1,348	189	-135	54	-595
	M	3,283	-952	2,331	6,391	-6,776	-385	192	-109	83	2,029
	J	1,577	-472	1,105	7,654	-6,922	733	195	-433	-238	1,600
	J	1,480	-599	881	6,548	-8,753	-2,205	208	-167	41	-1,283
	A	177	-127	50	8,366	-8,306	60	209	-84	125	235
	S	990	-637	353	9,986	-11,527	-1,542	203	-293	-90	-1,279
	O	571	-44	527	10,962	-8,632	2,330	213	-117	96	2,953
	N	603	-483	120	11,233	-9,127	2,106	211	-304	-93	2,133
	D	1,807	-1,648	158	5,298	-6,074	-776	216	-684	-469	-1,087
2003	J	640	-511	129	11,076	-9,759	1,316	219	-86	134	1,579
	F	2,647	-459	2,189	10,174	-10,222	-48	207	-214	-8	2,133
	M	567	-290	277	15,958	-13,343	2,614	232	-349	-117	2,775
	A	2,979	-232	2,748	16,383	-16,799	-416	227	-128	99	2,430
	M	1,055	-384	672	19,593	-20,053	-460	226	-151	75	287
	J	1,880	-1,984	-104	14,434	-16,260	-1,826	204	-471	-268	-2,198
	J	2,066	-174	1,892	15,916	-16,225	-309	218	-135	83	1,666
	A	531	-309	222	10,085	-12,156	-2,071	215	-81	134	-1,715
	S	757	-2,089	-1,332	16,531	-15,454	1,077	197	-364	-167	-421
	O	193	-97	96	16,379	-16,148	231	207	-132	75	402
	N	357	-1,019	-662	9,677	-9,168	509	198	-285	-86	-240
	D	884	-925	-42	12,434	-13,472	-1,038	203	-641	-438	-1,517

**Table 3**  
**Portfolio Transactions with Non-residents in Canadian Bonds, by Geographical Area and Type of Transaction - Continued**

Period		Other EU Countries									Total
		New Issues and Retirements			Outstanding Issues			Interest			
		New Issues	Retirements	Total	Sales	Purchases	Total	Accrued	Paid	Change in interest payable	
V No.	A	115118	115119	115117	115121	115122	115120	115124	115125	115123	115116
	Q	115267	115268	115266	115270	115271	115269	115273	115274	115272	115265
	M	115416	115417	115415	115419	115420	115418	115422	115423	115421	115414
millions of dollars											
1991		6,844	-4,314	2,530	8,898	-7,127	1,770	2,702	-2,840	-138	4,162
1992		5,898	-5,012	886	15,980	-15,378	602	2,925	-3,079	-154	1,334
1993		5,961	-4,588	1,372	18,122	-17,871	251	3,251	-3,157	94	1,717
1994		8,646	-4,721	3,925	18,977	-19,364	-387	3,587	-3,227	360	3,899
1995		5,413	-3,402	2,011	12,108	-13,423	-1,316	3,801	-3,537	264	959
1996		4,554	-6,629	-2,075	18,209	-17,214	995	3,603	-3,478	125	-954
1997		3,411	-5,535	-2,124	24,641	-24,633	8	3,389	-3,170	219	-1,896
1998		8,557	-4,447	4,110	33,290	-34,064	-774	3,660	-3,301	358	3,694
1999		1,724	-5,965	-4,241	19,918	-18,414	1,504	3,641	-3,385	256	-2,481
2000		183	-7,252	-7,068	17,469	-15,235	2,233	3,257	-3,187	70	-4,765
2001		7,307	-5,988	1,319	17,057	-16,482	575	3,000	-2,413	588	2,482
2002		3,408	-7,073	-3,665	19,533	-17,468	2,066	2,993	-2,792	201	-1,398
2003		6,949	-7,348	-399	21,726	-22,864	-1,138	2,839	-2,629	210	-1,327
2001	IV	2,714	-1,230	1,484	4,213	-4,864	-650	769	-616	153	987
2002	I	1,086	-915	171	3,791	-4,328	-537	726	-545	181	-185
	II	1,310	-2,557	-1,247	3,789	-3,456	334	735	-861	-127	-1,040
	III	512	-1,287	-775	6,442	-4,957	1,485	764	-657	107	817
	IV	499	-2,314	-1,814	5,511	-4,727	784	768	-729	39	-991
2003	I	945	-3,193	-2,247	6,636	-5,418	1,218	726	-631	96	-934
	II	2,751	-1,830	921	5,341	-5,280	60	714	-811	-97	884
	III	1,232	-665	567	5,412	-7,776	-2,364	702	-621	81	-1,715
	IV	2,020	-1,661	360	4,337	-4,390	-53	697	-567	130	438
2001	D	491	-417	74	440	-913	-474	258	-335	-77	-477
2002	J	0	-216	-216	1,359	-2,161	-802	253	-206	47	-971
	F	392	-426	-34	938	-1,339	-401	225	-191	34	-401
	M	694	-273	421	1,494	-828	666	248	-148	100	1,187
	A	0	-680	-680	1,482	-1,362	120	242	-232	10	-550
	M	807	-918	-111	1,191	-1,148	43	250	-207	43	-24
	J	503	-959	-456	1,116	-946	170	242	-422	-180	-465
	J	215	-401	-186	1,761	-2,103	-342	255	-391	-136	-664
	A	0	-448	-448	2,489	-945	1,544	257	-76	182	1,277
	S	297	-437	-141	2,192	-1,909	283	252	-191	62	204
	O	16	-161	-145	1,641	-659	982	261	-103	158	995
	N	59	-806	-747	1,953	-2,656	-703	252	-261	-9	-1,460
	D	425	-1,347	-923	1,918	-1,412	506	256	-365	-109	-526
2003	J	0	-915	-915	1,165	-1,454	-289	258	-233	25	-1,179
	F	0	-1,705	-1,705	1,703	-1,784	-81	224	-174	50	-1,737
	M	945	-572	373	3,768	-2,180	1,588	245	-224	21	1,982
	A	175	-415	-240	1,116	-1,633	-517	235	-202	34	-724
	M	740	-803	-62	2,292	-1,949	343	245	-199	46	327
	J	1,836	-612	1,223	1,932	-1,698	235	234	-411	-177	1,281
	J	0	-159	-159	1,600	-3,587	-1,987	241	-356	-115	-2,261
	A	0	-251	-251	1,531	-2,431	-901	234	-49	185	-966
	S	1,232	-255	977	2,282	-1,758	524	226	-215	11	1,512
	O	0	-2	-2	1,177	-1,580	-403	235	-86	149	-256
	N	429	-741	-312	2,040	-1,697	343	225	-224	1	32
	D	1,591	-918	674	1,120	-1,112	8	237	-257	-20	662



**Table 3**  
**Portfolio Transactions with Non-residents in Canadian Bonds, by Geographical Area and Type of Transaction - Continued**

		Japan									
		New Issues and Retirements			Outstanding Issues			Interest			Total
Period		New Issues	Retirements	Total	Sales	Purchases	Total	Accrued	Paid	Change in interest payable	
V No.	A	115128	115129	115127	115131	115132	115130	115134	115135	115133	115126
	Q	115277	115278	115276	115280	115281	115279	115283	115284	115282	115275
	M	115426	115427	115425	115429	115430	115428	115432	115433	115431	115424
millions of dollars											
1991		3,125	-2,897	229	16,723	-15,516	1,207	4,067	-3,140	927	2,362
1992		4,288	-3,568	721	22,027	-19,864	2,163	4,425	-3,528	897	3,781
1993		3,752	-3,331	421	16,731	-22,455	-5,724	4,377	-3,421	956	-4,347
1994		6,225	-2,071	4,154	5,633	-11,378	-5,745	3,539	-2,908	631	-960
1995		4,697	-2,857	1,840	6,967	-8,368	-1,401	3,350	-2,899	451	890
1996		5,707	-4,326	1,381	21,013	-19,116	1,897	3,060	-2,674	387	3,665
1997		4,632	-4,546	86	26,753	-29,232	-2,480	3,091	-2,584	507	-1,887
1998		1,632	-5,387	-3,754	7,873	-10,283	-2,411	2,854	-2,408	446	-5,719
1999		1,765	-6,671	-4,906	7,064	-5,526	1,538	2,645	-2,267	378	-2,990
2000		959	-5,353	-4,394	6,624	-6,613	11	2,431	-2,083	348	-4,035
2001		2,524	-5,015	-2,491	8,110	-6,818	1,291	2,115	-1,774	341	-859
2002		0	-4,027	-4,027	9,480	-10,080	-600	1,802	-1,385	417	-4,210
2003		235	-3,455	-3,219	17,960	-13,546	4,414	1,705	-1,287	418	1,613
2001	IV	543	-1,716	-1,172	2,149	-2,239	-90	513	-518	-5	-1,267
2002	I	0	-405	-405	1,322	-2,388	-1,066	473	-271	202	-1,269
	II	0	-2,011	-2,011	1,530	-2,584	-1,054	454	-439	15	-3,051
	III	0	-1,014	-1,014	2,470	-2,527	-57	431	-267	164	-908
	IV	0	-597	-597	4,158	-2,580	1,577	444	-407	37	1,018
2003	I	0	-1,707	-1,707	3,074	-3,606	-532	414	-267	146	-2,092
	II	0	-797	-797	8,273	-3,450	4,823	415	-362	53	4,079
	III	58	-573	-515	3,809	-3,712	97	443	-276	167	-250
	IV	177	-378	-201	2,803	-2,778	25	433	-382	51	-124
2001	D	439	-586	-147	507	-422	85	167	-339	-172	-235
2002	J	0	-7	-7	195	-1,290	-1,095	165	-75	90	-1,012
	F	0	-336	-336	551	-435	116	146	-67	79	-142
	M	0	-61	-61	576	-664	-87	162	-129	33	-116
	A	0	-594	-594	545	-950	-405	153	-70	83	-916
	M	0	-167	-167	434	-686	-251	155	-44	111	-307
	J	0	-1,249	-1,249	550	-948	-398	145	-325	-180	-1,828
	J	0	-218	-218	559	-1,350	-791	146	-77	69	-940
	A	0	-392	-392	628	-431	196	145	-72	73	-123
	S	0	-404	-404	1,283	-745	538	141	-119	22	156
	O	0	-16	-16	1,981	-765	1,216	148	-39	109	1,309
	N	0	-163	-163	1,193	-1,313	-121	146	-79	67	-217
	D	0	-418	-418	984	-503	482	150	-288	-138	-75
2003	J	0	-1,207	-1,207	894	-952	-59	148	-73	75	-1,191
	F	0	-345	-345	715	-1,280	-564	128	-53	75	-834
	M	0	-155	-155	1,466	-1,374	91	138	-141	-4	-67
	A	0	-355	-355	2,051	-1,058	993	132	-36	95	733
	M	0	-209	-209	4,014	-1,143	2,871	142	-26	116	2,777
	J	0	-233	-233	2,208	-1,249	960	142	-299	-158	569
	J	58	-29	29	1,392	-1,270	122	149	-34	115	266
	A	0	-175	-175	1,793	-1,039	754	150	-60	91	670
	S	0	-369	-369	624	-1,402	-779	144	-182	-38	-1,186
	O	0	0	0	732	-900	-167	147	-27	120	-48
	N	177	-36	141	768	-652	116	142	-63	78	335
	D	0	-342	-342	1,303	-1,226	77	145	-292	-147	-411

**Table 3**  
**Portfolio Transactions with Non-residents in Canadian Bonds, by Geographical Area and Type of Transaction - Continued**

Period		Other OECD Countries									Total
		New Issues and Retirements			Outstanding Issues			Interest			
		New Issues	Retirements	Total	Sales	Purchases	Total	Accrued	Paid	Change in interest payable	
V No.	A	115138	115139	115137	115141	115142	115140	115144	115145	115143	115136
	Q	115287	115288	115286	115290	115291	115289	115293	115294	115292	115285
	M	115436	115437	115435	115439	115440	115438	115442	115443	115441	115434
millions of dollars											
1991		5,703	-4,338	1,365	1,453	-1,413	39	2,668	-2,737	-69	1,335
1992		3,658	-4,914	-1,256	1,718	-1,854	-136	2,624	-2,868	-244	-1,636
1993		4,840	-5,428	-588	3,090	-2,149	941	2,534	-2,785	-251	102
1994		4,454	-4,986	-532	3,091	-2,040	1,051	2,671	-2,826	-155	364
1995		3,786	-3,019	768	3,684	-3,491	194	2,760	-2,850	-90	871
1996		1,042	-6,087	-5,045	5,165	-4,955	210	2,504	-2,769	-265	-5,100
1997		1,322	-4,786	-3,464	5,253	-5,164	89	2,200	-2,308	-108	-3,483
1998		3,229	-5,120	-1,891	7,875	-6,242	1,633	2,140	-2,235	-95	-353
1999		1,024	-4,174	-3,151	3,514	-3,239	275	1,993	-2,125	-132	-3,008
2000		132	-3,918	-3,786	5,853	-6,109	-256	1,814	-1,983	-168	-4,210
2001		676	-5,210	-4,535	8,158	-7,452	705	1,420	-1,657	-237	-4,066
2002		2,086	-5,058	-2,972	8,800	-8,397	403	1,213	-1,409	-197	-2,765
2003		2,450	-5,800	-3,350	11,524	-11,808	-284	978	-1,137	-159	-3,794
2001	IV	131	-892	-761	1,714	-1,940	-226	336	-455	-120	-1,107
2002	I	319	-813	-494	1,851	-2,123	-272	313	-287	26	-740
	II	443	-2,071	-1,629	1,558	-1,780	-222	304	-401	-98	-1,948
	III	241	-852	-611	3,184	-2,567	617	299	-301	-2	3
	IV	1,083	-1,321	-238	2,208	-1,927	281	296	-419	-123	-81
2003	I	844	-1,984	-1,140	3,374	-3,001	373	264	-274	-10	-777
	II	607	-1,375	-768	3,783	-3,332	451	250	-281	-31	-348
	III	594	-1,691	-1,097	2,209	-3,204	-995	239	-257	-18	-2,110
	IV	405	-749	-344	2,158	-2,272	-114	224	-325	-101	-559
2001	D	0	-263	-263	399	-503	-104	111	-210	-99	-466
2002	J	0	-200	-200	649	-870	-222	109	-93	16	-406
	F	319	-269	50	389	-662	-273	97	-113	-16	-239
	M	0	-343	-343	813	-591	222	108	-81	26	-95
	A	0	-446	-446	555	-428	127	103	-92	11	-308
	M	33	-812	-779	558	-455	103	104	-104	0	-676
	J	410	-814	-404	444	-896	-452	97	-205	-109	-965
	J	0	-306	-306	878	-406	471	101	-129	-28	137
	A	0	-246	-246	1,420	-1,117	303	101	-53	48	105
	S	241	-300	-59	886	-1,044	-158	98	-119	-22	-238
	O	0	-394	-394	1,030	-964	66	99	-84	15	-313
	N	118	-70	48	777	-622	155	97	-116	-19	184
	D	965	-857	108	401	-341	60	101	-220	-119	48
2003	J	224	-1,225	-1,001	830	-840	-10	95	-86	9	-1,001
	F	0	-658	-658	1,380	-755	624	80	-103	-23	-56
	M	620	-102	518	1,165	-1,405	-241	88	-85	4	281
	A	58	-632	-574	857	-868	-11	83	-64	19	-565
	M	240	-480	-240	1,415	-1,141	275	86	-52	34	69
	J	309	-263	45	1,510	-1,323	187	81	-166	-85	148
	J	309	-463	-155	836	-1,128	-293	85	-91	-7	-454
	A	0	-891	-891	499	-1,109	-611	81	-44	36	-1,465
	S	286	-338	-52	875	-966	-92	74	-122	-47	-191
	O	0	-4	-4	687	-782	-95	76	-59	17	-82
	N	143	-292	-149	585	-816	-231	73	-107	-34	-413
	D	262	-453	-192	885	-673	212	75	-159	-85	-64

**Table 3**  
**Portfolio Transactions with Non-residents in Canadian Bonds, by Geographical Area and Type of Transaction - Continued**

		All Other Countries									
		New Issues and Retirements			Outstanding Issues			Interest			Total
Period		New Issues	Retirements	Total	Sales	Purchases	Total	Accrued	Paid	Change in interest payable	
V No.	A	115148	115149	115147	115151	115152	115150	115154	115155	115153	115146
	Q	115297	115298	115296	115300	115301	115299	115303	115304	115302	115295
	M	115446	115447	115445	115449	115450	115448	115452	115453	115451	115444
millions of dollars											
1991		2,126	-1,279	847	14,938	-11,993	2,945	1,187	-1,091	96	3,888
1992		1,337	-1,362	-25	19,760	-17,774	1,986	1,415	-1,326	90	2,051
1993		2,560	-1,172	1,387	43,448	-43,107	341	1,551	-1,477	74	1,803
1994		5,572	-1,063	4,509	35,969	-35,486	483	1,830	-1,718	112	5,104
1995		2,762	-1,511	1,251	26,395	-23,737	2,658	2,004	-1,833	171	4,080
1996		222	-2,868	-2,646	31,599	-29,877	1,721	2,102	-2,089	13	-911
1997		211	-2,440	-2,230	60,779	-59,197	1,582	2,073	-2,010	63	-585
1998		1,641	-3,563	-1,922	30,108	-27,318	2,790	2,315	-2,265	49	917
1999		503	-3,876	-3,374	11,691	-11,027	664	2,125	-1,985	140	-2,570
2000		465	-3,743	-3,278	12,371	-12,470	-100	1,867	-1,772	95	-3,283
2001		0	-3,221	-3,221	9,302	-9,054	249	1,539	-1,501	38	-2,935
2002		541	-2,350	-1,809	10,582	-8,931	1,651	1,375	-1,325	50	-109
2003		1,503	-3,498	-1,995	11,081	-6,772	4,309	1,335	-1,318	17	2,330
2001	IV	0	-469	-469	2,564	-1,830	735	367	-386	-18	247
2002	I	0	-338	-338	2,188	-1,529	659	349	-283	66	387
	II	199	-1,089	-890	2,372	-2,758	-386	340	-386	-46	-1,322
	III	182	-463	-281	3,307	-2,982	325	342	-295	47	90
	IV	160	-459	-300	2,716	-1,662	1,053	344	-361	-17	737
2003	I	526	-1,429	-903	2,462	-1,253	1,209	340	-309	30	336
	II	518	-980	-461	3,496	-2,113	1,383	331	-344	-13	909
	III	196	-314	-118	3,270	-1,836	1,434	336	-305	31	1,347
	IV	263	-776	-513	1,853	-1,571	282	329	-360	-31	-262
2001	D	0	-111	-111	624	-670	-46	123	-270	-147	-305
2002	J	0	-118	-118	569	-472	96	120	-51	69	48
	F	0	-56	-56	864	-573	291	109	-111	-2	233
	M	0	-164	-164	755	-483	272	120	-121	-1	106
	A	0	-285	-285	602	-926	-324	115	-54	60	-549
	M	161	-363	-202	761	-875	-114	116	-61	55	-260
	J	38	-440	-403	1,008	-957	51	110	-271	-162	-513
	J	46	-152	-105	1,028	-962	66	114	-129	-15	-55
	A	16	-130	-115	1,287	-1,107	179	116	-52	63	128
	S	120	-181	-61	992	-913	80	112	-114	-1	17
	O	0	-48	-48	1,014	-766	249	116	-42	74	275
	N	35	-62	-27	986	-681	305	112	-60	53	331
	D	124	-349	-225	715	-216	499	116	-259	-143	131
2003	J	0	-208	-208	542	-343	200	119	-44	75	67
	F	395	-1,007	-611	646	-250	396	106	-107	-1	-217
	M	130	-214	-84	1,274	-660	614	115	-158	-43	486
	A	218	-166	52	372	-387	-15	111	-37	73	110
	M	0	-188	-188	1,295	-769	525	113	-44	69	406
	J	300	-625	-325	1,829	-956	873	107	-262	-155	393
	J	0	-38	-38	1,212	-639	572	113	-121	-8	526
	A	0	-83	-83	796	-710	86	113	-52	61	64
	S	196	-192	3	1,262	-486	777	109	-132	-23	757
	O	34	-38	-4	507	-277	230	113	-43	70	297
	N	66	-158	-93	714	-659	55	108	-59	49	11
	D	163	-579	-416	632	-635	-4	108	-258	-151	-570

**Table 3**  
**Portfolio Transactions with Non-residents in Canadian Bonds, by Geographical Area and Type of Transaction - Concluded**

		Total All Countries									
		New Issues and Retirements			Outstanding Issues			Interest			Total
Period		New Issues	Retirements	Total	Sales	Purchases	Total	Accrued	Paid	Change in interest payable	
V No.	A	113054	113061	113174	113087	113094	113047	113181	113188	113068	113195
	Q	113226	113233	113346	113259	113266	113219	113353	113360	113240	113367
	M	113398	113405	113518	113431	113438	113391	113525	113532	113412	113539
millions of dollars											
1991		34,382	-20,495	13,887	184,646	-171,322	13,324	18,612	-17,761	852	28,063
1992		33,626	-24,439	9,187	268,007	-259,023	8,984	20,462	-19,868	594	18,766
1993		44,130	-27,323	16,807	396,861	-383,091	13,770	22,630	-21,760	870	31,446
1994		43,263	-22,403	20,860	543,123	-549,033	-5,910	24,246	-23,200	1,045	15,995
1995		38,000	-20,220	17,780	481,511	-469,366	12,145	25,657	-24,852	805	30,730
1996		43,596	-32,820	10,776	671,749	-664,826	6,923	25,913	-25,659	254	17,953
1997		38,895	-31,635	7,260	1,037,583	-1,039,159	-1,576	26,503	-26,021	482	6,166
1998		55,608	-37,092	18,517	832,829	-841,773	-8,944	27,411	-26,646	765	10,337
1999		33,963	-38,997	-5,034	554,241	-546,639	7,602	27,421	-27,388	33	2,602
2000		20,378	-45,744	-25,366	394,398	-390,547	3,851	26,101	-26,296	-195	-21,710
2001		77,982	-50,335	27,647	378,739	-369,877	8,862	26,080	-25,238	842	37,351
2002		49,956	-45,937	4,019	385,708	-371,234	14,474	27,246	-27,027	220	18,712
2003		56,132	-48,688	7,444	564,328	-565,627	-1,299	25,367	-24,849	518	6,663
2001	IV	28,967	-10,594	18,372	91,180	-89,641	1,539	6,820	-6,665	155	20,066
2002	I	10,227	-5,604	4,623	82,050	-81,071	978	6,708	-6,155	553	6,154
	II	16,452	-14,011	2,440	85,906	-84,443	1,463	6,723	-6,860	-137	3,766
	III	11,816	-12,688	-872	117,983	-112,741	5,242	6,873	-6,141	732	5,102
	IV	11,462	-13,634	-2,173	99,769	-92,978	6,791	6,943	-7,871	-928	3,691
2003	I	13,698	-13,756	-59	123,280	-114,669	8,610	6,604	-6,014	590	9,141
	II	17,564	-14,688	2,876	164,711	-160,985	3,726	6,375	-6,665	-291	6,312
	III	8,611	-9,723	-1,112	148,561	-160,629	-12,068	6,306	-5,662	644	-12,536
	IV	16,259	-10,521	5,739	127,776	-129,344	-1,568	6,082	-6,507	-425	3,746
2001	D	3,596	-2,527	1,069	22,214	-23,770	-1,555	2,315	-3,403	-1,087	-1,574
2002	J	2,504	-1,446	1,059	26,372	-27,835	-1,463	2,317	-2,056	262	-143
	F	2,998	-2,465	533	23,872	-21,555	2,317	2,082	-2,152	-70	2,780
	M	4,725	-1,694	3,031	31,805	-31,681	124	2,308	-1,947	361	3,517
	A	3,812	-3,573	239	27,436	-26,373	1,063	2,241	-1,789	452	1,754
	M	5,369	-3,806	1,563	29,858	-29,974	-116	2,283	-1,500	783	2,230
	J	7,271	-6,632	639	28,611	-28,096	516	2,198	-3,570	-1,372	-218
	J	4,360	-6,077	-1,717	35,268	-33,607	1,661	2,299	-2,325	-26	-82
	A	984	-2,565	-1,580	43,111	-39,637	3,474	2,319	-1,782	537	2,431
	S	6,472	-4,046	2,425	39,603	-39,497	106	2,255	-2,034	221	2,752
	O	2,536	-3,083	-547	38,882	-34,419	4,463	2,341	-1,829	512	4,428
	N	2,270	-2,583	-313	37,021	-35,007	2,014	2,271	-2,156	115	1,816
	D	6,656	-7,968	-1,312	23,866	-23,553	313	2,331	-3,885	-1,554	-2,553
2003	J	941	-6,060	-5,119	35,693	-34,241	1,453	2,305	-1,857	449	-3,218
	F	5,422	-5,631	-208	38,819	-33,566	5,253	2,046	-2,035	12	5,056
	M	7,334	-2,066	5,268	48,767	-46,862	1,905	2,252	-2,123	129	7,302
	A	5,105	-3,913	1,192	44,900	-43,133	1,767	2,151	-1,661	490	3,449
	M	4,129	-3,486	643	58,945	-57,056	1,890	2,170	-1,393	777	3,310
	J	8,331	-7,290	1,041	60,866	-60,796	70	2,053	-3,611	-1,558	-448
	J	3,233	-2,186	1,048	57,376	-62,838	-5,462	2,157	-1,941	217	-4,198
	A	1,991	-2,649	-658	40,637	-48,227	-7,591	2,139	-1,569	570	-7,679
	S	3,386	-4,888	-1,502	50,549	-49,564	985	2,010	-2,152	-142	-659
	O	3,692	-1,945	1,748	48,022	-49,238	-1,217	2,048	-1,359	688	1,219
	N	5,318	-3,145	2,173	38,786	-37,035	1,751	1,979	-1,793	185	4,110
	D	7,249	-5,431	1,818	40,968	-43,070	-2,103	2,056	-3,354	-1,299	-1,584

**Table 4**  
**Portfolio Transactions with Non-residents in Canadian Bonds, by Geographical Area**

Period	United States	United Kingdom	Other EU Countries	Japan	Other OECD Countries	Other Countries	Total
V No. A	115096	115106	115116	115126	115136	115146	113195
Q	115245	115255	115265	115275	115285	115295	113367
M	115394	115404	115414	115424	115434	115444	113539
millions of dollars							
1991	9,552	6,764	4,162	2,362	1,335	3,888	28,063
1992	15,217	-1,981	1,334	3,781	-1,636	2,051	18,766
1993	22,897	9,275	1,717	-4,347	102	1,803	31,446
1994	8,549	-960	3,899	-960	364	5,104	15,995
1995	18,891	5,039	959	890	871	4,080	30,730
1996	18,143	3,110	-954	3,665	-5,100	-911	17,953
1997	7,251	6,765	-1,896	-1,887	-3,483	-585	6,166
1998	4,813	6,984	3,694	-5,719	-353	917	10,337
1999	6,472	7,179	-2,481	-2,990	-3,008	-2,570	2,602
2000	-8,894	3,478	-4,765	-4,035	-4,210	-3,283	-21,710
2001	38,145	4,584	2,482	-859	-4,066	-2,935	37,351
2002	21,966	5,229	-1,398	-4,210	-2,765	-109	18,712
2003	2,661	5,181	-1,327	1,613	-3,794	2,330	6,663
2001 IV	17,721	3,486	987	-1,267	-1,107	247	20,066
2002 I	7,438	523	-185	-1,269	-740	387	6,154
II	8,093	3,034	-1,040	-3,051	-1,948	-1,322	3,766
III	7,426	-2,327	817	-908	3	90	5,102
IV	-992	3,999	-991	1,018	-81	737	3,691
2003 I	6,121	6,486	-934	-2,092	-777	336	9,141
II	268	519	884	4,079	-348	909	6,312
III	-9,337	-470	-1,715	-250	-2,110	1,347	-12,536
IV	5,609	-1,355	438	-124	-559	-262	3,746
2001 D	574	-666	-477	-235	-466	-305	-1,574
2002 J	1,821	377	-971	-1,012	-406	48	-143
F	1,931	1,398	-401	-142	-239	233	2,780
M	3,687	-1,253	1,187	-116	-95	106	3,517
A	4,671	-595	-550	-916	-308	-549	1,754
M	1,469	2,029	-24	-307	-676	-260	2,230
J	1,954	1,600	-465	-1,828	-965	-513	-218
J	2,724	-1,283	-664	-940	137	-55	-82
A	810	235	1,277	-123	105	128	2,431
S	3,892	-1,279	204	156	-238	17	2,752
O	-791	2,953	995	1,309	-313	275	4,428
N	844	2,133	-1,460	-217	184	331	1,816
D	-1,045	-1,087	-526	-75	48	131	-2,553
2003 J	-1,492	1,579	-1,179	-1,191	-1,001	67	-3,218
F	5,767	2,133	-1,737	-834	-56	-217	5,056
M	1,846	2,775	1,982	-67	281	486	7,302
A	1,465	2,430	-724	733	-565	110	3,449
M	-556	287	327	2,777	69	406	3,310
J	-641	-2,198	1,281	569	148	393	-448
J	-3,941	1,666	-2,261	266	-454	526	-4,198
A	-4,267	-1,715	-966	670	-1,465	64	-7,679
S	-1,129	-421	1,512	-1,186	-191	757	-659
O	906	402	-256	-48	-82	297	1,219
N	4,385	-240	32	335	-413	11	4,110
D	318	-1,517	662	-411	-64	-570	-1,584

**Table 5**  
**Portfolio transactions with Non-residents in Canadian Bonds, by Type and Currency of Issue**

Period	New Issues				Retirements				Outstanding				
	Canadian dollars	U.S. dollars	Other currencies	Total	Canadian dollars	U.S. dollars	Other currencies	Total	Canadian dollars	U.S. dollars	Other currencies	Total	
V No.	A	113160	113165	113170	113054	113161	113166	113171	113061	113162	113167	113172	113047
	Q	113332	113337	113342	113226	113333	113338	113343	113233	113334	113339	113344	113219
	M	113504	113509	113514	113398	113505	113510	113515	113405	113506	113511	113516	113391
millions of dollars													
1991		12,701	17,289	4,392	34,382	-8,348	-8,585	-3,561	-20,495	13,324	..	..	13,324
1992		5,808	22,828	4,989	33,626	-9,751	-10,194	-4,494	-24,439	8,984	..	..	8,984
1993		11,328	27,887	4,914	44,130	-11,835	-10,505	-4,982	-27,323	13,770	..	..	13,770
1994		7,912	23,041	12,310	43,263	-9,262	-7,340	-5,801	-22,403	-5,277	-57	-57	-5,910
1995		3,125	24,291	10,584	38,000	-6,955	-9,095	-4,171	-20,220	12,694	-533	-16	12,145
1996		4,078	26,855	12,663	43,596	-13,635	-12,609	-6,576	-32,820	8,125	-1,154	-48	6,923
1997		2,233	26,130	10,532	38,895	-7,780	-15,582	-8,273	-31,635	-765	-674	-137	-1,576
1998		5,170	34,762	15,677	55,608	-14,531	-13,865	-8,696	-37,092	-6,160	-2,615	-168	-8,944
1999		4,172	25,112	4,680	33,963	-9,204	-21,669	-8,125	-38,997	8,916	-1,330	16	7,602
2000		1,755	14,610	4,013	20,378	-14,556	-21,049	-10,139	-45,744	2,786	929	136	3,851
2001		4,162	61,655	12,165	77,982	-16,752	-25,509	-8,073	-50,335	8,255	647	-41	8,862
2002		10,570	34,236	5,150	49,956	-10,492	-29,000	-6,445	-45,937	14,945	-509	37	14,474
2003		12,191	33,523	10,418	56,132	-16,928	-25,566	-6,194	-48,688	-439	-762	-98	-1,299
2001	IV	1,474	23,346	4,146	28,967	-3,432	-5,983	-1,180	-10,594	1,030	484	25	1,539
2002	I	2,299	7,164	764	10,227	-1,431	-3,324	-848	-5,604	505	490	-17	978
	II	3,154	10,364	2,934	16,452	-3,405	-9,482	-1,125	-14,011	1,519	-54	-2	1,463
	III	2,301	9,249	267	11,816	-2,033	-8,197	-2,457	-12,688	6,051	-818	9	5,242
	IV	2,817	7,459	1,186	11,462	-3,623	-7,997	-2,015	-13,634	6,870	-126	47	6,791
2003	I	2,183	8,322	3,192	13,698	-1,018	-10,616	-2,122	-13,756	8,934	-251	-72	8,610
	II	4,958	9,538	3,068	17,564	-5,725	-7,917	-1,046	-14,688	3,804	-42	-37	3,726
	III	2,499	3,345	2,766	8,611	-5,185	-2,882	-1,656	-9,723	-11,862	-218	12	-12,068
	IV	2,550	12,318	1,391	16,259	-4,999	-4,152	-1,370	-10,521	-1,315	-251	-2	-1,568
2001	D	0	2,689	907	3,596	-2,089	-363	-75	-2,527	-1,495	-45	-15	-1,555
2002	J	232	2,272	0	2,504	-230	-1,204	-12	-1,446	-1,484	-2	23	-1,463
	F	2,067	904	26	2,998	-705	-1,068	-692	-2,465	1,791	561	-34	2,317
	M	0	3,987	738	4,725	-497	-1,053	-144	-1,694	198	-69	-5	124
	A	48	3,194	569	3,812	-1,323	-2,036	-214	-3,573	1,103	-26	-14	1,063
	M	739	2,353	2,277	5,369	-853	-2,402	-551	-3,806	-100	-46	31	-116
	J	2,367	4,817	87	7,271	-1,228	-5,044	-360	-6,632	517	18	-19	516
	J	0	4,198	162	4,360	-498	-4,849	-730	-6,077	1,789	-142	14	1,661
	A	0	956	28	984	-236	-1,496	-832	-2,565	3,734	-252	-7	3,474
	S	2,301	4,094	77	6,472	-1,299	-1,852	-895	-4,046	528	-424	2	106
	O	0	2,099	437	2,536	-127	-2,662	-295	-3,083	4,573	-111	1	4,463
	N	279	1,922	68	2,270	-201	-1,467	-915	-2,583	1,780	227	7	2,014
	D	2,538	3,438	681	6,656	-3,295	-3,868	-805	-7,968	518	-243	38	313
2003	J	299	293	349	941	-133	-5,311	-616	-6,060	1,649	-188	-7	1,453
	F	606	3,002	1,814	5,422	-79	-4,464	-1,087	-5,631	5,699	-378	-67	5,253
	M	1,278	5,027	1,029	7,334	-806	-841	-419	-2,066	1,587	315	3	1,905
	A	2,045	2,971	89	5,105	-467	-2,861	-584	-3,913	1,838	-70	-1	1,767
	M	200	2,208	1,721	4,129	-979	-2,189	-319	-3,486	1,833	88	-32	1,890
	J	2,713	4,359	1,258	8,331	-4,279	-2,867	-143	-7,290	133	-60	-3	70
	J	546	891	1,796	3,233	-372	-1,287	-527	-2,186	-5,472	7	2	-5,462
	A	188	1,718	85	1,991	-992	-922	-735	-2,649	-7,276	-302	-13	-7,591
	S	1,765	736	885	3,386	-3,821	-673	-394	-4,888	885	78	22	985
	O	0	3,617	75	3,692	-386	-1,559	0	-1,945	-1,147	-38	-31	-1,217
	N	161	5,117	40	5,318	-851	-1,645	-649	-3,145	1,874	-134	11	1,751
	D	2,388	3,584	1,277	7,249	-3,763	-948	-721	-5,431	-2,042	-79	19	-2,103

**Table 5**  
**Portfolio transactions with Non-residents in Canadian Bonds, by Type and Currency of Issue - Concluded**

Period	Change in interest payable				Total			
	Canadian dollars	U.S. dollars	Other currencies	Total	Canadian dollars	U.S. dollars	Other currencies	Total
V No. A	113163	113168	113173	113068	113159	113164	113169	113158
Q	113335	113340	113345	113240	113331	113336	113341	113330
M	113507	113512	113517	113412	113503	113508	113513	113502
millions of dollars								
1991	623	190	39	852	18,300	8,894	869	28,063
1992	262	299	34	594	5,304	12,933	529	18,766
1993	421	505	-57	870	13,684	17,887	-125	31,446
1994	426	529	89	1,045	-6,201	15,655	6,541	15,995
1995	241	494	70	805	9,105	15,157	6,468	30,730
1996	-3	255	1	254	-1,435	13,347	6,041	17,953
1997	40	411	31	482	-6,272	10,285	2,153	6,166
1998	-40	592	212	765	-15,563	18,874	7,026	10,337
1999	-247	303	-23	33	3,637	2,416	-3,452	2,602
2000	-342	269	-121	-195	-10,357	-5,242	-6,111	-21,710
2001	-402	818	426	842	-4,737	37,611	4,477	37,351
2002	33	181	6	220	15,056	4,908	-1,252	18,712
2003	93	299	126	518	-5,083	7,495	4,252	6,663
2001 IV	-727	665	217	155	-1,655	18,512	3,209	20,066
2002 I	559	-88	82	553	1,932	4,241	-20	6,154
II	-534	293	103	-137	735	1,121	1,910	3,766
III	634	220	-123	732	6,953	454	-2,304	5,102
IV	-627	-245	-56	-928	5,437	-909	-838	3,691
2003 I	591	-46	45	590	10,689	-2,591	1,043	9,141
II	-516	163	62	-291	2,521	1,743	2,048	6,312
III	473	199	-28	644	-14,075	444	1,094	-12,536
IV	-455	-17	47	-425	-4,219	7,898	67	3,746
2001 D	-1,299	157	55	-1,087	-4,883	2,438	871	-1,574
2002 J	355	-157	63	262	-1,127	910	74	-143
F	236	-312	6	-70	3,389	85	-694	2,780
M	-32	381	13	361	-331	3,246	601	3,517
A	278	170	5	452	106	1,302	347	1,754
M	313	379	92	783	98	284	1,848	2,230
J	-1,124	-255	7	-1,372	531	-464	-285	-218
J	348	-129	-245	-26	1,639	-922	-798	-82
A	413	-1	125	537	3,911	-793	-687	2,431
S	-127	350	-3	221	1,403	2,169	-820	2,752
O	379	30	103	512	4,825	-643	246	4,428
N	383	-188	-80	115	2,241	494	-919	1,816
D	-1,389	-87	-79	-1,554	-1,629	-760	-165	-2,553
2003 J	412	4	34	449	2,227	-5,203	-241	-3,218
F	330	-353	34	12	6,556	-2,193	694	5,056
M	-151	303	-23	129	1,907	4,805	590	7,302
A	427	53	10	490	3,843	93	-486	3,449
M	444	313	20	777	1,499	421	1,390	3,310
J	-1,388	-203	32	-1,558	-2,821	1,230	1,144	-448
J	437	-10	-210	217	-4,860	-399	1,062	-4,198
A	437	-16	149	570	-7,643	478	-515	-7,679
S	-401	225	34	-142	-1,572	366	548	-659
O	334	245	109	688	-1,198	2,265	153	1,219
N	313	-97	-31	185	1,498	3,242	-630	4,110
D	-1,102	-166	-31	-1,299	-4,519	2,391	544	-1,584

**Table 6**  
**Portfolio Transactions with Non-residents in Canadian Money Market Instruments, by Sector, Sales and Purchases**

		Federal Government								
		Direct			Enterprises			Total		
Period		Sales	Purchases	Net	Sales	Purchases	Net	Sales	Purchases	Net
V No.	A	113143	113152	113081	113144	113153	113082	113142	113151	113080
	Q	113315	113324	113253	113316	113325	113254	113314	113323	113252
	M	113457	113466	113425	113458	113467	113426	113456	113465	113424
millions of dollars										
1991		78,368	-76,080	2,288	15,965	-12,971	2,994	94,333	-89,051	5,282
1992		140,424	-138,508	1,915	58,925	-59,138	-214	199,348	-197,647	1,701
1993		157,051	-146,112	10,939	32,408	-33,017	-610	189,459	-179,129	10,329
1994		266,691	-263,960	2,731	24,761	-25,422	-660	291,452	-289,381	2,071
1995		246,238	-246,957	-719	22,112	-22,904	-792	268,350	-269,861	-1,511
1996		282,373	-290,065	-7,691	25,747	-25,851	-104	308,121	-315,916	-7,795
1997		183,471	-185,759	-2,288	23,555	-21,938	1,617	207,026	-207,697	-671
1998		108,887	-111,333	-2,446	59,269	-57,908	1,361	168,156	-169,241	-1,085
1999		79,772	-86,349	-6,577	56,505	-57,984	-1,479	136,277	-144,333	-8,056
2000		65,723	-66,857	-1,134	38,455	-38,923	-468	104,177	-105,780	-1,603
2001		37,501	-42,079	-4,578	34,163	-34,074	89	71,665	-76,153	-4,489
2002		42,004	-40,024	1,980	58,878	-58,438	440	100,882	-98,463	2,420
2003		54,472	-54,149	323	42,454	-43,910	-1,456	96,926	-98,059	-1,133
2001	IV	8,876	-7,597	1,279	8,689	-8,653	35	17,564	-16,250	1,315
2002	I	10,790	-10,959	-169	15,417	-13,955	1,462	26,207	-24,914	1,293
	II	9,428	-8,539	889	14,930	-15,882	-952	24,358	-24,421	-62
	III	9,960	-10,090	-130	15,205	-16,572	-1,367	25,165	-26,662	-1,497
	IV	11,827	-10,437	1,390	13,325	-12,029	1,296	25,152	-22,466	2,686
2003	I	12,278	-13,212	-934	14,297	-13,940	357	26,575	-27,152	-577
	II	11,420	-10,074	1,346	10,281	-11,035	-754	21,701	-21,109	592
	III	14,253	-14,074	179	8,296	-9,055	-759	22,548	-23,129	-580
	IV	16,522	-16,789	-267	9,580	-9,880	-300	26,101	-26,669	-568
2001	D	3,734	-2,508	1,226	2,610	-2,320	290	6,344	-4,829	1,516
2002	J	3,403	-3,860	-457	3,100	-2,606	494	6,503	-6,467	37
	F	3,610	-3,779	-169	6,543	-6,229	314	10,153	-10,008	145
	M	3,777	-3,320	457	5,774	-5,120	655	9,551	-8,440	1,111
	A	2,440	-2,714	-274	5,306	-5,377	-70	7,746	-8,091	-344
	M	2,916	-2,433	483	4,992	-5,436	-444	7,908	-7,869	39
	J	4,073	-3,392	681	4,632	-5,070	-437	8,705	-8,461	243
	J	2,237	-1,869	368	6,203	-6,490	-288	8,440	-8,360	80
	A	3,768	-4,090	-322	4,953	-5,528	-575	8,721	-9,618	-897
	S	3,954	-4,131	-176	4,049	-4,553	-504	8,004	-8,684	-680
	O	3,551	-3,542	9	4,320	-4,318	2	7,871	-7,860	11
	N	2,443	-1,888	555	5,572	-4,661	911	8,015	-6,549	1,466
	D	5,833	-5,007	825	3,433	-3,050	384	9,266	-8,057	1,209
2003	J	3,868	-4,407	-539	5,504	-4,514	990	9,372	-8,920	451
	F	2,813	-3,509	-696	6,475	-6,436	40	9,289	-9,945	-656
	M	5,597	-5,296	300	2,318	-2,991	-673	7,915	-8,287	-372
	A	3,719	-2,638	1,081	2,146	-2,432	-286	5,866	-5,070	795
	M	3,010	-3,237	-227	4,868	-5,247	-379	7,878	-8,484	-606
	J	4,691	-4,199	492	3,266	-3,355	-89	7,957	-7,554	403
	J	4,433	-4,576	-142	3,265	-2,873	393	7,699	-7,448	250
	A	4,365	-4,454	-89	2,676	-3,048	-372	7,041	-7,502	-461
	S	5,455	-5,045	410	2,354	-3,134	-779	7,809	-8,178	-369
	O	3,727	-3,739	-12	3,671	-3,399	272	7,398	-7,138	261
	N	5,120	-5,712	-592	3,236	-2,970	266	8,356	-8,682	-326
	D	7,674	-7,338	336	2,673	-3,511	-838	10,347	-10,849	-502



**Table 6**  
**Portfolio Transactions with Non-residents in Canadian Money Market Instruments, by Sector, Sales and Purchases - Continued**

Period		Provincial Governments <sup>1</sup>								
		Direct			Enterprises			Total		
		Sales	Purchases	Net	Sales	Purchases	Net	Sales	Purchases	Net
V No.	A	113146	113155	113084	113147	113156	113085	113145	113154	113083
	Q	113318	113327	113256	113319	113328	113257	113317	113326	113255
	M	113460	113469	113428	113461	113470	113429	113459	113468	113427
millions of dollars										
1991		5,640	-4,727	913	396	-374	22	6,036	-5,101	935
1992		23,508	-22,035	1,473	5,661	-5,625	36	29,169	-27,660	1,509
1993		19,970	-19,822	148	2,740	-2,605	135	22,709	-22,427	283
1994		22,498	-23,540	-1,042	5,421	-5,382	39	27,919	-28,922	-1,003
1995		16,428	-15,931	497	5,012	-5,078	-66	21,440	-21,009	431
1996		18,719	-19,921	-1,202	8,365	-8,399	-34	27,084	-28,320	-1,236
1997		18,644	-20,211	-1,567	7,733	-6,656	1,076	26,377	-26,867	-491
1998		15,036	-13,568	1,468	7,431	-7,960	-530	22,466	-21,528	938
1999		16,849	-17,003	-154	2,994	-4,085	-1,091	19,843	-21,088	-1,245
2000		16,592	-15,304	1,288	2,036	-2,378	-342	18,628	-17,682	946
2001		16,234	-17,271	-1,037	209	-184	24	16,443	-17,455	-1,012
2002		15,406	-15,529	-123	382	-393	-11	15,788	-15,922	-134
2003		9,522	-11,174	-1,652	397	-393	4	9,919	-11,567	-1,648
2001	IV	4,119	-3,634	484	131	-119	12	4,250	-3,753	496
2002	I	3,364	-3,393	-29	81	-90	-10	3,445	-3,483	-38
	II	4,771	-4,240	531	137	-71	67	4,908	-4,310	598
	III	2,919	-3,624	-705	76	-74	2	2,994	-3,698	-704
	IV	4,352	-4,272	80	88	-158	-70	4,441	-4,430	10
2003	I	3,802	-4,299	-497	217	-39	178	4,019	-4,337	-319
	II	2,892	-3,500	-607	52	-53	-1	2,944	-3,553	-609
	III	1,248	-1,976	-728	66	-208	-142	1,314	-2,184	-871
	IV	1,580	-1,400	181	62	-93	-31	1,643	-1,493	150
2001	D	1,722	-1,069	653	32	-29	3	1,754	-1,097	656
2002	J	1,076	-1,176	-99	26	-21	5	1,102	-1,197	-95
	F	1,257	-888	369	18	-27	-9	1,275	-915	360
	M	1,031	-1,330	-299	36	-41	-5	1,067	-1,371	-304
	A	1,338	-863	475	30	-31	-1	1,368	-894	474
	M	1,889	-1,585	303	17	-26	-10	1,905	-1,612	293
	J	1,544	-1,791	-247	91	-13	77	1,634	-1,804	-170
	J	1,044	-1,272	-227	31	-32	-1	1,076	-1,304	-228
	A	955	-1,131	-176	17	-7	10	972	-1,138	-166
	S	920	-1,221	-302	27	-35	-8	947	-1,256	-309
	O	1,395	-1,338	57	28	-18	11	1,424	-1,356	68
	N	1,522	-1,515	6	38	-49	-11	1,560	-1,565	-4
	D	1,435	-1,419	16	22	-92	-70	1,457	-1,510	-53
2003	J	1,618	-1,284	334	54	-22	33	1,673	-1,306	367
	F	1,481	-1,937	-456	163	-15	148	1,643	-1,952	-308
	M	703	-1,077	-375	0	-2	-2	703	-1,080	-377
	A	1,268	-1,471	-203	13	-7	6	1,281	-1,478	-197
	M	858	-887	-29	28	-26	2	886	-913	-27
	J	766	-1,142	-375	10	-20	-10	777	-1,162	-385
	J	519	-926	-408	2	-53	-51	521	-980	-459
	A	380	-652	-272	51	-142	-92	431	-794	-364
	S	349	-398	-49	13	-12	1	362	-410	-48
	O	487	-687	-199	31	-3	28	518	-690	-171
	N	492	-316	177	24	-81	-57	517	-397	120
	D	601	-398	203	7	-9	-2	608	-407	201

<sup>1</sup> Includes municipalities.

**Table 6**  
**Portfolio Transactions with Non-residents in Canadian Money Market Instruments, by Sector, Sales and Purchases - Concluded**

Period		Total								
		Governments <sup>1</sup>			Corporations			Total		
		Sales	Purchases	Net	Sales	Purchases	Net	Sales	Purchases	Net
V No.	A	113141	113150	113079	113148	113157	113086	113140	113149	113078
	Q	113313	113322	113251	113320	113329	113258	113312	113321	113250
	M	113455	113464	113423	113462	113471	113430	113454	113463	113422
millions of dollars										
1991		100,370	-94,152	6,217	22,307	-24,096	-1,789	122,677	-118,249	4,428
1992		228,517	-225,307	3,210	25,694	-24,005	1,688	254,211	-249,312	4,898
1993		212,168	-201,556	10,612	33,922	-35,238	-1,316	246,090	-236,793	9,296
1994		319,371	-318,303	1,068	52,027	-52,190	-163	371,398	-370,493	905
1995		289,790	-290,870	-1,080	45,954	-46,128	-174	335,744	-336,998	-1,254
1996		335,204	-344,235	-9,031	54,013	-52,301	1,712	389,217	-396,536	-7,319
1997		233,403	-234,564	-1,161	82,853	-79,323	3,531	316,257	-313,887	2,369
1998		190,622	-190,770	-147	125,726	-125,449	277	316,349	-316,218	130
1999		156,121	-165,421	-9,301	78,817	-82,726	-3,909	234,938	-248,147	-13,209
2000		122,805	-123,462	-657	95,126	-93,646	1,481	217,931	-217,107	824
2001		88,108	-93,609	-5,501	100,017	-101,865	-1,848	188,125	-195,474	-7,349
2002		116,670	-114,385	2,285	75,873	-74,376	1,497	192,543	-188,761	3,782
2003		106,845	-109,626	-2,781	105,912	-107,504	-1,591	212,757	-217,130	-4,373
2001	IV	21,814	-20,003	1,811	25,153	-25,138	15	46,967	-45,141	1,826
2002	I	29,652	-28,397	1,255	18,309	-18,259	50	47,961	-46,656	1,305
	II	29,266	-28,731	535	16,300	-16,492	-192	45,566	-45,222	344
	III	28,159	-30,360	-2,201	19,161	-18,751	409	47,320	-49,111	-1,791
	IV	29,593	-26,897	2,696	22,103	-20,874	1,229	51,696	-47,771	3,925
2003	I	30,594	-31,490	-896	19,047	-19,027	20	49,641	-50,517	-876
	II	24,645	-24,662	-17	19,645	-20,394	-749	44,290	-45,055	-766
	III	23,862	-25,313	-1,451	31,651	-32,536	-885	55,513	-57,849	-2,336
	IV	27,744	-28,162	-418	35,570	-35,547	22	63,314	-63,709	-395
2001	D	8,098	-5,926	2,172	6,799	-6,625	175	14,897	-12,551	2,346
2002	J	7,606	-7,664	-58	6,908	-6,507	401	14,514	-14,171	343
	F	11,428	-10,923	506	5,516	-6,311	-794	16,945	-17,234	-289
	M	10,618	-9,811	807	5,884	-5,441	443	16,502	-15,252	1,250
	A	9,114	-8,984	130	5,452	-5,685	-233	14,566	-14,669	-103
	M	9,813	-9,480	332	5,488	-5,770	-282	15,301	-15,251	50
	J	10,339	-10,266	73	5,360	-5,036	324	15,699	-15,302	397
	J	9,516	-9,664	-148	6,686	-6,330	355	16,201	-15,994	207
	A	9,693	-10,756	-1,063	6,027	-6,210	-183	15,721	-16,966	-1,246
	S	8,950	-9,940	-990	6,448	-6,211	237	15,398	-16,151	-753
	O	9,294	-9,216	79	6,741	-6,396	345	16,035	-15,611	424
	N	9,576	-8,114	1,462	8,232	-7,436	796	17,808	-15,550	2,258
	D	10,723	-9,567	1,156	7,130	-7,042	88	17,853	-16,609	1,243
2003	J	11,045	-10,226	818	5,714	-5,733	-19	16,758	-15,960	799
	F	10,932	-11,896	-964	5,994	-6,002	-8	16,926	-17,898	-972
	M	8,618	-9,367	-750	7,339	-7,292	47	15,956	-16,659	-703
	A	7,147	-6,548	598	5,958	-5,935	23	13,104	-12,483	621
	M	8,765	-9,397	-633	6,258	-6,515	-258	15,022	-15,913	-890
	J	8,734	-8,716	18	7,429	-7,943	-514	16,163	-16,659	-496
	J	8,219	-8,428	-209	12,160	-12,460	-300	20,379	-20,888	-509
	A	7,471	-8,297	-825	10,489	-10,277	212	17,960	-18,574	-613
	S	8,172	-8,589	-417	9,002	-9,799	-797	17,173	-18,387	-1,214
	O	7,917	-7,827	90	13,828	-13,567	261	21,745	-21,394	351
	N	8,873	-9,079	-206	10,165	-10,241	-76	19,038	-19,320	-282
	D	10,954	-11,256	-302	11,577	-11,739	-163	22,531	-22,995	-464

<sup>1</sup> Including their enterprises.

**Table 7**  
**Portfolio Transactions with Non-residents in Canadian Money Market Instruments, by Geographical Area, Sales and Purchases**

Period	United States			United Kingdom			Other EU Countries		
	Sales	Purchases	Net	Sales	Purchases	Net	Sales	Purchases	Net
V No. A	115158	115159	115157	115161	115162	115160	115164	115165	115163
Q	115307	115308	115306	115310	115311	115309	115313	115314	115312
M	115456	115457	115455	115459	115460	115458	115462	115463	115461
millions of dollars									
1991	56,134	-55,137	997	20,406	-17,375	3,031	4,230	-4,758	-528
1992	144,134	-136,996	7,139	47,023	-47,219	-197	9,019	-9,076	-57
1993	112,572	-110,281	2,290	60,490	-59,137	1,353	9,222	-8,354	868
1994	205,916	-208,650	-2,734	50,928	-48,176	2,752	14,656	-15,217	-561
1995	130,015	-130,886	-871	82,318	-81,802	516	24,414	-24,438	-24
1996	142,725	-142,526	199	138,898	-143,085	-4,187	55,309	-54,889	421
1997	193,601	-189,520	4,081	35,006	-36,449	-1,443	44,643	-42,967	1,676
1998	229,670	-231,113	-1,443	30,314	-28,745	1,569	9,785	-10,047	-262
1999	171,931	-179,099	-7,169	26,830	-29,800	-2,970	7,790	-7,911	-121
2000	157,827	-156,451	1,376	21,463	-22,934	-1,471	8,960	-9,453	-493
2001	142,735	-146,747	-4,011	13,881	-14,585	-704	7,628	-7,974	-347
2002	144,184	-143,278	906	16,691	-15,609	1,082	4,811	-4,743	68
2003	161,858	-163,938	-2,080	15,410	-16,477	-1,067	3,921	-4,365	-445
2001 IV	38,193	-36,541	1,652	2,621	-2,421	200	1,215	-1,088	127
2002 I	34,442	-35,008	-566	6,459	-4,934	1,525	1,336	-1,265	71
II	35,298	-34,612	686	2,710	-3,450	-741	1,124	-1,266	-141
III	35,690	-36,900	-1,210	4,291	-4,310	-20	792	-1,138	-346
IV	38,753	-36,758	1,995	3,231	-2,914	317	1,559	-1,074	485
2003 I	35,844	-36,543	-699	3,779	-3,975	-195	1,496	-1,247	249
II	31,705	-32,520	-814	3,251	-3,060	191	953	-1,243	-289
III	44,553	-46,102	-1,549	2,689	-2,841	-152	854	-1,064	-210
IV	49,756	-48,774	982	5,691	-6,601	-910	618	-812	-194
2001 D	11,800	-10,004	1,795	1,247	-685	562	423	-360	63
2002 J	11,077	-10,966	111	1,509	-1,233	276	267	-284	-17
F	12,720	-12,907	-187	2,048	-1,538	509	494	-772	-278
M	10,645	-11,134	-489	2,902	-2,163	740	574	-209	365
A	11,045	-11,070	-25	769	-1,318	-549	367	-391	-25
M	11,926	-12,433	-507	543	-746	-204	540	-281	259
J	12,328	-11,110	1,218	1,398	-1,386	12	218	-594	-376
J	12,844	-12,743	101	1,032	-822	210	192	-263	-72
A	12,327	-13,105	-779	788	-1,275	-488	310	-477	-168
S	10,520	-11,052	-532	2,471	-2,213	258	290	-397	-107
O	11,856	-12,225	-369	881	-805	76	586	-286	300
N	13,423	-12,057	1,365	1,039	-863	176	430	-313	117
D	13,474	-12,476	998	1,312	-1,246	65	544	-475	69
2003 J	12,639	-11,474	1,166	1,265	-1,366	-101	533	-371	163
F	11,707	-13,062	-1,355	1,227	-1,237	-9	480	-493	-13
M	11,498	-12,007	-509	1,287	-1,372	-85	483	-383	99
A	8,852	-8,443	408	967	-713	255	300	-311	-11
M	11,354	-11,575	-221	704	-1,064	-361	329	-610	-280
J	11,500	-12,502	-1,002	1,580	-1,283	297	323	-322	2
J	16,919	-16,804	114	530	-781	-251	377	-377	0
A	14,709	-15,185	-476	907	-881	26	265	-282	-18
S	12,926	-14,113	-1,187	1,251	-1,179	72	212	-404	-192
O	18,333	-17,741	591	681	-844	-162	151	-131	20
N	15,072	-14,688	384	1,714	-2,092	-379	228	-355	-126
D	16,351	-16,345	6	3,296	-3,666	-370	238	-326	-88

**Table 7**  
**Portfolio Transactions with Non-residents in Canadian Money Market Instruments, by Geographical Area,**  
**Sales and Purchases - Concluded**

Period	Japan			Other OECD Countries			All Other Countries			Total		
	Sales	Purchases	Net	Sales	Purchases	Net	Sales	Purchases		Sales	Purchases	Net
V No. A	115167	115168	115166	115170	115171	115169	115173	115174	115172	113140	113149	113078
Q	115316	115317	115315	115319	115320	115318	115322	115323	115321	113312	113321	113250
M	115465	115466	115464	115468	115469	115467	115471	115472	115470	113454	113463	113422
millions of dollars												
1991	5,592	-4,432	1,160	13,896	-13,750	146	22,419	-22,797	-378	122,677	-118,249	4,428
1992	3,993	-5,328	-1,335	11,607	-13,042	-1,435	38,435	-37,652	784	254,211	-249,312	4,898
1993	5,145	-5,516	-371	15,356	-13,944	1,412	43,305	-39,561	3,744	246,090	-236,793	9,296
1994	1,865	-2,009	-144	23,696	-22,007	1,689	74,337	-74,433	-96	371,398	-370,493	905
1995	1,165	-1,371	-206	16,395	-17,240	-845	81,437	-81,261	176	335,744	-336,998	-1,254
1996	2,473	-1,833	641	10,062	-11,675	-1,613	39,749	-42,529	-2,780	389,217	-396,536	-7,319
1997	542	-1,070	-527	11,692	-10,840	853	30,771	-33,042	-2,270	316,257	-313,887	2,369
1998	166	-282	-115	16,530	-16,166	364	29,883	-29,866	17	316,349	-316,218	130
1999	195	-161	35	6,368	-6,878	-510	21,824	-24,297	-2,474	234,938	-248,147	-13,209
2000	452	-296	155	8,033	-8,265	-232	21,196	-19,708	1,488	217,931	-217,107	824
2001	263	-438	-175	5,164	-6,020	-856	18,454	-19,709	-1,255	188,125	-195,474	-7,349
2002	185	-176	10	5,705	-4,919	786	20,968	-20,037	931	192,543	-188,761	3,782
2003	230	-230	0	4,499	-5,123	-624	26,839	-26,997	-158	212,757	-217,130	-4,373
2001 IV	23	-123	-100	1,190	-1,283	-94	3,726	-3,685	40	46,967	-45,141	1,826
2002 I	47	-46	1	1,207	-964	243	4,471	-4,440	31	47,961	-46,656	1,305
II	55	-35	19	1,404	-1,327	77	4,975	-4,531	443	45,566	-45,222	344
III	49	-54	-5	1,071	-1,429	-358	5,427	-5,279	147	47,320	-49,111	-1,791
IV	34	-40	-6	2,022	-1,198	824	6,095	-5,786	309	51,696	-47,771	3,925
2003 I	36	-44	-8	1,447	-1,570	-123	7,038	-7,138	-100	49,641	-50,517	-876
II	69	-61	8	1,207	-1,243	-36	7,105	-6,929	176	44,290	-45,055	-766
III	38	-42	-4	1,059	-1,278	-219	6,320	-6,523	-203	55,513	-57,849	-2,336
IV	87	-83	4	787	-1,032	-246	6,376	-6,407	-31	63,314	-63,709	-395
2001 D	11	-108	-96	220	-332	-112	1,196	-1,062	134	14,897	-12,551	2,346
2002 J	22	-16	6	124	-165	-41	1,515	-1,506	8	14,514	-14,171	343
F	10	-17	-7	267	-509	-242	1,406	-1,490	-85	16,945	-17,234	-289
M	15	-12	2	816	-290	525	1,551	-1,443	107	16,502	-15,252	1,250
A	17	-7	11	760	-386	374	1,608	-1,497	110	14,566	-14,669	-103
M	19	-12	7	500	-324	176	1,773	-1,455	318	15,301	-15,251	50
J	18	-17	2	143	-617	-473	1,594	-1,579	15	15,699	-15,302	397
J	15	-22	-7	426	-542	-116	1,694	-1,602	92	16,201	-15,994	207
A	14	-13	1	326	-429	-103	1,957	-1,667	290	15,721	-16,966	-1,246
S	21	-20	1	320	-458	-138	1,776	-2,011	-235	15,398	-16,151	-753
O	10	-11	-1	899	-458	441	1,804	-1,827	-23	16,035	-16,611	424
N	8	-8	-1	642	-370	272	2,267	-1,938	328	17,808	-15,550	2,258
D	17	-21	-4	481	-370	112	2,025	-2,021	4	17,853	-16,609	1,243
2003 J	12	-23	-11	401	-522	-121	1,908	-2,204	-296	16,758	-15,960	799
F	11	-10	2	582	-520	62	2,919	-2,576	343	16,926	-17,898	-972
M	13	-11	2	464	-527	-63	2,212	-2,358	-146	15,956	-16,659	-703
A	40	-15	25	484	-598	-114	2,461	-2,403	58	13,104	-12,483	621
M	14	-25	-10	342	-387	-44	2,279	-2,253	26	15,022	-15,913	-890
J	15	-22	-7	381	-258	123	2,365	-2,273	91	16,163	-16,659	-496
J	8	-14	-6	336	-515	-179	2,210	-2,397	-187	20,379	-20,888	-509
A	16	-10	6	311	-264	47	1,752	-1,951	-199	17,960	-18,574	-613
S	14	-18	-4	412	-499	-87	2,358	-2,174	183	17,173	-18,387	-1,214
O	44	-14	30	270	-302	-31	2,266	-2,363	-97	21,745	-21,394	351
N	13	-11	2	202	-373	-172	1,809	-1,801	9	19,038	-19,320	-282
D	30	-58	-28	315	-358	-43	2,301	-2,243	58	22,531	-22,995	-464

**Table 8**  
**Portfolio Transactions with Non-residents in Canadian Stocks, by Geographical Area and Type of Transaction**

Period	United States					United Kingdom					
	Outstanding Issues			Other Transactions <sup>1</sup>	Total	Outstanding Issues			Other Transactions <sup>1</sup>	Total	
	Sales	Purchases	Net			Sales	Purchases	Net			
V No.	A	115217	115218	115216	115215	115214	115222	115223	115221	115220	115219
	Q	115366	115367	115365	115364	115363	115371	115372	115370	115369	115368
	M	115515	115516	115514	115513	115512	115520	115521	115519	115518	115517
millions of dollars											
1991		9,978	-12,147	-2,169	706	-1,463	2,469	-2,166	303	50	353
1992		13,274	-12,619	654	450	1,105	1,419	-1,605	-186	74	-112
1993		28,210	-18,540	9,670	1,385	11,055	2,713	-2,350	363	171	534
1994		33,521	-28,639	4,882	1,095	5,977	4,022	-4,059	-37	306	269
1995		25,974	-28,810	-2,836	1,384	-1,452	4,578	-6,127	-1,549	141	-1,408
1996		46,055	-41,871	4,185	3,460	7,645	7,098	-8,375	-1,278	403	-874
1997		68,900	-64,552	4,347	3,093	7,440	11,716	-10,160	1,556	152	1,708
1998		89,550	-89,827	-277	16,679	16,402	7,926	-8,896	-970	-8	-978
1999		87,658	-74,734	12,924	4,262	17,187	11,367	-8,551	2,816	57	2,873
2000		165,571	-137,931	27,640	5,628	33,268	20,349	-19,741	608	218	825
2001		127,138	-122,341	4,797	2,923	7,719	24,111	-26,641	-2,530	40	-2,490
2002		115,672	-119,359	-3,687	4,910	1,223	35,270	-38,042	-2,772	123	-2,649
2003		142,681	-131,212	11,470	1,125	12,595	32,299	-35,177	-2,878	0	-2,878
2001	IV	29,079	-28,135	944	911	1,854	8,273	-9,287	-1,015	-58	-1,073
2002	I	28,816	-27,958	858	-2,090	-1,232	12,509	-14,488	-1,979	0	-1,979
	II	30,711	-29,328	1,383	3,801	5,184	8,230	-8,561	-331	77	-253
	III	26,499	-33,045	-6,547	2,044	-4,503	6,363	-6,434	-71	45	-26
	IV	29,647	-29,029	619	1,155	1,774	8,168	-8,560	-391	0	-391
2003	I	29,643	-28,038	1,605	15	1,619	6,215	-7,716	-1,501	0	-1,501
	II	31,744	-28,672	3,071	372	3,444	7,301	-8,615	-1,314	0	-1,314
	III	36,434	-31,593	4,842	436	5,277	9,500	-9,450	51	0	51
	IV	44,861	-42,909	1,952	302	2,254	9,283	-9,397	-114	0	-114
2001	D	7,895	-7,668	227	1,999	2,226	4,324	-4,912	-588	0	-588
2002	J	9,382	-9,002	380	15	395	1,266	-1,669	-403	0	-403
	F	9,857	-9,593	264	-864	-600	7,285	-7,205	80	0	80
	M	9,577	-9,363	214	-1,241	-1,027	3,958	-5,614	-1,656	0	-1,656
	A	10,382	-10,240	143	166	309	1,494	-1,525	-31	0	-31
	M	9,507	-8,764	744	348	1,091	2,173	-2,741	-568	0	-568
	J	10,821	-10,325	496	3,287	3,784	4,563	-4,295	268	77	346
	J	9,936	-14,021	-4,084	231	-3,854	1,461	-1,181	280	0	280
	A	7,942	-9,122	-1,180	1,460	280	1,657	-1,875	-218	45	-173
	S	8,620	-9,903	-1,282	353	-929	3,245	-3,378	-133	0	-133
	O	10,162	-11,187	-1,025	534	-491	1,662	-1,750	-89	0	-89
	N	9,498	-8,681	817	271	1,088	2,283	-2,595	-312	0	-312
	D	9,987	-9,160	827	349	1,176	4,224	-4,215	9	0	9
2003	J	9,936	-9,814	122	2	123	596	-1,040	-444	0	-444
	F	9,744	-9,031	713	10	723	2,756	-2,775	-19	0	-19
	M	9,963	-9,193	770	4	774	2,862	-3,900	-1,038	0	-1,038
	A	9,456	-8,625	831	-151	681	1,572	-1,646	-74	0	-74
	M	10,622	-9,000	1,622	821	2,442	1,266	-2,079	-813	0	-813
	J	11,666	-11,048	618	-298	321	4,463	-4,889	-426	0	-426
	J	11,689	-10,135	1,554	302	1,856	3,024	-2,655	369	0	369
	A	11,468	-9,200	2,269	23	2,291	1,774	-2,709	-935	0	-935
	S	13,276	-12,258	1,019	111	1,130	4,702	-4,086	616	0	616
	O	14,776	-15,017	-242	304	62	2,723	-2,584	139	0	139
	N	14,519	-14,130	388	-118	270	1,663	-1,883	-220	0	-220
	D	15,566	-13,761	1,805	117	1,922	4,897	-4,930	-32	0	-32

<sup>1</sup> Other Transactions include new issues, retirements and/or withdrawals from the market due to activities such as takeovers.

**Table 8**  
**Portfolio Transactions with Non-residents in Canadian Stocks, by Geographical Area and Type of Transaction - Continued**

Period	Other EU Countries					Japan					
	Outstanding Issues			Other Transactions <sup>1</sup>	Total	Outstanding Issues			Other Transactions <sup>1</sup>	Total	
	Sales	Purchases	Net			Sales	Purchases	Net			
V No.	A	115227	115228	115226	115225	115224	115232	115233	115231	115230	115229
	Q	115376	115377	115375	115374	115373	115381	115382	115380	115379	115378
	M	115525	115526	115524	115523	115522	115530	115531	115529	115528	115527
millions of dollars											
1991		1,329	-1,411	-82	71	-10	242	-133	110	3	113
1992		929	-997	-67	75	8	186	-135	51	16	67
1993		2,176	-2,066	110	156	266	259	-247	12	16	28
1994		2,433	-2,495	-63	178	116	1,004	-727	277	27	304
1995		2,427	-3,255	-828	101	-726	304	-340	-36	10	-27
1996		2,852	-3,333	-481	416	-64	659	-373	286	9	295
1997		3,530	-3,965	-435	122	-313	1,343	-996	347	5	352
1998		5,590	-5,905	-315	5	-310	339	-796	-457	0	-457
1999		8,544	-13,113	-4,569	109	-4,460	759	-291	467	0	467
2000		18,547	-21,853	-3,307	-1,009	-4,316	510	-687	-177	0	-177
2001		37,624	-38,777	-1,153	-291	-1,443	124	-279	-155	0	-155
2002		13,241	-14,705	-1,464	16	-1,448	92	-156	-64	0	-64
2003		8,025	-7,630	395	2,588	2,982	17	-18	-1	0	-1
2001	IV	5,877	-6,472	-595	-325	-920	17	-34	-17	0	-17
2002	I	4,984	-6,206	-1,221	0	-1,221	8	-70	-62	0	-62
	II	5,009	-5,186	-177	10	-168	30	-28	2	0	2
	III	1,645	-1,522	123	4	127	34	-42	-8	0	-8
	IV	1,603	-1,791	-188	2	-186	20	-16	4	0	4
2003	I	1,744	-1,918	-174	37	-137	4	-4	-1	0	-1
	II	2,056	-1,721	335	0	335	4	-4	0	0	0
	III	2,012	-1,873	139	49	189	5	-4	1	0	1
	IV	2,213	-2,118	95	2,501	2,597	5	-5	-1	0	-1
2001	D	936	-927	9	-325	-316	1	-22	-20	0	-20
2002	J	1,083	-1,159	-76	0	-76	1	-10	-9	0	-9
	F	1,574	-1,660	-87	0	-87	1	-25	-23	0	-23
	M	2,328	-3,386	-1,058	0	-1,058	6	-36	-30	0	-30
	A	683	-1,131	-448	10	-438	6	-13	-7	0	-7
	M	1,577	-1,518	60	0	60	10	-3	7	0	7
	J	2,749	-2,538	211	0	211	14	-13	2	0	2
	J	621	-552	69	0	69	25	-4	21	0	21
	A	265	-332	-67	4	-63	7	-21	-13	0	-13
	S	759	-638	121	0	121	1	-18	-16	0	-16
	O	478	-381	97	2	99	16	-8	8	0	8
	N	568	-574	-6	0	-6	1	-4	-3	0	-3
	D	557	-836	-279	0	-279	4	-4	-1	0	-1
2003	J	579	-800	-221	0	-221	1	-2	-1	0	-1
	F	544	-438	106	37	142	1	-1	0	0	0
	M	621	-680	-58	0	-58	1	-1	0	0	0
	A	523	-600	-78	0	-78	2	-1	1	0	1
	M	558	-522	36	0	36	2	-2	0	0	0
	J	975	-599	377	0	377	1	-1	0	0	0
	J	879	-762	117	34	151	1	-1	0	0	0
	A	438	-433	5	2	7	1	-1	0	0	0
	S	694	-677	17	14	31	3	-2	1	0	1
	O	557	-484	74	52	126	2	-3	-1	0	-1
	N	694	-558	136	2,207	2,343	1	-1	0	0	0
	D	962	-1,076	-114	242	128	2	-1	1	0	1

1 Other Transactions include new issues, retirements and/or withdrawals from the market due to activities such as takeovers.

**Table 8**  
**Portfolio Transactions with Non-residents in Canadian Stocks, by Geographical Area and Type of Transaction - Continued**

Period	Other OECD Countries					All Other Countries					
	Outstanding Issues			Other Transactions <sup>1</sup>	Total	Outstanding Issues			Other Transactions <sup>1</sup>	Total	
	Sales	Purchases	Net			Sales	Purchases	Net			
V No.	A	115237	115238	115236	115235	115234	115242	115243	115241	115240	115239
	Q	115386	115387	115385	115384	115383	115391	115392	115390	115389	115388
	M	115535	115536	115534	115533	115532	115540	115541	115539	115538	115537
millions of dollars											
1991		467	-569	-102	137	35	1,576	-1,600	-24	6	-18
1992		526	-556	-31	82	51	823	-937	-114	32	-82
1993		1,473	-1,487	-14	82	68	2,567	-2,550	17	88	105
1994		1,544	-1,549	-5	213	208	3,496	-4,114	-619	157	-462
1995		1,366	-2,147	-781	49	-732	3,856	-3,810	46	56	101
1996		2,496	-2,663	-167	242	75	6,676	-5,977	699	260	958
1997		2,597	-2,884	-287	87	-200	7,456	-8,997	-1,541	199	-1,342
1998		2,465	-2,355	110	-7	102	12,782	-13,230	-448	-1	-449
1999		2,077	-2,551	-474	81	-392	22,361	-23,715	-1,354	24	-1,330
2000		3,083	-3,174	-91	5,326	5,235	37,509	-37,167	342	59	401
2001		2,142	-1,877	264	20	284	40,413	-40,307	106	646	752
2002		1,827	-1,781	46	1,188	1,234	48,538	-48,634	-95	363	268
2003		2,685	-2,364	320	188	508	29,544	-29,868	-323	5	-319
2001	IV	469	-461	8	0	8	10,768	-10,652	115	661	776
2002	I	408	-431	-22	12	-10	11,841	-11,552	289	351	640
	II	537	-610	-73	162	88	11,639	-11,711	-72	0	-72
	III	454	-348	107	366	473	12,223	-12,375	-152	12	-140
	IV	427	-392	35	648	683	12,836	-12,996	-160	0	-160
2003	I	385	-422	-37	0	-37	10,412	-10,625	-213	4	-209
	II	460	-382	78	0	78	7,140	-7,107	32	0	32
	III	765	-641	124	0	124	6,274	-6,522	-248	0	-248
	IV	1,074	-919	155	188	342	5,719	-5,614	105	0	105
2001	D	177	-164	13	0	13	2,595	-2,485	110	0	110
2002	J	121	-129	-8	0	-8	3,958	-3,953	5	0	5
	F	138	-147	-8	12	4	3,316	-2,924	392	0	392
	M	149	-155	-6	0	-6	4,567	-4,675	-109	351	242
	A	136	-216	-79	-7	-86	3,126	-3,096	31	0	31
	M	189	-219	-30	0	-30	4,448	-4,464	-16	0	-16
	J	212	-176	36	169	205	4,064	-4,151	-87	0	-87
	J	168	-143	25	135	160	3,913	-4,022	-109	0	-109
	A	148	-97	51	137	188	4,327	-4,280	47	12	59
	S	139	-108	30	94	124	3,983	-4,073	-90	0	-90
	O	126	-141	-15	391	376	4,690	-4,812	-122	0	-122
	N	149	-100	50	257	306	4,393	-4,474	-81	0	-81
	D	152	-151	1	0	1	3,753	-3,710	42	0	42
2003	J	125	-150	-26	0	-26	3,739	-3,815	-76	0	-76
	F	136	-158	-22	0	-22	3,709	-3,776	-67	0	-67
	M	125	-114	10	0	10	2,964	-3,034	-70	4	-66
	A	123	-101	22	0	22	2,652	-2,788	-136	0	-136
	M	158	-114	44	0	44	2,075	-1,983	92	0	92
	J	180	-167	13	0	13	2,413	-2,336	77	0	77
	J	191	-155	37	0	37	2,039	-2,479	-441	0	-441
	A	208	-231	-23	0	-23	2,035	-2,073	-38	0	-38
	S	366	-256	111	0	111	2,200	-1,969	231	0	231
	O	360	-271	89	188	276	2,166	-1,970	196	0	196
	N	353	-341	12	0	12	1,646	-1,853	-206	0	-206
	D	360	-307	54	0	54	1,906	-1,791	116	0	116

1 Other Transactions include new issues, retirements and/or withdrawals from the market due to activities such as takeovers.

**Table 8**  
**Portfolio Transactions with Non-residents in Canadian Stocks, by Geographical Area and Type of Transaction - Concluded**

Period	Total				
	Outstanding Issues			Other Transactions <sup>1</sup>	Total
	Sales	Purchases	Net		
V No. A	113138	113139	113076	113077	113075
Q	113310	113311	113248	113249	113247
M	113452	113453	113420	113421	113419
millions of dollars					
1991	16,061	-18,025	-1,964	974	-990
1992	17,156	-16,849	307	729	1,036
1993	37,398	-27,240	10,158	1,899	12,056
1994	46,020	-41,584	4,436	1,976	6,412
1995	38,505	-44,489	-5,984	1,741	-4,242
1996	65,836	-62,592	3,244	4,791	8,034
1997	95,542	-91,555	3,987	3,658	7,645
1998	118,654	-121,010	-2,357	16,668	14,311
1999	132,766	-122,954	9,812	4,534	14,346
2000	245,570	-220,553	25,016	10,221	35,237
2001	231,551	-230,222	1,329	3,338	4,667
2002	214,642	-222,678	-8,037	6,600	-1,436
2003	215,251	-206,269	8,983	3,906	12,888
2001 IV	54,483	-55,042	-559	1,188	629
2002 I	58,567	-60,704	-2,138	-1,727	-3,865
II	56,156	-55,425	731	4,050	4,781
III	47,217	-53,765	-6,548	2,472	-4,076
IV	52,702	-52,783	-81	1,805	1,724
2003 I	48,402	-48,723	-321	56	-265
II	48,704	-46,501	2,203	372	2,575
III	54,990	-50,082	4,908	486	5,394
IV	63,155	-60,962	2,192	2,992	5,184
2001 D	15,929	-16,178	-249	1,673	1,424
2002 J	15,811	-15,922	-111	15	-96
F	22,171	-21,553	618	-852	-234
M	20,584	-23,229	-2,645	-890	-3,535
A	15,829	-16,220	-391	169	-222
M	17,903	-17,708	196	348	543
J	22,424	-21,497	927	3,533	4,460
J	16,124	-19,922	-3,798	366	-3,432
A	14,345	-15,726	-1,381	1,659	279
S	16,748	-18,118	-1,370	447	-923
O	17,133	-18,279	-1,146	928	-218
N	16,892	-16,427	465	528	993
D	18,677	-18,077	600	349	949
2003 J	14,975	-15,622	-647	2	-645
F	16,890	-16,178	712	46	758
M	16,536	-16,923	-387	8	-378
A	14,327	-13,760	566	-151	416
M	14,680	-13,701	979	821	1,800
J	19,698	-19,040	658	-298	360
J	17,824	-16,188	1,636	336	1,972
A	15,925	-14,646	1,279	25	1,303
S	21,242	-19,248	1,994	125	2,119
O	20,584	-20,330	255	544	798
N	18,876	-18,767	109	2,089	2,198
D	23,694	-21,865	1,828	359	2,188

1 Other Transactions include new issues, retirements and/or withdrawals from the market due to activities such as takeovers.



**Table 9**  
**Portfolio Transactions with Non-residents in Canadian Stocks, by Geographical Area**

Period	United States	United Kingdom	Other EU Countries	Japan	Other OECD Countries	Other Countries	Total
V No. A	115214	115219	115224	115229	115234	115239	113075
Q	115363	115368	115373	115378	115383	115388	113247
M	115512	115517	115522	115527	115532	115537	113419
millions of dollars							
1991	-1,463	353	-10	113	35	-18	-990
1992	1,105	-112	8	67	51	-82	1,036
1993	11,055	534	266	28	68	105	12,056
1994	5,977	269	116	304	208	-462	6,412
1995	-1,452	-1,408	-726	-27	-732	101	-4,242
1996	7,645	-874	-64	295	75	958	8,034
1997	7,440	1,708	-313	352	-200	-1,342	7,645
1998	16,402	-978	-310	-457	102	-449	14,311
1999	17,187	2,873	-4,460	467	-392	-1,330	14,346
2000	33,268	825	-4,316	-177	5,235	401	35,237
2001	7,719	-2,490	-1,443	-155	284	752	4,667
2002	1,223	-2,649	-1,448	-64	1,234	268	-1,436
2003	12,595	-2,878	2,982	-1	508	-319	12,888
2001 IV	1,854	-1,073	-920	-17	8	776	629
2002 I	-1,232	-1,979	-1,221	-62	-10	640	-3,865
II	5,184	-253	-168	2	88	-72	4,781
III	-4,503	-26	127	-8	473	-140	-4,076
IV	1,774	-391	-186	4	683	-160	1,724
2003 I	1,619	-1,501	-137	-1	-37	-209	-265
II	3,444	-1,314	335	0	78	32	2,575
III	5,277	51	189	1	124	-248	5,394
IV	2,254	-114	2,597	-1	342	105	5,184
2001 D	2,226	-588	-316	-20	13	110	1,424
2002 J	395	-403	-76	-9	-8	5	-96
F	-600	80	-87	-23	4	392	-234
M	-1,027	-1,656	-1,058	-30	-6	242	-3,535
A	309	-31	-438	-7	-86	31	-222
M	1,091	-568	60	7	-30	-16	543
J	3,784	346	211	2	205	-87	4,460
J	-3,854	280	69	21	160	-109	-3,432
A	280	-173	-63	-13	188	59	279
S	-929	-133	121	-16	124	-90	-923
O	-491	-89	99	8	376	-122	-218
N	1,088	-312	-6	-3	306	-81	993
D	1,176	9	-279	-1	1	42	949
2003 J	123	-444	-221	-1	-26	-76	-645
F	723	-19	142	0	-22	-67	758
M	774	-1,038	-58	0	10	-66	-378
A	681	-74	-78	1	22	-136	416
M	2,442	-813	36	0	44	92	1,800
J	321	-426	377	0	13	77	360
J	1,856	369	151	0	37	-441	1,972
A	2,291	-935	7	0	-23	-38	1,303
S	1,130	616	31	1	111	231	2,119
O	62	139	126	-1	276	196	798
N	270	-220	2,343	0	12	-206	2,198
D	1,922	-32	128	1	54	116	2,188

**Table 10**  
**Portfolio Transactions with Non-residents in Foreign Securities by Instrument and Sector, Purchases and Sales**

Period	Foreign Bonds						Foreign Stocks						Total Foreign Securities
	U.S. Government	Other U.S.	Other foreign	Total			U.S.	Other foreign	Total				
				Purchases	Sales	Net			Purchases	Sales	Net		
V No.	A	113212	113213	113214	113133	113134	113132	113215	113216	113136	113137	113135	113131
	Q	113384	113385	113386	113305	113306	113304	113387	113388	113308	113309	113307	113303
	M	113556	113557	113558	113447	113448	113446	113559	113560	113450	113451	113449	113445
millions of dollars													
1991		-428	-598	-635	-54,494	52,833	-1,661	-7,404	-2,600	-39,388	29,384	-10,004	-11,665
1992		-1,033	-769	401	-80,577	79,176	-1,401	-6,802	-3,546	-42,478	32,130	-10,348	-11,749
1993		-1,761	-1,500	-1,809	-78,658	73,588	-5,071	-5,488	-7,323	-62,079	49,268	-12,811	-17,881
1994		1,831	-295	-1,101	-134,369	134,803	435	-1,797	-7,565	-71,541	62,179	-9,362	-8,927
1995		644	-427	-1,301	-159,914	158,830	-1,085	-1,443	-4,803	-82,714	76,468	-6,247	-7,331
1996		1,047	-2,478	-638	-221,467	219,397	-2,070	-5,533	-11,714	-98,522	81,275	-17,247	-19,317
1997		-825	-2,794	-3,024	-248,518	241,876	-6,642	-938	-4,269	-162,184	156,977	-5,207	-11,849
1998		-2,841	-2,944	-1,279	-361,203	354,139	-7,064	-10,162	-5,271	-163,865	148,433	-15,433	-22,497
1999		-1,205	443	-1,715	-245,256	242,778	-2,477	-14,986	-5,637	-260,481	239,858	-20,623	-23,101
2000		-1,507	-2,121	-335	-306,167	302,204	-3,963	-29,051	-30,818	-366,040	306,171	-59,870	-63,832
2001		-2,345	226	198	-377,653	375,732	-1,920	-20,914	-14,739	-351,281	315,628	-35,653	-37,573
2002		-4,042	-890	-1,311	-527,917	521,674	-6,243	-16,767	-1,940	-665,305	646,598	-18,707	-24,950
2003		-3,976	-2,133	-2,087	-506,234	498,038	-8,196	-3,172	-1,151	-593,445	589,122	-4,323	-12,519
2001	IV	700	-789	390	-111,272	111,572	301	-4,463	-1,042	-116,479	110,974	-5,505	-5,204
2002	I	-1,659	-1,055	273	-99,594	97,152	-2,442	-6,870	-2,122	-136,949	127,956	-8,993	-11,435
	II	-2,127	-509	338	-127,872	125,574	-2,298	-2,853	-1,715	-181,829	177,262	-4,567	-6,866
	III	-1,339	727	-859	-165,151	163,680	-1,472	-1,912	-338	-166,278	164,028	-2,250	-3,722
	IV	1,084	-53	-1,062	-135,300	135,268	-32	-5,132	2,235	-180,249	177,352	-2,897	-2,928
2003	I	-2,052	-352	-1,096	-109,800	106,300	-3,501	1,297	861	-150,474	152,633	2,159	-1,342
	II	-3,554	66	824	-140,416	137,752	-2,664	-600	54	-144,377	143,831	-546	-3,210
	III	2,098	-1,159	-928	-146,855	146,866	11	-2,276	-498	-137,297	134,522	-2,775	-2,764
	IV	-468	-687	-888	-109,163	107,121	-2,043	-1,594	-1,567	-161,298	158,137	-3,161	-5,204
2001	D	-3,279	-118	159	-38,381	35,143	-3,238	-4,202	-496	-42,257	37,559	-4,698	-7,936
2002	J	1,654	-522	-23	-36,686	37,794	1,108	138	-639	-34,004	33,504	-500	608
	F	-3,702	-328	164	-30,273	26,408	-3,865	-4,804	-862	-50,010	44,344	-5,667	-9,532
	M	389	-205	132	-32,635	32,950	315	-2,204	-621	-52,934	50,109	-2,826	-2,510
	A	-1,944	-46	231	-41,088	39,329	-1,759	-896	-1,321	-45,263	43,045	-2,218	-3,977
	M	-255	47	149	-45,491	45,432	-59	-481	-66	-81,424	80,876	-548	-607
	J	73	-511	-42	-41,292	40,812	-480	-1,475	-327	-55,143	53,341	-1,802	-2,282
	J	-1,427	286	633	-70,282	69,773	-508	-590	240	-47,664	47,315	-350	-858
	A	2,021	-342	-885	-53,788	54,582	795	-913	-302	-64,531	63,315	-1,216	-421
	S	-1,933	783	-607	-41,082	39,324	-1,758	-409	-276	-54,082	53,397	-685	-2,443
	O	3,288	-91	-369	-50,098	52,925	2,827	-1,938	1,917	-58,276	58,254	-22	2,806
	N	-3,686	679	-258	-51,988	48,724	-3,264	-2,750	-178	-58,231	55,303	-2,928	-6,192
	D	1,482	-641	-435	-33,213	33,618	405	-443	496	-63,742	63,795	52	458
2003	J	-585	426	-479	-32,913	32,275	-639	357	-100	-55,490	55,747	257	-382
	F	-957	-657	34	-35,805	34,226	-1,579	-181	100	-45,484	45,403	-82	-1,661
	M	-510	-122	-651	-41,082	39,799	-1,283	1,122	862	-49,500	51,483	1,983	701
	A	-2,033	349	18	-41,629	39,963	-1,666	1,160	-603	-47,184	47,741	558	-1,109
	M	111	-428	-56	-44,154	43,781	-373	-1,280	296	-47,485	46,502	-984	-1,357
	J	-1,632	146	862	-54,633	54,008	-625	-480	360	-49,707	49,588	-120	-744
	J	-1,133	-783	-459	-51,579	49,203	-2,375	-1,002	-155	-44,792	43,636	-1,157	-3,532
	A	177	-345	-166	-50,351	50,017	-334	-1,099	-642	-45,320	43,580	-1,741	-2,075
	S	3,054	-31	-302	-44,925	47,645	2,720	-176	298	-47,184	47,307	123	2,843
	O	1,290	-1,112	115	-42,064	42,357	293	-191	-632	-64,049	63,226	-823	-530
	N	-149	-2	76	-31,436	31,361	-76	-981	-902	-51,626	49,742	-1,883	-1,959
	D	-1,609	427	-1,079	-35,663	33,403	-2,260	-421	-34	-45,624	45,169	-455	-2,715

**Table 11**  
**Portfolio Transactions with Non-residents in Foreign Bonds, by Geographical Area, Purchases and Sales**

Period	United States			United Kingdom			Other EU Countries			
	Purchases	Sales	Net	Purchases	Sales	Net	Purchases	Sales	Net	
V No.	A	115177	115178	115176	115180	115181	115179	115183	115184	115182
	Q	115326	115327	115325	115329	115330	115328	115332	115333	115331
	M	115475	115476	115474	115478	115479	115477	115481	115482	115480
millions of dollars										
1991		-50,671	48,629	-2,042	-922	702	-220	-1,873	1,876	4
1992		-75,367	73,092	-2,274	-2,010	1,916	-94	-2,059	2,061	1
1993		-70,068	66,018	-4,050	-4,197	3,229	-969	-2,093	1,564	-529
1994		-109,689	110,484	795	-20,022	19,178	-843	-1,469	1,466	-3
1995		-132,156	131,308	-848	-20,830	20,837	7	-1,626	1,957	331
1996		-192,320	189,761	-2,559	-18,195	18,391	196	-4,316	4,782	466
1997		-203,928	196,934	-6,994	-33,965	34,565	600	-1,801	2,056	255
1998		-318,339	309,520	-8,818	-32,136	32,943	808	-2,180	2,084	-96
1999		-207,759	203,149	-4,609	-29,772	29,762	-10	-4,287	4,557	270
2000		-265,124	261,923	-3,201	-22,692	21,732	-960	-15,301	14,758	-543
2001		-348,017	344,663	-3,354	-12,090	13,205	1,116	-9,093	8,717	-375
2002		-479,686	476,379	-3,307	-34,514	28,371	-6,143	-8,523	8,411	-112
2003		-445,757	440,935	-4,822	-38,563	33,204	-5,359	-6,439	6,199	-240
2001	IV	-104,035	103,642	-393	-3,277	4,442	1,165	-957	790	-166
2002	I	-91,025	89,334	-1,691	-4,962	4,117	-844	-2,166	1,728	-438
	II	-114,639	111,774	-2,865	-9,759	9,185	-574	-1,867	1,725	-141
	III	-150,975	150,627	-348	-10,854	8,588	-2,266	-2,294	2,398	104
	IV	-123,046	124,643	1,597	-8,939	6,481	-2,458	-2,196	2,560	364
2003	I	-93,962	93,921	-41	-11,705	8,973	-2,732	-2,022	1,818	-204
	II	-123,554	120,831	-2,722	-10,456	9,960	-496	-885	1,316	431
	III	-131,624	130,728	-896	-8,418	7,818	-601	-1,605	2,044	439
	IV	-96,617	95,455	-1,162	-7,985	6,454	-1,531	-1,927	1,021	-907
2001	D	-35,860	32,255	-3,605	-1,097	1,583	486	-112	226	114
2002	J	-33,174	34,837	1,663	-1,953	1,433	-520	-798	426	-371
	F	-27,689	23,930	-3,760	-1,674	1,669	-4	-470	379	-91
	M	-30,161	30,567	406	-1,335	1,015	-320	-898	922	24
	A	-36,268	35,206	-1,062	-3,301	2,497	-803	-911	1,121	210
	M	-41,555	40,409	-1,146	-2,988	3,524	536	-490	287	-202
	J	-36,816	36,159	-657	-3,470	3,164	-307	-466	317	-149
	J	-65,598	64,230	-1,368	-3,834	3,213	-621	-352	1,091	739
	A	-47,764	49,715	1,951	-5,068	3,712	-1,356	-766	800	34
	S	-37,614	36,682	-931	-1,952	1,663	-290	-1,176	507	-669
	O	-46,444	50,164	3,721	-2,341	1,624	-717	-851	639	-212
	N	-47,463	44,024	-3,439	-3,492	3,491	-2	-762	709	-53
	D	-29,139	30,455	1,315	-3,106	1,367	-1,739	-583	1,212	629
2003	J	-28,617	28,824	207	-3,253	2,603	-650	-525	422	-103
	F	-30,843	30,648	-195	-3,348	2,225	-1,123	-948	840	-108
	M	-34,502	34,449	-53	-5,104	4,145	-959	-549	557	8
	A	-36,590	35,929	-661	-3,544	2,582	-962	-206	304	99
	M	-39,103	37,556	-1,547	-2,743	3,226	484	-368	347	-21
	J	-47,861	47,347	-514	-4,169	4,151	-18	-312	665	353
	J	-46,269	43,748	-2,521	-3,100	3,017	-84	-211	611	400
	A	-45,873	44,983	-889	-2,205	2,009	-196	-643	329	-314
	S	-39,482	41,997	2,514	-3,113	2,792	-321	-751	1,105	354
	O	-36,577	37,071	494	-3,565	3,098	-467	-902	350	-552
	N	-28,422	28,189	-233	-2,016	1,566	-450	-293	206	-87
	D	-31,617	30,194	-1,423	-2,404	1,790	-613	-733	464	-268

**Table 11**  
**Portfolio Transactions with Non-residents in Foreign Bonds, by Geographical Area, Purchases and Sales -**  
**Concluded**

Period	Japan			Other OECD Countries			All Other Countries			Total		
	Purchases	Sales	Net	Purchases	Sales	Net	Purchases	Sales	Net	Purchases	Sales	Net
V No. A	115186	115187	115185	115189	115190	115188	115192	115193	115191	113133	113134	113132
Q	115335	115336	115334	115338	115339	115337	115341	115342	115340	113305	113306	113304
M	115484	115485	115483	115487	115488	115486	115490	115491	115489	113447	113448	113446
millions of dollars												
1991	-367	582	215	-18	12	-6	-643	1,031	389	-54,494	52,833	-1,661
1992	-575	1,259	684	-38	59	22	-527	788	261	-80,577	79,176	-1,401
1993	-1,014	1,056	42	-134	311	177	-1,151	1,410	259	-78,658	73,588	-5,071
1994	-2,047	2,129	82	-168	289	121	-974	1,258	283	-134,369	134,803	435
1995	-2,809	2,335	-475	-218	174	-44	-2,275	2,219	-56	-159,914	158,830	-1,085
1996	-3,571	2,783	-787	-138	440	301	-2,926	3,240	314	-221,467	219,397	-2,070
1997	-3,523	942	-2,581	-156	192	36	-5,144	7,186	2,042	-248,518	241,876	-6,642
1998	-1,795	553	-1,243	-433	587	153	-6,320	8,452	2,132	-361,203	354,139	-7,064
1999	-1,238	912	-325	-651	573	-79	-1,550	3,826	2,276	-245,256	242,778	-2,477
2000	-576	439	-137	-516	675	159	-1,958	2,677	719	-306,167	302,204	-3,963
2001	-1,239	985	-254	-776	912	136	-6,438	7,249	811	-377,653	375,732	-1,920
2002	-729	661	-68	-701	1,441	740	-3,765	6,412	2,646	-527,917	521,674	-6,243
2003	-1,043	531	-512	-1,336	1,454	118	-13,095	15,715	2,619	-506,234	498,038	-8,196
2001 IV	-464	375	-89	-100	165	65	-2,438	2,158	-280	-111,272	111,572	301
2002 I	-179	179	1	-127	191	64	-1,136	1,603	467	-99,594	97,152	-2,442
II	-249	137	-112	-301	736	435	-1,058	2,017	959	-127,872	125,574	-2,298
III	-76	140	63	-183	214	31	-769	1,713	944	-165,151	163,680	-1,472
IV	-225	205	-20	-90	300	210	-802	1,079	276	-135,300	135,268	-32
2003 I	-381	63	-318	-385	345	-40	-1,345	1,179	-166	-109,800	106,300	-3,501
II	-296	155	-140	-212	353	142	-5,013	5,136	123	-140,416	137,752	-2,664
III	-208	167	-41	-318	337	20	-4,682	5,772	1,090	-146,855	146,866	11
IV	-158	146	-12	-422	418	-4	-2,055	3,628	1,573	-109,163	107,121	-2,043
2001 D	-147	104	-44	-31	61	30	-1,133	914	-219	-38,381	35,143	-3,238
2002 J	-93	61	-32	-53	102	50	-615	934	319	-36,686	37,794	1,108
F	-18	50	33	-44	51	7	-379	329	-50	-30,273	26,408	-3,865
M	-68	68	0	-30	38	8	-143	340	197	-32,635	32,950	315
A	-210	112	-98	-143	96	-47	-256	297	41	-41,088	39,329	-1,759
M	-27	20	-7	-104	199	95	-328	993	665	-45,491	45,432	-59
J	-12	4	-8	-54	441	387	-474	728	253	-41,292	40,812	-480
J	-5	80	75	-30	58	28	-463	1,101	638	-70,282	69,773	-508
A	-36	24	-13	-41	26	-15	-113	306	193	-53,788	54,582	795
S	-35	36	1	-112	131	19	-193	306	113	-41,082	39,324	-1,758
O	-97	37	-60	-34	131	97	-332	330	-1	-50,098	52,925	2,827
N	-119	62	-57	-11	98	87	-141	341	200	-51,988	48,724	-3,264
D	-10	106	97	-45	71	26	-330	407	77	-33,213	33,618	405
2003 J	-239	12	-227	-118	231	113	-162	183	21	-32,913	32,275	-639
F	-41	30	-11	-170	56	-114	-455	427	-28	-35,805	34,226	-1,579
M	-101	22	-80	-97	58	-39	-728	568	-160	-41,082	39,799	-1,283
A	-121	28	-94	-51	61	10	-1,117	1,059	-59	-41,629	39,963	-1,666
M	-57	59	1	-52	87	35	-1,831	2,507	676	-44,154	43,781	-373
J	-117	69	-48	-109	205	96	-2,064	1,571	-494	-54,633	54,008	-625
J	-88	58	-31	-199	208	9	-1,712	1,563	-149	-51,579	49,203	-2,375
A	-84	25	-59	-50	66	16	-1,496	2,606	1,109	-50,351	50,017	-334
S	-36	84	48	-69	64	-5	-1,474	1,604	130	-44,925	47,645	2,720
O	-127	110	-17	-57	95	37	-836	1,633	797	-42,064	42,357	293
N	-10	12	3	-133	138	5	-562	1,249	687	-31,436	31,361	-76
D	-21	24	2	-232	185	-46	-656	745	89	-35,663	33,403	-2,260

**Table 12**  
**Portfolio Transactions with Non-residents in Foreign Stocks, by Geographical Area, Purchases and Sales**

Period	United States			United Kingdom			Other EU Countries		
	Purchases	Sales	Net	Purchases	Sales	Net	Purchases	Sales	Net
V No. A	115196	115197	115195	115199	115200	115198	115202	115203	115201
Q	115345	115346	115344	115348	115349	115347	115351	115352	115350
M	115494	115495	115493	115497	115498	115496	115500	115501	115499
millions of dollars									
1991	-31,222	23,397	-7,824	-2,531	1,678	-853	-1,003	898	-105
1992	-33,796	26,488	-7,308	-3,378	1,541	-1,837	-1,198	1,086	-111
1993	-47,291	41,370	-5,921	-2,639	1,491	-1,149	-2,245	1,306	-939
1994	-54,206	51,444	-2,761	-2,992	2,184	-808	-2,224	1,601	-623
1995	-63,184	60,033	-3,151	-3,637	3,656	20	-4,447	3,701	-746
1996	-71,550	61,787	-9,763	-4,379	2,931	-1,447	-4,912	3,414	-1,498
1997	-130,658	126,474	-4,184	-5,535	4,430	-1,105	-5,998	5,337	-661
1998	-126,354	113,442	-12,913	-5,744	5,420	-324	-9,814	10,610	796
1999	-197,973	176,579	-21,394	-14,327	14,378	51	-11,956	12,751	795
2000	-257,713	220,083	-37,630	-41,136	35,474	-5,661	-35,487	17,253	-18,234
2001	-223,791	200,215	-23,575	-86,707	80,295	-6,412	-16,117	14,066	-2,052
2002	-336,855	312,482	-24,373	-269,904	267,943	-1,961	-20,081	19,725	-356
2003	-227,112	228,361	1,248	-297,168	293,947	-3,221	-18,294	15,550	-2,744
2001 IV	-66,855	63,206	-3,649	-40,626	39,602	-1,024	-3,544	2,490	-1,054
2002 I	-83,614	74,308	-9,306	-40,279	41,725	1,445	-4,366	4,046	-320
II	-81,540	77,175	-4,365	-81,575	79,136	-2,438	-7,730	7,698	-32
III	-85,347	78,476	-6,870	-70,724	71,074	350	-2,915	3,245	331
IV	-86,354	82,523	-3,832	-77,327	76,009	-1,318	-5,071	4,736	-335
2003 I	-73,940	72,897	-1,043	-62,516	64,917	2,400	-3,677	3,128	-549
II	-59,791	59,189	-602	-68,209	66,986	-1,223	-6,651	6,004	-647
III	-47,540	48,689	1,149	-72,434	70,036	-2,398	-3,999	3,587	-412
IV	-45,841	47,585	1,745	-94,009	92,009	-2,000	-3,967	2,831	-1,137
2001 D	-23,992	19,909	-4,083	-15,525	15,209	-315	-1,110	891	-219
2002 J	-24,776	25,667	891	-5,116	4,396	-720	-1,301	1,387	86
F	-29,115	22,991	-6,124	-16,412	17,450	1,038	-1,201	1,084	-117
M	-29,723	25,649	-4,074	-18,751	19,878	1,127	-1,864	1,576	-288
A	-25,525	23,561	-1,964	-13,318	13,813	495	-2,951	2,477	-475
M	-28,143	28,317	173	-45,974	44,266	-1,708	-2,961	2,831	-131
J	-27,872	25,298	-2,574	-22,283	21,058	-1,225	-1,817	2,391	573
J	-29,950	27,545	-2,405	-14,841	14,626	-215	-966	1,490	523
A	-28,189	25,100	-3,089	-32,391	32,708	318	-768	773	5
S	-27,209	25,832	-1,377	-23,492	23,739	247	-1,180	983	-197
O	-31,353	31,182	-171	-21,648	21,548	-100	-2,064	1,747	-317
N	-28,506	25,751	-2,755	-23,471	22,678	-793	-1,573	1,153	-419
D	-26,495	25,590	-905	-32,207	31,783	-424	-1,434	1,836	402
2003 J	-23,521	23,580	59	-27,696	28,578	882	-1,262	1,004	-257
F	-22,381	22,113	-268	-17,969	17,926	-43	-1,137	902	-235
M	-28,038	27,204	-834	-16,851	18,413	1,561	-1,278	1,222	-56
A	-25,007	25,594	587	-15,903	16,350	447	-3,165	1,967	-1,197
M	-19,220	17,348	-1,872	-22,889	21,677	-1,212	-2,183	2,529	345
J	-15,564	16,247	683	-29,417	28,959	-458	-1,303	1,508	206
J	-15,268	17,482	2,214	-24,775	21,424	-3,352	-1,201	906	-295
A	-17,148	16,752	-396	-21,590	21,434	-156	-1,360	1,091	-269
S	-15,124	14,455	-669	-26,068	27,178	1,110	-1,437	1,590	152
O	-17,035	19,124	2,089	-38,621	37,433	-1,188	-1,286	894	-391
N	-15,076	14,283	-792	-27,900	27,959	59	-1,784	1,109	-676
D	-13,730	14,178	448	-27,488	26,617	-872	-897	827	-70

**Table 12**  
**Portfolio Transactions with Non-residents in Foreign Stocks, by Geographical Area, Purchases and Sales -**  
**Concluded**

Period	Japan			Other OECD Countries			All Other Countries			Total		
	Purchases	Sales	Net	Purchases	Sales	Net	Purchases	Sales	Net	Purchases	Sales	Net
V No. A	115205	115206	115204	115208	115209	115207	115211	115212	115210	113136	113137	113135
Q	115354	115355	115353	115357	115358	115356	115360	115361	115359	113308	113309	113307
M	115503	115504	115502	115506	115507	115505	115509	115510	115508	113450	113451	113449
millions of dollars												
1991	-1,244	715	-529	-663	530	-133	-2,724	2,166	-559	-39,388	29,384	-10,004
1992	-725	521	-204	-598	448	-150	-2,784	2,047	-737	-42,478	32,130	-10,348
1993	-1,873	726	-1,147	-824	627	-197	-7,206	3,748	-3,458	-62,079	49,268	-12,811
1994	-3,223	1,531	-1,693	-1,058	865	-194	-7,838	4,554	-3,284	-71,541	62,179	-9,362
1995	-3,062	1,874	-1,188	-2,029	1,048	-981	-6,355	6,155	-200	-82,714	76,468	-6,247
1996	-2,447	1,678	-768	-1,757	1,576	-181	-13,478	9,889	-3,588	-98,522	81,275	-17,247
1997	-4,394	4,870	476	-2,228	2,218	-10	-13,371	13,647	276	-162,184	156,977	-5,207
1998	-3,817	2,206	-1,612	-2,787	3,086	299	-15,349	13,669	-1,680	-163,865	148,433	-15,433
1999	-5,277	5,560	283	-4,242	4,274	32	-26,706	26,316	-390	-260,481	239,858	-20,623
2000	-4,973	7,097	2,124	-6,532	6,532	-1	-20,200	19,732	-468	-366,040	306,171	-59,870
2001	-5,221	4,166	-1,055	-5,644	4,529	-1,115	-13,801	12,356	-1,444	-351,281	315,628	-35,653
2002	-4,714	5,189	475	-5,674	4,552	-1,122	-28,077	36,708	8,631	-665,305	646,598	-18,707
2003	-5,467	5,455	-12	-8,665	5,784	-2,881	-36,738	40,025	3,286	-593,445	589,122	-4,323
2001 IV	-899	1,143	244	-1,097	891	-207	-3,458	3,643	186	-116,479	110,974	-5,505
2002 I	-1,318	1,082	-236	-1,610	1,092	-518	-5,762	5,704	-58	-136,949	127,956	-8,993
II	-1,131	1,095	-36	-1,427	1,361	-66	-8,427	10,798	2,371	-181,829	177,262	-4,567
III	-678	1,118	441	-1,002	736	-265	-5,613	9,378	3,764	-166,278	164,028	-2,250
IV	-1,588	1,894	306	-1,635	1,363	-272	-8,274	10,828	2,554	-180,249	177,352	-2,897
2003 I	-853	1,097	245	-1,217	1,255	38	-8,271	9,338	1,067	-150,474	152,633	2,159
II	-817	825	8	-2,509	1,168	-1,341	-6,400	9,658	3,258	-144,377	143,831	-546
III	-2,027	1,481	-546	-1,991	1,583	-407	-9,306	9,145	-160	-137,297	134,522	-2,775
IV	-1,770	2,052	282	-2,949	1,777	-1,171	-12,762	11,883	-879	-161,298	158,137	-3,161
2001 D	-305	373	68	-302	317	16	-1,024	860	-165	-42,257	37,559	-4,698
2002 J	-533	264	-269	-473	300	-173	-1,805	1,489	-316	-34,004	33,504	-500
F	-475	530	56	-554	376	-178	-2,253	1,912	-341	-50,010	44,344	-5,667
M	-310	287	-23	-583	416	-167	-1,704	2,303	599	-52,934	50,109	-2,826
A	-339	260	-79	-383	343	-40	-2,747	2,591	-156	-45,263	43,045	-2,218
M	-419	322	-96	-628	476	-152	-3,300	4,666	1,366	-81,424	80,876	-548
J	-373	512	139	-417	542	125	-2,381	3,541	1,160	-55,143	53,341	-1,802
J	-182	590	409	-444	393	-51	-1,282	2,671	1,389	-47,664	47,315	-350
A	-316	294	-21	-271	177	-94	-2,597	4,263	1,666	-64,531	63,315	-1,216
S	-180	234	53	-287	166	-120	-1,735	2,443	709	-54,082	53,397	-685
O	-486	551	65	-659	420	-239	-2,065	2,807	741	-58,276	58,254	-22
N	-575	773	198	-514	289	-224	-3,592	4,659	1,067	-58,231	55,303	-2,928
D	-527	570	43	-462	653	192	-2,617	3,363	746	-63,742	63,795	52
2003 J	-328	304	-24	-448	376	-72	-2,236	1,905	-331	-55,490	55,747	257
F	-183	253	69	-350	406	57	-3,463	3,802	339	-45,484	45,403	-82
M	-342	541	199	-420	473	54	-2,571	3,631	1,060	-49,500	51,483	1,983
A	-269	291	22	-330	301	-29	-2,511	3,238	728	-47,184	47,741	558
M	-306	313	7	-659	306	-353	-2,227	4,329	2,101	-47,485	46,502	-984
J	-242	221	-21	-1,520	561	-959	-1,662	2,091	429	-49,707	49,588	-120
J	-403	364	-40	-506	442	-64	-2,639	3,019	380	-44,792	43,636	-1,157
A	-693	443	-250	-664	582	-82	-3,865	3,277	-588	-45,320	43,580	-1,741
S	-931	674	-257	-821	559	-262	-2,802	2,850	48	-47,184	47,307	123
O	-1,132	1,280	148	-1,238	614	-624	-4,737	3,882	-856	-64,049	63,226	-823
N	-498	534	36	-1,397	623	-773	-4,971	5,233	262	-51,626	49,742	-1,883
D	-140	238	98	-314	540	226	-3,054	2,768	-286	-45,624	45,169	-455

## **Supplementary Tables**

**Table 13**  
**Loans under Repurchase Agreements, Transactions with Non-residents, by Canadian and Foreign Securities**

Period	Canadian Securities								
	Assets			Liabilities			Total		
	Sales	Purchases	Net	Sales	Purchases	Net	Sales	Purchases	Net
	millions of dollars								
1996	1,156,654	-1,158,039	-1,385	639,384	-637,107	2,276	1,796,038	-1,795,146	891
1997	1,939,429	-1,952,179	-12,750	1,209,742	-1,204,877	4,865	3,149,171	-3,157,056	-7,885
1998	1,763,140	-1,746,743	16,397	1,248,719	-1,250,578	-1,859	3,011,859	-2,997,321	14,538
1999	1,264,495	-1,260,766	3,729	611,068	-611,198	-130	1,875,563	-1,871,963	3,599
2000	1,069,882	-1,070,113	-231	522,128	-520,156	1,972	1,592,010	-1,590,268	1,742
2001	676,252	-676,945	-694	655,136	-656,700	-1,564	1,331,388	-1,333,645	-2,257
2002	526,098	-529,875	-3,777	873,344	-867,807	5,537	1,399,442	-1,397,682	1,760
2003	732,914	-730,904	2,010	1,136,897	-1,133,193	3,705	1,869,812	-1,864,097	5,715
2001 IV	144,710	-146,418	-1,708	161,190	-161,671	-481	305,900	-308,088	-2,189
2002 I	115,054	-118,623	-3,568	186,067	-183,194	2,873	301,121	-301,817	-695
II	109,563	-106,584	2,979	213,957	-217,048	-3,091	323,520	-323,632	-112
III	148,954	-150,839	-1,884	237,829	-233,989	3,839	386,783	-384,828	1,955
IV	152,527	-153,830	-1,303	235,491	-233,575	1,916	388,018	-387,405	613
2003 I	198,401	-201,145	-2,744	277,500	-276,053	1,447	475,901	-477,198	-1,297
II	166,459	-163,550	2,908	287,705	-290,392	-2,687	454,164	-453,943	221
III	178,689	-180,611	-1,922	293,411	-293,691	-280	472,100	-474,302	-2,202
IV	189,365	-185,598	3,767	278,281	-273,056	5,225	467,646	-458,654	8,992
2001 D	40,611	-42,687	-2,076	57,342	-55,315	2,027	97,952	-98,002	-50
2002 J	38,786	-39,991	-1,206	57,450	-56,744	705	96,235	-96,736	-500
F	31,767	-30,416	1,351	65,125	-65,804	-679	96,892	-96,221	672
M	44,502	-48,215	-3,714	63,492	-60,646	2,847	107,994	-108,861	-867
A	35,371	-30,568	4,804	76,369	-79,001	-2,631	111,741	-109,568	2,173
M	32,730	-31,453	1,277	69,209	-71,498	-2,289	101,938	-102,950	-1,012
J	41,462	-44,564	-3,102	68,379	-66,550	1,829	109,841	-111,114	-1,273
J	48,295	-46,892	1,402	79,656	-79,375	281	127,951	-126,267	1,684
A	44,898	-44,767	132	71,883	-69,882	2,001	116,781	-114,648	2,133
S	55,761	-59,179	-3,418	86,289	-84,733	1,556	142,051	-143,912	-1,862
O	67,430	-66,815	615	87,943	-88,087	-144	155,373	-154,901	472
N	46,289	-43,949	2,339	65,203	-69,844	-4,641	111,491	-113,793	-2,302
D	38,808	-43,066	-4,258	82,346	-75,645	6,701	121,154	-118,711	2,443
2003 J	55,050	-55,837	-787	86,733	-87,342	-608	141,783	-143,178	-1,395
F	59,781	-58,542	1,240	83,221	-84,607	-1,386	143,002	-143,148	-146
M	83,570	-86,766	-3,196	107,546	-104,105	3,441	191,116	-190,871	244
A	63,530	-60,028	3,502	90,599	-94,058	-3,458	154,129	-154,086	44
M	56,354	-51,059	5,295	81,703	-86,189	-4,486	138,057	-137,248	809
J	46,575	-52,463	-5,888	115,403	-110,146	5,257	161,978	-162,609	-631
J	72,700	-74,456	-1,756	106,499	-102,112	4,387	179,199	-176,568	2,631
A	48,694	-46,677	2,016	89,250	-90,487	-1,237	137,944	-137,164	780
S	57,296	-59,478	-2,182	97,661	-101,092	-3,431	154,957	-160,570	-5,612
O	63,681	-64,359	-678	100,487	-96,786	3,702	164,168	-161,144	3,024
N	56,756	-50,838	5,918	76,301	-82,356	-6,055	133,057	-133,194	-138
D	68,929	-70,402	-1,473	101,492	-93,914	7,578	170,422	-164,316	6,106



**Table 13**  
**Loans under Repurchase Agreements, Transactions with Non-residents, by Canadian and Foreign Securities**  
 - Concluded

Period	Foreign Securities								
	Assets			Liabilities			Total		
	Sales	Purchases	Net	Sales	Purchases	Net	Sales	Purchases	Net
	millions of dollars								
1996	288,577	-287,744	833	94,759	-92,948	1,811	383,336	-380,692	2,644
1997	138,829	-139,923	-1,094	79,890	-81,283	-1,392	218,720	-221,206	-2,486
1998	89,541	-89,619	-79	81,845	-82,178	-333	171,386	-171,797	-411
1999	138,123	-138,016	107	104,832	-104,544	288	242,955	-242,561	394
2000	158,151	-158,302	-152	106,230	-105,657	573	264,381	-263,960	421
2001	143,503	-144,093	-590	154,178	-155,954	-1,776	297,681	-300,047	-2,366
2002	258,124	-260,154	-2,030	273,748	-274,612	-865	531,872	-534,766	-2,894
2003	281,591	-280,595	995	284,903	-284,469	434	566,494	-565,064	1,430
2001 IV	57,031	-57,677	-646	57,342	-57,916	-575	114,372	-115,593	-1,221
2002 I	49,999	-50,871	-871	42,931	-43,824	-893	92,930	-94,694	-1,764
II	53,777	-53,093	684	77,771	-76,769	1,002	131,548	-129,861	1,687
III	74,409	-75,917	-1,507	93,757	-94,779	-1,022	168,166	-170,695	-2,529
IV	79,939	-80,274	-336	59,289	-59,241	48	139,227	-139,515	-288
2003 I	71,331	-71,673	-342	75,057	-73,689	1,367	146,388	-145,362	1,025
II	88,500	-87,114	1,386	88,954	-89,382	-427	177,454	-176,495	959
III	56,665	-56,018	647	79,699	-79,441	258	136,364	-135,459	905
IV	65,095	-65,790	-695	41,193	-41,957	-764	106,287	-107,747	-1,460
2001 D	24,074	-23,637	437	16,326	-16,095	231	40,400	-39,732	668
2002 J	18,172	-19,587	-1,414	11,185	-12,319	-1,134	29,358	-31,905	-2,548
F	17,236	-17,560	-324	14,823	-14,526	297	32,059	-32,086	-27
M	14,591	-13,724	867	16,923	-16,979	-56	31,514	-30,703	811
A	14,388	-14,589	-201	22,327	-22,198	129	36,715	-36,787	-72
M	15,488	-15,458	29	21,101	-21,124	-23	36,589	-36,582	7
J	23,901	-23,045	856	34,343	-33,447	896	58,244	-56,492	1,752
J	31,566	-31,858	-292	45,152	-44,665	487	76,718	-76,522	196
A	23,311	-22,757	554	28,360	-29,196	-836	51,671	-51,954	-283
S	19,533	-21,302	-1,769	20,244	-20,918	-673	39,777	-42,219	-2,442
O	28,139	-28,913	-774	15,883	-16,262	-379	44,022	-45,175	-1,153
N	24,120	-24,101	19	23,690	-23,320	370	47,810	-47,421	389
D	27,680	-27,260	419	19,716	-19,659	57	47,396	-46,920	476
2003 J	19,415	-19,595	-180	18,462	-18,018	444	37,877	-37,613	264
F	26,037	-26,446	-408	28,355	-28,243	112	54,392	-54,689	-297
M	25,879	-25,633	246	28,240	-27,428	812	54,118	-53,060	1,058
A	28,841	-27,895	946	29,708	-29,945	-237	58,550	-57,840	709
M	31,161	-31,161	0	33,266	-33,361	-95	64,427	-64,522	-95
J	28,498	-28,058	440	25,980	-26,075	-95	54,478	-54,133	345
J	22,376	-22,452	-76	37,991	-38,748	-757	60,367	-61,200	-833
A	15,209	-14,094	1,115	25,599	-24,686	913	40,809	-38,780	2,029
S	19,080	-19,472	-393	16,109	-16,007	102	35,188	-35,479	-291
O	26,418	-27,321	-903	12,897	-13,826	-929	39,315	-41,147	-1,832
N	21,266	-21,495	-229	11,510	-11,607	-97	32,775	-33,102	-327
D	17,411	-16,975	437	16,786	-16,524	262	34,197	-33,499	698

**Table 14**  
**Loans under Repurchase Agreements, Transactions with Non-residents in Assets and Liabilities**

Period	Government of Canada						Other Canadian Securities			Foreign Securities			Total			
	Bonds			Treasury Bills			Purchases	Sales	Net	Purchases	Sales	Net	Purchases	Sales	Net	
	Purchases	Sales	Net	Purchases	Sales	Net										
	<b>Assets</b>															
V No.	A	113104	113103	113102	113107	113106	113105	113110	113109	113108	113113	113112	113111	113115	113114	113101
	Q	113276	113275	113274	113279	113278	113277	113282	113281	113280	113285	113284	113283	113287	113286	113273
	M	113475	113474	113473	113478	113477	113476	113481	113480	113479	113484	113483	113482	113486	113485	113472
		millions of dollars														
1996		-1,079,203	1,077,382	-1,821	-65,538	65,932	394	-13,299	13,340	42	-287,744	288,577	833	-1,445,784	1,445,231	-552
1997		-1,726,139	1,714,998	-11,141	-194,417	193,942	-474	-31,624	30,489	-1,135	-139,923	138,829	-1,094	-2,092,102	2,078,258	-13,844
1998		-1,665,277	1,680,951	15,674	-61,564	63,290	1,726	-19,902	18,899	-1,003	-89,619	89,541	-79	-1,836,362	1,852,681	16,319
1999		-1,148,452	1,153,431	4,980	-73,300	73,875	574	-39,014	37,189	-1,825	-138,016	138,123	107	-1,398,782	1,402,618	3,836
2000		-1,019,010	1,019,383	373	-21,813	21,714	-98	-29,290	28,785	-506	-158,302	158,151	-152	-1,228,415	1,228,033	-382
2001		-638,372	639,489	1,117	-12,741	11,360	-1,381	-25,833	25,403	-430	-144,093	143,503	-590	-821,039	819,755	-1,284
2002		-469,256	464,010	-5,245	-24,634	25,778	1,144	-35,985	36,310	325	-260,154	258,124	-2,030	-790,029	784,223	-5,807
2003		-651,293	653,594	2,302	-24,263	23,741	-522	-55,349	55,580	231	-280,595	281,591	995	-1,011,499	1,014,505	3,006
2001	IV	-125,011	124,469	-542	-11,144	10,209	-935	-10,263	10,031	-231	-57,677	57,031	-646	-204,094	201,740	-2,354
2002	I	-104,251	99,491	-4,760	-6,773	7,555	781	-7,598	8,009	410	-50,871	49,999	-871	-169,493	165,053	-4,440
	II	-93,255	96,914	3,659	-7,122	6,412	-710	-6,207	6,237	30	-53,093	53,777	684	-159,677	163,340	3,663
	III	-137,083	135,407	-1,676	-4,094	5,110	1,016	-9,661	8,438	-1,224	-75,917	74,409	-1,507	-226,755	223,364	-3,391
	IV	-134,667	132,199	-2,468	-6,645	6,701	56	-12,518	13,626	1,108	-80,274	79,939	-336	-234,104	232,465	-1,639
2003	I	-184,457	181,972	-2,485	-4,368	4,338	-30	-12,320	12,091	-229	-71,673	71,331	-342	-272,818	269,732	-3,086
	II	-150,725	154,900	4,175	-5,365	5,444	79	-7,460	6,115	-1,346	-87,114	88,500	1,386	-250,664	254,959	4,294
	III	-161,465	159,285	-2,180	-6,802	6,516	-286	-12,344	12,888	545	-56,018	56,665	647	-236,629	235,354	-1,275
	IV	-154,646	157,437	2,791	-7,727	7,443	-284	-23,225	24,485	1,260	-65,790	65,095	-695	-251,389	254,460	3,072
2001	D	-34,828	33,515	-1,313	-4,775	4,178	-597	-3,084	2,917	-166	-23,637	24,074	437	-66,324	64,685	-1,640
2002	J	-31,467	29,331	-2,135	-5,888	6,497	609	-2,636	2,957	321	-19,587	18,172	-1,414	-59,578	56,958	-2,620
	F	-27,830	28,923	1,093	-80	444	364	-2,506	2,400	-106	-17,560	17,236	-324	-47,976	49,003	1,027
	M	-44,954	41,237	-3,718	-805	613	-192	-2,456	2,652	196	-13,724	14,591	867	-61,939	59,092	-2,847
	A	-25,249	30,382	5,133	-2,272	2,073	-200	-3,046	2,917	-130	-14,589	14,388	-201	-45,157	49,759	4,603
	M	-26,905	28,261	1,357	-3,081	2,936	-146	-1,467	1,533	66	-15,458	15,488	29	-46,911	48,217	1,306
	J	-41,101	38,270	-2,831	-1,768	1,404	-364	-1,695	1,788	93	-23,045	23,901	856	-67,609	65,364	-2,245
	J	-43,277	43,588	311	-1,541	2,522	981	-2,075	2,185	110	-31,858	31,566	-292	-78,750	79,860	1,110
	A	-40,732	40,474	-258	-1,240	1,375	135	-2,795	3,049	254	-22,757	23,311	554	-67,524	68,209	685
	S	-53,075	51,345	-1,730	-1,314	1,213	-100	-4,791	3,203	-1,588	-21,302	19,533	-1,769	-80,481	75,294	-5,187
	O	-57,078	57,227	149	-2,897	2,670	-227	-6,840	7,533	693	-28,913	28,139	-774	-95,728	95,569	-159
	N	-38,900	41,453	2,553	-1,919	1,470	-449	-3,130	3,365	235	-24,101	24,120	19	-68,050	70,409	2,358
	D	-38,688	33,518	-5,170	-1,829	2,561	732	-2,548	2,728	180	-27,260	27,680	419	-70,326	66,488	-3,839
2003	J	-48,837	48,514	-322	-1,085	614	-470	-5,915	5,921	6	-19,595	19,415	-180	-75,431	74,465	-967
	F	-55,301	56,537	1,236	-296	491	195	-2,944	2,753	-192	-26,446	26,037	-408	-84,987	85,819	832
	M	-80,319	76,920	-3,399	-2,987	3,232	245	-3,460	3,417	-43	-25,633	25,879	246	-112,399	109,448	-2,951
	A	-55,464	58,758	3,294	-2,548	2,443	-105	-2,016	2,328	312	-27,895	28,841	946	-87,923	92,371	4,448
	M	-47,245	52,251	5,007	-2,527	2,736	209	-1,287	1,366	79	-31,161	31,161	0	-82,219	87,515	5,295
	J	-48,017	43,890	-4,126	-290	264	-26	-4,157	2,421	-1,736	-28,058	28,498	440	-80,522	75,073	-5,449
	J	-66,165	63,758	-2,407	-2,312	2,404	92	-5,979	6,537	558	-22,452	22,376	-76	-96,908	95,076	-1,832
	A	-42,393	44,615	2,223	-2,897	2,651	-246	-1,388	1,428	40	-14,094	15,209	1,115	-60,771	63,903	3,132
	S	-52,907	50,912	-1,996	-1,594	1,461	-133	-4,977	4,924	-53	-19,472	19,080	-393	-78,950	76,376	-2,575
	O	-57,444	57,109	-335	-381	430	49	-6,534	6,142	-392	-27,321	26,418	-903	-91,679	90,098	-1,581
	N	-41,461	47,429	5,968	-3,375	3,015	-360	-6,002	6,311	309	-21,495	21,266	-229	-72,333	78,021	5,689
	D	-55,741	52,898	-2,842	-3,971	3,998	27	-10,690	12,033	1,343	-16,975	17,411	437	-87,376	86,341	-1,036

**Table 14**  
**Loans under Repurchase Agreements, Transactions with Non-residents in Assets and Liabilities - Concluded**

Period	Government of Canada						Other Canadian Securities			Foreign Securities			Total			
	Bonds			Treasury Bills			Sales	Purchases	Net	Sales	Purchases	Net	Sales	Purchases	Net	
	Sales	Purchases	Net	Sales	Purchases	Net										
<b>Liabilities</b>																
V No.	A	113118	113119	113117	113121	113122	113120	113124	113125	113123	113127	113128	113126	113129	113130	113116
	Q	113290	113291	113289	113293	113294	113292	113296	113297	113295	113299	113300	113298	113301	113302	113288
	M	113489	113490	113488	113492	113493	113491	113495	113496	113494	113498	113499	113497	113500	113501	113487
millions of dollars																
1996		609,631	-607,714	1,918	27,955	-27,653	302	1,798	-1,741	57	94,759	-92,948	1,811	734,142	-730,055	4,088
1997		1,098,201	-1,094,328	3,873	109,134	-107,258	1,876	2,407	-3,291	-884	79,890	-81,283	-1,392	1,289,632	-1,286,159	3,473
1998		1,102,789	-1,102,977	-188	143,910	-144,306	-396	2,020	-3,295	-1,275	81,845	-82,178	-333	1,330,564	-1,332,756	-2,192
1999		586,226	-585,920	306	18,471	-17,405	1,066	6,371	-7,873	-1,502	104,832	-104,544	288	715,900	-715,742	158
2000		490,097	-486,514	3,583	17,857	-18,798	-941	14,174	-14,843	-669	106,230	-105,657	573	628,358	-625,813	2,545
2001		615,126	-616,614	-1,488	14,745	-14,915	-170	25,266	-25,171	95	154,178	-155,954	-1,776	809,314	-812,654	-3,339
2002		725,613	-720,979	4,634	41,999	-41,564	434	105,732	-105,263	469	273,748	-274,612	-865	1,147,091	-1,142,419	4,673
2003		929,521	-929,310	211	43,613	-42,417	1,196	163,763	-161,466	2,298	284,903	-284,469	434	1,421,800	-1,417,661	4,139
2001	IV	146,909	-147,491	-582	4,982	-5,104	-122	9,299	-9,076	223	57,342	-57,916	-575	218,532	-219,587	-1,055
2002	I	171,601	-168,890	2,711	7,258	-7,172	86	7,208	-7,132	76	42,931	-43,824	-893	228,998	-227,018	1,981
	II	192,910	-196,476	-3,566	14,275	-13,910	365	6,772	-6,662	110	77,771	-76,769	1,002	291,728	-293,817	-2,089
	III	191,192	-187,843	3,349	7,277	-7,615	-339	39,360	-38,530	829	93,757	-94,779	-1,022	331,585	-328,768	2,817
	IV	169,910	-167,769	2,140	13,189	-12,867	322	52,392	-52,939	-546	59,289	-59,241	48	294,780	-292,816	1,964
2003	I	228,692	-227,489	1,204	9,778	-9,705	73	39,030	-38,860	171	75,057	-73,689	1,367	352,557	-349,742	2,814
	II	255,114	-257,536	-2,422	9,937	-9,966	-29	22,655	-22,890	-235	88,954	-89,382	-427	376,660	-379,774	-3,114
	III	252,698	-253,376	-678	4,991	-5,030	-38	35,722	-35,285	436	79,699	-79,441	258	373,110	-373,132	-22
	IV	193,017	-190,909	2,108	18,907	-17,716	1,191	66,357	-64,431	1,926	41,193	-41,957	-764	319,473	-315,013	4,461
2001	D	53,599	-51,180	2,419	1,167	-1,788	-621	2,575	-2,347	229	16,326	-16,095	231	73,668	-71,410	2,258
2002	J	50,772	-50,329	442	4,822	-4,395	426	1,856	-2,020	-163	11,185	-12,319	-1,134	68,635	-69,063	-428
	F	60,769	-61,008	-239	2,169	-2,599	-430	2,188	-2,198	-10	14,823	-14,526	297	79,948	-80,330	-382
	M	60,060	-57,553	2,507	268	-178	90	3,164	-2,915	249	16,923	-16,979	-56	80,415	-77,625	2,790
	A	73,248	-75,908	-2,661	568	-563	4	2,554	-2,529	25	22,327	-22,198	129	98,697	-101,199	-2,502
	M	63,434	-67,526	-4,092	3,286	-1,707	1,578	2,489	-2,265	224	21,101	-21,124	-23	90,310	-92,621	-2,312
	J	56,229	-53,042	3,187	10,421	-11,639	-1,218	1,729	-1,868	-140	34,343	-33,447	896	102,722	-99,997	2,725
	J	71,078	-70,517	561	5,517	-6,005	-488	3,061	-2,853	208	45,152	-44,665	487	124,808	-124,039	769
	A	54,672	-53,343	1,329	828	-739	89	16,383	-15,799	584	28,360	-29,196	-836	100,243	-99,078	1,165
	S	65,442	-63,983	1,459	931	-871	60	19,916	-19,878	37	20,244	-20,918	-673	106,534	-105,651	883
	O	59,884	-60,879	-995	4,464	-3,698	766	23,595	-23,510	85	15,883	-16,262	-379	103,825	-104,349	-523
	N	47,599	-52,280	-4,680	2,028	-2,158	-130	15,575	-15,406	169	23,690	-23,320	370	88,892	-93,164	-4,271
	D	62,427	-54,611	7,816	6,698	-7,012	-314	13,222	-14,022	-800	19,716	-19,659	57	102,062	-95,304	6,758
2003	J	68,580	-69,681	-1,101	3,624	-3,173	451	14,529	-14,488	42	18,462	-18,018	444	105,195	-105,360	-165
	F	65,458	-67,820	-2,362	4,767	-3,915	852	12,996	-12,872	124	28,355	-28,243	112	111,576	-112,850	-1,274
	M	94,655	-89,988	4,666	1,387	-2,617	-1,230	11,505	-11,500	5	28,240	-27,428	812	135,786	-131,533	4,253
	A	77,577	-81,684	-4,107	2,097	-1,759	338	10,925	-10,615	310	29,708	-29,945	-237	120,308	-124,003	-3,695
	M	75,069	-79,131	-4,061	2,569	-2,643	-74	4,065	-4,416	-351	33,266	-33,361	-95	114,969	-119,550	-4,581
	J	102,468	-96,722	5,746	5,270	-5,565	-294	7,665	-7,860	-195	25,980	-26,075	-95	141,383	-136,221	5,162
	J	94,079	-90,863	3,216	1,756	-1,427	329	10,665	-9,822	842	37,991	-38,748	-757	144,491	-140,861	3,630
	A	76,417	-77,476	-1,059	1,344	-1,647	-303	11,489	-11,364	126	25,599	-24,686	913	114,850	-115,173	-323
	S	82,202	-85,037	-2,835	1,891	-1,956	-64	13,568	-14,099	-531	16,109	-16,007	102	113,770	-117,099	-3,329
	O	74,702	-72,892	1,809	3,064	-2,366	698	22,722	-21,527	1,195	12,897	-13,826	-929	113,385	-110,611	2,773
	N	49,616	-56,640	-7,024	5,006	-4,520	486	21,679	-21,196	483	11,510	-11,607	-97	87,811	-93,964	-6,153
	D	68,699	-61,377	7,323	10,837	-10,829	8	21,956	-21,708	248	16,786	-16,524	262	118,278	-110,438	7,840

**Table 15**  
**Portfolio Investment in Canadian Bonds, by Sector, Period-end Positions held by Non-residents**

End of period	All Governments and their enterprises							Corporations	Total		
	Federal Government			Provincial Governments			Municipal Governments			Total	
	Direct	Enterprises	Total	Direct	Enterprises	Total					
V No. A	236511	236512	236510	236514	236515	236513	236516	..	236517	236509	
V No. M	21241183	21241182	21241181	21241186	21241185	21241184	21241187	..	21241188	21241180	
millions of dollars											
1991	64,159	9,508	73,667	53,712	32,308	86,020	4,695	164,382	51,173	215,555	
1992	68,659	9,695	78,354	69,573	33,603	103,176	4,999	186,529	57,647	244,176	
1993	77,491	11,320	88,810	89,972	35,730	125,703	5,396	219,909	64,231	284,140	
1994	75,698	12,995	88,693	109,748	41,396	151,143	6,030	245,867	71,004	316,871	
1995	87,588	11,092	98,680	115,119	39,763	154,882	6,291	259,853	81,845	341,698	
1996	95,885	11,249	107,133	116,781	37,745	154,526	6,238	267,897	89,954	357,852	
1997	92,761	11,933	104,694	114,266	35,527	149,793	5,962	260,449	107,450	367,898	
1998	89,126	13,498	102,624	125,074	37,597	162,671	6,112	271,406	134,366	405,772	
1999	91,131	15,017	106,148	112,496	30,973	143,469	5,434	255,051	134,341	389,392	
2000	81,198	14,059	95,257	105,003	29,906	134,909	4,995	235,162	136,684	371,846	
2001	74,717	16,453	91,170	108,371	27,583	135,954	4,606	231,731	189,621	421,351	
2002	79,336	28,315	107,651	112,018	24,628	136,646	3,731	248,027	195,649	443,676	
2003	58,368	36,447	94,815	101,724	19,478	121,201	3,079	219,096	185,870	404,966	
2001	D	74,717	16,453	91,170	108,371	27,583	135,954	4,606	231,731	189,621	421,351
2002	J	72,627	17,080	89,707	107,034	27,089	134,123	4,472	228,303	190,920	419,223
	F	73,792	19,862	93,654	107,881	26,671	134,552	4,493	232,699	192,883	425,582
	M	74,036	20,419	94,455	107,047	26,526	133,573	4,447	232,475	195,416	427,891
	A	74,188	18,972	93,160	106,180	25,999	132,179	4,481	229,820	195,323	425,144
	M	73,839	18,147	91,986	106,360	24,780	131,140	4,147	227,273	192,277	419,549
	J	72,493	22,109	94,602	104,422	24,017	128,439	4,200	227,241	192,876	420,117
	J	74,073	22,884	96,957	107,050	24,535	131,585	4,153	232,695	200,587	433,282
	A	77,025	23,705	100,731	105,773	24,198	129,971	4,163	234,865	196,050	430,915
	S	75,056	26,272	101,327	107,849	24,626	132,475	4,199	238,002	201,274	439,275
	O	80,185	26,565	106,749	107,129	24,119	131,248	3,741	241,738	195,603	437,341
	N	82,297	25,848	108,145	108,974	24,287	133,262	3,784	245,191	195,505	440,696
	D	79,336	28,315	107,651	112,018	24,628	136,646	3,731	248,027	195,649	443,676
2003	J	79,804	27,495	107,298	104,628	23,770	128,398	3,787	239,483	190,523	430,006
	F	82,375	28,078	110,453	104,757	22,408	127,165	4,069	241,687	185,867	427,554
	M	82,391	30,453	112,844	105,440	22,107	127,548	3,816	244,207	187,880	432,088
	A	83,994	30,050	114,044	106,426	21,391	127,817	3,834	245,694	184,023	429,717
	M	86,108	28,263	114,370	105,456	20,817	126,273	3,443	244,086	179,917	424,003
	J	78,972	32,927	111,899	103,294	20,518	123,812	3,420	239,131	178,519	417,651
	J	73,480	34,144	107,624	106,176	20,839	127,015	3,325	237,964	186,835	424,798
	A	67,132	33,129	100,261	104,389	20,250	124,638	3,309	228,209	184,692	412,901
	S	63,089	35,079	98,168	103,982	19,846	123,828	3,178	225,174	183,095	408,269
	O	61,473	34,563	96,036	101,970	19,499	121,469	3,180	220,685	182,474	403,160
	N	62,990	33,749	96,739	102,136	19,366	121,502	3,093	221,334	183,263	404,597
	D	58,368	36,447	94,815	101,724	19,478	121,201	3,079	219,096	185,870	404,966

**Table 16**  
**Portfolio Investment in Canadian Bonds, by Geographical Area, Period-end Positions held by Non-residents**

End of period	United States	United Kingdom	Other EU Countries	Japan	Other OECD Countries	Other Countries	Total
V No. A	235438	235460	235504	235526	235548	235570	235413
V No. M	21241195	21241194	21241193	21241192	21241191	21241190	21241189
millions of dollars							
1991	68,088	21,502	33,165	45,047	33,290	14,462	215,555
1992	89,664	19,247	35,444	50,269	32,797	16,755	244,176
1993	115,927	26,371	41,315	47,906	33,811	18,810	284,140
1994	132,430	27,449	49,104	45,455	37,192	25,241	316,871
1995	146,504	33,598	50,012	44,464	38,454	28,667	341,698
1996	165,812	35,118	49,211	46,160	33,558	27,993	357,852
1997	179,873	34,888	48,051	45,366	30,564	29,156	367,898
1998	195,133	37,705	59,655	45,021	34,194	34,063	405,772
1999	194,794	37,024	54,559	41,313	31,141	30,561	389,392
2000	195,126	38,424	48,569	35,907	26,794	27,026	371,846
2001	244,466	44,082	51,872	34,163	23,823	22,946	421,351
2002	260,759	51,052	54,090	31,946	23,118	22,710	443,676
2003	229,684	50,531	53,636	31,616	18,219	21,280	404,966
2001 D	244,466	44,082	51,872	34,163	23,823	22,946	421,351
2002 J	245,586	44,509	50,146	32,918	23,160	22,903	419,223
F	249,242	45,913	50,622	33,051	23,453	23,301	425,582
M	252,376	44,816	51,299	33,040	23,341	23,019	427,891
A	251,668	43,902	51,261	32,474	23,243	22,596	425,144
M	245,885	45,340	51,377	32,131	22,517	22,299	419,549
J	245,884	47,226	52,140	30,714	22,308	21,845	420,117
J	256,108	48,584	52,554	30,851	22,762	22,422	433,282
A	252,221	49,772	53,167	30,618	22,508	22,630	430,915
S	259,752	49,632	53,955	30,777	22,699	22,461	439,275
O	256,096	50,868	53,884	31,607	22,344	22,542	437,341
N	258,459	52,542	52,742	31,564	22,533	22,855	440,696
D	260,759	51,052	54,090	31,946	23,118	22,710	443,676
2003 J	250,115	52,992	52,213	30,147	21,636	22,903	430,006
F	250,262	54,169	49,939	29,241	21,331	22,612	427,554
M	249,694	57,147	51,799	29,076	21,482	22,890	432,088
A	247,111	57,357	51,742	29,554	21,219	22,734	429,717
M	243,477	54,018	52,612	31,213	20,458	22,225	424,003
J	238,172	52,557	52,922	31,471	20,304	22,225	417,651
J	242,694	54,871	52,017	32,258	20,230	22,729	424,798
A	235,723	52,225	50,588	33,063	18,785	22,517	412,901
S	229,403	52,586	52,727	32,075	18,670	22,809	408,269
O	226,366	52,415	51,499	31,923	18,340	22,615	403,160
N	227,905	51,789	52,138	32,068	18,196	22,501	404,597
D	229,684	50,531	53,636	31,616	18,219	21,280	404,966

**Table 17**  
**Portfolio Investment in Canadian Money Market Instruments, by Sector, Period-end Positions held by Non-residents**

End of period	All Governments and their enterprises						Total	Corporations	Total	
	Federal Government			Provincial Governments						
	Direct	Enterprises	Total	Direct	Enterprises	Total				
V No. A	235620	235621	235619	235623	235624	235622	..	235625	235618	
V No. M	21241199	21241198	21241197	21241202	21241201	21241200	..	21241203	21241196	
millions of dollars										
1991	19,781	5,898	25,680	2,988	327	3,315	28,995	1,540	30,534	
1992	21,700	6,105	27,805	4,678	429	5,107	32,912	3,192	36,104	
1993	32,792	5,716	38,508	4,908	576	5,483	43,991	1,910	45,901	
1994	35,843	5,309	41,152	3,924	634	4,558	45,710	1,819	47,529	
1995	30,706	5,171	35,877	4,421	773	5,194	41,072	3,041	44,113	
1996	24,277	5,241	29,518	3,520	725	4,245	33,762	4,371	38,134	
1997	21,744	7,082	28,827	1,904	1,865	3,768	32,595	7,906	40,501	
1998	19,298	8,972	28,270	3,427	1,420	4,847	33,117	8,152	41,269	
1999	12,721	7,110	19,831	3,496	310	3,806	23,637	4,038	27,675	
2000	11,587	6,610	18,197	4,545	0	4,545	22,743	5,219	27,961	
2001	7,439	6,782	14,222	3,586	24	3,610	17,831	3,632	21,464	
2002	9,419	7,198	16,617	3,446	15	3,461	20,078	5,111	25,189	
2003	10,254	5,371	15,624	1,633	4	1,637	17,261	3,350	20,611	
2001	D	7,439	6,782	14,222	3,586	24	3,610	17,831	3,632	21,464
2002	J	6,982	7,267	14,249	3,482	29	3,511	17,760	4,030	21,789
	F	6,813	7,602	14,415	3,863	20	3,883	18,298	3,242	21,540
	M	7,270	8,246	15,516	3,557	15	3,572	19,088	3,683	22,771
	A	6,996	8,127	15,123	4,013	14	4,027	19,150	3,436	22,587
	M	7,479	7,605	15,083	4,290	4	4,294	19,378	3,137	22,515
	J	8,159	7,146	15,305	4,036	81	4,117	19,423	3,457	22,880
	J	8,527	6,981	15,508	3,847	83	3,930	19,438	3,851	23,289
	A	8,205	6,367	14,572	3,657	92	3,749	18,322	3,653	21,974
	S	8,029	5,899	13,928	3,371	86	3,457	17,386	3,908	21,294
	O	8,038	5,868	13,906	3,412	97	3,509	17,415	4,233	21,647
	N	8,594	6,784	15,377	3,422	85	3,507	18,885	5,015	23,900
	D	9,419	7,198	16,617	3,446	15	3,461	20,078	5,111	25,189
2003	J	9,392	8,087	17,478	3,748	47	3,795	21,274	5,056	26,330
	F	8,696	8,049	16,745	3,271	192	3,463	20,208	5,020	25,228
	M	8,997	7,347	16,343	2,887	188	3,075	19,419	5,055	24,473
	A	10,078	7,006	17,084	2,665	191	2,856	19,939	5,053	24,992
	M	9,851	6,531	16,382	2,599	187	2,786	19,168	4,748	23,917
	J	10,342	6,527	16,870	2,211	175	2,387	19,256	4,221	23,478
	J	10,200	6,999	17,199	1,841	128	1,969	19,168	3,942	23,110
	A	10,111	6,600	16,711	1,556	36	1,592	18,303	4,149	22,452
	S	10,521	5,757	16,278	1,485	35	1,521	17,799	3,343	21,142
	O	10,509	5,977	16,486	1,267	63	1,330	17,816	3,597	21,413
	N	9,918	6,209	16,127	1,433	6	1,439	17,566	3,512	21,078
	D	10,254	5,371	15,624	1,633	4	1,637	17,261	3,350	20,611

**Table 18**  
**Portfolio Investment in Canadian Money Market Instruments, by Geographical Area, Period-end Positions held by Non-residents**

End of period	United States	United Kingdom	Other EU Countries	Japan	Other OECD Countries	Other Countries	Total
V No. A	235441	235463	235507	235529	235551	235573	235416
v No. M	21241210	21241209	21241208	21241207	21241206	21241205	21241204
millions of dollars							
1991	11,090	4,617	1,675	2,068	4,055	7,031	30,534
1992	18,789	4,420	1,661	733	2,684	7,817	36,104
1993	21,515	5,773	2,558	361	4,132	11,561	45,901
1994	19,398	8,525	2,040	217	5,885	11,465	47,529
1995	18,240	9,778	1,819	10	4,101	10,165	44,113
1996	20,680	4,819	1,922	651	2,495	7,567	38,134
1997	24,149	4,072	3,628	124	3,414	5,115	40,501
1998	22,993	5,781	3,462	8	3,904	5,120	41,269
1999	15,934	4,765	2,302	43	1,991	2,640	27,675
2000	17,097	3,220	1,544	198	1,771	4,131	27,961
2001	13,581	2,785	1,198	23	915	2,961	21,464
2002	14,444	3,869	1,269	32	1,701	3,874	25,189
2003	12,396	2,573	823	33	1,077	3,709	20,611
2001 D	13,581	2,785	1,198	23	915	2,961	21,464
2002 J	13,681	3,057	1,180	29	874	2,970	21,789
F	13,525	3,573	903	22	632	2,886	21,540
M	13,019	4,310	1,268	24	1,157	2,993	22,771
A	12,927	3,748	1,244	35	1,532	3,102	22,587
M	12,315	3,527	1,503	42	1,708	3,419	22,515
J	13,503	3,536	1,130	43	1,234	3,433	22,880
J	13,778	3,770	1,059	36	1,118	3,528	23,289
A	12,940	3,274	891	37	1,015	3,817	21,974
S	12,467	3,544	784	38	877	3,583	21,294
O	12,047	3,601	1,084	37	1,317	3,560	21,647
N	13,422	3,781	1,200	37	1,589	3,870	23,900
D	14,444	3,869	1,269	32	1,701	3,874	25,189
2003 J	16,010	3,712	1,431	21	1,580	3,576	26,330
F	14,569	3,658	1,418	23	1,641	3,918	25,228
M	14,026	3,557	1,517	25	1,578	3,771	24,473
A	14,361	3,782	1,506	49	1,464	3,829	24,992
M	14,008	3,370	1,226	39	1,419	3,854	23,917
J	13,078	3,653	1,227	32	1,542	3,945	23,478
J	13,295	3,440	1,228	26	1,363	3,758	23,110
A	12,786	3,455	1,210	33	1,410	3,559	22,452
S	11,523	3,508	1,017	29	1,323	3,742	21,142
O	12,051	3,329	1,037	59	1,291	3,645	21,413
N	12,394	2,941	911	60	1,120	3,652	21,078
D	12,396	2,573	823	33	1,077	3,709	20,611

**Table 19**  
**Selected Stock Prices and Capital Market Yields**

Period	Stocks prices		Selected capital market yields			
	Canada	United States	Long-term			
	Toronto Stock Exchange S&P/TSX Composite Index 1975 = 1,000	Standard and Poor's Composite 500 1941 - 43 = 10	Canadian industrials average <sup>(1)</sup>	Government of Canada <sup>(2)</sup>	United States government <sup>(3)</sup>	
1999	D	8,413.8	1,469.3	6.96	6.18	6.40
2000	J	8,481.1	1,394.5	7.14	6.44	6.69
	F	9,129.0	1,366.4	6.99	6.19	6.44
	M	9,462.4	1,498.6	6.84	6.03	6.18
	A	9,347.6	1,452.4	6.73	6.10	6.14
	M	9,252.0	1,420.6	7.05	6.00	6.29
	J	10,195.5	1,454.6	6.95	5.93	6.11
	J	10,406.3	1,430.8	6.87	5.85	6.04
	A	11,247.9	1,517.7	6.78	5.77	5.81
	S	10,377.9	1,436.5	6.72	5.75	5.83
	O	9,639.6	1,429.4	6.76	5.72	5.67
	N	8,819.9	1,315.0	6.70	5.54	5.55
	D	8,933.7	1,320.3	6.58	5.35	5.11
	2001	J	9,321.9	1,366.0	6.46	5.39
F		8,078.7	1,239.9	6.38	5.36	4.92
M		7,608.0	1,160.3	6.37	5.41	4.97
A		7,946.3	1,249.5	6.52	5.66	5.28
M		8,161.9	1,255.8	6.86	5.96	5.54
J		7,736.4	1,224.4	6.59	5.73	5.26
J		7,689.7	1,211.2	6.64	5.76	5.20
A		7,399.2	1,133.6	6.24	5.36	4.78
S		6,838.6	1,040.9	6.26	5.32	4.65
O		6,885.7	1,059.8	5.81	4.86	4.30
N		7,425.7	1,139.5	6.35	5.36	4.98
D		7,688.4	1,148.1	6.27	5.44	5.22
2002		J	7,648.5	1,130.2	6.12	5.42
	F	7,637.5	1,106.7	6.01	5.31	4.84
	M	7,851.5	1,147.4	6.46	5.79	5.35
	A	7,663.4	1,076.9	6.21	5.64	5.11
	M	7,656.1	1,067.1	6.13	5.49	5.11
	J	7,145.6	989.8	6.08	5.37	4.75
	J	6,605.4	911.6	6.18	5.23	4.51
	A	6,612.0	916.1	6.05	5.14	4.22
	S	6,180.4	815.3	5.87	4.92	3.77
	O	6,248.8	885.8	6.10	5.16	3.99
	N	6,570.4	936.3	5.96	5.18	4.26
	D	6,614.5	879.8	5.60	4.88	3.95
	2003	J	6,569.5	855.7	5.76	5.02
F		6,555.1	841.2	5.68	4.93	3.78
M		6,343.3	848.2	5.96	5.13	3.96
A		6,586.1	916.9	5.61	4.90	3.89
M		6,859.8	963.6	5.21	4.50	3.44
J		6,983.1	974.5	5.05	4.37	3.38
J		7,257.9	990.3	5.36	4.78	4.34
A		7,510.3	1,008.0	5.49	4.96	4.54
S		7,421.1	1,006.6	5.13	4.64	4.16
O		7,772.7	1,050.7	5.30	4.85	4.31
N		7,859.4	1,058.3	5.21	4.79	4.25
D		8,220.9	1,111.9	5.01	4.66	4.27

(1) Last business day. Weighted mid-term bond index based on forty bonds covering a 5 to 15 year spectrum. Scotia Capital Inc.

(2) Mid-market closing prices for last Wednesday of direct issues due or callable in 10 years.

(3) Daily average for last week of issues due or callable in 10 years. United States Federal Reserve Bulletin.

Source: Bank of Canada, except as indicated.



**Table 19**  
**Selected Stock Prices and Capital Market Yields - Concluded**

		Selected capital market yields					Forward premium (+) or discount (-) United-States dollar in Canada 3 month <sup>(8)</sup>
		Short-term					
		Finance company paper 3 month	Commercial paper 3 month	Treasury bills 3 month			
Period		Canadian <sup>(4)</sup>	United States <sup>(5)</sup>	Canadian <sup>(6)</sup>	United States <sup>(7)</sup>	Eurodollars <sup>(8)</sup>	
1999	D	5.27	5.76	4.85	5.17	6.08	-0.89
2000	J	5.25	5.89	5.05	5.41	6.15	-0.31
	F	5.31	5.95	4.96	5.62	6.21	-0.83
	M	5.46	6.18	5.27	5.71	6.65	-0.89
	A	5.62	6.26	5.43	5.62	6.46	-0.82
	M	5.98	6.72	5.67	5.73	6.97	-0.89
	J	5.89	6.67	5.53	5.67	6.88	-0.93
	J	5.88	6.59	5.61	6.01	6.81	-0.89
	A	5.90	6.57	5.58	6.11	6.75	-0.85
	S	5.83	6.55	5.56	6.03	6.75	-0.84
	O	5.85	6.60	5.61	6.18	6.81	-0.91
	N	5.89	6.57	5.62	6.18	6.81	-0.87
	D	5.71	6.31	5.49	5.66	6.50	-0.72
2001	J	5.29	5.32	5.11	5.11	5.45	-0.11
	F	5.05	4.94	4.87	4.87	5.13	-0.05
	M	4.66	4.74	4.58	4.22	4.97	-0.21
	A	4.49	4.24	4.43	3.72	4.37	0.18
	M	4.49	3.94	4.34	3.58	4.02	0.52
	J	4.38	3.68	4.30	3.47	3.74	0.70
	J	4.22	3.61	4.07	3.48	3.74	0.55
	A	3.96	3.39	3.80	3.33	3.58	0.50
	S	3.19	2.52	3.05	2.34	2.98	0.64
	O	2.45	2.12	2.34	2.13	2.44	0.33
	N	2.17	2.00	2.07	1.84	2.38	0.20
	D	2.08	1.89	1.95	1.70	2.22	0.20
2002	J	2.07	1.76	1.96	1.65	2.15	0.23
	F	2.16	1.82	2.05	1.73	2.22	0.25
	M	2.36	1.94	2.30	1.79	2.28	0.41
	A	2.46	1.77	2.37	1.72	2.44	0.62
	M	2.68	1.77	2.60	1.73	2.09	0.85
	J	2.78	1.75	2.70	1.70	2.06	1.01
	J	2.88	1.82	2.81	1.68	2.06	1.10
	A	3.09	1.73	2.96	1.62	2.06	1.27
	S	2.90	1.74	2.83	1.63	2.03	1.21
	O	2.83	1.63	2.73	1.58	2.00	1.24
	N	2.85	1.35	2.71	1.23	1.74	1.44
	D	2.83	1.33	2.63	1.19	1.74	1.47
2003	J	2.91	1.25	2.83	1.17	1.68	1.60
	F	2.97	1.25	2.88	1.17	1.68	1.68
	M	3.28	1.20	3.14	1.13	1.65	2.07
	A	3.35	1.23	3.19	1.13	1.65	2.18
	M	3.27	1.20	3.16	1.07	1.65	2.11
	J	3.11	0.89	3.07	0.92	1.39	2.20
	J	2.89	1.06	2.81	0.90	1.49	1.91
	A	2.80	1.02	2.71	0.95	1.39	1.79
	S	2.64	1.04	2.58	0.94	1.39	1.71
	O	2.71	1.06	2.64	0.92	1.39	1.67
	N	2.73	1.08	2.67	0.93	1.39	1.68
	D	2.66	1.04	2.57	0.90	1.39	1.60

(4) Last Wednesday.

(5) Last Wednesday. Adjusted to 365-day true yield basis from 360-day basis.

(6) Average of rates of Thursday tender following the last Wednesday.

(7) Average of rates of the last full week of the month ending Friday.

(8) Expressed as annual yield. Last Wednesday.

Source: Bank of Canada, except as indicated.

## FOR FURTHER READING

### Selected Publications from Statistics Canada

	<u>Catalogue</u>	<u>Internet</u>
<b>Canada's Balance of International Payments,</b> <i>Quarterly, Bilingual</i>	<b>67-001-XPB</b>	<b>67-001-XIB</b>
<b>Canada's International Transactions in Securities,</b> <i>Monthly, English and French</i>	print on demand	<b>67-002-XIE</b> <b>67-002-XIF</b>
<b>Canada's International Investment Position,</b> <i>Quarterly, English</i>		<b>67-202-XIE</b> <b>67-202-XIF</b>
<b>Canada's International Trade in Services,</b> <i>Annual, Bilingual</i>		<b>67-203-XIB</b>
<b>Canadian Economic Accounts Quarterly Review,</b> <i>Quarterly, English</i>		<b>13-010-XIE</b> <b>13-010-XIF</b>
<b>Canada's Balance of International Payments and International Investment Position</b> <b>Concepts, Sources, Methods and Products</b> <i>Occasional, English</i> <b>New edition, July 2000</b>	<b>67-506-XPE</b> <b>67-506-XPF</b>	<b>67-506-XIE</b> <b>67-506-XIF</b>
<b>Canada's Balance of International Payments, Historical Statistics 1926 to 1990 <sup>(1)</sup>,</b> <i>Occasional, Bilingual</i>	<b>67-508-XPB</b>	
<b>Canadian Economic Observer,</b> <i>Monthly, Bilingual</i>	<b>11-010-XPB</b>	

(1) Starting with 1992, the first quarter editions of 67-001-XPB contain the update to the data published in 67-508-XPB.

To order a publication you may telephone 1-613-951-7277 or use facsimile number 1-613-951-1584.  
For toll free in Canada only, telephone 1-800-267-6677. When ordering by telephone or facsimile, a written confirmation is not required.

## List of Published Research Papers

	<u>Published</u>	<u>Catalogue</u>
1. <i>Non-corporate Foreign Investment in Canadian Real Estate, 1977-1980 (Teresa M. Omiecinski)</i>	1983	67F0001MPB97001
2. <i>Foreign Investment in the Canadian Bond Market, 1978 to 1990 (Lucie Laliberté)</i>	1990	67F0001MPB97002
3. <i>Characteristics of Canadian Importing Firms, 1978-1986 (Barry Mersereau)</i>	1992	67F0001MPB97003
4. <i>The Statistical Discrepancy in Canada's Balance of Payments, 1962-1991 (Fred Barzyk and Lucie Laliberté)</i>	1992	67F0001MPB97004
5. <i>Canada's Public Debt Held by Non-Residents: Historical Perspectives, 1926-1992 (Lucie Laliberté, Christian Lajule and Diane Thibault)</i>	1993	67F0001MPB97005
6. <i>Globalisation and Canada's International Investment Position, 1950-1992, (Lucie Laliberté)</i>	1993	67F0001MPB97006
7. <i>The Foreign Investment of Canadian Trusteed Pension Funds, 1970-1992 (Jean-Pierre Corbeil and Thomas Dufour)</i>	1993	67F0001MPB97007
8. <i>Recent Trends in Canadian Direct Investment Abroad - The Rise of Canadian Multinationals, 1969-1992 (Frank Chow)</i>	1993	67F0001MPB97008
9. <i>Direct Investment Profits - in Canada and Abroad, 1983-1993 (Diane Thibault and Emmanuel Manolikakis)</i>	1994	67F0001MPB97009
10. <i>Development of the Balance of Payments nomenclature (Gerard Meagher)</i>	1996	67F0001MPB97010
11. <i>Reconciliation of the Canada-United States Current Account, 1994 and 1995 (Lucie Laliberté and Anthony J. DiLullo)</i>	1996	67F0001MPB97011
12. <i>Measurement of Foreign Portfolio Investment in Canadian Bonds (Lucie Laliberté and Réjean Tremblay)</i>	1996	67F0001MPB97012
13. <i>Implementation in Canada of the International Standards for Service Trade - On With the Fifth (Hugh Henderson)</i>	1996	67F0001MPB97013
14. <i>Repo transactions between residents of Canada and non-residents, 1991-1995 (Éric Boulay)</i>	1997	67F0001MPB97014
15. <i>Canada's International Legal Services, 1995-1996 (Colleen Cardillo)</i>	1997	67F0001MPB97015

	<b><u>Published</u></b>	<b><u>Catalogue</u></b>
16. <i>Canada's International Management Consulting, 1990-1996 (Willa Rea)</i>	1997	67F0001MPB97016
17. <i>Canada's Implementation of BPM-5, 1997</i>	1997	67F0001MPB97017
18. <i>Reconciliation of the Canada-United States Current Account, 1997 and 1998 (Anthony J. DiLullo and Hugh Henderson)</i>	1999	67F0001MPB99018
19. <i>Issues in Provincializing Foreign Direct Investment (Rosemary Bender)</i>	1999	67F0001MPB99019
20. <i>Foreign Direct Investment: A Driving Force in Economic Globalization (Christian Lajule)</i>	2000	67F0001MPB00020
21. <i>Foreign Affiliate Trade Statistics - Measuring Economic Globalization A Canadian Perspective - from Research to Reality (Colleen Cardillo)</i>	2000	67F0001MPB01021

### **Economic Analysis Research Paper Series**

004 <i>Foreign Affiliate Trade Statistics - 1999 How Goods and Services are Delivered in International Markets (Colleen Cardillo)</i>	2002	004
013 <i>Foreign Affiliate Trade Statistics - Canadian Operations Abroad, 1999 to 2001 (Michael Marth)</i>	2003	013

### **How to Order Research Papers**

**By phone:** (613) 951-1855  
**By fax:** (613) 951-9031  
**By Mail:** Statistics Canada  
 Balance of Payments Division  
 Ottawa, Ontario  
 K1A 0T6

You can order our Research Papers for a fee of \$5.00 per copy.

These papers are posted on our Web site at: <http://www.statcan.ca/english/services>



# Retain for future reference

## Balance of Payments Division List of Publications

### Canada's Balance of International Payments

(the First quarter 1997 issue provides comprehensive historical coverage from 1926 to 1996) - presents Canada's economic transactions with non-residents under two main accounts: the current account which covers goods, services, investment income and current transfers; and the capital and finance account which covers capital transfers as well as both borrowings from and investments in foreign countries. The transactions are presented quarterly and annually with six broad geographical areas.

67-001-XPB  
67-001-XIB

### Canada's International Transactions in Securities

presents Canada's portfolio transactions in Canadian and foreign bonds and stocks and in Canadian money market securities with non-residents. New issues, retirements and trade in outstanding securities are covered as well as repurchase agreements. Monthly gross and net transactions are presented geographically according to six broad geographical areas.

67-002-XIE  
67-002-XIF

### Canada's International Investment Position

(the 1996 issue provides comprehensive historical data from 1926 to 1996) - presents Canada's asset position with and liability position to non-residents, including a detailed breakdown by claims (direct investment by country, portfolio, etc.) and by six broad geographical areas. The data include the foreign holding of Canada's public debt.

67-202-XIE  
67-202-XIF

### Canada's International Trade in Services

presents Canada's annual service transactions with non-residents. Travel, transportation, commercial services and government services which are presented by three broad geographical areas: United States, European Union and other countries. Commercial services are further categorized by industry; country of control (Canada, United States, Other); whether the service is with foreign affiliated companies or non-affiliates; and with a detailed country breakdown for commercial services.

67-203-XIB

## How to Order

**By phone:** (613) 951-7277 or 1 800 267-6677  
**By fax:** (613) 951-1584 or 1 800-889-9734  
**By Internet:** [order@statcan.ca](mailto:order@statcan.ca)  
**By Mail:** Statistics Canada  
Operations and Integration Division  
Circulation Management  
Ottawa, Ontario  
K1A 0T6

Catalogue no.	Frequency	By issue (all prices in Canadian dollars)				Annual Subscription/ (all prices in Canadian dollars)			
		Canada	United States	Other countries	Internet	Canada	United States	Other countries	Internet
67-001-XPB	Quarterly	\$41.00	\$44.00	\$48.00	\$32.00	\$133.00	\$157.00	\$173.00	\$100.00
67-002-XIE	Monthly				\$15.00				\$142.00
67-002 Print on demand	Monthly	\$41.00	\$47.00	\$51.00					
67-202-XIE	Quarterly				\$23.00				\$51.00
67-203-XIB	Annual				\$30.00				