



Catalogue no. 71-001-XIE

# Labour force information

Not for release before 7 A.M. E.S.T. Friday,  
December 2, 2005



Week ending November 12, 2005



Statistics  
Canada    Statistique  
Canada

Canada

## How to obtain more information

Specific inquiries about this product and related statistics or services should be directed to: Labour Force Survey Program, Labour Statistics Division, Statistics Canada, Ottawa, Ontario, K1A 0T6 (telephone: (613) 951-4090, toll free number: 1 866 873-8788, fax: (613) 951-2869 or by e-mail address: [labour@statcan.ca](mailto:labour@statcan.ca)).

For information on the wide range of data available from Statistics Canada, you can contact us by calling one of our toll free numbers. You can also contact us by e-mail or by visiting our website.

National inquiries line **1 800 263-1136**

National telecommunications device for the hearing impaired **1 800 363-7629**

Depository Services Program inquiries **1 800 700-1033**

Fax line for Depository Services Program **1 800 889-9734**

E-mail inquiries [infostats@statcan.ca](mailto:infostats@statcan.ca)

Website [www.statcan.ca](http://www.statcan.ca)

## Ordering and subscription information

This product, Catalogue no. 71-001-XIE, is published monthly in electronic format on the Statistics Canada Internet site at a single price of CAN\$9.00 per issue (PDF) and CAN\$84.00 for a one-year subscription (HTML). To obtain single issues or to subscribe, visit our website at [www.statcan.ca](http://www.statcan.ca), and select Products and Services.

## Standards of service to the public

Statistics Canada is committed to serving its clients in a prompt, reliable and courteous manner and in the official language of their choice. To this end, the Agency has developed *standards of service* which its employees observe in serving its clients. To obtain a copy of these service standards, please contact Statistics Canada toll free at 1 800 263-1136. The service standards are also published on [www.statcan.ca](http://www.statcan.ca) under About Statistics Canada > Providing services to Canadians.



Statistics Canada  
Labour Statistics Division  
Labour Force Survey Program

# Labour force information

Not for release before 7 A.M. E.S.T. Friday,

December 2, 2005

Week ending November 12, 2005

Published by authority of the Minister responsible for Statistics Canada

© Minister of Industry, 2005

All rights reserved. Use of this product is limited to the licensee and its employees. The product cannot be reproduced and transmitted to any person or organization outside of the licensee's organization.

Reasonable rights of use of the content of this product are granted solely for personal, corporate or public policy research, or educational purposes. This permission includes the use of the content in analyses and the reporting of results and conclusions, including the citation of limited amounts of supporting data extracted from the data product in these documents. These materials are solely for non-commercial purposes. In such cases, the source of the data must be acknowledged as follows: Source (or "Adapted from", if appropriate): Statistics Canada, name of product, catalogue, volume and issue numbers, reference period and page(s). Otherwise, users shall seek prior written permission of Licensing Services, Marketing Division, Statistics Canada, Ottawa, Ontario, Canada, K1A 0T6.

December 2005

Catalogue no. 71-001-XIE

ISSN 1492-5478

Frequency: Monthly

Ottawa

La version française de cette publication est disponible sur demande (n° 71-001-XIF au catalogue).

---

## **Note of appreciation**

*Canada owes the success of its statistical system to a long standing partnership between Statistics Canada, the citizens of Canada, its businesses, governments and other institutions. Accurate and timely statistical information could not be produced without their continued cooperation and goodwill.*

# User information

---

## Symbols

The following standard symbols are used in Statistics Canada publications:

- . not available for any reference period
- .. not available for a specific reference period
- ... not applicable
- 0 true zero or a value rounded to zero
- 0<sup>s</sup> value rounded to 0 (zero) where there is a meaningful distinction between true zero and the value that was rounded
- P preliminary
- r revised
- x suppressed to meet the confidentiality requirements of the *Statistics Act*
- E use with caution
- F too unreliable to be published

## Special requests (\$)

Custom tabulations can be arranged on an ad hoc or regular basis. This service enables you to specify tables and time series to meet your own requirements. The cost varies according to the request. For more information, contact us toll-free at 1-866-873-8788 or e-mail us at [labour@statcan.ca](mailto:labour@statcan.ca).

## Schedule of LFS releases

Reference period - Week ending	Release date
January 15, 2005	February 4, 2005
February 19, 2005	March 11, 2005
March 19, 2005	April 8, 2005
April 16, 2005	May 6, 2005
May 21, 2005	June 10, 2005
June 18, 2005	July 8, 2005
July 16, 2005	August 5, 2005
August 20, 2005	September 9, 2005
September 17, 2005	October 7, 2005
October 15, 2005	November 4, 2005
November 12, 2005	December 2, 2005
December 10, 2005	January 6, 2006

## Latest LFS release in *The Daily* (free)

# Table of contents

---

<b>Highlights</b>	<b>5</b>
<b>Analysis — November 2005</b>	<b>6</b>
<b>Charts</b>	
1. Employment in thousands and unemployment rate, Canada, seasonally adjusted	5
2. Employment and unemployment indicators, Canada, seasonally adjusted	8
3. Employment and unemployment indicators, Canada, seasonally adjusted	9
4. Index of employment by industry, Canada, seasonally adjusted, January, 2002=100	10
5. Index of employment by industry, Canada, seasonally adjusted, January 2002 = 100	11
6. Index of employment by industry, Canada, seasonally adjusted, January 2002 = 100	12
7. Index of employment by province, seasonally adjusted, January 2002 = 100	13
8. Index of employment by province, seasonally adjusted, January 2002 = 100	14
<b>Related products</b>	<b>15</b>
<b>Statistical tables</b>	
1 Labour force characteristics by age and sex, Canada, seasonally adjusted	23
2 Employment by class of worker and industry, Canada, seasonally adjusted	24
3 Labour force characteristics by province, seasonally adjusted	25
<b>4 Selected labour force characteristics (seasonally adjusted)</b>	<b>27</b>
4-1 Newfoundland and Labrador	27
4-2 Prince Edward Island	28
4-3 Nova Scotia	29
4-4 New Brunswick	30
4-5 Quebec	31
4-6 Ontario	32
4-7 Manitoba	33
4-8 Saskatchewan	34
4-9 Alberta	35
4-10 British Columbia	36

**Table of contents – continued**

<b>5</b>	<b>Labour force characteristics by census metropolitan area (seasonally adjusted)</b>	<b>37</b>
5-1	3 month moving average	37
5-2	Monthly	42
<b>6</b>	<b>Labour force characteristics by economic region<sup>1</sup> and for Yukon Territory and Northwest Territories, unadjusted, 3 month moving average ending in November 2004 and November 2005</b>	<b>43</b>
<b>7</b>	<b>Average usual hours and wages of employees by selected characteristics, Canada, unadjusted</b>	<b>49</b>
<b>8</b>	<b>Regional unemployment rates used by the Employment Insurance Program,<sup>1</sup> seasonally adjusted, 3 month moving average</b>	<b>50</b>
	<b>Data quality</b>	<b>52</b>

# Highlights

---

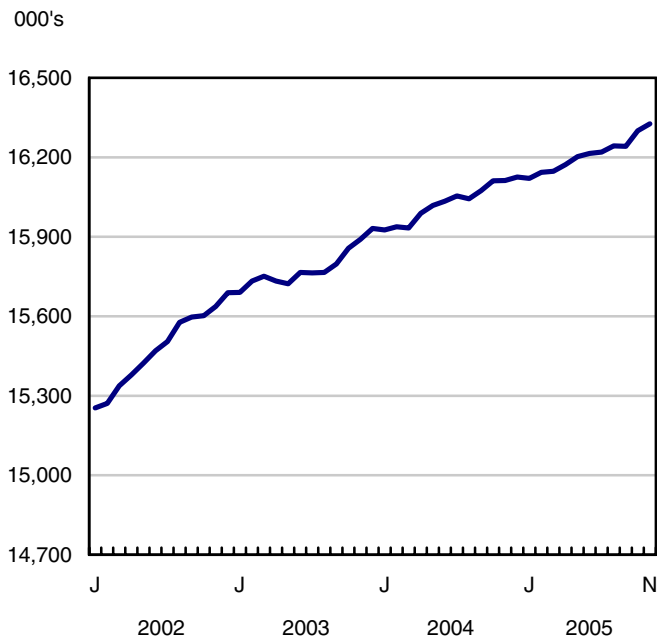
## November 2005

Spurred by full-time gains, employment increased by 31,000 in November. This brings gains over the last 12 months to 250,000 (+1.6%). In November, the unemployment rate fell 0.2 percentage points to 6.4%, the lowest rate in over three decades.

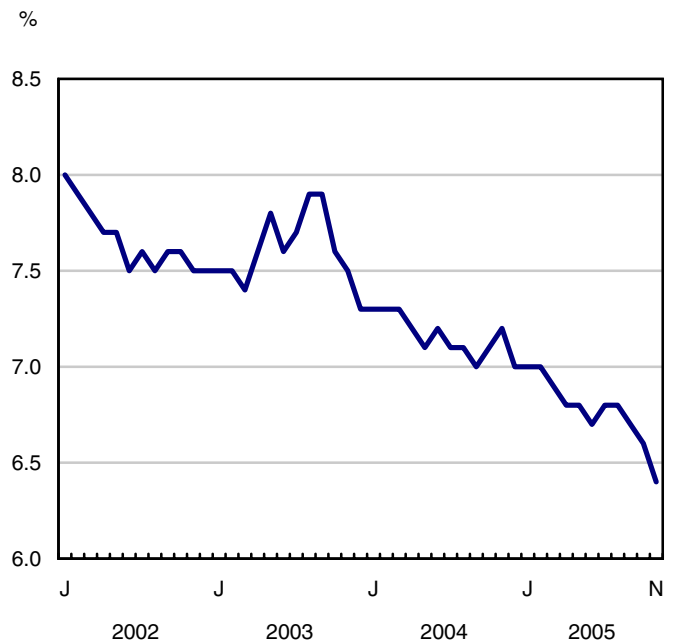
Chart 1

Employment in thousands and unemployment rate, Canada, seasonally adjusted

Employment



Unemployment rate



## Analysis — November 2005

---

Spurred by full-time gains, employment increased by 31,000 in November. This brings gains over the last 12 months to 250,000 (+1.6%). In November, the unemployment rate fell 0.2 percentage points to 6.4%, the lowest rate in over three decades.

Average hourly wages in November were 3.9% higher than 12 months ago, well above the 2.6% year-over-year increase in October's Consumer Price Index. Alberta saw the largest increase in average hourly wages with an increase of 6.7% from a year ago.

With all of the year-over-year increase in employment coming from full time, the total actual hours worked in the economy were up 2.0% in the last 12 months.

### **Unemployment rate for women hits 30-year low**

In November, the unemployment rate for adult women (aged 25 and over) fell by 0.4 percentage points to 5.2%, their lowest rate in the last 30 years. A small increase in employment and a drop in the number of adult women in the labour force contributed to the decline in their unemployment rate.

Among adult women, full-time work increased by 36,000 in November, while part time declined by 24,000. In the past 12 months, the number of full-time jobs for women has increased by 3.1%, while part-time has declined by 3.5%.

The youth unemployment rate declined in November, falling to 11.4% from 12.1% in October. Despite the lower unemployment rate, employment growth for youths has been lackluster, increasing by a very moderate 0.8% in the past 12 months. Over this same period, the participation rate among youths has declined by 1.3 percentage points to 65.7% in November.

### **More jobs in construction**

Employment growth in November was led by a gain of 24,000 in construction, primarily in Ontario and British Columbia. Business, building and other support services also added jobs in November, employing 12,000 additional workers. In the past year, employment in construction has grown by 7.2% (+71,000) and by 6.7% (+43,000) in the business, building and other support services industry.

Accommodation and food services also made strong employment gains in November (+23,000), primarily in full-service restaurants. Even with this increase, employment growth in the industry has been weak over the past year, rising by 1.0% or 10,000.

In educational services, employment increased by 12,000 in November, mostly in primary and secondary education. This brings gains over the past 12 months to 8.2% (+86,000), the fastest employment growth rate of all industries. Much of the added employment in education has been in Ontario and Quebec.

In November, employment declined by 17,000 in the health care and social assistance industry. While employment in health care facilities remained higher than a year ago, there were fewer people working in social assistance and nursing homes, leaving employment in the industry unchanged from a year ago.

Employment declined by 15,000 in finance, insurance, real estate and leasing in November, primarily in Quebec. Nevertheless, employment in the industry remained virtually unchanged from 12 months ago.

Employment in the natural resources industry dropped 11,000 in November. However, the number of people working in natural resources has increased by 4.9% (+14,000) in the past year, driven by gains in Alberta.



## Employment continues to rise in British Columbia

In November, employment increased by 18,000 in British Columbia, bringing the unemployment rate down to 4.9%, the lowest rate in over three decades. Jobs were added in a number of industries. Since November of last year, employment in the province has grown by 4.3% (+90,000), the highest growth rate of all the provinces.

Employment in New Brunswick increased by 5,000 in November, all full-time. At the same time, the number of people who were looking for work fell, pushing the unemployment rate in the province down 1.5 percentage points to 9.5%.

In Newfoundland and Labrador, employment rose by 3,000 in November leaving employment in the province 2.6% above the level of a year ago. In November, the increase was driven by a jump in manufacturing.

In November, employment rose by 3,000 in Manitoba, causing the province's unemployment rate to edge down 0.2 percentage points to 4.2%, the lowest since April 1976.

A gain of 21,000 full-time jobs in Alberta was offset by a similar decline in part-time leaving overall employment unchanged in November. Full-time employment in the province has increased by 55,000 (+3.8%) in the past twelve months while part-time employment has declined by 27,000 (-8.3%). In November, employment in the natural resources industry fell but was still 6.2% above the level of a year ago. Employment also increased in November in accommodation and food services; however, 16,000 (-12.8%) fewer Albertans were working in the industry compared to a year earlier.

In Ontario, the unemployment rate edged down 0.3 percentage points to 6.1% in November, as fewer people were looking for work. Although unchanged in November, in the past year, employment in the province has grown at a moderate rate of 1.6% (+101,000). Over the past year, employment growth in the province has been particularly strong in both educational services (+53,000) and construction (+40,000).

Despite little change in employment in Quebec, the unemployment rate fell by 0.3 percentage points to 8.0% in November. Declines in finance, insurance, real estate and leasing and health care and social assistance were offset by increases in other services and information, culture and recreation.

Employment was little changed in the other provinces.

### Note to readers: Upcoming LFS revisions

On Wednesday, January 25, 2006, there will be a revision affecting all Labour Force Survey estimates from January 1987 to December 2005.

There are three reasons for this revision. First, the revision will enable the use of improved population benchmarks in the LFS estimation process. These improved benchmarks will provide better information on the number of non-permanent residents. Second, there will be changes to the data for the public and private sectors from 1987 to 1999. Currently, the data on the public and private sectors for this period are based on an old definition of the public sector. The revised data will better reflect the current public sector definition, and therefore result in a longer time series for analysis.

Finally, the geographic coding of several small Census Agglomerations (CA) have been updated historically from 1996 urban centre boundaries to 2001 CA boundaries. This affects data from January 1987 to December 2004.

It is important to note that the change to almost all estimates will be very minor, with the exception of the public sector series and some associated industries from 1987 to 1999. Rates of unemployment, employment and participation are essentially unchanged, as are all key labour market trends.

During the revision, CANSIM data for the LFS will be off-line from January 16 to January 24, 2006. To facilitate data users' access to the revised data, LFS data on CANSIM will be free from January 25 to February 10, 2006.

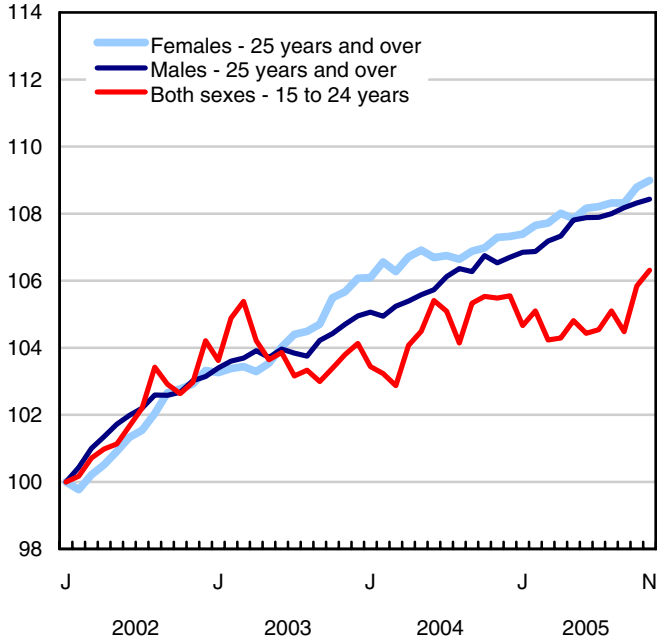
Special tabulations produced through the Client Services unit at the Labour Force Survey will be revised free of charge.

For more information, please contact Client Services at 613-951-4090 or toll-free at 1-866-873-8788 ( [labour@statcan.ca](mailto:labour@statcan.ca) ).

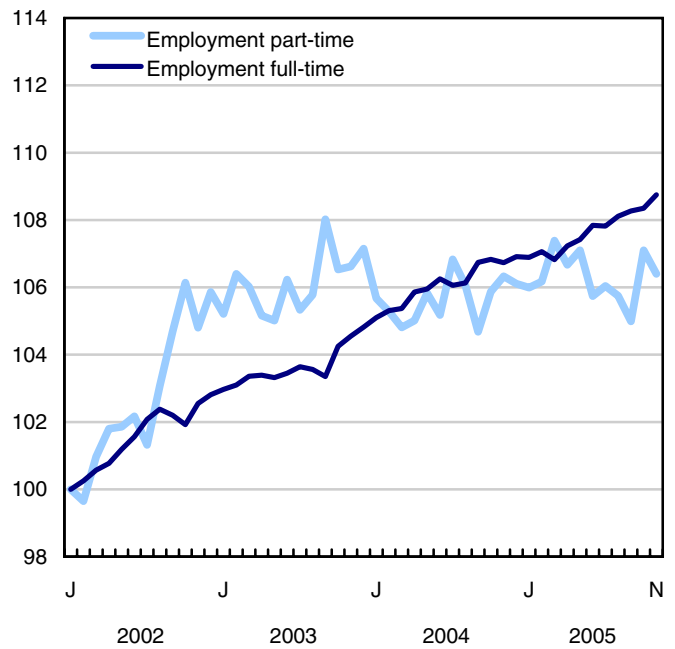
Chart 2

Employment and unemployment indicators, Canada, seasonally adjusted

Employment index, January 2002=100



Employment index, January 2002=100



Employment index, January 2002=100

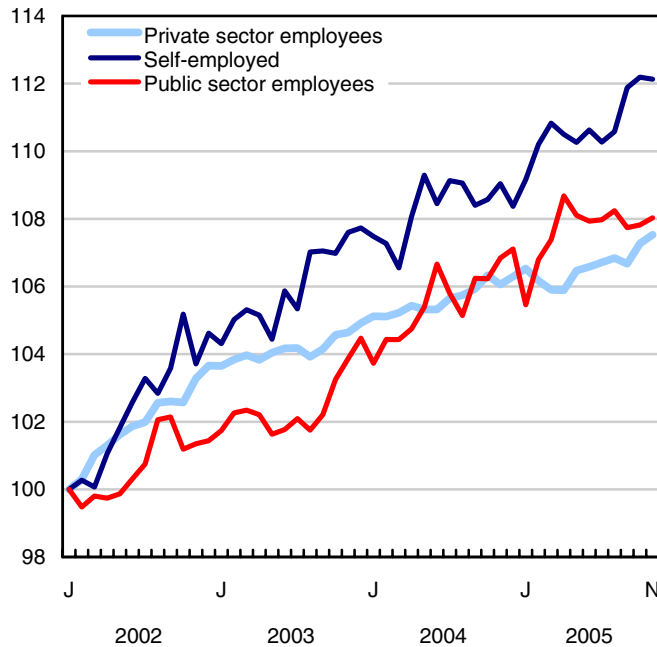
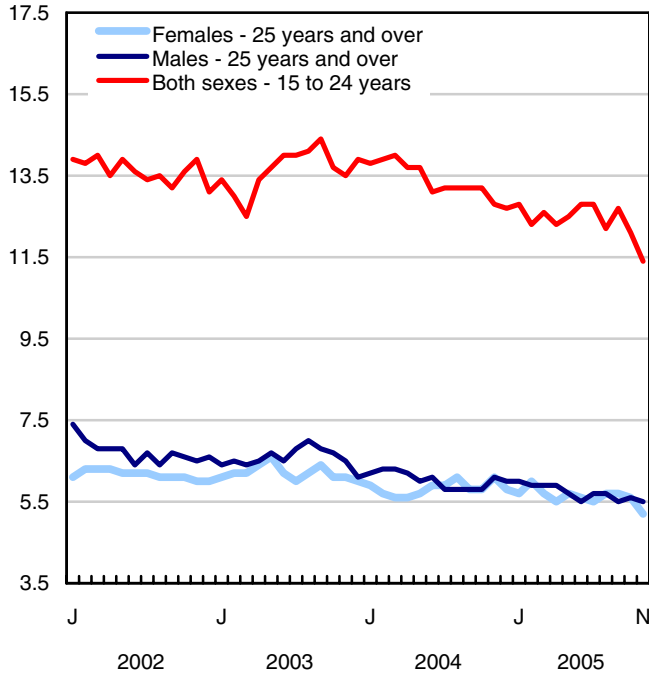


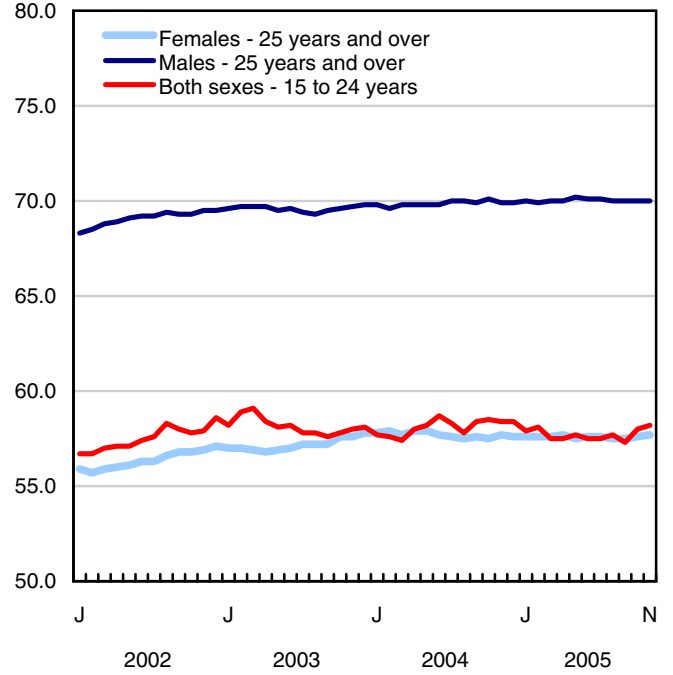
Chart 3

Employment and unemployment indicators, Canada, seasonally adjusted

Unemployment rate (%)



Employment rate (%)



Participation rate (%)

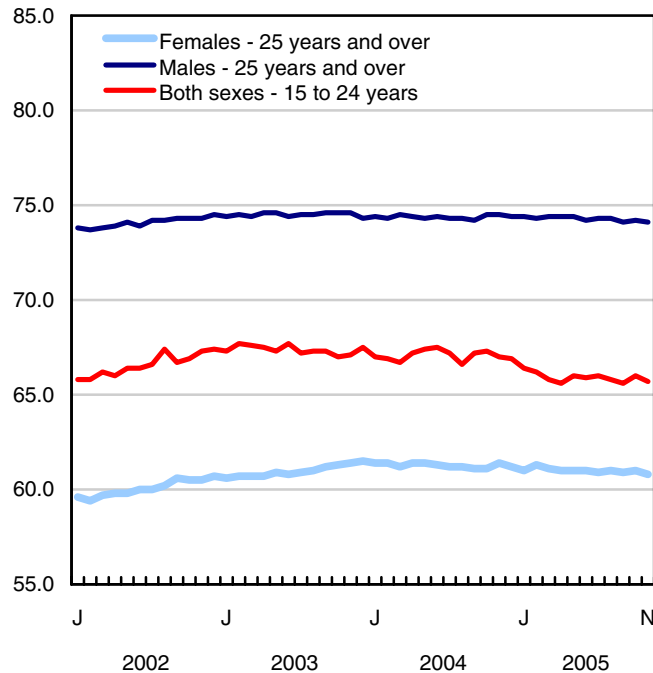


Chart 4

Index of employment by industry, Canada, seasonally adjusted, January, 2002=100

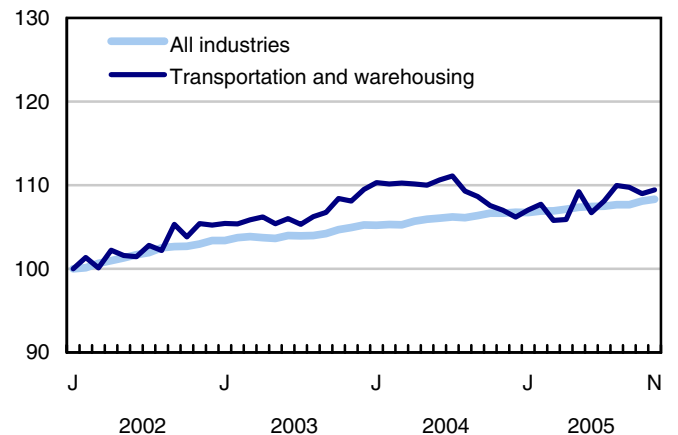
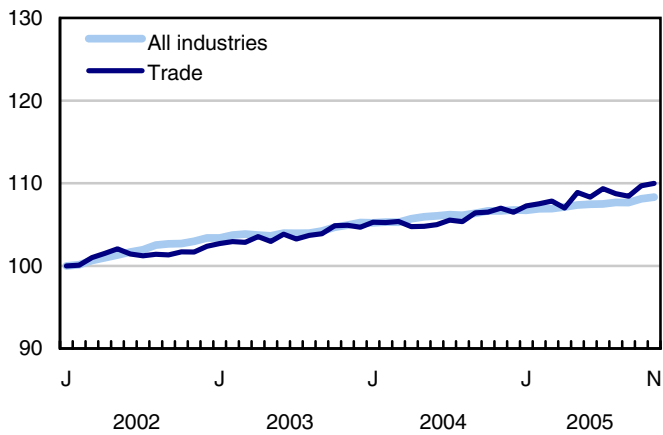
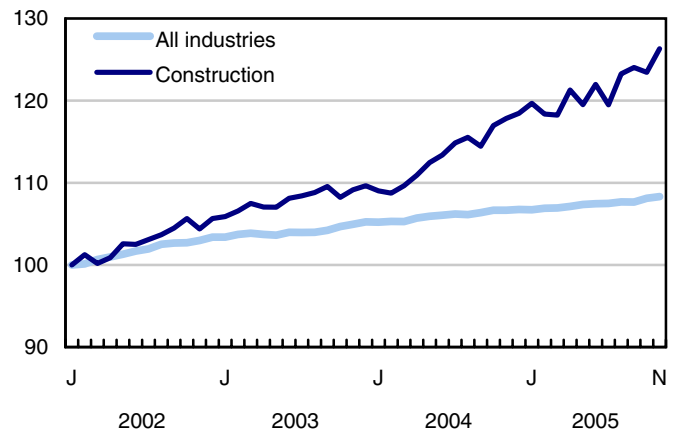
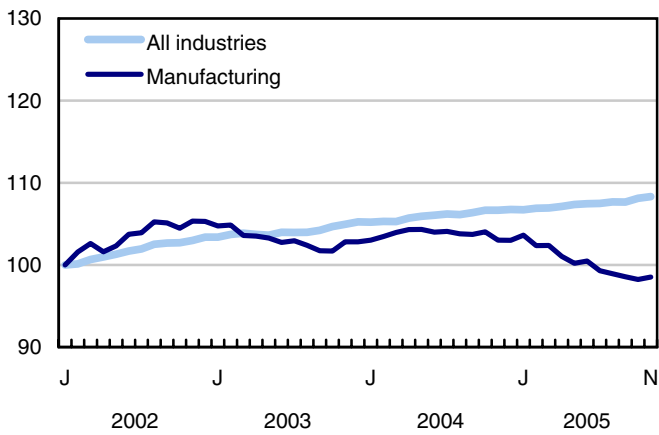
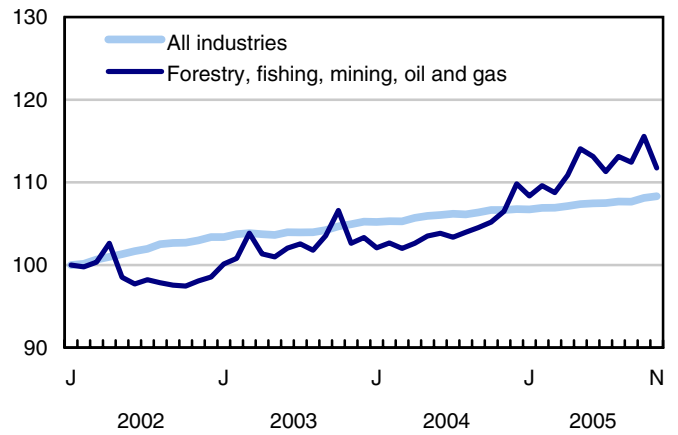
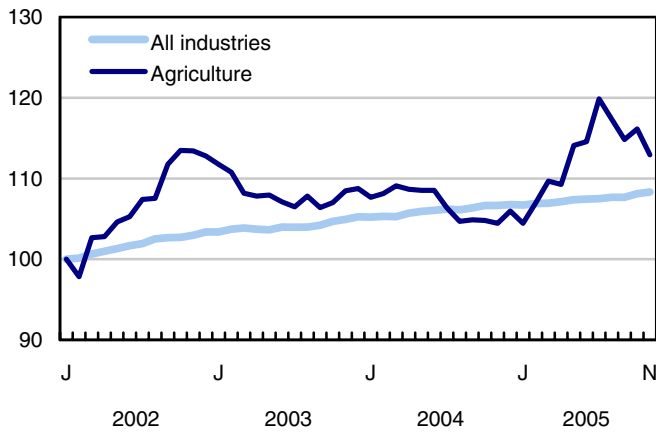


Chart 5

Index of employment by industry, Canada, seasonally adjusted, January 2002 = 100

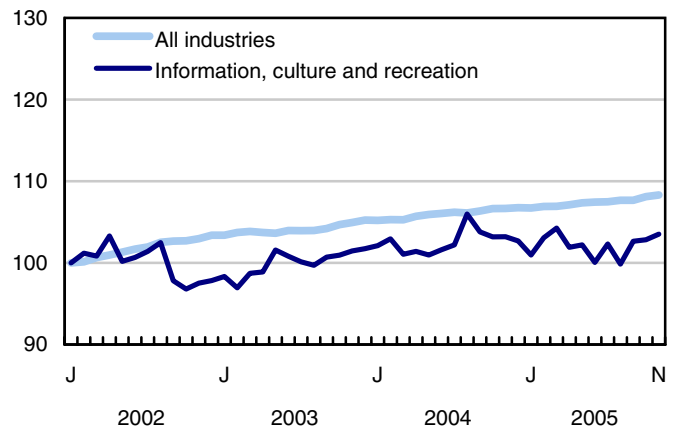
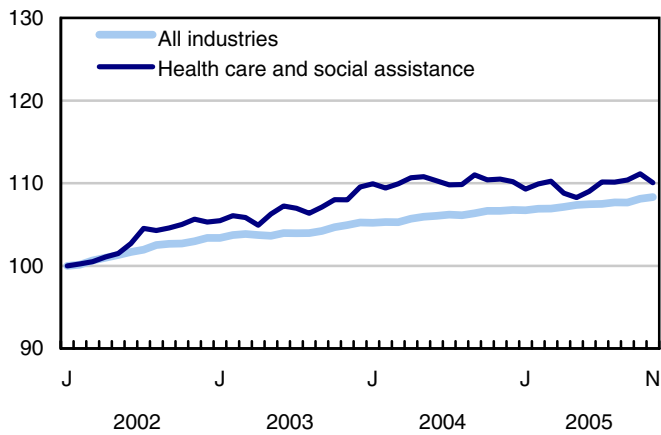
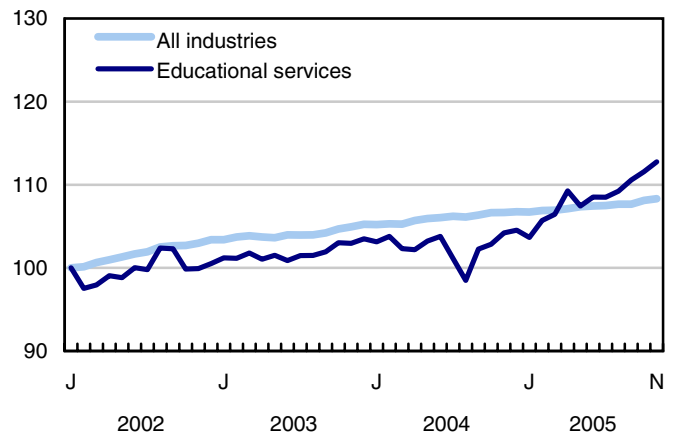
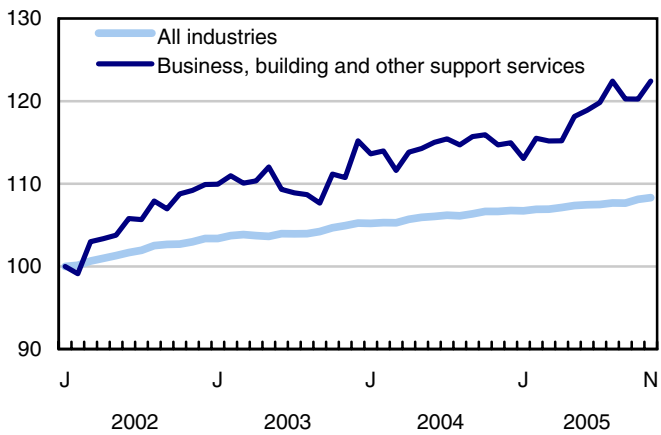
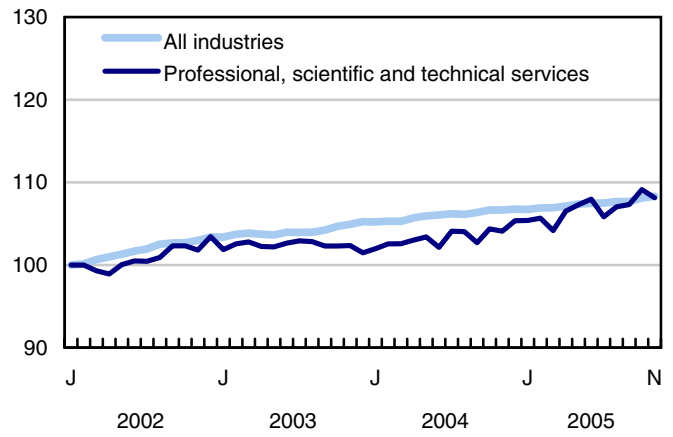
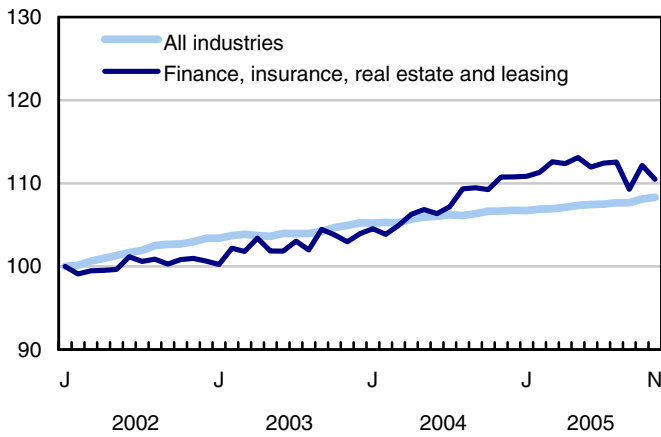


Chart 6

Index of employment by industry, Canada, seasonally adjusted, January 2002 = 100

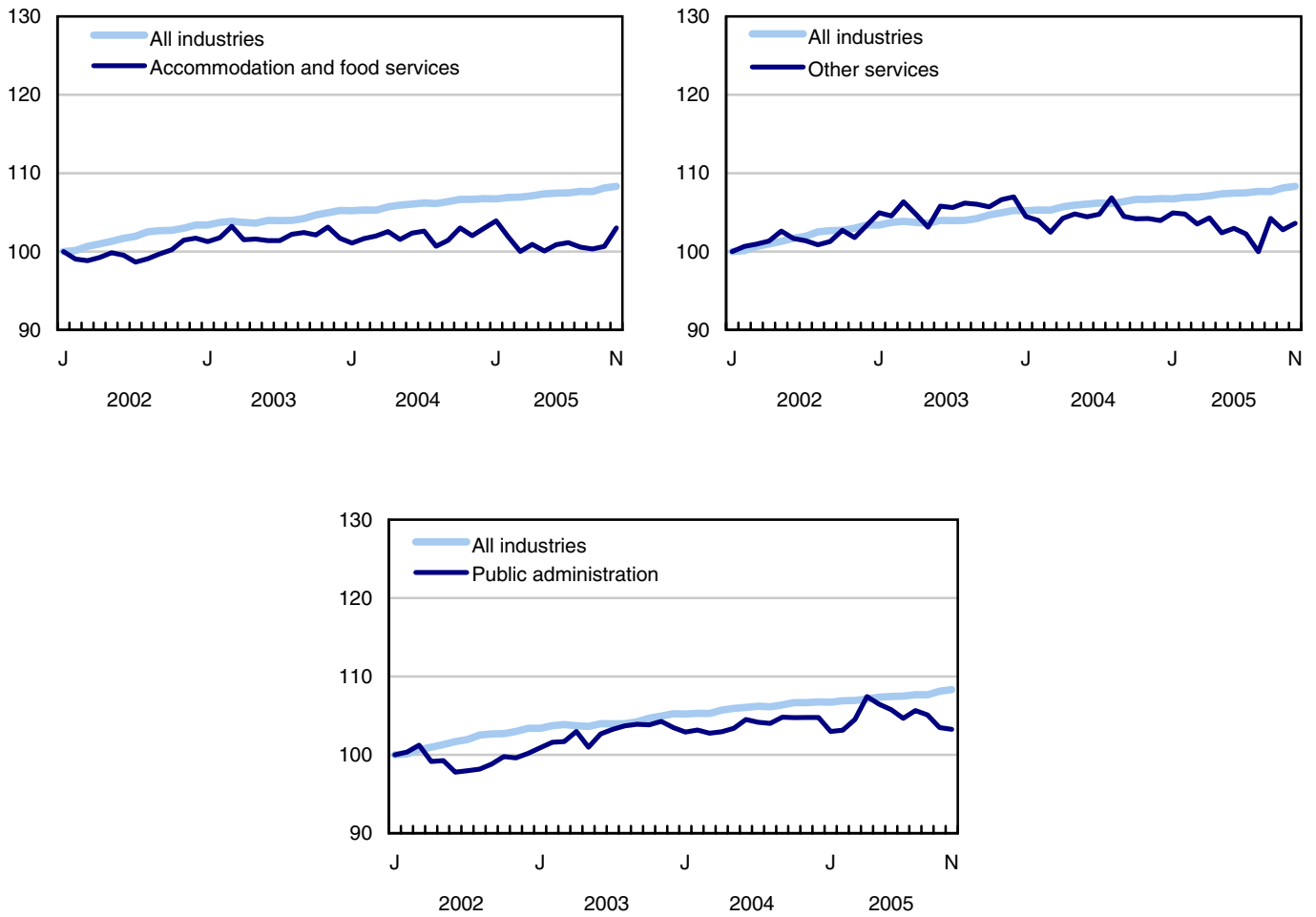


Chart 7

Index of employment by province, seasonally adjusted, January 2002 = 100

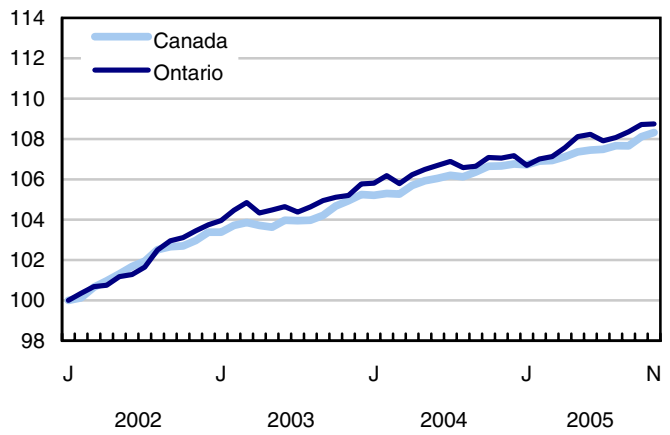
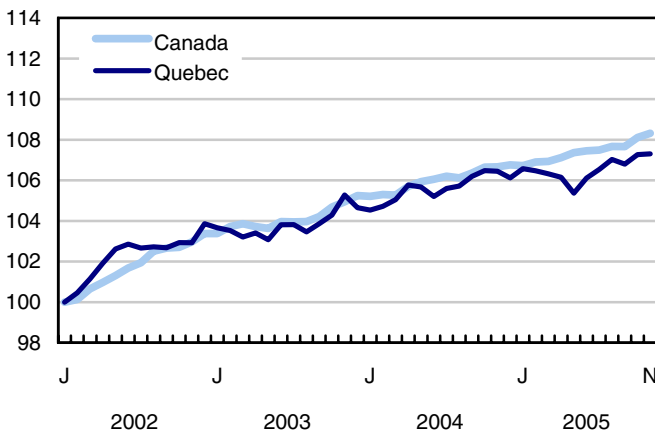
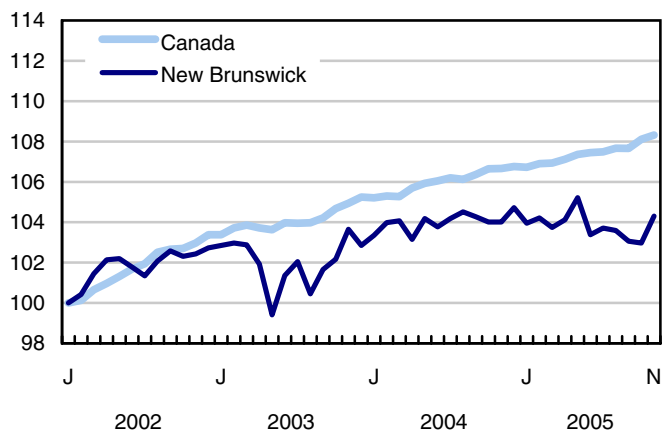
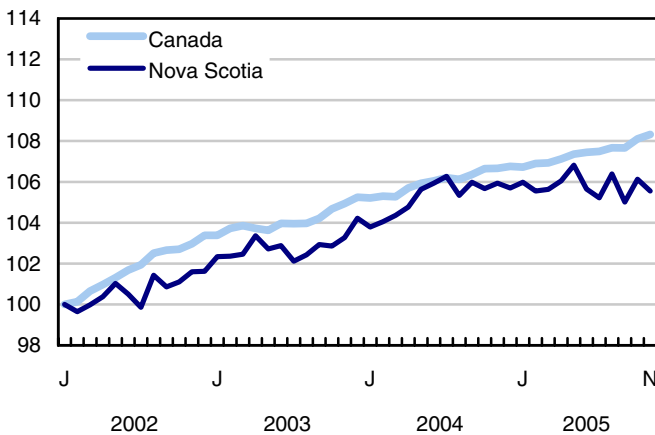
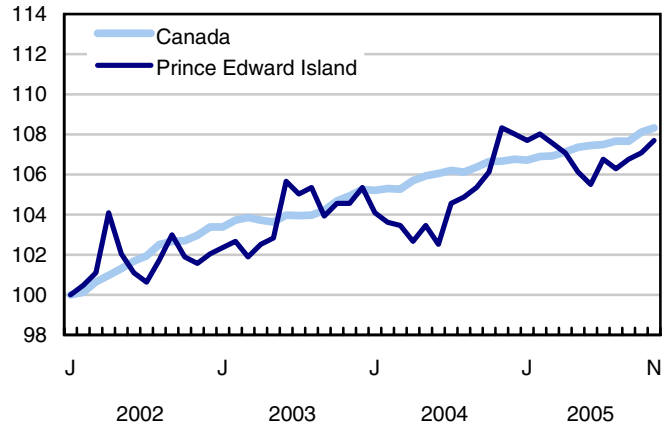
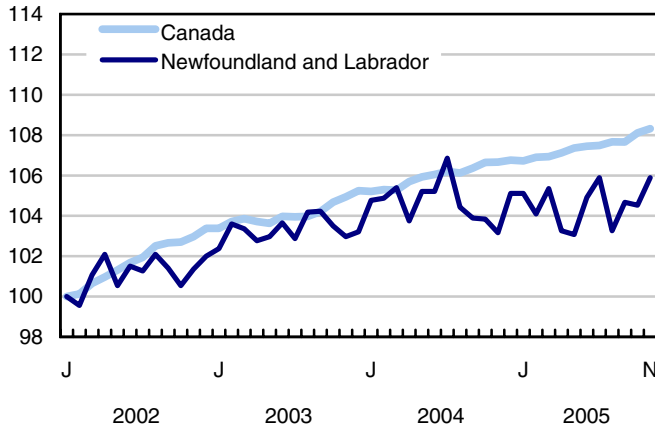
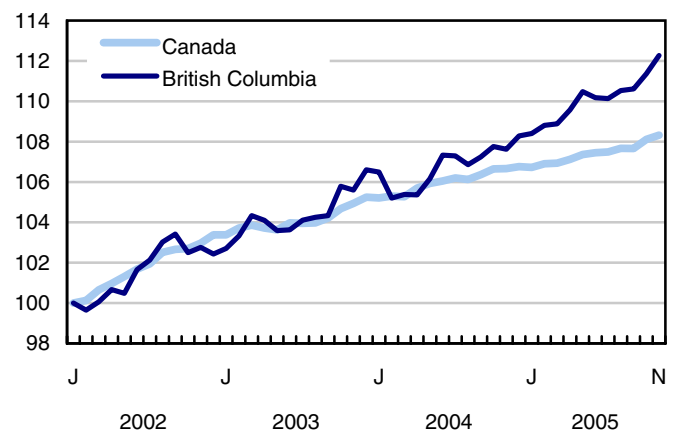
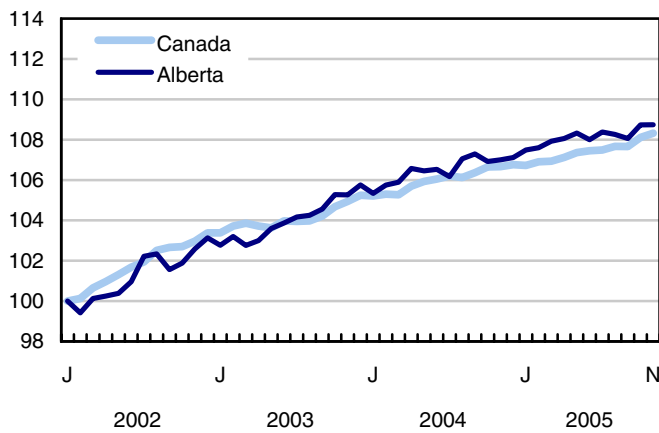
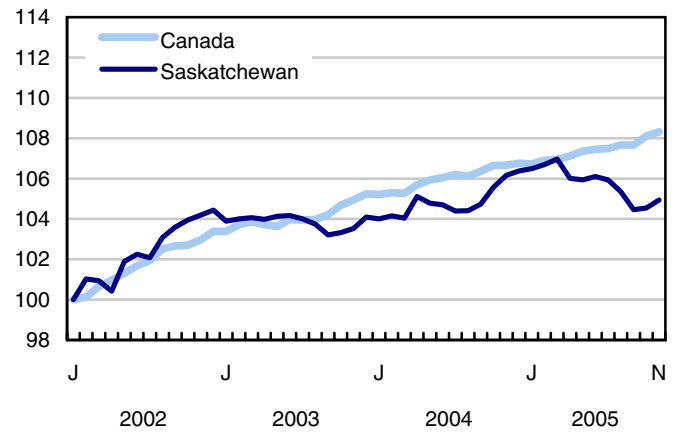
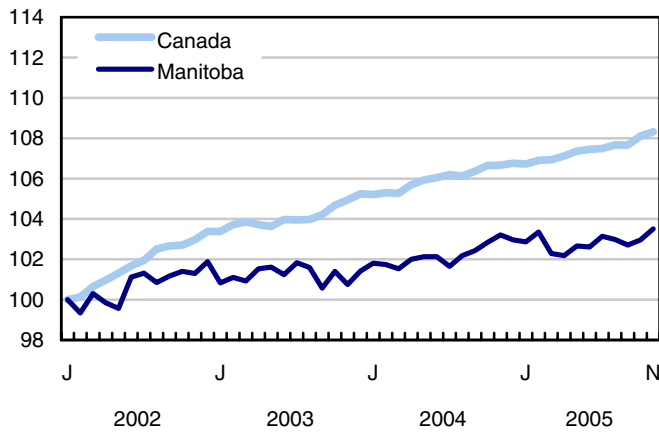


Chart 8

Index of employment by province, seasonally adjusted, January 2002 = 100





## Related products

---

### Selected publications from Statistics Canada

---

71-222-X	The Canadian labour market at a glance
71-526-X	Methodology of the Canadian Labour Force Survey
71-543-G	Guide to the Labour Force Survey
71-544-X	Labour Force Survey products and services.
71-587-X	Aboriginal peoples living off-reserve in Western Canada: estimates from the Labour Force Survey
71F0004X	Labour force historical review
71F0031X	Improvements to the Labour Force Survey (LFS)
71M0001X	Labour Force Survey microdata file
75-001-X	Perspectives on labour and income

---

### Selected CANSIM tables from Statistics Canada

---

282-0001	Labour force survey estimates (LFS), by sex and detailed age group
282-0002	Labour force survey estimates (LFS), by sex and detailed age group
282-0003	Labour force survey estimates (LFS), by educational attainment, sex and age group
282-0004	Labour force survey estimates (LFS), by educational attainment, sex and age group
282-0005	Labour force survey estimates (LFS), by full- and part-time students during school months, sex and age group
282-0006	Labour force survey estimates (LFS), by students during summer months, sex and age group
282-0007	Labour force survey estimates (LFS), by North American Industry Classification System (NAICS), sex and age group
282-0008	Labour force survey estimates (LFS), by North American Industry Classification System (NAICS), sex and age group
282-0009	Labour force survey estimates (LFS), by National Occupational Classification for Statistics (NOC-S) and sex

282-0010	Labour force survey estimates (LFS), by National Occupational Classification for Statistics (NOC-S) and sex
282-0011	Labour force survey estimates (LFS), employment by class of worker, North American Industry Classification System (NAICS) and sex
282-0012	Labour force survey estimates (LFS), employment by class of worker, North American Industry Classification System (NAICS) and sex
282-0013	Labour force survey estimates (LFS), part-time employment by reason for part-time work, sex and age group
282-0014	Labour force survey estimates (LFS), part-time employment by reason for part-time work, sex and age group
282-0015	Labour force survey estimates (LFS), by usual hours worked, main or all jobs, sex and age group
282-0016	Labour force survey estimates (LFS), by usual hours worked, main or all jobs, sex and age group
282-0017	Labour force survey estimates (LFS), by actual hours worked, main or all jobs, sex and age group
282-0018	Labour force survey estimates (LFS), by actual hours worked, main or all jobs, sex and age group
282-0019	Labour force survey estimates (LFS), by usual hours worked, class of worker, North American Industry Classification System (NAICS) and sex
282-0020	Labour force survey estimates (LFS), by usual hours worked, class of worker, North American Industry Classification System (NAICS) and sex
282-0021	Labour force survey estimates (LFS), by actual hours worked, class of worker, North American Industry Classification System (NAICS) and sex
282-0022	Labour force survey estimates (LFS), by actual hours worked, class of worker, North American Industry Classification System (NAICS) and sex
282-0023	Labour force survey estimates (LFS), by usual hours worked, class of worker, National Occupational Classification for Statistics (NOC-S) and sex
282-0024	Labour force survey estimates (LFS), by usual hours worked, class of worker, National Occupational Classification for Statistics (NOC-S) and sex
282-0025	Labour force survey estimates (LFS), by actual hours worked, class of worker, National Occupational Classification for Statistics (NOC-S) and sex
282-0026	Labour force survey estimates (LFS), by actual hours worked, class of worker, National Occupational Classification for Statistics (NOC-S) and sex
282-0027	Labour force survey estimates (LFS), by total and average usual and actual hours worked, main or all jobs, type of work, sex and age group
282-0028	Labour force survey estimates (LFS), by total and average usual and actual hours worked, main or all jobs, type of work, sex and age group
282-0029	Labour force survey estimates (LFS), average days lost for personal reasons per full-time employee by North American Industry Classification System (NAICS), sex and age group

282-0030	Labour force survey estimates (LFS), average days lost for personal reasons per full-time employee by National Occupational Classification for Statistics (NOC-S), sex and age group
282-0031	Labour force survey estimates (LFS), multiple jobholders by North American Industry Classification System (NAICS), sex and age group
282-0032	Labour force survey estimates (LFS), multiple jobholders by North American Industry Classification System (NAICS), sex and age group
282-0033	Labour force survey estimates (LFS), multiple jobholders by National Occupational Classification for Statistics (NOC-S), sex and age group
282-0034	Labour force survey estimates (LFS), multiple jobholders by National Occupational Classification for Statistics (NOC-S), sex and age group
282-0035	Labour force survey estimates (LFS), multiple jobholders by usual hours worked at main and all jobs
282-0036	Labour force survey estimates (LFS), multiple jobholders by usual hours worked at main and all jobs
282-0037	Labour force survey estimates (LFS), job tenure by type of work, sex and age group
282-0038	Labour force survey estimates (LFS), job tenure by type of work, sex and age group
282-0039	Labour force survey estimates (LFS), job tenure by National Occupational Classification for Statistics (NOC-S) and sex
282-0040	Labour force survey estimates (LFS), job tenure by National Occupational Classification for Statistics (NOC-S) and sex
282-0041	Labour force survey estimates (LFS), job tenure by North American Industry Classification System (NAICS) and sex
282-0042	Labour force survey estimates (LFS), job tenure by North American Industry Classification System (NAICS) and sex
282-0047	Labour force survey estimates (LFS), duration of unemployment by sex and age group
282-0048	Labour force survey estimates (LFS), duration of unemployment by sex and age group
282-0049	Labour force survey estimates (LFS), unemployment by type of work sought and search method, sex and age group
282-0050	Labour force survey estimates (LFS), unemployment by type of work sought and search method, sex and age group
282-0051	Labour force survey estimates (LFS), retirement age by class of worker and sex
282-0052	Labour force survey estimates (LFS), by census metropolitan area, sex and age group, 3-month moving average
282-0053	Labour force survey estimates (LFS), by census metropolitan area, sex and age group
282-0054	Labour force survey estimates (LFS), by economic region and Yukon Territory and Northwest Territories, 3-month moving average
282-0055	Labour force survey estimates (LFS), by economic region and Yukon Territory and Northwest Territories

282-0056	Labour force survey estimates (LFS), employment by census metropolitan area and North American Industry Classification System (NAICS), 3-month moving average
282-0057	Labour force survey estimates (LFS), employment by census metropolitan area and North American Industry Classification System (NAICS)
282-0058	Labour force survey estimates (LFS), employment by census metropolitan area and National Occupational Classification for Statistics (NOC-S), 3-month moving average
282-0059	Labour force survey estimates (LFS), employment by census metropolitan area and National Occupational Classification for Statistics (NOC-S)
282-0060	Labour force survey estimates (LFS), employment by economic region and North American Industry Classification System (NAICS), 3-month moving average
282-0061	Labour force survey estimates (LFS), employment by economic region and North American Industry Classification System (NAICS)
282-0062	Labour force survey estimates (LFS), employment by economic region and National Occupational Classification for Statistics (NOC-S), 3-month moving average
282-0063	Labour force survey estimates (LFS), employment by economic region and National Occupational Classification for Statistics (NOC-S)
282-0064	Labour force survey estimates (LFS), by selected medium-sized cities
282-0069	Labour force survey estimates (LFS), wages of employees by type of work, National Occupational Classification for Statistics (NOC-S), sex and age group
282-0070	Labour force survey estimates (LFS), wages of employees by type of work, National Occupational Classification for Statistics (NOC-S), sex and age group
282-0071	Labour force survey estimates (LFS), wages of employees by type of work, North American Industry Classification System (NAICS), sex and age group
282-0072	Labour force survey estimates (LFS), wages of employees by type of work, North American Industry Classification System (NAICS), sex and age group
282-0073	Labour force survey estimates (LFS), wages of employees by job permanence, union coverage, sex and age group
282-0074	Labour force survey estimates (LFS), wages of employees by job permanence, union coverage, sex and age group
282-0075	Labour force survey estimates (LFS), employees by establishment size, North American Industry Classification System (NAICS), sex and age group
282-0076	Labour force survey estimates (LFS), employees by establishment size, North American Industry Classification System (NAICS), sex and age group
282-0077	Labour force survey estimates (LFS), employees by union coverage, North American Industry Classification System (NAICS), sex and age group
282-0078	Labour force survey estimates (LFS), employees by union coverage, North American Industry Classification System (NAICS), sex and age group
282-0079	Labour force survey estimates (LFS), employees by job permanency, North American Industry Classification System (NAICS), sex and age group

282-0080	Labour force survey estimates (LFS), employees by job permanency, North American Industry Classification System (NAICS), sex and age group
282-0081	Labour force survey estimates (LFS), employees working overtime (weekly) by National Occupational Classification for Statistics (NOC-S), sex and age group
282-0082	Labour force survey estimates (LFS), employees working overtime (weekly) by National Occupational Classification for Statistics (NOC-S), sex and age group
282-0083	Labour force survey estimates (LFS), employees working overtime (weekly) by North American Industry Classification System (NAICS), sex and age group
282-0084	Labour force survey estimates (LFS), employees working overtime (weekly) by North American Industry Classification System (NAICS), sex and age group
282-0085	Labour force survey estimates (LFS), supplementary unemployment rates by sex and age group
282-0086	Labour force survey estimates (LFS), supplementary unemployment rates by sex and age group
282-0087	Labour force survey estimates (LFS), by sex and age group, seasonally adjusted and unadjusted
282-0088	Labour force survey estimates (LFS), employment by North American Industry Classification System (NAICS), seasonally adjusted and unadjusted
282-0089	Labour force survey estimates (LFS), employment by class of worker and sex, seasonally adjusted and unadjusted
282-0090	Labour force survey estimates (LFS), by census metropolitan area, 3-month moving average, seasonally adjusted and unadjusted
282-0091	Labour force survey estimates (LFS), by Montréal, Toronto and Vancouver census metropolitan areas, seasonally adjusted and unadjusted
282-0092	Labour force survey estimates (LFS), actual hours worked by North American Industry Classification System (NAICS), seasonally adjusted
282-0093	Labour force survey estimates (LFS), employment by National Occupational Classification for Statistics (NOC-S), seasonally adjusted
282-0094	Labour force survey estimates (LFS), by North American Industry Classification System (NAICS), Canada, seasonally adjusted
282-0095	Labour force survey estimates (LFS), by full- and part-time students during school months, sex and age group
282-0096	Labour force survey estimates (LFS), by urban and rural areas based on 2001 census boundaries, sex and age group
282-0098	Labour force survey estimates (LFS), employment by urban and rural areas based on 2001 census boundaries, class of worker and North American Industry Classification System (NAICS)

---

## **Selected surveys from Statistics Canada**

---

3701                      Labour Force Survey

---

## **Selected tables of Canadian statistics from Statistics Canada**

---

- *Labour force characteristics*
- *Employment by industry*
- *Selected economic indicators, Canada and United States (monthly and quarterly)*
- *Labour force and participation rates by sex and age group*
- *Labour force, employed and unemployed, numbers and rates, by provinces*
- *Employment by industry and sex*
- *Full-time and part-time employment by sex and age group*
- *Labour force characteristics by age and sex*
- *Distribution of employed people, by industry, by provinces*
- *Labour force characteristics, population 15 years and older, by census metropolitan areas*
- *Labour force characteristics, population 15 years and older, by economic regions, by province*
- *People employed, by educational attainment*
- *Reasons for part-time work by sex and age group*
- *Self-employment, historical summary*
- *Employment by age, sex, type of work, class of worker and provinces (monthly)*
- *Employment by major industry groups, seasonally adjusted, by provinces (monthly)*
- *Actual hours worked per week by industry, seasonally adjusted (monthly)*
- *Average hourly wages of employees by selected characteristics and profession, unadjusted data, by provinces (monthly)*
- *Labour force characteristics, seasonally adjusted, by province (monthly)*
- *Labour force characteristics, unadjusted, by province (monthly)*
- *Labour force characteristics, seasonally adjusted, by census metropolitan areas (3 month moving average)*
- *Labour force characteristics, unadjusted, by census metropolitan areas (3 month moving average)*

- *Labour force characteristics, unadjusted, by economic regions (3 month moving average)*

# Statistical tables

---

---



Table 1

## Labour force characteristics by age and sex, Canada, seasonally adjusted

	October 2005	November 2005	S.E. <sup>1</sup>	Change from			Percent change from		
				last month	last December	twelve months ago	last month	last December	twelve months ago
in thousands (except rates)									
<b>Both sexes, 15 years and over</b>									
Population	25,928.5	<b>25,959.7</b>	...	<b>31.2</b>	362.9	387.8	<b>0.1</b>	1.4	1.5
Labour force	17,423.1	<b>17,403.4</b>	28.1	<b>-19.7</b>	123.4	111.2	<b>-0.1</b>	0.7	0.6
Employment	16,267.1	<b>16,297.7</b>	28.9	<b>30.6</b>	234.6	249.7	<b>0.2</b>	1.5	1.6
Employment full-time	13,275.1	<b>13,325.3</b>	35.0	<b>50.2</b>	226.6	247.6	<b>0.4</b>	1.7	1.9
Employment part-time	2,992.0	<b>2,972.4</b>	31.6	<b>-19.6</b>	8.0	2.1	<b>-0.7</b>	0.3	0.1
Unemployment	1,155.9	<b>1,105.7</b>	24.2	<b>-50.2</b>	-111.2	-138.5	<b>-4.3</b>	-9.1	-11.1
Participation rate	67.2	<b>67.0</b>	0.1	<b>-0.2</b>	-0.5	-0.6	...	...	...
Unemployment rate	6.6	<b>6.4</b>	0.1	<b>-0.2</b>	-0.6	-0.8	...	...	...
Employment rate	62.7	<b>62.8</b>	0.1	<b>0.1</b>	0.0	0.0	...	...	...
Part-time rate	18.4	<b>18.2</b>	0.2	<b>-0.2</b>	-0.2	-0.3	...	...	...
<b>Both sexes, 15 to 24 years</b>									
Population	4,295.7	<b>4,299.2</b>	...	<b>3.5</b>	43.5	46.2	<b>0.1</b>	1.0	1.1
Labour force	2,834.1	<b>2,825.3</b>	16.9	<b>-8.8</b>	-20.1	-22.9	<b>-0.3</b>	-0.7	-0.8
Employment	2,491.8	<b>2,502.8</b>	16.5	<b>11.0</b>	17.9	19.6	<b>0.4</b>	0.7	0.8
Employment full-time	1,370.8	<b>1,381.3</b>	18.0	<b>10.5</b>	10.6	8.6	<b>0.8</b>	0.8	0.6
Employment part-time	1,121.0	<b>1,121.5</b>	18.4	<b>0.5</b>	7.3	11.0	<b>0.0</b>	0.7	1.0
Unemployment	342.2	<b>322.4</b>	14.3	<b>-19.8</b>	-38.1	-42.6	<b>-5.8</b>	-10.6	-11.7
Participation rate	66.0	<b>65.7</b>	0.4	<b>-0.3</b>	-1.2	-1.3	...	...	...
Unemployment rate	12.1	<b>11.4</b>	0.5	<b>-0.7</b>	-1.3	-1.4	...	...	...
Employment rate	58.0	<b>58.2</b>	0.4	<b>0.2</b>	-0.2	-0.2	...	...	...
Part-time rate	45.0	<b>44.8</b>	0.7	<b>-0.2</b>	0.0	0.1	...	...	...
<b>Men, 25 years and over</b>									
Population	10,562.1	<b>10,575.9</b>	...	<b>13.8</b>	158.9	169.7	<b>0.1</b>	1.5	1.6
Labour force	7,832.6	<b>7,837.1</b>	14.6	<b>4.5</b>	84.7	89.5	<b>0.1</b>	1.1	1.2
Employment	7,396.1	<b>7,403.7</b>	16.2	<b>7.6</b>	118.4	130.1	<b>0.1</b>	1.6	1.8
Employment full-time	6,911.5	<b>6,915.4</b>	19.7	<b>3.9</b>	82.0	90.1	<b>0.1</b>	1.2	1.3
Employment part-time	484.6	<b>488.3</b>	14.5	<b>3.7</b>	36.4	40.0	<b>0.8</b>	8.1	8.9
Unemployment	436.4	<b>433.4</b>	13.9	<b>-3.0</b>	-33.8	-40.6	<b>-0.7</b>	-7.2	-8.6
Participation rate	74.2	<b>74.1</b>	0.1	<b>-0.1</b>	-0.3	-0.4	...	...	...
Unemployment rate	5.6	<b>5.5</b>	0.2	<b>-0.1</b>	-0.5	-0.6	...	...	...
Employment rate	70.0	<b>70.0</b>	0.2	<b>0.0</b>	0.1	0.1	...	...	...
Part-time rate	6.6	<b>6.6</b>	0.2	<b>0.0</b>	0.4	0.4	...	...	...
<b>Women, 25 years and over</b>									
Population	11,070.7	<b>11,084.5</b>	...	<b>13.8</b>	160.4	171.8	<b>0.1</b>	1.5	1.6
Labour force	6,756.4	<b>6,741.1</b>	15.9	<b>-15.3</b>	58.9	44.7	<b>-0.2</b>	0.9	0.7
Employment	6,379.2	<b>6,391.2</b>	16.1	<b>12.0</b>	98.3	99.9	<b>0.2</b>	1.6	1.6
Employment full-time	4,992.8	<b>5,028.6</b>	22.7	<b>35.8</b>	134.0	148.9	<b>0.7</b>	2.7	3.1
Employment part-time	1,386.4	<b>1,362.6</b>	20.7	<b>-23.8</b>	-35.8	-48.9	<b>-1.7</b>	-2.6	-3.5
Unemployment	377.3	<b>349.9</b>	12.6	<b>-27.4</b>	-39.4	-55.3	<b>-7.3</b>	-10.1	-13.6
Participation rate	61.0	<b>60.8</b>	0.1	<b>-0.2</b>	-0.4	-0.6	...	...	...
Unemployment rate	5.6	<b>5.2</b>	0.2	<b>-0.4</b>	-0.6	-0.9	...	...	...
Employment rate	57.6	<b>57.7</b>	0.1	<b>0.1</b>	0.1	0.0	...	...	...
Part-time rate	21.7	<b>21.3</b>	0.3	<b>-0.4</b>	-0.9	-1.1	...	...	...
<b>Both sexes, 25 to 54 years</b>									
Population	14,161.7	<b>14,172.3</b>	...	<b>10.6</b>	113.8	119.3	<b>0.1</b>	0.8	0.8
Labour force	12,212.2	<b>12,209.3</b>	21.2	<b>-2.9</b>	45.4	34.9	<b>0.0</b>	0.4	0.3
Employment	11,521.7	<b>11,547.2</b>	22.8	<b>25.5</b>	115.3	132.5	<b>0.2</b>	1.0	1.2
Unemployment	690.6	<b>662.1</b>	18.1	<b>-28.5</b>	-69.9	-97.6	<b>-4.1</b>	-9.5	-12.8
Participation rate	86.2	<b>86.1</b>	0.2	<b>-0.1</b>	-0.4	-0.5	...	...	...
Unemployment rate	5.7	<b>5.4</b>	0.1	<b>-0.3</b>	-0.6	-0.8	...	...	...
Employment rate	81.4	<b>81.5</b>	0.2	<b>0.1</b>	0.2	0.3	...	...	...

1. Average standard error of change in two consecutive months (see "Sampling Errors" in Data Quality for further explanations).

Note: Related CANSIM table 282-0087

Table 2

## Employment by class of worker and industry, Canada, seasonally adjusted

	October 2005	November 2005	S.E. <sup>1</sup>	Change from			Percent change from		
				last month	last December	twelve months ago	last month	last December	twelve months ago
in thousands									
<b>Class of worker</b>									
Employees	13,727.2	<b>13,759.3</b>	30.7	<b>32.1</b>	149.6	179.8	<b>0.2</b>	1.1	1.3
Self-employed <sup>2</sup>	2,539.9	<b>2,538.4</b>	18.7	<b>-1.5</b>	85.0	69.9	<b>-0.1</b>	3.5	2.8
<b>Public/private sector employees</b>									
Public sector employees	3,119.2	<b>3,125.1</b>	18.0	<b>5.9</b>	26.4	34.4	<b>0.2</b>	0.9	1.1
Private sector employees	10,608.0	<b>10,634.2</b>	31.1	<b>26.2</b>	123.2	145.4	<b>0.2</b>	1.2	1.4
<b>Industry</b>	16,267.1	<b>16,297.7</b>	28.9	<b>30.6</b>	234.6	249.7	<b>0.2</b>	1.5	1.6
<b>Goods-producing sector</b>	4,007.2	<b>4,013.4</b>	22.7	<b>6.2</b>	-10.5	5.6	<b>0.2</b>	-0.3	0.1
Agriculture	352.6	<b>342.9</b>	6.3	<b>-9.7</b>	21.2	25.8	<b>-2.8</b>	6.6	8.1
Forestry, fishing, mining, oil and gas	317.0	<b>306.5</b>	5.5	<b>-10.5</b>	5.3	14.4	<b>-3.3</b>	1.8	4.9
Utilities	125.1	<b>120.7</b>	3.8	<b>-4.4</b>	-3.9	-6.0	<b>-3.5</b>	-3.1	-4.7
Construction	1,037.0	<b>1,061.1</b>	13.2	<b>24.1</b>	66.1	71.3	<b>2.3</b>	6.6	7.2
Manufacturing	2,175.5	<b>2,182.3</b>	18.1	<b>6.8</b>	-99.2	-99.7	<b>0.3</b>	-4.3	-4.4
<b>Services-producing sector</b>	12,259.9	<b>12,284.3</b>	30.4	<b>24.4</b>	245.1	244.0	<b>0.2</b>	2.0	2.0
Trade	2,599.9	<b>2,607.0</b>	18.9	<b>7.1</b>	82.8	71.3	<b>0.3</b>	3.3	2.8
Transportation and warehousing	807.4	<b>810.7</b>	11.0	<b>3.3</b>	24.1	18.1	<b>0.4</b>	3.1	2.3
Finance, insurance, real estate and leasing	996.8	<b>981.8</b>	12.1	<b>-15.0</b>	-2.6	-2.5	<b>-1.5</b>	-0.3	-0.3
Professional, scientific and technical services	1,066.6	<b>1,057.0</b>	12.7	<b>-9.6</b>	27.2	39.5	<b>-0.9</b>	2.6	3.9
Business, building and other support services	662.0	<b>674.0</b>	11.7	<b>12.0</b>	41.2	42.5	<b>1.8</b>	6.5	6.7
Educational services	1,127.9	<b>1,139.7</b>	12.0	<b>11.8</b>	83.0	86.3	<b>1.0</b>	7.9	8.2
Health care and social assistance	1,751.4	<b>1,734.3</b>	13.8	<b>-17.1</b>	-2.1	-7.0	<b>-1.0</b>	-0.1	-0.4
Information, culture and recreation	734.4	<b>739.2</b>	12.0	<b>4.8</b>	5.9	2.2	<b>0.7</b>	0.8	0.3
Accommodation and food services	993.8	<b>1,017.0</b>	13.2	<b>23.2</b>	0.3	9.8	<b>2.3</b>	0.0	1.0
Other services	694.0	<b>699.7</b>	11.1	<b>5.7</b>	-2.3	-4.0	<b>0.8</b>	-0.3	-0.6
Public administration	825.8	<b>824.0</b>	9.5	<b>-1.8</b>	-12.2	-12.1	<b>-0.2</b>	-1.5	-1.4

1. Average standard error of change in two consecutive months (see "Sampling Errors" in Data Quality for further explanations).

2. Includes both incorporated and unincorporated working owners, self-employed persons who do not have a business and persons working in a family business without pay.

**Note:** Related CANSIM tables 282-0088, 282-0089

Table 3

## Labour force characteristics by province, seasonally adjusted

	October 2005	November 2005	S.E. <sup>1</sup>	Change from			Percent change from		
				last month	last December	twelve months ago	last month	last December	twelve months ago
in thousands (except rates)									
<b>Newfoundland and Labrador</b>									
Population	429.4	<b>429.3</b>	...	<b>-0.1</b>	-1.1	-1.0	<b>0.0</b>	-0.3	-0.2
Labour force	253.3	<b>255.9</b>	2.4	<b>2.6</b>	3.7	3.8	<b>1.0</b>	1.5	1.5
Employment	214.8	<b>217.6</b>	2.5	<b>2.8</b>	1.6	5.6	<b>1.3</b>	0.7	2.6
Employment full-time	184.0	<b>183.5</b>	2.7	<b>-0.5</b>	0.3	3.3	<b>-0.3</b>	0.2	1.8
Employment part-time	30.9	<b>34.0</b>	2.0	<b>3.1</b>	1.3	2.3	<b>10.0</b>	4.0	7.3
Unemployment	38.5	<b>38.3</b>	2.3	<b>-0.2</b>	2.1	-1.9	<b>-0.5</b>	5.8	-4.7
Participation rate	59.0	<b>59.6</b>	0.6	<b>0.6</b>	1.0	1.0	...	...	...
Unemployment rate	15.2	<b>15.0</b>	0.8	<b>-0.2</b>	0.6	-0.9	...	...	...
Employment rate	50.0	<b>50.7</b>	0.6	<b>0.7</b>	0.5	1.4	...	...	...
<b>Prince Edward Island</b>									
Population	111.8	<b>111.9</b>	...	<b>0.1</b>	0.7	0.7	<b>0.1</b>	0.6	0.6
Labour force	76.6	<b>76.6</b>	0.7	<b>0.0</b>	-0.1	-0.2	<b>0.0</b>	-0.1	-0.3
Employment	68.1	<b>68.5</b>	0.7	<b>0.4</b>	-0.2	-0.4	<b>0.6</b>	-0.3	-0.6
Employment full-time	57.3	<b>57.1</b>	0.8	<b>-0.2</b>	-0.4	-0.4	<b>-0.3</b>	-0.7	-0.7
Employment part-time	10.7	<b>11.4</b>	0.7	<b>0.7</b>	0.2	0.0	<b>6.5</b>	1.8	0.0
Unemployment	8.5	<b>8.1</b>	0.7	<b>-0.4</b>	0.1	0.1	<b>-4.7</b>	1.2	1.2
Participation rate	68.5	<b>68.5</b>	0.6	<b>0.0</b>	-0.5	-0.6	...	...	...
Unemployment rate	11.1	<b>10.6</b>	0.8	<b>-0.5</b>	0.2	0.2	...	...	...
Employment rate	60.9	<b>61.2</b>	0.7	<b>0.3</b>	-0.6	-0.8	...	...	...
<b>Nova Scotia</b>									
Population	761.7	<b>761.7</b>	...	<b>0.0</b>	2.9	3.3	<b>0.0</b>	0.4	0.4
Labour force	486.3	<b>482.4</b>	3.0	<b>-3.9</b>	-4.2	-4.6	<b>-0.8</b>	-0.9	-0.9
Employment	445.2	<b>442.8</b>	3.2	<b>-2.4</b>	-0.6	-1.6	<b>-0.5</b>	-0.1	-0.4
Employment full-time	361.6	<b>360.2</b>	3.7	<b>-1.4</b>	1.3	-0.6	<b>-0.4</b>	0.4	-0.2
Employment part-time	83.6	<b>82.6</b>	3.3	<b>-1.0</b>	-1.9	-0.9	<b>-1.2</b>	-2.2	-1.1
Unemployment	41.2	<b>39.6</b>	2.7	<b>-1.6</b>	-3.6	-3.1	<b>-3.9</b>	-8.3	-7.3
Participation rate	63.8	<b>63.3</b>	0.4	<b>-0.5</b>	-0.8	-0.9	...	...	...
Unemployment rate	8.5	<b>8.2</b>	0.6	<b>-0.3</b>	-0.7	-0.6	...	...	...
Employment rate	58.4	<b>58.1</b>	0.4	<b>-0.3</b>	-0.3	-0.5	...	...	...
<b>New Brunswick</b>									
Population	611.3	<b>611.5</b>	...	<b>0.2</b>	2.9	3.1	<b>0.0</b>	0.5	0.5
Labour force	390.0	<b>388.2</b>	2.5	<b>-1.8</b>	-1.2	-0.2	<b>-0.5</b>	-0.3	-0.1
Employment	347.0	<b>351.5</b>	2.5	<b>4.5</b>	-1.4	1.0	<b>1.3</b>	-0.4	0.3
Employment full-time	290.4	<b>296.3</b>	2.8	<b>5.9</b>	-0.8	-0.2	<b>2.0</b>	-0.3	-0.1
Employment part-time	56.6	<b>55.3</b>	2.3	<b>-1.3</b>	-0.5	1.3	<b>-2.3</b>	-0.9	2.4
Unemployment	43.0	<b>36.7</b>	2.3	<b>-6.3</b>	0.2	-1.2	<b>-14.7</b>	0.5	-3.2
Participation rate	63.8	<b>63.5</b>	0.4	<b>-0.3</b>	-0.5	-0.3	...	...	...
Unemployment rate	11.0	<b>9.5</b>	0.6	<b>-1.5</b>	0.1	-0.3	...	...	...
Employment rate	56.8	<b>57.5</b>	0.4	<b>0.7</b>	-0.5	-0.1	...	...	...
<b>Quebec</b>									
Population	6,204.5	<b>6,211.1</b>	...	<b>6.6</b>	67.3	72.0	<b>0.1</b>	1.1	1.2
Labour force	4,083.5	<b>4,069.7</b>	15.2	<b>-13.8</b>	17.2	-7.2	<b>-0.3</b>	0.4	-0.2
Employment	3,743.9	<b>3,745.1</b>	15.5	<b>1.2</b>	41.2	29.8	<b>0.0</b>	1.1	0.8
Employment full-time	3,057.8	<b>3,047.8</b>	19.2	<b>-10.0</b>	1.3	-4.8	<b>-0.3</b>	0.0	-0.2
Employment part-time	686.1	<b>697.3</b>	17.1	<b>11.2</b>	39.9	34.6	<b>1.6</b>	6.1	5.2
Unemployment	339.7	<b>324.6</b>	13.6	<b>-15.1</b>	-24.0	-37.0	<b>-4.4</b>	-6.9	-10.2
Participation rate	65.8	<b>65.5</b>	0.3	<b>-0.3</b>	-0.5	-0.9	...	...	...
Unemployment rate	8.3	<b>8.0</b>	0.3	<b>-0.3</b>	-0.6	-0.9	...	...	...
Employment rate	60.3	<b>60.3</b>	0.3	<b>0.0</b>	0.0	-0.2	...	...	...

See footnotes at the end of the table.

Table 3 – continued

## Labour force characteristics by province, seasonally adjusted

	October 2005	November 2005	S.E. <sup>1</sup>	Change from			Percent change from		
				last month	last December	twelve months ago	last month	last December	twelve months ago
in thousands (except rates)									
<b>Ontario</b>									
Population	10,128.7	<b>10,141.9</b>	...	<b>13.2</b>	169.9	181.3	<b>0.1</b>	1.7	1.8
Labour force	6,887.1	<b>6,864.0</b>	18.9	<b>-23.1</b>	45.0	51.1	<b>-0.3</b>	0.7	0.8
Employment	6,445.6	<b>6,447.0</b>	19.1	<b>1.4</b>	93.5	100.7	<b>0.0</b>	1.5	1.6
Employment full-time	5,297.7	<b>5,299.6</b>	22.6	<b>1.9</b>	116.4	121.1	<b>0.0</b>	2.2	2.3
Employment part-time	1,148.0	<b>1,147.3</b>	20.6	<b>-0.7</b>	-23.0	-20.5	<b>-0.1</b>	-2.0	-1.8
Unemployment	441.5	<b>417.1</b>	15.8	<b>-24.4</b>	-48.4	-49.5	<b>-5.5</b>	-10.4	-10.6
Participation rate	68.0	<b>67.7</b>	0.2	<b>-0.3</b>	-0.7	-0.7	...	...	...
Unemployment rate	6.4	<b>6.1</b>	0.2	<b>-0.3</b>	-0.7	-0.7	...	...	...
Employment rate	63.6	<b>63.6</b>	0.2	<b>0.0</b>	-0.1	-0.1	...	...	...
<b>Manitoba</b>									
Population	890.1	<b>890.1</b>	...	<b>0.0</b>	5.1	5.6	<b>0.0</b>	0.6	0.6
Labour force	607.3	<b>608.6</b>	2.8	<b>1.3</b>	-2.5	-4.0	<b>0.2</b>	-0.4	-0.7
Employment	580.3	<b>583.4</b>	2.9	<b>3.1</b>	3.1	1.7	<b>0.5</b>	0.5	0.3
Employment full-time	466.1	<b>469.5</b>	3.8	<b>3.4</b>	-1.3	-1.4	<b>0.7</b>	-0.3	-0.3
Employment part-time	114.1	<b>113.9</b>	3.4	<b>-0.2</b>	4.4	3.1	<b>-0.2</b>	4.0	2.8
Unemployment	27.0	<b>25.3</b>	2.3	<b>-1.7</b>	-5.5	-5.7	<b>-6.3</b>	-17.9	-18.4
Participation rate	68.2	<b>68.4</b>	0.3	<b>0.2</b>	-0.7	-0.9	...	...	...
Unemployment rate	4.4	<b>4.2</b>	0.4	<b>-0.2</b>	-0.8	-0.9	...	...	...
Employment rate	65.2	<b>65.5</b>	0.3	<b>0.3</b>	-0.1	-0.3	...	...	...
<b>Saskatchewan</b>									
Population	748.9	<b>748.6</b>	...	<b>-0.3</b>	1.7	1.8	<b>0.0</b>	0.2	0.2
Labour force	505.0	<b>507.0</b>	2.5	<b>2.0</b>	-7.0	-5.2	<b>0.4</b>	-1.4	-1.0
Employment	478.5	<b>480.3</b>	2.5	<b>1.8</b>	-6.6	-5.6	<b>0.4</b>	-1.4	-1.2
Employment full-time	382.6	<b>387.4</b>	3.1	<b>4.8</b>	-4.0	-4.8	<b>1.3</b>	-1.0	-1.2
Employment part-time	95.9	<b>93.0</b>	2.9	<b>-2.9</b>	-2.5	-0.7	<b>-3.0</b>	-2.6	-0.7
Unemployment	26.5	<b>26.6</b>	1.9	<b>0.1</b>	-0.5	0.3	<b>0.4</b>	-1.8	1.1
Participation rate	67.4	<b>67.7</b>	0.3	<b>0.3</b>	-1.1	-0.9	...	...	...
Unemployment rate	5.2	<b>5.2</b>	0.4	<b>0.0</b>	-0.1	0.1	...	...	...
Employment rate	63.9	<b>64.2</b>	0.3	<b>0.3</b>	-1.0	-0.9	...	...	...
<b>Alberta</b>									
Population	2,574.0	<b>2,580.5</b>	...	<b>6.5</b>	54.5	57.9	<b>0.3</b>	2.2	2.3
Labour force	1,869.2	<b>1,872.0</b>	7.2	<b>2.8</b>	21.7	19.8	<b>0.1</b>	1.2	1.1
Employment	1,794.9	<b>1,795.1</b>	8.1	<b>0.2</b>	27.0	28.8	<b>0.0</b>	1.5	1.6
Employment full-time	1,479.1	<b>1,499.6</b>	10.3	<b>20.5</b>	54.1	55.3	<b>1.4</b>	3.7	3.8
Employment part-time	315.7	<b>295.4</b>	9.2	<b>-20.3</b>	-27.2	-26.7	<b>-6.4</b>	-8.4	-8.3
Unemployment	74.4	<b>76.9</b>	6.2	<b>2.5</b>	-5.4	-9.0	<b>3.4</b>	-6.6	-10.5
Participation rate	72.6	<b>72.5</b>	0.3	<b>-0.1</b>	-0.8	-0.9	...	...	...
Unemployment rate	4.0	<b>4.1</b>	0.3	<b>0.1</b>	-0.3	-0.5	...	...	...
Employment rate	69.7	<b>69.6</b>	0.3	<b>-0.1</b>	-0.4	-0.4	...	...	...
<b>British Columbia</b>									
Population	3,468.0	<b>3,473.2</b>	...	<b>5.2</b>	59.1	63.2	<b>0.1</b>	1.7	1.9
Labour force	2,264.6	<b>2,278.9</b>	10.9	<b>14.3</b>	50.7	58.0	<b>0.6</b>	2.3	2.6
Employment	2,148.9	<b>2,166.5</b>	11.4	<b>17.6</b>	77.0	89.7	<b>0.8</b>	3.7	4.3
Employment full-time	1,698.9	<b>1,724.3</b>	13.8	<b>25.4</b>	60.4	79.8	<b>1.5</b>	3.6	4.9
Employment part-time	450.0	<b>442.3</b>	12.5	<b>-7.7</b>	16.7	10.0	<b>-1.7</b>	3.9	2.3
Unemployment	115.7	<b>112.4</b>	9.0	<b>-3.3</b>	-26.4	-31.8	<b>-2.9</b>	-19.0	-22.1
Participation rate	65.3	<b>65.6</b>	0.3	<b>0.3</b>	0.3	0.5	...	...	...
Unemployment rate	5.1	<b>4.9</b>	0.4	<b>-0.2</b>	-1.3	-1.6	...	...	...
Employment rate	62.0	<b>62.4</b>	0.3	<b>0.4</b>	1.2	1.5	...	...	...

1. Average standard error of change in two consecutive months (see "Sampling Errors" in Data Quality for further explanations).

Note: Related CANSIM table 282-0087

Table 4-1

## Selected labour force characteristics (seasonally adjusted) — Newfoundland and Labrador

	October 2005	November 2005	S.E. <sup>1</sup>	Change from			Percent change from		
				last month	last December	twelve months ago	last month	last December	twelve months ago
in thousands (except rates)									
<b>Both sexes, 15 years and over</b>									
Population	429.4	<b>429.3</b>	...	<b>-0.1</b>	-1.1	-1.0	<b>0.0</b>	-0.3	-0.2
Labour force	253.3	<b>255.9</b>	2.4	<b>2.6</b>	3.7	3.8	<b>1.0</b>	1.5	1.5
Employment	214.8	<b>217.6</b>	2.5	<b>2.8</b>	1.6	5.6	<b>1.3</b>	0.7	2.6
Employment full-time	184.0	<b>183.5</b>	2.7	<b>-0.5</b>	0.3	3.3	<b>-0.3</b>	0.2	1.8
Unemployment	38.5	<b>38.3</b>	2.3	<b>-0.2</b>	2.1	-1.9	<b>-0.5</b>	5.8	-4.7
Participation rate	59.0	<b>59.6</b>	0.6	<b>0.6</b>	1.0	1.0	...	...	...
Unemployment rate	15.2	<b>15.0</b>	0.8	<b>-0.2</b>	0.6	-0.9	...	...	...
Employment rate	50.0	<b>50.7</b>	0.6	<b>0.7</b>	0.5	1.4	...	...	...
Part-time rate	14.4	<b>15.6</b>	0.9	<b>1.2</b>	0.5	0.7	...	...	...
<b>Both sexes, 15 to 24 years</b>									
Population	68.2	<b>68.0</b>	...	<b>-0.2</b>	-2.6	-2.8	<b>-0.3</b>	-3.7	-4.0
Labour force	36.0	<b>38.7</b>	1.4	<b>2.7</b>	0.2	-0.3	<b>7.5</b>	0.5	-0.8
Employment	27.4	<b>30.4</b>	1.3	<b>3.0</b>	-0.8	0.6	<b>10.9</b>	-2.6	2.0
Unemployment	8.6	<b>8.3</b>	1.1	<b>-0.3</b>	1.0	-0.9	<b>-3.5</b>	13.7	-9.8
Participation rate	52.8	<b>56.9</b>	1.9	<b>4.1</b>	2.4	1.8	...	...	...
Unemployment rate	23.9	<b>21.4</b>	2.6	<b>-2.5</b>	2.4	-2.2	...	...	...
Employment rate	40.2	<b>44.7</b>	1.8	<b>4.5</b>	0.5	2.6	...	...	...
Part-time rate	40.9	<b>46.4</b>	3.6	<b>5.5</b>	5.0	8.1	...	...	...
<b>Men, 25 years and over</b>									
Population	175.1	<b>175.1</b>	...	<b>0.0</b>	0.6	0.7	<b>0.0</b>	0.3	0.4
Labour force	114.0	<b>113.9</b>	1.4	<b>-0.1</b>	-1.4	-0.5	<b>-0.1</b>	-1.2	-0.4
Employment	97.2	<b>96.0</b>	1.5	<b>-1.2</b>	-2.7	-1.2	<b>-1.2</b>	-2.7	-1.2
Unemployment	16.8	<b>17.9</b>	1.5	<b>1.1</b>	1.3	0.7	<b>6.5</b>	7.8	4.1
Participation rate	65.1	<b>65.0</b>	0.8	<b>-0.1</b>	-1.1	-0.6	...	...	...
Unemployment rate	14.7	<b>15.7</b>	1.2	<b>1.0</b>	1.3	0.7	...	...	...
Employment rate	55.5	<b>54.8</b>	0.8	<b>-0.7</b>	-1.8	-0.9	...	...	...
Part-time rate	3.8	<b>4.7</b>	0.8	<b>0.9</b>	-0.5	-0.6	...	...	...
<b>Women, 25 years and over</b>									
Population	186.1	<b>186.2</b>	...	<b>0.1</b>	0.9	1.0	<b>0.1</b>	0.5	0.5
Labour force	103.3	<b>103.2</b>	1.2	<b>-0.1</b>	4.8	4.5	<b>-0.1</b>	4.9	4.6
Employment	90.2	<b>91.2</b>	1.3	<b>1.0</b>	5.2	6.3	<b>1.1</b>	6.0	7.4
Unemployment	13.1	<b>12.1</b>	1.2	<b>-1.0</b>	-0.3	-1.7	<b>-7.6</b>	-2.4	-12.3
Participation rate	55.5	<b>55.4</b>	0.7	<b>-0.1</b>	2.3	2.1	...	...	...
Unemployment rate	12.7	<b>11.7</b>	1.1	<b>-1.0</b>	-0.9	-2.3	...	...	...
Employment rate	48.5	<b>49.0</b>	0.7	<b>0.5</b>	2.6	3.2	...	...	...
Part-time rate	17.7	<b>17.0</b>	1.4	<b>-0.7</b>	-0.2	-0.9	...	...	...
<b>Industry</b>	214.8	<b>217.6</b>	2.5	<b>2.8</b>	1.6	5.6	<b>1.3</b>	0.7	2.6
<b>Goods-producing sector</b>	50.9	<b>51.2</b>	1.8	<b>0.3</b>	2.8	4.5	<b>0.6</b>	5.8	9.6
Agriculture	2.9	<b>2.5</b>	0.3	<b>-0.4</b>	0.9	0.8	<b>-13.8</b>	56.2	47.1
Forestry, fishing, mining, oil and gas	15.8	<b>15.0</b>	1.0	<b>-0.8</b>	-0.5	0.8	<b>-5.1</b>	-3.2	5.6
Utilities	2.1	<b>2.6</b>	0.2	<b>0.5</b>	0.1	0.3	<b>23.8</b>	4.0	13.0
Construction	13.0	<b>11.9</b>	0.9	<b>-1.1</b>	-1.6	-1.0	<b>-8.5</b>	-11.9	-7.8
Manufacturing	17.2	<b>19.3</b>	1.1	<b>2.1</b>	4.0	3.7	<b>12.2</b>	26.1	23.7
<b>Services-producing sector</b>	164.0	<b>166.3</b>	2.2	<b>2.3</b>	-1.2	1.0	<b>1.4</b>	-0.7	0.6
Trade	37.9	<b>38.8</b>	1.2	<b>0.9</b>	-0.3	0.0	<b>2.4</b>	-0.8	0.0
Transportation and warehousing	11.4	<b>11.1</b>	0.7	<b>-0.3</b>	-0.1	-0.6	<b>-2.6</b>	-0.9	-5.1
Finance, insurance, real estate and leasing	6.9	<b>7.9</b>	0.6	<b>1.0</b>	-0.7	-0.6	<b>14.5</b>	-8.1	-7.1
Professional, scientific and technical services	8.7	<b>7.3</b>	0.6	<b>-1.4</b>	0.9	1.0	<b>-16.1</b>	14.1	15.9
Business, building and other support services	6.5	<b>6.2</b>	0.8	<b>-0.3</b>	-1.3	-1.3	<b>-4.6</b>	-17.3	-17.3
Educational services	17.6	<b>17.3</b>	0.9	<b>-0.3</b>	0.3	0.2	<b>-1.7</b>	1.8	1.2
Health care and social assistance	29.7	<b>28.9</b>	0.9	<b>-0.8</b>	-1.1	-0.3	<b>-2.7</b>	-3.7	-1.0
Information, culture and recreation	6.6	<b>7.8</b>	0.6	<b>1.2</b>	-2.0	-0.8	<b>18.2</b>	-20.4	-9.3
Accommodation and food services	12.7	<b>13.6</b>	0.9	<b>0.9</b>	0.5	1.0	<b>7.1</b>	3.8	7.9
Other services	11.8	<b>12.2</b>	0.8	<b>0.4</b>	1.8	2.5	<b>3.4</b>	17.3	25.8
Public administration	14.3	<b>15.1</b>	0.8	<b>0.8</b>	0.6	-0.2	<b>5.6</b>	4.1	-1.3

1. Average standard error of change in two consecutive months (see "Sampling Errors" in Data Quality for further explanations).

Note: Related CANSIM tables 282-0087, 282-0088

Table 4-2

## Selected labour force characteristics (seasonally adjusted) — Prince Edward Island

	October 2005	November 2005	S.E. <sup>1</sup>	Change from			Percent change from		
				last month	last December	twelve months ago	last month	last December	twelve months ago
in thousands (except rates)									
<b>Both sexes, 15 years and over</b>									
Population	111.8	<b>111.9</b>	...	<b>0.1</b>	0.7	0.7	<b>0.1</b>	0.6	0.6
Labour force	76.6	<b>76.6</b>	0.7	<b>0.0</b>	-0.1	-0.2	<b>0.0</b>	-0.1	-0.3
Employment	68.1	<b>68.5</b>	0.7	<b>0.4</b>	-0.2	-0.4	<b>0.6</b>	-0.3	-0.6
Employment full-time	57.3	<b>57.1</b>	0.8	<b>-0.2</b>	-0.4	-0.4	<b>-0.3</b>	-0.7	-0.7
Unemployment	8.5	<b>8.1</b>	0.7	<b>-0.4</b>	0.1	0.1	<b>-4.7</b>	1.2	1.2
Participation rate	68.5	<b>68.5</b>	0.6	<b>0.0</b>	-0.5	-0.6	...	...	...
Unemployment rate	11.1	<b>10.6</b>	0.8	<b>-0.5</b>	0.2	0.2	...	...	...
Employment rate	60.9	<b>61.2</b>	0.7	<b>0.3</b>	-0.6	-0.8	...	...	...
Part-time rate	15.7	<b>16.6</b>	1.0	<b>0.9</b>	0.3	0.1	...	...	...
<b>Both sexes, 15 to 24 years</b>									
Population	19.7	<b>19.7</b>	...	<b>0.0</b>	0.2	0.2	<b>0.0</b>	1.0	1.0
Labour force	13.4	<b>13.4</b>	0.4	<b>0.0</b>	-0.1	-0.4	<b>0.0</b>	-0.7	-2.9
Employment	11.2	<b>11.6</b>	0.4	<b>0.4</b>	0.3	0.2	<b>3.6</b>	2.7	1.8
Unemployment	2.2	<b>1.8</b>	0.4	<b>-0.4</b>	-0.4	-0.6	<b>-18.2</b>	-18.2	-25.0
Participation rate	68.0	<b>68.0</b>	2.1	<b>0.0</b>	-1.2	-2.8	...	...	...
Unemployment rate	16.4	<b>13.4</b>	2.6	<b>-3.0</b>	-2.9	-4.0	...	...	...
Employment rate	56.9	<b>58.9</b>	2.1	<b>2.0</b>	1.0	0.4	...	...	...
Part-time rate	40.2	<b>43.1</b>	3.5	<b>2.9</b>	1.5	2.8	...	...	...
<b>Men, 25 years and over</b>									
Population	44.2	<b>44.2</b>	...	<b>0.0</b>	0.4	0.5	<b>0.0</b>	0.9	1.1
Labour force	32.8	<b>32.7</b>	0.4	<b>-0.1</b>	0.5	0.6	<b>-0.3</b>	1.6	1.9
Employment	28.9	<b>29.0</b>	0.4	<b>0.1</b>	-0.2	-0.1	<b>0.3</b>	-0.7	-0.3
Unemployment	3.9	<b>3.7</b>	0.4	<b>-0.2</b>	0.8	0.7	<b>-5.1</b>	27.6	23.3
Participation rate	74.2	<b>74.0</b>	0.8	<b>-0.2</b>	0.5	0.5	...	...	...
Unemployment rate	11.9	<b>11.3</b>	1.2	<b>-0.6</b>	2.3	2.0	...	...	...
Employment rate	65.4	<b>65.6</b>	1.0	<b>0.2</b>	-1.1	-1.0	...	...	...
Part-time rate	5.5	<b>6.6</b>	1.0	<b>1.0</b>	0.4	0.0	...	...	...
<b>Women, 25 years and over</b>									
Population	48.0	<b>47.9</b>	...	<b>-0.1</b>	0.0	0.0	<b>-0.2</b>	0.0	0.0
Labour force	30.4	<b>30.5</b>	0.3	<b>0.1</b>	-0.5	-0.4	<b>0.3</b>	-1.6	-1.3
Employment	27.9	<b>28.0</b>	0.4	<b>0.1</b>	-0.2	-0.3	<b>0.4</b>	-0.7	-1.1
Unemployment	2.5	<b>2.5</b>	0.4	<b>0.0</b>	-0.3	-0.1	<b>0.0</b>	-10.7	-3.8
Participation rate	63.3	<b>63.7</b>	0.7	<b>0.4</b>	-1.0	-0.8	...	...	...
Unemployment rate	8.2	<b>8.2</b>	1.2	<b>0.0</b>	-0.8	-0.2	...	...	...
Employment rate	58.1	<b>58.5</b>	0.9	<b>0.4</b>	-0.4	-0.6	...	...	...
Part-time rate	16.5	<b>15.7</b>	1.6	<b>-0.8</b>	-1.3	-1.6	...	...	...
<b>Industry</b>	68.1	<b>68.5</b>	0.7	<b>0.4</b>	-0.2	-0.4	<b>0.6</b>	-0.3	-0.6
<b>Goods-producing sector</b>	17.6	<b>17.5</b>	0.5	<b>-0.1</b>	-0.1	-0.6	<b>-0.6</b>	-0.6	-3.3
Agriculture	3.5	<b>3.6</b>	0.3	<b>0.1</b>	0.2	-0.3	<b>2.9</b>	5.9	-7.7
Forestry, fishing, mining, oil and gas	2.2	<b>2.0</b>	0.3	<b>-0.2</b>	-1.0	-1.1	<b>-9.1</b>	-33.3	-35.5
Utilities	0.4	<b>0.3</b>	0.0	<b>-0.1</b>	-0.1	-0.1	<b>-25.0</b>	-25.0	-25.0
Construction	4.8	<b>4.9</b>	0.3	<b>0.1</b>	0.9	0.9	<b>2.1</b>	22.5	22.5
Manufacturing	6.6	<b>6.7</b>	0.3	<b>0.1</b>	0.0	0.1	<b>1.5</b>	0.0	1.5
<b>Services-producing sector</b>	50.4	<b>51.0</b>	0.7	<b>0.6</b>	-0.1	0.2	<b>1.2</b>	-0.2	0.4
Trade	9.7	<b>9.9</b>	0.4	<b>0.2</b>	-0.1	0.1	<b>2.1</b>	-1.0	1.0
Transportation and warehousing	2.2	<b>2.2</b>	0.2	<b>0.0</b>	0.0	0.0	<b>0.0</b>	0.0	0.0
Finance, insurance, real estate and leasing	2.0	<b>2.0</b>	0.2	<b>0.0</b>	-0.2	-0.1	<b>0.0</b>	-9.1	-4.8
Professional, scientific and technical services	2.4	<b>2.8</b>	0.2	<b>0.4</b>	0.2	0.1	<b>16.7</b>	7.7	3.7
Business, building and other support services	3.0	<b>2.8</b>	0.2	<b>-0.2</b>	0.4	0.5	<b>-6.7</b>	16.7	21.7
Educational services	4.8	<b>4.8</b>	0.2	<b>0.0</b>	-0.2	-0.3	<b>0.0</b>	-4.0	-5.9
Health care and social assistance	8.3	<b>7.9</b>	0.3	<b>-0.4</b>	-0.2	-0.3	<b>-4.8</b>	-2.5	-3.7
Information, culture and recreation	2.9	<b>3.0</b>	0.2	<b>0.1</b>	0.3	0.2	<b>3.4</b>	11.1	7.1
Accommodation and food services	5.7	<b>5.8</b>	0.3	<b>0.1</b>	0.5	0.7	<b>1.8</b>	9.4	13.7
Other services	3.1	<b>3.4</b>	0.2	<b>0.3</b>	0.5	0.4	<b>9.7</b>	17.2	13.3
Public administration	6.4	<b>6.3</b>	0.3	<b>-0.1</b>	-1.4	-1.3	<b>-1.6</b>	-18.2	-17.1

1. Average standard error of change in two consecutive months (see "Sampling Errors" in Data Quality for further explanations).

Note: Related CANSIM tables 282-0087, 282-0088

Table 4-3

## Selected labour force characteristics (seasonally adjusted) — Nova Scotia

	October 2005	November 2005	S.E. <sup>1</sup>	Change from			Percent change from		
				last month	last December	twelve months ago	last month	last December	twelve months ago
in thousands (except rates)									
<b>Both sexes, 15 years and over</b>									
Population	761.7	<b>761.7</b>	...	<b>0.0</b>	2.9	3.3	<b>0.0</b>	0.4	0.4
Labour force	486.3	<b>482.4</b>	3.0	<b>-3.9</b>	-4.2	-4.6	<b>-0.8</b>	-0.9	-0.9
Employment	445.2	<b>442.8</b>	3.2	<b>-2.4</b>	-0.6	-1.6	<b>-0.5</b>	-0.1	-0.4
Employment full-time	361.6	<b>360.2</b>	3.7	<b>-1.4</b>	1.3	-0.6	<b>-0.4</b>	0.4	-0.2
Unemployment	41.2	<b>39.6</b>	2.7	<b>-1.6</b>	-3.6	-3.1	<b>-3.9</b>	-8.3	-7.3
Participation rate	63.8	<b>63.3</b>	0.4	<b>-0.5</b>	-0.8	-0.9	...	...	...
Unemployment rate	8.5	<b>8.2</b>	0.6	<b>-0.3</b>	-0.7	-0.6	...	...	...
Employment rate	58.4	<b>58.1</b>	0.4	<b>-0.3</b>	-0.3	-0.5	...	...	...
Part-time rate	18.8	<b>18.7</b>	0.7	<b>-0.1</b>	-0.4	-0.1	...	...	...
<b>Both sexes, 15 to 24 years</b>									
Population	123.7	<b>123.6</b>	...	<b>-0.1</b>	0.6	0.8	<b>-0.1</b>	0.5	0.7
Labour force	81.0	<b>80.4</b>	1.7	<b>-0.6</b>	-4.1	-3.6	<b>-0.7</b>	-4.9	-4.3
Employment	69.8	<b>70.0</b>	1.7	<b>0.2</b>	-1.2	-1.2	<b>0.3</b>	-1.7	-1.7
Unemployment	11.2	<b>10.4</b>	1.6	<b>-0.8</b>	-2.9	-2.4	<b>-7.1</b>	-21.8	-18.8
Participation rate	65.5	<b>65.0</b>	1.4	<b>-0.5</b>	-3.7	-3.4	...	...	...
Unemployment rate	13.8	<b>12.9</b>	1.8	<b>-0.9</b>	-2.8	-2.3	...	...	...
Employment rate	56.4	<b>56.6</b>	1.4	<b>0.2</b>	-1.3	-1.4	...	...	...
Part-time rate	46.3	<b>43.9</b>	2.5	<b>-2.4</b>	0.9	0.7	...	...	...
<b>Men, 25 years and over</b>									
Population	304.9	<b>304.9</b>	...	<b>0.0</b>	0.7	0.8	<b>0.0</b>	0.2	0.3
Labour force	211.8	<b>209.0</b>	1.6	<b>-2.8</b>	-3.6	-4.4	<b>-1.3</b>	-1.7	-2.1
Employment	195.6	<b>191.6</b>	1.8	<b>-4.0</b>	-4.7	-5.7	<b>-2.0</b>	-2.4	-2.9
Unemployment	16.3	<b>17.4</b>	1.6	<b>1.1</b>	1.1	1.2	<b>6.7</b>	6.7	7.4
Participation rate	69.5	<b>68.5</b>	0.5	<b>-1.0</b>	-1.4	-1.7	...	...	...
Unemployment rate	7.7	<b>8.3</b>	0.8	<b>0.6</b>	0.6	0.7	...	...	...
Employment rate	64.2	<b>62.8</b>	0.6	<b>-1.4</b>	-1.7	-2.1	...	...	...
Part-time rate	6.7	<b>6.6</b>	0.8	<b>-0.1</b>	-0.1	0.2	...	...	...
<b>Women, 25 years and over</b>									
Population	333.1	<b>333.2</b>	...	<b>0.1</b>	1.5	1.7	<b>0.0</b>	0.5	0.5
Labour force	193.5	<b>193.1</b>	1.6	<b>-0.4</b>	3.6	3.5	<b>-0.2</b>	1.9	1.8
Employment	179.8	<b>181.2</b>	1.7	<b>1.4</b>	5.3	5.3	<b>0.8</b>	3.0	3.0
Unemployment	13.7	<b>11.9</b>	1.4	<b>-1.8</b>	-1.7	-1.8	<b>-13.1</b>	-12.5	-13.1
Participation rate	58.1	<b>58.0</b>	0.5	<b>-0.1</b>	0.9	0.8	...	...	...
Unemployment rate	7.1	<b>6.2</b>	0.7	<b>-0.9</b>	-1.0	-1.0	...	...	...
Employment rate	54.0	<b>54.4</b>	0.5	<b>0.4</b>	1.4	1.3	...	...	...
Part-time rate	21.2	<b>21.7</b>	1.2	<b>0.4</b>	-1.5	-1.2	...	...	...
<b>Industry</b>	<b>445.2</b>	<b>442.8</b>	3.2	<b>-2.4</b>	-0.6	-1.6	<b>-0.5</b>	-0.1	-0.4
<b>Goods-producing sector</b>	<b>92.0</b>	<b>90.1</b>	2.2	<b>-1.9</b>	-3.6	-5.1	<b>-2.1</b>	-3.8	-5.4
Agriculture	5.6	<b>5.1</b>	0.6	<b>-0.5</b>	0.1	-0.7	<b>-8.9</b>	2.0	-12.1
Forestry, fishing, mining, oil and gas	16.5	<b>15.2</b>	1.0	<b>-1.3</b>	1.3	1.1	<b>-7.9</b>	9.4	7.8
Utilities	1.9	<b>1.8</b>	0.3	<b>-0.1</b>	-0.7	-0.8	<b>-5.3</b>	-28.0	-30.8
Construction	28.6	<b>27.7</b>	1.3	<b>-0.9</b>	-1.9	-2.0	<b>-3.1</b>	-6.4	-6.7
Manufacturing	39.4	<b>40.2</b>	1.4	<b>0.8</b>	-2.5	-2.9	<b>2.0</b>	-5.9	-6.7
<b>Services-producing sector</b>	<b>353.2</b>	<b>352.7</b>	3.0	<b>-0.5</b>	3.0	3.6	<b>-0.1</b>	0.9	1.0
Trade	79.3	<b>78.0</b>	1.8	<b>-1.3</b>	3.4	1.7	<b>-1.6</b>	4.6	2.2
Transportation and warehousing	19.3	<b>20.3</b>	1.1	<b>1.0</b>	-1.3	-1.5	<b>5.2</b>	-6.0	-6.9
Finance, insurance, real estate and leasing	22.0	<b>21.2</b>	1.1	<b>-0.8</b>	-1.3	-1.6	<b>-3.6</b>	-5.8	-7.0
Professional, scientific and technical services	20.6	<b>21.3</b>	1.1	<b>0.7</b>	0.9	1.5	<b>3.4</b>	4.4	7.6
Business, building and other support services	24.9	<b>26.1</b>	1.3	<b>1.2</b>	3.4	2.7	<b>4.8</b>	15.0	11.5
Educational services	36.5	<b>37.4</b>	1.3	<b>0.9</b>	-0.7	1.0	<b>2.5</b>	-1.8	2.7
Health care and social assistance	56.6	<b>56.6</b>	1.3	<b>0.0</b>	3.9	3.9	<b>0.0</b>	7.4	7.4
Information, culture and recreation	15.2	<b>14.1</b>	1.2	<b>-1.1</b>	-2.8	-2.4	<b>-7.2</b>	-16.6	-14.5
Accommodation and food services	30.2	<b>29.5</b>	1.5	<b>-0.7</b>	-2.6	-1.4	<b>-2.3</b>	-8.1	-4.5
Other services	20.4	<b>20.7</b>	1.1	<b>0.3</b>	-1.0	-0.9	<b>1.5</b>	-4.6	-4.2
Public administration	28.2	<b>27.6</b>	1.0	<b>-0.6</b>	1.3	0.6	<b>-2.1</b>	4.9	2.2

1. Average standard error of change in two consecutive months (see "Sampling Errors" in Data Quality for further explanations).

Note: Related CANSIM tables 282-0087, 282-0088

Table 4-4

## Selected labour force characteristics (seasonally adjusted) — New Brunswick

	October 2005	November 2005	S.E. <sup>1</sup>	Change from			Percent change from		
				last month	last December	twelve months ago	last month	last December	twelve months ago
in thousands (except rates)									
<b>Both sexes, 15 years and over</b>									
Population	611.3	<b>611.5</b>	...	<b>0.2</b>	2.9	3.1	<b>0.0</b>	0.5	0.5
Labour force	390.0	<b>388.2</b>	2.5	<b>-1.8</b>	-1.2	-0.2	<b>-0.5</b>	-0.3	-0.1
Employment	347.0	<b>351.5</b>	2.5	<b>4.5</b>	-1.4	1.0	<b>1.3</b>	-0.4	0.3
Employment full-time	290.4	<b>296.3</b>	2.8	<b>5.9</b>	-0.8	-0.2	<b>2.0</b>	-0.3	-0.1
Unemployment	43.0	<b>36.7</b>	2.3	<b>-6.3</b>	0.2	-1.2	<b>-14.7</b>	0.5	-3.2
Participation rate	63.8	<b>63.5</b>	0.4	<b>-0.3</b>	-0.5	-0.3	...	...	...
Unemployment rate	11.0	<b>9.5</b>	0.6	<b>-1.5</b>	0.1	-0.3	...	...	...
Employment rate	56.8	<b>57.5</b>	0.4	<b>0.7</b>	-0.5	-0.1	...	...	...
Part-time rate	16.3	<b>15.7</b>	0.6	<b>-0.6</b>	-0.1	0.3	...	...	...
<b>Both sexes, 15 to 24 years</b>									
Population	96.1	<b>96.2</b>	...	<b>0.1</b>	-0.9	-0.9	<b>0.1</b>	-0.9	-0.9
Labour force	63.9	<b>62.8</b>	1.4	<b>-1.1</b>	-0.9	-0.5	<b>-1.7</b>	-1.4	-0.8
Employment	52.8	<b>54.3</b>	1.4	<b>1.5</b>	-0.5	0.7	<b>2.8</b>	-0.9	1.3
Unemployment	11.1	<b>8.5</b>	1.2	<b>-2.6</b>	-0.4	-1.1	<b>-23.4</b>	-4.5	-11.5
Participation rate	66.5	<b>65.3</b>	1.4	<b>-1.2</b>	-0.3	0.1	...	...	...
Unemployment rate	17.4	<b>13.5</b>	1.8	<b>-3.9</b>	-0.5	-1.7	...	...	...
Employment rate	54.9	<b>56.4</b>	1.4	<b>1.5</b>	0.0	1.2	...	...	...
Part-time rate	39.6	<b>38.7</b>	2.3	<b>-0.9</b>	-1.1	0.6	...	...	...
<b>Men, 25 years and over</b>									
Population	248.8	<b>248.9</b>	...	<b>0.1</b>	1.8	2.0	<b>0.0</b>	0.7	0.8
Labour force	171.6	<b>169.9</b>	1.4	<b>-1.7</b>	-1.7	-1.0	<b>-1.0</b>	-1.0	-0.6
Employment	152.0	<b>152.6</b>	1.5	<b>0.6</b>	-2.3	-1.2	<b>0.4</b>	-1.5	-0.8
Unemployment	19.6	<b>17.3</b>	1.5	<b>-2.3</b>	0.5	0.3	<b>-11.7</b>	3.0	1.8
Participation rate	69.0	<b>68.3</b>	0.6	<b>-0.7</b>	-1.1	-0.9	...	...	...
Unemployment rate	11.4	<b>10.2</b>	0.8	<b>-1.2</b>	0.4	0.3	...	...	...
Employment rate	61.1	<b>61.3</b>	0.6	<b>0.2</b>	-1.4	-1.0	...	...	...
Part-time rate	5.4	<b>5.0</b>	0.7	<b>-0.3</b>	1.0	1.1	...	...	...
<b>Women, 25 years and over</b>									
Population	266.4	<b>266.4</b>	...	<b>0.0</b>	1.9	2.0	<b>0.0</b>	0.7	0.8
Labour force	154.5	<b>155.6</b>	1.3	<b>1.1</b>	1.5	1.3	<b>0.7</b>	1.0	0.8
Employment	142.2	<b>144.6</b>	1.4	<b>2.4</b>	1.4	1.5	<b>1.7</b>	1.0	1.0
Unemployment	12.3	<b>10.9</b>	1.2	<b>-1.4</b>	0.1	-0.3	<b>-11.4</b>	0.9	-2.7
Participation rate	58.0	<b>58.4</b>	0.5	<b>0.4</b>	0.1	0.0	...	...	...
Unemployment rate	8.0	<b>7.0</b>	0.8	<b>-1.0</b>	0.0	-0.3	...	...	...
Employment rate	53.4	<b>54.3</b>	0.5	<b>0.9</b>	0.2	0.2	...	...	...
Part-time rate	19.4	<b>18.4</b>	1.1	<b>-1.0</b>	-0.9	-0.8	...	...	...
<b>Industry</b>									
	347.0	<b>351.5</b>	2.5	<b>4.5</b>	-1.3	1.0	<b>1.3</b>	-0.4	0.3
<b>Goods-producing sector</b>									
Agriculture	6.1	<b>6.8</b>	0.6	<b>0.7</b>	1.3	0.9	<b>11.5</b>	23.6	15.3
Forestry, fishing, mining, oil and gas	11.8	<b>10.5</b>	0.8	<b>-1.3</b>	-1.8	-1.5	<b>-11.0</b>	-14.6	-12.5
Utilities	3.3	<b>3.2</b>	0.3	<b>-0.1</b>	-0.4	-0.5	<b>-3.0</b>	-11.1	-13.5
Construction	17.2	<b>19.0</b>	1.1	<b>1.8</b>	-0.1	-0.3	<b>10.5</b>	-0.5	-1.6
Manufacturing	33.7	<b>35.1</b>	1.3	<b>1.4</b>	-6.2	-6.2	<b>4.2</b>	-15.0	-15.0
<b>Services-producing sector</b>									
Trade	274.8	<b>276.9</b>	2.4	<b>2.1</b>	5.9	8.5	<b>0.8</b>	2.2	3.2
Transportation and warehousing	59.2	<b>58.3</b>	1.4	<b>-0.9</b>	3.0	3.7	<b>-1.5</b>	5.4	6.8
Finance, insurance, real estate and leasing	21.2	<b>21.0</b>	0.9	<b>-0.2</b>	-0.4	-0.3	<b>-0.9</b>	-1.9	-1.4
Professional, scientific and technical services	12.5	<b>13.3</b>	0.7	<b>0.8</b>	0.0	-0.8	<b>6.4</b>	0.0	-5.7
Business, building and other support services	13.3	<b>13.5</b>	0.8	<b>0.2</b>	-2.8	-2.6	<b>1.5</b>	-17.2	-16.1
Educational services	20.4	<b>20.6</b>	1.1	<b>0.2</b>	-0.7	0.5	<b>1.0</b>	-3.3	2.5
Health care and social assistance	27.4	<b>28.0</b>	0.9	<b>0.6</b>	1.6	2.0	<b>2.2</b>	6.1	7.7
Information, culture and recreation	47.0	<b>46.1</b>	1.1	<b>-0.9</b>	-1.0	-1.1	<b>-1.9</b>	-2.1	-2.3
Accommodation and food services	12.6	<b>13.3</b>	0.7	<b>0.7</b>	1.6	2.1	<b>5.6</b>	13.7	18.8
Other services	23.1	<b>24.2</b>	1.1	<b>1.1</b>	2.6	2.6	<b>4.8</b>	12.0	12.0
Public administration	16.4	<b>16.0</b>	0.9	<b>-0.4</b>	-1.5	-1.2	<b>-2.4</b>	-8.6	-7.0
	21.8	<b>22.6</b>	0.8	<b>0.8</b>	3.6	3.6	<b>3.7</b>	18.9	18.9

1. Average standard error of change in two consecutive months (see "Sampling Errors" in Data Quality for further explanations).

Note: Related CANSIM tables 282-0087, 282-0088



Table 4-5

## Selected labour force characteristics (seasonally adjusted) — Quebec

	October 2005	November 2005	S.E. <sup>1</sup>	Change from			Percent change from		
				last month	last December	twelve months ago	last month	last December	twelve months ago
in thousands (except rates)									
<b>Both sexes, 15 years and over</b>									
Population	6,204.5	<b>6,211.1</b>	...	<b>6.6</b>	67.3	72.0	<b>0.1</b>	1.1	1.2
Labour force	4,083.5	<b>4,069.7</b>	15.2	<b>-13.8</b>	17.2	-7.2	<b>-0.3</b>	0.4	-0.2
Employment	3,743.9	<b>3,745.1</b>	15.5	<b>1.2</b>	41.2	29.8	<b>0.0</b>	1.1	0.8
Employment full-time	3,057.8	<b>3,047.8</b>	19.2	<b>-10.0</b>	1.3	-4.8	<b>-0.3</b>	0.0	-0.2
Unemployment	339.7	<b>324.6</b>	13.6	<b>-15.1</b>	-24.0	-37.0	<b>-4.4</b>	-6.9	-10.2
Participation rate	65.8	<b>65.5</b>	0.3	<b>-0.3</b>	-0.5	-0.9	...	...	...
Unemployment rate	8.3	<b>8.0</b>	0.3	<b>-0.3</b>	-0.6	-0.9	...	...	...
Employment rate	60.3	<b>60.3</b>	0.3	<b>0.0</b>	0.0	-0.2	...	...	...
Part-time rate	18.3	<b>18.6</b>	0.5	<b>0.3</b>	0.9	0.8	...	...	...
<b>Both sexes, 15 to 24 years</b>									
Population	950.0	<b>950.2</b>	...	<b>0.2</b>	-0.8	-1.4	<b>0.0</b>	-0.1	-0.1
Labour force	623.1	<b>625.6</b>	8.7	<b>2.5</b>	-17.7	-30.1	<b>0.4</b>	-2.8	-4.6
Employment	540.2	<b>545.9</b>	8.7	<b>5.7</b>	-9.3	-17.9	<b>1.1</b>	-1.7	-3.2
Unemployment	82.9	<b>79.7</b>	7.6	<b>-3.2</b>	-8.4	-12.2	<b>-3.9</b>	-9.5	-13.3
Participation rate	65.6	<b>65.8</b>	0.9	<b>0.2</b>	-1.8	-3.1	...	...	...
Unemployment rate	13.3	<b>12.7</b>	1.1	<b>-0.6</b>	-1.0	-1.3	...	...	...
Employment rate	56.9	<b>57.5</b>	0.9	<b>0.6</b>	-0.9	-1.7	...	...	...
Part-time rate	46.4	<b>48.0</b>	1.6	<b>1.5</b>	2.3	3.3	...	...	...
<b>Men, 25 years and over</b>									
Population	2,564.8	<b>2,567.9</b>	...	<b>3.1</b>	35.8	38.6	<b>0.1</b>	1.4	1.5
Labour force	1,860.5	<b>1,856.0</b>	8.1	<b>-4.5</b>	14.8	5.1	<b>-0.2</b>	0.8	0.3
Employment	1,727.6	<b>1,723.7</b>	8.8	<b>-3.9</b>	36.3	28.7	<b>-0.2</b>	2.2	1.7
Unemployment	132.9	<b>132.3</b>	8.1	<b>-0.6</b>	-21.5	-23.6	<b>-0.5</b>	-14.0	-15.1
Participation rate	72.5	<b>72.3</b>	0.3	<b>-0.2</b>	-0.4	-0.9	...	...	...
Unemployment rate	7.1	<b>7.1</b>	0.4	<b>0.0</b>	-1.3	-1.3	...	...	...
Employment rate	67.4	<b>67.1</b>	0.4	<b>-0.3</b>	0.5	0.1	...	...	...
Part-time rate	7.4	<b>7.2</b>	0.5	<b>-0.1</b>	0.9	0.6	...	...	...
<b>Women, 25 years and over</b>									
Population	2,689.6	<b>2,693.0</b>	...	<b>3.4</b>	32.3	34.8	<b>0.1</b>	1.2	1.3
Labour force	1,599.9	<b>1,588.1</b>	8.6	<b>-11.8</b>	20.1	17.8	<b>-0.7</b>	1.3	1.1
Employment	1,476.1	<b>1,475.5</b>	8.8	<b>-0.6</b>	14.2	19.0	<b>0.0</b>	1.0	1.3
Unemployment	123.8	<b>112.7</b>	7.3	<b>-11.1</b>	6.0	-1.1	<b>-9.0</b>	5.6	-1.0
Participation rate	59.5	<b>59.0</b>	0.3	<b>-0.5</b>	0.1	-0.1	...	...	...
Unemployment rate	7.7	<b>7.1</b>	0.5	<b>-0.6</b>	0.3	-0.1	...	...	...
Employment rate	54.9	<b>54.8</b>	0.3	<b>-0.1</b>	-0.1	0.0	...	...	...
Part-time rate	20.9	<b>21.1</b>	0.7	<b>0.2</b>	0.8	0.5	...	...	...
<b>Industry</b>									
	3,743.9	<b>3,745.1</b>	15.5	<b>1.2</b>	41.2	29.8	<b>0.0</b>	1.1	0.8
<b>Goods-producing sector</b>									
Agriculture	63.3	<b>62.3</b>	2.8	<b>-1.0</b>	17.3	15.6	<b>-1.6</b>	38.4	33.4
Forestry, fishing, mining, oil and gas	38.8	<b>40.7</b>	2.2	<b>1.9</b>	2.6	5.3	<b>4.9</b>	6.8	15.0
Utilities	28.6	<b>30.9</b>	2.2	<b>2.3</b>	0.4	-1.9	<b>8.0</b>	1.3	-5.8
Construction	190.8	<b>189.4</b>	6.3	<b>-1.4</b>	20.1	14.4	<b>-0.7</b>	11.9	8.2
Manufacturing	604.0	<b>600.4</b>	10.4	<b>-3.6</b>	-34.9	-27.4	<b>-0.6</b>	-5.5	-4.4
<b>Services-producing sector</b>									
	2,818.3	<b>2,821.5</b>	16.4	<b>3.2</b>	35.8	23.8	<b>0.1</b>	1.3	0.9
Trade	631.3	<b>638.7</b>	10.7	<b>7.4</b>	16.5	12.3	<b>1.2</b>	2.7	2.0
Transportation and warehousing	164.9	<b>161.4</b>	5.8	<b>-3.5</b>	-0.4	-9.9	<b>-2.1</b>	-0.2	-5.8
Finance, insurance, real estate and leasing	214.3	<b>197.7</b>	6.3	<b>-16.6</b>	-13.3	-13.3	<b>-7.7</b>	-6.3	-6.3
Professional, scientific and technical services	225.4	<b>225.6</b>	6.8	<b>0.2</b>	0.6	4.8	<b>0.1</b>	0.3	2.2
Business, building and other support services	137.6	<b>134.0</b>	5.7	<b>-3.6</b>	11.7	14.8	<b>-2.6</b>	9.6	12.4
Educational services	253.5	<b>259.4</b>	6.5	<b>5.9</b>	17.1	18.5	<b>2.3</b>	7.1	7.7
Health care and social assistance	451.1	<b>440.4</b>	8.2	<b>-10.7</b>	1.4	0.3	<b>-2.4</b>	0.3	0.1
Information, culture and recreation	154.8	<b>163.4</b>	6.6	<b>8.6</b>	-9.7	-12.6	<b>5.6</b>	-5.6	-7.2
Accommodation and food services	220.5	<b>215.6</b>	6.9	<b>-4.9</b>	7.9	8.6	<b>-2.2</b>	3.8	4.2
Other services	154.7	<b>170.3</b>	6.2	<b>15.6</b>	8.4	2.6	<b>10.1</b>	5.2	1.6
Public administration	210.2	<b>214.9</b>	5.6	<b>4.7</b>	-4.4	-2.5	<b>2.2</b>	-2.0	-1.1

1. Average standard error of change in two consecutive months (see "Sampling Errors" in Data Quality for further explanations).

Note: Related CANSIM tables 282-0087, 282-0088

Table 4-6

## Selected labour force characteristics (seasonally adjusted) — Ontario

	October 2005	November 2005	S.E. <sup>1</sup>	Change from			Percent change from		
				last month	last December	twelve months ago	last month	last December	twelve months ago
in thousands (except rates)									
<b>Both sexes, 15 years and over</b>									
Population	10,128.7	<b>10,141.9</b>	...	<b>13.2</b>	169.9	181.3	<b>0.1</b>	1.7	1.8
Labour force	6,887.1	<b>6,864.0</b>	18.9	<b>-23.1</b>	45.0	51.1	<b>-0.3</b>	0.7	0.8
Employment	6,445.6	<b>6,447.0</b>	19.1	<b>1.4</b>	93.5	100.7	<b>0.0</b>	1.5	1.6
Employment full-time	5,297.7	<b>5,299.6</b>	22.6	<b>1.9</b>	116.4	121.1	<b>0.0</b>	2.2	2.3
Unemployment	441.5	<b>417.1</b>	15.8	<b>-24.4</b>	-48.4	-49.5	<b>-5.5</b>	-10.4	-10.6
Participation rate	68.0	<b>67.7</b>	0.2	<b>-0.3</b>	-0.7	-0.7	...	...	...
Unemployment rate	6.4	<b>6.1</b>	0.2	<b>-0.3</b>	-0.7	-0.7	...	...	...
Employment rate	63.6	<b>63.6</b>	0.2	<b>0.0</b>	-0.1	-0.1	...	...	...
Part-time rate	17.8	<b>17.8</b>	0.3	<b>0.0</b>	-0.6	-0.6	...	...	...
<b>Both sexes, 15 to 24 years</b>									
Population	1,690.9	<b>1,692.9</b>	...	<b>2.0</b>	29.9	31.7	<b>0.1</b>	1.8	1.9
Labour force	1,095.4	<b>1,091.1</b>	11.6	<b>-4.3</b>	-1.4	-0.6	<b>-0.4</b>	-0.1	-0.1
Employment	944.1	<b>945.9</b>	10.8	<b>1.8</b>	7.2	7.2	<b>0.2</b>	0.8	0.8
Unemployment	151.3	<b>145.2</b>	9.7	<b>-6.1</b>	-8.6	-7.8	<b>-4.0</b>	-5.6	-5.1
Participation rate	64.8	<b>64.5</b>	0.7	<b>-0.3</b>	-1.2	-1.2	...	...	...
Unemployment rate	13.8	<b>13.3</b>	0.8	<b>-0.5</b>	-0.8	-0.7	...	...	...
Employment rate	55.8	<b>55.9</b>	0.7	<b>0.1</b>	-0.5	-0.6	...	...	...
Part-time rate	48.4	<b>48.0</b>	1.1	<b>-0.4</b>	-0.6	-0.8	...	...	...
<b>Men, 25 years and over</b>									
Population	4,107.9	<b>4,113.3</b>	...	<b>5.4</b>	69.0	73.5	<b>0.1</b>	1.7	1.8
Labour force	3,094.7	<b>3,095.1</b>	9.5	<b>0.4</b>	44.0	52.7	<b>0.0</b>	1.4	1.7
Employment	2,943.0	<b>2,942.9</b>	10.7	<b>-0.1</b>	47.8	54.3	<b>0.0</b>	1.7	1.9
Unemployment	151.7	<b>152.3</b>	8.8	<b>0.6</b>	-3.7	-1.5	<b>0.4</b>	-2.4	-1.0
Participation rate	75.3	<b>75.2</b>	0.2	<b>-0.1</b>	-0.2	-0.1	...	...	...
Unemployment rate	4.9	<b>4.9</b>	0.3	<b>0.0</b>	-0.2	-0.2	...	...	...
Employment rate	71.6	<b>71.5</b>	0.3	<b>-0.1</b>	-0.1	0.0	...	...	...
Part-time rate	6.2	<b>6.6</b>	0.3	<b>0.4</b>	0.8	0.8	...	...	...
<b>Women, 25 years and over</b>									
Population	4,330.0	<b>4,335.7</b>	...	<b>5.7</b>	71.0	76.0	<b>0.1</b>	1.7	1.8
Labour force	2,697.0	<b>2,677.8</b>	10.6	<b>-19.2</b>	2.4	-1.1	<b>-0.7</b>	0.1	0.0
Employment	2,558.6	<b>2,558.2</b>	10.5	<b>-0.4</b>	38.5	39.2	<b>0.0</b>	1.5	1.6
Unemployment	138.5	<b>119.6</b>	8.1	<b>-18.9</b>	-36.1	-40.2	<b>-13.6</b>	-23.2	-25.2
Participation rate	62.3	<b>61.8</b>	0.2	<b>-0.5</b>	-0.9	-1.1	...	...	...
Unemployment rate	5.1	<b>4.5</b>	0.3	<b>-0.6</b>	-1.3	-1.5	...	...	...
Employment rate	59.1	<b>59.0</b>	0.2	<b>-0.1</b>	-0.1	-0.1	...	...	...
Part-time rate	19.9	<b>19.6</b>	0.5	<b>-0.3</b>	-2.1	-2.1	...	...	...
<b>Industry</b>									
Goods-producing sector	6,445.6	<b>6,447.0</b>	19.1	<b>1.4</b>	93.5	100.7	<b>0.0</b>	1.5	1.6
Agriculture	1,644.5	<b>1,645.2</b>	15.3	<b>0.7</b>	-2.6	8.4	<b>0.0</b>	-0.2	0.5
Forestry, fishing, mining, oil and gas	100.8	<b>98.5</b>	3.5	<b>-2.3</b>	17.9	23.6	<b>-2.3</b>	22.2	31.5
Utilities	37.4	<b>36.1</b>	2.0	<b>-1.3</b>	1.7	1.1	<b>-3.5</b>	4.9	3.1
Construction	52.4	<b>48.4</b>	2.5	<b>-4.0</b>	-4.4	-4.4	<b>-7.6</b>	-8.3	-8.3
Manufacturing	398.3	<b>412.2</b>	8.8	<b>13.9</b>	30.2	40.3	<b>3.5</b>	7.9	10.8
Services-producing sector	1,055.6	<b>1,049.9</b>	12.7	<b>-5.7</b>	-48.1	-52.4	<b>-0.5</b>	-4.4	-4.8
Trade	4,801.2	<b>4,801.8</b>	20.5	<b>0.6</b>	96.1	92.3	<b>0.0</b>	2.0	2.0
Transportation and warehousing	988.1	<b>992.6</b>	12.4	<b>4.5</b>	15.0	4.1	<b>0.5</b>	1.5	0.4
Finance, insurance, real estate and leasing	291.6	<b>297.2</b>	7.4	<b>5.6</b>	-2.8	5.4	<b>1.9</b>	-0.9	1.9
Professional, scientific and technical services	449.6	<b>452.1</b>	8.6	<b>2.5</b>	10.0	14.0	<b>0.6</b>	2.3	3.2
Business, building and other support services	456.8	<b>441.0</b>	8.6	<b>-15.8</b>	0.2	5.2	<b>-3.5</b>	0.0	1.2
Educational services	286.3	<b>301.3</b>	8.3	<b>15.0</b>	26.6	23.0	<b>5.2</b>	9.7	8.3
Health care and social assistance	448.3	<b>449.9</b>	7.8	<b>1.6</b>	50.4	53.2	<b>0.4</b>	12.6	13.4
Information, culture and recreation	632.0	<b>625.4</b>	8.6	<b>-6.6</b>	-13.5	-16.3	<b>-1.0</b>	-2.1	-2.5
Accommodation and food services	306.3	<b>292.8</b>	8.0	<b>-13.5</b>	-3.3	-8.4	<b>-4.4</b>	-1.1	-2.8
Other services	354.6	<b>372.9</b>	8.5	<b>18.3</b>	14.0	16.9	<b>5.2</b>	3.9	4.7
Public administration	264.3	<b>259.0</b>	7.2	<b>-5.3</b>	1.1	1.7	<b>-2.0</b>	0.4	0.7
Public administration	323.3	<b>317.6</b>	6.2	<b>-5.7</b>	-1.5	-6.6	<b>-1.8</b>	-0.5	-2.0

1. Average standard error of change in two consecutive months (see "Sampling Errors" in Data Quality for further explanations).

Note: Related CANSIM tables 282-0087, 282-0088

Table 4-7

## Selected labour force characteristics (seasonally adjusted) — Manitoba

	October 2005	November 2005	S.E. <sup>1</sup>	Change from			Percent change from		
				last month	last December	twelve months ago	last month	last December	twelve months ago
in thousands (except rates)									
<b>Both sexes, 15 years and over</b>									
Population	890.1	<b>890.1</b>	...	<b>0.0</b>	5.1	5.6	<b>0.0</b>	0.6	0.6
Labour force	607.3	<b>608.6</b>	2.8	<b>1.3</b>	-2.5	-4.0	<b>0.2</b>	-0.4	-0.7
Employment	580.3	<b>583.4</b>	2.9	<b>3.1</b>	3.1	1.7	<b>0.5</b>	0.5	0.3
Employment full-time	466.1	<b>469.5</b>	3.8	<b>3.4</b>	-1.3	-1.4	<b>0.7</b>	-0.3	-0.3
Unemployment	27.0	<b>25.3</b>	2.3	<b>-1.7</b>	-5.5	-5.7	<b>-6.3</b>	-17.9	-18.4
Participation rate	68.2	<b>68.4</b>	0.3	<b>0.2</b>	-0.7	-0.9	...	...	...
Unemployment rate	4.4	<b>4.2</b>	0.4	<b>-0.2</b>	-0.8	-0.9	...	...	...
Employment rate	65.2	<b>65.5</b>	0.3	<b>0.3</b>	-0.1	-0.3	...	...	...
Part-time rate	19.7	<b>19.5</b>	0.6	<b>-0.1</b>	0.7	0.5	...	...	...
<b>Both sexes, 15 to 24 years</b>									
Population	155.6	<b>155.5</b>	...	<b>-0.1</b>	0.7	0.9	<b>-0.1</b>	0.5	0.6
Labour force	108.4	<b>108.6</b>	1.7	<b>0.2</b>	0.4	0.2	<b>0.2</b>	0.4	0.2
Employment	99.9	<b>100.4</b>	1.7	<b>0.5</b>	3.5	3.5	<b>0.5</b>	3.6	3.6
Unemployment	8.4	<b>8.2</b>	1.4	<b>-0.2</b>	-3.1	-3.3	<b>-2.4</b>	-27.4	-28.7
Participation rate	69.7	<b>69.8</b>	1.1	<b>0.1</b>	-0.1	-0.3	...	...	...
Unemployment rate	7.7	<b>7.6</b>	1.3	<b>-0.1</b>	-2.8	-3.0	...	...	...
Employment rate	64.2	<b>64.6</b>	1.1	<b>0.4</b>	2.0	1.9	...	...	...
Part-time rate	45.9	<b>45.6</b>	1.9	<b>-0.3</b>	3.1	3.4	...	...	...
<b>Men, 25 years and over</b>									
Population	358.0	<b>358.0</b>	...	<b>0.0</b>	2.3	2.5	<b>0.0</b>	0.6	0.7
Labour force	268.3	<b>269.5</b>	1.4	<b>1.2</b>	-0.7	-0.5	<b>0.4</b>	-0.3	-0.2
Employment	257.9	<b>260.2</b>	1.6	<b>2.3</b>	0.8	1.4	<b>0.9</b>	0.3	0.5
Unemployment	10.4	<b>9.3</b>	1.3	<b>-1.1</b>	-1.5	-1.9	<b>-10.6</b>	-13.9	-17.0
Participation rate	74.9	<b>75.3</b>	0.4	<b>0.4</b>	-0.7	-0.6	...	...	...
Unemployment rate	3.9	<b>3.5</b>	0.5	<b>-0.4</b>	-0.5	-0.6	...	...	...
Employment rate	72.0	<b>72.7</b>	0.4	<b>0.7</b>	-0.2	-0.1	...	...	...
Part-time rate	5.4	<b>5.8</b>	0.6	<b>0.4</b>	-0.4	-0.7	...	...	...
<b>Women, 25 years and over</b>									
Population	376.6	<b>376.5</b>	...	<b>-0.1</b>	1.9	2.1	<b>0.0</b>	0.5	0.6
Labour force	230.6	<b>230.5</b>	1.6	<b>-0.1</b>	-2.3	-3.7	<b>0.0</b>	-1.0	-1.6
Employment	222.4	<b>222.8</b>	1.6	<b>0.4</b>	-1.2	-3.1	<b>0.2</b>	-0.5	-1.4
Unemployment	8.2	<b>7.7</b>	1.2	<b>-0.5</b>	-1.0	-0.6	<b>-6.1</b>	-11.5	-7.2
Participation rate	61.2	<b>61.2</b>	0.4	<b>0.0</b>	-0.9	-1.4	...	...	...
Unemployment rate	3.6	<b>3.3</b>	0.5	<b>-0.3</b>	-0.4	-0.2	...	...	...
Employment rate	59.1	<b>59.2</b>	0.4	<b>0.1</b>	-0.6	-1.1	...	...	...
Part-time rate	24.5	<b>23.8</b>	1.0	<b>-0.6</b>	0.4	0.3	...	...	...
<b>Industry</b>	580.3	<b>583.4</b>	2.9	<b>3.1</b>	3.1	1.7	<b>0.5</b>	0.5	0.3
<b>Goods-producing sector</b>	141.3	<b>139.3</b>	2.3	<b>-2.0</b>	-0.2	-3.1	<b>-1.4</b>	-0.1	-2.2
Agriculture	30.4	<b>30.7</b>	1.3	<b>0.3</b>	-1.6	-1.6	<b>1.0</b>	-5.0	-5.0
Forestry, fishing, mining, oil and gas	6.4	<b>6.7</b>	0.5	<b>0.3</b>	0.8	0.9	<b>4.7</b>	13.6	15.5
Utilities	6.2	<b>6.0</b>	0.4	<b>-0.2</b>	-0.5	-1.2	<b>-3.2</b>	-7.7	-16.7
Construction	29.5	<b>30.7</b>	1.3	<b>1.2</b>	2.3	0.6	<b>4.1</b>	8.1	2.0
Manufacturing	68.8	<b>65.3</b>	1.6	<b>-3.5</b>	-1.1	-1.7	<b>-5.1</b>	-1.7	-2.5
<b>Services-producing sector</b>	439.0	<b>444.1</b>	3.1	<b>5.1</b>	3.3	4.8	<b>1.2</b>	0.7	1.1
Trade	83.9	<b>83.5</b>	1.8	<b>-0.4</b>	-1.9	-2.0	<b>-0.5</b>	-2.2	-2.3
Transportation and warehousing	34.6	<b>34.8</b>	1.2	<b>0.2</b>	0.8	0.3	<b>0.6</b>	2.4	0.9
Finance, insurance, real estate and leasing	36.6	<b>35.0</b>	1.1	<b>-1.6</b>	2.5	3.8	<b>-4.4</b>	7.7	12.2
Professional, scientific and technical services	23.7	<b>23.9</b>	1.0	<b>0.2</b>	-3.0	-1.8	<b>0.8</b>	-11.2	-7.0
Business, building and other support services	18.6	<b>18.2</b>	1.2	<b>-0.4</b>	-2.7	-3.3	<b>-2.2</b>	-12.9	-15.3
Educational services	44.1	<b>45.2</b>	1.4	<b>1.1</b>	2.1	2.1	<b>2.5</b>	4.9	4.9
Health care and social assistance	75.4	<b>76.3</b>	1.5	<b>0.9</b>	-2.6	-2.3	<b>1.2</b>	-3.3	-2.9
Information, culture and recreation	23.4	<b>24.0</b>	1.2	<b>0.6</b>	0.0	0.9	<b>2.6</b>	0.0	3.9
Accommodation and food services	38.0	<b>42.3</b>	1.4	<b>4.3</b>	9.5	9.6	<b>11.3</b>	29.0	29.4
Other services	27.1	<b>27.3</b>	1.2	<b>0.2</b>	2.3	0.8	<b>0.7</b>	9.2	3.0
Public administration	33.5	<b>33.5</b>	1.1	<b>0.0</b>	-3.9	-3.4	<b>0.0</b>	-10.4	-9.2

1. Average standard error of change in two consecutive months (see "Sampling Errors" in Data Quality for further explanations).

Note: Related CANSIM tables 282-0087, 282-0088

Table 4-8

## Selected labour force characteristics (seasonally adjusted) — Saskatchewan

	October 2005	November 2005	S.E. <sup>1</sup>	Change from			Percent change from		
				last month	last December	twelve months ago	last month	last December	twelve months ago
in thousands (except rates)									
<b>Both sexes, 15 years and over</b>									
Population	748.9	<b>748.6</b>	...	<b>-0.3</b>	1.7	1.8	<b>0.0</b>	0.2	0.2
Labour force	505.0	<b>507.0</b>	2.5	<b>2.0</b>	-7.0	-5.2	<b>0.4</b>	-1.4	-1.0
Employment	478.5	<b>480.3</b>	2.5	<b>1.8</b>	-6.6	-5.6	<b>0.4</b>	-1.4	-1.2
Employment full-time	382.6	<b>387.4</b>	3.1	<b>4.8</b>	-4.0	-4.8	<b>1.3</b>	-1.0	-1.2
Unemployment	26.5	<b>26.6</b>	1.9	<b>0.1</b>	-0.5	0.3	<b>0.4</b>	-1.8	1.1
Participation rate	67.4	<b>67.7</b>	0.3	<b>0.3</b>	-1.1	-0.9	...	...	...
Unemployment rate	5.2	<b>5.2</b>	0.4	<b>0.0</b>	-0.1	0.1	...	...	...
Employment rate	63.9	<b>64.2</b>	0.3	<b>0.3</b>	-1.0	-0.9	...	...	...
Part-time rate	20.0	<b>19.4</b>	0.6	<b>-0.7</b>	-0.3	0.1	...	...	...
<b>Both sexes, 15 to 24 years</b>									
Population	138.3	<b>138.3</b>	...	<b>0.0</b>	-0.8	-0.8	<b>0.0</b>	-0.6	-0.6
Labour force	94.5	<b>93.7</b>	1.6	<b>-0.8</b>	-3.3	-1.5	<b>-0.8</b>	-3.4	-1.6
Employment	84.5	<b>83.3</b>	1.5	<b>-1.2</b>	-4.6	-3.2	<b>-1.4</b>	-5.2	-3.7
Unemployment	10.0	<b>10.4</b>	1.2	<b>0.4</b>	1.3	1.7	<b>4.0</b>	14.3	19.5
Participation rate	68.3	<b>67.8</b>	1.1	<b>-0.5</b>	-1.9	-0.6	...	...	...
Unemployment rate	10.6	<b>11.1</b>	1.3	<b>0.5</b>	1.7	2.0	...	...	...
Employment rate	61.1	<b>60.2</b>	1.1	<b>-0.9</b>	-3.0	-2.0	...	...	...
Part-time rate	40.7	<b>40.8</b>	1.8	<b>0.1</b>	1.3	1.6	...	...	...
<b>Men, 25 years and over</b>									
Population	297.5	<b>297.4</b>	...	<b>-0.1</b>	0.9	1.0	<b>0.0</b>	0.3	0.3
Labour force	222.1	<b>223.1</b>	1.3	<b>1.0</b>	-1.1	-1.3	<b>0.5</b>	-0.5	-0.6
Employment	212.7	<b>213.7</b>	1.4	<b>1.0</b>	0.7	-0.3	<b>0.5</b>	0.3	-0.1
Unemployment	9.4	<b>9.4</b>	1.1	<b>0.0</b>	-1.8	-1.0	<b>0.0</b>	-16.1	-9.6
Participation rate	74.7	<b>75.0</b>	0.4	<b>0.3</b>	-0.6	-0.7	...	...	...
Unemployment rate	4.2	<b>4.2</b>	0.5	<b>0.0</b>	-0.8	-0.4	...	...	...
Employment rate	71.5	<b>71.9</b>	0.5	<b>0.4</b>	0.1	-0.3	...	...	...
Part-time rate	7.2	<b>6.7</b>	0.6	<b>-0.5</b>	0.5	0.7	...	...	...
<b>Women, 25 years and over</b>									
Population	313.0	<b>312.9</b>	...	<b>-0.1</b>	1.5	1.7	<b>0.0</b>	0.5	0.5
Labour force	188.4	<b>190.2</b>	1.4	<b>1.8</b>	-2.6	-2.4	<b>1.0</b>	-1.3	-1.2
Employment	181.4	<b>183.3</b>	1.4	<b>1.9</b>	-2.7	-2.1	<b>1.0</b>	-1.5	-1.1
Unemployment	7.1	<b>6.9</b>	0.9	<b>-0.2</b>	0.2	-0.2	<b>-2.8</b>	3.0	-2.8
Participation rate	60.2	<b>60.8</b>	0.4	<b>0.6</b>	-1.1	-1.1	...	...	...
Unemployment rate	3.8	<b>3.6</b>	0.5	<b>-0.2</b>	0.1	-0.1	...	...	...
Employment rate	58.0	<b>58.6</b>	0.4	<b>0.6</b>	-1.1	-1.0	...	...	...
Part-time rate	25.5	<b>24.3</b>	1.0	<b>-1.1</b>	-1.2	-0.9	...	...	...
<b>Industry</b>	478.5	<b>480.3</b>	2.5	<b>1.8</b>	-6.6	-5.6	<b>0.4</b>	-1.4	-1.2
<b>Goods-producing sector</b>	128.2	<b>128.9</b>	2.0	<b>0.7</b>	2.3	3.1	<b>0.5</b>	1.8	2.5
Agriculture	47.4	<b>45.8</b>	1.4	<b>-1.6</b>	-1.2	-1.7	<b>-3.4</b>	-2.6	-3.6
Forestry, fishing, mining, oil and gas	18.9	<b>19.8</b>	0.8	<b>0.9</b>	0.8	0.9	<b>4.8</b>	4.2	4.8
Utilities	4.2	<b>4.1</b>	0.3	<b>-0.1</b>	-0.9	-0.7	<b>-2.4</b>	-18.0	-14.6
Construction	27.0	<b>28.6</b>	1.0	<b>1.6</b>	2.3	2.9	<b>5.9</b>	8.7	11.3
Manufacturing	30.6	<b>30.5</b>	1.0	<b>-0.1</b>	1.1	1.6	<b>-0.3</b>	3.7	5.5
<b>Services-producing sector</b>	350.3	<b>351.5</b>	2.5	<b>1.2</b>	-8.8	-8.7	<b>0.3</b>	-2.4	-2.4
Trade	74.8	<b>74.9</b>	1.5	<b>0.1</b>	-0.3	-1.4	<b>0.1</b>	-0.4	-1.8
Transportation and warehousing	24.7	<b>26.4</b>	0.9	<b>1.7</b>	3.1	2.7	<b>6.9</b>	13.3	11.4
Finance, insurance, real estate and leasing	25.6	<b>25.1</b>	0.9	<b>-0.5</b>	-1.3	-1.8	<b>-2.0</b>	-4.9	-6.7
Professional, scientific and technical services	17.9	<b>17.4</b>	0.7	<b>-0.5</b>	-0.7	-0.5	<b>-2.8</b>	-3.9	-2.8
Business, building and other support services	13.0	<b>13.2</b>	0.8	<b>0.2</b>	0.1	0.1	<b>1.5</b>	0.8	0.8
Educational services	37.8	<b>38.3</b>	1.1	<b>0.5</b>	-2.0	-2.0	<b>1.3</b>	-5.0	-5.0
Health care and social assistance	59.1	<b>57.4</b>	1.1	<b>-1.7</b>	-2.7	-2.6	<b>-2.9</b>	-4.5	-4.3
Information, culture and recreation	20.6	<b>20.5</b>	0.8	<b>-0.1</b>	1.1	1.4	<b>-0.5</b>	5.7	7.3
Accommodation and food services	27.6	<b>28.0</b>	1.2	<b>0.4</b>	-7.0	-5.5	<b>1.4</b>	-20.0	-16.4
Other services	22.4	<b>23.1</b>	1.0	<b>0.7</b>	0.0	0.0	<b>3.1</b>	0.0	0.0
Public administration	26.8	<b>27.1</b>	0.8	<b>0.3</b>	0.9	0.8	<b>1.1</b>	3.4	3.0

1. Average standard error of change in two consecutive months (see "Sampling Errors" in Data Quality for further explanations).

Note: Related CANSIM tables 282-0087, 282-0088

Table 4-9

## Selected labour force characteristics (seasonally adjusted) — Alberta

	October 2005	November 2005	S.E. <sup>1</sup>	Change from			Percent change from		
				last month	last December	twelve months ago	last month	last December	twelve months ago
in thousands (except rates)									
<b>Both sexes, 15 years and over</b>									
Population	2,574.0	<b>2,580.5</b>	...	<b>6.5</b>	54.5	57.9	<b>0.3</b>	2.2	2.3
Labour force	1,869.2	<b>1,872.0</b>	7.2	<b>2.8</b>	21.7	19.8	<b>0.1</b>	1.2	1.1
Employment	1,794.9	<b>1,795.1</b>	8.1	<b>0.2</b>	27.0	28.8	<b>0.0</b>	1.5	1.6
Employment full-time	1,479.1	<b>1,499.6</b>	10.3	<b>20.5</b>	54.1	55.3	<b>1.4</b>	3.7	3.8
Unemployment	74.4	<b>76.9</b>	6.2	<b>2.5</b>	-5.4	-9.0	<b>3.4</b>	-6.6	-10.5
Participation rate	72.6	<b>72.5</b>	0.3	<b>-0.1</b>	-0.8	-0.9	...	...	...
Unemployment rate	4.0	<b>4.1</b>	0.3	<b>0.1</b>	-0.3	-0.5	...	...	...
Employment rate	69.7	<b>69.6</b>	0.3	<b>-0.1</b>	-0.4	-0.4	...	...	...
Part-time rate	17.6	<b>16.5</b>	0.5	<b>-1.1</b>	-1.8	-1.8	...	...	...
<b>Both sexes, 15 to 24 years</b>									
Population	479.6	<b>480.7</b>	...	<b>1.1</b>	8.1	8.6	<b>0.2</b>	1.7	1.8
Labour force	337.6	<b>337.6</b>	4.6	<b>0.0</b>	-8.0	-2.2	<b>0.0</b>	-2.3	-0.6
Employment	313.3	<b>313.2</b>	5.1	<b>-0.1</b>	-6.0	-0.4	<b>0.0</b>	-1.9	-0.1
Unemployment	24.3	<b>24.3</b>	3.9	<b>0.0</b>	-2.0	-1.9	<b>0.0</b>	-7.6	-7.3
Participation rate	70.4	<b>70.2</b>	1.0	<b>-0.2</b>	-2.9	-1.8	...	...	...
Unemployment rate	7.2	<b>7.2</b>	1.1	<b>0.0</b>	-0.4	-0.5	...	...	...
Employment rate	65.3	<b>65.2</b>	1.1	<b>-0.1</b>	-2.3	-1.2	...	...	...
Part-time rate	35.3	<b>32.8</b>	1.7	<b>-2.5</b>	-5.7	-5.1	...	...	...
<b>Men, 25 years and over</b>									
Population	1,047.8	<b>1,050.7</b>	...	<b>2.9</b>	22.1	23.5	<b>0.3</b>	2.1	2.3
Labour force	845.3	<b>849.7</b>	3.9	<b>4.4</b>	23.3	22.1	<b>0.5</b>	2.8	2.7
Employment	818.9	<b>820.2</b>	4.5	<b>1.3</b>	21.1	21.6	<b>0.2</b>	2.6	2.7
Unemployment	26.4	<b>29.5</b>	3.4	<b>3.1</b>	2.2	0.6	<b>11.7</b>	8.1	2.1
Participation rate	80.7	<b>80.9</b>	0.4	<b>0.2</b>	0.6	0.3	...	...	...
Unemployment rate	3.1	<b>3.5</b>	0.4	<b>0.4</b>	0.2	0.0	...	...	...
Employment rate	78.2	<b>78.1</b>	0.4	<b>-0.1</b>	0.4	0.4	...	...	...
Part-time rate	5.9	<b>5.1</b>	0.5	<b>-0.8</b>	-0.5	-0.2	...	...	...
<b>Women, 25 years and over</b>									
Population	1,046.7	<b>1,049.2</b>	...	<b>2.5</b>	24.4	26.0	<b>0.2</b>	2.4	2.5
Labour force	686.3	<b>684.7</b>	4.2	<b>-1.6</b>	6.4	-0.1	<b>-0.2</b>	0.9	0.0
Employment	662.6	<b>661.6</b>	4.3	<b>-1.0</b>	11.9	7.6	<b>-0.2</b>	1.8	1.2
Unemployment	23.8	<b>23.1</b>	3.2	<b>-0.7</b>	-5.6	-7.7	<b>-2.9</b>	-19.5	-25.0
Participation rate	65.6	<b>65.3</b>	0.4	<b>-0.3</b>	-0.9	-1.6	...	...	...
Unemployment rate	3.5	<b>3.4</b>	0.5	<b>-0.1</b>	-0.8	-1.1	...	...	...
Employment rate	63.3	<b>63.1</b>	0.4	<b>-0.2</b>	-0.3	-0.8	...	...	...
Part-time rate	23.6	<b>22.8</b>	0.9	<b>-0.9</b>	-1.0	-1.9	...	...	...
<b>Industry</b>	<b>1,794.9</b>	<b>1,795.1</b>	8.1	<b>0.2</b>	27.0	28.8	<b>0.0</b>	1.5	1.6
<b>Goods-producing sector</b>	488.6	<b>488.6</b>	6.8	<b>0.0</b>	-10.3	-15.7	<b>0.0</b>	-2.1	-3.1
Agriculture	55.5	<b>53.9</b>	2.7	<b>-1.6</b>	-9.1	-9.2	<b>-2.9</b>	-14.4	-14.6
Forestry, fishing, mining, oil and gas	131.9	<b>125.9</b>	3.3	<b>-6.0</b>	6.1	7.4	<b>-4.5</b>	5.1	6.2
Utilities	14.7	<b>14.2</b>	1.0	<b>-0.5</b>	0.9	1.1	<b>-3.4</b>	6.8	8.4
Construction	162.4	<b>166.5</b>	4.7	<b>4.1</b>	-1.1	-2.3	<b>2.5</b>	-0.7	-1.4
Manufacturing	124.1	<b>128.1</b>	4.0	<b>4.0</b>	-7.1	-12.7	<b>3.2</b>	-5.3	-9.0
<b>Services-producing sector</b>	1,306.2	<b>1,306.5</b>	8.4	<b>0.3</b>	37.3	44.5	<b>0.0</b>	2.9	3.5
Trade	274.4	<b>276.7</b>	5.2	<b>2.3</b>	3.8	6.3	<b>0.8</b>	1.4	2.3
Transportation and warehousing	114.4	<b>113.3</b>	3.2	<b>-1.1</b>	15.9	12.2	<b>-1.0</b>	16.3	12.1
Finance, insurance, real estate and leasing	97.2	<b>91.0</b>	3.0	<b>-6.2</b>	-1.1	-3.7	<b>-6.4</b>	-1.2	-3.9
Professional, scientific and technical services	142.6	<b>139.0</b>	3.6	<b>-3.6</b>	20.5	23.0	<b>-2.5</b>	17.3	19.8
Business, building and other support services	61.2	<b>61.7</b>	3.2	<b>0.5</b>	-1.8	-2.0	<b>0.8</b>	-2.8	-3.1
Educational services	118.0	<b>118.3</b>	3.3	<b>0.3</b>	5.4	7.4	<b>0.3</b>	4.8	6.7
Health care and social assistance	169.6	<b>174.6</b>	3.9	<b>5.0</b>	11.1	12.6	<b>2.9</b>	6.8	7.8
Information, culture and recreation	73.1	<b>72.2</b>	3.1	<b>-0.9</b>	4.1	3.7	<b>-1.2</b>	6.0	5.4
Accommodation and food services	102.3	<b>109.3</b>	4.0	<b>7.0</b>	-17.7	-16.1	<b>6.8</b>	-13.9	-12.8
Other services	83.5	<b>79.7</b>	3.1	<b>-3.8</b>	-4.3	-2.6	<b>-4.6</b>	-5.1	-3.2
Public administration	69.9	<b>70.6</b>	2.3	<b>0.7</b>	1.2	3.6	<b>1.0</b>	1.7	5.4

1. Average standard error of change in two consecutive months (see "Sampling Errors" in Data Quality for further explanations).

Note: Related CANSIM tables 282-0087, 282-0088

Table 4-10

## Selected labour force characteristics (seasonally adjusted) — British Columbia

	October 2005	November 2005	S.E. <sup>1</sup>	Change from			Percent change from		
				last month	last December	twelve months ago	last month	last December	twelve months ago
in thousands (except rates)									
<b>Both sexes, 15 years and over</b>									
Population	3,468.0	<b>3,473.2</b>	...	<b>5.2</b>	59.1	63.2	<b>0.1</b>	1.7	1.9
Labour force	2,264.6	<b>2,278.9</b>	10.9	<b>14.3</b>	50.7	58.0	<b>0.6</b>	2.3	2.6
Employment	2,148.9	<b>2,166.5</b>	11.4	<b>17.6</b>	77.0	89.7	<b>0.8</b>	3.7	4.3
Employment full-time	1,698.9	<b>1,724.3</b>	13.8	<b>25.4</b>	60.4	79.8	<b>1.5</b>	3.6	4.9
Unemployment	115.7	<b>112.4</b>	9.0	<b>-3.3</b>	-26.4	-31.8	<b>-2.9</b>	-19.0	-22.1
Participation rate	65.3	<b>65.6</b>	0.3	<b>0.3</b>	0.3	0.5	...	...	...
Unemployment rate	5.1	<b>4.9</b>	0.4	<b>-0.2</b>	-1.3	-1.6	...	...	...
Employment rate	62.0	<b>62.4</b>	0.3	<b>0.4</b>	1.2	1.5	...	...	...
Part-time rate	20.9	<b>20.4</b>	0.6	<b>-0.5</b>	0.0	-0.4	...	...	...
<b>Both sexes, 15 to 24 years</b>									
Population	573.6	<b>574.1</b>	...	<b>0.5</b>	9.0	9.9	<b>0.1</b>	1.6	1.8
Labour force	380.9	<b>373.4</b>	6.3	<b>-7.5</b>	14.8	16.0	<b>-2.0</b>	4.1	4.5
Employment	348.6	<b>347.8</b>	6.4	<b>-0.8</b>	29.3	30.2	<b>-0.2</b>	9.2	9.5
Unemployment	32.3	<b>25.6</b>	5.3	<b>-6.7</b>	-14.5	-14.2	<b>-20.7</b>	-36.2	-35.7
Participation rate	66.4	<b>65.0</b>	1.1	<b>-1.4</b>	1.5	1.7	...	...	...
Unemployment rate	8.5	<b>6.9</b>	1.4	<b>-1.6</b>	-4.3	-4.2	...	...	...
Employment rate	60.8	<b>60.6</b>	1.1	<b>-0.2</b>	4.2	4.3	...	...	...
Part-time rate	44.1	<b>43.9</b>	2.0	<b>-0.1</b>	1.3	-0.1	...	...	...
<b>Men, 25 years and over</b>									
Population	1,413.1	<b>1,415.6</b>	...	<b>2.5</b>	25.1	26.7	<b>0.2</b>	1.8	1.9
Labour force	1,011.4	<b>1,018.2</b>	5.7	<b>6.8</b>	10.5	16.7	<b>0.7</b>	1.0	1.7
Employment	962.4	<b>973.9</b>	6.2	<b>11.5</b>	21.7	32.8	<b>1.2</b>	2.3	3.5
Unemployment	49.0	<b>44.3</b>	5.3	<b>-4.7</b>	-11.2	-16.1	<b>-9.6</b>	-20.2	-26.7
Participation rate	71.6	<b>71.9</b>	0.4	<b>0.3</b>	-0.6	-0.2	...	...	...
Unemployment rate	4.8	<b>4.4</b>	0.5	<b>-0.4</b>	-1.1	-1.6	...	...	...
Employment rate	68.1	<b>68.8</b>	0.5	<b>0.7</b>	0.3	1.0	...	...	...
Part-time rate	7.4	<b>7.5</b>	0.6	<b>0.1</b>	-0.5	-0.3	...	...	...
<b>Women, 25 years and over</b>									
Population	1,481.3	<b>1,483.5</b>	...	<b>2.2</b>	24.9	26.6	<b>0.1</b>	1.7	1.8
Labour force	872.3	<b>887.3</b>	6.2	<b>15.0</b>	25.4	25.2	<b>1.7</b>	2.9	2.9
Employment	837.9	<b>844.8</b>	6.5	<b>6.9</b>	26.0	26.7	<b>0.8</b>	3.2	3.3
Unemployment	34.4	<b>42.5</b>	4.7	<b>8.1</b>	-0.7	-1.5	<b>23.5</b>	-1.6	-3.4
Participation rate	58.9	<b>59.8</b>	0.4	<b>0.9</b>	0.7	0.6	...	...	...
Unemployment rate	3.9	<b>4.8</b>	0.5	<b>0.9</b>	-0.2	-0.3	...	...	...
Employment rate	56.6	<b>56.9</b>	0.4	<b>0.3</b>	0.8	0.7	...	...	...
Part-time rate	26.9	<b>25.7</b>	1.0	<b>-1.2</b>	-0.5	-1.1	...	...	...
<b>Industry</b>	<b>2,148.9</b>	<b>2,166.5</b>	11.4	<b>17.6</b>	77.0	89.7	<b>0.8</b>	3.7	4.3
<b>Goods-producing sector</b>	<b>444.1</b>	<b>456.5</b>	8.2	<b>12.4</b>	8.4	12.7	<b>2.8</b>	1.9	2.9
Agriculture	36.4	<b>33.8</b>	2.7	<b>-2.6</b>	-5.0	-1.6	<b>-7.1</b>	-12.9	-4.5
Forestry, fishing, mining, oil and gas	37.8	<b>35.1</b>	2.5	<b>-2.7</b>	-1.8	-0.1	<b>-7.1</b>	-4.9	-0.3
Utilities	11.2	<b>9.2</b>	1.1	<b>-2.0</b>	1.7	2.1	<b>-17.9</b>	22.7	29.6
Construction	164.7	<b>171.4</b>	5.3	<b>6.7</b>	14.6	15.8	<b>4.1</b>	9.3	10.2
Manufacturing	194.1	<b>207.1</b>	5.6	<b>13.0</b>	-1.1	-3.4	<b>6.7</b>	-0.5	-1.6
<b>Services-producing sector</b>	<b>1,704.8</b>	<b>1,710.1</b>	11.3	<b>5.3</b>	68.8	77.1	<b>0.3</b>	4.2	4.7
Trade	362.4	<b>354.8</b>	7.1	<b>-7.6</b>	42.9	44.5	<b>-2.1</b>	13.8	14.3
Transportation and warehousing	124.1	<b>123.1</b>	4.0	<b>-1.0</b>	10.1	9.8	<b>-0.8</b>	8.9	8.6
Finance, insurance, real estate and leasing	131.4	<b>133.8</b>	4.4	<b>2.4</b>	-2.3	0.7	<b>1.8</b>	-1.7	0.5
Professional, scientific and technical services	157.6	<b>164.9</b>	4.8	<b>7.3</b>	10.6	6.4	<b>4.6</b>	6.9	4.0
Business, building and other support services	90.1	<b>88.7</b>	4.3	<b>-1.4</b>	4.9	7.2	<b>-1.6</b>	5.8	8.8
Educational services	141.3	<b>143.2</b>	4.8	<b>1.9</b>	10.0	7.0	<b>1.3</b>	7.5	5.1
Health care and social assistance	219.4	<b>219.3</b>	5.0	<b>-0.1</b>	-3.4	0.9	<b>0.0</b>	-1.5	0.4
Information, culture and recreation	119.1	<b>126.8</b>	4.6	<b>7.7</b>	14.0	15.4	<b>6.5</b>	12.4	13.8
Accommodation and food services	178.3	<b>177.2</b>	5.4	<b>-1.1</b>	-5.5	-4.4	<b>-0.6</b>	-3.0	-2.4
Other services	90.4	<b>88.9</b>	4.1	<b>-1.5</b>	-5.2	-3.8	<b>-1.7</b>	-5.5	-4.1
Public administration	90.6	<b>89.2</b>	3.3	<b>-1.4</b>	-7.5	-6.8	<b>-1.5</b>	-7.8	-7.1

1. Average standard error of change in two consecutive months (see "Sampling Errors" in Data Quality for further explanations).

Note: Related CANSIM tables 282-0087, 282-0088

Table 5-1

## Labour force characteristics by census metropolitan area (seasonally adjusted) — 3 month moving average

	October 2005	November 2005	S.E. <sup>1</sup>	Change from			Percent change from		
				last month	last December	twelve months ago	last month	last December	twelve months ago
in thousands (except rates)									
<b>St. John's, Newfoundland and Labrador</b>									
Population	151.3	<b>151.5</b>	...	<b>0.2</b>	1.0	1.2	<b>0.1</b>	0.7	0.8
Labour force	99.2	<b>99.1</b>	0.9	<b>-0.1</b>	-0.7	0.5	<b>-0.1</b>	-0.7	0.5
Employment	90.6	<b>91.0</b>	0.9	<b>0.4</b>	-0.4	0.8	<b>0.4</b>	-0.4	0.9
Unemployment	8.6	<b>8.1</b>	0.6	<b>-0.5</b>	-0.3	-0.3	<b>-5.8</b>	-3.6	-3.6
Participation rate	65.6	<b>65.4</b>	0.6	<b>-0.2</b>	-0.9	-0.2	...	...	...
Unemployment rate	8.7	<b>8.2</b>	0.6	<b>-0.5</b>	-0.2	-0.3	...	...	...
Employment rate	59.9	<b>60.1</b>	0.6	<b>0.2</b>	-0.6	0.1	...	...	...
<b>Halifax, Nova Scotia</b>									
Population	311.8	<b>312.1</b>	...	<b>0.3</b>	2.9	3.3	<b>0.1</b>	0.9	1.1
Labour force	215.0	<b>214.9</b>	1.3	<b>-0.1</b>	-3.4	-2.9	<b>0.0</b>	-1.6	-1.3
Employment	203.9	<b>203.2</b>	1.3	<b>-0.7</b>	-1.9	-1.8	<b>-0.3</b>	-0.9	-0.9
Unemployment	11.1	<b>11.7</b>	0.7	<b>0.6</b>	-1.5	-1.1	<b>5.4</b>	-11.4	-8.6
Participation rate	69.0	<b>68.9</b>	0.4	<b>-0.1</b>	-1.7	-1.6	...	...	...
Unemployment rate	5.2	<b>5.4</b>	0.3	<b>0.2</b>	-0.6	-0.5	...	...	...
Employment rate	65.4	<b>65.1</b>	0.4	<b>-0.3</b>	-1.2	-1.3	...	...	...
<b>Saint John, New Brunswick</b>									
Population	103.0	<b>103.0</b>	...	<b>0.0</b>	0.6	0.6	<b>0.0</b>	0.6	0.6
Labour force	64.4	<b>64.8</b>	0.7	<b>0.4</b>	-2.1	-1.9	<b>0.6</b>	-3.1	-2.8
Employment	59.0	<b>59.9</b>	0.7	<b>0.9</b>	-2.0	-1.5	<b>1.5</b>	-3.2	-2.4
Unemployment	5.4	<b>4.9</b>	0.4	<b>-0.5</b>	-0.1	-0.4	<b>-9.3</b>	-2.0	-7.5
Participation rate	62.5	<b>62.9</b>	0.7	<b>0.4</b>	-2.4	-2.2	...	...	...
Unemployment rate	8.4	<b>7.6</b>	0.5	<b>-0.8</b>	0.1	-0.3	...	...	...
Employment rate	57.3	<b>58.2</b>	0.7	<b>0.9</b>	-2.2	-1.8	...	...	...
<b>Saguenay, Quebec</b>									
Population	126.3	<b>126.4</b>	...	<b>0.1</b>	-0.1	-0.1	<b>0.1</b>	-0.1	-0.1
Labour force	76.2	<b>76.3</b>	0.8	<b>0.1</b>	-2.9	-3.3	<b>0.1</b>	-3.7	-4.1
Employment	67.8	<b>67.8</b>	0.8	<b>0.0</b>	-2.8	-2.9	<b>0.0</b>	-4.0	-4.1
Unemployment	8.5	<b>8.4</b>	0.5	<b>-0.1</b>	-0.2	-0.5	<b>-1.2</b>	-2.3	-5.6
Participation rate	60.3	<b>60.4</b>	0.6	<b>0.1</b>	-2.2	-2.5	...	...	...
Unemployment rate	11.2	<b>11.0</b>	0.6	<b>-0.2</b>	0.1	-0.2	...	...	...
Employment rate	53.7	<b>53.6</b>	0.6	<b>-0.1</b>	-2.2	-2.3	...	...	...
<b>Québec, Quebec</b>									
Population	595.1	<b>595.8</b>	...	<b>0.7</b>	6.3	6.8	<b>0.1</b>	1.1	1.2
Labour force	399.9	<b>399.3</b>	3.1	<b>-0.6</b>	8.9	10.5	<b>-0.2</b>	2.3	2.7
Employment	377.1	<b>378.8</b>	3.1	<b>1.7</b>	10.1	10.5	<b>0.5</b>	2.7	2.9
Unemployment	22.9	<b>20.4</b>	1.5	<b>-2.5</b>	-1.3	-0.2	<b>-10.9</b>	-6.0	-1.0
Participation rate	67.2	<b>67.0</b>	0.5	<b>-0.2</b>	0.8	1.0	...	...	...
Unemployment rate	5.7	<b>5.1</b>	0.4	<b>-0.6</b>	-0.5	-0.2	...	...	...
Employment rate	63.4	<b>63.6</b>	0.5	<b>0.2</b>	1.1	1.1	...	...	...
<b>Trois-Rivières, Quebec</b>									
Population	118.6	<b>118.7</b>	...	<b>0.1</b>	1.0	1.1	<b>0.1</b>	0.8	0.9
Labour force	75.2	<b>75.2</b>	0.8	<b>0.0</b>	3.0	3.1	<b>0.0</b>	4.2	4.3
Employment	69.2	<b>69.1</b>	0.8	<b>-0.1</b>	3.9	4.5	<b>-0.1</b>	6.0	7.0
Unemployment	6.0	<b>6.1</b>	0.4	<b>0.1</b>	-0.9	-1.4	<b>1.7</b>	-12.9	-18.7
Participation rate	63.4	<b>63.4</b>	0.7	<b>0.0</b>	2.1	2.1	...	...	...
Unemployment rate	8.0	<b>8.1</b>	0.6	<b>0.1</b>	-1.6	-2.3	...	...	...
Employment rate	58.3	<b>58.2</b>	0.7	<b>-0.1</b>	2.8	3.3	...	...	...

See footnotes at the end of the table.

Table 5-1 – continued

## Labour force characteristics by census metropolitan area (seasonally adjusted) — 3 month moving average

	October 2005	November 2005	S.E. <sup>1</sup>	Change from			Percent change from		
				last month	last December	twelve months ago	last month	last December	twelve months ago
in thousands (except rates)									
<b>Sherbrooke, Quebec</b>									
Population	135.0	<b>135.2</b>	...	<b>0.2</b>	1.9	2.1	<b>0.1</b>	1.4	1.6
Labour force	86.0	<b>86.4</b>	0.8	<b>0.4</b>	-2.6	-1.3	<b>0.5</b>	-2.9	-1.5
Employment	79.8	<b>80.3</b>	0.8	<b>0.5</b>	-2.7	-1.5	<b>0.6</b>	-3.3	-1.8
Unemployment	6.2	<b>6.1</b>	0.4	<b>-0.1</b>	0.1	0.2	<b>-1.6</b>	1.7	3.4
Participation rate	63.7	<b>63.9</b>	0.6	<b>0.2</b>	-2.9	-2.0	...	...	...
Unemployment rate	7.2	<b>7.1</b>	0.5	<b>-0.1</b>	0.4	0.4	...	...	...
Employment rate	59.1	<b>59.4</b>	0.6	<b>0.3</b>	-2.9	-2.1	...	...	...
<b>Montréal, Quebec</b>									
Population	2,978.2	<b>2,981.6</b>	...	<b>3.4</b>	35.8	38.9	<b>0.1</b>	1.2	1.3
Labour force	2,013.0	<b>2,008.5</b>	7.5	<b>-4.5</b>	18.2	17.1	<b>-0.2</b>	0.9	0.9
Employment	1,834.5	<b>1,827.0</b>	7.7	<b>-7.5</b>	19.8	17.5	<b>-0.4</b>	1.1	1.0
Unemployment	178.5	<b>181.4</b>	4.9	<b>2.9</b>	-1.7	-0.5	<b>1.6</b>	-0.9	-0.3
Participation rate	67.6	<b>67.4</b>	0.3	<b>-0.2</b>	-0.2	-0.3	...	...	...
Unemployment rate	8.9	<b>9.0</b>	0.2	<b>0.1</b>	-0.2	-0.1	...	...	...
Employment rate	61.6	<b>61.3</b>	0.3	<b>-0.3</b>	0.0	-0.2	...	...	...
<b>Ottawa-Gatineau, Ontario/Quebec</b>									
Population	936.7	<b>938.0</b>	...	<b>1.3</b>	14.0	15.1	<b>0.1</b>	1.5	1.6
Labour force	661.5	<b>663.1</b>	3.5	<b>1.6</b>	-2.4	3.2	<b>0.2</b>	-0.4	0.5
Employment	616.9	<b>622.2</b>	3.6	<b>5.3</b>	-0.2	4.1	<b>0.9</b>	0.0	0.7
Unemployment	44.6	<b>40.9</b>	1.8	<b>-3.7</b>	-2.2	-0.8	<b>-8.3</b>	-5.1	-1.9
Participation rate	70.6	<b>70.7</b>	0.4	<b>0.1</b>	-1.3	-0.8	...	...	...
Unemployment rate	6.7	<b>6.2</b>	0.3	<b>-0.5</b>	-0.3	-0.1	...	...	...
Employment rate	65.9	<b>66.3</b>	0.4	<b>0.4</b>	-1.1	-0.7	...	...	...
<b>Ottawa-Gatineau, Quebec part, Ontario/Quebec</b>									
Population	232.2	<b>232.8</b>	...	<b>0.6</b>	5.9	6.4	<b>0.3</b>	2.6	2.8
Labour force	168.8	<b>169.7</b>	1.3	<b>0.9</b>	7.3	8.4	<b>0.5</b>	4.5	5.2
Employment	157.3	<b>158.6</b>	1.4	<b>1.3</b>	7.6	8.3	<b>0.8</b>	5.0	5.5
Unemployment	11.5	<b>11.0</b>	0.7	<b>-0.5</b>	-0.3	0.1	<b>-4.3</b>	-2.7	0.9
Participation rate	72.7	<b>72.9</b>	0.6	<b>0.2</b>	1.3	1.7	...	...	...
Unemployment rate	6.8	<b>6.5</b>	0.4	<b>-0.3</b>	-0.5	-0.3	...	...	...
Employment rate	67.7	<b>68.1</b>	0.6	<b>0.4</b>	1.6	1.7	...	...	...
<b>Ottawa-Gatineau, Ontario part, Ontario/Quebec</b>									
Population	704.4	<b>705.3</b>	...	<b>0.9</b>	8.2	8.8	<b>0.1</b>	1.2	1.3
Labour force	492.7	<b>493.4</b>	3.2	<b>0.7</b>	-9.7	-5.2	<b>0.1</b>	-1.9	-1.0
Employment	459.6	<b>463.5</b>	3.4	<b>3.9</b>	-7.9	-4.3	<b>0.8</b>	-1.7	-0.9
Unemployment	33.1	<b>29.9</b>	1.7	<b>-3.2</b>	-1.8	-0.9	<b>-9.7</b>	-5.7	-2.9
Participation rate	69.9	<b>70.0</b>	0.5	<b>0.1</b>	-2.2	-1.6	...	...	...
Unemployment rate	6.7	<b>6.1</b>	0.4	<b>-0.6</b>	-0.2	-0.1	...	...	...
Employment rate	65.2	<b>65.7</b>	0.5	<b>0.5</b>	-1.9	-1.5	...	...	...
<b>Kingston, Ontario</b>									
Population	125.9	<b>126.0</b>	...	<b>0.1</b>	1.6	1.7	<b>0.1</b>	1.3	1.4
Labour force	81.4	<b>80.8</b>	0.9	<b>-0.6</b>	2.4	2.8	<b>-0.7</b>	3.1	3.6
Employment	76.3	<b>76.9</b>	0.9	<b>0.6</b>	3.1	3.4	<b>0.8</b>	4.2	4.6
Unemployment	5.1	<b>3.9</b>	0.4	<b>-1.2</b>	-0.7	-0.6	<b>-23.5</b>	-15.2	-13.3
Participation rate	64.7	<b>64.1</b>	0.7	<b>-0.6</b>	1.1	1.3	...	...	...
Unemployment rate	6.3	<b>4.8</b>	0.5	<b>-1.5</b>	-1.1	-1.0	...	...	...
Employment rate	60.6	<b>61.0</b>	0.7	<b>0.4</b>	1.7	1.9	...	...	...

See footnotes at the end of the table.



Table 5-1 – continued

## Labour force characteristics by census metropolitan area (seasonally adjusted) — 3 month moving average

	October 2005	November 2005	S.E. <sup>1</sup>	Change from			Percent change from		
				last month	last December	twelve months ago	last month	last December	twelve months ago
in thousands (except rates)									
<b>Toronto, Ontario</b>									
Population	4,299.9	<b>4,307.8</b>	...	<b>7.9</b>	93.7	100.3	<b>0.2</b>	2.2	2.4
Labour force	2,999.0	<b>3,001.9</b>	8.5	<b>2.9</b>	74.0	82.2	<b>0.1</b>	2.5	2.8
Employment	2,800.9	<b>2,808.4</b>	9.0	<b>7.5</b>	104.2	104.8	<b>0.3</b>	3.9	3.9
Unemployment	198.1	<b>193.5</b>	5.6	<b>-4.6</b>	-30.2	-22.6	<b>-2.3</b>	-13.5	-10.5
Participation rate	69.7	<b>69.7</b>	0.2	<b>0.0</b>	0.2	0.3	...	...	...
Unemployment rate	6.6	<b>6.4</b>	0.2	<b>-0.2</b>	-1.2	-1.0	...	...	...
Employment rate	65.1	<b>65.2</b>	0.2	<b>0.1</b>	1.0	0.9	...	...	...
<b>Hamilton, Ontario</b>									
Population	582.8	<b>583.5</b>	...	<b>0.7</b>	8.2	8.7	<b>0.1</b>	1.4	1.5
Labour force	387.8	<b>390.3</b>	2.8	<b>2.5</b>	-6.1	-9.2	<b>0.6</b>	-1.5	-2.3
Employment	364.8	<b>367.5</b>	2.9	<b>2.7</b>	-3.6	-7.0	<b>0.7</b>	-1.0	-1.9
Unemployment	22.9	<b>22.8</b>	1.5	<b>-0.1</b>	-2.5	-2.2	<b>-0.4</b>	-9.9	-8.8
Participation rate	66.5	<b>66.9</b>	0.5	<b>0.4</b>	-2.0	-2.6	...	...	...
Unemployment rate	5.9	<b>5.8</b>	0.4	<b>-0.1</b>	-0.6	-0.5	...	...	...
Employment rate	62.6	<b>63.0</b>	0.5	<b>0.4</b>	-1.5	-2.2	...	...	...
<b>Kitchener, Ontario</b>									
Population	366.3	<b>366.8</b>	...	<b>0.5</b>	6.4	6.9	<b>0.1</b>	1.8	1.9
Labour force	265.8	<b>264.2</b>	1.9	<b>-1.6</b>	13.7	14.6	<b>-0.6</b>	5.5	5.8
Employment	250.5	<b>249.2</b>	2.0	<b>-1.3</b>	8.8	10.5	<b>-0.5</b>	3.7	4.4
Unemployment	15.2	<b>15.0</b>	0.8	<b>-0.2</b>	4.9	4.1	<b>-1.3</b>	48.5	37.6
Participation rate	72.6	<b>72.0</b>	0.5	<b>-0.6</b>	2.5	2.6	...	...	...
Unemployment rate	5.7	<b>5.7</b>	0.3	<b>0.0</b>	1.7	1.3	...	...	...
Employment rate	68.4	<b>67.9</b>	0.6	<b>-0.5</b>	1.2	1.6	...	...	...
<b>London, Ontario</b>									
Population	376.5	<b>376.9</b>	...	<b>0.4</b>	4.1	4.4	<b>0.1</b>	1.1	1.2
Labour force	260.1	<b>259.0</b>	2.0	<b>-1.1</b>	-0.5	1.4	<b>-0.4</b>	-0.2	0.5
Employment	243.0	<b>241.3</b>	2.1	<b>-1.7</b>	-0.7	1.2	<b>-0.7</b>	-0.3	0.5
Unemployment	17.1	<b>17.6</b>	0.9	<b>0.5</b>	0.1	0.1	<b>2.9</b>	0.6	0.6
Participation rate	69.1	<b>68.7</b>	0.5	<b>-0.4</b>	-0.9	-0.5	...	...	...
Unemployment rate	6.6	<b>6.8</b>	0.4	<b>0.2</b>	0.1	0.0	...	...	...
Employment rate	64.5	<b>64.0</b>	0.6	<b>-0.5</b>	-0.9	-0.5	...	...	...
<b>Oshawa, Ontario</b>									
Population	265.6	<b>266.2</b>	...	<b>0.6</b>	8.4	9.0	<b>0.2</b>	3.3	3.5
Labour force	185.5	<b>185.5</b>	1.3	<b>0.0</b>	5.7	6.9	<b>0.0</b>	3.2	3.9
Employment	174.0	<b>174.3</b>	1.3	<b>0.3</b>	4.7	6.0	<b>0.2</b>	2.8	3.6
Unemployment	11.5	<b>11.2</b>	0.5	<b>-0.3</b>	1.0	0.9	<b>-2.6</b>	9.8	8.7
Participation rate	69.8	<b>69.7</b>	0.5	<b>-0.1</b>	0.0	0.3	...	...	...
Unemployment rate	6.2	<b>6.0</b>	0.3	<b>-0.2</b>	0.3	0.2	...	...	...
Employment rate	65.5	<b>65.5</b>	0.5	<b>0.0</b>	-0.3	0.1	...	...	...
<b>St. Catharines-Niagara, Ontario</b>									
Population	325.7	<b>325.9</b>	...	<b>0.2</b>	2.5	2.6	<b>0.1</b>	0.8	0.8
Labour force	204.9	<b>202.7</b>	1.8	<b>-2.2</b>	-5.5	-2.3	<b>-1.1</b>	-2.6	-1.1
Employment	188.6	<b>188.5</b>	1.9	<b>-0.1</b>	-5.9	-3.5	<b>-0.1</b>	-3.0	-1.8
Unemployment	16.2	<b>14.3</b>	0.9	<b>-1.9</b>	0.5	1.2	<b>-11.7</b>	3.6	9.2
Participation rate	62.9	<b>62.2</b>	0.6	<b>-0.7</b>	-2.2	-1.2	...	...	...
Unemployment rate	7.9	<b>7.1</b>	0.4	<b>-0.8</b>	0.5	0.7	...	...	...
Employment rate	57.9	<b>57.8</b>	0.6	<b>-0.1</b>	-2.3	-1.6	...	...	...

See footnotes at the end of the table.

Table 5-1 – continued

## Labour force characteristics by census metropolitan area (seasonally adjusted) — 3 month moving average

	October 2005	November 2005	S.E. <sup>1</sup>	Change from			Percent change from		
				last month	last December	twelve months ago	last month	last December	twelve months ago
in thousands (except rates)									
<b>Greater Sudbury / Grand Sudbury, Ontario</b>									
Population	131.4	<b>131.5</b>	...	<b>0.1</b>	0.8	0.8	<b>0.1</b>	0.6	0.6
Labour force	80.9	<b>81.0</b>	0.7	<b>0.1</b>	-4.8	-4.2	<b>0.1</b>	-5.6	-4.9
Employment	74.7	<b>74.9</b>	0.7	<b>0.2</b>	-4.6	-3.8	<b>0.3</b>	-5.8	-4.8
Unemployment	6.2	<b>6.1</b>	0.4	<b>-0.1</b>	-0.2	-0.4	<b>-1.6</b>	-3.2	-6.2
Participation rate	61.6	<b>61.6</b>	0.5	<b>0.0</b>	-4.0	-3.6	...	...	...
Unemployment rate	7.7	<b>7.5</b>	0.5	<b>-0.2</b>	0.2	-0.1	...	...	...
Employment rate	56.8	<b>57.0</b>	0.5	<b>0.2</b>	-3.8	-3.2	...	...	...
<b>Thunder Bay, Ontario</b>									
Population	102.2	<b>102.2</b>	...	<b>0.0</b>	1.0	1.0	<b>0.0</b>	1.0	1.0
Labour force	66.9	<b>65.6</b>	0.6	<b>-1.3</b>	-2.4	-2.3	<b>-1.9</b>	-3.5	-3.4
Employment	62.6	<b>61.4</b>	0.7	<b>-1.2</b>	-0.9	-0.6	<b>-1.9</b>	-1.4	-1.0
Unemployment	4.3	<b>4.2</b>	0.3	<b>-0.1</b>	-1.5	-1.7	<b>-2.3</b>	-26.3	-28.8
Participation rate	65.5	<b>64.2</b>	0.6	<b>-1.3</b>	-3.0	-2.9	...	...	...
Unemployment rate	6.4	<b>6.4</b>	0.5	<b>0.0</b>	-2.0	-2.3	...	...	...
Employment rate	61.3	<b>60.1</b>	0.6	<b>-1.2</b>	-1.5	-1.2	...	...	...
<b>Windsor, Ontario</b>									
Population	270.6	<b>270.9</b>	...	<b>0.3</b>	3.3	3.6	<b>0.1</b>	1.2	1.3
Labour force	175.3	<b>175.4</b>	1.6	<b>0.1</b>	-4.9	-6.3	<b>0.1</b>	-2.7	-3.5
Employment	162.2	<b>162.7</b>	1.6	<b>0.5</b>	-0.1	-1.5	<b>0.3</b>	-0.1	-0.9
Unemployment	13.2	<b>12.7</b>	0.8	<b>-0.5</b>	-4.7	-4.8	<b>-3.8</b>	-27.0	-27.4
Participation rate	64.8	<b>64.7</b>	0.6	<b>-0.1</b>	-2.7	-3.3	...	...	...
Unemployment rate	7.5	<b>7.2</b>	0.5	<b>-0.3</b>	-2.5	-2.4	...	...	...
Employment rate	59.9	<b>60.1</b>	0.6	<b>0.2</b>	-0.7	-1.3	...	...	...
<b>Winnipeg, Manitoba</b>									
Population	570.0	<b>570.2</b>	...	<b>0.2</b>	4.2	4.7	<b>0.0</b>	0.7	0.8
Labour force	391.1	<b>390.8</b>	1.3	<b>-0.3</b>	-10.4	-10.9	<b>-0.1</b>	-2.6	-2.7
Employment	371.7	<b>372.8</b>	1.4	<b>1.1</b>	-7.1	-6.9	<b>0.3</b>	-1.9	-1.8
Unemployment	19.4	<b>17.9</b>	0.8	<b>-1.5</b>	-3.4	-4.2	<b>-7.7</b>	-16.0	-19.0
Participation rate	68.6	<b>68.5</b>	0.2	<b>-0.1</b>	-2.4	-2.5	...	...	...
Unemployment rate	5.0	<b>4.6</b>	0.2	<b>-0.4</b>	-0.7	-0.9	...	...	...
Employment rate	65.2	<b>65.4</b>	0.2	<b>0.2</b>	-1.7	-1.7	...	...	...
<b>Regina, Saskatchewan</b>									
Population	159.8	<b>159.9</b>	...	<b>0.1</b>	1.5	1.6	<b>0.1</b>	0.9	1.0
Labour force	112.5	<b>111.7</b>	0.7	<b>-0.8</b>	-2.4	-1.9	<b>-0.7</b>	-2.1	-1.7
Employment	106.7	<b>105.9</b>	0.7	<b>-0.8</b>	-2.3	-2.0	<b>-0.7</b>	-2.1	-1.9
Unemployment	5.8	<b>5.8</b>	0.4	<b>0.0</b>	-0.1	0.1	<b>0.0</b>	-1.7	1.8
Participation rate	70.4	<b>69.9</b>	0.5	<b>-0.5</b>	-2.1	-1.9	...	...	...
Unemployment rate	5.2	<b>5.2</b>	0.3	<b>0.0</b>	0.0	0.2	...	...	...
Employment rate	66.8	<b>66.2</b>	0.5	<b>-0.6</b>	-2.1	-2.0	...	...	...
<b>Saskatoon, Saskatchewan</b>									
Population	189.2	<b>189.3</b>	...	<b>0.1</b>	1.6	1.9	<b>0.1</b>	0.9	1.0
Labour force	133.0	<b>132.8</b>	0.9	<b>-0.2</b>	-1.0	0.2	<b>-0.2</b>	-0.7	0.2
Employment	125.4	<b>125.5</b>	0.9	<b>0.1</b>	-0.9	0.7	<b>0.1</b>	-0.7	0.6
Unemployment	7.6	<b>7.4</b>	0.4	<b>-0.2</b>	0.0	-0.4	<b>-2.6</b>	0.0	-5.1
Participation rate	70.3	<b>70.2</b>	0.5	<b>-0.1</b>	-1.1	-0.6	...	...	...
Unemployment rate	5.7	<b>5.6</b>	0.3	<b>-0.1</b>	0.1	-0.3	...	...	...
Employment rate	66.3	<b>66.3</b>	0.5	<b>0.0</b>	-1.0	-0.3	...	...	...

See footnotes at the end of the table.

Table 5-1 – continued

## Labour force characteristics by census metropolitan area (seasonally adjusted) — 3 month moving average

	October 2005	November 2005	S.E. <sup>1</sup>	Change from			Percent change from		
				last month	last December	twelve months ago	last month	last December	twelve months ago
in thousands (except rates)									
<b>Calgary, Alberta</b>									
Population	859.4	<b>861.6</b>	...	<b>2.2</b>	20.4	21.8	<b>0.3</b>	2.4	2.6
Labour force	628.9	<b>634.5</b>	3.0	<b>5.6</b>	8.3	3.7	<b>0.9</b>	1.3	0.6
Employment	603.7	<b>606.7</b>	3.0	<b>3.0</b>	10.5	6.9	<b>0.5</b>	1.8	1.2
Unemployment	25.2	<b>27.7</b>	1.7	<b>2.5</b>	-2.3	-3.3	<b>9.9</b>	-7.7	-10.6
Participation rate	73.2	<b>73.6</b>	0.4	<b>0.4</b>	-0.8	-1.5	...	...	...
Unemployment rate	4.0	<b>4.4</b>	0.3	<b>0.4</b>	-0.4	-0.5	...	...	...
Employment rate	70.2	<b>70.4</b>	0.4	<b>0.2</b>	-0.5	-1.0	...	...	...
<b>Edmonton, Alberta</b>									
Population	820.2	<b>822.1</b>	...	<b>1.9</b>	14.2	15.3	<b>0.2</b>	1.8	1.9
Labour force	577.8	<b>575.7</b>	2.6	<b>-2.1</b>	-17.8	-16.2	<b>-0.4</b>	-3.0	-2.7
Employment	551.5	<b>550.8</b>	2.7	<b>-0.7</b>	-11.4	-10.7	<b>-0.1</b>	-2.0	-1.9
Unemployment	26.3	<b>24.9</b>	1.4	<b>-1.4</b>	-6.3	-5.5	<b>-5.3</b>	-20.2	-18.1
Participation rate	70.4	<b>70.0</b>	0.3	<b>-0.4</b>	-3.5	-3.4	...	...	...
Unemployment rate	4.6	<b>4.3</b>	0.2	<b>-0.3</b>	-1.0	-0.8	...	...	...
Employment rate	67.2	<b>67.0</b>	0.4	<b>-0.2</b>	-2.6	-2.6	...	...	...
<b>Abbotsford, British Columbia</b>									
Population	129.1	<b>129.4</b>	...	<b>0.3</b>	1.9	2.2	<b>0.2</b>	1.5	1.7
Labour force	83.9	<b>86.0</b>	0.8	<b>2.1</b>	0.6	-0.7	<b>2.5</b>	0.7	-0.8
Employment	79.7	<b>81.2</b>	0.8	<b>1.5</b>	2.0	0.7	<b>1.9</b>	2.5	0.9
Unemployment	4.2	<b>4.7</b>	0.4	<b>0.5</b>	-1.5	-1.5	<b>11.9</b>	-24.2	-24.2
Participation rate	65.0	<b>66.5</b>	0.6	<b>1.5</b>	-0.5	-1.7	...	...	...
Unemployment rate	5.0	<b>5.5</b>	0.4	<b>0.5</b>	-1.8	-1.7	...	...	...
Employment rate	61.7	<b>62.8</b>	0.6	<b>1.1</b>	0.7	-0.5	...	...	...
<b>Vancouver, British Columbia</b>									
Population	1,828.7	<b>1,832.1</b>	...	<b>3.4</b>	36.4	39.0	<b>0.2</b>	2.0	2.2
Labour force	1,209.3	<b>1,217.7</b>	4.9	<b>8.4</b>	12.8	16.9	<b>0.7</b>	1.1	1.4
Employment	1,145.4	<b>1,158.9</b>	5.1	<b>13.5</b>	30.0	36.4	<b>1.2</b>	2.7	3.2
Unemployment	63.9	<b>58.8</b>	3.0	<b>-5.1</b>	-17.2	-19.5	<b>-8.0</b>	-22.6	-24.9
Participation rate	66.1	<b>66.5</b>	0.3	<b>0.4</b>	-0.6	-0.5	...	...	...
Unemployment rate	5.3	<b>4.8</b>	0.2	<b>-0.5</b>	-1.5	-1.7	...	...	...
Employment rate	62.6	<b>63.3</b>	0.3	<b>0.7</b>	0.4	0.7	...	...	...
<b>Victoria, British Columbia</b>									
Population	271.7	<b>272.0</b>	...	<b>0.3</b>	3.5	3.6	<b>0.1</b>	1.3	1.3
Labour force	180.2	<b>179.3</b>	1.7	<b>-0.9</b>	10.3	10.3	<b>-0.5</b>	6.1	6.1
Employment	172.3	<b>171.3</b>	1.8	<b>-1.0</b>	11.5	11.9	<b>-0.6</b>	7.2	7.5
Unemployment	7.9	<b>8.0</b>	0.7	<b>0.1</b>	-1.2	-1.6	<b>1.3</b>	-13.0	-16.7
Participation rate	66.3	<b>65.9</b>	0.7	<b>-0.4</b>	3.0	2.9	...	...	...
Unemployment rate	4.4	<b>4.5</b>	0.4	<b>0.1</b>	-0.9	-1.2	...	...	...
Employment rate	63.4	<b>63.0</b>	0.7	<b>-0.4</b>	3.5	3.6	...	...	...

1. Average standard error of change in two consecutive months (see "Sampling Errors" in Data Quality for further explanations).

**Note:** Related CANSIM table 282-0090

Table 5-2

## Labour force characteristics by census metropolitan area (seasonally adjusted) — Monthly

	October 2005	November 2005	S.E. <sup>1</sup>	Change from			Percent change from		
				last month	last December	twelve months ago	last month	last December	twelve months ago
in thousands (except rates)									
<b>Montréal, Quebec</b>									
Population	2,983.4	<b>2,986.8</b>	...	<b>3.4</b>	38.2	40.9	<b>0.1</b>	1.3	1.4
Labour force	2,017.9	<b>2,004.7</b>	16.0	<b>-13.2</b>	22.5	6.2	<b>-0.7</b>	1.1	0.3
Employment	1,835.8	<b>1,823.3</b>	16.3	<b>-12.5</b>	22.6	10.3	<b>-0.7</b>	1.3	0.6
Unemployment	182.1	<b>181.4</b>	11.9	<b>-0.7</b>	-0.2	-4.1	<b>-0.4</b>	-0.1	-2.2
Participation rate	67.6	<b>67.1</b>	0.5	<b>-0.5</b>	-0.1	-0.7	...	...	...
Unemployment rate	9.0	<b>9.0</b>	0.6	<b>0.0</b>	-0.2	-0.3	...	...	...
Employment rate	61.5	<b>61.0</b>	0.6	<b>-0.5</b>	-0.1	-0.5	...	...	...
<b>Toronto, Ontario</b>									
Population	4,305.4	<b>4,312.6</b>	...	<b>7.2</b>	92.3	98.3	<b>0.2</b>	2.2	2.3
Labour force	3,022.8	<b>2,987.1</b>	19.2	<b>-35.7</b>	62.0	55.1	<b>-1.2</b>	2.1	1.9
Employment	2,821.7	<b>2,804.8</b>	19.4	<b>-16.9</b>	112.2	92.2	<b>-0.6</b>	4.2	3.4
Unemployment	201.1	<b>182.3</b>	13.6	<b>-18.8</b>	-50.2	-37.1	<b>-9.3</b>	-21.6	-16.9
Participation rate	70.2	<b>69.3</b>	0.5	<b>-0.9</b>	0.0	-0.3	...	...	...
Unemployment rate	6.7	<b>6.1</b>	0.5	<b>-0.6</b>	-1.8	-1.4	...	...	...
Employment rate	65.5	<b>65.0</b>	0.5	<b>-0.5</b>	1.2	0.6	...	...	...
<b>Vancouver, British Columbia</b>									
Population	1,829.8	<b>1,833.0</b>	...	<b>3.2</b>	34.7	37.3	<b>0.2</b>	1.9	2.1
Labour force	1,206.5	<b>1,235.9</b>	10.7	<b>29.4</b>	25.8	35.6	<b>2.4</b>	2.1	3.0
Employment	1,150.5	<b>1,178.4</b>	11.1	<b>27.9</b>	38.9	55.8	<b>2.4</b>	3.4	5.0
Unemployment	56.0	<b>57.6</b>	7.4	<b>1.6</b>	-13.1	-20.1	<b>2.9</b>	-18.5	-25.9
Participation rate	65.9	<b>67.4</b>	0.6	<b>1.5</b>	0.1	0.6	...	...	...
Unemployment rate	4.6	<b>4.7</b>	0.6	<b>0.1</b>	-1.1	-1.8	...	...	...
Employment rate	62.9	<b>64.3</b>	0.6	<b>1.4</b>	0.9	1.8	...	...	...

1. Average standard error of change in two consecutive months (see "Sampling Errors" in Data Quality for further explanations).

**Note:** Related CANSIM table 282-0091

Table 6

Labour force characteristics by economic region<sup>1</sup> and for Yukon Territory and Northwest Territories, unadjusted, 3 month moving average ending in November 2004 and November 2005

	Population	Labour force			Participation rate	Unemployment rate	Employment rate
		Labour force	Employment	Unemployment			
in thousands							
<b>Canada <sup>2</sup></b>							
2004	25,544.9	17,199.0	16,067.3	1,131.7	67.3	6.6	62.9
2005	25,927.5	17,355.3	16,297.1	1,058.1	66.9	6.1	62.9
<b>Newfoundland and Labrador</b>							
2004	430.2	250.3	214.2	36.1	58.2	14.4	49.8
2005	429.3	252.5	217.4	35.1	58.8	13.9	50.6
Avalon Peninsula (010)							
2004	209.2	126.3	112.8	13.5	60.4	10.7	53.9
2005	210.0	128.8	114.8	14.0	61.3	10.9	54.7
South Coast-Burin Peninsula (020)							
2004	34.2	18.9	15.2	3.7	55.3	19.6	44.4
2005	33.7	17.9	14.0	3.9	53.1	21.8	41.5
West Coast-Northern Peninsula-Labrador (030)							
2004	90.2	52.7	43.1	9.6	58.4	18.2	47.8
2005	89.4	53.3	45.4	7.9	59.6	14.8	50.8
Notre Dame-Central Bonavista Bay (040)							
2004	96.7	52.4	43.1	9.4	54.2	17.9	44.6
2005	96.2	52.6	43.2	9.3	54.7	17.7	44.9
<b>Prince Edward Island</b>							
2004	111.1	75.8	68.6	7.1	68.2	9.4	61.7
2005	111.8	76.3	69.2	7.1	68.2	9.3	61.9
<b>Nova Scotia</b>							
2004	758.2	485.2	446.8	38.4	64.0	7.9	58.9
2005	761.6	482.6	445.1	37.5	63.4	7.8	58.4
Cape Breton (210)							
2004	117.0	58.8	49.7	9.1	50.3	15.5	42.5
2005	116.5	66.4	56.6	9.8	57.0	14.8	48.6
North Shore (220)							
2004	130.3	80.4	73.2	7.1	61.7	8.8	56.2
2005	130.5	79.9	74.8	5.1	61.2	6.4	57.3
Annapolis Valley (230)							
2004	98.9	65.5	61.2	4.3	66.2	6.6	61.9
2005	99.3	61.8	57.0	4.8	62.2	7.8	57.4
Southern (240)							
2004	103.1	63.5	57.3	6.2	61.6	9.8	55.6
2005	103.3	60.6	53.5	7.2	58.7	11.9	51.8
Halifax (250)							
2004	308.8	217.2	205.4	11.7	70.3	5.4	66.5
2005	312.1	213.8	203.2	10.6	68.5	5.0	65.1
<b>New Brunswick</b>							
2004	608.2	388.4	355.9	32.6	63.9	8.4	58.5
2005	611.3	388.2	353.7	34.6	63.5	8.9	57.9
Campbellton-Miramichi (310)							
2004	137.6	79.9	68.8	11.1	58.1	13.9	50.0
2005	136.9	80.8	69.4	11.4	59.0	14.1	50.7

See footnotes at the end of the table.

Table 6 – continued

Labour force characteristics by economic region<sup>1</sup> and for Yukon Territory and Northwest Territories, unadjusted, 3 month moving average ending in November 2004 and November 2005

	Population	Labour force			Participation rate	Unemployment rate	Employment rate
		Labour force	Employment	Unemployment			
	in thousands						
Moncton-Richibucto (320)							
2004	159.0	104.4	97.2	7.2	65.7	6.9	61.1
2005	161.0	106.3	98.2	8.2	66.0	7.7	61.0
Saint John-St. Stephen (330)							
2004	140.2	89.2	83.0	6.2	63.6	7.0	59.2
2005	141.0	87.4	81.5	5.9	62.0	6.8	57.8
Fredericton-Oromocto (340)							
2004	102.7	71.2	66.1	5.1	69.3	7.2	64.4
2005	103.7	69.8	64.3	5.5	67.3	7.9	62.0
Edmundston-Woodstock (350)							
2004	68.6	43.8	40.8	2.9	63.8	6.6	59.5
2005	68.7	43.9	40.3	3.7	63.9	8.4	58.7
<b>Quebec</b>							
2004	6,133.4	4,046.8	3,722.9	323.9	66.0	8.0	60.7
2005	6,204.6	4,064.3	3,749.8	314.5	65.5	7.7	60.4
Gaspésie-Îles-de-la-Madeleine (410)							
2004	79.6	40.9	33.3	7.6	51.4	18.6	41.8
2005	80.1	40.5	34.3	6.1	50.6	15.1	42.8
Bas-Saint-Laurent (415)							
2004	166.1	105.2	98.1	7.1	63.3	6.7	59.1
2005	166.7	99.2	91.9	7.3	59.5	7.4	55.1
Québec (420)							
2004	551.3	351.3	335.8	15.5	63.7	4.4	60.9
2005	557.2	358.7	344.3	14.4	64.4	4.0	61.8
Chaudière-Appalaches (425)							
2004	321.5	221.6	209.8	11.8	68.9	5.3	65.3
2005	324.0	223.1	211.9	11.1	68.9	5.0	65.4
Estrie (430)							
2004	243.0	156.8	145.7	11.1	64.5	7.1	60.0
2005	245.7	155.8	146.7	9.1	63.4	5.8	59.7
Centre-du-Québec (433)							
2004	180.9	120.2	112.0	8.2	66.4	6.8	61.9
2005	182.5	123.6	114.1	9.5	67.7	7.7	62.5
Montréal (440)							
2004	1,561.2	1,027.8	913.4	114.4	65.8	11.1	58.5
2005	1,573.1	1,026.8	911.7	115.1	65.3	11.2	58.0
Laval (445)							
2004	296.8	195.1	183.8	11.3	65.7	5.8	61.9
2005	301.6	202.7	190.1	12.6	67.2	6.2	63.0
Lanaudière (450)							
2004	329.7	225.1	206.4	18.7	68.3	8.3	62.6
2005	337.1	227.8	212.7	15.1	67.6	6.6	63.1

See footnotes at the end of the table.

Table 6 – continued

Labour force characteristics by economic region<sup>1</sup> and for Yukon Territory and Northwest Territories, unadjusted, 3 month moving average ending in November 2004 and November 2005

	Population	Labour force			Participation rate	Unemployment rate	Employment rate
		Labour force	Employment	Unemployment			
	in thousands						
Laurentides (455)							
2004	400.4	282.1	263.8	18.3	70.5	6.5	65.9
2005	410.5	271.9	251.4	20.5	66.2	7.5	61.2
Outaouais (460)							
2004	274.7	189.7	176.5	13.2	69.1	7.0	64.3
2005	281.3	197.1	184.6	12.5	70.1	6.3	65.6
Abitibi-Témiscamingue (465)							
2004	114.4	73.8	66.4	7.4	64.5	10.0	58.0
2005	114.5	69.8	64.5	5.3	61.0	7.6	56.3
Mauricie (470)							
2004	214.0	128.4	114.9	13.5	60.0	10.5	53.7
2005	215.3	128.0	117.8	10.2	59.5	8.0	54.7
Saguenay-Lac-Saint-Jean (475)							
2004	224.5	136.8	122.5	14.3	60.9	10.5	54.6
2005	224.1	137.8	123.8	14.0	61.5	10.2	55.2
Côte-Nord and Nord-du-Québec (480 and 490)							
2004	91.0	59.0	52.8	6.1	64.8	10.3	58.0
2005	90.3	55.1	51.0	4.2	61.0	7.6	56.5
<b>Ontario</b>							
2004	9,948.8	6,763.3	6,342.6	420.7	68.0	6.2	63.8
2005	10,128.1	6,848.1	6,447.7	400.4	67.6	5.8	63.7
Ottawa (510)							
2004	962.4	661.3	623.4	38.0	68.7	5.7	64.8
2005	974.8	668.4	630.2	38.2	68.6	5.7	64.6
Kingston-Pembroke (515)							
2004	355.1	223.6	212.7	10.9	63.0	4.9	59.9
2005	358.5	215.8	204.2	11.6	60.2	5.4	57.0
Muskoka-Kawartha (520)							
2004	296.9	175.3	168.3	7.0	59.0	4.0	56.7
2005	302.5	179.9	168.2	11.8	59.5	6.6	55.6
Toronto (530)							
2004	4,438.7	3,061.3	2,845.3	216.0	69.0	7.1	64.1
2005	4,544.2	3,148.3	2,958.4	189.9	69.3	6.0	65.1
Kitchener-Waterloo-Barrie (540)							
2004	916.4	647.5	619.2	28.4	70.7	4.4	67.6
2005	937.3	671.2	638.5	32.7	71.6	4.9	68.1
Hamilton-Niagara Peninsula (550)							
2004	1,099.1	740.4	698.2	42.1	67.4	5.7	63.5
2005	1,114.1	734.6	691.2	43.4	65.9	5.9	62.0
London (560)							
2004	497.3	347.8	328.4	19.3	69.9	5.5	66.0
2005	503.3	347.0	324.4	22.6	68.9	6.5	64.5
Windsor-Sarnia (570)							
2004	517.1	339.0	313.1	25.9	65.6	7.6	60.5
2005	522.5	339.9	317.5	22.4	65.1	6.6	60.8

See footnotes at the end of the table.

Table 6 – continued

Labour force characteristics by economic region<sup>1</sup> and for Yukon Territory and Northwest Territories, unadjusted, 3 month moving average ending in November 2004 and November 2005

	Population	Labour force			Participation rate	Unemployment rate	Employment rate
		Labour force	Employment	Unemployment			
	in thousands						
Stratford-Bruce Peninsula (580)							
2004	241.8	174.3	168.5	5.9	72.1	3.4	69.7
2005	244.9	165.4	160.0	5.4	67.5	3.3	65.3
Northeast (590)							
2004	448.8	274.0	253.8	20.2	61.1	7.4	56.6
2005	450.3	269.3	253.3	16.0	59.8	5.9	56.3
Northwest (595)							
2004	175.2	118.7	111.7	7.0	67.8	5.9	63.8
2005	175.7	108.3	101.8	6.5	61.6	6.0	57.9
<b>Manitoba</b>							
2004	883.9	611.5	581.1	30.4	69.2	5.0	65.7
2005	890.1	607.7	582.7	25.0	68.3	4.1	65.5
Southeast (610)							
2004	71.8	50.5	48.5	2.0	70.3	4.0	67.5
2005	73.3	54.1	51.9	2.1	73.8	3.9	70.8
South Central (620)							
2004	41.6	30.3	29.6	0.8	72.8	2.6	71.2
2005	42.1	27.7	27.1	0.6	65.8	2.2	64.4
Southwest (630)							
2004	81.1	53.2	50.9	2.4	65.6	4.5	62.8
2005	81.2	50.8	48.8	2.0	62.6	3.9	60.1
North Central (640)							
2004	35.0	20.4	19.6	0.8	58.3	3.9	56.0
2005	35.2	23.9	23.0	0.9	67.9	3.8	65.3
Winnipeg (650)							
2004	524.8	371.8	352.2	19.6	70.8	5.3	67.1
2005	528.8	360.6	344.1	16.5	68.2	4.6	65.1
Interlake (660)							
2004	66.9	45.1	42.8	2.2	67.4	4.9	64.0
2005	67.8	48.8	47.1	1.7	72.0	3.5	69.5
Parklands and North (670 and 680)							
2004	62.8	40.1	37.4	2.7	63.9	6.7	59.6
2005	61.6	41.7	40.6	1.2	67.7	2.9	65.9
<b>Saskatchewan</b>							
2004	746.6	508.1	484.4	23.7	68.1	4.7	64.9
2005	748.8	504.7	479.3	25.3	67.4	5.0	64.0
Regina-Moose Mountain (710)							
2004	216.8	155.0	149.0	6.0	71.5	3.9	68.7
2005	218.2	151.5	145.0	6.5	69.4	4.3	66.5
Swift Current-Moose Jaw (720)							
2004	82.2	52.1	49.9	2.1	63.4	4.0	60.7
2005	82.3	52.4	49.7	2.6	63.7	5.0	60.4
Saskatoon-Biggar (730)							
2004	231.4	162.9	154.7	8.2	70.4	5.0	66.9
2005	232.7	159.4	151.3	8.0	68.5	5.0	65.0

See footnotes at the end of the table.



Table 6 – continued

Labour force characteristics by economic region<sup>1</sup> and for Yukon Territory and Northwest Territories, unadjusted, 3 month moving average ending in November 2004 and November 2005

	Population	Labour force			Participation rate	Unemployment rate	Employment rate
		Labour force	Employment	Unemployment			
	in thousands						
Yorkton-Melville (740)							
2004	66.9	41.7	40.0	1.7	62.3	4.1	59.8
2005	66.0	44.5	42.4	2.1	67.4	4.7	64.2
Prince Albert and Northern (750 and 760)							
2004	149.3	96.4	90.9	5.5	64.6	5.7	60.9
2005	149.6	96.9	90.9	6.0	64.8	6.2	60.8
<b>Alberta</b>							
2004	2,519.0	1,848.8	1,768.3	80.5	73.4	4.4	70.2
2005	2,574.1	1,863.4	1,792.1	71.3	72.4	3.8	69.6
Lethbridge-Medicine Hat (810)							
2004	191.3	137.3	132.7	4.6	71.8	3.4	69.4
2005	194.3	142.0	136.7	5.3	73.1	3.7	70.4
Camrose-Drumheller (820)							
2004	145.2	105.2	101.7	3.5	72.5	3.3	70.0
2005	147.2	105.5	102.5	3.0	71.7	2.8	69.6
Calgary (830)							
2004	903.6	675.0	643.0	32.0	74.7	4.7	71.2
2005	927.8	681.5	651.0	30.4	73.5	4.5	70.2
Banff-Jasper-Rocky Mountain House (840)							
2004	63.1	46.0	44.8	x	72.9	x	71.0
2005	63.7	48.3	46.6	1.7	75.8	3.5	73.2
Red Deer (850)							
2004	128.1	90.3	86.7	3.6	70.5	4.0	67.7
2005	131.6	98.5	95.4	3.1	74.8	3.1	72.5
Edmonton (860)							
2004	837.9	611.7	583.5	28.2	73.0	4.6	69.6
2005	853.8	596.2	573.5	22.7	69.8	3.8	67.2
Athabasca-Grande Prairie-Peace River (870)							
2004	169.4	122.6	116.9	5.6	72.4	4.6	69.0
2005	172.3	129.6	126.3	3.3	75.2	2.5	73.3
Wood Buffalo-Cold Lake (880)							
2004	80.4	60.8	59.0	1.8	75.6	3.0	73.4
2005	83.4	61.9	60.1	1.8	74.2	2.9	72.1
<b>British Columbia</b>							
2004	3,405.4	2,220.7	2,082.4	138.3	65.2	6.2	61.1
2005	3,467.8	2,267.4	2,160.2	107.2	65.4	4.7	62.3
Vancouver Island and Coast (910)							
2004	590.1	358.9	334.9	24.0	60.8	6.7	56.8
2005	600.2	376.2	354.7	21.5	62.7	5.7	59.1
Lower Mainland-Southwest (920)							
2004	2,042.8	1,360.0	1,273.4	86.6	66.6	6.4	62.3
2005	2,087.0	1,378.5	1,317.3	61.3	66.1	4.4	63.1
Thompson-Okanagan (930)							
2004	396.0	248.0	235.8	12.2	62.6	4.9	59.5
2005	404.0	262.3	251.1	11.2	64.9	4.3	62.2

See footnotes at the end of the table.

Table 6 – continued

**Labour force characteristics by economic region<sup>1</sup> and for Yukon Territory and Northwest Territories, unadjusted, 3 month moving average ending in November 2004 and November 2005**

	Population	Labour force			Participation rate	Unemployment rate	Employment rate
		Labour force	Employment	Unemployment			
in thousands							
<b>Kootenay (940)</b>							
2004	124.8	79.0	74.5	4.5	63.3	5.7	59.7
2005	125.1	76.4	72.4	4.0	61.1	5.2	57.9
<b>Cariboo (950)</b>							
2004	131.7	90.5	85.3	5.2	68.7	5.7	64.8
2005	131.4	90.8	86.4	4.4	69.1	4.8	65.8
<b>North Coast and Nechako (960 and 970)</b>							
2004	71.4	49.8	45.1	4.7	69.7	9.4	63.2
2005	70.6	49.9	46.5	3.4	70.7	6.8	65.9
<b>Northeast (980)</b>							
2004	48.5	34.5	33.4	x	71.1	x	68.9
2005	49.4	33.3	31.8	x	67.4	x	64.4
<b>Yukon Territory <sup>3</sup></b>							
2004	21.6	16.3	15.3	1.0	75.5	6.1	70.8
2005	21.5	16.0	15.3	0.7	74.4	4.4	71.2
<b>Northwest Territories <sup>4</sup></b>							
2004	30.8	23.2	22.0	1.2	75.3	5.2	71.4
2005	31.6	23.5	22.3	1.2	74.4	5.1	70.6

1. For geographic descriptions of economic regions, refer to the Guide to the Labour Force Survey (catalogue number 71-543-GIE).

2. Estimates for Canada are a sum of the provincial totals and exclude estimates from Yukon Territory, Northwest Territories and Nunavut.

3. Since 1992, the Labour Force Survey has been administered in the Yukon Territory, using an alternative methodology that accommodates some of the operational difficulties inherent to remote locales. These estimates are not included in national totals.

4. Since 2001, the Labour Force Survey has been administered in the Northwest Territories, using an alternative methodology that accommodates some of the operational difficulties inherent to remote locales. These estimates are not included in national totals.

**Note:** Related CANSIM table 282-0054

Table 7

## Average usual hours and wages of employees by selected characteristics, Canada, unadjusted

	Employees				Full-time			Part-time		
	Number	Average weekly hours	Average weekly wages	Average hourly wages	Number	Average weekly hours	Average weekly wages	Number	Average weekly hours	Average weekly wages
	'000		\$		'000		\$	'000		\$
<b>November 2005</b>										
15 years and over	13,746.6	35.3	712.77	19.44	11,190.9	39.5	820.98	2,555.7	17.1	238.95
15 to 24 years	2,351.1	27.4	321.16	10.97	1,191.4	39.2	495.30	1,159.7	15.2	142.27
25 years and over	11,395.5	37.0	793.56	21.19	9,999.5	39.5	859.78	1,396.0	18.7	319.26
Men	6,986.7	38.0	822.27	21.10	6,204.4	40.8	900.03	782.3	16.2	205.59
Women	6,759.9	32.6	599.59	17.73	4,986.5	37.9	722.61	1,773.4	17.5	253.66
<b>Union coverage</b>										
Union coverage	4,426.1	35.9	817.43	22.52	3,795.0	38.7	891.77	631.0	19.0	370.37
No union coverage	9,320.5	35.1	663.07	17.98	7,395.9	39.9	784.65	1,924.7	16.5	195.86
<b>Job permanency</b>										
Permanent	12,045.5	36.3	747.28	19.99	10,261.9	39.5	832.52	1,783.5	18.2	256.84
Temporary	1,701.1	28.3	468.38	15.56	929.0	39.5	693.43	772.2	14.7	197.62
<b>Occupation</b>										
Management	986.1	40.0	1,192.55	29.92	955.5	40.6	1,217.66	30.5	18.7	406.47
Business, finance and administrative	2,602.7	35.1	663.85	18.50	2,214.3	38.2	737.06	388.3	17.2	246.40
Natural and applied sciences	966.9	38.5	1,063.33	27.50	929.4	39.4	1,092.94	37.6	17.4	330.82
Health	842.5	33.1	760.45	22.82	622.2	37.7	874.30	220.3	20.1	438.86
Social science, education, government service and religion	1,258.3	33.9	889.03	25.88	996.0	38.4	1,016.78	262.3	16.6	403.99
Art, culture, recreation and sport	324.5	29.4	634.88	20.01	208.8	38.5	865.77	115.7	13.0	218.01
Sales and service	3,463.2	30.5	422.68	12.90	2,164.1	38.5	575.73	1,299.1	17.0	167.70
Trades, transport and equipment operators	2,057.2	40.3	775.36	19.04	1,926.1	41.9	812.35	131.1	17.8	231.98
Occupations unique to primary industry	237.9	42.2	725.45	16.67	210.7	45.6	794.97	27.2	15.1	186.13
Occupations unique to processing, manufacturing and utilities	1,007.4	39.3	664.54	16.79	963.7	40.3	685.35	43.7	16.9	205.26
<b>November 2004</b>										
15 years and over	13,556.2	35.3	685.82	18.71	10,980.0	39.6	792.04	2,576.2	17.1	233.13
15 to 24 years	2,314.4	27.2	310.10	10.62	1,179.4	39.0	478.49	1,135.0	15.0	135.12
25 years and over	11,241.8	37.0	763.17	20.37	9,800.6	39.7	829.77	1,441.3	18.8	310.31
Men	6,895.9	38.1	798.19	20.42	6,134.4	40.9	872.51	761.6	16.0	199.53
Women	6,660.2	32.4	569.48	16.93	4,845.6	38.0	690.16	1,814.6	17.6	247.23
<b>Union coverage</b>										
Union coverage	4,326.0	35.8	786.25	21.70	3,682.2	38.7	861.32	643.9	19.0	356.91
No union coverage	9,230.2	35.1	638.75	17.31	7,297.8	40.0	757.08	1,932.4	16.5	191.88
<b>Job permanency</b>										
Permanent	11,878.7	36.3	721.44	19.31	10,062.4	39.6	805.93	1,816.3	18.2	253.40
Temporary	1,677.5	28.2	433.58	14.48	917.6	39.5	639.72	759.9	14.5	184.66
<b>Occupation</b>										
Management	939.8	40.3	1,199.45	29.89	914.0	40.9	1,219.60	25.8	20.4	486.00
Business, finance and administrative	2,614.0	35.1	643.52	17.93	2,207.0	38.3	713.72	406.9	17.8	262.84
Natural and applied sciences	912.7	38.5	1,032.13	26.72	884.5	39.3	1,056.27	28.2	15.5	274.66
Health	827.4	32.7	728.87	21.99	594.9	37.7	854.04	232.5	19.8	408.56
Social science, education, government service and religion	1,137.9	33.8	834.27	24.51	886.3	38.5	953.71	251.6	17.3	413.43
Art, culture, recreation and sport	297.1	30.7	610.69	18.65	206.2	38.6	801.06	90.9	12.9	178.97
Sales and service	3,495.4	30.2	409.67	12.57	2,161.8	38.6	563.21	1,333.7	16.7	160.80
Trades, transport and equipment operators	1,972.9	40.4	757.82	18.62	1,843.5	42.0	794.35	129.5	17.9	237.74
Occupations unique to primary industry	250.1	41.9	676.81	15.66	220.4	45.7	748.64	29.7	14.0	143.62
Occupations unique to processing, manufacturing and utilities	1,108.8	39.2	645.27	16.27	1,061.4	40.3	666.04	47.4	16.5	180.75

Note: Related CANSIM tables 282-0023, 282-0069, 282-0073

Table 8

**Regional unemployment rates used by the Employment Insurance Program,<sup>1</sup> seasonally adjusted, 3 month moving average**

Region	Effective from December 4, 2005 to January 7, 2006 Unemployment rate
	Percent
<b>Newfoundland and Labrador</b>	
01. St. John's	8.1
02. Newfoundland and Labrador	19.8
<b>Prince Edward Island</b>	
03. Prince Edward Island	11.1
<b>Nova Scotia</b>	
04. Eastern Nova Scotia	14.7
05. Western Nova Scotia	9.4
06. Halifax	5.4
<b>New Brunswick</b>	
07. Fredericton-Moncton-Saint John	7.8
08. Madawaska-Charlotte <sup>2</sup>	12.0
09. Restigouche-Albert	15.8
<b>Quebec</b>	
10. Gaspésie-Îles-de-la-Madeleine	17.1
11. Québec	5.2
12. Trois-Rivières	8.1
13. South Central Quebec	5.7
14. Sherbrooke	7.3
15. Montérégie	6.8
16. Montréal	9.1
17. Central Quebec	8.4
18. Northwestern Quebec	11.4
19. Bas-Saint-Laurent-Côte-Nord <sup>3</sup>	11.5
20. Gatineau	6.5
21. Saguenay	11.1
<b>Ontario</b>	
22. Ottawa	6.0
23. Eastern Ontario	7.0
24. Kingston	5.2
25. Central Ontario	6.3
26. Oshawa	6.1
27. Toronto	6.5
28. Hamilton	6.1
29. St. Catharines	7.0
30. London	6.9
31. Niagara	8.7
32. Windsor	6.9
33. Kitchener	5.8
34. Huron	8.2
35. South Central Ontario	5.1
36. Sudbury	8.2
37. Thunder Bay	6.4
38. Northern Ontario	9.5
<b>Manitoba</b>	
39. Winnipeg	4.6
40. Southern Manitoba	5.3
41. Northern Manitoba	23.1

See footnotes at the end of the table.

Table 8 – continued

**Regional unemployment rates used by the Employment Insurance Program,<sup>1</sup> seasonally adjusted, 3 month moving average**

Region	Effective from December 4, 2005 to January 7, 2006 Unemployment rate
	Percent
<b>Saskatchewan</b>	
42. Regina	5.2
43. Saskatoon	5.4
44. Southern Saskatchewan	7.3
45. Northern Saskatchewan	15.2
<b>Alberta</b>	
46. Calgary	4.4
47. Edmonton	4.5
48. Northern Alberta	6.9
49. Southern Alberta	4.9
<b>British Columbia</b>	
50. Southern Interior British Columbia	6.6
51. Abbotsford	5.3
52. Vancouver	4.8
53. Victoria	5.0
54. Southern Coastal British Columbia	7.5
55. Northern British Columbia	9.9
<b>Territories</b>	
56. Yukon Territory <sup>4</sup>	25.0
57. Northwest Territories <sup>4</sup>	25.0
58. Nunavut <sup>4</sup>	25.0

1. The boundaries of these regions are determined by Human Resources and Skills Development Canada (HRSDC). For geographic descriptions and maps of employment insurance regions, see the HRSDC website: <http://www14.hrdc-drhc.gc.ca/ei-ae/canadaei.htm>.
2. This unemployment rate has been determined using a transition formula prescribed in the EI Regulations. For further information, see: [http://www.hrsdc.gc.ca/en/cs/comm/news/2000/000913a\\_e.shtml](http://www.hrsdc.gc.ca/en/cs/comm/news/2000/000913a_e.shtml).
3. This unemployment rate has been determined using a transition formula prescribed in the EI Regulations. For further information, see: [http://www.hrsdc.gc.ca/en/cs/comm/news/2000/000913b\\_e.shtml](http://www.hrsdc.gc.ca/en/cs/comm/news/2000/000913b_e.shtml).
4. This rate is provided by Human Resources and Skills Development Canada.

# Data quality

---

## About the Labour Force Survey

The statistics contained in this report are based on information obtained through a sample survey of 53,000 representative households across the country. The Labour Force Survey, started in November 1945, was taken at quarterly intervals until November 1952. It has been carried out monthly since then. The information generated by the survey has expanded considerably over the years with a major redesign of the survey content in 1976 and again in 1997, and provides a rich and detailed picture of the Canadian labour market.

The sample used in the Labour Force Survey has been designed to represent all persons in the population 15 years of age and over residing in the provinces of Canada, with the exception of the following: persons living on Indian reserves, full-time members of the armed forces and people living in institutions (for example, inmates of penal institutions and patients in hospitals or nursing homes who have resided in the institution for more than six months). Monthly estimates of employment, unemployment and persons not in the labour force refer to the specific week covered by the survey each month, normally the week containing the 15th day.

## Definitions and explanations

The **labour force** is composed of those members of the civilian non-institutional population 15 years of age and over who, during the reference week, were employed or unemployed.

Employed persons are those who, during the reference week:

- (a) did any work at all
- (b) had a job but were not at work

A person is considered to be **full-time** if his/her usual hours at the main job are greater than 29 hours per week. When the number of hours worked at the main job is usually less than 30 hours per week then he/she is considered to be **part-time**.

**Unemployed** persons are those who, during the reference week:

- (a) were without work, had actively looked for work in the past four weeks (ending with reference week), and were available for work;
- (b) had not actively looked for work in the past four weeks but were on temporary layoff and were available for work;
- (c) had not actively looked for work in the past four weeks but had a new job to start in four weeks or less from the reference week, and were available for work.

Persons in the civilian non-institutional population 15 years of age and over who, during the reference week, were neither employed nor unemployed are classified as **not in the labour force**.

The **unemployment rate** represents the number of unemployed persons expressed as a percentage of the labour force. The unemployment rate for a particular group (age, sex, etc.) is the number unemployed in that group expressed as a percentage of the labour force for that group.

The **participation rate** represents the labour force expressed as a percentage of the population 15 years of age and over. The participation rate for a particular group (age, sex, etc.) is the labour force in that group expressed as a percentage of the population for that group.

The **employment rate (formerly the employment/population ratio)** represents the number of persons employed expressed as a percentage of the population 15 years of age and over. The employment rate for a particular group (age, sex, etc.) is the number employed in that group expressed as a percentage of the population for that group.

The **part-time rate** represents the number of persons employed part-time expressed as a percentage of the employed. The part-time rate for a particular group (age, sex, etc.) is the number employed part-time in that group expressed as a percentage of the employed for that group.

All geographic regions are based on the 2001 Census boundaries.

## Seasonal adjustment

Fluctuations in economic time series are caused by seasonal, cyclical and irregular movements. A seasonally adjusted series is one from which seasonal movements have been eliminated. Seasonal movements are defined as those which are caused by regular annual events such as climate, holidays, vacation periods and cycles related to crops, production and retail sales associated with Christmas and Easter. The seasonally adjusted series contains irregular as well as longer-term cyclical fluctuations.

The seasonally adjusted series are revised each year to take into account current data and to generate new forecast factors for the next twelve months. The data are therefore subject to slight revisions in future issues of this publication.

## Sampling error

Estimates in this publication are based on the Labour Force Survey, a monthly survey of approximately 53,000 households across Canada. Because they are based on a sample survey, the estimates are subject to sampling error. Changes in the level of any estimates between two months can be the result of a true change or sampling variability. In most tables in this publication an indicator of the sampling error is provided. Two thirds of the time, a change greater than the sampling error indicates a real change. Movements in estimates that are smaller than the sampling error are less likely to reflect a real change and more likely to be due to sampling variability. While the above is true for monthly movements, one can have more confidence in a series of consecutive movements in the same direction, even though some of the monthly movements may be smaller than the sampling error.

In November 2004, the Labour Force Survey implemented a new survey design to ensure the highest possible quality in monthly labour market estimates. This new sampling plan may have an impact on standard errors. The standard errors in this publication were derived using the old sample plan. The program to compute standard errors under the new design is now being developed. Even though we are expecting the standard errors under the new plan to be similar to the ones actually available in this publication, we ask users to be cautious in using the standard errors in this publication.

For more detailed information about the Labour Force Survey, see the following documents:

- Overview of the Labour Force Survey
- Guide to the Labour Force Survey (71-543-GIE)
- Data quality statement
- Methodology of the Canadian Labour Force Survey (71-526-XPB)