



Catalogue no. 85-225-XIE

Police Resources in Canada, 2000

Canadian Centre for Justice Statistics



How to obtain more information

Specific inquiries about this product and related statistics or services should be directed to: Canadian Centre for Justice Statistics, Statistics Canada, Ottawa, Ontario, K1A 0T6, (Toll-Free 1-800-387-2231) (telephone: (613) 951-9023) (fax: (613) 951-6615).

For information on the wide range of data available from Statistics Canada, you can contact us by calling one of our toll-free numbers. You can also contact us by e-mail or by visiting our Web site.

National inquiries line	1 800 263-1136
National telecommunications device for the hearing impaired	1 800 363-7629
Depository Services Program inquiries	1 800 700-1033
Fax line for Depository Services Program	1 800 889-9734
E-mail inquiries	infostats@statcan.ca
Web site	www.statcan.ca

Ordering and subscription information

This product, Catalogue no. 85-225-XIE, is published annually in electronic format on the Statistics Canada Internet site at a price of CDN \$26.00. To obtain single issues, visit our Web site at **www.statcan.ca**, and select Products and Services.

This product is also available in print through a Print-on-Demand service, at a price of CDN \$52.00. The following additional shipping charges apply for delivery outside Canada:

	Single issue
United States	CDN \$ 6.00
Other countries	CDN \$ 10.00

All prices exclude sales taxes.

The printed version can be ordered by

- Phone (Canada and United States) **1 800 267-6677**
- Fax (Canada and United States) **1 877 287-4369**
- E-mail **order@statcan.ca**
- Mail Statistics Canada
Dissemination Division
Circulation Management
120 Parkdale Avenue
Ottawa, Ontario K1A 0T6
- And, in person at the Statistics Canada Regional Centre nearest you.

When notifying us of a change in your address, please provide both old and new addresses.

Standards of service to the public

Statistics Canada is committed to serving its clients in a prompt, reliable and courteous manner and in the official language of their choice. To this end, the Agency has developed standards of service which its employees observe in serving its clients. To obtain a copy of these service standards, please contact Statistics Canada toll free at 1 800 263-1136.



Statistics Canada
Canadian Centre for Justice Statistics

Police Resources in Canada, 2000

**Prepared by : Robert Dunphy
Gayatri Shankarraman**

Published by authority of the Minister responsible for Statistics Canada

© Minister of Industry, 2000

All rights reserved. No part of this publication may be reproduced, stored in a retrieval system or transmitted in any form or by any means, electronic, mechanical, photocopying, recording or otherwise without prior written permission from Licence Services, Marketing Division, Statistics Canada, Ottawa, Ontario, Canada K1A 0T6.

December 2000

Catalogue no. 85-225-XIE
ISSN 1488-867X

Frequency: Annual

Ottawa

La version française de cette publication est disponible sur demande.

Note of appreciation

Canada owes the success of its statistical system to a long-standing partnership between Statistics Canada, the citizens of Canada, its businesses and governments. Accurate and timely statistical information could not be produced without their continued cooperation and goodwill.

ELECTRONIC PUBLICATIONS AVAILABLE AT
www.statcan.ca



Table of Contents

	Page
Highlights	4
Introduction	5
Part I Police Resources in Canada, Provinces/Territories and Census Metropolitan Areas (CMAs)	
Police Personnel	9
Figure 1 Police per 100,000 Population, Canada, 1962-2000	9
Figure 2 Criminal Code Incidents per Police Officer, Canada, 1962-1999	10
Figure 3 Police Officers per 100,000 Population, 2000	11
Table 1 Police Officers and Crime Rate in Census Metropolitan Areas (CMAs), 1999	11
Table 2 Police Officers by Sex, Canada, Selected Years	12
Figure 4 Proportion of Female Police Officers, Canada, 1965-2000	12
Table 3 Police Officers by Sex, Provinces/Territories, 2000	13
Table 4 Percentage of Male and Female Police Officers Within the Ranks, Canada, Selected Years	13
Figure 5 Ratio of Police Officers to Civilians, Canada, 1962-2000	14
Police Expenditures	14
Table 5 Current and Constant Dollar Expenditures on Policing, Canada 1985-1999	15
Figure 6 Current and Constant Dollar Spending on Policing, Canada, 1985-1999	15
Figure 7 Per Capita Spending on Municipal and Provincial Policing, 1999	16
Summary Tables	18
Table 6 Trends in Police Personnel and Expenditures, Canada, 1962-2000	18
Table 7 Police Officers by Level of Policing, 2000	19
Table 8 Total Expenditures on Policing, 1999	20
Table 9 Expenditures on Municipal Policing, 1999	21
Table 10 Expenditures on Provincial/Territorial Policing, 1999	22
Census Metropolitan Area (CMA) Reference List	23
Part II Police Resources in Municipal Police Forces	
Introduction	28
Important Notes	28
Statistical Tables	
Newfoundland	32
Prince Edward Island	32
Nova Scotia	34
New Brunswick	36
Quebec	38
Ontario	46
Manitoba	52
Saskatchewan	54
Alberta	56
British Columbia	60

Highlights

- As of June 15, 2000 there were 56,020 police officers in Canada, a slight increase (1.3%) over 1999. Expressed on a per capita basis, police strength has remained constant the last five years at about 182 police officers per 100,000 population following a 10% decrease between 1991 and 1996.
- Canada has fewer police per capita than both the United States and England and Wales. Canada's rate of 182 officers per 100,000 population in 2000 was 26% lower than the comparable rate in the United States (247 in 1998) and 22% lower than England and Wales (233 in 2000).
- Among the provinces, Quebec had the highest number of police officers per 100,000 population (188) in 2000, followed closely by Manitoba (187). Newfoundland (143) and Prince Edward Island (148) had the lowest rates.
- Among the census metropolitan areas, Thunder Bay had the most police officers per 100,000 population (196) in 1999, followed by Regina (192). Sherbrooke (110) and Chicoutimi-Jonquière (118) had the fewest.
- Female officer recruitment has shown positive results in recent years. There were 7,658 women police officers, an increase of 7% from 1999. Women police officers accounted for 14% of all officers in 2000. The proportion of female police officers has been increasing steadily since the mid-1970s, after remaining at less than 1% during the 1960s and early 1970s.
- The most recent expenditure data are for the year 1999. Policing costs totalled \$6.4 billion in 1999, an increase of 3% from 1998 (1% after adjusting for inflation). This represented a cost of \$210 per Canadian.
- Among the provinces, Quebec and Ontario continued to have the highest per capita costs in 1999 at \$187 each. The Atlantic region continued to have the lowest per capita costs with the average of the 4 provinces at \$116.

Introduction

Overview of Policing in Canada

Policing in Canada is the responsibility of all three levels of government: federal, provincial/territorial and municipal. The federal government, through the Royal Canadian Mounted Police (RCMP), is responsible for the enforcement of federal statutes in each province and territory, and for providing services such as forensic laboratories, identification services, the Canadian Police Information Centre (CPIC), and the Canadian Police College.

Each province/territory assumes responsibility for its own provincial/ territorial and municipal policing. Provincial policing involves enforcement of the Criminal Code and provincial statutes within areas of a province not served by a municipal police force (i.e., rural areas and small towns). In some cases, police boundaries may overlap. For example, in some areas provincial police perform traffic duties on major provincial thoroughfares that pass through municipal jurisdictions.

Municipal policing consists of enforcement of the Criminal Code, provincial statutes, and municipal by-laws within the boundaries of a municipality or several adjoining municipalities that comprise a region (e.g., Durham Regional Police in Ontario) or a metropolitan area (e.g., Montreal Urban Community).

Newfoundland, Yukon, the Northwest Territories and Nunavut are the only areas in Canada without municipal police forces. Municipal policing in Newfoundland is managed differently than in other provinces. The Royal Newfoundland Constabulary, which is a provincial police force, provides policing to the three largest municipalities (St. John's, Corner Brook, and Labrador City) as well as Churchill Falls.

The RCMP provides provincial/territorial policing in all provinces and territories except Quebec and Ontario, which maintain their own provincial police forces: the Sûreté du Québec and the Ontario Provincial Police, respectively. Newfoundland also maintains their own provincial police force, as mentioned above, and contracts the RCMP to provide provincial policing to the remaining municipalities and the rural areas.

In addition to federal, provincial and municipal policing, there are also various types of First Nations policing agreements for Aboriginal communities in place across Canada.

Survey Definitions and Coverage

This report is based upon data collected through the "Police Administration Survey" conducted by the Canadian Centre for Justice Statistics. This is an annual survey that collects data on police personnel and expenditures from each municipal, provincial and federal (RCMP) police service in Canada. The survey is the primary mechanism for the collection of national statistics on personnel and expenditures from Canadian police forces. More information is collected than is presented in this report and can be provided for special reports or individual requests.

All municipal and provincial police forces and the Royal Canadian Mounted Police are included in the survey. The following federal policing and security agencies are excluded: the Canadian Security Intelligence Service, Ports Canada, railway and military police. Federal and provincial government departments deploying personnel to enforce specific statutes in the areas of income tax, customs and excise, immigration, fisheries and wildlife are also excluded. Private security guards and investigators are beyond the scope of this survey.

The Police Administration Survey collects personnel data (actual strength as of June 15th for the current year) and expenditure data (for the previous year). Data presented in this report represent police personnel as of June 15th, 2000 and final expenditures for the year 1999 (or 1999/2000 for those forces operating on a fiscal year). Most municipal police

forces operate on a calendar year while the provincial forces and the RCMP operate on a fiscal year. Policing expenditures will be referred to as calendar year (e.g., 1999) throughout this report. This is the first report that presents both police personnel and expenditures for Nunavut. Previously, the expenditures for Nunavut were included with the Northwest Territories.

Personnel counts are based on permanent, full-time employees; part-time employees are converted to full-time equivalents (e.g., 4 employees working 10 hours per week would equal 1 full-time employee working a 40-hour week). Police officers include the actual number of sworn police officers as of the 15th of June. Civilians include all other non-police personnel as of June 15th (e.g., clerical, dispatch, management, cadets, special constables, security officers, school crossing guards, by-law enforcement officers). Temporary police officers, auxiliary police and other volunteer personnel are not included.

Police expenditures are actual operating expenditures and include: salaries and wages, benefits, and other operating expenses such as accommodation costs, fuel, maintenance, etc. Capital expenditures, revenues and recoveries are not included.

Population figures used in this report are from the Demography Division of Statistics Canada and represent postcensal or intercensal estimates. Population data are regularly updated and, as such, rates published in this report may differ slightly from rates published in earlier reports.

Data from the *Uniform Crime Reporting (UCR) Survey* are also included in this report to provide appropriate caseload context for the police in terms of the volume of criminal incidents coming to their attention. The *UCR Survey* collects crime and traffic incidents reported by all police forces in Canada, dating back to 1962.

Comparing Police Statistics

The report is subdivided into two parts. The first part contains information at the national, provincial/territorial and census metropolitan area (CMA) level. The second part contains summary information at the municipal police force level. While it is not possible to make direct comparisons among each of the nearly 600 municipal police services for the reasons described below, it is useful to examine the resources over time for the same police force.

Part I of this report examines police personnel and expenditures at the national, provincial/territorial and the census metropolitan area (CMA) level. Crime rates are presented at the national and CMA level. A CMA is a large urban area with a core population of at least 100,000 and includes the surrounding suburban and rural areas that are socially and economically integrated with the urban centre. In Canada, there are currently 25 CMAs. In order to present data at the CMA level, the data from all police forces providing services within the boundary of the CMA, including urban, suburban and rural areas, have been combined. This allows for the presentation of data for areas with a similar mix of characteristics and geography. However, expenditures (per capita costs) are not available at the CMA level due to the number of provincial policing detachments for which detachment-specific costs are not available.

Part II of this report presents data for each individual municipal police service according to its actual police jurisdiction and budget. While these data accurately reflect the police resources and crime rates in these communities, they are not necessarily comparable with one another at this level for a variety of reasons:

- (i) Each municipal police service has a different mix of urban, suburban, and rural areas, each with its own unique characteristics, geography and level of crime. Some municipal forces are “metropolitan” or “regional”, while others may serve primarily “inner city” areas and are surrounded by other suburban police forces.
- (ii) The expenditures presented in this section represent those costs included in the police operating budget of each municipality. The contents of these budgets tend to differ considerably from city to city. For example, some costs (e.g., accommodation, by-law enforcement, court security) and some services (e.g., computing, personnel and financial services) may be included within the police force’s operating budget for some municipalities, but in other municipalities they may be paid for by other departments or through the force’s capital budget, which is not included.

(iii) Expenditure figures for the RCMP municipal contracts represent only the amount billed to the municipality and not the total cost of the contract, nor any additional policing costs (e.g., accommodation, support staff, etc.) incurred by the municipality. Civilian employees provided by the municipality are not included.

Survey Revisions

1986 revision

The Police Administration Survey was revised in 1986 to collect police department expenditures as well as more detailed information on police personnel and functions. As both the old and revised surveys were run simultaneously in 1986, it was possible to examine the effects of the revised survey. An analysis of the data revealed that there were some minor differences in the distribution of police personnel between the two surveys. In order to correct for these methodological differences, the data presented in Table 6 prior to 1986 have been adjusted at the national level.

1996 revision

In 1996 changes were made to the effective date for collecting personnel strength, moving from September 30th to June 15th. School crossing guards were added to the survey in 1996 as their numbers warranted a separate category. Prior to 1996, they were captured under the "other" category. Adjustments were made to civilian personnel to account for this change, back to 1986.

Other changes to the survey involved the expenditure section, starting with 1995 final expenditures. Expenses associated with the purchasing and leasing of vehicles are now to be included only if they are part of the operational budget of the police force. Prior to 1995, all expenses related to the purchase and lease of vehicles were included, regardless of the type of budget. Benefits were expanded to include those paid by other government sources. The removal of expenses due to the capital purchases of vehicles, and the addition of expenses due to the inclusion of benefits paid by other government sources were examined in detail. It was estimated that these revisions accounted for an overall change of less than 1% in reported expenses.

Lineage

This report originally consisted of two annual reports from the *Police Administration Survey*. These two reports were combined for the first time in 1999 so that all relevant information in the area of police personnel, expenditures and crime rates could be included in one publication. This also was done to help avoid confusion over data presented at the census metropolitan area and at the individual municipal police service level.

The *Police Personnel and Expenditures Report* (formerly Catalogue no. 85F0019XPE) was primarily analytical and examined key trends and ratios in police personnel and expenditures at the national, provincial / territorial, and metropolitan area levels back to 1962. The information from this report is now contained in Part I.

The *Crime and Police Resources in Canadian Municipalities Report* (formerly Catalogue no. 85-223-XPE) was purely tabular and presented key resource and crime statistic ratios for each of the almost 600 municipal police services in Canada for the most current year. These were arranged by the population size of the community within each province for ease of use. The information from this report is now contained in Part II.

Part I

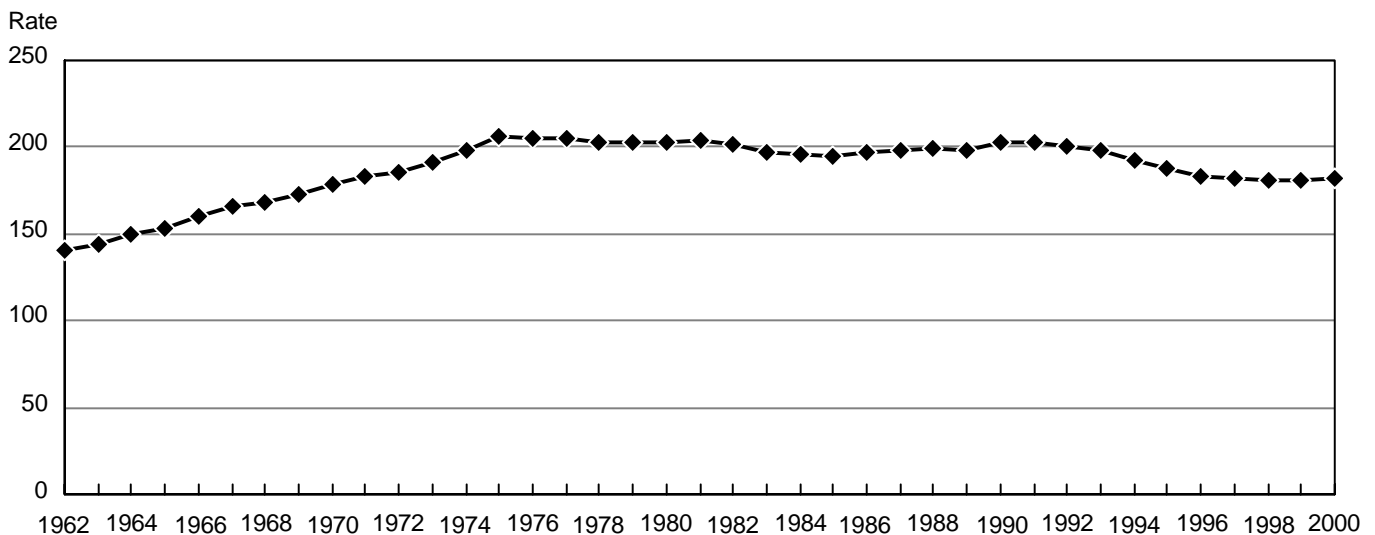
Police Resources in Canada, Provinces/Territories and Census Metropolitan Areas (CMAs)

Police Personnel

One police officer for every 549 citizens

The number of police in Canada increased 1.3% to 56,020 officers in 2000, up from 55,321 officers in 1999. The police per capita rate remained virtually unchanged at 182 police officers per 100,000 population. This is equal to one officer for every 549 Canadians (Figure 1, Table 6 – page 18).

Figure 1
Police per 100,000 Population, Canada, 1962-2000



Source: Police Administration Annual Survey, Canadian Centre for Justice Statistics

The number of police officers per 100,000 population had increased steadily during the 1960's and early 1970's, peaking at 206 police per 100,000 population in 1975. Between 1975 and 1991, the number of police officers increased at about the same pace as the Canadian population, maintaining an average of around 200 police per 100,000 population. However, in the five year span between 1991 and 1996, the rate dropped by 9.6% and has remained relatively constant at 182 police per 100,000 since 1996.

Police per capita in Canada (182 officers per 100,000 population) is lower than both the United States at 247 (1998 data)¹ and England and Wales at 233 (2000 data)². While the number of police officers grew 8% between 1996 and 1998 in the United States, the number of police officers in England and Wales has dropped by 2% since 1996.

Incidents per police officer continues to decrease

The number of Criminal Code incidents (excluding traffic) per police officer may be used as one indicator of police workload. The ratio is affected not only by the number of police officers, but also by changes in the number of crimes reported to the police. The number of Criminal Code incidents per officer increased steadily from 20 per officer in 1962

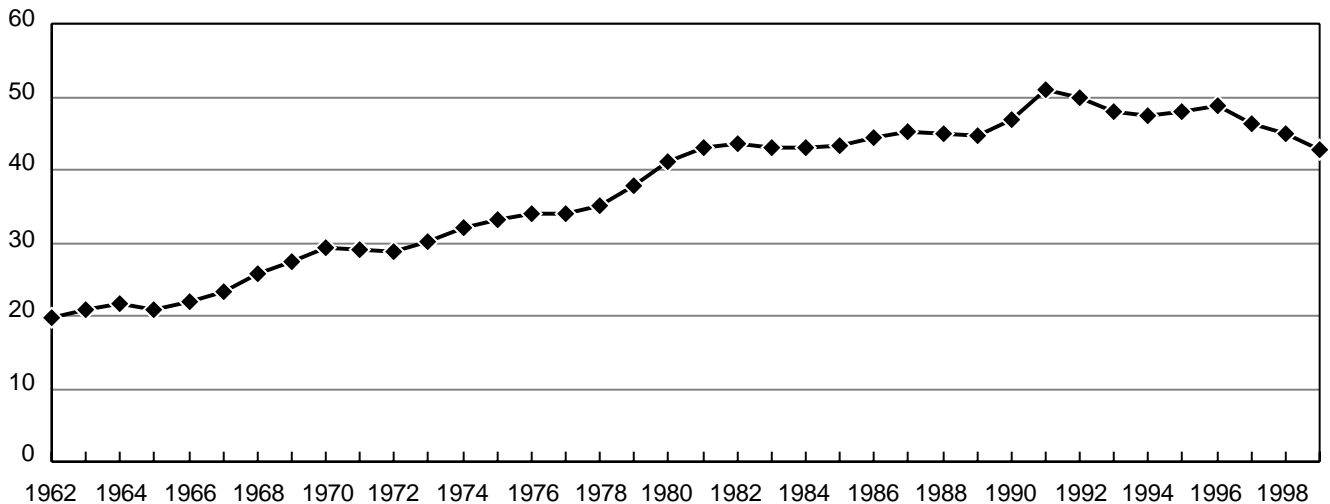
¹ U.S. Department of Justice, Bureau of Justice Statistics. FBI, "Crime in the United States, 1975-1998".

² Home Office. "Police Service Personnel – England and Wales, as of 31 March 2000" Statistical Bulletin. Issue 15/00. August 2000.

Police resources in Canada, 2000

to a peak of 51 in 1991. Since 1991, this ratio has generally been decreasing, and in 1999 was at 43 incidents per officer (Figure 2, Table 6).

Figure 2
Criminal Code Incidents per Police Officer, Canada, 1962-1999



Source: *Police Administration Annual Survey, Canadian Centre for Justice Statistics*

Among the provinces, Quebec had the most police per capita

Figure 3 presents the number of police officers per 100,000 population by province (excludes RCMP federal police officers). The three territories are not shown on this graph as their sparse populations over immense areas result in considerably higher police strengths than the rest of Canada (Table 7 - page 19). It should be noted that Quebec employs more “temporary” police officers than any other jurisdiction. Of the 1,213 temporary officers reported, 1,076 or 89% were employed in Quebec. Temporary police officers are hired to fill in, as needed, for permanent police officers. Counts for temporary officers are not included in any of the police officer counts, as only permanent, full-time officers (and full-time equivalents) are included.

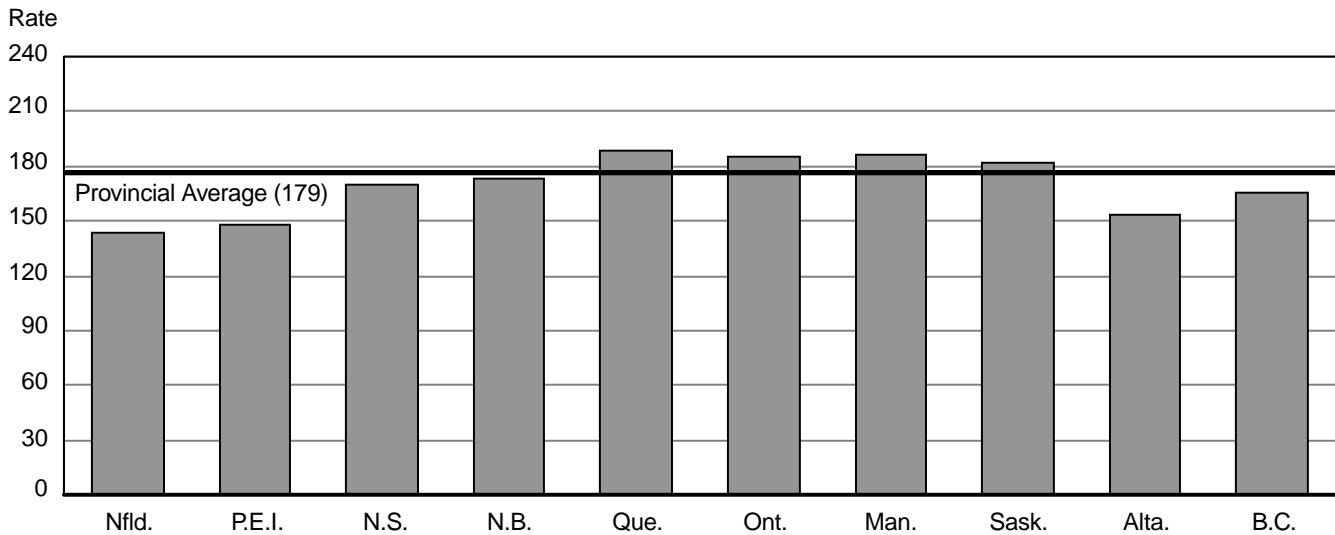
Among the provinces, Quebec had the most police officers per 100,000 population (188) in 2000. Manitoba (187), Ontario (185) and Saskatchewan (182) had the next highest rates. Previously, Manitoba had the highest per capita rate for four consecutive years. Prior to 1996, Quebec generally had the highest number of police per capita. Newfoundland (143) and Prince Edward Island (148) continued to show the lowest police per capita ratios. As mentioned earlier, the rates in the territories were much higher: Yukon (391), the Northwest Territories (366) and Nunavut (311).

While the number of police officers in Canada has dropped 1% since 1991, significant increases have taken place in British Columbia (+9%), Prince Edward Island (+9%) and Nova Scotia (+4%). Notable decreases have occurred in Newfoundland (-16%), Saskatchewan (-7%) and Quebec (-5%) over the same period (Table 7).

Thunder Bay highest among the metropolitan areas

Table 1 presents the number of police officers per 100,000 population and the crime rates for the 25 census metropolitan areas (CMAs) in Canada (defined as large urban areas with populations over 100,000). Police officers included in Table 1 represent only those involved in municipal and provincial policing. See *census metropolitan area (CMA) Reference List* (page 23) for a list of police forces included in each CMA.

Figure 3
Police Officers per 100,000 Population, 2000



Source: Police Administration Annual Survey, Canadian Centre for Justice Statistics

Table 1
Police Officers and Crime Rate in Census Metropolitan Areas (CMAs)¹, 1999²

CMAs	Population ³	Number of Police Officers	Police Officers per 100,000 Population	Crime Rate ⁴
Thunder Bay	126,649	248	196	9,109
Regina	199,163	382	192	15,191
Winnipeg ⁵	677,625	1,223	180	9,763
Windsor	299,966	541	180	6,595
Montréal	3,438,532	5,935	173	7,171
Toronto	4,680,250	7,708	165	5,385
Saskatoon	231,403	370	160	11,640
Halifax	352,594	553	157	9,551
Victoria	316,195	494	156	11,865
Edmonton	929,145	1,393	150	8,533
Saint John ⁶	146,267	219	150	7,367
St. John's ⁷	174,509	251	144	..
Sudbury	160,357	230	143	6,514
St. Catharines-Niagara ⁶	422,607	603	143	6,837
Vancouver	2,016,643	2,862	142	11,562
Hull (Quebec portion of Ottawa-Hull CMA)	255,987	353	138	6,160
Hamilton	665,169	917	138	6,743
Calgary	933,748	1,264	135	7,554
London	418,660	554	132	8,581
Ottawa (Ontario portion of Ottawa-Hull CMA)	809,034	1,055	130	6,445
Québec	688,085	889	129	4,790
Trois-Rivières	141,751	183	129	5,571
Kitchener ⁶	439,107	556	127	6,385
Chicoutimi-Jonquière ⁶	147,021	174	118	5,249
Sherbrooke	153,140	169	110	5,806

¹ The CMA of Oshawa is not included due to differences in policing jurisdiction and CMA boundaries. Crime investigated by RCMP federal personnel within the CMA are included, however police officer counts do not include RCMP federal police officers.

² Data for 2000 CMAs were not available at the time of publication.

³ Populations represent July 1st updated postcensal estimates for 1999, Demography Division, Statistics Canada.

⁴ Crime rate represents the number of Criminal Code incidents (excluding traffic) per 100,000 population.

⁵ Police officer counts for 1999 include 24 officers deployed to contract positions.

⁶ CMA populations were adjusted to follow police force boundaries.

⁷ Crime data for St. John's CMA were not available for 1999.

Source: Police Administration Annual Survey and Uniform Crime Reporting Survey, Canadian Centre for Justice Statistics.

Police resources in Canada, 2000

Thunder Bay had the most police officers per 100,000 population (196) in 1999, followed by Regina (192). Sherbrooke (110) and Chicoutimi-Jonquière (118) had the fewest. Among the larger CMAs (over 500,000 population), Winnipeg (180) had the highest police officers per capita while Québec (129) had the lowest. The police officer per capita rate has a tendency to be higher among those CMAs having higher crime rates.

Female police officers continue to increase

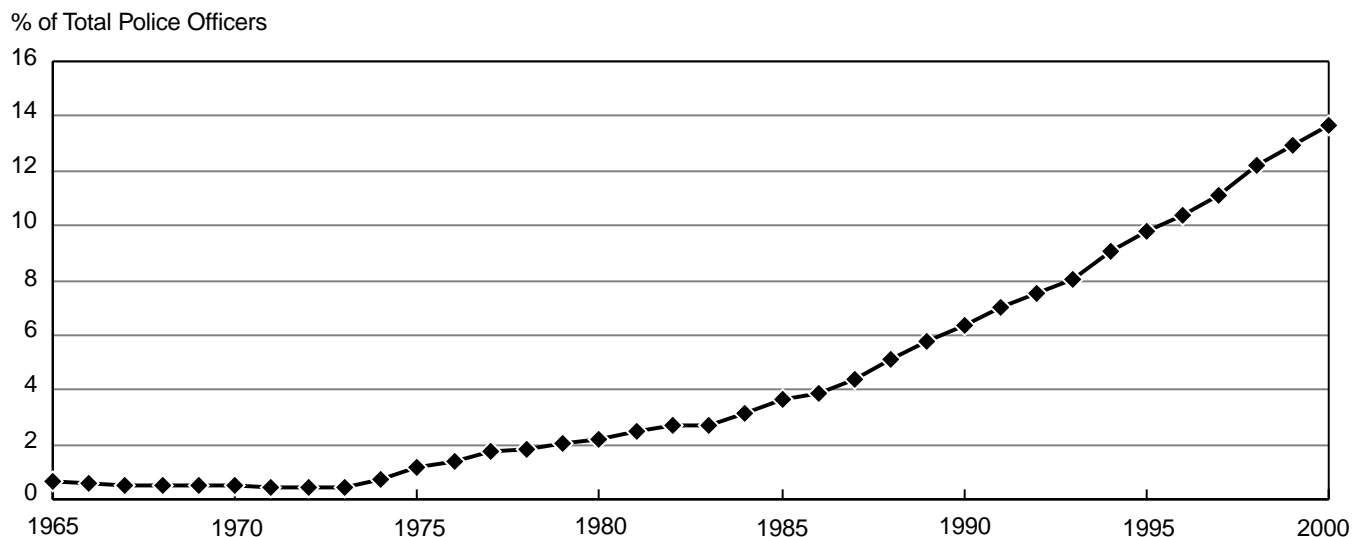
In 2000, women accounted for 14% of police officers in Canada. While the number of male police officers increased 0.4% from 1999, the number of female officers increased by 7% indicating that recruitment of women continues with positive results. The proportion of female police officers has been increasing steadily since the mid-1970s, after remaining at less than 1% during the 1960s and early 1970s. The number of female police officers has almost doubled over the past decade (Table 2, Figure 4).

Table 2
Police Officers by Sex, Canada, Selected Years

Year	Male		Female		Total
	Number	%	Number	%	
1965	29,956	99.4	190	0.6	30,146
1970	37,763	99.5	186	0.5	37,949
1975	47,151	98.8	562	1.2	47,713
1980	48,749	97.8	1,092	2.2	49,841
1985	48,518	96.4	1,833	3.6	50,351
1990	52,461	93.6	3,573	6.4	56,034
1995	49,630	90.2	5,378	9.8	55,008
2000	48,362	86.3	7,658	13.7	56,020

Source: Police Administration Annual Survey, Canadian Centre for Justice Statistics.

Figure 4
Proportion of Female Police Officers, Canada, 1965-2000



Source: Police Administration Annual Survey, Canadian Centre for Justice Statistics

British Columbia had the highest proportion of female police officers

In 2000, British Columbia had the highest percentage of female police officers at 17.5% (Table 3), followed by Ontario (14.5%) and Saskatchewan (13.5%). The lowest proportions were found in the Atlantic provinces, with women accounting for about 10% of the police officers in each province.

Table 3
Police Officers by Sex, Provinces/Territories, 2000

Province/Territory	Male		Female		Total
	Number	%	Number	%	
Newfoundland	698	90.4	74	9.6	772
Prince Edward Island	184	89.8	21	10.2	205
Nova Scotia	1,433	89.6	167	10.4	1,600
New Brunswick	1,173	89.6	136	10.4	1,309
Quebec	12,074	87.3	1,761	12.7	13,835
Ontario	18,561	85.8	3,076	14.2	21,637
Manitoba	1,873	87.4	269	12.6	2,142
Saskatchewan	1,613	86.5	251	13.5	1,864
Alberta	4,029	87.3	584	12.7	4,613
British Columbia	5,532	82.5	1,176	17.5	6,708
Yukon	106	88.3	14	11.7	120
Northwest Territories	134	87.0	20	13.0	154
Nunavut	77	89.5	9	10.5	86
RCMP Headquarters	875	89.7	100	10.3	975
Canada	48,362	86.3	7,658	13.7	56,020

Source: Police Administration Annual Survey, Canadian Centre for Justice Statistics.

Women continue to move up the ranks

Women police officers have increased their percentages in all ranks (Table 4). In 2000, women represented 3% of the senior officers, 6% of the non-commissioned officers and 17% of the constables, compared to 1986 when they accounted for less than 1% among the senior and the non-commissioned officer ranks and 5% among the constable ranks.

Table 4
Percentage of Male and Female Police Officers Within the Ranks, Canada, Selected Years

Year	Senior Officers			Non-Commissioned Officers			Constables		
	Male	Female	Total	Male	Female	Total	Male	Female	Total
	%	%	%	%	%	%	%	%	%
1986	99.8	0.2	100	99.5	0.5	100	94.6	5.4	100
1988	99.8	0.2	100	99.2	0.8	100	93.0	7.0	100
1990	99.6	0.4	100	98.7	1.3	100	91.4	8.6	100
1992	99.3	0.7	100	98.4	1.6	100	89.8	10.2	100
1994	98.7	1.3	100	97.8	2.2	100	88.0	12.0	100
1996	98.3	1.7	100	97.0	3.0	100	86.5	13.5	100
1998	97.8	2.2	100	96.1	3.9	100	84.5	15.5	100
2000	96.9	3.1	100	94.5	5.5	100	83.0	17.0	100

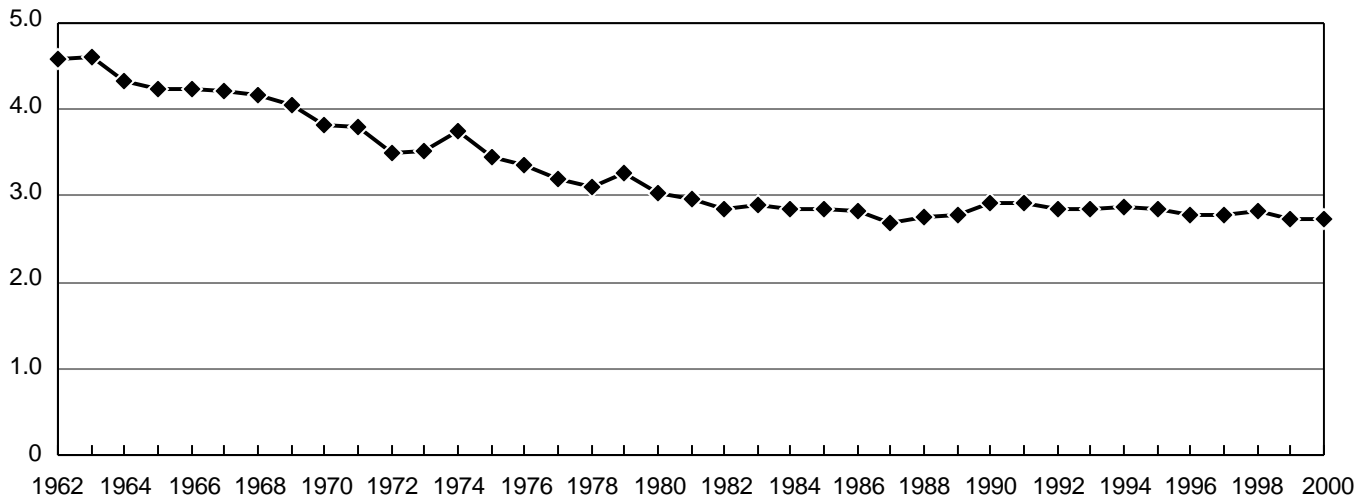
Source: Police Administration Annual Survey, Canadian Centre for Justice Statistics.

Civilian employees increase

In 2000 there were 20,530 civilian employees, an increase of 2% from 1999 (Table 6). From 1962 to 1987, civilians were in a period of steady growth, as some duties that were traditionally performed by police officers were reassigned to civilians (such as dispatch and by-law enforcement). During that 25 year period, the number of civilian personnel more than tripled, while the number of police officers doubled. Between 1987 and 1998, the count of civilians had stabilized, remaining around 19,550 employees. Since 1998, a 6% increase in civilian personnel has occurred. However, increases in the number of police officers have kept the ratio of police officers to civilian personnel relatively unchanged. Figure 5 shows that the ratio of police officers to civilians has dropped from a high of nearly 4.6 police for every civilian in 1963 to 2.7 in 1987. Over the last 13 years, this ratio has remained relatively stable.

The distribution of males and females among the civilian personnel has also changed over the years. Prior to 1970, the male employees out-numbered the female employees. With steadily increasing numbers of female civilians, the number of women surpassed the number of men after 1970. By the mid-1980s, females accounted for around two-thirds of all civilian staff, and they have remained at that proportion to the present time.

Figure 5
Ratio of Police Officers to Civilians, Canada, 1962-2000



Source: Police Administration Annual Survey, Canadian Centre for Justice Statistics

Policing Expenditures

Policing costs increase

Policing expenditures totalled \$6.4 billion in 1999. This represents an increase of nearly 3% from 1998. With an adjustment for inflation, expenditures were up 1.2%, marking the third year in a row that constant dollars have increased (Table 5, Figure 6). The \$6.4 billion spent on policing in 1999 translates into a cost of \$210 per Canadian (Table 6).

In general, salaries, wages and benefits make up over 80% of policing expenditures. Municipal policing accounts for about 58% of policing expenditures, provincial policing accounts for about 23% and federal and other RCMP costs account for the remaining 19% of the total expenditures (Table 8 – page 20).

Table 5
Current and Constant Dollar Expenditures on Policing, Canada, 1985-1999

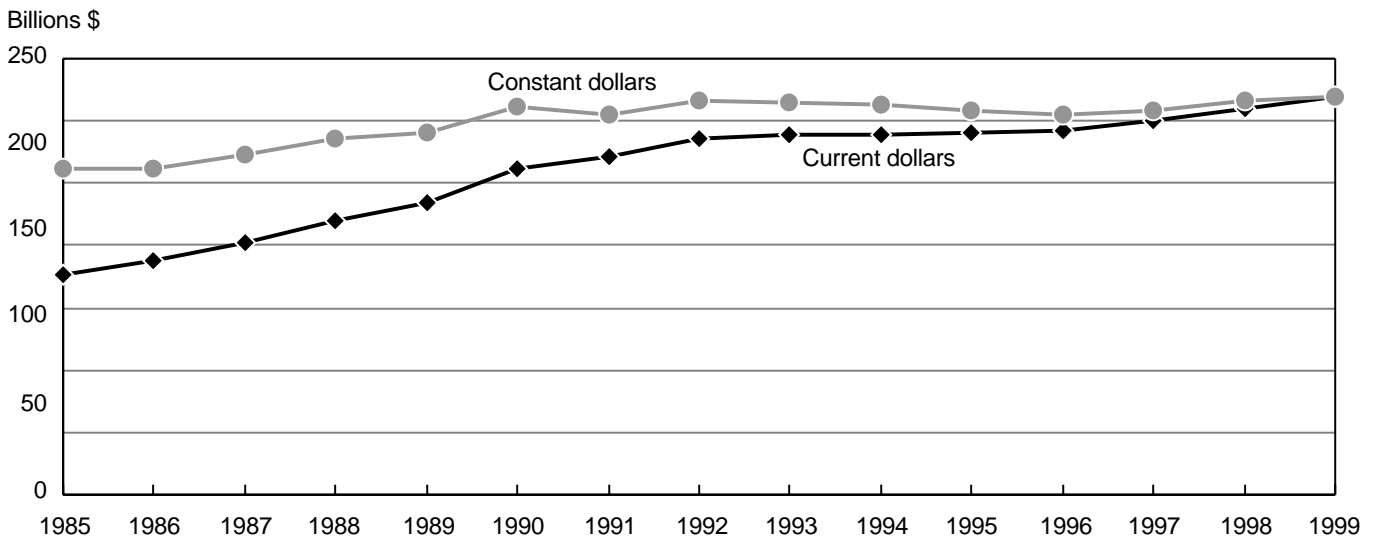
Year	Current Dollars		Constant Dollars	
	(\$000s)	% Change from Previous Year	(\$000s)	% Change from Previous Year
1985	3,542,240	...	5,218,900	...
1986	3,772,217	6.5	5,245,362	0.5
1987	4,027,809	6.8	5,461,017	4.1
1988	4,389,414	9.0	5,719,696	4.7
1989	4,684,760	6.7	5,816,472	1.7
1990	5,248,530	12.0	6,216,105	6.9
1991	5,426,887	3.4	6,088,031	-2.1
1992	5,716,833	5.3	6,317,100	3.8
1993	5,790,165	1.3	6,285,002	-0.5
1994	5,783,656	-0.1	6,265,627	-0.3
1995	5,808,607	0.4	6,159,799	-1.7
1996	5,856,055	0.8	6,110,425	-0.8
1997	5,989,022	2.3	6,150,436	0.7
1998	6,209,756	3.7	6,318,398	2.7
1999	6,391,164	2.9	6,391,164	1.2

... figures not applicable

Note: The Consumer Price Index was used to calculate constant dollars over a base year of 1999 (1999=100).

Source: Police Administration Annual Survey, Canadian Centre for Justice Statistics.

Figure 6
Current and Constant Dollar Spending on Policing, Canada, 1985-1999



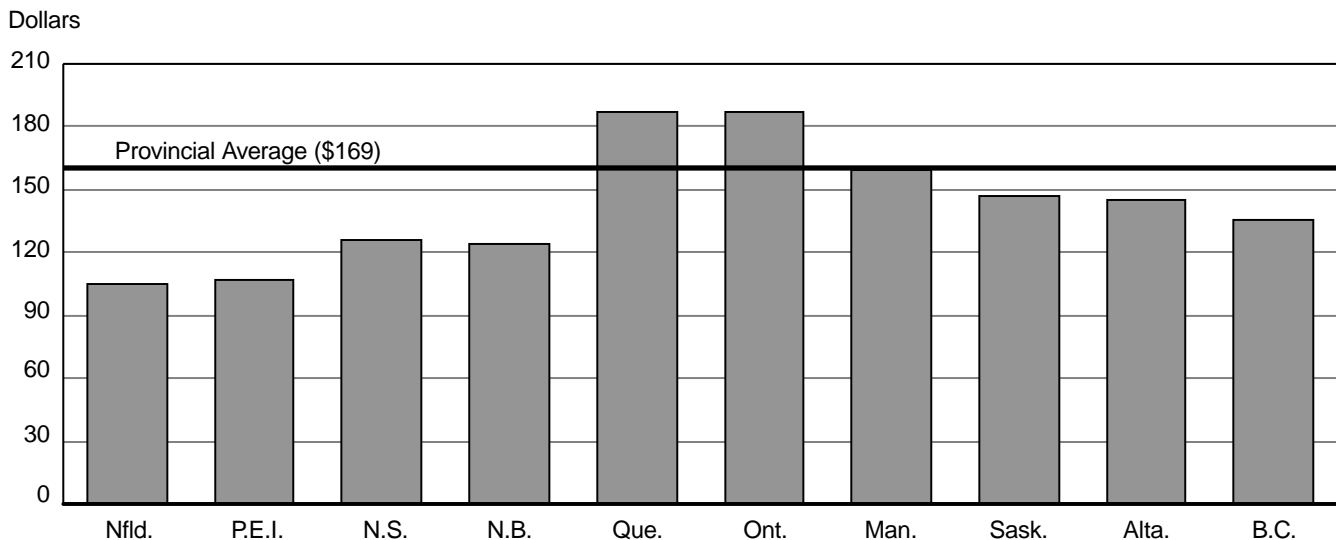
Source: Police Administration Annual Survey, Canadian Centre for Justice Statistics

Quebec and Ontario have the highest per capita costs

Figure 7 compares per capita policing costs of municipal and provincial/territorial policing by province for 1999. Only expenditures for municipal and provincial/territorial policing are included as the provinces/territories are not responsible for federal policing and other RCMP administrative expenditures. Per capita costs for Yukon, the Northwest Territories, and Nunavut were excluded from the graph as their sparse populations over immense areas resulted in per capita costs that were considerably higher than the rest of Canada (Table 8).

The per capita cost of municipal and provincial/territorial policing in Canada for 1999 was \$169. Consistent with historical data, Quebec and Ontario had the highest per capita cost (\$187) among the provinces. Newfoundland (\$105) and Prince Edward Island (\$107) had the lowest. The Atlantic provinces, particularly Newfoundland and Prince Edward Island, have generally had the lowest per capita costs in recent years. Among the territories, the per capita cost was \$426 for the Northwest Territories, \$310 for Yukon and \$411 for Nunavut.

Figure 7
Per Capita Spending on Municipal and Provincial Policing, 1999



Source: Police Administration Annual Survey, Canadian Centre for Justice Statistics

Municipal Policing Expenditures

Provincial legislation can require that cities and towns, upon reaching a minimum population, maintain their own municipal police force. Municipalities have three options when providing municipal policing services: forming their own police force, joining with an existing municipal police force or entering into an agreement with the provincial police force (which is provided by the RCMP in all provinces except Ontario and Quebec). In 1999, there were 591 municipal police forces in Canada, including 201 RCMP municipal contracts and 65 OPP municipal contracts. In total, municipal policing accounted for 66% of all police officers and 58% of all policing expenditures in 1999. Table 9 (page 21) provides information on municipal policing expenditures.

The RCMP employed 3,813 officers in 1999 under contract to 201 municipalities in all provinces except Newfoundland, Quebec and Ontario. RCMP municipal policing contract charges are based upon the size of the municipality. During 1999, most policing contracts in municipalities with a population of under 15,000 were billed 70% of the cost of the contract, while municipalities of 15,000 and over were billed 90% (in most cases) of the contract cost. The costing formula takes into consideration the costs of providing federal and other RCMP policing duties while also performing municipal policing duties.

There were 65 Ontario municipalities that contracted with the OPP in 1999 to provide municipal policing, for a total of 747 police officers.

The remaining 325 municipal police forces employed 31,683 officers, or 87% of municipal police officers in Canada, and accounted for 91% of total municipal policing expenditures in 1999.

Provincial/Territorial Policing Expenditures

Provincial policing for both the provinces and territories accounted for approximately one-quarter (23%) of policing costs in 1999. Table 10 (page 22) provides information on provincial policing costs.

Federal Policing and Other RCMP Expenditures

In 1999, the cost to the federal government for expenditures on federal policing and other RCMP expenditures totaled \$1.2 billion, which included the portion of municipal and provincial RCMP contract policing considered federal policing (\$276 million). The RCMP has responsibility in all provinces and territories for the enforcement of federal statutes and protective services.

Other RCMP expenditures include the cost of headquarters and divisional administration and the costs associated with providing national police services such as: forensic laboratory services; the Canadian Police College; informatics support for management and operation of the Canadian Police Information Centre (CPIC), an automated national computer information system that is available to all police forces; telecommunications services for data and radio transmissions to ensure all detachments receive current information; criminal intelligence and United Nations peacekeeping services.

Summary Tables

Table 6

Trends in Police Personnel¹ and Expenditures, Canada, 1962-2000

Year	Population ²	Police Officers	Civilian Personnel	Total Personnel	Police: Civilian Ratio	Population Per Police Officer	Police Per 100,000 Population	Actual ³ Criminal Code Incidents	Incidents per Officer	Total Expenditures	Per Capita Cost
	000's									\$000's	\$
1962	18,583.0	26,129	5,699	31,828	4.58	711.2	140.6	514,986	19.7
1963	18,931.0	27,333	5,935	33,268	4.61	692.6	144.4	572,105	20.9
1964	19,291.0	28,823	6,655	35,478	4.33	669.3	149.4	626,038	21.7
1965	19,644.0	30,146	7,133	37,279	4.23	651.6	153.5	628,418	20.8
1966	20,014.9	32,086	7,583	39,669	4.23	623.8	160.3	702,809	21.9
1967	20,378.0	33,792	8,018	41,810	4.21	603.0	165.8	784,568	23.2
1968	20,701.0	34,887	8,351	43,238	4.18	593.4	168.5	897,530	25.7
1969	21,001.0	36,342	8,963	45,305	4.05	577.9	173.0	994,790	27.4
1970	21,297.0	37,949	9,936	47,885	3.82	561.2	178.2	1,110,066	29.3
1971	21,962.1	40,148	10,597	50,745	3.79	547.0	182.8	1,166,458	29.1
1972	22,219.6	41,214	11,762	52,976	3.50	539.1	185.5	1,189,805	28.9
1973	22,493.8	43,142	12,297	55,439	3.51	521.4	191.8	1,298,551	30.1
1974	22,808.4	45,276	12,085	57,361	3.75	503.8	198.5	1,456,885	32.2
1975	23,142.3	47,713	13,794	61,507	3.46	485.0	206.2	1,585,805	33.2
1976	23,449.8	48,213	14,377	62,590	3.35	486.4	205.6	1,637,704	34.0
1977	23,726.3	48,764	15,231	63,995	3.20	486.6	205.5	1,654,020	33.9
1978	23,964.0	48,705	15,749	64,454	3.09	492.0	203.2	1,714,297	35.2
1979	24,202.2	48,990	15,001	63,991	3.27	494.0	202.4	1,855,271	37.9
1980	24,516.3	49,841	16,410	66,251	3.04	491.9	203.3	2,045,399	41.0
1981	24,820.4	50,563	16,999	67,562	2.97	490.9	203.7	2,168,201	42.9
1982	25,117.4	50,539	17,738	68,277	2.85	497.0	201.2	2,203,668	43.6
1983	25,367.0	50,081	17,342	67,423	2.89	506.5	197.4	2,148,633	42.9
1984	25,607.6	50,010	17,503	67,513	2.86	512.0	195.3	2,147,657	42.9
1985	25,842.6	50,351	17,702	68,053	2.84	513.2	194.8	2,174,175	43.2	3,542,240	137
1986	26,100.6	51,425	18,273	69,698	2.81	507.5	197.0	2,277,749	44.3	3,772,217	145
1987	26,449.9	52,510	19,558	72,068	2.68	503.7	198.5	2,368,956	45.1	4,027,809	152
1988	26,798.3	53,312	19,407	72,719	2.75	502.7	198.9	2,390,007	44.8	4,389,414	164
1989	27,286.2	54,211	19,526	73,737	2.78	503.3	198.7	2,425,936	44.7	4,684,760	172
1990	27,700.9	56,034	19,259	75,293	2.91	494.4	202.3	2,627,193	46.9	5,248,530	189
1991	28,030.9	56,768	19,440	76,208	2.92	493.8	202.5	2,898,988	51.1	5,426,887	194
1992	28,376.6	56,992	20,059	77,051	2.84	497.9	200.8	2,847,981	50.0	5,716,833	201
1993	28,703.1	56,901	19,956	76,857	2.85	504.4	198.2	2,735,626	48.1	5,790,165	202
1994	29,036.0	55,859	19,492	75,351	2.87	519.8	192.4	2,646,209	47.4	5,783,656	199
1995	29,353.9	55,008	19,259	74,267	2.86	533.6	187.4	2,639,654	48.0	5,808,607	198
1996	29,671.9	54,323	19,603	73,926	2.77	546.2	183.1	2,644,893	48.7	5,856,055	197
1997	29,987.2 ^r	54,719	19,679	74,398	2.78	548.0 ^r	182.5 ^r	2,534,766	46.3	5,989,022	200
1998	30,247.9 ^r	54,763	19,383	74,146	2.83	552.3 ^r	181.0 ^r	2,461,156 ^r	44.9 ^r	6,209,756 ^r	205 ^r
1999	30,493.4 ^r	55,321 ^r	20,168 ^r	75,489 ^r	2.74 ^r	551.2 ^r	181.4 ^r	2,357,771	42.6	6,391,164	210
2000	30,750.1	56,020	20,530	76,550	2.73	548.9	182.2

¹ A new survey was implemented in 1986. To maintain historical continuity, figures prior to 1986 have been adjusted.

² 1962-1970 final intercensal estimates at June 1st, without adjustment for net census undercounts; from 1971 onward estimates are adjusted to July 1st and include adjustments for net census undercoverage, non-permanent residents and returning Canadians; 1971-1990 revised intercensal estimates; 1991-1995 final intercensal estimates; 1996 final postcensal estimate; 1997-1999 updated postcensal estimates; 2000 preliminary postcensal estimate.

³ Data provided from the Uniform Crime Reporting Survey, Canadian Centre for Justice Statistics. Excludes Criminal Code traffic incidents.

^r Revised figures.

.. Figures not available.

Source: Police Administration Annual Survey, Canadian Centre for Justice Statistics

Table 7
Police Officers¹ by Level of Policing, 2000

Province/ Territory	Population ² 2000	Independent (Non-RCMP)		RCMP				Total Police Officers	% Change 1999-2000	% Change 1991 to 2000 ⁴	Police Officers Per 100,000 Population	
		Municipal	Provincial	Municipal	Provincial	Federal	Other ³					Total
	000's								%	%		
Newfoundland ⁵	538.8	...	313	...	373	69	17	459	772	0.7	-15.8	143
Prince Edward Island	138.9	84	...	7	88	21	5	121	205	4.1	9.0	148
Nova Scotia	941.0	731	...	58	644	142	25	869	1,600	1.1	3.8	170
New Brunswick	756.6	478	...	190	492	109	40	831	1,309	1.5	0.8	173
Quebec	7,349.1	9,132	3,768	915	20	935	13,835	0.6	-5.0	188
Ontario ⁶	11,669.3	16,145	3,925	1,473	94	1,567	21,637	2.9	2.0	185
Manitoba	1,147.9	1,280	...	172	512	152	26	862	2,142	-2.1	-2.3	187
Saskatchewan ⁷	1,023.6	792	...	202	634	194	42	1,072	1,864	-3.4	-6.6	182
Alberta	2,997.2	2,762	...	666	881	262	42	1,851	4,613	0.7	1.9	154
British Columbia	4,063.8	2,116	...	2,524	1,347	592	129	4,592	6,708	-0.3	9.1	165
Yukon ⁸	30.7	82	27	11	120	120	0.8	2.6	391
Northwest Territories ^{8,9}	42.1	132	11	11	154	154	-1.3	...	366
Nunavut ^{8,9}	27.7	76	4	6	86	86	3.6	..	311
Provincial/ Territorial Total	30,750.1	33,520	8,006	3,819	5,261	3,971	468	13,519	55,045	1.2	0.2	179
RCMP 'HQ' and Training Academy	370	605	975	975
Canada	30,750.1	33,520	8,006	3,819	5,261	4,341	1,073	14,494	56,020	1.3	-1.3	182

¹ Represents actual police officer strength as of June 15, 2000.

² Preliminary postcensal estimates for 2000, Demography Division, Statistics Canada.

³ Includes Canadian Police Services and Departmental and Divisional Administration.

⁴ 1991 was selected as the base year for the calculation of percentage change among the provinces/territories as decreases at the national level began after 1991.

⁵ Newfoundland does not have any municipal police forces. The Royal Newfoundland Constabulary (a provincial police force) provides policing to the larger municipalities.

⁶ Excludes personnel from RCMP Headquarters. The Ontario Provincial Police deploy 1,025 officers to provide municipal policing services under contract.

⁷ Excludes personnel from RCMP Training Academy.

⁸ Yukon, the Northwest Territories and Nunavut do not have any municipal police forces. The RCMP is responsible for providing policing to the territories.

⁹ Nunavut came into existence in April 1999 through the division of the Northwest Territories. Therefore, the percentage change from 1991 to 2000 is not appropriate for the Northwest Territories due to its decreased size and not available for Nunavut.

... figures not available.

... figures not appropriate or not applicable.

Source: Police Administration Annual Survey, Canadian Centre for Justice Statistics.

Police resources in Canada, 2000

Table 8
Total Expenditures¹ on Policing, 1999

Province/Territory	Population ² 1999	Expenditures			Per Capita Cost
		Municipal ³	Provincial ³	Total	
	000's	\$000's	\$000's	\$000's	\$
Newfoundland ⁴	540.8	...	56,797	56,797	105
Prince Edward Island	137.7	7,379	7,360	14,739	107
Nova Scotia	939.2	66,952	51,656	118,607	126
New Brunswick	754.3	54,682	38,732	93,413	124
Quebec	7,349.1	914,940	459,361	1,374,301	187
Ontario ⁵	11,517.3	1,662,162	496,824	2,158,987	187
Manitoba	1,142.6	130,115	51,696	181,811	159
Saskatchewan ⁶	1,025.7	93,844	57,294	151,138	147
Alberta	2,959.4	348,130	81,946	430,076	145
British Columbia	4,028.1	417,578	129,977	547,556	136
Yukon	31.1	...	9,642	9,642	310
Northwest Territories	41.1	...	17,522	17,522	426
Nunavut	27.0	...	11,101	11,101	411
Provincial/Territorial Total	30,493.4	3,695,782	1,469,910	5,165,692	169
RCMP Federal, Administration, ⁷ Headquarters, Training Academy	1,225,472	...
Canada Total⁸	30,493.4	3,695,782	1,469,910	6,391,164	210

¹ Expenditure figures represent gross operating expenditures and include costs that are paid from police department budgets and benefits paid from other sources. Revenues, recoveries and capital expenditures are excluded.

² Updated postcensal estimates for 1999. Demography Division, Statistics Canada.

³ Figures include the amount billed to the province, territory or municipality for RCMP contract policing and not the total cost of the contract. See Tables 9 and 10 for details. In some provinces, provincial policing is paid for by the municipalities.

⁴ Provincial policing figures include both the Royal Newfoundland Constabulary and the RCMP.

⁵ Excludes RCMP Headquarters.

⁶ Excludes RCMP Training Academy.

⁷ Includes all other RCMP costs which are not paid for by the municipality or the province/territory.

⁸ Municipal policing costs can be found in Table 9 (see footnote 6 in Table 9). Total provincial policing costs can be found in Table 10 (see footnote 6 in Table 10).

... figures not applicable.

Note: Totals may not add up due to rounding.

Source: Police Administration Annual Survey, Canadian Centre for Justice Statistics.

Table 9
Expenditures on Municipal Policing¹, 1999

Province/ Territory	Municipal (non-RCMP)			RCMP Municipal Contracts ²					Total Expenditures on Municipal Policing
	No. of Police Forces	Population ³ Policed 1999	Total Expen- ditures	No. of Police Contracts	Population ³ Policed 1999	Municipal Expen- ditures	Federal Expen- ditures	Total Expen- ditures	
		000's	\$000's		000's	\$000's	\$000's	\$000's	\$000's
Newfoundland ⁴
Prince Edward Island	4	50.6	6,903	2	8.3	476	193	669	7,572
Nova Scotia	17	349.3	63,226	9	31.4	3,726	1,553	5,278	68,504
New Brunswick	13	234.5	39,154	11	128.4	15,527	1,653	17,181	56,335
Quebec	155	5,842.7	914,940	914,940
Ontario ⁵	150	10,292.0	1,662,162	1,662,162
Manitoba	9	698.3	118,935	23	104.8	11,180	4,632	15,812	134,747
Saskatchewan	16	495.1	80,525	34	153.9	13,319	4,390	17,708	98,233
Alberta	13	1,694.7	301,333	63	600.8	46,797	12,945	59,742	361,075
British Columbia	13	1,142.1	227,594	59	2,168.3	189,984	28,325	218,309	445,904
Yukon ⁴
Northwest Territories ⁴
Nunavut ⁴
Canada⁶	390	20,799.3	3,414,772	201	3,195.9	281,010	53,691	334,700	3,749,472

¹ Expenditure figures represent gross operating expenditures and include costs that are paid from police department budgets and benefits paid from other sources. Revenues, recoveries and capital expenditures are excluded.

² Under the RCMP contract, most municipalities with populations of less than 15,000 were billed 70% of total costs, while municipalities with populations of 15,000 and over were billed 90% of total costs in most cases. The remaining costs are shown as "Federal Expenditures". Contract costs exclude employees the municipality provides to the RCMP.

³ Updated postcensal estimates for 1999 at the Census Subdivision level. Demography Division, Statistics Canada.

⁴ Newfoundland, Yukon, Northwest Territories and Nunavut do not have any municipal police forces. See Table 10 for policing costs.

⁵ Expenditures for OPP municipal contracts are included under "Municipal (Non-RCMP)".

⁶ Total municipal policing costs referred to in Table 8 includes both the total Municipal Non-RCMP cost (Column 4) plus the total RCMP Municipal Cost (Column 7). ... figures not applicable

Note: Totals may not add up due to rounding.

Source: Police Administration Annual Survey, Canadian Centre for Justice Statistics.

Police resources in Canada, 2000

Table 10
Expenditures¹ on Provincial/Territorial Policing, 1999

Province/ Territory	Provincial Police (Non-RCMP)	RCMP Provincial/Territorial Contracts			Total Expenditures Provincial/ Territorial Policing
		Provincial ² Cost	Federal ² Cost	Total	
	\$000's	\$000's	\$000's	\$000's	\$000's
Newfoundland ³	22,542	34,255	15,557	49,812	72,354
Prince Edward Island	...	7,360	3,237	10,597	10,597
Nova Scotia	...	51,656	22,593	74,249	74,249
New Brunswick	...	38,732	17,042	55,774	55,774
Quebec ⁴	459,361	459,361
Ontario ⁵	496,824	496,824
Manitoba	...	51,696	23,423	75,120	75,120
Saskatchewan	...	57,294	26,632	83,926	83,926
Alberta	...	81,946	36,582	118,528	118,528
British Columbia	...	129,977	58,357	188,334	188,334
Yukon	...	9,642	4,480	14,123	14,123
Northwest Territories	...	17,522	8,622	26,145	26,145
Nunavut	...	11,101	6,195	17,296	17,296
Canada⁶	978,727	491,183	222,720	713,903	1,692,630

¹ Expenditure figures represent gross operating expenditures and include costs that are paid from police department budgets and benefits paid from other sources. Revenues, recoveries and capital expenditures are excluded.

² In most cases, the provincial/territorial portion of policing contracts is 70% and the federal portion is 30%; however some administrative costs have been added to the federal portion, therefore the provincial/territorial portion may appear slightly lower than 70% in this table. In some provinces the cost of provincial policing is paid for by the municipalities.

³ The Royal Newfoundland Constabulary (RNC) shares provincial policing in Newfoundland with the RCMP. The RNC polices approximately 39% of the population and the RCMP the remaining 61%.

⁴ The Sûreté du Québec provides all provincial policing in Quebec.

⁵ The Ontario Provincial Police provides all provincial policing in Ontario.

⁶ Total provincial policing costs referred to in Table 8 includes both the total Provincial Police Non-RCMP cost (Column 2) plus the total RCMP Provincial Cost (Column 3).

... figures not applicable.

Note: Totals may not add up due to rounding.

Source: Police Administration Annual Survey, Canadian Centre for Justice Statistics.

Census Metropolitan Area (CMA) Reference List

Police Forces Included in CMAs, 1999

CALGARY

Calgary
Airdrie (RCMP)
Cochrane (RCMP)
Beiseker (RCMP rural)
Cochrane (RCMP rural)
Airdrie (RCMP rural)

CHICOUTIMI-JONQUIÈRE

Chicoutimi
Jonquière
La Baie

EDMONTON

Edmonton
Beaumont (RCMP)
Devon (RCMP)
Fort Saskatchewan (RCMP)
Leduc (RCMP)
Morinville (RCMP)
Redwater (RCMP)
Sherwood Park (RCMP)
Spruce Grove (RCMP)
St. Albert (RCMP)
Stony Plain (RCMP)
Fort Saskatchewan (RCMP rural)
Leduc (RCMP rural)
Morinville (RCMP rural)
Stony Plain (RCMP rural)
Thorsby (RCMP rural)

HALIFAX

Halifax Regional
Cole Harbour (RCMP rural)
Lower Sackville (RCMP rural)
Tantallon (RCMP rural)

HAMILTON

Hamilton-Wentworth Regional
Halton Regional (Burlington)
Burlington (OPP District)

KITCHENER

Waterloo Regional
Cambridge (OPP rural)

LONDON

London
St. Thomas
Elgin County (OPP rural)
London (OPP District)

MONTRÉAL

Montreal
Beloeil
Blainville
Boisbriand
Boucherville
Brossard
Carignan
Chambly
Châteauguay
Deux-Montagnes Regional
Greenfield Park
Hudson
Kanesatake Mohawk
Le Gardeur
L'Île-Perrot
Lachenaie
La Plaine
La Prairie
L'Assomption
Laval
Léry
Longueuil
Lorraine
Mascouche
Mercier
Mirabel
Mont-St-Hilaire
Otterburn Park
Pincourt
Repentigny
Rosemère
Roussillon (Régie)
Sainte-Julie
Saint-Basile-le-Grand
Saint-Bruno-de-Montarville
Saint-Eustache
Saint-Lambert
Saint-Thérèse
Seigneuries (Régie)
St-Hubert
St-Jérôme
Terrebonne
Varenes
Vaudreuil-Dorion
Deux-Montagne MRC (SQ)
Montreal (SQ)
Roussillon MRC (SQ)

OTTAWA-HULL (Quebec portion)

Hull
 Aylmer
 Gatineau
 MRC des Collines de l'Outaouais
 Buckingham (SQ)

OTTAWA-HULL (Ontario portion)

Ottawa-Carleton Regional
 Ottawa (OPP rural) -Traffic
 Casselman (OPP rural)

QUÉBEC

Québec
 Charlesbourg
 Chaudière-Etchemin
 Haute-Saint-Charles
 L'Ancienne-Lorette
 Lévis
 Sainte-Foy
 Sillery
 Val-Belair
 Wendake
 L'Île-D'Orléans MRC (SQ)

REGINA

Regina
 Lumsden (RCMP rural)
 Regina (RCMP rural)

SAINT JOHN

Saint John
 Rothesay Regional
 Hampton (RCMP)
 Hampton (RCMP District 3)

SASKATOON

Saskatoon
 Dalmeny
 Langham
 Colonsay (RCMP rural)
 Saskatoon (RCMP rural)
 Warman (RCMP rural)
 Warman (RCMP)

SHERBROOKE

Région Sherbrookoise
 East Angus

ST.CATHARINES-NIAGARA

Niagara Regional
 Niagara Falls (OPP rural)

ST.JOHN'S

RNC (St. John's)

SUDBURY

Sudbury Regional

THUNDER BAY

Thunder Bay
 Shuniah (OPP)
 Thunder Bay (OPP District)

TORONTO

Toronto
 Caledon (OPP)
 Durham Regional
 Halton Regional
 Mono (OPP)
 Orangeville
 Peel Regional
 York Regional
 Aurora (OPP District)
 Caledon (OPP rural)
 Downsview (OPP rural)
 Port Credit (OPP rural)

TROIS-RIVIÈRES

Trois-Rivières
 Cap-de-la-Madelaine
 Trois-Rivières-Ouest
 Becancour MRC (SQ)

VANCOUVER

Vancouver
 Burnaby (RCMP)
 Coquitlam (RCMP)
 Delta
 Langley (RCMP)
 Langley D.M. (RCMP)
 Maple Ridge (RCMP)
 New Westminster
 North Vancouver City (RCMP)
 North Vancouver D.M. (RCMP)
 Pitt Meadows (RCMP)
 Port Coquitlam (RCMP)
 Port Moody
 Richmond (RCMP)
 Surrey (RCMP)
 West Vancouver
 White Rock (RCMP)
 Coquitlam (RCMP rural)
 Surrey (RCMP rural)
 Vancouver (RCMP rural)

VICTORIA

Victoria
Central Saanich
Colwood (RCMP)
Esquimalt
Langford (RCMP)
North Saanich D.M. (RCMP)
Oak Bay
Saanich
Sidney (RCMP)
View Royal (RCMP)
Sidney (RCMP rural)
Sooke (RCMP rural)
Western Communities (RCMP rural)

WINDSOR

Windsor
Essex
Lakeshore (OPP)
LaSalle
Tecumseh (OPP)
Essex (OPP rural)

WINNIPEG

Winnipeg
East St. Paul
Oakbank (RCMP rural)
St. Pierre Jolys (RCMP rural)

Part II

Police Resources in Municipal Police Forces

Introduction

This part of the report contains summary information only on Canada's **municipal** police forces which employ 66% of all police officers in Canada and provide policing services to 24 million Canadians (79% of the Canadian population). Municipal policing includes all police services that are paid for by the municipalities and includes contract policing provided to municipalities by provincial police forces and the RCMP. It should be noted that offences investigated by federal RCMP personnel within a municipal policing jurisdiction are included in the crime statistics for that municipal police service, however personnel & expenditures associated with the federal RCMP are not included.

The report is organized by province. Within each province, municipal police forces are grouped into one of five population ranges and the municipalities within each group are listed alphabetically. Municipalities that are policed by the RCMP and the OPP under municipal contracts are separated by a line from the other municipal police services and then arranged alphabetically within each of the five population ranges.

Important Notes

1999 Police Resources & Population

Population

Most municipal populations represent updated postcensal estimates for July 1, 1999 as provided by Demography Division, Statistics Canada. The population estimates are based on usual place of residence. Populations for British Columbia municipalities were provided by the province. Populations for Aboriginal police services were provided by Indian and Northern Affairs Canada.

Population data are updated regularly and figures published in this report may differ slightly from figures published in earlier reports.

Municipalities are grouped according to the following population ranges:

- 100,000 +
- 50,000 – 99,999
- 15,000 – 49,999
- 5,000 – 14,999
- < 5,000

Population Density

Population density refers to the number of persons per square kilometre. The calculation for population density is total population divided by land area. Land area is the area in square kilometres of the land-based portions of the census geographic area, in this case census subdivision (municipality).

In order to provide context for the relative 'urban' or 'rural' composition of a municipality, a population density figure is provided. The land area measurements for the census subdivision reflect the boundaries in effect on January 1st, 1996 (the geographic reference date for the 1996 Census of Canada). Since the population density is a summary calculation of *total* municipal population divided by *total* municipal land area, it will not reflect the distribution of urban and rural segments within a municipality. However, it can be descriptive of the general urban or rural structure; a highly centralised city such as Vancouver, B.C. has a population density of 4908 persons/km² whereas an expansive city such as Sudbury, Ont. has a population density of 63.

Police Officers

Counts represent the “actual” number of permanent sworn police officers (of all ranks) as of June 15, 1999.

Population per Police Officer

Counts represent the population of the area serviced by the police force divided by the number of police officers. For some forces, particularly those patrolling cottage or tourist areas, the population policed can fluctuate dramatically throughout the year, usually peaking during the summer months. Correspondingly, the number of police officers assigned to these forces may also fluctuate to accommodate these peak periods. Because the personnel data are collected for a specific point in time (June 15th) and the population estimates are based on usual place of residence only, these aspects are not captured.

Other Personnel

Counts include civilian and other personnel (e.g., clerical, dispatch, management, cadets, special constables, security officers, school crossing guards, by-law enforcement officers) on the police department’s payroll as of June 15, 1999. There are no “other personnel” included in the counts for the RCMP municipal policing contracts. The municipality may hire other personnel, but they are not included in this report.

Expenditures

Figures include salaries, wages, benefits, and other operating expenses that are paid from the police force budget, as well as benefits paid from other government sources. They have been rounded to the nearest thousand. Revenues, recoveries, and those costs that fall under a police force’s capital expenditures are excluded.

Under the RCMP billing agreement, most municipalities with a population under 15,000 are billed 70% of total expenditures, and those with a population of 15,000 and over are billed 90% (in most cases) of total costs.

As operational situations may vary considerably between police forces, so will the operational costs that result. For example, some costs (accommodation, by-law enforcement, court security) and some services (computing, personnel, and financial services) may be included within the police force’s operational budget for some municipalities, but in other municipalities they may be paid for by other departments or through the police force’s capital budget (which is excluded).

Comparisons should be made with caution.

Per Capita Cost

Figures represent expenditures divided by the population of the area serviced by the police force (rounded to the nearest dollar). For the reasons described above, **comparisons should be made with caution.**

2000 Police Officers

Counts represent the “actual” number of permanent sworn police officers (of all ranks) as of June 15, 2000.

1999 Crime

The “incident” is the basic unit of count used to report crime to the Uniform Crime Reporting (UCR) Survey. An incident is the set of connected events that usually constitutes an occurrence report, a document used by police to record information. The UCR Survey classifies incidents according to the most serious offence (generally the offence that carries the longest maximum sentence under the Criminal Code of Canada). Since one incident may include more than one offence, less serious offences are under-represented by the UCR Survey.

In categorizing incidents, violent offences always take precedence over non-violent offences. For violent crime, a separate incident is recorded for each victim (i.e., if one person assaults three people, then three incidents are recorded; but if three people assault one person, only one incident is recorded). For non-violent crimes, one incident is counted for every distinct or separate occurrence. Robbery, a violent offence, is an exception to this rule. Unlike other violent offences, one occurrence of robbery is equal to one incident regardless of the number of victims. The reason for this exception is that robbery can involve many people who could all be considered victims, and would seriously overstate the number of robberies.

Violent Crime

Violent incidents involve offences that deal with the application, or threat of application, of force to an individual. These include homicide, attempted murder, various forms of sexual and non-sexual assault, other sexual offences, robbery, and abduction.

Property Crime

Property incidents involve unlawful acts with the intent of gaining property, but do not involve the use or threat of violence against an individual. Theft, breaking and entering, fraud, and possession of stolen goods are examples of property crimes.

Total Criminal Code (C.C.)

This total reflects both violent and property crimes, as well as other Criminal Code offences (e.g., damage to property, prostitution). Criminal Code traffic incidents are excluded.

Number

The “actual” number of incidents recorded by the UCR Survey refers to the total that have come to the attention of the police and that have been substantiated through police investigation.

Rate

Figures represent the total number of incidents per 100,000 population.

Clearance Rate (%)

When a police investigation leads to the identification of a suspect against whom a charge could be laid, then that incident can be cleared. Criminal incidents can either be “cleared by charge” or “cleared otherwise”. When an “information” is laid against the suspect (i.e., the person is formally charged), then from a statistical point of view the related “actual” incident can be “cleared by charge”. In cases where the police do not lay an information, even though they have identified a suspect and have enough evidence to support the laying of such, the incident is “cleared otherwise”. Examples include instances where alternative measures are recommended by the police; where the complainant declines to proceed with charges, or cases where the alleged offender dies before he or she can be formally charged.

The clearance rate reflects the total number of incidents cleared (by charge, or otherwise) during the year divided by the total number of incidents during the year. Since the process of solving crime is often time-consuming, a criminal incident may be solved months or even years after it was reported to police and recorded by the UCR Survey. Therefore, it is possible for the number of incidents cleared in a year to be greater than the total number of “actual” incidents that year, and thus for the clearance rate to exceed 100%.

Percent Change in Rate of Total Criminal Code (C.C.) Incidents 1998-1999

This figure represents the year-over-year percent change in the rate of total Criminal Code incidents (excluding traffic) per 100,000 population between 1998 and 1999.

Criminal Code (C.C.) Incidents per Officer

This figure represents the number of actual Criminal Code incidents (excluding traffic) reported to the police divided by the number of police officers.

Note

The statistical tables included in Part II utilise 1999 crime data from the Uniform Crime Reporting (UCR) Survey. For more information regarding the UCR Survey and crime statistics, please refer to *Canadian Crime Statistics* (Catalogue no. 85-205-XPE).

Police resources in Canada, 2000

Newfoundland

Police Force	1999 Police Resources & Population									2000
	Population	Population density	Police Officers			Population per Police Officer	Other Personnel	Operating Expenditures	Per Capita Costs	Police Officers
			Male	Female	Total					
								\$	\$	
Population (100,000+)										
St. John's (R.N.C.) ¹	174,182	235	233	18	251	694	66	18,290,987	105	253
Population (15,000 - 49,999)										
Corner Brook (R.N.C.)	21,545	146	36	3	39	552	6	2,465,443	114	39
Population (5,000 - 14,999)										
Labrador City (R.N.C.) ²	10,911	--	20	1	21	520	4	1,785,517	164	21

¹ Crime data were not available for 1999.

² Includes data for Churchill Falls.

-- amount too small to express

.. figures not available

Note: There are no municipal police forces in Newfoundland. The Royal Newfoundland Constabulary (R.N.C.), a provincial police force, is responsible for providing policing to the three largest municipalities and, for the purposes of this report, they have been included.

Prince Edward Island

Police Force	1999 Police Resources & Population									2000
	Population	Population density	Police Officers			Population per Police Officer	Other Personnel	Operating Expenditures	Per Capita Costs	Police Officers
			Male	Female	Total					
								\$	\$	
Population (15,000 - 49,999)										
Charlottetown	33,520	786	51	2	53	632	36	4,548,099	136	53
Population (5,000 - 14,999)										
Summerside	14,978	541	21	-	21	713	8	2,106,278	141	27
Stratford (RCMP)	6,199	280	3	1	4	1,550	-	270,748	44	4
Population (<5,000)										
Borden	707	55	2	-	2	354	-	99,300	140	2
Kensington	1,395	698	2	-	2	698	-	149,400	107	2
Montague (RCMP)	2,071	683	3	-	3	690	-	205,508	99	3

- nil or zero

... figures not appropriate or not applicable

Note for the RCMP municipal contracts: Expenditures include only the cost billed to the municipality and not the total cost of the contract, nor any additional policing costs. Civilian employees provided by the municipality are not included under "Other Personnel".

Newfoundland

1999 Crime											
Violent Crime			Property Crime			Total Criminal Code (C.C.)			% Change in C.C. Rate 1998-1999	C.C. Incidents per Officer for 1999	Police Force
Number	Rate	Clear. Rate	Number	Rate	Clear. Rate	Number	Rate	Clear. Rate			
		%			%			%	%		
..	Population (100,000+) St. John's (R.N.C.) ¹
140	650	89	441	2,047	48	961	4,460	58	-11	25	Population (15,000 - 49,999) Corner Brook (R.N.C.)
66	605	50	368	3,373	29	824	7,552	23	22	39	Population (5,000 - 14,999) Labrador City (R.N.C.) ²

Prince Edward Island

1999 Crime											
Violent Crime			Property Crime			Total Criminal Code (C.C.)			% Change in C.C. Rate 1998-1999	C.C. Incidents per Officer for 1999	Police Force
Number	Rate	Clear. Rate	Number	Rate	Clear. Rate	Number	Rate	Clear. Rate			
		%			%			%	%		
316	943	56	1,731	5,164	22	3,395	10,128	26	6	64	Population (15,000 - 49,999) Charlottetown
150	1,001	35	753	5,027	28	1,603	10,702	30	8	76	Population (5,000 - 14,999) Summerside
17	274	71	70	1,129	31	160	2,581	39	-16	40	Stratford (RCMP)
-	-	...	2	283	50	3	424	67	-94	2	Population (<5,000) Borden
9	645	-	65	4,659	-	133	9,534	-	13	67	Kensington
32	1,545	69	90	4,346	37	326	15,741	49	-10	109	Montague (RCMP)

Police resources in Canada, 2000

Nova Scotia

Police Force	1999 Police Resources & Population								2000	
	Population	Population density	Police Officers			Population per Police Officer	Other Personnel	Operating Expenditures	Per Capita Costs	Police Officers
			Male	Female	Total					
								\$	\$	
Population (100,000+)										
Halifax Regional	200,544	1,129	359	34	393	510	77	34,172,500	170	393
Population (50,000 - 99,999)										
Cape Breton Regional ¹	68,396	46	151	2	153	447	54	14,778,510	216	161
Population (5,000 - 14,999)										
Amherst	9,824	590	20	2	22	447	8	1,625,761	165	20
Bridgewater	7,627	571	17	1	18	424	6	1,280,171	168	21
Kentville	5,644	330	13	1	14	403	1	1,008,500	179	16
New Glasgow ²	13,882	597	28	-	28	496	25	1,974,172	142	29
Truro	13,176	316	26	3	29	454	20	2,178,903	165	29
Yarmouth (RCMP)	7,623	684	12	4	16	476	-	1,030,993	135	16
Population (<5,000)										
Annapolis Royal	571	272	2	-	2	286	-	133,853	234	3
Berwick ^{3,4}	2,226	379	4	-	4	557	1
Hantsport	1,266	653	4	-	4	317	1	286,170	226	4
Lunenburg-Mahone Bay	3,525	506	8	2	10	353	2	701,154	199	9
Middleton	1,864	334	6	-	6	311	5	387,583	208	5
Springhill	4,159	377	7	-	7	594	6	774,005	186	10
Stellarton	4,912	575	9	-	9	546	12	739,231	150	10
Trenton	3,004	463	8	-	8	376	5	575,945	192	7
Unama'ki Tribal ⁵	4,537	178	15	3	18	252	7	1,619,404	357	14
Wolfville ⁶	4,122	564	9	2	11	375	3	758,141	184	..
Antigonish (RCMP)	4,849	974	6	1	7	693	-	531,780	110	10
Digby (RCMP)	2,178	751	5	-	5	436	-	342,922	157	4
Oxford (RCMP)	1,346	126	3	-	3	449	-	208,353	155	3
Parrsboro (RCMP)	1,617	118	3	-	3	539	-	197,512	122	3
Pictou (RCMP)	4,025	520	5	-	5	805	-	354,930	88	6
Port Hawkesbury (RCMP)	3,773	479	4	1	5	755	-	341,999	91	5
Shelburne (RCMP)	2,084	253	4	-	4	521	-	263,734	127	4
Windsor (RCMP)	3,911	434	6	1	7	559	-	453,521	116	7

¹ Includes data for Sydney, North Sydney and Glace Bay.

² Includes data for Westville.

³ Police force closed mid 1999, therefore expenditures are not presented.

⁴ Crime data not presented as only four to six months of data was available.

⁵ Expenditures for 1999 were unavailable, therefore 1998 expenditures were substituted.

⁶ Police force closed in early 2000.

- nil or zero

... figures not available

... figures not appropriate or not applicable

Note for the RCMP municipal contracts: Expenditures include only the cost billed to the municipality and not the total cost of the contract, nor any additional policing costs. Civilian employees provided by the municipality are not included under "Other Personnel".

Nova Scotia

1999 Crime											
Violent Crime			Property Crime			Total Criminal Code (C.C.)			% Change in C.C. Rate 1998-1999	C.C. Incidents per Officer for 1999	Police Force
Number	Rate	Clear. Rate	Number	Rate	Clear. Rate	Number	Rate	Clear. Rate			
		%			%				%		
2,519	1,256	59	16,124	8,040	15	24,786	12,359	22	-1	63	Population (100,000+) Halifax Regional
818	1,196	50	2,046	2,991	23	5,840	8,539	33	-4	38	Population (50,000 - 99,999) Cape Breton Regional ¹
225	2,290	55	608	6,189	25	1,736	17,671	36	1	79	Population (5,000 - 14,999) Amherst
195	2,557	67	479	6,280	41	1,382	18,120	47	-10	77	Bridgewater
107	1,896	77	381	6,751	33	852	15,096	50	38	61	Kentville
178	1,282	66	722	5,221	33	1,793	12,916	51	-2	64	New Glasgow ²
195	1,480	75	1,023	7,764	30	2,171	16,477	46	22	75	Truro
143	1,876	86	470	6,166	33	1,151	15,099	47	2	72	Yarmouth (RCMP)
16	2,802	88	34	5,954	50	101	17,688	54	29	51	Population (<5,000) Annapolis Royal
...	Berwick ^{3,4}
6	474	50	20	1,580	25	81	6,398	53	26	20	Hantsport
36	1,021	75	115	3,262	30	244	6,922	39	-17	24	Lunenburg-Mahone Bay
52	2,790	73	102	5,472	35	340	18,240	42	27	57	Middleton
71	1,707	73	120	2,885	32	394	9,473	46	90	56	Springhill
73	1,486	74	317	6,454	21	990	20,155	43	6	110	Stellarton
15	499	93	65	2,164	28	146	4,860	47	-42	18	Trenton
259	5,709	67	188	4,144	42	1,031	22,724	57	48	57	Unama'ki Tribal ⁵
43	1,043	58	249	6,041	15	561	13,610	26	33	51	Wolfville ⁶
63	1,299	79	224	4,620	37	600	12,374	50	-18	86	Antigonish (RCMP)
97	4,454	92	89	4,086	69	397	18,228	81	-11	79	Digby (RCMP)
15	1,114	80	25	1,857	56	122	9,064	67	9	41	Oxford (RCMP)
17	1,051	65	71	4,391	39	169	10,451	51	52	56	Parrsboro (RCMP)
44	1,093	75	117	2,907	45	336	8,348	48	-2	67	Pictou (RCMP)
40	1,060	90	107	2,836	29	377	9,992	37	3	75	Port Hawkesbury (RCMP)
34	1,631	79	120	5,758	33	321	15,403	48	5	80	Shelburne (RCMP)
72	1,841	101	199	5,088	40	538	13,756	58	2	77	Windsor (RCMP)

Police resources in Canada, 2000

New Brunswick

Police Force	1999 Police Resources & Population								2000	
	Population	Population density	Police Officers			Population per Police Officer	Other Personnel	Operating Expenditures	Per Capita Costs	Police Officers
			Male	Female	Total					
							\$	\$		
Population (50,000 - 99,999)										
Saint John	72,221	224	157	14	171	422	43	14,994,243	208	173
Codiac Regional (RCMP) ¹	92,223	404	121	8	129	715	-	11,610,301	126	133
Population (15,000 - 49,999)										
Edmundston ²	18,141	86	31	3	34	534	14	2,946,496	162	35
Fredericton	47,614	364	80	14	94	507	62	6,711,558	141	94
Miramichi	18,721	107	41	-	41	457	27	3,853,495	206	41
Rothsay Regional	25,977	263	25	5	30	866	5	2,265,022	87	30
Population (5,000 - 14,999)										
B.N.P.P. Regional	10,176	90	14	-	14	727	2	1,247,098	123	14
Bathurst	13,644	150	30	2	32	426	26	2,711,974	199	32
Grand Falls	6,234	352	13	1	14	445	4	994,000	159	16
Sackville	5,346	72	11	-	11	486	6	861,370	161	11
St. Stephen	5,063	410	12	1	13	389	1	891,986	176	13
Woodstock	5,392	383	11	1	12	449	2	862,625	160	11
Campbellton (RCMP)	8,339	482	19	1	20	417	-	1,257,409	151	19
Oromocto (RCMP)	9,596	428	10	3	13	738	-	903,423	94	12
Population (<5,000)										
Blacks Harbour ^{3,4}	1,200	133	4	-	4	300	-
Caraquet	4,752	71	8	-	8	594	2	654,126	138	8
Buctouche (RCMP)	2,551	141	3	-	3	850	-	207,905	81	3
Cap Pele (RCMP)	2,277	98	4	-	4	569	-	200,883	88	3
Hampton (RCMP)	4,279	224	4	1	5	856	-	281,268	66	4
Mcadam (RCMP)	1,546	115	2	1	3	515	-	210,827	136	3
Neguac (RCMP)	1,768	67	3	-	3	589	-	208,707	118	3
Richibucto (RCMP)	1,400	123	1	2	3	467	-	215,194	154	3
Saint Quentin (RCMP)	2,536	699	3	-	3	845	-	217,205	86	4
St. Andrews (RCMP)	1,840	219	2	1	3	613	-	214,323	116	3

¹ The expenditures include 100% of the RCMP contract cost.
² Police force enlarged its jurisdiction in 1999, therefore comparisons with 1998 crime data are not presented.
³ Police force closed mid 1999 therefore expenditures are not presented.
⁴ Crime data were not available for 1999.
- nil or zero
... figures not available
... figures not appropriate or not applicable

Note for the RCMP municipal contracts: Expenditures include only the cost billed to the municipality and not the total cost of the contract, nor any additional policing costs. Civilian employees provided by the municipality are not included under "Other Personnel".

New Brunswick

1999 Crime											
Violent Crime			Property Crime			Total Criminal Code (C.C.)			% Change in C.C. Rate 1998-1999	C.C. Incidents per Officer for 1999	Police Force
Number	Rate	Clear. Rate	Number	Rate	Clear. Rate	Number	Rate	Clear. Rate			
		%			%			%			
1,047	1,450	30	3,195	4,424	21	7,135	9,879	19	6	42	Population (50,000 - 99,999) Saint John
905	981	75	4,703	5,100	32	9,088	9,854	40	-1	70	Codiac Regional (RCMP) ¹
103	568	57	391	2,155	21	749	4,129	30	...	22	Population (15,000 - 49,999) Edmundston ²
511	1,073	66	2,046	4,297	25	3,494	7,338	32	-5	37	Fredericton
333	1,779	93	467	2,495	55	1,615	8,627	66	-11	39	Miramichi
77	296	95	269	1,036	47	577	2,221	60	-13	19	Rothesay Regional
35	344	80	298	2,928	38	511	5,022	49	6	37	Population (5,000 - 14,999) B.N.P.P. Regional
194	1,422	59	705	5,167	37	1,673	12,262	48	-5	52	Bathurst
52	834	48	229	3,673	25	497	7,972	39	8	36	Grand Falls
55	1,029	67	123	2,301	18	245	4,583	30	9	22	Sackville
88	1,738	42	214	4,227	19	524	10,350	25	14	40	St. Stephen
65	1,205	74	267	4,952	18	514	9,533	32	-11	43	Woodstock
115	1,379	98	281	3,370	70	859	10,301	69	96	43	Campbellton (RCMP)
150	1,563	85	304	3,168	27	784	8,170	42	56	60	Oromocto (RCMP)
..	Population (<5,000) Blacks Harbour ^{3,4}
24	505	79	134	2,820	34	249	5,240	41	-4	31	Caraquet
4	157	100	19	745	42	51	1,999	47	-1	17	Buctouche (RCMP)
2	88	100	8	351	25	18	791	50	-78	5	Cap Pele (RCMP)
41	958	78	77	1,799	43	246	5,749	52	-7	49	Hampton (RCMP)
20	1,294	115	33	2,135	30	100	6,468	48	10	33	Mcadam (RCMP)
5	283	60	7	396	29	26	1,471	42	-26	9	Neguac (RCMP)
9	643	89	12	857	8	53	3,786	38	-30	18	Richibucto (RCMP)
36	1,420	92	96	3,785	34	227	8,951	50	120	76	Saint Quentin (RCMP)
2	109	150	20	1,087	70	41	2,228	63	-51	14	St. Andrews (RCMP)

Police resources in Canada, 2000

Quebec

Police Force	1999 Police Resources & Population								2000	
	Population	Population density	Police Officers			Population per Police Officer	Other Personnel	Operating Expenditures	Per Capita Costs	Police Officers
			Male	Female	Total					
								\$	\$	
Population (100,000+)										
Gatineau ¹	113,951	581	131	8	139	820	60	15,092,403	132	139
Laval	346,539	1,412	337	68	405	856	222	46,284,838	134	462
Longueuil	129,111	3,013	153	28	181	713	147	21,025,201	163	181
Montréal	1,799,448	3,646	3,247	763	4,010	449	1,137	376,681,000	209	4,039
Québec	273,045	1,013	399	45	444	615	104	44,473,943	163	448
Sherbrooke Regional	142,956	321	142	17	159	899	14	17,152,861	120	160
Population (50,000 - 99,999)										
Brossard	67,699	1,505	75	11	86	787	30	8,850,321	131	87
Charlesbourg	70,566	1,045	77	3	80	882	61	7,475,677	106	80
Chaudière-Etchemin (Régie) ²	74,959	241	57	11	68	1,102	27	7,346,250	98	76
Chicoutimi	69,101	184	74	-	74	934	48	9,108,216	132	74
Drummondville	56,500	339	61	3	64	883	19	7,196,530	127	64
Haut-Richelieu	58,444	335	56	5	61	958	20	6,673,067	114	63
Haute-Saint-Charles (Régie)	61,883	19	43	7	50	1,238	8	4,743,723	77	52
Hull	62,398	1,671	111	15	126	495	52	13,186,095	211	124
Joliette (Régie)	53,486	112	49	6	55	972	9	4,749,242	89	55
Jonquière	56,375	269	64	5	69	817	28	7,381,443	131	68
Lévis	52,509	207	49	6	55	955	24	6,083,853	116	54
Repentigny	55,129	2,258	47	5	52	1,060	36	5,560,986	101	52
Roussillon (Régie) ²	59,881	665	50	2	52	1,152	15	6,449,084	108	56
St-Hubert	85,105	1,330	91	9	100	851	28	10,581,785	124	100
St-Jérôme (Régie)	58,809	648	64	4	68	865	18	7,999,643	136	68
Ste-Foy ³	86,701	961	95	21	116	747	60	10,804,982	125	121
Terrebonne	65,697	388	59	1	60	1,095	22	6,588,748	100	60
Population (15,000 - 49,999)										
Alma	26,641	244	35	2	37	720	12	3,541,799	133	34
Aylmer ⁴	35,954	394	39	5	44	817	23	4,866,049	135	44
Baie-Comeau	25,004	71	33	4	37	676	14	4,582,234	183	37
Beloil	23,527	871	26	-	26	905	16	3,066,249	130	26
Blainville	34,665	628	26	2	28	1,238	18	3,382,425	98	28
Boisbriand	27,986	1,024	24	1	25	1,119	13	2,946,932	105	25
Boucherville	35,693	515	38	6	44	811	15	4,469,647	125	44
Cap-de-la-Madeleine	47,252	395	46	-	46	1,027	26	6,116,712	129	46
Chambly	22,354	892	21	1	22	1,016	16	2,571,511	115	24
Chateaugay	41,754	1,179	42	5	47	888	22	5,360,500	128	48
Deux-Montagnes Regional	37,626	619	36	2	38	990	8	4,013,638	107	38
Dolbeau-Mistassini	15,404	52	17	-	17	906	6	2,099,346	136	17
Granby	44,407	611	55	3	58	766	21	4,645,622	105	55
Greenfield Park	17,426	3,805	27	1	28	622	17	3,190,272	183	29
L'Ancienne-Lorette ⁵	16,188	2,057	16	-	16	1,012	10	2,016,949	125	..
L'Assomption	16,221	165	14	1	15	1,081	6	1,568,392	97	15
L'Île-Perrot	18,096	561	18	2	20	905	11	2,314,067	128	20
La Baie	21,369	82	29	2	31	689	12	3,596,813	168	31
La Plaine	17,353	437	15	3	18	964	10	1,849,689	107	14
La Prairie	18,112	418	19	1	20	906	8	2,774,321	153	23
Lachenaie	20,919	489	15	3	18	1,162	14	2,704,413	129	20
Lachute ²	18,251	53	15	-	15	1,217	7	1,824,859	100	22
Le Gardeur	24,206	529	21	3	24	1,009	11	2,824,353	117	24
Mascouche	29,541	274	27	2	29	1,019	21	3,731,636	126	29
Mempremagog (Régie) ⁶	27,500	64	34	4	38	724	21	4,096,883	149	40
Mirabel ¹	42,018	60	39	2	41	1,025	14	4,713,000	112	40

¹ Police force reduced its jurisdiction in 1999, therefore comparisons with 1998 crime data are not presented.
² Police force enlarged its jurisdiction in 1999, therefore comparisons with 1998 crime data are not presented.
³ Police force enlarged its jurisdiction in 2000, therefore comparisons with previous years should be done with caution.
⁴ Crime data were not available for October 1999, therefore data from October 1998 were substituted.
⁵ Police force closed early 2000.
⁶ Crime data not presented as only four to six months of data was available.
- nil or zero
-- amount too small to express
... figures not available
... figures not appropriate or not applicable

Quebec

1999 Crime											
Violent Crime			Property Crime			Total Criminal Code (C.C.)			% Change in C.C. Rate 1998-1999	C.C. Incidents per Officer for 1999	Police Force
Number	Rate	Clear. Rate	Number	Rate	Clear. Rate	Number	Rate	Clear. Rate			
		%			%			%	%		
Population (100,000+)											
723	634	79	3,777	3,315	25	6,237	5,473	38	...	45	Gatineau ¹
1,683	486	75	13,332	3,847	14	19,190	5,538	22	-6	47	Laval
1,713	1,327	81	6,659	5,158	22	11,688	9,053	38	3	65	Longueuil
20,798	1,156	66	100,405	5,580	17	159,997	8,891	27	-8	40	Montréal
1,783	653	50	11,136	4,078	23	17,313	6,341	26	-8	39	Québec
571	399	91	5,758	4,028	15	8,585	6,005	30	-3	54	Sherbrookoise Regional
Population (50,000 - 99,999)											
320	473	68	2,401	3,547	21	3,715	5,488	28	-10	43	Brossard
332	470	83	1,903	2,697	20	2,980	4,223	31	-5	37	Charlesbourg
194	259	86	1,545	2,061	20	2,326	3,103	28	...	34	Chaudière-Étchemin (Régie) ²
400	579	75	2,848	4,122	24	4,291	6,210	32	-12	58	Chicoutimi
379	671	82	2,527	4,473	22	4,040	7,150	32	-5	63	Drummondville
380	650	84	3,205	5,484	27	5,072	8,678	35	5	83	Haut-Richelieu
175	283	99	1,325	2,141	19	1,876	3,032	32	-19	38	Haute-Saint-Charles (Régie)
661	1,059	76	3,679	5,896	21	6,177	9,899	39	2	49	Hull
221	413	79	2,403	4,493	19	3,616	6,761	27	--	66	Joliette (Régie)
339	601	79	1,569	2,783	29	2,690	4,772	40	-25	39	Jonquière
198	377	95	1,261	2,401	24	2,071	3,944	35	-12	38	Lévis
184	334	93	1,795	3,256	19	2,690	4,879	31	-16	52	Repentigny
210	351	68	1,384	2,311	14	2,185	3,649	23	...	42	Roussillon (Régie) ²
608	714	78	3,061	3,597	16	4,939	5,803	31	-10	49	St-Hubert
391	665	74	3,352	5,700	20	5,068	8,618	27	-17	75	St-Jérôme (Régie)
373	430	82	3,337	3,849	23	5,007	5,775	28	-11	43	Ste-Foy ³
286	435	78	2,285	3,478	24	3,662	5,574	32	-11	61	Terrebonne
Population (15,000 - 49,999)											
117	439	84	960	3,603	23	1,456	5,465	32	-13	39	Alma
152	423	78	1,215	3,379	23	1,846	5,134	31	-6	42	Aylmer ⁴
142	568	94	811	3,243	35	1,466	5,863	48	-24	40	Baie-Comeau
82	349	90	830	3,528	14	1,141	4,850	22	2	44	Beloeil
56	162	66	703	2,028	21	932	2,689	24	-23	33	Blainville
98	350	73	603	2,155	21	855	3,055	33	-5	34	Boisbriand
114	319	82	1,265	3,544	14	1,861	5,214	26	3	42	Boucherville
154	326	78	1,159	2,453	28	1,771	3,748	39	-14	39	Cap-de-la-Madeleine
79	353	82	651	2,912	18	1,086	4,858	29	8	49	Chambly
287	687	72	1,118	2,678	21	2,187	5,238	33	7	47	Chateauguay
152	404	90	1,032	2,743	23	1,619	4,303	33	-17	43	Deux-Montagnes Regional
53	344	96	340	2,207	33	525	3,408	40	-17	31	Dolbeau-Mistassini
209	471	85	1,456	3,279	28	2,376	5,351	42	-15	41	Granby
160	918	81	938	5,383	31	1,438	8,252	40	-3	51	Greenfield Park
34	210	85	236	1,458	27	405	2,502	39	-25	25	L'Ancienne-Lorette ⁵
45	277	44	377	2,324	6	559	3,446	13	19	37	L'Assomption
57	315	86	369	2,039	24	640	3,537	37	2	32	L'Île-Perrot
97	454	74	451	2,111	27	736	3,444	39	-2	24	La Baie
75	432	91	429	2,472	21	738	4,253	40	--	41	La Plaine
123	679	73	538	2,970	10	993	5,483	23	17	50	La Prairie
89	425	81	351	1,678	26	632	3,021	43	-4	35	Lachenaie
85	466	75	478	2,619	44	780	4,274	49	...	52	Lachute ²
105	434	82	395	1,632	19	707	2,921	36	-8	29	Le Gardeur
87	295	85	758	2,566	23	1,115	3,774	28	-19	38	Mascouche
...	Memphremagog (Régie) ⁶
118	281	84	1,125	2,677	19	1,543	3,672	29	...	38	Mirabel ¹

Police resources in Canada, 2000

Quebec

Police Force	1999 Police Resources & Population								2000	
	Population	Population density	Police Officers			Population per Police Officer	Other Personnel	Operating Expenditures	Per Capita Costs	Police Officers
			Male	Female	Total					
								\$	\$	
Population (15,000 - 49,999)										
Montcalme (Régie) ¹	25,586	70	18	6	24	1,066	12	2,734,498	107	25
MRC des Collines de L'Outaouais	36,526	18	27	4	31	1,178	9	3,275,309	90	32
Rimouski	32,195	424	39	2	41	785	26	4,328,096	134	41
Riverains Regional	48,705	300	66	5	71	686	14	8,086,284	166	70
Rivière-du-Loup	15,210	898	21	1	22	691	6	2,216,272	146	21
Rivière-du-Nord (Régie)	18,999	93	9	5	14	1,357	8	2,085,447	110	19
Rouyn-Noranda	28,947	137	40	1	41	706	26	4,579,179	158	41
Sainte-Julie ²	44,974	179	46	8	54	833	22	4,684,665	104	50
Seigneuries (Régie)	24,673	109	17	3	20	1,234	7	2,418,868	98	20
Sept-Îles	25,674	86	45	1	46	558	20	4,550,790	177	45
Shawinigan Regional	41,199	32	45	5	50	824	27	4,521,309	110	51
Sorel	23,012	605	29	2	31	742	9	3,874,740	168	32
St-Bruno-de-Montarville	23,514	563	26	2	28	840	16	3,220,952	137	28
St-Eustache	40,753	582	41	4	45	906	20	4,932,700	121	45
St-Georges	20,744	832	22	1	23	902	8	2,741,742	132	23
St-Hyacinthe	38,854	1,061	53	4	57	682	36	6,155,146	158	53
St-Lambert	21,274	3,309	26	7	33	645	20	3,599,995	169	33
St. Luc	20,983	410	14	4	18	1,166	6	1,784,724	85	16
Ste-Thérèse	23,020	2,281	36	1	37	622	23	3,615,988	157	37
Thetford Mines	21,902	291	31	-	31	707	10	2,983,199	136	30
Trois-Rivières	47,863	615	81	3	84	570	27	6,427,988	134	86
Trois-Rivières-Ouest	31,214	343	28	3	31	1,007	13	3,115,980	100	28
Val-Bélair	22,116	323	16	5	21	1,053	24	2,216,270	100	22
Val-D'Or	24,566	20	25	1	26	945	18	3,423,862	139	26
Varenes	21,853	233	12	3	15	1,457	18	1,930,445	88	15
Vaudreuil-Dorion	19,106	261	21	-	21	910	13	2,730,654	143	21
Victoriaville	39,828	477	42	1	43	926	28	5,167,695	130	44
Population (5,000 - 14,999)										
Amos	13,831	32	19	1	20	692	5	1,909,394	138	19
Asbestos ²	6,833	390	10	-	10	683	2	992,261	145	10
Bromont	5,001	44	7	-	7	714	1	674,505	135	7
Carignan	5,705	91	5	2	7	815	1	744,930	131	10
Coaticook ³	6,709	532	7	-	7	958	1	994,248	148	12
Cowansville	12,357	252	15	-	15	824	8	1,428,598	116	15
Donnacona	8,379	112	9	-	9	931	4	806,852	96	9
East Angus	7,127	45	9	1	10	713	1	654,400	92	10
Farnham	6,082	243	9	1	10	608	6	1,028,200	169	10
Granby Canton	11,850	148	15	-	15	790	3	1,600,153	135	15
Grand-Mère	14,353	203	20	-	20	718	4	2,037,993	142	20
Kativik Regional ¹	9,142	11	35	3	38	241	17	6,260,165	685	32
La Malbaie-Pointe-au-Pic ²	12,602	24	6	-	6	2,100	-	906,551	72	17

¹ Crime data were not available for 1998, therefore year-over-year comparisons with 1999 crime data are not presented.

² Police force enlarged its jurisdiction in 1999, therefore comparisons with 1998 crime data are not presented.

³ Police force enlarged its jurisdiction in 2000, therefore comparisons with previous years should be done with caution.

- nil or zero

... figures not available

... figures not appropriate or not applicable

Quebec

1999 Crime											
Violent Crime			Property Crime			Total Criminal Code (C.C.)			% Change in C.C. Rate 1998-1999	C.C. Incidents per Officer for 1999	Police Force
Number	Rate	Clear. Rate	Number	Rate	Clear. Rate	Number	Rate	Clear. Rate			
	%			%			%		%		
Population (15,000 - 49,999)											
126	492	66	623	2,435	22	1,072	4,190	35	..	45	Montcalme (Régie) ¹
96	263	104	871	2,385	17	1,212	3,318	33	-6	39	MRC des Collines de L'Outaouais
129	401	88	910	2,827	23	1,611	5,004	32	-23	39	Rimouski
320	657	75	1,545	3,172	27	2,825	5,800	37	1	40	Riverains Regional
106	697	105	537	3,531	40	1,059	6,963	53	-4	48	Rivière-du-Loup
69	363	90	586	3,084	16	831	4,374	31	-16	59	Rivière-du-Nord (Régie)
254	877	86	1,290	4,456	28	2,177	7,521	41	-9	53	Rouyn-Noranda
123	273	80	941	2,092	17	1,469	3,266	27	...	27	Sainte-Julie ²
67	272	72	306	1,240	16	555	2,249	28	-10	28	Seigneuries (Régie)
252	982	86	1,099	4,281	26	1,953	7,607	41	-3	42	Sept-Îles
253	614	92	1,253	3,041	30	2,108	5,117	42	-4	42	Shawinigan Regional
129	561	79	721	3,133	23	1,309	5,688	37	-8	42	Sorel
74	315	66	1,109	4,716	21	1,556	6,617	22	14	56	St-Bruno-de-Montarville
257	631	86	2,035	4,993	20	3,074	7,543	29	1	68	St-Eustache
123	593	98	635	3,061	37	1,099	5,298	48	-9	48	St-Georges
310	798	79	1,814	4,669	24	2,981	7,672	34	-7	52	St-Hyacinthe
66	310	74	635	2,985	24	971	4,564	29	-3	29	St-Lambert
40	191	80	342	1,630	17	504	2,402	31	-20	28	St. Luc
145	630	82	1,558	6,768	27	2,195	9,535	34	-6	59	Ste-Thérèse
79	361	100	506	2,310	45	881	4,022	53	-1	28	Thetford Mines
356	744	88	2,520	5,265	34	4,222	8,821	47	-9	50	Trois-Rivières
86	276	91	898	2,877	23	1,341	4,296	31	-25	43	Trois-Rivières-Ouest
51	231	92	232	1,049	30	411	1,858	44	-17	20	Val-Bélair
214	871	95	1,343	5,467	20	2,097	8,536	31	-12	81	Val-D'Or
54	247	106	382	1,748	13	569	2,604	26	-23	38	Varennes
84	440	80	536	2,805	15	800	4,187	26	-14	38	Vaudreuil-Dorion
157	394	83	1,407	3,533	25	2,029	5,094	33	-1	47	Victoriaville
Population (5,000 - 14,999)											
56	405	109	563	4,071	26	823	5,950	37	-11	41	Amos
15	220	73	139	2,034	32	203	2,971	36	...	20	Asbestos ²
17	340	88	339	6,779	12	440	8,798	20	-5	63	Bromont
28	491	82	172	3,015	18	267	4,680	29	11	38	Carignan
34	507	94	167	2,489	17	333	4,963	34	...	48	Coaticook ³
117	947	103	488	3,949	32	945	7,647	48	19	63	Cowansville
38	454	87	129	1,540	36	241	2,876	55	-1	27	Donnacoona
35	491	89	186	2,610	18	306	4,294	36	11	31	East Angus
26	427	100	162	2,664	36	300	4,933	48	-24	30	Farnham
19	160	111	254	2,143	23	398	3,359	38	1	27	Granby Canton
78	543	81	359	2,501	33	609	4,243	44	-7	30	Grand-Mère
175	1,914	29	48	525	8	305	3,336	25	..	8	Kativik Regional ¹
48	381	85	178	1,412	38	382	3,031	42	...	64	La Malbaie-Pointe-au-Pic ²

Police resources in Canada, 2000

Quebec

Police Force	1999 Police Resources & Population								2000	
	Population	Population density	Police Officers			Population per Police Officer	Other Personnel	Operating Expenditures	Per Capita Costs	Police Officers
			Male	Female	Total					
							\$	\$		
Population (5,000 - 14,999)										
La Pocatière	5,079	241	9	1	10	508	2	654,067	129	8
La Tuque	11,986	20	20	1	21	571	6	1,719,184	143	19
Lac-Brome	5,309	26	7	1	8	664	1	624,884	118	7
Lac-Mégantic	5,992	286	8	-	8	749	3	794,739	133	8
Lorraine	9,119	1,670	6	-	6	1,520	6	936,465	103	7
Marieville	5,767	1,686	7	-	7	824	4	782,752	136	7
Matane	12,210	501	16	2	18	678	6	1,833,768	150	19
Mercier	9,443	206	10	-	10	944	4	986,738	104	10
Mont-Joli	6,252	652	9	-	9	695	1	856,080	137	9
Mont-St-Hilaire	13,493	311	14	1	15	900	9	1,933,300	143	15
Montmagny	11,932	95	12	2	14	852	5	1,596,378	134	14
Otterburn Park ¹	8,167	1,568	6	-	6	1,361	3	793,335	97	7
Pincoirt	12,142	1,187	13	-	13	934	7	1,783,130	147	13
Plessisville	6,732	1,551	8	-	8	842	2	863,816	128	8
Port-Cartier	6,936	79	14	-	14	495	5	1,378,409	199	14
Roberval	11,596	79	13	-	13	892	5	1,410,048	122	13
Rosemère	12,484	1,224	15	1	16	780	6	1,779,876	143	16
Shawinigan-Sud	12,039	234	15	-	15	803	8	1,563,014	130	15
Sillery	11,590	1,722	15	2	17	682	16	1,649,722	142	17
St-Basile-Le-Grand	12,839	369	10	1	11	1,167	5	1,165,767	91	11
St-Félicien	10,974	37	17	1	18	610	3	1,451,403	132	18
St-Rémi	5,649	71	8	-	8	706	6	1,074,739	190	9
Ste-Adèle	6,251	84	13	-	13	481	7	1,681,177	269	13
Ste-Agathe-Des-Monts ²	8,032	200	10	-	10	803	7	1,192,680	148	11
Ste-Marie	11,405	108	9	1	10	1,141	4	1,080,177	95	10
Tracy ³	14,517	709	20	2	22	660	6	2,439,587	168	21
Windsor	5,023	459	6	-	6	837	1	582,097	116	6
Population (<5,000)										
Amerindienne d'Odanak	307	61	2	-	2	154	1	168,750	550	2
Amerindienne de la Romaine	856	2,088	3	-	3	285	-	239,908	280	3
Amerindienne de Manawan	1,672	329	6	-	6	279	1	625,596	374	3
Amerindienne de Mingan	441	24	2	-	2	221	-	184,999	419	2
Bedford ⁴	2,840	627	5	2	7	406	-	424,000	149	7
Chandler	3,331	197	6	-	6	555	1	301,922	91	6
D'Essipit	181	532	1	1	2	91	1	150,000	829	3
Eagle Village ⁴	238	1,133	3	-	3	79	3	172,000	723	3
Estérel	98	8	4	-	4	25	-	327,122	3,338	4
Fermont	2,978	6	6	1	7	425	2	1,020,628	343	7
Gesgapegiac Amerindian	504	256	3	-	3	168	1	284,954	565	4
Hudson	4,683	216	9	-	9	520	-	1,009,656	216	9
Kanesatake Mohawk ¹	1,317	160	8	2	10	132	7	1,379,660	1,048	11
Kitigan Zibi Anishinabeg	1,425	8	6	1	7	204	1	492,000	345	7
Lac-Simon ^{4,5}	1,095	403	2	1	3	365	1	250,109	228	3
Lebel-Sur-Quévillon	3,339	77	5	1	6	557	1	622,817	187	6

¹ Crime data were not available for 1998, therefore year-over-year comparisons with 1999 crime data are not presented.

² Police force enlarged its jurisdiction in 1999, therefore comparisons with 1998 crime data are not presented.

³ Police force reduced its jurisdiction in 1999, therefore comparisons with 1998 crime data are not presented.

⁴ Expenses for 1999 and personnel for 2000 were not available, therefore 1998 expenditures and 1999 personnel were substituted.

⁵ Crime data were not available for December 1999, therefore data from December 1998 were substituted.

- nil or zero

.. figures not available

... figures not appropriate or not applicable

Quebec

1999 Crime											
Violent Crime			Property Crime			Total Criminal Code (C.C.)			% Change in C.C. Rate 1998-1999	C.C. Incidents per Officer for 1999	Police Force
Number	Rate	Clear. Rate	Number	Rate	Clear. Rate	Number	Rate	Clear. Rate			
		%			%			%	%		
Population (5,000 - 14,999)											
25	492	88	147	2,894	40	236	4,647	50	-1	24	La Pocatière
99	826	73	334	2,787	33	617	5,148	42	-6	29	La Tuque
13	245	92	142	2,675	6	219	4,125	24	-10	27	Lac-Brome
21	350	86	133	2,220	24	224	3,738	32	-14	28	Lac-Mégantic
12	132	100	181	1,985	6	286	3,136	13	-3	48	Lorraine
31	538	71	146	2,532	24	258	4,474	40	-9	37	Marieville
94	770	69	360	2,948	26	694	5,684	38	-6	39	Matane
28	297	89	147	1,557	26	235	2,489	38	-4	24	Mercier
36	576	100	152	2,431	38	312	4,990	47	-14	35	Mont-Joli
26	193	77	342	2,535	15	500	3,706	18	-1	33	Mont-St-Hilaire
32	268	97	244	2,045	32	390	3,269	42	-2	28	Montmagny
18	220	67	84	1,029	21	156	1,910	28	..	26	Otterburn Park ¹
45	371	91	240	1,977	28	413	3,401	37	-25	32	Pincourt
33	490	103	159	2,362	54	280	4,159	65	16	35	Plessisville
49	706	94	132	1,903	23	319	4,599	42	-18	23	Port-Cartier
85	733	85	493	4,251	22	825	7,115	40	-7	63	Roberval
59	473	75	718	5,751	26	1,021	8,178	32	-17	64	Rosemère
30	249	100	154	1,279	21	254	2,110	39	-28	17	Shawinigan-Sud
21	181	90	148	1,277	55	232	2,002	50	-22	14	Sillery
36	280	89	383	2,983	11	561	4,369	22	9	51	St-Basile-Le-Grand
34	310	103	286	2,606	22	482	4,392	36	-5	27	St-Félicien
41	726	100	182	3,222	30	315	5,576	47	4	39	St-Rémi
64	1,024	89	640	10,238	18	862	13,790	26	-17	66	Ste-Adèle
64	797	66	443	5,515	20	690	8,591	25	...	69	Ste-Agathe-Des-Monts ²
24	210	125	167	1,464	35	259	2,271	44	-27	26	Ste-Marie
70	482	60	514	3,541	17	779	5,366	26	...	35	Tracy ³
18	358	94	161	3,205	14	231	4,599	23	-9	39	Windsor
Population (<5,000)											
6	1,954	67	13	4,235	23	35	11,401	51	79	18	Amerindienne d'Odanak
44	5,140	91	8	935	25	99	11,565	84	22	33	Amerindienne de la Romaine
99	5,921	77	52	3,110	88	247	14,773	87	67	41	Amerindienne de Manawan
22	4,989	27	15	3,401	13	56	12,698	16	-8	28	Amerindienne de Mingan
19	669	68	38	1,338	16	109	3,838	31	-11	16	Bedford ⁴
40	1,201	98	104	3,122	35	263	7,896	45	112	44	Chandler
3	1,657	67	9	4,972	33	22	12,155	50	41	11	D'Essipit
8	3,361	75	3	1,261	33	18	7,563	78	-18	6	Eagle Village ⁴
2	2,041	50	20	20,408	5	27	27,551	11	-44	7	Estérel
16	537	63	47	1,578	26	112	3,761	38	9	16	Fermont
13	2,579	100	2	397	100	16	3,175	100	-3	5	Gesgapegiac Amerindian
11	235	64	51	1,089	22	100	2,135	27	-20	11	Hudson
14	1,063	43	10	759	10	34	2,582	26	..	3	Kanesatake Mohawk ¹
16	1,123	100	20	1,404	30	44	3,088	59	12	6	Kitigan Zibi Anishinabeg
65	5,936	34	90	8,219	18	253	23,105	27	31	84	Lac-Simon ^{4,5}
18	539	89	78	2,336	24	121	3,624	37	34	20	Lebel-Sur-Quévillon

Police resources in Canada, 2000

Quebec

Police Force	1999 Police Resources & Population								2000	
	Population	Population density	Police Officers			Population per Police Officer	Other Personnel	Operating Expenditures	Per Capita Costs	Police Officers
			Male	Female	Total					
							\$	\$		
Population (<5,000)										
Léry ¹	2,347	210	5	-	5	469	1	287,561	123	4
Long Point Amerindian	333	3,330	3	-	3	111	2	163,685	492	4
Mashteuiatsh	1,936	135	7	-	7	277	2	766,625	396	7
Metabetchouan ²	4,610	25	5	-	5	922	-	341,873	74	5
Montagnais de Schefferville	701	3	3	-	3	234	-	289,397	413	3
Morin Heights ³	2,494	45	4	1	5	499	1	408,107	164	8
Naskapi	542	14	3	-	3	181	2	346,637	640	3
Nicolet	4,235	754	7	-	7	605	1	638,246	151	7
Normandin	3,834	18	5	-	5	767	5	377,965	99	7
Obedjiwan ⁴	1,713	196	7	-	7	245	1	755,499	441	8
Pikogan ⁵	495	1,010	3	-	3	165	1	249,000	503	3
Princeville	4,071	1,010	6	-	6	679	3	525,255	129	7
Richmond	3,057	536	2	1	3	1,019	1	445,060	146	3
Saint Césaire	3,038	763	7	-	7	434	5	479,696	158	7
St-Adolphe-d'Howard	2,783	19	5	-	5	557	-	434,183	156	5
St-Donat	3,402	9	6	-	6	567	2	611,636	180	6
St-Jovite	4,838	219	6	1	7	691	1	595,803	123	5
St-Sauveur-Des-Monts	3,029	863	5	-	5	606	3	623,199	206	5
Timiskaming Amerindian	483	25	3	1	4	121	-	215,788	447	4
Uashat-Maliothenam	2,647	2,474	10	2	12	221	4	900,300	340	12
Valcourt	2,582	498	4	1	5	516	2	390,385	151	6
Wemindji ¹	1,050	7	5	-	5	210	-	495,486	472	5
Wendake	1,193	1,437	7	-	7	170	2	538,000	451	7

¹ Crime data were not available for 1999.

² Police force enlarged its jurisdiction in 1999, therefore comparisons with 1998 crime data are not presented.

³ Crime data were not available for November 1999, therefore data from November 1998 were substituted.

⁴ Crime data were not available for 1998, therefore year-over-year comparisons with 1999 crime data are not presented.

⁵ Crime data were not available for December 1999, therefore data from December 1998 were substituted.

- nil or zero

-- amount too small to express

... figures not available

... figures not appropriate or not applicable

Quebec

1999 Crime											
Violent Crime			Property Crime			Total Criminal Code (C.C.)			% Change in C.C. Rate 1998-1999	C.C. Incidents per Officer for 1999	Police Force
Number	Rate	Clear. Rate	Number	Rate	Clear. Rate	Number	Rate	Clear. Rate			
		%			%			%	%		
..	
24	7,207	92	17	5,105	65	85	25,526	79	13	28	
52	2,686	46	73	3,771	26	209	10,795	40	--	30	
7	152	86	90	1,952	28	126	2,733	33	...	25	
32	4,565	84	15	2,140	67	75	10,699	79	70	25	
6	241	-	74	2,967	-	95	3,809	-	-26	19	
25	4,613	100	2	369	150	45	8,303	102	1	15	
10	236	90	111	2,621	32	176	4,156	37	-28	25	
7	183	114	56	1,461	30	97	2,530	43	-25	19	
91	5,312	64	51	2,977	16	212	12,376	41	..	30	
25	5,051	100	25	5,051	64	68	13,737	85	-5	23	
21	516	100	77	1,891	42	131	3,218	50	21	22	
18	589	89	91	2,977	18	166	5,430	28	-2	55	
14	461	86	97	3,193	21	141	4,641	28	-12	20	
20	719	65	134	4,815	8	203	7,294	15	-19	41	
20	588	120	171	5,026	32	245	7,202	41	-6	41	
31	641	87	236	4,878	21	361	7,462	34	-7	52	
31	1,023	81	233	7,692	16	359	11,852	21	-4	72	
16	3,313	100	13	2,692	77	47	9,731	83	-10	12	
173	6,536	84	207	7,820	33	518	19,569	55	-8	43	
10	387	100	57	2,208	18	114	4,415	43	-27	23	
..	
11	922	82	64	5,365	6	119	9,975	18	30	17	

Population (<5,000)

Léry¹
 Long Point Amerindian
 Mashteuiatsh
 Metabetchouan²
 Montagnais de Schefferville
 Morin Heights³
 Naskapi
 Nicolet
 Normandin
 Obedjiwan⁴
 Pikogan⁵
 Princeville
 Richmond
 Saint Césaire
 St-Adolphe-d'Howard
 St-Donat
 St-Jovite
 St-Sauveur-Des-Monts
 Timiskaming Amerindian
 Uashat-Malietenam
 Valcourt
 Wemindji¹
 Wendake

Police resources in Canada, 2000

Ontario

Police Force	1999 Police Resources & Population								2000	
	Population	Population density	Police Officers			Population per Police Officer	Other Personnel	Operating Expenditures	Per Capita Costs	Police Officers
			Male	Female	Total					
							\$	\$		
Population (100,000+)										
Chatham-Kent ¹	112,303	45	128	12	140	802	45	14,023,818	125	148
Durham Regional	502,708	202	482	87	569	883	183	69,084,548	137	636
Guelph	105,607	1,212	113	14	127	832	49	13,542,360	128	134
Halton Regional	368,874	385	330	82	412	895	146	43,944,758	119	451
Hamilton-Wentworth Regional	493,833	444	594	101	695	711	252	79,631,080	161	698
Kingston ¹	113,647	254	119	23	142	800	32	12,461,901	110	147
London	340,205	777	375	48	423	804	167	43,902,547	129	459
Niagara Regional	421,708	228	506	62	568	742	238	58,748,605	139	613
Ottawa-Carleton Regional ¹	758,167	275	828	153	981	773	409	123,717,355	163	1,039
Peel Regional	936,875	1,738	1,043	144	1,187	789	515	148,069,813	158	1,275
Sudbury Regional	163,523	63	190	40	230	711	88	23,938,055	146	234
Thunder Bay ^{1,2}	120,530	179	178	31	209	577	96	19,172,159	159	207
Toronto	2,529,280	4,014	4,397	588	4,985	507	2,531	554,227,493	219	5,093
Waterloo Regional	438,369	322	438	85	523	838	177	56,570,275	129	563
Windsor	207,366	1,724	355	58	413	502	175	42,383,635	204	420
York Regional	689,726	396	703	100	803	859	171	81,339,519	118	841
Haldimand Norfolk (OPP) ³	107,890	38	110	22	132	817	20	12,262,362	114	132
Population (50,000 - 99,999)										
Barrie	93,171	1,213	100	11	111	839	45	11,993,012	129	121
Brantford	88,031	1,236	112	13	125	704	65	11,742,076	133	137
North Bay	57,043	135	75	12	87	656	47	9,553,993	167	86
Oxford Community ³	60,314	55	60	15	75	804	28	7,633,954	127	75
Peterborough Lakefield ¹	74,299	1,304	88	14	102	728	44	10,027,262	135	110
Sarnia ¹	73,834	418	97	11	108	684	44	11,555,467	157	110
Sault Ste. Marie	79,899	361	106	20	126	634	44	11,805,909	148	126
South Simcoe	50,024	104	46	7	53	944	21	5,510,086	110	55
New Tecumseth (OPP) ¹	53,004	57	30	16	46	1,152	5	3,333,409	63	46
Population (15,000 - 49,999)										
Amherstburg ¹	20,919	111	23	4	27	775	2	2,537,058	121	28
Belleville	46,308	196	63	13	76	609	21	7,328,980	158	74
Brockville	21,761	1,075	36	6	42	518	29	4,143,587	190	42
Cobourg	17,016	1,071	22	3	25	681	18	2,395,041	141	25
Cornwall	47,826	753	67	10	77	621	38	8,480,028	177	76
Essex ¹	20,585	72	22	2	24	858	3	2,244,345	109	27
Lasalle	24,007	366	25	3	28	857	10	2,891,958	120	30
Leamington	27,916	106	32	3	35	798	9	3,152,954	113	35
Lindsay ¹	23,116	91	25	8	33	700	17	3,254,637	141	33
Midland	15,672	721	22	3	25	627	9	2,489,290	159	26
Nishnawbe-Aski ⁴	18,175	8	90	-	90	202	15	9,018,875	496	86
Orangeville	23,844	1,695	24	4	28	852	17	3,338,171	140	31
Owen Sound	21,457	906	32	4	36	596	19	3,420,151	159	35
Quinte West	43,915	87	46	8	54	813	12	5,115,439	116	53
St. Thomas	34,399	1,068	45	7	52	662	13	4,437,459	129	54
Stratford	30,439	1,497	40	4	44	692	14	4,794,425	158	48
Strathroy ¹	19,286	71	22	1	23	839	7	2,034,335	105	23
Timmins	47,796	16	65	3	68	703	25	7,442,630	156	72
Caledon (OPP) ⁵	45,327	66	25	23	48	944	5	4,093,942	90	50
Collingwood (OPP) ⁵	16,694	497	18	3	21	795	2	1,868,053	112	22
Kingsville (OPP) ^{1,5}	19,562	80	16	4	20	978	1	1,704,528	87	20
Lakeshore (OPP) ^{1,5}	28,400	54	22	3	25	1,136	1	2,161,504	76	25
Orillia (OPP) ⁵	29,669	1,039	19	19	38	781	4	3,220,686	109	39
South Frontenac (OPP) ³	16,379	17	11	3	14	1,170	2	1,237,165	76	14
Tecumseh (OPP) ^{1,5}	26,497	221	15	3	18	1,472	1	1,479,184	56	18

¹ Police force enlarged its jurisdiction in 1999, therefore comparisons with 1998 crime data are not presented.

² Crime data were only available for nine months for 1999, therefore year over year comparisons are not presented.

³ Police force opened in 1999.

⁴ Crime data were available for less than six months of 1998, therefore year-over-year comparisons with 1999 crime data are not presented.

⁵ Crime data were not available for 1998, therefore year-over-year comparisons with 1999 crime data are not presented.

- nil or zero

... figures not available

... figures not appropriate or not applicable

Ontario

1999 Crime											
Violent Crime			Property Crime			Total Criminal Code (C.C.)			% Change in C.C. Rate 1998-1999	C.C. Incidents per Officer for 1999	Police Force
Number	Rate	Clear. Rate	Number	Rate	Clear. Rate	Number	Rate	Clear. Rate			
		%			%				%		
Population (100,000+)											
939	836	81	4,763	4,241	20	9,411	8,380	34	...	67 Chatham-Kent ¹	
3,145	626	83	13,969	2,779	24	25,549	5,082	40	-8	45 Durham Regional	
481	455	76	3,495	3,309	18	5,832	5,522	26	-10	46 Guelph	
1,691	458	78	8,554	2,319	31	14,583	3,953	39	-5	35 Halton Regional	
5,845	1,184	72	22,244	4,504	16	38,871	7,871	33	-5	56 Hamilton-Wentworth Regional	
764	672	75	6,154	5,415	20	10,018	8,815	27	...	71 Kingston ¹	
2,786	819	80	18,176	5,343	27	28,202	8,290	36	2	67 London	
2,599	616	78	17,027	4,038	20	28,804	6,830	31	-9	51 Niagara Regional	
5,609	740	62	31,211	4,117	12	50,159	6,616	23	-19	51 Ottawa-Carleton Regional ¹	
5,048	539	80	22,986	2,453	34	37,313	3,983	44	-9	31 Peel Regional	
1,510	923	81	5,870	3,590	21	10,445	6,387	40	-9	45 Sudbury Regional	
1,849	1,534	93	4,932	4,092	32	10,730	8,902	56	...	51 Thunder Bay ^{1,2}	
26,311	1,040	63	93,058	3,679	23	162,726	6,434	38	-10	33 Toronto	
2,931	669	81	17,683	4,034	19	27,900	6,365	29	-7	53 Waterloo Regional	
1,835	885	80	8,636	4,165	20	15,988	7,710	37	-14	39 Windsor	
3,669	532	65	18,617	2,699	21	29,337	4,253	28	4	37 York Regional	
917	850	78	4,023	3,729	24	8,103	7,510	36	..	61 Haldimand Norfolk (OPP) ³	
Population (50,000 - 99,999)											
1,161	1,246	69	4,400	4,722	33	9,200	9,874	42	-4	83 Barrie	
900	1,022	73	4,190	4,760	18	7,490	8,508	32	-1	60 Brantford	
505	885	100	2,716	4,761	36	4,485	7,862	50	13	52 North Bay	
397	658	91	2,214	3,671	24	4,359	7,227	33	..	58 Oxford Community ³	
710	956	90	2,832	3,812	34	5,091	6,852	47	...	50 Peterborough Lakefield ¹	
687	930	77	2,304	3,121	26	5,476	7,417	39	...	51 Sarnia ¹	
1,030	1,289	83	3,275	4,099	35	7,603	9,516	51	-24	60 Sault Ste. Marie	
286	572	87	1,015	2,029	18	1,862	3,722	34	-12	35 South Simcoe	
347	655	77	1,091	2,058	27	2,566	4,841	39	...	56 New Tecumseth (OPP) ¹	
Population (15,000 - 49,999)											
107	511	92	333	1,592	21	877	4,192	34	-33	32 Amherstburg ¹	
719	1,553	83	2,714	5,861	26	5,657	12,216	43	-9	74 Belleville	
289	1,328	93	1,192	5,478	36	2,786	12,803	47	-18	66 Brockville	
202	1,187	119	633	3,720	64	1,471	8,645	77	-18	59 Cobourg	
663	1,386	86	2,144	4,483	33	4,537	9,486	52	-3	59 Cornwall	
89	432	60	403	1,958	31	778	3,779	32	...	32 Essex ¹	
73	304	82	337	1,404	20	622	2,591	32	-25	22 Lasalle	
197	706	85	630	2,257	64	1,591	5,699	72	-22	45 Leamington	
446	1,929	82	1,444	6,247	38	3,489	15,093	54	...	106 Lindsay ¹	
326	2,080	75	1,140	7,274	37	2,192	13,987	43	-2	88 Midland	
1,017	5,596	91	960	5,282	67	5,035	27,703	87	...	56 Nishnawbe-Aski ⁴	
223	935	83	808	3,389	32	1,858	7,792	47	-3	66 Orangeville	
265	1,235	57	996	4,642	29	2,202	10,262	36	0	61 Owen Sound	
359	817	83	1,420	3,234	24	2,856	6,503	40	-6	53 Quinte West	
452	1,314	86	1,617	4,701	30	3,567	10,369	45	6	69 St. Thomas	
263	864	83	1,042	3,423	22	1,838	6,038	41	-8	42 Stratford	
117	607	92	658	3,412	31	1,196	6,201	41	...	52 Strathroy ¹	
470	983	81	1,875	3,923	32	3,749	7,844	48	4	55 Timmins	
163	360	69	963	2,125	33	1,662	3,667	39	..	35 Caledon (OPP) ⁵	
244	1,462	84	1,143	6,847	23	2,584	15,479	33	..	123 Collingwood (OPP) ⁵	
96	491	84	408	2,086	25	1,005	5,138	37	..	50 Kingsville (OPP) ^{1,5}	
82	289	79	360	1,268	26	722	2,542	41	..	29 Lakeshore (OPP) ^{1,5}	
507	1,709	79	1,923	6,482	26	3,940	13,280	43	..	104 Orillia (OPP) ⁵	
74	452	77	535	3,266	14	917	5,599	28	..	66 South Frontenac (OPP) ³	
102	385	97	543	2,049	28	1,033	3,899	43	..	57 Tecumseh (OPP) ^{1,5}	

Police resources in Canada, 2000

Ontario

Police Force	1999 Police Resources & Population								2000	
	Population	Population density	Police Officers			Population per Police Officer	Other Personnel	Operating Expenditures	Per Capita Costs	Police Officers
			Male	Female	Total					
							\$	\$		
Population (5,000 - 14,999)										
Akwesasne Mohawk	7,661	194	23	-	23	333	8	2,365,577	309	24
Anishinabek ¹	9,331	1,148	54	4	58	161	21	6,291,042	674	57
Aylmer	7,713	1,318	11	1	12	643	2	1,029,665	133	13
Carleton Place	9,051	1,240	13	2	15	603	5	1,630,683	180	15
Dryden	8,612	129	16	1	17	507	8	1,873,814	218	17
Elliot Lake (Twp.)	13,354	18	18	2	20	668	12	2,155,850	161	20
Espanola	5,560	315	8	1	9	618	6	997,626	179	9
Fergus ^{1,2}	9,700	1,342	9	2	11	882	2
Gananoque	5,178	575	9	2	11	471	6	1,029,526	199	11
Ingersoll	10,318	1,011	14	2	16	645	14	1,521,923	148	15
Kenora	10,407	679	25	2	27	385	16	2,423,195	233	27
Listowel ^{1,2}	5,600	905	7	1	8	700	9
Meaford-Thornbury	6,633	597	11	2	13	510	10	1,066,070	161	13
Paris	9,371	687	14	1	15	625	12	1,318,071	141	14
Pembroke	14,464	944	20	2	22	657	13	2,470,331	171	27
Perth	6,009	655	12	1	13	462	14	1,432,286	238	14
Port Hope	12,102	931	20	2	22	550	21	2,071,200	171	22
Renfrew	8,219	671	12	2	14	587	3	1,300,122	158	13
Saugeen Shores	12,261	72	15	3	18	681	2	1,507,499	123	18
Six Nations	10,448	56	19	1	20	522	8	2,112,000	202	21
Smiths Falls	8,874	1,082	18	2	20	444	8	1,887,454	213	20
South Bruce Grey	12,093	938	18	1	19	636	13	1,892,122	156	20
Stirling - Rawdon ³	5,024	18	3	-	3	1,675	-	685,786	137	7
Tillsonburg	14,214	646	20	1	21	677	17	2,442,565	172	22
West Nipissing ⁴	6,348	1,096	8	1	9	705	7	834,190	131	17
Arnprior (OPP) ⁵	7,463	548	9	3	12	622	-	1,020,244	137	12
Bath/Burg/Sherbrooke (OPP) ⁶	5,474	10	4	1	5	1,095	-	332,859	61	5
Cavan/Millb/N.Monaghan (OPP) ⁶	8,525	28	7	2	9	947	1	818,057	96	9
Cochrane (OPP) ⁶	9,753	606	7	2	9	1,084	2	821,567	84	9
Douro-Dummer (OPP) ⁶	7,137	15	4	-	4	1,784	1	404,852	57	4
Drummond-N. Elmsley (OPP) ⁶	6,509	18	4	1	5	1,302	1	430,845	66	5
E. Nipissing Gr Of 3 (OPP) ⁶	7,014	12	5	1	6	1,169	-	515,635	74	6
Fort Frances (OPP) ⁵	8,846	340	16	5	21	421	-	1,698,684	192	21
Goderich (OPP) ⁵	7,715	1,107	8	5	13	593	1	1,060,969	138	13
Hawkesbury (OPP) ⁶	10,382	1,192	15	2	17	611	5	1,633,571	157	17
Kapuskasing (OPP) ⁵	9,901	118	8	3	11	900	-	869,601	88	10
Kincardine (OPP) ⁵	6,667	650	8	4	12	556	-	1,247,994	187	16
Kirkland Lake (OPP) ⁵	9,727	36	12	6	18	540	2	1,506,291	155	19
Mississippi Mills (OPP) ⁶	11,865	23	6	2	8	1,483	1	713,809	60	8
Mono (OPP) ⁶	6,990	25	6	1	7	999	1	679,932	97	7
Moore (OPP) ^{5,7}	11,038	35	11	-	11	1,003	-	907,527	82	..
Otonabee/S. Monaghan (OPP) ⁶	6,947	20	6	2	8	868	1	712,460	103	8
Penetanguishene (OPP) ⁵	7,699	612	5	4	9	855	-	677,431	88	9
Petrolia (OPP) ^{5,7}	5,161	451	5	1	6	860	-	487,843	95	..
Rideau Lakes (OPP) ⁶	10,050	14	10	1	11	914	1	839,054	83	11
Smith/Ennismore (OPP) ⁶	14,185	44	10	2	12	1,182	1	1,119,617	79	12
St. Marys (OPP) ⁵	6,360	524	8	2	10	636	-	804,405	126	9
Stone Mills (OPP) ⁶	7,594	11	6	-	6	1,266	-	526,450	69	6

¹ Crime data were not available for 1999.
² Police force closed mid 1999 therefore expenditures are not presented.
³ Police force enlarged its jurisdiction in 1999, therefore comparisons with 1998 crime data are not presented.
⁴ Police force enlarged its jurisdiction in 2000, therefore comparisons with previous years should be done with caution.
⁵ Crime data were not available for 1998, therefore year-over-year comparisons with 1999 crime data are not presented.
⁶ Police force opened in 1999.
⁷ Police force closed late 1999.
 - nil or zero
 .. figures not available
 ... figures not appropriate or not applicable

Ontario

1999 Crime											
Violent Crime			Property Crime			Total Criminal Code (C.C.)			% Change in C.C. Rate 1998-1999	C.C. Incidents per Officer for 1999	Police Force
Number	Rate	Clear. Rate	Number	Rate	Clear. Rate	Number	Rate	Clear. Rate			
		%			%			%			
										Population (5,000 - 14,999)	
46	600	78	68	888	37	282	3,681	66	-8	12 Akwesasne Mohawk	
.. Anishinabek ¹	
88	1,141	88	228	2,956	29	596	7,727	42	-16	50 Aylmer	
180	1,989	87	426	4,707	33	1,132	12,507	47	13	75 Carleton Place	
97	1,126	70	376	4,366	24	828	9,614	33	-16	49 Dryden	
159	1,191	83	541	4,051	37	1,321	9,892	53	-15	66 Elliot Lake (Twp.)	
65	1,169	92	208	3,741	34	511	9,191	44	-17	57 Espanola	
.. Fergus ^{1,2}	
63	1,217	86	234	4,519	24	550	10,622	40	5	50 Gananoque	
89	863	94	307	2,975	35	702	6,804	51	-12	44 Ingersoll	
326	3,133	60	745	7,159	38	2,144	20,602	46	5	79 Kenora	
.. Listowel ^{1,2}	
47	709	98	180	2,714	42	352	5,307	57	-19	27 Meaford-Thornbury	
35	373	80	297	3,169	39	549	5,858	54	33	37 Paris	
178	1,231	71	751	5,192	36	1,464	10,122	46	-9	67 Pembroke	
69	1,148	71	330	5,492	32	763	12,698	41	-20	59 Perth	
91	752	93	480	3,966	36	917	7,577	53	-11	42 Port Hope	
71	864	86	247	3,005	37	603	7,337	47	-4	43 Renfrew	
66	538	88	382	3,116	34	719	5,864	48	-19	40 Saugeneen Shores	
151	1,445	74	247	2,364	20	795	7,609	43	-9	40 Six Nations	
130	1,465	85	649	7,314	29	1,242	13,996	41	-21	62 Smiths Falls	
99	819	85	390	3,225	41	837	6,921	47	-8	44 South Bruce Grey	
22	438	91	107	2,130	38	208	4,140	48	..	69 Stirling – Rawdon ³	
116	816	59	684	4,812	19	1,148	8,077	28	-2	55 Tillsonburg	
116	1,827	97	361	5,687	37	730	11,500	63	-1	81 West Nipissing ⁴	
92	1,233	109	276	3,698	47	700	9,380	56	..	58 Arnprior (OPP) ⁵	
14	256	79	95	1,735	11	154	2,813	24	..	31 Bath/Burg/Sherbrooke (OPP) ⁶	
105	1,232	73	194	2,276	27	773	9,067	23	..	86 Cavan/Millb/N.Monaghan (OPP) ⁶	
118	1,210	84	179	1,835	47	525	5,383	63	..	58 Cochrane (OPP) ⁶	
25	350	88	94	1,317	21	185	2,592	39	..	46 Douro-Dummer (OPP) ⁶	
31	476	77	104	1,598	22	207	3,180	41	..	41 Drummond-N. Elmsley (OPP) ⁶	
57	813	91	124	1,768	24	290	4,135	46	..	48 E. Nipissing Gr Of 3 (OPP) ⁶	
145	1,639	88	438	4,951	38	1,105	12,492	50	..	53 Fort Frances (OPP) ⁵	
86	1,115	97	301	3,901	44	724	9,384	58	..	56 Goderich (OPP) ⁵	
157	1,512	80	545	5,249	28	1,215	11,703	39	..	71 Hawkesbury (OPP) ⁶	
110	1,111	92	288	2,909	55	711	7,181	67	..	65 Kapuskasing (OPP) ⁵	
69	1,035	101	290	4,350	46	638	9,570	50	..	53 Kincardine (OPP) ⁵	
196	2,015	92	579	5,953	49	1,428	14,681	64	..	79 Kirkland Lake (OPP) ⁵	
68	573	74	265	2,233	24	587	4,947	35	..	73 Mississippi Mills (OPP) ⁶	
18	258	83	173	2,475	20	311	4,449	31	..	44 Mono (OPP) ⁶	
62	562	74	219	1,984	45	518	4,693	49	..	47 Moore (OPP) ^{5,7}	
31	446	94	174	2,505	28	312	4,491	35	..	39 Otonabee/S. Monaghan (OPP) ⁶	
111	1,442	68	388	5,040	37	812	10,547	44	..	90 Penetanguishene (OPP) ⁵	
32	620	75	134	2,596	25	281	5,445	37	..	47 Petrolia (OPP) ^{5,7}	
45	448	91	289	2,876	26	536	5,333	42	..	49 Rideau Lakes (OPP) ⁶	
53	374	79	249	1,755	25	498	3,511	43	..	42 Smith/Ennismore (OPP) ⁶	
51	802	84	210	3,302	23	484	7,610	36	..	48 St. Marys (OPP) ⁵	
22	290	91	148	1,949	24	268	3,529	37	..	45 Stone Mills (OPP) ⁶	

Police resources in Canada, 2000

Ontario

Police Force	1999 Police Resources & Population								2000	
	Population	Population density	Police Officers			Population per Police Officer	Other Personnel	Operating Expenditures	Per Capita Costs	Police Officers
			Male	Female	Total					
							\$	\$		
Population (<5,000)										
Atikokan (Twp.)	4,073	12	9	1	10	407	2	921,293	226	11
Deep River	4,470	88	6	1	7	639	2	574,701	129	7
Deseronto	1,806	676	4	1	5	361	1	433,528	240	5
Durham	2,698	584	5	-	5	540	-	337,029	125	5
Harriston ^{1,2}	2,100	619	3	1	4	525	-
Lac Seul	725	2	5	1	6	121	11	564,293	778	6
Michipicoten (Twp.)	4,171	10	8	1	9	463	2	938,391	225	9
New Liskeard	4,994	778	7	-	7	713	8	863,424	173	8
North Glengarry ³	3,599	803	6	-	6	600	5	768,451	214	..
Palmerston ^{1,2}	2,600	897	4	1	5	520	-
Point Edward ^{1,2}	2,300	653	5	1	6	383	2
Prescott	4,423	1,081	10	-	10	442	6	1,057,806	239	11
Red Rock (Twp)	1,159	11	4	-	4	290	-	297,617	257	3
Shelburne	3,971	1,026	7	-	7	567	4	630,611	159	7
Terrace Bay (Twp.)	2,246	15	7	-	7	321	1	660,807	294	7
U.C.C.M. Anishnaabe	1,870	13	9	3	12	156	3	1,225,965	656	13
Wikwemikong ⁴	2,802	7	8	2	10	280	2	1,036,750	370	10
Wingham	2,918	1,201	6	-	6	486	2	516,684	177	6
Asphodel-Norwood (OPP) ⁵	4,247	26	4	1	5	849	-	444,485	105	5
Blind River (OPP) ⁵	3,038	230	8	-	8	380	1	635,465	209	8
Brighton Town (OPP) ⁵	4,810	393	5	1	6	802	-	500,894	104	6
Brighton Twp (OPP) ⁵	4,758	23	5	-	5	952	-	414,364	87	5
Clinton (OPP) ⁶	3,264	800	5	1	6	544	-	409,360	125	6
Dymond (OPP) ⁵	1,271	16	2	1	3	424	-	217,828	171	2
East Perth (OPP) ⁶	1,603	901	2	-	2	802	-	119,505	75	2
Exeter (OPP) ⁶	4,602	945	3	3	6	767	-	521,866	113	5
Harvey/Gala/Caven. (OPP) ⁵	4,815	5	8	2	10	482	1	897,382	186	10
Havelock/Bel/Methuen (OPP) ⁵	4,558	8	3	1	4	1,140	1	404,908	89	4
Ignace (OPP) ⁵	1,705	23	2	1	3	568	-	307,665	180	3
Jaffray Melick (OPP) ⁵	4,395	20	4	1	5	879	-	422,354	96	5
Keewatin (OPP) ⁵	2,071	147	3	1	4	518	-	298,540	144	3
Kemptville (OPP) ⁶	3,587	1,446	5	1	6	598	-	497,172	139	6
Marathon (OPP) ⁶	4,644	29	9	2	11	422	1	708,378	153	9
Mattawa Group Of Four (OPP) ⁵	3,811	4	6	1	7	544	1	662,934	174	7
Merrickville (OPP) ⁵	2,706	13	3	-	3	902	1	232,686	86	3
Mnjikaning (OPP) ⁶	492	46	6	2	8	62	-	671,036	1,364	8
Montague (OPP) ⁵	3,869	14	3	1	4	967	-	309,954	80	3
N. Parry Sound Gr Of 2 (OPP) ⁵	3,202	5	1	1	2	1,601	1	227,810	71	2
N.Kawartha (OPP) ⁵	2,222	3	3	-	3	741	-	257,090	116	3
North Shore (OPP) ⁵	637	3	-	1	1	637	-	118,645	186	1
Powassan (OPP) ⁵	1,117	463	2	-	2	559	-	145,925	131	1
Red Lake (OPP) ⁵	2,308	20	12	2	14	165	1	1,250,529	542	13
Seaforth (OPP) ⁶	2,304	922	5	-	5	461	-	362,461	157	5
Shedden (OPP) ⁵	876	8	2	-	2	438	-	143,388	164	1
Shuniah (OPP) ⁵	2,447	4	2	1	3	816	-	270,614	111	3
Sioux Narrows (OPP) ⁵	454	6	1	-	1	454	-	126,073	278	1
Smooth Rock Falls (OPP) ⁵	1,935	9	2	-	2	968	1	195,273	101	2
Temagami (OPP) ⁵	813	3	3	-	3	271	1	287,467	354	3
Thessalon (OPP) ⁵	1,447	330	2	1	3	482	-	263,393	182	3
West Perth (OPP) ⁶	3,914	717	4	1	5	783	-	404,884	103	5
Warton (OPP) ⁶	2,437	445	2	1	3	812	-	222,084	91	3

¹ Crime data were not available for 1999.

² Police force closed mid 1999, therefore expenditures are not presented.

³ Police force closed early 2000.

⁴ Crime data were not available for December 1999, therefore data from December 1998 were substituted.

⁵ Police force opened in 1999.

⁶ Crime data were not available for 1998, therefore year-over-year comparisons with 1999 crime data are not presented.

- nil or zero

... figures not available

... figures not appropriate or not applicable

Ontario

1999 Crime											
Violent Crime			Property Crime			Total Criminal Code (C.C.)			% Change in C.C. Rate 1998-1999	C.C. Incidents per Officer for 1999	Police Force
Number	Rate	Clear. Rate	Number	Rate	Clear. Rate	Number	Rate	Clear. Rate			
		%			%			%	%		
Population (<5,000)											
52	1,277	75	162	3,977	36	321	7,881	42	-12	32	Atikokan (Twp.)
12	268	92	117	2,617	23	186	4,161	35	18	27	Deep River
59	3,267	90	116	6,423	34	351	19,435	66	7	70	Deseronto
9	334	100	25	927	92	61	2,261	93	-17	12	Durham
..	Harriston ^{1,2}
84	11,586	94	71	9,793	72	271	37,379	89	-23	45	Lac Seul
74	1,774	99	210	5,035	42	526	12,611	54	-8	58	Michipicoten (Twp.)
47	941	100	267	5,346	31	423	8,470	41	18	60	New Liskeard
38	1,056	63	108	3,001	41	217	6,029	58	-20	36	North Glengarry ³
..	Palmerston ^{1,2}
..	Point Edward ^{1,2}
61	1,379	90	138	3,120	27	281	6,353	44	-5	28	Prescott
4	345	100	19	1,639	37	36	3,106	50	-11	9	Red Rock (Twp)
74	1,864	95	235	5,918	66	667	16,797	81	24	95	Shelburne
13	579	77	61	2,716	28	122	5,432	32	3	17	Terrace Bay (Twp.)
95	5,080	88	147	7,861	29	433	23,155	63	3	36	U.C.C.M. Anishnaabe
139	4,961	83	201	7,173	24	541	19,308	50	-3	54	Wikwemikong ⁴
42	1,439	95	125	4,284	54	223	7,642	60	-5	37	Wingham
32	753	91	103	2,425	23	238	5,604	35	..	48	Asphodel-Norwood (OPP) ⁵
93	3,061	69	251	8,262	31	601	19,783	44	..	75	Blind River (OPP) ⁵
46	956	72	227	4,719	34	439	9,127	45	..	73	Brighton Town (OPP) ⁵
42	883	69	128	2,690	25	294	6,179	37	..	59	Brighton Twp (OPP) ⁵
34	1,042	79	161	4,933	30	322	9,865	40	..	54	Clinton (OPP) ⁶
16	1,259	88	84	6,609	38	143	11,251	42	..	48	Dymond (OPP) ⁵
10	624	60	15	936	7	56	3,493	30	..	28	East Perth (OPP) ⁶
60	1,304	72	163	3,542	26	386	8,388	45	..	64	Exeter (OPP) ⁶
31	644	71	153	3,178	14	262	5,441	24	..	26	Harvey/Gala/Caven. (OPP) ⁵
23	505	91	53	1,163	21	158	3,466	46	..	40	Havelock/Bel/Methuen (OPP) ⁵
23	1,349	87	80	4,692	46	163	9,560	58	..	54	Ignace (OPP) ⁵
50	1,138	82	88	2,002	25	236	5,370	53	..	47	Jaffray Melick (OPP) ⁵
14	676	107	57	2,752	32	124	5,987	52	..	31	Keewatin (OPP) ⁵
47	1,310	77	151	4,210	31	380	10,594	47	..	63	Kemptville (OPP) ⁵
56	1,206	89	128	2,756	51	345	7,429	67	..	31	Marathon (OPP) ⁶
58	1,522	140	173	4,539	29	366	9,604	58	..	52	Mattawa Group Of Four (OPP) ⁵
8	296	63	45	1,663	38	101	3,732	49	..	34	Merrickville (OPP) ⁵
47	9,553	87	147	29,878	44	738	150,000	35	..	92	Mnjikaning (OPP) ⁶
9	233	89	85	2,197	22	137	3,541	34	..	34	Montague (OPP) ⁵
7	219	243	44	1,374	25	75	2,342	59	..	38	N. Parry Sound Gr Of 2 (OPP) ⁵
2	90	100	49	2,205	14	52	2,340	19	..	17	N.Kawartha (OPP) ⁵
2	314	100	23	3,611	70	40	6,279	60	..	40	North Shore (OPP) ⁵
13	1,164	77	28	2,507	21	61	5,461	48	..	31	Powassan (OPP) ⁵
103	4,463	95	174	7,539	60	668	28,943	71	..	48	Red Lake (OPP) ⁵
17	738	94	108	4,688	25	175	7,595	34	..	35	Seaforth (OPP) ⁶
15	1,712	80	55	6,279	16	116	13,242	42	..	58	Shedden (OPP) ⁵
12	490	92	99	4,046	32	156	6,375	42	..	52	Shuniah (OPP) ⁵
3	661	100	21	4,626	43	54	11,894	59	..	54	Sioux Narrows (OPP) ⁵
9	465	33	52	2,687	29	86	4,444	28	..	43	Smooth Rock Falls (OPP) ⁵
5	615	80	102	12,546	71	145	17,835	67	..	48	Temagami (OPP) ⁵
18	1,244	56	48	3,317	46	124	8,569	60	..	41	Thessalon (OPP) ⁵
43	1,099	84	122	3,117	34	264	6,745	48	..	53	West Perth (OPP) ⁶
33	1,354	94	84	3,447	54	184	7,550	65	..	61	Warton (OPP) ⁶

Police resources in Canada, 2000

Manitoba

Police Force	1999 Police Resources & Population								2000	
	Population	Population density	Police Officers			Population per Police Officer	Other Personnel	Operating Expenditures	Per Capita Costs	Police Officers
			Male	Female	Total					
								\$	\$	
Population (100,000+)										
Winnipeg ¹	628,088	1,353	1,053	138	1,191	527	287	109,536,410	174	1,171
Population (15,000 - 49,999)										
Brandon	40,051	535	67	4	71	564	21	5,698,890	142	64
Population (5,000 - 14,999)										
East St.Paul	7,104	161	7	-	7	1,015	1	524,000	74	8
Morden	6,069	488	5	1	6	1,012	1	337,651	56	6
Winkler	7,957	487	7	1	8	995	-	459,613	58	5
Dauphin (RCMP)	8,336	698	10	1	11	758	-	862,015	103	14
Flin Flon (RCMP)	6,551	389	8	2	10	655	-	668,188	102	8
Portage La Prairie (RCMP)	13,364	556	17	5	22	607	-	1,502,652	112	23
Selkirk (RCMP)	10,335	418	13	3	16	646	-	975,117	94	14
Steinbach (RCMP)	8,788	348	8	-	8	1,099	-	543,696	62	8
The Pas (RCMP)	5,849	206	12	1	13	450	-	1,045,872	179	15
Thompson (RCMP)	14,087	836	29	9	38	371	-	2,212,512	157	36
Population (<5,000)										
Altona	3,489	933	5	-	5	698	1	362,854	104	5
Dakota Ojibway	2,852	28	14	1	15	190	6	1,689,104	592	15
Rivers	1,141	147	3	-	3	380	-	132,142	116	3
Ste. Anne ²	1,546	404	2	-	2	773	-	194,335	126	3
Beausejour (RCMP)	2,722	521	2	-	2	1,361	-	147,245	54	3
Boissevan (RCMP)	1,598	617	2	-	2	799	-	125,566	79	2
Carman (RCMP)	2,811	676	2	1	3	937	-	200,119	71	3
Gillam (RCMP)	1,262	1	3	1	4	316	-	225,575	179	4
Gimli (RCMP)	1,596	654	2	1	3	532	-	201,855	126	4
Killarney (RCMP)	2,261	457	3	-	3	754	-	202,790	90	3
Leaf Rapids (RCMP)	1,354	1	4	1	5	271	-	264,422	195	5
Minnedosa (RCMP)	2,431	164	3	1	4	608	-	254,420	105	4
Neepawa, Man. (RCMP)	3,386	200	3	1	4	847	-	259,414	77	4
Pinawa (RCMP)	1,634	13	2	-	2	817	-	109,746	67	2
Roblin (RCMP)	1,934	871	2	-	2	967	-	136,321	70	2
Russell (RCMP)	1,615	542	1	1	2	808	-	140,364	87	2
Souris (RCMP)	1,584	644	1	1	2	792	-	135,184	85	2
Stonewall (RCMP)	4,193	683	2	1	3	1,398	-	203,123	48	3
Swan River (RCMP)	4,102	627	7	1	8	513	-	492,812	120	7
Virден (RCMP)	3,010	1,099	3	-	3	1,003	-	270,979	90	4

¹ Police officer counts for 1999 and 2000 include 24 officers deployed to contract positions.

² Crime data were not available for 1998, therefore year-over-year comparisons with 1999 crime data are not presented.

- nil or zero

-- amount too small to express

... figures not available

... figures not appropriate or not applicable

Note for the RCMP municipal contracts: Expenditures include only the cost billed to the municipality and not the total cost of the contract, nor any additional policing costs. Civilian employees provided by the municipality are not included under "Other Personnel".

Manitoba

1999 Crime											Police Force
Violent Crime			Property Crime			Total Criminal Code (C.C.)			% Change in C.C. Rate 1998-1999	C.C. Incidents per Officer for 1999	
Number	Rate	Clear. Rate	Number	Rate	Clear. Rate	Number	Rate	Clear. Rate			
		%			%			%	%		
8,164	1,300	61	36,827	5,863	16	64,108	10,207	25	-2	54	Population (100,000+) Winnipeg ¹
486	1,213	85	2,764	6,901	28	5,283	13,191	44	11	74	Population (15,000 - 49,999) Brandon
19	267	58	178	2,506	15	389	5,476	24	37	56	Population (5,000 - 14,999) East St. Paul
56	923	80	319	5,256	31	542	8,931	45	18	90	Morden
37	465	81	417	5,241	60	651	8,181	62	4	81	Winkler
137	1,643	79	772	9,261	21	1,596	19,146	32	9	145	Dauphin (RCMP)
88	1,343	80	168	2,564	30	567	8,655	55	-15	57	Flin Flon (RCMP)
495	3,704	65	1,205	9,017	30	3,141	23,503	42	4	143	Portage La Prairie (RCMP)
211	2,042	49	582	5,631	22	1,567	15,162	28	-6	98	Selkirk (RCMP)
64	728	88	401	4,563	30	703	8,000	37	-6	88	Steinbach (RCMP)
291	4,975	71	488	8,343	39	1,521	26,004	53	-3	117	The Pas (RCMP)
634	4,501	72	997	7,077	51	3,899	27,678	59	9	103	Thompson (RCMP)
16	459	75	112	3,210	49	216	6,191	44	-22	43	Population (<5,000) Altona
275	9,642	76	200	7,013	25	730	25,596	56	-	49	Dakota Ojibway
21	1,840	100	56	4,908	80	159	13,935	69	21	53	Rivers
18	1,164	89	38	2,458	42	100	6,468	42	..	50	Ste. Anne ²
30	1,102	93	123	4,519	16	309	11,352	27	1	155	Beausejour (RCMP)
6	375	67	42	2,628	29	117	7,322	50	-13	59	Boissevan (RCMP)
20	711	25	97	3,451	10	234	8,324	16	-5	78	Carman (RCMP)
79	6,260	76	45	3,566	33	256	20,285	64	27	64	Gillam (RCMP)
23	1,441	61	57	3,571	33	169	10,589	42	-4	56	Gimli (RCMP)
8	354	75	72	3,184	19	158	6,988	35	13	53	Killarney (RCMP)
16	1,182	81	59	4,357	36	178	13,146	54	-18	36	Leaf Rapids (RCMP)
23	946	65	109	4,484	16	251	10,325	27	9	63	Minnedosa (RCMP)
44	1,299	61	133	3,928	26	333	9,835	30	-7	83	Neepawa, Man. (RCMP)
6	367	117	44	2,693	11	88	5,386	24	1	44	Pinawa (RCMP)
20	1,034	55	42	2,172	14	156	8,066	34	-20	78	Roblin (RCMP)
20	1,238	70	74	4,582	39	224	13,870	49	7	112	Russell (RCMP)
14	884	107	49	3,093	88	104	6,566	92	4	52	Souris (RCMP)
19	453	79	78	1,860	40	190	4,531	37	-25	63	Stonewall (RCMP)
93	2,267	60	374	9,118	27	704	17,162	34	15	88	Swan River (RCMP)
31	1,030	100	147	4,884	29	319	10,598	38	41	106	Virten (RCMP)

Police resources in Canada, 2000

Saskatchewan

Police Force	1999 Police Resources & Population									2000
	Population	Population density	Police Officers			Population per Police Officer	Other Personnel	Operating Expenditures	Per Capita Costs	Police Officers
			Male	Female	Total					
								\$	\$	
Population (100,000+)										
Regina	186,543	1,635	273	40	313	596	118	33,610,040	180	311
Saskatoon	205,931	1,505	281	31	312	660	117	31,891,038	155	311
Population (15,000 - 49,999)										
Moose Jaw	34,066	730	53	3	56	608	26	4,977,513	146	56
Prince Albert	36,925	568	58	8	66	559	43	6,207,925	168	64
Lloydminster (RCMP)	21,094	511	19	4	23	917	-	1,921,300	91	25
Swift Current (RCMP)	15,759	689	17	3	20	788	-	1,198,800	76	18
Yorkton (RCMP)	15,781	663	18	4	22	717	-	1,679,692	106	22
Population (5,000 - 14,999)										
Estevan	11,647	659	16	1	17	685	6	1,492,665	128	17
Weyburn	10,298	733	16	1	17	606	5	1,315,337	128	17
Humboldt (RCMP)	5,350	449	5	-	5	1,070	-	312,787	58	5
Meadow Lake (RCMP)	5,544	712	7	2	9	616	-	633,598	114	10
Melfort (RCMP)	6,199	423	6	-	6	1,033	-	435,238	70	6
North Battleford (RCMP)	14,720	415	20	5	25	589	-	1,536,570	104	26
Population (<5,000)										
Caronport	1,374	590	1	-	1	1,374	-	38,247	28	1
Churchbridge ^{1,2}	787	304	1	-	1	787	-
Cudworth	792	285	2	-	2	396	-	82,410	104	2
Dalmeny	1,518	620	2	-	2	759	-	148,572	98	3
Langham	1,070	268	5	-	5	214	1	321,946	301	6
Luseland	616	411	1	-	1	616	1	93,499	152	1
Macklin ¹	1,461	481	1	-	1	1,461	1	84,426	58	..
Stoughton ³	738	417	1	-	1	738	-	71,000	96	1
Watson	850	318	2	-	2	425	1	80,683	95	1
Yellow Grass ^{2,4}	469	181	1	-	1	469	-	48,546	104	1
Assiniboia (RCMP)	2,673	764	4	-	4	668	-	174,450	65	2
Battleford (RCMP)	4,005	180	4	1	5	801	-	310,092	77	5
Biggar (RCMP)	2,436	157	3	-	3	812	-	193,548	79	3
Canora (RCMP)	2,171	305	2	1	3	724	-	197,751	91	3
Creighton (RCMP)	1,732	122	2	1	3	577	-	147,501	85	3
Esterhazy (RCMP)	2,584	527	2	1	3	861	-	198,009	77	3
Fort Qu'Appelle (RCMP)	2,043	421	3	1	4	511	-	271,978	133	3
Hudson Bay (RCMP)	1,988	116	3	-	3	663	-	165,706	83	3
Indian Head (RCMP)	1,855	559	1	1	2	928	-	134,221	72	3
Kamsack (RCMP)	2,299	396	5	-	5	460	-	305,593	133	5
Kindersley (RCMP)	4,999	402	4	2	6	833	-	378,900	76	6
La Ronge (RCMP)	3,239	441	6	1	7	463	1	517,442	160	8
Lanigan (RCMP)	1,369	178	2	-	2	685	-	122,795	90	2
Maple Creek (RCMP)	2,380	502	3	-	3	793	-	191,206	80	3
Melville (RCMP)	4,789	311	5	-	5	958	-	313,889	66	5
Moosomin (RCMP)	2,560	439	2	-	2	1,280	-	137,711	54	2
Nipawin (RCMP)	4,497	551	6	1	7	642	-	394,596	88	6
Outlook (RCMP)	2,163	273	2	-	2	1,082	-	126,112	58	2
Rosetown (RCMP)	2,568	256	3	-	3	856	-	186,331	73	3
Shaunavon (RCMP)	1,883	409	2	-	2	942	-	134,187	71	2
Tisdale (RCMP)	3,079	636	1	1	2	1,540	-	187,854	61	3
Unity (RCMP)	2,277	232	2	1	3	759	-	157,523	69	3
Wadena (RCMP)	1,488	510	2	-	2	744	-	119,943	81	2
Warman (RCMP)	3,054	814	2	-	2	1,527	-	121,910	40	2
Watrous (RCMP)	1,885	174	2	-	2	943	-	132,315	70	3
Wilkie (RCMP)	1,389	153	1	1	2	695	-	91,507	66	2
Wynyard (RCMP)	2,032	387	3	1	4	508	-	187,766	92	3

¹ Police force closed mid 2000.

² Expenses for 1999 and personnel for 2000 were not available, therefore 1998 expenditures and 1999 personnel were substituted.

³ Crime data were not available for 1998, therefore year-over-year comparisons with 1999 crime data are not presented.

⁴ Crime data were not available for 1999.

- nil or zero

-- amount too small to express

... figures not available

... figures not appropriate or not applicable

Note for the RCMP municipal contracts: Expenditures include only the cost billed to the municipality and not the total cost of the contract, nor any additional policing costs. Civilian employees provided by the municipality are not included under "Other Personnel".

Saskatchewan

1999 Crime											Police Force
Violent Crime			Property Crime			Total Criminal Code (C.C.)			% Change in C.C. Rate 1998-1999	C.C. Incidents per Officer for 1999	
Number	Rate	Clear. Rate	Number	Rate	Clear. Rate	Number	Rate	Clear. Rate			%
		%			%						
Population (100,000+)											
3,281	1,759	70	16,311	8,744	20	29,018	15,556	40	-	93	Regina
2,916	1,416	63	14,061	6,828	23	25,406	12,337	42	-1	81	Saskatoon
Population (15,000 - 49,999)											
436	1,280	74	2,349	6,895	25	4,574	13,427	31	15	82	Moose Jaw
628	1,701	75	2,464	6,673	36	5,151	13,950	54	-10	78	Prince Albert
333	1,579	65	1,139	5,400	33	2,848	13,501	48	-20	124	Lloydminster (RCMP)
139	882	88	625	3,966	37	1,294	8,211	51	-14	65	Swift Current (RCMP)
226	1,432	84	841	5,329	41	1,969	12,477	53	2	90	Yorkton (RCMP)
Population (5,000 - 14,999)											
78	670	67	338	2,902	23	726	6,233	35	-43	43	Estevan
83	806	58	535	5,195	39	1,258	12,216	41	-16	74	Weyburn
23	430	74	221	4,131	42	343	6,411	45	2	69	Humboldt (RCMP)
178	3,211	98	444	8,009	47	1,359	24,513	72	-8	151	Meadow Lake (RCMP)
35	565	131	269	4,339	43	533	8,598	60	-5	89	Melfort (RCMP)
556	3,777	72	1,625	11,039	37	4,693	31,882	54	-8	188	North Battleford (RCMP)
Population (<5,000)											
2	146	100	16	1,164	13	27	1,965	22	16	27	Caronport
2	254	100	16	2,033	25	39	4,956	49	-50	39	Churchbridge ^{1,2}
2	253	-	11	1,389	27	20	2,525	50	-14	10	Cudworth
5	329	100	48	3,162	25	107	7,049	50	24	54	Dalmeny
4	374	100	28	2,617	32	50	4,673	40	-13	10	Langham
1	162	100	10	1,623	-	13	2,110	15	-23	13	Luseland
6	411	83	37	2,533	76	69	4,723	78	-10	69	Macklin ¹
5	678	100	22	2,981	45	48	6,504	63	..	48	Stoughton ³
2	235	50	33	3,882	30	40	4,706	38	25	20	Watson
..	Yellow Grass ^{2,4}
15	561	73	87	3,255	16	177	6,622	29	-2	44	Assiniboia (RCMP)
46	1,149	70	132	3,296	32	389	9,713	43	22	78	Battleford (RCMP)
24	985	63	115	4,721	30	268	11,002	43	-0	89	Biggar (RCMP)
20	921	70	57	2,626	47	156	7,186	47	-9	52	Canora (RCMP)
19	1,097	84	65	3,753	51	145	8,372	70	-34	48	Creighton (RCMP)
20	774	50	66	2,554	45	179	6,927	47	1	60	Esterhazy (RCMP)
52	2,545	60	282	13,803	29	573	28,047	43	30	143	Fort Qu'appelle (RCMP)
39	1,962	97	53	2,666	30	183	9,205	63	-26	61	Hudson Bay (RCMP)
26	1,402	69	90	4,852	26	172	9,272	41	22	86	Indian Head (RCMP)
70	3,045	76	234	10,178	44	643	27,969	65	-14	129	Kamsack (RCMP)
59	1,180	78	196	3,921	40	509	10,182	48	-7	85	Kindersley (RCMP)
155	4,785	74	231	7,132	49	874	26,984	67	-23	125	La Ronge (RCMP)
9	657	33	22	1,607	23	58	4,237	43	-44	29	Lanigan (RCMP)
26	1,092	77	146	6,134	62	251	10,546	63	-7	84	Maple Creek (RCMP)
27	564	81	187	3,905	29	369	7,705	45	3	74	Melville (RCMP)
16	625	81	95	3,711	20	160	6,250	32	-32	80	Moosomin (RCMP)
76	1,690	80	256	5,693	41	598	13,298	52	-1	85	Nipawin (RCMP)
8	370	75	73	3,375	36	167	7,721	32	-13	84	Outlook (RCMP)
9	350	100	151	5,880	34	233	9,073	41	18	78	Rosetown (RCMP)
10	531	50	61	3,240	25	142	7,541	35	32	71	Shaunavon (RCMP)
28	909	75	163	5,294	57	350	11,367	66	38	175	Tisdale (RCMP)
8	351	63	73	3,206	29	162	7,115	27	39	54	Unity (RCMP)
18	1,210	94	74	4,973	70	177	11,895	75	32	89	Wadena (RCMP)
10	327	80	77	2,521	35	129	4,224	42	-32	65	Warman (RCMP)
3	159	100	86	4,562	15	127	6,737	25	27	64	Watrous (RCMP)
10	720	70	71	5,112	46	150	10,799	47	51	75	Wilkie (RCMP)
22	1,083	100	62	3,051	31	181	8,907	49	-17	45	Wynyard (RCMP)

Police resources in Canada, 2000

Alberta

Police Force	1999 Police Resources & Population								2000	
	Population	Population density	Police Officers			Population per Police Officer	Other Personnel	Operating Expenditures	Per Capita Costs	Police Officers
			Male	Female	Total					
								\$	\$	
Population (100,000+)										
Calgary	865,607	1,208	1,082	136	1,218	711	531	145,544,261	168	1,291
Edmonton	651,416	972	1,005	139	1,144	569	451	123,601,509	190	1,176
Population (50,000 - 99,999)										
Lethbridge	67,488	563	103	6	109	619	36	12,282,900	182	106
Medicine Hat	55,021	448	78	4	82	671	26	10,278,212	187	84
Red Deer (RCMP)	64,393	1,107	72	8	80	805	-	6,177,401	96	81
St. Albert (RCMP)	52,696	1,551	34	8	42	1,255	-	2,890,207	55	41
Population (15,000 - 49,999)										
Airdrie (RCMP)	19,831	943	9	4	13	1,525	-	1,010,584	51	15
Fort McMurray (RCMP)	37,561	1	35	15	50	751	-	4,073,465	108	53
Grande Prairie (RCMP)	34,821	832	31	12	43	810	-	3,602,024	103	46
Leduc (RCMP)	15,290	600	12	3	15	1,019	-	947,029	62	16
Sherwood Park (RCMP)	43,778	62	31	12	43	1,018	-	3,331,129	76	42
Spruce Grove (RCMP)	15,996	626	12	2	14	1,143	-	876,698	55	14
Population (5,000 - 14,999)										
Blood Tribe ¹	7,421	5	17	2	19	391	8	1,782,258	240	21
Camrose	14,325	549	18	2	20	716	10	1,942,608	136	21
Coaldale	6,261	887	7	-	7	894	3	661,783	106	8
Lacombe	9,147	735	9	1	10	915	6	885,076	97	10
Taber	7,918	506	9	-	9	880	7	1,069,700	135	11
Banff (RCMP)	6,208	1,277	13	4	17	365	-	1,086,116	175	18
Beaumont (RCMP)	6,652	1,190	3	1	4	1,663	-	258,053	39	4
Bonnyville (RCMP)	5,399	375	6	2	8	675	-	593,468	110	6
Brooks (RCMP)	11,059	699	9	3	12	922	-	808,477	73	12
Canmore (RCMP)	10,159	151	7	1	8	1,270	-	607,303	60	9
Cochrane (RCMP)	9,753	606	4	2	6	1,626	-	377,069	39	6
Cold Lake (RCMP)	9,146	386	5	3	8	1,143	-	485,757	53	8
Crowsnest Pass (RCMP)	5,908	16	7	-	7	844	-	425,744	72	7
Devon (RCMP)	5,022	655	5	-	5	1,004	-	327,617	65	5
Drayton Valley (RCMP)	6,145	773	6	-	6	1,024	-	447,559	73	7
Drumheller (RCMP)	6,928	264	6	3	9	770	-	527,628	76	8
Edson (RCMP)	7,664	296	9	1	10	766	-	667,760	87	10
Fort Saskatchewan (RCMP)	13,271	294	12	5	17	781	-	909,788	69	15
High River (RCMP)	8,670	749	7	1	8	1,084	-	520,172	60	7
Hinton (RCMP)	10,900	489	9	4	13	838	-	793,195	73	12
Innisfail (RCMP)	6,661	678	6	1	7	952	-	443,839	67	6
Morinville (RCMP)	6,625	538	4	1	5	1,325	-	413,850	62	6
Okotoks (RCMP)	10,477	665	5	3	8	1,310	-	513,220	49	7
Olds (RCMP)	6,382	629	5	1	6	1,064	-	404,667	63	6
Peace River (RCMP)	6,740	318	5	2	7	963	-	485,225	72	6
Ponoka (RCMP)	6,601	656	5	2	7	943	-	384,114	58	6
Rocky Mt. House (RCMP)	6,191	572	8	3	11	563	-	650,812	105	10
Slave Lake (RCMP)	7,258	403	7	2	9	806	-	596,828	82	10
St. Paul (RCMP)	5,123	826	9	-	9	569	-	594,234	116	9
Stettler (RCMP)	5,523	591	6	-	6	921	-	383,186	69	6
Stony Plain (RCMP)	9,446	356	5	2	7	1,349	-	455,812	48	7
Strathmore (RCMP)	6,166	582	2	2	4	1,542	-	357,541	58	6
Sylvan Lake (RCMP)	6,146	751	6	1	7	878	-	385,819	63	6
Vegreville (RCMP)	5,589	403	6	-	6	932	-	416,288	74	6
Wainwright (RCMP)	5,437	666	6	-	6	906	-	347,501	64	6
Wetaskiwin (RCMP)	11,756	715	14	3	17	692	-	1,098,431	93	17
Whitecourt (RCMP)	8,377	330	7	3	10	838	-	622,901	74	9

¹ Crime data were not available for 1998, therefore year-over-year comparisons with 1999 crime data are not presented.

- nil or zero

-- amount too small to express

.. figures not available

Note for the RCMP municipal contracts: Expenditures include only the cost billed to the municipality and not the total cost of the contract, nor any additional policing costs. Civilian employees provided by the municipality are not included under "Other Personnel".

Alberta

1999 Crime											
Violent Crime			Property Crime			Total Criminal Code (C.C.)			% Change in C.C. Rate 1998-1999	C.C. Incidents per Officer for 1999	Police Force
Number	Rate	Clear. Rate	Number	Rate	Clear. Rate	Number	Rate	Clear. Rate			
		%			%				%		
7,582	876	74	45,434	5,249	23	67,077	7,749	32	-3	55	Population (100,000+)
6,428	987	69	37,661	5,781	28	63,557	9,757	42	-2	56	Calgary Edmonton
923	1,368	76	4,734	7,015	32	10,554	15,638	41	25	97	Population (50,000 - 99,999)
345	627	80	2,662	4,838	29	4,592	8,346	38	14	56	Lethbridge Medicine Hat
1,066	1,655	73	5,030	7,811	36	9,871	15,329	44	21	123	Red Deer (RCMP)
302	573	67	1,481	2,810	27	3,465	6,575	32	7	83	St. Albert (RCMP)
116	585	78	629	3,172	25	1,337	6,742	38	-28	103	Population (15,000 - 49,999)
732	1,949	76	1,853	4,933	42	5,890	15,681	57	-5	118	Airdrie (RCMP)
536	1,539	56	2,572	7,386	26	5,248	15,071	36	-5	122	Fort McMurray (RCMP)
153	1,001	64	663	4,336	29	1,343	8,784	37	--	90	Grande Prairie (RCMP)
210	480	81	1,001	2,287	34	2,113	4,827	38	-2	49	Leduc (RCMP)
138	863	87	527	3,295	47	1,228	7,677	53	-16	88	Sherwood Park (RCMP) Spruce Grove (RCMP)
694	9,352	79	503	6,778	44	2,365	31,869	64	..	124	Population (5,000 - 14,999)
165	1,152	57	772	5,389	39	1,792	12,510	44	--	90	Blood Tribe ¹
28	447	75	81	1,294	31	168	2,683	39	-81	24	Camrose
67	732	97	442	4,832	35	746	8,156	44	-9	75	Coaldale
157	1,983	73	513	6,479	25	1,282	16,191	41	41	142	Lacombe Taber
112	1,804	76	1,087	17,510	27	1,782	28,705	36	11	105	Banff (RCMP)
41	616	85	118	1,774	36	376	5,652	39	-18	94	Beaumont (RCMP)
106	1,963	76	365	6,761	27	847	15,688	43	-8	106	Bonnyville (RCMP)
232	2,098	97	745	6,737	36	1,956	17,687	54	8	163	Brooks (RCMP)
71	699	56	536	5,276	28	1,068	10,513	35	-3	134	Canmore (RCMP)
70	718	70	310	3,179	32	728	7,464	41	11	121	Cochrane (RCMP)
107	1,170	61	330	3,608	39	867	9,480	49	-10	108	Cold Lake (RCMP)
47	796	87	190	3,216	38	381	6,449	50	-33	54	Crowsnest Pass (RCMP)
27	538	100	178	3,544	42	353	7,029	48	-18	71	Devon (RCMP)
73	1,188	77	411	6,688	34	814	13,247	44	-8	136	Drayton Valley (RCMP)
118	1,703	64	460	6,640	35	1,017	14,680	46	-5	113	Drumheller (RCMP)
116	1,514	86	546	7,124	28	1,009	13,165	40	-14	101	Edson (RCMP)
82	618	74	412	3,105	18	891	6,714	32	-10	52	Fort Saskatchewan (RCMP)
70	807	83	368	4,245	29	738	8,512	36	13	92	High River (RCMP)
159	1,459	84	737	6,761	33	1,499	13,752	44	3	115	Hinton (RCMP)
61	916	75	290	4,354	41	631	9,473	49	-10	90	Innisfail (RCMP)
59	891	64	194	2,928	28	555	8,377	37	3	111	Morinville (RCMP)
66	630	71	367	3,503	29	893	8,523	35	-8	112	Okotoks (RCMP)
84	1,316	89	310	4,857	32	673	10,545	47	-9	112	Olds (RCMP)
86	1,276	86	278	4,125	28	671	9,955	48	-14	96	Peace River (RCMP)
61	924	90	214	3,242	57	557	8,438	65	-24	80	Ponoka (RCMP)
135	2,181	76	569	9,191	34	1,407	22,727	50	30	128	Rocky Mt. House (RCMP)
145	1,998	82	388	5,346	41	1,133	15,610	54	-7	126	Slave Lake (RCMP)
166	3,240	84	435	8,491	47	1,327	25,903	58	5	147	St. Paul (RCMP)
48	869	98	267	4,834	47	536	9,705	55	-25	89	Stettler (RCMP)
68	720	53	291	3,081	25	658	6,966	33	-2	94	Stony Plain (RCMP)
67	1,087	70	330	5,352	24	710	11,515	33	-16	178	Strathmore (RCMP)
59	960	81	264	4,295	34	648	10,543	46	-22	93	Sylvan Lake (RCMP)
66	1,181	95	262	4,688	32	625	11,183	40	20	104	Vegreville (RCMP)
104	1,913	98	210	3,862	43	528	9,711	62	-22	88	Wainwright (RCMP)
337	2,867	95	1,019	8,668	46	2,489	21,172	64	11	146	Wetaskiwin (RCMP)
114	1,361	79	366	4,369	38	897	10,708	52	-22	90	Whitcourt (RCMP)

Police resources in Canada, 2000

Alberta

Police Force	1999 Police Resources & Population								2000	
	Population	Population density	Police Officers			Population per Police Officer	Other Personnel	Operating Expenditures	Per Capita Costs	Police Officers
			Male	Female	Total					
							\$	\$		
Population (<5,000)										
Hobbema ¹	2,745	21	7	1	8	343	6	766,088	279	8
Lesser Slave Lake Regional ²	2,943	320	12	1	13	226	3	1,189,405	404	12
Louis Bull	1,176	45	4	-	4	294	8	527,000	448	6
Siksika Nation	3,220	5	10	-	10	322	7	802,000	249	8
Athabaska (RCMP)	2,538	151	2	1	3	846	-	200,874	79	3
Barrhead (RCMP)	4,260	550	5	1	6	710	-	359,642	84	6
Cardston (RCMP)	3,406	511	3	2	5	681	-	364,342	107	5
Claresholm (RCMP)	3,530	508	4	1	5	706	-	337,052	95	5
Didsbury (RCMP)	3,921	963	4	-	4	980	-	204,508	52	3
Fairview (RCMP)	3,659	380	3	1	4	915	-	319,013	87	4
Fort Macleod (RCMP)	3,011	130	4	1	5	602	-	321,307	107	5
Fox Creek (RCMP)	2,416	515	3	-	3	805	-	195,509	81	2
Grande Cache (RCMP)	4,959	140	3	-	3	1,653	-	266,737	54	3
Grimshaw (RCMP)	2,689	388	3	-	3	896	-	188,004	70	3
Hanna (RCMP)	2,931	352	3	-	3	977	1	235,947	81	3
High Level (RCMP)	3,282	154	6	1	7	469	-	481,711	147	7
High Prairie (RCMP)	2,910	545	5	1	6	485	-	378,546	130	6
Lac La Biche (RCMP)	2,808	493	5	1	6	468	-	366,589	131	5
Pincher Creek (RCMP)	3,701	555	4	1	5	740	-	301,262	81	5
Raymond (RCMP)	3,132	860	2	1	3	1,044	-	192,500	61	3
Redwater (RCMP)	2,117	302	3	-	3	706	-	202,791	96	3
Rimbey (RCMP)	2,293	582	3	-	3	764	-	196,830	86	3
Swan Hills (RCMP)	1,861	73	2	-	2	931	-	173,117	93	2
Three Hills (RCMP)	3,138	592	1	2	3	1,046	-	215,782	69	3
Valleyview (RCMP)	1,897	423	5	-	5	379	-	302,010	159	5
Vermilion (RCMP)	3,750	297	4	2	6	625	-	320,086	85	6
Westlock (RCMP)	4,846	497	5	1	6	808	-	374,571	77	5

¹ Crime data were not available for 1998, therefore year-over-year comparisons with 1999 crime data are not presented.

² Crime data were not available for 1999.

- nil or zero

-- amount too small to express

.. figures not available

Note for the RCMP municipal contracts: Expenditures include only the cost billed to the municipality and not the total cost of the contract, nor any additional policing costs. Civilian employees provided by the municipality are not included under "Other Personnel".

Alberta

1999 Crime											
Violent Crime			Property Crime			Total Criminal Code (C.C.)			% Change in C.C. Rate 1998-1999	C.C. Incidents per Officer for 1999	Police Force
Number	Rate	Clear. Rate	Number	Rate	Clear. Rate	Number	Rate	Clear. Rate			
		%			%			%			
242	8,816	108	303	11,038	100	906	33,005	103	..	113	Population (<5,000)
..	Hobbema ¹
106	9,014	74	150	12,755	56	394	33,503	68	29	99	Lesser Slave Lake Regional ²
275	8,540	86	188	5,839	47	646	20,062	66	36	65	Louis Bull
											Siksika Nation
27	1,064	78	118	4,649	39	294	11,584	53	-1	98	Athabaska (RCMP)
47	1,103	126	207	4,859	32	458	10,751	42	-2	76	Barrhead (RCMP)
60	1,762	68	219	6,430	43	495	14,533	56	-11	99	Cardston (RCMP)
40	1,133	98	186	5,269	42	335	9,490	50	31	67	Claresholm (RCMP)
27	689	74	131	3,341	24	280	7,141	34	-2	70	Didsbury (RCMP)
32	875	81	100	2,733	45	252	6,887	47	-20	63	Fairview (RCMP)
61	2,026	79	232	7,705	39	586	19,462	58	10	117	Fort Macleod (RCMP)
53	2,194	68	96	3,974	13	249	10,306	37	7	83	Fox Creek (RCMP)
53	1,069	94	86	1,734	29	304	6,130	47	-7	101	Grande Cache (RCMP)
40	1,488	98	114	4,239	46	280	10,413	64	-21	93	Grimshaw (RCMP)
28	955	82	84	2,866	65	182	6,209	68	-39	61	Hanna (RCMP)
117	3,565	81	260	7,922	42	1,116	34,004	69	36	159	High Level (RCMP)
176	6,048	73	331	11,375	43	954	32,784	55	11	159	High Prairie (RCMP)
154	5,484	73	270	9,615	33	814	28,989	52	-15	136	Lac La Biche (RCMP)
64	1,729	78	240	6,485	47	506	13,672	57	-5	101	Pincher Creek (RCMP)
35	1,117	71	58	1,852	22	167	5,332	34	--	56	Raymond (RCMP)
33	1,559	91	65	3,070	57	204	9,636	64	-27	68	Redwater (RCMP)
37	1,614	78	81	3,532	42	208	9,071	56	-14	69	Rimbey (RCMP)
22	1,182	77	97	5,212	41	207	11,123	58	36	104	Swan Hills (RCMP)
14	446	93	70	2,231	41	151	4,812	47	29	50	Three Hills (RCMP)
85	4,481	87	205	10,807	49	566	29,837	59	-15	113	Valleyview (RCMP)
27	720	93	145	3,867	45	300	8,000	50	-27	50	Vermilion (RCMP)
63	1,300	67	350	7,222	28	705	14,548	38	-2	118	Westlock (RCMP)

Police resources in Canada, 2000

British Columbia

Police Force	1999 Police Resources & Population								2000	
	Population	Population density	Police Officers			Population per Police Officer	Other Personnel	Operating Expenditures	Per Capita Costs	Police Officers
			Male	Female	Total					
								\$	\$	
Population (100,000+)										
Abbotsford	114,285	331	121	18	139	822	38	14,988,491	131	146
Delta	101,105	598	118	20	138	733	31	15,982,961	158	148
Saanich (D.M.)	106,695	1,036	120	27	147	726	35	15,496,193	145	129
Vancouver	559,678	4,908	985	164	1,149	487	304	124,139,659	222	1,174
Burnaby (RCMP)	190,272	2,151	183	54	237	803	-	17,788,677	93	230
Coquitlam (RCMP)	111,549	904	67	27	94	1,187	-	8,533,117	76	102
Richmond (RCMP)	164,009	1,321	145	49	194	845	-	14,669,603	89	192
Surrey (RCMP)	336,034	1,114	288	71	359	936	-	27,973,346	83	367
Population (50,000 - 99,999)										
New Westminster	54,177	3,523	92	17	109	497	32	12,739,001	235	115
Victoria	75,283	4,009	155	28	183	411	56	20,159,777	268	187
Chilliwack (D.M.) (RCMP)	66,837	244	66	18	84	796	-	6,483,142	97	81
Kamloops (RCMP)	81,958	277	82	14	96	854	-	7,135,209	87	88
Kelowna (RCMP)	97,385	458	93	20	113	862	-	8,751,222	90	114
Langley (Twp.) (RCMP)	89,060	292	78	22	100	891	-	7,897,136	89	99
Maple Ridge (RCMP)	62,165	237	40	20	60	1,036	-	4,963,260	80	61
N. Vancouver(D.M.) (RCMP)	85,995	527	61	29	90	956	-	7,074,583	82	92
Nanaimo (RCMP)	76,364	864	93	16	109	701	-	8,439,509	111	108
Port Coquitlam (RCMP)	51,136	1,731	35	8	43	1,189	-	2,706,550	53	47
Prince George (RCMP)	80,845	256	93	26	119	679	-	8,921,945	110	110
Population (15,000 - 49,999)										
District Of Central Saanich	15,509	364	19	2	21	739	7	2,495,938	161	21
Esquimalt (D.M.)	16,423	2,459	25	4	29	566	9	3,487,237	212	29
Oak Bay (D.M.)	17,900	1,692	20	2	22	814	5	2,360,688	132	22
Port Moody	23,736	906	27	3	30	791	12	4,085,494	172	31
West Vancouver (D.M.)	44,771	495	70	9	79	567	19	8,639,873	193	79
Campbell River (RCMP)	31,295	242	29	7	36	869	-	2,873,137	92	36
Courtenay (RCMP)	19,511	1,260	17	5	22	887	-	1,781,403	91	24
Cranbrook (RCMP)	19,797	1,152	22	2	24	825	-	1,939,513	98	23
Fort St. John (RCMP)	16,448	757	19	6	25	658	-	1,892,266	115	26
Langford (D.M.) (RCMP)	19,567	483	17	4	21	932	-	1,755,295	90	25
Langley (RCMP)	24,178	2,375	30	8	38	636	-	2,953,809	122	39
Mission (D.M.) (RCMP)	32,660	145	36	5	41	797	-	3,310,462	101	42
North Cowichan (RCMP) ¹	27,665	147	17	8	25	1,107	-	1,742,387	63	21
North Vancouver (RCMP)	44,975	4,041	46	12	58	775	-	4,347,232	97	54
Penticton (RCMP)	32,627	800	28	8	36	906	-	2,873,225	88	36
Port Alberni (RCMP)	19,334	1,086	26	5	31	624	-	2,462,802	127	30
Prince Rupert (RCMP)	16,985	317	24	10	34	500	-	2,635,563	155	40
Salmon Arm (RCMP)	16,488	102	11	3	14	1,178	-	845,332	51	14
Squamish (RCMP)	15,613	154	15	8	23	679	-	1,459,989	94	25
Vernon (RCMP)	34,227	456	33	3	36	951	-	2,819,330	82	35
White Rock (RCMP)	17,573	3,480	18	3	21	837	-	1,560,497	89	20

¹ Police force enlarged its jurisdiction in 1999, therefore comparisons with 1998 crime data are not presented.

- nil or zero

... figures not appropriate or not applicable

Note for the RCMP municipal contracts: Expenditures include only the cost billed to the municipality and not the total cost of the contract, nor any additional policing costs. Civilian employees provided by the municipality are not included under "Other Personnel".

British Columbia

1999 Crime											
Violent Crime			Property Crime			Total Criminal Code (C.C.)			% Change in C.C. Rate 1998-1999	C.C. Incidents per Officer for 1999	Police Force
Number	Rate	Clear. Rate	Number	Rate	Clear. Rate	Number	Rate	Clear. Rate			
		%			%			%			
Population (100,000+)											
1,268	1,110	66	6,019	5,267	16	10,502	9,189	29	-4	76	Abbotsford
717	709	67	4,063	4,019	16	7,039	6,962	26	-6	51	Delta
729	683	73	4,701	4,406	21	7,904	7,408	29	3	54	Saanich (D.M.)
7,206	1,288	48	63,105	11,275	9	81,815	14,618	16	-5	71	Vancouver
2,110	1,109	64	16,585	8,716	18	23,934	12,579	28	-5	101	Burnaby (RCMP)
1,013	908	60	7,230	6,481	14	11,371	10,194	24	1	121	Coquitlam (RCMP)
1,163	709	61	7,896	4,814	12	12,781	7,793	21	-9	66	Richmond (RCMP)
4,614	1,373	70	26,439	7,868	13	41,732	12,419	26	-4	116	Surrey (RCMP)
Population (50,000 - 99,999)											
1,307	2,412	62	5,067	9,353	15	9,149	16,887	32	-6	84	New Westminster
1,917	2,546	65	10,234	13,594	21	17,501	23,247	32	6	96	Victoria
933	1,396	80	3,918	5,862	23	7,511	11,238	40	-19	89	Chilliwack (D.M.) (RCMP)
1,330	1,623	81	5,833	7,117	26	10,522	12,838	41	-6	110	Kamloops (RCMP)
1,314	1,349	77	7,319	7,516	21	12,963	13,311	36	-5	115	Kelowna (RCMP)
687	771	64	4,694	5,271	15	7,922	8,895	21	-4	79	Langley (Twp.) (RCMP)
740	1,190	63	3,765	6,056	15	7,046	11,334	26	5	117	Maple Ridge (RCMP)
560	651	61	3,571	4,153	15	5,839	6,790	24	-7	65	N. Vancouver(D.M.) (RCMP)
1,053	1,379	74	5,701	7,466	26	10,613	13,898	41	-13	97	Nanaimo (RCMP)
513	1,003	65	2,884	5,640	12	5,179	10,128	25	-3	120	Port Coquitlam (RCMP)
1,672	2,068	71	6,212	7,684	25	13,041	16,131	49	-13	110	Prince George (RCMP)
Population (15,000 - 49,999)											
89	574	83	412	2,657	28	915	5,900	40	-5	44	District Of Central Saanich
361	2,198	78	943	5,742	22	2,134	12,994	45	7	74	Esquimalt (D.M.)
62	346	81	608	3,397	15	977	5,458	23	-1	44	Oak Bay (D.M.)
186	784	83	905	3,813	14	1,662	7,002	33	-18	55	Port Moody
274	612	70	1,713	3,826	23	2,986	6,669	31	-4	38	West Vancouver (D.M.)
789	2,521	74	2,923	9,340	24	5,480	17,511	41	12	152	Campbell River (RCMP)
367	1,881	71	1,733	8,882	29	3,673	18,825	41	1	167	Courtenay (RCMP)
368	1,859	79	1,240	6,264	29	2,593	13,098	44	-16	108	Cranbrook (RCMP)
441	2,681	78	1,072	6,518	32	3,199	19,449	62	2	128	Fort St. John (RCMP)
247	1,262	56	1,188	6,071	20	2,430	12,419	27	16	116	Langford (D.M.) (RCMP)
456	1,886	63	2,779	11,494	13	4,728	19,555	21	1	124	Langley (RCMP)
642	1,966	65	2,014	6,167	18	4,663	14,277	33	-12	114	Mission (D.M.) (RCMP)
301	1,088	80	1,143	4,132	17	2,474	8,943	38	...	99	North Cowichan (RCMP) ¹
710	1,579	62	3,250	7,226	21	5,496	12,220	33	-7	95	North Vancouver (RCMP)
431	1,321	86	2,436	7,466	25	4,729	14,494	41	5	131	Penticton (RCMP)
503	2,602	59	1,444	7,469	26	3,341	17,280	38	-4	108	Port Alberni (RCMP)
423	2,490	84	966	5,687	33	2,955	17,398	56	-8	87	Prince Rupert (RCMP)
174	1,055	75	720	4,367	23	1,411	8,558	38	-15	101	Salmon Arm (RCMP)
238	1,524	79	886	5,675	19	2,092	13,399	39	4	91	Squamish (RCMP)
529	1,546	66	3,092	9,034	21	5,318	15,537	31	-12	148	Vernon (RCMP)
117	666	75	1,006	5,725	16	1,778	10,118	27	-5	85	White Rock (RCMP)

Police resources in Canada, 2000

British Columbia

Police Force	1999 Police Resources & Population								2000	
	Population	Population density	Police Officers			Population per Police Officer	Other Personnel	Operating Expenditures	Per Capita Costs	Police Officers
			Male	Female	Total					
							\$	\$		
Population (5,000 - 14,999)										
Nelson	9,694	1,257	15	2	17	570	5	2,024,029	209	17
Castlegar (RCMP)	7,393	457	7	1	8	924	-	525,137	71	10
Coldstream (D.M.) (RCMP)	9,551	132	4	2	6	1,592	-	361,178	38	5
Colwood (RCMP)	14,676	821	8	5	13	1,129	-	792,133	54	13
Comox (RCMP)	12,153	840	6	3	9	1,350	-	594,104	49	9
Dawson Creek (RCMP)	11,812	582	17	5	22	537	-	1,267,538	107	20
Hope (RCMP)	6,826	173	8	1	9	758	-	591,607	87	11
Kimberley (RCMP)	6,916	119	6	1	7	988	-	467,456	68	8
Kitimat (D.M.) (RCMP)	11,672	45	8	3	11	1,061	-	719,360	62	14
Ladysmith (RCMP)	6,878	913	4	3	7	983	-	1,187,358	173	7
Lake Country (RCMP)	9,532	78	2	-	2	4,766	-	66,124	7	7
Mackenzie (RCMP)	6,250	32	7	1	8	781	-	476,225	76	8
Merritt (RCMP)	8,054	339	10	2	12	671	-	710,608	88	11
North Saanich (D.M.) (RCMP)	10,918	297	6	3	9	1,213	-	456,919	42	6
Parksville (RCMP)	10,358	650	12	2	14	740	-	816,844	79	11
Pitt Meadows (D.M.) (RCMP)	14,756	172	13	5	18	820	-	1,143,266	77	19
Port Hardy (RCMP) ¹	5,603	136	7	1	8	700	-	517,237	92	7
Powell River (D.M.) (RCMP)	13,900	477	15	1	16	869	-	980,526	71	18
Qualicum Beach (RCMP)	7,390	663	5	1	6	1,232	-	391,545	53	6
Quesnel (RCMP) ¹	10,589	4	12	3	15	706	-	1,024,461	97	18
Revelstoke (RCMP)	8,226	241	8	3	11	748	-	689,221	84	11
Sechelt (RCMP)	8,387	214	7	2	9	932	-	568,877	68	9
Sidney (RCMP)	11,202	2,231	9	5	14	800	-	741,746	66	12
Smithers (RCMP)	6,069	445	5	3	8	759	-	599,506	99	8
Spallumcheen (RCMP)	5,688	22	3	-	3	1,896	-	194,789	34	3
Summerland (RCMP)	10,856	158	5	2	7	1,551	-	425,922	39	6
Terrace (RCMP)	13,836	720	22	4	26	532	-	1,430,437	103	26
Trail (RCMP)	7,626	407	11	3	14	545	-	781,036	102	11
View Royal (RCMP)	7,325	475	8	2	10	733	-	488,701	67	7
Whistler (RCMP)	9,430	58	14	2	16	589	-	925,270	98	18
Williams Lake (RCMP)	11,917	508	17	4	21	567	-	1,459,452	122	24
Population (<5,000)										
Stl'atl'imx Tribal ²	2,852	25	6	1	7	407	5	995,000	349	10

¹ Police force enlarged its jurisdiction in 1999, therefore comparisons with 1998 crime data are not presented.

² Crime data were incomplete for 1999, therefore are not presented.

- - amount too small to express

- nil or zero

... figures not available

... figures not appropriate or not applicable

Note for the RCMP municipal contracts: Expenditures include only the cost billed to the municipality and not the total cost of the contract, nor any additional policing costs. Civilian employees provided by the municipality are not included under "Other Personnel".

British Columbia

1999 Crime											Police Force
Violent Crime			Property Crime			Total Criminal Code (C.C.)			% Change in C.C. Rate 1998-1999	C.C. Incidents per Officer for 1999	
Number	Rate	Clear. Rate	Number	Rate	Clear. Rate	Number	Rate	Clear. Rate			%
		%			%						
											Population (5,000 - 14,999)
92	949	86	525	5,416	39	1,020	10,522	42	-10	60	Nelson
108	1,461	74	416	5,627	26	1,002	13,553	35	-19	125	Castlegar (RCMP)
23	241	74	305	3,193	7	532	5,570	17	21	89	Coldstream (D.M.) (RCMP)
115	784	55	588	4,007	12	1,223	8,333	25	10	94	Colwood (RCMP)
47	387	79	252	2,074	27	670	5,513	40	1	74	Comox (RCMP)
353	2,988	85	895	7,577	30	2,354	19,929	54	-14	107	Dawson Creek (RCMP)
115	1,685	80	448	6,563	14	1,168	17,111	35	11	130	Hope (RCMP)
94	1,359	86	279	4,034	27	653	9,442	43	13	93	Kimberley (RCMP)
139	1,191	94	319	2,733	34	798	6,837	55	-26	73	Kitimat (D.M.) (RCMP)
67	974	78	300	4,362	31	569	8,273	44	-1	81	Ladysmith (RCMP)
61	640	93	313	3,284	22	602	6,316	37	-7	301	Lake Country (RCMP)
79	1,264	84	257	4,112	48	682	10,912	55	7	85	Mackenzie (RCMP)
251	3,116	58	623	7,735	19	1,381	17,147	36	-12	115	Merritt (RCMP)
31	284	65	196	1,795	13	440	4,030	23	-20	49	North Saanich (D.M.) (RCMP)
144	1,390	59	786	7,588	18	1,505	14,530	23	21	108	Parksville (RCMP)
150	1,017	63	716	4,852	6	1,356	9,189	20	18	75	Pitt Meadows (D.M.) (RCMP)
119	2,124	66	277	4,944	29	661	11,797	47	...	83	Port Hardy (RCMP) ¹
156	1,122	81	793	5,705	37	1,555	11,187	49	-1	97	Powell River (D.M.) (RCMP)
35	474	66	243	3,288	12	526	7,118	16	--	88	Qualicum Beach (RCMP)
221	2,087	83	770	7,272	24	1,865	17,613	41	...	124	Quesnel (RCMP) ¹
69	839	104	289	3,513	31	681	8,279	52	-18	62	Revelstoke (RCMP)
128	1,526	81	590	7,035	26	1,261	15,035	35	2	140	Sechelt (RCMP)
80	714	61	387	3,455	22	856	7,641	30	-10	61	Sidney (RCMP)
138	2,274	81	376	6,195	42	1,048	17,268	57	-13	131	Smithers (RCMP)
23	404	65	143	2,514	17	236	4,149	27	-5	79	Spallumcheen (RCMP)
69	636	100	347	3,196	12	620	5,711	30	12	89	Summerland (RCMP)
307	2,219	77	860	6,216	36	2,116	15,293	51	4	81	Terrace (RCMP)
181	2,373	59	331	4,340	40	1,002	13,139	50	5	72	Trail (RCMP)
72	983	57	376	5,133	14	831	11,345	24	8	83	View Royal (RCMP)
136	1,442	55	1,449	15,366	7	2,123	22,513	16	-3	133	Whistler (RCMP)
323	2,710	75	1,040	8,727	34	2,255	18,923	49	-12	107	Williams Lake (RCMP)
..	Population (<5,000)
											St'l'at'l'imx Tribal ²