



Catalogue no. 85-225-XIE

Police Resources in Canada, 2001

Canadian Centre for Justice Statistics



How to obtain more information

Specific inquiries about this product and related statistics or services should be directed to: Canadian Centre for Justice Statistics, Statistics Canada, Ottawa, Ontario, K1A 0T6, (Toll-Free 1-800-387-2231) (telephone: (613) 951-9023) (fax: (613) 951-6615).

For information on the wide range of data available from Statistics Canada, you can contact us by calling one of our toll-free numbers. You can also contact us by e-mail or by visiting our Web site.

National inquiries line	1 800 263-1136
National telecommunications device for the hearing impaired	1 800 363-7629
Depository Services Program inquiries	1 800 700-1033
Fax line for Depository Services Program	1 800 889-9734
E-mail inquiries	infostats@statcan.ca
Web site	www.statcan.ca

Ordering and subscription information

This product, Catalogue no. 85-225-XIE, is published annually in electronic format on the Statistics Canada Internet site at a price of CDN \$26.00. To obtain single issues, visit our Web site at www.statcan.ca, and select Products and Services.

This product is also available in print through a Print-on-Demand service, at a price of CDN \$52.00. The following additional shipping charges apply for delivery outside Canada:

	Single issue
United States	CDN \$ 6.00
Other countries	CDN \$ 10.00

All prices exclude sales taxes.

The printed version can be ordered by

- Phone (Canada and United States) **1 800 267-6677**
- Fax (Canada and United States) **1 877 287-4369**
- E-mail **order@statcan.ca**
- Mail Statistics Canada
Dissemination Division
Circulation Management
120 Parkdale Avenue
Ottawa, Ontario K1A 0T6
- And, in person at the Statistics Canada Regional Centre nearest you.

When notifying us of a change in your address, please provide both old and new addresses.

Standards of service to the public

Statistics Canada is committed to serving its clients in a prompt, reliable and courteous manner and in the official language of their choice. To this end, the Agency has developed standards of service which its employees observe in serving its clients. To obtain a copy of these service standards, please contact Statistics Canada toll free at 1 800 263-1136.



Statistics Canada
Canadian Centre for Justice Statistics

Police Resources in Canada, 2001

Prepared by : Rebecca E. Filyer

Published by authority of the Minister responsible for Statistics Canada

© Minister of Industry, 2002

All rights reserved. No part of this publication may be reproduced, stored in a retrieval system or transmitted in any form or by any means, electronic, mechanical, photocopying, recording or otherwise without prior written permission from Licence Services, Marketing Division, Statistics Canada, Ottawa, Ontario, Canada K1A 0T6.

February 2002

Catalogue no. 85-225-XIE
ISSN 1488-867X

Frequency: Annual

Ottawa

La version française de cette publication est disponible sur demande.

Note of appreciation

Canada owes the success of its statistical system to a long-standing partnership between Statistics Canada, the citizens of Canada, its businesses and governments. Accurate and timely statistical information could not be produced without their continued cooperation and goodwill.

ELECTRONIC PUBLICATIONS AVAILABLE AT
www.statcan.ca



Table of Contents

	Page
Highlights	4
Introduction	5
Part I Police Resources in Canada, Provinces/Territories and Census Metropolitan Areas (CMAs)	
Police Personnel	9
Figure 1 Police per 100,000 Population, Canada, 1962-2001, and the United States, 1975-1998	9
Figure 2 <i>Criminal Code</i> Incidents per Police Officer, Canada, 1962-2000	10
Figure 3 Police Officers per 100,000 Population, 2001	11
Table 1 Police Officers and Crime Rate in Census Metropolitan Areas (CMAs), 2000	12
Table 2 Police Officers by Sex, Canada, Selected Years	12
Figure 4 Proportion of Female Police Officers, Canada, 1965-2001	13
Table 3 Police Officers by Sex, Provinces/Territories, 2001	13
Table 4 Percentage of Male and Female Police Officers Within the Ranks, Canada, Selected Years	14
Figure 5 Ratio of Police Officers to Civilians, Canada, 1962-2001	15
Policing Expenditures	14
Table 5 Current and Constant Dollar Expenditures on Policing, Canada 1985-2000	15
Figure 6 Current and Constant Dollar Spending on Policing, Canada, 1985-2000	16
Figure 7 Per Capita Spending on Municipal and Provincial Policing, 2000	17
Summary Tables	19
Table 6 Trends in Police Personnel and Expenditures, Canada, 1962-2001	19
Table 7 Police Officers by Level of Policing, 2001	20
Table 8 Total Expenditures on Policing, 2000	21
Table 9 Expenditures on Municipal Policing, 2000	22
Table 10 Expenditures on Provincial/Territorial Policing, 2000	23
Census Metropolitan Area (CMA) Reference List	25
Part II Police Resources in Municipal Police Forces	
Introduction	30
Important Notes	30
Statistical Tables	
Newfoundland and Labrador	34
Prince Edward Island	34
Nova Scotia	36
New Brunswick	38
Quebec	40
Ontario	48
Manitoba	56
Saskatchewan	58
Alberta	62
British Columbia	66

Highlights

- As of June 15, 2001 there were 57,107 police officers in Canada, a slight increase (2.1%) over 2000. Most of the increase took place in the ranks of the RCMP, whose officers comprise 27% of Canadian police, and whose strength increased 4.5%, from 14,494 in 2000 to 15,148 in 2001. Expressed on a per capita basis, police strength was about 184 officers per 100,000 population. Police strength per capita has risen 1.5% since 1998, following an 11% decrease between 1991 and 1998.
- Canada has fewer police per capita than both the United States and England and Wales. Canada's rate of 184 officers per 100,000 population in 2001 was 26% lower than the comparable rate in the United States (247 in 1998, the latest year for which statistics are available) and 23% lower than England and Wales (240 in 2001).
- Among the provinces, Saskatchewan displaced Quebec as the province with the highest number of police officers per 100,000 population (193), an increase of about 6% over 2000. The majority of this increase was due to RCMP hiring. Saskatchewan was followed closely by Manitoba (192), Quebec (188), and Ontario (187). Newfoundland and Labrador (144) and Prince Edward Island (147) had the lowest rates.
- Among the census metropolitan areas, Thunder Bay continued to have the most police officers per 100,000 population (195) in 2000, followed by Regina and Toronto (both at 181). Sherbrooke (111) and Chicoutimi-Jonquière (119) once again had the fewest.
- Female officer recruitment continues to increase. There were 8,291 female police officers in 2001, an increase of 8.4% from 2000. Female police officers accounted for 14.5% of all officers in 2001. The proportion of female police officers has been increasing steadily since the mid-1970s, after remaining at less than 1% during the 1960s and early 1970s.
- The most recent expenditure data are for the year 2000. Policing costs totalled \$6.8 billion in 2000 (\$221 per Canadian), an increase of 6.4% from 1999 (3.5% after adjusting for inflation). Many police services reported that their members received wage increases in the past year after a number of years of wage freezes. Approximately half of the increase was due to changes in spending by the RCMP, who increased wages but also their strength, as noted earlier.
- Among the provinces, Ontario and Quebec continued to have the highest per capita costs in 2000, reporting \$197 and \$193, respectively. The Atlantic region continued to have the lowest per capita costs with the average of the 4 provinces at \$122.

Introduction

Overview of Policing in Canada

Policing in Canada is the responsibility of all three levels of government: federal, provincial/territorial and municipal. The federal government, through the Royal Canadian Mounted Police (RCMP), is responsible for the enforcement of federal statutes in each province and territory, and for providing services such as forensic laboratories, identification services, the Canadian Police Information Centre (CPIC), and the Canadian Police College.

Each province/territory assumes responsibility for its own provincial/territorial and municipal policing. Provincial policing involves enforcement of the *Criminal Code* and provincial statutes within areas of a province not served by a municipal police service (i.e., rural areas and small towns). In some cases, police boundaries may overlap. For example, in some areas provincial police perform traffic duties on major provincial thoroughfares that pass through municipal jurisdictions.

Municipal policing consists of enforcement of the *Criminal Code*, provincial statutes, and municipal by-laws within the boundaries of a municipality or several adjoining municipalities that comprise a region (e.g., Durham Regional Police in Ontario) or a metropolitan area (e.g., Montreal Urban Community).

Newfoundland and Labrador, Yukon, the Northwest Territories and Nunavut are the only areas in Canada without municipal police services. In Newfoundland and Labrador the Royal Newfoundland Constabulary, which is a provincial police service, provides policing to the three largest municipalities (St. John's, Corner Brook, and Labrador City) as well as Churchill Falls. Newfoundland and Labrador contracts the RCMP to provide policing to the remaining municipalities and the rural areas.

The RCMP provides provincial/territorial policing in all provinces and territories except Quebec and Ontario, which maintain their own provincial police services: the Sûreté du Québec and the Ontario Provincial Police, respectively. Newfoundland and Labrador also maintains its own provincial police service, as mentioned above.

In addition to federal, provincial and municipal policing, there are also various types of First Nations policing agreements for Aboriginal communities in place across Canada.

Survey Definitions and Coverage

This report is based upon data collected through the "Police Administration Survey" conducted by the Canadian Centre for Justice Statistics. This survey collects data on police personnel and expenditures from each municipal, provincial and federal (RCMP) police service in Canada. More information is collected than is presented in this report, and additional information can be provided for special reports or individual requests.

The following federal policing and security agencies are excluded from the survey: the Canadian Security Intelligence Service, railway, and military police. Federal and provincial government departments deploying personnel to enforce specific statutes in the areas of income tax, customs and excise, immigration, fisheries and wildlife are also excluded. Private security guards and investigators are beyond the scope of this survey.

Data presented in this report represent police personnel as of either June 15th, 2000 or June 15th 2001 (as identified in text and table headings) and final expenditures for the year 2000 (or 2000/2001 for those services operating on a fiscal year). Most municipal police services operate on a calendar year while the provincial services and the RCMP operate on a fiscal year. Policing expenditures will be referred to as calendar year (i.e., 2000) throughout this report.

Personnel counts are based on permanent, full-time equivalents; part-time employees are converted to full-time equivalents (e.g., 4 employees working 10 hours per week would equal 1 full-time employee working a 40-hour week). Police officers include the actual number of sworn police officers as of June 15th. Civilians include all other non-police personnel as of June 15th (e.g., clerical, dispatch, management, cadets, special constables, security officers, school crossing guards, by-law enforcement officers). Temporary police officers, auxiliary police and other volunteer personnel are not included in this report.

Police expenditures are actual operating expenditures and include: salaries and wages, benefits, and other operating expenses such as accommodation costs, fuel, maintenance, etc. Capital expenditures, revenues and recoveries are not included.

Population figures used in this report are from the Demography Division of Statistics Canada and represent postcensal or intercensal estimates. Population data are regularly updated and, as such, rates published in this report may differ slightly from rates published in earlier reports.

Data from the *Uniform Crime Reporting (UCR) Survey* are also included in this report to provide appropriate caseload context for the police in terms of the volume of criminal incidents coming to their attention. The *UCR Survey* collects crime and traffic offences reported by all police services in Canada, dating back to 1962.

Comparing Police Statistics

The report is subdivided into two parts. The first part contains information at the national, provincial/territorial and census metropolitan area (CMA) level. The second part contains summary information at the level of the municipal police service. While it is not possible to make direct comparisons among the more than 600 municipal police services for the reasons described below, it is useful to examine resources over time for the same police service.

Part I of this report examines police personnel and expenditures at the national, provincial/territorial and the census metropolitan area (CMA) level. Crime rates are presented at just the national and CMA level. A CMA is a large urban area with a core population of at least 100,000 and includes the surrounding suburban and rural areas that are socially and economically integrated with the urban centre. The areas that police services serve may differ in their mix of urban/suburban populations, and some inner city police services have to police many more people than the resident population, as large numbers of people enter the urban core to work and shop during the day. For these reasons, it is difficult to compare crime rates among police services. This lack of comparability is addressed by analyzing crime rates by CMA. In order to present data at the CMA level, the data from all police services providing services within the boundary of the CMA, including urban, suburban and rural areas, have been combined. However, expenditures (per capita costs) are not available at the CMA level due to the number of provincial policing detachments for which detachment-specific costs are not available.

Part II of this report presents data for each individual municipal police service according to its actual police jurisdiction and budget. While these data accurately reflect the police resources and crime rates in these communities, they are not necessarily comparable with one another at this level for a variety of reasons:

- (i) Each municipal police service has a different mix of urban, suburban, and rural areas, each with its own unique characteristics, geography and level of crime. Some municipal services are “metropolitan” or “regional”, while others may serve primarily “inner city” areas and are surrounded by other suburban police services.
- (ii) The expenditures presented in this section represent those costs included in the police operating budget of each municipality. The contents of these budgets tend to differ considerably from city to city. For example, some costs (e.g., accommodation, by-law enforcement, and court security) and some services (e.g., computing, personnel, and financial services) may be included within the police service’s operating budget for some municipalities, but in other municipalities they may be paid for by other departments or through the service’s capital budget, which is not included.

- (iii) In some police services, there may be police officers who are funded by external agencies (e.g. an airport authority or a community organisation). While these officers are included in this report, the expenditure of these funds is not. As a result, the cost of policing in these communities is underestimated. In addition, these officers may be restricted to policing certain areas (e.g. a port or airport), and therefore it may appear that more officers are available for general policing than is the case in some communities. Where this information has been made available to the CCJS, it has been footnoted in the appropriate tables.
- (iv) Expenditure figures for the RCMP municipal contracts represent only the amount billed to the municipality and not the total cost of the contract, nor any additional policing costs (e.g., accommodation, support staff, etc.) incurred by the municipality. Civilian employees provided by the municipality are not included.

Survey Revisions

1986 revision

The Police Administration Survey was revised in 1986 to collect police department expenditures as well as more detailed information on police personnel and functions. As both the old and revised surveys were run simultaneously in 1986, it was possible to examine the effects of the revised survey. An analysis of the data revealed that there were some minor differences in the distribution of police personnel between the two surveys. In order to correct for these methodological differences, the data presented in Table 6 prior to 1986 have been adjusted at the national level.

1996 revision

In 1996 changes were made to the effective date for collecting personnel strength, moving from September 30th to June 15th. School crossing guards were added to the survey in 1996 as their numbers warranted a separate category. Prior to 1996, they were captured under the "other" category. Adjustments were made to civilian personnel to account for this change, back to 1986.

Other changes to the survey involved the expenditure section, starting with 1995 final expenditures. Expenses associated with the purchasing and leasing of vehicles are now to be included only if they are part of the operational budget of the police service. Prior to 1995, all expenses related to the purchase and lease of vehicles were included, regardless of the type of budget. Benefits were expanded to include those paid by other government sources. The removal of expenses due to the capital purchases of vehicles, and the addition of expenses due to the inclusion of benefits paid by other government sources were examined in detail. It was estimated that these revisions accounted for an overall change of less than 1% in reported expenses.

Report History

There were originally two annual reports from the *Police Administration Survey*. These reports were combined in 1999 so that all relevant information in the area of police personnel, expenditures and crime rates could be included in one publication. This also was done to help avoid confusion over data presented at the census metropolitan area and at the individual municipal police service level.

The *Police Personnel and Expenditures Report* (formerly Catalogue no. 85F0019XPE) was primarily analytical and examined key trends and rates in police personnel and expenditures at the national, provincial / territorial, and metropolitan area levels back to 1962. The information from that report is now contained in Part I.

The *Crime and Police Resources in Canadian Municipalities Report* (formerly Catalogue no. 85-223-XPE) was purely tabular and presented key resource and crime statistics for each of the municipal police services in Canada for the previous year. The information from that report is now contained in Part II.

Part I

Police Resources in Canada, Provinces/Territories and Census Metropolitan Areas (CMAs)

Police Personnel

One police officer for every 544 residents

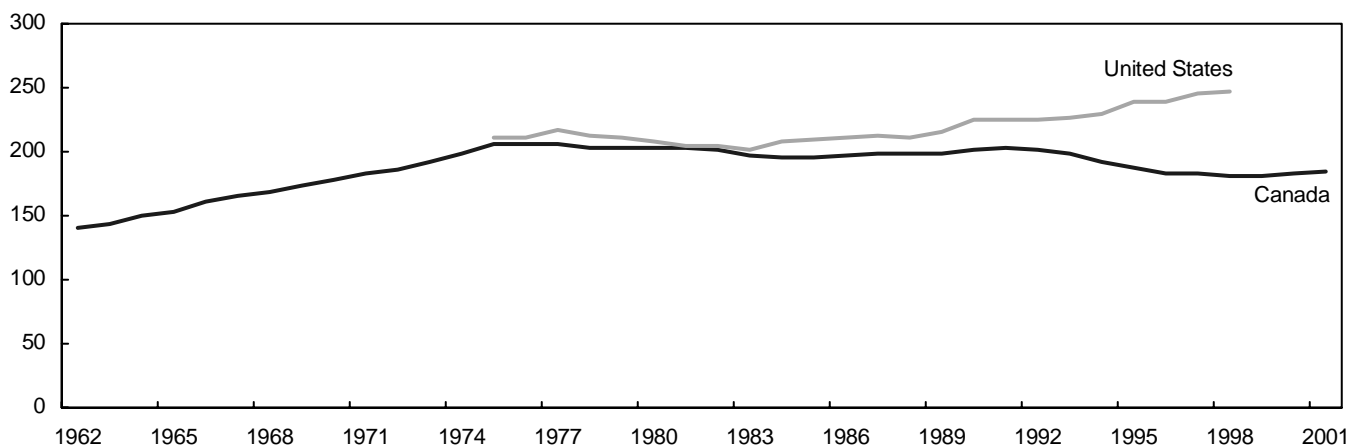
The number of police in Canada increased 2.1% to 57,107 officers in 2001, up from 55,954 officers in 2000. The police per capita rate rose slightly to 184 police officers per 100,000 population, from 182 the year before. This is equal to one officer for every 544 Canadian residents (Figure 1, Table 6). Most of the increase took place in the ranks of the RCMP, whose officers comprise 27% of Canadian police, and whose strength increased 4.5%, from 14,494 in 2000 to 15,148 in 2001 (Table 7).

The number of police officers per 100,000 population had increased steadily during the 1960's and early 1970's, peaking at 206 police per 100,000 population in 1975. Between 1975 and 1991, the number of police officers increased at about the same pace as the Canadian population, maintaining an average of around 200 police per 100,000 population. However, in the seven year span between 1991 and 1998, the rate dropped by 10.6%, and has risen only slightly since 1998.

Comparing the most recent data available, the rate of police per capita in Canada (184 officers per 100,000 population) is lower than both the United States at 247 (1998 data)¹ and England and Wales at 240 (2001 data)². The number of police officers in the United States grew 8% between 1996 and 1998. It was during this period that the U.S. federal government implemented a program known as the Community Oriented Policing Services Program (COPS), a major focus of which is to increase the number of officers deployed in American communities³. In comparison, the number of police officers in England and Wales had dropped by 2% between 1996 and 2000, but hiring during 2001 completely reversed that trend.

Figure 1

Police per 100,000 Population, Canada, 1962-2001, and the United States, 1975-1998



Source: Canadian data: Police Administration Survey, Canadian Centre for Justice Statistics. U.S. data: U.S. Department of Justice, Bureau of Justice Statistics

¹ U.S. Department of Justice, Bureau of Justice Statistics. FBI, "Crime in the United States, 1975-1998".

² Home Office. "Police Service Strength – England and Wales, 30 September 2001." Statistical Bulletin. Issue 23/01. December 2001.

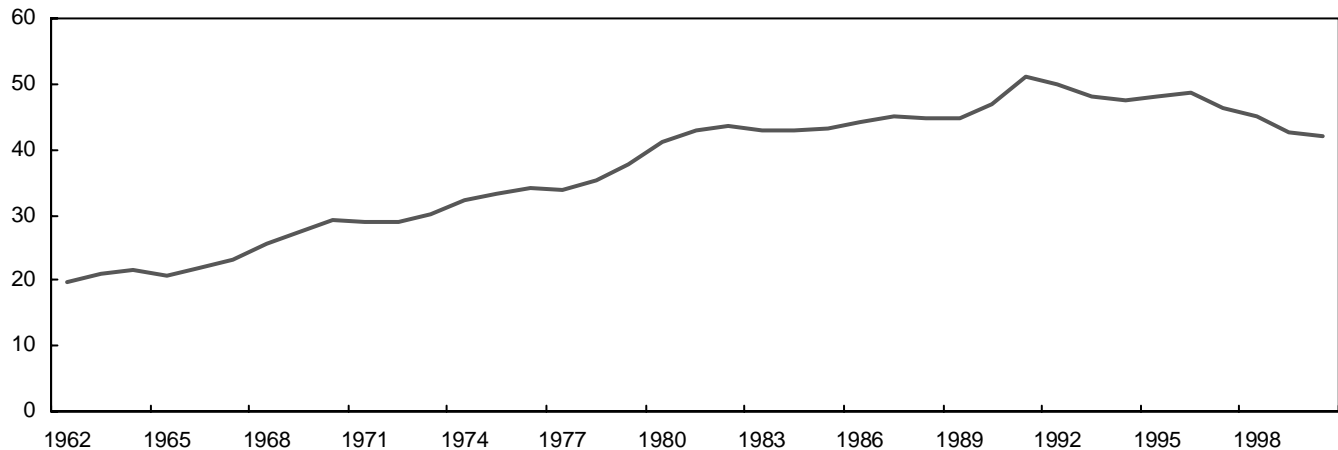
³ Roth, J.A. & Ryan, J.F. "The COPS Program After 4 Years – National Evaluation." National Institute of Justice: Research in Brief. August 2000.

Rate of incidents per police officer continues to decrease

The number of *Criminal Code* incidents (excluding traffic) per police officer may be used as one indicator of police workload. The rate is affected not only by the number of police officers, but also by changes in the number of crimes reported to the police. The number of *Criminal Code* incidents per officer increased steadily from 20 per officer in 1962 to a peak of 51 in 1991. Since 1991, this rate has generally been decreasing, and in 2000 was at 42 incidents per officer (Figure 2, Table 6).

Figure 2

Criminal Code Incidents per Police Officer, Canada, 1962-2000



Source: *Police Administration Survey, Canadian Centre for Justice Statistics*

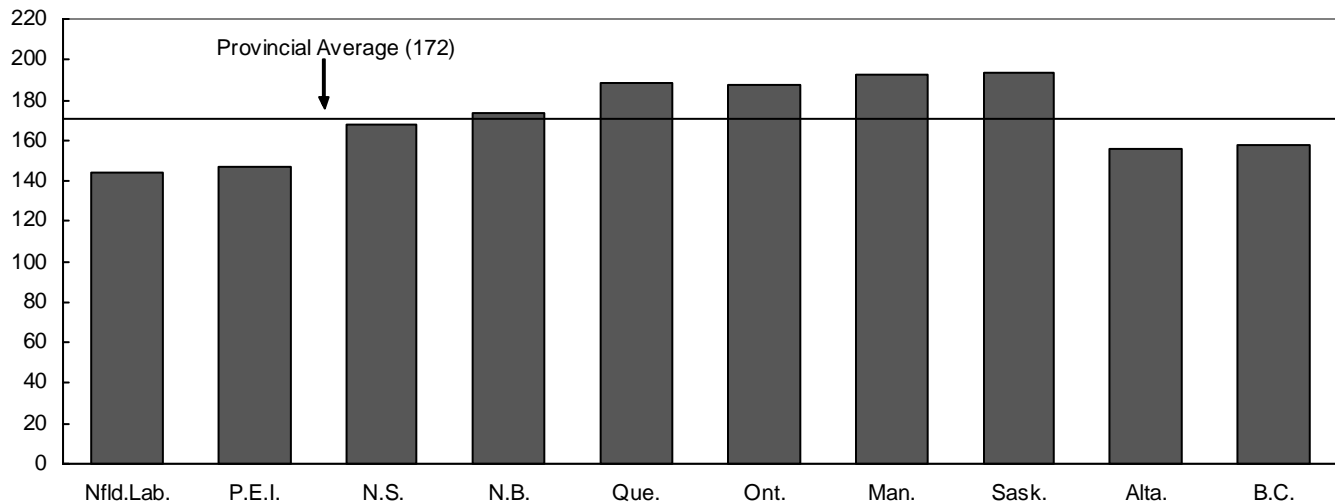
Among the provinces, Saskatchewan had the most police per capita

Figure 3 presents the number of police officers per 100,000 population by province (excluding RCMP federal police officers). The three territories are not shown on this graph as their sparse populations over immense areas result in considerably higher police strengths than the rest of Canada (Table 7). Counts for temporary officers are not included in any of the police officer counts, as only permanent, full-time officers (and full-time equivalents) are included. Temporary police officers are hired to fill in, as needed, for permanent police officers. It should be noted that Quebec employs more “temporary” police officers than any other jurisdiction. Of the 1,201 temporary officers reported, 1,020 or 85% were employed in Quebec.

Among the provinces, Saskatchewan had the most police officers per 100,000 population (193) in 2001, an increase of 6.0% from 2000. Manitoba (192), Quebec (188) and Ontario (187) had the next highest rates. This is the first time since 1985 that Saskatchewan’s rate has exceeded those of Manitoba and Quebec. This change has occurred partly because Saskatchewan’s population has been shrinking for the past two years and partly because the RCMP expanded its strength in Saskatchewan by 7.2% during the past year to make up for shortfalls in earlier years. Newfoundland and Labrador (144) and Prince Edward Island (147) continued to show the lowest police per capita rates. As mentioned earlier, the rates in Yukon (405), the Northwest Territories (372), and Nunavut (323) were much higher.

Notable increases since 1991 (Table 7) have taken place in the number of officers in British Columbia (+12.1%), Prince Edward Island (+8.0%), Alberta (+5.7%), and Ontario (+4.6%). However, these increases have not all kept up with increasing populations. The rate of officers per 100,000 population has actually decreased markedly in Alberta (-10.6%), Ontario (-8.2) and British Columbia (-7.6%), while increasing very little in Prince Edward Island (+1.6%). Notable decreases in the number of officers have occurred in Newfoundland and Labrador (-16.4%) and Quebec (-4.4%) over the same period, and these decreases are also reflected in the rate of officers per 100,000 (-9.2% and -8.9% respectively; see Table 7).

Figure 3

Police Officers per 100,000 Population, 2001

Source: Police Administration Survey, Canadian Centre for Justice Statistics

Thunder Bay had the most police officers per capita among the metropolitan areas

Table 1 presents the number of police officers per 100,000 population and the crime rates for the 25 census metropolitan areas (CMAs) in Canada (defined as large urban areas with populations over 100,000). All data in this table (including populations and police officer counts) are for the year 2000, because crime data for 2001 are not yet available. Police officers included in Table 1 represent only those involved in municipal and provincial policing. See *Census Metropolitan Area (CMA) Reference List* for a list of police services included in each CMA.

Thunder Bay had the most police officers per 100,000 population (195) in 2000, followed by Regina and Toronto (both with 181). Sherbrooke (111) and Chicoutimi-Jonqui re (119) had the fewest. Among the larger CMAs (over 500,000 population), Toronto (181) had the highest police officers per 100,000 population, whereas Qu bec (129) had the lowest. With some exceptions, the rate of police officers per capita has tended to be lower amongst those CMAs having lower crime rates.

Female police officers increasing, but remain a minority

In 2001, women accounted for 14.5% of police officers in Canada. While the number of male police officers increased 1.1% from 2000, the number of female officers increased by 8.4%, indicating that recruitment of women continues with positive results. The proportion of female police officers has been increasing steadily since the mid-1970s, after remaining at less than 1% during the 1960s and early 1970s. The number of female police officers has more than doubled over the past decade (Table 2, Figure 4).

Police resources in Canada, 2001

Table 1
Police Officers and Crime Rate in Census Metropolitan Areas (CMAs)¹, 2000²

CMAs	Population ³		Number of Police Officers		Police Officers per 100,000 Population	Population per Officer	Crime Rate ⁴
Thunder Bay	126,343		247		195	512	8,900
Regina	200,455		363		181	552	14,769
Toronto	4,751,408		8,579		181	554	5,290
Windsor	304,390		549		180	554	7,086
Hamilton	671,679		1,203		179	558	6,565
Winnipeg ⁵	681,146		1,201		176	567	10,377
Montréal	3,480,342		5,940		171	586	7,234
Saskatoon	232,600		380		163	612	12,891
Halifax ⁵	355,996		561		158	635	9,249
St.Catharines-Niagara ⁶	422,995		647		153	654	6,546
Saint John ⁶	146,844		221		150	664	6,277
Victoria	317,492		476		150	667	10,594
Edmonton	944,194		1,407		149	671	8,377
Sudbury	157,132		234		149	672	6,784
St.John's	175,062		253		145	692	6,759
Calgary	952,960		1,338		140	712	7,115
Hull (Quebec portion of Ottawa-Hull CMA)	258,053		357		138	723	6,415
Vancouver ^{5,7}	2,048,823		2,821		138	726	11,210
London ⁶	377,523		513		136	736	8,721
Ottawa (Ontario portion of Ottawa-Hull CMA)	822,933		1,107		135	743	5,680
Kitchener ⁶	446,311		596		134	749	6,110
Québec	689,654		892		129	773	5,108
Trois-Rivières	141,785		181		128	783	5,207
Chicoutimi-Jonquière ⁶	145,014		173		119	838	5,104
Sherbrooke	152,897		170		111	899	5,829

¹ The numbers in this table will not agree with the numbers in Part II of this report (which report data at the level of individual police services) because most CMAs are policed by more than one police service. The CMA of Oshawa is not included due to differences in policing jurisdiction and CMA boundaries. Crimes investigated by RCMP federal personnel within CMAs are included; however, police officer counts do not include RCMP federal police officers.

² Crime data for 2001 were not available at the time of publication, so all data reported in this table, including populations and police officer counts, are for 2000.

³ Populations represent July 1st, 2001 updated postcensal estimates for 2000, Demography Division, Statistics Canada.

⁴ Crime rate represents the number of Criminal Code incidents (excluding traffic) per 100,000 population.

⁵ Police officer counts include officers deployed to contract positions (e.g. airport, port, U.N. mission).

⁶ CMA populations were adjusted to follow police service boundaries.

⁷ From September to December 2000, as a result of labour action, there was a decrease in the number of theft crimes reported to Vancouver Police. Comparisons with prior years should be made with caution.

Source: Police Administration Survey and Uniform Crime Reporting Survey, Canadian Centre for Justice Statistics.

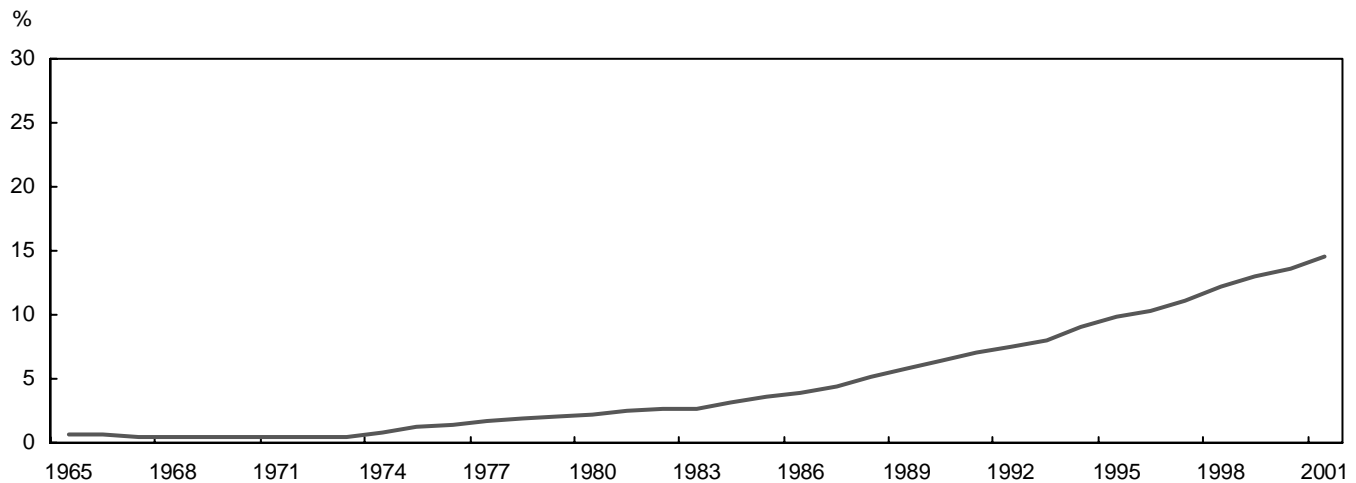
Table 2
Police Officers by Sex, Canada, Selected Years

Year	Male		Female		Total
	Number	%	Number	%	
1965	29,956	99.4	190	0.6	30,146
1970	37,763	99.5	186	0.5	37,949
1975	47,151	98.8	562	1.2	47,713
1980	48,749	97.8	1,092	2.2	49,841
1985	48,518	96.4	1,833	3.6	50,351
1990	52,461	93.6	3,573	6.4	56,034
1995	49,630	90.2	5,378	9.8	55,008
2000	48,304 ^r	86.3	7,650 ^r	13.7	55,954 ^r
2001	48,816	85.5	8,291	14.5	57,107

^r Revised figures.

Source: Police Administration Survey, Canadian Centre for Justice Statistics.

Figure 4

Proportion of Female Police Officers, Canada, 1965-2001

Source: Police Administration Survey, Canadian Centre for Justice Statistics

British Columbia had the highest percentage of female police officers

In 2001, British Columbia had the highest percentage of female police officers at 18.5% (Table 3), followed by Saskatchewan (15.1%) and Ontario (14.8%). The lowest proportions were found in the Atlantic provinces, with women accounting for about 10% to 11% of the police officers in each province.

Table 3

Police Officers by Sex, Provinces/Territories, 2001

Province/Territory	Male		Female		Total
	Number	%	Number	%	
British Columbia	5,618	81.5	1,277	18.5	6,895
Saskatchewan	1,666	84.9	296	15.1	1,962
Ontario	18,887	85.2	3,289	14.8	22,176
Northwest Territories	130	85.5	22	14.5	152
Alberta	4,118	86.1	667	13.9	4,785
Quebec	12,004	86.2	1,923	13.8	13,927
Nunavut	79	86.8	12	13.2	91
Manitoba	1,916	86.9	290	13.1	2,206
Yukon	107	88.4	14	11.6	121
New Brunswick	1,173	89.1	144	10.9	1,317
Prince Edward Island	182	89.7	21	10.3	203
Nova Scotia	1,419	89.8	162	10.2	1,581
Newfoundland and Labrador	689	89.8	78	10.2	767
RCMP Headquarters	828	89.6	96	10.4	924
Canada	48,816	85.5	8,291	14.5	57,107

Source: Police Administration Survey, Canadian Centre for Justice Statistics.

Women continue to move up the ranks

Women police officers have increased their percentages in all ranks in the past year (Table 4). In 2001, women represented 3.5% of the senior officers, 6.3% of the non-commissioned officers and 17.8% of the constables, compared to 1986 when they accounted for less than 1% among the senior and the non-commissioned officer ranks and 5% among the constable ranks.

Table 4

Percentage of Male and Female Police Officers Within the Ranks, Canada, Selected Years

Year	Senior Officers		Non-Commissioned Officers		Constables	
	Male	Female	Male	Female	Male	Female
	%		%		%	
1986	99.8	0.2	99.5	0.5	94.6	5.4
1988	99.8	0.2	99.2	0.8	93.0	7.0
1990	99.6	0.4	98.7	1.3	91.4	8.6
1992	99.3	0.7	98.4	1.6	89.8	10.2
1994	98.7	1.3	97.8	2.2	88.0	12.0
1996	98.3	1.7	97.0	3.0	86.5	13.5
1998	97.8	2.2	96.1	3.9	84.5	15.5
2000	96.9	3.1	94.5	5.5	83.0	17.0
2001	96.5	3.5	93.7	6.3	82.2	17.8

Source: Police Administration Survey, Canadian Centre for Justice Statistics.

Civilian employees increase

In 2001 there were 19,992 civilian employees, an increase of less than 1% from 2000 (Table 6). From 1962 to 1987, civilians were in a period of steady growth, as some duties that were traditionally performed by police officers were reassigned to civilians (such as dispatch and by-law enforcement). During that 25-year period, the number of civilian personnel more than tripled, while the number of police officers doubled. Between 1987 and 1998, the count of civilians had stabilized, remaining around 19,500 employees. Between 1998 and 2001, civilian personnel increased by 3%. However, increases in the number of police officers have kept the ratio of police officers to civilian personnel relatively unchanged. Figure 5 shows that the ratio of police officers to civilians dropped from a high of nearly 4.6 police for every civilian in 1963 to 2.7 in 1987. Over the last 14 years, this ratio has remained relatively stable.

The distribution of males and females among the civilian personnel has also changed over the years. Prior to 1970, men out-numbered women. With steadily increasing numbers of female civilians, the number of women surpassed the number of men after 1970. Since the mid-1980s, females have accounted for around two-thirds of all civilian staff. In 2001, females accounted for 69.4% of civilian employees.

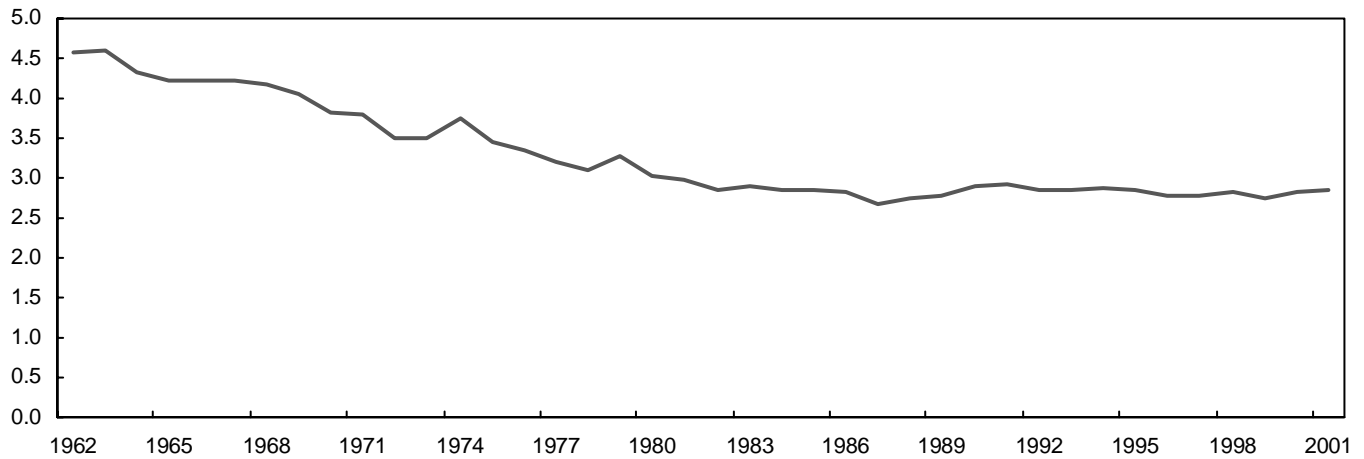
Policing Expenditures

Policing costs increase

Policing expenditures totalled \$6.8 billion in 2000. This represents an increase of 6.4% from 1999. With an adjustment for inflation, expenditures were up 3.5%, marking the fourth year in a row that constant dollars have increased (Table 5, Figure 6). The \$6.8 billion spent on policing in 2000 translates into a cost of \$221 per Canadian (Table 6).

Figure 5

Ratio of Police Officers to Civilians, Canada, 1962-2001



Source: Police Administration Survey, Canadian Centre for Justice Statistics

Table 5

Current and Constant Dollar Expenditures on Policing, Canada, 1985-2000

Year	Current Dollars		Constant Dollars ¹	
	(\$000s)	% Change from Previous Year	(\$000s)	% Change from Previous Year
1985	3,542,240	...	5,360,590	...
1986	3,772,217	6.5	5,482,031	2.3 ^r
1987	4,027,809	6.8	5,609,280	2.3 ^r
1988	4,389,414	9.0	5,874,982	4.7
1989	4,684,760	6.7	5,974,385	1.7
1990	5,248,530	12.0	6,384,868	6.9
1991	5,426,887	3.4	6,253,316	-2.1
1992	5,716,833	5.3	6,488,605	3.8
1993	5,790,165	1.3	6,455,636	-0.5
1994	5,783,656	-0.1	6,435,734	-0.3
1995	5,808,607	0.4	6,327,034	-1.7
1996	5,856,055	0.8	6,276,319	-0.8
1997	5,989,022	2.3	6,317,416	0.7
1998	6,209,756	3.7	6,489,939	2.7
1999	6,394,160 ^r	2.9	6,567,757	1.2
2000	6,800,516	6.4	6,800,516	3.5

^r Revised

... Figures not appropriate or not applicable

¹ The Consumer Price Index was used to calculate constant dollars over a base year of 2000.

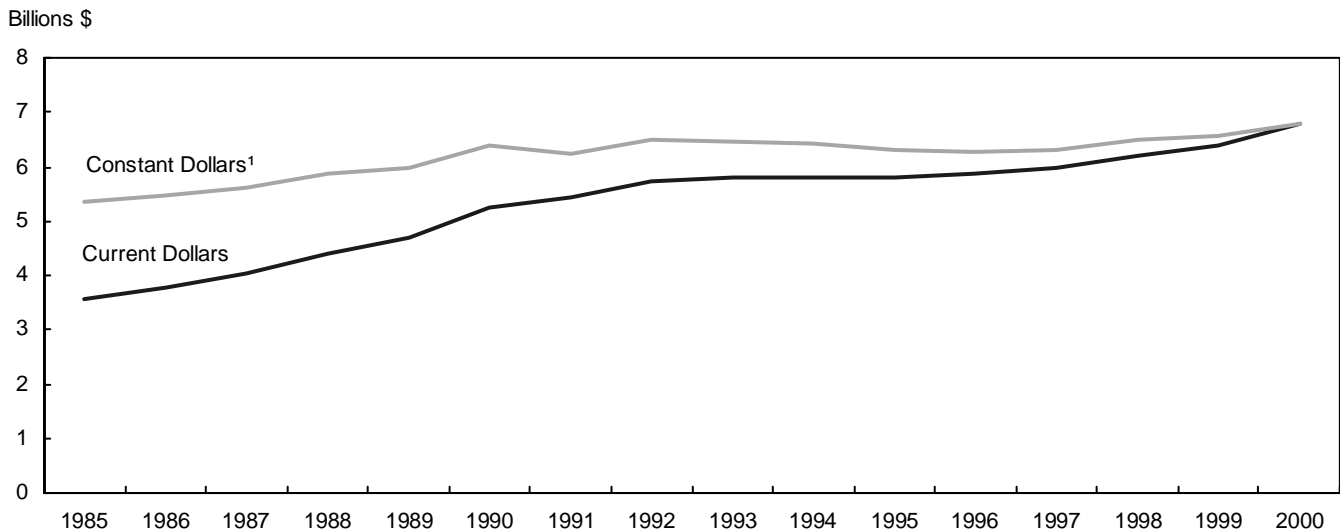
Source: Police Administration Survey, Canadian Centre for Justice Statistics.

Police resources in Canada, 2001

In general, salaries, wages and benefits make up about 80% of policing expenditures. Municipal policing accounts for about 57% of policing expenditures, provincial policing accounts for about 23% and federal and other RCMP costs account for the remaining 19% of the total expenditures (Table 8).

Figure 6

Current and Constant Dollar Spending on Policing, Canada, 1985-2000



¹ The Consumer Price Index was used to calculate constant dollars over a base year of 2000.

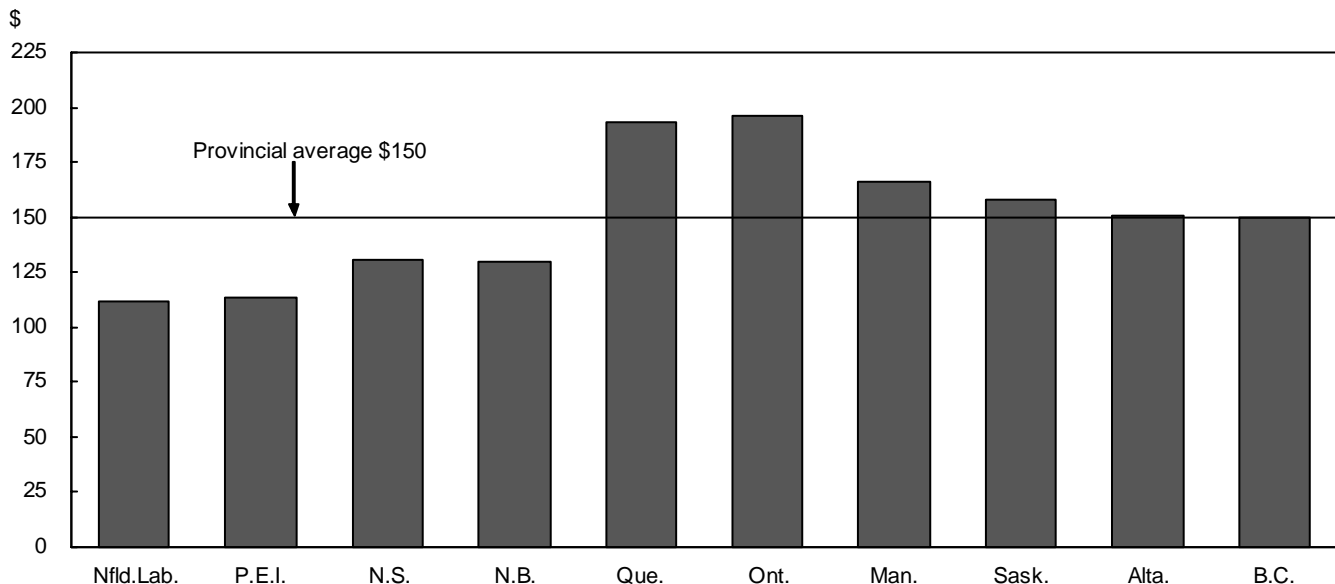
Source: Police Administration Survey, Canadian Centre for Justice Statistics

Quebec and Ontario have the highest per capita costs

Figure 7 compares per capita policing costs of municipal and provincial/territorial policing by province for 2000. Only expenditures for municipal and provincial/territorial policing are included, as the provinces/territories are not responsible for federal policing and other RCMP administrative expenditures. Per capita costs for Yukon, the Northwest Territories, and Nunavut were excluded from the graph as their sparse populations over immense areas resulted in per capita costs that were considerably higher than the rest of Canada (Table 8).

The per capita cost of municipal and provincial/territorial policing in Canada for 2000 was \$178. Amongst the provinces only, excluding the territories, the average per capita expenditure was \$150. Consistent with historical data, Ontario (\$197) and Quebec (\$193) had the highest per capita expenditures among the provinces. Newfoundland and Labrador (\$112) and Prince Edward Island (\$113) had the lowest. The Atlantic provinces, particularly Newfoundland and Labrador and Prince Edward Island, have generally had the lowest per capita costs in recent years. Among the territories, the per capita cost was \$449 for the Northwest Territories, \$333 for Yukon and \$480 for Nunavut.

Figure 7

Per Capita Spending on Municipal and Provincial Policing, 2000

Source: Police Administration Survey, Canadian Centre for Justice Statistics

Municipal Policing Expenditures

Provincial legislation can require that cities and towns, upon reaching a minimum population, maintain their own municipal police service. Municipalities have three options when providing municipal policing services: forming their own police service, joining with an existing municipal police service or entering into an agreement with the provincial police service or the RCMP. In 2000, there were 595 municipal police services in Canada, including 201 RCMP municipal contracts and 75 OPP municipal contracts. In total, municipal policing accounted for 67% of all police officers and 57% of all policing expenditures in 2000. Table 9 provides information on municipal policing expenditures.

The RCMP employed 3,819 officers in 2000 under contract to 201 municipalities in all provinces except Newfoundland and Labrador, Quebec and Ontario. RCMP municipal policing contract charges are based upon the size of the municipality. During 2000, most policing contracts in municipalities with a population of under 15,000 were billed 70% of the cost of the contract, while municipalities of 15,000 and over were billed 90% (in most cases) of the contract cost. The costing formula takes into consideration the costs of providing federal and other RCMP policing duties while also performing municipal policing duties.

There were 75 Ontario municipalities that contracted with the OPP in 2000 to provide municipal policing, for a total of 1,025 police officers.

The remaining 319 Canadian municipal police services employed 32,429 officers, or 87% of municipal police officers in Canada, and accounted for 88% of total municipal policing expenditures in 2000.

Provincial/Territorial Policing Expenditures

Provincial policing for both the provinces and territories accounted for approximately one-quarter (23%) of policing costs in 2000. Table 10 provides information on provincial and territorial policing costs.

Federal Policing and Other RCMP Expenditures

In 2000, the cost to the federal government for expenditures on federal policing and other RCMP expenditures totaled \$1.3 billion (Table 8), which included the portion of municipal and provincial RCMP contract policing considered federal policing (\$299 million; the sum of the "Federal" columns in Tables 9 and 10). The RCMP has responsibility in all provinces and territories for the enforcement of federal statutes and protective services.

Other RCMP expenditures include the cost of headquarters and divisional administration and the costs associated with providing national police services such as: forensic laboratory services; the Canadian Police College; informatics support for management and operation of the Canadian Police Information Centre (CPIC), an automated national computer information system that is available to all police services; telecommunications services for data and radio transmissions to ensure all detachments receive current information; criminal intelligence and United Nations peacekeeping services.

Summary Tables

Table 6
Trends in Police Personnel¹ and Expenditures, Canada, 1962-2001

Year	Population ²	Police Officers	Civilian Personnel	Total Personnel	Police: Civilian Ratio	Population Per Police Officer	Police Per 100,000 Population	Actual ³ Criminal Code Incidents	Incidents per Officer	Total Expenditures	Per Capita Cost
	000's									\$000's	\$
1962	18,583.0	26,129	5,699	31,828	4.58	711.2	140.6	514,986	19.7
1963	18,931.0	27,333	5,935	33,268	4.61	692.6	144.4	572,105	20.9
1964	19,291.0	28,823	6,655	35,478	4.33	669.3	149.4	626,038	21.7
1965	19,644.0	30,146	7,133	37,279	4.23	651.6	153.5	628,418	20.8
1966	20,014.9	32,086	7,583	39,669	4.23	623.8	160.3	702,809	21.9
1967	20,378.0	33,792	8,018	41,810	4.21	603.0	165.8	784,568	23.2
1968	20,701.0	34,887	8,351	43,238	4.18	593.4	168.5	897,530	25.7
1969	21,001.0	36,342	8,963	45,305	4.05	577.9	173.0	994,790	27.4
1970	21,297.0	37,949	9,936	47,885	3.82	561.2	178.2	1,110,066	29.3
1971	21,962.1	40,148	10,597	50,745	3.79	547.0	182.8	1,166,458	29.1
1972	22,219.6	41,214	11,762	52,976	3.50	539.1	185.5	1,189,805	28.9
1973	22,493.8	43,142	12,297	55,439	3.51	521.4	191.8	1,298,551	30.1
1974	22,808.4	45,276	12,085	57,361	3.75	503.8	198.5	1,456,885	32.2
1975	23,142.3	47,713	13,794	61,507	3.46	485.0	206.2	1,585,805	33.2
1976	23,449.8	48,213	14,377	62,590	3.35	486.4	205.6	1,637,704	34.0
1977	23,726.3	48,764	15,231	63,995	3.20	486.6	205.5	1,654,020	33.9
1978	23,964.0	48,705	15,749	64,454	3.09	492.0	203.2	1,714,297	35.2
1979	24,202.2	48,990	15,001	63,991	3.27	494.0	202.4	1,855,271	37.9
1980	24,516.3	49,841	16,410	66,251	3.04	491.9	203.3	2,045,399	41.0
1981	24,820.4	50,563	16,999	67,562	2.97	490.9	203.7	2,168,201	42.9
1982	25,117.4	50,539	17,738	68,277	2.85	497.0	201.2	2,203,668	43.6
1983	25,367.0	50,081	17,342	67,423	2.89	506.5	197.4	2,148,633	42.9
1984	25,607.6	50,010	17,503	67,513	2.86	512.0	195.3	2,147,657	42.9
1985	25,842.6	50,351	17,702	68,053	2.84	513.2	194.8	2,174,175	43.2	3,542,240	137
1986	26,100.6	51,425	18,273	69,698	2.81	507.5	197.0	2,277,749	44.3	3,772,217	145
1987	26,449.9	52,510	19,558	72,068	2.68	503.7	198.5	2,368,956	45.1	4,027,809	152
1988	26,798.3	53,312	19,407	72,719	2.75	502.7	198.9	2,390,007	44.8	4,389,414	164
1989	27,286.2	54,211	19,526	73,737	2.78	503.3	198.7	2,425,936	44.7	4,684,760	172
1990	27,700.9	56,034	19,259	75,293	2.91	494.4	202.3	2,627,193	46.9	5,248,530	189
1991	28,030.9	56,768	19,440	76,208	2.92	493.8	202.5	2,898,988	51.1	5,426,887	194
1992	28,376.6	56,992	20,059	77,051	2.84	497.9	200.8	2,847,981	50.0	5,716,833	201
1993	28,703.1	56,901	19,956	76,857	2.85	504.4	198.2	2,735,626	48.1	5,790,165	202
1994	29,036.0	55,859	19,492	75,351	2.87	519.8	192.4	2,646,209	47.4	5,783,656	199
1995	29,353.9	55,008	19,259	74,267	2.86	533.6	187.4	2,639,654	48.0	5,808,607	198
1996	29,671.9	54,323	19,603	73,926	2.77	546.2	183.1	2,644,893	48.7	5,856,055	197
1997	29,987.2	54,719	19,679	74,398	2.78	548.0	182.5	2,534,766	46.3	5,989,022	200
1998	30,248.2 [†]	54,763	19,383	74,146	2.83	552.3	181.0	2,461,156	44.9	6,209,756	205
1999	30,499.2 [†]	55,321	20,168	75,489	2.74	551.3 [†]	181.4	2,356,831 [†]	42.6	6,394,160 [†]	210
2000	30,769.7 [†]	55,954 [†]	19,909 [†]	75,863 [†]	2.81 [†]	549.9 [†]	181.8 [†]	2,353,926	42.1	6,800,516	221
2001	31,081.9	57,107	19,992	77,099	2.86	544.3	183.7

[†] Revised figures.

.. Figures not available.

¹ A new survey was implemented in 1986. To maintain historical continuity, figures prior to 1986 have been adjusted.

² 1962-1970 final intercensal estimates at June 1st, without adjustment for net census undercounts; from 1971 onward estimates are adjusted to July 1st and include adjustments for net census undercoverage, non-permanent residents and returning Canadians; 1971-1990 revised intercensal estimates; 1991-1995 final intercensal estimates; 1996 final postcensal estimate; 1997-2000 updated postcensal estimates; 2001 preliminary postcensal estimate.

³ Data provided from the Uniform Crime Reporting Survey, Canadian Centre for Justice Statistics. Excludes Criminal Code traffic incidents.

Source: Police Administration Survey, Canadian Centre for Justice Statistics

Police resources in Canada, 2001

Table 7
Police Officers¹ by Level of Policing, 2001

Province/ Territory	Popu- lation ² 2001	Independent (Non-RCMP)		RCMP					Total Police Officers	% Change 2000 to 2001	% Change 1991 to 2001 ⁴	Police Officers Per 100,000 Popu- lation	% Change in rate 1991 to 2001	Popu- lation Per Officer 2001
		Munic- ipal	Provin- cial	Munic- ipal	Provin- cial	Federal	Other ³	Total						
	000's									%	%		%	
Newfoundland and Labrador ⁵	533.8	...	310	...	371	69	17	457	767	-0.6	-16.4	144	-9.2	696
Prince Edward Island	138.5	85	...	7	85	20	6	118	203	-1.0	8.0	147	1.6	682
Nova Scotia	942.7	732	...	56	629	136	28	849	1,581	-1.2	2.5	168	-0.5	596
New Brunswick	757.1	474	...	194	495	116	38	843	1,317	0.8	1.5	174	-0.1	575
Quebec	7,410.5	9,169	3,840	899	19	918	13,927	0.7	-4.4	188	-8.9	532
Ontario ⁶	11,874.4	16,652	3,836	1,512	176	1,688	22,176	2.5	4.6	187	-8.2	535
Manitoba	1,150.0	1,244	...	192	581	151	38	962	2,206	3.0	0.6	192	-2.9	521
Saskatchewan ⁷	1,015.8	813	...	205	721	199	24	1,149	1,962	5.3	-1.7	193	-3.0	518
Alberta	3,064.2	2,785	...	716	972	275	37	2,000	4,785	3.7	5.7	156	-10.6	640
British Columbia	4,095.9	2,019	...	2,666	1,432	652	126	4,876	6,895	3.8	12.1	168	-7.6	594
Yukon ⁸	29.9	84	27	10	121	121	0.8	3.4	405	0.1	247
Northwest Territories ⁸	40.9	135	10	7	152	152	-1.3	...	372	...	269
Nunavut ⁸	28.2	82	3	6	91	91	5.8	...	323	...	309
Provincial/ Territorial Total	31,081.9	33,973	7,986	4,036	5,587	4,069	532	14,224	56,183	2.2	2.3	181	-7.8	553
RCMP 'HQ' and Training Academy	391	533	924	924
Canada	31,081.9	33,973	7,986	4,036	5,587	4,460	1,065	15,148	57,107	2.1	0.6	184	-9.3	544

... Figures not available.

... Figures not appropriate or not applicable.

¹ Represents actual police officer strength as of June 15, 2001.

² Preliminary postcensal estimates for 2001, Demography Division, Statistics Canada.

³ Includes Canadian Police Services and Departmental and Divisional Administration.

⁴ 1991 was selected as the base year for the calculation of percentage change among the provinces/territories as decreases at the national level began after 1991.

⁵ Newfoundland and Labrador does not have any municipal police services. The Royal Newfoundland Constabulary (a provincial police service) provides policing to the larger municipalities.

⁶ Excludes personnel from RCMP Headquarters. The Ontario Provincial Police deploy 1,215 officers to provide municipal policing services under contract and these are included as municipal, not provincial policing.

⁷ Excludes personnel from RCMP Training Academy.

⁸ Yukon, the Northwest Territories and Nunavut do not have any municipal police services. The RCMP is responsible for providing policing to the territories.

Source: Police Administration Survey, Canadian Centre for Justice Statistics.

Table 8
Total Expenditures^{1,2} on Policing, 2000

Province/Territory	2000 Population ³	Expenditures			Per Capita Cost
		Municipal ⁴	Provincial ⁴	Total	
	000's	\$000's	\$000's	\$000's	\$
Newfoundland and Labrador ⁵	537.2	...	60,338	60,338	112
Prince Edward Island	138.1	7,681	7,909	15,591	113
Nova Scotia	941.2	66,446	56,905	123,351	131
New Brunswick	755.3	56,466	41,913	98,380	130
Quebec	7,377.7	931,332	493,091	1,424,442	193
Ontario ⁶	11,685.3	1,777,846	522,700	2,300,546	197
Manitoba	1,146.0	134,272	56,311	190,583	166
Saskatchewan ⁷	1,022.0	98,558	63,030	161,588	158
Alberta	3,009.2	369,189	85,355	454,543	151
British Columbia	4,058.8	465,696	143,437	609,133	150
Yukon	30.6	...	10,173	10,173	333
Northwest Territories	40.9	...	18,348	18,348	449
Nunavut	27.4	...	13,149	13,149	480
Provincial/Territorial Total	30,769.7	3,907,485	1,572,659	5,480,145	178
RCMP Federal Policing, federal portion of RCMP municipal and provincial policing, Administration, Headquarters, Training Academy	1,320,371	...
Canada Total⁸	30,769.7	3,907,485	1,572,659	6,800,516	221

... Figures not appropriate or not applicable.

¹ Totals may not add up due to rounding.

² Expenditure figures represent gross operating expenditures and include costs that are paid from police department budgets and benefits paid from other sources. Revenues, recoveries and capital expenditures are excluded.

³ Updated postcensal estimates for 2000. Demography Division, Statistics Canada.

⁴ Figures include the amount billed to the province, territory or municipality for RCMP contract policing and not the total cost of the contract. The remaining costs are included in the row "RCMP Federal..." See Tables 9 and 10 for details. In some provinces, provincial policing is paid for by the municipalities.

⁵ Provincial policing figures include both the Royal Newfoundland Constabulary and the RCMP.

⁶ Excludes RCMP Headquarters.

⁷ Excludes RCMP Training Academy.

⁸ Municipal policing expenditures can be found in Table 9 (see footnote 7 in Table 9). Total provincial policing costs can be found in Table 10 (see footnote 7 in Table 10).

Source: Police Administration Survey, Canadian Centre for Justice Statistics.

Police resources in Canada, 2001

Table 9
Expenditures¹ on Municipal Policing², 2000

Province/ Territory	Municipal (non-RCMP)			RCMP Municipal Contracts ³					Total Expenditures on Municipal Policing
	No. of Police Services	Population ⁴ Policed	Total Expen- ditures	No. of Police Contracts	Population ⁴ Policed	Municipal Expen- ditures	Federal Expen- ditures	Total Expen- ditures	
		000's	\$000's		000's	\$000's	\$000's	\$000's	\$000's
Newfoundland and Labrador ⁵
Prince Edward Island	4	50.9	7,211	2	8.4	470	191	661	7,872
Nova Scotia	16	296.2	62,277	9	31.2	4,169	1,133	5,301	67,579
New Brunswick	12	233.1	40,241	11	128.9	16,225	1,526	17,751	57,992
Quebec	155	5,885.3	931,332	931,332
Ontario ⁶	154	10,671.7	1,777,846	1,777,846
Manitoba	9	700.9	122,124	23	104.0	12,148	5,047	17,195	139,319
Saskatchewan	15	494.2	84,466	34	153.3	14,091	4,629	18,720	103,186
Alberta	13	1,706.4	318,893	63	608.1	50,295	13,943	64,239	383,132
British Columbia	16	1,152.0	235,571	59	2,187.6	230,125	31,793	261,918	497,489
Yukon ⁵
Northwest Territories ⁵
Nunavut ⁵
Canada⁷	394	21,190.6	3,579,962	201	3,221.6	327,524	58,261	385,785	3,965,747

... Figures not appropriate or not applicable

¹ Totals may not add up due to rounding.

² Expenditure figures represent gross operating expenditures and include costs that are paid from police department budgets and benefits paid from other sources. Revenues, recoveries and capital expenditures are excluded.

³ Under the RCMP contract, most municipalities with populations of less than 15,000 were billed 70% of total costs, while municipalities with populations of 15,000 and over were billed 90% of total costs in most cases. The remaining costs are shown as "Federal Expenditures". Contract costs exclude employees the municipality provides to the RCMP.

⁴ Updated postcensal estimates for 2000 at the Census Subdivision level. Demography Division, Statistics Canada.

⁵ Newfoundland and Labrador, Yukon, Northwest Territories and Nunavut do not have any municipal police services. See Table 10 for policing costs.

⁶ Expenditures for OPP municipal contracts are included under "Municipal (Non-RCMP)".

⁷ Total municipal policing expenditures referred to in Table 8 includes both the total Municipal Non-RCMP Expenditures (Column 4) plus the total RCMP Municipal Expenditures (Column 7).

Source: Police Administration Survey, Canadian Centre for Justice Statistics.

Table 10
Expenditures^{1,2} on Provincial/Territorial Policing, 2000

Province/ Territory	Provincial Police (Non-RCMP)	RCMP Provincial/Territorial Contracts			Total Expenditures Provincial/ Territorial Policing
		Provincial ³ Expenditures	Federal ³ Expenditures	Total	
	\$000's	\$000's	\$000's	\$000's	\$000's
Newfoundland and Labrador ⁴	23,691	36,647	16,599	53,247	76,937
Prince Edward Island	...	7,909	3,462	11,371	11,371
Nova Scotia	...	56,905	24,696	81,601	81,601
New Brunswick	...	41,913	18,271	60,184	60,184
Quebec ⁵	493,091	493,091
Ontario ⁶	522,700	522,700
Manitoba	...	56,311	25,376	81,688	81,688
Saskatchewan	...	63,030	28,570	91,601	91,601
Alberta	...	85,355	40,254	125,609	125,609
British Columbia	...	143,437	63,207	206,644	206,644
Yukon	...	10,173	4,880	15,052	15,052
Northwest Territories	...	18,348	8,971	27,319	27,319
Nunavut	...	13,149	6,410	19,558	19,558
Canada⁷	1,039,481	533,178	240,696	773,874	1,813,355

... Figures not appropriate or not applicable.

¹ Totals may not add up due to rounding.

² Expenditure figures represent gross operating expenditures and include costs that are paid from police department budgets and benefits paid from other sources. Revenues, recoveries and capital expenditures are excluded.

³ In most cases, the provincial/territorial portion of policing contracts is 70% and the federal portion is 30%; however some administrative costs have been added to the federal portion, therefore the provincial/territorial portion may appear slightly lower than 70% in this table. In some provinces the cost of provincial policing is paid for by the municipalities.

⁴ The Royal Newfoundland Constabulary (RNC) shares provincial policing in Newfoundland and Labrador with the RCMP. The RNC polices approximately 39% of the population and the RCMP the remaining 61%.

⁵ The Sûreté du Québec provides all provincial policing in Quebec.

⁶ The Ontario Provincial Police provide all provincial policing in Ontario.

⁷ Total provincial policing costs referred to in Table 8 includes both the total Provincial Police Non-RCMP Expenditures (Column 2) plus the total RCMP Provincial Expenditures (Column 3).

Source: Police Administration Survey, Canadian Centre for Justice Statistics.

ELECTRONIC PUBLICATIONS AVAILABLE AT
www.statcan.ca



Census Metropolitan Area (CMA) Reference List

Police Services Included in CMAs, 2000

CALGARY

Airdrie (RCMP rural)
 Airdrie (RCMP)
 Beiseker (RCMP rural)
 Calgary
 Cochrane (RCMP rural)
 Cochrane (RCMP)

CHICOUTIMI-JONQUIÈRE

Chicoutimi
 Jonquière
 La Baie

EDMONTON

Beaumont (RCMP)
 Devon (RCMP)
 Edmonton
 Fort Saskatchewan (RCMP rural)
 Fort Saskatchewan (RCMP)
 Leduc (RCMP rural)
 Leduc (RCMP)
 Morinville (RCMP rural)
 Morinville (RCMP)
 Redwater (RCMP)
 Sherwood Park (RCMP)
 Spruce Grove (RCMP)
 St. Albert (RCMP)
 Stony Plain (RCMP rural)
 Stony Plain (RCMP)
 Thorsby (RCMP rural)

HALIFAX

Halifax County (RCMP rural)
 Halifax Regional

HAMILTON

Burlington (OPP District)
 Halton Regional (Burlington)
 Hamilton-Wentworth Regional

KITCHENER

Cambridge (OPP rural)
 Waterloo Regional

LONDON

London
 St. Thomas

MONTRÉAL

Blainville
 Boisbriand
 Boucherville
 Brossard
 Carignan
 Chambly
 Châteauguay
 Deux-Montagne MRC (SQ)
 Deux-Montagnes Regional
 Greenfield Park
 Hudson
 Kanesatake Mohawk
 La Plaine
 La Prairie
 Lachenaie
 L'Assomption
 Laval
 Le Gardeur
 L'Île-Perrot
 Longueuil
 Lorraine
 Mascouche
 Mercier
 Mirabel
 Montreal
 Mont-St-Hilaire
 Otterburn Park
 Pincourt
 Repentigny
 Rosemère
 Roussillon (Régie)
 Roussillon MRC (SQ)
 Saint-Basile-le-Grand
 Saint-Bruno-de-Montarville
 Sainte-Julie
 Saint-Eustache
 Saint-Lambert
 Saint-Thérèse
 Seigneuries (Régie)
 St-Hubert
 St-Jérôme
 Terrebonne
 Vallée-du-Richelieu
 Varennes
 Vaudreuil-Dorion

OTTAWA-HULL (Quebec portion)

Aylmer
 Buckingham (SQ)
 Gatineau
 Hull
 MRC des Collines de l'Outaouais

OTTAWA-HULL (Ontario portion)

Casselman (OPP rural)
 Ottawa (OPP rural) -Traffic
 Ottawa-Carleton Regional

QUÉBEC

Charlesbourg
 Chaudière-Etchemin
 Haute-Saint-Charles
 Lévis
 L'Île-D'Orléans MRC (SQ)
 Québec
 Sainte-Foy
 Sillery
 Val-Belair
 Wendake

REGINA

Lumsden (RCMP rural)
 Regina
 Regina (RCMP rural)

SAINT JOHN

Hampton (RCMP District 3)
 Hampton (RCMP)
 Rothesay Regional
 Saint John

SASKATOON

Colonsay (RCMP rural)
 Dalmeny
 Langham
 Saskatoon
 Saskatoon (RCMP rural)
 Warman (RCMP rural)
 Warman (RCMP)

SHERBROOKE

East Angus
 Région Sherbrookoise

ST.CATHARINES-NIAGARA

Niagara Falls (OPP rural)
 Niagara Regional

ST.JOHN'S

RNC (St. John's)

SUDBURY

Sudbury Regional

THUNDER BAY

Shuniah (OPP)
 Thunder Bay
 Thunder Bay (OPP District)

TORONTO

Aurora (OPP District)
 Caledon (OPP rural)
 Caledon (OPP)
 Downsview (OPP rural)
 Durham Regional
 Halton Regional
 Metro Toronto
 Mono (OPP)
 Orangeville
 Peel Regional
 Port Credit (OPP rural)
 York Regional

TROIS-RIVIÈRES

Becancour MRC (SQ)
 Cap-de-la-Madelaine
 Trois-Rivières
 Trois-Rivières-Ouest

VANCOUVER

Burnaby (RCMP)
 Coquitlam (RCMP rural)
 Coquitlam (RCMP)
 Delta
 Langley (RCMP)
 Langley D.M. (RCMP)
 Maple Ridge (RCMP)
 New Westminster
 North Vancouver City (RCMP)
 North Vancouver D.M. (RCMP)
 Pitt Meadows (RCMP)
 Port Coquitlam (RCMP)
 Port Moody
 Richmond (RCMP)
 Surrey (RCMP rural)
 Surrey (RCMP)
 Vancouver
 Vancouver (RCMP rural)
 West Vancouver
 White Rock (RCMP)

VICTORIA

Central Saanich
Colwood (RCMP)
Esquimalt
Langford (RCMP)
North Saanich D.M. (RCMP)
Oak Bay
Saanich
Sidney (RCMP rural)
Sidney (RCMP)
Sooke (RCMP rural)
Victoria
View Royal (RCMP)
Western Communities (RCMP rural)

WINDSOR

Essex
Essex (OPP rural)
Lakeshore (OPP)
LaSalle
Tecumseh (OPP)
Windsor

WINNIPEG

Oakbank (RCMP rural)
East St. Paul
St. Pierre Jolys (RCMP rural)
Winnipeg

Part II

Police Resources in Municipal Police Services

Introduction

This part of the report contains summary information on Canada's **municipal** police services, which employ 67% of all police officers in Canada and provide policing services to almost 25 million Canadians (79% of the Canadian population). Municipal policing includes all police services that are paid for by the municipalities and includes contract policing provided to municipalities by provincial police services and the RCMP. It should be noted that offences investigated by federal RCMP personnel within a municipal policing jurisdiction are included in the crime statistics for that municipal police service; however, personnel and expenditures associated with the federal RCMP are not included.

The report is organized by province. Within each province, municipal police services are grouped into one of five population ranges and the municipalities within each group are listed alphabetically. Within these groupings, municipalities that are policed by the RCMP or OPP under municipal contracts are separated by a space from the other municipal police services.

Because crime data and expenditure data for 2001 are not yet available for the municipal police services, most of the data presented in this section of the report are for the year 2000. Only total number of police officers is reported for 2001.

Important Notes

2000 Police Resources and Population

Population

Most municipal populations represent updated postcensal estimates for July 1, 2000 as provided by Demography Division, Statistics Canada. The population estimates are based on usual place of residence. Populations for British Columbia municipalities were provided by the province. Populations for Aboriginal police services were provided by Indian and Northern Affairs Canada.

Population data are updated regularly and figures published in this report may differ slightly from figures published in earlier reports.

Municipalities are grouped according to the following population ranges:

- 100,000 +
- 50,000 – 99,999
- 15,000 – 49,999
- 5,000 – 14,999
- < 5,000

Population Density

In order to provide context for the relative 'urban' or 'rural' composition of a municipality, a population density figure is provided. Population density refers to the number of persons per square kilometre. The calculation for population density is total population divided by land area. Land area is the area in square kilometres of the land-based portions of the census geographic area, in this case census subdivision (municipality).

The land area measurements for the census subdivision reflect the boundaries in effect on January 1st, 1996 (the geographic reference date for the 1996 Census of Canada). Since the population density is a summary calculation of *total* municipal population divided by *total* municipal land area, it will not reflect the distribution of urban and rural segments within a municipality. However, it can be descriptive of the general urban or rural structure; for example, a highly centralized city such as Vancouver, B.C. has a population density of 4,975 persons/km² whereas an expansive city such as Sudbury, Ont. has a population density of 62 persons/km².

2000 Police Officers

Counts represent the “actual” number (full-time equivalents) of permanent sworn police officers of all ranks as of June 15, 2000. This number also includes officers who are deployed to contract positions (e.g. airport policing, U.N. missions) and who are not available for general policing duties in their community.

Population per Police Officer

Counts represent the population of the area serviced by the police service divided by the number of police officers. For some services, particularly those patrolling cottage or tourist areas, the population policed can fluctuate dramatically throughout the year, usually peaking during the summer months. Correspondingly, the number of police officers assigned to these services may also fluctuate to accommodate these peak periods. Because the personnel data are collected for a specific point in time (June 15th) and the population estimates are based on usual place of residence only, these aspects are not captured.

Other Personnel

Counts include civilian and other personnel (e.g., clerical, dispatch, management, cadets, special constables, security officers, school crossing guards, by-law enforcement officers) on the police department’s payroll as of June 15, 2000. There are no “other personnel” included in the counts for the RCMP municipal policing contracts. The municipality may hire other personnel, but they are not included in this report.

Expenditures

Figures include salaries, wages, benefits, and other operating expenses that are paid from the police service budget, as well as benefits paid from other government sources. They have been rounded to the nearest thousand. Revenues, recoveries, and those costs that fall under a police service’s capital expenditures are excluded.

Under the RCMP billing agreement, most municipalities with a population under 15,000 are billed 70% of total expenditures, and those with a population of 15,000 and over are billed 90% (in most cases) of total costs.

As operational situations may vary considerably between police services, so will the operational costs that result. For example, some costs (accommodation, by-law enforcement, court security) and some services (computing, personnel, and financial services) may be included within the police service’s operational budget for some municipalities, but in other municipalities they may be paid for by other departments or through the police service’s capital budget (which is excluded). In some police services, there may be police officers who are funded by external agencies (e.g. an airport authority or a community organisation). While these officers are included in this report, the expenditure of these funds is not. As a result, the cost of policing in these communities is underestimated. **Comparisons should be made with caution.**

Per Capita Cost

Figures represent expenditures divided by the population of the area serviced by the police service (rounded to the nearest dollar). For the reasons described above, **comparisons should be made with caution.**

2001 Police Officers

Counts represent the “actual” number (full-time equivalents) of permanent sworn police officers of all ranks as of June 15, 2001. This number also includes officers who are deployed to contract positions (e.g. airport policing, U.N. missions) and who are not available for general policing duties in their community.

2000 Crime

The “incident” is the basic unit of count used to report crime to the Uniform Crime Reporting (UCR) Survey. An incident is the set of connected events that usually constitutes an occurrence report, a document used by police to record information. The UCR Survey classifies incidents according to the most serious offence (generally the offence that carries the longest maximum sentence under the *Criminal Code of Canada*). Since one incident may include more than one offence, less serious offences are under-represented by the UCR Survey.

In categorizing incidents, violent offences always take precedence over non-violent offences. For violent crime, a separate incident is recorded for each victim (i.e., if one person assaults three people, then three incidents are recorded; but if three people assault one person, only one incident is recorded). For non-violent crimes, one incident is counted for every distinct or separate occurrence. Robbery, a violent offence, is an exception to this rule. Unlike other violent offences, one occurrence of robbery is equal to one incident regardless of the number of victims. The reason for this exception is that robbery can involve many people who could all be considered victims, and so the total number of victims would seriously overstate the number of robberies.

Violent Crime

Violent incidents involve offences that deal with force, or threat of force, against an individual. These include homicide, attempted murder, various forms of sexual and non-sexual assault, other sexual offences, robbery, and abduction.

Property Crime

Property incidents involve unlawful acts with the intent of gaining property, but do not involve the use or threat of violence against an individual. Theft, breaking and entering, fraud, and possession of stolen goods are examples of property crimes.

Total *Criminal Code* (C.C.)

This total reflects both violent and property crimes, as well as other *Criminal Code* offences (e.g., damage to property, prostitution). *Criminal Code* traffic incidents are excluded.

Number

The number of “actual” incidents recorded by the UCR Survey refers to the total that have come to the attention of the police and that have been substantiated through police investigation.

Rate

Figures represent the total number of incidents per 100,000 population.

Clearance Rate (%)

When a police investigation leads to the identification of a suspect against whom a charge could be laid, then that incident can be cleared. Criminal incidents can either be “cleared by charge” or “cleared otherwise”. When an “information” is laid against the suspect (i.e., the person is formally charged), then from a statistical point of view the related “actual” incident can be “cleared by charge”. In cases where the police do not lay an information, even though they have identified a suspect and have enough evidence to support the laying of such, the incident is “cleared otherwise”. Examples include instances where alternative measures are recommended by the police, where the complainant declines to proceed with charges, or cases where the alleged offender dies before he or she can be formally charged.

The clearance rate reflects the total number of incidents cleared (by charge, or otherwise) during the year divided by the total number of incidents during the year. Since the process of solving crime is often time-consuming, a criminal incident may be solved months or even years after it was reported to police and recorded by the UCR Survey. Therefore, it is possible for the number of incidents cleared in a year to be greater than the total number of "actual" incidents that year, and thus for the clearance rate to exceed 100%.

Percent Change in Rate of Total *Criminal Code* (C.C.) Incidents 1999-2000

This figure represents the year-over-year percent change in the rate of total *Criminal Code* incidents (excluding traffic) per 100,000 population between 1999 and 2000.

***Criminal Code* (C.C.) Incidents per Officer**

This figure represents the number of actual *Criminal Code* incidents (excluding traffic) reported to the police divided by the number of police officers.

Note

The statistical tables included in Part II utilise 2000 crime data from the Uniform Crime Reporting (UCR) Survey. For more information regarding the UCR Survey and crime statistics, please refer to *Canadian Crime Statistics* (Catalogue no. 85-205-XPE).

Police resources in Canada, 2001

Newfoundland and Labrador

Police Force	2000 Police Resources & Population								2001	
	Population	Population density	Police Officers			Population per Police Officer	Other Personnel	Operating Expenditures	Per Capita Costs	Police Officers
			Male	Female	Total					
		persons/km ²						\$	\$	
Population (100,000+)										
St. John's (R.N.C.)	175,504	237	234	19	253	694	68	19,499,285	111	249
Population (15,000 - 49,999)										
Corner Brook (R.N.C.)	21,344	145	36	3	39	547	6	2,408,835	113	39
Population (5,000 - 14,999)										
Labrador City (R.N.C.) ¹	9,941	211	20	1	21	473	4	1,782,560	179	22

¹ Includes data for Churchill Falls.

Note: There are no municipal police forces in Newfoundland. The Royal Newfoundland Constabulary (R.N.C.), a provincial police force, is responsible for providing policing to the three largest municipalities and, for the purposes of this report, they have been included.

Prince Edward Island

Police Force	2000 Police Resources & Population								2001	
	Population	Population density	Police Officers			Population per Police Officer	Other Personnel	Operating Expenditures	Per Capita Costs	Police Officers
			Male	Female	Total					
		persons/km ²						\$	\$	
Population (15,000 - 49,999)										
Charlottetown	33,636	789	51	2	53	635	36	4,690,937	139	53
Summerside	15,167	547	26	1	27	562	10	2,272,171	150	27
Population (5,000 - 14,999)										
Stratford (RCMP)	6,279	284	3	1	4	1,570	-	280,611	45	4
Population (<5,000)										
Borden ¹	673	52	2	-	2	337	-	99,875	148	2
Kensington	1,406	703	2	-	2	703	-	148,300	105	3
Montague (RCMP)	2,099	693	3	-	3	700	-	189,467	90	3

- Nil or zero

.. Figures not appropriate or not applicable

¹ Crime data were not available for 2000.

Note for the RCMP municipal contracts: Expenditures include only the cost billed to the municipality and not the total cost of the contract, nor any additional policing costs. Civilian employees provided by the municipality are not included under "Other Personnel".

Use caution in comparing forces: The number of officers may not reflect the number available for general community policing because some officers in certain communities are restricted to specific locations (e.g. ports, airports). Operational expenditures may vary considerably between police services for many reasons. See "Expenditures" on page 33 for details.

Newfoundland and Labrador

2000 Crime											
Violent Crime			Property Crime			Total Criminal Code (C.C.)			% Change in C.C. Rate 1999-2000	C.C. Incidents per Officer for 2000	Police Force
Number	Rate	Clear. Rate	Number	Rate	Clear. Rate	Number	Rate	Clear. Rate			
		%			%			%			
1,489	848	55	6,707	3,822	21	11,832	6,742	27	9	47	Population (100,000+) St. John's (R.N.C.)
153	717	63	368	1,724	38	828	3,879	46	-13	21	Population (15,000 - 49,999) Corner Brook (R.N.C.)
39	392	79	235	2,364	11	470	4,728	26	-35	22	Population (5,000 - 14,999) Labrador City (R.N.C.) ¹

Prince Edward Island

2000 Crime											
Violent Crime			Property Crime			Total Criminal Code (C.C.)			% Change in C.C. Rate 1999-2000	C.C. Incidents per Officer for 2000	Police Force
Number	Rate	Clear. Rate	Number	Rate	Clear. Rate	Number	Rate	Clear. Rate			
		%			%			%			
332	987	45	1,616	4,804	19	3,457	10,278	22	1	65	Population (15,000 - 49,999) Charlottetown
179	1,180	44	719	4,741	33	1,535	10,121	33	-5	57	Summerside
15	239	53	103	1,640	22	175	2,787	29	5	44	Population (5,000 - 14,999) Stratford (RCMP)
..	Population (<5,000) Borden ¹
15	1,067	..	62	4,410	..	176	12,518	..	31	88	Kensington
33	1,572	94	92	4,383	46	323	15,388	54	-1	108	Montague (RCMP)

Police resources in Canada, 2001

Nova Scotia

Police Force	2000 Police Resources & Population								2001	
	Population	Population density	Police Officers			Population per Police Officer	Other Personnel	Operating Expenditures	Per Capita Costs	Police Officers
			Male	Female	Total					
		persons/km ²					\$	\$		
Population (100,000+)										
Halifax Regional ¹	200,456	1,129	352	41	393	510	180	35,559,642	177	393
Population (15,000 - 49,999)										
Cape Breton Regional ²	67,519	45	156	5	161	419	48	13,681,000	203	177
Population (5,000 - 14,999)										
Amherst	9,741	585	19	1	20	487	8	1,628,169	167	20
Bridgewater	7,671	575	19	2	21	365	7	1,439,686	188	21
Kentville	5,642	330	14	2	16	353	1	1,139,436	202	16
New Glasgow/Westville	13,885	966	29	-	29	345	15	2,220,060	160	29
Truro	13,185	317	25	4	29	455	20	2,256,164	171	30
Yarmouth (RCMP)	7,549	678	12	4	16	472	-	1,162,913	154	17
Population (<5,000)										
Annapolis Royal	565	269	3	-	3	188	-	133,603	236	4
Hantsport	1,253	646	4	-	4	313	1	275,502	220	4
Lunenburg-Mahone Bay ³	3,483	500	8	1	9	387	2	632,221	182	...
Middleton ⁴	1,862	334	5	-	5	372	4
Springhill	4,095	371	10	-	10	410	4	886,557	216	9
Stellarton	4,885	571	10	-	10	489	10	759,254	155	10
Trenton	3,018	465	7	-	7	431	6	648,743	215	7
Unama'ki Tribal	4,658	183	12	2	14	333	3	866,020	186	12
Antigonish (RCMP)	4,850	974	7	3	10	485	-	641,302	132	8
Digby (RCMP)	2,165	747	4	-	4	541	-	353,193	163	5
Oxford (RCMP)	1,330	124	3	-	3	443	-	229,646	173	3
Parrsboro (RCMP)	1,602	117	3	-	3	534	-	214,402	134	3
Pictou (RCMP)	4,022	520	5	1	6	670	-	394,468	98	5
Port Hawkesbury (RCMP)	3,763	478	3	2	5	753	-	363,338	97	5
Shelburne (RCMP)	2,055	249	4	-	4	514	-	304,022	148	3
Windsor (RCMP)	3,910	434	6	1	7	559	-	505,377	129	7

- Nil or zero

-- Amount too small to be expressed

... Figures not available

... Figures not appropriate or not applicable

¹ Of the total number of officers, 8 were under contract to and funded by the Halifax Port Authority, and thus not available for general policing duties.

Two (2) officers were funded as part of an Integrated Proceeds of Crime Unit.

² Includes data for Sydney, North Sydney and Glace Bay.

³ Police force closed early 2001.

⁴ Police force closed mid 2000; therefore, expenditures and crime data are not presented.

Note for the RCMP municipal contracts: Expenditures include only the cost billed to the municipality and not the total cost of the contract, nor any additional policing costs. Civilian employees provided by the municipality are not included under "Other Personnel".

Use caution in comparing forces: The number of officers may not reflect the number available for general community policing because some officers in certain communities are restricted to specific locations (e.g. ports, airports). Operational expenditures may vary considerably between police services for many reasons. See "Expenditures" on page 33 for details.

Nova Scotia

2000 Crime											
Violent Crime			Property Crime			Total Criminal Code (C.C.)			% Change in C.C. Rate 1999-2000	C.C. Incidents per Officer for 2000	Police Force
Number	Rate	Clear. Rate	Number	Rate	Clear. Rate	Number	Rate	Clear. Rate			
		%			%				%		
3,229	1,611	61	15,039	7,502	16	23,987	11,966	25	-4	61	Population (100,000+) Halifax Regional ¹
882	1,306	47	2168	3,211	18	6121	9,066	31	6	38	Population (15,000 - 49,999) Cape Breton Regional ²
191	1,961	57	507	5,205	27	1,346	13,818	34	-22	67	Population (5,000 - 14,999) Amherst
131	1,708	59	380	4,954	33	1,193	15,552	34	-14	57	Bridgewater
84	1,489	90	275	4,874	37	608	10,776	55	-28	38	Kentville
201	1,448	57	583	4,199	35	1,647	11,862	49	-8	57	New Glasgow/Westville
184	1,396	76	928	7,038	34	2,012	15,260	50	-8	69	Truro
183	2,424	85	491	6,504	36	1,149	15,221	51	--	72	Yarmouth (RCMP)
18	3,186	100	19	3,363	47	66	11,681	65	-34	22	Population (<5,000) Annapolis Royal
10	798	80	31	2,474	16	70	5,587	37	-13	18	Hantsport
22	632	86	74	2,125	27	171	4,910	36	-29	19	Lunenburg-Mahone Bay ³
...	Middleton ⁴
84	2,051	67	104	2,540	28	377	9,206	47	-3	38	Springhill
56	1,146	82	216	4,422	38	717	14,678	65	-27	72	Stellarton
19	630	84	50	1,657	44	125	4,142	56	-14	18	Trenton
176	3,778	68	136	2,920	62	677	14,534	71	-36	48	Unama'ki Tribal
47	969	79	258	5,320	34	746	15,381	33	25	75	Antigonish (RCMP)
41	1,894	98	105	4,850	74	371	17,136	70	-6	93	Digby (RCMP)
23	1,729	91	44	3,308	45	141	10,602	68	17	47	Oxford (RCMP)
20	1,248	55	37	2,310	38	104	6,492	42	-38	35	Parrsboro (RCMP)
46	1,144	93	81	2,014	27	251	6,241	48	-25	42	Pictou (RCMP)
45	1,196	80	174	4,624	32	466	12,384	42	25	93	Port Hawkesbury (RCMP)
34	1,655	97	108	5,255	50	317	15,426	58	--	79	Shelburne (RCMP)
78	1,995	86	201	5,141	39	538	13,760	54	-1	77	Windsor (RCMP)

Police resources in Canada, 2001

New Brunswick

Police Force	2000 Police Resources & Population								2001	
	Population	Population density	Police Officers			Population per Police Officer	Other Personnel	Operating Expenditures	Per Capita Costs	Police Officers
			Male	Female	Total					
		persons/km ²					\$	\$		
Population (50,000 - 99,999)										
Saint John	72,269	224	157	16	173	418	37	15,272,896	211	174
Codiac Regional (RCMP) ¹	92,978	407	122	11	133	699	-	12,594,252	135	135
Population (15,000 - 49,999)										
Edmundston	18,001	85	32	3	35	514	16	2,882,192	160	35
Fredericton	47,940	366	80	14	94	510	25	6,970,517	145	94
Miramichi	18,521	106	39	2	41	452	13	4,038,448	218	40
Rochesay Regional	26,149	265	25	5	30	872	6	2,532,485	97	31
Population (5,000 - 14,999)										
B.N.P.P. Regional	10,150	90	13	1	14	725	3	1,294,063	127	14
Bathurst	13,380	147	29	3	32	418	14	2,890,085	216	30
Grand Falls	6,141	346	15	1	16	384	2	1,024,000	167	16
Sackville	5,307	71	11	-	11	482	6	822,384	155	12
St. Stephen	5,100	413	9	1	10	510	1	932,593	183	10
Woodstock	5,396	383	11	-	11	491	2	899,125	167	11
Campbellton (RCMP)	8,225	475	18	1	19	433	-	1,110,149	135	20
Oromocto (RCMP)	9,418	420	8	4	12	785	-	866,055	92	14
Population (<5,000)										
Caraquet	4,718	70	8	-	8	590	2	682,520	145	7
Buctouche (RCMP)	2,566	141	3	-	3	855	-	164,522	64	3
Cap Pele (RCMP)	2,282	98	3	-	3	761	-	199,054	87	3
Hampton (RCMP)	4,324	226	3	1	4	1,081	-	269,407	62	4
Mcadam (RCMP)	1,552	115	2	1	3	517	-	205,865	133	3
Neguac (RCMP)	1,780	68	3	-	3	593	-	211,136	119	3
Richibucto (RCMP)	1,387	122	1	2	3	462	-	204,818	148	3
Saint Quentin (RCMP)	2,552	703	3	1	4	638	-	217,587	85	3
St. Andrews (RCMP)	1,876	224	2	1	3	625	-	181,982	97	3

- Nil or zero

-- Amount too small to be expressed

¹ The expenditures include 100% of the RCMP contract cost.

Note for the RCMP municipal contracts: Expenditures include only the cost billed to the municipality and not the total cost of the contract, nor any additional policing costs. Civilian employees provided by the municipality are not included under "Other Personnel".

Use caution in comparing forces: The number of officers may not reflect the number available for general community policing because some officers in certain communities are restricted to specific locations (e.g. ports, airports). Operational expenditures may vary considerably between police services for many reasons. See "Expenditures" on page 33 for details.

New Brunswick

2000 Crime											
Violent Crime			Property Crime			Total Criminal Code (C.C.)			% Change in C.C. Rate 1999-2000	C.C. Incidents per Officer for 2000	Police Force
Number	Rate	Clear. Rate	Number	Rate	Clear. Rate	Number	Rate	Clear. Rate			
		%			%				%		
1,119	1,548	62	2,904	4,018	32	6,142	8,499	37	-8	36	Population (50,000 - 99,999) Saint John
916	985	39	4,261	4,583	22	8,467	9,106	24	-8	64	Codiac Regional (RCMP) ¹
70	389	61	360	2,000	22	714	3,966	29	-5	20	Population (15,000 - 49,999) Edmundston
473	987	52	2,281	4,758	22	3,735	7,791	28	7	40	Fredericton
307	1,658	89	568	3,067	38	1,614	8,714	62	1	39	Miramichi
77	294	96	295	1,128	37	614	2,348	54	6	20	Rothesay Regional
43	424	81	299	2,946	32	509	5,015	48	-1	36	Population (5,000 - 14,999) B.N.P.P. Regional
204	1,525	53	999	7,466	37	2,023	15,120	41	23	63	Bathurst
55	896	51	163	2,654	29	368	5,993	36	-26	23	Grand Falls
27	509	81	93	1,752	19	180	3,392	33	-26	16	Sackville
78	1,529	72	254	4,980	22	525	10,294	32	--	53	St. Stephen
49	908	78	230	4,262	23	460	8,525	33	-11	42	Woodstock
139	1,690	76	314	3,818	46	972	11,818	54	14	51	Campbellton (RCMP)
175	1,858	65	272	2,888	28	802	8,516	37	3	67	Oromocto (RCMP)
29	615	69	122	2,586	26	230	4,875	36	-8	29	Population (<5,000) Caraquet
5	195	80	32	1,247	41	53	2,065	57	3	18	Buctouche (RCMP)
16	701	75	68	2,980	16	142	6,223	26	688	47	Cap Pele (RCMP)
41	948	78	76	1,758	32	212	4,903	42	-15	53	Hampton (RCMP)
18	1,160	83	37	2,384	14	120	7,732	29	20	40	Mcadam (RCMP)
2	112	50	6	337	50	30	1,685	37	15	10	Neguac (RCMP)
13	937	77	16	1,154	19	59	4,254	42	12	20	Richibucto (RCMP)
26	1,019	50	72	2,821	19	184	7,210	25	-20	46	Saint Quentin (RCMP)
10	533	60	55	2,932	22	152	8,102	23	265	51	St. Andrews (RCMP)

Police resources in Canada, 2001

Quebec

Police Force	2000 Police Resources & Population								2001	
	Population	Population density	Police Officers			Population per Police Officer	Other Personnel	Operating Expenditures	Per Capita Costs	Police Officers
			Male	Female	Total					
		persons/km ²						\$	\$	
Population (100,000+)										
Gatineau	115,622	589	125	14	139	832	48	13,768,055	119	139
Laval	349,172	1,423	379	83	462	756	132	49,961,141	143	448
Longueuil	129,388	3,020	153	28	181	715	125	20,939,531	162	185
Montréal ¹	1,825,527	3,699	3,186	853	4,039	452	847	368,813,402	202	4,082
Québec	273,400	1,014	396	52	448	610	101	48,819,686	179	455
Sherbrooke Regional	142,935	321	143	17	160	893	14	17,793,229	124	160
Ste-Foy ²	102,916	1,049	101	20	121	851	43	12,235,551	119	123
Population (50,000 - 99,999)										
Brossard	68,285	1,518	74	13	87	785	31	8,579,496	126	87
Charlesbourg	70,353	1,042	77	3	80	879	61	8,415,843	120	80
Chaudière-Etchemin (Régie)	75,276	242	69	7	76	990	27	7,738,066	103	76
Chicoutimi	68,450	182	70	4	74	925	30	9,337,901	136	74
Drummondville	56,631	339	61	3	64	885	28	7,449,451	132	64
Haute-Saint-Charles (Régie)	63,063	20	45	7	52	1,213	8	5,319,939	84	53
Haut-Richelieu	57,928	332	58	5	63	919	19	7,062,982	122	68
Hull	62,289	1,668	110	14	124	502	55	14,338,829	230	122
Joliette (Régie)	53,499	112	47	8	55	973	10	5,260,820	98	54
Jonquière	55,476	265	63	5	68	816	24	7,289,055	131	69
Lévis	52,560	207	48	6	54	973	24	6,392,879	122	52
Repentigny	54,658	2,238	48	4	52	1,051	21	5,758,342	105	52
Roussillon (Régie)	61,092	678	53	3	56	1,091	16	6,798,928	111	56
St-Hubert	86,098	1,345	91	9	100	861	29	10,113,707	117	99
St-Jérôme (Régie)	59,150	651	63	5	68	870	18	7,953,812	134	69
Terrebonne	65,749	388	59	1	60	1,096	22	6,740,842	103	62
Population (15,000 - 49,999)										
Alma	26,451	242	32	2	34	778	13	3,425,437	130	37
Aylmer	36,273	398	39	5	44	824	22	4,860,940	134	44
Baie-Comeau	24,546	70	32	5	37	663	14	4,875,159	199	37
Beleuil ^{2,3}	23,400	866	26	-	26	900	10	3,253,485	139	25
Blainville	36,152	655	26	2	28	1,291	12	3,523,503	97	29
Boisbriand	28,667	1,049	24	1	25	1,147	13	2,792,097	97	25
Boucherville	35,266	509	38	6	44	802	15	4,672,504	132	44
Cap-de-la-Madeleine	47,118	394	46	-	46	1,024	19	6,352,040	135	52
Chambly	23,028	919	23	1	24	960	16	2,668,858	116	24
Chateauguay ²	43,593	936	42	6	48	908	15	5,815,924	133	49
Deux-Montagnes Regional	37,977	625	35	3	38	999	11	4,052,291	107	38
Dolbeau-Mistassini	15,180	51	17	-	17	893	10	1,920,211	126	19
Granby	44,397	610	52	3	55	807	21	4,856,267	109	55
Greenfield Park	17,452	3,810	27	2	29	602	16	3,596,614	206	29
La Baie ⁴	21,144	81	29	2	31	682	12	3,596,813	170	31
La Plaine	18,070	455	12	2	14	1,291	8	1,776,908	98	14
La Prairie	18,192	420	20	3	23	791	8	2,691,590	148	23
Lachenaie	21,340	499	17	3	20	1,067	14	3,106,920	146	22
Lachute	17,926	52	19	3	22	815	10	2,162,158	121	25

- Nil or zero

-- Amount too small to be expressed

... Figures not appropriate or not applicable

¹ Expenditure data for 2000 excludes the cost of short-term financing, a cost included in prior years, so comparisons should not be made with prior year expenses.

² Police force enlarged its jurisdiction in 2000; therefore comparisons with 1999 crime data are not presented.

³ Name changed from Beleuil to Vallée-du-Richelieu early 2001.

⁴ Expenditures for 2000 and personnel for 2001 were not available; therefore 1999 expenditures and 2000 personnel were substituted.

Use caution in comparing forces: The number of officers may not reflect the number available for general community policing because some officers in certain communities are restricted to specific locations (e.g. ports, airports). Operational expenditures may vary considerably between police services for many reasons. See "Expenditures" on page 33 for details.

Quebec

2000 Crime											
Violent Crime			Property Crime			Total Criminal Code (C.C.)			% Change in C.C. Rate 1999-2000	C.C. Incidents per Officer for 2000	Police Force
Number	Rate	Clear. Rate	Number	Rate	Clear. Rate	Number	Rate	Clear. Rate			
		%			%			%			
Population (100,000+)											
912	789	81	3,758	3,250	27	6,639	5,742	41	5	48	Gatineau
1,798	515	75	13,115	3,756	17	19,477	5,578	25	1	42	Laval
1,789	1,383	88	5,693	4,400	25	10,555	8,158	43	-10	58	Longueuil
23,492	1,287	65	98,488	5,395	17	166,248	9,107	28	3	41	Montréal ¹
2,115	774	61	11,433	4,182	23	19,293	7,057	29	8	43	Québec
643	450	78	5,886	4,118	14	8,698	6,085	26	1	54	Sherbrookoise Regional
437	425	71	3,624	3,521	19	5,573	5,415	24	...	46	Ste-Foy ²
Population (50,000 - 99,999)											
323	473	79	2,399	3,513	24	3,741	5,479	34	--	43	Brossard
331	470	86	1,966	2,794	24	3,149	4,476	32	6	39	Charlesbourg
145	193	94	1,344	1,785	20	2,097	2,786	30	-10	28	Chaudière-Etchemin (Régie)
408	596	75	2,606	3,807	21	4,087	5,971	31	-4	55	Chicoutimi
411	726	87	2,329	4,113	21	3,828	6,760	34	-5	60	Drummondville
206	327	94	1,326	2,103	18	2,016	3,197	32	5	39	Haute-Saint-Charles (Régie)
386	666	86	3,143	5,426	26	4,852	8,376	36	-4	77	Haut-Richelieu
700	1,124	77	3,492	5,606	25	6,185	9,930	42	--	50	Hull
222	415	87	2,260	4,224	21	3,556	6,647	31	-2	65	Joliette (Régie)
297	535	86	1,622	2,924	26	2,652	4,780	39	-	39	Jonquière
210	400	81	1,315	2,502	20	2,175	4,138	31	5	40	Lévis
161	295	71	1,518	2,777	18	2,411	4,411	28	-10	46	Repentigny
264	432	89	1,957	3,203	17	2,876	4,708	29	29	51	Roussillon (Régie)
709	823	68	2,911	3,381	15	5,063	5,881	29	2	51	St-Hubert
417	705	77	3,256	5,505	25	5,165	8,732	32	1	76	St-Jérôme (Régie)
278	423	87	2,395	3,643	18	3,701	5,629	28	1	62	Terrebonne
Population (15,000 - 49,999)											
108	408	77	981	3,709	22	1,506	5,694	30	4	44	Alma
172	474	79	955	2,633	22	1,663	4,585	32	-11	38	Aylmer
140	570	90	720	2,933	30	1,433	5,838	44	-1	39	Baie-Comeau
57	244	102	703	3,004	17	1,008	4,308	27	...	39	Beleuil ^{2,3}
51	141	96	755	2,088	20	999	2,763	26	3	36	Blainville
85	297	79	639	2,229	25	922	3,216	37	5	37	Boisbriand
116	329	85	1,216	3,448	17	1,763	4,999	25	-4	40	Boucherville
168	357	82	1,141	2,422	27	1,726	3,663	36	-2	38	Cap-de-la-Madeleine
105	456	67	597	2,592	23	945	4,104	32	-15	39	Chambly
263	603	78	1,196	2,744	16	2,202	5,051	29	...	46	Chateauguay ²
130	342	82	983	2,588	18	1,573	4,142	27	-4	41	Deux-Montagnes Regional
36	237	89	358	2,358	24	516	3,399	38	-1	30	Dolbeau-Mistassini
155	349	87	1,539	3,466	22	2,456	5,532	34	3	45	Granby
130	745	82	899	5,151	31	1,416	8,114	40	-1	49	Greenfield Park
112	530	76	323	1,528	25	662	3,131	40	-9	21	La Baie ⁴
82	454	94	547	3,027	16	807	4,466	32	5	58	La Plaine
106	583	90	539	2,963	13	910	5,002	35	-9	40	La Prairie
89	417	89	375	1,757	26	647	3,032	42	--	32	Lachenaie
82	457	102	559	3,118	26	965	5,383	39	26	44	Lachute

Police resources in Canada, 2001

Quebec

Police Force	2000 Police Resources & Population								2001	
	Population	Population density	Police Officers			Population per Police Officer	Other Personnel	Operating Expenditures	Per Capita Costs	Police Officers
			Male	Female	Total					
		persons/km ²					\$	\$		
Population (15,000 - 49,999)										
L'Assomption	16,188	164	14	1	15	1,079	4	1,708,303	106	15
Le Gardeur	24,372	533	21	3	24	1,016	11	3,014,165	124	24
L'Île-Perrot	18,766	582	17	3	20	938	10	2,383,875	127	20
Mascouche	29,412	272	27	2	29	1,014	21	3,899,290	133	29
Memphremagog (Régie)	27,981	66	36	4	40	700	16	4,487,101	160	40
Mirabel ¹	44,071	63	35	5	40	1,102	16	5,744,815	130	41
Montcalme (Régie)	25,742	70	21	4	25	1,030	9	3,319,942	129	23
MRC des Collines de L'Outaouais	36,143	17	28	4	32	1,129	10	3,392,361	94	33
Rimouski	32,025	421	39	2	41	781	27	4,372,552	137	41
Riverains Regional	48,459	298	66	4	70	692	11	7,843,110	162	67
Rivière-du-Loup	15,157	895	20	1	21	722	4	2,387,707	158	21
Rivière-du-Nord (Régie) ¹	19,634	91	15	4	19	1,033	7	2,196,659	112	22
Rouyn-Noranda ¹	29,111	90	39	2	41	710	28	4,254,939	146	41
Sainte-Julie	45,246	180	42	8	50	905	16	4,947,004	109	50
Seigneuries (Régie)	25,517	112	17	3	20	1,276	8	2,667,832	105	20
Sept-Iles ²	25,065	84	44	1	45	557	14	4,536,010	181	43
Shawinigan Regional	40,485	31	46	5	51	794	39	4,696,586	116	51
Sorel ^{1,3}	36,955	631	30	2	32	1,155	9	5,721,978	155	53
St. Luc	21,685	424	12	4	16	1,355	6	1,522,145	70	18
St-Bruno-de-Montarville	23,180	555	25	3	28	828	16	3,310,891	143	29
Ste-Thérèse	22,632	2,243	36	1	37	612	23	3,964,679	175	37
St-Eustache	40,282	575	41	4	45	895	20	5,000,959	124	45
St-Georges	20,607	826	22	1	23	896	6	3,029,164	147	23
St-Hyacinthe	38,614	1,054	47	6	53	729	36	6,260,897	162	52
St-Lambert	21,380	3,325	26	7	33	648	23	3,626,499	170	32
Thetford Mines	21,523	286	29	1	30	717	10	3,398,781	158	30
Trois-Rivières	47,394	609	83	3	86	551	27	7,459,514	157	80
Trois-Rivières-Ouest	31,788	349	28	-	28	1,135	11	3,171,537	100	35
Val-Bélair	22,759	332	17	5	22	1,035	24	2,655,123	117	23
Val-D'Or	23,833	20	23	3	26	917	11	3,029,486	127	28
Varenes	22,519	240	12	3	15	1,501	11	2,034,339	90	15
Vaudreuil-Dorion	19,307	264	21	-	21	919	13	2,837,037	147	21
Victoriaville	39,715	476	43	1	44	903	28	5,544,493	140	44
Population (5,000 - 14,999)										
Amos	13,563	32	18	1	19	714	5	1,784,448	132	20
Asbestos	6,722	384	10	-	10	672	4	1,051,500	156	10
Bromont	5,224	46	7	-	7	746	1	756,921	145	7
Carignan	5,674	91	7	3	10	567	1	762,024	134	8
Coaticook	6,659	528	11	1	12	555	1	1,093,365	164	12
Cowansville	12,266	250	15	-	15	818	8	1,581,369	129	15
Donnacona	8,258	111	9	-	9	918	5	902,008	109	9
East Angus ⁴	7,004	44	8	2	10	700	1	654,400	93	...
Farnham ¹	7,997	85	9	1	10	800	6	1,070,408	134	10
Granby Canton	11,958	150	15	-	15	797	3	1,619,728	135	15
Grand-Mère	14,112	199	20	-	20	706	2	2,052,857	145	26

- Nil or zero

-- Amount too small to be expressed

... Figures not appropriate or not applicable

¹ Police force enlarged its jurisdiction in 2000; therefore comparisons with 1999 crime data are not presented.

² In 2000, crime data were not available for July, August, and December, so data from 1999 were substituted for those months. Therefore, comparisons with 1999 crime data are not presented.

³ Name changed from Sorel to Sorel-Tracy late 2000.

⁴ Closed mid 2001.

Use caution in comparing forces: The number of officers may not reflect the number available for general community policing because some officers in certain communities are restricted to specific locations (e.g. ports, airports). Operational expenditures may vary considerably between police services for many reasons. See "Expenditures" on page 33 for details.

Quebec

2000 Crime											
Violent Crime			Property Crime			Total Criminal Code (C.C.)			% Change in C.C. Rate 1999-2000	C.C. Incidents per Officer for 2000	Police Force
Number	Rate	Clear. Rate	Number	Rate	Clear. Rate	Number	Rate	Clear. Rate			
	%			%			%		%		
Population (15,000 - 49,999)											
54	334	65	401	2,477	14	633	3,910	25	13	42	L'Assomption
100	410	85	448	1,838	20	809	3,319	34	14	34	Le Gardeur
63	336	84	374	1,993	16	651	3,469	29	-2	33	L'Île-Perrot
77	262	88	848	2,883	23	1,207	4,104	29	8	42	Mascouche
139	497	99	960	3,431	21	1,500	5,361	35	-9	38	Memphremagog (Régie)
120	272	85	1,155	2,621	18	1,609	3,651	30	...	40	Mirabel ¹
147	571	88	731	2,840	20	1,201	4,666	40	10	48	Montcalme (Régie)
105	291	101	962	2,662	14	1,351	3,738	29	12	42	MRC des Collines de L'Outaouais
174	543	74	1,013	3,163	22	1,729	5,399	29	8	42	Rimouski
336	693	72	1,557	3,213	26	2,915	6,015	36	4	42	Riverains Regional
98	647	90	535	3,530	40	993	6,551	49	-6	47	Rivière-du-Loup
67	341	85	619	3,153	30	864	4,401	39	...	45	Rivière-du-Nord (Régie) ¹
228	783	78	1,268	4,356	23	2,165	7,437	36	...	53	Rouyn-Noranda ¹
114	252	82	1,015	2,243	15	1,467	3,242	25	-1	29	Sainte-Julie
72	282	96	276	1,082	16	518	2,030	33	-10	26	Seigneuries (Régie)
233	930	87	827	3,299	26	1,740	6,942	46	...	39	Sept-Iles ²
260	642	83	1,156	2,855	23	1,916	4,733	37	-8	38	Shawinigan Regional
145	392	77	991	2,682	25	1,662	4,497	36	...	52	Sorel ^{1,3}
33	152	79	421	1,941	21	589	2,716	28	13	37	St. Luc
76	328	64	1,038	4,478	18	1,420	6,126	22	-7	51	St-Bruno-de-Montarville
144	636	87	1,226	5,417	17	1,723	7,613	28	-20	47	Ste-Thérèse
256	636	82	1,899	4,714	19	2,918	7,244	31	-4	65	St-Eustache
105	510	86	669	3,246	33	1,134	5,503	40	3	49	St-Georges
368	953	85	1,955	5,063	19	3,236	8,380	32	9	61	St-Hyacinthe
66	309	83	605	2,830	21	891	4,167	30	-8	27	St-Lambert
68	316	87	462	2,147	43	781	3,629	48	-10	26	Theftord Mines
337	711	80	2,230	4,705	32	3,762	7,938	44	-10	44	Trois-Rivières
75	236	85	897	2,822	25	1,302	4,096	34	-4	47	Trois-Rivières-Ouest
68	299	94	245	1,076	36	441	1,938	50	4	20	Val-Bélair
212	890	64	1,056	4,431	18	1,783	7,481	25	-13	69	Val-D'Or
46	204	41	448	1,989	9	635	2,820	16	8	42	Varennes
88	456	74	549	2,844	11	879	4,553	20	9	42	Vaudreuil-Dorion
124	312	77	1,528	3,847	24	2,244	5,650	28	11	51	Victoriaville
Population (5,000 - 14,999)											
77	568	82	432	3,185	20	755	5,567	31	-6	40	Amos
24	357	108	153	2,276	35	232	3,451	43	15	23	Asbestos
17	325	53	363	6,949	7	455	8,710	14	-1	65	Bromont
27	476	78	163	2,873	17	266	4,688	30	--	27	Carignan
32	481	88	197	2,958	27	315	4,730	39	-5	26	Coaticook
94	766	89	365	2,976	32	803	6,547	48	-15	54	Cowansville
33	400	97	144	1,744	28	237	2,870	43	--	26	Donnacona
26	371	112	119	1,699	39	215	3,070	55	-29	22	East Angus ⁴
55	688	73	242	3,026	52	422	5,277	57	...	42	Farnham ¹
19	159	79	255	2,132	43	377	3,153	51	-6	25	Granby Canton
101	716	84	404	2,863	24	714	5,060	41	19	36	Grand-Mère

Police resources in Canada, 2001

Quebec

Police Force	2000 Police Resources & Population								2001	
	Population	Population density	Police Officers			Population per Police Officer	Other Personnel	Operating Expenditures	Per Capita Costs	Police Officers
			Male	Female	Total					
		persons/km ²					\$	\$		
Population (5,000 - 14,999)										
Kativik Regional	9,242	8	29	3	32	289	7	5,544,000	600	46
La Malbaie-Pointe-au-Pic	12,586	24	14	3	17	740	1	1,219,334	97	17
La Pocatière ¹	5,079	241	7	1	8	635	2	...	97	...
La Tuque	11,660	19	18	1	19	614	6	1,659,557	142	21
Lac-Brome	5,319	26	6	1	7	760	1	638,006	120	7
Lac-Mégantic	6,026	287	8	-	8	753	3	845,238	140	8
Lorraine	9,116	1,670	5	2	7	1,302	7	1,032,472	113	7
Marieville ²	7,744	119	7	-	7	1,106	4	946,486	122	8
Matane	11,949	491	19	-	19	629	7	2,380,840	199	19
Mercier ³	9,447	206	10	-	10	945	4	1,019,230	108	10
Mont-Joli	6,137	640	9	-	9	682	1	858,670	140	9
Mont-St-Hilaire ^{4,5}	13,484	311	14	1	15	899	9	1,933,300	143	...
Montmagny	11,918	95	12	2	14	851	3	1,515,582	127	14
Otterburn Park ⁵	8,373	1,607	7	-	7	1,196	3	717,933	86	...
Pincourt	12,196	1,192	13	-	13	938	7	1,764,238	145	14
Plessisville	6,664	1,535	8	-	8	833	2	863,372	130	8
Port-Cartier	6,692	77	14	-	14	478	5	1,442,941	216	14
Princeville ^{2,5}	5,850	29	7	-	7	836	2	678,927	116	...
Roberval	11,465	78	13	-	13	882	5	1,520,845	133	13
Rosemère	12,523	1,228	15	1	16	783	7	1,903,348	152	16
Shawinigan-Sud	11,886	231	15	-	15	792	8	1,528,339	129	15
Sillery	11,452	1,702	15	2	17	674	9	1,572,636	137	17
St-Basile-Le-Grand	13,060	375	10	1	11	1,187	5	1,221,206	94	11
St-Félicien	10,934	37	17	1	18	607	3	1,680,439	154	15
St-Rémi	5,562	70	9	-	9	618	6	1,141,566	205	9
Ste-Adèle	6,333	85	13	-	13	487	7	1,830,888	289	12
Ste-Agathe-Des-Monts	8,053	200	11	-	11	732	9	1,631,233	203	11
Ste-Marie	11,509	109	9	1	10	1,151	5	1,207,800	105	10
Windsor ²	5,553	398	6	-	6	926	2	691,422	125	7
Population (<5,000)										
Amerindienne d'Odanak ^{6,7}	307	61	2	-	2	154	1	168,750	550	2
Amerindienne de la Romaine ⁸	861	2,100	3	-	3	287	0	335,838	390	3
Amerindienne de Manawan ⁹	1,685	332	3	-	3	562	10	1,008,965	599	11
Amerindienne de Mingan	449	25	2	-	2	225	1	214,234	477	2
Bedford ^{1,10}	2,827	624	5	2	7	404	-	...	196	...
Chandler ¹	3,293	195	6	-	6	549	1	...	84	...
D'Essipit ¹¹	182	535	1	2	3	61	0	209,503	1,151	3

- Nil or zero

-- Amount too small to be expressed

... Figures not available

... Figures not appropriate or not applicable

¹ Police force closed late 2000; therefore, expenditures and crime data are not presented.

² Police force enlarged its jurisdiction in 2000; therefore comparisons with 1999 crime data are not presented.

³ In 2000, crime data were not available for July, so data from July 1999 were substituted.

⁴ Expenditures for 2000 were not available; therefore 1999 expenditures were substituted.

⁵ Police force closed early 2001.

⁶ Crime data were not available for 2000.

⁷ Expenditures for 2000 and personnel for 2001 were not available; therefore 1999 expenditures and 2000 personnel were substituted.

⁸ In 2000, crime data were not available for August, so data from August 1999 were substituted.

⁹ In 2000, crime data were not available for November and December, so data from 1999 were substituted for those months.

¹⁰ Personnel for 2000 were not available; therefore 1999 personnel were substituted.

¹¹ In 2000, crime data were not available for March and August, so data from 1999 were substituted for those months.

Use caution in comparing forces: The number of officers may not reflect the number available for general community policing because some officers in certain communities are restricted to specific locations (e.g. ports, airports). Operational expenditures may vary considerably between police services for many reasons. See "Expenditures" on page 33 for details.

Quebec

2000 Crime											
Violent Crime			Property Crime			Total Criminal Code (C.C.)			% Change in C.C. Rate 1999-2000	C.C. Incidents per Officer for 2000	Police Force
Number	Rate	Clear. Rate	Number	Rate	Clear. Rate	Number	Rate	Clear. Rate			
		%			%			%			
Population (5,000 - 14,999)											
264	2,857	86	58	628	33	514	5,562	73	67	16	Kativik Regional
74	588	96	268	2,129	35	515	4,092	44	36	30	La Malbaie-Pointe-au-Pic
...	La Pocatière ¹
99	849	83	336	2,882	23	651	5,583	40	8	34	La Tuque
21	395	90	107	2,012	8	184	3,459	27	-17	26	Lac-Brome
22	365	91	157	2,605	32	275	4,564	41	23	34	Lac-Mégantic
19	208	63	139	1,525	14	226	2,479	26	-21	32	Lorraine
36	465	108	172	2,221	22	329	4,248	43	...	47	Marieville ²
154	1,289	97	383	3,205	42	827	6,921	56	21	44	Matane
20	212	95	177	1,874	27	285	3,017	35	21	29	Mercier ³
44	717	100	128	2,086	29	269	4,383	43	-12	30	Mont-Joli
30	222	80	376	2,788	5	500	3,708	13	--	33	Mont-St-Hilaire ^{4,5}
35	294	77	218	1,829	32	375	3,147	36	-3	27	Montmagny
23	275	126	128	1,529	34	217	2,592	46	36	31	Otterburn Park ⁵
40	328	90	289	2,370	22	476	3,903	33	15	37	Pincourt
37	555	92	174	2,611	47	311	4,667	52	12	39	Plessisville
62	926	89	172	2,570	22	379	5,663	39	22	27	Port-Cartier
22	376	68	113	1,932	32	184	3,145	39	...	26	Princeville ^{2,5}
44	384	116	335	2,922	27	604	5,268	45	-26	46	Roberval
26	208	69	704	5,622	29	913	7,291	34	-11	57	Rosemère
42	353	79	195	1,641	23	335	2,818	35	33	22	Shawinigan-Sud
10	87	70	155	1,353	45	202	1,764	44	-12	12	Sillery
44	337	80	240	1,838	13	404	3,093	23	-29	37	St-Basile-Le-Grand
45	412	89	356	3,256	26	658	6,018	45	37	37	St-Félicien
33	593	91	254	4,567	19	348	6,257	30	12	39	St-Rémi
56	884	84	580	9,158	11	774	12,222	20	-12	60	Ste-Adèle
67	832	60	378	4,694	20	614	7,624	29	-11	56	Ste-Agathe-Des-Monts
30	261	73	160	1,390	36	286	2,485	37	10	29	Ste-Marie
26	468	77	154	2,773	23	252	4,538	28	...	42	Windsor ²
Population (<5,000)											
..	Amerindienne d'Odanak ^{6,7}
51	5,923	71	12	1,394	42	122	14,170	66	23	41	Amerindienne de la Romaine ⁸
82	4,866	73	58	3,442	59	230	13,650	73	-8	77	Amerindienne de Manawan ⁹
44	9,800	59	7	1,559	43	98	21,826	62	72	49	Amerindienne de Mingan
...	Bedford ^{1,10}
...	Chandler ¹
3	1,648	100	8	4,396	38	24	13,187	58	8	8	D'Essipit ¹¹

Police resources in Canada, 2001

Quebec

Police Force	2000 Police Resources & Population								2001	
	Population	Population density	Police Officers			Population per Police Officer	Other Personnel	Operating Expenditures	Per Capita Costs	Police Officers
			Male	Female	Total					
		persons/km ²					\$	\$		
Population (<5,000)										
Eagle Village ^{1,2}	234	1,114	3	-	3	78	3	257,400	1,100	2
Estérel ³	97	8	4	-	4	24	-	...	3,091	...
Fermont	2,816	6	6	1	7	402	2	950,997	338	7
Gesgapegiac Amerindian	508	258	4	-	4	127	2	312,683	616	4
Hudson	4,656	214	9	-	9	517	1	1,009,656	217	9
Kanesatake Mohawk	1,321	160	10	1	11	120	6	1,379,660	1,044	14
Kitigan Zibi Anishinabeg ⁴	1,435	8	7	-	7	205	1	510,000	355	7
Lebel-Sur-Quévillon ⁵	451	77	5	1	6	75	1
Léry ⁵	2,339	209	4	-	4	585	1
Long Point Amerindian	335	3,350	3	1	4	84	-	365,245	1,090	4
Mashteuiatsh	1,958	136	7	-	7	280	1	791,618	404	8
Metabetchouan ³	4,614	25	5	-	5	923	-	...	106	...
Montagnais de Schefferville ⁶	700	3	3	-	3	233	-	289,397	413	2
Morin Heights	2,527	46	6	2	8	316	1	471,355	187	6
Naskapi ⁴	542	14	3	-	3	181	3	407,752	752	5
Nicolet ⁷	4,088	727	7	-	7	584	1	688,373	168	...
Normandin ^{7,8}	3,754	18	6	1	7	536	4	377,965	101	...
Obedjiwan ^{6,9}	1,755	201	8	-	8	219	3	755,499	430	8
Pikogan	527	1,076	3	-	3	176	1	252,000	478	3
Richmond ¹⁰	3,528	451	2	1	3	1,176	1	477,666	135	5
Saint Césaire ¹⁰	4,894	71	7	-	7	699	4	644,072	132	10
St-Adolphe-d'Howard	2,810	19	5	-	5	562	1	573,910	204	8
St-Donat	3,407	9	6	-	6	568	2	623,260	183	7
St-Jovite ¹¹	4,892	221	5	-	5	978	3	756,935	155	20
St-Sauveur-Des-Monts	3,046	868	5	-	5	609	4	621,700	204	5
Timiskaming Amerindian	536	28	3	1	4	134	2	300,000	560	5
Uashat-Maliotenam	2,600	2,430	11	1	12	217	2	1,015,000	390	17
Valcourt ^{7,8}	2,571	496	5	1	6	429	1	390,385	152	...
Wemindji ^{6,12}	1,077	2	5	-	5	215	-	495,486	460	5
Wendake ⁴	1,218	1,467	7	-	7	174	2	570,556	468	7

- Nil or zero

.. Figures not available

... Figures not appropriate or not applicable

¹ Personnel for 2000 were not available; therefore 1999 personnel were substituted.

² In 2000, crime data were not available for January, August, and December, so data from 1999 were substituted for those months. Therefore, comparisons with 1999 crime data are not presented.

³ Police force closed late 2000; therefore, expenditures and crime data are not presented.

⁴ In 2000, crime data were not available for August, so data from August 1999 were substituted.

⁵ Police force closed mid 2000; therefore, expenditures and crime data are not presented.

⁶ Expenditures for 2000 and personnel for 2001 were not available; therefore 1999 expenditures and 2000 personnel were substituted.

⁷ Police force closed early 2001.

⁸ Expenditures for 2000 were not available; therefore 1999 expenditures were substituted.

⁹ In 2000, crime data were not available for December, so data from December 1999 were substituted.

¹⁰ Police force enlarged its jurisdiction in 2000; therefore comparisons with 1999 crime data are not presented.

¹¹ Name changed from St-Jovite to Mont-Tremblant early 2001.

¹² Crime data were not available for 2000.

Use caution in comparing forces: The number of officers may not reflect the number available for general community policing because some officers in certain communities are restricted to specific locations (e.g. ports, airports). Operational expenditures may vary considerably between police services for many reasons. See "Expenditures" on page 33 for details.

Quebec

2000 Crime											
Violent Crime			Property Crime			Total Criminal Code (C.C.)			% Change in C.C. Rate 1999-2000	C.C. Incidents per Officer for 2000	Police Force
Number	Rate	Clear. Rate	Number	Rate	Clear. Rate	Number	Rate	Clear. Rate			
		%			%				%		
6	2,564	67	7	2,991	43	17	7,265	47	...	6	Population (<5,000) Eagle Village ^{1,2}
...	Estérel ³
37	1,314	76	37	1,314	19	132	4,688	42	23	19	Fermont
36	7,087	89	19	3,740	79	76	14,961	86	371	19	Gesgapegiac Amerindian
5	107	80	61	1,310	13	107	2,298	21	8	12	Hudson
29	2,195	72	24	1,817	21	78	5,905	49	129	7	Kanesatake Mohawk
22	1,533	95	25	1,742	-	72	5,017	43	62	10	Kitigan Zibi Anishinabeg ⁴
...	Lebel-Sur-Quévillon ⁵
...	Léry ⁵
29	8,657	86	17	5,075	53	80	23,881	75	-6	20	Long Point Amerindian
32	1,634	56	16	817	25	67	3,422	51	-68	10	Mashteuiatsh
...	Metabetchouan ³
34	4,857	76	9	1,286	22	59	8,429	54	-21	20	Montagnais de Schefferville ⁶
1	40	-	59	2,335	-	74	2,928	-	-23	9	Morin Heights
13	2,399	100	12	2,214	92	29	5,351	97	-36	10	Naskapi ⁴
18	440	117	132	3,229	39	232	5,675	55	36	33	Nicolet ⁷
9	240	56	32	852	22	95	2,531	28	--	14	Normandin ^{7,8}
201	11,453	48	100	5,698	19	448	25,527	34	106	56	Obedjiwan ^{6,9}
28	5,313	82	36	6,831	44	98	18,596	61	35	33	Pikogan
21	595	81	107	3,033	18	190	5,385	27	...	63	Richmond ¹⁰
18	368	94	126	2,575	17	201	4,107	29	...	29	Saint Césaire ¹⁰
20	712	30	102	3,630	13	171	6,085	13	-17	34	St-Adolphe-d'Howard
15	440	73	185	5,430	11	275	8,072	18	12	46	St-Donat
46	940	91	330	6,746	26	525	10,732	37	44	105	St-Jovite ¹¹
23	755	65	237	7,781	17	350	11,490	20	-3	70	St-Sauveur-Des-Monts
21	3,918	5	30	5,597	-	88	16,418	3	69	22	Timiskaming Amerindian
171	6,577	57	169	6,500	28	475	18,269	40	-7	40	Uashat-Maliotenam
12	467	75	45	1,750	11	93	3,617	34	-18	16	Valcourt ^{7,8}
..	Wemindji ^{6,12}
12	985	75	54	4,433	13	111	9,113	21	-9	16	Wendake ⁴

Police resources in Canada, 2001

Ontario

Police Force	2000 Police Resources & Population								2001	
	Population	Population density	Police Officers			Population per Police Officer	Other Personnel	Operating Expenditures	Per Capita Costs	Police Officers
			Male	Female	Total					
		persons/km ²					\$	\$		
Population (100,000+)										
Chatham-Kent	112,632	45	133	15	148	761	51	14,580,563	129	155
Durham Regional	512,271	206	529	107	636	805	181	71,914,658	140	646
Guelph	108,115	1,241	119	15	134	807	55	16,217,247	150	143
Halton Regional	375,705	392	361	90	451	833	149	45,887,588	122	453
Hamilton-Wentworth Regional ¹	498,553	448	589	109	698	714	340	80,439,704	161	699
Kingston	114,336	256	121	26	147	778	46	16,025,980	140	161
London	342,785	783	400	59	459	747	174	45,915,200	134	468
Niagara Regional	423,600	229	546	67	613	691	248	62,730,000	148	619
Ottawa-Carleton Regional	779,274	283	856	183	1,039	750	424	131,775,044	169	1,046
Peel Regional	961,817	1,785	1,119	156	1,275	754	600	156,198,426	162	1,385
Sudbury Regional ²	160,739	62	190	44	234	687	83	24,379,133	152	241
Thunder Bay	120,148	179	179	28	207	580	95	21,167,686	176	212
Toronto	2,542,844	4,036	4,458	635	5,093	499	2,472	579,729,812	228	5,155
Waterloo Regional ³	446,833	329	471	92	563	794	183	61,025,457	137	583
Windsor	209,062	1,738	359	61	420	498	170	45,277,208	217	423
York Regional	724,703	416	731	110	841	862	239	89,281,598	123	881
Haldimand Norfolk (OPP)	108,677	38	111	21	132	823	21	12,004,688	110	132
Population (50,000 - 99,999)										
Barrie	97,927	1,275	108	13	121	809	53	13,418,057	137	129
Brantford	88,788	1,247	119	18	137	648	71	12,196,388	137	136
North Bay	56,948	134	74	12	86	662	44	10,301,676	181	89
Oxford Community	60,922	55	59	16	75	812	28	7,568,266	124	72
Peterborough Lakefield	74,467	1,307	94	16	110	677	40	10,169,303	137	107
Sarnia	73,483	416	99	11	110	668	46	11,484,086	156	111
Sault Ste. Marie	78,534	355	106	20	126	623	44	12,587,401	160	129
South Simcoe	51,641	107	48	7	55	939	22	5,523,448	107	56
Lambton Group (OPP) ⁴	53,397	20	53	9	62	861	-	5,454,549	102	62
New Tecumseth (OPP)	54,333	59	34	12	46	1,181	4	3,682,034	68	46
Storm/Dund/Glengarry (OPP) ⁴	66,382	21	68	12	80	830	9	5,457,229	82	80
Wellington County (OPP)	83,344	32	71	13	84	992	9	7,129,189	86	84
Population (15,000 - 49,999)										
Amherstburg	21,357	114	24	4	28	763	3	3,118,409	146	28
Belleville	46,379	197	61	13	74	627	25	7,570,376	163	73
Brockville	21,633	1,068	36	6	42	515	30	4,395,884	203	42
Cobourg ⁵	17,256	1,086	22	3	25	690	19	2,486,702	144	33
Cornwall	47,656	751	66	10	76	627	38	8,529,190	179	76
Essex	20,854	73	24	3	27	772	4	2,488,156	119	26
Lasalle	25,092	382	27	3	30	836	8	3,603,580	144	30
Leamington	28,603	108	32	3	35	817	10	3,271,132	114	36
Lindsay	23,456	93	26	7	33	711	19	3,459,341	147	33
Midland	15,837	728	23	3	26	609	11	2,506,958	158	25
Nishnawbe-Aski	18,734	9	74	12	86	218	20	9,034,022	482	94
Orangeville	24,659	1,753	26	5	31	795	19	3,927,583	159	31

- Nil or zero

... Figures not appropriate or not applicable

¹ Name changed to Hamilton early in 2001.

² Name changed to Greater Sudbury Police Service early in 2001.

³ In 2000, crime data were not available from October through December, so data from 1999 were substituted for those months. Therefore, comparisons with 1999 crime data are not presented.

⁴ Police force opened in 2000.

⁵ Police force enlarged its jurisdiction in 2001; therefore, comparisons with previous years should be done with caution.

Use caution in comparing forces: The number of officers may not reflect the number available for general community policing because some officers in certain communities are restricted to specific locations (e.g. ports, airports). Operational expenditures may vary considerably between police services for many reasons. See "Expenditures" on page 33 for details.

Ontario

2000 Crime											
Violent Crime			Property Crime			Total Criminal Code (C.C.)			% Change in C.C. Rate 1999-2000	C.C. Incidents per Officer for 2000	Police Force
Number	Rate	Clear. Rate	Number	Rate	Clear. Rate	Number	Rate	Clear. Rate			
		%			%				%		
Population (100,000+)											
948	842	83	4,922	4,370	19	9,649	8,567	37	2	65	Chatham-Kent
3,450	673	82	12,916	2,521	26	25,375	4,953	43	-3	40	Durham Regional
532	492	76	3,517	3,253	17	5,679	5,253	26	-5	42	Guelph
1,682	448	77	8,120	2,161	31	14,404	3,834	39	-3	32	Halton Regional
6,082	1,220	73	20,673	4,147	23	38,212	7,665	38	-3	55	Hamilton-Wentworth Regional ¹
752	658	72	5,747	5,026	19	9,572	8,372	28	-4	65	Kingston
2,703	789	81	18,248	5,323	25	28,994	8,458	35	2	63	London
2,632	621	79	15,653	3,695	21	27,606	6,517	33	-5	45	Niagara Regional
5,456	700	65	26,551	3,407	12	44,893	5,761	22	-12	43	Ottawa-Carleton Regional
5,416	563	82	22,975	2,389	36	38,824	4,037	46	1	30	Peel Regional
1,531	952	81	5,856	3,643	20	10,660	6,632	39	3	46	Sudbury Regional ²
1,660	1,382	84	4,886	4,067	25	10,292	8,566	49	-4	50	Thunder Bay
28,831	1,134	69	86,526	3,403	26	160,349	6,306	44	-2	31	Toronto
3,076	688	77	16,625	3,721	18	27,109	6,067	28	...	48	Waterloo Regional ³
1,822	872	81	9,384	4,489	18	16,995	8,129	37	6	40	Windsor
4,158	574	69	18,340	2,531	21	29,631	4,089	31	-3	35	York Regional
830	764	81	3,484	3,206	30	6,990	6,432	41	-14	53	Haldimand Norfolk (OPP)
Population (50,000 - 99,999)											
1,326	1,354	72	4,276	4,367	36	9,743	9,949	45	1	81	Barrie
1,069	1,204	75	4,098	4,615	15	7,671	8,640	32	2	56	Brantford
517	908	98	2,256	3,962	39	3,978	6,985	51	-11	46	North Bay
385	632	82	2,060	3,381	19	4,263	6,997	31	-3	57	Oxford Community
670	900	90	2,941	3,949	35	5,504	7,391	49	8	50	Peterborough Lakefield
659	897	77	2,261	3,077	23	5,770	7,852	34	6	52	Sarnia
1,002	1,276	104	2,918	3,716	31	5,954	7,581	53	-16	47	Sault Ste. Marie
301	583	91	1,132	2,192	19	2,099	4,065	35	10	38	South Simcoe
167	313	90	600	1,124	20	1,377	2,579	36	...	22	Lambton Group (OPP) ⁴
424	780	78	1,410	2,595	23	3,124	5,750	41	19	68	New Tecumseth (OPP)
234	353	97	1,328	2,001	31	2,462	3,709	45	...	31	Storm/Dund/Glengarry (OPP) ⁴
377	452	78	1,556	1,867	22	3,162	3,794	35	52	38	Wellington County (OPP)
Population (15,000 - 49,999)											
110	515	96	396	1,854	22	905	4,237	34	1	32	Amherstburg
802	1,729	74	2,803	6,044	28	6,116	13,187	43	8	83	Belleville
376	1,738	91	1,182	5,464	37	3,219	14,880	49	17	77	Brockville
184	1,066	109	596	3,454	45	1,397	8,096	56	-6	56	Cobourg ⁵
654	1,372	84	2,432	5,103	32	4,788	10,047	50	6	63	Cornwall
130	623	68	436	2,091	14	933	4,474	28	19	35	Essex
87	347	77	413	1,646	23	698	2,782	33	8	23	Lasalle
237	829	76	1,070	3,741	40	2,190	7,657	51	35	63	Leamington
438	1,867	77	1,334	5,687	36	3,284	14,001	53	-7	100	Lindsay
329	2,077	69	1,025	6,472	29	2,112	13,336	39	-4	81	Midland
1,028	5,487	94	1,023	5,461	70	4,942	26,380	89	-5	57	Nishnawbe-Aski
275	1,115	90	833	3,378	31	1,786	7,243	47	-6	58	Orangeville

Police resources in Canada, 2001

Ontario

Police Force	2000 Police Resources & Population								2001	
	Population	Population density	Police Officers			Population per Police Officer	Other Personnel	Operating Expenditures	Per Capita Costs	Police Officers
			Male	Female	Total					
		persons/km ²						\$	\$	
Population (15,000 - 49,999)										
Owen Sound	21,363	902	30	5	35	610	19	3,548,655	166	38
Quinte West	43,988	87	45	8	53	830	14	5,298,992	120	58
South Bruce Grey	15,810	49	19	1	20	791	11	2,039,100	129	19
St. Thomas	34,756	1,079	44	10	54	644	13	5,044,991	145	54
Stratford	30,765	1,513	44	4	48	641	14	5,278,508	172	48
Strathroy	19,582	72	21	2	23	851	8	2,296,400	117	27
Timmins	47,125	16	70	2	72	655	22	7,882,676	167	76
West Nipissing ¹	15,606	2	15	2	17	918	9	1,499,619	96	18
Caledon (OPP)	46,346	68	28	22	50	927	5	4,382,409	95	55
Collingwood (OPP)	17,021	507	19	3	22	774	2	1,940,340	114	23
Kingsville (OPP)	19,840	81	17	3	20	992	1	1,608,146	81	20
Lakeshore (OPP)	29,030	55	20	5	25	1,161	1	2,065,953	71	25
Orillia (OPP)	30,196	1,058	26	13	39	774	3	3,050,065	101	39
Prince Edward County (OPP) ²	26,360	25	24	5	29	909	3	2,444,791	93	30
South Frontenac (OPP)	16,687	17	11	3	14	1,192	2	1,162,553	70	13
Tecumseh (OPP) ¹	27,541	230	15	3	18	1,530	1	1,880,764	68	27
Population (5,000 - 14,999)										
Akwesasne Mohawk	7,815	198	24	-	24	326	8	2,362,949	302	24
Anishinabek ^{3,4}	9,589	8	50	7	57	168	19	6,291,042	656	57
Aylmer	7,879	1,347	11	2	13	606	1	1,174,349	149	13
Brant County ⁵	9,395	689	13	1	14	671	11	...	105	...
Carleton Place	9,177	1,257	13	2	15	612	8	1,739,813	190	17
Dryden	8,666	130	15	2	17	510	8	2,173,128	251	17
Elliot Lake (Twp.)	13,074	17	18	2	20	654	12	2,159,269	165	20
Espanola	5,560	315	8	1	9	618	6	1,131,420	203	9
Gananoque	5,142	571	9	2	11	467	5	1,050,144	204	11
Ingersoll	10,416	1,020	13	2	15	694	15	1,671,795	161	17
Kenora	10,448	682	25	2	27	387	17	2,896,887	277	31
Meaford-Thornbury	6,682	601	11	2	13	514	3	960,954	144	15
Pembroke	14,371	937	24	3	27	532	13	2,657,088	185	26
Perth	6,000	654	13	1	14	429	18	1,636,449	273	13
Port Hope	12,164	936	20	2	22	553	21	2,068,196	170	24
Renfrew ⁵	8,210	670	11	2	13	632	3	...	132	...
Saugeen Shores	12,196	72	15	3	18	678	2	1,663,657	136	19
Six Nations ⁶	10,814	58	20	1	21	515	5	2,117,000	196	22
Smiths Falls	8,709	1,062	18	2	20	435	8	1,966,677	226	19
Stirling-Rawdon	5,041	18	7	-	7	720	1	549,651	109	7
Tillsonburg ⁵	14,244	648	21	1	22	647	18	...	129	...

- Nil or zero

-- Amount too small to be expressed

... Figures not available

... Figures not appropriate or not applicable

¹ Police force enlarged its jurisdiction in 2000; therefore comparisons with 1999 crime data are not presented.

² Police force opened in late 1999; therefore comparisons with 1999 crime data are not presented.

³ Crime data were not available for 2000.

⁴ Expenditures for 2000 and personnel for 2001 were not available; therefore 1999 expenditures and 2000 personnel were substituted.

⁵ Police force closed late 2000; therefore, expenditures and crime data are not presented.

⁶ In 2000, crime data were not available for September, so data from September 1999 were substituted.

Use caution in comparing forces: The number of officers may not reflect the number available for general community policing because some officers in certain communities are restricted to specific locations (e.g. ports, airports). Operational expenditures may vary considerably between police services for many reasons. See "Expenditures" on page 33 for details.

Ontario

2000 Crime											
Violent Crime			Property Crime			Total Criminal Code (C.C.)			% Change in C.C. Rate 1999-2000	C.C. Incidents per Officer for 2000	Police Force
Number	Rate	Clear. Rate	Number	Rate	Clear. Rate	Number	Rate	Clear. Rate			
		%			%			%			
Population (15,000 - 49,999)											
230	1,077	64	967	4,527	32	2,185	10,228	43	--	62 Owen Sound	
345	784	77	1,491	3,390	24	2,954	6,715	40	3	56 Quinte West	
113	715	88	477	3,017	32	1,024	6,477	40	22	51 South Bruce Grey	
462	1,329	79	1,789	5,147	30	3,929	11,305	43	9	73 St. Thomas	
284	923	82	1,042	3,387	23	1,993	6,478	43	8	42 Stratford	
147	751	86	686	3,503	29	1,339	6,838	44	10	58 Strathroy	
519	1,101	78	1,891	4,013	33	3,883	8,240	48	5	54 Timmins	
134	859	98	463	2,967	38	907	5,812	60	...	53 West Nipissing ¹	
169	365	79	824	1,778	34	1,561	3,368	43	-9	31 Caledon (OPP)	
247	1,451	76	1,155	6,786	17	2,404	14,124	33	...	109 Collingwood (OPP)	
88	444	88	370	1,865	35	951	4,793	49	-7	48 Kingsville (OPP)	
95	327	80	451	1,554	30	985	3,393	44	34	39 Lakeshore (OPP)	
566	1,874	80	1,726	5,716	33	3,858	12,777	51	-3	99 Orillia (OPP)	
174	660	84	607	2,303	28	1,406	5,334	40	...	48 Prince Edward County (OPP) ²	
83	497	82	470	2,817	25	838	5,022	36	-10	60 South Frontenac (OPP)	
98	356	89	535	1,943	26	1,006	3,653	41	...	56 Tecumseh (OPP) ¹	
Population (5,000 - 14,999)											
37	473	95	71	909	45	266	3,404	71	-8	11 Akwesasne Mohawk	
.. Anishinabek ^{3,4}	
118	1,498	80	249	3,160	31	703	8,922	44	15	54 Aylmer	
.. Brant County ⁵	
182	1,983	86	421	4,588	33	1,074	11,703	53	-6	72 Carleton Place	
99	1,142	64	402	4,639	29	902	10,408	30	9	53 Dryden	
142	1,086	86	440	3,365	42	1,093	8,360	55	-16	55 Elliot Lake (Twp.)	
70	1,259	94	197	3,543	26	462	8,309	45	-9	51 Espanola	
76	1,478	87	248	4,823	23	558	10,852	42	2	51 Gananoque	
111	1,066	91	308	2,957	41	775	7,440	54	10	52 Ingersoll	
353	3,379	71	863	8,260	46	2,270	21,727	51	6	84 Kenora	
57	853	96	169	2,529	27	352	5,268	49	--	27 Meaford-Thornbury	
233	1,621	71	800	5,567	28	1,698	11,815	42	17	63 Pembroke	
93	1,550	76	342	5,700	44	752	12,533	53	-1	54 Perth	
102	839	101	578	4,752	43	1,126	9,257	54	22	51 Port Hope	
.. Renfrew ⁵	
61	500	84	386	3,165	27	736	6,035	43	3	41 Saugeen Shores	
194	1,794	80	319	2,950	16	1,072	9,913	43	30	51 Six Nations ⁶	
164	1,883	88	568	6,522	28	1,253	14,387	47	3	63 Smiths Falls	
13	258	92	99	1,964	39	265	5,257	52	27	38 Stirling-Rawdon	
.. Tillsonburg ⁵	

Police resources in Canada, 2001

Ontario

Police Force	2000 Police Resources & Population								2001	
	Population	Population density	Police Officers			Population per Police Officer	Other Personnel	Operating Expenditures	Per Capita Costs	Police Officers
			Male	Female	Total					
		persons/km ²						\$	\$	
Population (5,000 - 14,999)										
Arnprior (OPP)	7,487	549	10	2	12	624	-	1,095,600	146	12
Augusta (OPP) ¹	7,894	25	4	2	6	1,316	-	529,545	67	6
Bath/Burg/Sherbrooke (OPP)	5,550	10	4	1	5	1,110	-	370,688	67	4
Beckwith ²	6,273	26	2	1	3	2,091	-	312,028	50	3
Cavan/Millb/N.Monaghan (OPP)	8,560	28	7	2	9	951	1	720,673	84	9
Douro-Dummer (OPP)	7,235	16	3	1	4	1,809	-	348,205	48	4
Drummond-N. Elmsley (OPP)	6,567	18	4	1	5	1,313	-	427,334	65	4
E. Nipissing Gr Of 3 (OPP)	7,016	12	4	2	6	1,169	-	411,749	59	6
Fort Frances (OPP)	8,641	332	16	5	21	411	-	1,590,227	184	21
Goderich (OPP)	7,670	1,100	9	4	13	590	1	1,093,343	143	13
Hawkesbury (OPP)	10,405	1,195	12	5	17	612	4	1,649,972	159	17
Kapuskasing (OPP)	9,705	116	8	2	10	971	1	899,105	93	10
Kincardine (OPP)	6,612	645	11	5	16	413	-	1,305,815	197	15
Kirkland Lake (OPP)	9,531	35	14	5	19	502	2	1,460,243	153	19
Mississippi Mills (OPP)	12,036	23	7	1	8	1,505	1	707,220	59	8
Mono (OPP)	7,148	26	6	1	7	1,021	1	660,228	92	7
North Perth (OPP) ³	11,971	25	15	3	18	665	-	1,448,724	121	18
Otonabee/S. Monaghan (OPP)	6,970	20	7	1	8	871	-	622,684	89	8
Penetanguishene (OPP)	7,814	621	8	1	9	868	-	690,510	88	9
Rideau Lakes (OPP)	10,197	14	9	2	11	927	1	914,098	90	11
Smith/Ennismore (OPP)	14,258	44	10	2	12	1,188	2	976,963	69	12
St. Marys (OPP)	6,473	533	8	1	9	719	-	792,762	122	9
Stone Mills (OPP)	7,685	11	5	1	6	1,281	-	435,981	57	5
Population (<5,000)										
Atikokan (Twp.)	3,986	12	10	1	11	362	2	1,004,671	252	11
Deep River	4,413	87	6	1	7	630	2	643,450	146	8
Deseronto	1,797	673	4	1	5	359	1	440,364	245	5
Durham	2,711	587	5	-	5	542	-	363,059	134	5
Lac Seul	754	2	5	1	6	126	2	564,293	748	6
Michipicoten (Twp.)	4,115	10	8	1	9	457	2	1,002,864	244	10
New Liskeard	4,889	762	7	1	8	611	8	948,803	194	7
Prescott ⁴	4,385	1,072	11	-	11	399	5	1,062,698	242	10
Red Rock (Twp) ⁵	1,162	11	3	-	3	387	-	...	285	...
Shelburne	4,039	1,044	7	-	7	577	1	654,951	162	7
Terrace Bay (Twp.)	2,211	15	7	-	7	316	1	590,217	267	7
U.C.C.M. Anishnaabe	1,927	13	10	3	13	148	3	1,463,201	759	13
Wkwemikong ⁶	2,855	7	8	2	10	286	2	1,036,750	363	10
Wingham	2,878	1,184	6	-	6	480	3	506,500	176	7
Addington Highlands (OPP) ³	2,570	2	5	2	7	367	1	515,766	201	6

- Nil or zero

.. Figures not available

... Figures not appropriate or not applicable

¹ Police force opened in late 1999; therefore comparisons with 1999 crime data are not presented.

² Police force opened in early 2000.

³ Police force opened in mid 1999; therefore comparisons with 1999 crime data are not presented.

⁴ Crime data is not presented as only 6 months of data are available.

⁵ Police force closed late 2000; therefore, expenditures and crime data are not presented.

⁶ In 2000, crime data were not available for January, so data from January 1999 were substituted.

Use caution in comparing forces: The number of officers may not reflect the number available for general community policing because some officers in certain communities are restricted to specific locations (e.g. ports, airports). Operational expenditures may vary considerably between police services for many reasons. See "Expenditures" on page 33 for details.

Ontario

2000 Crime											
Violent Crime			Property Crime			Total Criminal Code (C.C.)			% Change in C.C. Rate 1999-2000	C.C. Incidents per Officer for 2000	Police Force
Number	Rate	Clear. Rate	Number	Rate	Clear. Rate	Number	Rate	Clear. Rate			
		%			%			%			
Population (5,000 - 14,999)											
77	1,028	71	304	4,060	31	650	8,682	40	-8	54	Arnprior (OPP)
32	405	94	128	1,621	20	251	3,180	36	...	42	Augusta (OPP) ¹
19	342	74	94	1,694	21	184	3,315	33	18	37	Bath/Burg/Sherbrooke (OPP)
24	383	104	101	1,610	17	178	2,838	37	...	59	Beckwith ²
169	1,974	86	149	1,741	27	470	5,491	58	-39	52	Cavan/Millb/N.Monaghan (OPP)
31	428	74	132	1,824	17	254	3,511	30	36	64	Douro-Dummer (OPP)
43	655	93	112	1,705	13	243	3,700	41	16	49	Drummond-N. Elmsley (OPP)
57	812	91	124	1,767	24	290	4,133	46	1	48	E. Nipissing Gr Of 3 (OPP)
175	2,025	93	403	4,664	35	1,096	12,684	53	1	52	Fort Frances (OPP)
45	587	93	287	3,742	37	579	7,549	49	-20	45	Goderich (OPP)
180	1,730	87	561	5,392	30	1,174	11,283	47	-3	69	Hawkesbury (OPP)
115	1,185	96	252	2,597	59	631	6,502	71	-10	63	Kapuskasing (OPP)
64	968	83	191	2,889	48	481	7,275	51	-24	30	Kincardine (OPP)
248	2,602	93	537	5,634	45	1,561	16,378	62	11	82	Kirkland Lake (OPP)
64	532	100	269	2,235	30	528	4,387	47	-11	66	Mississippi Mills (OPP)
33	462	79	159	2,224	33	292	4,085	36	-8	42	Mono (OPP)
75	627	100	273	2,281	45	672	5,614	58	...	37	North Perth (OPP) ³
39	560	79	183	2,626	24	327	4,692	39	5	41	Otonabee/S. Monaghan (OPP)
137	1,753	77	324	4,146	34	737	9,432	48	-10	82	Penetanguishene (OPP)
63	618	95	243	2,383	18	466	4,570	39	-14	42	Rideau Lakes (OPP)
78	547	77	272	1,908	26	548	3,843	40	10	46	Smith/Ennismore (OPP)
38	587	68	205	3,167	25	419	6,473	40	-15	47	St. Marys (OPP)
28	364	96	154	2,004	12	315	4,099	33	17	53	Stone Mills (OPP)
Population (<5,000)											
41	1,029	59	117	2,935	32	279	6,999	35	-12	25	Atikokan (Twp.)
22	499	91	97	2,198	35	160	3,626	41	-13	23	Deep River
41	2,282	90	161	8,959	53	370	20,590	68	6	74	Deseronto
12	443	100	60	2,213	85	122	4,500	89	100	24	Durham
78	10,345	100	47	6,233	83	254	33,687	97	-10	42	Lac Seul
57	1,385	82	179	4,350	41	492	11,956	53	-6	55	Michipicoten (Twp.)
22	450	86	250	5,114	38	391	7,998	48	-6	49	New Liskeard
...	Prescott ⁴
...	Red Rock (Twp) ⁵
98	2,426	89	200	4,952	52	596	14,756	66	-12	85	Shelburne
22	995	77	44	1,990	30	95	4,297	39	-21	14	Terrace Bay (Twp.)
82	4,255	77	128	6,642	44	374	19,408	63	-16	29	U.C.C.M. Anishnaabe
181	6,340	75	205	7,180	38	668	23,398	63	21	67	Wkwemikong ⁶
22	764	91	90	3,127	66	193	6,706	63	-12	32	Wingham
29	1,128	86	108	4,202	17	260	10,117	35	...	37	Addington Highlands (OPP) ³

Police resources in Canada, 2001

Ontario

Police Force	2000 Police Resources & Population								2001	
	Population	Population density	Police Officers			Population per Police Officer	Other Personnel	Operating Expenditures	Per Capita Costs	Police Officers
			Male	Female	Total					
		persons/km ²					\$	\$		
Population (<5,000)										
Asphodel-Norwood (OPP)	4,284	27	4	1	5	857	-	405,560	95	5
Blind River (OPP)	2,958	224	6	2	8	370	-	674,129	228	8
Brighton Town (OPP)	4,868	397	5	1	6	811	-	490,701	101	10
Brighton Twp (OPP) ^{1,2}	4,840	23	5	-	5	968	-	409,303	85	...
Clinton (OPP)	3,242	795	5	1	6	540	-	391,487	121	6
Cochrane (OPP)	4,280	627	7	2	9	476	2	781,580	183	9
Dymond (OPP)	1,260	16	2	-	2	630	-	202,813	161	2
East Perth (OPP)	1,596	897	2	-	2	798	-	116,492	73	2
Exeter (OPP)	4,592	943	2	3	5	918	-	508,525	111	5
Harvey/Gala/Caven. (OPP)	4,940	6	8	2	10	494	1	832,897	169	10
Havelock/Bel/Methuen (OPP)	4,616	8	3	1	4	1,154	-	359,252	78	4
Ignace (OPP)	1,673	23	2	1	3	558	-	275,516	165	3
Jaffray Melick (OPP)	4,422	20	4	1	5	884	-	332,324	75	4
Keewatin (OPP)	2,066	146	2	1	3	689	-	240,590	116	3
Kemptville (OPP)	3,685	1,486	6	-	6	614	-	530,074	144	6
Lanark Highlands (OPP) ³	4,844	5	2	1	3	1,615	-	325,997	67	3
Marathon (OPP)	4,573	28	7	2	9	508	1	691,097	151	8
Mattawa Group Of Four (OPP)	3,799	4	5	2	7	543	1	615,358	162	7
Merrickville (OPP)	2,730	13	3	-	3	910	-	292,448	107	3
Mnjikaning (OPP) ⁴	517	48	6	2	8	65	-	510,251	987	7
Montague (OPP)	3,859	14	3	-	3	1,286	-	305,116	79	3
N. Parry Sound Gr Of 2 (OPP)	3,217	5	1	1	2	1,609	-	207,587	65	2
N.Kawartha (OPP)	2,260	3	3	-	3	753	-	225,137	100	3
North Shore (OPP)	619	3	1	-	1	619	-	112,464	182	1
Point Edward (OPP)	2,202	626	5	-	5	440	1	483,763	220	5
Powassan (OPP)	1,109	460	1	-	1	1,109	-	134,040	121	1
Red Lake (OPP)	2,307	20	10	3	13	177	1	1,179,438	511	13
Seaforth (OPP) ⁵	2,282	913	5	-	5	456	-	350,758	154	...
Shedden (OPP)	860	8	1	-	1	860	-	133,042	155	1
Shuniah (OPP)	2,476	4	3	-	3	825	-	225,908	91	3
Sioux Narrows (OPP) ¹	464	6	1	-	1	464	-	99,937	215	1
Smooth Rock Falls (OPP)	1,896	9	2	-	2	948	-	189,597	100	2
Temagami (OPP)	803	3	2	1	3	268	-	295,492	368	3
Thessalon (OPP)	1,417	324	3	-	3	472	-	247,264	174	3
West Perth (OPP) ⁶	3,985	730	4	1	5	797	-	387,837	97	5
Warton (OPP)	2,432	444	2	1	3	811	-	236,820	97	3

- Nil or zero

-- Amount too small to be expressed

... Figures not available

... Figures not appropriate or not applicable

¹ Crime data were not available for 2000.

² Police force closed at the end of 2000.

³ Police force opened in late 1999; therefore comparisons with 1999 crime data are not presented.

⁴ Per capita costs appear high because this service polices a large casino with an influx of thousands of customers per day.

⁵ OPP contract ended at end of 2000. Seaforth policed by new Huron East municipal OPP detachment as of January 1, 2001.

⁶ Name changed from Mitchell to West Perth in 2000.

Use caution in comparing forces: The number of officers may not reflect the number available for general community policing because some officers in certain communities are restricted to specific locations (e.g. ports, airports). Operational expenditures may vary considerably between police services for many reasons. See "Expenditures" on page 33 for details.

Ontario

2000 Crime											
Violent Crime			Property Crime			Total Criminal Code (C.C.)			% Change in C.C. Rate 1999-2000	C.C. Incidents per Officer for 2000	Police Force
Number	Rate	Clear. Rate	Number	Rate	Clear. Rate	Number	Rate	Clear. Rate			
		%			%				%		
Population (<5,000)											
54	1,261	80	99	2,311	21	234	5,462	40	-2	47	Asphodel-Norwood (OPP)
82	2,772	98	227	7,674	48	590	19,946	57	--	74	Blind River (OPP)
89	1,828	66	255	5,238	19	573	11,771	34	29	96	Brighton Town (OPP)
..	Brighton Twp (OPP) ^{1,2}
18	555	100	147	4,534	34	243	7,495	42	-24	41	Clinton (OPP)
86	2,009	116	190	4,439	67	535	12,500	80	4	59	Cochrane (OPP)
7	556	114	67	5,317	72	115	9,127	75	-19	58	Dymond (OPP)
9	564	67	27	1,692	44	85	5,326	46	53	43	East Perth (OPP)
45	980	98	162	3,528	27	336	7,317	43	-13	67	Exeter (OPP)
33	668	91	158	3,198	17	282	5,709	34	5	28	Harvey/Gala/Caven. (OPP)
29	628	69	75	1,625	40	164	3,553	48	3	41	Havelock/Bel/Methuen (OPP)
30	1,793	93	58	3,467	64	181	10,819	68	14	60	Ignace (OPP)
30	678	100	73	1,651	32	220	4,975	54	-7	44	Jaffray Melick (OPP)
7	339	86	44	2,130	30	132	6,389	50	7	44	Keewatin (OPP)
57	1,547	91	144	3,908	28	390	10,583	56	--	65	Kemptville (OPP)
35	723	103	118	2,436	20	266	5,491	44	...	89	Lanark Highlands (OPP) ³
67	1,465	99	102	2,230	60	312	6,823	69	-8	35	Marathon (OPP)
56	1,474	98	196	5,159	37	372	9,792	55	3	53	Mattawa Group Of Four (OPP)
26	952	81	57	2,088	21	147	5,385	41	45	49	Merrickville (OPP)
57	11,025	74	135	26,112	47	583	112,766	33	-25	73	Mnjikaning (OPP) ⁴
11	285	64	69	1,788	12	124	3,213	26	-9	41	Montague (OPP)
6	187	83	45	1,399	36	89	2,767	45	18	45	N. Parry Sound Gr Of 2 (OPP)
14	619	93	63	2,788	30	114	5,044	41	116	38	N.Kawartha (OPP)
4	646	100	40	6,462	73	56	9,047	70	43	56	North Shore (OPP)
24	1,090	75	103	4,678	24	232	10,536	37	2	46	Point Edward (OPP)
13	1,172	85	47	4,238	36	106	9,558	60	75	106	Powassan (OPP)
97	4,205	95	149	6,459	52	1,015	43,997	84	53	78	Red Lake (OPP)
7	307	86	76	3,330	47	124	5,434	49	-29	25	Seaforth (OPP) ⁵
21	2,442	76	80	9,302	78	152	17,674	72	33	152	Shedden (OPP)
24	969	63	102	4,120	26	185	7,472	41	18	62	Shuniah (OPP)
..	Sioux Narrows (OPP) ¹
10	527	200	27	1,424	111	62	3,270	94	-27	31	Smooth Rock Falls (OPP)
6	747	100	31	3,861	23	66	8,219	42	-54	22	Temagami (OPP)
25	1,764	112	58	4,093	24	134	9,457	54	10	45	Thessalon (OPP)
30	753	83	147	3,689	25	268	6,725	36	--	54	West Perth (OPP) ⁶
38	1,563	79	96	3,947	48	221	9,087	61	20	74	Warton (OPP)

Police resources in Canada, 2001

Manitoba

Police Force	2000 Police Resources & Population								2001	
	Population	Population density	Police Officers			Population per Police Officer	Other Personnel	Operating Expenditures	Per Capita Costs	Police Officers
			Male	Female	Total					
		persons/km ²					\$	\$		
Population (100,000+)										
Winnipeg (Greater) ^{1,2}	629,798	1,357	1,030	141	1,171	538	305	113,883,483	181	1,127
Population (15,000 - 49,999)										
Brandon	40,396	540	62	2	64	631	24	4,357,546	108	67
Population (5,000 - 14,999)										
East St. Paul	7,290	166	7	1	8	911	1	573,965	79	9
Morden	6,165	496	5	1	6	1,028	1	390,317	63	6
Winkler	8,159	500	5	-	5	1,632	1	571,889	70	8
Dauphin (RCMP)	8,372	701	13	1	14	598	-	961,388	115	14
Flin Flon (RCMP)	6,331	376	7	1	8	791	-	694,028	110	11
Portage La Prairie (RCMP)	13,459	560	18	5	23	585	-	1,708,282	127	26
Selkirk (RCMP)	10,406	421	11	3	14	743	-	1,120,772	108	17
Steinbach (RCMP)	8,754	347	8	-	8	1,094	-	572,492	65	10
The Pas (RCMP)	5,706	200	13	2	15	380	-	1,039,073	182	15
Thompson (RCMP)	13,522	802	27	9	36	376	-	2,379,455	176	39
Population (<5,000)										
Altona	3,541	947	5	-	5	708	1	410,740	116	5
Dakota Ojibway Police Service	2,872	28	14	1	15	191	7	1,574,906	548	16
Rivers	1,156	149	3	-	3	385	-	147,098	127	3
Ste. Anne	1,537	401	3	-	3	512	1	213,564	139	3
Beausejour (RCMP)	2,758	528	2	1	3	919	-	197,906	72	4
Boissevan (RCMP)	1,600	618	1	1	2	800	-	150,572	94	2
Carman (RCMP)	2,839	682	2	1	3	946	-	208,160	73	3
Gillam (RCMP)	1,156	1	3	1	4	289	-	277,085	240	4
Gimli (RCMP)	1,606	658	2	2	4	402	-	188,116	117	3
Killarney (RCMP)	2,255	456	3	-	3	752	-	210,358	93	4
Leaf Rapids (RCMP)	1,277	1	5	-	5	255	-	281,221	220	5
Minnedosa (RCMP)	2,401	162	3	1	4	600	-	272,502	113	4
Neepawa, Man. (RCMP)	3,374	199	3	1	4	844	-	273,144	81	4
Pinawa (RCMP)	1,630	13	1	1	2	815	-	134,944	83	2
Roblin (RCMP)	1,932	870	2	-	2	966	-	146,513	76	2
Russell (RCMP)	1,603	538	1	1	2	802	-	148,293	93	2
Souris (RCMP)	1,582	643	1	1	2	791	-	144,013	91	2
Stonewall (RCMP)	4,305	701	3	-	3	1,435	-	233,393	54	4
Swan River (RCMP)	4,122	630	7	-	7	589	-	517,858	126	7
Virден (RCMP)	3,033	1,107	4	-	4	758	-	288,580	95	4

- Nil or zero

-- Amount too small to be expressed

¹ Name changed from Winnipeg (Greater) to Winnipeg in 2001.

² Number of police officers includes 66 externally funded officers: 16 assigned to airport policing, 40 to Community Policing and Gang Unit, 6 to Stolen Auto Unit, and 4 to RCMP programs (Viclas, Proceeds of Crime, and Canadian Police College).

Note for the RCMP municipal contracts: Expenditures include only the cost billed to the municipality and not the total cost of the contract, nor any additional policing costs. Civilian employees provided by the municipality are not included under "Other Personnel".

Use caution in comparing forces: The number of officers may not reflect the number available for general community policing because some officers in certain communities are restricted to specific locations (e.g. ports, airports). Operational expenditures may vary considerably between police services for many reasons. See "Expenditures" on page 33 for details.

Manitoba

2000 Crime											Police Force
Violent Crime			Property Crime			Total Criminal Code (C.C.)			% Change in C.C. Rate 1999-2000	C.C. Incidents per Officer for 2000	
Number	Rate	Clear. Rate	Number	Rate	Clear. Rate	Number	Rate	Clear. Rate			%
		%			%				%		
9,054	1,438	70	37,839	6,008	18	68,661	10,902	30	7	59	Population (100,000+) Winnipeg (Greater) ^{1,2}
515	1,275	80	2,436	6,030	27	5,087	12,593	43	-4	79	Population (15,000 - 49,999) Brandon
21	288	133	155	2,126	12	314	4,307	25	-22	39	Population (5,000 - 14,999) East St. Paul
36	584	83	208	3,374	31	388	6,294	44	-30	65	Morden
34	417	88	239	2,929	67	495	6,067	80	-26	99	Winkler
173	2,066	75	575	6,868	26	1,338	15,982	37	-16	96	Dauphin (RCMP)
100	1,580	62	155	2,448	28	668	10,551	40	21	84	Flin Flon (RCMP)
424	3,150	67	1,211	8,998	19	3,184	23,657	35	1	138	Portage La Prairie (RCMP)
269	2,585	49	692	6,650	20	1,842	17,701	25	16	132	Selkirk (RCMP)
55	628	75	400	4,569	25	715	8,168	36	1	89	Steinbach (RCMP)
306	5,363	70	370	6,484	36	1,417	24,834	51	-5	94	The Pas (RCMP)
842	6,227	70	889	6,574	42	3,942	29,152	49	4	110	Thompson (RCMP)
11	311	82	68	1,920	38	165	4,660	48	-25	33	Population (<5,000) Altona
235	8,182	66	180	6,267	24	680	23,677	52	-7	45	Dakota Ojibway Police Service
10	865	100	63	5,450	65	160	13,841	69	--	53	Rivers
14	911	100	48	3,123	31	131	8,523	47	31	44	Ste. Anne
36	1,305	72	124	4,496	28	365	13,234	37	18	122	Beausejour (RCMP)
13	813	77	34	2,125	41	109	6,813	56	-7	55	Boissevan (RCMP)
17	599	53	83	2,924	6	171	6,023	20	-28	57	Carman (RCMP)
35	3,028	69	30	2,595	23	140	12,111	44	-41	35	Gillam (RCMP)
17	1,059	71	67	4,172	33	150	9,340	36	-11	38	Gimli (RCMP)
10	443	80	57	2,528	26	114	5,055	36	-28	38	Killarney (RCMP)
25	1,958	88	48	3,759	13	144	11,276	44	-15	29	Leaf Rapids (RCMP)
26	1,083	65	90	3,748	13	240	9,996	24	-4	60	Minnedosa (RCMP)
30	889	117	125	3,705	38	354	10,492	41	6	89	Neepawa, Man. (RCMP)
5	307	60	23	1,411	17	70	4,294	29	-20	35	Pinawa (RCMP)
27	1,398	81	42	2,174	29	134	6,936	45	-14	67	Roblin (RCMP)
23	1,435	74	51	3,182	20	158	9,857	30	-29	79	Russell (RCMP)
7	442	100	21	1,327	57	58	3,666	59	-44	29	Souris (RCMP)
22	511	91	109	2,532	23	250	5,807	34	27	83	Stonewall (RCMP)
96	2,329	83	282	6,841	27	657	15,939	41	-7	94	Swan River (RCMP)
30	989	77	148	4,880	28	297	9,792	35	-7	74	Virden (RCMP)

Police resources in Canada, 2001

Saskatchewan

Police Force	2000 Police Resources & Population									2001
	Population	Population density	Police Officers			Population per Police Officer	Other Personnel	Operating Expenditures	Per Capita Costs	Police Officers
			Male	Female	Total					
		persons/km ²						\$	\$	
Population (100,000+)										
Regina	186,997	1,639	267	44	311	601	129	36,101,177	193	315
Saskatoon	206,490	1,510	278	33	311	664	128	32,979,694	160	330
Population (15,000 - 49,999)										
Moose Jaw	33,831	725	53	3	56	604	23	5,113,493	151	57
Prince Albert	36,793	566	57	7	64	575	46	6,422,180	175	65
Lloydminster (RCMP)	21,103	511	20	5	25	844	-	2,157,014	102	25
Swift Current (RCMP)	15,717	687	15	3	18	873	-	1,193,169	76	19
Yorkton (RCMP)	15,648	657	16	6	22	711	-	1,689,630	108	23
Population (5,000 - 14,999)										
Estevan	11,409	646	16	1	17	671	6	1,595,026	140	17
Weyburn	10,236	729	16	1	17	602	5	1,327,286	130	17
Humboldt (RCMP)	5,329	447	5	-	5	1,066	-	344,814	65	5
Meadow Lake (RCMP)	5,487	704	6	4	10	549	-	679,339	124	9
Melfort (RCMP)	6,297	430	5	1	6	1,050	-	409,582	65	6
North Battleford (RCMP)	14,721	415	21	5	26	566	-	1,705,787	116	26
Population (<5,000)										
Caronport	1,440	618	1	-	1	1,440	-	40,990	28	1
Cudworth ^{1,2}	789	284	2	-	2	395	-	79,174	100	...
Dalmeny	1,515	618	3	-	3	505	-	170,356	112	3
Langham	1,048	263	5	1	6	175	1	318,670	304	6
Luseland	599	399	1	-	1	599	1	91,434	153	1
Stoughton	715	404	1	-	1	715	-	77,000	108	1
Watson ³	847	317	1	-	1	847	1
Assiniboia (RCMP)	2,611	746	2	-	2	1,306	-	210,488	81	2
Battleford (RCMP)	3,957	177	4	1	5	791	-	315,905	80	5
Biggar (RCMP)	2,427	157	3	-	3	809	-	199,107	82	3
Canora (RCMP)	2,122	298	2	1	3	707	-	189,304	89	3
Creighton (RCMP)	1,717	121	3	-	3	572	-	163,635	95	3
Esterhazy (RCMP)	2,524	515	2	1	3	841	-	215,743	85	3
Fort Qu'appelle (RCMP)	2,052	423	3	-	3	684	-	192,881	94	3
Hudson Bay (RCMP)	2,009	118	3	-	3	670	-	167,521	83	3
Indian Head (RCMP)	1,857	559	3	-	3	619	-	144,029	78	2
Kamsack (RCMP)	2,270	391	4	1	5	454	-	345,377	152	5
Kindersley (RCMP)	4,966	400	4	2	6	828	-	378,055	76	5
La Ronge (RCMP)	3,284	447	5	3	8	411	-	114,529	35	9
Lanigan (RCMP)	1,354	176	2	-	2	677	-	525,101	388	2
Maple Creek (RCMP)	2,366	499	2	1	3	789	-	168,952	71	3
Melville (RCMP)	4,726	307	5	-	5	945	-	326,247	69	5
Moosomin (RCMP)	2,553	438	2	-	2	1,277	-	160,925	63	3
Nipawin (RCMP)	4,517	554	5	1	6	753	-	463,638	103	7

- Nil or zero

... Figures not available

.... Figures not appropriate or not applicable

¹ In 2000, crime data were not available for September, so data from September 1999 were substituted.

² Police force closed in early 2001.

³ Police force closed in mid 2000; therefore, expenditures and crime data are not presented.

Note for the RCMP municipal contracts: Expenditures include only the cost billed to the municipality and not the total cost of the contract, nor any additional policing costs. Civilian employees provided by the municipality are not included under "Other Personnel".

Use caution in comparing forces: The number of officers may not reflect the number available for general community policing because some officers in certain communities are restricted to specific locations (e.g. ports, airports). Operational expenditures may vary considerably between police services for many reasons. See "Expenditures" on page 33 for details.

Saskatchewan

2000 Crime											Police Force
Violent Crime			Property Crime			Total Criminal Code (C.C.)			% Change in C.C. Rate 1999-2000	C.C. Incidents per Officer for 2000	
Number	Rate	Clear. Rate	Number	Rate	Clear. Rate	Number	Rate	Clear. Rate			
		%			%				%		
3,048	1,630	72	16,278	8,705	18	28,463	15,221	37	-2	92	Population (100,000+)
3,299	1,598	63	15,140	7,332	23	28,425	13,766	39	11	91	Regina
											Saskatoon
344	1,017	82	2,095	6,193	32	3,885	11,484	37	-15	69	Population (15,000 - 49,999)
772	2,098	72	2,535	6,890	36	5,814	15,802	53	13	91	Moose Jaw
											Prince Albert
292	1,384	70	1,278	6,056	35	3,214	15,230	47	12	129	Lloydminster (RCMP)
115	732	75	538	3,423	32	1,216	7,737	42	-6	68	Swift Current (RCMP)
208	1,329	79	898	5,739	41	2,242	14,328	46	14	102	Yorkton (RCMP)
											Population (5,000 - 14,999)
81	710	60	368	3,226	27	819	7,179	43	13	48	Estevan
126	1,231	81	494	4,826	32	1,369	13,374	44	9	81	Weyburn
26	488	77	199	3,734	25	370	6,943	34	8	74	Humboldt (RCMP)
195	3,554	69	445	8,110	41	1,308	23,838	62	-5	131	Meadow Lake (RCMP)
64	1,016	81	306	4,859	32	641	10,179	47	19	107	Melfort (RCMP)
556	3,777	63	1,792	12,173	24	5,250	35,663	38	12	202	North Battleford (RCMP)
											Population (<5,000)
6	417	67	69	4,792	29	102	7,083	42	260	102	Caronport
1	127	100	8	1,014	25	11	1,394	45	-45	6	Cudworth ^{1,2}
10	660	80	48	3,168	50	117	7,723	45	9	39	Dalmeny
13	1,240	85	29	2,767	17	68	6,489	43	39	11	Langham
3	501	67	6	1,002	33	22	3,673	41	73	22	Luseland
8	1,119	100	28	3,916	18	50	6,993	38	6	50	Stoughton
...	Watson ³
14	536	71	105	4,021	43	194	7,430	44	12	97	Assiniboia (RCMP)
42	1,061	71	168	4,246	19	439	11,094	32	14	88	Battleford (RCMP)
26	1,071	69	107	4,409	46	273	11,248	53	2	91	Biggar (RCMP)
18	848	94	66	3,110	45	143	6,739	48	-7	48	Canora (RCMP)
14	815	86	39	2,271	74	125	7,280	91	-13	42	Creighton (RCMP)
25	990	120	57	2,258	51	144	5,705	67	-18	48	Esterhazy (RCMP)
71	3,460	73	308	15,010	30	617	30,068	42	8	206	Fort Qu'appelle (RCMP)
44	2,190	64	96	4,778	40	278	13,838	47	51	93	Hudson Bay (RCMP)
6	323	150	22	1,185	73	33	1,777	88	-81	11	Indian Head (RCMP)
83	3,656	104	258	11,366	69	794	34,978	78	25	159	Kamsack (RCMP)
53	1,067	68	243	4,893	35	517	10,411	45	2	86	Kindersley (RCMP)
180	5,481	73	344	10,475	41	1,121	34,135	62	27	140	La Ronge (RCMP)
6	443	83	37	2,733	41	69	5,096	54	20	35	Lanigan (RCMP)
27	1,141	81	162	6,847	43	257	10,862	47	3	86	Maple Creek (RCMP)
39	825	97	132	2,793	58	354	7,490	66	-3	71	Melville (RCMP)
12	470	58	68	2,664	22	134	5,249	28	-16	67	Moosomin (RCMP)
79	1,749	90	330	7,306	38	620	13,726	51	4	103	Nipawin (RCMP)

Saskatchewan

Police Force	2000 Police Resources & Population								2001	
	Population	Population density	Police Officers			Population per Police Officer	Other Personnel	Operating Expenditures	Per Capita Costs	Police Officers
			Male	Female	Total					
		persons/km ²					\$	\$		
Population (<5,000)										
Outlook (RCMP)	2,153	272	2	-	2	1,077	-	129,823	60	2
Rosetown (RCMP)	2,554	255	3	-	3	851	-	208,705	82	3
Shaunavon (RCMP)	1,863	405	2	-	2	932	-	143,763	77	2
Tisdale (RCMP)	3,090	638	2	1	3	1,030	-	259,630	84	4
Unity (RCMP)	2,241	228	1	2	3	747	-	199,640	89	3
Wadena (RCMP)	1,461	500	1	1	2	731	-	131,643	90	2
Warman (RCMP)	3,081	822	2	-	2	1,541	-	151,160	49	3
Watrous (RCMP)	1,871	172	3	-	3	624	-	94,990	51	2
Wilkie (RCMP)	1,362	150	2	-	2	681	-	112,745	83	2
Wynyard (RCMP)	2,016	384	3	-	3	672	-	198,504	98	3

- Nil or zero

Note for the RCMP municipal contracts: Expenditures include only the cost billed to the municipality and not the total cost of the contract, nor any additional policing costs. Civilian employees provided by the municipality are not included under "Other Personnel".

Use caution in comparing forces: The number of officers may not reflect the number available for general community policing because some officers in certain communities are restricted to specific locations (e.g. ports, airports). Operational expenditures may vary considerably between police services for many reasons. See "Expenditures" on page 33 for details.

Saskatchewan

2000 Crime											
Violent Crime			Property Crime			Total Criminal Code (C.C.)			% Change in C.C. Rate 1999-2000	C.C. Incidents per Officer for 2000	Police Force
Number	Rate	Clear. Rate	Number	Rate	Clear. Rate	Number	Rate	Clear. Rate			
		%			%			%			
										Population (<5,000)	
9	418	78	51	2,369	25	146	6,781	40	-12	73 Outlook (RCMP)	
17	666	88	95	3,720	36	172	6,735	49	-26	57 Rosetown (RCMP)	
19	1,020	100	72	3,865	22	197	10,574	38	40	99 Shaunavon (RCMP)	
24	777	75	118	3,819	42	291	9,417	53	-17	97 Tisdale (RCMP)	
12	535	58	84	3,748	46	209	9,326	43	30	70 Unity (RCMP)	
17	1,164	82	60	4,107	40	132	9,035	61	-24	66 Wadena (RCMP)	
7	227	71	79	2,564	24	121	3,927	26	-7	61 Warman (RCMP)	
9	481	89	67	3,581	19	122	6,521	40	-3	41 Watrous (RCMP)	
13	954	100	62	4,552	37	125	9,178	51	-16	63 Wilkie (RCMP)	
20	992	70	95	4,712	40	214	10,615	50	19	71 Wynyard (RCMP)	

Police resources in Canada, 2001

Alberta

Police Force	2000 Police Resources & Population									2001
	Population	Population density	Police Officers			Population per Police Officer	Other Personnel	Operating Expenditures	Per Capita Costs	Police Officers
			Male	Female	Total					
		persons/km ²						\$	\$	
Population (100,000+)										
Calgary	876,536	1,223	1,133	158	1,291	679	557	154,723,847	177	1,303
Edmonton	654,058	976	1,034	142	1,176	556	386	131,176,530	201	1,194
Population (50,000 - 99,999)										
Lethbridge	68,500	571	101	5	106	646	36	12,434,800	182	113
Medicine Hat	51,220	453	80	4	84	610	26	10,581,322	207	82
Red Deer (RCMP)	64,531	1,109	73	8	81	797	-	6,594,862	102	86
St. Albert (RCMP)	54,052	1,591	35	6	41	1,318	-	3,250,930	60	42
Population (15,000 - 49,999)										
Airdrie (RCMP)	20,770	988	10	5	15	1,385	-	1,239,910	60	17
Fort McMurray (RCMP)	37,433	1	34	19	53	706	-	4,215,999	113	54
Grande Prairie (RCMP)	35,566	850	34	12	46	773	-	3,814,071	107	50
Leduc (RCMP)	15,423	605	14	2	16	964	-	962,256	62	15
Sherwood Park (RCMP)	45,080	64	31	11	42	1,073	-	3,346,966	74	46
Spruce Grove (RCMP)	16,389	641	13	1	14	1,171	-	971,840	59	14
Population (5,000 - 14,999)										
Blood Tribe Police ¹	7,574	5	18	3	21	361	11	1,809,098	239	21
Camrose	14,264	547	19	2	21	679	11	2,125,087	149	21
Coaldale	6,408	908	8	-	8	801	3	726,514	113	8
Lacombe	9,374	753	9	1	10	937	6	987,329	105	11
Taber	8,111	518	11	-	11	737	7	1,030,224	127	12
Banff (RCMP)	6,082	1,251	13	5	18	338	-	1,207,004	198	17
Beaumont (RCMP)	6,870	1,229	3	1	4	1,718	-	296,758	43	4
Bonnyville (RCMP)	5,191	361	4	2	6	865	-	603,931	116	9
Brooks (RCMP)	11,307	715	9	3	12	942	-	881,898	78	15
Canmore (RCMP)	10,592	158	8	1	9	1,177	-	734,264	69	10
Cochrane (RCMP)	10,414	647	4	2	6	1,736	-	507,797	49	8
Cold Lake (RCMP)	8,920	377	5	3	8	1,115	-	563,586	63	8
Crowsnest Pass (RCMP)	5,644	15	7	-	7	806	-	459,814	81	8
Devon (RCMP)	5,142	670	5	-	5	1,028	-	335,404	65	4
Drayton Valley (RCMP)	6,150	774	6	1	7	879	-	463,352	75	8
Drumheller (RCMP)	7,031	268	5	3	8	879	-	572,943	81	11
Edson (RCMP)	7,502	290	9	1	10	750	-	733,966	98	10
Fort Saskatchewan (RCMP)	13,393	297	10	5	15	893	-	992,559	74	16
High River (RCMP)	8,926	771	6	1	7	1,275	-	559,504	63	8
Hinton (RCMP)	10,856	487	8	4	12	905	-	849,298	78	15
Innisfail (RCMP)	6,725	685	4	2	6	1,121	-	434,262	65	7
Morinville (RCMP)	6,677	542	5	1	6	1,113	-	443,633	66	6
Okotoks (RCMP)	10,946	695	5	2	7	1,564	-	584,975	53	11
Olds (RCMP)	6,419	633	5	1	6	1,070	-	465,639	73	7
Peace River (RCMP)	6,711	317	5	1	6	1,119	-	492,057	73	8
Ponoka, Alta. (RCMP)	6,633	659	5	1	6	1,106	-	435,946	66	8
Rocky Mt. House (RCMP)	6,252	578	7	3	10	625	-	680,919	109	8
Slave Lake (RCMP)	7,351	408	9	1	10	735	-	708,594	96	9
Stettler (RCMP)	5,422	580	6	-	6	904	-	416,986	77	6
Stony Plain (RCMP)	9,746	368	5	2	7	1,392	-	515,515	53	7

- Nil or zero

-- Amount too small to be expressed

¹ Due to a change in crime reporting practices, comparisons with 1999 crime data are not presented.

Note for the RCMP municipal contracts: Expenditures include only the cost billed to the municipality and not the total cost of the contract, nor any additional policing costs. Civilian employees provided by the municipality are not included under "Other Personnel".

Use caution in comparing forces: The number of officers may not reflect the number available for general community policing because some officers in certain communities are restricted to specific locations (e.g. ports, airports). Operational expenditures may vary considerably between police services for many reasons. See "Expenditures" on page 33 for details.

Alberta

2000 Crime											
Violent Crime			Property Crime			Total Criminal Code (C.C.)			% Change in C.C. Rate 1999-2000	C.C. Incidents per Officer for 2000	Police Force
Number	Rate	Clear. Rate	Number	Rate	Clear. Rate	Number	Rate	Clear. Rate			
		%			%			%			
8,085	922	77	41,537	4,739	26	64,442	7,352	36	-6	50	Population (100,000+)
7,209	1,102	69	36,943	5,648	27	65,130	9,958	44	2	55	Calgary
											Edmonton
1,000	1,460	82	3,748	5,472	38	7,821	11,418	55	-27	74	Population (50,000 - 99,999)
359	701	71	2,210	4,315	35	4,068	7,942	42	-12	48	Lethbridge
											Medicine Hat
945	1,464	71	5,067	7,852	24	9,892	15,329	35	--	122	Red Deer (RCMP)
239	442	47	1,479	2,736	20	3,892	7,200	16	10	95	St. Albert (RCMP)
											Population (15,000 - 49,999)
106	510	77	611	2,942	17	1,389	6,688	24	-1	93	Airdrie (RCMP)
719	1,921	65	1,870	4,996	32	5,745	15,347	46	-3	108	Fort McMurray (RCMP)
577	1,622	44	2,440	6,860	19	5,206	14,638	23	-3	113	Grande Prairie (RCMP)
143	927	63	597	3,871	27	1,276	8,273	31	-6	80	Leduc (RCMP)
184	408	80	996	2,209	27	2,099	4,656	34	-3	50	Sherwood Park (RCMP)
102	622	76	582	3,551	26	1,205	7,352	32	-4	86	Spruce Grove (RCMP)
											Population (5,000 - 14,999)
470	6,205	92	458	6,047	41	4,514	59,599	70	...	215	Blood Tribe Police ¹
182	1,276	56	798	5,595	34	1,911	13,397	34	7	91	Camrose
37	577	86	101	1,576	40	311	4,853	40	82	39	Coaldale
69	736	65	334	3,563	28	608	6,486	37	-21	61	Lacombe
97	1,196	90	383	4,722	37	888	10,948	45	-32	81	Taber
101	1,661	55	865	14,222	20	1,434	23,578	30	-18	80	Banff (RCMP)
42	611	79	147	2,140	35	388	5,648	43	--	97	Beaumont (RCMP)
131	2,524	66	324	6,242	32	1,066	20,536	46	28	178	Bonnyville (RCMP)
217	1,919	76	688	6,085	28	1,789	15,822	41	-10	149	Brooks (RCMP)
65	614	80	500	4,721	16	1,018	9,611	25	-8	113	Canmore (RCMP)
58	557	55	289	2,775	24	773	7,423	28	-1	129	Cochrane (RCMP)
119	1,334	61	317	3,554	32	878	9,843	39	1	110	Cold Lake (RCMP)
48	850	100	234	4,146	44	429	7,601	52	18	61	Crowsnest Pass (RCMP)
57	1,109	82	216	4,201	22	490	9,529	32	36	98	Devon (RCMP)
104	1,691	80	505	8,211	27	1,005	16,341	39	24	144	Drayton Valley (RCMP)
118	1,678	67	297	4,224	32	777	11,051	47	-24	97	Drumheller (RCMP)
78	1,040	82	657	8,758	22	1,098	14,636	30	10	110	Edson (RCMP)
119	889	61	344	2,569	21	847	6,324	32	-6	56	Fort Saskatchewan (RCMP)
74	829	77	344	3,854	30	781	8,750	40	2	112	High River (RCMP)
154	1,419	69	778	7,167	24	1,659	15,282	35	10	138	Hinton (RCMP)
47	699	68	347	5,160	34	664	9,874	40	4	111	Innisfail (RCMP)
78	1,168	65	200	2,995	34	625	9,360	36	12	104	Morinville (RCMP)
71	649	62	364	3,325	26	887	8,103	27	-6	127	Okotoks (RCMP)
85	1,324	86	271	4,222	40	680	10,594	49	--	113	Olds (RCMP)
100	1,490	81	248	3,695	33	701	10,446	50	5	117	Peace River (RCMP)
86	1,297	71	268	4,040	28	784	11,820	45	40	131	Ponoka, Alta. (RCMP)
127	2,031	80	462	7,390	34	1,382	22,105	49	-3	138	Rocky Mt. House (RCMP)
147	2,000	75	415	5,645	46	1,169	15,903	51	2	117	Slave Lake (RCMP)
68	1,254	91	284	5,238	24	609	11,232	40	14	102	Stettler (RCMP)
83	852	63	318	3,263	19	694	7,121	29	2	99	Stony Plain (RCMP)

Police resources in Canada, 2001

Alberta

Police Force	2000 Police Resources & Population								2001	
	Population	Population density	Police Officers			Population per Police Officer	Other Personnel	Operating Expenditures	Per Capita Costs	Police Officers
			Male	Female	Total					
		persons/km ²					\$	\$		
Population (5,000 - 14,999)										
Strathmore (RCMP)	6,488	613	3	3	6	1,081	-	387,345	60	7
Sylvan Lake (RCMP)	6,379	780	6	-	6	1,063	-	406,746	64	8
Vegreville (RCMP)	5,581	403	5	1	6	930	-	482,286	86	7
Wainwright (RCMP)	5,357	656	6	-	6	893	-	393,718	73	7
Wetaskiwin (RCMP)	11,873	722	15	2	17	698	-	1,183,286	100	16
Whitecourt (RCMP)	8,537	336	6	3	9	949	-	542,205	64	9
Population (<5,000)										
Hobbema Police ^{1,2}	2,848	21	7	1	8	356	6	766,088	269	...
Lesser Slave Lake Reg. ^{1,3}	2,986	9	11	1	12	249	3	1,102,550	369	...
Louis Bull	1,209	47	5	1	6	202	6	627,757	519	12
Siksika Nation Police ⁴	3,275	5	8	-	8	409	10	802,000	245	8
Athabaska (RCMP)	2,611	155	2	1	3	870	-	209,327	80	3
Barrhead (RCMP)	4,257	550	5	1	6	710	-	392,838	92	6
Cardston (RCMP)	3,442	516	3	2	5	688	-	364,631	106	4
Claresholm (RCMP)	3,608	519	4	1	5	722	-	358,546	99	5
Didsbury (RCMP)	3,953	971	3	-	3	1,318	-	231,173	58	4
Fairview (RCMP)	3,731	387	3	1	4	933	-	304,819	82	4
Fort Macleod (RCMP)	3,037	132	4	1	5	607	-	347,671	114	5
Fox Creek (RCMP)	2,312	493	2	-	2	1,156	-	211,469	91	3
Grande Cache (RCMP)	4,860	138	3	-	3	1,620	-	289,643	60	4
Grimshaw (RCMP)	2,662	384	3	-	3	887	-	180,008	68	3
Hanna (RCMP)	2,917	351	3	-	3	972	1	280,397	96	3
High Level (RCMP)	3,277	153	6	1	7	468	-	543,800	166	8
High Prairie (RCMP)	2,852	534	3	3	6	475	-	434,312	152	7
Lac La Biche (RCMP)	2,716	477	5	-	5	543	-	383,316	141	5
Pincher Creek (RCMP)	3,755	563	4	1	5	751	-	279,673	74	6
Raymond (RCMP)	3,142	863	2	1	3	1,047	-	210,452	67	3
Redwater (RCMP)	2,117	302	2	1	3	706	-	216,835	102	3
Rimbey (RCMP)	2,320	589	3	-	3	773	-	214,589	92	3
St. Paul (RCMP)	4,923	794	9	-	9	547	-	659,924	134	9
Swan Hills (RCMP)	1,773	69	2	-	2	887	-	187,949	106	2
Three Hills (RCMP)	3,181	600	2	1	3	1,060	-	203,090	64	3
Valleyview (RCMP)	1,792	400	5	-	5	358	-	317,969	177	6
Vermilion (RCMP)	3,689	292	4	2	6	615	-	340,901	92	5
Westlock (RCMP)	4,844	496	4	1	5	969	-	399,030	82	6

- Nil or zero

-- Amount too small to be expressed

... Figures not available

... Figures not appropriate or not applicable

¹ Police force closed at the end of 2000.

² Expenditures for 2000 were not available; therefore 1999 expenditures were substituted.

³ Crime data were not available for 2000.

⁴ Expenditures for 2000 and personnel for 2001 were not available; therefore 1999 expenditures and 2000 personnel were substituted.

Note for the RCMP municipal contracts: Expenditures include only the cost billed to the municipality and not the total cost of the contract, nor any additional policing costs. Civilian employees provided by the municipality are not included under "Other Personnel".

Use caution in comparing forces: The number of officers may not reflect the number available for general community policing because some officers in certain communities are restricted to specific locations (e.g. ports, airports). Operational expenditures may vary considerably between police services for many reasons. See "Expenditures" on page 33 for details.

Alberta

2000 Crime											
Violent Crime			Property Crime			Total Criminal Code (C.C.)			% Change in C.C. Rate 1999-2000	C.C. Incidents per Officer for 2000	Police Force
Number	Rate	Clear. Rate	Number	Rate	Clear. Rate	Number	Rate	Clear. Rate			
	%		%		%			%			
Population (5,000 - 14,999)											
46	709	72	283	4,362	28	549	8,462	33	-26	92	Strathmore (RCMP)
65	1,019	68	313	4,907	20	762	11,945	31	13	127	Sylvan Lake (RCMP)
41	735	83	227	4,067	26	504	9,031	37	-19	84	Vegreville (RCMP)
61	1,139	87	302	5,637	25	574	10,715	42	9	96	Wainwright (RCMP)
282	2,375	85	971	8,178	51	2,476	20,854	60	-1	146	Wetaskiwin (RCMP)
113	1,324	70	489	5,728	25	984	11,526	38	8	109	Whitcourt (RCMP)
Population (<5,000)											
201	7,058	53	252	8,848	35	963	33,813	46	2	120	Hobbema Police ^{1,2}
..	Lesser Slave Lake Reg. ^{1,3}
76	6,286	59	120	9,926	48	348	28,784	59	-14	58	Louis Bull
260	7,939	40	242	7,389	15	704	21,496	34	7	88	Siksika Nation Police ⁴
46	1,762	70	181	6,932	15	366	14,018	34	22	122	Athabaska (RCMP)
57	1,339	53	166	3,899	35	349	8,198	36	-23	58	Barrhead (RCMP)
37	1,075	122	185	5,375	53	406	11,795	60	-17	81	Cardston (RCMP)
27	748	85	125	3,465	28	234	6,486	44	-30	47	Claresholm (RCMP)
30	759	70	119	3,010	39	283	7,159	39	--	94	Didsbury (RCMP)
43	1,153	81	111	2,975	17	270	7,237	35	5	68	Fairview (RCMP)
56	1,844	98	188	6,190	35	498	16,398	58	-14	100	Fort Macleod (RCMP)
35	1,514	69	116	5,017	17	273	11,808	29	12	137	Fox Creek (RCMP)
41	844	54	104	2,140	30	311	6,399	35	2	104	Grande Cache (RCMP)
33	1,240	97	121	4,545	37	255	9,579	55	-8	85	Grimshaw (RCMP)
27	926	44	60	2,057	35	140	4,799	40	-22	47	Hanna (RCMP)
109	3,326	74	291	8,880	31	1,479	45,133	65	33	211	High Level (RCMP)
152	5,330	54	315	11,045	44	1,045	36,641	49	12	174	High Prairie (RCMP)
126	4,639	77	197	7,253	35	588	21,649	51	-27	118	Lac La Biche (RCMP)
54	1,438	80	157	4,181	38	383	10,200	47	-24	77	Pincher Creek (RCMP)
13	414	92	91	2,896	57	197	6,270	46	18	66	Raymond (RCMP)
28	1,323	75	85	4,015	36	193	9,117	47	-5	64	Redwater (RCMP)
20	862	100	84	3,621	48	181	7,802	60	-14	60	Rimbey (RCMP)
152	3,088	67	364	7,394	35	1,132	22,994	49	-13	126	St. Paul (RCMP)
23	1,297	61	52	2,933	71	130	7,332	55	-34	65	Swan Hills (RCMP)
7	220	114	87	2,735	51	154	4,841	44	2	51	Three Hills (RCMP)
97	5,413	86	180	10,045	43	528	29,464	58	-4	106	Valleyview (RCMP)
35	949	80	126	3,416	50	313	8,485	49	6	52	Vermilion (RCMP)
89	1,837	76	306	6,317	28	638	13,171	45	-9	128	Westlock (RCMP)

Police resources in Canada, 2001

British Columbia

Police Force	2000 Police Resources & Population								2001	
	Population	Population density	Police Officers			Population per Police Officer	Other Personnel	Operating Expenditures	Per Capita Costs	Police Officers
			Male	Female	Total					
		persons/km ²					\$	\$		
Population (100,000+)										
Abbotsford	115,195	334	129	17	146	789	39	16,921,172	147	143
Delta	101,440	600	125	23	148	685	31	16,970,949	167	138
Saanich (Dist. Mun.)	106,814	1,037	106	23	129	828	37	16,460,629	154	139
Vancouver ¹	567,351	4,975	921	190	1,111	511	249	127,163,239	224	1,097
Burnaby (RCMP)	192,389	2,175	179	51	230	836	-	19,474,503	101	228
Coquitlam (RCMP)	112,293	910	74	28	102	1,101	-	9,082,821	81	111
Kelowna (RCMP)	100,433	472	93	21	114	881	-	9,803,692	98	120
Richmond (RCMP)	165,133	1,330	141	51	192	860	-	20,116,129	122	208
Surrey (RCMP)	340,094	1,127	293	74	367	927	-	39,780,271	117	382
Population (50,000 - 99,999)										
New Westminster	54,904	3,570	98	17	115	477	40	13,217,409	241	111
Victoria	74,996	3,993	156	31	187	401	57	20,557,675	274	178
Chilliwack (D.M.) (RCMP)	66,995	245	60	21	81	827	-	6,800,529	102	89
Kamloops (RCMP)	82,832	280	74	14	88	941	-	8,044,931	97	97
Langley (Twp.) (RCMP)	89,925	295	70	29	99	908	-	10,331,121	115	109
Maple Ridge (RCMP)	63,333	242	38	23	61	1,038	-	5,074,299	80	68
N. Vancouver (Dist.Mun.) (RCMP)	86,298	528	62	30	92	938	-	9,173,338	106	87
Nanaimo (RCMP)	76,836	869	91	17	108	711	-	8,834,706	115	115
Port Coquitlam (RCMP)	51,429	1,741	38	9	47	1,094	-	4,783,132	93	48
Prince George (RCMP)	81,326	257	85	25	110	739	-	11,701,392	144	110
Population (15,000 - 49,999)										
District Of Central Saanich	15,553	365	19	2	21	741	7	2,479,320	159	21
Esquimalt (D.M.)	16,400	2,455	23	6	29	566	10	3,787,961	231	33
Oak Bay (Dist. Mun.)	17,664	1,670	20	2	22	803	5	2,467,503	140	22
Port Moody	23,819	909	28	3	31	768	12	3,521,345	148	30
West Vancouver (Dist Mun)	44,679	494	70	9	79	566	33	8,645,965	194	77
Campbell River (RCMP)	31,253	241	30	6	36	868	1	3,200,811	102	38
Courtenay (RCMP)	19,803	1,278	19	5	24	825	-	2,014,614	102	26
Cranbrook (RCMP)	19,874	1,157	21	2	23	864	-	1,983,487	100	24
Fort St. John (RCMP)	16,842	775	20	6	26	648	-	2,042,726	121	27
Langford (D.M.) (RCMP)	20,059	495	20	5	25	802	-	2,152,440	107	25
Langley (RCMP)	24,287	2,386	32	7	39	623	-	4,099,800	169	41
Mission (Dist. Mun.) (RCMP)	32,931	147	35	7	42	784	-	3,622,590	110	44
North Cowichan (RCMP)	27,612	147	13	8	21	1,315	-	2,003,563	73	28
North Vancouver (RCMP)	45,279	4,068	42	12	54	839	-	6,393,529	141	54
Penticton (RCMP)	32,542	798	28	8	36	904	-	3,163,038	97	38
Port Alberni (RCMP)	19,329	1,085	24	6	30	644	-	2,509,505	130	30
Prince Rupert (RCMP)	17,027	318	31	9	40	426	-	3,065,986	180	34
Salmon Arm (RCMP)	16,525	102	11	3	14	1,180	-	984,184	60	15
Squamish (RCMP)	15,611	154	16	9	25	624	-	1,606,714	103	26
Vernon (RCMP)	34,678	462	31	4	35	991	-	3,067,556	88	39
White Rock (RCMP)	17,371	3,440	16	4	20	869	-	1,742,032	100	23

- Nil or zero

-- Amount too small to be expressed

¹ Of the total number of officers for 2000, 42 were on secondment to other agencies and not available for general policing duties. In 2001, 41 were on secondment. These officers were fully funded by the external agencies and their salaries are not included in the operational expenses presented.

Note for the RCMP municipal contracts: Expenditures include only the cost billed to the municipality and not the total cost of the contract, nor any additional policing costs. Civilian employees provided by the municipality are not included under "Other Personnel".

Use caution in comparing forces: The number of officers may not reflect the number available for general community policing because some officers in certain communities are restricted to specific locations (e.g. ports, airports). Operational expenditures may vary considerably between police services for many reasons. See "Expenditures" on page 33 for details.

British Columbia

2000 Crime											
Violent Crime			Property Crime			Total Criminal Code (C.C.)			% Change in C.C. Rate 1999-2000	C.C. Incidents per Officer for 2000	Police Force
Number	Rate	Clear. Rate	Number	Rate	Clear. Rate	Number	Rate	Clear. Rate			
	%		%		%		%		%		
Population (100,000+)											
1,124	976	57	6,629	5,755	13	10,791	9,368	23	2	74	Abbotsford
748	737	64	3,890	3,835	16	7,260	7,157	25	3	49	Delta
753	705	65	3,792	3,550	22	6,942	6,499	28	-12	54	Saanich (Dist. Mun.)
6,845	1,206	48	57,647	10,161	9	78,107	13,767	16	-6	70	Vancouver ¹
2,121	1,102	58	15,309	7,957	13	23,026	11,968	22	-5	100	Burnaby (RCMP)
981	874	61	7,194	6,406	12	11,617	10,345	23	1	114	Coquitlam (RCMP)
1,176	1,171	67	7,097	7,066	19	12,178	12,125	29	-9	107	Kelowna (RCMP)
1,070	648	58	8,803	5,331	12	14,122	8,552	19	3	74	Richmond (RCMP)
5,184	1,524	61	26,409	7,765	12	43,030	12,652	23	2	117	Surrey (RCMP)
Population (50,000 - 99,999)											
1,048	1,909	53	4,686	8,535	14	8,120	14,789	27	-12	71	New Westminster
1,691	2,255	64	9,022	12,030	20	16,355	21,808	31	-6	87	Victoria
1,056	1,576	77	4,147	6,190	22	8,036	11,995	36	7	99	Chilliwack (D.M.) (RCMP)
1,349	1,629	74	5,976	7,215	26	11,158	13,471	36	5	127	Kamloops (RCMP)
814	905	59	4,875	5,421	12	8,075	8,980	19	1	82	Langley (Twp.) (RCMP)
776	1,225	57	4,175	6,592	13	7,568	11,950	20	5	124	Maple Ridge (RCMP)
633	734	56	3,114	3,608	11	5,631	6,525	22	-4	61	N. Vancouver (Dist. Mun.) (RCMP)
1,153	1,501	61	5,690	7,405	23	10,801	14,057	34	1	100	Nanaimo (RCMP)
527	1,025	64	2,510	4,881	13	4,973	9,670	28	-5	106	Port Coquitlam (RCMP)
1,489	1,831	67	5,770	7,095	26	12,511	15,384	46	-5	114	Prince George (RCMP)
Population (15,000 - 49,999)											
78	502	77	400	2,572	27	850	5,465	34	-7	40	District Of Central Saanich
319	1,945	76	924	5,634	23	2,088	12,732	45	-2	72	Esquimalt (D.M.)
49	277	82	549	3,108	13	948	5,367	20	-2	43	Oak Bay (Dist. Mun.)
199	835	80	941	3,951	16	1,811	7,603	34	9	58	Port Moody
223	499	69	1,454	3,254	23	2,678	5,994	28	-10	34	West Vancouver (Dist Mun)
765	2,448	64	2,699	8,636	21	5,247	16,789	32	-4	146	Campbell River (RCMP)
330	1,666	68	1,772	8,948	24	3,777	19,073	39	1	157	Courtenay (RCMP)
323	1,625	70	1,200	6,038	27	2,382	11,986	40	-9	104	Cranbrook (RCMP)
498	2,957	67	1,033	6,133	25	3,150	18,703	50	-4	121	Fort St. John (RCMP)
236	1,177	53	1,069	5,329	17	2,404	11,985	20	-4	96	Langford (D.M.) (RCMP)
455	1,873	57	2,277	9,375	11	3,886	16,000	19	-18	100	Langley (RCMP)
497	1,509	60	2,020	6,134	15	4,360	13,240	24	-7	104	Mission (Dist. Mun.) (RCMP)
320	1,159	70	1,028	3,723	19	2,330	8,438	36	-7	111	North Cowichan (RCMP)
718	1,586	61	2,987	6,597	18	5,356	11,829	30	-3	99	North Vancouver (RCMP)
386	1,186	79	2,106	6,472	22	4,023	12,362	36	-15	112	Penticton (RCMP)
546	2,825	55	1,682	8,702	19	3,711	19,199	29	11	124	Port Alberni (RCMP)
555	3,260	77	707	4,152	30	3,075	18,060	53	4	77	Prince Rupert (RCMP)
176	1,065	72	731	4,424	25	1,421	8,599	36	--	102	Salmon Arm (RCMP)
235	1,505	71	712	4,561	18	1,887	12,088	33	-10	75	Squamish (RCMP)
557	1,606	59	3,005	8,665	19	5,308	15,307	28	-2	152	Vernon (RCMP)
111	639	65	881	5,072	8	1,554	8,946	18	-12	78	White Rock (RCMP)

Police resources in Canada, 2001

British Columbia

Police Force	2000 Police Resources & Population								2001	
	Population	Population density	Police Officers			Population per Police Officer	Other Personnel	Operating Expenditures	Per Capita Costs	Police Officers
			Male	Female	Total					
		persons/km ²					\$	\$		
Population (5,000 - 14,999)										
Nelson	9,677	1,255	15	2	17	569	5	2,105,175	218	17
Castlegar (RCMP)	7,427	460	8	2	10	743	-	648,883	87	10
Coldstream D.M. (RCMP)	9,660	134	4	1	5	1,932	-	302,698	31	6
Colwood (RCMP)	14,655	820	10	3	13	1,127	-	896,986	61	13
Comox (RCMP)	12,252	847	6	3	9	1,361	-	604,336	49	7
Dawson Creek (RCMP)	11,715	577	17	3	20	586	-	1,344,999	115	24
Hope (RCMP)	6,825	173	9	2	11	620	-	813,301	119	12
Population (5,000 - 14,999)										
Kimberley (RCMP)	6,976	120	7	1	8	872	-	557,146	80	9
Kitimat (Dist Mun) (RCMP)	11,533	44	11	3	14	824	-	894,850	78	15
Ladysmith (RCMP)	6,963	925	4	3	7	995	-	450,771	65	7
Lake Country (RCMP)	9,366	77	5	2	7	1,338	-	459,103	49	8
Mackenzie (RCMP)	6,275	33	6	2	8	784	-	498,186	79	8
Merritt (RCMP)	8,075	340	9	2	11	734	-	852,273	106	13
North Saanich D.M. (RCMP)	10,931	297	3	3	6	1,822	-	464,095	42	10
Parksville (RCMP)	10,613	666	9	2	11	965	-	833,928	79	12
Pitt Meadows D.M. (RCMP)	14,850	173	15	4	19	782	-	1,224,342	82	19
Port Hardy (RCMP)	5,550	135	5	2	7	793	-	599,198	108	10
Powell River (D.M.) (RCMP)	13,837	475	16	2	18	769	-	1,082,594	78	18
Qualicum Beach (RCMP)	7,477	671	5	1	6	1,246	-	397,979	53	6
Quesnel (RCMP)	10,794	4	14	4	18	600	-	1,212,238	112	21
Revelstoke (RCMP)	8,213	241	7	4	11	747	-	719,634	88	12
Sechelt (RCMP)	8,499	216	6	3	9	944	-	625,637	74	9
Sidney (RCMP)	11,105	2,212	8	4	12	925	-	777,865	70	13
Smithers (RCMP)	6,139	450	6	2	8	767	-	620,065	101	7
Spallumcheen (RCMP)	5,737	22	3	-	3	1,912	-	198,767	35	3
Summerland (RCMP)	10,830	157	5	1	6	1,805	-	453,098	42	7
Terrace (RCMP)	13,871	722	21	5	26	534	-	1,647,935	119	29
Trail (RCMP)	7,728	412	8	3	11	703	-	781,729	101	13
View Royal (RCMP)	7,587	492	4	3	7	1,084	-	505,921	67	8
Whistler (RCMP)	9,683	59	15	3	18	538	-	1,323,680	137	21
Williams Lake (RCMP)	12,101	516	20	4	24	504	-	1,679,563	139	24
Population (<5,000)										
Ditidaht Public Safety ¹	276	146	1	-	1	276	1	92,500	335	1
Kitasoo/Xaixais Public Safety ¹	324	498	2	-	2	162	-	185,000	571	2
Stl'atl'imx Tribal ¹	2,913	26	9	1	10	291	2	995,000	342	10
Tsewultun ²	1,406	39	4	1	5	281	1

- Nil or zero

.. Figures not available

... Figures not appropriate or not applicable

¹ Crime data is not presented as less than 6 months of data are available.

² Police force closed late 2000; therefore expenditures and crime data are not presented.

Note for the RCMP municipal contracts: Expenditures include only the cost billed to the municipality and not the total cost of the contract, nor any additional policing costs. Civilian employees provided by the municipality are not included under "Other Personnel".

Use caution in comparing forces: The number of officers may not reflect the number available for general community policing because some officers in certain communities are restricted to specific locations (e.g. ports, airports). Operational expenditures may vary considerably between police services for many reasons. See "Expenditures" on page 33 for details.

British Columbia

2000 Crime											
Violent Crime			Property Crime			Total Criminal Code (C.C.)			% Change in C.C. Rate 1999-2000	C.C. Incidents per Officer for 2000	Police Force
Number	Rate	Clear. Rate	Number	Rate	Clear. Rate	Number	Rate	Clear. Rate			
		%			%			%			
Population (5,000 - 14,999)											
121	1,250	61	605	6,252	35	1,189	12,287	40	17	70	Nelson
93	1,252	69	464	6,247	20	1,022	13,761	29	2	102	Castlegar (RCMP)
23	238	70	209	2,164	4	386	3,996	16	-28	77	Coldstream D.M. (RCMP)
91	621	52	482	3,289	14	1,118	7,629	25	-8	86	Colwood (RCMP)
64	522	73	304	2,481	17	773	6,309	32	14	86	Comox (RCMP)
328	2,800	82	979	8,357	36	2,350	20,060	51	1	118	Dawson Creek (RCMP)
122	1,788	74	436	6,388	23	1,033	15,136	40	-12	94	Hope (RCMP)
Population (5,000 - 14,999)											
96	1,376	82	309	4,429	30	706	10,120	45	7	88	Kimberley (RCMP)
139	1,205	93	343	2,974	27	900	7,804	48	14	64	Kitimat (Dist Mun) (RCMP)
51	732	88	270	3,878	16	611	8,775	30	7	87	Ladysmith (RCMP)
53	566	72	289	3,086	10	629	6,716	25	6	90	Lake Country (RCMP)
96	1,530	90	167	2,661	28	663	10,566	49	-3	83	Mackenzie (RCMP)
213	2,638	66	535	6,625	18	1,299	16,087	35	-6	118	Merritt (RCMP)
31	284	77	198	1,811	9	423	3,870	21	-4	71	North Saanich D.M. (RCMP)
110	1,036	75	690	6,501	16	1,422	13,399	23	-8	129	Parksville (RCMP)
151	1,017	57	766	5,158	5	1,517	10,215	14	11	80	Pitt Meadows D.M. (RCMP)
107	1,928	69	265	4,775	18	648	11,676	33	-1	93	Port Hardy (RCMP)
185	1,337	76	856	6,186	29	1,702	12,300	41	10	95	Powell River (D.M.) (RCMP)
35	468	71	226	3,023	13	539	7,209	20	1	90	Qualicum Beach (RCMP)
295	2,733	68	870	8,060	18	2,420	22,420	34	27	134	Quesnel (RCMP)
74	901	81	344	4,188	24	768	9,351	42	13	70	Revelstoke (RCMP)
136	1,600	74	531	6,248	24	1,242	14,613	35	-3	138	Sechelt (RCMP)
69	621	52	317	2,855	26	731	6,583	27	-14	61	Sidney (RCMP)
201	3,274	55	395	6,434	27	1,226	19,971	42	16	153	Smithers (RCMP)
27	471	96	90	1,569	22	173	3,016	42	-27	58	Spallumcheen (RCMP)
55	508	87	350	3,232	11	538	4,968	24	-13	90	Summerland (RCMP)
371	2,675	71	825	5,948	33	2,382	17,173	51	12	92	Terrace (RCMP)
145	1,876	86	325	4,205	40	920	11,905	60	-9	84	Trail (RCMP)
67	883	57	292	3,849	10	689	9,081	21	-20	98	View Royal (RCMP)
166	1,714	58	1,326	13,694	9	2,098	21,667	19	-4	117	Whistler (RCMP)
337	2,785	72	1,053	8,702	30	2,465	20,370	43	8	103	Williams Lake (RCMP)
Population (<5,000)											
..	Ditidaht Public Safety ¹
..	Kitasoo/Xaixais Public Safety ¹
..	Stl'atl'imx Tribal ¹
...	Tsewultun ²