

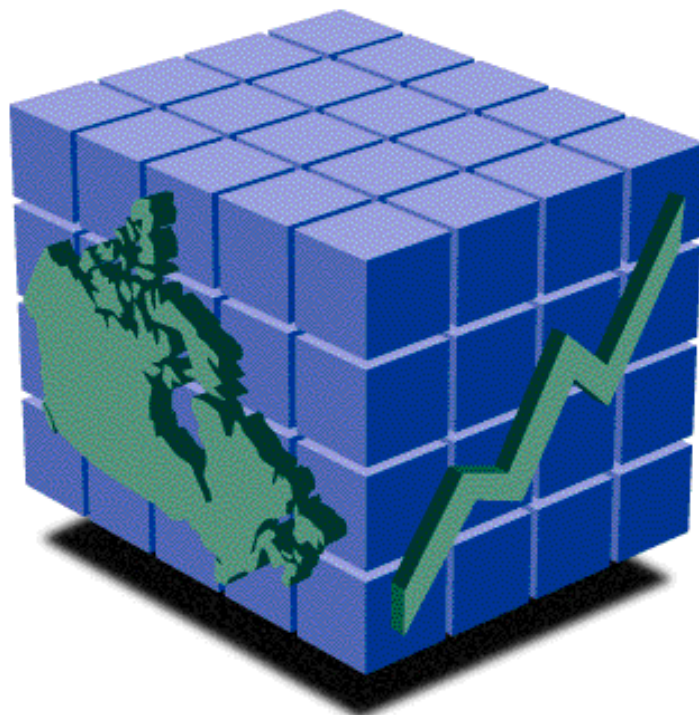


Catalogue No. 92-405-XIE

# Geography Catalogue, 2001 Census

Reference

Edition: March 2002



STATISTICS CANADA  
**GEO**  
STATISTIQUE CANADA



Statistics  
Canada

Statistique  
Canada

Canada



# Geography Catalogue 2001 Census

Reference

Edition: March 2002

Published by authority of the Minister  
responsible for Statistics Canada

©Minister of Industry, 2002

All rights reserved. No part of this product may be reproduced, stored in a retrieval system or transmitted in any form or by any means, electronic, mechanical, photocopying, recording or otherwise without prior written permission from Licence Services, Marketing Division, Statistics Canada, Ottawa, Ontario, Canada K1A 0T6.

March, 2002

Catalogue No. 92-405-XIE

ISBN 0-662-31267-8

Ottawa

---

#### **Note of appreciation**

*Canada owes the success of its statistical system to a long-standing co-operation involving Statistics Canada, the citizens of Canada, its businesses, governments and other institutions. Accurate and timely statistical information could not be produced without their continued co-operation and goodwill.*

# Table of Contents

<b>General Information</b> .....	1
<b>1. Geographic Reference Products</b> .....	3
Illustrated Glossary.....	3
GeoSearch .....	3
Geography Catalogue .....	4
Geography Definitions (2001 Census Dictionary).....	5
Reference Guides .....	5
Reference Maps – 2001 Census.....	6
Reference Maps – Complete Set, 2001 Census.....	6
National Reference Maps.....	7
Federal Electoral Districts (1996 Representation Order) Reference Map .....	8
Census Division and Census Subdivision Reference Maps .....	8
Census Tract Reference Maps, by Census Metropolitan Area or Census Agglomeration .....	11
Dissemination Area Reference Maps, by Census Tract, for Census Metropolitan Areas and Census Agglomerations.....	15
Dissemination Area Reference Maps, by non-tracted Census Agglomeration.....	18
Dissemination Area Reference Maps, by Census Division, for Areas Outside Census Metropolitan Areas and Census Agglomerations.....	24
Thematic Maps – 2001 Census .....	27
Geography Working Paper Series .....	28
Interim List of Changes to Municipal Boundaries, Status and Names.....	29
Standard Geographical Classification .....	29
Standard Geographical Classification. Volume I. The Classification .....	29
Standard Geographical Classification. Volume II. Reference Maps .....	29
<b>2. Geographic Data Products</b> .....	30
National Overview Tables, 2001 Census .....	30
GeoSuite, 2001 Census .....	32
GeoSearch .....	33
Postal Codes Counts, 1996 Census .....	34
<b>3. Spatial Information Products</b> .....	35
Cartographic Boundary Files (CBFs), 2001 Census.....	36
Provinces and Territories Cartographic Boundary File .....	37
Federal Electoral Districts (1996 Representation Order) Cartographic Boundary File .....	38
Census Divisions and Economic Regions Cartographic Boundary File.....	38
Census Consolidated Subdivisions Cartographic Boundary Files .....	39
Census Subdivisions Cartographic Boundary Files .....	39
Designated Places Cartographic Boundary File .....	40
Census Metropolitan Areas/Census Agglomerations Cartographic Boundary File .....	40
Census Tracts Cartographic Boundary Files .....	41
Urban Areas Cartographic Boundary File .....	41
Dissemination Areas Cartographic Boundary Files.....	42
Population Ecumene Census Division Boundary File, 2001 Census .....	44
Forward Sortation Areas Boundary File .....	45
Road Network Files (RNF), 2001 Census.....	46
Skeletal Road Network Files (SRNF), 2001 Census .....	47
<b>4. Attribute Information Products</b> .....	50
Postal Code Conversion File (PCCF) .....	50
Postal Code Conversion File (PCCF) – Update.....	50
Postal Codes by Federal Ridings (1996 Representation Order) File.....	53
Postal Codes by Federal Ridings (1996 Representation Order) File (PCFRF) – Update .....	53

<b>5. Geographic Services</b> .....	<b>54</b>
Custom Area Creation Service (formerly Geocoding Service).....	54
Geography Custom Service .....	54
Geography Custom Mapping .....	54
<b>6. Other STC Related Geographic Products and Services</b> .....	<b>55</b>
Agriculture Products and Services .....	55
Agricultural Ecumene of Canada, 1996.....	55
Digital boundary files for the census agricultural regions (CARs).....	55
Spatial Analysis and Geomatics Applications (SAGA) Program .....	55
Environment Services .....	56
The Environmental Information System .....	56
<b>Glossary</b> .....	<b>57</b>
<b>Appendix 1 Hierarchy of Standard Geographic Units for Dissemination, 2001 Census</b> .....	<b>62</b>
<b>Appendix 2 Table of Geographic Units by Province and Territory, 2001 Census</b> .....	<b>63</b>
<b>Appendix 3 List of Statistics Canada Regional Reference Centres</b> .....	<b>64</b>
<b>END-USE LICENCE AGREEMENT</b> .....	<b>66</b>
<b>Geography Products Feedback</b> .....	<b>67</b>

# General Information

Statistics Canada (STC) maintains a spatially referenced geographic database in support of the Censuses of Population and Agriculture, the Standard Geographical Classification and other Statistics Canada programs. STC also develops geographical concepts, delineates geographic areas, publishes maps and other reference materials, produces files on CD-ROM and diskette, posts online products through the STC web site ([www.statcan.ca](http://www.statcan.ca)) and offers a variety of services.

## Overview

Geography products for the 2001 Census reflect both the changes to geography concepts as well as the more precise geometry and more detailed cartographic features (such as water, roads and road names). For 2001, Cartographic Boundary Files (CBFs) replace Digital Cartographic Files (DCFs), and Digital Boundary Files (DBFs) are discontinued. The Road Network Files (RNFs), which cover all of Canada, replace Street Network Files (SNFs), which covered only large urban centres in Canada. The Block-face Data File (BFDF) is discontinued. Reference maps and other geographic products are available in a variety of media, including the Internet. Tools are provided for users to find and view their geographic area of interest on the Internet.

Geography products and services are listed and briefly described in the STC online catalogue (from the STC home page, click on "Our Products and Services"). This edition<sup>1</sup> of the *Geography Catalogue, 2001 Census* includes all of the information found in the STC online catalogue, but has the following additional information. It provides highlights of what's new about geographic products for the 2001 Census, as well as illustrations of several products. It includes a glossary of geography terms, the geography hierarchy diagram, and tables showing the number of geographic units by province and territory for the 2001 Census. Also included is a list of the STC regional offices and the STC "End Use Licence Agreement".

The catalogue is organised according to the following categories of products and services:

### 1. Geographic Reference Products

A full range of geographic reference products and tools are available free on the Internet. Many of these are also available for nominal fees as CD-ROMs and print publications.

### 2. Geographic Data Products

Population and dwelling counts from the 2001 Census are available free on the Internet for many levels of geography. Individual tables or groups of tables showing population and dwelling counts may be purchased from the Electronic shelf (E-shelf) or on CD-ROM. GeoSuite is a geographic reference tool that also provides 2001 Census population and dwelling counts on a CD-ROM.

### 3. Spatial Information Products

Spatial information products provide the shape and location of geographic features for use with computer mapping and geographic information system (GIS) applications. The road network, boundaries and other features of standard geographic areas are available.

### 4. Attribute Information Products

Attribute information products include the Postal Code Conversion File and the Postal Codes by Federal Ridings File. These products are currently available with 1996 Census attributes. They will be released with attributes for the 2001 Census at the end of 2002.

---

<sup>1</sup> This edition of the Geography catalogue is being released on March 12, 2002, the scheduled date for release of the first products related to the 2001 Census. Since details are not finalised for some Geography products that have a planned release date of November 2002, a second edition of the Geography catalogue is planned for later in 2002.

## **5. Geographic Services**

Regional offices in cooperation with the Geography Division provide custom services, including the preparation of custom boundaries for custom data retrievals (geocoding), custom mapping and other custom packaging of standard products.

## **6. Other STC Related Geographic Products and Services**

Products and services available from the Agriculture and Environment Divisions are briefly described.

## **Prices and Shipping Charges**

Prices quoted in this catalogue exclude sales tax. There are no shipping charges for delivery in Canada. For shipments to the United States, shipping charges are CDN \$6 per issue or item ordered. For shipments to other countries, shipping charges are CDN \$10 per issue or item ordered. Contact the nearest Statistics Canada Regional Office (see Appendix 3) for the most up-to-date information.

# 1. Geographic Reference Products

Geographic reference products help users gain a better understanding of geographic concepts and locate the geographic areas appropriate to their census and other data needs.

## What's New

- The Statistics Canada (STC) website ([www.statcan.ca](http://www.statcan.ca)) includes a new page (Discover Census Geography) to provide direct access to all the free geography products and tools.
- An illustrated glossary of terms, detailed definitions, maps, reference guides for geographic products, and research papers are all available free on the STC website.

Reference products for the 2001 Census are available beginning on March 12, 2002. They are described in more detail below.

## Illustrated Glossary

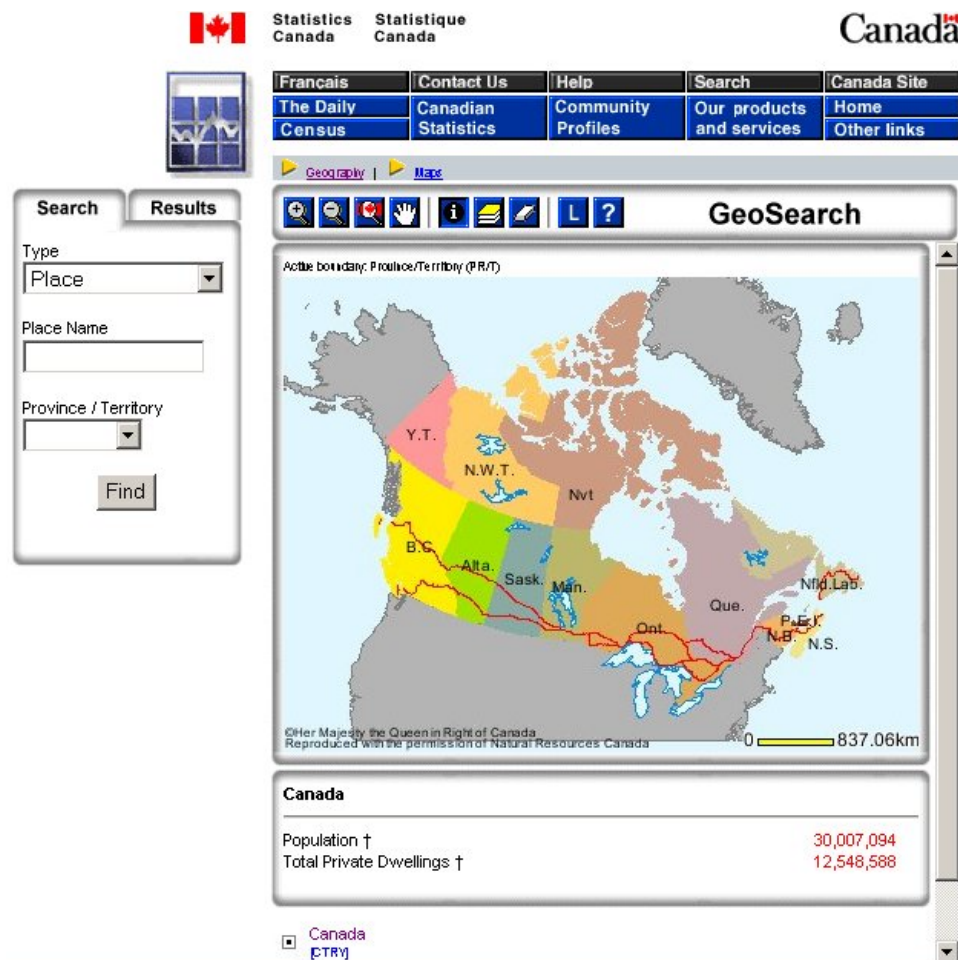
Visitors to the Geography site can access an illustrated glossary that presents geography concepts, products and services, as well as links to online tutorials and detailed definitions. To view the glossary, go to the Census Geography area on the Statistics Canada website.

## GeoSearch

GeoSearch is a new Internet tool that makes it easy to find any place in Canada, see it on a map, and get basic geographic and population and dwelling data for that place. To find a specific place of interest, users can click and zoom on a map of Canada or they can search by place name, street name, street intersection or postal code. GeoSearch finds and displays the appropriate map that shows boundaries and other features. GeoSearch also automatically displays population and dwelling counts for the selected place, and shows what kind of geographic area it is and its relationship to other geographic areas. The boundary layers displayed include dissemination area, census tract (where available), census subdivision, census division, census agglomeration, census metropolitan area, urban area, province and territory. GeoSearch is available to the public starting in March 2002. Go to the Census Geography area on the Statistics Canada website.

Catalogue No.	Medium	Language	Price
97C0013	Internet	English	Free
97C0013	Internet	French	Free

Figure 1. View of GeoSearch on the Statistics Canada Website



## Geography Catalogue

The Geography Catalogue, 2001 Census describes the geography products and services available from Statistics Canada for the 2001 Census. It contains additional information, illustrations and a glossary that are not available in the STC online catalogue (Our Products and Services on the STC home page).

Catalogue Number	Medium	Language	Price
92-405-XIE01000 (ISBN: 0-662-31267-8)	Internet	English	Free
92-405-XIF01000 (ISBN: 0-662-86432-8)	Internet	French	Free
92-405-XPE01000 (ISBN: 0-662-31266-X)	Print	English	\$10
92-405-XPFO1000 (ISBN: 0-662-86330-5)	Print	French	\$10



## Geography Definitions (2001 Census Dictionary)

The Geography section of the 2001 Census Dictionary gives an overview of what's new for 2001 and the definitions for 50 geographic concepts, products and other terms. The definitions include a detailed description of each term, any delineation rules, special notes, data quality information or applications relevant to the term. Some historical information is also provided. The dictionary also includes a comprehensive subject index. The Internet version is available March 12, 2002. A print publication is scheduled for release in August 2002.

Catalogue No.	Medium	Language	Price
92-378-XIE01000	Internet	English	Free
92-378-XIF01000	Internet	French	Free
92-378-XPE01000	Print	English	\$25
92-378-XPF01000	Print	French	\$25

## Reference Guides

Most Geography products come with free Reference Guides that describe the content and applications of the product, as well as data quality, record layouts, and other information. Reference guides are included as PDF files with the products when they are distributed. The guides are also accessible online.

Other products such as the National Overview Tables and GeoSuite include "Help" files and tutorials that users can access online while they are using the products.

The following is a list of the Reference Guides available for the 2001 Census Geography products. Go to the Census Geography area on the STC website.

Catalogue No.	Title	Medium	Price
92F0149GIE01000	Census Division and Census Subdivision Reference Maps, Reference Guide	Internet	Free
92F0145GIE01000	Census Tract Reference Maps, Reference Guide	Internet	Free
92F0146GIE01000	Dissemination Area Reference Maps, Reference Guide	Internet	Free
92F0171GIE01000	Cartographic Boundary Files, Reference Guide	Internet	Free
92F0159GIE01000	Population Ecumene Census Division Boundary File, Reference Guide	Internet	Free
92F0157GIE01000	Road Network Files, Reference Guide	Internet	Free
92F0158GIE01000	Skeletal Road Network Files, Reference Guide	Internet	Free
92F0150GIE01000	GeoSuite, Reference Guide	Internet	Free

## Reference Maps – 2001 Census

Reference maps show the location of the geographic areas for which census data are tabulated and disseminated. The maps display the boundaries, names and codes of standard geographic areas, as well as major cultural and physical features, such as roads, railroads, coastlines, rivers and lakes.

### What's New

- Individual reference maps can be viewed on the Internet ([www.statcan.ca](http://www.statcan.ca)) and downloaded for free (as PDF files)
- Reference maps can be purchased at the regional offices as PDF files on CD-ROM. The complete set of all reference maps for 2001 is available on demand for \$250. The minimum charge for custom orders is \$70.
- Paper copies of the reference maps can also be purchased. The minimum charge is \$70. Contact the nearest regional office for details.
- Reference Guides for the maps can be viewed on the Internet and downloaded for free (as PDF files), and are included free when maps are purchased.
- Dissemination area (DA) maps replace enumeration area (EA) maps, which are no longer published. There are three sets of DA maps to cover the entire country at the appropriate level of detail.
- The Federal Electoral District/Enumeration Area (FED EA) series of maps is discontinued for 2001.

Over 7,000 reference maps are available for the 2001 Census. Given the diversity in size of these geographic areas, different map scales and map coverages are required to show the appropriate level of detail. Descriptions of each series are provided with the individual catalogue entries below.

### **Reference Maps – Complete Set, 2001 Census**

The complete set of all reference maps for the 2001 Census is available on demand as PDF files on CD-ROM.

Catalogue No.	Medium	Language	Price
92F0172XCB01000	CD-ROM	Bilingual	\$250

## National Reference Maps

For the 2001 Census, four national maps (covering all of Canada) produced by Statistics Canada show the location of census divisions, economic regions, census metropolitan areas, census agglomerations, and the Statistical Area Classification.

### Census Divisions, 2001

Shows the census division (CD) boundaries and codes within each province and territory, on a background of major lakes and rivers. The map also lists the CD names in CD code order, by province and territory. The scale of this map is 1:10,000,000 (with an inset showing southern Quebec and southern Ontario at 1:5,000,000) and its approximate dimensions are 91 cm by 66 cm (36 inches by 26 inches). The approximate size of the PDF file is 1.2 MB.

### Economic Regions and Census Divisions, 2001

Shows the economic region (ER) and census division (CD) boundaries and codes within each province and territory. The map also lists, by province and territory, the ER names in ER code order, within which their component CD codes and names are numerically listed. The scale of this map is 1:10,000,000 (with an inset showing southern Quebec and southern Ontario at 1:5,000,000) and its approximate dimensions are 91 cm by 66 cm (36 inches by 26 inches). The approximate size of the PDF file is 1.4 MB.

### Census Metropolitan Areas and Census Agglomerations, 2001

Shows the general location of census metropolitan areas (CMAs) and census agglomerations (CAs) within each province and territory, with large dots designating CMAs and small dots designating CAs. The map also lists the CMA/CA names in CMA/CA code order, by province and territory. The scale of this map is 1:10,000,000 (with an inset showing southern Quebec and southern Ontario at 1:5,000,000) and its approximate dimensions are 91 cm by 66 cm (36 inches by 26 inches). The approximate size of the PDF file is 1.3 MB.

### Statistical Area Classification, 2001 Census Subdivisions

Shows census subdivisions (CSDs) classified by colour according to the category of the Statistical Area Classification (SAC) they are assigned to. The categories include: component of a census metropolitan area/census agglomeration, component of a census metropolitan area and census agglomeration influenced zone (strongly influenced, moderately influenced, weakly influenced or not influenced), or component of the territories (Northwest Territories, Nunavut, and Yukon Territory). The scale of this map is 1:7,500,000 (with an inset showing southern Quebec and southern Ontario at 1:4,000,000) and its approximate dimensions are 91 cm by 91 cm (36 inches by 36 inches). The approximate size of the PDF file is 4.3 MB.

Catalogue No.	Medium	Language	Price
92F0144XIB01000	Internet	Bilingual	Free
92F0144XCB01000	CD-ROM	Bilingual	\$70 minimum
92F0144XPB01000	Print-on-demand	Bilingual	\$70 minimum

**Price Note:** The complete set of all reference maps for the 2001 Census is available on demand as PDF files on CD-ROM for \$250 (Catalogue No. 92F0172XCB). The minimum charge for custom orders is \$70. Contact the nearest regional office for details.

### **Federal Electoral Districts (1996 Representation Order) Reference Map**

This national map shows the boundaries, names and codes of federal electoral districts (FEDs) according to the 1996 Representation Order, on a background of major lakes and rivers. Insets show more detail for the congested areas on the map. The FED map was produced by Natural Resources Canada for Elections Canada. The dimensions of this map are approximately 79 cm by 28 cm (31 inches by 11 inches).

Catalogue No.	Medium	Language	Price
92F0152XIE01000	Internet	English	Free
92F0152XIF01000	Internet	French	Free
92F0152XCE01000	CD-ROM	English	\$70 minimum
92F0152XCF01000	CD-ROM	French	\$70 minimum
92F0152XPE01000	Print-on-demand	English	\$70 minimum
92F0152XPF01000	Print-on-demand	French	\$70 minimum

**Price Note:** The complete set of all reference maps for the 2001 Census is available on demand as PDF files on CD-ROM for \$250 (Catalogue No. 92F0172XCB). The minimum charge for custom orders is \$70. Contact the nearest regional office for details.

### **Census Division and Census Subdivision Reference Maps**

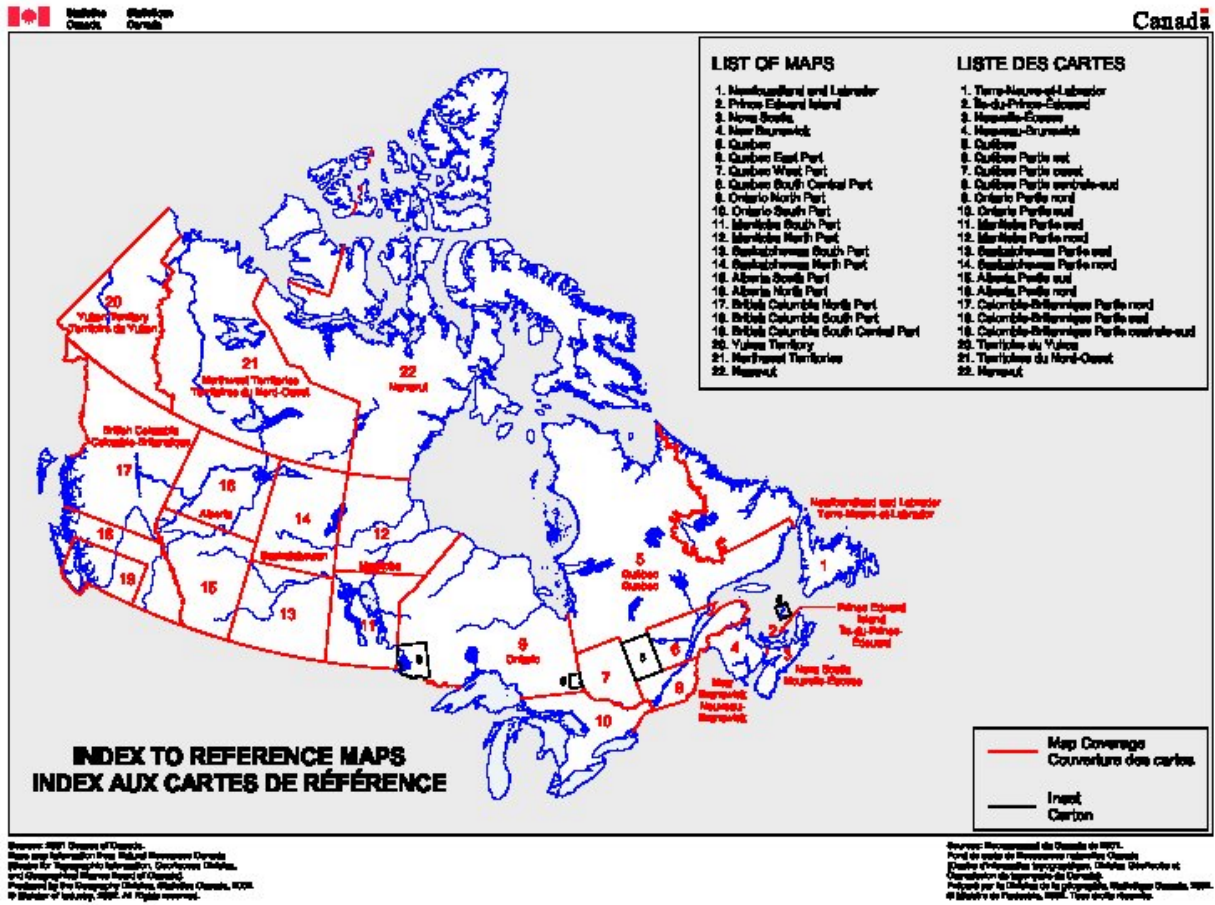
The set of Census Division and Census Subdivision Reference Maps covers all of Canada, by province and territory. The maps show the boundaries, names and codes of census divisions (such as counties and regional districts) and census subdivisions (such as cities, towns, villages, other local municipal entities, townships and Indian reserves). The maps also show the boundaries of census metropolitan areas and census agglomerations. There are 22 maps that vary in scale (ranging from 1:310,000 to 1:3,500,000) and size, the maximum dimensions being approximately 145 cm by 99 cm (57 inches by 39 inches); see Figure 2 and Table 1. The maps have the same general look as in 1996. A reference guide is available (92F0149GIE).

**Note:** The complete set of CD/CSD maps is available in the Standard Geographical Classification Manual, Volume II (Catalogue No. 12-572-XPB). This publication also includes three maps of Canada at the 1:10,000,000 scale, one showing census divisions, one showing economic regions and census divisions, and one showing point locations of census metropolitan areas and census agglomerations.

Catalogue No.	Medium	Language	Price
92F0149XIB01000	Internet	Bilingual	Free
92F0149XCB01000	CD-ROM	Bilingual	\$70 minimum
92F0149XPB01000	Print-on-demand	Bilingual	\$70 minimum

**Price Note:** The complete set of all reference maps for the 2001 Census is available on demand as PDF files on CD-ROM for \$250 (Catalogue No. 92F0172XCB). The minimum charge for custom orders is \$70. Contact the nearest regional office for details.

Figure 2. Index Map for Census Division and Census Subdivision Reference Maps



**Table 1. Summary of Census Division and Census Subdivision Reference Maps by Province and Territory (Catalogue No: 92F0148XCB, 92F0148XIB, 92F0148XPB)**

Map No.	Map Title	Map Scale	Map Dimensions (approximate)				Approx. Size of PDF File (MB)
			centimetres		inches		
			width	height	width	height	
1	Newfoundland and Labrador*	1:700,000	100.3	107.3	39.5	42.3	2.1
2	Prince Edward Island	1:310,000	78.1	59.1	30.8	23.3	0.3
3	Nova Scotia	1:800,000	82.6	69.9	32.5	27.5	0.7
4	New Brunswick	1:600,000	88.9	85.1	35.0	33.5	0.7
5	Quebec*	1:2,500,000	97.8	93.3	38.5	36.8	4.5
6	Quebec East Part	1:600,000	121.9	58.4	48.0	23.0	1.1
7	Quebec West Part	1:600,000	67.3	90.2	26.5	35.5	1.3
8	Quebec South Central Part	1:350,000	135.9	80.6	53.5	31.8	2.6
9	Ontario North Part	1:1,500,000	127.6	85.7	50.3	33.8	1.8
10	Ontario South Part*	1:750,000	134.0	101.6	52.8	40.0	1.9
11	Manitoba South Part	1:850,000	102.9	85.1	40.5	33.5	1.0
12	Manitoba North Part	1:850,000	113.7	88.3	44.8	34.8	0.9
13	Saskatchewan South Part	1:850,000	98.4	79.4	38.8	31.3	0.9
14	Saskatchewan North Part*	1:850,000	95.3	94.0	37.5	37.0	0.8
15	Alberta South Part*	1:850,000	108.0	94.6	42.5	37.3	1.0
16	Alberta North Part	1:850,000	102.2	80.0	40.3	31.5	0.5
17	British Columbia North Part*	1:1,000,000	119.4	114.9	47.0	45.3	2.4
18	British Columbia South Part	1:1,000,000	119.4	62.9	47.0	24.8	1.8
19	British Columbia South Central Part*	1:375,000	144.8	99.1	57.0	39.0	1.9
20	Yukon Territory	1:1,500,000	76.2	85.7	30.0	33.8	1.1
21	Northwest Territories	1:3,500,000	61.0	72.4	24.0	28.5	4.1
22	Nunavut	1:3,500,000	84.5	114.3	33.3	45.0	10.5

\*Oversize maps – both dimensions exceed 91 cm (36 inches).

## **Census Tract Reference Maps, by Census Metropolitan Area or Census Agglomeration**

The series of Census Tract Reference Maps<sup>2</sup> covers all 27 census metropolitan areas (CMAs) and the 19 census agglomerations (CAs) with census tracts. The maps show the boundaries and names of census tracts and census subdivisions, as well as the urban core, urban fringe and rural fringe within the CMAs or CAs. The maps include background information such as rivers, lakes, railroad tracks and provincial boundaries, and other significant features. There are 73 maps in the series, with one to four maps covering each CMA or CA (see Table 2). The map scales range from 1:25,000 to 1:2,000,000, and the maximum map dimensions are approximately 91 cm by 101 cm (36 inches by 40 inches). A reference guide is available (92F0145GIE).

**Note:** The publications in the Census Tract Profile series contain corresponding maps for each census metropolitan area and census agglomeration.

<b>Catalogue No.</b>	<b>Medium</b>	<b>Language</b>	<b>Price</b>
92F0145XIB01000	Internet	Bilingual	Free
92F0145XCB01000	CD-ROM	Bilingual	\$70 minimum
92F0145XPB01000	Print-on-demand	Bilingual	\$70 minimum

**Price Note:** The complete set of all reference maps for the 2001 Census is available on demand as PDF files on CD-ROM for \$250 (Catalogue No. 92F0172XCB). The minimum charge for custom orders is \$70. Contact the nearest regional office for details.

---

<sup>2</sup> The title for these maps for the 1996 Census was Census Metropolitan Area, Census Agglomeration and Census Tract Reference Maps.

Figure 3. Example of a Census Tract Reference Map

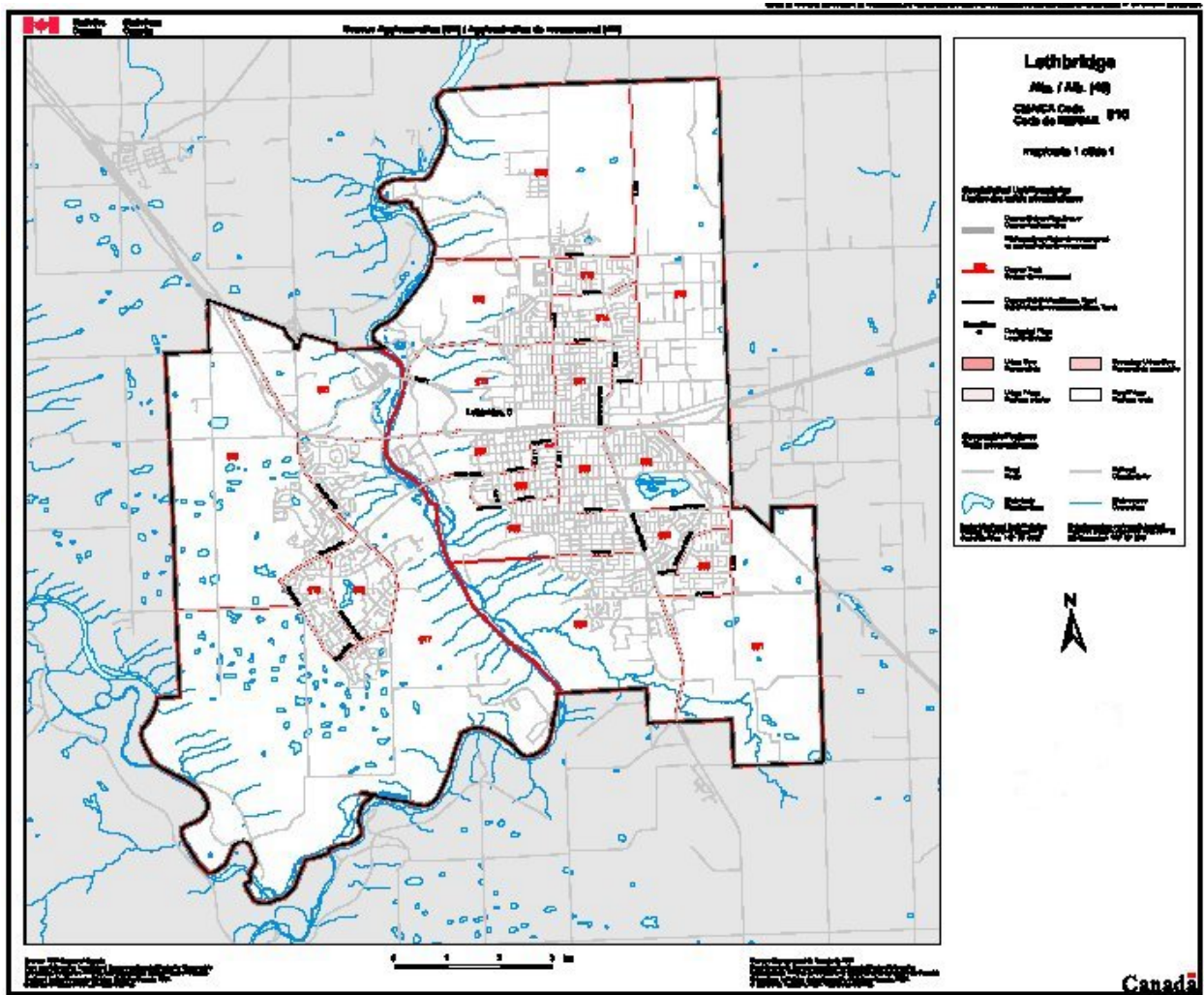


Figure 4. Detail from a Census Tract Reference Map





**Table 2. Summary of Census Tract Reference Maps by Census Metropolitan Area (CMA) and Census Agglomeration (CA) (Catalogue No: 92F0145XCB, 92F0145XIB, 92F0145XPB)**

CMAs and CAs	Map	PDF File Size (KB)	Approximate Map Dimensions	
			Centimetres	Inches
Abbotsford, B.C. (CMA)	1	614	102.1 x 91.9	40.2 x 36.2
Barrie, Ont. (CA)	1	1,725	57.6 x 37.3	22.7 x 14.7
Belleville, Ont. (CA)	1	1,143	57.6 x 47.5	22.7 x 18.7
	2	410	57.6 x 37.3	22.7 x 14.7
Brantford, Ont. (CA)	1	246	57.6 x 37.3	22.7 x 14.7
Calgary, Alta. (CMA)	1	1,350	57.6 x 47.5	22.7 x 18.7
	2	765	64.0 x 66.5	25.2 x 26.2
Chicoutimi – Jonquière, Que. (CMA)	1	2,086	64.0 x 66.5	25.2 x 26.2
Drummondville, Que. (CA)	1	662	64.0 x 66.5	25.2 x 26.2
Edmonton, Alta. (CMA)	1	2,101	81.8 x 71.6	32.2 x 28.2
	2	734	81.8 x 71.6	32.2 x 28.2
Granby, Que. (CA)	1	460	57.6 x 47.5	22.7 x 18.7
Greater Sudbury, Ont. (CMA)	1	1,183	47.5 x 47.5	18.7 x 18.7
	2	230	57.6 x 47.5	22.7 x 18.7
Guelph, Ont. (CA)	1	539	57.6 x 47.5	22.7 x 18.7
Halifax, N.S. (CMA)	1	2,580	57.6 x 47.5	22.7 x 18.7
	2	801	81.8 x 71.6	32.2 x 28.2
Hamilton, Ont. (CMA)	1	1,050	57.6 x 37.3	22.7 x 14.7
	2	670	76.7 x 53.8	30.2 x 21.2
Kamloops, B.C. (CA)	1	1,982	64.0 x 66.5	25.2 x 26.2
Kelowna, B.C. (CA)	1	1,485	64.0 x 66.5	25.2 x 26.2
Kingston, Ont. (CMA)	1	1,955	47.5 x 47.5	18.7 x 18.7
	2	374	57.6 x 37.3	22.7 x 14.7
Kitchener, Ont. (CMA)	1	884	47.5 x 47.5	18.7 x 18.7
	2	587	76.7 x 53.8	30.2 x 21.2
Lethbridge, Alta. (CA)	1	233	57.6 x 47.5	22.7 x 18.7
London, Ont. (CMA)	1	1,600	57.6 x 47.5	22.7 x 18.7
	2	369	57.6 x 47.5	22.7 x 18.7
Medicine Hat, Alta. (CA)	1	766	47.5 x 47.5	18.7 x 18.7
Moncton, N.B. (CA)	1	955	57.6 x 47.5	22.7 x 18.7
	2	261	57.6 x 37.3	22.7 x 14.7
Montréal, Que. (CMA)	1	4,586	81.8 x 71.6	32.2 x 28.2
	2	1,293	81.8 x 71.6	32.2 x 28.2
	3	2,049	102.1 x 91.9	40.2 x 36.2
Nanaimo, B.C. (CA)	1	1,727	64.0 x 66.5	25.2 x 26.2
North Bay, Ont. (CA)	1	1,425	76.7 x 53.8	30.2 x 21.2
Oshawa, Ont. (CMA)	1	478	57.6 x 47.5	22.7 x 18.7
	2	244	57.6 x 37.3	22.7 x 14.7
Ottawa – Hull, Ont. (CMA)	1	3,118	81.8 x 71.6	32.2 x 28.2
	2	957	81.8 x 71.6	32.2 x 28.2
Peterborough, Ont. (CA)	1	1,505	81.8 x 71.6	32.2 x 28.2
Prince George, B.C. (CA)	1	1,680	64.0 x 66.5	25.2 x 26.2
Québec, Que. (CMA)	1	3,032	102.1 x 91.9	40.2 x 36.2
	2	579	81.8 x 71.6	32.2 x 28.2
Red Deer, Alta. (CA)	1	157	47.5 x 47.5	18.7 x 18.7

CMAs and CAs	Map	PDF File Size (KB)	Approximate Map Dimensions	
			Centimetres	Inches
Regina, Sask. (CMA)	1	843	57.6 x 47.5	22.7 x 18.7
	2	212	57.6 x 47.5	22.7 x 18.7
Saint-Jean-sur-Richelieu, Que. (CA)	1	362	57.6 x 47.5	22.7 x 18.7
Saint John, N.B. (CMA)	1	1,536	57.6 x 37.3	22.7 x 14.7
	2	667	81.8 x 71.6	32.2 x 28.2
Sarnia, Ont. (CA)	1	789	57.6 x 37.3	22.7 x 14.7
Saskatoon, Sask. (CMA)	1	697	57.6 x 47.5	22.7 x 18.7
	2	256	57.6 x 47.5	22.7 x 18.7
Sault Ste. Marie, Ont. (CA)	1	528	76.7 x 53.8	30.2 x 21.2
Sherbrooke, Que. (CMA)	1	1,131	57.6 x 47.5	22.7 x 18.7
	2	285	57.6 x 37.3	22.7 x 14.7
St. Catharines – Niagara, Ont. (CMA)	1	925	102.1 x 91.9	40.2 x 36.2
St. John's, Nfld.Lab. (CMA)	1	1,069	47.5 x 47.5	18.7 x 18.7
	2	613	57.6 x 47.5	22.7 x 18.7
Thunder Bay, Ont. (CMA)	1	1,183	81.8 x 71.6	32.2 x 28.2
Toronto, Ont. (CMA)	1	5,395	102.1 x 91.9	40.2 x 36.2
	2	1,191	102.1 x 91.9	40.2 x 36.2
	3	1,108	81.8 x 71.6	32.2 x 28.2
Trois-Rivières, Que. (CMA)	1	961	57.6 x 37.3	22.7 x 14.7
	2	228	57.6 x 47.5	22.7 x 18.7
Vancouver, B.C. (CMA)	1	2,007	76.7 x 53.8	30.2 x 21.2
	2	950	81.8 x 71.6	32.2 x 28.2
	3	584	64.0 x 66.5	25.2 x 26.2
Victoria, B.C. (CMA)	1	828	57.6 x 37.3	22.7 x 14.7
	2	349	57.6 x 37.3	22.7 x 14.7
Windsor, Ont. (CMA)	1	1,040	64.0 x 66.5	25.2 x 26.2
Winnipeg, Man. (CMA)	1	1,145	57.6 x 47.5	22.7 x 18.7
	2	552	81.8 x 71.6	32.2 x 28.2
<b>Total</b>	<b>73</b>			

## ***Dissemination Area Reference Maps, by Census Tract, for Census Metropolitan Areas and Census Agglomerations***

The set of Dissemination Area Reference Maps by Census Tract<sup>3</sup> covers all 27 census metropolitan areas (CMAs) and the 19 census agglomerations (CAs) that are part of the census tract program. Each map in the set covers one census tract (CT) and shows the boundaries and codes of dissemination areas within that CT. The maps also show census tract, census subdivision, and census metropolitan area or census agglomeration boundaries on a background of detailed street networks and other visible features such as rivers, lakes and railroad tracks.

There are 6,154 maps in this set (see Table 3). The dimensions of each map are approximately 27 cm by 43 cm (11 inches by 17 inches). Map scales vary according to the size of the census tract; thus the maps cannot be cut and pasted together. In cases where there is too much detail to show on one map, the census tract may be split into two or more maps. Clients are not charged for the extra maps resulting from the CT split. A reference guide is available (92F0146GIE).

**Note:** Dissemination area reference maps are also available for smaller urban centres, that is, non-tracted census agglomerations (92F0147XCB, 92F0147XIB, 92F0147XPB), and by census division for areas outside census metropolitan areas and census agglomerations (92F0148XCB, 92F0148XIB, 92F0148XPB). Together, the three sets of dissemination area maps cover all of Canada.

<b>Catalogue No.</b>	<b>Medium</b>	<b>Language</b>	<b>Price</b>
92F0146XIB01000	Internet	Bilingual	Free
92F0146XCB01000	CD-ROM	Bilingual	\$70 minimum
92F0146XPB01000	Print-on-demand	Bilingual	\$70 minimum

**Price Note:** The complete set of all reference maps for the 2001 Census is available on demand as PDF files on CD-ROM for \$250 (Catalogue No. 92F0172XCB). The minimum charge for custom orders is \$70. Contact the nearest regional office for details.

---

<sup>3</sup> For the 1996 Census, the set of maps similar to this was called Large Urban Enumeration Area (EA) Reference Maps.

Figure 5. Example of a Dissemination Area Reference Map by Census Tract

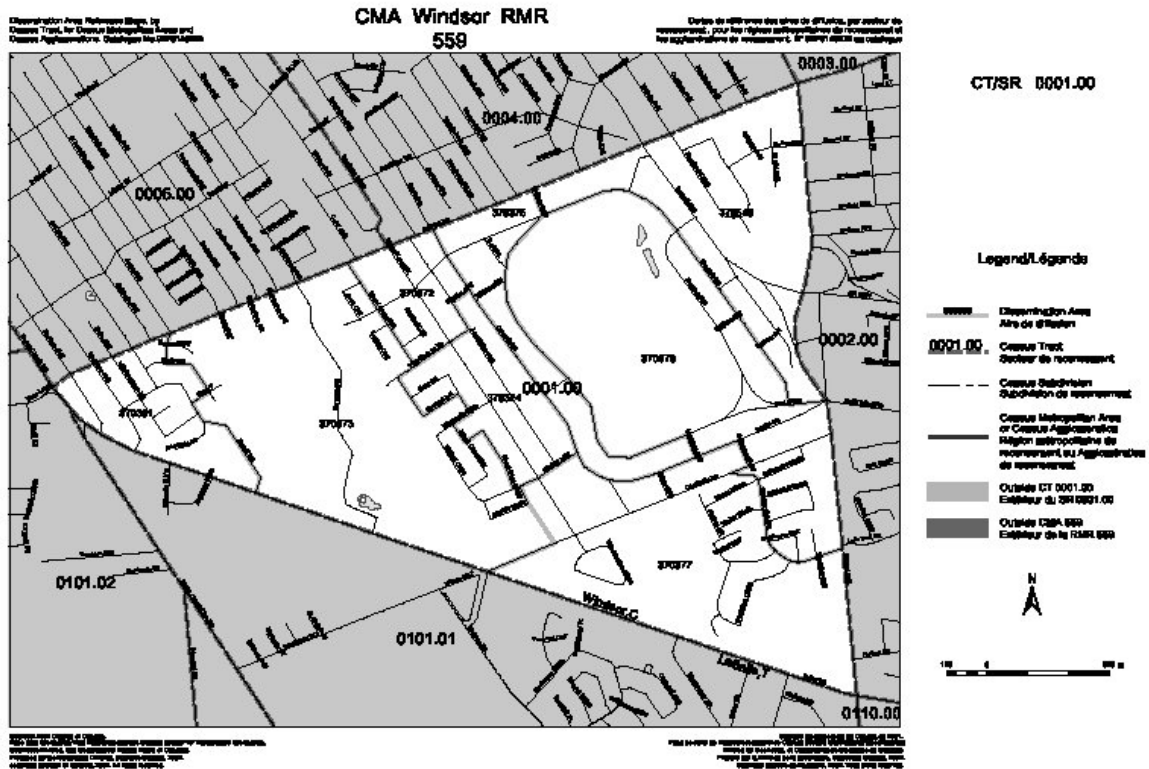
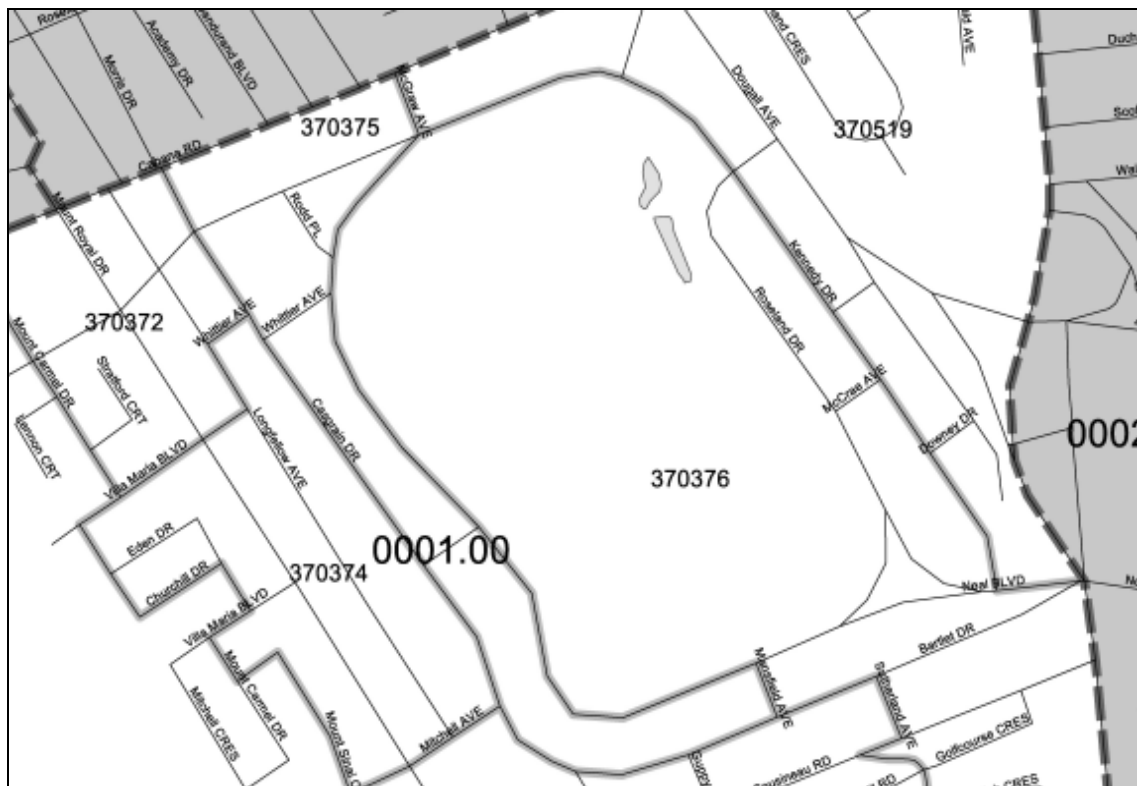


Figure 6. Detail from a Dissemination Area Reference Map by Census Tract



**Table 3. Summary of Dissemination Area Reference Maps by Census Tract  
(Catalogue No: 92F0146XCB, 92F0146XIB, 92F0146XPB)**

<b>Census Metropolitan Area (CMA) or Census Agglomeration (CA)</b>		<b>Number of Census Tracts</b>	<b>Number of PDF Files</b>	<b>Total Size of PDF Files (MB)</b>
<b>Code</b>	<b>Name</b>			
932	Abbotsford, B.C. (CMA)	35	37	5.7
568	Barrie, Ont. (CA)	28	54	25.2
522	Belleville, Ont. (CA)	33	47	21.6
543	Brantford, Ont. (CA)	19	23	17.7
825	Calgary, Alta. (CMA)	193	265	16.6
408	Chicoutimi – Jonquière, Que. (CMA)	36	51	14.4
447	Drummondville, Que. (CA)	15	28	4.2
835	Edmonton, Alta. (CMA)	211	279	23.5
450	Granby, Que. (CA)	17	29	4.9
580	Greater Sudbury, Ont. (CMA)	42	79	44.2
550	Guelph, Ont. (CA)	23	41	12.3
205	Halifax, N.S. (CMA)	86	118	47.8
537	Hamilton, Ont. (CMA)	172	200	48.5
925	Kamloops, B.C. (CA)	26	60	13.3
915	Kelowna, B.C. (CA)	35	63	10.2
521	Kingston, Ont. (CMA)	40	55	44.1
541	Kitchener, Ont. (CMA)	91	117	46.5
810	Lethbridge, Alta. (CA)	21	23	1.3
555	London, Ont. (CMA)	101	123	20.0
805	Medicine Hat, Alta. (CA)	16	38	3.0
305	Moncton, N.B. (CA)	25	57	7.3
462	Montréal, Que. (CMA)	862	1,050	56.0
938	Nanaimo, B.C. (CA)	19	33	4.3
575	North Bay, Ont. (CA)	21	31	9.7
532	Oshawa, Ont. (CMA)	68	86	10.3
505	Ottawa – Hull, Ont. (CMA)	237	297	65.6
529	Peterborough, Ont. (CA)	25	35	9.8
970	Prince George, B.C. (CA)	27	53	9.3
421	Québec, Que. (CMA)	165	236	47.7
830	Red Deer, Alta. (CA)	16	20	1.1
705	Regina, Sask. (CMA)	50	89	4.3
459	Saint-Jean-sur-Richelieu, Que. (CA)	35	37	5.1
310	Saint John, N.B. (CMA)	46	90	24.3
562	Sarnia, Ont. (CA)	24	26	2.5
725	Saskatoon, Sask. (CMA)	51	102	5.6
590	Sault Ste. Marie, Ont. (CA)	23	23	4.1
433	Sherbrooke, Que. (CMA)	39	57	13.0
539	St. Catharines – Niagara, Ont. (CMA)	91	92	11.3
001	St. John's, Nfld.Lab. (CMA)	45	63	14.4
595	Thunder Bay, Ont. (CMA)	33	46	7.2
535	Toronto, Ont. (CMA)	932	1,014	154.0
442	Trois-Rivières, Que. (CMA)	37	82	13.7
933	Vancouver, B.C. (CMA)	387	453	63.0
935	Victoria, B.C. (CMA)	68	72	9.8
559	Windsor, Ont. (CMA)	67	79	7.6
602	Winnipeg, Man. (CMA)	165	204	25.3
<b>Total</b>		<b>4,798</b>	<b>6,157</b>	

## **Dissemination Area Reference Maps, by non-tracted Census Agglomeration**

The set of Dissemination Area Reference Maps by Non-tracted Census Agglomeration<sup>4</sup> covers the smaller census agglomerations that are not part of the census tract program. Each map in the set covers one census agglomeration (CA) and shows the boundaries and codes of dissemination areas within that CA. The maps also show the boundaries of census subdivisions (municipalities), as well as urban areas, and representative points for designated places. The maps include background information such as rivers, lakes, railroad tracks and provincial boundaries, and other significant features.

There are approximately 170 maps in this set—generally two maps per census agglomeration (see Table 4). Some maps include insets to show detail for the congested areas. These insets appear on the main map where possible, but in some cases they appear on a second map sheet. The maps vary in scale and size; the maximum map dimensions are approximately 91 cm by 101 cm (36 inches by 40 inches). A reference guide is available (92F0146GIE).

**Note:** Dissemination area reference maps are also available by census tract for large urban centres—census metropolitan areas and census agglomerations (92F0146XCB, 92F0146XIB, 92F0146XPB) and by census division for areas outside census metropolitan areas and census agglomerations (92F0148XCB, 92F0148XIB, 92F0148XPB). Together, the three sets of dissemination area maps cover all of Canada.

Catalogue No.	Medium	Language	Price
92F0147XIB01000	Internet	Bilingual	Free
92F0147XCB01000	CD-ROM	Bilingual	\$70 minimum
92F0147XPB01000	Print-on-demand	Bilingual	\$70 minimum

**Price Note:** The complete set of all reference maps for the 2001 Census is available on demand as PDF files on CD-ROM for \$250 (Catalogue No. 92F0172XCB). The minimum charge for custom orders is \$70. Contact the nearest regional office for details.

---

<sup>4</sup> For the 1996 Census, the set of maps similar to this was called Small Urban Enumeration Area (EA) Reference Maps.

Figure 7. Example of a Dissemination Area Reference Map by Non-tracted Census Agglomeration

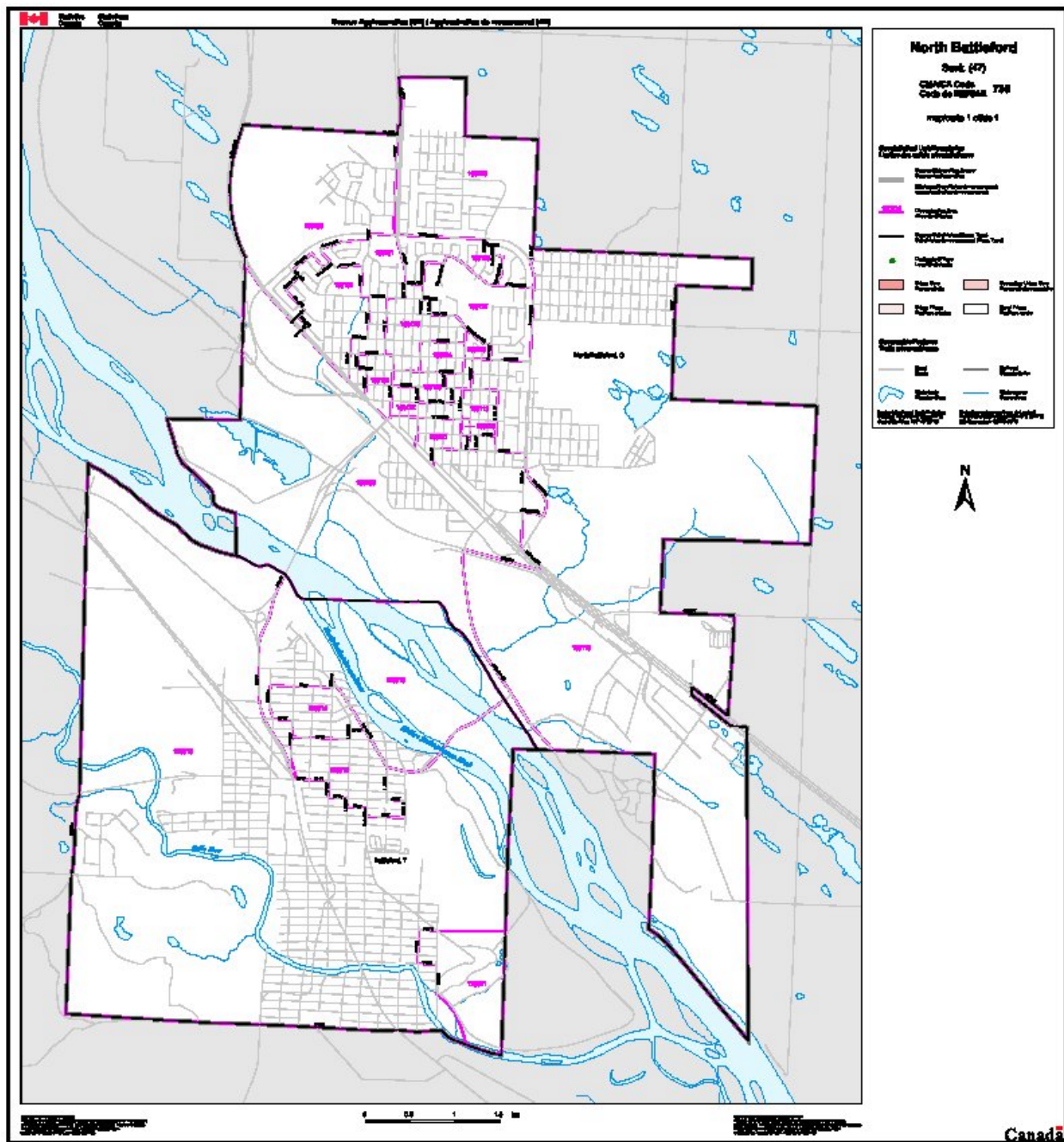


Figure 8. Detail from a Dissemination Area Reference Map by Non-tracted Census Agglomeration

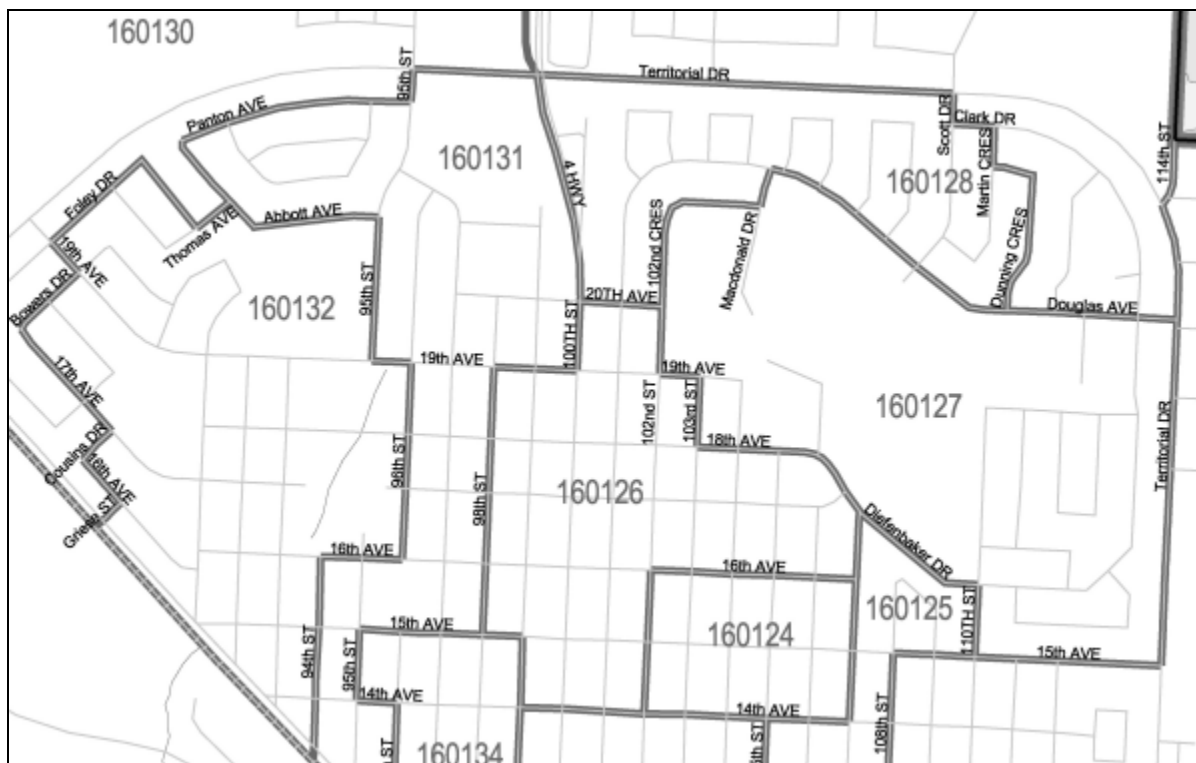


Table 4. Summary of Dissemination Area Reference Maps by Non-tracted Census Agglomeration (Catalogue No: 92F0147XCB, 92F0147XIB, 92F0147XPB)<sup>5</sup>

Non-tracted Census Agglomeration		Map	Size of PDFs (KB)	Approximate Map Dimensions	
Code	Name			Centimetres	Inches
410	Alma (Que.)	1	614		
		2	124		
481	Amos (Que.)	1	820		
		2	106		
406	Baie-Comeau (Que.)	1	466		
		2	218		
328	Bathurst (N.B.)	1	953		
		2	247		
610	Brandon (Man.)	1	540		
		2	236		
512	Brockville (Ont.)	1	1,419		
		2	155		
806	Brooks (Alta.)	1	105	76.7 x 53.8	30.2 x 21.2
944	Campbell River (B.C.)	1	838		
		2	160		
330	Campbellton (N.B.)	1	906		
		2	112		

<sup>5</sup> Some information was not available at the time of publication. The second edition of the Geography Catalogue will include complete details.



Non-tracted Census Agglomeration		Map	Size of PDFs (KB)	Approximate Map Dimensions	
Code	Name			Centimetres	Inches
833	Camrose (Alta.)	1	160	64.0 x 66.5	25.2 x 26.2
225	Cape Breton (N.S.)	1	1,408		
		2	211		
		3	177		
		4	176		
105	Charlottetown (P.E.I.)	1	813		
		2	237		
556	Chatham-Kent (Ont.)	1	1,540		
		2	204		
		3	160		
930	Chilliwack (B.C.)	1	609		
		2	289		
527	Cobourg (Ont.)	1	157	81.8 x 71.6	32.2 x 28.2
845	Cold Lake (Alta.)	1	800		
		2	127		
		3	115		
567	Collingwood (Ont.)	1	157		
		2	119		
015	Corner Brook (Nfld.Lab.)	1	812		
		2	216		
501	Cornwall (Ont.)	1	935		
		2	325		
943	Courtenay (B.C.)	1	531		
		2	160		
437	Cowansville (Que.)	1	181	76.7 x 53.8	30.2 x 21.2
905	Cranbrook (B.C.)	1	1,033		
		2	131		
975	Dawson Creek (B.C.)	1	1,143		
		2	159		
411	Dolbeau-Mistassini (Que.)	1	414		
		2	105		
937	Duncan (B.C.)	1	445		
		2	116		
335	Edmundston (N.B.)	1	473		
		2	205		
582	Elliot Lake (Ont.)	1	514		
		2	100		
750	Estevan (Sask.)	1	536		
		2	146		
977	Fort St. John (B.C.)	1	130	64.0 x 66.5	25.2 x 26.2
320	Fredericton (N.B.)	1	2,255		
		2	317		
011	Gander (Nfld.Lab.)	1	1,115		
		2	93		
010	Grand Falls-Windsor (Nfld.Lab.)	1	1,191		
		2	115		
		3	96		
850	Grande Prairie (Alta.)	1	123	81.8 x 71.6	32.2 x 28.2
584	Haileybury (Ont.)	1	348		
		2	162		
502	Hawkesbury (Ont.)	1	144	81.8 x 71.6	32.2 x 28.2
456	Joliette (Que.)	1	290	81.8 x 71.6	32.2 x 28.2

Non-tracted Census Agglomeration		Map	Size of PDFs (KB)	Approximate Map Dimensions	
Code	Name			Centimetres	Inches
530	Kawartha Lakes (Ont.)	1	3,785		
		2	203		
		3	104		
598	Kenora (Ont.)	1	613	102.1 x 91.9	40.2 x 36.2
210	Kentville (N.S.)	1	780		
		2	131		
960	Kitimat (B.C.)	1	156	102.1 x 91.9	40.2 x 36.2
446	La Tuque (Que.)	1	543		
		2	109		
025	Labrador City (Nfld.Lab.)	1	97	81.8 x 71.6	32.2 x 28.2
468	Lachute (Que.)	1	251	102.1 x 91.9	40.2 x 36.2
557	Leamington (Ont.)	1	422		
		2	189		
840	Lloydminster (Alta.)	1	130	81.8 x 71.6	32.2 x 28.2
435	Magog (Que.)	1	341	102.1 x 91.9	40.2 x 36.2
403	Matane (Que.)	1	340		
		2	109		
571	Midland (Ont.)	1	588	102.1 x 91.9	40.2 x 36.2
715	Moose Jaw (Sask.)	1	362		
		2	190		
220	New Glasgow (N.S.)	1	1,116		
		2	226		
547	Norfolk (Ont.)	1	1,993		
		2	91		
		3	255		
735	North Battleford (Sask.)	1	217	64.0 x 66.5	25.2 x 26.2
569	Orillia (Ont.)	1	1,244		
		2	192		
566	Owen Sound (Ont.)	1	594		
		2	147		
939	Parksville (B.C.)	1	210	102.1 x 91.9	40.2 x 36.2
515	Pembroke (Ont.)	1	425		
		2	111		
913	Penticton (B.C.)	1	924		
		2	179		
516	Petawawa (Ont.)	1	177		
		2	103		
940	Port Alberni (B.C.)	1	816		
		2	247		
528	Port Hope and Hope (Ont.)	1	488		
		2	128		
607	Portage la Prairie (Man.)	1	445		
		2	134		
945	Powell River (B.C.)	1	745		
		2	139		
		3	92		
745	Prince Albert (Sask.)	1	463		
		2	159		
955	Prince Rupert (B.C.)	1	178		
		2	108		
952	Quesnel (B.C.)	1	2,431		
		2	347		
404	Rimouski (Que.)	1	540		
		2	191		

Non-tracted Census Agglomeration		Map	Size of PDFs (KB)	Approximate Map Dimensions	
Code	Name			Centimetres	Inches
405	Rivière-du-Loup (Que.)	1	358		
		2	117		
485	Rouyn-Noranda (Que.)	1	1,115		
		2	155		
428	Saint-Georges (Que.)	1	393		
		2	153		
452	Saint-Hyacinthe (Que.)	1	287		
		2	190		
465	Salaberry-de-Valleyfield (Que.)	1	325		
		2	132		
412	Sept-Îles (Que.)	1	688		
		2	117		
444	Shawinigan (Que.)	1	1,063		
		2	372		
454	Sorel-Tracey (Que.)	1	355		
		2	158		
934	Squamish (B.C.)	1	239	102.1 x 91.9	40.2 x 36.2
553	Stratford (Ont.)	1	123	64.0 x 66.5	25.2 x 26.2
110	Summerside (P.E.I.)	1	238	102.1 x 91.9	40.2 x 36.2
720	Swift Current (Sask.)	1	296		
		2	160		
965	Terrace (B.C.)	1	741		
		2	147		
430	Thetford Mines (Que.)	1	409		
		2	149		
		3	91		
640	Thompson (Man.)	1	95	64.0 x 66.5	25.2 x 26.2
546	Tillsonburg (Ont.)	1	176	64.0 x 66.5	25.2 x 26.2
586	Timmins (Ont.)	1	737		
		2	120		
		3	105		
215	Truro (N.S.)	1	1,747		
		2	156		
480	Val-d'Or (Que.)	1	1,494		
		2	145		
918	Vernon (B.C.)	1	587		
		2	165		
440	Victoriaville (Que.)	1	282		
		2	168		
865	Wetaskiwin (Alta.)	1	133	76.7 x 53.8	30.2 x 21.2
990	Whitehorse (Y.T.)	1	163		
		2	99		
950	Williams Lake (B.C.)	1	1,458		
		2	150		
860	Wood Buffalo (Alta.)				
544	Woodstock (Ont.)	1	209	81.8 x 71.6	32.2 x 28.2
995	Yellowknife (N.W.T.)	1	111	64.0 x 66.5	25.2 x 26.2
710	Yorkton (Sask.)	1	187		
		2	108		

## ***Dissemination Area Reference Maps, by Census Division, for Areas Outside Census Metropolitan Areas and Census Agglomerations***

The set of Dissemination Area Reference Maps by Census Division<sup>6</sup> covers areas outside census metropolitan areas (CMAs) and census agglomerations (CAs). Each map in the set covers one census division (CD) and shows the boundaries and codes of dissemination areas within that CD. The maps also show the boundaries of census subdivisions, census metropolitan areas and census agglomerations, as well as urban areas and representative points for designated places. The maps include background information such as rivers, lakes, railroad tracks and provincial boundaries, and other significant features.

There are approximately 600 maps in this set—generally two maps per census division (see Table 5). Some maps include insets to show detail for the congested areas. These insets appear on the main map where possible, but in some cases they appear on a second map sheet. The maps vary in scale and size; the maximum dimensions are approximately 91 cm by 101 cm (36 inches by 40 inches). A reference guide is available (92F0146GIE).

**Note:** Dissemination area reference maps are also available by census tract for large urban centres—census metropolitan areas and census agglomerations (92F0146XCB, 92F0146XIB, 92F0146XPB) and by small urban centres—non-tracted census agglomerations (92F0147XCB, 92F0147XIB, 92F0147XPB). Together, the three sets of dissemination area maps cover all of Canada.

<b>Catalogue No.</b>	<b>Medium</b>	<b>Language</b>	<b>Price</b>
92F0148XIB01000	Internet	Bilingual	Free
92F0148XCB01000	CD-ROM	Bilingual	\$70 minimum
92F0148XPB01000	Print-on-demand	Bilingual	\$70 minimum

**Price Note:** The complete set of all reference maps for the 2001 Census is available on demand as PDF files on CD-ROM for \$250 (Catalogue No. 92F0172XCB). The minimum charge for custom orders is \$70. Contact the nearest regional office for details.

---

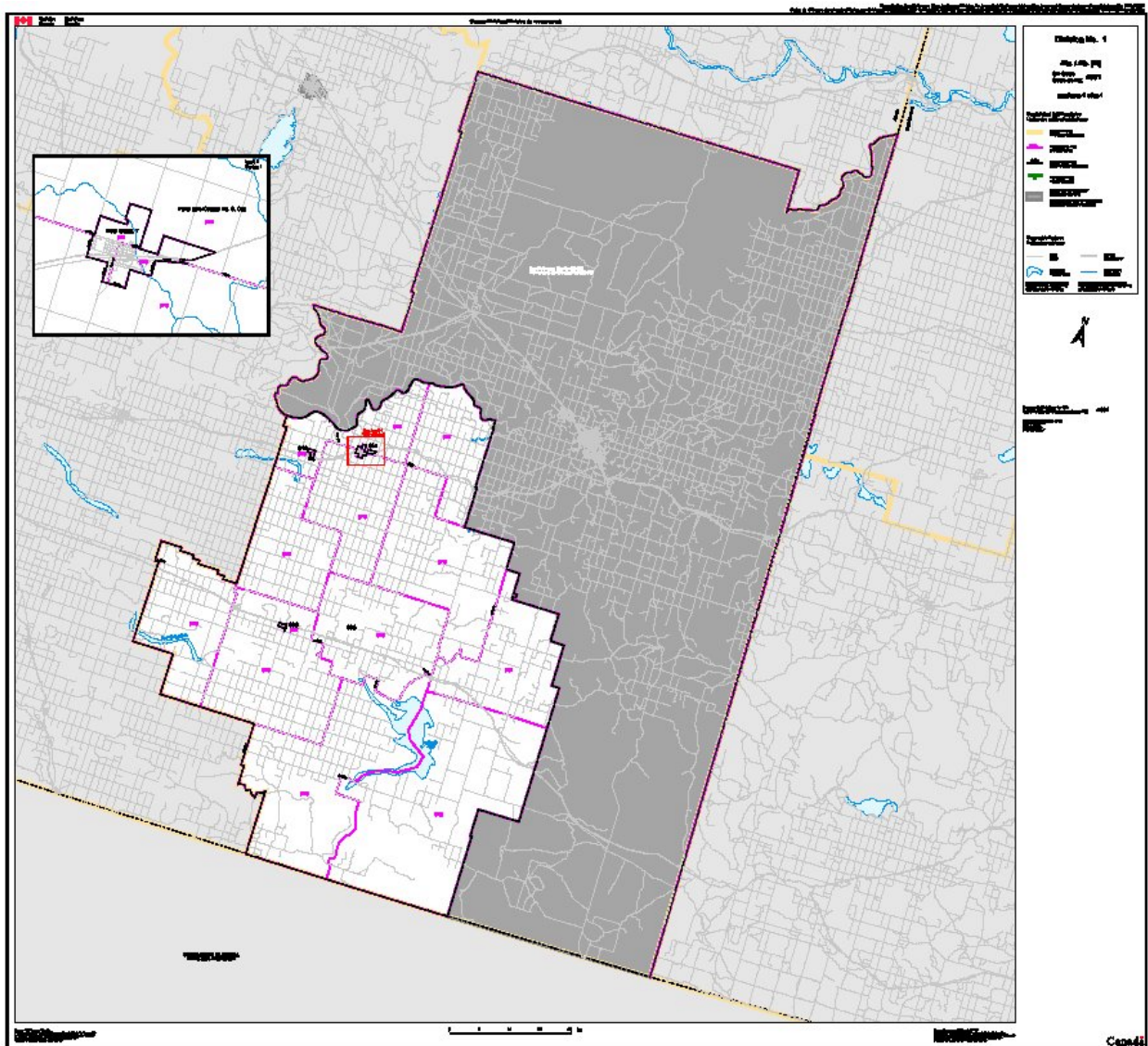
<sup>6</sup> For the 1996 Census, the set of maps similar to this was called Rural Enumeration Area (EA) Reference Maps.

**Table 5. Summary of Dissemination Area Reference Maps by Census Division, within each Province and Territory (Catalogue No: 92F0148XCB, 92F0148XIB, 92F0148XPB)<sup>7</sup>**

<b>Province/Territory</b>	<b>Number of Census Divisions</b>	<b>Number of PDF Files</b>	<b>Total Size of PDF Files (MB)</b>	<b>Maximum Map Dimensions</b>
Newfoundland and Labrador	10			
Prince Edward Island	3			
Nova Scotia	18			
New Brunswick	15			
Quebec	99			
Ontario	49			
Manitoba	23			
Saskatchewan	18			
Alberta	19			
British Columbia	28			
Yukon Territory	1			
Northwest Territories	2			
Nunavut	3			

<sup>7</sup> Some information was not available at the time of publication. The second edition of the Geography Catalogue will include complete details.

Figure 9. Example of a Dissemination Area Reference Map by Census Division



## Thematic Maps – 2001 Census

A thematic map shows the spatial distribution of one or more specific data themes for standard geographic areas. Thematic maps showing 2001 Census data can be viewed on the Internet ([www.statcan.ca](http://www.statcan.ca)) and downloaded for free (as PDF files).

The following maps of Canada are available.

- 100 Years of Change in Population Settlement  
(Animated file; Colour; map dimensions: 21.6 x 27.9 cm, 8.5 x 11 inches)
- Population Change, 1996 – 2001 by Provinces and Territories  
(3D; Colour; map dimensions: 21.6 x 27.9 cm, 8.5 x 11 inches)
- Population Change, 1996 – 2001 by Provinces and Territories  
(3D; Black and white; map dimensions: 21.6 x 27.9 cm, 8.5 x 11 inches)
- Population Change, 1996 – 2001 by 2001 Census Division and Population Ecumene  
(Colour; map dimensions: 21.6 x 27.9 cm, 8.5 x 11 inches)
- Population Change, 1996 – 2001 by 2001 Census Division and Population Ecumene  
(Black and white; map dimensions: 21.6 x 27.9 cm, 8.5 x 11 inches)
- Population Density 2001, by Dissemination Area  
(Colour; map dimensions: 21.6 x 27.9 cm, 8.5 x 11 inches)
- Population Density 2001, by Dissemination Area  
(Black and white; map dimensions: 21.6 x 27.9 cm, 8.5 x 11 inches)
- Statistical Area Classification, 2001  
(Colour; map dimensions: 91.4 x 76.2 cm, 36 x 30 inches)
- Statistical Area Classification, 2001  
(Colour; map dimensions: 21.6 x 27.9 cm, 8.5 x 11 inches)

In addition, thematic maps showing Population Change (1996 – 2001) by 2001 Census Tracts, for all census metropolitan areas are available. The maps are in colour and black and white (map dimensions: 21.6 x 27.9 cm, 8.5 x 11 inches) for the following census metropolitan areas (CMAs):

Abbotsford, B.C.	London, Ont.	St. Catharines – Niagara, Ont.
Calgary, Alta.	Montréal, Que.	St. John's, Nfld.Lab.
Chicoutimi – Jonquière, Que.	Oshawa, Ont.	Thunder Bay, Ont.
Edmonton, Alta.	Ottawa – Hull, Ont.	Toronto, Ont.
Greater Sudbury, Ont.	Québec, Que.	Trois-Rivières, Que.
Halifax, N.S.	Regina, Sask.	Vancouver, B.C.
Hamilton, Ont.	Saint John, N.B.	Victoria, B.C.
Kingston, Ont.	Saskatoon, Sask.	Windsor, Ont.
Kitchener, Ont.	Sherbrooke, Que.	Winnipeg, Man.

Catalogue No.	Title	Medium	Language	Price
92F0173XIE	Thematic Maps, 2001 Census	Internet	English	Free

## Geography Working Paper Series

The Geography Working Paper Series is intended to stimulate discussion on a variety of topics covering conceptual, methodological or technical work to support the development and dissemination of the division's data, products and services. Readers of the series are encouraged to contact the Geography Division with comments and suggestions.

The working papers are available for free on the Internet (<http://www.statcan.ca>). A print version is also available for a nominal charge.

Catalogue No.	Title	Medium	Language	Price
92F0138MIE	Geography Working Paper Series	Internet	English	Free
92F0138MPE	Geography Working Paper Series	Print	English	\$10

**Table 6. Titles in the Geography Working Paper Series\***

Catalogue Numbers	Title
92F0138MIE93001 92F0138MPE93001	A Comparison of Census Geographic Areas of Canada and the United States
92F0138MIE96001 92F0138MPE96001	Whither Land Area? A Case for Retaining the Status Quo for the 1996 Census
92F0138MIE98001 92F0138MPE98001	Automated Land Area Tests for the 2001 Census: Preliminary Results Using the 1996 Digital Cartographic Files
92F0138MIE00001 92F0138MPE00001	Census Metropolitan Area and Census Agglomeration Influenced Zones (MIZ) with Census Data
92F0138MIE00002 92F0138MPE00002	Census Metropolitan Area and Census Agglomeration Influence Zones (MIZ): A Description of the Methodology
92F0138MIE00003 92F0138MPE00003	Delineation of Canada's North: An Examination of the North-south Relationship in Canada
92F0138MIE00004 92F0138MPE00004	Introducing the Dissemination Area for the 2001 Census: an Update
92F0138MIE01001 92F0138MPE01001	Geographic Structures as Census Variables: Using Geography to Analyse Social and Economic Processes
92F0138MIE02001 92F0138MPE02001	Census Metropolitan Areas and Census Agglomerations with Census Tracts for the 2001 Census

\* as of March 2002



## Interim List of Changes to Municipal Boundaries, Status and Names

The Interim List is a report that provides a summary of changes to municipal boundaries, status and names. The list is produced on an annual basis for changes that occurred during the previous year.

The Geography Division of Statistics Canada processes the municipal changes that are based on information received through provincial/territorial gazettes, letters patent, and orders-in-council. The interim list may or may not include all those changes that have occurred within the given time period.

Catalogue No.	Medium	Language	Price
92F0009XPB	Print	Bilingual	\$25

## Standard Geographical Classification

The Standard Geographical Classification (SGC) is a system of names and codes representing areas of Canada. It consists of a three-tiered hierarchy – province or territory, census division and census subdivisions. This relationship is reflected in the seven-digit code. The SGC is used to identify information for particular geographical areas and to tabulate statistics.

Information about the 2001 SGC is organized into two volumes.

### ***Standard Geographical Classification. Volume I. The Classification***

*Volume I, The Classification*, is designed as a reference and coding manual. The classification volume contains tables of SGC units with their names and codes, related areas based upon the SGC and an alphabetical index of place names. It summarizes all changes occurring between 1996 and 2001 that impact directly upon the SGC.

Catalogue No.	Medium	Language	Price
12-571-XPB	Print	Bilingual	\$99

### ***Standard Geographical Classification. Volume II. Reference Maps***

*Volume II, Reference Maps*, shows the boundaries, names and codes of SGC areas. For information on ordering individual map sheets, see *Census Division and Census Subdivision Reference Maps* in this catalogue (92F0149XIB, 92F0149XCB, 92F0149XPB).

Catalogue No.	Medium	Language	Price
12-572-XPB	Print	Bilingual	\$99

## 2. Geographic Data Products

Geographic data products are those that contain 2001 Census population and dwelling counts.

### What's New

- Population and dwelling counts for most standard geographic areas are available free on the Internet beginning March 12, 2002.
- Internet population and dwelling count tables are dynamic, including sorting in ascending and descending order.
- The GeoSuite CD-ROM includes the "1996 Enumeration Area (EA) to 2001 Dissemination Area (DA) Correspondence List" as a separate flat ASCII file.
- GeoSearch automatically displays population and dwelling counts for the selected place.

### National Overview Tables, 2001 Census

The National Overview tables provide population and dwelling counts established by the 2001 Census of Canada. The levels of geography covered are Canada, provinces and territories, and other geographic areas including census subdivisions (municipalities), census metropolitan areas and census agglomerations. For selected geographies, the tables provide percentage change in the population between 1996 and 2001. Data are also provided for land area and population density. Geographic boundaries are those in effect on January 1, 2001.

Several options are available for accessing the National Overview tables:

- Free on the Internet under the census module beginning on March 12, 2002.
- Individual tables may be purchased from the Electronic Shelf (E-shelf) (see Table 7 for table titles).
- Tables are grouped into bundles for sale. Topic Bundle 1 - Geographic Areas and Statistical Classifications, includes E-shelf tables 1, 2, 3, 5, 8, 10, 11 and 12. Topic Bundle 2 - Urban and Rural, includes E-shelf tables 4, 5, 6, 7, 9 and 12. See Table 7 for E-shelf table titles.
- a print publication is available in Spring 2002

Catalogue No.	Title	Medium	Language	Price
Not applicable	National overview tables	Internet	English or French	Free
93F0050XDB01001 to 93F0050XDB01012	E-shelf	Diskette	Bilingual	\$60 per table
97F0001XCB01000	Topic Bundle 1 – Geographic Areas and Statistical Classifications	CD-ROM	Bilingual	\$70
97X0002XCB01000	Topic Bundle 2 – Urban and Rural	CD-ROM	Bilingual	\$70
93-360-XPB01000	A National Overview	Print	Bilingual	\$40

**Table 7. Summary of E-shelf tables for Population and Dwelling Counts, 2001 Census**

<b>Catalogue Number</b>	<b>Table No.</b>	<b>Table Title</b>
93F0050XDB01001	1	Population and Dwelling Counts, for Census Metropolitan Areas and Census Agglomerations, 2001 and 1996 Censuses – 100% Data
93F0050XDB01002	2	Population and Dwelling Counts, for Census Metropolitan Areas, Census Agglomerations and Component Census Subdivisions (Municipalities), 2001 and 1996 Censuses – 100% Data
93F0050XDB01003	3	Population and Dwelling Counts, for Census Divisions, Census Subdivisions (Municipalities) and Designated Places, 2001 and 1996 Censuses – 100% Data
93F0050XDB01004	4	Population Counts, for Census Metropolitan Areas and Census Agglomerations, by Urban Core, Urban Fringe, Rural Fringe, and Urban Areas, 2001 Census – 100% Data
93F0050XDB01005	5	Population and Dwelling Counts, for Urban Areas, 2001 Census – 100% Data
93F0050XDB01006	6	Population Counts, for Urban Areas Showing Census Subdivisions (Municipalities), 2001 Census – 100% Data
93F0050XDB01007	7	Population Counts, for Census Divisions and Census Subdivisions (Municipalities), by Urban and Rural, 2001 Census – 100% Data
93F0050XDB01008	8	Population and Dwelling Counts, for Federal Electoral Districts (1996 Representation Order), 2001 and 1996 Censuses – 100% Data
93F0050XDB01009	9	Population Counts, Showing Urban Population Size Groups and Rural Areas, for Census Divisions, 2001 Census – 100% Data
93F0050XDB01010	10	Population and Dwelling Counts, for Provinces and Territories, Census Divisions and Dissemination Areas, 2001 Census – 100% Data
93F0050XDB01011	11	Population and Dwelling Counts, for Census Metropolitan Areas, Census Agglomerations and Census Tracts, 2001 and 1996 Censuses – 100% Data
93F0050XDB01012	12	Population and Dwelling Counts, for Provinces and Territories, by the Statistical Area Classification, 2001 Census – 100% Data

## GeoSuite, 2001 Census

GeoSuite is a tool for data retrieval, query and tabular output, with software and data on a CD-ROM. GeoSuite allows users to explore the links between all standard levels of geography and to determine geographic codes, names, and population and dwelling counts. GeoSuite includes a dissemination area (DA) reference map listing that facilitates identification of appropriate DA reference maps.

**Note:** The GeoSuite CD-ROM includes the “1996 Enumeration Area (EA) to 2001 Dissemination Area (DA) Correspondence List” as separate a flat ASCII file. The GeoSuite CD-ROM also includes the Reference Guide as a PDF file. The Reference Guide describes the content and provides explanations of the various functions of the product, as well as installation instructions and other information.

### Computer Requirements:

- IBM-compatible microcomputer with a Pentium Class processor
- 32 Mb RAM required, 64 recommended
- Hard disk with 20 Mb for the application only; 150 Mb for full installation, including data
- SVGA monitor and graphics card (800 x 600, 256 colours, or better)
- CD-ROM drive
- Mouse or compatible pointing device

Catalogue No.	Medium	Language	Price
92F0150XCB01000	CD-ROM	Bilingual	\$60

Figure 10. View of GeoSuite 2001, Step 1: Name Search

**Step 1 of 4: Name Search**

Name:  Level:

Name	Code
Melbourne	2442075
Melfort	4714051
Melita	4605052
<b>Melocheville</b>	<b>2470060</b>

**2001 Census Info** | Geographic Levels | 1996 Census Info

CSD:  Prov/Terr:

UID:  Type:

Population:  Latitude:

Dwellings:  Longitude:

Land Area:  Km<sup>2</sup> Lambert X:

IR Refusal:  Lambert Y:

SAC Type:

## GeoSearch

GeoSearch is a new Internet tool that makes it easy to find any place in Canada, see it on a map, and get basic geographic and population and dwelling data for that place. To find a specific place of interest, users can click and zoom on a map of Canada or they can search by place name, street name, street intersection or postal code. GeoSearch finds and displays the appropriate map that shows boundaries and other features. GeoSearch also automatically displays population and dwelling counts for the selected place, and shows what kind of geographic area it is and its relationship to other geographic areas. The boundary layers displayed include dissemination area, census tract (where available), census subdivision, census division, census agglomeration, census metropolitan area, urban area, province and territory. GeoSearch is available to the public starting in March 2002. Go to the Census Geography area on the STC website.

Catalogue No.	Medium	Language	Price
97C0013	Internet	English	Free
97C0013	Internet	French	Free

Figure 11. View of GeoSearch on the Statistics Canada Website

The screenshot shows the GeoSearch interface on the Statistics Canada website. At the top, there is a navigation menu with links for 'Français', 'Contact Us', 'Help', 'Search', and 'Canada Site'. Below the menu, there is a search form with the following fields:

- Type: Place (dropdown menu)
- Place Name: [Text input field]
- Province / Territory: [Dropdown menu]
- Find: [Submit button]

The main content area displays a map of Canada with provincial and territorial boundaries. The map is titled 'Active boundary: Province/Territory (P/R/T)'. Below the map, there is a data box for 'Canada' with the following statistics:

Canada	
Population †	30,007,094
Total Private Dwellings †	12,548,588

At the bottom of the page, there is a small box with the text 'Canada' and a small icon.

## Postal Codes Counts, 1996 Census

**Note:** Postal code products for the 2001 Census are currently under review. The planned release for these products is in the fourth quarter of 2002. Until that time, postal codes products containing 1996 Census data will continue to be available.

**Postal Code Counts, 1996 Census** contains population and dwelling counts for all six character postal codes reported by respondents. The population and dwelling counts are provided by individual postal code, by forward sortation area (FSA - the first three character of the six-character postal code) and by province or territory. The data are provided with Windows-based software that enables users to perform simple data manipulations such as searching the data set for specific postal codes, importing groups of postal codes for which counts are required and exporting groupings of postal codes. Documentation and reference material are contained in electronic form on the CD-ROM.

Catalogue No.	Medium	Language	Price
92F0086XCB	CD-ROM	Bilingual	\$60

**Minimum Computer Requirements:** 486 33MHz or higher processor running MS Windows® version 3.1 or higher, or Windows NT® or Win95®; 12 MB RAM; VGA or higher-resolution monitor.

### 3. Spatial Information Products

Spatial information provides the shape and location of geographic features. The boundaries, road network and other features of standard geographic areas are available in digital form for mapping and geographic information system (GIS) applications. These products include Cartographic Boundary Files (CBFs), Road Network Files (RNFs) and Skeletal Road Network Files (SRNFs).

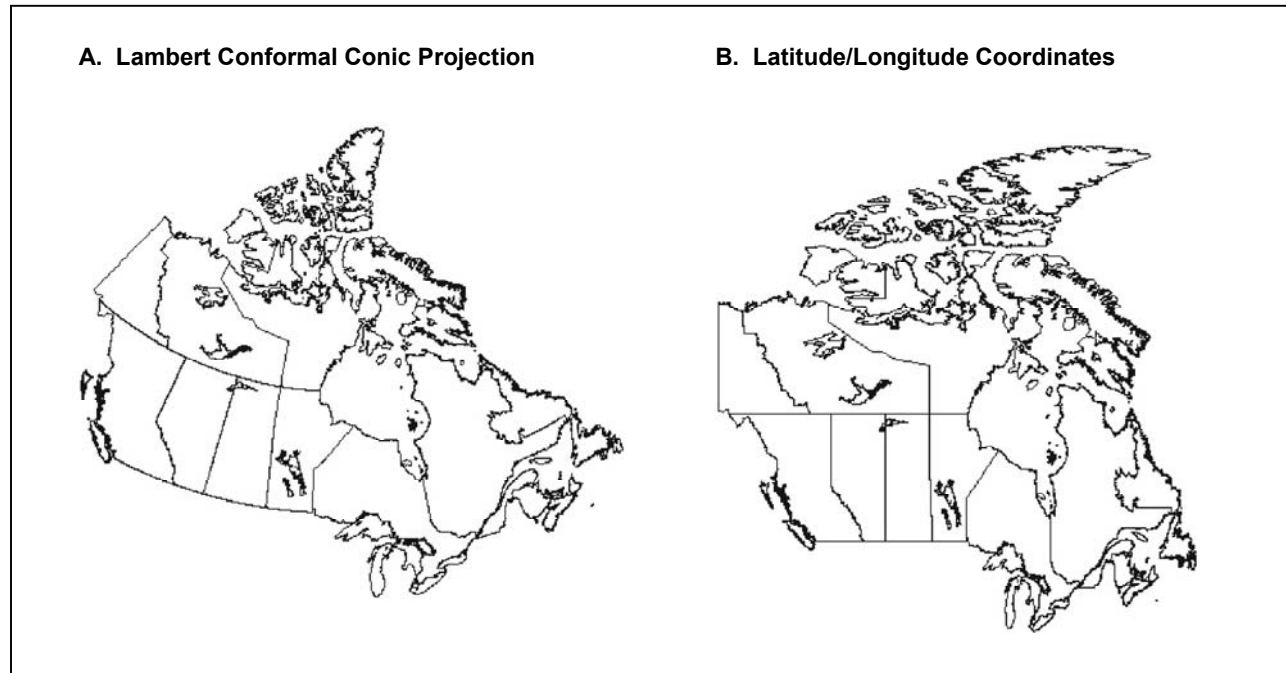
#### What's New

- Cartographic Boundary Files, Road Network Files and Skeletal Road Network Files are derived from the same new national geographic base and the roads are consistent with the boundaries.
- All the spatial information is now based on the North American Datum of 1983 (NAD83) instead of NAD27, which was used for previous censuses.
- Cartographic Boundary Files replace Digital Cartographic Files, and Digital Boundary Files are discontinued.
- Road Network Files, which cover all of Canada, replace Street Network Files, which covered only large urban centres in Canada.
- Skeletal Road Network Files cover all of Canada and contain selected roads ranked according to four levels of detail. They replace Skeletal Street Network Files that had only one level of detail and covered only large urban centres.
- There is a minimum charge of \$100 for Cartographic Boundary Files, Road Network Files and Skeletal Road Network Files.

Spatial data quality elements provide information on the fitness-for-use of a spatial database by describing why, when and how the data are created, and how accurate the data are. The elements include an overview describing the purpose and usage, as well as specific quality elements reporting on the lineage, positional accuracy, attribute accuracy, logical consistency and completeness. This information is provided to users for all spatial data products disseminated for the census.

**Note:** Although the spatial information products are disseminated in latitude/longitude coordinates (as a convenient way of transferring geographic data), maps should not be generated using these spherical coordinates as they are unprojected, resulting in a map that is distorted (see Figure 12). Users can convert the latitude/longitude coordinates to the desired map projection(s) using their GIS software. Users should also be aware that different spatial datasets can be in the same coordinate system or projection but not in the same datum, in which case the data will not be spatially coincident. Data overlay discrepancies will occur if spatial data from the 2001 Census, which are now based on NAD83, are overlaid with users' data that are based on NAD27.

**Figure 12. Example of a Map Projection and Unprojected Coordinates**



## **Cartographic Boundary Files (CBFs), 2001 Census**

Cartographic Boundary Files (CBFs) contain the boundaries of standard geographic areas together with the shoreline around Canada and the larger inland lakes, all integrated in a single layer. The coordinates are latitude/longitude and are based on the North American Datum of 1983 (NAD83). The Cartographic Boundary Files for 2001 replace the Digital Cartographic Files produced for the 1996 Census. A reference guide is included (92F0171GIE).

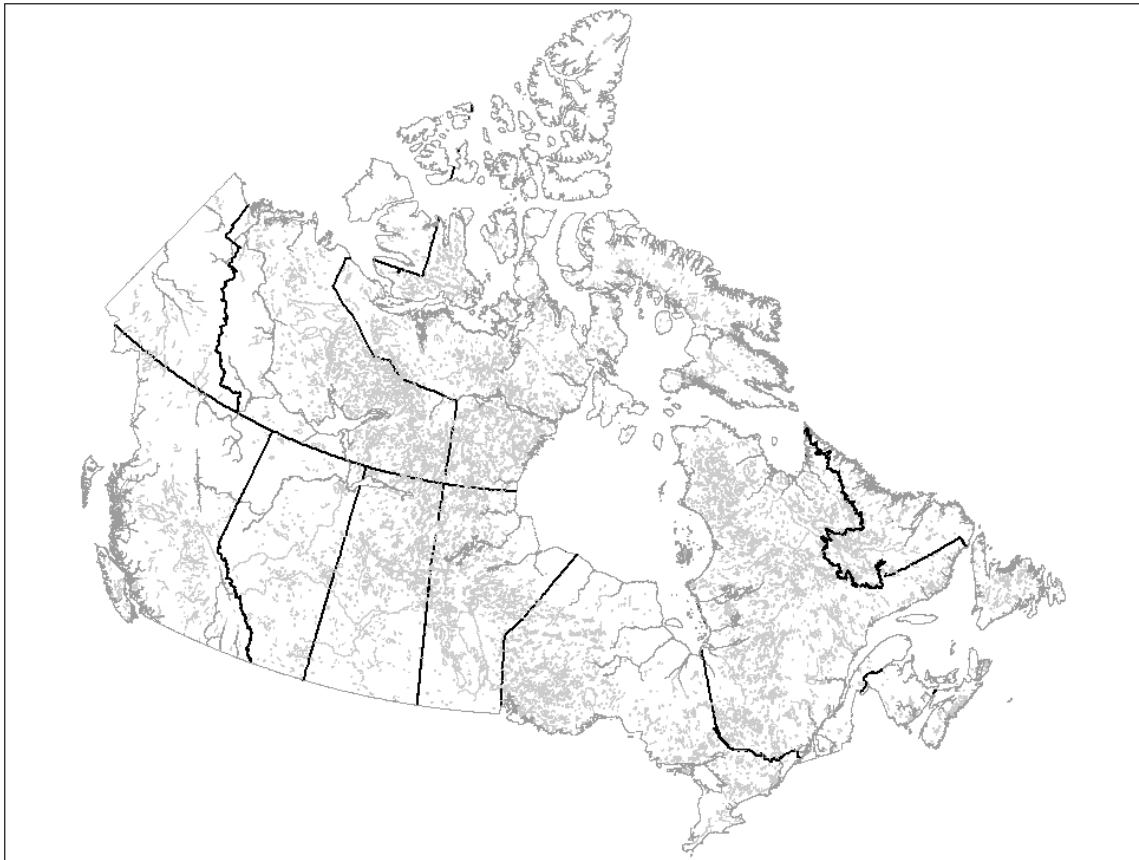
Cartographic Boundary Files can be used with Census of Population, Census of Agriculture or other Statistics Canada data for data analysis and thematic mapping (with appropriate software). Geographic codes provide the linkage between the statistical data and the geographic area boundaries. CBFs can also be used to create new geographic areas by aggregating standard geographic areas, and for other data manipulations available with the user's software. The CBFs can be used with the Road Network Files and Skeletal Road Network Files, which provide additional geographic context for mapping applications.

Prices and catalogue numbers vary by type of geographic boundary. See details under description of specific products and in Table 8. Figure 13 shows an example of a CBF. There are 200 CBFs offered as standard packages and custom orders are available on request. Contact the nearest regional office.

**Format:** ARC/INFO® Export, and MapInfo® Export for Windows (CBFs do not include software)



**Figure 13. Example of a Cartographic Boundary File (Provinces and Territories), 2001 Census**



***Provinces and Territories Cartographic Boundary File***

The Provinces and Territories Cartographic Boundary File contains the boundaries of the ten provinces and three territories that make up Canada. Provinces and territories are the major political units of Canada.

The Provinces and Territories Cartographic Boundary File is available as a standard package for Canada.

**Coordinates:** Latitude/Longitude (NAD83)

**Format:** ARC/INFO® Export, and MapInfo® Export for Windows

<b>Catalogue No.</b>	<b>Medium</b>	<b>Language</b>	<b>Price</b>
92F0160XCE01000	CD-ROM	English	\$60
92F0160XCF01000	CD-ROM	French	\$60

## ***Federal Electoral Districts (1996 Representation Order) Cartographic Boundary File***

The Federal Electoral Districts Cartographic Boundary File for Canada contains the boundaries of all 301 federal electoral districts for the 2001 Census. A federal electoral district (FED) is an area represented by a member of the House of Commons. The FED boundaries used for the 2001 Census are based on the 1996 Representation Order.

The Federal Electoral Districts (1996 Representation Order) Cartographic Boundary File is available as a standard package for Canada.

**Note:** The Federal Electoral Districts (1996 Representation Order) Digital Cartographic File (Catalogue No. 92F0031XDE) that was released for the 1996 Census is not compatible with the current Federal Electoral Districts (1996 Representation Order) Cartographic Boundary File for the 2001 Census. However, the current version is compatible with the roads in the Road Network File.

**Coordinates:** Latitude/Longitude (NAD83)

**Format:** ARC/INFO® Export, and MapInfo® Export for Windows

Catalogue No.	Medium	Language	Price
92F0163XCE01000	CD-ROM	English	\$100
92F0163XCF01000	CD-ROM	French	\$100

## ***Census Divisions and Economic Regions Cartographic Boundary File***

The Census Divisions Cartographic Boundary File for Canada contains the boundaries of all 288 census divisions for the 2001 Census. The Economic Regions Cartographic Boundary File for Canada contains the boundaries of all 76 economic regions for the 2001 Census.

A census division (CD) is a unit of regional government (such as a county or regional district) or an area treated as equivalent for statistical purposes. A CD is usually made up of a number of adjacent municipalities. An economic region (ER) is a grouping of complete census divisions (with one exception in Ontario) created as a standard geographic unit for analysis of regional economic activity.

The Census Divisions and Economic Regions Cartographic Boundary File is available as a standard package for Canada.

**Coordinates:** Latitude/Longitude (NAD83)

**Format:** ARC/INFO® Export, and MapInfo® Export for Windows

Catalogue No.	Medium	Language	Price
92F0161XCE01000	CD-ROM	English	\$100
92F0161XCF01000	CD-ROM	French	\$100

## **Census Consolidated Subdivisions Cartographic Boundary Files**

The Census Consolidated Subdivisions Cartographic Boundary File for Canada contains the boundaries of all 2,446 census consolidated subdivisions for the 2001 Census. A census consolidated subdivision (CCS) is a grouping of adjacent census subdivisions (municipalities) used primarily for disseminating Census of Agriculture data. The Census Consolidated Subdivisions (CCS) Cartographic Boundary Files are available as standard packages for Canada, the provinces and territories.

**Coordinates:** Latitude/Longitude (NAD83)

**Format:** ARC/INFO® Export, and MapInfo® Export for Windows

<b>Catalogue No.</b>	<b>Medium</b>	<b>Language</b>	<b>Price</b>
92F0167XCE01000	CD-ROM	English	\$500
92F0167XCF01000	CD-ROM	French	\$500

**Price Note:** The price for individual provinces and territories is \$100 each.

## **Census Subdivisions Cartographic Boundary Files**

The Census Subdivisions Cartographic Boundary File for Canada contains the boundaries of all 5,600 census subdivisions (CSDs) for the 2001 Census. A census subdivision is a municipality or an area treated as equivalent to a municipality for statistical purposes (for example, Indian reserves and unorganized territories). The Census Subdivisions (CSDs) Cartographic Boundary Files are available as standard packages for Canada, the provinces and territories, census metropolitan areas and census agglomerations with census tracts.

**Note:** Each CSD includes an attribute showing its classification according to the Statistical Area Classification (SAC). Under the SAC, each CSD is a component of a census metropolitan area, a census agglomeration, a census metropolitan area and census agglomeration influenced zone (strongly influenced, moderately influenced, weakly influenced or not influenced), or a component of the territories (Nunavut, Northwest Territories and Yukon Territory).

**Coordinates:** Latitude/Longitude (NAD83)

**Format:** ARC/INFO® Export, and MapInfo® Export for Windows

<b>Catalogue No.</b>	<b>Medium</b>	<b>Language</b>	<b>Price</b>
92F0162XCE01000	CD-ROM	English	\$1,200
92F0162XCF01000	CD-ROM	French	\$1,200

### **Price Notes:**

The price for individual provinces and territories ranges from \$100 to \$400. The price for individual census metropolitan areas (CMAs) or tracted census agglomerations (CAs) is \$100 each. See Table 8 for details.

### ***Designated Places Cartographic Boundary File***

The Designated Places Cartographic Boundary File for Canada contains the boundaries of all 1,261 designated places for the 2001 Census. A designated place (DPL) is usually a small community that does not meet the criteria used to define municipalities or urban areas. DPLs may straddle census subdivision (CSD) boundaries.

The Designated Places Cartographic Boundary File contains two layers. One layer shows the whole boundaries for the DPLs, and one layer shows the boundary parts for those DPLs that straddle census subdivision boundaries (82 DPLs straddle two or more census subdivisions). The Designated Places Cartographic Boundary File is available as a standard package for Canada.

**Coordinates:** Latitude/Longitude (NAD83)

**Format:** ARC/INFO® Export, and MapInfo® Export for Windows

Catalogue No.	Medium	Language	Price
92F0165XCE01000	CD-ROM	English	\$100
92F0165XCF01000	CD-ROM	French	\$100

### ***Census Metropolitan Areas/Census Agglomerations Cartographic Boundary File***

The Census Metropolitan Areas and Census Agglomerations Cartographic Boundary File contains the boundaries of the 27 census metropolitan areas and 113 census agglomerations for the 2001 Census. Census metropolitan areas (CMAs) and census agglomerations (CAs) consist of one or more adjacent municipalities (census subdivisions) around an urban core. To form a CMA, the urban core must have a population of at least 100,000. To form a CA, the urban core must have a population of at least 10,000. The Census Metropolitan Areas and Census Agglomerations Cartographic Boundary File is available as a standard package for Canada.

**Coordinates:** Latitude/Longitude (NAD83)

**Format:** ARC/INFO® Export, and MapInfo® Export for Windows

Catalogue No.	Medium	Language	Price
92F0166XCE01000	CD-ROM	English	\$100
92F0166XCF01000	CD-ROM	French	\$100

## ***Census Tracts Cartographic Boundary Files***

The Census Tracts Cartographic Boundary File for Canada contains boundaries for 4,798 census tracts, according to the 27 census metropolitan areas (CMAs) and 19 census agglomerations (CAs) in which they are located. The hydrography detail within these large urban centres makes the Census Tract CBFs suitable for mapping at small to medium scales. Census tracts (CTs) are small, relatively stable areas within large urban centres (all census metropolitan areas, and census agglomerations with an urban core population of 50,000 or more).

The Census Tracts Cartographic Boundary Files are available as standard packages for Canada, the provinces and territories, census metropolitan areas and census agglomerations with census tracts.

**Coordinates:** Latitude/Longitude (NAD83)

**Format:** ARC/INFO® Export, and MapInfo® Export for Windows

<b>Catalogue No.</b>	<b>Medium</b>	<b>Language</b>	<b>Price</b>
92F0168XCE01000	CD-ROM	English	\$900
92F0168XCF01000	CD-ROM	French	\$900

### **Price notes:**

The price for all census metropolitan areas (CMAs) and tracted census agglomerations (CAs) within individual provinces ranges from \$100 to \$600. The price for individual CMAs or CAs ranges from \$100 to \$250. See Table 8 for details.

When ordering all CMA/CA files for the province of Quebec, the Ontario part of the Ottawa – Hull CMA is excluded, and the reverse is true when ordering all CMA/CA files for Ontario (the Quebec part is excluded). When ordering the Ottawa – Hull CMA file, both the Ontario and Quebec parts are included.

## ***Urban Areas Cartographic Boundary File***

The Urban Areas Cartographic Boundary File for Canada contains the boundaries of 913 urban areas defined for the 2001 Census. An urban area (UA) has a minimum population concentration of 1,000 persons and a population density of at least 400 persons per square kilometre, based on the current census population count. The Urban Areas Cartographic Boundary File is available as a standard package for Canada.

**Coordinates:** Latitude/Longitude (NAD83)

**Format:** ARC/INFO® Export, and MapInfo® Export for Windows

<b>Catalogue No.</b>	<b>Medium</b>	<b>Language</b>	<b>Price</b>
92F0164XCE01000	CD-ROM	English	\$100
92F0164XCF01000	CD-ROM	French	\$100

## Dissemination Areas Cartographic Boundary Files

The Dissemination Areas Cartographic Boundary File for Canada contains the boundaries of dissemination areas for the 2001 Census. A dissemination area (DA) is a small area composed of one or more neighbouring blocks. DAs cover all of Canada and replace enumeration areas (EAs) as the smallest standard geographic areas for which all census data are disseminated. The Dissemination Areas Cartographic Boundary Files are available as standard packages for Canada, the provinces and territories, census metropolitan areas and census agglomerations with census tracts.

**Coordinates:** Latitude/Longitude (NAD83)

**Format:** ARC/INFO® Export, and MapInfo® Export for Windows

Catalogue No.	Medium	Language	Price
92F0169XCE01000	CD-ROM	English	\$9,800
92F0169XCF01000	CD-ROM	French	\$9,800

### Price notes:

The price for individual provinces or territories ranges from \$100 to \$3,500. The price for individual census metropolitan areas (CMAs) or tracted census agglomerations (CAs) ranges from \$100 to \$1,400. See Table 8 for details.

**Table 8. Summary of Prices for Census Subdivisions, Census Tracts, and Dissemination Areas Cartographic Boundary Files available for Canada, Provinces and Territories, and Census Metropolitan Areas and Census Agglomerations**

Coverage	Census Subdivisions	Census Tracts	Dissemination Areas
	92F0162XCE 92F0162XCF	92F0168XCE 92F0168XCF	92F0169XCE 92F0169XCF
<b>CANADA</b>	<b>\$1,200</b>	<b>\$900</b>	<b>\$9,800</b>
<b>Newfoundland and Labrador</b>	<b>\$100</b>	<b>\$100</b>	<b>\$300</b>
St. John's (CMA)	\$100	\$100	\$100
<b>Prince Edward Island</b>	<b>\$100</b>	...	<b>\$100</b>
<b>Nova Scotia</b>	<b>\$100</b>	<b>\$100</b>	<b>\$300</b>
Halifax (CMA)	\$100	\$100	\$200
<b>New Brunswick</b>	<b>\$100</b>	<b>\$100</b>	<b>\$300</b>
Moncton (CA)	\$100	\$100	\$100
Saint John (CMA)	\$100	\$100	\$100
<b>Quebec</b>	<b>\$400</b>	<b>\$500</b>	<b>\$2,300</b>
Chicoutimi – Jonquière (CMA)	\$100	\$100	\$150
Drummondville (CA)	\$100	\$100	\$100
Granby (CA)	\$100	\$100	\$100
Montréal (CMA)	\$100	\$250	\$1,150
Québec (CMA)	\$100	\$100	\$300
Saint-Jean-sur-Richelieu (CA)	\$100	\$100	\$100
Sherbrooke (CMA)	\$100	\$100	\$100
Trois-Rivières (CMA)	\$100	\$100	\$100
<b>Ontario</b>	<b>\$200</b>	<b>\$600</b>	<b>\$3,500</b>
Barrie (CA)	\$100	\$100	\$100

Coverage	Census Subdivisions 92F0162XCE 92F0162XCF	Census Tracts 92F0168XCE 92F0168XCF	Dissemination Areas 92F0169XCE 92F0169XCF
Belleville (CA)	\$100	\$100	\$100
Brantford (CA)	\$100	\$100	\$100
Greater Sudbury (CMA)	\$100	\$100	\$100
Guelph (CA)	\$100	\$100	\$100
Hamilton (CMA)	\$100	\$100	\$300
Kingston (CMA)	\$100	\$100	\$100
Kitchener (CMA)	\$100	\$100	\$200
London (CMA)	\$100	\$100	\$200
North Bay (CA)	\$100	\$100	\$100
Oshawa (CMA)	\$100	\$100	\$150
Ottawa – Hull (CMA)	\$100	\$100	\$400
Peterborough (CA)	\$100	\$100	\$100
Sarnia (CA)	\$100	\$100	\$100
Sault Ste. Marie (CA)	\$100	\$100	\$100
St. Catharines – Niagara (CMA)	\$100	\$100	\$200
Thunder Bay (CMA)	\$100	\$100	\$100
Toronto (CMA)	\$100	\$250	\$1,400
Windsor (CMA)	\$100	\$100	\$150
<b>Manitoba</b>	<b>\$100</b>	<b>\$100</b>	<b>\$500</b>
Winnipeg (CMA)	\$100	\$100	\$300
<b>Saskatchewan</b>	<b>\$250</b>	<b>\$150</b>	<b>\$600</b>
Regina (CMA)	\$100	\$100	\$150
Saskatoon (CMA)	\$100	\$100	\$150
<b>Alberta</b>	<b>\$100</b>	<b>\$150</b>	<b>\$1,050</b>
Calgary (CMA)	\$100	\$100	\$350
Edmonton (CMA)	\$100	\$100	\$350
Lethbridge (CA)	\$100	\$100	\$100
Medicine Hat (CA)	\$100	\$100	\$100
Red Deer (CA)	\$100	\$100	\$100
<b>British Columbia</b>	<b>\$150</b>	<b>\$200</b>	<b>\$1,450</b>
Abbotsford (CMA)	\$100	\$100	\$100
Kamloops (CA)	\$100	\$100	\$100
Kelowna (CA)	\$100	\$100	\$100
Nanaimo (CA)	\$100	\$100	\$100
Prince George (CA)	\$100	\$100	\$100
Vancouver (CMA)	\$100	\$150	\$700
Victoria (CMA)	\$100	\$100	\$200
<b>Yukon</b>	<b>\$100</b>	...	<b>\$100</b>
<b>Northwest Territories</b>	<b>\$100</b>	...	<b>\$100</b>
<b>Nunavut</b>	<b>\$100</b>	...	<b>\$100</b>

**Note:** The minimum charge for any Cartographic Boundary File is \$100.

## Population Ecumene Census Division Boundary File, 2001 Census

The Population Ecumene Census Division Boundary File contains a generalised population ecumene based on 2001 Census population density data with at least one ecumene polygon for every census division (see Figure 14). When ecumene boundaries are used for dot and choropleth mapping, they give a more accurate depiction of the spatial distribution of data within standard geographic areas.

The Population Ecumene Census Division Boundary File is available as a standard package for Canada free on the Internet or it can be purchased on CD-ROM through the nearest regional office.

This file is **not** a Cartographic Boundary File and it has its own reference guide (92F0159GIE).

**Coordinates:** Latitude/longitude (NAD83).

**Format:** ARC/INFO® Export, and MapInfo® Export for Windows

Catalogue No.	Medium	Language	Price
92F0159XIE01000	Internet	English	Free
92F0159XIF01000	Internet	French	Free
92F0159XCE01000	CD-ROM	English	\$100
92F0159XCF01000	CD-ROM	French	\$100

**Figure 14. Population Ecumene Census Division Boundary File, 2001 Census**





## Forward Sortation Areas Boundary File

**Note:** Postal code products for the 2001 Census are currently under review. The planned release for these products is in the fourth quarter of 2002. Until that time, postal code products containing 1996 Census data will continue to be available.

The **1996 Census Forward Sortation Areas Digital Cartographic File** is available as a standard package for Canada. It depicts forward sortation area (FSA) boundaries derived from postal codes captured from the 1996 Census questionnaires. Through analysis of the postal codes reported by census households, a single FSA was assigned to each enumeration area (most often the FSA reported by the largest number of census households). FSA polygons were formed by grouping enumeration areas. Therefore, the Census based FSA boundaries are not equivalent to FSA boundaries in use by Canada Post, but are representations created from enumeration areas.

**Coordinates:** Latitude/Longitude (NAD27)

**Format:** ARC/INFO® Export, and MapInfo® Export for Windows

Catalogue No.	Medium	Language	Price
92F0039XDE	Diskette	English	\$400
92F0039XDF	Diskette	French	\$400

## Road Network Files (RNF), 2001 Census

Road Network Files (RNFs) contain a road layer for the entire country and a province/territory boundary layer. The road layer includes roads, with road names and address ranges (arc attributes), and geographic codes to identify blocks, census subdivisions, census metropolitan areas/census agglomerations, and provinces/territories (polygon attributes). Address ranges are mainly available in the large urban centres of Canada. The province/territory boundary layer incorporates hydrography (the shoreline around Canada and the larger inland lakes) with the boundaries and the geographic codes. The digital coordinates are in latitude/longitude and are based on the North American Datum of 1983 (NAD83).

Road Network Files are available for Canada, for individual provinces and territories, and for census metropolitan areas (CMAs) and those census agglomerations (CAs) with census tracts. A reference guide is included (92F0157GIE).

Road Network Files are maintained to support census and other Statistics Canada activities and therefore topological accuracy takes precedence over absolute positional accuracy. Thus the positional accuracy of the RNFs does not support cadastral, surveying or engineering applications. RNFs can be used with Cartographic Boundary Files to provide additional geographic reference information.

**Note:** The Road Network Files replace the Street Network Files (SNFs), which were a similar product previously available only for the large urban centres of Canada. RNFs contain more roads, road names and address ranges than SNFs.

**Coordinates:** Latitude/Longitude (NAD83)

**Format:** ARC/INFO® Export, and MapInfo® Export for Windows

Catalogue No.	Medium	Language	Price
92F0157XCE01000	CD-ROM	English	\$25,000
92F0157XCF01000	CD-ROM	French	\$25,000

**Price notes:** The price for individual provinces or territories ranges from \$100 to \$9,800. The price for individual census metropolitan areas (CMAs) or tracted census agglomerations (CAs) ranges from \$150 to \$3,300. See Table 9 for details.

## Skeletal Road Network Files (SRNF), 2001 Census

The Skeletal Road Network Files contain selected roads (with road names, but no addresses) that are derived from Road Network Files (Catalogue No. 92F0157XCE). The selected roads are ranked according to four levels of detail (see Figure 15). The different levels of detail are suitable for mapping at small to medium scales. The SRNF can be used to provide some cartographic reference features when producing thematic maps with the Cartographic Boundary Files. The positional accuracy of the SRNF does not support cadastral, surveying or engineering applications. The SRNF does not include hydrography.

The Skeletal Road Network Files are available for Canada, provinces and territories, and census metropolitan areas (CMAs) and tracted census agglomerations (CAs). A reference guide is included (92F0158GIE).

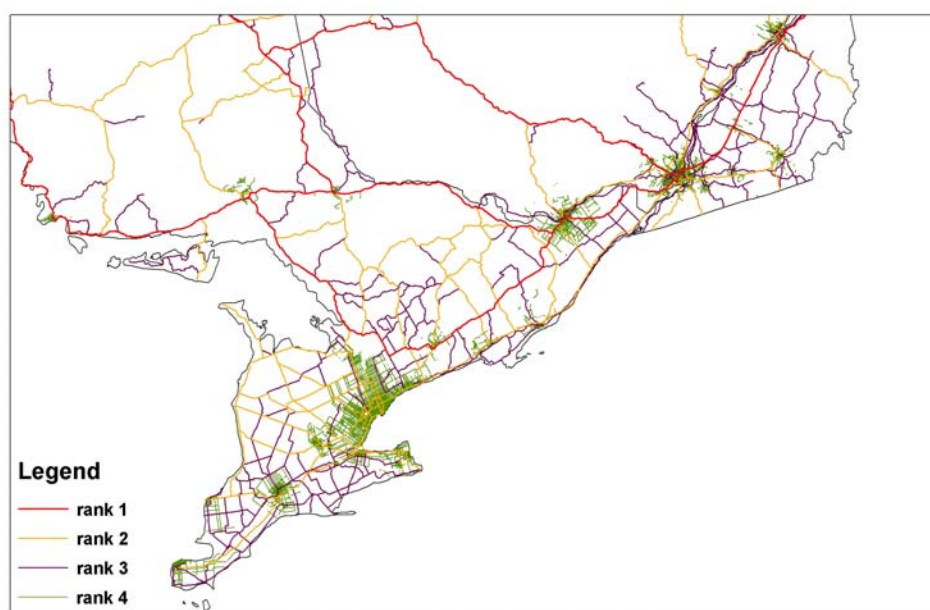
**Coordinates:** Latitude/Longitude (NAD83).

**Format:** ARC/INFO® Export, and MapInfo® Export for Windows

Catalogue No.	Medium	Language	Price
92F0158XCE01000	CD-ROM	English	\$2,900
92F0158XCF01000	CD-ROM	French	\$2,900

**Price notes:** The price for individual provinces or territories ranges from \$100 to \$800. The price for individual census metropolitan areas (CMAs) or tracted census agglomerations (CAs) ranges from \$100 to \$250. See Table 9 for details.

**Figure 15. Part of Skeletal Road Network File\*, showing southern Ontario and Quebec with Road Ranks 1, 2, 3 and 4**



\* The Skeletal Road Network Files do not include hydrography. A separate hydrography layer is shown in Figure 15 for cartographic display purposes only.

**Table 9. Summary of Prices for Road Network Files and Skeletal Road Network Files available for Canada, Provinces and Territories, and Census Metropolitan Areas and Census Agglomerations**

Coverage	Road Network Files 92F0157XCE, 92F0157XCF	Skeletal Road Network Files 92F0158XCE, 92F0158XCF
<b>CANADA</b>	<b>\$25,000</b>	<b>\$2,900</b>
<b>Newfoundland and Labrador</b>	<b>\$900</b>	<b>\$100</b>
St. John's (CMA)	\$300	\$100
<b>Prince Edward Island</b>	<b>\$250</b>	<b>\$100</b>
<b>Nova Scotia</b>	<b>\$1,550</b>	<b>\$150</b>
Halifax (CMA)	\$700	\$100
<b>New Brunswick</b>	<b>\$1,300</b>	<b>\$150</b>
Moncton (CA)	\$300	\$100
Saint John (CMA)	\$400	\$100
<b>Quebec</b>	<b>\$7,700</b>	<b>\$600</b>
Chicoutimi – Jonquière (CMA)	\$300	\$100
Drummondville (CA)	\$250	\$100
Granby (CA)	\$200	\$100
Montréal (CMA)	\$3,300	\$300
Québec (CMA)	\$1,000	\$150
Saint-Jean-sur-Richelieu (CA)	\$200	\$100
Sherbrooke (CMA)	\$350	\$100
Trois-Rivières (CMA)	\$300	\$100
<b>Ontario</b>	<b>\$9,800</b>	<b>\$800</b>
Barrie (CA)	\$250	\$100
Belleville (CA)	\$250	\$100
Brantford (CA)	\$150	\$100
Greater Sudbury (CMA)	\$350	\$100
Guelph (CA)	\$200	\$100
Hamilton (CMA)	\$650	\$100
Kingston (CMA)	\$300	\$100
Kitchener (CMA)	\$450	\$100
London (CMA)	\$500	\$100
North Bay (CA)	\$200	\$100
Oshawa (CMA)	\$350	\$100
Ottawa – Hull (CMA)	\$1,250	\$150
Peterborough (CA)	\$250	\$100
Sarnia (CA)	\$200	\$100
Sault Ste. Marie (CA)	\$200	\$100
St. Catharines – Niagara (CMA)	\$650	\$100
Thunder Bay (CMA)	\$250	\$100
Toronto (CMA)	\$2,800	\$250
Windsor (CMA)	\$450	\$100
<b>Manitoba</b>	<b>\$1,800</b>	<b>\$200</b>
Winnipeg (CMA)	\$800	\$150
<b>Saskatchewan</b>	<b>\$3,300</b>	<b>\$200</b>
Regina (CMA)	\$400	\$100
Saskatoon (CMA)	\$450	\$100

Coverage	Road Network Files 92F0157XCE, 92F0157XCF	Skeletal Road Network Files 92F0158XCE, 92F0158XCF
<b>Alberta</b>	<b>\$3,850</b>	<b>\$350</b>
Calgary (CMA)	\$1,100	\$150
Edmonton (CMA)	\$1,350	\$150
Lethbridge (CA)	\$150	\$100
Medicine Hat (CA)	\$300	\$100
Red Deer (CA)	\$150	\$100
<b>British Columbia</b>	<b>\$4,550</b>	<b>\$350</b>
Abbotsford (CMA)	\$250	\$100
Kamloops (CA)	\$300	\$100
Kelowna (CA)	\$300	\$100
Nanaimo (CA)	\$300	\$100
Prince George (CA)	\$300	\$100
Vancouver (CMA)	\$1,800	\$200
Victoria (CMA)	\$450	\$100
<b>Yukon</b>	<b>\$200</b>	<b>\$100</b>
<b>Northwest Territories</b>	<b>\$200</b>	<b>\$100</b>
<b>Nunavut</b>	<b>\$100</b>	...

**Note:** The minimum charge for any Road Network File or Skeletal Road Network File is \$100.

## 4. Attribute Information Products

Attribute information products include the Postal Code Conversion File (PCCF) and the Postal Code by Federal Ridings File (PCFRF).

### What's New

- Postal code products for the 2001 Census are currently under review. The planned release for these products is in the fourth quarter of 2002. Until that time, postal code products containing 1996 Census data will continue to be available.
- The Block-face Data File (BFDF) is discontinued for 2001.

### Postal Code Conversion File (PCCF)

The Postal Code Conversion File (PCCF) provides a link between six-character postal code and standard 1996 Census geographic areas (such as enumeration areas, municipalities, census tracts). It also provides the x,y (latitude/longitude) coordinates for a point representing the approximate location of the postal code to support mapping.

The PCCF is available as standard packages for Canada, the provinces and territories, census metropolitan areas (CMAs) and some census agglomerations (CAs). A reference guide is included.

**Coordinates:** Latitude/Longitude (NAD27)

**Format:** flat ASCII file

Catalogue No.	Medium	Language	Initial Price
92F0027XCB	CD-ROM	Bilingual	\$9,000
92F0027XDB	Diskette	Bilingual	\$9,000

#### Price notes:

The price for individual provinces or territories ranges from \$200 to \$3,550. The price for individual census metropolitan areas (CMAs) or census agglomerations (CAs) ranges from \$200 to \$1,450. See Table 10 for details.

Clients who purchase the PCCF at the initial price may purchase updates at a reduced flat rate or a subscription rate. For details, see Postal Code Conversion File – Update (Catalogue No. 92F0027UCB).

### Postal Code Conversion File (PCCF) – Update

The Postal Code Conversion File (PCCF) is updated with new postal codes on a semi-annual basis and is available in January and July. Clients must purchase the Postal Code Conversion File at the initial price; then subsequent updated files (92F0027UDB) may be purchased at the update or subscription rate. The update rate is a flat rate that in most cases is much lower than the initial purchase price. An additional 25% discount on updates is given to PCCF update subscribers. The subscription requires clients to pay in advance for at least one updated file per year until the PCCF reflecting the geography of the 2001 Census is released.

The PCCF Updates are available as standard packages for Canada and the provinces and territories. A reference guide is included.

**Coordinates:** Latitude/Longitude (NAD27)

**Format:** flat ASCII file

Catalogue No.	Medium	Language	Single Update Price	Subscription Update Price
92F0027UCB	CD-ROM	Bilingual	\$1,500	\$1,125
92F0027UDB	Diskette	Bilingual	\$1,500	\$1,125

**Price notes:** The single update price for individual provinces or territories ranges from \$100 to \$600. The subscription update price for individual provinces or territories ranges from \$75 to \$450. See Table 10 for details.

**Table 10. Summary of Prices for 1996 Census PCCF, PCCF Updates and PCCF Subscription Rates, Available for Canada, Provinces and Territories, Census Metropolitan Areas (CMA) and Census Agglomerations (CA)**

Coverage	PCCF (92F0027XDB, 92F0027XCB)	PCCF Updates (92F0027UDB, 92F0027UCB)	PCCF Subscription Rates
<b>CANADA</b>	<b>\$9,000</b>	<b>\$1,500</b>	<b>\$1,125</b>
<b>Newfoundland and Labrador</b>	<b>\$200</b>	<b>\$100</b>	<b>\$75</b>
St. John's (CMA)	\$200		
<b>Prince Edward Island</b>	<b>\$200</b>	<b>\$100</b>	<b>\$75</b>
<b>Nova Scotia</b>	<b>\$450</b>	<b>\$100</b>	<b>\$75</b>
Halifax (CMA)	\$200		
<b>New Brunswick</b>	<b>\$350</b>	<b>\$100</b>	<b>\$75</b>
Fredericton (CA)	\$200		
Moncton (CA)	\$200		
Saint John (CMA)	\$200		
<b>Quebec</b>	<b>\$2,500</b>	<b>\$400</b>	<b>\$300</b>
Chicoutimi – Jonquièrre (CMA)	\$200		
Montréal (CMA)	\$1,300		
Québec (CMA)	\$500		
Saint-Jean-sur-Richelieu (CA)	\$200		
Sherbrooke (CMA)	\$200		
Trois-Rivières (CMA)	\$200		
<b>Ontario</b>	<b>\$3,550</b>	<b>\$600</b>	<b>\$450</b>
Barrie (CA)	\$200		
Belleville (CA)	\$200		
Brantford (CA)	\$200		
Guelph (CA)	\$200		
Hamilton (CMA)	\$400		
Kingston (CMA)	\$200		
Kitchener (CA)	\$250		
London (CMA)	\$250		
North Bay (CA)	\$200		
Oshawa (CMA)	\$200		

Coverage	PCCF (92F0027XDB, 92F0027XCB)	PCCF Updates (92F0027UDB, 92F0027UCB)	PCCF Subscription Rates
Ottawa – Hull (CMA)	\$600		
Peterborough (CA)	\$200		
Sarnia (CA)	\$200		
Sault Ste. Marie (CA)	\$200		
St. Catharines – Niagara (CMA)	\$300		
Stratford (CA)	\$200		
Sudbury (CMA)	\$200		
Thunder Bay (CMA)	\$200		
Toronto (CMA)	\$1,450		
Windsor (CMA)	\$200		
Woodstock (CA)	\$200		
<b>Manitoba</b>	<b>\$500</b>	<b>\$100</b>	<b>\$75</b>
Winnipeg (CMA)	\$400		
<b>Saskatchewan</b>	<b>\$500</b>	<b>\$100</b>	<b>\$75</b>
Regina (CMA)	\$200		
Saskatoon (CMA)	\$200		
<b>Alberta</b>	<b>\$1,100</b>	<b>\$200</b>	<b>\$150</b>
Calgary (CMA)	\$500		
Edmonton (CMA)	\$550		
Lethbridge (CA)	\$250		
Red Deer (CA)	\$200		
<b>British Columbia</b>	<b>\$1,650</b>	<b>\$275</b>	<b>\$200</b>
Abbotsford (CA)	\$200		
Kamloops (CA)	\$200		
Kelowna (CA)	\$200		
Nanaimo (CA)	\$200		
Prince George (CA)	\$200		
Vancouver (CMA)	\$1,000		
Victoria (CMA)	\$250		
<b>Yukon Territory</b>	<b>\$200</b>	<b>\$100</b>	<b>\$75</b>
<b>Northwest Territories</b>	<b>\$200</b>	<b>\$100</b>	<b>\$75</b>
<b>Nunavut</b>	...	...	...

**Note:** The minimum charge for any PCCF is \$200; for any Update the minimum charge is \$100 and for any Subscription Update it is \$75



## Postal Codes by Federal Ridings (1996 Representation Order) File

The Postal Codes by Federal Ridings File (PCFRF) provides a link between the six character postal codes and the federal electoral districts (1996 Representation Order). A federal electoral district (FED), commonly referred to as a federal riding, is an area represented by a Member of Parliament in the House of Commons.

The PCFRF is intended as a tool for use with administrative files containing postal codes. By using the postal code as a link, data from administrative files may be organised and/or tabulated by federal riding. This PCFRF allows a link of more than 680,000 postal code records to the 301 federal electoral districts.

The PCFRFs are available as standard packages for Canada and five regions. A reference guide is included.

**Format:** flat ASCII file.

Catalogue No.	Medium	Language	Initial Price
92F0028XDB	Diskette	Bilingual	\$2,900

**Price Notes:** See Table 11 for prices for the five regions. Clients who purchase the Postal Codes by Federal Ridings (1996 Representation Order) File at the initial price may purchase subsequent update files at the update rate. For details, see Postal Code Federal Ridings File – Update (Catalogue No. 92F0028UDB).

## Postal Codes by Federal Ridings (1996 Representation Order) File (PCFRF) – Update

The Postal Code by Federal Ridings File (PCFRF) is updated with new postal codes on a semi-annual basis and is available in January and July. Updates released in July provide new postal codes effective January of the release year. Updates released in January provide new postal codes in use in July of the previous year. Clients who purchase the PCFRF (92F0028XDB) at the initial price may then purchase subsequent updated files (92F0028UDB) at the update rate (see Table 11 for details).

The PCFRF Updates are available as standard packages for Canada and five regions.

**Format:** flat ASCII file.

Catalogue No.	Medium	Language	Update Price
92F0028XDB	Diskette	Bilingual	\$500

**Table 11. Summary of Prices for PCFRF and PCFRF Updates, for Canada and Regions**

Coverage	PCFRF (92F0028XDB)	PCFRF Updates (92F0028UDB)
CANADA	\$2,900	\$500
Atlantic Provinces	\$500	\$200
Quebec	\$1,000	\$200
Ontario	\$1,000	\$200
Prairies provinces and Northwest Territories	\$1,000	\$200
British Columbia and Yukon Territory	\$1,000	\$200

## 5. Geographic Services

A variety of services is available, including custom mapping, custom data extraction (geocoding) and the development of custom geography products.

### Custom Area Creation Service (formerly Geocoding Service)

The Custom Area Creation Service (formerly called Geocoding Service) allows users to define their own geographic areas of study (user-defined areas or aggregations of standard census geographic areas) for census data tabulations. This custom geography is produced from the aggregation of blocks, or where necessary, block-faces within the road network file coverage. The custom area files thus created are then passed to Census for data tabulation. Contact the nearest regional office for details.

Catalogue No.	Price	Availability
97C0005	The minimum cost for this service is \$350. Cost estimates will be provided based on client's specifications, and on the complexity of the request.	Custom area creation services based on 2001 geography are available beginning in the fourth quarter, 2002.

### Geography Custom Service

If standard geography products do not satisfy a client's needs, the Geography Custom Service is available to produce non-standard geographic products. Examples include alternative packaging of geographic files, special data retrievals, manipulations or merges using any of the geography computer files (postal codes, cartographic boundary files, road network files and skeletal road network files). Contact the nearest regional office for details.

Catalogue No.	Price	Availability
97C0006	The minimum cost for this service is \$350. Cost estimates will be provided based on client's specifications, and on the complexity of the request.	Custom services based on 2001 Census geography are available from March 12, 2002.

### Geography Custom Mapping

Thematic maps and other maps, specially designed to meet customer needs, can be produced. Contact the nearest regional office for details.

Catalogue No.	Price	Availability
97C0007	The minimum cost for this service is \$350. Cost estimates will be provided based on client's specifications, and on the complexity of the request.	Custom mapping based on 2001 Census geography is available from March 12, 2002.

## 6. Other STC Related Geographic Products and Services

### Agriculture Products and Services

The Agriculture Division provides Digital Products and Special Services.

#### ***Agricultural Ecumene of Canada, 1996***

This digital boundary file delineates areas of significant agricultural activity in Canada, as indicated by the 1996 Census of Agriculture. An agricultural ecumene is used for displaying agricultural data, and limits data presentation to recognised areas of agricultural significance. Agricultural indicators such as the ratio of agricultural land on census farms relative to total land area, and total economic value of agricultural production are used in generating the agricultural ecumene. Regional variations are also taken into account. The ecumene is generalised for small scale mapping.

**Release:** Available

These data are updated as new 2001 information becomes available.

#### ***Digital boundary files for the census agricultural regions (CARs)***

Digital boundary files are available for the census agricultural regions (CARs) for the 1991, 1996 and 2001 Censuses. These boundaries are used by the Census of Agriculture for disseminating agricultural statistics. Census agricultural regions are subprovincial geographic areas made up of groups of adjacent census divisions. In Saskatchewan, census agricultural regions are made up of groups of adjacent census consolidated subdivisions but these groups do not necessarily respect census division boundaries. Census agricultural regions have not been defined in the Yukon, Northwest Territories and Nunavut. In the Prairie provinces, census agricultural regions are commonly referred to as crop districts.

**Coverage:** All Canada except the Yukon, Northwest Territories and Nunavut

**Price:** \$500 for Canada  
\$100 for each province

**Media:** CD-ROM

**Format:** ARC/INFO®Export; Coordinates: Latitude/Longitude

#### ***Spatial Analysis and Geomatics Applications (SAGA) Program***

SAGA provides a variety of products and services using the tools and methodologies of digital image analysis and geographic information systems. The SAGA program has evolved from a remote sensing research and development emphasis to a much broader program that includes operational agricultural and environmental applications and custom mapping, image analysis, and geomatics services.

SAGA offers remote sensing and geostatistical services on a fee-for-services basis. In addition to the custom mapping and image analysis capabilities, other applications could include:

- Estimation of crop and vegetation area, and crop yields by user-defined statistical units, such as risk areas, management districts
- Remote sensing/geographic information system integration and custom mapping
- Analysis and mapping of land-use classification and change monitoring
- Statistical sample frame construction for agriculture surveys
- Remote sensing consulting and training
- Spatial and statistical data integration

For further information on Agriculture Products and Services, please refer to *People, Products and Services* - Agriculture Division, 2002 (Catalogue Number 21F0003GPB, on the Internet 21F0003GIE).

## Environment Services

### ***The Environmental Information System***

The Environmental Information System provides detailed spatial information on social and economic characteristics that influence environmental conditions. These characteristics are aggregated by spatial boundaries that are highly effective for the analysis of environmental issues: drainage basins and ecozones.

The problem-solving power of this system comes from its ability to overlay and aggregate a wide variety of Statistics Canada micro-data series into new tabulations, charts or maps. Information from the system can also be combined with external data sets or geographic boundaries provided by the client to suit specific needs. We offer a full line of services, ranging from table and map preparation to a complete statistical consulting service, including analysis and report preparation on specific environmental issues.

The core data in the EIS resides in the ARC/INFO®Geographic Information System. Analytical results can be provided for various formats:

- Spreadsheets
- ASCII files
- Micro computer databases
- Tables on paper
- ARCVIEW®products
- ARC/INFO®export files
- Maps on paper, image or postscript files

For more information on Environment Services, please contact:

Environment Accounts and Statistics Division  
 Statistics Canada  
 7th Floor, R. H. Coats Building  
 Tunney's Pasture, Ottawa  
 K1A 0T6

Telephone: (613)-951-0297  
 Fax Number: (613)-951-0634 or  
 e-mail: [environ@statcan.ca](mailto:environ@statcan.ca)

# Glossary

The geographic terms are presented here in summary form only. The detailed definitions are available in the 2001 Census Dictionary (Catalogue 92-378-XIE01000).

## Adjusted Counts

Adjusted counts refer to previous census population and dwelling counts that have been adjusted (i.e., recompiled) to reflect current census boundaries, when a boundary change occurs between the two censuses.

## Block

A block is an area bounded on all sides by roads and/or boundaries of standard geographic areas. Blocks cover all the territory of Canada. The block is the smallest geographic area for which population and dwelling counts are disseminated.

## Block-face

A block-face is one side of a street between two consecutive features intersecting that street. The features can be other streets, boundaries of standard geographic areas, or limits of map tiles. Block-faces are used for generating block-face representative points, which in turn are used for geocoding and census data extraction when the street and address information is available.

## Cartographic Boundary Files (CBFs)

Cartographic Boundary Files (CBFs) contain boundaries of standard geographic areas, along with shorelines and lakes, at a level of detail appropriate for small- and medium-scale mapping.

## Census Agglomeration

Refer to the definition of Census Metropolitan Area (CMA) and Census Agglomeration (CA).

## Census Agricultural Region (CAR)

Census agricultural regions are composed of groups of adjacent census divisions. In Saskatchewan, census agricultural regions are made up of groups of adjacent census consolidated subdivisions, but these groups do not necessarily respect census division boundaries.

## Census Consolidated Subdivision (CCS)

A census consolidated subdivision (CCS) is a grouping of adjacent census subdivisions. Generally the smaller, more urban census subdivisions (towns, villages, etc.) are combined with the surrounding, larger, more rural census subdivision, in order to create a geographic level between the census subdivision and the census division.

## Census Division (CD)

Census division (CD) is the general term for provincially legislated areas (such as county, *municipalité régionale de comté* and regional district) or their equivalents. Census divisions are intermediate geographic areas between the province level and the municipality (census subdivision).

## Census Metropolitan Area (CMA) and Census Agglomeration (CA)

A census metropolitan area (CMA) or a census agglomeration (CA) is formed by one or more adjacent municipalities centred on a large urban area (known as the **urban core**). The census population count of the urban core is at least 10,000 to form a census agglomeration and at least 100,000 to form a census metropolitan area. To be included in the CMA or CA, other adjacent municipalities must have a high degree of integration with the central urban area, as measured by commuting flows derived from census place of work data.

If the population of the urban core of a CA declines below 10,000, the CA is retired. However, once an area becomes a CMA, it is retained as a CMA even if the population of its urban core declines below 100,000. The urban areas in the CMA or CA that are not contiguous to the urban core are called the **urban fringe**. Rural areas in the CMA or CA are called the **rural fringe**. When a CA has an urban core of at least 50,000 based on census counts, the CA is subdivided into **census tracts**. Census tracts are

maintained for the CA even if the population of the urban core subsequently falls below 50,000. All CMAs are subdivided into census tracts.

### **Census Metropolitan Area and Census Agglomeration Influenced Zone (MIZ)**

The census metropolitan area and census agglomeration influenced zone (MIZ) is a concept that geographically differentiates the area of Canada outside census metropolitan areas (CMAs) and census agglomerations (CAs). Census subdivisions outside CMAs and CAs are assigned to one of four categories according to the degree of influence (strong, moderate, weak or no influence) that the CMAs and/or CAs have on them. Census subdivisions (CSDs) are assigned to a MIZ category based on the percentage of their resident employed labour force that has a place of work in the urban core(s) of CMAs or CAs. CSDs with the same degree of influence tend to be clustered. They form **zones** around CMAs and CAs that progress through the categories from “strong” to “no” influence as distance from the CMAs and CAs increases.

### **Census Subdivision (CSD)**

Census subdivision (CSD) is the general term for municipalities (as determined by provincial legislation) or areas treated as municipal equivalents for statistical purposes (for example, Indian reserves, Indian settlements and unorganized territories).

### **Census Subdivision – Previous Census**

Census Subdivision – Previous Census refers to the census subdivisions as of January 1, 1996, the geographic reference date for the 1996 Census. A “best fit” linkage is established between blocks for the 2001 Census and census subdivisions (municipalities) for the 1996 Census. This linkage ensures that data from the current census can be tabulated for the census subdivisions from the previous census.

### **Census Tract (CT)**

Census tracts (CTs) are small, relatively stable geographic areas that usually have a population of 2,500 to 8,000. They are located in census metropolitan areas and in census agglomerations with an urban core population of 50,000 or more in the previous census.

A committee of local specialists (for example, planners, health and social workers and educators) initially delineates CTs in conjunction with Statistics Canada. Once a census metropolitan area (CMA) or census agglomeration (CA) has been subdivided into census tracts, the census tracts are maintained even if the urban core population subsequently declines below 50,000.

### **Coordinate System**

A coordinate system is a reference system based on mathematical rules for specifying positions (locations) on the surface of the earth. The coordinate values can be spherical (latitude and longitude) or planar (such as Universal Transverse Mercator). The Cartographic Boundary Files, the Road Network Files, the Skeletal Road Network Files and the representative points are disseminated in latitude/longitude coordinates.

### **Datum**

A datum is a geodetic reference system that specifies the size and shape of the earth, and the base point from which the latitude and longitude of all other points on the earth’s surface are referenced. The spatial data disseminated for the 2001 Census are based on the **North American Datum of 1983 (NAD83)**.

### **Designated Place (DPL)**

A designated place is normally a small community or settlement that does not meet the criteria established by Statistics Canada to be a census subdivision (an area with municipal status) or an urban area. Designated places are created by provinces and territories, in cooperation with Statistics Canada, to provide data for submunicipal areas.

### **Dissemination Area (DA)**

The dissemination area (DA) is a small, relatively stable geographic unit composed of one or more blocks. It is the smallest standard geographic area for which all census data are disseminated. DAs cover all the territory of Canada.

### **Economic Region (ER)**

An economic region (ER) is a grouping of complete **census divisions** (with one exception in Ontario) created as a standard geographic unit for analysis of regional economic activity.

### **Ecumene**

Ecumene is a term used by geographers to mean inhabited land. It generally refers to land where people have made their permanent home, and to all work areas that are considered occupied and used for agricultural or any other economic purposes. Thus, there can be various types of ecumenes, each having their own unique characteristics (population ecumene, agricultural ecumene, industrial ecumene, etc.).

### **Enumeration Area (EA)**

An enumeration area is the geographic area canvassed by one census representative. An EA is composed of one or more adjacent blocks. EAs cover all the territory of Canada. Enumeration areas are only used for census data collection. The dissemination area (DA) replaces the EA as a basic unit for dissemination.

### **Federal Electoral District (FED)**

A federal electoral district is an area represented by a member of the House of Commons. The federal electoral district boundaries used for the 2001 Census are based on the 1996 Representation Order.

### **Forward Sortation Area (FSA)**

The first three characters of the **postal code** identify the forward sortation area (FSA). Individual FSAs are associated with a postal facility from which mail delivery originates.

### **Geocoding**

Geocoding is the process of assigning geographic identifiers (codes) to map features and data records. The resulting geocodes permit data to be linked geographically. Households and postal codes are linked to block-face representative points when the street and address information is available; otherwise they are linked to block representative points.

### **Geographic Code**

A geographic code is a unique number used to identify and access standard geographic areas for the purposes of data storage, retrieval and display.

### **Geographic Reference Date**

The geographic reference date is a date determined by Statistics Canada for the purpose of finalizing the geographic framework for which census data will be collected, tabulated and reported. For the 2001 Census, the geographic reference date is **January 1, 2001**.

### **Land Area**

Land area is the area in square kilometres of the land-based portions of standard geographic areas. The land area measurements are unofficial, and are provided for the sole purpose of calculating population density.

### **Locality (LOC)**

Locality refers to the historical place names of former census subdivisions (municipalities), former designated places and former urban areas, as well as to the names of other entities, such as neighbourhoods, post offices, communities and unincorporated places.

### **Map Projection**

A map projection is the process of transforming and representing positions from the earth's three-dimensional curved surface to a two-dimensional (flat) surface. The process is accomplished by a direct geometric projection or by a mathematically derived transformation. The Lambert Conformal Conic map projection is widely used for general maps of Canada at small scales and is the most common map projection used at Statistics Canada.

### **National Geographic Base (NGB)**

The National Geographic Base (NGB) is a new database that contains roads and boundaries of standard geographic areas in one integrated layer, as well as other physical and cultural features (such as hydrography, railroads and power transmission lines) stored as separate layers.

The NGB is an internal, maintenance database that is not disseminated. It supports a wide range of census operations, such as updating the road network and address ranges, supporting the block program, delineating the boundaries of standard geographic areas (including the automated delineation of enumeration areas, urban areas and dissemination areas), and geocoding. As well, the NGB is the source for generating many geography products for the 2001 Census, such as reference maps and Cartographic Boundary Files.

### **Place Name (PN)**

Place name refers to the set of names that includes current census subdivisions (municipalities), current designated places and current urban areas, as well as the names of localities.

### **Population Density**

Population density is the number of persons per square kilometre.

### **Postal Code**

The postal code is a six-character code defined and maintained by Canada Post Corporation for the purpose of sorting and delivering mail.

### **Province/Territory**

Province and territory refer to the major political units of Canada. From a statistical point of view, province and territory are basic areas for which data are tabulated. Canada is divided into ten provinces and three territories.

### **Reference Map**

A reference map shows the location of the geographic areas for which census data are tabulated and disseminated. The maps display the boundaries, names and codes of standard geographic areas, as well as major cultural and physical features, such as roads, railroads, coastlines, rivers and lakes.

### **Representative Point**

A representative point is a single point that represents a linear or areal feature. The point is centrally located along the linear feature or centrally within the areal feature. Representative points are generated for block-faces, blocks, enumeration areas, dissemination areas, census subdivisions and designated places. The block-face and block representative points support the geocoding of households and postal codes.

### **Road Network Files (RNFs)**

The Road Network Files (RNFs) provide national coverage of roads, province/territory boundaries, and other visible features such as hydrography, as well as attribute information (for example, street names and address ranges for streets with assigned addresses). The RNFs replace the Street Network Files (SNFs), which were a similar product previously available only for the large urban centres of Canada.

### **Rural Area**

Rural areas include all territory lying outside urban areas. Taken together, urban and rural areas cover all of Canada.

### **Rural Population**

Rural population includes all population living in the rural fringes of census metropolitan areas (CMAs) and census agglomerations (CAs), as well as population living in rural areas outside CMAs and CAs.

### **Spatial Data Quality Elements**

Spatial data quality elements provide information on the fitness-for-use of a spatial database by describing why, when and how the data are created, and how accurate the data are. The elements include an overview describing the purpose and usage, as well as specific quality elements reporting on



the lineage, positional accuracy, attribute accuracy, logical consistency and completeness. This information is provided to users for all spatial data products disseminated for the census.

### **Standard Geographical Classification (SGC)**

The Standard Geographical Classification (SGC) is Statistics Canada's official classification for three types of geographic areas: provinces and territories, census divisions (CDs) and census subdivisions (CSDs). The SGC provides unique numeric identification (codes) for these hierarchically related geographic areas.

### **Statistical Area Classification (SAC)**

The Statistical Area Classification (SAC) groups census subdivisions according to whether they are a component of a census metropolitan area, a census agglomeration, a census metropolitan area and census agglomeration influenced zone (strong MIZ, moderate MIZ, weak MIZ or no MIZ), or the territories (Northwest Territories, Yukon Territory and Nunavut). The SAC is used for data dissemination purposes.

### **Thematic Map**

A thematic map shows the spatial distribution of one or more specific data themes for standard geographic areas. The map may be qualitative in nature (e.g., predominant farm types) or quantitative (e.g., percentage population change).

### **Urban Area (UA)**

An urban area has a minimum population concentration of 1,000 persons and a population density of at least 400 persons per square kilometre, based on the current census population count. All territory outside urban areas is classified as rural. Taken together, urban and rural areas cover all of Canada.

### **Urban Core, Urban Fringe and Rural Fringe**

Urban core, urban fringe and rural fringe distinguish between central and peripheral urban and rural areas within a census metropolitan area (CMA) or census agglomeration (CA). **Urban core** is a large urban area around which a CMA or a CA is delineated. The urban core must have a population (based on the previous census) of at least 100,000 persons in the case of a CMA, or between 10,000 and 99,999 persons in the case of a CA. The urban core of a CA that has been merged with an adjacent CMA or larger CA is called the **secondary urban core**. **Urban fringe** includes all small urban areas (with less than 10,000 population) within a CMA or CA that are not contiguous with the urban core of the CMA or CA. **Rural fringe** is all territory within a CMA or CA not classified as an urban core or an urban fringe.

### **Urban Population**

Urban population includes all population living in the urban cores, secondary urban cores and urban fringes of census metropolitan areas (CMAs) and census agglomerations (CAs), as well as the population living in urban areas outside CMAs and CAs.

### **Urban Population Size Group**

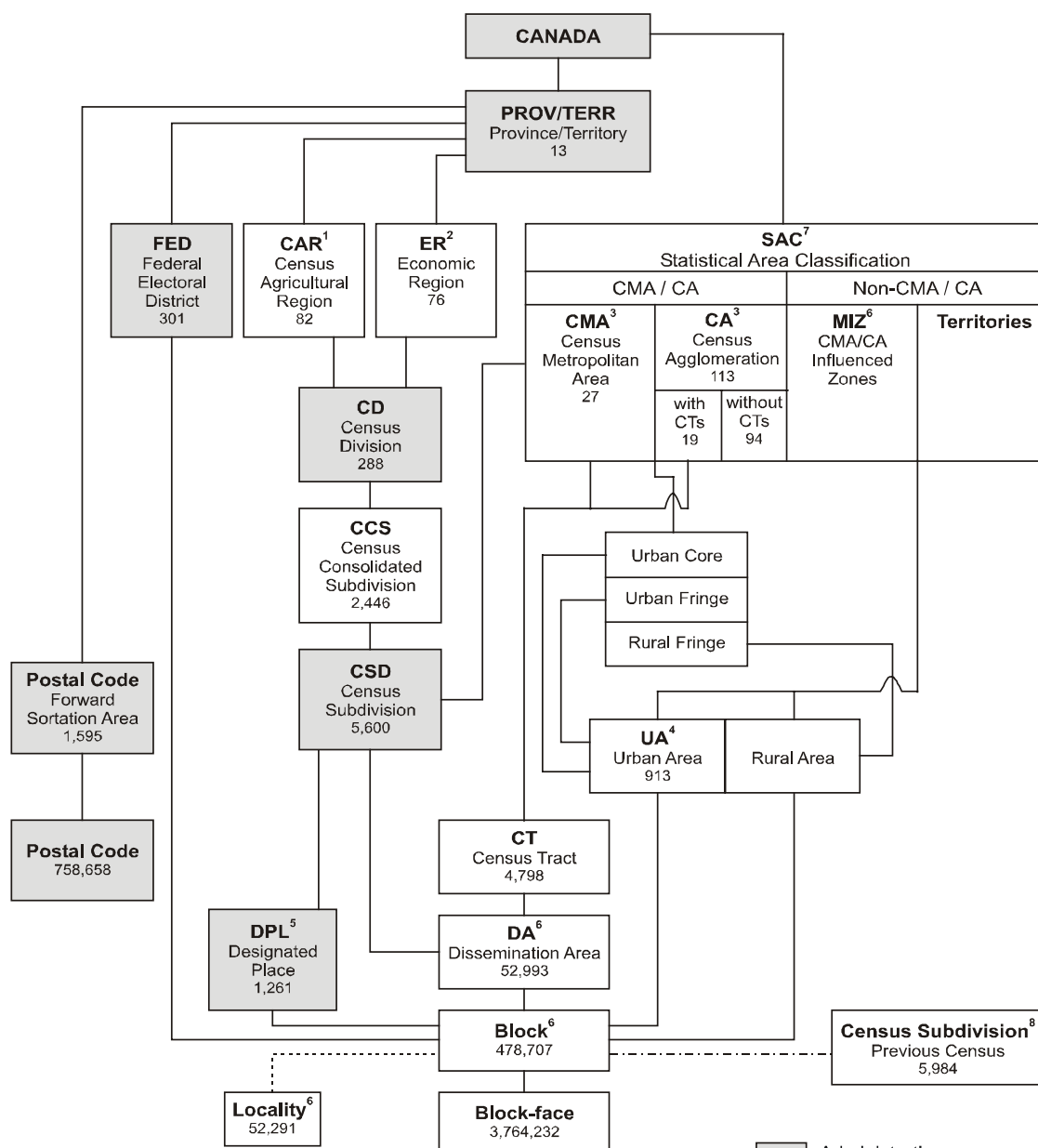
The term "Urban population size group" refers to the classification used in standard tabulations where urban areas are distributed according to the following predetermined size groups, based on the current census population.

1,000	—	2,499
2,500	—	4,999
5,000	—	9,999
10,000	—	24,999
25,000	—	49,999
50,000	—	99,999
100,000	—	249,999
250,000	—	499,999
500,000	—	999,999
1,000,00		and over

Tabulations are not limited to these predetermined population size groups; the census database has the capability of tabulating data according to any user-defined population size group.

# Appendix 1

## Hierarchy of Standard Geographic Units for Dissemination, 2001 Census



- Administrative area
- Statistical area
- Linkage using point-in-polygon process
- Best fit linkage

<sup>1</sup> Census agricultural regions in Saskatchewan are composed of census consolidated subdivisions.

<sup>2</sup> Economic regions in Ontario are composed of municipalities (census subdivisions).

<sup>3</sup> One CMA and four CAs cross provincial boundaries.

<sup>4</sup> Five UAs cross provincial boundaries.

<sup>5</sup> Designated places do not cover the total area of CSDs. Eighty-four DPLs cross CSD boundaries, of which 12 also cross CD boundaries.

<sup>6</sup> Census metropolitan area and census agglomeration influenced zones (MIZ), dissemination area, block, and locality are new concepts for the 2001 Census.

<sup>7</sup> The Statistical Area Classification (SAC) is a new geographic classification that allocates each CSD according to whether it is a component of a CMA, CA, a census metropolitan area and census agglomeration influenced zone (MIZ), or the territories outside the CAs of Whitehorse and Yellowknife.

<sup>8</sup> For the 2001 Census only, a best fit linkage is created between the 1996 CSDs and 2001 blocks to facilitate historical data retrieval. See the definition of Census Subdivision – Previous Census.

## Appendix 2

### Table of Geographic Units by Province and Territory, 2001 Census (as of January 25, 2002)

Geographic Unit	Canada		Nfld. Lab.	P.E.I.	N.S.	N.B.	Que.	Ont.	Man.	Sask.	Alta.	B.C.	Y.T.	N.W.T.	Nvt.
	1996	2001													
Federal electoral district (1996 Representation Order)	295*	301	7	4	11	10	75	103	14	14	26	34	1	1	1
Economic region	74	76	4	1	5	5	17	11	8	6	8	8	1	1	1
Census agricultural region	78	82	3	3	5	4	14	5	12	20	8	8	-	-	-
Census division	288	288	10	3	18	15	99	49	23	18	19	28	1	2	3
Census consolidated subdivision	2,607	2,446	87	68	43	151	1,111	318	127	301	77	157	1	2	3
Census subdivision	-	5,600	381	113	98	275	1,476	586	298	1,002	452	816	35	37	31
1996 Census Dissolutions (January 2, 1996 to January 1, 2001)	5,984 910	- -	381 -	113 -	110 14	283 12	1,599 232	947 529	298 3	970 18	467 18	713 83	35 1	68 -	N/A N/A
Incorporations (January 2, 1996 to January 1, 2001)	-	526	-	-	2	4	109	168	3	50	3	186	1	-	N/A
Designated place	828	1,261	182	-	59	172	78	81	51	158	260	219	1	-	-
Census metropolitan area	25	27	1	-	1	1	<u>6</u>	<u>11</u>	1	2	2	3	-	-	-
Census agglomeration	112	113	4	2	4	<u>5</u>	<u>28</u>	<u>30</u>	3	<u>7</u>	<u>10</u>	22	1	1	-
With census tracts	18	19	-	-	-	1	3	8	-	-	3	4	-	-	-
Without census tracts	94	94	4	2	4	<u>4</u>	<u>25</u>	<u>22</u>	3	<u>7</u>	<u>7</u>	18	1	1	-
Census tract	4,223	4,798	45	-	86	71	1,263	2,013	165	101	457	597	-	-	-
Urban area	929	913	36	7	39	<u>34</u>	<u>229</u>	<u>258</u>	<u>42</u>	<u>65</u>	<u>108</u>	93	1	3	3
Locality	N/A	52,291	2,428	964	3,920	3,445	12,448	10,889	2,339	3,868	3,466	7,699	362	173	290
Dissemination area	N/A	52,993	1,231	225	1,397	1,349	12,153	18,596	2,235	2,937	5,143	7,463	117	92	55
Enumeration area	49,361	42,851	1,204	225	1,337	1,216	9,133	14,753	1,805	2,697	4,129	6,088	117	92	55
Block	N/A	478,707	8,331	2,831	15,161	13,929	108,760	128,327	30,567	56,040	60,061	53,147	674	745	134
Block-face	817,734	3,764,232	80,162	19,854	168,840	136,311	865,600	955,847	200,569	377,776	435,604	499,365	10,644	12,304	1,356
Forward sortation area	1,477	1,595	33	7	74	110	398	518	64	47	147	188	3	3	3
Postal code	680,910	758,658	7,900	2,856	23,354	55,104	188,427	254,757	23,250	21,184	70,672	109,753	884	487	30

\* Federal electoral districts (1987 Representation Order)

**Note:** Underlined numbers indicate that those census metropolitan areas, census agglomerations and urban areas crossing provincial boundaries are counted in both provinces.

## Appendix 3

### List of Statistics Canada Regional Reference Centres

(as of February, 2002)

For more information about Geography products and services, contact the nearest Statistics Canada regional office at the locations listed below.

#### ATLANTIC REGION

Serving the provinces of Newfoundland and Labrador, Nova Scotia, Prince Edward Island and New Brunswick.

Statistics Canada  
Advisory Services  
1741 Brunswick Street  
2nd Floor, Box 11  
HALIFAX, Nova Scotia  
B3J 3X8

Toll-free number: 1-800-263-1136  
Local calls: (902) 426-5331  
Fax number: (902) 426-9538  
E-mail: [atlantic.info@statcan.ca](mailto:atlantic.info@statcan.ca)

#### QUEBEC REGION

Serving the province of Quebec except the National Capital Region and the territory of Nunavut

Statistics Canada  
Advisory Services  
200 René Levesque Blvd. W.  
Guy Favreau Complex  
4th Floor, East Tower  
MONTREAL, Quebec  
H2Z 1X4

Toll-free number: 1-800-263-1136  
Local calls: (514) 283-5725  
Fax number: (514) 283-9350  
E-mail: [infostcmontreal@statcan.ca](mailto:infostcmontreal@statcan.ca)

#### NATIONAL CAPITAL REGION

Serving the National Capital Region

Statistics Canada  
Statistical Reference Centre (National Capital  
Region)  
R.H. Coats Building, Lobby  
Holland Avenue  
OTTAWA, Ontario  
K1A 0T6

Toll-free number: 1-800-263-1136  
Local calls: (613) 951-8116  
Fax number: (613) 951-0581  
E-mail: [infostats@statcan.ca](mailto:infostats@statcan.ca)

#### ONTARIO REGION

Serving the province of Ontario except the National Capital Region

Statistics Canada  
Advisory Services  
Arthur Meighen Building, 10th Floor  
25 St. Clair Avenue East  
TORONTO, Ontario  
M4T 1M4

Toll-free number: 1-800-263-1136  
Local calls: (416) 973-6586  
Fax number: (416) 973-7475  
E-mail: [toronto.info@statcan.ca](mailto:toronto.info@statcan.ca)

## **PRAIRIE REGION**

This region has 3 Reference Centres serving the provinces of Manitoba, Saskatchewan, Alberta and the Northwest Territories.

### **Serving the province of Manitoba:**

Statistics Canada  
Advisory Services  
Via Rail building, Suite 200  
123 Main Street  
WINNIPEG, Manitoba  
R3C 4V9

Toll-free number: 1-800-263-1136  
Local calls: (204) 983-4020  
Fax number: (204) 983-7543  
E-mail: [prairies.info@statcan.ca](mailto:prairies.info@statcan.ca)

### **Serving the province of Saskatchewan:**

Statistics Canada  
Advisory Services  
Park Plaza, Suite 440  
2365 Albert Street  
REGINA, Saskatchewan  
S4P 4K1

Toll-free number: 1-800-263-1136  
Local calls: (306) 780-5405  
Fax number: (306) 780-5403  
E-mail: [prairies.info@statcan.ca](mailto:prairies.info@statcan.ca)

### **Serving Alberta and the Northwest Territories:**

Statistics Canada Prairie Regional Office  
Pacific Plaza, Suite 900  
10909 Jasper Avenue, N.W.  
EDMONTON, AB  
T5J 4J3

Toll-free number: 1-800-263-1136  
Local calls: (780) 495-3027  
Fax number: (780) 495-5318  
E-mail: [prairies.info@statcan.ca](mailto:prairies.info@statcan.ca)

## **PACIFIC REGION**

Serving the province of British Columbia and the Yukon Territory.

Statistics Canada  
Advisory Services  
Library Square Office Tower  
600-300 West Georgia Street  
VANCOUVER, British Columbia  
V6B 6C7

Toll-free number: 1-800-263-1136  
Local calls: (604) 666-3691  
Fax number: (604) 666-4863  
E-mail: [stcvan@statcan.ca](mailto:stcvan@statcan.ca)

## END-USE LICENCE AGREEMENT

### COPYRIGHT

The Government of Canada (Statistics Canada) is the owner or a licensee of all intellectual property rights (including copyright) in this data product. In consideration of your payment of the requisite fee, you or your organisation, as the case may be, (hereinafter referred to as the "licensee") are granted a non-exclusive, non-assignable and non-transferable licence to use this data product subject to the terms below. This license is not a sale of any or all of the rights of the owner(s).

### TERMS OF USE

1. All copyright and proprietary notices and all conditions of use associated with the data product must be communicated to all users of the data product.
2. The licensed organisation shall not transfer this data product to or store the data product in any electronic network for use by more than three (3) users unless it obtains prior written permission from Statistics Canada and pays any additional fees.
3. The licensee shall not lend, rent, lease, sub-licence, transfer or sell any part of the data product nor any right granted under this agreement to any person outside the licensed organisation or to any other organisation.
4. The licensee shall not disassemble, decompile or in any way attempt to reverse engineer any software provided as part of the data product.
5. The licensee shall not use any part of the data product to develop or derive any other data product or data service for distribution or commercial sale.
6. The licensee is granted reasonable rights of use of the content of this data product only for personal, corporate or public policy research, as well as for educational purposes. This permission includes the use of the content in analyses and the reporting of results and conclusions, including the citation of limited amounts of supporting data extracted from the data product in such documents. In such cases, the source of the data must be acknowledged in all such documents and communications by providing the following source citation at the bottom of each table and graph:  
*Source (or "Adapted from", if appropriate): Statistics Canada, name of product, catalogue number of product, reference date of product.*
7. The Licensee shall obtain approval from Statistics Canada, before publishing any significant volumes of material extracted from the data product in any medium.
8. Any violation of this license renders it void and of no effect. This agreement will terminate automatically without notice if the licensee fails to comply with any term of this agreement. In the event of termination, the licensee must immediately return the data product to Statistics Canada or destroy it and certify this destruction in writing to Statistics Canada.

### WARRANTIES AND DISCLAIMERS

This data product is provided "as-is", and Statistics Canada makes no warranty, either express or implied, including but not limited to, warranties of merchantability and fitness for a particular purpose. In no event will Statistics Canada be liable for any direct, special, indirect, consequential or other damages however caused.

### ACCEPTANCE OF TERMS

It is *YOUR RESPONSIBILITY* to ensure that your use of this data product complies with these terms and to seek prior written permission from Statistics Canada for any uses not permitted or not specified in this agreement. Any infringement of Statistics Canada's rights may result in legal action.

**ANY USE WHATSOEVER OF THIS DATA PRODUCT SHALL CONSTITUTE YOUR ACCEPTANCE OF THE TERMS OF THIS AGREEMENT.**

### For further information please contact:

Licensing Services  
Marketing Division, Statistics Canada  
R.H. Coats Building, 9<sup>th</sup> floor, section A  
Ottawa, Ontario K1A 0T6, Canada

E-mail: [licensing@statcan.ca](mailto:licensing@statcan.ca)  
Telephone: (613) 951-1122  
Fax: (613) 951-1134

© Statistics Canada, 2002

## **Geography Products Feedback**

Please tell us what you think of our products. Send your written comments or suggestions to:

**GEO-Help  
Geography Division  
Statistics Canada  
3rd Floor, Jean Talon Building  
Tunney's Pasture  
Ottawa, Ontario  
K1A 0T6**

**Fax: (613)-951-0569**

**Email: [geohelp@statcan.ca](mailto:geohelp@statcan.ca)**

To order, or for further information, contact your nearest Statistics Canada Regional Reference Centre.