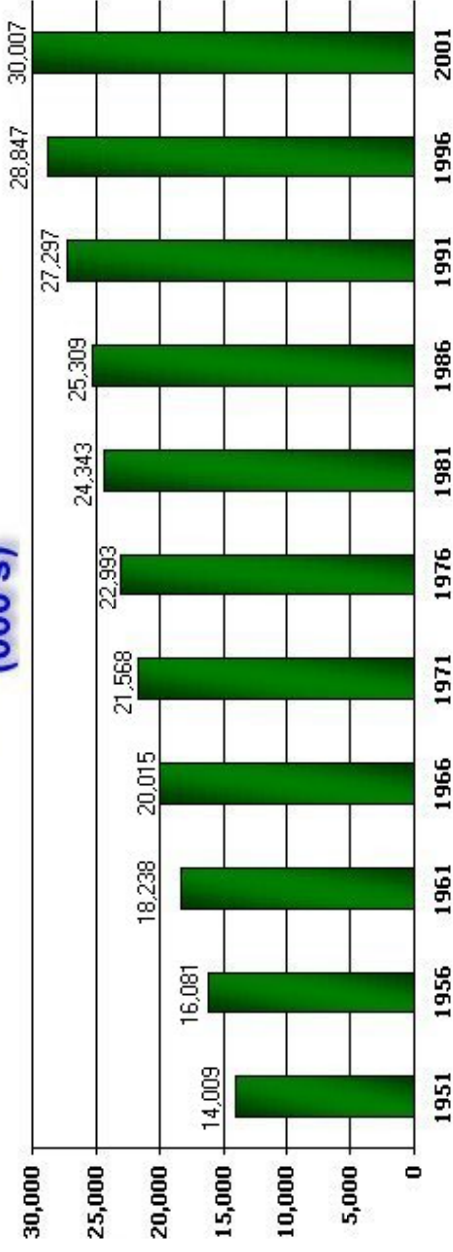


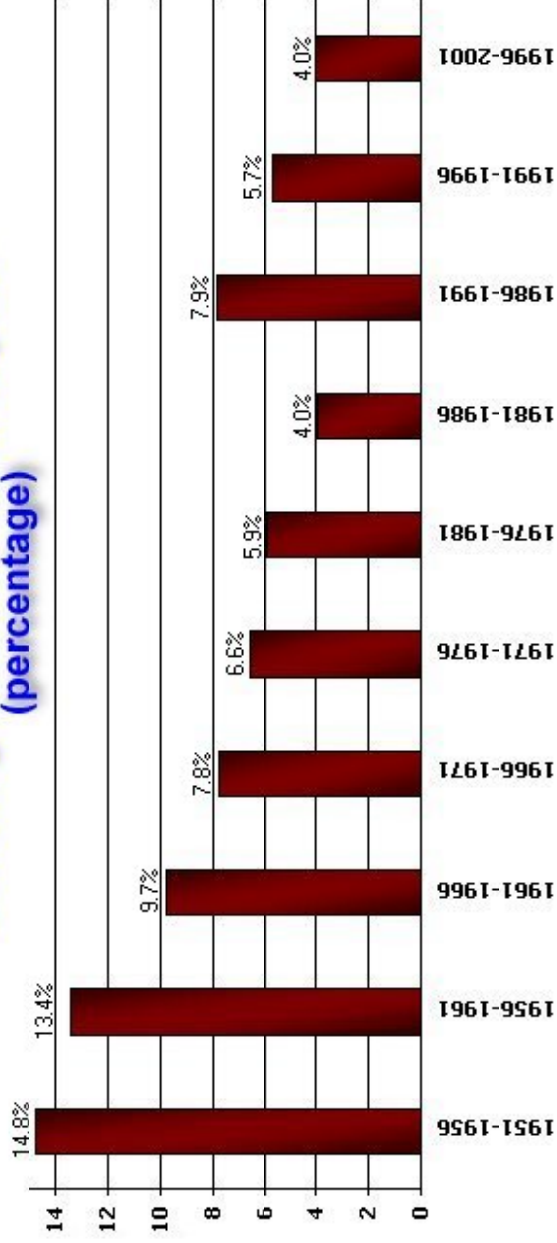
**Canada's Census population and growth rates  
over the last 50 years**

	<b>Population (000's)</b>	<b>Growth Rate (%)</b>
1951	14,009	
1956	16,081	14.8
1961	18,238	13.4
1966	20,015	9.7
1971	21,568	7.8
1976	22,993	6.6
1981	24,343	5.9
1986	25,309	4.0
1991	27,297	7.9
1996	28,847	5.7
2001	30,007	4.0

## Canada's population over 50 years (000's)



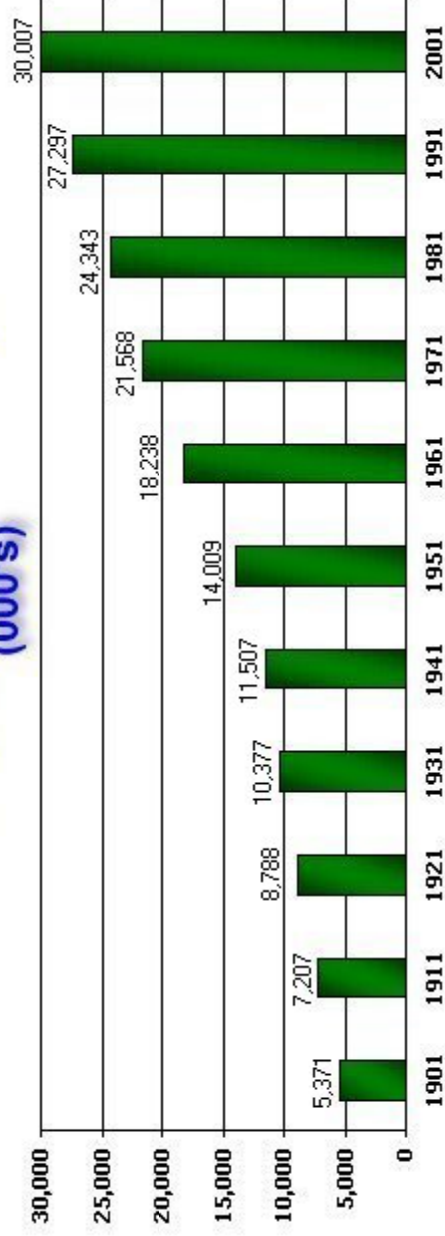
## Canada growth rates over 50 years (percentage)



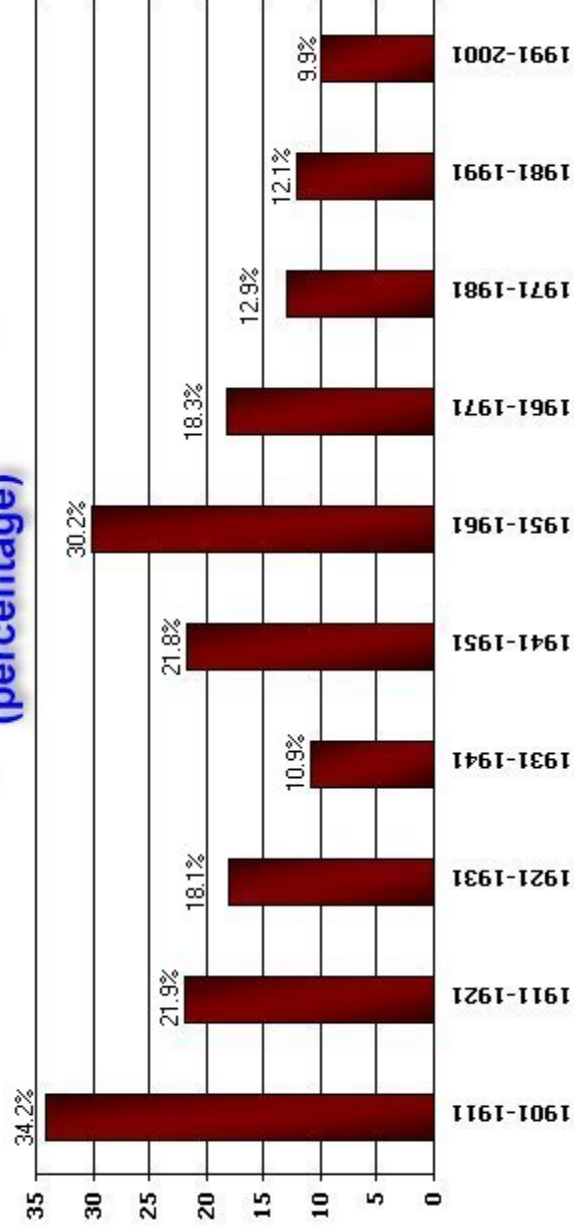
**Canada's Census population and growth rates  
over 100 years**

	<b>Population (000's)</b>	<b>Growth Rate (%)</b>
1901	5,371	
1911	7,207	34.2
1921	8,788	21.9
1931	10,377	18.1
1941	11,507	10.9
1951	14,009	21.8
1961	18,238	30.2
1971	21,568	18.3
1981	24,343	12.9
1991	27,297	12.1
2001	30,007	9.9

## Canada's population over 100 years (000's)



## Canada growth rates over 100 years (percentage)

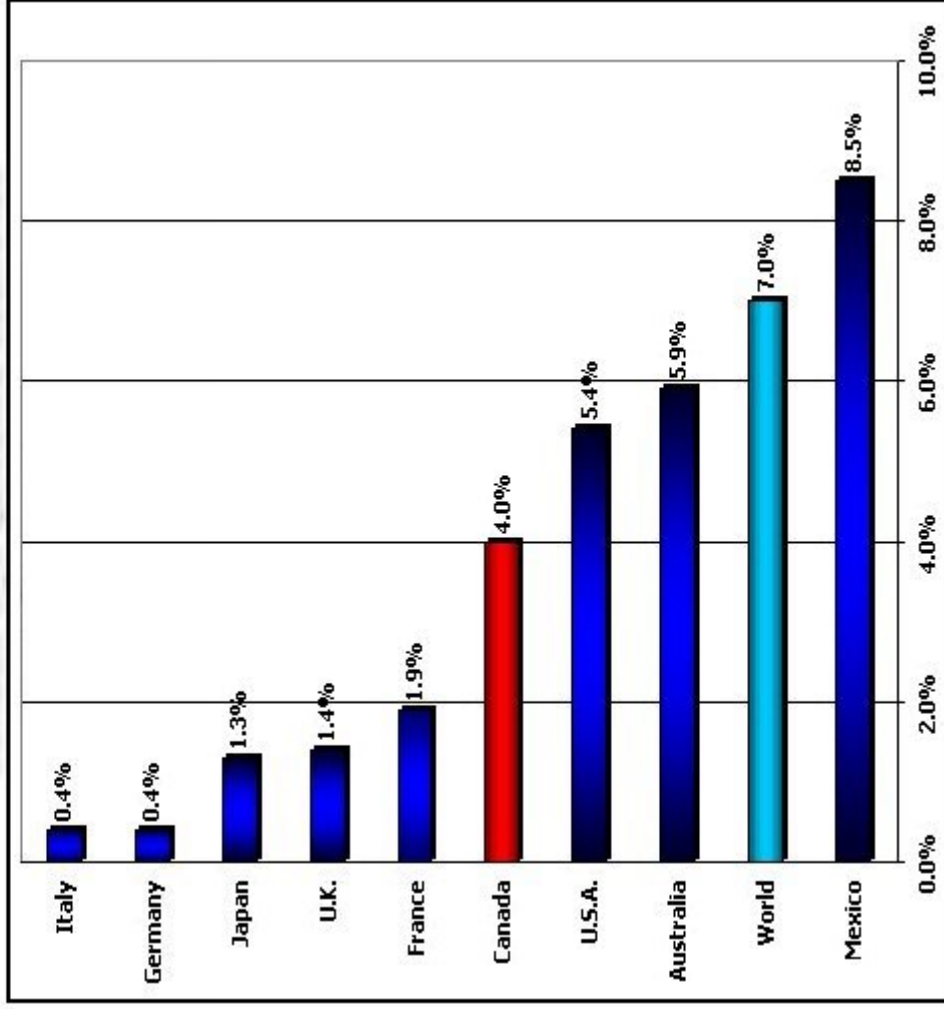


**Five-year growth rates:  
Canada and selected countries**

	<b>Growth Rate (%)</b>
Mexico	8.5
<b>World</b>	<b>7.0</b>
Australia	5.9
United States	5.4
<b>Canada</b>	<b>4.0</b>
France	1.9
United Kingdom	1.4
Japan	1.3
Germany	0.4
Italy	0.4

**Source:** UNITED NATIONS  
Population Division - Department of Economic  
and Social Affairs - February 2001  
**Canada Source:** 2001 Census of Population

## Five-year growth rates: Canada and selected countries



Source: United Nations  
Population Division - Department of Economic and Social Affairs  
February, 2001

Canada Source: 2001 Census of Population

## Population of Canada, Provinces and Territories over 100 Years (000's)

	Canada	New-found-land and Labrador	Prince Edward Island	Nova Scotia	New Brunswick	Quebec	Ontario	Manitoba	Saskatchewan	Alberta	British Columbia	Yukon	Northwest Territories	Nunavut
1901	5,371		103	460	331	1,649	2,183	255	91	73	179	27	20	
1911	7,207		94	492	352	2,006	2,527	461	492	374	392	9	7	
1921	8,787		89	524	388	2,361	2,934	610	758	588	525	4	8	
1931	10,377		88	513	408	2,875	3,432	700	922	732	694	4	9	
1941	11,507		95	578	457	3,332	3,788	730	896	796	818	5	12	
1951	14,009	361	98	643	516	4,056	4,598	777	832	940	1,165	9	16	
1961	18,238	458	105	737	598	5,259	6,236	922	925	1,332	1,629	15	23	
1971	21,568	522	112	789	635	6,028	7,703	988	926	1,628	2,185	18	35	
1981	24,343	568	123	847	696	6,438	8,625	1,026	968	2,238	2,744	23	46	
1991	27,297	568	130	900	724	6,896	10,085	1,092	989	2,546	3,282	28	36	21
2001	30,007	513	135	908	729	7,237	11,410	1,120	979	2,975	3,908	29	37	27

**Note:** In this table Nunavut is included in the Northwest Territories up to 1981.

## Population of Canada, Provinces and Territories over 50 Years (000's)

	Canada	New-found-land and Labrador	Prince Edward Island	Nova Scotia	New Brunswick	Quebec	Ontario	Manitoba	Saskatchewan	Alberta	British Columbia	Yukon	Northwest Territories	Nunavut
1951	14,009	361	98	643	516	4,056	4,598	777	832	940	1,165	9	16	
1956	16,081	415	99	695	555	4,628	5,405	850	881	1,123	1,398	12	19	
1961	18,238	458	105	737	598	5,259	6,236	922	925	1,332	1,629	15	23	
1966	20,015	493	109	756	617	5,781	6,961	963	955	1,463	1,874	14	29	
1971	21,568	522	112	789	635	6,028	7,703	988	926	1,628	2,185	18	35	
1976	22,993	558	118	829	677	6,234	8,264	1,022	921	1,838	2,467	22	43	
1981	24,343	568	123	847	696	6,438	8,625	1,026	968	2,238	2,744	23	46	
1986	25,309	568	127	873	709	6,532	9,102	1,063	1,010	2,366	2,883	24	52	
1991	27,297	568	130	900	724	6,896	10,085	1,092	989	2,546	3,282	28	36	21
1996	28,847	552	135	909	738	7,139	10,754	1,114	990	2,697	3,725	31	40	25
2001	30,007	513	135	908	729	7,237	11,410	1,120	979	2,975	3,908	29	37	27

**Note:** In this table Nunavut is included in the Northwest Territories up to 1986.

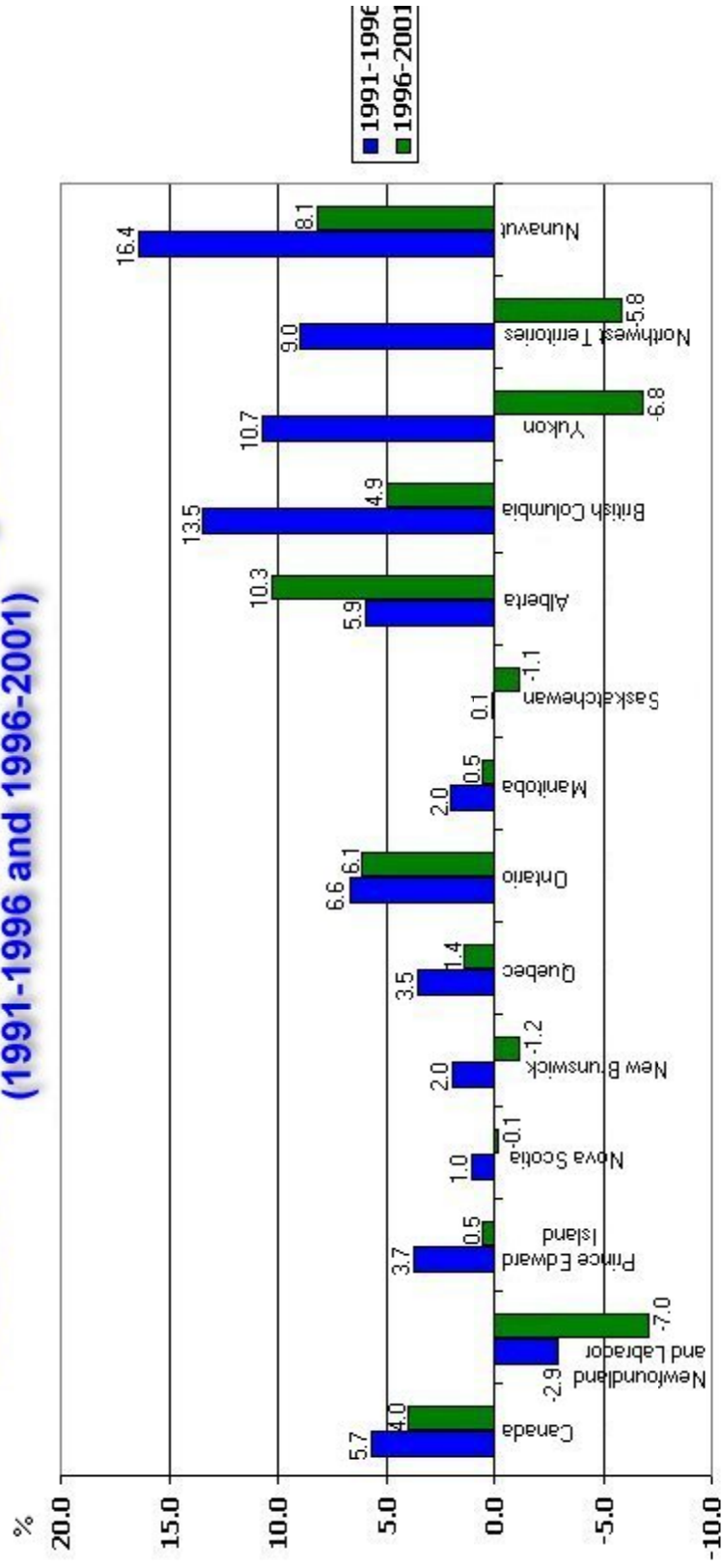
## Canada, Province and Territory growth rates over 50 years

	Canada	New-found-land and Labrador	Prince Edward Island	Nova Scotia	New Brunswick	Quebec	Ontario	Manitoba	Saskatchewan	Alberta	British Columbia	Yukon	Northwest Territories	Nunavut
1951-1956	14.8%	14.8%	0.9%	8.1%	7.5%	14.1%	17.6%	9.5%	5.9%	19.5%	20.0%	34.0%	20.7%	
1956-1961	13.4%	10.3%	5.4%	6.1%	7.8%	13.6%	15.4%	8.4%	5.1%	18.6%	16.5%	20.0%	19.1%	
1961-1966	9.7%	7.8%	3.7%	2.6%	3.2%	9.9%	11.6%	4.5%	3.3%	9.9%	15.0%	-1.7%	25.0%	
1966-1971	7.8%	5.8%	2.9%	4.4%	2.9%	4.3%	10.7%	2.6%	-3.0%	11.3%	16.6%	27.9%	21.1%	
1971-1976	6.6%	6.8%	5.9%	5.0%	6.7%	3.4%	7.3%	3.4%	-0.5%	12.9%	12.9%	18.7%	22.4%	
1976-1981	5.9%	1.8%	3.6%	2.3%	2.8%	3.3%	4.4%	0.5%	5.1%	21.7%	11.3%	6.0%	7.3%	
1981-1986	4.0%	0.1%	3.4%	3.0%	1.9%	1.5%	5.5%	3.6%	4.3%	5.7%	5.1%	1.5%	14.2%	
1986-1991	7.9%	0.0%	2.5%	3.1%	2.0%	5.6%	10.8%	2.7%	-2.0%	7.6%	13.8%	18.3%	10.4%	
1991-1996	5.7%	-2.9%	3.7%	1.0%	2.0%	3.5%	6.6%	2.0%	0.1%	5.9%	13.5%	10.7%	9.0%	16.4%
1996-2001	4.0%	-7.0%	0.5%	-0.1%	-1.2%	1.4%	6.1%	0.5%	-1.1%	10.3%	4.9%	-6.8%	-5.8%	8.1%

**Note:** The 1986-1991 Northwest Territory growth rate is calculated including Nunavut in both 1986 and 1991.



## Census-to-Census provincial and territorial growth rates (1991-1996 and 1996-2001)

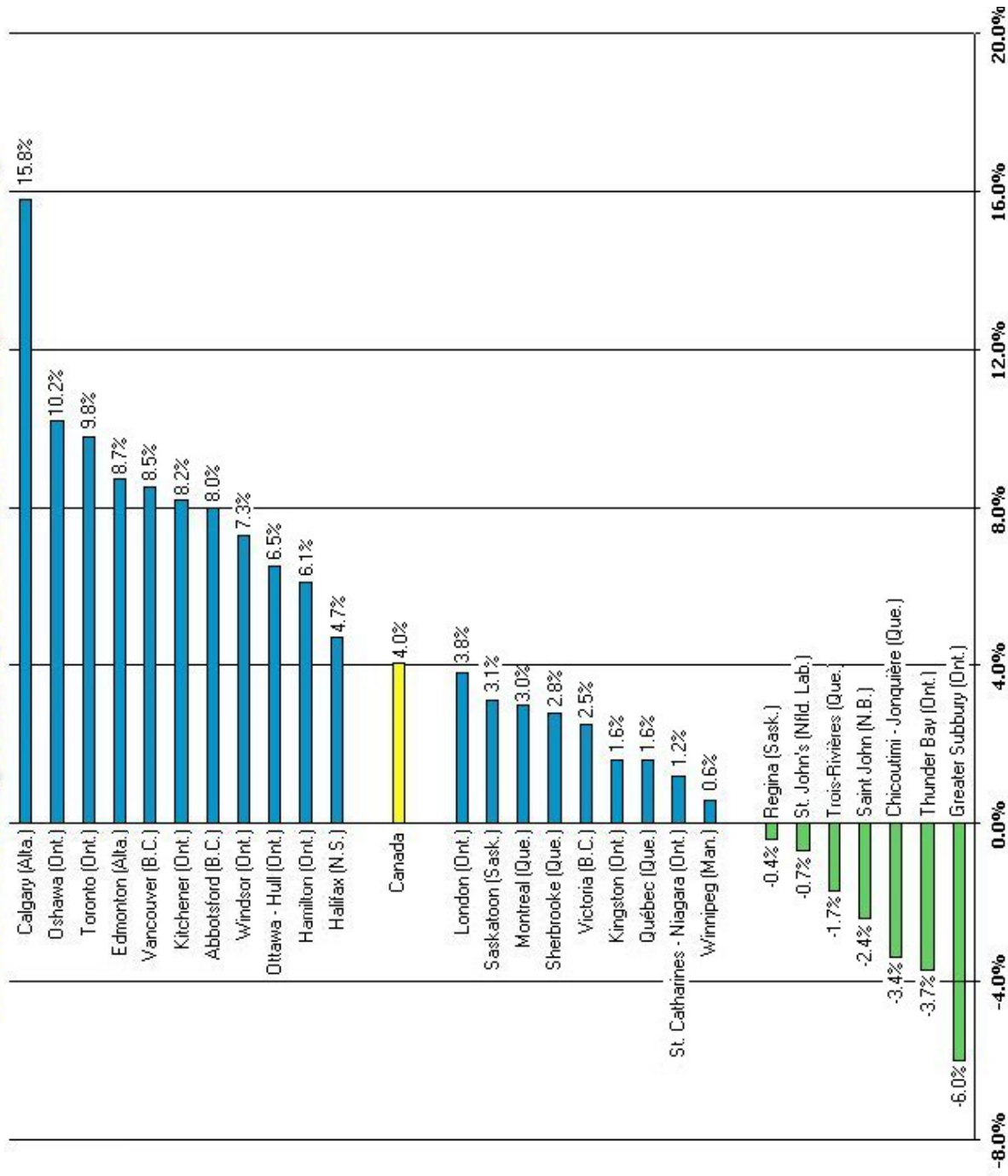


Source: 1996 and 2001 Censuses of Population

## Census metropolitan area populations and growth rates

	2001 Population	1996 Population	% Change
Canada	30,007,094	28,846,760	4.0
Abbotsford (B.C.)	147,370	136,480	8.0
Calgary (Alta.)	951,395	821,628	15.8
Chicoutimi - Jonquière (Que.)	154,938	160,454	-3.4
Edmonton (Alta.)	937,845	862,597	8.7
Greater Sudbury (Ont.)	155,601	165,618	-6.0
Halifax (N.S.)	359,183	342,966	4.7
Hamilton (Ont.)	662,401	624,360	6.1
Kingston (Ont.)	146,838	144,528	1.6
Kitchener (Ont.)	414,284	382,940	8.2
London (Ont.)	432,451	416,546	3.8
Montréal (Que.)	3,426,350	3,326,447	3.0
Oshawa (Ont.)	296,298	268,773	10.2
Ottawa - Hull (Ont.)	1,063,664	998,718	6.5
Québec (Que.)	682,757	671,889	1.6
Regina (Sask.)	192,800	193,652	-0.4
Saint John (N.B.)	122,678	125,705	-2.4
Saskatoon (Sask.)	225,927	219,056	3.1
Sherbrooke (Que.)	153,811	149,569	2.8
St. Catharines - Niagara (Ont.)	377,009	372,406	1.2
St. John's (Nfld. Lab.)	172,918	174,051	-0.7
Thunder Bay (Ont.)	121,986	126,643	-3.7
Toronto (Ont.)	4,682,897	4,263,759	9.8
Trois-Rivières (Que.)	137,507	139,956	-1.7
Vancouver (B.C.)	1,986,965	1,831,665	8.5
Victoria (B.C.)	311,902	304,287	2.5
Windsor (Ont.)	307,877	286,811	7.3
Winnipeg (Man.)	671,274	667,093	0.6

# Census Metropolitan Area Growth Rates (1996-2001)



**Fastest growing municipalities with populations of 5,000 or more  
(1996-2001)**

	Population		
	1996	2001	% change
Cochrane (Alta.)	7,424	11,798	58.9
Sylvan Lake (Alta.)	5,184	7,493	44.5
Strathmore (Alta.)	5,314	7,621	43.4
Wasaga Beach (Ont.)	8,698	12,417	42.8
Vaughan (Ont.)	132,549	182,022	37.3
Okotoks (Alta.)	8,528	11,664	36.8
Saint-Colomban (Que.)	5,569	7,520	35.0
Rocky View No. 44 (Alta.)	23,326	30,688	31.6
Barrie (Ont.)	79,191	103,710	31.0
Richmond Hill (Ont.)	101,725	132,030	29.8
Saint-Élie-d'Orford (Que.)	6,148	7,947	29.3
Canmore (Alta.)	8,354	10,792	29.2
Airdrie (Alta.)	15,946	20,382	27.8
High River (Alta.)	7,359	9,345	27.0
Caledon (Ont.)	39,893	50,595	26.8
Iqaluit (Nvt.)	4,220	5,236	24.1
Whistler (B.C.)	7,172	8,894	24.0
LaSalle (Ont.)	20,566	25,285	22.9
Masson-Angers (Que.)	7,989	9,799	22.7
Blainville (Que.)	29,603	36,029	21.7
Brampton (Ont.)	268,251	325,428	21.3
Notre-Dame-de-l'Île-Perrot (Que.)	7,059	8,546	21.1
Mirabel (Que.)	22,626	27,330	20.8
Paradise (Nfld.Lab.)	7,948	9,598	20.8
Markham (Ont.)	173,383	208,615	20.3

**Fastest declining municipalities with populations of 5,000 or more  
(1996-2001)**

	Population		% change
	1996	2001	
Greenstone (Ont.)	6,530	5,662	-13.3
Mackenzie (B.C.)	5,997	5,206	-13.2
Guysborough (N.S.)	5,942	5,165	-13.1
Kirkland Lake (Ont.)	9,905	8,616	-13.0
Prince Rupert (B.C.)	16,714	14,643	-12.4
Marystown (Nfld.Lab.)	6,742	5,908	-12.4
Elliot Lake (Ont.)	13,588	11,956	-12.0
Comox-Strathcona C (B.C.)	8,615	7,584	-12.0
Baie-Comeau (Que.)	25,554	23,079	-9.7
Gaspé (Que.)	16,517	14,932	-9.6
Port-Cartier (Que.)	7,070	6,412	-9.3
Inverness, Subd. A (N.S.)	6,595	6,009	-8.9
Flin Flon (Part) (Man.)	6,572	6,000	-8.7
Iroquois Falls (Ont.)	5,714	5,217	-8.7
Rouyn-Noranda (Que.)	30,936	28,269	-8.6
Chibougamau (Que.)	8,664	7,922	-8.6
Stephenville (Nfld.Lab.)	7,764	7,109	-8.4
Labrador City (Nfld.Lab.)	8,455	7,744	-8.4
Corner Brook (Nfld.Lab.)	21,893	20,103	-8.2
Timmins (Ont.)	47,499	43,686	-8.0
Mont-Laurier (Que.)	8,007	7,365	-8.0
Kapuskasing (Ont.)	10,036	9,238	-8.0
Happy Valley-Goose Bay (Nfld.Lab.)	8,655	7,969	-7.9
Thompson (Man.)	14,385	13,256	-7.8
Kitimat (B.C.)	11,136	10,285	-7.6