



Catalogue no. 91-002-XIE

Quarterly demographic statistics



October-December 2005



Statistics
Canada Statistique
Canada

Canada

How to obtain more information

Specific inquiries about this product and related statistics or services should be directed to: Demography Division, Statistics Canada, Ottawa, Ontario, K1A 0T6 (telephone: 1 800 263 1136).

For information on the wide range of data available from Statistics Canada, you can contact us by calling one of our toll free numbers. You can also contact us by e-mail or by visiting our website.

National inquiries line **1 800 263-1136**

National telecommunications device for the hearing impaired **1 800 363-7629**

Depository Services Program inquiries **1 800 700-1033**

Fax line for Depository Services Program **1 800 889-9734**

E-mail inquiries ***infostats@statcan.ca***

Website ***www.statcan.ca***

Ordering and subscription information

This product, Catalogue no. 91-002-XIE, is published quarterly in electronic format on the Statistics Canada Internet site at a single price of CAN\$9.00 per issue (PDF) and CAN\$27.00 for a one-year subscription (HTML). To obtain single issues or to subscribe, visit our website at ***www.statcan.ca***, and select Products and Services.

Standards of service to the public

Statistics Canada is committed to serving its clients in a prompt, reliable and courteous manner and in the official language of their choice. To this end, the Agency has developed *standards of service* which its employees observe in serving its clients. To obtain a copy of these service standards, please contact Statistics Canada toll free at 1 800 263-1136. The service standards are also published on ***www.statcan.ca*** under About Statistics Canada > Providing services to Canadians.



Statistics Canada
Demography Division

Quarterly demographic statistics

October-December 2005

Published by authority of the Minister responsible for Statistics Canada

© Minister of Industry, 2006

All rights reserved. Use of this product is limited to the licensee and its employees. The product cannot be reproduced and transmitted to any person or organization outside of the licensee's organization.

Reasonable rights of use of the content of this product are granted solely for personal, corporate or public policy research, or educational purposes. This permission includes the use of the content in analyses and the reporting of results and conclusions, including the citation of limited amounts of supporting data extracted from the data product in these documents. These materials are solely for non-commercial purposes. In such cases, the source of the data must be acknowledged as follows: Source (or "Adapted from", if appropriate): Statistics Canada, name of product, catalogue, volume and issue numbers, reference period and page(s). Otherwise, users shall seek prior written permission of Licensing Services, Client Services Division, Statistics Canada, Ottawa, Ontario, Canada, K1A 0T6.

March 2006

Catalogue no. 91-002-XIE, Vol. 19, No. 4

ISSN 1209-1235

Frequency: Quarterly

Ottawa

La version française de cette publication est disponible sur demande (n° 91-002-XIF au catalogue).

Note of appreciation

Canada owes the success of its statistical system to a long standing partnership between Statistics Canada, the citizens of Canada, its businesses, governments and other institutions. Accurate and timely statistical information could not be produced without their continued cooperation and goodwill.

User information

Symbols

The following standard symbols are used in Statistics Canada publications:

- . not available for any reference period
- .. not available for a specific reference period
- ... not applicable
- 0 true zero or a value rounded to zero
- 0^s value rounded to 0 (zero) where there is a meaningful distinction between true zero and the value that was rounded
- p preliminary
- r revised
- x suppressed to meet the confidentiality requirements of the *Statistics Act*
- E use with caution
- F too unreliable to be published

Notice to readers

Most of the components used to produce preliminary population estimates are estimated using demographic models or based on data sources less complete or reliable, albeit more timely, than those used for updated or final estimates.

Table of contents

Highlights	7
Analysis	8
Related products	11
Statistical tables	
1 Quarterly population estimates, Canada, provinces and territories	14
1-1 Population	14
1-2 Quarterly variation	15
1-3 Annual variation	16
2 Quarterly population estimates, numbers and variations	17
2-1 Canada	17
2-2 Newfoundland and Labrador	18
2-3 Prince Edward Island	19
2-4 Nova Scotia	20
2-5 New Brunswick	21
2-6 Quebec	22
2-7 Ontario	23
2-8 Manitoba	24
2-9 Saskatchewan	25
2-10 Alberta	26
2-11 British Columbia	27
2-12 Yukon Territory	28
2-13 Northwest Territories	29
2-14 Nunavut	30
3 Quarterly estimates of demographic components, Canada, provinces and territories	31
3-1 Births	31
3-2 Deaths	32
3-3 Immigrants	33
3-4 Emigrants	34
3-5 Returning emigrants	35
3-6 Net temporary emigrants	36
3-7 Net non-permanent residents	37

Table of contents – continued

3-8	Interprovincial in-migrants	38
3-9	Interprovincial out-migrants	39
3-10	Total growth	40
3-11	Natural increase	41
3-12	Net interprovincial migration	42
3-13	Net international migration	43
3-14	Total net migration	44
4	Quarterly population estimates and aggregated demographic components	45
4-1	Canada	45
4-2	Newfoundland and Labrador	46
4-3	Prince Edward Island	47
4-4	Nova Scotia	48
4-5	New Brunswick	49
4-6	Quebec	50
4-7	Ontario	51
4-8	Manitoba	52
4-9	Saskatchewan	53
4-10	Alberta	54
4-11	British Columbia	55
4-12	Yukon Territory	56
4-13	Northwest Territories	57
4-14	Nunavut	58
5	Quarterly estimates of demographic components	59
5-1	Canada	59
5-2	Newfoundland and Labrador	60
5-3	Prince Edward Island	61
5-4	Nova Scotia	62
5-5	New Brunswick	63
5-6	Quebec	64
5-7	Ontario	65
5-8	Manitoba	66
5-9	Saskatchewan	67
5-10	Alberta	68
5-11	British Columbia	69
5-12	Yukon Territory	70
5-13	Northwest Territories	71
5-14	Nunavut	72

Table of contents – continued

6	Quarterly estimates of interprovincial migrants by province or territory of origin and destination, Canada, October to December 2005	73
----------	--	----

Data quality, concepts and methodology

	Quality of estimates	74
	Explanatory notes for the tables	77

Appendix

I.	Glossary	79
II.	Source and remarks	82

Charts

1.	Quarterly aggregated demographic components, October to December, 1971 to 2005, Canada	8
2.	Quarterly aggregated demographic components, October to December, 1971 to 2005, Alberta	9
3.	Quarterly components of interprovincial migration, October to December, 1971 to 2005, Alberta	10
4.	Quarterly variation of population estimates, Canada, provinces and territories, October to December, 2004 and 2005	10

Highlights

- The population of Canada grew by 44,800 in the fourth quarter of 2005, reaching 32,422,900 on January 1, 2006. This was the largest fourth-quarter increase since 2001.
- This rise in Canadian population growth was due mainly to the arrival of 55,400 immigrants in the last three months of 2005, up 7,300 from the same period in the previous year. Not since 2000 has Canada received such a large number of immigrants in a fourth quarter.
- Alberta's net interprovincial migration reached 17,100, a new fourth-quarter high. Alberta's economic growth has exerted a powerful draw on Canadians nationwide, and this has led to much faster population growth in Alberta than elsewhere in Canada.

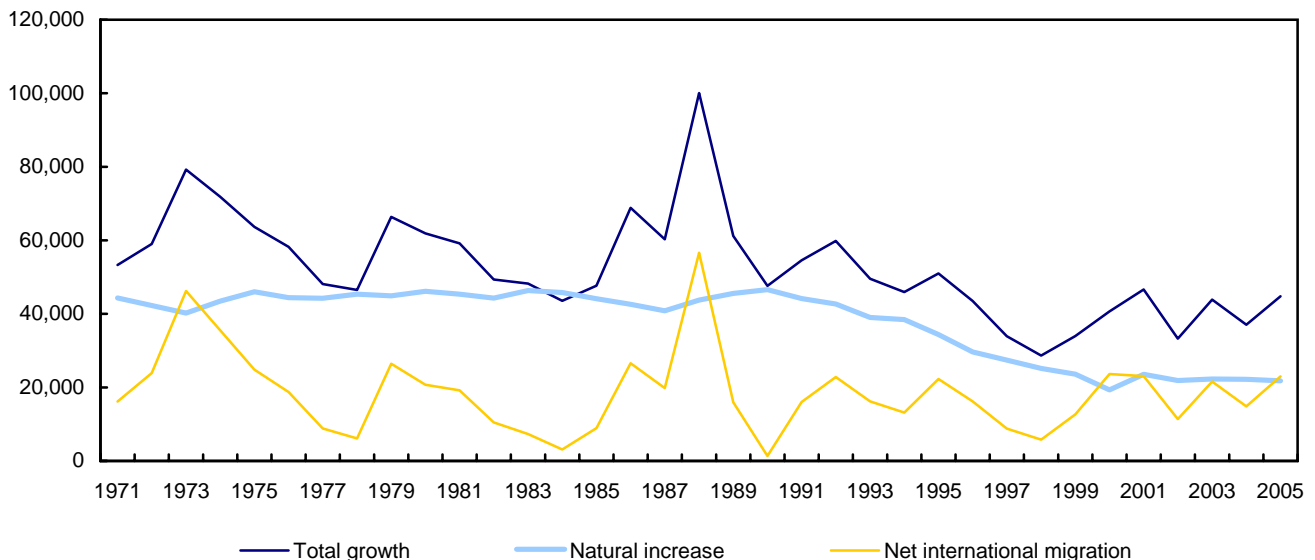
Analysis

In the last quarter of 2005, Canada's population grew by 44,800, reaching 32,422,900 on January 1, 2006. Since 1995, such a large increase has occurred only in 2001, when the population grew by 46,600.

This increase in population growth is mainly due to a rise in the number of immigrants arriving to Canada which raised the 2005 fourth-quarter net international migration up to 23,000 from 14,800 for the previous year. In the last three months of 2005, Canada received 55,400 immigrants, up 7,300 from the same period of the previous year. One has to go back in 2000 to see the country receive such a large number of immigrants in a fourth-quarter (57,500) (see chart 1).

Chart 1

Quarterly aggregated demographic components, October to December, 1971 to 2005, Canada



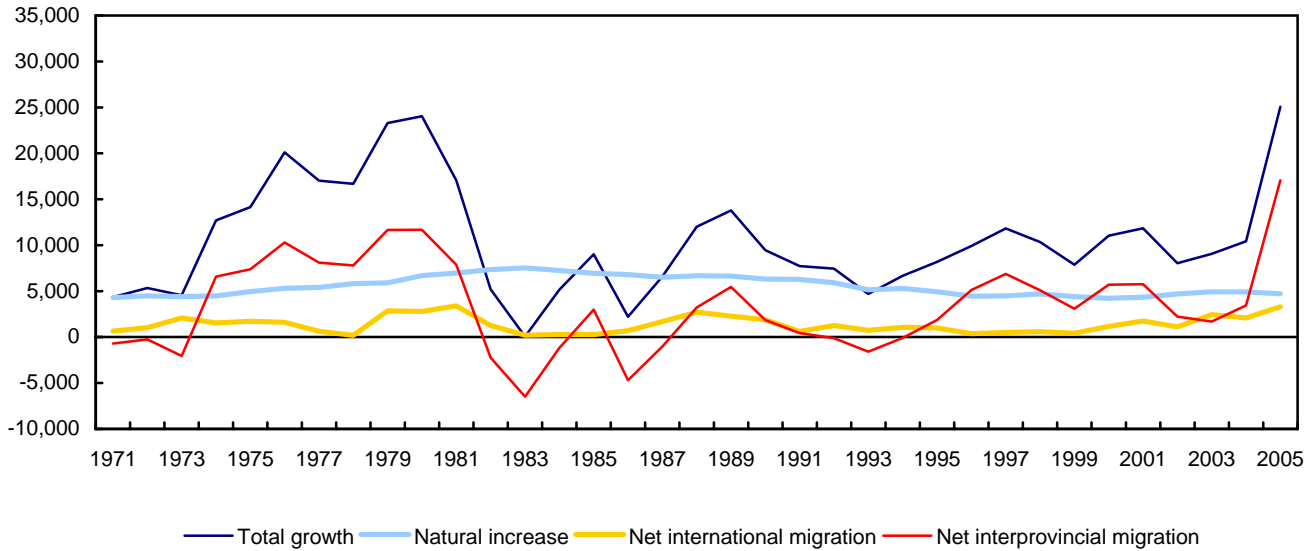
At the provincial level, Alberta had by far the largest population increase. Alberta's population growth rate, estimated at 0.76%, was more than five times greater than the Canadian average (0.14%). In absolute numbers, Alberta's growth (25,100) was the highest ever attained in a fourth quarter. Only during the oil boom period in 1979-1980 was there similar growth (see chart 2).

Alberta's performance was mainly due to a strong increase in its net interprovincial migration. In the last quarter of 2005, the province received 17,100 more persons than it lost in its exchanges with other parts of Canada. This was an all-time high for any quarter.

Net interprovincial migration accounted for more than two-thirds (68.1%) of Alberta's population growth in the fourth quarter of 2005. By comparison, the corresponding figure for the same period in 2004 was 33.1% of the province's total population growth.

Chart 2

Quarterly aggregated demographic components, October to December, 1971 to 2005, Alberta



Historically, only during the 1979-1980 period, did Alberta record net interprovincial migration figures that were similar to, although lower than, those posted in the last quarter of 2005. However, the two periods are different. In the earlier period, interprovincial movements involving Alberta were much more numerous. In conjunction with a number of in-migrants never equalled since then, the number of out-migrants was also very high. While the number of interprovincial in-migrants in the fourth quarter of 2005 did not reach the level attained in the earlier period, there were fewer out-migrants, and therefore net migration was greater.

Inevitably, when one region exerts such a powerful draw, the demography of the other regions is affected. Thus, seven of Canada's thirteen provinces and territories experienced a decrease in their population in the last three months of 2005. Only twice since 1971 have so many regions recorded a drop in the same quarter (see chart 3).

Apart from Alberta, only British Columbia (0.19%) and Nunavut (0.37 %) registered a population growth rate above the national average. Quebec (0.09%), Ontario (0.08%) and Manitoba (0.02%) are the other regions whose population growth was positive, although below the national average.

International immigration was up almost everywhere in Canada, offsetting the pull exerted by Alberta. Without this input from abroad, Manitoba would have lost population. Similarly, the demographic growth of British Columbia would have showed a 6-fold decrease and that of Quebec would have been diminished by half. As to Ontario, the increase in its net international migration made it the only region, along with Nunavut and Alberta, to have a larger population increase in the fourth quarter of 2005 than in the same quarter the previous year (see chart 4).

The four Atlantic provinces lost population in the last quarter, as did Saskatchewan, the Yukon and the Northwest Territories. Proportionally, the Northwest Territories experienced the greatest decrease (-1.02%). Among the other regions recording losses, the Yukon (-0.27%), Newfoundland and Labrador (-0.23%) and Saskatchewan (-0.21%) were noteworthy. Along with Manitoba, which however kept a positive growth in 2005, these four regions were proportionally the most affected by the strong pull exerted by Alberta.

Chart 3

Quarterly components of interprovincial migration, October to December, 1971 to 2005, Alberta

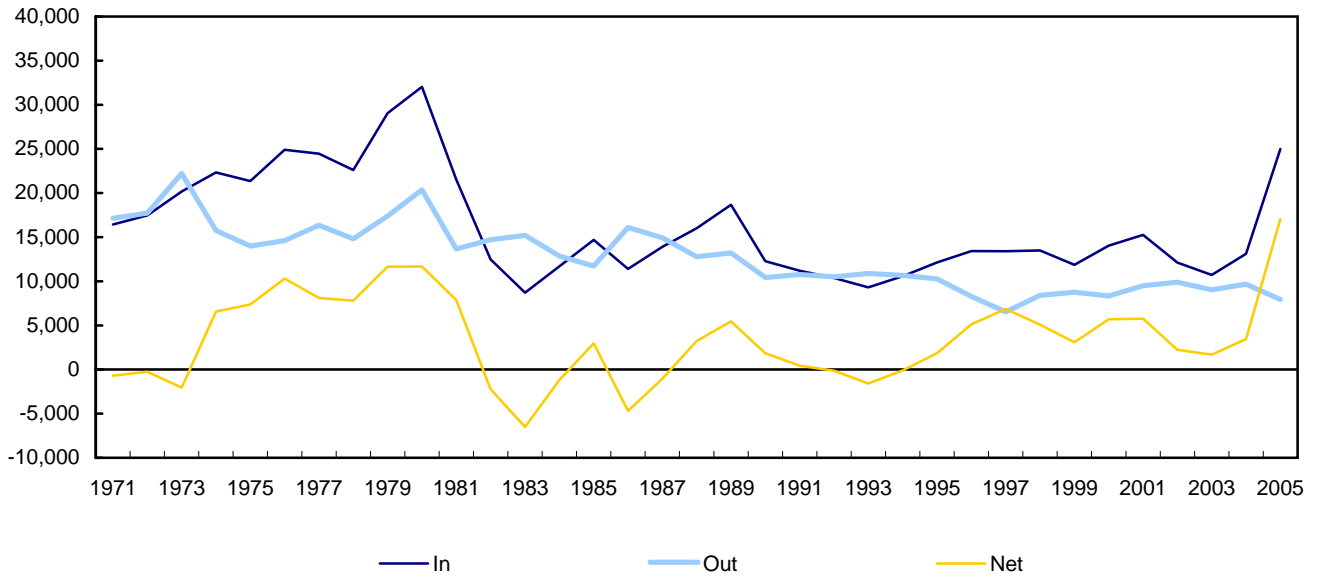
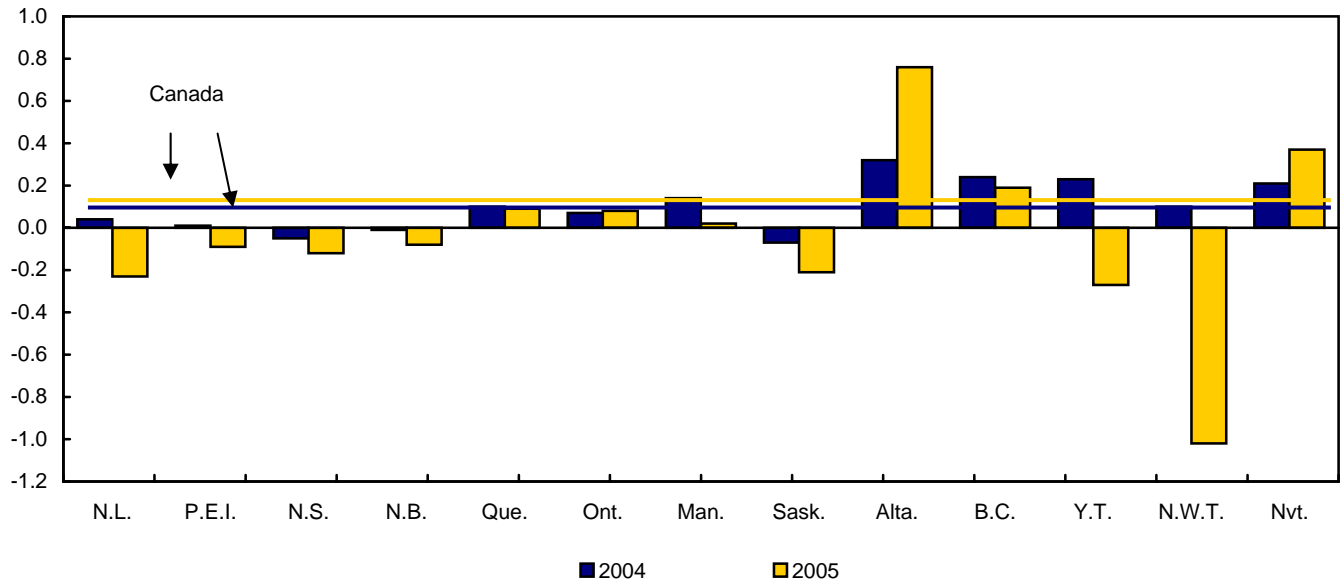


Chart 4

Quarterly variation of population estimates, Canada, provinces and territories, October to December, 2004 and 2005



Related products

Selected publications from Statistics Canada

91-209-X	Report on the demographic situation in Canada
91-213-X	Annual demographic statistics
91-520-X	Population projections for Canada, provinces and territories

Selected CANSIM tables from Statistics Canada

051-0001	Estimates of population, by age group and sex, Canada, provinces and territories
051-0002	Deaths, by sex and age group, Canada, provinces and territories
051-0004	Components of population growth, Canada, provinces and territories
051-0005	Estimates of population, Canada, provinces and territories
051-0006	Immigrants to Canada, by country of last permanent residence
051-0010	Estimates of population, by marital status, age group and sex, Canada, provinces and territories
051-0011	International migrants, by age group and sex, Canada, provinces, and territories
051-0012	Interprovincial migrants, by age group and sex, Canada, provinces and territories
051-0013	Births by sex, Canada, provinces and territories
051-0017	Interprovincial migrants, Canada, provinces and territories
051-0018	Interprovincial in-, out- and net-migrants, by province or territory
051-0019	Interprovincial migrants, by province or territory of origin and destination
051-0020	Number of non-permanent residents, Canada, provinces and territories
051-0037	International migration components, Canada, provinces and territories
053-0001	Vital statistics, births, deaths and marriages
102-0502	Deaths, by month, Canada, provinces and territories
102-4502	Live births, by month, Canada, provinces and territories

Selected surveys from Statistics Canada

3601	Estimates of Total Population, Canada, Provinces and Territories
3604	Estimates of Population by Age and Sex for Canada, the Provinces and the Territories
3605	Estimates of Population by Marital Status, Age and Sex for Canada, the Provinces and the Territories

Selected tables of Canadian statistics from Statistics Canada

- *Births and birth rate, by provinces and territories*
- *Deaths and death rate, by provinces and territories*
- *Components of population growth, by province and territory*
- *Marriages by provinces and territories*
- *Population by year, by province and territory*
- *Population by year, by province and territory*
- *Population by marital status and sex, by province and territory*

Statistical tables

Table 1-1

Quarterly population estimates, Canada, provinces and territories — Population 1

	Canada	Newfoundland and Labrador	Prince Edward Island	Nova Scotia	New Brunswick	Quebec	Ontario
	number						
2006							
January 1 st	32,422,919	514,409	138,157	936,988	751,111	7,623,870	12,599,364
2005							
October 1 st	32,378,122	515,591	138,278	938,116	751,726	7,616,645	12,589,823
July 1 st	32,270,507	515,961	138,113	937,889	752,006	7,598,146	12,541,410
April 1 st	32,173,890	516,374	137,826	937,800	752,345	7,582,541	12,494,228
January 1 st	32,107,043	517,339	137,771	938,339	752,266	7,573,726	12,462,445
2004							
October 1 st	32,069,999	517,112	137,762	938,821	752,313	7,566,136	12,454,171
July 1 st	31,974,363	517,284	137,861	937,509	752,078	7,547,728	12,407,347
April 1 st	31,877,982	517,844	137,787	936,879	751,827	7,531,006	12,357,421
January 1 st	31,805,716	518,677	137,618	937,196	751,375	7,519,875	12,320,329
2003							
October 1 st	31,761,823	518,816	137,519	937,133	751,438	7,512,119	12,305,346
July 1 st	31,669,150	518,469	137,300	936,302	751,215	7,493,958	12,259,568
April 1 st	31,573,504	518,683	137,136	935,596	751,011	7,478,357	12,208,499
January 1 st	31,501,729	519,040	137,087	935,375	750,935	7,467,289	12,169,065
2002							
October 1 st	31,468,449	519,386	137,066	935,554	750,972	7,461,563	12,155,145
July 1 st	31,372,587	519,449	136,934	934,507	750,327	7,445,745	12,102,045
April 1 st	31,265,843	519,790	136,835	933,720	749,618	7,432,197	12,036,968
January 1 st	31,182,448	521,229	136,847	933,609	749,286	7,421,309	11,986,887
2001							
October 1 st	31,135,823	521,455	136,872	933,245	749,716	7,413,392	11,965,417
July 1 st	31,021,251	521,986	136,672	932,389	749,890	7,396,990	11,897,647
	Manitoba	Saskat- chewan	Alberta	British Columbia	Yukon Territory	Northwest Territories	Nunavut
	number						
2006							
January 1 st	1,178,348	990,930	3,306,359	4,279,462	31,150	42,526	30,245
2005							
October 1 st	1,178,109	992,995	3,281,296	4,271,210	31,235	42,965	30,133
July 1 st	1,177,556	994,126	3,256,816	4,254,522	30,988	42,982	29,992
April 1 st	1,176,402	994,551	3,239,739	4,238,359	30,881	43,042	29,802
January 1 st	1,174,959	994,687	3,226,301	4,225,623	30,862	43,015	29,710
2004							
October 1 st	1,173,358	995,351	3,215,869	4,215,695	30,791	42,973	29,647
July 1 st	1,170,229	994,300	3,204,780	4,201,867	30,856	42,851	29,673
April 1 st	1,167,505	994,342	3,192,421	4,187,938	30,861	42,758	29,393
January 1 st	1,165,161	994,167	3,180,787	4,177,626	30,837	42,741	29,327
2003							
October 1 st	1,163,207	994,359	3,171,735	4,167,719	30,788	42,451	29,193
July 1 st	1,161,626	994,519	3,159,620	4,154,591	30,577	42,240	29,165
April 1 st	1,159,212	994,555	3,147,233	4,141,710	30,456	41,987	29,069
January 1 st	1,157,962	994,789	3,136,984	4,132,142	30,337	41,797	28,927
2002							
October 1 st	1,157,089	995,311	3,128,945	4,126,608	30,267	41,676	28,867
July 1 st	1,155,584	995,886	3,116,332	4,115,413	30,137	41,489	28,739
April 1 st	1,153,533	996,916	3,100,798	4,105,904	30,092	41,239	28,233
January 1 st	1,152,079	998,219	3,087,024	4,096,473	30,155	41,107	28,224
2001							
October 1 st	1,151,644	998,926	3,075,186	4,090,659	30,032	41,144	28,135
July 1 st	1,151,285	1,000,134	3,056,739	4,078,447	30,129	40,822	28,121

1. Population estimates are final postcensal from July 1, 2001 to July 1, 2002, updated postcensal from October 1, 2002 to April 1, 2005 and preliminary postcensal from July 1, 2005.

Table 1-2

 Quarterly population estimates, Canada, provinces and territories — Quarterly variation ¹

	Canada	Newfoundland and Labrador	Prince Edward Island	Nova Scotia	New Brunswick	Quebec	Ontario
variation in %							
2005							
October - December	0.14	-0.23	-0.09	-0.12	-0.08	0.09	0.08
July - September	0.33	-0.07	0.12	0.02	-0.04	0.24	0.39
April - June	0.30	-0.08	0.21	0.01	-0.05	0.21	0.38
January - March	0.21	-0.19	0.04	-0.06	0.01	0.12	0.26
2004							
October - December	0.12	0.04	0.01	-0.05	-0.01	0.10	0.07
July - September	0.30	-0.03	-0.07	0.14	0.03	0.24	0.38
April - June	0.30	-0.11	0.05	0.07	0.03	0.22	0.40
January - March	0.23	-0.16	0.12	-0.03	0.06	0.15	0.30
2003							
October - December	0.14	-0.03	0.07	0.01	-0.01	0.10	0.12
July - September	0.29	0.07	0.16	0.09	0.03	0.24	0.37
April - June	0.30	-0.04	0.12	0.08	0.03	0.21	0.42
January - March	0.23	-0.07	0.04	0.02	0.01	0.15	0.32
2002							
October - December	0.11	-0.07	0.02	-0.02	0.00	0.08	0.11
July - September	0.31	-0.01	0.10	0.11	0.09	0.21	0.44
April - June	0.34	-0.07	0.07	0.08	0.09	0.18	0.54
January - March	0.27	-0.28	-0.01	0.01	0.04	0.15	0.42
2001							
October - December	0.15	-0.04	-0.02	0.04	-0.06	0.11	0.18
July - September	0.37	-0.10	0.15	0.09	-0.02	0.22	0.57
	Manitoba	Saskat- chewan	Alberta	British Columbia	Yukon Territory	Northwest Territories	Nunavut
variation in %							
2005							
October - December	0.02	-0.21	0.76	0.19	-0.27	-1.02	0.37
July - September	0.05	-0.11	0.75	0.39	0.80	-0.04	0.47
April - June	0.10	-0.04	0.53	0.38	0.35	-0.14	0.64
January - March	0.12	-0.01	0.42	0.30	0.06	0.06	0.31
2004							
October - December	0.14	-0.07	0.32	0.24	0.23	0.10	0.21
July - September	0.27	0.11	0.35	0.33	-0.21	0.28	-0.09
April - June	0.23	0.00	0.39	0.33	-0.02	0.22	0.95
January - March	0.20	0.02	0.37	0.25	0.08	0.04	0.23
2003							
October - December	0.17	-0.02	0.29	0.24	0.16	0.68	0.46
July - September	0.14	-0.02	0.38	0.32	0.69	0.50	0.10
April - June	0.21	0.00	0.39	0.31	0.40	0.60	0.33
January - March	0.11	-0.02	0.33	0.23	0.39	0.45	0.49
2002							
October - December	0.08	-0.05	0.26	0.13	0.23	0.29	0.21
July - September	0.13	-0.06	0.40	0.27	0.43	0.45	0.45
April - June	0.18	-0.10	0.50	0.23	0.15	0.61	1.79
January - March	0.13	-0.13	0.45	0.23	-0.21	0.32	0.03
2001							
October - December	0.04	-0.07	0.38	0.14	0.41	-0.09	0.32
July - September	0.03	-0.12	0.60	0.30	-0.32	0.79	0.05

1. Numbers for total growth are final up to June 2002, updated from July 2002 to March 2005 and preliminary from April 2005.

Table 1-3

 Quarterly population estimates, Canada, provinces and territories — Annual variation ¹

	Canada	Newfoundland and Labrador	Prince Edward Island	Nova Scotia	New Brunswick	Quebec	Ontario
variation in %							
2006							
January 1 st	0.98	-0.57	0.28	-0.14	-0.15	0.66	1.10
2005							
October 1 st	0.96	-0.29	0.37	-0.08	-0.08	0.67	1.09
July 1 st	0.93	-0.26	0.18	0.04	-0.01	0.67	1.08
April 1 st	0.93	-0.28	0.03	0.10	0.07	0.68	1.11
January 1 st	0.95	-0.26	0.11	0.12	0.12	0.72	1.15
2004							
October 1 st	0.97	-0.33	0.18	0.18	0.12	0.72	1.21
July 1 st	0.96	-0.23	0.41	0.13	0.11	0.72	1.21
April 1 st	0.96	-0.16	0.47	0.14	0.11	0.70	1.22
January 1 st	0.96	-0.07	0.39	0.19	0.06	0.70	1.24
2003							
October 1 st	0.93	-0.11	0.33	0.17	0.06	0.68	1.24
July 1 st	0.95	-0.19	0.27	0.19	0.12	0.65	1.30
April 1 st	0.98	-0.21	0.22	0.20	0.19	0.62	1.43
January 1 st	1.02	-0.42	0.18	0.19	0.22	0.62	1.52
2002							
October 1 st	1.07	-0.40	0.14	0.25	0.17	0.65	1.59
July 1 st	1.13	-0.49	0.19	0.23	0.06	0.66	1.72
April 1 st	1.14	-0.67	0.24	0.08	-0.02	0.66	1.76
January 1 st	1.15	-0.79	0.33	0.01	-0.06	0.64	1.81
2001							
October 1 st	1.13	-1.02	0.33	-0.14	-0.07	0.60	1.83
July 1 st	1.08	-1.15	0.14	-0.16	-0.08	0.54	1.82
	Manitoba	Saskat- chewan	Alberta	British Columbia	Yukon Territory	Northwest Territories	Nunavut
variation in %							
2006							
January 1 st	0.29	-0.38	2.48	1.27	0.93	-1.14	1.80
2005							
October 1 st	0.40	-0.24	2.03	1.32	1.44	-0.02	1.64
July 1 st	0.63	-0.02	1.62	1.25	0.43	0.31	1.08
April 1 st	0.76	0.02	1.48	1.20	0.06	0.66	1.39
January 1 st	0.84	0.05	1.43	1.15	0.08	0.64	1.31
2004							
October 1 st	0.87	0.10	1.39	1.15	0.01	1.23	1.56
July 1 st	0.74	-0.02	1.43	1.14	0.91	1.45	1.74
April 1 st	0.72	-0.02	1.44	1.12	1.33	1.84	1.11
January 1 st	0.62	-0.06	1.40	1.10	1.65	2.26	1.38
2003							
October 1 st	0.53	-0.10	1.37	1.00	1.72	1.86	1.13
July 1 st	0.52	-0.14	1.39	0.95	1.46	1.81	1.48
April 1 st	0.49	-0.24	1.50	0.87	1.21	1.81	2.96
January 1 st	0.51	-0.34	1.62	0.87	0.60	1.68	2.49
2002							
October 1 st	0.47	-0.36	1.75	0.88	0.78	1.29	2.60
July 1 st	0.37	-0.42	1.95	0.91	0.03	1.63	2.20
April 1 st	0.33	-0.49	1.94	0.98	-0.07	1.48	1.08
January 1 st	0.31	-0.54	1.92	1.02	0.06	1.13	1.52
2001							
October 1 st	0.30	-0.73	1.90	1.02	-0.83	1.35	1.62
July 1 st	0.34	-0.76	1.72	0.97	-0.96	0.80	2.26

1. Population estimates are final postcensal from July 1, 2001 to July 1, 2002, updated postcensal from October 1, 2002 to April 1, 2005 and preliminary postcensal from July 1, 2005.

Table 2-1

 Quarterly population estimates, numbers and variations — Canada ¹

	Population	Quarterly	Annual
	number	variation in %	
2006			
January 1 st	32,422,919	0.14	0.98
2005			
October 1 st	32,378,122	0.33	0.96
July 1 st	32,270,507	0.30	0.93
April 1 st	32,173,890	0.21	0.93
January 1 st	32,107,043	0.12	0.95
2004			
October 1 st	32,069,999	0.30	0.97
July 1 st	31,974,363	0.30	0.96
April 1 st	31,877,982	0.23	0.96
January 1 st	31,805,716	0.14	0.96
2003			
October 1 st	31,761,823	0.29	0.93
July 1 st	31,669,150	0.30	0.95
April 1 st	31,573,504	0.23	0.98
January 1 st	31,501,729	0.11	1.02
2002			
October 1 st	31,468,449	0.31	1.07
July 1 st	31,372,587	0.34	1.13
April 1 st	31,265,843	0.27	1.14
January 1 st	31,182,448	0.15	1.15
2001			
October 1 st	31,135,823	0.37	1.13
July 1 st	31,021,251	0.35	1.08

1. Population estimates are final postcensal from July 1, 2001 to July 1, 2002, updated postcensal from October 1, 2002 to April 1, 2005 and preliminary postcensal from July 1, 2005.

Table 2-2

 Quarterly population estimates, numbers and variations — Newfoundland and Labrador¹

	Population	Quarterly	Annual
	number	variation in %	
2006			
January 1 st	514,409	-0.23	-0.57
2005			
October 1 st	515,591	-0.07	-0.29
July 1 st	515,961	-0.08	-0.26
April 1 st	516,374	-0.19	-0.28
January 1 st	517,339	0.04	-0.26
2004			
October 1 st	517,112	-0.03	-0.33
July 1 st	517,284	-0.11	-0.23
April 1 st	517,844	-0.16	-0.16
January 1 st	518,677	-0.03	-0.07
2003			
October 1 st	518,816	0.07	-0.11
July 1 st	518,469	-0.04	-0.19
April 1 st	518,683	-0.07	-0.21
January 1 st	519,040	-0.07	-0.42
2002			
October 1 st	519,386	-0.01	-0.40
July 1 st	519,449	-0.07	-0.49
April 1 st	519,790	-0.28	-0.67
January 1 st	521,229	-0.04	-0.79
2001			
October 1 st	521,455	-0.10	-1.02
July 1 st	521,986	-0.26	-1.15

1. Population estimates are final postcensal from July 1, 2001 to July 1, 2002, updated postcensal from October 1, 2002 to April 1, 2005 and preliminary postcensal from July 1, 2005.

Table 2-3

 Quarterly population estimates, numbers and variations — Prince Edward Island ¹

	Population	Quarterly	Annual
	number	variation in %	
2006			
January 1 st	138,157	-0.09	0.28
2005			
October 1 st	138,278	0.12	0.37
July 1 st	138,113	0.21	0.18
April 1 st	137,826	0.04	0.03
January 1 st	137,771	0.01	0.11
2004			
October 1 st	137,762	-0.07	0.18
July 1 st	137,861	0.05	0.41
April 1 st	137,787	0.12	0.47
January 1 st	137,618	0.07	0.39
2003			
October 1 st	137,519	0.16	0.33
July 1 st	137,300	0.12	0.27
April 1 st	137,136	0.04	0.22
January 1 st	137,087	0.02	0.18
2002			
October 1 st	137,066	0.10	0.14
July 1 st	136,934	0.07	0.19
April 1 st	136,835	-0.01	0.24
January 1 st	136,847	-0.02	0.33
2001			
October 1 st	136,872	0.15	0.33
July 1 st	136,672	0.12	0.14

1. Population estimates are final postcensal from July 1, 2001 to July 1, 2002, updated postcensal from October 1, 2002 to April 1, 2005 and preliminary postcensal from July 1, 2005.

Table 2-4

Quarterly population estimates, numbers and variations — Nova Scotia ¹

	Population	Quarterly	Annual
	number	variation in %	
2006			
January 1 st	936,988	-0.12	-0.14
2005			
October 1 st	938,116	0.02	-0.08
July 1 st	937,889	0.01	0.04
April 1 st	937,800	-0.06	0.10
January 1 st	938,339	-0.05	0.12
2004			
October 1 st	938,821	0.14	0.18
July 1 st	937,509	0.07	0.13
April 1 st	936,879	-0.03	0.14
January 1 st	937,196	0.01	0.19
2003			
October 1 st	937,133	0.09	0.17
July 1 st	936,302	0.08	0.19
April 1 st	935,596	0.02	0.20
January 1 st	935,375	-0.02	0.19
2002			
October 1 st	935,554	0.11	0.25
July 1 st	934,507	0.08	0.23
April 1 st	933,720	0.01	0.08
January 1 st	933,609	0.04	0.01
2001			
October 1 st	933,245	0.09	-0.14
July 1 st	932,389	-0.06	-0.16

1. Population estimates are final postcensal from July 1, 2001 to July 1, 2002, updated postcensal from October 1, 2002 to April 1, 2005 and preliminary postcensal from July 1, 2005.

Table 2-5

 Quarterly population estimates, numbers and variations — New Brunswick ¹

	Population	Quarterly	Annual
	number	variation in %	
2006			
January 1 st	751,111	-0.08	-0.15
2005			
October 1 st	751,726	-0.04	-0.08
July 1 st	752,006	-0.05	-0.01
April 1 st	752,345	0.01	0.07
January 1 st	752,266	-0.01	0.12
2004			
October 1 st	752,313	0.03	0.12
July 1 st	752,078	0.03	0.11
April 1 st	751,827	0.06	0.11
January 1 st	751,375	-0.01	0.06
2003			
October 1 st	751,438	0.03	0.06
July 1 st	751,215	0.03	0.12
April 1 st	751,011	0.01	0.19
January 1 st	750,935	0.00	0.22
2002			
October 1 st	750,972	0.09	0.17
July 1 st	750,327	0.09	0.06
April 1 st	749,618	0.04	-0.02
January 1 st	749,286	-0.06	-0.06
2001			
October 1 st	749,716	-0.02	-0.07
July 1 st	749,890	0.01	-0.08

1. Population estimates are final postcensal from July 1, 2001 to July 1, 2002, updated postcensal from October 1, 2002 to April 1, 2005 and preliminary postcensal from July 1, 2005.

Table 2-6

 Quarterly population estimates, numbers and variations — Quebec ¹

	Population	Quarterly	Annual
	number	variation in %	
2006			
January 1 st	7,623,870	0.09	0.66
2005			
October 1 st	7,616,645	0.24	0.67
July 1 st	7,598,146	0.21	0.67
April 1 st	7,582,541	0.12	0.68
January 1 st	7,573,726	0.10	0.72
2004			
October 1 st	7,566,136	0.24	0.72
July 1 st	7,547,728	0.22	0.72
April 1 st	7,531,006	0.15	0.70
January 1 st	7,519,875	0.10	0.70
2003			
October 1 st	7,512,119	0.24	0.68
July 1 st	7,493,958	0.21	0.65
April 1 st	7,478,357	0.15	0.62
January 1 st	7,467,289	0.08	0.62
2002			
October 1 st	7,461,563	0.21	0.65
July 1 st	7,445,745	0.18	0.66
April 1 st	7,432,197	0.15	0.66
January 1 st	7,421,309	0.11	0.64
2001			
October 1 st	7,413,392	0.22	0.60
July 1 st	7,396,990	0.18	0.54

1. Population estimates are final postcensal from July 1, 2001 to July 1, 2002, updated postcensal from October 1, 2002 to April 1, 2005 and preliminary postcensal from July 1, 2005.

Table 2-7

 Quarterly population estimates, numbers and variations — Ontario ¹

	Population	Quarterly	Annual
	number	variation in %	
2006			
January 1 st	12,599,364	0.08	1.10
2005			
October 1 st	12,589,823	0.39	1.09
July 1 st	12,541,410	0.38	1.08
April 1 st	12,494,228	0.26	1.11
January 1 st	12,462,445	0.07	1.15
2004			
October 1 st	12,454,171	0.38	1.21
July 1 st	12,407,347	0.40	1.21
April 1 st	12,357,421	0.30	1.22
January 1 st	12,320,329	0.12	1.24
2003			
October 1 st	12,305,346	0.37	1.24
July 1 st	12,259,568	0.42	1.30
April 1 st	12,208,499	0.32	1.43
January 1 st	12,169,065	0.11	1.52
2002			
October 1 st	12,155,145	0.44	1.59
July 1 st	12,102,045	0.54	1.72
April 1 st	12,036,968	0.42	1.76
January 1 st	11,986,887	0.18	1.81
2001			
October 1 st	11,965,417	0.57	1.83
July 1 st	11,897,647	0.59	1.82

1. Population estimates are final postcensal from July 1, 2001 to July 1, 2002, updated postcensal from October 1, 2002 to April 1, 2005 and preliminary postcensal from July 1, 2005.

Table 2-8

 Quarterly population estimates, numbers and variations — Manitoba ¹

	Population	Quarterly	Annual
	number	variation in %	
2006			
January 1 st	1,178,348	0.02	0.29
2005			
October 1 st	1,178,109	0.05	0.40
July 1 st	1,177,556	0.10	0.63
April 1 st	1,176,402	0.12	0.76
January 1 st	1,174,959	0.14	0.84
2004			
October 1 st	1,173,358	0.27	0.87
July 1 st	1,170,229	0.23	0.74
April 1 st	1,167,505	0.20	0.72
January 1 st	1,165,161	0.17	0.62
2003			
October 1 st	1,163,207	0.14	0.53
July 1 st	1,161,626	0.21	0.52
April 1 st	1,159,212	0.11	0.49
January 1 st	1,157,962	0.08	0.51
2002			
October 1 st	1,157,089	0.13	0.47
July 1 st	1,155,584	0.18	0.37
April 1 st	1,153,533	0.13	0.33
January 1 st	1,152,079	0.04	0.31
2001			
October 1 st	1,151,644	0.03	0.30
July 1 st	1,151,285	0.14	0.34

1. Population estimates are final postcensal from July 1, 2001 to July 1, 2002, updated postcensal from October 1, 2002 to April 1, 2005 and preliminary postcensal from July 1, 2005.

Table 2-9

 Quarterly population estimates, numbers and variations — Saskatchewan ¹

	Population	Quarterly	Annual
	number	variation in %	
2006			
January 1 st	990,930	-0.21	-0.38
2005			
October 1 st	992,995	-0.11	-0.24
July 1 st	994,126	-0.04	-0.02
April 1 st	994,551	-0.01	0.02
January 1 st	994,687	-0.07	0.05
2004			
October 1 st	995,351	0.11	0.10
July 1 st	994,300	0.00	-0.02
April 1 st	994,342	0.02	-0.02
January 1 st	994,167	-0.02	-0.06
2003			
October 1 st	994,359	-0.02	-0.10
July 1 st	994,519	0.00	-0.14
April 1 st	994,555	-0.02	-0.24
January 1 st	994,789	-0.05	-0.34
2002			
October 1 st	995,311	-0.06	-0.36
July 1 st	995,886	-0.10	-0.42
April 1 st	996,916	-0.13	-0.49
January 1 st	998,219	-0.07	-0.54
2001			
October 1 st	998,926	-0.12	-0.73
July 1 st	1,000,134	-0.17	-0.76

1. Population estimates are final postcensal from July 1, 2001 to July 1, 2002, updated postcensal from October 1, 2002 to April 1, 2005 and preliminary postcensal from July 1, 2005.

Table 2-10

 Quarterly population estimates, numbers and variations — Alberta ¹

	Population	Quarterly	Annual
	number	variation in %	
2006			
January 1 st	3,306,359	0.76	2.48
2005			
October 1 st	3,281,296	0.75	2.03
July 1 st	3,256,816	0.53	1.62
April 1 st	3,239,739	0.42	1.48
January 1 st	3,226,301	0.32	1.43
2004			
October 1 st	3,215,869	0.35	1.39
July 1 st	3,204,780	0.39	1.43
April 1 st	3,192,421	0.37	1.44
January 1 st	3,180,787	0.29	1.40
2003			
October 1 st	3,171,735	0.38	1.37
July 1 st	3,159,620	0.39	1.39
April 1 st	3,147,233	0.33	1.50
January 1 st	3,136,984	0.26	1.62
2002			
October 1 st	3,128,945	0.40	1.75
July 1 st	3,116,332	0.50	1.95
April 1 st	3,100,798	0.45	1.94
January 1 st	3,087,024	0.38	1.92
2001			
October 1 st	3,075,186	0.60	1.90
July 1 st	3,056,739	0.50	1.72

1. Population estimates are final postcensal from July 1, 2001 to July 1, 2002, updated postcensal from October 1, 2002 to April 1, 2005 and preliminary postcensal from July 1, 2005.

Table 2-11

 Quarterly population estimates, numbers and variations — British Columbia ¹

	Population	Quarterly	Annual
	number	variation in %	
2006			
January 1 st	4,279,462	0.19	1.27
2005			
October 1 st	4,271,210	0.39	1.32
July 1 st	4,254,522	0.38	1.25
April 1 st	4,238,359	0.30	1.20
January 1 st	4,225,623	0.24	1.15
2004			
October 1 st	4,215,695	0.33	1.15
July 1 st	4,201,867	0.33	1.14
April 1 st	4,187,938	0.25	1.12
January 1 st	4,177,626	0.24	1.10
2003			
October 1 st	4,167,719	0.32	1.00
July 1 st	4,154,591	0.31	0.95
April 1 st	4,141,710	0.23	0.87
January 1 st	4,132,142	0.13	0.87
2002			
October 1 st	4,126,608	0.27	0.88
July 1 st	4,115,413	0.23	0.91
April 1 st	4,105,904	0.23	0.98
January 1 st	4,096,473	0.14	1.02
2001			
October 1 st	4,090,659	0.30	1.02
July 1 st	4,078,447	0.31	0.97

1. Population estimates are final postcensal from July 1, 2001 to July 1, 2002, updated postcensal from October 1, 2002 to April 1, 2005 and preliminary postcensal from July 1, 2005.

Table 2-12

 Quarterly population estimates, numbers and variations — Yukon Territory ¹

	Population	Quarterly	Annual
	number	variation in %	
2006			
January 1 st	31,150	-0.27	0.93
2005			
October 1 st	31,235	0.80	1.44
July 1 st	30,988	0.35	0.43
April 1 st	30,881	0.06	0.06
January 1 st	30,862	0.23	0.08
2004			
October 1 st	30,791	-0.21	0.01
July 1 st	30,856	-0.02	0.91
April 1 st	30,861	0.08	1.33
January 1 st	30,837	0.16	1.65
2003			
October 1 st	30,788	0.69	1.72
July 1 st	30,577	0.40	1.46
April 1 st	30,456	0.39	1.21
January 1 st	30,337	0.23	0.60
2002			
October 1 st	30,267	0.43	0.78
July 1 st	30,137	0.15	0.03
April 1 st	30,092	-0.21	-0.07
January 1 st	30,155	0.41	0.06
2001			
October 1 st	30,032	-0.32	-0.83
July 1 st	30,129	0.05	-0.96

1. Population estimates are final postcensal from July 1, 2001 to July 1, 2002, updated postcensal from October 1, 2002 to April 1, 2005 and preliminary postcensal from July 1, 2005.

Table 2-13

 Quarterly population estimates, numbers and variations — Northwest Territories ¹

	Population	Quarterly	Annual
	number	variation in %	
2006			
January 1 st	42,526	-1.02	-1.14
2005			
October 1 st	42,965	-0.04	-0.02
July 1 st	42,982	-0.14	0.31
April 1 st	43,042	0.06	0.66
January 1 st	43,015	0.10	0.64
2004			
October 1 st	42,973	0.28	1.23
July 1 st	42,851	0.22	1.45
April 1 st	42,758	0.04	1.84
January 1 st	42,741	0.68	2.26
2003			
October 1 st	42,451	0.50	1.86
July 1 st	42,240	0.60	1.81
April 1 st	41,987	0.45	1.81
January 1 st	41,797	0.29	1.68
2002			
October 1 st	41,676	0.45	1.29
July 1 st	41,489	0.61	1.63
April 1 st	41,239	0.32	1.48
January 1 st	41,107	-0.09	1.13
2001			
October 1 st	41,144	0.79	1.35
July 1 st	40,822	0.45	0.80

1. Population estimates are final postcensal from July 1, 2001 to July 1, 2002, updated postcensal from October 1, 2002 to April 1, 2005 and preliminary postcensal from July 1, 2005.

Table 2-14

Quarterly population estimates, numbers and variations — Nunavut ¹

	Population	Quarterly	Annual
	number	variation in %	
2006			
January 1 st	30,245	0.37	1.80
2005			
October 1 st	30,133	0.47	1.64
July 1 st	29,992	0.64	1.08
April 1 st	29,802	0.31	1.39
January 1 st	29,710	0.21	1.31
2004			
October 1 st	29,647	-0.09	1.56
July 1 st	29,673	0.95	1.74
April 1 st	29,393	0.23	1.11
January 1 st	29,327	0.46	1.38
2003			
October 1 st	29,193	0.10	1.13
July 1 st	29,165	0.33	1.48
April 1 st	29,069	0.49	2.96
January 1 st	28,927	0.21	2.49
2002			
October 1 st	28,867	0.45	2.60
July 1 st	28,739	1.79	2.20
April 1 st	28,233	0.03	1.08
January 1 st	28,224	0.32	1.52
2001			
October 1 st	28,135	0.05	1.62
July 1 st	28,121	0.68	2.26

1. Population estimates are final postcensal from July 1, 2001 to July 1, 2002, updated postcensal from October 1, 2002 to April 1, 2005 and preliminary postcensal from July 1, 2005.

Table 3-1

 Quarterly estimates of demographic components, Canada, provinces and territories — Births ¹

	Canada	Newfoundland and Labrador	Prince Edward Island	Nova Scotia	New Brunswick	Quebec	Ontario
	number						
2005							
October - December	82,550	1,137	328	2,012	1,686	18,413	32,352
July - September	90,070	1,196	382	2,297	1,821	20,215	35,084
April - June	86,763	1,114	383	2,202	1,763	19,922	33,233
January - March	80,374	1,028	321	2,026	1,708	17,945	31,049
2004							
October - December	81,861	1,155	326	2,033	1,709	17,785	32,226
July - September	88,858	1,214	379	2,319	1,843	19,651	34,946
April - June	85,330	1,135	386	2,215	1,780	18,818	33,160
January - March	79,954	1,049	323	2,038	1,723	17,771	30,961
2003							
October - December	81,561	1,177	328	2,043	1,724	17,954	32,142
July - September	88,856	1,234	379	2,332	1,859	19,835	34,858
April - June	85,486	1,153	386	2,226	1,796	18,923	33,071
January - March	79,299	1,065	324	2,049	1,738	17,193	30,858
2002							
October - December	79,120	1,127	315	2,032	1,680	17,263	31,239
July - September	86,618	1,251	349	2,328	1,890	18,894	34,088
April - June	83,719	1,178	348	2,194	1,736	18,616	32,517
January - March	79,345	1,095	316	2,109	1,740	17,704	30,688
2001							
October - December	78,968	1,076	291	2,084	1,637	17,434	31,468
July - September	86,123	1,287	358	2,306	1,858	18,848	34,274
	Manitoba	Saskatchewan	Alberta	British Columbia	Yukon Territory	Northwest Territories	Nunavut
	number						
2005							
October - December	3,481	2,898	10,029	9,787	85	159	183
July - September	3,773	3,172	10,931	10,735	98	176	190
April - June	3,543	3,148	10,571	10,405	84	185	210
January - March	3,342	2,927	9,850	9,710	73	187	208
2004							
October - December	3,472	2,899	9,830	9,997	87	162	180
July - September	3,754	3,170	10,764	10,353	101	177	187
April - June	3,514	3,129	10,435	10,286	83	184	205
January - March	3,309	2,909	9,728	9,682	72	186	203
2003							
October - December	3,440	2,877	9,719	9,737	85	160	175
July - September	3,722	3,148	10,638	10,394	99	176	182
April - June	3,489	3,113	10,312	10,552	81	182	202
January - March	3,289	2,900	9,618	9,813	70	183	199
2002							
October - December	3,329	2,741	9,305	9,699	82	142	166
July - September	3,658	3,040	10,215	10,470	89	151	195
April - June	3,472	2,991	9,927	10,291	76	177	196
January - March	3,429	2,989	9,244	9,605	92	165	169
2001							
October - December	3,243	2,904	8,815	9,592	90	147	187
July - September	3,602	3,112	9,616	10,444	86	162	170

1. The numbers of births are final up to December 2003, updated from January 2004 to March 2005 and preliminary from April 2005.

Table 3-2

 Quarterly estimates of demographic components, Canada, provinces and territories — Deaths ¹

	Canada	Newfoundland and Labrador	Prince Edward Island	Nova Scotia	New Brunswick	Quebec	Ontario
	number						
2005							
October - December	60,741	1,113	298	2,167	1,697	13,401	23,779
July - September	54,895	1,047	290	2,009	1,528	12,474	20,891
April - June	57,400	1,121	308	2,196	1,612	13,483	21,597
January - March	63,072	1,143	338	2,150	1,677	15,983	23,484
2004							
October - December	59,656	1,140	314	2,078	1,662	13,769	22,972
July - September	54,517	1,025	299	1,989	1,495	12,194	20,866
April - June	56,490	1,099	307	2,156	1,579	13,598	20,963
January - March	61,513	1,119	337	2,113	1,643	15,751	22,774
2003							
October - December	59,278	1,126	317	2,053	1,634	13,933	22,430
July - September	53,979	1,005	299	1,949	1,462	12,852	20,204
April - June	55,300	1,077	306	2,115	1,545	13,586	20,327
January - March	58,728	1,093	337	2,074	1,608	14,283	22,058
2002							
October - December	57,233	1,089	309	1,997	1,588	13,640	21,594
July - September	53,441	982	294	1,907	1,431	13,304	19,616
April - June	54,130	1,048	301	2,066	1,507	13,326	19,684
January - March	58,799	1,064	332	2,027	1,570	15,265	21,346
2001							
October - December	55,406	1,069	280	1,983	1,583	13,392	20,594
July - September	52,159	945	292	1,846	1,405	12,752	19,369
	Manitoba	Saskatchewan	Alberta	British Columbia	Yukon Territory	Northwest Territories	Nunavut
	number						
2005							
October - December	2,733	2,520	5,318	7,568	39	64	44
July - September	2,394	2,210	4,857	7,089	30	46	30
April - June	2,504	2,253	5,025	7,184	39	41	37
January - March	2,629	2,327	5,166	8,063	41	42	29
2004							
October - December	2,668	2,415	4,921	7,604	37	40	36
July - September	2,463	2,200	4,705	7,150	47	48	36
April - June	2,467	2,227	4,861	7,119	38	41	35
January - March	2,587	2,300	5,002	7,779	39	41	28
2003							
October - December	2,646	2,400	4,795	7,833	35	40	36
July - September	2,427	2,175	4,552	6,926	46	48	34
April - June	2,433	2,204	4,712	6,880	37	43	35
January - March	2,550	2,276	4,850	7,493	38	41	27
2002							
October - December	2,581	2,352	4,608	7,369	33	39	34
July - September	2,384	2,144	4,402	6,854	43	47	33
April - June	2,385	2,169	4,545	6,989	35	42	33
January - March	2,499	2,241	4,679	7,672	36	41	27
2001							
October - December	2,500	2,157	4,484	7,243	45	37	39
July - September	2,336	2,083	4,229	6,793	34	44	31

1. The numbers of deaths are final up to December 2002, updated from January 2003 to March 2005 and preliminary from April 2005.

Table 3-3

 Quarterly estimates of demographic components, Canada, provinces and territories — Immigrants ¹

	Canada	Newfoundland and Labrador	Prince Edward Island	Nova Scotia	New Brunswick	Quebec	Ontario
	number						
2005							
October - December	55,354	109	44	465	247	8,231	30,232
July - September	75,975	107	113	677	357	13,227	40,333
April - June	74,471	131	101	459	311	12,536	40,694
January - March	56,439	147	72	328	178	9,344	29,269
2004							
October - December	48,091	93	86	372	182	9,158	25,301
July - September	65,578	176	53	546	199	12,421	34,734
April - June	67,242	159	89	459	232	12,326	36,346
January - March	54,915	151	82	393	182	10,342	28,723
2003							
October - December	53,610	79	50	390	182	10,027	28,646
July - September	63,349	148	46	465	165	11,866	34,263
April - June	58,876	64	34	309	164	10,184	31,876
January - March	45,567	68	23	312	155	7,491	24,993
2002							
October - December	41,843	115	25	322	161	7,846	22,532
July - September	52,926	66	7	314	168	9,407	30,437
April - June	72,719	117	44	421	211	10,572	44,525
January - March	61,583	109	31	365	170	9,754	36,136
2001							
October - December	52,132	104	41	331	169	8,715	30,033
July - September	69,900	92	29	498	218	10,038	42,142
	Manitoba	Saskat- chewan	Alberta	British Columbia	Yukon Territory	Northwest Territories	Nunavut
	number						
2005							
October - December	1,575	386	4,241	9,792	15	15	2
July - September	2,509	553	5,594	12,458	17	28	2
April - June	2,347	635	5,201	12,018	18	20	0
January - March	1,667	532	4,357	10,504	13	21	7
2004							
October - December	1,600	450	3,274	7,542	12	20	1
July - September	2,062	472	4,521	10,359	15	19	1
April - June	2,234	584	4,606	10,156	14	34	3
January - March	1,530	436	4,073	8,963	21	16	3
2003							
October - December	1,733	463	3,864	8,134	15	25	2
July - September	1,906	413	4,576	9,460	8	30	3
April - June	1,806	414	4,297	9,694	11	23	0
January - March	1,047	378	3,102	7,957	21	16	4
2002							
October - December	1,004	397	3,130	6,297	9	5	0
July - September	1,052	367	3,090	7,989	13	15	1
April - June	1,524	452	4,601	10,205	22	20	5
January - March	1,035	451	3,931	9,570	5	20	6
2001							
October - December	1,100	361	3,548	7,698	12	18	2
July - September	1,166	557	4,578	10,512	28	36	6

1. The numbers of immigrants are final up to December 2002, updated from January 2003 to March 2005 and preliminary from April 2005.

Table 3-4

 Quarterly estimates of demographic components, Canada, provinces and territories — Emigrants ¹

	Canada	Newfoundland and Labrador	Prince Edward Island	Nova Scotia	New Brunswick	Quebec	Ontario
	number						
2005							
October - December	7,615	16	7	167	64	1,189	3,395
July - September	15,756	34	13	349	130	2,462	7,026
April - June	6,989	15	6	154	59	1,091	3,117
January - March	5,680	13	4	126	47	887	2,532
2004							
October - December	7,576	16	7	167	64	1,183	3,377
July - September	15,621	34	13	346	130	2,440	6,965
April - June	6,953	15	5	154	57	1,086	3,101
January - March	5,650	13	4	126	47	882	2,519
2003							
October - December	7,509	16	6	166	63	1,173	3,348
July - September	15,423	33	13	341	128	2,409	6,877
April - June	6,914	15	5	153	57	1,079	3,085
January - March	5,622	12	4	124	46	878	2,509
2002							
October - December	7,440	15	6	165	61	1,161	3,319
July - September	14,849	31	12	329	123	2,318	6,624
April - June	7,857	35	13	160	109	1,264	3,253
January - March	5,959	26	10	121	83	959	2,466
2001							
October - December	7,525	33	13	154	104	1,211	3,114
July - September	17,587	78	30	358	245	2,831	7,281
	Manitoba	Saskatchewan	Alberta	British Columbia	Yukon Territory	Northwest Territories	Nunavut
	number						
2005							
October - December	282	127	859	1,500	3	3	3
July - September	582	263	1,776	3,104	5	7	5
April - June	259	116	788	1,376	2	4	2
January - March	211	95	640	1,118	2	3	2
2004							
October - December	280	127	854	1,492	3	3	3
July - September	577	261	1,761	3,077	5	7	5
April - June	257	116	784	1,370	2	4	2
January - March	208	94	637	1,113	2	3	2
2003							
October - December	277	125	847	1,479	3	3	3
July - September	571	258	1,738	3,038	5	7	5
April - June	257	115	779	1,361	2	4	2
January - March	208	93	634	1,107	2	3	2
2002							
October - December	277	124	838	1,465	3	3	3
July - September	551	248	1,673	2,923	5	7	5
April - June	251	128	943	1,690	4	4	3
January - March	190	98	715	1,282	3	3	3
2001							
October - December	240	123	904	1,619	3	4	3
July - September	560	287	2,111	3,785	7	9	5

1. The numbers of emigrants are final up to June 2002, updated from July 2002 to March 2005 and preliminary from April 2005.

Table 3-5

 Quarterly estimates of demographic components, Canada, provinces and territories — Returning emigrants ¹

	Canada	Newfoundland and Labrador	Prince Edward Island	Nova Scotia	New Brunswick	Quebec	Ontario
	number						
2005							
October - December	2,357	10	3	50	40	416	979
July - September	6,284	30	10	135	108	1,109	2,605
April - June	4,168	19	6	90	72	735	1,728
January - March	2,977	13	4	64	52	525	1,234
2004							
October - December	2,357	10	3	50	40	416	979
July - September	6,284	30	10	135	108	1,109	2,605
April - June	4,168	19	6	90	72	735	1,728
January - March	2,976	13	3	64	52	525	1,234
2003							
October - December	2,357	10	3	50	40	416	979
July - September	6,284	29	10	135	108	1,109	2,606
April - June	4,168	18	5	90	72	736	1,728
January - March	2,976	13	3	64	52	525	1,234
2002							
October - December	2,357	10	3	50	40	416	979
July - September	6,284	28	10	135	108	1,109	2,607
April - June	5,382	26	18	81	95	859	2,352
January - March	2,627	13	7	40	46	420	1,150
2001							
October - December	3,285	16	10	49	58	524	1,437
July - September	6,785	33	23	102	120	1,082	2,964
	Manitoba	Saskat- chewan	Alberta	British Columbia	Yukon Territory	Northwest Territories	Nunavut
	number						
2005							
October - December	147	27	296	386	3	0	0
July - September	393	72	788	1,029	5	0	0
April - June	260	48	523	683	4	0	0
January - March	187	34	374	487	3	0	0
2004							
October - December	147	27	296	386	3	0	0
July - September	393	72	788	1,029	5	0	0
April - June	260	48	523	683	4	0	0
January - March	187	34	374	487	3	0	0
2003							
October - December	147	27	296	386	3	0	0
July - September	393	72	788	1,029	5	0	0
April - June	260	48	524	683	4	0	0
January - March	187	34	374	487	3	0	0
2002							
October - December	147	27	296	386	3	0	0
July - September	393	72	788	1,029	5	0	0
April - June	254	74	824	794	4	1	0
January - March	123	36	403	388	1	0	0
2001							
October - December	155	45	503	486	2	0	0
July - September	320	93	1,038	1,002	5	3	0

1. The numbers of returning emigrants are final up to June 2002, updated from July 2002 to March 2005 and preliminary from April 2005.

Table 3-6

 Quarterly estimates of demographic components, Canada, provinces and territories — Net temporary emigrants ¹

	Canada	Newfoundland and Labrador	Prince Edward Island	Nova Scotia	New Brunswick	Quebec	Ontario
	number						
2005							
October - December	5,898	24	8	86	52	939	2,450
July - September	8,761	36	12	128	76	1,396	3,642
April - June	5,686	24	7	83	50	906	2,363
January - March	5,218	21	7	77	45	832	2,170
2004							
October - December	5,898	24	8	86	52	939	2,450
July - September	8,761	36	12	128	76	1,396	3,642
April - June	5,696	24	7	83	50	908	2,367
January - March	5,225	21	7	77	45	833	2,173
2003							
October - December	5,899	24	8	86	52	940	2,450
July - September	8,744	36	12	128	76	1,393	3,635
April - June	5,731	24	7	84	50	913	2,382
January - March	5,258	21	7	78	47	837	2,186
2002							
October - December	5,926	24	8	87	52	944	2,463
July - September	8,643	36	11	127	76	1,378	3,593
April - June	5,774	24	7	85	50	920	2,400
January - March	5,148	22	7	75	44	821	2,141
2001							
October - December	5,670	24	7	83	50	903	2,356
July - September	8,968	37	12	131	79	1,429	3,728
	Manitoba	Saskatchewan	Alberta	British Columbia	Yukon Territory	Northwest Territories	Nunavut
	number						
2005							
October - December	130	119	677	1,400	6	4	3
July - September	192	176	1,006	2,080	8	6	3
April - June	125	115	652	1,350	5	4	2
January - March	115	105	599	1,239	4	3	1
2004							
October - December	130	119	677	1,400	6	4	3
July - September	192	176	1,006	2,080	8	6	3
April - June	125	115	654	1,352	5	4	2
January - March	115	105	600	1,241	4	3	1
2003							
October - December	130	119	677	1,400	6	4	3
July - September	192	176	1,004	2,075	8	6	3
April - June	126	115	658	1,361	5	4	2
January - March	115	105	603	1,249	5	3	2
2002							
October - December	130	119	680	1,406	6	4	3
July - September	189	173	992	2,051	8	6	3
April - June	127	116	663	1,371	5	4	2
January - March	112	103	592	1,223	4	3	1
2001							
October - December	125	114	650	1,346	5	4	3
July - September	197	179	1,030	2,129	8	6	3

1. The numbers of net temporary emigrants are final up to June 2002, updated from July 2002 to March 2005 and preliminary from April 2005.

Table 3-7

 Quarterly estimates of demographic components, Canada, provinces and territories — Net non-permanent residents ¹

	Canada	Newfoundland and Labrador	Prince Edward Island	Nova Scotia	New Brunswick	Quebec	Ontario
	number						
2005							
October - December	-21,210	-274	-16	-247	-56	-2,665	-17,962
July - September	14,698	70	21	566	190	955	7,840
April - June	1,290	196	19	-102	-131	-8	-37
January - March	1,027	86	-7	-5	131	-1,043	-42
2004							
October - December	-22,135	-145	-2	-427	21	-3,932	-17,948
July - September	13,815	-103	43	343	361	1,289	8,002
April - June	8,780	185	-14	324	-89	2,036	5,797
January - March	6,809	-106	18	123	54	250	4,542
2003							
October - December	-20,949	13	-47	-206	19	-4,691	-16,528
July - September	12,330	78	77	496	356	1,031	8,098
April - June	15,061	75	4	316	36	1,785	10,039
January - March	13,541	-2	3	-41	19	2,260	8,966
2002							
October - December	-19,441	-161	-19	-429	-50	-3,723	-13,581
July - September	26,967	232	35	448	386	4,054	15,576
April - June	12,685	144	0	358	-44	1,410	9,434
January - March	9,746	44	-4	400	170	907	4,933
2001							
October - December	-19,159	-26	-38	89	-79	-3,341	-14,976
July - September	30,478	-88	30	678	379	4,636	17,699
	Manitoba	Saskatchewan	Alberta	British Columbia	Yukon Territory	Northwest Territories	Nunavut
	number						
2005							
October - December	188	-77	292	-376	-13	-14	10
July - September	83	220	1,696	3,065	-16	9	-1
April - June	278	113	652	302	24	-13	-3
January - March	-10	199	319	1,398	-14	15	0
2004							
October - December	-36	-225	35	595	-42	-29	0
July - September	306	217	860	2,564	-49	-1	-17
April - June	331	153	376	-404	63	8	14
January - March	224	123	500	1,019	24	31	7
2003							
October - December	50	-69	-193	679	-28	58	-6
July - September	190	165	402	1,445	-26	12	6
April - June	406	103	422	1,809	39	26	1
January - March	228	43	659	1,372	29	1	4
2002							
October - December	-95	-126	-800	-428	-21	-6	-2
July - September	518	291	1,482	3,925	40	-25	5
April - June	231	74	581	451	55	-5	-4
January - March	218	140	390	2,509	7	20	12
2001							
October - December	-126	-55	-749	206	-45	-21	2
July - September	419	146	1,653	4,911	-22	41	-4

1. The numbers of net non-permanent residents are final up to June 2002, updated from July 2002 to March 2005 and preliminary from April 2005.

Table 3-8

 Quarterly estimates of demographic components, Canada, provinces and territories — Interprovincial in-migrants ¹

	Canada	Newfoundland and Labrador	Prince Edward Island	Nova Scotia	New Brunswick	Quebec	Ontario
	number						
2005							
October - December	61,904	1,919	387	2,793	1,892	4,696	10,439
July - September	102,936	3,183	979	5,651	4,578	9,267	20,924
April - June	90,625	2,985	1,228	4,446	3,315	8,284	20,337
January - March	61,380	2,234	662	3,354	2,222	4,762	12,684
2004							
October - December	53,632	2,113	382	2,669	1,995	5,597	10,822
July - September	83,031	2,675	703	5,782	3,415	7,859	18,346
April - June	78,127	2,365	771	4,573	3,148	7,070	17,504
January - March	56,247	1,908	543	2,839	2,529	4,488	12,448
2003							
October - December	44,713	1,574	505	2,532	1,593	3,874	9,246
July - September	82,293	2,550	751	5,143	3,420	8,295	17,988
April - June	68,827	2,310	683	4,172	2,813	6,081	16,066
January - March	59,732	1,995	587	3,627	2,436	5,276	13,959
2002							
October - December	51,553	1,726	498	3,127	2,105	4,560	12,054
July - September	94,787	3,167	918	5,760	3,879	8,355	22,157
April - June	72,566	2,357	705	4,118	3,183	5,717	17,783
January - March	62,967	2,056	602	3,553	2,716	4,563	16,018
2001							
October - December	54,510	1,619	441	3,093	1,955	4,827	12,065
July - September	100,447	2,752	891	5,567	3,856	9,381	24,217
	Manitoba	Saskatchewan	Alberta	British Columbia	Yukon Territory	Northwest Territories	Nunavut
	number						
2005							
October - December	2,211	2,614	24,997	9,378	258	225	95
July - September	4,566	5,306	29,882	17,275	577	595	153
April - June	3,717	4,830	22,711	17,006	465	804	497
January - March	3,373	3,629	16,386	11,075	213	552	234
2004							
October - December	2,814	2,917	13,123	10,455	233	422	90
July - September	4,975	5,030	18,510	14,583	362	631	160
April - June	3,987	4,407	17,684	15,207	363	664	384
January - March	3,251	3,313	13,869	9,982	293	607	177
2003							
October - December	2,220	2,398	10,715	9,307	208	425	116
July - September	3,843	4,433	18,554	15,910	495	767	144
April - June	3,429	3,804	16,180	12,037	345	678	229
January - March	2,976	3,294	14,036	10,461	308	569	208
2002							
October - December	2,580	2,841	12,121	9,011	275	491	164
July - September	4,722	5,233	22,290	16,569	471	924	342
April - June	3,312	3,715	18,584	11,579	368	640	505
January - March	3,293	3,100	16,033	9,822	361	669	181
2001							
October - December	2,659	2,876	15,261	8,811	311	389	203
July - September	4,696	4,907	25,737	16,947	308	971	217

1. The numbers of interprovincial in-migrants are final up to June 2004, updated from July 2004 to March 2005 and preliminary from April 2005.

Table 3-9

 Quarterly estimates of demographic components, Canada, provinces and territories — Interprovincial out-migrants ¹

	Canada	Newfoundland and Labrador	Prince Edward Island	Nova Scotia	New Brunswick	Quebec	Ontario
	number						
2005							
October - December	61,904	2,930	554	3,781	2,611	6,337	16,875
July - September	102,936	3,839	1,025	6,613	5,600	9,942	26,814
April - June	90,625	3,698	1,129	4,573	3,948	10,384	21,696
January - March	61,380	3,296	648	3,953	2,443	5,016	14,225
2004							
October - December	53,632	1,819	457	2,848	2,216	5,543	14,307
July - September	83,031	3,069	963	5,350	3,990	7,891	20,336
April - June	78,127	3,285	845	4,638	3,206	8,671	18,178
January - March	56,247	2,695	452	3,458	2,353	4,779	13,350
2003							
October - December	44,713	1,826	409	2,441	1,872	3,778	11,274
July - September	82,293	2,618	720	5,322	4,019	7,321	21,319
April - June	68,827	2,718	630	4,055	3,025	6,530	15,917
January - March	59,732	2,370	543	3,514	2,623	5,679	13,823
2002							
October - December	51,553	2,035	478	3,032	2,272	4,891	11,927
July - September	94,787	3,758	870	5,575	4,156	9,001	21,932
April - June	72,566	3,056	695	4,074	2,806	8,116	16,197
January - March	62,967	3,644	615	4,133	2,813	5,415	12,891
2001							
October - December	54,510	1,889	470	3,062	2,433	4,736	12,493
July - September	100,447	3,547	797	5,960	4,876	10,571	23,148
	Manitoba	Saskat- chewan	Alberta	British Columbia	Yukon Territory	Northwest Territories	Nunavut
	number						
2005							
October - December	4,218	5,147	7,938	10,247	385	753	128
July - September	7,603	7,805	16,772	15,601	391	766	165
April - June	6,103	6,715	16,116	14,341	442	1,007	473
January - March	4,161	4,930	11,443	10,018	222	700	325
2004							
October - December	3,318	4,071	9,674	8,551	176	486	166
July - September	5,129	5,273	16,882	12,753	439	643	313
April - June	4,753	5,905	14,966	12,158	487	748	287
January - March	3,247	4,141	10,671	9,688	344	776	293
2003							
October - December	2,583	3,244	9,030	7,624	190	331	111
July - September	5,283	5,782	15,549	13,071	311	713	265
April - June	4,160	5,084	13,199	12,292	315	605	297
January - March	3,604	4,409	11,453	10,673	267	532	242
2002							
October - December	3,104	3,807	9,887	9,191	236	465	228
July - September	5,714	7,013	18,185	16,959	432	818	374
April - June	3,979	5,923	12,832	13,761	436	533	158
January - March	3,843	5,577	10,241	12,286	486	695	328
2001							
October - December	3,731	4,444	9,502	10,771	194	525	260
July - September	6,751	7,474	16,805	18,897	453	832	336

1. The numbers of interprovincial out-migrants are final up to June 2004, updated from July 2004 to March 2005 and preliminary from April 2005.

Table 3-10

 Quarterly estimates of demographic components, Canada, provinces and territories — Total growth ¹

	Canada	Newfoundland and Labrador	Prince Edward Island	Nova Scotia	New Brunswick	Quebec	Ontario
	number						
2005							
October - December	44,797	-1,182	-121	-1,128	-615	7,225	9,541
July - September	107,615	-370	165	227	-280	18,499	48,413
April - June	96,617	-413	287	89	-339	15,605	47,182
January - March	66,847	-965	55	-539	79	8,815	31,783
2004							
October - December	37,044	227	9	-482	-47	7,590	8,274
July - September	95,636	-172	-99	1,312	235	18,408	46,824
April - June	96,381	-560	74	630	251	16,722	49,926
January - March	72,266	-833	169	-317	452	11,131	37,092
2003							
October - December	43,893	-139	99	63	-63	7,756	14,983
July - September	92,673	347	219	831	223	18,161	45,778
April - June	95,646	-214	164	706	204	15,601	51,069
January - March	71,775	-357	49	221	76	11,068	39,434
2002							
October - December	33,280	-346	21	-179	-37	5,726	13,920
July - September	95,862	-63	132	1,047	645	15,818	53,100
April - June	106,744	-341	99	787	709	13,548	65,077
January - March	83,395	-1,439	-12	111	332	10,888	50,081
2001							
October - December	46,625	-226	-25	364	-430	7,917	21,470
July - September	114,572	-531	200	856	-174	16,402	67,770
	Manitoba	Saskatchewan	Alberta	British Columbia	Yukon Territory	Northwest Territories	Nunavut
	number						
2005							
October - December	239	-2,065	25,063	8,252	-85	-439	112
July - September	553	-1,131	24,480	16,688	247	-17	141
April - June	1,154	-425	17,077	16,163	107	-60	190
January - March	1,443	-136	13,438	12,736	19	27	92
2004							
October - December	1,601	-664	10,432	9,928	71	42	63
July - September	3,129	1,051	11,089	13,828	-65	122	-26
April - June	2,724	-42	12,359	13,929	-5	93	280
January - March	2,344	175	11,634	10,312	24	17	66
2003							
October - December	1,954	-192	9,052	9,907	49	290	134
July - September	1,581	-160	12,115	13,128	211	211	28
April - June	2,414	-36	12,387	12,881	121	253	96
January - March	1,250	-234	10,249	9,568	119	190	142
2002							
October - December	873	-522	8,039	5,534	70	121	60
July - September	1,505	-575	12,613	11,195	130	187	128
April - June	2,051	-1,030	15,534	9,509	45	250	506
January - March	1,454	-1,303	13,774	9,431	-63	132	9
2001							
October - December	435	-707	11,838	5,814	123	-37	89
July - September	359	-1,208	18,447	12,212	-97	322	14

1. Numbers for total growth are final up to June 2002, updated from July 2002 to March 2005 and preliminary from April 2005.

Table 3-11

 Quarterly estimates of demographic components, Canada, provinces and territories — Natural increase ¹

	Canada	Newfoundland and Labrador	Prince Edward Island	Nova Scotia	New Brunswick	Quebec	Ontario
	number						
2005							
October - December	21,809	24	30	-155	-11	5,012	8,573
July - September	35,175	149	92	288	293	7,741	14,193
April - June	29,363	-7	75	6	151	6,439	11,636
January - March	17,302	-115	-17	-124	31	1,962	7,565
2004							
October - December	22,205	15	12	-45	47	4,016	9,254
July - September	34,341	189	80	330	348	7,457	14,080
April - June	28,840	36	79	59	201	5,220	12,197
January - March	18,441	-70	-14	-75	80	2,020	8,187
2003							
October - December	22,283	51	11	-10	90	4,021	9,712
July - September	34,877	229	80	383	397	6,983	14,654
April - June	30,186	76	80	111	251	5,337	12,744
January - March	20,571	-28	-13	-25	130	2,910	8,800
2002							
October - December	21,887	38	6	35	92	3,623	9,645
July - September	33,177	269	55	421	459	5,590	14,472
April - June	29,589	130	47	128	229	5,290	12,833
January - March	20,546	31	-16	82	170	2,439	9,342
2001							
October - December	23,562	7	11	101	54	4,042	10,874
July - September	33,964	342	66	460	453	6,096	14,905
	Manitoba	Saskatchewan	Alberta	British Columbia	Yukon Territory	Northwest Territories	Nunavut
	number						
2005							
October - December	748	378	4,711	2,219	46	95	139
July - September	1,379	962	6,074	3,646	68	130	160
April - June	1,039	895	5,546	3,221	45	144	173
January - March	713	600	4,684	1,647	32	145	179
2004							
October - December	804	484	4,909	2,393	50	122	144
July - September	1,291	970	6,059	3,203	54	129	151
April - June	1,047	902	5,574	3,167	45	143	170
January - March	722	609	4,726	1,903	33	145	175
2003							
October - December	794	477	4,924	1,904	50	120	139
July - September	1,295	973	6,086	3,468	53	128	148
April - June	1,056	909	5,600	3,672	44	139	167
January - March	739	624	4,768	2,320	32	142	172
2002							
October - December	748	389	4,697	2,330	49	103	132
July - September	1,274	896	5,813	3,616	46	104	162
April - June	1,087	822	5,382	3,302	41	135	163
January - March	930	748	4,565	1,933	56	124	142
2001							
October - December	743	747	4,331	2,349	45	110	148
July - September	1,266	1,029	5,387	3,651	52	118	139

1. Natural increase is final up to December 2002, updated from January 2003 to March 2005 and preliminary from April 2005.

Table 3-12

 Quarterly estimates of demographic components, Canada, provinces and territories — Net interprovincial migration ¹

	Canada	Newfoundland and Labrador	Prince Edward Island	Nova Scotia	New Brunswick	Quebec	Ontario
number							
2005							
October - December	0	-1,011	-167	-988	-719	-1,641	-6,436
July - September	0	-656	-46	-962	-1,022	-675	-5,890
April - June	0	-713	99	-127	-633	-2,100	-1,359
January - March	0	-1,062	14	-599	-221	-254	-1,541
2004							
October - December	0	294	-75	-179	-221	54	-3,485
July - September	0	-394	-260	432	-575	-32	-1,990
April - June	0	-920	-74	-65	-58	-1,601	-674
January - March	0	-787	91	-619	176	-291	-902
2003							
October - December	0	-252	96	91	-279	96	-2,028
July - September	0	-68	31	-179	-599	974	-3,331
April - June	0	-408	53	117	-212	-449	149
January - March	0	-375	44	113	-187	-403	136
2002							
October - December	0	-309	20	95	-167	-331	127
July - September	0	-591	48	185	-277	-646	225
April - June	0	-699	10	44	377	-2,399	1,586
January - March	0	-1,588	-13	-580	-97	-852	3,127
2001							
October - December	0	-270	-29	31	-478	91	-428
July - September	0	-795	94	-393	-1,020	-1,190	1,069
	Manitoba	Saskatchewan	Alberta	British Columbia	Yukon Territory	Northwest Territories	Nunavut
number							
2005							
October - December	-2,007	-2,533	17,059	-869	-127	-528	-33
July - September	-3,037	-2,499	13,110	1,674	186	-171	-12
April - June	-2,386	-1,885	6,595	2,665	23	-203	24
January - March	-788	-1,301	4,943	1,057	-9	-148	-91
2004							
October - December	-504	-1,154	3,449	1,904	57	-64	-76
July - September	-154	-243	1,628	1,830	-77	-12	-153
April - June	-766	-1,498	2,718	3,049	-124	-84	97
January - March	4	-828	3,198	294	-51	-169	-116
2003							
October - December	-363	-846	1,685	1,683	18	94	5
July - September	-1,440	-1,349	3,005	2,839	184	54	-121
April - June	-731	-1,280	2,981	-255	30	73	-68
January - March	-628	-1,115	2,583	-212	41	37	-34
2002							
October - December	-524	-966	2,234	-180	39	26	-64
July - September	-992	-1,780	4,105	-390	39	106	-32
April - June	-667	-2,208	5,752	-2,182	-68	107	347
January - March	-550	-2,477	5,792	-2,464	-125	-26	-147
2001							
October - December	-1,072	-1,568	5,759	-1,960	117	-136	-57
July - September	-2,055	-2,567	8,932	-1,950	-145	139	-119

1. Net interprovincial migration numbers are final up to June 2004, updated from July 2004 to March 2005 and preliminary from April 2005.

Table 3-13

 Quarterly estimates of demographic components, Canada, provinces and territories — Net international migration ¹

	Canada	Newfoundland and Labrador	Prince Edward Island	Nova Scotia	New Brunswick	Quebec	Ontario
	number						
2005							
October - December	22,988	-195	16	15	115	3,854	7,404
July - September	72,440	137	119	901	449	11,433	40,110
April - June	67,254	307	113	210	143	11,266	36,905
January - March	49,545	212	58	184	269	7,107	25,759
2004							
October - December	14,839	-82	72	-258	127	3,520	2,505
July - September	61,295	33	81	550	462	10,983	34,734
April - June	67,541	324	69	636	108	13,103	38,403
January - March	53,825	24	92	377	196	9,402	29,807
2003							
October - December	21,610	62	-8	-18	126	3,639	7,299
July - September	57,796	186	108	627	425	10,204	34,455
April - June	65,460	118	31	478	165	10,713	38,176
January - March	51,204	46	18	133	133	8,561	30,498
2002							
October - December	11,393	-75	-5	-309	38	2,434	4,148
July - September	62,685	259	29	441	463	10,874	38,403
April - June	77,155	228	42	615	103	10,657	50,658
January - March	62,849	118	17	609	259	9,301	37,612
2001							
October - December	23,063	37	-7	232	-6	3,784	11,024
July - September	80,608	-78	40	789	393	11,496	51,796
	Manitoba	Saskat- chewan	Alberta	British Columbia	Yukon Territory	Northwest Territories	Nunavut
	number						
2005							
October - December	1,498	90	3,293	6,902	-4	-6	6
July - September	2,211	406	5,296	11,368	-7	24	-7
April - June	2,501	565	4,936	10,277	39	-1	-7
January - March	1,518	565	3,811	10,032	-4	30	4
2004							
October - December	1,301	6	2,074	5,631	-36	-16	-5
July - September	1,992	324	3,402	8,795	-42	5	-24
April - June	2,443	554	4,067	7,713	74	34	13
January - March	1,618	394	3,710	8,115	42	41	7
2003							
October - December	1,523	177	2,443	6,320	-19	76	-10
July - September	1,726	216	3,024	6,821	-26	29	1
April - June	2,089	335	3,806	9,464	47	41	-3
January - March	1,139	257	2,898	7,460	46	11	4
2002							
October - December	649	55	1,108	3,384	-18	-8	-8
July - September	1,223	309	2,695	7,969	45	-23	-2
April - June	1,631	356	4,400	8,389	72	8	-4
January - March	1,074	426	3,417	9,962	6	34	14
2001							
October - December	764	114	1,748	5,425	-39	-11	-2
July - September	1,148	330	4,128	10,511	-4	65	-6

1. Net international migration numbers are final up to June 2002, updated from July 2002 to March 2005 and preliminary from April 2005.

Table 3-14

 Quarterly estimates of demographic components, Canada, provinces and territories — Total net migration ¹

	Canada	Newfoundland and Labrador	Prince Edward Island	Nova Scotia	New Brunswick	Quebec	Ontario
number							
2005							
October - December	22,988	-1,206	-151	-973	-604	2,213	968
July - September	72,440	-519	73	-61	-573	10,758	34,220
April - June	67,254	-406	212	83	-490	9,166	35,546
January - March	49,545	-850	72	-415	48	6,853	24,218
2004							
October - December	14,839	212	-3	-437	-94	3,574	-980
July - September	61,295	-361	-179	982	-113	10,951	32,744
April - June	67,541	-596	-5	571	50	11,502	37,729
January - March	53,825	-763	183	-242	372	9,111	28,905
2003							
October - December	21,610	-190	88	73	-153	3,735	5,271
July - September	57,796	118	139	448	-174	11,178	31,124
April - June	65,460	-290	84	595	-47	10,264	38,325
January - March	51,204	-329	62	246	-54	8,158	30,634
2002							
October - December	11,393	-384	15	-214	-129	2,103	4,275
July - September	62,685	-332	77	626	186	10,228	38,628
April - June	77,155	-471	52	659	480	8,258	52,244
January - March	62,849	-1,470	4	29	162	8,449	40,739
2001							
October - December	23,063	-233	-36	263	-484	3,875	10,596
July - September	80,608	-873	134	396	-627	10,306	52,865
	Manitoba	Saskatchewan	Alberta	British Columbia	Yukon Territory	Northwest Territories	Nunavut
number							
2005							
October - December	-509	-2,443	20,352	6,033	-131	-534	-27
July - September	-826	-2,093	18,406	13,042	179	-147	-19
April - June	115	-1,320	11,531	12,942	62	-204	17
January - March	730	-736	8,754	11,089	-13	-118	-87
2004							
October - December	797	-1,148	5,523	7,535	21	-80	-81
July - September	1,838	81	5,030	10,625	-119	-7	-177
April - June	1,677	-944	6,785	10,762	-50	-50	110
January - March	1,622	-434	6,908	8,409	-9	-128	-109
2003							
October - December	1,160	-669	4,128	8,003	-1	170	-5
July - September	286	-1,133	6,029	9,660	158	83	-120
April - June	1,358	-945	6,787	9,209	77	114	-71
January - March	511	-858	5,481	7,248	87	48	-30
2002							
October - December	125	-911	3,342	3,204	21	18	-72
July - September	231	-1,471	6,800	7,579	84	83	-34
April - June	964	-1,852	10,152	6,207	4	115	343
January - March	524	-2,051	9,209	7,498	-119	8	-133
2001							
October - December	-308	-1,454	7,507	3,465	78	-147	-59
July - September	-907	-2,237	13,060	8,561	-149	204	-125

1. Total net migration numbers are final up to June 2002, updated from July 2002 to March 2005 and preliminary from April 2005.

Table 4-1

Quarterly population estimates and aggregated demographic components — Canada

	Population at beginning period	Natural increase	Net interprovincial migration	Net international migration	Total net migration	Total growth
	number					
2006						
January - March	32,422,919
2005						
October - December	32,378,122	21,809	0	22,988	22,988	44,797
July - September	32,270,507	35,175	0	72,440	72,440	107,615
April - June	32,173,890	29,363	0	67,254	67,254	96,617
January - March	32,107,043	17,302	0	49,545	49,545	66,847
2004						
October - December	32,069,999	22,205	0	14,839	14,839	37,044
July - September	31,974,363	34,341	0	61,295	61,295	95,636
April - June	31,877,982	28,840	0	67,541	67,541	96,381
January - March	31,805,716	18,441	0	53,825	53,825	72,266
2003						
October - December	31,761,823	22,283	0	21,610	21,610	43,893
July - September	31,669,150	34,877	0	57,796	57,796	92,673
April - June	31,573,504	30,186	0	65,460	65,460	95,646
January - March	31,501,729	20,571	0	51,204	51,204	71,775
2002						
October - December	31,468,449	21,887	0	11,393	11,393	33,280
July - September	31,372,587	33,177	0	62,685	62,685	95,862
April - June	31,265,843	29,589	0	77,155	77,155	106,744
January - March	31,182,448	20,546	0	62,849	62,849	83,395
2001						
October - December	31,135,823	23,562	0	23,063	23,063	46,625
July - September	31,021,251	33,964	0	80,608	80,608	114,572

Note: See "Data quality, concepts and methodology — Explanatory notes for the tables" section.

Table 4-2

Quarterly population estimates and aggregated demographic components — Newfoundland and Labrador

	Population at beginning period	Natural increase	Net interprovincial migration	Net international migration	Total net migration	Total growth
	number					
2006						
January - March	514,409
2005						
October - December	515,591	24	-1,011	-195	-1,206	-1,182
July - September	515,961	149	-656	137	-519	-370
April - June	516,374	-7	-713	307	-406	-413
January - March	517,339	-115	-1,062	212	-850	-965
2004						
October - December	517,112	15	294	-82	212	227
July - September	517,284	189	-394	33	-361	-172
April - June	517,844	36	-920	324	-596	-560
January - March	518,677	-70	-787	24	-763	-833
2003						
October - December	518,816	51	-252	62	-190	-139
July - September	518,469	229	-68	186	118	347
April - June	518,683	76	-408	118	-290	-214
January - March	519,040	-28	-375	46	-329	-357
2002						
October - December	519,386	38	-309	-75	-384	-346
July - September	519,449	269	-591	259	-332	-63
April - June	519,790	130	-699	228	-471	-341
January - March	521,229	31	-1,588	118	-1,470	-1,439
2001						
October - December	521,455	7	-270	37	-233	-226
July - September	521,986	342	-795	-78	-873	-531

Note: See "Data quality, concepts and methodology — Explanatory notes for the tables" section.

Table 4-3

Quarterly population estimates and aggregated demographic components — Prince Edward Island

	Population at beginning period	Natural increase	Net interprovincial migration	Net international migration	Total net migration	Total growth
	number					
2006						
January - March	138,157
2005						
October - December	138,278	30	-167	16	-151	-121
July - September	138,113	92	-46	119	73	165
April - June	137,826	75	99	113	212	287
January - March	137,771	-17	14	58	72	55
2004						
October - December	137,762	12	-75	72	-3	9
July - September	137,861	80	-260	81	-179	-99
April - June	137,787	79	-74	69	-5	74
January - March	137,618	-14	91	92	183	169
2003						
October - December	137,519	11	96	-8	88	99
July - September	137,300	80	31	108	139	219
April - June	137,136	80	53	31	84	164
January - March	137,087	-13	44	18	62	49
2002						
October - December	137,066	6	20	-5	15	21
July - September	136,934	55	48	29	77	132
April - June	136,835	47	10	42	52	99
January - March	136,847	-16	-13	17	4	-12
2001						
October - December	136,872	11	-29	-7	-36	-25
July - September	136,672	66	94	40	134	200

Note: See "Data quality, concepts and methodology — Explanatory notes for the tables" section.

Table 4-4

Quarterly population estimates and aggregated demographic components — Nova Scotia

	Population at beginning period	Natural increase	Net interprovincial migration	Net international migration	Total net migration	Total growth
	number					
2006						
January - March	936,988
2005						
October - December	938,116	-155	-988	15	-973	-1,128
July - September	937,889	288	-962	901	-61	227
April - June	937,800	6	-127	210	83	89
January - March	938,339	-124	-599	184	-415	-539
2004						
October - December	938,821	-45	-179	-258	-437	-482
July - September	937,509	330	432	550	982	1,312
April - June	936,879	59	-65	636	571	630
January - March	937,196	-75	-619	377	-242	-317
2003						
October - December	937,133	-10	91	-18	73	63
July - September	936,302	383	-179	627	448	831
April - June	935,596	111	117	478	595	706
January - March	935,375	-25	113	133	246	221
2002						
October - December	935,554	35	95	-309	-214	-179
July - September	934,507	421	185	441	626	1,047
April - June	933,720	128	44	615	659	787
January - March	933,609	82	-580	609	29	111
2001						
October - December	933,245	101	31	232	263	364
July - September	932,389	460	-393	789	396	856

Note: See "Data quality, concepts and methodology — Explanatory notes for the tables" section.

Table 4-5

Quarterly population estimates and aggregated demographic components — New Brunswick

	Population at beginning period	Natural increase	Net interprovincial migration	Net international migration	Total net migration	Total growth
	number					
2006						
January - March	751,111
2005						
October - December	751,726	-11	-719	115	-604	-615
July - September	752,006	293	-1,022	449	-573	-280
April - June	752,345	151	-633	143	-490	-339
January - March	752,266	31	-221	269	48	79
2004						
October - December	752,313	47	-221	127	-94	-47
July - September	752,078	348	-575	462	-113	235
April - June	751,827	201	-58	108	50	251
January - March	751,375	80	176	196	372	452
2003						
October - December	751,438	90	-279	126	-153	-63
July - September	751,215	397	-599	425	-174	223
April - June	751,011	251	-212	165	-47	204
January - March	750,935	130	-187	133	-54	76
2002						
October - December	750,972	92	-167	38	-129	-37
July - September	750,327	459	-277	463	186	645
April - June	749,618	229	377	103	480	709
January - March	749,286	170	-97	259	162	332
2001						
October - December	749,716	54	-478	-6	-484	-430
July - September	749,890	453	-1,020	393	-627	-174

Note: See "Data quality, concepts and methodology — Explanatory notes for the tables" section.

Table 4-6

Quarterly population estimates and aggregated demographic components — Quebec

	Population at beginning period	Natural increase	Net interprovincial migration	Net international migration	Total net migration	Total growth
	number					
2006						
January - March	7,623,870
2005						
October - December	7,616,645	5,012	-1,641	3,854	2,213	7,225
July - September	7,598,146	7,741	-675	11,433	10,758	18,499
April - June	7,582,541	6,439	-2,100	11,266	9,166	15,605
January - March	7,573,726	1,962	-254	7,107	6,853	8,815
2004						
October - December	7,566,136	4,016	54	3,520	3,574	7,590
July - September	7,547,728	7,457	-32	10,983	10,951	18,408
April - June	7,531,006	5,220	-1,601	13,103	11,502	16,722
January - March	7,519,875	2,020	-291	9,402	9,111	11,131
2003						
October - December	7,512,119	4,021	96	3,639	3,735	7,756
July - September	7,493,958	6,983	974	10,204	11,178	18,161
April - June	7,478,357	5,337	-449	10,713	10,264	15,601
January - March	7,467,289	2,910	-403	8,561	8,158	11,068
2002						
October - December	7,461,563	3,623	-331	2,434	2,103	5,726
July - September	7,445,745	5,590	-646	10,874	10,228	15,818
April - June	7,432,197	5,290	-2,399	10,657	8,258	13,548
January - March	7,421,309	2,439	-852	9,301	8,449	10,888
2001						
October - December	7,413,392	4,042	91	3,784	3,875	7,917
July - September	7,396,990	6,096	-1,190	11,496	10,306	16,402

Note: See "Data quality, concepts and methodology — Explanatory notes for the tables" section.

Table 4-7

Quarterly population estimates and aggregated demographic components — Ontario

	Population at beginning period	Natural increase	Net interprovincial migration	Net international migration	Total net migration	Total growth
	number					
2006						
January - March	12,599,364
2005						
October - December	12,589,823	8,573	-6,436	7,404	968	9,541
July - September	12,541,410	14,193	-5,890	40,110	34,220	48,413
April - June	12,494,228	11,636	-1,359	36,905	35,546	47,182
January - March	12,462,445	7,565	-1,541	25,759	24,218	31,783
2004						
October - December	12,454,171	9,254	-3,485	2,505	-980	8,274
July - September	12,407,347	14,080	-1,990	34,734	32,744	46,824
April - June	12,357,421	12,197	-674	38,403	37,729	49,926
January - March	12,320,329	8,187	-902	29,807	28,905	37,092
2003						
October - December	12,305,346	9,712	-2,028	7,299	5,271	14,983
July - September	12,259,568	14,654	-3,331	34,455	31,124	45,778
April - June	12,208,499	12,744	149	38,176	38,325	51,069
January - March	12,169,065	8,800	136	30,498	30,634	39,434
2002						
October - December	12,155,145	9,645	127	4,148	4,275	13,920
July - September	12,102,045	14,472	225	38,403	38,628	53,100
April - June	12,036,968	12,833	1,586	50,658	52,244	65,077
January - March	11,986,887	9,342	3,127	37,612	40,739	50,081
2001						
October - December	11,965,417	10,874	-428	11,024	10,596	21,470
July - September	11,897,647	14,905	1,069	51,796	52,865	67,770

Note: See "Data quality, concepts and methodology — Explanatory notes for the tables" section.

Table 4-8

Quarterly population estimates and aggregated demographic components — Manitoba

	Population at beginning period	Natural increase	Net interprovincial migration	Net international migration	Total net migration	Total growth
	number					
2006						
January - March	1,178,348
2005						
October - December	1,178,109	748	-2,007	1,498	-509	239
July - September	1,177,556	1,379	-3,037	2,211	-826	553
April - June	1,176,402	1,039	-2,386	2,501	115	1,154
January - March	1,174,959	713	-788	1,518	730	1,443
2004						
October - December	1,173,358	804	-504	1,301	797	1,601
July - September	1,170,229	1,291	-154	1,992	1,838	3,129
April - June	1,167,505	1,047	-766	2,443	1,677	2,724
January - March	1,165,161	722	4	1,618	1,622	2,344
2003						
October - December	1,163,207	794	-363	1,523	1,160	1,954
July - September	1,161,626	1,295	-1,440	1,726	286	1,581
April - June	1,159,212	1,056	-731	2,089	1,358	2,414
January - March	1,157,962	739	-628	1,139	511	1,250
2002						
October - December	1,157,089	748	-524	649	125	873
July - September	1,155,584	1,274	-992	1,223	231	1,505
April - June	1,153,533	1,087	-667	1,631	964	2,051
January - March	1,152,079	930	-550	1,074	524	1,454
2001						
October - December	1,151,644	743	-1,072	764	-308	435
July - September	1,151,285	1,266	-2,055	1,148	-907	359

Note: See "Data quality, concepts and methodology — Explanatory notes for the tables" section.

Table 4-9

Quarterly population estimates and aggregated demographic components — Saskatchewan

	Population at beginning period	Natural increase	Net interprovincial migration	Net international migration	Total net migration	Total growth
	number					
2006						
January - March	990,930
2005						
October - December	992,995	378	-2,533	90	-2,443	-2,065
July - September	994,126	962	-2,499	406	-2,093	-1,131
April - June	994,551	895	-1,885	565	-1,320	-425
January - March	994,687	600	-1,301	565	-736	-136
2004						
October - December	995,351	484	-1,154	6	-1,148	-664
July - September	994,300	970	-243	324	81	1,051
April - June	994,342	902	-1,498	554	-944	-42
January - March	994,167	609	-828	394	-434	175
2003						
October - December	994,359	477	-846	177	-669	-192
July - September	994,519	973	-1,349	216	-1,133	-160
April - June	994,555	909	-1,280	335	-945	-36
January - March	994,789	624	-1,115	257	-858	-234
2002						
October - December	995,311	389	-966	55	-911	-522
July - September	995,886	896	-1,780	309	-1,471	-575
April - June	996,916	822	-2,208	356	-1,852	-1,030
January - March	998,219	748	-2,477	426	-2,051	-1,303
2001						
October - December	998,926	747	-1,568	114	-1,454	-707
July - September	1,000,134	1,029	-2,567	330	-2,237	-1,208

Note: See "Data quality, concepts and methodology — Explanatory notes for the tables" section.

Table 4-10

Quarterly population estimates and aggregated demographic components — Alberta

	Population at beginning period	Natural increase	Net interprovincial migration	Net international migration	Total net migration	Total growth
	number					
2006						
January - March	3,306,359
2005						
October - December	3,281,296	4,711	17,059	3,293	20,352	25,063
July - September	3,256,816	6,074	13,110	5,296	18,406	24,480
April - June	3,239,739	5,546	6,595	4,936	11,531	17,077
January - March	3,226,301	4,684	4,943	3,811	8,754	13,438
2004						
October - December	3,215,869	4,909	3,449	2,074	5,523	10,432
July - September	3,204,780	6,059	1,628	3,402	5,030	11,089
April - June	3,192,421	5,574	2,718	4,067	6,785	12,359
January - March	3,180,787	4,726	3,198	3,710	6,908	11,634
2003						
October - December	3,171,735	4,924	1,685	2,443	4,128	9,052
July - September	3,159,620	6,086	3,005	3,024	6,029	12,115
April - June	3,147,233	5,600	2,981	3,806	6,787	12,387
January - March	3,136,984	4,768	2,583	2,898	5,481	10,249
2002						
October - December	3,128,945	4,697	2,234	1,108	3,342	8,039
July - September	3,116,332	5,813	4,105	2,695	6,800	12,613
April - June	3,100,798	5,382	5,752	4,400	10,152	15,534
January - March	3,087,024	4,565	5,792	3,417	9,209	13,774
2001						
October - December	3,075,186	4,331	5,759	1,748	7,507	11,838
July - September	3,056,739	5,387	8,932	4,128	13,060	18,447

Note: See "Data quality, concepts and methodology — Explanatory notes for the tables" section.

Table 4-11

Quarterly population estimates and aggregated demographic components — British Columbia

	Population at beginning period	Natural increase	Net interprovincial migration	Net international migration	Total net migration	Total growth
	number					
2006						
January - March	4,279,462
2005						
October - December	4,271,210	2,219	-869	6,902	6,033	8,252
July - September	4,254,522	3,646	1,674	11,368	13,042	16,688
April - June	4,238,359	3,221	2,665	10,277	12,942	16,163
January - March	4,225,623	1,647	1,057	10,032	11,089	12,736
2004						
October - December	4,215,695	2,393	1,904	5,631	7,535	9,928
July - September	4,201,867	3,203	1,830	8,795	10,625	13,828
April - June	4,187,938	3,167	3,049	7,713	10,762	13,929
January - March	4,177,626	1,903	294	8,115	8,409	10,312
2003						
October - December	4,167,719	1,904	1,683	6,320	8,003	9,907
July - September	4,154,591	3,468	2,839	6,821	9,660	13,128
April - June	4,141,710	3,672	-255	9,464	9,209	12,881
January - March	4,132,142	2,320	-212	7,460	7,248	9,568
2002						
October - December	4,126,608	2,330	-180	3,384	3,204	5,534
July - September	4,115,413	3,616	-390	7,969	7,579	11,195
April - June	4,105,904	3,302	-2,182	8,389	6,207	9,509
January - March	4,096,473	1,933	-2,464	9,962	7,498	9,431
2001						
October - December	4,090,659	2,349	-1,960	5,425	3,465	5,814
July - September	4,078,447	3,651	-1,950	10,511	8,561	12,212

Note: See "Data quality, concepts and methodology — Explanatory notes for the tables" section.

Table 4-12

Quarterly population estimates and aggregated demographic components — Yukon Territory

	Population at beginning period	Natural increase	Net interprovincial migration	Net international migration	Total net migration	Total growth
	number					
2006						
January - March	31,150
2005						
October - December	31,235	46	-127	-4	-131	-85
July - September	30,988	68	186	-7	179	247
April - June	30,881	45	23	39	62	107
January - March	30,862	32	-9	-4	-13	19
2004						
October - December	30,791	50	57	-36	21	71
July - September	30,856	54	-77	-42	-119	-65
April - June	30,861	45	-124	74	-50	-5
January - March	30,837	33	-51	42	-9	24
2003						
October - December	30,788	50	18	-19	-1	49
July - September	30,577	53	184	-26	158	211
April - June	30,456	44	30	47	77	121
January - March	30,337	32	41	46	87	119
2002						
October - December	30,267	49	39	-18	21	70
July - September	30,137	46	39	45	84	130
April - June	30,092	41	-68	72	4	45
January - March	30,155	56	-125	6	-119	-63
2001						
October - December	30,032	45	117	-39	78	123
July - September	30,129	52	-145	-4	-149	-97

Note: See "Data quality, concepts and methodology — Explanatory notes for the tables" section.

Table 4-13

Quarterly population estimates and aggregated demographic components — Northwest Territories

	Population at beginning period	Natural increase	Net interprovincial migration	Net international migration	Total net migration	Total growth
	number					
2006						
January - March	42,526
2005						
October - December	42,965	95	-528	-6	-534	-439
July - September	42,982	130	-171	24	-147	-17
April - June	43,042	144	-203	-1	-204	-60
January - March	43,015	145	-148	30	-118	27
2004						
October - December	42,973	122	-64	-16	-80	42
July - September	42,851	129	-12	5	-7	122
April - June	42,758	143	-84	34	-50	93
January - March	42,741	145	-169	41	-128	17
2003						
October - December	42,451	120	94	76	170	290
July - September	42,240	128	54	29	83	211
April - June	41,987	139	73	41	114	253
January - March	41,797	142	37	11	48	190
2002						
October - December	41,676	103	26	-8	18	121
July - September	41,489	104	106	-23	83	187
April - June	41,239	135	107	8	115	250
January - March	41,107	124	-26	34	8	132
2001						
October - December	41,144	110	-136	-11	-147	-37
July - September	40,822	118	139	65	204	322

Note: See "Data quality, concepts and methodology — Explanatory notes for the tables" section.

Table 4-14

Quarterly population estimates and aggregated demographic components — Nunavut

	Population at beginning period	Natural increase	Net interprovincial migration	Net international migration	Total net migration	Total growth
	number					
2006						
January - March	30,245
2005						
October - December	30,133	139	-33	6	-27	112
July - September	29,992	160	-12	-7	-19	141
April - June	29,802	173	24	-7	17	190
January - March	29,710	179	-91	4	-87	92
2004						
October - December	29,647	144	-76	-5	-81	63
July - September	29,673	151	-153	-24	-177	-26
April - June	29,393	170	97	13	110	280
January - March	29,327	175	-116	7	-109	66
2003						
October - December	29,193	139	5	-10	-5	134
July - September	29,165	148	-121	1	-120	28
April - June	29,069	167	-68	-3	-71	96
January - March	28,927	172	-34	4	-30	142
2002						
October - December	28,867	132	-64	-8	-72	60
July - September	28,739	162	-32	-2	-34	128
April - June	28,233	163	347	-4	343	506
January - March	28,224	142	-147	14	-133	9
2001						
October - December	28,135	148	-57	-2	-59	89
July - September	28,121	139	-119	-6	-125	14

Note: See "Data quality, concepts and methodology — Explanatory notes for the tables" section.

Table 5-1

Quarterly estimates of demographic components — Canada

	Natural increase		Interprovincial migration		International migration				
	Births	Deaths	In-migrants	Out-migrants	Immigrants	Emigrants	Returning emigrants	Net temporary emigrants	Net non-permanent residents
	number								
2005									
October - December	82,550	60,741	61,904	61,904	55,354	7,615	2,357	5,898	-21,210
July - September	90,070	54,895	102,936	102,936	75,975	15,756	6,284	8,761	14,698
April - June	86,763	57,400	90,625	90,625	74,471	6,989	4,168	5,686	1,290
January - March	80,374	63,072	61,380	61,380	56,439	5,680	2,977	5,218	1,027
2004									
October - December	81,861	59,656	53,632	53,632	48,091	7,576	2,357	5,898	-22,135
July - September	88,858	54,517	83,031	83,031	65,578	15,621	6,284	8,761	13,815
April - June	85,330	56,490	78,127	78,127	67,242	6,953	4,168	5,696	8,780
January - March	79,954	61,513	56,247	56,247	54,915	5,650	2,976	5,225	6,809
2003									
October - December	81,561	59,278	44,713	44,713	53,610	7,509	2,357	5,899	-20,949
July - September	88,856	53,979	82,293	82,293	63,349	15,423	6,284	8,744	12,330
April - June	85,486	55,300	68,827	68,827	58,876	6,914	4,168	5,731	15,061
January - March	79,299	58,728	59,732	59,732	45,567	5,622	2,976	5,258	13,541
2002									
October - December	79,120	57,233	51,553	51,553	41,843	7,440	2,357	5,926	-19,441
July - September	86,618	53,441	94,787	94,787	52,926	14,849	6,284	8,643	26,967
April - June	83,719	54,130	72,566	72,566	72,719	7,857	5,382	5,774	12,685
January - March	79,345	58,799	62,967	62,967	61,583	5,959	2,627	5,148	9,746
2001									
October - December	78,968	55,406	54,510	54,510	52,132	7,525	3,285	5,670	-19,159
July - September	86,123	52,159	100,447	100,447	69,900	17,587	6,785	8,968	30,478

Note: See "Data quality, concepts and methodology — Explanatory notes for the tables" section.

Table 5-2

Quarterly estimates of demographic components — Newfoundland and Labrador

	Natural increase		Interprovincial migration		International migration				
	Births	Deaths	In-migrants	Out-migrants	Immigrants	Emigrants	Returning emigrants	Net temporary emigrants	Net non-permanent residents
	number								
2005									
October - December	1,137	1,113	1,919	2,930	109	16	10	24	-274
July - September	1,196	1,047	3,183	3,839	107	34	30	36	70
April - June	1,114	1,121	2,985	3,698	131	15	19	24	196
January - March	1,028	1,143	2,234	3,296	147	13	13	21	86
2004									
October - December	1,155	1,140	2,113	1,819	93	16	10	24	-145
July - September	1,214	1,025	2,675	3,069	176	34	30	36	-103
April - June	1,135	1,099	2,365	3,285	159	15	19	24	185
January - March	1,049	1,119	1,908	2,695	151	13	13	21	-106
2003									
October - December	1,177	1,126	1,574	1,826	79	16	10	24	13
July - September	1,234	1,005	2,550	2,618	148	33	29	36	78
April - June	1,153	1,077	2,310	2,718	64	15	18	24	75
January - March	1,065	1,093	1,995	2,370	68	12	13	21	-2
2002									
October - December	1,127	1,089	1,726	2,035	115	15	10	24	-161
July - September	1,251	982	3,167	3,758	66	31	28	36	232
April - June	1,178	1,048	2,357	3,056	117	35	26	24	144
January - March	1,095	1,064	2,056	3,644	109	26	13	22	44
2001									
October - December	1,076	1,069	1,619	1,889	104	33	16	24	-26
July - September	1,287	945	2,752	3,547	92	78	33	37	-88

Note: See "Data quality, concepts and methodology — Explanatory notes for the tables" section.

Table 5-3

Quarterly estimates of demographic components — Prince Edward Island

	Natural increase		Interprovincial migration		International migration				
	Births	Deaths	In-migrants	Out-migrants	Immigrants	Emigrants	Returning emigrants	Net temporary emigrants	Net non-permanent residents
	number								
2005									
October - December	328	298	387	554	44	7	3	8	-16
July - September	382	290	979	1,025	113	13	10	12	21
April - June	383	308	1,228	1,129	101	6	6	7	19
January - March	321	338	662	648	72	4	4	7	-7
2004									
October - December	326	314	382	457	86	7	3	8	-2
July - September	379	299	703	963	53	13	10	12	43
April - June	386	307	771	845	89	5	6	7	-14
January - March	323	337	543	452	82	4	3	7	18
2003									
October - December	328	317	505	409	50	6	3	8	-47
July - September	379	299	751	720	46	13	10	12	77
April - June	386	306	683	630	34	5	5	7	4
January - March	324	337	587	543	23	4	3	7	3
2002									
October - December	315	309	498	478	25	6	3	8	-19
July - September	349	294	918	870	7	12	10	11	35
April - June	348	301	705	695	44	13	18	7	0
January - March	316	332	602	615	31	10	7	7	-4
2001									
October - December	291	280	441	470	41	13	10	7	-38
July - September	358	292	891	797	29	30	23	12	30

Note: See "Data quality, concepts and methodology — Explanatory notes for the tables" section.

Table 5-4

Quarterly estimates of demographic components — Nova Scotia

	Natural increase		Interprovincial migration		International migration				
	Births	Deaths	In-migrants	Out-migrants	Immigrants	Emigrants	Returning emigrants	Net temporary emigrants	Net non-permanent residents
	number								
2005									
October - December	2,012	2,167	2,793	3,781	465	167	50	86	-247
July - September	2,297	2,009	5,651	6,613	677	349	135	128	566
April - June	2,202	2,196	4,446	4,573	459	154	90	83	-102
January - March	2,026	2,150	3,354	3,953	328	126	64	77	-5
2004									
October - December	2,033	2,078	2,669	2,848	372	167	50	86	-427
July - September	2,319	1,989	5,782	5,350	546	346	135	128	343
April - June	2,215	2,156	4,573	4,638	459	154	90	83	324
January - March	2,038	2,113	2,839	3,458	393	126	64	77	123
2003									
October - December	2,043	2,053	2,532	2,441	390	166	50	86	-206
July - September	2,332	1,949	5,143	5,322	465	341	135	128	496
April - June	2,226	2,115	4,172	4,055	309	153	90	84	316
January - March	2,049	2,074	3,627	3,514	312	124	64	78	-41
2002									
October - December	2,032	1,997	3,127	3,032	322	165	50	87	-429
July - September	2,328	1,907	5,760	5,575	314	329	135	127	448
April - June	2,194	2,066	4,118	4,074	421	160	81	85	358
January - March	2,109	2,027	3,553	4,133	365	121	40	75	400
2001									
October - December	2,084	1,983	3,093	3,062	331	154	49	83	89
July - September	2,306	1,846	5,567	5,960	498	358	102	131	678

Note: See "Data quality, concepts and methodology — Explanatory notes for the tables" section.

Table 5-5

Quarterly estimates of demographic components — New Brunswick

	Natural increase		Interprovincial migration		International migration				
	Births	Deaths	In-migrants	Out-migrants	Immigrants	Emigrants	Returning emigrants	Net temporary emigrants	Net non-permanent residents
	number								
2005									
October - December	1,686	1,697	1,892	2,611	247	64	40	52	-56
July - September	1,821	1,528	4,578	5,600	357	130	108	76	190
April - June	1,763	1,612	3,315	3,948	311	59	72	50	-131
January - March	1,708	1,677	2,222	2,443	178	47	52	45	131
2004									
October - December	1,709	1,662	1,995	2,216	182	64	40	52	21
July - September	1,843	1,495	3,415	3,990	199	130	108	76	361
April - June	1,780	1,579	3,148	3,206	232	57	72	50	-89
January - March	1,723	1,643	2,529	2,353	182	47	52	45	54
2003									
October - December	1,724	1,634	1,593	1,872	182	63	40	52	19
July - September	1,859	1,462	3,420	4,019	165	128	108	76	356
April - June	1,796	1,545	2,813	3,025	164	57	72	50	36
January - March	1,738	1,608	2,436	2,623	155	46	52	47	19
2002									
October - December	1,680	1,588	2,105	2,272	161	61	40	52	-50
July - September	1,890	1,431	3,879	4,156	168	123	108	76	386
April - June	1,736	1,507	3,183	2,806	211	109	95	50	-44
January - March	1,740	1,570	2,716	2,813	170	83	46	44	170
2001									
October - December	1,637	1,583	1,955	2,433	169	104	58	50	-79
July - September	1,858	1,405	3,856	4,876	218	245	120	79	379

Note: See "Data quality, concepts and methodology — Explanatory notes for the tables" section.

Table 5-6

Quarterly estimates of demographic components — Quebec

	Natural increase		Interprovincial migration		International migration				
	Births	Deaths	In-migrants	Out-migrants	Immigrants	Emigrants	Returning emigrants	Net temporary emigrants	Net non-permanent residents
	number								
2005									
October - December	18,413	13,401	4,696	6,337	8,231	1,189	416	939	-2,665
July - September	20,215	12,474	9,267	9,942	13,227	2,462	1,109	1,396	955
April - June	19,922	13,483	8,284	10,384	12,536	1,091	735	906	-8
January - March	17,945	15,983	4,762	5,016	9,344	887	525	832	-1,043
2004									
October - December	17,785	13,769	5,597	5,543	9,158	1,183	416	939	-3,932
July - September	19,651	12,194	7,859	7,891	12,421	2,440	1,109	1,396	1,289
April - June	18,818	13,598	7,070	8,671	12,326	1,086	735	908	2,036
January - March	17,771	15,751	4,488	4,779	10,342	882	525	833	250
2003									
October - December	17,954	13,933	3,874	3,778	10,027	1,173	416	940	-4,691
July - September	19,835	12,852	8,295	7,321	11,866	2,409	1,109	1,393	1,031
April - June	18,923	13,586	6,081	6,530	10,184	1,079	736	913	1,785
January - March	17,193	14,283	5,276	5,679	7,491	878	525	837	2,260
2002									
October - December	17,263	13,640	4,560	4,891	7,846	1,161	416	944	-3,723
July - September	18,894	13,304	8,355	9,001	9,407	2,318	1,109	1,378	4,054
April - June	18,616	13,326	5,717	8,116	10,572	1,264	859	920	1,410
January - March	17,704	15,265	4,563	5,415	9,754	959	420	821	907
2001									
October - December	17,434	13,392	4,827	4,736	8,715	1,211	524	903	-3,341
July - September	18,848	12,752	9,381	10,571	10,038	2,831	1,082	1,429	4,636

Note: See "Data quality, concepts and methodology — Explanatory notes for the tables" section.

Table 5-7

Quarterly estimates of demographic components — Ontario

	Natural increase		Interprovincial migration		International migration				
	Births	Deaths	In-migrants	Out-migrants	Immigrants	Emigrants	Returning emigrants	Net temporary emigrants	Net non-permanent residents
	number								
2005									
October - December	32,352	23,779	10,439	16,875	30,232	3,395	979	2,450	-17,962
July - September	35,084	20,891	20,924	26,814	40,333	7,026	2,605	3,642	7,840
April - June	33,233	21,597	20,337	21,696	40,694	3,117	1,728	2,363	-37
January - March	31,049	23,484	12,684	14,225	29,269	2,532	1,234	2,170	-42
2004									
October - December	32,226	22,972	10,822	14,307	25,301	3,377	979	2,450	-17,948
July - September	34,946	20,866	18,346	20,336	34,734	6,965	2,605	3,642	8,002
April - June	33,160	20,963	17,504	18,178	36,346	3,101	1,728	2,367	5,797
January - March	30,961	22,774	12,448	13,350	28,723	2,519	1,234	2,173	4,542
2003									
October - December	32,142	22,430	9,246	11,274	28,646	3,348	979	2,450	-16,528
July - September	34,858	20,204	17,988	21,319	34,263	6,877	2,606	3,635	8,098
April - June	33,071	20,327	16,066	15,917	31,876	3,085	1,728	2,382	10,039
January - March	30,858	22,058	13,959	13,823	24,993	2,509	1,234	2,186	8,966
2002									
October - December	31,239	21,594	12,054	11,927	22,532	3,319	979	2,463	-13,581
July - September	34,088	19,616	22,157	21,932	30,437	6,624	2,607	3,593	15,576
April - June	32,517	19,684	17,783	16,197	44,525	3,253	2,352	2,400	9,434
January - March	30,688	21,346	16,018	12,891	36,136	2,466	1,150	2,141	4,933
2001									
October - December	31,468	20,594	12,065	12,493	30,033	3,114	1,437	2,356	-14,976
July - September	34,274	19,369	24,217	23,148	42,142	7,281	2,964	3,728	17,699

Note: See "Data quality, concepts and methodology — Explanatory notes for the tables" section.

Table 5-8

Quarterly estimates of demographic components — Manitoba

	Natural increase		Interprovincial migration		International migration				
	Births	Deaths	In-migrants	Out-migrants	Immigrants	Emigrants	Returning emigrants	Net temporary emigrants	Net non-permanent residents
	number								
2005									
October - December	3,481	2,733	2,211	4,218	1,575	282	147	130	188
July - September	3,773	2,394	4,566	7,603	2,509	582	393	192	83
April - June	3,543	2,504	3,717	6,103	2,347	259	260	125	278
January - March	3,342	2,629	3,373	4,161	1,667	211	187	115	-10
2004									
October - December	3,472	2,668	2,814	3,318	1,600	280	147	130	-36
July - September	3,754	2,463	4,975	5,129	2,062	577	393	192	306
April - June	3,514	2,467	3,987	4,753	2,234	257	260	125	331
January - March	3,309	2,587	3,251	3,247	1,530	208	187	115	224
2003									
October - December	3,440	2,646	2,220	2,583	1,733	277	147	130	50
July - September	3,722	2,427	3,843	5,283	1,906	571	393	192	190
April - June	3,489	2,433	3,429	4,160	1,806	257	260	126	406
January - March	3,289	2,550	2,976	3,604	1,047	208	187	115	228
2002									
October - December	3,329	2,581	2,580	3,104	1,004	277	147	130	-95
July - September	3,658	2,384	4,722	5,714	1,052	551	393	189	518
April - June	3,472	2,385	3,312	3,979	1,524	251	254	127	231
January - March	3,429	2,499	3,293	3,843	1,035	190	123	112	218
2001									
October - December	3,243	2,500	2,659	3,731	1,100	240	155	125	-126
July - September	3,602	2,336	4,696	6,751	1,166	560	320	197	419

Note: See "Data quality, concepts and methodology — Explanatory notes for the tables" section.

Table 5-9

Quarterly estimates of demographic components — Saskatchewan

	Natural increase		Interprovincial migration		International migration				
	Births	Deaths	In-migrants	Out-migrants	Immigrants	Emigrants	Returning emigrants	Net temporary emigrants	Net non-permanent residents
	number								
2005									
October - December	2,898	2,520	2,614	5,147	386	127	27	119	-77
July - September	3,172	2,210	5,306	7,805	553	263	72	176	220
April - June	3,148	2,253	4,830	6,715	635	116	48	115	113
January - March	2,927	2,327	3,629	4,930	532	95	34	105	199
2004									
October - December	2,899	2,415	2,917	4,071	450	127	27	119	-225
July - September	3,170	2,200	5,030	5,273	472	261	72	176	217
April - June	3,129	2,227	4,407	5,905	584	116	48	115	153
January - March	2,909	2,300	3,313	4,141	436	94	34	105	123
2003									
October - December	2,877	2,400	2,398	3,244	463	125	27	119	-69
July - September	3,148	2,175	4,433	5,782	413	258	72	176	165
April - June	3,113	2,204	3,804	5,084	414	115	48	115	103
January - March	2,900	2,276	3,294	4,409	378	93	34	105	43
2002									
October - December	2,741	2,352	2,841	3,807	397	124	27	119	-126
July - September	3,040	2,144	5,233	7,013	367	248	72	173	291
April - June	2,991	2,169	3,715	5,923	452	128	74	116	74
January - March	2,989	2,241	3,100	5,577	451	98	36	103	140
2001									
October - December	2,904	2,157	2,876	4,444	361	123	45	114	-55
July - September	3,112	2,083	4,907	7,474	557	287	93	179	146

Note: See "Data quality, concepts and methodology — Explanatory notes for the tables" section.

Table 5-10

Quarterly estimates of demographic components — Alberta

	Natural increase		Interprovincial migration		International migration				
	Births	Deaths	In-migrants	Out-migrants	Immigrants	Emigrants	Returning emigrants	Net temporary emigrants	Net non-permanent residents
	number								
2005									
October - December	10,029	5,318	24,997	7,938	4,241	859	296	677	292
July - September	10,931	4,857	29,882	16,772	5,594	1,776	788	1,006	1,696
April - June	10,571	5,025	22,711	16,116	5,201	788	523	652	652
January - March	9,850	5,166	16,386	11,443	4,357	640	374	599	319
2004									
October - December	9,830	4,921	13,123	9,674	3,274	854	296	677	35
July - September	10,764	4,705	18,510	16,882	4,521	1,761	788	1,006	860
April - June	10,435	4,861	17,684	14,966	4,606	784	523	654	376
January - March	9,728	5,002	13,869	10,671	4,073	637	374	600	500
2003									
October - December	9,719	4,795	10,715	9,030	3,864	847	296	677	-193
July - September	10,638	4,552	18,554	15,549	4,576	1,738	788	1,004	402
April - June	10,312	4,712	16,180	13,199	4,297	779	524	658	422
January - March	9,618	4,850	14,036	11,453	3,102	634	374	603	659
2002									
October - December	9,305	4,608	12,121	9,887	3,130	838	296	680	-800
July - September	10,215	4,402	22,290	18,185	3,090	1,673	788	992	1,482
April - June	9,927	4,545	18,584	12,832	4,601	943	824	663	581
January - March	9,244	4,679	16,033	10,241	3,931	715	403	592	390
2001									
October - December	8,815	4,484	15,261	9,502	3,548	904	503	650	-749
July - September	9,616	4,229	25,737	16,805	4,578	2,111	1,038	1,030	1,653

Note: See "Data quality, concepts and methodology — Explanatory notes for the tables" section.

Table 5-11

Quarterly estimates of demographic components — British Columbia

	Natural increase		Interprovincial migration		International migration				
	Births	Deaths	In-migrants	Out-migrants	Immigrants	Emigrants	Returning emigrants	Net temporary emigrants	Net non-permanent residents
number									
2005									
October - December	9,787	7,568	9,378	10,247	9,792	1,500	386	1,400	-376
July - September	10,735	7,089	17,275	15,601	12,458	3,104	1,029	2,080	3,065
April - June	10,405	7,184	17,006	14,341	12,018	1,376	683	1,350	302
January - March	9,710	8,063	11,075	10,018	10,504	1,118	487	1,239	1,398
2004									
October - December	9,997	7,604	10,455	8,551	7,542	1,492	386	1,400	595
July - September	10,353	7,150	14,583	12,753	10,359	3,077	1,029	2,080	2,564
April - June	10,286	7,119	15,207	12,158	10,156	1,370	683	1,352	-404
January - March	9,682	7,779	9,982	9,688	8,963	1,113	487	1,241	1,019
2003									
October - December	9,737	7,833	9,307	7,624	8,134	1,479	386	1,400	679
July - September	10,394	6,926	15,910	13,071	9,460	3,038	1,029	2,075	1,445
April - June	10,552	6,880	12,037	12,292	9,694	1,361	683	1,361	1,809
January - March	9,813	7,493	10,461	10,673	7,957	1,107	487	1,249	1,372
2002									
October - December	9,699	7,369	9,011	9,191	6,297	1,465	386	1,406	-428
July - September	10,470	6,854	16,569	16,959	7,989	2,923	1,029	2,051	3,925
April - June	10,291	6,989	11,579	13,761	10,205	1,690	794	1,371	451
January - March	9,605	7,672	9,822	12,286	9,570	1,282	388	1,223	2,509
2001									
October - December	9,592	7,243	8,811	10,771	7,698	1,619	486	1,346	206
July - September	10,444	6,793	16,947	18,897	10,512	3,785	1,002	2,129	4,911

Note: See "Data quality, concepts and methodology — Explanatory notes for the tables" section.

Table 5-12

Quarterly estimates of demographic components — Yukon Territory

	Natural increase		Interprovincial migration		International migration				
	Births	Deaths	In-migrants	Out-migrants	Immigrants	Emigrants	Returning emigrants	Net temporary emigrants	Net non-permanent residents
	number								
2005									
October - December	85	39	258	385	15	3	3	6	-13
July - September	98	30	577	391	17	5	5	8	-16
April - June	84	39	465	442	18	2	4	5	24
January - March	73	41	213	222	13	2	3	4	-14
2004									
October - December	87	37	233	176	12	3	3	6	-42
July - September	101	47	362	439	15	5	5	8	-49
April - June	83	38	363	487	14	2	4	5	63
January - March	72	39	293	344	21	2	3	4	24
2003									
October - December	85	35	208	190	15	3	3	6	-28
July - September	99	46	495	311	8	5	5	8	-26
April - June	81	37	345	315	11	2	4	5	39
January - March	70	38	308	267	21	2	3	5	29
2002									
October - December	82	33	275	236	9	3	3	6	-21
July - September	89	43	471	432	13	5	5	8	40
April - June	76	35	368	436	22	4	4	5	55
January - March	92	36	361	486	5	3	1	4	7
2001									
October - December	90	45	311	194	12	3	2	5	-45
July - September	86	34	308	453	28	7	5	8	-22

Note: See "Data quality, concepts and methodology — Explanatory notes for the tables" section.

Table 5-13

Quarterly estimates of demographic components — Northwest Territories

	Natural increase		Interprovincial migration		International migration				
	Births	Deaths	In-migrants	Out-migrants	Immigrants	Emigrants	Returning emigrants	Net temporary emigrants	Net non-permanent residents
	number								
2005									
October - December	159	64	225	753	15	3	0	4	-14
July - September	176	46	595	766	28	7	0	6	9
April - June	185	41	804	1,007	20	4	0	4	-13
January - March	187	42	552	700	21	3	0	3	15
2004									
October - December	162	40	422	486	20	3	0	4	-29
July - September	177	48	631	643	19	7	0	6	-1
April - June	184	41	664	748	34	4	0	4	8
January - March	186	41	607	776	16	3	0	3	31
2003									
October - December	160	40	425	331	25	3	0	4	58
July - September	176	48	767	713	30	7	0	6	12
April - June	182	43	678	605	23	4	0	4	26
January - March	183	41	569	532	16	3	0	3	1
2002									
October - December	142	39	491	465	5	3	0	4	-6
July - September	151	47	924	818	15	7	0	6	-25
April - June	177	42	640	533	20	4	1	4	-5
January - March	165	41	669	695	20	3	0	3	20
2001									
October - December	147	37	389	525	18	4	0	4	-21
July - September	162	44	971	832	36	9	3	6	41

Note: See "Data quality, concepts and methodology — Explanatory notes for the tables" section.

Table 5-14

Quarterly estimates of demographic components — Nunavut

	Natural increase		Interprovincial migration		International migration				
	Births	Deaths	In-migrants	Out-migrants	Immigrants	Emigrants	Returning emigrants	Net temporary emigrants	Net non-permanent residents
	number								
2005									
October - December	183	44	95	128	2	3	0	3	10
July - September	190	30	153	165	2	5	0	3	-1
April - June	210	37	497	473	0	2	0	2	-3
January - March	208	29	234	325	7	2	0	1	0
2004									
October - December	180	36	90	166	1	3	0	3	0
July - September	187	36	160	313	1	5	0	3	-17
April - June	205	35	384	287	3	2	0	2	14
January - March	203	28	177	293	3	2	0	1	7
2003									
October - December	175	36	116	111	2	3	0	3	-6
July - September	182	34	144	265	3	5	0	3	6
April - June	202	35	229	297	0	2	0	2	1
January - March	199	27	208	242	4	2	0	2	4
2002									
October - December	166	34	164	228	0	3	0	3	-2
July - September	195	33	342	374	1	5	0	3	5
April - June	196	33	505	158	5	3	0	2	-4
January - March	169	27	181	328	6	3	0	1	12
2001									
October - December	187	39	203	260	2	3	0	3	2
July - September	170	31	217	336	6	5	0	3	-4

Note: See "Data quality, concepts and methodology — Explanatory notes for the tables" section.

Table 6

Quarterly estimates of interprovincial migrants by province or territory of origin and destination, Canada, October to December 2005^P

Origin	Destination												
	Newfoundland and Labrador	Prince Edward Island	Nova Scotia	New Brunswick	Quebec	Ontario	Manitoba	Saskatchewan	Alberta	British Columbia	Yukon Territory	Northwest Territories	Nunavut
	number												
Newfoundland and Labrador	.	5	305	62	18	643	16	17	1,704	69	0	75	16
Prince Edward Island	44	.	101	36	14	118	8	12	200	21	0	0	0
Nova Scotia	296	124	.	437	113	933	46	52	1,505	257	0	12	6
New Brunswick	60	33	467	.	349	625	37	4	781	250	0	0	5
Quebec	17	34	88	411	.	3,665	58	50	1,420	577	13	0	4
Ontario	1,049	134	1,166	586	3,137	.	683	364	6,625	3,042	29	23	37
Manitoba	25	4	21	44	103	830	.	454	1,999	701	0	23	14
Saskatchewan	20	8	52	14	98	283	379	.	3,593	700	0	0	0
Alberta	262	0	372	184	374	1,296	494	1,315	.	3,474	80	81	6
British Columbia	57	45	221	104	451	1,973	424	307	6,553	.	100	5	7
Yukon Territory	28	0	0	14	0	21	21	0	101	200	.	0	0
Northwest Territories	61	0	0	0	19	30	45	32	460	70	36	.	0
Nunavut	0	0	0	0	20	22	0	7	56	17	0	6	.
In-migrants	1,919	387	2,793	1,892	4,696	10,439	2,211	2,614	24,997	9,378	258	225	95
Out-migrants	2,930	554	3,781	2,611	6,337	16,875	4,218	5,147	7,938	10,247	385	753	128
Net	-1,011	-167	-988	-719	-1,641	-6,436	-2,007	-2,533	17,059	-869	-127	-528	-33
Total number of migrants: 61,904													

^P Preliminary data.

Note: Preliminary estimates based on data from the Child Tax Benefit (CTB) Program and Fjk factors calculated using 2001-2002, 2002-2003 and 2003-2004 tax file data from Canada Revenue Agency.

Quality of estimates

Post-2001 postcensal population estimates

The postcensal estimates contain certain inaccuracies stemming from:

- (a) errors in the 2001 Census data (the base population on which these estimates were constructed) and
- (b) imperfections in other data sources and the method used to estimate the components.

Errors in census data

Census data for total population by province or territory are affected by coverage errors. These errors occur when dwellings and/or individuals are missed, incorrectly included or counted more than once. Following each census, Statistics Canada undertakes coverage studies to measure these errors. The main study is that of the Reverse Record Check Survey, complemented by the Automated Match Study and the Collective Dwelling Study. Based on these studies, estimates of undercount and overcount are produced. Demography Division adjusts the population enumerated in the census using these estimates, see Text table 1. The adjustment also incorporates the results of a study on the estimates of the number of people living on partially enumerated Indian reserves to complete the corrections for coverage errors in the census. The results of the coverage studies contain mainly sampling errors. For further information regarding the main coverage studies, please see the following document on Statistics Canada's web site: **2001 Census Technical Report on Coverage.2001 Census Technical Report on Coverage.**

Errors in other data sources due to methodology

Errors due to estimation methodologies and data sources other than the census are difficult to quantify but not insignificant.

The vital statistics data that were used in the calculations were final as of December 2002. Since the law requires the recording of vital statistics, these data meet very high standards. Nevertheless, preliminary data may differ from final data. For example, in 2002 the average annual absolute deviations in percent between the preliminary and final data for all ten provinces were 1.6% and 4.7% for births and deaths, respectively.

With respect to immigrants and non-permanent residents, Citizenship and Immigration Canada administers special data files on both of these components. Since immigration is controlled by law (the Immigration Act), data on immigrants and nonpermanent residents are compiled upon arrival in Canada. These data represent only "legal" immigration and exclude illegal immigrants. Thus, for the "legal" part of international movement into Canada, the data are considered to be of high quality.

However, some biases such as the difference between the stated province of intended residence at the time of arrival and the actual province of residence, may persist. Finally, since information provided by the Visitor Data System from Citizenship and Immigration Canada is not complete (age and sex of dependents, province of residence for certain groups of permit holders), estimates of nonpermanent residents are more prone to error than data on immigrants.

The estimate of the number of emigrants and returning emigrants is derived using Child Tax Benefit (CTB) data provided by Canada Revenue Agency. The estimate is then adjusted to take into account the number of children not eligible for the program. Using appropriate assumptions, these data are used to calculate the emigration of adults.

As current information on the number of persons living temporarily abroad does not exist, estimates are based on the Reverse Record Check (RRC) and the census. Estimates for the intercensal period, distributed equally among the five years, are maintained constant for the postcensal period. Moreover, assumptions were made to allow for

the distribution of data at the national level to the provincial and territorial levels and annual data to a quarterly level. Any geographical or quarterly variation may introduce error in the estimation of these components.

Estimates of interprovincial migration and emigration are more subject to error, in view of the use of administrative records that do not fully cover the universe.

Given the size of the errors observed at the end of the 1996-2001 intercensal period as indicated in Text table 2, the present postcensal estimates should have an acceptable degree of reliability, if it is assumed that the quality of the basic data remains constant. In interpreting these results, the reader must take into account the errors which may originate with census data and bear in mind that these errors are cumulated over a five-year period.

Intercensal estimates of population

Intercensal estimates contain the same types of errors as postcensal estimates, as well as errors resulting from the way in which the closure errors present at the end of the period were distributed, that is, on the basis of the time elapsed since the reference census.

Text table 1

Estimated net undercoverage of population for Canada, provinces and territories, 1996 and 2001 Censuses

	1996 ¹		2001 ¹	
	Number	Rate	Number	Rate
	in percent		in percent	
Canada	712,119	2.41	958,969	3.10
Newfoundland and Labrador	8,840	1.58	9,401	1.80
Prince Edward Island	896	0.66	1,325	0.97
Nova Scotia	21,126	2.27	24,521	2.63
New Brunswick	14,073	1.87	20,095	2.68
Quebec	102,680	1.42	152,880	2.07
Ontario	304,139	2.75	452,309	3.81
Manitoba	19,052	1.68	31,013	2.70
Saskatchewan	28,599	2.81	21,812	2.18
Alberta	71,971	2.60	74,834	2.45
British Columbia	137,446	3.56	164,805	4.05
Yukon Territory	467	1.50	1,423	4.73
Northwest Territories	1,979	4.75	3,295	8.11
Nunavut	851	3.33	1,256	4.49

1. The levels and rates are based on the Reverse Record Check (RRC) and the Overcoverage Study and include non-permanent residents.

Text table 2

Error of closure of the estimates of total population for Canada, provinces and territories, July 1, 1996 and 2001

	1996		2001	
	Number	Rate	Number	Rate
		in percent		in percent
Canada	113,416	0.38	46,467	0.15
Newfoundland and Labrador	8,840	1.58	11,416	2.19
Prince Edward Island	411	0.30	1,481	1.08
Nova Scotia	6,446	0.69	9,034	0.97
New Brunswick	5,634	0.75	4,638	0.62
Quebec	96,449	1.33	-320	0.00
Ontario	56,479	0.51	8,857	0.07
Manitoba	-852	-0.08	-1,121	-0.10
Saskatchewan	-7,400	-0.73	15,952	1.59
Alberta	-8,124	-0.29	714	0.02
British Columbia	-43,313	-1.12	-4,357	-0.11
Yukon Territory	-244	-0.78	-354	-1.18
Northwest Territories	-42	-0.10	481	1.18
Nunavut	-868	-3.39	46	0.16

Note: The error of closure is equal to the July 1 postcensal estimates minus the census count adjusted to July 1 and for net undercount. The percentage is: error of closure, divided by the census count adjusted to July 1 and for net undercount, multiplied by 10

Explanatory notes for the tables

Table 4
Quarterly population estimates and aggregated demographic components

Population	Population estimates are final postcensal from July 1, 2001 to July 1, 2002, updated postcensal from October 1, 2002 to April 1, 2005 and preliminary postcensal from July 1, 2005.
Natural increase	Natural increase is final up to December 2002, updated from January 2003 to March 2005 and preliminary from April 2005.
Interprovincial migration	Net interprovincial migration numbers are final up to June 2004, updated from July 2004 to March 2005 and preliminary from April 2005.
International migration	Net international migration numbers are final up to June 2002, updated from July 2002 to March 2005 and preliminary from April 2005
Total migration	Total net migration numbers are final up to June 2002, updated from July 2002 to March 2005 and preliminary from April 2005
Total growth	Numbers for total growth are final up to June 2002, updated from July 2002 to March 2005 and preliminary from April 2005

Table 5
Quarterly estimates of demographic components

Births	The numbers of births are final up to December 2003, updated from January 2004 to March 2005 and preliminary from April 2005.
Deaths	The numbers of deaths are final up to December 2002, updated from January 2003 to March 2005 and preliminary from April 2005.
In-migrants	The numbers of interprovincial in-migrants are final up to June 2004, updated from July 2004 to March 2005 and preliminary from April 2005.
Out-migrants	The numbers of interprovincial out-migrants are final up to June 2004, updated from July 2004 to March 2005 and preliminary from April 2005
Immigrants	The numbers of immigrants are final up to December 2002, updated from January 2003 to March 2005 and preliminary from April 2005.

Emigrants	The numbers of emigrants are final up to June 2002, updated from July 2002 to March 2005 and preliminary from April 2005.
Returning emigrants	The numbers of returning emigrants are final up to June 2002, updated from July 2002 to March 2005 and preliminary from April 2005.
Net temporary emigrants	The numbers of net temporary emigrants are final up to June 2002, updated from July 2002 to March 2005 and preliminary from April 2005.
Net non-permanent residents	The numbers of net non-permanent residents are final up to June 2002, updated from July 2002 to March 2005 and preliminary from April 2005.

Appendix I

Glossary

Census coverage

Net undercoverage: Difference between undercoverage and overcoverage.

Overcoverage: Number of persons who should not have been counted in the census or who were counted more than once.

Undercoverage: Number of persons who were intended to have been enumerated in a census but were not enumerated.

Components of demographic growth

Any of the classes of events generating population movement variations. Births, deaths and migrations are the components responsible for the variation since they alter the total population.

Emigrants

Canadian citizen or **immigrant** who has left Canada to establish a permanent residence in another country.

Error of closure

Difference between the **postcensal estimate** for the same date as the census and the results of the census adjusted for **net undercoverage**.

Immigrant

Within the framework of this publication, the term immigrant refers to **landed immigrant**. A landed immigrant is a person who does not have Canadian citizenship but was granted the right by immigration authorities to live in Canada on a permanent basis.

International migration

International migration represents movement of population between Canada and a foreign country which involves a change in the usual place of residence. A distinction is made with regard to **immigrants, emigrants, returning emigrants, net temporary emigrants** and **net non-permanent residents**.

Interprovincial migration

Interprovincial migration represents movement from one province or territory involving a permanent change in residence. A person who takes up residence in another province or territory is an **out-migrant** with reference to the province or territory of origin and an **in-migrant** with reference to the province or territory of destination.

Natural increase

Variation in population size over a given period as a result of the difference between the numbers of births and deaths.

Net international migration

Net international migration is obtained according to the following formula: **Immigrants + returning emigrants + net non permanent residents – (emigrants + net temporary emigrants)**

Net interprovincial migration

Net interprovincial migration represents the difference between **in-migrants** and **out-migrants** for a given province or territory.

Net non-permanent residents

Net non-permanent residents represent the variation in the number of non-permanent residents between two dates.

Non-permanent residents

A non permanent resident belongs to one of the five following groups:

- persons residing in Canada claiming refugee status;
- persons residing in Canada who hold a study permit;
- persons residing in Canada who hold a work permit;
- persons residing in Canada who hold a minister's permit;
- all non-Canadian born dependants of persons claiming refugee status, or of persons holding study permits, work permits or minister's permits and living in Canada.

Net temporary emigration

Net temporary emigration represents the variation in the number of temporary emigrants between two dates. Temporary emigration includes Canadian citizens and **immigrants** living temporarily abroad who have not maintained a usual place of residence in Canada.

Population

Estimated population and population according to the census are both defined as being the number of Canadians whose usual place of residence is in that area, regardless of where they happened to be on Census Day. Also included are any Canadians staying in a dwelling in that area on Census Day and having no usual place of residence elsewhere in Canada, as well as those considered **non-permanent residents**.

Population estimate

- (a) **postcensal**: Population estimate produced by using data from the most recent available census adjusted for **net undercoverage** and estimate of the **components of demographic growth** since that last census. This estimate can be preliminary, updated or final.
- (b) **intercensal**: Population estimate derived by using **postcensal estimates** and data adjusted for **net undercoverage** of censuses preceding and following the year in question.

Population growth or total growth

Variation of population size between two dates. It can also be obtained by summing the **natural increase**, **total net migration** and if possible, **residual deviation**. It can be positive or negative.

Residual deviation

Difference between demographic **population growth** calculated using **intercensal estimates** of population between two dates and that obtained by the sum of the components for the same period. This deviation results from the distribution of the **error of closure** between years within the quinquennial period.

Returning emigrants

Canadian citizen or **immigrant** having previously emigrated from Canada and subsequently returned to the country.

Total net migration

Sum of **net international** and **net interprovincial** migration.

Vital events

Includes all the demographic events (that is to say births, deaths, marriages and divorces) for which there exists a legal requirement to inform the Provincial or Territorial Registrar's Office.

Appendix II

Source and remarks

Base population

May 15, 2001 Census of Population, adjusted to July 1 and for net undercount.

Statistics Canada, **Census of Canada, 2001**, Catalogue no. 93-360-X.

Births and deaths

Statistics Canada, Health Statistics Division.

Statistics Canada, Demography Division, Catalogue no. 91-002-X, Quarterly, Analytical table 3.

Immigration

Citizenship and Immigration Canada

Emigrants

Statistics Canada, Demography Division - from data on emigrant children from the Child Tax Benefit program (CTB) from Canada Revenue Agency files - CRA and data from the "U.S.Department of Homeland Security, Office of Immigration Statistics"

Returning emigrants

Statistics Canada, Demography Division – based on data from the CTB program and adjustment factors calculated using CRA files.

Net temporary emigrants

Statistics Canada, Demography Division – based on data from the Reverse Record Check (RRC), 1996 and 2001 Censuses of Canada.

Non-permanent residents

Statistics Canada, Demography Division – based on data provided by Citizenship and Immigration Canada.

Interprovincial migration

Statistics Canada, Demography Division – based on the CTB program and adjustment factors calculated using CRA files.