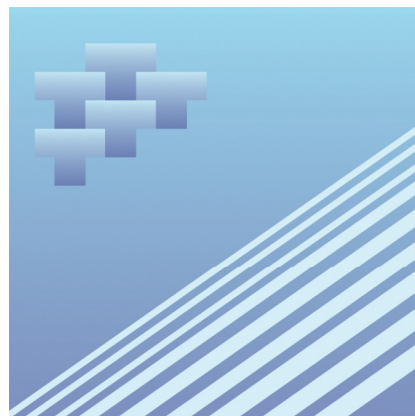




Catalogue no. 52-216-XIE

# Rail in Canada

2001



Statistics  
Canada

Statistique  
Canada

Canada

## How to obtain more information

Specific inquiries about this product and related statistics or services should be directed to: Multimodal Transport Section, Transportation Division, Statistics Canada, Ottawa, Ontario, K1A 0T6 (telephone: (613) 951-2486).

For information on the wide range of data available from Statistics Canada, you can contact us by calling one of our toll free numbers. You can also contact us by e-mail or by visiting our Web site.

National inquiries line **1 800 263-1136**

National telecommunications device for the hearing impaired **1 800 363-7629**

Depository Services Program inquiries **1 800 700-1033**

Fax line for Depository Services Program **1 800 889-9734**

E-mail inquiries ***infostats@statcan.ca***

Web site ***www.statcan.ca***

## Ordering and subscription information

This product, Catalogue no. 52-216-XIE, is published annually in electronic format on the Statistics Canada Internet site at a single price of CDN \$39.00 per issue. To obtain single issues or to subscribe, visit our Web site at ***www.statcan.ca***, and select Products and Services.

This product is also available in print through a Print-on-Demand service, at a price of CDN \$62.00 per issue. The following additional shipping charges apply for delivery outside Canada:

**United States** a single issue at a price of CDN \$6.00.

**Other countries** a single issue at a price of CDN \$10.00.

All prices exclude sales taxes.

The printed version can be ordered by

- Phone (Canada and United States) **1 800 267-6677**
- Fax (Canada and United States) **1 877 287-4369**
- E-mail ***order@statcan.ca***
- Mail: Statistics Canada, Dissemination Division, Circulation Management, 120 Parkdale Avenue, Ottawa, Ontario K1A 0T6
- And, in person at the Statistics Canada Regional Centre nearest you.

When notifying us of a change in your address, please provide both old and new addresses.

## Standards of service to the public

Statistics Canada is committed to serving its clients in a prompt, reliable and courteous manner and in the official language of their choice. To this end, the Agency has developed standards of service which its employees observe in serving its clients. To obtain a copy of these service standards, please contact Statistics Canada toll free at 1 800 263-1136.



Statistics Canada  
Transportation Division  
Multimodal Transport Section

# Rail in Canada

2001

Published by authority of the Minister responsible for Statistics Canada

© Minister of Industry, 2003

All rights reserved. No part of this publication may be reproduced, stored in a retrieval system or transmitted in any form or by any means, electronic, mechanical, photocopying, recording or otherwise without prior written permission from Licence Services, Marketing Division, Statistics Canada, Ottawa, Ontario, Canada K1A 0T6.

December 2003

Catalogue no. 52-216-XIE

ISSN 1209-1316

Frequency: Annual

Ottawa

La version française de cette publication est disponible sur demande.

---

#### **Note of appreciation**

*Canada owes the success of its statistical system to a long standing partnership between Statistics Canada, the citizens of Canada, its businesses, governments and other institutions. Accurate and timely statistical information could not be produced without their continued cooperation and goodwill.*

## Symbols

---

The following standard symbols are used in Statistics Canada publications:

- . not available for any reference period
- .. not available for a specific reference period
- ... not applicable
- P preliminary
- r revised
- X confidential to meet secrecy requirements of the *Statistics Act*
- E use with caution
- F too unreliable to be published

## Acknowledgements

---

This publication was prepared in the Transportation Division under the general direction of **Gord Baldwin**, Director, **Doug O’Keefe**, Chief, Multimodal Transportation section and **Harold Kohn**, Head Multimodal Transportation Unit.

**Francesca Teggart**, the Senior Analyst was the principal author of this publication. Technical assistance was provided by **Dorinda McNamee**, Production Manager, **David Binks** and **Suzanne Johnston**.

Statistics Canada would like to thank Transport Canada for its assistance in providing origin and destination data on commodities in Canada.

## Foreword

---

"Rail in Canada, 2001" provides information on the size and structure of the Canadian rail transport industry. It contains a number of financial and operating statistical tables. The 2001 publication has been modified from the 2000 edition. Most data tables for regional carriers (including short haul carriers) have been abbreviated to reflect the limited number of variables reported by these carriers. However, financial and operational tables for mainline carriers (Canadian National, Canadian Pacific and VIA Rail) present the same level of detail as previous editions.

The data released in this publication are based on various surveys of railways operating in Canada. The objectives, coverage and methodologies of these surveys are not identical. For details refer to the **Survey Concepts and Data Limitations** section of this publication.

### Attention Users!

The following changes in the coverage, data and format apply to this and prior publications:

- Data published prior to 1997 conformed to the industry group 453 (Railway Transport and Related Service Industries) of Statistics Canada's **Standard Industrial Classification, 1980**. This classification system was replaced by **The North American Industrial Classification System (NAICS)**, to allow comparability with the United States and Mexico. Please refer to the section on Survey Concepts and Data Limitations for more detail.
- Statistics Canada is required by law to protect the confidentiality of survey respondents. However, for decades, railway operations were regulated by governmental approval of shipping rates. Railway statistics were published in detail by carrier and by province/territory. Since deregulation in 1996, the railways can negotiate confidential contracts with shippers. In order to preserve confidentiality, data on commodity movements are presented by region. Mainline railways have granted permission to report their financial and operating statistics as they appear in this publication.

# Table of contents

---

<b>Highlights</b>	<b>7</b>
<b>Overview of rail transportation in 2001</b>	<b>8</b>
<b>Related products</b>	<b>16</b>
<b>Statistical tables</b>	
1-1 Rail transportation, operating and income accounts, CN, CP and VIA Rail, 2001	18
1-2 Rail transportation, summary of operating and income accounts, 2001	20
2-1 Rail transportation, balance sheet, CN, CP and VIA Rail, 2001	21
2-2 Rail transportation, summary of balance sheet, 2001	22
3-1 Rail transportation, summary of property accounts, assets and accumulated depreciation, CN, CP and VIA Rail, 2001	23
3-2 Rail transportation, summary of property accounts, balance at beginning and end of year, CN, CP and VIA Rail, 2001	25
4 Rail transportation, length of tracks operated at December 31, 2001	26
5 Rail transportation, length of tracks operated, by area, at December 31, 2001	27
6 Rail transportation, fuel and power consumed, 2001	27
7 Rail transportation, diesel oil consumed by province or territory, 2001	28
8-1 Rail transportation, operating statistics, CN, CP and VIA Rail, 2001	29
8-2 Rail transportation, summary of operating statistics, 2001	30
9 Rail transportation, summary statistics on freight and passenger transportation, 2001	31
10-1 Rail transportation, inventory of equipment in service, CN, CP and VIA Rail, 2001	32
10-2 Rail transportation, summary of inventory of equipment in service, 2001	33
11 Rail transportation, summary statistics on employment by major occupational group, 2001	34
12 Rail transportation, summary statistics on employment by occupational categories, CN, CP and VIA Rail, 2001	35
13 Rail transportation, origin and destination of commodity transported, 2001	36
14-1 Rail transportation, commodity movements from Atlantic, 2001	37
14-2 Rail transportation, commodity movements to Atlantic, 2001	39

**Table of contents – continued**

15-1	Rail transportation, commodity movements from Quebec, 2001	41
15-2	Rail transportation, commodity movements to Quebec, 2001	43
16-1	Rail transportation, commodity movements from Ontario, 2001	45
16-2	Rail transportation, commodity movements to Ontario, 2001	47
17-1	Rail transportation, commodity movements from Manitoba, 2001	49
17-2	Rail transportation, commodity movements to Manitoba, 2001	51
18-1	Rail transportation, commodity movements from Saskatchewan, 2001	53
18-2	Rail transportation, commodity movements to Saskatchewan, 2001	55
19-1	Rail transportation, commodity movements from Alberta, 2001	57
19-2	Rail transportation, commodity movements to Alberta, 2001	59
20-1	Rail transportation, commodity movements from British Columbia, 2001	61
20-2	Rail transportation, commodity movements to British Columbia, 2001	63
21-1	Rail transportation, commodity movements from United States and Mexico, 2001	65
21-2	Rail transportation, commodity movements to United States and Mexico, 2001	67
22-1	Rail transportation, non-intermodal and intermodal tonnage transported to Mexico, 2001	69
22-2	Rail transportation, non-intermodal and intermodal tonnage transported from Mexico, 2001	69

**Data quality, concepts and methodology**

Survey concepts and data limitations	70
Survey methodology, coverage and data limitations	72

**Appendix**

I. Glossary	74
-------------	----



## Highlights

---

- In 2001, the Canadian rail industry earned an operating income of \$1.6 billion on operating revenues of \$8.1 billion. Net income after taxes and extraordinary items was \$805 million, which represented a decrease of 18.8% compared to \$992 million in 2000.
- The \$8.1 billion operating revenues of the Canadian rail industry represented an increase of 0.2% over 2000. The only gains in revenues were from the sources identified as 'Passenger Transportation' and 'Other'.
- The industry's operating expenses increased 2.0% to \$6.6 billion in 2001.
- In 2001, Canadian railways employed about 39 thousand people, down 3.8% from the previous year. The compensation per employee increased 3.5% to almost \$62 thousand. However, the total compensation dropped 0.4% to \$2.43 billion.
- Freight tonnage decreased by 5.4% to 330.1 million tonnes in 2001. Tonne-kilometres decreased slightly (0.6%) to 317.9 billion tonne-kilometres.
- 4.2 million passengers travelled by rail in 2001, 0.5% more than in 2000. Passenger-kilometres increased by 1.3% from 2000 levels to 1.55 billion in 2001. The average passenger journey per ticket increased from 369 kilometres in 2000 to 372 kilometres in 2001.
- Rail freight shipments originating from Alberta, British Columbia and Saskatchewan accounted for 50.1% of total freight tonnage for 2001.
- In 2001, the top five commodities carried by railways in Canada were coal (34.8 million tonnes), wheat (21.7 million tonnes), mixed carload freight (17.3 million tonnes), iron ores and concentrates (17.0 million tonnes) and potash (12.9 million tonnes). These commodities totalled 103.7 million tonnes or 42.2% of the total tonnage.

## Overview of rail transportation in 2001

Canada's railways operated in a slowing of the North American economy in 2001. Canada's real gross domestic product (GDP) grew by just 1.9% in 2001, down from the 5.3% growth in real GDP experienced in 2000. The growth rate in terms of real GDP also slowed in the United States, down to 1.2% in 2001.<sup>1</sup> Trade between Canada and the United States was affected by the slowing economy and the tragic events of September 11<sup>th</sup>. Despite a Canadian dollar that averaged 64.6 cents U.S., in 2001, exports of goods and services to the United States decreased from \$359.0 billion in 2000 to \$352.1 billion in 2001.<sup>2</sup> Within this slowing 2001 economy, Canadian rail carriers earned a net operating income of \$1.6 billion, 6.7% less than in 2000, on total operating revenues of \$8.1 billion. Net income after taxes and extraordinary items declined 20.2% to \$805 million in 2001 compared to \$1.0 billion in 2000.

### 2001: A year of weak gains and weak losses following a record year

The operating revenues of the Canadian rail industry increased slightly (0.1%) in 2001 to \$8.1 billion. Freight transport revenues, which at \$7.2 billion accounted for 88.5% of this total, were down slightly (0.2%) from 2000. This small overall change hides some shifts in the transported commodities.

#### Text Table 1

#### Distribution of operating revenues by major sources, 1997-2001

Year	Operating revenues					Total
	Freight transportation	Passenger transportation	Services to VIA	Government payments	Other	
	\$'000					
2001	7,184,488	268,377	53,500	275,186	333,616	8,115,197
2000	7,196,857	247,338	54,160	285,162	317,025	8,100,542
1999	6,853,697	225,410	57,013	298,167	275,483	7,709,770
1998	6,809,684	207,557	59,322	277,831	246,336	7,600,730
1997	7,087,713	199,069	61,845	313,230	245,874	7,907,731

For CN, whose freight revenues were 51.3% of the industry's freight transport revenues, a decrease in revenue from the transport of automobile parts, due to a lower production of vehicles in North America in 2001, was offset by revenue gains for the transport of metal, forest products, cereal, fertilizers and intermodal goods.<sup>3</sup> CP recorded a small decrease in revenues (0.1%) to \$2.8 billion in 2001. Its freight revenues were 38.7% of the industry's total freight transport revenues. Decreases from the transport of cereals, sulphur, fertilizers, forest and industrial products and automobiles were offset by higher revenues for the transport of other

1. *Canadian Economic Observer, Historical statistical supplement 2002/2003. Statistics Canada - catalogue no. 11-210-XIB.*

2. *Statistics Canada, CANSIM, tables, 228-0001, 228-0002 and 228-0003.*

3. *Canadian National, Annual Report 2001.*

products, intermodal goods and coal. "In 2001, world markets for metallurgical coal strengthened following closure of several mines not served by CPR. Production at CPR-served mines in British Columbia increased to fill the demand, generating higher revenues over 2000 and 1999."<sup>4</sup>

Revenues from passenger transportation represented the strongest growth in 2001. These revenues grew 8.5%, from \$247.3 million in 2000 to \$268.4 million in 2001. The number of passengers for VIA Rail, Canada's main passenger railway, increased for the 10<sup>th</sup> consecutive year. VIA Rail's success may be a result of investments in train stations, locomotives, cars and customer services. Also, since the events of September 11<sup>th</sup>, 2001, train travel might have become an alternative to plane travel for many passengers concerned about security. It was mentioned in their annual report "For VIA Rail, this meant providing passenger services during the week following September 11<sup>th</sup>, for up to 40% more passengers in Central Canada, and up to 70% more in Atlantic Canada."<sup>5</sup>VIA Rail accounted for 57.8% of government payments to the rail industry in 2001, which was similar to the 2000 results.

In 2001, regional railways earned 10.0% of the freight revenues and 8.4% of the passenger revenues. (see table 1 and 1.1)

#### Text Table 2

#### Distribution of operating expenses by major category, 1997-2001

Year	Operating expenses				
	Ways and structures	Equipment	Rail operations	General	Total
	\$'000				
2001	1,200,557	1,459,619	2,784,686	1,105,354	6,550,216
2000	1,230,379	1,420,581	2,676,069	1,094,453	6,421,482
1999	1,226,343	1,392,702	2,411,777	1,690,376	6,721,198
1998	1,244,203	1,430,834	2,394,140	1,853,928	6,923,105
1997	1,248,943	1,563,335	2,537,280	1,366,515	6,716,073

In 2001, the Canadian rail industry's operating expenses increased by 2.0% over 2000 to \$6.6 billion. This increase was primarily a result of higher costs for the operation of trains, rail yards, stations and terminals, which accounted for 42.5% of the total of operating expenses. These rail operation expenses rose 4.1% to \$2.8 billion in 2001. Equipment expenses such as the maintenance of cars and locomotives increased 2.7% to \$1.5 billion. General expenses remained the same as in 2000 with \$1.1 billion. Expenditures on ways and structures declining 2.4% in 2001.

The distribution of operating expenses among the rail industry sectors in 2001 was consistent with 2000. The two mainline freight carriers accounted for 82.8% of the total expenses, while VIA Rail and the regional rail carriers accounted for 5.3% and 11.9% respectively.

4. *Canadian Pacific, Annual Report 2001, page 27.*

5. *VIA Rail, Annual Report 2001, page 12.*

Financial ratios, as shown in the text table 3, show that even if 2001 was a year of low growth, the steps taken by railway companies to rationalize their operations and reduce costs continue to show results.

**Text Table 3**

**Financial ratios, 1997-2001**

Year	Operating ratio	Debt-asset ratio	Debt-equity ratio
2001	0.81	0.42	0.72
2000	0.79	0.48	0.92
1999	0.87	0.50	1.00
1998	0.91	0.49	0.96
1997	0.85	0.47	0.88

The operating ratio, which is the proportion of total operating expenses divided by total operating revenues, declined by only 0.02 points in 2001. However, excluding the amount for special charges from the total expenses, the operating ratio would then be 0.77, which would be the best ratio registered over the last several years.

The debt-asset ratio, which is a measure of solvency and the capital provided by creditors, also showed an improvement in 2001. This ratio shows that in 2001, creditors financed 42% of railway total assets, whereas this ratio was usually near the 50% level for the past five years.

The debt-equity ratio, which is another measure of solvency, relates total liabilities to shareholder equity. It registered 0.72 in 2001, the best result since 1997.

**Freight transportation: first decrease since 1997**

In 2001, the tonnage of freight carried by rail carriers registered its first decrease since 1997, with a decline of 5.4% over 2000. Although the tonnage carried was lower in 2001 than 2000, the railways travelled about the same distance, since the tonne-kms decreased by only 0.6%; perhaps a reflection of less merchandise trade in 2001 compared to 2000. The average haul on each railway showed an increase in 2001, from 917 kilometres to 963 kilometres (See table 9).

**Text Table 4**

**Operating statistics for freight transportation, 1997-2001**

Year	Tonnes('000)	Tonne-km('000 000)	Train-km('000)	Car-km('000)	Cars per train (average number)
2001	330,067	317,904	113,429	8,310,569	73.3
2000	348,839	319,769	117,766	8,400,796	71.3
1999	328,428	297,504	115,029	7,770,127	67.5
1998	325,227	298,797	116,566	7,575,452	65.0
1997	319,143	306,198	118,336	7,908,228	66.8

In 2001, train-kilometres and car-kilometres experienced decreases of 3.7% and 1.1% respectively compared to 2000. The average number of cars per train has continued to increase since 1997 and represented 73.3 cars per train in 2001. As for locomotive-kilometres, these decreased by 6.3% to represent 251 million

locomotive-kilometres (see table 8). This decrease was the result of using newer, more powerful and fuel-efficient locomotives.

### Passenger transportation: continued growth since 1998

In 2001, the number of people who traveled by rail continued to grow with a slight increase of 0.5% to 4.2 million of passengers.

#### Text Table 5

#### Operating statistics for passenger transportation, 1997-2001

Year	Passengers('000)	Passenger-km('000)	Train-km('000)	Car-km('000)	Cars <sup>1</sup> per train (average number)
2001	4,179	1,553,059	11,853	78,358	6.6
2000	4,160	1,532,715	11,714	76,274	6.5
1999	4,116	1,510,216	11,403	73,436	6.4
1998	3,980	1,457,815	11,181	73,016	6.5
1997	4,104	1,514,593	11,522	70,729	6.1

1. Includes freight cars.

The number of passenger-kilometres showed an increase of 1.3% over 2000. All other variables relating to passenger transport (train-kilometres, car-kilometres, cars per train and locomotive-kilometres) increased in 2001. The average passenger journey per ticket went from 369 kilometres in 2000 to 372 kilometres in 2001 (see table 9). Various factors may have influenced travellers to choose train travel: affordable prices, train comfort, safety of travellers and convenient schedules are possible factors.

### Employment going down, but salary going up

Employment declined in 2001. "Employers responded to weak business conditions by cutting hiring by almost 7%, while permanent layoffs increased 2.1%."<sup>6</sup> This trend also applied in the rail industry which reduced its employment levels from almost 41 thousand people in 2000 to about 39 thousand in 2001.

6. *Perspectives on labour and income, Vol.3, No. 1, January 2002, Statistics Canada - catalogue no. 75-001-XIE, page 3.*

Text Table 6

**Number of employees and total compensation, 1997-2001**

Year	Number of employees and total compensation, 1997-2001	Compensation \$'000	Average annual compensation
2001	39,406	2,425,441	61,550
2000	40,983	2,436,163	59,443
1999	43,260	2,501,382	57,822
1998	45,304	2,636,011	58,185
1997	46,479	2,492,706	53,869

While the number of employees declined, the salary of the remaining staff increased. The average annual compensation per employee, increased by 3.5%, from \$59,443 in 2000 to \$61,550 in 2001. During the same period, the hourly compensation also increased, from \$25.20 to \$26.90.

Total compensation declined by \$11 million compared to 2000. Labour costs in 2001 represented 37% of total operating expenses, a decrease compared to the 37.9% these costs accounted for in 2000. These decreases are the results of reductions in operating expenses and rationalization of operations. Also, the usage of new technologies contributed to the decrease in the number of employees, but on the other hand, the advent of innovative state-of-the-art technologies has also helped create new and more specialized jobs for which they are better paid.

**Commodities origin and destination**

Commodity origin and destination statistics are based on data from CN and CP and the traffic data of regional and short-haul railways. For details, the reader may consult the section: **Survey methodology, coverage and data limitations** at the end of this publication.

It should be noted that the terms "origin" and "destination" as used in this publication refer to the rail transportation origins and destinations rather than the "true" origin or destination of commodities. Some commodities may enter or leave Canada by marine, land or air transport, and then be transferred to and from rail cars. The transfer point is the origin or destination in this publication.

**Most commodities originated from Western Canada**

In 2001, 245.6 million tonnes of commodities were carried by railways operating in Canada. The main regions of origin were: Alberta (with 44.9 million tonnes of commodities departing this province), British Columbia (with 41.8 million tonnes of commodities departing this province), and Saskatchewan (with 36.2 million tonnes of commodities departing this province). The main destinations for commodities, in 2001, were: British Columbia (with 70.3 million tonnes arriving in this province), the United States and Mexico (with 67.6 million tonnes received in this region) and Quebec which received 39.8 million tonnes of commodities (see table 13).

### What comes from the east, goes to the east

Quebec was the main destination for goods originating from the Atlantic Region. Almost 17 million tonnes of iron ores and concentrates and about 400 thousand tonnes of mixed carloads or unidentified freight were shipped from Atlantic Canada to Québec. Together, these two commodities represented 95.9% of the total commodities tonnage carried from Atlantic Canada to Quebec. They also accounted for 68.5% of all tonnage originating from Atlantic Canada.

Text Table 7

**Tonnage and market representation of top 2 commodities by origin and destination, 2001**

Origin - Destination	Tonnes ( <sup>1</sup> 000)	Percentage (%)
<b>Atlantic 1 - Quebec</b>		
<b>Commodities</b>		
Iron ores and concentrates	17.0	.
Mixed loads or unidentified freight	0.4	.
Total Atlantic 1 - Quebec	18.1	.
Share of these top 2 commodities for this market	.	95.9
Total origin - Atlantic 1	26.5	.
Share of these top 2 commodities for this origin	.	68.5
<b>Quebec - United States and Mexico</b>		
<b>Commodities</b>		
Mixed loads or unidentified freight	1.7	.
Lumber	1.7	.
Total Quebec - U.S. and Mexico	12.1	.
Share of these top 2 commodities for this market	.	28.4
Total origin - Quebec	28.1	.
Share of these top 2 commodities for this origin	.	43.0
<b>Ontario - United States and Mexico</b>		
<b>Commodities</b>		
Freight motor vehicles	1.2	.
Automobiles and mini-vans	1.2	.
Total Ontario - U.S. and Mexico	14.0	.
Share of these top 2 commodities for this market	.	16.6
Total origin - Ontario	34.7	.
Share of these top 2 commodities for this origin	.	40.4
<b>Manitoba - Ontario</b>		
<b>Commodities</b>		
Wheat	1.8	.
Colza seeds (canola)	0.4	.
Total Manitoba - Ontario	3.4	.
Share of these top 2 commodities for this market	.	62.5
Total origin - Manitoba	9.8	.
Share of these top 2 commodities for this origin	.	34.7
<b>Saskatchewan - United States and Mexico</b>		
<b>Commodities</b>		
Potash	7.6	.
Wheat	1.0	.
Total Saskatchewan - U.S. and Mexico	11.8	.
Share of these top 2 commodities for this market	.	72.9
Total origin - Saskatchewan	36.2	.
Share of these top 2 commodities for this origin	.	32.5
<b>Alberta - British Columbia 2</b>		
<b>Commodities</b>		
Coal	5.1	.
Wheat	5.0	.
Total Alberta - British Columbia 2	24.4	.
Share of these top 2 commodities for this market	.	41.4
Total origin - Alberta 2	44.9	.
Share of these top 2 commodities for this origin	.	54.4
<b>British Columbia - British Columbia</b>		
<b>Commodities</b>		
Coal	24.0	.
Wood chips	1.7	.
Total British Columbia - British Columbia	28.2	.
Share of these top 2 commodities for this market	.	91.0
Total origin - British Columbia	41.8	.
Share of these top 2 commodities for this origin	.	67.4
<b>United States and Mexico - Ontario</b>		
<b>Commodities</b>		
Other basic chemicals	1.4	.
Plastics and rubber	0.6	.
Total U.S. and Mexico - Ontario	6.5	.
Share of these top 2 commodities for this market	.	31.6
Total origin - U.S. and Mexico	23.5	.
Share of these top 2 commodities for this origin	.	27.8

1. Atlantic includes: Newfoundland and Labrador, Nova Scotia, New Brunswick and Prince Edward Island.

2. Alberta includes Northwest Territories.



### **Quebec and Ontario: diversified markets**

In 2001, the main destination of commodities from Quebec and Ontario was the United States and Mexico respectively. Quebec's main commodities carried to the United States and Mexico were mixed loads or unidentified freight and lumber which accounted for 1.7 million tonnes each. However, these two commodities only represented 28.4% of all the commodities shipped to the United States and Mexico from Quebec. It could suggest that the market is diversified, since the commercial trade between these two regions is not limited to only a few major commodities. It should also be noted, with respect to commodities coming from Quebec, that most are in fact originating from Europe. These commodities enter Quebec from various ports and are then loaded on to trains. It is not possible to determine the percentage of these commodities having Europe for "true" origin, but the important activities of certain ports and the growth of multimodal equipment suggest a possible significant percentage.

Ontario seems to also have a diversified market regarding commodities carried by rail. The two main commodities originating from Ontario and going to the United States and Mexico were freight motor vehicles (1.2 million tonnes) and automobiles and mini-vans (1.2 million tonnes). These two principal commodities represented just 16.6% of the total traffic between this origin and destination. The top ten commodities between Ontario and United States and Mexico, included wood pulp, sulphuric acid, plastics and rubber. (see table 16-1)

### **On the Prairies, wheat is king**

In Canada, the Prairies accounts for 89% of all wheat shipments. Most of Manitoba's wheat was shipped to its eastern neighbour, Ontario, which received 1.8 million tonnes in 2001. Some wheat arriving in Ontario is transhipped for export through Thunder Bay. Nearly 1 million tonnes of wheat coming from Saskatchewan was carried to the United States and Mexico. The wheat coming from Alberta was mostly carried to British Columbia (5 million tonnes), mainly for export.

### **From British Columbia to British Columbia**

Although the data for rail origin and destination for coal is British Columbia, most of the coal is moved by train to British Columbia's ports, and then exported to international destinations. In 2001, 24 million tonnes of coal were moved by rail carriers from British Columbia to British Columbia.

# Related products

---

## Selected surveys from Statistics Canada

---

2734	Railway Transport Survey - Annual
2736	Rail Commodity Origin and Destination Statistics

---

# Statistical Tables

---

---

Table 1-1

## Rail transportation, operating and income accounts, CN, CP and VIA Rail, 2001

Item	Canadian National	Canadian Pacific	VIA Rail	Total mainline companies
	\$'000			
<b>Revenues</b>				
Freight revenues	3,684,751	2,782,828	0	6,467,579
Passenger revenues	5,152	6,064	234,588	245,804
Miscellaneous rail revenues	120,221	122,742	5,256	248,219
Revenues from services for VIA Rail	46,638	1,148	0	47,786
Government payments	59,875	37,714	158,968	256,557
<b>Total rail operating revenues</b>	<b>3,916,637</b>	<b>2,950,496</b>	<b>398,812</b>	<b>7,265,945</b>
<b>Expenses</b>				
<b>Way and structures</b>				
Administration, ways and structures expenses	38,542	74,017	0	112,559
Track and roadway, maintenance	235,756	172,168	8,457	416,381
Track and roadway, depreciation	130,287	55,500	0	185,787
Building, maintenance	11,826	12,600	8,759	33,185
Building, depreciation	65,262	69,029	14,982	149,273
Leasehold improvements, amortization	139	124	5,666	5,929
Signals, communications and power, maintenance	20,539	19,525	0	40,064
Signals, communications and power, depreciation	19,270	17,705	0	36,975
Terminals and fuel stations, maintenance	3,084	3,899	0	6,983
Terminals and fuel stations, depreciation	6,096	4,773	0	10,869
Miscellaneous ways and structures expenses	56,657	30,702	230	87,589
Special depreciation, ways and structures expenses	-14,640	-6,247	-24,121	-45,008
<b>Total ways and structures expenses</b>	<b>572,818</b>	<b>453,795</b>	<b>13,973</b>	<b>1,040,586</b>
<b>Equipment</b>				
Administration, equipment expenses	35,832	23,667	9,004	68,503
Locomotives, maintenance and servicing	130,067	150,174	5,187	285,428
Locomotives, depreciation	46,597	41,603	5,339	93,539
Freight cars, maintenance	91,575	138,344	0	229,919
Freight cars, depreciation	38,173	9,954	0	48,127
Passenger cars, maintenance and servicing	2,318	3,905	45,788	52,011
Passenger cars, depreciation	-5	0	17,839	17,834
Intermodal equipment, maintenance	35,364	30,160	0	65,524
Intermodal equipment, depreciation	6,745	5,696	0	12,441
Work equipment and roadway machines, maintenance	30,836	14,633	0	45,469
Work equipment and roadway machines, depreciation	10,258	12,384	0	22,642
Other equipment, maintenance	6	0	0	6
Other equipment, depreciation	499	8,288	2,682	11,469
Net equipment rents expense	137,509	197,100	869	335,478
Miscellaneous equipment expenses	16,023	12,177	463	28,663
Special depreciation, equipment expenses	-1,183	-9,703	-22,219	-33,105
<b>Total equipment expenses</b>	<b>580,614</b>	<b>638,382</b>	<b>64,952</b>	<b>1,283,948</b>
<b>Rail Operation</b>				
Administration, rail operation expenses	80,622	91,599	20,189	192,410
Train related expenses	598,274	510,608	114,771	1,223,653
Yard related expenses	142,927	259,847	1,566	404,340
Train control expenses	21,116	13,008	0	34,124
Station and terminal operation	111,849	58,628	17,524	188,001
Other rail operations	19,819	24,900	5,116	49,835
Other transport modes	156,743	94,941	958	252,642

Table 1-1 – continued

## Rail transportation, operating and income accounts, CN, CP and VIA Rail, 2001

Item	Canadian National	Canadian Pacific	VIA Rail	Total mainline companies
Equipment cleaning and specialized servicing	1,998	2,085	875	4,958
Casualties and claims	45,228	26,924	0	72,152
Miscellaneous rail operation expenses	46,917	10,701	4,798	62,416
<b>Total rail operation expenses</b>	<b>1,225,493</b>	<b>1,093,241</b>	<b>165,797</b>	<b>2,484,531</b>
<b>General</b>				
Administration, general expenses	245,587	189,224	85,249	520,060
Employee benefits	196,931	83,168	-38,241	241,858
Taxes, other than on income	69,364	53,739	11,023	134,126
Other general expenses	12,092	10,006	42,751	64,849
<b>Total general expenses</b>	<b>523,974</b>	<b>336,137</b>	<b>100,782</b>	<b>960,893</b>
<b>Total rail operating expenses</b>	<b>2,902,899</b>	<b>2,521,555</b>	<b>345,504</b>	<b>5,769,958</b>
<b>Net rail operating income</b>	<b>1,013,738</b>	<b>428,941</b>	<b>53,308</b>	<b>1,495,987</b>
Other income and charges	-251,119	-114,231	13,725	-351,625
Net non-rail revenue	0	0	0	0
<b>Income before income taxes and extraordinary items</b>	<b>762,619</b>	<b>314,710</b>	<b>67,033</b>	<b>1,144,362</b>
Income taxes	259,281	95,485	13,012	367,778
Net income before extraordinary items	503,338	219,225	54,021	776,584
Extraordinary items	0	0	0	0
<b>Net income for the year</b>	<b>503,338</b>	<b>219,225</b>	<b>54,021</b>	<b>776,584</b>

Table 1-2

Rail transportation, summary of operating and income accounts, 2001

Main item	Canadian National	Canadian Pacific	VIA Rail	Regional <sup>1</sup> Railways	Total
	\$'000				
<b>Revenues</b>					
Freight revenues	3,684,751	2,782,828	0	716,909	7,184,488
Passenger revenues	5,152	6,064	234,588	22,573	268,377
All other operating revenues	226,734	161,604	164,224	109,770	662,332
<b>Total rail operating revenues</b>	<b>3,916,637</b>	<b>2,950,496</b>	<b>398,812</b>	<b>849,253</b>	<b>8,115,198</b>
<b>Expenses</b>					
Ways and structures expenses	572,818	453,795	13,973	159,971	1,200,557
Equipment expenses	580,614	638,382	64,952	175,671	1,459,619
Rail operating expenses	1,225,493	1,093,241	165,797	300,155	2,784,686
General expenses	523,974	336,137	100,782	144,461	1,105,354
<b>Total rail operating expenses</b>	<b>2,902,899</b>	<b>2,521,555</b>	<b>345,504</b>	<b>780,259</b>	<b>6,550,217</b>
<b>Net rail operating income</b>	<b>1,013,738</b>	<b>428,941</b>	<b>53,308</b>	<b>68,994</b>	<b>1,564,981</b>
<b>Income before income taxes and extraordinary items</b>	<b>762,619</b>	<b>314,710</b>	<b>67,033</b>	<b>49,358</b>	<b>1,193,720</b>
<b>Net income for the year</b>	<b>503,338</b>	<b>219,225</b>	<b>54,021</b>	<b>25,057</b>	<b>801,641</b>

1. Includes short-haul carriers.

Table 2-1

## Rail transportation, balance sheet, CN, CP and VIA Rail, 2001

Item	Canadian <sup>1</sup> National	Canadian <sup>1</sup> Pacific	VIA Rail	Total mainline companies
	\$'000			
<b>Current assets</b>				
Cash	0	0	11,518	11,518
Temporary investments	0	0	39,539	39,539
Accounts receivable, trade	346,989	177,030	8,594	532,613
Other accounts receivable	140,986	130,942	21,222	293,150
<b>Total accounts receivable</b>	<b>487,975</b>	<b>307,972</b>	<b>80,873</b>	<b>876,820</b>
Allowance for doubtful accounts (credit)	49,368	11,715	386	61,469
Material and supplies	59,964	84,580	15,950	160,494
Prepaid expenses	19,731	6,643	3,148	29,522
Other current assets	216,715	110,265	0	326,980
<b>Total current assets</b>	<b>735,017</b>	<b>497,745</b>	<b>99,585</b>	<b>1,332,347</b>
<b>Non-current assets</b>				
Segregated assets	0	0	0	0
Long-term accounts receivable	38,886	44,909	0	83,795
Long-term investments	0	1	49,959	49,960
Long-term intercorporate investments	11,978	21,894	0	33,872
Construction in progress	102,812	97,218	91,622	291,652
Property	11,154,857	8,011,652	1,039,197	20,205,706
Accumulated depreciation, property (credit)	4,959,641	3,169,688	573,202	8,702,531
Deferred charges	259,912	380,761	90,292	730,965
Intangible assets	0	0	0	0
Retired property	0	3,235	20,269	23,504
<b>Total non-current assets</b>	<b>6,608,804</b>	<b>5,389,982</b>	<b>718,137</b>	<b>12,716,923</b>
<b>Total assets</b>	<b>7,343,821</b>	<b>5,887,727</b>	<b>817,722</b>	<b>14,049,270</b>
<b>Current liabilities</b>				
Bank loans	0	0	0	0
Loans from Government of Canada	0	0	0	0
Accounts payable	181,743	235,235	5,777	422,755
Accrued liabilities	583,392	504,774	84,953	1,173,119
Notes and other loans payable	0	0	0	0
Income and other taxes payable	222,882	82,808	11,775	317,465
Dividends payable	0	0	0	0
Deferred revenues	5,074	23,829	7,123	36,026
Long-term debt maturing within 12 months	0	0	0	0
Lease obligations due within 1 year	0	31,391	0	31,391
Other current liabilities	63,333	14,684	634	78,651
<b>Total current liabilities</b>	<b>1,056,424</b>	<b>892,721</b>	<b>110,262</b>	<b>2,059,407</b>
<b>Non-current liabilities</b>				
Deferred liabilities	520,290	384,846	16,241	921,377
Deferred income taxes (non-current)	278,531	482,086	11,737	772,354
Long-term debt	0	0	0	0
Lease obligations	0	348,184	0	348,184
Other deferred credits, long-term	17,256	60,068	587,193	664,517
Minority shareholders' interest in subsidiary companies	4,338	0	0	4,338
Donations and grants	381,265	290,866	0	672,131
Investment tax credits	41,898	52,639	4,029	98,566
<b>Total non-current liabilities</b>	<b>1,243,578</b>	<b>1,618,689</b>	<b>619,200</b>	<b>3,481,467</b>
<b>Shareholders' equity</b>				
Share capital	2,551,471	0	9,300	2,560,771
Contributed surplus	178,098	0	4,963	183,061
Retained earnings	663,786	0	73,997	737,783
Net investment in rail assets	1,650,464	3,376,317	0	5,026,781

See footnotes at the end of the table.

Table 2-1 – continued

**Rail transportation, balance sheet, CN, CP and VIA Rail, 2001**

Item	Canadian <sup>1</sup> National	Canadian <sup>1</sup> Pacific	VIA Rail	Total mainline companies
<b>Total shareholder's equity</b>	<b>5,043,819</b>	<b>3,376,317</b>	<b>88,260</b>	<b>8,508,396</b>
<b>Total liabilities and shareholder's equity</b>	<b>7,343,821</b>	<b>5,887,727</b>	<b>817,722</b>	<b>14,049,270</b>

1. CN and CP report for Canadian operations only. Some current accounts for these companies (e.g. cash) have been applied to liabilities.

Table 2-2

**Rail transportation, summary of balance sheet, 2001**

Main item	Canadian National	Canadian Pacific	VIA Rail	Regional <sup>1</sup> Railways	Total
	\$'000				
<b>Total current assets</b>	<b>735,017</b>	<b>497,745</b>	<b>99,585</b>	<b>156,042</b>	<b>1,488,389</b>
<b>Total non-current assets</b>	<b>6,608,804</b>	<b>5,389,982</b>	<b>718,137</b>	<b>637,381</b>	<b>13,354,304</b>
<b>Total assets</b>	<b>7,343,821</b>	<b>5,887,727</b>	<b>817,722</b>	<b>793,425</b>	<b>14,842,695</b>
<b>Total current liabilities</b>	<b>1,056,424</b>	<b>892,721</b>	<b>110,262</b>	<b>203,252</b>	<b>2,262,659</b>
<b>Total non-current liabilities</b>	<b>1,243,578</b>	<b>1,618,689</b>	<b>619,200</b>	<b>454,904</b>	<b>3,936,371</b>
<b>Total shareholder's equity</b>	<b>5,043,819</b>	<b>3,376,317</b>	<b>88,260</b>	<b>135,267</b>	<b>8,643,663</b>
<b>Total liabilities and shareholder's equity</b>	<b>7,343,821</b>	<b>5,887,727</b>	<b>817,722</b>	<b>793,425</b>	<b>14,842,695</b>

1. Includes short-haul carriers.



Table 3-1

## Rail transportation, summary of property accounts, assets and accumulated depreciation, CN, CP and VIA Rail, 2001

Item	Canadian National	Canadian Pacific	VIA Rail	Total mainline companies
	\$'000			
<b>Land</b>				
Balance at beginning of year	107,725	109,256	4,678	221,659
Balance at end of year	108,164	109,787	4,963	222,914
<b>Ways and Structures:</b>				
<b>Track and roadway</b>				
Balance at beginning of year	5,423,811	3,772,752	0	9,196,563
Balance at end of year	5,476,388	3,754,694	0	9,231,082
Accumulated depreciation	1,717,780	1,249,513	0	2,967,293
<b>Net book value</b>	<b>3,758,608</b>	<b>2,505,181</b>	<b>0</b>	<b>6,263,789</b>
<b>Buildings and related machinery and equipment</b>				
Balance at beginning of year	1,138,476	811,264	210,173	2,159,914
Balance at end of year	1,244,966	870,301	217,359	2,332,626
Accumulated depreciation	541,569	240,382	140,474	922,425
Net book value	703,397	629,919	76,884	1,410,200
<b>Leasehold improvements</b>				
Balance at beginning of year	7,158	8,342	139,731	155,231
Balance at end of year	7,158	8,358	141,183	156,699
Accumulated depreciation	4,623	8,318	101,664	114,604
Net book value	2,535	40	39,520	42,095
<b>Signals, communications and power</b>				
Balance at beginning of year	961,447	465,632	0	1,427,080
Balance at end of year	997,593	483,976	0	1,481,568
Accumulated depreciation	522,517	214,484	0	737,001
Net book value	475,075	269,492	0	744,567
<b>Terminals and fuel stations</b>				
Balance at beginning of year	241,135	244,571	0	485,706
Balance at end of year	260,675	270,122	0	530,797
Accumulated depreciation	28,554	48,407	0	76,961
Net book value	232,121	221,714	0	453,836
<b>Total, Ways and Structures</b>				
Balance at beginning of year	7,772,027	5,302,562	349,905	13,424,494
Balance at end of year	7,986,779	5,387,451	358,542	13,732,772
Accumulated depreciation	2,815,043	1,761,105	242,138	4,818,285
Net book value	5,171,736	3,626,347	116,404	8,914,487
<b>Equipment:</b>				
<b>Rolling stock - revenue service</b>				
Balance at beginning of year	2,394,853	1,894,839	505,203	4,794,895
Balance at end of year	2,395,792	2,013,390	574,331	4,983,514
Accumulated depreciation	1,006,665	902,511	293,600	2,202,775
Net book value	1,389,127	1,110,879	280,732	2,780,739
<b>Intermodal equipment</b>				
Balance at beginning of year	176,342	116,330	0	292,671
Balance at end of year	226,179	119,841	0	346,020
Accumulated depreciation	45,899	44,607	0	90,506
Net book value	180,280	75,234	0	255,514
<b>Work equipment and roadway machines</b>				
Balance at beginning of year	378,912	295,985	0	674,897
Balance at end of year	377,940	295,506	0	673,446
Accumulated depreciation	273,831	142,783	0	416,615
Net book value	104,109	152,723	0	256,831

Table 3-1 – continued

**Rail transportation, summary of property accounts, assets and accumulated depreciation, CN, CP and VIA Rail, 2001**

Item	Canadian National	Canadian Pacific	VIA Rail	Total mainline companies
<b>Other equipment</b>				
Balance at beginning of year	28,362	109,866	96,267	234,495
Balance at end of year	28,378	109,333	101,362	239,074
Accumulated depreciation	28,838	53,844	37,466	120,148
Net book value	-460	55,489	63,896	118,925
<b>Total, equipment</b>				
Balance at beginning of year	2,978,469	2,417,019	601,471	5,996,959
Balance at end of year	3,028,290	2,538,071	675,693	6,242,054
Accumulated depreciation	1,355,234	1,143,746	331,065	2,830,044
Net book value	1,673,056	1,394,325	344,628	3,412,010
<b>Total</b>				
<b>Balance at beginning of year</b>	10,858,221	7,828,837	956,054	19,643,112
Balance at end of year	11,123,233	8,035,309	1,039,199	20,197,740
Accumulated depreciation	4,170,277	2,904,850	573,203	7,648,330
Net book value	6,952,956	5,130,458	465,996	12,549,411
<b>Miscellaneous Property Accounts</b>				
Balance at beginning of year	31,962	13,723	0	45,685
Balance at end of year	31,624	7,662	0	39,286

Table 3-2

## Rail transportation, summary of property accounts, balance at beginning and end of year, CN, CP and VIA Rail, 2001

Item	Canadian National	Canadian Pacific	VIA Rail	Regional <sup>1</sup> Railways	Total
	\$'000				
<b>Land</b>					
Balance at beginning of year	107,725	109,256	4,678	70,808	292,467
Balance at end of year	108,164	109,787	4,963	68,297	291,211
<b>Ways and Structures:</b>					
<b>Track and roadway</b>					
Balance at beginning of year	5,423,811	3,772,752	0	1,705,653	10,902,216
Balance at end of year	5,476,388	3,754,694	0	1,777,151	11,008,233
<b>Buildings and related machinery and equipment</b>					
Balance at beginning of year	1,138,476	811,264	210,173	162,290	2,322,203
Balance at end of year	1,244,966	870,301	217,359	172,411	2,505,037
<b>Leasehold improvements</b>					
Balance at beginning of year	7,158	8,342	139,731	2,535	157,766
Balance at end of year	7,158	8,358	141,183	3,222	159,921
<b>Signals, communications and power</b>					
Balance at beginning of year	961,447	465,632	0	83,825	1,510,904
Balance at end of year	997,593	483,976	0	82,950	1,564,519
<b>Terminals and fuel stations</b>					
Balance at beginning of year	241,135	244,571	0	7,140	492,846
Balance at end of year	260,675	270,122	0	7,539	538,336
<b>Total, Ways and Structures</b>					
Balance at beginning of year	7,772,027	5,302,562	349,905	1,961,442	15,385,936
Balance at end of year	7,986,779	5,387,451	358,542	2,043,273	15,776,045
<b>Equipment:</b>					
<b>Rolling stock - revenue service</b>					
Balance at beginning of year	2,394,853	1,894,839	505,203	223,569	5,018,464
Balance at end of year	2,395,792	2,013,390	574,331	233,846	5,217,359
<b>Intermodal equipment</b>					
Balance at beginning of year	176,342	116,330	0	25,314	317,986
Balance at end of year	226,179	119,841	0	26,039	372,059
<b>Work equipment and roadway machines</b>					
Balance at beginning of year	378,912	295,985	0	84,055	758,952
Balance at end of year	377,940	295,506	0	88,493	761,939
<b>Other equipment</b>					
Balance at beginning of year	28,362	109,866	96,267	20,100	254,595
Balance at end of year	28,378	109,333	101,362	25,629	264,702
<b>Total, equipment</b>					
Balance at beginning of year	2,978,469	2,417,019	601,471	353,038	6,349,997
Balance at end of year	3,028,290	2,538,071	675,693	374,007	6,616,061
<b>Total</b>					
Balance at beginning of year	10,858,221	7,828,837	956,054	2,385,289	22,028,401
Balance at end of year	11,123,233	8,035,309	1,039,199	2,485,577	22,683,318
<b>Miscellaneous Property Accounts</b>					
Balance at beginning of year	31,962	13,723	0	743	46,428
Balance at end of year	31,624	7,662	0	740	40,026

1. Includes short-haul carriers.

Table 4

Rail transportation, length of tracks operated at December 31, 2001

Item	Canadian National	Canadian Pacific	VIA Rail	Regional <sup>1</sup> railways	Total companies
	<b>Kilometres</b>				
<b>Lined owned</b>					
First main track	18,394	11,946	208	9,293	39,841
Second and other main track	1,932	803	0	187	2,922
Industrial, yard and sidings	8,370	4,805	0	1,969	15,144
<b>Total line owned</b>	<b>28,696</b>	<b>17,554</b>	<b>208</b>	<b>11,449</b>	<b>57,907</b>
<b>Line operated under lease, contract, trackage rights or jointly owned</b>					
First main track	467	2,816	8	2,670	5,961
Second and other main track	64	450	0	362	876
Industrial, yard and sidings	2,106	1,563	0	997	4,666
<b>Total line operated under lease, contract, trackage rights or jointly owned</b>	<b>2,637</b>	<b>4,829</b>	<b>8</b>	<b>4,029</b>	<b>11,503</b>
<b>Total track operated</b>	<b>31,333</b>	<b>22,383</b>	<b>216</b>	<b>15,478</b>	<b>69,410</b>

1. Includes short-haul carriers.

Table 5

## Rail transportation, length of tracks operated, by area, at December 31, 2001

Area	Canadian National	Canadian Pacific	VIA Rail	Regional <sup>1</sup> railways	Total companies
<b>Kilometres</b>					
<b>First Main Track</b>					
Newfoundland and Labrador	0	0	0	455	455
Nova Scotia	261	0	0	372	633
New Brunswick	645	0	0	315	960
Quebec	2,918	352	8	2,425	5,704
Ontario	4,418	3,800	208	3,494	11,919
Manitoba	1,390	1,994	0	1,630	5,015
Saskatchewan	4,416	4,084	0	505	9,005
Alberta	2,621	2,786	0	1,922	7,329
British Columbia	2,088	1,746	0	720	4,554
Northwest Territories	0	0	0	124	124
United States	104	0	0	0	104
<b>Total areas</b>	<b>18,861</b>	<b>14,762</b>	<b>216</b>	<b>11,963</b>	<b>45,802</b>
<b>Total Track Operated</b>					
Newfoundland and Labrador	0	0	0	528	528
Nova Scotia	598	0	0	465	1,063
New Brunswick	1,131	0	0	460	1,592
Quebec	4,843	938	8	3,071	8,860
Ontario	9,074	6,402	208	5,138	20,821
Manitoba	2,395	2,891	0	1,774	7,059
Saskatchewan	5,693	5,241	0	661	11,595
Alberta	4,116	3,971	0	2,164	10,251
British Columbia	3,334	2,940	0	1,080	7,354
Northwest Territories	0	0	0	137	137
United States	150	0	0	0	150
<b>Total areas</b>	<b>31,333</b>	<b>22,383</b>	<b>216</b>	<b>15,478</b>	<b>69,410</b>

1. Includes short-haul carriers.

Table 6

## Rail transportation, fuel and power consumed, 2001

Item	Canadian National	Canadian Pacific	VIA Rail	Regional <sup>1</sup> railways	Total companies
'000 litres					
<b>Diesel</b>					
Freight	874,689	758,391	0	202,786	1,835,867
Passenger	0	0	61,197	5,593	66,789
Yard switching	50,283	22,744	195	13,916	87,138
Work train	1,146	3,072	0	3,230	7,448
<b>Total diesel</b>	<b>926,118</b>	<b>784,208</b>	<b>61,391</b>	<b>225,525</b>	<b>1,997,242</b>
<b>Total cost of fuel \$</b>	<b>370,065,073</b>	<b>320,106,500</b>	<b>26,457,234</b>	<b>87,806,134</b>	<b>804,434,941</b>

1. Includes short-haul carriers.

Table 7

**Rail transportation, diesel oil consumed by province or territory, 2001**

Item	Canadian National	Canadian Pacific	VIA Rail	Regional <sup>1</sup> railways	Total companies
'000 litres					
<b>Diesel</b>					
Newfoundland and Labrador	0	0	0	12,710	12,710
Nova Scotia	10,282	0	1,474	4,893	16,649
New Brunswick	28,064	0	2,386	5,279	35,729
Quebec	92,545	19,377	11,689	59,480	183,091
Ontario	364,598	263,319	30,950	33,329	692,196
Manitoba	80,747	56,845	4,319	7,141	149,052
Saskatchewan	94,110	107,387	3,184	2,023	206,704
Alberta	109,411	118,975	2,837	19,152	250,375
British Columbia	138,998	218,304	4,552	80,450	442,305
Northwest Territories	0	0	0	1,068	1,068
United States	7,363	0	0	0	7,363
<b>Total areas</b>	<b>926,118</b>	<b>784,208</b>	<b>61,391</b>	<b>225,525</b>	<b>1,997,242</b>

1. Includes short-haul carriers.

Table 8-1

## Rail transportation, operating statistics, CN, CP and VIA Rail, 2001

Item	Canadian National	Canadian Pacific	VIA Rail	Total mainline companies
	metric units			
<b>Train-kilometres</b>				
Freight	58,182,340	46,959,438	0	105,141,778
Passenger				
Locomotive drawn for passenger services	0	0	10,417,839	10,417,839
Rail diesel car for passenger services	0	0	307,913	307,913
In work train service	415,146	258,704	0	673,850
<b>Total train-kilometres</b>	<b>58,597,486</b>	<b>47,218,142</b>	<b>10,725,752</b>	<b>116,541,380</b>
<b>Locomotive unit-kilometres</b>				
Hauling freight trains	136,186,162	102,489,045	0	238,675,207
Hauling passenger trains	0	0	14,385,120	14,385,120
Switching freight trains	16,303,488	14,743,888	0	31,047,376
Helping, doubling and running light	0	0	0	0
In work train service	497,117	385,063	0	882,180
<b>Total locomotive unit-kilometres</b>	<b>152,986,767</b>	<b>117,617,996</b>	<b>14,385,120</b>	<b>284,989,883</b>
<b>Freight car-kilometres</b>				
Loaded	3,149,649,523	1,753,573,652	0	4,903,223,175
Empty	1,700,834,801	1,241,174,091	0	2,942,008,892
Caboose	406,852	365,569	0	772,421
In work train service	1,026,375	482,113	0	1,508,488
<b>Total freight car-kilometres</b>	<b>4,851,917,551</b>	<b>2,995,595,425</b>	<b>0</b>	<b>7,847,512,976</b>
<b>Generator car-kilometres</b>				
In freight trains	0	0	0	0
In passenger trains	0	0	0	0
<b>Total generator car-kilometres</b>	<b>0</b>	<b>0</b>	<b>0</b>	<b>0</b>
<b>Passenger car-kilometres</b>				
Head-end cars	0	0	4,085,881	4,085,881
Meal service and lounge cars	0	0	15,935,700	15,935,700
Sleeping cars	0	0	21,715,769	21,715,769
Coach	0	221,536	31,924,106	32,145,642
Rail diesel cars	0	0	532,144	532,144
Commuter cars	0	0	0	0
In work train service	0	14,914	0	14,914
<b>Total passenger car-kilometres</b>	<b>0</b>	<b>236,450</b>	<b>74,193,600</b>	<b>74,430,050</b>
<b>Gross tonne-kilometres</b>				
Gross tonne-kilometres, freight train cars, contents and cabooses	297,685,214	236,942,328	0	534,627,542
Gross tonne-kilometres, passenger train cars (cars only)	0	17,083	3,933,636	3,950,719
<b>Train hours</b>				
Freight	1,387,820	1,224,692	0	2,612,512
Passenger	0	0	0	0
<b>Total train hours</b>	<b>1,387,820</b>	<b>1,224,692</b>	<b>0</b>	<b>2,612,512</b>

Table 8-2

## Rail transportation, summary of operating statistics, 2001

Item	Canadian National	Canadian Pacific	VIA Rail	Regional <sup>1</sup> Railways	Total
	metric units				
<b>Train-kilometres</b>					
Freight	58,182,340	46,959,438	0	8,287,546	113,429,324
Passenger					
Locomotive drawn for passenger services	0	0	10,417,839	750,840	11,168,679
Rail diesel car for passenger services	0	0	307,913	376,586	684,499
<b>Total train-kilometres<sup>2</sup></b>	<b>58,597,486</b>	<b>47,218,142</b>	<b>10,725,752</b>	<b>9,414,972</b>	<b>125,956,352</b>
<b>Locomotive unit-kilometres</b>					
Hauling freight trains	136,186,162	102,489,045	0	12,360,584	251,035,791
Hauling passenger trains	0	0	14,385,120	313,191	14,698,311
Switching freight trains	16,303,488	14,743,888	0	1,116,328	32,163,704
Helping, doubling and running light	0	0	0	0	0
<b>Total locomotive unit-kilometres</b>	<b>152,986,767</b>	<b>117,617,996</b>	<b>14,385,120</b>	<b>13,790,103</b>	<b>298,779,986</b>
<b>Freight car-kilometres</b>					
Loaded	3,149,649,523	1,753,573,652	0	237,247,805	5,140,470,980
Empty	1,700,834,801	1,241,174,091	0	226,539,835	3,168,548,727
Caboose	406,852	365,569	0	555,796	1,328,217
In freight trains	1,026,375	482,113	0	0	1,508,488
<b>Total freight car-kilometres</b>	<b>4,851,917,551</b>	<b>2,995,595,425</b>	<b>0</b>	<b>464,343,436</b>	<b>8,311,856,412</b>
<b>Generator car-kilometres</b>					
In freight trains	0	0	0	0	0
In passenger trains	0	0	0	15,553	15,553
<b>Total generator car-kilometres</b>	<b>0</b>	<b>0</b>	<b>0</b>	<b>15,553</b>	<b>15,553</b>
<b>Total passenger car-kilometres</b>	<b>0</b>	<b>236,450</b>	<b>74,193,600</b>	<b>4,164,810</b>	<b>78,594,860</b>
<b>Gross tonne-kilometres</b>					
Gross tonne-kilometres, freight train cars, contents and cabooses	297,685,214	236,942,328	0	32,285,120	566,912,662
Gross tonne-kilometres, passenger train cars (cars only)	0	17,083	3,933,636	175,508	4,126,227
<b>Train hours</b>					
Freight	1,387,820	1,224,692	0	174,734	2,787,246
Passenger	0	0	0	10,605	10,605
<b>Total train hours</b>	<b>1,387,820</b>	<b>1,224,692</b>	<b>0</b>	<b>185,339</b>	<b>2,797,851</b>

1. Includes short-haul carriers.

2. This total includes "in work train service".



Table 9

## Rail transportation, summary statistics on freight and passenger transportation, 2001

Item		Canadian National	Canadian Pacific	VIA Rail	Regional <sup>1</sup> railways	Total companies
<b>Revenue freight</b>						
Revenue freight, tonnes	('000)	126,028	104,598	0	99,442	330,067
Revenue freight, tonne-kilometres	('000)	168,129,903	124,786,715	0	24,987,511	317,904,128
Revenue freight, average haul on each railway	(km)	1,334	1,193	0	251	963
<b>Revenue and non-revenue freight</b>						
Revenue and non-revenue freight, tonnes	('000)	127,331	106,981	0	103,868	338,180
Revenue and non-revenue freight, tonne-kilometres	('000)	169,544,834	126,299,074	0	25,889,786	321,733,694
Revenue and non-revenue freight, average haul on each railway	(km)	1,332	1,181	0	249	951
<b>Revenue passengers</b>						
Revenue passengers, passengers	('000)	0	0	3,865	314	4,179
Revenue passengers, passenger-kilometres	('000)	0	0	1,482,206	70,853	1,553,059
Revenue passengers, average passenger journey per ticket	(km)	0	0	383	226	372
<b>Transportation services, averages</b>						
Transportation services, averages, cars per freight train	No.	83.4	63.8	0.0	56.0	73.3
Transportation services, averages, cars per passenger train	No.	0.0	0.0	6.9	3.7	6.6
Transportation services, averages, freight carload	Tonnes	53.8	72.0	0.0	109.1	62.6
Transportation services, averages, empty freight car-kilometres	%	35.1	41.4	0.0	48.8	38.1
Transportation services, averages, freight train speed	km/hr	41.9	38.3	0.0	47.4	40.7

1. Includes short-haul carriers.

Table 10-1

## Rail transportation, inventory of equipment in service, CN, CP and VIA Rail, 2001

Item	Canadian National	Canadian Pacific	VIA Rail	Total mainline companies
	Number			
<b>Locomotives</b>				
<b>Freight</b>				
Diesel	939	956	0	1,895
Electric	0	0	0	0
<b>Total freight locomotives</b>	<b>939</b>	<b>956</b>	<b>0</b>	<b>1,895</b>
<b>Passengers</b>				
Diesel	0	0	83	83
Electric	0	0	0	0
Other	14	0	0	14
<b>Total passenger locomotives</b>	<b>14</b>	<b>0</b>	<b>83</b>	<b>97</b>
<b>Yard</b>				
Diesel	295	221	0	516
Electric	0	0	0	0
<b>Total yard locomotives</b>	<b>295</b>	<b>221</b>	<b>0</b>	<b>516</b>
Associated equipment	0	27	0	27
<b>Total locomotives</b>	<b>1,248</b>	<b>1,204</b>	<b>83</b>	<b>2,535</b>
<b>Freight Cars</b>				
Box	14,475	6,834	0	21,309
Hopper	19,337	15,993	0	35,330
Gondola	5,989	4,025	0	10,014
Refrigerator	0	0	0	0
Flat	11,106	6,631	0	17,737
Stock	0	0	0	0
Caboose	67	124	0	191
Other	2,438	0	0	2,438
<b>Total freight cars</b>	<b>53,412</b>	<b>33,607</b>	<b>0</b>	<b>87,019</b>
<b>Passengers cars</b>				
Head-end	0	0	20	20
Meal and/or lounge	0	0	50	50
Sleeping	0	0	75	75
Coach	0	0	170	170
Diesel	0	0	6	6
Commuter	2	0	0	2
Other	0	0	0	0
<b>Total passenger cars</b>	<b>2</b>	<b>0</b>	<b>321</b>	<b>323</b>

Table 10-2

## Rail transportation, summary of inventory of equipment in service, 2001

Item	Canadian National	Canadian Pacific	VIA Rail	Regional <sup>1</sup> Railways	Total
	Number				
<b>Locomotives</b>					
Total freight locomotives	939	956	0	308	2,203
Total passenger locomotives	14	0	83	21	118
Total yard locomotives	295	221	0	17	533
Associated equipment	0	27	0	8	35
<b>Total locomotives</b>	<b>1,248</b>	<b>1,204</b>	<b>83</b>	<b>354</b>	<b>2,889</b>
<b>Total freight cars</b>	<b>53,412</b>	<b>33,607</b>	<b>0</b>	<b>13,091</b>	<b>100,110</b>
<b>Total passenger cars</b>	<b>2</b>	<b>0</b>	<b>321</b>	<b>126</b>	<b>449</b>

1. Includes short-haul carriers.

Table 11

## Rail transportation, summary statistics on employment by major occupational group, 2001

Activity	Canadian National	Canadian Pacific	VIA Rail	Regional <sup>1</sup> railways	Total companies
	Number				
<b>Average number of employees</b>					
General services	3,284	2,487	618	688	7,077
Road maintenance	4,581	3,029	12	1,555	9,177
Equipment maintenance	3,412	2,220	749	1,054	7,435
Transportation	6,097	5,826	1,701	2,093	15,717
<b>Total major occupational group</b>	<b>17,374</b>	<b>13,562</b>	<b>3,080</b>	<b>5,390</b>	<b>39,406</b>
<b>Total compensation</b>					
General services	234.1	158.3	31.3	37.4	461.1
Road maintenance	254.6	159.0	0.5	72.9	487.0
Equipment maintenance	177.7	113.7	37.7	54.6	383.7
Transportation	504.8	373.9	87.9	127.1	1,093.6
<b>Total major occupational group</b>	<b>1,171.2</b>	<b>804.9</b>	<b>157.4</b>	<b>292.0</b>	<b>2,425.4</b>
<b>Average compensation per year</b>					
General services	71,278	63,658	50,666	54,364	65,156
Road maintenance	55,578	52,498	42,972	46,854	53,067
Equipment maintenance	52,089	51,210	50,293	51,820	51,608
Transportation	82,794	64,170	51,682	60,716	69,583
<b>Total major occupational group</b>	<b>67,411</b>	<b>59,348</b>	<b>51,106</b>	<b>54,167</b>	<b>61,550</b>
<b>Average compensation per hour</b>					
General services	34.8	30.1	24.4	44.4	32.7
Road maintenance	23.4	23.0	21.8	34.3	24.4
Equipment maintenance	21.2	23.7	24.1	42.6	24.0
Transportation	26.7	25.2	24.9	43.3	27.2
<b>Total major occupational group</b>	<b>26.1</b>	<b>25.3</b>	<b>24.6</b>	<b>40.7</b>	<b>26.9</b>

1. Includes short-haul carriers.

Table 12

## Rail transportation, summary statistics on employment by occupational categories, CN, CP and VIA Rail, 2001

Occupational category	Average number of employees		Service hours paid for employees ('000)	Total employee compensation		Average hours paid for employees (hrs)	Average hourly employee compensation (\$)	Average annual employee compensation (\$)
	No.	%		(\$'000)	%			
<b>Managerial and supervisory</b>								
Canadian National and Canadian Pacific	2,987	9.7	6,650	263,270	13.3	2,226	39.6	88,138
VIA Rail	188	6.1	391	14,598	9.3	2,082	37.3	77,648
<b>Total mainline companies</b>	<b>3,175</b>	<b>9.3</b>	<b>7,041</b>	<b>277,868</b>	<b>13.0</b>	<b>2,218</b>	<b>39.5</b>	<b>87,517</b>
<b>Professional, scientific, technical and staff assistants</b>								
Canadian National and Canadian Pacific	4,634	15.0	11,049	324,376	16.4	2,384	29.4	69,999
VIA Rail	235	7.6	488	14,691	9.3	2,077	30.1	62,515
<b>Total mainline companies</b>	<b>4,869</b>	<b>14.3</b>	<b>11,537</b>	<b>339,067</b>	<b>15.9</b>	<b>2,370</b>	<b>29.4</b>	<b>69,638</b>
<b>Clerical</b>								
Canadian National and Canadian Pacific	2,837	9.2	4,888	106,062	5.4	1,723	21.7	37,385
VIA Rail	746	24.2	1,551	30,413	19.3	2,079	19.6	40,768
<b>Total mainline companies</b>	<b>3,583</b>	<b>10.5</b>	<b>6,439</b>	<b>136,475</b>	<b>6.4</b>	<b>1,797</b>	<b>21.2</b>	<b>38,089</b>
<b>Running trades</b>								
Canadian National and Canadian Pacific	8,340	27.0	25,132	658,611	33.3	3,013	26.2	78,970
VIA Rail	407	13.2	847	34,086	21.7	2,082	40.2	83,750
<b>Total mainline companies</b>	<b>8,747</b>	<b>25.7</b>	<b>25,979</b>	<b>692,697</b>	<b>32.5</b>	<b>2,970</b>	<b>26.7</b>	<b>79,193</b>
<b>Working foremen</b>								
Canadian National and Canadian Pacific	1,282	4.1	3,478	79,816	4.0	2,714	22.9	62,258
VIA Rail	3	0.1	6	149	0.1	2,091	23.8	49,745
<b>Total mainline companies</b>	<b>1,285</b>	<b>3.8</b>	<b>3,484</b>	<b>79,965</b>	<b>3.8</b>	<b>2,712</b>	<b>22.9</b>	<b>62,229</b>
<b>Craftsmen, tradesmen, lead hands, service workers and helpers</b>								
Canadian National and Canadian Pacific	9,697	31.4	22,968	494,840	25.1	2,369	21.5	51,030
VIA Rail	1,218	39.5	2,534	50,287	31.9	2,080	19.8	41,286
<b>Total mainline companies</b>	<b>10,915</b>	<b>32.1</b>	<b>25,502</b>	<b>545,127</b>	<b>25.6</b>	<b>2,336</b>	<b>21.4</b>	<b>49,943</b>
<b>Labourers, including building attendants and coach cleaners</b>								
Canadian National and Canadian Pacific	1,130	3.7	2,443	47,985	2.4	2,163	19.6	42,464
VIA Rail	283	9.2	589	13,183	8.4	2,081	22.4	46,583
<b>Total mainline companies</b>	<b>1,413</b>	<b>4.2</b>	<b>3,032</b>	<b>61,168</b>	<b>2.9</b>	<b>2,146</b>	<b>20.2</b>	<b>43,289</b>
<b>Total occupational categories</b>								
Canadian National and Canadian Pacific	30,907	100.0	76,611	1,974,957	100.0	2,479	25.8	63,900
VIA Rail	3,080	100.0	6,406	157,407	100.0	2,080	24.6	51,106
<b>Total mainline companies</b>	<b>33,987</b>	<b>100.0</b>	<b>83,017</b>	<b>2,132,364</b>	<b>100.0</b>	<b>2,443</b>	<b>25.7</b>	<b>62,741</b>

Table 13

Rail transportation, origin and destination of commodity transported, 2001

	Destination									Total tonnage for all destinations
	Atlantic <sup>1</sup>	Quebec	Ontario	Manitoba	Saskatchewan	Alberta <sup>2</sup>	British Columbia	U.S.	Mexico	
<b>Origin</b>										
Atlantic	4,126,541	18,149,324	1,161,517	42,317	7,375	138,529	56,463	2,815,387	236	26,497,689
Quebec	2,289,785	6,622,758	4,672,357	332,361	112,026	724,727	1,279,874	11,986,627	85,918	28,106,434
Ontario	1,771,681	5,320,250	6,700,421	919,487	349,813	3,428,544	2,183,093	13,977,845	37,249	34,688,382
Manitoba	42,891	748,165	3,404,096	256,206	264,590	518,654	1,562,127	2,963,559	39,112	9,799,400
Saskatchewan	304,449	1,417,148	8,652,786	1,144,164	151,871	1,030,362	11,751,477	11,683,272	88,237	36,223,766
Alberta	130,688	1,010,386	2,580,697	1,200,993	1,125,224	3,119,584	24,407,836	11,325,170	2,501	44,903,079
British Columbia	152,505	1,584,915	3,704,892	254,266	117,868	987,054	28,211,421	6,826,301	337	41,839,559
U.S.	878,063	4,942,876	6,539,580	771,881	709,258	3,052,651	850,198	5,772,743	5,018	23,522,268
Mexico	416	279	2,971	246	0	343	92	0	.	4,345
<b>Total tonnage from all origins</b>	<b>9,697,019</b>	<b>39,796,100</b>	<b>37,419,317</b>	<b>4,921,921</b>	<b>2,838,025</b>	<b>13,000,448</b>	<b>70,302,581</b>	<b>67,350,904</b>	<b>258,607</b>	<b>245,584,922</b>

1. Atlantic Region includes: Newfoundland and Labrador, Nova Scotia, New Brunswick and Prince Edward Island.  
 2. Alberta includes Northwest Territories.

Table 14-1

## Rail transportation, commodity movements from Atlantic, 2001

Commodity	Destination									Total tonnage for all destinations
	Atlantic <sup>1</sup>	Quebec	Ontario	Manitoba	Saskatchewan	Alberta <sup>2</sup>	British Columbia	U.S. and Mexico		
01 Wheat	0	0	0	0	0	0	0	0	0	0
02 Other cereal grains	181	0	1,284	0	0	0	0	1,292	2,757	2,757
03 Fresh, chilled or dried vegetables	0	7,348	28,753	218	25	97	243	1,253	37,938	37,938
04 Fresh, chilled or dried fruit and nuts	0	28	1,042	0	0	0	0	0	1,071	1,071
05 Colza seeds (canola)	0	0	0	0	0	0	0	0	0	0
06 Other oil seeds and nuts, other agricultural product	0	170	899	46	9	343	88	0	1,555	1,555
07 Animal feed and products	186	44,641	422	0	0	0	806	38	46,092	46,092
08 Meat, fish, seafood and preparations	43	508	2,550	82	304	1,366	975	347	6,174	6,174
09 Milled grain production and preparations, bakery products	0	168	326	52	0	162	65	6,959	7,731	7,731
10 Animal or vegetable fats, oils and flours	22	86	62	0	0	51	186	69	475	475
11 Sugar	0	667	335	221	0	296	280	0	1,799	1,799
12 Prepared food stuffs, not elsewhere classified	0	3,102	7,402	12,486	18	528	217	357	24,109	24,109
13 Alcoholic and non-alcoholic beverages	331	6,359	28,632	3,603	0	5,758	2,657	19	47,360	47,360
14 Sand, gravel and crushed stone	0	46	458	0	0	0	0	0	504	504
15 Salt	63,461	13,547	0	0	0	0	0	14,749	91,757	91,757
16 Phosphate rock	0	0	0	0	0	0	0	0	0	0
17 Sulphur	8,770	0	0	0	0	0	0	31,528	40,298	40,298
18 Gypsum <sup>3</sup>	0	0	0	0	0	0	0	0	0	0
19 Other non-metallic minerals	2,680,710	7,596	42,881	2,527	0	576	1,667	17,627	2,753,582	2,753,582
20 Iron ores and concentrates	0	16,996,243	0	0	0	0	0	0	16,996,243	16,996,243
21 Copper ores and concentrates	0	2,120	0	0	0	0	0	0	2,120	2,120
22 Nickel ores and concentrates	0	0	0	0	0	0	0	0	0	0
23 Lead ores and concentrates	0	0	0	0	0	0	0	82	82	82
24 Zinc ores and concentrates	0	0	0	0	0	0	0	0	0	0
25 Other metallic ores and concentrates	0	0	0	0	0	0	0	79	79	79
26 Coal	0	363	0	0	0	0	0	0	363	363
27 Gasoline and aviation turbine fuel	64,278	0	0	0	0	0	0	0	64,278	64,278
28 Fuel oils and crude petroleum	127,198	778	0	0	0	0	0	0	127,976	127,976
29 Gaseous hydrocarbons, including liquid petroleum gas (LPG's)	80,575	33,152	35,860	0	0	16,088	0	202,395	368,070	368,070
30 Coal coke and petroleum coke	0	0	0	0	0	0	0	0	0	0
31 Other refined petroleum and coal products	705	3,883	64	25	0	0	0	12,406	17,082	17,082
32 Sulphuric acid	453	0	152	0	0	0	0	84,703	85,307	85,307
33 Alumina	0	0	0	0	0	0	0	0	0	0
34 Other basic chemicals	18,645	287,847	16,754	601	0	289	26	11,274	335,436	335,436
35 Potash	702,427	23,124	455	0	0	0	0	20,615	746,621	746,621
36 Fertilizers (excluding potash)	130,436	79	217	0	0	0	0	0	130,732	130,732
37 Other chemical products and preparations	178	4,047	1,073	72	49	440	31	270	6,160	6,160
38 Plastic and rubber	7,907	22,958	38,726	505	511	4,740	1,889	42,404	119,639	119,639
39 Logs and other wood in the rough	19,887	8,582	1,334	0	465	0	0	6,847	37,115	37,115
40 Wood chips	0	0	148	0	0	0	0	0	148	148
41 Lumber	11,026	8,694	28,483	620	0	1,363	114	498,797	549,095	549,095
42 Other wood products (plywood, veneer)	179	1,919	11,874	2,014	153	2,366	1,725	239,904	260,134	260,134
43 Wood pulp	96,193	37,835	39,404	0	0	0	0	301,918	475,350	475,350
44 Newsprint	3,899	21,699	4,864	64	0	6	289	221,952	252,774	252,774
45 Paper and paperboard, except printed products	24,304	35,993	140,882	3,271	898	9,206	2,446	555,231	772,230	772,230
46 Cement	29,253	0	0	0	0	0	0	0	29,253	29,253
47 Other non-metallic mineral products	16	35,667	24,528	1,867	596	7,343	7,462	60,921	138,400	138,400
48 Iron and steel, primary or semi-finished	0	91	775	0	0	21	0	0	886	886
49 Copper, primary or semi-finished	0	0	28	0	0	0	0	0	28	28
50 Aluminum, primary or semi-finished	0	0	47	0	0	0	0	88	135	135
51 Other non-ferrous metal, primary or semi-finished	0	203	7,070	20	0	59,070	4,428	35,371	106,162	106,162
52 Articles of base metal	0	938	672	0	0	418	40	269	2,337	2,337
53 Machinery	54	172	1,023	0	12	5,026	387	658	7,332	7,332
54 Automobiles and mini-vans	33,664	19,615	27,187	961	413	4,540	10,307	18	96,704	96,704
55 Freight motor vehicles	2,146	15	34	0	0	143	0	12	2,351	2,351
56 Other vehicles	68	281	2,158	36	0	792	3	0	3,338	3,338
57 Parts and accessories for motor vehicles	0	28	2,908	0	0	0	0	54	2,990	2,990
58 Other transportation equipment	5,205	97	0	0	0	392	68	320	6,083	6,083
59 Metallic waste and scrap	665	94,405	7,826	0	0	0	0	856	103,753	103,753
60 Non-metallic waste and scrap	0	813	1,927	96	0	22	34	82	2,973	2,973
61 Other manufactured and miscellaneous goods	309	14,384	4,030	330	641	1,442	377	1,589	23,104	23,104
62 Pool car traffic of freight forwarder and ship associated	1,126	1,133	7,932	86	0	183	12	53	10,524	10,524
63 Mixed loads or unidentified freight	11,996	407,901	637,802	12,515	3,280	15,390	19,642	442,219	1,550,744	1,550,744
64 Less than carload shipments	45	0	238	0	0	73	0	0	356	356
<b>Total tonnage of all rail commodities</b>	<b>4,126,541</b>	<b>18,149,324</b>	<b>1,161,517</b>	<b>42,317</b>	<b>7,375</b>	<b>138,529</b>	<b>56,463</b>	<b>2,815,623</b>	<b>26,497,689</b>	<b>26,497,689</b>

See footnotes at the end of the table.

Table 14-1 – continued

**Rail transportation, commodity movements from Atlantic, 2001**

Commodity	Destination								
	Atlantic <sup>1</sup>	Quebec	Ontario	Manitoba	Saskatchewan	Alberta <sup>2</sup>	British Columbia	U.S. and Mexico	Total tonnage for all destinations
Car type <sup>4</sup>									
Containers on flat cars (COFC)	63,282	511,142	797,409	31,171	4,541	38,745	33,794	496,621	1,976,704
Trailers on flat cars (TOFC)	3,980	14,358	33,941	1,827	0	299	172	7,601	62,178

1. Atlantic Region includes: Newfoundland and Labrador, Nova Scotia, New Brunswick and Prince Edward Island.

2. Alberta includes Northwest Territories.

3. For confidentiality reasons, other non-metallic mineral products include the tonnage of gypsum.

4. C.O.F.C. and T.O.F.C. tonnage is included in the grand total.

**Source:** *Transport Canada*



Table 14-2

## Rail transportation, commodity movements to Atlantic, 2001

Commodity	Origin									Total and tonnage from all origins
	Atlantic <sup>1</sup>	Quebec	Ontario	Manitoba	Saskatchewan	Alberta <sup>2</sup>	British Columbia	U.S. Mexico		
01 Wheat	0	180	4,511	1,789	12,318	0	0	0	18,798	
02 Other cereal grains	181	40,746	7,199	429	6,279	1,836	0	32,510	89,181	
03 Fresh, chilled or dried vegetables	0	23,931	7,555	4,894	40,524	987	97	2,148	80,136	
04 Fresh, chilled or dried fruit and nuts	0	0	142	0	0	0	1,689	0	1,831	
05 Colza seeds (canola)	0	0	0	0	0	16	0	0	16	
06 Other oil seeds and nuts, other agricultural product	0	561	465	5,123	1,041	100	143	154	7,588	
07 Animal feed and products	186	177	31,576	423	205	217	3,585	34,741	71,110	
08 Meat, fish, seafood and preparations	43	1,870	2,147	395	138	1,110	1,087	4,510	11,298	
09 Milled grain production and preparations, bakery products	0	2,950	17,225	9,965	1,944	2,605	22	14,488	49,198	
10 Animal or vegetable fats, oils and flours	22	2,156	30,361	5,559	18,017	2,756	84	13,632	72,587	
11 Sugar	0	9,504	40,488	0	0	27	0	8,358	58,377	
12 Prepared food stuffs, not elsewhere classified	0	3,501	2,450	2,304	256	180	215	1,756	10,662	
13 Alcoholic and non-alcoholic beverages	331	17,841	13,572	219	10	2,058	933	1,820	36,782	
14 Sand, gravel and crushed stone	0	191,212	53,871	0	0	417	0	924	246,424	
15 Salt	63,461	0	112	0	48	0	0	0	63,621	
16 Phosphate rock	0	0	0	0	0	0	0	0	0	
17 Sulphur	8,770	0	0	0	0	21	0	0	8,791	
18 Gypsum <sup>3</sup>	.	.	.	.	.	.	.	.	.	
19 Other non-metallic minerals	2,680,710	107,071	844	0	172	224	0	150,535	2,939,555	
20 Iron ores and concentrates	0	18	0	0	0	0	0	0	18	
21 Copper ores and concentrates	0	0	20	0	0	0	0	0	20	
22 Nickel ores and concentrates	0	0	0	0	0	0	0	0	0	
23 Lead ores and concentrates	0	0	0	0	0	0	0	7,571	7,571	
24 Zinc ores and concentrates	0	0	0	0	0	0	0	0	0	
25 Other metallic ores and concentrates	0	1,828	0	0	0	0	0	0	1,828	
26 Coal	0	0	0	0	419	0	0	512	931	
27 Gasoline and aviation turbine fuel	64,278	123,746	28	0	0	0	0	0	188,052	
28 Fuel oils and crude petroleum	127,198	243,077	59,045	0	0	0	0	0	429,320	
29 Gaseous hydrocarbons, including liquid petroleum gas (LPG's)	80,575	5,846	237,458	924	4,223	19,945	0	4,493	353,465	
30 Coal coke and petroleum coke	0	107,389	0	0	0	0	0	0	107,389	
31 Other refined petroleum and coal products	705	22,616	15,327	0	0	44	16	10,731	49,439	
32 Sulphuric acid	453	22,297	111,964	0	0	0	0	3,968	138,681	
33 Alumina	0	0	15	0	0	0	0	0	15	
34 Other basic chemicals	18,645	131,846	55,673	0	36	11,221	21,976	71,840	311,237	
35 Potash	702,427	0	0	0	207,240	0	0	0	909,667	
36 Fertilizers (excluding potash)	130,436	32,763	420	370	2,371	13,195	0	36,615	216,171	
37 Other chemical products and preparations	178	1,523	5,316	0	75	119	22	21,336	28,569	
38 Plastic and rubber	7,907	6,134	24,716	62	0	15,726	178	69,432	124,155	
39 Logs and other wood in the rough	19,887	2,675	1,589	0	0	261	897	1,458	26,767	
40 Wood chips	0	0	0	0	0	17	0	0	17	
41 Lumber	11,026	19,492	5,879	112	218	15,124	26,178	172	78,199	
42 Other wood products (plywood, veneer)	179	10,566	5,231	7	939	10,885	28,170	50	56,027	
43 Wood pulp	96,193	40,712	8,266	0	0	1,403	31,321	9,032	186,927	
44 Newsprint	3,899	5,117	2,464	0	0	0	51	43	11,573	
45 Paper and paperboard, except printed products	24,304	19,494	67,183	39	0	5	68	3,566	114,657	
46 Cement	29,253	156,993	29	0	0	0	0	90	186,365	
47 Other non-metallic mineral products	16	115,840	3,037	951	0	10,458	624	883	131,810	
48 Iron and steel, primary or semi-finished	0	8,709	24,169	149	0	586	20	12,931	46,564	
49 Copper, primary or semi-finished	0	173	0	0	0	0	0	191	364	
50 Aluminum, primary or semi-finished	0	1,979	5	0	0	0	0	0	1,984	
51 Other non-ferrous metal, primary or semi-finished	0	693	7	349	0	0	54	0	1,103	
52 Articles of base metal	0	15,713	1,584	97	16	192	2,052	1,066	20,721	
53 Machinery	54	212	3,190	115	26	1,278	322	1,746	6,945	
54 Automobiles and mini-vans	33,664	1,682	36,552	0	0	0	21,303	14,554	107,755	
55 Freight motor vehicles	2,146	16,152	54,320	0	0	3	1,300	18,056	91,978	
56 Other vehicles	68	15	943	0	0	0	0	81	1,106	
57 Parts and accessories for motor vehicles	0	241	7,238	15	0	5	0	0	7,498	
58 Other transportation equipment	5,205	282	1,965	374	0	248	72	5,491	13,637	
59 Metallic waste and scrap	665	188	1,997	0	0	37	0	0	2,887	
60 Non-metallic waste and scrap	0	416	1,407	15	0	153	0	963	2,954	
61 Other manufactured and miscellaneous goods	309	9,811	13,850	1,137	140	674	404	426	26,751	
62 Pool car traffic of freight forwarder and ship associated	1,126	17,629	21,855	48	515	1,700	39	18	42,931	
63 Mixed loads or unidentified freight	11,996	744,193	786,420	7,029	7,277	14,856	9,585	315,592	1,896,948	
64 Less than carload shipments	45	28	2	0	0	0	0	0	75	
<b>Total tonnage of all rail commodities</b>	<b>4,126,541</b>	<b>2,289,785</b>	<b>1,771,681</b>	<b>42,891</b>	<b>304,449</b>	<b>130,688</b>	<b>152,505</b>	<b>878,479</b>	<b>9,697,019</b>	

See footnotes at the end of the table.

Table 14-2 – continued

**Rail transportation, commodity movements to Atlantic, 2001**

Commodity	Origin								
	Atlantic <sup>1</sup>	Quebec	Ontario	Manitoba	Saskatchewan	Alberta <sup>2</sup>	British Columbia	U.S. and Mexico	Total tonnage from all origins
Car type <sup>4</sup>									
Containers on flat cars (COFC)	63,282	951,750	845,939	23,178	58,815	41,077	21,865	320,688	2,326,595
Trailers on flat cars (TOFC)	3,980	24,938	47,032	628	55	136	210	2,808	79,786

1. Atlantic Region includes: Newfoundland and Labrador, Nova Scotia, New Brunswick and Prince Edward Island.

2. Alberta includes Northwest Territories.

3. For confidentiality reasons, other non-metallic mineral products include the tonnage of gypsum.

4. C.O.F.C. and T.O.F.C. tonnage is included in the grand total.

**Source:** *Transport Canada*

Table 15-1

## Rail transportation, commodity movements from Quebec, 2001

Commodity	Destination									Total tonnage for all destinations
	Atlantic <sup>1</sup>	Quebec	Ontario	Manitoba	Saskatchewan	Alberta <sup>2</sup>	British Columbia	U.S. and Mexico		
01 Wheat	180	4,773	3,112	0	0	0	0	9,266	17,330	
02 Other cereal grains	40,746	22,737	7,932	0	0	45	23	46,383	117,866	
03 Fresh, chilled or dried vegetables	23,931	350	43	294	54	192	442	478	25,784	
04 Fresh, chilled or dried fruit and nuts	0	0	147	0	123	234	544	20	1,068	
05 Colza seeds (canola)	0	173	10,063	123	0	0	0	0	10,358	
06 Other oil seeds and nuts, other agricultural product	561	16,569	1,381	223	0	339	11,400	348	30,821	
07 Animal feed and products	177	4,539	168	72	39	2,546	8,598	719	16,857	
08 Meat, fish, seafood and preparations	1,870	0	3,143	58	280	570	59,067	75	65,062	
09 Milled grain production and preparations, bakery products	2,950	0	3,435	1,624	412	2,033	2,551	2,957	15,962	
10 Animal or vegetable fats, oils and flours	2,156	3,346	256	0	0	115	2,429	769	9,070	
11 Sugar	9,504	0	121,947	0	19	996	2,234	5,695	140,395	
12 Prepared food stuffs, not elsewhere classified	3,501	0	4,854	874	7	4,231	15,961	6,101	35,528	
13 Alcoholic and non-alcoholic beverages	17,841	443	17,527	2,640	1,219	6,709	6,790	12,690	65,858	
14 Sand, gravel and crushed stone	191,212	5,872	1,500	26	26	30,653	10,162	92,370	331,821	
15 Salt	0	0	181	0	0	0	0	0	181	
16 Phosphate rock	0	0	0	0	0	0	0	0	0	
17 Sulphur	0	0	0	0	0	0	0	25,989	25,989	
18 Gypsum <sup>3</sup>	0	0	0	0	0	0	0	0	0	
19 Other non-metallic minerals	107,071	24,498	5,928	254	280	2,517	70,546	26,405	237,497	
20 Iron ores and concentrates	18	0	0	0	0	0	0	0	18	
21 Copper ores and concentrates	0	422,482	357,719	0	0	0	0	129	780,330	
22 Nickel ores and concentrates	0	0	9,485	0	0	0	0	0	9,485	
23 Lead ores and concentrates	0	43,394	0	12,682	0	0	1,618	0	57,694	
24 Zinc ores and concentrates	0	343,154	35,751	1,148	0	0	40,759	2,274	423,086	
25 Other metallic ores and concentrates	1,828	41	13,996	0	0	0	1,318	762	17,945	
26 Coal	0	0	0	0	0	0	0	0	0	
27 Gasoline and aviation turbine fuel	123,746	839,145	86,481	16,693	0	1,044	689	38,202	1,106,000	
28 Fuel oils and crude petroleum	243,077	1,057,651	307,436	2,425	0	0	6	76,373	1,686,968	
29 Gaseous hydrocarbons, including liquid petroleum gas (LPG's)	5,846	102,335	61,779	0	0	0	0	32,744	202,704	
30 Coal coke and petroleum coke	107,389	6,984	0	0	0	0	0	0	114,372	
31 Other refined petroleum and coal products	22,616	305,867	29,764	211	1,156	4,657	1,170	10,799	376,241	
32 Sulphuric acid	22,297	81,512	11,032	0	0	0	1,184	663,492	779,517	
33 Alumina	0	294,791	33,365	2,780	2,227	8,488	3,694	327,931	673,276	
34 Other basic chemicals	131,846	286,882	274,448	4,096	10,217	13,629	31,311	838,094	1,590,521	
35 Potash	0	90	25	0	0	9	0	0	123	
36 Fertilizers (excluding potash)	32,763	4,118	115,588	22,457	67	5,795	175	27,269	208,233	
37 Other chemical products and preparations	1,523	26,962	5,876	1,459	2,406	6,058	11,880	50,755	106,918	
38 Plastic and rubber	6,134	289,415	87,331	9,069	4,730	19,903	16,129	254,002	686,712	
39 Logs and other wood in the rough	2,675	134,915	0	4,293	2,459	873	521	34,309	180,044	
40 Wood chips	0	907,459	21,447	0	0	0	801	48	929,755	
41 Lumber	19,492	113,804	213,606	7,106	19	7,387	12,397	1,696,345	2,070,156	
42 Other wood products (plywood, veneer)	10,566	88,624	83,108	9,162	6,217	15,954	14,285	822,227	1,050,142	
43 Wood pulp	40,712	347,871	172,274	347	0	0	3,008	403,245	967,456	
44 Newsprint	5,117	123,780	90,030	134	0	324	479	1,441,513	1,661,377	
45 Paper and paperboard, except printed products	19,494	128,017	147,922	7,131	1,099	7,536	33,710	1,075,337	1,420,244	
46 Cement	156,993	18,713	10,208	24	0	0	0	357,450	543,387	
47 Other non-metallic mineral products	115,840	24,544	23,251	1,177	2,428	5,126	38,194	55,834	266,393	
48 Iron and steel, primary or semi-finished	8,709	816	585,465	1,703	12,741	33,734	5,577	315,819	964,564	
49 Copper, primary or semi-finished	173	191,050	0	2,176	704	272	373	125,124	319,874	
50 Aluminum, primary or semi-finished	1,979	171	301,620	35	418	1,228	16,344	1,087,225	1,409,019	
51 Other non-ferrous metal, primary or semi-finished	693	157	18,626	46,413	2,916	8	3,712	131,385	203,910	
52 Articles of base metal	15,713	747	6,705	490	460	5,527	2,990	17,834	50,466	
53 Machinery	212	172	1,288	9	59	1,499	974	47,692	51,905	
54 Automobiles and mini-vans	1,682	562	118	11,222	677	7,805	8,946	65,695	96,707	
55 Freight motor vehicles	16,152	48	23	107	472	98	327	4,285	21,511	
56 Other vehicles	15	0	62	121	35	9,719	80	0	10,030	
57 Parts and accessories for motor vehicles	241	0	143	0	0	67	90	4,451	4,992	
58 Other transportation equipment	282	12,782	2,363	147	368	378	526	6,527	23,375	
59 Metallic waste and scrap	188	250,563	20,977	0	25	57	3,127	14,128	289,064	
60 Non-metallic waste and scrap	416	82,301	4,013	124	379	981	666	47,104	135,984	
61 Other manufactured and miscellaneous goods	9,811	3,759	12,171	8,137	3,683	38,770	19,408	32,351	128,090	
62 Pool car traffic of freight forwarder and ship associated	17,629	91	1,267	13,864	4,751	63,504	43,653	356	145,115	
63 Mixed loads or unidentified freight	744,193	3,566	1,343,983	139,235	48,855	413,050	768,637	1,733,173	5,194,691	
64 Less than carload shipments	28	128	0	0	0	70	372	0	598	
<b>Total tonnage of all rail commodities</b>	<b>2,289,785</b>	<b>6,622,758</b>	<b>4,672,357</b>	<b>332,361</b>	<b>112,026</b>	<b>724,727</b>	<b>1,279,874</b>	<b>12,072,545</b>	<b>28,106,434</b>	

See footnotes at the end of the table.

Table 15-1 – continued

**Rail transportation, commodity movements from Quebec, 2001**

Commodity	Destination								
	Atlantic <sup>1</sup>	Quebec	Ontario	Manitoba	Saskatchewan	Alberta <sup>2</sup>	British Columbia	U.S. and Mexico	Total tonnage for all destinations
Car type <sup>4</sup>									
Containers on flat cars (COFC)	951,750	307	1,045,467	176,936	68,777	539,214	1,108,719	1,891,043	5,782,212
Trailers on flat cars (TOFC)	24,938	0	167,634	2,935	455	3,369	1,360	73,463	274,154

1. Atlantic Region includes: Newfoundland and Labrador, Nova Scotia, New Brunswick and Prince Edward Island.

2. Alberta includes Northwest Territories.

3. For confidentiality reasons, other non-metallic mineral products include the tonnage of gypsum.

4. C.O.F.C. and T.O.F.C. tonnage is included in the grand total.

**Source:** *Transport Canada*

Table 15-2

## Rail transportation, commodity movements to Quebec, 2001

Commodity	Origin								
	Atlantic <sup>1</sup>	Quebec	Ontario	Manitoba	Saskatchewan	Alberta <sup>2</sup>	British Columbia	U.S. and Mexico	Total tonnage from all origins
01 Wheat	0	4,773	936,543	137,328	712,894	21,460	89	1,366	1,814,453
02 Other cereal grains	0	22,737	66,078	19,678	119,441	1,086	431	682,059	911,509
03 Fresh, chilled or dried vegetables	7,348	350	11,744	106,104	294,343	23,022	3,919	80,233	527,063
04 Fresh, chilled or dried fruit and nuts	28	0	0	0	0	20	14,833	9,046	23,927
05 Colza seeds (canola)	0	173	1,261	2,665	0	0	0	0	4,100
06 Other oil seeds and nuts, other agricultural product	170	16,569	55,123	59,266	20,843	2,055	6,417	47,898	208,340
07 Animal feed and products	44,641	4,539	345,856	21,992	875	7,464	541	427,588	853,495
08 Meat, fish, seafood and preparations	508	0	1,100	16,709	3,039	14,197	44,889	9,079	89,521
09 Milled grain production and preparations, bakery products	168	0	16,303	27,127	18,341	32,781	1,246	25,488	121,452
10 Animal or vegetable fats, oils and flours	86	3,346	64,495	188,862	89,273	9,877	0	17,276	373,214
11 Sugar	667	0	56,761	0	0	90	418	93,399	151,335
12 Prepared food stuffs, not elsewhere classified	3,102	0	5,616	22,669	902	16,347	7,694	20,826	77,155
13 Alcoholic and non-alcoholic beverages	6,359	443	20,963	6,450	44	5,938	1,450	12,822	54,469
14 Sand, gravel and crushed stone	46	5,872	55,438	0	0	0	35	111,522	172,913
15 Salt	13,547	0	739,075	0	117	0	0	2,951	755,690
16 Phosphate rock	0	0	0	0	0	0	0	0	0
17 Sulphur	0	0	0	0	0	26	0	0	26
18 Gypsum <sup>3</sup>	.	.	.	.	.	.	.	.	.
19 Other non-metallic minerals	7,596	24,498	114,240	25	5,788	738	151	161,366	314,402
20 Iron ores and concentrates	16,996,243	0	0	123	0	0	0	0	16,996,366
21 Copper ores and concentrates	2,120	422,482	0	0	0	0	7,078	35,696	467,376
22 Nickel ores and concentrates	0	0	0	0	0	0	17	80	97
23 Lead ores and concentrates	0	43,394	0	0	0	0	999	0	44,393
24 Zinc ores and concentrates	0	343,154	0	0	0	0	0	0	343,154
25 Other metallic ores and concentrates	0	41	0	0	5,086	0	92,015	69	97,210
26 Coal	363	0	0	0	1,020	0	0	30,202	31,585
27 Gasoline and aviation turbine fuel	0	839,145	2,063	0	0	73	0	2	841,283
28 Fuel oils and crude petroleum	778	1,057,651	92,142	0	0	0	0	3,565	1,154,135
29 Gaseous hydrocarbons, including liquid petroleum gas (LPG's)	33,152	102,335	311,632	2,384	3,113	23,428	10	19,943	495,996
30 Coal coke and petroleum coke	0	6,984	35,275	0	0	133,095	0	103,301	278,655
31 Other refined petroleum and coal products	3,883	305,867	89,728	10	1,068	8,167	4	53,210	461,936
32 Sulphuric acid	0	81,512	137,526	0	0	0	1	12,786	231,825
33 Alumina	0	294,791	264	0	0	0	0	504	295,559
34 Other basic chemicals	287,847	286,882	118,489	1,183	1,199	174,607	25,158	551,168	1,446,534
35 Potash	23,124	90	0	0	69,521	0	0	0	92,735
36 Fertilizers (excluding potash)	79	4,118	15,402	5,884	16,244	56,286	275	112,739	211,027
37 Other chemical products and preparations	4,047	26,962	15,464	5,506	109	2,404	1,886	123,155	179,532
38 Plastic and rubber	22,958	289,415	55,857	775	11	89,523	6,737	257,674	722,949
39 Logs and other wood in the rough	8,582	134,915	1,257	0	0	54	219	718	145,745
40 Wood chips	0	907,459	625	0	19	106	902	0	909,111
41 Lumber	8,694	113,804	35,171	266	0	76,400	116,786	3,764	354,884
42 Other wood products (plywood, veneer)	1,919	88,624	21,576	819	7,288	109,320	126,423	14,533	370,501
43 Wood pulp	37,835	347,871	60,837	0	0	10,962	9,765	53,487	520,756
44 Newsprint	21,699	123,780	26,013	0	0	0	828	353	172,673
45 Paper and paperboard, except printed products	35,993	128,017	85,009	29,943	274	4,872	18,366	108,742	411,213
46 Cement	0	18,713	46,829	0	16	0	18	1,902	67,478
47 Other non-metallic mineral products	35,667	24,544	3,439	408	0	48,144	4,138	35,504	151,844
48 Iron and steel, primary or semi-finished	91	816	179,111	1,025	2,748	1,218	1,344	58,687	245,039
49 Copper, primary or semi-finished	0	191,050	28,721	2,049	0	119	0	2,051	223,990
50 Aluminum, primary or semi-finished	0	171	0	0	0	329	6,803	1,401	8,704
51 Other non-ferrous metal, primary or semi-finished	203	157	105,448	4,306	25	25,465	13,365	1,747	150,715
52 Articles of base metal	938	747	16,631	1,001	44	259	10,055	1,973	31,648
53 Machinery	172	172	837	716	412	268	4,511	5,750	12,836
54 Automobiles and mini-vans	19,615	562	127,797	155	0	677	132,255	164,308	445,369
55 Freight motor vehicles	15	48	58,862	0	0	317	9,522	105,421	174,185
56 Other vehicles	281	0	0	0	0	8,585	571	530	9,966
57 Parts and accessories for motor vehicles	28	0	22,219	0	0	97	637	151,336	174,317
58 Other transportation equipment	97	12,782	43,267	0	931	377	498	2,752	60,704
59 Metallic waste and scrap	94,405	250,563	172,535	676	1,082	1,641	342	69,507	590,751
60 Non-metallic waste and scrap	813	82,301	2,302	2,085	0	414	2,576	137,205	227,695
61 Other manufactured and miscellaneous goods	14,384	3,759	16,365	12,365	924	10,097	8,492	24,476	90,863
62 Pool car traffic of freight forwarder and ship associated	1,133	91	736	4,769	1,286	1,395	15,381	334	25,124
63 Mixed loads or unidentified freight	407,901	3,566	899,978	62,755	38,831	86,590	884,812	989,664	3,374,098
64 Less than carload shipments	0	128	250	89	0	0	19	0	486
<b>Total tonnage of all rail commodities</b>	<b>18,149,324</b>	<b>6,622,758</b>	<b>5,320,250</b>	<b>748,165</b>	<b>1,417,148</b>	<b>1,010,386</b>	<b>1,584,915</b>	<b>4,943,154</b>	<b>39,796,100</b>

See footnotes at the end of the table.

Table 15-2 – continued

**Rail transportation, commodity movements to Quebec, 2001**

Commodity	Origin								Total tonnage from all origins
	Atlantic <sup>1</sup>	Quebec	Ontario	Manitoba	Saskatchewan	Alberta <sup>2</sup>	British Columbia	U.S. and Mexico	
Car type <sup>4</sup>									
Containers on flat cars (COFC)	511,142	307	638,518	326,699	371,500	433,689	1,157,633	1,235,081	4,674,567
Trailers on flat cars (TOFC)	14,358	0	133,280	5,572	474	1,694	10,845	35,665	201,886

1. Atlantic Region includes: Newfoundland and Labrador, Nova Scotia, New Brunswick and Prince Edward Island.

2. Alberta includes Northwest Territories.

3. For confidentiality reasons, other non-metallic mineral products include the tonnage of gypsum.

4. C.O.F.C. and T.O.F.C. tonnage is included in the grand total.

**Source:** *Transport Canada*

Table 16-1

## Rail transportation, commodity movements from Ontario, 2001

Commodity	Destination									Total tonnage for all destinations
	Atlantic <sup>1</sup>	Quebec	Ontario	Manitoba	Saskatchewan	Alberta <sup>2</sup>	British Columbia	U.S. and Mexico		
01 Wheat	4,511	936,543	274,746	0	0	797	34	117,913	1,334,545	
02 Other cereal grains	7,199	66,078	39,786	21	25	2,642	4,216	14,456	134,423	
03 Fresh, chilled or dried vegetables	7,555	11,744	0	199	246	269	1,719	5,649	27,380	
04 Fresh, chilled or dried fruit and nuts	142	0	0	0	0	297	56	143	638	
05 Colza seeds (canola)	0	1,261	13,995	0	0	0	100	0	15,356	
06 Other oil seeds and nuts, other agricultural product	465	55,123	3,521	307	79	289	7,864	9,244	76,892	
07 Animal feed and products	31,576	345,856	40,432	5,224	3,950	23,634	2,459	69,877	523,007	
08 Meat, fish, seafood and preparations	2,147	1,100	0	25	157	178	19,002	54	22,663	
09 Milled grain production and preparations, bakery products	17,225	16,303	99,181	2,483	1,818	8,519	8,334	63,486	217,349	
10 Animal or vegetable fats, oils and flours	30,361	64,495	14,700	4,259	0	7,693	8,404	19,808	149,720	
11 Sugar	40,488	56,761	18,596	389	511	6,291	4,217	47,548	174,800	
12 Prepared food stuffs, not elsewhere classified	2,450	5,616	118	14,118	7,668	51,973	25,940	9,463	117,345	
13 Alcoholic and non-alcoholic beverages	13,572	20,963	983	3,747	1,215	28,191	21,469	19,788	109,926	
14 Sand, gravel and crushed stone	53,871	55,438	21,149	9,410	0	45,280	22	583,961	769,132	
15 Salt	112	739,075	120,461	0	130	0	280	34,447	894,503	
16 Phosphate rock	0	0	0	0	0	780,443	0	0	780,443	
17 Sulphur	0	0	523	0	0	0	63	16,066	16,652	
18 Gypsum <sup>3</sup>	0	0	0	0	0	0	0	0	0	
19 Other non-metallic minerals	844	114,240	6,692	1,502	0	13,364	6,790	309,572	453,005	
20 Iron ores and concentrates	0	0	0	0	0	0	0	2,307	2,307	
21 Copper ores and concentrates	20	0	0	0	0	0	20	258	298	
22 Nickel ores and concentrates	0	0	2,019,821	0	0	0	0	0	2,019,821	
23 Lead ores and concentrates	0	0	0	0	0	0	0	0	0	
24 Zinc ores and concentrates	0	0	0	0	0	0	0	0	0	
25 Other metallic ores and concentrates	0	0	0	0	90	0	13	20	123	
26 Coal	0	0	0	0	0	0	0	196	196	
27 Gasoline and aviation turbine fuel	28	2,063	63,430	0	0	0	0	0	65,522	
28 Fuel oils and crude petroleum	59,045	92,142	58,325	0	0	0	153	62,767	272,432	
29 Gaseous hydrocarbons, including liquid petroleum gas (LPG's)	237,458	311,632	371,657	0	0	0	0	1,039,771	1,960,518	
30 Coal coke and petroleum coke	0	35,275	16,501	0	0	0	0	22,851	74,627	
31 Other refined petroleum and coal products	15,327	89,728	225,353	15,478	3,310	99,894	30,782	351,003	830,874	
32 Sulphuric acid	111,964	137,526	215,189	1,178	0	3,830	9,552	917,732	1,396,970	
33 Alumina	15	264	1,592	91	0	724	19	17,260	19,965	
34 Other basic chemicals	55,673	118,489	256,108	22,483	15,317	36,196	16,297	600,814	1,121,377	
35 Potash	0	0	93	0	0	0	0	273	366	
36 Fertilizers (excluding potash)	420	15,402	57,333	314	0	1,274	0	165,960	240,703	
37 Other chemical products and preparations	5,316	15,464	13,610	1,115	1,863	12,570	4,660	218,130	272,728	
38 Plastic and rubber	24,716	55,857	373,170	7,350	4,689	57,577	31,617	644,862	1,199,838	
39 Logs and other wood in the rough	1,589	1,257	114,028	73	0	321	304	163,729	281,300	
40 Wood chips	0	625	113,552	0	0	0	0	136	114,313	
41 Lumber	5,879	35,171	126,944	27,255	177	9,299	4,066	781,470	990,260	
42 Other wood products (plywood, veneer)	5,231	21,576	57,569	18,675	7,025	27,860	13,183	633,799	784,918	
43 Wood pulp	8,266	60,837	317,136	5,422	0	0	77,501	1,013,455	1,482,616	
44 Newsprint	2,464	26,013	230,319	707	0	434	375	903,661	1,163,971	
45 Paper and paperboard, except printed products	67,183	85,009	246,907	86,345	6,584	48,753	22,190	265,290	828,260	
46 Cement	29	46,829	8,499	39,120	972	1,962	4,647	341,169	443,225	
47 Other non-metallic mineral products	3,037	3,439	818	12,271	5,224	104,690	28,772	52,589	210,841	
48 Iron and steel, primary or semi-finished	24,169	179,111	804,627	106,647	12,078	292,144	83,898	486,576	1,989,250	
49 Copper, primary or semi-finished	0	28,721	0	0	0	0	83	84,705	113,508	
50 Aluminum, primary or semi-finished	5	0	0	0	294	12	52	51,068	51,431	
51 Other non-ferrous metal, primary or semi-finished	7	105,448	90	28	4,490	94	94	3,600	113,851	
52 Articles of base metal	1,584	16,631	34,634	10,820	12,258	169,248	21,025	135,097	401,297	
53 Machinery	3,190	837	2,602	982	1,448	6,502	2,112	18,903	36,574	
54 Automobiles and mini-vans	36,552	127,797	5,910	23,720	10,081	65,384	53,462	1,083,783	1,406,689	
55 Freight motor vehicles	54,320	58,862	7,954	38,135	30,071	104,822	37,451	1,239,260	1,570,876	
56 Other vehicles	943	0	0	30	0	144	270	161,159	162,546	
57 Parts and accessories for motor vehicles	7,238	22,219	134,774	8,682	1,806	25,540	11,877	303,335	515,470	
58 Other transportation equipment	1,965	43,267	11,940	747	312	2,479	309	59,074	120,094	
59 Metallic waste and scrap	1,997	172,535	49,182	23,807	60,621	67	298	617,767	926,274	
60 Non-metallic waste and scrap	1,407	2,302	63,697	273	0	373	1,149	37,644	106,846	
61 Other manufactured and miscellaneous goods	13,850	16,365	3,376	29,548	10,974	67,396	50,727	94,858	287,094	
62 Pool car traffic of freight forwarder and ship associated	21,855	736	142	77,605	21,353	299,568	148,845	409	570,513	
63 Mixed loads or unidentified freight	786,420	899,978	38,658	318,907	122,907	1,019,532	1,416,185	116,881	4,719,468	
64 Less than carload shipments	2	250	0	0	70	0	137	0	459	
<b>Total tonnage of all rail commodities</b>	<b>1,771,681</b>	<b>5,320,250</b>	<b>6,700,421</b>	<b>919,487</b>	<b>349,813</b>	<b>3,428,544</b>	<b>2,183,093</b>	<b>14,015,094</b>	<b>34,688,382</b>	

See footnotes at the end of the table.

Table 16-1 – continued

**Rail transportation, commodity movements from Ontario, 2001**

Commodity	Destination								
	Atlantic <sup>1</sup>	Quebec	Ontario	Manitoba	Saskatchewan	Alberta <sup>2</sup>	British Columbia	U.S. and Mexico	Total tonnage for all destinations
Car type <sup>4</sup>									
Containers on flat cars (COFC)	845,939	638,518	144,144	396,065	161,765	1,323,325	1,646,333	209,910	5,365,998
Trailers on flat cars (TOFC)	47,032	133,280	22,340	11,113	979	22,474	10,654	91,920	339,791

1. Atlantic Region includes: Newfoundland and Labrador, Nova Scotia, New Brunswick and Prince Edward Island.

2. Alberta includes Northwest Territories.

3. For confidentiality reasons, other non-metallic mineral products include the tonnage of gypsum.

4. C.O.F.C. and T.O.F.C. tonnage is included in the grand total.

**Source:** *Transport Canada*



Table 16-2

## Rail transportation, commodity movements to Ontario, 2001

Commodity	Origin									Total tonnage from all origins
	Atlantic <sup>1</sup>	Quebec	Ontario	Manitoba	Saskatchewan	Alberta <sup>2</sup>	British Columbia	U.S. and Mexico		
01 Wheat	0	3,112	274,746	1,752,941	4,083,010	260,077	0	40,205	6,414,091	
02 Other cereal grains	1,284	7,932	39,786	61,768	711,978	5,039	0	94,461	922,247	
03 Fresh, chilled or dried vegetables	28,753	43	0	123,551	238,384	4,976	13,706	19,565	428,978	
04 Fresh, chilled or dried fruit and nuts	1,042	147	0	91	0	79	3,287	8,526	13,171	
05 Colza seeds (canola)	0	10,063	13,995	374,749	41,245	22	0	7,551	447,625	
06 Other oil seeds and nuts, other agricultural product	899	1,381	3,521	182,210	386,812	4,854	7,070	128,397	715,142	
07 Animal feed and products	422	168	40,432	31,149	23,333	15,803	348	53,078	164,732	
08 Meat, fish, seafood and preparations	2,550	3,143	0	3,910	798	18,504	8,033	2,708	39,646	
09 Milled grain production and preparations, bakery products	326	3,435	99,181	25,792	64,085	46,144	1,363	255,387	495,712	
10 Animal or vegetable fats, oils and flours	62	256	14,700	59,440	11,620	36,431	44	90,661	213,213	
11 Sugar	335	121,947	18,596	45	0	1,357	2,703	91,808	236,791	
12 Prepared food stuffs, not elsewhere classified	7,402	4,854	118	81,766	523	12,920	14,142	49,014	170,739	
13 Alcoholic and non-alcoholic beverages	28,632	17,527	983	30,486	367	21,692	6,599	114,941	221,226	
14 Sand, gravel and crushed stone	458	1,500	21,149	106	270	0	0	136,238	159,721	
15 Salt	0	181	120,461	0	7,227	631	0	12,097	140,596	
16 Phosphate rock	0	0	0	0	0	0	0	0	0	
17 Sulphur	0	0	523	261	5,869	813	0	0	7,466	
18 Gypsum <sup>3</sup>	.	.	.	.	.	.	.	.	.	
19 Other non-metallic minerals	42,881	5,928	6,692	293	91,855	592	33	387,921	536,195	
20 Iron ores and concentrates	0	0	0	0	0	0	0	0	0	
21 Copper ores and concentrates	0	357,719	0	0	0	18	0	87	357,824	
22 Nickel ores and concentrates	0	9,485	2,019,821	0	0	5	0	5,277	2,034,587	
23 Lead ores and concentrates	0	0	0	0	0	0	0	0	0	
24 Zinc ores and concentrates	0	35,751	0	0	0	0	0	0	35,751	
25 Other metallic ores and concentrates	0	13,996	0	0	0	0	0	6,932	20,928	
26 Coal	0	0	0	0	1,791,644	433,765	1,087,832	285	3,313,526	
27 Gasoline and aviation turbine fuel	0	86,481	63,430	67,212	0	6,159	0	1,775	225,056	
28 Fuel oils and crude petroleum	0	307,436	58,325	165,081	382	45,326	342	2,003	578,895	
29 Gaseous hydrocarbons, including liquid petroleum gas (LPG's)	35,860	61,779	371,657	11,127	1,779	2,513	9	37,886	522,610	
30 Coal coke and petroleum coke	0	0	16,501	0	133,098	38,748	0	10,572	198,918	
31 Other refined petroleum and coal products	64	29,764	225,353	0	7,288	20,824	210	224,197	507,701	
32 Sulphuric acid	152	11,032	215,189	5,103	0	1,804	0	45,778	279,057	
33 Alumina	0	33,365	1,592	0	0	279	0	23,046	58,282	
34 Other basic chemicals	16,754	274,448	256,108	19,258	24,355	617,722	20,380	1,438,583	2,667,609	
35 Potash	455	25	93	0	748,486	0	0	1,266	750,323	
36 Fertilizers (excluding potash)	217	115,588	57,333	52,971	139,768	192,987	558	351,122	910,544	
37 Other chemical products and preparations	1,073	5,876	13,610	343	701	2,977	3,149	263,057	290,786	
38 Plastic and rubber	38,726	87,331	373,170	3,389	703	117,796	10,818	628,529	1,260,462	
39 Logs and other wood in the rough	1,334	0	114,028	154	774	334	5,411	6,740	128,775	
40 Wood chips	148	21,447	113,552	0	0	39	2,231	246	137,662	
41 Lumber	28,483	213,606	126,944	4,446	3,645	213,277	379,557	10,090	980,047	
42 Other wood products (plywood, veneer)	11,874	83,108	57,569	656	31,055	114,959	138,115	28,094	465,430	
43 Wood pulp	39,404	172,274	317,136	18,898	7,871	29,141	41,556	79,694	705,971	
44 Newsprint	4,864	90,030	230,319	3,333	350	404	348	2,013	331,662	
45 Paper and paperboard, except printed products	140,882	147,922	246,907	17,917	12,412	13,815	37,961	222,609	840,425	
46 Cement	0	10,208	8,499	0	0	15,698	0	59	34,463	
47 Other non-metallic mineral products	24,528	23,251	818	339	0	31,177	18,231	87,178	185,523	
48 Iron and steel, primary or semi-finished	775	585,465	804,627	18,840	20,515	3,366	4,244	305,025	1,742,855	
49 Copper, primary or semi-finished	28	0	0	0	0	0	90	0	118	
50 Aluminum, primary or semi-finished	47	301,620	0	0	0	49	1,055	8,114	310,885	
51 Other non-ferrous metal, primary or semi-finished	7,070	18,626	90	63,498	0	10,136	5,776	1,138	106,333	
52 Articles of base metal	672	6,705	34,634	1,864	10,182	3,877	36,902	9,923	104,760	
53 Machinery	1,023	1,288	2,602	1,277	19	1,314	8,171	13,462	29,155	
54 Automobiles and mini-vans	27,187	118	5,910	1,274	136	4,008	98,952	150,745	288,330	
55 Freight motor vehicles	34	23	7,954	82	118	259	23,093	113,982	145,544	
56 Other vehicles	2,158	62	0	109	0	828	401	444	4,002	
57 Parts and accessories for motor vehicles	2,908	143	134,774	170	0	1,035	27,242	472,232	638,504	
58 Other transportation equipment	0	2,363	11,940	4,250	1,344	780	1,687	10,201	32,566	
59 Metallic waste and scrap	7,826	20,977	49,182	1,075	335	5,909	123	62,598	148,025	
60 Non-metallic waste and scrap	1,927	4,013	63,697	27,588	6,062	4,034	510	165,167	272,997	
61 Other manufactured and miscellaneous goods	4,030	12,171	3,376	59,190	5,898	55,040	18,289	11,764	169,758	
62 Pool car traffic of freight forwarder and ship associated	7,932	1,267	142	325	346	3,651	8,747	307	22,716	
63 Mixed loads or unidentified freight	637,802	1,343,983	38,658	125,773	36,145	156,690	1,665,513	247,777	4,252,340	
64 Less than carload shipments	238	0	0	0	0	25	61	0	323	
<b>Total tonnage of all rail commodities</b>	<b>1,161,517</b>	<b>4,672,357</b>	<b>6,700,421</b>	<b>3,404,096</b>	<b>8,652,786</b>	<b>2,580,697</b>	<b>3,704,892</b>	<b>6,542,550</b>	<b>37,419,317</b>	

See footnotes at the end of the table.

Table 16-2 – continued

**Rail transportation, commodity movements to Ontario, 2001**

Commodity	Origin								
	Atlantic <sup>1</sup>	Quebec	Ontario	Manitoba	Saskatchewan	Alberta <sup>2</sup>	British Columbia	U.S. and Mexico	Total tonnage from all origins
Car type <sup>4</sup>									
Containers on flat cars (COFC)	797,409	1,045,467	144,144	336,019	165,812	570,965	1,880,383	284,672	5,224,870
Trailers on flat cars (TOFC)	33,941	167,634	22,340	10,711	1,540	5,467	8,836	147,720	398,190

1. Atlantic Region includes: Newfoundland and Labrador, Nova Scotia, New Brunswick and Prince Edward Island.

2. Alberta includes Northwest Territories.

3. For confidentiality reasons, other non-metallic mineral products include the tonnage of gypsum.

4. C.O.F.C. and T.O.F.C. tonnage is included in the grand total.

**Source:** *Transport Canada*

Table 17-1

## Rail transportation, commodity movements from Manitoba, 2001

Commodity	Destination								
	Atlantic <sup>1</sup>	Quebec	Ontario	Manitoba	Saskatchewan	Alberta <sup>2</sup>	British Columbia	U.S. and Mexico	Total tonnage for all destinations
01 Wheat	1,789	137,328	1,752,941	127,079	0	24,177	944,526	909,974	3,897,813
02 Other cereal grains	429	19,678	61,768	4,751	369	309,441	23,511	598,750	1,018,696
03 Fresh, chilled or dried vegetables	4,894	106,104	123,551	8,593	118	0	20,056	42,812	306,129
04 Fresh, chilled or dried fruit and nuts	0	0	91	0	0	0	18	0	109
05 Colza seeds (canola)	0	2,665	374,749	80	65,895	66,567	276,578	42,879	829,414
06 Other oil seeds and nuts, other agricultural product	5,123	59,266	182,210	0	0	80	8,377	18,820	273,875
07 Animal feed and products	423	21,992	31,149	1,986	1,789	1,146	21,108	12,871	92,464
08 Meat, fish, seafood and preparations	395	16,709	3,910	0	0	29	53,340	0	74,382
09 Milled grain production and preparations, bakery products	9,965	27,127	25,792	489	0	3,331	19,494	24,278	110,475
10 Animal or vegetable fats, oils and flours	5,559	188,862	59,440	1,982	0	1,317	35,102	279,849	572,110
11 Sugar	0	0	45	0	0	0	0	0	45
12 Prepared food stuffs, not elsewhere classified	2,304	22,669	81,766	0	0	102	15,052	2,821	124,715
13 Alcoholic and non-alcoholic beverages	219	6,450	30,486	0	6,009	5,162	1,714	1,384	51,424
14 Sand, gravel and crushed stone	0	0	106	749	0	0	254	88	1,198
15 Salt	0	0	0	0	0	0	0	1,077	1,077
16 Phosphate rock	0	0	0	0	0	0	0	0	0
17 Sulphur	0	0	261	709	0	0	0	0	970
18 Gypsum <sup>3</sup>	0	0	0	0	0	0	0	0	0
19 Other non-metallic minerals	0	25	293	0	0	396	2,495	10,353	13,563
20 Iron ores and concentrates	0	123	0	0	0	0	0	0	123
21 Copper ores and concentrates	0	0	0	0	0	0	0	0	0
22 Nickel ores and concentrates	0	0	0	0	0	0	0	0	0
23 Lead ores and concentrates	0	0	0	0	0	0	0	0	0
24 Zinc ores and concentrates	0	0	0	0	0	0	0	0	0
25 Other metallic ores and concentrates	0	0	0	0	0	0	0	0	0
26 Coal	0	0	0	0	0	0	0	0	0
27 Gasoline and aviation turbine fuel	0	0	67,212	3,355	0	123	0	0	70,690
28 Fuel oils and crude petroleum	0	0	165,081	7,025	0	0	0	0	172,107
29 Gaseous hydrocarbons, including liquid petroleum gas (LPG's)	924	2,384	11,127	0	4,133	1,849	530	53,710	74,657
30 Coal coke and petroleum coke	0	0	0	0	0	0	0	0	0
31 Other refined petroleum and coal products	0	10	0	236	86	78	0	249	659
32 Sulphuric acid	0	0	5,103	5,276	0	628	4,227	19,083	34,316
33 Alumina	0	0	0	90	0	0	0	0	90
34 Other basic chemicals	0	1,183	19,258	262	14,102	3,204	10,387	93,861	142,258
35 Potash	0	0	0	0	180	0	0	181	361
36 Fertilizers (excluding potash)	370	5,884	52,971	13,915	31,574	0	6,947	158,782	270,443
37 Other chemical products and preparations	0	5,506	343	0	120	251	0	147	6,367
38 Plastic and rubber	62	775	3,389	0	0	442	904	74,816	80,387
39 Logs and other wood in the rough	0	0	154	181	0	0	25	17,872	18,233
40 Wood chips	0	0	0	0	0	0	0	211	211
41 Lumber	112	266	4,446	3,779	14	0	163	115,410	124,190
42 Other wood products (plywood, veneer)	7	819	656	253	0	61	178	195,573	197,547
43 Wood pulp	0	0	18,898	3	0	0	0	6,356	25,256
44 Newsprint	0	0	3,333	631	10,273	1,309	167	62,386	78,099
45 Paper and paperboard, except printed products	39	29,943	17,917	10,503	55	11,091	22,885	38,079	130,511
46 Cement	0	0	0	0	268	0	0	0	268
47 Other non-metallic mineral products	951	408	339	0	0	12,523	507	16,142	30,870
48 Iron and steel, primary or semi-finished	149	1,025	18,840	345	0	13,620	689	23,592	58,258
49 Copper, primary or semi-finished	0	2,049	0	0	0	0	0	79,505	81,554
50 Aluminum, primary or semi-finished	0	0	0	0	0	0	0	0	0
51 Other non-ferrous metal, primary or semi-finished	349	4,306	63,498	0	0	0	3,752	10,137	82,042
52 Articles of base metal	97	1,001	1,864	2,907	883	846	949	10,439	18,986
53 Machinery	115	716	1,277	593	0	47	3,667	242	6,656
54 Automobiles and mini-vans	0	155	1,274	192	0	0	685	0	2,306
55 Freight motor vehicles	0	0	82	29	0	0	108	13	231
56 Other vehicles	0	0	109	132	0	0	0	4,158	4,400
57 Parts and accessories for motor vehicles	15	0	170	28	0	6	48	140	407
58 Other transportation equipment	374	0	4,250	42,752	395	318	1,832	5,749	55,669
59 Metallic waste and scrap	0	676	1,075	12,142	125,083	0	2,088	13,933	154,996
60 Non-metallic waste and scrap	15	2,085	27,588	2,043	0	0	5,470	20,792	57,992
61 Other manufactured and miscellaneous goods	1,137	12,365	59,190	676	291	4,640	5,147	32,085	115,531
62 Pool car traffic of freight forwarder and ship associated	48	4,769	325	823	11	5,254	3,659	0	14,889
63 Mixed loads or unidentified freight	7,029	62,755	125,773	1,596	2,944	50,592	65,482	3,018	319,189
64 Less than carload shipments	0	89	0	24	0	23	9	54	199
<b>Total tonnage of all rail commodities</b>	<b>42,891</b>	<b>748,165</b>	<b>3,404,096</b>	<b>256,206</b>	<b>264,590</b>	<b>518,654</b>	<b>1,562,127</b>	<b>3,002,670</b>	<b>9,799,400</b>

See footnotes at the end of the table.

Table 17-1 – continued

**Rail transportation, commodity movements from Manitoba, 2001**

Commodity	Destination								
	Atlantic <sup>1</sup>	Quebec	Ontario	Manitoba	Saskatchewan	Alberta <sup>2</sup>	British Columbia	U.S. and Mexico	Total tonnage for all destinations
Car type <sup>4</sup>									
Containers on flat cars (COFC)	23,178	326,699	336,019	22	9,174	77,545	174,067	22,638	969,341
Trailers on flat cars (TOFC)	628	5,572	10,711	0	211	3,240	912	15,307	36,580

1. Atlantic Region includes: Newfoundland and Labrador, Nova Scotia, New Brunswick and Prince Edward Island.

2. Alberta includes Northwest Territories.

3. For confidentiality reasons, other non-metallic mineral products include the tonnage of gypsum.

4. C.O.F.C. and T.O.F.C. tonnage is included in the grand total.

**Source:** *Transport Canada*

Table 17-2

## Rail transportation, commodity movements to Manitoba, 2001

Commodity	Origin								Total tonnage from all origins
	Atlantic <sup>1</sup>	Quebec	Ontario	Manitoba	Saskatchewan	Alberta <sup>2</sup>	British Columbia	U.S. and Mexico	
01 Wheat	0	0	0	127,079	433,202	76,431	1,796	0	638,508
02 Other cereal grains	0	0	21	4,751	133,825	0	0	21,351	159,948
03 Fresh, chilled or dried vegetables	218	294	199	8,593	64,845	25	349	45	74,567
04 Fresh, chilled or dried fruit and nuts	0	0	0	0	0	0	908	0	908
05 Colza seeds (canola)	0	123	0	80	0	0	38	2,002	2,243
06 Other oil seeds and nuts, other agricultural product	46	223	307	0	2,164	104	389	0	3,233
07 Animal feed and products	0	72	5,224	1,986	41	2,795	250	5,185	15,552
08 Meat, fish, seafood and preparations	82	58	25	0	0	308	69	0	541
09 Milled grain production and preparations, bakery products	52	1,624	2,483	489	45,227	6,936	159	1,448	58,417
10 Animal or vegetable fats, oils and flours	0	0	4,259	1,982	1,251	159	472	21,185	29,308
11 Sugar	221	0	389	0	0	0	25	628	1,263
12 Prepared food stuffs, not elsewhere classified	12,486	874	14,118	0	0	4,140	7,143	368	39,128
13 Alcoholic and non-alcoholic beverages	3,603	2,640	3,747	0	0	71,431	8,109	216	89,746
14 Sand, gravel and crushed stone	0	26	9,410	749	0	0	95	0	10,281
15 Salt	0	0	0	0	64,420	956	0	0	65,376
16 Phosphate rock	0	0	0	0	0	0	0	0	0
17 Sulphur	0	0	0	709	24,757	8,782	0	0	34,247
18 Gypsum <sup>3</sup>	.	.	.	.	.	.	.	.	.
19 Other non-metallic minerals	2,527	254	1,502	0	5,059	987	431	7,385	18,145
20 Iron ores and concentrates	0	0	0	0	0	0	0	0	0
21 Copper ores and concentrates	0	0	0	0	0	0	63,168	486	63,655
22 Nickel ores and concentrates	0	0	0	0	0	0	0	0	0
23 Lead ores and concentrates	0	12,682	0	0	0	0	175	0	12,858
24 Zinc ores and concentrates	0	1,148	0	0	0	0	875	0	2,023
25 Other metallic ores and concentrates	0	0	0	0	0	0	0	78	78
26 Coal	0	0	0	0	62,462	0	0	366,436	428,897
27 Gasoline and aviation turbine fuel	0	16,693	0	3,355	5,582	15,258	0	0	40,888
28 Fuel oils and crude petroleum	0	2,425	0	7,025	12,113	78,552	2,730	0	102,845
29 Gaseous hydrocarbons, including liquid petroleum gas (LPG's)	0	0	0	0	11,567	11,187	530	0	23,284
30 Coal coke and petroleum coke	0	0	0	0	0	0	0	0	0
31 Other refined petroleum and coal products	25	211	15,478	236	14,570	67,853	152	8,382	106,906
32 Sulphuric acid	0	0	1,178	5,276	0	271	0	109	6,834
33 Alumina	0	2,780	91	90	0	0	0	167	3,127
34 Other basic chemicals	601	4,096	22,483	262	4,356	32,325	8,934	25,537	98,594
35 Potash	0	0	0	0	74,322	0	0	0	74,322
36 Fertilizers (excluding potash)	0	22,457	314	13,915	144,326	421,413	1,947	151,990	756,362
37 Other chemical products and preparations	72	1,459	1,115	0	0	4,472	172	2,411	9,701
38 Plastic and rubber	505	9,069	7,350	0	0	78,251	991	16,475	112,642
39 Logs and other wood in the rough	0	4,293	73	181	10,305	0	5,191	0	20,042
40 Wood chips	0	0	0	0	0	0	21	0	21
41 Lumber	620	7,106	27,255	3,779	2,844	25,771	38,079	1,506	106,960
42 Other wood products (plywood, veneer)	2,014	9,162	18,675	253	137	10,493	5,884	920	47,537
43 Wood pulp	0	347	5,422	3	20,648	0	2,555	0	28,974
44 Newsprint	64	134	707	631	0	0	62	19	1,617
45 Paper and paperboard, except printed products	3,271	7,131	86,345	10,503	0	1,535	4,955	5,651	119,390
46 Cement	0	24	39,120	0	0	165,450	11,261	2,312	218,166
47 Other non-metallic mineral products	1,867	1,177	12,271	0	5	24,446	211	2,504	42,480
48 Iron and steel, primary or semi-finished	0	1,703	106,647	345	0	423	1,752	4,953	115,822
49 Copper, primary or semi-finished	0	2,176	0	0	0	0	0	6,437	8,614
50 Aluminum, primary or semi-finished	0	35	0	0	0	0	0	0	35
51 Other non-ferrous metal, primary or semi-finished	20	46,413	28	0	0	40	50	2,029	48,580
52 Articles of base metal	0	490	10,820	2,907	0	1,163	1,071	2,415	18,866
53 Machinery	0	9	982	593	0	195	93	295	2,166
54 Automobiles and mini-vans	961	11,222	23,720	192	0	9	6,598	16,091	58,793
55 Freight motor vehicles	0	107	38,135	29	0	0	610	13,320	52,201
56 Other vehicles	36	121	30	132	0	114	31	170	634
57 Parts and accessories for motor vehicles	0	0	8,682	28	0	0	22	291	9,023
58 Other transportation equipment	0	147	747	42,752	3,942	2,862	15	42,637	93,101
59 Metallic waste and scrap	0	0	23,807	12,142	455	19,017	137	19,449	75,007
60 Non-metallic waste and scrap	96	124	273	2,043	106	159	25	13,120	15,947
61 Other manufactured and miscellaneous goods	330	8,137	29,548	676	270	1,337	1,510	2,652	44,459
62 Pool car traffic of freight forwarder and ship associated	86	13,864	77,605	823	0	1,300	1,273	0	94,951
63 Mixed loads or unidentified freight	12,515	139,235	318,907	1,596	1,368	64,044	72,955	3,473	614,092
64 Less than carload shipments	0	0	0	24	0	0	0	0	24
<b>Total tonnage of all rail commodities</b>	<b>42,317</b>	<b>332,361</b>	<b>919,487</b>	<b>256,206</b>	<b>1,144,164</b>	<b>1,200,993</b>	<b>254,266</b>	<b>772,127</b>	<b>4,921,921</b>

See footnotes at the end of the table.

Table 17-2 – continued

**Rail transportation, commodity movements to Manitoba, 2001**

Commodity	Origin								
	Atlantic <sup>1</sup>	Quebec	Ontario	Manitoba	Saskatchewan	Alberta <sup>2</sup>	British Columbia	U.S. and Mexico	Total tonnage from all origins
Car type <sup>4</sup>									
Containers on flat cars (COFC)	31,171	176,936	396,065	22	1,433	195,183	105,134	4,836	910,780
Trailers on flat cars (TOFC)	1,827	2,935	11,113	0	98	2,434	1,860	10,236	30,503

1. Atlantic Region includes: Newfoundland and Labrador, Nova Scotia, New Brunswick and Prince Edward Island.

2. Alberta includes Northwest Territories.

3. For confidentiality reasons, other non-metallic mineral products include the tonnage of gypsum.

4. C.O.F.C. and T.O.F.C. tonnage is included in the grand total.

**Source:** *Transport Canada*

Table 18-1

## Rail transportation, commodity movements from Saskatchewan, 2001

Commodity	Destination								Total tonnage for all destinations
	Atlantic <sup>1</sup>	Quebec	Ontario	Manitoba	Saskatchewan	Alberta <sup>2</sup>	British Columbia	U.S. and Mexico	
01 Wheat	12,318	712,894	4,083,010	433,202	4,522	75,138	3,624,247	979,892	9,925,223
02 Other cereal grains	6,279	119,441	711,978	133,825	0	306,848	749,787	781,161	2,809,318
03 Fresh, chilled or dried vegetables	40,524	294,343	238,384	64,845	75	289	1,396,193	40,802	2,075,454
04 Fresh, chilled or dried fruit and nuts	0	0	0	0	0	0	0	0	0
05 Colza seeds (canola)	0	0	41,245	0	24,959	210,745	1,437,123	43,309	1,757,381
06 Other oil seeds and nuts, other agricultural product	1,041	20,843	386,812	2,164	0	0	131,358	27,329	569,547
07 Animal feed and products	205	875	23,333	41	0	5,285	242,787	90,886	363,412
08 Meat, fish, seafood and preparations	138	3,039	798	0	0	0	304	0	4,279
09 Milled grain production and preparations, bakery products	1,944	18,341	64,085	45,227	0	17,335	173,570	56,256	376,757
10 Animal or vegetable fats, oils and flours	18,017	89,273	11,620	1,251	2,779	4,868	180,314	392,443	700,565
11 Sugar	0	0	0	0	0	0	0	0	0
12 Prepared food stuffs, not elsewhere classified	256	902	523	0	0	39	1,934	2,268	5,921
13 Alcoholic and non-alcoholic beverages	10	44	367	0	0	1,065	9,793	87	11,366
14 Sand, gravel and crushed stone	0	0	270	0	0	0	0	0	270
15 Salt	48	117	7,227	64,420	32,377	30,340	69,017	27,745	231,291
16 Phosphate rock	0	0	0	0	0	0	0	0	0
17 Sulphur	0	0	5,869	24,757	0	0	0	123,491	154,116
18 Gypsum <sup>3</sup>	0	0	0	0	0	0	0	0	0
19 Other non-metallic minerals	172	5,788	91,855	5,059	0	0	7,972	26,676	137,522
20 Iron ores and concentrates	0	0	0	0	0	0	0	0	0
21 Copper ores and concentrates	0	0	0	0	0	0	0	0	0
22 Nickel ores and concentrates	0	0	0	0	0	0	0	0	0
23 Lead ores and concentrates	0	0	0	0	0	0	0	0	0
24 Zinc ores and concentrates	0	0	0	0	0	0	0	0	0
25 Other metallic ores and concentrates	0	5,086	0	0	0	0	0	0	5,086
26 Coal	419	1,020	1,791,644	62,462	0	107	523	14,852	1,871,027
27 Gasoline and aviation turbine fuel	0	0	0	5,582	0	0	0	0	5,582
28 Fuel oils and crude petroleum	0	0	382	12,113	0	0	0	17,274	29,768
29 Gaseous hydrocarbons, including liquid petroleum gas (LPG's)	4,223	3,113	1,779	11,567	0	2,184	810	96,525	120,199
30 Coal coke and petroleum coke	0	0	133,098	0	4,171	11,039	13,489	61,461	223,257
31 Other refined petroleum and coal products	0	1,068	7,288	14,570	2,038	70	0	369,008	394,042
32 Sulphuric acid	0	0	0	0	0	0	0	0	0
33 Alumina	0	0	0	0	0	0	0	0	0
34 Other basic chemicals	36	1,199	24,355	4,356	4,296	14,653	12,889	7,404	69,189
35 Potash	207,240	69,521	748,486	74,322	46,621	14,289	3,315,467	7,596,328	12,072,275
36 Fertilizers (excluding potash)	2,371	16,244	139,768	144,326	12,027	22,359	11,707	180,145	528,949
37 Other chemical products and preparations	75	109	701	0	0	0	0	2,519	3,405
38 Plastic and rubber	0	11	703	0	0	57	0	2,383	3,154
39 Logs and other wood in the rough	0	0	774	10,305	0	0	0	0	11,079
40 Wood chips	0	19	0	0	0	0	0	0	19
41 Lumber	218	0	3,645	2,844	0	86	79	199,651	206,522
42 Other wood products (plywood, veneer)	939	7,288	31,055	137	0	465	2,950	236,819	279,653
43 Wood pulp	0	0	7,871	20,648	9,169	7,614	246,165	123,124	414,590
44 Newsprint	0	0	350	0	0	0	0	389	739
45 Paper and paperboard, except printed products	0	274	12,412	0	0	5	84	57,923	70,699
46 Cement	0	16	0	0	0	0	0	0	16
47 Other non-metallic mineral products	0	0	0	5	0	14	0	212	230
48 Iron and steel, primary or semi-finished	0	2,748	20,515	0	82	244,140	73,386	95,162	436,032
49 Copper, primary or semi-finished	0	0	0	0	0	0	0	0	0
50 Aluminum, primary or semi-finished	0	0	0	0	0	0	0	0	0
51 Other non-ferrous metal, primary or semi-finished	0	25	0	0	0	0	57	0	82
52 Articles of base metal	16	44	10,182	0	0	45,765	4,178	92,642	152,826
53 Machinery	26	412	19	0	0	0	1,138	41	1,636
54 Automobiles and mini-vans	0	0	136	0	0	0	15	0	151
55 Freight motor vehicles	0	0	118	0	0	2	25	0	145
56 Other vehicles	0	0	0	0	0	0	0	0	0
57 Parts and accessories for motor vehicles	0	0	0	0	0	13	0	21	34
58 Other transportation equipment	0	931	1,344	3,942	7,257	3,622	470	10,089	27,655
59 Metallic waste and scrap	0	1,082	335	455	290	9,820	336	4,322	16,640
60 Non-metallic waste and scrap	0	0	6,062	106	1,056	1,036	2,934	8,661	19,855
61 Other manufactured and miscellaneous goods	140	924	5,898	270	10	151	748	47	8,187
62 Pool car traffic of freight forwarder and ship associated	515	1,286	346	0	71	0	3,567	0	5,784
63 Mixed loads or unidentified freight	7,277	38,831	36,145	1,368	69	922	36,044	2,165	122,821
64 Less than carload shipments	0	0	0	0	0	0	18	0	18
<b>Total tonnage of all rail commodities</b>	<b>304,449</b>	<b>1,417,148</b>	<b>8,652,786</b>	<b>1,144,164</b>	<b>151,871</b>	<b>1,030,362</b>	<b>11,751,477</b>	<b>11,771,510</b>	<b>36,223,766</b>

See footnotes at the end of the table.

Table 18-1 – continued

**Rail transportation, commodity movements from Saskatchewan, 2001**

Commodity	Destination								
	Atlantic <sup>1</sup>	Quebec	Ontario	Manitoba	Saskatchewan	Alberta <sup>2</sup>	British Columbia	U.S. and Mexico	Total tonnage for all destinations
Car type <sup>4</sup>									
Containers on flat cars (COFC)	58,815	371,500	165,812	1,433	104	2,467	239,749	19,614	859,494
Trailers on flat cars (TOFC)	55	474	1,540	98	0	47	221	7,144	9,579

1. Atlantic Region includes: Newfoundland and Labrador, Nova Scotia, New Brunswick and Prince Edward Island.

2. Alberta includes Northwest Territories.

3. For confidentiality reasons, other non-metallic mineral products include the tonnage of gypsum.

4. C.O.F.C. and T.O.F.C. tonnage is included in the grand total.

**Source:** *Transport Canada*



Table 18-2

## Rail transportation, commodity movements to Saskatchewan, 2001

Commodity	Origin								Total tonnage from all origins
	Atlantic <sup>1</sup>	Quebec	Ontario	Manitoba	Saskatchewan	Alberta <sup>2</sup>	British Columbia	U.S. and Mexico	
01 Wheat	0	0	0	0	4,522	0	0	0	4,522
02 Other cereal grains	0	0	25	369	0	0	0	3,086	3,481
03 Fresh, chilled or dried vegetables	25	54	246	118	75	226	70	0	815
04 Fresh, chilled or dried fruit and nuts	0	123	0	0	0	0	766	0	888
05 Colza seeds (canola)	0	0	0	65,895	24,959	0	0	0	90,855
06 Other oil seeds and nuts, other agricultural product	9	0	79	0	0	0	44	0	132
07 Animal feed and products	0	39	3,950	1,789	0	3,504	0	52,522	61,804
08 Meat, fish, seafood and preparations	304	280	157	0	0	0	636	0	1,377
09 Milled grain production and preparations, bakery products	0	412	1,818	0	0	0	17	11,287	13,534
10 Animal or vegetable fats, oils and flours	0	0	0	0	2,779	2,428	908	1,119	7,233
11 Sugar	0	19	511	0	0	0	0	1,971	2,501
12 Prepared food stuffs, not elsewhere classified	18	7	7,668	0	0	2,743	3,663	98	14,197
13 Alcoholic and non-alcoholic beverages	0	1,219	1,215	6,009	0	36,637	1,383	227	46,689
14 Sand, gravel and crushed stone	0	26	0	0	0	1,443	3,866	20	5,356
15 Salt	0	0	130	0	32,377	516	0	0	33,022
16 Phosphate rock	0	0	0	0	0	0	0	0	0
17 Sulphur	0	0	0	0	0	29	0	0	29
18 Gypsum <sup>3</sup>	.	.	.	.	.	.	.	.	.
19 Other non-metallic minerals	0	280	0	0	0	1,618	0	5,070	6,969
20 Iron ores and concentrates	0	0	0	0	0	0	0	11,393	11,393
21 Copper ores and concentrates	0	0	0	0	0	0	0	0	0
22 Nickel ores and concentrates	0	0	0	0	0	0	0	0	0
23 Lead ores and concentrates	0	0	0	0	0	0	0	0	0
24 Zinc ores and concentrates	0	0	0	0	0	0	0	0	0
25 Other metallic ores and concentrates	0	0	90	0	0	0	0	0	90
26 Coal	0	0	0	0	0	0	13,646	0	13,646
27 Gasoline and aviation turbine fuel	0	0	0	0	0	0	0	0	0
28 Fuel oils and crude petroleum	0	0	0	0	0	3,602	758	146	4,506
29 Gaseous hydrocarbons, including liquid petroleum gas (LPG's)	0	0	0	4,133	0	23,124	1,093	8,381	36,731
30 Coal coke and petroleum coke	0	0	0	0	4,171	0	0	600	4,771
31 Other refined petroleum and coal products	0	1,156	3,310	86	2,038	28,254	5,243	13,468	53,556
32 Sulphuric acid	0	0	0	0	0	8,567	0	0	8,567
33 Alumina	0	2,227	0	0	0	0	0	0	2,227
34 Other basic chemicals	0	10,217	15,317	14,102	4,296	48,310	1,336	32,113	125,691
35 Potash	0	0	0	180	46,621	454	0	0	47,254
36 Fertilizers (excluding potash)	0	67	0	31,574	12,027	557,857	0	82,212	683,737
37 Other chemical products and preparations	49	2,406	1,863	120	0	1,142	147	26,794	32,521
38 Plastic and rubber	511	4,730	4,689	0	0	2,799	1,065	16,847	30,641
39 Logs and other wood in the rough	465	2,459	0	0	0	0	5,270	0	8,194
40 Wood chips	0	0	0	0	0	0	0	0	0
41 Lumber	0	19	177	14	0	0	1,171	1,447	2,828
42 Other wood products (plywood, veneer)	153	6,217	7,025	0	0	84	388	203	14,071
43 Wood pulp	0	0	0	0	9,169	0	344	65	9,578
44 Newsprint	0	0	0	10,273	0	0	192	0	10,465
45 Paper and paperboard, except printed products	898	1,099	6,584	55	0	1,356	2,149	4,828	16,970
46 Cement	0	0	972	268	0	79,872	0	74	81,186
47 Other non-metallic mineral products	596	2,428	5,224	0	0	48,900	505	35,185	92,839
48 Iron and steel, primary or semi-finished	0	12,741	12,078	0	82	0	4,100	83,681	112,682
49 Copper, primary or semi-finished	0	704	0	0	0	0	0	0	704
50 Aluminum, primary or semi-finished	0	418	294	0	0	0	0	0	712
51 Other non-ferrous metal, primary or semi-finished	0	2,916	4,490	0	0	0	43	1,182	8,630
52 Articles of base metal	0	460	12,258	883	0	6,203	69	10,251	30,124
53 Machinery	12	59	1,448	0	0	468	58	1,369	3,414
54 Automobiles and mini-vans	413	677	10,081	0	0	0	1,002	9,489	21,661
55 Freight motor vehicles	0	472	30,071	0	0	16	0	13,030	43,589
56 Other vehicles	0	35	0	0	0	0	0	0	35
57 Parts and accessories for motor vehicles	0	0	1,806	0	0	0	0	5	1,811
58 Other transportation equipment	0	368	312	395	7,257	898	53	8,785	18,068
59 Metallic waste and scrap	0	25	60,621	125,083	290	249,665	45,250	270,410	751,343
60 Non-metallic waste and scrap	0	379	0	0	1,056	0	0	507	1,942
61 Other manufactured and miscellaneous goods	641	3,683	10,974	291	10	1,860	504	826	18,790
62 Pool car traffic of freight forwarder and ship associated	0	4,751	21,353	11	71	485	103	27	26,801
63 Mixed loads or unidentified freight	3,280	48,855	122,907	2,944	69	12,163	22,028	539	212,784
64 Less than carload shipments	0	0	70	0	0	0	0	0	70
<b>Total tonnage of all rail commodities</b>	<b>7,375</b>	<b>112,026</b>	<b>349,813</b>	<b>264,590</b>	<b>151,871</b>	<b>1,125,224</b>	<b>117,868</b>	<b>709,258</b>	<b>2,838,025</b>

See footnotes at the end of the table.

Table 18-2 – continued

**Rail transportation, commodity movements to Saskatchewan, 2001**

Commodity	Origin								Total tonnage from all origins
	Atlantic <sup>1</sup>	Quebec	Ontario	Manitoba	Saskatchewan	Alberta <sup>2</sup>	British Columbia	U.S. and Mexico	
Car type <sup>4</sup>									
Containers on flat cars (COFC)	4,541	68,777	161,765	9,174	104	63,336	32,408	5,959	346,064
Trailers on flat cars (TOFC)	0	455	979	211	0	248	375	11,258	13,525

1. Atlantic Region includes: Newfoundland and Labrador, Nova Scotia, New Brunswick and Prince Edward Island.

2. Alberta includes Northwest Territories.

3. For confidentiality reasons, other non-metallic mineral products include the tonnage of gypsum.

4. C.O.F.C. and T.O.F.C. tonnage is included in the grand total.

**Source:** *Transport Canada*

Table 19-1

## Rail transportation, commodity movements from Alberta, 2001

Commodity	Destination									Total tonnage for all destinations
	Atlantic <sup>1</sup>	Quebec	Ontario	Manitoba	Saskatchewan	Alberta <sup>2</sup>	British Columbia	U.S. and Mexico		
01 Wheat	0	21,460	260,077	76,431	0	11,899	5,024,328	104,770	5,498,964	
02 Other cereal grains	1,836	1,086	5,039	0	0	13,533	408,931	45,987	476,411	
03 Fresh, chilled or dried vegetables	987	23,022	4,976	25	226	0	468,453	16,987	514,676	
04 Fresh, chilled or dried fruit and nuts	0	20	79	0	0	0	0	0	99	
05 Colza seeds (canola)	16	0	22	0	0	7,482	1,745,743	307	1,753,570	
06 Other oil seeds and nuts, other agricultural product	100	2,055	4,854	104	0	0	21,109	203	28,425	
07 Animal feed and products	217	7,464	15,803	2,795	3,504	10,570	620,301	229,880	890,534	
08 Meat, fish, seafood and preparations	1,110	14,197	18,504	308	0	0	7,077	0	41,195	
09 Milled grain production and preparations, bakery products	2,605	32,781	46,144	6,936	0	60	310,804	57,870	457,201	
10 Animal or vegetable fats, oils and flours	2,756	9,877	36,431	159	2,428	4,953	316,505	164,923	538,031	
11 Sugar	27	90	1,357	0	0	0	21	2,897	4,392	
12 Prepared food stuffs, not elsewhere classified	180	16,347	12,920	4,140	2,743	90	14,177	46,113	96,709	
13 Alcoholic and non-alcoholic beverages	2,058	5,938	21,692	71,431	36,637	386	31,530	16,789	186,460	
14 Sand, gravel and crushed stone	417	0	0	0	1,443	1,143,225	23,817	0	1,168,902	
15 Salt	0	0	631	956	516	22,270	50,685	0	75,059	
16 Phosphate rock	0	0	0	0	0	0	0	0	0	
17 Sulphur	21	26	813	8,782	29	57	4,089,916	976,511	5,076,155	
18 Gypsum <sup>3</sup>	0	0	0	0	0	0	0	0	0	
19 Other non-metallic minerals	224	738	592	987	1,618	259	1,955	287	6,660	
20 Iron ores and concentrates	0	0	0	0	0	0	0	0	0	
21 Copper ores and concentrates	0	0	18	0	0	0	0	0	18	
22 Nickel ores and concentrates	0	0	5	0	0	0	0	0	5	
23 Lead ores and concentrates	0	0	0	0	0	0	0	0	0	
24 Zinc ores and concentrates	0	0	0	0	0	0	0	0	0	
25 Other metallic ores and concentrates	0	0	0	0	0	0	1,306	0	1,306	
26 Coal	0	0	433,765	0	0	418,163	5,074,145	21,849	5,947,922	
27 Gasoline and aviation turbine fuel	0	73	6,159	15,258	0	49,332	143,713	0	214,534	
28 Fuel oils and crude petroleum	0	0	45,326	78,552	3,602	275,996	805,678	163,516	1,372,670	
29 Gaseous hydrocarbons, including liquid petroleum gas (LPG's)	19,945	23,428	2,513	11,187	23,124	153,049	111,600	1,039,150	1,383,997	
30 Coal coke and petroleum coke	0	133,095	38,748	0	0	0	423,368	13,152	608,362	
31 Other refined petroleum and coal products	44	8,167	20,824	67,853	28,254	76,848	182,235	69,343	453,567	
32 Sulphuric acid	0	0	1,804	271	8,567	35,873	25,312	14,436	86,263	
33 Alumina	0	0	279	0	0	0	0	0	279	
34 Other basic chemicals	11,221	174,607	617,722	32,325	48,310	218,949	2,016,614	1,077,505	4,197,253	
35 Potash	0	0	0	0	454	0	0	13,659	14,112	
36 Fertilizers (excluding potash)	13,195	56,286	192,987	421,413	557,857	244,847	193,452	1,479,820	3,159,857	
37 Other chemical products and preparations	119	2,404	2,977	4,472	1,142	1,009	29,393	135,765	177,279	
38 Plastic and rubber	15,726	89,523	117,796	78,251	2,799	110,830	229,080	1,278,010	1,922,014	
39 Logs and other wood in the rough	261	54	334	0	0	0	59	115	824	
40 Wood chips	17	106	39	0	0	0	57,795	122	58,079	
41 Lumber	15,124	76,400	213,277	25,771	0	5,857	31,944	1,256,895	1,625,267	
42 Other wood products (plywood, veneer)	10,885	109,320	114,959	10,493	84	3,032	61,442	1,383,757	1,693,970	
43 Wood pulp	1,403	10,962	29,141	0	0	70,841	1,369,916	1,002,700	2,484,962	
44 Newsprint	0	0	404	0	0	29,866	3,261	149,603	183,134	
45 Paper and paperboard, except printed products	5	4,872	13,815	1,535	1,356	76	4,433	1,286	27,377	
46 Cement	0	0	15,698	165,450	79,872	159,449	53,348	325,395	799,211	
47 Other non-metallic mineral products	10,458	48,144	31,177	24,446	48,900	1,971	18,225	50,995	234,316	
48 Iron and steel, primary or semi-finished	586	1,218	3,366	423	0	0	15,802	21,418	42,812	
49 Copper, primary or semi-finished	0	119	0	0	0	0	0	0	119	
50 Aluminum, primary or semi-finished	0	329	49	0	0	0	20	319	717	
51 Other non-ferrous metal, primary or semi-finished	0	25,465	10,136	40	0	0	6,624	0	42,265	
52 Articles of base metal	192	259	3,877	1,163	6,203	4,179	1,607	35,144	52,626	
53 Machinery	1,278	268	1,314	195	468	1,819	1,666	1,526	8,534	
54 Automobiles and mini-vans	0	677	4,008	9	0	0	587	166	5,447	
55 Freight motor vehicles	3	317	259	0	16	58	222	1,421	2,295	
56 Other vehicles	0	8,585	828	114	0	0	3	65	9,595	
57 Parts and accessories for motor vehicles	5	97	1,035	0	0	0	55	253	1,444	
58 Other transportation equipment	248	377	780	2,862	898	16,002	613	5,040	26,819	
59 Metallic waste and scrap	37	1,641	5,909	19,017	249,665	10,901	76,423	36,253	399,847	
60 Non-metallic waste and scrap	153	414	4,034	159	0	13,739	28,820	73,169	120,488	
61 Other manufactured and miscellaneous goods	674	10,097	55,040	1,337	1,860	201	6,359	2,685	78,253	
62 Pool car traffic of freight forwarder and ship associated	1,700	1,395	3,651	1,300	485	50	55,606	6	64,194	
63 Mixed loads or unidentified freight	14,856	86,590	156,690	64,044	12,163	1,868	241,730	9,548	587,488	
64 Less than carload shipments	0	0	25	0	0	0	27	66	118	
<b>Total tonnage of all rail commodities</b>	<b>130,688</b>	<b>1,010,386</b>	<b>2,580,697</b>	<b>1,200,993</b>	<b>1,125,224</b>	<b>3,119,584</b>	<b>24,407,836</b>	<b>11,327,672</b>	<b>44,903,079</b>	

See footnotes at the end of the table.

Table 19-1 – continued

**Rail transportation, commodity movements from Alberta, 2001**

Commodity	Destination								
	Atlantic <sup>1</sup>	Quebec	Ontario	Manitoba	Saskatchewan	Alberta <sup>2</sup>	British Columbia	U.S. and Mexico	Total tonnage for all destinations
Car type <sup>4</sup>									
Containers on flat cars (COFC)	41,077	433,689	570,965	195,183	63,336	4,004	955,143	60,892	2,324,288
Trailers on flat cars (TOFC)	136	1,694	5,467	2,434	248	64	2,280	67,496	79,817

1. Atlantic Region includes: Newfoundland and Labrador, Nova Scotia, New Brunswick and Prince Edward Island.

2. Alberta includes Northwest Territories.

3. For confidentiality reasons, other non-metallic mineral products include the tonnage of gypsum.

4. C.O.F.C. and T.O.F.C. tonnage is included in the grand total.

**Source:** *Transport Canada*

Table 19-2

## Rail transportation, commodity movements to Alberta, 2001

Commodity	Origin								Total tonnage from all origins
	Atlantic <sup>1</sup>	Quebec	Ontario	Manitoba	Saskatchewan	Alberta <sup>2</sup>	British Columbia	U.S. and Mexico	
01 Wheat	0	0	797	24,177	75,138	11,899	0	14,332	126,342
02 Other cereal grains	0	45	2,642	309,441	306,848	13,533	1,090	547,567	1,181,166
03 Fresh, chilled or dried vegetables	97	192	269	0	289	0	115	40	1,002
04 Fresh, chilled or dried fruit and nuts	0	234	297	0	0	0	1,535	0	2,066
05 Colza seeds (canola)	0	0	0	66,567	210,745	7,482	95	9,510	294,399
06 Other oil seeds and nuts, other agricultural product	343	339	289	80	0	0	51	73	1,174
07 Animal feed and products	0	2,546	23,634	1,146	5,285	10,570	3,761	155,623	202,565
08 Meat, fish, seafood and preparations	1,366	570	178	29	0	0	187	0	2,330
09 Milled grain production and preparations, bakery products	162	2,033	8,519	3,331	17,335	60	807	7,435	39,681
10 Animal or vegetable fats, oils and flours	51	115	7,693	1,317	4,868	4,953	3,143	29,376	51,515
11 Sugar	296	996	6,291	0	0	0	26,280	28,731	62,594
12 Prepared food stuffs, not elsewhere classified	528	4,231	51,973	102	39	90	778	6,144	63,884
13 Alcoholic and non-alcoholic beverages	5,758	6,709	28,191	5,162	1,065	386	45,746	9,242	102,257
14 Sand, gravel and crushed stone	0	30,653	45,280	0	0	1,143,225	1,431	394,450	1,615,038
15 Salt	0	0	0	0	30,340	22,270	0	180	52,789
16 Phosphate rock	0	0	780,443	0	0	0	93,624	22	874,089
17 Sulphur	0	0	0	0	0	57	0	28	85
18 Gypsum <sup>3</sup>	.	.	.	.	.	.	.	.	.
19 Other non-metallic minerals	576	2,517	13,364	396	0	259	107,296	133,036	257,444
20 Iron ores and concentrates	0	0	0	0	0	0	0	3,736	3,736
21 Copper ores and concentrates	0	0	0	0	0	0	0	0	0
22 Nickel ores and concentrates	0	0	0	0	0	0	0	0	0
23 Lead ores and concentrates	0	0	0	0	0	0	0	0	0
24 Zinc ores and concentrates	0	0	0	0	0	0	0	64	64
25 Other metallic ores and concentrates	0	0	0	0	0	0	0	1,272	1,272
26 Coal	0	0	0	0	107	418,163	28,388	6,539	453,197
27 Gasoline and aviation turbine fuel	0	1,044	0	123	0	49,332	171	11,371	62,041
28 Fuel oils and crude petroleum	0	0	0	0	0	275,996	3,141	388	279,525
29 Gaseous hydrocarbons, including liquid petroleum gas (LPG's)	16,088	0	0	1,849	2,184	153,049	4,521	38,346	216,037
30 Coal coke and petroleum coke	0	0	0	0	11,039	0	0	76,706	87,745
31 Other refined petroleum and coal products	0	4,657	99,894	78	70	76,848	13,469	110,705	305,720
32 Sulphuric acid	0	0	3,830	628	0	35,873	86	123	40,539
33 Alumina	0	8,488	724	0	0	0	0	1,170	10,382
34 Other basic chemicals	289	13,629	36,196	3,204	14,653	218,949	122,062	246,078	655,059
35 Potash	0	9	0	0	14,289	0	0	0	14,298
36 Fertilizers (excluding potash)	0	5,795	1,274	0	22,359	244,847	1,185	83,246	358,706
37 Other chemical products and preparations	440	6,058	12,570	251	0	1,009	289	47,606	68,223
38 Plastic and rubber	4,740	19,903	57,577	442	57	110,830	5,074	77,719	276,341
39 Logs and other wood in the rough	0	873	321	0	0	0	3,255	0	4,449
40 Wood chips	0	0	0	0	0	0	0	0	0
41 Lumber	1,363	7,387	9,299	0	86	5,857	32,191	7,373	63,555
42 Other wood products (plywood, veneer)	2,366	15,954	27,860	61	465	3,032	26,786	19,796	96,319
43 Wood pulp	0	0	0	0	7,614	70,841	28,169	22,176	128,800
44 Newsprint	6	324	434	1,309	0	29,866	63,696	253	95,889
45 Paper and paperboard, except printed products	9,206	7,536	48,753	11,091	5	76	18,503	49,234	144,405
46 Cement	0	0	1,962	0	0	159,449	10,346	210,833	382,589
47 Other non-metallic mineral products	7,343	5,126	104,690	12,523	14	1,971	847	59,973	192,487
48 Iron and steel, primary or semi-finished	21	33,734	292,144	13,620	244,140	0	21,764	177,027	782,448
49 Copper, primary or semi-finished	0	272	0	0	0	0	0	95	368
50 Aluminum, primary or semi-finished	0	1,228	12	0	0	0	6,213	16,276	23,729
51 Other non-ferrous metal, primary or semi-finished	59,070	8	94	0	0	0	19,017	143	78,333
52 Articles of base metal	418	5,527	169,248	846	45,765	4,179	32,681	162,766	421,431
53 Machinery	5,026	1,499	6,502	47	0	1,819	5,113	32,116	52,122
54 Automobiles and mini-vans	4,540	7,805	65,384	0	0	0	8,489	78,196	164,413
55 Freight motor vehicles	143	98	104,822	0	2	58	774	91,970	197,866
56 Other vehicles	792	9,719	144	0	0	0	2,420	781	13,855
57 Parts and accessories for motor vehicles	0	67	25,540	6	13	0	66	620	26,312
58 Other transportation equipment	392	378	2,479	318	3,622	16,002	1,091	7,036	31,318
59 Metallic waste and scrap	0	57	67	0	9,820	10,901	39,192	3,379	63,417
60 Non-metallic waste and scrap	22	981	373	0	1,036	13,739	2,226	7,363	25,739
61 Other manufactured and miscellaneous goods	1,442	38,770	67,396	4,640	151	201	5,338	11,134	129,072
62 Pool car traffic of freight forwarder and ship associated	183	63,504	299,568	5,254	0	50	1,387	5,881	375,828
63 Mixed loads or unidentified freight	15,390	413,050	1,019,532	50,592	922	1,868	193,152	47,721	1,742,226
64 Less than carload shipments	73	70	0	23	0	0	15	0	180
<b>Total tonnage of all rail commodities</b>	<b>138,529</b>	<b>724,727</b>	<b>3,428,544</b>	<b>518,654</b>	<b>1,030,362</b>	<b>3,119,584</b>	<b>987,054</b>	<b>3,052,994</b>	<b>13,000,448</b>

See footnotes at the end of the table.

Table 19-2 – continued

**Rail transportation, commodity movements to Alberta, 2001**

Commodity	Origin								Total tonnage from all origins
	Atlantic <sup>1</sup>	Quebec	Ontario	Manitoba	Saskatchewan	Alberta <sup>2</sup>	British Columbia	U.S. and Mexico	
Car type <sup>4</sup>									
Containers on flat cars (COFC)	38,745	539,214	1,323,325	77,545	2,467	4,004	267,734	67,765	2,320,800
Trailers on flat cars (TOFC)	299	3,369	22,474	3,240	47	64	4,305	92,341	126,138

1. Atlantic Region includes: Newfoundland and Labrador, Nova Scotia, New Brunswick and Prince Edward Island.

2. Alberta includes Northwest Territories.

3. For confidentiality reasons, other non-metallic mineral products include the tonnage of gypsum.

4. C.O.F.C. and T.O.F.C. tonnage is included in the grand total.

**Source:** *Transport Canada*

Table 20-1

## Rail transportation, commodity movements from British Columbia, 2001

Commodity	Destination								Total tonnage for all destinations
	Atlantic <sup>1</sup>	Quebec	Ontario	Manitoba	Saskatchewan	Alberta <sup>2</sup>	British Columbia	U.S. and Mexico	
01 Wheat	0	89	0	1,796	0	0	72,489	0	74,374
02 Other cereal grains	0	431	0	0	0	1,090	14,048	2,693	18,262
03 Fresh, chilled or dried vegetables	97	3,919	13,706	349	70	115	8,680	22	26,958
04 Fresh, chilled or dried fruit and nuts	1,689	14,833	3,287	908	766	1,535	0	0	23,018
05 Colza seeds (canola)	0	0	0	38	0	95	22,623	0	22,757
06 Other oil seeds and nuts, other agricultural product	143	6,417	7,070	389	44	51	0	4,106	18,219
07 Animal feed and products	3,585	541	348	250	0	3,761	6,549	466	15,499
08 Meat, fish, seafood and preparations	1,087	44,889	8,033	69	636	187	0	567	55,468
09 Milled grain production and preparations, bakery products	22	1,246	1,363	159	17	807	213	39	3,865
10 Animal or vegetable fats, oils and flours	84	0	44	472	908	3,143	564	93	5,308
11 Sugar	0	418	2,703	25	0	26,280	89	18	29,533
12 Prepared food stuffs, not elsewhere classified	215	7,694	14,142	7,143	3,663	778	0	728	34,363
13 Alcoholic and non-alcoholic beverages	933	1,450	6,599	8,109	1,383	45,746	0	402	64,621
14 Sand, gravel and crushed stone	0	35	0	95	3,866	1,431	74,267	0	79,694
15 Salt	0	0	0	0	0	0	99	0	99
16 Phosphate rock	0	0	0	0	0	93,624	0	0	93,624
17 Sulphur	0	0	0	0	0	0	0	0	0
18 Gypsum <sup>3</sup>	0	0	0	0	0	0	0	0	0
19 Other non-metallic minerals	0	151	33	431	0	107,296	112,075	4,506	224,492
20 Iron ores and concentrates	0	0	0	0	0	0	0	0	0
21 Copper ores and concentrates	0	7,078	0	63,168	0	0	400,338	15,737	486,321
22 Nickel ores and concentrates	0	17	0	0	0	0	0	0	17
23 Lead ores and concentrates	0	999	0	175	0	0	143,030	7,166	151,369
24 Zinc ores and concentrates	0	0	0	875	0	0	1,068	0	1,943
25 Other metallic ores and concentrates	0	92,015	0	0	0	0	2,779	0	94,794
26 Coal	0	0	1,087,832	0	13,646	28,388	24,017,038	1,466,079	26,612,982
27 Gasoline and aviation turbine fuel	0	0	0	0	0	171	0	0	171
28 Fuel oils and crude petroleum	0	0	342	2,730	758	3,141	10,666	1,584	19,220
29 Gaseous hydrocarbons, including liquid petroleum gas (LPG's)	0	10	9	530	1,093	4,521	17,678	1,464	25,306
30 Coal coke and petroleum coke	0	0	0	0	0	0	0	0	0
31 Other refined petroleum and coal products	16	4	210	152	5,243	13,469	4,571	3,288	26,952
32 Sulphuric acid	0	1	0	0	0	86	39,281	12,635	52,004
33 Alumina	0	0	0	0	0	0	0	0	0
34 Other basic chemicals	21,976	25,158	20,380	8,934	1,336	122,062	108,733	45,973	354,551
35 Potash	0	0	0	0	0	0	0	0	0
36 Fertilizers (excluding potash)	0	275	558	1,947	0	1,185	1,655	46,093	51,712
37 Other chemical products and preparations	22	1,886	3,149	172	147	289	0	14,413	20,078
38 Plastic and rubber	178	6,737	10,818	991	1,065	5,074	778	3,226	28,866
39 Logs and other wood in the rough	897	219	5,411	5,191	5,270	3,255	33,001	16,233	69,477
40 Wood chips	0	902	2,231	21	0	0	1,655,207	1,997	1,660,357
41 Lumber	26,178	116,786	379,557	38,079	1,171	32,191	154,120	3,253,068	4,001,150
42 Other wood products (plywood, veneer)	28,170	126,423	138,115	5,884	388	26,786	24,176	356,391	706,333
43 Wood pulp	31,321	9,765	41,556	2,555	344	28,169	981,602	688,054	1,783,365
44 Newsprint	51	828	348	62	192	63,696	836	189,592	255,606
45 Paper and paperboard, except printed products	68	18,366	37,961	4,955	2,149	18,503	12,331	275,139	369,473
46 Cement	0	18	0	11,261	0	10,346	38,906	48,152	108,683
47 Other non-metallic mineral products	624	4,138	18,231	211	505	847	21,429	14,539	60,524
48 Iron and steel, primary or semi-finished	20	1,344	4,244	1,752	4,100	21,764	70	124	33,417
49 Copper, primary or semi-finished	0	0	90	0	0	0	0	0	90
50 Aluminum, primary or semi-finished	0	6,803	1,055	0	0	6,213	0	13,103	27,175
51 Other non-ferrous metal, primary or semi-finished	54	13,365	5,776	50	43	19,017	279	56,389	94,971
52 Articles of base metal	2,052	10,055	36,902	1,071	69	32,681	1,508	17,946	102,285
53 Machinery	322	4,511	8,171	93	58	5,113	1,931	922	21,120
54 Automobiles and mini-vans	21,303	132,255	98,952	6,598	1,002	8,489	0	38	268,636
55 Freight motor vehicles	1,300	9,522	23,093	610	0	774	0	0	35,299
56 Other vehicles	0	571	401	31	0	2,420	86	0	3,508
57 Parts and accessories for motor vehicles	0	637	27,242	22	0	66	0	101	28,067
58 Other transportation equipment	72	498	1,687	15	53	1,091	16,112	6,911	26,438
59 Metallic waste and scrap	0	342	123	137	45,250	39,192	8,804	7,180	101,028
60 Non-metallic waste and scrap	0	2,576	510	25	0	2,226	201,456	25,621	232,414
61 Other manufactured and miscellaneous goods	404	8,492	18,289	1,510	504	5,338	182	2,504	37,224
62 Pool car traffic of freight forwarder and ship associated	39	15,381	8,747	1,273	103	1,387	0	0	26,929
63 Mixed loads or unidentified freight	9,585	884,812	1,665,513	72,955	22,028	193,152	75	221,338	3,069,459
64 Less than carload shipments	0	19	61	0	0	15	0	0	94
<b>Total tonnage of all rail commodities</b>	<b>152,505</b>	<b>1,584,915</b>	<b>3,704,892</b>	<b>254,266</b>	<b>117,868</b>	<b>987,054</b>	<b>28,211,421</b>	<b>6,826,638</b>	<b>41,839,559</b>

See footnotes at the end of the table.

Table 20-1 – continued

**Rail transportation, commodity movements from British Columbia, 2001**

Commodity	Destination								
	Atlantic <sup>1</sup>	Quebec	Ontario	Manitoba	Saskatchewan	Alberta <sup>2</sup>	British Columbia	U.S. and Mexico	Total tonnage for all destinations
Car type <sup>4</sup>									
Containers on flat cars (COFC)	21,865	1,157,633	1,880,383	105,134	32,408	267,734	75	278,418	3,743,651
Trailers on flat cars (TOFC)	210	10,845	8,836	1,860	375	4,305	0	77,005	103,434

1. Atlantic Region includes: Newfoundland and Labrador, Nova Scotia, New Brunswick and Prince Edward Island.

2. Alberta includes Northwest Territories.

3. For confidentiality reasons, other non-metallic mineral products include the tonnage of gypsum.

4. C.O.F.C. and T.O.F.C. tonnage is included in the grand total.

**Source:** *Transport Canada*



Table 20-2

## Rail transportation, commodity movements to British Columbia, 2001

Commodity	Origin								Total tonnage from all origins
	Atlantic <sup>1</sup>	Quebec	Ontario	Manitoba	Saskatchewan	Alberta <sup>2</sup>	British Columbia	U.S. and Mexico	
01 Wheat	0	0	34	944,526	3,624,247	5,024,328	72,489	0	9,665,623
02 Other cereal grains	0	23	4,216	23,511	749,787	408,931	14,048	75,784	1,276,298
03 Fresh, chilled or dried vegetables	243	442	1,719	20,056	1,396,193	468,453	8,680	541	1,896,327
04 Fresh, chilled or dried fruit and nuts	0	544	56	18	0	0	0	139	757
05 Colza seeds (canola)	0	0	100	276,578	1,437,123	1,745,743	22,623	9,753	3,491,920
06 Other oil seeds and nuts, other agricultural product	88	11,400	7,864	8,377	131,358	21,109	0	4,605	184,801
07 Animal feed and products	806	8,598	2,459	21,108	242,787	620,301	6,549	129,209	1,031,817
08 Meat, fish, seafood and preparations	975	59,067	19,002	53,340	304	7,077	0	0	139,765
09 Milled grain production and preparations, bakery products	65	2,551	8,334	19,494	173,570	310,804	213	21,187	536,219
10 Animal or vegetable fats, oils and flours	186	2,429	8,404	35,102	180,314	316,505	564	41,070	584,574
11 Sugar	280	2,234	4,217	0	0	21	89	16,559	23,399
12 Prepared food stuffs, not elsewhere classified	217	15,961	25,940	15,052	1,934	14,177	0	5,968	79,249
13 Alcoholic and non-alcoholic beverages	2,657	6,790	21,469	1,714	9,793	31,530	0	3,300	77,253
14 Sand, gravel and crushed stone	0	10,162	22	254	0	23,817	74,267	5,608	114,130
15 Salt	0	0	280	0	69,017	50,685	99	0	120,081
16 Phosphate rock	0	0	0	0	0	0	0	0	0
17 Sulphur	0	0	63	0	0	4,089,916	0	0	4,089,978
18 Gypsum <sup>3</sup>	.	.	.	.	.	.	.	.	.
19 Other non-metallic minerals	1,667	70,546	6,790	2,495	7,972	1,955	112,075	26,424	229,924
20 Iron ores and concentrates	0	0	0	0	0	0	0	12,392	12,392
21 Copper ores and concentrates	0	0	20	0	0	0	400,338	0	400,358
22 Nickel ores and concentrates	0	0	0	0	0	0	0	0	0
23 Lead ores and concentrates	0	1,618	0	0	0	0	143,030	29,902	174,549
24 Zinc ores and concentrates	0	40,759	0	0	0	0	1,068	19,962	61,788
25 Other metallic ores and concentrates	0	1,318	13	0	0	1,306	2,779	181	5,596
26 Coal	0	0	0	0	523	5,074,145	24,017,038	0	29,091,707
27 Gasoline and aviation turbine fuel	0	689	0	0	0	143,713	0	0	144,401
28 Fuel oils and crude petroleum	0	6	153	0	0	805,678	10,666	153	816,657
29 Gaseous hydrocarbons, including liquid petroleum gas (LPG's)	0	0	0	530	810	111,600	17,678	69	130,687
30 Coal coke and petroleum coke	0	0	0	0	13,489	423,368	0	5,109	441,966
31 Other refined petroleum and coal products	0	1,170	30,782	0	0	182,235	4,571	3,108	221,867
32 Sulphuric acid	0	1,184	9,552	4,227	0	25,312	39,281	1,072	80,628
33 Alumina	0	3,694	19	0	0	0	0	4,513	8,226
34 Other basic chemicals	26	31,311	16,297	10,387	12,889	2,016,614	108,733	88,851	2,285,108
35 Potash	0	0	0	0	3,315,467	0	0	0	3,315,467
36 Fertilizers (excluding potash)	0	175	0	6,947	11,707	193,452	1,655	17,691	231,627
37 Other chemical products and preparations	31	11,880	4,660	0	0	29,393	0	8,996	54,959
38 Plastic and rubber	1,889	16,129	31,617	904	0	229,080	778	41,015	321,410
39 Logs and other wood in the rough	0	521	304	25	0	59	33,001	0	33,910
40 Wood chips	0	801	0	0	0	57,795	1,655,207	77	1,713,880
41 Lumber	114	12,397	4,066	163	79	31,944	154,120	1,474	204,357
42 Other wood products (plywood, veneer)	1,725	14,285	13,183	178	2,950	61,442	24,176	9,994	127,932
43 Wood pulp	0	3,008	77,501	0	246,165	1,369,916	981,602	10,491	2,688,682
44 Newsprint	289	479	375	167	0	3,261	836	357	5,764
45 Paper and paperboard, except printed products	2,446	33,710	22,190	22,885	84	4,433	12,331	16,252	114,331
46 Cement	0	0	4,647	0	0	53,348	38,906	370	97,271
47 Other non-metallic mineral products	7,462	38,194	28,772	507	0	18,225	21,429	7,640	122,229
48 Iron and steel, primary or semi-finished	0	5,577	83,898	689	73,386	15,802	70	35,184	214,606
49 Copper, primary or semi-finished	0	373	83	0	0	0	0	0	455
50 Aluminum, primary or semi-finished	0	16,344	52	0	0	20	0	197	16,613
51 Other non-ferrous metal, primary or semi-finished	4,428	3,712	94	3,752	57	6,624	279	1,293	20,239
52 Articles of base metal	40	2,990	21,025	949	4,178	1,607	1,508	2,601	34,897
53 Machinery	387	974	2,112	3,667	1,138	1,666	1,931	2,770	14,645
54 Automobiles and mini-vans	10,307	8,946	53,462	685	15	587	0	45,241	119,243
55 Freight motor vehicles	0	327	37,451	108	25	222	0	19,752	57,886
56 Other vehicles	3	80	270	0	0	3	86	35	477
57 Parts and accessories for motor vehicles	0	90	11,877	48	0	55	0	189	12,258
58 Other transportation equipment	68	526	309	1,832	470	613	16,112	2,568	22,499
59 Metallic waste and scrap	0	3,127	298	2,088	336	76,423	8,804	4,018	95,095
60 Non-metallic waste and scrap	34	666	1,149	5,147	2,934	28,820	201,456	46,985	287,514
61 Other manufactured and miscellaneous goods	377	19,408	50,727	5,147	748	6,359	182	4,892	87,838
62 Pool car traffic of freight forwarder and ship associated	12	43,653	148,845	3,659	3,567	55,606	0	74	255,416
63 Mixed loads or unidentified freight	19,642	768,637	1,416,185	65,482	36,044	241,730	75	64,677	2,612,472
64 Less than carload shipments	0	372	137	9	18	27	0	0	563
<b>Total tonnage of all rail commodities</b>	<b>56,463</b>	<b>1,279,874</b>	<b>2,183,093</b>	<b>1,562,127</b>	<b>11,751,477</b>	<b>24,407,836</b>	<b>28,211,421</b>	<b>850,290</b>	<b>70,302,581</b>

See footnotes at the end of the table.

Table 20-2 – continued

**Rail transportation, commodity movements to British Columbia, 2001**

Commodity	Origin								
	Atlantic <sup>1</sup>	Quebec	Ontario	Manitoba	Saskatchewan	Alberta <sup>2</sup>	British Columbia	U.S. and Mexico	Total tonnage from all origins
Car type <sup>4</sup>									
Containers on flat cars (COFC)	33,794	1,108,719	1,646,333	174,067	239,749	955,143	75	80,047	4,237,926
Trailers on flat cars (TOFC)	172	1,360	10,654	912	221	2,280	0	27,058	42,657

1. Atlantic Region includes: Newfoundland and Labrador, Nova Scotia, New Brunswick and Prince Edward Island.

2. Alberta includes Northwest Territories.

3. For confidentiality reasons, other non-metallic mineral products include the tonnage of gypsum.

4. C.O.F.C. and T.O.F.C. tonnage is included in the grand total.

**Source:** *Transport Canada*

Table 21-1

## Rail transportation, commodity movements from United States and Mexico, 2001

Commodity	Destination									Total tonnage for all destinations
	Atlantic <sup>1</sup>	Quebec	Ontario	Manitoba	Saskatchewan	Alberta <sup>2</sup>	British Columbia	U.S. and Mexico		
01 Wheat	0	1,366	40,205	0	0	14,332	0	892,410	948,312	
02 Other cereal grains	32,510	682,059	94,461	21,351	3,086	547,567	75,784	595,886	2,052,703	
03 Fresh, chilled or dried vegetables	2,148	80,233	19,565	45	0	40	541	5,700	108,272	
04 Fresh, chilled or dried fruit and nuts	0	9,046	8,526	0	0	0	139	411	18,121	
05 Colza seeds (canola)	0	0	7,551	2,002	0	9,510	9,753	0	28,817	
06 Other oil seeds and nuts, other agricultural product	154	47,898	128,397	0	0	73	4,605	188,836	369,962	
07 Animal feed and products	34,741	427,588	53,078	5,185	52,522	155,623	129,209	427,241	1,285,186	
08 Meat, fish, seafood and preparations	4,510	9,079	2,708	0	0	0	0	1,127	17,423	
09 Milled grain production and preparations, bakery products	14,488	25,488	255,387	1,448	11,287	7,435	21,187	293,133	629,853	
10 Animal or vegetable fats, oils and flours	13,632	17,276	90,661	21,185	1,119	29,376	41,070	36,175	250,493	
11 Sugar	8,358	93,399	91,808	628	1,971	28,731	16,559	71,131	312,584	
12 Prepared food stuffs, not elsewhere classified	1,756	20,826	49,014	368	98	6,144	5,968	37,901	122,076	
13 Alcoholic and non-alcoholic beverages	1,820	12,822	114,941	216	227	9,242	3,300	51,812	194,380	
14 Sand, gravel and crushed stone	924	111,522	136,238	0	20	394,450	5,608	90,189	738,950	
15 Salt	0	2,951	12,097	0	0	180	0	1,546	16,774	
16 Phosphate rock	0	0	0	0	0	22	0	0	22	
17 Sulphur	0	0	0	0	0	28	0	789	817	
18 Gypsum <sup>3</sup>	0	0	0	0	0	0	0	0	0	
19 Other non-metallic minerals	150,535	161,366	387,921	7,385	5,070	133,036	26,424	90,288	962,026	
20 Iron ores and concentrates	0	0	0	0	11,393	3,736	12,392	1,724	29,245	
21 Copper ores and concentrates	0	35,696	87	486	0	0	0	0	36,269	
22 Nickel ores and concentrates	0	80	5,277	0	0	0	0	0	5,357	
23 Lead ores and concentrates	7,571	0	0	0	0	0	29,902	0	37,472	
24 Zinc ores and concentrates	0	0	0	0	0	64	19,962	0	20,025	
25 Other metallic ores and concentrates	0	69	6,932	78	0	1,272	181	0	8,531	
26 Coal	512	30,202	285	366,436	0	6,539	0	2,172	406,145	
27 Gasoline and aviation turbine fuel	0	2	1,775	0	0	11,371	0	1,312	14,459	
28 Fuel oils and crude petroleum	0	3,565	2,003	0	146	388	153	3,035	9,291	
29 Gaseous hydrocarbons, including liquid petroleum gas (LPG's)	4,493	19,943	37,886	0	8,381	38,346	69	1,882	110,999	
30 Coal coke and petroleum coke	0	103,301	10,572	0	600	76,706	5,109	208,108	404,396	
31 Other refined petroleum and coal products	10,731	53,210	224,197	8,382	13,468	110,705	3,108	99,024	522,824	
32 Sulphuric acid	3,968	12,786	45,778	109	0	123	1,072	0	63,835	
33 Alumina	0	504	23,046	167	0	1,170	4,513	0	29,401	
34 Other basic chemicals	71,840	551,168	1,438,583	25,537	32,113	246,078	88,851	128,515	2,582,685	
35 Potash	0	0	1,266	0	0	0	0	41,190	42,455	
36 Fertilizers (excluding potash)	36,615	112,739	351,122	151,990	82,212	83,246	17,691	10,374	845,988	
37 Other chemical products and preparations	21,336	123,155	263,057	2,411	26,794	47,606	8,996	38,292	531,648	
38 Plastic and rubber	69,432	257,674	628,529	16,475	16,847	77,719	41,015	95,637	1,203,328	
39 Logs and other wood in the rough	1,458	718	6,740	0	0	0	0	24,425	33,341	
40 Wood chips	0	0	246	0	0	0	77	1,130	1,453	
41 Lumber	172	3,764	10,090	1,506	1,447	7,373	1,474	414,577	440,402	
42 Other wood products (plywood, veneer)	50	14,533	28,094	920	203	19,796	9,994	320,107	393,696	
43 Wood pulp	9,032	53,487	79,694	0	65	22,176	10,491	289,727	464,671	
44 Newsprint	43	353	2,013	19	0	253	357	226,858	229,896	
45 Paper and paperboard, except printed products	3,566	108,742	222,609	5,651	4,828	49,234	16,252	803,635	1,214,516	
46 Cement	90	1,902	59	2,312	74	210,833	370	0	215,641	
47 Other non-metallic mineral products	883	35,504	87,178	2,504	35,185	59,973	7,640	57,215	286,082	
48 Iron and steel, primary or semi-finished	12,931	58,687	305,025	4,953	83,681	177,027	35,184	52,429	729,916	
49 Copper, primary or semi-finished	191	2,051	0	6,437	0	95	0	6,370	15,145	
50 Aluminum, primary or semi-finished	0	1,401	8,114	0	0	16,276	197	9,224	35,212	
51 Other non-ferrous metal, primary or semi-finished	0	1,747	1,138	2,029	1,182	143	1,293	1,123	8,656	
52 Articles of base metal	1,066	1,973	9,923	2,415	10,251	162,766	2,601	9,023	200,018	
53 Machinery	1,746	5,750	13,462	295	1,369	32,116	2,770	2,728	60,235	
54 Automobiles and mini-vans	14,554	164,308	150,745	16,091	9,489	78,196	45,241	109	478,732	
55 Freight motor vehicles	18,056	105,421	113,982	13,320	13,030	91,970	19,752	41	375,572	
56 Other vehicles	81	530	444	170	0	781	35	635	2,675	
57 Parts and accessories for motor vehicles	0	151,336	472,232	291	5	620	189	39,526	664,198	
58 Other transportation equipment	5,491	2,752	10,201	42,637	8,785	7,036	2,568	2,748	82,218	
59 Metallic waste and scrap	0	69,507	62,598	19,449	270,410	3,379	4,018	25,184	454,545	
60 Non-metallic waste and scrap	963	137,205	165,167	13,120	507	7,363	46,985	33,814	405,123	
61 Other manufactured and miscellaneous goods	426	24,476	11,764	2,652	826	11,134	4,892	21,729	77,898	
62 Pool car traffic of freight forwarder and ship associated	18	334	307	0	27	5,881	74	20	6,662	
63 Mixed loads or unidentified freight	315,592	989,664	247,777	3,473	539	47,721	64,677	19,546	1,688,988	
64 Less than carload shipments	0	0	0	0	0	0	0	0	0	
<b>Total tonnage of all rail commodities</b>	<b>878,479</b>	<b>4,943,154</b>	<b>6,542,550</b>	<b>772,127</b>	<b>709,258</b>	<b>3,052,994</b>	<b>850,290</b>	<b>5,777,761</b>	<b>23,526,613</b>	

See footnotes at the end of the table.

Table 21-1 – continued

**Rail transportation, commodity movements from United States and Mexico, 2001**

Commodity	Destination								Total tonnage for all destinations
	Atlantic <sup>1</sup>	Quebec	Ontario	Manitoba	Saskatchewan	Alberta <sup>2</sup>	British Columbia	U.S. and Mexico	
Car type <sup>4</sup>									
Containers on flat cars (COFC)	320,688	1,235,081	284,672	4,836	5,959	67,765	80,047	71,792	2,070,840
Trailers on flat cars (TOFC)	2,808	35,665	147,720	10,236	11,258	92,341	27,058	111,364	438,450

1. Atlantic Region includes: Newfoundland and Labrador, Nova Scotia, New Brunswick and Prince Edward Island.

2. Alberta includes Northwest Territories.

3. For confidentiality reasons, other non-metallic mineral products include the tonnage of gypsum.

4. C.O.F.C. and T.O.F.C. tonnage is included in the grand total.

Source: *Transport Canada*

Table 21-2

## Rail transportation, commodity movements to United States and Mexico, 2001

Commodity	Origin								
	Atlantic <sup>1</sup>	Quebec	Ontario	Manitoba	Saskatchewan	Alberta <sup>2</sup>	British Columbia	U.S. and Mexico	Total tonnage from all origins
01 Wheat	0	9,266	117,913	909,974	979,892	104,770	0	892,410	3,014,225
02 Other cereal grains	1,292	46,383	14,456	598,750	781,161	45,987	2,693	595,886	2,086,607
03 Fresh, chilled or dried vegetables	1,253	478	5,649	42,812	40,802	16,987	22	5,700	113,703
04 Fresh, chilled or dried fruit and nuts	0	20	143	0	0	0	0	411	574
05 Colza seeds (canola)	0	0	0	42,879	43,309	307	0	0	86,495
06 Other oil seeds and nuts, other agricultural product	0	348	9,244	18,820	27,329	203	4,106	188,836	248,886
07 Animal feed and products	38	719	69,877	12,871	90,886	229,880	466	427,241	831,978
08 Meat, fish, seafood and preparations	347	75	54	0	0	0	567	1,127	2,170
09 Milled grain production and preparations, bakery products	6,959	2,957	63,486	24,278	56,256	57,870	39	293,133	504,978
10 Animal or vegetable fats, oils and flours	69	769	19,808	279,849	392,443	164,923	93	36,175	894,129
11 Sugar	0	5,695	47,548	0	0	2,897	18	71,131	127,289
12 Prepared food stuffs, not elsewhere classified	357	6,101	9,463	2,821	2,268	46,113	728	37,901	105,752
13 Alcoholic and non-alcoholic beverages	19	12,690	19,788	1,384	87	16,789	402	51,812	102,971
14 Sand, gravel and crushed stone	0	92,370	583,961	88	0	0	0	90,189	766,608
15 Salt	14,749	0	34,447	1,077	27,745	0	0	1,546	79,564
16 Phosphate rock	0	0	0	0	0	0	0	0	0
17 Sulphur	31,528	25,989	16,066	0	123,491	976,511	0	789	1,174,375
18 Gypsum <sup>3</sup>	.	.	.	.	.	.	.	.	.
19 Other non-metallic minerals	17,627	26,405	309,572	10,353	26,676	287	4,506	90,288	485,712
20 Iron ores and concentrates	0	0	2,307	0	0	0	0	1,724	4,031
21 Copper ores and concentrates	0	129	258	0	0	0	15,737	0	16,123
22 Nickel ores and concentrates	0	0	0	0	0	0	0	0	0
23 Lead ores and concentrates	82	0	0	0	0	0	7,166	0	7,248
24 Zinc ores and concentrates	0	2,274	0	0	0	0	0	0	2,274
25 Other metallic ores and concentrates	79	762	20	0	0	0	0	0	861
26 Coal	0	0	196	0	14,852	21,849	1,466,079	2,172	1,505,148
27 Gasoline and aviation turbine fuel	0	38,202	0	0	0	0	0	1,312	39,513
28 Fuel oils and crude petroleum	0	76,373	62,767	0	17,274	163,516	1,584	3,035	324,549
29 Gaseous hydrocarbons, including liquid petroleum gas (LPG's)	202,395	32,744	1,039,771	53,710	96,525	1,039,150	1,464	1,882	2,467,639
30 Coal coke and petroleum coke	0	0	22,851	0	61,461	13,152	0	208,108	305,572
31 Other refined petroleum and coal products	12,406	10,799	351,003	249	369,008	69,343	3,288	99,024	915,118
32 Sulphuric acid	84,703	663,492	917,732	19,083	0	14,436	12,635	0	1,712,080
33 Alumina	0	327,931	17,260	0	0	0	0	0	345,191
34 Other basic chemicals	11,274	838,094	600,814	93,861	7,404	1,077,505	45,973	128,515	2,803,439
35 Potash	20,615	0	273	181	7,596,328	13,659	0	41,190	7,672,246
36 Fertilizers (excluding potash)	0	27,269	165,960	158,782	180,145	1,479,820	46,093	10,374	2,068,443
37 Other chemical products and preparations	270	50,755	218,130	147	2,519	135,765	14,413	38,292	460,292
38 Plastic and rubber	42,404	254,002	644,862	74,816	2,383	1,278,010	3,226	95,637	2,395,339
39 Logs and other wood in the rough	6,847	34,309	163,729	17,872	0	115	16,233	24,425	263,529
40 Wood chips	0	48	136	211	0	122	1,997	1,130	3,644
41 Lumber	498,797	1,696,345	781,470	115,410	199,651	1,256,895	3,253,068	414,577	8,216,213
42 Other wood products (plywood, veneer)	239,904	822,227	633,799	195,573	236,819	1,383,757	356,391	320,107	4,188,576
43 Wood pulp	301,918	403,245	1,013,455	6,356	123,124	1,002,700	688,054	289,727	3,828,577
44 Newsprint	221,952	1,441,513	903,661	62,386	389	149,603	189,592	226,858	3,195,954
45 Paper and paperboard, except printed products	555,231	1,075,337	265,290	38,079	57,923	1,286	275,139	803,635	3,071,919
46 Cement	0	357,450	341,169	0	0	325,395	48,152	0	1,072,165
47 Other non-metallic mineral products	60,921	55,834	52,589	16,142	212	50,995	14,539	57,215	308,447
48 Iron and steel, primary or semi-finished	0	315,819	486,576	23,592	95,162	21,418	124	52,429	995,119
49 Copper, primary or semi-finished	0	125,124	84,705	79,505	0	0	0	6,370	295,704
50 Aluminum, primary or semi-finished	88	1,087,225	51,068	0	0	319	13,103	9,224	1,161,028
51 Other non-ferrous metal, primary or semi-finished	35,371	131,385	3,600	10,137	0	0	56,389	1,123	238,005
52 Articles of base metal	269	17,834	135,097	10,439	92,642	35,144	17,946	9,023	318,394
53 Machinery	658	47,692	18,903	242	41	1,526	922	2,728	72,711
54 Automobiles and mini-vans	18	65,695	1,083,783	0	0	166	38	109	1,149,809
55 Freight motor vehicles	12	4,285	1,239,260	13	0	1,421	0	41	1,245,031
56 Other vehicles	0	0	161,159	4,158	0	65	0	635	166,018
57 Parts and accessories for motor vehicles	54	4,451	303,335	140	21	253	101	39,526	347,880
58 Other transportation equipment	320	6,527	59,074	5,749	10,089	5,040	6,911	2,748	96,457
59 Metallic waste and scrap	856	14,128	617,767	13,933	4,322	36,253	7,180	25,184	719,623
60 Non-metallic waste and scrap	82	47,104	37,644	20,792	8,661	73,169	25,621	33,814	246,886
61 Other manufactured and miscellaneous goods	1,589	32,351	94,858	32,085	47	2,685	2,504	21,729	187,849
62 Pool car traffic of freight forwarder and ship associated	53	356	409	0	0	6	0	20	844
63 Mixed loads or unidentified freight	442,219	1,733,173	116,881	3,018	2,165	9,548	221,338	19,546	2,547,888
64 Less than carload shipments	0	0	0	54	0	66	0	0	121
<b>Total tonnage of all rail commodities</b>	<b>2,815,623</b>	<b>12,072,545</b>	<b>14,015,094</b>	<b>3,002,670</b>	<b>11,771,510</b>	<b>11,327,672</b>	<b>6,826,638</b>	<b>5,777,761</b>	<b>67,609,511</b>

See footnotes at the end of the table.

Table 21-2 – continued

**Rail transportation, commodity movements to United States and Mexico, 2001**

Commodity	Origin								
	Atlantic <sup>1</sup>	Quebec	Ontario	Manitoba	Saskatchewan	Alberta <sup>2</sup>	British Columbia	U.S. and Mexico	Total tonnage from all origins
Car type <sup>4</sup>									
Containers on flat cars (COFC)	496,621	1,891,043	209,910	22,638	19,614	60,892	278,418	71,792	3,050,927
Trailers on flat cars (TOFC)	7,601	73,463	91,920	15,307	7,144	67,496	77,005	111,364	451,300

1. Atlantic Region includes: Newfoundland and Labrador, Nova Scotia, New Brunswick and Prince Edward Island.

2. Alberta includes Northwest Territories.

3. For confidentiality reasons, other non-metallic mineral products include the tonnage of gypsum.

4. C.O.F.C. and T.O.F.C. tonnage is included in the grand total.

**Source:** *Transport Canada*

Table 22-1

## Rail transportation, non-intermodal and intermodal tonnage transported to Mexico, 2001

	Origin								Total tonnage from all origins
	Atlantic <sup>1</sup>	Quebec	Ontario	Manitoba	Saskatchewan	Alberta <sup>2</sup>	British Columbia	U.S.	
Total Intermodal and Non Intermodal	236	85,918	37,249	39,112	88,237	2,501	337	5,018	258,607
Car type <sup>3</sup>									
Containers on flat cars (COFC)	0	908	592	548	0	323	21	0	2,392
Trailers on flat cars (TOFC)	14	2,248	274	20	18	337	43	0	2,953

1. Atlantic Region includes: Newfoundland and Labrador, Nova Scotia, New Brunswick and Prince Edward Island.

2. Alberta includes Northwest Territories.

3. C.O.F.C. and T.O.F.C. tonnage is included in the total Intermodal and Non Intermodal.

Table 22-2

## Rail transportation, non-intermodal and intermodal tonnage transported from Mexico, 2001

	Destination								Total tonnage for all destinations
	Atlantic <sup>1</sup>	Quebec	Ontario	Manitoba	Saskatchewan	Alberta <sup>2</sup>	British Columbia	U.S.	
Total Intermodal and Non Intermodal	416	279	2,971	246	0	343	92	0	4,345
Car type <sup>3</sup>									
Containers on flat cars (COFC)	84	141	193	225	0	65	92	0	799
Trailers on flat cars (TOFC)	332	52	193	21	0	278	0	0	875

1. Atlantic Region includes: Newfoundland and Labrador, Nova Scotia, New Brunswick and Prince Edward Island.

2. Alberta includes Northwest Territories.

3. C.O.F.C. and T.O.F.C. tonnage is included in the total Intermodal and Non Intermodal.

# Survey concepts and data limitations

---

## Collection authorities and related classifications

Railway statistics contained in this publication were collected in accordance with the provisions of the Carrier Information Regulations under Section 50 of the **Canada Transportation Act** and Chapter S-19 of the **Statistics Act** (Revised Statutes of Canada 1985).

Financial, operating and commodity statistics are produced from reports submitted by common carrier railways. Most of the reporting companies operate within the legislative authority of Transport Canada (TC). Financial details of railways are reported in accordance with the Uniform Classification of Accounts (UCA), as prescribed by the Canadian Transportation Agency (CTA). Readers are advised to refer to the Uniform Classification of Accounts to assist in the interpretation of the information presented in this publication.

Since 1997 industry data have been published in accordance with the **North American Industrial Classification System** (NAICS). This new industry classification system is based on a production-oriented economic concept and allows comparability of data among the participating countries: Canada, United States and Mexico.

Rail Transportation falls under NAICS sub-sector 482, which is classified as follows:

Short-Haul Freight Rail Transportation (482112)

Mainline Freight Rail Transportation (482113)

Passenger Rail Transportation (482114)

It should be noted that railway companies providing scenic and sightseeing train excursions as their primary activity are classified in the industry group 487110 under NAICS and are not included in this publication.

## Comparability with previous years

Railway companies that were under the legislative authority of the Parliament of Canada prior to 1997 were classified as follows:

Class I Canadian National Railway Company (CN), Canadian Pacific Railway Company (CP) and VIA Rail Canada Inc., and related operations.

Class II Other carriers involved in Canadian rail (freight) transportation.

Class III Other companies such as terminal, bridge and tunnel companies.

Carriers under provincial jurisdiction were classified as Class II carriers. Under NAICS, CN and CP are classified as 482113. VIA is classified as 482114.

Class II companies fall under NAICS 482112. Support activities for transportation have been consolidated under a single NAICS sub-sector 488. The former Class III companies are now classified as Support Activities for Rail



Transportation – 488210. Data from these companies are no longer included in this publication. Revised data from 1997 are available.

Employment statistics are collected in accordance with the ***Uniform Classification of Railway Employees*** (introduced January 1, 1964).

Commodity detail is reported according to the U.S. Standard Transportation Commodity Classification (STCC) and since 1999, converted to a 512 code Standard Classification of Transported Goods (SCTG).

# Survey methodology, coverage and data limitations

---

## Financial, operating and commodity statistics

### Coverage and survey methodology

Financial and operating statistics contained in this publication are derived from a mail census of common carrier railways operating in Canada. However, there is a certain lag before new shortline carriers that come into operation are able to provide meaningful data. For example, carriers that started operations during 2001 were not included and some others were only able to provide partial data.

Companies falling under federal jurisdiction report data on schedules or forms, specified by Transport Canada. Other railway carriers report directly to Statistics Canada on similar schedules. Individual reports undergo comprehensive review upon receipt and are edited for consistency and reliability.

### Data limitations

Users are advised to consult the UCA for concepts and reporting definitions as survey results may be misconstrued or improperly interpreted without prior knowledge of the accounts. For example, carriers may report total traffic over their tracks, hence operating statistics, such as passenger car-kilometres and freight car-kilometres may be duplicated.

Railway transportation statistics cover the activities of common carriers offering services to the general public, or industrial sectors, for compensation. **Private railways**, that transport goods solely for parent companies and do not operate on a for-hire basis, **are excluded**.

### Special notes on commodity statistics:

- i. Freight interlined between two or more Canadian rail carriers is included only once - unless specified otherwise - to avoid duplication. Traffic handled in intermediary switching service is excluded.
- ii. For the purpose of this publication, traffic south of the border is considered a United States rail connection for railways that operate in both Canada and the United States. Thus, freight crossing the international boundary (whether from or to a non-reporting United States railroad at that point, or carried by one of the respondents reporting in this series), appears as a "receipt from " or "delivery to" a United States rail connection.

- iii. Certain extensions of CN and CP rail services in the United States are, for statistical purposes, considered part of the Canadian operations and are included. This includes, for the most part, overhead movements (Canada to Canada through the United States) and short rail extensions across the border to connecting United States carriers.

## **Commodity origin and destination statistics**

### **Coverage and survey methodology**

Commodity origin and destination statistics are provided to Transport Canada (TC) and represent an annual census of waybill records from the two major railways - the Canadian National and Canadian Pacific. Freight interlined with Class II carriers is included while interline duplication between CN and CP is removed by TC. Each record represents a freight movement and shows origin, destination, commodity code, mass, waybill revenues and other related information. Statistics Canada, however does not receive data on revenues from TC.

### **Origin and destination**

CN reports Standard Point Location Code (SPLC) for points of origin and destination in Canada. CP provides Freight Station Accounting Code (FSAC) for points of origin and destination. These codes are matched by TC for the two railways and aggregated data containing provincial origins and destinations are provided to Statistics Canada. The point of origin and destination quoted is the point where rail traffic begins or terminates for intermodal traffic. In the case of interlined shipments, the origin and destination refers, also, to the rail transport origin and destination, which may differ from the point at which CN or CP picked up or delivered the goods.

### **Transborder shipments**

Shipments of Canadian origin that terminate in the United States and shipments originating in United States that terminate in Canada, are included in the data.

### **In-transit traffic**

In-transit traffic refers to movements where both the origin and the destination reported are in the United States. These are excluded in the tabulation results.

# Appendix I

---

## Glossary

### Average freight carload

This average is obtained by dividing tonne-kilometres by the number of loaded freight car-kilometres.

### Average train speed

Average train speed is obtained by dividing train-kilometres by train hours. Train hours may include en route train switching time.

### Box car

A box car is a closed railroad car with a roof and a door which is used for general service.

### Business car

Cars owned or leased by common carriers, or owned by individuals using free transportation, which are used for office or business purposes in transportation service.

### Caboose

A freight train car usually attached to the rear of the train for the use of train-men in giving and receiving signals, handling car records, and performing other duties.

### Canadian rail operations

Rail operations consist of transportation by rail of goods and passengers (both inter-city and commuter) including intermodal transportation which may involve modes other than rail where such operations are required to complete a rail move.

### Car-kilometre

A car-kilometre is the movement of a unit of car on one kilometre of track.

### Carload

A carload is a shipment that uses one rail car for its transportation.

### Carrier

Carrier means the entity having the legal authority to operate the railway.

### Classification of Carriers

Railway carriers within the legislative authority of the Parliament of Canada were classified as follows:

---

Class I	Canadian National Railway, Canadian Pacific Limited and VIA Rail Canada Inc., and their related operations.
Class II	Other carriers involved in Canadian rail transportation operations.

### **Classification of employees**

All employees are classified with respect to their occupation and assigned to their proper function and occupational class. Employees that work in more than one classification are prorated accordingly. Service hours and compensation are also distributed among the occupational classes in which the employee has worked.

### **Coach**

A term commonly used to designate passenger cars which are used for day travel. They are fitted with conventional or reclining seats.

### **Common carrier**

A railway that offers its services to the general public to transport passengers and/or goods for compensation.

### **Compensation, Total**

The compensation is the gross amount paid to employees, including vacations, holidays, leaves of absence with pay and before deductions for income tax. Compensation should not include retroactive wage increases, which, although paid during the current year, pertain to a prior period.

### **Container on flat car (C.O.F.C.)**

Transportation of loaded or empty containers on railway flat cars representing a form of intermodal transport.

### **Current ratio**

A measure of liquidity obtained by dividing current assets by current liabilities. This ratio is used to show the ability to pay current debts from current assets.

### **Debt-asset ratio**

A measure of solvency calculated by dividing total liabilities by total assets.

### **Debt-equity ratio**

A measure of solvency calculated by dividing total liabilities by owner's equity.

### **Delivered to United States rail**

Traffic delivered to United States rail connections or transported across the border by the respondent.

### **Delivered to other railways in Canada**

Traffic delivered directly to connecting Canadian rail carriers and deliveries to other modes of transport (other than car ferries) when these move at joint rates on through billing, or when a subsequent rail haul is indicated.

### **Destination**

Refers to the railway destination, not including connecting modes of transport, and is coded by the railway's respective station number. In the case of interlined

shipments, the destination refers to the rail transport destination, not the point at which the reporting railway delivered the goods.

### **Employee**

An employee is defined as any person in the service of a reporting carrier, whether on a full-time or part-time basis, and subject to the carrier's continuous authority to supervise and direct the manner of rendition of his service.

### **Employees, Number of**

The number of employees is the average of counts made each month throughout the year. The count is not restricted to the number of personnel actually on duty, and includes all other regularly assigned employees and those on vacation or sick leave with pay. Persons on leave without pay or under suspension are not included.

### **Employment functions**

The major railway Employment Functions are:

- General
- Road Maintenance
- Equipment Maintenance
- Transportation (non-train and train)

### **Empty car-kilometres**

Kilometres run by freight cars without load, and flat cars loaded with railroad owned or controlled highway trailers or containers, moving without revenue waybill, excluding company service equipment designed for use exclusively in work service.

### **Equipment (operations)**

This activity concerns all operations and transactions related to railway equipment, including locomotives, freight cars, passenger cars, inter-modal equipment, roadway machines, and work equipment. The operations or transactions within this activity include repair and maintenance, leases, rentals and depreciation of railway equipment.

### **Equipment maintenance (employment function)**

This function refers to maintenance and servicing of all motive power, car, shop and power plant equipment.

### **First main track**

Also referred to as road operated. It is equivalent to the length of single or first main track, measured by the distance between terminals over which railway transportation service is conducted (excludes parallel, yard and siding trackage).

### **Fiscal period**

Annual data refer to the year ending December 31.

**Freight car-kilometres**

A freight car kilometre is the movement of a freight car over one kilometre of track.

**Freight-train car-kilometres**

Kilometres run by loaded and empty freight train cars and caboose cars in transportation service.

**Freight train-kilometres**

The number of kilometres run by all trains between terminals or stations for the transportation of company or revenue freight; also kilometres run by trains made up of empty freight train cars, and by trains consisting of a locomotive and a caboose running light in connection with such service. Freight trains hauling passenger cars are classified as freight trains.

**General (operations and employment function)**

This activity group concerns all operations and transactions related to the railway as a whole and includes general administration, employee benefits, taxes, insurance, purchasing and material stores. The functions performed in this classification are required to support the overall railway enterprise.

**Gondola car**

A car with sides and ends but no top, used for hauling commodities such as sand, gravel and coal.

**Gross domestic product**

The gross domestic product is the value of goods and services produced in a country.

**Gross tonne-kilometres**

A gross tonne-kilometre is the movement of a tonne of rail equipment and intermodal equipment (including freight) over one kilometre of track. This covers all movements over the carrier's tracks except switching operations, including operations by other carriers.

**Head-end car**

A passenger train car designed for transporting mail, baggage, newspapers, milk in cans, etc. and not equipped to accommodate passengers.

**Hopper car**

A car which moves dry bulk freight and usually unloads through gravity by vents on the underside.

**Industrial track**

A switching track serving industries such as mines, mills, smelters and factories.

**Interline freight**

Tonnage passing over the lines of two or more carriers. The interchange is termed an interline movement.

### **Intermediate switching**

A switching service includes all the elements of switching performed by a carrier which neither originates nor terminates the shipment nor receives a line-haul on that shipment.

### **Intermodal**

Inter-modal operations involve more than one mode of transport to complete the movement of shipments. Goods are carried in a highway trailer or freight container, which is transferred between a rail car and some other mode, usually a truck or ship.

### **International carrier**

A carrier that operates between Canada and the United States.

### **Inter-provincial carrier**

A carrier that operates in more than one province or territory.

### **In-transit**

In-transit implies cargo or passengers en route between the point of origin and the point of destination.

### **Intra-provincial carrier**

A carrier that operates in only one province or territory.

### **Joint facility**

Railway tracks, yards, terminals, and other facilities owned by one carrier and used jointly by two or more carriers.

### **Length of road operated**

The single or first main track measured by the distance between terminals, over which railway transportation is conducted.

### **Light locomotive**

A locomotive which moves under its own power without pulling any cars.

### **Line-haul**

The movement of trains between terminals and stations on the main or branch lines of the railway, exclusive of switching operations.

### **Loaded**

Revenue freight originating directly on the track belonging to the respondent, including that received from private, non-reporting industrial sidings; freight received from switching roads connecting with the respondent where such freight has not previously been given line-haul transportation; freight received from other modes of transport; freight re-shipped following milling or fabrication at some point in transit; and idler or trailer cars.



**Loaded car-kilometres**

Kilometres run by freight cars in freight and passenger trains loaded with revenue or non-revenue freight and also by company service equipment designed for use exclusively in work service.

**Local traffic**

Traffic originating and terminating on the same railway without an intermediate haul by a connecting railway.

**Locomotive unit**

A piece of railway rolling stock containing engines used to propel a train along the track but not capable itself of accommodating passengers or freight. Such units may be used singly (with a crew cab) or in conjunction with other units, with all such units usually being controlled from the cab of one of the units.

**Locomotive unit-kilometres**

A locomotive unit-kilometre is the operation of a locomotive unit over a kilometre of track. VIA trains are considered part of the operating carrier's operations.

**Non-revenue freight**

Company materials and supplies transported without charge in freight trains of a particular railway for its own use.

**Occupational classification**

The major railway Occupational Classifications are:

- Managerial and supervisory
- Professional, technical and staff assistants
- Clerical
- Running trades
- Working foremen
- Craftsmen, tradesmen, lead hands, service workers and helpers
- Labourers, including building attendants and coach cleaners
- Floating equipment employees (Railway) and employees in other operations

**On company service (O.C.S.)**

The movement of non-revenue loaded cars for the company's own purposes such as work equipment, rail ties or ballast.

**Operating ratio**

The operating ratio is the proportion of total operating revenues absorbed by total operating expenses.

### **Other main track**

Length of track in the third or subsequent line parallel to the first and second main tracks.

### **Parlour car**

A passenger car of a more luxurious character than a day coach having revolving seats, and other conveniences and on which an extra fare is charged.

### **Passenger car**

A car equipped to carry passenger, baggage, etc., in passenger train service.

### **Passenger car-kilometres**

Kilometres run by passenger cars, including both loaded and empty car-kilometres. Passenger car-kilometres in VIA trains may be recorded by both VIA and the operating carrier.

### **Passenger-kilometres**

The movement of a passenger over a distance of one kilometre. Passenger-kilometres are derived by multiplying the number of passengers by distance travelled.

### **Passenger locomotive-kilometres**

The number of kilometres run by locomotives in passenger-train service.

### **Passenger train car-kilometres**

Kilometres run by passenger train cars, including empty cars deadheaded in connection with passenger service.

### **Passenger train-kilometres**

Kilometres run by passenger trains, to transport passengers and baggage etc., including trains comprised of deadhead passenger cars.

### **Passing tracks and crossovers**

Length of track parallel to first or other main track designated for meets and overtakes (passing) of trains and track provided for movement of trains between main tracks

### **Piggyback**

Piggyback is a term used to describe the transportation of loaded or empty highway trailers, or containers, on rail cars.

### **Private-line cars**

Freight cars owned by companies other than the railways and used for the transportation of goods over various lines. These are sometimes called private cars.

### **Private siding**

A small line owned by an individual or company and connected to a railway line.

### **Railway operations**

This activity concerns all of the operations of the railway which are directly involved in providing transportation service, including train operations, yard operations, train control operations, inter-modal operations, station and terminal operations, and other modes of transport used as an integral part of a rail service.

### **Real gross domestic product**

The gross domestic product expressed in constant dollars.

### **Received from other railways in Canada**

Traffic received directly from connecting Canadian rail carriers and receipts from other modes of transport (other than car ferries) when these move at joint rates on through billing, or when a previous rail haul is indicated.

### **Received from United States rail destined to Canadian points**

Traffic received from United States rail and transported across the border by the respondent, destined to Canadian points.

### **Received from United States rail destined to United States points**

Overhead traffic representing freight moving from United States rail connections to points in the United States through Canada.

### **Revenue passenger**

A person travelling on a train by right of fare.

### **Road maintenance (Employment function)**

This function represents the construction and maintenance of all track and structures and signal installations.

### **Rolling stock**

Transportation equipment on wheels owned by a rail carrier, not including motive power equipment.

### **Second main track**

Is equivalent to the length of track in a second line running parallel to first main track where double track (or triple track, etc.) is laid on the same road-bed.

### **Self-propelled car**

A single motor-powered unit of railway equipment designed to carry passenger or baggage traffic. It is not considered to be a locomotive. It is also referred to as a motor car or rail diesel car.

### **Service hours paid for**

Hours paid for include time actually worked plus time for such items as vacation, holiday, and leaves of absence when paid for, and applies to all employees.

### **Standard Transportation Commodity Code (STCC)**

The STCC system is a seven digit coding structure designed to classify all commodities or articles transported by rail.

### **Tonnes of revenue traffic**

This figure records the total weight of revenue shipments.

### **Tonne-kilometre**

The movement of one tonne, over a distance of one kilometre.

### **Trailer on flat car (T.O.F.C.)**

Transportation of loaded or empty highway trailers on railway flat cars representing a form of intermodal transport.

### **Train**

A unit or a combination of units of equipment (exclusive of light locomotives) equipped with self-contained motor equipment for movement over tracks. A self-propelled car moving on its own is a train, as is a several car freight train.

### **Train hours**

Train hours are measured as the time taken by a train between departure and arrival station, minus time spent in train switching en route.

### **Train-kilometres**

A train-kilometre is the movement of a train over one kilometre of track.

### **Train switching**

Switching service performed by train locomotives at terminals and at stations en route.

### **Train switching locomotive-kilometres**

Kilometres allowed to train locomotives for performing train switching. The time actually taken up in such service is converted into kilometres at a rate of 9.6 kilometres per hour.

### **Trans-border shipment**

A shipment originating in Canada and terminating in the United States as well as a shipment originating in United States and terminating in Canada.

### **Transportation (Employment function)**

This function represents scheduling, dispatching and operating trains and other ancillary services, the operation of terminal facilities and the distribution of cars and motive power. This function is also responsible for the movement of merchandise by means of the integration of express and less than carload operations.

### **Uniform Classification of Accounts (U.C.A.)**

Uniform Classification of Accounts and Related Railway Records as prescribed by the National Transportation of Canada (now called the Canadian Transportation Agency), for use by all railways under federal jurisdiction. These accounts are also used for railway carriers whose data are collected under the authority of the Statistics Act.

### **Unloaded**

Freight terminating directly on the road of the respondent. It includes, freight delivered to private, non-reporting industrial sidings and grain unloaded at interior, lake and coastal elevators for export. Also freight delivered to switching roads connecting with the respondent where there is no further line-haul; freight delivered to other modes of transport; and, freight unloaded for milling or fabrication at some point in transit.

### **Ways and structures (Operations)**

This activity concerns all operations and transactions related to the fixed plant of the railway, including track and roadway, buildings, signals, communication and power facilities, terminals and fuel stations. The operations or transactions within this activity include repair and maintenance, leases, rents, and depreciation of railway fixed plant.

### **Work train service**

A service performed by a train engaged in company service for which no revenue is received.

### **Yard switching**

Switching service performed by locomotives in yards where regular switching is performed, including both terminal switching and transfer operations within yard limits.

### **Yard switching kilometres**

Yard switching kilometres are measured as time spent in yard switching (including train transfer), converted to kilometres at a rate of 9.6 kilometres per hour.