



Catalogue no. 71-001-XIE

Labour Force Information

Not for release before 7 A.M. E.S.T.

Friday, March 9, 2007



February 11 to 17, 2007



Statistics
Canada

Statistique
Canada

Canada

How to obtain more information

Specific inquiries about this product and related statistics or services should be directed to: Labour Force Survey Program, Labour Statistics Division, Statistics Canada, Ottawa, Ontario, K1A 0T6 (telephone: 613-951-4090, toll free number: 1-866-873-8788, fax: 613-951-2869 or by e-mail address: labour@statcan.ca).

For information on the wide range of data available from Statistics Canada, you can contact us by calling one of our toll free numbers. You can also contact us by e-mail or by visiting our website at www.statcan.ca.

National inquiries line **1-800-263-1136**

National telecommunications device for the hearing impaired **1-800-363-7629**

Depository Services Program inquiries **1-800-700-1033**

Fax line for Depository Services Program **1-800-889-9734**

E-mail inquiries infostats@statcan.ca

Website www.statcan.ca

Information to access the product

This product, catalogue no. 71-001-XIE, is available for free in electronic format. To obtain a single issue, visit our website at www.statcan.ca and select Publications.

Standards of service to the public

Statistics Canada is committed to serving its clients in a prompt, reliable, courteous, and fair manner. To this end, the Agency has developed standards of service that its employees observe in serving its clients. To obtain a copy of these service standards, please contact Statistics Canada toll free at 1-800-263-1136. The service standards are also published on www.statcan.ca under About us > Providing services to Canadians.



Statistics Canada
Labour Statistics Division
Labour Force Survey Program

Labour Force Information

Not for release before 7 A.M. E.S.T.

Friday, March 9, 2007

February 11 to 17, 2007

Published by authority of the Minister responsible for Statistics Canada

© Minister of Industry, 2007

All rights reserved. The content of this electronic publication may be reproduced, in whole or in part, and by any means, without further permission from Statistics Canada, subject to the following conditions: that it be done solely for the purposes of private study, research, criticism, review or newspaper summary, and/or for non-commercial purposes; and that Statistics Canada be fully acknowledged as follows: Source (or "Adapted from", if appropriate): Statistics Canada, year of publication, name of product, catalogue number, volume and issue numbers, reference period and page(s). Otherwise, no part of this publication may be reproduced, stored in a retrieval system or transmitted in any form, by any means—electronic, mechanical or photocopy—or for any purposes without prior written permission of Licensing Services, Client Services Division, Statistics Canada, Ottawa, Ontario, Canada K1A 0T6.

March 2007

Catalogue no. 71-001-XIE

ISSN 1492-5478

Frequency: Monthly

Ottawa

La version française de cette publication est disponible sur demande (n° 71-001-XIF au catalogue).

Note of appreciation

Canada owes the success of its statistical system to a long standing partnership between Statistics Canada, the citizens of Canada, its businesses, governments and other institutions. Accurate and timely statistical information could not be produced without their continued cooperation and goodwill.

User information

Symbols

The following standard symbols are used in Statistics Canada publications:

- . not available for any reference period
- .. not available for a specific reference period
- ... not applicable
- 0 true zero or a value rounded to zero
- 0^s value rounded to 0 (zero) where there is a meaningful distinction between true zero and the value that was rounded
- p preliminary
- r revised
- x suppressed to meet the confidentiality requirements of the *Statistics Act*
- E use with caution
- F too unreliable to be published

Special requests (\$)

Custom tabulations can be arranged on an ad hoc or regular basis. This service enables you to specify tables and time series to meet your own requirements. The cost varies according to the request. For more information, contact us toll-free at 1-866-873-8788 or e-mail us at labour@statcan.ca.

Schedule of LFS releases

Reference period - Week ending	Release date
January 20, 2007	February 9, 2007
February 17, 2007	March 9, 2007
March 17, 2007	April 5, 2007
April 21, 2007	May 11, 2007
May 19, 2007	June 8, 2007
June 16, 2007	July 6, 2007
July 21, 2007	August 10, 2007
August 18, 2007	September 7, 2007
September 15, 2007	October 5, 2007
October 13, 2007	November 2, 2007
November 10, 2007	December 7, 2007
December 8, 2007	January 11, 2008

Latest LFS release in *The Daily* (free)

Table of contents

Highlights	5
Analysis — February 2007	6
Charts	
1. Employment and unemployment rates, Canada, seasonally adjusted	5
2. Employment and unemployment indicators, Canada, seasonally adjusted	9
3. Employment and unemployment indicators, Canada, seasonally adjusted	10
4. Index of employment by industry, Canada, seasonally adjusted, January, 2004=100	11
5. Index of employment by industry, Canada, seasonally adjusted, January 2004 = 100	12
6. Index of employment by industry, Canada, seasonally adjusted, January 2004 = 100	13
7. Index of employment by province, seasonally adjusted, January 2004 = 100	14
8. Index of employment by province, seasonally adjusted, January 2004 = 100	15
Related products	16
Statistical tables	
1 Labour force characteristics by age and sex, Canada, seasonally adjusted	24
2 Employment by class of worker and industry, Canada, seasonally adjusted	25
3 Labour force characteristics by province, seasonally adjusted	26
4 Selected labour force characteristics (seasonally adjusted)	28
4-1 Newfoundland and Labrador	28
4-2 Prince Edward Island	29
4-3 Nova Scotia	30
4-4 New Brunswick	31
4-5 Quebec	32
4-6 Ontario	33
4-7 Manitoba	34
4-8 Saskatchewan	35
4-9 Alberta	36
4-10 British Columbia	37
5 Labour force characteristics by census metropolitan area (seasonally adjusted)	38
5-1 3 month moving average	38
5-2 Monthly	43

Table of contents – continued

6	Labour force characteristics	44
6-1	by province and economic region, unadjusted for seasonality, 3 month moving average ending in February 2006 and February 2007	44
6-2	by territories, unadjusted for seasonality, 3 month moving average ending in February 2006 and February 2007	49
7	Average usual hours and wages of employees by selected characteristics, Canada, unadjusted for seasonality	50
8	Regional unemployment rates used by the Employment Insurance Program, seasonally adjusted, 3 month moving average	51

Data quality, concepts and methodology

Data quality	53
--------------	----

Highlights

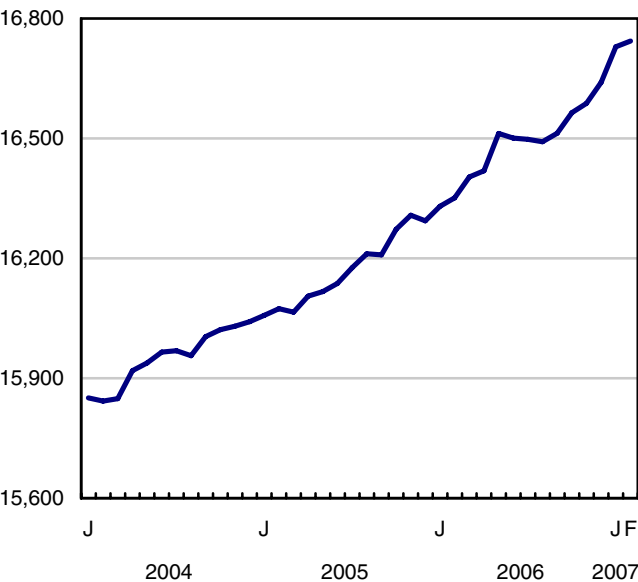
February 2007

Estimates from Statistics Canada's Labour Force Survey show little overall change in the labour market in February as employment edged up slightly (+14,000). The unemployment rate dipped 0.1 percentage points to 6.1 %. Employment has been on an upward trend since August 2006 with average monthly gains of 42,000.

Chart 1
Employment and unemployment rates, Canada, seasonally adjusted

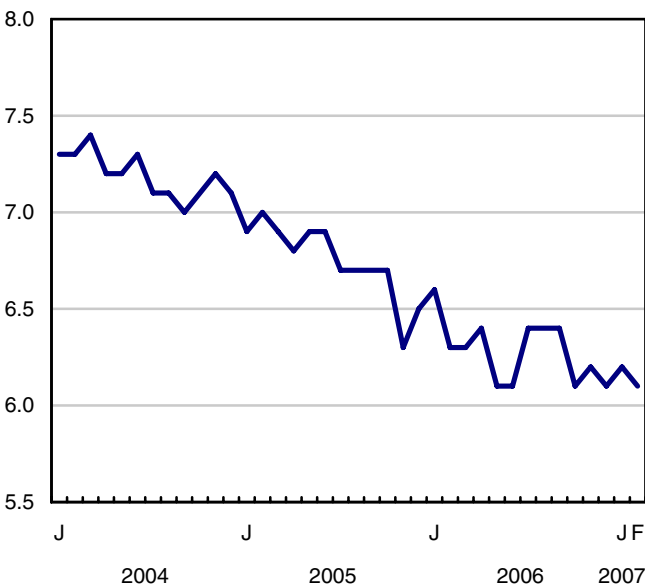
Employment

thousands



Unemployment rate

percentage



Analysis — February 2007

Estimates from Statistics Canada's Labour Force Survey show little overall change in the labour market in February as employment edged up slightly (+14,000). The unemployment rate dipped 0.1 percentage points to 6.1 %. Employment has been on an upward trend since August 2006 with average monthly gains of 42,000.

There were an estimated 392,000 more people working in February compared to a year ago, an increase of 2.4%. Most of the gain over the past 12 months has been in full-time employment. However, since October 2006, part-time employment has also picked up strength.

Youths were the only group with a significant increase in February as employment among both adult men and women was little changed.

The service sector continued to generate employment in February, while fewer people worked in the goods sector, the result of employment losses mainly in manufacturing and agriculture.

Manufacturing employment fell in February following six months of little change. February's losses were primarily in Quebec.

While employment was little changed in February, a long term trend that continues to hold is robust employment growth in Canada's three westernmost provinces. Since February 2006, growth in Saskatchewan, Alberta, and British Columbia has exceeded the national growth rate of 2.4%. This is in contrast to Central Canada where employment gains in both Quebec and Ontario have been more restrained with growth below the national average.

Both British Columbia and New Brunswick hit new record-low unemployment rates in February.

More people working in services

In February, employment in the service sector rose by an estimated 49,000. This sector continued to drive employment growth in central and eastern Canada over the past 12 months, while growth in the goods sector spurred gains in the West.

Service-sector gains in February were in finance, insurance, real estate and leasing (+18,000) with the largest increases in Quebec and Ontario. Compared to February of last year, employment in this industry is up 4.8%.

The strong upward trend in health care and social assistance observed over the past 12 months continued in February (+16,000). This brings total gains from a year ago to 110,000 (+6.3%), with growth spread across most provinces.

The number of people working in transportation and warehousing also rose in February, up 17,000, mainly in Ontario and British Columbia.

Losses in the goods-producing sector

While there was added employment in services, the goods-producing sector stumbled in February, mainly due to declines in manufacturing and agriculture.

There were manufacturing declines in Quebec (-33,000) and Alberta (-6,000) in February. The recent strike by Canadian National Railway workers may have led some manufacturers and support industries to scale back production. Despite February's decline, factory employment increased by an estimated 25,000 in Alberta from a year ago. Over the same period, manufacturing employment also increased by 10,000 in Manitoba. More recently, British Columbia has also added employment in manufacturing, with gains since last September totalling 15,000.

Agriculture also lost ground in February with an estimated 16,000 fewer people reporting this industry as their main source of employment.

While overall employment growth in the goods sector has been dampened by declines in manufacturing, there has been added employment in both natural resources (+11.5%) and construction (+4.0%) over the past 12 months. This is mostly due to strength in Alberta and British Columbia.

Atlantic Canada gains while the West holds its ground

In February, employment in Newfoundland and Labrador rose by an estimated 2,500, pushing the unemployment rate down 1.1 percentage points to 14.3%. Gains earlier in 2006 more than offset declines later in the year, leaving employment 9,000 above the level observed at the start of 2006.

Employment also rose by 2,500 in New Brunswick, bringing gains since last September, when the current upward trend began in the province, to 10,000. The increase over this period has been predominantly in the goods-producing sector. There have also been increases in health care and social assistance. The combined effect of more employment in February along with fewer people in the labour force pushed the unemployment rate down 1.2 percentage points to 6.9 %, setting a 31-year low. The proportion of the population aged 15 and over that was employed rose by 0.4 percentage points to 58.8% in February, matching the record high set last year.

Despite little employment change in February, the trend in Canada's three westernmost provinces has been strong. Since February 2006, employment growth in Saskatchewan, Alberta, and British Columbia has been well above the national growth rate of 2.4% and their respective unemployment rates remain the lowest in Canada. While most of the employment growth in the West has been in the goods sector, Saskatchewan's gains were predominantly in the service sector.

In Alberta, the continued abundance of employment opportunities has resulted in a new record high employment rate in February (71.6%). Similarly, British Columbia's employment rate maintained its record high (63.5%), while the unemployment rate hit a new record low of 4.0% in February.

Overall employment remained little changed in Quebec in February as gains in construction; finance, insurance, real estate and leasing; as well as business, building and other support services were offset by large losses in manufacturing. Over the past 12 months, there have been decreases in paper, primary metal and non-metallic mineral products, plastic and rubber products, as well as in clothing manufacturing. Compared to a year ago, overall employment in the province is up 1.3% (+50,000). The unemployment rate was little changed in February at 7.8%.

Similar to Quebec, the trend in Ontario over the past 12 months is also one of slower growth than the national average with employment in the province up only 1.9% (+125,000). Growth over the past year has been stronger in part-time than in full-time employment. Although the number of factory workers held steady in February, compared to 12 months ago, employment in manufacturing is down 5.1% with the largest losses in motor vehicles and parts, primary metal and fabricated metal products manufacturing.

More youths working this month

There were an estimated 21,000 more youths employed in February, bringing total gains over the past year to 48,000 (+1.9%). Although most of the increases over this 12 month period have been in full time, more recent gains have also occurred in part time. With more youths working in February, their unemployment rate continued to trend down, falling by 0.7 percentage points to 11.0%, the lowest since 1990.

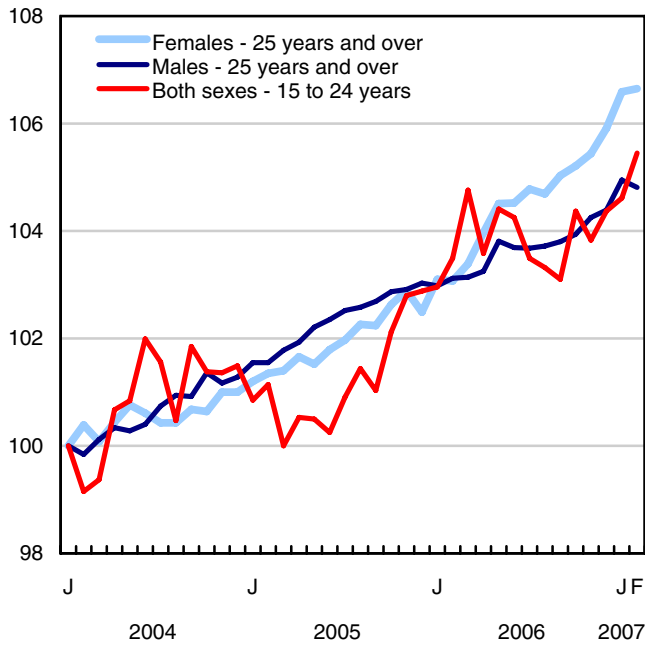
Among adults, it is women who have experienced the most employment growth over the past 12 months, up 3.5% or 223,000, while employment among men has increased by only 1.6% (+122,000). The unemployment rate for adult women remained at its record-low 4.9% in February, lower than the rate among adult men (5.3%).

Note to readers

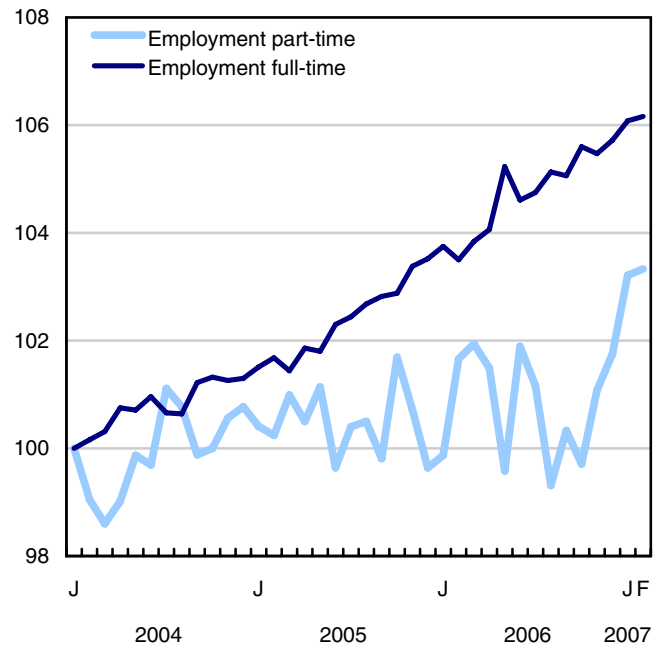
The 2006 Labour Force Historical Review on CD-ROM (71F0004XCB, \$209) is now available.

Chart 2
Employment and unemployment indicators, Canada, seasonally adjusted

Employment index, January 2004=100



Employment index, January 2004=100



Employment index, January 2004=100

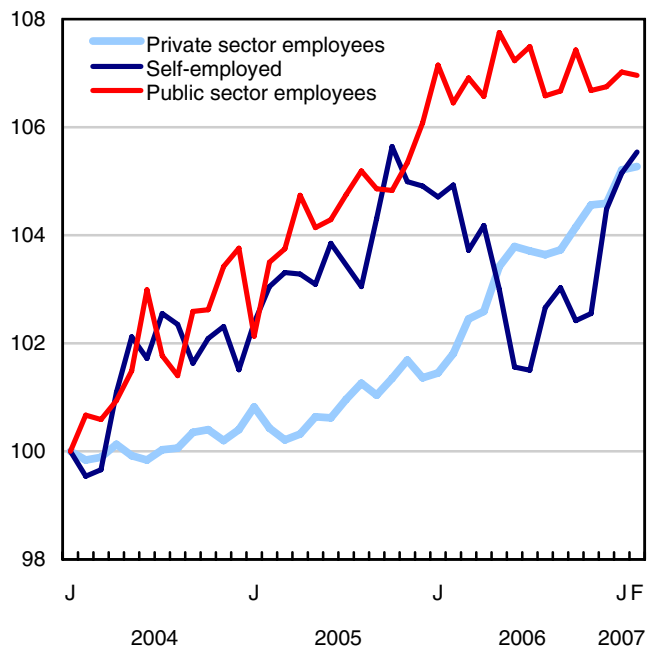
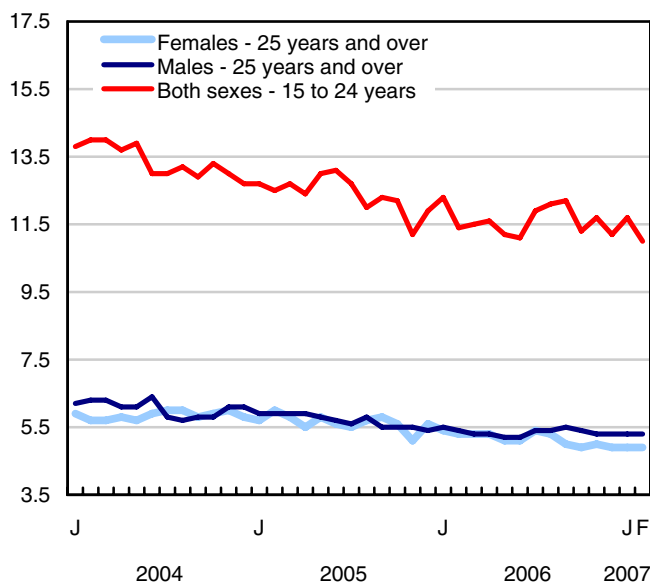
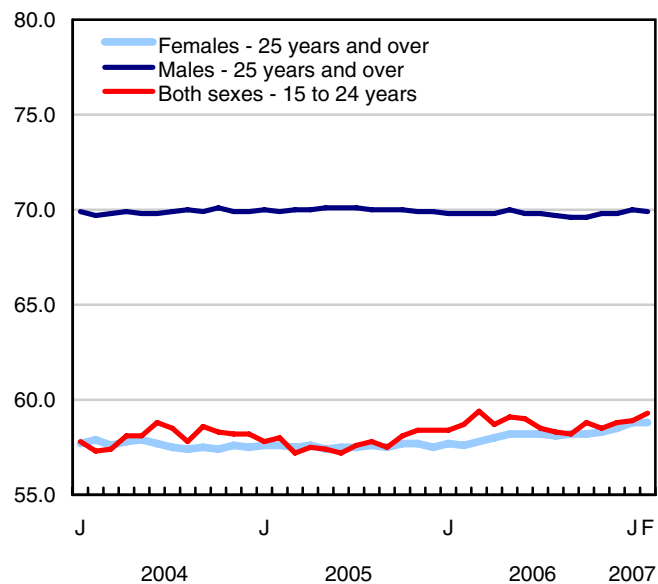


Chart 3
Employment and unemployment indicators, Canada, seasonally adjusted

Unemployment rate (%)



Employment rate (%)



Participation rate (%)

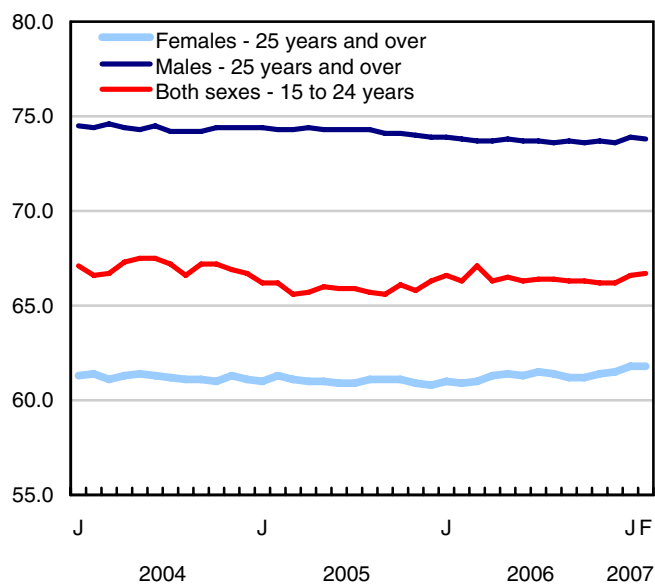


Chart 4
Index of employment by industry, Canada, seasonally adjusted, January, 2004=100

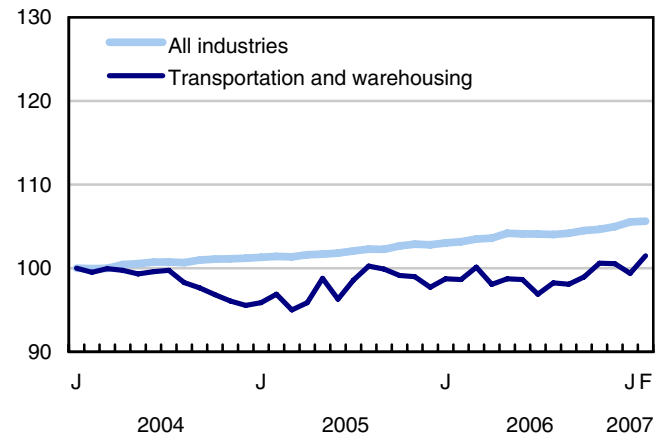
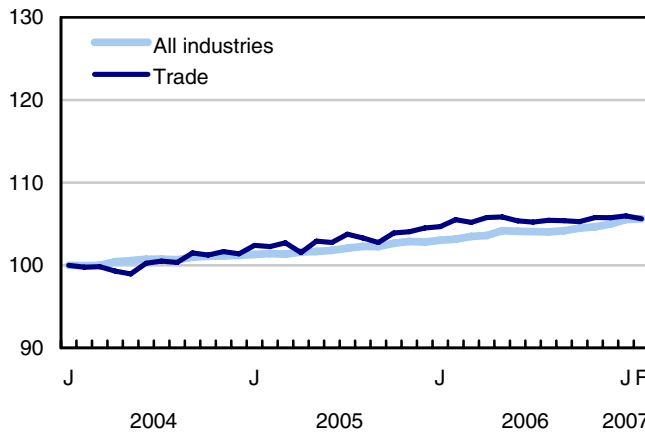
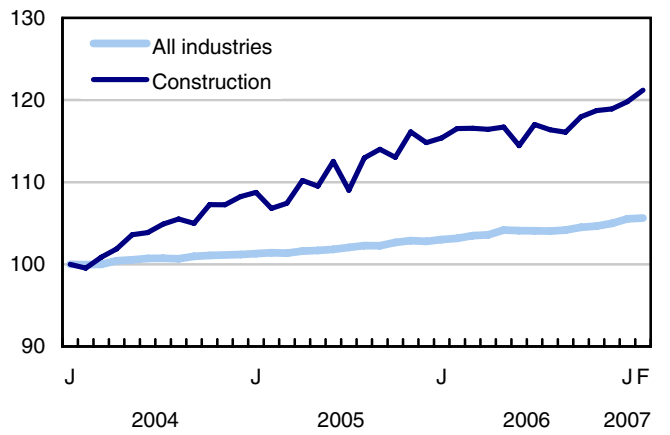
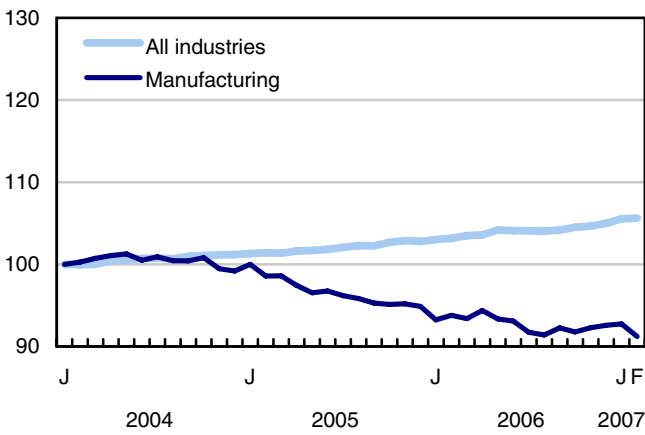
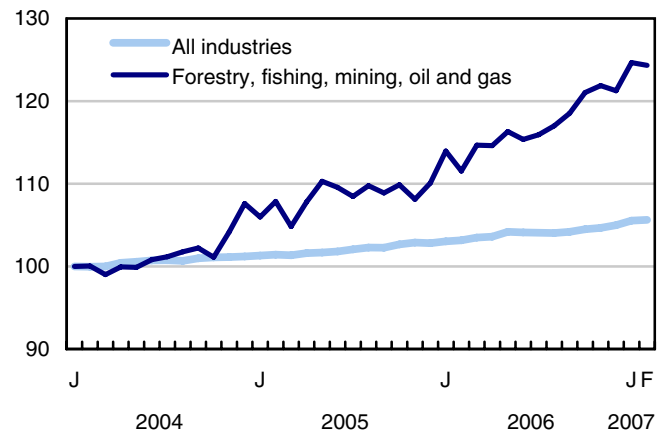
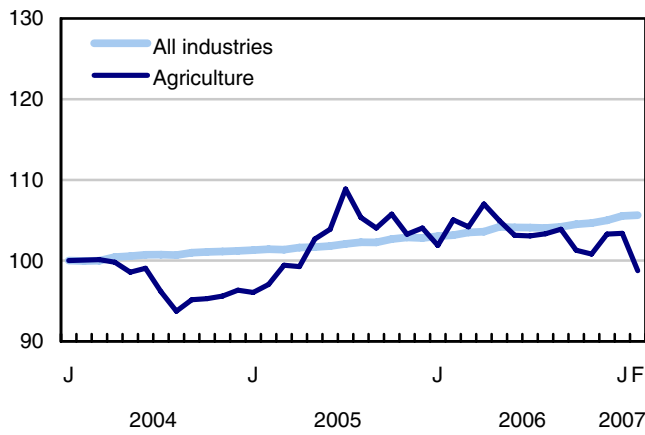


Chart 5
Index of employment by industry, Canada, seasonally adjusted, January 2004 = 100

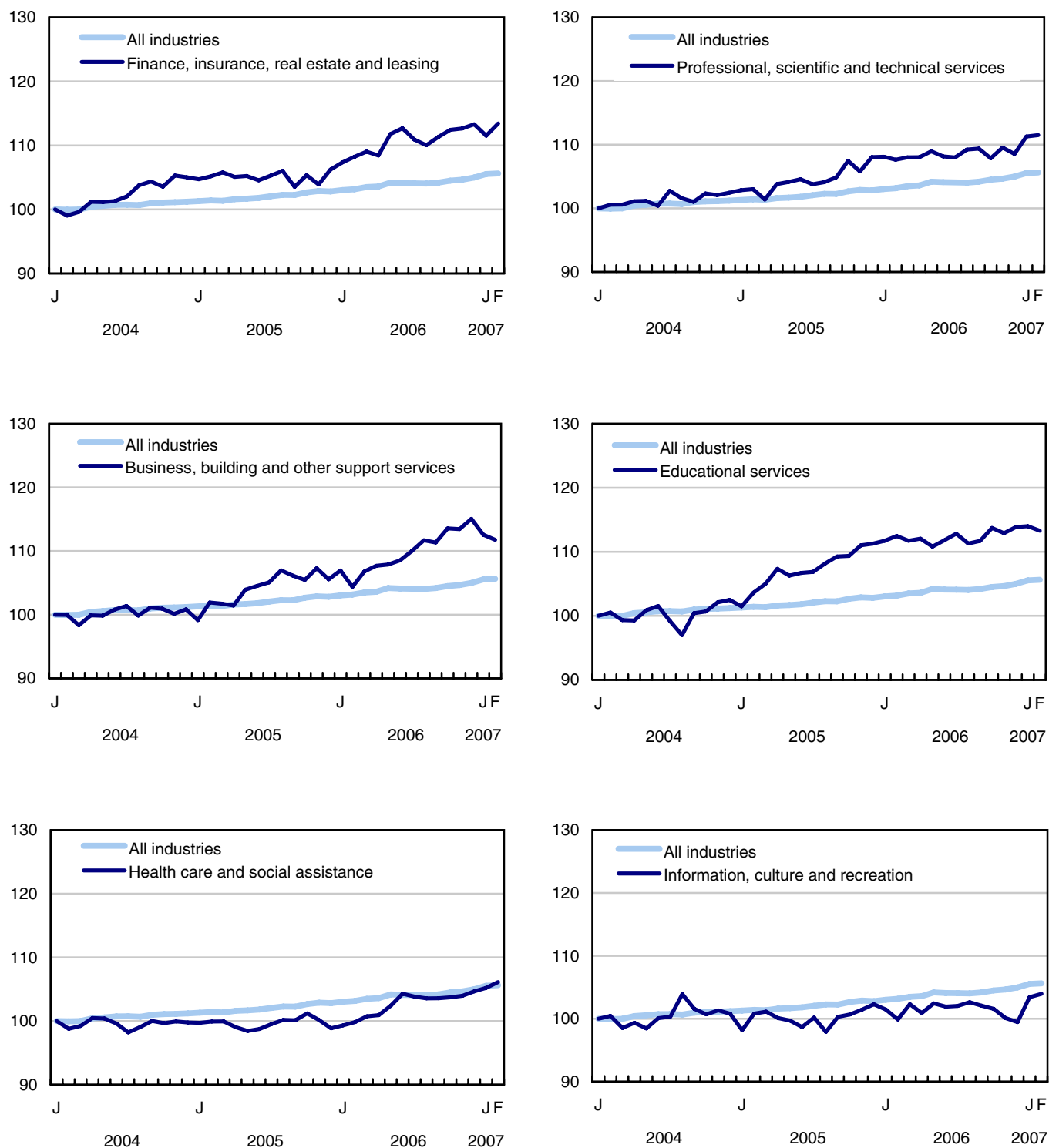


Chart 6
Index of employment by industry, Canada, seasonally adjusted, January 2004 = 100

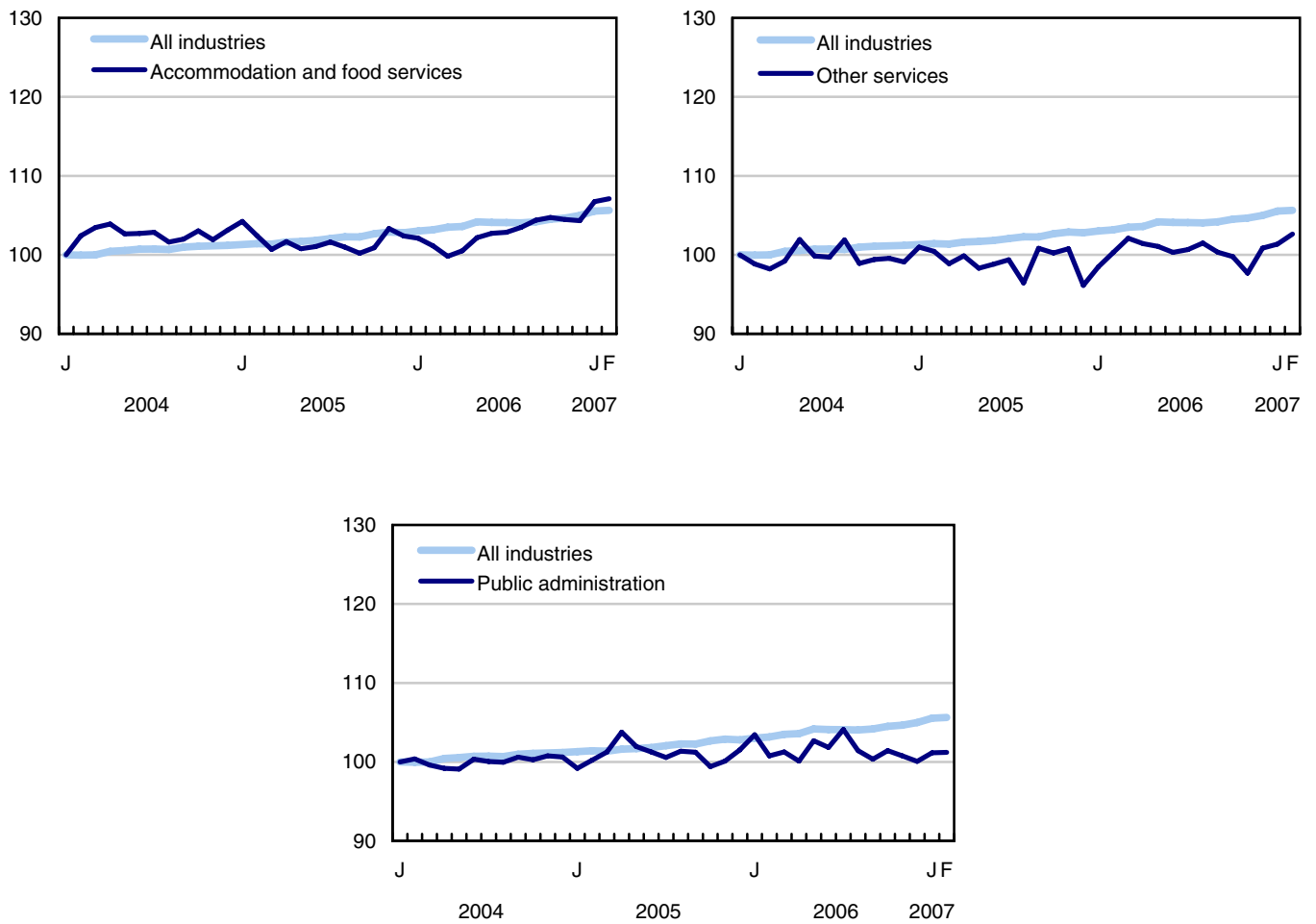


Chart 7
Index of employment by province, seasonally adjusted, January 2004 = 100

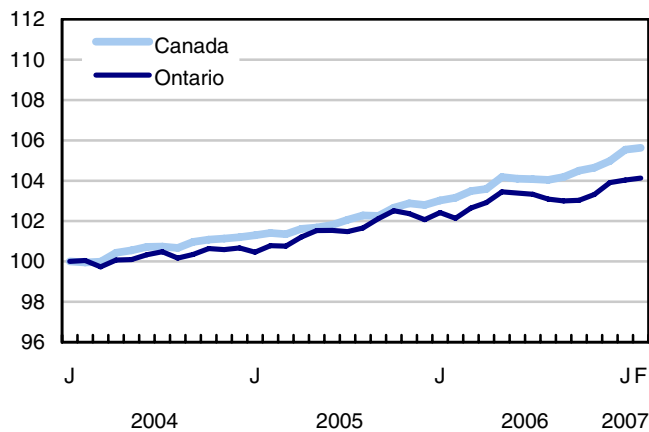
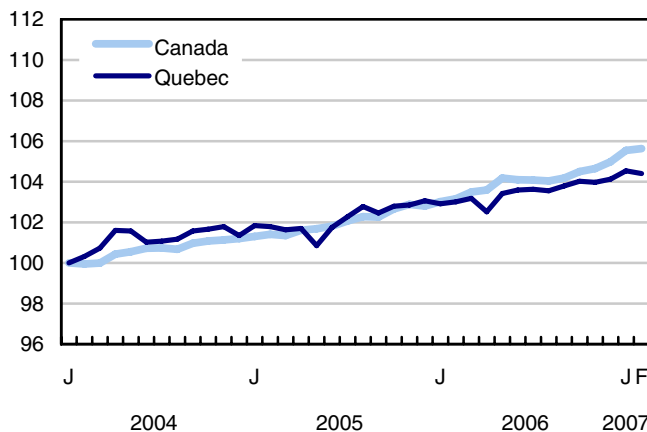
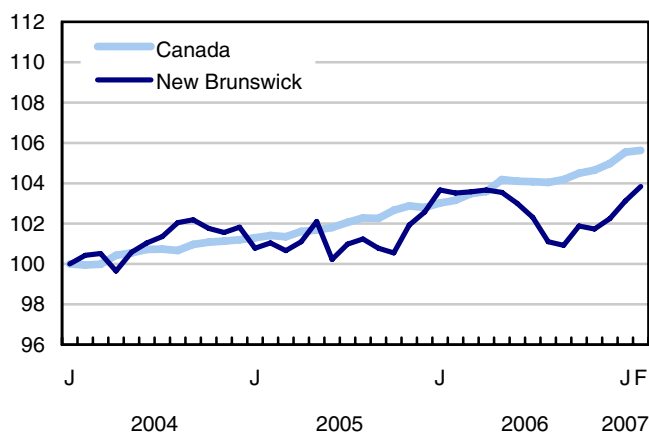
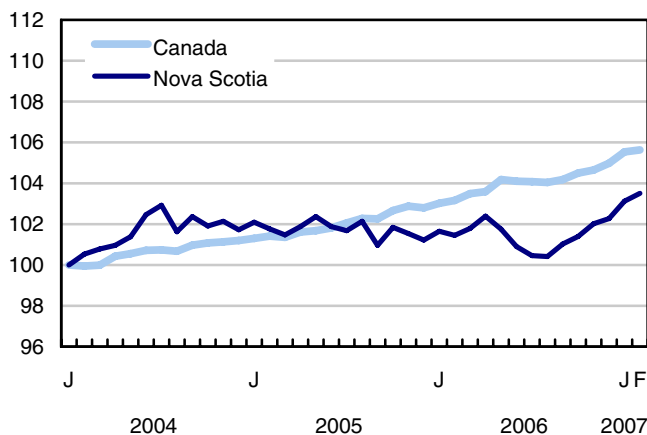
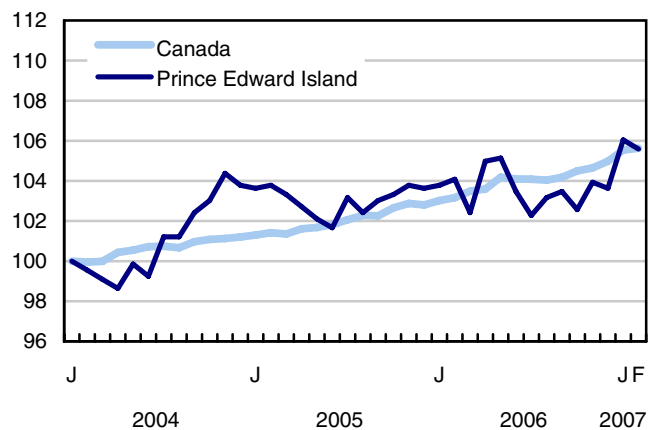
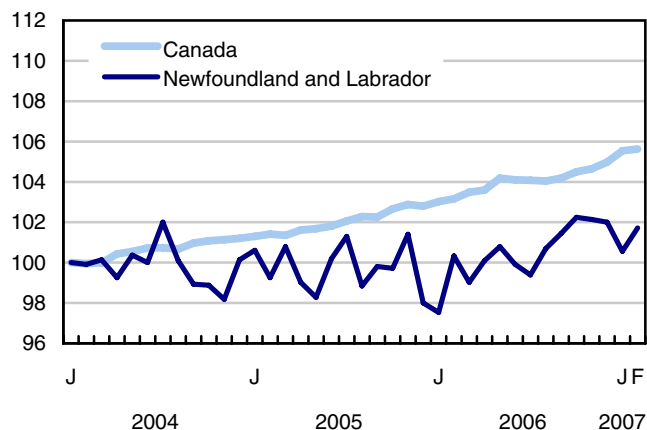
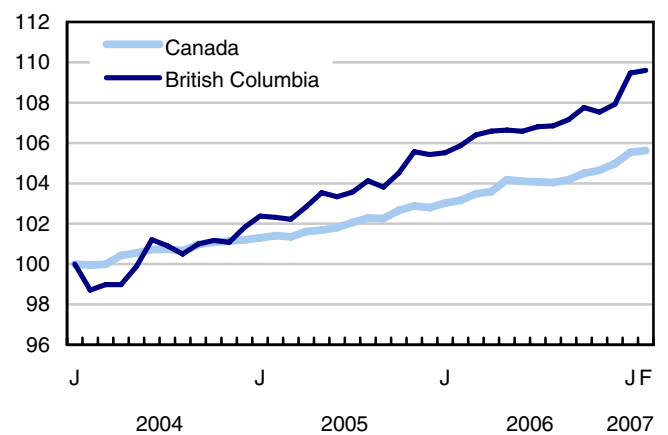
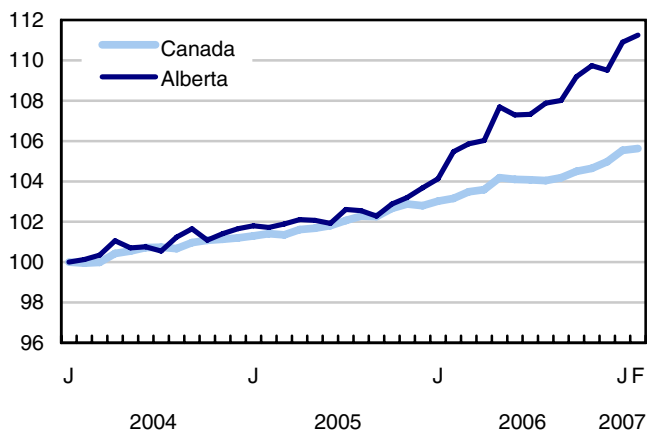
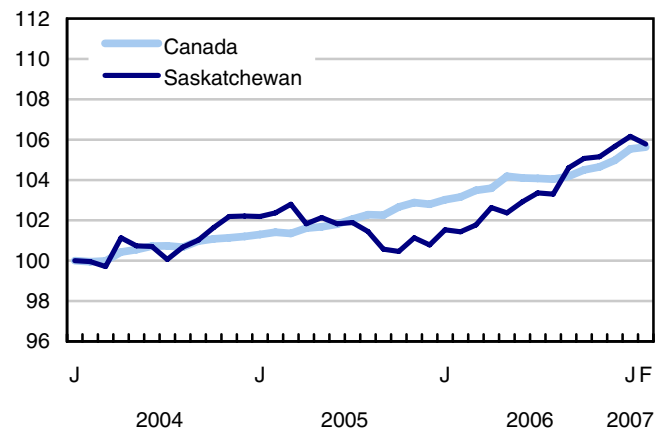
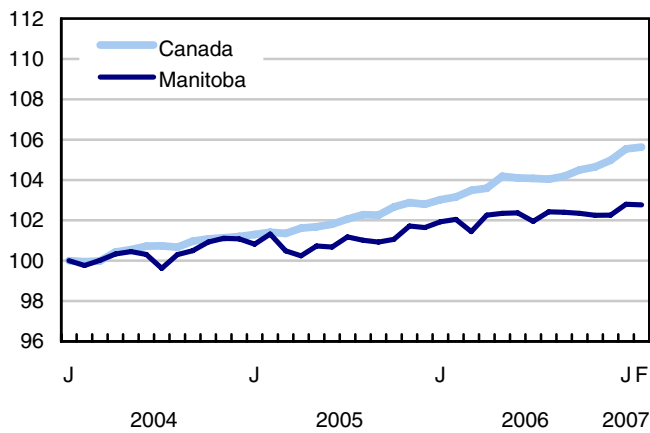


Chart 8
Index of employment by province, seasonally adjusted, January 2004 = 100



Related products

Selected publications from Statistics Canada

71-222-X	The Canadian Labour Market at a Glance
71-526-X	Methodology of the Canadian Labour Force Survey
71-543-G	Guide to the Labour Force Survey
71-544-X	Labour Force Survey Products and Services
71-587-X	Aboriginal Peoples Living Off-reserve in Western Canada: Estimates from the Labour Force Survey
71F0004X	Labour Force Historical Review
71F0031X	Improvements to the Labour Force Survey (LFS)
71M0001X	Labour Force Survey Microdata File
75-001-X	Perspectives on Labour and Income

Selected CANSIM tables from Statistics Canada

282-0001	Labour force survey estimates (LFS), by sex and detailed age group
282-0002	Labour force survey estimates (LFS), by sex and detailed age group
282-0003	Labour force survey estimates (LFS), by educational attainment, sex and age group
282-0004	Labour force survey estimates (LFS), by educational attainment, sex and age group
282-0005	Labour force survey estimates (LFS), by full- and part-time students during school months, sex and age group
282-0006	Labour force survey estimates (LFS), by students during summer months, sex and age group
282-0007	Labour force survey estimates (LFS), by North American Industry Classification System (NAICS), sex and age group
282-0008	Labour force survey estimates (LFS), by North American Industry Classification System (NAICS), sex and age group
282-0009	Labour force survey estimates (LFS), by National Occupational Classification for Statistics (NOC-S) and sex

282-0010	Labour force survey estimates (LFS), by National Occupational Classification for Statistics (NOC-S) and sex
282-0011	Labour force survey estimates (LFS), employment by class of worker, North American Industry Classification System (NAICS) and sex
282-0012	Labour force survey estimates (LFS), employment by class of worker, North American Industry Classification System (NAICS) and sex
282-0013	Labour force survey estimates (LFS), part-time employment by reason for part-time work, sex and age group
282-0014	Labour force survey estimates (LFS), part-time employment by reason for part-time work, sex and age group
282-0015	Labour force survey estimates (LFS), by usual hours worked, main or all jobs, sex and age group
282-0016	Labour force survey estimates (LFS), by usual hours worked, main or all jobs, sex and age group
282-0017	Labour force survey estimates (LFS), by actual hours worked, main or all jobs, sex and age group
282-0018	Labour force survey estimates (LFS), by actual hours worked, main or all jobs, sex and age group
282-0019	Labour force survey estimates (LFS), by usual hours worked, class of worker, North American Industry Classification System (NAICS) and sex
282-0020	Labour force survey estimates (LFS), by usual hours worked, class of worker, North American Industry Classification System (NAICS) and sex
282-0021	Labour force survey estimates (LFS), by actual hours worked, class of worker, North American Industry Classification System (NAICS) and sex
282-0022	Labour force survey estimates (LFS), by actual hours worked, class of worker, North American Industry Classification System (NAICS) and sex
282-0023	Labour force survey estimates (LFS), by usual hours worked, class of worker, National Occupational Classification for Statistics (NOC-S) and sex
282-0024	Labour force survey estimates (LFS), by usual hours worked, class of worker, National Occupational Classification for Statistics (NOC-S) and sex
282-0025	Labour force survey estimates (LFS), by actual hours worked, class of worker, National Occupational Classification for Statistics (NOC-S) and sex
282-0026	Labour force survey estimates (LFS), by actual hours worked, class of worker, National Occupational Classification for Statistics (NOC-S) and sex
282-0027	Labour force survey estimates (LFS), by total and average usual and actual hours worked, main or all jobs, type of work, sex and age group
282-0028	Labour force survey estimates (LFS), by total and average usual and actual hours worked, main or all jobs, type of work, sex and age group

282-0029	Labour force survey estimates (LFS), average days lost for personal reasons per full-time employee by North American Industry Classification System (NAICS), sex and age group
282-0030	Labour force survey estimates (LFS), average days lost for personal reasons per full-time employee by National Occupational Classification for Statistics (NOC-S), sex and age group
282-0031	Labour force survey estimates (LFS), multiple jobholders by North American Industry Classification System (NAICS), sex and age group
282-0032	Labour force survey estimates (LFS), multiple jobholders by North American Industry Classification System (NAICS), sex and age group
282-0033	Labour force survey estimates (LFS), multiple jobholders by National Occupational Classification for Statistics (NOC-S), sex and age group
282-0034	Labour force survey estimates (LFS), multiple jobholders by National Occupational Classification for Statistics (NOC-S), sex and age group
282-0035	Labour force survey estimates (LFS), multiple jobholders by usual hours worked at main and all jobs
282-0036	Labour force survey estimates (LFS), multiple jobholders by usual hours worked at main and all jobs
282-0037	Labour force survey estimates (LFS), job tenure by type of work, sex and age group
282-0038	Labour force survey estimates (LFS), job tenure by type of work, sex and age group
282-0039	Labour force survey estimates (LFS), job tenure by National Occupational Classification for Statistics (NOC-S) and sex
282-0040	Labour force survey estimates (LFS), job tenure by National Occupational Classification for Statistics (NOC-S) and sex
282-0041	Labour force survey estimates (LFS), job tenure by North American Industry Classification System (NAICS) and sex
282-0042	Labour force survey estimates (LFS), job tenure by North American Industry Classification System (NAICS) and sex
282-0047	Labour force survey estimates (LFS), duration of unemployment by sex and age group
282-0048	Labour force survey estimates (LFS), duration of unemployment by sex and age group
282-0049	Labour force survey estimates (LFS), unemployment by type of work sought and search method, sex and age group
282-0050	Labour force survey estimates (LFS), unemployment by type of work sought and search method, sex and age group
282-0051	Labour force survey estimates (LFS), retirement age by class of worker and sex
282-0052	Labour force survey estimates (LFS), by census metropolitan area, sex and age group, 3-month moving average
282-0053	Labour force survey estimates (LFS), by census metropolitan area, sex and age group

282-0054	Labour force survey estimates (LFS), by provinces, territories and economic regions, 3-month moving average
282-0055	Labour force survey estimates (LFS), by economic region and Yukon Territory and Northwest Territories
282-0056	Labour force survey estimates (LFS), employment by census metropolitan area and North American Industry Classification System (NAICS), 3-month moving average
282-0057	Labour force survey estimates (LFS), employment by census metropolitan area and North American Industry Classification System (NAICS)
282-0058	Labour force survey estimates (LFS), employment by census metropolitan area and National Occupational Classification for Statistics (NOC-S), 3-month moving average
282-0059	Labour force survey estimates (LFS), employment by census metropolitan area and National Occupational Classification for Statistics (NOC-S)
282-0060	Labour force survey estimates (LFS), employment by economic region and North American Industry Classification System (NAICS), 3-month moving average
282-0061	Labour force survey estimates (LFS), employment by economic region and North American Industry Classification System (NAICS)
282-0062	Labour force survey estimates (LFS), employment by economic region and National Occupational Classification for Statistics (NOC-S), 3-month moving average
282-0063	Labour force survey estimates (LFS), employment by economic region and National Occupational Classification for Statistics (NOC-S)
282-0064	Labour force survey estimates (LFS), by selected medium-sized cities
282-0069	Labour force survey estimates (LFS), wages of employees by type of work, National Occupational Classification for Statistics (NOC-S), sex and age group
282-0070	Labour force survey estimates (LFS), wages of employees by type of work, National Occupational Classification for Statistics (NOC-S), sex and age group
282-0071	Labour force survey estimates (LFS), wages of employees by type of work, North American Industry Classification System (NAICS), sex and age group
282-0072	Labour force survey estimates (LFS), wages of employees by type of work, North American Industry Classification System (NAICS), sex and age group
282-0073	Labour force survey estimates (LFS), wages of employees by job permanence, union coverage, sex and age group
282-0074	Labour force survey estimates (LFS), wages of employees by job permanence, union coverage, sex and age group
282-0075	Labour force survey estimates (LFS), employees by establishment size, North American Industry Classification System (NAICS), sex and age group
282-0076	Labour force survey estimates (LFS), employees by establishment size, North American Industry Classification System (NAICS), sex and age group

282-0077	Labour force survey estimates (LFS), employees by union coverage, North American Industry Classification System (NAICS), sex and age group
282-0078	Labour force survey estimates (LFS), employees by union coverage, North American Industry Classification System (NAICS), sex and age group
282-0079	Labour force survey estimates (LFS), employees by job permanency, North American Industry Classification System (NAICS), sex and age group
282-0080	Labour force survey estimates (LFS), employees by job permanency, North American Industry Classification System (NAICS), sex and age group
282-0081	Labour force survey estimates (LFS), employees working overtime (weekly) by National Occupational Classification for Statistics (NOC-S), sex and age group
282-0082	Labour force survey estimates (LFS), employees working overtime (weekly) by National Occupational Classification for Statistics (NOC-S), sex and age group
282-0083	Labour force survey estimates (LFS), employees working overtime (weekly) by North American Industry Classification System (NAICS), sex and age group
282-0084	Labour force survey estimates (LFS), employees working overtime (weekly) by North American Industry Classification System (NAICS), sex and age group
282-0085	Labour force survey estimates (LFS), supplementary unemployment rates by sex and age group
282-0086	Labour force survey estimates (LFS), supplementary unemployment rates by sex and age group
282-0087	Labour force survey estimates (LFS), by sex and age group, seasonally adjusted and unadjusted
282-0088	Labour force survey estimates (LFS), employment by North American Industry Classification System (NAICS), seasonally adjusted and unadjusted
282-0089	Labour force survey estimates (LFS), employment by class of worker and sex, seasonally adjusted and unadjusted
282-0090	Labour force survey estimates (LFS), by census metropolitan area, 3-month moving average, seasonally adjusted and unadjusted
282-0091	Labour force survey estimates (LFS), by Montréal, Toronto and Vancouver census metropolitan areas, seasonally adjusted and unadjusted
282-0092	Labour force survey estimates (LFS), actual hours worked by North American Industry Classification System (NAICS), seasonally adjusted
282-0093	Labour force survey estimates (LFS), employment by National Occupational Classification for Statistics (NOC-S), seasonally adjusted
282-0094	Labour force survey estimates (LFS), by North American Industry Classification System (NAICS), Canada, seasonally adjusted
282-0095	Labour force survey estimates (LFS), by full- and part-time students during school months, sex and age group
282-0096	Labour force survey estimates (LFS), by urban and rural areas based on 2001 census boundaries, sex and age group

282-0097	Labour force survey estimates (LFS), by urban and rural areas based on 2001 census boundaries, sex and age group
282-0098	Labour force survey estimates (LFS), employment by urban and rural areas based on 2001 census boundaries, class of worker and North American Industry Classification System (NAICS)
282-0099	Labour force survey estimates (LFS), employment by urban and rural areas based on 2001 census boundaries, class of worker and North American Industry Classification System (NAICS)

Selected surveys from Statistics Canada

3701	Labour Force Survey
------	---------------------

Selected summary tables from Statistics Canada

- *Labour force characteristics*
- *Employment by industry*
- *Selected economic indicators, Canada and United States (monthly and quarterly)*
- *Economy E-Cluster Indicators - Front Page (English)*
- *Days lost per worker due to illness or disability, by sex, by provinces*
- *Economic indicators, by province and territory (monthly and quarterly)*
- *Labour force and participation rates by sex and age group*
- *Labour force, employed and unemployed, numbers and rates, by provinces*
- *Employment by industry and sex*
- *Full-time and part-time employment by sex and age group*
- *Labour force characteristics by age and sex*
- *Distribution of employed people, by industry, by province*
- *Labour force characteristics, population 15 years and older, by census metropolitan area*
- *Labour force characteristics, population 15 years and older, by economic region, by province*
- *Days lost per worker by cause, by provinces*
- *Days lost per worker by industry and sex*

- *People employed, by educational attainment*
- *Reasons for part-time work by sex and age group*
- *Self-employment, historical summary*
- *Employment by age, sex, type of work, class of worker and provinces (monthly)*
- *Employment by major industry groups, seasonally adjusted, by provinces (monthly)*
- *Actual hours worked per week by industry, seasonally adjusted (monthly)*
- *Average hourly wages of employees by selected characteristics and profession, unadjusted data, by provinces (monthly)*
- *Labour force characteristics, seasonally adjusted, by province (monthly)*
- *Labour force characteristics, unadjusted, by province (monthly)*
- *Labour force characteristics, seasonally adjusted, by census metropolitan area (3 month moving average)*
- *Labour force characteristics, unadjusted, by census metropolitan area (3 month moving average)*
- *Labour force characteristics, unadjusted, by economic region (3 month moving average)*

Statistical tables

Table 1
Labour force characteristics by age and sex, Canada, seasonally adjusted

	January 2007	February 2007	S.E. ¹	Change from			Percent change from		
				last month	last December	twelve months ago	last month	last December	twelve months ago
in thousands (except rates)									
Both sexes, 15 years and over									
Population	26,392.3	26,415.0	...	22.7	57.4	370.6	0.1	0.2	1.4
Labour force	17,825.8	17,827.5	27.4	1.7	111.8	369.5	0.0	0.6	2.1
Employment	16,729.3	16,743.5	27.5	14.2	103.1	392.1	0.1	0.6	2.4
Employment full-time	13,683.1	13,693.6	35.5	10.5	56.4	342.9	0.1	0.4	2.6
Employment part-time	3,046.1	3,049.8	32.5	3.7	46.6	49.2	0.1	1.6	1.6
Unemployment	1,096.5	1,084.0	23.1	-12.5	8.7	-22.6	-1.1	0.8	-2.0
Participation rate	67.5	67.5	0.1	0.0	0.3	0.5
Unemployment rate	6.2	6.1	0.1	-0.1	0.0	-0.2
Employment rate	63.4	63.4	0.1	0.0	0.3	0.6
Part-time rate	18.2	18.2	0.2	0.0	0.2	-0.1
Both sexes, 15 to 24 years									
Population	4,341.2	4,342.6	...	1.4	4.6	35.4	0.0	0.1	0.8
Labour force	2,892.3	2,894.4	16.7	2.1	24.0	40.5	0.1	0.8	1.4
Employment	2,554.9	2,575.4	15.9	20.5	26.5	48.0	0.8	1.0	1.9
Employment full-time	1,421.7	1,432.1	17.8	10.4	5.3	42.5	0.7	0.4	3.1
Employment part-time	1,133.2	1,143.3	18.6	10.1	21.2	5.5	0.9	1.9	0.5
Unemployment	337.4	319.1	13.8	-18.3	-2.4	-7.4	-5.4	-0.7	-2.3
Participation rate	66.6	66.7	0.4	0.1	0.5	0.4
Unemployment rate	11.7	11.0	0.5	-0.7	-0.2	-0.4
Employment rate	58.9	59.3	0.4	0.4	0.5	0.6
Part-time rate	44.4	44.4	0.6	0.0	0.4	-0.6
Men, 25 years and over									
Population	10,770.4	10,781.0	...	10.6	26.0	167.2	0.1	0.2	1.6
Labour force	7,964.0	7,958.1	13.9	-5.9	38.4	125.6	-0.1	0.5	1.6
Employment	7,544.1	7,534.0	14.9	-10.1	30.3	121.6	-0.1	0.4	1.6
Employment full-time	7,022.8	7,025.3	19.4	2.5	7.8	98.4	0.0	0.1	1.4
Employment part-time	521.3	508.7	15.1	-12.6	22.5	23.2	-2.4	4.6	4.8
Unemployment	419.9	424.1	13.1	4.2	8.0	4.1	1.0	1.9	1.0
Participation rate	73.9	73.8	0.1	-0.1	0.2	0.0
Unemployment rate	5.3	5.3	0.2	0.0	0.0	-0.1
Employment rate	70.0	69.9	0.1	-0.1	0.1	0.1
Part-time rate	6.9	6.8	0.2	-0.2	0.3	0.2
Women, 25 years and over									
Population	11,280.7	11,291.4	...	10.7	26.8	168.0	0.1	0.2	1.5
Labour force	6,969.4	6,975.0	15.4	5.6	49.4	203.3	0.1	0.7	3.0
Employment	6,630.3	6,634.1	15.3	3.8	46.2	222.6	0.1	0.7	3.5
Employment full-time	5,238.7	5,236.3	22.6	-2.4	43.4	202.0	0.0	0.8	4.0
Employment part-time	1,391.6	1,397.9	21.0	6.3	3.0	20.6	0.5	0.2	1.5
Unemployment	339.1	340.8	12.3	1.7	3.1	-19.4	0.5	0.9	-5.4
Participation rate	61.8	61.8	0.1	0.0	0.3	0.9
Unemployment rate	4.9	4.9	0.2	0.0	0.0	-0.4
Employment rate	58.8	58.8	0.1	0.0	0.3	1.2
Part-time rate	21.0	21.1	0.3	0.1	-0.1	-0.4
Both sexes, 25 to 54 years									
Population	14,288.1	14,292.5	...	4.4	11.4	101.4	0.0	0.1	0.7
Labour force	12,398.1	12,383.3	20.4	-14.8	54.8	170.3	-0.1	0.4	1.4
Employment	11,763.8	11,743.6	21.7	-20.2	47.8	195.3	-0.2	0.4	1.7
Unemployment	634.3	639.6	16.9	5.3	6.9	-25.1	0.8	1.1	-3.8
Participation rate	86.8	86.6	0.1	-0.2	0.3	0.5
Unemployment rate	5.1	5.2	0.1	0.1	0.1	-0.2
Employment rate	82.3	82.2	0.2	-0.1	0.3	0.8

1. Average standard error of change in two consecutive months (see "Sampling Errors" in Data Quality for further explanations).

Note(s): Related CANSIM table 282-0087

Table 2
Employment by class of worker and industry, Canada, seasonally adjusted

	January 2007	February 2007	S.E. ¹	Change from			Percent change from		
				last month	last December	twelve months ago	last month	last December	twelve months ago
in thousands									
Class of worker									
Employees	14,184.6	14,189.4	31.8	4.8	77.5	377.4	0.0	0.5	2.7
Self-employed ²	2,544.7	2,554.1	21.1	9.4	25.6	14.8	0.4	1.0	0.6
Public/private sector employees									
Public sector employees	3,199.6	3,197.8	19.9	-1.8	6.3	15.4	-0.1	0.2	0.5
Private sector employees	10,985.0	10,991.6	33.0	6.6	71.1	362.0	0.1	0.7	3.4
Industry	16,729.3	16,743.5	27.5	14.2	103.1	392.1	0.1	0.6	2.4
Goods-producing sector	4,036.9	4,002.6	22.7	-34.3	-13.1	5.7	-0.8	-0.3	0.1
Agriculture	346.1	330.6	6.7	-15.5	-15.2	-21.1	-4.5	-4.4	-6.0
Forestry, fishing, mining, oil and gas	352.0	351.1	6.3	-0.9	8.7	36.1	-0.3	2.5	11.5
Utilities	124.0	128.1	3.6	4.1	3.5	6.5	3.3	2.8	5.3
Construction	1,097.6	1,110.3	13.7	12.7	21.0	42.9	1.2	1.9	4.0
Manufacturing	2,117.2	2,082.5	17.7	-34.7	-31.1	-58.8	-1.6	-1.5	-2.7
Services-producing sector	12,692.4	12,740.9	30.3	48.5	116.2	386.4	0.4	0.9	3.1
Trade	2,647.2	2,638.3	20.0	-8.9	-3.5	2.5	-0.3	-0.1	0.1
Transportation and warehousing	806.5	823.5	11.5	17.0	7.6	23.0	2.1	0.9	2.9
Finance, insurance, real estate and leasing	1,048.4	1,066.4	12.9	18.0	1.2	48.8	1.7	0.1	4.8
Professional, scientific and technical services	1,118.5	1,120.7	14.0	2.2	29.8	38.8	0.2	2.7	3.6
Business, building and other support services	707.6	702.5	12.4	-5.1	-20.7	46.4	-0.7	-2.9	7.1
Educational services	1,176.8	1,169.4	13.3	-7.4	-6.1	8.4	-0.6	-0.5	0.7
Health care and social assistance	1,831.1	1,847.1	14.4	16.0	25.5	109.7	0.9	1.4	6.3
Information, culture and recreation	759.6	763.5	12.1	3.9	33.1	29.9	0.5	4.5	4.1
Accommodation and food services	1,054.5	1,058.0	13.4	3.5	27.3	58.9	0.3	2.6	5.9
Other services	707.8	716.6	11.3	8.8	12.4	16.3	1.2	1.8	2.3
Public administration	834.4	834.9	10.3	0.5	9.5	3.7	0.1	1.2	0.4

1. Average standard error of change in two consecutive months (see "Sampling Errors" in Data Quality for further explanations).

2. Includes both incorporated and unincorporated working owners, self-employed persons who do not have a business and persons working in a family business without pay.

Note(s): Related CANSIM tables 282-0088, 282-0089

Table 3
Labour force characteristics by province, seasonally adjusted

	January 2007	February 2007	S.E. ¹	Change from			Percent change from		
				last month	last December	twelve months ago	last month	last December	twelve months ago
in thousands (except rates)									
Newfoundland and Labrador									
Population	426.1	425.9	...	-0.2	-0.5	-3.2	0.0	-0.1	-0.7
Labour force	255.0	254.7	2.2	-0.3	0.8	1.2	-0.1	0.3	0.5
Employment	215.8	218.3	2.3	2.5	-0.6	3.0	1.2	-0.3	1.4
Employment full-time	183.2	184.6	2.6	1.4	-0.1	5.3	0.8	-0.1	3.0
Employment part-time	32.6	33.7	1.9	1.1	-0.5	-2.3	3.4	-1.5	-6.4
Unemployment	39.2	36.3	2.2	-2.9	1.3	-1.9	-7.4	3.7	-5.0
Participation rate	59.8	59.8	0.5	0.0	0.3	0.7
Unemployment rate	15.4	14.3	0.8	-1.1	0.5	-0.8
Employment rate	50.6	51.3	0.5	0.7	0.0	1.1
Prince Edward Island									
Population	112.8	112.8	...	0.0	0.1	0.8	0.0	0.1	0.7
Labour force	78.6	77.9	0.6	-0.7	-0.4	0.6	-0.9	-0.5	0.8
Employment	70.2	69.9	0.7	-0.3	1.3	1.0	-0.4	1.9	1.5
Employment full-time	58.2	56.6	0.8	-1.6	0.0	-1.2	-2.7	0.0	-2.1
Employment part-time	12.0	13.3	0.6	1.3	1.3	2.2	10.8	10.8	19.8
Unemployment	8.4	7.9	0.6	-0.5	-1.8	-0.5	-6.0	-18.6	-6.0
Participation rate	69.7	69.1	0.5	-0.6	-0.4	0.1
Unemployment rate	10.7	10.1	0.7	-0.6	-2.3	-0.8
Employment rate	62.2	62.0	0.6	-0.2	1.1	0.5
Nova Scotia									
Population	763.5	763.5	...	0.0	0.0	1.1	0.0	0.0	0.1
Labour force	487.0	486.8	2.7	-0.2	6.3	4.7	0.0	1.3	1.0
Employment	449.1	450.8	3.0	1.7	5.4	9.0	0.4	1.2	2.0
Employment full-time	369.1	371.1	3.7	2.0	7.1	13.0	0.5	2.0	3.6
Employment part-time	79.9	79.8	3.1	-0.1	-1.6	-3.9	-0.1	-2.0	-4.7
Unemployment	37.9	36.0	2.6	-1.9	0.9	-4.3	-5.0	2.6	-10.7
Participation rate	63.8	63.8	0.4	0.0	0.9	0.6
Unemployment rate	7.8	7.4	0.5	-0.4	0.1	-1.0
Employment rate	58.8	59.0	0.4	0.2	0.7	1.1
New Brunswick									
Population	611.4	611.8	...	0.4	0.6	0.4	0.1	0.1	0.1
Labour force	389.0	386.5	2.3	-2.5	-0.6	-9.4	-0.6	-0.2	-2.4
Employment	357.3	359.8	2.5	2.5	5.5	1.1	0.7	1.6	0.3
Employment full-time	300.5	302.7	2.9	2.2	4.9	5.8	0.7	1.6	2.0
Employment part-time	56.8	57.1	2.4	0.3	0.6	-4.7	0.5	1.1	-7.6
Unemployment	31.7	26.7	2.1	-5.0	-6.1	-10.6	-15.8	-18.6	-28.4
Participation rate	63.6	63.2	0.4	-0.4	-0.1	-1.6
Unemployment rate	8.1	6.9	0.5	-1.2	-1.6	-2.5
Employment rate	58.4	58.8	0.4	0.4	0.8	0.1
Quebec									
Population	6,288.9	6,293.0	...	4.1	10.2	67.8	0.1	0.2	1.1
Labour force	4,119.9	4,122.2	14.5	2.3	26.5	38.4	0.1	0.6	0.9
Employment	3,804.1	3,799.0	14.8	-5.1	9.6	50.4	-0.1	0.3	1.3
Employment full-time	3,102.9	3,102.7	19.3	-0.2	-7.8	34.7	0.0	-0.3	1.1
Employment part-time	701.2	696.3	17.6	-4.9	17.4	15.7	-0.7	2.6	2.3
Unemployment	315.7	323.2	13.6	7.5	16.9	-12.0	2.4	5.5	-3.6
Participation rate	65.5	65.5	0.2	0.0	0.3	-0.1
Unemployment rate	7.7	7.8	0.3	0.1	0.3	-0.4
Employment rate	60.5	60.4	0.2	-0.1	0.1	0.2

See footnotes at the end of the table.

Table 3 – continued

Labour force characteristics by province, seasonally adjusted

	January 2007	February 2007	S.E. ¹	Change from			Percent change from		
				last month	last December	twelve months ago	last month	last December	twelve months ago
in thousands (except rates)									
Ontario									
Population	10,301.5	10,309.2	...	7.7	18.3	133.5	0.1	0.2	1.3
Labour force	7,001.0	7,002.7	18.4	1.7	34.1	141.0	0.0	0.5	2.1
Employment	6,554.2	6,560.2	18.1	6.0	13.6	125.3	0.1	0.2	1.9
Employment full-time	5,353.4	5,354.9	23.0	1.5	0.3	58.3	0.0	0.0	1.1
Employment part-time	1,200.8	1,205.3	21.2	4.5	13.4	67.1	0.4	1.1	5.9
Unemployment	446.7	442.5	15.3	-4.2	20.5	15.6	-0.9	4.9	3.7
Participation rate	68.0	67.9	0.2	-0.1	0.2	0.5
Unemployment rate	6.4	6.3	0.2	-0.1	0.2	0.1
Employment rate	63.6	63.6	0.2	0.0	0.0	0.4
Manitoba									
Population	894.3	894.7	...	0.4	0.9	4.6	0.0	0.1	0.5
Labour force	619.0	617.2	2.8	-1.8	4.6	4.2	-0.3	0.8	0.7
Employment	590.7	590.5	2.8	-0.2	2.9	4.1	0.0	0.5	0.7
Employment full-time	478.5	478.4	3.9	-0.1	6.0	7.5	0.0	1.3	1.6
Employment part-time	112.2	112.1	3.6	-0.1	-3.1	-3.4	-0.1	-2.7	-2.9
Unemployment	28.3	26.7	2.1	-1.6	1.7	0.1	-5.7	6.8	0.4
Participation rate	69.2	69.0	0.3	-0.2	0.5	0.1
Unemployment rate	4.6	4.3	0.3	-0.3	0.2	0.0
Employment rate	66.1	66.0	0.3	-0.1	0.3	0.1
Saskatchewan									
Population	747.0	747.4	...	0.4	1.1	0.0	0.1	0.1	0.0
Labour force	526.8	524.0	2.4	-2.8	0.0	14.3	-0.5	0.0	2.8
Employment	505.1	503.3	2.5	-1.8	0.5	20.7	-0.4	0.1	4.3
Employment full-time	409.8	406.1	3.3	-3.7	-1.6	17.4	-0.9	-0.4	4.5
Employment part-time	95.4	97.2	2.9	1.8	2.1	3.3	1.9	2.2	3.5
Unemployment	21.6	20.7	1.9	-0.9	-0.5	-6.4	-4.2	-2.4	-23.6
Participation rate	70.5	70.1	0.3	-0.4	-0.1	1.9
Unemployment rate	4.1	4.0	0.4	-0.1	0.0	-1.3
Employment rate	67.6	67.3	0.3	-0.3	-0.1	2.7
Alberta									
Population	2,703.1	2,709.2	...	6.1	17.1	105.9	0.2	0.6	4.1
Labour force	1,997.7	2,008.1	8.0	10.4	33.7	110.1	0.5	1.7	5.8
Employment	1,932.5	1,938.7	8.3	6.2	30.3	100.7	0.3	1.6	5.5
Employment full-time	1,633.2	1,639.0	10.8	5.8	23.5	119.0	0.4	1.5	7.8
Employment part-time	299.3	299.7	9.8	0.4	6.8	-18.3	0.1	2.3	-5.8
Unemployment	65.2	69.4	5.6	4.2	3.4	9.4	6.4	5.2	15.7
Participation rate	73.9	74.1	0.3	0.2	0.8	1.2
Unemployment rate	3.3	3.5	0.3	0.2	0.2	0.3
Employment rate	71.5	71.6	0.3	0.1	0.7	1.0
British Columbia									
Population	3,543.7	3,547.4	...	3.7	9.4	59.5	0.1	0.3	1.7
Labour force	2,352.0	2,347.4	10.0	-4.6	6.7	64.3	-0.2	0.3	2.8
Employment	2,250.2	2,252.9	10.1	2.7	34.4	76.6	0.1	1.6	3.5
Employment full-time	1,794.3	1,797.5	13.5	3.2	24.3	83.9	0.2	1.4	4.9
Employment part-time	455.9	455.3	12.5	-0.6	10.0	-7.4	-0.1	2.2	-1.6
Unemployment	101.8	94.6	7.3	-7.2	-27.6	-12.2	-7.1	-22.6	-11.4
Participation rate	66.4	66.2	0.3	-0.2	0.0	0.7
Unemployment rate	4.3	4.0	0.3	-0.3	-1.2	-0.7
Employment rate	63.5	63.5	0.3	0.0	0.8	1.1

1. Average standard error of change in two consecutive months (see "Sampling Errors" in Data Quality for further explanations).

Note(s): Related CANSIM table 282-0087

Table 4-1
Selected labour force characteristics (seasonally adjusted) — Newfoundland and Labrador

	January 2007	February 2007	S.E. ¹	Change from			Percent change from		
				last month	last December	twelve months ago	last month	last December	twelve months ago
in thousands (except rates)									
Both sexes, 15 years and over									
Population	426.1	425.9	...	-0.2	-0.5	-3.2	0.0	-0.1	-0.7
Labour force	255.0	254.7	2.2	-0.3	0.8	1.2	-0.1	0.3	0.5
Employment	215.8	218.3	2.3	2.5	-0.6	3.0	1.2	-0.3	1.4
Employment full-time	183.2	184.6	2.6	1.4	-0.1	5.3	0.8	-0.1	3.0
Unemployment	39.2	36.3	2.2	-2.9	1.3	-1.9	-7.4	3.7	-5.0
Participation rate	59.8	59.8	0.5	0.0	0.3	0.7
Unemployment rate	15.4	14.3	0.8	-1.1	0.5	-0.8
Employment rate	50.6	51.3	0.5	0.7	0.0	1.1
Part-time rate	15.1	15.4	0.9	0.3	-0.2	-1.3
Both sexes, 15 to 24 years									
Population	65.1	65.0	...	-0.1	-0.4	-2.7	-0.2	-0.6	-4.0
Labour force	36.0	36.5	1.2	0.5	0.1	0.4	1.4	0.3	1.1
Employment	27.8	29.5	1.1	1.7	1.1	2.0	6.1	3.9	7.3
Unemployment	8.2	7.0	1.1	-1.2	-0.9	-1.6	-14.6	-11.4	-18.6
Participation rate	55.3	56.2	1.8	0.9	0.5	2.9
Unemployment rate	22.8	19.2	2.8	-3.6	-2.5	-4.6
Employment rate	42.7	45.4	1.6	2.7	2.0	4.8
Part-time rate	41.7	44.1	3.6	2.3	2.5	-5.8
Men, 25 years and over									
Population	174.6	174.6	...	0.0	-0.1	-0.4	0.0	-0.1	-0.2
Labour force	115.9	114.3	1.2	-1.6	-0.7	0.3	-1.4	-0.6	0.3
Employment	97.1	96.8	1.4	-0.3	-2.0	1.0	-0.3	-2.0	1.0
Unemployment	18.9	17.5	1.4	-1.4	1.3	-0.7	-7.4	8.0	-3.8
Participation rate	66.4	65.5	0.7	-0.9	-0.3	0.4
Unemployment rate	16.3	15.3	1.1	-1.0	1.2	-0.7
Employment rate	55.6	55.4	0.8	-0.2	-1.2	0.7
Part-time rate	4.5	5.3	0.8	0.7	0.1	-0.2
Women, 25 years and over									
Population	186.4	186.3	...	-0.1	0.0	0.0	-0.1	0.0	0.0
Labour force	103.0	103.9	1.3	0.9	1.4	0.4	0.9	1.4	0.4
Employment	90.9	92.0	1.3	1.1	0.3	0.0	1.2	0.3	0.0
Unemployment	12.1	11.9	1.2	-0.2	1.0	0.4	-1.7	9.2	3.5
Participation rate	55.3	55.8	0.7	0.5	0.8	0.2
Unemployment rate	11.7	11.5	1.1	-0.2	0.9	0.4
Employment rate	48.8	49.4	0.7	0.6	0.2	0.0
Part-time rate	18.2	17.0	1.4	-1.2	-1.8	-1.5
Industry	215.8	218.3	2.3	2.5	-0.6	3.0	1.2	-0.3	1.4
Goods-producing sector	47.8	47.5	1.9	-0.3	-2.9	-1.8	-0.6	-5.8	-3.7
Agriculture	1.8	1.5	0.4	-0.3	-0.2	-0.6	-16.7	-11.8	-28.6
Forestry, fishing, mining, oil and gas	17.9	17.6	1.1	-0.3	-0.3	1.1	-1.7	-1.7	6.7
Utilities	1.7	1.5	0.3	-0.2	0.1	-0.8	-11.8	7.1	-34.8
Construction	11.9	12.3	1.0	0.4	-1.3	-0.2	3.4	-9.6	-1.6
Manufacturing	14.6	14.6	1.1	0.0	-1.2	-1.3	0.0	-7.6	-8.2
Services-producing sector	168.0	170.8	2.0	2.8	2.3	4.8	1.7	1.4	2.9
Trade	38.0	39.6	1.2	1.6	1.5	2.3	4.2	3.9	6.2
Transportation and warehousing	10.8	10.6	0.7	-0.2	-0.7	-1.0	-1.9	-6.2	-8.6
Finance, insurance, real estate and leasing	6.5	6.6	0.5	0.1	0.2	-1.4	1.5	3.1	-17.5
Professional, scientific and technical services	7.0	7.5	0.5	0.5	1.7	-0.8	7.1	29.3	-9.6
Business, building and other support services	7.9	8.2	0.7	0.3	-1.1	1.0	3.8	-11.8	13.9
Educational services	19.1	20.0	0.8	0.9	1.4	3.3	4.7	7.5	19.8
Health care and social assistance	29.4	29.8	1.0	0.4	0.1	-1.0	1.4	0.3	-3.2
Information, culture and recreation	9.1	8.5	0.6	-0.6	-0.6	1.2	-6.6	-6.6	16.4
Accommodation and food services	13.3	13.3	1.0	0.0	0.9	0.2	0.0	7.3	1.5
Other services	10.6	9.8	0.7	-0.8	-1.6	-2.0	-7.5	-14.0	-16.9
Public administration	16.3	16.9	0.8	0.6	0.6	3.0	3.7	3.7	21.6

1. Average standard error of change in two consecutive months (see "Sampling Errors" in Data Quality for further explanations).

Note(s): Related CANSIM tables 282-0087, 282-0088

Table 4-2

Selected labour force characteristics (seasonally adjusted) — Prince Edward Island

	January 2007	February 2007	S.E. ¹	Change from			Percent change from		
				last month	last December	twelve months ago	last month	last December	twelve months ago
in thousands (except rates)									
Both sexes, 15 years and over									
Population	112.8	112.8	...	0.0	0.1	0.8	0.0	0.1	0.7
Labour force	78.6	77.9	0.6	-0.7	-0.4	0.6	-0.9	-0.5	0.8
Employment	70.2	69.9	0.7	-0.3	1.3	1.0	-0.4	1.9	1.5
Employment full-time	58.2	56.6	0.8	-1.6	0.0	-1.2	-2.7	0.0	-2.1
Unemployment	8.4	7.9	0.6	-0.5	-1.8	-0.5	-6.0	-18.6	-6.0
Participation rate	69.7	69.1	0.5	-0.6	-0.4	0.1
Unemployment rate	10.7	10.1	0.7	-0.6	-2.3	-0.8
Employment rate	62.2	62.0	0.6	-0.2	1.1	0.5
Part-time rate	17.1	19.0	0.9	1.9	1.5	2.9
Both sexes, 15 to 24 years									
Population	19.8	19.8	...	0.0	0.0	0.0	0.0	0.0	0.0
Labour force	14.0	14.1	0.4	0.1	-0.2	0.0	0.7	-1.4	0.0
Employment	12.4	12.5	0.4	0.1	0.7	0.2	0.8	5.9	1.6
Unemployment	1.6	1.6	0.3	0.0	-0.9	-0.2	0.0	-36.0	-11.1
Participation rate	70.7	71.2	1.8	0.5	-1.0	0.0
Unemployment rate	11.4	11.3	2.2	-0.1	-6.2	-1.5
Employment rate	62.6	63.1	1.8	0.5	3.5	1.0
Part-time rate	40.3	42.4	3.1	2.1	0.9	5.8
Men, 25 years and over									
Population	44.5	44.6	...	0.1	0.1	0.4	0.2	0.2	0.9
Labour force	33.5	32.8	0.3	-0.7	-0.3	0.1	-2.1	-0.9	0.3
Employment	29.7	29.3	0.4	-0.4	0.6	0.5	-1.3	2.1	1.7
Unemployment	3.8	3.6	0.4	-0.2	-0.7	-0.3	-5.3	-16.3	-7.7
Participation rate	75.3	73.5	0.8	-1.8	-0.9	-0.5
Unemployment rate	11.3	11.0	1.1	-0.3	-2.0	-0.9
Employment rate	66.7	65.7	0.9	-1.0	1.2	0.5
Part-time rate	6.4	8.9	0.9	2.5	3.0	3.3
Women, 25 years and over									
Population	48.4	48.5	...	0.1	0.1	0.5	0.2	0.2	1.0
Labour force	31.0	31.0	0.3	0.0	0.0	0.4	0.0	0.0	1.3
Employment	28.1	28.2	0.4	0.1	0.1	0.3	0.4	0.4	1.1
Unemployment	2.9	2.8	0.3	-0.1	-0.1	0.1	-3.4	-3.4	3.7
Participation rate	64.0	63.9	0.7	-0.1	-0.1	0.1
Unemployment rate	9.4	9.0	1.0	-0.4	-0.4	0.2
Employment rate	58.1	58.1	0.8	0.0	0.0	0.0
Part-time rate	18.1	19.1	1.6	1.0	-0.1	1.2
Industry									
	70.2	69.9	0.7	-0.3	1.3	1.0	-0.4	1.9	1.5
Goods-producing sector									
	18.9	18.9	0.5	0.0	0.4	-0.7	0.0	2.2	-3.6
Agriculture	3.9	4.0	0.3	0.1	0.0	-0.4	2.6	0.0	-9.1
Forestry, fishing, mining, oil and gas	2.6	2.6	0.2	0.0	0.4	0.3	0.0	18.2	13.0
Utilities	0.2	0.2	0.1	0.0	0.0	-0.2	0.0	0.0	-50.0
Construction	5.3	5.3	0.3	0.0	-0.4	-0.4	0.0	-7.0	-7.0
Manufacturing	6.8	6.8	0.3	0.0	0.3	0.0	0.0	4.6	0.0
Services-producing sector									
	51.3	51.0	0.6	-0.3	0.9	1.7	-0.6	1.8	3.4
Trade	9.8	9.9	0.3	0.1	0.1	0.0	1.0	1.0	0.0
Transportation and warehousing	2.5	2.4	0.2	-0.1	0.0	0.6	-4.0	0.0	33.3
Finance, insurance, real estate and leasing	2.3	2.3	0.1	0.0	-0.1	0.6	0.0	-4.2	35.3
Professional, scientific and technical services	2.4	2.6	0.2	0.2	0.1	-0.2	8.3	4.0	-7.1
Business, building and other support services	2.8	2.6	0.3	-0.2	0.0	-0.2	-7.1	0.0	-7.1
Educational services	4.7	4.9	0.3	0.2	0.1	0.3	4.3	2.1	6.5
Health care and social assistance	8.6	8.3	0.3	-0.3	0.4	0.2	-3.5	5.1	2.5
Information, culture and recreation	2.8	2.7	0.2	-0.1	0.2	0.0	-3.6	8.0	0.0
Accommodation and food services	6.3	6.1	0.3	-0.2	0.3	0.2	-3.2	5.2	3.4
Other services	2.6	2.6	0.2	0.0	0.0	-0.9	0.0	0.0	-25.7
Public administration	6.5	6.6	0.3	0.1	-0.2	0.8	1.5	-2.9	13.8

1. Average standard error of change in two consecutive months (see "Sampling Errors" in Data Quality for further explanations).

Note(s): Related CANSIM tables 282-0087, 282-0088

Table 4-3

Selected labour force characteristics (seasonally adjusted) — Nova Scotia

	January 2007	February 2007	S.E. ¹	Change from			Percent change from		
				last month	last December	twelve months ago	last month	last December	twelve months ago
in thousands (except rates)									
Both sexes, 15 years and over									
Population	763.5	763.5	...	0.0	0.0	1.1	0.0	0.0	0.1
Labour force	487.0	486.8	2.7	-0.2	6.3	4.7	0.0	1.3	1.0
Employment	449.1	450.8	3.0	1.7	5.4	9.0	0.4	1.2	2.0
Employment full-time	369.1	371.1	3.7	2.0	7.1	13.0	0.5	2.0	3.6
Unemployment	37.9	36.0	2.6	-1.9	0.9	-4.3	-5.0	2.6	-10.7
Participation rate	63.8	63.8	0.4	0.0	0.9	0.6
Unemployment rate	7.8	7.4	0.5	-0.4	0.1	-1.0
Employment rate	58.8	59.0	0.4	0.2	0.7	1.1
Part-time rate	17.8	17.7	0.7	-0.1	-0.6	-1.2
Both sexes, 15 to 24 years									
Population	122.7	122.6	...	-0.1	-0.2	-0.9	-0.1	-0.2	-0.7
Labour force	82.1	81.0	1.7	-1.1	0.0	-2.6	-1.3	0.0	-3.1
Employment	71.1	70.2	1.7	-0.9	-0.8	-1.8	-1.3	-1.1	-2.5
Unemployment	11.0	10.8	1.5	-0.2	0.8	-0.8	-1.8	8.0	-6.9
Participation rate	66.9	66.1	1.4	-0.8	0.1	-1.6
Unemployment rate	13.4	13.3	1.7	-0.1	1.0	-0.6
Employment rate	57.9	57.3	1.3	-0.6	-0.5	-1.0
Part-time rate	44.0	44.6	2.4	0.6	-1.3	-0.4
Men, 25 years and over									
Population	305.9	305.9	...	0.0	0.1	0.7	0.0	0.0	0.2
Labour force	210.2	210.0	1.5	-0.2	3.1	3.0	-0.1	1.5	1.4
Employment	194.0	194.6	1.7	0.6	3.7	4.8	0.3	1.9	2.5
Unemployment	16.1	15.3	1.5	-0.8	-0.7	-1.9	-5.0	-4.4	-11.0
Participation rate	68.7	68.6	0.5	-0.1	0.9	0.8
Unemployment rate	7.7	7.3	0.7	-0.4	-0.4	-1.0
Employment rate	63.4	63.6	0.5	0.2	1.2	1.4
Part-time rate	7.5	7.3	0.7	-0.2	0.2	0.9
Women, 25 years and over									
Population	335.0	335.0	...	0.0	0.1	1.3	0.0	0.0	0.4
Labour force	194.8	195.9	1.4	1.1	3.3	4.4	0.6	1.7	2.3
Employment	183.9	185.9	1.5	2.0	2.3	6.0	1.1	1.3	3.3
Unemployment	10.8	9.9	1.3	-0.9	0.8	-1.6	-8.3	8.8	-13.9
Participation rate	58.1	58.5	0.4	0.4	1.0	1.1
Unemployment rate	5.5	5.1	0.6	-0.4	0.4	-0.9
Employment rate	54.9	55.5	0.4	0.6	0.7	1.6
Part-time rate	18.5	18.5	1.1	-0.1	-0.8	-3.3
Industry									
	449.1	450.8	3.0	1.7	5.4	9.0	0.4	1.2	2.0
Goods-producing sector									
	85.4	86.6	2.2	1.2	0.3	-0.6	1.4	0.3	-0.7
Agriculture	5.0	4.6	0.6	-0.4	0.1	-0.9	-8.0	2.2	-16.4
Forestry, fishing, mining, oil and gas	12.6	12.7	1.0	0.1	1.0	-1.0	0.8	8.5	-7.3
Utilities	1.8	1.6	0.2	-0.2	-0.6	-0.3	-11.1	-27.3	-15.8
Construction	24.3	26.3	1.4	2.0	-1.6	-0.4	8.2	-5.7	-1.5
Manufacturing	41.8	41.5	1.4	-0.3	1.5	2.1	-0.7	3.8	5.3
Services-producing sector									
	363.6	364.2	2.9	0.6	5.1	9.7	0.2	1.4	2.7
Trade	79.2	76.9	1.9	-2.3	-1.9	-2.6	-2.9	-2.4	-3.3
Transportation and warehousing	18.2	18.5	1.0	0.3	0.4	-0.6	1.6	2.2	-3.1
Finance, insurance, real estate and leasing	23.9	24.6	1.0	0.7	0.1	2.9	2.9	0.4	13.4
Professional, scientific and technical services	18.3	16.9	1.0	-1.4	0.1	-2.8	-7.7	0.6	-14.2
Business, building and other support services	28.9	27.9	1.3	-1.0	-1.1	0.5	-3.5	-3.8	1.8
Educational services	36.2	35.5	1.4	-0.7	0.6	0.1	-1.9	1.7	0.3
Health care and social assistance	61.2	62.2	1.3	1.0	1.4	3.4	1.6	2.3	5.8
Information, culture and recreation	15.7	18.0	1.0	2.3	1.7	3.1	14.6	10.4	20.8
Accommodation and food services	33.3	33.5	1.4	0.2	2.0	5.3	0.6	6.3	18.8
Other services	20.8	21.5	1.1	0.7	1.5	-0.4	3.4	7.5	-1.8
Public administration	28.0	28.7	1.1	0.7	0.1	0.7	2.5	0.3	2.5

1. Average standard error of change in two consecutive months (see "Sampling Errors" in Data Quality for further explanations).

Note(s): Related CANSIM tables 282-0087, 282-0088

Table 4-4

Selected labour force characteristics (seasonally adjusted) — New Brunswick

	January 2007	February 2007	S.E. ¹	Change from			Percent change from		
				last month	last December	twelve months ago	last month	last December	twelve months ago
in thousands (except rates)									
Both sexes, 15 years and over									
Population	611.4	611.8	...	0.4	0.6	0.4	0.1	0.1	0.1
Labour force	389.0	386.5	2.3	-2.5	-0.6	-9.4	-0.6	-0.2	-2.4
Employment	357.3	359.8	2.5	2.5	5.5	1.1	0.7	1.6	0.3
Employment full-time	300.5	302.7	2.9	2.2	4.9	5.8	0.7	1.6	2.0
Unemployment	31.7	26.7	2.1	-5.0	-6.1	-10.6	-15.8	-18.6	-28.4
Participation rate	63.6	63.2	0.4	-0.4	-0.1	-1.6
Unemployment rate	8.1	6.9	0.5	-1.2	-1.6	-2.5
Employment rate	58.4	58.8	0.4	0.4	0.8	0.1
Part-time rate	15.9	15.9	0.7	0.0	-0.1	-1.4
Both sexes, 15 to 24 years									
Population	95.1	95.2	...	0.1	0.0	-0.9	0.1	0.0	-0.9
Labour force	61.6	62.3	1.4	0.7	1.4	-4.3	1.1	2.3	-6.5
Employment	53.2	54.8	1.4	1.6	1.9	-1.6	3.0	3.6	-2.8
Unemployment	8.4	7.6	1.1	-0.8	-0.4	-2.6	-9.5	-5.0	-25.5
Participation rate	64.8	65.4	1.4	0.6	1.4	-3.9
Unemployment rate	13.6	12.2	1.6	-1.4	-0.9	-3.1
Employment rate	55.9	57.6	1.4	1.7	2.0	-1.1
Part-time rate	35.7	41.6	2.3	5.9	6.3	-0.4
Men, 25 years and over									
Population	249.6	249.8	...	0.2	0.3	0.9	0.1	0.1	0.4
Labour force	171.5	169.9	1.3	-1.6	0.3	-2.2	-0.9	0.2	-1.3
Employment	157.0	158.6	1.5	1.6	3.7	3.1	1.0	2.4	2.0
Unemployment	14.5	11.3	1.4	-3.2	-3.4	-5.3	-22.1	-23.1	-31.9
Participation rate	68.7	68.0	0.5	-0.7	0.0	-1.1
Unemployment rate	8.5	6.7	0.8	-1.8	-2.0	-2.9
Employment rate	62.9	63.5	0.6	0.6	1.4	1.0
Part-time rate	6.3	4.7	0.7	-1.6	-1.1	-1.3
Women, 25 years and over									
Population	266.7	266.8	...	0.1	0.3	0.5	0.0	0.1	0.2
Labour force	155.8	154.2	1.2	-1.6	-2.4	-3.0	-1.0	-1.5	-1.9
Employment	147.0	146.4	1.3	-0.6	-0.1	-0.4	-0.4	-0.1	-0.3
Unemployment	8.8	7.8	1.1	-1.0	-2.3	-2.7	-11.4	-22.8	-25.7
Participation rate	58.4	57.8	0.5	-0.6	-1.0	-1.2
Unemployment rate	5.6	5.1	0.7	-0.5	-1.3	-1.6
Employment rate	55.1	54.9	0.5	-0.2	-0.1	-0.2
Part-time rate	19.0	18.3	1.1	-0.7	-1.2	-1.3
Industry	357.3	359.8	2.5	2.5	5.5	1.1	0.7	1.6	0.3
Goods-producing sector	83.8	85.0	1.9	1.2	4.9	6.6	1.4	6.1	8.4
Agriculture	7.4	6.7	0.6	-0.7	0.7	-0.8	-9.5	11.7	-10.7
Forestry, fishing, mining, oil and gas	9.9	11.3	0.8	1.4	1.3	0.4	14.1	13.0	3.7
Utilities	4.5	3.7	0.3	-0.8	0.6	0.6	-17.8	19.4	19.4
Construction	22.9	23.2	1.2	0.3	0.5	2.5	1.3	2.2	12.1
Manufacturing	39.1	40.0	1.3	0.9	1.7	3.8	2.3	4.4	10.5
Services-producing sector	273.5	274.8	2.4	1.3	0.6	-5.4	0.5	0.2	-1.9
Trade	56.3	55.7	1.4	-0.6	-2.3	-4.4	-1.1	-4.0	-7.3
Transportation and warehousing	19.3	19.5	0.9	0.2	-0.7	0.2	1.0	-3.5	1.0
Finance, insurance, real estate and leasing	17.5	15.3	0.8	-2.2	-2.4	1.0	-12.6	-13.6	7.0
Professional, scientific and technical services	14.3	13.6	0.8	-0.7	-0.3	-1.0	-4.9	-2.2	-6.8
Business, building and other support services	19.8	20.7	1.1	0.9	1.0	-1.5	4.5	5.1	-6.8
Educational services	26.7	26.7	1.0	0.0	0.7	-2.1	0.0	2.7	-7.3
Health care and social assistance	47.8	47.7	1.1	-0.1	1.5	3.1	-0.2	3.2	7.0
Information, culture and recreation	11.1	11.7	0.8	0.6	0.3	0.0	5.4	2.6	0.0
Accommodation and food services	23.7	25.7	1.1	2.0	2.5	0.4	8.4	10.8	1.6
Other services	16.5	17.1	1.0	0.6	-0.3	-1.4	3.6	-1.7	-7.6
Public administration	20.3	21.0	0.9	0.7	0.6	0.1	3.4	2.9	0.5

1. Average standard error of change in two consecutive months (see "Sampling Errors" in Data Quality for further explanations).

Note(s): Related CANSIM tables 282-0087, 282-0088

Table 4-5
Selected labour force characteristics (seasonally adjusted) — Quebec

	January 2007	February 2007	S.E. ¹	Change from			Percent change from		
				last month	last December	twelve months ago	last month	last December	twelve months ago
in thousands (except rates)									
Both sexes, 15 years and over									
Population	6,288.9	6,293.0	...	4.1	10.2	67.8	0.1	0.2	1.1
Labour force	4,119.9	4,122.2	14.5	2.3	26.5	38.4	0.1	0.6	0.9
Employment	3,804.1	3,799.0	14.8	-5.1	9.6	50.4	-0.1	0.3	1.3
Employment full-time	3,102.9	3,102.7	19.3	-0.2	-7.8	34.7	0.0	-0.3	1.1
Unemployment	315.7	323.2	13.6	7.5	16.9	-12.0	2.4	5.5	-3.6
Participation rate	65.5	65.5	0.2	0.0	0.3	-0.1
Unemployment rate	7.7	7.8	0.3	0.1	0.3	-0.4
Employment rate	60.5	60.4	0.2	-0.1	0.1	0.2
Part-time rate	18.4	18.3	0.5	-0.1	0.4	0.2
Both sexes, 15 to 24 years									
Population	952.9	953.1	...	0.2	0.8	3.1	0.0	0.1	0.3
Labour force	627.2	627.2	8.5	0.0	0.2	-2.1	0.0	0.0	-0.3
Employment	540.9	547.9	8.2	7.0	-2.2	5.0	1.3	-0.4	0.9
Unemployment	86.3	79.3	7.6	-7.0	2.4	-7.2	-8.1	3.1	-8.3
Participation rate	65.8	65.8	0.9	0.0	0.0	-0.4
Unemployment rate	13.8	12.6	1.1	-1.2	0.3	-1.1
Employment rate	56.8	57.5	0.9	0.7	-0.3	0.4
Part-time rate	48.8	48.3	1.6	-0.5	1.2	2.7
Men, 25 years and over									
Population	2,606.0	2,607.9	...	1.9	4.7	32.9	0.1	0.2	1.3
Labour force	1,868.7	1,862.1	7.9	-6.6	1.9	4.4	-0.4	0.1	0.2
Employment	1,731.4	1,725.2	8.4	-6.2	4.0	6.7	-0.4	0.2	0.4
Unemployment	137.3	136.9	8.1	-0.4	-2.1	-2.3	-0.3	-1.5	-1.7
Participation rate	71.7	71.4	0.3	-0.3	-0.1	-0.7
Unemployment rate	7.3	7.4	0.4	0.1	-0.1	-0.1
Employment rate	66.4	66.2	0.3	-0.2	0.1	-0.5
Part-time rate	7.5	7.4	0.5	-0.2	0.6	0.6
Women, 25 years and over									
Population	2,730.0	2,732.0	...	2.0	4.7	31.9	0.1	0.2	1.2
Labour force	1,624.0	1,632.9	8.1	8.9	24.4	36.2	0.5	1.5	2.3
Employment	1,531.8	1,525.9	8.2	-5.9	7.7	38.7	-0.4	0.5	2.6
Unemployment	92.2	107.0	7.3	14.8	16.7	-2.5	16.1	18.5	-2.3
Participation rate	59.5	59.8	0.3	0.3	0.8	0.7
Unemployment rate	5.7	6.6	0.4	0.9	1.0	-0.3
Employment rate	56.1	55.9	0.3	-0.2	0.2	0.8
Part-time rate	20.0	20.0	0.7	-0.1	0.0	-1.3
Industry									
	3,804.1	3,799.0	14.8	-5.1	9.6	50.4	-0.1	0.3	1.3
Goods-producing sector									
Agriculture	63.9	60.5	3.6	-3.4	-6.0	-7.3	-5.3	-9.0	-10.8
Forestry, fishing, mining, oil and gas	38.6	36.4	2.3	-2.2	1.8	-5.3	-5.7	5.2	-12.7
Utilities	24.9	25.4	1.9	0.5	-0.1	-5.7	2.0	-0.4	-18.3
Construction	178.0	186.5	6.4	8.5	8.3	-0.8	4.8	4.7	-0.4
Manufacturing	579.7	546.6	10.0	-33.1	-28.7	-46.7	-5.7	-5.0	-7.9
Services-producing sector									
Trade	2,918.9	2,943.6	15.9	24.7	34.3	116.3	0.8	1.2	4.1
Transportation and warehousing	641.2	640.8	10.7	-0.4	4.5	-7.3	-0.1	0.7	-1.1
Finance, insurance, real estate and leasing	169.6	170.6	6.0	1.0	-3.3	4.6	0.6	-1.9	2.8
Professional, scientific and technical services	224.9	234.8	6.3	9.9	3.9	18.0	4.4	1.7	8.3
Business, building and other support services	253.2	256.0	7.5	2.8	1.6	26.6	1.1	0.6	11.6
Educational services	149.6	158.3	6.3	8.7	8.3	27.2	5.8	5.5	20.7
Health care and social assistance	266.0	257.6	7.2	-8.4	0.6	-8.9	-3.2	0.2	-3.3
Information, culture and recreation	456.5	457.8	7.9	1.3	3.5	16.2	0.3	0.8	3.7
Accommodation and food services	168.4	174.2	6.2	5.8	13.9	22.9	3.4	8.7	15.1
Other services	217.4	219.9	6.9	2.5	-0.2	15.1	1.1	-0.1	7.4
Public administration	163.4	162.0	5.9	-1.4	2.7	6.8	-0.9	1.7	4.4
	208.8	211.6	5.7	2.8	-1.1	-4.9	1.3	-0.5	-2.3

1. Average standard error of change in two consecutive months (see "Sampling Errors" in Data Quality for further explanations).

Note(s): Related CANSIM tables 282-0087, 282-0088

Table 4-6
Selected labour force characteristics (seasonally adjusted) — Ontario

	January 2007	February 2007	S.E. ¹	Change from			Percent change from		
				last month	last December	twelve months ago	last month	last December	twelve months ago
in thousands (except rates)									
Both sexes, 15 years and over									
Population	10,301.5	10,309.2	...	7.7	18.3	133.5	0.1	0.2	1.3
Labour force	7,001.0	7,002.7	18.4	1.7	34.1	141.0	0.0	0.5	2.1
Employment	6,554.2	6,560.2	18.1	6.0	13.6	125.3	0.1	0.2	1.9
Employment full-time	5,353.4	5,354.9	23.0	1.5	0.3	58.3	0.0	0.0	1.1
Unemployment	446.7	442.5	15.3	-4.2	20.5	15.6	-0.9	4.9	3.7
Participation rate	68.0	67.9	0.2	-0.1	0.2	0.5
Unemployment rate	6.4	6.3	0.2	-0.1	0.2	0.1
Employment rate	63.6	63.6	0.2	0.0	0.0	0.4
Part-time rate	18.3	18.4	0.3	0.1	0.2	0.7
Both sexes, 15 to 24 years									
Population	1,713.9	1,714.7	...	0.8	2.2	17.5	0.0	0.1	1.0
Labour force	1,105.0	1,106.7	11.6	1.7	8.7	24.4	0.2	0.8	2.3
Employment	959.2	966.8	10.7	7.6	8.9	23.4	0.8	0.9	2.5
Unemployment	145.8	139.9	9.6	-5.9	-0.2	0.9	-4.0	-0.1	0.6
Participation rate	64.5	64.5	0.7	0.0	0.4	0.7
Unemployment rate	13.2	12.6	0.8	-0.6	-0.2	-0.2
Employment rate	56.0	56.4	0.6	0.4	0.5	0.8
Part-time rate	49.5	49.4	1.1	-0.1	-0.5	1.8
Men, 25 years and over									
Population	4,176.9	4,180.1	...	3.2	7.2	53.5	0.1	0.2	1.3
Labour force	3,112.9	3,113.7	9.1	0.8	12.0	21.3	0.0	0.4	0.7
Employment	2,950.4	2,939.9	9.8	-10.5	-12.6	-1.6	-0.4	-0.4	-0.1
Unemployment	162.5	173.8	8.4	11.3	24.5	23.0	7.0	16.4	15.3
Participation rate	74.5	74.5	0.2	0.0	0.2	-0.4
Unemployment rate	5.2	5.6	0.3	0.4	0.8	0.7
Employment rate	70.6	70.3	0.2	-0.3	-0.5	-1.0
Part-time rate	6.6	6.5	0.3	-0.1	0.4	0.3
Women, 25 years and over									
Population	4,410.7	4,414.4	...	3.7	8.9	62.5	0.1	0.2	1.4
Labour force	2,783.1	2,782.3	10.2	-0.8	13.4	95.3	0.0	0.5	3.5
Employment	2,644.6	2,653.5	10.0	8.9	17.2	103.5	0.3	0.7	4.1
Unemployment	138.4	128.9	8.0	-9.5	-3.8	-8.1	-6.9	-2.9	-5.9
Participation rate	63.1	63.0	0.2	-0.1	0.1	1.3
Unemployment rate	5.0	4.6	0.3	-0.4	-0.2	-0.5
Employment rate	60.0	60.1	0.2	0.1	0.3	1.5
Part-time rate	20.1	20.2	0.5	0.1	0.0	0.4
Industry									
	6,554.2	6,560.2	18.1	6.0	13.6	125.3	0.1	0.2	1.9
Goods-producing sector									
	1,587.3	1,585.6	15.0	-1.7	-12.4	-33.1	-0.1	-0.8	-2.0
Agriculture	105.7	100.2	3.6	-5.5	-4.6	2.9	-5.2	-4.4	3.0
Forestry, fishing, mining, oil and gas	40.9	40.8	2.3	-0.1	-2.0	9.6	-0.2	-4.7	30.8
Utilities	54.1	57.2	2.3	3.1	4.4	6.5	5.7	8.3	12.8
Construction	413.8	413.6	8.9	-0.2	1.7	0.2	0.0	0.4	0.0
Manufacturing	972.9	973.7	12.6	0.8	-12.0	-52.4	0.1	-1.2	-5.1
Services-producing sector									
	4,966.9	4,974.6	20.5	7.7	26.0	158.5	0.2	0.5	3.3
Trade	1,026.8	1,014.3	13.4	-12.5	-12.3	37.7	-1.2	-1.2	3.9
Transportation and warehousing	297.7	307.2	7.8	9.5	1.9	21.0	3.2	0.6	7.3
Finance, insurance, real estate and leasing	472.9	483.7	9.6	10.8	9.0	18.4	2.3	1.9	4.0
Professional, scientific and technical services	466.2	463.1	9.5	-3.1	13.3	7.7	-0.7	3.0	1.7
Business, building and other support services	288.9	291.5	8.8	2.6	-12.2	7.5	0.9	-4.0	2.6
Educational services	442.7	446.5	8.8	3.8	-4.0	-12.0	0.9	-0.9	-2.6
Health care and social assistance	663.0	662.2	9.3	-0.8	3.4	34.9	-0.1	0.5	5.6
Information, culture and recreation	318.0	315.3	8.4	-2.7	-1.1	-6.1	-0.8	-0.3	-1.9
Accommodation and food services	403.4	396.3	8.7	-7.1	13.2	26.8	-1.8	3.4	7.3
Other services	269.1	272.8	7.6	3.7	6.1	9.8	1.4	2.3	3.7
Public administration	318.1	321.8	6.8	3.7	8.7	12.9	1.2	2.8	4.2

1. Average standard error of change in two consecutive months (see "Sampling Errors" in Data Quality for further explanations).

Note(s): Related CANSIM tables 282-0087, 282-0088

Table 4-7
Selected labour force characteristics (seasonally adjusted) — Manitoba

	January 2007	February 2007	S.E. ¹	Change from			Percent change from		
				last month	last December	twelve months ago	last month	last December	twelve months ago
in thousands (except rates)									
Both sexes, 15 years and over									
Population	894.3	894.7	...	0.4	0.9	4.6	0.0	0.1	0.5
Labour force	619.0	617.2	2.8	-1.8	4.6	4.2	-0.3	0.8	0.7
Employment	590.7	590.5	2.8	-0.2	2.9	4.1	0.0	0.5	0.7
Employment full-time	478.5	478.4	3.9	-0.1	6.0	7.5	0.0	1.3	1.6
Unemployment	28.3	26.7	2.1	-1.6	1.7	0.1	-5.7	6.8	0.4
Participation rate	69.2	69.0	0.3	-0.2	0.5	0.1
Unemployment rate	4.6	4.3	0.3	-0.3	0.2	0.0
Employment rate	66.1	66.0	0.3	-0.1	0.3	0.1
Part-time rate	19.0	19.0	0.6	0.0	-0.6	-0.7
Both sexes, 15 to 24 years									
Population	155.9	156.0	...	0.1	0.2	0.4	0.1	0.1	0.3
Labour force	113.0	110.9	1.8	-2.1	1.3	-3.5	-1.9	1.2	-3.1
Employment	101.3	101.9	1.7	0.6	0.5	-3.4	0.6	0.5	-3.2
Unemployment	11.6	9.0	1.4	-2.6	0.8	-0.1	-22.4	9.8	-1.1
Participation rate	72.5	71.1	1.1	-1.4	0.8	-2.4
Unemployment rate	10.3	8.1	1.2	-2.2	0.6	0.1
Employment rate	65.0	65.3	1.1	0.3	0.2	-2.4
Part-time rate	41.7	41.6	1.9	0.0	-0.4	-4.6
Men, 25 years and over									
Population	360.6	360.9	...	0.3	0.5	2.7	0.1	0.1	0.8
Labour force	271.7	270.8	1.4	-0.9	0.5	4.8	-0.3	0.2	1.8
Employment	262.6	261.5	1.4	-1.1	-0.1	4.0	-0.4	0.0	1.6
Unemployment	9.1	9.4	1.2	0.3	0.8	0.8	3.3	9.3	9.3
Participation rate	75.3	75.0	0.4	-0.3	0.0	0.7
Unemployment rate	3.3	3.5	0.4	0.2	0.3	0.3
Employment rate	72.8	72.5	0.4	-0.3	-0.1	0.6
Part-time rate	6.1	5.7	0.6	-0.4	-0.7	0.0
Women, 25 years and over									
Population	377.7	377.9	...	0.2	0.3	1.6	0.1	0.1	0.4
Labour force	234.3	235.5	1.6	1.2	2.7	2.9	0.5	1.2	1.2
Employment	226.7	227.1	1.6	0.4	2.5	3.5	0.2	1.1	1.6
Unemployment	7.5	8.4	1.1	0.9	0.2	-0.5	12.0	2.4	-5.6
Participation rate	62.0	62.3	0.4	0.3	0.6	0.5
Unemployment rate	3.2	3.6	0.5	0.4	0.1	-0.2
Employment rate	60.0	60.1	0.4	0.1	0.6	0.7
Part-time rate	23.8	24.1	1.0	0.3	-0.7	0.9
Industry									
	590.7	590.5	2.8	-0.2	2.9	4.1	0.0	0.5	0.7
Goods-producing sector									
	144.7	144.4	2.3	-0.3	3.1	8.0	-0.2	2.2	5.9
Agriculture	29.4	28.6	1.3	-0.8	-0.9	-2.4	-2.7	-3.1	-7.7
Forestry, fishing, mining, oil and gas	6.8	6.5	0.5	-0.3	-0.2	-0.1	-4.4	-3.0	-1.5
Utilities	4.7	4.6	0.4	-0.1	-0.4	-0.7	-2.1	-8.0	-13.2
Construction	31.3	31.2	1.4	-0.1	0.7	1.3	-0.3	2.3	4.3
Manufacturing	72.6	73.5	1.7	0.9	3.9	10.0	1.2	5.6	15.7
Services-producing sector									
	446.0	446.1	3.2	0.1	-0.2	-3.9	0.0	0.0	-0.9
Trade	90.0	90.9	2.1	0.9	-1.9	2.3	1.0	-2.0	2.6
Transportation and warehousing	36.0	34.2	1.2	-1.8	-0.9	-1.7	-5.0	-2.6	-4.7
Finance, insurance, real estate and leasing	32.8	31.2	1.2	-1.6	-1.2	-3.0	-4.9	-3.7	-8.8
Professional, scientific and technical services	22.2	23.9	1.1	1.7	2.8	-0.4	7.7	13.3	-1.6
Business, building and other support services	17.7	17.5	1.2	-0.2	-1.0	-1.1	-1.1	-5.4	-5.9
Educational services	47.3	47.3	1.5	0.0	-0.2	1.6	0.0	-0.4	3.5
Health care and social assistance	81.1	82.0	1.7	0.9	-0.1	4.1	1.1	-0.1	5.3
Information, culture and recreation	23.6	22.0	1.1	-1.6	-0.4	-1.7	-6.8	-1.8	-7.2
Accommodation and food services	34.8	35.9	1.6	1.1	0.9	-5.0	3.2	2.6	-12.2
Other services	24.6	25.4	1.2	0.8	0.5	-0.1	3.3	2.0	-0.4
Public administration	35.8	36.0	1.2	0.2	1.5	1.3	0.6	4.3	3.7

1. Average standard error of change in two consecutive months (see "Sampling Errors" in Data Quality for further explanations).

Note(s): Related CANSIM tables 282-0087, 282-0088

Table 4-8

Selected labour force characteristics (seasonally adjusted) — Saskatchewan

	January 2007	February 2007	S.E. ¹	Change from			Percent change from		
				last month	last December	twelve months ago	last month	last December	twelve months ago
in thousands (except rates)									
Both sexes, 15 years and over									
Population	747.0	747.4	...	0.4	1.1	0.0	0.1	0.1	0.0
Labour force	526.8	524.0	2.4	-2.8	0.0	14.3	-0.5	0.0	2.8
Employment	505.1	503.3	2.5	-1.8	0.5	20.7	-0.4	0.1	4.3
Employment full-time	409.8	406.1	3.3	-3.7	-1.6	17.4	-0.9	-0.4	4.5
Unemployment	21.6	20.7	1.9	-0.9	-0.5	-6.4	-4.2	-2.4	-23.6
Participation rate	70.5	70.1	0.3	-0.4	-0.1	1.9
Unemployment rate	4.1	4.0	0.4	-0.1	0.0	-1.3
Employment rate	67.6	67.3	0.3	-0.3	-0.1	2.7
Part-time rate	18.9	19.3	0.6	0.4	0.4	-0.1
Both sexes, 15 to 24 years									
Population	137.3	137.3	...	0.0	0.0	-0.9	0.0	0.0	-0.7
Labour force	103.7	103.2	1.5	-0.5	0.9	8.8	-0.5	0.9	9.3
Employment	95.3	95.0	1.5	-0.3	0.8	10.3	-0.3	0.8	12.2
Unemployment	8.5	8.2	1.2	-0.3	0.1	-1.4	-3.5	1.2	-14.6
Participation rate	75.5	75.2	1.1	-0.3	0.7	6.9
Unemployment rate	8.2	7.9	1.2	-0.3	0.0	-2.3
Employment rate	69.4	69.2	1.1	-0.2	0.6	7.9
Part-time rate	38.3	40.6	1.8	2.3	3.3	-2.3
Men, 25 years and over									
Population	297.6	297.8	...	0.2	0.6	0.8	0.1	0.2	0.3
Labour force	227.7	227.9	1.2	0.2	0.2	5.8	0.1	0.1	2.6
Employment	221.4	221.2	1.3	-0.2	0.7	8.5	-0.1	0.3	4.0
Unemployment	6.3	6.7	1.1	0.4	-0.6	-2.7	6.3	-8.2	-28.7
Participation rate	76.5	76.5	0.4	0.0	-0.1	1.7
Unemployment rate	2.8	2.9	0.5	0.1	-0.3	-1.3
Employment rate	74.4	74.3	0.5	-0.1	0.1	2.7
Part-time rate	6.4	6.4	0.6	0.0	-0.6	0.1
Women, 25 years and over									
Population	312.1	312.2	...	0.1	0.4	-0.1	0.0	0.1	0.0
Labour force	195.3	192.9	1.3	-2.4	-1.0	-0.3	-1.2	-0.5	-0.2
Employment	188.5	187.1	1.4	-1.4	-1.0	1.9	-0.7	-0.5	1.0
Unemployment	6.8	5.8	0.9	-1.0	0.0	-2.2	-14.7	0.0	-27.5
Participation rate	62.6	61.8	0.4	-0.8	-0.4	-0.1
Unemployment rate	3.5	3.0	0.5	-0.5	0.0	-1.1
Employment rate	60.4	59.9	0.4	-0.5	-0.4	0.6
Part-time rate	23.8	23.8	1.0	0.0	0.2	-0.1
Industry									
	505.1	503.3	2.5	-1.8	0.5	20.7	-0.4	0.1	4.3
Goods-producing sector									
	131.8	130.4	2.3	-1.4	-3.0	-2.0	-1.1	-2.2	-1.5
Agriculture	45.5	44.4	1.6	-1.1	-3.1	-2.9	-2.4	-6.5	-6.1
Forestry, fishing, mining, oil and gas	22.4	22.7	1.0	0.3	0.2	2.1	1.3	0.9	10.2
Utilities	4.0	3.4	0.4	-0.6	-0.6	-1.1	-15.0	-15.0	-24.4
Construction	30.9	30.6	1.3	-0.3	-0.1	1.9	-1.0	-0.3	6.6
Manufacturing	29.2	29.3	1.1	0.1	0.7	-2.0	0.3	2.4	-6.4
Services-producing sector									
	373.3	372.9	2.8	-0.4	3.5	22.7	-0.1	0.9	6.5
Trade	84.4	85.0	1.8	0.6	-0.9	8.1	0.7	-1.0	10.5
Transportation and warehousing	25.8	24.8	1.0	-1.0	-0.4	-1.5	-3.9	-1.6	-5.7
Finance, insurance, real estate and leasing	25.9	26.3	0.9	0.4	-0.8	0.6	1.5	-3.0	2.3
Professional, scientific and technical services	20.1	19.7	0.8	-0.4	-0.2	2.4	-2.0	-1.0	13.9
Business, building and other support services	11.9	10.5	0.8	-1.4	-1.3	-2.6	-11.8	-11.0	-19.8
Educational services	39.7	40.5	1.2	0.8	1.7	3.3	2.0	4.4	8.9
Health care and social assistance	64.6	62.4	1.4	-2.2	1.3	6.5	-3.4	2.1	11.6
Information, culture and recreation	19.9	19.3	1.0	-0.6	-1.1	0.2	-3.0	-5.4	1.0
Accommodation and food services	30.7	32.1	1.3	1.4	1.3	2.8	4.6	4.2	9.6
Other services	23.3	24.9	1.1	1.6	3.2	3.6	6.9	14.7	16.9
Public administration	27.1	27.4	1.0	0.3	0.7	-0.7	1.1	2.6	-2.5

1. Average standard error of change in two consecutive months (see "Sampling Errors" in Data Quality for further explanations).

Note(s): Related CANSIM tables 282-0087, 282-0088

Table 4-9
Selected labour force characteristics (seasonally adjusted) — Alberta

	January 2007	February 2007	S.E. ¹	Change from			Percent change from		
				last month	last December	twelve months ago	last month	last December	twelve months ago
in thousands (except rates)									
Both sexes, 15 years and over									
Population	2,703.1	2,709.2	...	6.1	17.1	105.9	0.2	0.6	4.1
Labour force	1,997.7	2,008.1	8.0	10.4	33.7	110.1	0.5	1.7	5.8
Employment	1,932.5	1,938.7	8.3	6.2	30.3	100.7	0.3	1.6	5.5
Employment full-time	1,633.2	1,639.0	10.8	5.8	23.5	119.0	0.4	1.5	7.8
Unemployment	65.2	69.4	5.6	4.2	3.4	9.4	6.4	5.2	15.7
Participation rate	73.9	74.1	0.3	0.2	0.8	1.2
Unemployment rate	3.3	3.5	0.3	0.2	0.2	0.3
Employment rate	71.5	71.6	0.3	0.1	0.7	1.0
Part-time rate	15.5	15.5	0.5	0.0	0.1	-1.8
Both sexes, 15 to 24 years									
Population	500.9	501.3	...	0.4	1.8	17.2	0.1	0.4	3.6
Labour force	361.6	367.0	5.1	5.4	10.7	14.3	1.5	3.0	4.1
Employment	339.4	341.3	5.1	1.9	7.6	9.9	0.6	2.3	3.0
Unemployment	22.2	25.7	3.6	3.5	3.1	4.4	15.8	13.7	20.7
Participation rate	72.2	73.2	1.0	1.0	1.9	0.3
Unemployment rate	6.1	7.0	1.0	0.9	0.7	1.0
Employment rate	67.8	68.1	1.0	0.3	1.3	-0.4
Part-time rate	32.9	31.3	1.6	-1.6	-0.7	-5.9
Men, 25 years and over									
Population	1,104.8	1,107.8	...	3.0	8.0	46.8	0.3	0.7	4.4
Labour force	903.4	905.8	3.5	2.4	13.4	52.7	0.3	1.5	6.2
Employment	881.7	886.0	3.9	4.3	15.6	51.2	0.5	1.8	6.1
Unemployment	21.7	19.8	3.0	-1.9	-2.2	1.5	-8.8	-10.0	8.2
Participation rate	81.8	81.8	0.3	0.0	0.7	1.4
Unemployment rate	2.4	2.2	0.3	-0.2	-0.3	0.1
Employment rate	79.8	80.0	0.4	0.2	0.9	1.3
Part-time rate	4.3	4.7	0.5	0.4	0.5	-0.3
Women, 25 years and over									
Population	1,097.4	1,100.2	...	2.8	7.4	42.1	0.3	0.7	4.0
Labour force	732.7	735.2	4.7	2.5	9.5	43.0	0.3	1.3	6.2
Employment	711.4	711.4	4.7	0.0	7.0	39.6	0.0	1.0	5.9
Unemployment	21.3	23.9	3.0	2.6	2.5	3.4	12.2	11.7	16.6
Participation rate	66.8	66.8	0.4	0.0	0.4	1.4
Unemployment rate	2.9	3.3	0.4	0.4	0.4	0.3
Employment rate	64.8	64.7	0.4	-0.1	0.2	1.2
Part-time rate	21.0	21.2	0.9	0.2	0.1	-1.6
Industry									
	1,932.5	1,938.7	8.3	6.2	30.3	100.7	0.3	1.6	5.5
Goods-producing sector									
	559.4	567.0	7.2	7.6	23.7	72.3	1.4	4.4	14.6
Agriculture	51.0	48.7	2.6	-2.3	0.8	-6.6	-4.5	1.7	-11.9
Forestry, fishing, mining, oil and gas	148.4	151.3	4.0	2.9	7.9	19.5	2.0	5.5	14.8
Utilities	20.2	21.1	1.3	0.9	0.1	6.8	4.5	0.5	47.6
Construction	183.9	195.8	5.0	11.9	14.1	27.7	6.5	7.8	16.5
Manufacturing	155.8	150.1	4.2	-5.7	0.7	24.9	-3.7	0.5	19.9
Services-producing sector									
	1,373.1	1,371.7	9.4	-1.4	6.6	28.5	-0.1	0.5	2.1
Trade	269.7	267.6	6.1	-2.1	-3.7	-27.3	-0.8	-1.4	-9.3
Transportation and warehousing	106.9	106.0	3.7	-0.9	-0.1	-0.5	-0.8	-0.1	-0.5
Finance, insurance, real estate and leasing	100.8	97.0	3.4	-3.8	-7.4	0.7	-3.8	-7.1	0.7
Professional, scientific and technical services	144.0	151.7	4.3	7.7	9.1	12.0	5.3	6.4	8.6
Business, building and other support services	70.1	64.7	3.4	-5.4	-5.6	3.2	-7.7	-8.0	5.2
Educational services	141.6	137.6	4.0	-4.0	-1.3	12.8	-2.8	-0.9	10.3
Health care and social assistance	177.3	183.0	4.4	5.7	2.1	10.8	3.2	1.2	6.3
Information, culture and recreation	76.4	74.7	3.4	-1.7	8.0	6.6	-2.2	12.0	9.7
Accommodation and food services	119.0	123.9	4.3	4.9	5.7	14.8	4.1	4.8	13.6
Other services	89.0	91.7	3.5	2.7	2.7	2.2	3.0	3.0	2.5
Public administration	78.4	73.8	3.0	-4.6	-2.9	-6.9	-5.9	-3.8	-8.6

1. Average standard error of change in two consecutive months (see "Sampling Errors" in Data Quality for further explanations).

Note(s): Related CANSIM tables 282-0087, 282-0088

Table 4-10
Selected labour force characteristics (seasonally adjusted) — British Columbia

	January 2007	February 2007	S.E. ¹	Change from			Percent change from		
				last month	last December	twelve months ago	last month	last December	twelve months ago
in thousands (except rates)									
Both sexes, 15 years and over									
Population	3,543.7	3,547.4	...	3.7	9.4	59.5	0.1	0.3	1.7
Labour force	2,352.0	2,347.4	10.0	-4.6	6.7	64.3	-0.2	0.3	2.8
Employment	2,250.2	2,252.9	10.1	2.7	34.4	76.6	0.1	1.6	3.5
Employment full-time	1,794.3	1,797.5	13.5	3.2	24.3	83.9	0.2	1.4	4.9
Unemployment	101.8	94.6	7.3	-7.2	-27.6	-12.2	-7.1	-22.6	-11.4
Participation rate	66.4	66.2	0.3	-0.2	0.0	0.7
Unemployment rate	4.3	4.0	0.3	-0.3	-1.2	-0.7
Employment rate	63.5	63.5	0.3	0.0	0.8	1.1
Part-time rate	20.3	20.2	0.5	-0.1	0.1	-1.1
Both sexes, 15 to 24 years									
Population	577.6	577.7	...	0.1	0.3	2.6	0.0	0.1	0.5
Labour force	388.0	385.6	5.8	-2.4	1.0	5.2	-0.6	0.3	1.4
Employment	354.2	355.5	5.8	1.3	7.9	4.0	0.4	2.3	1.1
Unemployment	33.8	30.1	4.2	-3.7	-6.9	1.2	-10.9	-18.6	4.2
Participation rate	67.2	66.7	1.0	-0.5	0.1	0.6
Unemployment rate	8.7	7.8	1.1	-0.9	-1.8	0.2
Employment rate	61.3	61.5	1.0	0.2	1.3	0.4
Part-time rate	38.7	39.5	1.8	0.8	1.3	-5.7
Men, 25 years and over									
Population	1,449.9	1,451.7	...	1.8	4.6	29.1	0.1	0.3	2.0
Labour force	1,048.6	1,050.7	5.2	2.1	7.7	35.2	0.2	0.7	3.5
Employment	1,018.7	1,020.8	5.4	2.1	16.4	43.1	0.2	1.6	4.4
Unemployment	29.8	29.9	4.2	0.1	-8.7	-7.9	0.3	-22.5	-20.9
Participation rate	72.3	72.4	0.4	0.1	0.3	1.0
Unemployment rate	2.8	2.8	0.4	0.0	-0.9	-0.9
Employment rate	70.3	70.3	0.4	0.0	0.9	1.6
Part-time rate	9.6	8.8	0.6	-0.8	-0.2	-0.1
Women, 25 years and over									
Population	1,516.3	1,518.1	...	1.8	4.6	27.9	0.1	0.3	1.9
Labour force	915.4	911.2	6.0	-4.2	-1.9	24.1	-0.5	-0.2	2.7
Employment	877.3	876.6	5.8	-0.7	10.1	29.5	-0.1	1.2	3.5
Unemployment	38.2	34.6	4.2	-3.6	-12.0	-5.5	-9.4	-25.8	-13.7
Participation rate	60.4	60.0	0.4	-0.4	-0.3	0.5
Unemployment rate	4.2	3.8	0.5	-0.4	-1.3	-0.7
Employment rate	57.9	57.7	0.4	-0.2	0.4	0.9
Part-time rate	25.2	25.7	0.9	0.5	0.1	0.0
Industry									
	2,250.2	2,252.9	10.1	2.7	34.4	76.6	0.1	1.6	3.5
Goods-producing sector									
Agriculture	35.5	35.7	2.6	0.2	-0.3	-0.3	0.6	-0.8	-0.8
Forestry, fishing, mining, oil and gas	52.5	48.3	2.8	-4.2	0.1	9.0	-8.0	0.2	22.9
Utilities	7.9	9.3	1.0	1.4	0.0	1.3	17.7	0.0	16.2
Construction	192.8	186.5	5.7	-6.3	0.0	12.2	-3.3	0.0	7.0
Manufacturing	204.8	204.5	5.3	-0.3	1.3	2.4	-0.1	0.6	1.2
Services-producing sector									
	1,756.6	1,768.7	11.1	12.1	33.4	52.1	0.7	1.9	3.0
Trade	352.1	359.1	7.3	7.0	18.7	-4.0	2.0	5.5	-1.1
Transportation and warehousing	121.2	131.3	4.3	10.1	14.1	3.2	8.3	12.0	2.5
Finance, insurance, real estate and leasing	137.6	139.9	4.5	2.3	-7.8	10.5	1.7	-5.3	8.1
Professional, scientific and technical services	166.8	168.9	5.1	2.1	4.4	-2.7	1.3	2.7	-1.6
Business, building and other support services	111.2	96.7	4.3	-14.5	-11.8	6.4	-13.0	-10.9	7.1
Educational services	156.1	159.9	4.8	3.8	-2.4	8.6	2.4	-1.5	5.7
Health care and social assistance	233.9	243.2	5.4	9.3	4.0	30.0	4.0	1.7	14.1
Information, culture and recreation	113.6	116.2	4.6	2.6	10.6	3.0	2.3	10.0	2.7
Accommodation and food services	179.8	173.1	5.5	-6.7	2.3	-0.8	-3.7	1.3	-0.5
Other services	88.4	89.0	4.1	0.6	0.0	-0.2	0.7	0.0	-0.2
Public administration	96.0	91.4	3.5	-4.6	1.4	-1.9	-4.8	1.6	-2.0

1. Average standard error of change in two consecutive months (see "Sampling Errors" in Data Quality for further explanations).

Note(s): Related CANSIM tables 282-0087, 282-0088

Table 5-1

Labour force characteristics by census metropolitan area (seasonally adjusted) — 3 month moving average

	January 2007	February 2007	S.E. ¹	Change from			Percent change from		
				last month	last December	twelve months ago	last month	last December	twelve months ago
in thousands (except rates)									
St. John's, Newfoundland and Labrador									
Population	151.8	151.9	...	0.1	0.1	0.8	0.1	0.1	0.5
Labour force	100.6	99.3	0.8	-1.3	-3.0	0.4	-1.3	-2.9	0.4
Employment	93.0	92.0	0.8	-1.0	-2.6	1.8	-1.1	-2.7	2.0
Unemployment	7.7	7.3	0.5	-0.4	-0.4	-1.4	-5.2	-5.2	-16.1
Participation rate	66.3	65.4	0.5	-0.9	-2.0	-0.1
Unemployment rate	7.7	7.4	0.4	-0.3	-0.1	-1.4
Employment rate	61.3	60.6	0.5	-0.7	-1.7	0.9
Halifax, Nova Scotia									
Population	312.2	312.4	...	0.2	0.4	1.9	0.1	0.1	0.6
Labour force	217.7	217.9	1.1	0.2	0.5	5.5	0.1	0.2	2.6
Employment	208.1	208.6	1.1	0.5	1.0	7.1	0.2	0.5	3.5
Unemployment	9.6	9.4	0.6	-0.2	-0.5	-1.5	-2.1	-5.1	-13.8
Participation rate	69.7	69.8	0.4	0.1	0.1	1.4
Unemployment rate	4.4	4.3	0.3	-0.1	-0.3	-0.8
Employment rate	66.7	66.8	0.4	0.1	0.3	1.9
Saint John, New Brunswick									
Population	103.5	103.5	...	0.0	0.1	0.1	0.0	0.1	0.1
Labour force	66.2	66.2	0.7	0.0	0.7	-1.2	0.0	1.1	-1.8
Employment	62.3	62.6	0.7	0.3	0.8	-0.9	0.5	1.3	-1.4
Unemployment	3.9	3.7	0.3	-0.2	0.0	-0.2	-5.1	0.0	-5.1
Participation rate	64.0	64.0	0.6	0.0	0.7	-1.2
Unemployment rate	5.9	5.6	0.5	-0.3	0.0	-0.2
Employment rate	60.2	60.5	0.7	0.3	0.7	-0.9
Saguenay, Quebec									
Population	126.0	125.9	...	-0.1	-0.1	-0.3	-0.1	-0.1	-0.2
Labour force	74.8	75.6	0.8	0.8	1.2	-2.4	1.1	1.6	-3.1
Employment	67.8	68.2	0.8	0.4	0.3	-3.8	0.6	0.4	-5.3
Unemployment	7.0	7.4	0.4	0.4	0.8	1.4	5.7	12.1	23.3
Participation rate	59.4	60.0	0.6	0.6	1.0	-1.8
Unemployment rate	9.4	9.8	0.5	0.4	0.9	2.1
Employment rate	53.8	54.2	0.6	0.4	0.3	-2.9
Québec, Quebec									
Population	602.7	603.3	...	0.6	1.1	7.1	0.1	0.2	1.2
Labour force	395.2	396.5	3.2	1.3	1.0	-3.4	0.3	0.3	-0.9
Employment	372.2	374.7	3.3	2.5	2.8	-5.2	0.7	0.8	-1.4
Unemployment	23.0	21.8	1.5	-1.2	-1.8	1.8	-5.2	-7.6	9.0
Participation rate	65.6	65.7	0.5	0.1	0.0	-1.4
Unemployment rate	5.8	5.5	0.4	-0.3	-0.5	0.5
Employment rate	61.8	62.1	0.6	0.3	0.3	-1.6
Trois-Rivières, Quebec									
Population	120.0	120.1	...	0.1	0.2	1.4	0.1	0.2	1.2
Labour force	73.6	75.0	0.7	1.4	2.4	-0.4	1.9	3.3	-0.5
Employment	68.3	68.9	0.7	0.6	1.3	0.2	0.9	1.9	0.3
Unemployment	5.3	6.1	0.3	0.8	1.2	-0.6	15.1	24.5	-9.0
Participation rate	61.3	62.4	0.6	1.1	1.8	-1.1
Unemployment rate	7.2	8.1	0.4	0.9	1.4	-0.8
Employment rate	56.9	57.4	0.6	0.5	1.0	-0.5

See footnotes at the end of the table.

Table 5-1 – continued

Labour force characteristics by census metropolitan area (seasonally adjusted) — 3 month moving average

	January 2007	February 2007	S.E. ¹	Change from			Percent change from		
				last month	last December	twelve months ago	last month	last December	twelve months ago
in thousands (except rates)									
Sherbrooke, Quebec									
Population	135.9	136.1	...	0.2	0.3	1.7	0.1	0.2	1.3
Labour force	89.5	89.2	0.7	-0.3	0.3	0.2	-0.3	0.3	0.2
Employment	82.8	83.0	0.8	0.2	0.8	1.0	0.2	1.0	1.2
Unemployment	6.6	6.2	0.3	-0.4	-0.5	-0.8	-6.1	-7.5	-11.4
Participation rate	65.9	65.5	0.5	-0.4	0.0	-0.7
Unemployment rate	7.4	7.0	0.4	-0.4	-0.5	-0.9
Employment rate	60.9	61.0	0.6	0.1	0.5	0.0
Montréal, Quebec									
Population	3,021.2	3,023.9	...	2.7	5.7	36.9	0.1	0.2	1.2
Labour force	2,033.5	2,025.9	7.3	-7.6	-14.7	4.8	-0.4	-0.7	0.2
Employment	1,881.0	1,875.0	7.5	-6.0	-10.4	45.7	-0.3	-0.6	2.5
Unemployment	152.5	151.0	4.9	-1.5	-4.2	-40.8	-1.0	-2.7	-21.3
Participation rate	67.3	67.0	0.2	-0.3	-0.6	-0.7
Unemployment rate	7.5	7.5	0.2	0.0	-0.1	-2.0
Employment rate	62.3	62.0	0.3	-0.3	-0.5	0.8
Ottawa-Gatineau, Ontario/Quebec									
Population	947.5	948.0	...	0.5	1.1	8.6	0.1	0.1	0.9
Labour force	666.5	668.6	3.2	2.1	2.7	-16.4	0.3	0.4	-2.4
Employment	627.6	631.0	3.4	3.4	2.8	-19.0	0.5	0.4	-2.9
Unemployment	38.8	37.6	1.6	-1.2	-0.1	2.6	-3.1	-0.3	7.4
Participation rate	70.3	70.5	0.3	0.2	0.2	-2.4
Unemployment rate	5.8	5.6	0.2	-0.2	-0.1	0.5
Employment rate	66.2	66.6	0.4	0.4	0.3	-2.6
Ottawa-Gatineau, Quebec part, Ontario/Quebec									
Population	237.6	238.0	...	0.4	0.8	4.3	0.2	0.3	1.8
Labour force	173.4	174.4	1.2	1.0	2.1	0.9	0.6	1.2	0.5
Employment	162.3	163.2	1.2	0.9	1.7	-1.0	0.6	1.1	-0.6
Unemployment	11.0	11.3	0.6	0.3	0.5	2.0	2.7	4.6	21.5
Participation rate	73.0	73.3	0.5	0.3	0.7	-0.9
Unemployment rate	6.3	6.5	0.3	0.2	0.2	1.1
Employment rate	68.3	68.6	0.5	0.3	0.5	-1.7
Ottawa-Gatineau, Ontario part, Ontario/Quebec									
Population	709.9	710.1	...	0.2	0.5	4.4	0.0	0.1	0.6
Labour force	493.1	494.2	3.0	1.1	0.5	-17.3	0.2	0.1	-3.4
Employment	465.3	467.9	3.2	2.6	1.2	-17.9	0.6	0.3	-3.7
Unemployment	27.8	26.4	1.5	-1.4	-0.6	0.7	-5.0	-2.2	2.7
Participation rate	69.5	69.6	0.4	0.1	0.0	-2.9
Unemployment rate	5.6	5.3	0.3	-0.3	-0.2	0.3
Employment rate	65.5	65.9	0.5	0.4	0.1	-2.9
Kingston, Ontario									
Population	125.9	126.0	...	0.1	0.1	0.5	0.1	0.1	0.4
Labour force	81.8	82.7	0.8	0.9	1.7	2.4	1.1	2.1	3.0
Employment	77.6	78.6	0.8	1.0	1.8	2.8	1.3	2.3	3.7
Unemployment	4.2	4.1	0.3	-0.1	-0.1	-0.4	-2.4	-2.4	-8.9
Participation rate	65.0	65.6	0.6	0.6	1.3	1.6
Unemployment rate	5.1	5.0	0.4	-0.1	-0.2	-0.6
Employment rate	61.6	62.4	0.6	0.8	1.4	2.0

See footnotes at the end of the table.

Table 5-1 – continued

Labour force characteristics by census metropolitan area (seasonally adjusted) — 3 month moving average

	January 2007	February 2007	S.E. ¹	Change from			Percent change from		
				last month	last December	twelve months ago	last month	last December	twelve months ago
in thousands (except rates)									
Toronto, Ontario									
Population	4,412.2	4,418.4	...	6.2	12.9	82.8	0.1	0.3	1.9
Labour force	3,043.6	3,065.4	9.0	21.8	41.9	88.4	0.7	1.4	3.0
Employment	2,843.6	2,867.0	9.2	23.4	44.5	90.5	0.8	1.6	3.3
Unemployment	200.0	198.4	5.4	-1.6	-2.6	-2.1	-0.8	-1.3	-1.0
Participation rate	69.0	69.4	0.2	0.4	0.8	0.7
Unemployment rate	6.6	6.5	0.2	-0.1	-0.1	-0.2
Employment rate	64.4	64.9	0.2	0.5	0.8	0.9
Hamilton, Ontario									
Population	590.5	590.8	...	0.3	0.7	5.5	0.1	0.1	0.9
Labour force	389.8	390.4	2.9	0.6	1.3	-9.7	0.2	0.3	-2.4
Employment	365.0	365.9	3.0	0.9	0.5	-10.8	0.2	0.1	-2.9
Unemployment	24.8	24.5	1.3	-0.3	0.7	1.0	-1.2	2.9	4.3
Participation rate	66.0	66.1	0.5	0.1	0.2	-2.3
Unemployment rate	6.4	6.3	0.3	-0.1	0.2	0.4
Employment rate	61.8	61.9	0.5	0.1	0.0	-2.5
Kitchener, Ontario									
Population	374.0	374.5	...	0.5	0.9	6.4	0.1	0.2	1.7
Labour force	270.5	267.9	1.9	-2.6	-4.1	2.0	-1.0	-1.5	0.8
Employment	255.2	252.1	2.0	-3.1	-5.2	0.2	-1.2	-2.0	0.1
Unemployment	15.3	15.8	0.9	0.5	1.1	1.8	3.3	7.5	12.9
Participation rate	72.3	71.5	0.5	-0.8	-1.3	-0.7
Unemployment rate	5.7	5.9	0.3	0.2	0.5	0.6
Employment rate	68.2	67.3	0.5	-0.9	-1.6	-1.1
London, Ontario									
Population	379.8	380.1	...	0.3	0.5	3.9	0.1	0.1	1.0
Labour force	266.9	265.4	1.7	-1.5	-2.2	9.5	-0.6	-0.8	3.7
Employment	250.6	250.4	1.8	-0.2	-0.6	10.1	-0.1	-0.2	4.2
Unemployment	16.2	15.0	0.9	-1.2	-1.6	-0.6	-7.4	-9.6	-3.8
Participation rate	70.3	69.8	0.5	-0.5	-0.7	1.8
Unemployment rate	6.1	5.7	0.3	-0.4	-0.5	-0.4
Employment rate	66.0	65.9	0.5	-0.1	-0.2	2.0
Oshawa, Ontario									
Population	278.2	278.9	...	0.7	1.4	8.2	0.3	0.5	3.0
Labour force	189.7	189.4	1.3	-0.3	-0.7	2.3	-0.2	-0.4	1.2
Employment	177.3	177.3	1.4	0.0	-0.1	2.6	0.0	-0.1	1.5
Unemployment	12.4	12.1	0.7	-0.3	-0.6	-0.3	-2.4	-4.7	-2.4
Participation rate	68.2	67.9	0.5	-0.3	-0.6	-1.2
Unemployment rate	6.5	6.4	0.4	-0.1	-0.3	-0.2
Employment rate	63.7	63.6	0.5	-0.1	-0.3	-0.9
St. Catharines-Niagara, Ontario									
Population	327.7	327.7	...	0.0	0.1	1.6	0.0	0.0	0.5
Labour force	199.7	201.2	1.7	1.5	0.3	3.0	0.8	0.1	1.5
Employment	187.3	188.2	1.7	0.9	0.1	3.6	0.5	0.1	2.0
Unemployment	12.5	13.0	0.7	0.5	0.3	-0.6	4.0	2.4	-4.4
Participation rate	60.9	61.4	0.5	0.5	0.1	0.6
Unemployment rate	6.3	6.5	0.3	0.2	0.2	-0.4
Employment rate	57.2	57.4	0.5	0.2	0.0	0.8

See footnotes at the end of the table.

Table 5-1 – continued

Labour force characteristics by census metropolitan area (seasonally adjusted) — 3 month moving average

	January 2007	February 2007	S.E. ¹	Change from			Percent change from		
				last month	last December	twelve months ago	last month	last December	twelve months ago
in thousands (except rates)									
Greater Sudbury / Grand Sudbury, Ontario									
Population	132.7	132.7	...	0.0	0.0	0.3	0.0	0.0	0.2
Labour force	84.1	83.7	0.7	-0.4	-0.6	1.7	-0.5	-0.7	2.1
Employment	79.1	78.9	0.7	-0.2	-0.2	3.2	-0.3	-0.3	4.2
Unemployment	5.0	4.8	0.3	-0.2	-0.4	-1.5	-4.0	-7.7	-23.8
Participation rate	63.4	63.1	0.5	-0.3	-0.4	1.2
Unemployment rate	5.9	5.7	0.4	-0.2	-0.5	-2.0
Employment rate	59.6	59.5	0.6	-0.1	-0.1	2.3
Thunder Bay, Ontario									
Population	104.3	104.2	...	-0.1	-0.1	0.0	-0.1	-0.1	0.0
Labour force	65.5	65.9	0.6	0.4	0.6	-0.4	0.6	0.9	-0.6
Employment	61.3	61.5	0.7	0.2	0.7	-0.1	0.3	1.2	-0.2
Unemployment	4.3	4.4	0.3	0.1	0.0	-0.4	2.3	0.0	-8.3
Participation rate	62.8	63.2	0.6	0.4	0.6	-0.4
Unemployment rate	6.6	6.7	0.5	0.1	0.0	-0.5
Employment rate	58.8	59.0	0.6	0.2	0.7	-0.1
Windsor, Ontario									
Population	271.3	271.4	...	0.1	0.2	1.8	0.0	0.1	0.7
Labour force	177.6	175.0	1.4	-2.6	-4.8	-6.8	-1.5	-2.7	-3.7
Employment	160.3	157.8	1.4	-2.5	-5.8	-8.0	-1.6	-3.5	-4.8
Unemployment	17.3	17.1	0.8	-0.2	0.9	1.2	-1.2	5.6	7.5
Participation rate	65.5	64.5	0.5	-1.0	-1.8	-2.9
Unemployment rate	9.7	9.8	0.4	0.1	0.8	1.1
Employment rate	59.1	58.1	0.5	-1.0	-2.2	-3.4
Winnipeg, Manitoba									
Population	573.0	573.4	...	0.4	0.8	3.5	0.1	0.1	0.6
Labour force	402.4	403.0	1.4	0.6	1.3	5.4	0.1	0.3	1.4
Employment	382.0	382.9	1.4	0.9	0.3	3.0	0.2	0.1	0.8
Unemployment	20.5	20.1	0.7	-0.4	1.0	2.4	-2.0	5.2	13.6
Participation rate	70.2	70.3	0.2	0.1	0.1	0.5
Unemployment rate	5.1	5.0	0.2	-0.1	0.2	0.5
Employment rate	66.7	66.8	0.2	0.1	0.0	0.1
Regina, Saskatchewan									
Population	161.5	161.7	...	0.2	0.4	0.9	0.1	0.2	0.6
Labour force	117.2	116.7	0.7	-0.5	-0.7	4.9	-0.4	-0.6	4.4
Employment	112.2	112.0	0.7	-0.2	-0.2	5.7	-0.2	-0.2	5.4
Unemployment	5.0	4.7	0.3	-0.3	-0.5	-0.8	-6.0	-9.6	-14.5
Participation rate	72.6	72.2	0.4	-0.4	-0.6	2.7
Unemployment rate	4.3	4.0	0.3	-0.3	-0.4	-0.9
Employment rate	69.5	69.3	0.5	-0.2	-0.3	3.2
Saskatoon, Saskatchewan									
Population	189.0	189.2	...	0.2	0.4	1.4	0.1	0.2	0.7
Labour force	139.0	140.1	0.8	1.1	1.9	9.5	0.8	1.4	7.3
Employment	134.3	134.9	0.9	0.6	1.3	11.2	0.4	1.0	9.1
Unemployment	4.7	5.1	0.4	0.4	0.6	-1.8	8.5	13.3	-26.1
Participation rate	73.5	74.0	0.4	0.5	0.8	4.5
Unemployment rate	3.4	3.6	0.3	0.2	0.3	-1.7
Employment rate	71.1	71.3	0.5	0.2	0.5	5.4

See footnotes at the end of the table.

Table 5-1 – continued

Labour force characteristics by census metropolitan area (seasonally adjusted) — 3 month moving average

	January 2007	February 2007	S.E. ¹	Change from			Percent change from		
				last month	last December	twelve months ago	last month	last December	twelve months ago
in thousands (except rates)									
Calgary, Alberta									
Population	905.9	909.0	...	3.1	6.6	38.1	0.3	0.7	4.4
Labour force	693.6	693.3	3.1	-0.3	0.4	39.0	0.0	0.1	6.0
Employment	675.3	671.8	3.2	-3.5	-3.1	42.5	-0.5	-0.5	6.8
Unemployment	18.3	21.5	1.4	3.2	3.5	-3.6	17.5	19.4	-14.3
Participation rate	76.6	76.3	0.4	-0.3	-0.5	1.2
Unemployment rate	2.6	3.1	0.2	0.5	0.5	-0.7
Employment rate	74.5	73.9	0.4	-0.6	-0.9	1.6
Edmonton, Alberta									
Population	853.3	855.7	...	2.4	5.3	31.4	0.3	0.6	3.8
Labour force	606.0	610.1	3.1	4.1	13.2	43.1	0.7	2.2	7.6
Employment	583.1	587.7	3.2	4.6	13.0	43.5	0.8	2.3	8.0
Unemployment	22.9	22.3	1.4	-0.6	0.1	-0.5	-2.6	0.5	-2.2
Participation rate	71.0	71.3	0.4	0.3	1.1	2.5
Unemployment rate	3.8	3.7	0.2	-0.1	0.0	-0.3
Employment rate	68.3	68.7	0.4	0.4	1.1	2.7
Abbotsford, British Columbia									
Population	129.9	130.3	...	0.4	0.7	3.9	0.3	0.5	3.1
Labour force	89.0	88.9	0.7	-0.1	0.7	2.1	-0.1	0.8	2.4
Employment	85.3	85.1	0.8	-0.2	0.8	2.2	-0.2	0.9	2.7
Unemployment	3.7	3.8	0.3	0.1	-0.1	-0.1	2.7	-2.6	-2.6
Participation rate	68.5	68.2	0.6	-0.3	0.1	-0.5
Unemployment rate	4.2	4.3	0.3	0.1	-0.1	-0.2
Employment rate	65.7	65.3	0.6	-0.4	0.3	-0.3
Vancouver, British Columbia									
Population	1,878.0	1,880.7	...	2.7	5.5	34.3	0.1	0.3	1.9
Labour force	1,258.8	1,263.3	4.8	4.5	4.5	43.1	0.4	0.4	3.5
Employment	1,198.6	1,209.7	4.8	11.1	9.5	48.3	0.9	0.8	4.2
Unemployment	60.2	53.6	2.3	-6.6	-5.0	-5.2	-11.0	-8.5	-8.8
Participation rate	67.0	67.2	0.3	0.2	0.1	1.1
Unemployment rate	4.8	4.2	0.2	-0.6	-0.5	-0.6
Employment rate	63.8	64.3	0.3	0.5	0.3	1.4
Victoria, British Columbia									
Population	281.0	281.4	...	0.4	0.9	5.7	0.1	0.3	2.1
Labour force	185.2	183.3	1.4	-1.9	-2.1	6.1	-1.0	-1.1	3.4
Employment	179.3	177.7	1.4	-1.6	-1.1	7.5	-0.9	-0.6	4.4
Unemployment	6.0	5.6	0.6	-0.4	-1.0	-1.4	-6.7	-15.2	-20.0
Participation rate	65.9	65.1	0.5	-0.8	-1.0	0.8
Unemployment rate	3.2	3.1	0.3	-0.1	-0.5	-0.9
Employment rate	63.8	63.1	0.5	-0.7	-0.6	1.4

1. Average standard error of change in two consecutive months (see "Sampling Errors" in Data Quality for further explanations).

Note(s): Related CANSIM table 282-0090

Table 5-2

Labour force characteristics by census metropolitan area (seasonally adjusted) — Monthly

	January 2007	February 2007	S.E. ¹	Change from			Percent change from		
				last month	last December	twelve months ago	last month	last December	twelve months ago
in thousands (except rates)									
Montréal, Quebec									
Population	3,024.2	3,026.6	...	2.4	5.6	37.4	0.1	0.2	1.3
Labour force	2,026.3	2,024.3	15.4	-2.0	-3.0	-2.9	-0.1	-0.1	-0.1
Employment	1,876.6	1,868.5	15.5	-8.1	-11.3	28.0	-0.4	-0.6	1.5
Unemployment	149.7	155.8	11.8	6.1	8.4	-30.8	4.1	5.7	-16.5
Participation rate	67.0	66.9	0.5	-0.1	-0.2	-0.9
Unemployment rate	7.4	7.7	0.6	0.3	0.4	-1.5
Employment rate	62.1	61.7	0.5	-0.4	-0.5	0.1
Toronto, Ontario									
Population	4,419.1	4,424.3	...	5.2	12.6	81.9	0.1	0.3	1.9
Labour force	3,072.3	3,074.7	19.3	2.4	25.5	104.2	0.1	0.8	3.5
Employment	2,873.6	2,870.6	19.1	-3.0	14.0	100.2	-0.1	0.5	3.6
Unemployment	198.6	204.1	13.2	5.5	11.5	4.0	2.8	6.0	2.0
Participation rate	69.5	69.5	0.4	0.0	0.4	1.1
Unemployment rate	6.5	6.6	0.4	0.1	0.3	-0.1
Employment rate	65.0	64.9	0.4	-0.1	0.1	1.1
Vancouver, British Columbia									
Population	1,881.1	1,883.2	...	2.1	5.5	34.2	0.1	0.3	1.8
Labour force	1,264.8	1,268.0	10.0	3.2	10.7	49.9	0.3	0.9	4.1
Employment	1,208.1	1,229.0	10.2	20.9	36.9	64.5	1.7	3.1	5.5
Unemployment	56.7	39.0	5.8	-17.7	-26.1	-14.7	-31.2	-40.1	-27.4
Participation rate	67.2	67.3	0.5	0.1	0.3	1.4
Unemployment rate	4.5	3.1	0.5	-1.4	-2.1	-1.3
Employment rate	64.2	65.3	0.5	1.1	1.8	2.3

1. Average standard error of change in two consecutive months (see "Sampling Errors" in Data Quality for further explanations).

Note(s): Related CANSIM table 282-0091

Table 6-1

Labour force characteristics by province and economic region¹, unadjusted for seasonality, 3 month moving average ending in February 2006 and February 2007

	Population	Labour force			Participation rate	Unemployment rate	Employment rate
		Labour force	Employment	Unemployment			
	in thousands						
Canada ²							
2006	26,017.1	17,222.5	16,072.9	1,149.6	66.2	6.7	61.8
2007	26,388.3	17,566.6	16,459.6	1,107.0	66.6	6.3	62.4
Newfoundland and Labrador							
2006	429.1	240.2	199.1	41.1	56.0	17.1	46.4
2007	426.1	243.5	204.5	39.0	57.1	16.0	48.0
Avalon Peninsula [1010]							
2006	209.7	127.1	111.0	16.1	60.6	12.7	52.9
2007	210.1	126.5	111.6	14.9	60.2	11.8	53.1
South Coast-Burin Peninsula [1020]							
2006	34.1	16.0	12.1	3.9	46.9	24.4	35.5
2007	33.3	17.0	12.7	4.3	51.1	25.3	38.1
West Coast-Northern Peninsula-Labrador [1030]							
2006	88.9	49.1	39.9	9.2	55.2	18.7	44.9
2007	87.9	51.6	41.3	10.3	58.7	20.0	47.0
Notre Dame-Central Bonavista Bay [1040]							
2006	96.4	47.9	36.1	11.8	49.7	24.6	37.4
2007	94.8	48.4	38.9	9.5	51.1	19.6	41.0
Prince Edward Island							
2006	112.0	74.1	64.2	10.0	66.2	13.5	57.3
2007	112.8	75.3	65.2	10.2	66.8	13.5	57.8
Nova Scotia							
2006	762.2	471.0	429.5	41.5	61.8	8.8	56.4
2007	763.5	475.1	436.8	38.3	62.2	8.1	57.2
Cape Breton [1210]							
2006	117.2	61.7	52.7	9.1	52.6	14.7	45.0
2007	116.7	62.5	52.9	9.6	53.6	15.4	45.3
North Shore [1220]							
2006	131.2	79.5	71.7	7.8	60.6	9.8	54.6
2007	130.9	77.3	68.5	8.8	59.1	11.4	52.3
Annapolis Valley [1230]							
2006	99.6	61.8	55.7	6.1	62.0	9.9	55.9
2007	100.0	61.8	57.8	4.0	61.8	6.5	57.8
Southern [1240]							
2006	103.8	58.5	51.7	6.8	56.4	11.6	49.8
2007	103.6	58.6	52.7	5.9	56.6	10.1	50.9
Halifax [1250]							
2006	310.5	209.5	197.8	11.7	67.5	5.6	63.7
2007	312.4	214.8	204.8	10.0	68.8	4.7	65.6
New Brunswick							
2006	611.4	382.7	345.1	37.6	62.6	9.8	56.4
2007	611.5	376.0	345.4	30.6	61.5	8.1	56.5
Campbellton-Miramichi [1310]							
2006	137.3	76.2	64.5	11.7	55.5	15.4	47.0
2007	135.9	75.9	65.9	10.0	55.8	13.2	48.5
Moncton-Richibucto [1320]							
2006	160.9	103.5	93.4	10.1	64.3	9.8	58.0
2007	162.2	100.4	92.0	8.4	61.9	8.4	56.7
Saint John-St. Stephen [1330]							
2006	141.3	90.6	84.2	6.4	64.1	7.1	59.6
2007	141.5	85.8	81.0	4.8	60.6	5.6	57.2

See footnotes at the end of the table.

Table 6-1 – continued

Labour force characteristics by province and economic region¹, unadjusted for seasonality, 3 month moving average ending in February 2006 and February 2007

	Population	Labour force			Participation rate	Unemployment rate	Employment rate
		Labour force	Employment	Unemployment			
		in thousands					
Fredericton-Oromocto [1340]							
2006	103.5	67.6	62.1	5.4	65.3	8.0	60.0
2007	103.9	70.0	66.0	4.0	67.4	5.7	63.5
Edmundston-Woodstock [1350]							
2006	68.4	44.9	40.8	4.1	65.6	9.1	59.6
2007	68.0	43.9	40.5	3.4	64.6	7.7	59.6
Quebec							
2006	6,220.9	4,035.0	3,674.9	360.1	64.9	8.9	59.1
2007	6,288.2	4,064.4	3,726.3	338.1	64.6	8.3	59.3
Gaspésie-Îles-de-la-Madeleine [2410]							
2006	80.6	37.4	30.0	7.4	46.4	19.8	37.2
2007	80.9	39.5	31.3	8.3	48.8	21.0	38.7
Bas-Saint-Laurent [2415]							
2006	167.0	96.6	86.5	10.1	57.8	10.5	51.8
2007	167.3	97.2	87.2	10.0	58.1	10.3	52.1
Capitale-Nationale [2420]							
2006	557.5	357.9	334.1	23.8	64.2	6.6	59.9
2007	562.6	353.1	327.7	25.4	62.8	7.2	58.2
Chaudière-Appalaches [2425]							
2006	323.6	218.2	205.4	12.9	67.4	5.9	63.5
2007	326.5	223.0	205.6	17.4	68.3	7.8	63.0
Estrie [2430]							
2006	245.4	153.9	140.8	13.1	62.7	8.5	57.4
2007	247.6	158.6	144.5	14.1	64.1	8.9	58.4
Centre-du-Québec [2433]							
2006	183.0	125.5	115.0	10.6	68.6	8.4	62.8
2007	184.7	129.6	117.9	11.7	70.2	9.0	63.8
Montréal [2435]							
2006	1,104.0	747.7	688.3	59.4	67.7	7.9	62.3
2007	1,117.6	741.7	689.0	52.8	66.4	7.1	61.6
Montréal [2440]							
2006	1,577.1	1,030.4	908.2	122.1	65.3	11.8	57.6
2007	1,590.8	1,020.0	929.8	90.2	64.1	8.8	58.4
Laval [2445]							
2006	302.4	196.1	181.8	14.3	64.8	7.3	60.1
2007	307.0	204.5	187.9	16.6	66.6	8.1	61.2
Lanaudière [2450]							
2006	340.2	220.5	206.3	14.1	64.8	6.4	60.6
2007	348.4	235.6	223.3	12.3	67.6	5.2	64.1
Laurentides [2455]							
2006	411.8	267.7	243.2	24.5	65.0	9.2	59.1
2007	420.9	272.4	248.1	24.4	64.7	9.0	58.9
Outaouais [2460]							
2006	283.0	199.4	187.7	11.7	70.5	5.9	66.3
2007	287.7	199.1	183.8	15.4	69.2	7.7	63.9
Abitibi-Témiscamingue [2465]							
2006	115.2	71.7	65.5	6.1	62.2	8.5	56.9
2007	115.5	76.4	69.2	7.2	66.1	9.4	59.9
Mauricie [2470]							
2006	215.9	122.4	111.7	10.8	56.7	8.8	51.7
2007	217.0	124.8	112.9	11.9	57.5	9.5	52.0

See footnotes at the end of the table.

Table 6-1 – continued

Labour force characteristics by province and economic region¹, unadjusted for seasonality, 3 month moving average ending in February 2006 and February 2007

	Population	Labour force			Participation rate	Unemployment rate	Employment rate
		Labour force	Employment	Unemployment			
		in thousands					
Saguenay-Lac-Saint-Jean [2475]							
2006	224.5	134.6	120.5	14.1	60.0	10.5	53.7
2007	224.2	135.7	120.7	15.0	60.5	11.1	53.8
Côte-Nord and Nord-du-Québec [2480, 2490]							
2006	89.7	55.1	50.0	5.2	61.4	9.4	55.7
2007	89.5	53.1	47.5	5.6	59.3	10.5	53.1
Ontario							
2006	10,164.8	6,787.3	6,368.4	418.8	66.8	6.2	62.7
2007	10,300.5	6,904.6	6,480.4	424.2	67.0	6.1	62.9
Ottawa [3510]							
2006	975.4	678.3	642.3	35.9	69.5	5.3	65.8
2007	981.6	660.3	622.1	38.1	67.3	5.8	63.4
Kingston-Pembroke [3515]							
2006	356.8	207.9	195.7	12.3	58.3	5.9	54.8
2007	358.4	213.6	201.7	11.9	59.6	5.6	56.3
Muskoka-Kawartha [3520]							
2006	304.6	185.6	173.6	12.0	60.9	6.5	57.0
2007	307.7	190.7	177.6	13.0	62.0	6.8	57.7
Toronto [3530]							
2006	4,568.4	3,090.5	2,894.4	196.1	67.6	6.3	63.4
2007	4,655.9	3,179.7	2,985.0	194.7	68.3	6.1	64.1
Kitchener-Waterloo-Barrie [3540]							
2006	940.8	670.0	638.2	31.8	71.2	4.7	67.8
2007	959.4	688.3	653.5	34.8	71.7	5.1	68.1
Hamilton-Niagara Peninsula [3550]							
2006	1,117.1	727.7	682.1	45.5	65.1	6.3	61.1
2007	1,128.2	724.9	677.6	47.3	64.3	6.5	60.1
London [3560]							
2006	503.7	341.4	318.7	22.7	67.8	6.6	63.3
2007	508.5	352.8	334.2	18.5	69.4	5.2	65.7
Windsor-Sarnia [3570]							
2006	521.6	346.2	318.6	27.6	66.4	8.0	61.1
2007	523.8	339.2	308.6	30.6	64.8	9.0	58.9
Stratford-Bruce Peninsula [3580]							
2006	245.9	159.0	151.2	7.8	64.7	4.9	61.5
2007	247.1	159.5	153.5	6.0	64.5	3.8	62.1
Northeast [3590]							
2006	453.0	270.6	251.5	19.1	59.7	7.1	55.5
2007	453.3	277.3	257.1	20.3	61.2	7.3	56.7
Northwest [3595]							
2006	177.5	110.1	101.9	8.1	62.0	7.4	57.4
2007	176.6	118.3	109.5	8.8	67.0	7.4	62.0
Manitoba							
2006	889.9	605.4	577.9	27.5	68.0	4.5	64.9
2007	894.3	610.7	582.6	28.1	68.3	4.6	65.1
Southeast [4610]							
2006	74.0	53.5	50.8	2.7	72.3	5.0	68.6
2007	75.5	49.5	46.6	2.9	65.6	5.9	61.7
South Central [4620]							
2006	42.2	26.5	25.9	0.6	62.8	2.3	61.4
2007	42.6	27.9	26.8	1.1	65.5	3.9	62.9

See footnotes at the end of the table.

Table 6-1 – continued

Labour force characteristics by province and economic region¹, unadjusted for seasonality, 3 month moving average ending in February 2006 and February 2007

	Population	Labour force			Participation rate	Unemployment rate	Employment rate
		Labour force	Employment	Unemployment			
		in thousands					
Southwest [4630]							
2006	81.7	55.0	51.2	3.9	67.3	7.1	62.7
2007	81.8	56.1	54.0	2.0	68.6	3.6	66.0
North Central [4640]							
2006	35.3	22.6	21.7	0.9	64.0	4.0	61.5
2007	35.6	22.0	21.3	0.7	61.8	3.2	59.8
Winnipeg [4650]							
2006	527.8	360.2	343.8	16.4	68.2	4.6	65.1
2007	530.3	368.8	350.8	18.0	69.5	4.9	66.2
Interlake [4660]							
2006	68.3	47.5	45.9	1.6	69.5	3.4	67.2
2007	69.1	45.7	44.2	1.5	66.1	3.3	64.0
Parklands and North [4670, 4680]							
2006	60.6	40.1	38.5	1.5	66.2	3.7	63.5
2007	59.5	40.7	38.8	1.9	68.4	4.7	65.2
Saskatchewan							
2006	747.8	500.1	472.4	27.6	66.9	5.5	63.2
2007	746.9	516.3	494.4	21.9	69.1	4.2	66.2
Regina-Moose Mountain [4710]							
2006	219.3	148.9	142.0	7.0	67.9	4.7	64.8
2007	219.5	155.8	149.3	6.5	71.0	4.2	68.0
Swift Current-Moose Jaw [4720]							
2006	82.9	54.9	52.3	2.7	66.2	4.9	63.1
2007	82.4	56.0	54.3	1.8	68.0	3.2	65.9
Saskatoon-Biggar [4730]							
2006	230.7	155.5	147.3	8.2	67.4	5.3	63.8
2007	231.6	166.8	160.4	6.4	72.0	3.8	69.3
Yorkton-Melville [4740]							
2006	65.2	42.7	40.8	1.9	65.5	4.4	62.6
2007	64.1	41.5	39.4	2.1	64.7	5.1	61.5
Prince Albert and Northern [4750, 4760]							
2006	149.7	97.9	90.0	7.9	65.4	8.1	60.1
2007	149.2	96.2	91.1	5.1	64.5	5.3	61.1
Alberta							
2006	2,595.7	1,866.7	1,797.2	69.5	71.9	3.7	69.2
2007	2,701.5	1,975.7	1,906.0	69.7	73.1	3.5	70.6
Lethbridge-Medicine Hat [4810]							
2006	197.3	139.1	134.7	4.4	70.5	3.2	68.3
2007	204.4	141.1	135.1	6.1	69.0	4.3	66.1
Camrose-Drumheller [4820]							
2006	148.9	103.4	100.9	2.5	69.4	2.4	67.8
2007	153.4	109.8	106.3	3.5	71.6	3.2	69.3
Calgary [4830]							
2006	935.9	700.4	673.0	27.4	74.8	3.9	71.9
2007	978.2	742.8	718.6	24.3	75.9	3.3	73.5
Banff-Jasper-Rocky Mountain House [4840]							
2006	65.2	49.6	48.1	1.5	76.1	3.0	73.8
2007	67.2	54.1	52.6	1.5	80.5	2.8	78.3
Red Deer [4850]							
2006	133.2	97.3	93.4	3.9	73.0	4.0	70.1
2007	139.6	102.3	99.2	3.0	73.3	2.9	71.1

See footnotes at the end of the table.

Table 6-1 – continued

Labour force characteristics by province and economic region¹, unadjusted for seasonality, 3 month moving average ending in February 2006 and February 2007

	Population	Labour force			Participation rate	Unemployment rate	Employment rate
		Labour force	Employment	Unemployment			
		in thousands					
Edmonton [4860]							
2006	855.6	581.5	557.8	23.8	68.0	4.1	65.2
2007	888.3	624.0	600.5	23.5	70.2	3.8	67.6
Athabasca-Grande Prairie-Peace River [4870]							
2006	174.4	131.2	128.0	3.2	75.2	2.4	73.4
2007	180.9	134.4	129.3	5.1	74.3	3.8	71.5
Wood Buffalo-Cold Lake [4880]							
2006	85.2	64.2	61.4	2.8	75.4	4.4	72.1
2007	89.6	67.3	64.5	2.7	75.1	4.0	72.0
British Columbia							
2006	3,483.3	2,260.1	2,144.3	115.8	64.9	5.1	61.6
2007	3,543.0	2,325.1	2,218.1	107.0	65.6	4.6	62.6
Vancouver Island and Coast [5910]							
2006	606.8	381.1	360.9	20.2	62.8	5.3	59.5
2007	618.1	390.2	369.6	20.6	63.1	5.3	59.8
Lower Mainland-Southwest [5920]							
2006	2,100.3	1,373.8	1,307.2	66.6	65.4	4.8	62.2
2007	2,141.2	1,422.3	1,363.1	59.2	66.4	4.2	63.7
Thompson-Okanagan [5930]							
2006	409.1	262.7	249.7	13.1	64.2	5.0	61.0
2007	419.2	265.0	251.7	13.3	63.2	5.0	60.0
Kootenay [5940]							
2006	122.3	71.0	65.9	5.1	58.1	7.2	53.9
2007	122.0	79.5	74.1	5.4	65.2	6.8	60.7
Cariboo [5950]							
2006	126.4	89.4	84.1	5.2	70.7	5.8	66.5
2007	124.9	86.4	81.8	4.6	69.2	5.3	65.5
North Coast and Nechako [5960, 5970]							
2006	68.2	46.3	41.8	4.5	67.9	9.7	61.3
2007	66.6	44.9	41.7	3.2	67.4	7.1	62.6
Northeast [5980]							
2006	50.2	35.8	34.7	x	71.3	x	69.1
2007	51.0	36.7	36.0	x	72.0	x	70.6

1. For geographic descriptions of economic regions, refer to the Guide to the Labour Force Survey (catalogue number 71-543-GIE).

2. Estimates for Canada are a sum of the provincial totals and exclude estimates from Yukon Territory, Northwest Territories and Nunavut.

Note(s): Related CANSIM table 282-0054.

Table 6-2

Labour force characteristics by territories, unadjusted for seasonality, 3 month moving average ending in February 2006 and February 2007

	Population	Labour force			Participation rate	Unemployment rate	Employment rate
		Labour force	Employment	Unemployment			
	in thousands						
Yukon Territory ¹							
2006	21.6	15.5	14.7	0.8	71.8	5.2	68.1
2007	21.4	15.1	14.6	0.5	70.6	3.3	68.2
Northwest Territories ²							
2006	31.5	24.0	22.8	1.3	76.2	5.4	72.4
2007	30.8	24.0	23.0	1.0	77.9	4.2	74.7
Nunavut - 10 largest communities ³							
2006	13.8	8.5	7.6	0.9	61.7	10.4	55.3
2007	13.9	9.6	8.8	0.8	69.2	8.6	63.3

1. Since 1992, the Labour force survey has been administered in the Yukon Territory, using an alternative methodology that accommodates some of the operational difficulties inherent to remote locales. These estimates are not included in national totals.
2. Since 2001, the Labour force survey has been administered in the Northwest Territories, using an alternative methodology that accommodates some of the operational difficulties inherent to remote locales. These estimates are not included in national totals.
3. Since 2004, the Labour force survey has been administered in Nunavut, using an alternative methodology that accommodates some of the operational difficulties inherent to remote locales. These estimates are not included in national totals. The 10 largest communities are Iqaluit, Cambridge Bay, Baker Lake, Arviat, Rankin Inlet, Kugluktuk, Pond Inlet, Cape Dorset, Pangnirtung, Igloolik.

Note(s): Related CANSIM table 282-0054.

Table 7
Average usual hours and wages of employees by selected characteristics, Canada, unadjusted for seasonality

	Employees				Full-time			Part-time		
	Number	Average weekly hours	Average weekly wages	Average hourly wages	Number	Average weekly hours	Average weekly wages	Number	Average weekly hours	Average weekly wages
	thousands		dollars		thousands		dollars	thousands		dollars
February 2007										
15 years and over	13,896.4	35.0	733.94	20.15	11,202.8	39.4	851.89	2,693.6	16.8	243.35
15 to 24 years	2,324.8	26.6	334.31	11.59	1,131.4	39.0	534.49	1,193.5	14.8	144.56
25 years and over	11,571.6	36.7	814.22	21.87	10,071.5	39.4	887.55	1,500.1	18.4	321.95
Men	6,931.6	37.6	849.97	21.95	6,095.1	40.6	937.48	836.5	16.0	212.30
Women	6,964.8	32.4	618.46	18.36	5,107.7	37.9	749.76	1,857.1	17.2	257.33
Union coverage										
Union coverage	4,448.7	35.7	835.52	23.13	3,783.5	38.7	916.61	665.3	18.8	374.33
No union coverage	9,447.7	34.7	686.10	18.75	7,419.4	39.7	818.89	2,028.3	16.2	200.39
Job permanency										
Permanent	12,259.7	36.0	767.86	20.65	10,335.7	39.4	862.13	1,924.0	17.9	261.44
Temporary	1,636.7	27.3	479.84	16.39	867.1	38.9	729.87	769.6	14.1	198.12
Occupation										
Management	990.7	39.9	1,249.19	31.37	967.2	40.5	1,270.96	23.5	17.8	355.10
Business, finance and administrative	2,676.4	35.1	685.44	19.05	2,261.2	38.3	763.17	415.2	17.6	262.06
Natural and applied sciences	1,027.2	38.6	1,095.06	28.38	987.6	39.4	1,120.13	39.6	18.1	469.96
Health	869.2	33.4	799.42	23.85	664.4	37.6	903.72	204.8	19.8	461.08
Social science, education, government service and religion	1,304.5	33.4	873.92	25.82	1,028.4	38.0	1,001.27	276.1	16.2	399.55
Art, culture, recreation and sport	301.0	29.9	637.27	20.26	203.4	38.4	849.77	97.6	12.1	194.39
Sales and service	3,619.5	30.0	436.36	13.46	2,205.4	38.7	604.06	1,414.1	16.6	174.83
Trades, transport and equipment operators	1,938.7	39.7	806.82	20.03	1,793.4	41.6	853.29	145.3	16.9	233.36
Occupations unique to primary industry	236.8	41.0	809.73	18.85	203.6	45.5	913.58	33.2	13.7	173.76
Occupations unique to processing, manufacturing and utilities	932.4	39.0	686.51	17.42	888.3	40.1	710.37	44.1	17.2	205.92
February 2006										
15 years and over	13,521.5	35.1	715.74	19.61	10,888.2	39.5	831.21	2,633.3	16.8	238.25
15 to 24 years	2,262.6	26.3	317.63	11.13	1,085.0	39.2	515.45	1,177.7	14.4	135.39
25 years and over	11,258.8	36.8	795.74	21.32	9,803.2	39.5	866.16	1,455.6	18.8	321.47
Men	6,793.3	37.7	829.62	21.39	5,974.6	40.7	915.40	818.7	15.6	203.64
Women	6,728.1	32.4	600.75	17.82	4,913.6	38.0	728.85	1,814.5	17.4	253.87
Union coverage										
Union coverage	4,345.3	35.7	818.29	22.65	3,694.7	38.7	897.20	650.6	18.8	370.17
No union coverage	9,176.2	34.8	667.17	18.17	7,193.5	39.9	797.32	1,982.7	16.2	194.96
Job permanency										
Permanent	11,958.9	36.1	748.70	20.10	10,099.2	39.5	839.21	1,859.7	17.9	257.19
Temporary	1,562.5	26.9	463.42	15.87	789.0	39.4	728.82	773.6	14.2	192.72
Occupation										
Management	996.1	40.0	1,206.63	30.29	966.1	40.7	1,230.12	30.0	19.0	450.26
Business, finance and administrative	2,658.1	35.0	666.66	18.64	2,246.7	38.2	741.51	411.4	17.2	257.97
Natural and applied sciences	973.9	38.7	1,080.17	27.88	943.2	39.4	1,102.74	30.8	18.2	387.91
Health	843.9	33.5	760.92	22.53	624.7	38.1	874.81	219.2	20.4	436.44
Social science, education, government service and religion	1,262.4	33.7	870.21	25.73	994.2	38.2	993.64	268.2	17.0	412.70
Art, culture, recreation and sport	337.2	28.6	579.70	18.64	208.4	38.4	815.12	128.8	12.8	198.85
Sales and service	3,383.3	29.8	417.57	12.89	2,036.3	38.7	584.75	1,347.0	16.4	164.84
Trades, transport and equipment operators	1,896.5	40.1	787.65	19.42	1,766.5	41.8	828.74	130.0	17.4	229.17
Occupations unique to primary industry	212.7	42.0	777.61	17.77	186.2	45.9	864.73	26.4	14.8	163.58
Occupations unique to processing, manufacturing and utilities	957.3	39.1	672.39	17.04	916.0	40.1	694.42	41.4	15.1	184.79

Note(s): Related CANSIM tables 282-0023, 282-0069, 282-0073

Table 8

Regional unemployment rates used by the Employment Insurance Program,¹ seasonally adjusted, 3 month moving average

Region	Effective from March 11, 2007 to April 7, 2007
	Percent
Newfoundland and Labrador	
01. St. John's	7.3
02. Newfoundland and Labrador	19.1
Prince Edward Island	
03. Prince Edward Island	11.1
Nova Scotia	
04. Eastern Nova Scotia	14.3
05. Western Nova Scotia	8.8
06. Halifax	4.3
New Brunswick	
07. Fredericton-Moncton-Saint John	5.4
08. Madawaska-Charlotte ²	9.5
09. Restigouche-Albert	13.0
Quebec	
10. Gaspésie-Îles-de-la-Madeleine	17.4
11. Québec	5.6
12. Trois-Rivières	8.0
13. South Central Quebec	5.7
14. Sherbrooke	7.0
15. Montérégie	7.2
16. Montréal	7.5
17. Central Quebec	9.2
18. Northwestern Quebec	10.9
19. Bas-Saint-Laurent-Côte-Nord ³	12.2
20. Gatineau	6.5
21. Saguenay	9.8
Ontario	
22. Ottawa	5.5
23. Eastern Ontario	7.5
24. Kingston	4.9
25. Central Ontario	4.9
26. Oshawa	6.4
27. Toronto	6.5
28. Hamilton	6.3
29. St. Catharines	6.4
30. London	5.7
31. Niagara	8.5
32. Windsor	9.9
33. Kitchener	5.8
34. Huron	7.6
35. South Central Ontario	5.2
36. Sudbury	6.0
37. Thunder Bay	6.7
38. Northern Ontario	11.0
Manitoba	
39. Winnipeg	4.9
40. Southern Manitoba	4.3
41. Northern Manitoba	26.6
Saskatchewan	
42. Regina	4.0
43. Saskatoon	3.8
44. Southern Saskatchewan	6.0
45. Northern Saskatchewan	13.9

See footnotes at the end of the table.

Table 8 – continued

Regional unemployment rates used by the Employment Insurance Program,¹ seasonally adjusted, 3 month moving average

Region	Effective from March 11, 2007 to April 7, 2007
	Percent
Alberta	
46. Calgary	3.2
47. Edmonton	3.8
48. Northern Alberta	7.9
49. Southern Alberta	4.6
British Columbia	
50. Southern Interior British Columbia	6.4
51. Abbotsford	4.2
52. Vancouver	4.4
53. Victoria	3.8
54. Southern Coastal British Columbia	6.5
55. Northern British Columbia	8.0
Territories	
56. Yukon Territory ⁴	25.0
57. Northwest Territories ⁴	25.0
58. Nunavut ⁴	25.0

1. The boundaries of these regions are determined by Human Resources and Social Development Canada (HRSDC). For geographic descriptions and maps of employment insurance regions, see the HRSDC website: http://www.hrsdc.gc.ca/asp/gateway.asp?hr=en/ei/region/economic_region_information.shtml&hs=eza.
2. This unemployment rate has been determined using a transition formula prescribed in the EI Regulations. For further information, see: http://www.hrsdc.gc.ca/en/cs/comm/news/2000/000913a_e.shtml.
3. This unemployment rate has been determined using a transition formula prescribed in the EI Regulations. For further information, see: http://www.hrsdc.gc.ca/en/cs/comm/news/2000/000913b_e.shtml.
4. This rate is provided by Human Resources and Skills Development Canada.

Data quality

About the Labour Force Survey

The statistics contained in this report are based on information obtained through a sample survey of 53,000 representative households across the country. The Labour Force Survey, started in November 1945, was taken at quarterly intervals until November 1952. It has been carried out monthly since then. The information generated by the survey has expanded considerably over the years with a major redesign of the survey content in 1976 and again in 1997, and provides a rich and detailed picture of the Canadian labour market.

The sample used in the Labour Force Survey has been designed to represent all persons in the population 15 years of age and over residing in the provinces of Canada, with the exception of the following: persons living on Indian reserves, full-time members of the armed forces and people living in institutions (for example, inmates of penal institutions and patients in hospitals or nursing homes who have resided in the institution for more than six months). Monthly estimates of employment, unemployment and persons not in the labour force refer to the specific week covered by the survey each month, normally the week containing the 15th day.

Definitions and explanations

The **labour force** is composed of those members of the civilian non-institutional population 15 years of age and over who, during the reference week, were employed or unemployed.

Employed persons are those who, during the reference week:

- (a) did any work at all
- (b) had a job but were not at work

A person is considered to be **full-time** if his/her usual hours at the main job are 30 or more hours per week. When the number of hours worked at the main job is usually less than 30 hours per week then he/she is considered to be **part-time**.

Unemployed persons are those who, during the reference week:

- (a) were without work, had actively looked for work in the past four weeks (ending with reference week), and were available for work;
- (b) had not actively looked for work in the past four weeks but were on temporary layoff and were available for work;
- (c) had not actively looked for work in the past four weeks but had a new job to start in four weeks or less from the reference week, and were available for work.

Persons in the civilian non-institutional population 15 years of age and over who, during the reference week, were neither employed nor unemployed are classified as **not in the labour force**.

The **unemployment rate** represents the number of unemployed persons expressed as a percentage of the labour force. The unemployment rate for a particular group (age, sex, etc.) is the number unemployed in that group expressed as a percentage of the labour force for that group.

The **participation rate** represents the labour force expressed as a percentage of the population 15 years of age and over. The participation rate for a particular group (age, sex, etc.) is the labour force in that group expressed as a percentage of the population for that group.

The **employment rate (formerly the employment/population ratio)** represents the number of persons employed expressed as a percentage of the population 15 years of age and over. The employment rate for a particular group (age, sex, etc.) is the number employed in that group expressed as a percentage of the population for that group.

The **part-time rate** represents the number of persons employed part-time expressed as a percentage of the employed. The part-time rate for a particular group (age, sex, etc.) is the number employed part-time in that group expressed as a percentage of the employed for that group.

All geographic regions are based on the 2001 Census boundaries.

Seasonal adjustment

Fluctuations in economic time series are caused by seasonal, cyclical and irregular movements. A seasonally adjusted series is one from which seasonal movements have been eliminated. Seasonal movements are defined as those which are caused by regular annual events such as climate, holidays, vacation periods and cycles related to crops, production and retail sales associated with Christmas and Easter. The seasonally adjusted series contains irregular as well as longer-term cyclical fluctuations.

The seasonally adjusted series are revised each year to take into account current data and to generate new forecast factors for the next twelve months. The data are therefore subject to slight revisions in future issues of this publication.

Sampling variability of estimates

Estimates in this publication are based on the Labour Force Survey, a monthly survey of approximately 53,000 households across Canada. Because the entire population is not surveyed, the estimates are subject to sampling error. While the published estimate is the best available indicator of the real value, changes in the level of any estimates between two months can be the result of a true change or sampling variability. The sampling error can be estimated by calculating the standard error for the published estimate or statistic. These standard errors have been included in the publication tables, in order to assist users in interpreting the data.

Interpretation based on standard error

Two thirds of the time (68%), a change greater than the sampling error indicates a real change. The larger the change compared to the standard error, the better the chance that we are observing a real change, as opposed to a change due to sampling variability. At the 95% level, in order to ensure that change is real, the change in the estimate must be greater than twice the sampling error.

Movements in estimates that are smaller than the sampling error are less likely to reflect a real change and more likely to be due to sampling variability. While the above is true for monthly movements, one can have more confidence in a series of consecutive movements in the same direction, even though some of the monthly movements may be smaller than the sampling error.

Interpretation based on confidence intervals

Confidence intervals provide another way of looking at the variability inherent in estimates of sample surveys. To illustrate how to calculate the confidence interval, let us say that one month the published estimate for total employment rose by 16,000 to reach 16,500,000. The associated standard error for the movement estimate is 27,200. The standard error used to interpret the movement estimate indicates that:

- There are approximately two chances in three (68%) that the real value of the movement between the two months falls within the range -11,200 to +43,200 (16,000 + or – one standard error).
- There are approximately nine chances in ten (90%) that the real value of the movement between the two months falls within the range -27,520 to +59,520 (16,000 + or – 1.6 times the standard error).
- There are approximately nineteen chances in twenty (95%) that the real value of the movement between the two months falls within the range -38,400 to +70,400 (16,000 + or – two standard errors).

For more detailed explanations on sampling variability of estimates, and in particular for information on how to assess the variability of level estimates, consult the Data quality section of the *Guide to the Labour Force Survey*, (71-543-G) on page 27.

Documentation

For more detailed information about the Labour Force Survey, see the following documents:

- Overview of the Labour Force Survey
- Guide to the Labour Force Survey (71-543-G)
- Data quality statement
- Methodology of the Canadian Labour Force Survey (71-526-X)
- LFS *geographical maps*