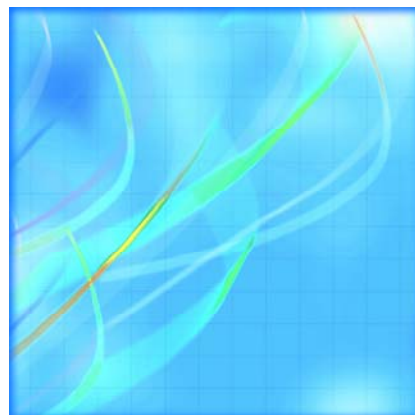




Catalogue no. 23-015-XIE

Poultry and Egg Statistics

January to March 2007



Statistics
Canada

Statistique
Canada

Canada

How to obtain more information

Specific inquiries about this product and related statistics or services should be directed to: Livestock Section, Agriculture Division, Statistics Canada, Ottawa, Ontario, K1A 0T6 (telephone: 1-800-263-1136).

For information on the wide range of data available from Statistics Canada, you can contact us by calling one of our toll free numbers. You can also contact us by e-mail or by visiting our website at www.statcan.ca.

National inquiries line **1-800-263-1136**

National telecommunications device for the hearing impaired **1-800-363-7629**

Depository Services Program inquiries **1-800-700-1033**

Fax line for Depository Services Program **1-800-889-9734**

E-mail inquiries **infostats@statcan.ca**

Website **www.statcan.ca**

Information to access the product

This product, catalogue no. 23-015-XIE, is available for free in electronic format. To obtain a single issue, visit our website at www.statcan.ca and select Publications.

Standards of service to the public

Statistics Canada is committed to serving its clients in a prompt, reliable and courteous manner. To this end, the Agency has developed *standards of service* which its employees observe in serving its clients.

To obtain a copy of these service standards, please contact Statistics Canada toll free at 1-800-263-1136. The service standards are also published on www.statcan.ca under About us > Providing services to Canadians.



Statistics Canada
Agriculture Division
Livestock Section

Poultry and Egg Statistics

January to March 2007

Published by authority of the Minister responsible for Statistics Canada

© Minister of Industry, 2007

All rights reserved. The content of this electronic publication may be reproduced, in whole or in part, and by any means, without further permission from Statistics Canada, subject to the following conditions: that it be done solely for the purposes of private study, research, criticism, review or newspaper summary, and/or for non-commercial purposes; and that Statistics Canada be fully acknowledged as follows: Source (or "Adapted from", if appropriate): Statistics Canada, year of publication, name of product, catalogue number, volume and issue numbers, reference period and page(s). Otherwise, no part of this publication may be reproduced, stored in a retrieval system or transmitted in any form, by any means—electronic, mechanical or photocopy—or for any purposes without prior written permission of Licensing Services, Client Services Division, Statistics Canada, Ottawa, Ontario, Canada K1A 0T6.

May 2007

Catalogue no. 23-015-XIE, Vol. 4, No. 1

ISSN 1710-3525

Frequency: Quarterly

Ottawa

La version française de cette publication est disponible sur demande (n° 23-015-XIF au catalogue).

Note of appreciation

Canada owes the success of its statistical system to a long standing partnership between Statistics Canada, the citizens of Canada, its businesses, governments and other institutions. Accurate and timely statistical information could not be produced without their continued cooperation and goodwill.

User information

Symbols

The following standard symbols are used in Statistics Canada publications:

- . not available for any reference period
- .. not available for a specific reference period
- ... not applicable
- 0 true zero or a value rounded to zero
- 0s value rounded to 0 (zero) where there is a meaningful distinction between true zero and the value that was rounded
- p preliminary
- r revised
- x suppressed to meet the confidentiality requirements of the *Statistics Act*
- E use with caution
- F too unreliable to be published

Table of contents

Highlights	5
Introduction	9
Related products	10
Statistical tables	
1 Production of poultry meat	12
2 Disposition of poultry meat	13
2-1 Chicken	13
2-2 Turkey	14
2-3 Total poultry	15
3 Supply and disposition of poultry meat	16
4 Production of eggs by province	18
4-1 Average number of layers	18
4-2 Eggs per 100 layers	19
4-3 in thousands of dozens	20
5 Disposition of eggs by province, quantity and value by province	21
5-1 Canada	21
5-2 Newfoundland and Labrador	22
5-3 Prince Edward Island	23
5-4 Nova Scotia	24
5-5 New Brunswick	25
5-6 Quebec	26
5-7 Ontario	27
5-8 Manitoba	28
5-9 Saskatchewan	29
5-10 Alberta	30
5-11 British Columbia	31
6 Stocks of frozen eggs and edible dried eggs, Canada	32
7 Supply and disposition of eggs	32
8 Average prices of eggs sold for consumption in Canada, by month	33

Table of contents – continued

9	Report of processed eggs production, Canada	33
---	---------------------------------------------	----

Data quality, concepts and methodology

	Poultry meat production and value	34
	Egg production and value	36
	Food Available - Poultry and Eggs	38

Appendix

I	Glossary of terms	39
---	-------------------	----

Highlights

Value of poultry products unchanged

- The value of poultry products totalled \$2.6 billion in 2006, virtually unchanged from 2005. Sales of poultry meat, including turkey, showed a decrease of 3.3 % with a total value of \$1.8 billion. The value of egg sales increased 2.0% from 2005 to stand at \$731.1 million.
- Canadian farmers produced 1.2 million tonnes of poultry meat in 2006, up 0.4% from 2005. Chicken, including stewing hens, accounts for 86% of all poultry meat produced. It decreased 0.3% from year-ago levels. Turkey production stood at 163 thousand tonnes in 2006, an increase of 5.1% from 2005.
- The quantity of poultry available for consumption has continued to increase over recent years, reaching 13.4 kilograms per person in 2006, a slight increase of 0.8% from last year and well above the 11.4 kilograms available for consumption per person ten years ago. The introduction of varied and readily available easy-to-prepare and ready-to-eat poultry products appeals to the time conscious consumer and has contributed to poultry's on-going popularity.

Egg production increases in 2006

- Egg production in 2006, at 588.4 million dozen, showed a slight increase of 0.3% from 2005. The central region produces over half of the eggs in Canada. Ontario alone produced 227 million dozen eggs in 2006 while Quebec, with 102.7 million dozen, produced 17.4% of the Canadian total.
- Annual quantity of eggs available for consumption has stabilized in recent years and was pegged at 12.3 dozen per person in 2006, an amount similar to 2005. Generally, the recent sustained growth in eggs available for consumption can be attributed to the publicity surrounding the nutritional benefits of eggs, the increased use of eggs by the food service sector, the growing popularity of value added products and the expanded use and availability of processed egg products.

Chart 1
Value of poultry products, Canada, 1997 to 2006

millions of dollars

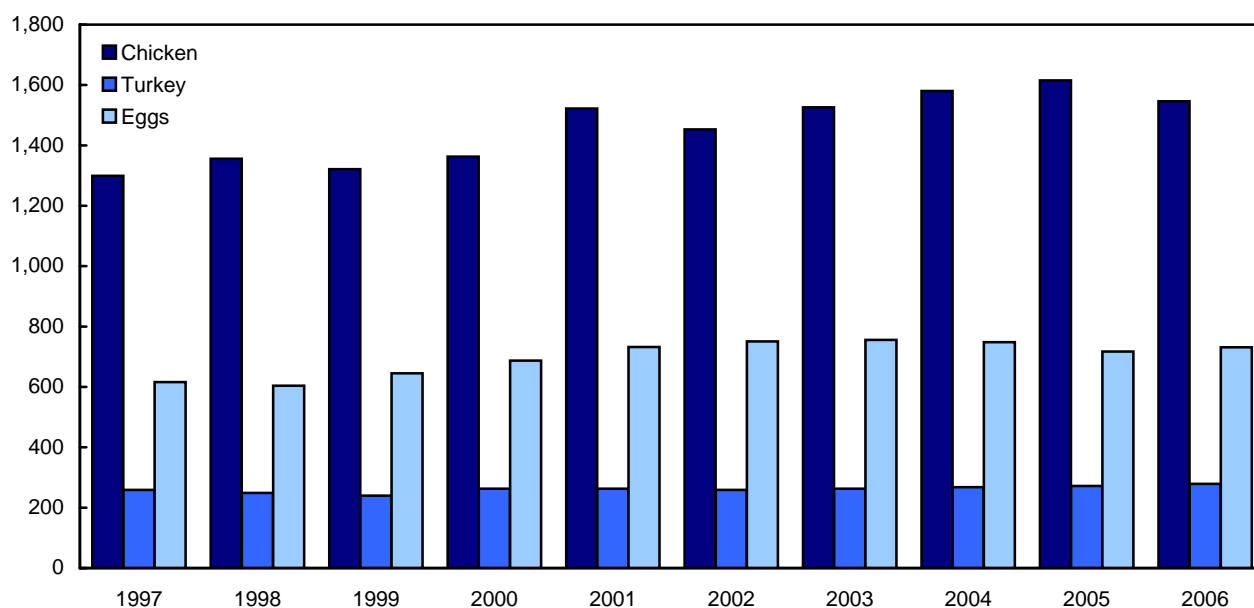


Chart 2
Poultry meat production, Canada 1997 to 2006

thousand metric tonnes

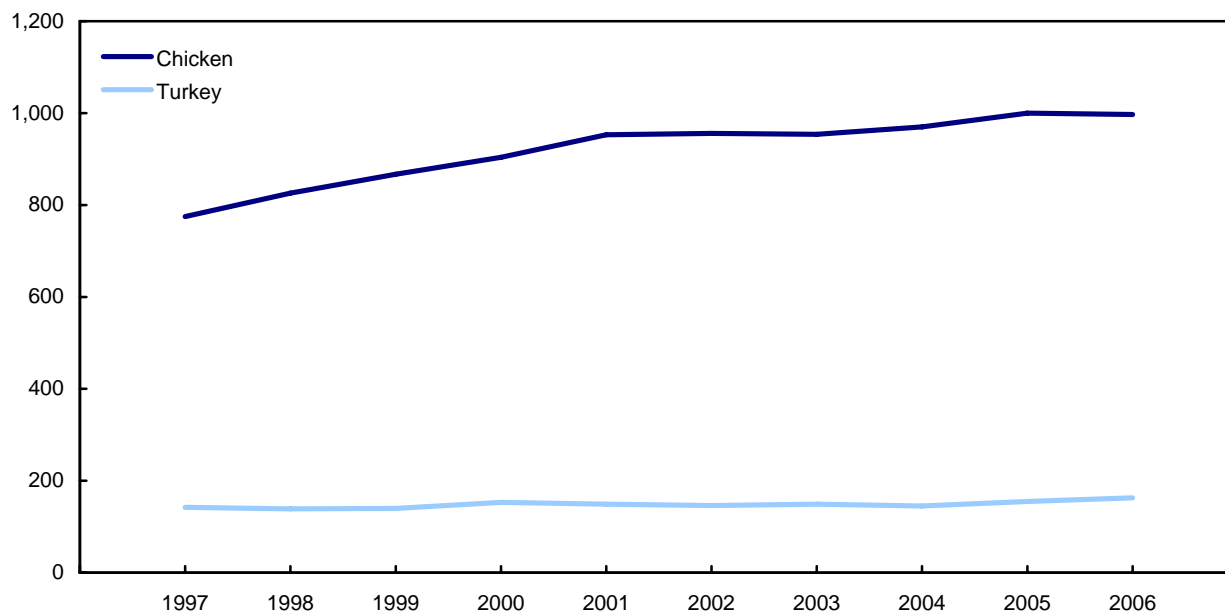


Chart 3
Quantity of meats available for consumption, Canada, 1997 to 2006

kilograms per person

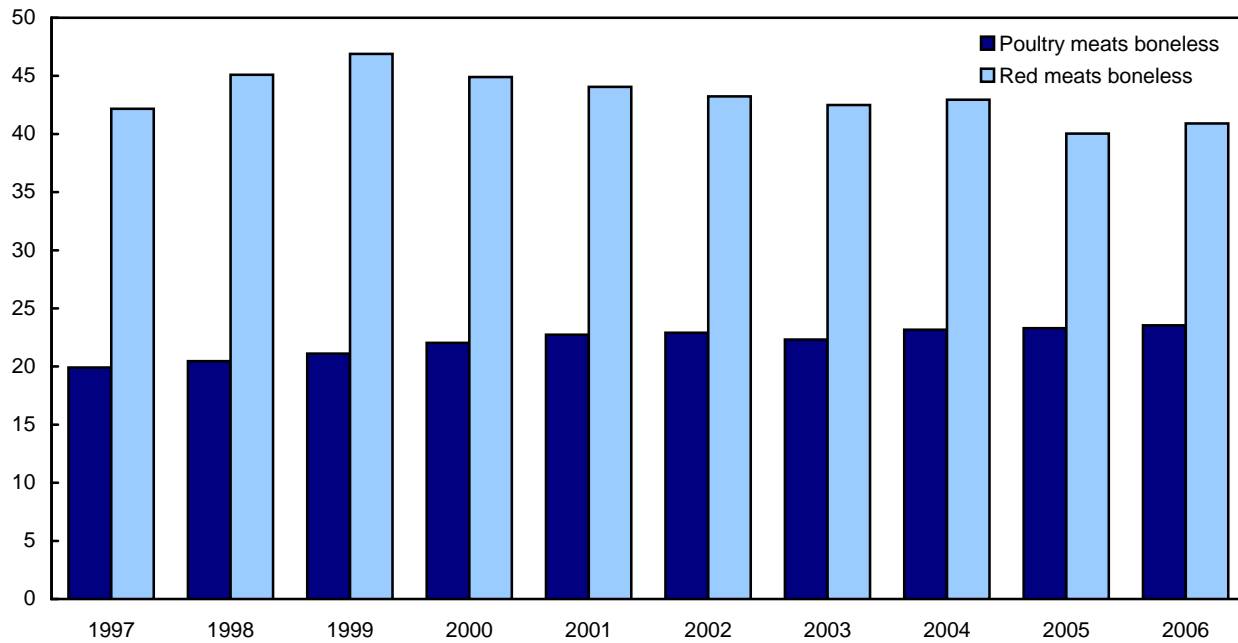


Chart 4
Production of eggs, Canada, 1997 to 2006

millions of dozens

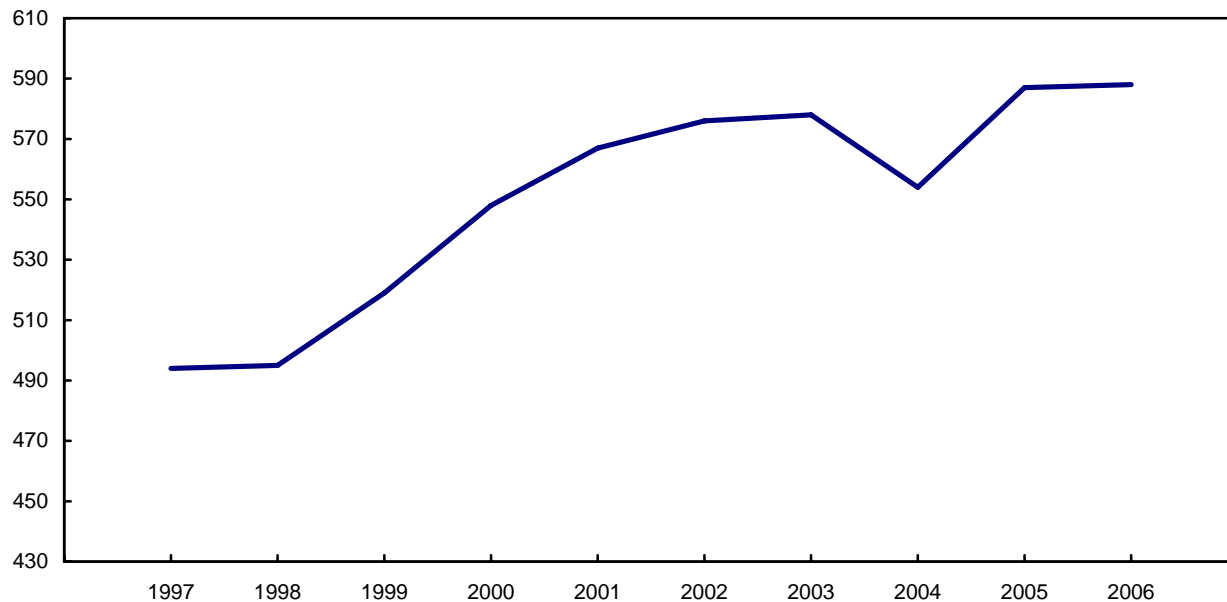
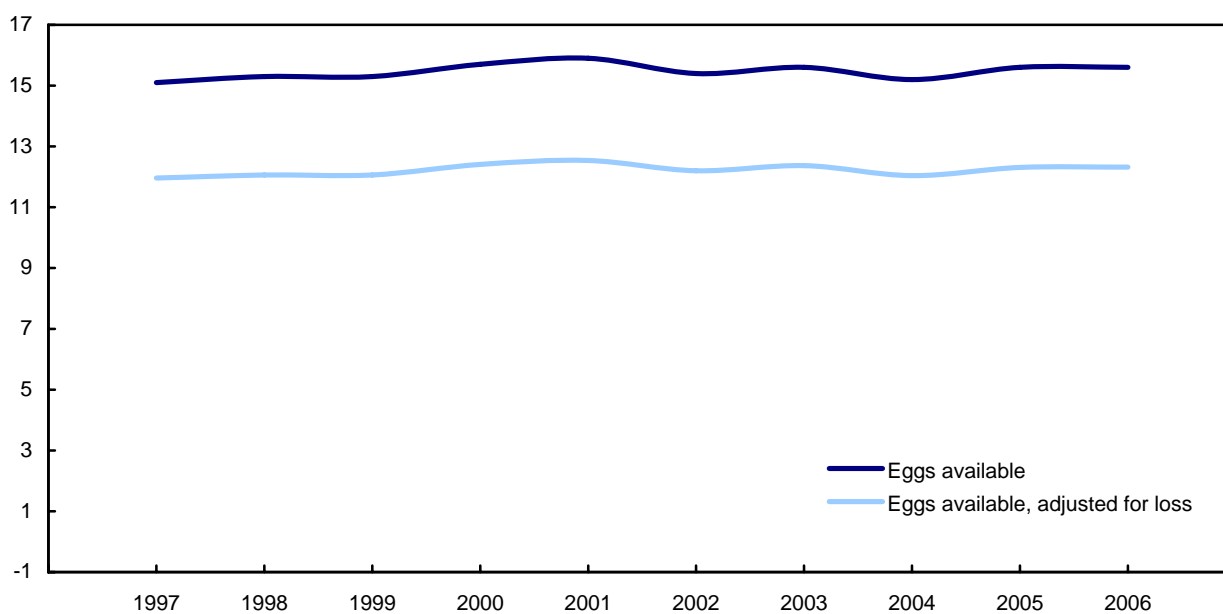


Chart 5
Quantity of eggs available for consumption, Canada, 1997 to 2006

dozens per person



Introduction

This publication provides data on the production, supply and disposition and value of poultry meat and eggs. Also included are data on the average price of eggs sold for table consumption, the food available and the food available, adjusted for loss of poultry meats and eggs, and the production and stocks of processed eggs.

The data presented are obtained from a variety of sources such as administrative sources and censuses. Administrative data are provided by the Canadian Egg Marketing Agency (CEMA), Agriculture and Agri-Food Canada (AAFC) and Statistics Canada. Information from Statistics Canada's Census of Agriculture and Census of Population is also used in preparing the estimates.

The data, published on a provincial basis, are used in decision making by government agencies, processors, retailers, universities, producer organizations and health institutions.

Statistics Canada has been estimating poultry meat production and value since 1951. Concepts and methods vary over time due to changes in the sector and/or the availability of data sources. Users should note the following:

- i. Production data supplied in table 7 (Supply and disposition of eggs) are compiled in May of each year and revised annually. Production and disposition data supplied in tables 4 and 5 (Production and disposition of eggs) are subject to revision throughout the year and may not compare exactly to the data in table 7;
- ii. beginning in 1986, the quantity of eggs available for consumption is adjusted to take into consideration a loss of 1.95% of total egg production due to leakers and rejects;
- iii. also beginning in 1986, a new method is used to calculate consumption on the farm;
- iv. a negligible number of hatchery-supply eggs are sold on the table market. Since data on the amount sold are not available, it is deemed to be zero;
- v. Please note that the quantity and value of eggs sold for hatching in New Brunswick also include the quantity and value for the other Atlantic provinces.

The data series are available on CANSIM at the same time as the information appears in The Daily, Statistics Canada's official release vehicle. CANSIM, Statistics Canada's computerized database, is an information management system designed to facilitate both historical research and current analysis.

Related products

Selected publications from Statistics Canada

21-206-X	Statistics on income of farm operators
21-207-X	Statistics on income of farm families
21-208-X	Statistics on revenues and expenses of farms
23-003-X	Production of eggs

Selected CANSIM tables from Statistics Canada

003-0017	Supply and disposition of poultry meat and eggs in Canada
003-0018	Production, disposition and farm value of poultry meat
003-0019	Fowl and chicken meat production, weight and farm value
003-0020	Production and disposition of eggs
003-0021	Placement of chicks and turkey poults for production
003-0022	Production and disposition of eggs

Selected surveys from Statistics Canada

3421	Egg Producers Survey
5039	Production of Poultry and Eggs

Selected summary tables from Statistics Canada

- *Production of eggs, by province*
- *Production of poultry, by province*

Statistical tables

Table 1
Production of poultry meat

	Birds			Weight			Value		
	2004	2005	2006	2004	2005	2006	2004	2005	2006
	in thousands			in thousands of kilograms			in thousands of dollars		
Chicken									
Canada	597,759	611,162	604,144	946,186	977,350	971,187	1,574,911	1,610,444	1,540,364
Newfoundland and Labrador	x	x	x	x	x	x	x	x	x
Prince Edward Island	x	x	x	x	x	x	x	x	x
Nova Scotia	21,831	21,969	21,635	33,257	33,392	33,046	58,070	55,821	53,266
New Brunswick	17,825	17,321	17,404	26,865	26,726	26,362	46,938	45,669	43,104
Quebec	164,144	158,376	160,519	267,494	262,618	262,621	443,882	424,907	407,247
Ontario	195,723	196,461	192,753	319,473	323,905	320,014	531,682	525,358	494,877
Manitoba	28,303	28,931	28,795	40,500	41,203	41,919	67,145	66,703	62,980
Saskatchewan	25,342	21,850	22,678	33,404	31,325	36,550	55,524	49,213	56,652
Alberta	54,297	53,013	53,417	87,983	86,880	86,732	138,320	141,893	137,866
British Columbia	78,537	101,453	95,485	120,458	154,440	147,601	204,372	272,179	258,142
Stewing hen									
Canada	15,768	15,089	17,581	23,603	22,722	25,541	4,857	4,764	5,720
Newfoundland and Labrador	x	x	x	x	x	x	x	x	x
Prince Edward Island	x	x	x	x	x	x	x	x	x
Nova Scotia	82	79	85	231	224	240	126	128	133
New Brunswick	328	155	284	407	280	377	131	89	134
Quebec	4,312	4,266	4,394	6,500	6,527	6,609	2,058	2,162	2,281
Ontario	8,581	8,742	9,532	11,623	12,030	12,183	1,268	1,317	1,345
Manitoba	197	194	214	555	528	560	1	4	4
Saskatchewan	182	147	110	468	351	301	51	38	36
Alberta	488	272	437	1,214	614	1,169	133	63	133
British Columbia	1,597	1,233	2,525	2,604	2,167	4,101	1,089	962	1,653
Total Chicken ¹									
Canada	613,527	626,251	621,725	969,789	1,000,072	996,728	1,579,768	1,615,208	1,546,085
Newfoundland and Labrador	x	x	x	x	x	x	x	x	x
Prince Edward Island	x	x	x	x	x	x	x	x	x
Nova Scotia	21,913	22,048	21,720	33,489	33,615	33,286	58,195	55,949	53,400
New Brunswick	18,153	17,476	17,688	27,272	27,006	26,739	47,069	45,758	43,238
Quebec	168,456	162,642	164,913	273,994	269,144	269,231	445,940	427,070	409,527
Ontario	204,304	205,203	202,285	331,096	335,935	332,196	532,950	526,675	496,222
Manitoba	28,500	29,125	29,009	41,054	41,731	42,479	67,146	66,707	62,984
Saskatchewan	25,524	21,996	22,787	33,872	31,677	36,852	55,575	49,251	56,688
Alberta	54,785	53,285	53,854	89,197	87,494	87,901	138,452	141,955	138,000
British Columbia	80,134	102,686	98,010	123,062	156,607	151,702	205,461	273,141	259,794
Turkey									
Canada	19,526	20,492	21,171	145,107	155,421	163,411	268,015	271,695	278,649
Newfoundland and Labrador	x	x	x	x	x	x	x	x	x
Prince Edward Island	x	x	x	x	x	x	x	x	x
Nova Scotia	730	731	789	3,522	3,544	3,745	6,458	6,069	6,493
New Brunswick	330	362	365	2,463	2,700	2,820	4,373	4,504	4,669
Quebec	4,449	4,343	4,567	31,423	31,554	33,060	57,895	55,004	56,253
Ontario	8,371	8,500	8,939	68,078	69,675	74,832	126,331	121,749	127,562
Manitoba	1,368	1,432	1,413	9,538	10,575	10,683	17,274	18,088	18,070
Saskatchewan	795	674	802	5,107	4,632	5,460	9,683	8,449	9,698
Alberta	1,662	1,757	1,651	12,129	13,118	13,324	23,209	24,034	23,886
British Columbia	1,816	2,688	2,640	12,809	19,583	19,445	22,717	33,726	31,947
Total poultry									
Canada	633,053	646,743	642,897	1,114,896	1,155,493	1,160,139	1,847,783	1,886,903	1,824,734
Newfoundland and Labrador	x	x	x	x	x	x	x	x	x
Prince Edward Island	x	x	x	x	x	x	x	x	x
Nova Scotia	22,643	22,779	22,508	37,011	37,159	37,031	64,653	62,018	59,893
New Brunswick	18,484	17,838	18,053	29,735	29,706	29,559	51,442	50,263	47,908
Quebec	172,905	166,985	169,480	305,417	300,698	302,290	503,835	482,074	465,780
Ontario	212,674	213,702	211,224	399,174	405,611	407,028	659,281	648,424	623,783
Manitoba	29,868	30,557	30,422	50,592	52,306	53,162	84,420	84,795	81,054
Saskatchewan	26,319	22,670	23,590	38,979	36,308	42,312	65,258	57,700	66,387
Alberta	56,447	55,042	55,505	101,326	100,612	101,225	161,661	165,989	161,885
British Columbia	81,950	105,374	100,650	135,870	176,190	171,146	228,178	306,867	291,742

1. Includes stewing hen.

Table 2-1
Disposition of poultry meat — Chicken¹

	Birds			Weight			Value		
	2004	2005	2006	2004	2005	2006	2004	2005	2006
	in thousands			in thousands of kilograms			in thousands of dollars		
Sold									
Canada	613,130	625,851	621,332	968,855	999,146	995,801	1,578,495	1,614,019	1,544,901
Newfoundland and Labrador	x	x	x	x	x	x	x	x	x
Prince Edward Island	x	x	x	x	x	x	x	x	x
Nova Scotia	21,907	22,042	21,713	33,472	33,599	33,270	58,168	55,923	53,374
New Brunswick	18,151	17,474	17,686	27,268	27,001	26,735	47,064	45,753	43,233
Quebec	168,430	162,617	164,888	273,932	269,082	269,169	445,846	426,980	409,439
Ontario	204,203	205,103	202,184	330,881	335,723	331,984	532,659	526,389	495,950
Manitoba	28,456	29,082	28,963	40,933	41,610	42,358	66,974	66,534	62,928
Saskatchewan	25,478	21,949	22,741	33,755	31,561	36,736	55,477	49,248	56,545
Alberta	54,673	53,167	53,750	88,928	87,226	87,633	138,041	141,529	137,583
British Columbia	80,079	102,632	97,953	122,943	156,491	151,585	205,304	272,978	259,635
Home consumption									
Canada	397	400	393	934	927	927	1,273	1,189	1,183
Newfoundland and Labrador	x	x	x	x	x	x	x	x	x
Prince Edward Island	x	x	x	x	x	x	x	x	x
Nova Scotia	6	6	7	16	16	16	28	26	25
New Brunswick	3	2	2	4	4	4	5	5	5
Quebec	26	25	25	62	62	62	94	90	88
Ontario	101	100	101	214	212	212	291	286	272
Manitoba	44	43	46	122	121	121	172	172	56
Saskatchewan	47	48	47	117	116	116	98	3	144
Alberta	112	118	104	269	268	268	412	427	417
British Columbia	55	54	57	119	117	117	157	163	160
Disposition ²									
Canada	613,527	626,251	621,725	969,789	1,000,072	996,728	1,579,768	1,615,208	1,546,085
Newfoundland and Labrador	x	x	x	x	x	x	x	x	x
Prince Edward Island	x	x	x	x	x	x	x	x	x
Nova Scotia	21,913	22,048	21,720	33,489	33,615	33,286	58,195	55,949	53,400
New Brunswick	18,153	17,476	17,688	27,272	27,006	26,739	47,069	45,758	43,238
Quebec	168,456	162,642	164,913	273,994	269,144	269,231	445,940	427,070	409,527
Ontario	204,304	205,203	202,285	331,096	335,935	332,196	532,950	526,675	496,222
Manitoba	28,500	29,125	29,009	41,054	41,731	42,479	67,146	66,707	62,984
Saskatchewan	25,524	21,996	22,787	33,872	31,677	36,852	55,575	49,251	56,688
Alberta	54,785	53,285	53,854	89,197	87,494	87,901	138,452	141,955	138,000
British Columbia	80,134	102,686	98,010	123,062	156,607	151,702	205,461	273,141	259,794

1. Includes stewing hen.

2. Includes sold and home consumption.

Table 2-2
Disposition of poultry meat — Turkey

	Birds			Weight			Value		
	2004	2005	2006	2004	2005	2006	2004	2005	2006
	in thousands			in thousands of kilograms			in thousands of dollars		
Sold									
Canada	19,511	20,478	21,157	145,004	155,315	163,306	267,823	271,506	278,465
Newfoundland and Labrador	x	x	x	x	x	x	x	x	x
Prince Edward Island	x	x	x	x	x	x	x	x	x
Nova Scotia	730	731	788	3,521	3,542	3,744	6,455	6,066	6,491
New Brunswick	330	362	365	2,462	2,699	2,819	4,372	4,503	4,668
Quebec	4,448	4,342	4,566	31,417	31,548	33,054	57,885	54,994	56,243
Ontario	8,368	8,497	8,937	68,057	69,654	74,811	126,293	121,712	127,526
Manitoba	1,366	1,431	1,411	9,525	10,562	10,671	17,252	18,066	18,048
Saskatchewan	792	671	799	5,087	4,612	5,440	9,646	8,412	9,663
Alberta	1,658	1,752	1,647	12,096	13,085	13,291	23,147	23,973	23,826
British Columbia	1,815	2,687	2,639	12,800	19,574	19,435	22,701	33,710	31,932
Home consumption									
Canada	15	14	14	103	106	106	192	189	184
Newfoundland and Labrador	x	x	x	x	x	x	x	x	x
Prince Edward Island	x	x	x	x	x	x	x	x	x
Nova Scotia	0	0	0	2	2	2	3	3	3
New Brunswick	0	0	0	1	1	1	2	2	2
Quebec	1	1	1	6	6	6	10	10	10
Ontario	3	3	3	21	21	21	38	37	36
Manitoba	2	2	2	13	13	13	23	22	22
Saskatchewan	3	3	3	20	20	20	37	37	36
Alberta	5	5	4	33	33	33	62	61	60
British Columbia	1	1	1	9	9	9	16	16	15
Disposition ¹									
Canada	19,526	20,492	21,171	145,107	155,421	163,411	268,015	271,695	278,649
Newfoundland and Labrador	x	x	x	x	x	x	x	x	x
Prince Edward Island	x	x	x	x	x	x	x	x	x
Nova Scotia	730	731	789	3,522	3,544	3,745	6,458	6,069	6,493
New Brunswick	330	362	365	2,463	2,700	2,820	4,373	4,504	4,669
Quebec	4,449	4,343	4,567	31,423	31,554	33,060	57,895	55,004	56,253
Ontario	8,371	8,500	8,939	68,078	69,675	74,832	126,331	121,749	127,562
Manitoba	1,368	1,432	1,413	9,538	10,575	10,683	17,274	18,088	18,070
Saskatchewan	795	674	802	5,107	4,632	5,460	9,683	8,449	9,698
Alberta	1,662	1,757	1,651	12,129	13,118	13,324	23,209	24,034	23,886
British Columbia	1,816	2,688	2,640	12,809	19,583	19,445	22,717	33,726	31,947

1. Includes sold and home consumption.

Table 2-3
Disposition of poultry meat — Total poultry

	Birds			Weight			Value		
	2004	2005	2006	2004	2005	2006	2004	2005	2006
	in thousands			in thousands of kilograms			in thousands of dollars		
Sold									
Canada	632,642	646,329	642,490	1,113,858	1,154,461	1,159,107	1,846,318	1,885,525	1,823,367
Newfoundland and Labrador	x	x	x	x	x	x	x	x	x
Prince Edward Island	x	x	x	x	x	x	x	x	x
Nova Scotia	22,637	22,773	22,501	36,993	37,141	37,013	64,623	61,988	59,865
New Brunswick	18,481	17,836	18,051	29,729	29,701	29,554	51,435	50,256	47,901
Quebec	172,878	166,959	169,454	305,349	300,630	302,222	503,730	481,974	465,683
Ontario	212,571	213,600	211,120	398,939	405,377	406,795	658,952	648,101	623,475
Manitoba	29,822	30,512	30,374	50,458	52,172	53,028	84,226	84,601	80,976
Saskatchewan	26,269	22,620	23,540	38,842	36,172	42,176	65,123	57,660	66,207
Alberta	56,331	54,919	55,397	101,024	100,311	100,924	161,188	165,502	161,409
British Columbia	81,894	105,319	100,592	135,743	176,064	171,020	228,005	306,688	291,567
Home consumption									
Canada	412	414	407	1,037	1,032	1,032	1,465	1,377	1,367
Newfoundland and Labrador	x	x	x	x	x	x	x	x	x
Prince Edward Island	x	x	x	x	x	x	x	x	x
Nova Scotia	6	7	7	18	18	18	30	29	28
New Brunswick	3	2	2	5	5	5	7	7	7
Quebec	27	26	26	68	68	68	105	100	98
Ontario	104	102	104	235	233	233	329	323	308
Manitoba	46	45	48	134	134	134	194	195	78
Saskatchewan	50	51	50	137	136	136	135	40	179
Alberta	116	122	108	302	301	301	474	488	477
British Columbia	56	56	58	128	126	126	173	179	175
Disposition ¹									
Canada	633,053	646,743	642,897	1,114,896	1,155,493	1,160,139	1,847,783	1,886,903	1,824,734
Newfoundland and Labrador	x	x	x	x	x	x	x	x	x
Prince Edward Island	x	x	x	x	x	x	x	x	x
Nova Scotia	22,643	22,779	22,508	37,011	37,159	37,031	64,653	62,018	59,893
New Brunswick	18,484	17,838	18,053	29,735	29,706	29,559	51,442	50,263	47,908
Quebec	172,905	166,985	169,480	305,417	300,698	302,290	503,835	482,074	465,780
Ontario	212,674	213,702	211,224	399,174	405,611	407,028	659,281	648,424	623,783
Manitoba	29,868	30,557	30,422	50,592	52,306	53,162	84,420	84,795	81,054
Saskatchewan	26,319	22,670	23,590	38,979	36,308	42,312	65,258	57,700	66,387
Alberta	56,447	55,042	55,505	101,326	100,612	101,225	161,661	165,989	161,885
British Columbia	81,950	105,374	100,650	135,870	176,190	171,146	228,178	306,867	291,742

1. Includes sold and home consumption.

Table 3
Supply and disposition of poultry meat

	2002	2003	2004	2005	2006
Chicken					
tonnes					
Production	931,617	929,749	946,186	977,350	971,187
Beginning stocks	29,281	28,947	23,719	33,069	38,361
Imports	107,315	110,579	129,793	132,857	153,656
Total supply	1,068,213	1,069,275	1,099,698	1,143,276	1,163,204
Exports	76,413	93,185	71,651	91,606	98,887
Ending stocks	28,947	23,719	33,069	38,361	28,218
Net supply	962,853	952,371	994,978	1,013,309	1,036,099
kilograms					
Food available per person, eviscerated basis	30.7	30.1	31.1	31.4	31.8
Food available per person, boneless weight	18.5	18.1	18.7	18.9	19.1
Food available per person, adjusted for loss ²	10.3	10.1	10.4	10.5	10.7
Stewing hen					
tonnes					
Production	24,348	24,617	23,603	22,722	25,541
Beginning stocks	732	1,942	780	837	1,256
Imports	46,725	37,538	46,166	46,432	48,386
Total supply	71,805	64,097	70,549	69,991	75,183
Exports	14,947	10,035	17,913	22,901	24,722
Ending stocks	1,942	780	837	1,256	946
Net supply	54,916	53,282	51,799	45,834	49,515
kilograms					
Food available per person, eviscerated basis	1.8	1.7	1.6	1.4	1.5
Food available per person, boneless weight	1.0	1.0	1.0	0.8	0.9
Food available per person, adjusted for loss ²	0.6	0.6	0.5	0.5	0.5
Total Chicken ¹					
tonnes					
Production	955,965	954,366	969,789	1,000,072	996,728
Beginning stocks	30,013	30,889	24,499	33,906	39,617
Imports	154,040	148,117	175,959	179,289	202,042
Total supply	1,140,018	1,133,372	1,170,247	1,213,267	1,238,387
Exports	91,360	103,220	89,564	114,507	123,609
Ending stocks	30,889	24,499	33,906	39,617	29,164
Net supply	1,017,769	1,005,653	1,046,777	1,059,143	1,085,614
kilograms					
Food available per person, eviscerated basis	32.4	31.8	32.7	32.8	33.3
Food available per person, boneless weight	19.5	19.1	19.7	19.7	20.0
Food available per person, adjusted for loss ²	10.9	10.7	11.0	11.0	11.2
Turkey					
tonnes					
Production	146,413	148,911	145,107	155,421	163,411
Beginning stocks	19,218	13,956	15,852	11,731	12,411
Imports	7,951	7,871	10,185	14,896	8,992
Total supply	173,582	170,738	171,144	182,048	184,814
Exports	25,675	26,355	19,141	24,471	27,145
Ending stocks	13,956	15,852	11,731	12,411	12,834
Net supply	133,951	128,531	140,272	145,166	144,835
kilograms					
Food available per person, eviscerated basis	4.3	4.1	4.4	4.5	4.4
Food available per person, boneless weight	3.4	3.2	3.5	3.6	3.5
Food available per person, adjusted for loss ²	2.1	2.0	2.2	2.2	2.2

See footnotes at the end of the table.

Table 3 – continued

Supply and disposition of poultry meat

	2002	2003	2004	2005	2006
	tonnes				
Total poultry meat					
Production	1,102,378	1,103,277	1,114,896	1,155,493	1,160,139
Beginning stocks	49,231	44,845	40,351	45,637	52,028
Imports	161,991	155,988	186,144	194,185	211,034
Total supply	1,313,600	1,304,110	1,341,391	1,395,315	1,423,201
Exports	117,035	129,575	108,705	138,978	150,754
Ending stocks	44,845	40,351	45,637	52,028	41,998
Net supply	1,151,719	1,134,184	1,187,049	1,204,309	1,230,449
	kilograms				
Food available per person, eviscerated basis	36.7	35.8	37.1	37.3	37.7
Food available per person, boneless weight	22.9	22.3	23.2	23.3	23.5
Food available per person, adjusted for loss ²	13.0	12.7	13.2	13.3	13.4

1. Includes stewing hen.

2. Experimental, use with caution. The data have been adjusted for retail, household, cooking and plate loss.

Table 4-1
Production of eggs by province — Average number of layers

	Jan.	Feb.	Mar.	Apr.	May	June	July	Aug.	Sept.	Oct.	Nov.	Dec.	Annual average
	in thousands												
Newfoundland and Labrador													
2005	348	342	344	341	329	337	346	336	334	342	333	334	339
2006	347	342	344	339	328	338	348	338	339	350	340	342	341
2007	355	350	352
Prince Edward Island													
2005	129	129	129	130	129	129	129	128	134	135	132	131	130
2006	128	128	131	131	131	131	130	130	136	137	133	132	132
2007	129	129	133
Nova Scotia													
2005	751	728	742	736	732	747	745	750	736	709	727	753	738
2006	753	749	754	739	737	752	750	755	740	714	731	758	744
2007	758	754	759
New Brunswick													
2005	729	734	757	777	767	761	726	718	723	732	778	764	747
2006	714	741	767	787	733	750	746	733	735	739	777	740	747
2007	819	815	842
Quebec													
2005	4,715	4,669	4,800	4,870	4,978	4,942	4,757	4,775	4,828	4,742	4,661	4,794	4,794
2006	4,834	4,764	4,857	4,874	4,930	4,859	4,731	4,732	4,741	4,749	4,708	4,717	4,791
2007	4,816	4,884	4,895
Ontario													
2005	9,894	9,734	9,712	9,813	9,835	9,844	9,786	9,760	9,778	9,699	9,671	9,519	9,754
2006	9,376	9,413	9,564	9,667	9,732	9,683	9,618	9,545	9,435	9,387	9,463	9,556	9,537
2007	9,491	9,472	9,480
Manitoba													
2005	3,107	3,094	3,120	3,087	3,078	3,111	3,102	3,091	3,077	3,030	3,029	3,064	3,083
2006	3,039	3,026	2,959	2,963	3,046	3,049	3,051	3,040	3,000	3,005	3,039	3,049	3,022
2007	2,964	2,945	3,042
Saskatchewan													
2005	1,126	1,135	1,106	1,078	1,120	1,176	1,189	1,179	1,147	1,176	1,215	1,197	1,154
2006	1,202	1,195	1,173	1,178	1,160	1,147	1,148	1,152	1,088	1,087	1,177	1,141	1,154
2007	1,135	1,188	1,173
Alberta													
2005	2,348	2,313	2,306	2,308	2,342	2,357	2,358	2,388	2,359	2,341	2,364	2,371	2,346
2006	2,365	2,318	2,286	2,312	2,264	2,248	2,317	2,375	2,381	2,374	2,385	2,344	2,331
2007	2,339	2,342	2,353
British Columbia													
2005	2,102	1,895	2,132	2,332	2,509	2,660	2,789	3,016	3,137	3,228	3,237	3,194	2,686
2006	2,801	3,155	3,131	3,219	3,257	3,207	3,141	3,164	3,155	3,126	3,132	3,143	3,136
2007	2,752	3,155	3,131
Canada													
2005	25,249	24,772	25,148	25,471	25,819	26,063	25,927	26,142	26,252	26,135	26,145	26,121	25,771
2006	25,559	25,831	25,966	26,210	26,318	26,164	25,979	25,964	25,749	25,668	25,886	25,923	25,935
2007	25,558	26,034	26,159

Table 4-2
Production of eggs by province — Eggs per 100 layers

	Jan.	Feb.	Mar.	Apr.	May	June	July	Aug.	Sept.	Oct.	Nov.	Dec.	Annual total
Newfoundland and Labrador													
2005	2,465	2,192	2,234	2,462	2,491	2,471	2,521	2,505	2,356	2,342	2,473	2,531	29,038
2006	2,432	2,222	2,273	2,466	2,475	2,497	2,437	2,528	2,495	2,323	2,467	2,534	29,143
2007	2,429	2,134	2,217
Prince Edward Island													
2005	2,320	2,194	2,251	2,302	2,369	2,398	2,395	2,336	2,231	2,315	2,289	2,335	27,722
2006	2,334	2,213	2,323	2,315	2,348	2,392	2,429	2,363	2,254	2,357	2,327	2,348	27,999
2007	2,360	2,286	2,421
Nova Scotia													
2005	2,466	2,236	2,374	2,430	2,514	2,448	2,552	2,551	2,454	2,464	2,516	2,524	29,533
2006	2,496	2,262	2,405	2,429	2,464	2,446	2,441	2,535	2,500	2,459	2,402	2,424	29,262
2007	2,423	2,161	2,384
New Brunswick													
2005	2,098	1,939	2,041	1,998	2,012	1,994	2,103	2,028	2,043	2,040	2,015	2,155	24,463
2006	2,065	1,936	2,040	1,982	2,057	2,017	2,052	2,077	2,019	2,039	2,016	2,108	24,402
2007	2,040	1,954	2,006
Quebec													
2005	2,218	2,053	2,210	2,099	2,191	2,129	2,197	2,208	2,142	2,213	2,165	2,234	26,060
2006	2,203	2,025	2,197	2,078	2,172	2,079	2,166	2,169	2,120	2,185	2,135	2,196	25,726
2007	2,203	1,983	2,165
Ontario													
2005	2,378	2,177	2,370	2,288	2,368	2,318	2,382	2,380	2,310	2,396	2,351	2,445	28,159
2006	2,444	2,225	2,419	2,323	2,416	2,328	2,429	2,397	2,345	2,422	2,381	2,485	28,614
2007	2,489	2,242	2,459
Manitoba													
2005	2,852	2,602	2,837	2,716	2,813	2,714	2,801	2,807	2,703	2,784	2,701	2,791	33,117
2006	2,808	2,536	2,790	2,679	2,767	2,678	2,764	2,762	2,668	2,738	2,654	2,785	32,632
2007	2,829	2,556	2,805
Saskatchewan													
2005	2,118	1,901	2,060	1,982	2,081	2,011	2,071	2,052	1,998	2,115	2,000	2,065	24,451
2006	2,043	1,868	1,929	1,804	1,832	1,779	1,854	1,851	1,786	1,894	1,812	1,836	22,298
2007	1,867	1,675	1,775
Alberta													
2005	2,010	1,822	2,001	1,916	2,009	1,911	1,983	1,941	1,898	1,969	1,936	2,011	23,411
2006	2,035	1,837	2,024	1,956	2,023	1,941	2,004	1,983	1,913	1,988	1,940	2,017	23,657
2007	2,059	1,843	2,024
British Columbia													
2005	2,051	2,006	2,143	1,998	2,140	1,990	2,078	2,040	1,971	2,029	2,006	2,077	24,529
2006	2,152	1,897	2,087	1,998	2,076	2,016	2,069	2,060	1,988	2,058	2,021	2,071	24,479
2007	2,151	1,897	2,066
Canada													
2005	2,329	2,143	2,318	2,228	2,315	2,242	2,314	2,302	2,231	2,302	2,258	2,339	27,325
2006	2,343	2,126	2,309	2,217	2,301	2,224	2,303	2,292	2,230	2,297	2,249	2,334	27,223
2007	2,353	2,113	2,307

Table 4-3
Production of eggs by province in thousands of dozens

	Jan.	Feb.	Mar.	Apr.	May	June	July	Aug.	Sept.	Oct.	Nov.	Dec.	Annual total
	in thousands												
Newfoundland and Labrador													
2005	716	625	640	699	682	693	727	702	656	668	685	705	8,199
2006	703	633	651	697	677	704	706	712	704	678	699	722	8,286
2007	718	622	649
Prince Edward Island													
2005	249	235	242	248	255	257	257	250	249	261	251	255	3,008
2006	248	236	253	253	256	260	264	256	255	269	258	259	3,068
2007	254	246	267
Nova Scotia													
2005	1,544	1,355	1,468	1,490	1,534	1,523	1,584	1,594	1,504	1,457	1,523	1,585	18,160
2006	1,566	1,413	1,512	1,497	1,513	1,532	1,524	1,594	1,542	1,463	1,464	1,532	18,150
2007	1,530	1,358	1,508
New Brunswick													
2005	1,275	1,186	1,288	1,294	1,286	1,265	1,273	1,214	1,231	1,244	1,306	1,371	15,232
2006	1,229	1,196	1,304	1,300	1,257	1,261	1,275	1,269	1,236	1,255	1,306	1,300	15,186
2007	1,393	1,327	1,408
Quebec													
2005	8,715	7,987	8,841	8,518	9,091	8,768	8,710	8,787	8,616	8,746	8,408	8,924	104,110
2006	8,876	8,039	8,892	8,440	8,922	8,419	8,540	8,555	8,375	8,645	8,377	8,634	102,713
2007	8,840	8,073	8,833
Ontario													
2005	19,604	17,662	19,179	18,713	19,407	19,018	19,424	19,358	18,821	19,364	18,946	19,394	228,889
2006	19,093	17,457	19,279	18,711	19,593	18,782	19,471	19,069	18,436	18,949	18,778	19,790	227,407
2007	19,683	17,697	19,428
Manitoba													
2005	7,385	6,708	7,377	6,986	7,215	7,035	7,240	7,230	6,931	7,029	6,818	7,127	85,083
2006	7,112	6,396	6,879	6,615	7,023	6,804	7,028	6,998	6,671	6,856	6,722	7,076	82,179
2007	6,988	6,272	7,110
Saskatchewan													
2005	1,988	1,798	1,899	1,781	1,942	1,971	2,052	2,017	1,910	2,073	2,025	2,060	23,514
2006	2,047	1,860	1,886	1,771	1,771	1,700	1,774	1,777	1,620	1,716	1,777	1,746	21,443
2007	1,766	1,659	1,735
Alberta													
2005	3,933	3,512	3,846	3,685	3,920	3,755	3,896	3,863	3,730	3,840	3,814	3,974	45,769
2006	4,010	3,548	3,855	3,769	3,817	3,636	3,870	3,925	3,795	3,932	3,856	3,940	45,953
2007	4,014	3,597	3,970
British Columbia													
2005	3,592	3,168	3,807	3,883	4,475	4,410	4,830	5,127	5,151	5,458	5,411	5,528	54,840
2006	5,023	4,987	5,445	5,361	5,636	5,388	5,415	5,432	5,226	5,361	5,275	5,425	63,972
2007	4,933	4,987	5,390
Canada													
2005	49,000	44,236	48,587	47,297	49,808	48,695	49,993	50,142	48,800	50,140	49,186	50,922	586,805
2006	49,907	45,762	49,956	48,412	50,464	48,485	49,867	49,587	47,859	49,125	48,511	50,421	588,357
2007	50,118	45,837	50,299

Table 5-1

Disposition of eggs by province, quantity and value by province — Canada

	Jan.	Feb.	Mar.	Apr.	May	June	July	Aug.	Sept.	Oct.	Nov.	Dec.	Annual total
quantity, in thousands of dozens													
Sold for consumption													
2005	43,302	38,572	42,279	41,276	43,421	42,518	43,706	43,830	42,737	44,177	43,225	44,745	513,788
2006	43,890	40,060	43,670	42,337	44,008	42,551	43,711	43,624	42,059	43,285	42,532	44,608	516,332
2007	43,771	39,981	43,875
Sold for hatching													
2005	4,636	4,694	5,254	4,990	5,317	5,127	5,194	5,221	4,992	4,876	4,899	5,078	60,277
2006	4,936	4,702	5,205	5,026	5,366	4,883	5,078	4,891	4,762	4,775	4,928	4,725	59,276
2007	5,265	4,859	5,340
Home consumption													
2005	125	125	125	125	125	125	125	125	125	125	125	125	1,501
2006	125	125	125	125	125	125	125	125	125	125	125	125	1,501
2007	125	125	125
Leakers and rejects													
2005	937	846	929	906	945	925	967	966	946	962	937	974	11,239
2006	956	875	956	925	965	926	954	947	914	941	927	964	11,249
2007	956	872	959
Total disposition of eggs													
2005	49,000	44,236	48,587	47,297	49,808	48,695	49,992	50,142	48,800	50,140	49,186	50,922	586,805
2006	49,907	45,762	49,955	48,413	50,464	48,485	49,867	49,587	47,859	49,125	48,512	50,422	588,358
2007	50,118	45,837	50,299
value, in thousands of dollars													
Sold for consumption													
2005	43,533	38,061	41,757	40,884	43,095	42,260	43,567	44,340	43,027	44,611	43,943	45,427	514,506
2006	43,670	40,792	44,654	43,448	45,154	43,683	44,970	45,111	43,547	44,447	43,721	45,691	528,888
2007	42,416	40,133	44,892
Sold for hatching													
2005	15,335	15,545	17,501	16,641	17,899	17,158	17,264	17,344	16,583	16,176	16,259	16,863	200,568
2006	16,513	15,859	17,517	16,959	18,095	16,509	17,064	16,459	16,077	16,130	16,883	16,181	200,245
2007	18,656	17,254	19,411
Home consumption													
2005	156	154	162	162	162	162	163	164	154	167	167	165	1,932
2006	162	163	162	163	163	163	163	167	170	167	167	165	1,970
2007	158	164	161
Total value of disposition of eggs													
2005	59,023	53,760	59,419	57,687	61,156	59,579	60,993	61,848	59,764	60,954	60,369	62,454	717,005
2006	60,345	56,814	62,332	60,569	63,411	60,354	62,197	61,737	59,793	60,744	60,770	62,038	731,103
2007	61,230	57,551	64,465

Table 5-2

Disposition of eggs by province, quantity and value by province — Newfoundland and Labrador

	Jan.	Feb.	Mar.	Apr.	May	June	July	Aug.	Sept.	Oct.	Nov.	Dec.	Annual total
quantity, in thousands of dozens													
Sold for consumption													
2005	702	613	628	685	669	679	713	688	643	655	672	691	8,037
2006	689	620	638	683	664	690	693	698	690	665	686	708	8,123
2007	704	609	637
Sold for hatching													
2005	0	0	0	0	0	0	0	0	0	0	0	0	0
2006	0	0	0	0	0	0	0	0	0	0	0	0	0
2007	0	0	0
Home consumption													
2005	0	0	0	0	0	0	0	0	0	0	0	0	2
2006	0	0	0	0	0	0	0	0	0	0	0	0	2
2007	0	0	0
Leakers and rejects													
2005	14	12	13	14	13	14	14	14	13	13	13	14	160
2006	14	12	13	14	13	14	14	14	14	13	14	14	162
2007	14	12	13
Total disposition of eggs													
2005	716	625	641	699	682	693	727	702	656	668	685	705	8,199
2006	703	633	651	697	677	704	707	712	704	678	699	723	8,287
2007	718	622	650
value, in thousands of dollars													
Sold for consumption													
2005	1,022	868	884	971	948	962	1,017	979	927	944	975	997	11,494
2006	935	862	887	950	923	952	949	956	937	896	924	933	11,103
2007	927	757	815
Sold for hatching													
2005	0	0	0	0	0	0	0	0	0	0	0	0	0
2006	0	0	0	0	0	0	0	0	0	0	0	0	0
2007	0	0	0
Home consumption													
2005	0	0	0	0	0	0	0	0	0	0	0	0	4
2006	0	0	0	0	0	0	0	0	0	0	0	0	4
2007	0	0	0
Total value of disposition of eggs													
2005	1,023	868	884	971	948	963	1,018	979	927	945	976	997	11,498
2006	936	862	887	950	923	952	949	957	937	896	924	933	11,106
2007	928	757	815

Table 5-3
Disposition of eggs by province, quantity and value by province — Prince Edward Island

	Jan.	Feb.	Mar.	Apr.	May	June	July	Aug.	Sept.	Oct.	Nov.	Dec.	Annual total
quantity, in thousands of dozens													
Sold for consumption													
2005	243	230	237	243	249	252	251	245	243	256	245	249	2,943
2006	243	230	248	248	251	255	258	251	249	264	253	254	3,003
2007	249	241	262
Sold for hatching													
2005	0	0	0	0	0	0	0	0	0	0	0	0	0
2006	0	0	0	0	0	0	0	0	0	0	0	0	0
2007	0	0	0
Home consumption													
2005	1	1	1	1	1	1	1	1	1	1	1	1	6
2006	1	1	1	1	1	1	1	1	1	1	1	1	6
2007	1	1	1
Leakers and rejects													
2005	5	5	5	5	5	5	5	5	5	5	5	5	59
2006	5	5	5	5	5	5	5	5	5	5	5	5	60
2007	5	5	5
Total disposition of eggs													
2005	249	235	242	248	255	257	257	250	249	261	251	255	3,008
2006	248	236	253	253	256	260	264	257	255	269	258	259	3,069
2007	254	246	267
value, in thousands of dollars													
Sold for consumption													
2005	303	280	288	296	304	306	306	299	302	317	304	309	3,613
2006	280	269	290	290	296	300	302	294	289	303	291	282	3,486
2007	277	251	294
Sold for hatching													
2005	0	0	0	0	0	0	0	0	0	0	0	0	0
2006	0	0	0	0	0	0	0	0	0	0	0	0	0
2007	0	0	0
Home consumption													
2005	1	1	1	1	1	1	1	1	1	1	1	1	8
2006	1	1	1	1	1	1	1	1	1	1	1	1	8
2007	1	1	1
Total value of disposition of eggs													
2005	304	281	289	297	304	307	306	300	302	317	305	309	3,621
2006	280	270	291	291	296	301	303	294	290	304	291	283	3,494
2007	277	252	295

Table 5-4
Disposition of eggs by province, quantity and value by province — Nova Scotia

	Jan.	Feb.	Mar.	Apr.	May	June	July	Aug.	Sept.	Oct.	Nov.	Dec.	Annual total
quantity, in thousands of dozens													
Sold for consumption													
2005	1,531	1,344	1,456	1,476	1,528	1,516	1,559	1,572	1,478	1,442	1,513	1,571	17,987
2006	1,551	1,400	1,498	1,486	1,501	1,520	1,513	1,582	1,530	1,452	1,452	1,520	18,006
2007	1,519	1,350	1,499
Sold for hatching													
2005	0	0	0	0	0	0	0	0	0	0	0	0	0
2006	0	0	0	0	0	0	0	0	0	0	0	0	0
2007	0	0	0
Home consumption													
2005	2	2	2	2	2	2	2	2	2	2	2	2	18
2006	2	2	2	2	2	2	2	2	2	2	2	2	18
2007	2	2	2
Leakers and rejects													
2005	11	10	11	12	5	6	23	21	24	13	8	12	155
2006	14	11	12	10	10	10	10	11	10	10	10	10	126
2007	10	7	7
Total disposition of eggs													
2005	1,544	1,355	1,468	1,490	1,534	1,523	1,584	1,594	1,504	1,457	1,523	1,585	18,160
2006	1,566	1,413	1,512	1,497	1,513	1,532	1,524	1,594	1,542	1,463	1,463	1,532	18,150
2007	1,530	1,358	1,508
value, in thousands of dollars													
Sold for consumption													
2005	1,931	1,695	1,836	1,862	1,925	1,910	1,966	1,983	1,864	1,819	1,908	1,981	22,679
2006	1,847	1,687	1,806	1,790	1,817	1,839	1,831	1,914	1,847	1,752	1,753	1,806	21,689
2007	1,804	1,488	1,721
Sold for hatching													
2005	0	0	0	0	0	0	0	0	0	0	0	0	0
2006	0	0	0	0	0	0	0	0	0	0	0	0	0
2007	0	0	0
Home consumption													
2005	3	3	3	3	3	3	3	3	3	3	3	3	37
2006	3	3	3	3	3	3	3	3	3	3	3	3	37
2007	3	3	3
Total value of disposition of eggs													
2005	1,934	1,698	1,839	1,865	1,928	1,913	1,969	1,986	1,867	1,822	1,911	1,984	22,716
2006	1,850	1,690	1,809	1,793	1,820	1,842	1,834	1,917	1,850	1,755	1,756	1,809	21,726
2007	1,807	1,490	1,724

Table 5-5
Disposition of eggs by province, quantity and value by province — New Brunswick

	Jan.	Feb.	Mar.	Apr.	May	June	July	Aug.	Sept.	Oct.	Nov.	Dec.	Annual total
quantity, in thousands of dozens													
Sold for consumption													
2005	843	768	841	843	810	796	828	785	814	827	866	931	9,952
2006	847	808	872	852	841	818	819	834	817	846	886	909	10,147
2007	890	852	890
Sold for hatching													
2005	406	393	421	425	450	443	419	404	393	392	414	413	4,972
2006	357	364	406	422	391	417	430	409	394	384	394	364	4,732
2007	474	448	490
Home consumption													
2005	1	1	1	1	1	1	1	1	1	1	1	1	11
2006	1	1	1	1	1	1	1	1	1	1	1	1	11
2007	1	1	1
Leakers and rejects													
2005	25	23	25	25	25	25	25	24	24	24	26	27	297
2006	24	23	25	25	25	25	25	25	24	25	26	25	296
2007	27	26	28
Total disposition of eggs													
2005	1,275	1,186	1,287	1,294	1,287	1,265	1,273	1,214	1,232	1,244	1,306	1,371	15,232
2006	1,229	1,196	1,303	1,299	1,257	1,261	1,275	1,269	1,236	1,255	1,306	1,299	15,186
2007	1,392	1,326	1,408
value, in thousands of dollars													
Sold for consumption													
2005	1,057	964	1,055	1,058	1,017	999	1,039	984	1,020	1,037	1,085	1,167	12,483
2006	980	952	1,027	1,003	996	970	970	988	968	1,002	1,050	1,060	11,965
2007	1,038	936	1,019
Sold for hatching													
2005	1,269	1,229	1,316	1,327	1,407	1,385	1,310	1,264	1,228	1,225	1,294	1,290	15,544
2006	1,115	1,137	1,268	1,318	1,224	1,304	1,345	1,280	1,232	1,200	1,231	1,139	14,792
2007	1,483	1,399	1,532
Home consumption													
2005	1	1	1	1	1	1	1	1	1	1	1	1	17
2006	1	1	1	1	1	1	1	1	1	1	1	1	17
2007	1	1	1
Total value of disposition of eggs													
2005	2,327	2,195	2,372	2,387	2,426	2,385	2,350	2,250	2,250	2,264	2,380	2,458	28,043
2006	2,096	2,090	2,296	2,322	2,221	2,275	2,317	2,269	2,201	2,204	2,282	2,200	26,773
2007	2,522	2,337	2,552

Table 5-6

Disposition of eggs by province, quantity and value by province — Quebec

	Jan.	Feb.	Mar.	Apr.	May	June	July	Aug.	Sept.	Oct.	Nov.	Dec.	Annual total
quantity, in thousands of dozens													
Sold for consumption													
2005	7,215	6,458	7,127	6,892	7,438	7,209	7,196	7,226	7,134	7,358	7,031	7,408	85,692
2006	7,411	6,612	7,265	6,932	7,277	6,934	7,069	7,099	6,921	7,261	6,999	7,255	85,035
2007	7,294	6,637	7,318
Sold for hatching													
2005	1,324	1,367	1,536	1,454	1,470	1,382	1,338	1,384	1,308	1,211	1,207	1,336	16,316
2006	1,286	1,264	1,448	1,337	1,465	1,315	1,298	1,283	1,285	1,209	1,209	1,205	15,603
2007	1,368	1,273	1,337
Home consumption													
2005	6	6	6	6	6	6	6	6	6	6	6	6	72
2006	6	6	6	6	6	6	6	6	6	6	6	6	72
2007	6	6	6
Leakers and rejects													
2005	170	156	172	166	177	171	170	171	168	171	164	174	2,030
2006	173	157	173	165	174	164	167	167	163	169	163	168	2,003
2007	172	157	172
Total disposition of eggs													
2005	8,715	7,987	8,841	8,518	9,091	8,768	8,710	8,787	8,616	8,746	8,408	8,924	104,110
2006	8,876	8,039	8,892	8,440	8,922	8,419	8,540	8,555	8,375	8,645	8,377	8,634	102,713
2007	8,840	8,073	8,833
value, in thousands of dollars													
Sold for consumption													
2005	7,963	6,869	7,585	7,336	7,917	7,674	7,661	7,716	7,613	7,855	7,633	8,041	91,863
2006	7,876	7,212	7,924	7,630	8,011	7,634	7,783	7,803	7,603	7,980	7,691	7,972	93,119
2007	7,649	7,252	8,142
Sold for hatching													
2005	4,198	4,333	4,869	4,610	4,660	4,381	4,294	4,441	4,200	3,864	3,849	4,287	51,986
2006	4,129	4,145	4,749	4,384	4,863	4,366	4,283	4,233	4,278	4,027	4,110	4,096	51,663
2007	4,857	4,518	4,786
Home consumption													
2005	8	7	8	8	8	8	8	8	8	8	8	8	95
2006	8	8	8	8	8	8	8	8	8	8	8	8	96
2007	8	8	8
Total value of disposition of eggs													
2005	12,169	11,209	12,462	11,954	12,585	12,063	11,963	12,165	11,821	11,727	11,490	12,336	143,944
2006	12,013	11,365	12,681	12,022	12,882	12,008	12,074	12,044	11,889	12,015	11,809	12,076	144,878
2007	12,514	11,778	12,936

Table 5-7
Disposition of eggs by province, quantity and value by province — Ontario

	Jan.	Feb.	Mar.	Apr.	May	June	July	Aug.	Sept.	Oct.	Nov.	Dec.	Annual total
quantity, in thousands of dozens													
Sold for consumption													
2005	17,528	15,645	17,081	16,627	17,404	16,995	17,443	17,379	16,932	17,470	17,071	17,507	205,082
2006	17,279	15,641	17,273	16,813	17,484	16,956	17,462	17,227	16,619	17,067	16,838	17,905	204,564
2007	17,704	15,905	17,411
Sold for hatching													
2005	1,661	1,640	1,691	1,688	1,592	1,619	1,569	1,569	1,489	1,483	1,473	1,476	18,949
2006	1,409	1,443	1,597	1,500	1,694	1,427	1,596	1,437	1,424	1,479	1,541	1,466	18,012
2007	1,562	1,414	1,605
Home consumption													
2005	33	33	33	33	33	33	33	33	33	33	33	33	396
2006	33	33	33	33	33	33	33	33	33	33	33	33	396
2007	33	33	33
Leakers and rejects													
2005	382	344	374	365	378	371	379	377	367	378	369	378	4,462
2006	372	340	376	365	382	366	380	372	360	370	366	386	4,435
2007	384	345	379
Total disposition of eggs													
2005	19,604	17,662	19,179	18,713	19,407	19,018	19,424	19,358	18,821	19,364	18,946	19,394	228,889
2006	19,093	17,457	19,279	18,711	19,593	18,782	19,471	19,069	18,436	18,949	18,778	19,790	227,407
2007	19,683	17,697	19,428
value, in thousands of dollars													
Sold for consumption													
2005	17,317	15,096	16,508	16,073	16,821	16,426	16,863	17,188	16,453	17,000	16,609	17,032	199,386
2006	17,246	16,045	17,699	17,380	18,072	17,526	18,051	17,847	17,232	17,692	17,450	18,552	210,792
2007	17,459	16,398	18,609
Sold for hatching													
2005	5,216	5,150	5,310	5,385	5,077	5,214	5,052	5,051	4,795	4,760	4,729	4,766	60,505
2006	4,651	4,761	5,255	4,934	5,538	4,667	5,187	4,669	4,657	4,837	5,161	4,909	59,226
2007	5,466	4,993	5,667
Home consumption													
2005	42	41	44	44	44	44	44	44	42	45	45	45	524
2006	46	47	44	44	44	44	44	44	46	46	46	46	541
2007	45	46	44
Total value of disposition of eggs													
2005	22,575	20,287	21,862	21,502	21,942	21,684	21,959	22,283	21,290	21,805	21,383	21,843	260,415
2006	21,943	20,853	22,998	22,358	23,654	22,237	23,282	22,560	21,935	22,575	22,657	23,507	270,559
2007	22,970	21,437	24,320

Table 5-8
Disposition of eggs by province, quantity and value by province — Manitoba

	Jan.	Feb.	Mar.	Apr.	May	June	July	Aug.	Sept.	Oct.	Nov.	Dec.	Annual total
quantity, in thousands of dozens													
Sold for consumption													
2005	7,014	6,322	6,931	6,574	6,762	6,593	6,815	6,800	6,521	6,618	6,384	6,705	80,039
2006	6,678	6,009	6,458	6,195	6,577	6,373	6,595	6,588	6,258	6,428	6,295	6,658	77,112
2007	6,563	5,862	6,646
Sold for hatching													
2005	212	240	287	261	297	290	269	274	260	259	286	268	3,205
2006	280	247	272	276	294	283	281	259	268	279	281	265	3,284
2007	274	273	310
Home consumption													
2005	15	15	15	15	15	15	15	15	15	15	15	15	180
2006	15	15	15	15	15	15	15	15	15	15	15	15	180
2007	15	15	15
Leakers and rejects													
2005	144	131	144	136	141	137	141	141	135	137	133	139	1,659
2006	139	125	134	129	137	133	137	136	130	134	131	138	1,603
2007	136	122	139
Total disposition of eggs													
2005	7,385	6,708	7,377	6,986	7,215	7,035	7,240	7,230	6,931	7,029	6,818	7,127	85,083
2006	7,112	6,396	6,879	6,615	7,023	6,804	7,028	6,998	6,671	6,856	6,722	7,076	82,179
2007	6,988	6,272	7,110
value, in thousands of dollars													
Sold for consumption													
2005	4,773	4,316	4,710	4,441	4,636	4,547	4,802	5,009	4,845	4,900	4,817	5,043	56,839
2006	4,504	4,085	4,564	4,176	4,479	4,358	4,617	4,785	4,548	4,694	4,640	4,884	54,334
2007	4,119	3,750	4,222
Sold for hatching													
2005	771	875	1,046	952	1,083	1,056	980	998	947	942	1,040	976	11,666
2006	1,018	900	991	1,004	1,068	1,029	1,021	944	976	1,016	1,023	964	11,954
2007	998	993	1,186
Home consumption													
2005	13	13	13	13	13	13	14	15	15	15	15	15	167
2006	13	13	13	13	13	13	13	15	15	15	15	15	166
2007	13	13	13
Total value of disposition of eggs													
2005	5,557	5,204	5,769	5,406	5,732	5,616	5,796	6,022	5,807	5,857	5,872	6,034	68,672
2006	5,535	4,998	5,568	5,193	5,560	5,400	5,651	5,744	5,539	5,725	5,678	5,863	66,454
2007	5,130	4,756	5,421

Table 5-9
Disposition of eggs by province, quantity and value by province — Saskatchewan

	Jan.	Feb.	Mar.	Apr.	May	June	July	Aug.	Sept.	Oct.	Nov.	Dec.	Annual total
quantity, in thousands of dozens													
Sold for consumption													
2005	1,735	1,560	1,657	1,559	1,698	1,728	1,800	1,781	1,712	1,801	1,761	1,766	20,558
2006	1,776	1,607	1,650	1,501	1,511	1,474	1,549	1,561	1,446	1,488	1,521	1,522	18,606
2007	1,519	1,426	1,475
Sold for hatching													
2005	199	188	190	172	191	190	197	182	146	217	210	239	2,319
2006	216	202	184	220	210	178	175	166	127	180	206	175	2,237
2007	198	186	211
Home consumption													
2005	15	15	15	15	15	15	15	15	15	15	15	15	180
2006	15	15	15	15	15	15	15	15	15	15	15	15	180
2007	15	15	15
Leakers and rejects													
2005	39	35	37	35	38	38	40	39	37	40	39	40	457
2006	40	36	37	35	35	33	35	35	32	33	35	34	420
2007	34	32	34
Total disposition of eggs													
2005	1,988	1,798	1,899	1,781	1,942	1,971	2,052	2,017	1,910	2,073	2,025	2,060	23,514
2006	2,047	1,860	1,886	1,771	1,771	1,700	1,774	1,777	1,620	1,716	1,777	1,746	21,443
2007	1,766	1,659	1,735
value, in thousands of dollars													
Sold for consumption													
2005	1,892	1,698	1,813	1,712	1,863	1,896	1,977	1,937	1,856	1,968	1,922	1,928	22,462
2006	1,847	1,699	1,751	1,614	1,626	1,587	1,671	1,706	1,584	1,566	1,597	1,597	19,845
2007	1,515	1,503	1,559
Sold for hatching													
2005	724	684	691	626	695	690	717	661	532	788	764	871	8,443
2006	785	735	669	802	764	649	636	604	461	654	750	636	8,145
2007	719	676	809
Home consumption													
2005	19	19	19	19	19	19	19	19	18	20	20	20	230
2006	19	19	19	19	19	19	19	20	20	20	20	20	233
2007	19	20	19
Total value of disposition of eggs													
2005	2,635	2,401	2,523	2,357	2,577	2,605	2,713	2,617	2,406	2,776	2,706	2,819	31,135
2006	2,651	2,453	2,439	2,435	2,409	2,255	2,326	2,330	2,065	2,240	2,367	2,253	28,223
2007	2,253	2,199	2,387

Table 5-10

Disposition of eggs by province, quantity and value by province — Alberta

	Jan.	Feb.	Mar.	Apr.	May	June	July	Aug.	Sept.	Oct.	Nov.	Dec.	Annual total
quantity, in thousands of dozens													
Sold for consumption													
2005	3,256	2,906	3,170	3,059	3,211	3,103	3,176	3,185	3,079	3,202	3,163	3,326	37,836
2006	3,346	2,979	3,250	3,177	3,186	3,025	3,225	3,252	3,150	3,277	3,201	3,321	38,389
2007	3,322	2,973	3,251
Sold for hatching													
2005	567	505	568	521	600	546	611	570	545	530	544	538	6,646
2006	553	467	497	486	524	507	537	563	538	545	547	509	6,273
2007	581	521	609
Home consumption													
2005	33	33	33	33	33	33	33	33	33	33	33	33	396
2006	33	33	33	33	33	33	33	33	33	33	33	33	396
2007	33	33	33
Leakers and rejects													
2005	77	68	75	72	76	73	76	75	73	75	74	77	891
2006	78	69	75	73	74	71	75	77	74	77	75	77	895
2007	78	70	77
Total disposition of eggs													
2005	3,933	3,512	3,846	3,685	3,920	3,755	3,896	3,863	3,730	3,840	3,814	3,974	45,769
2006	4,010	3,548	3,855	3,769	3,817	3,636	3,870	3,925	3,795	3,932	3,856	3,940	45,953
2007	4,014	3,597	3,970
value, in thousands of dollars													
Sold for consumption													
2005	3,555	3,170	3,471	3,344	3,511	3,393	3,478	3,479	3,370	3,527	3,482	3,658	41,438
2006	3,560	3,223	3,518	3,468	3,480	3,306	3,555	3,619	3,505	3,520	3,436	3,562	41,752
2007	3,414	3,224	3,526
Sold for hatching													
2005	2,145	1,909	2,147	1,970	2,270	1,947	2,181	2,036	1,947	1,894	1,942	1,920	24,308
2006	1,975	1,666	1,775	1,735	1,869	1,839	1,951	2,042	1,955	1,980	1,987	1,846	22,620
2007	2,108	1,891	2,209
Home consumption													
2005	40	40	41	41	41	41	41	41	39	41	41	41	488
2006	41	41	41	42	42	42	42	43	43	41	41	41	500
2007	40	42	41
Total value of disposition of eggs													
2005	5,740	5,119	5,659	5,355	5,822	5,381	5,700	5,556	5,356	5,462	5,465	5,619	66,234
2006	5,576	4,930	5,334	5,245	5,391	5,187	5,548	5,704	5,503	5,541	5,464	5,449	64,872
2007	5,562	5,157	5,776

Table 5-11
Disposition of eggs by province, quantity and value by province — British Columbia

	Jan.	Feb.	Mar.	Apr.	May	June	July	Aug.	Sept.	Oct.	Nov.	Dec.	Annual total
quantity, in thousands of dozens													
Sold for consumption													
2005	3,235	2,726	3,152	3,318	3,652	3,647	3,925	4,169	4,181	4,548	4,519	4,590	45,662
2006	4,070	4,153	4,518	4,450	4,717	4,506	4,528	4,532	4,378	4,538	4,401	4,556	53,347
2007	4,008	4,126	4,487
Sold for hatching													
2005	267	360	561	469	716	657	791	838	850	784	766	810	7,869
2006	835	717	801	786	789	757	761	774	726	698	751	743	9,136
2007	809	744	778
Home consumption													
2005	20	20	20	20	20	20	20	20	20	20	20	20	240
2006	20	20	20	20	20	20	20	20	20	20	20	20	240
2007	20	20	20
Leakers and rejects													
2005	70	62	74	76	87	86	94	100	100	106	106	108	1,069
2006	98	97	106	105	110	105	106	106	102	105	103	106	1,249
2007	96	97	105
Total disposition of eggs													
2005	3,592	3,168	3,807	3,883	4,475	4,410	4,830	5,127	5,151	5,458	5,411	5,528	54,840
2006	5,023	4,987	5,445	5,361	5,636	5,388	5,415	5,432	5,226	5,361	5,275	5,425	63,972
2007	4,933	4,987	5,390
value, in thousands of dollars													
Sold for consumption													
2005	3,720	3,105	3,607	3,792	4,154	4,146	4,458	4,767	4,777	5,244	5,208	5,272	52,250
2006	4,596	4,758	5,189	5,147	5,455	5,211	5,241	5,199	5,033	5,042	4,889	5,044	60,804
2007	4,214	4,574	4,985
Sold for hatching													
2005	1,012	1,365	2,122	1,771	2,707	2,485	2,730	2,893	2,934	2,703	2,641	2,753	28,116
2006	2,840	2,515	2,810	2,782	2,769	2,655	2,641	2,687	2,518	2,416	2,621	2,591	31,845
2007	3,025	2,784	3,222
Home consumption													
2005	28	28	31	31	31	31	31	31	26	32	32	30	362
2006	29	29	31	31	31	31	31	31	32	31	31	30	368
2007	28	30	31
Total value of disposition of eggs													
2005	4,760	4,498	5,760	5,594	6,892	6,662	7,219	7,691	7,737	7,979	7,881	8,055	80,728
2006	7,465	7,302	8,030	7,960	8,255	7,897	7,913	7,917	7,583	7,489	7,541	7,665	93,017
2007	7,267	7,388	8,238

Table 6
Stocks of frozen eggs and edible dried eggs, Canada

	Jan.	Feb.	Mar.	Apr.	May	June	July	Aug.	Sept.	Oct.	Nov.	Dec.
	tonnes											
Whole eggs, total												
2005	817	1,132	1,187	1,017	923	837	734	859	755	671	757	727
2006	549	948	1,250	1,151	1,178	1,302	1,088	1,176	1,165	1,008	832	661
2007	567	1,049	965	1,120	1,290
Yolk, total												
2005	497	552	566	553	548	605	776	687	639	609	663	765
2006	710	717	956	1,121	924	813	860	797	877	896	781	738
2007	639	849	938	1,054	718
Whites, total												
2005	163	148	147	128	122	100	119	91	124	83	87	137
2006	75	97	97	126	128	141	101	134	126	98	108	125
2007	79	120	78	90	93
Edible dried eggs												
2005	1,097	1,096	1,064	1,088	1,056	1,064	1,016	835	907	998	744	1,074
2006	862	986	1,042	1,009	804	913	994	1,131	1,090	1,214	1,164	1,029
2007	789	795	754	724	673
Dried, whole and mixes												
2005	358	291	340	376	396	303	333	293	284	229	232	286
2006	262	227	223	206	194	195	227	231	173	169	231	199
2007	172	188	243	256	209
Dried, yolk and mixes												
2005	359	419	338	339	313	427	273	146	170	210	211	262
2006	207	311	301	261	217	234	243	238	139	152	145	143
2007	137	161	108	124	149
Dried albumen												
2005	380	386	386	373	347	334	411	396	452	559	301	525
2006	392	448	518	541	393	485	524	662	778	893	788	686
2007	480	446	402	344	315

Table 7
Supply and disposition of eggs

	2002	2003	2004	2005	2006
	in thousands of dozens				
Production	575,789	577,612	554,218	586,805	588,357
Beginning stocks	9,026	10,737	8,697	12,230	10,830
Imports	42,880	44,304	68,025	46,536	41,494
Total supply	627,695	632,653	630,940	645,571	640,681
Exports	59,632	55,915	61,697	60,442	50,642
Used for hatching	61,985	61,614	59,134	60,277	59,276
Leakers and rejects	11,051	11,047	10,534	11,239	11,249
Ending stocks	10,737	8,697	12,230	10,830	11,087
Net supply	484,290	495,380	487,345	502,783	508,427
	dozens				
Food available per person	15.4	15.6	15.2	15.6	15.6
Food available per person, adjusted for loss ¹	12.2	12.4	12.0	12.3	12.3

1. Experimental, use with caution. The data have been adjusted for retail, household, cooking and plate loss.

Table 8
Average prices of eggs sold for consumption in Canada, by month

	Jan.	Feb.	Mar.	Apr.	May	June	July	Aug.	Sept.	Oct.	Nov.	Dec.
	dollars per dozen											
1999	0.98	0.98	0.98	0.99	1.00	1.00	1.02	1.01	1.01	1.01	1.00	0.99
2000	0.99	0.99	0.99	0.99	1.00	1.00	0.98	1.02	1.03	1.03	1.04	1.04
2001	1.02	1.02	1.04	1.04	1.05	1.05	1.05	1.05	1.04	1.05	1.07	1.06
2002	1.05	1.05	1.05	1.05	1.05	1.05	1.05	1.09	1.07	1.07	1.07	1.10
2003	1.05	1.06	1.06	1.06	1.06	1.06	1.07	1.07	1.07	1.07	1.07	1.07
2004	1.07	1.08	1.08	1.09	1.11	1.13	1.14	1.15	1.15	1.12	1.12	1.11
2005	1.00	0.99	0.99	0.99	0.99	0.99	1.00	1.01	1.01	1.01	1.02	1.02
2006	1.00	1.02	1.02	1.03	1.03	1.03	1.03	1.03	1.04	1.03	1.03	1.02
2007	0.97	1.00	1.02

Table 9
Report of processed eggs production, Canada

	Whole egg	Yolk	Albumen	Total processed egg
	kilograms			
Total break				
2004	24,776,368	7,620,863	13,728,322	46,125,553
2005	26,991,320	8,745,305	16,149,294	51,885,919
2006	29,032,174	8,603,393	16,785,691	54,421,258
Frozen eggs				
2004	3,120,313	2,476,640	759,878	6,356,831
2005	2,680,171	2,860,990	912,089	6,453,250
2006	2,458,411	3,084,370	700,203	6,242,984
Liquid eggs				
2004	19,384,914	2,419,455	4,790,931	26,595,300
2005	22,333,496	3,109,602	4,879,711	30,322,809
2006	21,120,932	2,450,719	5,894,230	29,465,881
Dried eggs				
2004	895,982	1,306,663	1,301,471	3,504,116
2005	964,512	1,201,930	1,673,582	3,840,024
2006	1,066,072	1,018,012	1,899,680	3,983,764

Poultry meat production and value

Concepts

Poultry meat production and value are estimated for chicken meat (including stewing hens) and turkey meat sold by producers as well as that consumed by these producers. Production is measured in both the number of birds slaughtered and the eviscerated weight of the slaughtered birds. Estimates of quantities sold consist of commercial and non-commercial slaughter and are made at the provincial level. Commercial slaughter is adjusted for inter-provincial and international movement. Commercial slaughter includes all birds that have been slaughtered in registered slaughter houses while non-commercial slaughter consists of any birds that may be slaughtered on farms. Poultry meat production is valued at the average price per kilogram (eviscerated weight basis) received by producers. Prices include any bonuses and premiums which can be attributed to specific commodities and exclude fees deducted before the producer is paid (e.g. storage, transport, and administration costs).

Home consumption is the amount of poultry meat available for consumption by producers and their immediate families. This amount is valued at market prices as it represents the income producers would have received had the product been sold.

Methods

The major administrative source of data for poultry meat production and value is Agriculture and Agri-Food Canada. Inspectors from the Canadian Food Inspection Agency (CFIA) collect quantity data while inspecting meat at processing plants as legislated under the *Meat Inspection Act*. Unless specified, these data are used as published, without further adjustment. Commercial slaughter represents all birds slaughtered in registered processing plants. The quantity and weight of all birds slaughtered in these facilities are reported to and published by AAFC.

Non-commercial slaughter is estimated based on data provided weekly to AAFC by registered hatcheries on the placement of chicks in small lots, intended to produce meat. The placement data are adjusted for death loss and birds kept for laying to arrive at an estimate of chickens that reach maturity. Estimates of both death loss and the time required for chicks to reach maturity are obtained from industry specialists. Non-commercial slaughter is further divided into home consumption and birds sold. Home consumption is calculated by multiplying quantity of food available for consumption of the given poultry meat by the human population of farms producing that kind of poultry.

The human population on farms is derived from the linkage of the Agriculture and the Population Censuses.

Two prices obtained from registered processing plants, and published by AAFC, are used to calculate the value of chicken meat production: one for chickens weighing less than 2.3 kg and another for those weighing 2.3 kg and over. Prices for the corresponding categories are weighted by the quantity produced to obtain the total value. The price for chickens weighing 2.3 kilograms and over is used in calculating the value of production for chickens slaughtered on farms (including home consumption).

Data on stewing hen production and prices are obtained from registered processing plant reports provided to AAFC. No calculation is made for stewing hens slaughtered on farms since the amount is considered negligible. Home consumption is calculated in the same manner as the chicken meat production.

Turkey meat production is based on birds slaughtered in registered slaughter houses, as reported by AAFC, and non-commercial slaughter. Non-commercial slaughter, turkeys slaughtered on farms, is estimated using data on turkey inventories from the most recent Census of Agriculture. Home consumption is calculated in the same manner as the chicken meat production.

Two prices are used to determine the value of turkey meat production: one for turkeys weighing less than 5.0 kg and another for those weighing 5.0 kg and over. Prices for the corresponding categories are multiplied by the quantity produced to obtain their value.

Data quality

Data on number of birds sold, eviscerated weight and value are obtained through administrative sources. Producers are paid for the birds which they sell through registered slaughter houses on the basis of these administrative records. Because of this process, the quality of the administrative data is deemed to be high. Registered slaughter houses account for approximately 99% of total poultry production. This implies that total production values are also good. Administrative sources are subject to non-sampling errors such as omissions, duplications and mistakes in reporting, recording and processing the data. The effects of these errors cannot be measured directly.

Although no systematic revisions are undertaken for poultry meat data, revisions that do occur reflect updates resulting from late entries and corrections due to misclassification and data entry errors. Overall, the changes between the original and revised numbers are very small (e.g. less than 1% for chicken and turkey).

Egg production and value

Concepts

Total egg production in Canada and the provinces includes all eggs sold for consumption, consumed by producers, sold for hatching, leakers and rejects. Production from registered, non-registered as well as hatchery supply flocks are included in the estimates.

The value of egg production is calculated at the provincial level using different prices for eggs produced by the three different types of flocks listed above. These prices include any bonuses and premiums which can be attributed to specific commodities and exclude fees deducted before the producer is paid (e.g. storage, transport and administration costs).

Egg production is derived using average layer numbers and their derived rates of lay. Laying hens include all layers 19 weeks and older except for layers in hatchery supply flocks where layers are 26 weeks and older. Layer numbers and average rates of lay are obtained for the three types of operations (registered flocks, non-registered flocks and hatchery supply flocks).

Methods

Registered flocks have to be registered with and provide information to provincial egg marketing boards. Layer numbers in registered flocks are supplied by the CEMA, the regulatory board for the egg producing industry. The agency, in turn, receives data from the provincial egg marketing boards. These data are used directly in the estimates without adjustments.

Non-registered flocks are those with fewer birds than the limits set by the provincial egg marketing boards. These limits vary by province and can range from 100 to 500 birds. Layer numbers for the non-registered flocks are estimated using Census data.

Hatchery supply flocks produce hatching eggs for both egg and meat type birds. Layers in hatchery supply flocks are estimated by Statistics Canada based on the number of birds (broilers) provided by Canadian Broiler Hatching Egg Marketing Agency, information on egg sets from CEMA and an average rate of lay for each type of bird.

Rates of lay, at the provincial level, for registered and non-registered flocks and hatchery supply flocks are estimated by industry specialists.

Estimates of all layers, rates of lay and egg production are prepared monthly using administrative data. Layers in registered flocks account for the bulk of the layer population and these data are available weekly from the CEMA.

Monthly estimates for non-registered flocks are made using historical seasonal patterns. Rates of lay do not fluctuate dramatically.

Shifts on rates of lay are made on the basis of monthly egg gradings collected by CEMA from registered grading stations.

The value of egg production for registered flocks is calculated using prices provided by CEMA, which regulates all prices paid to producers. Prices for the non-registered flocks are calculated based on industry information. In the case of eggs produced by the hatchery supply flock, all eggs are valued at prices paid to broiler egg producers as provided by the Canadian Broiler Hatching Egg Marketing Agency. Production estimates are simply multiplied by the prices to obtain the total value of production.

The quality of layer numbers in registered flocks is deemed to be high since the number of laying hens in these flocks is set by quota allocation and the flocks are subject to regular audits. The vast majority of layers are found in the registered flocks and thus, total layer estimates can also be considered to be of high quality. Based on the 2001 Census of Agriculture, more than 90% of all layers in each province were in registered flocks except for Saskatchewan and Alberta, where the totals were 79% and 86% respectively.

Revisions

Layer numbers in registered flocks are collected through the CEMA and are subject to minor revisions. Monthly layer estimates in non-registered flocks are revised, if necessary, after the results of the Census of Agriculture are available.

Rates of lay for both registered and non-registered flocks are assessed monthly based on administrative data published by CEMA on eggs graded at registered stations.

Food Available - Poultry and Eggs

Concepts

Statistics Canada's Agriculture Division produces data indicating the amount of food available for consumption along with estimated quantities of food available, adjusted for losses.

The amount of food available per person represents what is available for consumption on average for the total Canadian population. The estimates do not indicate total poultry and egg supplies actually consumed by an individual or specific group of individuals, since estimates are not calculated for waste or spoilage during transportation at the retail level, in households, private institutions or restaurants.

The estimated quantities of food available, adjusted for losses, represent the amount of food available per person data that have been adjusted to account for retail, household, cooking and plate loss. These data are considered experimental in nature and should be used with caution.

Methods

A residual approach is used in calculating quantities of poultry meat and eggs available for human consumption. Annual balance sheets are prepared to determine the consumption levels. Total supply is estimated by adding beginning stocks, annual production and imports. Exports and ending stocks are subtracted from total supply to estimate the net supply. Poultry meat export and import numbers are obtained from AAFC. The amount of food available per person is determined by dividing net supply by the total Canadian population at July 1 each year. Population numbers are obtained from the Demography Division of Statistics Canada. To estimate the amount food available, adjusted for losses, factors are applied to the amount of food available per person data to account for retail, household, cooking and plate loss.

Net supply for eggs is obtained by subtracting exports, eggs used for hatching, leakers and rejects from the total supply. A revised methodology was introduced in 1986 to calculate the quantity of eggs available for consumption where 1.95% of total egg production was subtracted to account for leakers and rejects. Import and export data are supplied by the International Trade Division of Statistics Canada. Net supply is then divided by the July 1 population of Canada to obtain the quantity available per person. To estimate the amount of food available, adjusted for losses, factors are applied to the amount of food available per person data to account for retail, household, cooking and plate loss.

Appendix I

Glossary of terms

Administrative Data: data that are collected by public or private agencies or organizations in the administration of programs or legislation.

Broilers: chickens that are being raised for meat production.

Egg Sets: fertilized eggs in hatcheries that are to hatch into chicks, either to replace laying hens or to be raised for meat production.

Eviscerated Weight: the weight of a bird that has not been de-boned but has had its head, feathers, feet and innards removed.

Food available: represents what is available for consumption on average for the total Canadian population. Net supply is divided by the July 1 Canadian population to arrive at the quantity available. The estimates do not indicate quantities actually consumed by an individual or specific group of individuals, since estimates are not calculated for waste or spoilage during transportation at the retail level, in households, private institutions or restaurants.

Food available, adjusted for losses: the estimated quantities of food available adjusted for losses represent the quantity of food available data that have been adjusted to account for retail, household, cooking and plate loss. These data are considered experimental in nature and should be used with caution.

Hatchery Supply Flock: consists of laying hens which produce eggs that will be hatched into chicks. These chicks will either become laying hens or be raised for meat production.

Leakers and rejects: eggs that do not meet the lowest standard grading requirements.

Stewing hens: laying hens which have completed their laying cycle and are slaughtered for meat.